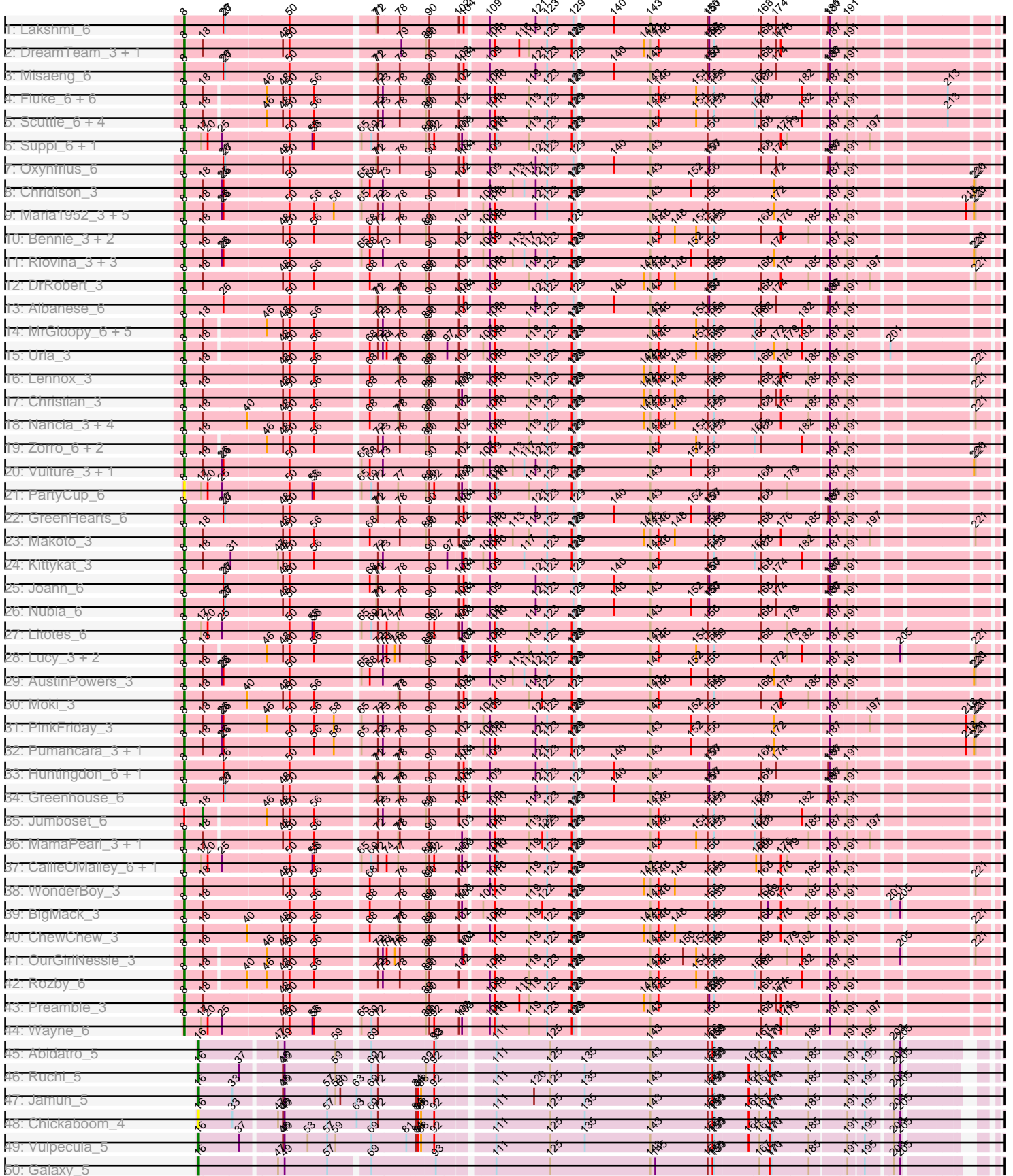
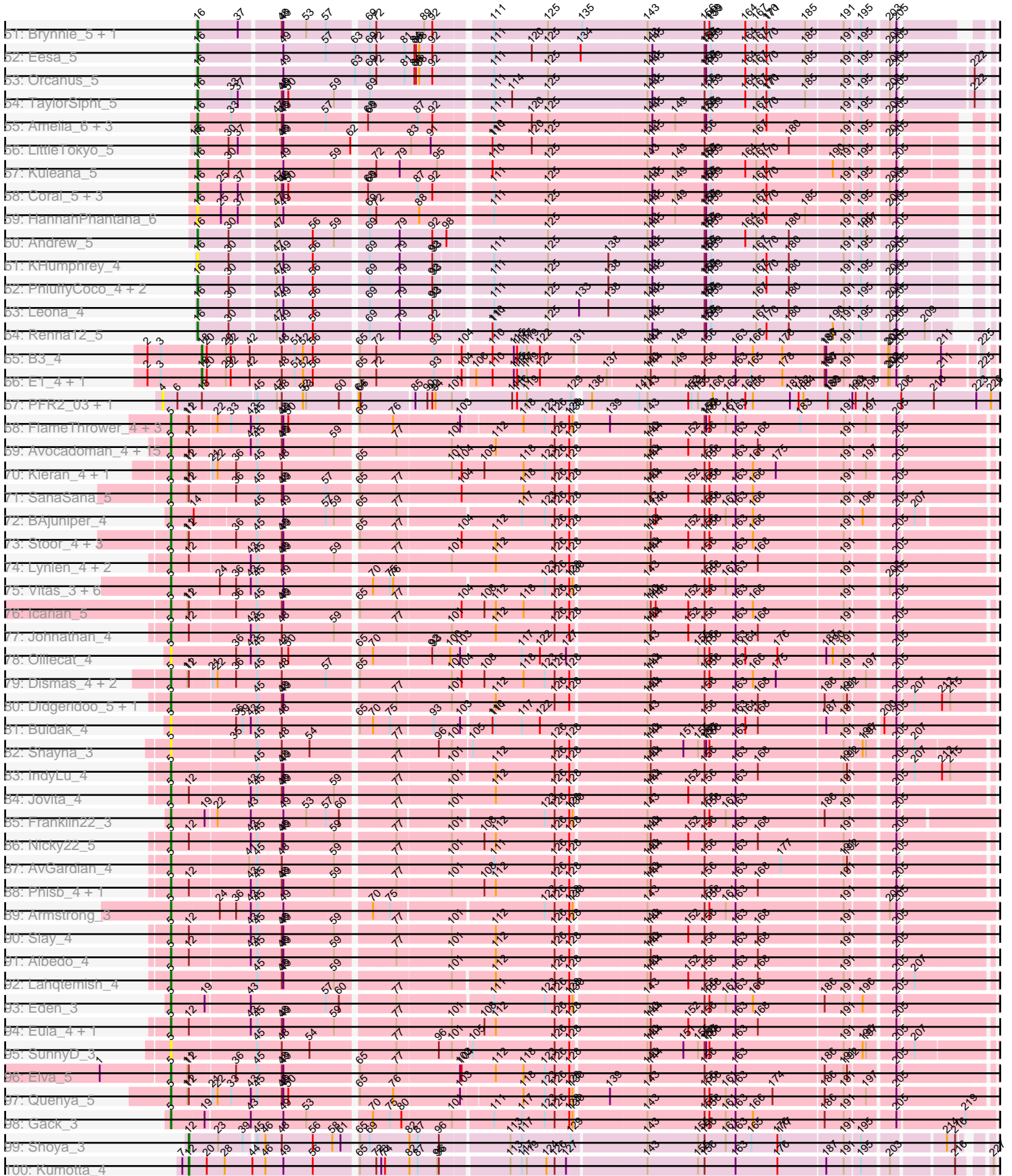


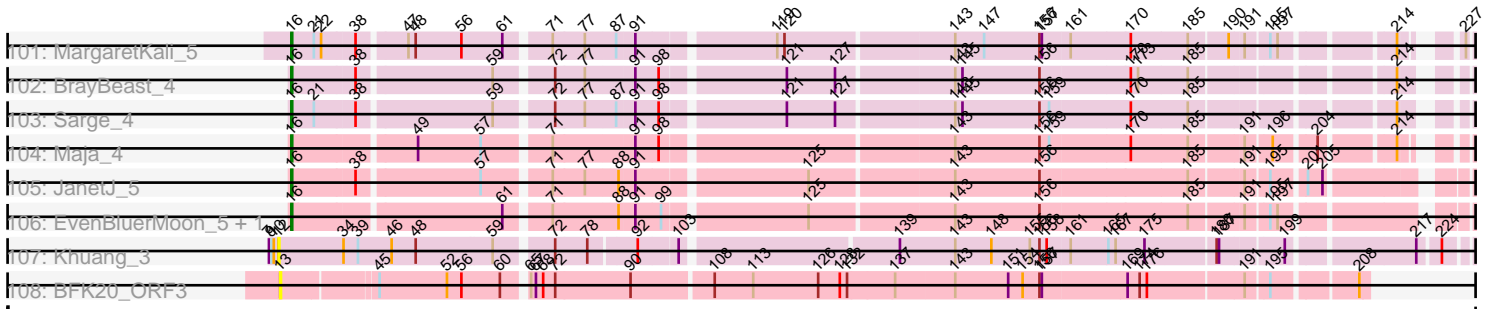
Zoomed Pham 169732



Zoomed Pham 169732



Zoomed Pham 169732



Note: Tracks are now grouped by subcluster and scaled. Switching in subcluster is indicated by changes in track color. Track scale is now set by default to display the region 30 bp upstream of start 1 to 30 bp downstream of the last possible start. If this default region is judged to be packed too tightly with annotated starts, the track will be further scaled to only show that region of the ORF with annotated starts. This action will be indicated by adding "Zoomed" to the title. For starts, yellow indicates the location of called starts comprised solely of Glimmer/GeneMark auto-annotations, green indicates the location of called starts with at least 1 manual gene annotation.

Pham 169732 Report

This analysis was run 07/09/24 on database version 566.

Pham number 169732 has 195 members, 18 are drafts.

Phages represented in each track:

- Track 1 : Lakshmi_6
- Track 2 : DreamTeam_3, Gisselle_3
- Track 3 : Misaeng_6
- Track 4 : Fluke_6, Beethoven_6, Carpal_6, Riverdale_6, TattModd_6, Vallejo_6, Savage2526_6
- Track 5 : Scuttle_6, BrotherBLo_6, Korra_6, Kalizoi_6, Immaculata_6
- Track 6 : Suppi_6, Canowicakte_6
- Track 7 : Oxynfrius_6
- Track 8 : Chridison_3
- Track 9 : Maria1952_3, KingBob_3, Herb_3, Sergei_3, Daiboju_3, Temper16_3
- Track 10 : Bennie_3, HeadNerd_3, Huckleberry_3
- Track 11 : Riovina_3, OMalley_3, Eunoia_3, Aledel_3
- Track 12 : DrRobert_3
- Track 13 : Albanese_6
- Track 14 : MrGloopy_6, Cholula_6, Potatoes_6, RAP15_6, MeganNoll_6, Wawa_6
- Track 15 : Urla_3
- Track 16 : Lennox_3
- Track 17 : Christian_3
- Track 18 : Nancia_3, Bodacious_3, CristinaYang_3, LilStuart_3, Lasagna_3
- Track 19 : Zorro_6, Dino_6, Glenn_6
- Track 20 : Vulture_3, HunterDalle_3
- Track 21 : PartyCup_6
- Track 22 : GreenHearts_6
- Track 23 : Makoto_3
- Track 24 : Kittykat_3
- Track 25 : Joann_6
- Track 26 : Nubia_6
- Track 27 : Litotes_6
- Track 28 : Lucy_3, PitaDog_3, Pterodactyl_3
- Track 29 : AustinPowers_3
- Track 30 : Moki_3
- Track 31 : PinkFriday_3
- Track 32 : Pumancara_3, Supakev_3
- Track 33 : Huntingdon_6, RcigaStruga_6
- Track 34 : Greenhouse_6
- Track 35 : Jumboset_6
- Track 36 : MamaPearl_3, EstebanJulior_3

- Track 37 : CallieOMalley_6, AppleCider_6
- Track 38 : WonderBoy_3
- Track 39 : BigMack_3
- Track 40 : ChewChew_3
- Track 41 : OurGirlNessie_3
- Track 42 : Rozby_6
- Track 43 : Preamble_3
- Track 44 : Wayne_6
- Track 45 : Abidatro_5
- Track 46 : Ruchi_5
- Track 47 : Jamun_5
- Track 48 : Chickaboom_4
- Track 49 : Vulpecula_5
- Track 50 : Galaxy_5
- Track 51 : Brynnie_5, Basilisk_5
- Track 52 : Eesa_5
- Track 53 : Orcanus_5
- Track 54 : TaylorSipt_5
- Track 55 : Amelia_6, Cote_6, Lunar_6, Melons_6
- Track 56 : LittleTokyo_5
- Track 57 : Kuleana_5
- Track 58 : Coral_5, Daob_6, Kepler_5, Polka_5
- Track 59 : HannahPhantana_6
- Track 60 : Andrew_5
- Track 61 : KHumphrey_4
- Track 62 : PhluffyCoco_4, Juno112_4, RedFox_4
- Track 63 : Leona_4
- Track 64 : Renna12_5
- Track 65 : B3_4
- Track 66 : E1_4, Anatole_4
- Track 67 : PFR2_03, PFR1_03
- Track 68 : FlameThrower_4, Bachaco_4, Celaena_4, Katzastrophic_4
- Track 69 : Avocadoman_4, Doobus_4, Finalfrontier_5, Burritobowl_4, Swervy_4, TukTuk_4, Albright_4, BelmontSKP_5, Abigail_4, LimaBean_4, Arroyo_5, SarBear_4, DickRichards_4, Cashington_4, CroZenni_4, AnnaLie_5
- Track 70 : Kieran_4, Sharkboy_4
- Track 71 : SanaSana_5
- Track 72 : BAjuniper_4
- Track 73 : Stoor_4, BabyYoda_4, DirtyBubble_4, Stromboli_4
- Track 74 : Lynlen_4, Kenzers_4, SansAfet_4
- Track 75 : Vitas_3, Clayda5_3, Bernstein_3, Brahms_3, Rollins_3, Coltrane_3, Skylord_3
- Track 76 : Icarian_5
- Track 77 : Johnathan_4
- Track 78 : Olliecat_4
- Track 79 : Dismas_4, ChiliPepper_4, Rona_4
- Track 80 : Didgeridoo_5, BabyDaisy_5
- Track 81 : Buldak_4
- Track 82 : Shayna_3
- Track 83 : IndyLu_4
- Track 84 : Jovita_4
- Track 85 : Franklin22_3
- Track 86 : Nicky22_5

- Track 87 : AvGardian_4
- Track 88 : Phisb_4, BubbaBear_4
- Track 89 : Armstrong_3
- Track 90 : Slay_4
- Track 91 : Albedo_4
- Track 92 : Lahqtemish_4
- Track 93 : Eden_3
- Track 94 : Eula_4, QMacho_5
- Track 95 : SunnyD_3
- Track 96 : Elva_5
- Track 97 : Quenya_5
- Track 98 : Gack_3
- Track 99 : Shoya_3
- Track 100 : Kumotta_4
- Track 101 : MargaretKali_5
- Track 102 : BrayBeast_4
- Track 103 : Sarge_4
- Track 104 : Maja_4
- Track 105 : JanetJ_5
- Track 106 : EvenBluerMoon_5, Aoka_5
- Track 107 : Khuang_3
- Track 108 : BFK20_ORF3

Summary of Final Annotations (See graph section above for start numbers):

The start number called the most often in the published annotations is 8, it was called in 81 of the 177 non-draft genes in the pham.

Genes that call this "Most Annotated" start:

- Albanese_6, Aledel_3, AppleCider_6, AustinPowers_3, Beethoven_6, Bennie_3, BigMack_3, Bodacious_3, BrotherBLo_6, CallieOMalley_6, Canowicakte_6, Carpal_6, ChewChew_3, Cholula_6, Chridison_3, Christian_3, CristinaYang_3, Daiboju_3, Dino_6, DrRobert_3, DreamTeam_3, EstebanJulior_3, Eunoia_3, Fluke_6, Gisselle_3, Glenn_6, GreenHearts_6, Greenhouse_6, HeadNerd_3, Herb_3, Huckleberry_3, HunterDalle_3, Huntingdon_6, Immaculata_6, Joann_6, Kalizoi_6, KingBob_3, Kittykat_3, Korra_6, Lakshmi_6, Lasagna_3, Lennox_3, LilStuart_3, Litotes_6, Lucy_3, Makoto_3, MamaPearl_3, Maria1952_3, MeganNoll_6, Misaeng_6, Moki_3, MrGloopy_6, Nancia_3, Nubia_6, OMalley_3, OurGirlNessie_3, Oxynfrius_6, PartyCup_6, PinkFriday_3, PitaDog_3, Potatoes_6, Preamble_3, Pterodactyl_3, Pumancara_3, RAP15_6, RcigaStruga_6, Riovina_3, Riverdale_6, Rozby_6, Savage2526_6, Scuttle_6, Sergei_3, Supakev_3, Suppi_6, TattModd_6, Temper16_3, Urla_3, Vallejo_6, Vulture_3, Wawa_6, Wayne_6, WonderBoy_3, Zorro_6,

Genes that have the "Most Annotated" start but do not call it:

- Jumboset_6,

Genes that do not have the "Most Annotated" start:

- Abidatro_5, Abigail_4, Albedo_4, Albright_4, Amelia_6, Anatole_4, Andrew_5, AnnaLie_5, Aoka_5, Armstrong_3, Arroyo_5, AvGardian_4, Avocadoman_4, B3_4,

BAjuniper_4, BFK20_ORF3, BabyDaisy_5, BabyYoda_4, Bachaco_4, Basilisk_5, BelmontSKP_5, Bernstein_3, Brahms_3, BrayBeast_4, Brynnie_5, BubbaBear_4, Buldak_4, Burritobowl_4, Cashington_4, Celaena_4, Chickaboom_4, ChiliPepper_4, Clayda5_3, Coltrane_3, Coral_5, Cote_6, CroZenni_4, Daob_6, DickRichards_4, Didgeridoo_5, DirtyBubble_4, Dismas_4, Doobus_4, E1_4, Eden_3, Eesa_5, Elva_5, Eula_4, EvenBluerMoon_5, Finalfrontier_5, FlameThrower_4, Franklin22_3, Gack_3, Galaxy_5, HannahPhantana_6, Icarian_5, IndyLu_4, Jamun_5, JanetJ_5, Johnathan_4, Jovita_4, Juno112_4, KHumphrey_4, Katzastrophic_4, Kenzers_4, Kepler_5, Khuang_3, Kieran_4, Kuleana_5, Kumotta_4, Lahqtemish_4, Leona_4, LimaBean_4, LittleTokyo_5, Lunar_6, Lynlen_4, Maja_4, MargaretKali_5, Melons_6, Nicky22_5, Olliecat_4, Orcanus_5, PFR1_03, PFR2_03, Phisb_4, PhluffyCoco_4, Polka_5, QMacho_5, Quenya_5, RedFox_4, Renna12_5, Rollins_3, Rona_4, Ruchi_5, SanaSana_5, SansAfet_4, SarBear_4, Sarge_4, Sharkboy_4, Shayna_3, Shoya_3, Skylord_3, Slay_4, Stoor_4, Stromboli_4, SunnyD_3, Swervy_4, TaylorSipt_5, TukTuk_4, Vitas_3, Vulpecula_5,

Summary by start number:

Start 4:

- Found in 2 of 195 (1.0%) of genes in pham
- No Manual Annotations of this start.
- Called 100.0% of time when present
- Phage (with cluster) where this start called: PFR1_03 (BX), PFR2_03 (BX),

Start 5:

- Found in 66 of 195 (33.8%) of genes in pham
- Manual Annotations of this start: 60 of 177
- Called 100.0% of time when present
- Phage (with cluster) where this start called: Abigail_4 (EB), Albedo_4 (EB), Albright_4 (EB), AnnaLie_5 (EB), Armstrong_3 (EB), Arroyo_5 (EB), AvGardian_4 (EB), Avocadoman_4 (EB), BAjuniper_4 (EB), BabyDaisy_5 (EB), BabyYoda_4 (EB), Bachaco_4 (EB), BelmontSKP_5 (EB), Bernstein_3 (EB), Brahms_3 (EB), BubbaBear_4 (EB), Buldak_4 (EB), Burritobowl_4 (EB), Cashington_4 (EB), Celaena_4 (EB), ChiliPepper_4 (EB), Clayda5_3 (EB), Coltrane_3 (EB), CroZenni_4 (EB), DickRichards_4 (EB), Didgeridoo_5 (EB), DirtyBubble_4 (EB), Dismas_4 (EB), Doobus_4 (EB), Eden_3 (EB), Elva_5 (EB), Eula_4 (EB), Finalfrontier_5 (EB), FlameThrower_4 (EB), Franklin22_3 (EB), Gack_3 (EB), Icarian_5 (EB), IndyLu_4 (EB), Johnathan_4 (EB), Jovita_4 (EB), Katzastrophic_4 (EB), Kenzers_4 (EB), Kieran_4 (EB), Lahqtemish_4 (EB), LimaBean_4 (EB), Lynlen_4 (EB), Nicky22_5 (EB), Olliecat_4 (EB), Phisb_4 (EB), QMacho_5 (EB), Quenya_5 (EB), Rollins_3 (EB), Rona_4 (EB), SanaSana_5 (EB), SansAfet_4 (EB), SarBear_4 (EB), Sharkboy_4 (EB), Shayna_3 (EB), Skylord_3 (EB), Slay_4 (EB), Stoor_4 (EB), Stromboli_4 (EB), SunnyD_3 (EB), Swervy_4 (EB), TukTuk_4 (EB), Vitas_3 (EB),

Start 8:

- Found in 84 of 195 (43.1%) of genes in pham
- Manual Annotations of this start: 81 of 177
- Called 98.8% of time when present
- Phage (with cluster) where this start called: Albanese_6 (AK), Aledel_3 (AK), AppleCider_6 (AK), AustinPowers_3 (AK), Beethoven_6 (AK), Bennie_3 (AK), BigMack_3 (AK), Bodacious_3 (AK), BrotherBLo_6 (AK), CallieOMalley_6 (AK), Canowicakte_6 (AK), Carpal_6 (AK), ChewChew_3 (AK), Cholula_6 (AK), Chridison_3 (AK), Christian_3 (AK), CristinaYang_3 (AK), Daiboju_3 (AK), Dino_6

(AK), DrRobert_3 (AK), DreamTeam_3 (AK), EstebanJulior_3 (AK), Eunoia_3 (AK), Fluke_6 (AK), Gisselle_3 (AK), Glenn_6 (AK), GreenHearts_6 (AK), Greenhouse_6 (AK), HeadNerd_3 (AK), Herb_3 (AK), Huckleberry_3 (AK), HunterDalle_3 (AK), Huntingdon_6 (AK), Immaculata_6 (AK), Joann_6 (AK), Kalizoi_6 (AK), KingBob_3 (AK), Kittykat_3 (AK), Korra_6 (AK), Lakshmi_6 (AK), Lasagna_3 (AK), Lennox_3 (AK), LilStuart_3 (AK), Litotes_6 (AK), Lucy_3 (AK), Makoto_3 (AK), MamaPearl_3 (AK), Maria1952_3 (AK), MeganNoll_6 (AK), Misaeng_6 (AK), Moki_3 (AK), MrGloopy_6 (AK), Nancia_3 (AK), Nubia_6 (AK), OMalley_3 (AK), OurGirlNessie_3 (AK), Oxynfrius_6 (AK), PartyCup_6 (AK), PinkFriday_3 (AK), PitaDog_3 (AK), Potatoes_6 (AK), Preamble_3 (AK), Pterodactyl_3 (AK), Pumancara_3 (AK), RAP15_6 (AK), RcigaStruga_6 (AK), Riovina_3 (AK), Riverdale_6 (AK), Rozby_6 (AK), Savage2526_6 (AK), Scuttle_6 (AK), Sergei_3 (AK), Supakev_3 (AK), Suppi_6 (AK), TattModd_6 (AK), Temper16_3 (AK), Urla_3 (AK), Vallejo_6 (AK), Vulture_3 (AK), Wawa_6 (AK), Wayne_6 (AK), WonderBoy_3 (AK), Zorro_6 (AK),

Start 12:

- Found in 48 of 195 (24.6%) of genes in pham
- Manual Annotations of this start: 2 of 177
- Called 6.2% of time when present
- Phage (with cluster) where this start called: Khuang_3 (UNK), Kumotta_4 (FB), Shoya_3 (FB),

Start 13:

- Found in 1 of 195 (0.5%) of genes in pham
- No Manual Annotations of this start.
- Called 100.0% of time when present
- Phage (with cluster) where this start called: BFK20_ORF3 (singleton),

Start 16:

- Found in 36 of 195 (18.5%) of genes in pham
- Manual Annotations of this start: 30 of 177
- Called 100.0% of time when present
- Phage (with cluster) where this start called: Abidatro_5 (AS1), Amelia_6 (AS2), Andrew_5 (AS3), Aoka_5 (FO), Basilisk_5 (AS1), BrayBeast_4 (FB), Brynnie_5 (AS1), Chickaboom_4 (AS1), Coral_5 (AS2), Cote_6 (AS2), Daob_6 (AS2), Eesa_5 (AS1), EvenBluerMoon_5 (FO), Galaxy_5 (AS1), HannahPhantana_6 (AS2), Jamun_5 (AS1), JanetJ_5 (FO), Juno112_4 (AS3), KHumphrey_4 (AS3), Kepler_5 (AS2), Kuleana_5 (AS2), Leona_4 (AS3), LittleTokyo_5 (AS2), Lunar_6 (AS2), Maja_4 (FO), MargaretKali_5 (FB), Melons_6 (AS2), Orcanus_5 (AS1), PhluffyCoco_4 (AS3), Polka_5 (AS2), RedFox_4 (AS3), Renna12_5 (AS3), Ruchi_5 (AS1), Sarge_4 (FB), TaylorSipht_5 (AS1), Vulpecula_5 (AS1),

Start 18:

- Found in 72 of 195 (36.9%) of genes in pham
- Manual Annotations of this start: 4 of 177
- Called 5.6% of time when present
- Phage (with cluster) where this start called: Anatole_4 (BV), B3_4 (BV), E1_4 (BV), Jumboset_6 (AK),

Summary by clusters:

There are 11 clusters represented in this pham: AS3, AS2, AS1, AK, singleton, BV, EB, FB, UNK, BX, FO,

Info for manual annotations of cluster AK:

- Start number 8 was manually annotated 81 times for cluster AK.
- Start number 18 was manually annotated 1 time for cluster AK.

Info for manual annotations of cluster AS1:

- Start number 16 was manually annotated 10 times for cluster AS1.

Info for manual annotations of cluster AS2:

- Start number 16 was manually annotated 10 times for cluster AS2.

Info for manual annotations of cluster AS3:

- Start number 16 was manually annotated 4 times for cluster AS3.

Info for manual annotations of cluster BV:

- Start number 18 was manually annotated 3 times for cluster BV.

Info for manual annotations of cluster EB:

- Start number 5 was manually annotated 60 times for cluster EB.

Info for manual annotations of cluster FB:

- Start number 12 was manually annotated 2 times for cluster FB.
- Start number 16 was manually annotated 3 times for cluster FB.

Info for manual annotations of cluster FO:

- Start number 16 was manually annotated 3 times for cluster FO.

Gene Information:

Gene: Abidatro_5 Start: 2692, Stop: 4635, Start Num: 16

Candidate Starts for Abidatro_5:

(Start: 16 @2692 has 30 MA's), (47, 2824), (49, 2836), (59, 2929), (69, 2980), (92, 3085), (93, 3088), (111, 3175), (125, 3274), (143, 3454), (156, 3559), (158, 3568), (159, 3571), (167, 3649), (170, 3667), (171, 3670), (185, 3736), (191, 3796), (195, 3820), (203, 3862), (205, 3874), (230, 4018), (236, 4060), (252, 4153), (263, 4246), (267, 4270), (299, 4510), (307, 4594), (310, 4621),

Gene: Abigail_4 Start: 2329, Stop: 4353, Start Num: 5

Candidate Starts for Abigail_4:

(Start: 5 @2329 has 60 MA's), (Start: 12 @2362 has 2 MA's), (43, 2470), (45, 2479), (48, 2524), (49, 2527), (59, 2620), (77, 2719), (101, 2812), (112, 2887), (126, 2995), (128, 3022), (143, 3154), (144, 3160), (152, 3229), (156, 3259), (163, 3313), (168, 3352), (191, 3496), (205, 3574), (284, 4093), (295, 4156), (299, 4222),

Gene: Albanese_6 Start: 4716, Stop: 6734, Start Num: 8

Candidate Starts for Albanese_6:

(Start: 8 @4716 has 81 MA's), (26, 4782), (50, 4893), (71, 5037), (72, 5040), (77, 5076), (78, 5079), (90, 5130), (102, 5181), (104, 5190), (109, 5226), (121, 5310), (123, 5331), (129, 5379), (140, 5445), (143, 5511), (156, 5616), (157, 5619), (168, 5709), (174, 5736), (186, 5826), (187, 5829), (191, 5856), (232, 6111), (236, 6144), (251, 6240), (256, 6267), (282, 6468), (299, 6609), (300, 6624), (307, 6693),

Gene: Albedo_4 Start: 2317, Stop: 4341, Start Num: 5

Candidate Starts for Albedo_4:

(Start: 5 @2317 has 60 MA's), (Start: 12 @2350 has 2 MA's), (43, 2458), (45, 2467), (48, 2512), (49, 2515), (59, 2608), (77, 2707), (101, 2800), (112, 2875), (126, 2983), (128, 3010), (143, 3142), (144, 3148), (156, 3247), (163, 3301), (168, 3340), (191, 3484), (205, 3562), (245, 3844), (284, 4081), (295, 4144), (299, 4210),

Gene: Albright_4 Start: 2329, Stop: 4353, Start Num: 5

Candidate Starts for Albright_4:

(Start: 5 @2329 has 60 MA's), (Start: 12 @2362 has 2 MA's), (43, 2470), (45, 2479), (48, 2524), (49, 2527), (59, 2620), (77, 2719), (101, 2812), (112, 2887), (126, 2995), (128, 3022), (143, 3154), (144, 3160), (152, 3229), (156, 3259), (163, 3313), (168, 3352), (191, 3496), (205, 3574), (284, 4093), (295, 4156), (299, 4222),

Gene: Aledel_3 Start: 2013, Stop: 4040, Start Num: 8

Candidate Starts for Aledel_3:

(Start: 8 @2013 has 81 MA's), (Start: 18 @2043 has 4 MA's), (25, 2076), (26, 2079), (50, 2190), (65, 2307), (68, 2322), (73, 2346), (90, 2427), (102, 2478), (107, 2511), (109, 2523), (113, 2565), (117, 2586), (121, 2607), (123, 2628), (128, 2673), (129, 2676), (143, 2808), (152, 2883), (156, 2913), (172, 3030), (187, 3126), (191, 3153), (220, 3354), (221, 3357), (232, 3417), (256, 3573), (263, 3642), (282, 3774), (292, 3822), (299, 3915), (300, 3930), (307, 3999),

Gene: Amelia_6 Start: 2875, Stop: 4818, Start Num: 16

Candidate Starts for Amelia_6:

(Start: 16 @2875 has 30 MA's), (33, 2935), (47, 3007), (48, 3016), (49, 3019), (57, 3097), (68, 3160), (69, 3163), (87, 3244), (92, 3268), (111, 3358), (120, 3427), (125, 3457), (143, 3637), (145, 3646), (149, 3688), (156, 3742), (157, 3745), (159, 3754), (167, 3832), (170, 3850), (191, 3979), (195, 4003), (203, 4045), (205, 4057), (230, 4201), (236, 4243), (252, 4336), (260, 4399), (263, 4429), (267, 4453), (296, 4642), (299, 4693), (300, 4708), (305, 4762),

Gene: Anatole_4 Start: 2800, Stop: 4233, Start Num: 18

Candidate Starts for Anatole_4:

(2, 2701), (3, 2725), (Start: 18 @2800 has 4 MA's), (20, 2809), (29, 2842), (32, 2851), (42, 2884), (48, 2938), (51, 2962), (52, 2977), (56, 2995), (65, 3067), (72, 3097), (93, 3199), (104, 3244), (106, 3262), (110, 3289), (115, 3328), (116, 3334), (117, 3343), (119, 3352), (122, 3376), (137, 3490), (143, 3559), (144, 3565), (149, 3610), (156, 3664), (163, 3718), (165, 3745), (178, 3802), (186, 3871), (187, 3874), (191, 3901), (202, 3964), (203, 3967), (205, 3979), (211, 4045), (225, 4102), (234, 4150), (240, 4204),

Gene: Andrew_5 Start: 2705, Stop: 4642, Start Num: 16

Candidate Starts for Andrew_5:

(Start: 16 @2705 has 30 MA's), (30, 2759), (47, 2834), (56, 2900), (59, 2939), (69, 2990), (79, 3044), (92, 3092), (98, 3116), (125, 3281), (143, 3461), (145, 3470), (156, 3566), (157, 3569), (159, 3578), (164, 3638), (167, 3656), (180, 3713), (191, 3803), (195, 3827), (197, 3836), (205, 3881), (236, 4067), (263, 4253), (267, 4277), (277, 4352), (289, 4412), (296, 4466), (299, 4517), (300, 4532),

Gene: AnnaLie_5 Start: 2675, Stop: 4699, Start Num: 5

Candidate Starts for AnnaLie_5:

(Start: 5 @2675 has 60 MA's), (Start: 12 @2708 has 2 MA's), (43, 2816), (45, 2825), (48, 2870), (49, 2873), (59, 2966), (77, 3065), (101, 3158), (112, 3233), (126, 3341), (128, 3368), (143, 3500), (144, 3506), (152, 3575), (156, 3605), (163, 3659), (168, 3698), (191, 3842), (205, 3920), (284, 4439), (295, 4502), (299, 4568),

Gene: Aoka_5 Start: 3139, Stop: 5082, Start Num: 16

Candidate Starts for Aoka_5:

(Start: 16 @3139 has 30 MA's), (61, 3385), (71, 3433), (88, 3508), (91, 3526), (99, 3556), (125, 3718), (143, 3889), (156, 3994), (185, 4171), (191, 4231), (195, 4255), (197, 4264), (258, 4648), (263, 4705), (275, 4789), (285, 4840), (291, 4873),

Gene: AppleCider_6 Start: 4658, Stop: 6673, Start Num: 8

Candidate Starts for AppleCider_6:

(Start: 8 @4658 has 81 MA's), (17, 4685), (20, 4697), (25, 4718), (50, 4832), (55, 4874), (56, 4877), (65, 4949), (69, 4967), (72, 4979), (74, 4994), (77, 5015), (89, 5063), (90, 5069), (92, 5078), (102, 5120), (103, 5126), (109, 5165), (110, 5174), (111, 5177), (119, 5237), (123, 5270), (128, 5315), (129, 5318), (143, 5450), (156, 5555), (166, 5639), (168, 5648), (176, 5684), (179, 5696), (187, 5768), (191, 5795), (232, 6050), (237, 6086), (261, 6257), (263, 6275), (299, 6548), (307, 6632),

Gene: Armstrong_3 Start: 2170, Stop: 4221, Start Num: 5

Candidate Starts for Armstrong_3:

(Start: 5 @2170 has 60 MA's), (24, 2254), (36, 2284), (43, 2311), (45, 2320), (49, 2368), (70, 2515), (75, 2545), (123, 2803), (126, 2821), (128, 2848), (130, 2854), (143, 2980), (156, 3085), (158, 3094), (161, 3124), (163, 3142), (191, 3325), (203, 3391), (205, 3403), (236, 3637), (252, 3733), (279, 3937), (285, 3970), (286, 3976), (290, 3991), (294, 4012), (299, 4093), (304, 4159),

Gene: Arroyo_5 Start: 2799, Stop: 4823, Start Num: 5

Candidate Starts for Arroyo_5:

(Start: 5 @2799 has 60 MA's), (Start: 12 @2832 has 2 MA's), (43, 2940), (45, 2949), (48, 2994), (49, 2997), (59, 3090), (77, 3189), (101, 3282), (112, 3357), (126, 3465), (128, 3492), (143, 3624), (144, 3630), (152, 3699), (156, 3729), (163, 3783), (168, 3822), (191, 3966), (205, 4044), (284, 4563), (295, 4626), (299, 4692),

Gene: AustinPowers_3 Start: 2013, Stop: 4040, Start Num: 8

Candidate Starts for AustinPowers_3:

(Start: 8 @2013 has 81 MA's), (Start: 18 @2043 has 4 MA's), (25, 2076), (26, 2079), (50, 2190), (65, 2307), (68, 2322), (73, 2346), (90, 2427), (102, 2478), (109, 2523), (113, 2565), (117, 2586), (121, 2607), (123, 2628), (128, 2673), (129, 2676), (143, 2808), (152, 2883), (156, 2913), (172, 3030), (187, 3126), (191, 3153), (220, 3354), (221, 3357), (232, 3417), (236, 3450), (256, 3573), (263, 3642), (273, 3708), (282, 3774), (292, 3822), (299, 3915), (300, 3930), (307, 3999),

Gene: AvGardian_4 Start: 2392, Stop: 4413, Start Num: 5

Candidate Starts for AvGardian_4:

(Start: 5 @2392 has 60 MA's), (41, 2530), (45, 2542), (48, 2587), (59, 2683), (77, 2782), (101, 2875), (111, 2944), (126, 3055), (128, 3082), (143, 3214), (144, 3220), (156, 3319), (163, 3373), (177, 3454), (191, 3556), (192, 3562), (205, 3634), (294, 4201), (295, 4216), (299, 4282), (304, 4348), (307, 4366),

Gene: Avocadoman_4 Start: 2387, Stop: 4411, Start Num: 5

Candidate Starts for Avocadoman_4:

(Start: 5 @2387 has 60 MA's), (Start: 12 @2420 has 2 MA's), (43, 2528), (45, 2537), (48, 2582), (49, 2585), (59, 2678), (77, 2777), (101, 2870), (112, 2945), (126, 3053), (128, 3080), (143, 3212), (144, 3218), (152, 3287), (156, 3317), (163, 3371), (168, 3410), (191, 3554), (205, 3632), (284, 4151), (295, 4214), (299, 4280),

Gene: B3_4 Start: 2800, Stop: 4233, Start Num: 18

Candidate Starts for B3_4:

(2, 2701), (3, 2725), (Start: 18 @2800 has 4 MA's), (20, 2809), (29, 2842), (32, 2851), (42, 2884), (48, 2938), (51, 2962), (52, 2977), (56, 2995), (65, 3067), (72, 3097), (93, 3199), (104, 3244), (110, 3289),

(115, 3328), (116, 3334), (117, 3343), (119, 3352), (122, 3376), (131, 3436), (143, 3559), (144, 3565), (149, 3610), (156, 3664), (163, 3718), (166, 3748), (178, 3802), (186, 3871), (187, 3874), (191, 3901), (202, 3964), (203, 3967), (205, 3979), (211, 4045), (225, 4102), (234, 4150), (240, 4204),

Gene: BAjuniper_4 Start: 2389, Stop: 4404, Start Num: 5

Candidate Starts for BAjuniper_4:

(Start: 5 @2389 has 60 MA's), (14, 2425), (45, 2530), (49, 2578), (57, 2656), (59, 2668), (65, 2701), (77, 2767), (117, 2971), (123, 3013), (126, 3031), (128, 3058), (143, 3190), (146, 3205), (156, 3295), (158, 3304), (161, 3334), (163, 3352), (166, 3382), (191, 3535), (196, 3562), (205, 3613), (207, 3640), (252, 3922), (260, 3985), (263, 4015), (275, 4093), (278, 4111), (285, 4153), (288, 4168), (294, 4195), (299, 4276), (304, 4342), (307, 4360),

Gene: BFK20_ORF3 Start: 2178, Stop: 3449, Start Num: 13

Candidate Starts for BFK20_ORF3:

(13, 2178), (45, 2286), (52, 2370), (56, 2388), (60, 2436), (65, 2460), (67, 2466), (68, 2475), (72, 2490), (90, 2583), (108, 2679), (113, 2727), (126, 2808), (128, 2835), (132, 2844), (137, 2901), (143, 2973), (151, 3039), (154, 3057), (156, 3078), (157, 3081), (169, 3183), (174, 3198), (176, 3207), (191, 3321), (195, 3345), (208, 3438),

Gene: BabyDaisy_5 Start: 2584, Stop: 4605, Start Num: 5

Candidate Starts for BabyDaisy_5:

(Start: 5 @2584 has 60 MA's), (45, 2734), (48, 2779), (49, 2782), (77, 2974), (101, 3067), (112, 3136), (126, 3244), (128, 3271), (143, 3403), (144, 3409), (156, 3508), (163, 3562), (168, 3601), (186, 3715), (191, 3745), (192, 3751), (205, 3823), (207, 3850), (212, 3898), (215, 3913), (235, 4033), (260, 4195), (294, 4393), (295, 4408), (299, 4474), (300, 4489), (303, 4522),

Gene: BabyYoda_4 Start: 2594, Stop: 4609, Start Num: 5

Candidate Starts for BabyYoda_4:

(Start: 5 @2594 has 60 MA's), (11, 2621), (Start: 12 @2624 has 2 MA's), (36, 2699), (45, 2735), (48, 2780), (49, 2783), (65, 2909), (77, 2975), (104, 3080), (112, 3140), (126, 3248), (128, 3275), (143, 3407), (144, 3413), (152, 3482), (156, 3512), (158, 3521), (163, 3569), (166, 3599), (191, 3752), (205, 3830), (272, 4289), (284, 4349), (295, 4412), (299, 4478),

Gene: Bachaco_4 Start: 2515, Stop: 4530, Start Num: 5

Candidate Starts for Bachaco_4:

(Start: 5 @2515 has 60 MA's), (11, 2542), (Start: 12 @2545 has 2 MA's), (22, 2587), (33, 2611), (43, 2647), (45, 2656), (48, 2701), (49, 2704), (50, 2713), (65, 2830), (76, 2890), (103, 2998), (118, 3103), (123, 3142), (126, 3160), (128, 3187), (130, 3193), (139, 3253), (143, 3319), (156, 3424), (157, 3427), (158, 3433), (161, 3463), (163, 3481), (183, 3595), (191, 3664), (197, 3697), (205, 3742), (235, 3961), (284, 4273), (294, 4321), (299, 4402), (303, 4450), (304, 4468),

Gene: Basilisk_5 Start: 2958, Stop: 4898, Start Num: 16

Candidate Starts for Basilisk_5:

(Start: 16 @2958 has 30 MA's), (37, 3030), (48, 3099), (49, 3102), (53, 3144), (57, 3180), (69, 3246), (72, 3258), (89, 3336), (92, 3351), (111, 3441), (125, 3540), (135, 3603), (143, 3720), (156, 3825), (158, 3834), (159, 3837), (164, 3897), (167, 3915), (170, 3933), (171, 3936), (185, 4002), (191, 4062), (195, 4086), (203, 4128), (205, 4140), (230, 4281), (236, 4323), (252, 4416), (263, 4509), (267, 4533), (296, 4722), (299, 4773), (300, 4788), (307, 4857), (310, 4884), (311, 4890),

Gene: Beethoven_6 Start: 4660, Stop: 6669, Start Num: 8

Candidate Starts for Beethoven_6:

(Start: 8 @4660 has 81 MA's), (Start: 18 @4690 has 4 MA's), (46, 4786), (48, 4816), (50, 4828), (56, 4873), (72, 4975), (73, 4984), (78, 5014), (89, 5059), (90, 5065), (102, 5116), (109, 5161), (110, 5170),

(119, 5233), (123, 5266), (128, 5311), (129, 5314), (143, 5446), (146, 5461), (154, 5530), (156, 5551), (159, 5563), (165, 5632), (168, 5644), (182, 5719), (187, 5764), (191, 5791), (213, 5944), (231, 6043), (232, 6046), (238, 6091), (250, 6172), (256, 6202), (261, 6253), (282, 6403), (299, 6544), (307, 6628),

Gene: BelmontSKP_5 Start: 2675, Stop: 4699, Start Num: 5

Candidate Starts for BelmontSKP_5:

(Start: 5 @2675 has 60 MA's), (Start: 12 @2708 has 2 MA's), (43, 2816), (45, 2825), (48, 2870), (49, 2873), (59, 2966), (77, 3065), (101, 3158), (112, 3233), (126, 3341), (128, 3368), (143, 3500), (144, 3506), (152, 3575), (156, 3605), (163, 3659), (168, 3698), (191, 3842), (205, 3920), (284, 4439), (295, 4502), (299, 4568),

Gene: Bennie_3 Start: 2010, Stop: 4028, Start Num: 8

Candidate Starts for Bennie_3:

(Start: 8 @2010 has 81 MA's), (Start: 18 @2040 has 4 MA's), (48, 2175), (50, 2187), (56, 2232), (68, 2319), (72, 2334), (78, 2373), (89, 2418), (90, 2424), (102, 2475), (107, 2508), (109, 2520), (110, 2529), (128, 2670), (143, 2805), (146, 2820), (148, 2850), (154, 2889), (156, 2910), (159, 2922), (168, 3003), (176, 3039), (185, 3090), (187, 3123), (191, 3150), (232, 3405), (238, 3450), (250, 3531), (282, 3762), (299, 3903), (307, 3987),

Gene: Bernstein_3 Start: 2230, Stop: 4281, Start Num: 5

Candidate Starts for Bernstein_3:

(Start: 5 @2230 has 60 MA's), (24, 2314), (36, 2344), (43, 2371), (45, 2380), (49, 2428), (70, 2575), (75, 2605), (76, 2611), (123, 2863), (126, 2881), (128, 2908), (130, 2914), (143, 3040), (156, 3145), (158, 3154), (161, 3184), (163, 3202), (191, 3385), (203, 3451), (205, 3463), (236, 3697), (252, 3793), (285, 4030), (286, 4036), (290, 4051), (294, 4072), (299, 4153), (304, 4219),

Gene: BigMack_3 Start: 2010, Stop: 4028, Start Num: 8

Candidate Starts for BigMack_3:

(Start: 8 @2010 has 81 MA's), (Start: 18 @2040 has 4 MA's), (50, 2187), (56, 2232), (68, 2319), (78, 2373), (89, 2418), (90, 2424), (102, 2475), (103, 2481), (107, 2508), (110, 2529), (119, 2592), (122, 2616), (128, 2670), (129, 2673), (143, 2805), (146, 2820), (156, 2910), (159, 2922), (168, 3003), (169, 3015), (176, 3039), (185, 3090), (187, 3123), (191, 3150), (201, 3210), (205, 3228), (231, 3402), (232, 3405), (238, 3450), (250, 3531), (282, 3762), (299, 3903), (307, 3987),

Gene: Bodacious_3 Start: 2010, Stop: 4028, Start Num: 8

Candidate Starts for Bodacious_3:

(Start: 8 @2010 has 81 MA's), (Start: 18 @2040 has 4 MA's), (40, 2118), (48, 2175), (50, 2187), (56, 2232), (68, 2319), (77, 2370), (78, 2373), (89, 2418), (90, 2424), (102, 2475), (109, 2520), (110, 2529), (119, 2592), (123, 2625), (128, 2670), (129, 2673), (142, 2793), (143, 2805), (146, 2820), (148, 2850), (156, 2910), (159, 2922), (168, 3003), (176, 3039), (185, 3090), (187, 3123), (191, 3150), (221, 3345), (232, 3405), (238, 3450), (250, 3531), (282, 3762), (299, 3903), (307, 3987),

Gene: Brahms_3 Start: 2170, Stop: 4221, Start Num: 5

Candidate Starts for Brahms_3:

(Start: 5 @2170 has 60 MA's), (24, 2254), (36, 2284), (43, 2311), (45, 2320), (49, 2368), (70, 2515), (75, 2545), (76, 2551), (123, 2803), (126, 2821), (128, 2848), (130, 2854), (143, 2980), (156, 3085), (158, 3094), (161, 3124), (163, 3142), (191, 3325), (203, 3391), (205, 3403), (236, 3637), (252, 3733), (285, 3970), (286, 3976), (290, 3991), (294, 4012), (299, 4093), (304, 4159),

Gene: BrayBeast_4 Start: 2058, Stop: 3983, Start Num: 16

Candidate Starts for BrayBeast_4:

(Start: 16 @2058 has 30 MA's), (38, 2133), (59, 2292), (72, 2355), (77, 2391), (91, 2448), (98, 2475), (121, 2613), (127, 2673), (143, 2811), (145, 2820), (156, 2916), (170, 3024), (173, 3033), (185, 3093),

(214, 3303), (229, 3372), (231, 3381), (239, 3432), (258, 3549), (259, 3555), (260, 3576), (267, 3630), (270, 3654), (277, 3699), (279, 3708), (285, 3741), (291, 3774), (296, 3810), (309, 3969),

Gene: BrotherBLo_6 Start: 4666, Stop: 6675, Start Num: 8

Candidate Starts for BrotherBLo_6:

(Start: 8 @4666 has 81 MA's), (Start: 18 @4696 has 4 MA's), (46, 4792), (48, 4822), (50, 4834), (56, 4879), (72, 4981), (73, 4990), (78, 5020), (89, 5065), (90, 5071), (102, 5122), (109, 5167), (110, 5176), (119, 5239), (123, 5272), (128, 5317), (129, 5320), (143, 5452), (146, 5467), (154, 5536), (156, 5557), (159, 5569), (165, 5638), (168, 5650), (182, 5725), (187, 5770), (191, 5797), (213, 5950), (232, 6052), (238, 6097), (250, 6178), (256, 6208), (261, 6259), (282, 6409), (299, 6550), (307, 6634),

Gene: Brynnie_5 Start: 2755, Stop: 4695, Start Num: 16

Candidate Starts for Brynnie_5:

(Start: 16 @2755 has 30 MA's), (37, 2827), (48, 2896), (49, 2899), (53, 2941), (57, 2977), (69, 3043), (72, 3055), (89, 3133), (92, 3148), (111, 3238), (125, 3337), (135, 3400), (143, 3517), (156, 3622), (158, 3631), (159, 3634), (164, 3694), (167, 3712), (170, 3730), (171, 3733), (185, 3799), (191, 3859), (195, 3883), (203, 3925), (205, 3937), (230, 4078), (236, 4120), (252, 4213), (263, 4306), (267, 4330), (296, 4519), (299, 4570), (300, 4585), (307, 4654), (310, 4681), (311, 4687),

Gene: BubbaBear_4 Start: 2317, Stop: 4341, Start Num: 5

Candidate Starts for BubbaBear_4:

(Start: 5 @2317 has 60 MA's), (Start: 12 @2350 has 2 MA's), (43, 2458), (45, 2467), (48, 2512), (49, 2515), (59, 2608), (77, 2707), (101, 2800), (108, 2854), (112, 2875), (126, 2983), (128, 3010), (143, 3142), (144, 3148), (156, 3247), (163, 3301), (168, 3340), (191, 3484), (205, 3562), (284, 4081), (295, 4144), (299, 4210),

Gene: Buldak_4 Start: 2587, Stop: 4644, Start Num: 5

Candidate Starts for Buldak_4:

(Start: 5 @2587 has 60 MA's), (36, 2701), (39, 2713), (43, 2728), (45, 2737), (48, 2782), (65, 2908), (70, 2932), (75, 2962), (93, 3031), (103, 3076), (110, 3124), (111, 3127), (117, 3178), (122, 3211), (143, 3397), (156, 3502), (163, 3556), (164, 3574), (168, 3595), (187, 3712), (191, 3739), (200, 3796), (205, 3817), (236, 4054), (262, 4237), (284, 4387), (289, 4411), (295, 4450), (299, 4522), (301, 4543),

Gene: Burritobowl_4 Start: 2327, Stop: 4351, Start Num: 5

Candidate Starts for Burritobowl_4:

(Start: 5 @2327 has 60 MA's), (Start: 12 @2360 has 2 MA's), (43, 2468), (45, 2477), (48, 2522), (49, 2525), (59, 2618), (77, 2717), (101, 2810), (112, 2885), (126, 2993), (128, 3020), (143, 3152), (144, 3158), (152, 3227), (156, 3257), (163, 3311), (168, 3350), (191, 3494), (205, 3572), (284, 4091), (295, 4154), (299, 4220),

Gene: CallieOMalley_6 Start: 4658, Stop: 6673, Start Num: 8

Candidate Starts for CallieOMalley_6:

(Start: 8 @4658 has 81 MA's), (17, 4685), (20, 4697), (25, 4718), (50, 4832), (55, 4874), (56, 4877), (65, 4949), (69, 4967), (72, 4979), (74, 4994), (77, 5015), (89, 5063), (90, 5069), (92, 5078), (102, 5120), (103, 5126), (109, 5165), (110, 5174), (111, 5177), (119, 5237), (123, 5270), (128, 5315), (129, 5318), (143, 5450), (156, 5555), (166, 5639), (168, 5648), (176, 5684), (179, 5696), (187, 5768), (191, 5795), (232, 6050), (237, 6086), (261, 6257), (263, 6275), (299, 6548), (307, 6632),

Gene: Canowicakte_6 Start: 4693, Stop: 6708, Start Num: 8

Candidate Starts for Canowicakte_6:

(Start: 8 @4693 has 81 MA's), (17, 4720), (20, 4732), (25, 4753), (50, 4867), (55, 4909), (56, 4912), (65, 4984), (69, 5002), (72, 5014), (89, 5098), (90, 5104), (92, 5113), (102, 5155), (103, 5161), (109, 5200), (110, 5209), (111, 5212), (119, 5272), (123, 5305), (128, 5350), (129, 5353), (143, 5485), (156,

5590), (168, 5683), (176, 5719), (179, 5731), (187, 5803), (191, 5830), (197, 5863), (232, 6085), (236, 6118), (237, 6121), (263, 6310), (299, 6583), (307, 6667),

Gene: Carpal_6 Start: 4666, Stop: 6675, Start Num: 8

Candidate Starts for Carpal_6:

(Start: 8 @4666 has 81 MA's), (Start: 18 @4696 has 4 MA's), (46, 4792), (48, 4822), (50, 4834), (56, 4879), (72, 4981), (73, 4990), (78, 5020), (89, 5065), (90, 5071), (102, 5122), (109, 5167), (110, 5176), (119, 5239), (123, 5272), (128, 5317), (129, 5320), (143, 5452), (146, 5467), (154, 5536), (156, 5557), (159, 5569), (165, 5638), (168, 5650), (182, 5725), (187, 5770), (191, 5797), (213, 5950), (231, 6049), (232, 6052), (238, 6097), (250, 6178), (256, 6208), (261, 6259), (282, 6409), (299, 6550), (307, 6634),

Gene: Cashington_4 Start: 2317, Stop: 4341, Start Num: 5

Candidate Starts for Cashington_4:

(Start: 5 @2317 has 60 MA's), (Start: 12 @2350 has 2 MA's), (43, 2458), (45, 2467), (48, 2512), (49, 2515), (59, 2608), (77, 2707), (101, 2800), (112, 2875), (126, 2983), (128, 3010), (143, 3142), (144, 3148), (152, 3217), (156, 3247), (163, 3301), (168, 3340), (191, 3484), (205, 3562), (284, 4081), (295, 4144), (299, 4210),

Gene: Celaena_4 Start: 2452, Stop: 4467, Start Num: 5

Candidate Starts for Celaena_4:

(Start: 5 @2452 has 60 MA's), (Start: 12 @2482 has 2 MA's), (22, 2524), (33, 2548), (43, 2584), (45, 2593), (48, 2638), (49, 2641), (50, 2650), (65, 2767), (76, 2827), (103, 2935), (118, 3040), (123, 3079), (126, 3097), (128, 3124), (130, 3130), (139, 3190), (143, 3256), (156, 3361), (157, 3364), (158, 3370), (161, 3400), (163, 3418), (183, 3532), (191, 3601), (197, 3634), (205, 3679), (235, 3898), (284, 4210), (294, 4258), (299, 4339), (303, 4387), (304, 4405),

Gene: ChewChew_3 Start: 2010, Stop: 4028, Start Num: 8

Candidate Starts for ChewChew_3:

(Start: 8 @2010 has 81 MA's), (Start: 18 @2040 has 4 MA's), (40, 2118), (48, 2175), (50, 2187), (56, 2232), (68, 2319), (77, 2370), (78, 2373), (89, 2418), (90, 2424), (102, 2475), (109, 2520), (110, 2529), (119, 2592), (123, 2625), (128, 2670), (129, 2673), (142, 2793), (143, 2805), (146, 2820), (148, 2850), (156, 2910), (159, 2922), (168, 3003), (176, 3039), (185, 3090), (187, 3123), (191, 3150), (221, 3345), (232, 3405), (238, 3450), (250, 3531), (272, 3690), (282, 3762), (299, 3903), (307, 3987),

Gene: Chickaboom_4 Start: 2389, Stop: 4344, Start Num: 16

Candidate Starts for Chickaboom_4:

(Start: 16 @2389 has 30 MA's), (33, 2449), (47, 2521), (48, 2530), (49, 2533), (57, 2611), (63, 2665), (69, 2692), (72, 2704), (84, 2767), (86, 2770), (88, 2776), (92, 2797), (111, 2887), (125, 2986), (135, 3049), (143, 3166), (156, 3271), (158, 3280), (159, 3283), (164, 3343), (167, 3361), (170, 3379), (171, 3382), (185, 3448), (191, 3508), (195, 3532), (203, 3574), (205, 3586), (230, 3727), (236, 3769), (252, 3862), (263, 3955), (267, 3979), (296, 4168), (299, 4219), (300, 4234), (307, 4303), (310, 4330), (311, 4336),

Gene: ChiliPepper_4 Start: 2572, Stop: 4596, Start Num: 5

Candidate Starts for ChiliPepper_4:

(Start: 5 @2572 has 60 MA's), (Start: 12 @2602 has 2 MA's), (21, 2635), (22, 2644), (36, 2677), (45, 2713), (48, 2758), (57, 2839), (65, 2887), (101, 3040), (104, 3058), (108, 3097), (118, 3169), (123, 3208), (126, 3226), (128, 3253), (143, 3385), (144, 3391), (156, 3490), (158, 3499), (163, 3547), (166, 3577), (175, 3619), (191, 3730), (197, 3763), (205, 3808), (235, 4027), (260, 4189), (268, 4255), (284, 4339), (287, 4354), (303, 4516), (304, 4534),

Gene: Cholula_6 Start: 4711, Stop: 6720, Start Num: 8

Candidate Starts for Cholula_6:

(Start: 8 @4711 has 81 MA's), (Start: 18 @4741 has 4 MA's), (46, 4837), (48, 4867), (50, 4879), (56, 4924), (72, 5026), (73, 5035), (78, 5065), (89, 5110), (90, 5116), (102, 5167), (109, 5212), (110, 5221), (119, 5284), (123, 5317), (128, 5362), (129, 5365), (143, 5497), (146, 5512), (154, 5581), (156, 5602), (159, 5614), (165, 5683), (168, 5695), (182, 5770), (187, 5815), (191, 5842), (231, 6094), (232, 6097), (238, 6142), (250, 6223), (256, 6253), (261, 6304), (282, 6454), (299, 6595), (307, 6679),

Gene: Chridison_3 Start: 2013, Stop: 4040, Start Num: 8

Candidate Starts for Chridison_3:

(Start: 8 @2013 has 81 MA's), (Start: 18 @2043 has 4 MA's), (25, 2076), (26, 2079), (50, 2190), (65, 2307), (68, 2322), (73, 2346), (90, 2427), (102, 2478), (109, 2523), (113, 2565), (117, 2586), (121, 2607), (123, 2628), (128, 2673), (129, 2676), (143, 2808), (152, 2883), (156, 2913), (172, 3030), (187, 3126), (191, 3153), (220, 3354), (221, 3357), (232, 3417), (236, 3450), (256, 3573), (263, 3642), (273, 3708), (292, 3822), (298, 3879), (299, 3915), (300, 3930), (307, 3999),

Gene: Christian_3 Start: 2010, Stop: 4028, Start Num: 8

Candidate Starts for Christian_3:

(Start: 8 @2010 has 81 MA's), (Start: 18 @2040 has 4 MA's), (48, 2175), (50, 2187), (56, 2232), (68, 2319), (78, 2373), (89, 2418), (90, 2424), (102, 2475), (103, 2481), (109, 2520), (110, 2529), (119, 2592), (123, 2625), (128, 2670), (129, 2673), (142, 2793), (143, 2805), (146, 2820), (148, 2850), (156, 2910), (159, 2922), (168, 3003), (174, 3030), (176, 3039), (185, 3090), (187, 3123), (191, 3150), (221, 3345), (231, 3402), (232, 3405), (238, 3450), (250, 3531), (265, 3636), (282, 3762), (299, 3903), (307, 3987),

Gene: Clayda5_3 Start: 2170, Stop: 4221, Start Num: 5

Candidate Starts for Clayda5_3:

(Start: 5 @2170 has 60 MA's), (24, 2254), (36, 2284), (43, 2311), (45, 2320), (49, 2368), (70, 2515), (75, 2545), (76, 2551), (123, 2803), (126, 2821), (128, 2848), (130, 2854), (143, 2980), (156, 3085), (158, 3094), (161, 3124), (163, 3142), (191, 3325), (203, 3391), (205, 3403), (236, 3637), (252, 3733), (285, 3970), (286, 3976), (290, 3991), (294, 4012), (299, 4093), (304, 4159),

Gene: Coltrane_3 Start: 2170, Stop: 4221, Start Num: 5

Candidate Starts for Coltrane_3:

(Start: 5 @2170 has 60 MA's), (24, 2254), (36, 2284), (43, 2311), (45, 2320), (49, 2368), (70, 2515), (75, 2545), (76, 2551), (123, 2803), (126, 2821), (128, 2848), (130, 2854), (143, 2980), (156, 3085), (158, 3094), (161, 3124), (163, 3142), (191, 3325), (203, 3391), (205, 3403), (236, 3637), (252, 3733), (285, 3970), (286, 3976), (290, 3991), (294, 4012), (299, 4093), (304, 4159),

Gene: Coral_5 Start: 2714, Stop: 4657, Start Num: 16

Candidate Starts for Coral_5:

(Start: 16 @2714 has 30 MA's), (25, 2756), (37, 2786), (47, 2846), (48, 2855), (49, 2858), (50, 2867), (68, 2999), (69, 3002), (87, 3083), (92, 3107), (111, 3197), (125, 3296), (143, 3476), (145, 3485), (149, 3527), (156, 3581), (157, 3584), (159, 3593), (167, 3671), (170, 3689), (191, 3818), (195, 3842), (203, 3884), (205, 3896), (230, 4040), (236, 4082), (252, 4175), (260, 4238), (263, 4268), (267, 4292), (296, 4481), (299, 4532), (300, 4547), (305, 4601),

Gene: Cote_6 Start: 2875, Stop: 4818, Start Num: 16

Candidate Starts for Cote_6:

(Start: 16 @2875 has 30 MA's), (33, 2935), (47, 3007), (48, 3016), (49, 3019), (57, 3097), (68, 3160), (69, 3163), (87, 3244), (92, 3268), (111, 3358), (120, 3427), (125, 3457), (143, 3637), (145, 3646), (149, 3688), (156, 3742), (157, 3745), (159, 3754), (167, 3832), (170, 3850), (191, 3979), (195, 4003), (203, 4045), (205, 4057), (230, 4201), (236, 4243), (252, 4336), (260, 4399), (263, 4429), (267, 4453), (296, 4642), (299, 4693), (300, 4708), (305, 4762),

Gene: CristinaYang_3 Start: 2010, Stop: 4028, Start Num: 8

Candidate Starts for CristinaYang_3:

(Start: 8 @2010 has 81 MA's), (Start: 18 @2040 has 4 MA's), (40, 2118), (48, 2175), (50, 2187), (56, 2232), (68, 2319), (77, 2370), (78, 2373), (89, 2418), (90, 2424), (102, 2475), (109, 2520), (110, 2529), (119, 2592), (123, 2625), (128, 2670), (129, 2673), (142, 2793), (143, 2805), (146, 2820), (148, 2850), (156, 2910), (159, 2922), (168, 3003), (176, 3039), (185, 3090), (187, 3123), (191, 3150), (221, 3345), (232, 3405), (238, 3450), (250, 3531), (282, 3762), (299, 3903), (307, 3987),

Gene: CroZenni_4 Start: 2329, Stop: 4353, Start Num: 5

Candidate Starts for CroZenni_4:

(Start: 5 @2329 has 60 MA's), (Start: 12 @2362 has 2 MA's), (43, 2470), (45, 2479), (48, 2524), (49, 2527), (59, 2620), (77, 2719), (101, 2812), (112, 2887), (126, 2995), (128, 3022), (143, 3154), (144, 3160), (152, 3229), (156, 3259), (163, 3313), (168, 3352), (191, 3496), (205, 3574), (284, 4093), (295, 4156), (299, 4222),

Gene: Daiboju_3 Start: 2012, Stop: 4039, Start Num: 8

Candidate Starts for Daiboju_3:

(Start: 8 @2012 has 81 MA's), (Start: 18 @2042 has 4 MA's), (25, 2075), (26, 2078), (50, 2189), (56, 2234), (58, 2270), (65, 2306), (72, 2336), (73, 2345), (78, 2375), (90, 2426), (107, 2510), (109, 2522), (110, 2531), (121, 2606), (123, 2627), (128, 2672), (129, 2675), (143, 2807), (156, 2912), (172, 3029), (187, 3125), (191, 3152), (218, 3338), (220, 3353), (221, 3356), (232, 3416), (256, 3572), (263, 3641), (273, 3707), (282, 3773), (292, 3821), (299, 3914), (300, 3929), (307, 3998),

Gene: Daob_6 Start: 2878, Stop: 4821, Start Num: 16

Candidate Starts for Daob_6:

(Start: 16 @2878 has 30 MA's), (25, 2920), (37, 2950), (47, 3010), (48, 3019), (49, 3022), (50, 3031), (68, 3163), (69, 3166), (87, 3247), (92, 3271), (111, 3361), (125, 3460), (143, 3640), (145, 3649), (149, 3691), (156, 3745), (157, 3748), (159, 3757), (167, 3835), (170, 3853), (191, 3982), (195, 4006), (203, 4048), (205, 4060), (230, 4204), (236, 4246), (252, 4339), (260, 4402), (263, 4432), (267, 4456), (296, 4645), (299, 4696), (300, 4711), (305, 4765),

Gene: DickRichards_4 Start: 2794, Stop: 4818, Start Num: 5

Candidate Starts for DickRichards_4:

(Start: 5 @2794 has 60 MA's), (Start: 12 @2827 has 2 MA's), (43, 2935), (45, 2944), (48, 2989), (49, 2992), (59, 3085), (77, 3184), (101, 3277), (112, 3352), (126, 3460), (128, 3487), (143, 3619), (144, 3625), (152, 3694), (156, 3724), (163, 3778), (168, 3817), (191, 3961), (205, 4039), (284, 4558), (295, 4621), (299, 4687),

Gene: Didgeridoo_5 Start: 2584, Stop: 4605, Start Num: 5

Candidate Starts for Didgeridoo_5:

(Start: 5 @2584 has 60 MA's), (45, 2734), (48, 2779), (49, 2782), (77, 2974), (101, 3067), (112, 3136), (126, 3244), (128, 3271), (143, 3403), (144, 3409), (156, 3508), (163, 3562), (168, 3601), (186, 3715), (191, 3745), (192, 3751), (205, 3823), (207, 3850), (212, 3898), (215, 3913), (235, 4033), (260, 4195), (294, 4393), (295, 4408), (299, 4474), (300, 4489), (303, 4522),

Gene: Dino_6 Start: 4666, Stop: 6675, Start Num: 8

Candidate Starts for Dino_6:

(Start: 8 @4666 has 81 MA's), (Start: 18 @4696 has 4 MA's), (46, 4792), (48, 4822), (50, 4834), (56, 4879), (72, 4981), (73, 4990), (78, 5020), (89, 5065), (90, 5071), (102, 5122), (109, 5167), (110, 5176), (119, 5239), (123, 5272), (128, 5317), (129, 5320), (143, 5452), (146, 5467), (154, 5536), (156, 5557), (159, 5569), (165, 5638), (168, 5650), (182, 5725), (187, 5770), (191, 5797), (232, 6052), (238, 6097), (250, 6178), (256, 6208), (261, 6259), (282, 6409), (299, 6550), (307, 6634),

Gene: DirtyBubble_4 Start: 2593, Stop: 4608, Start Num: 5

Candidate Starts for DirtyBubble_4:

(Start: 5 @2593 has 60 MA's), (11, 2620), (Start: 12 @2623 has 2 MA's), (36, 2698), (45, 2734), (48, 2779), (49, 2782), (65, 2908), (77, 2974), (104, 3079), (112, 3139), (126, 3247), (128, 3274), (143, 3406), (144, 3412), (152, 3481), (156, 3511), (158, 3520), (163, 3568), (166, 3598), (191, 3751), (205, 3829), (272, 4288), (284, 4348), (295, 4411), (299, 4477),

Gene: Dismas_4 Start: 2572, Stop: 4596, Start Num: 5

Candidate Starts for Dismas_4:

(Start: 5 @2572 has 60 MA's), (11, 2599), (Start: 12 @2602 has 2 MA's), (21, 2635), (22, 2644), (36, 2677), (45, 2713), (48, 2758), (57, 2839), (65, 2887), (101, 3040), (104, 3058), (108, 3097), (118, 3169), (123, 3208), (126, 3226), (128, 3253), (143, 3385), (144, 3391), (156, 3490), (158, 3499), (163, 3547), (166, 3577), (175, 3619), (191, 3730), (197, 3763), (205, 3808), (235, 4027), (260, 4189), (268, 4255), (284, 4339), (287, 4354), (303, 4516), (304, 4534),

Gene: Doobus_4 Start: 2551, Stop: 4575, Start Num: 5

Candidate Starts for Doobus_4:

(Start: 5 @2551 has 60 MA's), (Start: 12 @2584 has 2 MA's), (43, 2692), (45, 2701), (48, 2746), (49, 2749), (59, 2842), (77, 2941), (101, 3034), (112, 3109), (126, 3217), (128, 3244), (143, 3376), (144, 3382), (152, 3451), (156, 3481), (163, 3535), (168, 3574), (191, 3718), (205, 3796), (284, 4315), (295, 4378), (299, 4444),

Gene: DrRobert_3 Start: 2010, Stop: 4028, Start Num: 8

Candidate Starts for DrRobert_3:

(Start: 8 @2010 has 81 MA's), (Start: 18 @2040 has 4 MA's), (48, 2175), (50, 2187), (56, 2232), (68, 2319), (78, 2373), (89, 2418), (90, 2424), (102, 2475), (109, 2520), (110, 2529), (119, 2592), (123, 2625), (128, 2670), (129, 2673), (142, 2793), (143, 2805), (146, 2820), (148, 2850), (156, 2910), (159, 2922), (168, 3003), (176, 3039), (185, 3090), (187, 3123), (191, 3150), (197, 3183), (221, 3345), (231, 3402), (232, 3405), (238, 3450), (250, 3531), (265, 3636), (282, 3762), (299, 3903), (307, 3987),

Gene: DreamTeam_3 Start: 2010, Stop: 4028, Start Num: 8

Candidate Starts for DreamTeam_3:

(Start: 8 @2010 has 81 MA's), (Start: 18 @2040 has 4 MA's), (48, 2175), (50, 2187), (79, 2376), (89, 2418), (90, 2424), (109, 2520), (110, 2529), (116, 2574), (119, 2592), (123, 2625), (128, 2670), (129, 2673), (142, 2793), (143, 2805), (146, 2820), (156, 2910), (157, 2913), (159, 2922), (168, 3003), (174, 3030), (176, 3039), (187, 3123), (191, 3150), (232, 3405), (238, 3450), (248, 3525), (250, 3531), (261, 3612), (272, 3690), (282, 3762), (299, 3903), (307, 3987),

Gene: E1_4 Start: 2800, Stop: 4233, Start Num: 18

Candidate Starts for E1_4:

(2, 2701), (3, 2725), (Start: 18 @2800 has 4 MA's), (20, 2809), (29, 2842), (32, 2851), (42, 2884), (48, 2938), (51, 2962), (52, 2977), (56, 2995), (65, 3067), (72, 3097), (93, 3199), (104, 3244), (106, 3262), (110, 3289), (115, 3328), (116, 3334), (117, 3343), (119, 3352), (122, 3376), (137, 3490), (143, 3559), (144, 3565), (149, 3610), (156, 3664), (163, 3718), (165, 3745), (178, 3802), (186, 3871), (187, 3874), (191, 3901), (202, 3964), (203, 3967), (205, 3979), (211, 4045), (225, 4102), (234, 4150), (240, 4204),

Gene: Eden_3 Start: 2234, Stop: 4282, Start Num: 5

Candidate Starts for Eden_3:

(Start: 5 @2234 has 60 MA's), (19, 2288), (43, 2366), (57, 2501), (60, 2525), (77, 2615), (111, 2771), (123, 2864), (126, 2882), (128, 2909), (130, 2915), (143, 3041), (156, 3146), (158, 3155), (161, 3185), (163, 3203), (166, 3233), (186, 3356), (191, 3386), (196, 3413), (205, 3464), (249, 3785), (263, 3887), (288, 4046), (290, 4052), (292, 4067), (294, 4073), (299, 4154), (304, 4220),

Gene: Eesa_5 Start: 2893, Stop: 4869, Start Num: 16

Candidate Starts for Eesa_5:

(Start: 16 @2893 has 30 MA's), (49, 3037), (57, 3115), (63, 3169), (69, 3196), (72, 3208), (81, 3259), (84, 3271), (86, 3274), (88, 3280), (92, 3301), (111, 3391), (120, 3460), (125, 3490), (134, 3550), (143, 3670), (145, 3679), (156, 3775), (157, 3778), (159, 3787), (164, 3847), (167, 3865), (170, 3883), (185, 3952), (191, 4012), (195, 4036), (203, 4078), (205, 4090), (230, 4252), (236, 4294), (248, 4375), (252, 4387), (263, 4480), (266, 4501), (277, 4579), (281, 4594), (289, 4639), (299, 4744), (300, 4759), (308, 4849),

Gene: Elva_5 Start: 2650, Stop: 4677, Start Num: 5

Candidate Starts for Elva_5:

(1, 2527), (Start: 5 @2650 has 60 MA's), (11, 2677), (Start: 12 @2680 has 2 MA's), (36, 2755), (45, 2791), (48, 2836), (49, 2839), (65, 2965), (77, 3031), (103, 3133), (104, 3136), (112, 3196), (118, 3247), (123, 3286), (126, 3304), (128, 3331), (143, 3463), (144, 3469), (156, 3568), (163, 3625), (186, 3778), (191, 3808), (192, 3814), (205, 3886), (272, 4357), (295, 4480), (299, 4546), (307, 4630),

Gene: EstebanJulior_3 Start: 2010, Stop: 4019, Start Num: 8

Candidate Starts for EstebanJulior_3:

(Start: 8 @2010 has 81 MA's), (Start: 18 @2040 has 4 MA's), (48, 2166), (50, 2178), (56, 2223), (72, 2325), (77, 2361), (78, 2364), (90, 2415), (103, 2472), (109, 2511), (110, 2520), (119, 2583), (122, 2607), (123, 2616), (128, 2661), (129, 2664), (143, 2796), (146, 2811), (154, 2880), (156, 2901), (159, 2913), (165, 2982), (168, 2994), (185, 3081), (187, 3114), (191, 3141), (197, 3174), (232, 3396), (238, 3441), (250, 3522), (282, 3753), (287, 3774), (299, 3894), (307, 3978),

Gene: Eula_4 Start: 2316, Stop: 4340, Start Num: 5

Candidate Starts for Eula_4:

(Start: 5 @2316 has 60 MA's), (Start: 12 @2349 has 2 MA's), (43, 2457), (45, 2466), (48, 2511), (49, 2514), (59, 2607), (77, 2706), (101, 2799), (108, 2853), (112, 2874), (126, 2982), (128, 3009), (143, 3141), (144, 3147), (152, 3216), (156, 3246), (163, 3300), (168, 3339), (191, 3483), (205, 3561), (284, 4080), (294, 4128), (295, 4143), (299, 4209),

Gene: Eunoia_3 Start: 2013, Stop: 4040, Start Num: 8

Candidate Starts for Eunoia_3:

(Start: 8 @2013 has 81 MA's), (Start: 18 @2043 has 4 MA's), (25, 2076), (26, 2079), (50, 2190), (65, 2307), (68, 2322), (73, 2346), (90, 2427), (102, 2478), (107, 2511), (109, 2523), (113, 2565), (117, 2586), (121, 2607), (123, 2628), (128, 2673), (129, 2676), (143, 2808), (152, 2883), (156, 2913), (172, 3030), (187, 3126), (191, 3153), (220, 3354), (221, 3357), (232, 3417), (256, 3573), (263, 3642), (282, 3774), (292, 3822), (299, 3915), (300, 3930), (307, 3999),

Gene: EvenBluerMoon_5 Start: 3137, Stop: 5080, Start Num: 16

Candidate Starts for EvenBluerMoon_5:

(Start: 16 @3137 has 30 MA's), (61, 3383), (71, 3431), (88, 3506), (91, 3524), (99, 3554), (125, 3716), (143, 3887), (156, 3992), (185, 4169), (191, 4229), (195, 4253), (197, 4262), (258, 4646), (263, 4703), (275, 4787), (285, 4838), (291, 4871),

Gene: Finalfrontier_5 Start: 2822, Stop: 4846, Start Num: 5

Candidate Starts for Finalfrontier_5:

(Start: 5 @2822 has 60 MA's), (Start: 12 @2855 has 2 MA's), (43, 2963), (45, 2972), (48, 3017), (49, 3020), (59, 3113), (77, 3212), (101, 3305), (112, 3380), (126, 3488), (128, 3515), (143, 3647), (144, 3653), (152, 3722), (156, 3752), (163, 3806), (168, 3845), (191, 3989), (205, 4067), (284, 4586), (295, 4649), (299, 4715),

Gene: FlameThrower_4 Start: 2448, Stop: 4463, Start Num: 5

Candidate Starts for FlameThrower_4:

(Start: 5 @2448 has 60 MA's), (11, 2475), (Start: 12 @2478 has 2 MA's), (22, 2520), (33, 2544), (43, 2580), (45, 2589), (48, 2634), (49, 2637), (50, 2646), (65, 2763), (76, 2823), (103, 2931), (118, 3036), (123, 3075), (126, 3093), (128, 3120), (130, 3126), (139, 3186), (143, 3252), (156, 3357), (157, 3360), (158, 3366), (161, 3396), (163, 3414), (183, 3528), (191, 3597), (197, 3630), (205, 3675), (235, 3894), (284, 4206), (294, 4254), (299, 4335), (303, 4383), (304, 4401),

Gene: Fluke_6 Start: 4707, Stop: 6716, Start Num: 8

Candidate Starts for Fluke_6:

(Start: 8 @4707 has 81 MA's), (Start: 18 @4737 has 4 MA's), (46, 4833), (48, 4863), (50, 4875), (56, 4920), (72, 5022), (73, 5031), (78, 5061), (89, 5106), (90, 5112), (102, 5163), (109, 5208), (110, 5217), (119, 5280), (123, 5313), (128, 5358), (129, 5361), (143, 5493), (146, 5508), (154, 5577), (156, 5598), (159, 5610), (165, 5679), (168, 5691), (182, 5766), (187, 5811), (191, 5838), (213, 5991), (231, 6090), (232, 6093), (238, 6138), (250, 6219), (256, 6249), (261, 6300), (282, 6450), (299, 6591), (307, 6675),

Gene: Franklin22_3 Start: 2242, Stop: 4278, Start Num: 5

Candidate Starts for Franklin22_3:

(Start: 5 @2242 has 60 MA's), (19, 2296), (22, 2314), (43, 2374), (49, 2431), (53, 2473), (57, 2509), (60, 2533), (77, 2623), (101, 2710), (123, 2869), (126, 2887), (128, 2914), (130, 2920), (143, 3046), (156, 3151), (158, 3160), (161, 3190), (163, 3208), (186, 3361), (191, 3391), (205, 3469), (230, 3652), (263, 3883), (274, 3958), (277, 3976), (285, 4027), (286, 4033), (290, 4048), (294, 4069), (299, 4150), (304, 4216),

Gene: Gack_3 Start: 2278, Stop: 4326, Start Num: 5

Candidate Starts for Gack_3:

(Start: 5 @2278 has 60 MA's), (19, 2332), (43, 2410), (49, 2467), (53, 2509), (70, 2617), (75, 2647), (80, 2668), (101, 2749), (111, 2815), (117, 2866), (123, 2908), (126, 2926), (128, 2953), (130, 2959), (143, 3085), (156, 3190), (158, 3199), (161, 3229), (163, 3247), (166, 3277), (186, 3400), (191, 3430), (205, 3508), (219, 3625), (230, 3700), (263, 3931), (285, 4075), (286, 4081), (290, 4096), (294, 4117), (299, 4198),

Gene: Galaxy_5 Start: 2701, Stop: 4644, Start Num: 16

Candidate Starts for Galaxy_5:

(Start: 16 @2701 has 30 MA's), (47, 2833), (49, 2845), (57, 2923), (69, 2989), (93, 3097), (111, 3184), (125, 3283), (143, 3463), (145, 3472), (156, 3568), (158, 3577), (159, 3580), (167, 3658), (170, 3676), (171, 3679), (185, 3745), (191, 3805), (195, 3829), (203, 3871), (205, 3883), (230, 4027), (236, 4069), (252, 4162), (263, 4255), (267, 4279), (299, 4519), (300, 4534), (307, 4603), (310, 4630),

Gene: Gisselle_3 Start: 2010, Stop: 4028, Start Num: 8

Candidate Starts for Gisselle_3:

(Start: 8 @2010 has 81 MA's), (Start: 18 @2040 has 4 MA's), (48, 2175), (50, 2187), (79, 2376), (89, 2418), (90, 2424), (109, 2520), (110, 2529), (116, 2574), (119, 2592), (123, 2625), (128, 2670), (129, 2673), (142, 2793), (143, 2805), (146, 2820), (156, 2910), (157, 2913), (159, 2922), (168, 3003), (174, 3030), (176, 3039), (187, 3123), (191, 3150), (232, 3405), (238, 3450), (248, 3525), (250, 3531), (261, 3612), (272, 3690), (282, 3762), (299, 3903), (307, 3987),

Gene: Glenn_6 Start: 4717, Stop: 6726, Start Num: 8

Candidate Starts for Glenn_6:

(Start: 8 @4717 has 81 MA's), (Start: 18 @4747 has 4 MA's), (46, 4843), (48, 4873), (50, 4885), (56, 4930), (72, 5032), (73, 5041), (78, 5071), (89, 5116), (90, 5122), (102, 5173), (109, 5218), (110, 5227), (119, 5290), (123, 5323), (128, 5368), (129, 5371), (143, 5503), (146, 5518), (154, 5587), (156, 5608), (159, 5620), (165, 5689), (168, 5701), (182, 5776), (187, 5821), (191, 5848), (232, 6103), (238, 6148), (250, 6229), (256, 6259), (261, 6310), (282, 6460), (299, 6601), (307, 6685),

Gene: GreenHearts_6 Start: 4716, Stop: 6734, Start Num: 8

Candidate Starts for GreenHearts_6:

(Start: 8 @4716 has 81 MA's), (26, 4782), (27, 4785), (48, 4881), (50, 4893), (71, 5037), (72, 5040), (78, 5079), (90, 5130), (102, 5181), (104, 5190), (109, 5226), (121, 5310), (123, 5331), (129, 5379), (140, 5445), (143, 5511), (152, 5586), (156, 5616), (157, 5619), (168, 5709), (186, 5826), (187, 5829), (191, 5856), (232, 6111), (236, 6144), (251, 6240), (256, 6267), (282, 6468), (299, 6609), (300, 6624), (307, 6693),

Gene: Greenhouse_6 Start: 4685, Stop: 6703, Start Num: 8

Candidate Starts for Greenhouse_6:

(Start: 8 @4685 has 81 MA's), (26, 4751), (27, 4754), (48, 4850), (50, 4862), (71, 5006), (72, 5009), (77, 5045), (78, 5048), (90, 5099), (102, 5150), (104, 5159), (109, 5195), (121, 5279), (123, 5300), (129, 5348), (140, 5414), (143, 5480), (156, 5585), (157, 5588), (168, 5678), (186, 5795), (187, 5798), (191, 5825), (232, 6080), (236, 6113), (251, 6209), (256, 6236), (282, 6437), (299, 6578), (300, 6593), (307, 6662),

Gene: HannahPhantana_6 Start: 2878, Stop: 4821, Start Num: 16

Candidate Starts for HannahPhantana_6:

(Start: 16 @2878 has 30 MA's), (25, 2920), (37, 2950), (47, 3010), (49, 3022), (69, 3166), (72, 3178), (88, 3250), (111, 3361), (125, 3460), (143, 3640), (145, 3649), (149, 3691), (156, 3745), (157, 3748), (159, 3757), (167, 3835), (170, 3853), (185, 3922), (191, 3982), (195, 4006), (203, 4048), (205, 4060), (230, 4204), (236, 4246), (252, 4339), (260, 4402), (263, 4432), (267, 4456), (296, 4645), (299, 4696), (300, 4711), (305, 4765),

Gene: HeadNerd_3 Start: 2010, Stop: 4028, Start Num: 8

Candidate Starts for HeadNerd_3:

(Start: 8 @2010 has 81 MA's), (Start: 18 @2040 has 4 MA's), (48, 2175), (50, 2187), (56, 2232), (68, 2319), (72, 2334), (78, 2373), (89, 2418), (90, 2424), (102, 2475), (107, 2508), (109, 2520), (110, 2529), (128, 2670), (143, 2805), (146, 2820), (148, 2850), (154, 2889), (156, 2910), (159, 2922), (168, 3003), (176, 3039), (185, 3090), (187, 3123), (191, 3150), (232, 3405), (238, 3450), (250, 3531), (282, 3762), (299, 3903), (307, 3987),

Gene: Herb_3 Start: 2012, Stop: 4039, Start Num: 8

Candidate Starts for Herb_3:

(Start: 8 @2012 has 81 MA's), (Start: 18 @2042 has 4 MA's), (25, 2075), (26, 2078), (50, 2189), (56, 2234), (58, 2270), (65, 2306), (72, 2336), (73, 2345), (78, 2375), (90, 2426), (107, 2510), (109, 2522), (110, 2531), (121, 2606), (123, 2627), (128, 2672), (129, 2675), (143, 2807), (156, 2912), (172, 3029), (187, 3125), (191, 3152), (218, 3338), (220, 3353), (221, 3356), (232, 3416), (256, 3572), (263, 3641), (273, 3707), (282, 3773), (292, 3821), (299, 3914), (300, 3929), (307, 3998),

Gene: Huckleberry_3 Start: 2010, Stop: 4028, Start Num: 8

Candidate Starts for Huckleberry_3:

(Start: 8 @2010 has 81 MA's), (Start: 18 @2040 has 4 MA's), (48, 2175), (50, 2187), (56, 2232), (68, 2319), (72, 2334), (78, 2373), (89, 2418), (90, 2424), (102, 2475), (107, 2508), (109, 2520), (110, 2529), (128, 2670), (143, 2805), (146, 2820), (148, 2850), (154, 2889), (156, 2910), (159, 2922), (168, 3003), (176, 3039), (185, 3090), (187, 3123), (191, 3150), (232, 3405), (238, 3450), (250, 3531), (282, 3762), (299, 3903), (307, 3987),

Gene: HunterDalle_3 Start: 2013, Stop: 4040, Start Num: 8

Candidate Starts for HunterDalle_3:

(Start: 8 @2013 has 81 MA's), (Start: 18 @2043 has 4 MA's), (25, 2076), (26, 2079), (50, 2190), (65, 2307), (68, 2322), (73, 2346), (90, 2427), (102, 2478), (107, 2511), (109, 2523), (113, 2565), (117,

2586), (121, 2607), (123, 2628), (128, 2673), (129, 2676), (143, 2808), (152, 2883), (156, 2913), (187, 3126), (191, 3153), (220, 3354), (221, 3357), (232, 3417), (256, 3573), (263, 3642), (282, 3774), (292, 3822), (299, 3915), (300, 3930), (307, 3999),

Gene: Huntingdon_6 Start: 4664, Stop: 6682, Start Num: 8

Candidate Starts for Huntingdon_6:

(Start: 8 @4664 has 81 MA's), (26, 4730), (50, 4841), (71, 4985), (72, 4988), (77, 5024), (78, 5027), (90, 5078), (102, 5129), (104, 5138), (109, 5174), (121, 5258), (123, 5279), (129, 5327), (140, 5393), (143, 5459), (156, 5564), (157, 5567), (168, 5657), (174, 5684), (186, 5774), (187, 5777), (191, 5804), (232, 6059), (236, 6092), (250, 6185), (251, 6188), (256, 6215), (282, 6416), (299, 6557), (300, 6572), (307, 6641),

Gene: Icarian_5 Start: 2585, Stop: 4600, Start Num: 5

Candidate Starts for Icarian_5:

(Start: 5 @2585 has 60 MA's), (11, 2612), (Start: 12 @2615 has 2 MA's), (36, 2690), (45, 2726), (48, 2771), (49, 2774), (65, 2900), (77, 2966), (104, 3071), (108, 3110), (112, 3131), (118, 3182), (126, 3239), (128, 3266), (143, 3398), (144, 3404), (146, 3413), (152, 3473), (156, 3503), (163, 3560), (166, 3590), (191, 3743), (205, 3821), (260, 4190), (295, 4403), (299, 4469),

Gene: Immaculata_6 Start: 4711, Stop: 6720, Start Num: 8

Candidate Starts for Immaculata_6:

(Start: 8 @4711 has 81 MA's), (Start: 18 @4741 has 4 MA's), (46, 4837), (48, 4867), (50, 4879), (56, 4924), (72, 5026), (73, 5035), (78, 5065), (89, 5110), (90, 5116), (102, 5167), (109, 5212), (110, 5221), (119, 5284), (123, 5317), (128, 5362), (129, 5365), (143, 5497), (146, 5512), (154, 5581), (156, 5602), (159, 5614), (165, 5683), (168, 5695), (182, 5770), (187, 5815), (191, 5842), (213, 5995), (232, 6097), (238, 6142), (250, 6223), (256, 6253), (261, 6304), (282, 6454), (299, 6595), (307, 6679),

Gene: IndyLu_4 Start: 2408, Stop: 4429, Start Num: 5

Candidate Starts for IndyLu_4:

(Start: 5 @2408 has 60 MA's), (45, 2558), (48, 2603), (49, 2606), (77, 2798), (101, 2891), (112, 2960), (126, 3068), (128, 3095), (143, 3227), (144, 3233), (156, 3332), (163, 3386), (168, 3425), (191, 3569), (192, 3575), (205, 3647), (207, 3674), (212, 3722), (215, 3737), (260, 4019), (294, 4217), (295, 4232), (299, 4298), (300, 4313), (303, 4346),

Gene: Jamun_5 Start: 2958, Stop: 4916, Start Num: 16

Candidate Starts for Jamun_5:

(Start: 16 @2958 has 30 MA's), (33, 3018), (48, 3099), (49, 3102), (57, 3180), (59, 3195), (60, 3204), (63, 3234), (69, 3261), (72, 3273), (84, 3336), (86, 3339), (88, 3345), (92, 3366), (111, 3456), (120, 3525), (125, 3555), (135, 3618), (143, 3735), (156, 3840), (158, 3849), (159, 3852), (164, 3912), (167, 3930), (170, 3948), (171, 3951), (185, 4017), (191, 4077), (195, 4101), (203, 4143), (205, 4155), (230, 4299), (236, 4341), (252, 4434), (263, 4527), (267, 4551), (296, 4740), (299, 4791), (300, 4806), (307, 4875), (308, 4896),

Gene: JanetJ_5 Start: 2916, Stop: 4856, Start Num: 16

Candidate Starts for JanetJ_5:

(Start: 16 @2916 has 30 MA's), (38, 2991), (57, 3135), (71, 3210), (77, 3249), (88, 3285), (91, 3303), (125, 3495), (143, 3666), (156, 3771), (185, 3948), (191, 4008), (195, 4032), (201, 4068), (205, 4086), (258, 4422), (275, 4563), (285, 4614), (291, 4647),

Gene: Joann_6 Start: 4656, Stop: 6674, Start Num: 8

Candidate Starts for Joann_6:

(Start: 8 @4656 has 81 MA's), (26, 4722), (27, 4725), (48, 4821), (50, 4833), (68, 4965), (71, 4977), (72, 4980), (78, 5019), (90, 5070), (102, 5121), (104, 5130), (109, 5166), (121, 5250), (123, 5271),

(129, 5319), (140, 5385), (143, 5451), (156, 5556), (157, 5559), (168, 5649), (174, 5676), (186, 5766), (187, 5769), (191, 5796), (232, 6051), (236, 6084), (251, 6180), (256, 6207), (282, 6408), (299, 6549), (300, 6564), (307, 6633),

Gene: Johnathan_4 Start: 2329, Stop: 4353, Start Num: 5

Candidate Starts for Johnathan_4:

(Start: 5 @2329 has 60 MA's), (Start: 12 @2362 has 2 MA's), (43, 2470), (45, 2479), (48, 2524), (59, 2620), (77, 2719), (101, 2812), (112, 2887), (126, 2995), (128, 3022), (143, 3154), (144, 3160), (152, 3229), (156, 3259), (163, 3313), (168, 3352), (191, 3496), (205, 3574), (284, 4093), (295, 4156), (299, 4222),

Gene: Jovita_4 Start: 2442, Stop: 4466, Start Num: 5

Candidate Starts for Jovita_4:

(Start: 5 @2442 has 60 MA's), (Start: 12 @2475 has 2 MA's), (43, 2583), (45, 2592), (48, 2637), (49, 2640), (59, 2733), (77, 2832), (101, 2925), (112, 3000), (126, 3108), (128, 3135), (143, 3267), (144, 3273), (152, 3342), (156, 3372), (163, 3426), (191, 3609), (205, 3687), (284, 4206), (294, 4254), (295, 4269), (299, 4335),

Gene: Jumboset_6 Start: 4690, Stop: 6669, Start Num: 18

Candidate Starts for Jumboset_6:

(Start: 8 @4660 has 81 MA's), (Start: 18 @4690 has 4 MA's), (46, 4786), (48, 4816), (50, 4828), (56, 4873), (72, 4975), (73, 4984), (78, 5014), (89, 5059), (90, 5065), (102, 5116), (109, 5161), (110, 5170), (119, 5233), (123, 5266), (128, 5311), (129, 5314), (143, 5446), (146, 5461), (156, 5551), (159, 5563), (165, 5632), (168, 5644), (182, 5719), (187, 5764), (191, 5791), (231, 6043), (232, 6046), (238, 6091), (250, 6172), (256, 6202), (261, 6253), (282, 6403), (299, 6544), (307, 6628),

Gene: Juno112_4 Start: 2335, Stop: 4254, Start Num: 16

Candidate Starts for Juno112_4:

(Start: 16 @2335 has 30 MA's), (30, 2389), (47, 2464), (49, 2476), (56, 2530), (69, 2620), (79, 2674), (92, 2722), (93, 2725), (111, 2809), (125, 2908), (138, 3019), (143, 3088), (145, 3097), (156, 3193), (157, 3196), (159, 3205), (167, 3283), (170, 3301), (180, 3340), (191, 3430), (195, 3454), (203, 3496), (205, 3508), (230, 3646), (236, 3688), (246, 3760), (263, 3874), (267, 3898), (277, 3964), (279, 3973), (289, 4024), (296, 4078), (299, 4129), (300, 4144), (305, 4198),

Gene: KHumphrey_4 Start: 2335, Stop: 4254, Start Num: 16

Candidate Starts for KHumphrey_4:

(Start: 16 @2335 has 30 MA's), (30, 2389), (47, 2464), (49, 2476), (56, 2530), (69, 2620), (79, 2674), (92, 2722), (93, 2725), (111, 2809), (125, 2908), (138, 3019), (143, 3088), (145, 3097), (156, 3193), (157, 3196), (159, 3205), (167, 3283), (170, 3301), (180, 3340), (191, 3430), (195, 3454), (203, 3496), (205, 3508), (230, 3646), (236, 3688), (246, 3760), (263, 3874), (267, 3898), (277, 3964), (279, 3973), (286, 4012), (289, 4024), (296, 4078), (299, 4129), (300, 4144), (305, 4198),

Gene: Kalizoi_6 Start: 4660, Stop: 6669, Start Num: 8

Candidate Starts for Kalizoi_6:

(Start: 8 @4660 has 81 MA's), (Start: 18 @4690 has 4 MA's), (46, 4786), (48, 4816), (50, 4828), (56, 4873), (72, 4975), (73, 4984), (78, 5014), (89, 5059), (90, 5065), (102, 5116), (109, 5161), (110, 5170), (119, 5233), (123, 5266), (128, 5311), (129, 5314), (143, 5446), (146, 5461), (154, 5530), (156, 5551), (159, 5563), (165, 5632), (168, 5644), (182, 5719), (187, 5764), (191, 5791), (213, 5944), (232, 6046), (238, 6091), (250, 6172), (256, 6202), (261, 6253), (282, 6403), (299, 6544), (307, 6628),

Gene: Katzastrophic_4 Start: 2515, Stop: 4530, Start Num: 5

Candidate Starts for Katzastrophic_4:

(Start: 5 @2515 has 60 MA's), (11, 2542), (Start: 12 @2545 has 2 MA's), (22, 2587), (33, 2611), (43, 2647), (45, 2656), (48, 2701), (49, 2704), (50, 2713), (65, 2830), (76, 2890), (103, 2998), (118, 3103), (123, 3142), (126, 3160), (128, 3187), (130, 3193), (139, 3253), (143, 3319), (156, 3424), (157, 3427), (158, 3433), (161, 3463), (163, 3481), (183, 3595), (191, 3664), (197, 3697), (205, 3742), (235, 3961), (284, 4273), (294, 4321), (299, 4402), (303, 4450), (304, 4468),

Gene: Kenzers_4 Start: 2317, Stop: 4341, Start Num: 5

Candidate Starts for Kenzers_4:

(Start: 5 @2317 has 60 MA's), (Start: 12 @2350 has 2 MA's), (43, 2458), (45, 2467), (48, 2512), (49, 2515), (59, 2608), (77, 2707), (101, 2800), (112, 2875), (126, 2983), (128, 3010), (143, 3142), (144, 3148), (156, 3247), (163, 3301), (168, 3340), (191, 3484), (205, 3562), (284, 4081), (295, 4144), (299, 4210),

Gene: Kepler_5 Start: 2713, Stop: 4656, Start Num: 16

Candidate Starts for Kepler_5:

(Start: 16 @2713 has 30 MA's), (25, 2755), (37, 2785), (47, 2845), (48, 2854), (49, 2857), (50, 2866), (68, 2998), (69, 3001), (87, 3082), (92, 3106), (111, 3196), (125, 3295), (143, 3475), (145, 3484), (149, 3526), (156, 3580), (157, 3583), (159, 3592), (167, 3670), (170, 3688), (191, 3817), (195, 3841), (203, 3883), (205, 3895), (230, 4039), (236, 4081), (252, 4174), (260, 4237), (263, 4267), (267, 4291), (296, 4480), (299, 4531), (300, 4546), (305, 4600),

Gene: Khuang_3 Start: 1991, Stop: 3505, Start Num: 12

Candidate Starts for Khuang_3:

(7, 1979), (9, 1982), (10, 1985), (Start: 12 @1991 has 2 MA's), (34, 2072), (39, 2090), (46, 2132), (48, 2162), (59, 2255), (72, 2318), (78, 2357), (92, 2411), (103, 2456), (139, 2708), (143, 2774), (148, 2819), (155, 2867), (156, 2879), (158, 2888), (161, 2915), (165, 2960), (167, 2969), (175, 3005), (186, 3086), (187, 3089), (199, 3158), (217, 3299), (224, 3323), (234, 3389), (241, 3446), (243, 3476), (244, 3479),

Gene: Kieran_4 Start: 2572, Stop: 4596, Start Num: 5

Candidate Starts for Kieran_4:

(Start: 5 @2572 has 60 MA's), (11, 2599), (Start: 12 @2602 has 2 MA's), (21, 2635), (22, 2644), (36, 2677), (45, 2713), (48, 2758), (65, 2887), (101, 3040), (104, 3058), (108, 3097), (118, 3169), (123, 3208), (126, 3226), (128, 3253), (143, 3385), (144, 3391), (156, 3490), (158, 3499), (163, 3547), (166, 3577), (175, 3619), (191, 3730), (197, 3763), (205, 3808), (235, 4027), (260, 4189), (268, 4255), (284, 4339), (287, 4354), (303, 4516), (304, 4534),

Gene: KingBob_3 Start: 2012, Stop: 4039, Start Num: 8

Candidate Starts for KingBob_3:

(Start: 8 @2012 has 81 MA's), (Start: 18 @2042 has 4 MA's), (25, 2075), (26, 2078), (50, 2189), (56, 2234), (58, 2270), (65, 2306), (72, 2336), (73, 2345), (78, 2375), (90, 2426), (107, 2510), (109, 2522), (110, 2531), (121, 2606), (123, 2627), (128, 2672), (129, 2675), (143, 2807), (156, 2912), (172, 3029), (187, 3125), (191, 3152), (218, 3338), (220, 3353), (221, 3356), (232, 3416), (256, 3572), (263, 3641), (273, 3707), (282, 3773), (292, 3821), (299, 3914), (300, 3929), (307, 3998),

Gene: Kittykat_3 Start: 2010, Stop: 4025, Start Num: 8

Candidate Starts for Kittykat_3:

(Start: 8 @2010 has 81 MA's), (Start: 18 @2040 has 4 MA's), (31, 2085), (47, 2163), (48, 2172), (50, 2184), (56, 2229), (72, 2331), (73, 2340), (90, 2421), (97, 2454), (103, 2478), (104, 2481), (107, 2505), (109, 2517), (110, 2526), (117, 2580), (123, 2622), (128, 2667), (129, 2670), (143, 2802), (146, 2817), (156, 2907), (159, 2919), (165, 2988), (168, 3000), (182, 3075), (187, 3120), (191, 3147), (232, 3402), (238, 3447), (248, 3522), (250, 3528), (261, 3609), (272, 3687), (282, 3759), (299, 3900), (307, 3984),

Gene: Korra_6 Start: 4666, Stop: 6675, Start Num: 8

Candidate Starts for Korra_6:

(Start: 8 @4666 has 81 MA's), (Start: 18 @4696 has 4 MA's), (46, 4792), (48, 4822), (50, 4834), (56, 4879), (72, 4981), (73, 4990), (78, 5020), (89, 5065), (90, 5071), (102, 5122), (109, 5167), (110, 5176), (119, 5239), (123, 5272), (128, 5317), (129, 5320), (143, 5452), (146, 5467), (154, 5536), (156, 5557), (159, 5569), (165, 5638), (168, 5650), (182, 5725), (187, 5770), (191, 5797), (213, 5950), (232, 6052), (238, 6097), (250, 6178), (256, 6208), (261, 6259), (282, 6409), (299, 6550), (307, 6634),

Gene: Kuleana_5 Start: 2687, Stop: 4621, Start Num: 16

Candidate Starts for Kuleana_5:

(Start: 16 @2687 has 30 MA's), (30, 2741), (49, 2828), (59, 2921), (72, 2984), (79, 3026), (95, 3083), (110, 3161), (125, 3263), (143, 3443), (149, 3494), (156, 3548), (157, 3551), (159, 3560), (164, 3620), (167, 3638), (170, 3656), (190, 3770), (191, 3785), (195, 3809), (205, 3863), (230, 4004), (236, 4046), (252, 4139), (263, 4232), (267, 4256), (277, 4331), (299, 4496), (300, 4511), (302, 4541),

Gene: Kumotta_4 Start: 2487, Stop: 4460, Start Num: 12

Candidate Starts for Kumotta_4:

(7, 2475), (Start: 12 @2487 has 2 MA's), (20, 2517), (28, 2550), (44, 2601), (46, 2625), (49, 2658), (56, 2712), (65, 2784), (72, 2814), (73, 2823), (74, 2829), (82, 2871), (87, 2886), (95, 2922), (96, 2925), (113, 3036), (117, 3057), (119, 3066), (124, 3102), (126, 3117), (127, 3138), (143, 3276), (155, 3369), (156, 3381), (163, 3435), (176, 3510), (187, 3594), (191, 3621), (195, 3645), (203, 3687), (216, 3783), (227, 3828), (229, 3852), (231, 3861), (236, 3897), (237, 3900), (239, 3912), (250, 3987), (258, 4029), (260, 4056), (267, 4110), (279, 4185), (285, 4218), (291, 4251), (309, 4446),

Gene: Lahqtemish_4 Start: 2406, Stop: 4427, Start Num: 5

Candidate Starts for Lahqtemish_4:

(Start: 5 @2406 has 60 MA's), (45, 2556), (48, 2601), (49, 2604), (59, 2697), (101, 2889), (112, 2958), (126, 3066), (128, 3093), (143, 3225), (144, 3231), (152, 3300), (156, 3330), (163, 3384), (168, 3423), (191, 3567), (205, 3645), (207, 3672), (235, 3855), (260, 4017), (294, 4215), (295, 4230), (299, 4296), (303, 4344),

Gene: Lakshmi_6 Start: 4692, Stop: 6710, Start Num: 8

Candidate Starts for Lakshmi_6:

(Start: 8 @4692 has 81 MA's), (26, 4758), (27, 4761), (50, 4869), (71, 5013), (72, 5016), (78, 5055), (90, 5106), (102, 5157), (104, 5166), (109, 5202), (121, 5286), (123, 5307), (129, 5355), (140, 5421), (143, 5487), (156, 5592), (157, 5595), (168, 5685), (174, 5712), (186, 5802), (187, 5805), (191, 5832), (232, 6087), (236, 6120), (251, 6216), (256, 6243), (282, 6444), (299, 6585), (300, 6600), (307, 6669),

Gene: Lasagna_3 Start: 2010, Stop: 4028, Start Num: 8

Candidate Starts for Lasagna_3:

(Start: 8 @2010 has 81 MA's), (Start: 18 @2040 has 4 MA's), (40, 2118), (48, 2175), (50, 2187), (56, 2232), (68, 2319), (77, 2370), (78, 2373), (89, 2418), (90, 2424), (102, 2475), (109, 2520), (110, 2529), (119, 2592), (123, 2625), (128, 2670), (129, 2673), (142, 2793), (143, 2805), (146, 2820), (148, 2850), (156, 2910), (159, 2922), (168, 3003), (176, 3039), (185, 3090), (187, 3123), (191, 3150), (221, 3345), (232, 3405), (238, 3450), (250, 3531), (282, 3762), (299, 3903), (307, 3987),

Gene: Lennox_3 Start: 2010, Stop: 4028, Start Num: 8

Candidate Starts for Lennox_3:

(Start: 8 @2010 has 81 MA's), (Start: 18 @2040 has 4 MA's), (48, 2175), (50, 2187), (56, 2232), (68, 2319), (77, 2370), (78, 2373), (89, 2418), (90, 2424), (102, 2475), (109, 2520), (110, 2529), (119, 2592), (123, 2625), (128, 2670), (129, 2673), (142, 2793), (143, 2805), (146, 2820), (148, 2850), (156, 2910), (159, 2922), (168, 3003), (176, 3039), (185, 3090), (187, 3123), (191, 3150), (221, 3345), (231, 3402), (232, 3405), (238, 3450), (248, 3525), (250, 3531), (272, 3690), (282, 3762), (299, 3903), (307, 3987),

3987),

Gene: Leona_4 Start: 2383, Stop: 4302, Start Num: 16

Candidate Starts for Leona_4:

(Start: 16 @2383 has 30 MA's), (30, 2437), (47, 2512), (49, 2524), (56, 2578), (69, 2668), (79, 2722), (92, 2770), (93, 2773), (111, 2857), (125, 2956), (133, 3013), (138, 3067), (143, 3136), (145, 3145), (156, 3241), (157, 3244), (159, 3253), (167, 3331), (180, 3388), (191, 3478), (195, 3502), (203, 3544), (205, 3556), (230, 3694), (236, 3736), (246, 3808), (263, 3922), (267, 3946), (277, 4012), (279, 4021), (289, 4072), (296, 4126), (299, 4177), (300, 4192), (305, 4246),

Gene: LilStuart_3 Start: 2010, Stop: 4028, Start Num: 8

Candidate Starts for LilStuart_3:

(Start: 8 @2010 has 81 MA's), (Start: 18 @2040 has 4 MA's), (40, 2118), (48, 2175), (50, 2187), (56, 2232), (68, 2319), (77, 2370), (78, 2373), (89, 2418), (90, 2424), (102, 2475), (109, 2520), (110, 2529), (119, 2592), (123, 2625), (128, 2670), (129, 2673), (142, 2793), (143, 2805), (146, 2820), (148, 2850), (156, 2910), (159, 2922), (168, 3003), (176, 3039), (185, 3090), (187, 3123), (191, 3150), (221, 3345), (232, 3405), (238, 3450), (250, 3531), (282, 3762), (299, 3903), (307, 3987),

Gene: LimaBean_4 Start: 2329, Stop: 4353, Start Num: 5

Candidate Starts for LimaBean_4:

(Start: 5 @2329 has 60 MA's), (Start: 12 @2362 has 2 MA's), (43, 2470), (45, 2479), (48, 2524), (49, 2527), (59, 2620), (77, 2719), (101, 2812), (112, 2887), (126, 2995), (128, 3022), (143, 3154), (144, 3160), (152, 3229), (156, 3259), (163, 3313), (168, 3352), (191, 3496), (205, 3574), (284, 4093), (295, 4156), (299, 4222),

Gene: Litotes_6 Start: 4646, Stop: 6661, Start Num: 8

Candidate Starts for Litotes_6:

(Start: 8 @4646 has 81 MA's), (17, 4673), (20, 4685), (25, 4706), (50, 4820), (55, 4862), (56, 4865), (65, 4937), (69, 4955), (72, 4967), (74, 4982), (77, 5003), (90, 5057), (92, 5066), (102, 5108), (103, 5114), (109, 5153), (110, 5162), (111, 5165), (119, 5225), (123, 5258), (128, 5303), (129, 5306), (143, 5438), (156, 5543), (168, 5636), (179, 5684), (187, 5756), (191, 5783), (232, 6038), (236, 6071), (261, 6245), (263, 6263), (299, 6536), (307, 6620),

Gene: LittleTokyo_5 Start: 2662, Stop: 4599, Start Num: 16

Candidate Starts for LittleTokyo_5:

(15, 2656), (Start: 16 @2662 has 30 MA's), (30, 2716), (37, 2731), (48, 2800), (49, 2803), (62, 2926), (83, 3019), (91, 3049), (110, 3139), (111, 3142), (120, 3211), (125, 3241), (143, 3421), (145, 3430), (156, 3526), (167, 3616), (180, 3673), (191, 3763), (195, 3787), (203, 3829), (205, 3841), (229, 3979), (231, 3988), (252, 4117), (254, 4129), (260, 4180), (263, 4210), (266, 4231), (289, 4369), (296, 4423), (299, 4474), (300, 4489), (302, 4519), (306, 4549),

Gene: Lucy_3 Start: 2010, Stop: 4019, Start Num: 8

Candidate Starts for Lucy_3:

(Start: 8 @2010 has 81 MA's), (Start: 18 @2040 has 4 MA's), (46, 2136), (48, 2166), (50, 2178), (56, 2223), (72, 2325), (73, 2334), (74, 2340), (76, 2355), (78, 2364), (89, 2409), (90, 2415), (103, 2472), (104, 2475), (109, 2511), (110, 2520), (119, 2583), (123, 2616), (128, 2661), (129, 2664), (143, 2796), (146, 2811), (154, 2880), (156, 2901), (159, 2913), (168, 2994), (179, 3042), (182, 3069), (187, 3114), (191, 3141), (205, 3219), (221, 3336), (231, 3393), (232, 3396), (238, 3441), (250, 3522), (282, 3753), (299, 3894), (307, 3978),

Gene: Lunar_6 Start: 2875, Stop: 4818, Start Num: 16

Candidate Starts for Lunar_6:

(Start: 16 @2875 has 30 MA's), (33, 2935), (47, 3007), (48, 3016), (49, 3019), (57, 3097), (68, 3160), (69, 3163), (87, 3244), (92, 3268), (111, 3358), (120, 3427), (125, 3457), (143, 3637), (145, 3646), (149, 3688), (156, 3742), (157, 3745), (159, 3754), (167, 3832), (170, 3850), (191, 3979), (195, 4003), (203, 4045), (205, 4057), (230, 4201), (236, 4243), (252, 4336), (260, 4399), (263, 4429), (267, 4453), (296, 4642), (299, 4693), (300, 4708), (305, 4762),

Gene: Lynlen_4 Start: 2317, Stop: 4341, Start Num: 5

Candidate Starts for Lynlen_4:

(Start: 5 @2317 has 60 MA's), (Start: 12 @2350 has 2 MA's), (43, 2458), (45, 2467), (48, 2512), (49, 2515), (59, 2608), (77, 2707), (101, 2800), (112, 2875), (126, 2983), (128, 3010), (143, 3142), (144, 3148), (156, 3247), (163, 3301), (168, 3340), (191, 3484), (205, 3562), (284, 4081), (295, 4144), (299, 4210),

Gene: Maja_4 Start: 2483, Stop: 4399, Start Num: 16

Candidate Starts for Maja_4:

(Start: 16 @2483 has 30 MA's), (49, 2624), (57, 2702), (71, 2777), (91, 2873), (98, 2900), (143, 3236), (156, 3341), (159, 3353), (170, 3449), (185, 3518), (191, 3578), (196, 3605), (204, 3650), (214, 3728), (229, 3791), (231, 3800), (236, 3836), (258, 3965), (260, 3992), (285, 4157), (291, 4190), (309, 4385),

Gene: Makoto_3 Start: 2010, Stop: 4028, Start Num: 8

Candidate Starts for Makoto_3:

(Start: 8 @2010 has 81 MA's), (Start: 18 @2040 has 4 MA's), (48, 2175), (50, 2187), (56, 2232), (68, 2319), (78, 2373), (89, 2418), (90, 2424), (102, 2475), (109, 2520), (110, 2529), (113, 2562), (119, 2592), (123, 2625), (128, 2670), (129, 2673), (142, 2793), (143, 2805), (146, 2820), (148, 2850), (156, 2910), (159, 2922), (168, 3003), (176, 3039), (185, 3090), (187, 3123), (191, 3150), (197, 3183), (221, 3345), (232, 3405), (238, 3450), (250, 3531), (272, 3690), (282, 3762), (299, 3903), (307, 3987),

Gene: MamaPearl_3 Start: 2010, Stop: 4019, Start Num: 8

Candidate Starts for MamaPearl_3:

(Start: 8 @2010 has 81 MA's), (Start: 18 @2040 has 4 MA's), (48, 2166), (50, 2178), (56, 2223), (72, 2325), (77, 2361), (78, 2364), (90, 2415), (103, 2472), (109, 2511), (110, 2520), (119, 2583), (122, 2607), (123, 2616), (128, 2661), (129, 2664), (143, 2796), (146, 2811), (154, 2880), (156, 2901), (159, 2913), (165, 2982), (168, 2994), (185, 3081), (187, 3114), (191, 3141), (197, 3174), (232, 3396), (238, 3441), (250, 3522), (282, 3753), (287, 3774), (299, 3894), (307, 3978),

Gene: MargaretKali_5 Start: 2564, Stop: 4480, Start Num: 16

Candidate Starts for MargaretKali_5:

(Start: 16 @2564 has 30 MA's), (21, 2591), (22, 2600), (38, 2639), (47, 2693), (48, 2702), (56, 2759), (61, 2810), (71, 2858), (77, 2897), (87, 2933), (91, 2954), (119, 3107), (120, 3116), (143, 3317), (147, 3353), (156, 3422), (157, 3425), (161, 3458), (170, 3530), (185, 3599), (190, 3644), (191, 3659), (195, 3683), (197, 3692), (214, 3809), (227, 3848), (229, 3872), (231, 3881), (237, 3920), (247, 3995), (250, 4007), (258, 4049), (260, 4076), (267, 4130), (269, 4145), (270, 4154), (271, 4160), (285, 4238), (291, 4271), (307, 4442), (309, 4466),

Gene: Maria1952_3 Start: 2012, Stop: 4039, Start Num: 8

Candidate Starts for Maria1952_3:

(Start: 8 @2012 has 81 MA's), (Start: 18 @2042 has 4 MA's), (25, 2075), (26, 2078), (50, 2189), (56, 2234), (58, 2270), (65, 2306), (72, 2336), (73, 2345), (78, 2375), (90, 2426), (107, 2510), (109, 2522), (110, 2531), (121, 2606), (123, 2627), (128, 2672), (129, 2675), (143, 2807), (156, 2912), (172, 3029), (187, 3125), (191, 3152), (218, 3338), (220, 3353), (221, 3356), (232, 3416), (256, 3572), (263, 3641), (273, 3707), (282, 3773), (292, 3821), (299, 3914), (300, 3929), (307, 3998),

Gene: MeganNoll_6 Start: 4717, Stop: 6726, Start Num: 8

Candidate Starts for MeganNoll_6:

(Start: 8 @4717 has 81 MA's), (Start: 18 @4747 has 4 MA's), (46, 4843), (48, 4873), (50, 4885), (56, 4930), (72, 5032), (73, 5041), (78, 5071), (89, 5116), (90, 5122), (102, 5173), (109, 5218), (110, 5227), (119, 5290), (123, 5323), (128, 5368), (129, 5371), (143, 5503), (146, 5518), (154, 5587), (156, 5608), (159, 5620), (165, 5689), (168, 5701), (182, 5776), (187, 5821), (191, 5848), (231, 6100), (232, 6103), (238, 6148), (250, 6229), (256, 6259), (261, 6310), (282, 6460), (299, 6601), (307, 6685),

Gene: Melons_6 Start: 2875, Stop: 4818, Start Num: 16

Candidate Starts for Melons_6:

(Start: 16 @2875 has 30 MA's), (33, 2935), (47, 3007), (48, 3016), (49, 3019), (57, 3097), (68, 3160), (69, 3163), (87, 3244), (92, 3268), (111, 3358), (120, 3427), (125, 3457), (143, 3637), (145, 3646), (149, 3688), (156, 3742), (157, 3745), (159, 3754), (167, 3832), (170, 3850), (191, 3979), (195, 4003), (203, 4045), (205, 4057), (230, 4201), (236, 4243), (252, 4336), (260, 4399), (263, 4429), (267, 4453), (296, 4642), (299, 4693), (300, 4708), (305, 4762),

Gene: Misaeng_6 Start: 4729, Stop: 6747, Start Num: 8

Candidate Starts for Misaeng_6:

(Start: 8 @4729 has 81 MA's), (26, 4795), (27, 4798), (50, 4906), (71, 5050), (72, 5053), (78, 5092), (90, 5143), (102, 5194), (104, 5203), (109, 5239), (121, 5323), (123, 5344), (129, 5392), (140, 5458), (143, 5524), (156, 5629), (157, 5632), (168, 5722), (174, 5749), (186, 5839), (187, 5842), (191, 5869), (232, 6124), (236, 6157), (250, 6250), (251, 6253), (256, 6280), (282, 6481), (299, 6622), (300, 6637), (307, 6706),

Gene: Moki_3 Start: 2010, Stop: 4028, Start Num: 8

Candidate Starts for Moki_3:

(Start: 8 @2010 has 81 MA's), (Start: 18 @2040 has 4 MA's), (40, 2118), (48, 2175), (50, 2187), (56, 2232), (77, 2370), (78, 2373), (90, 2424), (102, 2475), (104, 2484), (110, 2529), (119, 2592), (122, 2616), (128, 2670), (143, 2805), (146, 2820), (156, 2910), (159, 2922), (168, 3003), (176, 3039), (185, 3090), (187, 3123), (191, 3150), (231, 3402), (232, 3405), (238, 3450), (250, 3531), (272, 3690), (282, 3762), (299, 3903), (307, 3987),

Gene: MrGloopy_6 Start: 4650, Stop: 6659, Start Num: 8

Candidate Starts for MrGloopy_6:

(Start: 8 @4650 has 81 MA's), (Start: 18 @4680 has 4 MA's), (46, 4776), (48, 4806), (50, 4818), (56, 4863), (72, 4965), (73, 4974), (78, 5004), (89, 5049), (90, 5055), (102, 5106), (109, 5151), (110, 5160), (119, 5223), (123, 5256), (128, 5301), (129, 5304), (143, 5436), (146, 5451), (154, 5520), (156, 5541), (159, 5553), (165, 5622), (168, 5634), (182, 5709), (187, 5754), (191, 5781), (231, 6033), (232, 6036), (238, 6081), (250, 6162), (256, 6192), (261, 6243), (282, 6393), (299, 6534), (307, 6618),

Gene: Nancia_3 Start: 2010, Stop: 4028, Start Num: 8

Candidate Starts for Nancia_3:

(Start: 8 @2010 has 81 MA's), (Start: 18 @2040 has 4 MA's), (40, 2118), (48, 2175), (50, 2187), (56, 2232), (68, 2319), (77, 2370), (78, 2373), (89, 2418), (90, 2424), (102, 2475), (109, 2520), (110, 2529), (119, 2592), (123, 2625), (128, 2670), (129, 2673), (142, 2793), (143, 2805), (146, 2820), (148, 2850), (156, 2910), (159, 2922), (168, 3003), (176, 3039), (185, 3090), (187, 3123), (191, 3150), (221, 3345), (232, 3405), (238, 3450), (250, 3531), (282, 3762), (299, 3903), (307, 3987),

Gene: Nicky22_5 Start: 2791, Stop: 4815, Start Num: 5

Candidate Starts for Nicky22_5:

(Start: 5 @2791 has 60 MA's), (Start: 12 @2824 has 2 MA's), (43, 2932), (45, 2941), (48, 2986), (49, 2989), (59, 3082), (77, 3181), (101, 3274), (108, 3328), (112, 3349), (126, 3457), (128, 3484), (143, 3616), (144, 3622), (152, 3691), (156, 3721), (163, 3775), (168, 3814), (191, 3958), (205, 4036), (284, 4555), (295, 4618), (297, 4648), (299, 4684),

Gene: Nubia_6 Start: 4652, Stop: 6670, Start Num: 8

Candidate Starts for Nubia_6:

(Start: 8 @4652 has 81 MA's), (26, 4718), (27, 4721), (48, 4817), (50, 4829), (71, 4973), (72, 4976), (78, 5015), (90, 5066), (102, 5117), (104, 5126), (109, 5162), (121, 5246), (123, 5267), (129, 5315), (140, 5381), (143, 5447), (152, 5522), (156, 5552), (157, 5555), (168, 5645), (174, 5672), (186, 5762), (187, 5765), (191, 5792), (232, 6047), (236, 6080), (251, 6176), (256, 6203), (282, 6404), (299, 6545), (300, 6560), (307, 6629),

Gene: OMalley_3 Start: 2013, Stop: 4040, Start Num: 8

Candidate Starts for OMalley_3:

(Start: 8 @2013 has 81 MA's), (Start: 18 @2043 has 4 MA's), (25, 2076), (26, 2079), (50, 2190), (65, 2307), (68, 2322), (73, 2346), (90, 2427), (102, 2478), (107, 2511), (109, 2523), (113, 2565), (117, 2586), (121, 2607), (123, 2628), (128, 2673), (129, 2676), (143, 2808), (152, 2883), (156, 2913), (172, 3030), (187, 3126), (191, 3153), (220, 3354), (221, 3357), (232, 3417), (256, 3573), (263, 3642), (282, 3774), (292, 3822), (299, 3915), (300, 3930), (307, 3999),

Gene: Olliecat_4 Start: 2543, Stop: 4600, Start Num: 5

Candidate Starts for Olliecat_4:

(Start: 5 @2543 has 60 MA's), (36, 2657), (43, 2684), (45, 2693), (48, 2738), (50, 2750), (65, 2864), (70, 2888), (92, 2984), (93, 2987), (100, 3014), (103, 3032), (117, 3134), (122, 3167), (127, 3215), (143, 3353), (155, 3446), (156, 3458), (158, 3467), (163, 3512), (164, 3530), (176, 3587), (187, 3668), (190, 3680), (191, 3695), (205, 3773), (236, 4010), (238, 4022), (262, 4193), (274, 4280), (284, 4343), (289, 4367), (294, 4391), (295, 4406), (297, 4442), (299, 4478), (304, 4544),

Gene: Orcanus_5 Start: 2686, Stop: 4656, Start Num: 16

Candidate Starts for Orcanus_5:

(Start: 16 @2686 has 30 MA's), (49, 2830), (63, 2962), (69, 2989), (72, 3001), (81, 3052), (84, 3064), (86, 3067), (88, 3073), (92, 3094), (111, 3184), (125, 3283), (143, 3463), (145, 3472), (156, 3568), (157, 3571), (159, 3580), (164, 3640), (167, 3658), (170, 3676), (185, 3745), (191, 3805), (195, 3829), (203, 3871), (205, 3883), (222, 3997), (230, 4045), (236, 4087), (263, 4273), (272, 4333), (277, 4366), (289, 4426), (299, 4531), (305, 4600), (307, 4615), (308, 4636),

Gene: OurGirlNessie_3 Start: 2010, Stop: 4019, Start Num: 8

Candidate Starts for OurGirlNessie_3:

(Start: 8 @2010 has 81 MA's), (Start: 18 @2040 has 4 MA's), (46, 2136), (48, 2166), (50, 2178), (56, 2223), (72, 2325), (73, 2334), (74, 2340), (76, 2355), (78, 2364), (89, 2409), (90, 2415), (103, 2472), (104, 2475), (110, 2520), (119, 2583), (123, 2616), (128, 2661), (129, 2664), (143, 2796), (146, 2811), (150, 2856), (154, 2880), (156, 2901), (159, 2913), (168, 2994), (179, 3042), (182, 3069), (187, 3114), (191, 3141), (205, 3219), (221, 3336), (231, 3393), (232, 3396), (238, 3441), (250, 3522), (282, 3753), (299, 3894), (307, 3978),

Gene: Oxynfrius_6 Start: 4665, Stop: 6683, Start Num: 8

Candidate Starts for Oxynfrius_6:

(Start: 8 @4665 has 81 MA's), (26, 4731), (27, 4734), (48, 4830), (50, 4842), (71, 4986), (72, 4989), (78, 5028), (90, 5079), (102, 5130), (104, 5139), (109, 5175), (121, 5259), (123, 5280), (129, 5328), (140, 5394), (143, 5460), (156, 5565), (157, 5568), (168, 5658), (174, 5685), (186, 5775), (187, 5778), (191, 5805), (232, 6060), (236, 6093), (251, 6189), (256, 6216), (282, 6417), (299, 6558), (300, 6573), (307, 6642),

Gene: PFR1_03 Start: 2000, Stop: 4156, Start Num: 4

Candidate Starts for PFR1_03:

(4, 2000), (6, 2027), (Start: 18 @2072 has 4 MA's), (45, 2165), (47, 2201), (48, 2210), (52, 2249), (53, 2255), (60, 2315), (64, 2339), (66, 2342), (85, 2435), (90, 2453), (92, 2462), (94, 2468), (101, 2498), (114, 2600), (116, 2609), (119, 2627), (129, 2708), (136, 2729), (141, 2810), (143, 2825), (152, 2900), (153, 2906), (155, 2918), (160, 2945), (162, 2972), (164, 3005), (166, 3017), (181, 3083), (182, 3098), (184, 3107), (188, 3152), (189, 3155), (193, 3197), (194, 3203), (198, 3224), (206, 3287), (210, 3347), (223, 3425), (226, 3452), (228, 3473), (229, 3488), (231, 3497), (233, 3509), (242, 3599), (253, 3653), (257, 3677), (264, 3752), (267, 3773), (272, 3809), (276, 3845), (278, 3857), (280, 3869), (283, 3890), (293, 3938), (299, 4034), (300, 4049), (301, 4055), (302, 4079),

Gene: PFR2_03 Start: 2000, Stop: 4156, Start Num: 4

Candidate Starts for PFR2_03:

(4, 2000), (6, 2027), (Start: 18 @2072 has 4 MA's), (45, 2165), (47, 2201), (48, 2210), (52, 2249), (53, 2255), (60, 2315), (64, 2339), (66, 2342), (85, 2435), (90, 2453), (92, 2462), (94, 2468), (101, 2498), (114, 2600), (116, 2609), (119, 2627), (129, 2708), (136, 2729), (141, 2810), (143, 2825), (152, 2900), (153, 2906), (155, 2918), (160, 2945), (162, 2972), (164, 3005), (166, 3017), (181, 3083), (182, 3098), (184, 3107), (188, 3152), (189, 3155), (193, 3197), (194, 3203), (198, 3224), (206, 3287), (210, 3347), (223, 3425), (226, 3452), (228, 3473), (229, 3488), (231, 3497), (233, 3509), (242, 3599), (253, 3653), (257, 3677), (264, 3752), (267, 3773), (272, 3809), (276, 3845), (278, 3857), (280, 3869), (283, 3890), (293, 3938), (299, 4034), (300, 4049), (301, 4055), (302, 4079),

Gene: PartyCup_6 Start: 4693, Stop: 6708, Start Num: 8

Candidate Starts for PartyCup_6:

(Start: 8 @4693 has 81 MA's), (17, 4720), (20, 4732), (25, 4753), (50, 4867), (55, 4909), (56, 4912), (65, 4984), (69, 5002), (72, 5014), (77, 5050), (89, 5098), (90, 5104), (92, 5113), (102, 5155), (103, 5161), (109, 5200), (110, 5209), (111, 5212), (119, 5272), (123, 5305), (128, 5350), (129, 5353), (143, 5485), (156, 5590), (168, 5683), (179, 5731), (187, 5803), (191, 5830), (232, 6085), (236, 6118), (237, 6121), (261, 6292), (263, 6310), (299, 6583), (307, 6667),

Gene: Phisb_4 Start: 2317, Stop: 4341, Start Num: 5

Candidate Starts for Phisb_4:

(Start: 5 @2317 has 60 MA's), (Start: 12 @2350 has 2 MA's), (43, 2458), (45, 2467), (48, 2512), (49, 2515), (59, 2608), (77, 2707), (101, 2800), (108, 2854), (112, 2875), (126, 2983), (128, 3010), (143, 3142), (144, 3148), (156, 3247), (163, 3301), (168, 3340), (191, 3484), (205, 3562), (284, 4081), (295, 4144), (299, 4210),

Gene: PhluffyCoco_4 Start: 2335, Stop: 4254, Start Num: 16

Candidate Starts for PhluffyCoco_4:

(Start: 16 @2335 has 30 MA's), (30, 2389), (47, 2464), (49, 2476), (56, 2530), (69, 2620), (79, 2674), (92, 2722), (93, 2725), (111, 2809), (125, 2908), (138, 3019), (143, 3088), (145, 3097), (156, 3193), (157, 3196), (159, 3205), (167, 3283), (170, 3301), (180, 3340), (191, 3430), (195, 3454), (203, 3496), (205, 3508), (230, 3646), (236, 3688), (246, 3760), (263, 3874), (267, 3898), (277, 3964), (279, 3973), (289, 4024), (296, 4078), (299, 4129), (300, 4144), (305, 4198),

Gene: PinkFriday_3 Start: 2012, Stop: 4039, Start Num: 8

Candidate Starts for PinkFriday_3:

(Start: 8 @2012 has 81 MA's), (Start: 18 @2042 has 4 MA's), (25, 2075), (26, 2078), (46, 2147), (50, 2189), (56, 2234), (58, 2270), (65, 2306), (72, 2336), (73, 2345), (78, 2375), (90, 2426), (102, 2477), (107, 2510), (109, 2522), (121, 2606), (123, 2627), (128, 2672), (129, 2675), (143, 2807), (152, 2882), (156, 2912), (172, 3029), (187, 3125), (197, 3185), (218, 3338), (220, 3353), (221, 3356), (232, 3416), (238, 3461), (256, 3572), (263, 3641), (273, 3707), (282, 3773), (287, 3794), (292, 3821), (299, 3914), (300, 3929), (307, 3998),

Gene: PitaDog_3 Start: 2010, Stop: 4019, Start Num: 8

Candidate Starts for PitaDog_3:

(Start: 8 @2010 has 81 MA's), (Start: 18 @2040 has 4 MA's), (46, 2136), (48, 2166), (50, 2178), (56, 2223), (72, 2325), (73, 2334), (74, 2340), (76, 2355), (78, 2364), (89, 2409), (90, 2415), (103, 2472), (104, 2475), (109, 2511), (110, 2520), (119, 2583), (123, 2616), (128, 2661), (129, 2664), (143, 2796), (146, 2811), (154, 2880), (156, 2901), (159, 2913), (168, 2994), (179, 3042), (182, 3069), (187, 3114), (191, 3141), (205, 3219), (221, 3336), (231, 3393), (232, 3396), (238, 3441), (250, 3522), (282, 3753), (299, 3894), (307, 3978),

Gene: Polka_5 Start: 2714, Stop: 4657, Start Num: 16

Candidate Starts for Polka_5:

(Start: 16 @2714 has 30 MA's), (25, 2756), (37, 2786), (47, 2846), (48, 2855), (49, 2858), (50, 2867), (68, 2999), (69, 3002), (87, 3083), (92, 3107), (111, 3197), (125, 3296), (143, 3476), (145, 3485), (149, 3527), (156, 3581), (157, 3584), (159, 3593), (167, 3671), (170, 3689), (191, 3818), (195, 3842), (203, 3884), (205, 3896), (230, 4040), (236, 4082), (252, 4175), (260, 4238), (263, 4268), (267, 4292), (296, 4481), (299, 4532), (300, 4547), (305, 4601),

Gene: Potatoes_6 Start: 4711, Stop: 6720, Start Num: 8

Candidate Starts for Potatoes_6:

(Start: 8 @4711 has 81 MA's), (Start: 18 @4741 has 4 MA's), (46, 4837), (48, 4867), (50, 4879), (56, 4924), (72, 5026), (73, 5035), (78, 5065), (89, 5110), (90, 5116), (102, 5167), (109, 5212), (110, 5221), (119, 5284), (123, 5317), (128, 5362), (129, 5365), (143, 5497), (146, 5512), (154, 5581), (156, 5602), (159, 5614), (165, 5683), (168, 5695), (182, 5770), (187, 5815), (191, 5842), (231, 6094), (232, 6097), (238, 6142), (250, 6223), (256, 6253), (261, 6304), (282, 6454), (299, 6595), (307, 6679),

Gene: Preamble_3 Start: 2010, Stop: 4028, Start Num: 8

Candidate Starts for Preamble_3:

(Start: 8 @2010 has 81 MA's), (Start: 18 @2040 has 4 MA's), (48, 2175), (50, 2187), (89, 2418), (90, 2424), (109, 2520), (110, 2529), (116, 2574), (119, 2592), (123, 2625), (128, 2670), (129, 2673), (142, 2793), (143, 2805), (146, 2820), (156, 2910), (157, 2913), (159, 2922), (168, 3003), (174, 3030), (176, 3039), (187, 3123), (191, 3150), (232, 3405), (238, 3450), (248, 3525), (250, 3531), (261, 3612), (272, 3690), (282, 3762), (299, 3903), (307, 3987),

Gene: Pterodactyl_3 Start: 2010, Stop: 4019, Start Num: 8

Candidate Starts for Pterodactyl_3:

(Start: 8 @2010 has 81 MA's), (Start: 18 @2040 has 4 MA's), (46, 2136), (48, 2166), (50, 2178), (56, 2223), (72, 2325), (73, 2334), (74, 2340), (76, 2355), (78, 2364), (89, 2409), (90, 2415), (103, 2472), (104, 2475), (109, 2511), (110, 2520), (119, 2583), (123, 2616), (128, 2661), (129, 2664), (143, 2796), (146, 2811), (154, 2880), (156, 2901), (159, 2913), (168, 2994), (179, 3042), (182, 3069), (187, 3114), (191, 3141), (205, 3219), (221, 3336), (231, 3393), (232, 3396), (238, 3441), (250, 3522), (282, 3753), (299, 3894), (307, 3978),

Gene: Pumancara_3 Start: 2012, Stop: 4039, Start Num: 8

Candidate Starts for Pumancara_3:

(Start: 8 @2012 has 81 MA's), (Start: 18 @2042 has 4 MA's), (25, 2075), (26, 2078), (50, 2189), (56, 2234), (58, 2270), (65, 2306), (72, 2336), (73, 2345), (78, 2375), (90, 2426), (102, 2477), (107, 2510), (109, 2522), (110, 2531), (121, 2606), (123, 2627), (128, 2672), (129, 2675), (143, 2807), (152, 2882), (156, 2912), (172, 3029), (187, 3125), (218, 3338), (220, 3353), (221, 3356), (232, 3416), (238, 3461), (256, 3572), (263, 3641), (273, 3707), (282, 3773), (292, 3821), (298, 3878), (299, 3914), (300, 3929), (307, 3998),

Gene: QMacho_5 Start: 2799, Stop: 4823, Start Num: 5

Candidate Starts for QMacho_5:

(Start: 5 @2799 has 60 MA's), (Start: 12 @2832 has 2 MA's), (43, 2940), (45, 2949), (48, 2994), (49, 2997), (59, 3090), (77, 3189), (101, 3282), (108, 3336), (112, 3357), (126, 3465), (128, 3492), (143, 3624), (144, 3630), (152, 3699), (156, 3729), (163, 3783), (168, 3822), (191, 3966), (205, 4044), (284, 4563), (294, 4611), (295, 4626), (299, 4692),

Gene: Quenya_5 Start: 2508, Stop: 4526, Start Num: 5

Candidate Starts for Quenya_5:

(Start: 5 @2508 has 60 MA's), (11, 2535), (Start: 12 @2538 has 2 MA's), (21, 2571), (22, 2580), (33, 2604), (43, 2640), (45, 2649), (48, 2694), (49, 2697), (50, 2706), (65, 2823), (76, 2883), (103, 2994), (118, 3099), (123, 3138), (126, 3156), (128, 3183), (130, 3189), (139, 3249), (143, 3315), (156, 3420), (158, 3429), (161, 3459), (163, 3477), (174, 3543), (186, 3630), (191, 3660), (197, 3693), (205, 3738), (230, 3918), (284, 4269), (294, 4317), (299, 4398), (303, 4446), (304, 4464),

Gene: RAP15_6 Start: 4717, Stop: 6726, Start Num: 8

Candidate Starts for RAP15_6:

(Start: 8 @4717 has 81 MA's), (Start: 18 @4747 has 4 MA's), (46, 4843), (48, 4873), (50, 4885), (56, 4930), (72, 5032), (73, 5041), (78, 5071), (89, 5116), (90, 5122), (102, 5173), (109, 5218), (110, 5227), (119, 5290), (123, 5323), (128, 5368), (129, 5371), (143, 5503), (146, 5518), (154, 5587), (156, 5608), (159, 5620), (165, 5689), (168, 5701), (182, 5776), (187, 5821), (191, 5848), (231, 6100), (232, 6103), (238, 6148), (250, 6229), (256, 6259), (261, 6310), (282, 6460), (299, 6601), (307, 6685),

Gene: RcigaStruga_6 Start: 4664, Stop: 6682, Start Num: 8

Candidate Starts for RcigaStruga_6:

(Start: 8 @4664 has 81 MA's), (26, 4730), (50, 4841), (71, 4985), (72, 4988), (77, 5024), (78, 5027), (90, 5078), (102, 5129), (104, 5138), (109, 5174), (121, 5258), (123, 5279), (129, 5327), (140, 5393), (143, 5459), (156, 5564), (157, 5567), (168, 5657), (174, 5684), (186, 5774), (187, 5777), (191, 5804), (232, 6059), (236, 6092), (250, 6185), (251, 6188), (256, 6215), (282, 6416), (299, 6557), (300, 6572), (307, 6641),

Gene: RedFox_4 Start: 2335, Stop: 4254, Start Num: 16

Candidate Starts for RedFox_4:

(Start: 16 @2335 has 30 MA's), (30, 2389), (47, 2464), (49, 2476), (56, 2530), (69, 2620), (79, 2674), (92, 2722), (93, 2725), (111, 2809), (125, 2908), (138, 3019), (143, 3088), (145, 3097), (156, 3193), (157, 3196), (159, 3205), (167, 3283), (170, 3301), (180, 3340), (191, 3430), (195, 3454), (203, 3496), (205, 3508), (230, 3646), (236, 3688), (246, 3760), (263, 3874), (267, 3898), (277, 3964), (279, 3973), (289, 4024), (296, 4078), (299, 4129), (300, 4144), (305, 4198),

Gene: Renna12_5 Start: 2548, Stop: 4458, Start Num: 16

Candidate Starts for Renna12_5:

(Start: 16 @2548 has 30 MA's), (30, 2602), (47, 2677), (49, 2689), (56, 2743), (69, 2833), (79, 2887), (92, 2935), (110, 3019), (111, 3022), (125, 3121), (143, 3301), (145, 3310), (156, 3406), (157, 3409), (159, 3418), (167, 3496), (170, 3514), (180, 3553), (190, 3628), (191, 3643), (195, 3667), (203, 3709), (205, 3721), (209, 3763), (230, 3850), (236, 3892), (246, 3964), (263, 4078), (267, 4102), (270, 4126), (277, 4168), (279, 4177), (289, 4228), (296, 4282), (299, 4333), (300, 4348), (305, 4402),

Gene: Riovina_3 Start: 2013, Stop: 4040, Start Num: 8

Candidate Starts for Riovina_3:

(Start: 8 @2013 has 81 MA's), (Start: 18 @2043 has 4 MA's), (25, 2076), (26, 2079), (50, 2190), (65, 2307), (68, 2322), (73, 2346), (90, 2427), (102, 2478), (107, 2511), (109, 2523), (113, 2565), (117, 2586), (121, 2607), (123, 2628), (128, 2673), (129, 2676), (143, 2808), (152, 2883), (156, 2913), (172, 3030), (187, 3126), (191, 3153), (220, 3354), (221, 3357), (232, 3417), (256, 3573), (263, 3642), (282, 3774), (292, 3822), (299, 3915), (300, 3930), (307, 3999),

Gene: Riverdale_6 Start: 4648, Stop: 6657, Start Num: 8

Candidate Starts for Riverdale_6:

(Start: 8 @4648 has 81 MA's), (Start: 18 @4678 has 4 MA's), (46, 4774), (48, 4804), (50, 4816), (56, 4861), (72, 4963), (73, 4972), (78, 5002), (89, 5047), (90, 5053), (102, 5104), (109, 5149), (110, 5158), (119, 5221), (123, 5254), (128, 5299), (129, 5302), (143, 5434), (146, 5449), (154, 5518), (156, 5539), (159, 5551), (165, 5620), (168, 5632), (182, 5707), (187, 5752), (191, 5779), (213, 5932), (231, 6031), (232, 6034), (238, 6079), (250, 6160), (256, 6190), (261, 6241), (282, 6391), (299, 6532), (307, 6616),

Gene: Rollins_3 Start: 2230, Stop: 4281, Start Num: 5

Candidate Starts for Rollins_3:

(Start: 5 @2230 has 60 MA's), (24, 2314), (36, 2344), (43, 2371), (45, 2380), (49, 2428), (70, 2575), (75, 2605), (76, 2611), (123, 2863), (126, 2881), (128, 2908), (130, 2914), (143, 3040), (156, 3145), (158, 3154), (161, 3184), (163, 3202), (191, 3385), (203, 3451), (205, 3463), (236, 3697), (252, 3793), (285, 4030), (286, 4036), (290, 4051), (294, 4072), (299, 4153), (304, 4219),

Gene: Rona_4 Start: 2572, Stop: 4596, Start Num: 5

Candidate Starts for Rona_4:

(Start: 5 @2572 has 60 MA's), (11, 2599), (Start: 12 @2602 has 2 MA's), (21, 2635), (22, 2644), (36, 2677), (45, 2713), (48, 2758), (57, 2839), (65, 2887), (101, 3040), (104, 3058), (108, 3097), (118, 3169), (123, 3208), (126, 3226), (128, 3253), (143, 3385), (144, 3391), (156, 3490), (158, 3499), (163, 3547), (166, 3577), (175, 3619), (191, 3730), (197, 3763), (205, 3808), (235, 4027), (260, 4189), (268, 4255), (284, 4339), (287, 4354), (303, 4516), (304, 4534),

Gene: Rozby_6 Start: 4648, Stop: 6657, Start Num: 8

Candidate Starts for Rozby_6:

(Start: 8 @4648 has 81 MA's), (Start: 18 @4678 has 4 MA's), (40, 4747), (46, 4774), (48, 4804), (50, 4816), (56, 4861), (72, 4963), (73, 4972), (78, 5002), (89, 5047), (90, 5053), (102, 5104), (109, 5149), (110, 5158), (119, 5221), (123, 5254), (128, 5299), (129, 5302), (143, 5434), (146, 5449), (154, 5518), (156, 5539), (159, 5551), (165, 5620), (168, 5632), (182, 5707), (187, 5752), (191, 5779), (231, 6031), (232, 6034), (238, 6079), (250, 6160), (256, 6190), (261, 6241), (282, 6391), (299, 6532), (307, 6616),

Gene: Ruchi_5 Start: 2958, Stop: 4898, Start Num: 16

Candidate Starts for Ruchi_5:

(Start: 16 @2958 has 30 MA's), (37, 3030), (48, 3099), (49, 3102), (59, 3195), (69, 3246), (72, 3258), (89, 3336), (92, 3351), (111, 3441), (125, 3540), (135, 3603), (143, 3720), (156, 3825), (158, 3834), (159, 3837), (164, 3897), (167, 3915), (170, 3933), (171, 3936), (185, 4002), (191, 4062), (195, 4086), (203, 4128), (205, 4140), (230, 4281), (236, 4323), (252, 4416), (263, 4509), (267, 4533), (296, 4722), (299, 4773), (300, 4788), (307, 4857), (310, 4884), (311, 4890),

Gene: SanaSana_5 Start: 2596, Stop: 4611, Start Num: 5

Candidate Starts for SanaSana_5:

(Start: 5 @2596 has 60 MA's), (11, 2623), (Start: 12 @2626 has 2 MA's), (36, 2701), (45, 2737), (48, 2782), (49, 2785), (57, 2863), (65, 2911), (77, 2977), (104, 3082), (118, 3193), (126, 3250), (128, 3277), (143, 3409), (144, 3415), (152, 3484), (156, 3514), (158, 3523), (163, 3571), (166, 3601), (191, 3754), (205, 3832), (284, 4351), (295, 4414), (299, 4480), (304, 4546), (307, 4564),

Gene: SansAfet_4 Start: 2317, Stop: 4341, Start Num: 5

Candidate Starts for SansAfet_4:

(Start: 5 @2317 has 60 MA's), (Start: 12 @2350 has 2 MA's), (43, 2458), (45, 2467), (48, 2512), (49, 2515), (59, 2608), (77, 2707), (101, 2800), (112, 2875), (126, 2983), (128, 3010), (143, 3142), (144, 3148), (156, 3247), (163, 3301), (168, 3340), (191, 3484), (205, 3562), (284, 4081), (295, 4144), (299, 4210),

Gene: SarBear_4 Start: 2316, Stop: 4340, Start Num: 5

Candidate Starts for SarBear_4:

(Start: 5 @2316 has 60 MA's), (Start: 12 @2349 has 2 MA's), (43, 2457), (45, 2466), (48, 2511), (49, 2514), (59, 2607), (77, 2706), (101, 2799), (112, 2874), (126, 2982), (128, 3009), (143, 3141), (144, 3147), (152, 3216), (156, 3246), (163, 3300), (168, 3339), (191, 3483), (205, 3561), (284, 4080), (295, 4143), (299, 4209),

Gene: Sarge_4 Start: 2058, Stop: 3983, Start Num: 16

Candidate Starts for Sarge_4:

(Start: 16 @2058 has 30 MA's), (21, 2085), (38, 2133), (59, 2292), (72, 2355), (77, 2391), (87, 2427), (91, 2448), (98, 2475), (121, 2613), (127, 2673), (143, 2811), (145, 2820), (156, 2916), (159, 2928), (170, 3024), (185, 3093), (214, 3303), (229, 3372), (231, 3381), (239, 3432), (257, 3540), (258, 3549), (259, 3555), (267, 3630), (270, 3654), (277, 3699), (279, 3708), (285, 3741), (291, 3774), (296, 3810), (309, 3969),

Gene: Savage2526_6 Start: 4711, Stop: 6720, Start Num: 8

Candidate Starts for Savage2526_6:

(Start: 8 @4711 has 81 MA's), (Start: 18 @4741 has 4 MA's), (46, 4837), (48, 4867), (50, 4879), (56, 4924), (72, 5026), (73, 5035), (78, 5065), (89, 5110), (90, 5116), (102, 5167), (109, 5212), (110, 5221), (119, 5284), (123, 5317), (128, 5362), (129, 5365), (143, 5497), (146, 5512), (154, 5581), (156, 5602), (159, 5614), (165, 5683), (168, 5695), (182, 5770), (187, 5815), (191, 5842), (213, 5995), (231, 6094), (232, 6097), (238, 6142), (250, 6223), (256, 6253), (261, 6304), (282, 6454), (299, 6595), (307, 6679),

Gene: Scuttle_6 Start: 4717, Stop: 6726, Start Num: 8

Candidate Starts for Scuttle_6:

(Start: 8 @4717 has 81 MA's), (Start: 18 @4747 has 4 MA's), (46, 4843), (48, 4873), (50, 4885), (56, 4930), (72, 5032), (73, 5041), (78, 5071), (89, 5116), (90, 5122), (102, 5173), (109, 5218), (110, 5227), (119, 5290), (123, 5323), (128, 5368), (129, 5371), (143, 5503), (146, 5518), (154, 5587), (156, 5608), (159, 5620), (165, 5689), (168, 5701), (182, 5776), (187, 5821), (191, 5848), (213, 6001), (232, 6103), (238, 6148), (250, 6229), (256, 6259), (261, 6310), (282, 6460), (299, 6601), (307, 6685),

Gene: Sergei_3 Start: 2012, Stop: 4039, Start Num: 8

Candidate Starts for Sergei_3:

(Start: 8 @2012 has 81 MA's), (Start: 18 @2042 has 4 MA's), (25, 2075), (26, 2078), (50, 2189), (56, 2234), (58, 2270), (65, 2306), (72, 2336), (73, 2345), (78, 2375), (90, 2426), (107, 2510), (109, 2522), (110, 2531), (121, 2606), (123, 2627), (128, 2672), (129, 2675), (143, 2807), (156, 2912), (172, 3029), (187, 3125), (191, 3152), (218, 3338), (220, 3353), (221, 3356), (232, 3416), (256, 3572), (263, 3641), (273, 3707), (282, 3773), (292, 3821), (299, 3914), (300, 3929), (307, 3998),

Gene: Sharkboy_4 Start: 2571, Stop: 4595, Start Num: 5

Candidate Starts for Sharkboy_4:

(Start: 5 @2571 has 60 MA's), (Start: 12 @2601 has 2 MA's), (21, 2634), (22, 2643), (36, 2676), (45, 2712), (48, 2757), (65, 2886), (101, 3039), (104, 3057), (108, 3096), (118, 3168), (123, 3207), (126, 3225), (128, 3252), (143, 3384), (144, 3390), (156, 3489), (158, 3498), (163, 3546), (166, 3576), (175, 3618), (191, 3729), (197, 3762), (205, 3807), (235, 4026), (260, 4188), (268, 4254), (284, 4338), (287, 4353), (303, 4515), (304, 4533),

Gene: Shayna_3 Start: 2294, Stop: 4342, Start Num: 5

Candidate Starts for Shayna_3:

(Start: 5 @2294 has 60 MA's), (35, 2405), (45, 2444), (48, 2489), (54, 2540), (77, 2684), (96, 2756), (101, 2777), (105, 2810), (126, 2957), (128, 2984), (143, 3116), (144, 3122), (151, 3182), (155, 3209), (156, 3221), (157, 3224), (158, 3230), (163, 3275), (191, 3458), (196, 3485), (197, 3491), (205, 3536), (207, 3563), (245, 3824), (295, 4145), (299, 4217), (304, 4283), (308, 4322),

Gene: Shoya_3 Start: 1803, Stop: 3764, Start Num: 12

Candidate Starts for Shoya_3:

(Start: 12 @1803 has 2 MA's), (23, 1857), (39, 1902), (45, 1920), (46, 1935), (48, 1965), (56, 2022), (58, 2058), (61, 2073), (65, 2094), (69, 2112), (82, 2181), (87, 2196), (96, 2235), (113, 2349), (117, 2370), (129, 2460), (143, 2589), (155, 2682), (156, 2694), (161, 2730), (163, 2748), (165, 2775), (176, 2823), (177, 2829), (191, 2934), (195, 2958), (214, 3084), (216, 3096), (229, 3153), (231, 3162), (236, 3198), (247, 3276), (255, 3312), (258, 3330), (260, 3357), (267, 3411), (277, 3480), (285, 3522), (291, 3555), (296, 3591), (309, 3750),

Gene: Skylord_3 Start: 2170, Stop: 4221, Start Num: 5

Candidate Starts for Skylord_3:

(Start: 5 @2170 has 60 MA's), (24, 2254), (36, 2284), (43, 2311), (45, 2320), (49, 2368), (70, 2515), (75, 2545), (76, 2551), (123, 2803), (126, 2821), (128, 2848), (130, 2854), (143, 2980), (156, 3085), (158, 3094), (161, 3124), (163, 3142), (191, 3325), (203, 3391), (205, 3403), (236, 3637), (252, 3733), (285, 3970), (286, 3976), (290, 3991), (294, 4012), (299, 4093), (304, 4159),

Gene: Slay_4 Start: 2793, Stop: 4817, Start Num: 5

Candidate Starts for Slay_4:

(Start: 5 @2793 has 60 MA's), (Start: 12 @2826 has 2 MA's), (43, 2934), (45, 2943), (48, 2988), (49, 2991), (59, 3084), (77, 3183), (101, 3276), (112, 3351), (126, 3459), (128, 3486), (143, 3618), (144, 3624), (152, 3693), (156, 3723), (163, 3777), (168, 3816), (191, 3960), (205, 4038), (284, 4557), (295, 4620),

Gene: Stoor_4 Start: 2593, Stop: 4608, Start Num: 5

Candidate Starts for Stoor_4:

(Start: 5 @2593 has 60 MA's), (11, 2620), (Start: 12 @2623 has 2 MA's), (36, 2698), (45, 2734), (48, 2779), (49, 2782), (65, 2908), (77, 2974), (104, 3079), (112, 3139), (126, 3247), (128, 3274), (143, 3406), (144, 3412), (152, 3481), (156, 3511), (158, 3520), (163, 3568), (166, 3598), (191, 3751), (205, 3829), (272, 4288), (284, 4348), (295, 4411), (299, 4477),

Gene: Stromboli_4 Start: 2593, Stop: 4608, Start Num: 5

Candidate Starts for Stromboli_4:

(Start: 5 @2593 has 60 MA's), (11, 2620), (Start: 12 @2623 has 2 MA's), (36, 2698), (45, 2734), (48, 2779), (49, 2782), (65, 2908), (77, 2974), (104, 3079), (112, 3139), (126, 3247), (128, 3274), (143, 3406), (144, 3412), (152, 3481), (156, 3511), (158, 3520), (163, 3568), (166, 3598), (191, 3751), (205, 3829), (272, 4288), (284, 4348), (295, 4411), (299, 4477),

Gene: SunnyD_3 Start: 2294, Stop: 4342, Start Num: 5

Candidate Starts for SunnyD_3:

(Start: 5 @2294 has 60 MA's), (45, 2444), (48, 2489), (54, 2540), (77, 2684), (96, 2756), (101, 2777), (105, 2810), (126, 2957), (128, 2984), (143, 3116), (144, 3122), (151, 3182), (155, 3209), (156, 3221), (157, 3224), (158, 3230), (163, 3275), (191, 3458), (196, 3485), (197, 3491), (205, 3536), (207, 3563), (245, 3824), (295, 4145), (299, 4217), (304, 4283), (308, 4322),

Gene: Supakev_3 Start: 2012, Stop: 4039, Start Num: 8

Candidate Starts for Supakev_3:

(Start: 8 @2012 has 81 MA's), (Start: 18 @2042 has 4 MA's), (25, 2075), (26, 2078), (50, 2189), (56, 2234), (58, 2270), (65, 2306), (72, 2336), (73, 2345), (78, 2375), (90, 2426), (102, 2477), (107, 2510), (109, 2522), (110, 2531), (121, 2606), (123, 2627), (128, 2672), (129, 2675), (143, 2807), (152, 2882), (156, 2912), (172, 3029), (187, 3125), (218, 3338), (220, 3353), (221, 3356), (232, 3416), (238, 3461), (256, 3572), (263, 3641), (273, 3707), (282, 3773), (292, 3821), (298, 3878), (299, 3914), (300, 3929), (307, 3998),

Gene: Suppi_6 Start: 4693, Stop: 6708, Start Num: 8

Candidate Starts for Suppi_6:

(Start: 8 @4693 has 81 MA's), (17, 4720), (20, 4732), (25, 4753), (50, 4867), (55, 4909), (56, 4912), (65, 4984), (69, 5002), (72, 5014), (89, 5098), (90, 5104), (92, 5113), (102, 5155), (103, 5161), (109, 5200), (110, 5209), (111, 5212), (119, 5272), (123, 5305), (128, 5350), (129, 5353), (143, 5485), (156, 5590), (168, 5683), (176, 5719), (179, 5731), (187, 5803), (191, 5830), (197, 5863), (232, 6085), (236, 6118), (237, 6121), (263, 6310), (299, 6583), (307, 6667),

Gene: Swervy_4 Start: 2316, Stop: 4340, Start Num: 5

Candidate Starts for Swervy_4:

(Start: 5 @2316 has 60 MA's), (Start: 12 @2349 has 2 MA's), (43, 2457), (45, 2466), (48, 2511), (49, 2514), (59, 2607), (77, 2706), (101, 2799), (112, 2874), (126, 2982), (128, 3009), (143, 3141), (144, 3147), (152, 3216), (156, 3246), (163, 3300), (168, 3339), (191, 3483), (205, 3561), (284, 4080), (295, 4143), (299, 4209),

Gene: TattModd_6 Start: 4711, Stop: 6720, Start Num: 8

Candidate Starts for TattModd_6:

(Start: 8 @4711 has 81 MA's), (Start: 18 @4741 has 4 MA's), (46, 4837), (48, 4867), (50, 4879), (56, 4924), (72, 5026), (73, 5035), (78, 5065), (89, 5110), (90, 5116), (102, 5167), (109, 5212), (110, 5221), (119, 5284), (123, 5317), (128, 5362), (129, 5365), (143, 5497), (146, 5512), (154, 5581), (156, 5602), (159, 5614), (165, 5683), (168, 5695), (182, 5770), (187, 5815), (191, 5842), (213, 5995), (231, 6094), (232, 6097), (238, 6142), (250, 6223), (256, 6253), (261, 6304), (282, 6454), (299, 6595), (307, 6679),

Gene: TaylorSipt_5 Start: 2710, Stop: 4677, Start Num: 16

Candidate Starts for TaylorSipt_5:

(Start: 16 @2710 has 30 MA's), (33, 2770), (37, 2782), (48, 2851), (49, 2854), (50, 2863), (59, 2947), (69, 2998), (111, 3193), (114, 3226), (125, 3292), (143, 3472), (145, 3481), (156, 3577), (159, 3589), (164, 3649), (167, 3667), (170, 3685), (171, 3688), (185, 3754), (191, 3814), (195, 3838), (203, 3880), (205, 3892), (222, 4009), (230, 4057), (236, 4099), (248, 4180), (266, 4306), (277, 4384), (287, 4435), (299, 4549), (300, 4564), (308, 4654),

Gene: Temper16_3 Start: 2012, Stop: 4039, Start Num: 8

Candidate Starts for Temper16_3:

(Start: 8 @2012 has 81 MA's), (Start: 18 @2042 has 4 MA's), (25, 2075), (26, 2078), (50, 2189), (56, 2234), (58, 2270), (65, 2306), (72, 2336), (73, 2345), (78, 2375), (90, 2426), (107, 2510), (109, 2522), (110, 2531), (121, 2606), (123, 2627), (128, 2672), (129, 2675), (143, 2807), (156, 2912), (172, 3029), (187, 3125), (191, 3152), (218, 3338), (220, 3353), (221, 3356), (232, 3416), (256, 3572), (263, 3641), (273, 3707), (282, 3773), (292, 3821), (299, 3914), (300, 3929), (307, 3998),

Gene: TukTuk_4 Start: 2316, Stop: 4340, Start Num: 5

Candidate Starts for TukTuk_4:

(Start: 5 @2316 has 60 MA's), (Start: 12 @2349 has 2 MA's), (43, 2457), (45, 2466), (48, 2511), (49, 2514), (59, 2607), (77, 2706), (101, 2799), (112, 2874), (126, 2982), (128, 3009), (143, 3141), (144, 3147), (152, 3216), (156, 3246), (163, 3300), (168, 3339), (191, 3483), (205, 3561), (284, 4080), (295, 4143), (299, 4209),

Gene: Urla_3 Start: 2010, Stop: 4019, Start Num: 8

Candidate Starts for Urla_3:

(Start: 8 @2010 has 81 MA's), (Start: 18 @2040 has 4 MA's), (48, 2166), (50, 2178), (56, 2223), (68, 2310), (72, 2325), (73, 2334), (74, 2340), (78, 2364), (89, 2409), (90, 2415), (97, 2448), (102, 2466), (107, 2499), (109, 2511), (110, 2520), (119, 2583), (123, 2616), (128, 2661), (129, 2664), (143, 2796), (146, 2811), (154, 2880), (156, 2901), (159, 2913), (165, 2982), (172, 3018), (179, 3042), (182, 3069),

(187, 3114), (191, 3141), (201, 3201), (231, 3393), (232, 3396), (238, 3441), (250, 3522), (282, 3753), (286, 3771), (299, 3894), (307, 3978),

Gene: Vallejo_6 Start: 4648, Stop: 6657, Start Num: 8

Candidate Starts for Vallejo_6:

(Start: 8 @4648 has 81 MA's), (Start: 18 @4678 has 4 MA's), (46, 4774), (48, 4804), (50, 4816), (56, 4861), (72, 4963), (73, 4972), (78, 5002), (89, 5047), (90, 5053), (102, 5104), (109, 5149), (110, 5158), (119, 5221), (123, 5254), (128, 5299), (129, 5302), (143, 5434), (146, 5449), (154, 5518), (156, 5539), (159, 5551), (165, 5620), (168, 5632), (182, 5707), (187, 5752), (191, 5779), (213, 5932), (231, 6031), (232, 6034), (238, 6079), (250, 6160), (256, 6190), (261, 6241), (282, 6391), (299, 6532), (307, 6616),

Gene: Vitas_3 Start: 2170, Stop: 4221, Start Num: 5

Candidate Starts for Vitas_3:

(Start: 5 @2170 has 60 MA's), (24, 2254), (36, 2284), (43, 2311), (45, 2320), (49, 2368), (70, 2515), (75, 2545), (76, 2551), (123, 2803), (126, 2821), (128, 2848), (130, 2854), (143, 2980), (156, 3085), (158, 3094), (161, 3124), (163, 3142), (191, 3325), (203, 3391), (205, 3403), (236, 3637), (252, 3733), (285, 3970), (286, 3976), (290, 3991), (294, 4012), (299, 4093), (304, 4159),

Gene: Vulpecula_5 Start: 3027, Stop: 4982, Start Num: 16

Candidate Starts for Vulpecula_5:

(Start: 16 @3027 has 30 MA's), (37, 3099), (48, 3168), (49, 3171), (53, 3213), (57, 3249), (59, 3264), (69, 3330), (81, 3393), (84, 3405), (86, 3408), (88, 3414), (92, 3435), (111, 3525), (125, 3624), (135, 3687), (143, 3804), (156, 3909), (158, 3918), (159, 3921), (164, 3981), (167, 3999), (170, 4017), (171, 4020), (185, 4086), (191, 4146), (195, 4170), (203, 4212), (205, 4224), (230, 4365), (236, 4407), (252, 4500), (263, 4593), (267, 4617), (296, 4806), (299, 4857), (300, 4872), (307, 4941), (308, 4962),

Gene: Vulture_3 Start: 2013, Stop: 4040, Start Num: 8

Candidate Starts for Vulture_3:

(Start: 8 @2013 has 81 MA's), (Start: 18 @2043 has 4 MA's), (25, 2076), (26, 2079), (50, 2190), (65, 2307), (68, 2322), (73, 2346), (90, 2427), (102, 2478), (107, 2511), (109, 2523), (113, 2565), (117, 2586), (121, 2607), (123, 2628), (128, 2673), (129, 2676), (143, 2808), (152, 2883), (156, 2913), (187, 3126), (191, 3153), (220, 3354), (221, 3357), (232, 3417), (256, 3573), (263, 3642), (282, 3774), (292, 3822), (299, 3915), (300, 3930), (307, 3999),

Gene: Wawa_6 Start: 4687, Stop: 6696, Start Num: 8

Candidate Starts for Wawa_6:

(Start: 8 @4687 has 81 MA's), (Start: 18 @4717 has 4 MA's), (46, 4813), (48, 4843), (50, 4855), (56, 4900), (72, 5002), (73, 5011), (78, 5041), (89, 5086), (90, 5092), (102, 5143), (109, 5188), (110, 5197), (119, 5260), (123, 5293), (128, 5338), (129, 5341), (143, 5473), (146, 5488), (154, 5557), (156, 5578), (159, 5590), (165, 5659), (168, 5671), (182, 5746), (187, 5791), (191, 5818), (231, 6070), (232, 6073), (238, 6118), (250, 6199), (256, 6229), (261, 6280), (282, 6430), (299, 6571), (307, 6655),

Gene: Wayne_6 Start: 4739, Stop: 6754, Start Num: 8

Candidate Starts for Wayne_6:

(Start: 8 @4739 has 81 MA's), (17, 4766), (20, 4778), (25, 4799), (48, 4901), (50, 4913), (55, 4955), (56, 4958), (65, 5030), (69, 5048), (72, 5060), (89, 5144), (90, 5150), (92, 5159), (102, 5201), (103, 5207), (109, 5246), (110, 5255), (111, 5258), (119, 5318), (123, 5351), (128, 5396), (129, 5399), (143, 5531), (156, 5636), (168, 5729), (176, 5765), (179, 5777), (187, 5849), (191, 5876), (197, 5909), (232, 6131), (236, 6164), (237, 6167), (263, 6356), (299, 6629), (307, 6713),

Gene: WonderBoy_3 Start: 2010, Stop: 4028, Start Num: 8

Candidate Starts for WonderBoy_3:

(Start: 8 @2010 has 81 MA's), (Start: 18 @2040 has 4 MA's), (48, 2175), (50, 2187), (56, 2232), (68, 2319), (78, 2373), (89, 2418), (90, 2424), (102, 2475), (109, 2520), (110, 2529), (119, 2592), (123, 2625), (128, 2670), (129, 2673), (142, 2793), (143, 2805), (146, 2820), (148, 2850), (156, 2910), (159, 2922), (168, 3003), (176, 3039), (185, 3090), (187, 3123), (191, 3150), (221, 3345), (232, 3405), (238, 3450), (250, 3531), (272, 3690), (282, 3762), (299, 3903), (307, 3987),

Gene: Zorro_6 Start: 4666, Stop: 6675, Start Num: 8

Candidate Starts for Zorro_6:

(Start: 8 @4666 has 81 MA's), (Start: 18 @4696 has 4 MA's), (46, 4792), (48, 4822), (50, 4834), (56, 4879), (72, 4981), (73, 4990), (78, 5020), (89, 5065), (90, 5071), (102, 5122), (109, 5167), (110, 5176), (119, 5239), (123, 5272), (128, 5317), (129, 5320), (143, 5452), (146, 5467), (154, 5536), (156, 5557), (159, 5569), (165, 5638), (168, 5650), (182, 5725), (187, 5770), (191, 5797), (232, 6052), (238, 6097), (250, 6178), (256, 6208), (261, 6259), (282, 6409), (299, 6550), (307, 6634),