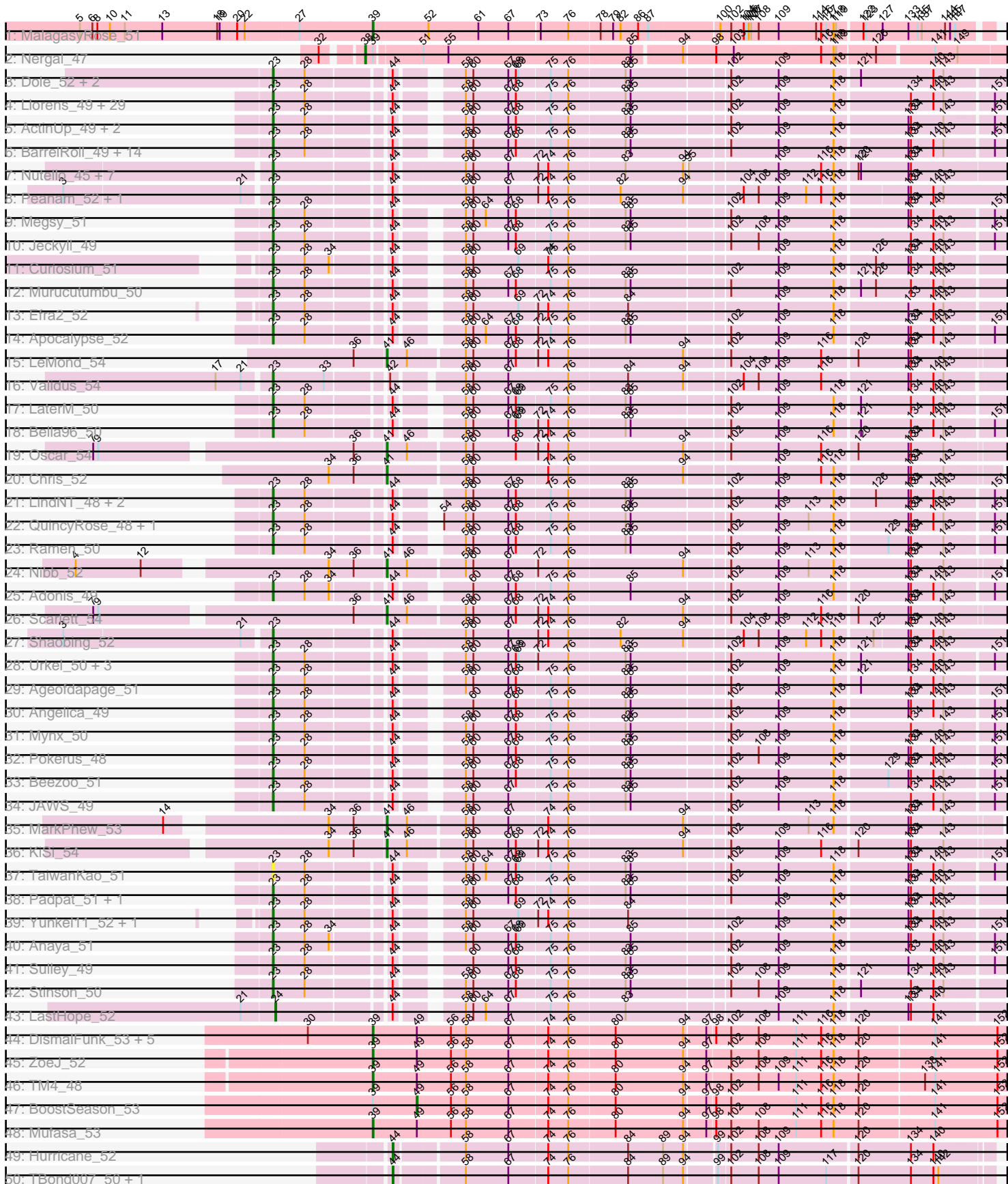
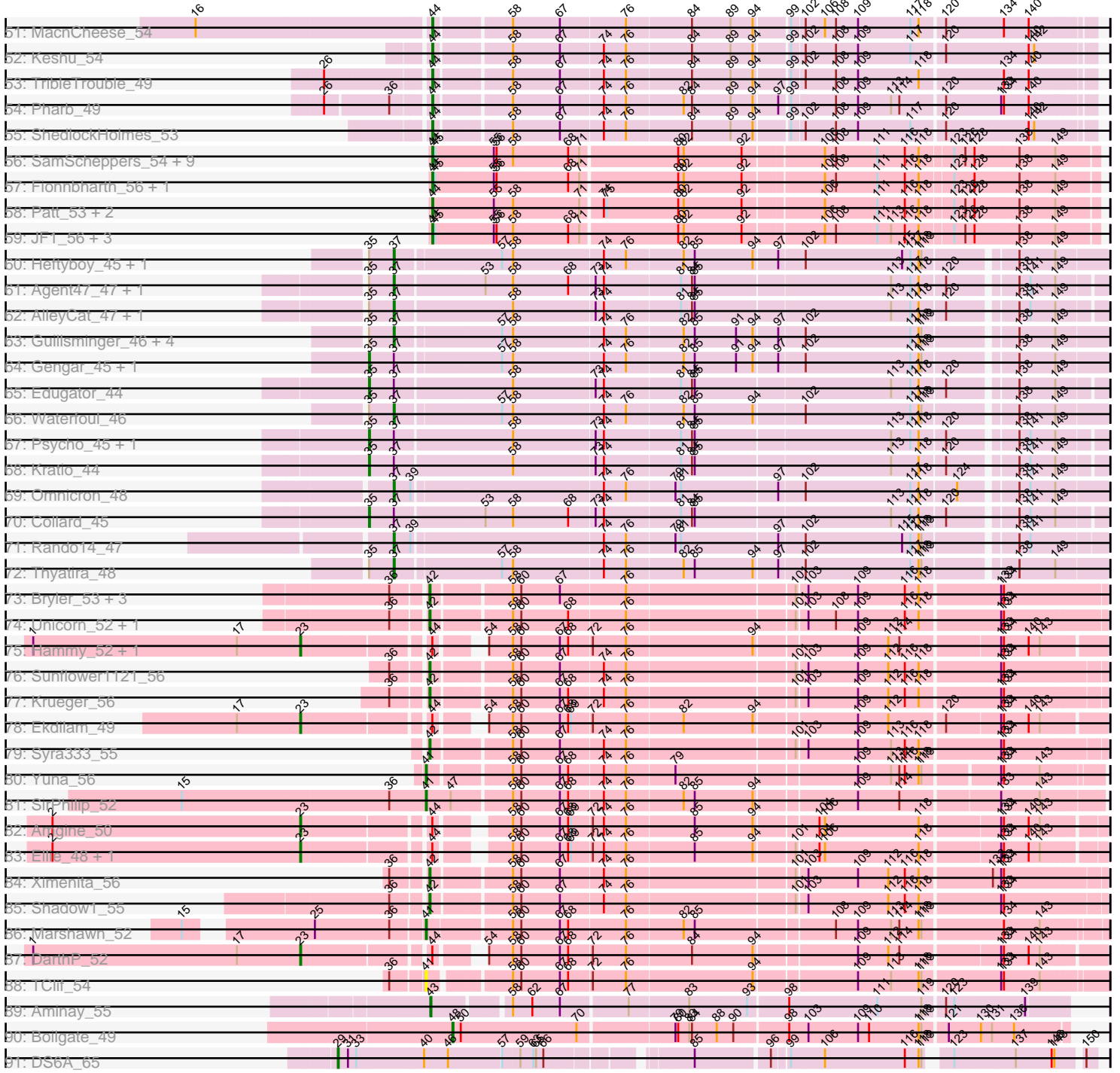


Pham 169743



Pham 169743



Note: Tracks are now grouped by subcluster and scaled. Switching in subcluster is indicated by changes in track color. Track scale is now set by default to display the region 30 bp upstream of start 1 to 30 bp downstream of the last possible start. If this default region is judged to be packed too tightly with annotated starts, the track will be further scaled to only show that region of the ORF with annotated starts. This action will be indicated by adding "Zoomed" to the title. For starts, yellow indicates the location of called starts comprised solely of Glimmer/GeneMark auto-annotations, green indicates the location of called starts with at least 1 manual gene annotation.

Pham 169743 Report

This analysis was run 07/09/24 on database version 566.

Pham number 169743 has 190 members, 6 are drafts.

Phages represented in each track:

- Track 1 : MalagasyRose_51
- Track 2 : Nergal_47
- Track 3 : Dole_52, Illumine_52, Devera_54
- Track 4 : Llorens_49, Topper_49, Padfoot_49, Dalmuri_49, Hyperbowlee_49, CREW_49, AlishaPH_49, Rosmarinus_49, Boiii_49, BaghaKamala_48, BGIlluviae_49, Asayake_49, Joy99_49, Zavala_51, Blizzard_49, Belladonna_49, Adephagia_49, Piatt_49, BEEST_49, Homura_49, Inky_49, Capricorn_49, Durfee_49, Lunahalos_49, ShiaSurprise_50, Peel_49, Jarvi_49, Spock_49, Twitch_49, CaseJules_51
- Track 5 : ActinUp_49, HedwigODU_49, Zabiza_45
- Track 6 : BarrelRoll_49, Rapunzel97_50, Tiri_50, Geraldini_52, TruffulaTree_49, Jayhawk_50, Deby_49, CheetoDust_48, Veliki_50, Atiba_50, MeaningOfLife_50, YoureAdopted_48, CrimD_49, Tachez_49, Slimphazie_49
- Track 7 : Nutello_45, Nikao_48, Amelie_45, SgtBeansprout_45, LilPharaoh_45, Binglebops_45, Enkosi_47, Mdavu_46
- Track 8 : Peanam_52, Niklas_52
- Track 9 : Megsy_51
- Track 10 : Jeckyll_49
- Track 11 : Curiosium_51
- Track 12 : Murucutumbu_50
- Track 13 : Efra2_52
- Track 14 : Apocalypse_52
- Track 15 : LeMond_54
- Track 16 : Validus_54
- Track 17 : LaterM_50
- Track 18 : Bella96_50
- Track 19 : Oscar_54
- Track 20 : Chris_52
- Track 21 : LindNT_48, Prithvi_50, TreyKay_50
- Track 22 : QuincyRose_48, Ganymede_50
- Track 23 : Ramen_50
- Track 24 : Nibb_52
- Track 25 : Adonis_49
- Track 26 : Scarlett_54
- Track 27 : Shaobing_52
- Track 28 : Urkel_50, SamuelLPlaqson_50, TiniBug_50, DrHayes_50
- Track 29 : Ageofdapage_51

- Track 30 : Angelica_49
- Track 31 : Mynx_50
- Track 32 : Pokerus_48
- Track 33 : Beezoo_51
- Track 34 : JAWS_49
- Track 35 : MarkPhew_53
- Track 36 : KiSi_54
- Track 37 : TaiwanKao_51
- Track 38 : Padpat_51, Emerson_50
- Track 39 : Yunkel11_52, Guanica15_52
- Track 40 : Anaya_51
- Track 41 : Sulley_49
- Track 42 : Stinson_50
- Track 43 : LastHope_52
- Track 44 : DismalFunk_53, Findley_53, DismalStressor_53, Milly_53, Strobilo_53, Marcoliusprime_53
- Track 45 : ZoeJ_52
- Track 46 : TM4_48
- Track 47 : BoostSeason_53
- Track 48 : Mufasa_53
- Track 49 : Hurricane_52
- Track 50 : TBond007_50, Pixie_51
- Track 51 : MacnCheese_54
- Track 52 : Keshu_54
- Track 53 : TribbleTrouble_49
- Track 54 : Pharb_49
- Track 55 : ShedlockHolmes_53
- Track 56 : SamScheppers_54, Juliette_58, Cheetobro_56, Slarp_56, Wintermute_56, OmniCritical_55, Malthus_57, Mitti_56, Chancellor_56, Taquito_56
- Track 57 : Fionnbharth_56, Eponine_58
- Track 58 : Patt_53, Reptar3000_54, MissDaisy_54
- Track 59 : JF1_56, Ruthiejr_57, Y10_55, Y2_55
- Track 60 : Heftyboy_45, SoSeph_45
- Track 61 : Agent47_47, InvictusManeo_45
- Track 62 : AlleyCat_47, Dadosky_47
- Track 63 : Guillsminger_46, Leston_45, Feyre_46, Paola_45, Miryou_49
- Track 64 : Gengar_45, OkiRoe_45
- Track 65 : Edugator_44
- Track 66 : Waterfoul_46
- Track 67 : Psycho_45, Larva_46
- Track 68 : Kratio_44
- Track 69 : Omnicron_48
- Track 70 : Collard_45
- Track 71 : Rando14_47
- Track 72 : Thyatira_48
- Track 73 : Bryler_53, Tierra_53, Phrank_53, Cain_53
- Track 74 : Unicorn_52, PhelpsODU_52
- Track 75 : Hammy_52, Amohnition_52
- Track 76 : Sunflower1121_56
- Track 77 : Krueger_56
- Track 78 : Ekdilam_49
- Track 79 : Syra333_55
- Track 80 : Yuna_56

- Track 81 : SirPhilip_52
- Track 82 : Amgine_50
- Track 83 : Ellie_48, Fefferhead_50
- Track 84 : Ximenita_56
- Track 85 : Shadow1_55
- Track 86 : Marshawn_52
- Track 87 : DarthP_52
- Track 88 : TClif_54
- Track 89 : Aminay_55
- Track 90 : Boilgate_49
- Track 91 : DS6A_65

Summary of Final Annotations (See graph section above for start numbers):

The start number called the most often in the published annotations is 23, it was called in 99 of the 184 non-draft genes in the pham.

Genes that call this "Most Annotated" start:

- ActinUp_49, Adephegia_49, Adonis_49, Ageofdapage_51, AlishaPH_49, Amelie_45, Amgine_50, Amohnition_52, Anaya_51, Angelica_49, Apocalypse_52, Asayake_49, Atiba_50, BEEST_49, BGlluviae_49, BaghaKamala_48, BarrelRoll_49, Beezoo_51, Bella96_50, Belladonna_49, Biglebops_45, Blizzard_49, Boiiii_49, CREW_49, Capricorn_49, CaseJules_51, CheetoDust_48, CrimD_49, Curiosium_51, Dalmuri_49, DarthP_52, Deby_49, Devera_54, Dole_52, DrHayes_50, Durfee_49, Efra2_52, Ekdilam_49, Ellie_48, Emerson_50, Enkosi_47, Fefferhead_50, Ganymede_50, Geraldini_52, Guanica15_52, Hammy_52, HedwigODU_49, Homura_49, Hyperbowlee_49, Illumine_52, Inky_49, JAWS_49, Jarvi_49, Jayhawk_50, Jeckyll_49, Joy99_49, LaterM_50, LilPharaoh_45, LindNT_48, Llorens_49, Lunahalos_49, Mdavu_46, MeaningOfLife_50, Megsy_51, Murucutumbu_50, Mynx_50, Nikao_48, Niklas_52, Nutello_45, Padfoot_49, Padpat_51, Peanam_52, Peel_49, Piatt_49, Pokerus_48, Prithvi_50, QuincyRose_48, Ramen_50, Rapunzel97_50, Rosmarinus_49, SamuelLPlaqsom_50, SgtBeansprout_45, Shaobing_52, ShiaSurprise_50, Slimphazie_49, Spock_49, Stinson_50, Sulley_49, Tachez_49, TaiwanKao_51, TiniBug_50, Tiri_50, Topper_49, TreyKay_50, TruffulaTree_49, Twitch_49, Urkel_50, Validus_54, Veliki_50, YoureAdopted_48, Yunkel11_52, Zabiza_45, Zavala_51,

Genes that have the "Most Annotated" start but do not call it:

-

Genes that do not have the "Most Annotated" start:

- Agent47_47, AlleyCat_47, Aminay_55, Boilgate_49, BoostSeason_53, Bryler_53, Cain_53, Chancellor_56, Cheetobro_56, Chris_52, Collard_45, DS6A_65, Dadosky_47, DismalFunk_53, DismalStressor_53, Edugator_44, Eponine_58, Feyre_46, Findley_53, Fionnbharth_56, Gengar_45, Guillsminger_46, Heftyboy_45, Hurricane_52, InvictusManeo_45, JF1_56, Juliette_58, Keshu_54, KiSi_54, Kratio_44, Krueger_56, Larva_46, LastHope_52, LeMond_54, Leston_45, MacnCheese_54, MalagasyRose_51, Malthus_57, Marcoliusprime_53, MarkPhew_53, Marshawn_52, Milly_53, Miryou_49, MissDaisy_54, Mitti_56, Mufasa_53, Nergal_47, Nibb_52, OkiRoe_45, OmniCritical_55, Omnicron_48,

Oscar_54, Paola_45, Patt_53, Pharb_49, PhelpsODU_52, Phrank_53, Pixie_51, Psycho_45, Rando14_47, Reptar3000_54, Ruthiejr_57, SamScheppers_54, Scarlett_54, Shadow1_55, ShedlockHolmes_53, SirPhilip_52, Slarp_56, SoSeph_45, Strobilo_53, Sunflower1121_56, Syra333_55, TBond007_50, TClif_54, TM4_48, Taquito_56, Thyatira_48, Tierra_53, TribbleTrouble_49, Unicorn_52, Waterfoul_46, Wintermute_56, Ximenita_56, Y10_55, Y2_55, Yuna_56, ZoeJ_52,

Summary by start number:

Start 23:

- Found in 103 of 190 (54.2%) of genes in pham
- Manual Annotations of this start: 99 of 184
- Called 100.0% of time when present
- Phage (with cluster) where this start called: ActinUp_49 (K1), Adephagia_49 (K1), Adonis_49 (K1), Ageofdapage_51 (K1), AlishaPH_49 (K1), Amelie_45 (K1), Amgine_50 (K6), Amohntion_52 (K6), Anaya_51 (K1), Angelica_49 (K1), Apocalypse_52 (K1), Asayake_49 (K1), Atiba_50 (K1), BEEST_49 (K1), BGIlluvia_49 (K1), BaghaKamala_48 (K1), BarrelRoll_49 (K1), Beezoo_51 (K1), Bella96_50 (K1), Belladonna_49 (K1), Binglebops_45 (K1), Blizzard_49 (K1), Boiiii_49 (K1), CREW_49 (K1), Capricorn_49 (K1), CaseJules_51 (K1), CheetoDust_48 (K1), CrimD_49 (K1), Curiosium_51 (K1), Dalmuri_49 (K1), DarthP_52 (K6), Deby_49 (K1), Devera_54 (K1), Dole_52 (K1), DrHayes_50 (K1), Durfee_49 (K1), Efra2_52 (K1), Ekdilam_49 (K6), Ellie_48 (K6), Emerson_50 (K1), Enkosi_47 (K1), Fefferhead_50 (K6), Ganymede_50 (K1), Geraldini_52 (K1), Guanica15_52 (K1), Hammy_52 (K6), HedwigODU_49 (K1), Homura_49 (K1), Hyperbowlee_49 (K1), Illumine_52 (K1), Inky_49 (K1), JAWS_49 (K1), Jarvi_49 (K1), Jayhawk_50 (K1), Jeckyll_49 (K1), Joy99_49 (K1), LaterM_50 (K1), LilPharaoh_45 (K1), LindNT_48 (K1), Llorens_49 (K1), Lunahalos_49 (K1), Mdavu_46 (K1), MeaningOfLife_50 (K1), Megsy_51 (K1), Murucutumbu_50 (K1), Mynx_50 (K1), Nikao_48 (K1), Niklas_52 (K1), Nutello_45 (K1), Padfoot_49 (K1), Padpat_51 (K1), Peanam_52 (K1), Peel_49 (K1), Piatt_49 (K1), Pokerus_48 (K1), Prithvi_50 (K1), QuincyRose_48 (K1), Ramen_50 (K1), Rapunzel97_50 (K1), Rosmarinus_49 (K1), SamuelLPlaqson_50 (K1), SgtBeansprout_45 (K1), Shaobing_52 (K1), ShiaSurprise_50 (K1), Slimphazie_49 (K1), Spock_49 (K1), Stinson_50 (K1), Sulley_49 (K1), Tachez_49 (K1), TaiwanKao_51 (K1), TiniBug_50 (K1), Tiri_50 (K1), Topper_49 (K1), TreyKay_50 (K1), TruffulaTree_49 (K1), Twitch_49 (K1), Urkel_50 (K1), Validus_54 (K1), Veliki_50 (K1), YoureAdopted_48 (K1), Yunkel11_52 (K1), Zabiza_45 (K1), Zavala_51 (K1),

Start 24:

- Found in 1 of 190 (0.5%) of genes in pham
- Manual Annotations of this start: 1 of 184
- Called 100.0% of time when present
- Phage (with cluster) where this start called: LastHope_52 (K1),

Start 29:

- Found in 1 of 190 (0.5%) of genes in pham
- Manual Annotations of this start: 1 of 184
- Called 100.0% of time when present
- Phage (with cluster) where this start called: DS6A_65 (singleton),

Start 35:

- Found in 20 of 190 (10.5%) of genes in pham

- Manual Annotations of this start: 7 of 184
- Called 35.0% of time when present
- Phage (with cluster) where this start called: Collard_45 (K5), Edugator_44 (K5), Gengar_45 (K5), Kratio_44 (K5), Larva_46 (K5), OkiRoe_45 (K5), Psycho_45 (K5),

Start 37:

- Found in 22 of 190 (11.6%) of genes in pham
- Manual Annotations of this start: 14 of 184
- Called 68.2% of time when present
- Phage (with cluster) where this start called: Agent47_47 (K5), AlleyCat_47 (K5), Dadosky_47 (K5), Feyre_46 (K5), Guillsminger_46 (K5), Heftyboy_45 (K5), InvictusManeo_45 (K5), Leston_45 (K5), Miryou_49 (K5), Omnicron_48 (K5), Paola_45 (K5), Rando14_47 (K5), SoSeph_45 (K5), Thyatira_48 (K5), Waterfoul_46 (K5),

Start 38:

- Found in 1 of 190 (0.5%) of genes in pham
- Manual Annotations of this start: 1 of 184
- Called 100.0% of time when present
- Phage (with cluster) where this start called: Nergal_47 (AG),

Start 39:

- Found in 14 of 190 (7.4%) of genes in pham
- Manual Annotations of this start: 10 of 184
- Called 71.4% of time when present
- Phage (with cluster) where this start called: DismalFunk_53 (K2), DismalStressor_53 (K2), Findley_53 (K2), MalagasyRose_51 (AG), Marcoliusprime_53 (K2), Milly_53 (K2), Mufasa_53 (K2), Strobilo_53 (K2), TM4_48 (K2), ZoeJ_52 (K2),

Start 41:

- Found in 11 of 190 (5.8%) of genes in pham
- Manual Annotations of this start: 10 of 184
- Called 100.0% of time when present
- Phage (with cluster) where this start called: Chris_52 (K1), KiSi_54 (K1), LeMond_54 (K1), MarkPhew_53 (K1), Marshawn_52 (K6), Nibb_52 (K1), Oscar_54 (K1), Scarlett_54 (K1), SirPhilip_52 (K6), TClif_54 (K6), Yuna_56 (K6),

Start 42:

- Found in 12 of 190 (6.3%) of genes in pham
- Manual Annotations of this start: 11 of 184
- Called 91.7% of time when present
- Phage (with cluster) where this start called: Bryler_53 (K6), Cain_53 (K6), Krueger_56 (K6), PhelpsODU_52 (K6), Phrank_53 (K6), Shadow1_55 (K6), Sunflower1121_56 (K6), Syra333_55 (K6), Tierra_53 (K6), Unicorn_52 (K6), Ximenita_56 (K6),

Start 43:

- Found in 1 of 190 (0.5%) of genes in pham
- Manual Annotations of this start: 1 of 184
- Called 100.0% of time when present
- Phage (with cluster) where this start called: Aminay_55 (K7),

Start 44:

- Found in 130 of 190 (68.4%) of genes in pham
- Manual Annotations of this start: 27 of 184
- Called 20.8% of time when present
- Phage (with cluster) where this start called: Chancellor_56 (K4), Cheetobro_56 (K4), Eponine_58 (K4), Fionnbharth_56 (K4), Hurricane_52 (K3), JF1_56 (K4), Juliette_58 (K4), Keshu_54 (K3), MacnCheese_54 (K3), Malthus_57 (K4), MissDaisy_54 (K4), Mitti_56 (K4), OmniCritical_55 (K4), Patt_53 (K4), Pharb_49 (K3), Pixie_51 (K3), Reptar3000_54 (K4), Ruthiejr_57 (K4), SamScheppers_54 (K4), ShedlockHolmes_53 (K3), Slarp_56 (K4), TBond007_50 (K3), Taquito_56 (K4), TribbleTrouble_49 (K3), Wintermute_56 (K4), Y10_55 (K4), Y2_55 (K4),

Start 48:

- Found in 1 of 190 (0.5%) of genes in pham
- Manual Annotations of this start: 1 of 184
- Called 100.0% of time when present
- Phage (with cluster) where this start called: Boilgate_49 (K8),

Start 49:

- Found in 10 of 190 (5.3%) of genes in pham
- Manual Annotations of this start: 1 of 184
- Called 10.0% of time when present
- Phage (with cluster) where this start called: BoostSeason_53 (K2),

Summary by clusters:

There are 10 clusters represented in this pham: singleton, AG, K3, K2, K1, K7, K6, K5, K4, K8,

Info for manual annotations of cluster AG:

- Start number 38 was manually annotated 1 time for cluster AG.
- Start number 39 was manually annotated 1 time for cluster AG.

Info for manual annotations of cluster K1:

- Start number 23 was manually annotated 92 times for cluster K1.
- Start number 24 was manually annotated 1 time for cluster K1.
- Start number 41 was manually annotated 7 times for cluster K1.

Info for manual annotations of cluster K2:

- Start number 39 was manually annotated 9 times for cluster K2.
- Start number 49 was manually annotated 1 time for cluster K2.

Info for manual annotations of cluster K3:

- Start number 44 was manually annotated 8 times for cluster K3.

Info for manual annotations of cluster K4:

- Start number 44 was manually annotated 19 times for cluster K4.

Info for manual annotations of cluster K5:

- Start number 35 was manually annotated 7 times for cluster K5.
- Start number 37 was manually annotated 14 times for cluster K5.

Info for manual annotations of cluster K6:

- Start number 23 was manually annotated 7 times for cluster K6.
- Start number 41 was manually annotated 3 times for cluster K6.
- Start number 42 was manually annotated 11 times for cluster K6.

Info for manual annotations of cluster K7:

- Start number 43 was manually annotated 1 time for cluster K7.

Info for manual annotations of cluster K8:

- Start number 48 was manually annotated 1 time for cluster K8.

Gene Information:

Gene: ActinUp_49 Start: 36568, Stop: 37359, Start Num: 23

Candidate Starts for ActinUp_49:

(Start: 23 @36568 has 99 MA's), (28, 36604), (Start: 44 @36691 has 27 MA's), (58, 36745), (60, 36754), (67, 36796), (68, 36805), (75, 36844), (76, 36865), (83, 36931), (85, 36937), (102, 37045), (109, 37102), (118, 37168), (133, 37252), (134, 37255), (143, 37294), (151, 37348),

Gene: Adephagia_49 Start: 36565, Stop: 37356, Start Num: 23

Candidate Starts for Adephagia_49:

(Start: 23 @36565 has 99 MA's), (28, 36601), (Start: 44 @36688 has 27 MA's), (58, 36742), (60, 36751), (67, 36793), (68, 36802), (75, 36841), (76, 36862), (83, 36928), (85, 36934), (102, 37042), (109, 37099), (118, 37165), (134, 37252), (140, 37279), (143, 37291), (151, 37345),

Gene: Adonis_49 Start: 36863, Stop: 37654, Start Num: 23

Candidate Starts for Adonis_49:

(Start: 23 @36863 has 99 MA's), (28, 36899), (34, 36926), (Start: 44 @36986 has 27 MA's), (60, 37049), (67, 37091), (68, 37100), (75, 37139), (76, 37160), (85, 37232), (102, 37340), (109, 37397), (118, 37463), (133, 37547), (134, 37550), (140, 37577), (143, 37589), (151, 37643),

Gene: Agent47_47 Start: 35656, Stop: 36384, Start Num: 37

Candidate Starts for Agent47_47:

(Start: 35 @35629 has 7 MA's), (Start: 37 @35656 has 14 MA's), (53, 35749), (58, 35779), (68, 35839), (73, 35866), (74, 35875), (81, 35956), (84, 35968), (85, 35971), (113, 36178), (117, 36199), (118, 36208), (120, 36232), (138, 36298), (141, 36310), (149, 36337),

Gene: Ageofdapage_51 Start: 37548, Stop: 38339, Start Num: 23

Candidate Starts for Ageofdapage_51:

(Start: 23 @37548 has 99 MA's), (28, 37584), (Start: 44 @37671 has 27 MA's), (58, 37725), (60, 37734), (67, 37776), (68, 37785), (75, 37824), (76, 37845), (83, 37911), (85, 37917), (102, 38025), (109, 38082), (118, 38148), (121, 38175), (134, 38235), (140, 38262), (143, 38274),

Gene: AlishaPH_49 Start: 36838, Stop: 37629, Start Num: 23

Candidate Starts for AlishaPH_49:

(Start: 23 @36838 has 99 MA's), (28, 36874), (Start: 44 @36961 has 27 MA's), (58, 37015), (60, 37024), (67, 37066), (68, 37075), (75, 37114), (76, 37135), (83, 37201), (85, 37207), (102, 37315), (109, 37372), (118, 37438), (134, 37525), (140, 37552), (143, 37564), (151, 37618),

Gene: AlleyCat_47 Start: 35510, Stop: 36238, Start Num: 37

Candidate Starts for AlleyCat_47:

(Start: 35 @35483 has 7 MA's), (Start: 37 @35510 has 14 MA's), (58, 35633), (73, 35720), (74, 35729), (81, 35810), (84, 35822), (85, 35825), (113, 36032), (117, 36053), (118, 36062), (120, 36086), (138, 36152), (141, 36164), (149, 36191),

Gene: Amelie_45 Start: 36225, Stop: 37043, Start Num: 23

Candidate Starts for Amelie_45:

(Start: 23 @36225 has 99 MA's), (Start: 44 @36348 has 27 MA's), (58, 36423), (60, 36432), (67, 36474), (72, 36510), (74, 36522), (76, 36546), (83, 36612), (94, 36681), (95, 36684), (109, 36783), (116, 36834), (118, 36849), (120, 36873), (121, 36876), (133, 36933), (134, 36936),

Gene: Amgine_50 Start: 37771, Stop: 38556, Start Num: 23

Candidate Starts for Amgine_50:

(2, 37501), (Start: 23 @37771 has 99 MA's), (Start: 44 @37894 has 27 MA's), (58, 37948), (60, 37957), (67, 37999), (68, 38008), (69, 38011), (72, 38032), (74, 38044), (76, 38068), (85, 38140), (94, 38203), (104, 38263), (106, 38269), (118, 38371), (133, 38452), (134, 38455), (140, 38482), (143, 38494),

Gene: Aminay_55 Start: 38521, Stop: 39168, Start Num: 43

Candidate Starts for Aminay_55:

(Start: 43 @38521 has 1 MA's), (58, 38596), (62, 38617), (67, 38647), (77, 38716), (83, 38779), (93, 38836), (98, 38875), (111, 38971), (119, 39019), (120, 39040), (123, 39049), (139, 39124),

Gene: Amohnition_52 Start: 37775, Stop: 38563, Start Num: 23

Candidate Starts for Amohnition_52:

(1, 37484), (17, 37706), (Start: 23 @37775 has 99 MA's), (Start: 44 @37898 has 27 MA's), (54, 37928), (58, 37952), (60, 37961), (67, 38003), (68, 38012), (72, 38036), (76, 38072), (94, 38207), (109, 38309), (112, 38342), (114, 38354), (133, 38456), (134, 38459), (140, 38486), (143, 38498),

Gene: Anaya_51 Start: 37165, Stop: 37956, Start Num: 23

Candidate Starts for Anaya_51:

(Start: 23 @37165 has 99 MA's), (28, 37201), (34, 37228), (Start: 44 @37288 has 27 MA's), (58, 37342), (60, 37351), (67, 37393), (68, 37402), (69, 37405), (75, 37441), (76, 37462), (85, 37534), (102, 37642), (109, 37699), (118, 37765), (133, 37849), (134, 37852), (140, 37879), (143, 37891), (151, 37945),

Gene: Angelica_49 Start: 36795, Stop: 37586, Start Num: 23

Candidate Starts for Angelica_49:

(Start: 23 @36795 has 99 MA's), (28, 36831), (Start: 44 @36918 has 27 MA's), (60, 36981), (67, 37023), (68, 37032), (75, 37071), (76, 37092), (83, 37158), (85, 37164), (102, 37272), (109, 37329), (118, 37395), (133, 37479), (134, 37482), (140, 37509), (143, 37521), (151, 37575),

Gene: Apocalypse_52 Start: 37574, Stop: 38365, Start Num: 23

Candidate Starts for Apocalypse_52:

(Start: 23 @37574 has 99 MA's), (28, 37610), (Start: 44 @37697 has 27 MA's), (58, 37751), (60, 37760), (64, 37775), (67, 37802), (68, 37811), (72, 37835), (75, 37850), (76, 37871), (83, 37937), (85, 37943), (102, 38051), (109, 38108), (118, 38174), (133, 38258), (134, 38261), (140, 38288), (143, 38300), (151, 38354),

Gene: Asayake_49 Start: 36880, Stop: 37671, Start Num: 23

Candidate Starts for Asayake_49:

(Start: 23 @36880 has 99 MA's), (28, 36916), (Start: 44 @37003 has 27 MA's), (58, 37057), (60, 37066), (67, 37108), (68, 37117), (75, 37156), (76, 37177), (83, 37243), (85, 37249), (102, 37357), (109, 37414), (118, 37480), (134, 37567), (140, 37594), (143, 37606), (151, 37660),

Gene: Atiba_50 Start: 36528, Stop: 37319, Start Num: 23

Candidate Starts for Atiba_50:

(Start: 23 @36528 has 99 MA's), (28, 36564), (Start: 44 @36651 has 27 MA's), (58, 36705), (60, 36714), (67, 36756), (68, 36765), (75, 36804), (76, 36825), (83, 36891), (85, 36897), (102, 37005), (109, 37062), (118, 37128), (133, 37212), (134, 37215), (140, 37242), (143, 37254), (151, 37308),

Gene: BEEST_49 Start: 36880, Stop: 37671, Start Num: 23

Candidate Starts for BEEST_49:

(Start: 23 @36880 has 99 MA's), (28, 36916), (Start: 44 @37003 has 27 MA's), (58, 37057), (60, 37066), (67, 37108), (68, 37117), (75, 37156), (76, 37177), (83, 37243), (85, 37249), (102, 37357), (109, 37414), (118, 37480), (134, 37567), (140, 37594), (143, 37606), (151, 37660),

Gene: BGlluviae_49 Start: 36683, Stop: 37474, Start Num: 23

Candidate Starts for BGlluviae_49:

(Start: 23 @36683 has 99 MA's), (28, 36719), (Start: 44 @36806 has 27 MA's), (58, 36860), (60, 36869), (67, 36911), (68, 36920), (75, 36959), (76, 36980), (83, 37046), (85, 37052), (102, 37160), (109, 37217), (118, 37283), (134, 37370), (140, 37397), (143, 37409), (151, 37463),

Gene: BaghaKamala_48 Start: 36003, Stop: 36794, Start Num: 23

Candidate Starts for BaghaKamala_48:

(Start: 23 @36003 has 99 MA's), (28, 36039), (Start: 44 @36126 has 27 MA's), (58, 36180), (60, 36189), (67, 36231), (68, 36240), (75, 36279), (76, 36300), (83, 36366), (85, 36372), (102, 36480), (109, 36537), (118, 36603), (134, 36690), (140, 36717), (143, 36729), (151, 36783),

Gene: BarrelRoll_49 Start: 36551, Stop: 37342, Start Num: 23

Candidate Starts for BarrelRoll_49:

(Start: 23 @36551 has 99 MA's), (28, 36587), (Start: 44 @36674 has 27 MA's), (58, 36728), (60, 36737), (67, 36779), (68, 36788), (75, 36827), (76, 36848), (83, 36914), (85, 36920), (102, 37028), (109, 37085), (118, 37151), (133, 37235), (134, 37238), (140, 37265), (143, 37277), (151, 37331),

Gene: Beezoo_51 Start: 37526, Stop: 38317, Start Num: 23

Candidate Starts for Beezoo_51:

(Start: 23 @37526 has 99 MA's), (28, 37562), (Start: 44 @37649 has 27 MA's), (58, 37703), (60, 37712), (67, 37754), (68, 37763), (75, 37802), (76, 37823), (83, 37889), (85, 37895), (102, 38003), (109, 38060), (118, 38126), (129, 38186), (133, 38210), (134, 38213), (140, 38240), (143, 38252), (151, 38306),

Gene: Bella96_50 Start: 37392, Stop: 38183, Start Num: 23

Candidate Starts for Bella96_50:

(Start: 23 @37392 has 99 MA's), (28, 37428), (Start: 44 @37515 has 27 MA's), (58, 37569), (60, 37578), (67, 37620), (68, 37629), (69, 37632), (72, 37653), (74, 37665), (76, 37689), (83, 37755), (85, 37761), (102, 37869), (109, 37926), (118, 37992), (121, 38019), (134, 38079), (140, 38106), (143, 38118), (151, 38172),

Gene: Belladonna_49 Start: 36683, Stop: 37474, Start Num: 23

Candidate Starts for Belladonna_49:

(Start: 23 @36683 has 99 MA's), (28, 36719), (Start: 44 @36806 has 27 MA's), (58, 36860), (60, 36869), (67, 36911), (68, 36920), (75, 36959), (76, 36980), (83, 37046), (85, 37052), (102, 37160), (109, 37217), (118, 37283), (134, 37370), (140, 37397), (143, 37409), (151, 37463),

Gene: Biglebops_45 Start: 36225, Stop: 37043, Start Num: 23

Candidate Starts for Biglebops_45:

(Start: 23 @36225 has 99 MA's), (Start: 44 @36348 has 27 MA's), (58, 36423), (60, 36432), (67, 36474), (72, 36510), (74, 36522), (76, 36546), (83, 36612), (94, 36681), (95, 36684), (109, 36783), (116, 36834), (118, 36849), (120, 36873), (121, 36876), (133, 36933), (134, 36936),

Gene: Blizzard_49 Start: 36880, Stop: 37671, Start Num: 23

Candidate Starts for Blizzard_49:

(Start: 23 @36880 has 99 MA's), (28, 36916), (Start: 44 @37003 has 27 MA's), (58, 37057), (60, 37066), (67, 37108), (68, 37117), (75, 37156), (76, 37177), (83, 37243), (85, 37249), (102, 37357), (109, 37414), (118, 37480), (134, 37567), (140, 37594), (143, 37606), (151, 37660),

Gene: Boiiii_49 Start: 36882, Stop: 37673, Start Num: 23

Candidate Starts for Boiiii_49:

(Start: 23 @36882 has 99 MA's), (28, 36918), (Start: 44 @37005 has 27 MA's), (58, 37059), (60, 37068), (67, 37110), (68, 37119), (75, 37158), (76, 37179), (83, 37245), (85, 37251), (102, 37359), (109, 37416), (118, 37482), (134, 37569), (140, 37596), (143, 37608), (151, 37662),

Gene: Boilgate_49 Start: 37862, Stop: 38506, Start Num: 48

Candidate Starts for Boilgate_49:

(Start: 48 @37862 has 1 MA's), (50, 37871), (70, 37997), (79, 38096), (80, 38099), (83, 38111), (84, 38114), (88, 38141), (90, 38159), (98, 38213), (103, 38234), (109, 38288), (110, 38300), (118, 38354), (119, 38357), (121, 38381), (130, 38414), (131, 38426), (136, 38450),

Gene: BoostSeason_53 Start: 38442, Stop: 39131, Start Num: 49

Candidate Starts for BoostSeason_53:

(Start: 39 @38391 has 10 MA's), (Start: 49 @38442 has 1 MA's), (56, 38481), (58, 38499), (67, 38550), (74, 38595), (76, 38619), (80, 38673), (94, 38754), (97, 38778), (98, 38787), (102, 38805), (111, 38883), (116, 38913), (118, 38928), (120, 38958), (141, 39045), (152, 39120),

Gene: Bryler_53 Start: 36462, Stop: 37157, Start Num: 42

Candidate Starts for Bryler_53:

(36, 36429), (Start: 42 @36462 has 11 MA's), (58, 36540), (60, 36549), (67, 36591), (76, 36660), (101, 36834), (103, 36843), (109, 36897), (116, 36948), (118, 36963), (133, 37047), (134, 37050),

Gene: CREW_49 Start: 36683, Stop: 37474, Start Num: 23

Candidate Starts for CREW_49:

(Start: 23 @36683 has 99 MA's), (28, 36719), (Start: 44 @36806 has 27 MA's), (58, 36860), (60, 36869), (67, 36911), (68, 36920), (75, 36959), (76, 36980), (83, 37046), (85, 37052), (102, 37160), (109, 37217), (118, 37283), (134, 37370), (140, 37397), (143, 37409), (151, 37463),

Gene: Cain_53 Start: 36450, Stop: 37145, Start Num: 42

Candidate Starts for Cain_53:

(36, 36417), (Start: 42 @36450 has 11 MA's), (58, 36528), (60, 36537), (67, 36579), (76, 36648), (101, 36822), (103, 36831), (109, 36885), (116, 36936), (118, 36951), (133, 37035), (134, 37038),

Gene: Capricorn_49 Start: 36683, Stop: 37474, Start Num: 23

Candidate Starts for Capricorn_49:

(Start: 23 @36683 has 99 MA's), (28, 36719), (Start: 44 @36806 has 27 MA's), (58, 36860), (60, 36869), (67, 36911), (68, 36920), (75, 36959), (76, 36980), (83, 37046), (85, 37052), (102, 37160), (109, 37217), (118, 37283), (134, 37370), (140, 37397), (143, 37409), (151, 37463),

Gene: CaseJules_51 Start: 36880, Stop: 37671, Start Num: 23

Candidate Starts for CaseJules_51:

(Start: 23 @36880 has 99 MA's), (28, 36916), (Start: 44 @37003 has 27 MA's), (58, 37057), (60, 37066), (67, 37108), (68, 37117), (75, 37156), (76, 37177), (83, 37243), (85, 37249), (102, 37357), (109, 37414), (118, 37480), (134, 37567), (140, 37594), (143, 37606), (151, 37660),

Gene: Chancellor_56 Start: 38211, Stop: 38903, Start Num: 44

Candidate Starts for Chancellor_56:

(Start: 44 @38211 has 27 MA's), (45, 38214), (55, 38274), (56, 38277), (58, 38295), (68, 38352), (71, 38364), (80, 38466), (82, 38472), (92, 38535), (106, 38616), (108, 38628), (111, 38673), (116, 38703), (118, 38718), (123, 38751), (126, 38763), (128, 38772), (138, 38820), (149, 38859),

Gene: CheetoDust_48 Start: 36052, Stop: 36843, Start Num: 23

Candidate Starts for CheetoDust_48:

(Start: 23 @36052 has 99 MA's), (28, 36088), (Start: 44 @36175 has 27 MA's), (58, 36229), (60, 36238), (67, 36280), (68, 36289), (75, 36328), (76, 36349), (83, 36415), (85, 36421), (102, 36529), (109, 36586), (118, 36652), (133, 36736), (134, 36739), (140, 36766), (143, 36778), (151, 36832),

Gene: Cheetobro_56 Start: 38208, Stop: 38900, Start Num: 44

Candidate Starts for Cheetobro_56:

(Start: 44 @38208 has 27 MA's), (45, 38211), (55, 38271), (56, 38274), (58, 38292), (68, 38349), (71, 38361), (80, 38463), (82, 38469), (92, 38532), (106, 38613), (108, 38625), (111, 38670), (116, 38700), (118, 38715), (123, 38748), (126, 38760), (128, 38769), (138, 38817), (149, 38856),

Gene: Chris_52 Start: 37597, Stop: 38295, Start Num: 41

Candidate Starts for Chris_52:

(34, 37531), (36, 37561), (Start: 41 @37597 has 10 MA's), (58, 37684), (60, 37693), (74, 37780), (76, 37804), (94, 37939), (109, 38041), (116, 38092), (118, 38107), (133, 38191), (134, 38194), (143, 38233),

Gene: Collard_45 Start: 35590, Stop: 36345, Start Num: 35

Candidate Starts for Collard_45:

(Start: 35 @35590 has 7 MA's), (Start: 37 @35617 has 14 MA's), (53, 35710), (58, 35740), (68, 35800), (73, 35827), (74, 35836), (81, 35917), (84, 35929), (85, 35932), (113, 36139), (117, 36160), (118, 36169), (120, 36193), (138, 36259), (141, 36271), (149, 36298),

Gene: CrimD_49 Start: 36789, Stop: 37580, Start Num: 23

Candidate Starts for CrimD_49:

(Start: 23 @36789 has 99 MA's), (28, 36825), (Start: 44 @36912 has 27 MA's), (58, 36966), (60, 36975), (67, 37017), (68, 37026), (75, 37065), (76, 37086), (83, 37152), (85, 37158), (102, 37266), (109, 37323), (118, 37389), (133, 37473), (134, 37476), (140, 37503), (143, 37515), (151, 37569),

Gene: Curiosium_51 Start: 35467, Stop: 36258, Start Num: 23

Candidate Starts for Curiosium_51:

(Start: 23 @35467 has 99 MA's), (28, 35503), (34, 35530), (Start: 44 @35590 has 27 MA's), (58, 35644), (60, 35653), (69, 35707), (74, 35740), (75, 35743), (76, 35764), (109, 36001), (118, 36067), (126, 36112), (133, 36151), (134, 36154), (140, 36181), (143, 36193),

Gene: DS6A_65 Start: 43090, Stop: 43806, Start Num: 29

Candidate Starts for DS6A_65:

(Start: 29 @43090 has 1 MA's), (31, 43099), (33, 43108), (40, 43177), (46, 43201), (57, 43255), (59, 43273), (63, 43285), (65, 43288), (66, 43294), (85, 43423), (96, 43495), (99, 43510), (106, 43546), (116, 43633), (118, 43648), (119, 43651), (123, 43669), (137, 43729), (146, 43768), (148, 43771), (150, 43795),

Gene: Dadosky_47 Start: 35512, Stop: 36240, Start Num: 37

Candidate Starts for Dadosky_47:

(Start: 35 @35485 has 7 MA's), (Start: 37 @35512 has 14 MA's), (58, 35635), (73, 35722), (74, 35731), (81, 35812), (84, 35824), (85, 35827), (113, 36034), (117, 36055), (118, 36064), (120, 36088), (138, 36154), (141, 36166), (149, 36193),

Gene: Dalmuri_49 Start: 36683, Stop: 37474, Start Num: 23

Candidate Starts for Dalmuri_49:

(Start: 23 @36683 has 99 MA's), (28, 36719), (Start: 44 @36806 has 27 MA's), (58, 36860), (60, 36869), (67, 36911), (68, 36920), (75, 36959), (76, 36980), (83, 37046), (85, 37052), (102, 37160), (109, 37217), (118, 37283), (134, 37370), (140, 37397), (143, 37409), (151, 37463),

Gene: DarthP_52 Start: 37659, Stop: 38447, Start Num: 23

Candidate Starts for DarthP_52:

(1, 37368), (17, 37590), (Start: 23 @37659 has 99 MA's), (Start: 44 @37782 has 27 MA's), (54, 37812), (58, 37836), (60, 37845), (67, 37887), (68, 37896), (72, 37920), (76, 37956), (84, 38025), (94, 38091), (109, 38193), (112, 38226), (114, 38238), (133, 38340), (134, 38343), (140, 38370), (143, 38382),

Gene: Deby_49 Start: 36811, Stop: 37602, Start Num: 23

Candidate Starts for Deby_49:

(Start: 23 @36811 has 99 MA's), (28, 36847), (Start: 44 @36934 has 27 MA's), (58, 36988), (60, 36997), (67, 37039), (68, 37048), (75, 37087), (76, 37108), (83, 37174), (85, 37180), (102, 37288), (109, 37345), (118, 37411), (133, 37495), (134, 37498), (140, 37525), (143, 37537), (151, 37591),

Gene: Devera_54 Start: 37315, Stop: 38106, Start Num: 23

Candidate Starts for Devera_54:

(Start: 23 @37315 has 99 MA's), (28, 37351), (Start: 44 @37438 has 27 MA's), (58, 37492), (60, 37501), (67, 37543), (68, 37552), (69, 37555), (75, 37591), (76, 37612), (83, 37678), (85, 37684), (102, 37792), (109, 37849), (118, 37915), (121, 37942), (140, 38029), (143, 38041),

Gene: DismalFunk_53 Start: 38822, Stop: 39562, Start Num: 39

Candidate Starts for DismalFunk_53:

(30, 38744), (Start: 39 @38822 has 10 MA's), (Start: 49 @38873 has 1 MA's), (56, 38912), (58, 38930), (67, 38981), (74, 39026), (76, 39050), (80, 39104), (94, 39185), (97, 39209), (98, 39218), (102, 39236), (108, 39269), (111, 39314), (116, 39344), (118, 39359), (120, 39389), (141, 39476), (152, 39551),

Gene: DismalStressor_53 Start: 38822, Stop: 39562, Start Num: 39

Candidate Starts for DismalStressor_53:

(30, 38744), (Start: 39 @38822 has 10 MA's), (Start: 49 @38873 has 1 MA's), (56, 38912), (58, 38930), (67, 38981), (74, 39026), (76, 39050), (80, 39104), (94, 39185), (97, 39209), (98, 39218), (102, 39236), (108, 39269), (111, 39314), (116, 39344), (118, 39359), (120, 39389), (141, 39476), (152, 39551),

Gene: Dole_52 Start: 37317, Stop: 38108, Start Num: 23

Candidate Starts for Dole_52:

(Start: 23 @37317 has 99 MA's), (28, 37353), (Start: 44 @37440 has 27 MA's), (58, 37494), (60, 37503), (67, 37545), (68, 37554), (69, 37557), (75, 37593), (76, 37614), (83, 37680), (85, 37686), (102, 37794), (109, 37851), (118, 37917), (121, 37944), (140, 38031), (143, 38043),

Gene: DrHayes_50 Start: 37454, Stop: 38245, Start Num: 23

Candidate Starts for DrHayes_50:

(Start: 23 @37454 has 99 MA's), (28, 37490), (Start: 44 @37577 has 27 MA's), (58, 37631), (60, 37640), (67, 37682), (68, 37691), (69, 37694), (72, 37715), (76, 37751), (83, 37817), (85, 37823), (102, 37931), (109, 37988), (118, 38054), (121, 38081), (133, 38138), (134, 38141), (140, 38168), (143, 38180), (151, 38234),

Gene: Durfee_49 Start: 36880, Stop: 37671, Start Num: 23

Candidate Starts for Durfee_49:

(Start: 23 @36880 has 99 MA's), (28, 36916), (Start: 44 @37003 has 27 MA's), (58, 37057), (60, 37066), (67, 37108), (68, 37117), (75, 37156), (76, 37177), (83, 37243), (85, 37249), (102, 37357), (109, 37414), (118, 37480), (134, 37567), (140, 37594), (143, 37606), (151, 37660),

Gene: Edugator_44 Start: 35910, Stop: 36665, Start Num: 35

Candidate Starts for Edugator_44:

(Start: 35 @35910 has 7 MA's), (Start: 37 @35937 has 14 MA's), (58, 36060), (73, 36147), (74, 36156), (81, 36237), (84, 36249), (85, 36252), (113, 36459), (117, 36480), (118, 36489), (120, 36513), (138, 36579), (149, 36618),

Gene: Efra2_52 Start: 36399, Stop: 37190, Start Num: 23

Candidate Starts for Efra2_52:

(Start: 23 @36399 has 99 MA's), (28, 36435), (Start: 44 @36522 has 27 MA's), (58, 36576), (60, 36585), (69, 36639), (72, 36660), (74, 36672), (76, 36696), (84, 36765), (109, 36933), (118, 36999), (133, 37083), (140, 37113), (143, 37125),

Gene: Ekdilam_49 Start: 37206, Stop: 37994, Start Num: 23

Candidate Starts for Ekdilam_49:

(17, 37137), (Start: 23 @37206 has 99 MA's), (Start: 44 @37329 has 27 MA's), (54, 37359), (58, 37383), (60, 37392), (67, 37434), (68, 37443), (69, 37446), (72, 37467), (76, 37503), (82, 37563), (94, 37638), (109, 37740), (112, 37773), (120, 37830), (133, 37887), (134, 37890), (140, 37917), (143, 37929),

Gene: Ellie_48 Start: 36959, Stop: 37744, Start Num: 23

Candidate Starts for Ellie_48:

(2, 36689), (Start: 23 @36959 has 99 MA's), (Start: 44 @37082 has 27 MA's), (58, 37136), (60, 37145), (67, 37187), (68, 37196), (69, 37199), (72, 37220), (74, 37232), (76, 37256), (85, 37328), (94, 37391), (101, 37430), (104, 37451), (106, 37457), (118, 37559), (133, 37640), (134, 37643), (140, 37670), (143, 37682),

Gene: Emerson_50 Start: 36559, Stop: 37350, Start Num: 23

Candidate Starts for Emerson_50:

(Start: 23 @36559 has 99 MA's), (28, 36595), (Start: 44 @36682 has 27 MA's), (58, 36736), (60, 36745), (67, 36787), (68, 36796), (75, 36835), (76, 36856), (83, 36922), (85, 36928), (102, 37036), (109, 37093), (118, 37159), (133, 37243), (134, 37246), (140, 37273), (143, 37285),

Gene: Enkosi_47 Start: 38838, Stop: 39656, Start Num: 23

Candidate Starts for Enkosi_47:

(Start: 23 @38838 has 99 MA's), (Start: 44 @38961 has 27 MA's), (58, 39036), (60, 39045), (67, 39087), (72, 39123), (74, 39135), (76, 39159), (83, 39225), (94, 39294), (95, 39297), (109, 39396), (116, 39447), (118, 39462), (120, 39486), (121, 39489), (133, 39546), (134, 39549),

Gene: Eponine_58 Start: 39048, Stop: 39740, Start Num: 44

Candidate Starts for Eponine_58:

(Start: 44 @39048 has 27 MA's), (45, 39051), (55, 39111), (56, 39114), (68, 39189), (71, 39201), (80, 39303), (82, 39309), (92, 39372), (106, 39453), (108, 39465), (111, 39510), (116, 39540), (118,

39555), (123, 39588), (128, 39609), (138, 39657), (149, 39696),

Gene: Fefferhead_50 Start: 36909, Stop: 37694, Start Num: 23

Candidate Starts for Fefferhead_50:

(2, 36639), (Start: 23 @36909 has 99 MA's), (Start: 44 @37032 has 27 MA's), (58, 37086), (60, 37095), (67, 37137), (68, 37146), (69, 37149), (72, 37170), (74, 37182), (76, 37206), (85, 37278), (94, 37341), (101, 37380), (104, 37401), (106, 37407), (118, 37509), (133, 37590), (134, 37593), (140, 37620), (143, 37632),

Gene: Feyre_46 Start: 36760, Stop: 37491, Start Num: 37

Candidate Starts for Feyre_46:

(Start: 35 @36733 has 7 MA's), (Start: 37 @36760 has 14 MA's), (57, 36868), (58, 36880), (74, 36976), (76, 37000), (82, 37060), (85, 37072), (91, 37117), (94, 37135), (97, 37159), (102, 37186), (117, 37300), (118, 37309), (119, 37312), (138, 37399), (149, 37438),

Gene: Findley_53 Start: 38815, Stop: 39555, Start Num: 39

Candidate Starts for Findley_53:

(30, 38737), (Start: 39 @38815 has 10 MA's), (Start: 49 @38866 has 1 MA's), (56, 38905), (58, 38923), (67, 38974), (74, 39019), (76, 39043), (80, 39097), (94, 39178), (97, 39202), (98, 39211), (102, 39229), (108, 39262), (111, 39307), (116, 39337), (118, 39352), (120, 39382), (141, 39469), (152, 39544),

Gene: Fionnbharth_56 Start: 38446, Stop: 39138, Start Num: 44

Candidate Starts for Fionnbharth_56:

(Start: 44 @38446 has 27 MA's), (45, 38449), (55, 38509), (56, 38512), (68, 38587), (71, 38599), (80, 38701), (82, 38707), (92, 38770), (106, 38851), (108, 38863), (111, 38908), (116, 38938), (118, 38953), (123, 38986), (128, 39007), (138, 39055), (149, 39094),

Gene: Ganymede_50 Start: 36998, Stop: 37789, Start Num: 23

Candidate Starts for Ganymede_50:

(Start: 23 @36998 has 99 MA's), (28, 37034), (Start: 44 @37121 has 27 MA's), (54, 37151), (58, 37175), (60, 37184), (67, 37226), (68, 37235), (75, 37274), (76, 37295), (83, 37361), (85, 37367), (102, 37475), (109, 37532), (113, 37568), (118, 37598), (133, 37682), (134, 37685), (140, 37712), (143, 37724), (151, 37778),

Gene: Gengar_45 Start: 35348, Stop: 36106, Start Num: 35

Candidate Starts for Gengar_45:

(Start: 35 @35348 has 7 MA's), (Start: 37 @35375 has 14 MA's), (57, 35483), (58, 35495), (74, 35591), (76, 35615), (82, 35675), (85, 35687), (91, 35732), (94, 35750), (97, 35774), (102, 35801), (117, 35915), (118, 35924), (119, 35927), (138, 36014), (149, 36053),

Gene: Geraldini_52 Start: 37615, Stop: 38406, Start Num: 23

Candidate Starts for Geraldini_52:

(Start: 23 @37615 has 99 MA's), (28, 37651), (Start: 44 @37738 has 27 MA's), (58, 37792), (60, 37801), (67, 37843), (68, 37852), (75, 37891), (76, 37912), (83, 37978), (85, 37984), (102, 38092), (109, 38149), (118, 38215), (133, 38299), (134, 38302), (140, 38329), (143, 38341), (151, 38395),

Gene: Guanica15_52 Start: 36356, Stop: 37147, Start Num: 23

Candidate Starts for Guanica15_52:

(Start: 23 @36356 has 99 MA's), (28, 36392), (Start: 44 @36479 has 27 MA's), (58, 36533), (60, 36542), (69, 36596), (72, 36617), (74, 36629), (76, 36653), (84, 36722), (109, 36890), (118, 36956), (133, 37040), (134, 37043), (140, 37070), (143, 37082),

Gene: Guillsminger_46 Start: 35346, Stop: 36077, Start Num: 37

Candidate Starts for Guillsminger_46:

(Start: 35 @35319 has 7 MA's), (Start: 37 @35346 has 14 MA's), (57, 35454), (58, 35466), (74, 35562), (76, 35586), (82, 35646), (85, 35658), (91, 35703), (94, 35721), (97, 35745), (102, 35772), (117, 35886), (118, 35895), (119, 35898), (138, 35985), (149, 36024),

Gene: Hammy_52 Start: 37647, Stop: 38435, Start Num: 23

Candidate Starts for Hammy_52:

(1, 37356), (17, 37578), (Start: 23 @37647 has 99 MA's), (Start: 44 @37770 has 27 MA's), (54, 37800), (58, 37824), (60, 37833), (67, 37875), (68, 37884), (72, 37908), (76, 37944), (94, 38079), (109, 38181), (112, 38214), (114, 38226), (133, 38328), (134, 38331), (140, 38358), (143, 38370),

Gene: HedwigODU_49 Start: 36568, Stop: 37359, Start Num: 23

Candidate Starts for HedwigODU_49:

(Start: 23 @36568 has 99 MA's), (28, 36604), (Start: 44 @36691 has 27 MA's), (58, 36745), (60, 36754), (67, 36796), (68, 36805), (75, 36844), (76, 36865), (83, 36931), (85, 36937), (102, 37045), (109, 37102), (118, 37168), (133, 37252), (134, 37255), (143, 37294), (151, 37348),

Gene: Heftyboy_45 Start: 35496, Stop: 36227, Start Num: 37

Candidate Starts for Heftyboy_45:

(Start: 35 @35469 has 7 MA's), (Start: 37 @35496 has 14 MA's), (57, 35604), (58, 35616), (74, 35712), (76, 35736), (82, 35796), (85, 35808), (94, 35871), (97, 35895), (102, 35922), (115, 36027), (117, 36036), (118, 36045), (119, 36048), (138, 36135), (149, 36174),

Gene: Homura_49 Start: 36683, Stop: 37474, Start Num: 23

Candidate Starts for Homura_49:

(Start: 23 @36683 has 99 MA's), (28, 36719), (Start: 44 @36806 has 27 MA's), (58, 36860), (60, 36869), (67, 36911), (68, 36920), (75, 36959), (76, 36980), (83, 37046), (85, 37052), (102, 37160), (109, 37217), (118, 37283), (134, 37370), (140, 37397), (143, 37409), (151, 37463),

Gene: Hurricane_52 Start: 37245, Stop: 37922, Start Num: 44

Candidate Starts for Hurricane_52:

(Start: 44 @37245 has 27 MA's), (58, 37320), (67, 37371), (74, 37416), (76, 37440), (84, 37509), (89, 37551), (94, 37575), (99, 37608), (102, 37620), (108, 37653), (109, 37677), (120, 37767), (134, 37830), (140, 37857),

Gene: Hyperbowlee_49 Start: 36880, Stop: 37671, Start Num: 23

Candidate Starts for Hyperbowlee_49:

(Start: 23 @36880 has 99 MA's), (28, 36916), (Start: 44 @37003 has 27 MA's), (58, 37057), (60, 37066), (67, 37108), (68, 37117), (75, 37156), (76, 37177), (83, 37243), (85, 37249), (102, 37357), (109, 37414), (118, 37480), (134, 37567), (140, 37594), (143, 37606), (151, 37660),

Gene: Illumine_52 Start: 37317, Stop: 38108, Start Num: 23

Candidate Starts for Illumine_52:

(Start: 23 @37317 has 99 MA's), (28, 37353), (Start: 44 @37440 has 27 MA's), (58, 37494), (60, 37503), (67, 37545), (68, 37554), (69, 37557), (75, 37593), (76, 37614), (83, 37680), (85, 37686), (102, 37794), (109, 37851), (118, 37917), (121, 37944), (140, 38031), (143, 38043),

Gene: Inky_49 Start: 36683, Stop: 37474, Start Num: 23

Candidate Starts for Inky_49:

(Start: 23 @36683 has 99 MA's), (28, 36719), (Start: 44 @36806 has 27 MA's), (58, 36860), (60, 36869), (67, 36911), (68, 36920), (75, 36959), (76, 36980), (83, 37046), (85, 37052), (102, 37160), (109, 37217), (118, 37283), (134, 37370), (140, 37397), (143, 37409), (151, 37463),

Gene: InvictusManeo_45 Start: 35660, Stop: 36388, Start Num: 37

Candidate Starts for InvictusManeo_45:

(Start: 35 @35633 has 7 MA's), (Start: 37 @35660 has 14 MA's), (53, 35753), (58, 35783), (68, 35843), (73, 35870), (74, 35879), (81, 35960), (84, 35972), (85, 35975), (113, 36182), (117, 36203), (118, 36212), (120, 36236), (138, 36302), (141, 36314), (149, 36341),

Gene: JAWS_49 Start: 36557, Stop: 37348, Start Num: 23

Candidate Starts for JAWS_49:

(Start: 23 @36557 has 99 MA's), (28, 36593), (Start: 44 @36680 has 27 MA's), (58, 36734), (60, 36743), (67, 36785), (75, 36833), (76, 36854), (83, 36920), (85, 36926), (102, 37034), (109, 37091), (118, 37157), (134, 37244), (140, 37271), (143, 37283), (151, 37337),

Gene: JF1_56 Start: 38363, Stop: 39055, Start Num: 44

Candidate Starts for JF1_56:

(Start: 44 @38363 has 27 MA's), (45, 38366), (55, 38426), (56, 38429), (58, 38447), (68, 38504), (71, 38516), (80, 38618), (82, 38624), (92, 38687), (106, 38768), (108, 38780), (111, 38825), (113, 38840), (116, 38855), (118, 38870), (123, 38903), (126, 38915), (128, 38924), (138, 38972), (149, 39011),

Gene: Jarvi_49 Start: 36683, Stop: 37474, Start Num: 23

Candidate Starts for Jarvi_49:

(Start: 23 @36683 has 99 MA's), (28, 36719), (Start: 44 @36806 has 27 MA's), (58, 36860), (60, 36869), (67, 36911), (68, 36920), (75, 36959), (76, 36980), (83, 37046), (85, 37052), (102, 37160), (109, 37217), (118, 37283), (134, 37370), (140, 37397), (143, 37409), (151, 37463),

Gene: Jayhawk_50 Start: 36566, Stop: 37357, Start Num: 23

Candidate Starts for Jayhawk_50:

(Start: 23 @36566 has 99 MA's), (28, 36602), (Start: 44 @36689 has 27 MA's), (58, 36743), (60, 36752), (67, 36794), (68, 36803), (75, 36842), (76, 36863), (83, 36929), (85, 36935), (102, 37043), (109, 37100), (118, 37166), (133, 37250), (134, 37253), (140, 37280), (143, 37292), (151, 37346),

Gene: Jeckyll_49 Start: 36683, Stop: 37474, Start Num: 23

Candidate Starts for Jeckyll_49:

(Start: 23 @36683 has 99 MA's), (28, 36719), (Start: 44 @36806 has 27 MA's), (58, 36860), (60, 36869), (67, 36911), (68, 36920), (75, 36959), (76, 36980), (83, 37046), (85, 37052), (102, 37160), (108, 37193), (109, 37217), (118, 37283), (134, 37370), (140, 37397), (143, 37409), (151, 37463),

Gene: Joy99_49 Start: 36612, Stop: 37403, Start Num: 23

Candidate Starts for Joy99_49:

(Start: 23 @36612 has 99 MA's), (28, 36648), (Start: 44 @36735 has 27 MA's), (58, 36789), (60, 36798), (67, 36840), (68, 36849), (75, 36888), (76, 36909), (83, 36975), (85, 36981), (102, 37089), (109, 37146), (118, 37212), (134, 37299), (140, 37326), (143, 37338), (151, 37392),

Gene: Juliette_58 Start: 38516, Stop: 39208, Start Num: 44

Candidate Starts for Juliette_58:

(Start: 44 @38516 has 27 MA's), (45, 38519), (55, 38579), (56, 38582), (58, 38600), (68, 38657), (71, 38669), (80, 38771), (82, 38777), (92, 38840), (106, 38921), (108, 38933), (111, 38978), (116, 39008), (118, 39023), (123, 39056), (126, 39068), (128, 39077), (138, 39125), (149, 39164),

Gene: Keshu_54 Start: 37312, Stop: 37989, Start Num: 44

Candidate Starts for Keshu_54:

(Start: 44 @37312 has 27 MA's), (58, 37387), (67, 37438), (74, 37483), (76, 37507), (84, 37576), (89, 37618), (94, 37642), (99, 37675), (102, 37687), (108, 37720), (109, 37744), (117, 37801), (120,

37834), (140, 37924), (142, 37930),

Gene: KiSi_54 Start: 37986, Stop: 38690, Start Num: 41

Candidate Starts for KiSi_54:

(34, 37920), (36, 37950), (Start: 41 @37986 has 10 MA's), (46, 38010), (58, 38073), (60, 38082), (67, 38124), (68, 38133), (72, 38157), (74, 38169), (76, 38193), (94, 38328), (102, 38373), (109, 38430), (116, 38481), (120, 38520), (133, 38580), (134, 38583), (143, 38622),

Gene: Kratio_44 Start: 35184, Stop: 35939, Start Num: 35

Candidate Starts for Kratio_44:

(Start: 35 @35184 has 7 MA's), (Start: 37 @35211 has 14 MA's), (58, 35334), (73, 35421), (74, 35430), (81, 35511), (84, 35523), (85, 35526), (113, 35733), (118, 35763), (120, 35787), (138, 35853), (141, 35865), (149, 35892),

Gene: Krueger_56 Start: 37456, Stop: 38148, Start Num: 42

Candidate Starts for Krueger_56:

(36, 37423), (Start: 42 @37456 has 11 MA's), (58, 37534), (60, 37543), (67, 37585), (68, 37594), (74, 37630), (76, 37654), (101, 37828), (103, 37837), (109, 37891), (112, 37924), (116, 37942), (118, 37957), (133, 38041), (134, 38044),

Gene: Larva_46 Start: 35352, Stop: 36107, Start Num: 35

Candidate Starts for Larva_46:

(Start: 35 @35352 has 7 MA's), (Start: 37 @35379 has 14 MA's), (58, 35502), (73, 35589), (74, 35598), (81, 35679), (84, 35691), (85, 35694), (113, 35901), (117, 35922), (118, 35931), (120, 35955), (138, 36021), (141, 36033), (149, 36060),

Gene: LastHope_52 Start: 35843, Stop: 36631, Start Num: 24

Candidate Starts for LastHope_52:

(21, 35804), (Start: 24 @35843 has 1 MA's), (Start: 44 @35963 has 27 MA's), (58, 36017), (60, 36026), (64, 36041), (67, 36068), (75, 36116), (76, 36137), (83, 36203), (109, 36374), (118, 36440), (133, 36524), (134, 36527), (140, 36554),

Gene: LaterM_50 Start: 37445, Stop: 38236, Start Num: 23

Candidate Starts for LaterM_50:

(Start: 23 @37445 has 99 MA's), (28, 37481), (Start: 44 @37568 has 27 MA's), (58, 37622), (60, 37631), (67, 37673), (68, 37682), (69, 37685), (75, 37721), (76, 37742), (83, 37808), (85, 37814), (102, 37922), (109, 37979), (118, 38045), (121, 38072), (134, 38132), (140, 38159), (143, 38171),

Gene: LeMond_54 Start: 37970, Stop: 38674, Start Num: 41

Candidate Starts for LeMond_54:

(36, 37934), (Start: 41 @37970 has 10 MA's), (46, 37994), (58, 38057), (60, 38066), (67, 38108), (68, 38117), (72, 38141), (74, 38153), (76, 38177), (94, 38312), (102, 38357), (109, 38414), (116, 38465), (120, 38504), (133, 38564), (134, 38567), (143, 38606),

Gene: Leston_45 Start: 35475, Stop: 36206, Start Num: 37

Candidate Starts for Leston_45:

(Start: 35 @35448 has 7 MA's), (Start: 37 @35475 has 14 MA's), (57, 35583), (58, 35595), (74, 35691), (76, 35715), (82, 35775), (85, 35787), (91, 35832), (94, 35850), (97, 35874), (102, 35901), (117, 36015), (118, 36024), (119, 36027), (138, 36114), (149, 36153),

Gene: LilPharaoh_45 Start: 35953, Stop: 36771, Start Num: 23

Candidate Starts for LilPharaoh_45:

(Start: 23 @35953 has 99 MA's), (Start: 44 @36076 has 27 MA's), (58, 36151), (60, 36160), (67, 36202), (72, 36238), (74, 36250), (76, 36274), (83, 36340), (94, 36409), (95, 36412), (109, 36511), (116, 36562), (118, 36577), (120, 36601), (121, 36604), (133, 36661), (134, 36664),

Gene: LindNT_48 Start: 36768, Stop: 37559, Start Num: 23

Candidate Starts for LindNT_48:

(Start: 23 @36768 has 99 MA's), (28, 36804), (Start: 44 @36891 has 27 MA's), (58, 36945), (60, 36954), (67, 36996), (68, 37005), (75, 37044), (76, 37065), (83, 37131), (85, 37137), (102, 37245), (109, 37302), (118, 37368), (126, 37413), (133, 37452), (134, 37455), (140, 37482), (143, 37494), (151, 37548),

Gene: Llorens_49 Start: 36683, Stop: 37474, Start Num: 23

Candidate Starts for Llorens_49:

(Start: 23 @36683 has 99 MA's), (28, 36719), (Start: 44 @36806 has 27 MA's), (58, 36860), (60, 36869), (67, 36911), (68, 36920), (75, 36959), (76, 36980), (83, 37046), (85, 37052), (102, 37160), (109, 37217), (118, 37283), (134, 37370), (140, 37397), (143, 37409), (151, 37463),

Gene: Lunahalos_49 Start: 36683, Stop: 37474, Start Num: 23

Candidate Starts for Lunahalos_49:

(Start: 23 @36683 has 99 MA's), (28, 36719), (Start: 44 @36806 has 27 MA's), (58, 36860), (60, 36869), (67, 36911), (68, 36920), (75, 36959), (76, 36980), (83, 37046), (85, 37052), (102, 37160), (109, 37217), (118, 37283), (134, 37370), (140, 37397), (143, 37409), (151, 37463),

Gene: MacnCheese_54 Start: 38254, Stop: 38931, Start Num: 44

Candidate Starts for MacnCheese_54:

(16, 38008), (Start: 44 @38254 has 27 MA's), (58, 38329), (67, 38380), (76, 38449), (84, 38518), (89, 38560), (94, 38584), (99, 38617), (102, 38629), (106, 38650), (108, 38662), (109, 38686), (117, 38743), (118, 38752), (120, 38776), (134, 38839), (140, 38866),

Gene: MalagasyRose_51 Start: 35357, Stop: 36058, Start Num: 39

Candidate Starts for MalagasyRose_51:

(5, 35012), (6, 35027), (8, 35033), (10, 35048), (11, 35066), (13, 35111), (18, 35177), (19, 35180), (20, 35201), (22, 35210), (27, 35273), (Start: 39 @35357 has 10 MA's), (52, 35420), (61, 35480), (67, 35516), (73, 35549), (76, 35582), (78, 35618), (79, 35633), (82, 35642), (86, 35663), (87, 35675), (100, 35756), (102, 35768), (104, 35783), (105, 35786), (106, 35789), (107, 35792), (108, 35801), (109, 35825), (114, 35870), (116, 35876), (117, 35882), (118, 35891), (119, 35894), (122, 35921), (123, 35924), (127, 35942), (133, 35972), (135, 35981), (137, 35984), (144, 36011), (145, 36017), (147, 36023),

Gene: Malthus_57 Start: 38204, Stop: 38896, Start Num: 44

Candidate Starts for Malthus_57:

(Start: 44 @38204 has 27 MA's), (45, 38207), (55, 38267), (56, 38270), (58, 38288), (68, 38345), (71, 38357), (80, 38459), (82, 38465), (92, 38528), (106, 38609), (108, 38621), (111, 38666), (116, 38696), (118, 38711), (123, 38744), (126, 38756), (128, 38765), (138, 38813), (149, 38852),

Gene: Marcoliusprime_53 Start: 38822, Stop: 39562, Start Num: 39

Candidate Starts for Marcoliusprime_53:

(30, 38744), (Start: 39 @38822 has 10 MA's), (Start: 49 @38873 has 1 MA's), (56, 38912), (58, 38930), (67, 38981), (74, 39026), (76, 39050), (80, 39104), (94, 39185), (97, 39209), (98, 39218), (102, 39236), (108, 39269), (111, 39314), (116, 39344), (118, 39359), (120, 39389), (141, 39476), (152, 39551),

Gene: MarkPhew_53 Start: 37429, Stop: 38127, Start Num: 41

Candidate Starts for MarkPhew_53:

(14, 37198), (34, 37363), (36, 37393), (Start: 41 @37429 has 10 MA's), (46, 37453), (58, 37516), (60, 37525), (67, 37567), (74, 37612), (76, 37636), (94, 37771), (102, 37816), (113, 37909), (118, 37939), (133, 38023), (134, 38026), (143, 38065),

Gene: Marshawn_52 Start: 37567, Stop: 38265, Start Num: 41

Candidate Starts for Marshawn_52:

(15, 37342), (25, 37453), (36, 37534), (Start: 41 @37567 has 10 MA's), (58, 37651), (60, 37660), (67, 37702), (68, 37711), (76, 37771), (82, 37831), (85, 37843), (108, 37984), (109, 38008), (113, 38044), (114, 38053), (118, 38074), (119, 38077), (134, 38161), (143, 38200),

Gene: Mdavu_46 Start: 36214, Stop: 37032, Start Num: 23

Candidate Starts for Mdavu_46:

(Start: 23 @36214 has 99 MA's), (Start: 44 @36337 has 27 MA's), (58, 36412), (60, 36421), (67, 36463), (72, 36499), (74, 36511), (76, 36535), (83, 36601), (94, 36670), (95, 36673), (109, 36772), (116, 36823), (118, 36838), (120, 36862), (121, 36865), (133, 36922), (134, 36925),

Gene: MeaningOfLife_50 Start: 37492, Stop: 38283, Start Num: 23

Candidate Starts for MeaningOfLife_50:

(Start: 23 @37492 has 99 MA's), (28, 37528), (Start: 44 @37615 has 27 MA's), (58, 37669), (60, 37678), (67, 37720), (68, 37729), (75, 37768), (76, 37789), (83, 37855), (85, 37861), (102, 37969), (109, 38026), (118, 38092), (133, 38176), (134, 38179), (140, 38206), (143, 38218), (151, 38272),

Gene: Megsy_51 Start: 36827, Stop: 37618, Start Num: 23

Candidate Starts for Megsy_51:

(Start: 23 @36827 has 99 MA's), (28, 36863), (Start: 44 @36950 has 27 MA's), (58, 37004), (60, 37013), (64, 37028), (67, 37055), (68, 37064), (75, 37103), (76, 37124), (83, 37190), (85, 37196), (102, 37304), (109, 37361), (118, 37427), (133, 37511), (134, 37514), (140, 37541), (151, 37607),

Gene: Milly_53 Start: 38795, Stop: 39535, Start Num: 39

Candidate Starts for Milly_53:

(30, 38717), (Start: 39 @38795 has 10 MA's), (Start: 49 @38846 has 1 MA's), (56, 38885), (58, 38903), (67, 38954), (74, 38999), (76, 39023), (80, 39077), (94, 39158), (97, 39182), (98, 39191), (102, 39209), (108, 39242), (111, 39287), (116, 39317), (118, 39332), (120, 39362), (141, 39449), (152, 39524),

Gene: Miryou_49 Start: 37678, Stop: 38409, Start Num: 37

Candidate Starts for Miryou_49:

(Start: 35 @37651 has 7 MA's), (Start: 37 @37678 has 14 MA's), (57, 37786), (58, 37798), (74, 37894), (76, 37918), (82, 37978), (85, 37990), (91, 38035), (94, 38053), (97, 38077), (102, 38104), (117, 38218), (118, 38227), (119, 38230), (138, 38317), (149, 38356),

Gene: MissDaisy_54 Start: 37736, Stop: 38428, Start Num: 44

Candidate Starts for MissDaisy_54:

(Start: 44 @37736 has 27 MA's), (55, 37799), (58, 37820), (71, 37889), (74, 37910), (75, 37913), (80, 37991), (82, 37997), (92, 38060), (106, 38141), (111, 38198), (116, 38228), (118, 38243), (123, 38276), (126, 38288), (128, 38297), (138, 38345), (149, 38384),

Gene: Mitti_56 Start: 38383, Stop: 39075, Start Num: 44

Candidate Starts for Mitti_56:

(Start: 44 @38383 has 27 MA's), (45, 38386), (55, 38446), (56, 38449), (58, 38467), (68, 38524), (71, 38536), (80, 38638), (82, 38644), (92, 38707), (106, 38788), (108, 38800), (111, 38845), (116, 38875), (118, 38890), (123, 38923), (126, 38935), (128, 38944), (138, 38992), (149, 39031),

Gene: Mufasa_53 Start: 38376, Stop: 39116, Start Num: 39

Candidate Starts for Mufasa_53:

(Start: 39 @38376 has 10 MA's), (Start: 49 @38427 has 1 MA's), (56, 38466), (58, 38484), (67, 38535), (74, 38580), (76, 38604), (80, 38658), (94, 38739), (97, 38763), (98, 38772), (102, 38790), (108, 38823), (111, 38868), (116, 38898), (118, 38913), (120, 38943), (141, 39030), (152, 39105),

Gene: Murucutumbu_50 Start: 37538, Stop: 38329, Start Num: 23

Candidate Starts for Murucutumbu_50:

(Start: 23 @37538 has 99 MA's), (28, 37574), (Start: 44 @37661 has 27 MA's), (58, 37715), (60, 37724), (67, 37766), (68, 37775), (75, 37814), (76, 37835), (83, 37901), (85, 37907), (102, 38015), (109, 38072), (118, 38138), (121, 38165), (126, 38183), (134, 38225), (140, 38252), (143, 38264),

Gene: Mynx_50 Start: 36884, Stop: 37675, Start Num: 23

Candidate Starts for Mynx_50:

(Start: 23 @36884 has 99 MA's), (28, 36920), (Start: 44 @37007 has 27 MA's), (58, 37061), (60, 37070), (67, 37112), (68, 37121), (75, 37160), (76, 37181), (83, 37247), (85, 37253), (102, 37361), (109, 37418), (118, 37484), (134, 37571), (143, 37610), (151, 37664),

Gene: Nergal_47 Start: 35299, Stop: 36027, Start Num: 38

Candidate Starts for Nergal_47:

(32, 35260), (Start: 38 @35299 has 1 MA's), (Start: 39 @35308 has 10 MA's), (51, 35359), (55, 35389), (85, 35605), (94, 35659), (98, 35695), (103, 35716), (116, 35821), (118, 35836), (119, 35839), (126, 35881), (141, 35944), (149, 35971),

Gene: Nibb_52 Start: 37118, Stop: 37816, Start Num: 41

Candidate Starts for Nibb_52:

(4, 36782), (12, 36860), (34, 37052), (36, 37082), (Start: 41 @37118 has 10 MA's), (46, 37142), (58, 37205), (60, 37214), (67, 37256), (72, 37289), (76, 37325), (94, 37460), (102, 37505), (109, 37562), (113, 37598), (118, 37628), (133, 37712), (134, 37715), (143, 37754),

Gene: Nikao_48 Start: 38838, Stop: 39656, Start Num: 23

Candidate Starts for Nikao_48:

(Start: 23 @38838 has 99 MA's), (Start: 44 @38961 has 27 MA's), (58, 39036), (60, 39045), (67, 39087), (72, 39123), (74, 39135), (76, 39159), (83, 39225), (94, 39294), (95, 39297), (109, 39396), (116, 39447), (118, 39462), (120, 39486), (121, 39489), (133, 39546), (134, 39549),

Gene: Niklas_52 Start: 37531, Stop: 38349, Start Num: 23

Candidate Starts for Niklas_52:

(3, 37291), (21, 37501), (Start: 23 @37531 has 99 MA's), (Start: 44 @37654 has 27 MA's), (58, 37729), (60, 37738), (67, 37780), (72, 37816), (74, 37828), (76, 37852), (82, 37912), (94, 37987), (104, 38047), (108, 38065), (109, 38089), (112, 38122), (116, 38140), (118, 38155), (133, 38236), (134, 38239), (140, 38266), (143, 38278),

Gene: Nutello_45 Start: 36225, Stop: 37043, Start Num: 23

Candidate Starts for Nutello_45:

(Start: 23 @36225 has 99 MA's), (Start: 44 @36348 has 27 MA's), (58, 36423), (60, 36432), (67, 36474), (72, 36510), (74, 36522), (76, 36546), (83, 36612), (94, 36681), (95, 36684), (109, 36783), (116, 36834), (118, 36849), (120, 36873), (121, 36876), (133, 36933), (134, 36936),

Gene: OkiRoe_45 Start: 35321, Stop: 36079, Start Num: 35

Candidate Starts for OkiRoe_45:

(Start: 35 @35321 has 7 MA's), (Start: 37 @35348 has 14 MA's), (57, 35456), (58, 35468), (74, 35564), (76, 35588), (82, 35648), (85, 35660), (91, 35705), (94, 35723), (97, 35747), (102, 35774), (117, 35888), (118, 35897), (119, 35900), (138, 35987), (149, 36026),

Gene: OmniCritical_55 Start: 38192, Stop: 38884, Start Num: 44

Candidate Starts for OmniCritical_55:

(Start: 44 @38192 has 27 MA's), (45, 38195), (55, 38255), (56, 38258), (58, 38276), (68, 38333), (71, 38345), (80, 38447), (82, 38453), (92, 38516), (106, 38597), (108, 38609), (111, 38654), (116, 38684), (118, 38699), (123, 38732), (126, 38744), (128, 38753), (138, 38801), (149, 38840),

Gene: Omnicron_48 Start: 34963, Stop: 35694, Start Num: 37

Candidate Starts for Omnicron_48:

(Start: 37 @34963 has 14 MA's), (Start: 39 @34981 has 10 MA's), (74, 35179), (76, 35203), (79, 35254), (81, 35260), (97, 35362), (102, 35389), (117, 35503), (118, 35512), (124, 35548), (138, 35602), (141, 35614), (149, 35641),

Gene: Oscar_54 Start: 37872, Stop: 38576, Start Num: 41

Candidate Starts for Oscar_54:

(7, 37548), (9, 37554), (36, 37836), (Start: 41 @37872 has 10 MA's), (46, 37896), (58, 37959), (60, 37968), (68, 38019), (72, 38043), (74, 38055), (76, 38079), (94, 38214), (102, 38259), (109, 38316), (116, 38367), (120, 38406), (133, 38466), (134, 38469), (143, 38508),

Gene: Padfoot_49 Start: 36880, Stop: 37671, Start Num: 23

Candidate Starts for Padfoot_49:

(Start: 23 @36880 has 99 MA's), (28, 36916), (Start: 44 @37003 has 27 MA's), (58, 37057), (60, 37066), (67, 37108), (68, 37117), (75, 37156), (76, 37177), (83, 37243), (85, 37249), (102, 37357), (109, 37414), (118, 37480), (134, 37567), (140, 37594), (143, 37606), (151, 37660),

Gene: Padpat_51 Start: 36559, Stop: 37350, Start Num: 23

Candidate Starts for Padpat_51:

(Start: 23 @36559 has 99 MA's), (28, 36595), (Start: 44 @36682 has 27 MA's), (58, 36736), (60, 36745), (67, 36787), (68, 36796), (75, 36835), (76, 36856), (83, 36922), (85, 36928), (102, 37036), (109, 37093), (118, 37159), (133, 37243), (134, 37246), (140, 37273), (143, 37285),

Gene: Paola_45 Start: 35346, Stop: 36077, Start Num: 37

Candidate Starts for Paola_45:

(Start: 35 @35319 has 7 MA's), (Start: 37 @35346 has 14 MA's), (57, 35454), (58, 35466), (74, 35562), (76, 35586), (82, 35646), (85, 35658), (91, 35703), (94, 35721), (97, 35745), (102, 35772), (117, 35886), (118, 35895), (119, 35898), (138, 35985), (149, 36024),

Gene: Patt_53 Start: 37460, Stop: 38152, Start Num: 44

Candidate Starts for Patt_53:

(Start: 44 @37460 has 27 MA's), (55, 37523), (58, 37544), (71, 37613), (74, 37634), (75, 37637), (80, 37715), (82, 37721), (92, 37784), (106, 37865), (111, 37922), (116, 37952), (118, 37967), (123, 38000), (126, 38012), (128, 38021), (138, 38069), (149, 38108),

Gene: Peanam_52 Start: 37489, Stop: 38307, Start Num: 23

Candidate Starts for Peanam_52:

(3, 37249), (21, 37459), (Start: 23 @37489 has 99 MA's), (Start: 44 @37612 has 27 MA's), (58, 37687), (60, 37696), (67, 37738), (72, 37774), (74, 37786), (76, 37810), (82, 37870), (94, 37945), (104, 38005), (108, 38023), (109, 38047), (112, 38080), (116, 38098), (118, 38113), (133, 38194), (134, 38197), (140, 38224), (143, 38236),

Gene: Peel_49 Start: 36685, Stop: 37476, Start Num: 23

Candidate Starts for Peel_49:

(Start: 23 @36685 has 99 MA's), (28, 36721), (Start: 44 @36808 has 27 MA's), (58, 36862), (60, 36871), (67, 36913), (68, 36922), (75, 36961), (76, 36982), (83, 37048), (85, 37054), (102, 37162), (109, 37219), (118, 37285), (134, 37372), (140, 37399), (143, 37411), (151, 37465),

Gene: Pharb_49 Start: 36008, Stop: 36685, Start Num: 44

Candidate Starts for Pharb_49:

(26, 35906), (36, 35972), (Start: 44 @36008 has 27 MA's), (58, 36083), (67, 36134), (74, 36179), (76, 36203), (82, 36263), (84, 36272), (89, 36314), (94, 36338), (97, 36362), (99, 36371), (108, 36416), (109, 36440), (113, 36476), (114, 36485), (120, 36530), (133, 36590), (134, 36593), (140, 36620),

Gene: PhelpsODU_52 Start: 36483, Stop: 37178, Start Num: 42

Candidate Starts for PhelpsODU_52:

(36, 36450), (Start: 42 @36483 has 11 MA's), (58, 36561), (60, 36570), (68, 36621), (76, 36681), (101, 36855), (103, 36864), (108, 36894), (109, 36918), (116, 36969), (118, 36984), (133, 37068), (134, 37071),

Gene: Phrank_53 Start: 36440, Stop: 37135, Start Num: 42

Candidate Starts for Phrank_53:

(36, 36407), (Start: 42 @36440 has 11 MA's), (58, 36518), (60, 36527), (67, 36569), (76, 36638), (101, 36812), (103, 36821), (109, 36875), (116, 36926), (118, 36941), (133, 37025), (134, 37028),

Gene: Piatt_49 Start: 36880, Stop: 37671, Start Num: 23

Candidate Starts for Piatt_49:

(Start: 23 @36880 has 99 MA's), (28, 36916), (Start: 44 @37003 has 27 MA's), (58, 37057), (60, 37066), (67, 37108), (68, 37117), (75, 37156), (76, 37177), (83, 37243), (85, 37249), (102, 37357), (109, 37414), (118, 37480), (134, 37567), (140, 37594), (143, 37606), (151, 37660),

Gene: Pixie_51 Start: 36777, Stop: 37454, Start Num: 44

Candidate Starts for Pixie_51:

(Start: 44 @36777 has 27 MA's), (58, 36852), (67, 36903), (74, 36948), (76, 36972), (84, 37041), (89, 37083), (94, 37107), (99, 37140), (102, 37152), (108, 37185), (109, 37209), (117, 37266), (120, 37299), (134, 37362), (140, 37389), (142, 37395),

Gene: Pokerus_48 Start: 36606, Stop: 37397, Start Num: 23

Candidate Starts for Pokerus_48:

(Start: 23 @36606 has 99 MA's), (28, 36642), (Start: 44 @36729 has 27 MA's), (58, 36783), (60, 36792), (67, 36834), (68, 36843), (75, 36882), (76, 36903), (83, 36969), (85, 36975), (102, 37083), (108, 37116), (109, 37140), (118, 37206), (133, 37290), (134, 37293), (140, 37320), (143, 37332), (151, 37386),

Gene: Prithvi_50 Start: 36768, Stop: 37559, Start Num: 23

Candidate Starts for Prithvi_50:

(Start: 23 @36768 has 99 MA's), (28, 36804), (Start: 44 @36891 has 27 MA's), (58, 36945), (60, 36954), (67, 36996), (68, 37005), (75, 37044), (76, 37065), (83, 37131), (85, 37137), (102, 37245), (109, 37302), (118, 37368), (126, 37413), (133, 37452), (134, 37455), (140, 37482), (143, 37494), (151, 37548),

Gene: Psycho_45 Start: 35482, Stop: 36237, Start Num: 35

Candidate Starts for Psycho_45:

(Start: 35 @35482 has 7 MA's), (Start: 37 @35509 has 14 MA's), (58, 35632), (73, 35719), (74, 35728), (81, 35809), (84, 35821), (85, 35824), (113, 36031), (117, 36052), (118, 36061), (120, 36085),

(138, 36151), (141, 36163), (149, 36190),

Gene: QuincyRose_48 Start: 36998, Stop: 37789, Start Num: 23

Candidate Starts for QuincyRose_48:

(Start: 23 @36998 has 99 MA's), (28, 37034), (Start: 44 @37121 has 27 MA's), (54, 37151), (58, 37175), (60, 37184), (67, 37226), (68, 37235), (75, 37274), (76, 37295), (83, 37361), (85, 37367), (102, 37475), (109, 37532), (113, 37568), (118, 37598), (133, 37682), (134, 37685), (140, 37712), (143, 37724), (151, 37778),

Gene: Ramen_50 Start: 36570, Stop: 37361, Start Num: 23

Candidate Starts for Ramen_50:

(Start: 23 @36570 has 99 MA's), (28, 36606), (Start: 44 @36693 has 27 MA's), (58, 36747), (60, 36756), (67, 36798), (68, 36807), (75, 36846), (76, 36867), (83, 36933), (85, 36939), (102, 37047), (109, 37104), (118, 37170), (129, 37230), (133, 37254), (134, 37257), (143, 37296), (151, 37350),

Gene: Rando14_47 Start: 34531, Stop: 35259, Start Num: 37

Candidate Starts for Rando14_47:

(Start: 37 @34531 has 14 MA's), (Start: 39 @34549 has 10 MA's), (74, 34747), (76, 34771), (79, 34822), (81, 34828), (97, 34930), (102, 34957), (115, 35062), (117, 35071), (118, 35080), (119, 35083), (138, 35170), (141, 35182),

Gene: Rapunzel97_50 Start: 36566, Stop: 37357, Start Num: 23

Candidate Starts for Rapunzel97_50:

(Start: 23 @36566 has 99 MA's), (28, 36602), (Start: 44 @36689 has 27 MA's), (58, 36743), (60, 36752), (67, 36794), (68, 36803), (75, 36842), (76, 36863), (83, 36929), (85, 36935), (102, 37043), (109, 37100), (118, 37166), (133, 37250), (134, 37253), (140, 37280), (143, 37292), (151, 37346),

Gene: Reptar3000_54 Start: 37448, Stop: 38140, Start Num: 44

Candidate Starts for Reptar3000_54:

(Start: 44 @37448 has 27 MA's), (55, 37511), (58, 37532), (71, 37601), (74, 37622), (75, 37625), (80, 37703), (82, 37709), (92, 37772), (106, 37853), (111, 37910), (116, 37940), (118, 37955), (123, 37988), (126, 38000), (128, 38009), (138, 38057), (149, 38096),

Gene: Rosmarinus_49 Start: 36671, Stop: 37462, Start Num: 23

Candidate Starts for Rosmarinus_49:

(Start: 23 @36671 has 99 MA's), (28, 36707), (Start: 44 @36794 has 27 MA's), (58, 36848), (60, 36857), (67, 36899), (68, 36908), (75, 36947), (76, 36968), (83, 37034), (85, 37040), (102, 37148), (109, 37205), (118, 37271), (134, 37358), (140, 37385), (143, 37397), (151, 37451),

Gene: Ruthiejr_57 Start: 38254, Stop: 38946, Start Num: 44

Candidate Starts for Ruthiejr_57:

(Start: 44 @38254 has 27 MA's), (45, 38257), (55, 38317), (56, 38320), (58, 38338), (68, 38395), (71, 38407), (80, 38509), (82, 38515), (92, 38578), (106, 38659), (108, 38671), (111, 38716), (113, 38731), (116, 38746), (118, 38761), (123, 38794), (126, 38806), (128, 38815), (138, 38863), (149, 38902),

Gene: SamScheppers_54 Start: 38683, Stop: 39375, Start Num: 44

Candidate Starts for SamScheppers_54:

(Start: 44 @38683 has 27 MA's), (45, 38686), (55, 38746), (56, 38749), (58, 38767), (68, 38824), (71, 38836), (80, 38938), (82, 38944), (92, 39007), (106, 39088), (108, 39100), (111, 39145), (116, 39175), (118, 39190), (123, 39223), (126, 39235), (128, 39244), (138, 39292), (149, 39331),

Gene: SamuelLPlaqson_50 Start: 37454, Stop: 38245, Start Num: 23

Candidate Starts for SamuelLPlaqson_50:

(Start: 23 @37454 has 99 MA's), (28, 37490), (Start: 44 @37577 has 27 MA's), (58, 37631), (60, 37640), (67, 37682), (68, 37691), (69, 37694), (72, 37715), (76, 37751), (83, 37817), (85, 37823), (102, 37931), (109, 37988), (118, 38054), (121, 38081), (133, 38138), (134, 38141), (140, 38168), (143, 38180), (151, 38234),

Gene: Scarlett_54 Start: 37864, Stop: 38568, Start Num: 41

Candidate Starts for Scarlett_54:

(7, 37540), (9, 37546), (36, 37828), (Start: 41 @37864 has 10 MA's), (46, 37888), (58, 37951), (60, 37960), (67, 38002), (68, 38011), (72, 38035), (74, 38047), (76, 38071), (94, 38206), (102, 38251), (109, 38308), (116, 38359), (120, 38398), (133, 38458), (134, 38461), (143, 38500),

Gene: SgtBeansprout_45 Start: 36225, Stop: 37043, Start Num: 23

Candidate Starts for SgtBeansprout_45:

(Start: 23 @36225 has 99 MA's), (Start: 44 @36348 has 27 MA's), (58, 36423), (60, 36432), (67, 36474), (72, 36510), (74, 36522), (76, 36546), (83, 36612), (94, 36681), (95, 36684), (109, 36783), (116, 36834), (118, 36849), (120, 36873), (121, 36876), (133, 36933), (134, 36936),

Gene: Shadow1_55 Start: 37601, Stop: 38293, Start Num: 42

Candidate Starts for Shadow1_55:

(36, 37568), (Start: 42 @37601 has 11 MA's), (58, 37679), (60, 37688), (67, 37730), (74, 37775), (76, 37799), (101, 37973), (103, 37982), (112, 38069), (116, 38087), (118, 38102), (133, 38186), (134, 38189),

Gene: Shaobing_52 Start: 37507, Stop: 38325, Start Num: 23

Candidate Starts for Shaobing_52:

(3, 37267), (21, 37477), (Start: 23 @37507 has 99 MA's), (Start: 44 @37630 has 27 MA's), (58, 37705), (60, 37714), (67, 37756), (72, 37792), (74, 37804), (76, 37828), (82, 37888), (94, 37963), (104, 38023), (108, 38041), (109, 38065), (112, 38098), (116, 38116), (118, 38131), (125, 38173), (133, 38212), (134, 38215), (140, 38242), (143, 38254),

Gene: ShedlockHolmes_53 Start: 37302, Stop: 37979, Start Num: 44

Candidate Starts for ShedlockHolmes_53:

(Start: 44 @37302 has 27 MA's), (58, 37377), (67, 37428), (74, 37473), (76, 37497), (84, 37566), (89, 37608), (94, 37632), (99, 37665), (102, 37677), (108, 37710), (109, 37734), (117, 37791), (120, 37824), (140, 37914), (142, 37920),

Gene: ShiaSurprise_50 Start: 36880, Stop: 37671, Start Num: 23

Candidate Starts for ShiaSurprise_50:

(Start: 23 @36880 has 99 MA's), (28, 36916), (Start: 44 @37003 has 27 MA's), (58, 37057), (60, 37066), (67, 37108), (68, 37117), (75, 37156), (76, 37177), (83, 37243), (85, 37249), (102, 37357), (109, 37414), (118, 37480), (134, 37567), (140, 37594), (143, 37606), (151, 37660),

Gene: SirPhilip_52 Start: 37984, Stop: 38682, Start Num: 41

Candidate Starts for SirPhilip_52:

(15, 37723), (36, 37945), (Start: 41 @37984 has 10 MA's), (47, 38011), (58, 38071), (60, 38080), (67, 38122), (68, 38131), (74, 38167), (76, 38191), (82, 38251), (85, 38263), (94, 38326), (109, 38428), (114, 38473), (133, 38575), (143, 38617),

Gene: Slarp_56 Start: 38211, Stop: 38903, Start Num: 44

Candidate Starts for Slarp_56:

(Start: 44 @38211 has 27 MA's), (45, 38214), (55, 38274), (56, 38277), (58, 38295), (68, 38352), (71, 38364), (80, 38466), (82, 38472), (92, 38535), (106, 38616), (108, 38628), (111, 38673), (116, 38703), (118, 38718), (123, 38751), (126, 38763), (128, 38772), (138, 38820), (149, 38859),

Gene: Slimphazie_49 Start: 36566, Stop: 37357, Start Num: 23

Candidate Starts for Slimphazie_49:

(Start: 23 @36566 has 99 MA's), (28, 36602), (Start: 44 @36689 has 27 MA's), (58, 36743), (60, 36752), (67, 36794), (68, 36803), (75, 36842), (76, 36863), (83, 36929), (85, 36935), (102, 37043), (109, 37100), (118, 37166), (133, 37250), (134, 37253), (140, 37280), (143, 37292), (151, 37346),

Gene: SoSeph_45 Start: 35496, Stop: 36227, Start Num: 37

Candidate Starts for SoSeph_45:

(Start: 35 @35469 has 7 MA's), (Start: 37 @35496 has 14 MA's), (57, 35604), (58, 35616), (74, 35712), (76, 35736), (82, 35796), (85, 35808), (94, 35871), (97, 35895), (102, 35922), (115, 36027), (117, 36036), (118, 36045), (119, 36048), (138, 36135), (149, 36174),

Gene: Spock_49 Start: 36684, Stop: 37475, Start Num: 23

Candidate Starts for Spock_49:

(Start: 23 @36684 has 99 MA's), (28, 36720), (Start: 44 @36807 has 27 MA's), (58, 36861), (60, 36870), (67, 36912), (68, 36921), (75, 36960), (76, 36981), (83, 37047), (85, 37053), (102, 37161), (109, 37218), (118, 37284), (134, 37371), (140, 37398), (143, 37410), (151, 37464),

Gene: Stinson_50 Start: 37058, Stop: 37849, Start Num: 23

Candidate Starts for Stinson_50:

(Start: 23 @37058 has 99 MA's), (28, 37094), (Start: 44 @37181 has 27 MA's), (58, 37235), (60, 37244), (67, 37286), (68, 37295), (75, 37334), (76, 37355), (83, 37421), (85, 37427), (102, 37535), (108, 37568), (109, 37592), (118, 37658), (121, 37685), (134, 37745), (140, 37772), (143, 37784),

Gene: Strobilo_53 Start: 38797, Stop: 39537, Start Num: 39

Candidate Starts for Strobilo_53:

(30, 38719), (Start: 39 @38797 has 10 MA's), (Start: 49 @38848 has 1 MA's), (56, 38887), (58, 38905), (67, 38956), (74, 39001), (76, 39025), (80, 39079), (94, 39160), (97, 39184), (98, 39193), (102, 39211), (108, 39244), (111, 39289), (116, 39319), (118, 39334), (120, 39364), (141, 39451), (152, 39526),

Gene: Sulley_49 Start: 36810, Stop: 37601, Start Num: 23

Candidate Starts for Sulley_49:

(Start: 23 @36810 has 99 MA's), (28, 36846), (Start: 44 @36933 has 27 MA's), (60, 36996), (67, 37038), (68, 37047), (75, 37086), (76, 37107), (83, 37173), (85, 37179), (102, 37287), (109, 37344), (118, 37410), (133, 37494), (140, 37524), (143, 37536), (151, 37590),

Gene: Sunflower1121_56 Start: 37702, Stop: 38394, Start Num: 42

Candidate Starts for Sunflower1121_56:

(36, 37669), (Start: 42 @37702 has 11 MA's), (58, 37780), (60, 37789), (67, 37831), (74, 37876), (76, 37900), (101, 38074), (103, 38083), (109, 38137), (112, 38170), (116, 38188), (118, 38203), (133, 38287), (134, 38290),

Gene: Syra333_55 Start: 37366, Stop: 38058, Start Num: 42

Candidate Starts for Syra333_55:

(Start: 42 @37366 has 11 MA's), (58, 37444), (60, 37453), (67, 37495), (74, 37540), (76, 37564), (101, 37738), (103, 37747), (109, 37801), (113, 37837), (116, 37852), (118, 37867), (133, 37951), (134, 37954),

Gene: TBond007_50 Start: 36776, Stop: 37453, Start Num: 44

Candidate Starts for TBond007_50:

(Start: 44 @36776 has 27 MA's), (58, 36851), (67, 36902), (74, 36947), (76, 36971), (84, 37040), (89, 37082), (94, 37106), (99, 37139), (102, 37151), (108, 37184), (109, 37208), (117, 37265), (120, 37298), (134, 37361), (140, 37388), (142, 37394),

Gene: TClif_54 Start: 37733, Stop: 38428, Start Num: 41

Candidate Starts for TClif_54:

(36, 37700), (Start: 41 @37733 has 10 MA's), (58, 37811), (60, 37820), (67, 37862), (68, 37871), (72, 37895), (76, 37931), (94, 38066), (109, 38168), (113, 38204), (118, 38234), (119, 38237), (133, 38318), (134, 38321), (143, 38360),

Gene: TM4_48 Start: 33177, Stop: 33917, Start Num: 39

Candidate Starts for TM4_48:

(Start: 39 @33177 has 10 MA's), (Start: 49 @33228 has 1 MA's), (56, 33267), (58, 33285), (67, 33336), (74, 33381), (76, 33405), (80, 33459), (94, 33540), (97, 33564), (102, 33591), (108, 33624), (109, 33648), (111, 33669), (116, 33699), (118, 33714), (120, 33744), (138, 33819), (141, 33831), (152, 33906),

Gene: Tachez_49 Start: 36528, Stop: 37319, Start Num: 23

Candidate Starts for Tachez_49:

(Start: 23 @36528 has 99 MA's), (28, 36564), (Start: 44 @36651 has 27 MA's), (58, 36705), (60, 36714), (67, 36756), (68, 36765), (75, 36804), (76, 36825), (83, 36891), (85, 36897), (102, 37005), (109, 37062), (118, 37128), (133, 37212), (134, 37215), (140, 37242), (143, 37254), (151, 37308),

Gene: TaiwanKao_51 Start: 36824, Stop: 37615, Start Num: 23

Candidate Starts for TaiwanKao_51:

(Start: 23 @36824 has 99 MA's), (28, 36860), (Start: 44 @36947 has 27 MA's), (58, 37001), (60, 37010), (64, 37025), (67, 37052), (68, 37061), (69, 37064), (75, 37100), (76, 37121), (83, 37187), (85, 37193), (102, 37301), (109, 37358), (118, 37424), (133, 37508), (134, 37511), (140, 37538), (143, 37550), (151, 37604),

Gene: Taquito_56 Start: 38539, Stop: 39231, Start Num: 44

Candidate Starts for Taquito_56:

(Start: 44 @38539 has 27 MA's), (45, 38542), (55, 38602), (56, 38605), (58, 38623), (68, 38680), (71, 38692), (80, 38794), (82, 38800), (92, 38863), (106, 38944), (108, 38956), (111, 39001), (116, 39031), (118, 39046), (123, 39079), (126, 39091), (128, 39100), (138, 39148), (149, 39187),

Gene: Thyatira_48 Start: 37698, Stop: 38429, Start Num: 37

Candidate Starts for Thyatira_48:

(Start: 35 @37671 has 7 MA's), (Start: 37 @37698 has 14 MA's), (57, 37806), (58, 37818), (74, 37914), (76, 37938), (82, 37998), (85, 38010), (94, 38073), (97, 38097), (102, 38124), (117, 38238), (118, 38247), (119, 38250), (138, 38337), (149, 38376),

Gene: Tierra_53 Start: 37251, Stop: 37946, Start Num: 42

Candidate Starts for Tierra_53:

(36, 37218), (Start: 42 @37251 has 11 MA's), (58, 37329), (60, 37338), (67, 37380), (76, 37449), (101, 37623), (103, 37632), (109, 37686), (116, 37737), (118, 37752), (133, 37836), (134, 37839),

Gene: TiniBug_50 Start: 37450, Stop: 38241, Start Num: 23

Candidate Starts for TiniBug_50:

(Start: 23 @37450 has 99 MA's), (28, 37486), (Start: 44 @37573 has 27 MA's), (58, 37627), (60, 37636), (67, 37678), (68, 37687), (69, 37690), (72, 37711), (76, 37747), (83, 37813), (85, 37819), (102, 37927), (109, 37984), (118, 38050), (121, 38077), (133, 38134), (134, 38137), (140, 38164), (143, 38176), (151, 38230),

Gene: Tiri_50 Start: 36858, Stop: 37649, Start Num: 23

Candidate Starts for Tiri_50:

(Start: 23 @36858 has 99 MA's), (28, 36894), (Start: 44 @36981 has 27 MA's), (58, 37035), (60, 37044), (67, 37086), (68, 37095), (75, 37134), (76, 37155), (83, 37221), (85, 37227), (102, 37335), (109, 37392), (118, 37458), (133, 37542), (134, 37545), (140, 37572), (143, 37584), (151, 37638),

Gene: Topper_49 Start: 36683, Stop: 37474, Start Num: 23

Candidate Starts for Topper_49:

(Start: 23 @36683 has 99 MA's), (28, 36719), (Start: 44 @36806 has 27 MA's), (58, 36860), (60, 36869), (67, 36911), (68, 36920), (75, 36959), (76, 36980), (83, 37046), (85, 37052), (102, 37160), (109, 37217), (118, 37283), (134, 37370), (140, 37397), (143, 37409), (151, 37463),

Gene: TreyKay_50 Start: 36768, Stop: 37559, Start Num: 23

Candidate Starts for TreyKay_50:

(Start: 23 @36768 has 99 MA's), (28, 36804), (Start: 44 @36891 has 27 MA's), (58, 36945), (60, 36954), (67, 36996), (68, 37005), (75, 37044), (76, 37065), (83, 37131), (85, 37137), (102, 37245), (109, 37302), (118, 37368), (126, 37413), (133, 37452), (134, 37455), (140, 37482), (143, 37494), (151, 37548),

Gene: TribbleTrouble_49 Start: 36661, Stop: 37338, Start Num: 44

Candidate Starts for TribbleTrouble_49:

(26, 36556), (Start: 44 @36661 has 27 MA's), (58, 36736), (67, 36787), (74, 36832), (76, 36856), (84, 36925), (89, 36967), (94, 36991), (99, 37024), (102, 37036), (108, 37069), (109, 37093), (118, 37159), (134, 37246), (140, 37273),

Gene: TruffulaTree_49 Start: 36562, Stop: 37353, Start Num: 23

Candidate Starts for TruffulaTree_49:

(Start: 23 @36562 has 99 MA's), (28, 36598), (Start: 44 @36685 has 27 MA's), (58, 36739), (60, 36748), (67, 36790), (68, 36799), (75, 36838), (76, 36859), (83, 36925), (85, 36931), (102, 37039), (109, 37096), (118, 37162), (133, 37246), (134, 37249), (140, 37276), (143, 37288), (151, 37342),

Gene: Twitch_49 Start: 36685, Stop: 37476, Start Num: 23

Candidate Starts for Twitch_49:

(Start: 23 @36685 has 99 MA's), (28, 36721), (Start: 44 @36808 has 27 MA's), (58, 36862), (60, 36871), (67, 36913), (68, 36922), (75, 36961), (76, 36982), (83, 37048), (85, 37054), (102, 37162), (109, 37219), (118, 37285), (134, 37372), (140, 37399), (143, 37411), (151, 37465),

Gene: Unicorn_52 Start: 36483, Stop: 37178, Start Num: 42

Candidate Starts for Unicorn_52:

(36, 36450), (Start: 42 @36483 has 11 MA's), (58, 36561), (60, 36570), (68, 36621), (76, 36681), (101, 36855), (103, 36864), (108, 36894), (109, 36918), (116, 36969), (118, 36984), (133, 37068), (134, 37071),

Gene: Urkel_50 Start: 37454, Stop: 38245, Start Num: 23

Candidate Starts for Urkel_50:

(Start: 23 @37454 has 99 MA's), (28, 37490), (Start: 44 @37577 has 27 MA's), (58, 37631), (60, 37640), (67, 37682), (68, 37691), (69, 37694), (72, 37715), (76, 37751), (83, 37817), (85, 37823), (102, 37931), (109, 37988), (118, 38054), (121, 38081), (133, 38138), (134, 38141), (140, 38168), (143, 38180), (151, 38234),

Gene: Validus_54 Start: 37554, Stop: 38354, Start Num: 23

Candidate Starts for Validus_54:

(17, 37494), (21, 37524), (Start: 23 @37554 has 99 MA's), (33, 37611), (Start: 42 @37674 has 11 MA's), (58, 37740), (60, 37749), (67, 37791), (76, 37863), (84, 37932), (94, 37998), (104, 38058), (108, 38076), (109, 38100), (116, 38151), (133, 38250), (134, 38253), (140, 38280), (143, 38292),

Gene: Veliki_50 Start: 36602, Stop: 37393, Start Num: 23

Candidate Starts for Veliki_50:

(Start: 23 @36602 has 99 MA's), (28, 36638), (Start: 44 @36725 has 27 MA's), (58, 36779), (60, 36788), (67, 36830), (68, 36839), (75, 36878), (76, 36899), (83, 36965), (85, 36971), (102, 37079), (109, 37136), (118, 37202), (133, 37286), (134, 37289), (140, 37316), (143, 37328), (151, 37382),

Gene: Waterfoul_46 Start: 35589, Stop: 36320, Start Num: 37

Candidate Starts for Waterfoul_46:

(Start: 35 @35562 has 7 MA's), (Start: 37 @35589 has 14 MA's), (57, 35697), (58, 35709), (74, 35805), (76, 35829), (82, 35889), (85, 35901), (94, 35964), (102, 36015), (117, 36129), (118, 36138), (119, 36141), (138, 36228), (149, 36267),

Gene: Wintermute_56 Start: 38441, Stop: 39133, Start Num: 44

Candidate Starts for Wintermute_56:

(Start: 44 @38441 has 27 MA's), (45, 38444), (55, 38504), (56, 38507), (58, 38525), (68, 38582), (71, 38594), (80, 38696), (82, 38702), (92, 38765), (106, 38846), (108, 38858), (111, 38903), (116, 38933), (118, 38948), (123, 38981), (126, 38993), (128, 39002), (138, 39050), (149, 39089),

Gene: Ximenita_56 Start: 37555, Stop: 38247, Start Num: 42

Candidate Starts for Ximenita_56:

(36, 37522), (Start: 42 @37555 has 11 MA's), (58, 37633), (60, 37642), (67, 37684), (74, 37729), (76, 37753), (101, 37927), (103, 37936), (109, 37990), (112, 38023), (116, 38041), (118, 38056), (132, 38131), (133, 38140), (134, 38143),

Gene: Y10_55 Start: 38363, Stop: 39055, Start Num: 44

Candidate Starts for Y10_55:

(Start: 44 @38363 has 27 MA's), (45, 38366), (55, 38426), (56, 38429), (58, 38447), (68, 38504), (71, 38516), (80, 38618), (82, 38624), (92, 38687), (106, 38768), (108, 38780), (111, 38825), (113, 38840), (116, 38855), (118, 38870), (123, 38903), (126, 38915), (128, 38924), (138, 38972), (149, 39011),

Gene: Y2_55 Start: 38363, Stop: 39055, Start Num: 44

Candidate Starts for Y2_55:

(Start: 44 @38363 has 27 MA's), (45, 38366), (55, 38426), (56, 38429), (58, 38447), (68, 38504), (71, 38516), (80, 38618), (82, 38624), (92, 38687), (106, 38768), (108, 38780), (111, 38825), (113, 38840), (116, 38855), (118, 38870), (123, 38903), (126, 38915), (128, 38924), (138, 38972), (149, 39011),

Gene: YoureAdopted_48 Start: 36767, Stop: 37558, Start Num: 23

Candidate Starts for YoureAdopted_48:

(Start: 23 @36767 has 99 MA's), (28, 36803), (Start: 44 @36890 has 27 MA's), (58, 36944), (60, 36953), (67, 36995), (68, 37004), (75, 37043), (76, 37064), (83, 37130), (85, 37136), (102, 37244), (109, 37301), (118, 37367), (133, 37451), (134, 37454), (140, 37481), (143, 37493), (151, 37547),

Gene: Yuna_56 Start: 38468, Stop: 39154, Start Num: 41

Candidate Starts for Yuna_56:

(Start: 41 @38468 has 10 MA's), (58, 38549), (60, 38558), (67, 38600), (68, 38609), (74, 38645), (76, 38669), (79, 38720), (109, 38906), (113, 38942), (114, 38951), (116, 38957), (118, 38972), (119, 38975), (133, 39050), (134, 39053), (143, 39092),

Gene: Yunkel11_52 Start: 36355, Stop: 37146, Start Num: 23

Candidate Starts for Yunkel11_52:

(Start: 23 @36355 has 99 MA's), (28, 36391), (Start: 44 @36478 has 27 MA's), (58, 36532), (60, 36541), (69, 36595), (72, 36616), (74, 36628), (76, 36652), (84, 36721), (109, 36889), (118, 36955), (133, 37039), (134, 37042), (140, 37069), (143, 37081),

Gene: Zabiza_45 Start: 32873, Stop: 33664, Start Num: 23

Candidate Starts for Zabiza_45:

(Start: 23 @32873 has 99 MA's), (28, 32909), (Start: 44 @32996 has 27 MA's), (58, 33050), (60, 33059), (67, 33101), (68, 33110), (75, 33149), (76, 33170), (83, 33236), (85, 33242), (102, 33350), (109, 33407), (118, 33473), (133, 33557), (134, 33560), (143, 33599), (151, 33653),

Gene: Zavala_51 Start: 36844, Stop: 37635, Start Num: 23

Candidate Starts for Zavala_51:

(Start: 23 @36844 has 99 MA's), (28, 36880), (Start: 44 @36967 has 27 MA's), (58, 37021), (60, 37030), (67, 37072), (68, 37081), (75, 37120), (76, 37141), (83, 37207), (85, 37213), (102, 37321), (109, 37378), (118, 37444), (134, 37531), (140, 37558), (143, 37570), (151, 37624),

Gene: ZoeJ_52 Start: 38268, Stop: 39008, Start Num: 39

Candidate Starts for ZoeJ_52:

(Start: 39 @38268 has 10 MA's), (Start: 49 @38319 has 1 MA's), (56, 38358), (58, 38376), (67, 38427), (74, 38472), (76, 38496), (80, 38550), (94, 38631), (97, 38655), (102, 38682), (108, 38715), (111, 38760), (116, 38790), (118, 38805), (120, 38835), (141, 38922), (152, 38997),