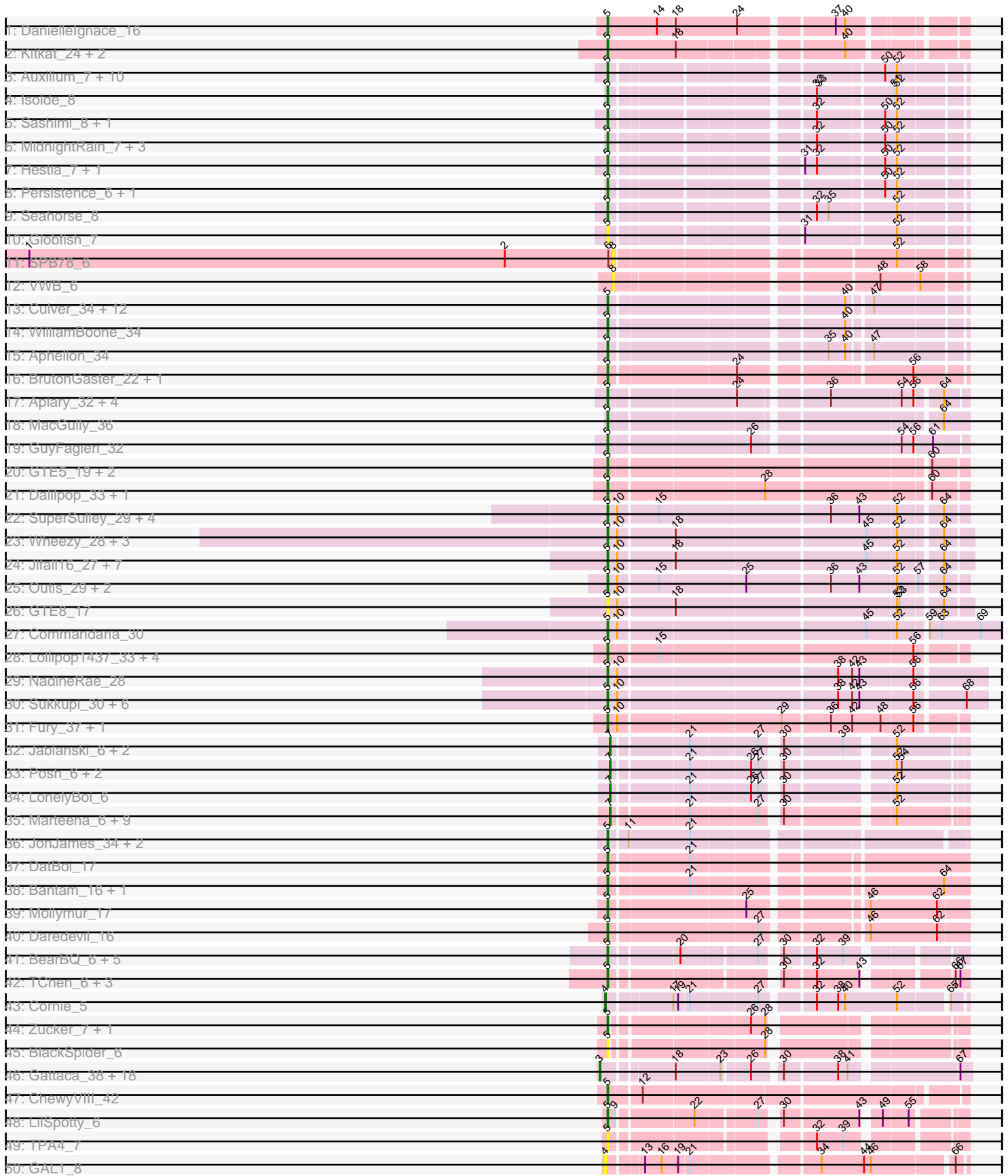
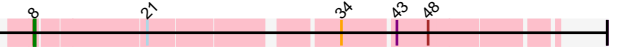


Pham 169774



51: Samy\_9



A series of horizontal lines for writing, starting from the top of the page and extending to the bottom. The lines are evenly spaced and cover the majority of the page area.

Note: Tracks are now grouped by subcluster and scaled. Switching in subcluster is indicated by changes in track color. Track scale is now set by default to display the region 30 bp upstream of start 1 to 30 bp downstream of the last possible start. If this default region is judged to be packed too tightly with annotated starts, the track will be further scaled to only show that region of the ORF with annotated starts. This action will be indicated by adding "Zoomed" to the title. For starts, yellow indicates the location of called starts comprised solely of Glimmer/GeneMark auto-annotations, green indicates the location of called starts with at least 1 manual gene annotation.

## Pham 169774 Report

This analysis was run 07/09/24 on database version 566.

WARNING: Pham size does not match number of genes in report. Either unphamerated genes have been added (by you) or starterator has removed genes due to invalid start codon.

Pham number 169774 has 159 members, 29 are drafts.

Phages represented in each track:

- Track 1 : DanielleIgnace\_16
- Track 2 : Kitkat\_24, BeatusComedenti\_23, KelleEzio\_23
- Track 3 : Auxilium\_7, BenchScraper\_7, Faja\_7, BillyTP\_7, YoungHarleezy\_7, Gorpy\_7, Richie\_7, Raphaella\_7, Sakai\_7, Aikyam\_7, CookieBear\_7
- Track 4 : Isolde\_8
- Track 5 : Sashimi\_8, EvePickles\_7
- Track 6 : MidnightRain\_7, RadFad\_7, Hillester\_7, Phrank15\_7
- Track 7 : Hestia\_7, Tiff81\_8
- Track 8 : Persistence\_6, Anekin\_7
- Track 9 : Seahorse\_8
- Track 10 : Globfish\_7
- Track 11 : SPB78\_6
- Track 12 : VWB\_6
- Track 13 : Culver\_34, Miskis\_36, Dusty\_32, Lozinak\_34, Abscondus\_33, Smoothie\_35, Cucurbita\_36, Engineer\_35, Bachita\_36, Toniann\_34, PhinkBoden\_34, Norvs\_35, ClubL\_34
- Track 14 : WilliamBoone\_34
- Track 15 : Aphelion\_34
- Track 16 : BrutonGaster\_22, OneUp\_28
- Track 17 : Apiary\_32, Polyuyuki\_32, Maselop\_32, CoffeeBean\_32, Braxoaddie\_32
- Track 18 : MacGully\_36
- Track 19 : GuyFagieri\_32
- Track 20 : GTE5\_19, Flapper\_32, Turuncu\_32
- Track 21 : Dalilpop\_33, GRU1\_18
- Track 22 : SuperSulley\_29, NosilaM\_31, Bonum\_31, Kabluna\_31, Buggaboo\_29
- Track 23 : Wheezy\_28, GrootJr\_30, Arti\_28, NovumRegina\_28
- Track 24 : Jifall16\_27, Foxboro\_29, NatB6\_28, KidneyBean\_28, Kurt\_28, Phomeo\_27, Emianna\_28, Tracker\_28
- Track 25 : Outis\_29, MerCougar\_29, StarStruck\_29
- Track 26 : GTE8\_17
- Track 27 : Commandaria\_30
- Track 28 : Lollipop1437\_33, Patio\_31, Ennea\_34, Float294\_30, Skysand\_30
- Track 29 : NadineRae\_28

- Track 30 : Sukkupi\_30, BiPauneto\_31, Marietta\_30, IDyn\_29, Yndexa\_30, WhoseManz\_30, HubbaBubba\_27
- Track 31 : Fury\_37, Pleakley\_37
- Track 32 : Jablanski\_6, Pytheas\_6, Bradissa\_6
- Track 33 : Posh\_6, Confidence\_6, BeeGee\_6
- Track 34 : LonelyBoi\_6
- Track 35 : Marteena\_6, EnalisNailo\_6, Cashline\_6, Angelique\_6, EMSquaredA\_6, Wrigley\_6, Floral\_6, BritBrat\_6, Lilas\_6, Pollux\_6
- Track 36 : JonJames\_34, Cardigan\_34, YvonneTastic\_32
- Track 37 : DatBoi\_17
- Track 38 : Bantam\_16, SpeedDemon\_170
- Track 39 : Mollymur\_17
- Track 40 : Daredevil\_16
- Track 41 : BearBQ\_6, MortyNRick\_6, Apricot\_6, Kuwabara\_6, Crater\_6, Birdsong\_6
- Track 42 : TChen\_6, LunaStella\_6, ThetaBob\_6, Renaud18\_6
- Track 43 : Cornie\_5
- Track 44 : Zucker\_7, Bauer\_8
- Track 45 : BlackSpider\_6
- Track 46 : Gattaca\_38, RedRaider77\_39, FeliMaine\_39, Corazon\_37, Clarkson\_40, Poise\_39, Tesla\_38, Raela\_39, Pringar\_39, JoieB\_40, LittleLaf\_39, Beelzebub\_43, Lilbit\_40, Huphlepuuff\_41, Marvin\_37, VasuNzinga\_39, MosMoris\_37, Caprice\_36, Blackbeetle\_39
- Track 47 : ChewyVIII\_42
- Track 48 : LilSpotty\_6
- Track 49 : TPA4\_7
- Track 50 : GAL1\_8
- Track 51 : Samy\_9

***Summary of Final Annotations (See graph section above for start numbers):***

The start number called the most often in the published annotations is 5, it was called in 95 of the 130 non-draft genes in the pham.

Genes that call this "Most Annotated" start:

- Abscondus\_33, Aikyam\_7, Anekin\_7, Aphelion\_34, Apiary\_32, Apricot\_6, Arti\_28, Auxilium\_7, Bachita\_36, Bantam\_16, Bauer\_8, BearBQ\_6, BeatusComedenti\_23, BenchScraper\_7, BiPauneto\_31, BillyTP\_7, Birdsong\_6, BlackSpider\_6, Bonum\_31, Braxoaddie\_32, BrutonGaster\_22, Buggaboo\_29, Cardigan\_34, ChewyVIII\_42, ClubL\_34, CoffeeBean\_32, Commandaria\_30, CookieBear\_7, Crater\_6, Cucurbita\_36, Culver\_34, Dalilpop\_33, DanielleIgnace\_16, Daredevil\_16, DatBoi\_17, Dusty\_32, Emianna\_28, Engineer\_35, Ennea\_34, EvePickles\_7, Faja\_7, Flapper\_32, Float294\_30, Foxboro\_29, Fury\_37, GRU1\_18, GTE5\_19, GTE8\_17, Globfish\_7, Gorpy\_7, GrootJr\_30, GuyFagieri\_32, Hestia\_7, Hillester\_7, HubbaBubba\_27, IDyn\_29, Isolde\_8, Jifall16\_27, JonJames\_34, Kabluna\_31, KellEzio\_23, KidneyBean\_28, Kitkat\_24, Kurt\_28, Kuwabara\_6, LilSpotty\_6, Lollipop1437\_33, Lozinak\_34, LunaStella\_6, MacGully\_36, Marietta\_30, Maselop\_32, MerCougar\_29, MidnightRain\_7, Miskis\_36, Mollymur\_17, MortyNRick\_6, NadineRae\_28, NatB6\_28, Norvs\_35, NosilaM\_31, NovumRegina\_28, OneUp\_28, Outis\_29, Patio\_31, Persistence\_6, PhinkBoden\_34, Phomeo\_27, Phrank15\_7, Pleakley\_37, Polyuyuki\_32, RadFad\_7, Raphaella\_7, Renaud18\_6, Richie\_7, Sakai\_7, Sashimi\_8,

Seahorse\_8, Skysand\_30, Smoothie\_35, SpeedDemon\_170, StarStruck\_29, Sukkupi\_30, SuperSulley\_29, TChen\_6, TPA4\_7, ThetaBob\_6, Tiff81\_8, Toniann\_34, Tracker\_28, Turuncu\_32, Wheezy\_28, WhoseManz\_30, WilliamBoone\_34, Yndexa\_30, YoungHarleezy\_7, Yvonnetastic\_32, Zucker\_7,

Genes that have the "Most Annotated" start but do not call it:

- 

Genes that do not have the "Most Annotated" start:

- Angelique\_6, BeeGee\_6, Beelzebub\_43, Blackbeetle\_39, Bradissa\_6, BritBrat\_6, Caprice\_36, Cashline\_6, Clarkson\_40, Confidence\_6, Corazon\_37, Cornie\_5, EMSquaredA\_6, EnalisNailo\_6, FeliMaine\_39, Floral\_6, GAL1\_8, Gattaca\_38, Huphlepuuff\_41, Jablanski\_6, JoieB\_40, Lilas\_6, Lilbit\_40, LittleLaf\_39, LonelyBoi\_6, Marteena\_6, Marvin\_37, MosMoris\_37, Poise\_39, Pollux\_6, Posh\_6, Pringar\_39, Pytheas\_6, Raela\_39, RedRaider77\_39, SPB78\_6, Samy\_9, Tesla\_38, VWB\_6, VasuNzinga\_39, Wrigley\_6,

### Summary by start number:

Start 3:

- Found in 19 of 159 ( 11.9% ) of genes in pham
- Manual Annotations of this start: 16 of 130
- Called 100.0% of time when present
- Phage (with cluster) where this start called: Beelzebub\_43 (S), Blackbeetle\_39 (S), Caprice\_36 (S), Clarkson\_40 (S), Corazon\_37 (S), FeliMaine\_39 (S), Gattaca\_38 (S), Huphlepuuff\_41 (S), JoieB\_40 (S), Lilbit\_40 (S), LittleLaf\_39 (S), Marvin\_37 (S), MosMoris\_37 (S), Poise\_39 (S), Pringar\_39 (S), Raela\_39 (S), RedRaider77\_39 (S), Tesla\_38 (S), VasuNzinga\_39 (S),

Start 4:

- Found in 2 of 159 ( 1.3% ) of genes in pham
- Manual Annotations of this start: 1 of 130
- Called 100.0% of time when present
- Phage (with cluster) where this start called: Cornie\_5 (F5), GAL1\_8 (singleton),

Start 5:

- Found in 118 of 159 ( 74.2% ) of genes in pham
- Manual Annotations of this start: 95 of 130
- Called 100.0% of time when present
- Phage (with cluster) where this start called: Abscondus\_33 (CQ), Aikyam\_7 (AY), Anekin\_7 (AY), Aphelion\_34 (CQ1), Apiary\_32 (CR), Apricot\_6 (DN3), Arti\_28 (CR2), Auxilium\_7 (AY), Bachita\_36 (CQ1), Bantam\_16 (DL), Bauer\_8 (FN), BearBQ\_6 (DN), BeatusComedenti\_23 (AT), BenchScraper\_7 (AY), BiPauneto\_31 (CR4), BillyTP\_7 (AY), Birdsong\_6 (DN), BlackSpider\_6 (FN), Bonum\_31 (CR2), Braxoaddie\_32 (CR), BrutonGaster\_22 (CQ2), Buggaboo\_29 (CR2), Cardigan\_34 (DD), ChewyVIII\_42 (singleton), ClubL\_34 (CQ1), CoffeeBean\_32 (CR), Commandaria\_30 (CR2), CookieBear\_7 (AY), Crater\_6 (DN3), Cucurbita\_36 (CQ1), Culver\_34 (CQ1), Dalilpop\_33 (CR1), DaniellEgnace\_16 (AT), Daredevil\_16 (DL), DatBoi\_17 (DL), Dusty\_32 (CQ), Emianna\_28 (CR2), Engineer\_35 (CQ1), Ennea\_34 (CR3), EvePickles\_7 (AY), Faja\_7 (AY), Flapper\_32 (CR1), Float294\_30 (CR3), Foxboro\_29 (CR2), Fury\_37 (CR5), GRU1\_18 (CR1), GTE5\_19 (CR1), GTE8\_17 (CR2), Globfish\_7 (AY), Gorpy\_7 (AY), GrootJr\_30 (CR2), GuyFagieri\_32 (CR), Hestia\_7 (AY), Hillester\_7 (AY), HubbaBubba\_27 (CR4), IDyn\_29 (CR4), Isolde\_8

(AY), Jifall16\_27 (CR2), JonJames\_34 (DD), Kabluna\_31 (CR2), KelleEzio\_23 (AT), KidneyBean\_28 (CR2), Kitkat\_24 (AT), Kurt\_28 (CR2), Kuwabara\_6 (DN4), LilSpotty\_6 (singleton), Lollipop1437\_33 (CR3), Lozinak\_34 (CQ1), LunaStella\_6 (F4), MacGully\_36 (CR), Marietta\_30 (CR4), Maselop\_32 (CR), MerCougar\_29 (CR2), MidnightRain\_7 (AY), Miskis\_36 (CQ), Mollymur\_17 (DL), MortyNRick\_6 (DN), NadineRae\_28 (CR4), NatB6\_28 (CR2), Norvs\_35 (CQ), NosilaM\_31 (CR2), NovumRegina\_28 (CR2), OneUp\_28 (CQ2), Outis\_29 (CR2), Patio\_31 (CR3), Persistence\_6 (AY), PhinkBoden\_34 (CQ1), Phomeo\_27 (CR2), Phrank15\_7 (AY), Pleakley\_37 (CR5), Polyuyuki\_32 (CR), RadFad\_7 (AY), Raphaella\_7 (AY), Renaud18\_6 (F4), Richie\_7 (AY), Sakai\_7 (AY), Sashimi\_8 (AY), Seahorse\_8 (AY), Skysand\_30 (CR3), Smoothie\_35 (CQ1), SpeedDemon\_170 (DL), StarStruck\_29 (CR2), Sukkupi\_30 (CR4), SuperSulley\_29 (CR2), TChen\_6 (F4), TPA4\_7 (singleton), ThetaBob\_6 (F4), Tiff81\_8 (AY), Toniann\_34 (CQ1), Tracker\_28 (CR2), Turuncu\_32 (CR1), Wheezy\_28 (CR2), WhoseManz\_30 (CR4), WilliamBoone\_34 (CQ1), Yndexa\_30 (CR4), YoungHarleezy\_7 (AY), Yvonnetastic\_32 (DD), Zucker\_7 (FN),

Start 7:

- Found in 17 of 159 ( 10.7% ) of genes in pham
- Manual Annotations of this start: 17 of 130
- Called 100.0% of time when present
- Phage (with cluster) where this start called: Angelique\_6 (CY1), BeeGee\_6 (CY), Bradissa\_6 (CY1), BritBrat\_6 (CY2), Cashline\_6 (CY), Confidence\_6 (CY1), EMSquaredA\_6 (CY1), EnalisNailo\_6 (CY1), Floral\_6 (CY1), Jablanski\_6 (CY), Lilas\_6 (CY1), LonelyBoi\_6 (CY), Marteena\_6 (CY1), Pollux\_6 (CY1), Posh\_6 (CY), Pytheas\_6 (CY), Wrigley\_6 (CY),

Start 8:

- Found in 3 of 159 ( 1.9% ) of genes in pham
- Manual Annotations of this start: 1 of 130
- Called 100.0% of time when present
- Phage (with cluster) where this start called: SPB78\_6 (BA), Samy\_9 (singleton), VWB\_6 (BA),

### Summary by clusters:

There are 25 clusters represented in this pham: DN, singleton, BA, DD, DL, FN, DN4, DN3, CQ2, CQ1, CY2, CY1, CY, AT, AY, CR, CQ, CR2, CR3, CR1, F4, F5, CR4, CR5, S,

Info for manual annotations of cluster AT:

- Start number 5 was manually annotated 4 times for cluster AT.

Info for manual annotations of cluster AY:

- Start number 5 was manually annotated 13 times for cluster AY.

Info for manual annotations of cluster CQ:

- Start number 5 was manually annotated 1 time for cluster CQ.

Info for manual annotations of cluster CQ1:

- Start number 5 was manually annotated 11 times for cluster CQ1.

Info for manual annotations of cluster CQ2:

- Start number 5 was manually annotated 2 times for cluster CQ2.

Info for manual annotations of cluster CR:

- Start number 5 was manually annotated 7 times for cluster CR.

Info for manual annotations of cluster CR1:

- Start number 5 was manually annotated 3 times for cluster CR1.

Info for manual annotations of cluster CR2:

- Start number 5 was manually annotated 20 times for cluster CR2.

Info for manual annotations of cluster CR3:

- Start number 5 was manually annotated 5 times for cluster CR3.

Info for manual annotations of cluster CR4:

- Start number 5 was manually annotated 7 times for cluster CR4.

Info for manual annotations of cluster CR5:

- Start number 5 was manually annotated 2 times for cluster CR5.

Info for manual annotations of cluster CY:

- Start number 7 was manually annotated 7 times for cluster CY.

Info for manual annotations of cluster CY1:

- Start number 7 was manually annotated 9 times for cluster CY1.

Info for manual annotations of cluster CY2:

- Start number 7 was manually annotated 1 time for cluster CY2.

Info for manual annotations of cluster DD:

- Start number 5 was manually annotated 2 times for cluster DD.

Info for manual annotations of cluster DL:

- Start number 5 was manually annotated 5 times for cluster DL.

Info for manual annotations of cluster DN:

- Start number 5 was manually annotated 2 times for cluster DN.

Info for manual annotations of cluster DN3:

- Start number 5 was manually annotated 2 times for cluster DN3.

Info for manual annotations of cluster DN4:

- Start number 5 was manually annotated 1 time for cluster DN4.

Info for manual annotations of cluster F4:

- Start number 5 was manually annotated 4 times for cluster F4.

Info for manual annotations of cluster F5:

- Start number 4 was manually annotated 1 time for cluster F5.

Info for manual annotations of cluster FN:

- Start number 5 was manually annotated 2 times for cluster FN.

Info for manual annotations of cluster S:

•Start number 3 was manually annotated 16 times for cluster S.

**Gene Information:**

Gene: Abscondus\_33 Start: 13642, Stop: 14040, Start Num: 5

Candidate Starts for Abscondus\_33:

(Start: 5 @13642 has 95 MA's), (40, 13912), (47, 13936),

Gene: Aikyam\_7 Start: 5476, Stop: 5871, Start Num: 5

Candidate Starts for Aikyam\_7:

(Start: 5 @5476 has 95 MA's), (50, 5779), (52, 5794),

Gene: Anekin\_7 Start: 5629, Stop: 6024, Start Num: 5

Candidate Starts for Anekin\_7:

(Start: 5 @5629 has 95 MA's), (50, 5932), (52, 5947),

Gene: Angelique\_6 Start: 5300, Stop: 5683, Start Num: 7

Candidate Starts for Angelique\_6:

(Start: 7 @5300 has 17 MA's), (21, 5387), (27, 5468), (30, 5483), (52, 5603),

Gene: Aphelion\_34 Start: 13889, Stop: 14287, Start Num: 5

Candidate Starts for Aphelion\_34:

(Start: 5 @13889 has 95 MA's), (35, 14138), (40, 14159), (47, 14183),

Gene: Apiary\_32 Start: 19572, Stop: 19976, Start Num: 5

Candidate Starts for Apiary\_32:

(Start: 5 @19572 has 95 MA's), (24, 19722), (36, 19821), (54, 19908), (56, 19923), (64, 19950),

Gene: Apricot\_6 Start: 4848, Stop: 5222, Start Num: 5

Candidate Starts for Apricot\_6:

(Start: 5 @4848 has 95 MA's), (20, 4926), (27, 5013), (30, 5028), (32, 5064), (39, 5097),

Gene: Arti\_28 Start: 17591, Stop: 18016, Start Num: 5

Candidate Starts for Arti\_28:

(Start: 5 @17591 has 95 MA's), (10, 17600), (18, 17666), (45, 17900), (52, 17936), (64, 17984),

Gene: Auxilium\_7 Start: 5490, Stop: 5885, Start Num: 5

Candidate Starts for Auxilium\_7:

(Start: 5 @5490 has 95 MA's), (50, 5793), (52, 5808),

Gene: Bachita\_36 Start: 14322, Stop: 14720, Start Num: 5

Candidate Starts for Bachita\_36:

(Start: 5 @14322 has 95 MA's), (40, 14592), (47, 14616),

Gene: Bantam\_16 Start: 11161, Stop: 11574, Start Num: 5

Candidate Starts for Bantam\_16:

(Start: 5 @11161 has 95 MA's), (21, 11257), (64, 11542),

Gene: Bauer\_8 Start: 5911, Stop: 6297, Start Num: 5



Candidate Starts for Bauer\_8:

(Start: 5 @5911 has 95 MA's), (26, 6067), (28, 6085),

Gene: BearBQ\_6 Start: 4848, Stop: 5222, Start Num: 5

Candidate Starts for BearBQ\_6:

(Start: 5 @4848 has 95 MA's), (20, 4926), (27, 5013), (30, 5028), (32, 5064), (39, 5097),

Gene: BeatusComedenti\_23 Start: 12436, Stop: 12837, Start Num: 5

Candidate Starts for BeatusComedenti\_23:

(Start: 5 @12436 has 95 MA's), (18, 12523), (40, 12712),

Gene: BeeGee\_6 Start: 5303, Stop: 5686, Start Num: 7

Candidate Starts for BeeGee\_6:

(Start: 7 @5303 has 17 MA's), (21, 5390), (26, 5462), (27, 5471), (30, 5486), (52, 5606), (54, 5612),

Gene: Beelzebub\_43 Start: 16130, Stop: 16534, Start Num: 3

Candidate Starts for Beelzebub\_43:

(Start: 3 @16130 has 16 MA's), (18, 16208), (23, 16262), (26, 16292), (30, 16322), (38, 16385), (41, 16397), (67, 16520),

Gene: BenchScraper\_7 Start: 5490, Stop: 5885, Start Num: 5

Candidate Starts for BenchScraper\_7:

(Start: 5 @5490 has 95 MA's), (50, 5793), (52, 5808),

Gene: BiPauneto\_31 Start: 17447, Stop: 17893, Start Num: 5

Candidate Starts for BiPauneto\_31:

(Start: 5 @17447 has 95 MA's), (10, 17456), (38, 17720), (42, 17738), (43, 17747), (56, 17813), (68, 17867),

Gene: BillyTP\_7 Start: 5484, Stop: 5879, Start Num: 5

Candidate Starts for BillyTP\_7:

(Start: 5 @5484 has 95 MA's), (50, 5787), (52, 5802),

Gene: Birdsong\_6 Start: 4848, Stop: 5222, Start Num: 5

Candidate Starts for Birdsong\_6:

(Start: 5 @4848 has 95 MA's), (20, 4926), (27, 5013), (30, 5028), (32, 5064), (39, 5097),

Gene: BlackSpider\_6 Start: 4970, Stop: 5356, Start Num: 5

Candidate Starts for BlackSpider\_6:

(Start: 5 @4970 has 95 MA's), (28, 5144),

Gene: Blackbeetle\_39 Start: 15149, Stop: 15553, Start Num: 3

Candidate Starts for Blackbeetle\_39:

(Start: 3 @15149 has 16 MA's), (18, 15227), (23, 15281), (26, 15311), (30, 15341), (38, 15404), (41, 15416), (67, 15539),

Gene: Bonum\_31 Start: 17932, Stop: 18351, Start Num: 5

Candidate Starts for Bonum\_31:

(Start: 5 @17932 has 95 MA's), (10, 17941), (15, 17989), (36, 18196), (43, 18232), (52, 18277), (64, 18325),

Gene: Bradissa\_6 Start: 5307, Stop: 5690, Start Num: 7

Candidate Starts for Bradissa\_6:

(Start: 7 @5307 has 17 MA's), (21, 5394), (27, 5475), (30, 5490), (39, 5559), (52, 5610),

Gene: Braxoaddie\_32 Start: 19561, Stop: 19965, Start Num: 5

Candidate Starts for Braxoaddie\_32:

(Start: 5 @19561 has 95 MA's), (24, 19711), (36, 19810), (54, 19897), (56, 19912), (64, 19939),

Gene: BritBrat\_6 Start: 5309, Stop: 5692, Start Num: 7

Candidate Starts for BritBrat\_6:

(Start: 7 @5309 has 17 MA's), (21, 5396), (27, 5477), (30, 5492), (52, 5612),

Gene: BrutonGaster\_22 Start: 10580, Stop: 10981, Start Num: 5

Candidate Starts for BrutonGaster\_22:

(Start: 5 @10580 has 95 MA's), (24, 10730), (56, 10925),

Gene: Buggaboo\_29 Start: 18417, Stop: 18836, Start Num: 5

Candidate Starts for Buggaboo\_29:

(Start: 5 @18417 has 95 MA's), (10, 18426), (15, 18474), (36, 18681), (43, 18717), (52, 18762), (64, 18810),

Gene: Caprice\_36 Start: 15219, Stop: 15623, Start Num: 3

Candidate Starts for Caprice\_36:

(Start: 3 @15219 has 16 MA's), (18, 15297), (23, 15351), (26, 15381), (30, 15411), (38, 15474), (41, 15486), (67, 15609),

Gene: Cardigan\_34 Start: 15847, Stop: 16248, Start Num: 5

Candidate Starts for Cardigan\_34:

(Start: 5 @15847 has 95 MA's), (11, 15868), (21, 15943),

Gene: Cashline\_6 Start: 5156, Stop: 5539, Start Num: 7

Candidate Starts for Cashline\_6:

(Start: 7 @5156 has 17 MA's), (21, 5243), (27, 5324), (30, 5339), (52, 5459),

Gene: ChewyVIII\_42 Start: 25136, Stop: 25552, Start Num: 5

Candidate Starts for ChewyVIII\_42:

(Start: 5 @25136 has 95 MA's), (12, 25172),

Gene: Clarkson\_40 Start: 15831, Stop: 16235, Start Num: 3

Candidate Starts for Clarkson\_40:

(Start: 3 @15831 has 16 MA's), (18, 15909), (23, 15963), (26, 15993), (30, 16023), (38, 16086), (41, 16098), (67, 16221),

Gene: ClubL\_34 Start: 13823, Stop: 14221, Start Num: 5

Candidate Starts for ClubL\_34:

(Start: 5 @13823 has 95 MA's), (40, 14093), (47, 14117),

Gene: CoffeeBean\_32 Start: 19516, Stop: 19920, Start Num: 5

Candidate Starts for CoffeeBean\_32:

(Start: 5 @19516 has 95 MA's), (24, 19666), (36, 19765), (54, 19852), (56, 19867), (64, 19894),

Gene: Commandaria\_30 Start: 18882, Stop: 19346, Start Num: 5

Candidate Starts for Commandaria\_30:

(Start: 5 @18882 has 95 MA's), (10, 18891), (45, 19191), (52, 19227), (59, 19257), (63, 19272), (69, 19320),

Gene: Confidence\_6 Start: 5303, Stop: 5686, Start Num: 7  
Candidate Starts for Confidence\_6:  
(Start: 7 @5303 has 17 MA's), (21, 5390), (26, 5462), (27, 5471), (30, 5486), (52, 5606), (54, 5612),

Gene: CookieBear\_7 Start: 5490, Stop: 5885, Start Num: 5  
Candidate Starts for CookieBear\_7:  
(Start: 5 @5490 has 95 MA's), (50, 5793), (52, 5808),

Gene: Corazon\_37 Start: 15784, Stop: 16188, Start Num: 3  
Candidate Starts for Corazon\_37:  
(Start: 3 @15784 has 16 MA's), (18, 15862), (23, 15916), (26, 15946), (30, 15976), (38, 16039), (41, 16051), (67, 16174),

Gene: Cornie\_5 Start: 4459, Stop: 4863, Start Num: 4  
Candidate Starts for Cornie\_5:  
(Start: 4 @4459 has 1 MA's), (17, 4534), (19, 4540), (21, 4552), (27, 4633), (32, 4690), (38, 4717), (40, 4726), (52, 4789), (65, 4846),

Gene: Crater\_6 Start: 4848, Stop: 5222, Start Num: 5  
Candidate Starts for Crater\_6:  
(Start: 5 @4848 has 95 MA's), (20, 4926), (27, 5013), (30, 5028), (32, 5064), (39, 5097),

Gene: Cucurbita\_36 Start: 15181, Stop: 15579, Start Num: 5  
Candidate Starts for Cucurbita\_36:  
(Start: 5 @15181 has 95 MA's), (40, 15451), (47, 15475),

Gene: Culver\_34 Start: 13642, Stop: 14040, Start Num: 5  
Candidate Starts for Culver\_34:  
(Start: 5 @13642 has 95 MA's), (40, 13912), (47, 13936),

Gene: Dalilpop\_33 Start: 19952, Stop: 20371, Start Num: 5  
Candidate Starts for Dalilpop\_33:  
(Start: 5 @19952 has 95 MA's), (28, 20138), (60, 20330),

Gene: DanielleIgnace\_16 Start: 11672, Stop: 12079, Start Num: 5  
Candidate Starts for DanielleIgnace\_16:  
(Start: 5 @11672 has 95 MA's), (14, 11735), (18, 11756), (24, 11834), (37, 11942), (40, 11954),

Gene: Daredevil\_16 Start: 10047, Stop: 10457, Start Num: 5  
Candidate Starts for Daredevil\_16:  
(Start: 5 @10047 has 95 MA's), (27, 10224), (46, 10338), (62, 10419),

Gene: DatBoi\_17 Start: 11997, Stop: 12410, Start Num: 5  
Candidate Starts for DatBoi\_17:  
(Start: 5 @11997 has 95 MA's), (21, 12093),

Gene: Dusty\_32 Start: 13642, Stop: 14040, Start Num: 5  
Candidate Starts for Dusty\_32:  
(Start: 5 @13642 has 95 MA's), (40, 13912), (47, 13936),

Gene: EMSquaredA\_6 Start: 5309, Stop: 5692, Start Num: 7  
Candidate Starts for EMSquaredA\_6:

(Start: 7 @5309 has 17 MA's), (21, 5396), (27, 5477), (30, 5492), (52, 5612),

Gene: Emianna\_28 Start: 18630, Stop: 19055, Start Num: 5

Candidate Starts for Emianna\_28:

(Start: 5 @18630 has 95 MA's), (10, 18639), (18, 18705), (45, 18939), (52, 18975), (64, 19023),

Gene: EnalisNailo\_6 Start: 5309, Stop: 5692, Start Num: 7

Candidate Starts for EnalisNailo\_6:

(Start: 7 @5309 has 17 MA's), (21, 5396), (27, 5477), (30, 5492), (52, 5612),

Gene: Engineer\_35 Start: 13837, Stop: 14235, Start Num: 5

Candidate Starts for Engineer\_35:

(Start: 5 @13837 has 95 MA's), (40, 14107), (47, 14131),

Gene: Ennea\_34 Start: 19252, Stop: 19671, Start Num: 5

Candidate Starts for Ennea\_34:

(Start: 5 @19252 has 95 MA's), (15, 19309), (56, 19618),

Gene: EvePickles\_7 Start: 5532, Stop: 5927, Start Num: 5

Candidate Starts for EvePickles\_7:

(Start: 5 @5532 has 95 MA's), (32, 5757), (50, 5835), (52, 5850),

Gene: Faja\_7 Start: 5476, Stop: 5871, Start Num: 5

Candidate Starts for Faja\_7:

(Start: 5 @5476 has 95 MA's), (50, 5779), (52, 5794),

Gene: FeliMaine\_39 Start: 15832, Stop: 16236, Start Num: 3

Candidate Starts for FeliMaine\_39:

(Start: 3 @15832 has 16 MA's), (18, 15910), (23, 15964), (26, 15994), (30, 16024), (38, 16087), (41, 16099), (67, 16222),

Gene: Flapper\_32 Start: 19033, Stop: 19452, Start Num: 5

Candidate Starts for Flapper\_32:

(Start: 5 @19033 has 95 MA's), (60, 19411),

Gene: Float294\_30 Start: 18694, Stop: 19113, Start Num: 5

Candidate Starts for Float294\_30:

(Start: 5 @18694 has 95 MA's), (15, 18751), (56, 19060),

Gene: Floral\_6 Start: 5309, Stop: 5692, Start Num: 7

Candidate Starts for Floral\_6:

(Start: 7 @5309 has 17 MA's), (21, 5396), (27, 5477), (30, 5492), (52, 5612),

Gene: Foxboro\_29 Start: 19136, Stop: 19561, Start Num: 5

Candidate Starts for Foxboro\_29:

(Start: 5 @19136 has 95 MA's), (10, 19145), (18, 19211), (45, 19445), (52, 19481), (64, 19529),

Gene: Fury\_37 Start: 18318, Stop: 18737, Start Num: 5

Candidate Starts for Fury\_37:

(Start: 5 @18318 has 95 MA's), (10, 18327), (29, 18525), (36, 18582), (42, 18609), (48, 18645), (56, 18684),

Gene: GAL1\_8 Start: 6396, Stop: 6800, Start Num: 4

Candidate Starts for GAL1\_8:

(Start: 4 @6396 has 1 MA's), (13, 6435), (16, 6456), (19, 6477), (21, 6489), (34, 6633), (44, 6687), (46, 6696), (66, 6789),

Gene: GRU1\_18 Start: 10918, Stop: 11337, Start Num: 5

Candidate Starts for GRU1\_18:

(Start: 5 @10918 has 95 MA's), (28, 11104), (60, 11296),

Gene: GTE5\_19 Start: 11921, Stop: 12340, Start Num: 5

Candidate Starts for GTE5\_19:

(Start: 5 @11921 has 95 MA's), (60, 12299),

Gene: GTE8\_17 Start: 11895, Stop: 12320, Start Num: 5

Candidate Starts for GTE8\_17:

(Start: 5 @11895 has 95 MA's), (10, 11904), (18, 11970), (52, 12240), (53, 12243), (64, 12288),

Gene: Gattaca\_38 Start: 15011, Stop: 15415, Start Num: 3

Candidate Starts for Gattaca\_38:

(Start: 3 @15011 has 16 MA's), (18, 15089), (23, 15143), (26, 15173), (30, 15203), (38, 15266), (41, 15278), (67, 15401),

Gene: Globfish\_7 Start: 5535, Stop: 5930, Start Num: 5

Candidate Starts for Globfish\_7:

(Start: 5 @5535 has 95 MA's), (31, 5745), (52, 5853),

Gene: Gorpy\_7 Start: 5484, Stop: 5879, Start Num: 5

Candidate Starts for Gorpy\_7:

(Start: 5 @5484 has 95 MA's), (50, 5787), (52, 5802),

Gene: GrootJr\_30 Start: 17986, Stop: 18411, Start Num: 5

Candidate Starts for GrootJr\_30:

(Start: 5 @17986 has 95 MA's), (10, 17995), (18, 18061), (45, 18295), (52, 18331), (64, 18379),

Gene: GuyFagieri\_32 Start: 19354, Stop: 19767, Start Num: 5

Candidate Starts for GuyFagieri\_32:

(Start: 5 @19354 has 95 MA's), (26, 19522), (54, 19690), (56, 19705), (61, 19726),

Gene: Hestia\_7 Start: 5623, Stop: 6018, Start Num: 5

Candidate Starts for Hestia\_7:

(Start: 5 @5623 has 95 MA's), (31, 5833), (32, 5848), (50, 5926), (52, 5941),

Gene: Hillester\_7 Start: 5476, Stop: 5871, Start Num: 5

Candidate Starts for Hillester\_7:

(Start: 5 @5476 has 95 MA's), (32, 5701), (50, 5779), (52, 5794),

Gene: HubbaBubba\_27 Start: 14465, Stop: 14911, Start Num: 5

Candidate Starts for HubbaBubba\_27:

(Start: 5 @14465 has 95 MA's), (10, 14474), (38, 14738), (42, 14756), (43, 14765), (56, 14831), (68, 14885),

Gene: Huphlebuff\_41 Start: 15636, Stop: 16040, Start Num: 3

Candidate Starts for Huphlebuff\_41:

(Start: 3 @15636 has 16 MA's), (18, 15714), (23, 15768), (26, 15798), (30, 15828), (38, 15891), (41, 15903), (67, 16026),

Gene: IDyn\_29 Start: 15861, Stop: 16307, Start Num: 5

Candidate Starts for IDyn\_29:

(Start: 5 @15861 has 95 MA's), (10, 15870), (38, 16134), (42, 16152), (43, 16161), (56, 16227), (68, 16281),

Gene: Isolde\_8 Start: 5547, Stop: 5942, Start Num: 5

Candidate Starts for Isolde\_8:

(Start: 5 @5547 has 95 MA's), (32, 5772), (33, 5775), (51, 5862), (52, 5865),

Gene: Jablanski\_6 Start: 5156, Stop: 5539, Start Num: 7

Candidate Starts for Jablanski\_6:

(Start: 7 @5156 has 17 MA's), (21, 5243), (27, 5324), (30, 5339), (39, 5408), (52, 5459),

Gene: Jifall16\_27 Start: 18266, Stop: 18691, Start Num: 5

Candidate Starts for Jifall16\_27:

(Start: 5 @18266 has 95 MA's), (10, 18275), (18, 18341), (45, 18575), (52, 18611), (64, 18659),

Gene: JoieB\_40 Start: 15855, Stop: 16259, Start Num: 3

Candidate Starts for JoieB\_40:

(Start: 3 @15855 has 16 MA's), (18, 15933), (23, 15987), (26, 16017), (30, 16047), (38, 16110), (41, 16122), (67, 16245),

Gene: JonJames\_34 Start: 18062, Stop: 18463, Start Num: 5

Candidate Starts for JonJames\_34:

(Start: 5 @18062 has 95 MA's), (11, 18083), (21, 18158),

Gene: Kabluna\_31 Start: 17332, Stop: 17751, Start Num: 5

Candidate Starts for Kabluna\_31:

(Start: 5 @17332 has 95 MA's), (10, 17341), (15, 17389), (36, 17596), (43, 17632), (52, 17677), (64, 17725),

Gene: KellEzio\_23 Start: 12438, Stop: 12839, Start Num: 5

Candidate Starts for KellEzio\_23:

(Start: 5 @12438 has 95 MA's), (18, 12525), (40, 12714),

Gene: KidneyBean\_28 Start: 18378, Stop: 18803, Start Num: 5

Candidate Starts for KidneyBean\_28:

(Start: 5 @18378 has 95 MA's), (10, 18387), (18, 18453), (45, 18687), (52, 18723), (64, 18771),

Gene: Kitkat\_24 Start: 12556, Stop: 12957, Start Num: 5

Candidate Starts for Kitkat\_24:

(Start: 5 @12556 has 95 MA's), (18, 12643), (40, 12832),

Gene: Kurt\_28 Start: 18645, Stop: 19070, Start Num: 5

Candidate Starts for Kurt\_28:

(Start: 5 @18645 has 95 MA's), (10, 18654), (18, 18720), (45, 18954), (52, 18990), (64, 19038),

Gene: Kuwabara\_6 Start: 4848, Stop: 5222, Start Num: 5

Candidate Starts for Kuwabara\_6:

(Start: 5 @4848 has 95 MA's), (20, 4926), (27, 5013), (30, 5028), (32, 5064), (39, 5097),

Gene: LilSpotty\_6 Start: 4547, Stop: 4921, Start Num: 5  
Candidate Starts for LilSpotty\_6:  
(Start: 5 @4547 has 95 MA's), (9, 4556), (22, 4643), (27, 4712), (30, 4727), (43, 4817), (49, 4832), (55, 4862),

Gene: Lilas\_6 Start: 5309, Stop: 5692, Start Num: 7  
Candidate Starts for Lilas\_6:  
(Start: 7 @5309 has 17 MA's), (21, 5396), (27, 5477), (30, 5492), (52, 5612),

Gene: Lilbit\_40 Start: 15832, Stop: 16236, Start Num: 3  
Candidate Starts for Lilbit\_40:  
(Start: 3 @15832 has 16 MA's), (18, 15910), (23, 15964), (26, 15994), (30, 16024), (38, 16087), (41, 16099), (67, 16222),

Gene: LittleLaf\_39 Start: 15561, Stop: 15965, Start Num: 3  
Candidate Starts for LittleLaf\_39:  
(Start: 3 @15561 has 16 MA's), (18, 15639), (23, 15693), (26, 15723), (30, 15753), (38, 15816), (41, 15828), (67, 15951),

Gene: Lollipop1437\_33 Start: 19240, Stop: 19659, Start Num: 5  
Candidate Starts for Lollipop1437\_33:  
(Start: 5 @19240 has 95 MA's), (15, 19297), (56, 19606),

Gene: LonelyBoi\_6 Start: 5156, Stop: 5539, Start Num: 7  
Candidate Starts for LonelyBoi\_6:  
(Start: 7 @5156 has 17 MA's), (21, 5243), (26, 5315), (27, 5324), (30, 5339), (52, 5459),

Gene: Lozinak\_34 Start: 13892, Stop: 14290, Start Num: 5  
Candidate Starts for Lozinak\_34:  
(Start: 5 @13892 has 95 MA's), (40, 14162), (47, 14186),

Gene: LunaStella\_6 Start: 5099, Stop: 5473, Start Num: 5  
Candidate Starts for LunaStella\_6:  
(Start: 5 @5099 has 95 MA's), (30, 5279), (32, 5315), (43, 5369), (66, 5459), (67, 5462),

Gene: MacGully\_36 Start: 19536, Stop: 19943, Start Num: 5  
Candidate Starts for MacGully\_36:  
(Start: 5 @19536 has 95 MA's), (64, 19914),

Gene: Marietta\_30 Start: 15781, Stop: 16227, Start Num: 5  
Candidate Starts for Marietta\_30:  
(Start: 5 @15781 has 95 MA's), (10, 15790), (38, 16054), (42, 16072), (43, 16081), (56, 16147), (68, 16201),

Gene: Marteena\_6 Start: 5309, Stop: 5692, Start Num: 7  
Candidate Starts for Marteena\_6:  
(Start: 7 @5309 has 17 MA's), (21, 5396), (27, 5477), (30, 5492), (52, 5612),

Gene: Marvin\_37 Start: 15831, Stop: 16235, Start Num: 3  
Candidate Starts for Marvin\_37:  
(Start: 3 @15831 has 16 MA's), (18, 15909), (23, 15963), (26, 15993), (30, 16023), (38, 16086), (41, 16098), (67, 16221),

Gene: Maselop\_32 Start: 19592, Stop: 19996, Start Num: 5  
Candidate Starts for Maselop\_32:  
(Start: 5 @19592 has 95 MA's), (24, 19742), (36, 19841), (54, 19928), (56, 19943), (64, 19970),

Gene: MerCougar\_29 Start: 18538, Stop: 18957, Start Num: 5  
Candidate Starts for MerCougar\_29:  
(Start: 5 @18538 has 95 MA's), (10, 18547), (15, 18595), (25, 18700), (36, 18802), (43, 18838), (52, 18883), (57, 18907), (64, 18931),

Gene: MidnightRain\_7 Start: 5476, Stop: 5871, Start Num: 5  
Candidate Starts for MidnightRain\_7:  
(Start: 5 @5476 has 95 MA's), (32, 5701), (50, 5779), (52, 5794),

Gene: Miskis\_36 Start: 13667, Stop: 14065, Start Num: 5  
Candidate Starts for Miskis\_36:  
(Start: 5 @13667 has 95 MA's), (40, 13937), (47, 13961),

Gene: Mollymur\_17 Start: 12082, Stop: 12492, Start Num: 5  
Candidate Starts for Mollymur\_17:  
(Start: 5 @12082 has 95 MA's), (25, 12244), (46, 12373), (62, 12454),

Gene: MortyNRick\_6 Start: 4848, Stop: 5222, Start Num: 5  
Candidate Starts for MortyNRick\_6:  
(Start: 5 @4848 has 95 MA's), (20, 4926), (27, 5013), (30, 5028), (32, 5064), (39, 5097),

Gene: MosMoris\_37 Start: 15011, Stop: 15415, Start Num: 3  
Candidate Starts for MosMoris\_37:  
(Start: 3 @15011 has 16 MA's), (18, 15089), (23, 15143), (26, 15173), (30, 15203), (38, 15266), (41, 15278), (67, 15401),

Gene: NadineRae\_28 Start: 15027, Stop: 15473, Start Num: 5  
Candidate Starts for NadineRae\_28:  
(Start: 5 @15027 has 95 MA's), (10, 15036), (38, 15300), (42, 15318), (43, 15327), (56, 15393),

Gene: NatB6\_28 Start: 17654, Stop: 18079, Start Num: 5  
Candidate Starts for NatB6\_28:  
(Start: 5 @17654 has 95 MA's), (10, 17663), (18, 17729), (45, 17963), (52, 17999), (64, 18047),

Gene: Norvs\_35 Start: 13894, Stop: 14292, Start Num: 5  
Candidate Starts for Norvs\_35:  
(Start: 5 @13894 has 95 MA's), (40, 14164), (47, 14188),

Gene: NosilaM\_31 Start: 18229, Stop: 18648, Start Num: 5  
Candidate Starts for NosilaM\_31:  
(Start: 5 @18229 has 95 MA's), (10, 18238), (15, 18286), (36, 18493), (43, 18529), (52, 18574), (64, 18622),

Gene: NovumRegina\_28 Start: 17985, Stop: 18410, Start Num: 5  
Candidate Starts for NovumRegina\_28:  
(Start: 5 @17985 has 95 MA's), (10, 17994), (18, 18060), (45, 18294), (52, 18330), (64, 18378),

Gene: OneUp\_28 Start: 11666, Stop: 12067, Start Num: 5



Candidate Starts for OneUp\_28:  
(Start: 5 @11666 has 95 MA's), (24, 11816), (56, 12011),

Gene: Outis\_29 Start: 18232, Stop: 18651, Start Num: 5  
Candidate Starts for Outis\_29:  
(Start: 5 @18232 has 95 MA's), (10, 18241), (15, 18289), (25, 18394), (36, 18496), (43, 18532), (52, 18577), (57, 18601), (64, 18625),

Gene: Patio\_31 Start: 18476, Stop: 18895, Start Num: 5  
Candidate Starts for Patio\_31:  
(Start: 5 @18476 has 95 MA's), (15, 18533), (56, 18842),

Gene: Persistence\_6 Start: 5584, Stop: 5979, Start Num: 5  
Candidate Starts for Persistence\_6:  
(Start: 5 @5584 has 95 MA's), (50, 5887), (52, 5902),

Gene: PhinkBoden\_34 Start: 14275, Stop: 14673, Start Num: 5  
Candidate Starts for PhinkBoden\_34:  
(Start: 5 @14275 has 95 MA's), (40, 14545), (47, 14569),

Gene: Phomeo\_27 Start: 18280, Stop: 18705, Start Num: 5  
Candidate Starts for Phomeo\_27:  
(Start: 5 @18280 has 95 MA's), (10, 18289), (18, 18355), (45, 18589), (52, 18625), (64, 18673),

Gene: Phrank15\_7 Start: 5630, Stop: 6025, Start Num: 5  
Candidate Starts for Phrank15\_7:  
(Start: 5 @5630 has 95 MA's), (32, 5855), (50, 5933), (52, 5948),

Gene: Pleakley\_37 Start: 18319, Stop: 18738, Start Num: 5  
Candidate Starts for Pleakley\_37:  
(Start: 5 @18319 has 95 MA's), (10, 18328), (29, 18526), (36, 18583), (42, 18610), (48, 18646), (56, 18685),

Gene: Poise\_39 Start: 15149, Stop: 15553, Start Num: 3  
Candidate Starts for Poise\_39:  
(Start: 3 @15149 has 16 MA's), (18, 15227), (23, 15281), (26, 15311), (30, 15341), (38, 15404), (41, 15416), (67, 15539),

Gene: Pollux\_6 Start: 5309, Stop: 5692, Start Num: 7  
Candidate Starts for Pollux\_6:  
(Start: 7 @5309 has 17 MA's), (21, 5396), (27, 5477), (30, 5492), (52, 5612),

Gene: Polyzuki\_32 Start: 19584, Stop: 19988, Start Num: 5  
Candidate Starts for Polyzuki\_32:  
(Start: 5 @19584 has 95 MA's), (24, 19734), (36, 19833), (54, 19920), (56, 19935), (64, 19962),

Gene: Posh\_6 Start: 5303, Stop: 5686, Start Num: 7  
Candidate Starts for Posh\_6:  
(Start: 7 @5303 has 17 MA's), (21, 5390), (26, 5462), (27, 5471), (30, 5486), (52, 5606), (54, 5612),

Gene: Pringar\_39 Start: 15461, Stop: 15865, Start Num: 3  
Candidate Starts for Pringar\_39:

(Start: 3 @15461 has 16 MA's), (18, 15539), (23, 15593), (26, 15623), (30, 15653), (38, 15716), (41, 15728), (67, 15851),

Gene: Pytheas\_6 Start: 5156, Stop: 5539, Start Num: 7

Candidate Starts for Pytheas\_6:

(Start: 7 @5156 has 17 MA's), (21, 5243), (27, 5324), (30, 5339), (39, 5408), (52, 5459),

Gene: RadFad\_7 Start: 5476, Stop: 5871, Start Num: 5

Candidate Starts for RadFad\_7:

(Start: 5 @5476 has 95 MA's), (32, 5701), (50, 5779), (52, 5794),

Gene: Raela\_39 Start: 15704, Stop: 16108, Start Num: 3

Candidate Starts for Raela\_39:

(Start: 3 @15704 has 16 MA's), (18, 15782), (23, 15836), (26, 15866), (30, 15896), (38, 15959), (41, 15971), (67, 16094),

Gene: Raphaella\_7 Start: 5490, Stop: 5885, Start Num: 5

Candidate Starts for Raphaella\_7:

(Start: 5 @5490 has 95 MA's), (50, 5793), (52, 5808),

Gene: RedRaider77\_39 Start: 15605, Stop: 16009, Start Num: 3

Candidate Starts for RedRaider77\_39:

(Start: 3 @15605 has 16 MA's), (18, 15683), (23, 15737), (26, 15767), (30, 15797), (38, 15860), (41, 15872), (67, 15995),

Gene: Renaud18\_6 Start: 4979, Stop: 5353, Start Num: 5

Candidate Starts for Renaud18\_6:

(Start: 5 @4979 has 95 MA's), (30, 5159), (32, 5195), (43, 5249), (66, 5339), (67, 5342),

Gene: Richie\_7 Start: 5490, Stop: 5885, Start Num: 5

Candidate Starts for Richie\_7:

(Start: 5 @5490 has 95 MA's), (50, 5793), (52, 5808),

Gene: SPB78\_6 Start: 5176, Stop: 5565, Start Num: 8

Candidate Starts for SPB78\_6:

(1, 4432), (2, 5038), (6, 5170), (Start: 8 @5176 has 1 MA's), (52, 5488),

Gene: Sakai\_7 Start: 5484, Stop: 5879, Start Num: 5

Candidate Starts for Sakai\_7:

(Start: 5 @5484 has 95 MA's), (50, 5787), (52, 5802),

Gene: Samy\_9 Start: 6526, Stop: 6921, Start Num: 8

Candidate Starts for Samy\_9:

(Start: 8 @6526 has 1 MA's), (21, 6613), (34, 6757), (43, 6799), (48, 6826),

Gene: Sashimi\_8 Start: 5649, Stop: 6044, Start Num: 5

Candidate Starts for Sashimi\_8:

(Start: 5 @5649 has 95 MA's), (32, 5874), (50, 5952), (52, 5967),

Gene: Seahorse\_8 Start: 5761, Stop: 6156, Start Num: 5

Candidate Starts for Seahorse\_8:

(Start: 5 @5761 has 95 MA's), (32, 5986), (35, 6001), (52, 6079),

Gene: Skysand\_30 Start: 18696, Stop: 19115, Start Num: 5  
Candidate Starts for Skysand\_30:  
(Start: 5 @18696 has 95 MA's), (15, 18753), (56, 19062),

Gene: Smoothie\_35 Start: 13892, Stop: 14290, Start Num: 5  
Candidate Starts for Smoothie\_35:  
(Start: 5 @13892 has 95 MA's), (40, 14162), (47, 14186),

Gene: SpeedDemon\_170 Start: 11467, Stop: 11880, Start Num: 5  
Candidate Starts for SpeedDemon\_170:  
(Start: 5 @11467 has 95 MA's), (21, 11563), (64, 11848),

Gene: StarStruck\_29 Start: 18232, Stop: 18651, Start Num: 5  
Candidate Starts for StarStruck\_29:  
(Start: 5 @18232 has 95 MA's), (10, 18241), (15, 18289), (25, 18394), (36, 18496), (43, 18532), (52, 18577), (57, 18601), (64, 18625),

Gene: Sukkupi\_30 Start: 17338, Stop: 17784, Start Num: 5  
Candidate Starts for Sukkupi\_30:  
(Start: 5 @17338 has 95 MA's), (10, 17347), (38, 17611), (42, 17629), (43, 17638), (56, 17704), (68, 17758),

Gene: SuperSulley\_29 Start: 18417, Stop: 18836, Start Num: 5  
Candidate Starts for SuperSulley\_29:  
(Start: 5 @18417 has 95 MA's), (10, 18426), (15, 18474), (36, 18681), (43, 18717), (52, 18762), (64, 18810),

Gene: TChen\_6 Start: 5099, Stop: 5473, Start Num: 5  
Candidate Starts for TChen\_6:  
(Start: 5 @5099 has 95 MA's), (30, 5279), (32, 5315), (43, 5369), (66, 5459), (67, 5462),

Gene: TPA4\_7 Start: 5997, Stop: 6371, Start Num: 5  
Candidate Starts for TPA4\_7:  
(Start: 5 @5997 has 95 MA's), (32, 6213), (39, 6246),

Gene: Tesla\_38 Start: 15454, Stop: 15858, Start Num: 3  
Candidate Starts for Tesla\_38:  
(Start: 3 @15454 has 16 MA's), (18, 15532), (23, 15586), (26, 15616), (30, 15646), (38, 15709), (41, 15721), (67, 15844),

Gene: ThetaBob\_6 Start: 4979, Stop: 5353, Start Num: 5  
Candidate Starts for ThetaBob\_6:  
(Start: 5 @4979 has 95 MA's), (30, 5159), (32, 5195), (43, 5249), (66, 5339), (67, 5342),

Gene: Tiff81\_8 Start: 5647, Stop: 6042, Start Num: 5  
Candidate Starts for Tiff81\_8:  
(Start: 5 @5647 has 95 MA's), (31, 5857), (32, 5872), (50, 5950), (52, 5965),

Gene: Toniann\_34 Start: 13837, Stop: 14235, Start Num: 5  
Candidate Starts for Toniann\_34:  
(Start: 5 @13837 has 95 MA's), (40, 14107), (47, 14131),

Gene: Tracker\_28 Start: 17408, Stop: 17833, Start Num: 5

Candidate Starts for Tracker\_28:

(Start: 5 @17408 has 95 MA's), (10, 17417), (18, 17483), (45, 17717), (52, 17753), (64, 17801),

Gene: Turuncu\_32 Start: 18728, Stop: 19147, Start Num: 5

Candidate Starts for Turuncu\_32:

(Start: 5 @18728 has 95 MA's), (60, 19106),

Gene: VWB\_6 Start: 5231, Stop: 5620, Start Num: 8

Candidate Starts for VWB\_6:

(Start: 8 @5231 has 1 MA's), (48, 5525), (58, 5570),

Gene: VasuNzinga\_39 Start: 15038, Stop: 15442, Start Num: 3

Candidate Starts for VasuNzinga\_39:

(Start: 3 @15038 has 16 MA's), (18, 15116), (23, 15170), (26, 15200), (30, 15230), (38, 15293), (41, 15305), (67, 15428),

Gene: Wheezy\_28 Start: 17611, Stop: 18036, Start Num: 5

Candidate Starts for Wheezy\_28:

(Start: 5 @17611 has 95 MA's), (10, 17620), (18, 17686), (45, 17920), (52, 17956), (64, 18004),

Gene: WhoseManz\_30 Start: 15392, Stop: 15838, Start Num: 5

Candidate Starts for WhoseManz\_30:

(Start: 5 @15392 has 95 MA's), (10, 15401), (38, 15665), (42, 15683), (43, 15692), (56, 15758), (68, 15812),

Gene: WilliamBoone\_34 Start: 13226, Stop: 13624, Start Num: 5

Candidate Starts for WilliamBoone\_34:

(Start: 5 @13226 has 95 MA's), (40, 13496),

Gene: Wrigley\_6 Start: 5153, Stop: 5536, Start Num: 7

Candidate Starts for Wrigley\_6:

(Start: 7 @5153 has 17 MA's), (21, 5240), (27, 5321), (30, 5336), (52, 5456),

Gene: Yndexa\_30 Start: 17338, Stop: 17784, Start Num: 5

Candidate Starts for Yndexa\_30:

(Start: 5 @17338 has 95 MA's), (10, 17347), (38, 17611), (42, 17629), (43, 17638), (56, 17704), (68, 17758),

Gene: YoungHarleezy\_7 Start: 5488, Stop: 5883, Start Num: 5

Candidate Starts for YoungHarleezy\_7:

(Start: 5 @5488 has 95 MA's), (50, 5791), (52, 5806),

Gene: Yvonnetastic\_32 Start: 15611, Stop: 16012, Start Num: 5

Candidate Starts for Yvonnetastic\_32:

(Start: 5 @15611 has 95 MA's), (11, 15632), (21, 15707),

Gene: Zucker\_7 Start: 5223, Stop: 5609, Start Num: 5

Candidate Starts for Zucker\_7:

(Start: 5 @5223 has 95 MA's), (26, 5379), (28, 5397),