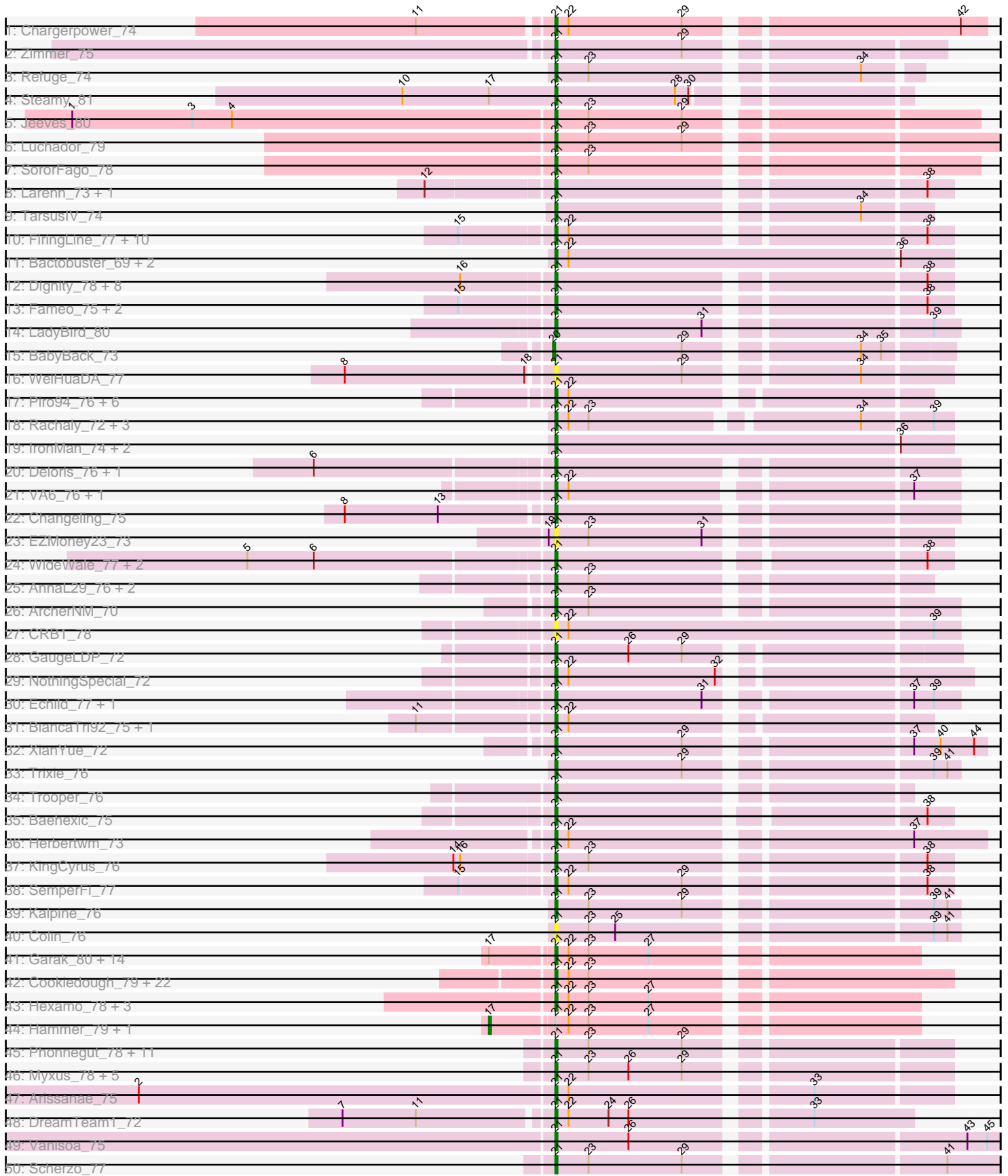
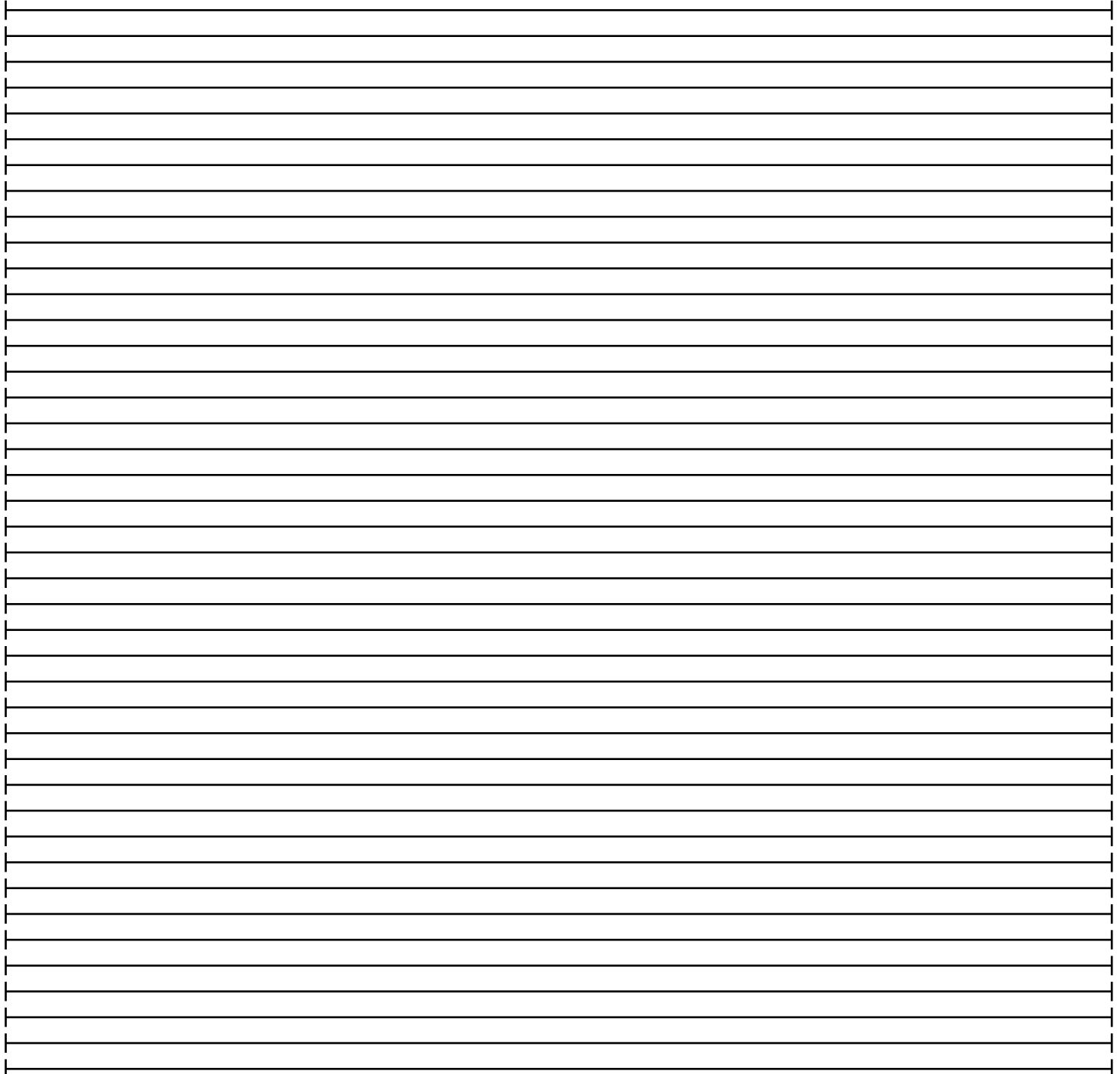
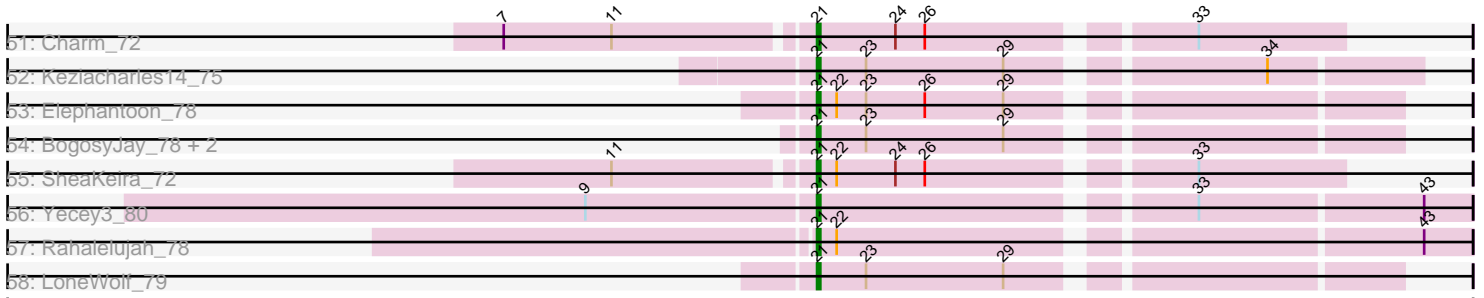


Pham 169776



Pham 169776



Note: Tracks are now grouped by subcluster and scaled. Switching in subcluster is indicated by changes in track color. Track scale is now set by default to display the region 30 bp upstream of start 1 to 30 bp downstream of the last possible start. If this default region is judged to be packed too tightly with annotated starts, the track will be further scaled to only show that region of the ORF with annotated starts. This action will be indicated by adding "Zoomed" to the title. For starts, yellow indicates the location of called starts comprised solely of Glimmer/GeneMark auto-annotations, green indicates the location of called starts with at least 1 manual gene annotation.

## Pham 169776 Report

This analysis was run 07/09/24 on database version 566.

Pham number 169776 has 158 members, 14 are drafts.

Phages represented in each track:

- Track 1 : Chargerpower\_74
- Track 2 : Zimmer\_75
- Track 3 : Refuge\_74
- Track 4 : Steamy\_81
- Track 5 : Jeeves\_80
- Track 6 : Luchador\_79
- Track 7 : SororFago\_78
- Track 8 : Larenn\_73, Malec\_74
- Track 9 : TarsusIV\_74
- Track 10 : FiringLine\_77, Retro23\_77, Power\_76, Dalmatian\_77, DudeLittle\_75, SweetiePie\_76, QueenBeesly\_77, Crucio\_77, SnapTap\_76, Georgie2\_78, Anselm\_78
- Track 11 : Bactobuster\_69, Landor\_75, Phaded\_72
- Track 12 : Dignity\_78, Agape74\_78, Jerm\_78, Leviathan\_78, Smeagan\_79, LilTurb\_77, AbbyPaige\_78, Turbido\_77, Buggy\_78
- Track 13 : Fameo\_75, QueenB2\_74, Heffalump\_74
- Track 14 : LadyBird\_80
- Track 15 : BabyBack\_73
- Track 16 : WeiHuaDA\_77
- Track 17 : Piro94\_76, 20ES\_78, JoshKayV\_77, First\_0077, HarryHoudini\_77, lwokeuplikedis\_78, Drake55\_78
- Track 18 : Rachaly\_72, BobSwaget\_69, Miko\_70, Lokk\_70
- Track 19 : IronMan\_74, Pukovnik\_73, Jaan\_75
- Track 20 : Deloris\_76, BengiVuitton\_76
- Track 21 : VA6\_76, AN3\_78
- Track 22 : Changeling\_75
- Track 23 : EZMoney23\_73
- Track 24 : WideWale\_77, Updawg\_77, Equemioh13\_76
- Track 25 : AnnaL29\_76, Loser\_78, RedRock\_75
- Track 26 : ArcherNM\_70
- Track 27 : CRB1\_78
- Track 28 : GaugeLDP\_72
- Track 29 : NothingSpecial\_72
- Track 30 : Echild\_77, Benvolio\_74
- Track 31 : BiancaTri92\_75, Leogania\_75
- Track 32 : XianYue\_72
- Track 33 : Trixie\_76

- Track 34 : Trooper\_76
- Track 35 : Baehexic\_75
- Track 36 : Herbertwm\_73
- Track 37 : KingCyrus\_76
- Track 38 : SemperFi\_77
- Track 39 : Kalpine\_76
- Track 40 : Colin\_76
- Track 41 : Garak\_80, Zaka\_79, Lilbunny\_76, Rifter\_79, Tucker\_79, ToneTone\_76, Indra\_82, Yokurt\_78, WunderPhul\_79, Zulu\_80, Helmet\_80, Gruunaga\_78, CloudWang3\_79, Blue7\_80, Wiks\_78
- Track 42 : Cookiedough\_79, DaVinci\_77, Hoot\_74, Kazan\_80, Neeharika16\_78, Jordennis\_77, VohminGhazi\_79, Candra\_77, Isiphiwo\_76, SmellyB\_79, Blinn1\_83, SuperCallie99\_76, BABullseye\_72, GreedyLawyer\_74, EricB\_78, Priamo\_81, Newrala\_78, Kipper29\_79, Dorothea\_76, Pmask\_78, McFly\_80, SuperAwesome\_79, Chartreuse\_76
- Track 43 : Hexamo\_78, Artemis2UCLA\_78, Koko\_80, Roksolana\_79
- Track 44 : Hammer\_79, Gladiator\_76
- Track 45 : Phonnegut\_78, Conquerage\_76, Alma\_76, Fayely\_76, Priya\_76, Qobbit\_76, ExplosioNervosa\_76, Beemo\_78, Spouty\_73, Pioneer\_78, Eidsmoe\_76, EmyBug\_75
- Track 46 : Myxus\_78, Tubs\_78, HortumSL17\_79, PackMan\_77, Catalina\_80, Phaeder\_78
- Track 47 : Arissanae\_75
- Track 48 : DreamTeam1\_72
- Track 49 : Vanisoa\_75
- Track 50 : Scherzo\_77
- Track 51 : Charm\_72
- Track 52 : Keziacharles14\_75
- Track 53 : Elephantoon\_78
- Track 54 : BogosyJay\_78, Maminiaina\_78, Gail\_78
- Track 55 : SheaKeira\_72
- Track 56 : Yecey3\_80
- Track 57 : Rahalelujah\_78
- Track 58 : LoneWolf\_79

***Summary of Final Annotations (See graph section above for start numbers):***

The start number called the most often in the published annotations is 21, it was called in 141 of the 144 non-draft genes in the pham.

Genes that call this "Most Annotated" start:

- 20ES\_78, AN3\_78, AbbyPaige\_78, Agape74\_78, Alma\_76, AnnaL29\_76, Anselm\_78, ArcherNM\_70, Arissanae\_75, Artemis2UCLA\_78, BABullseye\_72, Bactobuster\_69, Baehexic\_75, Beemo\_78, BengiVuitton\_76, Benvolio\_74, BiancaTri92\_75, Blinn1\_83, Blue7\_80, BobSwaget\_69, BogosyJay\_78, Bugsy\_78, CRB1\_78, Candra\_77, Catalina\_80, Changeling\_75, Chargerpower\_74, Charm\_72, Chartreuse\_76, CloudWang3\_79, Colin\_76, Conquerage\_76, Cookiedough\_79, Crucio\_77, DaVinci\_77, Dalmatian\_77, Deloris\_76, Dignity\_78, Dorothea\_76, Drake55\_78, DreamTeam1\_72, DudeLittle\_75, EZMoney23\_73, Echild\_77, Eidsmoe\_76, Elephantoon\_78, EmyBug\_75, Equemioh13\_76, EricB\_78,

ExplosioNervosa\_76, Fameo\_75, Fayely\_76, FiringLine\_77, First\_0077, Gail\_78, Garak\_80, GaugeLDP\_72, Georgie2\_78, GreedyLawyer\_74, Gruunaga\_78, HarryHoudini\_77, Heffalump\_74, Helmet\_80, Herbertwm\_73, Hexamo\_78, Hoot\_74, HortumSL17\_79, Indra\_82, IronMan\_74, Isiphiwo\_76, Iwokeuplikedis\_78, Jaan\_75, Jeeves\_80, Jerm\_78, Jordennis\_77, JoshKayV\_77, Kalpine\_76, Kazan\_80, Keziacharles14\_75, KingCyrus\_76, Kipper29\_79, Koko\_80, LadyBird\_80, Landor\_75, Larenn\_73, Leogania\_75, Leviathan\_78, LilTurb\_77, Lilbunny\_76, Lokk\_70, LoneWolf\_79, Loser\_78, Luchador\_79, Malec\_74, Maminiaina\_78, McFly\_80, Miko\_70, Myxus\_78, Neeharika16\_78, Newrala\_78, NothingSpecial\_72, PackMan\_77, Phaded\_72, Phaeder\_78, Phonnegut\_78, Pioneer\_78, Piro94\_76, Pmask\_78, Power\_76, Priamo\_81, Priya\_76, Pukovnik\_73, Qobbit\_76, QueenB2\_74, QueenBeesly\_77, Rachaly\_72, Rahalelujah\_78, RedRock\_75, Refuge\_74, Retro23\_77, Rifter\_79, Roksolana\_79, Scherzo\_77, SemperFi\_77, SheaKeira\_72, Smeagan\_79, SmellyB\_79, SnapTap\_76, SororFago\_78, Spouty\_73, Steamy\_81, SuperAwesome\_79, SuperCallie99\_76, SweetiePie\_76, TarsusIV\_74, ToneTone\_76, Trixie\_76, Trooper\_76, Tubs\_78, Tucker\_79, Turbido\_77, Updawg\_77, VA6\_76, Vanisoa\_75, VohminGhazi\_79, WeiHuaDA\_77, WideWale\_77, Wiks\_78, WunderPhui\_79, XianYue\_72, Yecey3\_80, Yokurt\_78, Zaka\_79, Zimmer\_75, Zulu\_80,

Genes that have the "Most Annotated" start but do not call it:

- Gladiator\_76, Hammer\_79,

Genes that do not have the "Most Annotated" start:

- BabyBack\_73,

### Summary by start number:

Start 17:

- Found in 18 of 158 ( 11.4% ) of genes in pham
- Manual Annotations of this start: 2 of 144
- Called 11.1% of time when present
- Phage (with cluster) where this start called: Gladiator\_76 (A6), Hammer\_79 (A6),

Start 20:

- Found in 1 of 158 ( 0.6% ) of genes in pham
- Manual Annotations of this start: 1 of 144
- Called 100.0% of time when present
- Phage (with cluster) where this start called: BabyBack\_73 (A2),

Start 21:

- Found in 157 of 158 ( 99.4% ) of genes in pham
- Manual Annotations of this start: 141 of 144
- Called 98.7% of time when present
- Phage (with cluster) where this start called: 20ES\_78 (A2), AN3\_78 (A2), AbbyPaige\_78 (A2), Agape74\_78 (A2), Alma\_76 (A9), AnnaL29\_76 (A2), Anselm\_78 (A2), ArcherNM\_70 (A2), Arissanae\_75 (A9), Artemis2UCLA\_78 (A6), BABullseye\_72 (A6), Bactobuster\_69 (A2), Baehexic\_75 (A2), Beemo\_78 (A9), BengiVuitton\_76 (A2), Benvolio\_74 (A2), BiancaTri92\_75 (A2), Blinn1\_83 (A6), Blue7\_80 (A6), BobSwaget\_69 (A2), BogosyJay\_78 (A9), Bugsy\_78 (A2), CRB1\_78 (A2), Candra\_77 (A6), Catalina\_80 (A9), Changeling\_75 (A2), Chargerpower\_74 (A), Charm\_72 (A9), Chartreuse\_76 (A6), CloudWang3\_79 (A6), Colin\_76 (A2), Conquerage\_76 (A9), Cookiedough\_79 (A6), Crucio\_77 (A2), DaVinci\_77 (A6), Dalmatian\_77 (A2),

Deloris\_76 (A2), Dignity\_78 (A2), Dorothea\_76 (A6), Drake55\_78 (A2), DreamTeam1\_72 (A9), DudeLittle\_75 (A2), EZMoney23\_73 (A2), Echild\_77 (A2), Eidsmoe\_76 (A9), Elephantoon\_78 (A9), EmyBug\_75 (A9), Equemioh13\_76 (A2), EricB\_78 (A6), ExplosioNervosa\_76 (A9), Fameo\_75 (A2), Fayely\_76 (A9), FiringLine\_77 (A2), First\_0077 (A2), Gail\_78 (A14), Garak\_80 (A6), GaugeLDP\_72 (A2), Georgie2\_78 (A2), GreedyLawyer\_74 (A6), Gruunaga\_78 (A6), HarryHoudini\_77 (A2), Heffalump\_74 (A2), Helmet\_80 (A6), Herbertwm\_73 (A2), Hexamo\_78 (A6), Hoot\_74 (A6), HortumSL17\_79 (A9), Indra\_82 (A6), IronMan\_74 (A2), Isiphiwo\_76 (A6), Iwokeuplikedis\_78 (A2), Jaan\_75 (A2), Jeeves\_80 (A14), Jerm\_78 (A2), Jordennis\_77 (A6), JoshKayV\_77 (A2), Kalpine\_76 (A2), Kazan\_80 (A6), Keziacharles14\_75 (A9), KingCyrus\_76 (A2), Kipper29\_79 (A6), Koko\_80 (A6), LadyBird\_80 (A2), Landor\_75 (A2), Larenn\_73 (A2), Leogania\_75 (A2), Leviathan\_78 (A2), LiiTurb\_77 (A2), Lilbunny\_76 (A6), Lokk\_70 (A2), LoneWolf\_79 (A9), Loser\_78 (A2), Luchador\_79 (A14), Malec\_74 (A2), Maminaiaina\_78 (A9), McFly\_80 (A6), Miko\_70 (A2), Myxus\_78 (A9), Neeharika16\_78 (A6), Newrala\_78 (A6), NothingSpecial\_72 (A2), PackMan\_77 (A9), Phaded\_72 (A2), Phaeder\_78 (A9), Phonnegut\_78 (A9), Pioneer\_78 (A9), Piro94\_76 (A2), Pmask\_78 (A6), Power\_76 (A2), Priamo\_81 (A6), Priya\_76 (A9), Pukovnik\_73 (A2), Qobbit\_76 (A9), QueenB2\_74 (A2), QueenBeesly\_77 (A2), Rachaly\_72 (A2), Rahalelujah\_78 (A9), RedRock\_75 (A2), Refuge\_74 (A12), Retro23\_77 (A2), Rifter\_79 (A6), Roksolana\_79 (A6), Scherzo\_77 (A9), SemperFi\_77 (A2), SheaKeira\_72 (A9), Smeagan\_79 (A2), SmellyB\_79 (A6), SnapTap\_76 (A2), SororFago\_78 (A14), Spouty\_73 (A9), Steamy\_81 (A12), SuperAwesome\_79 (A6), SuperCallie99\_76 (A6), SweetiePie\_76 (A2), TarsusIV\_74 (A2), ToneTone\_76 (A6), Trixie\_76 (A2), Trooper\_76 (A2), Tubs\_78 (A9), Tucker\_79 (A6), Turbido\_77 (A2), Updawg\_77 (A2), VA6\_76 (A2), Vanisoa\_75 (A9), VohminGhazi\_79 (A6), WeiHuaDA\_77 (A2), WideWale\_77 (A2), Wiks\_78 (A6), WunderPhul\_79 (A6), XianYue\_72 (A2), Yecey3\_80 (A9), Yokurt\_78 (A6), Zaka\_79 (A6), Zimmer\_75 (A12), Zulu\_80 (A6),

### Summary by clusters:

There are 6 clusters represented in this pham: A, A14, A12, A2, A6, A9,

Info for manual annotations of cluster A:

- Start number 21 was manually annotated 1 time for cluster A.

Info for manual annotations of cluster A12:

- Start number 21 was manually annotated 3 times for cluster A12.

Info for manual annotations of cluster A14:

- Start number 21 was manually annotated 4 times for cluster A14.

Info for manual annotations of cluster A2:

- Start number 20 was manually annotated 1 time for cluster A2.
- Start number 21 was manually annotated 67 times for cluster A2.

Info for manual annotations of cluster A6:

- Start number 17 was manually annotated 2 times for cluster A6.
- Start number 21 was manually annotated 36 times for cluster A6.

Info for manual annotations of cluster A9:

- Start number 21 was manually annotated 30 times for cluster A9.

**Gene Information:**

Gene: 20ES\_78 Start: 45905, Stop: 45738, Start Num: 21

Candidate Starts for 20ES\_78:

(Start: 21 @45905 has 141 MA's), (22, 45899),

Gene: AN3\_78 Start: 44672, Stop: 44505, Start Num: 21

Candidate Starts for AN3\_78:

(Start: 21 @44672 has 141 MA's), (22, 44666), (37, 44525),

Gene: AbbyPaige\_78 Start: 46176, Stop: 46012, Start Num: 21

Candidate Starts for AbbyPaige\_78:

(16, 46215), (Start: 21 @46176 has 141 MA's), (38, 46023),

Gene: Agape74\_78 Start: 46171, Stop: 46007, Start Num: 21

Candidate Starts for Agape74\_78:

(16, 46210), (Start: 21 @46171 has 141 MA's), (38, 46018),

Gene: Alma\_76 Start: 45089, Stop: 44925, Start Num: 21

Candidate Starts for Alma\_76:

(Start: 21 @45089 has 141 MA's), (23, 45074), (29, 45032),

Gene: AnnaL29\_76 Start: 46109, Stop: 45954, Start Num: 21

Candidate Starts for AnnaL29\_76:

(Start: 21 @46109 has 141 MA's), (23, 46094),

Gene: Anselm\_78 Start: 46243, Stop: 46079, Start Num: 21

Candidate Starts for Anselm\_78:

(15, 46282), (Start: 21 @46243 has 141 MA's), (22, 46237), (38, 46090),

Gene: ArcherNM\_70 Start: 45375, Stop: 45208, Start Num: 21

Candidate Starts for ArcherNM\_70:

(Start: 21 @45375 has 141 MA's), (23, 45360),

Gene: Arissanae\_75 Start: 45413, Stop: 45249, Start Num: 21

Candidate Starts for Arissanae\_75:

(2, 45599), (Start: 21 @45413 has 141 MA's), (22, 45407), (33, 45308),

Gene: Artemis2UCLA\_78 Start: 44266, Stop: 44114, Start Num: 21

Candidate Starts for Artemis2UCLA\_78:

(Start: 21 @44266 has 141 MA's), (22, 44260), (23, 44251), (27, 44224),

Gene: BABullseye\_72 Start: 42895, Stop: 42728, Start Num: 21

Candidate Starts for BABullseye\_72:

(Start: 21 @42895 has 141 MA's), (22, 42889), (23, 42880),

Gene: BabyBack\_73 Start: 45797, Stop: 45633, Start Num: 20

Candidate Starts for BabyBack\_73:

(Start: 20 @45797 has 1 MA's), (29, 45740), (34, 45671), (35, 45662),

Gene: Bactobuster\_69 Start: 45446, Stop: 45270, Start Num: 21

Candidate Starts for Bactobuster\_69:  
(Start: 21 @45446 has 141 MA's), (22, 45440), (36, 45293),

Gene: Baehexic\_75 Start: 45567, Stop: 45403, Start Num: 21  
Candidate Starts for Baehexic\_75:  
(Start: 21 @45567 has 141 MA's), (38, 45414),

Gene: Beemo\_78 Start: 45129, Stop: 44965, Start Num: 21  
Candidate Starts for Beemo\_78:  
(Start: 21 @45129 has 141 MA's), (23, 45114), (29, 45072),

Gene: BengiVuitton\_76 Start: 45866, Stop: 45699, Start Num: 21  
Candidate Starts for BengiVuitton\_76:  
(6, 45968), (Start: 21 @45866 has 141 MA's),

Gene: Benvolio\_74 Start: 45472, Stop: 45305, Start Num: 21  
Candidate Starts for Benvolio\_74:  
(Start: 21 @45472 has 141 MA's), (31, 45406), (37, 45325), (39, 45316),

Gene: BiancaTri92\_75 Start: 45806, Stop: 45651, Start Num: 21  
Candidate Starts for BiancaTri92\_75:  
(11, 45863), (Start: 21 @45806 has 141 MA's), (22, 45800),

Gene: Blinn1\_83 Start: 45509, Stop: 45342, Start Num: 21  
Candidate Starts for Blinn1\_83:  
(Start: 21 @45509 has 141 MA's), (22, 45503), (23, 45494),

Gene: Blue7\_80 Start: 44486, Stop: 44334, Start Num: 21  
Candidate Starts for Blue7\_80:  
(Start: 17 @44513 has 2 MA's), (Start: 21 @44486 has 141 MA's), (22, 44480), (23, 44471), (27, 44444),

Gene: BobSwaget\_69 Start: 43679, Stop: 43515, Start Num: 21  
Candidate Starts for BobSwaget\_69:  
(Start: 21 @43679 has 141 MA's), (22, 43673), (23, 43664), (34, 43553), (39, 43523),

Gene: BogosyJay\_78 Start: 45362, Stop: 45198, Start Num: 21  
Candidate Starts for BogosyJay\_78:  
(Start: 21 @45362 has 141 MA's), (23, 45347), (29, 45305),

Gene: Buggy\_78 Start: 46221, Stop: 46057, Start Num: 21  
Candidate Starts for Buggy\_78:  
(16, 46260), (Start: 21 @46221 has 141 MA's), (38, 46068),

Gene: CRB1\_78 Start: 46424, Stop: 46245, Start Num: 21  
Candidate Starts for CRB1\_78:  
(Start: 21 @46424 has 141 MA's), (22, 46418), (39, 46256),

Gene: Candra\_77 Start: 44590, Stop: 44423, Start Num: 21  
Candidate Starts for Candra\_77:  
(Start: 21 @44590 has 141 MA's), (22, 44584), (23, 44575),

Gene: Catalina\_80 Start: 45183, Stop: 45019, Start Num: 21



Candidate Starts for Catalina\_80:  
(Start: 21 @45183 has 141 MA's), (23, 45168), (26, 45150), (29, 45126),

Gene: Changeling\_75 Start: 46099, Stop: 45932, Start Num: 21  
Candidate Starts for Changeling\_75:  
(8, 46189), (13, 46147), (Start: 21 @46099 has 141 MA's),

Gene: Chargerpower\_74 Start: 44306, Stop: 44124, Start Num: 21  
Candidate Starts for Chargerpower\_74:  
(11, 44363), (Start: 21 @44306 has 141 MA's), (22, 44300), (29, 44249), (42, 44135),

Gene: Charm\_72 Start: 44293, Stop: 44144, Start Num: 21  
Candidate Starts for Charm\_72:  
(7, 44383), (11, 44350), (Start: 21 @44293 has 141 MA's), (24, 44269), (26, 44260), (33, 44188),

Gene: Chartreuse\_76 Start: 43901, Stop: 43734, Start Num: 21  
Candidate Starts for Chartreuse\_76:  
(Start: 21 @43901 has 141 MA's), (22, 43895), (23, 43886),

Gene: CloudWang3\_79 Start: 44778, Stop: 44626, Start Num: 21  
Candidate Starts for CloudWang3\_79:  
(Start: 17 @44805 has 2 MA's), (Start: 21 @44778 has 141 MA's), (22, 44772), (23, 44763), (27, 44736),

Gene: Colin\_76 Start: 46817, Stop: 46650, Start Num: 21  
Candidate Starts for Colin\_76:  
(Start: 21 @46817 has 141 MA's), (23, 46802), (25, 46790), (39, 46661), (41, 46655),

Gene: Conquerage\_76 Start: 44858, Stop: 44694, Start Num: 21  
Candidate Starts for Conquerage\_76:  
(Start: 21 @44858 has 141 MA's), (23, 44843), (29, 44801),

Gene: Cookiedough\_79 Start: 45205, Stop: 45038, Start Num: 21  
Candidate Starts for Cookiedough\_79:  
(Start: 21 @45205 has 141 MA's), (22, 45199), (23, 45190),

Gene: Crucio\_77 Start: 46142, Stop: 45978, Start Num: 21  
Candidate Starts for Crucio\_77:  
(15, 46181), (Start: 21 @46142 has 141 MA's), (22, 46136), (38, 45989),

Gene: DaVinci\_77 Start: 43955, Stop: 43788, Start Num: 21  
Candidate Starts for DaVinci\_77:  
(Start: 21 @43955 has 141 MA's), (22, 43949), (23, 43940),

Gene: Dalmatian\_77 Start: 45962, Stop: 45798, Start Num: 21  
Candidate Starts for Dalmatian\_77:  
(15, 46001), (Start: 21 @45962 has 141 MA's), (22, 45956), (38, 45809),

Gene: Deloris\_76 Start: 45562, Stop: 45395, Start Num: 21  
Candidate Starts for Deloris\_76:  
(6, 45664), (Start: 21 @45562 has 141 MA's),

Gene: Dignity\_78 Start: 46259, Stop: 46095, Start Num: 21

Candidate Starts for Dignity\_78:  
(16, 46298), (Start: 21 @46259 has 141 MA's), (38, 46106),

Gene: Dorothea\_76 Start: 45201, Stop: 45034, Start Num: 21  
Candidate Starts for Dorothea\_76:  
(Start: 21 @45201 has 141 MA's), (22, 45195), (23, 45186),

Gene: Drake55\_78 Start: 45846, Stop: 45691, Start Num: 21  
Candidate Starts for Drake55\_78:  
(Start: 21 @45846 has 141 MA's), (22, 45840),

Gene: DreamTeam1\_72 Start: 44140, Stop: 43991, Start Num: 21  
Candidate Starts for DreamTeam1\_72:  
(7, 44230), (11, 44197), (Start: 21 @44140 has 141 MA's), (22, 44134), (24, 44116), (26, 44107), (33, 44035),

Gene: DudeLittle\_75 Start: 45728, Stop: 45564, Start Num: 21  
Candidate Starts for DudeLittle\_75:  
(15, 45767), (Start: 21 @45728 has 141 MA's), (22, 45722), (38, 45575),

Gene: EZMoney23\_73 Start: 45628, Stop: 45464, Start Num: 21  
Candidate Starts for EZMoney23\_73:  
(19, 45631), (Start: 21 @45628 has 141 MA's), (23, 45613), (31, 45562),

Gene: Echild\_77 Start: 45496, Stop: 45329, Start Num: 21  
Candidate Starts for Echild\_77:  
(Start: 21 @45496 has 141 MA's), (31, 45430), (37, 45349), (39, 45340),

Gene: Eidsmoe\_76 Start: 44850, Stop: 44686, Start Num: 21  
Candidate Starts for Eidsmoe\_76:  
(Start: 21 @44850 has 141 MA's), (23, 44835), (29, 44793),

Gene: Elephantoon\_78 Start: 45016, Stop: 44852, Start Num: 21  
Candidate Starts for Elephantoon\_78:  
(Start: 21 @45016 has 141 MA's), (22, 45010), (23, 45001), (26, 44983), (29, 44959),

Gene: EmyBug\_75 Start: 44852, Stop: 44688, Start Num: 21  
Candidate Starts for EmyBug\_75:  
(Start: 21 @44852 has 141 MA's), (23, 44837), (29, 44795),

Gene: Equemioh13\_76 Start: 45675, Stop: 45511, Start Num: 21  
Candidate Starts for Equemioh13\_76:  
(5, 45807), (6, 45777), (Start: 21 @45675 has 141 MA's), (38, 45522),

Gene: EricB\_78 Start: 44547, Stop: 44380, Start Num: 21  
Candidate Starts for EricB\_78:  
(Start: 21 @44547 has 141 MA's), (22, 44541), (23, 44532),

Gene: ExplosioNervosa\_76 Start: 44918, Stop: 44754, Start Num: 21  
Candidate Starts for ExplosioNervosa\_76:  
(Start: 21 @44918 has 141 MA's), (23, 44903), (29, 44861),

Gene: Fameo\_75 Start: 45770, Stop: 45606, Start Num: 21

Candidate Starts for Fameo\_75:  
(15, 45809), (Start: 21 @45770 has 141 MA's), (38, 45617),

Gene: Fayely\_76 Start: 44819, Stop: 44655, Start Num: 21  
Candidate Starts for Fayely\_76:  
(Start: 21 @44819 has 141 MA's), (23, 44804), (29, 44762),

Gene: FiringLine\_77 Start: 46124, Stop: 45960, Start Num: 21  
Candidate Starts for FiringLine\_77:  
(15, 46163), (Start: 21 @46124 has 141 MA's), (22, 46118), (38, 45971),

Gene: First\_0077 Start: 45805, Stop: 45638, Start Num: 21  
Candidate Starts for First\_0077:  
(Start: 21 @45805 has 141 MA's), (22, 45799),

Gene: Gail\_78 Start: 46233, Stop: 46051, Start Num: 21  
Candidate Starts for Gail\_78:  
(Start: 21 @46233 has 141 MA's), (23, 46218), (29, 46176),

Gene: Garak\_80 Start: 44729, Stop: 44577, Start Num: 21  
Candidate Starts for Garak\_80:  
(Start: 17 @44756 has 2 MA's), (Start: 21 @44729 has 141 MA's), (22, 44723), (23, 44714), (27, 44687),

Gene: GaugeLDP\_72 Start: 45357, Stop: 45190, Start Num: 21  
Candidate Starts for GaugeLDP\_72:  
(Start: 21 @45357 has 141 MA's), (26, 45324), (29, 45300),

Gene: Georgie2\_78 Start: 46168, Stop: 46004, Start Num: 21  
Candidate Starts for Georgie2\_78:  
(15, 46207), (Start: 21 @46168 has 141 MA's), (22, 46162), (38, 46015),

Gene: Gladiator\_76 Start: 44659, Stop: 44480, Start Num: 17  
Candidate Starts for Gladiator\_76:  
(Start: 17 @44659 has 2 MA's), (Start: 21 @44632 has 141 MA's), (22, 44626), (23, 44617), (27, 44590),

Gene: GreedyLawyer\_74 Start: 44520, Stop: 44353, Start Num: 21  
Candidate Starts for GreedyLawyer\_74:  
(Start: 21 @44520 has 141 MA's), (22, 44514), (23, 44505),

Gene: Gruunaga\_78 Start: 44587, Stop: 44435, Start Num: 21  
Candidate Starts for Gruunaga\_78:  
(Start: 17 @44614 has 2 MA's), (Start: 21 @44587 has 141 MA's), (22, 44581), (23, 44572), (27, 44545),

Gene: Hammer\_79 Start: 44321, Stop: 44142, Start Num: 17  
Candidate Starts for Hammer\_79:  
(Start: 17 @44321 has 2 MA's), (Start: 21 @44294 has 141 MA's), (22, 44288), (23, 44279), (27, 44252),

Gene: HarryHoudini\_77 Start: 45843, Stop: 45688, Start Num: 21  
Candidate Starts for HarryHoudini\_77:

(Start: 21 @45843 has 141 MA's), (22, 45837),

Gene: Heffalump\_74 Start: 46238, Stop: 46074, Start Num: 21

Candidate Starts for Heffalump\_74:

(15, 46277), (Start: 21 @46238 has 141 MA's), (38, 46085),

Gene: Helmet\_80 Start: 44729, Stop: 44577, Start Num: 21

Candidate Starts for Helmet\_80:

(Start: 17 @44756 has 2 MA's), (Start: 21 @44729 has 141 MA's), (22, 44723), (23, 44714), (27, 44687),

Gene: Herbertwm\_73 Start: 45474, Stop: 45292, Start Num: 21

Candidate Starts for Herbertwm\_73:

(Start: 21 @45474 has 141 MA's), (22, 45468), (37, 45324),

Gene: Hexamo\_78 Start: 44263, Stop: 44111, Start Num: 21

Candidate Starts for Hexamo\_78:

(Start: 21 @44263 has 141 MA's), (22, 44257), (23, 44248), (27, 44221),

Gene: Hoot\_74 Start: 42405, Stop: 42238, Start Num: 21

Candidate Starts for Hoot\_74:

(Start: 21 @42405 has 141 MA's), (22, 42399), (23, 42390),

Gene: HortumSL17\_79 Start: 45181, Stop: 45017, Start Num: 21

Candidate Starts for HortumSL17\_79:

(Start: 21 @45181 has 141 MA's), (23, 45166), (26, 45148), (29, 45124),

Gene: Indra\_82 Start: 44730, Stop: 44578, Start Num: 21

Candidate Starts for Indra\_82:

(Start: 17 @44757 has 2 MA's), (Start: 21 @44730 has 141 MA's), (22, 44724), (23, 44715), (27, 44688),

Gene: IronMan\_74 Start: 46915, Stop: 46739, Start Num: 21

Candidate Starts for IronMan\_74:

(Start: 21 @46915 has 141 MA's), (36, 46762),

Gene: Isiphiwo\_76 Start: 44572, Stop: 44405, Start Num: 21

Candidate Starts for Isiphiwo\_76:

(Start: 21 @44572 has 141 MA's), (22, 44566), (23, 44557),

Gene: Iwokeuplikedis\_78 Start: 46300, Stop: 46124, Start Num: 21

Candidate Starts for Iwokeuplikedis\_78:

(Start: 21 @46300 has 141 MA's), (22, 46294),

Gene: Jaan\_75 Start: 47076, Stop: 46900, Start Num: 21

Candidate Starts for Jaan\_75:

(Start: 21 @47076 has 141 MA's), (36, 46923),

Gene: Jeeves\_80 Start: 45143, Stop: 44967, Start Num: 21

Candidate Starts for Jeeves\_80:

(1, 45359), (3, 45305), (4, 45287), (Start: 21 @45143 has 141 MA's), (23, 45128), (29, 45086),

Gene: Jerm\_78 Start: 46242, Stop: 46078, Start Num: 21

Candidate Starts for Jerm\_78:  
(16, 46281), (Start: 21 @46242 has 141 MA's), (38, 46089),

Gene: Jordennis\_77 Start: 44787, Stop: 44620, Start Num: 21  
Candidate Starts for Jordennis\_77:  
(Start: 21 @44787 has 141 MA's), (22, 44781), (23, 44772),

Gene: JoshKayV\_77 Start: 46282, Stop: 46115, Start Num: 21  
Candidate Starts for JoshKayV\_77:  
(Start: 21 @46282 has 141 MA's), (22, 46276),

Gene: Kalpine\_76 Start: 46163, Stop: 45996, Start Num: 21  
Candidate Starts for Kalpine\_76:  
(Start: 21 @46163 has 141 MA's), (23, 46148), (29, 46106), (39, 46007), (41, 46001),

Gene: Kazan\_80 Start: 44560, Stop: 44393, Start Num: 21  
Candidate Starts for Kazan\_80:  
(Start: 21 @44560 has 141 MA's), (22, 44554), (23, 44545),

Gene: Keziacharles14\_75 Start: 45797, Stop: 45627, Start Num: 21  
Candidate Starts for Keziacharles14\_75:  
(Start: 21 @45797 has 141 MA's), (23, 45782), (29, 45740), (34, 45671),

Gene: KingCyrus\_76 Start: 47256, Stop: 47092, Start Num: 21  
Candidate Starts for KingCyrus\_76:  
(14, 47298), (16, 47295), (Start: 21 @47256 has 141 MA's), (23, 47241), (38, 47103),

Gene: Kipper29\_79 Start: 44573, Stop: 44406, Start Num: 21  
Candidate Starts for Kipper29\_79:  
(Start: 21 @44573 has 141 MA's), (22, 44567), (23, 44558),

Gene: Koko\_80 Start: 45118, Stop: 44966, Start Num: 21  
Candidate Starts for Koko\_80:  
(Start: 21 @45118 has 141 MA's), (22, 45112), (23, 45103), (27, 45076),

Gene: LadyBird\_80 Start: 46485, Stop: 46318, Start Num: 21  
Candidate Starts for LadyBird\_80:  
(Start: 21 @46485 has 141 MA's), (31, 46419), (39, 46329),

Gene: Landor\_75 Start: 47003, Stop: 46827, Start Num: 21  
Candidate Starts for Landor\_75:  
(Start: 21 @47003 has 141 MA's), (22, 46997), (36, 46850),

Gene: Larenn\_73 Start: 45502, Stop: 45338, Start Num: 21  
Candidate Starts for Larenn\_73:  
(12, 45556), (Start: 21 @45502 has 141 MA's), (38, 45349),

Gene: Leogania\_75 Start: 46184, Stop: 46029, Start Num: 21  
Candidate Starts for Leogania\_75:  
(11, 46241), (Start: 21 @46184 has 141 MA's), (22, 46178),

Gene: Leviathan\_78 Start: 46308, Stop: 46144, Start Num: 21  
Candidate Starts for Leviathan\_78:

(16, 46347), (Start: 21 @46308 has 141 MA's), (38, 46155),

Gene: LilTurb\_77 Start: 46122, Stop: 45958, Start Num: 21

Candidate Starts for LilTurb\_77:

(16, 46161), (Start: 21 @46122 has 141 MA's), (38, 45969),

Gene: Lilbunny\_76 Start: 44361, Stop: 44209, Start Num: 21

Candidate Starts for Lilbunny\_76:

(Start: 17 @44388 has 2 MA's), (Start: 21 @44361 has 141 MA's), (22, 44355), (23, 44346), (27, 44319),

Gene: Lokk\_70 Start: 44303, Stop: 44139, Start Num: 21

Candidate Starts for Lokk\_70:

(Start: 21 @44303 has 141 MA's), (22, 44297), (23, 44288), (34, 44177), (39, 44147),

Gene: LoneWolf\_79 Start: 45428, Stop: 45264, Start Num: 21

Candidate Starts for LoneWolf\_79:

(Start: 21 @45428 has 141 MA's), (23, 45413), (29, 45371),

Gene: Loser\_78 Start: 46367, Stop: 46212, Start Num: 21

Candidate Starts for Loser\_78:

(Start: 21 @46367 has 141 MA's), (23, 46352),

Gene: Luchador\_79 Start: 46628, Stop: 46443, Start Num: 21

Candidate Starts for Luchador\_79:

(Start: 21 @46628 has 141 MA's), (23, 46613), (29, 46571),

Gene: Malec\_74 Start: 46069, Stop: 45905, Start Num: 21

Candidate Starts for Malec\_74:

(12, 46123), (Start: 21 @46069 has 141 MA's), (38, 45916),

Gene: Maminiaina\_78 Start: 45344, Stop: 45180, Start Num: 21

Candidate Starts for Maminiaina\_78:

(Start: 21 @45344 has 141 MA's), (23, 45329), (29, 45287),

Gene: McFly\_80 Start: 45189, Stop: 45022, Start Num: 21

Candidate Starts for McFly\_80:

(Start: 21 @45189 has 141 MA's), (22, 45183), (23, 45174),

Gene: Miko\_70 Start: 45080, Stop: 44916, Start Num: 21

Candidate Starts for Miko\_70:

(Start: 21 @45080 has 141 MA's), (22, 45074), (23, 45065), (34, 44954), (39, 44924),

Gene: Myxus\_78 Start: 45181, Stop: 45017, Start Num: 21

Candidate Starts for Myxus\_78:

(Start: 21 @45181 has 141 MA's), (23, 45166), (26, 45148), (29, 45124),

Gene: Neeharika16\_78 Start: 44656, Stop: 44489, Start Num: 21

Candidate Starts for Neeharika16\_78:

(Start: 21 @44656 has 141 MA's), (22, 44650), (23, 44641),

Gene: Newrala\_78 Start: 44995, Stop: 44828, Start Num: 21

Candidate Starts for Newrala\_78:

(Start: 21 @44995 has 141 MA's), (22, 44989), (23, 44980),

Gene: NothingSpecial\_72 Start: 45754, Stop: 45581, Start Num: 21

Candidate Starts for NothingSpecial\_72:

(Start: 21 @45754 has 141 MA's), (22, 45748), (32, 45682),

Gene: PackMan\_77 Start: 45056, Stop: 44892, Start Num: 21

Candidate Starts for PackMan\_77:

(Start: 21 @45056 has 141 MA's), (23, 45041), (26, 45023), (29, 44999),

Gene: Phaded\_72 Start: 46962, Stop: 46786, Start Num: 21

Candidate Starts for Phaded\_72:

(Start: 21 @46962 has 141 MA's), (22, 46956), (36, 46809),

Gene: Phaeder\_78 Start: 45056, Stop: 44892, Start Num: 21

Candidate Starts for Phaeder\_78:

(Start: 21 @45056 has 141 MA's), (23, 45041), (26, 45023), (29, 44999),

Gene: Phonnegut\_78 Start: 45128, Stop: 44964, Start Num: 21

Candidate Starts for Phonnegut\_78:

(Start: 21 @45128 has 141 MA's), (23, 45113), (29, 45071),

Gene: Pioneer\_78 Start: 45128, Stop: 44964, Start Num: 21

Candidate Starts for Pioneer\_78:

(Start: 21 @45128 has 141 MA's), (23, 45113), (29, 45071),

Gene: Piro94\_76 Start: 45778, Stop: 45623, Start Num: 21

Candidate Starts for Piro94\_76:

(Start: 21 @45778 has 141 MA's), (22, 45772),

Gene: Pmask\_78 Start: 45193, Stop: 45026, Start Num: 21

Candidate Starts for Pmask\_78:

(Start: 21 @45193 has 141 MA's), (22, 45187), (23, 45178),

Gene: Power\_76 Start: 46167, Stop: 46003, Start Num: 21

Candidate Starts for Power\_76:

(15, 46206), (Start: 21 @46167 has 141 MA's), (22, 46161), (38, 46014),

Gene: Priamo\_81 Start: 44855, Stop: 44688, Start Num: 21

Candidate Starts for Priamo\_81:

(Start: 21 @44855 has 141 MA's), (22, 44849), (23, 44840),

Gene: Priya\_76 Start: 44853, Stop: 44689, Start Num: 21

Candidate Starts for Priya\_76:

(Start: 21 @44853 has 141 MA's), (23, 44838), (29, 44796),

Gene: Pukovnik\_73 Start: 46577, Stop: 46401, Start Num: 21

Candidate Starts for Pukovnik\_73:

(Start: 21 @46577 has 141 MA's), (36, 46424),

Gene: Qobbit\_76 Start: 44815, Stop: 44651, Start Num: 21

Candidate Starts for Qobbit\_76:

(Start: 21 @44815 has 141 MA's), (23, 44800), (29, 44758),

Gene: QueenB2\_74 Start: 45451, Stop: 45287, Start Num: 21

Candidate Starts for QueenB2\_74:

(15, 45490), (Start: 21 @45451 has 141 MA's), (38, 45298),

Gene: QueenBeesly\_77 Start: 46124, Stop: 45960, Start Num: 21

Candidate Starts for QueenBeesly\_77:

(15, 46163), (Start: 21 @46124 has 141 MA's), (22, 46118), (38, 45971),

Gene: Rachaly\_72 Start: 45226, Stop: 45062, Start Num: 21

Candidate Starts for Rachaly\_72:

(Start: 21 @45226 has 141 MA's), (22, 45220), (23, 45211), (34, 45100), (39, 45070),

Gene: Rahalelujah\_78 Start: 44992, Stop: 44807, Start Num: 21

Candidate Starts for Rahalelujah\_78:

(Start: 21 @44992 has 141 MA's), (22, 44986), (43, 44821),

Gene: RedRock\_75 Start: 46134, Stop: 45979, Start Num: 21

Candidate Starts for RedRock\_75:

(Start: 21 @46134 has 141 MA's), (23, 46119),

Gene: Refuge\_74 Start: 46251, Stop: 46102, Start Num: 21

Candidate Starts for Refuge\_74:

(Start: 21 @46251 has 141 MA's), (23, 46236), (34, 46125),

Gene: Retro23\_77 Start: 45856, Stop: 45692, Start Num: 21

Candidate Starts for Retro23\_77:

(15, 45895), (Start: 21 @45856 has 141 MA's), (22, 45850), (38, 45703),

Gene: Rifter\_79 Start: 43891, Stop: 43739, Start Num: 21

Candidate Starts for Rifter\_79:

(Start: 17 @43918 has 2 MA's), (Start: 21 @43891 has 141 MA's), (22, 43885), (23, 43876), (27, 43849),

Gene: Roksolana\_79 Start: 44624, Stop: 44472, Start Num: 21

Candidate Starts for Roksolana\_79:

(Start: 21 @44624 has 141 MA's), (22, 44618), (23, 44609), (27, 44582),

Gene: Scherzo\_77 Start: 45338, Stop: 45153, Start Num: 21

Candidate Starts for Scherzo\_77:

(Start: 21 @45338 has 141 MA's), (23, 45323), (29, 45281), (41, 45176),

Gene: SemperFi\_77 Start: 46012, Stop: 45848, Start Num: 21

Candidate Starts for SemperFi\_77:

(15, 46051), (Start: 21 @46012 has 141 MA's), (22, 46006), (29, 45955), (38, 45859),

Gene: SheaKeira\_72 Start: 44164, Stop: 44015, Start Num: 21

Candidate Starts for SheaKeira\_72:

(11, 44221), (Start: 21 @44164 has 141 MA's), (22, 44158), (24, 44140), (26, 44131), (33, 44059),

Gene: Smeagan\_79 Start: 46399, Stop: 46235, Start Num: 21

Candidate Starts for Smeagan\_79:

(16, 46438), (Start: 21 @46399 has 141 MA's), (38, 46246),



Gene: SmellyB\_79 Start: 44554, Stop: 44387, Start Num: 21

Candidate Starts for SmellyB\_79:

(Start: 21 @44554 has 141 MA's), (22, 44548), (23, 44539),

Gene: SnapTap\_76 Start: 45823, Stop: 45659, Start Num: 21

Candidate Starts for SnapTap\_76:

(15, 45862), (Start: 21 @45823 has 141 MA's), (22, 45817), (38, 45670),

Gene: SororFago\_78 Start: 46342, Stop: 46166, Start Num: 21

Candidate Starts for SororFago\_78:

(Start: 21 @46342 has 141 MA's), (23, 46327),

Gene: Spouty\_73 Start: 44852, Stop: 44688, Start Num: 21

Candidate Starts for Spouty\_73:

(Start: 21 @44852 has 141 MA's), (23, 44837), (29, 44795),

Gene: Steamy\_81 Start: 48438, Stop: 48295, Start Num: 21

Candidate Starts for Steamy\_81:

(10, 48507), (Start: 17 @48468 has 2 MA's), (Start: 21 @48438 has 141 MA's), (28, 48384), (30, 48378),

Gene: SuperAwesome\_79 Start: 45232, Stop: 45065, Start Num: 21

Candidate Starts for SuperAwesome\_79:

(Start: 21 @45232 has 141 MA's), (22, 45226), (23, 45217),

Gene: SuperCallie99\_76 Start: 45076, Stop: 44909, Start Num: 21

Candidate Starts for SuperCallie99\_76:

(Start: 21 @45076 has 141 MA's), (22, 45070), (23, 45061),

Gene: SweetiePie\_76 Start: 45955, Stop: 45791, Start Num: 21

Candidate Starts for SweetiePie\_76:

(15, 45994), (Start: 21 @45955 has 141 MA's), (22, 45949), (38, 45802),

Gene: TarsusIV\_74 Start: 45855, Stop: 45700, Start Num: 21

Candidate Starts for TarsusIV\_74:

(Start: 21 @45855 has 141 MA's), (34, 45729),

Gene: ToneTone\_76 Start: 44289, Stop: 44137, Start Num: 21

Candidate Starts for ToneTone\_76:

(Start: 17 @44316 has 2 MA's), (Start: 21 @44289 has 141 MA's), (22, 44283), (23, 44274), (27, 44247),

Gene: Trixie\_76 Start: 46566, Stop: 46399, Start Num: 21

Candidate Starts for Trixie\_76:

(Start: 21 @46566 has 141 MA's), (29, 46509), (39, 46410), (41, 46404),

Gene: Trooper\_76 Start: 45821, Stop: 45675, Start Num: 21

Candidate Starts for Trooper\_76:

(Start: 21 @45821 has 141 MA's),

Gene: Tubs\_78 Start: 45056, Stop: 44892, Start Num: 21

Candidate Starts for Tubs\_78:

(Start: 21 @45056 has 141 MA's), (23, 45041), (26, 45023), (29, 44999),

Gene: Tucker\_79 Start: 44492, Stop: 44340, Start Num: 21

Candidate Starts for Tucker\_79:

(Start: 17 @44519 has 2 MA's), (Start: 21 @44492 has 141 MA's), (22, 44486), (23, 44477), (27, 44450),

Gene: Turbido\_77 Start: 46120, Stop: 45956, Start Num: 21

Candidate Starts for Turbido\_77:

(16, 46159), (Start: 21 @46120 has 141 MA's), (38, 45967),

Gene: Updawg\_77 Start: 45675, Stop: 45511, Start Num: 21

Candidate Starts for Updawg\_77:

(5, 45807), (6, 45777), (Start: 21 @45675 has 141 MA's), (38, 45522),

Gene: VA6\_76 Start: 45850, Stop: 45683, Start Num: 21

Candidate Starts for VA6\_76:

(Start: 21 @45850 has 141 MA's), (22, 45844), (37, 45703),

Gene: Vanisoa\_75 Start: 45726, Stop: 45541, Start Num: 21

Candidate Starts for Vanisoa\_75:

(Start: 21 @45726 has 141 MA's), (26, 45693), (43, 45555), (45, 45546),

Gene: VohminGhazi\_79 Start: 44555, Stop: 44388, Start Num: 21

Candidate Starts for VohminGhazi\_79:

(Start: 21 @44555 has 141 MA's), (22, 44549), (23, 44540),

Gene: WeiHuaDA\_77 Start: 46612, Stop: 46448, Start Num: 21

Candidate Starts for WeiHuaDA\_77:

(8, 46702), (18, 46621), (Start: 21 @46612 has 141 MA's), (29, 46555), (34, 46486),

Gene: WideWale\_77 Start: 45675, Stop: 45511, Start Num: 21

Candidate Starts for WideWale\_77:

(5, 45807), (6, 45777), (Start: 21 @45675 has 141 MA's), (38, 45522),

Gene: Wiks\_78 Start: 44360, Stop: 44208, Start Num: 21

Candidate Starts for Wiks\_78:

(Start: 17 @44387 has 2 MA's), (Start: 21 @44360 has 141 MA's), (22, 44354), (23, 44345), (27, 44318),

Gene: WunderPhul\_79 Start: 44358, Stop: 44206, Start Num: 21

Candidate Starts for WunderPhul\_79:

(Start: 17 @44385 has 2 MA's), (Start: 21 @44358 has 141 MA's), (22, 44352), (23, 44343), (27, 44316),

Gene: XianYue\_72 Start: 45602, Stop: 45423, Start Num: 21

Candidate Starts for XianYue\_72:

(Start: 21 @45602 has 141 MA's), (29, 45545), (37, 45455), (40, 45443), (44, 45428),

Gene: Yecey3\_80 Start: 45152, Stop: 44967, Start Num: 21

Candidate Starts for Yecey3\_80:

(9, 45221), (Start: 21 @45152 has 141 MA's), (33, 45047), (43, 44981),

Gene: Yokurt\_78 Start: 44360, Stop: 44208, Start Num: 21

Candidate Starts for Yokurt\_78:

(Start: 17 @44387 has 2 MA's), (Start: 21 @44360 has 141 MA's), (22, 44354), (23, 44345), (27, 44318),

Gene: Zaka\_79 Start: 44360, Stop: 44208, Start Num: 21

Candidate Starts for Zaka\_79:

(Start: 17 @44387 has 2 MA's), (Start: 21 @44360 has 141 MA's), (22, 44354), (23, 44345), (27, 44318),

Gene: Zimmer\_75 Start: 46180, Stop: 46019, Start Num: 21

Candidate Starts for Zimmer\_75:

(Start: 21 @46180 has 141 MA's), (29, 46123),

Gene: Zulu\_80 Start: 44738, Stop: 44586, Start Num: 21

Candidate Starts for Zulu\_80:

(Start: 17 @44765 has 2 MA's), (Start: 21 @44738 has 141 MA's), (22, 44732), (23, 44723), (27, 44696),