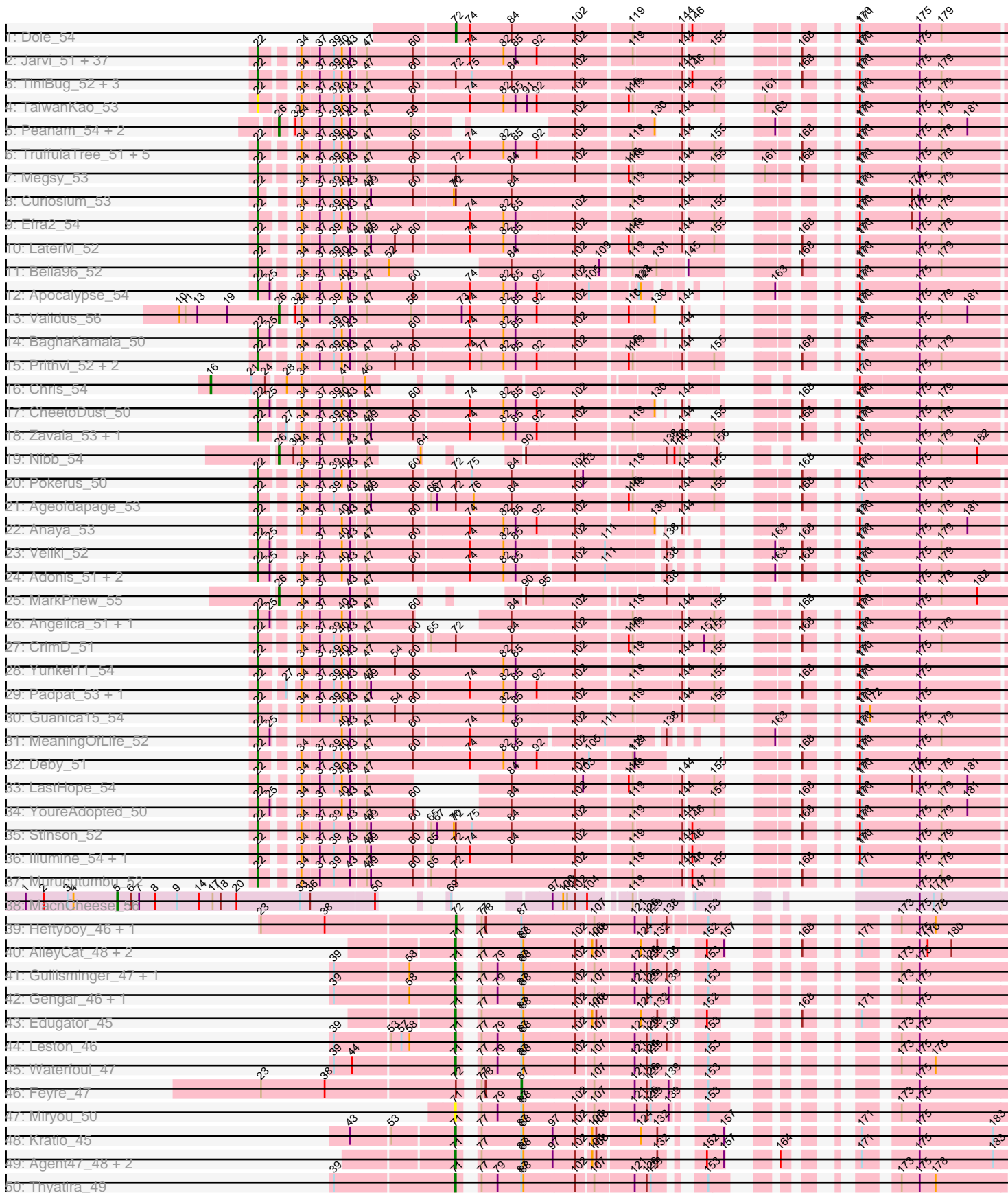
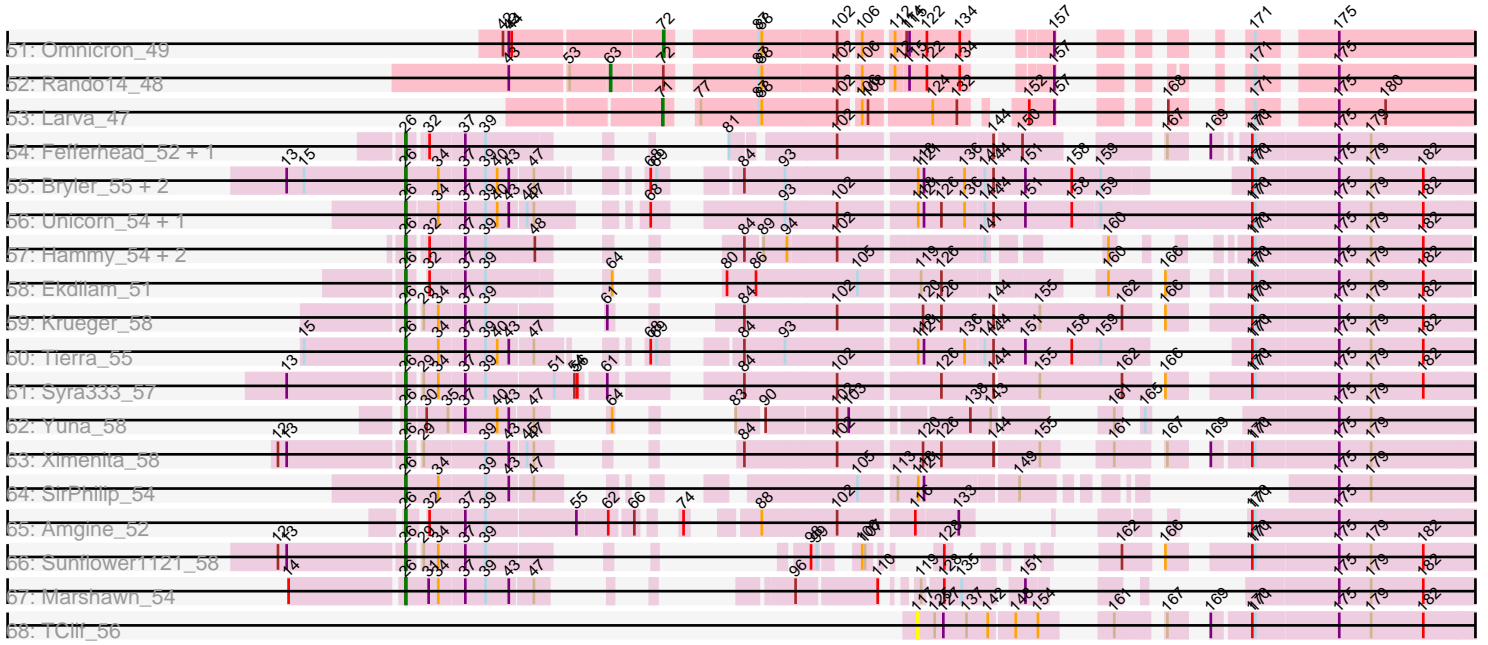


Pham 169806



Pham 169806



Note: Tracks are now grouped by subcluster and scaled. Switching in subcluster is indicated by changes in track color. Track scale is now set by default to display the region 30 bp upstream of start 1 to 30 bp downstream of the last possible start. If this default region is judged to be packed too tightly with annotated starts, the track will be further scaled to only show that region of the ORF with annotated starts. This action will be indicated by adding "Zoomed" to the title. For starts, yellow indicates the location of called starts comprised solely of Glimmer/GeneMark auto-annotations, green indicates the location of called starts with at least 1 manual gene annotation.

Pham 169806 Report

This analysis was run 07/09/24 on database version 566.

Pham number 169806 has 136 members, 6 are drafts.

Phages represented in each track:

- Track 1 : Dole_54
- Track 2 : Jarvi_51, Peel_51, Rosmarinus_51, CREW_51, Geraldini_54, Boiii_51, Dalmuri_51, BGIlluviae_51, Asayake_51, Hyperbowlee_51, Jeckyll_51, AlishaPH_51, Atiba_52, ActinUp_51, BEEEST_51, Zabiza_47, Joy99_51, Inky_51, Lunahalos_51, JAWS_51, Capricorn_51, Blizzard_51, Belladonna_51, Beezoo_53, Durfee_51, Adephagia_51, Tachez_51, Homura_51, Spock_51, Twitch_51, HedwigODU_51, CaseJules_53, Topper_51, ShiaSurprise_52, Piatt_51, Padfoot_51, Llorens_51, Ramen_52
- Track 3 : TiniBug_52, DrHayes_52, SamuelLPlaqson_52, Urkel_52
- Track 4 : TaiwanKao_53
- Track 5 : Peanam_54, Shaobing_54, Niklas_54
- Track 6 : TruffulaTree_51, Tiri_52, Rapunzel97_52, BarrelRoll_51, Slimphazie_51, Jayhawk_52
- Track 7 : Megsy_53
- Track 8 : Curiosium_53
- Track 9 : Efra2_54
- Track 10 : LaterM_52
- Track 11 : Bella96_52
- Track 12 : Apocalypse_54
- Track 13 : Validus_56
- Track 14 : BaghaKamala_50
- Track 15 : Prithvi_52, LindNT_50, TreyKay_52
- Track 16 : Chris_54
- Track 17 : CheetoDust_50
- Track 18 : Zavala_53, Mynx_52
- Track 19 : Nibb_54
- Track 20 : Pokerus_50
- Track 21 : Ageofdapage_53
- Track 22 : Anaya_53
- Track 23 : Veliki_52
- Track 24 : Adonis_51, Ganymede_52, QuincyRose_50
- Track 25 : MarkPhew_55
- Track 26 : Angelica_51, Sulley_51
- Track 27 : CrimD_51
- Track 28 : Yunkel11_54
- Track 29 : Padpat_53, Emerson_52
- Track 30 : Guanica15_54

- Track 31 : MeaningOfLife_52
- Track 32 : Deby_51
- Track 33 : LastHope_54
- Track 34 : YoureAdopted_50
- Track 35 : Stinson_52
- Track 36 : Illumine_54, Devera_56
- Track 37 : Murucutumbu_52
- Track 38 : MacnCheese_56
- Track 39 : Heftyboy_46, SoSeph_46
- Track 40 : AlleyCat_48, Dadosky_48, Psycho_46
- Track 41 : Guillsminger_47, Paola_46
- Track 42 : Gengar_46, OkiRoe_46
- Track 43 : Edugator_45
- Track 44 : Leston_46
- Track 45 : Waterfoul_47
- Track 46 : Feyre_47
- Track 47 : Miryou_50
- Track 48 : Kratio_45
- Track 49 : Agent47_48, Collard_46, InvictusManeo_46
- Track 50 : Thyatira_49
- Track 51 : Omnicron_49
- Track 52 : Rando14_48
- Track 53 : Larva_47
- Track 54 : Fefferhead_52, Ellie_50
- Track 55 : Bryler_55, Cain_55, Phrank_55
- Track 56 : Unicorn_54, PhelpsODU_54
- Track 57 : Hammy_54, DarthP_54, Amohnition_54
- Track 58 : Ekdilam_51
- Track 59 : Krueger_58
- Track 60 : Tierra_55
- Track 61 : Syra333_57
- Track 62 : Yuna_58
- Track 63 : Ximenita_58
- Track 64 : SirPhilip_54
- Track 65 : Amgine_52
- Track 66 : Sunflower1121_58
- Track 67 : Marshawn_54
- Track 68 : TClif_56

Summary of Final Annotations (See graph section above for start numbers):

The start number called the most often in the published annotations is 22, it was called in 80 of the 130 non-draft genes in the pham.

Genes that call this "Most Annotated" start:

- ActinUp_51, Adephagia_51, Adonis_51, Ageofdapage_53, AlishaPH_51, Anaya_53, Angelica_51, Apocalypse_54, Asayake_51, Atiba_52, BEEST_51, BGlluviae_51, BaghaKamala_50, BarrelRoll_51, Beezoo_53, Bella96_52, Belladonna_51, Blizzard_51, Boiiii_51, CREW_51, Capricorn_51, CaseJules_53, CheetoDust_50, CrimD_51, Curiosium_53, Dalmuri_51, Deby_51, Devera_56, DrHayes_52,

Durfee_51, Efra2_54, Emerson_52, Ganymede_52, Geraldini_54, Guanica15_54, HedwigODU_51, Homura_51, Hyperbowlee_51, Illumine_54, Inky_51, JAWS_51, Jarvi_51, Jayhawk_52, Jeckyll_51, Joy99_51, LastHope_54, LaterM_52, LindNT_50, Llorens_51, Lunahalos_51, MeaningOfLife_52, Megsy_53, Murucutumbu_52, Mynx_52, Padfoot_51, Padpat_53, Peel_51, Piatt_51, Pokerus_50, Prithvi_52, QuincyRose_50, Ramen_52, Rapunzel97_52, Rosmarinus_51, SamuelLPlaçon_52, ShiaSurprise_52, Slimphazie_51, Spock_51, Stinson_52, Sulley_51, Tachez_51, TaiwanKao_53, TiniBug_52, Tiri_52, Topper_51, TreyKay_52, TruffulaTree_51, Twitch_51, Urkel_52, Veliki_52, YoureAdopted_50, Yunkel11_54, Zabiza_47, Zavala_53,

Genes that have the "Most Annotated" start but do not call it:

-

Genes that do not have the "Most Annotated" start:

- Agent47_48, AlleyCat_48, Amgine_52, Amohntion_54, Bryler_55, Cain_55, Chris_54, Collard_46, Dadosky_48, DarthP_54, Dole_54, Edugator_45, Ekdilam_51, Ellie_50, Fefferhead_52, Feyre_47, Gengar_46, Guillsminger_47, Hammy_54, Heftyboy_46, InvictusManeo_46, Kratio_45, Krueger_58, Larva_47, Leston_46, MacnCheese_56, MarkPhew_55, Marshawn_54, Miryou_50, Nibb_54, Niklas_54, OkiRoe_46, Omnicron_49, Paola_46, Peanam_54, PhelpsODU_54, Phrank_55, Psycho_46, Rando14_48, Shaobing_54, SirPhilip_54, SoSeph_46, Sunflower1121_58, Syra333_57, TClif_56, Thyatira_49, Tierra_55, Unicorn_54, Validus_56, Waterfoul_47, Ximenita_58, Yuna_58,

Summary by start number:

Start 5:

- Found in 1 of 136 (0.7%) of genes in pham
- Manual Annotations of this start: 1 of 130
- Called 100.0% of time when present
- Phage (with cluster) where this start called: MacnCheese_56 (K3),

Start 16:

- Found in 1 of 136 (0.7%) of genes in pham
- Manual Annotations of this start: 1 of 130
- Called 100.0% of time when present
- Phage (with cluster) where this start called: Chris_54 (K1),

Start 22:

- Found in 84 of 136 (61.8%) of genes in pham
- Manual Annotations of this start: 80 of 130
- Called 100.0% of time when present
- Phage (with cluster) where this start called: ActinUp_51 (K1), Adephegia_51 (K1), Adonis_51 (K1), Ageofdapage_53 (K1), AlishaPH_51 (K1), Anaya_53 (K1), Angelica_51 (K1), Apocalypse_54 (K1), Asayake_51 (K1), Atiba_52 (K1), BEEST_51 (K1), BGlluviae_51 (K1), BaghaKamala_50 (K1), BarrelRoll_51 (K1), Beezoo_53 (K1), Bella96_52 (K1), Belladonna_51 (K1), Blizzard_51 (K1), Boiiii_51 (K1), CREW_51 (K1), Capricorn_51 (K1), CaseJules_53 (K1), CheetoDust_50 (K1), CrimD_51 (K1), Curiosium_53 (K1), Dalmuri_51 (K1), Deby_51 (K1), Devera_56 (K1), DrHayes_52 (K1), Durfee_51 (K1), Efra2_54 (K1), Emerson_52 (K1), Ganymede_52 (K1), Geraldini_54 (K1), Guanica15_54 (K1), HedwigODU_51 (K1), Homura_51 (K1), Hyperbowlee_51 (K1), Illumine_54 (K1), Inky_51 (K1), JAWS_51

(K1), Jarvi_51 (K1), Jayhawk_52 (K1), Jeckyll_51 (K1), Joy99_51 (K1), LastHope_54 (K1), LaterM_52 (K1), LindNT_50 (K1), Llorens_51 (K1), Lunahalos_51 (K1), MeaningOfLife_52 (K1), Megsy_53 (K1), Murucutumbu_52 (K1), Mynx_52 (K1), Padfoot_51 (K1), Padpat_53 (K1), Peel_51 (K1), Piatt_51 (K1), Pokerus_50 (K1), Prithvi_52 (K1), QuincyRose_50 (K1), Ramen_52 (K1), Rapunzel97_52 (K1), Rosmarinus_51 (K1), SamuelLPlaqson_52 (K1), ShiaSurprise_52 (K1), Slimphazie_51 (K1), Spock_51 (K1), Stinson_52 (K1), Sulley_51 (K1), Tachez_51 (K1), TaiwanKao_53 (K1), TiniBug_52 (K1), Tiri_52 (K1), Topper_51 (K1), TreyKay_52 (K1), TruffulaTree_51 (K1), Twitch_51 (K1), Urkel_52 (K1), Veliki_52 (K1), YoureAdopted_50 (K1), Yunkel11_54 (K1), Zabiza_47 (K1), Zavala_53 (K1),

Start 26:

- Found in 26 of 136 (19.1%) of genes in pham
- Manual Annotations of this start: 26 of 130
- Called 100.0% of time when present
- Phage (with cluster) where this start called: Amgine_52 (K6), Amohnition_54 (K6), Bryler_55 (K6), Cain_55 (K6), DarthP_54 (K6), Ekdilam_51 (K6), Ellie_50 (K6), Fefferhead_52 (K6), Hammy_54 (K6), Krueger_58 (K6), MarkPhew_55 (K1), Marshawn_54 (K6), Nibb_54 (K1), Niklas_54 (K1), Peanam_54 (K1), PhelpsODU_54 (K6), Phrank_55 (K6), Shaobing_54 (K1), SirPhilip_54 (K6), Sunflower1121_58 (K6), Syra333_57 (K6), Tierra_55 (K6), Unicorn_54 (K6), Validus_56 (K1), Ximenita_58 (K6), Yuna_58 (K6),

Start 63:

- Found in 1 of 136 (0.7%) of genes in pham
- Manual Annotations of this start: 1 of 130
- Called 100.0% of time when present
- Phage (with cluster) where this start called: Rando14_48 (K5),

Start 71:

- Found in 17 of 136 (12.5%) of genes in pham
- Manual Annotations of this start: 16 of 130
- Called 100.0% of time when present
- Phage (with cluster) where this start called: Agent47_48 (K5), AlleyCat_48 (K5), Collard_46 (K5), Dadosky_48 (K5), Edugator_45 (K5), Gengar_46 (K5), Guillsminger_47 (K5), InvictusManeo_46 (K5), Kratio_45 (K5), Larva_47 (K5), Leston_46 (K5), Miryou_50 (K5), OkiRoe_46 (K5), Paola_46 (K5), Psycho_46 (K5), Thyatira_49 (K5), Waterfoul_47 (K5),

Start 72:

- Found in 19 of 136 (14.0%) of genes in pham
- Manual Annotations of this start: 4 of 130
- Called 21.1% of time when present
- Phage (with cluster) where this start called: Dole_54 (K1), Heftyboy_46 (K5), Omnicron_49 (K5), SoSeph_46 (K5),

Start 87:

- Found in 22 of 136 (16.2%) of genes in pham
- Manual Annotations of this start: 1 of 130
- Called 4.5% of time when present
- Phage (with cluster) where this start called: Feyre_47 (K5),

Start 117:

- Found in 1 of 136 (0.7%) of genes in pham
- No Manual Annotations of this start.
- Called 100.0% of time when present
- Phage (with cluster) where this start called: TClif_56 (K6),

Summary by clusters:

There are 4 clusters represented in this pham: K3, K1, K6, K5,

Info for manual annotations of cluster K1:

- Start number 16 was manually annotated 1 time for cluster K1.
- Start number 22 was manually annotated 80 times for cluster K1.
- Start number 26 was manually annotated 6 times for cluster K1.
- Start number 72 was manually annotated 1 time for cluster K1.

Info for manual annotations of cluster K3:

- Start number 5 was manually annotated 1 time for cluster K3.

Info for manual annotations of cluster K5:

- Start number 63 was manually annotated 1 time for cluster K5.
- Start number 71 was manually annotated 16 times for cluster K5.
- Start number 72 was manually annotated 3 times for cluster K5.
- Start number 87 was manually annotated 1 time for cluster K5.

Info for manual annotations of cluster K6:

- Start number 26 was manually annotated 20 times for cluster K6.

Gene Information:

Gene: ActinUp_51 Start: 37616, Stop: 38557, Start Num: 22

Candidate Starts for ActinUp_51:

(Start: 22 @37616 has 80 MA's), (34, 37655), (37, 37679), (39, 37700), (40, 37712), (43, 37724), (47, 37745), (60, 37814), (74, 37892), (82, 37943), (85, 37961), (92, 37988), (102, 38039), (119, 38117), (144, 38186), (155, 38228), (168, 38291), (170, 38324), (171, 38327), (175, 38414),

Gene: Adephagia_51 Start: 37613, Stop: 38554, Start Num: 22

Candidate Starts for Adephagia_51:

(Start: 22 @37613 has 80 MA's), (34, 37652), (37, 37676), (39, 37697), (40, 37709), (43, 37721), (47, 37742), (60, 37811), (74, 37889), (82, 37940), (85, 37958), (92, 37985), (102, 38036), (119, 38114), (144, 38183), (155, 38225), (168, 38288), (170, 38321), (171, 38324), (175, 38411),

Gene: Adonis_51 Start: 37911, Stop: 38798, Start Num: 22

Candidate Starts for Adonis_51:

(Start: 22 @37911 has 80 MA's), (25, 37929), (34, 37953), (37, 37977), (40, 38010), (43, 38022), (47, 38043), (60, 38112), (74, 38190), (82, 38241), (85, 38259), (102, 38331), (111, 38376), (138, 38454), (163, 38514), (168, 38532), (170, 38565), (171, 38568), (175, 38655), (179, 38688),

Gene: Agent47_48 Start: 36423, Stop: 37028, Start Num: 71

Candidate Starts for Agent47_48:

(Start: 71 @36423 has 16 MA's), (77, 36438), (Start: 87 @36498 has 1 MA's), (88, 36501), (97, 36543), (102, 36576), (106, 36594), (108, 36600), (132, 36684), (152, 36720), (157, 36744), (164,

36771), (171, 36822), (175, 36888), (183, 36999),

Gene: Ageofdapage_53 Start: 38596, Stop: 39540, Start Num: 22

Candidate Starts for Ageofdapage_53:

(Start: 22 @38596 has 80 MA's), (34, 38632), (37, 38656), (39, 38677), (43, 38701), (47, 38722), (49, 38728), (60, 38791), (65, 38812), (67, 38821), (Start: 72 @38848 has 4 MA's), (76, 38875), (84, 38929), (102, 39022), (116, 39094), (119, 39100), (144, 39169), (155, 39211), (168, 39274), (171, 39310), (175, 39397), (179, 39430),

Gene: AlishaPH_51 Start: 37886, Stop: 38827, Start Num: 22

Candidate Starts for AlishaPH_51:

(Start: 22 @37886 has 80 MA's), (34, 37925), (37, 37949), (39, 37970), (40, 37982), (43, 37994), (47, 38015), (60, 38084), (74, 38162), (82, 38213), (85, 38231), (92, 38258), (102, 38309), (119, 38387), (144, 38456), (155, 38498), (168, 38561), (170, 38594), (171, 38597), (175, 38684),

Gene: AlleyCat_48 Start: 36277, Stop: 36879, Start Num: 71

Candidate Starts for AlleyCat_48:

(Start: 71 @36277 has 16 MA's), (77, 36292), (Start: 87 @36352 has 1 MA's), (88, 36355), (102, 36430), (106, 36448), (108, 36454), (124, 36514), (132, 36538), (152, 36574), (157, 36598), (168, 36640), (171, 36676), (175, 36742), (176, 36754), (180, 36790),

Gene: Amgine_52 Start: 38804, Stop: 39586, Start Num: 26

Candidate Starts for Amgine_52:

(Start: 26 @38804 has 26 MA's), (32, 38819), (37, 38852), (39, 38873), (55, 38960), (62, 38990), (66, 39011), (74, 39029), (88, 39071), (102, 39146), (116, 39218), (133, 39260), (170, 39341), (171, 39344), (175, 39431),

Gene: Amohndition_54 Start: 38811, Stop: 39545, Start Num: 26

Candidate Starts for Amohndition_54:

(Start: 26 @38811 has 26 MA's), (32, 38826), (37, 38859), (39, 38880), (48, 38928), (84, 38988), (89, 39003), (94, 39027), (102, 39075), (141, 39213), (160, 39255), (170, 39306), (171, 39309), (175, 39393), (179, 39426), (182, 39480),

Gene: Anaya_53 Start: 38213, Stop: 39073, Start Num: 22

Candidate Starts for Anaya_53:

(Start: 22 @38213 has 80 MA's), (34, 38255), (37, 38279), (40, 38312), (43, 38324), (47, 38345), (60, 38414), (74, 38492), (82, 38543), (85, 38561), (92, 38588), (102, 38639), (130, 38747), (144, 38750), (170, 38840), (171, 38843), (175, 38930), (179, 38963), (181, 39002),

Gene: Angelica_51 Start: 37843, Stop: 38703, Start Num: 22

Candidate Starts for Angelica_51:

(Start: 22 @37843 has 80 MA's), (25, 37861), (34, 37885), (37, 37909), (40, 37942), (43, 37954), (47, 37975), (60, 38044), (84, 38092), (102, 38185), (119, 38263), (144, 38332), (155, 38374), (168, 38437), (170, 38470), (171, 38473), (175, 38560),

Gene: Apocalypse_54 Start: 38622, Stop: 39491, Start Num: 22

Candidate Starts for Apocalypse_54:

(Start: 22 @38622 has 80 MA's), (25, 38640), (34, 38664), (37, 38688), (40, 38721), (43, 38733), (47, 38754), (60, 38823), (74, 38901), (82, 38952), (85, 38970), (92, 38997), (102, 39048), (105, 39069), (123, 39126), (124, 39129), (163, 39207), (170, 39258), (171, 39261), (175, 39348),

Gene: Asayake_51 Start: 37928, Stop: 38869, Start Num: 22

Candidate Starts for Asayake_51:

(Start: 22 @37928 has 80 MA's), (34, 37967), (37, 37991), (39, 38012), (40, 38024), (43, 38036), (47, 38057), (60, 38126), (74, 38204), (82, 38255), (85, 38273), (92, 38300), (102, 38351), (119, 38429), (144, 38498), (155, 38540), (168, 38603), (170, 38636), (171, 38639), (175, 38726),

Gene: Atiba_52 Start: 37576, Stop: 38517, Start Num: 22

Candidate Starts for Atiba_52:

(Start: 22 @37576 has 80 MA's), (34, 37615), (37, 37639), (39, 37660), (40, 37672), (43, 37684), (47, 37705), (60, 37774), (74, 37852), (82, 37903), (85, 37921), (92, 37948), (102, 37999), (119, 38077), (144, 38146), (155, 38188), (168, 38251), (170, 38284), (171, 38287), (175, 38374),

Gene: BEEST_51 Start: 37928, Stop: 38869, Start Num: 22

Candidate Starts for BEEST_51:

(Start: 22 @37928 has 80 MA's), (34, 37967), (37, 37991), (39, 38012), (40, 38024), (43, 38036), (47, 38057), (60, 38126), (74, 38204), (82, 38255), (85, 38273), (92, 38300), (102, 38351), (119, 38429), (144, 38498), (155, 38540), (168, 38603), (170, 38636), (171, 38639), (175, 38726),

Gene: BGIlluviae_51 Start: 37731, Stop: 38672, Start Num: 22

Candidate Starts for BGIlluviae_51:

(Start: 22 @37731 has 80 MA's), (34, 37770), (37, 37794), (39, 37815), (40, 37827), (43, 37839), (47, 37860), (60, 37929), (74, 38007), (82, 38058), (85, 38076), (92, 38103), (102, 38154), (119, 38232), (144, 38301), (155, 38343), (168, 38406), (170, 38439), (171, 38442), (175, 38529),

Gene: BaghaKamala_50 Start: 37051, Stop: 37917, Start Num: 22

Candidate Starts for BaghaKamala_50:

(Start: 22 @37051 has 80 MA's), (25, 37069), (34, 37093), (39, 37138), (40, 37150), (43, 37162), (60, 37252), (74, 37336), (82, 37387), (85, 37405), (102, 37483), (144, 37594), (170, 37684), (171, 37687), (175, 37774),

Gene: BarrelRoll_51 Start: 37599, Stop: 38540, Start Num: 22

Candidate Starts for BarrelRoll_51:

(Start: 22 @37599 has 80 MA's), (34, 37638), (37, 37662), (39, 37683), (40, 37695), (43, 37707), (47, 37728), (60, 37797), (74, 37875), (82, 37926), (85, 37944), (92, 37971), (102, 38022), (119, 38100), (144, 38169), (155, 38211), (168, 38274), (170, 38307), (171, 38310), (175, 38397), (179, 38430),

Gene: Beezoo_53 Start: 38574, Stop: 39515, Start Num: 22

Candidate Starts for Beezoo_53:

(Start: 22 @38574 has 80 MA's), (34, 38613), (37, 38637), (39, 38658), (40, 38670), (43, 38682), (47, 38703), (60, 38772), (74, 38850), (82, 38901), (85, 38919), (92, 38946), (102, 38997), (119, 39075), (144, 39144), (155, 39186), (168, 39249), (170, 39282), (171, 39285), (175, 39372),

Gene: Bella96_52 Start: 38440, Stop: 39297, Start Num: 22

Candidate Starts for Bella96_52:

(Start: 22 @38440 has 80 MA's), (34, 38482), (37, 38506), (39, 38527), (40, 38539), (43, 38551), (47, 38572), (52, 38605), (84, 38686), (102, 38779), (109, 38815), (119, 38857), (131, 38890), (145, 38929), (168, 39031), (170, 39064), (171, 39067), (175, 39154), (179, 39187),

Gene: Belladonna_51 Start: 37731, Stop: 38672, Start Num: 22

Candidate Starts for Belladonna_51:

(Start: 22 @37731 has 80 MA's), (34, 37770), (37, 37794), (39, 37815), (40, 37827), (43, 37839), (47, 37860), (60, 37929), (74, 38007), (82, 38058), (85, 38076), (92, 38103), (102, 38154), (119, 38232), (144, 38301), (155, 38343), (168, 38406), (170, 38439), (171, 38442), (175, 38529),

Gene: Blizzard_51 Start: 37928, Stop: 38869, Start Num: 22

Candidate Starts for Blizzard_51:

(Start: 22 @37928 has 80 MA's), (34, 37967), (37, 37991), (39, 38012), (40, 38024), (43, 38036), (47, 38057), (60, 38126), (74, 38204), (82, 38255), (85, 38273), (92, 38300), (102, 38351), (119, 38429), (144, 38498), (155, 38540), (168, 38603), (170, 38636), (171, 38639), (175, 38726),

Gene: Boiiii_51 Start: 37930, Stop: 38871, Start Num: 22

Candidate Starts for Boiiii_51:

(Start: 22 @37930 has 80 MA's), (34, 37969), (37, 37993), (39, 38014), (40, 38026), (43, 38038), (47, 38059), (60, 38128), (74, 38206), (82, 38257), (85, 38275), (92, 38302), (102, 38353), (119, 38431), (144, 38500), (155, 38542), (168, 38605), (170, 38638), (171, 38641), (175, 38728),

Gene: Bryler_55 Start: 37408, Stop: 38334, Start Num: 26

Candidate Starts for Bryler_55:

(13, 37285), (15, 37303), (Start: 26 @37408 has 26 MA's), (34, 37441), (37, 37465), (39, 37486), (40, 37498), (43, 37510), (47, 37531), (68, 37588), (69, 37594), (84, 37642), (93, 37684), (118, 37810), (121, 37816), (136, 37858), (141, 37876), (144, 37885), (151, 37918), (158, 37966), (159, 37996), (170, 38062), (171, 38065), (175, 38149), (179, 38182), (182, 38236),

Gene: CREW_51 Start: 37731, Stop: 38672, Start Num: 22

Candidate Starts for CREW_51:

(Start: 22 @37731 has 80 MA's), (34, 37770), (37, 37794), (39, 37815), (40, 37827), (43, 37839), (47, 37860), (60, 37929), (74, 38007), (82, 38058), (85, 38076), (92, 38103), (102, 38154), (119, 38232), (144, 38301), (155, 38343), (168, 38406), (170, 38439), (171, 38442), (175, 38529),

Gene: Cain_55 Start: 37396, Stop: 38322, Start Num: 26

Candidate Starts for Cain_55:

(13, 37273), (15, 37291), (Start: 26 @37396 has 26 MA's), (34, 37429), (37, 37453), (39, 37474), (40, 37486), (43, 37498), (47, 37519), (68, 37576), (69, 37582), (84, 37630), (93, 37672), (118, 37798), (121, 37804), (136, 37846), (141, 37864), (144, 37873), (151, 37906), (158, 37954), (159, 37984), (170, 38050), (171, 38053), (175, 38137), (179, 38170), (182, 38224),

Gene: Capricorn_51 Start: 37731, Stop: 38672, Start Num: 22

Candidate Starts for Capricorn_51:

(Start: 22 @37731 has 80 MA's), (34, 37770), (37, 37794), (39, 37815), (40, 37827), (43, 37839), (47, 37860), (60, 37929), (74, 38007), (82, 38058), (85, 38076), (92, 38103), (102, 38154), (119, 38232), (144, 38301), (155, 38343), (168, 38406), (170, 38439), (171, 38442), (175, 38529),

Gene: CaseJules_53 Start: 37928, Stop: 38869, Start Num: 22

Candidate Starts for CaseJules_53:

(Start: 22 @37928 has 80 MA's), (34, 37967), (37, 37991), (39, 38012), (40, 38024), (43, 38036), (47, 38057), (60, 38126), (74, 38204), (82, 38255), (85, 38273), (92, 38300), (102, 38351), (119, 38429), (144, 38498), (155, 38540), (168, 38603), (170, 38636), (171, 38639), (175, 38726),

Gene: CheetoDust_50 Start: 37100, Stop: 37960, Start Num: 22

Candidate Starts for CheetoDust_50:

(Start: 22 @37100 has 80 MA's), (25, 37118), (34, 37142), (37, 37166), (39, 37187), (40, 37199), (43, 37211), (47, 37232), (60, 37301), (74, 37379), (82, 37430), (85, 37448), (92, 37475), (102, 37526), (130, 37634), (144, 37637), (168, 37694), (170, 37727), (171, 37730), (175, 37817), (179, 37850),

Gene: Chris_54 Start: 38558, Stop: 39373, Start Num: 16

Candidate Starts for Chris_54:

(Start: 16 @38558 has 1 MA's), (21, 38618), (24, 38639), (28, 38663), (34, 38684), (41, 38741), (46, 38774), (170, 39137), (175, 39224),

Gene: Collard_46 Start: 36384, Stop: 36989, Start Num: 71

Candidate Starts for Collard_46:

(Start: 71 @36384 has 16 MA's), (77, 36399), (Start: 87 @36459 has 1 MA's), (88, 36462), (97, 36504), (102, 36537), (106, 36555), (108, 36561), (132, 36645), (152, 36681), (157, 36705), (164, 36732), (171, 36783), (175, 36849), (183, 36960),

Gene: CrimD_51 Start: 37837, Stop: 38787, Start Num: 22

Candidate Starts for CrimD_51:

(Start: 22 @37837 has 80 MA's), (34, 37879), (37, 37903), (39, 37924), (40, 37936), (43, 37948), (47, 37969), (60, 38038), (65, 38059), (Start: 72 @38095 has 4 MA's), (84, 38176), (102, 38269), (116, 38341), (119, 38347), (144, 38416), (151, 38443), (155, 38458), (168, 38521), (170, 38554), (171, 38557), (175, 38644), (179, 38677),

Gene: Curiosium_53 Start: 36518, Stop: 37456, Start Num: 22

Candidate Starts for Curiosium_53:

(Start: 22 @36518 has 80 MA's), (34, 36548), (37, 36572), (39, 36593), (40, 36605), (43, 36617), (47, 36638), (49, 36644), (60, 36707), (70, 36764), (Start: 72 @36767 has 4 MA's), (84, 36848), (119, 37019), (144, 37088), (170, 37223), (171, 37226), (174, 37301), (175, 37313), (179, 37346),

Gene: Dadosky_48 Start: 36279, Stop: 36881, Start Num: 71

Candidate Starts for Dadosky_48:

(Start: 71 @36279 has 16 MA's), (77, 36294), (Start: 87 @36354 has 1 MA's), (88, 36357), (102, 36432), (106, 36450), (108, 36456), (124, 36516), (132, 36540), (152, 36576), (157, 36600), (168, 36642), (171, 36678), (175, 36744), (176, 36756), (180, 36792),

Gene: Dalmuri_51 Start: 37731, Stop: 38672, Start Num: 22

Candidate Starts for Dalmuri_51:

(Start: 22 @37731 has 80 MA's), (34, 37770), (37, 37794), (39, 37815), (40, 37827), (43, 37839), (47, 37860), (60, 37929), (74, 38007), (82, 38058), (85, 38076), (92, 38103), (102, 38154), (119, 38232), (144, 38301), (155, 38343), (168, 38406), (170, 38439), (171, 38442), (175, 38529),

Gene: DarthP_54 Start: 38695, Stop: 39429, Start Num: 26

Candidate Starts for DarthP_54:

(Start: 26 @38695 has 26 MA's), (32, 38710), (37, 38743), (39, 38764), (48, 38812), (84, 38872), (89, 38887), (94, 38911), (102, 38959), (141, 39097), (160, 39139), (170, 39190), (171, 39193), (175, 39277), (179, 39310), (182, 39364),

Gene: Deby_51 Start: 37859, Stop: 38731, Start Num: 22

Candidate Starts for Deby_51:

(Start: 22 @37859 has 80 MA's), (34, 37898), (37, 37922), (39, 37943), (40, 37955), (43, 37967), (47, 37988), (60, 38057), (74, 38141), (82, 38192), (85, 38210), (92, 38237), (102, 38288), (105, 38309), (119, 38366), (121, 38369), (168, 38465), (170, 38498), (171, 38501), (175, 38588),

Gene: Devera_56 Start: 38363, Stop: 39304, Start Num: 22

Candidate Starts for Devera_56:

(Start: 22 @38363 has 80 MA's), (34, 38399), (37, 38423), (39, 38444), (43, 38468), (47, 38489), (49, 38495), (60, 38558), (65, 38579), (Start: 72 @38615 has 4 MA's), (74, 38636), (84, 38696), (102, 38789), (119, 38867), (144, 38936), (146, 38945), (170, 39071), (171, 39074), (175, 39161), (179, 39194),

Gene: Dole_54 Start: 38618, Stop: 39307, Start Num: 72

Candidate Starts for Dole_54:

(Start: 72 @38618 has 4 MA's), (74, 38639), (84, 38699), (102, 38792), (119, 38870), (144, 38939), (146, 38948), (170, 39074), (171, 39077), (175, 39164), (179, 39197),

Gene: DrHayes_52 Start: 38502, Stop: 39452, Start Num: 22

Candidate Starts for DrHayes_52:

(Start: 22 @38502 has 80 MA's), (34, 38544), (37, 38568), (39, 38589), (40, 38601), (43, 38613), (47, 38634), (60, 38703), (Start: 72 @38760 has 4 MA's), (75, 38784), (84, 38841), (102, 38934), (144, 39081), (146, 39090), (168, 39186), (170, 39219), (171, 39222), (175, 39309), (179, 39342),

Gene: Durfee_51 Start: 37928, Stop: 38869, Start Num: 22

Candidate Starts for Durfee_51:

(Start: 22 @37928 has 80 MA's), (34, 37967), (37, 37991), (39, 38012), (40, 38024), (43, 38036), (47, 38057), (60, 38126), (74, 38204), (82, 38255), (85, 38273), (92, 38300), (102, 38351), (119, 38429), (144, 38498), (155, 38540), (168, 38603), (170, 38636), (171, 38639), (175, 38726),

Gene: Edugator_45 Start: 36704, Stop: 37297, Start Num: 71

Candidate Starts for Edugator_45:

(Start: 71 @36704 has 16 MA's), (77, 36719), (Start: 87 @36779 has 1 MA's), (88, 36782), (102, 36857), (106, 36875), (108, 36881), (124, 36941), (132, 36965), (152, 37001), (168, 37058), (171, 37094), (175, 37160),

Gene: Efra2_54 Start: 37447, Stop: 38388, Start Num: 22

Candidate Starts for Efra2_54:

(Start: 22 @37447 has 80 MA's), (34, 37486), (37, 37510), (39, 37531), (40, 37543), (43, 37555), (47, 37576), (74, 37723), (82, 37774), (85, 37792), (102, 37870), (119, 37948), (144, 38017), (155, 38059), (170, 38155), (171, 38158), (174, 38233), (175, 38245), (179, 38278),

Gene: Ekdilam_51 Start: 38242, Stop: 39063, Start Num: 26

Candidate Starts for Ekdilam_51:

(Start: 26 @38242 has 26 MA's), (32, 38254), (37, 38287), (39, 38308), (64, 38380), (80, 38395), (86, 38425), (105, 38527), (119, 38584), (126, 38605), (160, 38722), (166, 38764), (170, 38824), (171, 38827), (175, 38911), (179, 38944), (182, 38998),

Gene: Ellie_50 Start: 37992, Stop: 38804, Start Num: 26

Candidate Starts for Ellie_50:

(Start: 26 @37992 has 26 MA's), (32, 38007), (37, 38040), (39, 38061), (81, 38139), (102, 38232), (144, 38379), (150, 38403), (167, 38499), (169, 38520), (170, 38550), (171, 38553), (175, 38637), (179, 38670),

Gene: Emerson_52 Start: 37607, Stop: 38551, Start Num: 22

Candidate Starts for Emerson_52:

(Start: 22 @37607 has 80 MA's), (27, 37640), (34, 37649), (37, 37673), (39, 37694), (40, 37706), (43, 37718), (47, 37739), (49, 37745), (60, 37808), (74, 37886), (82, 37937), (85, 37955), (92, 37982), (102, 38033), (119, 38111), (144, 38180), (155, 38222), (168, 38285), (170, 38318), (171, 38321), (175, 38408),

Gene: Fefferhead_52 Start: 37942, Stop: 38751, Start Num: 26

Candidate Starts for Fefferhead_52:

(Start: 26 @37942 has 26 MA's), (32, 37957), (37, 37990), (39, 38011), (81, 38089), (102, 38182), (144, 38329), (150, 38353), (167, 38449), (169, 38470), (170, 38497), (171, 38500), (175, 38584), (179, 38617),

Gene: Feyre_47 Start: 37611, Stop: 38171, Start Num: 87

Candidate Starts for Feyre_47:

(23, 37245), (38, 37341), (Start: 72 @37533 has 4 MA's), (77, 37551), (78, 37557), (Start: 87 @37611 has 1 MA's), (107, 37710), (121, 37767), (126, 37785), (129, 37791), (139, 37818), (153, 37851), (175, 38025),

Gene: Ganymede_52 Start: 38046, Stop: 38933, Start Num: 22

Candidate Starts for Ganymede_52:

(Start: 22 @38046 has 80 MA's), (25, 38064), (34, 38088), (37, 38112), (40, 38145), (43, 38157), (47, 38178), (60, 38247), (74, 38325), (82, 38376), (85, 38394), (102, 38466), (111, 38511), (138, 38589), (163, 38649), (168, 38667), (170, 38700), (171, 38703), (175, 38790), (179, 38823),

Gene: Gengar_46 Start: 36147, Stop: 36782, Start Num: 71

Candidate Starts for Gengar_46:

(39, 35970), (58, 36078), (Start: 71 @36147 has 16 MA's), (77, 36162), (79, 36186), (Start: 87 @36222 has 1 MA's), (88, 36225), (102, 36297), (107, 36321), (121, 36378), (126, 36396), (129, 36402), (139, 36429), (153, 36462), (173, 36609), (175, 36636),

Gene: Geraldini_54 Start: 38663, Stop: 39604, Start Num: 22

Candidate Starts for Geraldini_54:

(Start: 22 @38663 has 80 MA's), (34, 38702), (37, 38726), (39, 38747), (40, 38759), (43, 38771), (47, 38792), (60, 38861), (74, 38939), (82, 38990), (85, 39008), (92, 39035), (102, 39086), (119, 39164), (144, 39233), (155, 39275), (168, 39338), (170, 39371), (171, 39374), (175, 39461),

Gene: Guanica15_54 Start: 37404, Stop: 38348, Start Num: 22

Candidate Starts for Guanica15_54:

(Start: 22 @37404 has 80 MA's), (34, 37443), (37, 37467), (39, 37488), (40, 37500), (43, 37512), (47, 37533), (54, 37575), (60, 37602), (82, 37734), (85, 37752), (102, 37830), (119, 37908), (144, 37977), (155, 38019), (170, 38115), (171, 38118), (172, 38130), (175, 38205),

Gene: Guillsminger_47 Start: 36118, Stop: 36753, Start Num: 71

Candidate Starts for Guillsminger_47:

(39, 35941), (58, 36049), (Start: 71 @36118 has 16 MA's), (77, 36133), (79, 36157), (Start: 87 @36193 has 1 MA's), (88, 36196), (102, 36268), (107, 36292), (121, 36349), (126, 36367), (129, 36373), (138, 36397), (153, 36433), (173, 36580), (175, 36607),

Gene: Hammy_54 Start: 38683, Stop: 39417, Start Num: 26

Candidate Starts for Hammy_54:

(Start: 26 @38683 has 26 MA's), (32, 38698), (37, 38731), (39, 38752), (48, 38800), (84, 38860), (89, 38875), (94, 38899), (102, 38947), (141, 39085), (160, 39127), (170, 39178), (171, 39181), (175, 39265), (179, 39298), (182, 39352),

Gene: HedwigODU_51 Start: 37616, Stop: 38557, Start Num: 22

Candidate Starts for HedwigODU_51:

(Start: 22 @37616 has 80 MA's), (34, 37655), (37, 37679), (39, 37700), (40, 37712), (43, 37724), (47, 37745), (60, 37814), (74, 37892), (82, 37943), (85, 37961), (92, 37988), (102, 38039), (119, 38117), (144, 38186), (155, 38228), (168, 38291), (170, 38324), (171, 38327), (175, 38414),

Gene: Heftyboy_46 Start: 36269, Stop: 36925, Start Num: 72

Candidate Starts for Heftyboy_46:

(23, 35981), (38, 36077), (Start: 72 @36269 has 4 MA's), (77, 36287), (78, 36293), (Start: 87 @36347 has 1 MA's), (107, 36446), (121, 36503), (126, 36521), (129, 36527), (138, 36551), (153, 36605), (173, 36752), (175, 36779), (178, 36803),

Gene: Homura_51 Start: 37731, Stop: 38672, Start Num: 22

Candidate Starts for Homura_51:

(Start: 22 @37731 has 80 MA's), (34, 37770), (37, 37794), (39, 37815), (40, 37827), (43, 37839), (47, 37860), (60, 37929), (74, 38007), (82, 38058), (85, 38076), (92, 38103), (102, 38154), (119, 38232), (144, 38301), (155, 38343), (168, 38406), (170, 38439), (171, 38442), (175, 38529),

Gene: Hyperbowlee_51 Start: 37928, Stop: 38869, Start Num: 22

Candidate Starts for Hyperbowlee_51:

(Start: 22 @37928 has 80 MA's), (34, 37967), (37, 37991), (39, 38012), (40, 38024), (43, 38036), (47, 38057), (60, 38126), (74, 38204), (82, 38255), (85, 38273), (92, 38300), (102, 38351), (119, 38429), (144, 38498), (155, 38540), (168, 38603), (170, 38636), (171, 38639), (175, 38726),

Gene: Illumine_54 Start: 38365, Stop: 39306, Start Num: 22

Candidate Starts for Illumine_54:

(Start: 22 @38365 has 80 MA's), (34, 38401), (37, 38425), (39, 38446), (43, 38470), (47, 38491), (49, 38497), (60, 38560), (65, 38581), (Start: 72 @38617 has 4 MA's), (74, 38638), (84, 38698), (102, 38791), (119, 38869), (144, 38938), (146, 38947), (170, 39073), (171, 39076), (175, 39163), (179, 39196),

Gene: Inky_51 Start: 37731, Stop: 38672, Start Num: 22

Candidate Starts for Inky_51:

(Start: 22 @37731 has 80 MA's), (34, 37770), (37, 37794), (39, 37815), (40, 37827), (43, 37839), (47, 37860), (60, 37929), (74, 38007), (82, 38058), (85, 38076), (92, 38103), (102, 38154), (119, 38232), (144, 38301), (155, 38343), (168, 38406), (170, 38439), (171, 38442), (175, 38529),

Gene: InvictusManeo_46 Start: 36427, Stop: 37032, Start Num: 71

Candidate Starts for InvictusManeo_46:

(Start: 71 @36427 has 16 MA's), (77, 36442), (Start: 87 @36502 has 1 MA's), (88, 36505), (97, 36547), (102, 36580), (106, 36598), (108, 36604), (132, 36688), (152, 36724), (157, 36748), (164, 36775), (171, 36826), (175, 36892), (183, 37003),

Gene: JAWS_51 Start: 37605, Stop: 38546, Start Num: 22

Candidate Starts for JAWS_51:

(Start: 22 @37605 has 80 MA's), (34, 37644), (37, 37668), (39, 37689), (40, 37701), (43, 37713), (47, 37734), (60, 37803), (74, 37881), (82, 37932), (85, 37950), (92, 37977), (102, 38028), (119, 38106), (144, 38175), (155, 38217), (168, 38280), (170, 38313), (171, 38316), (175, 38403),

Gene: Jarvi_51 Start: 37731, Stop: 38672, Start Num: 22

Candidate Starts for Jarvi_51:

(Start: 22 @37731 has 80 MA's), (34, 37770), (37, 37794), (39, 37815), (40, 37827), (43, 37839), (47, 37860), (60, 37929), (74, 38007), (82, 38058), (85, 38076), (92, 38103), (102, 38154), (119, 38232), (144, 38301), (155, 38343), (168, 38406), (170, 38439), (171, 38442), (175, 38529),

Gene: Jayhawk_52 Start: 37614, Stop: 38555, Start Num: 22

Candidate Starts for Jayhawk_52:

(Start: 22 @37614 has 80 MA's), (34, 37653), (37, 37677), (39, 37698), (40, 37710), (43, 37722), (47, 37743), (60, 37812), (74, 37890), (82, 37941), (85, 37959), (92, 37986), (102, 38037), (119, 38115), (144, 38184), (155, 38226), (168, 38289), (170, 38322), (171, 38325), (175, 38412), (179, 38445),

Gene: Jeckyll_51 Start: 37731, Stop: 38672, Start Num: 22

Candidate Starts for Jeckyll_51:

(Start: 22 @37731 has 80 MA's), (34, 37770), (37, 37794), (39, 37815), (40, 37827), (43, 37839), (47, 37860), (60, 37929), (74, 38007), (82, 38058), (85, 38076), (92, 38103), (102, 38154), (119, 38232),

(144, 38301), (155, 38343), (168, 38406), (170, 38439), (171, 38442), (175, 38529),

Gene: Joy99_51 Start: 37660, Stop: 38601, Start Num: 22

Candidate Starts for Joy99_51:

(Start: 22 @37660 has 80 MA's), (34, 37699), (37, 37723), (39, 37744), (40, 37756), (43, 37768), (47, 37789), (60, 37858), (74, 37936), (82, 37987), (85, 38005), (92, 38032), (102, 38083), (119, 38161), (144, 38230), (155, 38272), (168, 38335), (170, 38368), (171, 38371), (175, 38458),

Gene: Kratio_45 Start: 35977, Stop: 36582, Start Num: 71

Candidate Starts for Kratio_45:

(43, 35833), (53, 35890), (Start: 71 @35977 has 16 MA's), (77, 35992), (Start: 87 @36052 has 1 MA's), (88, 36055), (97, 36097), (102, 36130), (106, 36148), (108, 36154), (124, 36214), (132, 36238), (157, 36298), (171, 36376), (175, 36442), (183, 36553),

Gene: Krueger_58 Start: 38393, Stop: 39313, Start Num: 26

Candidate Starts for Krueger_58:

(Start: 26 @38393 has 26 MA's), (29, 38405), (34, 38420), (37, 38444), (39, 38465), (61, 38531), (84, 38576), (102, 38669), (120, 38747), (126, 38765), (144, 38819), (155, 38861), (162, 38945), (166, 38975), (170, 39041), (171, 39044), (175, 39128), (179, 39161), (182, 39215),

Gene: Larva_47 Start: 36146, Stop: 36748, Start Num: 71

Candidate Starts for Larva_47:

(Start: 71 @36146 has 16 MA's), (77, 36161), (Start: 87 @36221 has 1 MA's), (88, 36224), (102, 36299), (106, 36317), (108, 36323), (124, 36383), (132, 36407), (152, 36443), (157, 36467), (168, 36509), (171, 36545), (175, 36611), (180, 36659),

Gene: LastHope_54 Start: 36888, Stop: 37739, Start Num: 22

Candidate Starts for LastHope_54:

(Start: 22 @36888 has 80 MA's), (34, 36924), (37, 36948), (39, 36969), (40, 36981), (43, 36993), (47, 37014), (84, 37128), (102, 37221), (103, 37233), (116, 37293), (119, 37299), (144, 37368), (155, 37410), (170, 37506), (171, 37509), (174, 37584), (175, 37596), (179, 37629), (181, 37668),

Gene: LaterM_52 Start: 38493, Stop: 39431, Start Num: 22

Candidate Starts for LaterM_52:

(Start: 22 @38493 has 80 MA's), (34, 38529), (37, 38553), (39, 38574), (43, 38598), (47, 38619), (49, 38625), (54, 38661), (60, 38688), (74, 38766), (82, 38817), (85, 38835), (102, 38913), (116, 38985), (119, 38991), (144, 39060), (155, 39102), (168, 39165), (170, 39198), (171, 39201), (175, 39288), (179, 39321),

Gene: Leston_46 Start: 36247, Stop: 36882, Start Num: 71

Candidate Starts for Leston_46:

(39, 36070), (53, 36151), (57, 36166), (58, 36178), (Start: 71 @36247 has 16 MA's), (77, 36262), (79, 36286), (Start: 87 @36322 has 1 MA's), (88, 36325), (102, 36397), (107, 36421), (121, 36478), (126, 36496), (129, 36502), (138, 36526), (153, 36562), (173, 36709), (175, 36736),

Gene: LindNT_50 Start: 37816, Stop: 38760, Start Num: 22

Candidate Starts for LindNT_50:

(Start: 22 @37816 has 80 MA's), (34, 37858), (37, 37882), (39, 37903), (40, 37915), (43, 37927), (47, 37948), (54, 37990), (60, 38017), (74, 38095), (77, 38113), (82, 38146), (85, 38164), (92, 38191), (102, 38242), (116, 38314), (119, 38320), (144, 38389), (155, 38431), (168, 38494), (170, 38527), (171, 38530), (175, 38617), (179, 38650),

Gene: Llorens_51 Start: 37731, Stop: 38672, Start Num: 22

Candidate Starts for Llorens_51:

(Start: 22 @37731 has 80 MA's), (34, 37770), (37, 37794), (39, 37815), (40, 37827), (43, 37839), (47, 37860), (60, 37929), (74, 38007), (82, 38058), (85, 38076), (92, 38103), (102, 38154), (119, 38232), (144, 38301), (155, 38343), (168, 38406), (170, 38439), (171, 38442), (175, 38529),

Gene: Lunahalos_51 Start: 37731, Stop: 38672, Start Num: 22

Candidate Starts for Lunahalos_51:

(Start: 22 @37731 has 80 MA's), (34, 37770), (37, 37794), (39, 37815), (40, 37827), (43, 37839), (47, 37860), (60, 37929), (74, 38007), (82, 38058), (85, 38076), (92, 38103), (102, 38154), (119, 38232), (144, 38301), (155, 38343), (168, 38406), (170, 38439), (171, 38442), (175, 38529),

Gene: MacnCheese_56 Start: 39191, Stop: 40129, Start Num: 5

Candidate Starts for MacnCheese_56:

(1, 39053), (2, 39080), (3, 39116), (4, 39125), (Start: 5 @39191 has 1 MA's), (6, 39212), (7, 39224), (8, 39248), (9, 39281), (14, 39314), (17, 39335), (18, 39347), (20, 39371), (33, 39467), (36, 39482), (50, 39572), (69, 39590), (97, 39653), (100, 39668), (101, 39674), (102, 39686), (104, 39704), (119, 39752), (147, 39827), (175, 39986), (177, 40007), (179, 40019),

Gene: MarkPhew_55 Start: 38390, Stop: 39106, Start Num: 26

Candidate Starts for MarkPhew_55:

(Start: 26 @38390 has 26 MA's), (34, 38423), (37, 38447), (43, 38492), (47, 38513), (90, 38570), (95, 38594), (138, 38759), (170, 38870), (175, 38957), (179, 38990), (182, 39044),

Gene: Marshawn_54 Start: 38519, Stop: 39190, Start Num: 26

Candidate Starts for Marshawn_54:

(14, 38411), (Start: 26 @38519 has 26 MA's), (31, 38543), (34, 38552), (37, 38576), (39, 38597), (43, 38621), (47, 38642), (96, 38723), (110, 38801), (119, 38816), (128, 38834), (135, 38852), (151, 38903), (175, 39047), (179, 39080), (182, 39134),

Gene: MeaningOfLife_52 Start: 38540, Stop: 39427, Start Num: 22

Candidate Starts for MeaningOfLife_52:

(Start: 22 @38540 has 80 MA's), (25, 38558), (40, 38639), (43, 38651), (47, 38672), (60, 38741), (74, 38819), (85, 38888), (102, 38960), (111, 39005), (138, 39083), (163, 39143), (170, 39194), (171, 39197), (175, 39284), (179, 39317),

Gene: Megsy_53 Start: 37875, Stop: 38825, Start Num: 22

Candidate Starts for Megsy_53:

(Start: 22 @37875 has 80 MA's), (34, 37917), (37, 37941), (39, 37962), (40, 37974), (43, 37986), (47, 38007), (60, 38076), (Start: 72 @38133 has 4 MA's), (84, 38214), (102, 38307), (116, 38379), (119, 38385), (144, 38454), (155, 38496), (161, 38526), (168, 38559), (170, 38592), (171, 38595), (175, 38682), (179, 38715),

Gene: Miryou_50 Start: 38449, Stop: 39084, Start Num: 71

Candidate Starts for Miryou_50:

(Start: 71 @38449 has 16 MA's), (77, 38464), (79, 38488), (Start: 87 @38524 has 1 MA's), (88, 38527), (102, 38599), (107, 38623), (121, 38680), (126, 38698), (129, 38704), (139, 38731), (153, 38764), (173, 38911), (175, 38938),

Gene: Murucutumbu_52 Start: 38586, Stop: 39530, Start Num: 22

Candidate Starts for Murucutumbu_52:

(Start: 22 @38586 has 80 MA's), (34, 38622), (37, 38646), (39, 38667), (43, 38691), (47, 38712), (49, 38718), (60, 38781), (65, 38802), (Start: 72 @38838 has 4 MA's), (102, 39012), (119, 39090), (144, 39159), (146, 39168), (155, 39201), (168, 39264), (171, 39300), (175, 39387), (179, 39420),

Gene: Mynx_52 Start: 37932, Stop: 38876, Start Num: 22

Candidate Starts for Mynx_52:

(Start: 22 @37932 has 80 MA's), (27, 37965), (34, 37974), (37, 37998), (39, 38019), (40, 38031), (43, 38043), (47, 38064), (49, 38070), (60, 38133), (74, 38211), (82, 38262), (85, 38280), (92, 38307), (102, 38358), (119, 38436), (144, 38505), (155, 38547), (168, 38610), (170, 38643), (171, 38646), (175, 38733), (179, 38766),

Gene: Nibb_54 Start: 38079, Stop: 38801, Start Num: 26

Candidate Starts for Nibb_54:

(Start: 26 @38079 has 26 MA's), (30, 38100), (34, 38112), (37, 38136), (43, 38181), (47, 38202), (64, 38223), (90, 38259), (138, 38448), (140, 38460), (143, 38469), (156, 38514), (170, 38559), (175, 38646), (179, 38679), (182, 38733),

Gene: Niklas_54 Start: 38606, Stop: 39313, Start Num: 26

Candidate Starts for Niklas_54:

(Start: 26 @38606 has 26 MA's), (32, 38621), (34, 38630), (37, 38654), (39, 38675), (40, 38687), (43, 38699), (47, 38720), (59, 38786), (102, 38879), (130, 38987), (144, 38990), (163, 39029), (170, 39080), (171, 39083), (175, 39170), (179, 39203), (181, 39242),

Gene: OkiRoe_46 Start: 36120, Stop: 36755, Start Num: 71

Candidate Starts for OkiRoe_46:

(39, 35943), (58, 36051), (Start: 71 @36120 has 16 MA's), (77, 36135), (79, 36159), (Start: 87 @36195 has 1 MA's), (88, 36198), (102, 36270), (107, 36294), (121, 36351), (126, 36369), (129, 36375), (139, 36402), (153, 36435), (173, 36582), (175, 36609),

Gene: Omnicron_49 Start: 35732, Stop: 36313, Start Num: 72

Candidate Starts for Omnicron_49:

(42, 35576), (43, 35582), (44, 35585), (Start: 72 @35732 has 4 MA's), (Start: 87 @35810 has 1 MA's), (88, 35813), (102, 35885), (106, 35903), (112, 35927), (114, 35936), (115, 35939), (122, 35957), (134, 35990), (157, 36032), (171, 36110), (175, 36176),

Gene: Padfoot_51 Start: 37928, Stop: 38869, Start Num: 22

Candidate Starts for Padfoot_51:

(Start: 22 @37928 has 80 MA's), (34, 37967), (37, 37991), (39, 38012), (40, 38024), (43, 38036), (47, 38057), (60, 38126), (74, 38204), (82, 38255), (85, 38273), (92, 38300), (102, 38351), (119, 38429), (144, 38498), (155, 38540), (168, 38603), (170, 38636), (171, 38639), (175, 38726),

Gene: Padpat_53 Start: 37607, Stop: 38551, Start Num: 22

Candidate Starts for Padpat_53:

(Start: 22 @37607 has 80 MA's), (27, 37640), (34, 37649), (37, 37673), (39, 37694), (40, 37706), (43, 37718), (47, 37739), (49, 37745), (60, 37808), (74, 37886), (82, 37937), (85, 37955), (92, 37982), (102, 38033), (119, 38111), (144, 38180), (155, 38222), (168, 38285), (170, 38318), (171, 38321), (175, 38408),

Gene: Paola_46 Start: 36118, Stop: 36753, Start Num: 71

Candidate Starts for Paola_46:

(39, 35941), (58, 36049), (Start: 71 @36118 has 16 MA's), (77, 36133), (79, 36157), (Start: 87 @36193 has 1 MA's), (88, 36196), (102, 36268), (107, 36292), (121, 36349), (126, 36367), (129, 36373), (138, 36397), (153, 36433), (173, 36580), (175, 36607),

Gene: Peanam_54 Start: 38564, Stop: 39271, Start Num: 26

Candidate Starts for Peanam_54:

(Start: 26 @38564 has 26 MA's), (32, 38579), (34, 38588), (37, 38612), (39, 38633), (40, 38645), (43, 38657), (47, 38678), (59, 38744), (102, 38837), (130, 38945), (144, 38948), (163, 38987), (170, 39038), (171, 39041), (175, 39128), (179, 39161), (181, 39200),

Gene: Peel_51 Start: 37733, Stop: 38674, Start Num: 22

Candidate Starts for Peel_51:

(Start: 22 @37733 has 80 MA's), (34, 37772), (37, 37796), (39, 37817), (40, 37829), (43, 37841), (47, 37862), (60, 37931), (74, 38009), (82, 38060), (85, 38078), (92, 38105), (102, 38156), (119, 38234), (144, 38303), (155, 38345), (168, 38408), (170, 38441), (171, 38444), (175, 38531),

Gene: PhelpsODU_54 Start: 37429, Stop: 38442, Start Num: 26

Candidate Starts for PhelpsODU_54:

(Start: 26 @37429 has 26 MA's), (34, 37459), (37, 37483), (39, 37504), (40, 37516), (43, 37528), (45, 37543), (47, 37549), (68, 37621), (93, 37723), (102, 37774), (118, 37849), (121, 37855), (126, 37873), (136, 37897), (141, 37915), (144, 37924), (151, 37957), (158, 38005), (159, 38032), (170, 38188), (171, 38191), (175, 38275), (179, 38308), (182, 38362),

Gene: Phrank_55 Start: 37386, Stop: 38312, Start Num: 26

Candidate Starts for Phrank_55:

(13, 37263), (15, 37281), (Start: 26 @37386 has 26 MA's), (34, 37419), (37, 37443), (39, 37464), (40, 37476), (43, 37488), (47, 37509), (68, 37566), (69, 37572), (84, 37620), (93, 37662), (118, 37788), (121, 37794), (136, 37836), (141, 37854), (144, 37863), (151, 37896), (158, 37944), (159, 37974), (170, 38040), (171, 38043), (175, 38127), (179, 38160), (182, 38214),

Gene: Piatt_51 Start: 37928, Stop: 38869, Start Num: 22

Candidate Starts for Piatt_51:

(Start: 22 @37928 has 80 MA's), (34, 37967), (37, 37991), (39, 38012), (40, 38024), (43, 38036), (47, 38057), (60, 38126), (74, 38204), (82, 38255), (85, 38273), (92, 38300), (102, 38351), (119, 38429), (144, 38498), (155, 38540), (168, 38603), (170, 38636), (171, 38639), (175, 38726),

Gene: Pokerus_50 Start: 37654, Stop: 38604, Start Num: 22

Candidate Starts for Pokerus_50:

(Start: 22 @37654 has 80 MA's), (34, 37696), (37, 37720), (39, 37741), (40, 37753), (43, 37765), (47, 37786), (60, 37855), (Start: 72 @37912 has 4 MA's), (75, 37936), (84, 37993), (102, 38086), (103, 38098), (119, 38164), (144, 38233), (155, 38275), (168, 38338), (170, 38371), (171, 38374), (175, 38461),

Gene: Prithvi_52 Start: 37816, Stop: 38760, Start Num: 22

Candidate Starts for Prithvi_52:

(Start: 22 @37816 has 80 MA's), (34, 37858), (37, 37882), (39, 37903), (40, 37915), (43, 37927), (47, 37948), (54, 37990), (60, 38017), (74, 38095), (77, 38113), (82, 38146), (85, 38164), (92, 38191), (102, 38242), (116, 38314), (119, 38320), (144, 38389), (155, 38431), (168, 38494), (170, 38527), (171, 38530), (175, 38617), (179, 38650),

Gene: Psycho_46 Start: 36276, Stop: 36878, Start Num: 71

Candidate Starts for Psycho_46:

(Start: 71 @36276 has 16 MA's), (77, 36291), (Start: 87 @36351 has 1 MA's), (88, 36354), (102, 36429), (106, 36447), (108, 36453), (124, 36513), (132, 36537), (152, 36573), (157, 36597), (168, 36639), (171, 36675), (175, 36741), (176, 36753), (180, 36789),

Gene: QuincyRose_50 Start: 38046, Stop: 38933, Start Num: 22

Candidate Starts for QuincyRose_50:

(Start: 22 @38046 has 80 MA's), (25, 38064), (34, 38088), (37, 38112), (40, 38145), (43, 38157), (47, 38178), (60, 38247), (74, 38325), (82, 38376), (85, 38394), (102, 38466), (111, 38511), (138, 38589), (163, 38649), (168, 38667), (170, 38700), (171, 38703), (175, 38790), (179, 38823),

Gene: Ramen_52 Start: 37618, Stop: 38559, Start Num: 22

Candidate Starts for Ramen_52:

(Start: 22 @37618 has 80 MA's), (34, 37657), (37, 37681), (39, 37702), (40, 37714), (43, 37726), (47, 37747), (60, 37816), (74, 37894), (82, 37945), (85, 37963), (92, 37990), (102, 38041), (119, 38119), (144, 38188), (155, 38230), (168, 38293), (170, 38326), (171, 38329), (175, 38416),

Gene: Rando14_48 Start: 35246, Stop: 35872, Start Num: 63

Candidate Starts for Rando14_48:

(43, 35150), (53, 35207), (Start: 63 @35246 has 1 MA's), (Start: 72 @35297 has 4 MA's), (Start: 87 @35375 has 1 MA's), (88, 35378), (102, 35450), (106, 35468), (112, 35492), (115, 35504), (122, 35522), (134, 35555), (157, 35597), (171, 35669), (175, 35735),

Gene: Rapunzel97_52 Start: 37614, Stop: 38555, Start Num: 22

Candidate Starts for Rapunzel97_52:

(Start: 22 @37614 has 80 MA's), (34, 37653), (37, 37677), (39, 37698), (40, 37710), (43, 37722), (47, 37743), (60, 37812), (74, 37890), (82, 37941), (85, 37959), (92, 37986), (102, 38037), (119, 38115), (144, 38184), (155, 38226), (168, 38289), (170, 38322), (171, 38325), (175, 38412), (179, 38445),

Gene: Rosmarinus_51 Start: 37719, Stop: 38660, Start Num: 22

Candidate Starts for Rosmarinus_51:

(Start: 22 @37719 has 80 MA's), (34, 37758), (37, 37782), (39, 37803), (40, 37815), (43, 37827), (47, 37848), (60, 37917), (74, 37995), (82, 38046), (85, 38064), (92, 38091), (102, 38142), (119, 38220), (144, 38289), (155, 38331), (168, 38394), (170, 38427), (171, 38430), (175, 38517),

Gene: SamuelLPlaqson_52 Start: 38502, Stop: 39452, Start Num: 22

Candidate Starts for SamuelLPlaqson_52:

(Start: 22 @38502 has 80 MA's), (34, 38544), (37, 38568), (39, 38589), (40, 38601), (43, 38613), (47, 38634), (60, 38703), (Start: 72 @38760 has 4 MA's), (75, 38784), (84, 38841), (102, 38934), (144, 39081), (146, 39090), (168, 39186), (170, 39219), (171, 39222), (175, 39309), (179, 39342),

Gene: Shaobing_54 Start: 38582, Stop: 39289, Start Num: 26

Candidate Starts for Shaobing_54:

(Start: 26 @38582 has 26 MA's), (32, 38597), (34, 38606), (37, 38630), (39, 38651), (40, 38663), (43, 38675), (47, 38696), (59, 38762), (102, 38855), (130, 38963), (144, 38966), (163, 39005), (170, 39056), (171, 39059), (175, 39146), (179, 39179), (181, 39218),

Gene: ShiaSurprise_52 Start: 37928, Stop: 38869, Start Num: 22

Candidate Starts for ShiaSurprise_52:

(Start: 22 @37928 has 80 MA's), (34, 37967), (37, 37991), (39, 38012), (40, 38024), (43, 38036), (47, 38057), (60, 38126), (74, 38204), (82, 38255), (85, 38273), (92, 38300), (102, 38351), (119, 38429), (144, 38498), (155, 38540), (168, 38603), (170, 38636), (171, 38639), (175, 38726),

Gene: SirPhilip_54 Start: 38933, Stop: 39697, Start Num: 26

Candidate Starts for SirPhilip_54:

(Start: 26 @38933 has 26 MA's), (34, 38963), (39, 39008), (43, 39032), (47, 39053), (105, 39245), (113, 39278), (118, 39299), (121, 39305), (149, 39392), (175, 39530), (179, 39563),

Gene: Slimphazie_51 Start: 37614, Stop: 38555, Start Num: 22

Candidate Starts for Slimphazie_51:

(Start: 22 @37614 has 80 MA's), (34, 37653), (37, 37677), (39, 37698), (40, 37710), (43, 37722), (47, 37743), (60, 37812), (74, 37890), (82, 37941), (85, 37959), (92, 37986), (102, 38037), (119, 38115), (144, 38184), (155, 38226), (168, 38289), (170, 38322), (171, 38325), (175, 38412), (179, 38445),

Gene: SoSeph_46 Start: 36269, Stop: 36925, Start Num: 72

Candidate Starts for SoSeph_46:

(23, 35981), (38, 36077), (Start: 72 @36269 has 4 MA's), (77, 36287), (78, 36293), (Start: 87 @36347 has 1 MA's), (107, 36446), (121, 36503), (126, 36521), (129, 36527), (138, 36551), (153, 36605), (173, 36752), (175, 36779), (178, 36803),

Gene: Spock_51 Start: 37732, Stop: 38673, Start Num: 22

Candidate Starts for Spock_51:

(Start: 22 @37732 has 80 MA's), (34, 37771), (37, 37795), (39, 37816), (40, 37828), (43, 37840), (47, 37861), (60, 37930), (74, 38008), (82, 38059), (85, 38077), (92, 38104), (102, 38155), (119, 38233), (144, 38302), (155, 38344), (168, 38407), (170, 38440), (171, 38443), (175, 38530),

Gene: Stinson_52 Start: 38106, Stop: 39053, Start Num: 22

Candidate Starts for Stinson_52:

(Start: 22 @38106 has 80 MA's), (34, 38142), (37, 38166), (39, 38187), (43, 38211), (47, 38232), (49, 38238), (60, 38301), (65, 38322), (67, 38331), (70, 38355), (Start: 72 @38358 has 4 MA's), (75, 38382), (84, 38439), (102, 38532), (119, 38610), (144, 38682), (146, 38691), (168, 38787), (170, 38820), (171, 38823), (175, 38910), (179, 38943),

Gene: Sulley_51 Start: 37858, Stop: 38718, Start Num: 22

Candidate Starts for Sulley_51:

(Start: 22 @37858 has 80 MA's), (25, 37876), (34, 37900), (37, 37924), (40, 37957), (43, 37969), (47, 37990), (60, 38059), (84, 38107), (102, 38200), (119, 38278), (144, 38347), (155, 38389), (168, 38452), (170, 38485), (171, 38488), (175, 38575),

Gene: Sunflower1121_58 Start: 38639, Stop: 39289, Start Num: 26

Candidate Starts for Sunflower1121_58:

(12, 38513), (13, 38522), (Start: 26 @38639 has 26 MA's), (29, 38651), (34, 38666), (37, 38690), (39, 38711), (98, 38816), (99, 38822), (106, 38843), (107, 38846), (128, 38870), (162, 38939), (166, 38969), (170, 39035), (171, 39038), (175, 39122), (179, 39155), (182, 39209),

Gene: Syra333_57 Start: 38303, Stop: 39322, Start Num: 26

Candidate Starts for Syra333_57:

(13, 38186), (Start: 26 @38303 has 26 MA's), (29, 38315), (34, 38330), (37, 38354), (39, 38375), (51, 38441), (54, 38462), (56, 38465), (61, 38489), (84, 38585), (102, 38678), (126, 38774), (144, 38828), (155, 38870), (162, 38954), (166, 38984), (170, 39050), (171, 39053), (175, 39137), (179, 39170), (182, 39224),

Gene: TClif_56 Start: 38682, Stop: 39194, Start Num: 117

Candidate Starts for TClif_56:

(117, 38682), (125, 38697), (127, 38706), (137, 38730), (142, 38751), (148, 38775), (154, 38796), (161, 38832), (167, 38868), (169, 38889), (170, 38925), (171, 38928), (175, 39012), (179, 39045), (182, 39099),

Gene: Tachez_51 Start: 37576, Stop: 38517, Start Num: 22

Candidate Starts for Tachez_51:

(Start: 22 @37576 has 80 MA's), (34, 37615), (37, 37639), (39, 37660), (40, 37672), (43, 37684), (47, 37705), (60, 37774), (74, 37852), (82, 37903), (85, 37921), (92, 37948), (102, 37999), (119, 38077), (144, 38146), (155, 38188), (168, 38251), (170, 38284), (171, 38287), (175, 38374),

Gene: TaiwanKao_53 Start: 37872, Stop: 38816, Start Num: 22

Candidate Starts for TaiwanKao_53:

(Start: 22 @37872 has 80 MA's), (34, 37914), (37, 37938), (39, 37959), (40, 37971), (43, 37983), (47, 38004), (60, 38073), (74, 38151), (82, 38202), (85, 38220), (91, 38235), (92, 38247), (102, 38298), (116, 38370), (119, 38376), (144, 38445), (155, 38487), (161, 38517), (170, 38583), (171, 38586), (175, 38673), (179, 38706),

Gene: Thyatira_49 Start: 38470, Stop: 39090, Start Num: 71

Candidate Starts for Thyatira_49:

(39, 38293), (Start: 71 @38470 has 16 MA's), (77, 38485), (79, 38509), (Start: 87 @38545 has 1 MA's), (88, 38548), (102, 38620), (107, 38644), (121, 38701), (126, 38719), (129, 38725), (153, 38776), (173, 38923), (175, 38950), (178, 38974),

Gene: Tierra_55 Start: 38197, Stop: 39123, Start Num: 26

Candidate Starts for Tierra_55:

(15, 38092), (Start: 26 @38197 has 26 MA's), (34, 38230), (37, 38254), (39, 38275), (40, 38287), (43, 38299), (47, 38320), (68, 38377), (69, 38383), (84, 38431), (93, 38473), (118, 38599), (121, 38605), (136, 38647), (141, 38665), (144, 38674), (151, 38707), (158, 38755), (159, 38785), (170, 38851), (171, 38854), (175, 38938), (179, 38971), (182, 39025),

Gene: TiniBug_52 Start: 38498, Stop: 39448, Start Num: 22

Candidate Starts for TiniBug_52:

(Start: 22 @38498 has 80 MA's), (34, 38540), (37, 38564), (39, 38585), (40, 38597), (43, 38609), (47, 38630), (60, 38699), (Start: 72 @38756 has 4 MA's), (75, 38780), (84, 38837), (102, 38930), (144, 39077), (146, 39086), (168, 39182), (170, 39215), (171, 39218), (175, 39305), (179, 39338),

Gene: Tiri_52 Start: 37906, Stop: 38847, Start Num: 22

Candidate Starts for Tiri_52:

(Start: 22 @37906 has 80 MA's), (34, 37945), (37, 37969), (39, 37990), (40, 38002), (43, 38014), (47, 38035), (60, 38104), (74, 38182), (82, 38233), (85, 38251), (92, 38278), (102, 38329), (119, 38407), (144, 38476), (155, 38518), (168, 38581), (170, 38614), (171, 38617), (175, 38704), (179, 38737),

Gene: Topper_51 Start: 37731, Stop: 38672, Start Num: 22

Candidate Starts for Topper_51:

(Start: 22 @37731 has 80 MA's), (34, 37770), (37, 37794), (39, 37815), (40, 37827), (43, 37839), (47, 37860), (60, 37929), (74, 38007), (82, 38058), (85, 38076), (92, 38103), (102, 38154), (119, 38232), (144, 38301), (155, 38343), (168, 38406), (170, 38439), (171, 38442), (175, 38529),

Gene: TreyKay_52 Start: 37816, Stop: 38760, Start Num: 22

Candidate Starts for TreyKay_52:

(Start: 22 @37816 has 80 MA's), (34, 37858), (37, 37882), (39, 37903), (40, 37915), (43, 37927), (47, 37948), (54, 37990), (60, 38017), (74, 38095), (77, 38113), (82, 38146), (85, 38164), (92, 38191), (102, 38242), (116, 38314), (119, 38320), (144, 38389), (155, 38431), (168, 38494), (170, 38527), (171, 38530), (175, 38617), (179, 38650),

Gene: TruffulaTree_51 Start: 37610, Stop: 38551, Start Num: 22

Candidate Starts for TruffulaTree_51:

(Start: 22 @37610 has 80 MA's), (34, 37649), (37, 37673), (39, 37694), (40, 37706), (43, 37718), (47, 37739), (60, 37808), (74, 37886), (82, 37937), (85, 37955), (92, 37982), (102, 38033), (119, 38111), (144, 38180), (155, 38222), (168, 38285), (170, 38318), (171, 38321), (175, 38408), (179, 38441),

Gene: Twitch_51 Start: 37733, Stop: 38674, Start Num: 22

Candidate Starts for Twitch_51:

(Start: 22 @37733 has 80 MA's), (34, 37772), (37, 37796), (39, 37817), (40, 37829), (43, 37841), (47, 37862), (60, 37931), (74, 38009), (82, 38060), (85, 38078), (92, 38105), (102, 38156), (119, 38234), (144, 38303), (155, 38345), (168, 38408), (170, 38441), (171, 38444), (175, 38531),

Gene: Unicorn_54 Start: 37429, Stop: 38442, Start Num: 26

Candidate Starts for Unicorn_54:

(Start: 26 @37429 has 26 MA's), (34, 37459), (37, 37483), (39, 37504), (40, 37516), (43, 37528), (45, 37543), (47, 37549), (68, 37621), (93, 37723), (102, 37774), (118, 37849), (121, 37855), (126, 37873), (136, 37897), (141, 37915), (144, 37924), (151, 37957), (158, 38005), (159, 38032), (170, 38188), (171, 38191), (175, 38275), (179, 38308), (182, 38362),

Gene: Urkel_52 Start: 38502, Stop: 39452, Start Num: 22

Candidate Starts for Urkel_52:

(Start: 22 @38502 has 80 MA's), (34, 38544), (37, 38568), (39, 38589), (40, 38601), (43, 38613), (47, 38634), (60, 38703), (Start: 72 @38760 has 4 MA's), (75, 38784), (84, 38841), (102, 38934), (144, 39081), (146, 39090), (168, 39186), (170, 39219), (171, 39222), (175, 39309), (179, 39342),

Gene: Validus_56 Start: 38620, Stop: 39468, Start Num: 26

Candidate Starts for Validus_56:

(10, 38473), (11, 38482), (13, 38500), (19, 38545), (Start: 26 @38620 has 26 MA's), (32, 38635), (34, 38644), (37, 38668), (39, 38689), (43, 38713), (47, 38734), (59, 38800), (73, 38869), (74, 38881), (82, 38932), (85, 38950), (92, 38977), (102, 39028), (116, 39100), (130, 39136), (144, 39139), (170, 39232), (171, 39235), (175, 39322), (179, 39355), (181, 39394),

Gene: Veliki_52 Start: 37650, Stop: 38537, Start Num: 22

Candidate Starts for Veliki_52:

(Start: 22 @37650 has 80 MA's), (25, 37668), (37, 37716), (40, 37749), (43, 37761), (47, 37782), (60, 37851), (74, 37929), (82, 37980), (85, 37998), (102, 38070), (111, 38115), (138, 38193), (163, 38253), (168, 38271), (170, 38304), (171, 38307), (175, 38394), (179, 38427),

Gene: Waterfoul_47 Start: 36361, Stop: 36987, Start Num: 71

Candidate Starts for Waterfoul_47:

(39, 36184), (44, 36211), (Start: 71 @36361 has 16 MA's), (77, 36376), (79, 36400), (Start: 87 @36436 has 1 MA's), (88, 36439), (102, 36511), (107, 36535), (121, 36592), (126, 36610), (129, 36616), (153, 36667), (173, 36814), (175, 36841), (178, 36865),

Gene: Ximenita_58 Start: 38492, Stop: 39322, Start Num: 26

Candidate Starts for Ximenita_58:

(12, 38366), (13, 38375), (Start: 26 @38492 has 26 MA's), (29, 38504), (39, 38564), (43, 38588), (45, 38603), (47, 38609), (84, 38654), (102, 38747), (120, 38825), (126, 38843), (144, 38897), (155, 38939), (161, 38975), (167, 39011), (169, 39032), (170, 39065), (171, 39068), (175, 39152), (179, 39185),

Gene: YoureAdopted_50 Start: 37815, Stop: 38675, Start Num: 22

Candidate Starts for YoureAdopted_50:

(Start: 22 @37815 has 80 MA's), (25, 37833), (34, 37857), (37, 37881), (40, 37914), (43, 37926), (47, 37947), (60, 38016), (84, 38064), (102, 38157), (119, 38235), (144, 38304), (155, 38346), (168, 38409), (170, 38442), (171, 38445), (175, 38532), (179, 38565), (181, 38604),

Gene: Yuna_58 Start: 39426, Stop: 40163, Start Num: 26

Candidate Starts for Yuna_58:

(Start: 26 @39426 has 26 MA's), (30, 39444), (35, 39465), (37, 39480), (40, 39513), (43, 39525), (47, 39546), (64, 39567), (83, 39579), (90, 39603), (102, 39672), (103, 39684), (138, 39789), (143, 39810), (161, 39879), (165, 39891), (175, 39993), (179, 40026),

Gene: Yunkel11_54 Start: 37403, Stop: 38347, Start Num: 22

Candidate Starts for Yunkel11_54:

(Start: 22 @37403 has 80 MA's), (34, 37442), (37, 37466), (39, 37487), (40, 37499), (43, 37511), (47, 37532), (54, 37574), (60, 37601), (82, 37733), (85, 37751), (102, 37829), (119, 37907), (144, 37976), (155, 38018), (170, 38114), (171, 38117), (175, 38204),

Gene: Zabiza_47 Start: 33921, Stop: 34862, Start Num: 22

Candidate Starts for Zabiza_47:

(Start: 22 @33921 has 80 MA's), (34, 33960), (37, 33984), (39, 34005), (40, 34017), (43, 34029), (47, 34050), (60, 34119), (74, 34197), (82, 34248), (85, 34266), (92, 34293), (102, 34344), (119, 34422), (144, 34491), (155, 34533), (168, 34596), (170, 34629), (171, 34632), (175, 34719),

Gene: Zavala_53 Start: 37892, Stop: 38836, Start Num: 22

Candidate Starts for Zavala_53:

(Start: 22 @37892 has 80 MA's), (27, 37925), (34, 37934), (37, 37958), (39, 37979), (40, 37991), (43, 38003), (47, 38024), (49, 38030), (60, 38093), (74, 38171), (82, 38222), (85, 38240), (92, 38267), (102, 38318), (119, 38396), (144, 38465), (155, 38507), (168, 38570), (170, 38603), (171, 38606), (175, 38693), (179, 38726),