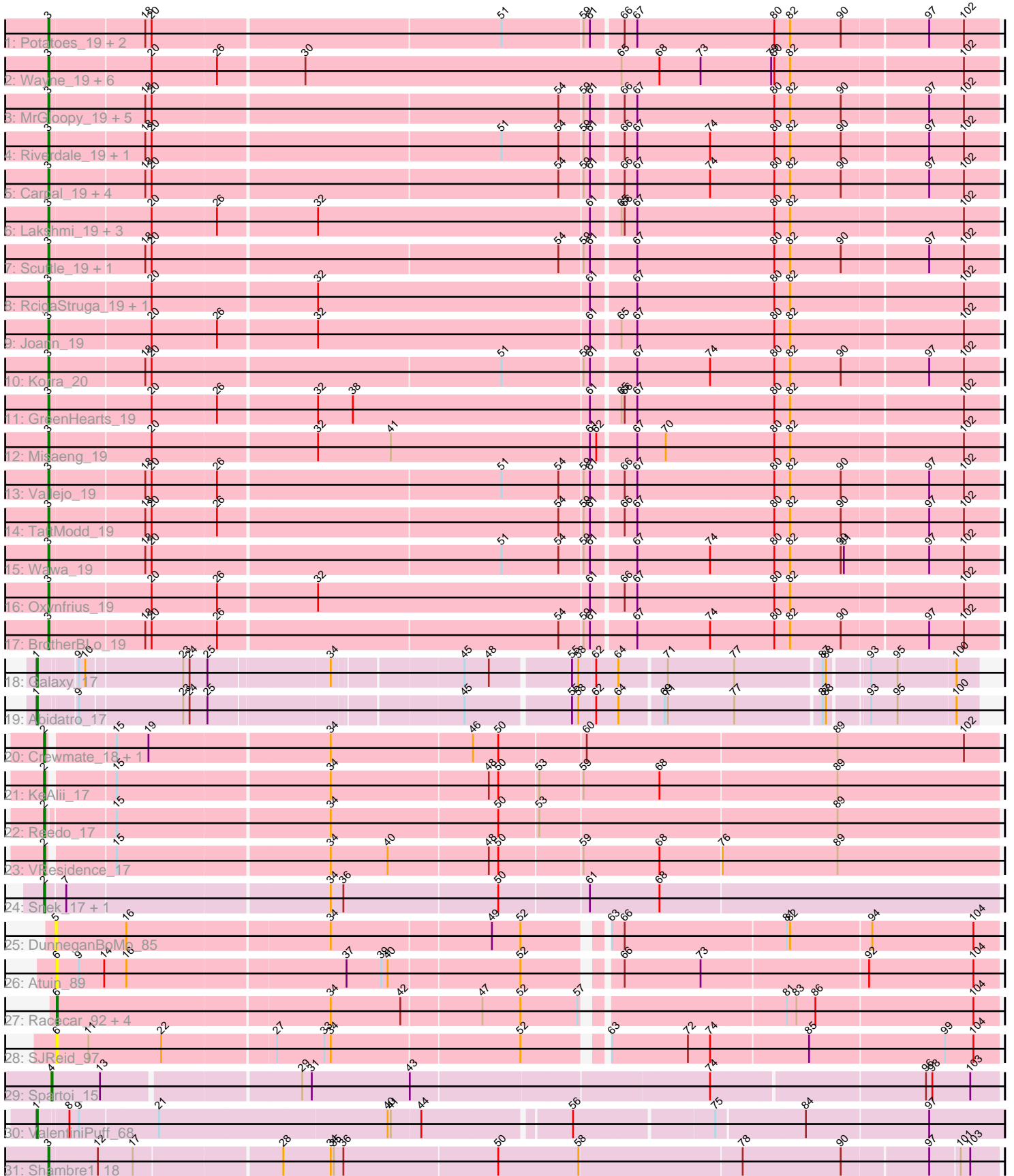


Pham 169994



Note: Tracks are now grouped by subcluster and scaled. Switching in subcluster is indicated by changes in track color. Track scale is now set by default to display the region 30 bp upstream of start 1 to 30 bp downstream of the last possible start. If this default region is judged to be packed too tightly with annotated starts, the track will be further scaled to only show that region of the ORF with annotated starts. This action will be indicated by adding "Zoomed" to the title. For starts, yellow indicates the location of called starts comprised solely of Glimmer/GeneMark auto-annotations, green indicates the location of called starts with at least 1 manual gene annotation.

Pham 169994 Report

This analysis was run 07/09/24 on database version 566.

Pham number 169994 has 60 members, 9 are drafts.

Phages represented in each track:

- Track 1 : Potatoes_19, Cholula_19, Immaculata_19
- Track 2 : Wayne_19, Suppi_19, CallieOMalley_19, Canowicakte_19, Litotes_19, AppleCider_19, PartyCup_19
- Track 3 : MrGloopy_19, Jumboset_19, Fluke_19, MeganNoll_19, RAP15_19, Savage2526_19
- Track 4 : Riverdale_19, Rozby_19
- Track 5 : Carpal_19, Dino_19, Glenn_19, Kalizoi_19, Zorro_19
- Track 6 : Lakshmi_19, Albanese_19, Greenhouse_19, Nubia_19
- Track 7 : Scuttle_19, Beethoven_19
- Track 8 : RcigaStruga_19, Huntingdon_19
- Track 9 : Joann_19
- Track 10 : Korra_20
- Track 11 : GreenHearts_19
- Track 12 : Misaeng_19
- Track 13 : Vallejo_19
- Track 14 : TattModd_19
- Track 15 : Wawa_19
- Track 16 : Oxynfrius_19
- Track 17 : BrotherBLo_19
- Track 18 : Galaxy_17
- Track 19 : Abidatro_17
- Track 20 : Crewmate_18, ObiToo_17
- Track 21 : KeAlii_17
- Track 22 : Reedo_17
- Track 23 : VResidence_17
- Track 24 : Snek_17, Tweety19_17
- Track 25 : DunneganBoMo_85
- Track 26 : Atuin_89
- Track 27 : Racecar_92, Talia1610_94, Mimi_97, Bloom_95, Patbob_92
- Track 28 : SJReid_97
- Track 29 : Spartoi_15
- Track 30 : ValentiniPuff_68
- Track 31 : Shambre1_18

Summary of Final Annotations (See graph section above for start numbers):

The start number called the most often in the published annotations is 3, it was called in 39 of the 51 non-draft genes in the pham.

Genes that call this "Most Annotated" start:

- Albanese_19, AppleCider_19, Beethoven_19, BrotherBLo_19, CallieOMalley_19, Canowicakte_19, Carpal_19, Cholula_19, Dino_19, Fluke_19, Glenn_19, GreenHearts_19, Greenhouse_19, Huntingdon_19, Immaculata_19, Joann_19, Jumboset_19, Kalizoi_19, Korra_20, Lakshmi_19, Litotes_19, MeganNoll_19, Misaeng_19, MrGloopy_19, Nubia_19, Oxynfrius_19, PartyCup_19, Potatoes_19, RAP15_19, RcigaStruga_19, Riverdale_19, Rozby_19, Savage2526_19, Scuttle_19, Shambre1_18, Suppi_19, TattModd_19, Vallejo_19, Wawa_19, Wayne_19, Zorro_19,

Genes that have the "Most Annotated" start but do not call it:

-

Genes that do not have the "Most Annotated" start:

- Abidatro_17, Atuin_89, Bloom_95, Crewmate_18, DunneganBoMo_85, Galaxy_17, KeAlii_17, Mimi_97, ObiToo_17, Patbob_92, Racecar_92, Reedo_17, SJReid_97, Snek_17, Spartoi_15, Talia1610_94, Tweety19_17, VResidence_17, ValentiniPuff_68,

Summary by start number:

Start 1:

- Found in 3 of 60 (5.0%) of genes in pham
- Manual Annotations of this start: 3 of 51
- Called 100.0% of time when present
- Phage (with cluster) where this start called: Abidatro_17 (AS1), Galaxy_17 (AS1), ValentiniPuff_68 (singleton),

Start 2:

- Found in 7 of 60 (11.7%) of genes in pham
- Manual Annotations of this start: 7 of 51
- Called 100.0% of time when present
- Phage (with cluster) where this start called: Crewmate_18 (AZ1), KeAlii_17 (AZ1), ObiToo_17 (AZ1), Reedo_17 (AZ1), Snek_17 (AZ3), Tweety19_17 (AZ3), VResidence_17 (AZ1),

Start 3:

- Found in 41 of 60 (68.3%) of genes in pham
- Manual Annotations of this start: 39 of 51
- Called 100.0% of time when present
- Phage (with cluster) where this start called: Albanese_19 (AK), AppleCider_19 (AK), Beethoven_19 (AK), BrotherBLo_19 (AK), CallieOMalley_19 (AK), Canowicakte_19 (AK), Carpal_19 (AK), Cholula_19 (AK), Dino_19 (AK), Fluke_19 (AK), Glenn_19 (AK), GreenHearts_19 (AK), Greenhouse_19 (AK), Huntingdon_19 (AK), Immaculata_19 (AK), Joann_19 (AK), Jumboset_19 (AK), Kalizoi_19 (AK), Korra_20 (AK), Lakshmi_19 (AK), Litotes_19 (AK), MeganNoll_19 (AK), Misaeng_19 (AK), MrGloopy_19 (AK), Nubia_19 (AK), Oxynfrius_19 (AK), PartyCup_19 (AK), Potatoes_19 (AK), RAP15_19 (AK), RcigaStruga_19 (AK), Riverdale_19 (AK), Rozby_19 (AK), Savage2526_19 (AK), Scuttle_19 (AK), Shambre1_18 (singleton), Suppi_19 (AK), TattModd_19 (AK), Vallejo_19 (AK), Wawa_19 (AK), Wayne_19 (AK),

Zorro_19 (AK),

Start 4:

- Found in 1 of 60 (1.7%) of genes in pham
- Manual Annotations of this start: 1 of 51
- Called 100.0% of time when present
- Phage (with cluster) where this start called: Spartoi_15 (singleton),

Start 5:

- Found in 1 of 60 (1.7%) of genes in pham
- No Manual Annotations of this start.
- Called 100.0% of time when present
- Phage (with cluster) where this start called: DunneganBoMo_85 (FC),

Start 6:

- Found in 7 of 60 (11.7%) of genes in pham
- Manual Annotations of this start: 1 of 51
- Called 100.0% of time when present
- Phage (with cluster) where this start called: Atuin_89 (FC), Bloom_95 (FC), Mimi_97 (FC), Patbob_92 (FC), Racecar_92 (FC), SJReid_97 (FC), Talia1610_94 (FC),

Summary by clusters:

There are 6 clusters represented in this pham: AS1, AK, singleton, FC, AZ1, AZ3,

Info for manual annotations of cluster AK:

- Start number 3 was manually annotated 38 times for cluster AK.

Info for manual annotations of cluster AS1:

- Start number 1 was manually annotated 2 times for cluster AS1.

Info for manual annotations of cluster AZ1:

- Start number 2 was manually annotated 5 times for cluster AZ1.

Info for manual annotations of cluster AZ3:

- Start number 2 was manually annotated 2 times for cluster AZ3.

Info for manual annotations of cluster FC:

- Start number 6 was manually annotated 1 time for cluster FC.

Gene Information:

Gene: Abidatro_17 Start: 12853, Stop: 13671, Start Num: 1

Candidate Starts for Abidatro_17:

(Start: 1 @12853 has 3 MA's), (9, 12886), (23, 12979), (24, 12985), (25, 13000), (45, 13222), (55, 13315), (58, 13321), (62, 13336), (64, 13357), (69, 13396), (71, 13399), (77, 13462), (87, 13540), (88, 13543), (93, 13576), (95, 13600), (100, 13651),

Gene: Albanese_19 Start: 15218, Stop: 16090, Start Num: 3

Candidate Starts for Albanese_19:

(Start: 3 @15218 has 39 MA's), (20, 15311), (26, 15371), (32, 15461), (61, 15716), (65, 15740), (66, 15743), (67, 15755), (80, 15884), (82, 15899), (102, 16058),

Gene: AppleCider_19 Start: 15167, Stop: 16048, Start Num: 3

Candidate Starts for AppleCider_19:

(Start: 3 @15167 has 39 MA's), (20, 15260), (26, 15320), (30, 15398), (65, 15698), (68, 15734), (73, 15773), (79, 15839), (80, 15842), (82, 15857), (102, 16016),

Gene: Atuin_89 Start: 59949, Stop: 60800, Start Num: 6

Candidate Starts for Atuin_89:

(Start: 6 @59949 has 1 MA's), (9, 59970), (14, 59994), (16, 60015), (37, 60216), (39, 60249), (40, 60255), (52, 60375), (66, 60453), (73, 60525), (92, 60678), (104, 60777),

Gene: Beethoven_19 Start: 15125, Stop: 15994, Start Num: 3

Candidate Starts for Beethoven_19:

(Start: 3 @15125 has 39 MA's), (18, 15212), (20, 15218), (54, 15593), (59, 15614), (61, 15620), (67, 15659), (80, 15788), (82, 15803), (90, 15851), (97, 15929), (102, 15962),

Gene: Bloom_95 Start: 60812, Stop: 61663, Start Num: 6

Candidate Starts for Bloom_95:

(Start: 6 @60812 has 1 MA's), (34, 61064), (42, 61130), (47, 61202), (52, 61238), (57, 61292), (81, 61466), (83, 61475), (86, 61493), (104, 61640),

Gene: BrotherBLo_19 Start: 15131, Stop: 16000, Start Num: 3

Candidate Starts for BrotherBLo_19:

(Start: 3 @15131 has 39 MA's), (18, 15218), (20, 15224), (26, 15284), (54, 15599), (59, 15620), (61, 15626), (67, 15665), (74, 15734), (80, 15794), (82, 15809), (90, 15857), (97, 15935), (102, 15968),

Gene: CallieOMalley_19 Start: 15167, Stop: 16048, Start Num: 3

Candidate Starts for CallieOMalley_19:

(Start: 3 @15167 has 39 MA's), (20, 15260), (26, 15320), (30, 15398), (65, 15698), (68, 15734), (73, 15773), (79, 15839), (80, 15842), (82, 15857), (102, 16016),

Gene: Canowicakte_19 Start: 15202, Stop: 16083, Start Num: 3

Candidate Starts for Canowicakte_19:

(Start: 3 @15202 has 39 MA's), (20, 15295), (26, 15355), (30, 15433), (65, 15733), (68, 15769), (73, 15808), (79, 15874), (80, 15877), (82, 15892), (102, 16051),

Gene: Carpal_19 Start: 15132, Stop: 16001, Start Num: 3

Candidate Starts for Carpal_19:

(Start: 3 @15132 has 39 MA's), (18, 15219), (20, 15225), (54, 15600), (59, 15621), (61, 15627), (66, 15654), (67, 15666), (74, 15735), (80, 15795), (82, 15810), (90, 15858), (97, 15936), (102, 15969),

Gene: Cholula_19 Start: 15177, Stop: 16046, Start Num: 3

Candidate Starts for Cholula_19:

(Start: 3 @15177 has 39 MA's), (18, 15264), (20, 15270), (51, 15591), (59, 15666), (61, 15672), (66, 15699), (67, 15711), (80, 15840), (82, 15855), (90, 15903), (97, 15981), (102, 16014),

Gene: Crewmate_18 Start: 13486, Stop: 14358, Start Num: 2

Candidate Starts for Crewmate_18:

(Start: 2 @13486 has 7 MA's), (15, 13543), (19, 13573), (34, 13738), (46, 13870), (50, 13894), (60, 13972), (89, 14206), (102, 14326),

Gene: Dino_19 Start: 15130, Stop: 15999, Start Num: 3

Candidate Starts for Dino_19:

(Start: 3 @15130 has 39 MA's), (18, 15217), (20, 15223), (54, 15598), (59, 15619), (61, 15625), (66, 15652), (67, 15664), (74, 15733), (80, 15793), (82, 15808), (90, 15856), (97, 15934), (102, 15967),

Gene: DunneganBoMo_85 Start: 56806, Stop: 57657, Start Num: 5

Candidate Starts for DunneganBoMo_85:

(5, 56806), (16, 56872), (34, 57058), (49, 57205), (52, 57232), (63, 57298), (66, 57310), (81, 57460), (82, 57463), (94, 57538), (104, 57634),

Gene: Fluke_19 Start: 15173, Stop: 16042, Start Num: 3

Candidate Starts for Fluke_19:

(Start: 3 @15173 has 39 MA's), (18, 15260), (20, 15266), (54, 15641), (59, 15662), (61, 15668), (66, 15695), (67, 15707), (80, 15836), (82, 15851), (90, 15899), (97, 15977), (102, 16010),

Gene: Galaxy_17 Start: 12859, Stop: 13677, Start Num: 1

Candidate Starts for Galaxy_17:

(Start: 1 @12859 has 3 MA's), (9, 12892), (10, 12898), (23, 12985), (24, 12991), (25, 13006), (34, 13114), (45, 13228), (48, 13249), (55, 13321), (58, 13327), (62, 13342), (64, 13363), (71, 13405), (77, 13468), (87, 13546), (88, 13549), (93, 13582), (95, 13606), (100, 13657),

Gene: Glenn_19 Start: 15182, Stop: 16051, Start Num: 3

Candidate Starts for Glenn_19:

(Start: 3 @15182 has 39 MA's), (18, 15269), (20, 15275), (54, 15650), (59, 15671), (61, 15677), (66, 15704), (67, 15716), (74, 15785), (80, 15845), (82, 15860), (90, 15908), (97, 15986), (102, 16019),

Gene: GreenHearts_19 Start: 15265, Stop: 16137, Start Num: 3

Candidate Starts for GreenHearts_19:

(Start: 3 @15265 has 39 MA's), (20, 15358), (26, 15418), (32, 15508), (38, 15541), (61, 15763), (65, 15787), (66, 15790), (67, 15802), (80, 15931), (82, 15946), (102, 16105),

Gene: Greenhouse_19 Start: 15189, Stop: 16061, Start Num: 3

Candidate Starts for Greenhouse_19:

(Start: 3 @15189 has 39 MA's), (20, 15282), (26, 15342), (32, 15432), (61, 15687), (65, 15711), (66, 15714), (67, 15726), (80, 15855), (82, 15870), (102, 16029),

Gene: Huntingdon_19 Start: 15175, Stop: 16047, Start Num: 3

Candidate Starts for Huntingdon_19:

(Start: 3 @15175 has 39 MA's), (20, 15268), (32, 15418), (61, 15673), (67, 15712), (80, 15841), (82, 15856), (102, 16015),

Gene: Immaculata_19 Start: 15176, Stop: 16045, Start Num: 3

Candidate Starts for Immaculata_19:

(Start: 3 @15176 has 39 MA's), (18, 15263), (20, 15269), (51, 15590), (59, 15665), (61, 15671), (66, 15698), (67, 15710), (80, 15839), (82, 15854), (90, 15902), (97, 15980), (102, 16013),

Gene: Joann_19 Start: 15169, Stop: 16041, Start Num: 3

Candidate Starts for Joann_19:

(Start: 3 @15169 has 39 MA's), (20, 15262), (26, 15322), (32, 15412), (61, 15667), (65, 15691), (67, 15706), (80, 15835), (82, 15850), (102, 16009),

Gene: Jumboset_19 Start: 15125, Stop: 15994, Start Num: 3

Candidate Starts for Jumboset_19:

(Start: 3 @15125 has 39 MA's), (18, 15212), (20, 15218), (54, 15593), (59, 15614), (61, 15620), (66, 15647), (67, 15659), (80, 15788), (82, 15803), (90, 15851), (97, 15929), (102, 15962),

Gene: Kalizoi_19 Start: 15124, Stop: 15993, Start Num: 3

Candidate Starts for Kalizoi_19:

(Start: 3 @15124 has 39 MA's), (18, 15211), (20, 15217), (54, 15592), (59, 15613), (61, 15619), (66, 15646), (67, 15658), (74, 15727), (80, 15787), (82, 15802), (90, 15850), (97, 15928), (102, 15961),

Gene: KeAlii_17 Start: 13071, Stop: 13943, Start Num: 2

Candidate Starts for KeAlii_17:

(Start: 2 @13071 has 7 MA's), (15, 13128), (34, 13323), (48, 13470), (50, 13479), (53, 13515), (59, 13554), (68, 13626), (89, 13791),

Gene: Korra_20 Start: 15130, Stop: 15999, Start Num: 3

Candidate Starts for Korra_20:

(Start: 3 @15130 has 39 MA's), (18, 15217), (20, 15223), (51, 15544), (59, 15619), (61, 15625), (67, 15664), (74, 15733), (80, 15793), (82, 15808), (90, 15856), (97, 15934), (102, 15967),

Gene: Lakshmi_19 Start: 15194, Stop: 16066, Start Num: 3

Candidate Starts for Lakshmi_19:

(Start: 3 @15194 has 39 MA's), (20, 15287), (26, 15347), (32, 15437), (61, 15692), (65, 15716), (66, 15719), (67, 15731), (80, 15860), (82, 15875), (102, 16034),

Gene: Litotes_19 Start: 15152, Stop: 16033, Start Num: 3

Candidate Starts for Litotes_19:

(Start: 3 @15152 has 39 MA's), (20, 15245), (26, 15305), (30, 15383), (65, 15683), (68, 15719), (73, 15758), (79, 15824), (80, 15827), (82, 15842), (102, 16001),

Gene: MeganNoll_19 Start: 15182, Stop: 16051, Start Num: 3

Candidate Starts for MeganNoll_19:

(Start: 3 @15182 has 39 MA's), (18, 15269), (20, 15275), (54, 15650), (59, 15671), (61, 15677), (66, 15704), (67, 15716), (80, 15845), (82, 15860), (90, 15908), (97, 15986), (102, 16019),

Gene: Mimi_97 Start: 60159, Stop: 61010, Start Num: 6

Candidate Starts for Mimi_97:

(Start: 6 @60159 has 1 MA's), (34, 60411), (42, 60477), (47, 60549), (52, 60585), (57, 60639), (81, 60813), (83, 60822), (86, 60840), (104, 60987),

Gene: Misaeng_19 Start: 15239, Stop: 16111, Start Num: 3

Candidate Starts for Misaeng_19:

(Start: 3 @15239 has 39 MA's), (20, 15332), (32, 15482), (41, 15551), (61, 15737), (62, 15743), (67, 15776), (70, 15803), (80, 15905), (82, 15920), (102, 16079),

Gene: MrGloopy_19 Start: 15116, Stop: 15985, Start Num: 3

Candidate Starts for MrGloopy_19:

(Start: 3 @15116 has 39 MA's), (18, 15203), (20, 15209), (54, 15584), (59, 15605), (61, 15611), (66, 15638), (67, 15650), (80, 15779), (82, 15794), (90, 15842), (97, 15920), (102, 15953),

Gene: Nubia_19 Start: 15154, Stop: 16026, Start Num: 3

Candidate Starts for Nubia_19:

(Start: 3 @15154 has 39 MA's), (20, 15247), (26, 15307), (32, 15397), (61, 15652), (65, 15676), (66, 15679), (67, 15691), (80, 15820), (82, 15835), (102, 15994),

Gene: ObiToo_17 Start: 13223, Stop: 14095, Start Num: 2

Candidate Starts for ObiToo_17:

(Start: 2 @13223 has 7 MA's), (15, 13280), (19, 13310), (34, 13475), (46, 13607), (50, 13631), (60, 13709), (89, 13943), (102, 14063),

Gene: Oxynfrius_19 Start: 15167, Stop: 16039, Start Num: 3

Candidate Starts for Oxynfrius_19:

(Start: 3 @15167 has 39 MA's), (20, 15260), (26, 15320), (32, 15410), (61, 15665), (66, 15692), (67, 15704), (80, 15833), (82, 15848), (102, 16007),

Gene: PartyCup_19 Start: 15199, Stop: 16080, Start Num: 3

Candidate Starts for PartyCup_19:

(Start: 3 @15199 has 39 MA's), (20, 15292), (26, 15352), (30, 15430), (65, 15730), (68, 15766), (73, 15805), (79, 15871), (80, 15874), (82, 15889), (102, 16048),

Gene: Patbob_92 Start: 61031, Stop: 61882, Start Num: 6

Candidate Starts for Patbob_92:

(Start: 6 @61031 has 1 MA's), (34, 61283), (42, 61349), (47, 61421), (52, 61457), (57, 61511), (81, 61685), (83, 61694), (86, 61712), (104, 61859),

Gene: Potatoes_19 Start: 15177, Stop: 16046, Start Num: 3

Candidate Starts for Potatoes_19:

(Start: 3 @15177 has 39 MA's), (18, 15264), (20, 15270), (51, 15591), (59, 15666), (61, 15672), (66, 15699), (67, 15711), (80, 15840), (82, 15855), (90, 15903), (97, 15981), (102, 16014),

Gene: RAP15_19 Start: 15182, Stop: 16051, Start Num: 3

Candidate Starts for RAP15_19:

(Start: 3 @15182 has 39 MA's), (18, 15269), (20, 15275), (54, 15650), (59, 15671), (61, 15677), (66, 15704), (67, 15716), (80, 15845), (82, 15860), (90, 15908), (97, 15986), (102, 16019),

Gene: Racecar_92 Start: 60812, Stop: 61663, Start Num: 6

Candidate Starts for Racecar_92:

(Start: 6 @60812 has 1 MA's), (34, 61064), (42, 61130), (47, 61202), (52, 61238), (57, 61292), (81, 61466), (83, 61475), (86, 61493), (104, 61640),

Gene: RcigaStruga_19 Start: 15175, Stop: 16047, Start Num: 3

Candidate Starts for RcigaStruga_19:

(Start: 3 @15175 has 39 MA's), (20, 15268), (32, 15418), (61, 15673), (67, 15712), (80, 15841), (82, 15856), (102, 16015),

Gene: Reedo_17 Start: 13087, Stop: 13962, Start Num: 2

Candidate Starts for Reedo_17:

(Start: 2 @13087 has 7 MA's), (15, 13147), (34, 13342), (50, 13498), (53, 13534), (89, 13810),

Gene: Riverdale_19 Start: 15112, Stop: 15981, Start Num: 3

Candidate Starts for Riverdale_19:

(Start: 3 @15112 has 39 MA's), (18, 15199), (20, 15205), (51, 15526), (54, 15580), (59, 15601), (61, 15607), (66, 15634), (67, 15646), (74, 15715), (80, 15775), (82, 15790), (90, 15838), (97, 15916), (102, 15949),

Gene: Rozby_19 Start: 15113, Stop: 15982, Start Num: 3

Candidate Starts for Rozby_19:

(Start: 3 @15113 has 39 MA's), (18, 15200), (20, 15206), (51, 15527), (54, 15581), (59, 15602), (61, 15608), (66, 15635), (67, 15647), (74, 15716), (80, 15776), (82, 15791), (90, 15839), (97, 15917), (102, 15950),

Gene: SJReid_97 Start: 60651, Stop: 61502, Start Num: 6

Candidate Starts for SJReid_97:

(Start: 6 @60651 has 1 MA's), (11, 60681), (22, 60750), (27, 60852), (33, 60897), (34, 60903), (52, 61077), (63, 61143), (72, 61215), (74, 61236), (85, 61326), (99, 61452), (104, 61479),

Gene: Savage2526_19 Start: 15176, Stop: 16045, Start Num: 3

Candidate Starts for Savage2526_19:

(Start: 3 @15176 has 39 MA's), (18, 15263), (20, 15269), (54, 15644), (59, 15665), (61, 15671), (66, 15698), (67, 15710), (80, 15839), (82, 15854), (90, 15902), (97, 15980), (102, 16013),

Gene: Scuttle_19 Start: 15181, Stop: 16050, Start Num: 3

Candidate Starts for Scuttle_19:

(Start: 3 @15181 has 39 MA's), (18, 15268), (20, 15274), (54, 15649), (59, 15670), (61, 15676), (67, 15715), (80, 15844), (82, 15859), (90, 15907), (97, 15985), (102, 16018),

Gene: Shambre1_18 Start: 14673, Stop: 15542, Start Num: 3

Candidate Starts for Shambre1_18:

(Start: 3 @14673 has 39 MA's), (12, 14718), (17, 14751), (28, 14883), (34, 14928), (35, 14931), (36, 14940), (50, 15084), (58, 15159), (78, 15309), (90, 15402), (97, 15480), (101, 15507), (103, 15516),

Gene: Snek_17 Start: 12117, Stop: 12995, Start Num: 2

Candidate Starts for Snek_17:

(Start: 2 @12117 has 7 MA's), (7, 12135), (34, 12375), (36, 12387), (50, 12531), (61, 12612), (68, 12678),

Gene: Spartoi_15 Start: 11996, Stop: 12856, Start Num: 4

Candidate Starts for Spartoi_15:

(Start: 4 @11996 has 1 MA's), (13, 12041), (29, 12218), (31, 12227), (43, 12320), (74, 12593), (96, 12788), (98, 12794), (103, 12830),

Gene: Suppi_19 Start: 15202, Stop: 16083, Start Num: 3

Candidate Starts for Suppi_19:

(Start: 3 @15202 has 39 MA's), (20, 15295), (26, 15355), (30, 15433), (65, 15733), (68, 15769), (73, 15808), (79, 15874), (80, 15877), (82, 15892), (102, 16051),

Gene: Talia1610_94 Start: 60177, Stop: 61028, Start Num: 6

Candidate Starts for Talia1610_94:

(Start: 6 @60177 has 1 MA's), (34, 60429), (42, 60495), (47, 60567), (52, 60603), (57, 60657), (81, 60831), (83, 60840), (86, 60858), (104, 61005),

Gene: TattModd_19 Start: 15175, Stop: 16044, Start Num: 3

Candidate Starts for TattModd_19:

(Start: 3 @15175 has 39 MA's), (18, 15262), (20, 15268), (26, 15328), (54, 15643), (59, 15664), (61, 15670), (66, 15697), (67, 15709), (80, 15838), (82, 15853), (90, 15901), (97, 15979), (102, 16012),

Gene: Tweety19_17 Start: 12116, Stop: 12994, Start Num: 2

Candidate Starts for Tweety19_17:

(Start: 2 @12116 has 7 MA's), (7, 12134), (34, 12374), (36, 12386), (50, 12530), (61, 12611), (68, 12677),

Gene: VResidence_17 Start: 13143, Stop: 14015, Start Num: 2

Candidate Starts for VResidence_17:

(Start: 2 @13143 has 7 MA's), (15, 13200), (34, 13395), (40, 13449), (48, 13542), (50, 13551), (59, 13626), (68, 13698), (76, 13755), (89, 13863),

Gene: ValentiniPuff_68 Start: 36653, Stop: 37528, Start Num: 1

Candidate Starts for ValentiniPuff_68:

(Start: 1 @36653 has 3 MA's), (8, 36680), (9, 36689), (21, 36761), (40, 36974), (41, 36977), (44, 37004), (56, 37136), (75, 37262), (84, 37343), (97, 37457),

Gene: Vallejo_19 Start: 15114, Stop: 15983, Start Num: 3

Candidate Starts for Vallejo_19:

(Start: 3 @15114 has 39 MA's), (18, 15201), (20, 15207), (26, 15267), (51, 15528), (54, 15582), (59, 15603), (61, 15609), (66, 15636), (67, 15648), (80, 15777), (82, 15792), (90, 15840), (97, 15918), (102, 15951),

Gene: Wawa_19 Start: 15151, Stop: 16020, Start Num: 3

Candidate Starts for Wawa_19:

(Start: 3 @15151 has 39 MA's), (18, 15238), (20, 15244), (51, 15565), (54, 15619), (59, 15640), (61, 15646), (67, 15685), (74, 15754), (80, 15814), (82, 15829), (90, 15877), (91, 15880), (97, 15955), (102, 15988),

Gene: Wayne_19 Start: 15248, Stop: 16129, Start Num: 3

Candidate Starts for Wayne_19:

(Start: 3 @15248 has 39 MA's), (20, 15341), (26, 15401), (30, 15479), (65, 15779), (68, 15815), (73, 15854), (79, 15920), (80, 15923), (82, 15938), (102, 16097),

Gene: Zorro_19 Start: 15130, Stop: 15999, Start Num: 3

Candidate Starts for Zorro_19:

(Start: 3 @15130 has 39 MA's), (18, 15217), (20, 15223), (54, 15598), (59, 15619), (61, 15625), (66, 15652), (67, 15664), (74, 15733), (80, 15793), (82, 15808), (90, 15856), (97, 15934), (102, 15967),