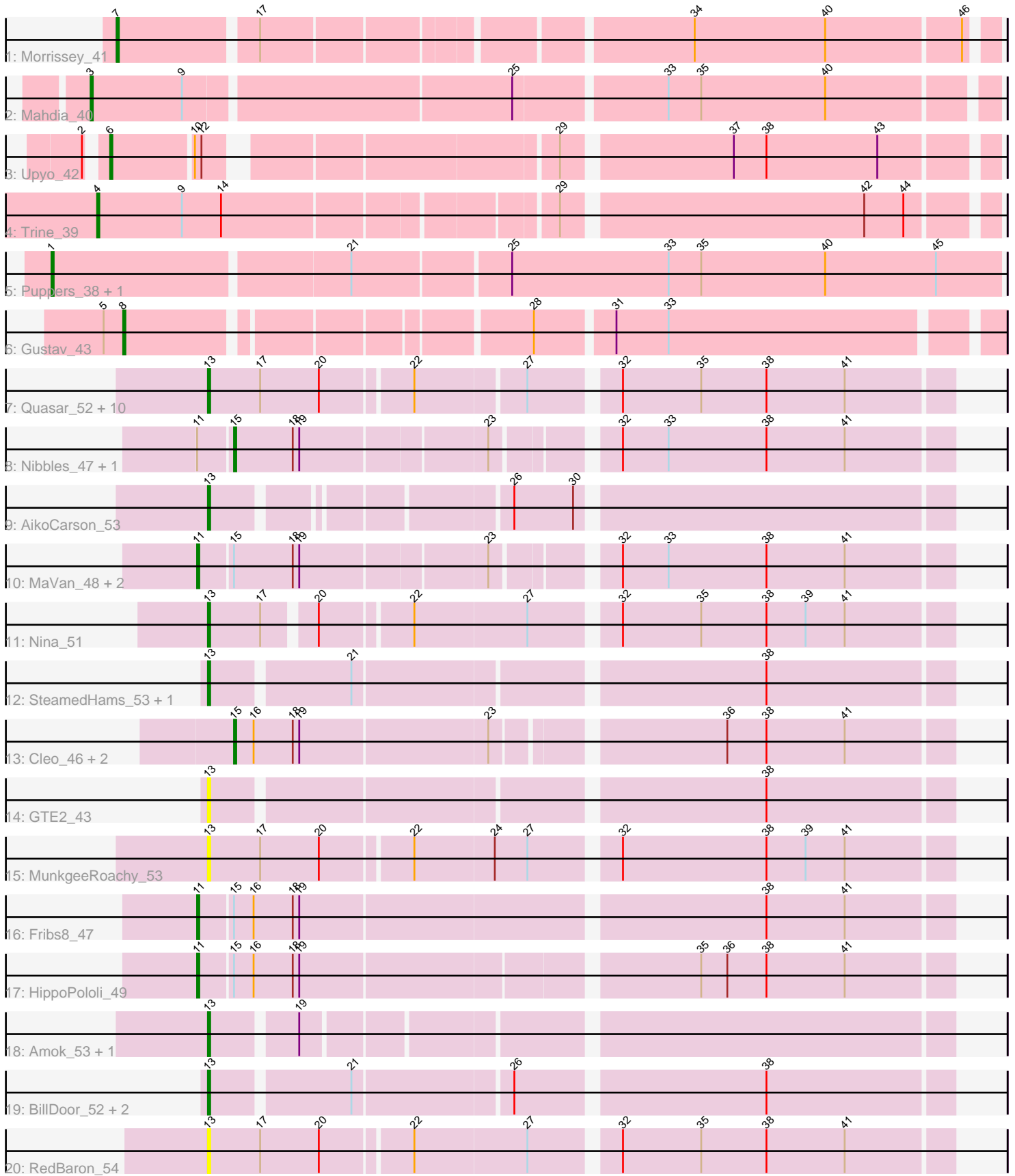


Pham 170115



Note: Tracks are now grouped by subcluster and scaled. Switching in subcluster is indicated by changes in track color. Track scale is now set by default to display the region 30 bp upstream of start 1 to 30 bp downstream of the last possible start. If this default region is judged to be packed too tightly with annotated starts, the track will be further scaled to only show that region of the ORF with annotated starts. This action will be indicated by adding "Zoomed" to the title. For starts, yellow indicates the location of called starts comprised solely of Glimmer/GeneMark auto-annotations, green indicates the location of called starts with at least 1 manual gene annotation.

Pham 170115 Report

This analysis was run 07/09/24 on database version 566.

Pham number 170115 has 40 members, 9 are drafts.

Phages represented in each track:

- Track 1 : Morrissey_41
- Track 2 : Mahdia_40
- Track 3 : Upyo_42
- Track 4 : Trine_39
- Track 5 : Puppies_38, Widow_40
- Track 6 : Gustav_43
- Track 7 : Quasar_52, Agatha_52, Sopespian_49, Cozz_50, PsychoKiller_51, SweatNTears_54, Elliott_52, Axym_51, GoldHunter_53, Burnsey_52, Typhonmachy_52
- Track 8 : Nibbles_47, Zareef_50
- Track 9 : AikoCarson_53
- Track 10 : MaVan_48, Azira_48, Survivors_48
- Track 11 : Nina_51
- Track 12 : SteamedHams_53, Tolls_53
- Track 13 : Cleo_46, Dre3_47, Gibbous_47
- Track 14 : GTE2_43
- Track 15 : MunkgeeRoachy_53
- Track 16 : Fribs8_47
- Track 17 : HippoPololi_49
- Track 18 : Amok_53, Emalyn_51
- Track 19 : BillDoor_52, AndPeggy_49, Yarn_49
- Track 20 : RedBaron_54

Summary of Final Annotations (See graph section above for start numbers):

The start number called the most often in the published annotations is 13, it was called in 15 of the 31 non-draft genes in the pham.

Genes that call this "Most Annotated" start:

- Agatha_52, AikoCarson_53, Amok_53, AndPeggy_49, Axym_51, BillDoor_52, Burnsey_52, Cozz_50, Elliott_52, Emalyn_51, GTE2_43, GoldHunter_53, MunkgeeRoachy_53, Nina_51, PsychoKiller_51, Quasar_52, RedBaron_54, Sopespian_49, SteamedHams_53, SweatNTears_54, Tolls_53, Typhonmachy_52, Yarn_49,

Genes that have the "Most Annotated" start but do not call it:

-

Genes that do not have the "Most Annotated" start:

- Azira_48, Cleo_46, Dre3_47, Fribs8_47, Gibbous_47, Gustav_43, HippoPololi_49, MaVan_48, Mahdia_40, Morrissey_41, Nibbles_47, Puppies_38, Survivors_48, Trine_39, Upyo_42, Widow_40, Zareef_50,

Summary by start number:

Start 1:

- Found in 2 of 40 (5.0%) of genes in pham
- Manual Annotations of this start: 2 of 31
- Called 100.0% of time when present
- Phage (with cluster) where this start called: Puppies_38 (CD), Widow_40 (CD),

Start 3:

- Found in 1 of 40 (2.5%) of genes in pham
- Manual Annotations of this start: 1 of 31
- Called 100.0% of time when present
- Phage (with cluster) where this start called: Mahdia_40 (CD),

Start 4:

- Found in 1 of 40 (2.5%) of genes in pham
- Manual Annotations of this start: 1 of 31
- Called 100.0% of time when present
- Phage (with cluster) where this start called: Trine_39 (CD),

Start 6:

- Found in 1 of 40 (2.5%) of genes in pham
- Manual Annotations of this start: 1 of 31
- Called 100.0% of time when present
- Phage (with cluster) where this start called: Upyo_42 (CD),

Start 7:

- Found in 1 of 40 (2.5%) of genes in pham
- Manual Annotations of this start: 1 of 31
- Called 100.0% of time when present
- Phage (with cluster) where this start called: Morrissey_41 (CD),

Start 8:

- Found in 1 of 40 (2.5%) of genes in pham
- Manual Annotations of this start: 1 of 31
- Called 100.0% of time when present
- Phage (with cluster) where this start called: Gustav_43 (CD),

Start 11:

- Found in 7 of 40 (17.5%) of genes in pham
- Manual Annotations of this start: 5 of 31
- Called 71.4% of time when present
- Phage (with cluster) where this start called: Azira_48 (CT), Fribs8_47 (CT), HippoPololi_49 (CT), MaVan_48 (CT), Survivors_48 (CT),

Start 13:

- Found in 23 of 40 (57.5%) of genes in pham
- Manual Annotations of this start: 15 of 31
- Called 100.0% of time when present
- Phage (with cluster) where this start called: Agatha_52 (CT), AikoCarson_53 (CT), Amok_53 (CT), AndPeggy_49 (CT), Axym_51 (CT), BillDoor_52 (CT), Burnsey_52 (CT), Cozz_50 (CT), Elliott_52 (CT), Emalyn_51 (CT), GTE2_43 (CT), GoldHunter_53 (CT), MunkgeeRoachy_53 (CT), Nina_51 (CT), PsychoKiller_51 (CT), Quasar_52 (CT), RedBaron_54 (CT), Sopespian_49 (CT), SteamedHams_53 (CT), SweatNTears_54 (CT), Tolls_53 (CT), Typhonmacy_52 (CT), Yarn_49 (CT),

Start 15:

- Found in 10 of 40 (25.0%) of genes in pham
- Manual Annotations of this start: 4 of 31
- Called 50.0% of time when present
- Phage (with cluster) where this start called: Cleo_46 (CT), Dre3_47 (CT), Gibbous_47 (CT), Nibbles_47 (CT), Zareef_50 (CT),

Summary by clusters:

There are 2 clusters represented in this pham: CD, CT,

Info for manual annotations of cluster CD:

- Start number 1 was manually annotated 2 times for cluster CD.
- Start number 3 was manually annotated 1 time for cluster CD.
- Start number 4 was manually annotated 1 time for cluster CD.
- Start number 6 was manually annotated 1 time for cluster CD.
- Start number 7 was manually annotated 1 time for cluster CD.
- Start number 8 was manually annotated 1 time for cluster CD.

Info for manual annotations of cluster CT:

- Start number 11 was manually annotated 5 times for cluster CT.
- Start number 13 was manually annotated 15 times for cluster CT.
- Start number 15 was manually annotated 4 times for cluster CT.

Gene Information:

Gene: Agatha_52 Start: 37367, Stop: 37041, Start Num: 13

Candidate Starts for Agatha_52:

(Start: 13 @37367 has 15 MA's), (17, 37343), (20, 37316), (22, 37277), (27, 37226), (32, 37190), (35, 37154), (38, 37124), (41, 37088),

Gene: AikoCarson_53 Start: 37632, Stop: 37321, Start Num: 13

Candidate Starts for AikoCarson_53:

(Start: 13 @37632 has 15 MA's), (26, 37512), (30, 37485),

Gene: Amok_53 Start: 37560, Stop: 37246, Start Num: 13

Candidate Starts for Amok_53:

(Start: 13 @37560 has 15 MA's), (19, 37524),

Gene: AndPeggy_49 Start: 36840, Stop: 36526, Start Num: 13
Candidate Starts for AndPeggy_49:
(Start: 13 @36840 has 15 MA's), (21, 36780), (26, 36717), (38, 36609),

Gene: Axym_51 Start: 37264, Stop: 36938, Start Num: 13
Candidate Starts for Axym_51:
(Start: 13 @37264 has 15 MA's), (17, 37240), (20, 37213), (22, 37174), (27, 37123), (32, 37087), (35, 37051), (38, 37021), (41, 36985),

Gene: Azira_48 Start: 36422, Stop: 36099, Start Num: 11
Candidate Starts for Azira_48:
(Start: 11 @36422 has 5 MA's), (Start: 15 @36407 has 4 MA's), (18, 36380), (19, 36377), (23, 36296), (32, 36248), (33, 36227), (38, 36182), (41, 36146),

Gene: BillDoor_52 Start: 36516, Stop: 36196, Start Num: 13
Candidate Starts for BillDoor_52:
(Start: 13 @36516 has 15 MA's), (21, 36456), (26, 36387), (38, 36279),

Gene: Burnsey_52 Start: 37358, Stop: 37032, Start Num: 13
Candidate Starts for Burnsey_52:
(Start: 13 @37358 has 15 MA's), (17, 37334), (20, 37307), (22, 37268), (27, 37217), (32, 37181), (35, 37145), (38, 37115), (41, 37079),

Gene: Cleo_46 Start: 36154, Stop: 35843, Start Num: 15
Candidate Starts for Cleo_46:
(Start: 15 @36154 has 4 MA's), (16, 36145), (18, 36127), (19, 36124), (23, 36040), (36, 35944), (38, 35926), (41, 35890),

Gene: Cozz_50 Start: 36955, Stop: 36629, Start Num: 13
Candidate Starts for Cozz_50:
(Start: 13 @36955 has 15 MA's), (17, 36931), (20, 36904), (22, 36865), (27, 36814), (32, 36778), (35, 36742), (38, 36712), (41, 36676),

Gene: Dre3_47 Start: 35897, Stop: 35586, Start Num: 15
Candidate Starts for Dre3_47:
(Start: 15 @35897 has 4 MA's), (16, 35888), (18, 35870), (19, 35867), (23, 35783), (36, 35687), (38, 35669), (41, 35633),

Gene: Elliott_52 Start: 37251, Stop: 36925, Start Num: 13
Candidate Starts for Elliott_52:
(Start: 13 @37251 has 15 MA's), (17, 37227), (20, 37200), (22, 37161), (27, 37110), (32, 37074), (35, 37038), (38, 37008), (41, 36972),

Gene: Emalyn_51 Start: 36352, Stop: 36038, Start Num: 13
Candidate Starts for Emalyn_51:
(Start: 13 @36352 has 15 MA's), (19, 36316),

Gene: Fribs8_47 Start: 36192, Stop: 35860, Start Num: 11
Candidate Starts for Fribs8_47:
(Start: 11 @36192 has 5 MA's), (Start: 15 @36177 has 4 MA's), (16, 36168), (18, 36150), (19, 36147), (38, 35943), (41, 35907),

Gene: GTE2_43 Start: 36955, Stop: 36635, Start Num: 13

Candidate Starts for GTE2_43:
(Start: 13 @36955 has 15 MA's), (38, 36718),

Gene: Gibbous_47 Start: 35897, Stop: 35586, Start Num: 15
Candidate Starts for Gibbous_47:
(Start: 15 @35897 has 4 MA's), (16, 35888), (18, 35870), (19, 35867), (23, 35783), (36, 35687), (38, 35669), (41, 35633),

Gene: GoldHunter_53 Start: 37368, Stop: 37042, Start Num: 13
Candidate Starts for GoldHunter_53:
(Start: 13 @37368 has 15 MA's), (17, 37344), (20, 37317), (22, 37278), (27, 37227), (32, 37191), (35, 37155), (38, 37125), (41, 37089),

Gene: Gustav_43 Start: 32873, Stop: 32505, Start Num: 8
Candidate Starts for Gustav_43:
(5, 32882), (Start: 8 @32873 has 1 MA's), (28, 32705), (31, 32672), (33, 32648),

Gene: HippoPololi_49 Start: 36327, Stop: 35998, Start Num: 11
Candidate Starts for HippoPololi_49:
(Start: 11 @36327 has 5 MA's), (Start: 15 @36312 has 4 MA's), (16, 36303), (18, 36285), (19, 36282), (35, 36111), (36, 36099), (38, 36081), (41, 36045),

Gene: MaVan_48 Start: 36451, Stop: 36128, Start Num: 11
Candidate Starts for MaVan_48:
(Start: 11 @36451 has 5 MA's), (Start: 15 @36436 has 4 MA's), (18, 36409), (19, 36406), (23, 36325), (32, 36277), (33, 36256), (38, 36211), (41, 36175),

Gene: Mahdia_40 Start: 31815, Stop: 31420, Start Num: 3
Candidate Starts for Mahdia_40:
(Start: 3 @31815 has 1 MA's), (9, 31773), (25, 31629), (33, 31563), (35, 31548), (40, 31491),

Gene: Morrissey_41 Start: 32244, Stop: 31873, Start Num: 7
Candidate Starts for Morrissey_41:
(Start: 7 @32244 has 1 MA's), (17, 32184), (34, 32004), (40, 31944), (46, 31884),

Gene: MunkgeeRoachy_53 Start: 36714, Stop: 36388, Start Num: 13
Candidate Starts for MunkgeeRoachy_53:
(Start: 13 @36714 has 15 MA's), (17, 36690), (20, 36663), (22, 36624), (24, 36588), (27, 36573), (32, 36537), (38, 36471), (39, 36453), (41, 36435),

Gene: Nibbles_47 Start: 36132, Stop: 35824, Start Num: 15
Candidate Starts for Nibbles_47:
(Start: 11 @36147 has 5 MA's), (Start: 15 @36132 has 4 MA's), (18, 36105), (19, 36102), (23, 36021), (32, 35973), (33, 35952), (38, 35907), (41, 35871),

Gene: Nina_51 Start: 37528, Stop: 37208, Start Num: 13
Candidate Starts for Nina_51:
(Start: 13 @37528 has 15 MA's), (17, 37504), (20, 37483), (22, 37444), (27, 37393), (32, 37357), (35, 37321), (38, 37291), (39, 37273), (41, 37255),

Gene: PsychoKiller_51 Start: 37252, Stop: 36926, Start Num: 13
Candidate Starts for PsychoKiller_51:

(Start: 13 @37252 has 15 MA's), (17, 37228), (20, 37201), (22, 37162), (27, 37111), (32, 37075), (35, 37039), (38, 37009), (41, 36973),

Gene: Puppets_38 Start: 31067, Stop: 30642, Start Num: 1

Candidate Starts for Puppets_38:

(Start: 1 @31067 has 2 MA's), (21, 30935), (25, 30866), (33, 30794), (35, 30779), (40, 30722), (45, 30671),

Gene: Quasar_52 Start: 37956, Stop: 37633, Start Num: 13

Candidate Starts for Quasar_52:

(Start: 13 @37956 has 15 MA's), (17, 37932), (20, 37905), (22, 37866), (27, 37818), (32, 37782), (35, 37746), (38, 37716), (41, 37680),

Gene: RedBaron_54 Start: 37581, Stop: 37255, Start Num: 13

Candidate Starts for RedBaron_54:

(Start: 13 @37581 has 15 MA's), (17, 37557), (20, 37530), (22, 37491), (27, 37440), (32, 37404), (35, 37368), (38, 37338), (41, 37302),

Gene: Sopespian_49 Start: 37253, Stop: 36927, Start Num: 13

Candidate Starts for Sopespian_49:

(Start: 13 @37253 has 15 MA's), (17, 37229), (20, 37202), (22, 37163), (27, 37112), (32, 37076), (35, 37040), (38, 37010), (41, 36974),

Gene: SteamedHams_53 Start: 36817, Stop: 36497, Start Num: 13

Candidate Starts for SteamedHams_53:

(Start: 13 @36817 has 15 MA's), (21, 36757), (38, 36580),

Gene: Survivors_48 Start: 36347, Stop: 36024, Start Num: 11

Candidate Starts for Survivors_48:

(Start: 11 @36347 has 5 MA's), (Start: 15 @36332 has 4 MA's), (18, 36305), (19, 36302), (23, 36221), (32, 36173), (33, 36152), (38, 36107), (41, 36071),

Gene: SweatNTears_54 Start: 37495, Stop: 37169, Start Num: 13

Candidate Starts for SweatNTears_54:

(Start: 13 @37495 has 15 MA's), (17, 37471), (20, 37444), (22, 37405), (27, 37354), (32, 37318), (35, 37282), (38, 37252), (41, 37216),

Gene: Tolls_53 Start: 37088, Stop: 36768, Start Num: 13

Candidate Starts for Tolls_53:

(Start: 13 @37088 has 15 MA's), (21, 37028), (38, 36851),

Gene: Trine_39 Start: 31423, Stop: 31040, Start Num: 4

Candidate Starts for Trine_39:

(Start: 4 @31423 has 1 MA's), (9, 31384), (14, 31366), (29, 31225), (42, 31093), (44, 31075),

Gene: Typhonmachy_52 Start: 37077, Stop: 36751, Start Num: 13

Candidate Starts for Typhonmachy_52:

(Start: 13 @37077 has 15 MA's), (17, 37053), (20, 37026), (22, 36987), (27, 36936), (32, 36900), (35, 36864), (38, 36834), (41, 36798),

Gene: Upyo_42 Start: 32741, Stop: 32373, Start Num: 6

Candidate Starts for Upyo_42:

(2, 32747), (Start: 6 @32741 has 1 MA's), (10, 32705), (12, 32702), (29, 32558), (37, 32486), (38, 32471), (43, 32420),

Gene: Widow_40 Start: 32148, Stop: 31723, Start Num: 1

Candidate Starts for Widow_40:

(Start: 1 @32148 has 2 MA's), (21, 32016), (25, 31947), (33, 31875), (35, 31860), (40, 31803), (45, 31752),

Gene: Yarn_49 Start: 36845, Stop: 36531, Start Num: 13

Candidate Starts for Yarn_49:

(Start: 13 @36845 has 15 MA's), (21, 36785), (26, 36722), (38, 36614),

Gene: Zareef_50 Start: 36426, Stop: 36118, Start Num: 15

Candidate Starts for Zareef_50:

(Start: 11 @36441 has 5 MA's), (Start: 15 @36426 has 4 MA's), (18, 36399), (19, 36396), (23, 36315), (32, 36267), (33, 36246), (38, 36201), (41, 36165),