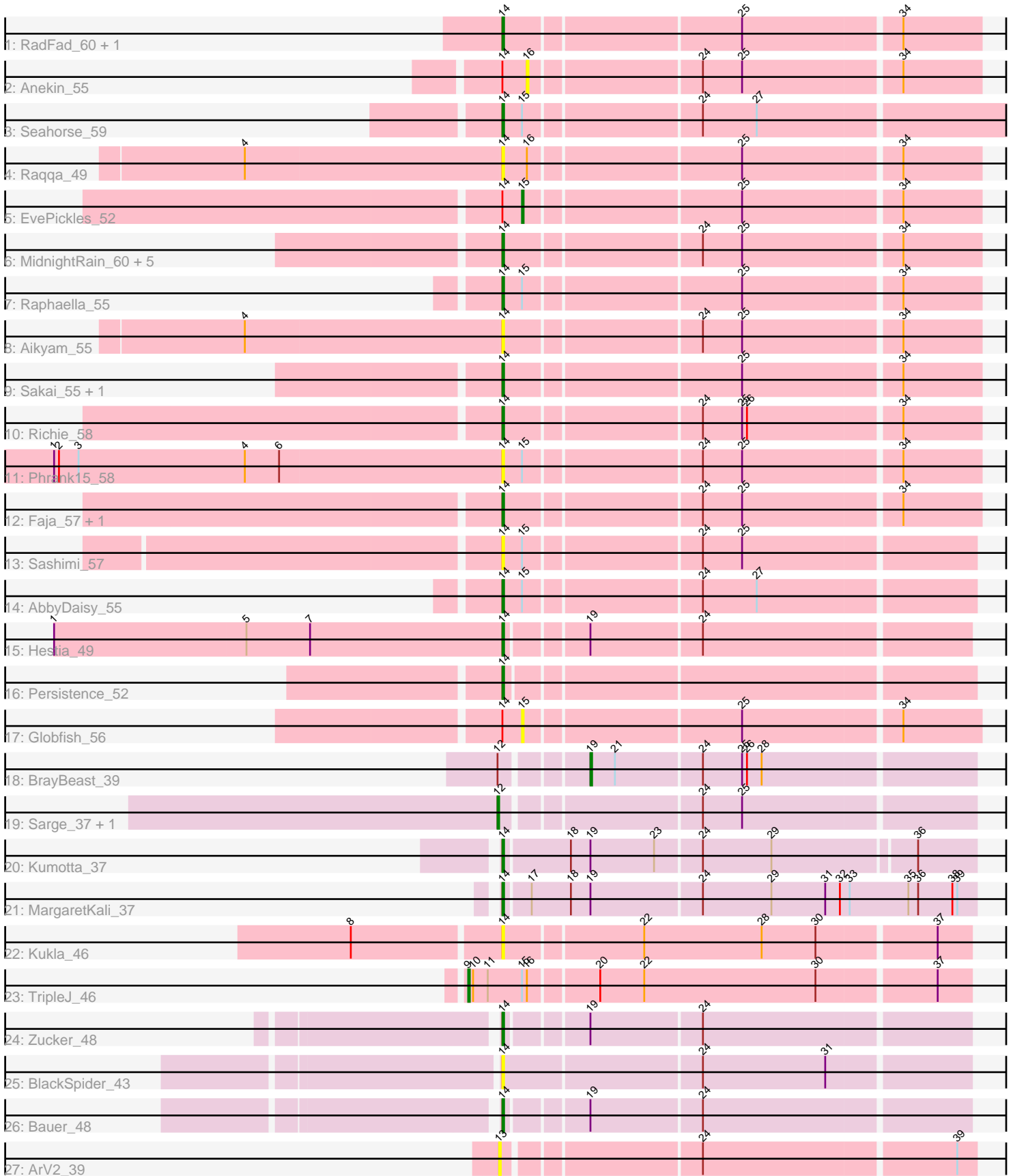


Pham 170159



Note: Tracks are now grouped by subcluster and scaled. Switching in subcluster is indicated by changes in track color. Track scale is now set by default to display the region 30 bp upstream of start 1 to 30 bp downstream of the last possible start. If this default region is judged to be packed too tightly with annotated starts, the track will be further scaled to only show that region of the ORF with annotated starts. This action will be indicated by adding "Zoomed" to the title. For starts, yellow indicates the location of called starts comprised solely of Glimmer/GeneMark auto-annotations, green indicates the location of called starts with at least 1 manual gene annotation.

Pham 170159 Report

This analysis was run 07/09/24 on database version 566.

Pham number 170159 has 36 members, 15 are drafts.

Phages represented in each track:

- Track 1 : RadFad_60, Hillester_60
- Track 2 : Anekin_55
- Track 3 : Seahorse_59
- Track 4 : Raqqa_49
- Track 5 : EvePickles_52
- Track 6 : MidnightRain_60, BenchScraper_55, BillyTP_58, CookieBear_56, Isolde_55, YoungHarleezy_56
- Track 7 : Raphaella_55
- Track 8 : Aikyam_55
- Track 9 : Sakai_55, Gorpy_56
- Track 10 : Richie_58
- Track 11 : Phrank15_58
- Track 12 : Faja_57, Tiff81_56
- Track 13 : Sashimi_57
- Track 14 : AbbyDaisy_55
- Track 15 : Hestia_49
- Track 16 : Persistence_52
- Track 17 : Globfish_56
- Track 18 : BrayBeast_39
- Track 19 : Sarge_37, Shoya_43
- Track 20 : Kumotta_37
- Track 21 : MargaretKali_37
- Track 22 : Kukla_46
- Track 23 : TripleJ_46
- Track 24 : Zucker_48
- Track 25 : BlackSpider_43
- Track 26 : Bauer_48
- Track 27 : ArV2_39

Summary of Final Annotations (See graph section above for start numbers):

The start number called the most often in the published annotations is 14, it was called in 16 of the 21 non-draft genes in the pham.

Genes that call this "Most Annotated" start:

- AbbyDaisy_55, Aikyam_55, Bauer_48, BenchScraper_55, BillyTP_58, BlackSpider_43, CookieBear_56, Faja_57, Gorpy_56, Hestia_49, Hillester_60, Isolde_55, Kukla_46, Kumotta_37, MargaretKali_37, MidnightRain_60, Persistence_52, Phrank15_58, RadFad_60, Raphaella_55, Raqqa_49, Richie_58, Sakai_55, Sashimi_57, Seahorse_59, Tiff81_56, YoungHarleezy_56, Zucker_48,

Genes that have the "Most Annotated" start but do not call it:

- Aekin_55, EvePickles_52, Globfish_56,

Genes that do not have the "Most Annotated" start:

- ArV2_39, BrayBeast_39, Sarge_37, Shoya_43, TripleJ_46,

Summary by start number:

Start 9:

- Found in 1 of 36 (2.8%) of genes in pham
- Manual Annotations of this start: 1 of 21
- Called 100.0% of time when present
- Phage (with cluster) where this start called: TripleJ_46 (FJ),

Start 12:

- Found in 3 of 36 (8.3%) of genes in pham
- Manual Annotations of this start: 2 of 21
- Called 66.7% of time when present
- Phage (with cluster) where this start called: Sarge_37 (FB), Shoya_43 (FB),

Start 13:

- Found in 1 of 36 (2.8%) of genes in pham
- No Manual Annotations of this start.
- Called 100.0% of time when present
- Phage (with cluster) where this start called: ArV2_39 (singleton),

Start 14:

- Found in 31 of 36 (86.1%) of genes in pham
- Manual Annotations of this start: 16 of 21
- Called 90.3% of time when present
- Phage (with cluster) where this start called: AbbyDaisy_55 (AY), Aikyam_55 (AY), Bauer_48 (FN), BenchScraper_55 (AY), BillyTP_58 (AY), BlackSpider_43 (FN), CookieBear_56 (AY), Faja_57 (AY), Gorpy_56 (AY), Hestia_49 (AY), Hillester_60 (AY), Isolde_55 (AY), Kukla_46 (FJ), Kumotta_37 (FB), MargaretKali_37 (FB), MidnightRain_60 (AY), Persistence_52 (AY), Phrank15_58 (AY), RadFad_60 (AY), Raphaella_55 (AY), Raqqa_49 (AY), Richie_58 (AY), Sakai_55 (AY), Sashimi_57 (AY), Seahorse_59 (AY), Tiff81_56 (AY), YoungHarleezy_56 (AY), Zucker_48 (FN),

Start 15:

- Found in 8 of 36 (22.2%) of genes in pham
- Manual Annotations of this start: 1 of 21
- Called 25.0% of time when present
- Phage (with cluster) where this start called: EvePickles_52 (AY), Globfish_56 (AY),

Start 16:

- Found in 3 of 36 (8.3%) of genes in pham

- No Manual Annotations of this start.
- Called 33.3% of time when present
- Phage (with cluster) where this start called: Anekin_55 (AY),

Start 19:

- Found in 6 of 36 (16.7%) of genes in pham
- Manual Annotations of this start: 1 of 21
- Called 16.7% of time when present
- Phage (with cluster) where this start called: BrayBeast_39 (FB),

Summary by clusters:

There are 5 clusters represented in this pham: AY, FJ, FB, singleton, FN,

Info for manual annotations of cluster AY:

- Start number 14 was manually annotated 12 times for cluster AY.
- Start number 15 was manually annotated 1 time for cluster AY.

Info for manual annotations of cluster FB:

- Start number 12 was manually annotated 2 times for cluster FB.
- Start number 14 was manually annotated 2 times for cluster FB.
- Start number 19 was manually annotated 1 time for cluster FB.

Info for manual annotations of cluster FJ:

- Start number 9 was manually annotated 1 time for cluster FJ.

Info for manual annotations of cluster FN:

- Start number 14 was manually annotated 2 times for cluster FN.

Gene Information:

Gene: AbbyDaisy_55 Start: 33488, Stop: 33763, Start Num: 14

Candidate Starts for AbbyDaisy_55:

(Start: 14 @33488 has 16 MA's), (Start: 15 @33500 has 1 MA's), (24, 33602), (27, 33635),

Gene: Aikyam_55 Start: 31597, Stop: 31875, Start Num: 14

Candidate Starts for Aikyam_55:

(4, 31441), (Start: 14 @31597 has 16 MA's), (24, 31711), (25, 31735), (34, 31828),

Gene: Anekin_55 Start: 33284, Stop: 33547, Start Num: 16

Candidate Starts for Anekin_55:

(Start: 14 @33269 has 16 MA's), (16, 33284), (24, 33383), (25, 33407), (34, 33500),

Gene: ArV2_39 Start: 25620, Stop: 25892, Start Num: 13

Candidate Starts for ArV2_39:

(13, 25620), (24, 25731), (39, 25881),

Gene: Bauer_48 Start: 30759, Stop: 31028, Start Num: 14

Candidate Starts for Bauer_48:

(Start: 14 @30759 has 16 MA's), (Start: 19 @30804 has 1 MA's), (24, 30870),

Gene: BenchScraper_55 Start: 32919, Stop: 33197, Start Num: 14
Candidate Starts for BenchScraper_55:
(Start: 14 @32919 has 16 MA's), (24, 33033), (25, 33057), (34, 33150),

Gene: BillyTP_58 Start: 34791, Stop: 35069, Start Num: 14
Candidate Starts for BillyTP_58:
(Start: 14 @34791 has 16 MA's), (24, 34905), (25, 34929), (34, 35022),

Gene: BlackSpider_43 Start: 29911, Stop: 30186, Start Num: 14
Candidate Starts for BlackSpider_43:
(Start: 14 @29911 has 16 MA's), (24, 30028), (31, 30103),

Gene: BrayBeast_39 Start: 26993, Stop: 27220, Start Num: 19
Candidate Starts for BrayBeast_39:
(Start: 12 @26948 has 2 MA's), (Start: 19 @26993 has 1 MA's), (21, 27008), (24, 27059), (25, 27083),
(26, 27086), (28, 27095),

Gene: CookieBear_56 Start: 33175, Stop: 33453, Start Num: 14
Candidate Starts for CookieBear_56:
(Start: 14 @33175 has 16 MA's), (24, 33289), (25, 33313), (34, 33406),

Gene: EvePickles_52 Start: 33387, Stop: 33653, Start Num: 15
Candidate Starts for EvePickles_52:
(Start: 14 @33375 has 16 MA's), (Start: 15 @33387 has 1 MA's), (25, 33513), (34, 33606),

Gene: Faja_57 Start: 34759, Stop: 35037, Start Num: 14
Candidate Starts for Faja_57:
(Start: 14 @34759 has 16 MA's), (24, 34873), (25, 34897), (34, 34990),

Gene: Globfish_56 Start: 33286, Stop: 33552, Start Num: 15
Candidate Starts for Globfish_56:
(Start: 14 @33274 has 16 MA's), (Start: 15 @33286 has 1 MA's), (25, 33412), (34, 33505),

Gene: Gorpy_56 Start: 34167, Stop: 34445, Start Num: 14
Candidate Starts for Gorpy_56:
(Start: 14 @34167 has 16 MA's), (25, 34305), (34, 34398),

Gene: Hestia_49 Start: 30820, Stop: 31089, Start Num: 14
Candidate Starts for Hestia_49:
(1, 30547), (5, 30664), (7, 30703), (Start: 14 @30820 has 16 MA's), (Start: 19 @30865 has 1 MA's),
(24, 30931),

Gene: Hillester_60 Start: 34520, Stop: 34798, Start Num: 14
Candidate Starts for Hillester_60:
(Start: 14 @34520 has 16 MA's), (25, 34658), (34, 34751),

Gene: Isolde_55 Start: 32844, Stop: 33122, Start Num: 14
Candidate Starts for Isolde_55:
(Start: 14 @32844 has 16 MA's), (24, 32958), (25, 32982), (34, 33075),

Gene: Kukla_46 Start: 31182, Stop: 31457, Start Num: 14
Candidate Starts for Kukla_46:
(8, 31095), (Start: 14 @31182 has 16 MA's), (22, 31263), (28, 31335), (30, 31368), (37, 31437),

Gene: Kumotta_37 Start: 27134, Stop: 27412, Start Num: 14

Candidate Starts for Kumotta_37:

(Start: 14 @27134 has 16 MA's), (18, 27173), (Start: 19 @27185 has 1 MA's), (23, 27224), (24, 27251), (29, 27293), (36, 27377),

Gene: MargaretKali_37 Start: 26763, Stop: 27047, Start Num: 14

Candidate Starts for MargaretKali_37:

(Start: 14 @26763 has 16 MA's), (17, 26778), (18, 26802), (Start: 19 @26814 has 1 MA's), (24, 26880), (29, 26922), (31, 26955), (32, 26964), (33, 26970), (35, 27006), (36, 27012), (38, 27033), (39, 27036),

Gene: MidnightRain_60 Start: 34697, Stop: 34975, Start Num: 14

Candidate Starts for MidnightRain_60:

(Start: 14 @34697 has 16 MA's), (24, 34811), (25, 34835), (34, 34928),

Gene: Persistence_52 Start: 32315, Stop: 32587, Start Num: 14

Candidate Starts for Persistence_52:

(Start: 14 @32315 has 16 MA's),

Gene: Phrank15_58 Start: 33473, Stop: 33751, Start Num: 14

Candidate Starts for Phrank15_58:

(1, 33200), (2, 33203), (3, 33215), (4, 33317), (6, 33338), (Start: 14 @33473 has 16 MA's), (Start: 15 @33485 has 1 MA's), (24, 33587), (25, 33611), (34, 33704),

Gene: RadFad_60 Start: 34520, Stop: 34798, Start Num: 14

Candidate Starts for RadFad_60:

(Start: 14 @34520 has 16 MA's), (25, 34658), (34, 34751),

Gene: Raphaella_55 Start: 32779, Stop: 33057, Start Num: 14

Candidate Starts for Raphaella_55:

(Start: 14 @32779 has 16 MA's), (Start: 15 @32791 has 1 MA's), (25, 32917), (34, 33010),

Gene: Raqqa_49 Start: 30784, Stop: 31062, Start Num: 14

Candidate Starts for Raqqa_49:

(4, 30628), (Start: 14 @30784 has 16 MA's), (16, 30799), (25, 30922), (34, 31015),

Gene: Richie_58 Start: 33845, Stop: 34123, Start Num: 14

Candidate Starts for Richie_58:

(Start: 14 @33845 has 16 MA's), (24, 33959), (25, 33983), (26, 33986), (34, 34076),

Gene: Sakai_55 Start: 32878, Stop: 33156, Start Num: 14

Candidate Starts for Sakai_55:

(Start: 14 @32878 has 16 MA's), (25, 33016), (34, 33109),

Gene: Sarge_37 Start: 25294, Stop: 25566, Start Num: 12

Candidate Starts for Sarge_37:

(Start: 12 @25294 has 2 MA's), (24, 25405), (25, 25429),

Gene: Sashimi_57 Start: 34105, Stop: 34380, Start Num: 14

Candidate Starts for Sashimi_57:

(Start: 14 @34105 has 16 MA's), (Start: 15 @34117 has 1 MA's), (24, 34219), (25, 34243),

Gene: Seahorse_59 Start: 35114, Stop: 35410, Start Num: 14

Candidate Starts for Seahorse_59:

(Start: 14 @35114 has 16 MA's), (Start: 15 @35126 has 1 MA's), (24, 35228), (27, 35261),

Gene: Shoya_43 Start: 27262, Stop: 27534, Start Num: 12

Candidate Starts for Shoya_43:

(Start: 12 @27262 has 2 MA's), (24, 27373), (25, 27397),

Gene: Tiff81_56 Start: 31289, Stop: 31567, Start Num: 14

Candidate Starts for Tiff81_56:

(Start: 14 @31289 has 16 MA's), (24, 31403), (25, 31427), (34, 31520),

Gene: TripleJ_46 Start: 31114, Stop: 31410, Start Num: 9

Candidate Starts for TripleJ_46:

(Start: 9 @31114 has 1 MA's), (10, 31117), (11, 31126), (Start: 15 @31147 has 1 MA's), (16, 31150), (20, 31189), (22, 31216), (30, 31321), (37, 31390),

Gene: YoungHarleezy_56 Start: 33342, Stop: 33620, Start Num: 14

Candidate Starts for YoungHarleezy_56:

(Start: 14 @33342 has 16 MA's), (24, 33456), (25, 33480), (34, 33573),

Gene: Zucker_48 Start: 31843, Stop: 32112, Start Num: 14

Candidate Starts for Zucker_48:

(Start: 14 @31843 has 16 MA's), (Start: 19 @31888 has 1 MA's), (24, 31954),