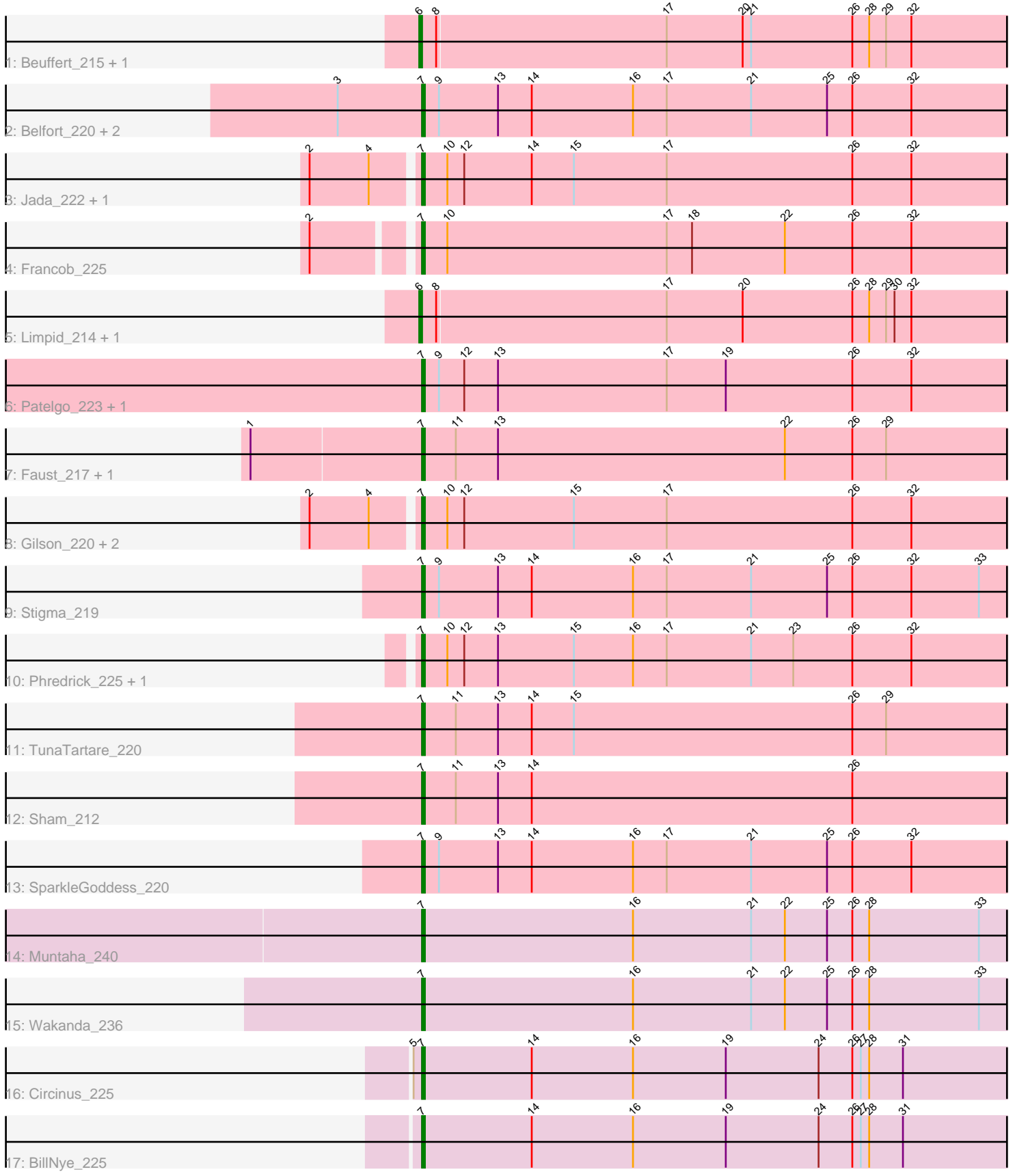


# Zoomed Pham 170235



Note: Tracks are now grouped by subcluster and scaled. Switching in subcluster is indicated by changes in track color. Track scale is now set by default to display the region 30 bp upstream of start 1 to 30 bp downstream of the last possible start. If this default region is judged to be packed too tightly with annotated starts, the track will be further scaled to only show that region of the ORF with annotated starts. This action will be indicated by adding "Zoomed" to the title. For starts, yellow indicates the location of called starts comprised solely of Glimmer/GeneMark auto-annotations, green indicates the location of called starts with at least 1 manual gene annotation.

## Pham 170235 Report

This analysis was run 07/09/24 on database version 566.

Pham number 170235 has 27 members, 1 are drafts.

Phages represented in each track:

- Track 1 : Beuffert\_215, Blueeyedbeauty\_216
- Track 2 : Belfort\_220, Comrade\_217, Karp\_216
- Track 3 : Jada\_222, Forrest\_223
- Track 4 : Francob\_225
- Track 5 : Limpid\_214, Annadreamy\_207
- Track 6 : Patelgo\_223, Moab\_222
- Track 7 : Faust\_217, SeresaTree\_221
- Track 8 : Gilson\_220, Emma1919\_223, MeganTheeKilla\_225
- Track 9 : Stigma\_219
- Track 10 : Phredrick\_225, Kenrey\_226
- Track 11 : TunaTartare\_220
- Track 12 : Sham\_212
- Track 13 : SparkleGoddess\_220
- Track 14 : Muntaha\_240
- Track 15 : Wakanda\_236
- Track 16 : Circinus\_225
- Track 17 : BillNye\_225

### ***Summary of Final Annotations (See graph section above for start numbers):***

The start number called the most often in the published annotations is 7, it was called in 22 of the 26 non-draft genes in the pham.

Genes that call this "Most Annotated" start:

- Belfort\_220, BillNye\_225, Circinus\_225, Comrade\_217, Emma1919\_223, Faust\_217, Forrest\_223, Francob\_225, Gilson\_220, Jada\_222, Karp\_216, Kenrey\_226, MeganTheeKilla\_225, Moab\_222, Muntaha\_240, Patelgo\_223, Phredrick\_225, SeresaTree\_221, Sham\_212, SparkleGoddess\_220, Stigma\_219, TunaTartare\_220, Wakanda\_236,

Genes that have the "Most Annotated" start but do not call it:

- 

Genes that do not have the "Most Annotated" start:

- Annadreamy\_207, Beuffert\_215, Blueeyedbeauty\_216, Limpid\_214,

### **Summary by start number:**

#### Start 6:

- Found in 4 of 27 ( 14.8% ) of genes in pham
- Manual Annotations of this start: 4 of 26
- Called 100.0% of time when present
- Phage (with cluster) where this start called: Annadreamy\_207 (BK1), Beuffert\_215 (BK1), Blueeyedbeauty\_216 (BK1), Limpid\_214 (BK1),

#### Start 7:

- Found in 23 of 27 ( 85.2% ) of genes in pham
- Manual Annotations of this start: 22 of 26
- Called 100.0% of time when present
- Phage (with cluster) where this start called: Belfort\_220 (BK1), BillNye\_225 (BK2), Circinus\_225 (BK2), Comrade\_217 (BK1), Emma1919\_223 (BK1), Faust\_217 (BK1), Forrest\_223 (BK1), Francob\_225 (BK1), Gilson\_220 (BK1), Jada\_222 (BK1), Karp\_216 (BK1), Kenrey\_226 (BK1), MeganTheeKilla\_225 (BK1), Moab\_222 (BK1), Muntaha\_240 (BK2), Patelgo\_223 (BK1), Phredrick\_225 (BK1), SeresaTree\_221 (BK1), Sham\_212 (BK1), SparkleGoddess\_220 (BK1), Stigma\_219 (BK1), TunaTartare\_220 (BK1), Wakanda\_236 (BK2),

### **Summary by clusters:**

There are 2 clusters represented in this pham: BK1, BK2,

Info for manual annotations of cluster BK1:

- Start number 6 was manually annotated 4 times for cluster BK1.
- Start number 7 was manually annotated 18 times for cluster BK1.

Info for manual annotations of cluster BK2:

- Start number 7 was manually annotated 4 times for cluster BK2.

### **Gene Information:**

Gene: Annadreamy\_207 Start: 104711, Stop: 105034, Start Num: 6

Candidate Starts for Annadreamy\_207:

(Start: 6 @104711 has 4 MA's), (8, 104717), (17, 104798), (20, 104825), (26, 104864), (28, 104870), (29, 104876), (30, 104879), (32, 104885), (35, 104987), (36, 104993),

Gene: Belfort\_220 Start: 109294, Stop: 109542, Start Num: 7

Candidate Starts for Belfort\_220:

(3, 109264), (Start: 7 @109294 has 22 MA's), (9, 109300), (13, 109321), (14, 109333), (16, 109369), (17, 109381), (21, 109411), (25, 109438), (26, 109447), (32, 109468),

Gene: Beuffert\_215 Start: 108879, Stop: 109202, Start Num: 6

Candidate Starts for Beuffert\_215:

(Start: 6 @108879 has 4 MA's), (8, 108885), (17, 108966), (20, 108993), (21, 108996), (26, 109032), (28, 109038), (29, 109044), (32, 109053), (35, 109155), (36, 109161),

Gene: BillNye\_225 Start: 115514, Stop: 115792, Start Num: 7

Candidate Starts for BillNye\_225:

(Start: 7 @115514 has 22 MA's), (14, 115553), (16, 115589), (19, 115622), (24, 115655), (26, 115667), (27, 115670), (28, 115673), (31, 115685),

Gene: Blueeyedbeauty\_216 Start: 108411, Stop: 108734, Start Num: 6

Candidate Starts for Blueeyedbeauty\_216:

(Start: 6 @108411 has 4 MA's), (8, 108417), (17, 108498), (20, 108525), (21, 108528), (26, 108564), (28, 108570), (29, 108576), (32, 108585), (35, 108687), (36, 108693),

Gene: Circinus\_225 Start: 115103, Stop: 115381, Start Num: 7

Candidate Starts for Circinus\_225:

(5, 115100), (Start: 7 @115103 has 22 MA's), (14, 115142), (16, 115178), (19, 115211), (24, 115244), (26, 115256), (27, 115259), (28, 115262), (31, 115274),

Gene: Comrade\_217 Start: 109494, Stop: 109742, Start Num: 7

Candidate Starts for Comrade\_217:

(3, 109464), (Start: 7 @109494 has 22 MA's), (9, 109500), (13, 109521), (14, 109533), (16, 109569), (17, 109581), (21, 109611), (25, 109638), (26, 109647), (32, 109668),

Gene: Emma1919\_223 Start: 108070, Stop: 108357, Start Num: 7

Candidate Starts for Emma1919\_223:

(2, 108034), (4, 108055), (Start: 7 @108070 has 22 MA's), (10, 108079), (12, 108085), (15, 108124), (17, 108157), (26, 108223), (32, 108244),

Gene: Faust\_217 Start: 110060, Stop: 110392, Start Num: 7

Candidate Starts for Faust\_217:

(1, 110000), (Start: 7 @110060 has 22 MA's), (11, 110072), (13, 110087), (22, 110189), (26, 110213), (29, 110225), (36, 110342),

Gene: Forrest\_223 Start: 109035, Stop: 109322, Start Num: 7

Candidate Starts for Forrest\_223:

(2, 108999), (4, 109020), (Start: 7 @109035 has 22 MA's), (10, 109044), (12, 109050), (14, 109074), (15, 109089), (17, 109122), (26, 109188), (32, 109209),

Gene: Francob\_225 Start: 109083, Stop: 109376, Start Num: 7

Candidate Starts for Francob\_225:

(2, 109050), (Start: 7 @109083 has 22 MA's), (10, 109092), (17, 109170), (18, 109179), (22, 109212), (26, 109236), (32, 109257),

Gene: Gilson\_220 Start: 107596, Stop: 107883, Start Num: 7

Candidate Starts for Gilson\_220:

(2, 107560), (4, 107581), (Start: 7 @107596 has 22 MA's), (10, 107605), (12, 107611), (15, 107650), (17, 107683), (26, 107749), (32, 107770),

Gene: Jada\_222 Start: 108272, Stop: 108559, Start Num: 7

Candidate Starts for Jada\_222:

(2, 108236), (4, 108257), (Start: 7 @108272 has 22 MA's), (10, 108281), (12, 108287), (14, 108311), (15, 108326), (17, 108359), (26, 108425), (32, 108446),

Gene: Karp\_216 Start: 109661, Stop: 109909, Start Num: 7

Candidate Starts for Karp\_216:

(3, 109631), (Start: 7 @109661 has 22 MA's), (9, 109667), (13, 109688), (14, 109700), (16, 109736), (17, 109748), (21, 109778), (25, 109805), (26, 109814), (32, 109835),

Gene: Kenrey\_226 Start: 108842, Stop: 109135, Start Num: 7

Candidate Starts for Kenrey\_226:

(Start: 7 @108842 has 22 MA's), (10, 108851), (12, 108857), (13, 108869), (15, 108896), (16, 108917), (17, 108929), (21, 108959), (23, 108974), (26, 108995), (32, 109016), (34, 109070),

Gene: Limpid\_214 Start: 110024, Stop: 110347, Start Num: 6

Candidate Starts for Limpid\_214:

(Start: 6 @110024 has 4 MA's), (8, 110030), (17, 110111), (20, 110138), (26, 110177), (28, 110183), (29, 110189), (30, 110192), (32, 110198), (35, 110300), (36, 110306),

Gene: MeganTheeKilla\_225 Start: 108467, Stop: 108754, Start Num: 7

Candidate Starts for MeganTheeKilla\_225:

(2, 108431), (4, 108452), (Start: 7 @108467 has 22 MA's), (10, 108476), (12, 108482), (15, 108521), (17, 108554), (26, 108620), (32, 108641),

Gene: Moab\_222 Start: 110575, Stop: 110913, Start Num: 7

Candidate Starts for Moab\_222:

(Start: 7 @110575 has 22 MA's), (9, 110581), (12, 110590), (13, 110602), (17, 110662), (19, 110683), (26, 110728), (32, 110749),

Gene: Muntaha\_240 Start: 115773, Stop: 116012, Start Num: 7

Candidate Starts for Muntaha\_240:

(Start: 7 @115773 has 22 MA's), (16, 115848), (21, 115890), (22, 115902), (25, 115917), (26, 115926), (28, 115932), (33, 115971),

Gene: Patelgo\_223 Start: 111005, Stop: 111343, Start Num: 7

Candidate Starts for Patelgo\_223:

(Start: 7 @111005 has 22 MA's), (9, 111011), (12, 111020), (13, 111032), (17, 111092), (19, 111113), (26, 111158), (32, 111179),

Gene: Phredrick\_225 Start: 107894, Stop: 108187, Start Num: 7

Candidate Starts for Phredrick\_225:

(Start: 7 @107894 has 22 MA's), (10, 107903), (12, 107909), (13, 107921), (15, 107948), (16, 107969), (17, 107981), (21, 108011), (23, 108026), (26, 108047), (32, 108068), (34, 108122),

Gene: SeresaTree\_221 Start: 110046, Stop: 110378, Start Num: 7

Candidate Starts for SeresaTree\_221:

(1, 109986), (Start: 7 @110046 has 22 MA's), (11, 110058), (13, 110073), (22, 110175), (26, 110199), (29, 110211), (36, 110328),

Gene: Sham\_212 Start: 110948, Stop: 111280, Start Num: 7

Candidate Starts for Sham\_212:

(Start: 7 @110948 has 22 MA's), (11, 110960), (13, 110975), (14, 110987), (26, 111101), (36, 111230), (37, 111233), (38, 111245),

Gene: SparkleGoddess\_220 Start: 109722, Stop: 109970, Start Num: 7

Candidate Starts for SparkleGoddess\_220:

(Start: 7 @109722 has 22 MA's), (9, 109728), (13, 109749), (14, 109761), (16, 109797), (17, 109809), (21, 109839), (25, 109866), (26, 109875), (32, 109896),

Gene: Stigma\_219 Start: 109928, Stop: 110176, Start Num: 7

Candidate Starts for Stigma\_219:

(Start: 7 @109928 has 22 MA's), (9, 109934), (13, 109955), (14, 109967), (16, 110003), (17, 110015), (21, 110045), (25, 110072), (26, 110081), (32, 110102), (33, 110126),

Gene: TunaTartare\_220 Start: 113242, Stop: 113574, Start Num: 7

Candidate Starts for TunaTartare\_220:

(Start: 7 @113242 has 22 MA's), (11, 113254), (13, 113269), (14, 113281), (15, 113296), (26, 113395), (29, 113407), (37, 113527), (38, 113539),

Gene: Wakanda\_236 Start: 114761, Stop: 115000, Start Num: 7

Candidate Starts for Wakanda\_236:

(Start: 7 @114761 has 22 MA's), (16, 114836), (21, 114878), (22, 114890), (25, 114905), (26, 114914), (28, 114920), (33, 114959),