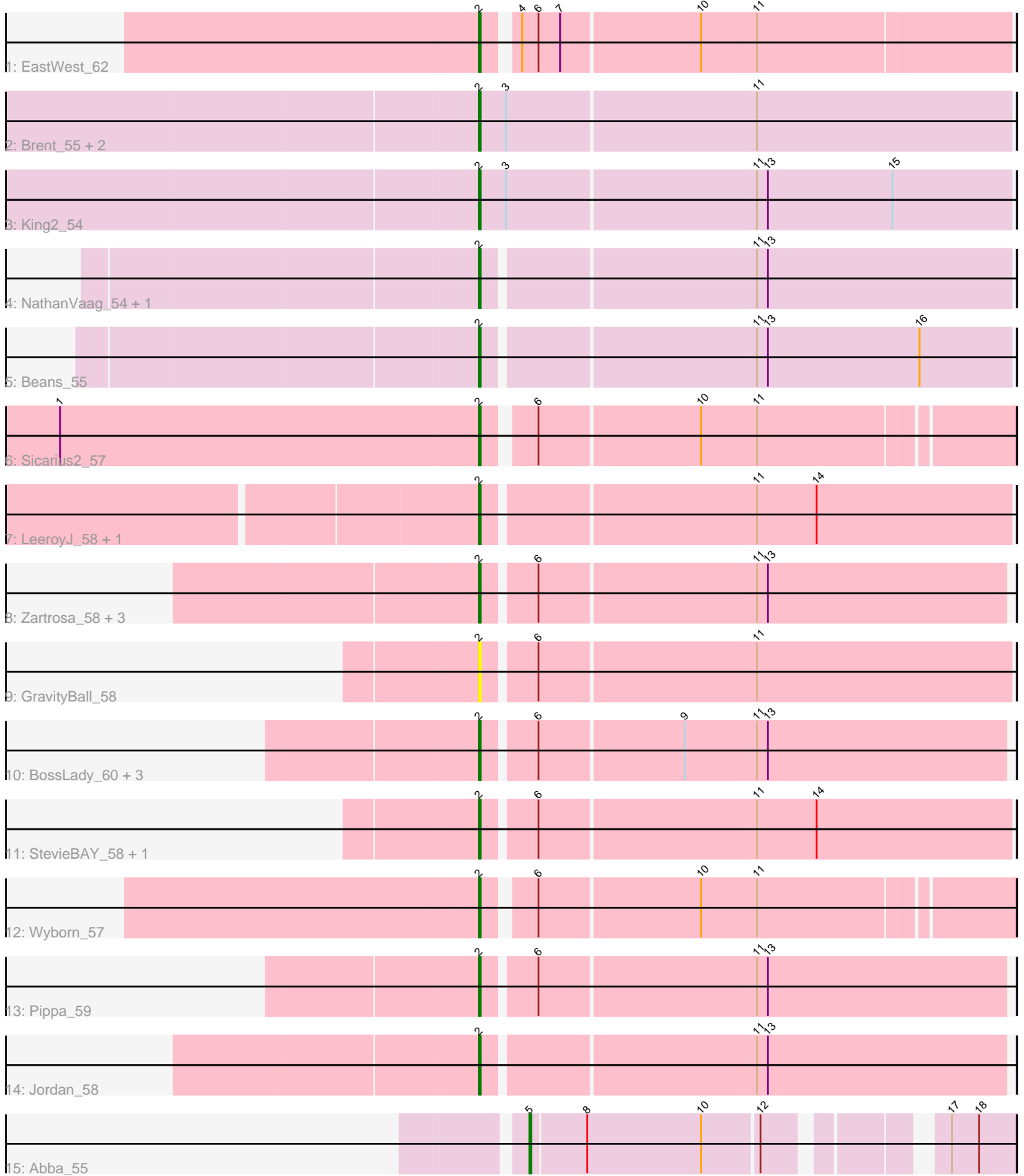


Pham 170250



Note: Tracks are now grouped by subcluster and scaled. Switching in subcluster is indicated by changes in track color. Track scale is now set by default to display the region 30 bp upstream of start 1 to 30 bp downstream of the last possible start. If this default region is judged to be packed too tightly with annotated starts, the track will be further scaled to only show that region of the ORF with annotated starts. This action will be indicated by adding "Zoomed" to the title. For starts, yellow indicates the location of called starts comprised solely of Glimmer/GeneMark auto-annotations, green indicates the location of called starts with at least 1 manual gene annotation.

## Pham 170250 Report

This analysis was run 07/09/24 on database version 566.

Pham number 170250 has 26 members, 1 are drafts.

Phages represented in each track:

- Track 1 : EastWest\_62
- Track 2 : Brent\_55, Jawnski\_54, Franzy\_55
- Track 3 : King2\_54
- Track 4 : NathanVaag\_54, Piccoletto\_55
- Track 5 : Beans\_55
- Track 6 : Sicarius2\_57
- Track 7 : LeeroyJ\_58, BarretLemon\_58
- Track 8 : Zartrosa\_58, Shade\_58, Sonny\_57, JKerns\_58
- Track 9 : GravityBall\_58
- Track 10 : BossLady\_60, Grekaycon\_59, TaeYoung\_60, Martha\_59
- Track 11 : StevieBAY\_58, Timinator\_58
- Track 12 : Wyborn\_57
- Track 13 : Pippa\_59
- Track 14 : Jordan\_58
- Track 15 : Abba\_55

### ***Summary of Final Annotations (See graph section above for start numbers):***

The start number called the most often in the published annotations is 2, it was called in 24 of the 25 non-draft genes in the pham.

Genes that call this "Most Annotated" start:

- BarretLemon\_58, Beans\_55, BossLady\_60, Brent\_55, EastWest\_62, Franzy\_55, GravityBall\_58, Grekaycon\_59, JKerns\_58, Jawnski\_54, Jordan\_58, King2\_54, LeeroyJ\_58, Martha\_59, NathanVaag\_54, Piccoletto\_55, Pippa\_59, Shade\_58, Sicarius2\_57, Sonny\_57, StevieBAY\_58, TaeYoung\_60, Timinator\_58, Wyborn\_57, Zartrosa\_58,

Genes that have the "Most Annotated" start but do not call it:

- 

Genes that do not have the "Most Annotated" start:

- Abba\_55,

## Summary by start number:

### Start 2:

- Found in 25 of 26 ( 96.2% ) of genes in pham
- Manual Annotations of this start: 24 of 25
- Called 100.0% of time when present
- Phage (with cluster) where this start called: BarretLemon\_58 (AO2), Beans\_55 (AO1), BossLady\_60 (AO2), Brent\_55 (AO1), EastWest\_62 (AO), Franzy\_55 (AO1), GravityBall\_58 (AO2), Grekaycon\_59 (AO2), JKerns\_58 (AO2), Jawnski\_54 (AO1), Jordan\_58 (AO2), King2\_54 (AO1), LeeroyJ\_58 (AO2), Martha\_59 (AO2), NathanVaag\_54 (AO1), Piccoletto\_55 (AO1), Pippa\_59 (AO2), Shade\_58 (AO2), Sicarius2\_57 (AO2), Sonny\_57 (AO2), StevieBAY\_58 (AO2), TaeYoung\_60 (AO2), Timinator\_58 (AO2), Wyborn\_57 (AO2), Zartrosa\_58 (AO2),

### Start 5:

- Found in 1 of 26 ( 3.8% ) of genes in pham
- Manual Annotations of this start: 1 of 25
- Called 100.0% of time when present
- Phage (with cluster) where this start called: Abba\_55 (AO3),

## Summary by clusters:

There are 4 clusters represented in this pham: AO, AO3, AO2, AO1,

Info for manual annotations of cluster AO:

- Start number 2 was manually annotated 1 time for cluster AO.

Info for manual annotations of cluster AO1:

- Start number 2 was manually annotated 7 times for cluster AO1.

Info for manual annotations of cluster AO2:

- Start number 2 was manually annotated 16 times for cluster AO2.

Info for manual annotations of cluster AO3:

- Start number 5 was manually annotated 1 time for cluster AO3.

## Gene Information:

Gene: Abba\_55 Start: 37377, Stop: 37613, Start Num: 5

Candidate Starts for Abba\_55:

(Start: 5 @37377 has 1 MA's), (8, 37407), (10, 37470), (12, 37500), (17, 37578), (18, 37593),

Gene: BarretLemon\_58 Start: 40379, Stop: 40663, Start Num: 2

Candidate Starts for BarretLemon\_58:

(Start: 2 @40379 has 24 MA's), (11, 40523), (14, 40556),

Gene: Beans\_55 Start: 40120, Stop: 40404, Start Num: 2

Candidate Starts for Beans\_55:

(Start: 2 @40120 has 24 MA's), (11, 40264), (13, 40270), (16, 40354),

Gene: BossLady\_60 Start: 40759, Stop: 41040, Start Num: 2

Candidate Starts for BossLady\_60:

(Start: 2 @40759 has 24 MA's), (6, 40786), (9, 40864), (11, 40903), (13, 40909),

Gene: Brent\_55 Start: 40359, Stop: 40649, Start Num: 2

Candidate Starts for Brent\_55:

(Start: 2 @40359 has 24 MA's), (3, 40374), (11, 40509),

Gene: EastWest\_62 Start: 39551, Stop: 39829, Start Num: 2

Candidate Starts for EastWest\_62:

(Start: 2 @39551 has 24 MA's), (4, 39566), (6, 39575), (7, 39587), (10, 39662), (11, 39692),

Gene: Franzy\_55 Start: 40375, Stop: 40665, Start Num: 2

Candidate Starts for Franzy\_55:

(Start: 2 @40375 has 24 MA's), (3, 40390), (11, 40525),

Gene: GravityBall\_58 Start: 40677, Stop: 40961, Start Num: 2

Candidate Starts for GravityBall\_58:

(Start: 2 @40677 has 24 MA's), (6, 40704), (11, 40821),

Gene: Grekaycon\_59 Start: 40639, Stop: 40920, Start Num: 2

Candidate Starts for Grekaycon\_59:

(Start: 2 @40639 has 24 MA's), (6, 40666), (9, 40744), (11, 40783), (13, 40789),

Gene: JKerns\_58 Start: 40705, Stop: 40986, Start Num: 2

Candidate Starts for JKerns\_58:

(Start: 2 @40705 has 24 MA's), (6, 40732), (11, 40849), (13, 40855),

Gene: Jawnski\_54 Start: 39884, Stop: 40174, Start Num: 2

Candidate Starts for Jawnski\_54:

(Start: 2 @39884 has 24 MA's), (3, 39899), (11, 40034),

Gene: Jordan\_58 Start: 40519, Stop: 40800, Start Num: 2

Candidate Starts for Jordan\_58:

(Start: 2 @40519 has 24 MA's), (11, 40663), (13, 40669),

Gene: King2\_54 Start: 40236, Stop: 40526, Start Num: 2

Candidate Starts for King2\_54:

(Start: 2 @40236 has 24 MA's), (3, 40251), (11, 40386), (13, 40392), (15, 40461),

Gene: LeeroyJ\_58 Start: 40408, Stop: 40692, Start Num: 2

Candidate Starts for LeeroyJ\_58:

(Start: 2 @40408 has 24 MA's), (11, 40552), (14, 40585),

Gene: Martha\_59 Start: 40744, Stop: 41025, Start Num: 2

Candidate Starts for Martha\_59:

(Start: 2 @40744 has 24 MA's), (6, 40771), (9, 40849), (11, 40888), (13, 40894),

Gene: NathanVaag\_54 Start: 39900, Stop: 40184, Start Num: 2

Candidate Starts for NathanVaag\_54:

(Start: 2 @39900 has 24 MA's), (11, 40044), (13, 40050),

Gene: Piccoletto\_55 Start: 40093, Stop: 40377, Start Num: 2

Candidate Starts for Piccoletto\_55:

(Start: 2 @40093 has 24 MA's), (11, 40237), (13, 40243),

Gene: Pippa\_59 Start: 40715, Stop: 40996, Start Num: 2

Candidate Starts for Pippa\_59:

(Start: 2 @40715 has 24 MA's), (6, 40742), (11, 40859), (13, 40865),

Gene: Shade\_58 Start: 40441, Stop: 40722, Start Num: 2

Candidate Starts for Shade\_58:

(Start: 2 @40441 has 24 MA's), (6, 40468), (11, 40585), (13, 40591),

Gene: Sicarius2\_57 Start: 38499, Stop: 38774, Start Num: 2

Candidate Starts for Sicarius2\_57:

(1, 38268), (Start: 2 @38499 has 24 MA's), (6, 38523), (10, 38610), (11, 38640),

Gene: Sonny\_57 Start: 40191, Stop: 40472, Start Num: 2

Candidate Starts for Sonny\_57:

(Start: 2 @40191 has 24 MA's), (6, 40218), (11, 40335), (13, 40341),

Gene: StevieBAY\_58 Start: 40674, Stop: 40958, Start Num: 2

Candidate Starts for StevieBAY\_58:

(Start: 2 @40674 has 24 MA's), (6, 40701), (11, 40818), (14, 40851),

Gene: TaeYoung\_60 Start: 40717, Stop: 40998, Start Num: 2

Candidate Starts for TaeYoung\_60:

(Start: 2 @40717 has 24 MA's), (6, 40744), (9, 40822), (11, 40861), (13, 40867),

Gene: Timinator\_58 Start: 40523, Stop: 40807, Start Num: 2

Candidate Starts for Timinator\_58:

(Start: 2 @40523 has 24 MA's), (6, 40550), (11, 40667), (14, 40700),

Gene: Wyborn\_57 Start: 39509, Stop: 39784, Start Num: 2

Candidate Starts for Wyborn\_57:

(Start: 2 @39509 has 24 MA's), (6, 39533), (10, 39620), (11, 39650),

Gene: Zartrosa\_58 Start: 40489, Stop: 40770, Start Num: 2

Candidate Starts for Zartrosa\_58:

(Start: 2 @40489 has 24 MA's), (6, 40516), (11, 40633), (13, 40639),