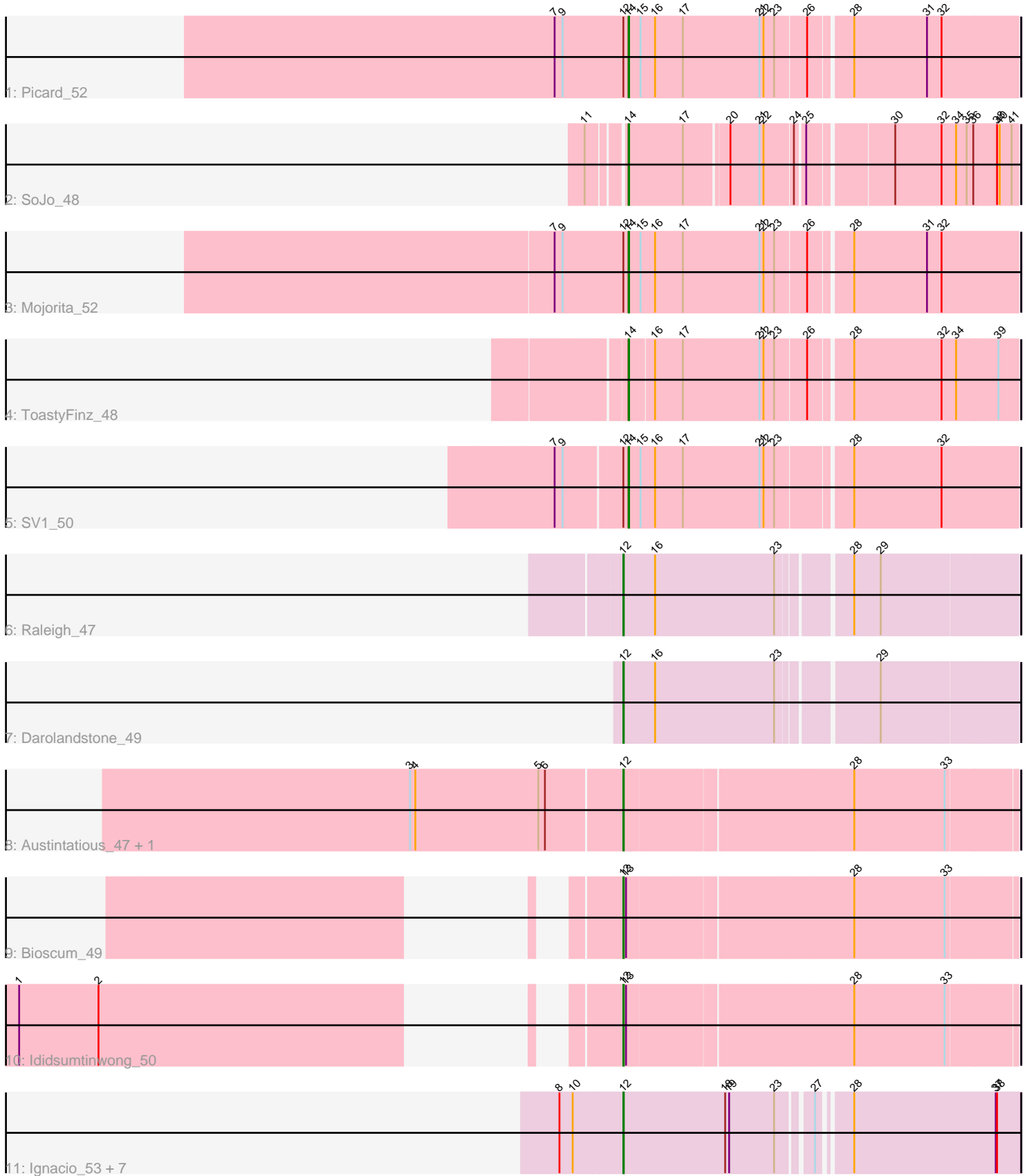


# Pham 170321



Note: Tracks are now grouped by subcluster and scaled. Switching in subcluster is indicated by changes in track color. Track scale is now set by default to display the region 30 bp upstream of start 1 to 30 bp downstream of the last possible start. If this default region is judged to be packed too tightly with annotated starts, the track will be further scaled to only show that region of the ORF with annotated starts. This action will be indicated by adding "Zoomed" to the title. For starts, yellow indicates the location of called starts comprised solely of Glimmer/GeneMark auto-annotations, green indicates the location of called starts with at least 1 manual gene annotation.

## Pham 170321 Report

This analysis was run 07/09/24 on database version 566.

WARNING: Pham size does not match number of genes in report. Either unphamerated genes have been added (by you) or starterator has removed genes due to invalid start codon.

Pham number 170321 has 19 members, 0 are drafts.

Phages represented in each track:

- Track 1 : Picard\_52
- Track 2 : SoJo\_48
- Track 3 : Mojorita\_52
- Track 4 : ToastyFinz\_48
- Track 5 : SV1\_50
- Track 6 : Raleigh\_47
- Track 7 : Darolandstone\_49
- Track 8 : Austintatious\_47, PapayaSalad\_49
- Track 9 : Bioscum\_49
- Track 10 : Ididsumtinwong\_50
- Track 11 : Ignacio\_53, AxeJC\_53, Vondra\_52, Eklok\_53, Eastland\_53, HFrancette\_54, Piccadilly\_53, Cumberbatch\_54

### ***Summary of Final Annotations (See graph section above for start numbers):***

The start number called the most often in the published annotations is 12, it was called in 14 of the 19 non-draft genes in the pham.

Genes that call this "Most Annotated" start:

- Austintatious\_47, AxeJC\_53, Bioscum\_49, Cumberbatch\_54, Darolandstone\_49, Eastland\_53, Eklok\_53, HFrancette\_54, Ididsumtinwong\_50, Ignacio\_53, PapayaSalad\_49, Piccadilly\_53, Raleigh\_47, Vondra\_52,

Genes that have the "Most Annotated" start but do not call it:

- Mojorita\_52, Picard\_52, SV1\_50,

Genes that do not have the "Most Annotated" start:

- SoJo\_48, ToastyFinz\_48,

**Summary by start number:**

Start 12:

- Found in 17 of 19 ( 89.5% ) of genes in pham
- Manual Annotations of this start: 14 of 19
- Called 82.4% of time when present
- Phage (with cluster) where this start called: Austintatious\_47 (BC3), AxeJC\_53 (BP), Bioscum\_49 (BC3), Cumberbatch\_54 (BP), Darolandstone\_49 (BC2), Eastland\_53 (BP), Eklok\_53 (BP), HFrancette\_54 (BP), Ididsumtinwong\_50 (BC3), Ignacio\_53 (BP), PapayaSalad\_49 (BC3), Piccadilly\_53 (BP), Raleigh\_47 (BC2), Vondra\_52 (BP),

Start 14:

- Found in 5 of 19 ( 26.3% ) of genes in pham
- Manual Annotations of this start: 5 of 19
- Called 100.0% of time when present
- Phage (with cluster) where this start called: Mojorita\_52 (BC1), Picard\_52 (BC1), SV1\_50 (BC1), SoJo\_48 (BC1), ToastyFinz\_48 (BC1),

### **Summary by clusters:**

There are 4 clusters represented in this pham: BP, BC1, BC2, BC3,

Info for manual annotations of cluster BC1:

- Start number 14 was manually annotated 5 times for cluster BC1.

Info for manual annotations of cluster BC2:

- Start number 12 was manually annotated 2 times for cluster BC2.

Info for manual annotations of cluster BC3:

- Start number 12 was manually annotated 4 times for cluster BC3.

Info for manual annotations of cluster BP:

- Start number 12 was manually annotated 8 times for cluster BP.

### **Gene Information:**

Gene: Austintatious\_47 Start: 30353, Stop: 31189, Start Num: 12

Candidate Starts for Austintatious\_47:

(3, 29879), (4, 29891), (5, 30170), (6, 30185), (Start: 12 @30353 has 14 MA's), (28, 30842), (33, 31043),

Gene: AxeJC\_53 Start: 33884, Stop: 34711, Start Num: 12

Candidate Starts for AxeJC\_53:

(8, 33743), (10, 33773), (Start: 12 @33884 has 14 MA's), (18, 34106), (19, 34115), (23, 34217), (27, 34283), (28, 34343), (37, 34655), (38, 34658),

Gene: Bioscum\_49 Start: 32463, Stop: 33296, Start Num: 12

Candidate Starts for Bioscum\_49:

(Start: 12 @32463 has 14 MA's), (13, 32469), (28, 32949), (33, 33150),

Gene: Cumberbatch\_54 Start: 33768, Stop: 34595, Start Num: 12

Candidate Starts for Cumberbatch\_54:

(8, 33627), (10, 33657), (Start: 12 @33768 has 14 MA's), (18, 33990), (19, 33999), (23, 34101), (27, 34167), (28, 34227), (37, 34539), (38, 34542),

Gene: Darolandstone\_49 Start: 36242, Stop: 37060, Start Num: 12

Candidate Starts for Darolandstone\_49:

(Start: 12 @36242 has 14 MA's), (16, 36308), (23, 36572), (29, 36767),

Gene: Eastland\_53 Start: 33728, Stop: 34555, Start Num: 12

Candidate Starts for Eastland\_53:

(8, 33587), (10, 33617), (Start: 12 @33728 has 14 MA's), (18, 33950), (19, 33959), (23, 34061), (27, 34127), (28, 34187), (37, 34499), (38, 34502),

Gene: Eklok\_53 Start: 33527, Stop: 34354, Start Num: 12

Candidate Starts for Eklok\_53:

(8, 33386), (10, 33416), (Start: 12 @33527 has 14 MA's), (18, 33749), (19, 33758), (23, 33860), (27, 33926), (28, 33986), (37, 34298), (38, 34301),

Gene: HFrancette\_54 Start: 34416, Stop: 35243, Start Num: 12

Candidate Starts for HFrancette\_54:

(8, 34275), (10, 34305), (Start: 12 @34416 has 14 MA's), (18, 34638), (19, 34647), (23, 34749), (27, 34815), (28, 34875), (37, 35187), (38, 35190),

Gene: Ididsumtinwong\_50 Start: 32455, Stop: 33288, Start Num: 12

Candidate Starts for Ididsumtinwong\_50:

(1, 31462), (2, 31642), (Start: 12 @32455 has 14 MA's), (13, 32461), (28, 32941), (33, 33142),

Gene: Ignacio\_53 Start: 34319, Stop: 35146, Start Num: 12

Candidate Starts for Ignacio\_53:

(8, 34178), (10, 34208), (Start: 12 @34319 has 14 MA's), (18, 34541), (19, 34550), (23, 34652), (27, 34718), (28, 34778), (37, 35090), (38, 35093),

Gene: Mojerita\_52 Start: 34066, Stop: 34896, Start Num: 14

Candidate Starts for Mojerita\_52:

(7, 33901), (9, 33919), (Start: 12 @34054 has 14 MA's), (Start: 14 @34066 has 5 MA's), (15, 34087), (16, 34120), (17, 34183), (21, 34348), (22, 34357), (23, 34381), (26, 34444), (28, 34531), (31, 34696), (32, 34729),

Gene: PapayaSalad\_49 Start: 32950, Stop: 33786, Start Num: 12

Candidate Starts for PapayaSalad\_49:

(3, 32476), (4, 32488), (5, 32767), (6, 32782), (Start: 12 @32950 has 14 MA's), (28, 33439), (33, 33640),

Gene: Picard\_52 Start: 34264, Stop: 35094, Start Num: 14

Candidate Starts for Picard\_52:

(7, 34099), (9, 34117), (Start: 12 @34252 has 14 MA's), (Start: 14 @34264 has 5 MA's), (15, 34285), (16, 34318), (17, 34381), (21, 34546), (22, 34555), (23, 34579), (26, 34642), (28, 34729), (31, 34894), (32, 34927),

Gene: Piccadilly\_53 Start: 33727, Stop: 34554, Start Num: 12

Candidate Starts for Piccadilly\_53:

(8, 33586), (10, 33616), (Start: 12 @33727 has 14 MA's), (18, 33949), (19, 33958), (23, 34060), (27, 34126), (28, 34186), (37, 34498), (38, 34501),

Gene: Raleigh\_47 Start: 36279, Stop: 37097, Start Num: 12

Candidate Starts for Raleigh\_47:

(Start: 12 @36279 has 14 MA's), (16, 36345), (23, 36609), (28, 36750), (29, 36804),

Gene: SV1\_50 Start: 32958, Stop: 33791, Start Num: 14

Candidate Starts for SV1\_50:

(7, 32805), (9, 32823), (Start: 12 @32946 has 14 MA's), (Start: 14 @32958 has 5 MA's), (15, 32979), (16, 33012), (17, 33075), (21, 33243), (22, 33252), (23, 33276), (28, 33426), (32, 33624),

Gene: SoJo\_48 Start: 34568, Stop: 35362, Start Num: 14

Candidate Starts for SoJo\_48:

(11, 34496), (Start: 14 @34568 has 5 MA's), (17, 34682), (20, 34772), (21, 34838), (22, 34847), (24, 34904), (25, 34922), (30, 35093), (32, 35198), (34, 35231), (35, 35255), (36, 35270), (38, 35321), (40, 35327), (41, 35351),

Gene: ToastyFinz\_48 Start: 35454, Stop: 36284, Start Num: 14

Candidate Starts for ToastyFinz\_48:

(Start: 14 @35454 has 5 MA's), (16, 35499), (17, 35562), (21, 35733), (22, 35742), (23, 35766), (26, 35832), (28, 35919), (32, 36117), (34, 36150), (39, 36243),

Gene: Vondra\_52 Start: 33313, Stop: 34140, Start Num: 12

Candidate Starts for Vondra\_52:

(8, 33172), (10, 33202), (Start: 12 @33313 has 14 MA's), (18, 33535), (19, 33544), (23, 33646), (27, 33712), (28, 33772), (37, 34084), (38, 34087),