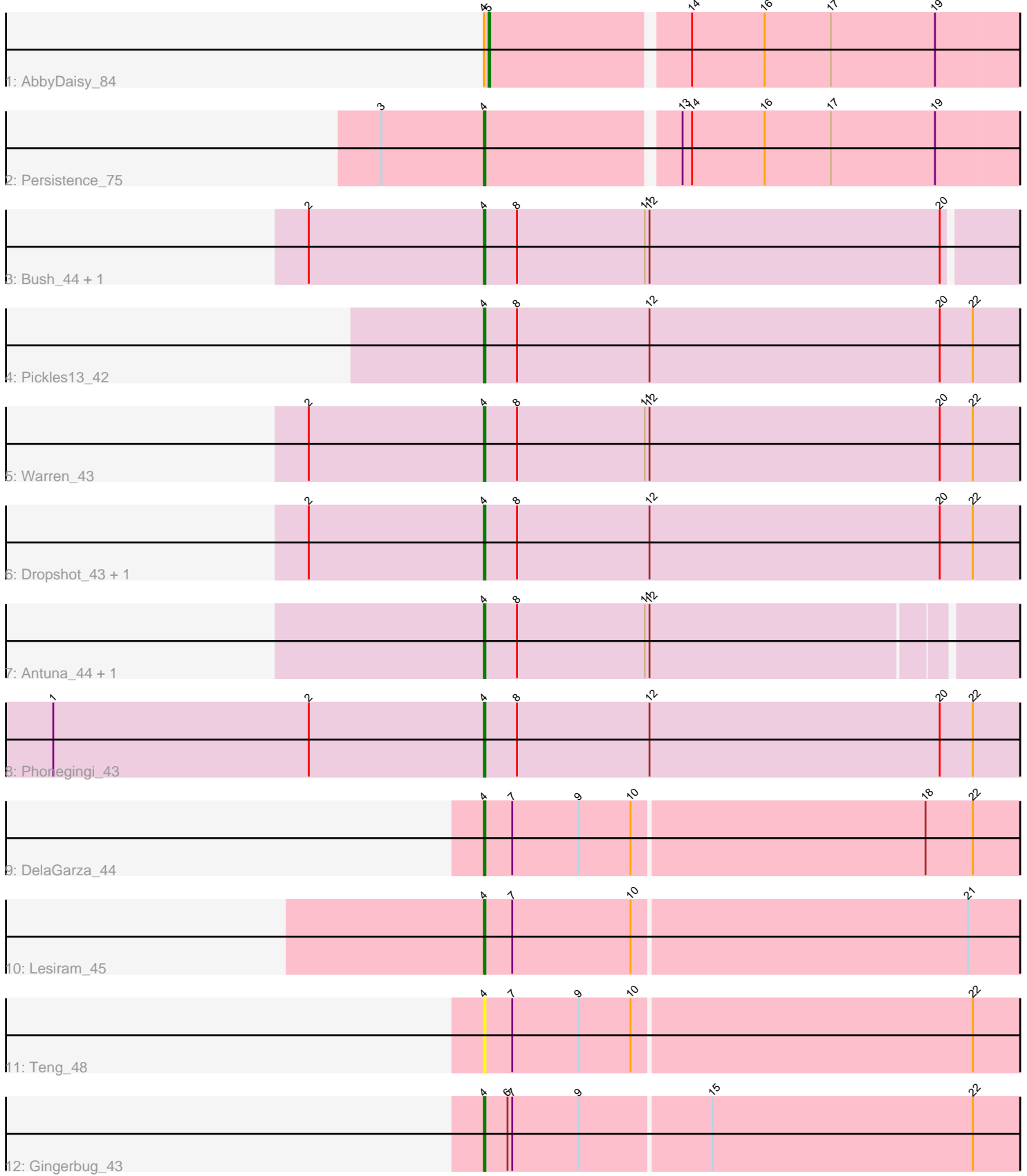


Pham 170414



Note: Tracks are now grouped by subcluster and scaled. Switching in subcluster is indicated by changes in track color. Track scale is now set by default to display the region 30 bp upstream of start 1 to 30 bp downstream of the last possible start. If this default region is judged to be packed too tightly with annotated starts, the track will be further scaled to only show that region of the ORF with annotated starts. This action will be indicated by adding "Zoomed" to the title. For starts, yellow indicates the location of called starts comprised solely of Glimmer/GeneMark auto-annotations, green indicates the location of called starts with at least 1 manual gene annotation.

Pham 170414 Report

This analysis was run 07/09/24 on database version 566.

Pham number 170414 has 15 members, 2 are drafts.

Phages represented in each track:

- Track 1 : AbbyDaisy_84
- Track 2 : Persistence_75
- Track 3 : Bush_44, Blett_43
- Track 4 : Pickles13_42
- Track 5 : Warren_43
- Track 6 : Dropshot_43, Appa_43
- Track 7 : Antuna_44, MenE_47
- Track 8 : Phonegingi_43
- Track 9 : DelaGarza_44
- Track 10 : Lesiram_45
- Track 11 : Teng_48
- Track 12 : Gingerbug_43

Summary of Final Annotations (See graph section above for start numbers):

The start number called the most often in the published annotations is 4, it was called in 12 of the 13 non-draft genes in the pham.

Genes that call this "Most Annotated" start:

- Antuna_44, Appa_43, Blett_43, Bush_44, DelaGarza_44, Dropshot_43, Gingerbug_43, Lesiram_45, MenE_47, Persistence_75, Phonegingi_43, Pickles13_42, Teng_48, Warren_43,

Genes that have the "Most Annotated" start but do not call it:

- AbbyDaisy_84,

Genes that do not have the "Most Annotated" start:

-

Summary by start number:

Start 4:

- Found in 15 of 15 (100.0%) of genes in pham
- Manual Annotations of this start: 12 of 13

- Called 93.3% of time when present
- Phage (with cluster) where this start called: Antuna_44 (GA), Appa_43 (GA), Blett_43 (GA), Bush_44 (GA), DelaGarza_44 (GF), Dropshot_43 (GA), Gingerbug_43 (GF), Lesiram_45 (GF), MenE_47 (GA), Persistence_75 (AY), Phonegingi_43 (GA), Pickles13_42 (GA), Teng_48 (GF), Warren_43 (GA),

Start 5:

- Found in 1 of 15 (6.7%) of genes in pham
- Manual Annotations of this start: 1 of 13
- Called 100.0% of time when present
- Phage (with cluster) where this start called: AbbyDaisy_84 (AY),

Summary by clusters:

There are 3 clusters represented in this pham: AY, GF, GA,

Info for manual annotations of cluster AY:

- Start number 4 was manually annotated 1 time for cluster AY.
- Start number 5 was manually annotated 1 time for cluster AY.

Info for manual annotations of cluster GA:

- Start number 4 was manually annotated 8 times for cluster GA.

Info for manual annotations of cluster GF:

- Start number 4 was manually annotated 3 times for cluster GF.

Gene Information:

Gene: AbbyDaisy_84 Start: 48452, Stop: 48808, Start Num: 5

Candidate Starts for AbbyDaisy_84:

(Start: 4 @48449 has 12 MA's), (Start: 5 @48452 has 1 MA's), (14, 48572), (16, 48617), (17, 48659), (19, 48725),

Gene: Antuna_44 Start: 26934, Stop: 27266, Start Num: 4

Candidate Starts for Antuna_44:

(Start: 4 @26934 has 12 MA's), (8, 26955), (11, 27036), (12, 27039),

Gene: Appa_43 Start: 26832, Stop: 27176, Start Num: 4

Candidate Starts for Appa_43:

(2, 26721), (Start: 4 @26832 has 12 MA's), (8, 26853), (12, 26937), (20, 27120), (22, 27141),

Gene: Blett_43 Start: 27033, Stop: 27371, Start Num: 4

Candidate Starts for Blett_43:

(2, 26922), (Start: 4 @27033 has 12 MA's), (8, 27054), (11, 27135), (12, 27138), (20, 27321),

Gene: Bush_44 Start: 26981, Stop: 27319, Start Num: 4

Candidate Starts for Bush_44:

(2, 26870), (Start: 4 @26981 has 12 MA's), (8, 27002), (11, 27083), (12, 27086), (20, 27269),

Gene: DelaGarza_44 Start: 26877, Stop: 26524, Start Num: 4

Candidate Starts for DelaGarza_44:

(Start: 4 @26877 has 12 MA's), (7, 26859), (9, 26817), (10, 26784), (18, 26601), (22, 26571),

Gene: Dropshot_43 Start: 26667, Stop: 27011, Start Num: 4

Candidate Starts for Dropshot_43:

(2, 26556), (Start: 4 @26667 has 12 MA's), (8, 26688), (12, 26772), (20, 26955), (22, 26976),

Gene: Gingerbug_43 Start: 27395, Stop: 27042, Start Num: 4

Candidate Starts for Gingerbug_43:

(Start: 4 @27395 has 12 MA's), (6, 27380), (7, 27377), (9, 27335), (15, 27254), (22, 27089),

Gene: Lesiram_45 Start: 26848, Stop: 26495, Start Num: 4

Candidate Starts for Lesiram_45:

(Start: 4 @26848 has 12 MA's), (7, 26830), (10, 26755), (21, 26545),

Gene: MenE_47 Start: 26956, Stop: 27288, Start Num: 4

Candidate Starts for MenE_47:

(Start: 4 @26956 has 12 MA's), (8, 26977), (11, 27058), (12, 27061),

Gene: Persistence_75 Start: 44425, Stop: 44784, Start Num: 4

Candidate Starts for Persistence_75:

(3, 44362), (Start: 4 @44425 has 12 MA's), (13, 44542), (14, 44548), (16, 44593), (17, 44635), (19, 44701),

Gene: Phonegingi_43 Start: 26878, Stop: 27222, Start Num: 4

Candidate Starts for Phonegingi_43:

(1, 26605), (2, 26767), (Start: 4 @26878 has 12 MA's), (8, 26899), (12, 26983), (20, 27166), (22, 27187),

Gene: Pickles13_42 Start: 27142, Stop: 27486, Start Num: 4

Candidate Starts for Pickles13_42:

(Start: 4 @27142 has 12 MA's), (8, 27163), (12, 27247), (20, 27430), (22, 27451),

Gene: Teng_48 Start: 26868, Stop: 26515, Start Num: 4

Candidate Starts for Teng_48:

(Start: 4 @26868 has 12 MA's), (7, 26850), (9, 26808), (10, 26775), (22, 26562),

Gene: Warren_43 Start: 26888, Stop: 27232, Start Num: 4

Candidate Starts for Warren_43:

(2, 26777), (Start: 4 @26888 has 12 MA's), (8, 26909), (11, 26990), (12, 26993), (20, 27176), (22, 27197),