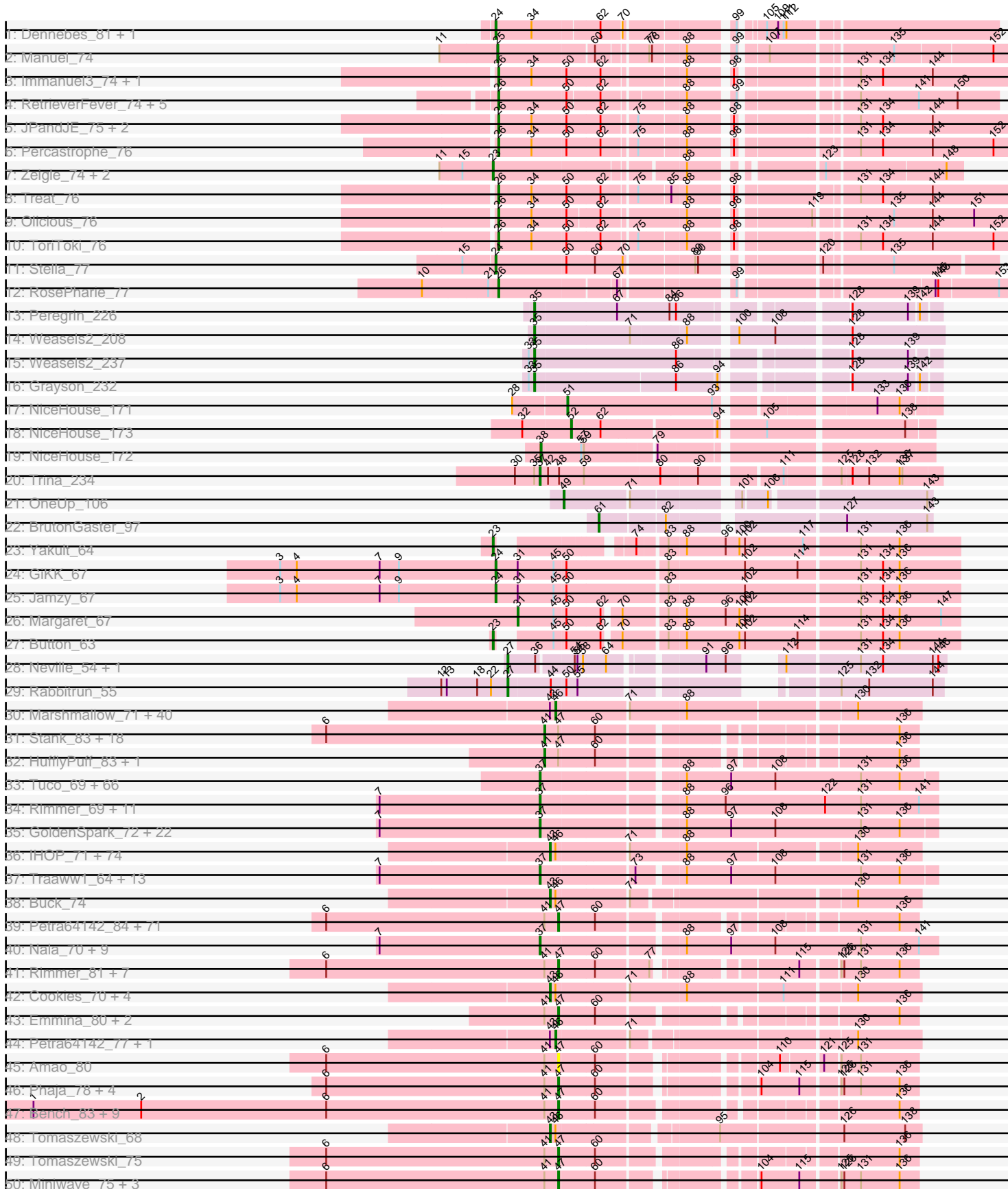
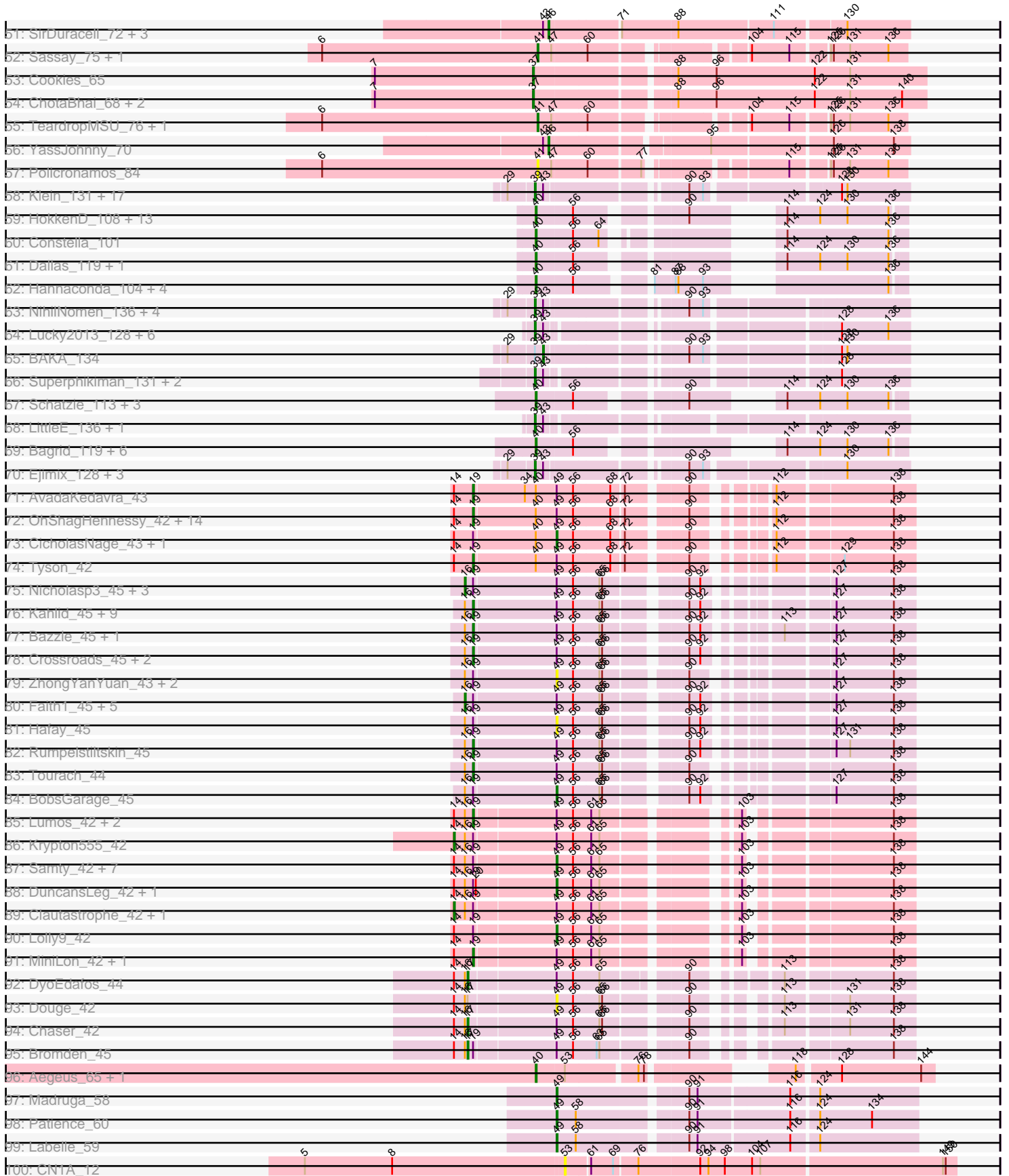


Pham 171092



Pham 171092



Note: Tracks are now grouped by subcluster and scaled. Switching in subcluster is indicated by changes in track color. Track scale is now set by default to display the region 30 bp upstream of start 1 to 30 bp downstream of the last possible start. If this default region is judged to be packed too tightly with annotated starts, the track will be further scaled to only show that region of the ORF with annotated starts. This action will be indicated by adding "Zoomed" to the title. For starts, yellow indicates the location of called starts comprised solely of Glimmer/GeneMark auto-annotations, green indicates the location of called starts with at least 1 manual gene annotation.

Pham 171092 Report

This analysis was run 07/09/24 on database version 566.

Pham number 171092 has 584 members, 44 are drafts.

Phages represented in each track:

- Track 1 : Dennebes_81, Rideau_80
- Track 2 : Manuel_74
- Track 3 : Immanuel3_74, Romero_76
- Track 4 : RetrieverFever_74, Gremlin23_74, FlowerPower_74, Fabian_73, Geostin_69, Vorvolakos_75
- Track 5 : JPandJE_75, HaugeAnator_76, ZooBear_76
- Track 6 : Percastrophe_76
- Track 7 : Zeigle_74, Kumquat_74, WRightOn_78
- Track 8 : Treat_76
- Track 9 : Olicious_76
- Track 10 : ToriToki_76
- Track 11 : Stella_77
- Track 12 : RosePharie_77
- Track 13 : Peregrin_226
- Track 14 : Weasels2_208
- Track 15 : Weasels2_237
- Track 16 : Grayson_232
- Track 17 : NiceHouse_171
- Track 18 : NiceHouse_173
- Track 19 : NiceHouse_172
- Track 20 : Trina_234
- Track 21 : OneUp_106
- Track 22 : BrutonGaster_97
- Track 23 : Yakult_64
- Track 24 : GiKK_67
- Track 25 : Jamzy_67
- Track 26 : Margaret_67
- Track 27 : Button_63
- Track 28 : Neville_54, Trax_53
- Track 29 : Rabbitrun_55
- Track 30 : Marshmallow_71, Teaspoon_74, Nala_75, Sassay_68, Thresher_75, Murica_76, 244_74, Nimrod_74, Command613_75, StellaBean_71, BilboSwaggins_72, AmericanBeauty_80, Kostya_73, NelitzaMV_71, GoldenSpark_77, Youngblood_76, Icee_74, Balomoji_73, Palpatine_75, MadamMonkfish_73, Dumbo_73, Simpliphy_72, Eureka_71, Goldilocks_76, Terminus_76, CrystalP_72, Cjw1_73, BugsBunny_73, Policronamos_77, Daikon_75, Filch_74, Easy2Say_74, Porky_72, Pumpkin_76, Amao_73, Elph10_73, Murphy_73,

Maxxinista_75, Wiggin_75, FireRed_77, Willez_68

- Track 31 : Stank_83, Marshmallow_78, BugsBunny_80, Kostya_80, BilboSwaggins_79, Cjw1_80, Daikon_82, Elph10_80, DrDrey_80, Adnama_84, NelitzaMV_78, Eureka_78, Goku_78, Bruin_77, GoldenSpark_84, MISSy_81, Command613_82, ABCat_77, Dumbo_80
- Track 32 : HufflyPuff_83, Porky_79
- Track 33 : Tuco_69, Quallification_69, Miniwave_63, IHOP_66, Icee_69, Thresher_70, Kanye_65, Murica_71, Murphy_68, Pharsalus_65, StellaBean_66, BadStone_65, Gator_66, HufflyPuff_71, Stark_69, Paperbeatsrock_67, Tarkin_67, Rakim_69, ABCat_65, Hopey_68, NelitzaMV_66, Marshmallow_66, BigBubba_68, PhatBacter_72, Goku_66, Flypotenuse_64, OrionPax_67, Lilac_70, Czyszczone1_69, RiverMonster_68, Manda_68, Phaux_70, Sotrice96_69, Ukulele_63, Cactus_71, Elph10_68, Kostya_68, SophKB_65, Elite2014_67, ChosenOne_68, Balomoji_68, Dusk_65, DrDrey_68, Palpatine_70, Simpliphy_67, Policronamos_72, Saints25_67, Lilpickle_67, ShereKhan_67, Highbury_67, NoSleep_69, Daikon_70, TeardropMSU_64, Dumbo_68, Pumpkin_71, xkcd_71, Eureka_66, 244_69, Maxxinista_70, Phrux_65, Phaja_66, Cjw1_68, HanKaySha_68, BugsBunny_68, Myrale_68, Xandras_67, Filch_69
- Track 34 : Rimmer_69, Sassay_63, Harella_68, Bask21_68, Petra64142_72, SirDuracell_67, YassJohnny_65, Buck_69, Glexan_67, Tomaszewski_63, DoctorDiddles_67, Willez_63
- Track 35 : GoldenSpark_72, Porky_67, Gemini_73, Gage_70, Emmina_68, TBrady12_71, Youngblood_71, Lilizi_69, BaboJay_65, Inca_65, MadamMonkfish_68, Argent26_72, Hoonter_71, GooberAzure_71, Goldilocks_71, Bench_71, Kimchi_72, JeTaime_68, StolenFromERC_71, AmericanBeauty_75, Command613_70, Teaspoon_69, Holt_73
- Track 36 : IHOP_71, Traaww1_69, Miniwave_68, Highbury_72, NoSleep_74, Glexan_72, Lilizi_74, Inca_70, Gemini_78, HufflyPuff_76, MISSy_74, Moldemort_76, Gage_75, Phaja_71, HanKaySha_73, Mosby_69, Myrale_73, Manda_74, SophKB_70, Elite2014_72, MPhalcon_74, Dusk_70, Quallification_74, Kanye_70, Saints25_72, PhatBacter_77, JeTaime_73, BadStone_70, Lilpickle_72, Contagion_69, ShereKhan_72, Henry_71, Emmina_73, Flypotenuse_69, Stank_76, Mindy_72, Hoonter_76, Lilac_75, Phaux_75, Ukulele_68, Cactus_76, Adnama_77, Hopey_73, GooberAzure_76, TBrady12_76, Bench_76, Phrux_70, BaboJay_70, Goku_71, Kimchi_77, Asriel_72, Bruin_70, Argent26_77, Xandras_72, Tuco_74, Barbarian_72, TeardropMSU_69, ShamWow_73, xkcd_76, StolenFromERC_76, RiverMonster_73, Sotrice96_74, Harella_73, Czyszczone1_74, Toto_71, Pharsalus_70, Gator_71, Stark_74, Misfit_74, ChosenOne_73, Tarkin_72, ABCat_70, DrDrey_73, Holt_78, Paperbeatsrock_72
- Track 37 : Traaww1_64, Easy2Say_69, Moldemort_71, CrystalP_67, Asriel_67, Henry_66, Barbarian_67, ShamWow_68, BilboSwaggins_67, Adnama_72, Toto_66, Stank_71, Mindy_67, Wiggin_70
- Track 38 : Buck_74
- Track 39 : Petra64142_84, Highbury_79, Mindy_79, Filch_81, Inca_77, Sotrice96_81, Moldemort_83, Dusk_77, Henry_78, Kanye_77, StellaBean_78, AmericanBeauty_87, Rakim_81, Misfit_81, Lilac_82, Terminus_83, IHOP_78, Glexan_79, Palpatine_82, Saints25_79, Cactus_83, Buck_81, Simpliphy_79, GooberAzure_83, MadamMonkfish_80, Lilpickle_79, Holt_85, JeTaime_80, Icee_81, MPhalcon_81, Kimchi_84, Czyszczone1_81, Maxxinista_82, Hopey_80, BadStone_77, Balomoji_80, Harella_80, TBrady12_83, Stark_81, RiverMonster_80, Easy2Say_81, CrystalP_79, Ukulele_75, BaboJay_77, Asriel_79, Murphy_80, HanKaySha_80, Contagion_76, Goldilocks_83, StolenFromERC_83, Tuco_81, BigBubba_80, Traaww1_76, Mosby_76, Barbarian_79, Flypotenuse_76, OrionPax_79, Gage_82,

Thresher_82, ShamWow_80, ChosenOne_80, Phrux_77, Youngblood_83, Toto_78, Manda_81, Gator_78, Teaspoon_81, Elite2014_79, NoSleep_81, Wiggins_82, Argent26_84, Gemini_85

- Track 40 : Nala_70, MPhalcon_69, Mosby_64, Bruin_65, Nimrod_69, Contagion_64, MISSy_69, Terminus_71, Misfit_69, FireRed_72
- Track 41 : Rimmer_81, Cookies_77, Bask21_80, ChotaBhai_80, SirDuracell_79, Pat3_78, Phaux_82, DoctorDiddles_79
- Track 42 : Cookies_70, ChotaBhai_73, Rakim_74, Pat3_71, BigBubba_73
- Track 43 : Emmina_80, xkcd_83, Murica_83
- Track 44 : Petra64142_77, Rimmer_74
- Track 45 : Amao_80
- Track 46 : Phaja_78, SophKB_77, ShereKhan_78, Myrale_80, Quallification_81
- Track 47 : Bench_83, 244_81, Pumpkin_83, PhatBacter_84, Lilizi_81, FireRed_84, Hoonter_83, Xandras_79, Nimrod_81, Nala_82
- Track 48 : Tomaszewski_68
- Track 49 : Tomaszewski_75
- Track 50 : Miniwave_75, Pharsalus_77, Tarkin_79, Paperbeatsrock_79
- Track 51 : SirDuracell_72, Bask21_73, OrionPax_72, DoctorDiddles_72
- Track 52 : Sassay_75, Willez_75
- Track 53 : Cookies_65
- Track 54 : ChotaBhai_68, Amao_68, Pat3_66
- Track 55 : TeardropMSU_76, YassJohnny_77
- Track 56 : YassJohnny_70
- Track 57 : Policronamos_84
- Track 58 : Klein_131, Redno2_126, Wanda_133, Odette_138, ThreeRngTarjay_130, Minerva_133, Dove_127, HokkenD_126, DmpstrDiver_134, Constella_128, Duke13_129, Schatzie_130, Bagrid_135, Hughesyang_134, Yeet_128, Phoebus_135, EricMillard_126, Zelink_129
- Track 59 : HokkenD_108, Ariel_113, Redno2_112, Lucky2013_110, Courthouse_108, JuicyJay_115, Phoebus_119, Porcelain_113, Squint_111, Beem_120, Superphikiman_110, MiaZeal_113, NihilNomen_120, Dove_108
- Track 60 : Constella_101
- Track 61 : Dallas_119, Thibault_99
- Track 62 : Hannaconda_104, KashFlow_110, Gonephishing_107, Omega_124, LittleE_118
- Track 63 : NihilNomen_136, Bombitas_122, JuicyJay_131, Bobby_126, Beem_136
- Track 64 : Lucky2013_128, MiaZeal_133, Gonephishing_128, Hannaconda_127, KashFlow_131, Porcelain_131, Squint_131
- Track 65 : BAKA_134
- Track 66 : Superphikiman_131, Ariel_133, Courthouse_129
- Track 67 : Schatzie_113, Bombitas_106, Yeet_109, Odette_120
- Track 68 : LittleE_136, Omega_143
- Track 69 : Bagrid_119, Halley_121, Minerva_116, DmpstrDiver_119, Hughesyang_118, Pound_108, Ejimix_113
- Track 70 : Ejimix_128, Halley_136, Thibault_119, Dallas_135
- Track 71 : AvadaKedavra_43
- Track 72 : OhShagHennessy_42, Appletree2_42, Rose5_42, Zaria_43, Enceladus_42, Halena_42, DirkDirk_42, JoeDirt_42, Wyatt2_43, UPIE_43, Acquire49_43, Wamburgrxpress_43, Silverleaf_42, LeBron_43, Calm_43
- Track 73 : CicholasNage_43, MAckerman_42
- Track 74 : Tyson_42
- Track 75 : Nicholasp3_45, Loadrie_44, GuuelaD_44, Wigglewiggles_45

- Track 76 : Kahlid_45, MkaliMitinis3_45, Gabriela_45, BigCheese_45, Lewan_45, Vetric_45, Netyap_45, Wilder_45, DrSeegs_45, LilDestine_45
- Track 77 : Bazzle_45, Archie_45
- Track 78 : Crossroads_45, Zakai_45, Gardann_45
- Track 79 : ZhongYanYuan_43, Baoshan_43, Claus_45
- Track 80 : Faith1_45, Itos_44, Finemlucis_45, Winky_45, Breezona_45, Miley16_45
- Track 81 : Hafay_45
- Track 82 : Rumpelstiltskin_45
- Track 83 : Tourach_44
- Track 84 : BobsGarage_45
- Track 85 : Lumos_42, Jubie_42, Whirlwind_43
- Track 86 : Krypton555_42
- Track 87 : Samty_42, Moostard_42, Jobypre_42, Kingsolomon_42, Bellis_42, Finnry_42, Snenia_42, Nicholas_42
- Track 88 : DuncansLeg_42, Ellson_42
- Track 89 : Clautastrophe_42, MsGreen_42
- Track 90 : Lolly9_42
- Track 91 : MiniLon_42, MiniMac_42
- Track 92 : DyoEdafos_44
- Track 93 : Douge_42
- Track 94 : Chaser_42
- Track 95 : Bromden_45
- Track 96 : Aegeus_65, Baudelaire_65
- Track 97 : Madruga_58
- Track 98 : Patience_60
- Track 99 : Labelle_59
- Track 100 : CN1A_12

Summary of Final Annotations (See graph section above for start numbers):

The start number called the most often in the published annotations is 37, it was called in 123 of the 540 non-draft genes in the pham.

Genes that call this "Most Annotated" start:

- 244_69, ABCat_65, Adnama_72, Amao_68, AmericanBeauty_75, Argent26_72, Asriel_67, BaboJay_65, BadStone_65, Balomoji_68, Barbarian_67, Bask21_68, Bench_71, BigBubba_68, BilboSwaggins_67, Bruin_65, Buck_69, BugsBunny_68, Cactus_71, ChosenOne_68, ChotaBhai_68, Cjw1_68, Command613_70, Contagion_64, Cookies_65, CrystalP_67, Czystczon1_69, Daikon_70, DoctorDiddles_67, DrDrey_68, Dumbo_68, Dusk_65, Easy2Say_69, Elite2014_67, Elph10_68, Emmina_68, Eureka_66, Filch_69, FireRed_72, Flypotenuse_64, Gage_70, Gator_66, Gemini_73, Glexan_67, Goku_66, GoldenSpark_72, Goldilocks_71, GooberAzure_71, HanKaySha_68, Harella_68, Henry_66, Highbury_67, Holt_73, Hoonter_71, Hopey_68, HufflyPuff_71, IHOP_66, Icee_69, Inca_65, JeTaime_68, Kanye_65, Kimchi_72, Kostya_68, Lilac_70, Lilizi_69, Lilpickle_67, MISSy_69, MPhalcon_69, MadamMonkfish_68, Manda_68, Marshmallow_66, Maxxinista_70, Mindy_67, Miniwave_63, Misfit_69, Moldemort_71, Mosby_64, Murica_71, Murphy_68, Myrale_68, Nala_70, NelitzaMV_66, Nimrod_69, NoSleep_69, OrionPax_67, Palpatine_70, Paperbeatsrock_67, Pat3_66, Petra64142_72, Phaja_66, Pharsalus_65, PhatBacter_72, Phaux_70, Phrux_65,

Policronamos_72, Porky_67, Pumpkin_71, Quallification_69, Rakim_69, Rimmer_69, RiverMonster_68, Saints25_67, Sassay_63, ShamWow_68, ShereKhan_67, Simpliphy_67, SirDuracell_67, SophKB_65, Sotrice96_69, Stank_71, Stark_69, StellaBean_66, StolenFromERC_71, TBrady12_71, Tarkin_67, TeardropMSU_64, Teaspoon_69, Terminus_71, Thresher_70, Tomaszewski_63, Toto_66, Traaww1_64, Trina_234, Tuco_69, Ukulele_63, Wiggins_70, Willez_63, Xandras_67, YassJohnny_65, Youngblood_71, xkcd_71,

Genes that have the "Most Annotated" start but do not call it:

-

Genes that do not have the "Most Annotated" start:

- 244_74, 244_81, ABCat_70, ABCat_77, Acquire49_43, Adnama_77, Adnama_84, Aegeus_65, Amao_73, Amao_80, AmericanBeauty_80, AmericanBeauty_87, Appletree2_42, Archie_45, Argent26_77, Argent26_84, Ariel_113, Ariel_133, Asriel_72, Asriel_79, AvadaKedavra_43, BAKA_134, BaboJay_70, BaboJay_77, BadStone_70, BadStone_77, Bagrid_119, Bagrid_135, Balomoji_73, Balomoji_80, Baoshan_43, Barbarian_72, Barbarian_79, Bask21_73, Bask21_80, Baudelaire_65, Bazzle_45, Beem_120, Beem_136, Bellis_42, Bench_76, Bench_83, BigBubba_73, BigBubba_80, BigCheese_45, BilboSwaggins_72, BilboSwaggins_79, Bobby_126, BobsGarage_45, Bombitas_106, Bombitas_122, Breezona_45, Bromden_45, Bruin_70, Bruin_77, BrutonGaster_97, Buck_74, Buck_81, BugsBunny_73, BugsBunny_80, Button_63, CN1A_12, Cactus_76, Cactus_83, Calm_43, Chaser_42, ChosenOne_73, ChosenOne_80, ChotaBhai_73, ChotaBhai_80, CicholasNage_43, Cjw1_73, Cjw1_80, Claus_45, Clautastrophe_42, Command613_75, Command613_82, Constella_101, Constella_128, Contagion_69, Contagion_76, Cookies_70, Cookies_77, Courthouse_108, Courthouse_129, Crossroads_45, CrystalP_72, CrystalP_79, Czyszczonek_74, Czyszczonek_81, Daikon_75, Daikon_82, Dallas_119, Dallas_135, Dennebes_81, DirkDirk_42, DmpstrDiver_119, DmpstrDiver_134, DoctorDiddles_72, DoctorDiddles_79, Douge_42, Dove_108, Dove_127, DrDrey_73, DrDrey_80, DrSeegs_45, Duke13_129, Dumbo_73, Dumbo_80, DuncansLeg_42, Dusk_70, Dusk_77, DyoEdafos_44, Easy2Say_74, Easy2Say_81, Ejimix_113, Ejimix_128, Elite2014_72, Elite2014_79, Ellson_42, Elph10_73, Elph10_80, Emmina_73, Emmina_80, Enceladus_42, EricMillard_126, Eureka_71, Eureka_78, Fabian_73, Faith1_45, Filch_74, Filch_81, Finemlucis_45, Finnry_42, FireRed_77, FireRed_84, FlowerPower_74, Flypotenuse_69, Flypotenuse_76, Gabriela_45, Gage_75, Gage_82, Gardann_45, Gator_71, Gator_78, Gemini_78, Gemini_85, Geostin_69, GiKK_67, Glexan_72, Glexan_79, Goku_71, Goku_78, GoldenSpark_77, GoldenSpark_84, Goldilocks_76, Goldilocks_83, Gonephishing_107, Gonephishing_128, GooberAzure_76, GooberAzure_83, Grayson_232, Gremlin23_74, GuuelaD_44, Hafay_45, Halena_42, Halley_121, Halley_136, HanKaySha_73, HanKaySha_80, Hannaconda_104, Hannaconda_127, Harella_73, Harella_80, HaugeAnator_76, Henry_71, Henry_78, Highbury_72, Highbury_79, HokkenD_108, HokkenD_126, Holt_78, Holt_85, Hoonter_76, Hoonter_83, Hopey_73, Hopey_80, HufflyPuff_76, HufflyPuff_83, Hughesyang_118, Hughesyang_134, IHOP_71, IHOP_78, Icee_74, Icee_81, Immanuel3_74, Inca_70, Inca_77, Itos_44, JPandJE_75, Jamzy_67, JeTaime_73, JeTaime_80, Jobypre_42, JoeDirt_42, Jubie_42, JuicyJay_115, JuicyJay_131, Kahlid_45, Kanye_70, Kanye_77, KashFlow_110, KashFlow_131, Kimchi_77, Kimchi_84, Kingsolomon_42, Klein_131, Kostya_73, Kostya_80, Krypton555_42, Kumquat_74, Labelle_59, LeBron_43, Lewan_45, LilDestine_45, Lilac_75, Lilac_82, Lilizi_74, Lilizi_81, Lilpickle_72, Lilpickle_79, LittleE_118, LittleE_136, Loadrie_44, Lolly9_42, Lucky2013_110, Lucky2013_128, Lumos_42, MAckerman_42, MISSy_74,

MISSy_81, MPhalcon_74, MPhalcon_81, MadamMonkfish_73, MadamMonkfish_80,
 Madrugá_58, Manda_74, Manda_81, Manuel_74, Margaret_67, Marshmallow_71,
 Marshmallow_78, Maxxinista_75, Maxxinista_82, MiaZeal_113, MiaZeal_133,
 Miley16_45, Mindy_72, Mindy_79, Minerva_116, Minerva_133, MiniLon_42,
 MiniMac_42, Miniwave_68, Miniwave_75, Misfit_74, Misfit_81, MkaliMitinis3_45,
 Moldemort_76, Moldemort_83, Moostard_42, Mosby_69, Mosby_76, MsGreen_42,
 Murica_76, Murica_83, Murphy_73, Murphy_80, Myrale_73, Myrale_80, Nala_75,
 Nala_82, NelitzaMV_71, NelitzaMV_78, Netyap_45, Neville_54, NiceHouse_171,
 NiceHouse_172, NiceHouse_173, Nicholas_42, Nicholasp3_45, NihilNomen_120,
 NihilNomen_136, Nimrod_74, Nimrod_81, NoSleep_74, NoSleep_81, Odette_120,
 Odette_138, OhShagHennessy_42, Olicious_76, Omega_124, Omega_143,
 OneUp_106, OrionPax_72, OrionPax_79, Palpatine_75, Palpatine_82,
 Paperbeatsrock_72, Paperbeatsrock_79, Pat3_71, Pat3_78, Patience_60,
 Percastrophe_76, Peregrin_226, Petra64142_77, Petra64142_84, Phaja_71,
 Phaja_78, Pharsalus_70, Pharsalus_77, PhatBacter_77, PhatBacter_84, Phaux_75,
 Phaux_82, Phoebus_119, Phoebus_135, Phrux_70, Phrux_77, Policronamos_77,
 Policronamos_84, Porcelain_113, Porcelain_131, Porky_72, Porky_79, Pound_108,
 Pumpkin_76, Pumpkin_83, Quallification_74, Quallification_81, Rabbitrun_55,
 Rakim_74, Rakim_81, Redno2_112, Redno2_126, RetrieverFever_74, Rideau_80,
 Rimmer_74, Rimmer_81, RiverMonster_73, RiverMonster_80, Romero_76,
 Rose5_42, RosePharie_77, Rumpelstiltskin_45, Saints25_72, Saints25_79,
 Samty_42, Sassay_68, Sassay_75, Schatzie_113, Schatzie_130, ShamWow_73,
 ShamWow_80, ShereKhan_72, ShereKhan_78, Silverleaf_42, Simpliphy_72,
 Simpliphy_79, SirDuracell_72, SirDuracell_79, Snenia_42, SophKB_70, SophKB_77,
 Sotrice96_74, Sotrice96_81, Squint_111, Squint_131, Stank_76, Stank_83, Stark_74,
 Stark_81, StellaBean_71, StellaBean_78, Stella_77, StolenFromERC_76,
 StolenFromERC_83, Superphikiman_110, Superphikiman_131, TBrady12_76,
 TBrady12_83, Tarkin_72, Tarkin_79, TeardropMSU_69, TeardropMSU_76,
 Teaspoon_74, Teaspoon_81, Terminus_76, Terminus_83, Thibault_119, Thibault_99,
 ThreeRngTarjay_130, Thresher_75, Thresher_82, Tomaszewski_68,
 Tomaszewski_75, ToriToki_76, Toto_71, Toto_78, Tourach_44, Traaww1_69,
 Traaww1_76, Trax_53, Treat_76, Tuco_74, Tuco_81, Tyson_42, UPIE_43,
 Ukulele_68, Ukulele_75, Vetrix_45, Vorvolakos_75, WRightOn_78,
 Wamburggrxpress_43, Wanda_133, Weasels2_208, Weasels2_237, Whirlwind_43,
 Wiggin_75, Wiggin_82, Wigglewobble_45, Wilder_45, Willez_68, Willez_75,
 Winky_45, Wyatt2_43, Xandras_72, Xandras_79, Yakult_64, YassJohnny_70,
 YassJohnny_77, Yeet_109, Yeet_128, Youngblood_76, Youngblood_83, Zakai_45,
 Zaria_43, Zeigle_74, Zelink_129, ZhongYanYuan_43, ZooBear_76, xkcd_76,
 xkcd_83,

Summary by start number:

Start 14:

- Found in 42 of 584 (7.2%) of genes in pham
- Manual Annotations of this start: 3 of 540
- Called 7.1% of time when present
- Phage (with cluster) where this start called: Clautastrophe_42 (L3), Krypton555_42 (L3), MsGreen_42 (L3),

Start 16:

- Found in 52 of 584 (8.9%) of genes in pham
- Manual Annotations of this start: 10 of 540
- Called 19.2% of time when present

- Phage (with cluster) where this start called: Breezona_45 (L2), Faith1_45 (L2), Finemlucis_45 (L2), GuuelaD_44 (L2), Itos_44 (L2), Loadrie_44 (L2), Miley16_45 (L2), Nicholasp3_45 (L2), Wigglewiggle_45 (L2), Winky_45 (L2),

Start 17:

- Found in 4 of 584 (0.7%) of genes in pham
- Manual Annotations of this start: 3 of 540
- Called 75.0% of time when present
- Phage (with cluster) where this start called: Bromden_45 (L4), Chaser_42 (L4), DyoEdafos_44 (L4),

Start 19:

- Found in 71 of 584 (12.2%) of genes in pham
- Manual Annotations of this start: 39 of 540
- Called 54.9% of time when present
- Phage (with cluster) where this start called: Acquire49_43 (L1), Appletree2_42 (L1), Archie_45 (L2), AvadaKedavra_43 (L1), Bazzle_45 (L2), BigCheese_45 (L2), Calm_43 (L1), Crossroads_45 (L2), DirkDirk_42 (L1), DrSeegs_45 (L2), Enceladus_42 (L1), Gabriela_45 (L2), Gardann_45 (L2), Halena_42 (L1), JoeDirt_42 (L1), Jubie_42 (L3), Kahlid_45 (L2), LeBron_43 (L1), Lewan_45 (L2), LilDestine_45 (L2), Lumos_42 (L3), MiniLon_42 (L3), MiniMac_42 (L3), MkaliMitinis3_45 (L2), Netyap_45 (L2), OhShagHennessy_42 (L1), Rose5_42 (L1), Rumpelstiltskin_45 (L2), Silverleaf_42 (L1), Tourach_44 (L2), Tyson_42 (L1), UPIE_43 (L1), Vetrrix_45 (L2), Wamburgrxpress_43 (L1), Whirlwind_43 (L3), Wilder_45 (L2), Wyatt2_43 (L1), Zakai_45 (L2), Zaria_43 (L1),

Start 23:

- Found in 5 of 584 (0.9%) of genes in pham
- Manual Annotations of this start: 5 of 540
- Called 100.0% of time when present
- Phage (with cluster) where this start called: Button_63 (CT), Kumquat_74 (BF), WRightOn_78 (BF), Yakult_64 (CT), Zeigle_74 (BF),

Start 24:

- Found in 5 of 584 (0.9%) of genes in pham
- Manual Annotations of this start: 4 of 540
- Called 100.0% of time when present
- Phage (with cluster) where this start called: Dennebes_81 (BF), GiKK_67 (CT), Jamzy_67 (CT), Rideau_80 (BF), Stella_77 (BF),

Start 25:

- Found in 1 of 584 (0.2%) of genes in pham
- Manual Annotations of this start: 1 of 540
- Called 100.0% of time when present
- Phage (with cluster) where this start called: Manuel_74 (BF),

Start 26:

- Found in 16 of 584 (2.7%) of genes in pham
- Manual Annotations of this start: 15 of 540
- Called 100.0% of time when present
- Phage (with cluster) where this start called: Fabian_73 (BF), FlowerPower_74 (BF), Geostin_69 (BF), Gremlin23_74 (BF), HaugeAnator_76 (BF), Immanuel3_74 (BF), JPandJE_75 (BF), Olicious_76 (BF), Percastrophe_76 (BF), RetrieverFever_74 (BF),

Romero_76 (BF), RosePharie_77 (BF), ToriToki_76 (BF), Treat_76 (BF), Vorvolakos_75 (BF), ZooBear_76 (BF),

Start 27:

- Found in 3 of 584 (0.5%) of genes in pham
- Manual Annotations of this start: 3 of 540
- Called 100.0% of time when present
- Phage (with cluster) where this start called: Neville_54 (DU2), Rabbitrun_55 (DU2), Trax_53 (DU2),

Start 31:

- Found in 3 of 584 (0.5%) of genes in pham
- Manual Annotations of this start: 1 of 540
- Called 33.3% of time when present
- Phage (with cluster) where this start called: Margaret_67 (CT),

Start 35:

- Found in 5 of 584 (0.9%) of genes in pham
- Manual Annotations of this start: 4 of 540
- Called 80.0% of time when present
- Phage (with cluster) where this start called: Grayson_232 (CB), Peregrin_226 (CB), Weasels2_208 (CB), Weasels2_237 (CB),

Start 37:

- Found in 131 of 584 (22.4%) of genes in pham
- Manual Annotations of this start: 123 of 540
- Called 100.0% of time when present
- Phage (with cluster) where this start called: 244_69 (E), ABCat_65 (E), Adnama_72 (E), Amao_68 (E), AmericanBeauty_75 (E), Argent26_72 (E), Asriel_67 (E), BaboJay_65 (E), BadStone_65 (E), Balomoji_68 (E), Barbarian_67 (E), Bask21_68 (E), Bench_71 (E), BigBubba_68 (E), BilboSwaggins_67 (E), Bruin_65 (E), Buck_69 (E), BugsBunny_68 (E), Cactus_71 (E), ChosenOne_68 (E), ChotaBhai_68 (E), Cjw1_68 (E), Command613_70 (E), Contagion_64 (E), Cookies_65 (E), CrystalP_67 (E), Czyszczonek_69 (E), Daikon_70 (E), DoctorDiddles_67 (E), DrDrey_68 (E), Dumbo_68 (E), Dusk_65 (E), Easy2Say_69 (E), Elite2014_67 (E), Elph10_68 (E), Emmina_68 (E), Eureka_66 (E), Filch_69 (E), FireRed_72 (E), Flypotenuse_64 (E), Gage_70 (E), Gator_66 (E), Gemini_73 (E), Glexan_67 (E), Goku_66 (E), GoldenSpark_72 (E), Goldilocks_71 (E), GooberAzure_71 (E), HanKaySha_68 (E), Harella_68 (E), Henry_66 (E), Highbury_67 (E), Holt_73 (E), Hoonter_71 (E), Hopey_68 (E), HufflyPuff_71 (E), IHOP_66 (E), Icee_69 (E), Inca_65 (E), JeTaime_68 (E), Kanye_65 (E), Kimchi_72 (E), Kostya_68 (E), Lilac_70 (E), Lilizi_69 (E), Lilpickle_67 (E), MISSy_69 (E), MPhalcon_69 (E), MadamMonkfish_68 (E), Manda_68 (E), Marshmallow_66 (E), Maxxinista_70 (E), Mindy_67 (E), Miniwave_63 (E), Misfit_69 (E), Moldemort_71 (E), Mosby_64 (E), Murica_71 (E), Murphy_68 (E), Myrale_68 (E), Nala_70 (E), NelitzaMV_66 (E), Nimrod_69 (E), NoSleep_69 (E), OrionPax_67 (E), Palpatine_70 (E), Paperbeatsrock_67 (E), Pat3_66 (E), Petra64142_72 (E), Phaja_66 (E), Pharsalus_65 (E), PhatBacter_72 (E), Phaux_70 (E), Phrux_65 (E), Policronamos_72 (E), Porky_67 (E), Pumpkin_71 (E), Quallification_69 (E), Rakim_69 (E), Rimmer_69 (E), RiverMonster_68 (E), Saints25_67 (E), Sassay_63 (E), ShamWow_68 (E), ShereKhan_67 (E), Simpliphy_67 (E), SirDuracell_67 (E), SophKB_65 (E), Sotrice96_69 (E), Stank_71 (E), Stark_69 (E), StellaBean_66 (E), StolenFromERC_71 (E), TBrady12_71 (E), Tarkin_67 (E), TeardropMSU_64 (E), Teaspoon_69 (E), Terminus_71 (E),

Thresher_70 (E), Tomaszewski_63 (E), Toto_66 (E), Traaww1_64 (E), Trina_234 (CE), Tuco_69 (E), Ukulele_63 (E), Wiggin_70 (E), Willez_63 (E), Xandras_67 (E), YassJohnny_65 (E), Youngblood_71 (E), xkcd_71 (E),

Start 38:

- Found in 1 of 584 (0.2%) of genes in pham
- Manual Annotations of this start: 1 of 540
- Called 100.0% of time when present
- Phage (with cluster) where this start called: NiceHouse_172 (CE),

Start 39:

- Found in 40 of 584 (6.8%) of genes in pham
- Manual Annotations of this start: 35 of 540
- Called 97.5% of time when present
- Phage (with cluster) where this start called: Ariel_133 (J), Bagrid_135 (J), Beem_136 (J), Bobby_126 (J), Bombitas_122 (J), Constella_128 (J), Courthouse_129 (J), Dallas_135 (J), DmpstrDiver_134 (J), Dove_127 (J), Duke13_129 (J), Ejimix_128 (J), EricMillard_126 (J), Gonephishing_128 (J), Halley_136 (J), Hannaconda_127 (J), HokkenD_126 (J), Hughesyang_134 (J), JuicyJay_131 (J), KashFlow_131 (J), Klein_131 (J), LittleE_136 (J), Lucky2013_128 (J), MiaZeal_133 (J), Minerva_133 (J), NihilNomen_136 (J), Odette_138 (J), Omega_143 (J), Phoebus_135 (J), Porcelain_131 (J), Redno2_126 (J), Schatzie_130 (J), Squint_131 (J), Superphikiman_131 (J), Thibault_119 (J), ThreeRngTarjay_130 (J), Wanda_133 (J), Yeet_128 (J), Zelink_129 (J),

Start 40:

- Found in 54 of 584 (9.2%) of genes in pham
- Manual Annotations of this start: 31 of 540
- Called 64.8% of time when present
- Phage (with cluster) where this start called: Aegeus_65 (L5), Ariel_113 (J), Bagrid_119 (J), Baudelaire_65 (L5), Beem_120 (J), Bombitas_106 (J), Constella_101 (J), Courthouse_108 (J), Dallas_119 (J), DmpstrDiver_119 (J), Dove_108 (J), Ejimix_113 (J), Gonephishing_107 (J), Halley_121 (J), Hannaconda_104 (J), HokkenD_108 (J), Hughesyang_118 (J), JuicyJay_115 (J), KashFlow_110 (J), LittleE_118 (J), Lucky2013_110 (J), MiaZeal_113 (J), Minerva_116 (J), NihilNomen_120 (J), Odette_120 (J), Omega_124 (J), Phoebus_119 (J), Porcelain_113 (J), Pound_108 (J), Redno2_112 (J), Schatzie_113 (J), Squint_111 (J), Superphikiman_110 (J), Thibault_99 (J), Yeet_109 (J),

Start 41:

- Found in 130 of 584 (22.3%) of genes in pham
- Manual Annotations of this start: 22 of 540
- Called 20.0% of time when present
- Phage (with cluster) where this start called: ABCat_77 (E), Adnama_84 (E), BilboSwaggins_79 (E), Bruin_77 (E), BugsBunny_80 (E), Cjw1_80 (E), Command613_82 (E), Daikon_82 (E), DrDrey_80 (E), Dumbo_80 (E), Elph10_80 (E), Eureka_78 (E), Goku_78 (E), GoldenSpark_84 (E), HufflyPuff_83 (E), Kostya_80 (E), MISSy_81 (E), Marshmallow_78 (E), NelitzaMV_78 (E), Policronamos_84 (E), Porky_79 (E), Sassay_75 (E), Stank_83 (E), TeardropMSU_76 (E), Willez_75 (E), YassJohnny_77 (E),

Start 43:

- Found in 170 of 584 (29.1%) of genes in pham

- Manual Annotations of this start: 83 of 540
- Called 48.8% of time when present
- Phage (with cluster) where this start called: ABCat_70 (E), Adnama_77 (E), Argent26_77 (E), Asriel_72 (E), BAKA_134 (J), BaboJay_70 (E), BadStone_70 (E), Barbarian_72 (E), Bench_76 (E), BigBubba_73 (E), Bruin_70 (E), Buck_74 (E), Cactus_76 (E), ChosenOne_73 (E), ChotaBhai_73 (E), Contagion_69 (E), Cookies_70 (E), Czyszczone1_74 (E), DrDrey_73 (E), Dusk_70 (E), Elite2014_72 (E), Emmina_73 (E), Flypotenuse_69 (E), Gage_75 (E), Gator_71 (E), Gemini_78 (E), Glexan_72 (E), Goku_71 (E), GooberAzure_76 (E), HanKaySha_73 (E), Harella_73 (E), Henry_71 (E), Highbury_72 (E), Holt_78 (E), Hoonter_76 (E), Hopey_73 (E), HufflyPuff_76 (E), IHOP_71 (E), Inca_70 (E), JeTaime_73 (E), Kanye_70 (E), Kimchi_77 (E), Lilac_75 (E), Lilizi_74 (E), Lilpickle_72 (E), MISSy_74 (E), MPhalcon_74 (E), Manda_74 (E), Mindy_72 (E), Miniwave_68 (E), Misfit_74 (E), Moldemort_76 (E), Mosby_69 (E), Myrale_73 (E), NoSleep_74 (E), Paperbeatsrock_72 (E), Pat3_71 (E), Phaja_71 (E), Pharsalus_70 (E), PhatBacter_77 (E), Phaux_75 (E), Phrux_70 (E), Qualification_74 (E), Rakim_74 (E), RiverMonster_73 (E), Saints25_72 (E), ShamWow_73 (E), ShereKhan_72 (E), SophKB_70 (E), Sotrice96_74 (E), Stank_76 (E), Stark_74 (E), StolenFromERC_76 (E), TBrady12_76 (E), Tarkin_72 (E), TeardropMSU_69 (E), Tomaszewski_68 (E), Toto_71 (E), Traaww1_69 (E), Tuco_74 (E), Ukulele_68 (E), Xandras_72 (E), xkcd_76 (E),

Start 46:

- Found in 130 of 584 (22.3%) of genes in pham
- Manual Annotations of this start: 40 of 540
- Called 36.9% of time when present
- Phage (with cluster) where this start called: 244_74 (E), Amao_73 (E), AmericanBeauty_80 (E), Balomoji_73 (E), Bask21_73 (E), BilboSwaggins_72 (E), BugsBunny_73 (E), Cjw1_73 (E), Command613_75 (E), CrystalP_72 (E), Daikon_75 (E), DoctorDiddles_72 (E), Dumbo_73 (E), Easy2Say_74 (E), Elph10_73 (E), Eureka_71 (E), Filch_74 (E), FireRed_77 (E), GoldenSpark_77 (E), Goldilocks_76 (E), Icee_74 (E), Kostya_73 (E), MadamMonkfish_73 (E), Marshmallow_71 (E), Maxxinista_75 (E), Murica_76 (E), Murphy_73 (E), Nala_75 (E), NelitzaMV_71 (E), Nimrod_74 (E), OrionPax_72 (E), Palpatine_75 (E), Petra64142_77 (E), Policronamos_77 (E), Porky_72 (E), Pumpkin_76 (E), Rimmer_74 (E), Sassay_68 (E), Simpliphy_72 (E), SirDuracell_72 (E), StellaBean_71 (E), Teaspoon_74 (E), Terminus_76 (E), Thresher_75 (E), Wiggin_75 (E), Willez_68 (E), YassJohnny_70 (E), Youngblood_76 (E),

Start 47:

- Found in 130 of 584 (22.3%) of genes in pham
- Manual Annotations of this start: 100 of 540
- Called 80.0% of time when present
- Phage (with cluster) where this start called: 244_81 (E), Amao_80 (E), AmericanBeauty_87 (E), Argent26_84 (E), Asriel_79 (E), BaboJay_77 (E), BadStone_77 (E), Balomoji_80 (E), Barbarian_79 (E), Bask21_80 (E), Bench_83 (E), BigBubba_80 (E), Buck_81 (E), Cactus_83 (E), ChosenOne_80 (E), ChotaBhai_80 (E), Contagion_76 (E), Cookies_77 (E), CrystalP_79 (E), Czyszczone1_81 (E), DoctorDiddles_79 (E), Dusk_77 (E), Easy2Say_81 (E), Elite2014_79 (E), Emmina_80 (E), Filch_81 (E), FireRed_84 (E), Flypotenuse_76 (E), Gage_82 (E), Gator_78 (E), Gemini_85 (E), Glexan_79 (E), Goldilocks_83 (E), GooberAzure_83 (E), HanKaySha_80 (E), Harella_80 (E), Henry_78 (E), Highbury_79 (E), Holt_85 (E), Hoonter_83 (E), Hopey_80 (E), IHOP_78 (E), Icee_81 (E), Inca_77 (E), JeTaime_80

(E), Kanye_77 (E), Kimchi_84 (E), Lilac_82 (E), Lilizi_81 (E), Lilpickle_79 (E), MPhalcon_81 (E), MadamMonkfish_80 (E), Manda_81 (E), Maxxinista_82 (E), Mindy_79 (E), Miniwave_75 (E), Misfit_81 (E), Moldemort_83 (E), Mosby_76 (E), Murica_83 (E), Murphy_80 (E), Myrale_80 (E), Nala_82 (E), Nimrod_81 (E), NoSleep_81 (E), OrionPax_79 (E), Palpatine_82 (E), Paperbeatsrock_79 (E), Pat3_78 (E), Petra64142_84 (E), Phaja_78 (E), Pharsalus_77 (E), PhatBacter_84 (E), Phaux_82 (E), Phrux_77 (E), Pumpkin_83 (E), Quallification_81 (E), Rakim_81 (E), Rimmer_81 (E), RiverMonster_80 (E), Saints25_79 (E), ShamWow_80 (E), ShereKhan_78 (E), Simpliphy_79 (E), SirDuracell_79 (E), SophKB_77 (E), Sotrice96_81 (E), Stark_81 (E), StellaBean_78 (E), StolenFromERC_83 (E), TBrady12_83 (E), Tarkin_79 (E), Teaspoon_81 (E), Terminus_83 (E), Thresher_82 (E), Tomaszewski_75 (E), Toto_78 (E), Traaww1_76 (E), Tuco_81 (E), Ukulele_75 (E), Wiggins_82 (E), Xandras_79 (E), Youngblood_83 (E), xkcd_83 (E),

Start 49:

- Found in 78 of 584 (13.4%) of genes in pham
- Manual Annotations of this start: 14 of 540
- Called 29.5% of time when present
- Phage (with cluster) where this start called: Baoshan_43 (L2), Bellis_42 (L3), BobsGarage_45 (L2), CicholasNage_43 (L1), Claus_45 (L2), Douge_42 (L4), DuncansLeg_42 (L3), Ellson_42 (L3), Finnry_42 (L3), Hafay_45 (L2), Jobypre_42 (L3), Kingsolomon_42 (L3), Labelle_59 (U), Lolly9_42 (L3), MAckerman_42 (L1), Madrug_58 (U), Moostard_42 (L3), Nicholas_42 (L3), OneUp_106 (CQ2), Patience_60 (U), Samty_42 (L3), Snenia_42 (L3), ZhongYanYuan_43 (L2),

Start 51:

- Found in 1 of 584 (0.2%) of genes in pham
- Manual Annotations of this start: 1 of 540
- Called 100.0% of time when present
- Phage (with cluster) where this start called: NiceHouse_171 (CE),

Start 52:

- Found in 1 of 584 (0.2%) of genes in pham
- Manual Annotations of this start: 1 of 540
- Called 100.0% of time when present
- Phage (with cluster) where this start called: NiceHouse_173 (CE),

Start 53:

- Found in 3 of 584 (0.5%) of genes in pham
- No Manual Annotations of this start.
- Called 33.3% of time when present
- Phage (with cluster) where this start called: CN1A_12 (singleton),

Start 61:

- Found in 21 of 584 (3.6%) of genes in pham
- Manual Annotations of this start: 1 of 540
- Called 4.8% of time when present
- Phage (with cluster) where this start called: BrutonGaster_97 (CQ2),

Summary by clusters:

There are 15 clusters represented in this pham: BF, E, CQ2, CB, J, singleton, CE, L4, L5, L2, L3, L1, U, DU2, CT,

Info for manual annotations of cluster BF:

- Start number 23 was manually annotated 3 times for cluster BF.
- Start number 24 was manually annotated 2 times for cluster BF.
- Start number 25 was manually annotated 1 time for cluster BF.
- Start number 26 was manually annotated 15 times for cluster BF.

Info for manual annotations of cluster CB:

- Start number 35 was manually annotated 4 times for cluster CB.

Info for manual annotations of cluster CE:

- Start number 37 was manually annotated 1 time for cluster CE.
- Start number 38 was manually annotated 1 time for cluster CE.
- Start number 51 was manually annotated 1 time for cluster CE.
- Start number 52 was manually annotated 1 time for cluster CE.

Info for manual annotations of cluster CQ2:

- Start number 49 was manually annotated 1 time for cluster CQ2.
- Start number 61 was manually annotated 1 time for cluster CQ2.

Info for manual annotations of cluster CT:

- Start number 23 was manually annotated 2 times for cluster CT.
- Start number 24 was manually annotated 2 times for cluster CT.
- Start number 31 was manually annotated 1 time for cluster CT.

Info for manual annotations of cluster DU2:

- Start number 27 was manually annotated 3 times for cluster DU2.

Info for manual annotations of cluster E:

- Start number 37 was manually annotated 122 times for cluster E.
- Start number 41 was manually annotated 22 times for cluster E.
- Start number 43 was manually annotated 82 times for cluster E.
- Start number 46 was manually annotated 40 times for cluster E.
- Start number 47 was manually annotated 100 times for cluster E.

Info for manual annotations of cluster J:

- Start number 39 was manually annotated 35 times for cluster J.
- Start number 40 was manually annotated 29 times for cluster J.
- Start number 43 was manually annotated 1 time for cluster J.

Info for manual annotations of cluster L1:

- Start number 19 was manually annotated 17 times for cluster L1.
- Start number 49 was manually annotated 1 time for cluster L1.

Info for manual annotations of cluster L2:

- Start number 16 was manually annotated 10 times for cluster L2.
- Start number 19 was manually annotated 17 times for cluster L2.
- Start number 49 was manually annotated 1 time for cluster L2.

Info for manual annotations of cluster L3:

- Start number 14 was manually annotated 3 times for cluster L3.
- Start number 19 was manually annotated 5 times for cluster L3.
- Start number 49 was manually annotated 8 times for cluster L3.

Info for manual annotations of cluster L4:

- Start number 17 was manually annotated 3 times for cluster L4.

Info for manual annotations of cluster L5:

- Start number 40 was manually annotated 2 times for cluster L5.

Info for manual annotations of cluster U:

- Start number 49 was manually annotated 3 times for cluster U.

Gene Information:

Gene: 244_74 Start: 47428, Stop: 47793, Start Num: 46

Candidate Starts for 244_74:

(Start: 43 @47422 has 83 MA's), (Start: 46 @47428 has 40 MA's), (71, 47500), (88, 47554), (130, 47725),

Gene: 244_81 Start: 49796, Stop: 50131, Start Num: 47

Candidate Starts for 244_81:

(1, 49226), (2, 49343), (6, 49544), (Start: 41 @49781 has 22 MA's), (Start: 47 @49796 has 100 MA's), (60, 49832), (136, 50111),

Gene: 244_69 Start: 45158, Stop: 45568, Start Num: 37

Candidate Starts for 244_69:

(Start: 37 @45158 has 123 MA's), (88, 45299), (97, 45347), (108, 45395), (131, 45488), (136, 45530),

Gene: ABCat_65 Start: 45505, Stop: 45915, Start Num: 37

Candidate Starts for ABCat_65:

(Start: 37 @45505 has 123 MA's), (88, 45646), (97, 45694), (108, 45742), (131, 45835), (136, 45877),

Gene: ABCat_70 Start: 47769, Stop: 48146, Start Num: 43

Candidate Starts for ABCat_70:

(Start: 43 @47769 has 83 MA's), (Start: 46 @47775 has 40 MA's), (71, 47847), (88, 47907), (130, 48078),

Gene: ABCat_77 Start: 50134, Stop: 50484, Start Num: 41

Candidate Starts for ABCat_77:

(6, 49897), (Start: 41 @50134 has 22 MA's), (Start: 47 @50149 has 100 MA's), (60, 50185), (136, 50464),

Gene: Acquire49_43 Start: 34025, Stop: 34441, Start Num: 19

Candidate Starts for Acquire49_43:

(Start: 14 @34004 has 3 MA's), (Start: 19 @34025 has 39 MA's), (Start: 40 @34091 has 31 MA's), (Start: 49 @34112 has 14 MA's), (56, 34130), (68, 34169), (72, 34181), (90, 34238), (112, 34298), (138, 34418),

Gene: Adnama_84 Start: 50160, Stop: 50507, Start Num: 41

Candidate Starts for Adnama_84:

(6, 49923), (Start: 41 @50160 has 22 MA's), (Start: 47 @50175 has 100 MA's), (60, 50211), (136, 50487),

Gene: Adnama_72 Start: 45528, Stop: 45938, Start Num: 37

Candidate Starts for Adnama_72:

(7, 45354), (Start: 37 @45528 has 123 MA's), (73, 45624), (88, 45669), (97, 45717), (108, 45765), (131, 45858), (136, 45900),

Gene: Adnama_77 Start: 47795, Stop: 48172, Start Num: 43

Candidate Starts for Adnama_77:

(Start: 43 @47795 has 83 MA's), (Start: 46 @47801 has 40 MA's), (71, 47873), (88, 47933), (130, 48104),

Gene: Aegeus_65 Start: 44400, Stop: 44765, Start Num: 40

Candidate Starts for Aegeus_65:

(Start: 40 @44400 has 31 MA's), (53, 44430), (76, 44502), (78, 44508), (118, 44622), (128, 44664), (144, 44751),

Gene: Amao_80 Start: 49569, Stop: 49901, Start Num: 47

Candidate Starts for Amao_80:

(6, 49317), (Start: 41 @49554 has 22 MA's), (Start: 47 @49569 has 100 MA's), (60, 49605), (110, 49764), (121, 49803), (125, 49818), (131, 49839),

Gene: Amao_68 Start: 44913, Stop: 45326, Start Num: 37

Candidate Starts for Amao_68:

(7, 44739), (Start: 37 @44913 has 123 MA's), (88, 45054), (96, 45096), (122, 45204), (131, 45243), (140, 45300),

Gene: Amao_73 Start: 47195, Stop: 47566, Start Num: 46

Candidate Starts for Amao_73:

(Start: 43 @47189 has 83 MA's), (Start: 46 @47195 has 40 MA's), (71, 47267), (88, 47327), (130, 47498),

Gene: AmericanBeauty_80 Start: 47944, Stop: 48315, Start Num: 46

Candidate Starts for AmericanBeauty_80:

(Start: 43 @47938 has 83 MA's), (Start: 46 @47944 has 40 MA's), (71, 48016), (88, 48076), (130, 48247),

Gene: AmericanBeauty_87 Start: 50318, Stop: 50653, Start Num: 47

Candidate Starts for AmericanBeauty_87:

(6, 50066), (Start: 41 @50303 has 22 MA's), (Start: 47 @50318 has 100 MA's), (60, 50354), (136, 50633),

Gene: AmericanBeauty_75 Start: 45671, Stop: 46081, Start Num: 37

Candidate Starts for AmericanBeauty_75:

(7, 45497), (Start: 37 @45671 has 123 MA's), (88, 45812), (97, 45860), (108, 45908), (131, 46001), (136, 46043),

Gene: Appletree2_42 Start: 33952, Stop: 34368, Start Num: 19

Candidate Starts for Appletree2_42:

(Start: 14 @33931 has 3 MA's), (Start: 19 @33952 has 39 MA's), (Start: 40 @34018 has 31 MA's), (Start: 49 @34039 has 14 MA's), (56, 34057), (68, 34096), (72, 34108), (90, 34165), (112, 34225), (138, 34345),

Gene: Archie_45 Start: 35560, Stop: 35976, Start Num: 19

Candidate Starts for Archie_45:

(Start: 16 @35551 has 10 MA's), (Start: 19 @35560 has 39 MA's), (Start: 49 @35647 has 14 MA's), (56, 35665), (65, 35692), (66, 35695), (90, 35770), (92, 35782), (113, 35842), (127, 35890), (138, 35953),

Gene: Argent26_72 Start: 45309, Stop: 45719, Start Num: 37

Candidate Starts for Argent26_72:

(7, 45135), (Start: 37 @45309 has 123 MA's), (88, 45450), (97, 45498), (108, 45546), (131, 45639), (136, 45681),

Gene: Argent26_77 Start: 47576, Stop: 47953, Start Num: 43

Candidate Starts for Argent26_77:

(Start: 43 @47576 has 83 MA's), (Start: 46 @47582 has 40 MA's), (71, 47654), (88, 47714), (130, 47885),

Gene: Argent26_84 Start: 49956, Stop: 50291, Start Num: 47

Candidate Starts for Argent26_84:

(6, 49704), (Start: 41 @49941 has 22 MA's), (Start: 47 @49956 has 100 MA's), (60, 49992), (136, 50271),

Gene: Ariel_113 Start: 61833, Stop: 62153, Start Num: 40

Candidate Starts for Ariel_113:

(Start: 40 @61833 has 31 MA's), (56, 61872), (90, 61971), (114, 62028), (124, 62064), (130, 62094), (136, 62139),

Gene: Ariel_133 Start: 69964, Stop: 70317, Start Num: 39

Candidate Starts for Ariel_133:

(Start: 39 @69964 has 35 MA's), (Start: 43 @69973 has 83 MA's), (128, 70243),

Gene: Asriel_67 Start: 43865, Stop: 44275, Start Num: 37

Candidate Starts for Asriel_67:

(7, 43691), (Start: 37 @43865 has 123 MA's), (73, 43961), (88, 44006), (97, 44054), (108, 44102), (131, 44195), (136, 44237),

Gene: Asriel_72 Start: 46132, Stop: 46509, Start Num: 43

Candidate Starts for Asriel_72:

(Start: 43 @46132 has 83 MA's), (Start: 46 @46138 has 40 MA's), (71, 46210), (88, 46270), (130, 46441),

Gene: Asriel_79 Start: 48512, Stop: 48844, Start Num: 47

Candidate Starts for Asriel_79:

(6, 48260), (Start: 41 @48497 has 22 MA's), (Start: 47 @48512 has 100 MA's), (60, 48548), (136, 48824),

Gene: AvadaKedavra_43 Start: 34034, Stop: 34450, Start Num: 19

Candidate Starts for AvadaKedavra_43:

(Start: 14 @34013 has 3 MA's), (Start: 19 @34034 has 39 MA's), (34, 34088), (Start: 40 @34100 has 31 MA's), (Start: 49 @34121 has 14 MA's), (56, 34139), (68, 34178), (72, 34190), (90, 34247), (112, 34307), (138, 34427),

Gene: BAKA_134 Start: 72670, Stop: 73020, Start Num: 43

Candidate Starts for BAKA_134:

(29, 72634), (Start: 39 @72661 has 35 MA's), (Start: 43 @72670 has 83 MA's), (90, 72802), (93, 72817), (128, 72946), (130, 72952),

Gene: BaboJay_65 Start: 44702, Stop: 45112, Start Num: 37
Candidate Starts for BaboJay_65:
(7, 44528), (Start: 37 @44702 has 123 MA's), (88, 44843), (97, 44891), (108, 44939), (131, 45032),
(136, 45074),

Gene: BaboJay_70 Start: 46969, Stop: 47346, Start Num: 43
Candidate Starts for BaboJay_70:
(Start: 43 @46969 has 83 MA's), (Start: 46 @46975 has 40 MA's), (71, 47047), (88, 47107), (130,
47278),

Gene: BaboJay_77 Start: 49349, Stop: 49684, Start Num: 47
Candidate Starts for BaboJay_77:
(6, 49097), (Start: 41 @49334 has 22 MA's), (Start: 47 @49349 has 100 MA's), (60, 49385), (136,
49664),

Gene: BadStone_65 Start: 45074, Stop: 45484, Start Num: 37
Candidate Starts for BadStone_65:
(Start: 37 @45074 has 123 MA's), (88, 45215), (97, 45263), (108, 45311), (131, 45404), (136, 45446),

Gene: BadStone_70 Start: 47338, Stop: 47715, Start Num: 43
Candidate Starts for BadStone_70:
(Start: 43 @47338 has 83 MA's), (Start: 46 @47344 has 40 MA's), (71, 47416), (88, 47476), (130,
47647),

Gene: BadStone_77 Start: 49718, Stop: 50053, Start Num: 47
Candidate Starts for BadStone_77:
(6, 49466), (Start: 41 @49703 has 22 MA's), (Start: 47 @49718 has 100 MA's), (60, 49754), (136,
50033),

Gene: Bagrid_119 Start: 66108, Stop: 66428, Start Num: 40
Candidate Starts for Bagrid_119:
(Start: 40 @66108 has 31 MA's), (56, 66147), (114, 66303), (124, 66339), (130, 66369), (136, 66414),

Gene: Bagrid_135 Start: 72784, Stop: 73143, Start Num: 39
Candidate Starts for Bagrid_135:
(29, 72757), (Start: 39 @72784 has 35 MA's), (Start: 43 @72793 has 83 MA's), (90, 72925), (93,
72940), (128, 73069), (130, 73075),

Gene: Balomoji_73 Start: 47905, Stop: 48276, Start Num: 46
Candidate Starts for Balomoji_73:
(Start: 43 @47899 has 83 MA's), (Start: 46 @47905 has 40 MA's), (71, 47977), (88, 48037), (130,
48208),

Gene: Balomoji_80 Start: 50279, Stop: 50614, Start Num: 47
Candidate Starts for Balomoji_80:
(6, 50027), (Start: 41 @50264 has 22 MA's), (Start: 47 @50279 has 100 MA's), (60, 50315), (136,
50594),

Gene: Balomoji_68 Start: 45635, Stop: 46045, Start Num: 37
Candidate Starts for Balomoji_68:
(Start: 37 @45635 has 123 MA's), (88, 45776), (97, 45824), (108, 45872), (131, 45965), (136, 46007),

Gene: Baoshan_43 Start: 35304, Stop: 35633, Start Num: 49

Candidate Starts for Baoshan_43:

(Start: 16 @35208 has 10 MA's), (Start: 19 @35217 has 39 MA's), (Start: 49 @35304 has 14 MA's), (56, 35322), (65, 35349), (66, 35352), (90, 35430), (127, 35547), (138, 35610),

Gene: Barbarian_67 Start: 43865, Stop: 44275, Start Num: 37

Candidate Starts for Barbarian_67:

(7, 43691), (Start: 37 @43865 has 123 MA's), (73, 43961), (88, 44006), (97, 44054), (108, 44102), (131, 44195), (136, 44237),

Gene: Barbarian_72 Start: 46132, Stop: 46509, Start Num: 43

Candidate Starts for Barbarian_72:

(Start: 43 @46132 has 83 MA's), (Start: 46 @46138 has 40 MA's), (71, 46210), (88, 46270), (130, 46441),

Gene: Barbarian_79 Start: 48512, Stop: 48844, Start Num: 47

Candidate Starts for Barbarian_79:

(6, 48260), (Start: 41 @48497 has 22 MA's), (Start: 47 @48512 has 100 MA's), (60, 48548), (136, 48824),

Gene: Bask21_80 Start: 49132, Stop: 49467, Start Num: 47

Candidate Starts for Bask21_80:

(6, 48880), (Start: 41 @49117 has 22 MA's), (Start: 47 @49132 has 100 MA's), (60, 49168), (77, 49222), (115, 49348), (125, 49384), (126, 49387), (131, 49405), (136, 49447),

Gene: Bask21_68 Start: 44476, Stop: 44889, Start Num: 37

Candidate Starts for Bask21_68:

(7, 44302), (Start: 37 @44476 has 123 MA's), (88, 44617), (96, 44659), (122, 44767), (131, 44806), (141, 44869),

Gene: Bask21_73 Start: 46758, Stop: 47129, Start Num: 46

Candidate Starts for Bask21_73:

(Start: 43 @46752 has 83 MA's), (Start: 46 @46758 has 40 MA's), (71, 46830), (88, 46890), (111, 46989), (130, 47061),

Gene: Baudelaire_65 Start: 44400, Stop: 44765, Start Num: 40

Candidate Starts for Baudelaire_65:

(Start: 40 @44400 has 31 MA's), (53, 44430), (76, 44502), (78, 44508), (118, 44622), (128, 44664), (144, 44751),

Gene: Bazzle_45 Start: 35592, Stop: 36008, Start Num: 19

Candidate Starts for Bazzle_45:

(Start: 16 @35583 has 10 MA's), (Start: 19 @35592 has 39 MA's), (Start: 49 @35679 has 14 MA's), (56, 35697), (65, 35724), (66, 35727), (90, 35802), (92, 35814), (113, 35874), (127, 35922), (138, 35985),

Gene: Beem_120 Start: 67476, Stop: 67796, Start Num: 40

Candidate Starts for Beem_120:

(Start: 40 @67476 has 31 MA's), (56, 67515), (90, 67614), (114, 67671), (124, 67707), (130, 67737), (136, 67782),

Gene: Beem_136 Start: 74259, Stop: 74618, Start Num: 39

Candidate Starts for Beem_136:

(29, 74232), (Start: 39 @74259 has 35 MA's), (Start: 43 @74268 has 83 MA's), (90, 74400), (93, 74415),

Gene: Bellis_42 Start: 35732, Stop: 36055, Start Num: 49

Candidate Starts for Bellis_42:

(Start: 14 @35627 has 3 MA's), (Start: 16 @35639 has 10 MA's), (Start: 19 @35648 has 39 MA's), (Start: 49 @35732 has 14 MA's), (56, 35750), (Start: 61 @35768 has 1 MA's), (65, 35777), (103, 35894), (138, 36032),

Gene: Bench_83 Start: 49816, Stop: 50148, Start Num: 47

Candidate Starts for Bench_83:

(1, 49246), (2, 49363), (6, 49564), (Start: 41 @49801 has 22 MA's), (Start: 47 @49816 has 100 MA's), (60, 49852), (136, 50128),

Gene: Bench_76 Start: 47439, Stop: 47813, Start Num: 43

Candidate Starts for Bench_76:

(Start: 43 @47439 has 83 MA's), (Start: 46 @47445 has 40 MA's), (71, 47517), (88, 47577), (130, 47745),

Gene: Bench_71 Start: 45175, Stop: 45585, Start Num: 37

Candidate Starts for Bench_71:

(7, 45001), (Start: 37 @45175 has 123 MA's), (88, 45316), (97, 45364), (108, 45412), (131, 45505), (136, 45547),

Gene: BigBubba_68 Start: 44884, Stop: 45294, Start Num: 37

Candidate Starts for BigBubba_68:

(Start: 37 @44884 has 123 MA's), (88, 45025), (97, 45073), (108, 45121), (131, 45214), (136, 45256),

Gene: BigBubba_73 Start: 47151, Stop: 47525, Start Num: 43

Candidate Starts for BigBubba_73:

(Start: 43 @47151 has 83 MA's), (Start: 46 @47157 has 40 MA's), (71, 47229), (88, 47289), (111, 47385), (130, 47457),

Gene: BigBubba_80 Start: 49528, Stop: 49860, Start Num: 47

Candidate Starts for BigBubba_80:

(6, 49276), (Start: 41 @49513 has 22 MA's), (Start: 47 @49528 has 100 MA's), (60, 49564), (136, 49840),

Gene: BigCheese_45 Start: 35356, Stop: 35772, Start Num: 19

Candidate Starts for BigCheese_45:

(Start: 16 @35347 has 10 MA's), (Start: 19 @35356 has 39 MA's), (Start: 49 @35443 has 14 MA's), (56, 35461), (65, 35488), (66, 35491), (90, 35566), (92, 35578), (127, 35686), (138, 35749),

Gene: BilboSwaggins_72 Start: 47783, Stop: 48154, Start Num: 46

Candidate Starts for BilboSwaggins_72:

(Start: 43 @47777 has 83 MA's), (Start: 46 @47783 has 40 MA's), (71, 47855), (88, 47915), (130, 48086),

Gene: BilboSwaggins_79 Start: 50142, Stop: 50489, Start Num: 41

Candidate Starts for BilboSwaggins_79:

(6, 49905), (Start: 41 @50142 has 22 MA's), (Start: 47 @50157 has 100 MA's), (60, 50193), (136, 50469),

Gene: BilboSwaggins_67 Start: 45513, Stop: 45923, Start Num: 37
Candidate Starts for BilboSwaggins_67:
(7, 45339), (Start: 37 @45513 has 123 MA's), (73, 45609), (88, 45654), (97, 45702), (108, 45750),
(131, 45843), (136, 45885),

Gene: Bobby_126 Start: 74360, Stop: 74719, Start Num: 39
Candidate Starts for Bobby_126:
(29, 74333), (Start: 39 @74360 has 35 MA's), (Start: 43 @74369 has 83 MA's), (90, 74501), (93,
74516),

Gene: BobsGarage_45 Start: 35443, Stop: 35772, Start Num: 49
Candidate Starts for BobsGarage_45:
(Start: 16 @35347 has 10 MA's), (Start: 19 @35356 has 39 MA's), (Start: 49 @35443 has 14 MA's),
(56, 35461), (65, 35488), (66, 35491), (90, 35566), (92, 35578), (127, 35686), (138, 35749),

Gene: Bombitas_106 Start: 63398, Stop: 63718, Start Num: 40
Candidate Starts for Bombitas_106:
(Start: 40 @63398 has 31 MA's), (56, 63437), (90, 63536), (114, 63593), (124, 63629), (130, 63659),
(136, 63704),

Gene: Bombitas_122 Start: 71670, Stop: 72029, Start Num: 39
Candidate Starts for Bombitas_122:
(29, 71643), (Start: 39 @71670 has 35 MA's), (Start: 43 @71679 has 83 MA's), (90, 71811), (93,
71826),

Gene: Breezona_45 Start: 35347, Stop: 35772, Start Num: 16
Candidate Starts for Breezona_45:
(Start: 16 @35347 has 10 MA's), (Start: 19 @35356 has 39 MA's), (Start: 49 @35443 has 14 MA's),
(56, 35461), (65, 35488), (66, 35491), (90, 35566), (92, 35578), (127, 35686), (138, 35749),

Gene: Bromden_45 Start: 35106, Stop: 35519, Start Num: 17
Candidate Starts for Bromden_45:
(Start: 14 @35091 has 3 MA's), (Start: 16 @35103 has 10 MA's), (Start: 17 @35106 has 3 MA's),
(Start: 19 @35112 has 39 MA's), (Start: 49 @35196 has 14 MA's), (56, 35214), (63, 35238), (65,
35241), (90, 35322), (138, 35496),

Gene: Bruin_65 Start: 44048, Stop: 44461, Start Num: 37
Candidate Starts for Bruin_65:
(7, 43874), (Start: 37 @44048 has 123 MA's), (88, 44189), (97, 44237), (108, 44285), (131, 44378),
(141, 44441),

Gene: Bruin_77 Start: 48677, Stop: 49027, Start Num: 41
Candidate Starts for Bruin_77:
(6, 48440), (Start: 41 @48677 has 22 MA's), (Start: 47 @48692 has 100 MA's), (60, 48728), (136,
49007),

Gene: Bruin_70 Start: 46315, Stop: 46689, Start Num: 43
Candidate Starts for Bruin_70:
(Start: 43 @46315 has 83 MA's), (Start: 46 @46321 has 40 MA's), (71, 46393), (88, 46453), (130,
46621),

Gene: BrutonGaster_97 Start: 63227, Stop: 63556, Start Num: 61
Candidate Starts for BrutonGaster_97:

(Start: 61 @63227 has 1 MA's), (82, 63293), (127, 63464), (143, 63551),

Gene: Buck_74 Start: 48026, Stop: 48394, Start Num: 43

Candidate Starts for Buck_74:

(Start: 43 @48026 has 83 MA's), (Start: 46 @48032 has 40 MA's), (71, 48104), (130, 48326),

Gene: Buck_69 Start: 45756, Stop: 46169, Start Num: 37

Candidate Starts for Buck_69:

(7, 45582), (Start: 37 @45756 has 123 MA's), (88, 45897), (96, 45939), (122, 46047), (131, 46086), (141, 46149),

Gene: Buck_81 Start: 50397, Stop: 50732, Start Num: 47

Candidate Starts for Buck_81:

(6, 50145), (Start: 41 @50382 has 22 MA's), (Start: 47 @50397 has 100 MA's), (60, 50433), (136, 50712),

Gene: BugsBunny_80 Start: 50209, Stop: 50556, Start Num: 41

Candidate Starts for BugsBunny_80:

(6, 49972), (Start: 41 @50209 has 22 MA's), (Start: 47 @50224 has 100 MA's), (60, 50260), (136, 50536),

Gene: BugsBunny_73 Start: 47853, Stop: 48221, Start Num: 46

Candidate Starts for BugsBunny_73:

(Start: 43 @47847 has 83 MA's), (Start: 46 @47853 has 40 MA's), (71, 47925), (88, 47985), (130, 48153),

Gene: BugsBunny_68 Start: 45583, Stop: 45993, Start Num: 37

Candidate Starts for BugsBunny_68:

(Start: 37 @45583 has 123 MA's), (88, 45724), (97, 45772), (108, 45820), (131, 45913), (136, 45955),

Gene: Button_63 Start: 43199, Stop: 43654, Start Num: 23

Candidate Starts for Button_63:

(Start: 23 @43199 has 5 MA's), (45, 43241), (50, 43253), (62, 43289), (70, 43304), (83, 43346), (88, 43364), (100, 43421), (102, 43427), (114, 43484), (131, 43547), (134, 43571), (136, 43589),

Gene: CN1A_12 Start: 5964, Stop: 6377, Start Num: 53

Candidate Starts for CN1A_12:

(5, 5682), (8, 5778), (53, 5964), (Start: 61 @5988 has 1 MA's), (69, 6012), (76, 6036), (92, 6102), (94, 6111), (98, 6129), (104, 6159), (107, 6168), (149, 6363), (150, 6366),

Gene: Cactus_83 Start: 49173, Stop: 49508, Start Num: 47

Candidate Starts for Cactus_83:

(6, 48921), (Start: 41 @49158 has 22 MA's), (Start: 47 @49173 has 100 MA's), (60, 49209), (136, 49488),

Gene: Cactus_76 Start: 46793, Stop: 47170, Start Num: 43

Candidate Starts for Cactus_76:

(Start: 43 @46793 has 83 MA's), (Start: 46 @46799 has 40 MA's), (71, 46871), (88, 46931), (130, 47102),

Gene: Cactus_71 Start: 44529, Stop: 44939, Start Num: 37

Candidate Starts for Cactus_71:

(Start: 37 @44529 has 123 MA's), (88, 44670), (97, 44718), (108, 44766), (131, 44859), (136, 44901),

Gene: Calm_43 Start: 34040, Stop: 34456, Start Num: 19

Candidate Starts for Calm_43:

(Start: 14 @34019 has 3 MA's), (Start: 19 @34040 has 39 MA's), (Start: 40 @34106 has 31 MA's), (Start: 49 @34127 has 14 MA's), (56, 34145), (68, 34184), (72, 34196), (90, 34253), (112, 34313), (138, 34433),

Gene: Chaser_42 Start: 34097, Stop: 34510, Start Num: 17

Candidate Starts for Chaser_42:

(Start: 14 @34082 has 3 MA's), (Start: 16 @34094 has 10 MA's), (Start: 17 @34097 has 3 MA's), (Start: 49 @34187 has 14 MA's), (56, 34205), (65, 34232), (66, 34235), (90, 34313), (113, 34376), (131, 34439), (138, 34487),

Gene: ChosenOne_68 Start: 44532, Stop: 44942, Start Num: 37

Candidate Starts for ChosenOne_68:

(Start: 37 @44532 has 123 MA's), (88, 44673), (97, 44721), (108, 44769), (131, 44862), (136, 44904),

Gene: ChosenOne_80 Start: 49173, Stop: 49508, Start Num: 47

Candidate Starts for ChosenOne_80:

(6, 48921), (Start: 41 @49158 has 22 MA's), (Start: 47 @49173 has 100 MA's), (60, 49209), (136, 49488),

Gene: ChosenOne_73 Start: 46796, Stop: 47170, Start Num: 43

Candidate Starts for ChosenOne_73:

(Start: 43 @46796 has 83 MA's), (Start: 46 @46802 has 40 MA's), (71, 46874), (88, 46934), (130, 47102),

Gene: ChotaBhai_73 Start: 47117, Stop: 47494, Start Num: 43

Candidate Starts for ChotaBhai_73:

(Start: 43 @47117 has 83 MA's), (Start: 46 @47123 has 40 MA's), (71, 47195), (88, 47255), (111, 47354), (130, 47426),

Gene: ChotaBhai_80 Start: 49497, Stop: 49832, Start Num: 47

Candidate Starts for ChotaBhai_80:

(6, 49245), (Start: 41 @49482 has 22 MA's), (Start: 47 @49497 has 100 MA's), (60, 49533), (77, 49587), (115, 49713), (125, 49749), (126, 49752), (131, 49770), (136, 49812),

Gene: ChotaBhai_68 Start: 44844, Stop: 45257, Start Num: 37

Candidate Starts for ChotaBhai_68:

(7, 44670), (Start: 37 @44844 has 123 MA's), (88, 44985), (96, 45027), (122, 45135), (131, 45174), (140, 45231),

Gene: CicholasNage_43 Start: 34148, Stop: 34477, Start Num: 49

Candidate Starts for CicholasNage_43:

(Start: 14 @34040 has 3 MA's), (Start: 19 @34061 has 39 MA's), (Start: 40 @34127 has 31 MA's), (Start: 49 @34148 has 14 MA's), (56, 34166), (68, 34205), (72, 34217), (90, 34274), (112, 34334), (138, 34454),

Gene: Cjw1_80 Start: 50855, Stop: 51202, Start Num: 41

Candidate Starts for Cjw1_80:

(6, 50618), (Start: 41 @50855 has 22 MA's), (Start: 47 @50870 has 100 MA's), (60, 50906), (136, 51182),

Gene: Cjw1_73 Start: 48499, Stop: 48867, Start Num: 46

Candidate Starts for Cjw1_73:

(Start: 43 @48493 has 83 MA's), (Start: 46 @48499 has 40 MA's), (71, 48571), (88, 48631), (130, 48799),

Gene: Cjw1_68 Start: 46229, Stop: 46639, Start Num: 37

Candidate Starts for Cjw1_68:

(Start: 37 @46229 has 123 MA's), (88, 46370), (97, 46418), (108, 46466), (131, 46559), (136, 46601),

Gene: Claus_45 Start: 35462, Stop: 35791, Start Num: 49

Candidate Starts for Claus_45:

(Start: 16 @35366 has 10 MA's), (Start: 19 @35375 has 39 MA's), (Start: 49 @35462 has 14 MA's), (56, 35480), (65, 35507), (66, 35510), (90, 35588), (127, 35705), (138, 35768),

Gene: Clautastrophe_42 Start: 35625, Stop: 36053, Start Num: 14

Candidate Starts for Clautastrophe_42:

(Start: 14 @35625 has 3 MA's), (Start: 16 @35637 has 10 MA's), (Start: 19 @35646 has 39 MA's), (Start: 49 @35730 has 14 MA's), (56, 35748), (Start: 61 @35766 has 1 MA's), (65, 35775), (103, 35892), (138, 36030),

Gene: Command613_75 Start: 47838, Stop: 48209, Start Num: 46

Candidate Starts for Command613_75:

(Start: 43 @47832 has 83 MA's), (Start: 46 @47838 has 40 MA's), (71, 47910), (88, 47970), (130, 48141),

Gene: Command613_82 Start: 50197, Stop: 50547, Start Num: 41

Candidate Starts for Command613_82:

(6, 49960), (Start: 41 @50197 has 22 MA's), (Start: 47 @50212 has 100 MA's), (60, 50248), (136, 50527),

Gene: Command613_70 Start: 45568, Stop: 45978, Start Num: 37

Candidate Starts for Command613_70:

(7, 45394), (Start: 37 @45568 has 123 MA's), (88, 45709), (97, 45757), (108, 45805), (131, 45898), (136, 45940),

Gene: Constella_101 Start: 60252, Stop: 60566, Start Num: 40

Candidate Starts for Constella_101:

(Start: 40 @60252 has 31 MA's), (56, 60291), (64, 60318), (114, 60441), (136, 60552),

Gene: Constella_128 Start: 72912, Stop: 73271, Start Num: 39

Candidate Starts for Constella_128:

(29, 72885), (Start: 39 @72912 has 35 MA's), (Start: 43 @72921 has 83 MA's), (90, 73053), (93, 73068), (128, 73197), (130, 73203),

Gene: Contagion_69 Start: 46596, Stop: 46970, Start Num: 43

Candidate Starts for Contagion_69:

(Start: 43 @46596 has 83 MA's), (Start: 46 @46602 has 40 MA's), (71, 46674), (88, 46734), (130, 46902),

Gene: Contagion_64 Start: 44329, Stop: 44742, Start Num: 37

Candidate Starts for Contagion_64:

(7, 44155), (Start: 37 @44329 has 123 MA's), (88, 44470), (97, 44518), (108, 44566), (131, 44659), (141, 44722),

Gene: Contagion_76 Start: 48973, Stop: 49308, Start Num: 47

Candidate Starts for Contagion_76:

(6, 48721), (Start: 41 @48958 has 22 MA's), (Start: 47 @48973 has 100 MA's), (60, 49009), (136, 49288),

Gene: Cookies_77 Start: 49354, Stop: 49689, Start Num: 47

Candidate Starts for Cookies_77:

(6, 49102), (Start: 41 @49339 has 22 MA's), (Start: 47 @49354 has 100 MA's), (60, 49390), (77, 49444), (115, 49570), (125, 49606), (126, 49609), (131, 49627), (136, 49669),

Gene: Cookies_70 Start: 46974, Stop: 47351, Start Num: 43

Candidate Starts for Cookies_70:

(Start: 43 @46974 has 83 MA's), (Start: 46 @46980 has 40 MA's), (71, 47052), (88, 47112), (111, 47211), (130, 47283),

Gene: Cookies_65 Start: 44698, Stop: 45111, Start Num: 37

Candidate Starts for Cookies_65:

(7, 44524), (Start: 37 @44698 has 123 MA's), (88, 44839), (96, 44881), (122, 44989), (131, 45028),

Gene: Courthouse_108 Start: 61433, Stop: 61753, Start Num: 40

Candidate Starts for Courthouse_108:

(Start: 40 @61433 has 31 MA's), (56, 61472), (90, 61571), (114, 61628), (124, 61664), (130, 61694), (136, 61739),

Gene: Courthouse_129 Start: 69822, Stop: 70175, Start Num: 39

Candidate Starts for Courthouse_129:

(Start: 39 @69822 has 35 MA's), (Start: 43 @69831 has 83 MA's), (128, 70101),

Gene: Crossroads_45 Start: 35358, Stop: 35774, Start Num: 19

Candidate Starts for Crossroads_45:

(Start: 16 @35349 has 10 MA's), (Start: 19 @35358 has 39 MA's), (Start: 49 @35445 has 14 MA's), (56, 35463), (65, 35490), (66, 35493), (90, 35568), (92, 35580), (127, 35688), (138, 35751),

Gene: CrystalP_67 Start: 45513, Stop: 45923, Start Num: 37

Candidate Starts for CrystalP_67:

(7, 45339), (Start: 37 @45513 has 123 MA's), (73, 45609), (88, 45654), (97, 45702), (108, 45750), (131, 45843), (136, 45885),

Gene: CrystalP_72 Start: 47783, Stop: 48154, Start Num: 46

Candidate Starts for CrystalP_72:

(Start: 43 @47777 has 83 MA's), (Start: 46 @47783 has 40 MA's), (71, 47855), (88, 47915), (130, 48086),

Gene: CrystalP_79 Start: 50157, Stop: 50489, Start Num: 47

Candidate Starts for CrystalP_79:

(6, 49905), (Start: 41 @50142 has 22 MA's), (Start: 47 @50157 has 100 MA's), (60, 50193), (136, 50469),

Gene: Czyszczone1_69 Start: 45038, Stop: 45448, Start Num: 37

Candidate Starts for Czyszczone1_69:

(Start: 37 @45038 has 123 MA's), (88, 45179), (97, 45227), (108, 45275), (131, 45368), (136, 45410),

Gene: Czyszczone1_81 Start: 49679, Stop: 50011, Start Num: 47
Candidate Starts for Czyszczone1_81:
(6, 49427), (Start: 41 @49664 has 22 MA's), (Start: 47 @49679 has 100 MA's), (60, 49715), (136, 49991),

Gene: Czyszczone1_74 Start: 47302, Stop: 47676, Start Num: 43
Candidate Starts for Czyszczone1_74:
(Start: 43 @47302 has 83 MA's), (Start: 46 @47308 has 40 MA's), (71, 47380), (88, 47440), (130, 47608),

Gene: Daikon_82 Start: 50285, Stop: 50635, Start Num: 41
Candidate Starts for Daikon_82:
(6, 50048), (Start: 41 @50285 has 22 MA's), (Start: 47 @50300 has 100 MA's), (60, 50336), (136, 50615),

Gene: Daikon_75 Start: 47926, Stop: 48297, Start Num: 46
Candidate Starts for Daikon_75:
(Start: 43 @47920 has 83 MA's), (Start: 46 @47926 has 40 MA's), (71, 47998), (88, 48058), (130, 48229),

Gene: Daikon_70 Start: 45656, Stop: 46066, Start Num: 37
Candidate Starts for Daikon_70:
(Start: 37 @45656 has 123 MA's), (88, 45797), (97, 45845), (108, 45893), (131, 45986), (136, 46028),

Gene: Dallas_119 Start: 66991, Stop: 67311, Start Num: 40
Candidate Starts for Dallas_119:
(Start: 40 @66991 has 31 MA's), (56, 67030), (114, 67186), (124, 67222), (130, 67252), (136, 67297),

Gene: Dallas_135 Start: 73726, Stop: 74085, Start Num: 39
Candidate Starts for Dallas_135:
(29, 73699), (Start: 39 @73726 has 35 MA's), (Start: 43 @73735 has 83 MA's), (90, 73867), (93, 73882), (130, 74017),

Gene: Dennebes_81 Start: 39474, Stop: 38989, Start Num: 24
Candidate Starts for Dennebes_81:
(Start: 24 @39474 has 4 MA's), (34, 39435), (62, 39366), (70, 39345), (99, 39243), (105, 39225), (109, 39213), (111, 39207), (112, 39204),

Gene: DirkDirk_42 Start: 34012, Stop: 34428, Start Num: 19
Candidate Starts for DirkDirk_42:
(Start: 14 @33991 has 3 MA's), (Start: 19 @34012 has 39 MA's), (Start: 40 @34078 has 31 MA's), (Start: 49 @34099 has 14 MA's), (56, 34117), (68, 34156), (72, 34168), (90, 34225), (112, 34285), (138, 34405),

Gene: DmpstrDiver_134 Start: 73073, Stop: 73432, Start Num: 39
Candidate Starts for DmpstrDiver_134:
(29, 73046), (Start: 39 @73073 has 35 MA's), (Start: 43 @73082 has 83 MA's), (90, 73214), (93, 73229), (128, 73358), (130, 73364),

Gene: DmpstrDiver_119 Start: 66397, Stop: 66717, Start Num: 40
Candidate Starts for DmpstrDiver_119:
(Start: 40 @66397 has 31 MA's), (56, 66436), (114, 66592), (124, 66628), (130, 66658), (136, 66703),

Gene: DoctorDiddles_67 Start: 44888, Stop: 45301, Start Num: 37
Candidate Starts for DoctorDiddles_67:
(7, 44714), (Start: 37 @44888 has 123 MA's), (88, 45029), (96, 45071), (122, 45179), (131, 45218),
(141, 45281),

Gene: DoctorDiddles_72 Start: 47167, Stop: 47538, Start Num: 46
Candidate Starts for DoctorDiddles_72:
(Start: 43 @47161 has 83 MA's), (Start: 46 @47167 has 40 MA's), (71, 47239), (88, 47299), (111,
47398), (130, 47470),

Gene: DoctorDiddles_79 Start: 49541, Stop: 49876, Start Num: 47
Candidate Starts for DoctorDiddles_79:
(6, 49289), (Start: 41 @49526 has 22 MA's), (Start: 47 @49541 has 100 MA's), (60, 49577), (77,
49631), (115, 49757), (125, 49793), (126, 49796), (131, 49814), (136, 49856),

Gene: Douge_42 Start: 34125, Stop: 34448, Start Num: 49
Candidate Starts for Douge_42:
(Start: 14 @34020 has 3 MA's), (Start: 16 @34032 has 10 MA's), (Start: 17 @34035 has 3 MA's),
(Start: 49 @34125 has 14 MA's), (56, 34143), (65, 34170), (66, 34173), (90, 34251), (113, 34314),
(131, 34377), (138, 34425),

Gene: Dove_127 Start: 68672, Stop: 69031, Start Num: 39
Candidate Starts for Dove_127:
(29, 68645), (Start: 39 @68672 has 35 MA's), (Start: 43 @68681 has 83 MA's), (90, 68813), (93,
68828), (128, 68957), (130, 68963),

Gene: Dove_108 Start: 61905, Stop: 62225, Start Num: 40
Candidate Starts for Dove_108:
(Start: 40 @61905 has 31 MA's), (56, 61944), (90, 62043), (114, 62100), (124, 62136), (130, 62166),
(136, 62211),

Gene: DrDrey_80 Start: 50583, Stop: 50930, Start Num: 41
Candidate Starts for DrDrey_80:
(6, 50346), (Start: 41 @50583 has 22 MA's), (Start: 47 @50598 has 100 MA's), (60, 50634), (136,
50910),

Gene: DrDrey_68 Start: 45954, Stop: 46364, Start Num: 37
Candidate Starts for DrDrey_68:
(Start: 37 @45954 has 123 MA's), (88, 46095), (97, 46143), (108, 46191), (131, 46284), (136, 46326),

Gene: DrDrey_73 Start: 48218, Stop: 48595, Start Num: 43
Candidate Starts for DrDrey_73:
(Start: 43 @48218 has 83 MA's), (Start: 46 @48224 has 40 MA's), (71, 48296), (88, 48356), (130,
48527),

Gene: DrSeegs_45 Start: 35356, Stop: 35772, Start Num: 19
Candidate Starts for DrSeegs_45:
(Start: 16 @35347 has 10 MA's), (Start: 19 @35356 has 39 MA's), (Start: 49 @35443 has 14 MA's),
(56, 35461), (65, 35488), (66, 35491), (90, 35566), (92, 35578), (127, 35686), (138, 35749),

Gene: Duke13_129 Start: 70374, Stop: 70733, Start Num: 39
Candidate Starts for Duke13_129:

(29, 70347), (Start: 39 @70374 has 35 MA's), (Start: 43 @70383 has 83 MA's), (90, 70515), (93, 70530), (128, 70659), (130, 70665),

Gene: Dumbo_73 Start: 46707, Stop: 47075, Start Num: 46

Candidate Starts for Dumbo_73:

(Start: 43 @46701 has 83 MA's), (Start: 46 @46707 has 40 MA's), (71, 46779), (88, 46839), (130, 47007),

Gene: Dumbo_68 Start: 44437, Stop: 44847, Start Num: 37

Candidate Starts for Dumbo_68:

(Start: 37 @44437 has 123 MA's), (88, 44578), (97, 44626), (108, 44674), (131, 44767), (136, 44809),

Gene: Dumbo_80 Start: 49063, Stop: 49413, Start Num: 41

Candidate Starts for Dumbo_80:

(6, 48826), (Start: 41 @49063 has 22 MA's), (Start: 47 @49078 has 100 MA's), (60, 49114), (136, 49393),

Gene: DuncansLeg_42 Start: 35754, Stop: 36077, Start Num: 49

Candidate Starts for DuncansLeg_42:

(Start: 14 @35646 has 3 MA's), (Start: 16 @35658 has 10 MA's), (Start: 19 @35667 has 39 MA's), (20, 35670), (Start: 49 @35754 has 14 MA's), (56, 35772), (Start: 61 @35790 has 1 MA's), (65, 35799), (103, 35916), (138, 36054),

Gene: Dusk_77 Start: 49378, Stop: 49713, Start Num: 47

Candidate Starts for Dusk_77:

(6, 49126), (Start: 41 @49363 has 22 MA's), (Start: 47 @49378 has 100 MA's), (60, 49414), (136, 49693),

Gene: Dusk_70 Start: 46998, Stop: 47375, Start Num: 43

Candidate Starts for Dusk_70:

(Start: 43 @46998 has 83 MA's), (Start: 46 @47004 has 40 MA's), (71, 47076), (88, 47136), (130, 47307),

Gene: Dusk_65 Start: 44734, Stop: 45144, Start Num: 37

Candidate Starts for Dusk_65:

(Start: 37 @44734 has 123 MA's), (88, 44875), (97, 44923), (108, 44971), (131, 45064), (136, 45106),

Gene: DyoEdafos_44 Start: 34357, Stop: 34776, Start Num: 17

Candidate Starts for DyoEdafos_44:

(Start: 14 @34342 has 3 MA's), (Start: 16 @34354 has 10 MA's), (Start: 17 @34357 has 3 MA's), (Start: 49 @34447 has 14 MA's), (56, 34465), (65, 34492), (90, 34570), (113, 34642), (138, 34753),

Gene: Easy2Say_69 Start: 45975, Stop: 46385, Start Num: 37

Candidate Starts for Easy2Say_69:

(7, 45801), (Start: 37 @45975 has 123 MA's), (73, 46071), (88, 46116), (97, 46164), (108, 46212), (131, 46305), (136, 46347),

Gene: Easy2Say_81 Start: 50622, Stop: 50954, Start Num: 47

Candidate Starts for Easy2Say_81:

(6, 50370), (Start: 41 @50607 has 22 MA's), (Start: 47 @50622 has 100 MA's), (60, 50658), (136, 50934),

Gene: Easy2Say_74 Start: 48248, Stop: 48619, Start Num: 46

Candidate Starts for Easy2Say_74:

(Start: 43 @48242 has 83 MA's), (Start: 46 @48248 has 40 MA's), (71, 48320), (88, 48380), (130, 48551),

Gene: Ejimix_128 Start: 73794, Stop: 74153, Start Num: 39

Candidate Starts for Ejimix_128:

(29, 73767), (Start: 39 @73794 has 35 MA's), (Start: 43 @73803 has 83 MA's), (90, 73935), (93, 73950), (130, 74085),

Gene: Ejimix_113 Start: 67525, Stop: 67845, Start Num: 40

Candidate Starts for Ejimix_113:

(Start: 40 @67525 has 31 MA's), (56, 67564), (114, 67720), (124, 67756), (130, 67786), (136, 67831),

Gene: Elite2014_72 Start: 46795, Stop: 47169, Start Num: 43

Candidate Starts for Elite2014_72:

(Start: 43 @46795 has 83 MA's), (Start: 46 @46801 has 40 MA's), (71, 46873), (88, 46933), (130, 47101),

Gene: Elite2014_67 Start: 44531, Stop: 44941, Start Num: 37

Candidate Starts for Elite2014_67:

(Start: 37 @44531 has 123 MA's), (88, 44672), (97, 44720), (108, 44768), (131, 44861), (136, 44903),

Gene: Elite2014_79 Start: 49172, Stop: 49507, Start Num: 47

Candidate Starts for Elite2014_79:

(6, 48920), (Start: 41 @49157 has 22 MA's), (Start: 47 @49172 has 100 MA's), (60, 49208), (136, 49487),

Gene: Ellson_42 Start: 35730, Stop: 36053, Start Num: 49

Candidate Starts for Ellson_42:

(Start: 14 @35622 has 3 MA's), (Start: 16 @35634 has 10 MA's), (Start: 19 @35643 has 39 MA's), (20, 35646), (Start: 49 @35730 has 14 MA's), (56, 35748), (Start: 61 @35766 has 1 MA's), (65, 35775), (103, 35892), (138, 36030),

Gene: Elph10_80 Start: 49162, Stop: 49509, Start Num: 41

Candidate Starts for Elph10_80:

(6, 48925), (Start: 41 @49162 has 22 MA's), (Start: 47 @49177 has 100 MA's), (60, 49213), (136, 49489),

Gene: Elph10_68 Start: 44536, Stop: 44946, Start Num: 37

Candidate Starts for Elph10_68:

(Start: 37 @44536 has 123 MA's), (88, 44677), (97, 44725), (108, 44773), (131, 44866), (136, 44908),

Gene: Elph10_73 Start: 46806, Stop: 47174, Start Num: 46

Candidate Starts for Elph10_73:

(Start: 43 @46800 has 83 MA's), (Start: 46 @46806 has 40 MA's), (71, 46878), (88, 46938), (130, 47106),

Gene: Emmina_80 Start: 49079, Stop: 49411, Start Num: 47

Candidate Starts for Emmina_80:

(Start: 41 @49064 has 22 MA's), (Start: 47 @49079 has 100 MA's), (60, 49115), (136, 49391),

Gene: Emmina_68 Start: 44438, Stop: 44848, Start Num: 37

Candidate Starts for Emmina_68:

(7, 44264), (Start: 37 @44438 has 123 MA's), (88, 44579), (97, 44627), (108, 44675), (131, 44768), (136, 44810),

Gene: Emmina_73 Start: 46702, Stop: 47076, Start Num: 43

Candidate Starts for Emmina_73:

(Start: 43 @46702 has 83 MA's), (Start: 46 @46708 has 40 MA's), (71, 46780), (88, 46840), (130, 47008),

Gene: Enceladus_42 Start: 33995, Stop: 34411, Start Num: 19

Candidate Starts for Enceladus_42:

(Start: 14 @33974 has 3 MA's), (Start: 19 @33995 has 39 MA's), (Start: 40 @34061 has 31 MA's), (Start: 49 @34082 has 14 MA's), (56, 34100), (68, 34139), (72, 34151), (90, 34208), (112, 34268), (138, 34388),

Gene: EricMillard_126 Start: 72298, Stop: 72657, Start Num: 39

Candidate Starts for EricMillard_126:

(29, 72271), (Start: 39 @72298 has 35 MA's), (Start: 43 @72307 has 83 MA's), (90, 72439), (93, 72454), (128, 72583), (130, 72589),

Gene: Eureka_78 Start: 49628, Stop: 49975, Start Num: 41

Candidate Starts for Eureka_78:

(6, 49391), (Start: 41 @49628 has 22 MA's), (Start: 47 @49643 has 100 MA's), (60, 49679), (136, 49955),

Gene: Eureka_71 Start: 47272, Stop: 47640, Start Num: 46

Candidate Starts for Eureka_71:

(Start: 43 @47266 has 83 MA's), (Start: 46 @47272 has 40 MA's), (71, 47344), (88, 47404), (130, 47572),

Gene: Eureka_66 Start: 45002, Stop: 45412, Start Num: 37

Candidate Starts for Eureka_66:

(Start: 37 @45002 has 123 MA's), (88, 45143), (97, 45191), (108, 45239), (131, 45332), (136, 45374),

Gene: Fabian_73 Start: 38951, Stop: 38469, Start Num: 26

Candidate Starts for Fabian_73:

(Start: 26 @38951 has 15 MA's), (50, 38879), (62, 38846), (88, 38768), (99, 38726), (131, 38618), (141, 38555), (150, 38513),

Gene: Faith1_45 Start: 35347, Stop: 35772, Start Num: 16

Candidate Starts for Faith1_45:

(Start: 16 @35347 has 10 MA's), (Start: 19 @35356 has 39 MA's), (Start: 49 @35443 has 14 MA's), (56, 35461), (65, 35488), (66, 35491), (90, 35566), (92, 35578), (127, 35686), (138, 35749),

Gene: Filch_81 Start: 49104, Stop: 49436, Start Num: 47

Candidate Starts for Filch_81:

(6, 48852), (Start: 41 @49089 has 22 MA's), (Start: 47 @49104 has 100 MA's), (60, 49140), (136, 49416),

Gene: Filch_74 Start: 46733, Stop: 47101, Start Num: 46

Candidate Starts for Filch_74:

(Start: 43 @46727 has 83 MA's), (Start: 46 @46733 has 40 MA's), (71, 46805), (88, 46865), (130, 47033),

Gene: Filch_69 Start: 44463, Stop: 44873, Start Num: 37

Candidate Starts for Filch_69:

(Start: 37 @44463 has 123 MA's), (88, 44604), (97, 44652), (108, 44700), (131, 44793), (136, 44835),

Gene: Finemlucis_45 Start: 35623, Stop: 36048, Start Num: 16

Candidate Starts for Finemlucis_45:

(Start: 16 @35623 has 10 MA's), (Start: 19 @35632 has 39 MA's), (Start: 49 @35719 has 14 MA's), (56, 35737), (65, 35764), (66, 35767), (90, 35842), (92, 35854), (127, 35962), (138, 36025),

Gene: Finnry_42 Start: 35733, Stop: 36056, Start Num: 49

Candidate Starts for Finnry_42:

(Start: 14 @35628 has 3 MA's), (Start: 16 @35640 has 10 MA's), (Start: 19 @35649 has 39 MA's), (Start: 49 @35733 has 14 MA's), (56, 35751), (Start: 61 @35769 has 1 MA's), (65, 35778), (103, 35895), (138, 36033),

Gene: FireRed_84 Start: 50666, Stop: 51001, Start Num: 47

Candidate Starts for FireRed_84:

(1, 50096), (2, 50213), (6, 50414), (Start: 41 @50651 has 22 MA's), (Start: 47 @50666 has 100 MA's), (60, 50702), (136, 50981),

Gene: FireRed_72 Start: 46025, Stop: 46438, Start Num: 37

Candidate Starts for FireRed_72:

(7, 45851), (Start: 37 @46025 has 123 MA's), (88, 46166), (97, 46214), (108, 46262), (131, 46355), (141, 46418),

Gene: FireRed_77 Start: 48298, Stop: 48663, Start Num: 46

Candidate Starts for FireRed_77:

(Start: 43 @48292 has 83 MA's), (Start: 46 @48298 has 40 MA's), (71, 48370), (88, 48424), (130, 48595),

Gene: FlowerPower_74 Start: 38621, Stop: 38139, Start Num: 26

Candidate Starts for FlowerPower_74:

(Start: 26 @38621 has 15 MA's), (50, 38549), (62, 38516), (88, 38438), (99, 38396), (131, 38288), (141, 38225), (150, 38183),

Gene: Flypotenuse_69 Start: 46783, Stop: 47160, Start Num: 43

Candidate Starts for Flypotenuse_69:

(Start: 43 @46783 has 83 MA's), (Start: 46 @46789 has 40 MA's), (71, 46861), (88, 46921), (130, 47092),

Gene: Flypotenuse_64 Start: 44519, Stop: 44929, Start Num: 37

Candidate Starts for Flypotenuse_64:

(Start: 37 @44519 has 123 MA's), (88, 44660), (97, 44708), (108, 44756), (131, 44849), (136, 44891),

Gene: Flypotenuse_76 Start: 49163, Stop: 49498, Start Num: 47

Candidate Starts for Flypotenuse_76:

(6, 48911), (Start: 41 @49148 has 22 MA's), (Start: 47 @49163 has 100 MA's), (60, 49199), (136, 49478),

Gene: Gabriela_45 Start: 35618, Stop: 36034, Start Num: 19

Candidate Starts for Gabriela_45:

(Start: 16 @35609 has 10 MA's), (Start: 19 @35618 has 39 MA's), (Start: 49 @35705 has 14 MA's), (56, 35723), (65, 35750), (66, 35753), (90, 35828), (92, 35840), (127, 35948), (138, 36011),

Gene: Gage_75 Start: 47576, Stop: 47953, Start Num: 43

Candidate Starts for Gage_75:

(Start: 43 @47576 has 83 MA's), (Start: 46 @47582 has 40 MA's), (71, 47654), (88, 47714), (130, 47885),

Gene: Gage_70 Start: 45309, Stop: 45719, Start Num: 37

Candidate Starts for Gage_70:

(7, 45135), (Start: 37 @45309 has 123 MA's), (88, 45450), (97, 45498), (108, 45546), (131, 45639), (136, 45681),

Gene: Gage_82 Start: 49956, Stop: 50291, Start Num: 47

Candidate Starts for Gage_82:

(6, 49704), (Start: 41 @49941 has 22 MA's), (Start: 47 @49956 has 100 MA's), (60, 49992), (136, 50271),

Gene: Gardann_45 Start: 35357, Stop: 35773, Start Num: 19

Candidate Starts for Gardann_45:

(Start: 16 @35348 has 10 MA's), (Start: 19 @35357 has 39 MA's), (Start: 49 @35444 has 14 MA's), (56, 35462), (65, 35489), (66, 35492), (90, 35567), (92, 35579), (127, 35687), (138, 35750),

Gene: Gator_66 Start: 45365, Stop: 45775, Start Num: 37

Candidate Starts for Gator_66:

(Start: 37 @45365 has 123 MA's), (88, 45506), (97, 45554), (108, 45602), (131, 45695), (136, 45737),

Gene: Gator_71 Start: 47629, Stop: 48006, Start Num: 43

Candidate Starts for Gator_71:

(Start: 43 @47629 has 83 MA's), (Start: 46 @47635 has 40 MA's), (71, 47707), (88, 47767), (130, 47938),

Gene: Gator_78 Start: 50009, Stop: 50341, Start Num: 47

Candidate Starts for Gator_78:

(6, 49757), (Start: 41 @49994 has 22 MA's), (Start: 47 @50009 has 100 MA's), (60, 50045), (136, 50321),

Gene: Gemini_73 Start: 45826, Stop: 46236, Start Num: 37

Candidate Starts for Gemini_73:

(7, 45652), (Start: 37 @45826 has 123 MA's), (88, 45967), (97, 46015), (108, 46063), (131, 46156), (136, 46198),

Gene: Gemini_78 Start: 48093, Stop: 48470, Start Num: 43

Candidate Starts for Gemini_78:

(Start: 43 @48093 has 83 MA's), (Start: 46 @48099 has 40 MA's), (71, 48171), (88, 48231), (130, 48402),

Gene: Gemini_85 Start: 50473, Stop: 50808, Start Num: 47

Candidate Starts for Gemini_85:

(6, 50221), (Start: 41 @50458 has 22 MA's), (Start: 47 @50473 has 100 MA's), (60, 50509), (136, 50788),

Gene: Geostin_69 Start: 38621, Stop: 38139, Start Num: 26

Candidate Starts for Geostin_69:

(Start: 26 @38621 has 15 MA's), (50, 38549), (62, 38516), (88, 38438), (99, 38396), (131, 38288), (141, 38225), (150, 38183),

Gene: GiKK_67 Start: 44458, Stop: 44943, Start Num: 24

Candidate Starts for GiKK_67:

(3, 44224), (4, 44242), (7, 44332), (9, 44353), (Start: 24 @44458 has 4 MA's), (Start: 31 @44482 has 1 MA's), (45, 44521), (50, 44533), (83, 44635), (102, 44716), (114, 44773), (131, 44836), (134, 44860), (136, 44878),

Gene: Glexan_72 Start: 47913, Stop: 48290, Start Num: 43

Candidate Starts for Glexan_72:

(Start: 43 @47913 has 83 MA's), (Start: 46 @47919 has 40 MA's), (71, 47991), (88, 48051), (130, 48222),

Gene: Glexan_67 Start: 45646, Stop: 46059, Start Num: 37

Candidate Starts for Glexan_67:

(7, 45472), (Start: 37 @45646 has 123 MA's), (88, 45787), (96, 45829), (122, 45937), (131, 45976), (141, 46039),

Gene: Glexan_79 Start: 50293, Stop: 50628, Start Num: 47

Candidate Starts for Glexan_79:

(6, 50041), (Start: 41 @50278 has 22 MA's), (Start: 47 @50293 has 100 MA's), (60, 50329), (136, 50608),

Gene: Goku_66 Start: 44731, Stop: 45141, Start Num: 37

Candidate Starts for Goku_66:

(Start: 37 @44731 has 123 MA's), (88, 44872), (97, 44920), (108, 44968), (131, 45061), (136, 45103),

Gene: Goku_78 Start: 49357, Stop: 49704, Start Num: 41

Candidate Starts for Goku_78:

(6, 49120), (Start: 41 @49357 has 22 MA's), (Start: 47 @49372 has 100 MA's), (60, 49408), (136, 49684),

Gene: Goku_71 Start: 46995, Stop: 47369, Start Num: 43

Candidate Starts for Goku_71:

(Start: 43 @46995 has 83 MA's), (Start: 46 @47001 has 40 MA's), (71, 47073), (88, 47133), (130, 47301),

Gene: GoldenSpark_72 Start: 45309, Stop: 45719, Start Num: 37

Candidate Starts for GoldenSpark_72:

(7, 45135), (Start: 37 @45309 has 123 MA's), (88, 45450), (97, 45498), (108, 45546), (131, 45639), (136, 45681),

Gene: GoldenSpark_77 Start: 47582, Stop: 47953, Start Num: 46

Candidate Starts for GoldenSpark_77:

(Start: 43 @47576 has 83 MA's), (Start: 46 @47582 has 40 MA's), (71, 47654), (88, 47714), (130, 47885),

Gene: GoldenSpark_84 Start: 49941, Stop: 50291, Start Num: 41

Candidate Starts for GoldenSpark_84:

(6, 49704), (Start: 41 @49941 has 22 MA's), (Start: 47 @49956 has 100 MA's), (60, 49992), (136, 50271),

Gene: Goldilocks_76 Start: 47080, Stop: 47451, Start Num: 46

Candidate Starts for Goldilocks_76:

(Start: 43 @47074 has 83 MA's), (Start: 46 @47080 has 40 MA's), (71, 47152), (88, 47212), (130, 47383),

Gene: Goldilocks_71 Start: 44810, Stop: 45220, Start Num: 37

Candidate Starts for Goldilocks_71:

(7, 44636), (Start: 37 @44810 has 123 MA's), (88, 44951), (97, 44999), (108, 45047), (131, 45140), (136, 45182),

Gene: Goldilocks_83 Start: 49454, Stop: 49786, Start Num: 47

Candidate Starts for Goldilocks_83:

(6, 49202), (Start: 41 @49439 has 22 MA's), (Start: 47 @49454 has 100 MA's), (60, 49490), (136, 49766),

Gene: Gonephishing_128 Start: 69464, Stop: 69817, Start Num: 39

Candidate Starts for Gonephishing_128:

(Start: 39 @69464 has 35 MA's), (Start: 43 @69473 has 83 MA's), (128, 69743), (136, 69794),

Gene: Gonephishing_107 Start: 60857, Stop: 61180, Start Num: 40

Candidate Starts for Gonephishing_107:

(Start: 40 @60857 has 31 MA's), (56, 60896), (81, 60962), (87, 60983), (88, 60986), (93, 61013), (136, 61166),

Gene: GooberAzure_83 Start: 49956, Stop: 50291, Start Num: 47

Candidate Starts for GooberAzure_83:

(6, 49704), (Start: 41 @49941 has 22 MA's), (Start: 47 @49956 has 100 MA's), (60, 49992), (136, 50271),

Gene: GooberAzure_71 Start: 45309, Stop: 45719, Start Num: 37

Candidate Starts for GooberAzure_71:

(7, 45135), (Start: 37 @45309 has 123 MA's), (88, 45450), (97, 45498), (108, 45546), (131, 45639), (136, 45681),

Gene: GooberAzure_76 Start: 47576, Stop: 47953, Start Num: 43

Candidate Starts for GooberAzure_76:

(Start: 43 @47576 has 83 MA's), (Start: 46 @47582 has 40 MA's), (71, 47654), (88, 47714), (130, 47885),

Gene: Grayson_232 Start: 113102, Stop: 113485, Start Num: 35

Candidate Starts for Grayson_232:

(33, 113096), (Start: 35 @113102 has 4 MA's), (86, 113249), (94, 113288), (128, 113396), (139, 113456), (142, 113465),

Gene: Gremlin23_74 Start: 38621, Stop: 38139, Start Num: 26

Candidate Starts for Gremlin23_74:

(Start: 26 @38621 has 15 MA's), (50, 38549), (62, 38516), (88, 38438), (99, 38396), (131, 38288), (141, 38225), (150, 38183),

Gene: GuuelaD_44 Start: 35386, Stop: 35811, Start Num: 16

Candidate Starts for GuuelaD_44:

(Start: 16 @35386 has 10 MA's), (Start: 19 @35395 has 39 MA's), (Start: 49 @35482 has 14 MA's), (56, 35500), (65, 35527), (66, 35530), (90, 35605), (92, 35617), (127, 35725), (138, 35788),

Gene: Hafay_45 Start: 35477, Stop: 35806, Start Num: 49

Candidate Starts for Hafay_45:

(Start: 16 @35381 has 10 MA's), (Start: 19 @35390 has 39 MA's), (Start: 49 @35477 has 14 MA's), (56, 35495), (65, 35522), (66, 35525), (90, 35600), (92, 35612), (127, 35720), (138, 35783),

Gene: Halena_42 Start: 34036, Stop: 34452, Start Num: 19

Candidate Starts for Halena_42:

(Start: 14 @34015 has 3 MA's), (Start: 19 @34036 has 39 MA's), (Start: 40 @34102 has 31 MA's), (Start: 49 @34123 has 14 MA's), (56, 34141), (68, 34180), (72, 34192), (90, 34249), (112, 34309), (138, 34429),

Gene: Halley_121 Start: 67841, Stop: 68161, Start Num: 40

Candidate Starts for Halley_121:

(Start: 40 @67841 has 31 MA's), (56, 67880), (114, 68036), (124, 68072), (130, 68102), (136, 68147),

Gene: Halley_136 Start: 74110, Stop: 74469, Start Num: 39

Candidate Starts for Halley_136:

(29, 74083), (Start: 39 @74110 has 35 MA's), (Start: 43 @74119 has 83 MA's), (90, 74251), (93, 74266), (130, 74401),

Gene: HanKaySha_73 Start: 46880, Stop: 47254, Start Num: 43

Candidate Starts for HanKaySha_73:

(Start: 43 @46880 has 83 MA's), (Start: 46 @46886 has 40 MA's), (71, 46958), (88, 47018), (130, 47186),

Gene: HanKaySha_80 Start: 49257, Stop: 49589, Start Num: 47

Candidate Starts for HanKaySha_80:

(6, 49005), (Start: 41 @49242 has 22 MA's), (Start: 47 @49257 has 100 MA's), (60, 49293), (136, 49569),

Gene: HanKaySha_68 Start: 44616, Stop: 45026, Start Num: 37

Candidate Starts for HanKaySha_68:

(Start: 37 @44616 has 123 MA's), (88, 44757), (97, 44805), (108, 44853), (131, 44946), (136, 44988),

Gene: Hannaconda_104 Start: 59803, Stop: 60126, Start Num: 40

Candidate Starts for Hannaconda_104:

(Start: 40 @59803 has 31 MA's), (56, 59842), (81, 59908), (87, 59929), (88, 59932), (93, 59959), (136, 60112),

Gene: Hannaconda_127 Start: 70117, Stop: 70470, Start Num: 39

Candidate Starts for Hannaconda_127:

(Start: 39 @70117 has 35 MA's), (Start: 43 @70126 has 83 MA's), (128, 70396), (136, 70447),

Gene: Harella_68 Start: 46162, Stop: 46575, Start Num: 37

Candidate Starts for Harella_68:

(7, 45988), (Start: 37 @46162 has 123 MA's), (88, 46303), (96, 46345), (122, 46453), (131, 46492), (141, 46555),

Gene: Harella_80 Start: 50809, Stop: 51144, Start Num: 47

Candidate Starts for Harella_80:

(6, 50557), (Start: 41 @50794 has 22 MA's), (Start: 47 @50809 has 100 MA's), (60, 50845), (136, 51124),

Gene: Harella_73 Start: 48429, Stop: 48806, Start Num: 43

Candidate Starts for Harella_73:

(Start: 43 @48429 has 83 MA's), (Start: 46 @48435 has 40 MA's), (71, 48507), (88, 48567), (130, 48738),

Gene: HaugeAnator_76 Start: 38999, Stop: 38496, Start Num: 26

Candidate Starts for HaugeAnator_76:

(Start: 26 @38999 has 15 MA's), (34, 38963), (50, 38927), (62, 38891), (75, 38858), (88, 38810), (98, 38771), (131, 38660), (134, 38636), (144, 38582),

Gene: Henry_78 Start: 49597, Stop: 49929, Start Num: 47

Candidate Starts for Henry_78:

(6, 49345), (Start: 41 @49582 has 22 MA's), (Start: 47 @49597 has 100 MA's), (60, 49633), (136, 49909),

Gene: Henry_66 Start: 44953, Stop: 45363, Start Num: 37

Candidate Starts for Henry_66:

(7, 44779), (Start: 37 @44953 has 123 MA's), (73, 45049), (88, 45094), (97, 45142), (108, 45190), (131, 45283), (136, 45325),

Gene: Henry_71 Start: 47217, Stop: 47594, Start Num: 43

Candidate Starts for Henry_71:

(Start: 43 @47217 has 83 MA's), (Start: 46 @47223 has 40 MA's), (71, 47295), (88, 47355), (130, 47526),

Gene: Highbury_72 Start: 46868, Stop: 47242, Start Num: 43

Candidate Starts for Highbury_72:

(Start: 43 @46868 has 83 MA's), (Start: 46 @46874 has 40 MA's), (71, 46946), (88, 47006), (130, 47174),

Gene: Highbury_79 Start: 49245, Stop: 49580, Start Num: 47

Candidate Starts for Highbury_79:

(6, 48993), (Start: 41 @49230 has 22 MA's), (Start: 47 @49245 has 100 MA's), (60, 49281), (136, 49560),

Gene: Highbury_67 Start: 44604, Stop: 45014, Start Num: 37

Candidate Starts for Highbury_67:

(Start: 37 @44604 has 123 MA's), (88, 44745), (97, 44793), (108, 44841), (131, 44934), (136, 44976),

Gene: HokkenD_108 Start: 64913, Stop: 65233, Start Num: 40

Candidate Starts for HokkenD_108:

(Start: 40 @64913 has 31 MA's), (56, 64952), (90, 65051), (114, 65108), (124, 65144), (130, 65174), (136, 65219),

Gene: HokkenD_126 Start: 72994, Stop: 73353, Start Num: 39

Candidate Starts for HokkenD_126:

(29, 72967), (Start: 39 @72994 has 35 MA's), (Start: 43 @73003 has 83 MA's), (90, 73135), (93, 73150), (128, 73279), (130, 73285),

Gene: Holt_85 Start: 50370, Stop: 50705, Start Num: 47

Candidate Starts for Holt_85:

(6, 50118), (Start: 41 @50355 has 22 MA's), (Start: 47 @50370 has 100 MA's), (60, 50406), (136, 50685),

Gene: Holt_78 Start: 47990, Stop: 48367, Start Num: 43

Candidate Starts for Holt_78:

(Start: 43 @47990 has 83 MA's), (Start: 46 @47996 has 40 MA's), (71, 48068), (88, 48128), (130, 48299),

Gene: Holt_73 Start: 45723, Stop: 46133, Start Num: 37

Candidate Starts for Holt_73:

(7, 45549), (Start: 37 @45723 has 123 MA's), (88, 45864), (97, 45912), (108, 45960), (131, 46053), (136, 46095),

Gene: Hoonter_71 Start: 45309, Stop: 45719, Start Num: 37

Candidate Starts for Hoonter_71:

(7, 45135), (Start: 37 @45309 has 123 MA's), (88, 45450), (97, 45498), (108, 45546), (131, 45639), (136, 45681),

Gene: Hoonter_76 Start: 47576, Stop: 47953, Start Num: 43

Candidate Starts for Hoonter_76:

(Start: 43 @47576 has 83 MA's), (Start: 46 @47582 has 40 MA's), (71, 47654), (88, 47714), (130, 47885),

Gene: Hoonter_83 Start: 49956, Stop: 50288, Start Num: 47

Candidate Starts for Hoonter_83:

(1, 49386), (2, 49503), (6, 49704), (Start: 41 @49941 has 22 MA's), (Start: 47 @49956 has 100 MA's), (60, 49992), (136, 50268),

Gene: Hoopy_68 Start: 45148, Stop: 45558, Start Num: 37

Candidate Starts for Hoopy_68:

(Start: 37 @45148 has 123 MA's), (88, 45289), (97, 45337), (108, 45385), (131, 45478), (136, 45520),

Gene: Hoopy_80 Start: 49789, Stop: 50121, Start Num: 47

Candidate Starts for Hoopy_80:

(6, 49537), (Start: 41 @49774 has 22 MA's), (Start: 47 @49789 has 100 MA's), (60, 49825), (136, 50101),

Gene: Hoopy_73 Start: 47412, Stop: 47786, Start Num: 43

Candidate Starts for Hoopy_73:

(Start: 43 @47412 has 83 MA's), (Start: 46 @47418 has 40 MA's), (71, 47490), (88, 47550), (130, 47718),

Gene: HufflyPuff_83 Start: 50607, Stop: 50954, Start Num: 41

Candidate Starts for HufflyPuff_83:

(Start: 41 @50607 has 22 MA's), (Start: 47 @50622 has 100 MA's), (60, 50658), (136, 50934),

Gene: HufflyPuff_71 Start: 45981, Stop: 46391, Start Num: 37

Candidate Starts for HufflyPuff_71:

(Start: 37 @45981 has 123 MA's), (88, 46122), (97, 46170), (108, 46218), (131, 46311), (136, 46353),

Gene: HufflyPuff_76 Start: 48245, Stop: 48619, Start Num: 43

Candidate Starts for HufflyPuff_76:

(Start: 43 @48245 has 83 MA's), (Start: 46 @48251 has 40 MA's), (71, 48323), (88, 48383), (130, 48551),

Gene: Hughesyang_134 Start: 73880, Stop: 74239, Start Num: 39

Candidate Starts for Hughesyang_134:

(29, 73853), (Start: 39 @73880 has 35 MA's), (Start: 43 @73889 has 83 MA's), (90, 74021), (93, 74036), (128, 74165), (130, 74171),

Gene: Hughesyang_118 Start: 67297, Stop: 67617, Start Num: 40

Candidate Starts for Hughesyang_118:

(Start: 40 @67297 has 31 MA's), (56, 67336), (114, 67492), (124, 67528), (130, 67558), (136, 67603),

Gene: IHOP_71 Start: 47341, Stop: 47718, Start Num: 43

Candidate Starts for IHOP_71:

(Start: 43 @47341 has 83 MA's), (Start: 46 @47347 has 40 MA's), (71, 47419), (88, 47479), (130, 47650),

Gene: IHOP_66 Start: 45077, Stop: 45487, Start Num: 37

Candidate Starts for IHOP_66:

(Start: 37 @45077 has 123 MA's), (88, 45218), (97, 45266), (108, 45314), (131, 45407), (136, 45449),

Gene: IHOP_78 Start: 49721, Stop: 50053, Start Num: 47

Candidate Starts for IHOP_78:

(6, 49469), (Start: 41 @49706 has 22 MA's), (Start: 47 @49721 has 100 MA's), (60, 49757), (136, 50033),

Gene: Icee_69 Start: 44976, Stop: 45386, Start Num: 37

Candidate Starts for Icee_69:

(Start: 37 @44976 has 123 MA's), (88, 45117), (97, 45165), (108, 45213), (131, 45306), (136, 45348),

Gene: Icee_74 Start: 47246, Stop: 47617, Start Num: 46

Candidate Starts for Icee_74:

(Start: 43 @47240 has 83 MA's), (Start: 46 @47246 has 40 MA's), (71, 47318), (88, 47378), (130, 47549),

Gene: Icee_81 Start: 49620, Stop: 49955, Start Num: 47

Candidate Starts for Icee_81:

(6, 49368), (Start: 41 @49605 has 22 MA's), (Start: 47 @49620 has 100 MA's), (60, 49656), (136, 49935),

Gene: Immanuel3_74 Start: 39005, Stop: 38502, Start Num: 26

Candidate Starts for Immanuel3_74:

(Start: 26 @39005 has 15 MA's), (34, 38969), (50, 38933), (62, 38897), (88, 38816), (98, 38777), (131, 38666), (134, 38642), (144, 38588),

Gene: Inca_70 Start: 45869, Stop: 46243, Start Num: 43

Candidate Starts for Inca_70:

(Start: 43 @45869 has 83 MA's), (Start: 46 @45875 has 40 MA's), (71, 45947), (88, 46007), (130, 46175),

Gene: Inca_77 Start: 48246, Stop: 48581, Start Num: 47

Candidate Starts for Inca_77:

(6, 47994), (Start: 41 @48231 has 22 MA's), (Start: 47 @48246 has 100 MA's), (60, 48282), (136, 48561),

Gene: Inca_65 Start: 43602, Stop: 44012, Start Num: 37

Candidate Starts for Inca_65:

(7, 43428), (Start: 37 @43602 has 123 MA's), (88, 43743), (97, 43791), (108, 43839), (131, 43932), (136, 43974),

Gene: Itos_44 Start: 34253, Stop: 34678, Start Num: 16

Candidate Starts for Itos_44:

(Start: 16 @34253 has 10 MA's), (Start: 19 @34262 has 39 MA's), (Start: 49 @34349 has 14 MA's), (56, 34367), (65, 34394), (66, 34397), (90, 34472), (92, 34484), (127, 34592), (138, 34655),

Gene: JPandJE_75 Start: 39350, Stop: 38847, Start Num: 26

Candidate Starts for JPandJE_75:

(Start: 26 @39350 has 15 MA's), (34, 39314), (50, 39278), (62, 39242), (75, 39209), (88, 39161), (98, 39122), (131, 39011), (134, 38987), (144, 38933),

Gene: Jamzy_67 Start: 44194, Stop: 44679, Start Num: 24

Candidate Starts for Jamzy_67:

(3, 43960), (4, 43978), (7, 44068), (9, 44089), (Start: 24 @44194 has 4 MA's), (Start: 31 @44218 has 1 MA's), (45, 44257), (50, 44269), (83, 44371), (102, 44452), (131, 44572), (134, 44596), (136, 44614),

Gene: JeTaime_73 Start: 48064, Stop: 48435, Start Num: 43

Candidate Starts for JeTaime_73:

(Start: 43 @48064 has 83 MA's), (Start: 46 @48070 has 40 MA's), (71, 48142), (88, 48196), (130, 48367),

Gene: JeTaime_80 Start: 50438, Stop: 50770, Start Num: 47

Candidate Starts for JeTaime_80:

(6, 50186), (Start: 41 @50423 has 22 MA's), (Start: 47 @50438 has 100 MA's), (60, 50474), (136, 50750),

Gene: JeTaime_68 Start: 45800, Stop: 46210, Start Num: 37

Candidate Starts for JeTaime_68:

(7, 45626), (Start: 37 @45800 has 123 MA's), (88, 45941), (97, 45989), (108, 46037), (131, 46130), (136, 46172),

Gene: Jobypre_42 Start: 35730, Stop: 36053, Start Num: 49

Candidate Starts for Jobypre_42:

(Start: 14 @35625 has 3 MA's), (Start: 16 @35637 has 10 MA's), (Start: 19 @35646 has 39 MA's), (Start: 49 @35730 has 14 MA's), (56, 35748), (Start: 61 @35766 has 1 MA's), (65, 35775), (103, 35892), (138, 36030),

Gene: JoeDirt_42 Start: 33993, Stop: 34409, Start Num: 19

Candidate Starts for JoeDirt_42:

(Start: 14 @33972 has 3 MA's), (Start: 19 @33993 has 39 MA's), (Start: 40 @34059 has 31 MA's), (Start: 49 @34080 has 14 MA's), (56, 34098), (68, 34137), (72, 34149), (90, 34206), (112, 34266), (138, 34386),

Gene: Jubie_42 Start: 35647, Stop: 36054, Start Num: 19

Candidate Starts for Jubie_42:

(Start: 14 @35626 has 3 MA's), (Start: 16 @35638 has 10 MA's), (Start: 19 @35647 has 39 MA's), (Start: 49 @35731 has 14 MA's), (56, 35749), (Start: 61 @35767 has 1 MA's), (65, 35776), (103, 35893), (138, 36031),

Gene: JuicyJay_115 Start: 68611, Stop: 68931, Start Num: 40

Candidate Starts for JuicyJay_115:

(Start: 40 @68611 has 31 MA's), (56, 68650), (90, 68749), (114, 68806), (124, 68842), (130, 68872), (136, 68917),

Gene: JuicyJay_131 Start: 75395, Stop: 75754, Start Num: 39

Candidate Starts for JuicyJay_131:

(29, 75368), (Start: 39 @75395 has 35 MA's), (Start: 43 @75404 has 83 MA's), (90, 75536), (93, 75551),

Gene: Kahlid_45 Start: 35362, Stop: 35778, Start Num: 19

Candidate Starts for Kahlid_45:

(Start: 16 @35353 has 10 MA's), (Start: 19 @35362 has 39 MA's), (Start: 49 @35449 has 14 MA's), (56, 35467), (65, 35494), (66, 35497), (90, 35572), (92, 35584), (127, 35692), (138, 35755),

Gene: Kanye_65 Start: 44658, Stop: 45068, Start Num: 37

Candidate Starts for Kanye_65:

(Start: 37 @44658 has 123 MA's), (88, 44799), (97, 44847), (108, 44895), (131, 44988), (136, 45030),

Gene: Kanye_77 Start: 49302, Stop: 49637, Start Num: 47

Candidate Starts for Kanye_77:

(6, 49050), (Start: 41 @49287 has 22 MA's), (Start: 47 @49302 has 100 MA's), (60, 49338), (136, 49617),

Gene: Kanye_70 Start: 46922, Stop: 47299, Start Num: 43

Candidate Starts for Kanye_70:

(Start: 43 @46922 has 83 MA's), (Start: 46 @46928 has 40 MA's), (71, 47000), (88, 47060), (130, 47231),

Gene: KashFlow_110 Start: 62308, Stop: 62631, Start Num: 40

Candidate Starts for KashFlow_110:

(Start: 40 @62308 has 31 MA's), (56, 62347), (81, 62413), (87, 62434), (88, 62437), (93, 62464), (136, 62617),

Gene: KashFlow_131 Start: 71552, Stop: 71905, Start Num: 39

Candidate Starts for KashFlow_131:

(Start: 39 @71552 has 35 MA's), (Start: 43 @71561 has 83 MA's), (128, 71831), (136, 71882),

Gene: Kimchi_84 Start: 49959, Stop: 50294, Start Num: 47

Candidate Starts for Kimchi_84:

(6, 49707), (Start: 41 @49944 has 22 MA's), (Start: 47 @49959 has 100 MA's), (60, 49995), (136, 50274),

Gene: Kimchi_77 Start: 47579, Stop: 47956, Start Num: 43

Candidate Starts for Kimchi_77:

(Start: 43 @47579 has 83 MA's), (Start: 46 @47585 has 40 MA's), (71, 47657), (88, 47717), (130, 47888),

Gene: Kimchi_72 Start: 45312, Stop: 45722, Start Num: 37

Candidate Starts for Kimchi_72:

(7, 45138), (Start: 37 @45312 has 123 MA's), (88, 45453), (97, 45501), (108, 45549), (131, 45642), (136, 45684),

Gene: Kingsolomon_42 Start: 35730, Stop: 36053, Start Num: 49

Candidate Starts for Kingsolomon_42:

(Start: 14 @35625 has 3 MA's), (Start: 16 @35637 has 10 MA's), (Start: 19 @35646 has 39 MA's), (Start: 49 @35730 has 14 MA's), (56, 35748), (Start: 61 @35766 has 1 MA's), (65, 35775), (103, 35892), (138, 36030),

Gene: Klein_131 Start: 71031, Stop: 71390, Start Num: 39

Candidate Starts for Klein_131:

(29, 71004), (Start: 39 @71031 has 35 MA's), (Start: 43 @71040 has 83 MA's), (90, 71172), (93, 71187), (128, 71316), (130, 71322),

Gene: Kostya_80 Start: 49805, Stop: 50155, Start Num: 41

Candidate Starts for Kostya_80:

(6, 49568), (Start: 41 @49805 has 22 MA's), (Start: 47 @49820 has 100 MA's), (60, 49856), (136, 50135),

Gene: Kostya_73 Start: 47446, Stop: 47817, Start Num: 46

Candidate Starts for Kostya_73:

(Start: 43 @47440 has 83 MA's), (Start: 46 @47446 has 40 MA's), (71, 47518), (88, 47578), (130, 47749),

Gene: Kostya_68 Start: 45176, Stop: 45586, Start Num: 37

Candidate Starts for Kostya_68:

(Start: 37 @45176 has 123 MA's), (88, 45317), (97, 45365), (108, 45413), (131, 45506), (136, 45548),

Gene: Krypton555_42 Start: 35542, Stop: 35970, Start Num: 14

Candidate Starts for Krypton555_42:

(Start: 14 @35542 has 3 MA's), (Start: 16 @35554 has 10 MA's), (Start: 19 @35563 has 39 MA's), (Start: 49 @35647 has 14 MA's), (56, 35665), (Start: 61 @35683 has 1 MA's), (65, 35692), (103, 35809), (138, 35947),

Gene: Kumquat_74 Start: 38229, Stop: 37786, Start Num: 23

Candidate Starts for Kumquat_74:

(11, 38286), (15, 38262), (Start: 23 @38229 has 5 MA's), (88, 38040), (123, 37926), (148, 37803),

Gene: Labelle_59 Start: 43035, Stop: 43403, Start Num: 49

Candidate Starts for Labelle_59:

(Start: 49 @43035 has 14 MA's), (58, 43056), (90, 43164), (91, 43173), (116, 43269), (124, 43296),

Gene: LeBron_43 Start: 34037, Stop: 34453, Start Num: 19

Candidate Starts for LeBron_43:

(Start: 14 @34016 has 3 MA's), (Start: 19 @34037 has 39 MA's), (Start: 40 @34103 has 31 MA's), (Start: 49 @34124 has 14 MA's), (56, 34142), (68, 34181), (72, 34193), (90, 34250), (112, 34310), (138, 34430),

Gene: Lewan_45 Start: 35349, Stop: 35765, Start Num: 19

Candidate Starts for Lewan_45:

(Start: 16 @35340 has 10 MA's), (Start: 19 @35349 has 39 MA's), (Start: 49 @35436 has 14 MA's), (56, 35454), (65, 35481), (66, 35484), (90, 35559), (92, 35571), (127, 35679), (138, 35742),

Gene: LilDestine_45 Start: 35354, Stop: 35770, Start Num: 19

Candidate Starts for LilDestine_45:

(Start: 16 @35345 has 10 MA's), (Start: 19 @35354 has 39 MA's), (Start: 49 @35441 has 14 MA's), (56, 35459), (65, 35486), (66, 35489), (90, 35564), (92, 35576), (127, 35684), (138, 35747),

Gene: Lilac_82 Start: 49574, Stop: 49906, Start Num: 47

Candidate Starts for Lilac_82:

(6, 49322), (Start: 41 @49559 has 22 MA's), (Start: 47 @49574 has 100 MA's), (60, 49610), (136, 49886),

Gene: Lilac_75 Start: 47197, Stop: 47571, Start Num: 43

Candidate Starts for Lilac_75:

(Start: 43 @47197 has 83 MA's), (Start: 46 @47203 has 40 MA's), (71, 47275), (88, 47335), (130, 47503),

Gene: Lilac_70 Start: 44933, Stop: 45343, Start Num: 37

Candidate Starts for Lilac_70:

(Start: 37 @44933 has 123 MA's), (88, 45074), (97, 45122), (108, 45170), (131, 45263), (136, 45305),

Gene: Lilizi_74 Start: 46910, Stop: 47284, Start Num: 43

Candidate Starts for Lilizi_74:

(Start: 43 @46910 has 83 MA's), (Start: 46 @46916 has 40 MA's), (71, 46988), (88, 47048), (130, 47216),

Gene: Lilizi_69 Start: 44646, Stop: 45056, Start Num: 37

Candidate Starts for Lilizi_69:

(7, 44472), (Start: 37 @44646 has 123 MA's), (88, 44787), (97, 44835), (108, 44883), (131, 44976), (136, 45018),

Gene: Lilizi_81 Start: 49287, Stop: 49619, Start Num: 47

Candidate Starts for Lilizi_81:

(1, 48717), (2, 48834), (6, 49035), (Start: 41 @49272 has 22 MA's), (Start: 47 @49287 has 100 MA's), (60, 49323), (136, 49599),

Gene: Lilpickle_72 Start: 46795, Stop: 47169, Start Num: 43

Candidate Starts for Lilpickle_72:

(Start: 43 @46795 has 83 MA's), (Start: 46 @46801 has 40 MA's), (71, 46873), (88, 46933), (130, 47101),

Gene: Lilpickle_79 Start: 49172, Stop: 49507, Start Num: 47

Candidate Starts for Lilpickle_79:

(6, 48920), (Start: 41 @49157 has 22 MA's), (Start: 47 @49172 has 100 MA's), (60, 49208), (136, 49487),

Gene: Lilpickle_67 Start: 44531, Stop: 44941, Start Num: 37

Candidate Starts for Lilpickle_67:

(Start: 37 @44531 has 123 MA's), (88, 44672), (97, 44720), (108, 44768), (131, 44861), (136, 44903),

Gene: LittleE_136 Start: 72806, Stop: 73159, Start Num: 39

Candidate Starts for LittleE_136:

(Start: 39 @72806 has 35 MA's), (Start: 43 @72815 has 83 MA's),

Gene: LittleE_118 Start: 65723, Stop: 66046, Start Num: 40

Candidate Starts for LittleE_118:

(Start: 40 @65723 has 31 MA's), (56, 65762), (81, 65828), (87, 65849), (88, 65852), (93, 65879), (136, 66032),

Gene: Loadrie_44 Start: 35379, Stop: 35804, Start Num: 16

Candidate Starts for Loadrie_44:

(Start: 16 @35379 has 10 MA's), (Start: 19 @35388 has 39 MA's), (Start: 49 @35475 has 14 MA's), (56, 35493), (65, 35520), (66, 35523), (90, 35598), (92, 35610), (127, 35718), (138, 35781),

Gene: Lolly9_42 Start: 35541, Stop: 35864, Start Num: 49

Candidate Starts for Lolly9_42:

(Start: 14 @35436 has 3 MA's), (Start: 19 @35457 has 39 MA's), (Start: 49 @35541 has 14 MA's), (56, 35559), (Start: 61 @35577 has 1 MA's), (65, 35586), (103, 35703), (138, 35841),

Gene: Lucky2013_128 Start: 69682, Stop: 70035, Start Num: 39

Candidate Starts for Lucky2013_128:

(Start: 39 @69682 has 35 MA's), (Start: 43 @69691 has 83 MA's), (128, 69961), (136, 70012),

Gene: Lucky2013_110 Start: 61874, Stop: 62194, Start Num: 40

Candidate Starts for Lucky2013_110:

(Start: 40 @61874 has 31 MA's), (56, 61913), (90, 62012), (114, 62069), (124, 62105), (130, 62135), (136, 62180),

Gene: Lumos_42 Start: 35643, Stop: 36050, Start Num: 19

Candidate Starts for Lumos_42:

(Start: 14 @35622 has 3 MA's), (Start: 16 @35634 has 10 MA's), (Start: 19 @35643 has 39 MA's), (Start: 49 @35727 has 14 MA's), (56, 35745), (Start: 61 @35763 has 1 MA's), (65, 35772), (103, 35889), (138, 36027),

Gene: MAckerman_42 Start: 34117, Stop: 34446, Start Num: 49

Candidate Starts for MAckerman_42:

(Start: 14 @34009 has 3 MA's), (Start: 19 @34030 has 39 MA's), (Start: 40 @34096 has 31 MA's), (Start: 49 @34117 has 14 MA's), (56, 34135), (68, 34174), (72, 34186), (90, 34243), (112, 34303), (138, 34423),

Gene: MISSy_74 Start: 47301, Stop: 47675, Start Num: 43

Candidate Starts for MISSy_74:

(Start: 43 @47301 has 83 MA's), (Start: 46 @47307 has 40 MA's), (71, 47379), (88, 47439), (130, 47607),

Gene: MISSy_69 Start: 45034, Stop: 45447, Start Num: 37

Candidate Starts for MISSy_69:

(7, 44860), (Start: 37 @45034 has 123 MA's), (88, 45175), (97, 45223), (108, 45271), (131, 45364), (141, 45427),

Gene: MISSy_81 Start: 49663, Stop: 50013, Start Num: 41

Candidate Starts for MISSy_81:

(6, 49426), (Start: 41 @49663 has 22 MA's), (Start: 47 @49678 has 100 MA's), (60, 49714), (136, 49993),

Gene: MPhalcon_69 Start: 45027, Stop: 45440, Start Num: 37

Candidate Starts for MPhalcon_69:

(7, 44853), (Start: 37 @45027 has 123 MA's), (88, 45168), (97, 45216), (108, 45264), (131, 45357), (141, 45420),

Gene: MPhalcon_74 Start: 47294, Stop: 47668, Start Num: 43

Candidate Starts for MPhalcon_74:

(Start: 43 @47294 has 83 MA's), (Start: 46 @47300 has 40 MA's), (71, 47372), (88, 47432), (130, 47600),

Gene: MPhalcon_81 Start: 49671, Stop: 50006, Start Num: 47

Candidate Starts for MPhalcon_81:

(6, 49419), (Start: 41 @49656 has 22 MA's), (Start: 47 @49671 has 100 MA's), (60, 49707), (136, 49986),

Gene: MadamMonkfish_68 Start: 44255, Stop: 44665, Start Num: 37

Candidate Starts for MadamMonkfish_68:

(7, 44081), (Start: 37 @44255 has 123 MA's), (88, 44396), (97, 44444), (108, 44492), (131, 44585), (136, 44627),

Gene: MadamMonkfish_80 Start: 48896, Stop: 49234, Start Num: 47

Candidate Starts for MadamMonkfish_80:

(6, 48644), (Start: 41 @48881 has 22 MA's), (Start: 47 @48896 has 100 MA's), (60, 48932), (136, 49214),

Gene: MadamMonkfish_73 Start: 46525, Stop: 46893, Start Num: 46

Candidate Starts for MadamMonkfish_73:

(Start: 43 @46519 has 83 MA's), (Start: 46 @46525 has 40 MA's), (71, 46597), (88, 46657), (130, 46825),

Gene: Madruga_58 Start: 42688, Stop: 43056, Start Num: 49

Candidate Starts for Madruga_58:

(Start: 49 @42688 has 14 MA's), (90, 42817), (91, 42826), (116, 42922), (124, 42949),

Gene: Manda_74 Start: 48378, Stop: 48755, Start Num: 43

Candidate Starts for Manda_74:

(Start: 43 @48378 has 83 MA's), (Start: 46 @48384 has 40 MA's), (71, 48456), (88, 48516), (130, 48687),

Gene: Manda_68 Start: 45536, Stop: 45946, Start Num: 37

Candidate Starts for Manda_68:

(Start: 37 @45536 has 123 MA's), (88, 45677), (97, 45725), (108, 45773), (131, 45866), (136, 45908),

Gene: Manda_81 Start: 50758, Stop: 51093, Start Num: 47

Candidate Starts for Manda_81:

(6, 50506), (Start: 41 @50743 has 22 MA's), (Start: 47 @50758 has 100 MA's), (60, 50794), (136, 51073),

Gene: Manuel_74 Start: 38664, Stop: 38179, Start Num: 25

Candidate Starts for Manuel_74:

(11, 38724), (Start: 25 @38664 has 1 MA's), (60, 38565), (77, 38517), (78, 38514), (88, 38481), (99, 38439), (107, 38415), (135, 38295), (152, 38193),

Gene: Margaret_67 Start: 43929, Stop: 44381, Start Num: 31

Candidate Starts for Margaret_67:

(Start: 31 @43929 has 1 MA's), (45, 43968), (50, 43980), (62, 44016), (70, 44031), (83, 44073), (88, 44091), (96, 44133), (100, 44148), (102, 44154), (131, 44274), (134, 44298), (136, 44316), (147, 44361),

Gene: Marshmallow_71 Start: 48077, Stop: 48448, Start Num: 46

Candidate Starts for Marshmallow_71:

(Start: 43 @48071 has 83 MA's), (Start: 46 @48077 has 40 MA's), (71, 48149), (88, 48209), (130, 48380),

Gene: Marshmallow_78 Start: 50436, Stop: 50783, Start Num: 41

Candidate Starts for Marshmallow_78:

(6, 50199), (Start: 41 @50436 has 22 MA's), (Start: 47 @50451 has 100 MA's), (60, 50487), (136, 50763),

Gene: Marshmallow_66 Start: 45804, Stop: 46214, Start Num: 37

Candidate Starts for Marshmallow_66:

(Start: 37 @45804 has 123 MA's), (88, 45945), (97, 45993), (108, 46041), (131, 46134), (136, 46176),

Gene: Maxxinista_82 Start: 49547, Stop: 49879, Start Num: 47

Candidate Starts for Maxxinista_82:

(6, 49295), (Start: 41 @49532 has 22 MA's), (Start: 47 @49547 has 100 MA's), (60, 49583), (136, 49859),

Gene: Maxxinista_70 Start: 44906, Stop: 45316, Start Num: 37

Candidate Starts for Maxxinista_70:

(Start: 37 @44906 has 123 MA's), (88, 45047), (97, 45095), (108, 45143), (131, 45236), (136, 45278),

Gene: Maxxinista_75 Start: 47176, Stop: 47544, Start Num: 46

Candidate Starts for Maxxinista_75:

(Start: 43 @47170 has 83 MA's), (Start: 46 @47176 has 40 MA's), (71, 47248), (88, 47308), (130, 47476),

Gene: MiaZeal_133 Start: 70821, Stop: 71174, Start Num: 39

Candidate Starts for MiaZeal_133:

(Start: 39 @70821 has 35 MA's), (Start: 43 @70830 has 83 MA's), (128, 71100), (136, 71151),

Gene: MiaZeal_113 Start: 62505, Stop: 62825, Start Num: 40

Candidate Starts for MiaZeal_113:

(Start: 40 @62505 has 31 MA's), (56, 62544), (90, 62643), (114, 62700), (124, 62736), (130, 62766), (136, 62811),

Gene: Miley16_45 Start: 35347, Stop: 35772, Start Num: 16

Candidate Starts for Miley16_45:

(Start: 16 @35347 has 10 MA's), (Start: 19 @35356 has 39 MA's), (Start: 49 @35443 has 14 MA's), (56, 35461), (65, 35488), (66, 35491), (90, 35566), (92, 35578), (127, 35686), (138, 35749),

Gene: Mindy_79 Start: 48763, Stop: 49095, Start Num: 47

Candidate Starts for Mindy_79:

(6, 48511), (Start: 41 @48748 has 22 MA's), (Start: 47 @48763 has 100 MA's), (60, 48799), (136, 49075),

Gene: Mindy_72 Start: 46383, Stop: 46760, Start Num: 43

Candidate Starts for Mindy_72:

(Start: 43 @46383 has 83 MA's), (Start: 46 @46389 has 40 MA's), (71, 46461), (88, 46521), (130, 46692),

Gene: Mindy_67 Start: 44119, Stop: 44529, Start Num: 37

Candidate Starts for Mindy_67:

(7, 43945), (Start: 37 @44119 has 123 MA's), (73, 44215), (88, 44260), (97, 44308), (108, 44356), (131, 44449), (136, 44491),

Gene: Minerva_133 Start: 72481, Stop: 72840, Start Num: 39

Candidate Starts for Minerva_133:

(29, 72454), (Start: 39 @72481 has 35 MA's), (Start: 43 @72490 has 83 MA's), (90, 72622), (93, 72637), (128, 72766), (130, 72772),

Gene: Minerva_116 Start: 65898, Stop: 66218, Start Num: 40

Candidate Starts for Minerva_116:

(Start: 40 @65898 has 31 MA's), (56, 65937), (114, 66093), (124, 66129), (130, 66159), (136, 66204),

Gene: MiniLon_42 Start: 35458, Stop: 35865, Start Num: 19

Candidate Starts for MiniLon_42:

(Start: 14 @35437 has 3 MA's), (Start: 19 @35458 has 39 MA's), (Start: 49 @35542 has 14 MA's), (56, 35560), (Start: 61 @35578 has 1 MA's), (65, 35587), (103, 35704), (138, 35842),

Gene: MiniMac_42 Start: 35455, Stop: 35862, Start Num: 19

Candidate Starts for MiniMac_42:

(Start: 14 @35434 has 3 MA's), (Start: 19 @35455 has 39 MA's), (Start: 49 @35539 has 14 MA's), (56, 35557), (Start: 61 @35575 has 1 MA's), (65, 35584), (103, 35701), (138, 35839),

Gene: Miniwave_63 Start: 44572, Stop: 44982, Start Num: 37

Candidate Starts for Miniwave_63:

(Start: 37 @44572 has 123 MA's), (88, 44713), (97, 44761), (108, 44809), (131, 44902), (136, 44944),

Gene: Miniwave_68 Start: 46836, Stop: 47213, Start Num: 43

Candidate Starts for Miniwave_68:

(Start: 43 @46836 has 83 MA's), (Start: 46 @46842 has 40 MA's), (71, 46914), (88, 46974), (130, 47145),

Gene: Miniwave_75 Start: 49216, Stop: 49551, Start Num: 47

Candidate Starts for Miniwave_75:

(6, 48964), (Start: 41 @49201 has 22 MA's), (Start: 47 @49216 has 100 MA's), (60, 49252), (104, 49393), (115, 49432), (125, 49468), (126, 49471), (131, 49489), (136, 49531),

Gene: Misfit_81 Start: 50690, Stop: 51025, Start Num: 47

Candidate Starts for Misfit_81:

(6, 50438), (Start: 41 @50675 has 22 MA's), (Start: 47 @50690 has 100 MA's), (60, 50726), (136, 51005),

Gene: Misfit_69 Start: 46046, Stop: 46459, Start Num: 37

Candidate Starts for Misfit_69:

(7, 45872), (Start: 37 @46046 has 123 MA's), (88, 46187), (97, 46235), (108, 46283), (131, 46376), (141, 46439),

Gene: Misfit_74 Start: 48313, Stop: 48687, Start Num: 43

Candidate Starts for Misfit_74:

(Start: 43 @48313 has 83 MA's), (Start: 46 @48319 has 40 MA's), (71, 48391), (88, 48451), (130, 48619),

Gene: MkaliMitinis3_45 Start: 35358, Stop: 35774, Start Num: 19

Candidate Starts for MkaliMitinis3_45:

(Start: 16 @35349 has 10 MA's), (Start: 19 @35358 has 39 MA's), (Start: 49 @35445 has 14 MA's), (56, 35463), (65, 35490), (66, 35493), (90, 35568), (92, 35580), (127, 35688), (138, 35751),

Gene: Moldemort_76 Start: 47395, Stop: 47772, Start Num: 43

Candidate Starts for Moldemort_76:

(Start: 43 @47395 has 83 MA's), (Start: 46 @47401 has 40 MA's), (71, 47473), (88, 47533), (130, 47704),

Gene: Moldemort_71 Start: 45128, Stop: 45538, Start Num: 37

Candidate Starts for Moldemort_71:

(7, 44954), (Start: 37 @45128 has 123 MA's), (73, 45224), (88, 45269), (97, 45317), (108, 45365), (131, 45458), (136, 45500),

Gene: Moldemort_83 Start: 49775, Stop: 50107, Start Num: 47

Candidate Starts for Moldemort_83:

(6, 49523), (Start: 41 @49760 has 22 MA's), (Start: 47 @49775 has 100 MA's), (60, 49811), (136, 50087),

Gene: Moostard_42 Start: 35732, Stop: 36055, Start Num: 49

Candidate Starts for Moostard_42:

(Start: 14 @35627 has 3 MA's), (Start: 16 @35639 has 10 MA's), (Start: 19 @35648 has 39 MA's), (Start: 49 @35732 has 14 MA's), (56, 35750), (Start: 61 @35768 has 1 MA's), (65, 35777), (103, 35894), (138, 36032),

Gene: Mosby_64 Start: 44329, Stop: 44742, Start Num: 37

Candidate Starts for Mosby_64:

(7, 44155), (Start: 37 @44329 has 123 MA's), (88, 44470), (97, 44518), (108, 44566), (131, 44659), (141, 44722),

Gene: Mosby_69 Start: 46596, Stop: 46970, Start Num: 43

Candidate Starts for Mosby_69:

(Start: 43 @46596 has 83 MA's), (Start: 46 @46602 has 40 MA's), (71, 46674), (88, 46734), (130, 46902),

Gene: Mosby_76 Start: 48973, Stop: 49308, Start Num: 47

Candidate Starts for Mosby_76:

(6, 48721), (Start: 41 @48958 has 22 MA's), (Start: 47 @48973 has 100 MA's), (60, 49009), (136, 49288),

Gene: MsGreen_42 Start: 35625, Stop: 36053, Start Num: 14

Candidate Starts for MsGreen_42:

(Start: 14 @35625 has 3 MA's), (Start: 16 @35637 has 10 MA's), (Start: 19 @35646 has 39 MA's), (Start: 49 @35730 has 14 MA's), (56, 35748), (Start: 61 @35766 has 1 MA's), (65, 35775), (103, 35892), (138, 36030),

Gene: Murica_76 Start: 48251, Stop: 48619, Start Num: 46

Candidate Starts for Murica_76:

(Start: 43 @48245 has 83 MA's), (Start: 46 @48251 has 40 MA's), (71, 48323), (88, 48383), (130, 48551),

Gene: Murica_71 Start: 45981, Stop: 46391, Start Num: 37

Candidate Starts for Murica_71:

(Start: 37 @45981 has 123 MA's), (88, 46122), (97, 46170), (108, 46218), (131, 46311), (136, 46353),

Gene: Murica_83 Start: 50622, Stop: 50954, Start Num: 47

Candidate Starts for Murica_83:

(Start: 41 @50607 has 22 MA's), (Start: 47 @50622 has 100 MA's), (60, 50658), (136, 50934),

Gene: Murphy_68 Start: 45418, Stop: 45828, Start Num: 37

Candidate Starts for Murphy_68:

(Start: 37 @45418 has 123 MA's), (88, 45559), (97, 45607), (108, 45655), (131, 45748), (136, 45790),

Gene: Murphy_80 Start: 50059, Stop: 50391, Start Num: 47

Candidate Starts for Murphy_80:

(6, 49807), (Start: 41 @50044 has 22 MA's), (Start: 47 @50059 has 100 MA's), (60, 50095), (136, 50371),

Gene: Murphy_73 Start: 47688, Stop: 48056, Start Num: 46

Candidate Starts for Murphy_73:

(Start: 43 @47682 has 83 MA's), (Start: 46 @47688 has 40 MA's), (71, 47760), (88, 47820), (130, 47988),

Gene: Myrale_73 Start: 47936, Stop: 48313, Start Num: 43

Candidate Starts for Myrale_73:

(Start: 43 @47936 has 83 MA's), (Start: 46 @47942 has 40 MA's), (71, 48014), (88, 48074), (130, 48245),

Gene: Myrale_80 Start: 50316, Stop: 50651, Start Num: 47

Candidate Starts for Myrale_80:

(6, 50064), (Start: 41 @50301 has 22 MA's), (Start: 47 @50316 has 100 MA's), (60, 50352), (104, 50493), (115, 50532), (125, 50568), (126, 50571), (131, 50589), (136, 50631),

Gene: Myrale_68 Start: 45669, Stop: 46079, Start Num: 37

Candidate Starts for Myrale_68:

(Start: 37 @45669 has 123 MA's), (88, 45810), (97, 45858), (108, 45906), (131, 45999), (136, 46041),

Gene: Nala_75 Start: 47812, Stop: 48177, Start Num: 46

Candidate Starts for Nala_75:

(Start: 43 @47806 has 83 MA's), (Start: 46 @47812 has 40 MA's), (71, 47884), (88, 47938), (130, 48109),

Gene: Nala_70 Start: 45539, Stop: 45952, Start Num: 37

Candidate Starts for Nala_70:

(7, 45365), (Start: 37 @45539 has 123 MA's), (88, 45680), (97, 45728), (108, 45776), (131, 45869), (141, 45932),

Gene: Nala_82 Start: 50180, Stop: 50515, Start Num: 47

Candidate Starts for Nala_82:

(1, 49610), (2, 49727), (6, 49928), (Start: 41 @50165 has 22 MA's), (Start: 47 @50180 has 100 MA's), (60, 50216), (136, 50495),

Gene: NelitzaMV_66 Start: 44618, Stop: 45028, Start Num: 37
Candidate Starts for NelitzaMV_66:
(Start: 37 @44618 has 123 MA's), (88, 44759), (97, 44807), (108, 44855), (131, 44948), (136, 44990),

Gene: NelitzaMV_71 Start: 46888, Stop: 47259, Start Num: 46
Candidate Starts for NelitzaMV_71:
(Start: 43 @46882 has 83 MA's), (Start: 46 @46888 has 40 MA's), (71, 46960), (88, 47020), (130, 47191),

Gene: NelitzaMV_78 Start: 49247, Stop: 49597, Start Num: 41
Candidate Starts for NelitzaMV_78:
(6, 49010), (Start: 41 @49247 has 22 MA's), (Start: 47 @49262 has 100 MA's), (60, 49298), (136, 49577),

Gene: Netyap_45 Start: 35356, Stop: 35772, Start Num: 19
Candidate Starts for Netyap_45:
(Start: 16 @35347 has 10 MA's), (Start: 19 @35356 has 39 MA's), (Start: 49 @35443 has 14 MA's), (56, 35461), (65, 35488), (66, 35491), (90, 35566), (92, 35578), (127, 35686), (138, 35749),

Gene: Neville_54 Start: 37372, Stop: 37770, Start Num: 27
Candidate Starts for Neville_54:
(Start: 27 @37372 has 3 MA's), (36, 37402), (54, 37438), (55, 37441), (58, 37447), (64, 37471), (91, 37558), (96, 37579), (112, 37603), (131, 37678), (134, 37702), (144, 37756), (146, 37762),

Gene: NiceHouse_171 Start: 97963, Stop: 98331, Start Num: 51
Candidate Starts for NiceHouse_171:
(28, 97906), (Start: 51 @97963 has 1 MA's), (93, 98119), (133, 98266), (136, 98290),

Gene: NiceHouse_173 Start: 98723, Stop: 99082, Start Num: 52
Candidate Starts for NiceHouse_173:
(32, 98672), (Start: 52 @98723 has 1 MA's), (62, 98753), (94, 98870), (105, 98912), (138, 99053),

Gene: NiceHouse_172 Start: 98331, Stop: 98723, Start Num: 38
Candidate Starts for NiceHouse_172:
(Start: 38 @98331 has 1 MA's), (57, 98373), (59, 98376), (79, 98448),

Gene: Nicholas_42 Start: 35730, Stop: 36053, Start Num: 49
Candidate Starts for Nicholas_42:
(Start: 14 @35625 has 3 MA's), (Start: 16 @35637 has 10 MA's), (Start: 19 @35646 has 39 MA's), (Start: 49 @35730 has 14 MA's), (56, 35748), (Start: 61 @35766 has 1 MA's), (65, 35775), (103, 35892), (138, 36030),

Gene: Nicholasp3_45 Start: 35348, Stop: 35773, Start Num: 16
Candidate Starts for Nicholasp3_45:
(Start: 16 @35348 has 10 MA's), (Start: 19 @35357 has 39 MA's), (Start: 49 @35444 has 14 MA's), (56, 35462), (65, 35489), (66, 35492), (90, 35567), (92, 35579), (127, 35687), (138, 35750),

Gene: NihilNomen_136 Start: 73340, Stop: 73699, Start Num: 39
Candidate Starts for NihilNomen_136:
(29, 73313), (Start: 39 @73340 has 35 MA's), (Start: 43 @73349 has 83 MA's), (90, 73481), (93, 73496),

Gene: NihilNomen_120 Start: 66563, Stop: 66883, Start Num: 40
Candidate Starts for NihilNomen_120:
(Start: 40 @66563 has 31 MA's), (56, 66602), (90, 66701), (114, 66758), (124, 66794), (130, 66824),
(136, 66869),

Gene: Nimrod_74 Start: 48509, Stop: 48880, Start Num: 46
Candidate Starts for Nimrod_74:
(Start: 43 @48503 has 83 MA's), (Start: 46 @48509 has 40 MA's), (71, 48581), (88, 48641), (130,
48812),

Gene: Nimrod_69 Start: 46236, Stop: 46649, Start Num: 37
Candidate Starts for Nimrod_69:
(7, 46062), (Start: 37 @46236 has 123 MA's), (88, 46377), (97, 46425), (108, 46473), (131, 46566),
(141, 46629),

Gene: Nimrod_81 Start: 50883, Stop: 51218, Start Num: 47
Candidate Starts for Nimrod_81:
(1, 50313), (2, 50430), (6, 50631), (Start: 41 @50868 has 22 MA's), (Start: 47 @50883 has 100 MA's),
(60, 50919), (136, 51198),

Gene: NoSleep_74 Start: 47140, Stop: 47514, Start Num: 43
Candidate Starts for NoSleep_74:
(Start: 43 @47140 has 83 MA's), (Start: 46 @47146 has 40 MA's), (71, 47218), (88, 47278), (130,
47446),

Gene: NoSleep_69 Start: 44876, Stop: 45286, Start Num: 37
Candidate Starts for NoSleep_69:
(Start: 37 @44876 has 123 MA's), (88, 45017), (97, 45065), (108, 45113), (131, 45206), (136, 45248),

Gene: NoSleep_81 Start: 49517, Stop: 49852, Start Num: 47
Candidate Starts for NoSleep_81:
(6, 49265), (Start: 41 @49502 has 22 MA's), (Start: 47 @49517 has 100 MA's), (60, 49553), (136,
49832),

Gene: Odette_138 Start: 74911, Stop: 75270, Start Num: 39
Candidate Starts for Odette_138:
(29, 74884), (Start: 39 @74911 has 35 MA's), (Start: 43 @74920 has 83 MA's), (90, 75052), (93,
75067), (128, 75196), (130, 75202),

Gene: Odette_120 Start: 66457, Stop: 66777, Start Num: 40
Candidate Starts for Odette_120:
(Start: 40 @66457 has 31 MA's), (56, 66496), (90, 66595), (114, 66652), (124, 66688), (130, 66718),
(136, 66763),

Gene: OhShagHennessy_42 Start: 33983, Stop: 34399, Start Num: 19
Candidate Starts for OhShagHennessy_42:
(Start: 14 @33962 has 3 MA's), (Start: 19 @33983 has 39 MA's), (Start: 40 @34049 has 31 MA's),
(Start: 49 @34070 has 14 MA's), (56, 34088), (68, 34127), (72, 34139), (90, 34196), (112, 34256),
(138, 34376),

Gene: Olicious_76 Start: 39002, Stop: 38499, Start Num: 26
Candidate Starts for Olicious_76:

(Start: 26 @39002 has 15 MA's), (34, 38966), (50, 38930), (62, 38897), (88, 38813), (98, 38774), (119, 38702), (135, 38627), (144, 38585), (151, 38540),

Gene: Omega_143 Start: 74487, Stop: 74840, Start Num: 39
Candidate Starts for Omega_143:
(Start: 39 @74487 has 35 MA's), (Start: 43 @74496 has 83 MA's),

Gene: Omega_124 Start: 66872, Stop: 67195, Start Num: 40
Candidate Starts for Omega_124:
(Start: 40 @66872 has 31 MA's), (56, 66911), (81, 66977), (87, 66998), (88, 67001), (93, 67028), (136, 67181),

Gene: OneUp_106 Start: 66594, Stop: 66947, Start Num: 49
Candidate Starts for OneUp_106:
(Start: 49 @66594 has 14 MA's), (71, 66660), (101, 66759), (106, 66783), (143, 66942),

Gene: OrionPax_67 Start: 44624, Stop: 45034, Start Num: 37
Candidate Starts for OrionPax_67:
(Start: 37 @44624 has 123 MA's), (88, 44765), (97, 44813), (108, 44861), (131, 44954), (136, 44996),

Gene: OrionPax_72 Start: 46894, Stop: 47265, Start Num: 46
Candidate Starts for OrionPax_72:
(Start: 43 @46888 has 83 MA's), (Start: 46 @46894 has 40 MA's), (71, 46966), (88, 47026), (111, 47125), (130, 47197),

Gene: OrionPax_79 Start: 49268, Stop: 49603, Start Num: 47
Candidate Starts for OrionPax_79:
(6, 49016), (Start: 41 @49253 has 22 MA's), (Start: 47 @49268 has 100 MA's), (60, 49304), (136, 49583),

Gene: Palpatine_82 Start: 50649, Stop: 50981, Start Num: 47
Candidate Starts for Palpatine_82:
(6, 50397), (Start: 41 @50634 has 22 MA's), (Start: 47 @50649 has 100 MA's), (60, 50685), (136, 50961),

Gene: Palpatine_75 Start: 48278, Stop: 48646, Start Num: 46
Candidate Starts for Palpatine_75:
(Start: 43 @48272 has 83 MA's), (Start: 46 @48278 has 40 MA's), (71, 48350), (88, 48410), (130, 48578),

Gene: Palpatine_70 Start: 46008, Stop: 46418, Start Num: 37
Candidate Starts for Palpatine_70:
(Start: 37 @46008 has 123 MA's), (88, 46149), (97, 46197), (108, 46245), (131, 46338), (136, 46380),

Gene: Paperbeatsrock_67 Start: 45250, Stop: 45660, Start Num: 37
Candidate Starts for Paperbeatsrock_67:
(Start: 37 @45250 has 123 MA's), (88, 45391), (97, 45439), (108, 45487), (131, 45580), (136, 45622),

Gene: Paperbeatsrock_72 Start: 47514, Stop: 47891, Start Num: 43
Candidate Starts for Paperbeatsrock_72:
(Start: 43 @47514 has 83 MA's), (Start: 46 @47520 has 40 MA's), (71, 47592), (88, 47652), (130, 47823),

Gene: Paperbeatsrock_79 Start: 49894, Stop: 50229, Start Num: 47

Candidate Starts for Paperbeatsrock_79:

(6, 49642), (Start: 41 @49879 has 22 MA's), (Start: 47 @49894 has 100 MA's), (60, 49930), (104, 50071), (115, 50110), (125, 50146), (126, 50149), (131, 50167), (136, 50209),

Gene: Pat3_78 Start: 48426, Stop: 48761, Start Num: 47

Candidate Starts for Pat3_78:

(6, 48174), (Start: 41 @48411 has 22 MA's), (Start: 47 @48426 has 100 MA's), (60, 48462), (77, 48516), (115, 48642), (125, 48678), (126, 48681), (131, 48699), (136, 48741),

Gene: Pat3_71 Start: 46046, Stop: 46423, Start Num: 43

Candidate Starts for Pat3_71:

(Start: 43 @46046 has 83 MA's), (Start: 46 @46052 has 40 MA's), (71, 46124), (88, 46184), (111, 46283), (130, 46355),

Gene: Pat3_66 Start: 43773, Stop: 44186, Start Num: 37

Candidate Starts for Pat3_66:

(7, 43599), (Start: 37 @43773 has 123 MA's), (88, 43914), (96, 43956), (122, 44064), (131, 44103), (140, 44160),

Gene: Patience_60 Start: 43583, Stop: 43951, Start Num: 49

Candidate Starts for Patience_60:

(Start: 49 @43583 has 14 MA's), (58, 43604), (90, 43712), (91, 43721), (116, 43817), (124, 43844), (134, 43901),

Gene: Percastrophe_76 Start: 38934, Stop: 38431, Start Num: 26

Candidate Starts for Percastrophe_76:

(Start: 26 @38934 has 15 MA's), (34, 38898), (50, 38862), (62, 38826), (75, 38793), (88, 38745), (98, 38706), (131, 38595), (134, 38571), (144, 38517), (152, 38451),

Gene: Peregrin_226 Start: 113095, Stop: 113481, Start Num: 35

Candidate Starts for Peregrin_226:

(Start: 35 @113095 has 4 MA's), (67, 113182), (84, 113239), (86, 113245), (128, 113392), (139, 113452), (142, 113461),

Gene: Petra64142_84 Start: 51113, Stop: 51448, Start Num: 47

Candidate Starts for Petra64142_84:

(6, 50861), (Start: 41 @51098 has 22 MA's), (Start: 47 @51113 has 100 MA's), (60, 51149), (136, 51428),

Gene: Petra64142_72 Start: 46472, Stop: 46885, Start Num: 37

Candidate Starts for Petra64142_72:

(7, 46298), (Start: 37 @46472 has 123 MA's), (88, 46613), (96, 46655), (122, 46763), (131, 46802), (141, 46865),

Gene: Petra64142_77 Start: 48748, Stop: 49110, Start Num: 46

Candidate Starts for Petra64142_77:

(Start: 43 @48742 has 83 MA's), (Start: 46 @48748 has 40 MA's), (71, 48820), (130, 49042),

Gene: Phaja_71 Start: 47340, Stop: 47717, Start Num: 43

Candidate Starts for Phaja_71:

(Start: 43 @47340 has 83 MA's), (Start: 46 @47346 has 40 MA's), (71, 47418), (88, 47478), (130, 47649),

Gene: Phaja_78 Start: 49720, Stop: 50055, Start Num: 47

Candidate Starts for Phaja_78:

(6, 49468), (Start: 41 @49705 has 22 MA's), (Start: 47 @49720 has 100 MA's), (60, 49756), (104, 49897), (115, 49936), (125, 49972), (126, 49975), (131, 49993), (136, 50035),

Gene: Phaja_66 Start: 45076, Stop: 45486, Start Num: 37

Candidate Starts for Phaja_66:

(Start: 37 @45076 has 123 MA's), (88, 45217), (97, 45265), (108, 45313), (131, 45406), (136, 45448),

Gene: Pharsalus_65 Start: 45050, Stop: 45460, Start Num: 37

Candidate Starts for Pharsalus_65:

(Start: 37 @45050 has 123 MA's), (88, 45191), (97, 45239), (108, 45287), (131, 45380), (136, 45422),

Gene: Pharsalus_70 Start: 47314, Stop: 47691, Start Num: 43

Candidate Starts for Pharsalus_70:

(Start: 43 @47314 has 83 MA's), (Start: 46 @47320 has 40 MA's), (71, 47392), (88, 47452), (130, 47623),

Gene: Pharsalus_77 Start: 49694, Stop: 50029, Start Num: 47

Candidate Starts for Pharsalus_77:

(6, 49442), (Start: 41 @49679 has 22 MA's), (Start: 47 @49694 has 100 MA's), (60, 49730), (104, 49871), (115, 49910), (125, 49946), (126, 49949), (131, 49967), (136, 50009),

Gene: PhatBacter_72 Start: 46025, Stop: 46435, Start Num: 37

Candidate Starts for PhatBacter_72:

(Start: 37 @46025 has 123 MA's), (88, 46166), (97, 46214), (108, 46262), (131, 46355), (136, 46397),

Gene: PhatBacter_77 Start: 48289, Stop: 48663, Start Num: 43

Candidate Starts for PhatBacter_77:

(Start: 43 @48289 has 83 MA's), (Start: 46 @48295 has 40 MA's), (71, 48367), (88, 48427), (130, 48595),

Gene: PhatBacter_84 Start: 50666, Stop: 51001, Start Num: 47

Candidate Starts for PhatBacter_84:

(1, 50096), (2, 50213), (6, 50414), (Start: 41 @50651 has 22 MA's), (Start: 47 @50666 has 100 MA's), (60, 50702), (136, 50981),

Gene: Phaux_75 Start: 48284, Stop: 48658, Start Num: 43

Candidate Starts for Phaux_75:

(Start: 43 @48284 has 83 MA's), (Start: 46 @48290 has 40 MA's), (71, 48362), (88, 48422), (130, 48590),

Gene: Phaux_70 Start: 46020, Stop: 46430, Start Num: 37

Candidate Starts for Phaux_70:

(Start: 37 @46020 has 123 MA's), (88, 46161), (97, 46209), (108, 46257), (131, 46350), (136, 46392),

Gene: Phaux_82 Start: 50661, Stop: 50996, Start Num: 47

Candidate Starts for Phaux_82:

(6, 50409), (Start: 41 @50646 has 22 MA's), (Start: 47 @50661 has 100 MA's), (60, 50697), (77, 50751), (115, 50877), (125, 50913), (126, 50916), (131, 50934), (136, 50976),

Gene: Phoebus_119 Start: 68421, Stop: 68741, Start Num: 40

Candidate Starts for Phoebus_119:

(Start: 40 @68421 has 31 MA's), (56, 68460), (90, 68559), (114, 68616), (124, 68652), (130, 68682), (136, 68727),

Gene: Phoebus_135 Start: 75234, Stop: 75593, Start Num: 39

Candidate Starts for Phoebus_135:

(29, 75207), (Start: 39 @75234 has 35 MA's), (Start: 43 @75243 has 83 MA's), (90, 75375), (93, 75390), (128, 75519), (130, 75525),

Gene: Phrux_70 Start: 46880, Stop: 47254, Start Num: 43

Candidate Starts for Phrux_70:

(Start: 43 @46880 has 83 MA's), (Start: 46 @46886 has 40 MA's), (71, 46958), (88, 47018), (130, 47186),

Gene: Phrux_77 Start: 49257, Stop: 49589, Start Num: 47

Candidate Starts for Phrux_77:

(6, 49005), (Start: 41 @49242 has 22 MA's), (Start: 47 @49257 has 100 MA's), (60, 49293), (136, 49569),

Gene: Phrux_65 Start: 44616, Stop: 45026, Start Num: 37

Candidate Starts for Phrux_65:

(Start: 37 @44616 has 123 MA's), (88, 44757), (97, 44805), (108, 44853), (131, 44946), (136, 44988),

Gene: Policronamos_72 Start: 46020, Stop: 46430, Start Num: 37

Candidate Starts for Policronamos_72:

(Start: 37 @46020 has 123 MA's), (88, 46161), (97, 46209), (108, 46257), (131, 46350), (136, 46392),

Gene: Policronamos_77 Start: 48290, Stop: 48658, Start Num: 46

Candidate Starts for Policronamos_77:

(Start: 43 @48284 has 83 MA's), (Start: 46 @48290 has 40 MA's), (71, 48362), (88, 48422), (130, 48590),

Gene: Policronamos_84 Start: 50646, Stop: 50996, Start Num: 41

Candidate Starts for Policronamos_84:

(6, 50409), (Start: 41 @50646 has 22 MA's), (Start: 47 @50661 has 100 MA's), (60, 50697), (77, 50751), (115, 50877), (125, 50913), (126, 50916), (131, 50934), (136, 50976),

Gene: Porcelain_113 Start: 62820, Stop: 63140, Start Num: 40

Candidate Starts for Porcelain_113:

(Start: 40 @62820 has 31 MA's), (56, 62859), (90, 62958), (114, 63015), (124, 63051), (130, 63081), (136, 63126),

Gene: Porcelain_131 Start: 70628, Stop: 70981, Start Num: 39

Candidate Starts for Porcelain_131:

(Start: 39 @70628 has 35 MA's), (Start: 43 @70637 has 83 MA's), (128, 70907), (136, 70958),

Gene: Porky_67 Start: 44446, Stop: 44856, Start Num: 37

Candidate Starts for Porky_67:

(7, 44272), (Start: 37 @44446 has 123 MA's), (88, 44587), (97, 44635), (108, 44683), (131, 44776), (136, 44818),

Gene: Porky_72 Start: 46716, Stop: 47084, Start Num: 46

Candidate Starts for Porky_72:

(Start: 43 @46710 has 83 MA's), (Start: 46 @46716 has 40 MA's), (71, 46788), (88, 46848), (130, 47016),

Gene: Porky_79 Start: 49072, Stop: 49419, Start Num: 41

Candidate Starts for Porky_79:

(Start: 41 @49072 has 22 MA's), (Start: 47 @49087 has 100 MA's), (60, 49123), (136, 49399),

Gene: Pound_108 Start: 64917, Stop: 65237, Start Num: 40

Candidate Starts for Pound_108:

(Start: 40 @64917 has 31 MA's), (56, 64956), (114, 65112), (124, 65148), (130, 65178), (136, 65223),

Gene: Pumpkin_83 Start: 50315, Stop: 50647, Start Num: 47

Candidate Starts for Pumpkin_83:

(1, 49745), (2, 49862), (6, 50063), (Start: 41 @50300 has 22 MA's), (Start: 47 @50315 has 100 MA's), (60, 50351), (136, 50627),

Gene: Pumpkin_76 Start: 47944, Stop: 48312, Start Num: 46

Candidate Starts for Pumpkin_76:

(Start: 43 @47938 has 83 MA's), (Start: 46 @47944 has 40 MA's), (71, 48016), (88, 48076), (130, 48244),

Gene: Pumpkin_71 Start: 45674, Stop: 46084, Start Num: 37

Candidate Starts for Pumpkin_71:

(Start: 37 @45674 has 123 MA's), (88, 45815), (97, 45863), (108, 45911), (131, 46004), (136, 46046),

Gene: Quallification_69 Start: 45658, Stop: 46068, Start Num: 37

Candidate Starts for Quallification_69:

(Start: 37 @45658 has 123 MA's), (88, 45799), (97, 45847), (108, 45895), (131, 45988), (136, 46030),

Gene: Quallification_74 Start: 47922, Stop: 48299, Start Num: 43

Candidate Starts for Quallification_74:

(Start: 43 @47922 has 83 MA's), (Start: 46 @47928 has 40 MA's), (71, 48000), (88, 48060), (130, 48231),

Gene: Quallification_81 Start: 50302, Stop: 50637, Start Num: 47

Candidate Starts for Quallification_81:

(6, 50050), (Start: 41 @50287 has 22 MA's), (Start: 47 @50302 has 100 MA's), (60, 50338), (104, 50479), (115, 50518), (125, 50554), (126, 50557), (131, 50575), (136, 50617),

Gene: Rabbitrun_55 Start: 37898, Stop: 38293, Start Num: 27

Candidate Starts for Rabbitrun_55:

(12, 37826), (13, 37832), (18, 37865), (22, 37880), (Start: 27 @37898 has 3 MA's), (44, 37943), (50, 37958), (55, 37970), (125, 38183), (132, 38213), (144, 38282),

Gene: Rakim_69 Start: 45127, Stop: 45537, Start Num: 37

Candidate Starts for Rakim_69:

(Start: 37 @45127 has 123 MA's), (88, 45268), (97, 45316), (108, 45364), (131, 45457), (136, 45499),

Gene: Rakim_81 Start: 49771, Stop: 50103, Start Num: 47

Candidate Starts for Rakim_81:

(6, 49519), (Start: 41 @49756 has 22 MA's), (Start: 47 @49771 has 100 MA's), (60, 49807), (136, 50083),

Gene: Rakim_74 Start: 47394, Stop: 47768, Start Num: 43

Candidate Starts for Rakim_74:

(Start: 43 @47394 has 83 MA's), (Start: 46 @47400 has 40 MA's), (71, 47472), (88, 47532), (111, 47628), (130, 47700),

Gene: Redno2_126 Start: 70622, Stop: 70981, Start Num: 39

Candidate Starts for Redno2_126:

(29, 70595), (Start: 39 @70622 has 35 MA's), (Start: 43 @70631 has 83 MA's), (90, 70763), (93, 70778), (128, 70907), (130, 70913),

Gene: Redno2_112 Start: 64353, Stop: 64673, Start Num: 40

Candidate Starts for Redno2_112:

(Start: 40 @64353 has 31 MA's), (56, 64392), (90, 64491), (114, 64548), (124, 64584), (130, 64614), (136, 64659),

Gene: RetrieverFever_74 Start: 38621, Stop: 38139, Start Num: 26

Candidate Starts for RetrieverFever_74:

(Start: 26 @38621 has 15 MA's), (50, 38549), (62, 38516), (88, 38438), (99, 38396), (131, 38288), (141, 38225), (150, 38183),

Gene: Rideau_80 Start: 39365, Stop: 38880, Start Num: 24

Candidate Starts for Rideau_80:

(Start: 24 @39365 has 4 MA's), (34, 39326), (62, 39257), (70, 39236), (99, 39134), (105, 39116), (109, 39104), (111, 39098), (112, 39095),

Gene: Rimmer_69 Start: 45366, Stop: 45779, Start Num: 37

Candidate Starts for Rimmer_69:

(7, 45192), (Start: 37 @45366 has 123 MA's), (88, 45507), (96, 45549), (122, 45657), (131, 45696), (141, 45759),

Gene: Rimmer_81 Start: 50007, Stop: 50342, Start Num: 47

Candidate Starts for Rimmer_81:

(6, 49755), (Start: 41 @49992 has 22 MA's), (Start: 47 @50007 has 100 MA's), (60, 50043), (77, 50097), (115, 50223), (125, 50259), (126, 50262), (131, 50280), (136, 50322),

Gene: Rimmer_74 Start: 47642, Stop: 48004, Start Num: 46

Candidate Starts for Rimmer_74:

(Start: 43 @47636 has 83 MA's), (Start: 46 @47642 has 40 MA's), (71, 47714), (130, 47936),

Gene: RiverMonster_68 Start: 45194, Stop: 45604, Start Num: 37

Candidate Starts for RiverMonster_68:

(Start: 37 @45194 has 123 MA's), (88, 45335), (97, 45383), (108, 45431), (131, 45524), (136, 45566),

Gene: RiverMonster_80 Start: 49835, Stop: 50167, Start Num: 47

Candidate Starts for RiverMonster_80:

(6, 49583), (Start: 41 @49820 has 22 MA's), (Start: 47 @49835 has 100 MA's), (60, 49871), (136, 50147),

Gene: RiverMonster_73 Start: 47458, Stop: 47832, Start Num: 43

Candidate Starts for RiverMonster_73:

(Start: 43 @47458 has 83 MA's), (Start: 46 @47464 has 40 MA's), (71, 47536), (88, 47596), (130, 47764),

Gene: Romero_76 Start: 38995, Stop: 38492, Start Num: 26

Candidate Starts for Romero_76:

(Start: 26 @38995 has 15 MA's), (34, 38959), (50, 38923), (62, 38887), (88, 38806), (98, 38767), (131, 38656), (134, 38632), (144, 38578),

Gene: Rose5_42 Start: 34025, Stop: 34441, Start Num: 19

Candidate Starts for Rose5_42:

(Start: 14 @34004 has 3 MA's), (Start: 19 @34025 has 39 MA's), (Start: 40 @34091 has 31 MA's), (Start: 49 @34112 has 14 MA's), (56, 34130), (68, 34169), (72, 34181), (90, 34238), (112, 34298), (138, 34418),

Gene: RosePharie_77 Start: 39114, Stop: 38629, Start Num: 26

Candidate Starts for RosePharie_77:

(10, 39192), (21, 39123), (Start: 26 @39114 has 15 MA's), (67, 38994), (99, 38889), (145, 38703), (146, 38700), (153, 38637),

Gene: Rumpelstiltskin_45 Start: 35623, Stop: 36039, Start Num: 19

Candidate Starts for Rumpelstiltskin_45:

(Start: 16 @35614 has 10 MA's), (Start: 19 @35623 has 39 MA's), (Start: 49 @35710 has 14 MA's), (56, 35728), (65, 35755), (66, 35758), (90, 35833), (92, 35845), (127, 35953), (131, 35968), (138, 36016),

Gene: Saints25_72 Start: 46868, Stop: 47242, Start Num: 43

Candidate Starts for Saints25_72:

(Start: 43 @46868 has 83 MA's), (Start: 46 @46874 has 40 MA's), (71, 46946), (88, 47006), (130, 47174),

Gene: Saints25_79 Start: 49245, Stop: 49580, Start Num: 47

Candidate Starts for Saints25_79:

(6, 48993), (Start: 41 @49230 has 22 MA's), (Start: 47 @49245 has 100 MA's), (60, 49281), (136, 49560),

Gene: Saints25_67 Start: 44604, Stop: 45014, Start Num: 37

Candidate Starts for Saints25_67:

(Start: 37 @44604 has 123 MA's), (88, 44745), (97, 44793), (108, 44841), (131, 44934), (136, 44976),

Gene: Samty_42 Start: 35731, Stop: 36054, Start Num: 49

Candidate Starts for Samty_42:

(Start: 14 @35626 has 3 MA's), (Start: 16 @35638 has 10 MA's), (Start: 19 @35647 has 39 MA's), (Start: 49 @35731 has 14 MA's), (56, 35749), (Start: 61 @35767 has 1 MA's), (65, 35776), (103, 35893), (138, 36031),

Gene: Sassay_68 Start: 45564, Stop: 45932, Start Num: 46

Candidate Starts for Sassay_68:

(Start: 43 @45558 has 83 MA's), (Start: 46 @45564 has 40 MA's), (71, 45636), (88, 45696), (130, 45864),

Gene: Sassay_63 Start: 43291, Stop: 43704, Start Num: 37

Candidate Starts for Sassay_63:

(7, 43117), (Start: 37 @43291 has 123 MA's), (88, 43432), (96, 43474), (122, 43582), (131, 43621), (141, 43684),

Gene: Sassay_75 Start: 47920, Stop: 48270, Start Num: 41

Candidate Starts for Sassay_75:

(6, 47683), (Start: 41 @47920 has 22 MA's), (Start: 47 @47935 has 100 MA's), (60, 47971), (104, 48112), (115, 48151), (125, 48187), (126, 48190), (131, 48208), (136, 48250),

Gene: Schatzie_113 Start: 65339, Stop: 65659, Start Num: 40

Candidate Starts for Schatzie_113:

(Start: 40 @65339 has 31 MA's), (56, 65378), (90, 65477), (114, 65534), (124, 65570), (130, 65600), (136, 65645),

Gene: Schatzie_130 Start: 73330, Stop: 73689, Start Num: 39

Candidate Starts for Schatzie_130:

(29, 73303), (Start: 39 @73330 has 35 MA's), (Start: 43 @73339 has 83 MA's), (90, 73471), (93, 73486), (128, 73615), (130, 73621),

Gene: ShamWow_68 Start: 45513, Stop: 45923, Start Num: 37

Candidate Starts for ShamWow_68:

(7, 45339), (Start: 37 @45513 has 123 MA's), (73, 45609), (88, 45654), (97, 45702), (108, 45750), (131, 45843), (136, 45885),

Gene: ShamWow_73 Start: 47777, Stop: 48154, Start Num: 43

Candidate Starts for ShamWow_73:

(Start: 43 @47777 has 83 MA's), (Start: 46 @47783 has 40 MA's), (71, 47855), (88, 47915), (130, 48086),

Gene: ShamWow_80 Start: 50157, Stop: 50489, Start Num: 47

Candidate Starts for ShamWow_80:

(6, 49905), (Start: 41 @50142 has 22 MA's), (Start: 47 @50157 has 100 MA's), (60, 50193), (136, 50469),

Gene: ShereKhan_72 Start: 47846, Stop: 48223, Start Num: 43

Candidate Starts for ShereKhan_72:

(Start: 43 @47846 has 83 MA's), (Start: 46 @47852 has 40 MA's), (71, 47924), (88, 47984), (130, 48155),

Gene: ShereKhan_78 Start: 50227, Stop: 50562, Start Num: 47

Candidate Starts for ShereKhan_78:

(6, 49975), (Start: 41 @50212 has 22 MA's), (Start: 47 @50227 has 100 MA's), (60, 50263), (104, 50404), (115, 50443), (125, 50479), (126, 50482), (131, 50500), (136, 50542),

Gene: ShereKhan_67 Start: 45582, Stop: 45992, Start Num: 37

Candidate Starts for ShereKhan_67:

(Start: 37 @45582 has 123 MA's), (88, 45723), (97, 45771), (108, 45819), (131, 45912), (136, 45954),

Gene: Silverleaf_42 Start: 34025, Stop: 34441, Start Num: 19

Candidate Starts for Silverleaf_42:

(Start: 14 @34004 has 3 MA's), (Start: 19 @34025 has 39 MA's), (Start: 40 @34091 has 31 MA's), (Start: 49 @34112 has 14 MA's), (56, 34130), (68, 34169), (72, 34181), (90, 34238), (112, 34298), (138, 34418),

Gene: Simpliphy_79 Start: 49235, Stop: 49570, Start Num: 47

Candidate Starts for Simpliphy_79:

(6, 48983), (Start: 41 @49220 has 22 MA's), (Start: 47 @49235 has 100 MA's), (60, 49271), (136, 49550),

Gene: Simpliphy_72 Start: 46864, Stop: 47232, Start Num: 46

Candidate Starts for Simpliphy_72:

(Start: 43 @46858 has 83 MA's), (Start: 46 @46864 has 40 MA's), (71, 46936), (88, 46996), (130, 47164),

Gene: Simpliphy_67 Start: 44594, Stop: 45004, Start Num: 37

Candidate Starts for Simpliphy_67:

(Start: 37 @44594 has 123 MA's), (88, 44735), (97, 44783), (108, 44831), (131, 44924), (136, 44966),

Gene: SirDuracell_67 Start: 43865, Stop: 44278, Start Num: 37

Candidate Starts for SirDuracell_67:

(7, 43691), (Start: 37 @43865 has 123 MA's), (88, 44006), (96, 44048), (122, 44156), (131, 44195), (141, 44258),

Gene: SirDuracell_79 Start: 48521, Stop: 48856, Start Num: 47

Candidate Starts for SirDuracell_79:

(6, 48269), (Start: 41 @48506 has 22 MA's), (Start: 47 @48521 has 100 MA's), (60, 48557), (77, 48611), (115, 48737), (125, 48773), (126, 48776), (131, 48794), (136, 48836),

Gene: SirDuracell_72 Start: 46147, Stop: 46518, Start Num: 46

Candidate Starts for SirDuracell_72:

(Start: 43 @46141 has 83 MA's), (Start: 46 @46147 has 40 MA's), (71, 46219), (88, 46279), (111, 46378), (130, 46450),

Gene: Snenia_42 Start: 35731, Stop: 36054, Start Num: 49

Candidate Starts for Snenia_42:

(Start: 14 @35626 has 3 MA's), (Start: 16 @35638 has 10 MA's), (Start: 19 @35647 has 39 MA's), (Start: 49 @35731 has 14 MA's), (56, 35749), (Start: 61 @35767 has 1 MA's), (65, 35776), (103, 35893), (138, 36031),

Gene: SophKB_70 Start: 46533, Stop: 46910, Start Num: 43

Candidate Starts for SophKB_70:

(Start: 43 @46533 has 83 MA's), (Start: 46 @46539 has 40 MA's), (71, 46611), (88, 46671), (130, 46842),

Gene: SophKB_77 Start: 48913, Stop: 49248, Start Num: 47

Candidate Starts for SophKB_77:

(6, 48661), (Start: 41 @48898 has 22 MA's), (Start: 47 @48913 has 100 MA's), (60, 48949), (104, 49090), (115, 49129), (125, 49165), (126, 49168), (131, 49186), (136, 49228),

Gene: SophKB_65 Start: 44269, Stop: 44679, Start Num: 37

Candidate Starts for SophKB_65:

(Start: 37 @44269 has 123 MA's), (88, 44410), (97, 44458), (108, 44506), (131, 44599), (136, 44641),

Gene: Sotrice96_81 Start: 49916, Stop: 50251, Start Num: 47

Candidate Starts for Sotrice96_81:

(6, 49664), (Start: 41 @49901 has 22 MA's), (Start: 47 @49916 has 100 MA's), (60, 49952), (136, 50231),

Gene: Sotrice96_69 Start: 45272, Stop: 45682, Start Num: 37

Candidate Starts for Sotrice96_69:

(Start: 37 @45272 has 123 MA's), (88, 45413), (97, 45461), (108, 45509), (131, 45602), (136, 45644),

Gene: Sotrice96_74 Start: 47536, Stop: 47913, Start Num: 43

Candidate Starts for Sotrice96_74:

(Start: 43 @47536 has 83 MA's), (Start: 46 @47542 has 40 MA's), (71, 47614), (88, 47674), (130, 47845),

Gene: Squint_111 Start: 62624, Stop: 62944, Start Num: 40

Candidate Starts for Squint_111:

(Start: 40 @62624 has 31 MA's), (56, 62663), (90, 62762), (114, 62819), (124, 62855), (130, 62885), (136, 62930),

Gene: Squint_131 Start: 70888, Stop: 71241, Start Num: 39

Candidate Starts for Squint_131:

(Start: 39 @70888 has 35 MA's), (Start: 43 @70897 has 83 MA's), (128, 71167), (136, 71218),

Gene: Stank_83 Start: 50159, Stop: 50509, Start Num: 41

Candidate Starts for Stank_83:

(6, 49922), (Start: 41 @50159 has 22 MA's), (Start: 47 @50174 has 100 MA's), (60, 50210), (136, 50489),

Gene: Stank_76 Start: 47794, Stop: 48171, Start Num: 43

Candidate Starts for Stank_76:

(Start: 43 @47794 has 83 MA's), (Start: 46 @47800 has 40 MA's), (71, 47872), (88, 47932), (130, 48103),

Gene: Stank_71 Start: 45527, Stop: 45937, Start Num: 37

Candidate Starts for Stank_71:

(7, 45353), (Start: 37 @45527 has 123 MA's), (73, 45623), (88, 45668), (97, 45716), (108, 45764), (131, 45857), (136, 45899),

Gene: Stark_69 Start: 45077, Stop: 45487, Start Num: 37

Candidate Starts for Stark_69:

(Start: 37 @45077 has 123 MA's), (88, 45218), (97, 45266), (108, 45314), (131, 45407), (136, 45449),

Gene: Stark_81 Start: 49718, Stop: 50050, Start Num: 47

Candidate Starts for Stark_81:

(6, 49466), (Start: 41 @49703 has 22 MA's), (Start: 47 @49718 has 100 MA's), (60, 49754), (136, 50030),

Gene: Stark_74 Start: 47341, Stop: 47715, Start Num: 43

Candidate Starts for Stark_74:

(Start: 43 @47341 has 83 MA's), (Start: 46 @47347 has 40 MA's), (71, 47419), (88, 47479), (130, 47647),

Gene: Stella_77 Start: 39604, Stop: 39116, Start Num: 24

Candidate Starts for Stella_77:

(15, 39637), (Start: 24 @39604 has 4 MA's), (50, 39529), (60, 39499), (70, 39469), (89, 39400), (90, 39397), (120, 39292), (135, 39223),

Gene: StellaBean_66 Start: 44837, Stop: 45247, Start Num: 37

Candidate Starts for StellaBean_66:

(Start: 37 @44837 has 123 MA's), (88, 44978), (97, 45026), (108, 45074), (131, 45167), (136, 45209),

Gene: StellaBean_71 Start: 47107, Stop: 47478, Start Num: 46
Candidate Starts for StellaBean_71:
(Start: 43 @47101 has 83 MA's), (Start: 46 @47107 has 40 MA's), (71, 47179), (88, 47239), (130, 47410),

Gene: StellaBean_78 Start: 49481, Stop: 49813, Start Num: 47
Candidate Starts for StellaBean_78:
(6, 49229), (Start: 41 @49466 has 22 MA's), (Start: 47 @49481 has 100 MA's), (60, 49517), (136, 49793),

Gene: StolenFromERC_83 Start: 49956, Stop: 50291, Start Num: 47
Candidate Starts for StolenFromERC_83:
(6, 49704), (Start: 41 @49941 has 22 MA's), (Start: 47 @49956 has 100 MA's), (60, 49992), (136, 50271),

Gene: StolenFromERC_76 Start: 47576, Stop: 47953, Start Num: 43
Candidate Starts for StolenFromERC_76:
(Start: 43 @47576 has 83 MA's), (Start: 46 @47582 has 40 MA's), (71, 47654), (88, 47714), (130, 47885),

Gene: StolenFromERC_71 Start: 45309, Stop: 45719, Start Num: 37
Candidate Starts for StolenFromERC_71:
(7, 45135), (Start: 37 @45309 has 123 MA's), (88, 45450), (97, 45498), (108, 45546), (131, 45639), (136, 45681),

Gene: Superphikiman_131 Start: 70104, Stop: 70457, Start Num: 39
Candidate Starts for Superphikiman_131:
(Start: 39 @70104 has 35 MA's), (Start: 43 @70113 has 83 MA's), (128, 70383),

Gene: Superphikiman_110 Start: 61715, Stop: 62035, Start Num: 40
Candidate Starts for Superphikiman_110:
(Start: 40 @61715 has 31 MA's), (56, 61754), (90, 61853), (114, 61910), (124, 61946), (130, 61976), (136, 62021),

Gene: TBrady12_71 Start: 45011, Stop: 45421, Start Num: 37
Candidate Starts for TBrady12_71:
(7, 44837), (Start: 37 @45011 has 123 MA's), (88, 45152), (97, 45200), (108, 45248), (131, 45341), (136, 45383),

Gene: TBrady12_83 Start: 49655, Stop: 49990, Start Num: 47
Candidate Starts for TBrady12_83:
(6, 49403), (Start: 41 @49640 has 22 MA's), (Start: 47 @49655 has 100 MA's), (60, 49691), (136, 49970),

Gene: TBrady12_76 Start: 47275, Stop: 47652, Start Num: 43
Candidate Starts for TBrady12_76:
(Start: 43 @47275 has 83 MA's), (Start: 46 @47281 has 40 MA's), (71, 47353), (88, 47413), (130, 47584),

Gene: Tarkin_67 Start: 45259, Stop: 45669, Start Num: 37
Candidate Starts for Tarkin_67:
(Start: 37 @45259 has 123 MA's), (88, 45400), (97, 45448), (108, 45496), (131, 45589), (136, 45631),

Gene: Tarkin_72 Start: 47523, Stop: 47900, Start Num: 43

Candidate Starts for Tarkin_72:

(Start: 43 @47523 has 83 MA's), (Start: 46 @47529 has 40 MA's), (71, 47601), (88, 47661), (130, 47832),

Gene: Tarkin_79 Start: 49903, Stop: 50238, Start Num: 47

Candidate Starts for Tarkin_79:

(6, 49651), (Start: 41 @49888 has 22 MA's), (Start: 47 @49903 has 100 MA's), (60, 49939), (104, 50080), (115, 50119), (125, 50155), (126, 50158), (131, 50176), (136, 50218),

Gene: TeardropMSU_76 Start: 48888, Stop: 49238, Start Num: 41

Candidate Starts for TeardropMSU_76:

(6, 48651), (Start: 41 @48888 has 22 MA's), (Start: 47 @48903 has 100 MA's), (60, 48939), (104, 49080), (115, 49119), (125, 49155), (126, 49158), (131, 49176), (136, 49218),

Gene: TeardropMSU_69 Start: 46523, Stop: 46900, Start Num: 43

Candidate Starts for TeardropMSU_69:

(Start: 43 @46523 has 83 MA's), (Start: 46 @46529 has 40 MA's), (71, 46601), (88, 46661), (130, 46832),

Gene: TeardropMSU_64 Start: 44259, Stop: 44669, Start Num: 37

Candidate Starts for TeardropMSU_64:

(Start: 37 @44259 has 123 MA's), (88, 44400), (97, 44448), (108, 44496), (131, 44589), (136, 44631),

Gene: Teaspoon_74 Start: 47423, Stop: 47794, Start Num: 46

Candidate Starts for Teaspoon_74:

(Start: 43 @47417 has 83 MA's), (Start: 46 @47423 has 40 MA's), (71, 47495), (88, 47555), (130, 47726),

Gene: Teaspoon_81 Start: 49797, Stop: 50132, Start Num: 47

Candidate Starts for Teaspoon_81:

(6, 49545), (Start: 41 @49782 has 22 MA's), (Start: 47 @49797 has 100 MA's), (60, 49833), (136, 50112),

Gene: Teaspoon_69 Start: 45153, Stop: 45563, Start Num: 37

Candidate Starts for Teaspoon_69:

(7, 44979), (Start: 37 @45153 has 123 MA's), (88, 45294), (97, 45342), (108, 45390), (131, 45483), (136, 45525),

Gene: Terminus_83 Start: 50690, Stop: 51025, Start Num: 47

Candidate Starts for Terminus_83:

(6, 50438), (Start: 41 @50675 has 22 MA's), (Start: 47 @50690 has 100 MA's), (60, 50726), (136, 51005),

Gene: Terminus_76 Start: 48319, Stop: 48687, Start Num: 46

Candidate Starts for Terminus_76:

(Start: 43 @48313 has 83 MA's), (Start: 46 @48319 has 40 MA's), (71, 48391), (88, 48451), (130, 48619),

Gene: Terminus_71 Start: 46046, Stop: 46459, Start Num: 37

Candidate Starts for Terminus_71:

(7, 45872), (Start: 37 @46046 has 123 MA's), (88, 46187), (97, 46235), (108, 46283), (131, 46376), (141, 46439),

Gene: Thibault_99 Start: 60528, Stop: 60848, Start Num: 40
Candidate Starts for Thibault_99:
(Start: 40 @60528 has 31 MA's), (56, 60567), (114, 60723), (124, 60759), (130, 60789), (136, 60834),

Gene: Thibault_119 Start: 70544, Stop: 70903, Start Num: 39
Candidate Starts for Thibault_119:
(29, 70517), (Start: 39 @70544 has 35 MA's), (Start: 43 @70553 has 83 MA's), (90, 70685), (93, 70700), (130, 70835),

Gene: ThreeRngTarjay_130 Start: 73825, Stop: 74184, Start Num: 39
Candidate Starts for ThreeRngTarjay_130:
(29, 73798), (Start: 39 @73825 has 35 MA's), (Start: 43 @73834 has 83 MA's), (90, 73966), (93, 73981), (128, 74110), (130, 74116),

Gene: Thresher_75 Start: 48406, Stop: 48774, Start Num: 46
Candidate Starts for Thresher_75:
(Start: 43 @48400 has 83 MA's), (Start: 46 @48406 has 40 MA's), (71, 48478), (88, 48538), (130, 48706),

Gene: Thresher_70 Start: 46136, Stop: 46546, Start Num: 37
Candidate Starts for Thresher_70:
(Start: 37 @46136 has 123 MA's), (88, 46277), (97, 46325), (108, 46373), (131, 46466), (136, 46508),

Gene: Thresher_82 Start: 50777, Stop: 51109, Start Num: 47
Candidate Starts for Thresher_82:
(6, 50525), (Start: 41 @50762 has 22 MA's), (Start: 47 @50777 has 100 MA's), (60, 50813), (136, 51089),

Gene: Tomaszewski_68 Start: 46695, Stop: 47063, Start Num: 43
Candidate Starts for Tomaszewski_68:
(Start: 43 @46695 has 83 MA's), (Start: 46 @46701 has 40 MA's), (95, 46857), (126, 46980), (138, 47046),

Gene: Tomaszewski_75 Start: 49066, Stop: 49401, Start Num: 47
Candidate Starts for Tomaszewski_75:
(6, 48814), (Start: 41 @49051 has 22 MA's), (Start: 47 @49066 has 100 MA's), (60, 49102), (136, 49381),

Gene: Tomaszewski_63 Start: 44425, Stop: 44838, Start Num: 37
Candidate Starts for Tomaszewski_63:
(7, 44251), (Start: 37 @44425 has 123 MA's), (88, 44566), (96, 44608), (122, 44716), (131, 44755), (141, 44818),

Gene: ToriToki_76 Start: 38998, Stop: 38495, Start Num: 26
Candidate Starts for ToriToki_76:
(Start: 26 @38998 has 15 MA's), (34, 38962), (50, 38926), (62, 38890), (75, 38857), (88, 38809), (98, 38770), (131, 38659), (134, 38635), (144, 38581), (152, 38515),

Gene: Toto_66 Start: 45513, Stop: 45923, Start Num: 37
Candidate Starts for Toto_66:
(7, 45339), (Start: 37 @45513 has 123 MA's), (73, 45609), (88, 45654), (97, 45702), (108, 45750), (131, 45843), (136, 45885),

Gene: Toto_71 Start: 47777, Stop: 48154, Start Num: 43

Candidate Starts for Toto_71:

(Start: 43 @47777 has 83 MA's), (Start: 46 @47783 has 40 MA's), (71, 47855), (88, 47915), (130, 48086),

Gene: Toto_78 Start: 50157, Stop: 50489, Start Num: 47

Candidate Starts for Toto_78:

(6, 49905), (Start: 41 @50142 has 22 MA's), (Start: 47 @50157 has 100 MA's), (60, 50193), (136, 50469),

Gene: Tourach_44 Start: 35371, Stop: 35784, Start Num: 19

Candidate Starts for Tourach_44:

(Start: 16 @35362 has 10 MA's), (Start: 19 @35371 has 39 MA's), (Start: 49 @35458 has 14 MA's), (56, 35476), (65, 35503), (66, 35506), (90, 35581), (138, 35761),

Gene: Traaww1_64 Start: 44694, Stop: 45104, Start Num: 37

Candidate Starts for Traaww1_64:

(7, 44520), (Start: 37 @44694 has 123 MA's), (73, 44790), (88, 44835), (97, 44883), (108, 44931), (131, 45024), (136, 45066),

Gene: Traaww1_69 Start: 46961, Stop: 47338, Start Num: 43

Candidate Starts for Traaww1_69:

(Start: 43 @46961 has 83 MA's), (Start: 46 @46967 has 40 MA's), (71, 47039), (88, 47099), (130, 47270),

Gene: Traaww1_76 Start: 49341, Stop: 49673, Start Num: 47

Candidate Starts for Traaww1_76:

(6, 49089), (Start: 41 @49326 has 22 MA's), (Start: 47 @49341 has 100 MA's), (60, 49377), (136, 49653),

Gene: Trax_53 Start: 37657, Stop: 38055, Start Num: 27

Candidate Starts for Trax_53:

(Start: 27 @37657 has 3 MA's), (36, 37687), (54, 37723), (55, 37726), (58, 37732), (64, 37756), (91, 37843), (96, 37864), (112, 37888), (131, 37963), (134, 37987), (144, 38041), (146, 38047),

Gene: Treat_76 Start: 38873, Stop: 38370, Start Num: 26

Candidate Starts for Treat_76:

(Start: 26 @38873 has 15 MA's), (34, 38837), (50, 38801), (62, 38765), (75, 38732), (85, 38699), (88, 38684), (98, 38645), (131, 38534), (134, 38510), (144, 38456),

Gene: Trina_234 Start: 121206, Stop: 121604, Start Num: 37

Candidate Starts for Trina_234:

(30, 121179), (Start: 35 @121200 has 4 MA's), (Start: 37 @121206 has 123 MA's), (42, 121215), (48, 121227), (59, 121254), (80, 121335), (90, 121374), (111, 121449), (125, 121500), (128, 121509), (132, 121527), (136, 121560), (137, 121563),

Gene: Tuco_69 Start: 46021, Stop: 46431, Start Num: 37

Candidate Starts for Tuco_69:

(Start: 37 @46021 has 123 MA's), (88, 46162), (97, 46210), (108, 46258), (131, 46351), (136, 46393),

Gene: Tuco_74 Start: 48285, Stop: 48662, Start Num: 43

Candidate Starts for Tuco_74:

(Start: 43 @48285 has 83 MA's), (Start: 46 @48291 has 40 MA's), (71, 48363), (88, 48423), (130, 48594),

Gene: Tuco_81 Start: 50665, Stop: 50997, Start Num: 47

Candidate Starts for Tuco_81:

(6, 50413), (Start: 41 @50650 has 22 MA's), (Start: 47 @50665 has 100 MA's), (60, 50701), (136, 50977),

Gene: Tyson_42 Start: 34026, Stop: 34442, Start Num: 19

Candidate Starts for Tyson_42:

(Start: 14 @34005 has 3 MA's), (Start: 19 @34026 has 39 MA's), (Start: 40 @34092 has 31 MA's), (Start: 49 @34113 has 14 MA's), (56, 34131), (68, 34170), (72, 34182), (90, 34239), (112, 34299), (129, 34365), (138, 34419),

Gene: UPIE_43 Start: 34009, Stop: 34425, Start Num: 19

Candidate Starts for UPIE_43:

(Start: 14 @33988 has 3 MA's), (Start: 19 @34009 has 39 MA's), (Start: 40 @34075 has 31 MA's), (Start: 49 @34096 has 14 MA's), (56, 34114), (68, 34153), (72, 34165), (90, 34222), (112, 34282), (138, 34402),

Gene: Ukulele_68 Start: 46671, Stop: 47045, Start Num: 43

Candidate Starts for Ukulele_68:

(Start: 43 @46671 has 83 MA's), (Start: 46 @46677 has 40 MA's), (71, 46749), (88, 46809), (130, 46977),

Gene: Ukulele_63 Start: 44407, Stop: 44817, Start Num: 37

Candidate Starts for Ukulele_63:

(Start: 37 @44407 has 123 MA's), (88, 44548), (97, 44596), (108, 44644), (131, 44737), (136, 44779),

Gene: Ukulele_75 Start: 49048, Stop: 49383, Start Num: 47

Candidate Starts for Ukulele_75:

(6, 48796), (Start: 41 @49033 has 22 MA's), (Start: 47 @49048 has 100 MA's), (60, 49084), (136, 49363),

Gene: Vetrrix_45 Start: 35363, Stop: 35779, Start Num: 19

Candidate Starts for Vetrrix_45:

(Start: 16 @35354 has 10 MA's), (Start: 19 @35363 has 39 MA's), (Start: 49 @35450 has 14 MA's), (56, 35468), (65, 35495), (66, 35498), (90, 35573), (92, 35585), (127, 35693), (138, 35756),

Gene: Vorvolakos_75 Start: 38620, Stop: 38138, Start Num: 26

Candidate Starts for Vorvolakos_75:

(Start: 26 @38620 has 15 MA's), (50, 38548), (62, 38515), (88, 38437), (99, 38395), (131, 38287), (141, 38224), (150, 38182),

Gene: WRightOn_78 Start: 38385, Stop: 37942, Start Num: 23

Candidate Starts for WRightOn_78:

(11, 38442), (15, 38418), (Start: 23 @38385 has 5 MA's), (88, 38196), (123, 38082), (148, 37959),

Gene: Wamburgxpress_43 Start: 34024, Stop: 34440, Start Num: 19

Candidate Starts for Wamburgxpress_43:

(Start: 14 @34003 has 3 MA's), (Start: 19 @34024 has 39 MA's), (Start: 40 @34090 has 31 MA's), (Start: 49 @34111 has 14 MA's), (56, 34129), (68, 34168), (72, 34180), (90, 34237), (112, 34297), (138, 34417),

Gene: Wanda_133 Start: 70960, Stop: 71319, Start Num: 39

Candidate Starts for Wanda_133:

(29, 70933), (Start: 39 @70960 has 35 MA's), (Start: 43 @70969 has 83 MA's), (90, 71101), (93, 71116), (128, 71245), (130, 71251),

Gene: Weasels2_208 Start: 107565, Stop: 107978, Start Num: 35

Candidate Starts for Weasels2_208:

(Start: 35 @107565 has 4 MA's), (71, 107664), (88, 107721), (100, 107766), (108, 107805), (128, 107880),

Gene: Weasels2_237 Start: 116136, Stop: 116522, Start Num: 35

Candidate Starts for Weasels2_237:

(33, 116130), (Start: 35 @116136 has 4 MA's), (86, 116286), (128, 116433), (139, 116493),

Gene: Whirlwind_43 Start: 35405, Stop: 35812, Start Num: 19

Candidate Starts for Whirlwind_43:

(Start: 14 @35384 has 3 MA's), (Start: 16 @35396 has 10 MA's), (Start: 19 @35405 has 39 MA's), (Start: 49 @35489 has 14 MA's), (56, 35507), (Start: 61 @35525 has 1 MA's), (65, 35534), (103, 35651), (138, 35789),

Gene: Wiggin_82 Start: 49742, Stop: 50074, Start Num: 47

Candidate Starts for Wiggin_82:

(6, 49490), (Start: 41 @49727 has 22 MA's), (Start: 47 @49742 has 100 MA's), (60, 49778), (136, 50054),

Gene: Wiggin_70 Start: 45095, Stop: 45505, Start Num: 37

Candidate Starts for Wiggin_70:

(7, 44921), (Start: 37 @45095 has 123 MA's), (73, 45191), (88, 45236), (97, 45284), (108, 45332), (131, 45425), (136, 45467),

Gene: Wiggin_75 Start: 47368, Stop: 47739, Start Num: 46

Candidate Starts for Wiggin_75:

(Start: 43 @47362 has 83 MA's), (Start: 46 @47368 has 40 MA's), (71, 47440), (88, 47500), (130, 47671),

Gene: Wigglewiggles_45 Start: 35380, Stop: 35805, Start Num: 16

Candidate Starts for Wigglewiggles_45:

(Start: 16 @35380 has 10 MA's), (Start: 19 @35389 has 39 MA's), (Start: 49 @35476 has 14 MA's), (56, 35494), (65, 35521), (66, 35524), (90, 35599), (92, 35611), (127, 35719), (138, 35782),

Gene: Wilder_45 Start: 35362, Stop: 35778, Start Num: 19

Candidate Starts for Wilder_45:

(Start: 16 @35353 has 10 MA's), (Start: 19 @35362 has 39 MA's), (Start: 49 @35449 has 14 MA's), (56, 35467), (65, 35494), (66, 35497), (90, 35572), (92, 35584), (127, 35692), (138, 35755),

Gene: Willez_75 Start: 47920, Stop: 48270, Start Num: 41

Candidate Starts for Willez_75:

(6, 47683), (Start: 41 @47920 has 22 MA's), (Start: 47 @47935 has 100 MA's), (60, 47971), (104, 48112), (115, 48151), (125, 48187), (126, 48190), (131, 48208), (136, 48250),

Gene: Willez_68 Start: 45564, Stop: 45932, Start Num: 46

Candidate Starts for Willez_68:

(Start: 43 @45558 has 83 MA's), (Start: 46 @45564 has 40 MA's), (71, 45636), (88, 45696), (130, 45864),

Gene: Willez_63 Start: 43291, Stop: 43704, Start Num: 37

Candidate Starts for Willez_63:

(7, 43117), (Start: 37 @43291 has 123 MA's), (88, 43432), (96, 43474), (122, 43582), (131, 43621), (141, 43684),

Gene: Winky_45 Start: 35347, Stop: 35772, Start Num: 16

Candidate Starts for Winky_45:

(Start: 16 @35347 has 10 MA's), (Start: 19 @35356 has 39 MA's), (Start: 49 @35443 has 14 MA's), (56, 35461), (65, 35488), (66, 35491), (90, 35566), (92, 35578), (127, 35686), (138, 35749),

Gene: Wyatt2_43 Start: 34025, Stop: 34441, Start Num: 19

Candidate Starts for Wyatt2_43:

(Start: 14 @34004 has 3 MA's), (Start: 19 @34025 has 39 MA's), (Start: 40 @34091 has 31 MA's), (Start: 49 @34112 has 14 MA's), (56, 34130), (68, 34169), (72, 34181), (90, 34238), (112, 34298), (138, 34418),

Gene: Xandras_72 Start: 46773, Stop: 47147, Start Num: 43

Candidate Starts for Xandras_72:

(Start: 43 @46773 has 83 MA's), (Start: 46 @46779 has 40 MA's), (71, 46851), (88, 46911), (130, 47079),

Gene: Xandras_79 Start: 49150, Stop: 49482, Start Num: 47

Candidate Starts for Xandras_79:

(1, 48580), (2, 48697), (6, 48898), (Start: 41 @49135 has 22 MA's), (Start: 47 @49150 has 100 MA's), (60, 49186), (136, 49462),

Gene: Xandras_67 Start: 44506, Stop: 44916, Start Num: 37

Candidate Starts for Xandras_67:

(Start: 37 @44506 has 123 MA's), (88, 44647), (97, 44695), (108, 44743), (131, 44836), (136, 44878),

Gene: Yakult_64 Start: 44046, Stop: 44489, Start Num: 23

Candidate Starts for Yakult_64:

(Start: 23 @44046 has 5 MA's), (74, 44154), (83, 44181), (88, 44199), (96, 44241), (100, 44256), (102, 44262), (117, 44325), (131, 44382), (136, 44424),

Gene: YassJohnny_65 Start: 44464, Stop: 44877, Start Num: 37

Candidate Starts for YassJohnny_65:

(7, 44290), (Start: 37 @44464 has 123 MA's), (88, 44605), (96, 44647), (122, 44755), (131, 44794), (141, 44857),

Gene: YassJohnny_77 Start: 49090, Stop: 49440, Start Num: 41

Candidate Starts for YassJohnny_77:

(6, 48853), (Start: 41 @49090 has 22 MA's), (Start: 47 @49105 has 100 MA's), (60, 49141), (104, 49282), (115, 49321), (125, 49357), (126, 49360), (131, 49378), (136, 49420),

Gene: YassJohnny_70 Start: 46740, Stop: 47102, Start Num: 46

Candidate Starts for YassJohnny_70:

(Start: 43 @46734 has 83 MA's), (Start: 46 @46740 has 40 MA's), (95, 46896), (126, 47019), (138, 47085),

Gene: Yeet_109 Start: 64277, Stop: 64597, Start Num: 40
Candidate Starts for Yeet_109:
(Start: 40 @64277 has 31 MA's), (56, 64316), (90, 64415), (114, 64472), (124, 64508), (130, 64538),
(136, 64583),

Gene: Yeet_128 Start: 73023, Stop: 73382, Start Num: 39
Candidate Starts for Yeet_128:
(29, 72996), (Start: 39 @73023 has 35 MA's), (Start: 43 @73032 has 83 MA's), (90, 73164), (93,
73179), (128, 73308), (130, 73314),

Gene: Youngblood_71 Start: 45976, Stop: 46386, Start Num: 37
Candidate Starts for Youngblood_71:
(7, 45802), (Start: 37 @45976 has 123 MA's), (88, 46117), (97, 46165), (108, 46213), (131, 46306),
(136, 46348),

Gene: Youngblood_76 Start: 48246, Stop: 48614, Start Num: 46
Candidate Starts for Youngblood_76:
(Start: 43 @48240 has 83 MA's), (Start: 46 @48246 has 40 MA's), (71, 48318), (88, 48378), (130,
48546),

Gene: Youngblood_83 Start: 50617, Stop: 50952, Start Num: 47
Candidate Starts for Youngblood_83:
(6, 50365), (Start: 41 @50602 has 22 MA's), (Start: 47 @50617 has 100 MA's), (60, 50653), (136,
50932),

Gene: Zakai_45 Start: 35614, Stop: 36030, Start Num: 19
Candidate Starts for Zakai_45:
(Start: 16 @35605 has 10 MA's), (Start: 19 @35614 has 39 MA's), (Start: 49 @35701 has 14 MA's),
(56, 35719), (65, 35746), (66, 35749), (90, 35824), (92, 35836), (127, 35944), (138, 36007),

Gene: Zaria_43 Start: 34040, Stop: 34456, Start Num: 19
Candidate Starts for Zaria_43:
(Start: 14 @34019 has 3 MA's), (Start: 19 @34040 has 39 MA's), (Start: 40 @34106 has 31 MA's),
(Start: 49 @34127 has 14 MA's), (56, 34145), (68, 34184), (72, 34196), (90, 34253), (112, 34313),
(138, 34433),

Gene: Zeigle_74 Start: 38229, Stop: 37786, Start Num: 23
Candidate Starts for Zeigle_74:
(11, 38286), (15, 38262), (Start: 23 @38229 has 5 MA's), (88, 38040), (123, 37926), (148, 37803),

Gene: Zelink_129 Start: 73772, Stop: 74131, Start Num: 39
Candidate Starts for Zelink_129:
(29, 73745), (Start: 39 @73772 has 35 MA's), (Start: 43 @73781 has 83 MA's), (90, 73913), (93,
73928), (128, 74057), (130, 74063),

Gene: ZhongYanYuan_43 Start: 35304, Stop: 35633, Start Num: 49
Candidate Starts for ZhongYanYuan_43:
(Start: 16 @35208 has 10 MA's), (Start: 19 @35217 has 39 MA's), (Start: 49 @35304 has 14 MA's),
(56, 35322), (65, 35349), (66, 35352), (90, 35430), (127, 35547), (138, 35610),

Gene: ZooBear_76 Start: 38999, Stop: 38496, Start Num: 26
Candidate Starts for ZooBear_76:

(Start: 26 @38999 has 15 MA's), (34, 38963), (50, 38927), (62, 38891), (75, 38858), (88, 38810), (98, 38771), (131, 38660), (134, 38636), (144, 38582),

Gene: xkcd_83 Start: 50807, Stop: 51139, Start Num: 47

Candidate Starts for xkcd_83:

(Start: 41 @50792 has 22 MA's), (Start: 47 @50807 has 100 MA's), (60, 50843), (136, 51119),

Gene: xkcd_71 Start: 46166, Stop: 46576, Start Num: 37

Candidate Starts for xkcd_71:

(Start: 37 @46166 has 123 MA's), (88, 46307), (97, 46355), (108, 46403), (131, 46496), (136, 46538),

Gene: xkcd_76 Start: 48430, Stop: 48804, Start Num: 43

Candidate Starts for xkcd_76:

(Start: 43 @48430 has 83 MA's), (Start: 46 @48436 has 40 MA's), (71, 48508), (88, 48568), (130, 48736),