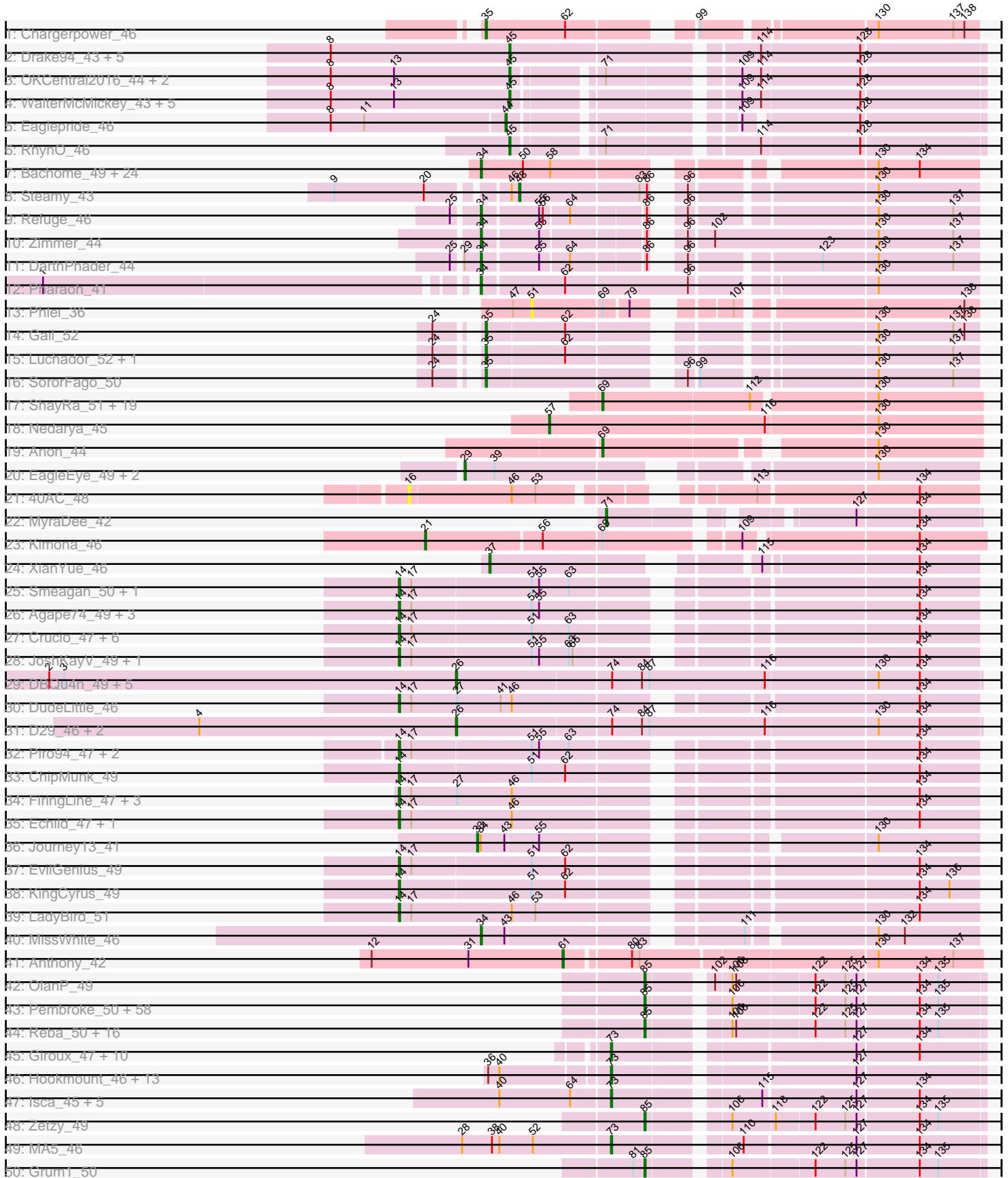
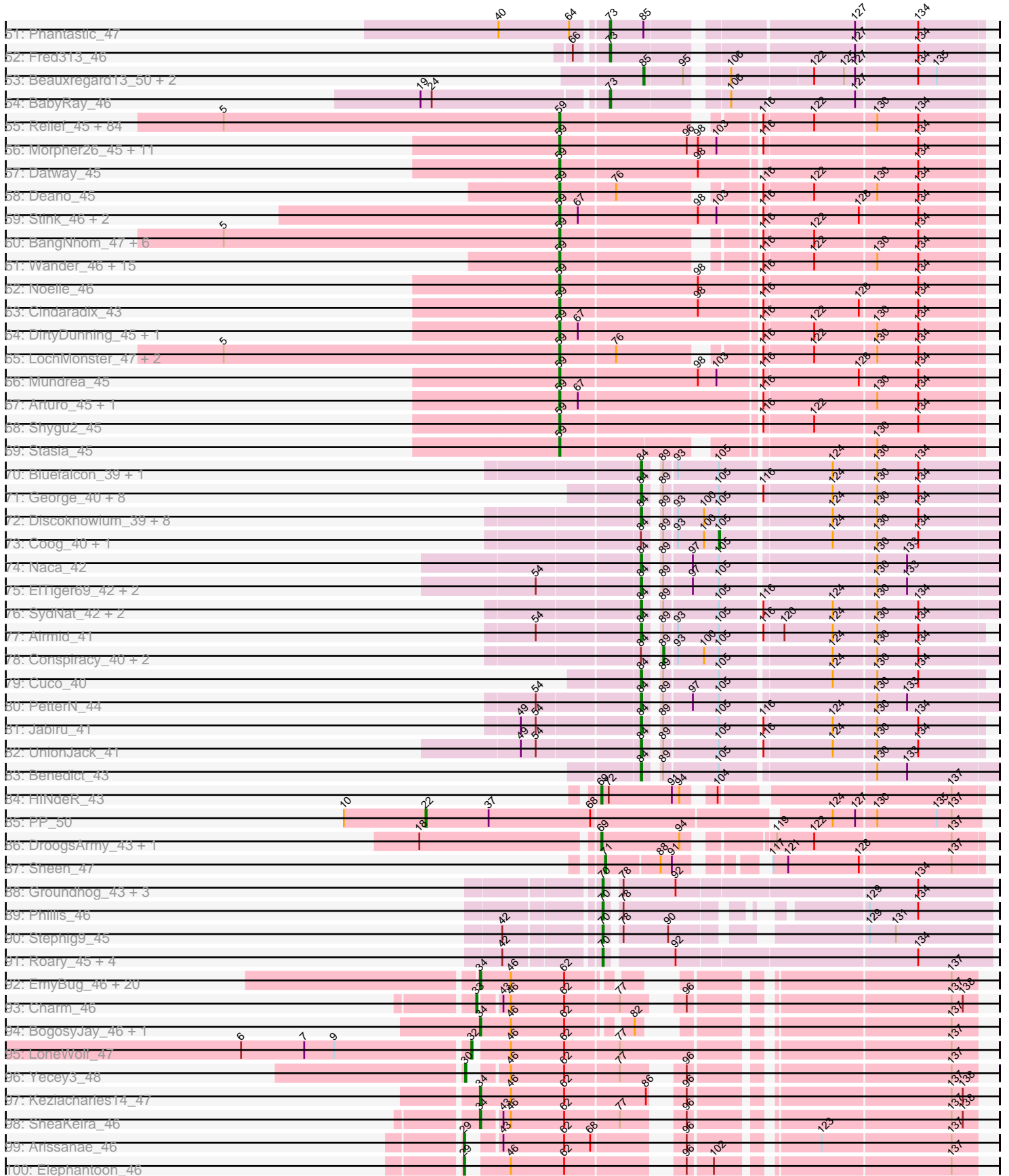


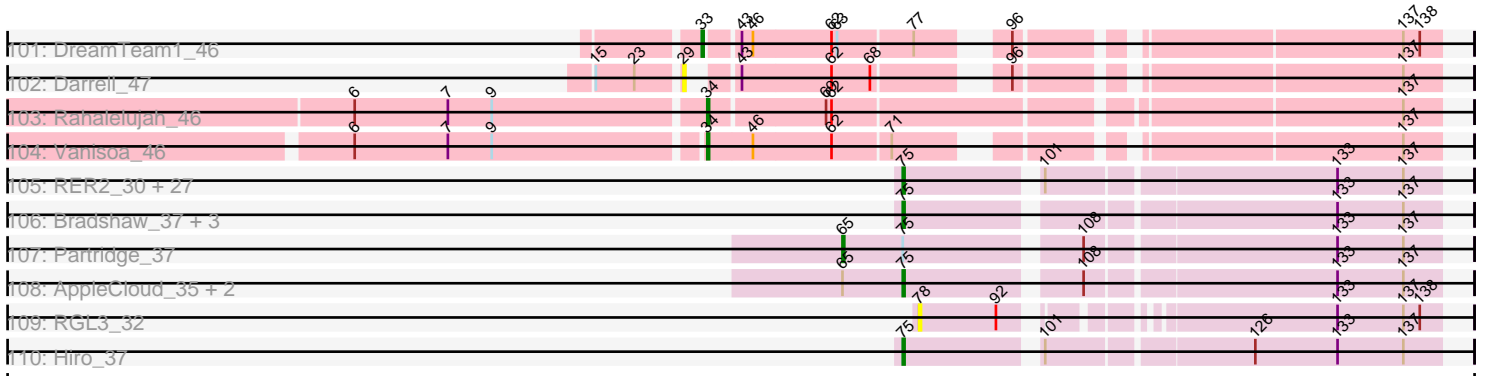
Pham 171104



Pham 171104



Pham 171104



Note: Tracks are now grouped by subcluster and scaled. Switching in subcluster is indicated by changes in track color. Track scale is now set by default to display the region 30 bp upstream of start 1 to 30 bp downstream of the last possible start. If this default region is judged to be packed too tightly with annotated starts, the track will be further scaled to only show that region of the ORF with annotated starts. This action will be indicated by adding "Zoomed" to the title. For starts, yellow indicates the location of called starts comprised solely of Glimmer/GeneMark auto-annotations, green indicates the location of called starts with at least 1 manual gene annotation.

Pham 171104 Report

This analysis was run 07/09/24 on database version 566.

Pham number 171104 has 503 members, 19 are drafts.

Phages represented in each track:

- Track 1 : Chargerpower_46
- Track 2 : Drake94_43, Trike_43, Poompha_44, Severus_43, PeaceMeal1_43, KittenMittens_42
- Track 3 : OKCentral2016_44, Chupacabra_44, Goose_45
- Track 4 : WalterMcMickey_43, Rebeuca_45, Topanga_43, Kristoff_45, Edison31_44, Twister_43
- Track 5 : Eaglepride_46
- Track 6 : RhynO_46
- Track 7 : Bachome_49, Sham4_47, Orange_47, Insomnia_48, Snape_47, Mabel_47, Munch_48, Et2Brutus_46, Fibonacci_47, Bud_47, Lucivia_48, Bowtie_48, Mulciber_47, MaCh_48, Gilberta_48, Petersenfast_46, Timothy_47, Aneem_48, Flaverint_48, Hutc2_47, Ebony_47, Jabith_48, Salz_46, TinyTimmy_46, Joselito_48
- Track 8 : Steamy_43
- Track 9 : Refuge_46
- Track 10 : Zimmer_44
- Track 11 : DarthPhader_44
- Track 12 : Pharaoh_41
- Track 13 : Phlei_36
- Track 14 : Gail_52
- Track 15 : Luchador_52, Jeeves_52
- Track 16 : SororFago_50
- Track 17 : ShayRa_51, Soups_50, Nebulosus_49, KatherineG_51, Switzerland_49, Anaysia_50, LastResort_49, Epsocamisio_48, Waits_49, Remus_49, Looper_50, ReMo_49, Battleship_50, Strosahl_49, Boohoo_50, DekHockey33_50, Oofda_50, MinecraftSteve_50, Rosalind_48, JSwag_48
- Track 18 : Nedarya_45
- Track 19 : Anon_44
- Track 20 : EagleEye_49, PainterBoy_48, Lucyedi_48
- Track 21 : 40AC_48
- Track 22 : MyraDee_42
- Track 23 : Kimona_46
- Track 24 : XianYue_46
- Track 25 : Smeagan_50, Leviathan_49
- Track 26 : Agape74_49, AbbyPaige_49, LilTurb_48, Whabigail7_48
- Track 27 : Crucio_47, Dignity_49, SweetiePie_47, SemperFi_48, Retro23_48, Georgie2_48, Dalmatian_48
- Track 28 : JoshKayV_49, CRB1_50

- Track 29 : DBQu4n_49, Pomar16_49, Tomathan_49, Kerberos_49, Duplo_49, StarStuff_49
- Track 30 : DudeLittle_46
- Track 31 : D29_46, Naji_49, D32_49
- Track 32 : Piro94_47, HarryHoudini_48, Drake55_49
- Track 33 : ChipMunk_49
- Track 34 : FiringLine_47, Power_46, QueenBeesly_47, SnapTap_47
- Track 35 : Echild_47, Benvolio_44
- Track 36 : Journey13_41
- Track 37 : EvilGenius_49
- Track 38 : KingCyrus_49
- Track 39 : LadyBird_51
- Track 40 : MissWhite_46
- Track 41 : Anthony_42
- Track 42 : OlanP_49
- Track 43 : Pembroke_50, Aglet_51, MarQuardt_50, SoYo_50, DaHudson_50, MadMarie_50, StepMih_50, BreSam8_50, PotatoSplit_52, Methuselah_47, Marie_50, BuzzBuzz_48, Soshari_52, LugYA_53, Tiffany_50, Misomonster_51, Daishi_49, MuchMore_53, Farber_50, Anubis_53, JHC117_50, Hercules11_50, Microwolf_50, Taurus_51, Fernando_50, Grif_50, Colbster_50, JenCasNa_51, Sabinator_49, LarryKay_50, Ollie_50, LBerry_51, P28Green_51, AgronaGT15_49, GtownJaz_50, Vix_50, Rummer_49, Stagni_50, KADY_50, MoneyMay_50, GingkoMaracino_50, HashRod_51, Louie6_49, Mainiac_50, Cullens_50, Malinsilva_52, Phoxy_50, Wooldri_52, Spike509_50, Sabia_50, Lilith_51, AugsMagnumOpus_53, Snickers_50, Phoebe_51, Grub_50, Dieselweasel_51, Watson_50, Bxz2_46, PGHhamlin_52
- Track 44 : Reba_50, Marius_51, HaveUMetTed_51, Groupthink_51, PurpleHaze_50, Kalb97_51, JeppNRM_51, Kalnoky_51, Pawn_50, Heliosoles_49, Phranny_51, Manu_50, PhishRPhriends_48, SoilDragon_50, Jobu08_49, ACFishhook_49, Gemma_49
- Track 45 : Giroux_47, Heathen_46, Idleandcovert_47, SaturnRing_47, Pistachio_48, Puppy_48, Scout_46, BlueBird_48, Bugatti_47, TNguyen7_47, HelDan_46
- Track 46 : Hookmount_46, Texage_45, Pocahontas_46, Popcicle_46, Noella_46, ResDef_47, Margo_46, QuinnKiro_45, Norbert_45, Panamaxus_44, Lambert1_46, Caviar_46, Veracruz_45, Todacoro_46
- Track 47 : Isca_45, JF4_46, JF2_46, MK4_46, Rockstar_46, B1_43
- Track 48 : Zetzy_49
- Track 49 : MA5_46
- Track 50 : Grum1_50
- Track 51 : Phantastic_47
- Track 52 : Fred313_46
- Track 53 : Beauxregard13_50, Penny1_51, EpicPhail_51
- Track 54 : BabyRay_46
- Track 55 : Relief_45, Melvin_48, HamSlice_45, JetBlade_46, Eapen_46, Jaykayelowell_44, Phelipe_47, Blackmoor_46, Shaka_46, Clarenza_45, Ohfah_47, Anyong_46, Thanksgivukkah_45, Baby16_46, LappelDuVide_45, Tinybot_45, Abdiel_46, Broseidon_46, Polymorphads_47, Nebs_47, CentreCat_46, Nyxis_46, Lemur_46, Morrow_47, Iracema64_47, Koreni_45, Iceman_46, Sparxx_47, Pumbaa_46, BubbleTrouble_45, Kingmustik0402_46, ICleared_46, TinaFeyge_46, LeoAvram_46, Florean_46, MeeZee_46, PeterPeter_46, Spino_45, Dhanush_46, Bombshell_46, Pipcraft_44, NorthStar_45, Ruin_46, Cintron_45, Alberto7_47, Connomayer_46, KFPoly_45, Scamp_46, Peaches_46, Eros_46, LittleGuy_46, Holli_45, Citius_46, Palestino_45, Phontbonne_46, Kamy_46, OKaNui_46, Ulysses_45, Chaph_46, TygerBlood_46, TroyPia_47, Millski_45, Caelakin_46,

LittleB_46, Medusa_46, Sabertooth_46, Wizard007_46, Bartimeaus_46, Skipitt_45, Lunsford_47, Druantia_46, Eurydice_47, Burger_44, Happiness_45, Roosevelt_45, Albee_46, Maxo_47, Flux_46, Eris_45, Eagle_46, Commander_46, TiroTheta9_46, Lorenzo_46, YoSam321_46, Taquarus_46

- Track 56 : Morpher26_45, Cici_45, Xena_44, Perplexer_45, Achebe_44, Badger_44, Bumblebee11_44, AbbysRanger_45, Backyardigan_44, PetiteSangsue_45, Wile_45, Katalie136_45
- Track 57 : Datway_45
- Track 58 : Deano_45
- Track 59 : Stink_46, AvatarAhPeg_45, Miramae_45
- Track 60 : BangNhom_47, SheldonCooper_48, Kremtemulon_44, LHTSCC_48, Obama12_47, ChampagnePapi_48, Cerulean_47
- Track 61 : Wander_46, Cocoaberry_46, Gadost_46, Avle17_46, NotAPhaseMom_46, Bruiser_45, Houdini22_46, BellusTerra_47, Mazhar510_46, Camperdownii_44, Kyee_46, Funston_45, JoongJeon_45, Phacado_46, Nemo27_46, Maverick_46
- Track 62 : Noelle_46
- Track 63 : Cindaradix_43
- Track 64 : DirtyDunning_45, Phighter1804_46
- Track 65 : LochMonster_47, Romney_46, Wilbur_46
- Track 66 : Mundrea_45
- Track 67 : Arturo_45, Kratak_46
- Track 68 : Shygu2_45
- Track 69 : Stasia_45
- Track 70 : Bluefalcon_39, MarysWell_39
- Track 71 : George_40, HuhtaEnerson15_41, Milcery_41, Micasa_41, LittleCherry_41, Tarynearal_39, Bonamassa_41, Dublin_39, Swirley_43
- Track 72 : Discoknowium_39, Lev2_40, Aragog_39, AgentM_39, Archetta_40, Phlorence_39, ForGetIt_40, Jovo_40, PickleBack_40
- Track 73 : Coog_40, Midas2_40
- Track 74 : Naca_42
- Track 75 : EITiger69_42, Scorpia_44, Chadwick_44
- Track 76 : SydNat_42, Ghoulboy_42, Zolita_41
- Track 77 : Airmid_41
- Track 78 : Conspiracy_40, Tiger_39, Theia_38
- Track 79 : Cuco_40
- Track 80 : PetterN_44
- Track 81 : Jabiru_41
- Track 82 : UnionJack_41
- Track 83 : Benedict_43
- Track 84 : HINdeR_43
- Track 85 : PP_50
- Track 86 : DroogsArmy_43, Timshel_45
- Track 87 : Sheen_47
- Track 88 : Groundhog_43, Saintus_39, Astro_44, NearlyHeadless_44
- Track 89 : Phillis_46
- Track 90 : Stephig9_45
- Track 91 : Roary_45, Smeadley_45, Dixon_44, Expelliarmus_44, Danforth_44
- Track 92 : EmyBug_46, PackMan_46, Scherzo_47, Fayely_47, Phaeder_47, Eidsmoe_47, Myxus_47, Ugenie5_44, Conquerage_47, Qobbit_47, Phonnegut_47, Pioneer_47, ExplosioNervosa_47, HortumSL17_47, Tubs_47, Spouty_45, Priya_47, Beemo_47, Aliter_47, Alma_47, Catalina_48
- Track 93 : Charm_46

- Track 94 : BogosyJay_46, Maminiaina_46
- Track 95 : LoneWolf_47
- Track 96 : Yecey3_48
- Track 97 : Keziacharles14_47
- Track 98 : SheaKeira_46
- Track 99 : Arissanae_46
- Track 100 : Elephantoon_46
- Track 101 : DreamTeam1_46
- Track 102 : Darrell_47
- Track 103 : Rahalelujah_46
- Track 104 : Vanisoa_46
- Track 105 : RER2_30, BobbyDazzler_37, PhailMary_36, Lillie_37, UhSalsa_37, Shuman_37, Bryce_37, Natosaleda_37, Erik_37, Nancinator_37, Yogi_37, Jester_37, RexFury_37, Rhodalysa_37, Rasputin_37, Espica_37, Phrankenstein_37, Belenaria_37, Gollum_37, Harlequin_37, Swann_37, CosmicSans_37, TWAMP_37, Alpacados_36, Takoda_37, Yoncess_37, AngryOrchard_35, Bonanza_37
- Track 106 : Bradshaw_37, StCroix_37, Naiad_37, Alatin_37
- Track 107 : Partridge_37
- Track 108 : AppleCloud_35, Krishelle_37, Dinger_37
- Track 109 : RGL3_32
- Track 110 : Hiro_37

Summary of Final Annotations (See graph section above for start numbers):

The start number called the most often in the published annotations is 59, it was called in 135 of the 484 non-draft genes in the pham.

Genes that call this "Most Annotated" start:

- AbbysRanger_45, Abdiel_46, Achebe_44, Albee_46, Alberto7_47, Annyong_46, Arturo_45, AvatarAhPeg_45, Avle17_46, Baby16_46, Backyardigan_44, Badger_44, BangNhom_47, Bartimeaus_46, BellusTerra_47, Blackmoor_46, Bombshell_46, Broseidon_46, Bruiser_45, BubbleTrouble_45, Bumblebee11_44, Burger_44, Caelakin_46, Camperdownii_44, CentreCat_46, Cerulean_47, ChampagnePapi_48, Chaph_46, Cici_45, Cindaradix_43, Cintron_45, Citius_46, Clarenza_45, Cocoaberry_46, Commander_46, Connomayer_46, Datway_45, Deano_45, Dhanush_46, DirtyDunning_45, Druantia_46, Eagle_46, Eapen_46, Eris_45, Eros_46, Eurydice_47, Florean_46, Flux_46, Funston_45, Gadost_46, HamSlice_45, Happiness_45, Holli_45, Houdini22_46, ICleared_46, Iceman_46, Iracema64_47, Jaykayelowell_44, JetBlade_46, JoongJeon_45, KFPoly_45, Kampy_46, Katalie136_45, Kingmustik0402_46, Koreni_45, Kratark_46, Kremtemulon_44, Kyee_46, LHTSCC_48, LappelDuVide_45, Lemur_46, LeoAvram_46, LittleB_46, LittleGuy_46, LochMonster_47, Lorenzo_46, Lunsford_47, Maverick_46, Maxo_47, Mazhar510_46, Medusa_46, MeeZee_46, Melvin_48, Millski_45, Miramae_45, Morpher26_45, Morrow_47, Mundrea_45, Nebs_47, Nemo27_46, Noelle_46, NorthStar_45, NotAPhaseMom_46, Nyxis_46, OKaNui_46, Obama12_47, Ohfah_47, Palestino_45, Peaches_46, Perplexer_45, PeterPeter_46, PetiteSangsue_45, Phacado_46, Phelipe_47, Phighter1804_46, Phontbonne_46, Pipcraft_44, Polymorphads_47, Pumbaa_46, Relief_45, Romney_46, Roosevelt_45, Ruin_46, Sabertooth_46, Scamp_46, Shaka_46, SheldonCooper_48, Shygu2_45, Skipitt_45, Sparxx_47, Spino_45, Stasia_45, Stink_46, Taquarus_46, Thanksgiving_45,

TinaFeyge_46, Tinybot_45, TiroTheta9_46, TroyPia_47, TygerBlood_46, Ulysses_45, Wander_46, Wilbur_46, Wile_45, Wizard007_46, Xena_44, YoSam321_46,

Genes that have the "Most Annotated" start but do not call it:

-

Genes that do not have the "Most Annotated" start:

- 40AC_48, ACFishhook_49, AbbyPaige_49, Agape74_49, AgentM_39, Aglet_51, AgronaGT15_49, Airmid_41, Alatin_37, Aliter_47, Alma_47, Alpacados_36, Anaysia_50, Aneem_48, AngryOrchard_35, Anon_44, Anthony_42, Anubis_53, AppleCloud_35, Aragog_39, Archetta_40, Arissanae_46, Astro_44, AugsMagnumOpus_53, B1_43, BabyRay_46, Bachome_49, Battleship_50, Beauxregard13_50, Beemo_47, Belenaria_37, Benedict_43, Benvolio_44, BlueBird_48, Bluefalcon_39, BobbyDazzler_37, BogosyJay_46, Bonamassa_41, Bonanza_37, Boohoo_50, Bowtie_48, Bradshaw_37, BreSam8_50, Bryce_37, Bud_47, Bugatti_47, BuzzBuzz_48, Bxz2_46, CRB1_50, Catalina_48, Caviar_46, Chadwick_44, Chargerpower_46, Charm_46, ChipMunk_49, Chupacabra_44, Colbster_50, Conquerage_47, Conspiracy_40, Coog_40, CosmicSans_37, Crucio_47, Cuco_40, Cullens_50, D29_46, D32_49, DBQu4n_49, DaHudson_50, Daishi_49, Dalmatian_48, Danforth_44, Darrell_47, DARTHPhader_44, DekHockey33_50, Dieselweasel_51, Dignity_49, Dinger_37, Discoknowium_39, Dixon_44, Drake55_49, Drake94_43, DreamTeam1_46, DroogsArmy_43, Dublin_39, DudeLittle_46, Duplo_49, EagleEye_49, Eaglepride_46, Ebony_47, Echild_47, Edison31_44, Eidsmoe_47, ElTiger69_42, Elephantoon_46, EmyBug_46, EpicPhail_51, Epsocamisio_48, Erik_37, Espica_37, Et2Brutus_46, EvilGenius_49, Expelliarmus_44, ExplosioNervosa_47, Farber_50, Fayely_47, Fernando_50, Fibonacci_47, FiringLine_47, Flaverint_48, ForGetIt_40, Fred313_46, Gail_52, Gemma_49, George_40, Georgie2_48, Ghoulyboy_42, Gilberta_48, GingkoMaracino_50, Giroux_47, Gollum_37, Goose_45, Grif_50, Groundhog_43, Groupthink_51, Grub_50, Grum1_50, GtownJaz_50, HINDeR_43, Harlequin_37, HarryHoudini_48, HashRod_51, HaveUMetTed_51, Heathen_46, HelDan_46, Heliosoles_49, Hercules11_50, Hiro_37, Hookmount_46, HortumSL17_47, HuhtaEnerson15_41, Hutc2_47, Idleandcovert_47, Insomnia_48, Isca_45, JF2_46, JF4_46, JHC117_50, JSwag_48, Jabiru_41, Jabith_48, Jeeves_52, JenCasNa_51, JeppNRM_51, Jester_37, Jobu08_49, Joselito_48, JoshKayV_49, Journey13_41, Jovo_40, KADY_50, Kalb97_51, Kalnoky_51, KatherineG_51, Kerberos_49, Keziacharles14_47, Kimona_46, KingCyrus_49, KittenMittens_42, Krishelle_37, Kristoff_45, LBerry_51, LadyBird_51, Lambert1_46, LarryKay_50, LastResort_49, Lev2_40, Leviathan_49, LilTurb_48, Lilith_51, Lillie_37, LittleCherry_41, LoneWolf_47, Looper_50, Louie6_49, Luchador_52, Lucivia_48, Lucyedi_48, LugYA_53, MA5_46, MK4_46, MaCh_48, Mabel_47, MadMarie_50, Mainiac_50, Malinsilva_52, Maminiaina_46, Manu_50, MarQuardt_50, Margo_46, Marie_50, Marius_51, MarysWell_39, Methuselah_47, Micasa_41, Microwolf_50, Midas2_40, Milcery_41, MinecraftSteve_50, Misomonster_51, MissWhite_46, MoneyMay_50, MuchMore_53, Mulciber_47, Munch_48, MyraDee_42, Myxus_47, Naca_42, Naiad_37, Naji_49, Nancinator_37, Natosaleda_37, NearlyHeadless_44, Nebulosus_49, Nedarya_45, Noella_46, Norbert_45, OKCentral2016_44, OlanP_49, Ollie_50, Oofda_50, Orange_47, P28Green_51, PGHhamlin_52, PP_50, PackMan_46, PainterBoy_48, Panamaxus_44, Partridge_37, Pawn_50, PeaceMeal1_43, Pembroke_50, Penny1_51, Petersenfast_46, PetterN_44, Phaeder_47, PhailMary_36, Phantastic_47, Pharaoh_41, Phillis_46, PhishRPhriends_48, Phlei_36, Phlorence_39, Phoebe_51, Phonnegut_47, Phoxy_50, Phrankenstein_37, Phranny_51, PickleBack_40, Pioneer_47, Piro94_47,

Pistachio_48, Pocahontas_46, Pomar16_49, Poompha_44, Popcicle_46, PotatoSplit_52, Power_46, Priya_47, Puppy_48, PurpleHaze_50, Qobbit_47, QueenBeesly_47, QuinnKiro_45, RER2_30, RGL3_32, Rahalelujah_46, Rasputin_37, ReMo_49, Reba_50, Rebeuca_45, Refuge_46, Remus_49, ResDef_47, Retro23_48, RexFury_37, Rhodalysa_37, RhynO_46, Roary_45, Rockstar_46, Rosalind_48, Rummer_49, Sabia_50, Sabinator_49, Saintus_39, Salz_46, SaturnRing_47, Scherzo_47, Scorpia_44, Scout_46, SemperFi_48, Severus_43, Sham4_47, ShayRa_51, Sheakeira_46, Sheen_47, Shuman_37, Smeadley_45, Smeagan_50, SnapTap_47, Snape_47, Snickers_50, SoYo_50, SoilDragon_50, SororFago_50, Soshari_52, Soups_50, Spike509_50, Spouty_45, StCroix_37, Stagni_50, StarStuff_49, Steamy_43, StepMih_50, StepHig9_45, Strosahl_49, Swann_37, SweetiePie_47, Swirley_43, Switzerland_49, SydNat_42, TNguyen7_47, TWAMP_37, Takoda_37, Tarynearal_39, Taurus_51, Texage_45, Theia_38, Tiffany_50, Tiger_39, Timothy_47, Timshel_45, TinyTimmy_46, Todacoro_46, Tomathan_49, Topanga_43, Trike_43, Tubs_47, Twister_43, Ugenie5_44, UhSalsa_37, UnionJack_41, Vanisoa_46, Veracruz_45, Vix_50, Waits_49, WalterMcMickey_43, Watson_50, Whabigail7_48, Wooldri_52, XianYue_46, Yecey3_48, Yogi_37, Yoncess_37, Zetzy_49, Zimmer_44, Zolita_41,

Summary by start number:

Start 14:

- Found in 29 of 503 (5.8%) of genes in pham
- Manual Annotations of this start: 28 of 484
- Called 100.0% of time when present
- Phage (with cluster) where this start called: AbbyPaige_49 (A2), Agape74_49 (A2), Benvolio_44 (A2), CRB1_50 (A2), ChipMunk_49 (A2), Crucio_47 (A2), Dalmatian_48 (A2), Dignity_49 (A2), Drake55_49 (A2), DudeLittle_46 (A2), Echild_47 (A2), EvilGenius_49 (A2), FiringLine_47 (A2), Georgie2_48 (A2), HarryHoudini_48 (A2), JoshKayV_49 (A2), KingCyrus_49 (A2), LadyBird_51 (A2), Leviathan_49 (A2), LilTurb_48 (A2), Piro94_47 (A2), Power_46 (A2), QueenBeesly_47 (A2), Retro23_48 (A2), SemperFi_48 (A2), Smeagan_50 (A2), SnapTap_47 (A2), SweetiePie_47 (A2), Whabigail7_48 (A2),

Start 16:

- Found in 1 of 503 (0.2%) of genes in pham
- No Manual Annotations of this start.
- Called 100.0% of time when present
- Phage (with cluster) where this start called: 40AC_48 (A17),

Start 21:

- Found in 1 of 503 (0.2%) of genes in pham
- Manual Annotations of this start: 1 of 484
- Called 100.0% of time when present
- Phage (with cluster) where this start called: Kimona_46 (A19),

Start 22:

- Found in 1 of 503 (0.2%) of genes in pham
- Manual Annotations of this start: 1 of 484
- Called 100.0% of time when present
- Phage (with cluster) where this start called: PP_50 (A7),

Start 26:

- Found in 9 of 503 (1.8%) of genes in pham
- Manual Annotations of this start: 9 of 484
- Called 100.0% of time when present
- Phage (with cluster) where this start called: D29_46 (A2), D32_49 (A2), DBQu4n_49 (A2), Duplo_49 (A2), Kerberos_49 (A2), Naji_49 (A2), Pomar16_49 (A2), StarStuff_49 (A2), Tomathan_49 (A2),

Start 29:

- Found in 7 of 503 (1.4%) of genes in pham
- Manual Annotations of this start: 5 of 484
- Called 85.7% of time when present
- Phage (with cluster) where this start called: Arissanee_46 (A9), Darrell_47 (A9), EagleEye_49 (A16), Elephantoon_46 (A9), Lucyedi_48 (A16), PainterBoy_48 (A16),

Start 30:

- Found in 1 of 503 (0.2%) of genes in pham
- Manual Annotations of this start: 1 of 484
- Called 100.0% of time when present
- Phage (with cluster) where this start called: Yecey3_48 (A9),

Start 32:

- Found in 1 of 503 (0.2%) of genes in pham
- Manual Annotations of this start: 1 of 484
- Called 100.0% of time when present
- Phage (with cluster) where this start called: LoneWolf_47 (A9),

Start 33:

- Found in 3 of 503 (0.6%) of genes in pham
- Manual Annotations of this start: 3 of 484
- Called 100.0% of time when present
- Phage (with cluster) where this start called: Charm_46 (A9), DreamTeam1_46 (A9), Journey13_41 (A2),

Start 34:

- Found in 58 of 503 (11.5%) of genes in pham
- Manual Annotations of this start: 54 of 484
- Called 98.3% of time when present
- Phage (with cluster) where this start called: Aliter_47 (A9), Alma_47 (A9), Aneem_48 (A11), Bachome_49 (A11), Beemo_47 (A9), BogosyJay_46 (A9), Bowtie_48 (A11), Bud_47 (A11), Catalina_48 (A9), Conquerage_47 (A9), DARTHPhader_44 (A12), Ebony_47 (A11), Eidsmoe_47 (A9), EmyBug_46 (A9), Et2Brutus_46 (A11), ExplosioNervosa_47 (A9), Fayely_47 (A9), Fibonacci_47 (A11), Flaverint_48 (A11), Gilberta_48 (A11), HortumSL17_47 (A9), Hutc2_47 (A11), Insomnia_48 (A11), Jabith_48 (A11), Joselito_48 (A11), Keziacharles14_47 (A9), Lucivia_48 (A11), MaCh_48 (A11), Mabel_47 (A11), Maminiaiina_46 (A9), MissWhite_46 (A2), Mulciber_47 (A11), Munch_48 (A11), Myxus_47 (A9), Orange_47 (A11), PackMan_46 (A9), Petersenfast_46 (A11), Phaeder_47 (A9), Pharaoh_41 (A12), Phonnegut_47 (A9), Pioneer_47 (A9), Priya_47 (A9), Qobbit_47 (A9), Rahalelujah_46 (A9), Refuge_46 (A12), Salz_46 (A11), Scherzo_47 (A9), Sham4_47 (A11), SheaKeira_46 (A9), Snape_47 (A11), Spouty_45 (A9), Timothy_47 (A11), TinyTimmy_46 (A11), Tubs_47 (A9), Ugenie5_44 (A9), Vanisoa_46 (A9), Zimmer_44 (A12),

Start 35:

- Found in 5 of 503 (1.0%) of genes in pham
- Manual Annotations of this start: 5 of 484
- Called 100.0% of time when present
- Phage (with cluster) where this start called: Chargerpower_46 (A), Gail_52 (A14), Jeeves_52 (A14), Luchador_52 (A14), SororFago_50 (A14),

Start 37:

- Found in 2 of 503 (0.4%) of genes in pham
- Manual Annotations of this start: 1 of 484
- Called 50.0% of time when present
- Phage (with cluster) where this start called: XianYue_46 (A2),

Start 44:

- Found in 1 of 503 (0.2%) of genes in pham
- Manual Annotations of this start: 1 of 484
- Called 100.0% of time when present
- Phage (with cluster) where this start called: Eaglepride_46 (A10),

Start 45:

- Found in 16 of 503 (3.2%) of genes in pham
- Manual Annotations of this start: 16 of 484
- Called 100.0% of time when present
- Phage (with cluster) where this start called: Chupacabra_44 (A10), Drake94_43 (A10), Edison31_44 (A10), Goose_45 (A10), KittenMittens_42 (A10), Kristoff_45 (A10), OKCentral2016_44 (A10), PeaceMeal1_43 (A10), Poompha_44 (A10), Rebeuca_45 (A10), RhynO_46 (A10), Severus_43 (A10), Topanga_43 (A10), Trike_43 (A10), Twister_43 (A10), WalterMcMickey_43 (A10),

Start 48:

- Found in 1 of 503 (0.2%) of genes in pham
- Manual Annotations of this start: 1 of 484
- Called 100.0% of time when present
- Phage (with cluster) where this start called: Steamy_43 (A12),

Start 51:

- Found in 22 of 503 (4.4%) of genes in pham
- No Manual Annotations of this start.
- Called 4.5% of time when present
- Phage (with cluster) where this start called: Phlei_36 (A13),

Start 57:

- Found in 1 of 503 (0.2%) of genes in pham
- Manual Annotations of this start: 1 of 484
- Called 100.0% of time when present
- Phage (with cluster) where this start called: Nedarya_45 (A15),

Start 59:

- Found in 137 of 503 (27.2%) of genes in pham
- Manual Annotations of this start: 135 of 484
- Called 100.0% of time when present
- Phage (with cluster) where this start called: AbbysRanger_45 (A4), Abdiel_46 (A4), Achebe_44 (A4), Albee_46 (A4), Alberto7_47 (A4), Annyong_46 (A4), Arturo_45

(A4), AvatarAhPeg_45 (A4), Avle17_46 (A4), Baby16_46 (A4), Backyardigan_44 (A4), Badger_44 (A4), BangNhom_47 (A4), Bartimeaus_46 (A4), BellusTerra_47 (A4), Blackmoor_46 (A4), Bombshell_46 (A4), Broseidon_46 (A4), Bruiser_45 (A4), BubbleTrouble_45 (A4), Bumblebee11_44 (A4), Burger_44 (A4), Caelakin_46 (A4), Camperdownii_44 (A4), CentreCat_46 (A4), Cerulean_47 (A4), ChampagnePapi_48 (A4), Chaph_46 (A4), Cici_45 (A4), Cindaradix_43 (A4), Cintron_45 (A4), Citius_46 (A4), Clarenza_45 (A4), Cocoaberry_46 (A4), Commander_46 (A4), Connomayer_46 (A4), Datway_45 (A4), Deano_45 (A4), Dhanush_46 (A4), DirtyDunning_45 (A4), Druantia_46 (A4), Eagle_46 (A4), Eapen_46 (A4), Eris_45 (A4), Eros_46 (A4), Eurydice_47 (A4), Florean_46 (A4), Flux_46 (A4), Funston_45 (A4), Gadost_46 (A4), HamSlice_45 (A4), Happiness_45 (A4), Holli_45 (A4), Houdini22_46 (A4), ICleared_46 (A4), Iceman_46 (A4), Iracema64_47 (A4), Jaykayelowell_44 (A4), JetBlade_46 (A4), JoongJeon_45 (A4), KFPoly_45 (A4), Kampy_46 (A4), Katalie136_45 (A4), Kingmustik0402_46 (A4), Koreni_45 (A4), Kratark_46 (A4), Kremtemulon_44 (A4), Kyee_46 (A4), LHTSCC_48 (A4), LappelDuVide_45 (A4), Lemur_46 (A4), LeoAvram_46 (A4), LittleB_46 (A4), LittleGuy_46 (A4), LochMonster_47 (A4), Lorenzo_46 (A4), Lunsford_47 (A4), Maverick_46 (A4), Maxo_47 (A4), Mazhar510_46 (A4), Medusa_46 (A4), MeeZee_46 (A4), Melvin_48 (A4), Millski_45 (A4), Miramae_45 (A4), Morpher26_45 (A4), Morrow_47 (A4), Mundrea_45 (A4), Nebs_47 (A4), Nemo27_46 (A4), Noelle_46 (A4), NorthStar_45 (A4), NotAPhaseMom_46 (A4), Nyxis_46 (A4), OKaNui_46 (A4), Obama12_47 (A4), Ohfah_47 (A4), Palestino_45 (A4), Peaches_46 (A4), Perplexer_45 (A4), PeterPeter_46 (A4), PetiteSangsue_45 (A4), Phacado_46 (A4), Felipe_47 (A4), Phighter1804_46 (A4), Phontbonne_46 (A4), Pipcraft_44 (A4), Polymorphads_47 (A4), Pumbaa_46 (A4), Relief_45 (A4), Romney_46 (A4), Roosevelt_45 (A4), Ruin_46 (A4), Sabertooth_46 (A4), Scamp_46 (A4), Shaka_46 (A4), SheldonCooper_48 (A4), Shygu2_45 (A4), Skipitt_45 (A4), Sparxx_47 (A4), Spino_45 (A4), Stasia_45 (A4), Stink_46 (A4), Taquarus_46 (A4), Thanksgivukkah_45 (A4), TinaFeyge_46 (A4), Tinybot_45 (A4), TiroTheta9_46 (A4), TroyPia_47 (A4), TygerBlood_46 (A4), Ulysses_45 (A4), Wander_46 (A4), Wilbur_46 (A4), Wile_45 (A4), Wizard007_46 (A4), Xena_44 (A4), YoSam321_46 (A4),

Start 61:

- Found in 1 of 503 (0.2%) of genes in pham
- Manual Annotations of this start: 1 of 484
- Called 100.0% of time when present
- Phage (with cluster) where this start called: Anthony_42 (A20),

Start 65:

- Found in 6 of 503 (1.2%) of genes in pham
- Manual Annotations of this start: 1 of 484
- Called 16.7% of time when present
- Phage (with cluster) where this start called: Partridge_37 (CA),

Start 69:

- Found in 26 of 503 (5.2%) of genes in pham
- Manual Annotations of this start: 23 of 484
- Called 92.3% of time when present
- Phage (with cluster) where this start called: Anaysia_50 (A15), Anon_44 (A15), Battleship_50 (A15), Boohoo_50 (A15), DekHockey33_50 (A15), DroogsArmy_43 (A7), Epsocamisio_48 (A15), HINdeR_43 (A7), JSwag_48 (A15), KatherineG_51 (A15), LastResort_49 (A15), Looper_50 (A15), MinecraftSteve_50 (A15), Nebulosus_49 (A15), Oofda_50 (A15), ReMo_49 (A15), Remus_49 (A15),

Rosalind_48 (A15), ShayRa_51 (A15), Soups_50 (A15), Strosahl_49 (A15), Switzerland_49 (A15), Timshel_45 (A7), Waits_49 (A15),

Start 70:

- Found in 11 of 503 (2.2%) of genes in pham
- Manual Annotations of this start: 11 of 484
- Called 100.0% of time when present
- Phage (with cluster) where this start called: Astro_44 (A8), Danforth_44 (A8), Dixon_44 (A8), Expelliarmus_44 (A8), Groundhog_43 (A8), NearlyHeadless_44 (A8), Phillis_46 (A8), Roary_45 (A8), Saintus_39 (A8), Smeadley_45 (A8), StepHig9_45 (A8),

Start 71:

- Found in 7 of 503 (1.4%) of genes in pham
- Manual Annotations of this start: 2 of 484
- Called 28.6% of time when present
- Phage (with cluster) where this start called: MyraDee_42 (A18), Sheen_47 (A7),

Start 73:

- Found in 35 of 503 (7.0%) of genes in pham
- Manual Annotations of this start: 31 of 484
- Called 100.0% of time when present
- Phage (with cluster) where this start called: B1_43 (A3), BabyRay_46 (A3), BlueBird_48 (A3), Bugatti_47 (A3), Caviar_46 (A3), Fred313_46 (A3), Giroux_47 (A3), Heathen_46 (A3), HeiDan_46 (A3), Hookmount_46 (A3), Idleandcovert_47 (A3), Isca_45 (A3), JF2_46 (A3), JF4_46 (A3), Lambert1_46 (A3), MA5_46 (A3), MK4_46 (A3), Margo_46 (A3), Noella_46 (A3), Norbert_45 (A3), Panamaxus_44 (A3), Phantastic_47 (A3), Pistachio_48 (A3), Pocahontas_46 (A3), Popcicle_46 (A3), Puppy_48 (A3), QuinnKiro_45 (A3), ResDef_47 (A3), Rockstar_46 (A3), SaturnRing_47 (A3), Scout_46 (A3), TNguyen7_47 (A3), Texage_45 (A3), Todacoro_46 (A3), Veracruz_45 (A3),

Start 75:

- Found in 37 of 503 (7.4%) of genes in pham
- Manual Annotations of this start: 35 of 484
- Called 97.3% of time when present
- Phage (with cluster) where this start called: Alatin_37 (CA), Alpacados_36 (CA), AngryOrchard_35 (CA), AppleCloud_35 (CA), Belenaria_37 (CA), BobbyDazzler_37 (CA), Bonanza_37 (CA), Bradshaw_37 (CA), Bryce_37 (CA), CosmicSans_37 (CA), Dinger_37 (CA), Erik_37 (CA), Espica_37 (CA), Gollum_37 (CA), Harlequin_37 (CA), Hiro_37 (CA), Jester_37 (CA), Krishelle_37 (CA), Lillie_37 (CA), Naiad_37 (CA), Nancinator_37 (CA), Natosaleda_37 (CA), PhailMary_36 (CA), PhrankenStein_37 (CA), RER2_30 (CA), Rasputin_37 (CA), RexFury_37 (CA), Rhodalysa_37 (CA), Shuman_37 (CA), StCroix_37 (CA), Swann_37 (CA), TWAMP_37 (CA), Takoda_37 (CA), UhSalsa_37 (CA), Yogi_37 (CA), Yoncess_37 (CA),

Start 78:

- Found in 7 of 503 (1.4%) of genes in pham
- No Manual Annotations of this start.
- Called 14.3% of time when present
- Phage (with cluster) where this start called: RGL3_32 (CA),

Start 84:

- Found in 47 of 503 (9.3%) of genes in pham
- Manual Annotations of this start: 32 of 484
- Called 70.2% of time when present
- Phage (with cluster) where this start called: AgentM_39 (A5), Airmid_41 (A5), Aragog_39 (A5), Archetta_40 (A5), Benedict_43 (A5), Bluefalcon_39 (A5), Bonamassa_41 (A5), Chadwick_44 (A5), Cuco_40 (A5), Discoknowium_39 (A5), Dublin_39 (A5), ElTiger69_42 (A5), ForGetIt_40 (A5), George_40 (A5), Ghouboy_42 (A5), HuhtaEnerson15_41 (A5), Jabiru_41 (A5), Jovo_40 (A5), Lev2_40 (A5), LittleCherry_41 (A5), MarysWell_39 (A5), Micasa_41 (A5), Milcery_41 (A5), Naca_42 (A5), PetterN_44 (A5), Phlorence_39 (A5), PickleBack_40 (A5), Scorpia_44 (A5), Swirley_43 (A5), SydNat_42 (A5), Tarynearl_39 (A5), UnionJack_41 (A5), Zolita_41 (A5),

Start 85:

- Found in 83 of 503 (16.5%) of genes in pham
- Manual Annotations of this start: 80 of 484
- Called 98.8% of time when present
- Phage (with cluster) where this start called: ACFishhook_49 (A3), Aglet_51 (A3), AgronaGT15_49 (A3), Anubis_53 (A3), AugsMagnumOpus_53 (A3), Beauxregard13_50 (A3), BreSam8_50 (A3), BuzzBuzz_48 (A3), Bxz2_46 (A3), Colbster_50 (A3), Cullens_50 (A3), DaHudson_50 (A3), Daishi_49 (A3), Dieselweasel_51 (A3), EpicPhail_51 (A3), Farber_50 (A3), Fernando_50 (A3), Gemma_49 (A3), GingkoMaracino_50 (A3), Grif_50 (A3), Groupthink_51 (A3), Grub_50 (A3), Grum1_50 (A3), GtownJaz_50 (A3), HashRod_51 (A3), HaveUMetTed_51 (A3), Heliosoles_49 (A3), Hercules11_50 (A3), JHC117_50 (A3), JenCasNa_51 (A3), JeppNRM_51 (A3), Jobu08_49 (A3), KADY_50 (A3), Kalb97_51 (A3), Kalnoky_51 (A3), LBerry_51 (A3), LarryKay_50 (A3), Lilith_51 (A3), Louie6_49 (A3), LugYA_53 (A3), MadMarie_50 (A3), Mainiac_50 (A3), Malinsilva_52 (A3), Manu_50 (A3), MarQuardt_50 (A3), Marie_50 (A3), Marius_51 (A3), Methuselah_47 (A3), Microwolf_50 (A3), Misomonster_51 (A3), MoneyMay_50 (A3), MuchMore_53 (A3), OlanP_49 (A3), Ollie_50 (A3), P28Green_51 (A3), PGHhamlin_52 (A3), Pawn_50 (A3), Pembroke_50 (A3), Penny1_51 (A3), PhishRPhriends_48 (A3), Phoebe_51 (A3), Phoxy_50 (A3), Phranny_51 (A3), PotatoSplit_52 (A3), PurpleHaze_50 (A3), Reba_50 (A3), Rummer_49 (A3), Sabia_50 (A3), Sabinator_49 (A3), Snickers_50 (A3), SoYo_50 (A3), SoilDragon_50 (A3), Soshari_52 (A3), Spike509_50 (A3), Stagni_50 (A3), StepMih_50 (A3), Taurus_51 (A3), Tiffany_50 (A3), Vix_50 (A3), Watson_50 (A3), Wooldri_52 (A3), Zetzy_49 (A3),

Start 89:

- Found in 38 of 503 (7.6%) of genes in pham
- Manual Annotations of this start: 3 of 484
- Called 7.9% of time when present
- Phage (with cluster) where this start called: Conspiracy_40 (A5), Theia_38 (A5), Tiger_39 (A5),

Start 105:

- Found in 38 of 503 (7.6%) of genes in pham
- Manual Annotations of this start: 2 of 484
- Called 5.3% of time when present
- Phage (with cluster) where this start called: Coog_40 (A5), Midas2_40 (A5),

Summary by clusters:

There are 20 clusters represented in this pham: A15, A14, A17, A16, A11, A10, A13, A12, CA, A19, A18, A20, A3, A2, A5, A4, A7, A9, A8, A,

Info for manual annotations of cluster A:

- Start number 35 was manually annotated 1 time for cluster A.

Info for manual annotations of cluster A10:

- Start number 44 was manually annotated 1 time for cluster A10.
- Start number 45 was manually annotated 16 times for cluster A10.

Info for manual annotations of cluster A11:

- Start number 34 was manually annotated 23 times for cluster A11.

Info for manual annotations of cluster A12:

- Start number 34 was manually annotated 4 times for cluster A12.
- Start number 48 was manually annotated 1 time for cluster A12.

Info for manual annotations of cluster A14:

- Start number 35 was manually annotated 4 times for cluster A14.

Info for manual annotations of cluster A15:

- Start number 57 was manually annotated 1 time for cluster A15.
- Start number 69 was manually annotated 20 times for cluster A15.

Info for manual annotations of cluster A16:

- Start number 29 was manually annotated 3 times for cluster A16.

Info for manual annotations of cluster A18:

- Start number 71 was manually annotated 1 time for cluster A18.

Info for manual annotations of cluster A19:

- Start number 21 was manually annotated 1 time for cluster A19.

Info for manual annotations of cluster A2:

- Start number 14 was manually annotated 28 times for cluster A2.
- Start number 26 was manually annotated 9 times for cluster A2.
- Start number 33 was manually annotated 1 time for cluster A2.
- Start number 34 was manually annotated 1 time for cluster A2.
- Start number 37 was manually annotated 1 time for cluster A2.

Info for manual annotations of cluster A20:

- Start number 61 was manually annotated 1 time for cluster A20.

Info for manual annotations of cluster A3:

- Start number 73 was manually annotated 31 times for cluster A3.
- Start number 85 was manually annotated 80 times for cluster A3.

Info for manual annotations of cluster A4:

- Start number 59 was manually annotated 135 times for cluster A4.

Info for manual annotations of cluster A5:

- Start number 84 was manually annotated 32 times for cluster A5.
- Start number 89 was manually annotated 3 times for cluster A5.
- Start number 105 was manually annotated 2 times for cluster A5.

Info for manual annotations of cluster A7:

- Start number 22 was manually annotated 1 time for cluster A7.
- Start number 69 was manually annotated 3 times for cluster A7.
- Start number 71 was manually annotated 1 time for cluster A7.

Info for manual annotations of cluster A8:

- Start number 70 was manually annotated 11 times for cluster A8.

Info for manual annotations of cluster A9:

- Start number 29 was manually annotated 2 times for cluster A9.
- Start number 30 was manually annotated 1 time for cluster A9.
- Start number 32 was manually annotated 1 time for cluster A9.
- Start number 33 was manually annotated 2 times for cluster A9.
- Start number 34 was manually annotated 26 times for cluster A9.

Info for manual annotations of cluster CA:

- Start number 65 was manually annotated 1 time for cluster CA.
- Start number 75 was manually annotated 35 times for cluster CA.

Gene Information:

Gene: 40AC_48 Start: 33450, Stop: 33055, Start Num: 16

Candidate Starts for 40AC_48:

(16, 33450), (46, 33372), (53, 33354), (113, 33225), (134, 33102),

Gene: ACFishhook_49 Start: 32280, Stop: 32032, Start Num: 85

Candidate Starts for ACFishhook_49:

(Start: 85 @32280 has 80 MA's), (106, 32226), (108, 32223), (122, 32163), (125, 32139), (127, 32130), (134, 32082), (135, 32067),

Gene: AbbyPaige_49 Start: 32616, Stop: 32194, Start Num: 14

Candidate Starts for AbbyPaige_49:

(Start: 14 @32616 has 28 MA's), (17, 32607), (51, 32514), (55, 32508), (134, 32241),

Gene: AbbysRanger_45 Start: 31867, Stop: 31544, Start Num: 59

Candidate Starts for AbbysRanger_45:

(Start: 59 @31867 has 135 MA's), (96, 31768), (98, 31759), (103, 31744), (116, 31714), (134, 31594),

Gene: Abdiel_46 Start: 31881, Stop: 31579, Start Num: 59

Candidate Starts for Abdiel_46:

(5, 32151), (Start: 59 @31881 has 135 MA's), (116, 31749), (122, 31710), (130, 31662), (134, 31629),

Gene: Achebe_44 Start: 31850, Stop: 31527, Start Num: 59

Candidate Starts for Achebe_44:

(Start: 59 @31850 has 135 MA's), (96, 31751), (98, 31742), (103, 31727), (116, 31697), (134, 31577),

Gene: Agape74_49 Start: 32601, Stop: 32179, Start Num: 14

Candidate Starts for Agape74_49:

(Start: 14 @32601 has 28 MA's), (17, 32592), (51, 32499), (55, 32493), (134, 32226),

Gene: AgentM_39 Start: 30764, Stop: 30501, Start Num: 84

Candidate Starts for AgentM_39:

(Start: 84 @30764 has 32 MA's), (Start: 89 @30755 has 3 MA's), (93, 30746), (100, 30725), (Start: 105 @30713 has 2 MA's), (124, 30629), (130, 30596), (134, 30563),

Gene: Aglet_51 Start: 32309, Stop: 32061, Start Num: 85

Candidate Starts for Aglet_51:

(Start: 85 @32309 has 80 MA's), (106, 32255), (122, 32192), (125, 32168), (127, 32159), (134, 32111), (135, 32096),

Gene: AgronaGT15_49 Start: 32160, Stop: 31912, Start Num: 85

Candidate Starts for AgronaGT15_49:

(Start: 85 @32160 has 80 MA's), (106, 32106), (122, 32043), (125, 32019), (127, 32010), (134, 31962), (135, 31947),

Gene: Airmid_41 Start: 30823, Stop: 30572, Start Num: 84

Candidate Starts for Airmid_41:

(54, 30901), (Start: 84 @30823 has 32 MA's), (Start: 89 @30814 has 3 MA's), (93, 30805), (Start: 105 @30772 has 2 MA's), (116, 30742), (120, 30727), (124, 30688), (130, 30655), (134, 30622),

Gene: Alatin_37 Start: 28461, Stop: 28189, Start Num: 75

Candidate Starts for Alatin_37:

(Start: 75 @28461 has 35 MA's), (133, 28245), (137, 28209),

Gene: Albee_46 Start: 31880, Stop: 31578, Start Num: 59

Candidate Starts for Albee_46:

(5, 32150), (Start: 59 @31880 has 135 MA's), (116, 31748), (122, 31709), (130, 31661), (134, 31628),

Gene: Alberto7_47 Start: 32217, Stop: 31915, Start Num: 59

Candidate Starts for Alberto7_47:

(5, 32487), (Start: 59 @32217 has 135 MA's), (116, 32085), (122, 32046), (130, 31998), (134, 31965),

Gene: Aliter_47 Start: 32037, Stop: 31711, Start Num: 34

Candidate Starts for Aliter_47:

(Start: 34 @32037 has 54 MA's), (46, 32013), (62, 31971), (137, 31731),

Gene: Alma_47 Start: 32160, Stop: 31834, Start Num: 34

Candidate Starts for Alma_47:

(Start: 34 @32160 has 54 MA's), (46, 32136), (62, 32094), (137, 31854),

Gene: Alpacados_36 Start: 28366, Stop: 28094, Start Num: 75

Candidate Starts for Alpacados_36:

(Start: 75 @28366 has 35 MA's), (101, 28300), (133, 28150), (137, 28114),

Gene: Anaysia_50 Start: 30853, Stop: 30560, Start Num: 69

Candidate Starts for Anaysia_50:

(Start: 69 @30853 has 23 MA's), (112, 30736), (130, 30643),

Gene: Aneem_48 Start: 31705, Stop: 31358, Start Num: 34

Candidate Starts for Aneem_48:

(Start: 34 @31705 has 54 MA's), (50, 31672), (58, 31651), (130, 31438), (134, 31405),

Gene: AngryOrchard_35 Start: 28325, Stop: 28053, Start Num: 75

Candidate Starts for AngryOrchard_35:

(Start: 75 @28325 has 35 MA's), (101, 28259), (133, 28109), (137, 28073),

Gene: Annyong_46 Start: 31925, Stop: 31623, Start Num: 59

Candidate Starts for Annyong_46:

(5, 32195), (Start: 59 @31925 has 135 MA's), (116, 31793), (122, 31754), (130, 31706), (134, 31673),

Gene: Anon_44 Start: 29643, Stop: 29365, Start Num: 69

Candidate Starts for Anon_44:

(Start: 69 @29643 has 23 MA's), (130, 29448),

Gene: Anthony_42 Start: 29795, Stop: 29478, Start Num: 61

Candidate Starts for Anthony_42:

(12, 29948), (31, 29870), (Start: 61 @29795 has 1 MA's), (80, 29747), (83, 29741), (130, 29561), (137, 29501),

Gene: Anubis_53 Start: 32195, Stop: 31947, Start Num: 85

Candidate Starts for Anubis_53:

(Start: 85 @32195 has 80 MA's), (106, 32141), (122, 32078), (125, 32054), (127, 32045), (134, 31997), (135, 31982),

Gene: AppleCloud_35 Start: 28336, Stop: 28064, Start Num: 75

Candidate Starts for AppleCloud_35:

(Start: 65 @28369 has 1 MA's), (Start: 75 @28336 has 35 MA's), (108, 28249), (133, 28120), (137, 28084),

Gene: Aragog_39 Start: 30794, Stop: 30531, Start Num: 84

Candidate Starts for Aragog_39:

(Start: 84 @30794 has 32 MA's), (Start: 89 @30785 has 3 MA's), (93, 30776), (100, 30755), (Start: 105 @30743 has 2 MA's), (124, 30659), (130, 30626), (134, 30593),

Gene: Archetta_40 Start: 31324, Stop: 31061, Start Num: 84

Candidate Starts for Archetta_40:

(Start: 84 @31324 has 32 MA's), (Start: 89 @31315 has 3 MA's), (93, 31306), (100, 31285), (Start: 105 @31273 has 2 MA's), (124, 31189), (130, 31156), (134, 31123),

Gene: Arissanae_46 Start: 32694, Stop: 32350, Start Num: 29

Candidate Starts for Arissanae_46:

(Start: 29 @32694 has 5 MA's), (43, 32679), (62, 32631), (68, 32610), (96, 32556), (123, 32472), (137, 32370),

Gene: Arturo_45 Start: 32157, Stop: 31834, Start Num: 59

Candidate Starts for Arturo_45:

(Start: 59 @32157 has 135 MA's), (67, 32142), (116, 32004), (130, 31917), (134, 31884),

Gene: Astro_44 Start: 31145, Stop: 30849, Start Num: 70

Candidate Starts for Astro_44:

(Start: 70 @31145 has 11 MA's), (78, 31136), (92, 31094), (134, 30908),

Gene: AugsMagnumOpus_53 Start: 32300, Stop: 32052, Start Num: 85

Candidate Starts for AugsMagnumOpus_53:

(Start: 85 @32300 has 80 MA's), (106, 32246), (122, 32183), (125, 32159), (127, 32150), (134, 32102), (135, 32087),

Gene: AvatarAhPeg_45 Start: 32379, Stop: 32056, Start Num: 59

Candidate Starts for AvatarAhPeg_45:

(Start: 59 @32379 has 135 MA's), (67, 32364), (98, 32271), (103, 32256), (116, 32226), (128, 32151), (134, 32106),

Gene: Avle17_46 Start: 31877, Stop: 31575, Start Num: 59

Candidate Starts for Avle17_46:

(Start: 59 @31877 has 135 MA's), (116, 31745), (122, 31706), (130, 31658), (134, 31625),

Gene: B1_43 Start: 31013, Stop: 30738, Start Num: 73

Candidate Starts for B1_43:

(40, 31100), (64, 31043), (Start: 73 @31013 has 31 MA's), (115, 30908), (127, 30836), (134, 30788),

Gene: Baby16_46 Start: 31891, Stop: 31589, Start Num: 59

Candidate Starts for Baby16_46:

(5, 32161), (Start: 59 @31891 has 135 MA's), (116, 31759), (122, 31720), (130, 31672), (134, 31639),

Gene: BabyRay_46 Start: 31749, Stop: 31474, Start Num: 73

Candidate Starts for BabyRay_46:

(19, 31890), (24, 31881), (Start: 73 @31749 has 31 MA's), (106, 31668), (127, 31572),

Gene: Bachome_49 Start: 31693, Stop: 31346, Start Num: 34

Candidate Starts for Bachome_49:

(Start: 34 @31693 has 54 MA's), (50, 31660), (58, 31639), (130, 31426), (134, 31393),

Gene: Backyardigan_44 Start: 31883, Stop: 31560, Start Num: 59

Candidate Starts for Backyardigan_44:

(Start: 59 @31883 has 135 MA's), (96, 31784), (98, 31775), (103, 31760), (116, 31730), (134, 31610),

Gene: Badger_44 Start: 31851, Stop: 31528, Start Num: 59

Candidate Starts for Badger_44:

(Start: 59 @31851 has 135 MA's), (96, 31752), (98, 31743), (103, 31728), (116, 31698), (134, 31578),

Gene: BangNhom_47 Start: 32302, Stop: 32000, Start Num: 59

Candidate Starts for BangNhom_47:

(5, 32572), (Start: 59 @32302 has 135 MA's), (116, 32170), (122, 32131), (134, 32050),

Gene: Bartimeaus_46 Start: 31882, Stop: 31580, Start Num: 59

Candidate Starts for Bartimeaus_46:

(5, 32152), (Start: 59 @31882 has 135 MA's), (116, 31750), (122, 31711), (130, 31663), (134, 31630),

Gene: Battleship_50 Start: 30586, Stop: 30293, Start Num: 69

Candidate Starts for Battleship_50:

(Start: 69 @30586 has 23 MA's), (112, 30469), (130, 30376),

Gene: Beauxregard13_50 Start: 32312, Stop: 32064, Start Num: 85

Candidate Starts for Beauxregard13_50:

(Start: 85 @32312 has 80 MA's), (95, 32282), (106, 32258), (122, 32195), (125, 32171), (127, 32162), (134, 32114), (135, 32099),

Gene: Beemo_47 Start: 32159, Stop: 31833, Start Num: 34

Candidate Starts for Beemo_47:

(Start: 34 @32159 has 54 MA's), (46, 32135), (62, 32093), (137, 31853),

Gene: Belenaria_37 Start: 28395, Stop: 28123, Start Num: 75

Candidate Starts for Belenaria_37:

(Start: 75 @28395 has 35 MA's), (101, 28329), (133, 28179), (137, 28143),

Gene: BellusTerra_47 Start: 31881, Stop: 31579, Start Num: 59

Candidate Starts for BellusTerra_47:

(Start: 59 @31881 has 135 MA's), (116, 31749), (122, 31710), (130, 31662), (134, 31629),

Gene: Benedict_43 Start: 30995, Stop: 30732, Start Num: 84

Candidate Starts for Benedict_43:

(Start: 84 @30995 has 32 MA's), (Start: 89 @30986 has 3 MA's), (Start: 105 @30944 has 2 MA's),
(130, 30827), (133, 30803),

Gene: Benvolio_44 Start: 31563, Stop: 31141, Start Num: 14

Candidate Starts for Benvolio_44:

(Start: 14 @31563 has 28 MA's), (17, 31554), (46, 31476), (134, 31188),

Gene: Blackmoor_46 Start: 31882, Stop: 31580, Start Num: 59

Candidate Starts for Blackmoor_46:

(5, 32152), (Start: 59 @31882 has 135 MA's), (116, 31750), (122, 31711), (130, 31663), (134, 31630),

Gene: BlueBird_48 Start: 31838, Stop: 31563, Start Num: 73

Candidate Starts for BlueBird_48:

(Start: 73 @31838 has 31 MA's), (127, 31661), (134, 31613),

Gene: Bluefalcon_39 Start: 31282, Stop: 31019, Start Num: 84

Candidate Starts for Bluefalcon_39:

(Start: 84 @31282 has 32 MA's), (Start: 89 @31273 has 3 MA's), (93, 31264), (Start: 105 @31231 has
2 MA's), (124, 31147), (130, 31114), (134, 31081),

Gene: BobbyDazzler_37 Start: 28440, Stop: 28168, Start Num: 75

Candidate Starts for BobbyDazzler_37:

(Start: 75 @28440 has 35 MA's), (101, 28374), (133, 28224), (137, 28188),

Gene: BogosyJay_46 Start: 31869, Stop: 31543, Start Num: 34

Candidate Starts for BogosyJay_46:

(Start: 34 @31869 has 54 MA's), (46, 31845), (62, 31803), (82, 31761), (137, 31563),

Gene: Bombshell_46 Start: 31877, Stop: 31575, Start Num: 59

Candidate Starts for Bombshell_46:

(5, 32147), (Start: 59 @31877 has 135 MA's), (116, 31745), (122, 31706), (130, 31658), (134, 31625),

Gene: Bonamassa_41 Start: 31313, Stop: 31050, Start Num: 84

Candidate Starts for Bonamassa_41:

(Start: 84 @31313 has 32 MA's), (Start: 89 @31304 has 3 MA's), (Start: 105 @31262 has 2 MA's),
(116, 31232), (124, 31178), (130, 31145), (134, 31112),

Gene: Bonanza_37 Start: 28368, Stop: 28096, Start Num: 75

Candidate Starts for Bonanza_37:

(Start: 75 @28368 has 35 MA's), (101, 28302), (133, 28152), (137, 28116),

Gene: Boohoo_50 Start: 30853, Stop: 30560, Start Num: 69

Candidate Starts for Boohoo_50:

(Start: 69 @30853 has 23 MA's), (112, 30736), (130, 30643),

Gene: Bowtie_48 Start: 31712, Stop: 31365, Start Num: 34

Candidate Starts for Bowtie_48:

(Start: 34 @31712 has 54 MA's), (50, 31679), (58, 31658), (130, 31445), (134, 31412),

Gene: Bradshaw_37 Start: 28394, Stop: 28122, Start Num: 75

Candidate Starts for Bradshaw_37:

(Start: 75 @28394 has 35 MA's), (133, 28178), (137, 28142),

Gene: BreSam8_50 Start: 32302, Stop: 32054, Start Num: 85

Candidate Starts for BreSam8_50:

(Start: 85 @32302 has 80 MA's), (106, 32248), (122, 32185), (125, 32161), (127, 32152), (134, 32104), (135, 32089),

Gene: Broseidon_46 Start: 31882, Stop: 31580, Start Num: 59

Candidate Starts for Broseidon_46:

(5, 32152), (Start: 59 @31882 has 135 MA's), (116, 31750), (122, 31711), (130, 31663), (134, 31630),

Gene: Bruiser_45 Start: 31880, Stop: 31578, Start Num: 59

Candidate Starts for Bruiser_45:

(Start: 59 @31880 has 135 MA's), (116, 31748), (122, 31709), (130, 31661), (134, 31628),

Gene: Bryce_37 Start: 28369, Stop: 28097, Start Num: 75

Candidate Starts for Bryce_37:

(Start: 75 @28369 has 35 MA's), (101, 28303), (133, 28153), (137, 28117),

Gene: BubbleTrouble_45 Start: 31880, Stop: 31578, Start Num: 59

Candidate Starts for BubbleTrouble_45:

(5, 32150), (Start: 59 @31880 has 135 MA's), (116, 31748), (122, 31709), (130, 31661), (134, 31628),

Gene: Bud_47 Start: 31267, Stop: 30920, Start Num: 34

Candidate Starts for Bud_47:

(Start: 34 @31267 has 54 MA's), (50, 31234), (58, 31213), (130, 31000), (134, 30967),

Gene: Bugatti_47 Start: 31838, Stop: 31563, Start Num: 73

Candidate Starts for Bugatti_47:

(Start: 73 @31838 has 31 MA's), (127, 31661), (134, 31613),

Gene: Bumblebee11_44 Start: 31853, Stop: 31530, Start Num: 59

Candidate Starts for Bumblebee11_44:

(Start: 59 @31853 has 135 MA's), (96, 31754), (98, 31745), (103, 31730), (116, 31700), (134, 31580),

Gene: Burger_44 Start: 31880, Stop: 31578, Start Num: 59

Candidate Starts for Burger_44:

(5, 32150), (Start: 59 @31880 has 135 MA's), (116, 31748), (122, 31709), (130, 31661), (134, 31628),

Gene: BuzzBuzz_48 Start: 32339, Stop: 32091, Start Num: 85

Candidate Starts for BuzzBuzz_48:

(Start: 85 @32339 has 80 MA's), (106, 32285), (122, 32222), (125, 32198), (127, 32189), (134, 32141), (135, 32126),

Gene: Bxz2_46 Start: 32346, Stop: 32098, Start Num: 85

Candidate Starts for Bxz2_46:

(Start: 85 @32346 has 80 MA's), (106, 32292), (122, 32229), (125, 32205), (127, 32196), (134, 32148), (135, 32133),

Gene: CRB1_50 Start: 32781, Stop: 32359, Start Num: 14

Candidate Starts for CRB1_50:

(Start: 14 @32781 has 28 MA's), (17, 32772), (51, 32679), (55, 32673), (63, 32649), (Start: 65 @32646 has 1 MA's), (134, 32406),

Gene: Caelakin_46 Start: 31880, Stop: 31578, Start Num: 59

Candidate Starts for Caelakin_46:

(5, 32150), (Start: 59 @31880 has 135 MA's), (116, 31748), (122, 31709), (130, 31661), (134, 31628),

Gene: Camperdownii_44 Start: 31553, Stop: 31251, Start Num: 59

Candidate Starts for Camperdownii_44:

(Start: 59 @31553 has 135 MA's), (116, 31421), (122, 31382), (130, 31334), (134, 31301),

Gene: Catalina_48 Start: 32110, Stop: 31784, Start Num: 34

Candidate Starts for Catalina_48:

(Start: 34 @32110 has 54 MA's), (46, 32086), (62, 32044), (137, 31804),

Gene: Caviar_46 Start: 32081, Stop: 31806, Start Num: 73

Candidate Starts for Caviar_46:

(36, 32171), (40, 32162), (Start: 73 @32081 has 31 MA's), (127, 31904),

Gene: CentreCat_46 Start: 31883, Stop: 31581, Start Num: 59

Candidate Starts for CentreCat_46:

(5, 32153), (Start: 59 @31883 has 135 MA's), (116, 31751), (122, 31712), (130, 31664), (134, 31631),

Gene: Cerulean_47 Start: 32303, Stop: 32001, Start Num: 59

Candidate Starts for Cerulean_47:

(5, 32573), (Start: 59 @32303 has 135 MA's), (116, 32171), (122, 32132), (134, 32051),

Gene: Chadwick_44 Start: 30975, Stop: 30712, Start Num: 84

Candidate Starts for Chadwick_44:

(54, 31053), (Start: 84 @30975 has 32 MA's), (Start: 89 @30966 has 3 MA's), (97, 30945), (Start: 105 @30924 has 2 MA's), (130, 30807), (133, 30783),

Gene: ChampagnePapi_48 Start: 32302, Stop: 32000, Start Num: 59

Candidate Starts for ChampagnePapi_48:

(5, 32572), (Start: 59 @32302 has 135 MA's), (116, 32170), (122, 32131), (134, 32050),

Gene: Chaph_46 Start: 31891, Stop: 31589, Start Num: 59

Candidate Starts for Chaph_46:

(5, 32161), (Start: 59 @31891 has 135 MA's), (116, 31759), (122, 31720), (130, 31672), (134, 31639),

Gene: Chargerpower_46 Start: 31054, Stop: 30704, Start Num: 35

Candidate Starts for Chargerpower_46:

(Start: 35 @31054 has 5 MA's), (62, 30991), (99, 30910), (130, 30784), (137, 30724), (138, 30715),

Gene: Charm_46 Start: 31899, Stop: 31555, Start Num: 33

Candidate Starts for Charm_46:

(Start: 33 @31899 has 3 MA's), (43, 31884), (46, 31878), (62, 31836), (77, 31794), (96, 31761), (137, 31575), (138, 31566),

Gene: ChipMunk_49 Start: 33873, Stop: 33451, Start Num: 14

Candidate Starts for ChipMunk_49:

(Start: 14 @33873 has 28 MA's), (51, 33771), (62, 33744), (134, 33498),

Gene: Chupacabra_44 Start: 31467, Stop: 31129, Start Num: 45

Candidate Starts for Chupacabra_44:

(8, 31611), (13, 31560), (Start: 45 @31467 has 16 MA's), (Start: 71 @31407 has 2 MA's), (109, 31317), (114, 31302), (128, 31224),

Gene: Cici_45 Start: 31868, Stop: 31545, Start Num: 59

Candidate Starts for Cici_45:

(Start: 59 @31868 has 135 MA's), (96, 31769), (98, 31760), (103, 31745), (116, 31715), (134, 31595),

Gene: Cindaradix_43 Start: 31493, Stop: 31170, Start Num: 59

Candidate Starts for Cindaradix_43:

(Start: 59 @31493 has 135 MA's), (98, 31385), (116, 31340), (128, 31265), (134, 31220),

Gene: Cintron_45 Start: 31860, Stop: 31558, Start Num: 59

Candidate Starts for Cintron_45:

(5, 32130), (Start: 59 @31860 has 135 MA's), (116, 31728), (122, 31689), (130, 31641), (134, 31608),

Gene: Citius_46 Start: 31901, Stop: 31599, Start Num: 59

Candidate Starts for Citius_46:

(5, 32171), (Start: 59 @31901 has 135 MA's), (116, 31769), (122, 31730), (130, 31682), (134, 31649),

Gene: Clarenza_45 Start: 31877, Stop: 31575, Start Num: 59

Candidate Starts for Clarenza_45:

(5, 32147), (Start: 59 @31877 has 135 MA's), (116, 31745), (122, 31706), (130, 31658), (134, 31625),

Gene: Cocoaberry_46 Start: 31884, Stop: 31582, Start Num: 59

Candidate Starts for Cocoaberry_46:

(Start: 59 @31884 has 135 MA's), (116, 31752), (122, 31713), (130, 31665), (134, 31632),

Gene: Colbster_50 Start: 32312, Stop: 32064, Start Num: 85

Candidate Starts for Colbster_50:

(Start: 85 @32312 has 80 MA's), (106, 32258), (122, 32195), (125, 32171), (127, 32162), (134, 32114), (135, 32099),

Gene: Commander_46 Start: 31879, Stop: 31577, Start Num: 59

Candidate Starts for Commander_46:

(5, 32149), (Start: 59 @31879 has 135 MA's), (116, 31747), (122, 31708), (130, 31660), (134, 31627),

Gene: Connomayer_46 Start: 31880, Stop: 31578, Start Num: 59

Candidate Starts for Connomayer_46:

(5, 32150), (Start: 59 @31880 has 135 MA's), (116, 31748), (122, 31709), (130, 31661), (134, 31628),

Gene: Conquerage_47 Start: 32133, Stop: 31807, Start Num: 34
Candidate Starts for Conquerage_47:
(Start: 34 @32133 has 54 MA's), (46, 32109), (62, 32067), (137, 31827),

Gene: Conspiracy_40 Start: 30997, Stop: 30743, Start Num: 89
Candidate Starts for Conspiracy_40:
(Start: 84 @31006 has 32 MA's), (Start: 89 @30997 has 3 MA's), (93, 30988), (100, 30967), (Start: 105 @30955 has 2 MA's), (124, 30871), (130, 30838), (134, 30805),

Gene: Coog_40 Start: 31053, Stop: 30841, Start Num: 105
Candidate Starts for Coog_40:
(Start: 84 @31104 has 32 MA's), (Start: 89 @31095 has 3 MA's), (93, 31086), (100, 31065), (Start: 105 @31053 has 2 MA's), (124, 30969), (130, 30936), (134, 30903),

Gene: CosmicSans_37 Start: 28394, Stop: 28122, Start Num: 75
Candidate Starts for CosmicSans_37:
(Start: 75 @28394 has 35 MA's), (101, 28328), (133, 28178), (137, 28142),

Gene: Crucio_47 Start: 32116, Stop: 31694, Start Num: 14
Candidate Starts for Crucio_47:
(Start: 14 @32116 has 28 MA's), (17, 32107), (51, 32014), (63, 31984), (134, 31741),

Gene: Cuco_40 Start: 31061, Stop: 30810, Start Num: 84
Candidate Starts for Cuco_40:
(Start: 84 @31061 has 32 MA's), (Start: 89 @31052 has 3 MA's), (Start: 105 @31010 has 2 MA's), (124, 30926), (130, 30893), (134, 30860),

Gene: Cullens_50 Start: 32308, Stop: 32060, Start Num: 85
Candidate Starts for Cullens_50:
(Start: 85 @32308 has 80 MA's), (106, 32254), (122, 32191), (125, 32167), (127, 32158), (134, 32110), (135, 32095),

Gene: D29_46 Start: 31906, Stop: 31496, Start Num: 26
Candidate Starts for D29_46:
(4, 32113), (Start: 26 @31906 has 9 MA's), (74, 31786), (Start: 84 @31762 has 32 MA's), (87, 31756), (116, 31663), (130, 31576), (134, 31543),

Gene: D32_49 Start: 31906, Stop: 31496, Start Num: 26
Candidate Starts for D32_49:
(4, 32113), (Start: 26 @31906 has 9 MA's), (74, 31786), (Start: 84 @31762 has 32 MA's), (87, 31756), (116, 31663), (130, 31576), (134, 31543),

Gene: DBQu4n_49 Start: 31906, Stop: 31496, Start Num: 26
Candidate Starts for DBQu4n_49:
(2, 32233), (3, 32221), (Start: 26 @31906 has 9 MA's), (74, 31786), (Start: 84 @31762 has 32 MA's), (87, 31756), (116, 31663), (130, 31576), (134, 31543),

Gene: DaHudson_50 Start: 32301, Stop: 32053, Start Num: 85
Candidate Starts for DaHudson_50:
(Start: 85 @32301 has 80 MA's), (106, 32247), (122, 32184), (125, 32160), (127, 32151), (134, 32103), (135, 32088),

Gene: Daishi_49 Start: 31180, Stop: 30932, Start Num: 85

Candidate Starts for Daishi_49:

(Start: 85 @31180 has 80 MA's), (106, 31126), (122, 31063), (125, 31039), (127, 31030), (134, 30982), (135, 30967),

Gene: Dalmatian_48 Start: 32508, Stop: 32086, Start Num: 14

Candidate Starts for Dalmatian_48:

(Start: 14 @32508 has 28 MA's), (17, 32499), (51, 32406), (63, 32376), (134, 32133),

Gene: Danforth_44 Start: 31174, Stop: 30878, Start Num: 70

Candidate Starts for Danforth_44:

(42, 31240), (Start: 70 @31174 has 11 MA's), (92, 31123), (134, 30937),

Gene: Darrell_47 Start: 32497, Stop: 32153, Start Num: 29

Candidate Starts for Darrell_47:

(15, 32539), (23, 32518), (Start: 29 @32497 has 5 MA's), (43, 32482), (62, 32434), (68, 32413), (96, 32359), (137, 32173),

Gene: DARTHPhader_44 Start: 32954, Stop: 32610, Start Num: 34

Candidate Starts for DARTHPhader_44:

(25, 32966), (Start: 29 @32960 has 5 MA's), (Start: 34 @32954 has 54 MA's), (55, 32912), (64, 32891), (86, 32837), (96, 32825), (123, 32732), (130, 32690), (137, 32630),

Gene: Datway_45 Start: 31839, Stop: 31516, Start Num: 59

Candidate Starts for Datway_45:

(Start: 59 @31839 has 135 MA's), (98, 31731), (134, 31566),

Gene: Deano_45 Start: 31888, Stop: 31586, Start Num: 59

Candidate Starts for Deano_45:

(Start: 59 @31888 has 135 MA's), (76, 31846), (116, 31756), (122, 31717), (130, 31669), (134, 31636),

Gene: DekHockey33_50 Start: 31068, Stop: 30775, Start Num: 69

Candidate Starts for DekHockey33_50:

(Start: 69 @31068 has 23 MA's), (112, 30951), (130, 30858),

Gene: Dhanush_46 Start: 31883, Stop: 31581, Start Num: 59

Candidate Starts for Dhanush_46:

(5, 32153), (Start: 59 @31883 has 135 MA's), (116, 31751), (122, 31712), (130, 31664), (134, 31631),

Gene: Dieselweasel_51 Start: 32311, Stop: 32063, Start Num: 85

Candidate Starts for Dieselweasel_51:

(Start: 85 @32311 has 80 MA's), (106, 32257), (122, 32194), (125, 32170), (127, 32161), (134, 32113), (135, 32098),

Gene: Dignity_49 Start: 32681, Stop: 32259, Start Num: 14

Candidate Starts for Dignity_49:

(Start: 14 @32681 has 28 MA's), (17, 32672), (51, 32579), (63, 32549), (134, 32306),

Gene: Dinger_37 Start: 28378, Stop: 28106, Start Num: 75

Candidate Starts for Dinger_37:

(Start: 65 @28411 has 1 MA's), (Start: 75 @28378 has 35 MA's), (108, 28291), (133, 28162), (137, 28126),

Gene: DirtyDunning_45 Start: 31898, Stop: 31575, Start Num: 59
Candidate Starts for DirtyDunning_45:
(Start: 59 @31898 has 135 MA's), (67, 31883), (116, 31745), (122, 31706), (130, 31658), (134, 31625),

Gene: Discoknowium_39 Start: 30803, Stop: 30540, Start Num: 84
Candidate Starts for Discoknowium_39:
(Start: 84 @30803 has 32 MA's), (Start: 89 @30794 has 3 MA's), (93, 30785), (100, 30764), (Start: 105 @30752 has 2 MA's), (124, 30668), (130, 30635), (134, 30602),

Gene: Dixon_44 Start: 31047, Stop: 30760, Start Num: 70
Candidate Starts for Dixon_44:
(42, 31113), (Start: 70 @31047 has 11 MA's), (92, 30996), (134, 30810),

Gene: Drake55_49 Start: 32605, Stop: 32183, Start Num: 14
Candidate Starts for Drake55_49:
(Start: 14 @32605 has 28 MA's), (17, 32596), (51, 32503), (55, 32497), (63, 32473), (134, 32230),

Gene: Drake94_43 Start: 30743, Stop: 30387, Start Num: 45
Candidate Starts for Drake94_43:
(8, 30887), (Start: 45 @30743 has 16 MA's), (114, 30560), (128, 30482),

Gene: DreamTeam1_46 Start: 31773, Stop: 31429, Start Num: 33
Candidate Starts for DreamTeam1_46:
(Start: 33 @31773 has 3 MA's), (43, 31758), (46, 31752), (62, 31710), (63, 31707), (77, 31668), (96, 31635), (137, 31449), (138, 31440),

Gene: DroogsArmy_43 Start: 33565, Stop: 33284, Start Num: 69
Candidate Starts for DroogsArmy_43:
(18, 33700), (Start: 69 @33565 has 23 MA's), (94, 33502), (119, 33445), (122, 33415), (137, 33307),

Gene: Druantia_46 Start: 31883, Stop: 31581, Start Num: 59
Candidate Starts for Druantia_46:
(5, 32153), (Start: 59 @31883 has 135 MA's), (116, 31751), (122, 31712), (130, 31664), (134, 31631),

Gene: Dublin_39 Start: 30825, Stop: 30562, Start Num: 84
Candidate Starts for Dublin_39:
(Start: 84 @30825 has 32 MA's), (Start: 89 @30816 has 3 MA's), (Start: 105 @30774 has 2 MA's), (116, 30744), (124, 30690), (130, 30657), (134, 30624),

Gene: DudeLittle_46 Start: 32250, Stop: 31828, Start Num: 14
Candidate Starts for DudeLittle_46:
(Start: 14 @32250 has 28 MA's), (17, 32241), (27, 32205), (41, 32172), (46, 32163), (134, 31875),

Gene: Duplo_49 Start: 31944, Stop: 31534, Start Num: 26
Candidate Starts for Duplo_49:
(2, 32271), (3, 32259), (Start: 26 @31944 has 9 MA's), (74, 31824), (Start: 84 @31800 has 32 MA's), (87, 31794), (116, 31701), (130, 31614), (134, 31581),

Gene: Eagle_46 Start: 31905, Stop: 31603, Start Num: 59
Candidate Starts for Eagle_46:
(5, 32175), (Start: 59 @31905 has 135 MA's), (116, 31773), (122, 31734), (130, 31686), (134, 31653),

Gene: EagleEye_49 Start: 31670, Stop: 31308, Start Num: 29

Candidate Starts for EagleEye_49:

(Start: 29 @31670 has 5 MA's), (39, 31646), (130, 31388),

Gene: Eaglepride_46 Start: 31543, Stop: 31214, Start Num: 44

Candidate Starts for Eaglepride_46:

(8, 31681), (11, 31654), (Start: 44 @31543 has 1 MA's), (109, 31393), (128, 31309),

Gene: Eapen_46 Start: 31875, Stop: 31573, Start Num: 59

Candidate Starts for Eapen_46:

(5, 32145), (Start: 59 @31875 has 135 MA's), (116, 31743), (122, 31704), (130, 31656), (134, 31623),

Gene: Ebony_47 Start: 31284, Stop: 30937, Start Num: 34

Candidate Starts for Ebony_47:

(Start: 34 @31284 has 54 MA's), (50, 31251), (58, 31230), (130, 31017), (134, 30984),

Gene: Echild_47 Start: 31587, Stop: 31165, Start Num: 14

Candidate Starts for Echild_47:

(Start: 14 @31587 has 28 MA's), (17, 31578), (46, 31500), (134, 31212),

Gene: Edison31_44 Start: 31487, Stop: 31149, Start Num: 45

Candidate Starts for Edison31_44:

(8, 31631), (13, 31580), (Start: 45 @31487 has 16 MA's), (109, 31337), (114, 31322), (128, 31244),

Gene: Eidsmoe_47 Start: 32173, Stop: 31847, Start Num: 34

Candidate Starts for Eidsmoe_47:

(Start: 34 @32173 has 54 MA's), (46, 32149), (62, 32107), (137, 31867),

Gene: EITiger69_42 Start: 30992, Stop: 30729, Start Num: 84

Candidate Starts for EITiger69_42:

(54, 31070), (Start: 84 @30992 has 32 MA's), (Start: 89 @30983 has 3 MA's), (97, 30962), (Start: 105 @30941 has 2 MA's), (130, 30824), (133, 30800),

Gene: Elephantoon_46 Start: 31477, Stop: 31130, Start Num: 29

Candidate Starts for Elephantoon_46:

(Start: 29 @31477 has 5 MA's), (46, 31453), (62, 31411), (96, 31336), (102, 31318), (137, 31150),

Gene: EmyBug_46 Start: 32175, Stop: 31849, Start Num: 34

Candidate Starts for EmyBug_46:

(Start: 34 @32175 has 54 MA's), (46, 32151), (62, 32109), (137, 31869),

Gene: EpicPhail_51 Start: 32312, Stop: 32064, Start Num: 85

Candidate Starts for EpicPhail_51:

(Start: 85 @32312 has 80 MA's), (95, 32282), (106, 32258), (122, 32195), (125, 32171), (127, 32162), (134, 32114), (135, 32099),

Gene: Epsocamisio_48 Start: 30391, Stop: 30098, Start Num: 69

Candidate Starts for Epsocamisio_48:

(Start: 69 @30391 has 23 MA's), (112, 30274), (130, 30181),

Gene: Erik_37 Start: 28392, Stop: 28120, Start Num: 75

Candidate Starts for Erik_37:

(Start: 75 @28392 has 35 MA's), (101, 28326), (133, 28176), (137, 28140),

Gene: Eris_45 Start: 31880, Stop: 31578, Start Num: 59

Candidate Starts for Eris_45:

(5, 32150), (Start: 59 @31880 has 135 MA's), (116, 31748), (122, 31709), (130, 31661), (134, 31628),

Gene: Eros_46 Start: 31882, Stop: 31580, Start Num: 59

Candidate Starts for Eros_46:

(5, 32152), (Start: 59 @31882 has 135 MA's), (116, 31750), (122, 31711), (130, 31663), (134, 31630),

Gene: Espica_37 Start: 28395, Stop: 28123, Start Num: 75

Candidate Starts for Espica_37:

(Start: 75 @28395 has 35 MA's), (101, 28329), (133, 28179), (137, 28143),

Gene: Et2Brutus_46 Start: 31244, Stop: 30897, Start Num: 34

Candidate Starts for Et2Brutus_46:

(Start: 34 @31244 has 54 MA's), (50, 31211), (58, 31190), (130, 30977), (134, 30944),

Gene: Eurydice_47 Start: 31877, Stop: 31575, Start Num: 59

Candidate Starts for Eurydice_47:

(5, 32147), (Start: 59 @31877 has 135 MA's), (116, 31745), (122, 31706), (130, 31658), (134, 31625),

Gene: EvilGenius_49 Start: 33877, Stop: 33455, Start Num: 14

Candidate Starts for EvilGenius_49:

(Start: 14 @33877 has 28 MA's), (17, 33868), (51, 33775), (62, 33748), (134, 33502),

Gene: Expelliarmus_44 Start: 31203, Stop: 30907, Start Num: 70

Candidate Starts for Expelliarmus_44:

(42, 31269), (Start: 70 @31203 has 11 MA's), (92, 31152), (134, 30966),

Gene: ExplosioNervosa_47 Start: 32193, Stop: 31867, Start Num: 34

Candidate Starts for ExplosioNervosa_47:

(Start: 34 @32193 has 54 MA's), (46, 32169), (62, 32127), (137, 31887),

Gene: Farber_50 Start: 32301, Stop: 32053, Start Num: 85

Candidate Starts for Farber_50:

(Start: 85 @32301 has 80 MA's), (106, 32247), (122, 32184), (125, 32160), (127, 32151), (134, 32103), (135, 32088),

Gene: Fayely_47 Start: 32142, Stop: 31816, Start Num: 34

Candidate Starts for Fayely_47:

(Start: 34 @32142 has 54 MA's), (46, 32118), (62, 32076), (137, 31836),

Gene: Fernando_50 Start: 32308, Stop: 32060, Start Num: 85

Candidate Starts for Fernando_50:

(Start: 85 @32308 has 80 MA's), (106, 32254), (122, 32191), (125, 32167), (127, 32158), (134, 32110), (135, 32095),

Gene: Fibonacci_47 Start: 31259, Stop: 30912, Start Num: 34

Candidate Starts for Fibonacci_47:

(Start: 34 @31259 has 54 MA's), (50, 31226), (58, 31205), (130, 30992), (134, 30959),

Gene: FiringLine_47 Start: 32097, Stop: 31675, Start Num: 14

Candidate Starts for FiringLine_47:

(Start: 14 @32097 has 28 MA's), (17, 32088), (27, 32052), (46, 32010), (134, 31722),

Gene: Flaverint_48 Start: 31706, Stop: 31359, Start Num: 34

Candidate Starts for Flaverint_48:

(Start: 34 @31706 has 54 MA's), (50, 31673), (58, 31652), (130, 31439), (134, 31406),

Gene: Florean_46 Start: 31879, Stop: 31577, Start Num: 59

Candidate Starts for Florean_46:

(5, 32149), (Start: 59 @31879 has 135 MA's), (116, 31747), (122, 31708), (130, 31660), (134, 31627),

Gene: Flux_46 Start: 31879, Stop: 31577, Start Num: 59

Candidate Starts for Flux_46:

(5, 32149), (Start: 59 @31879 has 135 MA's), (116, 31747), (122, 31708), (130, 31660), (134, 31627),

Gene: ForGetIt_40 Start: 31031, Stop: 30768, Start Num: 84

Candidate Starts for ForGetIt_40:

(Start: 84 @31031 has 32 MA's), (Start: 89 @31022 has 3 MA's), (93, 31013), (100, 30992), (Start: 105 @30980 has 2 MA's), (124, 30896), (130, 30863), (134, 30830),

Gene: Fred313_46 Start: 31411, Stop: 31136, Start Num: 73

Candidate Starts for Fred313_46:

(66, 31432), (Start: 73 @31411 has 31 MA's), (127, 31234), (134, 31186),

Gene: Funston_45 Start: 31880, Stop: 31578, Start Num: 59

Candidate Starts for Funston_45:

(Start: 59 @31880 has 135 MA's), (116, 31748), (122, 31709), (130, 31661), (134, 31628),

Gene: Gadost_46 Start: 31884, Stop: 31582, Start Num: 59

Candidate Starts for Gadost_46:

(Start: 59 @31884 has 135 MA's), (116, 31752), (122, 31713), (130, 31665), (134, 31632),

Gene: Gail_52 Start: 33875, Stop: 33528, Start Num: 35

Candidate Starts for Gail_52:

(24, 33899), (Start: 35 @33875 has 5 MA's), (62, 33815), (130, 33608), (137, 33548), (138, 33539),

Gene: Gemma_49 Start: 32204, Stop: 31956, Start Num: 85

Candidate Starts for Gemma_49:

(Start: 85 @32204 has 80 MA's), (106, 32150), (108, 32147), (122, 32087), (125, 32063), (127, 32054), (134, 32006), (135, 31991),

Gene: George_40 Start: 31255, Stop: 30992, Start Num: 84

Candidate Starts for George_40:

(Start: 84 @31255 has 32 MA's), (Start: 89 @31246 has 3 MA's), (Start: 105 @31204 has 2 MA's), (116, 31174), (124, 31120), (130, 31087), (134, 31054),

Gene: Georgie2_48 Start: 32142, Stop: 31720, Start Num: 14

Candidate Starts for Georgie2_48:

(Start: 14 @32142 has 28 MA's), (17, 32133), (51, 32040), (63, 32010), (134, 31767),

Gene: Ghouboy_42 Start: 31768, Stop: 31505, Start Num: 84

Candidate Starts for Ghouboy_42:

(Start: 84 @31768 has 32 MA's), (Start: 89 @31759 has 3 MA's), (Start: 105 @31717 has 2 MA's), (116, 31687), (124, 31633), (130, 31600), (134, 31567),

Gene: Gilberta_48 Start: 31696, Stop: 31349, Start Num: 34

Candidate Starts for Gilberta_48:

(Start: 34 @31696 has 54 MA's), (50, 31663), (58, 31642), (130, 31429), (134, 31396),

Gene: GingkoMaracino_50 Start: 32194, Stop: 31946, Start Num: 85

Candidate Starts for GingkoMaracino_50:

(Start: 85 @32194 has 80 MA's), (106, 32140), (122, 32077), (125, 32053), (127, 32044), (134, 31996), (135, 31981),

Gene: Giroux_47 Start: 31837, Stop: 31562, Start Num: 73

Candidate Starts for Giroux_47:

(Start: 73 @31837 has 31 MA's), (127, 31660), (134, 31612),

Gene: Gollum_37 Start: 28394, Stop: 28122, Start Num: 75

Candidate Starts for Gollum_37:

(Start: 75 @28394 has 35 MA's), (101, 28328), (133, 28178), (137, 28142),

Gene: Goose_45 Start: 31271, Stop: 30933, Start Num: 45

Candidate Starts for Goose_45:

(8, 31415), (13, 31364), (Start: 45 @31271 has 16 MA's), (Start: 71 @31211 has 2 MA's), (109, 31121), (114, 31106), (128, 31028),

Gene: Grif_50 Start: 32383, Stop: 32135, Start Num: 85

Candidate Starts for Grif_50:

(Start: 85 @32383 has 80 MA's), (106, 32329), (122, 32266), (125, 32242), (127, 32233), (134, 32185), (135, 32170),

Gene: Groundhog_43 Start: 31110, Stop: 30814, Start Num: 70

Candidate Starts for Groundhog_43:

(Start: 70 @31110 has 11 MA's), (78, 31101), (92, 31059), (134, 30873),

Gene: Groupthink_51 Start: 32208, Stop: 31960, Start Num: 85

Candidate Starts for Groupthink_51:

(Start: 85 @32208 has 80 MA's), (106, 32154), (108, 32151), (122, 32091), (125, 32067), (127, 32058), (134, 32010), (135, 31995),

Gene: Grub_50 Start: 32300, Stop: 32052, Start Num: 85

Candidate Starts for Grub_50:

(Start: 85 @32300 has 80 MA's), (106, 32246), (122, 32183), (125, 32159), (127, 32150), (134, 32102), (135, 32087),

Gene: Grum1_50 Start: 32308, Stop: 32060, Start Num: 85

Candidate Starts for Grum1_50:

(81, 32317), (Start: 85 @32308 has 80 MA's), (106, 32254), (122, 32191), (125, 32167), (127, 32158), (134, 32110), (135, 32095),

Gene: GtownJaz_50 Start: 32310, Stop: 32062, Start Num: 85

Candidate Starts for GtownJaz_50:

(Start: 85 @32310 has 80 MA's), (106, 32256), (122, 32193), (125, 32169), (127, 32160), (134, 32112), (135, 32097),

Gene: HINdeR_43 Start: 33388, Stop: 33113, Start Num: 69

Candidate Starts for HINdeR_43:

(Start: 69 @33388 has 23 MA's), (72, 33382), (91, 33331), (94, 33325), (104, 33307), (137, 33136),

Gene: HamSlice_45 Start: 31878, Stop: 31576, Start Num: 59

Candidate Starts for HamSlice_45:

(5, 32148), (Start: 59 @31878 has 135 MA's), (116, 31746), (122, 31707), (130, 31659), (134, 31626),

Gene: Happiness_45 Start: 31885, Stop: 31583, Start Num: 59

Candidate Starts for Happiness_45:

(5, 32155), (Start: 59 @31885 has 135 MA's), (116, 31753), (122, 31714), (130, 31666), (134, 31633),

Gene: Harlequin_37 Start: 28399, Stop: 28127, Start Num: 75

Candidate Starts for Harlequin_37:

(Start: 75 @28399 has 35 MA's), (101, 28333), (133, 28183), (137, 28147),

Gene: HarryHoudini_48 Start: 32614, Stop: 32192, Start Num: 14

Candidate Starts for HarryHoudini_48:

(Start: 14 @32614 has 28 MA's), (17, 32605), (51, 32512), (55, 32506), (63, 32482), (134, 32239),

Gene: HashRod_51 Start: 32339, Stop: 32091, Start Num: 85

Candidate Starts for HashRod_51:

(Start: 85 @32339 has 80 MA's), (106, 32285), (122, 32222), (125, 32198), (127, 32189), (134, 32141), (135, 32126),

Gene: HaveUMetTed_51 Start: 32190, Stop: 31942, Start Num: 85

Candidate Starts for HaveUMetTed_51:

(Start: 85 @32190 has 80 MA's), (106, 32136), (108, 32133), (122, 32073), (125, 32049), (127, 32040), (134, 31992), (135, 31977),

Gene: Heathen_46 Start: 31467, Stop: 31192, Start Num: 73

Candidate Starts for Heathen_46:

(Start: 73 @31467 has 31 MA's), (127, 31290), (134, 31242),

Gene: HelDan_46 Start: 31719, Stop: 31444, Start Num: 73

Candidate Starts for HelDan_46:

(Start: 73 @31719 has 31 MA's), (127, 31542), (134, 31494),

Gene: Heliosoles_49 Start: 32211, Stop: 31963, Start Num: 85

Candidate Starts for Heliosoles_49:

(Start: 85 @32211 has 80 MA's), (106, 32157), (108, 32154), (122, 32094), (125, 32070), (127, 32061), (134, 32013), (135, 31998),

Gene: Hercules11_50 Start: 32317, Stop: 32069, Start Num: 85

Candidate Starts for Hercules11_50:

(Start: 85 @32317 has 80 MA's), (106, 32263), (122, 32200), (125, 32176), (127, 32167), (134, 32119), (135, 32104),

Gene: Hiro_37 Start: 28654, Stop: 28382, Start Num: 75

Candidate Starts for Hiro_37:

(Start: 75 @28654 has 35 MA's), (101, 28588), (126, 28483), (133, 28438), (137, 28402),

Gene: Holli_45 Start: 31670, Stop: 31368, Start Num: 59

Candidate Starts for Holli_45:

(5, 31940), (Start: 59 @31670 has 135 MA's), (116, 31538), (122, 31499), (130, 31451), (134, 31418),

Gene: Hookmount_46 Start: 32082, Stop: 31807, Start Num: 73

Candidate Starts for Hookmount_46:

(36, 32172), (40, 32163), (Start: 73 @32082 has 31 MA's), (127, 31905),

Gene: HortumSL17_47 Start: 32109, Stop: 31783, Start Num: 34

Candidate Starts for HortumSL17_47:

(Start: 34 @32109 has 54 MA's), (46, 32085), (62, 32043), (137, 31803),

Gene: Houdini22_46 Start: 31884, Stop: 31582, Start Num: 59

Candidate Starts for Houdini22_46:

(Start: 59 @31884 has 135 MA's), (116, 31752), (122, 31713), (130, 31665), (134, 31632),

Gene: HuhtaEnerson15_41 Start: 31246, Stop: 30983, Start Num: 84

Candidate Starts for HuhtaEnerson15_41:

(Start: 84 @31246 has 32 MA's), (Start: 89 @31237 has 3 MA's), (Start: 105 @31195 has 2 MA's),
(116, 31165), (124, 31111), (130, 31078), (134, 31045),

Gene: Hutc2_47 Start: 31259, Stop: 30912, Start Num: 34

Candidate Starts for Hutc2_47:

(Start: 34 @31259 has 54 MA's), (50, 31226), (58, 31205), (130, 30992), (134, 30959),

Gene: ICleared_46 Start: 31909, Stop: 31607, Start Num: 59

Candidate Starts for ICleared_46:

(5, 32179), (Start: 59 @31909 has 135 MA's), (116, 31777), (122, 31738), (130, 31690), (134, 31657),

Gene: Iceman_46 Start: 32166, Stop: 31864, Start Num: 59

Candidate Starts for Iceman_46:

(5, 32436), (Start: 59 @32166 has 135 MA's), (116, 32034), (122, 31995), (130, 31947), (134, 31914),

Gene: Idleandcovert_47 Start: 31838, Stop: 31563, Start Num: 73

Candidate Starts for Idleandcovert_47:

(Start: 73 @31838 has 31 MA's), (127, 31661), (134, 31613),

Gene: Insomnia_48 Start: 31764, Stop: 31417, Start Num: 34

Candidate Starts for Insomnia_48:

(Start: 34 @31764 has 54 MA's), (50, 31731), (58, 31710), (130, 31497), (134, 31464),

Gene: Iracema64_47 Start: 32144, Stop: 31842, Start Num: 59

Candidate Starts for Iracema64_47:

(5, 32414), (Start: 59 @32144 has 135 MA's), (116, 32012), (122, 31973), (130, 31925), (134, 31892),

Gene: Isca_45 Start: 31262, Stop: 30987, Start Num: 73

Candidate Starts for Isca_45:

(40, 31349), (64, 31292), (Start: 73 @31262 has 31 MA's), (115, 31157), (127, 31085), (134, 31037),

Gene: JF2_46 Start: 31013, Stop: 30738, Start Num: 73

Candidate Starts for JF2_46:

(40, 31100), (64, 31043), (Start: 73 @31013 has 31 MA's), (115, 30908), (127, 30836), (134, 30788),

Gene: JF4_46 Start: 31013, Stop: 30738, Start Num: 73

Candidate Starts for JF4_46:

(40, 31100), (64, 31043), (Start: 73 @31013 has 31 MA's), (115, 30908), (127, 30836), (134, 30788),

Gene: JHC117_50 Start: 32307, Stop: 32059, Start Num: 85

Candidate Starts for JHC117_50:

(Start: 85 @32307 has 80 MA's), (106, 32253), (122, 32190), (125, 32166), (127, 32157), (134, 32109), (135, 32094),

Gene: JSwag_48 Start: 30329, Stop: 30036, Start Num: 69

Candidate Starts for JSwag_48:

(Start: 69 @30329 has 23 MA's), (112, 30212), (130, 30119),

Gene: Jabiru_41 Start: 30865, Stop: 30614, Start Num: 84

Candidate Starts for Jabiru_41:

(49, 30955), (54, 30943), (Start: 84 @30865 has 32 MA's), (Start: 89 @30856 has 3 MA's), (Start: 105 @30814 has 2 MA's), (116, 30784), (124, 30730), (130, 30697), (134, 30664),

Gene: Jabith_48 Start: 31765, Stop: 31418, Start Num: 34

Candidate Starts for Jabith_48:

(Start: 34 @31765 has 54 MA's), (50, 31732), (58, 31711), (130, 31498), (134, 31465),

Gene: Jaykayelowell_44 Start: 31873, Stop: 31571, Start Num: 59

Candidate Starts for Jaykayelowell_44:

(5, 32143), (Start: 59 @31873 has 135 MA's), (116, 31741), (122, 31702), (130, 31654), (134, 31621),

Gene: Jeeves_52 Start: 32647, Stop: 32300, Start Num: 35

Candidate Starts for Jeeves_52:

(24, 32671), (Start: 35 @32647 has 5 MA's), (62, 32587), (130, 32380), (137, 32320),

Gene: JenCasNa_51 Start: 32308, Stop: 32060, Start Num: 85

Candidate Starts for JenCasNa_51:

(Start: 85 @32308 has 80 MA's), (106, 32254), (122, 32191), (125, 32167), (127, 32158), (134, 32110), (135, 32095),

Gene: JeppNRM_51 Start: 32209, Stop: 31961, Start Num: 85

Candidate Starts for JeppNRM_51:

(Start: 85 @32209 has 80 MA's), (106, 32155), (108, 32152), (122, 32092), (125, 32068), (127, 32059), (134, 32011), (135, 31996),

Gene: Jester_37 Start: 28330, Stop: 28058, Start Num: 75

Candidate Starts for Jester_37:

(Start: 75 @28330 has 35 MA's), (101, 28264), (133, 28114), (137, 28078),

Gene: JetBlade_46 Start: 31874, Stop: 31572, Start Num: 59

Candidate Starts for JetBlade_46:

(5, 32144), (Start: 59 @31874 has 135 MA's), (116, 31742), (122, 31703), (130, 31655), (134, 31622),

Gene: Jobu08_49 Start: 32140, Stop: 31892, Start Num: 85

Candidate Starts for Jobu08_49:

(Start: 85 @32140 has 80 MA's), (106, 32086), (108, 32083), (122, 32023), (125, 31999), (127, 31990), (134, 31942), (135, 31927),

Gene: JoongJeon_45 Start: 31877, Stop: 31575, Start Num: 59

Candidate Starts for JoongJeon_45:

(Start: 59 @31877 has 135 MA's), (116, 31745), (122, 31706), (130, 31658), (134, 31625),

Gene: Joselito_48 Start: 31705, Stop: 31358, Start Num: 34

Candidate Starts for Joselito_48:

(Start: 34 @31705 has 54 MA's), (50, 31672), (58, 31651), (130, 31438), (134, 31405),

Gene: JoshKayV_49 Start: 32755, Stop: 32333, Start Num: 14

Candidate Starts for JoshKayV_49:

(Start: 14 @32755 has 28 MA's), (17, 32746), (51, 32653), (55, 32647), (63, 32623), (Start: 65 @32620 has 1 MA's), (134, 32380),

Gene: Journey13_41 Start: 30529, Stop: 30176, Start Num: 33

Candidate Starts for Journey13_41:

(Start: 33 @30529 has 3 MA's), (Start: 34 @30526 has 54 MA's), (43, 30508), (55, 30484), (130, 30256),

Gene: Jovo_40 Start: 31287, Stop: 31024, Start Num: 84

Candidate Starts for Jovo_40:

(Start: 84 @31287 has 32 MA's), (Start: 89 @31278 has 3 MA's), (93, 31269), (100, 31248), (Start: 105 @31236 has 2 MA's), (124, 31152), (130, 31119), (134, 31086),

Gene: KADY_50 Start: 32339, Stop: 32091, Start Num: 85

Candidate Starts for KADY_50:

(Start: 85 @32339 has 80 MA's), (106, 32285), (122, 32222), (125, 32198), (127, 32189), (134, 32141), (135, 32126),

Gene: KFPoly_45 Start: 31874, Stop: 31572, Start Num: 59

Candidate Starts for KFPoly_45:

(5, 32144), (Start: 59 @31874 has 135 MA's), (116, 31742), (122, 31703), (130, 31655), (134, 31622),

Gene: Kalb97_51 Start: 32207, Stop: 31959, Start Num: 85

Candidate Starts for Kalb97_51:

(Start: 85 @32207 has 80 MA's), (106, 32153), (108, 32150), (122, 32090), (125, 32066), (127, 32057), (134, 32009), (135, 31994),

Gene: Kalnoky_51 Start: 32205, Stop: 31957, Start Num: 85

Candidate Starts for Kalnoky_51:

(Start: 85 @32205 has 80 MA's), (106, 32151), (108, 32148), (122, 32088), (125, 32064), (127, 32055), (134, 32007), (135, 31992),

Gene: Kamy_46 Start: 31882, Stop: 31580, Start Num: 59

Candidate Starts for Kamy_46:

(5, 32152), (Start: 59 @31882 has 135 MA's), (116, 31750), (122, 31711), (130, 31663), (134, 31630),

Gene: Katalie136_45 Start: 31853, Stop: 31530, Start Num: 59

Candidate Starts for Katalie136_45:

(Start: 59 @31853 has 135 MA's), (96, 31754), (98, 31745), (103, 31730), (116, 31700), (134, 31580),

Gene: KatherineG_51 Start: 31068, Stop: 30775, Start Num: 69

Candidate Starts for KatherineG_51:

(Start: 69 @31068 has 23 MA's), (112, 30951), (130, 30858),

Gene: Kerberos_49 Start: 31906, Stop: 31496, Start Num: 26

Candidate Starts for Kerberos_49:

(2, 32233), (3, 32221), (Start: 26 @31906 has 9 MA's), (74, 31786), (Start: 84 @31762 has 32 MA's), (87, 31756), (116, 31663), (130, 31576), (134, 31543),

Gene: Keziacharles14_47 Start: 33144, Stop: 32797, Start Num: 34

Candidate Starts for Keziacharles14_47:

(Start: 34 @33144 has 54 MA's), (46, 33120), (62, 33078), (86, 33015), (96, 33003), (137, 32817), (138, 32808),

Gene: Kimona_46 Start: 30459, Stop: 30046, Start Num: 21

Candidate Starts for Kimona_46:

(Start: 21 @30459 has 1 MA's), (56, 30369), (Start: 69 @30324 has 23 MA's), (109, 30228), (134, 30099),

Gene: KingCyrus_49 Start: 33872, Stop: 33450, Start Num: 14

Candidate Starts for KingCyrus_49:

(Start: 14 @33872 has 28 MA's), (51, 33770), (62, 33743), (134, 33497), (136, 33473),

Gene: Kingmustik0402_46 Start: 31869, Stop: 31567, Start Num: 59

Candidate Starts for Kingmustik0402_46:

(5, 32139), (Start: 59 @31869 has 135 MA's), (116, 31737), (122, 31698), (130, 31650), (134, 31617),

Gene: KittenMittens_42 Start: 30751, Stop: 30395, Start Num: 45

Candidate Starts for KittenMittens_42:

(8, 30895), (Start: 45 @30751 has 16 MA's), (114, 30568), (128, 30490),

Gene: Koreni_45 Start: 31561, Stop: 31259, Start Num: 59

Candidate Starts for Koreni_45:

(5, 31831), (Start: 59 @31561 has 135 MA's), (116, 31429), (122, 31390), (130, 31342), (134, 31309),

Gene: Kratark_46 Start: 32040, Stop: 31717, Start Num: 59

Candidate Starts for Kratark_46:

(Start: 59 @32040 has 135 MA's), (67, 32025), (116, 31887), (130, 31800), (134, 31767),

Gene: Kremtemulon_44 Start: 31831, Stop: 31529, Start Num: 59

Candidate Starts for Kremtemulon_44:

(5, 32101), (Start: 59 @31831 has 135 MA's), (116, 31699), (122, 31660), (134, 31579),

Gene: Krishelle_37 Start: 28678, Stop: 28406, Start Num: 75

Candidate Starts for Krishelle_37:

(Start: 65 @28711 has 1 MA's), (Start: 75 @28678 has 35 MA's), (108, 28591), (133, 28462), (137, 28426),

Gene: Kristoff_45 Start: 31839, Stop: 31501, Start Num: 45

Candidate Starts for Kristoff_45:

(8, 31983), (13, 31932), (Start: 45 @31839 has 16 MA's), (109, 31689), (114, 31674), (128, 31596),

Gene: Kyee_46 Start: 31878, Stop: 31576, Start Num: 59

Candidate Starts for Kyee_46:

(Start: 59 @31878 has 135 MA's), (116, 31746), (122, 31707), (130, 31659), (134, 31626),

Gene: LBerry_51 Start: 32312, Stop: 32064, Start Num: 85

Candidate Starts for LBerry_51:

(Start: 85 @32312 has 80 MA's), (106, 32258), (122, 32195), (125, 32171), (127, 32162), (134, 32114), (135, 32099),

Gene: LHTSCC_48 Start: 32302, Stop: 32000, Start Num: 59

Candidate Starts for LHTSCC_48:

(5, 32572), (Start: 59 @32302 has 135 MA's), (116, 32170), (122, 32131), (134, 32050),

Gene: LadyBird_51 Start: 32746, Stop: 32324, Start Num: 14

Candidate Starts for LadyBird_51:

(Start: 14 @32746 has 28 MA's), (17, 32737), (46, 32659), (53, 32641), (134, 32371),

Gene: Lambert1_46 Start: 32081, Stop: 31806, Start Num: 73

Candidate Starts for Lambert1_46:

(36, 32171), (40, 32162), (Start: 73 @32081 has 31 MA's), (127, 31904),

Gene: LappelDuVide_45 Start: 31879, Stop: 31577, Start Num: 59

Candidate Starts for LappelDuVide_45:

(5, 32149), (Start: 59 @31879 has 135 MA's), (116, 31747), (122, 31708), (130, 31660), (134, 31627),

Gene: LarryKay_50 Start: 32341, Stop: 32093, Start Num: 85

Candidate Starts for LarryKay_50:

(Start: 85 @32341 has 80 MA's), (106, 32287), (122, 32224), (125, 32200), (127, 32191), (134, 32143), (135, 32128),

Gene: LastResort_49 Start: 30629, Stop: 30336, Start Num: 69

Candidate Starts for LastResort_49:

(Start: 69 @30629 has 23 MA's), (112, 30512), (130, 30419),

Gene: Lemur_46 Start: 31877, Stop: 31575, Start Num: 59

Candidate Starts for Lemur_46:

(5, 32147), (Start: 59 @31877 has 135 MA's), (116, 31745), (122, 31706), (130, 31658), (134, 31625),

Gene: LeoAvram_46 Start: 31880, Stop: 31578, Start Num: 59

Candidate Starts for LeoAvram_46:

(5, 32150), (Start: 59 @31880 has 135 MA's), (116, 31748), (122, 31709), (130, 31661), (134, 31628),

Gene: Lev2_40 Start: 30919, Stop: 30656, Start Num: 84

Candidate Starts for Lev2_40:

(Start: 84 @30919 has 32 MA's), (Start: 89 @30910 has 3 MA's), (93, 30901), (100, 30880), (Start: 105 @30868 has 2 MA's), (124, 30784), (130, 30751), (134, 30718),

Gene: Leviathan_49 Start: 32730, Stop: 32308, Start Num: 14

Candidate Starts for Leviathan_49:

(Start: 14 @32730 has 28 MA's), (17, 32721), (51, 32628), (55, 32622), (63, 32598), (134, 32355),

Gene: LilTurb_48 Start: 32563, Stop: 32141, Start Num: 14

Candidate Starts for LilTurb_48:

(Start: 14 @32563 has 28 MA's), (17, 32554), (51, 32461), (55, 32455), (134, 32188),

Gene: Lilith_51 Start: 32301, Stop: 32053, Start Num: 85

Candidate Starts for Lilith_51:

(Start: 85 @32301 has 80 MA's), (106, 32247), (122, 32184), (125, 32160), (127, 32151), (134, 32103), (135, 32088),

Gene: Lillie_37 Start: 28394, Stop: 28122, Start Num: 75

Candidate Starts for Lillie_37:

(Start: 75 @28394 has 35 MA's), (101, 28328), (133, 28178), (137, 28142),

Gene: LittleB_46 Start: 31881, Stop: 31579, Start Num: 59

Candidate Starts for LittleB_46:

(5, 32151), (Start: 59 @31881 has 135 MA's), (116, 31749), (122, 31710), (130, 31662), (134, 31629),

Gene: LittleCherry_41 Start: 31256, Stop: 30993, Start Num: 84

Candidate Starts for LittleCherry_41:

(Start: 84 @31256 has 32 MA's), (Start: 89 @31247 has 3 MA's), (Start: 105 @31205 has 2 MA's), (116, 31175), (124, 31121), (130, 31088), (134, 31055),

Gene: LittleGuy_46 Start: 31776, Stop: 31474, Start Num: 59

Candidate Starts for LittleGuy_46:

(5, 32046), (Start: 59 @31776 has 135 MA's), (116, 31644), (122, 31605), (130, 31557), (134, 31524),

Gene: LochMonster_47 Start: 32116, Stop: 31814, Start Num: 59

Candidate Starts for LochMonster_47:

(5, 32386), (Start: 59 @32116 has 135 MA's), (76, 32074), (116, 31984), (122, 31945), (130, 31897), (134, 31864),

Gene: LoneWolf_47 Start: 31870, Stop: 31502, Start Num: 32

Candidate Starts for LoneWolf_47:

(6, 32050), (7, 31999), (9, 31975), (Start: 32 @31870 has 1 MA's), (46, 31846), (62, 31804), (77, 31762), (137, 31522),

Gene: Looper_50 Start: 30606, Stop: 30313, Start Num: 69

Candidate Starts for Looper_50:

(Start: 69 @30606 has 23 MA's), (112, 30489), (130, 30396),

Gene: Lorenzo_46 Start: 31880, Stop: 31578, Start Num: 59

Candidate Starts for Lorenzo_46:

(5, 32150), (Start: 59 @31880 has 135 MA's), (116, 31748), (122, 31709), (130, 31661), (134, 31628),

Gene: Louie6_49 Start: 32340, Stop: 32092, Start Num: 85

Candidate Starts for Louie6_49:

(Start: 85 @32340 has 80 MA's), (106, 32286), (122, 32223), (125, 32199), (127, 32190), (134, 32142), (135, 32127),

Gene: Luchador_52 Start: 34435, Stop: 34088, Start Num: 35

Candidate Starts for Luchador_52:

(24, 34459), (Start: 35 @34435 has 5 MA's), (62, 34375), (130, 34168), (137, 34108),

Gene: Lucivia_48 Start: 31754, Stop: 31407, Start Num: 34

Candidate Starts for Lucivia_48:

(Start: 34 @31754 has 54 MA's), (50, 31721), (58, 31700), (130, 31487), (134, 31454),

Gene: Lucyedi_48 Start: 31865, Stop: 31503, Start Num: 29

Candidate Starts for Lucyedi_48:

(Start: 29 @31865 has 5 MA's), (39, 31841), (130, 31583),

Gene: LugYA_53 Start: 32309, Stop: 32061, Start Num: 85

Candidate Starts for LugYA_53:

(Start: 85 @32309 has 80 MA's), (106, 32255), (122, 32192), (125, 32168), (127, 32159), (134, 32111), (135, 32096),

Gene: Lunsford_47 Start: 31874, Stop: 31572, Start Num: 59

Candidate Starts for Lunsford_47:

(5, 32144), (Start: 59 @31874 has 135 MA's), (116, 31742), (122, 31703), (130, 31655), (134, 31622),

Gene: MA5_46 Start: 31164, Stop: 30889, Start Num: 73

Candidate Starts for MA5_46:

(28, 31281), (38, 31257), (40, 31251), (52, 31224), (Start: 73 @31164 has 31 MA's), (110, 31074), (127, 30987), (134, 30939),

Gene: MK4_46 Start: 31247, Stop: 30972, Start Num: 73

Candidate Starts for MK4_46:

(40, 31334), (64, 31277), (Start: 73 @31247 has 31 MA's), (115, 31142), (127, 31070), (134, 31022),

Gene: MaCh_48 Start: 31692, Stop: 31345, Start Num: 34

Candidate Starts for MaCh_48:

(Start: 34 @31692 has 54 MA's), (50, 31659), (58, 31638), (130, 31425), (134, 31392),

Gene: Mabel_47 Start: 31294, Stop: 30947, Start Num: 34

Candidate Starts for Mabel_47:

(Start: 34 @31294 has 54 MA's), (50, 31261), (58, 31240), (130, 31027), (134, 30994),

Gene: MadMarie_50 Start: 32310, Stop: 32062, Start Num: 85

Candidate Starts for MadMarie_50:

(Start: 85 @32310 has 80 MA's), (106, 32256), (122, 32193), (125, 32169), (127, 32160), (134, 32112), (135, 32097),

Gene: Mainiac_50 Start: 32302, Stop: 32054, Start Num: 85

Candidate Starts for Mainiac_50:

(Start: 85 @32302 has 80 MA's), (106, 32248), (122, 32185), (125, 32161), (127, 32152), (134, 32104), (135, 32089),

Gene: Malinsilva_52 Start: 32300, Stop: 32052, Start Num: 85

Candidate Starts for Malinsilva_52:

(Start: 85 @32300 has 80 MA's), (106, 32246), (122, 32183), (125, 32159), (127, 32150), (134, 32102), (135, 32087),

Gene: Maminiaina_46 Start: 31851, Stop: 31525, Start Num: 34

Candidate Starts for Maminiaina_46:

(Start: 34 @31851 has 54 MA's), (46, 31827), (62, 31785), (82, 31743), (137, 31545),

Gene: Manu_50 Start: 32208, Stop: 31960, Start Num: 85

Candidate Starts for Manu_50:

(Start: 85 @32208 has 80 MA's), (106, 32154), (108, 32151), (122, 32091), (125, 32067), (127, 32058), (134, 32010), (135, 31995),

Gene: MarQuardt_50 Start: 32310, Stop: 32062, Start Num: 85

Candidate Starts for MarQuardt_50:

(Start: 85 @32310 has 80 MA's), (106, 32256), (122, 32193), (125, 32169), (127, 32160), (134, 32112), (135, 32097),

Gene: Margo_46 Start: 32107, Stop: 31832, Start Num: 73

Candidate Starts for Margo_46:

(36, 32197), (40, 32188), (Start: 73 @32107 has 31 MA's), (127, 31930),

Gene: Marie_50 Start: 32308, Stop: 32060, Start Num: 85

Candidate Starts for Marie_50:

(Start: 85 @32308 has 80 MA's), (106, 32254), (122, 32191), (125, 32167), (127, 32158), (134, 32110), (135, 32095),

Gene: Marius_51 Start: 32205, Stop: 31957, Start Num: 85

Candidate Starts for Marius_51:

(Start: 85 @32205 has 80 MA's), (106, 32151), (108, 32148), (122, 32088), (125, 32064), (127, 32055), (134, 32007), (135, 31992),

Gene: MarysWell_39 Start: 31119, Stop: 30856, Start Num: 84

Candidate Starts for MarysWell_39:

(Start: 84 @31119 has 32 MA's), (Start: 89 @31110 has 3 MA's), (93, 31101), (Start: 105 @31068 has 2 MA's), (124, 30984), (130, 30951), (134, 30918),

Gene: Maverick_46 Start: 31880, Stop: 31578, Start Num: 59

Candidate Starts for Maverick_46:

(Start: 59 @31880 has 135 MA's), (116, 31748), (122, 31709), (130, 31661), (134, 31628),

Gene: Maxo_47 Start: 31882, Stop: 31580, Start Num: 59

Candidate Starts for Maxo_47:

(5, 32152), (Start: 59 @31882 has 135 MA's), (116, 31750), (122, 31711), (130, 31663), (134, 31630),

Gene: Mazhar510_46 Start: 31881, Stop: 31579, Start Num: 59

Candidate Starts for Mazhar510_46:

(Start: 59 @31881 has 135 MA's), (116, 31749), (122, 31710), (130, 31662), (134, 31629),

Gene: Medusa_46 Start: 31879, Stop: 31577, Start Num: 59

Candidate Starts for Medusa_46:

(5, 32149), (Start: 59 @31879 has 135 MA's), (116, 31747), (122, 31708), (130, 31660), (134, 31627),

Gene: MeeZee_46 Start: 31877, Stop: 31575, Start Num: 59

Candidate Starts for MeeZee_46:

(5, 32147), (Start: 59 @31877 has 135 MA's), (116, 31745), (122, 31706), (130, 31658), (134, 31625),

Gene: Melvin_48 Start: 31875, Stop: 31573, Start Num: 59

Candidate Starts for Melvin_48:

(5, 32145), (Start: 59 @31875 has 135 MA's), (116, 31743), (122, 31704), (130, 31656), (134, 31623),

Gene: Methuselah_47 Start: 32335, Stop: 32087, Start Num: 85

Candidate Starts for Methuselah_47:

(Start: 85 @32335 has 80 MA's), (106, 32281), (122, 32218), (125, 32194), (127, 32185), (134, 32137), (135, 32122),

Gene: Micasa_41 Start: 31386, Stop: 31123, Start Num: 84

Candidate Starts for Micasa_41:

(Start: 84 @31386 has 32 MA's), (Start: 89 @31377 has 3 MA's), (Start: 105 @31335 has 2 MA's), (116, 31305), (124, 31251), (130, 31218), (134, 31185),

Gene: Microwolf_50 Start: 32309, Stop: 32061, Start Num: 85

Candidate Starts for Microwolf_50:

(Start: 85 @32309 has 80 MA's), (106, 32255), (122, 32192), (125, 32168), (127, 32159), (134, 32111), (135, 32096),

Gene: Midas2_40 Start: 31053, Stop: 30841, Start Num: 105

Candidate Starts for Midas2_40:

(Start: 84 @31104 has 32 MA's), (Start: 89 @31095 has 3 MA's), (93, 31086), (100, 31065), (Start: 105 @31053 has 2 MA's), (124, 30969), (130, 30936), (134, 30903),

Gene: Milcery_41 Start: 31223, Stop: 30960, Start Num: 84

Candidate Starts for Milcery_41:

(Start: 84 @31223 has 32 MA's), (Start: 89 @31214 has 3 MA's), (Start: 105 @31172 has 2 MA's), (116, 31142), (124, 31088), (130, 31055), (134, 31022),

Gene: Millski_45 Start: 31881, Stop: 31579, Start Num: 59

Candidate Starts for Millski_45:

(5, 32151), (Start: 59 @31881 has 135 MA's), (116, 31749), (122, 31710), (130, 31662), (134, 31629),

Gene: MinecraftSteve_50 Start: 30593, Stop: 30300, Start Num: 69

Candidate Starts for MinecraftSteve_50:

(Start: 69 @30593 has 23 MA's), (112, 30476), (130, 30383),

Gene: Miramae_45 Start: 32041, Stop: 31718, Start Num: 59

Candidate Starts for Miramae_45:

(Start: 59 @32041 has 135 MA's), (67, 32026), (98, 31933), (103, 31918), (116, 31888), (128, 31813), (134, 31768),

Gene: Misomonster_51 Start: 32338, Stop: 32090, Start Num: 85

Candidate Starts for Misomonster_51:

(Start: 85 @32338 has 80 MA's), (106, 32284), (122, 32221), (125, 32197), (127, 32188), (134, 32140), (135, 32125),

Gene: MissWhite_46 Start: 30606, Stop: 30256, Start Num: 34

Candidate Starts for MissWhite_46:

(Start: 34 @30606 has 54 MA's), (43, 30588), (111, 30426), (130, 30336), (132, 30315),

Gene: MoneyMay_50 Start: 32308, Stop: 32060, Start Num: 85

Candidate Starts for MoneyMay_50:

(Start: 85 @32308 has 80 MA's), (106, 32254), (122, 32191), (125, 32167), (127, 32158), (134, 32110), (135, 32095),

Gene: Morpher26_45 Start: 31874, Stop: 31551, Start Num: 59

Candidate Starts for Morpher26_45:

(Start: 59 @31874 has 135 MA's), (96, 31775), (98, 31766), (103, 31751), (116, 31721), (134, 31601),

Gene: Morrow_47 Start: 31886, Stop: 31584, Start Num: 59

Candidate Starts for Morrow_47:

(5, 32156), (Start: 59 @31886 has 135 MA's), (116, 31754), (122, 31715), (130, 31667), (134, 31634),

Gene: MuchMore_53 Start: 32300, Stop: 32052, Start Num: 85
Candidate Starts for MuchMore_53:
(Start: 85 @32300 has 80 MA's), (106, 32246), (122, 32183), (125, 32159), (127, 32150), (134, 32102), (135, 32087),

Gene: Mulciber_47 Start: 31256, Stop: 30909, Start Num: 34
Candidate Starts for Mulciber_47:
(Start: 34 @31256 has 54 MA's), (50, 31223), (58, 31202), (130, 30989), (134, 30956),

Gene: Munch_48 Start: 31705, Stop: 31358, Start Num: 34
Candidate Starts for Munch_48:
(Start: 34 @31705 has 54 MA's), (50, 31672), (58, 31651), (130, 31438), (134, 31405),

Gene: Mundrea_45 Start: 31861, Stop: 31538, Start Num: 59
Candidate Starts for Mundrea_45:
(Start: 59 @31861 has 135 MA's), (98, 31753), (103, 31738), (116, 31708), (128, 31633), (134, 31588),

Gene: MyraDee_42 Start: 29297, Stop: 29043, Start Num: 71
Candidate Starts for MyraDee_42:
(Start: 71 @29297 has 2 MA's), (127, 29138), (134, 29090),

Gene: Myxus_47 Start: 32109, Stop: 31783, Start Num: 34
Candidate Starts for Myxus_47:
(Start: 34 @32109 has 54 MA's), (46, 32085), (62, 32043), (137, 31803),

Gene: Naca_42 Start: 31534, Stop: 31271, Start Num: 84
Candidate Starts for Naca_42:
(Start: 84 @31534 has 32 MA's), (Start: 89 @31525 has 3 MA's), (97, 31504), (Start: 105 @31483 has 2 MA's), (130, 31366), (133, 31342),

Gene: Naiad_37 Start: 28407, Stop: 28135, Start Num: 75
Candidate Starts for Naiad_37:
(Start: 75 @28407 has 35 MA's), (133, 28191), (137, 28155),

Gene: Naji_49 Start: 31906, Stop: 31496, Start Num: 26
Candidate Starts for Naji_49:
(4, 32113), (Start: 26 @31906 has 9 MA's), (74, 31786), (Start: 84 @31762 has 32 MA's), (87, 31756), (116, 31663), (130, 31576), (134, 31543),

Gene: Nancinator_37 Start: 28395, Stop: 28123, Start Num: 75
Candidate Starts for Nancinator_37:
(Start: 75 @28395 has 35 MA's), (101, 28329), (133, 28179), (137, 28143),

Gene: Natosaleda_37 Start: 28394, Stop: 28122, Start Num: 75
Candidate Starts for Natosaleda_37:
(Start: 75 @28394 has 35 MA's), (101, 28328), (133, 28178), (137, 28142),

Gene: NearlyHeadless_44 Start: 30949, Stop: 30662, Start Num: 70
Candidate Starts for NearlyHeadless_44:
(Start: 70 @30949 has 11 MA's), (78, 30940), (92, 30898), (134, 30712),

Gene: Nebs_47 Start: 31880, Stop: 31578, Start Num: 59

Candidate Starts for Nebs_47:

(5, 32150), (Start: 59 @31880 has 135 MA's), (116, 31748), (122, 31709), (130, 31661), (134, 31628),

Gene: Nebulosus_49 Start: 30625, Stop: 30332, Start Num: 69

Candidate Starts for Nebulosus_49:

(Start: 69 @30625 has 23 MA's), (112, 30508), (130, 30415),

Gene: Nedarya_45 Start: 30054, Stop: 29713, Start Num: 57

Candidate Starts for Nedarya_45:

(Start: 57 @30054 has 1 MA's), (116, 29883), (130, 29796),

Gene: Nemo27_46 Start: 31879, Stop: 31577, Start Num: 59

Candidate Starts for Nemo27_46:

(Start: 59 @31879 has 135 MA's), (116, 31747), (122, 31708), (130, 31660), (134, 31627),

Gene: Noella_46 Start: 32082, Stop: 31807, Start Num: 73

Candidate Starts for Noella_46:

(36, 32172), (40, 32163), (Start: 73 @32082 has 31 MA's), (127, 31905),

Gene: Noelle_46 Start: 32163, Stop: 31840, Start Num: 59

Candidate Starts for Noelle_46:

(Start: 59 @32163 has 135 MA's), (98, 32055), (116, 32010), (134, 31890),

Gene: Norbert_45 Start: 32081, Stop: 31806, Start Num: 73

Candidate Starts for Norbert_45:

(36, 32171), (40, 32162), (Start: 73 @32081 has 31 MA's), (127, 31904),

Gene: NorthStar_45 Start: 31880, Stop: 31578, Start Num: 59

Candidate Starts for NorthStar_45:

(5, 32150), (Start: 59 @31880 has 135 MA's), (116, 31748), (122, 31709), (130, 31661), (134, 31628),

Gene: NotAPhaseMom_46 Start: 31884, Stop: 31582, Start Num: 59

Candidate Starts for NotAPhaseMom_46:

(Start: 59 @31884 has 135 MA's), (116, 31752), (122, 31713), (130, 31665), (134, 31632),

Gene: Nyxis_46 Start: 31770, Stop: 31468, Start Num: 59

Candidate Starts for Nyxis_46:

(5, 32040), (Start: 59 @31770 has 135 MA's), (116, 31638), (122, 31599), (130, 31551), (134, 31518),

Gene: OKCentral2016_44 Start: 31174, Stop: 30836, Start Num: 45

Candidate Starts for OKCentral2016_44:

(8, 31318), (13, 31267), (Start: 45 @31174 has 16 MA's), (Start: 71 @31114 has 2 MA's), (109, 31024), (114, 31009), (128, 30931),

Gene: OKaNui_46 Start: 31930, Stop: 31628, Start Num: 59

Candidate Starts for OKaNui_46:

(5, 32200), (Start: 59 @31930 has 135 MA's), (116, 31798), (122, 31759), (130, 31711), (134, 31678),

Gene: Obama12_47 Start: 32304, Stop: 32002, Start Num: 59

Candidate Starts for Obama12_47:

(5, 32574), (Start: 59 @32304 has 135 MA's), (116, 32172), (122, 32133), (134, 32052),

Gene: Ohfah_47 Start: 31880, Stop: 31578, Start Num: 59

Candidate Starts for Ohfah_47:

(5, 32150), (Start: 59 @31880 has 135 MA's), (116, 31748), (122, 31709), (130, 31661), (134, 31628),

Gene: OlanP_49 Start: 32378, Stop: 32130, Start Num: 85

Candidate Starts for OlanP_49:

(Start: 85 @32378 has 80 MA's), (102, 32336), (106, 32324), (108, 32321), (122, 32261), (125, 32237), (127, 32228), (134, 32180), (135, 32165),

Gene: Ollie_50 Start: 32179, Stop: 31931, Start Num: 85

Candidate Starts for Ollie_50:

(Start: 85 @32179 has 80 MA's), (106, 32125), (122, 32062), (125, 32038), (127, 32029), (134, 31981), (135, 31966),

Gene: Oofda_50 Start: 30484, Stop: 30191, Start Num: 69

Candidate Starts for Oofda_50:

(Start: 69 @30484 has 23 MA's), (112, 30367), (130, 30274),

Gene: Orange_47 Start: 31254, Stop: 30907, Start Num: 34

Candidate Starts for Orange_47:

(Start: 34 @31254 has 54 MA's), (50, 31221), (58, 31200), (130, 30987), (134, 30954),

Gene: P28Green_51 Start: 32311, Stop: 32063, Start Num: 85

Candidate Starts for P28Green_51:

(Start: 85 @32311 has 80 MA's), (106, 32257), (122, 32194), (125, 32170), (127, 32161), (134, 32113), (135, 32098),

Gene: PGHhamlin_52 Start: 32300, Stop: 32052, Start Num: 85

Candidate Starts for PGHhamlin_52:

(Start: 85 @32300 has 80 MA's), (106, 32246), (122, 32183), (125, 32159), (127, 32150), (134, 32102), (135, 32087),

Gene: PP_50 Start: 36311, Stop: 35883, Start Num: 22

Candidate Starts for PP_50:

(10, 36377), (Start: 22 @36311 has 1 MA's), (Start: 37 @36260 has 1 MA's), (68, 36179), (124, 35999), (127, 35981), (130, 35966), (135, 35918), (137, 35906),

Gene: PackMan_46 Start: 32109, Stop: 31783, Start Num: 34

Candidate Starts for PackMan_46:

(Start: 34 @32109 has 54 MA's), (46, 32085), (62, 32043), (137, 31803),

Gene: PainterBoy_48 Start: 31801, Stop: 31439, Start Num: 29

Candidate Starts for PainterBoy_48:

(Start: 29 @31801 has 5 MA's), (39, 31777), (130, 31519),

Gene: Palestino_45 Start: 31880, Stop: 31578, Start Num: 59

Candidate Starts for Palestino_45:

(5, 32150), (Start: 59 @31880 has 135 MA's), (116, 31748), (122, 31709), (130, 31661), (134, 31628),

Gene: Panamaxus_44 Start: 32081, Stop: 31806, Start Num: 73

Candidate Starts for Panamaxus_44:

(36, 32171), (40, 32162), (Start: 73 @32081 has 31 MA's), (127, 31904),

Gene: Partridge_37 Start: 28510, Stop: 28205, Start Num: 65

Candidate Starts for Partridge_37:

(Start: 65 @28510 has 1 MA's), (Start: 75 @28477 has 35 MA's), (108, 28390), (133, 28261), (137, 28225),

Gene: Pawn_50 Start: 32212, Stop: 31964, Start Num: 85

Candidate Starts for Pawn_50:

(Start: 85 @32212 has 80 MA's), (106, 32158), (108, 32155), (122, 32095), (125, 32071), (127, 32062), (134, 32014), (135, 31999),

Gene: PeaceMeal1_43 Start: 30752, Stop: 30396, Start Num: 45

Candidate Starts for PeaceMeal1_43:

(8, 30896), (Start: 45 @30752 has 16 MA's), (114, 30569), (128, 30491),

Gene: Peaches_46 Start: 31879, Stop: 31577, Start Num: 59

Candidate Starts for Peaches_46:

(5, 32149), (Start: 59 @31879 has 135 MA's), (116, 31747), (122, 31708), (130, 31660), (134, 31627),

Gene: Pembroke_50 Start: 32309, Stop: 32061, Start Num: 85

Candidate Starts for Pembroke_50:

(Start: 85 @32309 has 80 MA's), (106, 32255), (122, 32192), (125, 32168), (127, 32159), (134, 32111), (135, 32096),

Gene: Penny1_51 Start: 32312, Stop: 32064, Start Num: 85

Candidate Starts for Penny1_51:

(Start: 85 @32312 has 80 MA's), (95, 32282), (106, 32258), (122, 32195), (125, 32171), (127, 32162), (134, 32114), (135, 32099),

Gene: Perplexer_45 Start: 31850, Stop: 31527, Start Num: 59

Candidate Starts for Perplexer_45:

(Start: 59 @31850 has 135 MA's), (96, 31751), (98, 31742), (103, 31727), (116, 31697), (134, 31577),

Gene: PeterPeter_46 Start: 31877, Stop: 31575, Start Num: 59

Candidate Starts for PeterPeter_46:

(5, 32147), (Start: 59 @31877 has 135 MA's), (116, 31745), (122, 31706), (130, 31658), (134, 31625),

Gene: Petersenfast_46 Start: 31261, Stop: 30914, Start Num: 34

Candidate Starts for Petersenfast_46:

(Start: 34 @31261 has 54 MA's), (50, 31228), (58, 31207), (130, 30994), (134, 30961),

Gene: PetiteSangsue_45 Start: 31853, Stop: 31530, Start Num: 59

Candidate Starts for PetiteSangsue_45:

(Start: 59 @31853 has 135 MA's), (96, 31754), (98, 31745), (103, 31730), (116, 31700), (134, 31580),

Gene: PetterN_44 Start: 30975, Stop: 30712, Start Num: 84

Candidate Starts for PetterN_44:

(54, 31053), (Start: 84 @30975 has 32 MA's), (Start: 89 @30966 has 3 MA's), (97, 30945), (Start: 105 @30924 has 2 MA's), (130, 30807), (133, 30783),

Gene: Phacado_46 Start: 31879, Stop: 31577, Start Num: 59

Candidate Starts for Phacado_46:

(Start: 59 @31879 has 135 MA's), (116, 31747), (122, 31708), (130, 31660), (134, 31627),

Gene: Phaeder_47 Start: 32109, Stop: 31783, Start Num: 34

Candidate Starts for Phaeder_47:

(Start: 34 @32109 has 54 MA's), (46, 32085), (62, 32043), (137, 31803),

Gene: PhailMary_36 Start: 28716, Stop: 28444, Start Num: 75

Candidate Starts for PhailMary_36:

(Start: 75 @28716 has 35 MA's), (101, 28650), (133, 28500), (137, 28464),

Gene: Phantastic_47 Start: 31457, Stop: 31182, Start Num: 73

Candidate Starts for Phantastic_47:

(40, 31538), (64, 31481), (Start: 73 @31457 has 31 MA's), (Start: 85 @31430 has 80 MA's), (127, 31280), (134, 31232),

Gene: Pharaoh_41 Start: 31682, Stop: 31311, Start Num: 34

Candidate Starts for Pharaoh_41:

(1, 32006), (Start: 34 @31682 has 54 MA's), (62, 31619), (96, 31523), (130, 31391),

Gene: Phelipe_47 Start: 31880, Stop: 31578, Start Num: 59

Candidate Starts for Phelipe_47:

(5, 32150), (Start: 59 @31880 has 135 MA's), (116, 31748), (122, 31709), (130, 31661), (134, 31628),

Gene: Phighter1804_46 Start: 31943, Stop: 31620, Start Num: 59

Candidate Starts for Phighter1804_46:

(Start: 59 @31943 has 135 MA's), (67, 31928), (116, 31790), (122, 31751), (130, 31703), (134, 31670),

Gene: Phillis_46 Start: 31492, Stop: 31232, Start Num: 70

Candidate Starts for Phillis_46:

(Start: 70 @31492 has 11 MA's), (78, 31483), (129, 31330), (134, 31291),

Gene: PhishRPhriends_48 Start: 31386, Stop: 31138, Start Num: 85

Candidate Starts for PhishRPhriends_48:

(Start: 85 @31386 has 80 MA's), (106, 31332), (108, 31329), (122, 31269), (125, 31245), (127, 31236), (134, 31188), (135, 31173),

Gene: Phlei_36 Start: 31613, Stop: 31308, Start Num: 51

Candidate Starts for Phlei_36:

(47, 31628), (51, 31613), (Start: 69 @31559 has 23 MA's), (79, 31541), (107, 31487), (138, 31319),

Gene: Phlorence_39 Start: 30794, Stop: 30531, Start Num: 84

Candidate Starts for Phlorence_39:

(Start: 84 @30794 has 32 MA's), (Start: 89 @30785 has 3 MA's), (93, 30776), (100, 30755), (Start: 105 @30743 has 2 MA's), (124, 30659), (130, 30626), (134, 30593),

Gene: Phoebe_51 Start: 32301, Stop: 32053, Start Num: 85

Candidate Starts for Phoebe_51:

(Start: 85 @32301 has 80 MA's), (106, 32247), (122, 32184), (125, 32160), (127, 32151), (134, 32103), (135, 32088),

Gene: Phonnegut_47 Start: 32158, Stop: 31832, Start Num: 34

Candidate Starts for Phonnegut_47:

(Start: 34 @32158 has 54 MA's), (46, 32134), (62, 32092), (137, 31852),

Gene: Phontbonne_46 Start: 31771, Stop: 31469, Start Num: 59

Candidate Starts for Phontbonne_46:

(5, 32041), (Start: 59 @31771 has 135 MA's), (116, 31639), (122, 31600), (130, 31552), (134, 31519),

Gene: Phoxy_50 Start: 32336, Stop: 32088, Start Num: 85

Candidate Starts for Phoxy_50:

(Start: 85 @32336 has 80 MA's), (106, 32282), (122, 32219), (125, 32195), (127, 32186), (134, 32138), (135, 32123),

Gene: Phrankenstein_37 Start: 28340, Stop: 28068, Start Num: 75

Candidate Starts for Phrankenstein_37:

(Start: 75 @28340 has 35 MA's), (101, 28274), (133, 28124), (137, 28088),

Gene: Phranny_51 Start: 32194, Stop: 31946, Start Num: 85

Candidate Starts for Phranny_51:

(Start: 85 @32194 has 80 MA's), (106, 32140), (108, 32137), (122, 32077), (125, 32053), (127, 32044), (134, 31996), (135, 31981),

Gene: PickleBack_40 Start: 30920, Stop: 30657, Start Num: 84

Candidate Starts for PickleBack_40:

(Start: 84 @30920 has 32 MA's), (Start: 89 @30911 has 3 MA's), (93, 30902), (100, 30881), (Start: 105 @30869 has 2 MA's), (124, 30785), (130, 30752), (134, 30719),

Gene: Pioneer_47 Start: 32158, Stop: 31832, Start Num: 34

Candidate Starts for Pioneer_47:

(Start: 34 @32158 has 54 MA's), (46, 32134), (62, 32092), (137, 31852),

Gene: Pipcraft_44 Start: 31880, Stop: 31578, Start Num: 59

Candidate Starts for Pipcraft_44:

(5, 32150), (Start: 59 @31880 has 135 MA's), (116, 31748), (122, 31709), (130, 31661), (134, 31628),

Gene: Piro94_47 Start: 32531, Stop: 32109, Start Num: 14

Candidate Starts for Piro94_47:

(Start: 14 @32531 has 28 MA's), (17, 32522), (51, 32429), (55, 32423), (63, 32399), (134, 32156),

Gene: Pistachio_48 Start: 31385, Stop: 31110, Start Num: 73

Candidate Starts for Pistachio_48:

(Start: 73 @31385 has 31 MA's), (127, 31208), (134, 31160),

Gene: Pocahontas_46 Start: 32078, Stop: 31803, Start Num: 73

Candidate Starts for Pocahontas_46:

(36, 32168), (40, 32159), (Start: 73 @32078 has 31 MA's), (127, 31901),

Gene: Polymorphads_47 Start: 31873, Stop: 31571, Start Num: 59

Candidate Starts for Polymorphads_47:

(5, 32143), (Start: 59 @31873 has 135 MA's), (116, 31741), (122, 31702), (130, 31654), (134, 31621),

Gene: Pomar16_49 Start: 31947, Stop: 31537, Start Num: 26

Candidate Starts for Pomar16_49:

(2, 32274), (3, 32262), (Start: 26 @31947 has 9 MA's), (74, 31827), (Start: 84 @31803 has 32 MA's), (87, 31797), (116, 31704), (130, 31617), (134, 31584),

Gene: Poompha_44 Start: 30750, Stop: 30394, Start Num: 45

Candidate Starts for Poompha_44:

(8, 30894), (Start: 45 @30750 has 16 MA's), (114, 30567), (128, 30489),

Gene: Popcicle_46 Start: 32078, Stop: 31803, Start Num: 73

Candidate Starts for Popcicle_46:

(36, 32168), (40, 32159), (Start: 73 @32078 has 31 MA's), (127, 31901),

Gene: PotatoSplit_52 Start: 32312, Stop: 32064, Start Num: 85

Candidate Starts for PotatoSplit_52:

(Start: 85 @32312 has 80 MA's), (106, 32258), (122, 32195), (125, 32171), (127, 32162), (134, 32114), (135, 32099),

Gene: Power_46 Start: 32150, Stop: 31728, Start Num: 14

Candidate Starts for Power_46:

(Start: 14 @32150 has 28 MA's), (17, 32141), (27, 32105), (46, 32063), (134, 31775),

Gene: Priya_47 Start: 32176, Stop: 31850, Start Num: 34

Candidate Starts for Priya_47:

(Start: 34 @32176 has 54 MA's), (46, 32152), (62, 32110), (137, 31870),

Gene: Pumbaa_46 Start: 31825, Stop: 31523, Start Num: 59

Candidate Starts for Pumbaa_46:

(5, 32095), (Start: 59 @31825 has 135 MA's), (116, 31693), (122, 31654), (130, 31606), (134, 31573),

Gene: Puppy_48 Start: 31458, Stop: 31183, Start Num: 73

Candidate Starts for Puppy_48:

(Start: 73 @31458 has 31 MA's), (127, 31281), (134, 31233),

Gene: PurpleHaze_50 Start: 32207, Stop: 31959, Start Num: 85

Candidate Starts for PurpleHaze_50:

(Start: 85 @32207 has 80 MA's), (106, 32153), (108, 32150), (122, 32090), (125, 32066), (127, 32057), (134, 32009), (135, 31994),

Gene: Qobbit_47 Start: 32138, Stop: 31812, Start Num: 34

Candidate Starts for Qobbit_47:

(Start: 34 @32138 has 54 MA's), (46, 32114), (62, 32072), (137, 31832),

Gene: QueenBeesly_47 Start: 32097, Stop: 31675, Start Num: 14

Candidate Starts for QueenBeesly_47:

(Start: 14 @32097 has 28 MA's), (17, 32088), (27, 32052), (46, 32010), (134, 31722),

Gene: QuinnKiro_45 Start: 32081, Stop: 31806, Start Num: 73

Candidate Starts for QuinnKiro_45:

(36, 32171), (40, 32162), (Start: 73 @32081 has 31 MA's), (127, 31904),

Gene: RER2_30 Start: 25266, Stop: 24994, Start Num: 75

Candidate Starts for RER2_30:

(Start: 75 @25266 has 35 MA's), (101, 25200), (133, 25050), (137, 25014),

Gene: RGL3_32 Start: 26225, Stop: 25980, Start Num: 78

Candidate Starts for RGL3_32:

(78, 26225), (92, 26183), (133, 26036), (137, 26000), (138, 25991),

Gene: Rahalelujah_46 Start: 31411, Stop: 31040, Start Num: 34

Candidate Starts for Rahalelujah_46:

(6, 31597), (7, 31546), (9, 31522), (Start: 34 @31411 has 54 MA's), (60, 31351), (62, 31348), (137, 31060),

Gene: Rasputin_37 Start: 28364, Stop: 28092, Start Num: 75

Candidate Starts for Rasputin_37:

(Start: 75 @28364 has 35 MA's), (101, 28298), (133, 28148), (137, 28112),

Gene: ReMo_49 Start: 30626, Stop: 30333, Start Num: 69

Candidate Starts for ReMo_49:

(Start: 69 @30626 has 23 MA's), (112, 30509), (130, 30416),

Gene: Reba_50 Start: 31867, Stop: 31619, Start Num: 85

Candidate Starts for Reba_50:

(Start: 85 @31867 has 80 MA's), (106, 31813), (108, 31810), (122, 31750), (125, 31726), (127, 31717), (134, 31669), (135, 31654),

Gene: Rebeuca_45 Start: 31840, Stop: 31502, Start Num: 45

Candidate Starts for Rebeuca_45:

(8, 31984), (13, 31933), (Start: 45 @31840 has 16 MA's), (109, 31690), (114, 31675), (128, 31597),

Gene: Refuge_46 Start: 33330, Stop: 32986, Start Num: 34

Candidate Starts for Refuge_46:

(25, 33342), (Start: 34 @33330 has 54 MA's), (55, 33288), (56, 33285), (64, 33267), (86, 33213), (96, 33201), (130, 33066), (137, 33006),

Gene: Relief_45 Start: 31877, Stop: 31575, Start Num: 59

Candidate Starts for Relief_45:

(5, 32147), (Start: 59 @31877 has 135 MA's), (116, 31745), (122, 31706), (130, 31658), (134, 31625),

Gene: Remus_49 Start: 30309, Stop: 30016, Start Num: 69

Candidate Starts for Remus_49:

(Start: 69 @30309 has 23 MA's), (112, 30192), (130, 30099),

Gene: ResDef_47 Start: 32081, Stop: 31806, Start Num: 73

Candidate Starts for ResDef_47:

(36, 32171), (40, 32162), (Start: 73 @32081 has 31 MA's), (127, 31904),

Gene: Retro23_48 Start: 32504, Stop: 32082, Start Num: 14

Candidate Starts for Retro23_48:

(Start: 14 @32504 has 28 MA's), (17, 32495), (51, 32402), (63, 32372), (134, 32129),

Gene: RexFury_37 Start: 28425, Stop: 28153, Start Num: 75

Candidate Starts for RexFury_37:

(Start: 75 @28425 has 35 MA's), (101, 28359), (133, 28209), (137, 28173),

Gene: Rhodalysa_37 Start: 28394, Stop: 28122, Start Num: 75

Candidate Starts for Rhodalysa_37:

(Start: 75 @28394 has 35 MA's), (101, 28328), (133, 28178), (137, 28142),

Gene: RhynO_46 Start: 31639, Stop: 31301, Start Num: 45

Candidate Starts for RhynO_46:

(Start: 45 @31639 has 16 MA's), (Start: 71 @31579 has 2 MA's), (114, 31474), (128, 31396),

Gene: Roary_45 Start: 31159, Stop: 30863, Start Num: 70
Candidate Starts for Roary_45:
(42, 31225), (Start: 70 @31159 has 11 MA's), (92, 31108), (134, 30922),

Gene: Rockstar_46 Start: 31256, Stop: 30981, Start Num: 73
Candidate Starts for Rockstar_46:
(40, 31343), (64, 31286), (Start: 73 @31256 has 31 MA's), (115, 31151), (127, 31079), (134, 31031),

Gene: Romney_46 Start: 31877, Stop: 31575, Start Num: 59
Candidate Starts for Romney_46:
(5, 32147), (Start: 59 @31877 has 135 MA's), (76, 31835), (116, 31745), (122, 31706), (130, 31658),
(134, 31625),

Gene: Roosevelt_45 Start: 31882, Stop: 31580, Start Num: 59
Candidate Starts for Roosevelt_45:
(5, 32152), (Start: 59 @31882 has 135 MA's), (116, 31750), (122, 31711), (130, 31663), (134, 31630),

Gene: Rosalind_48 Start: 30512, Stop: 30219, Start Num: 69
Candidate Starts for Rosalind_48:
(Start: 69 @30512 has 23 MA's), (112, 30395), (130, 30302),

Gene: Ruin_46 Start: 31873, Stop: 31571, Start Num: 59
Candidate Starts for Ruin_46:
(5, 32143), (Start: 59 @31873 has 135 MA's), (116, 31741), (122, 31702), (130, 31654), (134, 31621),

Gene: Rummer_49 Start: 32339, Stop: 32091, Start Num: 85
Candidate Starts for Rummer_49:
(Start: 85 @32339 has 80 MA's), (106, 32285), (122, 32222), (125, 32198), (127, 32189), (134,
32141), (135, 32126),

Gene: Sabertooth_46 Start: 31882, Stop: 31580, Start Num: 59
Candidate Starts for Sabertooth_46:
(5, 32152), (Start: 59 @31882 has 135 MA's), (116, 31750), (122, 31711), (130, 31663), (134, 31630),

Gene: Sabia_50 Start: 32302, Stop: 32054, Start Num: 85
Candidate Starts for Sabia_50:
(Start: 85 @32302 has 80 MA's), (106, 32248), (122, 32185), (125, 32161), (127, 32152), (134,
32104), (135, 32089),

Gene: Sabinator_49 Start: 32307, Stop: 32059, Start Num: 85
Candidate Starts for Sabinator_49:
(Start: 85 @32307 has 80 MA's), (106, 32253), (122, 32190), (125, 32166), (127, 32157), (134,
32109), (135, 32094),

Gene: Saintus_39 Start: 27880, Stop: 27593, Start Num: 70
Candidate Starts for Saintus_39:
(Start: 70 @27880 has 11 MA's), (78, 27871), (92, 27829), (134, 27643),

Gene: Salz_46 Start: 31232, Stop: 30885, Start Num: 34
Candidate Starts for Salz_46:
(Start: 34 @31232 has 54 MA's), (50, 31199), (58, 31178), (130, 30965), (134, 30932),

Gene: SaturnRing_47 Start: 31838, Stop: 31563, Start Num: 73

Candidate Starts for SaturnRing_47:

(Start: 73 @31838 has 31 MA's), (127, 31661), (134, 31613),

Gene: Scamp_46 Start: 31882, Stop: 31580, Start Num: 59

Candidate Starts for Scamp_46:

(5, 32152), (Start: 59 @31882 has 135 MA's), (116, 31750), (122, 31711), (130, 31663), (134, 31630),

Gene: Scherzo_47 Start: 32347, Stop: 32021, Start Num: 34

Candidate Starts for Scherzo_47:

(Start: 34 @32347 has 54 MA's), (46, 32323), (62, 32281), (137, 32041),

Gene: Scorpia_44 Start: 31052, Stop: 30789, Start Num: 84

Candidate Starts for Scorpia_44:

(54, 31130), (Start: 84 @31052 has 32 MA's), (Start: 89 @31043 has 3 MA's), (97, 31022), (Start: 105 @31001 has 2 MA's), (130, 30884), (133, 30860),

Gene: Scout_46 Start: 30966, Stop: 30691, Start Num: 73

Candidate Starts for Scout_46:

(Start: 73 @30966 has 31 MA's), (127, 30789), (134, 30741),

Gene: SemperFi_48 Start: 32365, Stop: 31943, Start Num: 14

Candidate Starts for SemperFi_48:

(Start: 14 @32365 has 28 MA's), (17, 32356), (51, 32263), (63, 32233), (134, 31990),

Gene: Severus_43 Start: 30750, Stop: 30394, Start Num: 45

Candidate Starts for Severus_43:

(8, 30894), (Start: 45 @30750 has 16 MA's), (114, 30567), (128, 30489),

Gene: Shaka_46 Start: 31877, Stop: 31575, Start Num: 59

Candidate Starts for Shaka_46:

(5, 32147), (Start: 59 @31877 has 135 MA's), (116, 31745), (122, 31706), (130, 31658), (134, 31625),

Gene: Sham4_47 Start: 31260, Stop: 30913, Start Num: 34

Candidate Starts for Sham4_47:

(Start: 34 @31260 has 54 MA's), (50, 31227), (58, 31206), (130, 30993), (134, 30960),

Gene: ShayRa_51 Start: 30830, Stop: 30537, Start Num: 69

Candidate Starts for ShayRa_51:

(Start: 69 @30830 has 23 MA's), (112, 30713), (130, 30620),

Gene: SheaKeira_46 Start: 31684, Stop: 31340, Start Num: 34

Candidate Starts for SheaKeira_46:

(Start: 34 @31684 has 54 MA's), (43, 31669), (46, 31663), (62, 31621), (77, 31579), (96, 31546), (137, 31360), (138, 31351),

Gene: Sheen_47 Start: 34109, Stop: 33846, Start Num: 71

Candidate Starts for Sheen_47:

(Start: 71 @34109 has 2 MA's), (88, 34067), (91, 34058), (117, 34010), (121, 33998), (128, 33941), (137, 33869),

Gene: SheldonCooper_48 Start: 32303, Stop: 32001, Start Num: 59

Candidate Starts for SheldonCooper_48:

(5, 32573), (Start: 59 @32303 has 135 MA's), (116, 32171), (122, 32132), (134, 32051),

Gene: Shuman_37 Start: 28407, Stop: 28135, Start Num: 75

Candidate Starts for Shuman_37:

(Start: 75 @28407 has 35 MA's), (101, 28341), (133, 28191), (137, 28155),

Gene: Shygu2_45 Start: 31853, Stop: 31530, Start Num: 59

Candidate Starts for Shygu2_45:

(Start: 59 @31853 has 135 MA's), (116, 31700), (122, 31661), (134, 31580),

Gene: Skipitt_45 Start: 31874, Stop: 31572, Start Num: 59

Candidate Starts for Skipitt_45:

(5, 32144), (Start: 59 @31874 has 135 MA's), (116, 31742), (122, 31703), (130, 31655), (134, 31622),

Gene: Smeadley_45 Start: 31325, Stop: 31029, Start Num: 70

Candidate Starts for Smeadley_45:

(42, 31391), (Start: 70 @31325 has 11 MA's), (92, 31274), (134, 31088),

Gene: Smeagan_50 Start: 32817, Stop: 32395, Start Num: 14

Candidate Starts for Smeagan_50:

(Start: 14 @32817 has 28 MA's), (17, 32808), (51, 32715), (55, 32709), (63, 32685), (134, 32442),

Gene: SnapTap_47 Start: 32176, Stop: 31754, Start Num: 14

Candidate Starts for SnapTap_47:

(Start: 14 @32176 has 28 MA's), (17, 32167), (27, 32131), (46, 32089), (134, 31801),

Gene: Snape_47 Start: 31258, Stop: 30911, Start Num: 34

Candidate Starts for Snape_47:

(Start: 34 @31258 has 54 MA's), (50, 31225), (58, 31204), (130, 30991), (134, 30958),

Gene: Snickers_50 Start: 32282, Stop: 32034, Start Num: 85

Candidate Starts for Snickers_50:

(Start: 85 @32282 has 80 MA's), (106, 32228), (122, 32165), (125, 32141), (127, 32132), (134, 32084), (135, 32069),

Gene: SoYo_50 Start: 32220, Stop: 31972, Start Num: 85

Candidate Starts for SoYo_50:

(Start: 85 @32220 has 80 MA's), (106, 32166), (122, 32103), (125, 32079), (127, 32070), (134, 32022), (135, 32007),

Gene: SoilDragon_50 Start: 31756, Stop: 31508, Start Num: 85

Candidate Starts for SoilDragon_50:

(Start: 85 @31756 has 80 MA's), (106, 31702), (108, 31699), (122, 31639), (125, 31615), (127, 31606), (134, 31558), (135, 31543),

Gene: SororFago_50 Start: 33759, Stop: 33412, Start Num: 35

Candidate Starts for SororFago_50:

(24, 33783), (Start: 35 @33759 has 5 MA's), (96, 33624), (99, 33618), (130, 33492), (137, 33432),

Gene: Soshari_52 Start: 32335, Stop: 32087, Start Num: 85

Candidate Starts for Soshari_52:

(Start: 85 @32335 has 80 MA's), (106, 32281), (122, 32218), (125, 32194), (127, 32185), (134, 32137), (135, 32122),

Gene: Soups_50 Start: 30829, Stop: 30536, Start Num: 69
Candidate Starts for Soups_50:
(Start: 69 @30829 has 23 MA's), (112, 30712), (130, 30619),

Gene: Sparxx_47 Start: 31875, Stop: 31573, Start Num: 59
Candidate Starts for Sparxx_47:
(5, 32145), (Start: 59 @31875 has 135 MA's), (116, 31743), (122, 31704), (130, 31656), (134, 31623),

Gene: Spike509_50 Start: 32336, Stop: 32088, Start Num: 85
Candidate Starts for Spike509_50:
(Start: 85 @32336 has 80 MA's), (106, 32282), (122, 32219), (125, 32195), (127, 32186), (134, 32138), (135, 32123),

Gene: Spino_45 Start: 31880, Stop: 31578, Start Num: 59
Candidate Starts for Spino_45:
(5, 32150), (Start: 59 @31880 has 135 MA's), (116, 31748), (122, 31709), (130, 31661), (134, 31628),

Gene: Spouty_45 Start: 32175, Stop: 31849, Start Num: 34
Candidate Starts for Spouty_45:
(Start: 34 @32175 has 54 MA's), (46, 32151), (62, 32109), (137, 31869),

Gene: StCroix_37 Start: 28407, Stop: 28135, Start Num: 75
Candidate Starts for StCroix_37:
(Start: 75 @28407 has 35 MA's), (133, 28191), (137, 28155),

Gene: Stagni_50 Start: 32311, Stop: 32063, Start Num: 85
Candidate Starts for Stagni_50:
(Start: 85 @32311 has 80 MA's), (106, 32257), (122, 32194), (125, 32170), (127, 32161), (134, 32113), (135, 32098),

Gene: StarStuff_49 Start: 31909, Stop: 31499, Start Num: 26
Candidate Starts for StarStuff_49:
(2, 32236), (3, 32224), (Start: 26 @31909 has 9 MA's), (74, 31789), (Start: 84 @31765 has 32 MA's), (87, 31759), (116, 31666), (130, 31579), (134, 31546),

Gene: Stasia_45 Start: 31752, Stop: 31450, Start Num: 59
Candidate Starts for Stasia_45:
(Start: 59 @31752 has 135 MA's), (130, 31533),

Gene: Steamy_43 Start: 31608, Stop: 31282, Start Num: 48
Candidate Starts for Steamy_43:
(9, 31740), (20, 31668), (46, 31614), (Start: 48 @31608 has 1 MA's), (83, 31515), (86, 31509), (96, 31497), (130, 31362),

Gene: StepMih_50 Start: 32302, Stop: 32054, Start Num: 85
Candidate Starts for StepMih_50:
(Start: 85 @32302 has 80 MA's), (106, 32248), (122, 32185), (125, 32161), (127, 32152), (134, 32104), (135, 32089),

Gene: Stephig9_45 Start: 31163, Stop: 30888, Start Num: 70
Candidate Starts for Stephig9_45:
(42, 31229), (Start: 70 @31163 has 11 MA's), (78, 31154), (90, 31118), (129, 30986), (131, 30965),

Gene: Stink_46 Start: 32321, Stop: 31998, Start Num: 59

Candidate Starts for Stink_46:

(Start: 59 @32321 has 135 MA's), (67, 32306), (98, 32213), (103, 32198), (116, 32168), (128, 32093), (134, 32048),

Gene: Strosahl_49 Start: 30309, Stop: 30016, Start Num: 69

Candidate Starts for Strosahl_49:

(Start: 69 @30309 has 23 MA's), (112, 30192), (130, 30099),

Gene: Swann_37 Start: 28394, Stop: 28122, Start Num: 75

Candidate Starts for Swann_37:

(Start: 75 @28394 has 35 MA's), (101, 28328), (133, 28178), (137, 28142),

Gene: SweetiePie_47 Start: 32305, Stop: 31883, Start Num: 14

Candidate Starts for SweetiePie_47:

(Start: 14 @32305 has 28 MA's), (17, 32296), (51, 32203), (63, 32173), (134, 31930),

Gene: Swirley_43 Start: 31587, Stop: 31324, Start Num: 84

Candidate Starts for Swirley_43:

(Start: 84 @31587 has 32 MA's), (Start: 89 @31578 has 3 MA's), (Start: 105 @31536 has 2 MA's), (116, 31506), (124, 31452), (130, 31419), (134, 31386),

Gene: Switzerland_49 Start: 30692, Stop: 30399, Start Num: 69

Candidate Starts for Switzerland_49:

(Start: 69 @30692 has 23 MA's), (112, 30575), (130, 30482),

Gene: SydNat_42 Start: 31777, Stop: 31514, Start Num: 84

Candidate Starts for SydNat_42:

(Start: 84 @31777 has 32 MA's), (Start: 89 @31768 has 3 MA's), (Start: 105 @31726 has 2 MA's), (116, 31696), (124, 31642), (130, 31609), (134, 31576),

Gene: TNguyen7_47 Start: 31805, Stop: 31530, Start Num: 73

Candidate Starts for TNguyen7_47:

(Start: 73 @31805 has 31 MA's), (127, 31628), (134, 31580),

Gene: TWAMP_37 Start: 28394, Stop: 28122, Start Num: 75

Candidate Starts for TWAMP_37:

(Start: 75 @28394 has 35 MA's), (101, 28328), (133, 28178), (137, 28142),

Gene: Takoda_37 Start: 28367, Stop: 28095, Start Num: 75

Candidate Starts for Takoda_37:

(Start: 75 @28367 has 35 MA's), (101, 28301), (133, 28151), (137, 28115),

Gene: Taquarus_46 Start: 31883, Stop: 31581, Start Num: 59

Candidate Starts for Taquarus_46:

(5, 32153), (Start: 59 @31883 has 135 MA's), (116, 31751), (122, 31712), (130, 31664), (134, 31631),

Gene: Tarynearal_39 Start: 31029, Stop: 30766, Start Num: 84

Candidate Starts for Tarynearal_39:

(Start: 84 @31029 has 32 MA's), (Start: 89 @31020 has 3 MA's), (Start: 105 @30978 has 2 MA's), (116, 30948), (124, 30894), (130, 30861), (134, 30828),

Gene: Taurus_51 Start: 32308, Stop: 32060, Start Num: 85
Candidate Starts for Taurus_51:
(Start: 85 @32308 has 80 MA's), (106, 32254), (122, 32191), (125, 32167), (127, 32158), (134, 32110), (135, 32095),

Gene: Texage_45 Start: 32082, Stop: 31807, Start Num: 73
Candidate Starts for Texage_45:
(36, 32172), (40, 32163), (Start: 73 @32082 has 31 MA's), (127, 31905),

Gene: Thanksgivukkah_45 Start: 31878, Stop: 31576, Start Num: 59
Candidate Starts for Thanksgivukkah_45:
(5, 32148), (Start: 59 @31878 has 135 MA's), (116, 31746), (122, 31707), (130, 31659), (134, 31626),

Gene: Theia_38 Start: 31043, Stop: 30789, Start Num: 89
Candidate Starts for Theia_38:
(Start: 84 @31052 has 32 MA's), (Start: 89 @31043 has 3 MA's), (93, 31034), (100, 31013), (Start: 105 @31001 has 2 MA's), (124, 30917), (130, 30884), (134, 30851),

Gene: Tiffany_50 Start: 32194, Stop: 31946, Start Num: 85
Candidate Starts for Tiffany_50:
(Start: 85 @32194 has 80 MA's), (106, 32140), (122, 32077), (125, 32053), (127, 32044), (134, 31996), (135, 31981),

Gene: Tiger_39 Start: 30576, Stop: 30322, Start Num: 89
Candidate Starts for Tiger_39:
(Start: 84 @30585 has 32 MA's), (Start: 89 @30576 has 3 MA's), (93, 30567), (100, 30546), (Start: 105 @30534 has 2 MA's), (124, 30450), (130, 30417), (134, 30384),

Gene: Timothy_47 Start: 31235, Stop: 30888, Start Num: 34
Candidate Starts for Timothy_47:
(Start: 34 @31235 has 54 MA's), (50, 31202), (58, 31181), (130, 30968), (134, 30935),

Gene: Timshel_45 Start: 33822, Stop: 33541, Start Num: 69
Candidate Starts for Timshel_45:
(18, 33957), (Start: 69 @33822 has 23 MA's), (94, 33759), (119, 33702), (122, 33672), (137, 33564),

Gene: TinaFeyge_46 Start: 31875, Stop: 31573, Start Num: 59
Candidate Starts for TinaFeyge_46:
(5, 32145), (Start: 59 @31875 has 135 MA's), (116, 31743), (122, 31704), (130, 31656), (134, 31623),

Gene: TinyTimmy_46 Start: 31278, Stop: 30931, Start Num: 34
Candidate Starts for TinyTimmy_46:
(Start: 34 @31278 has 54 MA's), (50, 31245), (58, 31224), (130, 31011), (134, 30978),

Gene: Tinybot_45 Start: 31907, Stop: 31605, Start Num: 59
Candidate Starts for Tinybot_45:
(5, 32177), (Start: 59 @31907 has 135 MA's), (116, 31775), (122, 31736), (130, 31688), (134, 31655),

Gene: TiroTheta9_46 Start: 31874, Stop: 31572, Start Num: 59
Candidate Starts for TiroTheta9_46:
(5, 32144), (Start: 59 @31874 has 135 MA's), (116, 31742), (122, 31703), (130, 31655), (134, 31622),

Gene: Todacoro_46 Start: 32081, Stop: 31806, Start Num: 73

Candidate Starts for Todacoro_46:

(36, 32171), (40, 32162), (Start: 73 @32081 has 31 MA's), (127, 31904),

Gene: Tomathan_49 Start: 31906, Stop: 31496, Start Num: 26

Candidate Starts for Tomathan_49:

(2, 32233), (3, 32221), (Start: 26 @31906 has 9 MA's), (74, 31786), (Start: 84 @31762 has 32 MA's), (87, 31756), (116, 31663), (130, 31576), (134, 31543),

Gene: Topanga_43 Start: 31489, Stop: 31151, Start Num: 45

Candidate Starts for Topanga_43:

(8, 31633), (13, 31582), (Start: 45 @31489 has 16 MA's), (109, 31339), (114, 31324), (128, 31246),

Gene: Trike_43 Start: 30758, Stop: 30402, Start Num: 45

Candidate Starts for Trike_43:

(8, 30902), (Start: 45 @30758 has 16 MA's), (114, 30575), (128, 30497),

Gene: TroyPia_47 Start: 31878, Stop: 31576, Start Num: 59

Candidate Starts for TroyPia_47:

(5, 32148), (Start: 59 @31878 has 135 MA's), (116, 31746), (122, 31707), (130, 31659), (134, 31626),

Gene: Tubs_47 Start: 32109, Stop: 31783, Start Num: 34

Candidate Starts for Tubs_47:

(Start: 34 @32109 has 54 MA's), (46, 32085), (62, 32043), (137, 31803),

Gene: Twister_43 Start: 31400, Stop: 31062, Start Num: 45

Candidate Starts for Twister_43:

(8, 31544), (13, 31493), (Start: 45 @31400 has 16 MA's), (109, 31250), (114, 31235), (128, 31157),

Gene: TygerBlood_46 Start: 31880, Stop: 31578, Start Num: 59

Candidate Starts for TygerBlood_46:

(5, 32150), (Start: 59 @31880 has 135 MA's), (116, 31748), (122, 31709), (130, 31661), (134, 31628),

Gene: Ugenie5_44 Start: 32346, Stop: 32020, Start Num: 34

Candidate Starts for Ugenie5_44:

(Start: 34 @32346 has 54 MA's), (46, 32322), (62, 32280), (137, 32040),

Gene: UhSalsa_37 Start: 28395, Stop: 28123, Start Num: 75

Candidate Starts for UhSalsa_37:

(Start: 75 @28395 has 35 MA's), (101, 28329), (133, 28179), (137, 28143),

Gene: Ulysses_45 Start: 31557, Stop: 31255, Start Num: 59

Candidate Starts for Ulysses_45:

(5, 31827), (Start: 59 @31557 has 135 MA's), (116, 31425), (122, 31386), (130, 31338), (134, 31305),

Gene: UnionJack_41 Start: 30553, Stop: 30302, Start Num: 84

Candidate Starts for UnionJack_41:

(49, 30643), (54, 30631), (Start: 84 @30553 has 32 MA's), (Start: 89 @30544 has 3 MA's), (Start: 105 @30502 has 2 MA's), (116, 30472), (124, 30418), (130, 30385), (134, 30352),

Gene: Vanisoa_46 Start: 32705, Stop: 32358, Start Num: 34

Candidate Starts for Vanisoa_46:

(6, 32888), (7, 32837), (9, 32813), (Start: 34 @32705 has 54 MA's), (46, 32681), (62, 32639), (Start: 71 @32609 has 2 MA's), (137, 32378),

Gene: Veracruz_45 Start: 32081, Stop: 31806, Start Num: 73
Candidate Starts for Veracruz_45:
(36, 32171), (40, 32162), (Start: 73 @32081 has 31 MA's), (127, 31904),

Gene: Vix_50 Start: 32391, Stop: 32143, Start Num: 85
Candidate Starts for Vix_50:
(Start: 85 @32391 has 80 MA's), (106, 32337), (122, 32274), (125, 32250), (127, 32241), (134, 32193), (135, 32178),

Gene: Waits_49 Start: 30481, Stop: 30188, Start Num: 69
Candidate Starts for Waits_49:
(Start: 69 @30481 has 23 MA's), (112, 30364), (130, 30271),

Gene: WalterMcMickey_43 Start: 31400, Stop: 31062, Start Num: 45
Candidate Starts for WalterMcMickey_43:
(8, 31544), (13, 31493), (Start: 45 @31400 has 16 MA's), (109, 31250), (114, 31235), (128, 31157),

Gene: Wander_46 Start: 31877, Stop: 31575, Start Num: 59
Candidate Starts for Wander_46:
(Start: 59 @31877 has 135 MA's), (116, 31745), (122, 31706), (130, 31658), (134, 31625),

Gene: Watson_50 Start: 32300, Stop: 32052, Start Num: 85
Candidate Starts for Watson_50:
(Start: 85 @32300 has 80 MA's), (106, 32246), (122, 32183), (125, 32159), (127, 32150), (134, 32102), (135, 32087),

Gene: Whabigail7_48 Start: 32545, Stop: 32123, Start Num: 14
Candidate Starts for Whabigail7_48:
(Start: 14 @32545 has 28 MA's), (17, 32536), (51, 32443), (55, 32437), (134, 32170),

Gene: Wilbur_46 Start: 31877, Stop: 31575, Start Num: 59
Candidate Starts for Wilbur_46:
(5, 32147), (Start: 59 @31877 has 135 MA's), (76, 31835), (116, 31745), (122, 31706), (130, 31658), (134, 31625),

Gene: Wile_45 Start: 31884, Stop: 31561, Start Num: 59
Candidate Starts for Wile_45:
(Start: 59 @31884 has 135 MA's), (96, 31785), (98, 31776), (103, 31761), (116, 31731), (134, 31611),

Gene: Wizard007_46 Start: 31885, Stop: 31583, Start Num: 59
Candidate Starts for Wizard007_46:
(5, 32155), (Start: 59 @31885 has 135 MA's), (116, 31753), (122, 31714), (130, 31666), (134, 31633),

Gene: Wooldri_52 Start: 32220, Stop: 31972, Start Num: 85
Candidate Starts for Wooldri_52:
(Start: 85 @32220 has 80 MA's), (106, 32166), (122, 32103), (125, 32079), (127, 32070), (134, 32022), (135, 32007),

Gene: Xena_44 Start: 31850, Stop: 31527, Start Num: 59
Candidate Starts for Xena_44:
(Start: 59 @31850 has 135 MA's), (96, 31751), (98, 31742), (103, 31727), (116, 31697), (134, 31577),

Gene: XianYue_46 Start: 31886, Stop: 31548, Start Num: 37

Candidate Starts for XianYue_46:

(Start: 37 @31886 has 1 MA's), (115, 31712), (134, 31595),

Gene: Yecey3_48 Start: 31582, Stop: 31238, Start Num: 30

Candidate Starts for Yecey3_48:

(Start: 30 @31582 has 1 MA's), (46, 31561), (62, 31519), (77, 31477), (96, 31444), (137, 31258),

Gene: YoSam321_46 Start: 31874, Stop: 31572, Start Num: 59

Candidate Starts for YoSam321_46:

(5, 32144), (Start: 59 @31874 has 135 MA's), (116, 31742), (122, 31703), (130, 31655), (134, 31622),

Gene: Yogi_37 Start: 28368, Stop: 28096, Start Num: 75

Candidate Starts for Yogi_37:

(Start: 75 @28368 has 35 MA's), (101, 28302), (133, 28152), (137, 28116),

Gene: Yoncess_37 Start: 28369, Stop: 28097, Start Num: 75

Candidate Starts for Yoncess_37:

(Start: 75 @28369 has 35 MA's), (101, 28303), (133, 28153), (137, 28117),

Gene: Zetzy_49 Start: 31871, Stop: 31623, Start Num: 85

Candidate Starts for Zetzy_49:

(Start: 85 @31871 has 80 MA's), (106, 31817), (118, 31784), (122, 31754), (125, 31730), (127, 31721), (134, 31673), (135, 31658),

Gene: Zimmer_44 Start: 32823, Stop: 32467, Start Num: 34

Candidate Starts for Zimmer_44:

(Start: 34 @32823 has 54 MA's), (55, 32781), (86, 32706), (96, 32694), (102, 32676), (130, 32547), (137, 32487),

Gene: Zolita_41 Start: 31781, Stop: 31518, Start Num: 84

Candidate Starts for Zolita_41:

(Start: 84 @31781 has 32 MA's), (Start: 89 @31772 has 3 MA's), (Start: 105 @31730 has 2 MA's), (116, 31700), (124, 31646), (130, 31613), (134, 31580),