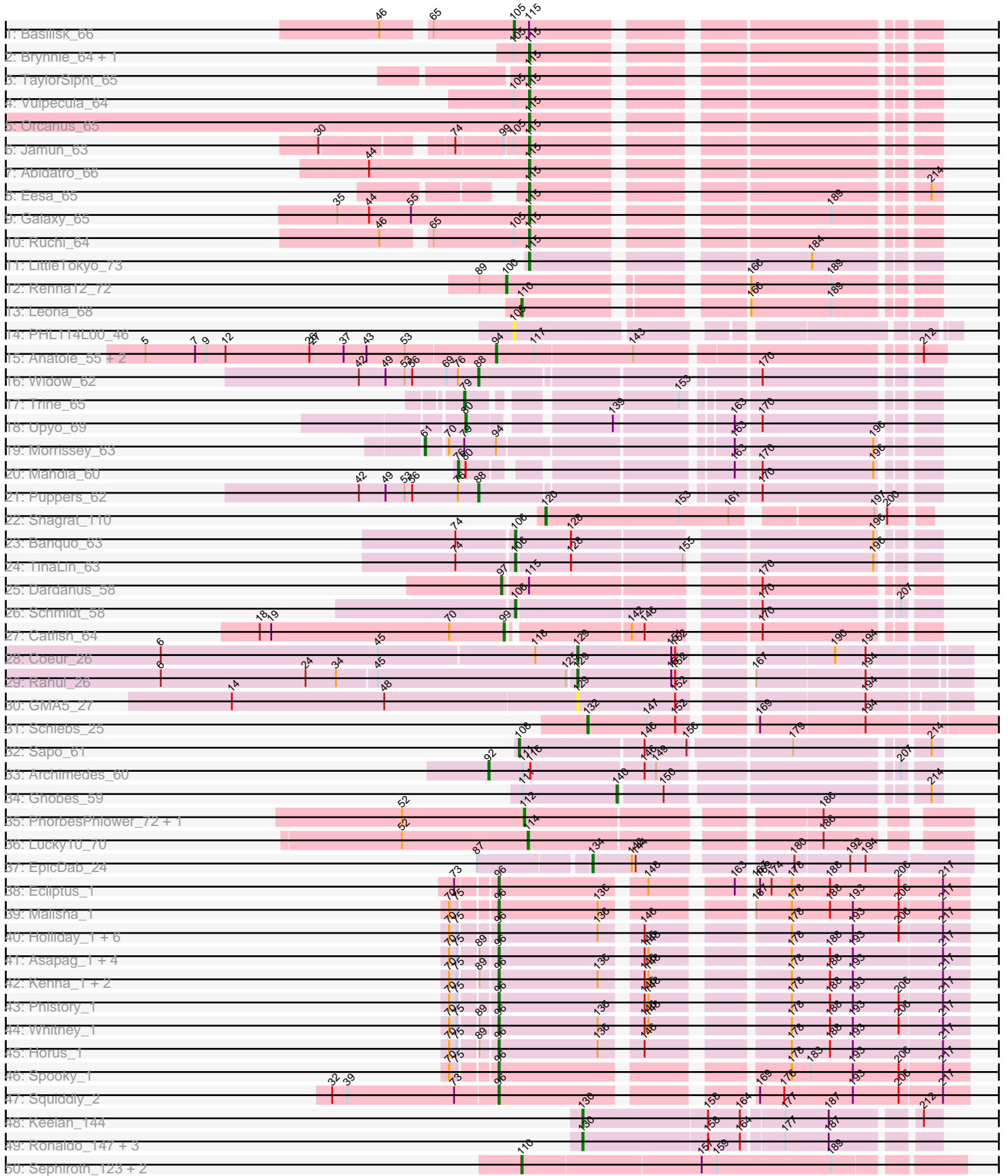
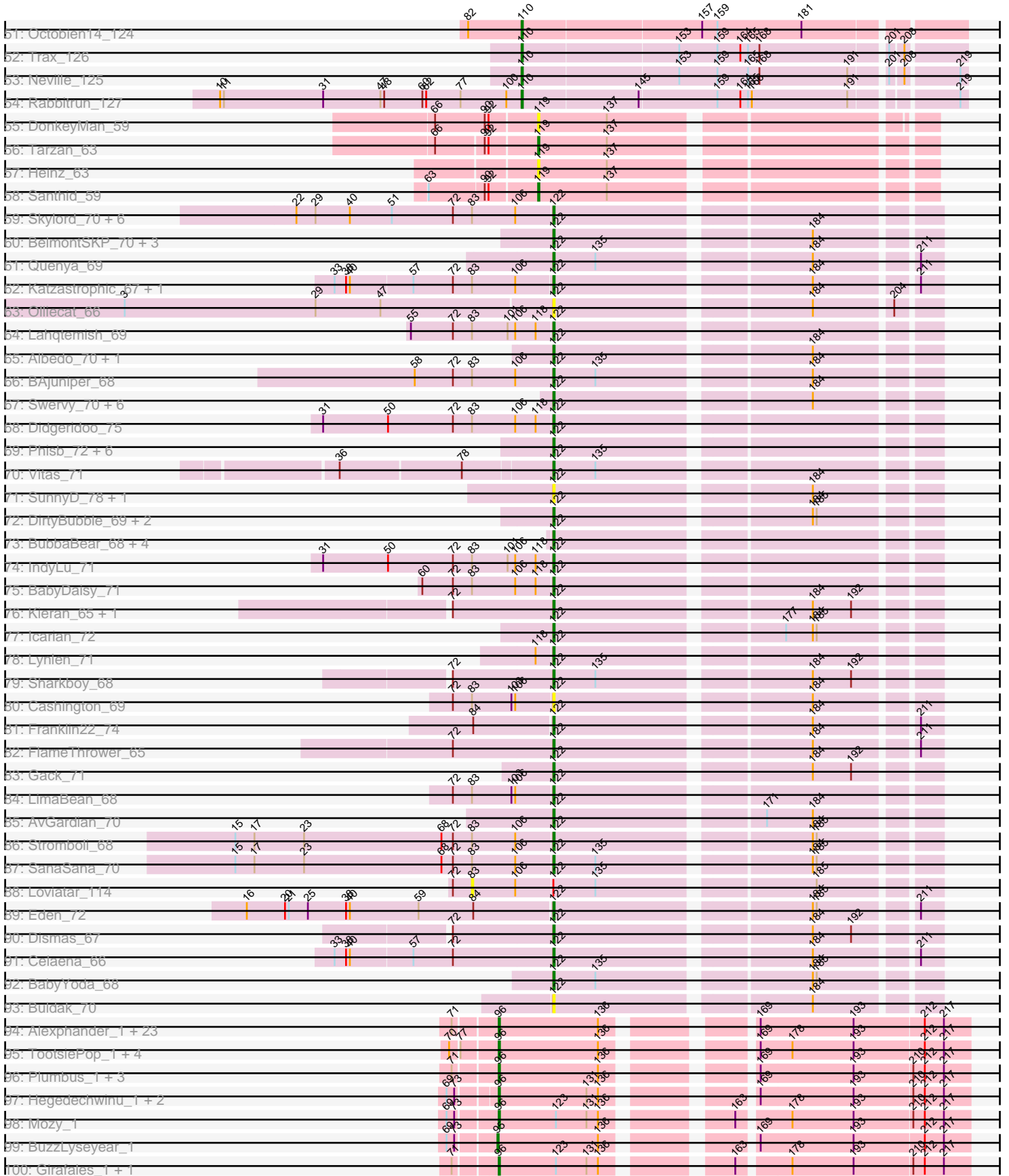


Pham 171107



Pham 171107



Note: Tracks are now grouped by subcluster and scaled. Switching in subcluster is indicated by changes in track color. Track scale is now set by default to display the region 30 bp upstream of start 1 to 30 bp downstream of the last possible start. If this default region is judged to be packed too tightly with annotated starts, the track will be further scaled to only show that region of the ORF with annotated starts. This action will be indicated by adding "Zoomed" to the title. For starts, yellow indicates the location of called starts comprised solely of Glimmer/GeneMark auto-annotations, green indicates the location of called starts with at least 1 manual gene annotation.

Pham 171107 Report

This analysis was run 07/09/24 on database version 566.

Pham number 171107 has 474 members, 30 are drafts.

Phages represented in each track:

- Track 1 : Basilisk_66
- Track 2 : Brynnie_64, Chickaboom_70
- Track 3 : TaylorSipht_65
- Track 4 : Vulpecula_64
- Track 5 : Orcanus_65
- Track 6 : Jamun_63
- Track 7 : Abidatro_66
- Track 8 : Eesa_65
- Track 9 : Galaxy_65
- Track 10 : Ruchi_64
- Track 11 : LittleTokyo_73
- Track 12 : Renna12_72
- Track 13 : Leona_68
- Track 14 : PHL114L00_46
- Track 15 : Anatole_55, E1_55, B3_57
- Track 16 : Widow_62
- Track 17 : Trine_65
- Track 18 : Upyo_69
- Track 19 : Morrissey_63
- Track 20 : Mahdia_60
- Track 21 : Puppets_62
- Track 22 : Shagrat_110
- Track 23 : Banquo_63
- Track 24 : TinaLin_63
- Track 25 : Dardanus_58
- Track 26 : Schmidt_58
- Track 27 : Catfish_64
- Track 28 : Coeur_26
- Track 29 : Rahul_26
- Track 30 : GMA5_27
- Track 31 : Schiebs_25
- Track 32 : Sapo_61
- Track 33 : Archimedes_60
- Track 34 : Ghobes_59
- Track 35 : PhorbesPhlower_72, Morkie_74
- Track 36 : Lucky10_70
- Track 37 : EpicDab_24

- Track 38 : Ecliptus_1
- Track 39 : Malisha_1
- Track 40 : Holliday_1, LitninMcQueen_1, Phabuloso_1, Kamaru_1, Budski_1, CheeseTouch_1, ODay_1
- Track 41 : Asapag_1, Getalong_1, Leroy_1, BENtherdunthat_1, Frickyeah_1
- Track 42 : Kenna_1, Periwinkle_1, Lutum_1
- Track 43 : Phistory_1
- Track 44 : Whitney_1
- Track 45 : Horus_1
- Track 46 : Spooky_1
- Track 47 : Squiddly_2
- Track 48 : Keelan_144
- Track 49 : Ronaldo_147, Guey18_149, Fryberger_144, Volt_150
- Track 50 : Sephiroth_123, Kudefre_128, Syleon_128
- Track 51 : Octobien14_124
- Track 52 : Trax_126
- Track 53 : Neville_125
- Track 54 : Rabbitrun_127
- Track 55 : DonkeyMan_59
- Track 56 : Tarzan_63
- Track 57 : Heinz_63
- Track 58 : Santhid_59
- Track 59 : Skylord_70, Clayda5_72, Armstrong_70, Rollins_70, Bernstein_70, Coltrane_70, Brahms_70
- Track 60 : BelmontSKP_70, AnnaLie_70, Arroyo_71, SansAfet_72
- Track 61 : Quenya_69
- Track 62 : Katzastrophic_67, Bachaco_67
- Track 63 : Olliecat_66
- Track 64 : Lahqtemish_69
- Track 65 : Albedo_70, Kenzers_69
- Track 66 : BAjuniper_68
- Track 67 : Swervy_70, Eula_69, TukTuk_70, Jovita_68, Slay_70, Finalfrontier_69, Nicky22_69
- Track 68 : Didgeridoo_75
- Track 69 : Phisb_72, Johnathan_70, Burritobowl_72, SarBear_72, Abigail_70, QMacho_72, CroZenni_71
- Track 70 : Vitas_71
- Track 71 : SunnyD_78, Shayna_75
- Track 72 : DirtyBubble_69, Elva_73, Stoor_69
- Track 73 : BubbaBear_68, DickRichards_68, Doobus_68, Albright_69, Avocadoman_69
- Track 74 : IndyLu_71
- Track 75 : BabyDaisy_71
- Track 76 : Kieran_65, Rona_66
- Track 77 : Icarian_72
- Track 78 : Lynlen_71
- Track 79 : Sharkboy_68
- Track 80 : Cashington_69
- Track 81 : Franklin22_74
- Track 82 : FlameThrower_65
- Track 83 : Gack_71
- Track 84 : LimaBean_68
- Track 85 : AvGardian_70

- Track 86 : Stromboli_68
- Track 87 : SanaSana_70
- Track 88 : Loviatar_114
- Track 89 : Eden_72
- Track 90 : Dismas_67
- Track 91 : Celaena_66
- Track 92 : BabyYoda_68
- Track 93 : Buldak_70
- Track 94 : Alexphander_1, Leozinho_1, Spikelee_1, Bobi_1, Kingsley_1, Stap_1, Cerasum_1, UncleRicky_1, Drago_1, OwlsT2W_1, Enby_1, Sarma624_1, DosHalletts_1, Boomer_1, Beakin_1, DaWorst_1, Coco12_1, BigPhil_1, RockyHorror_1, Lorde_1, JalFarm20_1, DirtMcgirt_1, Velveteen_1, Tootsieroll_1
- Track 95 : TootsiePop_1, DocMcStuffins_1, Misha28_1, Piper2020_1, ChickenDinner_1
- Track 96 : Plumbus_1, Job42_1, Kimberlium_1, Juice456_1
- Track 97 : Hegedechwinu_1, Frankie_1, Flathead_1
- Track 98 : Mozy_1
- Track 99 : BuzzLyseyear_1
- Track 100 : Girafales_1, Quico_1
- Track 101 : Marker_1
- Track 102 : Starceвич_1, Totinger_1, Rialto_1, LittleShirley_1
- Track 103 : Ogopogo_2
- Track 104 : Oksu_1
- Track 105 : Awesomesauce_1
- Track 106 : Cornucopia_1
- Track 107 : Ramsey_1
- Track 108 : Madiba_1, Pollywog_1
- Track 109 : Mova_1
- Track 110 : Yoshi_1, Avani_1, Demsculpinboyz_1, Soul22_1
- Track 111 : Zapner_2, Jabbawokkie_2
- Track 112 : Che9d_1
- Track 113 : Squirty_1
- Track 114 : JanetJ_52
- Track 115 : Aoka_54
- Track 116 : LouisV14_64, Camri_62, Marmie_62, PinkYoshi_62, Phish_61, CassieYates_62, Remy19_62, Kareem_63, Jane_63, Hope_62, OctaviousRex_61, Renaissance_61, Aroostook_62, Annihilator_61, Jonghyun_60, Phreak_62, Hotshotbaby7_62, Mowgli_62, CLED96_61, Cedasite_62, JorRay_63, BruceB_62, Sweets_62, Cherrybomb426_61, DNAIII_0059, TomBrady_62, Chance64_62, DMoney_61, Gideon_62, Kasen3_63, Sizemore_63, Gomashi_61, Coleslaw_61, Crespo_61, Darionha_62, Angel_60, Olga_63, Plagueis_62, Peeb_61, ShaboiShabazz_61, BPs_62, ECartman_60, Grizzly_61, Frosty24_62, Halo_63, BQuat_61, Avrafan_61, ZoMa_61, Schiebel_60, Jolene_62, Zombie_62, GoldenAsh_60
- Track 117 : Barkley26_59, Periodt_62, Liefie_59, Paito_63
- Track 118 : Taheera_58, Terror_58
- Track 119 : Rabbs_63, Sneeze_62
- Track 120 : Avocado_67
- Track 121 : Cambiare_66, FlagStaff_64
- Track 122 : Pinnie_65, MOOREtheMARYer_66
- Track 123 : Lemuria_64
- Track 124 : Mercurio_63, Jolie2_61
- Track 125 : Antsirabe_65

- Track 126 : Stargaze_64
- Track 127 : Blizzard_97, Adonis_96, TreyKay_98, Capricorn_97, Homura_95, Beezoo_100, Adephegia_95, JAWS_95, MeaningOfLife_98, Megsy_102, Deby_96, Geraldini_97, BGlluviae_96, Boiii_97, ShiaSurprise_99, Jeckyll_97, Belladonna_97, Veliki_97, YoureAdopted_95, Spock_96, Angelica_95, Tachez_97, Jayhawk_97, ActinUp_97, TruffulaTree_98, Atiba_97, BEEST_96, BaghaKamala_96, Lunahalos_96, Emerson_101, HedwigODU_96, TaiwanKao_98, Durfee_97, DrHayes_98, Anaya_99, Ramen_97, Sulley_95, Rapunzel97_99, AlishaPH_89, TiniBug_95, Prithvi_98, Hyperbowlee_95, Jarvi_96, Zabiza_92, Pokerus_96, Slimphazie_99, LindNT_94, SamuelLPlaqsom_98, Mynx_97, Dalmuri_97, CheetoDust_96, Ganymede_96, Padpat_101, CrimD_96, Twitch_97, QuincyRose_94, Rosmarinus_97, CaseJules_100, Piatt_95, BarrelRoll_96, Padfoot_96, Peel_96, CREW_95, Tiri_97, Asayake_97, Urkel_98, Inky_96, Topper_96, Joy99_98, Zavala_98
- Track 128 : Oscar_104, KiSi_104, Scarlett_103, LeMond_103
- Track 129 : Ageofdapage_100, Illumine_100, Murucutumbu_96, Stinson_97, Devera_103, LaterM_96, Dole_99
- Track 130 : Curiosium_104
- Track 131 : Efra2_104, Guanica15_103, Yunkel11_101
- Track 132 : Binglebops_77, SgtBeansprout_78, LilPharaoh_78, Enkosi_79, Amelie_77, Nutello_77, Mdavu_78, Nikao_80
- Track 133 : Shaobing_96, Niklas_98
- Track 134 : Validus_106
- Track 135 : Bella96_98
- Track 136 : Chris_101
- Track 137 : Apocalypse_99
- Track 138 : LastHope_103
- Track 139 : Peanam_99
- Track 140 : MarkPhew_103
- Track 141 : Nibb_103
- Track 142 : TM4_92
- Track 143 : ZoeJ_92
- Track 144 : DismalStressor_94, Findley_94, Strobilo_95, Marcoliusprime_92, DismalFunk_94, Milly_94
- Track 145 : Mufasa_94
- Track 146 : BoostSeason_94
- Track 147 : Pharb_97
- Track 148 : Keshu_101
- Track 149 : ShedlockHolmes_100, TBond007_97, TripleTrouble_97, Pixie_100
- Track 150 : MacnCheese_99
- Track 151 : Hurricane_98
- Track 152 : Taquito_94, Chancellor_94, Slarp_92, Cheetobro_92, SamScheppers_93, OmniCritical_94, Mitti_94
- Track 153 : JF1_94, Malthus_95, Y2_90, Fionnbharth_94, Juliette_96, Ruthiejr_96, Y10_90, Eponine_96, Wintermute_94
- Track 154 : MissDaisy_88, Reptar3000_88, Patt_87
- Track 155 : Miryou_100, OkiRoe_97, Waterfoul_95, Guillsminger_96, Thyatira_97, SoSeph_96, Heftyboy_96, Leston_95, Gengar_96, Paola_93, Feyre_98
- Track 156 : Psycho_98, Dadosky_100, Larva_98, AlleyCat_100
- Track 157 : Collard_95, InvictusManeo_97, Kratio_100, Agent47_97
- Track 158 : Rando14_92, Omnicron_96
- Track 159 : Edugator_92
- Track 160 : Shadow1_100, Cain_102, Bryler_94, Phrank_103, Sunflower1121_100

- Track 161 : Krueger_101
- Track 162 : Ekdilam_92
- Track 163 : Ellie_96, Amgine_97, Fefferhead_98
- Track 164 : SirPhilip_98
- Track 165 : Yuna_100
- Track 166 : Hammy_95, DarthP_95, Amohnition_95
- Track 167 : Tierra_102, PhelpsODU_92, Ximenita_103, Syra333_99
- Track 168 : TClif_101
- Track 169 : Marshawn_96
- Track 170 : Aminay_104
- Track 171 : Boilgate_83
- Track 172 : Khuang_70
- Track 173 : Typha_129, Hilltopfarm_134
- Track 174 : Cracklewink_136
- Track 175 : Bipper_136
- Track 176 : Min1_34
- Track 177 : RRH1_20
- Track 178 : P3MA_62
- Track 179 : IdentityCrisis_61
- Track 180 : BFK20_ORF55
- Track 181 : LilSpotty_85

Summary of Final Annotations (See graph section above for start numbers):

The start number called the most often in the published annotations is 109, it was called in 120 of the 444 non-draft genes in the pham.

Genes that call this "Most Annotated" start:

• ActinUp_97, Adephegia_95, Adonis_96, Agent47_97, Ageofdapage_100, AlishaPH_89, AlleyCat_100, Amgine_97, Amohnition_95, Anaya_99, Angelica_95, Apocalypse_99, Asayake_97, Atiba_97, BEEST_96, BGIlluviae_96, BaghaKamala_96, BarrelRoll_96, Beezoo_100, Bella96_98, Belladonna_97, Blizzard_97, Boiiii_97, CREW_95, Capricorn_97, CaseJules_100, CheetoDust_96, Collard_95, CrimD_96, Dadosky_100, Dalmuri_97, DarthP_95, Deby_96, Devera_103, DismalFunk_94, DismalStressor_94, Dole_99, DrHayes_98, Durfee_97, Edugator_92, Efra2_104, Ekdilam_92, Ellie_96, Emerson_101, Fefferhead_98, Feyre_98, Findley_94, Ganymede_96, Gengar_96, Geraldini_97, Guanica15_103, Guillsminger_96, Hammy_95, HedwigODU_96, Heftyboy_96, Homura_95, Hyperbowlee_95, Illumine_100, Inky_96, InvictusManeo_97, JAWS_95, Jarvi_96, Jayhawk_97, Jeckyll_97, Joy99_98, Kratio_100, Larva_98, LaterM_96, Leston_95, LindNT_94, Lunahalos_96, Marcoliusprime_92, Marshawn_96, MeaningOfLife_98, Megsy_102, Milly_94, Miryou_100, Mufasa_94, Murucutumbu_96, Mynx_97, Niklas_98, OkiRoe_97, Omnicron_96, Padfoot_96, Padpat_101, Paola_93, Peanam_99, Peel_96, Piatt_95, Pokerus_96, Prithvi_98, Psycho_98, QuincyRose_94, Ramen_97, Rando14_92, Rapunzel97_99, Rosmarinus_97, SamuelLPlaqson_98, Shaobing_96, ShiaSurprise_99, Slimphazie_99, SoSeph_96, Spock_96, Stinson_97, Strobilo_95, Sulley_95, Tachez_97, TaiwanKao_98, Thyatira_97, TiniBug_95, Tiri_97, Topper_96, TreyKay_98, TruffulaTree_98, Twitch_97, Urkel_98, Validus_106, Veliki_97, Waterfoul_95, YoureAdopted_95, Yunkel11_101, Zabiza_92, Zavala_98, ZoeJ_92,

Genes that have the "Most Annotated" start but do not call it:

- BoostSeason_94, TM4_92,

Genes that do not have the "Most Annotated" start:

- Abidatro_66, Abigail_70, Albedo_70, Albright_69, Alexphander_1, Amelie_77, Aminay_104, Anatole_55, Angel_60, AnnaLie_70, Annihilator_61, Antsirabe_65, Aoka_54, Archimedes_60, Armstrong_70, Aroostook_62, Arroyo_71, Asapag_1, AvGardian_70, Avani_1, Avocado_67, Avocadoman_69, Avrafan_61, Awesomesauce_1, B3_57, BAjuniper_68, BENtherdunthat_1, BFK20_ORF55, BPs_62, BQuat_61, BabyDaisy_71, BabyYoda_68, Bachaco_67, Banquo_63, Barkley26_59, Basilisk_66, Beakin_1, BelmontSKP_70, Bernstein_70, BigPhil_1, Binglebops_77, Bipper_136, Bobi_1, Boilgate_83, Boomer_1, Brahms_70, BruceB_62, Bryler_94, Brynnie_64, BubbaBear_68, Budski_1, Buldak_70, Burritobowl_72, BuzzLyseyear_1, CLED96_61, Cain_102, Cambiare_66, Camri_62, Cashington_69, CassieYates_62, Catfish_64, Cedasite_62, Celaena_66, Cerasum_1, Chance64_62, Chancellor_94, Che9d_1, CheeseTouch_1, Cheetobro_92, Cherrybomb426_61, Chickaboom_70, ChickenDinner_1, Chris_101, Clayda5_72, Coco12_1, Coeur_26, Coleslaw_61, Coltrane_70, Cornucopia_1, Cracklewink_136, Crespo_61, CroZenni_71, Curiosium_104, DMoney_61, DNAll_0059, DaWorst_1, Dardanus_58, Darionha_62, Demsculpinboyz_1, DickRichards_68, Didgeridoo_75, DirtMcgirt_1, DirtyBubble_69, Dismas_67, DocMcStuffins_1, DonkeyMan_59, Doobus_68, DosHalletts_1, Drago_1, E1_55, ECartman_60, Ecliptus_1, Eden_72, Eesa_65, Elva_73, Enby_1, Enkosi_79, EpicDab_24, Eponine_96, Eula_69, Finalfrontier_69, Fionnbharth_94, FlagStaff_64, FlameThrower_65, Flathead_1, Frankie_1, Franklin22_74, Frickyeah_1, Frosty24_62, Fryberger_144, GMA5_27, Gack_71, Galaxy_65, Getalong_1, Ghobes_59, Gideon_62, Girafales_1, GoldenAsh_60, Gomashi_61, Grizzly_61, Guey18_149, Halo_63, Hegedechwinu_1, Heinz_63, Hilltopfarm_134, Holliday_1, Hope_62, Horus_1, Hotshotbaby7_62, Hurricane_98, Icarian_72, IdentityCrisis_61, IndyLu_71, JF1_94, Jabbawokkie_2, JalFarm20_1, Jamun_63, Jane_63, JanetJ_52, Job42_1, Johnathan_70, Jolene_62, Jolie2_61, Jonghyun_60, JorRay_63, Jovita_68, Juice456_1, Juliette_96, Kamaru_1, Kareem_63, Kasen3_63, Katzastrophic_67, Keelan_144, Kenna_1, Kenzers_69, Keshu_101, Khuang_70, KiSi_104, Kieran_65, Kimberlium_1, Kingsley_1, Krueger_101, Kudrefre_128, Lahqtemish_69, LastHope_103, LeMond_103, Lemuria_64, Leona_68, Leozinho_1, Leroy_1, Liefie_59, LilPharaoh_78, LilSpotty_85, LimaBean_68, LitninMcQueen_1, LittleShirley_1, LittleTokyo_73, Lorde_1, LouisV14_64, Loviatar_114, Lucky10_70, Lutum_1, Lynlen_71, MOOREtheMARYer_66, MacnCheese_99, Madiba_1, Mahdia_60, Malisha_1, Malthus_95, MarkPhew_103, Marker_1, Marmie_62, Mdavu_78, Mercurio_63, Min1_34, Misha28_1, MissDaisy_88, Mitti_94, Morkie_74, Morrissey_63, Mova_1, Mowgli_62, Mozy_1, Neville_125, Nibb_103, Nicky22_69, Nikao_80, Nutello_77, ODay_1, OctaviousRex_61, Octobien14_124, Ogopogo_2, Oksu_1, Olga_63, Olliecat_66, OmniCritical_94, Orcanus_65, Oscar_104, OwlsT2W_1, P3MA_62, PHL114L00_46, Paito_63, Patt_87, Peeb_61, Periodt_62, Periwinkle_1, Phabuloso_1, Pharb_97, PhelpsODU_92, Phisb_72, Phish_61, Phistory_1, PhorbesPhlower_72, Phrank_103, Phreak_62, PinkYoshi_62, Pinnie_65, Piper2020_1, Pixie_100, Plagueis_62, Plumbus_1, Pollywog_1, Puppies_62, QMacho_72, Quenya_69, Quico_1, RRH1_20, Rabbitrun_127, Rabbs_63, Rahul_26, Ramsey_1, Remy19_62, Renaissance_61, Renna12_72, Reptar3000_88, Rialto_1, RockyHorror_1, Rollins_70, Rona_66, Ronaldo_147, Ruchi_64, Ruthiejr_96, SamScheppers_93, SanaSana_70, SansAfet_72, Santhid_59, Sapo_61, SarBear_72, Sarma624_1, Scarlett_103, Schiebel_60, Schiebs_25, Schmidt_58,

Sephiroth_123, SgtBeansprout_78, ShaboiShabazz_61, Shadow1_100, Shagrat_110, Sharkboy_68, Shayna_75, ShedlockHolmes_100, SirPhilip_98, Sizemore_63, Skylord_70, Slarp_92, Slay_70, Sneeze_62, Soul22_1, Spikelee_1, Spooky_1, Squiddly_2, Squirty_1, Stap_1, Starceвич_1, Stargaze_64, Stoor_69, Stromboli_68, Sunflower1121_100, SunnyD_78, Sweets_62, Swervy_70, Syleon_128, Syra333_99, TBond007_97, TClif_101, Taheera_58, Taquito_94, Tarzan_63, TaylorSipht_65, Terror_58, Tierra_102, TinaLin_63, TomBrady_62, TootsiePop_1, Tootsieroll_1, Totinger_1, Trax_126, TribbleTrouble_97, Trine_65, TukTuk_70, Typha_129, UncleRicky_1, Upyo_69, Velveteen_1, Vitas_71, Volt_150, Vulpecula_64, Whitney_1, Widow_62, Wintermute_94, Ximenita_103, Y10_90, Y2_90, Yoshi_1, Yuna_100, Zapner_2, ZoMa_61, Zombie_62,

Summary by start number:

Start 61:

- Found in 1 of 474 (0.2%) of genes in pham
- Manual Annotations of this start: 1 of 444
- Called 100.0% of time when present
- Phage (with cluster) where this start called: Morrissey_63 (CD),

Start 71:

- Found in 44 of 474 (9.3%) of genes in pham
- Manual Annotations of this start: 1 of 444
- Called 2.3% of time when present
- Phage (with cluster) where this start called: Ramsey_1 (F1),

Start 73:

- Found in 12 of 474 (2.5%) of genes in pham
- Manual Annotations of this start: 1 of 444
- Called 8.3% of time when present
- Phage (with cluster) where this start called: IdentityCrisis_61 (singleton),

Start 76:

- Found in 3 of 474 (0.6%) of genes in pham
- Manual Annotations of this start: 1 of 444
- Called 33.3% of time when present
- Phage (with cluster) where this start called: Mahdia_60 (CD),

Start 79:

- Found in 2 of 474 (0.4%) of genes in pham
- Manual Annotations of this start: 1 of 444
- Called 50.0% of time when present
- Phage (with cluster) where this start called: Trine_65 (CD),

Start 80:

- Found in 2 of 474 (0.4%) of genes in pham
- Manual Annotations of this start: 1 of 444
- Called 50.0% of time when present
- Phage (with cluster) where this start called: Upyo_69 (CD),

Start 83:

- Found in 20 of 474 (4.2%) of genes in pham
- No Manual Annotations of this start.

- Called 5.0% of time when present
- Phage (with cluster) where this start called: Loviatar_114 (EB),

Start 85:

- Found in 5 of 474 (1.1%) of genes in pham
- Manual Annotations of this start: 4 of 444
- Called 80.0% of time when present
- Phage (with cluster) where this start called: Bipper_136 (Y), Cracklewink_136 (Y), Hilltopfarm_134 (Y), Typha_129 (Y),

Start 88:

- Found in 2 of 474 (0.4%) of genes in pham
- Manual Annotations of this start: 2 of 444
- Called 100.0% of time when present
- Phage (with cluster) where this start called: Puppies_62 (CD), Widow_62 (CD),

Start 91:

- Found in 71 of 474 (15.0%) of genes in pham
- Manual Annotations of this start: 67 of 444
- Called 100.0% of time when present
- Phage (with cluster) where this start called: Angel_60 (G1), Annihilator_61 (G1), Antsirabe_65 (G5), Aroostook_62 (G1), Avocado_67 (G2), Avrafan_61 (G1), BPs_62 (G1), BQuat_61 (G1), Barkley26_59 (G1), BruceB_62 (G1), CLED96_61 (G1), Cambiare_66 (G2), Camri_62 (G1), CassieYates_62 (G1), Cedasite_62 (G1), Chance64_62 (G1), Cherrybomb426_61 (G1), Coleslaw_61 (G1), Crespo_61 (G1), DMoney_61 (G1), DNAIII_0059 (G1), Darionha_62 (G1), ECartman_60 (G1), FlagStaff_64 (G2), Frosty24_62 (G1), Gideon_62 (G1), GoldenAsh_60 (G1), Gomashi_61 (G1), Grizzly_61 (G1), Halo_63 (G1), Hope_62 (G1), Hotshotbaby7_62 (G1), Jane_63 (G1), Jolene_62 (G1), Jolie2_61 (G4), Jonghyun_60 (G1), JorRay_63 (G1), Kareem_63 (G1), Kasen3_63 (G1), Lemuria_64 (G4), Liefie_59 (G1), LouisV14_64 (G1), MOOREtheMARYer_66 (G3), Marmie_62 (G1), Mercurio_63 (G4), Mowgli_62 (G1), OctaviousRex_61 (G1), Olga_63 (G1), P3MA_62 (singleton), Paito_63 (G1), Peeb_61 (G1), Periodt_62 (G1), Phish_61 (G1), Phreak_62 (G1), PinkYoshi_62 (G1), Pinnie_65 (G3), Plagueis_62 (G1), Rabbs_63 (G1), Remy19_62 (G1), Renaissance_61 (G1), Schiebel_60 (G1), ShaboiShabazz_61 (G1), Sizemore_63 (G1), Sneeze_62 (G1), Stargaze_64 (G5), Sweets_62 (G1), Taheera_58 (G1), Terror_58 (G1), TomBrady_62 (G1), ZoMa_61 (G1), Zombie_62 (G1),

Start 92:

- Found in 12 of 474 (2.5%) of genes in pham
- Manual Annotations of this start: 1 of 444
- Called 8.3% of time when present
- Phage (with cluster) where this start called: Archimedes_60 (DA),

Start 94:

- Found in 5 of 474 (1.1%) of genes in pham
- Manual Annotations of this start: 3 of 444
- Called 60.0% of time when present
- Phage (with cluster) where this start called: Anatole_55 (BV), B3_57 (BV), E1_55 (BV),

Start 95:

- Found in 5 of 474 (1.1%) of genes in pham
- Manual Annotations of this start: 5 of 444
- Called 100.0% of time when present
- Phage (with cluster) where this start called: BuzzLyseyear_1 (F1), Madiba_1 (F1), Marker_1 (F1), Mova_1 (F1), Pollywog_1 (F1),

Start 96:

- Found in 78 of 474 (16.5%) of genes in pham
- Manual Annotations of this start: 72 of 444
- Called 98.7% of time when present
- Phage (with cluster) where this start called: Alexphander_1 (F1), Asapag_1 (DN1), Avani_1 (F2), Awesomesauce_1 (F1), BENtherdunthat_1 (DN1), Beakin_1 (F1), BigPhil_1 (F1), Bobi_1 (F1), Boomer_1 (F1), Budski_1 (DN), Cerasum_1 (F1), Che9d_1 (F2), CheeseTouch_1 (DN1), ChickenDinner_1 (F1), Coco12_1 (F1), Cornucopia_1 (F1), DaWorst_1 (F1), Demsculpinboyz_1 (F2), DirtMcgirt_1 (F1), DocMcStuffins_1 (F1), DosHalletts_1 (F1), Drago_1 (F1), Ecliptus_1 (DN), Enby_1 (F1), Flathead_1 (F1), Frankie_1 (F1), Frickyeah_1 (DN1), Getalong_1 (DN1), Girafales_1 (F1), Hegedechwinu_1 (F1), Holliday_1 (DN1), Horus_1 (DN1), Jabbawokkie_2 (F2), JalFarm20_1 (F1), Job42_1 (F1), Juice456_1 (F1), Kamaru_1 (DN1), Kenna_1 (DN1), Kimberlium_1 (F1), Kingsley_1 (F1), Leozinho_1 (F1), Leroy_1 (DN1), LitninMcQueen_1 (DN1), LittleShirley_1 (F1), Lorde_1 (F1), Lutum_1 (DN1), Malisha_1 (DN), Misha28_1 (F1), Mozy_1 (F1), ODay_1 (DN), Ogopogo_2 (F1), Oksu_1 (F1), OwlsT2W_1 (F1), Periwinkle_1 (DN1), Phabuloso_1 (DN1), Phistory_1 (DN1), Piper2020_1 (F1), Plumbus_1 (F1), Quico_1 (F1), Rialto_1 (F1), RockyHorror_1 (F1), Sarma624_1 (F1), Soul22_1 (F2), Spikelee_1 (F1), Spooky_1 (DN2), Squiddly_2 (DN2), Squirty_1 (F3), Stap_1 (F1), Starcevich_1 (F1), TootsiePop_1 (F1), Tootsieroll_1 (F1), Totinger_1 (F1), UncleRicky_1 (F1), Velveteen_1 (F1), Whitney_1 (DN1), Yoshi_1 (F2), Zapner_2 (F2),

Start 97:

- Found in 1 of 474 (0.2%) of genes in pham
- Manual Annotations of this start: 1 of 444
- Called 100.0% of time when present
- Phage (with cluster) where this start called: Dardanus_58 (CU3),

Start 98:

- Found in 1 of 474 (0.2%) of genes in pham
- Manual Annotations of this start: 1 of 444
- Called 100.0% of time when present
- Phage (with cluster) where this start called: Aminay_104 (K7),

Start 99:

- Found in 2 of 474 (0.4%) of genes in pham
- Manual Annotations of this start: 1 of 444
- Called 50.0% of time when present
- Phage (with cluster) where this start called: Catfish_64 (CU5),

Start 100:

- Found in 2 of 474 (0.4%) of genes in pham
- Manual Annotations of this start: 1 of 444
- Called 50.0% of time when present
- Phage (with cluster) where this start called: Renna12_72 (AS3),

Start 102:

- Found in 20 of 474 (4.2%) of genes in pham
- Manual Annotations of this start: 20 of 444
- Called 100.0% of time when present
- Phage (with cluster) where this start called: Boilgate_83 (K8), Chancellor_94 (K4), Cheetobro_92 (K4), Eponine_96 (K4), Fionnbharth_94 (K4), JF1_94 (K4), Juliette_96 (K4), Malthus_95 (K4), MissDaisy_88 (K4), Mitti_94 (K4), OmniCritical_94 (K4), Patt_87 (K4), Reptar3000_88 (K4), Ruthiejr_96 (K4), SamScheppers_93 (K4), Slarp_92 (K4), Taquito_94 (K4), Wintermute_94 (K4), Y10_90 (K4), Y2_90 (K4),

Start 104:

- Found in 1 of 474 (0.2%) of genes in pham
- Manual Annotations of this start: 1 of 444
- Called 100.0% of time when present
- Phage (with cluster) where this start called: Yuna_100 (K6),

Start 105:

- Found in 7 of 474 (1.5%) of genes in pham
- Manual Annotations of this start: 1 of 444
- Called 28.6% of time when present
- Phage (with cluster) where this start called: Basilisk_66 (AS1), PHL114L00_46 (BU),

Start 106:

- Found in 23 of 474 (4.9%) of genes in pham
- Manual Annotations of this start: 3 of 444
- Called 13.0% of time when present
- Phage (with cluster) where this start called: Banquo_63 (CU1), Schmidt_58 (CU4), TinaLin_63 (CU1),

Start 107:

- Found in 29 of 474 (6.1%) of genes in pham
- Manual Annotations of this start: 20 of 444
- Called 72.4% of time when present
- Phage (with cluster) where this start called: BoostSeason_94 (K2), Bryler_94 (K6), Cain_102 (K6), Chris_101 (K1), KiSi_104 (K1), Krueger_101 (K6), LeMond_103 (K1), MarkPhew_103 (K1), Nibb_103 (K1), Oscar_104 (K1), PhelpsODU_92 (K6), Phrank_103 (K6), Scarlett_103 (K1), Shadow1_100 (K6), SirPhilip_98 (K6), Sunflower1121_100 (K6), Syra333_99 (K6), TClif_101 (K6), TM4_92 (K2), Tierra_102 (K6), Ximenita_103 (K6),

Start 108:

- Found in 1 of 474 (0.2%) of genes in pham
- Manual Annotations of this start: 1 of 444
- Called 100.0% of time when present
- Phage (with cluster) where this start called: Sapo_61 (DA),

Start 109:

- Found in 126 of 474 (26.6%) of genes in pham
- Manual Annotations of this start: 120 of 444
- Called 98.4% of time when present
- Phage (with cluster) where this start called: ActinUp_97 (K1), Adephegia_95 (K1), Adonis_96 (K1), Agent47_97 (K5), Ageofdapage_100 (K1), AlishaPH_89 (K1), AlleyCat_100 (K5), Amgine_97 (K6), Amohnition_95 (K6), Anaya_99 (K1),

Angelica_95 (K1), Apocalypse_99 (K1), Asayake_97 (K1), Atiba_97 (K1), BEEST_96 (K1), BGIlluviae_96 (K1), BaghaKamala_96 (K1), BarrelRoll_96 (K1), Beezoo_100 (K1), Bella96_98 (K1), Belladonna_97 (K1), Blizzard_97 (K1), Boiiii_97 (K1), CREW_95 (K1), Capricorn_97 (K1), CaseJules_100 (K1), CheetoDust_96 (K1), Collard_95 (K5), CrimD_96 (K1), Dadosky_100 (K5), Dalmuri_97 (K1), DarthP_95 (K6), Deby_96 (K1), Devera_103 (K1), DismalFunk_94 (K2), DismalStressor_94 (K2), Dole_99 (K1), DrHayes_98 (K1), Durfee_97 (K1), Edugator_92 (K5), Efra2_104 (K1), Ekdilam_92 (K6), Ellie_96 (K6), Emerson_101 (K1), Fefferhead_98 (K6), Feyre_98 (K5), Findley_94 (K2), Ganymede_96 (K1), Gengar_96 (K5), Geraldini_97 (K1), Guanica15_103 (K1), Guillsminger_96 (K5), Hammy_95 (K6), HedwigODU_96 (K1), Heftyboy_96 (K5), Homura_95 (K1), Hyperbowlee_95 (K1), Illumine_100 (K1), Inky_96 (K1), InvictusManeo_97 (K5), JAWS_95 (K1), Jarvi_96 (K1), Jayhawk_97 (K1), Jeckyll_97 (K1), Joy99_98 (K1), Kratio_100 (K5), Larva_98 (K5), LaterM_96 (K1), Leston_95 (K5), LindNT_94 (K1), Lunahalos_96 (K1), Marcoliusprime_92 (K2), Marshawn_96 (K6), MeaningOfLife_98 (K1), Megsy_102 (K1), Milly_94 (K2), Miryou_100 (K5), Mufasa_94 (K2), Murucutumbu_96 (K1), Mynx_97 (K1), Niklas_98 (K1), OkiRoe_97 (K5), Omnicron_96 (K5), Padfoot_96 (K1), Padpat_101 (K1), Paola_93 (K5), Peanam_99 (K1), Peel_96 (K1), Piatt_95 (K1), Pokerus_96 (K1), Prithvi_98 (K1), Psycho_98 (K5), QuincyRose_94 (K1), Ramen_97 (K1), Rando14_92 (K5), Rapunzel97_99 (K1), Rosmarinus_97 (K1), SamuelLPlaqson_98 (K1), Shaobing_96 (K1), ShiaSurprise_99 (K1), Slimphazie_99 (K1), SoSeph_96 (K5), Spock_96 (K1), Stinson_97 (K1), Strobilo_95 (K2), Sulley_95 (K1), Tachez_97 (K1), TaiwanKao_98 (K1), Thyatira_97 (K5), TiniBug_95 (K1), Tiri_97 (K1), Topper_96 (K1), TreyKay_98 (K1), TruffulaTree_98 (K1), Twitch_97 (K1), Urkel_98 (K1), Validus_106 (K1), Veliki_97 (K1), Waterfoul_95 (K5), YoureAdopted_95 (K1), Yunkel11_101 (K1), Zabiza_92 (K1), Zavala_98 (K1), ZoeJ_92 (K2),

Start 110:

- Found in 10 of 474 (2.1%) of genes in pham
- Manual Annotations of this start: 10 of 444
- Called 100.0% of time when present
- Phage (with cluster) where this start called: Aoka_54 (FO), JanetJ_52 (FO), Kudrefre_128 (DU1), Leona_68 (AS3), Neville_125 (DU2), Octobien14_124 (DU1), Rabbitrun_127 (DU2), Sephiroth_123 (DU1), Syleon_128 (DU1), Trax_126 (DU2),

Start 111:

- Found in 3 of 474 (0.6%) of genes in pham
- No Manual Annotations of this start.
- Called 33.3% of time when present
- Phage (with cluster) where this start called: Khuang_70 (UNK),

Start 112:

- Found in 2 of 474 (0.4%) of genes in pham
- Manual Annotations of this start: 2 of 444
- Called 100.0% of time when present
- Phage (with cluster) where this start called: Morkie_74 (DH), PhorbesPhlower_72 (DH),

Start 113:

- Found in 18 of 474 (3.8%) of genes in pham
- Manual Annotations of this start: 18 of 444
- Called 100.0% of time when present

- Phage (with cluster) where this start called: Amelie_77 (K1), Binglebops_77 (K1), Curiosium_104 (K1), Enkosi_79 (K1), Hurricane_98 (K3), Keshu_101 (K3), LastHope_103 (K1), LilPharaoh_78 (K1), MacnCheese_99 (K3), Mdavu_78 (K1), Nikao_80 (K1), Nutello_77 (K1), Pharb_97 (K3), Pixie_100 (K3), SgtBeansprout_78 (K1), ShedlockHolmes_100 (K3), TBond007_97 (K3), TripleTrouble_97 (K3),

Start 114:

- Found in 1 of 474 (0.2%) of genes in pham
- Manual Annotations of this start: 1 of 444
- Called 100.0% of time when present
- Phage (with cluster) where this start called: Lucky10_70 (DH),

Start 115:

- Found in 13 of 474 (2.7%) of genes in pham
- Manual Annotations of this start: 10 of 444
- Called 84.6% of time when present
- Phage (with cluster) where this start called: Abidatro_66 (AS1), Brynnie_64 (AS1), Chickaboom_70 (AS1), Eesa_65 (AS1), Galaxy_65 (AS1), Jamun_63 (AS1), LittleTokyo_73 (AS2), Orcanus_65 (AS1), Ruchi_64 (AS1), TaylorSipht_65 (AS1), Vulpecula_64 (AS1),

Start 116:

- Found in 2 of 474 (0.4%) of genes in pham
- No Manual Annotations of this start.
- Called 50.0% of time when present
- Phage (with cluster) where this start called: BFK20_ORF55 (singleton),

Start 117:

- Found in 4 of 474 (0.8%) of genes in pham
- No Manual Annotations of this start.
- Called 25.0% of time when present
- Phage (with cluster) where this start called: Min1_34 (singleton),

Start 119:

- Found in 4 of 474 (0.8%) of genes in pham
- Manual Annotations of this start: 2 of 444
- Called 100.0% of time when present
- Phage (with cluster) where this start called: DonkeyMan_59 (DY), Heinz_63 (DY), Santhid_59 (DY), Tarzan_63 (DY),

Start 120:

- Found in 1 of 474 (0.2%) of genes in pham
- Manual Annotations of this start: 1 of 444
- Called 100.0% of time when present
- Phage (with cluster) where this start called: Shagrat_110 (CF),

Start 121:

- Found in 1 of 474 (0.2%) of genes in pham
- Manual Annotations of this start: 1 of 444
- Called 100.0% of time when present
- Phage (with cluster) where this start called: LilSpotty_85 (singleton),

Start 122:

- Found in 66 of 474 (13.9%) of genes in pham
- Manual Annotations of this start: 59 of 444
- Called 98.5% of time when present
- Phage (with cluster) where this start called: Abigail_70 (EB), Albedo_70 (EB), Albright_69 (EB), AnnaLie_70 (EB), Armstrong_70 (EB), Arroyo_71 (EB), AvGardian_70 (EB), Avocadoman_69 (EB), BAjuniper_68 (EB), BabyDaisy_71 (EB), BabyYoda_68 (EB), Bachaco_67 (EB), BelmontSKP_70 (EB), Bernstein_70 (EB), Brahms_70 (EB), BubbaBear_68 (EB), Buldak_70 (EB), Burritobowl_72 (EB), Cashington_69 (EB), Celaena_66 (EB), Clayda5_72 (EB), Coltrane_70 (EB), CroZenni_71 (EB), DickRichards_68 (EB), Didgeridoo_75 (EB), DirtyBubble_69 (EB), Dismas_67 (EB), Doobus_68 (EB), Eden_72 (EB), Elva_73 (EB), Eula_69 (EB), Finalfrontier_69 (EB), FlameThrower_65 (EB), Franklin22_74 (EB), Gack_71 (EB), Icarian_72 (EB), IndyLu_71 (EB), Johnathan_70 (EB), Jovita_68 (EB), Katzastrophic_67 (EB), Kenzers_69 (EB), Kieran_65 (EB), Lahqtemish_69 (EB), LimaBean_68 (EB), Lynlen_71 (EB), Nicky22_69 (EB), Olliecat_66 (EB), Phisb_72 (EB), QMacho_72 (EB), Quenya_69 (EB), Rollins_70 (EB), Rona_66 (EB), SanaSana_70 (EB), SansAfet_72 (EB), SarBear_72 (EB), Sharkboy_68 (EB), Shayna_75 (EB), Skylord_70 (EB), Slay_70 (EB), Stoor_69 (EB), Stromboli_68 (EB), SunnyD_78 (EB), Swervy_70 (EB), TukTuk_70 (EB), Vitas_71 (EB),

Start 127:

- Found in 1 of 474 (0.2%) of genes in pham
- No Manual Annotations of this start.
- Called 100.0% of time when present
- Phage (with cluster) where this start called: RRH1_20 (singleton),

Start 129:

- Found in 3 of 474 (0.6%) of genes in pham
- Manual Annotations of this start: 2 of 444
- Called 100.0% of time when present
- Phage (with cluster) where this start called: Coeur_26 (CW2), GMA5_27 (CW2), Rahul_26 (CW2),

Start 130:

- Found in 5 of 474 (1.1%) of genes in pham
- Manual Annotations of this start: 5 of 444
- Called 100.0% of time when present
- Phage (with cluster) where this start called: Fryberger_144 (DP), Guey18_149 (DP), Keelan_144 (DP), Ronaldo_147 (DP), Volt_150 (DP),

Start 132:

- Found in 6 of 474 (1.3%) of genes in pham
- Manual Annotations of this start: 1 of 444
- Called 16.7% of time when present
- Phage (with cluster) where this start called: Schiebs_25 (CW3),

Start 134:

- Found in 1 of 474 (0.2%) of genes in pham
- Manual Annotations of this start: 1 of 444
- Called 100.0% of time when present
- Phage (with cluster) where this start called: EpicDab_24 (DM),

Start 140:

- Found in 1 of 474 (0.2%) of genes in pham
- Manual Annotations of this start: 1 of 444
- Called 100.0% of time when present
- Phage (with cluster) where this start called: Ghobes_59 (DA),

Summary by clusters:

There are 44 clusters represented in this pham: DN, singleton, DM, DH, G5, UNK, K4, DA, K3, K2, BV, K7, K6, K5, DY, K8, DP, FO, CU5, CU4, G3, G2, G1, CW3, CW2, DN1, DN2, DU1, DU2, AS3, AS2, AS1, CF, EB, G4, Y, CU3, CD, F1, F2, F3, CU1, BU, K1,

Info for manual annotations of cluster AS1:

- Start number 105 was manually annotated 1 time for cluster AS1.
- Start number 115 was manually annotated 9 times for cluster AS1.

Info for manual annotations of cluster AS2:

- Start number 115 was manually annotated 1 time for cluster AS2.

Info for manual annotations of cluster AS3:

- Start number 100 was manually annotated 1 time for cluster AS3.
- Start number 110 was manually annotated 1 time for cluster AS3.

Info for manual annotations of cluster BV:

- Start number 94 was manually annotated 3 times for cluster BV.

Info for manual annotations of cluster CD:

- Start number 61 was manually annotated 1 time for cluster CD.
- Start number 76 was manually annotated 1 time for cluster CD.
- Start number 79 was manually annotated 1 time for cluster CD.
- Start number 80 was manually annotated 1 time for cluster CD.
- Start number 88 was manually annotated 2 times for cluster CD.

Info for manual annotations of cluster CF:

- Start number 120 was manually annotated 1 time for cluster CF.

Info for manual annotations of cluster CU1:

- Start number 106 was manually annotated 2 times for cluster CU1.

Info for manual annotations of cluster CU3:

- Start number 97 was manually annotated 1 time for cluster CU3.

Info for manual annotations of cluster CU4:

- Start number 106 was manually annotated 1 time for cluster CU4.

Info for manual annotations of cluster CU5:

- Start number 99 was manually annotated 1 time for cluster CU5.

Info for manual annotations of cluster CW2:

- Start number 129 was manually annotated 2 times for cluster CW2.

Info for manual annotations of cluster CW3:

- Start number 132 was manually annotated 1 time for cluster CW3.

Info for manual annotations of cluster DA:

- Start number 92 was manually annotated 1 time for cluster DA.
- Start number 108 was manually annotated 1 time for cluster DA.
- Start number 140 was manually annotated 1 time for cluster DA.

Info for manual annotations of cluster DH:

- Start number 112 was manually annotated 2 times for cluster DH.
- Start number 114 was manually annotated 1 time for cluster DH.

Info for manual annotations of cluster DM:

- Start number 134 was manually annotated 1 time for cluster DM.

Info for manual annotations of cluster DN:

- Start number 96 was manually annotated 4 times for cluster DN.

Info for manual annotations of cluster DN1:

- Start number 96 was manually annotated 15 times for cluster DN1.

Info for manual annotations of cluster DN2:

- Start number 96 was manually annotated 2 times for cluster DN2.

Info for manual annotations of cluster DP:

- Start number 130 was manually annotated 5 times for cluster DP.

Info for manual annotations of cluster DU1:

- Start number 110 was manually annotated 4 times for cluster DU1.

Info for manual annotations of cluster DU2:

- Start number 110 was manually annotated 3 times for cluster DU2.

Info for manual annotations of cluster DY:

- Start number 119 was manually annotated 2 times for cluster DY.

Info for manual annotations of cluster EB:

- Start number 122 was manually annotated 59 times for cluster EB.

Info for manual annotations of cluster F1:

- Start number 71 was manually annotated 1 time for cluster F1.
- Start number 95 was manually annotated 5 times for cluster F1.
- Start number 96 was manually annotated 43 times for cluster F1.

Info for manual annotations of cluster F2:

- Start number 96 was manually annotated 7 times for cluster F2.

Info for manual annotations of cluster F3:

- Start number 96 was manually annotated 1 time for cluster F3.

Info for manual annotations of cluster FO:

- Start number 110 was manually annotated 2 times for cluster FO.

Info for manual annotations of cluster G1:

- Start number 91 was manually annotated 58 times for cluster G1.

Info for manual annotations of cluster G2:

- Start number 91 was manually annotated 3 times for cluster G2.

Info for manual annotations of cluster G3:

- Start number 91 was manually annotated 2 times for cluster G3.

Info for manual annotations of cluster G4:

- Start number 91 was manually annotated 2 times for cluster G4.

Info for manual annotations of cluster G5:

- Start number 91 was manually annotated 1 time for cluster G5.

Info for manual annotations of cluster K1:

- Start number 107 was manually annotated 7 times for cluster K1.
- Start number 109 was manually annotated 83 times for cluster K1.
- Start number 113 was manually annotated 10 times for cluster K1.

Info for manual annotations of cluster K2:

- Start number 107 was manually annotated 2 times for cluster K2.
- Start number 109 was manually annotated 8 times for cluster K2.

Info for manual annotations of cluster K3:

- Start number 113 was manually annotated 8 times for cluster K3.

Info for manual annotations of cluster K4:

- Start number 102 was manually annotated 19 times for cluster K4.

Info for manual annotations of cluster K5:

- Start number 109 was manually annotated 21 times for cluster K5.

Info for manual annotations of cluster K6:

- Start number 104 was manually annotated 1 time for cluster K6.
- Start number 107 was manually annotated 11 times for cluster K6.
- Start number 109 was manually annotated 8 times for cluster K6.

Info for manual annotations of cluster K7:

- Start number 98 was manually annotated 1 time for cluster K7.

Info for manual annotations of cluster K8:

- Start number 102 was manually annotated 1 time for cluster K8.

Info for manual annotations of cluster Y:

- Start number 85 was manually annotated 4 times for cluster Y.

Gene Information:

Gene: Abidatro_66 Start: 38766, Stop: 39044, Start Num: 115

Candidate Starts for Abidatro_66:

(44, 38640), (Start: 115 @38766 has 10 MA's),

Gene: Abigail_70 Start: 40540, Stop: 40815, Start Num: 122

Candidate Starts for Abigail_70:

(Start: 122 @40540 has 59 MA's),

Gene: ActinUp_97 Start: 59451, Stop: 59753, Start Num: 109

Candidate Starts for ActinUp_97:

(93, 59430), (Start: 109 @59451 has 120 MA's), (146, 59526), (213, 59712), (218, 59727),

Gene: Adephagia_95 Start: 59285, Stop: 59587, Start Num: 109

Candidate Starts for Adephagia_95:

(93, 59264), (Start: 109 @59285 has 120 MA's), (146, 59360), (213, 59546), (218, 59561),

Gene: Adonis_96 Start: 59670, Stop: 59972, Start Num: 109

Candidate Starts for Adonis_96:

(93, 59649), (Start: 109 @59670 has 120 MA's), (146, 59745), (213, 59931), (218, 59946),

Gene: Agent47_97 Start: 60723, Stop: 61028, Start Num: 109

Candidate Starts for Agent47_97:

(Start: 109 @60723 has 120 MA's), (172, 60891),

Gene: Ageofdapage_100 Start: 60254, Stop: 60556, Start Num: 109

Candidate Starts for Ageofdapage_100:

(93, 60233), (Start: 109 @60254 has 120 MA's), (133, 60305), (146, 60329), (213, 60515), (218, 60530),

Gene: Albedo_70 Start: 41350, Stop: 41625, Start Num: 122

Candidate Starts for Albedo_70:

(Start: 122 @41350 has 59 MA's), (184, 41536),

Gene: Albright_69 Start: 40420, Stop: 40695, Start Num: 122

Candidate Starts for Albright_69:

(Start: 122 @40420 has 59 MA's),

Gene: Alexphander_1 Start: 41, Stop: 373, Start Num: 96

Candidate Starts for Alexphander_1:

(Start: 71 @11 has 1 MA's), (Start: 96 @41 has 72 MA's), (136, 119), (169, 212), (193, 284), (212, 338), (217, 353),

Gene: AlishaPH_89 Start: 56673, Stop: 56975, Start Num: 109

Candidate Starts for AlishaPH_89:

(93, 56652), (Start: 109 @56673 has 120 MA's), (146, 56748), (213, 56934), (218, 56949),

Gene: AlleyCat_100 Start: 61692, Stop: 61997, Start Num: 109

Candidate Starts for AlleyCat_100:

(Start: 109 @61692 has 120 MA's), (160, 61830),

Gene: Amelie_77 Start: 56074, Stop: 56379, Start Num: 113

Candidate Starts for Amelie_77:

(41, 55942), (Start: 113 @56074 has 18 MA's), (146, 56149), (160, 56194), (213, 56338), (215, 56344), (218, 56353),

Gene: Amgine_97 Start: 61886, Stop: 62176, Start Num: 109
Candidate Starts for Amgine_97:
(Start: 109 @61886 has 120 MA's), (146, 61961), (206, 62123),

Gene: Aminay_104 Start: 59192, Stop: 59479, Start Num: 98
Candidate Starts for Aminay_104:
(Start: 98 @59192 has 1 MA's), (169, 59342),

Gene: Amohnition_95 Start: 61401, Stop: 61697, Start Num: 109
Candidate Starts for Amohnition_95:
(Start: 109 @61401 has 120 MA's), (Start: 132 @61449 has 1 MA's), (146, 61476), (198, 61635), (215, 61662),

Gene: Anatole_55 Start: 34869, Stop: 35189, Start Num: 94
Candidate Starts for Anatole_55:
(5, 34596), (7, 34635), (9, 34644), (12, 34659), (26, 34725), (27, 34728), (37, 34752), (43, 34770), (53, 34800), (Start: 94 @34869 has 3 MA's), (117, 34899), (143, 34974), (212, 35172),

Gene: Anaya_99 Start: 60473, Stop: 60775, Start Num: 109
Candidate Starts for Anaya_99:
(93, 60452), (Start: 109 @60473 has 120 MA's), (146, 60548), (213, 60734), (218, 60749),

Gene: Angel_60 Start: 40665, Stop: 40991, Start Num: 91
Candidate Starts for Angel_60:
(Start: 91 @40665 has 67 MA's), (172, 40860), (195, 40938),

Gene: Angelica_95 Start: 59237, Stop: 59539, Start Num: 109
Candidate Starts for Angelica_95:
(93, 59216), (Start: 109 @59237 has 120 MA's), (146, 59312), (213, 59498), (218, 59513),

Gene: AnnaLie_70 Start: 41202, Stop: 41477, Start Num: 122
Candidate Starts for AnnaLie_70:
(Start: 122 @41202 has 59 MA's), (184, 41388),

Gene: Annihilator_61 Start: 41117, Stop: 41443, Start Num: 91
Candidate Starts for Annihilator_61:
(Start: 91 @41117 has 67 MA's), (172, 41312), (195, 41390),

Gene: Antsirabe_65 Start: 44050, Stop: 44373, Start Num: 91
Candidate Starts for Antsirabe_65:
(Start: 91 @44050 has 67 MA's), (123, 44101), (162, 44221), (163, 44224), (169, 44236),

Gene: Aoka_54 Start: 36392, Stop: 36673, Start Num: 110
Candidate Starts for Aoka_54:
(64, 36335), (Start: 110 @36392 has 10 MA's),

Gene: Apocalypse_99 Start: 59588, Stop: 59890, Start Num: 109
Candidate Starts for Apocalypse_99:
(93, 59567), (Start: 109 @59588 has 120 MA's), (146, 59663), (158, 59699), (213, 59849), (218, 59864),

Gene: Archimedes_60 Start: 44555, Stop: 44878, Start Num: 92
Candidate Starts for Archimedes_60:

(Start: 92 @44555 has 1 MA's), (111, 44582), (116, 44588), (146, 44672), (149, 44681), (207, 44852),

Gene: Armstrong_70 Start: 39580, Stop: 39855, Start Num: 122

Candidate Starts for Armstrong_70:

(22, 39382), (29, 39397), (40, 39424), (51, 39457), (72, 39505), (83, 39520), (Start: 106 @39553 has 3 MA's), (Start: 122 @39580 has 59 MA's),

Gene: Aroostook_62 Start: 41127, Stop: 41453, Start Num: 91

Candidate Starts for Aroostook_62:

(Start: 91 @41127 has 67 MA's), (172, 41322), (195, 41400),

Gene: Arroyo_71 Start: 41666, Stop: 41941, Start Num: 122

Candidate Starts for Arroyo_71:

(Start: 122 @41666 has 59 MA's), (184, 41852),

Gene: Asapag_1 Start: 39, Stop: 371, Start Num: 96

Candidate Starts for Asapag_1:

(70, 9), (75, 15), (89, 27), (Start: 96 @39 has 72 MA's), (146, 141), (148, 144), (178, 234), (188, 264), (193, 282), (217, 351),

Gene: Asayake_97 Start: 59544, Stop: 59846, Start Num: 109

Candidate Starts for Asayake_97:

(93, 59523), (Start: 109 @59544 has 120 MA's), (146, 59619), (213, 59805), (218, 59820),

Gene: Atiba_97 Start: 59195, Stop: 59497, Start Num: 109

Candidate Starts for Atiba_97:

(93, 59174), (Start: 109 @59195 has 120 MA's), (146, 59270), (213, 59456), (218, 59471),

Gene: AvGardian_70 Start: 41184, Stop: 41459, Start Num: 122

Candidate Starts for AvGardian_70:

(Start: 122 @41184 has 59 MA's), (171, 41334), (184, 41370),

Gene: Avani_1 Start: 38, Stop: 370, Start Num: 96

Candidate Starts for Avani_1:

(Start: 71 @11 has 1 MA's), (Start: 96 @38 has 72 MA's), (136, 116), (148, 143), (178, 233), (188, 263), (193, 281), (210, 326), (217, 350),

Gene: Avocado_67 Start: 44700, Stop: 45026, Start Num: 91

Candidate Starts for Avocado_67:

(Start: 91 @44700 has 67 MA's), (123, 44754),

Gene: Avocadoman_69 Start: 40737, Stop: 41012, Start Num: 122

Candidate Starts for Avocadoman_69:

(Start: 122 @40737 has 59 MA's),

Gene: Avrafan_61 Start: 41125, Stop: 41451, Start Num: 91

Candidate Starts for Avrafan_61:

(Start: 91 @41125 has 67 MA's), (172, 41320), (195, 41398),

Gene: Awesomesauce_1 Start: 42, Stop: 374, Start Num: 96

Candidate Starts for Awesomesauce_1:

(70, 9), (77, 15), (Start: 96 @42 has 72 MA's), (131, 111), (136, 120), (169, 213), (178, 237), (188, 267), (193, 285), (210, 330), (212, 339), (217, 354),

Gene: B3_57 Start: 35532, Stop: 35852, Start Num: 94

Candidate Starts for B3_57:

(5, 35259), (7, 35298), (9, 35307), (12, 35322), (26, 35388), (27, 35391), (37, 35415), (43, 35433), (53, 35463), (Start: 94 @35532 has 3 MA's), (117, 35562), (143, 35637), (212, 35835),

Gene: BAjuniper_68 Start: 41633, Stop: 41908, Start Num: 122

Candidate Starts for BAjuniper_68:

(58, 41528), (72, 41558), (83, 41573), (Start: 106 @41606 has 3 MA's), (Start: 122 @41633 has 59 MA's), (135, 41666), (184, 41819),

Gene: BEEST_96 Start: 59545, Stop: 59847, Start Num: 109

Candidate Starts for BEEST_96:

(93, 59524), (Start: 109 @59545 has 120 MA's), (146, 59620), (213, 59806), (218, 59821),

Gene: BENtherdunthat_1 Start: 39, Stop: 371, Start Num: 96

Candidate Starts for BENtherdunthat_1:

(70, 9), (75, 15), (89, 27), (Start: 96 @39 has 72 MA's), (146, 141), (148, 144), (178, 234), (188, 264), (193, 282), (217, 351),

Gene: BFK20_ORF55 Start: 42590, Stop: 42880, Start Num: 116

Candidate Starts for BFK20_ORF55:

(Start: 92 @42557 has 1 MA's), (103, 42575), (116, 42590), (126, 42617), (146, 42674), (173, 42761), (199, 42845),

Gene: BGlluviae_96 Start: 58947, Stop: 59249, Start Num: 109

Candidate Starts for BGlluviae_96:

(93, 58926), (Start: 109 @58947 has 120 MA's), (146, 59022), (213, 59208), (218, 59223),

Gene: BPs_62 Start: 41125, Stop: 41451, Start Num: 91

Candidate Starts for BPs_62:

(Start: 91 @41125 has 67 MA's), (172, 41320), (195, 41398),

Gene: BQuat_61 Start: 41117, Stop: 41443, Start Num: 91

Candidate Starts for BQuat_61:

(Start: 91 @41117 has 67 MA's), (172, 41312), (195, 41390),

Gene: BabyDaisy_71 Start: 41763, Stop: 42038, Start Num: 122

Candidate Starts for BabyDaisy_71:

(60, 41664), (72, 41688), (83, 41703), (Start: 106 @41736 has 3 MA's), (118, 41751), (Start: 122 @41763 has 59 MA's),

Gene: BabyYoda_68 Start: 41093, Stop: 41368, Start Num: 122

Candidate Starts for BabyYoda_68:

(Start: 122 @41093 has 59 MA's), (135, 41126), (184, 41279), (185, 41282),

Gene: Bachaco_67 Start: 42043, Stop: 42318, Start Num: 122

Candidate Starts for Bachaco_67:

(33, 41878), (38, 41887), (40, 41890), (57, 41938), (72, 41968), (83, 41983), (Start: 106 @42016 has 3 MA's), (Start: 122 @42043 has 59 MA's), (184, 42229), (211, 42301),

Gene: BaghaKamala_96 Start: 58771, Stop: 59073, Start Num: 109

Candidate Starts for BaghaKamala_96:

(93, 58750), (Start: 109 @58771 has 120 MA's), (146, 58846), (213, 59032), (218, 59047),

Gene: Banquo_63 Start: 39126, Stop: 39422, Start Num: 106

Candidate Starts for Banquo_63:

(74, 39084), (Start: 106 @39126 has 3 MA's), (128, 39168), (196, 39384),

Gene: Barkley26_59 Start: 40570, Stop: 40896, Start Num: 91

Candidate Starts for Barkley26_59:

(Start: 91 @40570 has 67 MA's),

Gene: BarrelRoll_96 Start: 59311, Stop: 59613, Start Num: 109

Candidate Starts for BarrelRoll_96:

(93, 59290), (Start: 109 @59311 has 120 MA's), (146, 59386), (213, 59572), (218, 59587),

Gene: Basilisk_66 Start: 38281, Stop: 38571, Start Num: 105

Candidate Starts for Basilisk_66:

(46, 38188), (65, 38218), (Start: 105 @38281 has 1 MA's), (Start: 115 @38293 has 10 MA's),

Gene: Beakin_1 Start: 41, Stop: 373, Start Num: 96

Candidate Starts for Beakin_1:

(Start: 71 @11 has 1 MA's), (Start: 96 @41 has 72 MA's), (136, 119), (169, 212), (193, 284), (212, 338), (217, 353),

Gene: Beezoo_100 Start: 60133, Stop: 60435, Start Num: 109

Candidate Starts for Beezoo_100:

(93, 60112), (Start: 109 @60133 has 120 MA's), (146, 60208), (213, 60394), (218, 60409),

Gene: Bella96_98 Start: 60366, Stop: 60668, Start Num: 109

Candidate Starts for Bella96_98:

(93, 60345), (Start: 109 @60366 has 120 MA's), (146, 60441), (213, 60627),

Gene: Belladonna_97 Start: 59347, Stop: 59649, Start Num: 109

Candidate Starts for Belladonna_97:

(93, 59326), (Start: 109 @59347 has 120 MA's), (146, 59422), (213, 59608), (218, 59623),

Gene: BelmontSKP_70 Start: 41202, Stop: 41477, Start Num: 122

Candidate Starts for BelmontSKP_70:

(Start: 122 @41202 has 59 MA's), (184, 41388),

Gene: Bernstein_70 Start: 39578, Stop: 39853, Start Num: 122

Candidate Starts for Bernstein_70:

(22, 39380), (29, 39395), (40, 39422), (51, 39455), (72, 39503), (83, 39518), (Start: 106 @39551 has 3 MA's), (Start: 122 @39578 has 59 MA's),

Gene: BigPhil_1 Start: 41, Stop: 373, Start Num: 96

Candidate Starts for BigPhil_1:

(Start: 71 @11 has 1 MA's), (Start: 96 @41 has 72 MA's), (136, 119), (169, 212), (193, 284), (212, 338), (217, 353),

Gene: Biglebops_77 Start: 56089, Stop: 56394, Start Num: 113

Candidate Starts for Biglebops_77:

(41, 55957), (Start: 113 @56089 has 18 MA's), (146, 56164), (160, 56209), (213, 56353), (215, 56359), (218, 56368),

Gene: Bipper_136 Start: 77103, Stop: 77429, Start Num: 85
Candidate Starts for Bipper_136:
(Start: 85 @77103 has 4 MA's), (141, 77217), (146, 77229), (170, 77304), (190, 77361), (192, 77373),

Gene: Blizzard_97 Start: 59544, Stop: 59846, Start Num: 109
Candidate Starts for Blizzard_97:
(93, 59523), (Start: 109 @59544 has 120 MA's), (146, 59619), (213, 59805), (218, 59820),

Gene: Bobi_1 Start: 41, Stop: 373, Start Num: 96
Candidate Starts for Bobi_1:
(Start: 71 @11 has 1 MA's), (Start: 96 @41 has 72 MA's), (136, 119), (169, 212), (193, 284), (212, 338), (217, 353),

Gene: Boiiii_97 Start: 59546, Stop: 59848, Start Num: 109
Candidate Starts for Boiiii_97:
(93, 59525), (Start: 109 @59546 has 120 MA's), (146, 59621), (213, 59807), (218, 59822),

Gene: Boilgate_83 Start: 56925, Stop: 57236, Start Num: 102
Candidate Starts for Boilgate_83:
(Start: 102 @56925 has 20 MA's), (218, 57207),

Gene: Boomer_1 Start: 41, Stop: 373, Start Num: 96
Candidate Starts for Boomer_1:
(Start: 71 @11 has 1 MA's), (Start: 96 @41 has 72 MA's), (136, 119), (169, 212), (193, 284), (212, 338), (217, 353),

Gene: BoostSeason_94 Start: 57637, Stop: 57918, Start Num: 107
Candidate Starts for BoostSeason_94:
(Start: 107 @57637 has 20 MA's), (Start: 109 @57640 has 120 MA's), (218, 57898),

Gene: Brahms_70 Start: 39480, Stop: 39755, Start Num: 122
Candidate Starts for Brahms_70:
(22, 39282), (29, 39297), (40, 39324), (51, 39357), (72, 39405), (83, 39420), (Start: 106 @39453 has 3 MA's), (Start: 122 @39480 has 59 MA's),

Gene: BruceB_62 Start: 41125, Stop: 41451, Start Num: 91
Candidate Starts for BruceB_62:
(Start: 91 @41125 has 67 MA's), (172, 41320), (195, 41398),

Gene: Bryler_94 Start: 57308, Stop: 57616, Start Num: 107
Candidate Starts for Bryler_94:
(Start: 107 @57308 has 20 MA's), (146, 57383), (218, 57590),

Gene: Brynnie_64 Start: 38238, Stop: 38516, Start Num: 115
Candidate Starts for Brynnie_64:
(Start: 105 @38226 has 1 MA's), (Start: 115 @38238 has 10 MA's),

Gene: BubbaBear_68 Start: 41351, Stop: 41626, Start Num: 122
Candidate Starts for BubbaBear_68:
(Start: 122 @41351 has 59 MA's),

Gene: Budski_1 Start: 39, Stop: 371, Start Num: 96

Candidate Starts for Budski_1:

(70, 9), (75, 15), (Start: 96 @39 has 72 MA's), (136, 117), (146, 141), (178, 234), (193, 282), (206, 318), (217, 351),

Gene: Buldak_70 Start: 39158, Stop: 39433, Start Num: 122

Candidate Starts for Buldak_70:

(Start: 122 @39158 has 59 MA's), (184, 39344),

Gene: Burritobowl_72 Start: 40954, Stop: 41229, Start Num: 122

Candidate Starts for Burritobowl_72:

(Start: 122 @40954 has 59 MA's),

Gene: BuzzLyseyear_1 Start: 40, Stop: 372, Start Num: 95

Candidate Starts for BuzzLyseyear_1:

(69, 7), (Start: 73 @13 has 1 MA's), (Start: 95 @40 has 5 MA's), (136, 118), (169, 211), (193, 283), (212, 337), (217, 352),

Gene: CLED96_61 Start: 40680, Stop: 41006, Start Num: 91

Candidate Starts for CLED96_61:

(Start: 91 @40680 has 67 MA's), (172, 40875), (195, 40953),

Gene: CREW_95 Start: 59346, Stop: 59648, Start Num: 109

Candidate Starts for CREW_95:

(93, 59325), (Start: 109 @59346 has 120 MA's), (146, 59421), (213, 59607), (218, 59622),

Gene: Cain_102 Start: 60455, Stop: 60763, Start Num: 107

Candidate Starts for Cain_102:

(Start: 107 @60455 has 20 MA's), (146, 60530), (218, 60737),

Gene: Cambiare_66 Start: 44472, Stop: 44798, Start Num: 91

Candidate Starts for Cambiare_66:

(Start: 91 @44472 has 67 MA's), (123, 44526), (162, 44646),

Gene: Camri_62 Start: 41125, Stop: 41451, Start Num: 91

Candidate Starts for Camri_62:

(Start: 91 @41125 has 67 MA's), (172, 41320), (195, 41398),

Gene: Capricorn_97 Start: 59347, Stop: 59649, Start Num: 109

Candidate Starts for Capricorn_97:

(93, 59326), (Start: 109 @59347 has 120 MA's), (146, 59422), (213, 59608), (218, 59623),

Gene: CaseJules_100 Start: 59544, Stop: 59846, Start Num: 109

Candidate Starts for CaseJules_100:

(93, 59523), (Start: 109 @59544 has 120 MA's), (146, 59619), (213, 59805), (218, 59820),

Gene: Cashington_69 Start: 41137, Stop: 41412, Start Num: 122

Candidate Starts for Cashington_69:

(72, 41062), (83, 41077), (103, 41107), (Start: 106 @41110 has 3 MA's), (Start: 122 @41137 has 59 MA's), (184, 41323),

Gene: CassieYates_62 Start: 41125, Stop: 41451, Start Num: 91

Candidate Starts for CassieYates_62:

(Start: 91 @41125 has 67 MA's), (172, 41320), (195, 41398),

Gene: Catfish_64 Start: 41148, Stop: 41444, Start Num: 99
Candidate Starts for Catfish_64:
(18, 40959), (19, 40968), (70, 41106), (Start: 99 @41148 has 1 MA's), (142, 41235), (146, 41244),
(170, 41319),

Gene: Cedasite_62 Start: 41125, Stop: 41451, Start Num: 91
Candidate Starts for Cedasite_62:
(Start: 91 @41125 has 67 MA's), (172, 41320), (195, 41398),

Gene: Celaena_66 Start: 41809, Stop: 42084, Start Num: 122
Candidate Starts for Celaena_66:
(33, 41641), (38, 41650), (40, 41653), (57, 41701), (72, 41731), (Start: 122 @41809 has 59 MA's),
(184, 41995), (211, 42067),

Gene: Cerasum_1 Start: 41, Stop: 373, Start Num: 96
Candidate Starts for Cerasum_1:
(Start: 71 @11 has 1 MA's), (Start: 96 @41 has 72 MA's), (136, 119), (169, 212), (193, 284), (212,
338), (217, 353),

Gene: Chance64_62 Start: 41127, Stop: 41453, Start Num: 91
Candidate Starts for Chance64_62:
(Start: 91 @41127 has 67 MA's), (172, 41322), (195, 41400),

Gene: Chancellor_94 Start: 56785, Stop: 57090, Start Num: 102
Candidate Starts for Chancellor_94:
(Start: 102 @56785 has 20 MA's), (218, 57064),

Gene: Che9d_1 Start: 48, Stop: 380, Start Num: 96
Candidate Starts for Che9d_1:
(Start: 71 @21 has 1 MA's), (Start: 96 @48 has 72 MA's), (136, 126), (148, 153), (178, 243), (188,
273), (193, 291), (210, 336), (217, 360),

Gene: CheeseTouch_1 Start: 39, Stop: 371, Start Num: 96
Candidate Starts for CheeseTouch_1:
(70, 9), (75, 15), (Start: 96 @39 has 72 MA's), (136, 117), (146, 141), (178, 234), (193, 282), (206,
318), (217, 351),

Gene: CheetoDust_96 Start: 58941, Stop: 59243, Start Num: 109
Candidate Starts for CheetoDust_96:
(93, 58920), (Start: 109 @58941 has 120 MA's), (146, 59016), (213, 59202), (218, 59217),

Gene: Cheetobro_92 Start: 56341, Stop: 56646, Start Num: 102
Candidate Starts for Cheetobro_92:
(Start: 102 @56341 has 20 MA's), (218, 56620),

Gene: Cherrybomb426_61 Start: 40680, Stop: 41006, Start Num: 91
Candidate Starts for Cherrybomb426_61:
(Start: 91 @40680 has 67 MA's), (172, 40875), (195, 40953),

Gene: Chickaboom_70 Start: 38402, Stop: 38680, Start Num: 115
Candidate Starts for Chickaboom_70:
(Start: 105 @38390 has 1 MA's), (Start: 115 @38402 has 10 MA's),

Gene: ChickenDinner_1 Start: 42, Stop: 374, Start Num: 96
Candidate Starts for ChickenDinner_1:
(70, 9), (77, 15), (Start: 96 @42 has 72 MA's), (136, 120), (169, 213), (178, 237), (193, 285), (212, 339), (217, 354),

Gene: Chris_101 Start: 61722, Stop: 62015, Start Num: 107
Candidate Starts for Chris_101:
(Start: 107 @61722 has 20 MA's), (186, 61914), (190, 61923), (209, 61971), (220, 62001),

Gene: Clayda5_72 Start: 39546, Stop: 39821, Start Num: 122
Candidate Starts for Clayda5_72:
(22, 39348), (29, 39363), (40, 39390), (51, 39423), (72, 39471), (83, 39486), (Start: 106 @39519 has 3 MA's), (Start: 122 @39546 has 59 MA's),

Gene: Coco12_1 Start: 41, Stop: 373, Start Num: 96
Candidate Starts for Coco12_1:
(Start: 71 @11 has 1 MA's), (Start: 96 @41 has 72 MA's), (136, 119), (169, 212), (193, 284), (212, 338), (217, 353),

Gene: Coeur_26 Start: 15840, Stop: 16118, Start Num: 129
Candidate Starts for Coeur_26:
(6, 15516), (45, 15687), (118, 15807), (Start: 129 @15840 has 2 MA's), (151, 15912), (152, 15915), (190, 16020), (194, 16044),

Gene: Coleslaw_61 Start: 41117, Stop: 41443, Start Num: 91
Candidate Starts for Coleslaw_61:
(Start: 91 @41117 has 67 MA's), (172, 41312), (195, 41390),

Gene: Collard_95 Start: 60975, Stop: 61280, Start Num: 109
Candidate Starts for Collard_95:
(Start: 109 @60975 has 120 MA's), (172, 61143),

Gene: Coltrane_70 Start: 39480, Stop: 39755, Start Num: 122
Candidate Starts for Coltrane_70:
(22, 39282), (29, 39297), (40, 39324), (51, 39357), (72, 39405), (83, 39420), (Start: 106 @39453 has 3 MA's), (Start: 122 @39480 has 59 MA's),

Gene: Cornucopia_1 Start: 41, Stop: 373, Start Num: 96
Candidate Starts for Cornucopia_1:
(Start: 71 @11 has 1 MA's), (Start: 96 @41 has 72 MA's), (123, 86), (136, 119), (163, 200), (178, 236), (193, 284), (210, 329), (212, 338), (217, 353),

Gene: Cracklewink_136 Start: 76262, Stop: 76588, Start Num: 85
Candidate Starts for Cracklewink_136:
(13, 76067), (28, 76136), (Start: 85 @76262 has 4 MA's), (141, 76376), (146, 76388), (170, 76463), (190, 76520), (192, 76532),

Gene: Crespo_61 Start: 41126, Stop: 41452, Start Num: 91
Candidate Starts for Crespo_61:
(Start: 91 @41126 has 67 MA's), (172, 41321), (195, 41399),

Gene: CrimD_96 Start: 59439, Stop: 59741, Start Num: 109

Candidate Starts for CrimD_96:

(93, 59418), (Start: 109 @59439 has 120 MA's), (146, 59514), (213, 59700), (218, 59715),

Gene: CroZenni_71 Start: 41008, Stop: 41283, Start Num: 122

Candidate Starts for CroZenni_71:

(Start: 122 @41008 has 59 MA's),

Gene: Curiosium_104 Start: 60864, Stop: 61154, Start Num: 113

Candidate Starts for Curiosium_104:

(Start: 113 @60864 has 18 MA's),

Gene: DMoney_61 Start: 41104, Stop: 41430, Start Num: 91

Candidate Starts for DMoney_61:

(Start: 91 @41104 has 67 MA's), (172, 41299), (195, 41377),

Gene: DNAIII_0059 Start: 38754, Stop: 39080, Start Num: 91

Candidate Starts for DNAIII_0059:

(Start: 91 @38754 has 67 MA's), (172, 38949), (195, 39027),

Gene: DaWorst_1 Start: 41, Stop: 373, Start Num: 96

Candidate Starts for DaWorst_1:

(Start: 71 @11 has 1 MA's), (Start: 96 @41 has 72 MA's), (136, 119), (169, 212), (193, 284), (212, 338), (217, 353),

Gene: Dadosky_100 Start: 61693, Stop: 61998, Start Num: 109

Candidate Starts for Dadosky_100:

(Start: 109 @61693 has 120 MA's), (160, 61831),

Gene: Dalmuri_97 Start: 59347, Stop: 59649, Start Num: 109

Candidate Starts for Dalmuri_97:

(93, 59326), (Start: 109 @59347 has 120 MA's), (146, 59422), (213, 59608), (218, 59623),

Gene: Dardanus_58 Start: 37373, Stop: 37678, Start Num: 97

Candidate Starts for Dardanus_58:

(Start: 97 @37373 has 1 MA's), (Start: 115 @37391 has 10 MA's), (170, 37553),

Gene: Darionha_62 Start: 41125, Stop: 41451, Start Num: 91

Candidate Starts for Darionha_62:

(Start: 91 @41125 has 67 MA's), (172, 41320), (195, 41398),

Gene: DarthP_95 Start: 61234, Stop: 61530, Start Num: 109

Candidate Starts for DarthP_95:

(Start: 109 @61234 has 120 MA's), (Start: 132 @61282 has 1 MA's), (146, 61309), (198, 61468), (215, 61495),

Gene: Deby_96 Start: 60102, Stop: 60404, Start Num: 109

Candidate Starts for Deby_96:

(93, 60081), (Start: 109 @60102 has 120 MA's), (146, 60177), (213, 60363), (218, 60378),

Gene: Demsculpinboyz_1 Start: 38, Stop: 370, Start Num: 96

Candidate Starts for Demsculpinboyz_1:

(Start: 71 @11 has 1 MA's), (Start: 96 @38 has 72 MA's), (136, 116), (148, 143), (178, 233), (188, 263), (193, 281), (210, 326), (217, 350),

Gene: Devera_103 Start: 60259, Stop: 60561, Start Num: 109

Candidate Starts for Devera_103:

(93, 60238), (Start: 109 @60259 has 120 MA's), (133, 60310), (146, 60334), (213, 60520), (218, 60535),

Gene: DickRichards_68 Start: 40877, Stop: 41152, Start Num: 122

Candidate Starts for DickRichards_68:

(Start: 122 @40877 has 59 MA's),

Gene: Didgeridoo_75 Start: 42192, Stop: 42467, Start Num: 122

Candidate Starts for Didgeridoo_75:

(31, 42015), (50, 42066), (72, 42117), (83, 42132), (Start: 106 @42165 has 3 MA's), (118, 42180), (Start: 122 @42192 has 59 MA's),

Gene: DirtMcgirt_1 Start: 41, Stop: 373, Start Num: 96

Candidate Starts for DirtMcgirt_1:

(Start: 71 @11 has 1 MA's), (Start: 96 @41 has 72 MA's), (136, 119), (169, 212), (193, 284), (212, 338), (217, 353),

Gene: DirtyBubble_69 Start: 41228, Stop: 41503, Start Num: 122

Candidate Starts for DirtyBubble_69:

(Start: 122 @41228 has 59 MA's), (184, 41414), (185, 41417),

Gene: DismalFunk_94 Start: 57690, Stop: 57968, Start Num: 109

Candidate Starts for DismalFunk_94:

(Start: 107 @57687 has 20 MA's), (Start: 109 @57690 has 120 MA's), (172, 57840), (218, 57948),

Gene: DismalStressor_94 Start: 57690, Stop: 57968, Start Num: 109

Candidate Starts for DismalStressor_94:

(Start: 107 @57687 has 20 MA's), (Start: 109 @57690 has 120 MA's), (172, 57840), (218, 57948),

Gene: Dismas_67 Start: 41256, Stop: 41531, Start Num: 122

Candidate Starts for Dismas_67:

(72, 41181), (Start: 122 @41256 has 59 MA's), (184, 41442), (192, 41472),

Gene: DocMcStuffins_1 Start: 42, Stop: 374, Start Num: 96

Candidate Starts for DocMcStuffins_1:

(70, 9), (77, 15), (Start: 96 @42 has 72 MA's), (136, 120), (169, 213), (178, 237), (193, 285), (212, 339), (217, 354),

Gene: Dole_99 Start: 60262, Stop: 60564, Start Num: 109

Candidate Starts for Dole_99:

(93, 60241), (Start: 109 @60262 has 120 MA's), (133, 60313), (146, 60337), (213, 60523), (218, 60538),

Gene: DonkeyMan_59 Start: 39766, Stop: 40047, Start Num: 119

Candidate Starts for DonkeyMan_59:

(66, 39688), (90, 39727), (Start: 92 @39730 has 1 MA's), (Start: 119 @39766 has 2 MA's), (137, 39820),

Gene: Doobus_68 Start: 40732, Stop: 41007, Start Num: 122

Candidate Starts for Doobus_68:

(Start: 122 @40732 has 59 MA's),

Gene: DosHalletts_1 Start: 41, Stop: 373, Start Num: 96

Candidate Starts for DosHalletts_1:

(Start: 71 @11 has 1 MA's), (Start: 96 @41 has 72 MA's), (136, 119), (169, 212), (193, 284), (212, 338), (217, 353),

Gene: DrHayes_98 Start: 60168, Stop: 60470, Start Num: 109

Candidate Starts for DrHayes_98:

(93, 60147), (Start: 109 @60168 has 120 MA's), (146, 60243), (213, 60429), (218, 60444),

Gene: Drago_1 Start: 41, Stop: 373, Start Num: 96

Candidate Starts for Drago_1:

(Start: 71 @11 has 1 MA's), (Start: 96 @41 has 72 MA's), (136, 119), (169, 212), (193, 284), (212, 338), (217, 353),

Gene: Durfee_97 Start: 59544, Stop: 59846, Start Num: 109

Candidate Starts for Durfee_97:

(93, 59523), (Start: 109 @59544 has 120 MA's), (146, 59619), (213, 59805), (218, 59820),

Gene: E1_55 Start: 34794, Stop: 35114, Start Num: 94

Candidate Starts for E1_55:

(5, 34521), (7, 34560), (9, 34569), (12, 34584), (26, 34650), (27, 34653), (37, 34677), (43, 34695), (53, 34725), (Start: 94 @34794 has 3 MA's), (117, 34824), (143, 34899), (212, 35097),

Gene: ECartman_60 Start: 41125, Stop: 41451, Start Num: 91

Candidate Starts for ECartman_60:

(Start: 91 @41125 has 67 MA's), (172, 41320), (195, 41398),

Gene: Ecliptus_1 Start: 40, Stop: 372, Start Num: 96

Candidate Starts for Ecliptus_1:

(Start: 73 @13 has 1 MA's), (Start: 96 @40 has 72 MA's), (148, 145), (163, 199), (167, 208), (169, 211), (174, 220), (178, 235), (188, 265), (206, 319), (217, 352),

Gene: Eden_72 Start: 40483, Stop: 40758, Start Num: 122

Candidate Starts for Eden_72:

(16, 40246), (20, 40276), (21, 40279), (25, 40294), (38, 40324), (40, 40327), (59, 40381), (84, 40423), (Start: 122 @40483 has 59 MA's), (184, 40669), (185, 40672), (211, 40741),

Gene: Edugator_92 Start: 62924, Stop: 63229, Start Num: 109

Candidate Starts for Edugator_92:

(Start: 109 @62924 has 120 MA's), (160, 63062), (172, 63092),

Gene: Eesa_65 Start: 39439, Stop: 39717, Start Num: 115

Candidate Starts for Eesa_65:

(Start: 115 @39439 has 10 MA's), (214, 39709),

Gene: Efra2_104 Start: 60929, Stop: 61216, Start Num: 109

Candidate Starts for Efra2_104:

(Start: 109 @60929 has 120 MA's), (202, 61166), (215, 61181), (216, 61184),

Gene: Ekdilam_92 Start: 61413, Stop: 61709, Start Num: 109

Candidate Starts for Ekdilam_92:

(4, 61107), (Start: 109 @61413 has 120 MA's), (Start: 132 @61461 has 1 MA's), (146, 61488), (198, 61647), (215, 61674),

Gene: Ellie_96 Start: 61595, Stop: 61885, Start Num: 109
Candidate Starts for Ellie_96:
(Start: 109 @61595 has 120 MA's), (146, 61670), (206, 61832),

Gene: Elva_73 Start: 41675, Stop: 41950, Start Num: 122
Candidate Starts for Elva_73:
(Start: 122 @41675 has 59 MA's), (184, 41861), (185, 41864),

Gene: Emerson_101 Start: 59949, Stop: 60251, Start Num: 109
Candidate Starts for Emerson_101:
(93, 59928), (Start: 109 @59949 has 120 MA's), (146, 60024), (213, 60210), (218, 60225),

Gene: Enby_1 Start: 41, Stop: 373, Start Num: 96
Candidate Starts for Enby_1:
(Start: 71 @11 has 1 MA's), (Start: 96 @41 has 72 MA's), (136, 119), (169, 212), (193, 284), (212, 338), (217, 353),

Gene: Enkosi_79 Start: 58687, Stop: 58992, Start Num: 113
Candidate Starts for Enkosi_79:
(41, 58555), (Start: 113 @58687 has 18 MA's), (146, 58762), (160, 58807), (213, 58951), (215, 58957), (218, 58966),

Gene: EpicDab_24 Start: 16340, Stop: 16612, Start Num: 134
Candidate Starts for EpicDab_24:
(87, 16259), (Start: 134 @16340 has 1 MA's), (142, 16370), (144, 16373), (180, 16478), (192, 16520), (194, 16532),

Gene: Eponine_96 Start: 57765, Stop: 58070, Start Num: 102
Candidate Starts for Eponine_96:
(Start: 102 @57765 has 20 MA's), (149, 57870), (218, 58044),

Gene: Eula_69 Start: 40916, Stop: 41191, Start Num: 122
Candidate Starts for Eula_69:
(Start: 122 @40916 has 59 MA's), (184, 41102),

Gene: Fefferhead_98 Start: 61016, Stop: 61306, Start Num: 109
Candidate Starts for Fefferhead_98:
(Start: 109 @61016 has 120 MA's), (146, 61091), (206, 61253),

Gene: Feyre_98 Start: 63125, Stop: 63430, Start Num: 109
Candidate Starts for Feyre_98:
(Start: 109 @63125 has 120 MA's),

Gene: Finalfrontier_69 Start: 41583, Stop: 41858, Start Num: 122
Candidate Starts for Finalfrontier_69:
(Start: 122 @41583 has 59 MA's), (184, 41769),

Gene: Findley_94 Start: 57711, Stop: 57989, Start Num: 109
Candidate Starts for Findley_94:
(Start: 107 @57708 has 20 MA's), (Start: 109 @57711 has 120 MA's), (172, 57861), (218, 57969),

Gene: Fionnbharth_94 Start: 57163, Stop: 57468, Start Num: 102

Candidate Starts for Fionnbharth_94:

(Start: 102 @57163 has 20 MA's), (149, 57268), (218, 57442),

Gene: FlagStaff_64 Start: 43887, Stop: 44213, Start Num: 91

Candidate Starts for FlagStaff_64:

(Start: 91 @43887 has 67 MA's), (123, 43941), (162, 44061),

Gene: FlameThrower_65 Start: 40846, Stop: 41121, Start Num: 122

Candidate Starts for FlameThrower_65:

(72, 40768), (Start: 122 @40846 has 59 MA's), (184, 41032), (211, 41104),

Gene: Flathead_1 Start: 40, Stop: 372, Start Num: 96

Candidate Starts for Flathead_1:

(69, 7), (Start: 73 @13 has 1 MA's), (Start: 96 @40 has 72 MA's), (131, 109), (136, 118), (169, 211), (193, 283), (210, 328), (212, 337), (217, 352),

Gene: Frankie_1 Start: 40, Stop: 372, Start Num: 96

Candidate Starts for Frankie_1:

(69, 7), (Start: 73 @13 has 1 MA's), (Start: 96 @40 has 72 MA's), (131, 109), (136, 118), (169, 211), (193, 283), (210, 328), (212, 337), (217, 352),

Gene: Franklin22_74 Start: 40216, Stop: 40491, Start Num: 122

Candidate Starts for Franklin22_74:

(84, 40156), (Start: 122 @40216 has 59 MA's), (184, 40402), (211, 40474),

Gene: Frickyeah_1 Start: 39, Stop: 371, Start Num: 96

Candidate Starts for Frickyeah_1:

(70, 9), (75, 15), (89, 27), (Start: 96 @39 has 72 MA's), (146, 141), (148, 144), (178, 234), (188, 264), (193, 282), (217, 351),

Gene: Frosty24_62 Start: 41125, Stop: 41451, Start Num: 91

Candidate Starts for Frosty24_62:

(Start: 91 @41125 has 67 MA's), (172, 41320), (195, 41398),

Gene: Fryberger_144 Start: 66223, Stop: 66480, Start Num: 130

Candidate Starts for Fryberger_144:

(Start: 130 @66223 has 5 MA's), (158, 66319), (164, 66343), (177, 66373), (187, 66406),

Gene: GMA5_27 Start: 17062, Stop: 17340, Start Num: 129

Candidate Starts for GMA5_27:

(14, 16792), (48, 16912), (Start: 129 @17062 has 2 MA's), (152, 17137), (194, 17266),

Gene: Gack_71 Start: 40197, Stop: 40472, Start Num: 122

Candidate Starts for Gack_71:

(Start: 122 @40197 has 59 MA's), (184, 40383), (192, 40413),

Gene: Galaxy_65 Start: 37453, Stop: 37731, Start Num: 115

Candidate Starts for Galaxy_65:

(35, 37303), (44, 37327), (55, 37360), (Start: 115 @37453 has 10 MA's), (189, 37660),

Gene: Ganymede_96 Start: 59358, Stop: 59660, Start Num: 109

Candidate Starts for Ganymede_96:
(93, 59337), (Start: 109 @59358 has 120 MA's), (146, 59433), (213, 59619), (218, 59634),

Gene: Gengar_96 Start: 61193, Stop: 61498, Start Num: 109
Candidate Starts for Gengar_96:
(Start: 109 @61193 has 120 MA's),

Gene: Geraldini_97 Start: 59457, Stop: 59759, Start Num: 109
Candidate Starts for Geraldini_97:
(93, 59436), (Start: 109 @59457 has 120 MA's), (146, 59532), (213, 59718), (218, 59733),

Gene: Getalong_1 Start: 39, Stop: 371, Start Num: 96
Candidate Starts for Getalong_1:
(70, 9), (75, 15), (89, 27), (Start: 96 @39 has 72 MA's), (146, 141), (148, 144), (178, 234), (188, 264),
(193, 282), (217, 351),

Gene: Ghobes_59 Start: 45003, Stop: 45227, Start Num: 140
Candidate Starts for Ghobes_59:
(111, 44931), (Start: 140 @45003 has 1 MA's), (150, 45036), (214, 45219),

Gene: Gideon_62 Start: 41127, Stop: 41453, Start Num: 91
Candidate Starts for Gideon_62:
(Start: 91 @41127 has 67 MA's), (172, 41322), (195, 41400),

Gene: Girafales_1 Start: 41, Stop: 373, Start Num: 96
Candidate Starts for Girafales_1:
(Start: 71 @11 has 1 MA's), (Start: 96 @41 has 72 MA's), (123, 86), (131, 110), (136, 119), (163, 200),
(178, 236), (193, 284), (210, 329), (212, 338), (217, 353),

Gene: GoldenAsh_60 Start: 40665, Stop: 40991, Start Num: 91
Candidate Starts for GoldenAsh_60:
(Start: 91 @40665 has 67 MA's), (172, 40860), (195, 40938),

Gene: Gomashi_61 Start: 41127, Stop: 41453, Start Num: 91
Candidate Starts for Gomashi_61:
(Start: 91 @41127 has 67 MA's), (172, 41322), (195, 41400),

Gene: Grizzly_61 Start: 40976, Stop: 41302, Start Num: 91
Candidate Starts for Grizzly_61:
(Start: 91 @40976 has 67 MA's), (172, 41171), (195, 41249),

Gene: Guanica15_103 Start: 60618, Stop: 60905, Start Num: 109
Candidate Starts for Guanica15_103:
(Start: 109 @60618 has 120 MA's), (202, 60855), (215, 60870), (216, 60873),

Gene: Guey18_149 Start: 67884, Stop: 68141, Start Num: 130
Candidate Starts for Guey18_149:
(Start: 130 @67884 has 5 MA's), (158, 67980), (164, 68004), (177, 68034), (187, 68067),

Gene: Guillsminger_96 Start: 62720, Stop: 63025, Start Num: 109
Candidate Starts for Guillsminger_96:
(Start: 109 @62720 has 120 MA's),

Gene: Halo_63 Start: 41673, Stop: 41999, Start Num: 91
Candidate Starts for Halo_63:
(Start: 91 @41673 has 67 MA's), (172, 41868), (195, 41946),

Gene: Hammy_95 Start: 61452, Stop: 61748, Start Num: 109
Candidate Starts for Hammy_95:
(Start: 109 @61452 has 120 MA's), (Start: 132 @61500 has 1 MA's), (146, 61527), (198, 61686), (215, 61713),

Gene: HedwigODU_96 Start: 59451, Stop: 59753, Start Num: 109
Candidate Starts for HedwigODU_96:
(93, 59430), (Start: 109 @59451 has 120 MA's), (146, 59526), (213, 59712), (218, 59727),

Gene: Heftyboy_96 Start: 61535, Stop: 61840, Start Num: 109
Candidate Starts for Heftyboy_96:
(Start: 109 @61535 has 120 MA's),

Gene: Hegedechwinu_1 Start: 40, Stop: 372, Start Num: 96
Candidate Starts for Hegedechwinu_1:
(69, 7), (Start: 73 @13 has 1 MA's), (Start: 96 @40 has 72 MA's), (131, 109), (136, 118), (169, 211), (193, 283), (210, 328), (212, 337), (217, 352),

Gene: Heinz_63 Start: 39746, Stop: 40030, Start Num: 119
Candidate Starts for Heinz_63:
(Start: 119 @39746 has 2 MA's), (137, 39800),

Gene: Hilltopfarm_134 Start: 76128, Stop: 76451, Start Num: 85
Candidate Starts for Hilltopfarm_134:
(Start: 85 @76128 has 4 MA's), (153, 76278), (182, 76359), (190, 76383), (192, 76395),

Gene: Holliday_1 Start: 39, Stop: 371, Start Num: 96
Candidate Starts for Holliday_1:
(70, 9), (75, 15), (Start: 96 @39 has 72 MA's), (136, 117), (146, 141), (178, 234), (193, 282), (206, 318), (217, 351),

Gene: Homura_95 Start: 59347, Stop: 59649, Start Num: 109
Candidate Starts for Homura_95:
(93, 59326), (Start: 109 @59347 has 120 MA's), (146, 59422), (213, 59608), (218, 59623),

Gene: Hope_62 Start: 41125, Stop: 41451, Start Num: 91
Candidate Starts for Hope_62:
(Start: 91 @41125 has 67 MA's), (172, 41320), (195, 41398),

Gene: Horus_1 Start: 39, Stop: 371, Start Num: 96
Candidate Starts for Horus_1:
(70, 9), (75, 15), (89, 27), (Start: 96 @39 has 72 MA's), (136, 117), (146, 141), (178, 234), (188, 264), (193, 282), (217, 351),

Gene: Hotshotbaby7_62 Start: 41127, Stop: 41453, Start Num: 91
Candidate Starts for Hotshotbaby7_62:
(Start: 91 @41127 has 67 MA's), (172, 41322), (195, 41400),

Gene: Hurricane_98 Start: 60965, Stop: 61252, Start Num: 113

Candidate Starts for Hurricane_98:

(81, 60923), (Start: 92 @60938 has 1 MA's), (Start: 113 @60965 has 18 MA's), (203, 61202), (218, 61226),

Gene: Hyperbowlee_95 Start: 59544, Stop: 59846, Start Num: 109

Candidate Starts for Hyperbowlee_95:

(93, 59523), (Start: 109 @59544 has 120 MA's), (146, 59619), (213, 59805), (218, 59820),

Gene: Icarian_72 Start: 41856, Stop: 42131, Start Num: 122

Candidate Starts for Icarian_72:

(Start: 122 @41856 has 59 MA's), (177, 42021), (184, 42042), (185, 42045),

Gene: IdentityCrisis_61 Start: 37798, Stop: 38148, Start Num: 73

Candidate Starts for IdentityCrisis_61:

(Start: 73 @37798 has 1 MA's),

Gene: Illumine_100 Start: 60261, Stop: 60563, Start Num: 109

Candidate Starts for Illumine_100:

(93, 60240), (Start: 109 @60261 has 120 MA's), (133, 60312), (146, 60336), (213, 60522), (218, 60537),

Gene: IndyLu_71 Start: 41495, Stop: 41770, Start Num: 122

Candidate Starts for IndyLu_71:

(31, 41318), (50, 41369), (72, 41420), (83, 41435), (101, 41462), (Start: 106 @41468 has 3 MA's), (118, 41483), (Start: 122 @41495 has 59 MA's),

Gene: Inky_96 Start: 59347, Stop: 59649, Start Num: 109

Candidate Starts for Inky_96:

(93, 59326), (Start: 109 @59347 has 120 MA's), (146, 59422), (213, 59608), (218, 59623),

Gene: InvictusManeo_97 Start: 60727, Stop: 61032, Start Num: 109

Candidate Starts for InvictusManeo_97:

(Start: 109 @60727 has 120 MA's), (172, 60895),

Gene: JAWS_95 Start: 59388, Stop: 59690, Start Num: 109

Candidate Starts for JAWS_95:

(93, 59367), (Start: 109 @59388 has 120 MA's), (146, 59463), (213, 59649), (218, 59664),

Gene: JF1_94 Start: 57078, Stop: 57383, Start Num: 102

Candidate Starts for JF1_94:

(Start: 102 @57078 has 20 MA's), (149, 57183), (218, 57357),

Gene: Jabbawokkie_2 Start: 561, Stop: 893, Start Num: 96

Candidate Starts for Jabbawokkie_2:

(69, 528), (Start: 96 @561 has 72 MA's), (178, 756), (188, 786), (193, 804), (210, 849), (217, 873),

Gene: JalFarm20_1 Start: 41, Stop: 373, Start Num: 96

Candidate Starts for JalFarm20_1:

(Start: 71 @11 has 1 MA's), (Start: 96 @41 has 72 MA's), (136, 119), (169, 212), (193, 284), (212, 338), (217, 353),

Gene: Jamun_63 Start: 38467, Stop: 38745, Start Num: 115

Candidate Starts for Jamun_63:

(30, 38326), (74, 38413), (Start: 99 @38449 has 1 MA's), (Start: 105 @38455 has 1 MA's), (Start: 115 @38467 has 10 MA's),

Gene: Jane_63 Start: 41125, Stop: 41451, Start Num: 91
Candidate Starts for Jane_63:
(Start: 91 @41125 has 67 MA's), (172, 41320), (195, 41398),

Gene: JanetJ_52 Start: 36634, Stop: 36915, Start Num: 110
Candidate Starts for JanetJ_52:
(Start: 110 @36634 has 10 MA's),

Gene: Jarvi_96 Start: 59347, Stop: 59649, Start Num: 109
Candidate Starts for Jarvi_96:
(93, 59326), (Start: 109 @59347 has 120 MA's), (146, 59422), (213, 59608), (218, 59623),

Gene: Jayhawk_97 Start: 59371, Stop: 59673, Start Num: 109
Candidate Starts for Jayhawk_97:
(93, 59350), (Start: 109 @59371 has 120 MA's), (146, 59446), (213, 59632), (218, 59647),

Gene: Jeckyll_97 Start: 59347, Stop: 59649, Start Num: 109
Candidate Starts for Jeckyll_97:
(93, 59326), (Start: 109 @59347 has 120 MA's), (146, 59422), (213, 59608), (218, 59623),

Gene: Job42_1 Start: 41, Stop: 373, Start Num: 96
Candidate Starts for Job42_1:
(Start: 71 @11 has 1 MA's), (Start: 96 @41 has 72 MA's), (136, 119), (169, 212), (193, 284), (210, 329), (212, 338), (217, 353),

Gene: Johnathan_70 Start: 40508, Stop: 40783, Start Num: 122
Candidate Starts for Johnathan_70:
(Start: 122 @40508 has 59 MA's),

Gene: Jolene_62 Start: 41529, Stop: 41855, Start Num: 91
Candidate Starts for Jolene_62:
(Start: 91 @41529 has 67 MA's), (172, 41724), (195, 41802),

Gene: Jolie2_61 Start: 43385, Stop: 43714, Start Num: 91
Candidate Starts for Jolie2_61:
(Start: 91 @43385 has 67 MA's), (167, 43568), (195, 43655),

Gene: Jonghyun_60 Start: 41128, Stop: 41454, Start Num: 91
Candidate Starts for Jonghyun_60:
(Start: 91 @41128 has 67 MA's), (172, 41323), (195, 41401),

Gene: JorRay_63 Start: 41125, Stop: 41451, Start Num: 91
Candidate Starts for JorRay_63:
(Start: 91 @41125 has 67 MA's), (172, 41320), (195, 41398),

Gene: Jovita_68 Start: 40684, Stop: 40959, Start Num: 122
Candidate Starts for Jovita_68:
(Start: 122 @40684 has 59 MA's), (184, 40870),

Gene: Joy99_98 Start: 59476, Stop: 59778, Start Num: 109

Candidate Starts for Joy99_98:

(93, 59455), (Start: 109 @59476 has 120 MA's), (146, 59551), (213, 59737), (218, 59752),

Gene: Juice456_1 Start: 41, Stop: 373, Start Num: 96

Candidate Starts for Juice456_1:

(Start: 71 @11 has 1 MA's), (Start: 96 @41 has 72 MA's), (136, 119), (169, 212), (193, 284), (210, 329), (212, 338), (217, 353),

Gene: Juliette_96 Start: 57159, Stop: 57464, Start Num: 102

Candidate Starts for Juliette_96:

(Start: 102 @57159 has 20 MA's), (149, 57264), (218, 57438),

Gene: Kamaru_1 Start: 39, Stop: 371, Start Num: 96

Candidate Starts for Kamaru_1:

(70, 9), (75, 15), (Start: 96 @39 has 72 MA's), (136, 117), (146, 141), (178, 234), (193, 282), (206, 318), (217, 351),

Gene: Kareem_63 Start: 41125, Stop: 41451, Start Num: 91

Candidate Starts for Kareem_63:

(Start: 91 @41125 has 67 MA's), (172, 41320), (195, 41398),

Gene: Kasen3_63 Start: 41114, Stop: 41440, Start Num: 91

Candidate Starts for Kasen3_63:

(Start: 91 @41114 has 67 MA's), (172, 41309), (195, 41387),

Gene: Katzastrophic_67 Start: 41352, Stop: 41627, Start Num: 122

Candidate Starts for Katzastrophic_67:

(33, 41187), (38, 41196), (40, 41199), (57, 41247), (72, 41277), (83, 41292), (Start: 106 @41325 has 3 MA's), (Start: 122 @41352 has 59 MA's), (184, 41538), (211, 41610),

Gene: Keelan_144 Start: 66560, Stop: 66817, Start Num: 130

Candidate Starts for Keelan_144:

(Start: 130 @66560 has 5 MA's), (158, 66656), (164, 66680), (177, 66710), (187, 66743), (212, 66803),

Gene: Kenna_1 Start: 39, Stop: 371, Start Num: 96

Candidate Starts for Kenna_1:

(70, 9), (75, 15), (89, 27), (Start: 96 @39 has 72 MA's), (136, 117), (146, 141), (148, 144), (178, 234), (188, 264), (193, 282), (217, 351),

Gene: Kenzers_69 Start: 40798, Stop: 41073, Start Num: 122

Candidate Starts for Kenzers_69:

(Start: 122 @40798 has 59 MA's), (184, 40984),

Gene: Keshu_101 Start: 60898, Stop: 61185, Start Num: 113

Candidate Starts for Keshu_101:

(46, 60787), (54, 60811), (81, 60856), (Start: 92 @60871 has 1 MA's), (Start: 113 @60898 has 18 MA's), (203, 61135), (218, 61159),

Gene: Khuang_70 Start: 39192, Stop: 39488, Start Num: 111

Candidate Starts for Khuang_70:

(111, 39192), (124, 39222), (170, 39360),

Gene: KiSi_104 Start: 62208, Stop: 62504, Start Num: 107
Candidate Starts for KiSi_104:
(Start: 107 @62208 has 20 MA's), (186, 62400), (190, 62409),

Gene: Kieran_65 Start: 41080, Stop: 41355, Start Num: 122
Candidate Starts for Kieran_65:
(72, 41005), (Start: 122 @41080 has 59 MA's), (184, 41266), (192, 41296),

Gene: Kimberlium_1 Start: 41, Stop: 373, Start Num: 96
Candidate Starts for Kimberlium_1:
(Start: 71 @11 has 1 MA's), (Start: 96 @41 has 72 MA's), (136, 119), (169, 212), (193, 284), (210, 329), (212, 338), (217, 353),

Gene: Kingsley_1 Start: 41, Stop: 373, Start Num: 96
Candidate Starts for Kingsley_1:
(Start: 71 @11 has 1 MA's), (Start: 96 @41 has 72 MA's), (136, 119), (169, 212), (193, 284), (212, 338), (217, 353),

Gene: Kratio_100 Start: 62318, Stop: 62623, Start Num: 109
Candidate Starts for Kratio_100:
(Start: 109 @62318 has 120 MA's), (172, 62486),

Gene: Krueger_101 Start: 59962, Stop: 60270, Start Num: 107
Candidate Starts for Krueger_101:
(Start: 107 @59962 has 20 MA's), (146, 60037), (218, 60244),

Gene: Kudrefre_128 Start: 69247, Stop: 69579, Start Num: 110
Candidate Starts for Kudrefre_128:
(Start: 110 @69247 has 10 MA's), (157, 69385), (159, 69397), (189, 69487),

Gene: Lahqtemish_69 Start: 41710, Stop: 41985, Start Num: 122
Candidate Starts for Lahqtemish_69:
(55, 41602), (72, 41635), (83, 41650), (101, 41677), (Start: 106 @41683 has 3 MA's), (118, 41698), (Start: 122 @41710 has 59 MA's),

Gene: Larva_98 Start: 62571, Stop: 62876, Start Num: 109
Candidate Starts for Larva_98:
(Start: 109 @62571 has 120 MA's), (160, 62709),

Gene: LastHope_103 Start: 60575, Stop: 60865, Start Num: 113
Candidate Starts for LastHope_103:
(Start: 113 @60575 has 18 MA's), (184, 60758),

Gene: LaterM_96 Start: 59784, Stop: 60086, Start Num: 109
Candidate Starts for LaterM_96:
(93, 59763), (Start: 109 @59784 has 120 MA's), (133, 59835), (146, 59859), (213, 60045), (218, 60060),

Gene: LeMond_103 Start: 62165, Stop: 62461, Start Num: 107
Candidate Starts for LeMond_103:
(Start: 107 @62165 has 20 MA's), (186, 62357), (190, 62366),

Gene: Lemuria_64 Start: 44074, Stop: 44403, Start Num: 91

Candidate Starts for Lemuria_64:
(Start: 91 @44074 has 67 MA's), (167, 44257), (180, 44287), (195, 44344),

Gene: Leona_68 Start: 38237, Stop: 38518, Start Num: 110
Candidate Starts for Leona_68:
(Start: 110 @38237 has 10 MA's), (166, 38384), (189, 38447),

Gene: Leozinho_1 Start: 41, Stop: 373, Start Num: 96
Candidate Starts for Leozinho_1:
(Start: 71 @11 has 1 MA's), (Start: 96 @41 has 72 MA's), (136, 119), (169, 212), (193, 284), (212, 338), (217, 353),

Gene: Leroy_1 Start: 39, Stop: 371, Start Num: 96
Candidate Starts for Leroy_1:
(70, 9), (75, 15), (89, 27), (Start: 96 @39 has 72 MA's), (146, 141), (148, 144), (178, 234), (188, 264), (193, 282), (217, 351),

Gene: Leston_95 Start: 61375, Stop: 61680, Start Num: 109
Candidate Starts for Leston_95:
(Start: 109 @61375 has 120 MA's),

Gene: Liefie_59 Start: 40764, Stop: 41090, Start Num: 91
Candidate Starts for Liefie_59:
(Start: 91 @40764 has 67 MA's),

Gene: LilPharaoh_78 Start: 55802, Stop: 56107, Start Num: 113
Candidate Starts for LilPharaoh_78:
(41, 55670), (Start: 113 @55802 has 18 MA's), (146, 55877), (160, 55922), (213, 56066), (215, 56072), (218, 56081),

Gene: LilSpotty_85 Start: 49411, Stop: 49689, Start Num: 121
Candidate Starts for LilSpotty_85:
(Start: 121 @49411 has 1 MA's), (216, 49663),

Gene: LimaBean_68 Start: 40790, Stop: 41065, Start Num: 122
Candidate Starts for LimaBean_68:
(72, 40715), (83, 40730), (103, 40760), (Start: 106 @40763 has 3 MA's), (Start: 122 @40790 has 59 MA's),

Gene: LindNT_94 Start: 59694, Stop: 59996, Start Num: 109
Candidate Starts for LindNT_94:
(93, 59673), (Start: 109 @59694 has 120 MA's), (146, 59769), (213, 59955), (218, 59970),

Gene: LitninMcQueen_1 Start: 39, Stop: 371, Start Num: 96
Candidate Starts for LitninMcQueen_1:
(70, 9), (75, 15), (Start: 96 @39 has 72 MA's), (136, 117), (146, 141), (178, 234), (193, 282), (206, 318), (217, 351),

Gene: LittleShirley_1 Start: 41, Stop: 373, Start Num: 96
Candidate Starts for LittleShirley_1:
(Start: 71 @11 has 1 MA's), (Start: 96 @41 has 72 MA's), (136, 119), (169, 212), (178, 236), (193, 284), (212, 338), (217, 353),

Gene: LittleTokyo_73 Start: 38604, Stop: 38882, Start Num: 115
Candidate Starts for LittleTokyo_73:
(Start: 115 @38604 has 10 MA's), (184, 38796),

Gene: Lorde_1 Start: 41, Stop: 373, Start Num: 96
Candidate Starts for Lorde_1:
(Start: 71 @11 has 1 MA's), (Start: 96 @41 has 72 MA's), (136, 119), (169, 212), (193, 284), (212, 338), (217, 353),

Gene: LouisV14_64 Start: 43369, Stop: 43695, Start Num: 91
Candidate Starts for LouisV14_64:
(Start: 91 @43369 has 67 MA's), (172, 43564), (195, 43642),

Gene: Loviatar_114 Start: 42044, Stop: 42379, Start Num: 83
Candidate Starts for Loviatar_114:
(72, 42029), (83, 42044), (Start: 106 @42077 has 3 MA's), (Start: 122 @42104 has 59 MA's), (135, 42137), (185, 42293),

Gene: Lucky10_70 Start: 42595, Stop: 42897, Start Num: 114
Candidate Starts for Lucky10_70:
(52, 42496), (Start: 114 @42595 has 1 MA's), (186, 42802),

Gene: Lunahalos_96 Start: 59347, Stop: 59649, Start Num: 109
Candidate Starts for Lunahalos_96:
(93, 59326), (Start: 109 @59347 has 120 MA's), (146, 59422), (213, 59608), (218, 59623),

Gene: Lutum_1 Start: 39, Stop: 371, Start Num: 96
Candidate Starts for Lutum_1:
(70, 9), (75, 15), (89, 27), (Start: 96 @39 has 72 MA's), (136, 117), (146, 141), (148, 144), (178, 234), (188, 264), (193, 282), (217, 351),

Gene: Lynlen_71 Start: 40984, Stop: 41259, Start Num: 122
Candidate Starts for Lynlen_71:
(118, 40972), (Start: 122 @40984 has 59 MA's),

Gene: MOOREtheMARYer_66 Start: 43647, Stop: 43973, Start Num: 91
Candidate Starts for MOOREtheMARYer_66:
(Start: 91 @43647 has 67 MA's), (123, 43701), (162, 43821), (163, 43824),

Gene: MacnCheese_99 Start: 61214, Stop: 61501, Start Num: 113
Candidate Starts for MacnCheese_99:
(57, 61130), (81, 61172), (Start: 92 @61187 has 1 MA's), (Start: 113 @61214 has 18 MA's),

Gene: Madiba_1 Start: 40, Stop: 372, Start Num: 95
Candidate Starts for Madiba_1:
(69, 7), (Start: 73 @13 has 1 MA's), (Start: 95 @40 has 5 MA's), (136, 118), (178, 235), (193, 283), (212, 337), (217, 352),

Gene: Mahdia_60 Start: 41790, Stop: 42113, Start Num: 76
Candidate Starts for Mahdia_60:
(Start: 76 @41790 has 1 MA's), (Start: 80 @41796 has 1 MA's), (163, 41970), (170, 41988), (196, 42075),

Gene: Malisha_1 Start: 39, Stop: 371, Start Num: 96
Candidate Starts for Malisha_1:
(70, 9), (75, 15), (Start: 96 @39 has 72 MA's), (136, 117), (167, 207), (178, 234), (188, 264), (193, 282), (206, 318), (217, 351),

Gene: Malthus_95 Start: 56888, Stop: 57193, Start Num: 102
Candidate Starts for Malthus_95:
(Start: 102 @56888 has 20 MA's), (149, 56993), (218, 57167),

Gene: Marcoliusprime_92 Start: 57690, Stop: 57968, Start Num: 109
Candidate Starts for Marcoliusprime_92:
(Start: 107 @57687 has 20 MA's), (Start: 109 @57690 has 120 MA's), (172, 57840), (218, 57948),

Gene: MarkPhew_103 Start: 61805, Stop: 62098, Start Num: 107
Candidate Starts for MarkPhew_103:
(Start: 107 @61805 has 20 MA's), (146, 61880), (190, 62006), (220, 62084),

Gene: Marker_1 Start: 40, Stop: 372, Start Num: 95
Candidate Starts for Marker_1:
(69, 7), (Start: 73 @13 has 1 MA's), (Start: 95 @40 has 5 MA's), (136, 118), (169, 211), (178, 235), (193, 283), (212, 337), (217, 352),

Gene: Marmie_62 Start: 41126, Stop: 41452, Start Num: 91
Candidate Starts for Marmie_62:
(Start: 91 @41126 has 67 MA's), (172, 41321), (195, 41399),

Gene: Marshawn_96 Start: 61097, Stop: 61411, Start Num: 109
Candidate Starts for Marshawn_96:
(Start: 109 @61097 has 120 MA's), (146, 61172), (216, 61379), (218, 61385),

Gene: Mdavu_78 Start: 56078, Stop: 56383, Start Num: 113
Candidate Starts for Mdavu_78:
(41, 55946), (Start: 113 @56078 has 18 MA's), (146, 56153), (160, 56198), (213, 56342), (215, 56348), (218, 56357),

Gene: MeaningOfLife_98 Start: 60071, Stop: 60373, Start Num: 109
Candidate Starts for MeaningOfLife_98:
(93, 60050), (Start: 109 @60071 has 120 MA's), (146, 60146), (213, 60332), (218, 60347),

Gene: Megsy_102 Start: 59832, Stop: 60134, Start Num: 109
Candidate Starts for Megsy_102:
(93, 59811), (Start: 109 @59832 has 120 MA's), (146, 59907), (213, 60093), (218, 60108),

Gene: Mercurio_63 Start: 43953, Stop: 44282, Start Num: 91
Candidate Starts for Mercurio_63:
(Start: 91 @43953 has 67 MA's), (167, 44136), (195, 44223),

Gene: Milly_94 Start: 57772, Stop: 58050, Start Num: 109
Candidate Starts for Milly_94:
(Start: 107 @57769 has 20 MA's), (Start: 109 @57772 has 120 MA's), (172, 57922), (218, 58030),

Gene: Min1_34 Start: 16506, Stop: 16799, Start Num: 117
Candidate Starts for Min1_34:

(Start: 71 @16446 has 1 MA's), (83, 16461), (86, 16464), (Start: 94 @16479 has 3 MA's), (Start: 106 @16491 has 3 MA's), (117, 16506), (154, 16617), (177, 16686), (212, 16782),

Gene: Miryou_100 Start: 62747, Stop: 63052, Start Num: 109
Candidate Starts for Miryou_100:
(Start: 109 @62747 has 120 MA's),

Gene: Misha28_1 Start: 42, Stop: 374, Start Num: 96
Candidate Starts for Misha28_1:
(70, 9), (77, 15), (Start: 96 @42 has 72 MA's), (136, 120), (169, 213), (178, 237), (193, 285), (212, 339), (217, 354),

Gene: MissDaisy_88 Start: 53576, Stop: 53857, Start Num: 102
Candidate Starts for MissDaisy_88:
(Start: 102 @53576 has 20 MA's), (216, 53825), (218, 53831),

Gene: Mitti_94 Start: 56983, Stop: 57288, Start Num: 102
Candidate Starts for Mitti_94:
(Start: 102 @56983 has 20 MA's), (218, 57262),

Gene: Morkie_74 Start: 41703, Stop: 42008, Start Num: 112
Candidate Starts for Morkie_74:
(52, 41607), (Start: 112 @41703 has 2 MA's), (186, 41913),

Gene: Morrissey_63 Start: 43651, Stop: 44007, Start Num: 61
Candidate Starts for Morrissey_63:
(Start: 61 @43651 has 1 MA's), (70, 43666), (Start: 79 @43678 has 1 MA's), (Start: 94 @43702 has 3 MA's), (163, 43864), (196, 43969),

Gene: Mova_1 Start: 41, Stop: 373, Start Num: 95
Candidate Starts for Mova_1:
(Start: 71 @11 has 1 MA's), (Start: 95 @41 has 5 MA's), (136, 119), (169, 212), (178, 236), (193, 284), (212, 338), (217, 353),

Gene: Mowgli_62 Start: 41126, Stop: 41452, Start Num: 91
Candidate Starts for Mowgli_62:
(Start: 91 @41126 has 67 MA's), (172, 41321), (195, 41399),

Gene: Mozy_1 Start: 40, Stop: 372, Start Num: 96
Candidate Starts for Mozy_1:
(69, 7), (Start: 73 @13 has 1 MA's), (Start: 96 @40 has 72 MA's), (123, 85), (131, 109), (136, 118), (163, 199), (178, 235), (193, 283), (210, 328), (212, 337), (217, 352),

Gene: Mufasa_94 Start: 57627, Stop: 57905, Start Num: 109
Candidate Starts for Mufasa_94:
(Start: 107 @57624 has 20 MA's), (Start: 109 @57627 has 120 MA's), (218, 57885),

Gene: Murucutumbu_96 Start: 60249, Stop: 60551, Start Num: 109
Candidate Starts for Murucutumbu_96:
(93, 60228), (Start: 109 @60249 has 120 MA's), (133, 60300), (146, 60324), (213, 60510), (218, 60525),

Gene: Mynx_97 Start: 59694, Stop: 59996, Start Num: 109

Candidate Starts for Mynx_97:

(93, 59673), (Start: 109 @59694 has 120 MA's), (146, 59769), (213, 59955), (218, 59970),

Gene: Neville_125 Start: 70232, Stop: 70561, Start Num: 110

Candidate Starts for Neville_125:

(Start: 110 @70232 has 10 MA's), (153, 70352), (159, 70382), (165, 70406), (168, 70415), (191, 70484), (201, 70508), (208, 70517), (219, 70556),

Gene: Nibb_103 Start: 61945, Stop: 62238, Start Num: 107

Candidate Starts for Nibb_103:

(Start: 107 @61945 has 20 MA's), (146, 62020), (190, 62146), (209, 62194),

Gene: Nicky22_69 Start: 41321, Stop: 41596, Start Num: 122

Candidate Starts for Nicky22_69:

(Start: 122 @41321 has 59 MA's), (184, 41507),

Gene: Nikao_80 Start: 58687, Stop: 58992, Start Num: 113

Candidate Starts for Nikao_80:

(41, 58555), (Start: 113 @58687 has 18 MA's), (146, 58762), (160, 58807), (213, 58951), (215, 58957), (218, 58966),

Gene: Niklas_98 Start: 60655, Stop: 60942, Start Num: 109

Candidate Starts for Niklas_98:

(2, 60328), (67, 60592), (Start: 109 @60655 has 120 MA's), (146, 60730), (186, 60847), (202, 60892), (220, 60928),

Gene: Nutello_77 Start: 56074, Stop: 56379, Start Num: 113

Candidate Starts for Nutello_77:

(41, 55942), (Start: 113 @56074 has 18 MA's), (146, 56149), (160, 56194), (213, 56338), (215, 56344), (218, 56353),

Gene: ODay_1 Start: 39, Stop: 371, Start Num: 96

Candidate Starts for ODay_1:

(70, 9), (75, 15), (Start: 96 @39 has 72 MA's), (136, 117), (146, 141), (178, 234), (193, 282), (206, 318), (217, 351),

Gene: OctaviousRex_61 Start: 41104, Stop: 41430, Start Num: 91

Candidate Starts for OctaviousRex_61:

(Start: 91 @41104 has 67 MA's), (172, 41299), (195, 41377),

Gene: Octobien14_124 Start: 67781, Stop: 68113, Start Num: 110

Candidate Starts for Octobien14_124:

(82, 67739), (Start: 110 @67781 has 10 MA's), (157, 67919), (159, 67931), (181, 67997),

Gene: Ogotogo_2 Start: 299, Stop: 631, Start Num: 96

Candidate Starts for Ogotogo_2:

(Start: 96 @299 has 72 MA's), (136, 377), (178, 494), (188, 524), (193, 542), (210, 587), (217, 611),

Gene: OkiRoe_97 Start: 62228, Stop: 62533, Start Num: 109

Candidate Starts for OkiRoe_97:

(Start: 109 @62228 has 120 MA's),

Gene: Oksu_1 Start: 41, Stop: 373, Start Num: 96

Candidate Starts for Oksu_1:

(Start: 71 @11 has 1 MA's), (Start: 96 @41 has 72 MA's), (136, 119), (178, 236), (193, 284), (212, 338), (217, 353),

Gene: Olga_63 Start: 41126, Stop: 41452, Start Num: 91

Candidate Starts for Olga_63:

(Start: 91 @41126 has 67 MA's), (172, 41321), (195, 41399),

Gene: Olliecat_66 Start: 38762, Stop: 39037, Start Num: 122

Candidate Starts for Olliecat_66:

(3, 38429), (29, 38579), (47, 38630), (Start: 122 @38762 has 59 MA's), (184, 38948), (204, 39005),

Gene: OmniCritical_94 Start: 57061, Stop: 57366, Start Num: 102

Candidate Starts for OmniCritical_94:

(Start: 102 @57061 has 20 MA's), (218, 57340),

Gene: Omnicron_96 Start: 61077, Stop: 61382, Start Num: 109

Candidate Starts for Omnicron_96:

(72, 61029), (Start: 109 @61077 has 120 MA's), (172, 61245),

Gene: Orcanus_65 Start: 39051, Stop: 39329, Start Num: 115

Candidate Starts for Orcanus_65:

(Start: 115 @39051 has 10 MA's),

Gene: Oscar_104 Start: 62087, Stop: 62383, Start Num: 107

Candidate Starts for Oscar_104:

(Start: 107 @62087 has 20 MA's), (186, 62279), (190, 62288),

Gene: OwlsT2W_1 Start: 41, Stop: 373, Start Num: 96

Candidate Starts for OwlsT2W_1:

(Start: 71 @11 has 1 MA's), (Start: 96 @41 has 72 MA's), (136, 119), (169, 212), (193, 284), (212, 338), (217, 353),

Gene: P3MA_62 Start: 40580, Stop: 40894, Start Num: 91

Candidate Starts for P3MA_62:

(40, 40472), (Start: 91 @40580 has 67 MA's), (185, 40793), (218, 40871),

Gene: PHL114L00_46 Start: 29111, Stop: 29413, Start Num: 105

Candidate Starts for PHL114L00_46:

(Start: 105 @29111 has 1 MA's),

Gene: Padfoot_96 Start: 59544, Stop: 59846, Start Num: 109

Candidate Starts for Padfoot_96:

(93, 59523), (Start: 109 @59544 has 120 MA's), (146, 59619), (213, 59805), (218, 59820),

Gene: Padpat_101 Start: 59949, Stop: 60251, Start Num: 109

Candidate Starts for Padpat_101:

(93, 59928), (Start: 109 @59949 has 120 MA's), (146, 60024), (213, 60210), (218, 60225),

Gene: Paito_63 Start: 40764, Stop: 41090, Start Num: 91

Candidate Starts for Paito_63:

(Start: 91 @40764 has 67 MA's),

Gene: Paola_93 Start: 61102, Stop: 61407, Start Num: 109
Candidate Starts for Paola_93:
(Start: 109 @61102 has 120 MA's),

Gene: Patt_87 Start: 53723, Stop: 54004, Start Num: 102
Candidate Starts for Patt_87:
(Start: 102 @53723 has 20 MA's), (216, 53972), (218, 53978),

Gene: Peanam_99 Start: 60707, Stop: 60994, Start Num: 109
Candidate Starts for Peanam_99:
(2, 60395), (67, 60644), (Start: 109 @60707 has 120 MA's), (146, 60782), (186, 60899), (202, 60944),
(220, 60980),

Gene: Peeb_61 Start: 41100, Stop: 41426, Start Num: 91
Candidate Starts for Peeb_61:
(Start: 91 @41100 has 67 MA's), (172, 41295), (195, 41373),

Gene: Peel_96 Start: 59350, Stop: 59652, Start Num: 109
Candidate Starts for Peel_96:
(93, 59329), (Start: 109 @59350 has 120 MA's), (146, 59425), (213, 59611), (218, 59626),

Gene: Periodt_62 Start: 41518, Stop: 41844, Start Num: 91
Candidate Starts for Periodt_62:
(Start: 91 @41518 has 67 MA's),

Gene: Periwinkle_1 Start: 39, Stop: 371, Start Num: 96
Candidate Starts for Periwinkle_1:
(70, 9), (75, 15), (89, 27), (Start: 96 @39 has 72 MA's), (136, 117), (146, 141), (148, 144), (178, 234),
(188, 264), (193, 282), (217, 351),

Gene: Phabuloso_1 Start: 39, Stop: 371, Start Num: 96
Candidate Starts for Phabuloso_1:
(70, 9), (75, 15), (Start: 96 @39 has 72 MA's), (136, 117), (146, 141), (178, 234), (193, 282), (206,
318), (217, 351),

Gene: Pharb_97 Start: 60473, Stop: 60760, Start Num: 113
Candidate Starts for Pharb_97:
(1, 60098), (8, 60224), (46, 60362), (57, 60389), (Start: 85 @60437 has 4 MA's), (Start: 113 @60473
has 18 MA's), (Start: 132 @60521 has 1 MA's), (195, 60701),

Gene: PhelpsODU_92 Start: 56221, Stop: 56529, Start Num: 107
Candidate Starts for PhelpsODU_92:
(Start: 107 @56221 has 20 MA's), (146, 56296), (218, 56503),

Gene: Phisb_72 Start: 41092, Stop: 41367, Start Num: 122
Candidate Starts for Phisb_72:
(Start: 122 @41092 has 59 MA's),

Gene: Phish_61 Start: 41125, Stop: 41451, Start Num: 91
Candidate Starts for Phish_61:
(Start: 91 @41125 has 67 MA's), (172, 41320), (195, 41398),

Gene: Phistory_1 Start: 39, Stop: 371, Start Num: 96

Candidate Starts for Phistory_1:

(70, 9), (75, 15), (Start: 96 @39 has 72 MA's), (146, 141), (148, 144), (178, 234), (188, 264), (193, 282), (206, 318), (217, 351),

Gene: PhorbesPhlower_72 Start: 41098, Stop: 41403, Start Num: 112

Candidate Starts for PhorbesPhlower_72:

(52, 41002), (Start: 112 @41098 has 2 MA's), (186, 41308),

Gene: Phrank_103 Start: 60753, Stop: 61058, Start Num: 107

Candidate Starts for Phrank_103:

(Start: 107 @60753 has 20 MA's), (146, 60828), (218, 61032),

Gene: Phreak_62 Start: 41125, Stop: 41451, Start Num: 91

Candidate Starts for Phreak_62:

(Start: 91 @41125 has 67 MA's), (172, 41320), (195, 41398),

Gene: Piatt_95 Start: 59544, Stop: 59846, Start Num: 109

Candidate Starts for Piatt_95:

(93, 59523), (Start: 109 @59544 has 120 MA's), (146, 59619), (213, 59805), (218, 59820),

Gene: PinkYoshi_62 Start: 41117, Stop: 41443, Start Num: 91

Candidate Starts for PinkYoshi_62:

(Start: 91 @41117 has 67 MA's), (172, 41312), (195, 41390),

Gene: Pinnie_65 Start: 44002, Stop: 44328, Start Num: 91

Candidate Starts for Pinnie_65:

(Start: 91 @44002 has 67 MA's), (123, 44056), (162, 44176), (163, 44179),

Gene: Piper2020_1 Start: 42, Stop: 374, Start Num: 96

Candidate Starts for Piper2020_1:

(70, 9), (77, 15), (Start: 96 @42 has 72 MA's), (136, 120), (169, 213), (178, 237), (193, 285), (212, 339), (217, 354),

Gene: Pixie_100 Start: 60794, Stop: 61081, Start Num: 113

Candidate Starts for Pixie_100:

(46, 60683), (81, 60752), (Start: 92 @60767 has 1 MA's), (Start: 113 @60794 has 18 MA's), (203, 61031), (218, 61055),

Gene: Plagueis_62 Start: 40946, Stop: 41272, Start Num: 91

Candidate Starts for Plagueis_62:

(Start: 91 @40946 has 67 MA's), (172, 41141), (195, 41219),

Gene: Plumbus_1 Start: 41, Stop: 373, Start Num: 96

Candidate Starts for Plumbus_1:

(Start: 71 @11 has 1 MA's), (Start: 96 @41 has 72 MA's), (136, 119), (169, 212), (193, 284), (210, 329), (212, 338), (217, 353),

Gene: Pokerus_96 Start: 59414, Stop: 59716, Start Num: 109

Candidate Starts for Pokerus_96:

(93, 59393), (Start: 109 @59414 has 120 MA's), (146, 59489), (213, 59675), (218, 59690),

Gene: Pollywog_1 Start: 40, Stop: 372, Start Num: 95

Candidate Starts for Pollywog_1:

(69, 7), (Start: 73 @13 has 1 MA's), (Start: 95 @40 has 5 MA's), (136, 118), (178, 235), (193, 283), (212, 337), (217, 352),

Gene: Prithvi_98 Start: 59952, Stop: 60254, Start Num: 109

Candidate Starts for Prithvi_98:

(93, 59931), (Start: 109 @59952 has 120 MA's), (146, 60027), (213, 60213), (218, 60228),

Gene: Psycho_98 Start: 61690, Stop: 61995, Start Num: 109

Candidate Starts for Psycho_98:

(Start: 109 @61690 has 120 MA's), (160, 61828),

Gene: Puppies_62 Start: 41790, Stop: 42113, Start Num: 88

Candidate Starts for Puppies_62:

(42, 41697), (49, 41718), (53, 41733), (56, 41739), (Start: 76 @41775 has 1 MA's), (Start: 88 @41790 has 2 MA's), (170, 41988),

Gene: QMacho_72 Start: 41222, Stop: 41497, Start Num: 122

Candidate Starts for QMacho_72:

(Start: 122 @41222 has 59 MA's),

Gene: Quenya_69 Start: 41516, Stop: 41791, Start Num: 122

Candidate Starts for Quenya_69:

(Start: 122 @41516 has 59 MA's), (135, 41549), (184, 41702), (211, 41774),

Gene: Quico_1 Start: 41, Stop: 373, Start Num: 96

Candidate Starts for Quico_1:

(Start: 71 @11 has 1 MA's), (Start: 96 @41 has 72 MA's), (123, 86), (131, 110), (136, 119), (163, 200), (178, 236), (193, 284), (210, 329), (212, 338), (217, 353),

Gene: QuincyRose_94 Start: 59358, Stop: 59660, Start Num: 109

Candidate Starts for QuincyRose_94:

(93, 59337), (Start: 109 @59358 has 120 MA's), (146, 59433), (213, 59619), (218, 59634),

Gene: RRH1_20 Start: 13909, Stop: 14184, Start Num: 127

Candidate Starts for RRH1_20:

(127, 13909), (152, 13987), (194, 14116), (212, 14152),

Gene: Rabbitrun_127 Start: 71852, Stop: 72181, Start Num: 110

Candidate Starts for Rabbitrun_127:

(10, 71615), (11, 71618), (31, 71696), (47, 71741), (48, 71744), (60, 71774), (62, 71777), (77, 71804), (Start: 100 @71840 has 1 MA's), (Start: 110 @71852 has 10 MA's), (145, 71942), (159, 72002), (164, 72020), (165, 72026), (166, 72029), (191, 72104), (219, 72176),

Gene: Rabbs_63 Start: 41200, Stop: 41526, Start Num: 91

Candidate Starts for Rabbs_63:

(Start: 91 @41200 has 67 MA's), (195, 41473),

Gene: Rahul_26 Start: 15845, Stop: 16123, Start Num: 129

Candidate Starts for Rahul_26:

(6, 15524), (24, 15638), (34, 15662), (45, 15692), (125, 15839), (Start: 129 @15845 has 2 MA's), (151, 15917), (152, 15920), (167, 15965), (194, 16049),

Gene: Ramen_97 Start: 59101, Stop: 59403, Start Num: 109

Candidate Starts for Ramen_97:

(93, 59080), (Start: 109 @59101 has 120 MA's), (146, 59176), (213, 59362), (218, 59377),

Gene: Ramsey_1 Start: 11, Stop: 373, Start Num: 71

Candidate Starts for Ramsey_1:

(Start: 71 @11 has 1 MA's), (Start: 96 @41 has 72 MA's), (136, 119), (169, 212), (193, 284), (212, 338), (217, 353),

Gene: Rando14_92 Start: 59491, Stop: 59796, Start Num: 109

Candidate Starts for Rando14_92:

(72, 59443), (Start: 109 @59491 has 120 MA's), (172, 59659),

Gene: Rapunzel97_99 Start: 59326, Stop: 59628, Start Num: 109

Candidate Starts for Rapunzel97_99:

(93, 59305), (Start: 109 @59326 has 120 MA's), (146, 59401), (213, 59587), (218, 59602),

Gene: Remy19_62 Start: 41125, Stop: 41451, Start Num: 91

Candidate Starts for Remy19_62:

(Start: 91 @41125 has 67 MA's), (172, 41320), (195, 41398),

Gene: Renaissance_61 Start: 41103, Stop: 41429, Start Num: 91

Candidate Starts for Renaissance_61:

(Start: 91 @41103 has 67 MA's), (172, 41298), (195, 41376),

Gene: Renna12_72 Start: 38798, Stop: 39091, Start Num: 100

Candidate Starts for Renna12_72:

(89, 38777), (Start: 100 @38798 has 1 MA's), (166, 38957), (189, 39020),

Gene: Reptar3000_88 Start: 53713, Stop: 53994, Start Num: 102

Candidate Starts for Reptar3000_88:

(Start: 102 @53713 has 20 MA's), (216, 53962), (218, 53968),

Gene: Rialto_1 Start: 41, Stop: 373, Start Num: 96

Candidate Starts for Rialto_1:

(Start: 71 @11 has 1 MA's), (Start: 96 @41 has 72 MA's), (136, 119), (169, 212), (178, 236), (193, 284), (212, 338), (217, 353),

Gene: RockyHorror_1 Start: 41, Stop: 373, Start Num: 96

Candidate Starts for RockyHorror_1:

(Start: 71 @11 has 1 MA's), (Start: 96 @41 has 72 MA's), (136, 119), (169, 212), (193, 284), (212, 338), (217, 353),

Gene: Rollins_70 Start: 39578, Stop: 39853, Start Num: 122

Candidate Starts for Rollins_70:

(22, 39380), (29, 39395), (40, 39422), (51, 39455), (72, 39503), (83, 39518), (Start: 106 @39551 has 3 MA's), (Start: 122 @39578 has 59 MA's),

Gene: Rona_66 Start: 41247, Stop: 41522, Start Num: 122

Candidate Starts for Rona_66:

(72, 41172), (Start: 122 @41247 has 59 MA's), (184, 41433), (192, 41463),

Gene: Ronaldo_147 Start: 67378, Stop: 67635, Start Num: 130

Candidate Starts for Ronaldo_147:

(Start: 130 @67378 has 5 MA's), (158, 67474), (164, 67498), (177, 67528), (187, 67561),

Gene: Rosmarinus_97 Start: 59335, Stop: 59637, Start Num: 109

Candidate Starts for Rosmarinus_97:

(93, 59314), (Start: 109 @59335 has 120 MA's), (146, 59410), (213, 59596), (218, 59611),

Gene: Ruchi_64 Start: 38215, Stop: 38493, Start Num: 115

Candidate Starts for Ruchi_64:

(46, 38110), (65, 38140), (Start: 105 @38203 has 1 MA's), (Start: 115 @38215 has 10 MA's),

Gene: Ruthiejr_96 Start: 56946, Stop: 57251, Start Num: 102

Candidate Starts for Ruthiejr_96:

(Start: 102 @56946 has 20 MA's), (149, 57051), (218, 57225),

Gene: SamScheppers_93 Start: 57439, Stop: 57744, Start Num: 102

Candidate Starts for SamScheppers_93:

(Start: 102 @57439 has 20 MA's), (218, 57718),

Gene: SamuelLPlaqson_98 Start: 60168, Stop: 60470, Start Num: 109

Candidate Starts for SamuelLPlaqson_98:

(93, 60147), (Start: 109 @60168 has 120 MA's), (146, 60243), (213, 60429), (218, 60444),

Gene: SanaSana_70 Start: 41542, Stop: 41817, Start Num: 122

Candidate Starts for SanaSana_70:

(15, 41296), (17, 41311), (23, 41350), (68, 41458), (72, 41467), (83, 41482), (Start: 106 @41515 has 3 MA's), (Start: 122 @41542 has 59 MA's), (135, 41575), (184, 41728), (185, 41731),

Gene: SansAfet_72 Start: 41068, Stop: 41343, Start Num: 122

Candidate Starts for SansAfet_72:

(Start: 122 @41068 has 59 MA's), (184, 41254),

Gene: Santhid_59 Start: 38581, Stop: 38865, Start Num: 119

Candidate Starts for Santhid_59:

(63, 38500), (90, 38542), (Start: 92 @38545 has 1 MA's), (Start: 119 @38581 has 2 MA's), (137, 38635),

Gene: Sapo_61 Start: 45211, Stop: 45513, Start Num: 108

Candidate Starts for Sapo_61:

(Start: 108 @45211 has 1 MA's), (146, 45304), (156, 45337), (179, 45412), (214, 45505),

Gene: SarBear_72 Start: 41148, Stop: 41423, Start Num: 122

Candidate Starts for SarBear_72:

(Start: 122 @41148 has 59 MA's),

Gene: Sarma624_1 Start: 41, Stop: 373, Start Num: 96

Candidate Starts for Sarma624_1:

(Start: 71 @11 has 1 MA's), (Start: 96 @41 has 72 MA's), (136, 119), (169, 212), (193, 284), (212, 338), (217, 353),

Gene: Scarlett_103 Start: 61956, Stop: 62252, Start Num: 107

Candidate Starts for Scarlett_103:

(Start: 107 @61956 has 20 MA's), (186, 62148), (190, 62157),

Gene: Schiebel_60 Start: 40665, Stop: 40991, Start Num: 91
Candidate Starts for Schiebel_60:
(Start: 91 @40665 has 67 MA's), (172, 40860), (195, 40938),

Gene: Schiebs_25 Start: 14310, Stop: 14615, Start Num: 132
Candidate Starts for Schiebs_25:
(Start: 132 @14310 has 1 MA's), (147, 14355), (152, 14376), (169, 14424), (194, 14505),

Gene: Schmidt_58 Start: 36837, Stop: 37133, Start Num: 106
Candidate Starts for Schmidt_58:
(Start: 106 @36837 has 3 MA's), (170, 37008), (207, 37107),

Gene: Sephiroth_123 Start: 69017, Stop: 69349, Start Num: 110
Candidate Starts for Sephiroth_123:
(Start: 110 @69017 has 10 MA's), (157, 69155), (159, 69167), (189, 69257),

Gene: SgtBeansprout_78 Start: 56074, Stop: 56379, Start Num: 113
Candidate Starts for SgtBeansprout_78:
(41, 55942), (Start: 113 @56074 has 18 MA's), (146, 56149), (160, 56194), (213, 56338), (215, 56344), (218, 56353),

Gene: ShaboiShabazz_61 Start: 41125, Stop: 41451, Start Num: 91
Candidate Starts for ShaboiShabazz_61:
(Start: 91 @41125 has 67 MA's), (172, 41320), (195, 41398),

Gene: Shadow1_100 Start: 60099, Stop: 60404, Start Num: 107
Candidate Starts for Shadow1_100:
(Start: 107 @60099 has 20 MA's), (146, 60174), (218, 60378),

Gene: Shagrat_110 Start: 58151, Stop: 58423, Start Num: 120
Candidate Starts for Shagrat_110:
(Start: 120 @58151 has 1 MA's), (153, 58256), (161, 58295), (197, 58391), (200, 58394),

Gene: Shaobing_96 Start: 60696, Stop: 60983, Start Num: 109
Candidate Starts for Shaobing_96:
(2, 60369), (67, 60633), (Start: 109 @60696 has 120 MA's), (146, 60771), (186, 60888), (202, 60933), (220, 60969),

Gene: Sharkboy_68 Start: 41611, Stop: 41886, Start Num: 122
Candidate Starts for Sharkboy_68:
(72, 41536), (Start: 122 @41611 has 59 MA's), (135, 41644), (184, 41797), (192, 41827),

Gene: Shayna_75 Start: 41004, Stop: 41279, Start Num: 122
Candidate Starts for Shayna_75:
(Start: 122 @41004 has 59 MA's), (184, 41190),

Gene: ShedlockHolmes_100 Start: 60729, Stop: 61016, Start Num: 113
Candidate Starts for ShedlockHolmes_100:
(46, 60618), (81, 60687), (Start: 92 @60702 has 1 MA's), (Start: 113 @60729 has 18 MA's), (203, 60966), (218, 60990),

Gene: ShiaSurprise_99 Start: 59544, Stop: 59846, Start Num: 109
Candidate Starts for ShiaSurprise_99:

(93, 59523), (Start: 109 @59544 has 120 MA's), (146, 59619), (213, 59805), (218, 59820),

Gene: SirPhilip_98 Start: 61540, Stop: 61833, Start Num: 107

Candidate Starts for SirPhilip_98:

(Start: 107 @61540 has 20 MA's), (146, 61615),

Gene: Sizemore_63 Start: 41114, Stop: 41440, Start Num: 91

Candidate Starts for Sizemore_63:

(Start: 91 @41114 has 67 MA's), (172, 41309), (195, 41387),

Gene: Skylord_70 Start: 39495, Stop: 39770, Start Num: 122

Candidate Starts for Skylord_70:

(22, 39297), (29, 39312), (40, 39339), (51, 39372), (72, 39420), (83, 39435), (Start: 106 @39468 has 3 MA's), (Start: 122 @39495 has 59 MA's),

Gene: Slarp_92 Start: 56344, Stop: 56649, Start Num: 102

Candidate Starts for Slarp_92:

(Start: 102 @56344 has 20 MA's), (218, 56623),

Gene: Slay_70 Start: 41458, Stop: 41733, Start Num: 122

Candidate Starts for Slay_70:

(Start: 122 @41458 has 59 MA's), (184, 41644),

Gene: Slimphazie_99 Start: 59782, Stop: 60084, Start Num: 109

Candidate Starts for Slimphazie_99:

(93, 59761), (Start: 109 @59782 has 120 MA's), (146, 59857), (213, 60043), (218, 60058),

Gene: Sneeze_62 Start: 41199, Stop: 41525, Start Num: 91

Candidate Starts for Sneeze_62:

(Start: 91 @41199 has 67 MA's), (195, 41472),

Gene: SoSeph_96 Start: 61535, Stop: 61840, Start Num: 109

Candidate Starts for SoSeph_96:

(Start: 109 @61535 has 120 MA's),

Gene: Soul22_1 Start: 38, Stop: 370, Start Num: 96

Candidate Starts for Soul22_1:

(Start: 71 @11 has 1 MA's), (Start: 96 @38 has 72 MA's), (136, 116), (148, 143), (178, 233), (188, 263), (193, 281), (210, 326), (217, 350),

Gene: Spikelee_1 Start: 41, Stop: 373, Start Num: 96

Candidate Starts for Spikelee_1:

(Start: 71 @11 has 1 MA's), (Start: 96 @41 has 72 MA's), (136, 119), (169, 212), (193, 284), (212, 338), (217, 353),

Gene: Spock_96 Start: 59348, Stop: 59650, Start Num: 109

Candidate Starts for Spock_96:

(93, 59327), (Start: 109 @59348 has 120 MA's), (146, 59423), (213, 59609), (218, 59624),

Gene: Spooky_1 Start: 39, Stop: 371, Start Num: 96

Candidate Starts for Spooky_1:

(70, 9), (75, 15), (Start: 96 @39 has 72 MA's), (178, 234), (183, 249), (193, 282), (206, 318), (217, 351),

Gene: Squiddly_2 Start: 730, Stop: 1062, Start Num: 96

Candidate Starts for Squiddly_2:

(32, 601), (39, 613), (Start: 73 @697 has 1 MA's), (Start: 96 @730 has 72 MA's), (169, 901), (176, 919), (193, 973), (206, 1009), (217, 1042),

Gene: Squirry_1 Start: 40, Stop: 372, Start Num: 96

Candidate Starts for Squirry_1:

(69, 7), (Start: 73 @13 has 1 MA's), (Start: 96 @40 has 72 MA's), (131, 109), (136, 118), (169, 211), (188, 265), (193, 283), (210, 328), (212, 337), (217, 352),

Gene: Stap_1 Start: 41, Stop: 373, Start Num: 96

Candidate Starts for Stap_1:

(Start: 71 @11 has 1 MA's), (Start: 96 @41 has 72 MA's), (136, 119), (169, 212), (193, 284), (212, 338), (217, 353),

Gene: Starcevich_1 Start: 41, Stop: 373, Start Num: 96

Candidate Starts for Starcevich_1:

(Start: 71 @11 has 1 MA's), (Start: 96 @41 has 72 MA's), (136, 119), (169, 212), (178, 236), (193, 284), (212, 338), (217, 353),

Gene: Stargaze_64 Start: 44492, Stop: 44815, Start Num: 91

Candidate Starts for Stargaze_64:

(Start: 91 @44492 has 67 MA's), (123, 44543), (162, 44663),

Gene: Stinson_97 Start: 59559, Stop: 59861, Start Num: 109

Candidate Starts for Stinson_97:

(93, 59538), (Start: 109 @59559 has 120 MA's), (133, 59610), (146, 59634), (213, 59820), (218, 59835),

Gene: Stoor_69 Start: 41350, Stop: 41625, Start Num: 122

Candidate Starts for Stoor_69:

(Start: 122 @41350 has 59 MA's), (184, 41536), (185, 41539),

Gene: Strobilo_95 Start: 57688, Stop: 57966, Start Num: 109

Candidate Starts for Strobilo_95:

(Start: 107 @57685 has 20 MA's), (Start: 109 @57688 has 120 MA's), (172, 57838), (218, 57946),

Gene: Stromboli_68 Start: 41130, Stop: 41405, Start Num: 122

Candidate Starts for Stromboli_68:

(15, 40884), (17, 40899), (23, 40938), (68, 41046), (72, 41055), (83, 41070), (Start: 106 @41103 has 3 MA's), (Start: 122 @41130 has 59 MA's), (184, 41316), (185, 41319),

Gene: Sulley_95 Start: 59512, Stop: 59814, Start Num: 109

Candidate Starts for Sulley_95:

(93, 59491), (Start: 109 @59512 has 120 MA's), (146, 59587), (213, 59773), (218, 59788),

Gene: Sunflower1121_100 Start: 59857, Stop: 60162, Start Num: 107

Candidate Starts for Sunflower1121_100:

(Start: 107 @59857 has 20 MA's), (146, 59932), (218, 60136),

Gene: SunnyD_78 Start: 41007, Stop: 41282, Start Num: 122

Candidate Starts for SunnyD_78:

(Start: 122 @41007 has 59 MA's), (184, 41193),

Gene: Sweets_62 Start: 41120, Stop: 41446, Start Num: 91

Candidate Starts for Sweets_62:

(Start: 91 @41120 has 67 MA's), (172, 41315), (195, 41393),

Gene: Swervy_70 Start: 41047, Stop: 41322, Start Num: 122

Candidate Starts for Swervy_70:

(Start: 122 @41047 has 59 MA's), (184, 41233),

Gene: Syleon_128 Start: 69768, Stop: 70100, Start Num: 110

Candidate Starts for Syleon_128:

(Start: 110 @69768 has 10 MA's), (157, 69906), (159, 69918), (189, 70008),

Gene: Syra333_99 Start: 59939, Stop: 60244, Start Num: 107

Candidate Starts for Syra333_99:

(Start: 107 @59939 has 20 MA's), (146, 60014), (218, 60218),

Gene: TBond007_97 Start: 60792, Stop: 61079, Start Num: 113

Candidate Starts for TBond007_97:

(46, 60681), (81, 60750), (Start: 92 @60765 has 1 MA's), (Start: 113 @60792 has 18 MA's), (203, 61029), (218, 61053),

Gene: TClif_101 Start: 61109, Stop: 61408, Start Num: 107

Candidate Starts for TClif_101:

(Start: 107 @61109 has 20 MA's), (138, 61175), (186, 61301), (202, 61349), (218, 61382),

Gene: TM4_92 Start: 52356, Stop: 52637, Start Num: 107

Candidate Starts for TM4_92:

(Start: 107 @52356 has 20 MA's), (Start: 109 @52359 has 120 MA's), (172, 52509), (175, 52515), (218, 52617),

Gene: Tachez_97 Start: 59195, Stop: 59497, Start Num: 109

Candidate Starts for Tachez_97:

(93, 59174), (Start: 109 @59195 has 120 MA's), (146, 59270), (213, 59456), (218, 59471),

Gene: Taheera_58 Start: 40097, Stop: 40423, Start Num: 91

Candidate Starts for Taheera_58:

(Start: 91 @40097 has 67 MA's), (205, 40382),

Gene: TaiwanKao_98 Start: 59607, Stop: 59909, Start Num: 109

Candidate Starts for TaiwanKao_98:

(93, 59586), (Start: 109 @59607 has 120 MA's), (146, 59682), (213, 59868), (218, 59883),

Gene: Taquito_94 Start: 57502, Stop: 57783, Start Num: 102

Candidate Starts for Taquito_94:

(Start: 102 @57502 has 20 MA's), (218, 57757),

Gene: Tarzan_63 Start: 39834, Stop: 40118, Start Num: 119

Candidate Starts for Tarzan_63:

(66, 39759), (90, 39795), (Start: 92 @39798 has 1 MA's), (Start: 119 @39834 has 2 MA's), (137, 39888),

Gene: TaylorSipht_65 Start: 38681, Stop: 38959, Start Num: 115
Candidate Starts for TaylorSipht_65:
(Start: 115 @38681 has 10 MA's),

Gene: Terror_58 Start: 40097, Stop: 40423, Start Num: 91
Candidate Starts for Terror_58:
(Start: 91 @40097 has 67 MA's), (205, 40382),

Gene: Thyatira_97 Start: 63441, Stop: 63746, Start Num: 109
Candidate Starts for Thyatira_97:
(Start: 109 @63441 has 120 MA's),

Gene: Tierra_102 Start: 61060, Stop: 61368, Start Num: 107
Candidate Starts for Tierra_102:
(Start: 107 @61060 has 20 MA's), (146, 61135), (218, 61342),

Gene: TinaLin_63 Start: 39046, Stop: 39342, Start Num: 106
Candidate Starts for TinaLin_63:
(74, 39004), (Start: 106 @39046 has 3 MA's), (128, 39088), (155, 39172), (196, 39304),

Gene: TiniBug_95 Start: 59943, Stop: 60245, Start Num: 109
Candidate Starts for TiniBug_95:
(93, 59922), (Start: 109 @59943 has 120 MA's), (146, 60018), (213, 60204), (218, 60219),

Gene: Tiri_97 Start: 59088, Stop: 59390, Start Num: 109
Candidate Starts for Tiri_97:
(93, 59067), (Start: 109 @59088 has 120 MA's), (146, 59163), (213, 59349), (218, 59364),

Gene: TomBrady_62 Start: 41126, Stop: 41452, Start Num: 91
Candidate Starts for TomBrady_62:
(Start: 91 @41126 has 67 MA's), (172, 41321), (195, 41399),

Gene: TootsiePop_1 Start: 42, Stop: 374, Start Num: 96
Candidate Starts for TootsiePop_1:
(70, 9), (77, 15), (Start: 96 @42 has 72 MA's), (136, 120), (169, 213), (178, 237), (193, 285), (212, 339), (217, 354),

Gene: Tootsieroll_1 Start: 41, Stop: 373, Start Num: 96
Candidate Starts for Tootsieroll_1:
(Start: 71 @11 has 1 MA's), (Start: 96 @41 has 72 MA's), (136, 119), (169, 212), (193, 284), (212, 338), (217, 353),

Gene: Topper_96 Start: 59347, Stop: 59649, Start Num: 109
Candidate Starts for Topper_96:
(93, 59326), (Start: 109 @59347 has 120 MA's), (146, 59422), (213, 59608), (218, 59623),

Gene: Totinger_1 Start: 41, Stop: 373, Start Num: 96
Candidate Starts for Totinger_1:
(Start: 71 @11 has 1 MA's), (Start: 96 @41 has 72 MA's), (136, 119), (169, 212), (178, 236), (193, 284), (212, 338), (217, 353),

Gene: Trax_126 Start: 71052, Stop: 71381, Start Num: 110
Candidate Starts for Trax_126:

(Start: 110 @71052 has 10 MA's), (153, 71172), (159, 71202), (164, 71220), (165, 71226), (168, 71235), (201, 71328), (208, 71337),

Gene: TreyKay_98 Start: 59952, Stop: 60254, Start Num: 109

Candidate Starts for TreyKay_98:

(93, 59931), (Start: 109 @59952 has 120 MA's), (146, 60027), (213, 60213), (218, 60228),

Gene: TribbleTrouble_97 Start: 61312, Stop: 61599, Start Num: 113

Candidate Starts for TribbleTrouble_97:

(46, 61201), (81, 61270), (Start: 92 @61285 has 1 MA's), (Start: 113 @61312 has 18 MA's), (203, 61549), (218, 61573),

Gene: Trine_65 Start: 43058, Stop: 43372, Start Num: 79

Candidate Starts for Trine_65:

(Start: 79 @43058 has 1 MA's), (153, 43199),

Gene: TruffulaTree_98 Start: 59748, Stop: 60050, Start Num: 109

Candidate Starts for TruffulaTree_98:

(93, 59727), (Start: 109 @59748 has 120 MA's), (146, 59823), (213, 60009), (218, 60024),

Gene: TukTuk_70 Start: 41237, Stop: 41512, Start Num: 122

Candidate Starts for TukTuk_70:

(Start: 122 @41237 has 59 MA's), (184, 41423),

Gene: Twitch_97 Start: 59350, Stop: 59652, Start Num: 109

Candidate Starts for Twitch_97:

(93, 59329), (Start: 109 @59350 has 120 MA's), (146, 59425), (213, 59611), (218, 59626),

Gene: Typha_129 Start: 74982, Stop: 75305, Start Num: 85

Candidate Starts for Typha_129:

(Start: 85 @74982 has 4 MA's), (153, 75132), (182, 75213), (190, 75237), (192, 75249),

Gene: UncleRicky_1 Start: 41, Stop: 373, Start Num: 96

Candidate Starts for UncleRicky_1:

(Start: 71 @11 has 1 MA's), (Start: 96 @41 has 72 MA's), (136, 119), (169, 212), (193, 284), (212, 338), (217, 353),

Gene: Upyo_69 Start: 44979, Stop: 45296, Start Num: 80

Candidate Starts for Upyo_69:

(Start: 80 @44979 has 1 MA's), (139, 45075), (163, 45153), (170, 45171),

Gene: Urkel_98 Start: 60168, Stop: 60470, Start Num: 109

Candidate Starts for Urkel_98:

(93, 60147), (Start: 109 @60168 has 120 MA's), (146, 60243), (213, 60429), (218, 60444),

Gene: Validus_106 Start: 62130, Stop: 62417, Start Num: 109

Candidate Starts for Validus_106:

(Start: 109 @62130 has 120 MA's), (146, 62205), (186, 62322), (202, 62367), (215, 62382), (220, 62403),

Gene: Veliki_97 Start: 59373, Stop: 59675, Start Num: 109

Candidate Starts for Veliki_97:

(93, 59352), (Start: 109 @59373 has 120 MA's), (146, 59448), (213, 59634), (218, 59649),

Gene: Velveteen_1 Start: 41, Stop: 373, Start Num: 96
Candidate Starts for Velveteen_1:
(Start: 71 @11 has 1 MA's), (Start: 96 @41 has 72 MA's), (136, 119), (169, 212), (193, 284), (212, 338), (217, 353),

Gene: Vitas_71 Start: 39646, Stop: 39921, Start Num: 122
Candidate Starts for Vitas_71:
(36, 39487), (78, 39580), (Start: 122 @39646 has 59 MA's), (135, 39679),

Gene: Volt_150 Start: 67542, Stop: 67799, Start Num: 130
Candidate Starts for Volt_150:
(Start: 130 @67542 has 5 MA's), (158, 67638), (164, 67662), (177, 67692), (187, 67725),

Gene: Vulpecula_64 Start: 37410, Stop: 37688, Start Num: 115
Candidate Starts for Vulpecula_64:
(Start: 105 @37398 has 1 MA's), (Start: 115 @37410 has 10 MA's),

Gene: Waterfoul_95 Start: 60815, Stop: 61120, Start Num: 109
Candidate Starts for Waterfoul_95:
(Start: 109 @60815 has 120 MA's),

Gene: Whitney_1 Start: 39, Stop: 371, Start Num: 96
Candidate Starts for Whitney_1:
(70, 9), (75, 15), (89, 27), (Start: 96 @39 has 72 MA's), (136, 117), (146, 141), (148, 144), (178, 234), (188, 264), (193, 282), (206, 318), (217, 351),

Gene: Widow_62 Start: 42336, Stop: 42659, Start Num: 88
Candidate Starts for Widow_62:
(42, 42243), (49, 42264), (53, 42279), (56, 42285), (69, 42312), (Start: 76 @42321 has 1 MA's), (Start: 88 @42336 has 2 MA's), (170, 42534),

Gene: Wintermute_94 Start: 57134, Stop: 57439, Start Num: 102
Candidate Starts for Wintermute_94:
(Start: 102 @57134 has 20 MA's), (149, 57239), (218, 57413),

Gene: Ximenita_103 Start: 60672, Stop: 60977, Start Num: 107
Candidate Starts for Ximenita_103:
(Start: 107 @60672 has 20 MA's), (146, 60747), (218, 60951),

Gene: Y10_90 Start: 57078, Stop: 57383, Start Num: 102
Candidate Starts for Y10_90:
(Start: 102 @57078 has 20 MA's), (149, 57183), (218, 57357),

Gene: Y2_90 Start: 57078, Stop: 57383, Start Num: 102
Candidate Starts for Y2_90:
(Start: 102 @57078 has 20 MA's), (149, 57183), (218, 57357),

Gene: Yoshi_1 Start: 38, Stop: 370, Start Num: 96
Candidate Starts for Yoshi_1:
(Start: 71 @11 has 1 MA's), (Start: 96 @38 has 72 MA's), (136, 116), (148, 143), (178, 233), (188, 263), (193, 281), (210, 326), (217, 350),

Gene: YoureAdopted_95 Start: 59143, Stop: 59445, Start Num: 109
Candidate Starts for YoureAdopted_95:
(93, 59122), (Start: 109 @59143 has 120 MA's), (146, 59218), (213, 59404), (218, 59419),

Gene: Yuna_100 Start: 61837, Stop: 62139, Start Num: 104
Candidate Starts for Yuna_100:
(Start: 104 @61837 has 1 MA's), (146, 61912), (213, 62098),

Gene: Yunkel11_101 Start: 60401, Stop: 60688, Start Num: 109
Candidate Starts for Yunkel11_101:
(Start: 109 @60401 has 120 MA's), (202, 60638), (215, 60653), (216, 60656),

Gene: Zabiza_92 Start: 55756, Stop: 56058, Start Num: 109
Candidate Starts for Zabiza_92:
(93, 55735), (Start: 109 @55756 has 120 MA's), (146, 55831), (213, 56017), (218, 56032),

Gene: Zapner_2 Start: 562, Stop: 894, Start Num: 96
Candidate Starts for Zapner_2:
(69, 529), (Start: 96 @562 has 72 MA's), (178, 757), (188, 787), (193, 805), (210, 850), (217, 874),

Gene: Zavala_98 Start: 59608, Stop: 59910, Start Num: 109
Candidate Starts for Zavala_98:
(93, 59587), (Start: 109 @59608 has 120 MA's), (146, 59683), (213, 59869), (218, 59884),

Gene: ZoMa_61 Start: 41125, Stop: 41451, Start Num: 91
Candidate Starts for ZoMa_61:
(Start: 91 @41125 has 67 MA's), (172, 41320), (195, 41398),

Gene: ZoeJ_92 Start: 56879, Stop: 57157, Start Num: 109
Candidate Starts for ZoeJ_92:
(Start: 107 @56876 has 20 MA's), (Start: 109 @56879 has 120 MA's), (158, 56990), (172, 57029),
(218, 57137),

Gene: Zombie_62 Start: 41125, Stop: 41451, Start Num: 91
Candidate Starts for Zombie_62:
(Start: 91 @41125 has 67 MA's), (172, 41320), (195, 41398),