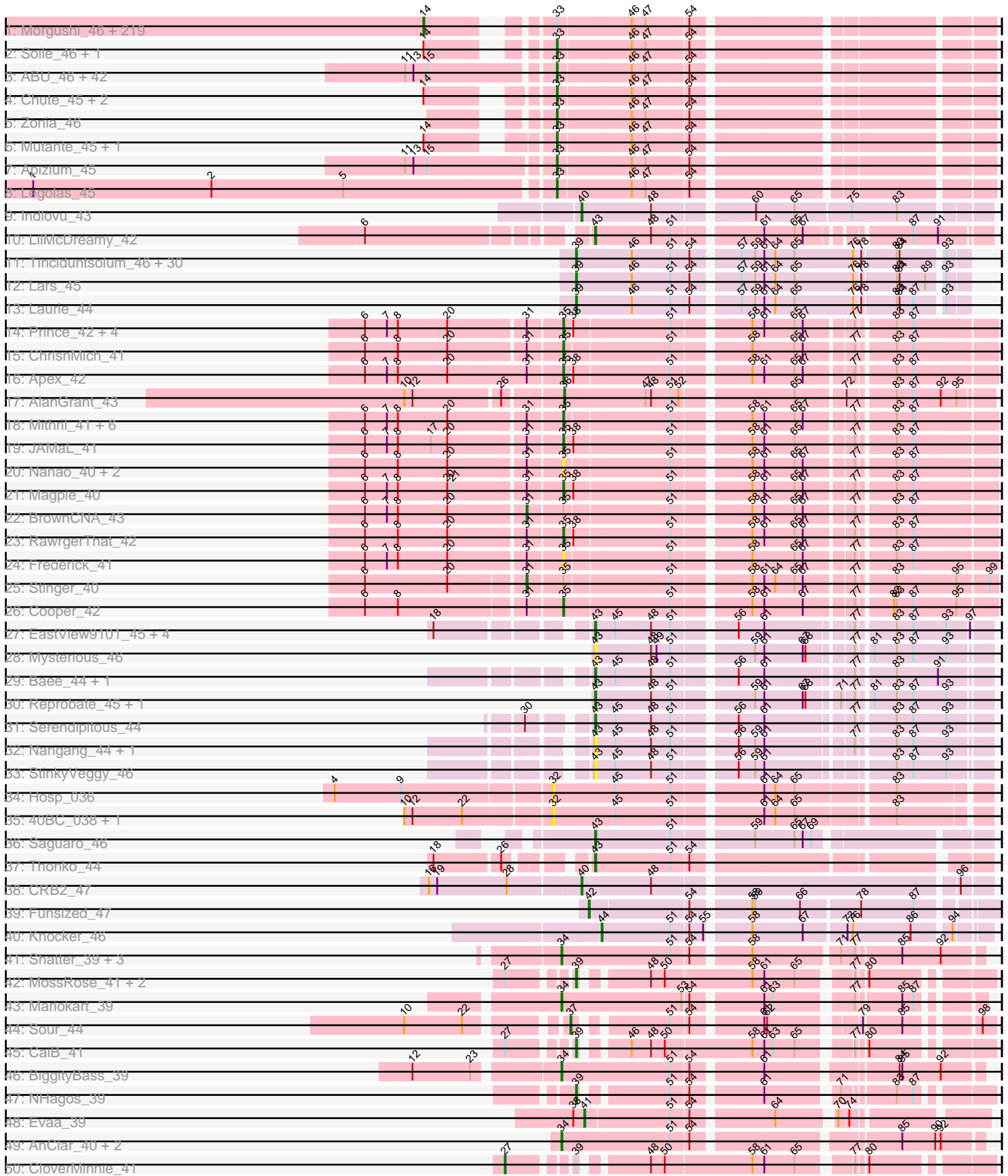
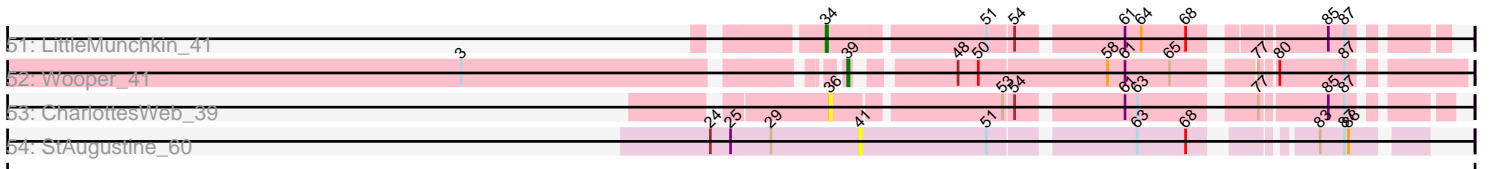


Pham 171125



Pham 171125



A series of 35 horizontal lines, alternating between solid and dashed, providing a template for handwritten notes.

Note: Tracks are now grouped by subcluster and scaled. Switching in subcluster is indicated by changes in track color. Track scale is now set by default to display the region 30 bp upstream of start 1 to 30 bp downstream of the last possible start. If this default region is judged to be packed too tightly with annotated starts, the track will be further scaled to only show that region of the ORF with annotated starts. This action will be indicated by adding "Zoomed" to the title. For starts, yellow indicates the location of called starts comprised solely of Glimmer/GeneMark auto-annotations, green indicates the location of called starts with at least 1 manual gene annotation.

Pham 171125 Report

This analysis was run 07/09/24 on database version 566.

Pham number 171125 has 376 members, 40 are drafts.

Phages represented in each track:

- Track 1 : Morgushi_46, Bluephacebaby_45, MiniBoss_46, Hamish_46, Spartan300_46, Beaglebox_45, Kwadwo_45, PhenghisKhan_45, JangoPhett_46, Haleema_45, Horchata_46, LostAndPhound_45, Eremos_46, Timmi_45, True_45, Solosis_45, Lulumae_45, Dice_48, AbsoluteMadLad_45, Keitherie_46, PhrankReynolds_44, Telesworld_45, Colbert_46, Brilliant_46, Charles1_46, SassyCat97_45, Schueller_46, UAch1_46, Quisquiliae_46, Omniscient_46, Squiggle_46, Xavier_45, Lulwa_46, Phipps_46, Wallhey_45, Banjo_45, Jillium_45, Held_46, Slatt_46, HenryJackson_45, Lumine_45, FugateOSU_45, Vaishali24_45, Roliet_46, Harvey_46, Orfeu_46, Mag7_45, Nyala_45, DaddyDaniels_46, Lasso_46, Valjean_46, Tooj_46, Ricotta_46, DoesntMatter_45, AltPhacts_46, DonSanchon_45, Mikota_46, Gophee_46, Potter_45, Veritas_45, Robyn_45, KingTut_37, Vaticameos_42, Piglet_0045, CamL_46, Fozzie_45, Scrick_46, BlueHusk_46, MRabcd_45, Riggan_46, Puhltonio_46, Mesh1_46, Kahve_45, LeiMonet_47, Kimbrough_46, PhatLouie_46, Daka_47, ShiVal_46, Oosterbaan_46, TomBombadil_46, YouGoGlencoco_46, Kloppinator_46, Anderson_46, HSavage_46, Labeouficaum_45, CharlieGBrown_45, Placalicious_45, Zaider_47, Cosmolli16_45, BatteryCK_45, Struggle_45, Jiraiya_47, Derpp_45, FriarPreacher_45, Soto_46, Haimas_46, DirtJuice_46, Kwksand96_45, Zelda_46, TallGrassMM_46, EmpTee_46, Carthage_44, Matalotodo_46, Cannibal_46, Buckeye_46, Dione_45, Orwigg_46, Sheila_46, Thora_46, Samaymay_46, Hetaeria_46, LuckyMarjie_45, Basato_47, Phleuron_45, Usavi_46, Swiphy_48, Pacifista_48, Melc17_46, Pipsqueak_46, Chaelin_46, Cher_45, Burr_45, KingVeVeVe_46, Megamind20_46, Roscoe_47, MrPhizzler_45, Vivaldi_46, Serpentine_0046, Murdoc_46, MichaelPhcott_45, Prickles_46, Iridoclysis_46, Simielle_45, Magic8_46, DelRivs_45, Weher20_46, MitKao_46, Numberten_46, Boehler_46, Maru_45, Aelin_45, Rimu_48, Pops_46, Pinkman_45, Chunky_46, Bishoperium_45, Mcshane_45, Gwilliam_47, Vortex_46, Olive_46, OliverWalter_46, SDcharge11_46, Plmatters_46, Oline_45, Tomlarah_46, Waterdiva_46, Nicole21_46, Manad_45, JakeO_45, Giraffe_46, Hartsy_46, Frankicide_46, Jiminy_45, Freya_45, Mosaic_45, Podrick_46, Grand2040_45, KlimbOn_46, Altwerkus_45, KLucky39_46, Selr12_47, Phunky_46, Suffolk_46, Roy17_46, Windsor_45, Skippy_46, Schadenfreude_45, Lopsy_45, Coletti_45, Sophia_45, UncleHowie_46, Eugenia_46, Duggie_45, Serendipity_46, Crownjwl_46, ProfessorX_46, Kailash_46, Phergie_45, Mana_45, QueenBeane_46, Gyarad_0046, Dingo_46, Cornobble_45, LeeLot_46, Squid_46, PinheadLarry_46, Doddsville_46, Longacauda_45, Mecca_45, Thunderbird_46, Etaye_46, Virgeve_45, Toni_45, Surely_46, TyrionL_45, Vista_46, Chorkpop_46, Childish_45, Inverness_46, Virapocalypse_46, Newman_46, Cobra_46, Hocus_45, CheetO_46, LemonSlice_46,

GeneCoco_46, Daffy_46, Phareon_46, Antonia_45, Hertubise_46

- Track 2 : Soile_46, Gareth_45
- Track 3 : ABU_46, Badfish_46, LasagnaCat_46, Yoshand_46, Fang_46, Katniss_46, Orion_46, Scoot17C_46, Emiris_46, Megatron_46, PhrodoBaggins_45, Swish_46, IsaacEli_46, PhatCats2014_46, JacAttac_46, Phamished_46, HighStump_45, CampRoach_46, Craff_46, Maskar_45, Fringe_46, Pherdinand_46, Adriana_46, DuchessDung_44, PG1_46, RedMaple_45, Mulan_45, ImtiyazSitla_45, Nacho_0046, OSmaximus_46, Inchworm_46, FluffyNinja_46, Chah_47, BlackStallion_46, ThreeOh3D2_46, Morty_46, Ashraf_45, Trypo_46, MelsMeow_45, Kikipoo_46, Sigman_46, Durga_46, Andre_47
- Track 4 : Chute_45, JDog_45, Dati_46
- Track 5 : Zonia_46
- Track 6 : Mutante_45, Olak_46
- Track 7 : Apizium_45
- Track 8 : Legolas_45
- Track 9 : Indlovu_43
- Track 10 : LilMcDreamy_42
- Track 11 : Tinciduntolum_46, Hedgerow_45, TA17A_45, Rhinoforte_45, Boyle_45, Eaglehorse_45, Arbiter_44, Ares_45, MasterPo_45, FrenchFry_45, Bananafish_45, Blocker23_45, Tres_45, Holeinone_45, Sabella_44, Allegro_45, Glass_45, Lephleur_45, ItsyBitsy1_45, Kheth_45, Kaleb_45, Phantasmagoria_45, LizLemon_45, Brownie5_45, Calamitous_45, Faze9_44, West99_45, Coffee_45, Godines_45, Rosebush_44, Opia_45
- Track 12 : Lars_45
- Track 13 : Laurie_44
- Track 14 : Prince_42, Zemanar_42, VioletZ_42, Austelle_42, Lolalove_41
- Track 15 : ChrisnMich_41
- Track 16 : Apex_42
- Track 17 : AlanGrant_43
- Track 18 : Mithril_41, Hydro_41, Heath_40, BobbyK_42, Waleliano_41, Mudslide_41, Hangman_41
- Track 19 : JAMaL_41
- Track 20 : Nanao_40, Ahwei_40, Poster_40
- Track 21 : Magpie_40
- Track 22 : BrownCNA_43
- Track 23 : RawrgerThat_42
- Track 24 : Frederick_41
- Track 25 : Stinger_40
- Track 26 : Cooper_42
- Track 27 : EastView9101_45, SirJeffery_45, Acadian_45, Donny_45, Suigeneris_45
- Track 28 : Mysterious_46
- Track 29 : Bae_44, Rich_43
- Track 30 : Reprobate_45, Phelemich_44
- Track 31 : Serendipitous_44
- Track 32 : Nangang_44, DigitDog_44
- Track 33 : StinkyVeggy_46
- Track 34 : Hosp_036
- Track 35 : 40BC_038, 39HC_038
- Track 36 : Saguaro_46
- Track 37 : Thonko_44
- Track 38 : CRB2_47
- Track 39 : Funsized_47
- Track 40 : Knocker_46

- Track 41 : Shatter_39, Ligma_39, Fresco_39, Axumite_39
- Track 42 : MossRose_41, MakoManhole_41, AnarQue_41
- Track 43 : Mariokart_39
- Track 44 : Sour_44
- Track 45 : CaiB_41
- Track 46 : BiggityBass_39
- Track 47 : NHagos_39
- Track 48 : Evaa_39
- Track 49 : AnClar_40, Yago84_39, Sisko_39
- Track 50 : CloverMinnie_41
- Track 51 : LittleMunchkin_41
- Track 52 : Wooper_41
- Track 53 : CharlottesWeb_39
- Track 54 : StAugustine_60

Summary of Final Annotations (See graph section above for start numbers):

The start number called the most often in the published annotations is 14, it was called in 202 of the 336 non-draft genes in the pham.

Genes that call this "Most Annotated" start:

- AbsoluteMadLad_45, Aelin_45, AltPhacts_46, Altwerkus_45, Anderson_46, Antonia_45, Banjo_45, Basato_47, BatteryCK_45, Beaglebox_45, Bishoperium_45, BlueHusk_46, Bluephacebaby_45, Bohler_46, Brilliant_46, Buckeye_46, Burr_45, CamL_46, Cannibal_46, Carthage_44, Chaelin_46, Charles1_46, CharlieGBrown_45, CheetO_46, Cher_45, Childish_45, Chorkpop_46, Chunky_46, Cobra_46, Colbert_46, Coletti_45, Cornobble_45, Cosmolli16_45, Crownjwl_46, DaddyDaniels_46, Daffy_46, Daka_47, DelRivs_45, Derpp_45, Dice_48, Dingo_46, Dione_45, DirtJuice_46, Doddsville_46, DoesntMatter_45, DonSanchon_45, Duggie_45, EmpTee_46, Eremos_46, Etaye_46, Eugenia_46, Fozzie_45, Frankicide_46, Freya_45, FriarPreacher_45, FugateOSU_45, GeneCoco_46, Giraffe_46, Gophee_46, Grand2040_45, Gwilliam_47, Gyarad_0046, HSavage_46, Haimas_46, Haleema_45, Hamish_46, Hartsy_46, Harvey_46, Held_46, HenryJackson_45, Hertubise_46, Hetaeria_46, Hocus_45, Horchata_46, Inverness_46, Iridoclysis_46, JakeO_45, JangoPhett_46, Jillium_45, Jiminy_45, Jiraiya_47, KLucky39_46, Kahve_45, Kailash_46, Keitherie_46, Kimbrough_46, KingTut_37, KingVeVeVe_46, KlimbOn_46, Kloppinator_46, Kwadwo_45, Kwksand96_45, Labeouficaum_45, Lasso_46, LeeLot_46, LeiMonet_47, LemonSlice_46, Longacauda_45, Lopsy_45, LostAndPhound_45, LuckyMarjie_45, Lulumae_45, Lulwa_46, Lumine_45, MRabcd_45, Mag7_45, Magic8_46, Mana_45, Manad_45, Maru_45, Matalotodo_46, Mcshane_45, Mecca_45, Megamind20_46, Melc17_46, Mesh1_46, MichaelPhcott_45, Mikota_46, MiniBoss_46, MitKao_46, Morgushi_46, Mosaic_45, MrPhizzler_45, Murdoc_46, Newman_46, Nicole21_46, Numberten_46, Nyala_45, Oline_45, Olive_46, OliverWalter_46, Omniscient_46, Oosterbaan_46, Orfeu_46, Orwigg_46, Pacifista_48, Phareon_46, PhatLouie_46, PhenghisKhan_45, Phergie_45, Phipps_46, Phleuron_45, PhrankReynolds_44, Phunky_46, Piglet_0045, PinheadLarry_46, Pinkman_45, Pipsqueak_46, Placalicious_45, Plmatters_46, Podrick_46, Pops_46, Potter_45, Prickles_46, ProfessorX_46, Puhltonio_46, QueenBeane_46, Quisquiliae_46, Ricotta_46, Riggan_46, Rimu_48, Robyn_45, Roliet_46, Roscoe_47, Roy17_46,

SDcharge11_46, Samaymay_46, SassyCat97_45, Schadenfreude_45, Schueller_46, Scrick_46, Selr12_47, Serendipity_46, Serpentine_0046, Sheila_46, ShiVal_46, Simielle_45, Skippy_46, Slatt_46, Solosis_45, Sophia_45, Soto_46, Spartan300_46, Squid_46, Squiggle_46, Struggle_45, Suffolk_46, Surely_46, Swiphy_48, TallGrassMM_46, Telesworld_45, Thora_46, Thunderbird_46, Timmi_45, TomBombadil_46, Tomlarah_46, Toni_45, Tooj_46, True_45, TyrionL_45, UAch1_46, UncleHowie_46, Usavi_46, Vaishali24_45, Valjean_46, Vaticameos_42, Veritas_45, Virapocalypse_46, Virgeve_45, Vista_46, Vivaldi_46, Vortex_46, Wallhey_45, Waterdiva_46, Weher20_46, Windsor_45, Xavier_45, YouGoGlencoco_46, Zaider_47, Zelda_46,

Genes that have the "Most Annotated" start but do not call it:

- Chute_45, Dati_46, Gareth_45, JDog_45, Mutante_45, Olak_46, Soile_46,

Genes that do not have the "Most Annotated" start:

- 39HC_038, 40BC_038, ABU_46, Acadian_45, Adriana_46, Ahwei_40, AlanGrant_43, Allegro_45, AnClar_40, AnarQue_41, Andre_47, Apex_42, Apizium_45, Arbitrator_44, Ares_45, Ashraf_45, Austelle_42, Axumite_39, Badfish_46, Bae_44, Bananafish_45, BiggityBass_39, BlackStallion_46, Blocker23_45, BobbyK_42, Boyle_45, BrownCNA_43, Brownie5_45, CRB2_47, CaiB_41, Calamitous_45, CampRoach_46, Chah_47, CharlottesWeb_39, ChrisnMich_41, CloverMinnie_41, Coffee_45, Cooper_42, Craff_46, DigitDog_44, Donny_45, DuchessDung_44, Durga_46, Eaglehorse_45, EastView9101_45, Emiris_46, Evaa_39, Fang_46, Faze9_44, FluffyNinja_46, Frederick_41, FrenchFry_45, Fresco_39, Fringe_46, Funsized_47, Glass_45, Godines_45, Hangman_41, Heath_40, Hedgerow_45, HighStump_45, Holeinone_45, Hosp_036, Hydro_41, ImtiyazSitla_45, Inchworm_46, Indlovu_43, IsaacEli_46, ItsyBitsy1_45, JAMaL_41, JacAttac_46, Kaleb_45, Katniss_46, Kheth_45, Kikipoo_46, Knocker_46, Lars_45, LasagnaCat_46, Laurie_44, Legolas_45, Lephleur_45, Ligma_39, LilMcDreamy_42, LittleMunchkin_41, LizLemon_45, Lolalove_41, Magpie_40, MakoManhole_41, Mariokart_39, Maskar_45, MasterPo_45, Megatron_46, MelsMeow_45, Mithril_41, Morty_46, MossRose_41, Mudslide_41, Mulan_45, Mysterious_46, NHagos_39, Nacho_0046, Nanao_40, Nangang_44, OSmaximus_46, Opia_45, Orion_46, PG1_46, Phamished_46, Phantasmagoria_45, PhatCats2014_46, Phelemich_44, Pherdinand_46, PhrodoBaggins_45, Poster_40, Prince_42, RawrgerThat_42, RedMaple_45, Reprobate_45, Rhinoforte_45, Rich_43, Rosebush_44, Sabella_44, Saguaro_46, Scoot17C_46, Serendipitous_44, Shatter_39, Sigman_46, SirJeffery_45, Sisko_39, Sour_44, StAugustine_60, Stinger_40, StinkyVeggy_46, Suigeneris_45, Swish_46, TA17A_45, Thonko_44, ThreeOh3D2_46, Tinciduntolum_46, Tres_45, Trypo_46, VioletZ_42, Waleliano_41, West99_45, Wooper_41, Yago84_39, Yoshand_46, Zemanar_42, Zonia_46,

Summary by start number:

Start 14:

- Found in 227 of 376 (60.4%) of genes in pham
- Manual Annotations of this start: 202 of 336
- Called 96.9% of time when present
- Phage (with cluster) where this start called: AbsoluteMadLad_45 (B1), Aelin_45 (B1), AltPhacts_46 (B1), Altwerkus_45 (B1), Anderson_46 (B1), Antonia_45 (B1), Banjo_45 (B1), Basato_47 (B1), BatteryCK_45 (B1), Beaglebox_45 (B1), Bishoperium_45 (B1), BlueHusk_46 (B1), Bluephacebaby_45 (B1), Boehler_46 (B1), Brilliant_46 (B1), Buckeye_46 (B1), Burr_45 (B1), CamL_46 (B1), Cannibal_46 (B1),

Carthage_44 (B1), Chaelin_46 (B1), Charles1_46 (B1), CharlieGBrown_45 (B1),
 CheetO_46 (B1), Cher_45 (B1), Childish_45 (B1), Chorkpop_46 (B1), Chunky_46
 (B1), Cobra_46 (B1), Colbert_46 (B1), Coletti_45 (B1), Cornobble_45 (B1),
 Cosmolli16_45 (B1), Crownjwl_46 (B1), DaddyDaniels_46 (B1), Daffy_46 (B1),
 Daka_47 (B1), DelRivs_45 (B1), Derpp_45 (B1), Dice_48 (B1), Dingo_46 (B1),
 Dione_45 (B1), DirtJuice_46 (B1), Doddsville_46 (B1), DoesntMatter_45 (B1),
 DonSanchon_45 (B1), Duggie_45 (B1), EmpTee_46 (B1), Eremos_46 (B1), Etaye_46
 (B1), Eugenia_46 (B1), Fozzie_45 (B1), Frankicide_46 (B1), Freya_45 (B1),
 FriarPreacher_45 (B1), FugateOSU_45 (B1), GeneCoco_46 (B1), Giraffe_46 (B1),
 Gophee_46 (B1), Grand2040_45 (B1), Gwilliam_47 (B1), Gyarad_0046 (B1),
 HSavage_46 (B1), Haimas_46 (B1), Haleema_45 (B1), Hamish_46 (B1), Hartsy_46
 (B1), Harvey_46 (B1), Held_46 (B1), HenryJackson_45 (B1), Hertubise_46 (B1),
 Hetaeria_46 (B1), Hocus_45 (B1), Horchata_46 (B1), Inverness_46 (B1),
 Iridoclysis_46 (B1), JakeO_45 (B1), JangoPhett_46 (B1), Jillium_45 (B1), Jiminy_45
 (B1), Jiraiya_47 (B1), KLucky39_46 (B1), Kahve_45 (B1), Kailash_46 (B1),
 Keitherie_46 (B1), Kimbrough_46 (B1), KingTut_37 (B1), KingVeVeVe_46 (B1),
 KlimbOn_46 (B1), Kloppinator_46 (B1), Kwadwo_45 (B1), Kwksand96_45 (B1),
 Labeouficaum_45 (B1), Lasso_46 (B1), LeeLot_46 (B1), LeiMonet_47 (B1),
 LemonSlice_46 (B1), Longacauda_45 (B1), Lopsy_45 (B1), LostAndPhound_45 (B1),
 LuckyMarjie_45 (B1), Lulumae_45 (B1), Lulwa_46 (B1), Lumine_45 (B1),
 MRabcd_45 (B1), Mag7_45 (B1), Magic8_46 (B1), Mana_45 (B1), Manad_45 (B1),
 Maru_45 (B1), Matalotodo_46 (B1), Mcshane_45 (B1), Mecca_45 (B1),
 Megamind20_46 (B1), Melc17_46 (B1), Mesh1_46 (B1), MichaelPhcott_45 (B1),
 Mikota_46 (B1), MiniBoss_46 (B1), MitKao_46 (B1), Morgushi_46 (B1), Mosaic_45
 (B1), MrPhizzler_45 (B1), Murdoc_46 (B1), Newman_46 (B1), Nicole21_46 (B1),
 Numberten_46 (B1), Nyala_45 (B1), Oline_45 (B1), Olive_46 (B1), OliverWalter_46
 (B1), Omniscient_46 (B1), Oosterbaan_46 (B1), Orfeu_46 (B1), Orwigg_46 (B1),
 Pacifista_48 (B1), Phareon_46 (B1), PhatLouie_46 (B1), PhenghisKhan_45 (B1),
 Phergie_45 (B1), Phipps_46 (B1), Phleuron_45 (B1), PhrankReynolds_44 (B1),
 Phunky_46 (B1), Piglet_0045 (B1), PinheadLarry_46 (B1), Pinkman_45 (B1),
 Pipsqueak_46 (B1), Placalicious_45 (B1), Plmatters_46 (B1), Podrick_46 (B1),
 Pops_46 (B1), Potter_45 (B1), Prickles_46 (B1), ProfessorX_46 (B1), Puhltonio_46
 (B1), QueenBeane_46 (B1), Quisquiliae_46 (B1), Ricotta_46 (B1), Riggan_46 (B1),
 Rimu_48 (B1), Robyn_45 (B1), Roliet_46 (B1), Roscoe_47 (B1), Roy17_46 (B1),
 SDcharge11_46 (B1), Samaymay_46 (B1), SassyCat97_45 (B1), Schadenfreude_45
 (B1), Schueller_46 (B1), Scrick_46 (B1), Selr12_47 (B1), Serendipity_46 (B1),
 Serpentine_0046 (B1), Sheila_46 (B1), ShiVal_46 (B1), Simielle_45 (B1), Skippy_46
 (B1), Slatt_46 (B1), Solosis_45 (B1), Sophia_45 (B1), Soto_46 (B1), Spartan300_46
 (B1), Squid_46 (B1), Squiggle_46 (B1), Struggle_45 (B1), Suffolk_46 (B1), Surely_46
 (B1), Swiphy_48 (B1), TallGrassMM_46 (B1), Telesworld_45 (B1), Thora_46 (B1),
 Thunderbird_46 (B1), Timmi_45 (B1), TomBombadil_46 (B1), Tomlarah_46 (B1),
 Toni_45 (B1), Tooj_46 (B1), True_45 (B1), TyrionL_45 (B1), UAch1_46 (B1),
 UncleHowie_46 (B1), Usavi_46 (B1), Vaishali24_45 (B1), Valjean_46 (B1),
 Vaticameos_42 (B1), Veritas_45 (B1), Virapocalypse_46 (B1), Virgeve_45 (B1),
 Vista_46 (B1), Vivaldi_46 (B1), Vortex_46 (B1), Wallhey_45 (B1), Waterdiva_46 (B1),
 Weher20_46 (B1), Windsor_45 (B1), Xavier_45 (B1), YouGoGlencoco_46 (B1),
 Zaider_47 (B1), Zelda_46 (B1),

Start 27:

- Found in 5 of 376 (1.3%) of genes in pham
- Manual Annotations of this start: 1 of 336
- Called 20.0% of time when present
- Phage (with cluster) where this start called: CloverMinnie_41 (DR),

Start 31:

- Found in 24 of 376 (6.4%) of genes in pham
- Manual Annotations of this start: 2 of 336
- Called 8.3% of time when present
- Phage (with cluster) where this start called: BrownCNA_43 (B4), Stinger_40 (B4),

Start 32:

- Found in 3 of 376 (0.8%) of genes in pham
- No Manual Annotations of this start.
- Called 100.0% of time when present
- Phage (with cluster) where this start called: 39HC_038 (B6), 40BC_038 (B6), Hosp_036 (B6),

Start 33:

- Found in 273 of 376 (72.6%) of genes in pham
- Manual Annotations of this start: 50 of 336
- Called 19.4% of time when present
- Phage (with cluster) where this start called: ABU_46 (B1), Adriana_46 (B1), Andre_47 (B1), Apizium_45 (B1), Ashraf_45 (B1), Badfish_46 (B1), BlackStallion_46 (B1), CampRoach_46 (B1), Chah_47 (B1), Chute_45 (B1), Craff_46 (B1), Dati_46 (B1), DuchessDung_44 (B1), Durga_46 (B1), Emiris_46 (B1), Fang_46 (B1), FluffyNinja_46 (B1), Fringe_46 (B1), Gareth_45 (B1), HighStump_45 (B1), ImtiyazSitla_45 (B1), Inchworm_46 (B1), IsaacEli_46 (B1), JDog_45 (B1), JacAttac_46 (B1), Katniss_46 (B1), Kikipoo_46 (B1), LasagnaCat_46 (B1), Legolas_45 (B1), Maskar_45 (B1), Megatron_46 (B1), MelsMeow_45 (B1), Morty_46 (B1), Mulan_45 (B1), Mutante_45 (B1), Nacho_0046 (B1), OSmaximus_46 (B1), Olak_46 (B1), Orion_46 (B1), PG1_46 (B1), Phamished_46 (B1), PhatCats2014_46 (B1), Pherdinand_46 (B1), PhrodoBaggins_45 (B1), RedMaple_45 (B1), Scoot17C_46 (B1), Sigman_46 (B1), Soile_46 (B1), Swish_46 (B1), ThreeOh3D2_46 (B1), Trypo_46 (B1), Yoshand_46 (B1), Zonia_46 (B1),

Start 34:

- Found in 10 of 376 (2.7%) of genes in pham
- Manual Annotations of this start: 10 of 336
- Called 100.0% of time when present
- Phage (with cluster) where this start called: AnClar_40 (DR), Axumite_39 (DR), BiggityBass_39 (DR), Fresco_39 (DR), Ligma_39 (DR), LittleMunchkin_41 (DR), Mariokart_39 (DR), Shatter_39 (DR), Sisko_39 (DR), Yago84_39 (DR),

Start 35:

- Found in 24 of 376 (6.4%) of genes in pham
- Manual Annotations of this start: 17 of 336
- Called 91.7% of time when present
- Phage (with cluster) where this start called: Ahwei_40 (B4), Apex_42 (B4), Austelle_42 (B4), BobbyK_42 (B4), ChrisnMich_41 (B4), Cooper_42 (B4), Frederick_41 (B4), Hangman_41 (B4), Heath_40 (B4), Hydro_41 (B4), JAMaL_41 (B4), Lolalove_41 (B4), Magpie_40 (B4), Mithril_41 (B4), Mudslide_41 (B4), Nanao_40 (B4), Poster_40 (B4), Prince_42 (B4), RawrgerThat_42 (B4), VioletZ_42 (B4), Waleliano_41 (B4), Zemanar_42 (B4),

Start 36:

- Found in 2 of 376 (0.5%) of genes in pham

- Manual Annotations of this start: 1 of 336
- Called 100.0% of time when present
- Phage (with cluster) where this start called: AlanGrant_43 (B4), CharlottesWeb_39 (DR),

Start 37:

- Found in 1 of 376 (0.3%) of genes in pham
- Manual Annotations of this start: 1 of 336
- Called 100.0% of time when present
- Phage (with cluster) where this start called: Sour_44 (DR),

Start 39:

- Found in 40 of 376 (10.6%) of genes in pham
- Manual Annotations of this start: 36 of 336
- Called 97.5% of time when present
- Phage (with cluster) where this start called: Allegro_45 (B2), AnarQue_41 (DR), Arbitrator_44 (B2), Ares_45 (B2), Bananafish_45 (B2), Blocker23_45 (B2), Boyle_45 (B2), Brownie5_45 (B2), CaiB_41 (DR), Calamitous_45 (B2), Coffee_45 (B2), Eaglehorse_45 (B2), Faze9_44 (B2), FrenchFry_45 (B2), Glass_45 (B2), Godines_45 (B2), Hedgerow_45 (B2), Holeinone_45 (B2), ItsyBitsy1_45 (B2), Kaleb_45 (B2), Kheth_45 (B2), Lars_45 (B2), Laurie_44 (B2), Lephleur_45 (B2), LizLemon_45 (B2), MakoManhole_41 (DR), MasterPo_45 (B2), MossRose_41 (DR), NHagos_39 (DR), Opia_45 (B2), Phantasmagoria_45 (B2), Rhinoforte_45 (B2), Rosebush_44 (B2), Sabella_44 (B2), TA17A_45 (B2), Tinciduntolum_46 (B2), Tres_45 (B2), West99_45 (B2), Wooper_41 (DR),

Start 40:

- Found in 2 of 376 (0.5%) of genes in pham
- Manual Annotations of this start: 2 of 336
- Called 100.0% of time when present
- Phage (with cluster) where this start called: CRB2_47 (B9), Indlovu_43 (B11),

Start 41:

- Found in 2 of 376 (0.5%) of genes in pham
- Manual Annotations of this start: 1 of 336
- Called 100.0% of time when present
- Phage (with cluster) where this start called: Evaa_39 (DR), StAugustine_60 (singleton),

Start 42:

- Found in 1 of 376 (0.3%) of genes in pham
- Manual Annotations of this start: 1 of 336
- Called 100.0% of time when present
- Phage (with cluster) where this start called: Funsized_47 (B9),

Start 43:

- Found in 17 of 376 (4.5%) of genes in pham
- Manual Annotations of this start: 11 of 336
- Called 100.0% of time when present
- Phage (with cluster) where this start called: Acadian_45 (B5), Bae_44 (B5), DigitDog_44 (B5), Donny_45 (B5), EastView9101_45 (B5), LilMcDreamy_42 (B12), Mysterious_46 (B5), Nangang_44 (B5), Phelemich_44 (B5), Reprobate_45 (B5), Rich_43 (B5), Saguario_46 (B7), Serendipitous_44 (B5), SirJeffery_45 (B5),

StinkyVeggy_46 (B5), Suigeneris_45 (B5), Thonko_44 (B8),

Start 44:

- Found in 1 of 376 (0.3%) of genes in pham
- Manual Annotations of this start: 1 of 336
- Called 100.0% of time when present
- Phage (with cluster) where this start called: Knocker_46 (B9),

Summary by clusters:

There are 12 clusters represented in this pham: singleton, B8, B4, B5, B6, B7, B12, B1, B2, B11, DR, B9,

Info for manual annotations of cluster B1:

- Start number 14 was manually annotated 202 times for cluster B1.
- Start number 33 was manually annotated 50 times for cluster B1.

Info for manual annotations of cluster B11:

- Start number 40 was manually annotated 1 time for cluster B11.

Info for manual annotations of cluster B12:

- Start number 43 was manually annotated 1 time for cluster B12.

Info for manual annotations of cluster B2:

- Start number 39 was manually annotated 31 times for cluster B2.

Info for manual annotations of cluster B4:

- Start number 31 was manually annotated 2 times for cluster B4.
- Start number 35 was manually annotated 17 times for cluster B4.
- Start number 36 was manually annotated 1 time for cluster B4.

Info for manual annotations of cluster B5:

- Start number 43 was manually annotated 8 times for cluster B5.

Info for manual annotations of cluster B7:

- Start number 43 was manually annotated 1 time for cluster B7.

Info for manual annotations of cluster B8:

- Start number 43 was manually annotated 1 time for cluster B8.

Info for manual annotations of cluster B9:

- Start number 40 was manually annotated 1 time for cluster B9.
- Start number 42 was manually annotated 1 time for cluster B9.
- Start number 44 was manually annotated 1 time for cluster B9.

Info for manual annotations of cluster DR:

- Start number 27 was manually annotated 1 time for cluster DR.
- Start number 34 was manually annotated 10 times for cluster DR.
- Start number 37 was manually annotated 1 time for cluster DR.
- Start number 39 was manually annotated 5 times for cluster DR.
- Start number 41 was manually annotated 1 time for cluster DR.

Gene Information:

Gene: 39HC_038 Start: 37421, Stop: 36984, Start Num: 32

Candidate Starts for 39HC_038:

(10, 37574), (12, 37565), (22, 37511), (32, 37421), (45, 37355), (51, 37295), (61, 37208), (64, 37196), (65, 37175), (83, 37076),

Gene: 40BC_038 Start: 37421, Stop: 36984, Start Num: 32

Candidate Starts for 40BC_038:

(10, 37574), (12, 37565), (22, 37511), (32, 37421), (45, 37355), (51, 37295), (61, 37208), (64, 37196), (65, 37175), (83, 37076),

Gene: ABU_46 Start: 39612, Stop: 39187, Start Num: 33

Candidate Starts for ABU_46:

(11, 39762), (13, 39753), (15, 39738), (Start: 33 @39612 has 50 MA's), (46, 39534), (47, 39519), (54, 39474),

Gene: AbsoluteMadLad_45 Start: 39726, Stop: 39196, Start Num: 14

Candidate Starts for AbsoluteMadLad_45:

(Start: 14 @39726 has 202 MA's), (Start: 33 @39621 has 50 MA's), (46, 39543), (47, 39528), (54, 39483),

Gene: Acadian_45 Start: 40034, Stop: 39648, Start Num: 43

Candidate Starts for Acadian_45:

(18, 40172), (Start: 43 @40034 has 11 MA's), (45, 40013), (48, 39974), (51, 39953), (56, 39893), (61, 39866), (77, 39779), (83, 39743), (87, 39725), (93, 39689), (97, 39668),

Gene: Adriana_46 Start: 39610, Stop: 39185, Start Num: 33

Candidate Starts for Adriana_46:

(11, 39760), (13, 39751), (15, 39736), (Start: 33 @39610 has 50 MA's), (46, 39532), (47, 39517), (54, 39472),

Gene: Aelin_45 Start: 39278, Stop: 38751, Start Num: 14

Candidate Starts for Aelin_45:

(Start: 14 @39278 has 202 MA's), (Start: 33 @39176 has 50 MA's), (46, 39098), (47, 39083), (54, 39038),

Gene: Ahwei_40 Start: 38593, Stop: 38168, Start Num: 35

Candidate Starts for Ahwei_40:

(6, 38797), (8, 38761), (20, 38707), (Start: 31 @38626 has 2 MA's), (Start: 35 @38593 has 17 MA's), (51, 38485), (58, 38410), (61, 38398), (65, 38365), (67, 38356), (77, 38308), (83, 38272), (87, 38254),

Gene: AlanGrant_43 Start: 40379, Stop: 39954, Start Num: 36

Candidate Starts for AlanGrant_43:

(10, 40535), (12, 40526), (26, 40436), (Start: 36 @40379 has 1 MA's), (47, 40292), (48, 40286), (51, 40265), (52, 40256), (65, 40145), (72, 40097), (83, 40052), (87, 40034), (92, 40004), (95, 39989),

Gene: Allegro_45 Start: 39852, Stop: 39463, Start Num: 39

Candidate Starts for Allegro_45:

(Start: 39 @39852 has 36 MA's), (46, 39795), (51, 39753), (54, 39732), (57, 39687), (59, 39672), (61, 39663), (64, 39651), (65, 39630), (76, 39567), (78, 39561), (83, 39525), (84, 39522), (93, 39483),

Gene: AltPhacts_46 Start: 39698, Stop: 39174, Start Num: 14

Candidate Starts for AltPhacts_46:

(Start: 14 @39698 has 202 MA's), (Start: 33 @39599 has 50 MA's), (46, 39521), (47, 39506), (54, 39461),

Gene: Altwerkus_45 Start: 39405, Stop: 38875, Start Num: 14

Candidate Starts for Altwerkus_45:

(Start: 14 @39405 has 202 MA's), (Start: 33 @39300 has 50 MA's), (46, 39222), (47, 39207), (54, 39162),

Gene: AnClar_40 Start: 36039, Stop: 35620, Start Num: 34

Candidate Starts for AnClar_40:

(Start: 34 @36039 has 10 MA's), (51, 35922), (54, 35904), (85, 35703), (90, 35667), (92, 35661),

Gene: AnarQue_41 Start: 35226, Stop: 34840, Start Num: 39

Candidate Starts for AnarQue_41:

(Start: 27 @35280 has 1 MA's), (Start: 39 @35226 has 36 MA's), (48, 35166), (50, 35151), (58, 35058), (61, 35046), (65, 35013), (77, 34965), (80, 34956),

Gene: Anderson_46 Start: 39704, Stop: 39180, Start Num: 14

Candidate Starts for Anderson_46:

(Start: 14 @39704 has 202 MA's), (Start: 33 @39605 has 50 MA's), (46, 39527), (47, 39512), (54, 39467),

Gene: Andre_47 Start: 39604, Stop: 39179, Start Num: 33

Candidate Starts for Andre_47:

(11, 39754), (13, 39745), (15, 39730), (Start: 33 @39604 has 50 MA's), (46, 39526), (47, 39511), (54, 39466),

Gene: Antonia_45 Start: 39278, Stop: 38751, Start Num: 14

Candidate Starts for Antonia_45:

(Start: 14 @39278 has 202 MA's), (Start: 33 @39176 has 50 MA's), (46, 39098), (47, 39083), (54, 39038),

Gene: Apex_42 Start: 39799, Stop: 39374, Start Num: 35

Candidate Starts for Apex_42:

(6, 40009), (7, 39985), (8, 39973), (20, 39919), (Start: 31 @39832 has 2 MA's), (Start: 35 @39799 has 17 MA's), (38, 39793), (51, 39691), (58, 39616), (61, 39604), (65, 39571), (67, 39562), (77, 39514), (83, 39478), (87, 39460),

Gene: Apizium_45 Start: 39365, Stop: 38940, Start Num: 33

Candidate Starts for Apizium_45:

(11, 39518), (13, 39509), (15, 39494), (Start: 33 @39365 has 50 MA's), (46, 39287), (47, 39272), (54, 39227),

Gene: Arbiter_44 Start: 39938, Stop: 39549, Start Num: 39

Candidate Starts for Arbiter_44:

(Start: 39 @39938 has 36 MA's), (46, 39881), (51, 39839), (54, 39818), (57, 39773), (59, 39758), (61, 39749), (64, 39737), (65, 39716), (76, 39653), (78, 39647), (83, 39611), (84, 39608), (93, 39569),

Gene: Ares_45 Start: 39922, Stop: 39533, Start Num: 39

Candidate Starts for Ares_45:

(Start: 39 @39922 has 36 MA's), (46, 39865), (51, 39823), (54, 39802), (57, 39757), (59, 39742), (61, 39733), (64, 39721), (65, 39700), (76, 39637), (78, 39631), (83, 39595), (84, 39592), (93, 39553),

Gene: Ashraf_45 Start: 39169, Stop: 38744, Start Num: 33

Candidate Starts for Ashraf_45:

(11, 39319), (13, 39310), (15, 39295), (Start: 33 @39169 has 50 MA's), (46, 39091), (47, 39076), (54, 39031),

Gene: Austelle_42 Start: 40255, Stop: 39830, Start Num: 35

Candidate Starts for Austelle_42:

(6, 40459), (7, 40435), (8, 40423), (20, 40369), (Start: 31 @40288 has 2 MA's), (Start: 35 @40255 has 17 MA's), (38, 40249), (51, 40147), (58, 40072), (61, 40060), (65, 40027), (67, 40018), (77, 39970), (83, 39934), (87, 39916),

Gene: Axumite_39 Start: 33273, Stop: 32851, Start Num: 34

Candidate Starts for Axumite_39:

(Start: 34 @33273 has 10 MA's), (51, 33156), (54, 33138), (58, 33081), (71, 32994), (77, 32979), (85, 32934), (92, 32892),

Gene: Badfish_46 Start: 39635, Stop: 39210, Start Num: 33

Candidate Starts for Badfish_46:

(11, 39785), (13, 39776), (15, 39761), (Start: 33 @39635 has 50 MA's), (46, 39557), (47, 39542), (54, 39497),

Gene: Bae_44 Start: 39937, Stop: 39551, Start Num: 43

Candidate Starts for Bae_44:

(Start: 43 @39937 has 11 MA's), (45, 39916), (48, 39877), (51, 39856), (56, 39796), (61, 39769), (77, 39682), (83, 39646), (91, 39601),

Gene: Bananafish_45 Start: 39858, Stop: 39469, Start Num: 39

Candidate Starts for Bananafish_45:

(Start: 39 @39858 has 36 MA's), (46, 39801), (51, 39759), (54, 39738), (57, 39693), (59, 39678), (61, 39669), (64, 39657), (65, 39636), (76, 39573), (78, 39567), (83, 39531), (84, 39528), (93, 39489),

Gene: Banjo_45 Start: 39409, Stop: 38885, Start Num: 14

Candidate Starts for Banjo_45:

(Start: 14 @39409 has 202 MA's), (Start: 33 @39310 has 50 MA's), (46, 39232), (47, 39217), (54, 39172),

Gene: Basato_47 Start: 39988, Stop: 39464, Start Num: 14

Candidate Starts for Basato_47:

(Start: 14 @39988 has 202 MA's), (Start: 33 @39889 has 50 MA's), (46, 39811), (47, 39796), (54, 39751),

Gene: BatteryCK_45 Start: 39331, Stop: 38804, Start Num: 14

Candidate Starts for BatteryCK_45:

(Start: 14 @39331 has 202 MA's), (Start: 33 @39229 has 50 MA's), (46, 39151), (47, 39136), (54, 39091),

Gene: Beaglebox_45 Start: 39430, Stop: 38906, Start Num: 14

Candidate Starts for Beaglebox_45:

(Start: 14 @39430 has 202 MA's), (Start: 33 @39331 has 50 MA's), (46, 39253), (47, 39238), (54, 39193),

Gene: BiggityBass_39 Start: 35501, Stop: 35082, Start Num: 34

Candidate Starts for BiggityBass_39:

(12, 35645), (23, 35582), (Start: 34 @35501 has 10 MA's), (51, 35384), (54, 35366), (61, 35297), (84, 35168), (85, 35165), (92, 35123),

Gene: Bishoperium_45 Start: 39418, Stop: 38894, Start Num: 14

Candidate Starts for Bishoperium_45:

(Start: 14 @39418 has 202 MA's), (Start: 33 @39319 has 50 MA's), (46, 39241), (47, 39226), (54, 39181),

Gene: BlackStallion_46 Start: 39621, Stop: 39196, Start Num: 33

Candidate Starts for BlackStallion_46:

(11, 39771), (13, 39762), (15, 39747), (Start: 33 @39621 has 50 MA's), (46, 39543), (47, 39528), (54, 39483),

Gene: Blocker23_45 Start: 39976, Stop: 39587, Start Num: 39

Candidate Starts for Blocker23_45:

(Start: 39 @39976 has 36 MA's), (46, 39919), (51, 39877), (54, 39856), (57, 39811), (59, 39796), (61, 39787), (64, 39775), (65, 39754), (76, 39691), (78, 39685), (83, 39649), (84, 39646), (93, 39607),

Gene: BlueHusk_46 Start: 39223, Stop: 38693, Start Num: 14

Candidate Starts for BlueHusk_46:

(Start: 14 @39223 has 202 MA's), (Start: 33 @39118 has 50 MA's), (46, 39040), (47, 39025), (54, 38980),

Gene: Bluephacebaby_45 Start: 39421, Stop: 38891, Start Num: 14

Candidate Starts for Bluephacebaby_45:

(Start: 14 @39421 has 202 MA's), (Start: 33 @39316 has 50 MA's), (46, 39238), (47, 39223), (54, 39178),

Gene: BobbyK_42 Start: 39624, Stop: 39199, Start Num: 35

Candidate Starts for BobbyK_42:

(6, 39828), (7, 39804), (8, 39792), (20, 39738), (Start: 31 @39657 has 2 MA's), (Start: 35 @39624 has 17 MA's), (51, 39516), (58, 39441), (61, 39429), (65, 39396), (67, 39387), (77, 39339), (83, 39303), (87, 39285),

Gene: Boehler_46 Start: 39727, Stop: 39197, Start Num: 14

Candidate Starts for Boehler_46:

(Start: 14 @39727 has 202 MA's), (Start: 33 @39622 has 50 MA's), (46, 39544), (47, 39529), (54, 39484),

Gene: Boyle_45 Start: 39977, Stop: 39588, Start Num: 39

Candidate Starts for Boyle_45:

(Start: 39 @39977 has 36 MA's), (46, 39920), (51, 39878), (54, 39857), (57, 39812), (59, 39797), (61, 39788), (64, 39776), (65, 39755), (76, 39692), (78, 39686), (83, 39650), (84, 39647), (93, 39608),

Gene: Brilliant_46 Start: 39426, Stop: 38902, Start Num: 14

Candidate Starts for Brilliant_46:

(Start: 14 @39426 has 202 MA's), (Start: 33 @39327 has 50 MA's), (46, 39249), (47, 39234), (54, 39189),

Gene: BrownCNA_43 Start: 39918, Stop: 39460, Start Num: 31

Candidate Starts for BrownCNA_43:

(6, 40089), (7, 40065), (8, 40053), (20, 39999), (Start: 31 @39918 has 2 MA's), (Start: 35 @39885 has 17 MA's), (51, 39777), (58, 39702), (61, 39690), (65, 39657), (67, 39648), (77, 39600), (83, 39564), (87, 39546),

Gene: Brownie5_45 Start: 39983, Stop: 39594, Start Num: 39

Candidate Starts for Brownie5_45:

(Start: 39 @39983 has 36 MA's), (46, 39926), (51, 39884), (54, 39863), (57, 39818), (59, 39803), (61, 39794), (64, 39782), (65, 39761), (76, 39698), (78, 39692), (83, 39656), (84, 39653), (93, 39614),

Gene: Buckeye_46 Start: 39741, Stop: 39214, Start Num: 14

Candidate Starts for Buckeye_46:

(Start: 14 @39741 has 202 MA's), (Start: 33 @39639 has 50 MA's), (46, 39561), (47, 39546), (54, 39501),

Gene: Burr_45 Start: 39415, Stop: 38891, Start Num: 14

Candidate Starts for Burr_45:

(Start: 14 @39415 has 202 MA's), (Start: 33 @39316 has 50 MA's), (46, 39238), (47, 39223), (54, 39178),

Gene: CRB2_47 Start: 42140, Stop: 41727, Start Num: 40

Candidate Starts for CRB2_47:

(16, 42299), (19, 42290), (28, 42215), (Start: 40 @42140 has 2 MA's), (48, 42065), (96, 41756),

Gene: CaiB_41 Start: 35212, Stop: 34826, Start Num: 39

Candidate Starts for CaiB_41:

(Start: 27 @35266 has 1 MA's), (Start: 39 @35212 has 36 MA's), (46, 35173), (48, 35152), (50, 35137), (58, 35044), (61, 35032), (63, 35023), (65, 34999), (77, 34951), (80, 34942),

Gene: Calamitous_45 Start: 39863, Stop: 39474, Start Num: 39

Candidate Starts for Calamitous_45:

(Start: 39 @39863 has 36 MA's), (46, 39806), (51, 39764), (54, 39743), (57, 39698), (59, 39683), (61, 39674), (64, 39662), (65, 39641), (76, 39578), (78, 39572), (83, 39536), (84, 39533), (93, 39494),

Gene: CamL_46 Start: 39716, Stop: 39192, Start Num: 14

Candidate Starts for CamL_46:

(Start: 14 @39716 has 202 MA's), (Start: 33 @39617 has 50 MA's), (46, 39539), (47, 39524), (54, 39479),

Gene: CampRoach_46 Start: 39607, Stop: 39182, Start Num: 33

Candidate Starts for CampRoach_46:

(11, 39757), (13, 39748), (15, 39733), (Start: 33 @39607 has 50 MA's), (46, 39529), (47, 39514), (54, 39469),

Gene: Cannibal_46 Start: 39699, Stop: 39175, Start Num: 14

Candidate Starts for Cannibal_46:

(Start: 14 @39699 has 202 MA's), (Start: 33 @39600 has 50 MA's), (46, 39522), (47, 39507), (54, 39462),

Gene: Carthage_44 Start: 38628, Stop: 38104, Start Num: 14

Candidate Starts for Carthage_44:

(Start: 14 @38628 has 202 MA's), (Start: 33 @38529 has 50 MA's), (46, 38451), (47, 38436), (54, 38391),

Gene: Chaelin_46 Start: 39416, Stop: 38889, Start Num: 14

Candidate Starts for Chaelin_46:

(Start: 14 @39416 has 202 MA's), (Start: 33 @39314 has 50 MA's), (46, 39236), (47, 39221), (54, 39176),

Gene: Chah_47 Start: 39634, Stop: 39209, Start Num: 33

Candidate Starts for Chah_47:

(11, 39784), (13, 39775), (15, 39760), (Start: 33 @39634 has 50 MA's), (46, 39556), (47, 39541), (54, 39496),

Gene: Charles1_46 Start: 39701, Stop: 39177, Start Num: 14

Candidate Starts for Charles1_46:

(Start: 14 @39701 has 202 MA's), (Start: 33 @39602 has 50 MA's), (46, 39524), (47, 39509), (54, 39464),

Gene: CharlieGBrown_45 Start: 39291, Stop: 38767, Start Num: 14

Candidate Starts for CharlieGBrown_45:

(Start: 14 @39291 has 202 MA's), (Start: 33 @39192 has 50 MA's), (46, 39114), (47, 39099), (54, 39054),

Gene: CharlottesWeb_39 Start: 33161, Stop: 32775, Start Num: 36

Candidate Starts for CharlottesWeb_39:

(Start: 36 @33161 has 1 MA's), (53, 33047), (54, 33041), (61, 32972), (63, 32963), (77, 32888), (85, 32843), (87, 32831),

Gene: CheetO_46 Start: 39721, Stop: 39191, Start Num: 14

Candidate Starts for CheetO_46:

(Start: 14 @39721 has 202 MA's), (Start: 33 @39616 has 50 MA's), (46, 39538), (47, 39523), (54, 39478),

Gene: Cher_45 Start: 39438, Stop: 38914, Start Num: 14

Candidate Starts for Cher_45:

(Start: 14 @39438 has 202 MA's), (Start: 33 @39339 has 50 MA's), (46, 39261), (47, 39246), (54, 39201),

Gene: Childish_45 Start: 39441, Stop: 38917, Start Num: 14

Candidate Starts for Childish_45:

(Start: 14 @39441 has 202 MA's), (Start: 33 @39342 has 50 MA's), (46, 39264), (47, 39249), (54, 39204),

Gene: Chorkpop_46 Start: 39437, Stop: 38913, Start Num: 14

Candidate Starts for Chorkpop_46:

(Start: 14 @39437 has 202 MA's), (Start: 33 @39338 has 50 MA's), (46, 39260), (47, 39245), (54, 39200),

Gene: ChrisnMich_41 Start: 38585, Stop: 38160, Start Num: 35

Candidate Starts for ChrisnMich_41:

(6, 38789), (8, 38753), (20, 38699), (Start: 31 @38618 has 2 MA's), (Start: 35 @38585 has 17 MA's), (51, 38477), (58, 38402), (65, 38357), (67, 38348), (77, 38300), (83, 38264), (87, 38246),

Gene: Chunky_46 Start: 39724, Stop: 39200, Start Num: 14

Candidate Starts for Chunky_46:

(Start: 14 @39724 has 202 MA's), (Start: 33 @39625 has 50 MA's), (46, 39547), (47, 39532), (54, 39487),

Gene: Chute_45 Start: 39663, Stop: 39238, Start Num: 33

Candidate Starts for Chute_45:

(Start: 14 @39765 has 202 MA's), (Start: 33 @39663 has 50 MA's), (46, 39585), (47, 39570), (54, 39525),

Gene: CloverMinnie_41 Start: 35206, Stop: 34766, Start Num: 27

Candidate Starts for CloverMinnie_41:

(Start: 27 @35206 has 1 MA's), (Start: 39 @35152 has 36 MA's), (48, 35092), (50, 35077), (58, 34984), (61, 34972), (65, 34939), (77, 34891), (80, 34882),

Gene: Cobra_46 Start: 39722, Stop: 39198, Start Num: 14

Candidate Starts for Cobra_46:

(Start: 14 @39722 has 202 MA's), (Start: 33 @39623 has 50 MA's), (46, 39545), (47, 39530), (54, 39485),

Gene: Coffee_45 Start: 39966, Stop: 39577, Start Num: 39

Candidate Starts for Coffee_45:

(Start: 39 @39966 has 36 MA's), (46, 39909), (51, 39867), (54, 39846), (57, 39801), (59, 39786), (61, 39777), (64, 39765), (65, 39744), (76, 39681), (78, 39675), (83, 39639), (84, 39636), (93, 39597),

Gene: Colbert_46 Start: 39777, Stop: 39253, Start Num: 14

Candidate Starts for Colbert_46:

(Start: 14 @39777 has 202 MA's), (Start: 33 @39678 has 50 MA's), (46, 39600), (47, 39585), (54, 39540),

Gene: Coletti_45 Start: 39765, Stop: 39238, Start Num: 14

Candidate Starts for Coletti_45:

(Start: 14 @39765 has 202 MA's), (Start: 33 @39663 has 50 MA's), (46, 39585), (47, 39570), (54, 39525),

Gene: Cooper_42 Start: 38807, Stop: 38379, Start Num: 35

Candidate Starts for Cooper_42:

(6, 39008), (8, 38972), (Start: 31 @38840 has 2 MA's), (Start: 35 @38807 has 17 MA's), (51, 38696), (58, 38621), (61, 38609), (67, 38567), (77, 38519), (82, 38486), (83, 38483), (87, 38465), (95, 38420),

Gene: Cornobble_45 Start: 39279, Stop: 38752, Start Num: 14

Candidate Starts for Cornobble_45:

(Start: 14 @39279 has 202 MA's), (Start: 33 @39177 has 50 MA's), (46, 39099), (47, 39084), (54, 39039),

Gene: Cosmolli16_45 Start: 39429, Stop: 38902, Start Num: 14

Candidate Starts for Cosmolli16_45:

(Start: 14 @39429 has 202 MA's), (Start: 33 @39327 has 50 MA's), (46, 39249), (47, 39234), (54, 39189),

Gene: Craff_46 Start: 39620, Stop: 39195, Start Num: 33

Candidate Starts for Craff_46:

(11, 39770), (13, 39761), (15, 39746), (Start: 33 @39620 has 50 MA's), (46, 39542), (47, 39527), (54, 39482),

Gene: Crownjwl_46 Start: 39498, Stop: 38968, Start Num: 14

Candidate Starts for Crownjwl_46:

(Start: 14 @39498 has 202 MA's), (Start: 33 @39393 has 50 MA's), (46, 39315), (47, 39300), (54, 39255),

Gene: DaddyDaniels_46 Start: 39410, Stop: 38886, Start Num: 14

Candidate Starts for DaddyDaniels_46:

(Start: 14 @39410 has 202 MA's), (Start: 33 @39311 has 50 MA's), (46, 39233), (47, 39218), (54, 39173),

Gene: Daffy_46 Start: 39441, Stop: 38917, Start Num: 14

Candidate Starts for Daffy_46:

(Start: 14 @39441 has 202 MA's), (Start: 33 @39342 has 50 MA's), (46, 39264), (47, 39249), (54, 39204),

Gene: Daka_47 Start: 39714, Stop: 39190, Start Num: 14

Candidate Starts for Daka_47:

(Start: 14 @39714 has 202 MA's), (Start: 33 @39615 has 50 MA's), (46, 39537), (47, 39522), (54, 39477),

Gene: Dati_46 Start: 39336, Stop: 38911, Start Num: 33

Candidate Starts for Dati_46:

(Start: 14 @39438 has 202 MA's), (Start: 33 @39336 has 50 MA's), (46, 39258), (47, 39243), (54, 39198),

Gene: DelRivs_45 Start: 39442, Stop: 38912, Start Num: 14

Candidate Starts for DelRivs_45:

(Start: 14 @39442 has 202 MA's), (Start: 33 @39337 has 50 MA's), (46, 39259), (47, 39244), (54, 39199),

Gene: Derpp_45 Start: 39280, Stop: 38756, Start Num: 14

Candidate Starts for Derpp_45:

(Start: 14 @39280 has 202 MA's), (Start: 33 @39181 has 50 MA's), (46, 39103), (47, 39088), (54, 39043),

Gene: Dice_48 Start: 39412, Stop: 38891, Start Num: 14

Candidate Starts for Dice_48:

(Start: 14 @39412 has 202 MA's), (Start: 33 @39316 has 50 MA's), (46, 39238), (47, 39223), (54, 39178),

Gene: DigitDog_44 Start: 39734, Stop: 39348, Start Num: 43

Candidate Starts for DigitDog_44:

(Start: 43 @39734 has 11 MA's), (45, 39713), (48, 39674), (51, 39653), (56, 39593), (59, 39575), (61, 39566), (77, 39479), (83, 39443), (87, 39425), (93, 39389),

Gene: Dingo_46 Start: 39704, Stop: 39174, Start Num: 14

Candidate Starts for Dingo_46:

(Start: 14 @39704 has 202 MA's), (Start: 33 @39599 has 50 MA's), (46, 39521), (47, 39506), (54, 39461),

Gene: Dione_45 Start: 39420, Stop: 38896, Start Num: 14

Candidate Starts for Dione_45:

(Start: 14 @39420 has 202 MA's), (Start: 33 @39321 has 50 MA's), (46, 39243), (47, 39228), (54, 39183),

Gene: DirtJuice_46 Start: 39704, Stop: 39180, Start Num: 14

Candidate Starts for DirtJuice_46:

(Start: 14 @39704 has 202 MA's), (Start: 33 @39605 has 50 MA's), (46, 39527), (47, 39512), (54, 39467),

Gene: Doddsville_46 Start: 39434, Stop: 38910, Start Num: 14

Candidate Starts for Doddsville_46:

(Start: 14 @39434 has 202 MA's), (Start: 33 @39335 has 50 MA's), (46, 39257), (47, 39242), (54, 39197),

Gene: DoesntMatter_45 Start: 39707, Stop: 39183, Start Num: 14

Candidate Starts for DoesntMatter_45:

(Start: 14 @39707 has 202 MA's), (Start: 33 @39608 has 50 MA's), (46, 39530), (47, 39515), (54, 39470),

Gene: DonSanchon_45 Start: 39417, Stop: 38890, Start Num: 14

Candidate Starts for DonSanchon_45:

(Start: 14 @39417 has 202 MA's), (Start: 33 @39315 has 50 MA's), (46, 39237), (47, 39222), (54, 39177),

Gene: Donny_45 Start: 40039, Stop: 39653, Start Num: 43

Candidate Starts for Donny_45:

(18, 40177), (Start: 43 @40039 has 11 MA's), (45, 40018), (48, 39979), (51, 39958), (56, 39898), (61, 39871), (77, 39784), (83, 39748), (87, 39730), (93, 39694), (97, 39673),

Gene: DuchessDung_44 Start: 38469, Stop: 38044, Start Num: 33

Candidate Starts for DuchessDung_44:

(11, 38619), (13, 38610), (15, 38595), (Start: 33 @38469 has 50 MA's), (46, 38391), (47, 38376), (54, 38331),

Gene: Duggie_45 Start: 39436, Stop: 38912, Start Num: 14

Candidate Starts for Duggie_45:

(Start: 14 @39436 has 202 MA's), (Start: 33 @39337 has 50 MA's), (46, 39259), (47, 39244), (54, 39199),

Gene: Durga_46 Start: 39635, Stop: 39210, Start Num: 33

Candidate Starts for Durga_46:

(11, 39785), (13, 39776), (15, 39761), (Start: 33 @39635 has 50 MA's), (46, 39557), (47, 39542), (54, 39497),

Gene: Eaglehorse_45 Start: 39890, Stop: 39501, Start Num: 39

Candidate Starts for Eaglehorse_45:

(Start: 39 @39890 has 36 MA's), (46, 39833), (51, 39791), (54, 39770), (57, 39725), (59, 39710), (61, 39701), (64, 39689), (65, 39668), (76, 39605), (78, 39599), (83, 39563), (84, 39560), (93, 39521),

Gene: EastView9101_45 Start: 39689, Stop: 39303, Start Num: 43

Candidate Starts for EastView9101_45:

(18, 39827), (Start: 43 @39689 has 11 MA's), (45, 39668), (48, 39629), (51, 39608), (56, 39548), (61, 39521), (77, 39434), (83, 39398), (87, 39380), (93, 39344), (97, 39323),

Gene: Emiris_46 Start: 39603, Stop: 39178, Start Num: 33
Candidate Starts for Emiris_46:
(11, 39753), (13, 39744), (15, 39729), (Start: 33 @39603 has 50 MA's), (46, 39525), (47, 39510), (54, 39465),

Gene: EmpTee_46 Start: 39720, Stop: 39190, Start Num: 14
Candidate Starts for EmpTee_46:
(Start: 14 @39720 has 202 MA's), (Start: 33 @39615 has 50 MA's), (46, 39537), (47, 39522), (54, 39477),

Gene: Eremos_46 Start: 39713, Stop: 39189, Start Num: 14
Candidate Starts for Eremos_46:
(Start: 14 @39713 has 202 MA's), (Start: 33 @39614 has 50 MA's), (46, 39536), (47, 39521), (54, 39476),

Gene: Etaye_46 Start: 39707, Stop: 39180, Start Num: 14
Candidate Starts for Etaye_46:
(Start: 14 @39707 has 202 MA's), (Start: 33 @39605 has 50 MA's), (46, 39527), (47, 39512), (54, 39467),

Gene: Eugenia_46 Start: 39723, Stop: 39199, Start Num: 14
Candidate Starts for Eugenia_46:
(Start: 14 @39723 has 202 MA's), (Start: 33 @39624 has 50 MA's), (46, 39546), (47, 39531), (54, 39486),

Gene: Evaa_39 Start: 34284, Stop: 33898, Start Num: 41
Candidate Starts for Evaa_39:
(38, 34296), (Start: 41 @34284 has 1 MA's), (51, 34194), (54, 34176), (64, 34095), (70, 34041), (74, 34029),

Gene: Fang_46 Start: 39628, Stop: 39203, Start Num: 33
Candidate Starts for Fang_46:
(11, 39778), (13, 39769), (15, 39754), (Start: 33 @39628 has 50 MA's), (46, 39550), (47, 39535), (54, 39490),

Gene: Faze9_44 Start: 39986, Stop: 39597, Start Num: 39
Candidate Starts for Faze9_44:
(Start: 39 @39986 has 36 MA's), (46, 39929), (51, 39887), (54, 39866), (57, 39821), (59, 39806), (61, 39797), (64, 39785), (65, 39764), (76, 39701), (78, 39695), (83, 39659), (84, 39656), (93, 39617),

Gene: FluffyNinja_46 Start: 39621, Stop: 39196, Start Num: 33
Candidate Starts for FluffyNinja_46:
(11, 39771), (13, 39762), (15, 39747), (Start: 33 @39621 has 50 MA's), (46, 39543), (47, 39528), (54, 39483),

Gene: Fozzie_45 Start: 39742, Stop: 39212, Start Num: 14
Candidate Starts for Fozzie_45:
(Start: 14 @39742 has 202 MA's), (Start: 33 @39637 has 50 MA's), (46, 39559), (47, 39544), (54, 39499),

Gene: Frankicide_46 Start: 39732, Stop: 39208, Start Num: 14
Candidate Starts for Frankicide_46:

(Start: 14 @39732 has 202 MA's), (Start: 33 @39633 has 50 MA's), (46, 39555), (47, 39540), (54, 39495),

Gene: Frederick_41 Start: 39624, Stop: 39199, Start Num: 35

Candidate Starts for Frederick_41:

(6, 39828), (7, 39804), (8, 39792), (20, 39738), (Start: 31 @39657 has 2 MA's), (Start: 35 @39624 has 17 MA's), (51, 39516), (58, 39441), (65, 39396), (67, 39387), (77, 39339), (83, 39303), (87, 39285),

Gene: FrenchFry_45 Start: 39980, Stop: 39591, Start Num: 39

Candidate Starts for FrenchFry_45:

(Start: 39 @39980 has 36 MA's), (46, 39923), (51, 39881), (54, 39860), (57, 39815), (59, 39800), (61, 39791), (64, 39779), (65, 39758), (76, 39695), (78, 39689), (83, 39653), (84, 39650), (93, 39611),

Gene: Fresco_39 Start: 33273, Stop: 32851, Start Num: 34

Candidate Starts for Fresco_39:

(Start: 34 @33273 has 10 MA's), (51, 33156), (54, 33138), (58, 33081), (71, 32994), (77, 32979), (85, 32934), (92, 32892),

Gene: Freya_45 Start: 39411, Stop: 38887, Start Num: 14

Candidate Starts for Freya_45:

(Start: 14 @39411 has 202 MA's), (Start: 33 @39312 has 50 MA's), (46, 39234), (47, 39219), (54, 39174),

Gene: FriarPreacher_45 Start: 39744, Stop: 39214, Start Num: 14

Candidate Starts for FriarPreacher_45:

(Start: 14 @39744 has 202 MA's), (Start: 33 @39639 has 50 MA's), (46, 39561), (47, 39546), (54, 39501),

Gene: Fringe_46 Start: 39604, Stop: 39179, Start Num: 33

Candidate Starts for Fringe_46:

(11, 39754), (13, 39745), (15, 39730), (Start: 33 @39604 has 50 MA's), (46, 39526), (47, 39511), (54, 39466),

Gene: FugateOSU_45 Start: 39419, Stop: 38892, Start Num: 14

Candidate Starts for FugateOSU_45:

(Start: 14 @39419 has 202 MA's), (Start: 33 @39317 has 50 MA's), (46, 39239), (47, 39224), (54, 39179),

Gene: Funsized_47 Start: 42156, Stop: 41758, Start Num: 42

Candidate Starts for Funsized_47:

(Start: 42 @42156 has 1 MA's), (54, 42054), (58, 41997), (59, 41994), (66, 41946), (78, 41886), (87, 41829),

Gene: Gareth_45 Start: 39320, Stop: 38895, Start Num: 33

Candidate Starts for Gareth_45:

(Start: 14 @39419 has 202 MA's), (Start: 33 @39320 has 50 MA's), (46, 39242), (47, 39227), (54, 39182),

Gene: GeneCoco_46 Start: 39728, Stop: 39204, Start Num: 14

Candidate Starts for GeneCoco_46:

(Start: 14 @39728 has 202 MA's), (Start: 33 @39629 has 50 MA's), (46, 39551), (47, 39536), (54, 39491),

Gene: Giraffe_46 Start: 39422, Stop: 38898, Start Num: 14

Candidate Starts for Giraffe_46:

(Start: 14 @39422 has 202 MA's), (Start: 33 @39323 has 50 MA's), (46, 39245), (47, 39230), (54, 39185),

Gene: Glass_45 Start: 39980, Stop: 39591, Start Num: 39

Candidate Starts for Glass_45:

(Start: 39 @39980 has 36 MA's), (46, 39923), (51, 39881), (54, 39860), (57, 39815), (59, 39800), (61, 39791), (64, 39779), (65, 39758), (76, 39695), (78, 39689), (83, 39653), (84, 39650), (93, 39611),

Gene: Godines_45 Start: 39922, Stop: 39533, Start Num: 39

Candidate Starts for Godines_45:

(Start: 39 @39922 has 36 MA's), (46, 39865), (51, 39823), (54, 39802), (57, 39757), (59, 39742), (61, 39733), (64, 39721), (65, 39700), (76, 39637), (78, 39631), (83, 39595), (84, 39592), (93, 39553),

Gene: Gophee_46 Start: 39711, Stop: 39181, Start Num: 14

Candidate Starts for Gophee_46:

(Start: 14 @39711 has 202 MA's), (Start: 33 @39606 has 50 MA's), (46, 39528), (47, 39513), (54, 39468),

Gene: Grand2040_45 Start: 39437, Stop: 38913, Start Num: 14

Candidate Starts for Grand2040_45:

(Start: 14 @39437 has 202 MA's), (Start: 33 @39338 has 50 MA's), (46, 39260), (47, 39245), (54, 39200),

Gene: Gwilliam_47 Start: 39717, Stop: 39193, Start Num: 14

Candidate Starts for Gwilliam_47:

(Start: 14 @39717 has 202 MA's), (Start: 33 @39618 has 50 MA's), (46, 39540), (47, 39525), (54, 39480),

Gene: Gyarad_0046 Start: 39719, Stop: 39195, Start Num: 14

Candidate Starts for Gyarad_0046:

(Start: 14 @39719 has 202 MA's), (Start: 33 @39620 has 50 MA's), (46, 39542), (47, 39527), (54, 39482),

Gene: HSavage_46 Start: 39723, Stop: 39199, Start Num: 14

Candidate Starts for HSavage_46:

(Start: 14 @39723 has 202 MA's), (Start: 33 @39624 has 50 MA's), (46, 39546), (47, 39531), (54, 39486),

Gene: Haimas_46 Start: 39717, Stop: 39190, Start Num: 14

Candidate Starts for Haimas_46:

(Start: 14 @39717 has 202 MA's), (Start: 33 @39615 has 50 MA's), (46, 39537), (47, 39522), (54, 39477),

Gene: Haleema_45 Start: 39437, Stop: 38913, Start Num: 14

Candidate Starts for Haleema_45:

(Start: 14 @39437 has 202 MA's), (Start: 33 @39338 has 50 MA's), (46, 39260), (47, 39245), (54, 39200),

Gene: Hamish_46 Start: 39709, Stop: 39182, Start Num: 14

Candidate Starts for Hamish_46:

(Start: 14 @39709 has 202 MA's), (Start: 33 @39607 has 50 MA's), (46, 39529), (47, 39514), (54, 39469),

Gene: Hangman_41 Start: 39616, Stop: 39191, Start Num: 35

Candidate Starts for Hangman_41:

(6, 39820), (7, 39796), (8, 39784), (20, 39730), (Start: 31 @39649 has 2 MA's), (Start: 35 @39616 has 17 MA's), (51, 39508), (58, 39433), (61, 39421), (65, 39388), (67, 39379), (77, 39331), (83, 39295), (87, 39277),

Gene: Hartsy_46 Start: 39760, Stop: 39233, Start Num: 14

Candidate Starts for Hartsy_46:

(Start: 14 @39760 has 202 MA's), (Start: 33 @39658 has 50 MA's), (46, 39580), (47, 39565), (54, 39520),

Gene: Harvey_46 Start: 39735, Stop: 39208, Start Num: 14

Candidate Starts for Harvey_46:

(Start: 14 @39735 has 202 MA's), (Start: 33 @39633 has 50 MA's), (46, 39555), (47, 39540), (54, 39495),

Gene: Heath_40 Start: 39223, Stop: 38798, Start Num: 35

Candidate Starts for Heath_40:

(6, 39427), (7, 39403), (8, 39391), (20, 39337), (Start: 31 @39256 has 2 MA's), (Start: 35 @39223 has 17 MA's), (51, 39115), (58, 39040), (61, 39028), (65, 38995), (67, 38986), (77, 38938), (83, 38902), (87, 38884),

Gene: Hedgerow_45 Start: 39962, Stop: 39573, Start Num: 39

Candidate Starts for Hedgerow_45:

(Start: 39 @39962 has 36 MA's), (46, 39905), (51, 39863), (54, 39842), (57, 39797), (59, 39782), (61, 39773), (64, 39761), (65, 39740), (76, 39677), (78, 39671), (83, 39635), (84, 39632), (93, 39593),

Gene: Held_46 Start: 39421, Stop: 38897, Start Num: 14

Candidate Starts for Held_46:

(Start: 14 @39421 has 202 MA's), (Start: 33 @39322 has 50 MA's), (46, 39244), (47, 39229), (54, 39184),

Gene: HenryJackson_45 Start: 39437, Stop: 38913, Start Num: 14

Candidate Starts for HenryJackson_45:

(Start: 14 @39437 has 202 MA's), (Start: 33 @39338 has 50 MA's), (46, 39260), (47, 39245), (54, 39200),

Gene: Hertubise_46 Start: 39731, Stop: 39204, Start Num: 14

Candidate Starts for Hertubise_46:

(Start: 14 @39731 has 202 MA's), (Start: 33 @39629 has 50 MA's), (46, 39551), (47, 39536), (54, 39491),

Gene: Hetaeria_46 Start: 39733, Stop: 39206, Start Num: 14

Candidate Starts for Hetaeria_46:

(Start: 14 @39733 has 202 MA's), (Start: 33 @39631 has 50 MA's), (46, 39553), (47, 39538), (54, 39493),

Gene: HighStump_45 Start: 39321, Stop: 38896, Start Num: 33

Candidate Starts for HighStump_45:

(11, 39471), (13, 39462), (15, 39447), (Start: 33 @39321 has 50 MA's), (46, 39243), (47, 39228), (54, 39183),

Gene: Hocus_45 Start: 39426, Stop: 38902, Start Num: 14

Candidate Starts for Hocus_45:

(Start: 14 @39426 has 202 MA's), (Start: 33 @39327 has 50 MA's), (46, 39249), (47, 39234), (54, 39189),

Gene: Holeinone_45 Start: 39842, Stop: 39453, Start Num: 39

Candidate Starts for Holeinone_45:

(Start: 39 @39842 has 36 MA's), (46, 39785), (51, 39743), (54, 39722), (57, 39677), (59, 39662), (61, 39653), (64, 39641), (65, 39620), (76, 39557), (78, 39551), (83, 39515), (84, 39512), (93, 39473),

Gene: Horchata_46 Start: 39711, Stop: 39184, Start Num: 14

Candidate Starts for Horchata_46:

(Start: 14 @39711 has 202 MA's), (Start: 33 @39609 has 50 MA's), (46, 39531), (47, 39516), (54, 39471),

Gene: Hosp_036 Start: 35614, Stop: 35177, Start Num: 32

Candidate Starts for Hosp_036:

(4, 35842), (9, 35770), (32, 35614), (45, 35548), (51, 35488), (61, 35401), (64, 35389), (65, 35368), (83, 35269),

Gene: Hydro_41 Start: 39633, Stop: 39208, Start Num: 35

Candidate Starts for Hydro_41:

(6, 39837), (7, 39813), (8, 39801), (20, 39747), (Start: 31 @39666 has 2 MA's), (Start: 35 @39633 has 17 MA's), (51, 39525), (58, 39450), (61, 39438), (65, 39405), (67, 39396), (77, 39348), (83, 39312), (87, 39294),

Gene: ImtiyazSitla_45 Start: 39169, Stop: 38744, Start Num: 33

Candidate Starts for ImtiyazSitla_45:

(11, 39319), (13, 39310), (15, 39295), (Start: 33 @39169 has 50 MA's), (46, 39091), (47, 39076), (54, 39031),

Gene: Inchworm_46 Start: 39607, Stop: 39182, Start Num: 33

Candidate Starts for Inchworm_46:

(11, 39757), (13, 39748), (15, 39733), (Start: 33 @39607 has 50 MA's), (46, 39529), (47, 39514), (54, 39469),

Gene: Indlovu_43 Start: 38910, Stop: 38503, Start Num: 40

Candidate Starts for Indlovu_43:

(Start: 40 @38910 has 2 MA's), (48, 38835), (60, 38736), (65, 38694), (75, 38637), (83, 38589),

Gene: Inverness_46 Start: 39720, Stop: 39196, Start Num: 14

Candidate Starts for Inverness_46:

(Start: 14 @39720 has 202 MA's), (Start: 33 @39621 has 50 MA's), (46, 39543), (47, 39528), (54, 39483),

Gene: Iridoclysis_46 Start: 39703, Stop: 39176, Start Num: 14

Candidate Starts for Iridoclysis_46:

(Start: 14 @39703 has 202 MA's), (Start: 33 @39601 has 50 MA's), (46, 39523), (47, 39508), (54, 39463),

Gene: IsaacEli_46 Start: 39625, Stop: 39200, Start Num: 33

Candidate Starts for IsaacEli_46:

(11, 39775), (13, 39766), (15, 39751), (Start: 33 @39625 has 50 MA's), (46, 39547), (47, 39532), (54, 39487),

Gene: ItsyBitsy1_45 Start: 39844, Stop: 39455, Start Num: 39

Candidate Starts for ItsyBitsy1_45:

(Start: 39 @39844 has 36 MA's), (46, 39787), (51, 39745), (54, 39724), (57, 39679), (59, 39664), (61, 39655), (64, 39643), (65, 39622), (76, 39559), (78, 39553), (83, 39517), (84, 39514), (93, 39475),

Gene: JAMaL_41 Start: 39804, Stop: 39379, Start Num: 35

Candidate Starts for JAMaL_41:

(6, 40008), (7, 39984), (8, 39972), (17, 39936), (20, 39918), (Start: 31 @39837 has 2 MA's), (Start: 35 @39804 has 17 MA's), (38, 39798), (51, 39696), (58, 39621), (61, 39609), (65, 39576), (77, 39519), (83, 39483), (87, 39465),

Gene: JDog_45 Start: 39338, Stop: 38913, Start Num: 33

Candidate Starts for JDog_45:

(Start: 14 @39440 has 202 MA's), (Start: 33 @39338 has 50 MA's), (46, 39260), (47, 39245), (54, 39200),

Gene: JacAttac_46 Start: 39607, Stop: 39182, Start Num: 33

Candidate Starts for JacAttac_46:

(11, 39757), (13, 39748), (15, 39733), (Start: 33 @39607 has 50 MA's), (46, 39529), (47, 39514), (54, 39469),

Gene: JakeO_45 Start: 39439, Stop: 38915, Start Num: 14

Candidate Starts for JakeO_45:

(Start: 14 @39439 has 202 MA's), (Start: 33 @39340 has 50 MA's), (46, 39262), (47, 39247), (54, 39202),

Gene: JangoPhett_46 Start: 39714, Stop: 39184, Start Num: 14

Candidate Starts for JangoPhett_46:

(Start: 14 @39714 has 202 MA's), (Start: 33 @39609 has 50 MA's), (46, 39531), (47, 39516), (54, 39471),

Gene: Jillium_45 Start: 39433, Stop: 38906, Start Num: 14

Candidate Starts for Jillium_45:

(Start: 14 @39433 has 202 MA's), (Start: 33 @39331 has 50 MA's), (46, 39253), (47, 39238), (54, 39193),

Gene: Jiminy_45 Start: 39274, Stop: 38750, Start Num: 14

Candidate Starts for Jiminy_45:

(Start: 14 @39274 has 202 MA's), (Start: 33 @39175 has 50 MA's), (46, 39097), (47, 39082), (54, 39037),

Gene: Jiraiya_47 Start: 39427, Stop: 38903, Start Num: 14

Candidate Starts for Jiraiya_47:

(Start: 14 @39427 has 202 MA's), (Start: 33 @39328 has 50 MA's), (46, 39250), (47, 39235), (54, 39190),

Gene: KLucky39_46 Start: 39718, Stop: 39194, Start Num: 14

Candidate Starts for KLucky39_46:

(Start: 14 @39718 has 202 MA's), (Start: 33 @39619 has 50 MA's), (46, 39541), (47, 39526), (54, 39481),

Gene: Kahve_45 Start: 39434, Stop: 38910, Start Num: 14

Candidate Starts for Kahve_45:

(Start: 14 @39434 has 202 MA's), (Start: 33 @39335 has 50 MA's), (46, 39257), (47, 39242), (54, 39197),

Gene: Kailash_46 Start: 39775, Stop: 39248, Start Num: 14

Candidate Starts for Kailash_46:

(Start: 14 @39775 has 202 MA's), (Start: 33 @39673 has 50 MA's), (46, 39595), (47, 39580), (54, 39535),

Gene: Kaleb_45 Start: 39977, Stop: 39588, Start Num: 39

Candidate Starts for Kaleb_45:

(Start: 39 @39977 has 36 MA's), (46, 39920), (51, 39878), (54, 39857), (57, 39812), (59, 39797), (61, 39788), (64, 39776), (65, 39755), (76, 39692), (78, 39686), (83, 39650), (84, 39647), (93, 39608),

Gene: Katniss_46 Start: 39634, Stop: 39209, Start Num: 33

Candidate Starts for Katniss_46:

(11, 39784), (13, 39775), (15, 39760), (Start: 33 @39634 has 50 MA's), (46, 39556), (47, 39541), (54, 39496),

Gene: Keitherie_46 Start: 39774, Stop: 39247, Start Num: 14

Candidate Starts for Keitherie_46:

(Start: 14 @39774 has 202 MA's), (Start: 33 @39672 has 50 MA's), (46, 39594), (47, 39579), (54, 39534),

Gene: Kheth_45 Start: 39865, Stop: 39476, Start Num: 39

Candidate Starts for Kheth_45:

(Start: 39 @39865 has 36 MA's), (46, 39808), (51, 39766), (54, 39745), (57, 39700), (59, 39685), (61, 39676), (64, 39664), (65, 39643), (76, 39580), (78, 39574), (83, 39538), (84, 39535), (93, 39496),

Gene: Kikipoo_46 Start: 39625, Stop: 39200, Start Num: 33

Candidate Starts for Kikipoo_46:

(11, 39775), (13, 39766), (15, 39751), (Start: 33 @39625 has 50 MA's), (46, 39547), (47, 39532), (54, 39487),

Gene: Kimbrough_46 Start: 39435, Stop: 38902, Start Num: 14

Candidate Starts for Kimbrough_46:

(Start: 14 @39435 has 202 MA's), (Start: 33 @39327 has 50 MA's), (46, 39249), (47, 39234), (54, 39189),

Gene: KingTut_37 Start: 35098, Stop: 34571, Start Num: 14

Candidate Starts for KingTut_37:

(Start: 14 @35098 has 202 MA's), (Start: 33 @34996 has 50 MA's), (46, 34918), (47, 34903), (54, 34858),

Gene: KingVeVeVe_46 Start: 39705, Stop: 39175, Start Num: 14

Candidate Starts for KingVeVeVe_46:

(Start: 14 @39705 has 202 MA's), (Start: 33 @39600 has 50 MA's), (46, 39522), (47, 39507), (54, 39462),

Gene: KlimbOn_46 Start: 39712, Stop: 39188, Start Num: 14
Candidate Starts for KlimbOn_46:
(Start: 14 @39712 has 202 MA's), (Start: 33 @39613 has 50 MA's), (46, 39535), (47, 39520), (54, 39475),

Gene: Kloppinator_46 Start: 39738, Stop: 39211, Start Num: 14
Candidate Starts for Kloppinator_46:
(Start: 14 @39738 has 202 MA's), (Start: 33 @39636 has 50 MA's), (46, 39558), (47, 39543), (54, 39498),

Gene: Knocker_46 Start: 41265, Stop: 40882, Start Num: 44
Candidate Starts for Knocker_46:
(Start: 44 @41265 has 1 MA's), (51, 41190), (54, 41172), (55, 41157), (58, 41115), (67, 41061), (73, 41019), (76, 41013), (86, 40950), (94, 40914),

Gene: Kwadwo_45 Start: 39416, Stop: 38892, Start Num: 14
Candidate Starts for Kwadwo_45:
(Start: 14 @39416 has 202 MA's), (Start: 33 @39317 has 50 MA's), (46, 39239), (47, 39224), (54, 39179),

Gene: Kwksand96_45 Start: 39285, Stop: 38761, Start Num: 14
Candidate Starts for Kwksand96_45:
(Start: 14 @39285 has 202 MA's), (Start: 33 @39186 has 50 MA's), (46, 39108), (47, 39093), (54, 39048),

Gene: Labeouficaum_45 Start: 39280, Stop: 38756, Start Num: 14
Candidate Starts for Labeouficaum_45:
(Start: 14 @39280 has 202 MA's), (Start: 33 @39181 has 50 MA's), (46, 39103), (47, 39088), (54, 39043),

Gene: Lars_45 Start: 39967, Stop: 39578, Start Num: 39
Candidate Starts for Lars_45:
(Start: 39 @39967 has 36 MA's), (46, 39910), (51, 39868), (54, 39847), (57, 39802), (59, 39787), (61, 39778), (64, 39766), (65, 39745), (76, 39682), (78, 39676), (83, 39640), (84, 39637), (89, 39610), (93, 39598),

Gene: LasagnaCat_46 Start: 39619, Stop: 39194, Start Num: 33
Candidate Starts for LasagnaCat_46:
(11, 39769), (13, 39760), (15, 39745), (Start: 33 @39619 has 50 MA's), (46, 39541), (47, 39526), (54, 39481),

Gene: Lasso_46 Start: 39691, Stop: 39167, Start Num: 14
Candidate Starts for Lasso_46:
(Start: 14 @39691 has 202 MA's), (Start: 33 @39592 has 50 MA's), (46, 39514), (47, 39499), (54, 39454),

Gene: Laurie_44 Start: 39366, Stop: 38977, Start Num: 39
Candidate Starts for Laurie_44:
(Start: 39 @39366 has 36 MA's), (46, 39309), (51, 39267), (54, 39246), (57, 39201), (59, 39186), (61, 39177), (64, 39165), (65, 39144), (76, 39081), (78, 39075), (83, 39039), (84, 39036), (87, 39021), (93, 38997),

Gene: LeeLot_46 Start: 39722, Stop: 39198, Start Num: 14

Candidate Starts for LeeLot_46:

(Start: 14 @39722 has 202 MA's), (Start: 33 @39623 has 50 MA's), (46, 39545), (47, 39530), (54, 39485),

Gene: Legolas_45 Start: 39333, Stop: 38908, Start Num: 33

Candidate Starts for Legolas_45:

(1, 39888), (2, 39693), (5, 39549), (Start: 33 @39333 has 50 MA's), (46, 39255), (47, 39240), (54, 39195),

Gene: LeiMonet_47 Start: 39423, Stop: 38899, Start Num: 14

Candidate Starts for LeiMonet_47:

(Start: 14 @39423 has 202 MA's), (Start: 33 @39324 has 50 MA's), (46, 39246), (47, 39231), (54, 39186),

Gene: LemonSlice_46 Start: 39422, Stop: 38895, Start Num: 14

Candidate Starts for LemonSlice_46:

(Start: 14 @39422 has 202 MA's), (Start: 33 @39320 has 50 MA's), (46, 39242), (47, 39227), (54, 39182),

Gene: Lephleur_45 Start: 39860, Stop: 39471, Start Num: 39

Candidate Starts for Lephleur_45:

(Start: 39 @39860 has 36 MA's), (46, 39803), (51, 39761), (54, 39740), (57, 39695), (59, 39680), (61, 39671), (64, 39659), (65, 39638), (76, 39575), (78, 39569), (83, 39533), (84, 39530), (93, 39491),

Gene: Ligma_39 Start: 33273, Stop: 32851, Start Num: 34

Candidate Starts for Ligma_39:

(Start: 34 @33273 has 10 MA's), (51, 33156), (54, 33138), (58, 33081), (71, 32994), (77, 32979), (85, 32934), (92, 32892),

Gene: LilMcDreamy_42 Start: 39137, Stop: 38754, Start Num: 43

Candidate Starts for LilMcDreamy_42:

(6, 39353), (Start: 43 @39137 has 11 MA's), (48, 39077), (51, 39056), (61, 38969), (65, 38936), (67, 38927), (87, 38831), (91, 38804),

Gene: LittleMunchkin_41 Start: 36568, Stop: 36182, Start Num: 34

Candidate Starts for LittleMunchkin_41:

(Start: 34 @36568 has 10 MA's), (51, 36460), (54, 36442), (61, 36373), (64, 36361), (68, 36328), (85, 36247), (87, 36235),

Gene: LizLemon_45 Start: 39976, Stop: 39587, Start Num: 39

Candidate Starts for LizLemon_45:

(Start: 39 @39976 has 36 MA's), (46, 39919), (51, 39877), (54, 39856), (57, 39811), (59, 39796), (61, 39787), (64, 39775), (65, 39754), (76, 39691), (78, 39685), (83, 39649), (84, 39646), (93, 39607),

Gene: Lolalove_41 Start: 39630, Stop: 39205, Start Num: 35

Candidate Starts for Lolalove_41:

(6, 39834), (7, 39810), (8, 39798), (20, 39744), (Start: 31 @39663 has 2 MA's), (Start: 35 @39630 has 17 MA's), (38, 39624), (51, 39522), (58, 39447), (61, 39435), (65, 39402), (67, 39393), (77, 39345), (83, 39309), (87, 39291),

Gene: Longacauda_45 Start: 39424, Stop: 38900, Start Num: 14

Candidate Starts for Longacauda_45:

(Start: 14 @39424 has 202 MA's), (Start: 33 @39325 has 50 MA's), (46, 39247), (47, 39232), (54, 39187),

Gene: Lopsy_45 Start: 39277, Stop: 38750, Start Num: 14

Candidate Starts for Lopsy_45:

(Start: 14 @39277 has 202 MA's), (Start: 33 @39175 has 50 MA's), (46, 39097), (47, 39082), (54, 39037),

Gene: LostAndPhound_45 Start: 39425, Stop: 38901, Start Num: 14

Candidate Starts for LostAndPhound_45:

(Start: 14 @39425 has 202 MA's), (Start: 33 @39326 has 50 MA's), (46, 39248), (47, 39233), (54, 39188),

Gene: LuckyMarjie_45 Start: 39431, Stop: 38910, Start Num: 14

Candidate Starts for LuckyMarjie_45:

(Start: 14 @39431 has 202 MA's), (Start: 33 @39335 has 50 MA's), (46, 39257), (47, 39242), (54, 39197),

Gene: Lulumae_45 Start: 39416, Stop: 38892, Start Num: 14

Candidate Starts for Lulumae_45:

(Start: 14 @39416 has 202 MA's), (Start: 33 @39317 has 50 MA's), (46, 39239), (47, 39224), (54, 39179),

Gene: Lulwa_46 Start: 39703, Stop: 39179, Start Num: 14

Candidate Starts for Lulwa_46:

(Start: 14 @39703 has 202 MA's), (Start: 33 @39604 has 50 MA's), (46, 39526), (47, 39511), (54, 39466),

Gene: Lumine_45 Start: 39412, Stop: 38888, Start Num: 14

Candidate Starts for Lumine_45:

(Start: 14 @39412 has 202 MA's), (Start: 33 @39313 has 50 MA's), (46, 39235), (47, 39220), (54, 39175),

Gene: MRabcd_45 Start: 39416, Stop: 38892, Start Num: 14

Candidate Starts for MRabcd_45:

(Start: 14 @39416 has 202 MA's), (Start: 33 @39317 has 50 MA's), (46, 39239), (47, 39224), (54, 39179),

Gene: Mag7_45 Start: 39325, Stop: 38798, Start Num: 14

Candidate Starts for Mag7_45:

(Start: 14 @39325 has 202 MA's), (Start: 33 @39223 has 50 MA's), (46, 39145), (47, 39130), (54, 39085),

Gene: Magic8_46 Start: 39760, Stop: 39233, Start Num: 14

Candidate Starts for Magic8_46:

(Start: 14 @39760 has 202 MA's), (Start: 33 @39658 has 50 MA's), (46, 39580), (47, 39565), (54, 39520),

Gene: Magpie_40 Start: 39466, Stop: 39041, Start Num: 35

Candidate Starts for Magpie_40:

(6, 39670), (7, 39646), (8, 39634), (20, 39580), (21, 39574), (Start: 31 @39499 has 2 MA's), (Start: 35 @39466 has 17 MA's), (38, 39460), (51, 39358), (58, 39283), (61, 39271), (65, 39238), (67, 39229), (77, 39181), (83, 39145), (87, 39127),

Gene: MakoManhole_41 Start: 35230, Stop: 34844, Start Num: 39

Candidate Starts for MakoManhole_41:

(Start: 27 @35284 has 1 MA's), (Start: 39 @35230 has 36 MA's), (48, 35170), (50, 35155), (58, 35062), (61, 35050), (65, 35017), (77, 34969), (80, 34960),

Gene: Mana_45 Start: 39431, Stop: 38907, Start Num: 14

Candidate Starts for Mana_45:

(Start: 14 @39431 has 202 MA's), (Start: 33 @39332 has 50 MA's), (46, 39254), (47, 39239), (54, 39194),

Gene: Manad_45 Start: 39276, Stop: 38749, Start Num: 14

Candidate Starts for Manad_45:

(Start: 14 @39276 has 202 MA's), (Start: 33 @39174 has 50 MA's), (46, 39096), (47, 39081), (54, 39036),

Gene: Mariokart_39 Start: 33175, Stop: 32774, Start Num: 34

Candidate Starts for Mariokart_39:

(Start: 34 @33175 has 10 MA's), (53, 33046), (54, 33040), (61, 32971), (63, 32962), (77, 32887), (85, 32842), (87, 32830),

Gene: Maru_45 Start: 39374, Stop: 38850, Start Num: 14

Candidate Starts for Maru_45:

(Start: 14 @39374 has 202 MA's), (Start: 33 @39275 has 50 MA's), (46, 39197), (47, 39182), (54, 39137),

Gene: Maskar_45 Start: 39169, Stop: 38744, Start Num: 33

Candidate Starts for Maskar_45:

(11, 39319), (13, 39310), (15, 39295), (Start: 33 @39169 has 50 MA's), (46, 39091), (47, 39076), (54, 39031),

Gene: MasterPo_45 Start: 39863, Stop: 39474, Start Num: 39

Candidate Starts for MasterPo_45:

(Start: 39 @39863 has 36 MA's), (46, 39806), (51, 39764), (54, 39743), (57, 39698), (59, 39683), (61, 39674), (64, 39662), (65, 39641), (76, 39578), (78, 39572), (83, 39536), (84, 39533), (93, 39494),

Gene: Matalotodo_46 Start: 39720, Stop: 39193, Start Num: 14

Candidate Starts for Matalotodo_46:

(Start: 14 @39720 has 202 MA's), (Start: 33 @39618 has 50 MA's), (46, 39540), (47, 39525), (54, 39480),

Gene: Mcshane_45 Start: 39417, Stop: 38890, Start Num: 14

Candidate Starts for Mcshane_45:

(Start: 14 @39417 has 202 MA's), (Start: 33 @39315 has 50 MA's), (46, 39237), (47, 39222), (54, 39177),

Gene: Mecca_45 Start: 39423, Stop: 38893, Start Num: 14

Candidate Starts for Mecca_45:

(Start: 14 @39423 has 202 MA's), (Start: 33 @39318 has 50 MA's), (46, 39240), (47, 39225), (54, 39180),

Gene: Megamind20_46 Start: 39445, Stop: 38915, Start Num: 14

Candidate Starts for Megamind20_46:

(Start: 14 @39445 has 202 MA's), (Start: 33 @39340 has 50 MA's), (46, 39262), (47, 39247), (54, 39202),

Gene: Megatron_46 Start: 39616, Stop: 39191, Start Num: 33

Candidate Starts for Megatron_46:

(11, 39766), (13, 39757), (15, 39742), (Start: 33 @39616 has 50 MA's), (46, 39538), (47, 39523), (54, 39478),

Gene: Melc17_46 Start: 39715, Stop: 39188, Start Num: 14

Candidate Starts for Melc17_46:

(Start: 14 @39715 has 202 MA's), (Start: 33 @39613 has 50 MA's), (46, 39535), (47, 39520), (54, 39475),

Gene: MelsMeow_45 Start: 39219, Stop: 38794, Start Num: 33

Candidate Starts for MelsMeow_45:

(11, 39369), (13, 39360), (15, 39345), (Start: 33 @39219 has 50 MA's), (46, 39141), (47, 39126), (54, 39081),

Gene: Mesh1_46 Start: 39732, Stop: 39205, Start Num: 14

Candidate Starts for Mesh1_46:

(Start: 14 @39732 has 202 MA's), (Start: 33 @39630 has 50 MA's), (46, 39552), (47, 39537), (54, 39492),

Gene: MichaelPhcott_45 Start: 39322, Stop: 38795, Start Num: 14

Candidate Starts for MichaelPhcott_45:

(Start: 14 @39322 has 202 MA's), (Start: 33 @39220 has 50 MA's), (46, 39142), (47, 39127), (54, 39082),

Gene: Mikota_46 Start: 39702, Stop: 39178, Start Num: 14

Candidate Starts for Mikota_46:

(Start: 14 @39702 has 202 MA's), (Start: 33 @39603 has 50 MA's), (46, 39525), (47, 39510), (54, 39465),

Gene: MiniBoss_46 Start: 39708, Stop: 39184, Start Num: 14

Candidate Starts for MiniBoss_46:

(Start: 14 @39708 has 202 MA's), (Start: 33 @39609 has 50 MA's), (46, 39531), (47, 39516), (54, 39471),

Gene: MitKao_46 Start: 39423, Stop: 38899, Start Num: 14

Candidate Starts for MitKao_46:

(Start: 14 @39423 has 202 MA's), (Start: 33 @39324 has 50 MA's), (46, 39246), (47, 39231), (54, 39186),

Gene: Mithril_41 Start: 39634, Stop: 39209, Start Num: 35

Candidate Starts for Mithril_41:

(6, 39838), (7, 39814), (8, 39802), (20, 39748), (Start: 31 @39667 has 2 MA's), (Start: 35 @39634 has 17 MA's), (51, 39526), (58, 39451), (61, 39439), (65, 39406), (67, 39397), (77, 39349), (83, 39313), (87, 39295),

Gene: Morgushi_46 Start: 39424, Stop: 38900, Start Num: 14

Candidate Starts for Morgushi_46:

(Start: 14 @39424 has 202 MA's), (Start: 33 @39325 has 50 MA's), (46, 39247), (47, 39232), (54, 39187),

Gene: Morty_46 Start: 39625, Stop: 39200, Start Num: 33
Candidate Starts for Morty_46:
(11, 39775), (13, 39766), (15, 39751), (Start: 33 @39625 has 50 MA's), (46, 39547), (47, 39532), (54, 39487),

Gene: Mosaic_45 Start: 39417, Stop: 38905, Start Num: 14
Candidate Starts for Mosaic_45:
(Start: 14 @39417 has 202 MA's), (Start: 33 @39318 has 50 MA's), (46, 39252), (47, 39237), (54, 39192),

Gene: MossRose_41 Start: 35209, Stop: 34823, Start Num: 39
Candidate Starts for MossRose_41:
(Start: 27 @35263 has 1 MA's), (Start: 39 @35209 has 36 MA's), (48, 35149), (50, 35134), (58, 35041), (61, 35029), (65, 34996), (77, 34948), (80, 34939),

Gene: MrPhizzler_45 Start: 39432, Stop: 38908, Start Num: 14
Candidate Starts for MrPhizzler_45:
(Start: 14 @39432 has 202 MA's), (Start: 33 @39333 has 50 MA's), (46, 39255), (47, 39240), (54, 39195),

Gene: Mudslide_41 Start: 39866, Stop: 39441, Start Num: 35
Candidate Starts for Mudslide_41:
(6, 40070), (7, 40046), (8, 40034), (20, 39980), (Start: 31 @39899 has 2 MA's), (Start: 35 @39866 has 17 MA's), (51, 39758), (58, 39683), (61, 39671), (65, 39638), (67, 39629), (77, 39581), (83, 39545), (87, 39527),

Gene: Mulan_45 Start: 39342, Stop: 38917, Start Num: 33
Candidate Starts for Mulan_45:
(11, 39492), (13, 39483), (15, 39468), (Start: 33 @39342 has 50 MA's), (46, 39264), (47, 39249), (54, 39204),

Gene: Murdoc_46 Start: 39716, Stop: 39192, Start Num: 14
Candidate Starts for Murdoc_46:
(Start: 14 @39716 has 202 MA's), (Start: 33 @39617 has 50 MA's), (46, 39539), (47, 39524), (54, 39479),

Gene: Mutante_45 Start: 39324, Stop: 38899, Start Num: 33
Candidate Starts for Mutante_45:
(Start: 14 @39429 has 202 MA's), (Start: 33 @39324 has 50 MA's), (46, 39246), (47, 39231), (54, 39186),

Gene: Mysterious_46 Start: 40306, Stop: 39920, Start Num: 43
Candidate Starts for Mysterious_46:
(Start: 43 @40306 has 11 MA's), (48, 40246), (49, 40240), (51, 40225), (59, 40147), (61, 40138), (67, 40096), (68, 40093), (77, 40051), (81, 40039), (83, 40015), (87, 39997), (93, 39961),

Gene: NHagos_39 Start: 33821, Stop: 33447, Start Num: 39
Candidate Starts for NHagos_39:
(Start: 39 @33821 has 36 MA's), (51, 33740), (54, 33722), (61, 33653), (71, 33584), (83, 33533), (87, 33515),

Gene: Nacho_0046 Start: 39619, Stop: 39194, Start Num: 33

Candidate Starts for Nacho_0046:

(11, 39769), (13, 39760), (15, 39745), (Start: 33 @39619 has 50 MA's), (46, 39541), (47, 39526), (54, 39481),

Gene: Nanao_40 Start: 38592, Stop: 38167, Start Num: 35

Candidate Starts for Nanao_40:

(6, 38796), (8, 38760), (20, 38706), (Start: 31 @38625 has 2 MA's), (Start: 35 @38592 has 17 MA's), (51, 38484), (58, 38409), (61, 38397), (65, 38364), (67, 38355), (77, 38307), (83, 38271), (87, 38253),

Gene: Nangang_44 Start: 40099, Stop: 39713, Start Num: 43

Candidate Starts for Nangang_44:

(Start: 43 @40099 has 11 MA's), (45, 40078), (48, 40039), (51, 40018), (56, 39958), (59, 39940), (61, 39931), (77, 39844), (83, 39808), (87, 39790), (93, 39754),

Gene: Newman_46 Start: 39715, Stop: 39191, Start Num: 14

Candidate Starts for Newman_46:

(Start: 14 @39715 has 202 MA's), (Start: 33 @39616 has 50 MA's), (46, 39538), (47, 39523), (54, 39478),

Gene: Nicole21_46 Start: 39716, Stop: 39189, Start Num: 14

Candidate Starts for Nicole21_46:

(Start: 14 @39716 has 202 MA's), (Start: 33 @39614 has 50 MA's), (46, 39536), (47, 39521), (54, 39476),

Gene: Numberten_46 Start: 39722, Stop: 39198, Start Num: 14

Candidate Starts for Numberten_46:

(Start: 14 @39722 has 202 MA's), (Start: 33 @39623 has 50 MA's), (46, 39545), (47, 39530), (54, 39485),

Gene: Nyala_45 Start: 39421, Stop: 38891, Start Num: 14

Candidate Starts for Nyala_45:

(Start: 14 @39421 has 202 MA's), (Start: 33 @39316 has 50 MA's), (46, 39238), (47, 39223), (54, 39178),

Gene: OSmaximus_46 Start: 39658, Stop: 39233, Start Num: 33

Candidate Starts for OSmaximus_46:

(11, 39808), (13, 39799), (15, 39784), (Start: 33 @39658 has 50 MA's), (46, 39580), (47, 39565), (54, 39520),

Gene: Olak_46 Start: 39319, Stop: 38894, Start Num: 33

Candidate Starts for Olak_46:

(Start: 14 @39424 has 202 MA's), (Start: 33 @39319 has 50 MA's), (46, 39241), (47, 39226), (54, 39181),

Gene: Oline_45 Start: 39284, Stop: 38760, Start Num: 14

Candidate Starts for Oline_45:

(Start: 14 @39284 has 202 MA's), (Start: 33 @39185 has 50 MA's), (46, 39107), (47, 39092), (54, 39047),

Gene: Olive_46 Start: 39711, Stop: 39181, Start Num: 14

Candidate Starts for Olive_46:

(Start: 14 @39711 has 202 MA's), (Start: 33 @39606 has 50 MA's), (46, 39528), (47, 39513), (54, 39468),

Gene: OliverWalter_46 Start: 39733, Stop: 39203, Start Num: 14
Candidate Starts for OliverWalter_46:
(Start: 14 @39733 has 202 MA's), (Start: 33 @39628 has 50 MA's), (46, 39550), (47, 39535), (54, 39490),

Gene: Omniscient_46 Start: 39730, Stop: 39200, Start Num: 14
Candidate Starts for Omniscient_46:
(Start: 14 @39730 has 202 MA's), (Start: 33 @39625 has 50 MA's), (46, 39547), (47, 39532), (54, 39487),

Gene: Oosterbaan_46 Start: 39718, Stop: 39191, Start Num: 14
Candidate Starts for Oosterbaan_46:
(Start: 14 @39718 has 202 MA's), (Start: 33 @39616 has 50 MA's), (46, 39538), (47, 39523), (54, 39478),

Gene: Opia_45 Start: 39849, Stop: 39460, Start Num: 39
Candidate Starts for Opia_45:
(Start: 39 @39849 has 36 MA's), (46, 39792), (51, 39750), (54, 39729), (57, 39684), (59, 39669), (61, 39660), (64, 39648), (65, 39627), (76, 39564), (78, 39558), (83, 39522), (84, 39519), (93, 39480),

Gene: Orfeu_46 Start: 39423, Stop: 38899, Start Num: 14
Candidate Starts for Orfeu_46:
(Start: 14 @39423 has 202 MA's), (Start: 33 @39324 has 50 MA's), (46, 39246), (47, 39231), (54, 39186),

Gene: Orion_46 Start: 39614, Stop: 39189, Start Num: 33
Candidate Starts for Orion_46:
(11, 39764), (13, 39755), (15, 39740), (Start: 33 @39614 has 50 MA's), (46, 39536), (47, 39521), (54, 39476),

Gene: Orwigg_46 Start: 39417, Stop: 38887, Start Num: 14
Candidate Starts for Orwigg_46:
(Start: 14 @39417 has 202 MA's), (Start: 33 @39312 has 50 MA's), (46, 39234), (47, 39219), (54, 39174),

Gene: PG1_46 Start: 39627, Stop: 39202, Start Num: 33
Candidate Starts for PG1_46:
(11, 39777), (13, 39768), (15, 39753), (Start: 33 @39627 has 50 MA's), (46, 39549), (47, 39534), (54, 39489),

Gene: Pacifista_48 Start: 39420, Stop: 38893, Start Num: 14
Candidate Starts for Pacifista_48:
(Start: 14 @39420 has 202 MA's), (Start: 33 @39318 has 50 MA's), (46, 39240), (47, 39225), (54, 39180),

Gene: Phamished_46 Start: 39622, Stop: 39197, Start Num: 33
Candidate Starts for Phamished_46:
(11, 39772), (13, 39763), (15, 39748), (Start: 33 @39622 has 50 MA's), (46, 39544), (47, 39529), (54, 39484),

Gene: Phantasmagoria_45 Start: 39861, Stop: 39472, Start Num: 39
Candidate Starts for Phantasmagoria_45:

(Start: 39 @39861 has 36 MA's), (46, 39804), (51, 39762), (54, 39741), (57, 39696), (59, 39681), (61, 39672), (64, 39660), (65, 39639), (76, 39576), (78, 39570), (83, 39534), (84, 39531), (93, 39492),

Gene: Phareon_46 Start: 39425, Stop: 38901, Start Num: 14

Candidate Starts for Phareon_46:

(Start: 14 @39425 has 202 MA's), (Start: 33 @39326 has 50 MA's), (46, 39248), (47, 39233), (54, 39188),

Gene: PhatCats2014_46 Start: 39631, Stop: 39206, Start Num: 33

Candidate Starts for PhatCats2014_46:

(11, 39781), (13, 39772), (15, 39757), (Start: 33 @39631 has 50 MA's), (46, 39553), (47, 39538), (54, 39493),

Gene: PhatLouie_46 Start: 39722, Stop: 39195, Start Num: 14

Candidate Starts for PhatLouie_46:

(Start: 14 @39722 has 202 MA's), (Start: 33 @39620 has 50 MA's), (46, 39542), (47, 39527), (54, 39482),

Gene: Phelemich_44 Start: 40305, Stop: 39919, Start Num: 43

Candidate Starts for Phelemich_44:

(Start: 43 @40305 has 11 MA's), (48, 40245), (51, 40224), (59, 40146), (61, 40137), (67, 40095), (68, 40092), (71, 40062), (77, 40050), (81, 40038), (83, 40014), (87, 39996), (93, 39960),

Gene: PhenghisKhan_45 Start: 39328, Stop: 38801, Start Num: 14

Candidate Starts for PhenghisKhan_45:

(Start: 14 @39328 has 202 MA's), (Start: 33 @39226 has 50 MA's), (46, 39148), (47, 39133), (54, 39088),

Gene: Pherdinand_46 Start: 39622, Stop: 39197, Start Num: 33

Candidate Starts for Pherdinand_46:

(11, 39772), (13, 39763), (15, 39748), (Start: 33 @39622 has 50 MA's), (46, 39544), (47, 39529), (54, 39484),

Gene: Phergie_45 Start: 39319, Stop: 38792, Start Num: 14

Candidate Starts for Phergie_45:

(Start: 14 @39319 has 202 MA's), (Start: 33 @39217 has 50 MA's), (46, 39139), (47, 39124), (54, 39079),

Gene: Phipps_46 Start: 39698, Stop: 39168, Start Num: 14

Candidate Starts for Phipps_46:

(Start: 14 @39698 has 202 MA's), (Start: 33 @39593 has 50 MA's), (46, 39515), (47, 39500), (54, 39455),

Gene: Phleuron_45 Start: 39325, Stop: 38798, Start Num: 14

Candidate Starts for Phleuron_45:

(Start: 14 @39325 has 202 MA's), (Start: 33 @39223 has 50 MA's), (46, 39145), (47, 39130), (54, 39085),

Gene: PhrankReynolds_44 Start: 39325, Stop: 38798, Start Num: 14

Candidate Starts for PhrankReynolds_44:

(Start: 14 @39325 has 202 MA's), (Start: 33 @39223 has 50 MA's), (46, 39145), (47, 39130), (54, 39085),

Gene: PhrodoBaggins_45 Start: 39610, Stop: 39185, Start Num: 33
Candidate Starts for PhrodoBaggins_45:
(11, 39760), (13, 39751), (15, 39736), (Start: 33 @39610 has 50 MA's), (46, 39532), (47, 39517), (54, 39472),

Gene: Phunky_46 Start: 39722, Stop: 39198, Start Num: 14
Candidate Starts for Phunky_46:
(Start: 14 @39722 has 202 MA's), (Start: 33 @39623 has 50 MA's), (46, 39545), (47, 39530), (54, 39485),

Gene: Piglet_0045 Start: 39829, Stop: 39305, Start Num: 14
Candidate Starts for Piglet_0045:
(Start: 14 @39829 has 202 MA's), (Start: 33 @39730 has 50 MA's), (46, 39652), (47, 39637), (54, 39592),

Gene: PinheadLarry_46 Start: 39435, Stop: 38911, Start Num: 14
Candidate Starts for PinheadLarry_46:
(Start: 14 @39435 has 202 MA's), (Start: 33 @39336 has 50 MA's), (46, 39258), (47, 39243), (54, 39198),

Gene: Pinkman_45 Start: 39278, Stop: 38754, Start Num: 14
Candidate Starts for Pinkman_45:
(Start: 14 @39278 has 202 MA's), (Start: 33 @39179 has 50 MA's), (46, 39101), (47, 39086), (54, 39041),

Gene: Pipsqueak_46 Start: 39723, Stop: 39196, Start Num: 14
Candidate Starts for Pipsqueak_46:
(Start: 14 @39723 has 202 MA's), (Start: 33 @39621 has 50 MA's), (46, 39543), (47, 39528), (54, 39483),

Gene: Placalicious_45 Start: 39416, Stop: 38889, Start Num: 14
Candidate Starts for Placalicious_45:
(Start: 14 @39416 has 202 MA's), (Start: 33 @39314 has 50 MA's), (46, 39236), (47, 39221), (54, 39176),

Gene: Plmatters_46 Start: 39719, Stop: 39195, Start Num: 14
Candidate Starts for Plmatters_46:
(Start: 14 @39719 has 202 MA's), (Start: 33 @39620 has 50 MA's), (46, 39542), (47, 39527), (54, 39482),

Gene: Podrick_46 Start: 39710, Stop: 39186, Start Num: 14
Candidate Starts for Podrick_46:
(Start: 14 @39710 has 202 MA's), (Start: 33 @39611 has 50 MA's), (46, 39533), (47, 39518), (54, 39473),

Gene: Pops_46 Start: 39734, Stop: 39210, Start Num: 14
Candidate Starts for Pops_46:
(Start: 14 @39734 has 202 MA's), (Start: 33 @39635 has 50 MA's), (46, 39557), (47, 39542), (54, 39497),

Gene: Poster_40 Start: 38593, Stop: 38168, Start Num: 35
Candidate Starts for Poster_40:

(6, 38797), (8, 38761), (20, 38707), (Start: 31 @38626 has 2 MA's), (Start: 35 @38593 has 17 MA's), (51, 38485), (58, 38410), (61, 38398), (65, 38365), (67, 38356), (77, 38308), (83, 38272), (87, 38254),

Gene: Potter_45 Start: 39434, Stop: 38910, Start Num: 14

Candidate Starts for Potter_45:

(Start: 14 @39434 has 202 MA's), (Start: 33 @39335 has 50 MA's), (46, 39257), (47, 39242), (54, 39197),

Gene: Prickles_46 Start: 39710, Stop: 39186, Start Num: 14

Candidate Starts for Prickles_46:

(Start: 14 @39710 has 202 MA's), (Start: 33 @39611 has 50 MA's), (46, 39533), (47, 39518), (54, 39473),

Gene: Prince_42 Start: 39776, Stop: 39351, Start Num: 35

Candidate Starts for Prince_42:

(6, 39980), (7, 39956), (8, 39944), (20, 39890), (Start: 31 @39809 has 2 MA's), (Start: 35 @39776 has 17 MA's), (38, 39770), (51, 39668), (58, 39593), (61, 39581), (65, 39548), (67, 39539), (77, 39491), (83, 39455), (87, 39437),

Gene: ProfessorX_46 Start: 39711, Stop: 39181, Start Num: 14

Candidate Starts for ProfessorX_46:

(Start: 14 @39711 has 202 MA's), (Start: 33 @39606 has 50 MA's), (46, 39528), (47, 39513), (54, 39468),

Gene: Puhltonio_46 Start: 39726, Stop: 39202, Start Num: 14

Candidate Starts for Puhltonio_46:

(Start: 14 @39726 has 202 MA's), (Start: 33 @39627 has 50 MA's), (46, 39549), (47, 39534), (54, 39489),

Gene: QueenBeane_46 Start: 39716, Stop: 39192, Start Num: 14

Candidate Starts for QueenBeane_46:

(Start: 14 @39716 has 202 MA's), (Start: 33 @39617 has 50 MA's), (46, 39539), (47, 39524), (54, 39479),

Gene: Quisquilliae_46 Start: 39747, Stop: 39220, Start Num: 14

Candidate Starts for Quisquilliae_46:

(Start: 14 @39747 has 202 MA's), (Start: 33 @39645 has 50 MA's), (46, 39567), (47, 39552), (54, 39507),

Gene: RawrgerThat_42 Start: 39621, Stop: 39196, Start Num: 35

Candidate Starts for RawrgerThat_42:

(6, 39825), (8, 39789), (20, 39735), (Start: 31 @39654 has 2 MA's), (Start: 35 @39621 has 17 MA's), (38, 39615), (51, 39513), (58, 39438), (61, 39426), (65, 39393), (67, 39384), (77, 39336), (83, 39300), (87, 39282),

Gene: RedMaple_45 Start: 39624, Stop: 39199, Start Num: 33

Candidate Starts for RedMaple_45:

(11, 39774), (13, 39765), (15, 39750), (Start: 33 @39624 has 50 MA's), (46, 39546), (47, 39531), (54, 39486),

Gene: Reprobate_45 Start: 40310, Stop: 39924, Start Num: 43

Candidate Starts for Reprobate_45:

(Start: 43 @40310 has 11 MA's), (48, 40250), (51, 40229), (59, 40151), (61, 40142), (67, 40100), (68, 40097), (71, 40067), (77, 40055), (81, 40043), (83, 40019), (87, 40001), (93, 39965),

Gene: Rhinoforte_45 Start: 39970, Stop: 39581, Start Num: 39

Candidate Starts for Rhinoforte_45:

(Start: 39 @39970 has 36 MA's), (46, 39913), (51, 39871), (54, 39850), (57, 39805), (59, 39790), (61, 39781), (64, 39769), (65, 39748), (76, 39685), (78, 39679), (83, 39643), (84, 39640), (93, 39601),

Gene: Rich_43 Start: 39907, Stop: 39521, Start Num: 43

Candidate Starts for Rich_43:

(Start: 43 @39907 has 11 MA's), (45, 39886), (48, 39847), (51, 39826), (56, 39766), (61, 39739), (77, 39652), (83, 39616), (91, 39571),

Gene: Ricotta_46 Start: 39439, Stop: 38918, Start Num: 14

Candidate Starts for Ricotta_46:

(Start: 14 @39439 has 202 MA's), (Start: 33 @39343 has 50 MA's), (46, 39265), (47, 39250), (54, 39205),

Gene: Riggan_46 Start: 39706, Stop: 39179, Start Num: 14

Candidate Starts for Riggan_46:

(Start: 14 @39706 has 202 MA's), (Start: 33 @39604 has 50 MA's), (46, 39526), (47, 39511), (54, 39466),

Gene: Rimu_48 Start: 39452, Stop: 38928, Start Num: 14

Candidate Starts for Rimu_48:

(Start: 14 @39452 has 202 MA's), (Start: 33 @39353 has 50 MA's), (46, 39275), (47, 39260), (54, 39215),

Gene: Robyn_45 Start: 39290, Stop: 38763, Start Num: 14

Candidate Starts for Robyn_45:

(Start: 14 @39290 has 202 MA's), (Start: 33 @39188 has 50 MA's), (46, 39110), (47, 39095), (54, 39050),

Gene: Roliet_46 Start: 39718, Stop: 39188, Start Num: 14

Candidate Starts for Roliet_46:

(Start: 14 @39718 has 202 MA's), (Start: 33 @39613 has 50 MA's), (46, 39535), (47, 39520), (54, 39475),

Gene: Roscoe_47 Start: 39956, Stop: 39426, Start Num: 14

Candidate Starts for Roscoe_47:

(Start: 14 @39956 has 202 MA's), (Start: 33 @39851 has 50 MA's), (46, 39773), (47, 39758), (54, 39713),

Gene: Rosebush_44 Start: 39977, Stop: 39588, Start Num: 39

Candidate Starts for Rosebush_44:

(Start: 39 @39977 has 36 MA's), (46, 39920), (51, 39878), (54, 39857), (57, 39812), (59, 39797), (61, 39788), (64, 39776), (65, 39755), (76, 39692), (78, 39686), (83, 39650), (84, 39647), (93, 39608),

Gene: Roy17_46 Start: 39416, Stop: 38892, Start Num: 14

Candidate Starts for Roy17_46:

(Start: 14 @39416 has 202 MA's), (Start: 33 @39317 has 50 MA's), (46, 39239), (47, 39224), (54, 39179),

Gene: SDcharge11_46 Start: 39696, Stop: 39166, Start Num: 14

Candidate Starts for SDcharge11_46:

(Start: 14 @39696 has 202 MA's), (Start: 33 @39591 has 50 MA's), (46, 39513), (47, 39498), (54, 39453),

Gene: Sabella_44 Start: 39854, Stop: 39465, Start Num: 39

Candidate Starts for Sabella_44:

(Start: 39 @39854 has 36 MA's), (46, 39797), (51, 39755), (54, 39734), (57, 39689), (59, 39674), (61, 39665), (64, 39653), (65, 39632), (76, 39569), (78, 39563), (83, 39527), (84, 39524), (93, 39485),

Gene: Saguaro_46 Start: 41034, Stop: 40648, Start Num: 43

Candidate Starts for Saguaro_46:

(Start: 43 @41034 has 11 MA's), (51, 40953), (59, 40875), (65, 40833), (67, 40824), (69, 40815),

Gene: Samaymay_46 Start: 39716, Stop: 39192, Start Num: 14

Candidate Starts for Samaymay_46:

(Start: 14 @39716 has 202 MA's), (Start: 33 @39617 has 50 MA's), (46, 39539), (47, 39524), (54, 39479),

Gene: SassyCat97_45 Start: 39422, Stop: 38898, Start Num: 14

Candidate Starts for SassyCat97_45:

(Start: 14 @39422 has 202 MA's), (Start: 33 @39323 has 50 MA's), (46, 39245), (47, 39230), (54, 39185),

Gene: Schadenfreude_45 Start: 39264, Stop: 38749, Start Num: 14

Candidate Starts for Schadenfreude_45:

(Start: 14 @39264 has 202 MA's), (Start: 33 @39162 has 50 MA's), (46, 39096), (47, 39081), (54, 39036),

Gene: Schueller_46 Start: 39435, Stop: 38911, Start Num: 14

Candidate Starts for Schueller_46:

(Start: 14 @39435 has 202 MA's), (Start: 33 @39336 has 50 MA's), (46, 39258), (47, 39243), (54, 39198),

Gene: Scoot17C_46 Start: 39616, Stop: 39191, Start Num: 33

Candidate Starts for Scoot17C_46:

(11, 39766), (13, 39757), (15, 39742), (Start: 33 @39616 has 50 MA's), (46, 39538), (47, 39523), (54, 39478),

Gene: Scrick_46 Start: 39446, Stop: 38916, Start Num: 14

Candidate Starts for Scrick_46:

(Start: 14 @39446 has 202 MA's), (Start: 33 @39341 has 50 MA's), (46, 39263), (47, 39248), (54, 39203),

Gene: Selr12_47 Start: 39449, Stop: 38919, Start Num: 14

Candidate Starts for Selr12_47:

(Start: 14 @39449 has 202 MA's), (Start: 33 @39344 has 50 MA's), (46, 39266), (47, 39251), (54, 39206),

Gene: Serendipitous_44 Start: 39865, Stop: 39479, Start Num: 43

Candidate Starts for Serendipitous_44:

(30, 39916), (Start: 43 @39865 has 11 MA's), (45, 39844), (48, 39805), (51, 39784), (56, 39724), (61, 39697), (77, 39610), (83, 39574), (87, 39556), (93, 39520),

Gene: Serendipity_46 Start: 39740, Stop: 39216, Start Num: 14
Candidate Starts for Serendipity_46:
(Start: 14 @39740 has 202 MA's), (Start: 33 @39641 has 50 MA's), (46, 39563), (47, 39548), (54, 39503),

Gene: Serpentine_0046 Start: 39721, Stop: 39197, Start Num: 14
Candidate Starts for Serpentine_0046:
(Start: 14 @39721 has 202 MA's), (Start: 33 @39622 has 50 MA's), (46, 39544), (47, 39529), (54, 39484),

Gene: Shatter_39 Start: 33273, Stop: 32851, Start Num: 34
Candidate Starts for Shatter_39:
(Start: 34 @33273 has 10 MA's), (51, 33156), (54, 33138), (58, 33081), (71, 32994), (77, 32979), (85, 32934), (92, 32892),

Gene: Sheila_46 Start: 39758, Stop: 39234, Start Num: 14
Candidate Starts for Sheila_46:
(Start: 14 @39758 has 202 MA's), (Start: 33 @39659 has 50 MA's), (46, 39581), (47, 39566), (54, 39521),

Gene: ShiVal_46 Start: 39720, Stop: 39190, Start Num: 14
Candidate Starts for ShiVal_46:
(Start: 14 @39720 has 202 MA's), (Start: 33 @39615 has 50 MA's), (46, 39537), (47, 39522), (54, 39477),

Gene: Sigman_46 Start: 39607, Stop: 39182, Start Num: 33
Candidate Starts for Sigman_46:
(11, 39757), (13, 39748), (15, 39733), (Start: 33 @39607 has 50 MA's), (46, 39529), (47, 39514), (54, 39469),

Gene: Simielle_45 Start: 39409, Stop: 38885, Start Num: 14
Candidate Starts for Simielle_45:
(Start: 14 @39409 has 202 MA's), (Start: 33 @39310 has 50 MA's), (46, 39232), (47, 39217), (54, 39172),

Gene: SirJeffery_45 Start: 40036, Stop: 39650, Start Num: 43
Candidate Starts for SirJeffery_45:
(18, 40174), (Start: 43 @40036 has 11 MA's), (45, 40015), (48, 39976), (51, 39955), (56, 39895), (61, 39868), (77, 39781), (83, 39745), (87, 39727), (93, 39691), (97, 39670),

Gene: Sisko_39 Start: 34043, Stop: 33624, Start Num: 34
Candidate Starts for Sisko_39:
(Start: 34 @34043 has 10 MA's), (51, 33926), (54, 33908), (85, 33707), (90, 33671), (92, 33665),

Gene: Skippy_46 Start: 39704, Stop: 39180, Start Num: 14
Candidate Starts for Skippy_46:
(Start: 14 @39704 has 202 MA's), (Start: 33 @39605 has 50 MA's), (46, 39527), (47, 39512), (54, 39467),

Gene: Slatt_46 Start: 39730, Stop: 39206, Start Num: 14
Candidate Starts for Slatt_46:

(Start: 14 @39730 has 202 MA's), (Start: 33 @39631 has 50 MA's), (46, 39553), (47, 39538), (54, 39493),

Gene: Soile_46 Start: 39334, Stop: 38909, Start Num: 33

Candidate Starts for Soile_46:

(Start: 14 @39433 has 202 MA's), (Start: 33 @39334 has 50 MA's), (46, 39256), (47, 39241), (54, 39196),

Gene: Solosis_45 Start: 39431, Stop: 38907, Start Num: 14

Candidate Starts for Solosis_45:

(Start: 14 @39431 has 202 MA's), (Start: 33 @39332 has 50 MA's), (46, 39254), (47, 39239), (54, 39194),

Gene: Sophia_45 Start: 39431, Stop: 38907, Start Num: 14

Candidate Starts for Sophia_45:

(Start: 14 @39431 has 202 MA's), (Start: 33 @39332 has 50 MA's), (46, 39254), (47, 39239), (54, 39194),

Gene: Soto_46 Start: 39730, Stop: 39200, Start Num: 14

Candidate Starts for Soto_46:

(Start: 14 @39730 has 202 MA's), (Start: 33 @39625 has 50 MA's), (46, 39547), (47, 39532), (54, 39487),

Gene: Sour_44 Start: 37942, Stop: 37568, Start Num: 37

Candidate Starts for Sour_44:

(10, 38089), (22, 38026), (Start: 37 @37942 has 1 MA's), (51, 37858), (54, 37840), (61, 37771), (62, 37768), (79, 37684), (85, 37645), (98, 37582),

Gene: Spartan300_46 Start: 39716, Stop: 39186, Start Num: 14

Candidate Starts for Spartan300_46:

(Start: 14 @39716 has 202 MA's), (Start: 33 @39611 has 50 MA's), (46, 39533), (47, 39518), (54, 39473),

Gene: Squid_46 Start: 39422, Stop: 38898, Start Num: 14

Candidate Starts for Squid_46:

(Start: 14 @39422 has 202 MA's), (Start: 33 @39323 has 50 MA's), (46, 39245), (47, 39230), (54, 39185),

Gene: Squiggle_46 Start: 39440, Stop: 38910, Start Num: 14

Candidate Starts for Squiggle_46:

(Start: 14 @39440 has 202 MA's), (Start: 33 @39335 has 50 MA's), (46, 39257), (47, 39242), (54, 39197),

Gene: StAugustine_60 Start: 48208, Stop: 47849, Start Num: 41

Candidate Starts for StAugustine_60:

(24, 48319), (25, 48304), (29, 48274), (Start: 41 @48208 has 1 MA's), (51, 48115), (63, 48019), (68, 47983), (83, 47917), (87, 47899), (88, 47896),

Gene: Stinger_40 Start: 38231, Stop: 37773, Start Num: 31

Candidate Starts for Stinger_40:

(6, 38399), (20, 38309), (Start: 31 @38231 has 2 MA's), (Start: 35 @38198 has 17 MA's), (51, 38090), (58, 38015), (61, 38003), (64, 37991), (65, 37970), (67, 37961), (77, 37913), (83, 37877), (95, 37814), (99, 37781),

Gene: StinkyVeggy_46 Start: 40176, Stop: 39790, Start Num: 43

Candidate Starts for StinkyVeggy_46:

(Start: 43 @40176 has 11 MA's), (45, 40155), (48, 40116), (51, 40095), (56, 40035), (59, 40017), (61, 40008), (83, 39885), (87, 39867), (93, 39831),

Gene: Struggle_45 Start: 39272, Stop: 38748, Start Num: 14

Candidate Starts for Struggle_45:

(Start: 14 @39272 has 202 MA's), (Start: 33 @39173 has 50 MA's), (46, 39095), (47, 39080), (54, 39035),

Gene: Suffolk_46 Start: 39721, Stop: 39197, Start Num: 14

Candidate Starts for Suffolk_46:

(Start: 14 @39721 has 202 MA's), (Start: 33 @39622 has 50 MA's), (46, 39544), (47, 39529), (54, 39484),

Gene: Suigeneris_45 Start: 40039, Stop: 39653, Start Num: 43

Candidate Starts for Suigeneris_45:

(18, 40177), (Start: 43 @40039 has 11 MA's), (45, 40018), (48, 39979), (51, 39958), (56, 39898), (61, 39871), (77, 39784), (83, 39748), (87, 39730), (93, 39694), (97, 39673),

Gene: Surely_46 Start: 39727, Stop: 39200, Start Num: 14

Candidate Starts for Surely_46:

(Start: 14 @39727 has 202 MA's), (Start: 33 @39625 has 50 MA's), (46, 39547), (47, 39532), (54, 39487),

Gene: Swiphy_48 Start: 39722, Stop: 39195, Start Num: 14

Candidate Starts for Swiphy_48:

(Start: 14 @39722 has 202 MA's), (Start: 33 @39620 has 50 MA's), (46, 39542), (47, 39527), (54, 39482),

Gene: Swish_46 Start: 39608, Stop: 39183, Start Num: 33

Candidate Starts for Swish_46:

(11, 39758), (13, 39749), (15, 39734), (Start: 33 @39608 has 50 MA's), (46, 39530), (47, 39515), (54, 39470),

Gene: TA17A_45 Start: 39844, Stop: 39455, Start Num: 39

Candidate Starts for TA17A_45:

(Start: 39 @39844 has 36 MA's), (46, 39787), (51, 39745), (54, 39724), (57, 39679), (59, 39664), (61, 39655), (64, 39643), (65, 39622), (76, 39559), (78, 39553), (83, 39517), (84, 39514), (93, 39475),

Gene: TallGrassMM_46 Start: 39346, Stop: 38822, Start Num: 14

Candidate Starts for TallGrassMM_46:

(Start: 14 @39346 has 202 MA's), (Start: 33 @39247 has 50 MA's), (46, 39169), (47, 39154), (54, 39109),

Gene: Telesworld_45 Start: 39419, Stop: 38895, Start Num: 14

Candidate Starts for Telesworld_45:

(Start: 14 @39419 has 202 MA's), (Start: 33 @39320 has 50 MA's), (46, 39242), (47, 39227), (54, 39182),

Gene: Thonko_44 Start: 37338, Stop: 36958, Start Num: 43

Candidate Starts for Thonko_44:

(18, 37470), (26, 37404), (Start: 43 @37338 has 11 MA's), (51, 37257), (54, 37239),

Gene: Thora_46 Start: 39726, Stop: 39199, Start Num: 14

Candidate Starts for Thora_46:

(Start: 14 @39726 has 202 MA's), (Start: 33 @39624 has 50 MA's), (46, 39546), (47, 39531), (54, 39486),

Gene: ThreeOh3D2_46 Start: 39622, Stop: 39197, Start Num: 33

Candidate Starts for ThreeOh3D2_46:

(11, 39772), (13, 39763), (15, 39748), (Start: 33 @39622 has 50 MA's), (46, 39544), (47, 39529), (54, 39484),

Gene: Thunderbird_46 Start: 39427, Stop: 38903, Start Num: 14

Candidate Starts for Thunderbird_46:

(Start: 14 @39427 has 202 MA's), (Start: 33 @39328 has 50 MA's), (46, 39250), (47, 39235), (54, 39190),

Gene: Timmi_45 Start: 39432, Stop: 38908, Start Num: 14

Candidate Starts for Timmi_45:

(Start: 14 @39432 has 202 MA's), (Start: 33 @39333 has 50 MA's), (46, 39255), (47, 39240), (54, 39195),

Gene: Tinciduntolum_46 Start: 39982, Stop: 39593, Start Num: 39

Candidate Starts for Tinciduntolum_46:

(Start: 39 @39982 has 36 MA's), (46, 39925), (51, 39883), (54, 39862), (57, 39817), (59, 39802), (61, 39793), (64, 39781), (65, 39760), (76, 39697), (78, 39691), (83, 39655), (84, 39652), (93, 39613),

Gene: TomBombadil_46 Start: 39717, Stop: 39193, Start Num: 14

Candidate Starts for TomBombadil_46:

(Start: 14 @39717 has 202 MA's), (Start: 33 @39618 has 50 MA's), (46, 39540), (47, 39525), (54, 39480),

Gene: Tomlarah_46 Start: 39714, Stop: 39184, Start Num: 14

Candidate Starts for Tomlarah_46:

(Start: 14 @39714 has 202 MA's), (Start: 33 @39609 has 50 MA's), (46, 39531), (47, 39516), (54, 39471),

Gene: Toni_45 Start: 39424, Stop: 38900, Start Num: 14

Candidate Starts for Toni_45:

(Start: 14 @39424 has 202 MA's), (Start: 33 @39325 has 50 MA's), (46, 39247), (47, 39232), (54, 39187),

Gene: Tooj_46 Start: 39781, Stop: 39257, Start Num: 14

Candidate Starts for Tooj_46:

(Start: 14 @39781 has 202 MA's), (Start: 33 @39682 has 50 MA's), (46, 39604), (47, 39589), (54, 39544),

Gene: Tres_45 Start: 39857, Stop: 39468, Start Num: 39

Candidate Starts for Tres_45:

(Start: 39 @39857 has 36 MA's), (46, 39800), (51, 39758), (54, 39737), (57, 39692), (59, 39677), (61, 39668), (64, 39656), (65, 39635), (76, 39572), (78, 39566), (83, 39530), (84, 39527), (93, 39488),

Gene: True_45 Start: 39424, Stop: 38897, Start Num: 14

Candidate Starts for True_45:

(Start: 14 @39424 has 202 MA's), (Start: 33 @39322 has 50 MA's), (46, 39244), (47, 39229), (54, 39184),

Gene: Trypo_46 Start: 39618, Stop: 39193, Start Num: 33

Candidate Starts for Trypo_46:

(11, 39768), (13, 39759), (15, 39744), (Start: 33 @39618 has 50 MA's), (46, 39540), (47, 39525), (54, 39480),

Gene: TyrionL_45 Start: 39280, Stop: 38756, Start Num: 14

Candidate Starts for TyrionL_45:

(Start: 14 @39280 has 202 MA's), (Start: 33 @39181 has 50 MA's), (46, 39103), (47, 39088), (54, 39043),

Gene: UAch1_46 Start: 39733, Stop: 39206, Start Num: 14

Candidate Starts for UAch1_46:

(Start: 14 @39733 has 202 MA's), (Start: 33 @39631 has 50 MA's), (46, 39553), (47, 39538), (54, 39493),

Gene: UncleHowie_46 Start: 39423, Stop: 38896, Start Num: 14

Candidate Starts for UncleHowie_46:

(Start: 14 @39423 has 202 MA's), (Start: 33 @39321 has 50 MA's), (46, 39243), (47, 39228), (54, 39183),

Gene: Usavi_46 Start: 39721, Stop: 39197, Start Num: 14

Candidate Starts for Usavi_46:

(Start: 14 @39721 has 202 MA's), (Start: 33 @39622 has 50 MA's), (46, 39544), (47, 39529), (54, 39484),

Gene: Vaishali24_45 Start: 39382, Stop: 38858, Start Num: 14

Candidate Starts for Vaishali24_45:

(Start: 14 @39382 has 202 MA's), (Start: 33 @39283 has 50 MA's), (46, 39205), (47, 39190), (54, 39145),

Gene: Valjean_46 Start: 39719, Stop: 39189, Start Num: 14

Candidate Starts for Valjean_46:

(Start: 14 @39719 has 202 MA's), (Start: 33 @39614 has 50 MA's), (46, 39536), (47, 39521), (54, 39476),

Gene: Vaticameos_42 Start: 37411, Stop: 36887, Start Num: 14

Candidate Starts for Vaticameos_42:

(Start: 14 @37411 has 202 MA's), (Start: 33 @37312 has 50 MA's), (46, 37234), (47, 37219), (54, 37174),

Gene: Veritas_45 Start: 39286, Stop: 38759, Start Num: 14

Candidate Starts for Veritas_45:

(Start: 14 @39286 has 202 MA's), (Start: 33 @39184 has 50 MA's), (46, 39106), (47, 39091), (54, 39046),

Gene: VioletZ_42 Start: 39692, Stop: 39267, Start Num: 35

Candidate Starts for VioletZ_42:

(6, 39896), (7, 39872), (8, 39860), (20, 39806), (Start: 31 @39725 has 2 MA's), (Start: 35 @39692 has 17 MA's), (38, 39686), (51, 39584), (58, 39509), (61, 39497), (65, 39464), (67, 39455), (77, 39407),

(83, 39371), (87, 39353),

Gene: Virapocalypse_46 Start: 39714, Stop: 39184, Start Num: 14

Candidate Starts for Virapocalypse_46:

(Start: 14 @39714 has 202 MA's), (Start: 33 @39609 has 50 MA's), (46, 39531), (47, 39516), (54, 39471),

Gene: Virgeve_45 Start: 39491, Stop: 38964, Start Num: 14

Candidate Starts for Virgeve_45:

(Start: 14 @39491 has 202 MA's), (Start: 33 @39389 has 50 MA's), (46, 39311), (47, 39296), (54, 39251),

Gene: Vista_46 Start: 39724, Stop: 39197, Start Num: 14

Candidate Starts for Vista_46:

(Start: 14 @39724 has 202 MA's), (Start: 33 @39622 has 50 MA's), (46, 39544), (47, 39529), (54, 39484),

Gene: Vivaldi_46 Start: 39750, Stop: 39226, Start Num: 14

Candidate Starts for Vivaldi_46:

(Start: 14 @39750 has 202 MA's), (Start: 33 @39651 has 50 MA's), (46, 39573), (47, 39558), (54, 39513),

Gene: Vortex_46 Start: 39427, Stop: 38903, Start Num: 14

Candidate Starts for Vortex_46:

(Start: 14 @39427 has 202 MA's), (Start: 33 @39328 has 50 MA's), (46, 39250), (47, 39235), (54, 39190),

Gene: Waleliano_41 Start: 39619, Stop: 39194, Start Num: 35

Candidate Starts for Waleliano_41:

(6, 39823), (7, 39799), (8, 39787), (20, 39733), (Start: 31 @39652 has 2 MA's), (Start: 35 @39619 has 17 MA's), (51, 39511), (58, 39436), (61, 39424), (65, 39391), (67, 39382), (77, 39334), (83, 39298), (87, 39280),

Gene: Wallhey_45 Start: 39284, Stop: 38760, Start Num: 14

Candidate Starts for Wallhey_45:

(Start: 14 @39284 has 202 MA's), (Start: 33 @39185 has 50 MA's), (46, 39107), (47, 39092), (54, 39047),

Gene: Waterdiva_46 Start: 39716, Stop: 39189, Start Num: 14

Candidate Starts for Waterdiva_46:

(Start: 14 @39716 has 202 MA's), (Start: 33 @39614 has 50 MA's), (46, 39536), (47, 39521), (54, 39476),

Gene: Weher20_46 Start: 39715, Stop: 39188, Start Num: 14

Candidate Starts for Weher20_46:

(Start: 14 @39715 has 202 MA's), (Start: 33 @39613 has 50 MA's), (46, 39535), (47, 39520), (54, 39475),

Gene: West99_45 Start: 39977, Stop: 39588, Start Num: 39

Candidate Starts for West99_45:

(Start: 39 @39977 has 36 MA's), (46, 39920), (51, 39878), (54, 39857), (57, 39812), (59, 39797), (61, 39788), (64, 39776), (65, 39755), (76, 39692), (78, 39686), (83, 39650), (84, 39647), (93, 39608),

Gene: Windsor_45 Start: 39420, Stop: 38893, Start Num: 14

Candidate Starts for Windsor_45:

(Start: 14 @39420 has 202 MA's), (Start: 33 @39318 has 50 MA's), (46, 39240), (47, 39225), (54, 39180),

Gene: Wooper_41 Start: 35248, Stop: 34859, Start Num: 39

Candidate Starts for Wooper_41:

(3, 35497), (Start: 39 @35248 has 36 MA's), (48, 35188), (50, 35173), (58, 35080), (61, 35068), (65, 35035), (77, 34987), (80, 34978), (87, 34930),

Gene: Xavier_45 Start: 39434, Stop: 38910, Start Num: 14

Candidate Starts for Xavier_45:

(Start: 14 @39434 has 202 MA's), (Start: 33 @39335 has 50 MA's), (46, 39257), (47, 39242), (54, 39197),

Gene: Yago84_39 Start: 34117, Stop: 33698, Start Num: 34

Candidate Starts for Yago84_39:

(Start: 34 @34117 has 10 MA's), (51, 34000), (54, 33982), (85, 33781), (90, 33745), (92, 33739),

Gene: Yoshand_46 Start: 39621, Stop: 39196, Start Num: 33

Candidate Starts for Yoshand_46:

(11, 39771), (13, 39762), (15, 39747), (Start: 33 @39621 has 50 MA's), (46, 39543), (47, 39528), (54, 39483),

Gene: YouGoGlencoco_46 Start: 39718, Stop: 39191, Start Num: 14

Candidate Starts for YouGoGlencoco_46:

(Start: 14 @39718 has 202 MA's), (Start: 33 @39616 has 50 MA's), (46, 39538), (47, 39523), (54, 39478),

Gene: Zaider_47 Start: 39948, Stop: 39421, Start Num: 14

Candidate Starts for Zaider_47:

(Start: 14 @39948 has 202 MA's), (Start: 33 @39846 has 50 MA's), (46, 39768), (47, 39753), (54, 39708),

Gene: Zelda_46 Start: 39765, Stop: 39238, Start Num: 14

Candidate Starts for Zelda_46:

(Start: 14 @39765 has 202 MA's), (Start: 33 @39663 has 50 MA's), (46, 39585), (47, 39570), (54, 39525),

Gene: Zemanar_42 Start: 39622, Stop: 39197, Start Num: 35

Candidate Starts for Zemanar_42:

(6, 39826), (7, 39802), (8, 39790), (20, 39736), (Start: 31 @39655 has 2 MA's), (Start: 35 @39622 has 17 MA's), (38, 39616), (51, 39514), (58, 39439), (61, 39427), (65, 39394), (67, 39385), (77, 39337), (83, 39301), (87, 39283),

Gene: Zonia_46 Start: 39635, Stop: 39210, Start Num: 33

Candidate Starts for Zonia_46:

(Start: 33 @39635 has 50 MA's), (46, 39557), (47, 39542), (54, 39497),