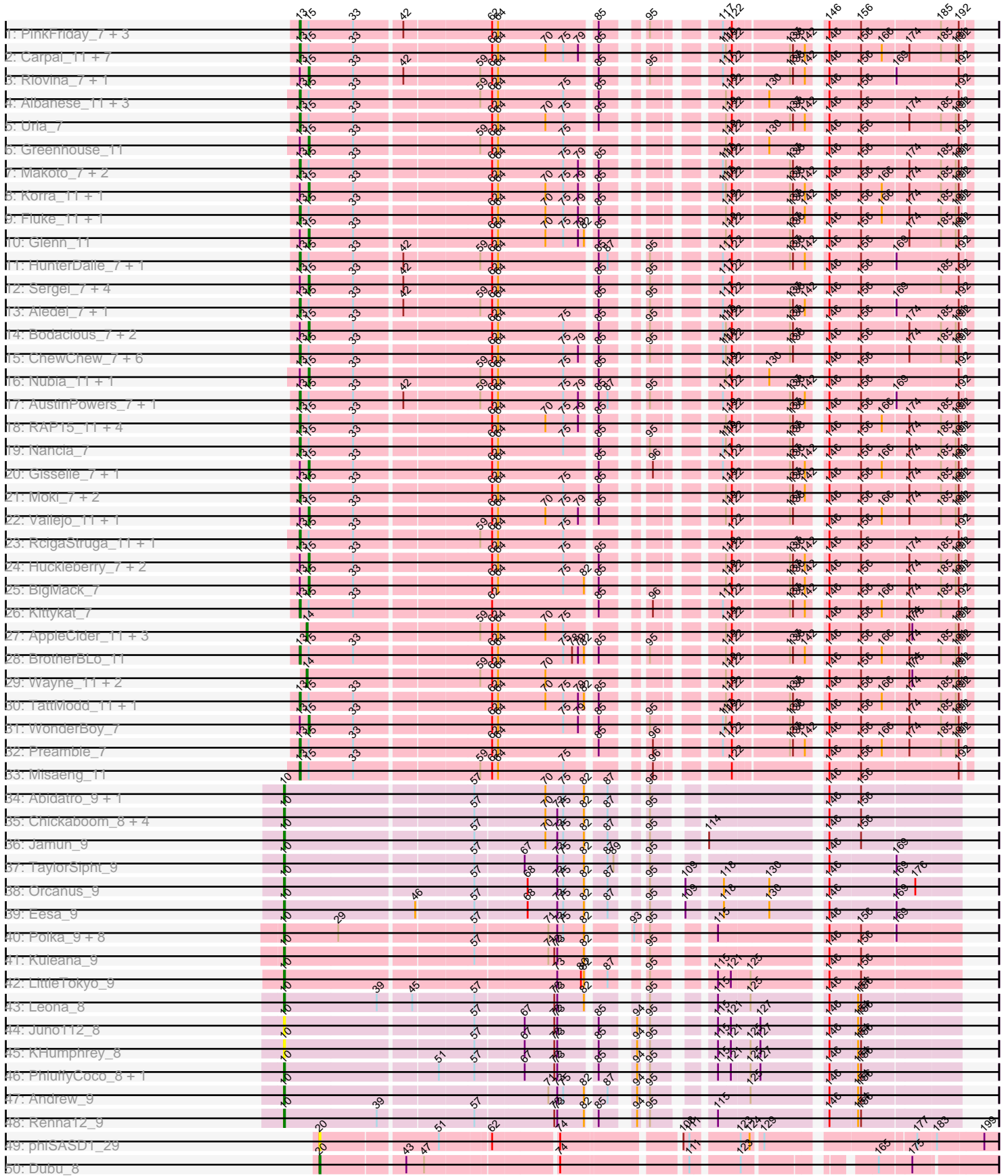
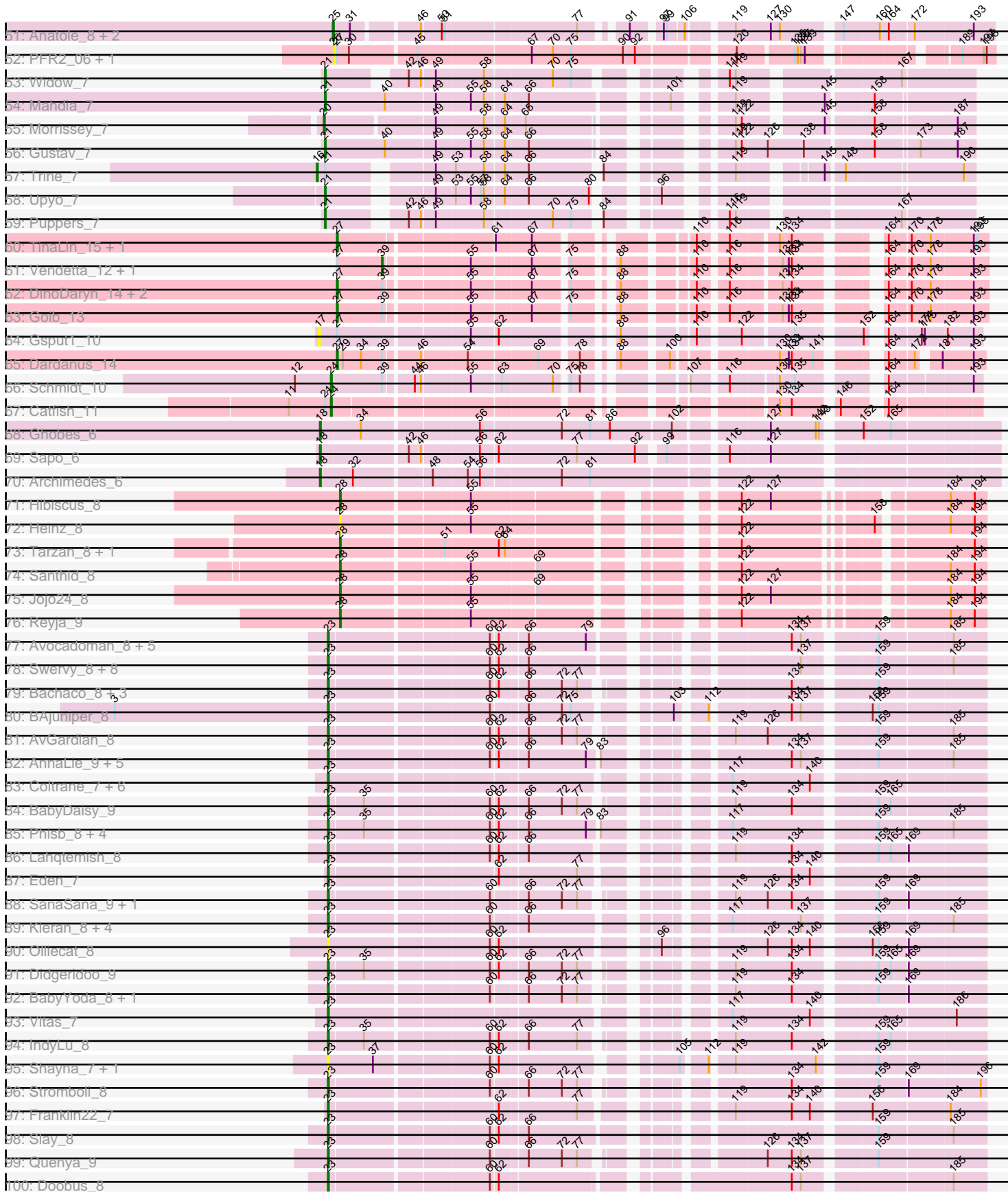


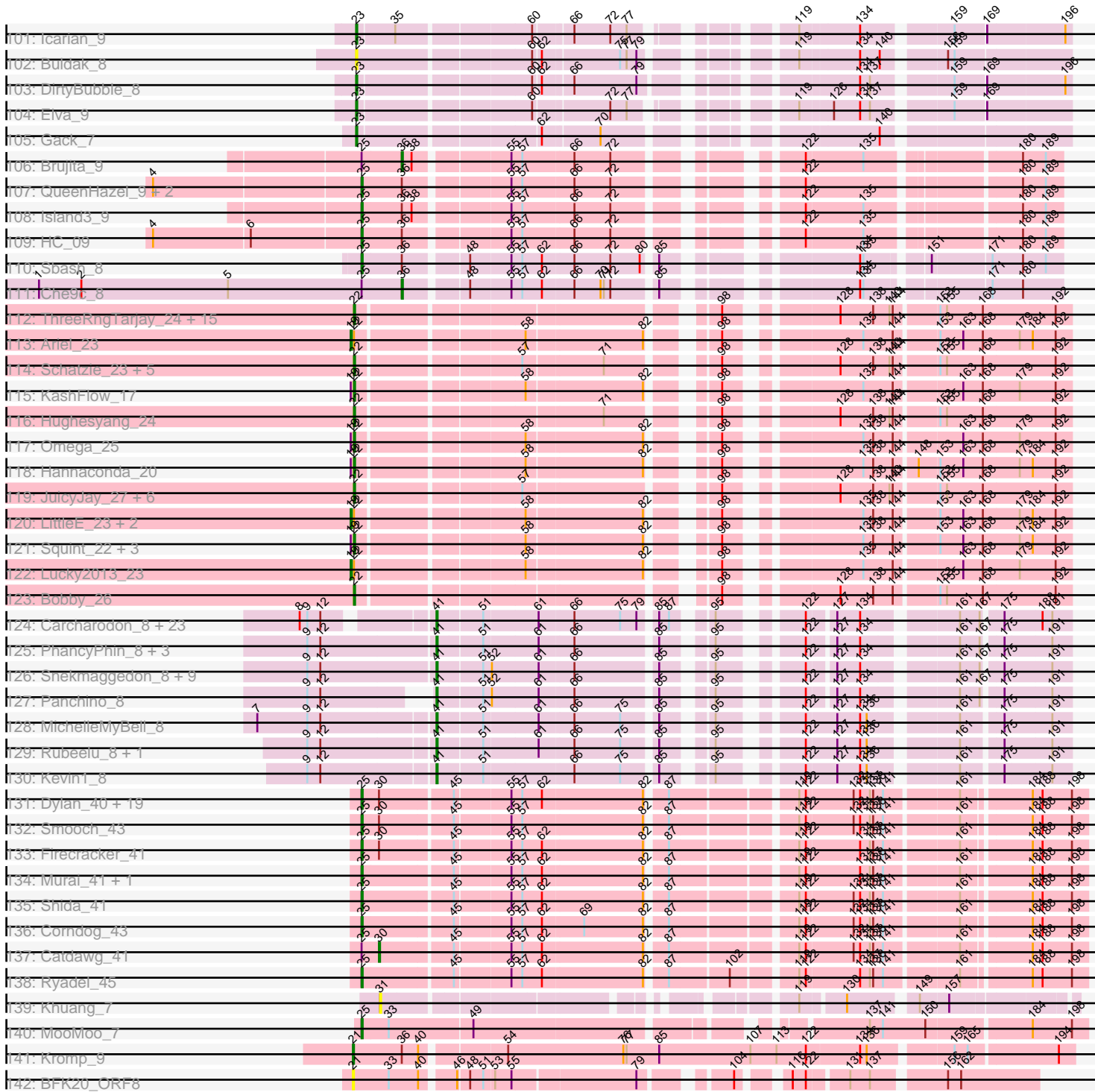
Pham 171140



Pham 171140



Pham 171140



Note: Tracks are now grouped by subcluster and scaled. Switching in subcluster is indicated by changes in track color. Track scale is now set by default to display the region 30 bp upstream of start 1 to 30 bp downstream of the last possible start. If this default region is judged to be packed too tightly with annotated starts, the track will be further scaled to only show that region of the ORF with annotated starts. This action will be indicated by adding "Zoomed" to the title. For starts, yellow indicates the location of called starts comprised solely of Glimmer/GeneMark auto-annotations, green indicates the location of called starts with at least 1 manual gene annotation.

Pham 171140 Report

This analysis was run 07/10/24 on database version 566.

Pham number 171140 has 342 members, 32 are drafts.

Phages represented in each track:

- Track 1 : PinkFriday_7, Pumancara_7, Maria1952_7, Supakev_7
- Track 2 : Carpal_11, Wawa_11, Cholula_11, Dino_11, Kalizoi_11, Potatoes_11, Immaculata_11, Beethoven_11
- Track 3 : Riovina_7, Eunoia_7
- Track 4 : Albanese_11, Lakshmi_11, GreenHearts_11, Joann_11
- Track 5 : Urla_7
- Track 6 : Greenhouse_11
- Track 7 : Makoto_7, Lucy_7, Pterodactyl_7
- Track 8 : Korra_11, Zorro_11
- Track 9 : Fluke_11, Rozby_11
- Track 10 : Glenn_11
- Track 11 : HunterDalle_7, Vulture_7
- Track 12 : Sergei_7, Temper16_7, Daiboju_7, KingBob_7, Herb_7
- Track 13 : Aledel_7, OMalley_7
- Track 14 : Bodacious_7, CristinaYang_7, Lasagna_7
- Track 15 : ChewChew_7, DrRobert_7, PitaDog_7, Christian_7, Lennox_7, OurGirlNessie_7, LilStuart_7
- Track 16 : Nubia_11, Oxynfrius_11
- Track 17 : AustinPowers_7, Chridison_7
- Track 18 : RAP15_11, Jumboset_11, Riverdale_11, MeganNoll_11, Savage2526_11
- Track 19 : Nancia_7
- Track 20 : Gisselle_7, DreamTeam_7
- Track 21 : Moki_7, Bennie_7, HeadNerd_7
- Track 22 : Vallejo_11, Scuttle_11
- Track 23 : RcigaStruga_11, Huntingdon_11
- Track 24 : Huckleberry_7, EstebanJulior_7, MamaPearl_7
- Track 25 : BigMack_7
- Track 26 : Kittykat_7
- Track 27 : AppleCider_11, Litotes_11, PartyCup_11, CallieOMalley_11
- Track 28 : BrotherBLo_11
- Track 29 : Wayne_11, Suppi_11, Canowicakte_11
- Track 30 : TattModd_11, MrGloopy_11
- Track 31 : WonderBoy_7
- Track 32 : Preamble_7
- Track 33 : Misaeng_11
- Track 34 : Abidatro_9, Galaxy_9

- Track 35 : Chickaboom_8, Vulpecula_9, Basilisk_9, Ruchi_9, Brynnie_9
- Track 36 : Jamun_9
- Track 37 : TaylorSipht_9
- Track 38 : Orcanus_9
- Track 39 : Eesa_9
- Track 40 : Polka_9, Coral_9, Daob_10, Melons_10, Kepler_9, HannahPhantana_10, Amelia_10, Cote_10, Lunar_10
- Track 41 : Kuleana_9
- Track 42 : LittleTokyo_9
- Track 43 : Leona_8
- Track 44 : Juno112_8
- Track 45 : KHumphrey_8
- Track 46 : PhluffyCoco_8, RedFox_8
- Track 47 : Andrew_9
- Track 48 : Renna12_9
- Track 49 : phiSASD1_29
- Track 50 : Dubu_8
- Track 51 : Anatole_8, B3_8, E1_8
- Track 52 : PFR2_06, PFR1_06
- Track 53 : Widow_7
- Track 54 : Mahdia_7
- Track 55 : Morrissey_7
- Track 56 : Gustav_7
- Track 57 : Trine_7
- Track 58 : Upyo_7
- Track 59 : Puppies_7
- Track 60 : TinaLin_15, Banquo_16
- Track 61 : Vendetta_12, Splinter_12
- Track 62 : DinoDaryn_14, Huffy_14, TZGordon_14
- Track 63 : Goib_13
- Track 64 : Gspu1_10
- Track 65 : Dardanus_14
- Track 66 : Schmidt_10
- Track 67 : Catfish_11
- Track 68 : Ghobes_6
- Track 69 : Sapo_6
- Track 70 : Archimedes_6
- Track 71 : Hibiscus_8
- Track 72 : Heinz_8
- Track 73 : Tarzan_8, DonkeyMan_8
- Track 74 : Santhid_8
- Track 75 : Jojo24_8
- Track 76 : Reyja_9
- Track 77 : Avocadoman_8, Johnathan_8, Albright_8, Arroyo_9, LimaBean_8, Abigail_8
- Track 78 : Swervy_8, Jovita_8, SarBear_8, QMacho_9, TukTuk_8, Nicky22_9, Cashington_8, Eula_8, Finalfrontier_9
- Track 79 : Bachaco_8, Celaena_8, FlameThrower_8, Katzastrophic_8
- Track 80 : BAjuniper_8
- Track 81 : AvGardian_8
- Track 82 : AnnaLie_9, SansAfet_8, DickRichards_8, Burritobowl_8, BelmontSKP_9, CroZenni_8

- Track 83 : Coltrane_7, Skylord_7, Clayda5_7, Rollins_7, Brahms_7, Armstrong_7, Bernstein_7
- Track 84 : BabyDaisy_9
- Track 85 : Phisb_8, BubbaBear_8, Albedo_8, Lynlen_8, Kenzers_8
- Track 86 : Lahqtemish_8
- Track 87 : Eden_7
- Track 88 : SanaSana_9, Stoor_8
- Track 89 : Kieran_8, Rona_8, ChiliPepper_8, Sharkboy_8, Dismas_8
- Track 90 : Olliecat_8
- Track 91 : Didgeridoo_9
- Track 92 : BabyYoda_8, Loviatar_15
- Track 93 : Vitas_7
- Track 94 : IndyLu_8
- Track 95 : Shayna_7, SunnyD_7
- Track 96 : Stromboli_8
- Track 97 : Franklin22_7
- Track 98 : Slay_8
- Track 99 : Quenya_9
- Track 100 : Doobus_8
- Track 101 : Icarian_9
- Track 102 : Buldak_8
- Track 103 : DirtyBubble_8
- Track 104 : Elva_9
- Track 105 : Gack_7
- Track 106 : Brujita_9
- Track 107 : QueenHazel_9, Xula_8, Babsiella_9
- Track 108 : Island3_9
- Track 109 : HC_09
- Track 110 : Sbash_8
- Track 111 : Che9c_8
- Track 112 : ThreeRngTarjay_24, Ejimix_26, Phoebus_25, Beem_25, Bagrid_23, Kalah2_26, Pound_25, EricMillard_25, Redno2_24, DmpstrDiver_24, Thibault_21, BAKA_22, HokkenD_20, Dallas_25, Halley_25, Optimus_23
- Track 113 : Ariel_23
- Track 114 : Schatzie_23, Dove_24, NihilNomen_24, Wanda_26, Bombitas_22, Klein_25
- Track 115 : KashFlow_17
- Track 116 : Hughesyang_24
- Track 117 : Omega_25
- Track 118 : Hannaconda_20
- Track 119 : JuicyJay_27, Minerva_25, Constella_20, Zelink_26, Yeet_23, Odette_24, Duke13_22
- Track 120 : LittleE_23, Courthouse_23, MiaZeal_23
- Track 121 : Squint_22, Porcelain_23, Superphikiman_23, Gonephishing_21
- Track 122 : Lucky2013_23
- Track 123 : Bobby_26
- Track 124 : Carcharodon_8, Bosection6_8, Parmesanjohn_8, Andies_8, Duplicity_8, Silvafighter_8, Journey_8, Silvy_8, Melville_8, Xeno_8, Schnauzer_8, Phloss_8, Tapioca_8, Pipsqueaks_8, Chewbacca_8, Philonius_8, Scitech_8, Fulbright_8, Magsby_8, Charlie_8, Xerxes_8, Aggie_8, Smurph_8, Gex_8
- Track 125 : PhancyPhin_8, Raymond7_8, Shweta_8, Phrann_8
- Track 126 : Snekmaggedon_8, Redi_8, ShrimpFriedEgg_8, Rebel_8, BabeRuth_8, Purgamenstris_8, Jamie19_8, SkinnyPete_8, SpongeBob_8, Nенаe_8

- Track 127 : Panchino_8
- Track 128 : MichelleMyBell_8
- Track 129 : Rubeelu_8, Butters_8
- Track 130 : Kevin1_8
- Track 131 : Dylan_40, TelAviv_38, Zakhe101_41, Ashwin_42, Familton_42, Bora_38, Winget_42, FoulBall_38, Blessica_42, NiebruSaylor_40, Mori_40, SchoolBus_41, YungJamal_44, Wildflower_41, JangDynasty_41, Vorrps_40, Alkhayr_39, Schuy_42, MadKillah_42, Idergollasper_41
- Track 132 : Smooch_43
- Track 133 : Firecracker_41
- Track 134 : Murai_41, Krili_40
- Track 135 : Shida_41
- Track 136 : Corndog_43
- Track 137 : Catdawg_41
- Track 138 : Ryadel_45
- Track 139 : Khuang_7
- Track 140 : MooMoo_7
- Track 141 : Kromp_9
- Track 142 : BFK20_ORF8

Summary of Final Annotations (See graph section above for start numbers):

The start number called the most often in the published annotations is 23, it was called in 60 of the 310 non-draft genes in the pham.

Genes that call this "Most Annotated" start:

- Abigail_8, Albedo_8, Albright_8, AnnaLie_9, Armstrong_7, Arroyo_9, AvGardian_8, Avocadoman_8, BAjuniper_8, BabyDaisy_9, BabyYoda_8, Bachaco_8, BelmontSKP_9, Bernstein_7, Brahms_7, BubbaBear_8, Buldak_8, Burritobowl_8, Cashington_8, Celaena_8, ChiliPepper_8, Clayda5_7, Coltrane_7, CroZenni_8, DickRichards_8, Didgeridoo_9, DirtyBubble_8, Dismas_8, Doobus_8, Eden_7, Elva_9, Eula_8, Finalfrontier_9, FlameThrower_8, Franklin22_7, Gack_7, Icarian_9, IndyLu_8, Johnathan_8, Jovita_8, Katzastrophic_8, Kenzers_8, Kieran_8, Lahqtemish_8, LimaBean_8, Loviatar_15, Lynlen_8, Nicky22_9, Olliecat_8, Phisb_8, QMacho_9, Quenya_9, Rollins_7, Rona_8, SanaSana_9, SansAfet_8, SarBear_8, Sharkboy_8, Shayna_7, Skylord_7, Slay_8, Stoor_8, Stromboli_8, SunnyD_7, Swervy_8, TukTuk_8, Vitas_7,

Genes that have the "Most Annotated" start but do not call it:

-

Genes that do not have the "Most Annotated" start:

- Abidatro_9, Aggie_8, Albanese_11, Aledel_7, Alkhayr_39, Amelia_10, Anatole_8, Andies_8, Andrew_9, AppleCider_11, Archimedes_6, Ariel_23, Ashwin_42, AustinPowers_7, B3_8, BAKA_22, BFK20_ORF8, BabeRuth_8, Babsiella_9, Bagrid_23, Banquo_16, Basilisk_9, Beem_25, Beethoven_11, Bennie_7, BigMack_7, Blessica_42, Bobby_26, Bodacious_7, Bombitas_22, Bora_38, Bosection6_8, BrotherBLo_11, Brujita_9, Brynnie_9, Butters_8, CallieOMalley_11, Canowicakte_11, Carcharodon_8, Carpal_11, Catdawg_41, Catfish_11, Charlie_8, Che9c_8, ChewChew_7, Chewbacca_8, Chickaboom_8, Cholula_11, Chridison_7, Christian_7,

Constella_20, Coral_9, Corndog_43, Cote_10, Courthouse_23, CristinaYang_7, Daiboju_7, Dallas_25, Daob_10, Dardanus_14, DinoDaryn_14, Dino_11, DmpstrDiver_24, DonkeyMan_8, Dove_24, DrRobert_7, DreamTeam_7, Dubu_8, Duke13_22, Duplicity_8, Dylan_40, E1_8, Eesa_9, Ejimix_26, EricMillard_25, EstebanJulior_7, Eunoia_7, Familton_42, Firecracker_41, Fluke_11, FoulBall_38, Fulbright_8, Galaxy_9, Gex_8, Ghobes_6, Gisselle_7, Glenn_11, Goib_13, Gonephishing_21, GreenHearts_11, Greenhouse_11, Gspu1_10, Gustav_7, HC_09, Halley_25, Hannaconda_20, HannahPhantana_10, HeadNerd_7, Heinz_8, Herb_7, Hibiscus_8, HokkenD_20, Huckleberry_7, Huff_14, Hughesyang_24, HunterDalle_7, Huntingdon_11, Idergollasper_41, Immaculata_11, Island3_9, Jamie19_8, Jamun_9, JangDynasty_41, Joann_11, Jojo24_8, Journey_8, JuicyJay_27, Jumboset_11, Juno112_8, KHumphrey_8, Kalah2_26, Kalizoi_11, KashFlow_17, Kepler_9, Kevin1_8, Khuang_7, KingBob_7, Kittykat_7, Klein_25, Korra_11, Krili_40, Kromp_9, Kuleana_9, Lakshmi_11, Lasagna_7, Lennox_7, Leona_8, LilStuart_7, Litotes_11, LittleE_23, LittleTokyo_9, Lucky2013_23, Lucy_7, Lunar_10, MadKillah_42, Magsby_8, Mahdia_7, Makoto_7, MamaPearl_7, Maria1952_7, MeganNoll_11, Melons_10, Melville_8, MiaZeal_23, MichelleMyBell_8, Minerva_25, Misaeng_11, Moki_7, MooMoo_7, Mori_40, Morrissey_7, MrGloopy_11, Murai_41, Nancia_7, Nenae_8, NiebruSaylor_40, NihilNomen_24, Nubia_11, OMalley_7, Odette_24, Omega_25, Optimus_23, Orcanus_9, OurGirlNessie_7, Oxynfrius_11, PFR1_06, PFR2_06, Panchino_8, ParmesanJohn_8, PartyCup_11, PhancyPhin_8, Philonius_8, Phloss_8, PhluffyCoco_8, Phoebus_25, Phrann_8, PinkFriday_7, Pipsqueaks_8, PitaDog_7, Polka_9, Porcelain_23, Potatoes_11, Pound_25, Preamble_7, Pterodactyl_7, Pumancara_7, Puppies_7, Purgamenstris_8, QueenHazel_9, RAP15_11, Raymond7_8, RcigaStruga_11, Rebel_8, RedFox_8, Redi_8, Redno2_24, Renna12_9, Reyja_9, Riovina_7, Riverdale_11, Rozby_11, Rubeelu_8, Ruchi_9, Ryadel_45, Santhid_8, Sapo_6, Savage2526_11, Sbash_8, Schatzie_23, Schmidt_10, Schnauzer_8, SchoolBus_41, Schuy_42, Scitech_8, Scuttle_11, Sergei_7, Shida_41, ShrimpFriedEgg_8, Shweta_8, Silvafighter_8, Silvy_8, SkinnyPete_8, Smooch_43, Smurph_8, Snekmaggon_8, Splinter_12, SpongeBob_8, Squint_22, Supakev_7, Superphikiman_23, Suppi_11, TZGordon_14, Tapioca_8, Tarzan_8, TattModd_11, TaylorSipht_9, TelAviv_38, Temper16_7, Thibault_21, ThreeRngTarjay_24, TinaLin_15, Trine_7, Upyo_7, Urla_7, Vallejo_11, Vendetta_12, Vorrrps_40, Vulpecula_9, Vulture_7, Wanda_26, Wawa_11, Wayne_11, Widow_7, Wildflower_41, Winget_42, WonderBoy_7, Xeno_8, Xerxes_8, Xula_8, Yeet_23, YungJamal_44, Zakhe101_41, Zelink_26, Zorro_11, phiSASD1_29,

Summary by start number:

Start 10:

- Found in 29 of 342 (8.5%) of genes in pham
- Manual Annotations of this start: 24 of 310
- Called 100.0% of time when present
- Phage (with cluster) where this start called: Abidatro_9 (AS1), Amelia_10 (AS2), Andrew_9 (AS3), Basilisk_9 (AS1), Brynnie_9 (AS1), Chickaboom_8 (AS1), Coral_9 (AS2), Cote_10 (AS2), Daob_10 (AS2), Eesa_9 (AS1), Galaxy_9 (AS1), HannahPhantana_10 (AS2), Jamun_9 (AS1), Juno112_8 (AS3), KHumphrey_8 (AS3), Kepler_9 (AS2), Kuleana_9 (AS2), Leona_8 (AS3), LittleTokyo_9 (AS2), Lunar_10 (AS2), Melons_10 (AS2), Orcanus_9 (AS1), PhluffyCoco_8 (AS3), Polka_9 (AS2), RedFox_8 (AS3), Renna12_9 (AS3), Ruchi_9 (AS1), TaylorSipht_9 (AS1), Vulpecula_9 (AS1),

Start 13:

- Found in 77 of 342 (22.5%) of genes in pham
- Manual Annotations of this start: 51 of 310
- Called 67.5% of time when present
- Phage (with cluster) where this start called: Albanese_11 (AK), Aledel_7 (AK), AustinPowers_7 (AK), Beethoven_11 (AK), Bennie_7 (AK), BrotherBLo_11 (AK), Carpal_11 (AK), ChewChew_7 (AK), Cholula_11 (AK), Chridison_7 (AK), Christian_7 (AK), Dino_11 (AK), DrRobert_7 (AK), Fluke_11 (AK), GreenHearts_11 (AK), HeadNerd_7 (AK), HunterDalle_7 (AK), Huntingdon_11 (AK), Immaculata_11 (AK), Joann_11 (AK), Jumboset_11 (AK), Kalizoi_11 (AK), Kittykat_7 (AK), Lakshmi_11 (AK), Lennox_7 (AK), LilStuart_7 (AK), Lucy_7 (AK), Makoto_7 (AK), Maria1952_7 (AK), MeganNoll_11 (AK), Misaeng_11 (AK), Moki_7 (AK), MrGloopy_11 (AK), Nancia_7 (AK), OMalley_7 (AK), OurGirlNessie_7 (AK), PinkFriday_7 (AK), PitaDog_7 (AK), Potatoes_11 (AK), Preamble_7 (AK), Pterodactyl_7 (AK), Pumancara_7 (AK), RAP15_11 (AK), RcigaStruga_11 (AK), Riverdale_11 (AK), Rozby_11 (AK), Savage2526_11 (AK), Supakev_7 (AK), TattModd_11 (AK), Urla_7 (AK), Vulture_7 (AK), Wawa_11 (AK),

Start 14:

- Found in 7 of 342 (2.0%) of genes in pham
- Manual Annotations of this start: 6 of 310
- Called 100.0% of time when present
- Phage (with cluster) where this start called: AppleCider_11 (AK), CallieOMalley_11 (AK), Canowicakte_11 (AK), Litotes_11 (AK), PartyCup_11 (AK), Suppi_11 (AK), Wayne_11 (AK),

Start 15:

- Found in 77 of 342 (22.5%) of genes in pham
- Manual Annotations of this start: 25 of 310
- Called 32.5% of time when present
- Phage (with cluster) where this start called: BigMack_7 (AK), Bodacious_7 (AK), CristinaYang_7 (AK), Daiboju_7 (AK), DreamTeam_7 (AK), EstebanJulior_7 (AK), Eunoia_7 (AK), Gisselle_7 (AK), Glenn_11 (AK), Greenhouse_11 (AK), Herb_7 (AK), Huckleberry_7 (AK), KingBob_7 (AK), Korra_11 (AK), Lasagna_7 (AK), MamaPearl_7 (AK), Nubia_11 (AK), Oxynfrius_11 (AK), Riovina_7 (AK), Scuttle_11 (AK), Sergei_7 (AK), Temper16_7 (AK), Vallejo_11 (AK), WonderBoy_7 (AK), Zorro_11 (AK),

Start 16:

- Found in 1 of 342 (0.3%) of genes in pham
- Manual Annotations of this start: 1 of 310
- Called 100.0% of time when present
- Phage (with cluster) where this start called: Trine_7 (CD),

Start 17:

- Found in 1 of 342 (0.3%) of genes in pham
- No Manual Annotations of this start.
- Called 100.0% of time when present
- Phage (with cluster) where this start called: Gspu1_10 (CU2),

Start 18:

- Found in 3 of 342 (0.9%) of genes in pham
- Manual Annotations of this start: 3 of 310
- Called 100.0% of time when present

- Phage (with cluster) where this start called: Archimedes_6 (DA), Ghobes_6 (DA), Sapo_6 (DA),

Start 19:

- Found in 12 of 342 (3.5%) of genes in pham
- Manual Annotations of this start: 5 of 310
- Called 41.7% of time when present
- Phage (with cluster) where this start called: Ariel_23 (J), Courthouse_23 (J), LittleE_23 (J), Lucky2013_23 (J), MiaZeal_23 (J),

Start 20:

- Found in 3 of 342 (0.9%) of genes in pham
- Manual Annotations of this start: 2 of 310
- Called 100.0% of time when present
- Phage (with cluster) where this start called: Dubu_8 (BJ), Morrissey_7 (CD), phiSASD1_29 (BJ),

Start 21:

- Found in 9 of 342 (2.6%) of genes in pham
- Manual Annotations of this start: 6 of 310
- Called 77.8% of time when present
- Phage (with cluster) where this start called: BFK20_ORF8 (singleton), Gustav_7 (CD), Kromp_9 (singleton), Mahdia_7 (CD), Puppies_7 (CD), Upyo_7 (CD), Widow_7 (CD),

Start 22:

- Found in 43 of 342 (12.6%) of genes in pham
- Manual Annotations of this start: 34 of 310
- Called 88.4% of time when present
- Phage (with cluster) where this start called: BAKA_22 (J), Bagrid_23 (J), Beem_25 (J), Bobby_26 (J), Bombitas_22 (J), Constella_20 (J), Dallas_25 (J), DmpstrDiver_24 (J), Dove_24 (J), Duke13_22 (J), Ejimix_26 (J), EricMillard_25 (J), Gonephishing_21 (J), Halley_25 (J), Hannaconda_20 (J), HokkenD_20 (J), Hughesyang_24 (J), JuicyJay_27 (J), Kalah2_26 (J), KashFlow_17 (J), Klein_25 (J), Minerva_25 (J), NihilNomen_24 (J), Odette_24 (J), Omega_25 (J), Optimus_23 (J), Phoebus_25 (J), Porcelain_23 (J), Pound_25 (J), Redno2_24 (J), Schatzie_23 (J), Squint_22 (J), Superphikiman_23 (J), Thibault_21 (J), ThreeRngTarjay_24 (J), Wanda_26 (J), Yeet_23 (J), Zelink_26 (J),

Start 23:

- Found in 67 of 342 (19.6%) of genes in pham
- Manual Annotations of this start: 60 of 310
- Called 100.0% of time when present
- Phage (with cluster) where this start called: Abigail_8 (EB), Albedo_8 (EB), Albright_8 (EB), AnnaLie_9 (EB), Armstrong_7 (EB), Arroyo_9 (EB), AvGardian_8 (EB), Avocadoman_8 (EB), BAjuniper_8 (EB), BabyDaisy_9 (EB), BabyYoda_8 (EB), Bachaco_8 (EB), BelmontSKP_9 (EB), Bernstein_7 (EB), Brahms_7 (EB), BubbaBear_8 (EB), Buldak_8 (EB), Burritobowl_8 (EB), Cashington_8 (EB), Celaena_8 (EB), ChiliPepper_8 (EB), Clayda5_7 (EB), Coltrane_7 (EB), CroZenni_8 (EB), DickRichards_8 (EB), Didgeridoo_9 (EB), DirtyBubble_8 (EB), Dismas_8 (EB), Doobus_8 (EB), Eden_7 (EB), Elva_9 (EB), Eula_8 (EB), Finalfrontier_9 (EB), FlameThrower_8 (EB), Franklin22_7 (EB), Gack_7 (EB), Icarian_9 (EB), IndyLu_8 (EB), Johnathan_8 (EB), Jovita_8 (EB), Katzastrophic_8 (EB), Kenzers_8 (EB),

Kieran_8 (EB), Lahqtemish_8 (EB), LimaBean_8 (EB), Loviatar_15 (EB), Lynlen_8 (EB), Nicky22_9 (EB), Olliecat_8 (EB), Phisb_8 (EB), QMacho_9 (EB), Quenya_9 (EB), Rollins_7 (EB), Rona_8 (EB), SanaSana_9 (EB), SansAfet_8 (EB), SarBear_8 (EB), Sharkboy_8 (EB), Shayna_7 (EB), Skylord_7 (EB), Slay_8 (EB), Stoor_8 (EB), Stromboli_8 (EB), SunnyD_7 (EB), Swervy_8 (EB), TukTuk_8 (EB), Vitas_7 (EB),

Start 24:

- Found in 2 of 342 (0.6%) of genes in pham
- Manual Annotations of this start: 2 of 310
- Called 100.0% of time when present
- Phage (with cluster) where this start called: Catfish_11 (CU5), Schmidt_10 (CU4),

Start 25:

- Found in 40 of 342 (11.7%) of genes in pham
- Manual Annotations of this start: 35 of 310
- Called 92.5% of time when present
- Phage (with cluster) where this start called: Alkhayr_39 (O), Anatole_8 (BV), Ashwin_42 (O), B3_8 (BV), Babsiella_9 (I1), Blessica_42 (O), Bora_38 (O), Corndog_43 (O), Dylan_40 (O), E1_8 (BV), Familton_42 (O), Firecracker_41 (O), FoulBall_38 (O), HC_09 (I1), Idergollasper_41 (O), Island3_9 (I1), JangDynasty_41 (O), Krili_40 (O), MadKillah_42 (O), MooMoo_7 (singleton), Mori_40 (O), Murai_41 (O), NiebruSaylor_40 (O), QueenHazel_9 (I1), Ryadel_45 (O), Sbash_8 (I2), SchoolBus_41 (O), Schuy_42 (O), Shida_41 (O), Smooch_43 (O), TelAviv_38 (O), Vorrrps_40 (O), Wildflower_41 (O), Winget_42 (O), Xula_8 (I1), YungJamal_44 (O), Zakhe101_41 (O),

Start 26:

- Found in 2 of 342 (0.6%) of genes in pham
- No Manual Annotations of this start.
- Called 100.0% of time when present
- Phage (with cluster) where this start called: PFR1_06 (BX), PFR2_06 (BX),

Start 27:

- Found in 12 of 342 (3.5%) of genes in pham
- Manual Annotations of this start: 7 of 310
- Called 58.3% of time when present
- Phage (with cluster) where this start called: Banquo_16 (CU1), Dardanus_14 (CU3), DinoDaryn_14 (CU1), Goib_13 (CU1), Huffy_14 (CU1), TZGordon_14 (CU1), TinaLin_15 (CU1),

Start 28:

- Found in 7 of 342 (2.0%) of genes in pham
- Manual Annotations of this start: 5 of 310
- Called 100.0% of time when present
- Phage (with cluster) where this start called: DonkeyMan_8 (DY), Heinz_8 (DY), Hibiscus_8 (DY), Jojo24_8 (DY), Reyja_9 (DY), Santhid_8 (DY), Tarzan_8 (DY),

Start 30:

- Found in 25 of 342 (7.3%) of genes in pham
- Manual Annotations of this start: 1 of 310
- Called 4.0% of time when present
- Phage (with cluster) where this start called: Catdawg_41 (O),

Start 31:

- Found in 4 of 342 (1.2%) of genes in pham
- No Manual Annotations of this start.
- Called 25.0% of time when present
- Phage (with cluster) where this start called: Khuang_7 (UNK),

Start 36:

- Found in 9 of 342 (2.6%) of genes in pham
- Manual Annotations of this start: 2 of 310
- Called 22.2% of time when present
- Phage (with cluster) where this start called: Brujita_9 (I1), Che9c_8 (I2),

Start 39:

- Found in 10 of 342 (2.9%) of genes in pham
- Manual Annotations of this start: 2 of 310
- Called 20.0% of time when present
- Phage (with cluster) where this start called: Splinter_12 (CU1), Vendetta_12 (CU1),

Start 41:

- Found in 43 of 342 (12.6%) of genes in pham
- Manual Annotations of this start: 39 of 310
- Called 100.0% of time when present
- Phage (with cluster) where this start called: Aggie_8 (N), Andies_8 (N), BabeRuth_8 (N), Bosection6_8 (N), Butters_8 (N), Carcharodon_8 (N), Charlie_8 (N), Chewbacca_8 (N), Duplicity_8 (N), Fulbright_8 (N), Gex_8 (N), Jamie19_8 (N), Journey_8 (N), Kevin1_8 (N), Magsby_8 (N), Melville_8 (N), MichelleMyBell_8 (N), Nенаe_8 (N), Panchino_8 (N), Parmesanjohn_8 (N), PhancyPhin_8 (N), Philonius_8 (N), Phloss_8 (N), Phrann_8 (N), Pipsqueaks_8 (N), Purgamenstris_8 (N), Raymond7_8 (N), Rebel_8 (N), Redi_8 (N), Rubeelu_8 (N), Schnauzer_8 (N), Scitech_8 (N), ShrimpFriedEgg_8 (N), Shweta_8 (N), Silvafighter_8 (N), Silvy_8 (N), SkinnyPete_8 (N), Smurph_8 (N), Snekmaggon_8 (N), SpongeBob_8 (N), Tapioca_8 (N), Xeno_8 (N), Xerxes_8 (N),

Summary by clusters:

There are 23 clusters represented in this pham: singleton, UNK, BJ, DA, BV, DY, BX, CU5, CU4, CU3, CU2, CU1, I1, I2, AS3, AS2, AS1, AK, J, O, N, CD, EB,

Info for manual annotations of cluster AK:

- Start number 13 was manually annotated 51 times for cluster AK.
- Start number 14 was manually annotated 6 times for cluster AK.
- Start number 15 was manually annotated 25 times for cluster AK.

Info for manual annotations of cluster AS1:

- Start number 10 was manually annotated 10 times for cluster AS1.

Info for manual annotations of cluster AS2:

- Start number 10 was manually annotated 10 times for cluster AS2.

Info for manual annotations of cluster AS3:

- Start number 10 was manually annotated 4 times for cluster AS3.

Info for manual annotations of cluster BJ:

- Start number 20 was manually annotated 1 time for cluster BJ.

Info for manual annotations of cluster BV:

- Start number 25 was manually annotated 3 times for cluster BV.

Info for manual annotations of cluster CD:

- Start number 16 was manually annotated 1 time for cluster CD.
- Start number 20 was manually annotated 1 time for cluster CD.
- Start number 21 was manually annotated 5 times for cluster CD.

Info for manual annotations of cluster CU1:

- Start number 27 was manually annotated 6 times for cluster CU1.
- Start number 39 was manually annotated 2 times for cluster CU1.

Info for manual annotations of cluster CU3:

- Start number 27 was manually annotated 1 time for cluster CU3.

Info for manual annotations of cluster CU4:

- Start number 24 was manually annotated 1 time for cluster CU4.

Info for manual annotations of cluster CU5:

- Start number 24 was manually annotated 1 time for cluster CU5.

Info for manual annotations of cluster DA:

- Start number 18 was manually annotated 3 times for cluster DA.

Info for manual annotations of cluster DY:

- Start number 28 was manually annotated 5 times for cluster DY.

Info for manual annotations of cluster EB:

- Start number 23 was manually annotated 60 times for cluster EB.

Info for manual annotations of cluster I1:

- Start number 25 was manually annotated 5 times for cluster I1.
- Start number 36 was manually annotated 1 time for cluster I1.

Info for manual annotations of cluster I2:

- Start number 25 was manually annotated 1 time for cluster I2.
- Start number 36 was manually annotated 1 time for cluster I2.

Info for manual annotations of cluster J:

- Start number 19 was manually annotated 5 times for cluster J.
- Start number 22 was manually annotated 34 times for cluster J.

Info for manual annotations of cluster N:

- Start number 41 was manually annotated 39 times for cluster N.

Info for manual annotations of cluster O:

- Start number 25 was manually annotated 25 times for cluster O.
- Start number 30 was manually annotated 1 time for cluster O.

Gene Information:

Gene: Abidatro_9 Start: 7106, Stop: 7693, Start Num: 10

Candidate Starts for Abidatro_9:

(Start: 10 @7106 has 24 MA's), (57, 7286), (70, 7352), (75, 7370), (82, 7391), (87, 7406), (95, 7427), (146, 7568), (156, 7598),

Gene: Abigail_8 Start: 6884, Stop: 7444, Start Num: 23

Candidate Starts for Abigail_8:

(Start: 23 @6884 has 60 MA's), (60, 7031), (62, 7037), (66, 7061), (79, 7118), (134, 7271), (137, 7280), (159, 7343), (185, 7412),

Gene: Aggie_8 Start: 5956, Stop: 6441, Start Num: 41

Candidate Starts for Aggie_8:

(8, 5854), (9, 5860), (12, 5872), (Start: 41 @5956 has 39 MA's), (51, 5995), (61, 6043), (66, 6073), (75, 6115), (79, 6130), (85, 6142), (87, 6151), (95, 6175), (122, 6232), (127, 6253), (134, 6274), (161, 6349), (167, 6367), (175, 6382), (188, 6415), (191, 6424),

Gene: Albanese_11 Start: 9268, Stop: 9846, Start Num: 13

Candidate Starts for Albanese_11:

(Start: 13 @9268 has 51 MA's), (Start: 15 @9277 has 25 MA's), (33, 9322), (59, 9439), (62, 9451), (64, 9457), (75, 9520), (85, 9547), (119, 9631), (122, 9637), (130, 9667), (146, 9715), (156, 9745), (192, 9838),

Gene: Albedo_8 Start: 6756, Stop: 7316, Start Num: 23

Candidate Starts for Albedo_8:

(Start: 23 @6756 has 60 MA's), (35, 6789), (60, 6903), (62, 6909), (66, 6933), (79, 6990), (83, 6999), (117, 7089), (159, 7215), (185, 7284),

Gene: Albright_8 Start: 6765, Stop: 7325, Start Num: 23

Candidate Starts for Albright_8:

(Start: 23 @6765 has 60 MA's), (60, 6912), (62, 6918), (66, 6942), (79, 6999), (134, 7152), (137, 7161), (159, 7224), (185, 7293),

Gene: Aledel_7 Start: 6342, Stop: 6923, Start Num: 13

Candidate Starts for Aledel_7:

(Start: 13 @6342 has 51 MA's), (Start: 15 @6351 has 25 MA's), (33, 6396), (42, 6441), (59, 6513), (62, 6525), (64, 6531), (85, 6621), (95, 6651), (117, 6702), (122, 6711), (137, 6762), (138, 6765), (142, 6777), (146, 6789), (156, 6819), (169, 6852), (192, 6912),

Gene: Alkhayr_39 Start: 21489, Stop: 22094, Start Num: 25

Candidate Starts for Alkhayr_39:

(Start: 25 @21489 has 35 MA's), (Start: 30 @21504 has 1 MA's), (45, 21567), (55, 21615), (57, 21624), (62, 21642), (82, 21732), (87, 21747), (119, 21849), (122, 21855), (132, 21897), (134, 21903), (137, 21912), (138, 21915), (141, 21924), (161, 21987), (184, 22044), (188, 22053), (198, 22080),

Gene: Amelia_10 Start: 7302, Stop: 7892, Start Num: 10

Candidate Starts for Amelia_10:

(Start: 10 @7302 has 24 MA's), (29, 7356), (57, 7482), (71, 7551), (73, 7560), (75, 7566), (82, 7587), (93, 7614), (95, 7626), (115, 7671), (146, 7767), (156, 7797), (169, 7830),

Gene: Anatole_8 Start: 6423, Stop: 6980, Start Num: 25

Candidate Starts for Anatole_8:

(Start: 25 @6423 has 35 MA's), (31, 6438), (46, 6495), (50, 6513), (51, 6516), (77, 6639), (91, 6672), (97, 6696), (99, 6699), (106, 6714), (119, 6750), (127, 6783), (130, 6792), (147, 6843), (160, 6876), (164, 6885), (172, 6906), (193, 6960),

Gene: Andies_8 Start: 5956, Stop: 6441, Start Num: 41

Candidate Starts for Andies_8:

(8, 5854), (9, 5860), (12, 5872), (Start: 41 @5956 has 39 MA's), (51, 5995), (61, 6043), (66, 6073), (75, 6115), (79, 6130), (85, 6142), (87, 6151), (95, 6175), (122, 6232), (127, 6253), (134, 6274), (161, 6349), (167, 6367), (175, 6382), (188, 6415), (191, 6424),

Gene: Andrew_9 Start: 7093, Stop: 7680, Start Num: 10

Candidate Starts for Andrew_9:

(Start: 10 @7093 has 24 MA's), (71, 7342), (73, 7351), (75, 7357), (82, 7378), (87, 7393), (94, 7408), (95, 7414), (125, 7489), (146, 7555), (154, 7582), (156, 7585),

Gene: AnnaLie_9 Start: 7111, Stop: 7671, Start Num: 23

Candidate Starts for AnnaLie_9:

(Start: 23 @7111 has 60 MA's), (60, 7258), (62, 7264), (66, 7288), (79, 7345), (83, 7354), (134, 7498), (137, 7507), (159, 7570), (185, 7639),

Gene: AppleCider_11 Start: 9230, Stop: 9802, Start Num: 14

Candidate Starts for AppleCider_11:

(Start: 14 @9230 has 6 MA's), (59, 9392), (62, 9404), (64, 9410), (70, 9455), (75, 9473), (119, 9584), (122, 9590), (146, 9668), (156, 9698), (174, 9743), (175, 9746), (191, 9788), (192, 9791),

Gene: Archimedes_6 Start: 5387, Stop: 6001, Start Num: 18

Candidate Starts for Archimedes_6:

(Start: 18 @5387 has 3 MA's), (32, 5420), (48, 5489), (54, 5522), (56, 5534), (72, 5609), (81, 5636),

Gene: Ariel_23 Start: 13524, Stop: 14096, Start Num: 19

Candidate Starts for Ariel_23:

(Start: 19 @13524 has 5 MA's), (Start: 22 @13527 has 34 MA's), (58, 13668), (82, 13770), (98, 13812), (135, 13914), (144, 13941), (153, 13977), (163, 13998), (168, 14016), (179, 14049), (184, 14061), (192, 14082),

Gene: Armstrong_7 Start: 6533, Stop: 7093, Start Num: 23

Candidate Starts for Armstrong_7:

(Start: 23 @6533 has 60 MA's), (117, 6866), (140, 6938),

Gene: Arroyo_9 Start: 7235, Stop: 7795, Start Num: 23

Candidate Starts for Arroyo_9:

(Start: 23 @7235 has 60 MA's), (60, 7382), (62, 7388), (66, 7412), (79, 7469), (134, 7622), (137, 7631), (159, 7694), (185, 7763),

Gene: Ashwin_42 Start: 21487, Stop: 22092, Start Num: 25

Candidate Starts for Ashwin_42:

(Start: 25 @21487 has 35 MA's), (Start: 30 @21502 has 1 MA's), (45, 21565), (55, 21613), (57, 21622), (62, 21640), (82, 21730), (87, 21745), (119, 21847), (122, 21853), (132, 21895), (134, 21901), (137, 21910), (138, 21913), (141, 21922), (161, 21985), (184, 22042), (188, 22051), (198, 22078),

Gene: AustinPowers_7 Start: 6343, Stop: 6924, Start Num: 13

Candidate Starts for AustinPowers_7:

(Start: 13 @6343 has 51 MA's), (Start: 15 @6352 has 25 MA's), (33, 6397), (42, 6442), (59, 6514), (62, 6526), (64, 6532), (75, 6595), (79, 6610), (85, 6622), (87, 6631), (95, 6652), (117, 6703), (122, 6712), (137, 6763), (138, 6766), (142, 6778), (146, 6790), (156, 6820), (169, 6853), (192, 6913),

Gene: AvGardian_8 Start: 6822, Stop: 7373, Start Num: 23

Candidate Starts for AvGardian_8:

(Start: 23 @6822 has 60 MA's), (60, 6969), (62, 6975), (66, 6999), (72, 7032), (77, 7047), (119, 7149), (126, 7176), (159, 7272), (185, 7341),

Gene: Avocadoman_8 Start: 6823, Stop: 7383, Start Num: 23

Candidate Starts for Avocadoman_8:

(Start: 23 @6823 has 60 MA's), (60, 6970), (62, 6976), (66, 7000), (79, 7057), (134, 7210), (137, 7219), (159, 7282), (185, 7351),

Gene: B3_8 Start: 6423, Stop: 6980, Start Num: 25

Candidate Starts for B3_8:

(Start: 25 @6423 has 35 MA's), (31, 6438), (46, 6495), (50, 6513), (51, 6516), (77, 6639), (91, 6672), (97, 6696), (99, 6699), (106, 6714), (119, 6750), (127, 6783), (130, 6792), (147, 6843), (160, 6876), (164, 6885), (172, 6906), (193, 6960),

Gene: BAKA_22 Start: 15634, Stop: 16203, Start Num: 22

Candidate Starts for BAKA_22:

(Start: 22 @15634 has 34 MA's), (98, 15919), (128, 16000), (138, 16030), (143, 16045), (144, 16048), (153, 16084), (155, 16090), (168, 16123), (192, 16189),

Gene: BAjuniper_8 Start: 6709, Stop: 7266, Start Num: 23

Candidate Starts for BAjuniper_8:

(3, 6496), (Start: 23 @6709 has 60 MA's), (60, 6856), (66, 6886), (72, 6919), (75, 6928), (103, 7000), (112, 7024), (134, 7093), (137, 7102), (156, 7159), (159, 7165),

Gene: BFK20_ORF8 Start: 6306, Stop: 6848, Start Num: 21

Candidate Starts for BFK20_ORF8:

(Start: 21 @6306 has 6 MA's), (33, 6339), (40, 6366), (46, 6393), (48, 6402), (51, 6414), (53, 6423), (55, 6438), (79, 6546), (104, 6609), (116, 6642), (122, 6654), (131, 6687), (137, 6705), (156, 6765), (162, 6777),

Gene: BabeRuth_8 Start: 5997, Stop: 6482, Start Num: 41

Candidate Starts for BabeRuth_8:

(9, 5883), (12, 5895), (Start: 41 @5997 has 39 MA's), (51, 6036), (52, 6042), (61, 6084), (66, 6114), (85, 6183), (95, 6216), (122, 6273), (127, 6294), (134, 6315), (161, 6390), (167, 6408), (175, 6423), (191, 6465),

Gene: Babsiella_9 Start: 6984, Stop: 7529, Start Num: 25

Candidate Starts for Babsiella_9:

(4, 6798), (Start: 25 @6984 has 35 MA's), (Start: 36 @7020 has 2 MA's), (55, 7107), (57, 7116), (66, 7161), (72, 7194), (122, 7320), (180, 7494), (189, 7515),

Gene: BabyDaisy_9 Start: 6993, Stop: 7544, Start Num: 23

Candidate Starts for BabyDaisy_9:

(Start: 23 @6993 has 60 MA's), (35, 7026), (60, 7140), (62, 7146), (66, 7170), (72, 7203), (77, 7218), (119, 7320), (134, 7371), (159, 7443), (165, 7455),

Gene: BabyYoda_8 Start: 7015, Stop: 7566, Start Num: 23

Candidate Starts for BabyYoda_8:

(Start: 23 @7015 has 60 MA's), (60, 7162), (66, 7192), (72, 7225), (77, 7240), (119, 7342), (134, 7393), (159, 7465), (169, 7492),

Gene: Bachaco_8 Start: 6906, Stop: 7457, Start Num: 23

Candidate Starts for Bachaco_8:

(Start: 23 @6906 has 60 MA's), (60, 7053), (62, 7059), (66, 7083), (72, 7116), (77, 7131), (134, 7284), (159, 7356),

Gene: Bagrid_23 Start: 15423, Stop: 15992, Start Num: 22

Candidate Starts for Bagrid_23:

(Start: 22 @15423 has 34 MA's), (98, 15708), (128, 15789), (138, 15819), (143, 15834), (144, 15837), (153, 15873), (155, 15879), (168, 15912), (192, 15978),

Gene: Banquo_16 Start: 9976, Stop: 10500, Start Num: 27

Candidate Starts for Banquo_16:

(Start: 27 @9976 has 7 MA's), (61, 10117), (67, 10150), (110, 10267), (116, 10291), (130, 10333), (134, 10345), (164, 10411), (170, 10429), (178, 10447), (193, 10486), (195, 10489),

Gene: Basilisk_9 Start: 7430, Stop: 8017, Start Num: 10

Candidate Starts for Basilisk_9:

(Start: 10 @7430 has 24 MA's), (57, 7610), (70, 7676), (73, 7688), (75, 7694), (82, 7715), (87, 7730), (95, 7751), (146, 7892), (156, 7922),

Gene: Beem_25 Start: 15989, Stop: 16558, Start Num: 22

Candidate Starts for Beem_25:

(Start: 22 @15989 has 34 MA's), (98, 16274), (128, 16355), (138, 16385), (143, 16400), (144, 16403), (153, 16439), (155, 16445), (168, 16478), (192, 16544),

Gene: Beethoven_11 Start: 9184, Stop: 9762, Start Num: 13

Candidate Starts for Beethoven_11:

(Start: 13 @9184 has 51 MA's), (Start: 15 @9193 has 25 MA's), (33, 9238), (62, 9367), (64, 9373), (70, 9418), (75, 9436), (79, 9451), (85, 9463), (117, 9544), (119, 9547), (122, 9553), (137, 9604), (138, 9607), (142, 9619), (146, 9631), (156, 9661), (166, 9682), (174, 9706), (185, 9736), (191, 9751), (192, 9754),

Gene: BelmontSKP_9 Start: 7111, Stop: 7671, Start Num: 23

Candidate Starts for BelmontSKP_9:

(Start: 23 @7111 has 60 MA's), (60, 7258), (62, 7264), (66, 7288), (79, 7345), (83, 7354), (134, 7498), (137, 7507), (159, 7570), (185, 7639),

Gene: Bennie_7 Start: 6329, Stop: 6907, Start Num: 13

Candidate Starts for Bennie_7:

(Start: 13 @6329 has 51 MA's), (Start: 15 @6338 has 25 MA's), (33, 6383), (62, 6512), (64, 6518), (75, 6581), (85, 6608), (119, 6692), (122, 6698), (137, 6749), (138, 6752), (142, 6764), (146, 6776), (156, 6806), (174, 6851), (185, 6881), (191, 6896), (192, 6899),

Gene: Bernstein_7 Start: 6593, Stop: 7153, Start Num: 23

Candidate Starts for Bernstein_7:

(Start: 23 @6593 has 60 MA's), (117, 6926), (140, 6998),

Gene: BigMack_7 Start: 6338, Stop: 6907, Start Num: 15

Candidate Starts for BigMack_7:

(Start: 13 @6329 has 51 MA's), (Start: 15 @6338 has 25 MA's), (33, 6383), (62, 6512), (64, 6518), (75, 6581), (82, 6602), (85, 6608), (119, 6692), (122, 6698), (137, 6749), (138, 6752), (142, 6764), (146, 6776), (156, 6806), (174, 6851), (185, 6881), (191, 6896), (192, 6899),

Gene: Blessica_42 Start: 21890, Stop: 22495, Start Num: 25

Candidate Starts for Blessica_42:

(Start: 25 @21890 has 35 MA's), (Start: 30 @21905 has 1 MA's), (45, 21968), (55, 22016), (57, 22025), (62, 22043), (82, 22133), (87, 22148), (119, 22250), (122, 22256), (132, 22298), (134, 22304), (137, 22313), (138, 22316), (141, 22325), (161, 22388), (184, 22445), (188, 22454), (198, 22481),

Gene: Bobby_26 Start: 15942, Stop: 16511, Start Num: 22

Candidate Starts for Bobby_26:

(Start: 22 @15942 has 34 MA's), (98, 16227), (128, 16308), (138, 16338), (144, 16356), (153, 16392), (155, 16398), (168, 16431), (192, 16497),

Gene: Bodacious_7 Start: 6336, Stop: 6905, Start Num: 15

Candidate Starts for Bodacious_7:

(Start: 13 @6327 has 51 MA's), (Start: 15 @6336 has 25 MA's), (33, 6381), (62, 6510), (64, 6516), (75, 6579), (85, 6606), (95, 6636), (117, 6687), (119, 6690), (122, 6696), (137, 6747), (138, 6750), (146, 6774), (156, 6804), (174, 6849), (185, 6879), (191, 6894), (192, 6897),

Gene: Bombitas_22 Start: 15299, Stop: 15868, Start Num: 22

Candidate Starts for Bombitas_22:

(Start: 22 @15299 has 34 MA's), (57, 15437), (71, 15506), (98, 15584), (128, 15665), (138, 15695), (143, 15710), (144, 15713), (153, 15749), (155, 15755), (168, 15788), (192, 15854),

Gene: Bora_38 Start: 20940, Stop: 21545, Start Num: 25

Candidate Starts for Bora_38:

(Start: 25 @20940 has 35 MA's), (Start: 30 @20955 has 1 MA's), (45, 21018), (55, 21066), (57, 21075), (62, 21093), (82, 21183), (87, 21198), (119, 21300), (122, 21306), (132, 21348), (134, 21354), (137, 21363), (138, 21366), (141, 21375), (161, 21438), (184, 21495), (188, 21504), (198, 21531),

Gene: Bosection6_8 Start: 5956, Stop: 6441, Start Num: 41

Candidate Starts for Bosection6_8:

(8, 5854), (9, 5860), (12, 5872), (Start: 41 @5956 has 39 MA's), (51, 5995), (61, 6043), (66, 6073), (75, 6115), (79, 6130), (85, 6142), (87, 6151), (95, 6175), (122, 6232), (127, 6253), (134, 6274), (161, 6349), (167, 6367), (175, 6382), (188, 6415), (191, 6424),

Gene: Brahms_7 Start: 6533, Stop: 7093, Start Num: 23

Candidate Starts for Brahms_7:

(Start: 23 @6533 has 60 MA's), (117, 6866), (140, 6938),

Gene: BrotherBLo_11 Start: 9191, Stop: 9769, Start Num: 13

Candidate Starts for BrotherBLo_11:

(Start: 13 @9191 has 51 MA's), (Start: 15 @9200 has 25 MA's), (33, 9245), (62, 9374), (64, 9380), (75, 9443), (78, 9452), (79, 9458), (82, 9464), (85, 9470), (95, 9500), (119, 9554), (122, 9560), (137, 9611), (138, 9614), (142, 9626), (146, 9638), (156, 9668), (166, 9689), (174, 9713), (185, 9743), (191, 9758), (192, 9761),

Gene: Brujita_9 Start: 7024, Stop: 7533, Start Num: 36

Candidate Starts for Brujita_9:

(Start: 25 @6988 has 35 MA's), (Start: 36 @7024 has 2 MA's), (38, 7033), (55, 7111), (57, 7120), (66, 7165), (72, 7198), (122, 7324), (135, 7375), (180, 7498), (189, 7519),

Gene: Brynnie_9 Start: 7242, Stop: 7829, Start Num: 10

Candidate Starts for Brynnie_9:

(Start: 10 @7242 has 24 MA's), (57, 7422), (70, 7488), (73, 7500), (75, 7506), (82, 7527), (87, 7542), (95, 7563), (146, 7704), (156, 7734),

Gene: BubbaBear_8 Start: 6756, Stop: 7316, Start Num: 23

Candidate Starts for BubbaBear_8:

(Start: 23 @6756 has 60 MA's), (35, 6789), (60, 6903), (62, 6909), (66, 6933), (79, 6990), (83, 6999), (117, 7089), (159, 7215), (185, 7284),

Gene: Buldak_8 Start: 7041, Stop: 7601, Start Num: 23

Candidate Starts for Buldak_8:

(Start: 23 @7041 has 60 MA's), (60, 7191), (62, 7197), (75, 7263), (77, 7269), (79, 7278), (119, 7377), (134, 7428), (140, 7446), (156, 7494), (159, 7500),

Gene: Burritobowl_8 Start: 6792, Stop: 7352, Start Num: 23

Candidate Starts for Burritobowl_8:

(Start: 23 @6792 has 60 MA's), (60, 6939), (62, 6945), (66, 6969), (79, 7026), (83, 7035), (134, 7179), (137, 7188), (159, 7251), (185, 7320),

Gene: Butters_8 Start: 5970, Stop: 6461, Start Num: 41

Candidate Starts for Butters_8:

(9, 5859), (12, 5871), (Start: 41 @5970 has 39 MA's), (51, 6009), (61, 6057), (66, 6087), (75, 6129), (85, 6156), (95, 6189), (122, 6246), (127, 6273), (134, 6294), (136, 6300), (161, 6369), (175, 6402), (191, 6444),

Gene: CallieOMalley_11 Start: 9230, Stop: 9802, Start Num: 14

Candidate Starts for CallieOMalley_11:

(Start: 14 @9230 has 6 MA's), (59, 9392), (62, 9404), (64, 9410), (70, 9455), (75, 9473), (119, 9584), (122, 9590), (146, 9668), (156, 9698), (174, 9743), (175, 9746), (191, 9788), (192, 9791),

Gene: Canowicakte_11 Start: 9265, Stop: 9837, Start Num: 14

Candidate Starts for Canowicakte_11:

(Start: 14 @9265 has 6 MA's), (59, 9427), (62, 9439), (64, 9445), (70, 9490), (119, 9619), (122, 9625), (146, 9703), (156, 9733), (174, 9778), (175, 9781), (191, 9823), (192, 9826),

Gene: Carcharodon_8 Start: 5956, Stop: 6441, Start Num: 41

Candidate Starts for Carcharodon_8:

(8, 5854), (9, 5860), (12, 5872), (Start: 41 @5956 has 39 MA's), (51, 5995), (61, 6043), (66, 6073), (75, 6115), (79, 6130), (85, 6142), (87, 6151), (95, 6175), (122, 6232), (127, 6253), (134, 6274), (161, 6349), (167, 6367), (175, 6382), (188, 6415), (191, 6424),

Gene: Carpal_11 Start: 9191, Stop: 9769, Start Num: 13

Candidate Starts for Carpal_11:

(Start: 13 @9191 has 51 MA's), (Start: 15 @9200 has 25 MA's), (33, 9245), (62, 9374), (64, 9380), (70, 9425), (75, 9443), (79, 9458), (85, 9470), (117, 9551), (119, 9554), (122, 9560), (137, 9611), (138, 9614), (142, 9626), (146, 9638), (156, 9668), (166, 9689), (174, 9713), (185, 9743), (191, 9758), (192, 9761),

Gene: Cashington_8 Start: 6782, Stop: 7342, Start Num: 23

Candidate Starts for Cashington_8:

(Start: 23 @6782 has 60 MA's), (60, 6929), (62, 6935), (66, 6959), (137, 7178), (159, 7241), (185, 7310),

Gene: Catdawg_41 Start: 21594, Stop: 22184, Start Num: 30

Candidate Starts for Catdawg_41:

(Start: 25 @21579 has 35 MA's), (Start: 30 @21594 has 1 MA's), (45, 21657), (55, 21705), (57, 21714), (62, 21732), (82, 21822), (87, 21837), (119, 21939), (122, 21945), (132, 21987), (134, 21993), (137, 22002), (138, 22005), (141, 22014), (161, 22077), (184, 22134), (188, 22143), (198, 22170),

Gene: Catfish_11 Start: 7940, Stop: 8464, Start Num: 24

Candidate Starts for Catfish_11:

(11, 7898), (Start: 21 @7934 has 6 MA's), (Start: 24 @7940 has 2 MA's), (130, 8303), (134, 8315), (146, 8351), (164, 8381),

Gene: Celaena_8 Start: 6843, Stop: 7394, Start Num: 23

Candidate Starts for Celaena_8:

(Start: 23 @6843 has 60 MA's), (60, 6990), (62, 6996), (66, 7020), (72, 7053), (77, 7068), (134, 7221), (159, 7293),

Gene: Charlie_8 Start: 5956, Stop: 6441, Start Num: 41

Candidate Starts for Charlie_8:

(8, 5854), (9, 5860), (12, 5872), (Start: 41 @5956 has 39 MA's), (51, 5995), (61, 6043), (66, 6073), (75, 6115), (79, 6130), (85, 6142), (87, 6151), (95, 6175), (122, 6232), (127, 6253), (134, 6274), (161, 6349), (167, 6367), (175, 6382), (188, 6415), (191, 6424),

Gene: Che9c_8 Start: 6622, Stop: 7134, Start Num: 36

Candidate Starts for Che9c_8:

(1, 6289), (2, 6328), (5, 6463), (Start: 25 @6586 has 35 MA's), (Start: 36 @6622 has 2 MA's), (48, 6673), (55, 6709), (57, 6718), (62, 6736), (66, 6763), (70, 6787), (71, 6790), (72, 6796), (85, 6832), (134, 6970), (135, 6973), (171, 7072), (180, 7099),

Gene: ChewChew_7 Start: 6326, Stop: 6904, Start Num: 13

Candidate Starts for ChewChew_7:

(Start: 13 @6326 has 51 MA's), (Start: 15 @6335 has 25 MA's), (33, 6380), (62, 6509), (64, 6515), (75, 6578), (79, 6593), (85, 6605), (95, 6635), (117, 6686), (119, 6689), (122, 6695), (137, 6746), (138, 6749), (146, 6773), (156, 6803), (174, 6848), (185, 6878), (191, 6893), (192, 6896),

Gene: Chewbacca_8 Start: 5956, Stop: 6441, Start Num: 41

Candidate Starts for Chewbacca_8:

(8, 5854), (9, 5860), (12, 5872), (Start: 41 @5956 has 39 MA's), (51, 5995), (61, 6043), (66, 6073), (75, 6115), (79, 6130), (85, 6142), (87, 6151), (95, 6175), (122, 6232), (127, 6253), (134, 6274), (161, 6349), (167, 6367), (175, 6382), (188, 6415), (191, 6424),

Gene: Chickaboom_8 Start: 6787, Stop: 7374, Start Num: 10

Candidate Starts for Chickaboom_8:

(Start: 10 @6787 has 24 MA's), (57, 6967), (70, 7033), (73, 7045), (75, 7051), (82, 7072), (87, 7087), (95, 7108), (146, 7249), (156, 7279),

Gene: ChiliPepper_8 Start: 6996, Stop: 7553, Start Num: 23

Candidate Starts for ChiliPepper_8:

(Start: 23 @6996 has 60 MA's), (60, 7143), (66, 7173), (117, 7326), (137, 7389), (159, 7452), (185, 7521),

Gene: Cholula_11 Start: 9236, Stop: 9814, Start Num: 13

Candidate Starts for Cholula_11:

(Start: 13 @9236 has 51 MA's), (Start: 15 @9245 has 25 MA's), (33, 9290), (62, 9419), (64, 9425), (70, 9470), (75, 9488), (79, 9503), (85, 9515), (117, 9596), (119, 9599), (122, 9605), (137, 9656), (138, 9659), (142, 9671), (146, 9683), (156, 9713), (166, 9734), (174, 9758), (185, 9788), (191, 9803), (192, 9806),

Gene: Chridison_7 Start: 6343, Stop: 6924, Start Num: 13

Candidate Starts for Chridison_7:

(Start: 13 @6343 has 51 MA's), (Start: 15 @6352 has 25 MA's), (33, 6397), (42, 6442), (59, 6514), (62, 6526), (64, 6532), (75, 6595), (79, 6610), (85, 6622), (87, 6631), (95, 6652), (117, 6703), (122, 6712), (137, 6763), (138, 6766), (142, 6778), (146, 6790), (156, 6820), (169, 6853), (192, 6913),

Gene: Christian_7 Start: 6327, Stop: 6905, Start Num: 13

Candidate Starts for Christian_7:

(Start: 13 @6327 has 51 MA's), (Start: 15 @6336 has 25 MA's), (33, 6381), (62, 6510), (64, 6516), (75, 6579), (79, 6594), (85, 6606), (95, 6636), (117, 6687), (119, 6690), (122, 6696), (137, 6747), (138, 6750), (146, 6774), (156, 6804), (174, 6849), (185, 6879), (191, 6894), (192, 6897),

Gene: Clayda5_7 Start: 6533, Stop: 7093, Start Num: 23

Candidate Starts for Clayda5_7:

(Start: 23 @6533 has 60 MA's), (117, 6866), (140, 6938),

Gene: Coltrane_7 Start: 6533, Stop: 7093, Start Num: 23

Candidate Starts for Coltrane_7:

(Start: 23 @6533 has 60 MA's), (117, 6866), (140, 6938),

Gene: Constella_20 Start: 14812, Stop: 15381, Start Num: 22

Candidate Starts for Constella_20:

(Start: 22 @14812 has 34 MA's), (57, 14950), (98, 15097), (128, 15178), (138, 15208), (143, 15223), (144, 15226), (153, 15262), (155, 15268), (168, 15301), (192, 15367),

Gene: Coral_9 Start: 7141, Stop: 7731, Start Num: 10

Candidate Starts for Coral_9:

(Start: 10 @7141 has 24 MA's), (29, 7195), (57, 7321), (71, 7390), (73, 7399), (75, 7405), (82, 7426), (93, 7453), (95, 7465), (115, 7510), (146, 7606), (156, 7636), (169, 7669),

Gene: Corndog_43 Start: 22037, Stop: 22642, Start Num: 25

Candidate Starts for Corndog_43:

(Start: 25 @22037 has 35 MA's), (45, 22115), (55, 22163), (57, 22172), (62, 22190), (69, 22226), (82, 22280), (87, 22295), (119, 22397), (122, 22403), (132, 22445), (134, 22451), (137, 22460), (138, 22463), (141, 22472), (161, 22535), (184, 22592), (188, 22601), (198, 22628),

Gene: Cote_10 Start: 7302, Stop: 7892, Start Num: 10

Candidate Starts for Cote_10:

(Start: 10 @7302 has 24 MA's), (29, 7356), (57, 7482), (71, 7551), (73, 7560), (75, 7566), (82, 7587), (93, 7614), (95, 7626), (115, 7671), (146, 7767), (156, 7797), (169, 7830),

Gene: Courthouse_23 Start: 13926, Stop: 14498, Start Num: 19

Candidate Starts for Courthouse_23:

(Start: 19 @13926 has 5 MA's), (Start: 22 @13929 has 34 MA's), (58, 14070), (82, 14172), (98, 14214), (135, 14316), (138, 14325), (144, 14343), (153, 14379), (163, 14400), (168, 14418), (179,

14451), (184, 14463), (192, 14484),

Gene: CristinaYang_7 Start: 6336, Stop: 6905, Start Num: 15

Candidate Starts for CristinaYang_7:

(Start: 13 @6327 has 51 MA's), (Start: 15 @6336 has 25 MA's), (33, 6381), (62, 6510), (64, 6516), (75, 6579), (85, 6606), (95, 6636), (117, 6687), (119, 6690), (122, 6696), (137, 6747), (138, 6750), (146, 6774), (156, 6804), (174, 6849), (185, 6879), (191, 6894), (192, 6897),

Gene: CroZenni_8 Start: 6765, Stop: 7325, Start Num: 23

Candidate Starts for CroZenni_8:

(Start: 23 @6765 has 60 MA's), (60, 6912), (62, 6918), (66, 6942), (79, 6999), (83, 7008), (134, 7152), (137, 7161), (159, 7224), (185, 7293),

Gene: Daiboju_7 Start: 6353, Stop: 6925, Start Num: 15

Candidate Starts for Daiboju_7:

(Start: 13 @6344 has 51 MA's), (Start: 15 @6353 has 25 MA's), (33, 6398), (42, 6443), (62, 6527), (64, 6533), (85, 6623), (95, 6653), (117, 6704), (122, 6713), (146, 6791), (156, 6821), (185, 6896), (192, 6914),

Gene: Dallas_25 Start: 15529, Stop: 16098, Start Num: 22

Candidate Starts for Dallas_25:

(Start: 22 @15529 has 34 MA's), (98, 15814), (128, 15895), (138, 15925), (143, 15940), (144, 15943), (153, 15979), (155, 15985), (168, 16018), (192, 16084),

Gene: Daob_10 Start: 7305, Stop: 7895, Start Num: 10

Candidate Starts for Daob_10:

(Start: 10 @7305 has 24 MA's), (29, 7359), (57, 7485), (71, 7554), (73, 7563), (75, 7569), (82, 7590), (93, 7617), (95, 7629), (115, 7674), (146, 7770), (156, 7800), (169, 7833),

Gene: Dardanus_14 Start: 9026, Stop: 9541, Start Num: 27

Candidate Starts for Dardanus_14:

(Start: 27 @9026 has 7 MA's), (29, 9032), (34, 9050), (Start: 39 @9071 has 2 MA's), (46, 9101), (54, 9143), (69, 9206), (78, 9239), (88, 9260), (100, 9299), (130, 9389), (133, 9398), (134, 9401), (141, 9422), (164, 9467), (172, 9488), (181, 9503), (193, 9530),

Gene: DickRichards_8 Start: 7259, Stop: 7819, Start Num: 23

Candidate Starts for DickRichards_8:

(Start: 23 @7259 has 60 MA's), (60, 7406), (62, 7412), (66, 7436), (79, 7493), (83, 7502), (134, 7646), (137, 7655), (159, 7718), (185, 7787),

Gene: Didgeridoo_9 Start: 6993, Stop: 7544, Start Num: 23

Candidate Starts for Didgeridoo_9:

(Start: 23 @6993 has 60 MA's), (35, 7026), (60, 7140), (62, 7146), (66, 7170), (72, 7203), (77, 7218), (119, 7320), (134, 7371), (159, 7443), (165, 7455), (169, 7470),

Gene: Dino_11 Start: 9190, Stop: 9768, Start Num: 13

Candidate Starts for Dino_11:

(Start: 13 @9190 has 51 MA's), (Start: 15 @9199 has 25 MA's), (33, 9244), (62, 9373), (64, 9379), (70, 9424), (75, 9442), (79, 9457), (85, 9469), (117, 9550), (119, 9553), (122, 9559), (137, 9610), (138, 9613), (142, 9625), (146, 9637), (156, 9667), (166, 9688), (174, 9712), (185, 9742), (191, 9757), (192, 9760),

Gene: DinoDaryn_14 Start: 9110, Stop: 9634, Start Num: 27

Candidate Starts for DinoDaryn_14:

(Start: 27 @9110 has 7 MA's), (Start: 39 @9155 has 2 MA's), (55, 9230), (67, 9284), (75, 9314), (88, 9344), (110, 9401), (116, 9425), (131, 9470), (134, 9479), (164, 9545), (170, 9563), (178, 9581), (193, 9620),

Gene: DirtyBubble_8 Start: 7014, Stop: 7574, Start Num: 23

Candidate Starts for DirtyBubble_8:

(Start: 23 @7014 has 60 MA's), (60, 7161), (62, 7167), (66, 7191), (79, 7248), (134, 7401), (137, 7410), (159, 7473), (169, 7500), (196, 7569),

Gene: Dismas_8 Start: 6996, Stop: 7553, Start Num: 23

Candidate Starts for Dismas_8:

(Start: 23 @6996 has 60 MA's), (60, 7143), (66, 7173), (117, 7326), (137, 7389), (159, 7452), (185, 7521),

Gene: DmpstrDiver_24 Start: 16165, Stop: 16734, Start Num: 22

Candidate Starts for DmpstrDiver_24:

(Start: 22 @16165 has 34 MA's), (98, 16450), (128, 16531), (138, 16561), (143, 16576), (144, 16579), (153, 16615), (155, 16621), (168, 16654), (192, 16720),

Gene: DonkeyMan_8 Start: 6278, Stop: 6811, Start Num: 28

Candidate Starts for DonkeyMan_8:

(Start: 28 @6278 has 5 MA's), (51, 6374), (62, 6425), (64, 6431), (122, 6605), (194, 6800),

Gene: Doobus_8 Start: 6987, Stop: 7556, Start Num: 23

Candidate Starts for Doobus_8:

(Start: 23 @6987 has 60 MA's), (60, 7134), (62, 7140), (134, 7383), (137, 7392), (185, 7524),

Gene: Dove_24 Start: 15298, Stop: 15867, Start Num: 22

Candidate Starts for Dove_24:

(Start: 22 @15298 has 34 MA's), (57, 15436), (71, 15505), (98, 15583), (128, 15664), (138, 15694), (143, 15709), (144, 15712), (153, 15748), (155, 15754), (168, 15787), (192, 15853),

Gene: DrRobert_7 Start: 6327, Stop: 6905, Start Num: 13

Candidate Starts for DrRobert_7:

(Start: 13 @6327 has 51 MA's), (Start: 15 @6336 has 25 MA's), (33, 6381), (62, 6510), (64, 6516), (75, 6579), (79, 6594), (85, 6606), (95, 6636), (117, 6687), (119, 6690), (122, 6696), (137, 6747), (138, 6750), (146, 6774), (156, 6804), (174, 6849), (185, 6879), (191, 6894), (192, 6897),

Gene: DreamTeam_7 Start: 6382, Stop: 6951, Start Num: 15

Candidate Starts for DreamTeam_7:

(Start: 13 @6373 has 51 MA's), (Start: 15 @6382 has 25 MA's), (33, 6427), (62, 6556), (64, 6562), (85, 6652), (96, 6685), (117, 6733), (122, 6742), (137, 6793), (138, 6796), (142, 6808), (146, 6820), (156, 6850), (166, 6871), (174, 6895), (185, 6925), (191, 6940), (192, 6943),

Gene: Dubu_8 Start: 6313, Stop: 6891, Start Num: 20

Candidate Starts for Dubu_8:

(Start: 20 @6313 has 2 MA's), (43, 6391), (47, 6409), (74, 6529), (111, 6640), (123, 6682), (165, 6784), (175, 6814),

Gene: Duke13_22 Start: 15563, Stop: 16132, Start Num: 22

Candidate Starts for Duke13_22:

(Start: 22 @15563 has 34 MA's), (57, 15701), (98, 15848), (128, 15929), (138, 15959), (143, 15974), (144, 15977), (153, 16013), (155, 16019), (168, 16052), (192, 16118),

Gene: Duplicity_8 Start: 5956, Stop: 6441, Start Num: 41

Candidate Starts for Duplicity_8:

(8, 5854), (9, 5860), (12, 5872), (Start: 41 @5956 has 39 MA's), (51, 5995), (61, 6043), (66, 6073), (75, 6115), (79, 6130), (85, 6142), (87, 6151), (95, 6175), (122, 6232), (127, 6253), (134, 6274), (161, 6349), (167, 6367), (175, 6382), (188, 6415), (191, 6424),

Gene: Dylan_40 Start: 21292, Stop: 21897, Start Num: 25

Candidate Starts for Dylan_40:

(Start: 25 @21292 has 35 MA's), (Start: 30 @21307 has 1 MA's), (45, 21370), (55, 21418), (57, 21427), (62, 21445), (82, 21535), (87, 21550), (119, 21652), (122, 21658), (132, 21700), (134, 21706), (137, 21715), (138, 21718), (141, 21727), (161, 21790), (184, 21847), (188, 21856), (198, 21883),

Gene: E1_8 Start: 6423, Stop: 6980, Start Num: 25

Candidate Starts for E1_8:

(Start: 25 @6423 has 35 MA's), (31, 6438), (46, 6495), (50, 6513), (51, 6516), (77, 6639), (91, 6672), (97, 6696), (99, 6699), (106, 6714), (119, 6750), (127, 6783), (130, 6792), (147, 6843), (160, 6876), (164, 6885), (172, 6906), (193, 6960),

Gene: Eden_7 Start: 6625, Stop: 7182, Start Num: 23

Candidate Starts for Eden_7:

(Start: 23 @6625 has 60 MA's), (62, 6778), (77, 6850), (134, 7009), (140, 7027),

Gene: Eesa_9 Start: 7305, Stop: 7892, Start Num: 10

Candidate Starts for Eesa_9:

(Start: 10 @7305 has 24 MA's), (46, 7431), (57, 7485), (68, 7533), (73, 7563), (75, 7569), (82, 7590), (87, 7605), (95, 7626), (109, 7647), (118, 7677), (130, 7719), (146, 7767), (169, 7830),

Gene: Ejimix_26 Start: 16739, Stop: 17308, Start Num: 22

Candidate Starts for Ejimix_26:

(Start: 22 @16739 has 34 MA's), (98, 17024), (128, 17105), (138, 17135), (143, 17150), (144, 17153), (153, 17189), (155, 17195), (168, 17228), (192, 17294),

Gene: Elva_9 Start: 7080, Stop: 7631, Start Num: 23

Candidate Starts for Elva_9:

(Start: 23 @7080 has 60 MA's), (60, 7227), (72, 7290), (77, 7305), (119, 7407), (126, 7434), (134, 7458), (137, 7467), (159, 7530), (169, 7557),

Gene: EricMillard_25 Start: 16275, Stop: 16844, Start Num: 22

Candidate Starts for EricMillard_25:

(Start: 22 @16275 has 34 MA's), (98, 16560), (128, 16641), (138, 16671), (143, 16686), (144, 16689), (153, 16725), (155, 16731), (168, 16764), (192, 16830),

Gene: EstebanJulior_7 Start: 6380, Stop: 6949, Start Num: 15

Candidate Starts for EstebanJulior_7:

(Start: 13 @6371 has 51 MA's), (Start: 15 @6380 has 25 MA's), (33, 6425), (62, 6554), (64, 6560), (75, 6623), (85, 6650), (119, 6734), (122, 6740), (137, 6791), (138, 6794), (142, 6806), (146, 6818), (156, 6848), (174, 6893), (185, 6923), (191, 6938), (192, 6941),

Gene: Eula_8 Start: 6763, Stop: 7323, Start Num: 23

Candidate Starts for Eula_8:

(Start: 23 @6763 has 60 MA's), (60, 6910), (62, 6916), (66, 6940), (137, 7159), (159, 7222), (185, 7291),

Gene: Eunoia_7 Start: 6351, Stop: 6923, Start Num: 15

Candidate Starts for Eunoia_7:

(Start: 13 @6342 has 51 MA's), (Start: 15 @6351 has 25 MA's), (33, 6396), (42, 6441), (59, 6513), (62, 6525), (64, 6531), (85, 6621), (95, 6651), (117, 6702), (122, 6711), (137, 6762), (138, 6765), (142, 6777), (146, 6789), (156, 6819), (169, 6852), (192, 6912),

Gene: Familton_42 Start: 21583, Stop: 22188, Start Num: 25

Candidate Starts for Familton_42:

(Start: 25 @21583 has 35 MA's), (Start: 30 @21598 has 1 MA's), (45, 21661), (55, 21709), (57, 21718), (62, 21736), (82, 21826), (87, 21841), (119, 21943), (122, 21949), (132, 21991), (134, 21997), (137, 22006), (138, 22009), (141, 22018), (161, 22081), (184, 22138), (188, 22147), (198, 22174),

Gene: Finalfrontier_9 Start: 7274, Stop: 7834, Start Num: 23

Candidate Starts for Finalfrontier_9:

(Start: 23 @7274 has 60 MA's), (60, 7421), (62, 7427), (66, 7451), (137, 7670), (159, 7733), (185, 7802),

Gene: Firecracker_41 Start: 21190, Stop: 21795, Start Num: 25

Candidate Starts for Firecracker_41:

(Start: 25 @21190 has 35 MA's), (Start: 30 @21205 has 1 MA's), (45, 21268), (55, 21316), (57, 21325), (62, 21343), (82, 21433), (87, 21448), (119, 21550), (122, 21556), (134, 21604), (137, 21613), (138, 21616), (141, 21625), (161, 21688), (184, 21745), (188, 21754), (198, 21781),

Gene: FlameThrower_8 Start: 6731, Stop: 7282, Start Num: 23

Candidate Starts for FlameThrower_8:

(Start: 23 @6731 has 60 MA's), (60, 6878), (62, 6884), (66, 6908), (72, 6941), (77, 6956), (134, 7109), (159, 7181),

Gene: Fluke_11 Start: 9232, Stop: 9810, Start Num: 13

Candidate Starts for Fluke_11:

(Start: 13 @9232 has 51 MA's), (Start: 15 @9241 has 25 MA's), (33, 9286), (62, 9415), (64, 9421), (70, 9466), (75, 9484), (79, 9499), (85, 9511), (119, 9595), (122, 9601), (137, 9652), (138, 9655), (142, 9667), (146, 9679), (156, 9709), (166, 9730), (174, 9754), (185, 9784), (191, 9799), (192, 9802),

Gene: FoulBall_38 Start: 21577, Stop: 22182, Start Num: 25

Candidate Starts for FoulBall_38:

(Start: 25 @21577 has 35 MA's), (Start: 30 @21592 has 1 MA's), (45, 21655), (55, 21703), (57, 21712), (62, 21730), (82, 21820), (87, 21835), (119, 21937), (122, 21943), (132, 21985), (134, 21991), (137, 22000), (138, 22003), (141, 22012), (161, 22075), (184, 22132), (188, 22141), (198, 22168),

Gene: Franklin22_7 Start: 6606, Stop: 7163, Start Num: 23

Candidate Starts for Franklin22_7:

(Start: 23 @6606 has 60 MA's), (62, 6759), (77, 6831), (119, 6939), (134, 6990), (140, 7008), (156, 7056), (184, 7128),

Gene: Fulbright_8 Start: 5956, Stop: 6441, Start Num: 41

Candidate Starts for Fulbright_8:

(8, 5854), (9, 5860), (12, 5872), (Start: 41 @5956 has 39 MA's), (51, 5995), (61, 6043), (66, 6073), (75, 6115), (79, 6130), (85, 6142), (87, 6151), (95, 6175), (122, 6232), (127, 6253), (134, 6274), (161, 6349), (167, 6367), (175, 6382), (188, 6415), (191, 6424),

Gene: Gack_7 Start: 6676, Stop: 7233, Start Num: 23
Candidate Starts for Gack_7:
(Start: 23 @6676 has 60 MA's), (62, 6829), (70, 6877), (140, 7078),

Gene: Galaxy_9 Start: 7113, Stop: 7700, Start Num: 10
Candidate Starts for Galaxy_9:
(Start: 10 @7113 has 24 MA's), (57, 7293), (70, 7359), (75, 7377), (82, 7398), (87, 7413), (95, 7434),
(146, 7575), (156, 7605),

Gene: Gex_8 Start: 5956, Stop: 6441, Start Num: 41
Candidate Starts for Gex_8:
(8, 5854), (9, 5860), (12, 5872), (Start: 41 @5956 has 39 MA's), (51, 5995), (61, 6043), (66, 6073), (75, 6115), (79, 6130), (85, 6142), (87, 6151), (95, 6175), (122, 6232), (127, 6253), (134, 6274), (161, 6349), (167, 6367), (175, 6382), (188, 6415), (191, 6424),

Gene: Ghobes_6 Start: 5444, Stop: 6055, Start Num: 18
Candidate Starts for Ghobes_6:
(Start: 18 @5444 has 3 MA's), (34, 5483), (56, 5591), (72, 5666), (81, 5693), (86, 5711), (102, 5768),
(127, 5849), (142, 5894), (143, 5897), (152, 5927), (165, 5954),

Gene: Gisselle_7 Start: 6382, Stop: 6951, Start Num: 15
Candidate Starts for Gisselle_7:
(Start: 13 @6373 has 51 MA's), (Start: 15 @6382 has 25 MA's), (33, 6427), (62, 6556), (64, 6562),
(85, 6652), (96, 6685), (117, 6733), (122, 6742), (137, 6793), (138, 6796), (142, 6808), (146, 6820),
(156, 6850), (166, 6871), (174, 6895), (185, 6925), (191, 6940), (192, 6943),

Gene: Glenn_11 Start: 9251, Stop: 9820, Start Num: 15
Candidate Starts for Glenn_11:
(Start: 13 @9242 has 51 MA's), (Start: 15 @9251 has 25 MA's), (33, 9296), (62, 9425), (64, 9431),
(70, 9476), (75, 9494), (79, 9509), (82, 9515), (85, 9521), (119, 9605), (122, 9611), (137, 9662), (138, 9665), (146, 9689), (156, 9719), (174, 9764), (185, 9794), (191, 9809), (192, 9812),

Gene: Goib_13 Start: 8885, Stop: 9409, Start Num: 27
Candidate Starts for Goib_13:
(Start: 27 @8885 has 7 MA's), (Start: 39 @8930 has 2 MA's), (55, 9005), (67, 9059), (75, 9089), (88, 9119), (110, 9176), (116, 9200), (131, 9245), (133, 9251), (134, 9254), (164, 9320), (170, 9338), (178, 9356), (193, 9395),

Gene: Gonephishing_21 Start: 14102, Stop: 14671, Start Num: 22
Candidate Starts for Gonephishing_21:
(Start: 19 @14099 has 5 MA's), (Start: 22 @14102 has 34 MA's), (58, 14243), (82, 14345), (98, 14387), (135, 14489), (138, 14498), (144, 14516), (153, 14552), (163, 14573), (168, 14591), (179, 14624), (184, 14636), (192, 14657),

Gene: GreenHearts_11 Start: 9314, Stop: 9892, Start Num: 13
Candidate Starts for GreenHearts_11:
(Start: 13 @9314 has 51 MA's), (Start: 15 @9323 has 25 MA's), (33, 9368), (59, 9485), (62, 9497),
(64, 9503), (75, 9566), (85, 9593), (119, 9677), (122, 9683), (130, 9713), (146, 9761), (156, 9791),
(192, 9884),

Gene: Greenhouse_11 Start: 9248, Stop: 9817, Start Num: 15
Candidate Starts for Greenhouse_11:

(Start: 13 @9239 has 51 MA's), (Start: 15 @9248 has 25 MA's), (33, 9293), (59, 9410), (62, 9422), (64, 9428), (75, 9491), (119, 9602), (122, 9608), (130, 9638), (146, 9686), (156, 9716), (192, 9809),

Gene: Gspu1_10 Start: 7323, Stop: 7862, Start Num: 17

Candidate Starts for Gspu1_10:

(17, 7323), (Start: 27 @7341 has 7 MA's), (55, 7464), (62, 7488), (88, 7578), (110, 7635), (122, 7671), (135, 7716), (152, 7770), (164, 7779), (174, 7806), (175, 7809), (182, 7830), (193, 7854),

Gene: Gustav_7 Start: 6033, Stop: 6599, Start Num: 21

Candidate Starts for Gustav_7:

(Start: 21 @6033 has 6 MA's), (40, 6093), (49, 6141), (55, 6174), (58, 6186), (64, 6204), (66, 6225), (119, 6378), (122, 6384), (126, 6408), (138, 6444), (158, 6507), (173, 6546), (187, 6582),

Gene: HC_09 Start: 6987, Stop: 7532, Start Num: 25

Candidate Starts for HC_09:

(4, 6801), (6, 6888), (Start: 25 @6987 has 35 MA's), (Start: 36 @7023 has 2 MA's), (55, 7110), (57, 7119), (66, 7164), (72, 7197), (122, 7323), (135, 7374), (180, 7497), (189, 7518),

Gene: Halley_25 Start: 15988, Stop: 16557, Start Num: 22

Candidate Starts for Halley_25:

(Start: 22 @15988 has 34 MA's), (98, 16273), (128, 16354), (138, 16384), (143, 16399), (144, 16402), (153, 16438), (155, 16444), (168, 16477), (192, 16543),

Gene: Hannaconda_20 Start: 12609, Stop: 13178, Start Num: 22

Candidate Starts for Hannaconda_20:

(Start: 19 @12606 has 5 MA's), (Start: 22 @12609 has 34 MA's), (58, 12750), (82, 12852), (98, 12894), (135, 12996), (138, 13005), (144, 13023), (148, 13041), (153, 13059), (163, 13080), (168, 13098), (179, 13131), (184, 13143), (192, 13164),

Gene: HannahPhantana_10 Start: 7305, Stop: 7895, Start Num: 10

Candidate Starts for HannahPhantana_10:

(Start: 10 @7305 has 24 MA's), (29, 7359), (57, 7485), (71, 7554), (73, 7563), (75, 7569), (82, 7590), (93, 7617), (95, 7629), (115, 7674), (146, 7770), (156, 7800), (169, 7833),

Gene: HeadNerd_7 Start: 6329, Stop: 6907, Start Num: 13

Candidate Starts for HeadNerd_7:

(Start: 13 @6329 has 51 MA's), (Start: 15 @6338 has 25 MA's), (33, 6383), (62, 6512), (64, 6518), (75, 6581), (85, 6608), (119, 6692), (122, 6698), (137, 6749), (138, 6752), (142, 6764), (146, 6776), (156, 6806), (174, 6851), (185, 6881), (191, 6896), (192, 6899),

Gene: Heinz_8 Start: 6314, Stop: 6847, Start Num: 28

Candidate Starts for Heinz_8:

(Start: 28 @6314 has 5 MA's), (55, 6434), (122, 6641), (158, 6752), (184, 6812), (194, 6836),

Gene: Herb_7 Start: 6353, Stop: 6925, Start Num: 15

Candidate Starts for Herb_7:

(Start: 13 @6344 has 51 MA's), (Start: 15 @6353 has 25 MA's), (33, 6398), (42, 6443), (62, 6527), (64, 6533), (85, 6623), (95, 6653), (117, 6704), (122, 6713), (146, 6791), (156, 6821), (185, 6896), (192, 6914),

Gene: Hibiscus_8 Start: 6288, Stop: 6821, Start Num: 28

Candidate Starts for Hibiscus_8:

(Start: 28 @6288 has 5 MA's), (55, 6408), (122, 6615), (127, 6642), (184, 6786), (194, 6810),

Gene: HokkenD_20 Start: 15558, Stop: 16127, Start Num: 22

Candidate Starts for HokkenD_20:

(Start: 22 @15558 has 34 MA's), (98, 15843), (128, 15924), (138, 15954), (143, 15969), (144, 15972), (153, 16008), (155, 16014), (168, 16047), (192, 16113),

Gene: Huckleberry_7 Start: 6338, Stop: 6907, Start Num: 15

Candidate Starts for Huckleberry_7:

(Start: 13 @6329 has 51 MA's), (Start: 15 @6338 has 25 MA's), (33, 6383), (62, 6512), (64, 6518), (75, 6581), (85, 6608), (119, 6692), (122, 6698), (137, 6749), (138, 6752), (142, 6764), (146, 6776), (156, 6806), (174, 6851), (185, 6881), (191, 6896), (192, 6899),

Gene: Huffu_14 Start: 9110, Stop: 9634, Start Num: 27

Candidate Starts for Huffu_14:

(Start: 27 @9110 has 7 MA's), (Start: 39 @9155 has 2 MA's), (55, 9230), (67, 9284), (75, 9314), (88, 9344), (110, 9401), (116, 9425), (131, 9470), (134, 9479), (164, 9545), (170, 9563), (178, 9581), (193, 9620),

Gene: Hughesyang_24 Start: 16171, Stop: 16740, Start Num: 22

Candidate Starts for Hughesyang_24:

(Start: 22 @16171 has 34 MA's), (71, 16378), (98, 16456), (128, 16537), (138, 16567), (143, 16582), (144, 16585), (153, 16621), (155, 16627), (168, 16660), (192, 16726),

Gene: HunterDalle_7 Start: 6342, Stop: 6923, Start Num: 13

Candidate Starts for HunterDalle_7:

(Start: 13 @6342 has 51 MA's), (Start: 15 @6351 has 25 MA's), (33, 6396), (42, 6441), (59, 6513), (62, 6525), (64, 6531), (85, 6621), (87, 6630), (95, 6651), (117, 6702), (122, 6711), (137, 6762), (138, 6765), (142, 6777), (146, 6789), (156, 6819), (169, 6852), (192, 6912),

Gene: Huntingdon_11 Start: 9225, Stop: 9803, Start Num: 13

Candidate Starts for Huntingdon_11:

(Start: 13 @9225 has 51 MA's), (Start: 15 @9234 has 25 MA's), (33, 9279), (59, 9396), (62, 9408), (64, 9414), (75, 9477), (122, 9594), (146, 9672), (156, 9702), (192, 9795),

Gene: Icarian_9 Start: 7006, Stop: 7557, Start Num: 23

Candidate Starts for Icarian_9:

(Start: 23 @7006 has 60 MA's), (35, 7039), (60, 7153), (66, 7183), (72, 7216), (77, 7231), (119, 7333), (134, 7384), (159, 7456), (169, 7483), (196, 7552),

Gene: Idergollasper_41 Start: 21577, Stop: 22182, Start Num: 25

Candidate Starts for Idergollasper_41:

(Start: 25 @21577 has 35 MA's), (Start: 30 @21592 has 1 MA's), (45, 21655), (55, 21703), (57, 21712), (62, 21730), (82, 21820), (87, 21835), (119, 21937), (122, 21943), (132, 21985), (134, 21991), (137, 22000), (138, 22003), (141, 22012), (161, 22075), (184, 22132), (188, 22141), (198, 22168),

Gene: Immaculata_11 Start: 9236, Stop: 9814, Start Num: 13

Candidate Starts for Immaculata_11:

(Start: 13 @9236 has 51 MA's), (Start: 15 @9245 has 25 MA's), (33, 9290), (62, 9419), (64, 9425), (70, 9470), (75, 9488), (79, 9503), (85, 9515), (117, 9596), (119, 9599), (122, 9605), (137, 9656), (138, 9659), (142, 9671), (146, 9683), (156, 9713), (166, 9734), (174, 9758), (185, 9788), (191, 9803), (192, 9806),

Gene: IndyLu_8 Start: 6817, Stop: 7368, Start Num: 23

Candidate Starts for IndyLu_8:

(Start: 23 @6817 has 60 MA's), (35, 6850), (60, 6964), (62, 6970), (66, 6994), (77, 7042), (119, 7144), (134, 7195), (159, 7267), (165, 7279),

Gene: Island3_9 Start: 6988, Stop: 7533, Start Num: 25

Candidate Starts for Island3_9:

(Start: 25 @6988 has 35 MA's), (Start: 36 @7024 has 2 MA's), (38, 7033), (55, 7111), (57, 7120), (66, 7165), (72, 7198), (122, 7324), (135, 7375), (180, 7498), (189, 7519),

Gene: Jamie19_8 Start: 5997, Stop: 6482, Start Num: 41

Candidate Starts for Jamie19_8:

(9, 5883), (12, 5895), (Start: 41 @5997 has 39 MA's), (51, 6036), (52, 6042), (61, 6084), (66, 6114), (85, 6183), (95, 6216), (122, 6273), (127, 6294), (134, 6315), (161, 6390), (167, 6408), (175, 6423), (191, 6465),

Gene: Jamun_9 Start: 7454, Stop: 8041, Start Num: 10

Candidate Starts for Jamun_9:

(Start: 10 @7454 has 24 MA's), (57, 7634), (70, 7700), (73, 7712), (75, 7718), (82, 7739), (87, 7754), (95, 7775), (114, 7811), (146, 7916), (156, 7946),

Gene: JangDynasty_41 Start: 21672, Stop: 22277, Start Num: 25

Candidate Starts for JangDynasty_41:

(Start: 25 @21672 has 35 MA's), (Start: 30 @21687 has 1 MA's), (45, 21750), (55, 21798), (57, 21807), (62, 21825), (82, 21915), (87, 21930), (119, 22032), (122, 22038), (132, 22080), (134, 22086), (137, 22095), (138, 22098), (141, 22107), (161, 22170), (184, 22227), (188, 22236), (198, 22263),

Gene: Joann_11 Start: 9217, Stop: 9795, Start Num: 13

Candidate Starts for Joann_11:

(Start: 13 @9217 has 51 MA's), (Start: 15 @9226 has 25 MA's), (33, 9271), (59, 9388), (62, 9400), (64, 9406), (75, 9469), (85, 9496), (119, 9580), (122, 9586), (130, 9616), (146, 9664), (156, 9694), (192, 9787),

Gene: Johnathan_8 Start: 6765, Stop: 7325, Start Num: 23

Candidate Starts for Johnathan_8:

(Start: 23 @6765 has 60 MA's), (60, 6912), (62, 6918), (66, 6942), (79, 6999), (134, 7152), (137, 7161), (159, 7224), (185, 7293),

Gene: Jojo24_8 Start: 6283, Stop: 6816, Start Num: 28

Candidate Starts for Jojo24_8:

(Start: 28 @6283 has 5 MA's), (55, 6403), (69, 6463), (122, 6610), (127, 6637), (184, 6781), (194, 6805),

Gene: Journey_8 Start: 5956, Stop: 6441, Start Num: 41

Candidate Starts for Journey_8:

(8, 5854), (9, 5860), (12, 5872), (Start: 41 @5956 has 39 MA's), (51, 5995), (61, 6043), (66, 6073), (75, 6115), (79, 6130), (85, 6142), (87, 6151), (95, 6175), (122, 6232), (127, 6253), (134, 6274), (161, 6349), (167, 6367), (175, 6382), (188, 6415), (191, 6424),

Gene: Jovita_8 Start: 6864, Stop: 7424, Start Num: 23

Candidate Starts for Jovita_8:

(Start: 23 @6864 has 60 MA's), (60, 7011), (62, 7017), (66, 7041), (137, 7260), (159, 7323), (185, 7392),

Gene: JuicyJay_27 Start: 16822, Stop: 17391, Start Num: 22

Candidate Starts for JuicyJay_27:

(Start: 22 @16822 has 34 MA's), (57, 16960), (98, 17107), (128, 17188), (138, 17218), (143, 17233), (144, 17236), (153, 17272), (155, 17278), (168, 17311), (192, 17377),

Gene: Jumboset_11 Start: 9185, Stop: 9763, Start Num: 13

Candidate Starts for Jumboset_11:

(Start: 13 @9185 has 51 MA's), (Start: 15 @9194 has 25 MA's), (33, 9239), (62, 9368), (64, 9374), (70, 9419), (75, 9437), (79, 9452), (85, 9464), (119, 9548), (122, 9554), (137, 9605), (138, 9608), (146, 9632), (156, 9662), (166, 9683), (174, 9707), (185, 9737), (191, 9752), (192, 9755),

Gene: Juno112_8 Start: 6715, Stop: 7302, Start Num: 10

Candidate Starts for Juno112_8:

(Start: 10 @6715 has 24 MA's), (57, 6895), (67, 6940), (72, 6970), (73, 6973), (85, 7006), (94, 7030), (95, 7036), (115, 7081), (121, 7093), (127, 7120), (146, 7177), (154, 7204), (156, 7207),

Gene: KHumphrey_8 Start: 6714, Stop: 7301, Start Num: 10

Candidate Starts for KHumphrey_8:

(Start: 10 @6714 has 24 MA's), (57, 6894), (67, 6939), (72, 6969), (73, 6972), (85, 7005), (94, 7029), (95, 7035), (115, 7080), (121, 7092), (125, 7110), (127, 7119), (146, 7176), (154, 7203), (156, 7206),

Gene: Kalah2_26 Start: 16590, Stop: 17159, Start Num: 22

Candidate Starts for Kalah2_26:

(Start: 22 @16590 has 34 MA's), (98, 16875), (128, 16956), (138, 16986), (143, 17001), (144, 17004), (153, 17040), (155, 17046), (168, 17079), (192, 17145),

Gene: Kalizoi_11 Start: 9184, Stop: 9762, Start Num: 13

Candidate Starts for Kalizoi_11:

(Start: 13 @9184 has 51 MA's), (Start: 15 @9193 has 25 MA's), (33, 9238), (62, 9367), (64, 9373), (70, 9418), (75, 9436), (79, 9451), (85, 9463), (117, 9544), (119, 9547), (122, 9553), (137, 9604), (138, 9607), (142, 9619), (146, 9631), (156, 9661), (166, 9682), (174, 9706), (185, 9736), (191, 9751), (192, 9754),

Gene: KashFlow_17 Start: 12175, Stop: 12744, Start Num: 22

Candidate Starts for KashFlow_17:

(Start: 19 @12172 has 5 MA's), (Start: 22 @12175 has 34 MA's), (58, 12316), (82, 12418), (98, 12460), (135, 12562), (144, 12589), (163, 12646), (168, 12664), (179, 12697), (192, 12730),

Gene: Katzastrophic_8 Start: 6906, Stop: 7457, Start Num: 23

Candidate Starts for Katzastrophic_8:

(Start: 23 @6906 has 60 MA's), (60, 7053), (62, 7059), (66, 7083), (72, 7116), (77, 7131), (134, 7284), (159, 7356),

Gene: Kenzers_8 Start: 6779, Stop: 7339, Start Num: 23

Candidate Starts for Kenzers_8:

(Start: 23 @6779 has 60 MA's), (35, 6812), (60, 6926), (62, 6932), (66, 6956), (79, 7013), (83, 7022), (117, 7112), (159, 7238), (185, 7307),

Gene: Kepler_9 Start: 7140, Stop: 7730, Start Num: 10

Candidate Starts for Kepler_9:

(Start: 10 @7140 has 24 MA's), (29, 7194), (57, 7320), (71, 7389), (73, 7398), (75, 7404), (82, 7425), (93, 7452), (95, 7464), (115, 7509), (146, 7605), (156, 7635), (169, 7668),

Gene: Kevin1_8 Start: 5970, Stop: 6461, Start Num: 41

Candidate Starts for Kevin1_8:

(9, 5859), (12, 5871), (Start: 41 @5970 has 39 MA's), (51, 6009), (66, 6087), (75, 6129), (85, 6156), (95, 6189), (122, 6246), (127, 6273), (134, 6294), (136, 6300), (161, 6369), (175, 6402), (191, 6444),

Gene: Khuang_7 Start: 5855, Stop: 6379, Start Num: 31

Candidate Starts for Khuang_7:

(31, 5855), (119, 6161), (130, 6197), (149, 6251), (157, 6275),

Gene: Kieran_8 Start: 6999, Stop: 7556, Start Num: 23

Candidate Starts for Kieran_8:

(Start: 23 @6999 has 60 MA's), (60, 7146), (66, 7176), (117, 7329), (137, 7392), (159, 7455), (185, 7524),

Gene: KingBob_7 Start: 6353, Stop: 6925, Start Num: 15

Candidate Starts for KingBob_7:

(Start: 13 @6344 has 51 MA's), (Start: 15 @6353 has 25 MA's), (33, 6398), (42, 6443), (62, 6527), (64, 6533), (85, 6623), (95, 6653), (117, 6704), (122, 6713), (146, 6791), (156, 6821), (185, 6896), (192, 6914),

Gene: Kittykat_7 Start: 6370, Stop: 6948, Start Num: 13

Candidate Starts for Kittykat_7:

(Start: 13 @6370 has 51 MA's), (Start: 15 @6379 has 25 MA's), (33, 6424), (62, 6553), (85, 6649), (96, 6682), (117, 6730), (122, 6739), (137, 6790), (138, 6793), (142, 6805), (146, 6817), (156, 6847), (166, 6868), (174, 6892), (185, 6922), (192, 6940),

Gene: Klein_25 Start: 15568, Stop: 16137, Start Num: 22

Candidate Starts for Klein_25:

(Start: 22 @15568 has 34 MA's), (57, 15706), (71, 15775), (98, 15853), (128, 15934), (138, 15964), (143, 15979), (144, 15982), (153, 16018), (155, 16024), (168, 16057), (192, 16123),

Gene: Korra_11 Start: 9199, Stop: 9768, Start Num: 15

Candidate Starts for Korra_11:

(Start: 13 @9190 has 51 MA's), (Start: 15 @9199 has 25 MA's), (33, 9244), (62, 9373), (64, 9379), (70, 9424), (75, 9442), (79, 9457), (85, 9469), (117, 9550), (119, 9553), (122, 9559), (137, 9610), (138, 9613), (142, 9625), (146, 9637), (156, 9667), (166, 9688), (174, 9712), (185, 9742), (191, 9757), (192, 9760),

Gene: Krili_40 Start: 21294, Stop: 21899, Start Num: 25

Candidate Starts for Krili_40:

(Start: 25 @21294 has 35 MA's), (45, 21372), (55, 21420), (57, 21429), (62, 21447), (82, 21537), (87, 21552), (119, 21654), (122, 21660), (134, 21708), (137, 21717), (138, 21720), (141, 21729), (161, 21792), (184, 21849), (188, 21858), (198, 21885),

Gene: Kromp_9 Start: 7708, Stop: 8337, Start Num: 21

Candidate Starts for Kromp_9:

(Start: 21 @7708 has 6 MA's), (Start: 36 @7753 has 2 MA's), (40, 7768), (54, 7837), (76, 7942), (77, 7945), (85, 7975), (107, 8059), (113, 8083), (122, 8110), (134, 8158), (136, 8164), (159, 8233), (165, 8245), (194, 8323),

Gene: Kuleana_9 Start: 7105, Stop: 7692, Start Num: 10

Candidate Starts for Kuleana_9:

(Start: 10 @7105 has 24 MA's), (57, 7285), (71, 7354), (72, 7360), (73, 7363), (82, 7390), (95, 7426), (146, 7567), (156, 7597),

Gene: Lahqtemish_8 Start: 6855, Stop: 7412, Start Num: 23

Candidate Starts for Lahqtemish_8:

(Start: 23 @6855 has 60 MA's), (60, 7002), (62, 7008), (66, 7032), (119, 7188), (134, 7239), (159, 7311), (165, 7323), (169, 7338),

Gene: Lakshmi_11 Start: 9244, Stop: 9822, Start Num: 13

Candidate Starts for Lakshmi_11:

(Start: 13 @9244 has 51 MA's), (Start: 15 @9253 has 25 MA's), (33, 9298), (59, 9415), (62, 9427), (64, 9433), (75, 9496), (85, 9523), (119, 9607), (122, 9613), (130, 9643), (146, 9691), (156, 9721), (192, 9814),

Gene: Lasagna_7 Start: 6336, Stop: 6905, Start Num: 15

Candidate Starts for Lasagna_7:

(Start: 13 @6327 has 51 MA's), (Start: 15 @6336 has 25 MA's), (33, 6381), (62, 6510), (64, 6516), (75, 6579), (85, 6606), (95, 6636), (117, 6687), (119, 6690), (122, 6696), (137, 6747), (138, 6750), (146, 6774), (156, 6804), (174, 6849), (185, 6879), (191, 6894), (192, 6897),

Gene: Lennox_7 Start: 6327, Stop: 6905, Start Num: 13

Candidate Starts for Lennox_7:

(Start: 13 @6327 has 51 MA's), (Start: 15 @6336 has 25 MA's), (33, 6381), (62, 6510), (64, 6516), (75, 6579), (79, 6594), (85, 6606), (95, 6636), (117, 6687), (119, 6690), (122, 6696), (137, 6747), (138, 6750), (146, 6774), (156, 6804), (174, 6849), (185, 6879), (191, 6894), (192, 6897),

Gene: Leona_8 Start: 6765, Stop: 7352, Start Num: 10

Candidate Starts for Leona_8:

(Start: 10 @6765 has 24 MA's), (Start: 39 @6858 has 2 MA's), (45, 6888), (57, 6945), (72, 7020), (73, 7023), (82, 7050), (95, 7086), (115, 7131), (125, 7161), (146, 7227), (154, 7254), (156, 7257),

Gene: LilStuart_7 Start: 6327, Stop: 6905, Start Num: 13

Candidate Starts for LilStuart_7:

(Start: 13 @6327 has 51 MA's), (Start: 15 @6336 has 25 MA's), (33, 6381), (62, 6510), (64, 6516), (75, 6579), (79, 6594), (85, 6606), (95, 6636), (117, 6687), (119, 6690), (122, 6696), (137, 6747), (138, 6750), (146, 6774), (156, 6804), (174, 6849), (185, 6879), (191, 6894), (192, 6897),

Gene: LimaBean_8 Start: 6765, Stop: 7325, Start Num: 23

Candidate Starts for LimaBean_8:

(Start: 23 @6765 has 60 MA's), (60, 6912), (62, 6918), (66, 6942), (79, 6999), (134, 7152), (137, 7161), (159, 7224), (185, 7293),

Gene: Litotes_11 Start: 9218, Stop: 9790, Start Num: 14

Candidate Starts for Litotes_11:

(Start: 14 @9218 has 6 MA's), (59, 9380), (62, 9392), (64, 9398), (70, 9443), (75, 9461), (119, 9572), (122, 9578), (146, 9656), (156, 9686), (174, 9731), (175, 9734), (191, 9776), (192, 9779),

Gene: LittleE_23 Start: 15311, Stop: 15883, Start Num: 19

Candidate Starts for LittleE_23:

(Start: 19 @15311 has 5 MA's), (Start: 22 @15314 has 34 MA's), (58, 15455), (82, 15557), (98, 15599), (135, 15701), (138, 15710), (144, 15728), (153, 15764), (163, 15785), (168, 15803), (179, 15836), (184, 15848), (192, 15869),

Gene: LittleTokyo_9 Start: 7047, Stop: 7634, Start Num: 10

Candidate Starts for LittleTokyo_9:

(Start: 10 @7047 has 24 MA's), (73, 7305), (80, 7329), (82, 7332), (87, 7347), (95, 7368), (115, 7413), (121, 7425), (125, 7443), (146, 7509), (156, 7539),

Gene: Loviatar_15 Start: 7027, Stop: 7578, Start Num: 23

Candidate Starts for Loviatar_15:

(Start: 23 @7027 has 60 MA's), (60, 7174), (66, 7204), (72, 7237), (77, 7252), (119, 7354), (134, 7405), (159, 7477), (169, 7504),

Gene: Lucky2013_23 Start: 14054, Stop: 14626, Start Num: 19

Candidate Starts for Lucky2013_23:

(Start: 19 @14054 has 5 MA's), (Start: 22 @14057 has 34 MA's), (58, 14198), (82, 14300), (98, 14342), (135, 14444), (144, 14471), (163, 14528), (168, 14546), (179, 14579), (192, 14612),

Gene: Lucy_7 Start: 6318, Stop: 6896, Start Num: 13

Candidate Starts for Lucy_7:

(Start: 13 @6318 has 51 MA's), (Start: 15 @6327 has 25 MA's), (33, 6372), (62, 6501), (64, 6507), (75, 6570), (79, 6585), (85, 6597), (117, 6678), (119, 6681), (122, 6687), (137, 6738), (138, 6741), (146, 6765), (156, 6795), (174, 6840), (185, 6870), (191, 6885), (192, 6888),

Gene: Lunar_10 Start: 7302, Stop: 7892, Start Num: 10

Candidate Starts for Lunar_10:

(Start: 10 @7302 has 24 MA's), (29, 7356), (57, 7482), (71, 7551), (73, 7560), (75, 7566), (82, 7587), (93, 7614), (95, 7626), (115, 7671), (146, 7767), (156, 7797), (169, 7830),

Gene: Lynlen_8 Start: 6779, Stop: 7339, Start Num: 23

Candidate Starts for Lynlen_8:

(Start: 23 @6779 has 60 MA's), (35, 6812), (60, 6926), (62, 6932), (66, 6956), (79, 7013), (83, 7022), (117, 7112), (159, 7238), (185, 7307),

Gene: MadKillah_42 Start: 21516, Stop: 22121, Start Num: 25

Candidate Starts for MadKillah_42:

(Start: 25 @21516 has 35 MA's), (Start: 30 @21531 has 1 MA's), (45, 21594), (55, 21642), (57, 21651), (62, 21669), (82, 21759), (87, 21774), (119, 21876), (122, 21882), (132, 21924), (134, 21930), (137, 21939), (138, 21942), (141, 21951), (161, 22014), (184, 22071), (188, 22080), (198, 22107),

Gene: Magsby_8 Start: 5956, Stop: 6441, Start Num: 41

Candidate Starts for Magsby_8:

(8, 5854), (9, 5860), (12, 5872), (Start: 41 @5956 has 39 MA's), (51, 5995), (61, 6043), (66, 6073), (75, 6115), (79, 6130), (85, 6142), (87, 6151), (95, 6175), (122, 6232), (127, 6253), (134, 6274), (161, 6349), (167, 6367), (175, 6382), (188, 6415), (191, 6424),

Gene: Mahdia_7 Start: 6047, Stop: 6601, Start Num: 21

Candidate Starts for Mahdia_7:

(Start: 21 @6047 has 6 MA's), (40, 6107), (49, 6155), (55, 6188), (58, 6200), (64, 6218), (66, 6239), (101, 6356), (119, 6395), (145, 6467), (158, 6509),

Gene: Makoto_7 Start: 6327, Stop: 6905, Start Num: 13

Candidate Starts for Makoto_7:

(Start: 13 @6327 has 51 MA's), (Start: 15 @6336 has 25 MA's), (33, 6381), (62, 6510), (64, 6516), (75, 6579), (79, 6594), (85, 6606), (117, 6687), (119, 6690), (122, 6696), (137, 6747), (138, 6750), (146, 6774), (156, 6804), (174, 6849), (185, 6879), (191, 6894), (192, 6897),

Gene: MamaPearl_7 Start: 6380, Stop: 6949, Start Num: 15

Candidate Starts for MamaPearl_7:

(Start: 13 @6371 has 51 MA's), (Start: 15 @6380 has 25 MA's), (33, 6425), (62, 6554), (64, 6560), (75, 6623), (85, 6650), (119, 6734), (122, 6740), (137, 6791), (138, 6794), (142, 6806), (146, 6818), (156, 6848), (174, 6893), (185, 6923), (191, 6938), (192, 6941),

Gene: Maria1952_7 Start: 6344, Stop: 6925, Start Num: 13

Candidate Starts for Maria1952_7:

(Start: 13 @6344 has 51 MA's), (Start: 15 @6353 has 25 MA's), (33, 6398), (42, 6443), (62, 6527), (64, 6533), (85, 6623), (95, 6653), (117, 6704), (122, 6713), (146, 6791), (156, 6821), (185, 6896), (192, 6914),

Gene: MeganNoll_11 Start: 9242, Stop: 9820, Start Num: 13

Candidate Starts for MeganNoll_11:

(Start: 13 @9242 has 51 MA's), (Start: 15 @9251 has 25 MA's), (33, 9296), (62, 9425), (64, 9431), (70, 9476), (75, 9494), (79, 9509), (85, 9521), (119, 9605), (122, 9611), (137, 9662), (138, 9665), (146, 9689), (156, 9719), (166, 9740), (174, 9764), (185, 9794), (191, 9809), (192, 9812),

Gene: Melons_10 Start: 7302, Stop: 7892, Start Num: 10

Candidate Starts for Melons_10:

(Start: 10 @7302 has 24 MA's), (29, 7356), (57, 7482), (71, 7551), (73, 7560), (75, 7566), (82, 7587), (93, 7614), (95, 7626), (115, 7671), (146, 7767), (156, 7797), (169, 7830),

Gene: Melville_8 Start: 5956, Stop: 6441, Start Num: 41

Candidate Starts for Melville_8:

(8, 5854), (9, 5860), (12, 5872), (Start: 41 @5956 has 39 MA's), (51, 5995), (61, 6043), (66, 6073), (75, 6115), (79, 6130), (85, 6142), (87, 6151), (95, 6175), (122, 6232), (127, 6253), (134, 6274), (161, 6349), (167, 6367), (175, 6382), (188, 6415), (191, 6424),

Gene: MiaZeal_23 Start: 13745, Stop: 14317, Start Num: 19

Candidate Starts for MiaZeal_23:

(Start: 19 @13745 has 5 MA's), (Start: 22 @13748 has 34 MA's), (58, 13889), (82, 13991), (98, 14033), (135, 14135), (138, 14144), (144, 14162), (153, 14198), (163, 14219), (168, 14237), (179, 14270), (184, 14282), (192, 14303),

Gene: MichelleMyBell_8 Start: 5990, Stop: 6481, Start Num: 41

Candidate Starts for MichelleMyBell_8:

(7, 5834), (9, 5879), (12, 5891), (Start: 41 @5990 has 39 MA's), (51, 6029), (61, 6077), (66, 6107), (75, 6149), (85, 6176), (95, 6209), (122, 6266), (127, 6293), (134, 6314), (136, 6320), (161, 6389), (175, 6422), (191, 6464),

Gene: Minerva_25 Start: 16053, Stop: 16622, Start Num: 22

Candidate Starts for Minerva_25:

(Start: 22 @16053 has 34 MA's), (57, 16191), (98, 16338), (128, 16419), (138, 16449), (143, 16464), (144, 16467), (153, 16503), (155, 16509), (168, 16542), (192, 16608),

Gene: Misaeng_11 Start: 9290, Stop: 9868, Start Num: 13

Candidate Starts for Misaeng_11:

(Start: 13 @9290 has 51 MA's), (Start: 15 @9299 has 25 MA's), (33, 9344), (59, 9461), (62, 9473), (64, 9479), (75, 9542), (96, 9602), (122, 9659), (146, 9737), (156, 9767), (192, 9860),

Gene: Moki_7 Start: 6329, Stop: 6907, Start Num: 13

Candidate Starts for Moki_7:

(Start: 13 @6329 has 51 MA's), (Start: 15 @6338 has 25 MA's), (33, 6383), (62, 6512), (64, 6518), (75, 6581), (85, 6608), (119, 6692), (122, 6698), (137, 6749), (138, 6752), (142, 6764), (146, 6776), (156, 6806), (174, 6851), (185, 6881), (191, 6896), (192, 6899),

Gene: MooMoo_7 Start: 5220, Stop: 5819, Start Num: 25

Candidate Starts for MooMoo_7:

(Start: 25 @5220 has 35 MA's), (33, 5244), (49, 5319), (137, 5628), (141, 5640), (150, 5679), (184, 5769), (198, 5805),

Gene: Mori_40 Start: 21165, Stop: 21770, Start Num: 25

Candidate Starts for Mori_40:

(Start: 25 @21165 has 35 MA's), (Start: 30 @21180 has 1 MA's), (45, 21243), (55, 21291), (57, 21300), (62, 21318), (82, 21408), (87, 21423), (119, 21525), (122, 21531), (132, 21573), (134, 21579), (137, 21588), (138, 21591), (141, 21600), (161, 21663), (184, 21720), (188, 21729), (198, 21756),

Gene: Morrissey_7 Start: 6029, Stop: 6574, Start Num: 20

Candidate Starts for Morrissey_7:

(Start: 20 @6029 has 2 MA's), (49, 6131), (58, 6176), (64, 6194), (65, 6212), (119, 6368), (122, 6374), (145, 6440), (158, 6482), (187, 6557),

Gene: MrGloopy_11 Start: 9175, Stop: 9753, Start Num: 13

Candidate Starts for MrGloopy_11:

(Start: 13 @9175 has 51 MA's), (Start: 15 @9184 has 25 MA's), (33, 9229), (62, 9358), (64, 9364), (70, 9409), (75, 9427), (79, 9442), (82, 9448), (85, 9454), (119, 9538), (122, 9544), (137, 9595), (138, 9598), (146, 9622), (156, 9652), (166, 9673), (174, 9697), (185, 9727), (191, 9742), (192, 9745),

Gene: Murai_41 Start: 21355, Stop: 21960, Start Num: 25

Candidate Starts for Murai_41:

(Start: 25 @21355 has 35 MA's), (45, 21433), (55, 21481), (57, 21490), (62, 21508), (82, 21598), (87, 21613), (119, 21715), (122, 21721), (134, 21769), (137, 21778), (138, 21781), (141, 21790), (161, 21853), (184, 21910), (188, 21919), (198, 21946),

Gene: Nancia_7 Start: 6327, Stop: 6905, Start Num: 13

Candidate Starts for Nancia_7:

(Start: 13 @6327 has 51 MA's), (Start: 15 @6336 has 25 MA's), (33, 6381), (62, 6510), (64, 6516), (75, 6579), (85, 6606), (95, 6636), (117, 6687), (119, 6690), (122, 6696), (137, 6747), (138, 6750), (146, 6774), (156, 6804), (174, 6849), (185, 6879), (191, 6894), (192, 6897),

Gene: Nenae_8 Start: 5997, Stop: 6482, Start Num: 41

Candidate Starts for Nenae_8:

(9, 5883), (12, 5895), (Start: 41 @5997 has 39 MA's), (51, 6036), (52, 6042), (61, 6084), (66, 6114), (85, 6183), (95, 6216), (122, 6273), (127, 6294), (134, 6315), (161, 6390), (167, 6408), (175, 6423), (191, 6465),

Gene: Nicky22_9 Start: 7213, Stop: 7773, Start Num: 23

Candidate Starts for Nicky22_9:

(Start: 23 @7213 has 60 MA's), (60, 7360), (62, 7366), (66, 7390), (137, 7609), (159, 7672), (185, 7741),

Gene: NiebruSaylor_40 Start: 21166, Stop: 21771, Start Num: 25

Candidate Starts for NiebruSaylor_40:

(Start: 25 @21166 has 35 MA's), (Start: 30 @21181 has 1 MA's), (45, 21244), (55, 21292), (57, 21301), (62, 21319), (82, 21409), (87, 21424), (119, 21526), (122, 21532), (132, 21574), (134, 21580), (137, 21589), (138, 21592), (141, 21601), (161, 21664), (184, 21721), (188, 21730), (198, 21757),

Gene: NihilNomen_24 Start: 16050, Stop: 16619, Start Num: 22

Candidate Starts for NihilNomen_24:

(Start: 22 @16050 has 34 MA's), (57, 16188), (71, 16257), (98, 16335), (128, 16416), (138, 16446), (143, 16461), (144, 16464), (153, 16500), (155, 16506), (168, 16539), (192, 16605),

Gene: Nubia_11 Start: 9213, Stop: 9782, Start Num: 15

Candidate Starts for Nubia_11:

(Start: 13 @9204 has 51 MA's), (Start: 15 @9213 has 25 MA's), (33, 9258), (59, 9375), (62, 9387), (64, 9393), (75, 9456), (85, 9483), (119, 9567), (122, 9573), (130, 9603), (146, 9651), (156, 9681), (192, 9774),

Gene: OMalley_7 Start: 6342, Stop: 6923, Start Num: 13

Candidate Starts for OMalley_7:

(Start: 13 @6342 has 51 MA's), (Start: 15 @6351 has 25 MA's), (33, 6396), (42, 6441), (59, 6513), (62, 6525), (64, 6531), (85, 6621), (95, 6651), (117, 6702), (122, 6711), (137, 6762), (138, 6765), (142, 6777), (146, 6789), (156, 6819), (169, 6852), (192, 6912),

Gene: Odette_24 Start: 15531, Stop: 16100, Start Num: 22

Candidate Starts for Odette_24:

(Start: 22 @15531 has 34 MA's), (57, 15669), (98, 15816), (128, 15897), (138, 15927), (143, 15942), (144, 15945), (153, 15981), (155, 15987), (168, 16020), (192, 16086),

Gene: Olliecat_8 Start: 6996, Stop: 7556, Start Num: 23

Candidate Starts for Olliecat_8:

(Start: 23 @6996 has 60 MA's), (60, 7146), (62, 7152), (96, 7281), (126, 7359), (134, 7383), (140, 7401), (156, 7449), (159, 7455), (169, 7482),

Gene: Omega_25 Start: 17674, Stop: 18243, Start Num: 22

Candidate Starts for Omega_25:

(Start: 19 @17671 has 5 MA's), (Start: 22 @17674 has 34 MA's), (58, 17815), (82, 17917), (98, 17959), (135, 18061), (138, 18070), (144, 18088), (163, 18145), (168, 18163), (179, 18196), (192, 18229),

Gene: Optimus_23 Start: 15628, Stop: 16197, Start Num: 22

Candidate Starts for Optimus_23:

(Start: 22 @15628 has 34 MA's), (98, 15913), (128, 15994), (138, 16024), (143, 16039), (144, 16042), (153, 16078), (155, 16084), (168, 16117), (192, 16183),

Gene: Orcanus_9 Start: 7095, Stop: 7682, Start Num: 10

Candidate Starts for Orcanus_9:

(Start: 10 @7095 has 24 MA's), (57, 7275), (68, 7323), (73, 7353), (75, 7359), (82, 7380), (87, 7395), (95, 7416), (109, 7437), (118, 7467), (130, 7509), (146, 7557), (169, 7620), (176, 7638),

Gene: OurGirlNessie_7 Start: 6318, Stop: 6896, Start Num: 13

Candidate Starts for OurGirlNessie_7:

(Start: 13 @6318 has 51 MA's), (Start: 15 @6327 has 25 MA's), (33, 6372), (62, 6501), (64, 6507), (75, 6570), (79, 6585), (85, 6597), (95, 6627), (117, 6678), (119, 6681), (122, 6687), (137, 6738), (138, 6741), (146, 6765), (156, 6795), (174, 6840), (185, 6870), (191, 6885), (192, 6888),

Gene: Oxynfrius_11 Start: 9226, Stop: 9795, Start Num: 15

Candidate Starts for Oxynfrius_11:

(Start: 13 @9217 has 51 MA's), (Start: 15 @9226 has 25 MA's), (33, 9271), (59, 9388), (62, 9400), (64, 9406), (75, 9469), (85, 9496), (119, 9580), (122, 9586), (130, 9616), (146, 9664), (156, 9694), (192, 9787),

Gene: PFR1_06 Start: 6360, Stop: 6935, Start Num: 26

Candidate Starts for PFR1_06:

(26, 6360), (Start: 27 @6363 has 7 MA's), (Start: 30 @6375 has 1 MA's), (45, 6438), (67, 6546), (70, 6567), (75, 6585), (90, 6633), (92, 6645), (120, 6729), (135, 6780), (136, 6783), (137, 6786), (139, 6789), (189, 6903), (197, 6924), (198, 6927),

Gene: PFR2_06 Start: 6360, Stop: 6935, Start Num: 26

Candidate Starts for PFR2_06:

(26, 6360), (Start: 27 @6363 has 7 MA's), (Start: 30 @6375 has 1 MA's), (45, 6438), (67, 6546), (70, 6567), (75, 6585), (90, 6633), (92, 6645), (120, 6729), (135, 6780), (136, 6783), (137, 6786), (139, 6789), (189, 6903), (197, 6924), (198, 6927),

Gene: Panchino_8 Start: 5973, Stop: 6458, Start Num: 41

Candidate Starts for Panchino_8:

(9, 5883), (12, 5895), (Start: 41 @5973 has 39 MA's), (51, 6012), (52, 6018), (61, 6060), (66, 6090), (85, 6159), (95, 6192), (122, 6249), (127, 6270), (134, 6291), (161, 6366), (167, 6384), (175, 6399), (191, 6441),

Gene: Parmesanjohn_8 Start: 5956, Stop: 6441, Start Num: 41

Candidate Starts for Parmesanjohn_8:

(8, 5854), (9, 5860), (12, 5872), (Start: 41 @5956 has 39 MA's), (51, 5995), (61, 6043), (66, 6073), (75, 6115), (79, 6130), (85, 6142), (87, 6151), (95, 6175), (122, 6232), (127, 6253), (134, 6274), (161, 6349), (167, 6367), (175, 6382), (188, 6415), (191, 6424),

Gene: PartyCup_11 Start: 9265, Stop: 9837, Start Num: 14

Candidate Starts for PartyCup_11:

(Start: 14 @9265 has 6 MA's), (59, 9427), (62, 9439), (64, 9445), (70, 9490), (75, 9508), (119, 9619), (122, 9625), (146, 9703), (156, 9733), (174, 9778), (175, 9781), (191, 9823), (192, 9826),

Gene: PhancyPhin_8 Start: 5997, Stop: 6482, Start Num: 41

Candidate Starts for PhancyPhin_8:

(9, 5883), (12, 5895), (Start: 41 @5997 has 39 MA's), (51, 6036), (61, 6084), (66, 6114), (85, 6183), (95, 6216), (122, 6273), (127, 6294), (134, 6315), (161, 6390), (167, 6408), (175, 6423), (191, 6465),

Gene: Philonius_8 Start: 5956, Stop: 6441, Start Num: 41

Candidate Starts for Philonius_8:

(8, 5854), (9, 5860), (12, 5872), (Start: 41 @5956 has 39 MA's), (51, 5995), (61, 6043), (66, 6073), (75, 6115), (79, 6130), (85, 6142), (87, 6151), (95, 6175), (122, 6232), (127, 6253), (134, 6274), (161, 6349), (167, 6367), (175, 6382), (188, 6415), (191, 6424),

Gene: Phisb_8 Start: 6756, Stop: 7316, Start Num: 23

Candidate Starts for Phisb_8:

(Start: 23 @6756 has 60 MA's), (35, 6789), (60, 6903), (62, 6909), (66, 6933), (79, 6990), (83, 6999), (117, 7089), (159, 7215), (185, 7284),

Gene: Phloss_8 Start: 5956, Stop: 6441, Start Num: 41

Candidate Starts for Phloss_8:

(8, 5854), (9, 5860), (12, 5872), (Start: 41 @5956 has 39 MA's), (51, 5995), (61, 6043), (66, 6073), (75, 6115), (79, 6130), (85, 6142), (87, 6151), (95, 6175), (122, 6232), (127, 6253), (134, 6274), (161, 6349), (167, 6367), (175, 6382), (188, 6415), (191, 6424),

Gene: PhluffyCoco_8 Start: 6714, Stop: 7301, Start Num: 10

Candidate Starts for PhluffyCoco_8:

(Start: 10 @6714 has 24 MA's), (51, 6861), (57, 6894), (67, 6939), (72, 6969), (73, 6972), (85, 7005), (94, 7029), (95, 7035), (115, 7080), (121, 7092), (125, 7110), (127, 7119), (146, 7176), (154, 7203), (156, 7206),

Gene: Phoebus_25 Start: 16275, Stop: 16844, Start Num: 22

Candidate Starts for Phoebus_25:

(Start: 22 @16275 has 34 MA's), (98, 16560), (128, 16641), (138, 16671), (143, 16686), (144, 16689), (153, 16725), (155, 16731), (168, 16764), (192, 16830),

Gene: Phrann_8 Start: 5997, Stop: 6482, Start Num: 41

Candidate Starts for Phrann_8:

(9, 5883), (12, 5895), (Start: 41 @5997 has 39 MA's), (51, 6036), (61, 6084), (66, 6114), (85, 6183), (95, 6216), (122, 6273), (127, 6294), (134, 6315), (161, 6390), (167, 6408), (175, 6423), (191, 6465),

Gene: PinkFriday_7 Start: 6345, Stop: 6926, Start Num: 13

Candidate Starts for PinkFriday_7:

(Start: 13 @6345 has 51 MA's), (Start: 15 @6354 has 25 MA's), (33, 6399), (42, 6444), (62, 6528), (64, 6534), (85, 6624), (95, 6654), (117, 6705), (122, 6714), (146, 6792), (156, 6822), (185, 6897), (192, 6915),

Gene: Pipsqueaks_8 Start: 5956, Stop: 6441, Start Num: 41

Candidate Starts for Pipsqueaks_8:

(8, 5854), (9, 5860), (12, 5872), (Start: 41 @5956 has 39 MA's), (51, 5995), (61, 6043), (66, 6073), (75, 6115), (79, 6130), (85, 6142), (87, 6151), (95, 6175), (122, 6232), (127, 6253), (134, 6274), (161, 6349), (167, 6367), (175, 6382), (188, 6415), (191, 6424),

Gene: PitaDog_7 Start: 6318, Stop: 6896, Start Num: 13

Candidate Starts for PitaDog_7:

(Start: 13 @6318 has 51 MA's), (Start: 15 @6327 has 25 MA's), (33, 6372), (62, 6501), (64, 6507), (75, 6570), (79, 6585), (85, 6597), (95, 6627), (117, 6678), (119, 6681), (122, 6687), (137, 6738), (138, 6741), (146, 6765), (156, 6795), (174, 6840), (185, 6870), (191, 6885), (192, 6888),

Gene: Polka_9 Start: 7141, Stop: 7731, Start Num: 10

Candidate Starts for Polka_9:

(Start: 10 @7141 has 24 MA's), (29, 7195), (57, 7321), (71, 7390), (73, 7399), (75, 7405), (82, 7426), (93, 7453), (95, 7465), (115, 7510), (146, 7606), (156, 7636), (169, 7669),

Gene: Porcelain_23 Start: 13748, Stop: 14317, Start Num: 22

Candidate Starts for Porcelain_23:

(Start: 19 @13745 has 5 MA's), (Start: 22 @13748 has 34 MA's), (58, 13889), (82, 13991), (98, 14033), (135, 14135), (138, 14144), (144, 14162), (153, 14198), (163, 14219), (168, 14237), (179, 14270), (184, 14282), (192, 14303),

Gene: Potatoes_11 Start: 9236, Stop: 9814, Start Num: 13

Candidate Starts for Potatoes_11:

(Start: 13 @9236 has 51 MA's), (Start: 15 @9245 has 25 MA's), (33, 9290), (62, 9419), (64, 9425), (70, 9470), (75, 9488), (79, 9503), (85, 9515), (117, 9596), (119, 9599), (122, 9605), (137, 9656), (138,

9659), (142, 9671), (146, 9683), (156, 9713), (166, 9734), (174, 9758), (185, 9788), (191, 9803), (192, 9806),

Gene: Pound_25 Start: 16367, Stop: 16936, Start Num: 22

Candidate Starts for Pound_25:

(Start: 22 @16367 has 34 MA's), (98, 16652), (128, 16733), (138, 16763), (143, 16778), (144, 16781), (153, 16817), (155, 16823), (168, 16856), (192, 16922),

Gene: Preamble_7 Start: 6328, Stop: 6906, Start Num: 13

Candidate Starts for Preamble_7:

(Start: 13 @6328 has 51 MA's), (Start: 15 @6337 has 25 MA's), (33, 6382), (62, 6511), (64, 6517), (85, 6607), (96, 6640), (117, 6688), (122, 6697), (137, 6748), (138, 6751), (142, 6763), (146, 6775), (156, 6805), (166, 6826), (174, 6850), (185, 6880), (191, 6895), (192, 6898),

Gene: Pterodactyl_7 Start: 6319, Stop: 6897, Start Num: 13

Candidate Starts for Pterodactyl_7:

(Start: 13 @6319 has 51 MA's), (Start: 15 @6328 has 25 MA's), (33, 6373), (62, 6502), (64, 6508), (75, 6571), (79, 6586), (85, 6598), (117, 6679), (119, 6682), (122, 6688), (137, 6739), (138, 6742), (146, 6766), (156, 6796), (174, 6841), (185, 6871), (191, 6886), (192, 6889),

Gene: Pumancara_7 Start: 6344, Stop: 6925, Start Num: 13

Candidate Starts for Pumancara_7:

(Start: 13 @6344 has 51 MA's), (Start: 15 @6353 has 25 MA's), (33, 6398), (42, 6443), (62, 6527), (64, 6533), (85, 6623), (95, 6653), (117, 6704), (122, 6713), (146, 6791), (156, 6821), (185, 6896), (192, 6914),

Gene: Puppies_7 Start: 5969, Stop: 6499, Start Num: 21

Candidate Starts for Puppies_7:

(Start: 21 @5969 has 6 MA's), (42, 6032), (46, 6044), (49, 6056), (58, 6101), (70, 6164), (75, 6182), (84, 6203), (116, 6284), (119, 6290), (167, 6431),

Gene: Purgamenstris_8 Start: 5997, Stop: 6482, Start Num: 41

Candidate Starts for Purgamenstris_8:

(9, 5883), (12, 5895), (Start: 41 @5997 has 39 MA's), (51, 6036), (52, 6042), (61, 6084), (66, 6114), (85, 6183), (95, 6216), (122, 6273), (127, 6294), (134, 6315), (161, 6390), (167, 6408), (175, 6423), (191, 6465),

Gene: QMacho_9 Start: 7246, Stop: 7806, Start Num: 23

Candidate Starts for QMacho_9:

(Start: 23 @7246 has 60 MA's), (60, 7393), (62, 7399), (66, 7423), (137, 7642), (159, 7705), (185, 7774),

Gene: QueenHazel_9 Start: 6990, Stop: 7535, Start Num: 25

Candidate Starts for QueenHazel_9:

(4, 6804), (Start: 25 @6990 has 35 MA's), (Start: 36 @7026 has 2 MA's), (55, 7113), (57, 7122), (66, 7167), (72, 7200), (122, 7326), (180, 7500), (189, 7521),

Gene: Quenya_9 Start: 6901, Stop: 7452, Start Num: 23

Candidate Starts for Quenya_9:

(Start: 23 @6901 has 60 MA's), (60, 7048), (66, 7078), (72, 7111), (77, 7126), (126, 7255), (134, 7279), (137, 7288), (159, 7351),

Gene: RAP15_11 Start: 9242, Stop: 9820, Start Num: 13

Candidate Starts for RAP15_11:

(Start: 13 @9242 has 51 MA's), (Start: 15 @9251 has 25 MA's), (33, 9296), (62, 9425), (64, 9431), (70, 9476), (75, 9494), (79, 9509), (85, 9521), (119, 9605), (122, 9611), (137, 9662), (138, 9665), (146, 9689), (156, 9719), (166, 9740), (174, 9764), (185, 9794), (191, 9809), (192, 9812),

Gene: Raymond7_8 Start: 5997, Stop: 6482, Start Num: 41

Candidate Starts for Raymond7_8:

(9, 5883), (12, 5895), (Start: 41 @5997 has 39 MA's), (51, 6036), (61, 6084), (66, 6114), (85, 6183), (95, 6216), (122, 6273), (127, 6294), (134, 6315), (161, 6390), (167, 6408), (175, 6423), (191, 6465),

Gene: RcigaStruga_11 Start: 9225, Stop: 9803, Start Num: 13

Candidate Starts for RcigaStruga_11:

(Start: 13 @9225 has 51 MA's), (Start: 15 @9234 has 25 MA's), (33, 9279), (59, 9396), (62, 9408), (64, 9414), (75, 9477), (122, 9594), (146, 9672), (156, 9702), (192, 9795),

Gene: Rebel_8 Start: 5997, Stop: 6482, Start Num: 41

Candidate Starts for Rebel_8:

(9, 5883), (12, 5895), (Start: 41 @5997 has 39 MA's), (51, 6036), (52, 6042), (61, 6084), (66, 6114), (85, 6183), (95, 6216), (122, 6273), (127, 6294), (134, 6315), (161, 6390), (167, 6408), (175, 6423), (191, 6465),

Gene: RedFox_8 Start: 6714, Stop: 7301, Start Num: 10

Candidate Starts for RedFox_8:

(Start: 10 @6714 has 24 MA's), (51, 6861), (57, 6894), (67, 6939), (72, 6969), (73, 6972), (85, 7005), (94, 7029), (95, 7035), (115, 7080), (121, 7092), (125, 7110), (127, 7119), (146, 7176), (154, 7203), (156, 7206),

Gene: Redi_8 Start: 5997, Stop: 6482, Start Num: 41

Candidate Starts for Redi_8:

(9, 5883), (12, 5895), (Start: 41 @5997 has 39 MA's), (51, 6036), (52, 6042), (61, 6084), (66, 6114), (85, 6183), (95, 6216), (122, 6273), (127, 6294), (134, 6315), (161, 6390), (167, 6408), (175, 6423), (191, 6465),

Gene: Redno2_24 Start: 15759, Stop: 16328, Start Num: 22

Candidate Starts for Redno2_24:

(Start: 22 @15759 has 34 MA's), (98, 16044), (128, 16125), (138, 16155), (143, 16170), (144, 16173), (153, 16209), (155, 16215), (168, 16248), (192, 16314),

Gene: Renna12_9 Start: 6911, Stop: 7501, Start Num: 10

Candidate Starts for Renna12_9:

(Start: 10 @6911 has 24 MA's), (Start: 39 @7004 has 2 MA's), (57, 7091), (72, 7166), (73, 7169), (82, 7196), (85, 7202), (94, 7226), (95, 7232), (115, 7280), (146, 7376), (154, 7403), (156, 7406),

Gene: Reyja_9 Start: 6424, Stop: 6957, Start Num: 28

Candidate Starts for Reyja_9:

(Start: 28 @6424 has 5 MA's), (55, 6544), (122, 6751), (184, 6922), (194, 6946),

Gene: Riovina_7 Start: 6351, Stop: 6923, Start Num: 15

Candidate Starts for Riovina_7:

(Start: 13 @6342 has 51 MA's), (Start: 15 @6351 has 25 MA's), (33, 6396), (42, 6441), (59, 6513), (62, 6525), (64, 6531), (85, 6621), (95, 6651), (117, 6702), (122, 6711), (137, 6762), (138, 6765), (142, 6777), (146, 6789), (156, 6819), (169, 6852), (192, 6912),

Gene: Riverdale_11 Start: 9173, Stop: 9751, Start Num: 13

Candidate Starts for Riverdale_11:

(Start: 13 @9173 has 51 MA's), (Start: 15 @9182 has 25 MA's), (33, 9227), (62, 9356), (64, 9362), (70, 9407), (75, 9425), (79, 9440), (85, 9452), (119, 9536), (122, 9542), (137, 9593), (138, 9596), (146, 9620), (156, 9650), (166, 9671), (174, 9695), (185, 9725), (191, 9740), (192, 9743),

Gene: Rollins_7 Start: 6593, Stop: 7153, Start Num: 23

Candidate Starts for Rollins_7:

(Start: 23 @6593 has 60 MA's), (117, 6926), (140, 6998),

Gene: Rona_8 Start: 6996, Stop: 7553, Start Num: 23

Candidate Starts for Rona_8:

(Start: 23 @6996 has 60 MA's), (60, 7143), (66, 7173), (117, 7326), (137, 7389), (159, 7452), (185, 7521),

Gene: Rozby_11 Start: 9173, Stop: 9751, Start Num: 13

Candidate Starts for Rozby_11:

(Start: 13 @9173 has 51 MA's), (Start: 15 @9182 has 25 MA's), (33, 9227), (62, 9356), (64, 9362), (70, 9407), (75, 9425), (79, 9440), (85, 9452), (119, 9536), (122, 9542), (137, 9593), (138, 9596), (142, 9608), (146, 9620), (156, 9650), (166, 9671), (174, 9695), (185, 9725), (191, 9740), (192, 9743),

Gene: Rubeelu_8 Start: 5970, Stop: 6461, Start Num: 41

Candidate Starts for Rubeelu_8:

(9, 5859), (12, 5871), (Start: 41 @5970 has 39 MA's), (51, 6009), (61, 6057), (66, 6087), (75, 6129), (85, 6156), (95, 6189), (122, 6246), (127, 6273), (134, 6294), (136, 6300), (161, 6369), (175, 6402), (191, 6444),

Gene: Ruchi_9 Start: 7376, Stop: 7963, Start Num: 10

Candidate Starts for Ruchi_9:

(Start: 10 @7376 has 24 MA's), (57, 7556), (70, 7622), (73, 7634), (75, 7640), (82, 7661), (87, 7676), (95, 7697), (146, 7838), (156, 7868),

Gene: Ryadel_45 Start: 22639, Stop: 23244, Start Num: 25

Candidate Starts for Ryadel_45:

(Start: 25 @22639 has 35 MA's), (45, 22717), (55, 22765), (57, 22774), (62, 22792), (82, 22882), (87, 22897), (102, 22948), (119, 22999), (122, 23005), (134, 23053), (137, 23062), (138, 23065), (141, 23074), (161, 23137), (184, 23194), (188, 23203), (198, 23230),

Gene: SanaSana_9 Start: 7016, Stop: 7567, Start Num: 23

Candidate Starts for SanaSana_9:

(Start: 23 @7016 has 60 MA's), (60, 7163), (66, 7193), (72, 7226), (77, 7241), (119, 7343), (126, 7370), (134, 7394), (159, 7466), (169, 7493),

Gene: SansAfet_8 Start: 6776, Stop: 7336, Start Num: 23

Candidate Starts for SansAfet_8:

(Start: 23 @6776 has 60 MA's), (60, 6923), (62, 6929), (66, 6953), (79, 7010), (83, 7019), (134, 7163), (137, 7172), (159, 7235), (185, 7304),

Gene: Santhid_8 Start: 6292, Stop: 6825, Start Num: 28

Candidate Starts for Santhid_8:

(Start: 28 @6292 has 5 MA's), (55, 6412), (69, 6472), (122, 6619), (184, 6790), (194, 6814),

Gene: Sapo_6 Start: 5442, Stop: 6047, Start Num: 18

Candidate Starts for Sapo_6:

(Start: 18 @5442 has 3 MA's), (42, 5523), (46, 5535), (56, 5589), (62, 5604), (77, 5679), (92, 5733), (99, 5754), (116, 5802), (127, 5841),

Gene: SarBear_8 Start: 6739, Stop: 7299, Start Num: 23

Candidate Starts for SarBear_8:

(Start: 23 @6739 has 60 MA's), (60, 6886), (62, 6892), (66, 6916), (137, 7135), (159, 7198), (185, 7267),

Gene: Savage2526_11 Start: 9236, Stop: 9814, Start Num: 13

Candidate Starts for Savage2526_11:

(Start: 13 @9236 has 51 MA's), (Start: 15 @9245 has 25 MA's), (33, 9290), (62, 9419), (64, 9425), (70, 9470), (75, 9488), (79, 9503), (85, 9515), (119, 9599), (122, 9605), (137, 9656), (138, 9659), (146, 9683), (156, 9713), (166, 9734), (174, 9758), (185, 9788), (191, 9803), (192, 9806),

Gene: Sbash_8 Start: 6564, Stop: 7112, Start Num: 25

Candidate Starts for Sbash_8:

(Start: 25 @6564 has 35 MA's), (Start: 36 @6600 has 2 MA's), (48, 6651), (55, 6687), (57, 6696), (62, 6714), (66, 6741), (72, 6774), (80, 6801), (85, 6810), (134, 6948), (135, 6951), (151, 6999), (171, 7050), (180, 7077), (189, 7098),

Gene: Schatzie_23 Start: 15300, Stop: 15869, Start Num: 22

Candidate Starts for Schatzie_23:

(Start: 22 @15300 has 34 MA's), (57, 15438), (71, 15507), (98, 15585), (128, 15666), (138, 15696), (143, 15711), (144, 15714), (153, 15750), (155, 15756), (168, 15789), (192, 15855),

Gene: Schmidt_10 Start: 7341, Stop: 7862, Start Num: 24

Candidate Starts for Schmidt_10:

(12, 7305), (Start: 24 @7341 has 2 MA's), (Start: 39 @7392 has 2 MA's), (44, 7416), (46, 7422), (55, 7467), (63, 7494), (70, 7542), (75, 7551), (78, 7560), (107, 7632), (116, 7662), (130, 7704), (135, 7719), (164, 7782), (193, 7854),

Gene: Schnauzer_8 Start: 5956, Stop: 6441, Start Num: 41

Candidate Starts for Schnauzer_8:

(8, 5854), (9, 5860), (12, 5872), (Start: 41 @5956 has 39 MA's), (51, 5995), (61, 6043), (66, 6073), (75, 6115), (79, 6130), (85, 6142), (87, 6151), (95, 6175), (122, 6232), (127, 6253), (134, 6274), (161, 6349), (167, 6367), (175, 6382), (188, 6415), (191, 6424),

Gene: SchoolBus_41 Start: 21580, Stop: 22185, Start Num: 25

Candidate Starts for SchoolBus_41:

(Start: 25 @21580 has 35 MA's), (Start: 30 @21595 has 1 MA's), (45, 21658), (55, 21706), (57, 21715), (62, 21733), (82, 21823), (87, 21838), (119, 21940), (122, 21946), (132, 21988), (134, 21994), (137, 22003), (138, 22006), (141, 22015), (161, 22078), (184, 22135), (188, 22144), (198, 22171),

Gene: Schuy_42 Start: 21513, Stop: 22118, Start Num: 25

Candidate Starts for Schuy_42:

(Start: 25 @21513 has 35 MA's), (Start: 30 @21528 has 1 MA's), (45, 21591), (55, 21639), (57, 21648), (62, 21666), (82, 21756), (87, 21771), (119, 21873), (122, 21879), (132, 21921), (134, 21927), (137, 21936), (138, 21939), (141, 21948), (161, 22011), (184, 22068), (188, 22077), (198, 22104),

Gene: Scitech_8 Start: 5956, Stop: 6441, Start Num: 41

Candidate Starts for Scitech_8:

(8, 5854), (9, 5860), (12, 5872), (Start: 41 @5956 has 39 MA's), (51, 5995), (61, 6043), (66, 6073), (75, 6115), (79, 6130), (85, 6142), (87, 6151), (95, 6175), (122, 6232), (127, 6253), (134, 6274), (161, 6349), (167, 6367), (175, 6382), (188, 6415), (191, 6424),

Gene: Scuttle_11 Start: 9251, Stop: 9820, Start Num: 15

Candidate Starts for Scuttle_11:

(Start: 13 @9242 has 51 MA's), (Start: 15 @9251 has 25 MA's), (33, 9296), (62, 9425), (64, 9431), (70, 9476), (75, 9494), (79, 9509), (85, 9521), (119, 9605), (122, 9611), (137, 9662), (138, 9665), (146, 9689), (156, 9719), (166, 9740), (174, 9764), (185, 9794), (191, 9809), (192, 9812),

Gene: Sergei_7 Start: 6353, Stop: 6925, Start Num: 15

Candidate Starts for Sergei_7:

(Start: 13 @6344 has 51 MA's), (Start: 15 @6353 has 25 MA's), (33, 6398), (42, 6443), (62, 6527), (64, 6533), (85, 6623), (95, 6653), (117, 6704), (122, 6713), (146, 6791), (156, 6821), (185, 6896), (192, 6914),

Gene: Sharkboy_8 Start: 6995, Stop: 7552, Start Num: 23

Candidate Starts for Sharkboy_8:

(Start: 23 @6995 has 60 MA's), (60, 7142), (66, 7172), (117, 7325), (137, 7388), (159, 7451), (185, 7520),

Gene: Shayna_7 Start: 6598, Stop: 7158, Start Num: 23

Candidate Starts for Shayna_7:

(Start: 23 @6598 has 60 MA's), (37, 6643), (60, 6748), (62, 6754), (105, 6895), (112, 6916), (119, 6934), (142, 7009), (159, 7057),

Gene: Shida_41 Start: 21420, Stop: 22025, Start Num: 25

Candidate Starts for Shida_41:

(Start: 25 @21420 has 35 MA's), (45, 21498), (55, 21546), (57, 21555), (62, 21573), (82, 21663), (87, 21678), (119, 21780), (122, 21786), (132, 21828), (134, 21834), (137, 21843), (138, 21846), (141, 21855), (161, 21918), (184, 21975), (188, 21984), (198, 22011),

Gene: ShrimpFriedEgg_8 Start: 5997, Stop: 6482, Start Num: 41

Candidate Starts for ShrimpFriedEgg_8:

(9, 5883), (12, 5895), (Start: 41 @5997 has 39 MA's), (51, 6036), (52, 6042), (61, 6084), (66, 6114), (85, 6183), (95, 6216), (122, 6273), (127, 6294), (134, 6315), (161, 6390), (167, 6408), (175, 6423), (191, 6465),

Gene: Shweta_8 Start: 5997, Stop: 6482, Start Num: 41

Candidate Starts for Shweta_8:

(9, 5883), (12, 5895), (Start: 41 @5997 has 39 MA's), (51, 6036), (61, 6084), (66, 6114), (85, 6183), (95, 6216), (122, 6273), (127, 6294), (134, 6315), (161, 6390), (167, 6408), (175, 6423), (191, 6465),

Gene: Silvafighter_8 Start: 5956, Stop: 6441, Start Num: 41

Candidate Starts for Silvafighter_8:

(8, 5854), (9, 5860), (12, 5872), (Start: 41 @5956 has 39 MA's), (51, 5995), (61, 6043), (66, 6073), (75, 6115), (79, 6130), (85, 6142), (87, 6151), (95, 6175), (122, 6232), (127, 6253), (134, 6274), (161, 6349), (167, 6367), (175, 6382), (188, 6415), (191, 6424),

Gene: Silvy_8 Start: 5956, Stop: 6441, Start Num: 41

Candidate Starts for Silvy_8:

(8, 5854), (9, 5860), (12, 5872), (Start: 41 @5956 has 39 MA's), (51, 5995), (61, 6043), (66, 6073), (75, 6115), (79, 6130), (85, 6142), (87, 6151), (95, 6175), (122, 6232), (127, 6253), (134, 6274), (161,

6349), (167, 6367), (175, 6382), (188, 6415), (191, 6424),

Gene: SkinnyPete_8 Start: 5997, Stop: 6482, Start Num: 41

Candidate Starts for SkinnyPete_8:

(9, 5883), (12, 5895), (Start: 41 @5997 has 39 MA's), (51, 6036), (52, 6042), (61, 6084), (66, 6114), (85, 6183), (95, 6216), (122, 6273), (127, 6294), (134, 6315), (161, 6390), (167, 6408), (175, 6423), (191, 6465),

Gene: Skylord_7 Start: 6533, Stop: 7093, Start Num: 23

Candidate Starts for Skylord_7:

(Start: 23 @6533 has 60 MA's), (117, 6866), (140, 6938),

Gene: Slay_8 Start: 7215, Stop: 7775, Start Num: 23

Candidate Starts for Slay_8:

(Start: 23 @7215 has 60 MA's), (60, 7362), (62, 7368), (66, 7392), (159, 7674), (185, 7743),

Gene: Smooch_43 Start: 22708, Stop: 23313, Start Num: 25

Candidate Starts for Smooch_43:

(Start: 25 @22708 has 35 MA's), (Start: 30 @22723 has 1 MA's), (45, 22786), (55, 22834), (57, 22843), (82, 22951), (87, 22966), (119, 23068), (122, 23074), (132, 23116), (134, 23122), (137, 23131), (138, 23134), (141, 23143), (161, 23206), (184, 23263), (188, 23272), (198, 23299),

Gene: Smurph_8 Start: 5956, Stop: 6441, Start Num: 41

Candidate Starts for Smurph_8:

(8, 5854), (9, 5860), (12, 5872), (Start: 41 @5956 has 39 MA's), (51, 5995), (61, 6043), (66, 6073), (75, 6115), (79, 6130), (85, 6142), (87, 6151), (95, 6175), (122, 6232), (127, 6253), (134, 6274), (161, 6349), (167, 6367), (175, 6382), (188, 6415), (191, 6424),

Gene: Snekmaggedon_8 Start: 5997, Stop: 6482, Start Num: 41

Candidate Starts for Snekmaggedon_8:

(9, 5883), (12, 5895), (Start: 41 @5997 has 39 MA's), (51, 6036), (52, 6042), (61, 6084), (66, 6114), (85, 6183), (95, 6216), (122, 6273), (127, 6294), (134, 6315), (161, 6390), (167, 6408), (175, 6423), (191, 6465),

Gene: Splinter_12 Start: 8930, Stop: 9409, Start Num: 39

Candidate Starts for Splinter_12:

(Start: 27 @8885 has 7 MA's), (Start: 39 @8930 has 2 MA's), (55, 9005), (67, 9059), (75, 9089), (88, 9119), (110, 9176), (116, 9200), (131, 9245), (133, 9251), (134, 9254), (164, 9320), (170, 9338), (178, 9356), (193, 9395),

Gene: SpongeBob_8 Start: 5997, Stop: 6482, Start Num: 41

Candidate Starts for SpongeBob_8:

(9, 5883), (12, 5895), (Start: 41 @5997 has 39 MA's), (51, 6036), (52, 6042), (61, 6084), (66, 6114), (85, 6183), (95, 6216), (122, 6273), (127, 6294), (134, 6315), (161, 6390), (167, 6408), (175, 6423), (191, 6465),

Gene: Squint_22 Start: 13875, Stop: 14444, Start Num: 22

Candidate Starts for Squint_22:

(Start: 19 @13872 has 5 MA's), (Start: 22 @13875 has 34 MA's), (58, 14016), (82, 14118), (98, 14160), (135, 14262), (138, 14271), (144, 14289), (153, 14325), (163, 14346), (168, 14364), (179, 14397), (184, 14409), (192, 14430),

Gene: Stoor_8 Start: 7013, Stop: 7564, Start Num: 23

Candidate Starts for Stoor_8:

(Start: 23 @7013 has 60 MA's), (60, 7160), (66, 7190), (72, 7223), (77, 7238), (119, 7340), (126, 7367), (134, 7391), (159, 7463), (169, 7490),

Gene: Stromboli_8 Start: 7014, Stop: 7565, Start Num: 23

Candidate Starts for Stromboli_8:

(Start: 23 @7014 has 60 MA's), (60, 7161), (66, 7191), (72, 7224), (77, 7239), (134, 7392), (159, 7464), (169, 7491), (196, 7560),

Gene: SunnyD_7 Start: 6598, Stop: 7158, Start Num: 23

Candidate Starts for SunnyD_7:

(Start: 23 @6598 has 60 MA's), (37, 6643), (60, 6748), (62, 6754), (105, 6895), (112, 6916), (119, 6934), (142, 7009), (159, 7057),

Gene: Supakev_7 Start: 6344, Stop: 6925, Start Num: 13

Candidate Starts for Supakev_7:

(Start: 13 @6344 has 51 MA's), (Start: 15 @6353 has 25 MA's), (33, 6398), (42, 6443), (62, 6527), (64, 6533), (85, 6623), (95, 6653), (117, 6704), (122, 6713), (146, 6791), (156, 6821), (185, 6896), (192, 6914),

Gene: Superphikiman_23 Start: 13929, Stop: 14498, Start Num: 22

Candidate Starts for Superphikiman_23:

(Start: 19 @13926 has 5 MA's), (Start: 22 @13929 has 34 MA's), (58, 14070), (82, 14172), (98, 14214), (135, 14316), (138, 14325), (144, 14343), (153, 14379), (163, 14400), (168, 14418), (179, 14451), (184, 14463), (192, 14484),

Gene: Suppi_11 Start: 9265, Stop: 9837, Start Num: 14

Candidate Starts for Suppi_11:

(Start: 14 @9265 has 6 MA's), (59, 9427), (62, 9439), (64, 9445), (70, 9490), (119, 9619), (122, 9625), (146, 9703), (156, 9733), (174, 9778), (175, 9781), (191, 9823), (192, 9826),

Gene: Swervy_8 Start: 6739, Stop: 7299, Start Num: 23

Candidate Starts for Swervy_8:

(Start: 23 @6739 has 60 MA's), (60, 6886), (62, 6892), (66, 6916), (137, 7135), (159, 7198), (185, 7267),

Gene: TZGordon_14 Start: 9027, Stop: 9551, Start Num: 27

Candidate Starts for TZGordon_14:

(Start: 27 @9027 has 7 MA's), (Start: 39 @9072 has 2 MA's), (55, 9147), (67, 9201), (75, 9231), (88, 9261), (110, 9318), (116, 9342), (131, 9387), (134, 9396), (164, 9462), (170, 9480), (178, 9498), (193, 9537),

Gene: Tapioca_8 Start: 5956, Stop: 6441, Start Num: 41

Candidate Starts for Tapioca_8:

(8, 5854), (9, 5860), (12, 5872), (Start: 41 @5956 has 39 MA's), (51, 5995), (61, 6043), (66, 6073), (75, 6115), (79, 6130), (85, 6142), (87, 6151), (95, 6175), (122, 6232), (127, 6253), (134, 6274), (161, 6349), (167, 6367), (175, 6382), (188, 6415), (191, 6424),

Gene: Tarzan_8 Start: 6283, Stop: 6816, Start Num: 28

Candidate Starts for Tarzan_8:

(Start: 28 @6283 has 5 MA's), (51, 6379), (62, 6430), (64, 6436), (122, 6610), (194, 6805),

Gene: TattModd_11 Start: 9236, Stop: 9814, Start Num: 13

Candidate Starts for TattModd_11:

(Start: 13 @9236 has 51 MA's), (Start: 15 @9245 has 25 MA's), (33, 9290), (62, 9419), (64, 9425), (70, 9470), (75, 9488), (79, 9503), (82, 9509), (85, 9515), (119, 9599), (122, 9605), (137, 9656), (138, 9659), (146, 9683), (156, 9713), (166, 9734), (174, 9758), (185, 9788), (191, 9803), (192, 9806),

Gene: TaylorSipht_9 Start: 7181, Stop: 7768, Start Num: 10

Candidate Starts for TaylorSipht_9:

(Start: 10 @7181 has 24 MA's), (57, 7361), (67, 7406), (73, 7439), (75, 7445), (82, 7466), (87, 7481), (89, 7487), (95, 7502), (146, 7643), (169, 7706),

Gene: TelAviv_38 Start: 21574, Stop: 22179, Start Num: 25

Candidate Starts for TelAviv_38:

(Start: 25 @21574 has 35 MA's), (Start: 30 @21589 has 1 MA's), (45, 21652), (55, 21700), (57, 21709), (62, 21727), (82, 21817), (87, 21832), (119, 21934), (122, 21940), (132, 21982), (134, 21988), (137, 21997), (138, 22000), (141, 22009), (161, 22072), (184, 22129), (188, 22138), (198, 22165),

Gene: Temper16_7 Start: 6353, Stop: 6925, Start Num: 15

Candidate Starts for Temper16_7:

(Start: 13 @6344 has 51 MA's), (Start: 15 @6353 has 25 MA's), (33, 6398), (42, 6443), (62, 6527), (64, 6533), (85, 6623), (95, 6653), (117, 6704), (122, 6713), (146, 6791), (156, 6821), (185, 6896), (192, 6914),

Gene: Thibault_21 Start: 15559, Stop: 16128, Start Num: 22

Candidate Starts for Thibault_21:

(Start: 22 @15559 has 34 MA's), (98, 15844), (128, 15925), (138, 15955), (143, 15970), (144, 15973), (153, 16009), (155, 16015), (168, 16048), (192, 16114),

Gene: ThreeRngTarjay_24 Start: 16125, Stop: 16694, Start Num: 22

Candidate Starts for ThreeRngTarjay_24:

(Start: 22 @16125 has 34 MA's), (98, 16410), (128, 16491), (138, 16521), (143, 16536), (144, 16539), (153, 16575), (155, 16581), (168, 16614), (192, 16680),

Gene: TinaLin_15 Start: 9599, Stop: 10123, Start Num: 27

Candidate Starts for TinaLin_15:

(Start: 27 @9599 has 7 MA's), (61, 9740), (67, 9773), (110, 9890), (116, 9914), (130, 9956), (134, 9968), (164, 10034), (170, 10052), (178, 10070), (193, 10109), (195, 10112),

Gene: Trine_7 Start: 5978, Stop: 6505, Start Num: 16

Candidate Starts for Trine_7:

(Start: 16 @5978 has 1 MA's), (Start: 21 @5984 has 6 MA's), (49, 6071), (53, 6089), (58, 6116), (64, 6134), (66, 6155), (84, 6218), (119, 6305), (145, 6371), (148, 6386), (190, 6494),

Gene: TukTuk_8 Start: 6739, Stop: 7299, Start Num: 23

Candidate Starts for TukTuk_8:

(Start: 23 @6739 has 60 MA's), (60, 6886), (62, 6892), (66, 6916), (137, 7135), (159, 7198), (185, 7267),

Gene: Upyo_7 Start: 5995, Stop: 6522, Start Num: 21

Candidate Starts for Upyo_7:

(Start: 21 @5995 has 6 MA's), (49, 6082), (53, 6100), (55, 6115), (57, 6124), (58, 6127), (64, 6145), (66, 6166), (80, 6226), (96, 6268),

Gene: Urla_7 Start: 6374, Stop: 6952, Start Num: 13

Candidate Starts for Urla_7:

(Start: 13 @6374 has 51 MA's), (Start: 15 @6383 has 25 MA's), (33, 6428), (62, 6557), (64, 6563), (70, 6608), (75, 6626), (85, 6653), (119, 6737), (122, 6743), (137, 6794), (138, 6797), (142, 6809), (146, 6821), (156, 6851), (174, 6896), (185, 6926), (191, 6941), (192, 6944),

Gene: Vallejo_11 Start: 9183, Stop: 9752, Start Num: 15

Candidate Starts for Vallejo_11:

(Start: 13 @9174 has 51 MA's), (Start: 15 @9183 has 25 MA's), (33, 9228), (62, 9357), (64, 9363), (70, 9408), (75, 9426), (79, 9441), (85, 9453), (119, 9537), (122, 9543), (137, 9594), (138, 9597), (146, 9621), (156, 9651), (166, 9672), (174, 9696), (185, 9726), (191, 9741), (192, 9744),

Gene: Vendetta_12 Start: 8930, Stop: 9409, Start Num: 39

Candidate Starts for Vendetta_12:

(Start: 27 @8885 has 7 MA's), (Start: 39 @8930 has 2 MA's), (55, 9005), (67, 9059), (75, 9089), (88, 9119), (110, 9176), (116, 9200), (131, 9245), (133, 9251), (134, 9254), (164, 9320), (170, 9338), (178, 9356), (193, 9395),

Gene: Vitas_7 Start: 6533, Stop: 7093, Start Num: 23

Candidate Starts for Vitas_7:

(Start: 23 @6533 has 60 MA's), (117, 6866), (140, 6938), (186, 7064),

Gene: Vorrrps_40 Start: 21166, Stop: 21771, Start Num: 25

Candidate Starts for Vorrrps_40:

(Start: 25 @21166 has 35 MA's), (Start: 30 @21181 has 1 MA's), (45, 21244), (55, 21292), (57, 21301), (62, 21319), (82, 21409), (87, 21424), (119, 21526), (122, 21532), (132, 21574), (134, 21580), (137, 21589), (138, 21592), (141, 21601), (161, 21664), (184, 21721), (188, 21730), (198, 21757),

Gene: Vulpecula_9 Start: 7452, Stop: 8039, Start Num: 10

Candidate Starts for Vulpecula_9:

(Start: 10 @7452 has 24 MA's), (57, 7632), (70, 7698), (73, 7710), (75, 7716), (82, 7737), (87, 7752), (95, 7773), (146, 7914), (156, 7944),

Gene: Vulture_7 Start: 6342, Stop: 6923, Start Num: 13

Candidate Starts for Vulture_7:

(Start: 13 @6342 has 51 MA's), (Start: 15 @6351 has 25 MA's), (33, 6396), (42, 6441), (59, 6513), (62, 6525), (64, 6531), (85, 6621), (87, 6630), (95, 6651), (117, 6702), (122, 6711), (137, 6762), (138, 6765), (142, 6777), (146, 6789), (156, 6819), (169, 6852), (192, 6912),

Gene: Wanda_26 Start: 15568, Stop: 16137, Start Num: 22

Candidate Starts for Wanda_26:

(Start: 22 @15568 has 34 MA's), (57, 15706), (71, 15775), (98, 15853), (128, 15934), (138, 15964), (143, 15979), (144, 15982), (153, 16018), (155, 16024), (168, 16057), (192, 16123),

Gene: Wawa_11 Start: 9211, Stop: 9789, Start Num: 13

Candidate Starts for Wawa_11:

(Start: 13 @9211 has 51 MA's), (Start: 15 @9220 has 25 MA's), (33, 9265), (62, 9394), (64, 9400), (70, 9445), (75, 9463), (79, 9478), (85, 9490), (117, 9571), (119, 9574), (122, 9580), (137, 9631), (138, 9634), (142, 9646), (146, 9658), (156, 9688), (166, 9709), (174, 9733), (185, 9763), (191, 9778), (192, 9781),

Gene: Wayne_11 Start: 9311, Stop: 9883, Start Num: 14

Candidate Starts for Wayne_11:

(Start: 14 @9311 has 6 MA's), (59, 9473), (62, 9485), (64, 9491), (70, 9536), (119, 9665), (122, 9671), (146, 9749), (156, 9779), (174, 9824), (175, 9827), (191, 9869), (192, 9872),

Gene: Widow_7 Start: 5960, Stop: 6490, Start Num: 21

Candidate Starts for Widow_7:

(Start: 21 @5960 has 6 MA's), (42, 6023), (46, 6035), (49, 6047), (58, 6092), (70, 6155), (75, 6173), (116, 6275), (119, 6281), (167, 6422),

Gene: Wildflower_41 Start: 21152, Stop: 21757, Start Num: 25

Candidate Starts for Wildflower_41:

(Start: 25 @21152 has 35 MA's), (Start: 30 @21167 has 1 MA's), (45, 21230), (55, 21278), (57, 21287), (62, 21305), (82, 21395), (87, 21410), (119, 21512), (122, 21518), (132, 21560), (134, 21566), (137, 21575), (138, 21578), (141, 21587), (161, 21650), (184, 21707), (188, 21716), (198, 21743),

Gene: Winget_42 Start: 21846, Stop: 22451, Start Num: 25

Candidate Starts for Winget_42:

(Start: 25 @21846 has 35 MA's), (Start: 30 @21861 has 1 MA's), (45, 21924), (55, 21972), (57, 21981), (62, 21999), (82, 22089), (87, 22104), (119, 22206), (122, 22212), (132, 22254), (134, 22260), (137, 22269), (138, 22272), (141, 22281), (161, 22344), (184, 22401), (188, 22410), (198, 22437),

Gene: WonderBoy_7 Start: 6336, Stop: 6905, Start Num: 15

Candidate Starts for WonderBoy_7:

(Start: 13 @6327 has 51 MA's), (Start: 15 @6336 has 25 MA's), (33, 6381), (62, 6510), (64, 6516), (75, 6579), (79, 6594), (85, 6606), (95, 6636), (117, 6687), (119, 6690), (122, 6696), (137, 6747), (138, 6750), (146, 6774), (156, 6804), (174, 6849), (185, 6879), (191, 6894), (192, 6897),

Gene: Xeno_8 Start: 5956, Stop: 6441, Start Num: 41

Candidate Starts for Xeno_8:

(8, 5854), (9, 5860), (12, 5872), (Start: 41 @5956 has 39 MA's), (51, 5995), (61, 6043), (66, 6073), (75, 6115), (79, 6130), (85, 6142), (87, 6151), (95, 6175), (122, 6232), (127, 6253), (134, 6274), (161, 6349), (167, 6367), (175, 6382), (188, 6415), (191, 6424),

Gene: Xerxes_8 Start: 5956, Stop: 6441, Start Num: 41

Candidate Starts for Xerxes_8:

(8, 5854), (9, 5860), (12, 5872), (Start: 41 @5956 has 39 MA's), (51, 5995), (61, 6043), (66, 6073), (75, 6115), (79, 6130), (85, 6142), (87, 6151), (95, 6175), (122, 6232), (127, 6253), (134, 6274), (161, 6349), (167, 6367), (175, 6382), (188, 6415), (191, 6424),

Gene: Xula_8 Start: 6619, Stop: 7164, Start Num: 25

Candidate Starts for Xula_8:

(4, 6433), (Start: 25 @6619 has 35 MA's), (Start: 36 @6655 has 2 MA's), (55, 6742), (57, 6751), (66, 6796), (72, 6829), (122, 6955), (180, 7129), (189, 7150),

Gene: Yeet_23 Start: 15301, Stop: 15870, Start Num: 22

Candidate Starts for Yeet_23:

(Start: 22 @15301 has 34 MA's), (57, 15439), (98, 15586), (128, 15667), (138, 15697), (143, 15712), (144, 15715), (153, 15751), (155, 15757), (168, 15790), (192, 15856),

Gene: YungJamal_44 Start: 21885, Stop: 22490, Start Num: 25

Candidate Starts for YungJamal_44:

(Start: 25 @21885 has 35 MA's), (Start: 30 @21900 has 1 MA's), (45, 21963), (55, 22011), (57, 22020), (62, 22038), (82, 22128), (87, 22143), (119, 22245), (122, 22251), (132, 22293), (134, 22299), (137, 22308), (138, 22311), (141, 22320), (161, 22383), (184, 22440), (188, 22449), (198, 22476),

Gene: Zakhe101_41 Start: 21296, Stop: 21901, Start Num: 25

Candidate Starts for Zakhe101_41:

(Start: 25 @21296 has 35 MA's), (Start: 30 @21311 has 1 MA's), (45, 21374), (55, 21422), (57, 21431), (62, 21449), (82, 21539), (87, 21554), (119, 21656), (122, 21662), (132, 21704), (134, 21710), (137, 21719), (138, 21722), (141, 21731), (161, 21794), (184, 21851), (188, 21860), (198, 21887),

Gene: Zelink_26 Start: 16153, Stop: 16722, Start Num: 22

Candidate Starts for Zelink_26:

(Start: 22 @16153 has 34 MA's), (57, 16291), (98, 16438), (128, 16519), (138, 16549), (143, 16564), (144, 16567), (153, 16603), (155, 16609), (168, 16642), (192, 16708),

Gene: Zorro_11 Start: 9199, Stop: 9768, Start Num: 15

Candidate Starts for Zorro_11:

(Start: 13 @9190 has 51 MA's), (Start: 15 @9199 has 25 MA's), (33, 9244), (62, 9373), (64, 9379), (70, 9424), (75, 9442), (79, 9457), (85, 9469), (117, 9550), (119, 9553), (122, 9559), (137, 9610), (138, 9613), (142, 9625), (146, 9637), (156, 9667), (166, 9688), (174, 9712), (185, 9742), (191, 9757), (192, 9760),

Gene: phiSASD1_29 Start: 6506, Stop: 7102, Start Num: 20

Candidate Starts for phiSASD1_29:

(Start: 20 @6506 has 2 MA's), (51, 6617), (62, 6662), (74, 6722), (108, 6827), (111, 6833), (123, 6875), (124, 6884), (129, 6893), (177, 7025), (183, 7043), (199, 7088),