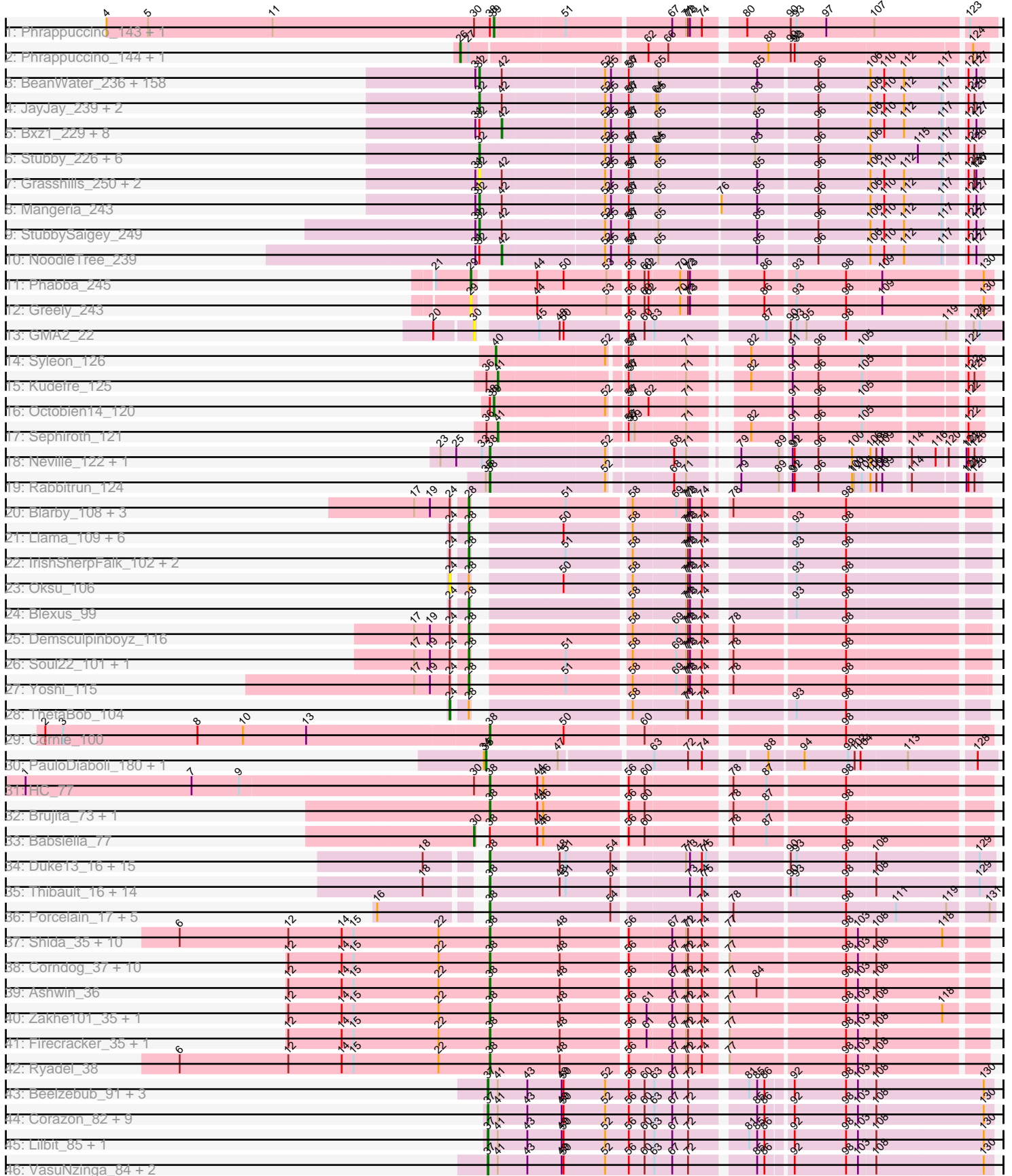


Pham 171146



Note: Tracks are now grouped by subcluster and scaled. Switching in subcluster is indicated by changes in track color. Track scale is now set by default to display the region 30 bp upstream of start 1 to 30 bp downstream of the last possible start. If this default region is judged to be packed too tightly with annotated starts, the track will be further scaled to only show that region of the ORF with annotated starts. This action will be indicated by adding "Zoomed" to the title. For starts, yellow indicates the location of called starts comprised solely of Glimmer/GeneMark auto-annotations, green indicates the location of called starts with at least 1 manual gene annotation.

Pham 171146 Report

This analysis was run 07/10/24 on database version 566.

Pham number 171146 has 310 members, 30 are drafts.

Phages represented in each track:

- Track 1 : Phrappuccino_143, Settecandela_143
- Track 2 : Phrappuccino_144, Settecandela_144
- Track 3 : BeanWater_236, ValleyTerrace_244, Wally_241, YemiJoy2021_244, Lee7_242, LifeSavor_244, Pivoine_244, ChaylaJr_242, InterFolia_245, Zalkecks_242, Mikro_237, JulietS_235, DTDevon_244, Teardrop_241, Gamgam_245, Issimir_238, TinyTim_241, Delylah_245, ET08_229, Ghost_243, Lukilu_232, LinStu_240, JPickles_240, Colt_233, LRRHood_235, Breeniome_243, LordLeafolot_245, QBert_235, RoMag_238, Grungle_225, Naija_244, PurduePete_243, CindyLou_244, NedWong_242, IkeLoa_237, Kboogie_247, Roots515_246, McWolfish_240, Blubba_238, Yucca_243, Atlantean_243, ScottMcG_235, Blackbrain_241, Naval22_248, Momo_245, Daffodil_249, Jaygup_240, Erdmann_244, Fludd_243, Capablanca_248, Asterius_238, Burrough_244, Loanshark_240, Shelob_244, Babyland_246, Chargie21_240, Koguma_242, Shnickers_242, Littleton_247, Kamryn_242, EasyJones_244, Basquiat_240, Bigswole_248, Adlitam_243, Ading_245, Amataga_244, Audrick_246, ArcherS7_244, Nappy_242, Megamind_240, Napoleon13_240, Shrimp_245, Ronan_239, Sauce_240, Bread_239, Gizmo_248, Ngannou_238, Patter_245, Spec_237, Turret_234, Norm_243, Guwapp_239, Trinitium_239, EmmaElysia_248, YoungMoneyMata_243, MikeLiesin_244, Dandelion_249, Melpomini_238, Yassified_239, MoMoMixon_239, Blackdragon_238, Cane17_232, Darko_242, McGee_244, BananaFence_240, SmallFry_244, Rahel_245, Jedediah_245, ParkTD_242, Pleione_247, Tonenili_265, FrayBell_246, Janiyra_246, Bonray_245, Zeenon_244, ChickenPhender_239, ShiaLabeouf_241, FudgeTart_238, Iota_240, Specks_247, Derek_239, Shaqnato_234, Astraea_238, SrishMeg2525_240, Delilah_241, Jessibeth14_243, Gabriel_246, Salacia_244, Pio_250, InigoMontoya_247, Bipolarisk_241, Khaleesi_242, Nidhogg_244, Latch_243, JustHall_237, BadAgartude_237, Ava3_240, NuevoMundo_245, ErnieJ_236, Essence_241, BackyardAgain_238, Caravan_233, DrPhinkDaddy_240, Bangla1971_244, CharlieB_238, Phlegm_248, LolaVinca_239, Halldule_235, StephanieG_237, Maby2021_243, FoxtrotP1_241, Concombre_248, Morizzled23_240, Jemmno_243, Chomp_241, Tyke_240, SilverDipper_248, I3_253, Izajani_239, Cali_233, Phox_244, Pier_242, Quasimodo_246, Phusco_242, Tortoise16_241, ZygoTaiga_239, Ewok_242, EmToTheThree_243, Willis_244
- Track 4 : JayJay_239, DirtMonster_232, Sebata_243
- Track 5 : Bxz1_229, Matsumoto_241, Dietrick_232, Drazdys_240, Catera_232, Sprinklers_241, Cactojaque_237, Spud_235, Rizal_232

- Track 6 : Stubby_226, Pinkcreek_223, Alice_229, Flabslab_237, HyRo_228, Shifa_220, Rabinovish_236
- Track 7 : Grasshills_250, EggyFarm_251, BigCity_251
- Track 8 : Mangeria_243
- Track 9 : StubbySaigey_249
- Track 10 : NoodleTree_239
- Track 11 : Phabba_245
- Track 12 : Greely_243
- Track 13 : GMA2_22
- Track 14 : Syleon_126
- Track 15 : Kudefre_125
- Track 16 : Octobien14_120
- Track 17 : Sephiroth_121
- Track 18 : Neville_122, Trax_123
- Track 19 : Rabbitrun_124
- Track 20 : Blarby_108, Avani_106, Jabbawokkie_107, Zapner_107
- Track 21 : Llama_109, Jinglebell_111, AlpineSix_100, OfUltron_109, Ochi17_108, Seabastian_109, Modragons_105
- Track 22 : IrishSherpFalk_102, Che8_109, WillSterrel_100
- Track 23 : Oksu_106
- Track 24 : Blexus_99
- Track 25 : Demsculpinboyz_116
- Track 26 : Soul22_101, Che9d_110
- Track 27 : Yoshi_115
- Track 28 : ThetaBob_104
- Track 29 : Cornie_100
- Track 30 : PauloDiaboli_180, A3Wally_180
- Track 31 : HC_77
- Track 32 : Brujita_73, Island3_75
- Track 33 : Babsiella_77
- Track 34 : Duke13_16, HokkenD_15, BAKA_16, Pound_20, EricMillard_20, Bobby_21, ThreeRngTarjay_19, Constella_15, Schatzie_18, Optimus_17, Beem_20, Hughesyang_19, Dove_18, NihilNomen_19, Bombitas_17, Phoebus_20
- Track 35 : Thibault_16, Dallas_19, Odette_19, Minerva_19, Wanda_20, Halley_20, Klein_20, DmpstrDiver_19, Zelink_20, Ejimix_21, Kalah2_20, JuicyJay_21, Yeet_18, Bagrid_18, Redno2_19
- Track 36 : Porcelain_17, KashFlow_11, Courthouse_17, Hannaconda_14, MiaZeal_17, Superphikiman_17
- Track 37 : Shida_35, Idergollasper_35, Familton_36, TelAviv_32, Blessica_36, SchoolBus_35, Winget_36, Catdawg_35, FoulBall_32, JangDynasty_35, Alkhayr_33
- Track 38 : Corndog_37, Schuy_36, Mori_34, Vorrps_34, MadKillah_36, Bora_32, Murai_35, Wildflower_35, Krili_34, NiebruSaylor_34, Smooch_37
- Track 39 : Ashwin_36
- Track 40 : Zakhe101_35, Dylan_34
- Track 41 : Firecracker_35, YungJamal_38
- Track 42 : Ryadel_38
- Track 43 : Beelzebub_91, Marvin_81, FeliMaine_83, Pringar_83
- Track 44 : Corazon_82, Huphlepuuff_89, RedRaider77_86, Caprice_79, Raela_88, Blackbeetle_87, MosMoris_81, Gattaca_84, Poise_87, Tesla_82
- Track 45 : Lilbit_85, LittleLaf_85
- Track 46 : VasuNzinga_84, JoieB_87, Clarkson_88

Summary of Final Annotations (See graph section above for start numbers):

The start number called the most often in the published annotations is 32, it was called in 158 of the 280 non-draft genes in the pham.

Genes that call this "Most Annotated" start:

- Ading_245, Adlitam_243, Alice_229, Amataga_244, ArcherS7_244, Asterius_238, Astraea_238, Atlantean_243, Audrick_246, Ava3_240, Babyland_246, BackyardAgain_238, BadAgartude_237, BananaFence_240, Bangla1971_244, Basquiat_240, BeanWater_236, BigCity_251, Bigswole_248, Bipolarisk_241, Blackbrain_241, Blackdragon_238, Blubba_238, Bonray_245, Bread_239, Breeniome_243, Burrough_244, Cali_233, Cane17_232, Capablanca_248, Caravan_233, Chargie21_240, CharlieB_238, ChaylaJr_242, ChickenPhender_239, Chomp_241, CindyLou_244, Colt_233, Concombre_248, DTDevon_244, Daffodil_249, Dandelion_249, Darko_242, Delilah_241, Delylah_245, Derek_239, DirtMonster_232, DrPhinkDaddy_240, ET08_229, EasyJones_244, EggyFarm_251, EmToTheThree_243, EmmaElysia_248, Erdmann_244, ErnieJ_236, Essence_241, Ewok_242, Flabslab_237, Fludd_243, FoxtrotP1_241, FrayBell_246, FudgeTart_238, Gabriel_246, Gamgam_245, Ghost_243, Gizmo_248, Grasshills_250, Grungle_225, Guwapp_239, Halldule_235, HyRo_228, I3_253, IkeLoa_237, InigoMontoya_247, InterFolia_245, Iota_240, Issimir_238, Izajani_239, JPickles_240, Janiyra_246, JayJay_239, Jaygup_240, Jedediah_245, Jemmno_243, Jessibeth14_243, JulietS_235, JustHall_237, Kamryn_242, Kboogie_247, Khaleesi_242, Koguma_242, LRRHood_235, Latch_243, Lee7_242, LifeSavor_244, LinStu_240, Littleton_247, Loanshark_240, LolaVinca_239, LordLeafolot_245, Lukilu_232, Maby2021_243, Mangeria_243, McGee_244, McWolfish_240, Megamind_240, Melpomini_238, MikeLiesIn_244, Mikro_237, MoMoMixon_239, Momo_245, Morizzled23_240, Naija_244, Napoleon13_240, Nappy_242, Naval22_248, NedWong_242, Ngannou_238, Nidhogg_244, Norm_243, NuevoMundo_245, ParkTD_242, Patter_245, Phlegm_248, Phox_244, Phusco_242, Pier_242, Pinkcreek_223, Pio_250, Pivoine_244, Pleione_247, PurduePete_243, QBert_235, Quasimodo_246, Rabinovish_236, Rahel_245, RoMag_238, Ronan_239, Roots515_246, Salacia_244, Sauce_240, ScottMcG_235, Sebata_243, Shaqnato_234, Shelob_244, ShiaLabeouf_241, Shifa_220, Shnickers_242, Shrimp_245, SilverDipper_248, SmallFry_244, Spec_237, Specks_247, SrishMeg2525_240, StephanieG_237, StubbySaigey_249, Stubby_226, Teardrop_241, TinyTim_241, Tonenili_265, Tortoise16_241, Trinitium_239, Turret_234, Tyke_240, ValleyTerrace_244, Wally_241, Willis_244, Yassified_239, YemiJoy2021_244, YoungMoneyMata_243, Yucca_243, Zalkecks_242, Zeenon_244, ZygoTaiga_239,

Genes that have the "Most Annotated" start but do not call it:

- Bxz1_229, Cactojaque_237, Catera_232, Dietrick_232, Drazdys_240, Matsumoto_241, NoodleTree_239, Rizal_232, Sprinklers_241, Spud_235,

Genes that do not have the "Most Annotated" start:

- A3Wally_180, Alkhayr_33, AlpineSix_100, Ashwin_36, Avani_106, BAKA_16, Babsiella_77, Bagrid_18, Beelzebub_91, Beem_20, Blackbeetle_87, Blarby_108, Blessica_36, Blexus_99, Bobby_21, Bombitas_17, Bora_32, Brujita_73, Caprice_79, Catdawg_35, Che8_109, Che9d_110, Clarkson_88, Constella_15, Corazon_82, Corndog_37, Cornie_100, Courthouse_17, Dallas_19, Demsculpinboyz_116, DmpstrDiver_19, Dove_18, Duke13_16, Dylan_34, Ejimix_21, EricMillard_20, Familton_36, FeliMaine_83, Firecracker_35, FoulBall_32, GMA2_22, Gattaca_84,

Greely_243, HC_77, Halley_20, Hannaconda_14, HokkenD_15, Hughesyang_19, Huphlepuuff_89, Idergollasper_35, IrishSherpFalk_102, Island3_75, Jabbawokkie_107, JangDynasty_35, Jinglebell_111, JoieB_87, JuicyJay_21, Kalah2_20, KashFlow_11, Klein_20, Krili_34, Kudrefre_125, Lilbit_85, LittleLaf_85, Llama_109, MadKillah_36, Marvin_81, MiaZeal_17, Minerva_19, Modragons_105, Mori_34, MosMoris_81, Murai_35, Neville_122, NiebruSaylor_34, NihilNomen_19, Ochi17_108, Octobien14_120, Odette_19, OfUltron_109, Oksu_106, Optimus_17, PauloDiaboli_180, Phabba_245, Phoebus_20, Phrappuccino_143, Phrappuccino_144, Poise_87, Porcelain_17, Pound_20, Pringar_83, Rabbitrun_124, Raela_88, RedRaider77_86, Redno2_19, Ryadel_38, Schatzie_18, SchoolBus_35, Schuy_36, Sebastian_109, Sephiroth_121, Settecandela_143, Settecandela_144, Shida_35, Smooch_37, Soul22_101, Superphikiman_17, Syleon_126, TelAviv_32, Tesla_82, ThetaBob_104, Thibault_16, ThreeRngTarjay_19, Trax_123, VasuNzinga_84, Vorrps_34, Wanda_20, Wildflower_35, WillSterrel_100, Winget_36, Yeet_18, Yoshi_115, YungJamal_38, Zakhe101_35, Zapner_107, Zelink_20,

Summary by start number:

Start 24:

- Found in 21 of 310 (6.8%) of genes in pham
- Manual Annotations of this start: 1 of 280
- Called 9.5% of time when present
- Phage (with cluster) where this start called: Oksu_106 (F1), ThetaBob_104 (F4),

Start 26:

- Found in 2 of 310 (0.6%) of genes in pham
- Manual Annotations of this start: 2 of 280
- Called 100.0% of time when present
- Phage (with cluster) where this start called: Phrappuccino_144 (AA), Settecandela_144 (AA),

Start 28:

- Found in 21 of 310 (6.8%) of genes in pham
- Manual Annotations of this start: 17 of 280
- Called 90.5% of time when present
- Phage (with cluster) where this start called: AlpineSix_100 (F1), Avani_106 (F2), Blarby_108 (F), Blexus_99 (F1), Che8_109 (F1), Che9d_110 (F2), Demsculpinboyz_116 (F2), IrishSherpFalk_102 (F1), Jabbawokkie_107 (F2), Jinglebell_111 (F1), Llama_109 (F1), Modragons_105 (F1), Ochi17_108 (F1), OfUltron_109 (F1), Sebastian_109 (F1), Soul22_101 (F2), WillSterrel_100 (F1), Yoshi_115 (F2), Zapner_107 (F2),

Start 29:

- Found in 2 of 310 (0.6%) of genes in pham
- Manual Annotations of this start: 1 of 280
- Called 100.0% of time when present
- Phage (with cluster) where this start called: Greely_243 (C2), Phabba_245 (C2),

Start 30:

- Found in 5 of 310 (1.6%) of genes in pham
- Manual Annotations of this start: 1 of 280
- Called 40.0% of time when present
- Phage (with cluster) where this start called: Babsiella_77 (I1), GMA2_22 (DS),

Start 32:

- Found in 184 of 310 (59.4%) of genes in pham
- Manual Annotations of this start: 158 of 280
- Called 94.6% of time when present
- Phage (with cluster) where this start called: Ading_245 (C1), Adlitam_243 (C1), Alice_229 (C1), Amataga_244 (C1), ArcherS7_244 (C1), Asterius_238 (C1), Astraea_238 (C1), Atlantean_243 (C1), Audrick_246 (C1), Ava3_240 (C1), Babyland_246 (C1), BackyardAgain_238 (C1), BadAgartude_237 (C1), BananaFence_240 (C1), Bangla1971_244 (C1), Basquiat_240 (C1), BeanWater_236 (C1), BigCity_251 (C1), Bigswole_248 (C1), Bipolarisk_241 (C1), Blackbrain_241 (C1), Blackdragon_238 (C1), Blubba_238 (C1), Bonray_245 (C1), Bread_239 (C1), Breeniome_243 (C1), Burrough_244 (C1), Cali_233 (C1), Cane17_232 (C1), Capablanca_248 (C1), Caravan_233 (C1), Chargie21_240 (C1), CharlieB_238 (C1), ChaylaJr_242 (C1), ChickenPhender_239 (C1), Chomp_241 (C1), CindyLou_244 (C1), Colt_233 (C1), Concombre_248 (C1), DTDevon_244 (C1), Daffodil_249 (C1), Dandelion_249 (C1), Darko_242 (C1), Delilah_241 (C1), Delylah_245 (C1), Derek_239 (C1), DirtMonster_232 (C1), DrPhinkDaddy_240 (C1), ET08_229 (C1), EasyJones_244 (C1), EggyFarm_251 (C1), EmToTheThree_243 (C1), EmmaElysia_248 (C1), Erdmann_244 (C1), ErnieJ_236 (C1), Essence_241 (C1), Ewok_242 (C1), Flabslab_237 (C1), Fludd_243 (C1), FoxtrotP1_241 (C1), FrayBell_246 (C1), FudgeTart_238 (C1), Gabriel_246 (C1), Gamgam_245 (C1), Ghost_243 (C1), Gizmo_248 (C1), Grasshills_250 (C1), Grungle_225 (C1), Guwapp_239 (C1), Halldule_235 (C1), HyRo_228 (C1), I3_253 (C1), IkeLoa_237 (C1), InigoMontoya_247 (C1), InterFolia_245 (C1), Iota_240 (C1), Issimir_238 (C1), Izajani_239 (C1), JPickles_240 (C1), Janiyr_246 (C1), JayJay_239 (C1), Jaygup_240 (C1), Jedediah_245 (C1), Jemmno_243 (C1), Jessibeth14_243 (C1), JulietS_235 (C1), JustHall_237 (C1), Kamryn_242 (C1), Kboogie_247 (C1), Khaleesi_242 (C1), Koguma_242 (C1), LRRHood_235 (C1), Latch_243 (C1), Lee7_242 (C1), LifeSavor_244 (C1), LinStu_240 (C1), Littleton_247 (C1), Loanshark_240 (C1), LolaVinca_239 (C1), LordLeafolot_245 (C1), Lukilu_232 (C1), Maby2021_243 (C1), Mangeria_243 (C1), McGee_244 (C1), McWolfish_240 (C1), Megamind_240 (C1), Melpomini_238 (C1), MikeLiesIn_244 (C1), Mikro_237 (C1), MoMoMixon_239 (C1), Momo_245 (C1), Morizzled23_240 (C1), Naija_244 (C1), Napoleon13_240 (C1), Nappy_242 (C1), Naval22_248 (C1), NedWong_242 (C1), Ngannou_238 (C1), Nidhogg_244 (C1), Norm_243 (C1), NuevoMundo_245 (C1), ParkTD_242 (C1), Patter_245 (C1), Phlegm_248 (C1), Phox_244 (C1), Phusco_242 (C1), Pier_242 (C1), Pinkcreek_223 (C1), Pio_250 (C1), Pivoine_244 (C1), Pleione_247 (C1), PurduePete_243 (C1), QBert_235 (C1), Quasimodo_246 (C1), Rabinovish_236 (C1), Rahel_245 (C1), RoMag_238 (C1), Ronan_239 (C1), Roots515_246 (C1), Salacia_244 (C1), Sauce_240 (C1), ScottMcG_235 (C1), Sebata_243 (C1), Shaqnato_234 (C1), Shelob_244 (C1), ShiaLabeouf_241 (C1), Shifa_220 (C1), Shnickers_242 (C1), Shrimp_245 (C1), SilverDipper_248 (C1), SmallFry_244 (C1), Spec_237 (C1), Specks_247 (C1), SrishMeg2525_240 (C1), StephanieG_237 (C1), StubbySaigey_249 (C1), Stubby_226 (C1), Teardrop_241 (C1), TinyTim_241 (C1), Tonenili_265 (C1), Tortoise16_241 (C1), Trinitium_239 (C1), Turret_234 (C1), Tyke_240 (C1), ValleyTerrace_244 (C1), Wally_241 (C1), Willis_244 (C1), Yassified_239 (C1), YemiJoy2021_244 (C1), YoungMoneyMata_243 (C1), Yucca_243 (C1), Zalkecks_242 (C1), Zeenon_244 (C1), ZygoTaiga_239 (C1),

Start 35:

- Found in 3 of 310 (1.0%) of genes in pham
- Manual Annotations of this start: 2 of 280

- Called 66.7% of time when present
- Phage (with cluster) where this start called: A3Wally_180 (GD1), PauloDiaboli_180 (GD1),

Start 37:

- Found in 19 of 310 (6.1%) of genes in pham
- Manual Annotations of this start: 16 of 280
- Called 100.0% of time when present
- Phage (with cluster) where this start called: Beelzebub_91 (S), Blackbeetle_87 (S), Caprice_79 (S), Clarkson_88 (S), Corazon_82 (S), FeliMaine_83 (S), Gattaca_84 (S), Huphlepuuff_89 (S), JoieB_87 (S), Lilbit_85 (S), LittleLaf_85 (S), Marvin_81 (S), MosMoris_81 (S), Poise_87 (S), Pringar_83 (S), Raela_88 (S), RedRaider77_86 (S), Tesla_82 (S), VasuNzinga_84 (S),

Start 38:

- Found in 76 of 310 (24.5%) of genes in pham
- Manual Annotations of this start: 67 of 280
- Called 94.7% of time when present
- Phage (with cluster) where this start called: Alkhayr_33 (O), Ashwin_36 (O), BAKA_16 (J), Bagrid_18 (J), Beem_20 (J), Blessica_36 (O), Bobby_21 (J), Bombitas_17 (J), Bora_32 (O), Brujita_73 (I1), Catdawg_35 (O), Constella_15 (J), Corndog_37 (O), Cornie_100 (F5), Courthouse_17 (J), Dallas_19 (J), DmpstrDiver_19 (J), Dove_18 (J), Duke13_16 (J), Dylan_34 (O), Ejimix_21 (J), EricMillard_20 (J), Familton_36 (O), Firecracker_35 (O), FoulBall_32 (O), HC_77 (I1), Halley_20 (J), Hannaconda_14 (J), HokkenD_15 (J), Hughesyang_19 (J), Idergollasper_35 (O), Island3_75 (I1), JangDynasty_35 (O), JuicyJay_21 (J), Kalah2_20 (J), KashFlow_11 (J), Klein_20 (J), Krili_34 (O), MadKillah_36 (O), MiaZeal_17 (J), Minerva_19 (J), Mori_34 (O), Murai_35 (O), Neville_122 (DU2), NiebruSaylor_34 (O), NihilNomen_19 (J), Odette_19 (J), Optimus_17 (J), Phoebus_20 (J), Porcelain_17 (J), Pound_20 (J), Rabbitrun_124 (DU2), Redno2_19 (J), Ryadel_38 (O), Schatzie_18 (J), SchoolBus_35 (O), Schuy_36 (O), Shida_35 (O), Smooch_37 (O), Superphikiman_17 (J), TelAviv_32 (O), Thibault_16 (J), ThreeRngTarjay_19 (J), Trax_123 (DU2), Vorrps_34 (O), Wanda_20 (J), Wildflower_35 (O), Winget_36 (O), Yeet_18 (J), YungJamal_38 (O), Zakhe101_35 (O), Zelink_20 (J),

Start 39:

- Found in 3 of 310 (1.0%) of genes in pham
- Manual Annotations of this start: 3 of 280
- Called 100.0% of time when present
- Phage (with cluster) where this start called: Octobien14_120 (DU1), Phrappuccino_143 (AA), Settecandela_143 (AA),

Start 40:

- Found in 1 of 310 (0.3%) of genes in pham
- Manual Annotations of this start: 1 of 280
- Called 100.0% of time when present
- Phage (with cluster) where this start called: Syleon_126 (DU1),

Start 41:

- Found in 21 of 310 (6.8%) of genes in pham
- Manual Annotations of this start: 2 of 280
- Called 9.5% of time when present

- Phage (with cluster) where this start called: Kudrefre_125 (DU1), Sephiroth_121 (DU1),

Start 42:

- Found in 177 of 310 (57.1%) of genes in pham
- Manual Annotations of this start: 9 of 280
- Called 5.6% of time when present
- Phage (with cluster) where this start called: Bxz1_229 (C1), Cactojaque_237 (C1), Catera_232 (C1), Dietrick_232 (C1), Drazdys_240 (C1), Matsumoto_241 (C1), NoodleTree_239 (C1), Rizal_232 (C1), Sprinklers_241 (C1), Spud_235 (C1),

Summary by clusters:

There are 16 clusters represented in this pham: AA, F1, F2, F4, F5, GD1, I1, J, O, DS, S, F, C2, DU1, C1, DU2,

Info for manual annotations of cluster AA:

- Start number 26 was manually annotated 2 times for cluster AA.
- Start number 39 was manually annotated 2 times for cluster AA.

Info for manual annotations of cluster C1:

- Start number 32 was manually annotated 158 times for cluster C1.
- Start number 42 was manually annotated 9 times for cluster C1.

Info for manual annotations of cluster C2:

- Start number 29 was manually annotated 1 time for cluster C2.

Info for manual annotations of cluster DU1:

- Start number 39 was manually annotated 1 time for cluster DU1.
- Start number 40 was manually annotated 1 time for cluster DU1.
- Start number 41 was manually annotated 2 times for cluster DU1.

Info for manual annotations of cluster DU2:

- Start number 38 was manually annotated 3 times for cluster DU2.

Info for manual annotations of cluster F1:

- Start number 28 was manually annotated 10 times for cluster F1.

Info for manual annotations of cluster F2:

- Start number 28 was manually annotated 7 times for cluster F2.

Info for manual annotations of cluster F4:

- Start number 24 was manually annotated 1 time for cluster F4.

Info for manual annotations of cluster F5:

- Start number 38 was manually annotated 1 time for cluster F5.

Info for manual annotations of cluster GD1:

- Start number 35 was manually annotated 2 times for cluster GD1.

Info for manual annotations of cluster I1:

- Start number 30 was manually annotated 1 time for cluster I1.
- Start number 38 was manually annotated 3 times for cluster I1.

Info for manual annotations of cluster J:

- Start number 38 was manually annotated 34 times for cluster J.

Info for manual annotations of cluster O:

- Start number 38 was manually annotated 26 times for cluster O.

Info for manual annotations of cluster S:

- Start number 37 was manually annotated 16 times for cluster S.

Gene Information:

Gene: A3Wally_180 Start: 99450, Stop: 100151, Start Num: 35

Candidate Starts for A3Wally_180:

(34, 99447), (Start: 35 @99450 has 2 MA's), (47, 99555), (63, 99681), (72, 99732), (74, 99753), (88, 99828), (94, 99876), (99, 99942), (102, 99951), (104, 99960), (113, 100029), (128, 100122),

Gene: Ading_245 Start: 136141, Stop: 136857, Start Num: 32

Candidate Starts for Ading_245:

(31, 136135), (Start: 32 @136141 has 158 MA's), (Start: 42 @136174 has 9 MA's), (52, 136321), (55, 136330), (56, 136357), (57, 136360), (65, 136399), (85, 136543), (96, 136627), (106, 136702), (110, 136723), (112, 136753), (117, 136810), (122, 136834), (127, 136846),

Gene: Adlitam_243 Start: 134745, Stop: 135461, Start Num: 32

Candidate Starts for Adlitam_243:

(31, 134739), (Start: 32 @134745 has 158 MA's), (Start: 42 @134778 has 9 MA's), (52, 134925), (55, 134934), (56, 134961), (57, 134964), (65, 135003), (85, 135147), (96, 135231), (106, 135306), (110, 135327), (112, 135357), (117, 135414), (122, 135438), (127, 135450),

Gene: Alice_229 Start: 132036, Stop: 132746, Start Num: 32

Candidate Starts for Alice_229:

(Start: 32 @132036 has 158 MA's), (52, 132216), (55, 132225), (56, 132252), (57, 132255), (64, 132291), (65, 132294), (83, 132435), (96, 132519), (106, 132594), (115, 132666), (117, 132702), (122, 132726), (126, 132735),

Gene: Alkhayr_33 Start: 17670, Stop: 18362, Start Num: 38

Candidate Starts for Alkhayr_33:

(6, 17199), (12, 17364), (14, 17445), (15, 17463), (22, 17592), (Start: 38 @17670 has 67 MA's), (48, 17775), (56, 17865), (67, 17928), (71, 17949), (72, 17952), (74, 17973), (77, 17997), (98, 18162), (103, 18180), (108, 18204), (118, 18303),

Gene: AlpineSix_100 Start: 54932, Stop: 55630, Start Num: 28

Candidate Starts for AlpineSix_100:

(Start: 24 @54914 has 1 MA's), (Start: 28 @54932 has 17 MA's), (50, 55046), (58, 55136), (71, 55214), (72, 55217), (73, 55220), (74, 55238), (93, 55352), (98, 55427),

Gene: Amataga_244 Start: 133744, Stop: 134460, Start Num: 32

Candidate Starts for Amataga_244:

(31, 133738), (Start: 32 @133744 has 158 MA's), (Start: 42 @133777 has 9 MA's), (52, 133924), (55, 133933), (56, 133960), (57, 133963), (65, 134002), (85, 134146), (96, 134230), (106, 134305), (110, 134326), (112, 134356), (117, 134413), (122, 134437), (127, 134449),

Gene: ArcherS7_244 Start: 135489, Stop: 136205, Start Num: 32

Candidate Starts for ArcherS7_244:

(31, 135483), (Start: 32 @135489 has 158 MA's), (Start: 42 @135522 has 9 MA's), (52, 135669), (55, 135678), (56, 135705), (57, 135708), (65, 135747), (85, 135891), (96, 135975), (106, 136050), (110, 136071), (112, 136101), (117, 136158), (122, 136182), (127, 136194),

Gene: Ashwin_36 Start: 17680, Stop: 18372, Start Num: 38

Candidate Starts for Ashwin_36:

(12, 17374), (14, 17455), (15, 17473), (22, 17602), (Start: 38 @17680 has 67 MA's), (48, 17785), (56, 17875), (67, 17938), (71, 17959), (72, 17962), (74, 17983), (77, 18007), (84, 18046), (98, 18172), (103, 18190), (108, 18214),

Gene: Asterius_238 Start: 134153, Stop: 134869, Start Num: 32

Candidate Starts for Asterius_238:

(31, 134147), (Start: 32 @134153 has 158 MA's), (Start: 42 @134186 has 9 MA's), (52, 134333), (55, 134342), (56, 134369), (57, 134372), (65, 134411), (85, 134555), (96, 134639), (106, 134714), (110, 134735), (112, 134765), (117, 134822), (122, 134846), (127, 134858),

Gene: Astraea_238 Start: 133348, Stop: 134064, Start Num: 32

Candidate Starts for Astraea_238:

(31, 133342), (Start: 32 @133348 has 158 MA's), (Start: 42 @133381 has 9 MA's), (52, 133528), (55, 133537), (56, 133564), (57, 133567), (65, 133606), (85, 133750), (96, 133834), (106, 133909), (110, 133930), (112, 133960), (117, 134017), (122, 134041), (127, 134053),

Gene: Atlantean_243 Start: 133744, Stop: 134460, Start Num: 32

Candidate Starts for Atlantean_243:

(31, 133738), (Start: 32 @133744 has 158 MA's), (Start: 42 @133777 has 9 MA's), (52, 133924), (55, 133933), (56, 133960), (57, 133963), (65, 134002), (85, 134146), (96, 134230), (106, 134305), (110, 134326), (112, 134356), (117, 134413), (122, 134437), (127, 134449),

Gene: Audrick_246 Start: 133634, Stop: 134350, Start Num: 32

Candidate Starts for Audrick_246:

(31, 133628), (Start: 32 @133634 has 158 MA's), (Start: 42 @133667 has 9 MA's), (52, 133814), (55, 133823), (56, 133850), (57, 133853), (65, 133892), (85, 134036), (96, 134120), (106, 134195), (110, 134216), (112, 134246), (117, 134303), (122, 134327), (127, 134339),

Gene: Ava3_240 Start: 134204, Stop: 134920, Start Num: 32

Candidate Starts for Ava3_240:

(31, 134198), (Start: 32 @134204 has 158 MA's), (Start: 42 @134237 has 9 MA's), (52, 134384), (55, 134393), (56, 134420), (57, 134423), (65, 134462), (85, 134606), (96, 134690), (106, 134765), (110, 134786), (112, 134816), (117, 134873), (122, 134897), (127, 134909),

Gene: Avani_106 Start: 53056, Stop: 53754, Start Num: 28

Candidate Starts for Avani_106:

(17, 52984), (19, 53008), (Start: 24 @53038 has 1 MA's), (Start: 28 @53056 has 17 MA's), (51, 53173), (58, 53260), (69, 53323), (71, 53338), (72, 53341), (73, 53344), (74, 53362), (78, 53392), (98, 53551),

Gene: BAKA_16 Start: 12678, Stop: 13379, Start Num: 38

Candidate Starts for BAKA_16:

(18, 12612), (Start: 38 @12678 has 67 MA's), (48, 12783), (51, 12792), (54, 12858), (71, 12957), (73, 12963), (74, 12981), (75, 12987), (90, 13086), (93, 13095), (98, 13170), (108, 13212), (129, 13356),

Gene: Babsiella_77 Start: 47291, Stop: 47992, Start Num: 30

Candidate Starts for Babsiella_77:

(Start: 30 @47291 has 1 MA's), (Start: 38 @47294 has 67 MA's), (44, 47366), (46, 47375), (56, 47489), (60, 47513), (78, 47627), (87, 47675), (98, 47786),

Gene: Babyland_246 Start: 134521, Stop: 135237, Start Num: 32

Candidate Starts for Babyland_246:

(31, 134515), (Start: 32 @134521 has 158 MA's), (Start: 42 @134554 has 9 MA's), (52, 134701), (55, 134710), (56, 134737), (57, 134740), (65, 134779), (85, 134923), (96, 135007), (106, 135082), (110, 135103), (112, 135133), (117, 135190), (122, 135214), (127, 135226),

Gene: BackyardAgain_238 Start: 131894, Stop: 132610, Start Num: 32

Candidate Starts for BackyardAgain_238:

(31, 131888), (Start: 32 @131894 has 158 MA's), (Start: 42 @131927 has 9 MA's), (52, 132074), (55, 132083), (56, 132110), (57, 132113), (65, 132152), (85, 132296), (96, 132380), (106, 132455), (110, 132476), (112, 132506), (117, 132563), (122, 132587), (127, 132599),

Gene: BadAgartude_237 Start: 133846, Stop: 134562, Start Num: 32

Candidate Starts for BadAgartude_237:

(31, 133840), (Start: 32 @133846 has 158 MA's), (Start: 42 @133879 has 9 MA's), (52, 134026), (55, 134035), (56, 134062), (57, 134065), (65, 134104), (85, 134248), (96, 134332), (106, 134407), (110, 134428), (112, 134458), (117, 134515), (122, 134539), (127, 134551),

Gene: Bagrid_18 Start: 12470, Stop: 13171, Start Num: 38

Candidate Starts for Bagrid_18:

(18, 12404), (Start: 38 @12470 has 67 MA's), (48, 12575), (51, 12584), (54, 12650), (73, 12755), (74, 12773), (75, 12779), (90, 12878), (93, 12887), (98, 12962), (108, 13004), (129, 13148),

Gene: BananaFence_240 Start: 133977, Stop: 134693, Start Num: 32

Candidate Starts for BananaFence_240:

(31, 133971), (Start: 32 @133977 has 158 MA's), (Start: 42 @134010 has 9 MA's), (52, 134157), (55, 134166), (56, 134193), (57, 134196), (65, 134235), (85, 134379), (96, 134463), (106, 134538), (110, 134559), (112, 134589), (117, 134646), (122, 134670), (127, 134682),

Gene: Bangla1971_244 Start: 134453, Stop: 135169, Start Num: 32

Candidate Starts for Bangla1971_244:

(31, 134447), (Start: 32 @134453 has 158 MA's), (Start: 42 @134486 has 9 MA's), (52, 134633), (55, 134642), (56, 134669), (57, 134672), (65, 134711), (85, 134855), (96, 134939), (106, 135014), (110, 135035), (112, 135065), (117, 135122), (122, 135146), (127, 135158),

Gene: Basquiat_240 Start: 132263, Stop: 132979, Start Num: 32

Candidate Starts for Basquiat_240:

(31, 132257), (Start: 32 @132263 has 158 MA's), (Start: 42 @132296 has 9 MA's), (52, 132443), (55, 132452), (56, 132479), (57, 132482), (65, 132521), (85, 132665), (96, 132749), (106, 132824), (110, 132845), (112, 132875), (117, 132932), (122, 132956), (127, 132968),

Gene: BeanWater_236 Start: 133590, Stop: 134306, Start Num: 32

Candidate Starts for BeanWater_236:

(31, 133584), (Start: 32 @133590 has 158 MA's), (Start: 42 @133623 has 9 MA's), (52, 133770), (55, 133779), (56, 133806), (57, 133809), (65, 133848), (85, 133992), (96, 134076), (106, 134151), (110, 134172), (112, 134202), (117, 134259), (122, 134283), (127, 134295),

Gene: Beelzebub_91 Start: 46647, Stop: 47375, Start Num: 37

Candidate Starts for Beelzebub_91:

(Start: 37 @46647 has 16 MA's), (Start: 41 @46662 has 2 MA's), (43, 46707), (49, 46758), (50, 46761), (52, 46824), (56, 46860), (60, 46884), (63, 46899), (67, 46926), (72, 46950), (81, 47025), (85, 47037), (86, 47046), (92, 47079), (98, 47157), (103, 47175), (108, 47199), (130, 47361),

Gene: Beem_20 Start: 13036, Stop: 13737, Start Num: 38

Candidate Starts for Beem_20:

(18, 12970), (Start: 38 @13036 has 67 MA's), (48, 13141), (51, 13150), (54, 13216), (71, 13315), (73, 13321), (74, 13339), (75, 13345), (90, 13444), (93, 13453), (98, 13528), (108, 13570), (129, 13714),

Gene: BigCity_251 Start: 136350, Stop: 137066, Start Num: 32

Candidate Starts for BigCity_251:

(31, 136344), (Start: 32 @136350 has 158 MA's), (Start: 42 @136383 has 9 MA's), (52, 136530), (55, 136539), (56, 136566), (57, 136569), (65, 136608), (85, 136752), (96, 136836), (106, 136911), (110, 136932), (112, 136962), (117, 137019), (122, 137043), (126, 137052), (127, 137055),

Gene: Bigswole_248 Start: 136324, Stop: 137040, Start Num: 32

Candidate Starts for Bigswole_248:

(31, 136318), (Start: 32 @136324 has 158 MA's), (Start: 42 @136357 has 9 MA's), (52, 136504), (55, 136513), (56, 136540), (57, 136543), (65, 136582), (85, 136726), (96, 136810), (106, 136885), (110, 136906), (112, 136936), (117, 136993), (122, 137017), (127, 137029),

Gene: Bipolarisk_241 Start: 134472, Stop: 135188, Start Num: 32

Candidate Starts for Bipolarisk_241:

(31, 134466), (Start: 32 @134472 has 158 MA's), (Start: 42 @134505 has 9 MA's), (52, 134652), (55, 134661), (56, 134688), (57, 134691), (65, 134730), (85, 134874), (96, 134958), (106, 135033), (110, 135054), (112, 135084), (117, 135141), (122, 135165), (127, 135177),

Gene: Blackbeetle_87 Start: 46008, Stop: 46736, Start Num: 37

Candidate Starts for Blackbeetle_87:

(Start: 37 @46008 has 16 MA's), (Start: 41 @46023 has 2 MA's), (43, 46068), (49, 46119), (50, 46122), (52, 46185), (56, 46221), (60, 46245), (63, 46260), (67, 46287), (72, 46311), (85, 46398), (86, 46407), (92, 46440), (98, 46518), (103, 46536), (108, 46560), (130, 46722),

Gene: Blackbrain_241 Start: 134040, Stop: 134756, Start Num: 32

Candidate Starts for Blackbrain_241:

(31, 134034), (Start: 32 @134040 has 158 MA's), (Start: 42 @134073 has 9 MA's), (52, 134220), (55, 134229), (56, 134256), (57, 134259), (65, 134298), (85, 134442), (96, 134526), (106, 134601), (110, 134622), (112, 134652), (117, 134709), (122, 134733), (127, 134745),

Gene: Blackdragon_238 Start: 134077, Stop: 134793, Start Num: 32

Candidate Starts for Blackdragon_238:

(31, 134071), (Start: 32 @134077 has 158 MA's), (Start: 42 @134110 has 9 MA's), (52, 134257), (55, 134266), (56, 134293), (57, 134296), (65, 134335), (85, 134479), (96, 134563), (106, 134638), (110, 134659), (112, 134689), (117, 134746), (122, 134770), (127, 134782),

Gene: Blarby_108 Start: 53883, Stop: 54581, Start Num: 28

Candidate Starts for Blarby_108:

(17, 53811), (19, 53835), (Start: 24 @53865 has 1 MA's), (Start: 28 @53883 has 17 MA's), (51, 54000), (58, 54087), (69, 54150), (71, 54165), (72, 54168), (73, 54171), (74, 54189), (78, 54219), (98, 54378),

Gene: Blessica_36 Start: 18071, Stop: 18763, Start Num: 38

Candidate Starts for Blessica_36:

(6, 17600), (12, 17765), (14, 17846), (15, 17864), (22, 17993), (Start: 38 @18071 has 67 MA's), (48, 18176), (56, 18266), (67, 18329), (71, 18350), (72, 18353), (74, 18374), (77, 18398), (98, 18563), (103, 18581), (108, 18605), (118, 18704),

Gene: Blexus_99 Start: 56032, Stop: 56730, Start Num: 28

Candidate Starts for Blexus_99:

(Start: 24 @56014 has 1 MA's), (Start: 28 @56032 has 17 MA's), (58, 56236), (71, 56314), (72, 56317), (73, 56320), (74, 56338), (93, 56452), (98, 56527),

Gene: Blubba_238 Start: 137283, Stop: 137999, Start Num: 32

Candidate Starts for Blubba_238:

(31, 137277), (Start: 32 @137283 has 158 MA's), (Start: 42 @137316 has 9 MA's), (52, 137463), (55, 137472), (56, 137499), (57, 137502), (65, 137541), (85, 137685), (96, 137769), (106, 137844), (110, 137865), (112, 137895), (117, 137952), (122, 137976), (127, 137988),

Gene: Bobby_21 Start: 12989, Stop: 13690, Start Num: 38

Candidate Starts for Bobby_21:

(18, 12923), (Start: 38 @12989 has 67 MA's), (48, 13094), (51, 13103), (54, 13169), (71, 13268), (73, 13274), (74, 13292), (75, 13298), (90, 13397), (93, 13406), (98, 13481), (108, 13523), (129, 13667),

Gene: Bombitas_17 Start: 12345, Stop: 13046, Start Num: 38

Candidate Starts for Bombitas_17:

(18, 12279), (Start: 38 @12345 has 67 MA's), (48, 12450), (51, 12459), (54, 12525), (71, 12624), (73, 12630), (74, 12648), (75, 12654), (90, 12753), (93, 12762), (98, 12837), (108, 12879), (129, 13023),

Gene: Bonray_245 Start: 135840, Stop: 136556, Start Num: 32

Candidate Starts for Bonray_245:

(31, 135834), (Start: 32 @135840 has 158 MA's), (Start: 42 @135873 has 9 MA's), (52, 136020), (55, 136029), (56, 136056), (57, 136059), (65, 136098), (85, 136242), (96, 136326), (106, 136401), (110, 136422), (112, 136452), (117, 136509), (122, 136533), (127, 136545),

Gene: Bora_32 Start: 17133, Stop: 17825, Start Num: 38

Candidate Starts for Bora_32:

(12, 16827), (14, 16908), (15, 16926), (22, 17055), (Start: 38 @17133 has 67 MA's), (48, 17238), (56, 17328), (67, 17391), (71, 17412), (72, 17415), (74, 17436), (77, 17460), (98, 17625), (103, 17643), (108, 17667),

Gene: Bread_239 Start: 133847, Stop: 134563, Start Num: 32

Candidate Starts for Bread_239:

(31, 133841), (Start: 32 @133847 has 158 MA's), (Start: 42 @133880 has 9 MA's), (52, 134027), (55, 134036), (56, 134063), (57, 134066), (65, 134105), (85, 134249), (96, 134333), (106, 134408), (110, 134429), (112, 134459), (117, 134516), (122, 134540), (127, 134552),

Gene: Breeniome_243 Start: 133313, Stop: 134029, Start Num: 32

Candidate Starts for Breeniome_243:

(31, 133307), (Start: 32 @133313 has 158 MA's), (Start: 42 @133346 has 9 MA's), (52, 133493), (55, 133502), (56, 133529), (57, 133532), (65, 133571), (85, 133715), (96, 133799), (106, 133874), (110,

133895), (112, 133925), (117, 133982), (122, 134006), (127, 134018),

Gene: Brujita_73 Start: 45931, Stop: 46629, Start Num: 38

Candidate Starts for Brujita_73:

(Start: 38 @45931 has 67 MA's), (44, 46003), (46, 46012), (56, 46126), (60, 46150), (78, 46264), (87, 46312), (98, 46423),

Gene: Burrough_244 Start: 135617, Stop: 136333, Start Num: 32

Candidate Starts for Burrough_244:

(31, 135611), (Start: 32 @135617 has 158 MA's), (Start: 42 @135650 has 9 MA's), (52, 135797), (55, 135806), (56, 135833), (57, 135836), (65, 135875), (85, 136019), (96, 136103), (106, 136178), (110, 136199), (112, 136229), (117, 136286), (122, 136310), (127, 136322),

Gene: Bxz1_229 Start: 135855, Stop: 136538, Start Num: 42

Candidate Starts for Bxz1_229:

(31, 135816), (Start: 32 @135822 has 158 MA's), (Start: 42 @135855 has 9 MA's), (52, 136002), (55, 136011), (56, 136038), (57, 136041), (65, 136080), (85, 136224), (96, 136308), (106, 136383), (110, 136404), (112, 136434), (117, 136491), (122, 136515), (127, 136527),

Gene: Cactojaque_237 Start: 133019, Stop: 133702, Start Num: 42

Candidate Starts for Cactojaque_237:

(31, 132980), (Start: 32 @132986 has 158 MA's), (Start: 42 @133019 has 9 MA's), (52, 133166), (55, 133175), (56, 133202), (57, 133205), (65, 133244), (85, 133388), (96, 133472), (106, 133547), (110, 133568), (112, 133598), (117, 133655), (122, 133679), (127, 133691),

Gene: Cali_233 Start: 134215, Stop: 134931, Start Num: 32

Candidate Starts for Cali_233:

(31, 134209), (Start: 32 @134215 has 158 MA's), (Start: 42 @134248 has 9 MA's), (52, 134395), (55, 134404), (56, 134431), (57, 134434), (65, 134473), (85, 134617), (96, 134701), (106, 134776), (110, 134797), (112, 134827), (117, 134884), (122, 134908), (127, 134920),

Gene: Cane17_232 Start: 137692, Stop: 138408, Start Num: 32

Candidate Starts for Cane17_232:

(31, 137686), (Start: 32 @137692 has 158 MA's), (Start: 42 @137725 has 9 MA's), (52, 137872), (55, 137881), (56, 137908), (57, 137911), (65, 137950), (85, 138094), (96, 138178), (106, 138253), (110, 138274), (112, 138304), (117, 138361), (122, 138385), (127, 138397),

Gene: Capablanca_248 Start: 136468, Stop: 137184, Start Num: 32

Candidate Starts for Capablanca_248:

(31, 136462), (Start: 32 @136468 has 158 MA's), (Start: 42 @136501 has 9 MA's), (52, 136648), (55, 136657), (56, 136684), (57, 136687), (65, 136726), (85, 136870), (96, 136954), (106, 137029), (110, 137050), (112, 137080), (117, 137137), (122, 137161), (127, 137173),

Gene: Caprice_79 Start: 45946, Stop: 46674, Start Num: 37

Candidate Starts for Caprice_79:

(Start: 37 @45946 has 16 MA's), (Start: 41 @45961 has 2 MA's), (43, 46006), (49, 46057), (50, 46060), (52, 46123), (56, 46159), (60, 46183), (63, 46198), (67, 46225), (72, 46249), (85, 46336), (86, 46345), (92, 46378), (98, 46456), (103, 46474), (108, 46498), (130, 46660),

Gene: Caravan_233 Start: 134555, Stop: 135271, Start Num: 32

Candidate Starts for Caravan_233:

(31, 134549), (Start: 32 @134555 has 158 MA's), (Start: 42 @134588 has 9 MA's), (52, 134735), (55, 134744), (56, 134771), (57, 134774), (65, 134813), (85, 134957), (96, 135041), (106, 135116), (110,

135137), (112, 135167), (117, 135224), (122, 135248), (127, 135260),

Gene: Catdawg_35 Start: 17760, Stop: 18452, Start Num: 38

Candidate Starts for Catdawg_35:

(6, 17289), (12, 17454), (14, 17535), (15, 17553), (22, 17682), (Start: 38 @17760 has 67 MA's), (48, 17865), (56, 17955), (67, 18018), (71, 18039), (72, 18042), (74, 18063), (77, 18087), (98, 18252), (103, 18270), (108, 18294), (118, 18393),

Gene: Catera_232 Start: 132990, Stop: 133673, Start Num: 42

Candidate Starts for Catera_232:

(31, 132951), (Start: 32 @132957 has 158 MA's), (Start: 42 @132990 has 9 MA's), (52, 133137), (55, 133146), (56, 133173), (57, 133176), (65, 133215), (85, 133359), (96, 133443), (106, 133518), (110, 133539), (112, 133569), (117, 133626), (122, 133650), (127, 133662),

Gene: Chargie21_240 Start: 132263, Stop: 132979, Start Num: 32

Candidate Starts for Chargie21_240:

(31, 132257), (Start: 32 @132263 has 158 MA's), (Start: 42 @132296 has 9 MA's), (52, 132443), (55, 132452), (56, 132479), (57, 132482), (65, 132521), (85, 132665), (96, 132749), (106, 132824), (110, 132845), (112, 132875), (117, 132932), (122, 132956), (127, 132968),

Gene: CharlieB_238 Start: 133981, Stop: 134697, Start Num: 32

Candidate Starts for CharlieB_238:

(31, 133975), (Start: 32 @133981 has 158 MA's), (Start: 42 @134014 has 9 MA's), (52, 134161), (55, 134170), (56, 134197), (57, 134200), (65, 134239), (85, 134383), (96, 134467), (106, 134542), (110, 134563), (112, 134593), (117, 134650), (122, 134674), (127, 134686),

Gene: ChaylaJr_242 Start: 133654, Stop: 134370, Start Num: 32

Candidate Starts for ChaylaJr_242:

(31, 133648), (Start: 32 @133654 has 158 MA's), (Start: 42 @133687 has 9 MA's), (52, 133834), (55, 133843), (56, 133870), (57, 133873), (65, 133912), (85, 134056), (96, 134140), (106, 134215), (110, 134236), (112, 134266), (117, 134323), (122, 134347), (127, 134359),

Gene: Che8_109 Start: 57343, Stop: 58041, Start Num: 28

Candidate Starts for Che8_109:

(Start: 24 @57325 has 1 MA's), (Start: 28 @57343 has 17 MA's), (51, 57460), (58, 57547), (71, 57625), (72, 57628), (73, 57631), (74, 57649), (93, 57763), (98, 57838),

Gene: Che9d_110 Start: 54871, Stop: 55566, Start Num: 28

Candidate Starts for Che9d_110:

(17, 54799), (19, 54823), (Start: 24 @54853 has 1 MA's), (Start: 28 @54871 has 17 MA's), (51, 54988), (58, 55075), (69, 55138), (71, 55153), (72, 55156), (73, 55159), (74, 55177), (78, 55207), (98, 55366),

Gene: ChickenPhender_239 Start: 132410, Stop: 133126, Start Num: 32

Candidate Starts for ChickenPhender_239:

(31, 132404), (Start: 32 @132410 has 158 MA's), (Start: 42 @132443 has 9 MA's), (52, 132590), (55, 132599), (56, 132626), (57, 132629), (65, 132668), (85, 132812), (96, 132896), (106, 132971), (110, 132992), (112, 133022), (117, 133079), (122, 133103), (127, 133115),

Gene: Chomp_241 Start: 135846, Stop: 136562, Start Num: 32

Candidate Starts for Chomp_241:

(31, 135840), (Start: 32 @135846 has 158 MA's), (Start: 42 @135879 has 9 MA's), (52, 136026), (55, 136035), (56, 136062), (57, 136065), (65, 136104), (85, 136248), (96, 136332), (106, 136407), (110,

136428), (112, 136458), (117, 136515), (122, 136539), (127, 136551),

Gene: CindyLou_244 Start: 136106, Stop: 136822, Start Num: 32

Candidate Starts for CindyLou_244:

(31, 136100), (Start: 32 @136106 has 158 MA's), (Start: 42 @136139 has 9 MA's), (52, 136286), (55, 136295), (56, 136322), (57, 136325), (65, 136364), (85, 136508), (96, 136592), (106, 136667), (110, 136688), (112, 136718), (117, 136775), (122, 136799), (127, 136811),

Gene: Clarkson_88 Start: 46327, Stop: 47055, Start Num: 37

Candidate Starts for Clarkson_88:

(Start: 37 @46327 has 16 MA's), (Start: 41 @46342 has 2 MA's), (43, 46387), (49, 46438), (50, 46441), (52, 46504), (56, 46540), (60, 46564), (63, 46579), (67, 46606), (72, 46630), (85, 46717), (86, 46726), (92, 46759), (98, 46837), (103, 46855), (108, 46879), (130, 47041),

Gene: Colt_233 Start: 136923, Stop: 137639, Start Num: 32

Candidate Starts for Colt_233:

(31, 136917), (Start: 32 @136923 has 158 MA's), (Start: 42 @136956 has 9 MA's), (52, 137103), (55, 137112), (56, 137139), (57, 137142), (65, 137181), (85, 137325), (96, 137409), (106, 137484), (110, 137505), (112, 137535), (117, 137592), (122, 137616), (127, 137628),

Gene: Concombres_248 Start: 136002, Stop: 136718, Start Num: 32

Candidate Starts for Concombres_248:

(31, 135996), (Start: 32 @136002 has 158 MA's), (Start: 42 @136035 has 9 MA's), (52, 136182), (55, 136191), (56, 136218), (57, 136221), (65, 136260), (85, 136404), (96, 136488), (106, 136563), (110, 136584), (112, 136614), (117, 136671), (122, 136695), (127, 136707),

Gene: Constella_15 Start: 11859, Stop: 12560, Start Num: 38

Candidate Starts for Constella_15:

(18, 11793), (Start: 38 @11859 has 67 MA's), (48, 11964), (51, 11973), (54, 12039), (71, 12138), (73, 12144), (74, 12162), (75, 12168), (90, 12267), (93, 12276), (98, 12351), (108, 12393), (129, 12537),

Gene: Corazon_82 Start: 46521, Stop: 47249, Start Num: 37

Candidate Starts for Corazon_82:

(Start: 37 @46521 has 16 MA's), (Start: 41 @46536 has 2 MA's), (43, 46581), (49, 46632), (50, 46635), (52, 46698), (56, 46734), (60, 46758), (63, 46773), (67, 46800), (72, 46824), (85, 46911), (86, 46920), (92, 46953), (98, 47031), (103, 47049), (108, 47073), (130, 47235),

Gene: Corndog_37 Start: 18218, Stop: 18910, Start Num: 38

Candidate Starts for Corndog_37:

(12, 17912), (14, 17993), (15, 18011), (22, 18140), (Start: 38 @18218 has 67 MA's), (48, 18323), (56, 18413), (67, 18476), (71, 18497), (72, 18500), (74, 18521), (77, 18545), (98, 18710), (103, 18728), (108, 18752),

Gene: Cornie_100 Start: 55310, Stop: 56005, Start Num: 38

Candidate Starts for Cornie_100:

(2, 54668), (3, 54695), (8, 54899), (10, 54968), (13, 55064), (Start: 38 @55310 has 67 MA's), (50, 55421), (60, 55529), (98, 55799),

Gene: Courthouse_17 Start: 10999, Stop: 11700, Start Num: 38

Candidate Starts for Courthouse_17:

(16, 10864), (Start: 38 @10999 has 67 MA's), (54, 11179), (74, 11302), (78, 11332), (98, 11491), (111, 11563), (119, 11638), (131, 11692),

Gene: DTDevon_244 Start: 136485, Stop: 137201, Start Num: 32

Candidate Starts for DTDevon_244:

(31, 136479), (Start: 32 @136485 has 158 MA's), (Start: 42 @136518 has 9 MA's), (52, 136665), (55, 136674), (56, 136701), (57, 136704), (65, 136743), (85, 136887), (96, 136971), (106, 137046), (110, 137067), (112, 137097), (117, 137154), (122, 137178), (127, 137190),

Gene: Daffodil_249 Start: 134772, Stop: 135488, Start Num: 32

Candidate Starts for Daffodil_249:

(31, 134766), (Start: 32 @134772 has 158 MA's), (Start: 42 @134805 has 9 MA's), (52, 134952), (55, 134961), (56, 134988), (57, 134991), (65, 135030), (85, 135174), (96, 135258), (106, 135333), (110, 135354), (112, 135384), (117, 135441), (122, 135465), (127, 135477),

Gene: Dallas_19 Start: 12576, Stop: 13277, Start Num: 38

Candidate Starts for Dallas_19:

(18, 12510), (Start: 38 @12576 has 67 MA's), (48, 12681), (51, 12690), (54, 12756), (73, 12861), (74, 12879), (75, 12885), (90, 12984), (93, 12993), (98, 13068), (108, 13110), (129, 13254),

Gene: Dandelion_249 Start: 137375, Stop: 138091, Start Num: 32

Candidate Starts for Dandelion_249:

(31, 137369), (Start: 32 @137375 has 158 MA's), (Start: 42 @137408 has 9 MA's), (52, 137555), (55, 137564), (56, 137591), (57, 137594), (65, 137633), (85, 137777), (96, 137861), (106, 137936), (110, 137957), (112, 137987), (117, 138044), (122, 138068), (127, 138080),

Gene: Darko_242 Start: 133981, Stop: 134697, Start Num: 32

Candidate Starts for Darko_242:

(31, 133975), (Start: 32 @133981 has 158 MA's), (Start: 42 @134014 has 9 MA's), (52, 134161), (55, 134170), (56, 134197), (57, 134200), (65, 134239), (85, 134383), (96, 134467), (106, 134542), (110, 134563), (112, 134593), (117, 134650), (122, 134674), (127, 134686),

Gene: Delilah_241 Start: 134865, Stop: 135581, Start Num: 32

Candidate Starts for Delilah_241:

(31, 134859), (Start: 32 @134865 has 158 MA's), (Start: 42 @134898 has 9 MA's), (52, 135045), (55, 135054), (56, 135081), (57, 135084), (65, 135123), (85, 135267), (96, 135351), (106, 135426), (110, 135447), (112, 135477), (117, 135534), (122, 135558), (127, 135570),

Gene: Delylah_245 Start: 135179, Stop: 135895, Start Num: 32

Candidate Starts for Delylah_245:

(31, 135173), (Start: 32 @135179 has 158 MA's), (Start: 42 @135212 has 9 MA's), (52, 135359), (55, 135368), (56, 135395), (57, 135398), (65, 135437), (85, 135581), (96, 135665), (106, 135740), (110, 135761), (112, 135791), (117, 135848), (122, 135872), (127, 135884),

Gene: Demsculpinboyz_116 Start: 56032, Stop: 56727, Start Num: 28

Candidate Starts for Demsculpinboyz_116:

(17, 55960), (19, 55984), (Start: 24 @56014 has 1 MA's), (Start: 28 @56032 has 17 MA's), (58, 56236), (69, 56299), (71, 56314), (72, 56317), (73, 56320), (74, 56338), (78, 56368), (98, 56527),

Gene: Derek_239 Start: 135123, Stop: 135839, Start Num: 32

Candidate Starts for Derek_239:

(31, 135117), (Start: 32 @135123 has 158 MA's), (Start: 42 @135156 has 9 MA's), (52, 135303), (55, 135312), (56, 135339), (57, 135342), (65, 135381), (85, 135525), (96, 135609), (106, 135684), (110, 135705), (112, 135735), (117, 135792), (122, 135816), (127, 135828),

Gene: Dietrick_232 Start: 133019, Stop: 133702, Start Num: 42

Candidate Starts for Dietrick_232:

(31, 132980), (Start: 32 @132986 has 158 MA's), (Start: 42 @133019 has 9 MA's), (52, 133166), (55, 133175), (56, 133202), (57, 133205), (65, 133244), (85, 133388), (96, 133472), (106, 133547), (110, 133568), (112, 133598), (117, 133655), (122, 133679), (127, 133691),

Gene: DirtMonster_232 Start: 133794, Stop: 134504, Start Num: 32

Candidate Starts for DirtMonster_232:

(Start: 32 @133794 has 158 MA's), (Start: 42 @133827 has 9 MA's), (52, 133974), (55, 133983), (56, 134010), (57, 134013), (64, 134049), (65, 134052), (83, 134193), (96, 134277), (106, 134352), (110, 134373), (112, 134403), (117, 134460), (122, 134484), (126, 134493),

Gene: DmpstrDiver_19 Start: 13216, Stop: 13917, Start Num: 38

Candidate Starts for DmpstrDiver_19:

(18, 13150), (Start: 38 @13216 has 67 MA's), (48, 13321), (51, 13330), (54, 13396), (73, 13501), (74, 13519), (75, 13525), (90, 13624), (93, 13633), (98, 13708), (108, 13750), (129, 13894),

Gene: Dove_18 Start: 12344, Stop: 13045, Start Num: 38

Candidate Starts for Dove_18:

(18, 12278), (Start: 38 @12344 has 67 MA's), (48, 12449), (51, 12458), (54, 12524), (71, 12623), (73, 12629), (74, 12647), (75, 12653), (90, 12752), (93, 12761), (98, 12836), (108, 12878), (129, 13022),

Gene: DrPhinkDaddy_240 Start: 135550, Stop: 136266, Start Num: 32

Candidate Starts for DrPhinkDaddy_240:

(31, 135544), (Start: 32 @135550 has 158 MA's), (Start: 42 @135583 has 9 MA's), (52, 135730), (55, 135739), (56, 135766), (57, 135769), (65, 135808), (85, 135952), (96, 136036), (106, 136111), (110, 136132), (112, 136162), (117, 136219), (122, 136243), (127, 136255),

Gene: Drazdys_240 Start: 135163, Stop: 135846, Start Num: 42

Candidate Starts for Drazdys_240:

(31, 135124), (Start: 32 @135130 has 158 MA's), (Start: 42 @135163 has 9 MA's), (52, 135310), (55, 135319), (56, 135346), (57, 135349), (65, 135388), (85, 135532), (96, 135616), (106, 135691), (110, 135712), (112, 135742), (117, 135799), (122, 135823), (127, 135835),

Gene: Duke13_16 Start: 12606, Stop: 13307, Start Num: 38

Candidate Starts for Duke13_16:

(18, 12540), (Start: 38 @12606 has 67 MA's), (48, 12711), (51, 12720), (54, 12786), (71, 12885), (73, 12891), (74, 12909), (75, 12915), (90, 13014), (93, 13023), (98, 13098), (108, 13140), (129, 13284),

Gene: Dylan_34 Start: 17485, Stop: 18177, Start Num: 38

Candidate Starts for Dylan_34:

(12, 17179), (14, 17260), (15, 17278), (22, 17407), (Start: 38 @17485 has 67 MA's), (48, 17590), (56, 17680), (61, 17707), (67, 17743), (71, 17764), (72, 17767), (74, 17788), (77, 17812), (98, 17977), (103, 17995), (108, 18019), (118, 18118),

Gene: ET08_229 Start: 133474, Stop: 134181, Start Num: 32

Candidate Starts for ET08_229:

(31, 133468), (Start: 32 @133474 has 158 MA's), (Start: 42 @133507 has 9 MA's), (52, 133654), (55, 133663), (56, 133690), (57, 133693), (65, 133732), (85, 133867), (96, 133951), (106, 134026), (110, 134047), (112, 134077), (117, 134134), (122, 134158), (127, 134170),

Gene: EasyJones_244 Start: 133506, Stop: 134222, Start Num: 32

Candidate Starts for EasyJones_244:

(31, 133500), (Start: 32 @133506 has 158 MA's), (Start: 42 @133539 has 9 MA's), (52, 133686), (55, 133695), (56, 133722), (57, 133725), (65, 133764), (85, 133908), (96, 133992), (106, 134067), (110, 134088), (112, 134118), (117, 134175), (122, 134199), (127, 134211),

Gene: EggyFarm_251 Start: 136351, Stop: 137067, Start Num: 32

Candidate Starts for EggyFarm_251:

(31, 136345), (Start: 32 @136351 has 158 MA's), (Start: 42 @136384 has 9 MA's), (52, 136531), (55, 136540), (56, 136567), (57, 136570), (65, 136609), (85, 136753), (96, 136837), (106, 136912), (110, 136933), (112, 136963), (117, 137020), (122, 137044), (126, 137053), (127, 137056),

Gene: Ejimix_21 Start: 13786, Stop: 14487, Start Num: 38

Candidate Starts for Ejimix_21:

(18, 13720), (Start: 38 @13786 has 67 MA's), (48, 13891), (51, 13900), (54, 13966), (73, 14071), (74, 14089), (75, 14095), (90, 14194), (93, 14203), (98, 14278), (108, 14320), (129, 14464),

Gene: EmToTheThree_243 Start: 134889, Stop: 135605, Start Num: 32

Candidate Starts for EmToTheThree_243:

(31, 134883), (Start: 32 @134889 has 158 MA's), (Start: 42 @134922 has 9 MA's), (52, 135069), (55, 135078), (56, 135105), (57, 135108), (65, 135147), (85, 135291), (96, 135375), (106, 135450), (110, 135471), (112, 135501), (117, 135558), (122, 135582), (127, 135594),

Gene: EmmaElysia_248 Start: 136001, Stop: 136717, Start Num: 32

Candidate Starts for EmmaElysia_248:

(31, 135995), (Start: 32 @136001 has 158 MA's), (Start: 42 @136034 has 9 MA's), (52, 136181), (55, 136190), (56, 136217), (57, 136220), (65, 136259), (85, 136403), (96, 136487), (106, 136562), (110, 136583), (112, 136613), (117, 136670), (122, 136694), (127, 136706),

Gene: Erdmann_244 Start: 134857, Stop: 135573, Start Num: 32

Candidate Starts for Erdmann_244:

(31, 134851), (Start: 32 @134857 has 158 MA's), (Start: 42 @134890 has 9 MA's), (52, 135037), (55, 135046), (56, 135073), (57, 135076), (65, 135115), (85, 135259), (96, 135343), (106, 135418), (110, 135439), (112, 135469), (117, 135526), (122, 135550), (127, 135562),

Gene: EricMillard_20 Start: 13326, Stop: 14027, Start Num: 38

Candidate Starts for EricMillard_20:

(18, 13260), (Start: 38 @13326 has 67 MA's), (48, 13431), (51, 13440), (54, 13506), (71, 13605), (73, 13611), (74, 13629), (75, 13635), (90, 13734), (93, 13743), (98, 13818), (108, 13860), (129, 14004),

Gene: ErnieJ_236 Start: 131685, Stop: 132401, Start Num: 32

Candidate Starts for ErnieJ_236:

(31, 131679), (Start: 32 @131685 has 158 MA's), (Start: 42 @131718 has 9 MA's), (52, 131865), (55, 131874), (56, 131901), (57, 131904), (65, 131943), (85, 132087), (96, 132171), (106, 132246), (110, 132267), (112, 132297), (117, 132354), (122, 132378), (127, 132390),

Gene: Essence_241 Start: 134342, Stop: 135058, Start Num: 32

Candidate Starts for Essence_241:

(31, 134336), (Start: 32 @134342 has 158 MA's), (Start: 42 @134375 has 9 MA's), (52, 134522), (55, 134531), (56, 134558), (57, 134561), (65, 134600), (85, 134744), (96, 134828), (106, 134903), (110, 134924), (112, 134954), (117, 135011), (122, 135035), (127, 135047),

Gene: Ewok_242 Start: 134800, Stop: 135516, Start Num: 32

Candidate Starts for Ewok_242:

(31, 134794), (Start: 32 @134800 has 158 MA's), (Start: 42 @134833 has 9 MA's), (52, 134980), (55, 134989), (56, 135016), (57, 135019), (65, 135058), (85, 135202), (96, 135286), (106, 135361), (110, 135382), (112, 135412), (117, 135469), (122, 135493), (127, 135505),

Gene: Familton_36 Start: 17764, Stop: 18456, Start Num: 38

Candidate Starts for Familton_36:

(6, 17293), (12, 17458), (14, 17539), (15, 17557), (22, 17686), (Start: 38 @17764 has 67 MA's), (48, 17869), (56, 17959), (67, 18022), (71, 18043), (72, 18046), (74, 18067), (77, 18091), (98, 18256), (103, 18274), (108, 18298), (118, 18397),

Gene: FeliMaine_83 Start: 46569, Stop: 47297, Start Num: 37

Candidate Starts for FeliMaine_83:

(Start: 37 @46569 has 16 MA's), (Start: 41 @46584 has 2 MA's), (43, 46629), (49, 46680), (50, 46683), (52, 46746), (56, 46782), (60, 46806), (63, 46821), (67, 46848), (72, 46872), (81, 46947), (85, 46959), (86, 46968), (92, 47001), (98, 47079), (103, 47097), (108, 47121), (130, 47283),

Gene: Firecracker_35 Start: 17383, Stop: 18075, Start Num: 38

Candidate Starts for Firecracker_35:

(12, 17077), (14, 17158), (15, 17176), (22, 17305), (Start: 38 @17383 has 67 MA's), (48, 17488), (56, 17578), (61, 17605), (67, 17641), (71, 17662), (72, 17665), (74, 17686), (77, 17710), (98, 17875), (103, 17893), (108, 17917),

Gene: Flabslab_237 Start: 131491, Stop: 132201, Start Num: 32

Candidate Starts for Flabslab_237:

(Start: 32 @131491 has 158 MA's), (52, 131671), (55, 131680), (56, 131707), (57, 131710), (64, 131746), (65, 131749), (83, 131890), (96, 131974), (106, 132049), (115, 132121), (117, 132157), (122, 132181), (126, 132190),

Gene: Fludd_243 Start: 133218, Stop: 133934, Start Num: 32

Candidate Starts for Fludd_243:

(31, 133212), (Start: 32 @133218 has 158 MA's), (Start: 42 @133251 has 9 MA's), (52, 133398), (55, 133407), (56, 133434), (57, 133437), (65, 133476), (85, 133620), (96, 133704), (106, 133779), (110, 133800), (112, 133830), (117, 133887), (122, 133911), (127, 133923),

Gene: FoulBall_32 Start: 17758, Stop: 18450, Start Num: 38

Candidate Starts for FoulBall_32:

(6, 17287), (12, 17452), (14, 17533), (15, 17551), (22, 17680), (Start: 38 @17758 has 67 MA's), (48, 17863), (56, 17953), (67, 18016), (71, 18037), (72, 18040), (74, 18061), (77, 18085), (98, 18250), (103, 18268), (108, 18292), (118, 18391),

Gene: FoxtrotP1_241 Start: 135443, Stop: 136159, Start Num: 32

Candidate Starts for FoxtrotP1_241:

(31, 135437), (Start: 32 @135443 has 158 MA's), (Start: 42 @135476 has 9 MA's), (52, 135623), (55, 135632), (56, 135659), (57, 135662), (65, 135701), (85, 135845), (96, 135929), (106, 136004), (110, 136025), (112, 136055), (117, 136112), (122, 136136), (127, 136148),

Gene: FrayBell_246 Start: 133418, Stop: 134134, Start Num: 32

Candidate Starts for FrayBell_246:

(31, 133412), (Start: 32 @133418 has 158 MA's), (Start: 42 @133451 has 9 MA's), (52, 133598), (55, 133607), (56, 133634), (57, 133637), (65, 133676), (85, 133820), (96, 133904), (106, 133979), (110, 134000), (112, 134030), (117, 134087), (122, 134111), (127, 134123),

Gene: FudgeTart_238 Start: 133947, Stop: 134663, Start Num: 32

Candidate Starts for FudgeTart_238:

(31, 133941), (Start: 32 @133947 has 158 MA's), (Start: 42 @133980 has 9 MA's), (52, 134127), (55, 134136), (56, 134163), (57, 134166), (65, 134205), (85, 134349), (96, 134433), (106, 134508), (110, 134529), (112, 134559), (117, 134616), (122, 134640), (127, 134652),

Gene: GMA2_22 Start: 20237, Stop: 20953, Start Num: 30

Candidate Starts for GMA2_22:

(20, 20183), (Start: 30 @20237 has 1 MA's), (45, 20315), (48, 20345), (50, 20351), (56, 20435), (60, 20459), (63, 20471), (87, 20621), (90, 20648), (93, 20657), (95, 20672), (98, 20732), (119, 20879), (125, 20909), (129, 20918),

Gene: Gabriel_246 Start: 133377, Stop: 134093, Start Num: 32

Candidate Starts for Gabriel_246:

(31, 133371), (Start: 32 @133377 has 158 MA's), (Start: 42 @133410 has 9 MA's), (52, 133557), (55, 133566), (56, 133593), (57, 133596), (65, 133635), (85, 133779), (96, 133863), (106, 133938), (110, 133959), (112, 133989), (117, 134046), (122, 134070), (127, 134082),

Gene: Gamgam_245 Start: 133734, Stop: 134450, Start Num: 32

Candidate Starts for Gamgam_245:

(31, 133728), (Start: 32 @133734 has 158 MA's), (Start: 42 @133767 has 9 MA's), (52, 133914), (55, 133923), (56, 133950), (57, 133953), (65, 133992), (85, 134136), (96, 134220), (106, 134295), (110, 134316), (112, 134346), (117, 134403), (122, 134427), (127, 134439),

Gene: Gattaca_84 Start: 46106, Stop: 46834, Start Num: 37

Candidate Starts for Gattaca_84:

(Start: 37 @46106 has 16 MA's), (Start: 41 @46121 has 2 MA's), (43, 46166), (49, 46217), (50, 46220), (52, 46283), (56, 46319), (60, 46343), (63, 46358), (67, 46385), (72, 46409), (85, 46496), (86, 46505), (92, 46538), (98, 46616), (103, 46634), (108, 46658), (130, 46820),

Gene: Ghost_243 Start: 134358, Stop: 135074, Start Num: 32

Candidate Starts for Ghost_243:

(31, 134352), (Start: 32 @134358 has 158 MA's), (Start: 42 @134391 has 9 MA's), (52, 134538), (55, 134547), (56, 134574), (57, 134577), (65, 134616), (85, 134760), (96, 134844), (106, 134919), (110, 134940), (112, 134970), (117, 135027), (122, 135051), (127, 135063),

Gene: Gizmo_248 Start: 136774, Stop: 137490, Start Num: 32

Candidate Starts for Gizmo_248:

(31, 136768), (Start: 32 @136774 has 158 MA's), (Start: 42 @136807 has 9 MA's), (52, 136954), (55, 136963), (56, 136990), (57, 136993), (65, 137032), (85, 137176), (96, 137260), (106, 137335), (110, 137356), (112, 137386), (117, 137443), (122, 137467), (127, 137479),

Gene: Grasshills_250 Start: 136350, Stop: 137066, Start Num: 32

Candidate Starts for Grasshills_250:

(31, 136344), (Start: 32 @136350 has 158 MA's), (Start: 42 @136383 has 9 MA's), (52, 136530), (55, 136539), (56, 136566), (57, 136569), (65, 136608), (85, 136752), (96, 136836), (106, 136911), (110, 136932), (112, 136962), (117, 137019), (122, 137043), (126, 137052), (127, 137055),

Gene: Greely_243 Start: 136991, Stop: 137698, Start Num: 29

Candidate Starts for Greely_243:

(Start: 29 @136991 has 1 MA's), (44, 137072), (53, 137174), (56, 137198), (60, 137222), (62, 137228), (70, 137273), (72, 137285), (73, 137288), (86, 137381), (93, 137417), (98, 137492), (109, 137543), (130, 137684),

Gene: Grungle_225 Start: 131692, Stop: 132408, Start Num: 32

Candidate Starts for Grungle_225:

(31, 131686), (Start: 32 @131692 has 158 MA's), (Start: 42 @131725 has 9 MA's), (52, 131872), (55, 131881), (56, 131908), (57, 131911), (65, 131950), (85, 132094), (96, 132178), (106, 132253), (110, 132274), (112, 132304), (117, 132361), (122, 132385), (127, 132397),

Gene: Guwapp_239 Start: 133192, Stop: 133908, Start Num: 32

Candidate Starts for Guwapp_239:

(31, 133186), (Start: 32 @133192 has 158 MA's), (Start: 42 @133225 has 9 MA's), (52, 133372), (55, 133381), (56, 133408), (57, 133411), (65, 133450), (85, 133594), (96, 133678), (106, 133753), (110, 133774), (112, 133804), (117, 133861), (122, 133885), (127, 133897),

Gene: HC_77 Start: 45180, Stop: 45878, Start Num: 38

Candidate Starts for HC_77:

(1, 44505), (7, 44757), (9, 44829), (Start: 30 @45177 has 1 MA's), (Start: 38 @45180 has 67 MA's), (44, 45252), (46, 45261), (56, 45375), (60, 45399), (78, 45513), (87, 45561), (98, 45672),

Gene: Halldule_235 Start: 132874, Stop: 133590, Start Num: 32

Candidate Starts for Halldule_235:

(31, 132868), (Start: 32 @132874 has 158 MA's), (Start: 42 @132907 has 9 MA's), (52, 133054), (55, 133063), (56, 133090), (57, 133093), (65, 133132), (85, 133276), (96, 133360), (106, 133435), (110, 133456), (112, 133486), (117, 133543), (122, 133567), (127, 133579),

Gene: Halley_20 Start: 13036, Stop: 13737, Start Num: 38

Candidate Starts for Halley_20:

(18, 12970), (Start: 38 @13036 has 67 MA's), (48, 13141), (51, 13150), (54, 13216), (73, 13321), (74, 13339), (75, 13345), (90, 13444), (93, 13453), (98, 13528), (108, 13570), (129, 13714),

Gene: Hannaconda_14 Start: 9679, Stop: 10380, Start Num: 38

Candidate Starts for Hannaconda_14:

(16, 9544), (Start: 38 @9679 has 67 MA's), (54, 9859), (74, 9982), (78, 10012), (98, 10171), (111, 10243), (119, 10318), (131, 10372),

Gene: HokkenD_15 Start: 12609, Stop: 13310, Start Num: 38

Candidate Starts for HokkenD_15:

(18, 12543), (Start: 38 @12609 has 67 MA's), (48, 12714), (51, 12723), (54, 12789), (71, 12888), (73, 12894), (74, 12912), (75, 12918), (90, 13017), (93, 13026), (98, 13101), (108, 13143), (129, 13287),

Gene: Hughesyang_19 Start: 13216, Stop: 13917, Start Num: 38

Candidate Starts for Hughesyang_19:

(18, 13150), (Start: 38 @13216 has 67 MA's), (48, 13321), (51, 13330), (54, 13396), (71, 13495), (73, 13501), (74, 13519), (75, 13525), (90, 13624), (93, 13633), (98, 13708), (108, 13750), (129, 13894),

Gene: Huphlebuff_89 Start: 46132, Stop: 46860, Start Num: 37

Candidate Starts for Huphlebuff_89:

(Start: 37 @46132 has 16 MA's), (Start: 41 @46147 has 2 MA's), (43, 46192), (49, 46243), (50, 46246), (52, 46309), (56, 46345), (60, 46369), (63, 46384), (67, 46411), (72, 46435), (85, 46522), (86, 46531), (92, 46564), (98, 46642), (103, 46660), (108, 46684), (130, 46846),

Gene: HyRo_228 Start: 133953, Stop: 134663, Start Num: 32

Candidate Starts for HyRo_228:

(Start: 32 @133953 has 158 MA's), (52, 134133), (55, 134142), (56, 134169), (57, 134172), (64, 134208), (65, 134211), (83, 134352), (96, 134436), (106, 134511), (115, 134583), (117, 134619), (122,

134643), (126, 134652),

Gene: I3_253 Start: 135560, Stop: 136282, Start Num: 32

Candidate Starts for I3_253:

(31, 135554), (Start: 32 @135560 has 158 MA's), (Start: 42 @135593 has 9 MA's), (52, 135740), (55, 135749), (56, 135776), (57, 135779), (65, 135818), (85, 135968), (96, 136052), (106, 136127), (110, 136148), (112, 136178), (117, 136235), (122, 136259), (127, 136271),

Gene: Idergollasper_35 Start: 17758, Stop: 18450, Start Num: 38

Candidate Starts for Idergollasper_35:

(6, 17287), (12, 17452), (14, 17533), (15, 17551), (22, 17680), (Start: 38 @17758 has 67 MA's), (48, 17863), (56, 17953), (67, 18016), (71, 18037), (72, 18040), (74, 18061), (77, 18085), (98, 18250), (103, 18268), (108, 18292), (118, 18391),

Gene: IkeLoa_237 Start: 134090, Stop: 134806, Start Num: 32

Candidate Starts for IkeLoa_237:

(31, 134084), (Start: 32 @134090 has 158 MA's), (Start: 42 @134123 has 9 MA's), (52, 134270), (55, 134279), (56, 134306), (57, 134309), (65, 134348), (85, 134492), (96, 134576), (106, 134651), (110, 134672), (112, 134702), (117, 134759), (122, 134783), (127, 134795),

Gene: InigoMontoya_247 Start: 134408, Stop: 135124, Start Num: 32

Candidate Starts for InigoMontoya_247:

(31, 134402), (Start: 32 @134408 has 158 MA's), (Start: 42 @134441 has 9 MA's), (52, 134588), (55, 134597), (56, 134624), (57, 134627), (65, 134666), (85, 134810), (96, 134894), (106, 134969), (110, 134990), (112, 135020), (117, 135077), (122, 135101), (127, 135113),

Gene: InterFolia_245 Start: 135223, Stop: 135939, Start Num: 32

Candidate Starts for InterFolia_245:

(31, 135217), (Start: 32 @135223 has 158 MA's), (Start: 42 @135256 has 9 MA's), (52, 135403), (55, 135412), (56, 135439), (57, 135442), (65, 135481), (85, 135625), (96, 135709), (106, 135784), (110, 135805), (112, 135835), (117, 135892), (122, 135916), (127, 135928),

Gene: Iota_240 Start: 134120, Stop: 134836, Start Num: 32

Candidate Starts for Iota_240:

(31, 134114), (Start: 32 @134120 has 158 MA's), (Start: 42 @134153 has 9 MA's), (52, 134300), (55, 134309), (56, 134336), (57, 134339), (65, 134378), (85, 134522), (96, 134606), (106, 134681), (110, 134702), (112, 134732), (117, 134789), (122, 134813), (127, 134825),

Gene: IrishSherpFalk_102 Start: 55787, Stop: 56485, Start Num: 28

Candidate Starts for IrishSherpFalk_102:

(Start: 24 @55769 has 1 MA's), (Start: 28 @55787 has 17 MA's), (51, 55904), (58, 55991), (71, 56069), (72, 56072), (73, 56075), (74, 56093), (93, 56207), (98, 56282),

Gene: Island3_75 Start: 46161, Stop: 46859, Start Num: 38

Candidate Starts for Island3_75:

(Start: 38 @46161 has 67 MA's), (44, 46233), (46, 46242), (56, 46356), (60, 46380), (78, 46494), (87, 46542), (98, 46653),

Gene: Issimir_238 Start: 134046, Stop: 134762, Start Num: 32

Candidate Starts for Issimir_238:

(31, 134040), (Start: 32 @134046 has 158 MA's), (Start: 42 @134079 has 9 MA's), (52, 134226), (55, 134235), (56, 134262), (57, 134265), (65, 134304), (85, 134448), (96, 134532), (106, 134607), (110, 134628), (112, 134658), (117, 134715), (122, 134739), (127, 134751),

Gene: Izajani_239 Start: 134940, Stop: 135656, Start Num: 32

Candidate Starts for Izajani_239:

(31, 134934), (Start: 32 @134940 has 158 MA's), (Start: 42 @134973 has 9 MA's), (52, 135120), (55, 135129), (56, 135156), (57, 135159), (65, 135198), (85, 135342), (96, 135426), (106, 135501), (110, 135522), (112, 135552), (117, 135609), (122, 135633), (127, 135645),

Gene: JPickles_240 Start: 133096, Stop: 133812, Start Num: 32

Candidate Starts for JPickles_240:

(31, 133090), (Start: 32 @133096 has 158 MA's), (Start: 42 @133129 has 9 MA's), (52, 133276), (55, 133285), (56, 133312), (57, 133315), (65, 133354), (85, 133498), (96, 133582), (106, 133657), (110, 133678), (112, 133708), (117, 133765), (122, 133789), (127, 133801),

Gene: Jabbawokkie_107 Start: 53803, Stop: 54501, Start Num: 28

Candidate Starts for Jabbawokkie_107:

(17, 53731), (19, 53755), (Start: 24 @53785 has 1 MA's), (Start: 28 @53803 has 17 MA's), (51, 53920), (58, 54007), (69, 54070), (71, 54085), (72, 54088), (73, 54091), (74, 54109), (78, 54139), (98, 54298),

Gene: JangDynasty_35 Start: 17853, Stop: 18545, Start Num: 38

Candidate Starts for JangDynasty_35:

(6, 17382), (12, 17547), (14, 17628), (15, 17646), (22, 17775), (Start: 38 @17853 has 67 MA's), (48, 17958), (56, 18048), (67, 18111), (71, 18132), (72, 18135), (74, 18156), (77, 18180), (98, 18345), (103, 18363), (108, 18387), (118, 18486),

Gene: Janiyra_246 Start: 134633, Stop: 135349, Start Num: 32

Candidate Starts for Janiyra_246:

(31, 134627), (Start: 32 @134633 has 158 MA's), (Start: 42 @134666 has 9 MA's), (52, 134813), (55, 134822), (56, 134849), (57, 134852), (65, 134891), (85, 135035), (96, 135119), (106, 135194), (110, 135215), (112, 135245), (117, 135302), (122, 135326), (127, 135338),

Gene: JayJay_239 Start: 133993, Stop: 134703, Start Num: 32

Candidate Starts for JayJay_239:

(Start: 32 @133993 has 158 MA's), (Start: 42 @134026 has 9 MA's), (52, 134173), (55, 134182), (56, 134209), (57, 134212), (64, 134248), (65, 134251), (83, 134392), (96, 134476), (106, 134551), (110, 134572), (112, 134602), (117, 134659), (122, 134683), (126, 134692),

Gene: Jaygup_240 Start: 134267, Stop: 134983, Start Num: 32

Candidate Starts for Jaygup_240:

(31, 134261), (Start: 32 @134267 has 158 MA's), (Start: 42 @134300 has 9 MA's), (52, 134447), (55, 134456), (56, 134483), (57, 134486), (65, 134525), (85, 134669), (96, 134753), (106, 134828), (110, 134849), (112, 134879), (117, 134936), (122, 134960), (127, 134972),

Gene: Jedediah_245 Start: 135320, Stop: 136036, Start Num: 32

Candidate Starts for Jedediah_245:

(31, 135314), (Start: 32 @135320 has 158 MA's), (Start: 42 @135353 has 9 MA's), (52, 135500), (55, 135509), (56, 135536), (57, 135539), (65, 135578), (85, 135722), (96, 135806), (106, 135881), (110, 135902), (112, 135932), (117, 135989), (122, 136013), (127, 136025),

Gene: Jemmno_243 Start: 134039, Stop: 134755, Start Num: 32

Candidate Starts for Jemmno_243:

(31, 134033), (Start: 32 @134039 has 158 MA's), (Start: 42 @134072 has 9 MA's), (52, 134219), (55, 134228), (56, 134255), (57, 134258), (65, 134297), (85, 134441), (96, 134525), (106, 134600), (110,

134621), (112, 134651), (117, 134708), (122, 134732), (127, 134744),

Gene: Jessibeth14_243 Start: 135515, Stop: 136231, Start Num: 32

Candidate Starts for Jessibeth14_243:

(31, 135509), (Start: 32 @135515 has 158 MA's), (Start: 42 @135548 has 9 MA's), (52, 135695), (55, 135704), (56, 135731), (57, 135734), (65, 135773), (85, 135917), (96, 136001), (106, 136076), (110, 136097), (112, 136127), (117, 136184), (122, 136208), (127, 136220),

Gene: Jinglebell_111 Start: 57042, Stop: 57740, Start Num: 28

Candidate Starts for Jinglebell_111:

(Start: 24 @57024 has 1 MA's), (Start: 28 @57042 has 17 MA's), (50, 57156), (58, 57246), (71, 57324), (72, 57327), (73, 57330), (74, 57348), (93, 57462), (98, 57537),

Gene: JoieB_87 Start: 46595, Stop: 47323, Start Num: 37

Candidate Starts for JoieB_87:

(Start: 37 @46595 has 16 MA's), (Start: 41 @46610 has 2 MA's), (43, 46655), (49, 46706), (50, 46709), (52, 46772), (56, 46808), (60, 46832), (63, 46847), (67, 46874), (72, 46898), (85, 46985), (86, 46994), (92, 47027), (98, 47105), (103, 47123), (108, 47147), (130, 47309),

Gene: JuicyJay_21 Start: 13867, Stop: 14568, Start Num: 38

Candidate Starts for JuicyJay_21:

(18, 13801), (Start: 38 @13867 has 67 MA's), (48, 13972), (51, 13981), (54, 14047), (73, 14152), (74, 14170), (75, 14176), (90, 14275), (93, 14284), (98, 14359), (108, 14401), (129, 14545),

Gene: JulietS_235 Start: 131619, Stop: 132335, Start Num: 32

Candidate Starts for JulietS_235:

(31, 131613), (Start: 32 @131619 has 158 MA's), (Start: 42 @131652 has 9 MA's), (52, 131799), (55, 131808), (56, 131835), (57, 131838), (65, 131877), (85, 132021), (96, 132105), (106, 132180), (110, 132201), (112, 132231), (117, 132288), (122, 132312), (127, 132324),

Gene: JustHall_237 Start: 133569, Stop: 134285, Start Num: 32

Candidate Starts for JustHall_237:

(31, 133563), (Start: 32 @133569 has 158 MA's), (Start: 42 @133602 has 9 MA's), (52, 133749), (55, 133758), (56, 133785), (57, 133788), (65, 133827), (85, 133971), (96, 134055), (106, 134130), (110, 134151), (112, 134181), (117, 134238), (122, 134262), (127, 134274),

Gene: Kalah2_20 Start: 13635, Stop: 14336, Start Num: 38

Candidate Starts for Kalah2_20:

(18, 13569), (Start: 38 @13635 has 67 MA's), (48, 13740), (51, 13749), (54, 13815), (73, 13920), (74, 13938), (75, 13944), (90, 14043), (93, 14052), (98, 14127), (108, 14169), (129, 14313),

Gene: Kamryn_242 Start: 135159, Stop: 135875, Start Num: 32

Candidate Starts for Kamryn_242:

(31, 135153), (Start: 32 @135159 has 158 MA's), (Start: 42 @135192 has 9 MA's), (52, 135339), (55, 135348), (56, 135375), (57, 135378), (65, 135417), (85, 135561), (96, 135645), (106, 135720), (110, 135741), (112, 135771), (117, 135828), (122, 135852), (127, 135864),

Gene: KashFlow_11 Start: 9245, Stop: 9946, Start Num: 38

Candidate Starts for KashFlow_11:

(16, 9110), (Start: 38 @9245 has 67 MA's), (54, 9425), (74, 9548), (78, 9578), (98, 9737), (111, 9809), (119, 9884), (131, 9938),

Gene: Kboogie_247 Start: 134198, Stop: 134914, Start Num: 32

Candidate Starts for Kboogie_247:

(31, 134192), (Start: 32 @134198 has 158 MA's), (Start: 42 @134231 has 9 MA's), (52, 134378), (55, 134387), (56, 134414), (57, 134417), (65, 134456), (85, 134600), (96, 134684), (106, 134759), (110, 134780), (112, 134810), (117, 134867), (122, 134891), (127, 134903),

Gene: Khaleesi_242 Start: 134982, Stop: 135698, Start Num: 32

Candidate Starts for Khaleesi_242:

(31, 134976), (Start: 32 @134982 has 158 MA's), (Start: 42 @135015 has 9 MA's), (52, 135162), (55, 135171), (56, 135198), (57, 135201), (65, 135240), (85, 135384), (96, 135468), (106, 135543), (110, 135564), (112, 135594), (117, 135651), (122, 135675), (127, 135687),

Gene: Klein_20 Start: 12613, Stop: 13314, Start Num: 38

Candidate Starts for Klein_20:

(18, 12547), (Start: 38 @12613 has 67 MA's), (48, 12718), (51, 12727), (54, 12793), (73, 12898), (74, 12916), (75, 12922), (90, 13021), (93, 13030), (98, 13105), (108, 13147), (129, 13291),

Gene: Koguma_242 Start: 133851, Stop: 134567, Start Num: 32

Candidate Starts for Koguma_242:

(31, 133845), (Start: 32 @133851 has 158 MA's), (Start: 42 @133884 has 9 MA's), (52, 134031), (55, 134040), (56, 134067), (57, 134070), (65, 134109), (85, 134253), (96, 134337), (106, 134412), (110, 134433), (112, 134463), (117, 134520), (122, 134544), (127, 134556),

Gene: Krili_34 Start: 17486, Stop: 18178, Start Num: 38

Candidate Starts for Krili_34:

(12, 17180), (14, 17261), (15, 17279), (22, 17408), (Start: 38 @17486 has 67 MA's), (48, 17591), (56, 17681), (67, 17744), (71, 17765), (72, 17768), (74, 17789), (77, 17813), (98, 17978), (103, 17996), (108, 18020),

Gene: Kudrefre_125 Start: 67574, Stop: 68203, Start Num: 41

Candidate Starts for Kudrefre_125:

(36, 67559), (Start: 41 @67574 has 2 MA's), (56, 67751), (57, 67754), (71, 67832), (82, 67892), (91, 67943), (96, 67982), (105, 68048), (122, 68180), (126, 68189),

Gene: LRRHood_235 Start: 133191, Stop: 133907, Start Num: 32

Candidate Starts for LRRHood_235:

(31, 133185), (Start: 32 @133191 has 158 MA's), (Start: 42 @133224 has 9 MA's), (52, 133371), (55, 133380), (56, 133407), (57, 133410), (65, 133449), (85, 133593), (96, 133677), (106, 133752), (110, 133773), (112, 133803), (117, 133860), (122, 133884), (127, 133896),

Gene: Latch_243 Start: 133744, Stop: 134460, Start Num: 32

Candidate Starts for Latch_243:

(31, 133738), (Start: 32 @133744 has 158 MA's), (Start: 42 @133777 has 9 MA's), (52, 133924), (55, 133933), (56, 133960), (57, 133963), (65, 134002), (85, 134146), (96, 134230), (106, 134305), (110, 134326), (112, 134356), (117, 134413), (122, 134437), (127, 134449),

Gene: Lee7_242 Start: 136396, Stop: 137112, Start Num: 32

Candidate Starts for Lee7_242:

(31, 136390), (Start: 32 @136396 has 158 MA's), (Start: 42 @136429 has 9 MA's), (52, 136576), (55, 136585), (56, 136612), (57, 136615), (65, 136654), (85, 136798), (96, 136882), (106, 136957), (110, 136978), (112, 137008), (117, 137065), (122, 137089), (127, 137101),

Gene: LifeSavor_244 Start: 134972, Stop: 135688, Start Num: 32

Candidate Starts for LifeSavor_244:

(31, 134966), (Start: 32 @134972 has 158 MA's), (Start: 42 @135005 has 9 MA's), (52, 135152), (55, 135161), (56, 135188), (57, 135191), (65, 135230), (85, 135374), (96, 135458), (106, 135533), (110, 135554), (112, 135584), (117, 135641), (122, 135665), (127, 135677),

Gene: Lilbit_85 Start: 46692, Stop: 47420, Start Num: 37

Candidate Starts for Lilbit_85:

(Start: 37 @46692 has 16 MA's), (Start: 41 @46707 has 2 MA's), (43, 46752), (49, 46803), (50, 46806), (52, 46869), (56, 46905), (60, 46929), (63, 46944), (67, 46971), (72, 46995), (81, 47070), (85, 47082), (86, 47091), (92, 47124), (98, 47202), (103, 47220), (108, 47244), (130, 47406),

Gene: LinStu_240 Start: 133150, Stop: 133866, Start Num: 32

Candidate Starts for LinStu_240:

(31, 133144), (Start: 32 @133150 has 158 MA's), (Start: 42 @133183 has 9 MA's), (52, 133330), (55, 133339), (56, 133366), (57, 133369), (65, 133408), (85, 133552), (96, 133636), (106, 133711), (110, 133732), (112, 133762), (117, 133819), (122, 133843), (127, 133855),

Gene: LittleLaf_85 Start: 46421, Stop: 47149, Start Num: 37

Candidate Starts for LittleLaf_85:

(Start: 37 @46421 has 16 MA's), (Start: 41 @46436 has 2 MA's), (43, 46481), (49, 46532), (50, 46535), (52, 46598), (56, 46634), (60, 46658), (63, 46673), (67, 46700), (72, 46724), (81, 46799), (85, 46811), (86, 46820), (92, 46853), (98, 46931), (103, 46949), (108, 46973), (130, 47135),

Gene: Littleton_247 Start: 134981, Stop: 135697, Start Num: 32

Candidate Starts for Littleton_247:

(31, 134975), (Start: 32 @134981 has 158 MA's), (Start: 42 @135014 has 9 MA's), (52, 135161), (55, 135170), (56, 135197), (57, 135200), (65, 135239), (85, 135383), (96, 135467), (106, 135542), (110, 135563), (112, 135593), (117, 135650), (122, 135674), (127, 135686),

Gene: Llama_109 Start: 56685, Stop: 57383, Start Num: 28

Candidate Starts for Llama_109:

(Start: 24 @56667 has 1 MA's), (Start: 28 @56685 has 17 MA's), (50, 56799), (58, 56889), (71, 56967), (72, 56970), (73, 56973), (74, 56991), (93, 57105), (98, 57180),

Gene: Loanshark_240 Start: 134331, Stop: 135047, Start Num: 32

Candidate Starts for Loanshark_240:

(31, 134325), (Start: 32 @134331 has 158 MA's), (Start: 42 @134364 has 9 MA's), (52, 134511), (55, 134520), (56, 134547), (57, 134550), (65, 134589), (85, 134733), (96, 134817), (106, 134892), (110, 134913), (112, 134943), (117, 135000), (122, 135024), (127, 135036),

Gene: LolaVinca_239 Start: 134653, Stop: 135369, Start Num: 32

Candidate Starts for LolaVinca_239:

(31, 134647), (Start: 32 @134653 has 158 MA's), (Start: 42 @134686 has 9 MA's), (52, 134833), (55, 134842), (56, 134869), (57, 134872), (65, 134911), (85, 135055), (96, 135139), (106, 135214), (110, 135235), (112, 135265), (117, 135322), (122, 135346), (127, 135358),

Gene: LordLeafolot_245 Start: 134266, Stop: 134982, Start Num: 32

Candidate Starts for LordLeafolot_245:

(31, 134260), (Start: 32 @134266 has 158 MA's), (Start: 42 @134299 has 9 MA's), (52, 134446), (55, 134455), (56, 134482), (57, 134485), (65, 134524), (85, 134668), (96, 134752), (106, 134827), (110, 134848), (112, 134878), (117, 134935), (122, 134959), (127, 134971),

Gene: Lukilu_232 Start: 135207, Stop: 135923, Start Num: 32

Candidate Starts for Lukilu_232:

(31, 135201), (Start: 32 @135207 has 158 MA's), (Start: 42 @135240 has 9 MA's), (52, 135387), (55, 135396), (56, 135423), (57, 135426), (65, 135465), (85, 135609), (96, 135693), (106, 135768), (110, 135789), (112, 135819), (117, 135876), (122, 135900), (127, 135912),

Gene: Maby2021_243 Start: 135435, Stop: 136151, Start Num: 32

Candidate Starts for Maby2021_243:

(31, 135429), (Start: 32 @135435 has 158 MA's), (Start: 42 @135468 has 9 MA's), (52, 135615), (55, 135624), (56, 135651), (57, 135654), (65, 135693), (85, 135837), (96, 135921), (106, 135996), (110, 136017), (112, 136047), (117, 136104), (122, 136128), (127, 136140),

Gene: MadKillah_36 Start: 17696, Stop: 18388, Start Num: 38

Candidate Starts for MadKillah_36:

(12, 17390), (14, 17471), (15, 17489), (22, 17618), (Start: 38 @17696 has 67 MA's), (48, 17801), (56, 17891), (67, 17954), (71, 17975), (72, 17978), (74, 17999), (77, 18023), (98, 18188), (103, 18206), (108, 18230),

Gene: Mangeria_243 Start: 135210, Stop: 135926, Start Num: 32

Candidate Starts for Mangeria_243:

(31, 135204), (Start: 32 @135210 has 158 MA's), (Start: 42 @135243 has 9 MA's), (52, 135390), (55, 135399), (56, 135426), (57, 135429), (65, 135468), (76, 135558), (85, 135612), (96, 135696), (106, 135771), (110, 135792), (112, 135822), (117, 135879), (122, 135903), (127, 135915),

Gene: Marvin_81 Start: 46217, Stop: 46945, Start Num: 37

Candidate Starts for Marvin_81:

(Start: 37 @46217 has 16 MA's), (Start: 41 @46232 has 2 MA's), (43, 46277), (49, 46328), (50, 46331), (52, 46394), (56, 46430), (60, 46454), (63, 46469), (67, 46496), (72, 46520), (81, 46595), (85, 46607), (86, 46616), (92, 46649), (98, 46727), (103, 46745), (108, 46769), (130, 46931),

Gene: Matsumoto_241 Start: 134219, Stop: 134902, Start Num: 42

Candidate Starts for Matsumoto_241:

(31, 134180), (Start: 32 @134186 has 158 MA's), (Start: 42 @134219 has 9 MA's), (52, 134366), (55, 134375), (56, 134402), (57, 134405), (65, 134444), (85, 134588), (96, 134672), (106, 134747), (110, 134768), (112, 134798), (117, 134855), (122, 134879), (127, 134891),

Gene: McGee_244 Start: 134083, Stop: 134799, Start Num: 32

Candidate Starts for McGee_244:

(31, 134077), (Start: 32 @134083 has 158 MA's), (Start: 42 @134116 has 9 MA's), (52, 134263), (55, 134272), (56, 134299), (57, 134302), (65, 134341), (85, 134485), (96, 134569), (106, 134644), (110, 134665), (112, 134695), (117, 134752), (122, 134776), (127, 134788),

Gene: McWolfish_240 Start: 134193, Stop: 134909, Start Num: 32

Candidate Starts for McWolfish_240:

(31, 134187), (Start: 32 @134193 has 158 MA's), (Start: 42 @134226 has 9 MA's), (52, 134373), (55, 134382), (56, 134409), (57, 134412), (65, 134451), (85, 134595), (96, 134679), (106, 134754), (110, 134775), (112, 134805), (117, 134862), (122, 134886), (127, 134898),

Gene: Megamind_240 Start: 134518, Stop: 135234, Start Num: 32

Candidate Starts for Megamind_240:

(31, 134512), (Start: 32 @134518 has 158 MA's), (Start: 42 @134551 has 9 MA's), (52, 134698), (55, 134707), (56, 134734), (57, 134737), (65, 134776), (85, 134920), (96, 135004), (106, 135079), (110, 135100), (112, 135130), (117, 135187), (122, 135211), (127, 135223),

Gene: Melpomini_238 Start: 133278, Stop: 133994, Start Num: 32

Candidate Starts for Melpomini_238:

(31, 133272), (Start: 32 @133278 has 158 MA's), (Start: 42 @133311 has 9 MA's), (52, 133458), (55, 133467), (56, 133494), (57, 133497), (65, 133536), (85, 133680), (96, 133764), (106, 133839), (110, 133860), (112, 133890), (117, 133947), (122, 133971), (127, 133983),

Gene: MiaZeal_17 Start: 10818, Stop: 11519, Start Num: 38

Candidate Starts for MiaZeal_17:

(16, 10683), (Start: 38 @10818 has 67 MA's), (54, 10998), (74, 11121), (78, 11151), (98, 11310), (111, 11382), (119, 11457), (131, 11511),

Gene: MikeLiesIn_244 Start: 135654, Stop: 136370, Start Num: 32

Candidate Starts for MikeLiesIn_244:

(31, 135648), (Start: 32 @135654 has 158 MA's), (Start: 42 @135687 has 9 MA's), (52, 135834), (55, 135843), (56, 135870), (57, 135873), (65, 135912), (85, 136056), (96, 136140), (106, 136215), (110, 136236), (112, 136266), (117, 136323), (122, 136347), (127, 136359),

Gene: Mikro_237 Start: 136166, Stop: 136882, Start Num: 32

Candidate Starts for Mikro_237:

(31, 136160), (Start: 32 @136166 has 158 MA's), (Start: 42 @136199 has 9 MA's), (52, 136346), (55, 136355), (56, 136382), (57, 136385), (65, 136424), (85, 136568), (96, 136652), (106, 136727), (110, 136748), (112, 136778), (117, 136835), (122, 136859), (127, 136871),

Gene: Minerva_19 Start: 13096, Stop: 13797, Start Num: 38

Candidate Starts for Minerva_19:

(18, 13030), (Start: 38 @13096 has 67 MA's), (48, 13201), (51, 13210), (54, 13276), (73, 13381), (74, 13399), (75, 13405), (90, 13504), (93, 13513), (98, 13588), (108, 13630), (129, 13774),

Gene: MoMoMixon_239 Start: 134659, Stop: 135375, Start Num: 32

Candidate Starts for MoMoMixon_239:

(31, 134653), (Start: 32 @134659 has 158 MA's), (Start: 42 @134692 has 9 MA's), (52, 134839), (55, 134848), (56, 134875), (57, 134878), (65, 134917), (85, 135061), (96, 135145), (106, 135220), (110, 135241), (112, 135271), (117, 135328), (122, 135352), (127, 135364),

Gene: Modragons_105 Start: 56673, Stop: 57371, Start Num: 28

Candidate Starts for Modragons_105:

(Start: 24 @56655 has 1 MA's), (Start: 28 @56673 has 17 MA's), (50, 56787), (58, 56877), (71, 56955), (72, 56958), (73, 56961), (74, 56979), (93, 57093), (98, 57168),

Gene: Momo_245 Start: 133744, Stop: 134460, Start Num: 32

Candidate Starts for Momo_245:

(31, 133738), (Start: 32 @133744 has 158 MA's), (Start: 42 @133777 has 9 MA's), (52, 133924), (55, 133933), (56, 133960), (57, 133963), (65, 134002), (85, 134146), (96, 134230), (106, 134305), (110, 134326), (112, 134356), (117, 134413), (122, 134437), (127, 134449),

Gene: Mori_34 Start: 17357, Stop: 18049, Start Num: 38

Candidate Starts for Mori_34:

(12, 17051), (14, 17132), (15, 17150), (22, 17279), (Start: 38 @17357 has 67 MA's), (48, 17462), (56, 17552), (67, 17615), (71, 17636), (72, 17639), (74, 17660), (77, 17684), (98, 17849), (103, 17867), (108, 17891),

Gene: Morizzled23_240 Start: 133111, Stop: 133827, Start Num: 32

Candidate Starts for Morizzled23_240:

(31, 133105), (Start: 32 @133111 has 158 MA's), (Start: 42 @133144 has 9 MA's), (52, 133291), (55, 133300), (56, 133327), (57, 133330), (65, 133369), (85, 133513), (96, 133597), (106, 133672), (110, 133693), (112, 133723), (117, 133780), (122, 133804), (127, 133816),

Gene: MosMoris_81 Start: 46112, Stop: 46840, Start Num: 37

Candidate Starts for MosMoris_81:

(Start: 37 @46112 has 16 MA's), (Start: 41 @46127 has 2 MA's), (43, 46172), (49, 46223), (50, 46226), (52, 46289), (56, 46325), (60, 46349), (63, 46364), (67, 46391), (72, 46415), (85, 46502), (86, 46511), (92, 46544), (98, 46622), (103, 46640), (108, 46664), (130, 46826),

Gene: Murai_35 Start: 17547, Stop: 18239, Start Num: 38

Candidate Starts for Murai_35:

(12, 17241), (14, 17322), (15, 17340), (22, 17469), (Start: 38 @17547 has 67 MA's), (48, 17652), (56, 17742), (67, 17805), (71, 17826), (72, 17829), (74, 17850), (77, 17874), (98, 18039), (103, 18057), (108, 18081),

Gene: Naija_244 Start: 134447, Stop: 135163, Start Num: 32

Candidate Starts for Naija_244:

(31, 134441), (Start: 32 @134447 has 158 MA's), (Start: 42 @134480 has 9 MA's), (52, 134627), (55, 134636), (56, 134663), (57, 134666), (65, 134705), (85, 134849), (96, 134933), (106, 135008), (110, 135029), (112, 135059), (117, 135116), (122, 135140), (127, 135152),

Gene: Napoleon13_240 Start: 133476, Stop: 134192, Start Num: 32

Candidate Starts for Napoleon13_240:

(31, 133470), (Start: 32 @133476 has 158 MA's), (Start: 42 @133509 has 9 MA's), (52, 133656), (55, 133665), (56, 133692), (57, 133695), (65, 133734), (85, 133878), (96, 133962), (106, 134037), (110, 134058), (112, 134088), (117, 134145), (122, 134169), (127, 134181),

Gene: Nappy_242 Start: 135622, Stop: 136338, Start Num: 32

Candidate Starts for Nappy_242:

(31, 135616), (Start: 32 @135622 has 158 MA's), (Start: 42 @135655 has 9 MA's), (52, 135802), (55, 135811), (56, 135838), (57, 135841), (65, 135880), (85, 136024), (96, 136108), (106, 136183), (110, 136204), (112, 136234), (117, 136291), (122, 136315), (127, 136327),

Gene: Naval22_248 Start: 136227, Stop: 136943, Start Num: 32

Candidate Starts for Naval22_248:

(31, 136221), (Start: 32 @136227 has 158 MA's), (Start: 42 @136260 has 9 MA's), (52, 136407), (55, 136416), (56, 136443), (57, 136446), (65, 136485), (85, 136629), (96, 136713), (106, 136788), (110, 136809), (112, 136839), (117, 136896), (122, 136920), (127, 136932),

Gene: NedWong_242 Start: 134905, Stop: 135621, Start Num: 32

Candidate Starts for NedWong_242:

(31, 134899), (Start: 32 @134905 has 158 MA's), (Start: 42 @134938 has 9 MA's), (52, 135085), (55, 135094), (56, 135121), (57, 135124), (65, 135163), (85, 135307), (96, 135391), (106, 135466), (110, 135487), (112, 135517), (117, 135574), (122, 135598), (127, 135610),

Gene: Neville_122 Start: 68676, Stop: 69314, Start Num: 38

Candidate Starts for Neville_122:

(23, 68601), (25, 68625), (33, 68664), (Start: 38 @68676 has 67 MA's), (52, 68844), (68, 68931), (71, 68946), (79, 68991), (89, 69045), (91, 69057), (92, 69060), (96, 69096), (100, 69147), (106, 69171), (108, 69180), (109, 69189), (114, 69225), (116, 69261), (120, 69276), (121, 69291), (122, 69294), (126, 69303),

Gene: Ngannou_238 Start: 133429, Stop: 134145, Start Num: 32

Candidate Starts for Ngannou_238:

(31, 133423), (Start: 32 @133429 has 158 MA's), (Start: 42 @133462 has 9 MA's), (52, 133609), (55, 133618), (56, 133645), (57, 133648), (65, 133687), (85, 133831), (96, 133915), (106, 133990), (110, 134011), (112, 134041), (117, 134098), (122, 134122), (127, 134134),

Gene: Nidhogg_244 Start: 135273, Stop: 135989, Start Num: 32

Candidate Starts for Nidhogg_244:

(31, 135267), (Start: 32 @135273 has 158 MA's), (Start: 42 @135306 has 9 MA's), (52, 135453), (55, 135462), (56, 135489), (57, 135492), (65, 135531), (85, 135675), (96, 135759), (106, 135834), (110, 135855), (112, 135885), (117, 135942), (122, 135966), (127, 135978),

Gene: NiebruSaylor_34 Start: 17358, Stop: 18050, Start Num: 38

Candidate Starts for NiebruSaylor_34:

(12, 17052), (14, 17133), (15, 17151), (22, 17280), (Start: 38 @17358 has 67 MA's), (48, 17463), (56, 17553), (67, 17616), (71, 17637), (72, 17640), (74, 17661), (77, 17685), (98, 17850), (103, 17868), (108, 17892),

Gene: NihilNomen_19 Start: 13095, Stop: 13796, Start Num: 38

Candidate Starts for NihilNomen_19:

(18, 13029), (Start: 38 @13095 has 67 MA's), (48, 13200), (51, 13209), (54, 13275), (71, 13374), (73, 13380), (74, 13398), (75, 13404), (90, 13503), (93, 13512), (98, 13587), (108, 13629), (129, 13773),

Gene: NoodleTree_239 Start: 130057, Stop: 130740, Start Num: 42

Candidate Starts for NoodleTree_239:

(31, 130018), (Start: 32 @130024 has 158 MA's), (Start: 42 @130057 has 9 MA's), (52, 130204), (55, 130213), (56, 130240), (57, 130243), (65, 130282), (85, 130426), (96, 130510), (106, 130585), (110, 130606), (112, 130636), (117, 130693), (122, 130717), (127, 130729),

Gene: Norm_243 Start: 135174, Stop: 135890, Start Num: 32

Candidate Starts for Norm_243:

(31, 135168), (Start: 32 @135174 has 158 MA's), (Start: 42 @135207 has 9 MA's), (52, 135354), (55, 135363), (56, 135390), (57, 135393), (65, 135432), (85, 135576), (96, 135660), (106, 135735), (110, 135756), (112, 135786), (117, 135843), (122, 135867), (127, 135879),

Gene: NuevoMundo_245 Start: 135729, Stop: 136445, Start Num: 32

Candidate Starts for NuevoMundo_245:

(31, 135723), (Start: 32 @135729 has 158 MA's), (Start: 42 @135762 has 9 MA's), (52, 135909), (55, 135918), (56, 135945), (57, 135948), (65, 135987), (85, 136131), (96, 136215), (106, 136290), (110, 136311), (112, 136341), (117, 136398), (122, 136422), (127, 136434),

Gene: Ochi17_108 Start: 56280, Stop: 56978, Start Num: 28

Candidate Starts for Ochi17_108:

(Start: 24 @56262 has 1 MA's), (Start: 28 @56280 has 17 MA's), (50, 56394), (58, 56484), (71, 56562), (72, 56565), (73, 56568), (74, 56586), (93, 56700), (98, 56775),

Gene: Octobien14_120 Start: 66087, Stop: 66722, Start Num: 39

Candidate Starts for Octobien14_120:

(Start: 38 @66081 has 67 MA's), (Start: 39 @66087 has 3 MA's), (52, 66249), (56, 66270), (57, 66273), (62, 66300), (71, 66351), (91, 66462), (96, 66501), (105, 66567), (122, 66699),

Gene: Odette_19 Start: 12578, Stop: 13279, Start Num: 38

Candidate Starts for Odette_19:

(18, 12512), (Start: 38 @12578 has 67 MA's), (48, 12683), (51, 12692), (54, 12758), (73, 12863), (74, 12881), (75, 12887), (90, 12986), (93, 12995), (98, 13070), (108, 13112), (129, 13256),

Gene: OfUltron_109 Start: 56829, Stop: 57527, Start Num: 28

Candidate Starts for OfUltron_109:

(Start: 24 @56811 has 1 MA's), (Start: 28 @56829 has 17 MA's), (50, 56943), (58, 57033), (71, 57111), (72, 57114), (73, 57117), (74, 57135), (93, 57249), (98, 57324),

Gene: Oksu_106 Start: 57901, Stop: 58617, Start Num: 24

Candidate Starts for Oksu_106:

(Start: 24 @57901 has 1 MA's), (Start: 28 @57919 has 17 MA's), (50, 58033), (58, 58123), (71, 58201), (72, 58204), (73, 58207), (74, 58225), (93, 58339), (98, 58414),

Gene: Optimus_17 Start: 12679, Stop: 13380, Start Num: 38

Candidate Starts for Optimus_17:

(18, 12613), (Start: 38 @12679 has 67 MA's), (48, 12784), (51, 12793), (54, 12859), (71, 12958), (73, 12964), (74, 12982), (75, 12988), (90, 13087), (93, 13096), (98, 13171), (108, 13213), (129, 13357),

Gene: ParkTD_242 Start: 134744, Stop: 135460, Start Num: 32

Candidate Starts for ParkTD_242:

(31, 134738), (Start: 32 @134744 has 158 MA's), (Start: 42 @134777 has 9 MA's), (52, 134924), (55, 134933), (56, 134960), (57, 134963), (65, 135002), (85, 135146), (96, 135230), (106, 135305), (110, 135326), (112, 135356), (117, 135413), (122, 135437), (127, 135449),

Gene: Patter_245 Start: 134473, Stop: 135189, Start Num: 32

Candidate Starts for Patter_245:

(31, 134467), (Start: 32 @134473 has 158 MA's), (Start: 42 @134506 has 9 MA's), (52, 134653), (55, 134662), (56, 134689), (57, 134692), (65, 134731), (85, 134875), (96, 134959), (106, 135034), (110, 135055), (112, 135085), (117, 135142), (122, 135166), (127, 135178),

Gene: PauloDiaboli_180 Start: 97497, Stop: 98198, Start Num: 35

Candidate Starts for PauloDiaboli_180:

(34, 97494), (Start: 35 @97497 has 2 MA's), (47, 97602), (63, 97728), (72, 97779), (74, 97800), (88, 97875), (94, 97923), (99, 97989), (102, 97998), (104, 98007), (113, 98076), (128, 98169),

Gene: Phabba_245 Start: 136373, Stop: 137080, Start Num: 29

Candidate Starts for Phabba_245:

(21, 136322), (Start: 29 @136373 has 1 MA's), (44, 136454), (50, 136493), (53, 136556), (56, 136580), (60, 136604), (62, 136610), (70, 136655), (72, 136667), (73, 136670), (86, 136763), (93, 136799), (98, 136874), (109, 136925), (130, 137066),

Gene: Phlegm_248 Start: 135150, Stop: 135866, Start Num: 32

Candidate Starts for Phlegm_248:

(31, 135144), (Start: 32 @135150 has 158 MA's), (Start: 42 @135183 has 9 MA's), (52, 135330), (55, 135339), (56, 135366), (57, 135369), (65, 135408), (85, 135552), (96, 135636), (106, 135711), (110, 135732), (112, 135762), (117, 135819), (122, 135843), (127, 135855),

Gene: Phoebus_20 Start: 13326, Stop: 14027, Start Num: 38

Candidate Starts for Phoebus_20:

(18, 13260), (Start: 38 @13326 has 67 MA's), (48, 13431), (51, 13440), (54, 13506), (71, 13605), (73, 13611), (74, 13629), (75, 13635), (90, 13734), (93, 13743), (98, 13818), (108, 13860), (129, 14004),

Gene: Phox_244 Start: 134399, Stop: 135115, Start Num: 32

Candidate Starts for Phox_244:

(31, 134393), (Start: 32 @134399 has 158 MA's), (Start: 42 @134432 has 9 MA's), (52, 134579), (55, 134588), (56, 134615), (57, 134618), (65, 134657), (85, 134801), (96, 134885), (106, 134960), (110, 134981), (112, 135011), (117, 135068), (122, 135092), (127, 135104),

Gene: Phrappuccino_143 Start: 100434, Stop: 101129, Start Num: 39

Candidate Starts for Phrappuccino_143:

(4, 99846), (5, 99909), (11, 100098), (Start: 30 @100404 has 1 MA's), (Start: 38 @100428 has 67 MA's), (Start: 39 @100434 has 3 MA's), (51, 100536), (67, 100680), (71, 100701), (72, 100704), (73, 100707), (74, 100725), (80, 100776), (90, 100836), (93, 100845), (97, 100890), (107, 100962), (123, 101088),

Gene: Phrappuccino_144 Start: 101126, Stop: 101848, Start Num: 26

Candidate Starts for Phrappuccino_144:

(Start: 26 @101126 has 2 MA's), (27, 101138), (62, 101381), (66, 101408), (88, 101540), (90, 101573), (92, 101579), (93, 101582), (124, 101825),

Gene: Phusco_242 Start: 133982, Stop: 134698, Start Num: 32

Candidate Starts for Phusco_242:

(31, 133976), (Start: 32 @133982 has 158 MA's), (Start: 42 @134015 has 9 MA's), (52, 134162), (55, 134171), (56, 134198), (57, 134201), (65, 134240), (85, 134384), (96, 134468), (106, 134543), (110, 134564), (112, 134594), (117, 134651), (122, 134675), (127, 134687),

Gene: Pier_242 Start: 135275, Stop: 135991, Start Num: 32

Candidate Starts for Pier_242:

(31, 135269), (Start: 32 @135275 has 158 MA's), (Start: 42 @135308 has 9 MA's), (52, 135455), (55, 135464), (56, 135491), (57, 135494), (65, 135533), (85, 135677), (96, 135761), (106, 135836), (110, 135857), (112, 135887), (117, 135944), (122, 135968), (127, 135980),

Gene: Pinkcreek_223 Start: 131816, Stop: 132526, Start Num: 32

Candidate Starts for Pinkcreek_223:

(Start: 32 @131816 has 158 MA's), (52, 131996), (55, 132005), (56, 132032), (57, 132035), (64, 132071), (65, 132074), (83, 132215), (96, 132299), (106, 132374), (115, 132446), (117, 132482), (122, 132506), (126, 132515),

Gene: Pio_250 Start: 136478, Stop: 137194, Start Num: 32

Candidate Starts for Pio_250:

(31, 136472), (Start: 32 @136478 has 158 MA's), (Start: 42 @136511 has 9 MA's), (52, 136658), (55, 136667), (56, 136694), (57, 136697), (65, 136736), (85, 136880), (96, 136964), (106, 137039), (110, 137060), (112, 137090), (117, 137147), (122, 137171), (127, 137183),

Gene: Pivoine_244 Start: 134447, Stop: 135163, Start Num: 32

Candidate Starts for Pivoine_244:

(31, 134441), (Start: 32 @134447 has 158 MA's), (Start: 42 @134480 has 9 MA's), (52, 134627), (55, 134636), (56, 134663), (57, 134666), (65, 134705), (85, 134849), (96, 134933), (106, 135008), (110, 135029), (112, 135059), (117, 135116), (122, 135140), (127, 135152),

Gene: Pleione_247 Start: 135210, Stop: 135926, Start Num: 32

Candidate Starts for Pleione_247:

(31, 135204), (Start: 32 @135210 has 158 MA's), (Start: 42 @135243 has 9 MA's), (52, 135390), (55, 135399), (56, 135426), (57, 135429), (65, 135468), (85, 135612), (96, 135696), (106, 135771), (110, 135792), (112, 135822), (117, 135879), (122, 135903), (127, 135915),

Gene: Poise_87 Start: 46008, Stop: 46736, Start Num: 37

Candidate Starts for Poise_87:

(Start: 37 @46008 has 16 MA's), (Start: 41 @46023 has 2 MA's), (43, 46068), (49, 46119), (50, 46122), (52, 46185), (56, 46221), (60, 46245), (63, 46260), (67, 46287), (72, 46311), (85, 46398), (86, 46407), (92, 46440), (98, 46518), (103, 46536), (108, 46560), (130, 46722),

Gene: Porcelain_17 Start: 10818, Stop: 11519, Start Num: 38

Candidate Starts for Porcelain_17:

(16, 10683), (Start: 38 @10818 has 67 MA's), (54, 10998), (74, 11121), (78, 11151), (98, 11310), (111, 11382), (119, 11457), (131, 11511),

Gene: Pound_20 Start: 13414, Stop: 14115, Start Num: 38

Candidate Starts for Pound_20:

(18, 13348), (Start: 38 @13414 has 67 MA's), (48, 13519), (51, 13528), (54, 13594), (71, 13693), (73, 13699), (74, 13717), (75, 13723), (90, 13822), (93, 13831), (98, 13906), (108, 13948), (129, 14092),

Gene: Pringar_83 Start: 45933, Stop: 46661, Start Num: 37

Candidate Starts for Pringar_83:

(Start: 37 @45933 has 16 MA's), (Start: 41 @45948 has 2 MA's), (43, 45993), (49, 46044), (50, 46047), (52, 46110), (56, 46146), (60, 46170), (63, 46185), (67, 46212), (72, 46236), (81, 46311), (85, 46323), (86, 46332), (92, 46365), (98, 46443), (103, 46461), (108, 46485), (130, 46647),

Gene: PurduePete_243 Start: 135475, Stop: 136191, Start Num: 32

Candidate Starts for PurduePete_243:

(31, 135469), (Start: 32 @135475 has 158 MA's), (Start: 42 @135508 has 9 MA's), (52, 135655), (55, 135664), (56, 135691), (57, 135694), (65, 135733), (85, 135877), (96, 135961), (106, 136036), (110, 136057), (112, 136087), (117, 136144), (122, 136168), (127, 136180),

Gene: QBert_235 Start: 132798, Stop: 133514, Start Num: 32

Candidate Starts for QBert_235:

(31, 132792), (Start: 32 @132798 has 158 MA's), (Start: 42 @132831 has 9 MA's), (52, 132978), (55, 132987), (56, 133014), (57, 133017), (65, 133056), (85, 133200), (96, 133284), (106, 133359), (110, 133380), (112, 133410), (117, 133467), (122, 133491), (127, 133503),

Gene: Quasimodo_246 Start: 134783, Stop: 135499, Start Num: 32

Candidate Starts for Quasimodo_246:

(31, 134777), (Start: 32 @134783 has 158 MA's), (Start: 42 @134816 has 9 MA's), (52, 134963), (55, 134972), (56, 134999), (57, 135002), (65, 135041), (85, 135185), (96, 135269), (106, 135344), (110, 135365), (112, 135395), (117, 135452), (122, 135476), (127, 135488),

Gene: Rabbitrun_124 Start: 70287, Stop: 70925, Start Num: 38

Candidate Starts for Rabbitrun_124:

(Start: 35 @70281 has 2 MA's), (Start: 38 @70287 has 67 MA's), (52, 70455), (68, 70542), (71, 70557), (79, 70602), (89, 70656), (91, 70668), (92, 70671), (96, 70707), (100, 70758), (101, 70761), (105, 70773), (106, 70782), (108, 70791), (109, 70800), (114, 70836), (121, 70902), (122, 70905), (126, 70914),

Gene: Rabinovish_236 Start: 133491, Stop: 134201, Start Num: 32

Candidate Starts for Rabinovish_236:

(Start: 32 @133491 has 158 MA's), (52, 133671), (55, 133680), (56, 133707), (57, 133710), (64, 133746), (65, 133749), (83, 133890), (96, 133974), (106, 134049), (115, 134121), (117, 134157), (122, 134181), (126, 134190),

Gene: Raela_88 Start: 46559, Stop: 47287, Start Num: 37

Candidate Starts for Raela_88:

(Start: 37 @46559 has 16 MA's), (Start: 41 @46574 has 2 MA's), (43, 46619), (49, 46670), (50, 46673), (52, 46736), (56, 46772), (60, 46796), (63, 46811), (67, 46838), (72, 46862), (85, 46949), (86, 46958), (92, 46991), (98, 47069), (103, 47087), (108, 47111), (130, 47273),

Gene: Rahel_245 Start: 134885, Stop: 135601, Start Num: 32

Candidate Starts for Rahel_245:

(31, 134879), (Start: 32 @134885 has 158 MA's), (Start: 42 @134918 has 9 MA's), (52, 135065), (55, 135074), (56, 135101), (57, 135104), (65, 135143), (85, 135287), (96, 135371), (106, 135446), (110, 135467), (112, 135497), (117, 135554), (122, 135578), (127, 135590),

Gene: RedRaider77_86 Start: 45953, Stop: 46681, Start Num: 37

Candidate Starts for RedRaider77_86:

(Start: 37 @45953 has 16 MA's), (Start: 41 @45968 has 2 MA's), (43, 46013), (49, 46064), (50, 46067), (52, 46130), (56, 46166), (60, 46190), (63, 46205), (67, 46232), (72, 46256), (85, 46343), (86, 46352), (92, 46385), (98, 46463), (103, 46481), (108, 46505), (130, 46667),

Gene: Redno2_19 Start: 12806, Stop: 13507, Start Num: 38

Candidate Starts for Redno2_19:

(18, 12740), (Start: 38 @12806 has 67 MA's), (48, 12911), (51, 12920), (54, 12986), (73, 13091), (74, 13109), (75, 13115), (90, 13214), (93, 13223), (98, 13298), (108, 13340), (129, 13484),

Gene: Rizal_232 Start: 132733, Stop: 133416, Start Num: 42

Candidate Starts for Rizal_232:

(31, 132694), (Start: 32 @132700 has 158 MA's), (Start: 42 @132733 has 9 MA's), (52, 132880), (55, 132889), (56, 132916), (57, 132919), (65, 132958), (85, 133102), (96, 133186), (106, 133261), (110, 133282), (112, 133312), (117, 133369), (122, 133393), (127, 133405),

Gene: RoMag_238 Start: 134481, Stop: 135197, Start Num: 32

Candidate Starts for RoMag_238:

(31, 134475), (Start: 32 @134481 has 158 MA's), (Start: 42 @134514 has 9 MA's), (52, 134661), (55, 134670), (56, 134697), (57, 134700), (65, 134739), (85, 134883), (96, 134967), (106, 135042), (110, 135063), (112, 135093), (117, 135150), (122, 135174), (127, 135186),

Gene: Ronan_239 Start: 132882, Stop: 133589, Start Num: 32

Candidate Starts for Ronan_239:

(31, 132876), (Start: 32 @132882 has 158 MA's), (Start: 42 @132915 has 9 MA's), (52, 133062), (55, 133071), (56, 133098), (57, 133101), (65, 133140), (85, 133275), (96, 133359), (106, 133434), (110, 133455), (112, 133485), (117, 133542), (122, 133566), (127, 133578),

Gene: Roots515_246 Start: 136026, Stop: 136742, Start Num: 32

Candidate Starts for Roots515_246:

(31, 136020), (Start: 32 @136026 has 158 MA's), (Start: 42 @136059 has 9 MA's), (52, 136206), (55, 136215), (56, 136242), (57, 136245), (65, 136284), (85, 136428), (96, 136512), (106, 136587), (110, 136608), (112, 136638), (117, 136695), (122, 136719), (127, 136731),

Gene: Ryadel_38 Start: 18574, Stop: 19266, Start Num: 38

Candidate Starts for Ryadel_38:

(6, 18103), (12, 18268), (14, 18349), (15, 18367), (22, 18496), (Start: 38 @18574 has 67 MA's), (48, 18679), (56, 18769), (67, 18832), (71, 18853), (72, 18856), (74, 18877), (77, 18901), (98, 19066), (103, 19084), (108, 19108),

Gene: Salacia_244 Start: 135901, Stop: 136617, Start Num: 32

Candidate Starts for Salacia_244:

(31, 135895), (Start: 32 @135901 has 158 MA's), (Start: 42 @135934 has 9 MA's), (52, 136081), (55, 136090), (56, 136117), (57, 136120), (65, 136159), (85, 136303), (96, 136387), (106, 136462), (110, 136483), (112, 136513), (117, 136570), (122, 136594), (127, 136606),

Gene: Sauce_240 Start: 134209, Stop: 134925, Start Num: 32

Candidate Starts for Sauce_240:

(31, 134203), (Start: 32 @134209 has 158 MA's), (Start: 42 @134242 has 9 MA's), (52, 134389), (55, 134398), (56, 134425), (57, 134428), (65, 134467), (85, 134611), (96, 134695), (106, 134770), (110, 134791), (112, 134821), (117, 134878), (122, 134902), (127, 134914),

Gene: Schatzie_18 Start: 12345, Stop: 13046, Start Num: 38

Candidate Starts for Schatzie_18:

(18, 12279), (Start: 38 @12345 has 67 MA's), (48, 12450), (51, 12459), (54, 12525), (71, 12624), (73, 12630), (74, 12648), (75, 12654), (90, 12753), (93, 12762), (98, 12837), (108, 12879), (129, 13023),

Gene: SchoolBus_35 Start: 17761, Stop: 18453, Start Num: 38

Candidate Starts for SchoolBus_35:

(6, 17290), (12, 17455), (14, 17536), (15, 17554), (22, 17683), (Start: 38 @17761 has 67 MA's), (48, 17866), (56, 17956), (67, 18019), (71, 18040), (72, 18043), (74, 18064), (77, 18088), (98, 18253), (103, 18271), (108, 18295), (118, 18394),

Gene: Schuy_36 Start: 17705, Stop: 18397, Start Num: 38

Candidate Starts for Schuy_36:

(12, 17399), (14, 17480), (15, 17498), (22, 17627), (Start: 38 @17705 has 67 MA's), (48, 17810), (56, 17900), (67, 17963), (71, 17984), (72, 17987), (74, 18008), (77, 18032), (98, 18197), (103, 18215), (108, 18239),

Gene: ScottMcG_235 Start: 133479, Stop: 134195, Start Num: 32

Candidate Starts for ScottMcG_235:

(31, 133473), (Start: 32 @133479 has 158 MA's), (Start: 42 @133512 has 9 MA's), (52, 133659), (55, 133668), (56, 133695), (57, 133698), (65, 133737), (85, 133881), (96, 133965), (106, 134040), (110, 134061), (112, 134091), (117, 134148), (122, 134172), (127, 134184),

Gene: Seabastian_109 Start: 56830, Stop: 57528, Start Num: 28

Candidate Starts for Seabastian_109:

(Start: 24 @56812 has 1 MA's), (Start: 28 @56830 has 17 MA's), (50, 56944), (58, 57034), (71, 57112), (72, 57115), (73, 57118), (74, 57136), (93, 57250), (98, 57325),

Gene: Sebata_243 Start: 135184, Stop: 135894, Start Num: 32

Candidate Starts for Sebata_243:

(Start: 32 @135184 has 158 MA's), (Start: 42 @135217 has 9 MA's), (52, 135364), (55, 135373), (56, 135400), (57, 135403), (64, 135439), (65, 135442), (83, 135583), (96, 135667), (106, 135742), (110, 135763), (112, 135793), (117, 135850), (122, 135874), (126, 135883),

Gene: Sephiroth_121 Start: 67329, Stop: 67958, Start Num: 41

Candidate Starts for Sephiroth_121:

(36, 67314), (Start: 41 @67329 has 2 MA's), (56, 67506), (57, 67509), (59, 67515), (71, 67587), (82, 67647), (91, 67698), (96, 67737), (105, 67803), (122, 67935),

Gene: Settecandela_143 Start: 100434, Stop: 101129, Start Num: 39

Candidate Starts for Settecandela_143:

(4, 99846), (5, 99909), (11, 100098), (Start: 30 @100404 has 1 MA's), (Start: 38 @100428 has 67 MA's), (Start: 39 @100434 has 3 MA's), (51, 100536), (67, 100680), (71, 100701), (72, 100704), (73, 100707), (74, 100725), (80, 100776), (90, 100836), (93, 100845), (97, 100890), (107, 100962), (123, 101088),

Gene: Settecandela_144 Start: 101126, Stop: 101848, Start Num: 26

Candidate Starts for Settecandela_144:

(Start: 26 @101126 has 2 MA's), (27, 101138), (62, 101381), (66, 101408), (88, 101540), (90, 101573), (92, 101579), (93, 101582), (124, 101825),

Gene: Shaqnato_234 Start: 133619, Stop: 134335, Start Num: 32

Candidate Starts for Shaqnato_234:

(31, 133613), (Start: 32 @133619 has 158 MA's), (Start: 42 @133652 has 9 MA's), (52, 133799), (55, 133808), (56, 133835), (57, 133838), (65, 133877), (85, 134021), (96, 134105), (106, 134180), (110, 134201), (112, 134231), (117, 134288), (122, 134312), (127, 134324),

Gene: Shelob_244 Start: 136344, Stop: 137060, Start Num: 32

Candidate Starts for Shelob_244:

(31, 136338), (Start: 32 @136344 has 158 MA's), (Start: 42 @136377 has 9 MA's), (52, 136524), (55, 136533), (56, 136560), (57, 136563), (65, 136602), (85, 136746), (96, 136830), (106, 136905), (110, 136926), (112, 136956), (117, 137013), (122, 137037), (127, 137049),

Gene: ShiaLabeouf_241 Start: 134203, Stop: 134919, Start Num: 32

Candidate Starts for ShiaLabeouf_241:

(31, 134197), (Start: 32 @134203 has 158 MA's), (Start: 42 @134236 has 9 MA's), (52, 134383), (55, 134392), (56, 134419), (57, 134422), (65, 134461), (85, 134605), (96, 134689), (106, 134764), (110, 134785), (112, 134815), (117, 134872), (122, 134896), (127, 134908),

Gene: Shida_35 Start: 17612, Stop: 18304, Start Num: 38

Candidate Starts for Shida_35:

(6, 17141), (12, 17306), (14, 17387), (15, 17405), (22, 17534), (Start: 38 @17612 has 67 MA's), (48, 17717), (56, 17807), (67, 17870), (71, 17891), (72, 17894), (74, 17915), (77, 17939), (98, 18104), (103, 18122), (108, 18146), (118, 18245),

Gene: Shifa_220 Start: 133921, Stop: 134631, Start Num: 32

Candidate Starts for Shifa_220:

(Start: 32 @133921 has 158 MA's), (52, 134101), (55, 134110), (56, 134137), (57, 134140), (64, 134176), (65, 134179), (83, 134320), (96, 134404), (106, 134479), (115, 134551), (117, 134587), (122, 134611), (126, 134620),

Gene: Shnickers_242 Start: 134267, Stop: 134983, Start Num: 32

Candidate Starts for Shnickers_242:

(31, 134261), (Start: 32 @134267 has 158 MA's), (Start: 42 @134300 has 9 MA's), (52, 134447), (55, 134456), (56, 134483), (57, 134486), (65, 134525), (85, 134669), (96, 134753), (106, 134828), (110, 134849), (112, 134879), (117, 134936), (122, 134960), (127, 134972),

Gene: Shrimp_245 Start: 135512, Stop: 136228, Start Num: 32

Candidate Starts for Shrimp_245:

(31, 135506), (Start: 32 @135512 has 158 MA's), (Start: 42 @135545 has 9 MA's), (52, 135692), (55, 135701), (56, 135728), (57, 135731), (65, 135770), (85, 135914), (96, 135998), (106, 136073), (110, 136094), (112, 136124), (117, 136181), (122, 136205), (127, 136217),

Gene: SilverDipper_248 Start: 135003, Stop: 135719, Start Num: 32

Candidate Starts for SilverDipper_248:

(31, 134997), (Start: 32 @135003 has 158 MA's), (Start: 42 @135036 has 9 MA's), (52, 135183), (55, 135192), (56, 135219), (57, 135222), (65, 135261), (85, 135405), (96, 135489), (106, 135564), (110, 135585), (112, 135615), (117, 135672), (122, 135696), (127, 135708),

Gene: SmallFry_244 Start: 134361, Stop: 135077, Start Num: 32

Candidate Starts for SmallFry_244:

(31, 134355), (Start: 32 @134361 has 158 MA's), (Start: 42 @134394 has 9 MA's), (52, 134541), (55, 134550), (56, 134577), (57, 134580), (65, 134619), (85, 134763), (96, 134847), (106, 134922), (110, 134943), (112, 134973), (117, 135030), (122, 135054), (127, 135066),

Gene: Smooch_37 Start: 18901, Stop: 19593, Start Num: 38

Candidate Starts for Smooch_37:

(12, 18595), (14, 18676), (15, 18694), (22, 18823), (Start: 38 @18901 has 67 MA's), (48, 19006), (56, 19096), (67, 19159), (71, 19180), (72, 19183), (74, 19204), (77, 19228), (98, 19393), (103, 19411), (108, 19435),

Gene: Soul22_101 Start: 53405, Stop: 54103, Start Num: 28

Candidate Starts for Soul22_101:

(17, 53333), (19, 53357), (Start: 24 @53387 has 1 MA's), (Start: 28 @53405 has 17 MA's), (51, 53522), (58, 53609), (69, 53672), (71, 53687), (72, 53690), (73, 53693), (74, 53711), (78, 53741), (98, 53900),

Gene: Spec_237 Start: 134442, Stop: 135158, Start Num: 32

Candidate Starts for Spec_237:

(31, 134436), (Start: 32 @134442 has 158 MA's), (Start: 42 @134475 has 9 MA's), (52, 134622), (55, 134631), (56, 134658), (57, 134661), (65, 134700), (85, 134844), (96, 134928), (106, 135003), (110, 135024), (112, 135054), (117, 135111), (122, 135135), (127, 135147),

Gene: Specks_247 Start: 134852, Stop: 135568, Start Num: 32

Candidate Starts for Specks_247:

(31, 134846), (Start: 32 @134852 has 158 MA's), (Start: 42 @134885 has 9 MA's), (52, 135032), (55, 135041), (56, 135068), (57, 135071), (65, 135110), (85, 135254), (96, 135338), (106, 135413), (110, 135434), (112, 135464), (117, 135521), (122, 135545), (127, 135557),

Gene: Sprinklers_241 Start: 134142, Stop: 134825, Start Num: 42

Candidate Starts for Sprinklers_241:

(31, 134103), (Start: 32 @134109 has 158 MA's), (Start: 42 @134142 has 9 MA's), (52, 134289), (55, 134298), (56, 134325), (57, 134328), (65, 134367), (85, 134511), (96, 134595), (106, 134670), (110, 134691), (112, 134721), (117, 134778), (122, 134802), (127, 134814),

Gene: Spud_235 Start: 133851, Stop: 134534, Start Num: 42

Candidate Starts for Spud_235:

(31, 133812), (Start: 32 @133818 has 158 MA's), (Start: 42 @133851 has 9 MA's), (52, 133998), (55, 134007), (56, 134034), (57, 134037), (65, 134076), (85, 134220), (96, 134304), (106, 134379), (110, 134400), (112, 134430), (117, 134487), (122, 134511), (127, 134523),

Gene: SrishMeg2525_240 Start: 135007, Stop: 135723, Start Num: 32

Candidate Starts for SrishMeg2525_240:

(31, 135001), (Start: 32 @135007 has 158 MA's), (Start: 42 @135040 has 9 MA's), (52, 135187), (55, 135196), (56, 135223), (57, 135226), (65, 135265), (85, 135409), (96, 135493), (106, 135568), (110, 135589), (112, 135619), (117, 135676), (122, 135700), (127, 135712),

Gene: StephanieG_237 Start: 135004, Stop: 135720, Start Num: 32

Candidate Starts for StephanieG_237:

(31, 134998), (Start: 32 @135004 has 158 MA's), (Start: 42 @135037 has 9 MA's), (52, 135184), (55, 135193), (56, 135220), (57, 135223), (65, 135262), (85, 135406), (96, 135490), (106, 135565), (110, 135586), (112, 135616), (117, 135673), (122, 135697), (127, 135709),

Gene: Stubby_226 Start: 132001, Stop: 132711, Start Num: 32

Candidate Starts for Stubby_226:

(Start: 32 @132001 has 158 MA's), (52, 132181), (55, 132190), (56, 132217), (57, 132220), (64, 132256), (65, 132259), (83, 132400), (96, 132484), (106, 132559), (115, 132631), (117, 132667), (122, 132691), (126, 132700),

Gene: StubbySaigey_249 Start: 134537, Stop: 135253, Start Num: 32

Candidate Starts for StubbySaigey_249:

(31, 134531), (Start: 32 @134537 has 158 MA's), (Start: 42 @134570 has 9 MA's), (52, 134717), (55, 134726), (56, 134753), (57, 134756), (65, 134795), (85, 134939), (96, 135023), (106, 135098), (110, 135119), (112, 135149), (117, 135206), (122, 135230), (127, 135242),

Gene: Superphikiman_17 Start: 10999, Stop: 11700, Start Num: 38

Candidate Starts for Superphikiman_17:

(16, 10864), (Start: 38 @10999 has 67 MA's), (54, 11179), (74, 11302), (78, 11332), (98, 11491), (111, 11563), (119, 11638), (131, 11692),

Gene: Syleon_126 Start: 68092, Stop: 68724, Start Num: 40

Candidate Starts for Syleon_126:

(Start: 40 @68092 has 1 MA's), (52, 68251), (56, 68272), (57, 68275), (71, 68353), (82, 68413), (91, 68464), (96, 68503), (105, 68569), (122, 68701),

Gene: Teardrop_241 Start: 133864, Stop: 134580, Start Num: 32

Candidate Starts for Teardrop_241:

(31, 133858), (Start: 32 @133864 has 158 MA's), (Start: 42 @133897 has 9 MA's), (52, 134044), (55, 134053), (56, 134080), (57, 134083), (65, 134122), (85, 134266), (96, 134350), (106, 134425), (110, 134446), (112, 134476), (117, 134533), (122, 134557), (127, 134569),

Gene: TelAviv_32 Start: 17755, Stop: 18447, Start Num: 38

Candidate Starts for TelAviv_32:

(6, 17284), (12, 17449), (14, 17530), (15, 17548), (22, 17677), (Start: 38 @17755 has 67 MA's), (48, 17860), (56, 17950), (67, 18013), (71, 18034), (72, 18037), (74, 18058), (77, 18082), (98, 18247), (103, 18265), (108, 18289), (118, 18388),

Gene: Tesla_82 Start: 45802, Stop: 46530, Start Num: 37

Candidate Starts for Tesla_82:

(Start: 37 @45802 has 16 MA's), (Start: 41 @45817 has 2 MA's), (43, 45862), (49, 45913), (50, 45916), (52, 45979), (56, 46015), (60, 46039), (63, 46054), (67, 46081), (72, 46105), (85, 46192), (86, 46201), (92, 46234), (98, 46312), (103, 46330), (108, 46354), (130, 46516),

Gene: ThetaBob_104 Start: 54869, Stop: 55582, Start Num: 24

Candidate Starts for ThetaBob_104:

(Start: 24 @54869 has 1 MA's), (Start: 28 @54887 has 17 MA's), (58, 55091), (71, 55169), (72, 55172), (74, 55193), (93, 55307), (98, 55382),

Gene: Thibault_16 Start: 12606, Stop: 13307, Start Num: 38

Candidate Starts for Thibault_16:

(18, 12540), (Start: 38 @12606 has 67 MA's), (48, 12711), (51, 12720), (54, 12786), (73, 12891), (74, 12909), (75, 12915), (90, 13014), (93, 13023), (98, 13098), (108, 13140), (129, 13284),

Gene: ThreeRngTarjay_19 Start: 13170, Stop: 13871, Start Num: 38

Candidate Starts for ThreeRngTarjay_19:

(18, 13104), (Start: 38 @13170 has 67 MA's), (48, 13275), (51, 13284), (54, 13350), (71, 13449), (73, 13455), (74, 13473), (75, 13479), (90, 13578), (93, 13587), (98, 13662), (108, 13704), (129, 13848),

Gene: TinyTim_241 Start: 133831, Stop: 134547, Start Num: 32

Candidate Starts for TinyTim_241:

(31, 133825), (Start: 32 @133831 has 158 MA's), (Start: 42 @133864 has 9 MA's), (52, 134011), (55, 134020), (56, 134047), (57, 134050), (65, 134089), (85, 134233), (96, 134317), (106, 134392), (110, 134413), (112, 134443), (117, 134500), (122, 134524), (127, 134536),

Gene: Tonenili_265 Start: 139657, Stop: 140373, Start Num: 32

Candidate Starts for Tonenili_265:

(31, 139651), (Start: 32 @139657 has 158 MA's), (Start: 42 @139690 has 9 MA's), (52, 139837), (55, 139846), (56, 139873), (57, 139876), (65, 139915), (85, 140059), (96, 140143), (106, 140218), (110, 140239), (112, 140269), (117, 140326), (122, 140350), (127, 140362),

Gene: Tortoise16_241 Start: 134293, Stop: 135009, Start Num: 32

Candidate Starts for Tortoise16_241:

(31, 134287), (Start: 32 @134293 has 158 MA's), (Start: 42 @134326 has 9 MA's), (52, 134473), (55, 134482), (56, 134509), (57, 134512), (65, 134551), (85, 134695), (96, 134779), (106, 134854), (110, 134875), (112, 134905), (117, 134962), (122, 134986), (127, 134998),

Gene: Trax_123 Start: 69496, Stop: 70134, Start Num: 38

Candidate Starts for Trax_123:

(23, 69421), (25, 69445), (33, 69484), (Start: 38 @69496 has 67 MA's), (52, 69664), (68, 69751), (71, 69766), (79, 69811), (89, 69865), (91, 69877), (92, 69880), (96, 69916), (100, 69967), (106, 69991), (108, 70000), (109, 70009), (114, 70045), (116, 70081), (120, 70096), (121, 70111), (122, 70114), (126, 70123),

Gene: Trinitium_239 Start: 132585, Stop: 133301, Start Num: 32

Candidate Starts for Trinitium_239:

(31, 132579), (Start: 32 @132585 has 158 MA's), (Start: 42 @132618 has 9 MA's), (52, 132765), (55, 132774), (56, 132801), (57, 132804), (65, 132843), (85, 132987), (96, 133071), (106, 133146), (110, 133167), (112, 133197), (117, 133254), (122, 133278), (127, 133290),

Gene: Turret_234 Start: 132167, Stop: 132883, Start Num: 32

Candidate Starts for Turret_234:

(31, 132161), (Start: 32 @132167 has 158 MA's), (Start: 42 @132200 has 9 MA's), (52, 132347), (55, 132356), (56, 132383), (57, 132386), (65, 132425), (85, 132569), (96, 132653), (106, 132728), (110, 132749), (112, 132779), (117, 132836), (122, 132860), (127, 132872),

Gene: Tyke_240 Start: 136485, Stop: 137201, Start Num: 32

Candidate Starts for Tyke_240:

(31, 136479), (Start: 32 @136485 has 158 MA's), (Start: 42 @136518 has 9 MA's), (52, 136665), (55, 136674), (56, 136701), (57, 136704), (65, 136743), (85, 136887), (96, 136971), (106, 137046), (110, 137067), (112, 137097), (117, 137154), (122, 137178), (127, 137190),

Gene: ValleyTerrace_244 Start: 133744, Stop: 134460, Start Num: 32

Candidate Starts for ValleyTerrace_244:

(31, 133738), (Start: 32 @133744 has 158 MA's), (Start: 42 @133777 has 9 MA's), (52, 133924), (55, 133933), (56, 133960), (57, 133963), (65, 134002), (85, 134146), (96, 134230), (106, 134305), (110, 134326), (112, 134356), (117, 134413), (122, 134437), (127, 134449),

Gene: VasuNzinga_84 Start: 45891, Stop: 46619, Start Num: 37

Candidate Starts for VasuNzinga_84:

(Start: 37 @45891 has 16 MA's), (Start: 41 @45906 has 2 MA's), (43, 45951), (49, 46002), (50, 46005), (52, 46068), (56, 46104), (60, 46128), (63, 46143), (67, 46170), (72, 46194), (85, 46281), (86, 46290), (92, 46323), (98, 46401), (103, 46419), (108, 46443), (130, 46605),

Gene: Vorrps_34 Start: 17358, Stop: 18050, Start Num: 38

Candidate Starts for Vorrps_34:

(12, 17052), (14, 17133), (15, 17151), (22, 17280), (Start: 38 @17358 has 67 MA's), (48, 17463), (56, 17553), (67, 17616), (71, 17637), (72, 17640), (74, 17661), (77, 17685), (98, 17850), (103, 17868), (108, 17892),

Gene: Wally_241 Start: 133728, Stop: 134444, Start Num: 32

Candidate Starts for Wally_241:

(31, 133722), (Start: 32 @133728 has 158 MA's), (Start: 42 @133761 has 9 MA's), (52, 133908), (55, 133917), (56, 133944), (57, 133947), (65, 133986), (85, 134130), (96, 134214), (106, 134289), (110, 134310), (112, 134340), (117, 134397), (122, 134421), (127, 134433),

Gene: Wanda_20 Start: 12613, Stop: 13314, Start Num: 38

Candidate Starts for Wanda_20:

(18, 12547), (Start: 38 @12613 has 67 MA's), (48, 12718), (51, 12727), (54, 12793), (73, 12898), (74, 12916), (75, 12922), (90, 13021), (93, 13030), (98, 13105), (108, 13147), (129, 13291),

Gene: Wildflower_35 Start: 17344, Stop: 18036, Start Num: 38

Candidate Starts for Wildflower_35:

(12, 17038), (14, 17119), (15, 17137), (22, 17266), (Start: 38 @17344 has 67 MA's), (48, 17449), (56, 17539), (67, 17602), (71, 17623), (72, 17626), (74, 17647), (77, 17671), (98, 17836), (103, 17854), (108, 17878),

Gene: WillSterrel_100 Start: 55820, Stop: 56518, Start Num: 28

Candidate Starts for WillSterrel_100:

(Start: 24 @55802 has 1 MA's), (Start: 28 @55820 has 17 MA's), (51, 55937), (58, 56024), (71, 56102), (72, 56105), (73, 56108), (74, 56126), (93, 56240), (98, 56315),

Gene: Willis_244 Start: 134667, Stop: 135383, Start Num: 32

Candidate Starts for Willis_244:

(31, 134661), (Start: 32 @134667 has 158 MA's), (Start: 42 @134700 has 9 MA's), (52, 134847), (55, 134856), (56, 134883), (57, 134886), (65, 134925), (85, 135069), (96, 135153), (106, 135228), (110, 135249), (112, 135279), (117, 135336), (122, 135360), (127, 135372),

Gene: Winget_36 Start: 18027, Stop: 18719, Start Num: 38

Candidate Starts for Winget_36:

(6, 17556), (12, 17721), (14, 17802), (15, 17820), (22, 17949), (Start: 38 @18027 has 67 MA's), (48, 18132), (56, 18222), (67, 18285), (71, 18306), (72, 18309), (74, 18330), (77, 18354), (98, 18519), (103, 18537), (108, 18561), (118, 18660),

Gene: Yassified_239 Start: 133883, Stop: 134590, Start Num: 32

Candidate Starts for Yassified_239:

(31, 133877), (Start: 32 @133883 has 158 MA's), (Start: 42 @133916 has 9 MA's), (52, 134063), (55, 134072), (56, 134099), (57, 134102), (65, 134141), (85, 134276), (96, 134360), (106, 134435), (110, 134456), (112, 134486), (117, 134543), (122, 134567), (127, 134579),

Gene: Yeet_18 Start: 12345, Stop: 13046, Start Num: 38

Candidate Starts for Yeet_18:

(18, 12279), (Start: 38 @12345 has 67 MA's), (48, 12450), (51, 12459), (54, 12525), (73, 12630), (74, 12648), (75, 12654), (90, 12753), (93, 12762), (98, 12837), (108, 12879), (129, 13023),

Gene: YemiJoy2021_244 Start: 135398, Stop: 136114, Start Num: 32

Candidate Starts for YemiJoy2021_244:

(31, 135392), (Start: 32 @135398 has 158 MA's), (Start: 42 @135431 has 9 MA's), (52, 135578), (55, 135587), (56, 135614), (57, 135617), (65, 135656), (85, 135800), (96, 135884), (106, 135959), (110, 135980), (112, 136010), (117, 136067), (122, 136091), (127, 136103),

Gene: Yoshi_115 Start: 57309, Stop: 58004, Start Num: 28

Candidate Starts for Yoshi_115:

(17, 57237), (19, 57261), (Start: 24 @57291 has 1 MA's), (Start: 28 @57309 has 17 MA's), (51, 57426), (58, 57513), (69, 57576), (71, 57591), (72, 57594), (73, 57597), (74, 57615), (78, 57645), (98, 57804),

Gene: YoungMoneyMata_243 Start: 134928, Stop: 135644, Start Num: 32

Candidate Starts for YoungMoneyMata_243:

(31, 134922), (Start: 32 @134928 has 158 MA's), (Start: 42 @134961 has 9 MA's), (52, 135108), (55, 135117), (56, 135144), (57, 135147), (65, 135186), (85, 135330), (96, 135414), (106, 135489), (110, 135510), (112, 135540), (117, 135597), (122, 135621), (127, 135633),

Gene: Yucca_243 Start: 135390, Stop: 136106, Start Num: 32

Candidate Starts for Yucca_243:

(31, 135384), (Start: 32 @135390 has 158 MA's), (Start: 42 @135423 has 9 MA's), (52, 135570), (55, 135579), (56, 135606), (57, 135609), (65, 135648), (85, 135792), (96, 135876), (106, 135951), (110, 135972), (112, 136002), (117, 136059), (122, 136083), (127, 136095),

Gene: YungJamal_38 Start: 18090, Stop: 18782, Start Num: 38

Candidate Starts for YungJamal_38:

(12, 17784), (14, 17865), (15, 17883), (22, 18012), (Start: 38 @18090 has 67 MA's), (48, 18195), (56, 18285), (61, 18312), (67, 18348), (71, 18369), (72, 18372), (74, 18393), (77, 18417), (98, 18582), (103, 18600), (108, 18624),

Gene: Zakhe101_35 Start: 17489, Stop: 18181, Start Num: 38

Candidate Starts for Zakhe101_35:

(12, 17183), (14, 17264), (15, 17282), (22, 17411), (Start: 38 @17489 has 67 MA's), (48, 17594), (56, 17684), (61, 17711), (67, 17747), (71, 17768), (72, 17771), (74, 17792), (77, 17816), (98, 17981), (103, 17999), (108, 18023), (118, 18122),

Gene: Zalkecks_242 Start: 134496, Stop: 135212, Start Num: 32

Candidate Starts for Zalkecks_242:

(31, 134490), (Start: 32 @134496 has 158 MA's), (Start: 42 @134529 has 9 MA's), (52, 134676), (55, 134685), (56, 134712), (57, 134715), (65, 134754), (85, 134898), (96, 134982), (106, 135057), (110, 135078), (112, 135108), (117, 135165), (122, 135189), (127, 135201),

Gene: Zapner_107 Start: 53897, Stop: 54595, Start Num: 28

Candidate Starts for Zapner_107:

(17, 53825), (19, 53849), (Start: 24 @53879 has 1 MA's), (Start: 28 @53897 has 17 MA's), (51, 54014), (58, 54101), (69, 54164), (71, 54179), (72, 54182), (73, 54185), (74, 54203), (78, 54233), (98, 54392),

Gene: Zeenon_244 Start: 135030, Stop: 135746, Start Num: 32

Candidate Starts for Zeenon_244:

(31, 135024), (Start: 32 @135030 has 158 MA's), (Start: 42 @135063 has 9 MA's), (52, 135210), (55, 135219), (56, 135246), (57, 135249), (65, 135288), (85, 135432), (96, 135516), (106, 135591), (110, 135612), (112, 135642), (117, 135699), (122, 135723), (127, 135735),

Gene: Zelink_20 Start: 13198, Stop: 13899, Start Num: 38

Candidate Starts for Zelink_20:

(18, 13132), (Start: 38 @13198 has 67 MA's), (48, 13303), (51, 13312), (54, 13378), (73, 13483), (74, 13501), (75, 13507), (90, 13606), (93, 13615), (98, 13690), (108, 13732), (129, 13876),

Gene: ZygoTaiga_239 Start: 135687, Stop: 136403, Start Num: 32

Candidate Starts for ZygoTaiga_239:

(31, 135681), (Start: 32 @135687 has 158 MA's), (Start: 42 @135720 has 9 MA's), (52, 135867), (55, 135876), (56, 135903), (57, 135906), (65, 135945), (85, 136089), (96, 136173), (106, 136248), (110, 136269), (112, 136299), (117, 136356), (122, 136380), (127, 136392),