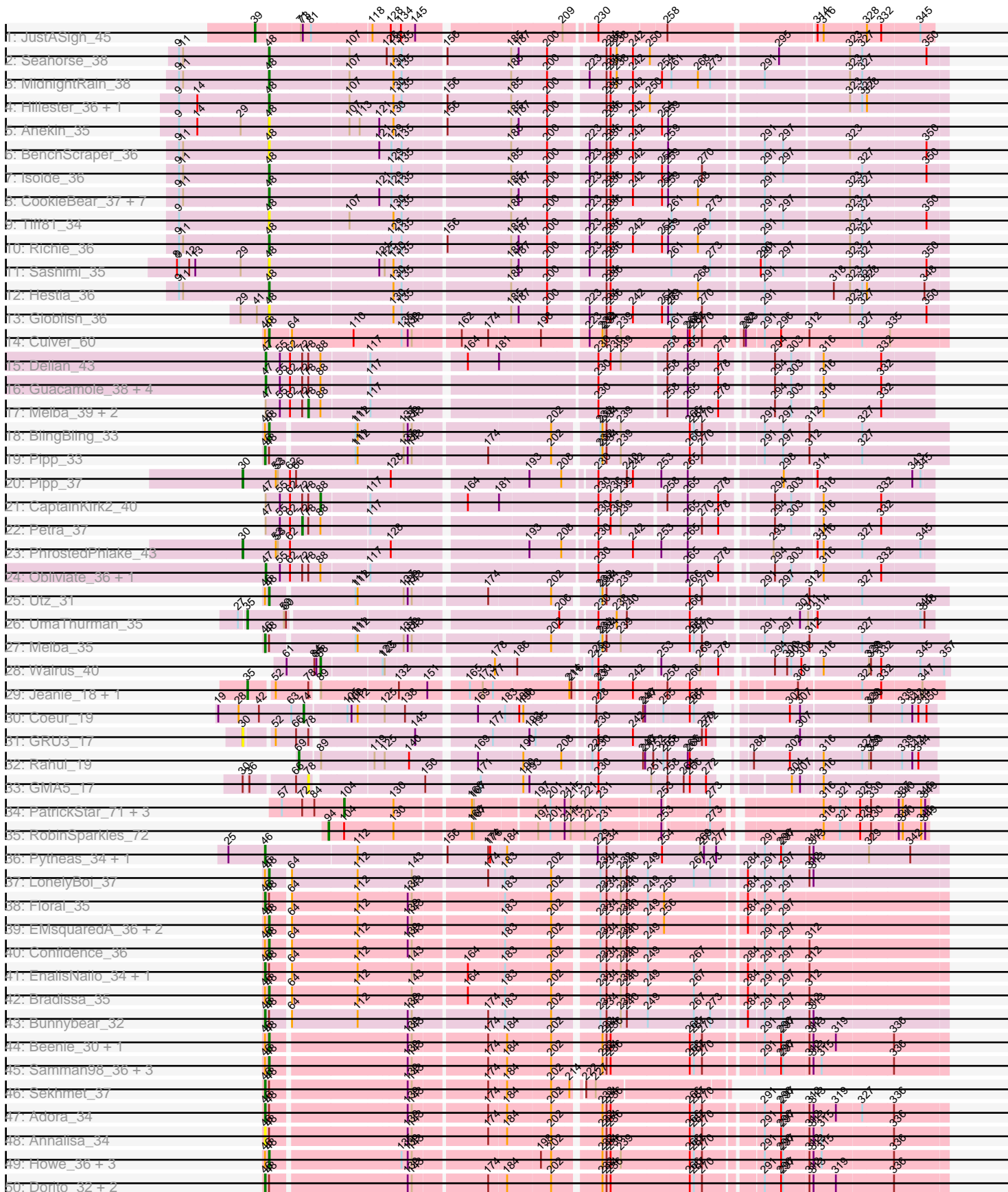
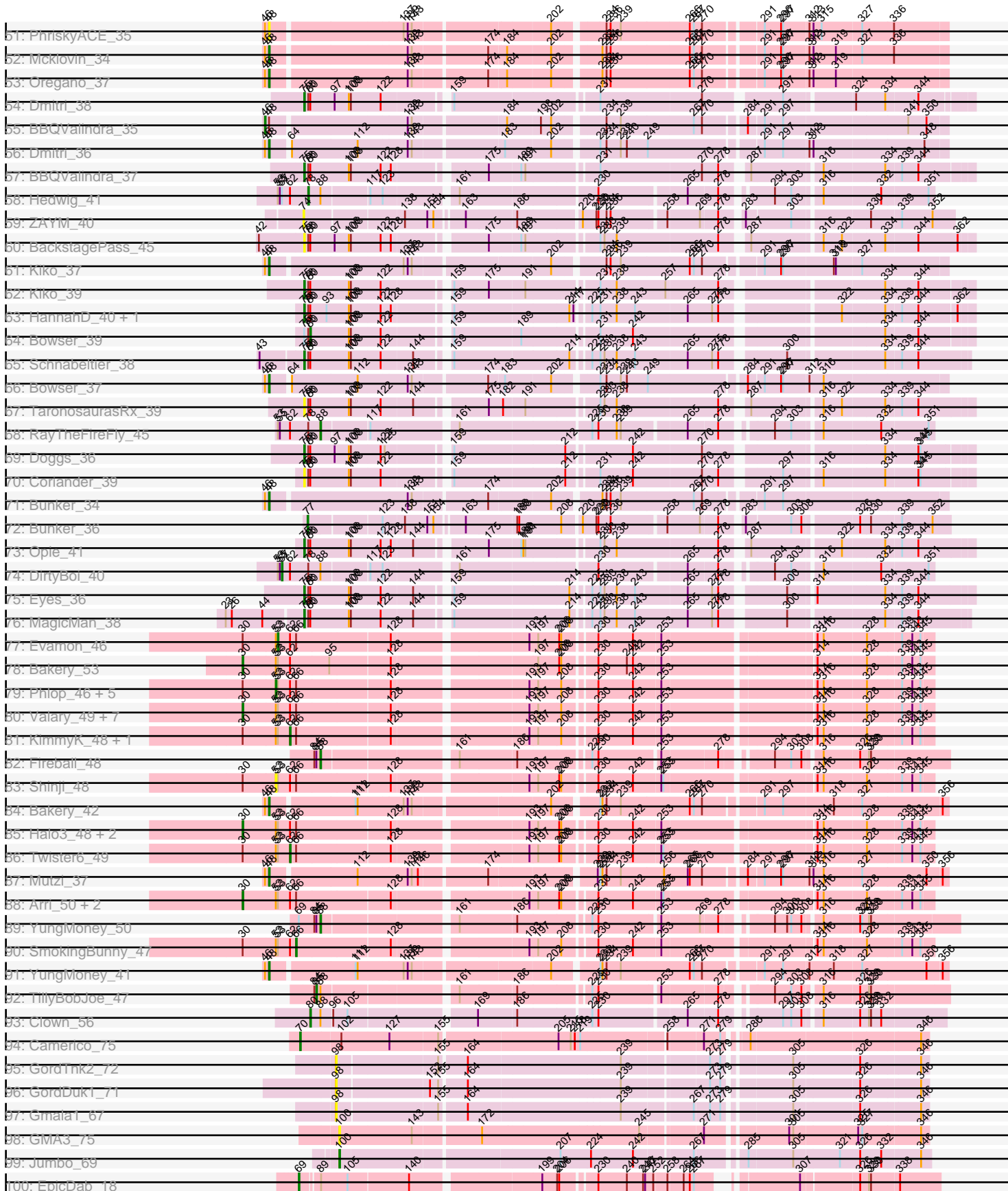


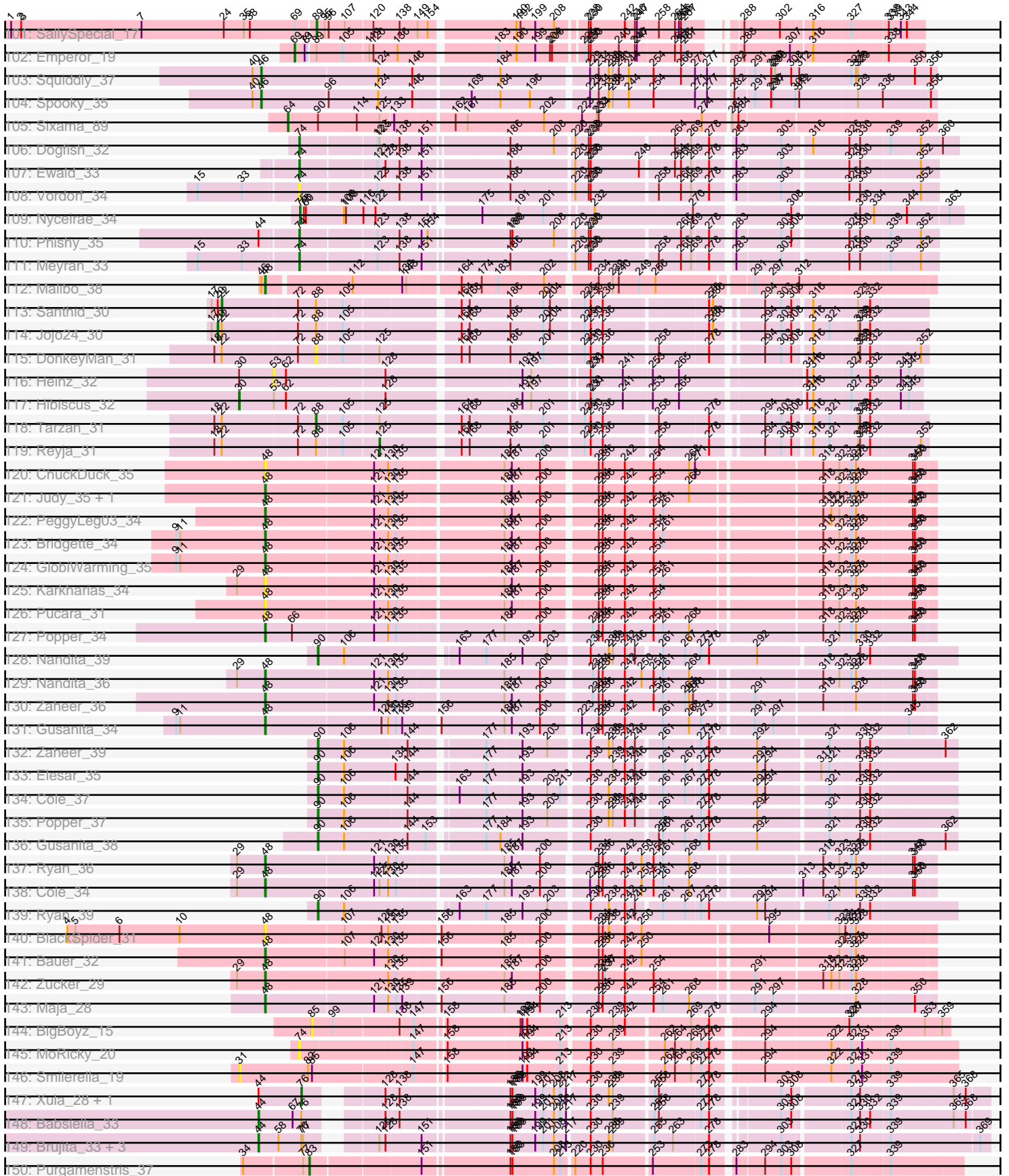
Pham 171149



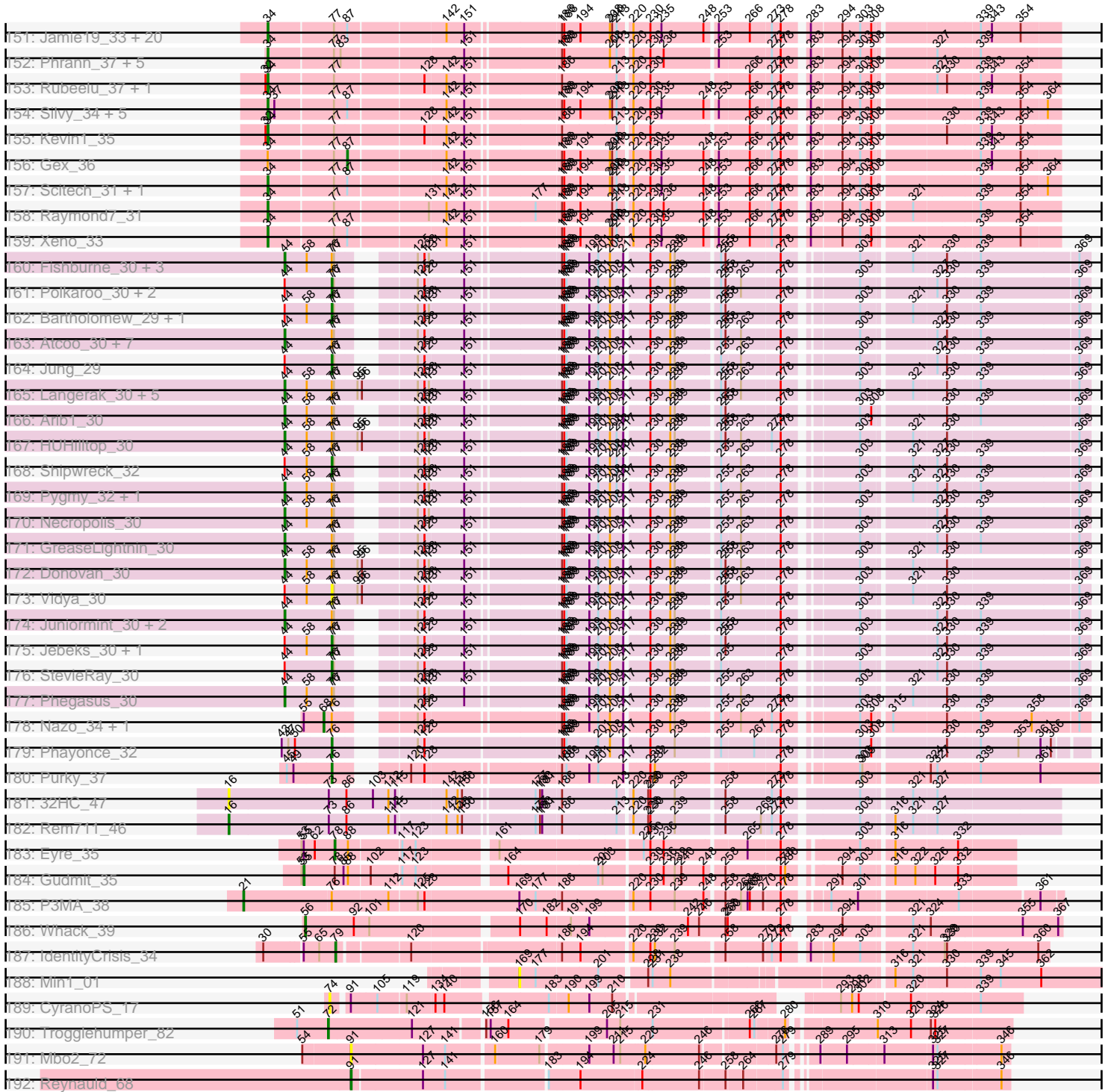
Pham 171149



Pham 171149



Pham 171149



Note: Tracks are now grouped by subcluster and scaled. Switching in subcluster is indicated by changes in track color. Track scale is now set by default to display the region 30 bp upstream of start 1 to 30 bp downstream of the last possible start. If this default region is judged to be packed too tightly with annotated starts, the track will be further scaled to only show that region of the ORF with annotated starts. This action will be indicated by adding "Zoomed" to the title. For starts, yellow indicates the location of called starts comprised solely of Glimmer/GeneMark auto-annotations, green indicates the location of called starts with at least 1 manual gene annotation.

Pham 171149 Report

This analysis was run 07/10/24 on database version 566.

Pham number 171149 has 302 members, 45 are drafts.

Phages represented in each track:

- Track 1 : JustASigh_45
- Track 2 : Seahorse_38
- Track 3 : MidnightRain_38
- Track 4 : Hillester_36, RadFad_36
- Track 5 : Anekin_35
- Track 6 : BenchScraper_36
- Track 7 : Isolde_36
- Track 8 : CookieBear_37, Sakai_36, Aikyam_33, Auxilium_34, Raphaella_36, Gorpy_37, BillyTP_37, YoungHarleezy_36
- Track 9 : Tiff81_34
- Track 10 : Richie_36
- Track 11 : Sashimi_35
- Track 12 : Hestia_36
- Track 13 : Globfish_36
- Track 14 : Culver_60
- Track 15 : Delian_43
- Track 16 : Guacamole_38, Zarbodnamra_39, JasperJr_38, Archis_43, MintFen_40
- Track 17 : Melba_39, Barco_38, BlingBling_37
- Track 18 : BlingBling_33
- Track 19 : Pipp_33
- Track 20 : Pipp_37
- Track 21 : CaptainKirk2_40
- Track 22 : Petra_37
- Track 23 : PhrostedPhlake_43
- Track 24 : Obliviate_36, Hitter_41
- Track 25 : Utz_31
- Track 26 : UmaThurman_35
- Track 27 : Melba_35
- Track 28 : Walrus_40
- Track 29 : Jeanie_18, McGonagall_18
- Track 30 : Coeur_19
- Track 31 : GRU3_17
- Track 32 : Rahul_19
- Track 33 : GMA5_17
- Track 34 : PatrickStar_71, Gibbles_68, Orchid_70, Kampe_71
- Track 35 : RobinSparkles_72
- Track 36 : Pytheas_34, Jablanski_34

- Track 37 : LonelyBoi_37
- Track 38 : Floral_35
- Track 39 : EMSquaredA_36, Pollux_37, Marteena_35
- Track 40 : Confidence_36
- Track 41 : EnalisNailo_34, Lilas_37
- Track 42 : Bradissa_35
- Track 43 : Bunnybear_32
- Track 44 : Beenie_30, MichaelScott_36
- Track 45 : Samman98_36, Dolores_37, Thimann_34, WinkNick_38
- Track 46 : Sekhmet_37
- Track 47 : Adora_34
- Track 48 : Annalisa_34
- Track 49 : Howe_36, Hortense_36, Shlim410_35, Twinkle_35
- Track 50 : Dorito_32, DobbysSock_30, Clark_36
- Track 51 : PhriskyACE_35
- Track 52 : Mcklovin_34
- Track 53 : Oregano_37
- Track 54 : Dmitri_38
- Track 55 : BBQValindra_35
- Track 56 : Dmitri_36
- Track 57 : BBQValindra_37
- Track 58 : Hedwig_41
- Track 59 : ZAYM_40
- Track 60 : BackstagePass_45
- Track 61 : Kiko_37
- Track 62 : Kiko_39
- Track 63 : HannahD_40, GEazy_42
- Track 64 : Bowser_39
- Track 65 : Schnabeltier_38
- Track 66 : Bowser_37
- Track 67 : TaronosaurusRx_39
- Track 68 : RayTheFireFly_45
- Track 69 : Doggs_36
- Track 70 : Coriander_39
- Track 71 : Bunker_34
- Track 72 : Bunker_36
- Track 73 : Opie_41
- Track 74 : DirtyBoi_40
- Track 75 : Eyes_36
- Track 76 : MagicMan_38
- Track 77 : Evamon_46
- Track 78 : Bakery_53
- Track 79 : Phlop_46, Wizard_46, Barb_49, Fugax_50, PinkCoffee_49, Gezellig_49
- Track 80 : Valary_49, Mutzi_47, Jambalaya_47, PullumCavea_46, ClamChowder_49, VanDeWege_50, Savbucketdawg_47, Nubi_47
- Track 81 : KimmyK_48, Togo_46
- Track 82 : Fireball_48
- Track 83 : Shinji_48
- Track 84 : Bakery_42
- Track 85 : Halo3_48, Salvador_46, Portcullis_49
- Track 86 : Twister6_49
- Track 87 : Mutzi_37
- Track 88 : Arri_50, Danyall_49, RogerDodger_50

- Track 89 : YungMoney_50
- Track 90 : SmokingBunny_47
- Track 91 : YungMoney_41
- Track 92 : TillyBobJoe_47
- Track 93 : Clown_56
- Track 94 : Camerico_75
- Track 95 : GordTnk2_72
- Track 96 : GordDuk1_71
- Track 97 : Gmala1_67
- Track 98 : GMA3_75
- Track 99 : Jumbo_69
- Track 100 : EpicDab_18
- Track 101 : SallySpecial_17
- Track 102 : Emperor_19
- Track 103 : Squiddly_37
- Track 104 : Spooky_35
- Track 105 : Sixama_89
- Track 106 : Dogfish_32
- Track 107 : Ewald_33
- Track 108 : Vordorf_34
- Track 109 : Nyceirae_34
- Track 110 : Phishy_35
- Track 111 : Meyran_33
- Track 112 : Malibo_38
- Track 113 : Santhid_30
- Track 114 : Jojo24_30
- Track 115 : DonkeyMan_31
- Track 116 : Heinz_32
- Track 117 : Hibiscus_32
- Track 118 : Tarzan_31
- Track 119 : Reyja_31
- Track 120 : ChuckDuck_35
- Track 121 : Judy_35, Constance_34
- Track 122 : PeggyLeg03_34
- Track 123 : Bridgette_34
- Track 124 : GlobiWarming_35
- Track 125 : Karkharias_34
- Track 126 : Pucara_31
- Track 127 : Popper_34
- Track 128 : Nandita_39
- Track 129 : Nandita_36
- Track 130 : Zaheer_36
- Track 131 : Gusanita_34
- Track 132 : Zaheer_39
- Track 133 : Elesar_35
- Track 134 : Cole_37
- Track 135 : Popper_37
- Track 136 : Gusanita_38
- Track 137 : Ryan_36
- Track 138 : Cole_34
- Track 139 : Ryan_39
- Track 140 : BlackSpider_31
- Track 141 : Bauer_32

- Track 142 : Zucker_29
- Track 143 : Maja_28
- Track 144 : BigBoyz_15
- Track 145 : MoRicky_20
- Track 146 : Smilerella_19
- Track 147 : Xula_28, QueenHazel_29
- Track 148 : Babsiella_33
- Track 149 : Brujita_33, Malithi_30, Island3_33, Sonah_30
- Track 150 : Purgamenstris_37
- Track 151 : Jamie19_33, Duplicity_36, Phloss_34, Fulbright_35, Parmesanjohn_36, Panchino_32, Chewbacca_37, Melville_38, Andies_33, Smurph_36, Magsby_36, Tapioca_37, SpongeBob_33, MichelleMyBell_34, Schnauzer_36, Pipsqueaks_36, Carcharodon_36, Silvafighter_37, Xerxes_36, Snekmaggedon_33, Shweta_33
- Track 152 : Phrann_37, Redi_37, ShrimpFriedEgg_37, PhancyPhin_37, BabeRuth_38, Nенаe_37
- Track 153 : Rubeelu_37, Butters_37
- Track 154 : Silvy_34, Charlie_34, Philonius_34, Journey_35, Aggie_34, Bosection6_34
- Track 155 : Kevin1_35
- Track 156 : Gex_36
- Track 157 : Scitech_31, SkinnyPete_31
- Track 158 : Raymond7_31
- Track 159 : Xeno_33
- Track 160 : Fishburne_30, Venti_30, Dynamo_30, Phineas_30
- Track 161 : Polkaroo_30, Brusacoram_30, Thespis_30
- Track 162 : Bartholomew_29, Kari_30
- Track 163 : Atcoo_30, Phalm_30, CactusJack_30, Megiddo_30, Willsammy_29, KilKor_30, StressBall_30, Glaske_30
- Track 164 : Jung_29
- Track 165 : Langerak_30, Mangethe_30, Majeke_30, FirstPlacePfu_30, Techage_30, Zilizebeth_30
- Track 166 : Arib1_30
- Track 167 : HUHilltop_30
- Track 168 : Shipwreck_32
- Track 169 : Pygmy_32, Bogie_32
- Track 170 : Necropolis_30
- Track 171 : GreaseLightnin_30
- Track 172 : Donovan_30
- Track 173 : Vidya_30
- Track 174 : Juniormint_30, Ksquared_30, Bunnies_30
- Track 175 : Jebeks_30, Camster_30
- Track 176 : StevieRay_30
- Track 177 : Phegasus_30
- Track 178 : Nazo_34, BigNuz_33
- Track 179 : Phayonce_32
- Track 180 : Purky_37
- Track 181 : 32HC_47
- Track 182 : Rem711_46
- Track 183 : Eyre_35
- Track 184 : Gudmit_35
- Track 185 : P3MA_38
- Track 186 : Whack_39
- Track 187 : IdentityCrisis_34

- Track 188 : Min1_01
- Track 189 : CyranoPS_17
- Track 190 : Trogglehumper_82
- Track 191 : Mbo2_72
- Track 192 : Reynauld_68

Summary of Final Annotations (See graph section above for start numbers):

The start number called the most often in the published annotations is 48, it was called in 53 of the 257 non-draft genes in the pham.

Genes that call this "Most Annotated" start:

- Aikyam_33, Anekin_35, Auxilium_34, Bakery_42, Bauer_32, Beenie_30, BenchScraper_36, BillyTP_37, BlackSpider_31, BlingBling_33, Bowser_37, Bradissa_35, Bridgette_34, Bunker_34, ChuckDuck_35, Cole_34, Confidence_36, Constance_34, CookieBear_37, Culver_60, Dmitri_36, Dolores_37, EMSquaredA_36, Globfish_36, GlobiWarming_35, Gorpy_37, Gusanita_34, Hestia_36, Hillester_36, Hortense_36, Howe_36, Isolde_36, Judy_35, Karkharias_34, Kiko_37, LonelyBoi_37, Maja_28, Malibo_38, Marteena_35, Mcklovin_34, MichaelScott_36, MidnightRain_38, Mutzi_37, Nandita_36, Oregano_37, PeggyLeg03_34, PhriskyACE_35, Pollux_37, Popper_34, Pucara_31, RadFad_36, Raphaella_36, Richie_36, Ryan_36, Sakai_36, Samman98_36, Sashimi_35, Seahorse_38, Shlim410_35, Thimann_34, Tiff81_34, Twinkle_35, Utz_31, WinkNick_38, YoungHarleezy_36, YungMoney_41, Zaheer_36, Zucker_29,

Genes that have the "Most Annotated" start but do not call it:

- Adora_34, Annalisa_34, BBQValindra_35, Bunnybear_32, Clark_36, DobbysSock_30, Dorito_32, EnalisNailo_34, Floral_35, Lilas_37, Melba_35, Pipp_33, Sekhmet_37,

Genes that do not have the "Most Annotated" start:

- 32HC_47, Aggie_34, Andies_33, Archis_43, Arib1_30, Arri_50, Atcoo_30, BBQValindra_37, BabeRuth_38, Babsiella_33, BackstagePass_45, Bakery_53, Barb_49, Barco_38, Bartholomew_29, BigBoyz_15, BigNuz_33, BlingBling_37, Bogie_32, Bosection6_34, Bowser_39, Brujita_33, Brusacoram_30, Bunker_36, Bunnies_30, Butters_37, CactusJack_30, Camerico_75, Camster_30, CaptainKirk2_40, Carcharodon_36, Charlie_34, Chewbacca_37, ClamChowder_49, Clown_56, Coeur_19, Cole_37, Coriander_39, CyranoPS_17, Danyall_49, Delian_43, DirtyBoi_40, Dmitri_38, Dogfish_32, Doggs_36, DonkeyMan_31, Donovan_30, Duplicity_36, Dynamo_30, Elesar_35, Emperor_19, EpicDab_18, Evamon_46, Ewald_33, Eyes_36, Eyre_35, Fireball_48, FirstPlacePfu_30, Fishburne_30, Fugax_50, Fulbright_35, GEazy_42, GMA3_75, GMA5_17, GRU3_17, Gex_36, Gezellig_49, Gibbles_68, Glaske_30, Gmala1_67, GordDuk1_71, GordTnk2_72, GreaseLightnin_30, Guacamole_38, Gudmit_35, Gusanita_38, HUHilltop_30, Halo3_48, HannahD_40, Hedwig_41, Heinz_32, Hibiscus_32, Hitter_41, IdentityCrisis_34, Island3_33, Jablanski_34, Jambalaya_47, Jamie19_33, JasperJr_38, Jeanie_18, Jebeks_30, Jojo24_30, Journey_35, Jumbo_69, Jung_29, Juniormint_30, JustASigh_45, Kampe_71, Kari_30, Kevin1_35, Kiko_39, KillKor_30, KimmyK_48, Ksquared_30, Langerak_30, MagicMan_38, Magsby_36, Majeke_30, Malithi_30, Mangethe_30, Mbo2_72, McGonagall_18, Megidido_30, Melba_39,

Melville_38, Meyran_33, MichelleMyBell_34, Min1_01, MintFen_40, MoRicky_20, Mutzi_47, Nandita_39, Nazo_34, Necropolis_30, Nенаe_37, Nubi_47, Nyceirae_34, Obliviate_36, Opie_41, Orchid_70, P3MA_38, Panchino_32, Parmesanjohn_36, PatrickStar_71, Petra_37, Phalm_30, PhancyPhin_37, Phayonce_32, Phegasus_30, Philonius_34, Phineas_30, Phishy_35, Phlop_46, Phloss_34, Phrann_37, PhrostedPhlake_43, PinkCoffee_49, Pipp_37, Pipsqueaks_36, Polkaroo_30, Popper_37, Portcullis_49, PullumCavea_46, Purgamenstris_37, Purky_37, Pygmy_32, Pytheas_34, QueenHazel_29, Rahul_19, RayTheFireFly_45, Raymond7_31, Redi_37, Rem711_46, Reyja_31, Reynauld_68, RobinSparkles_72, RogerDodger_50, Rubeelu_37, Ryan_39, SallySpecial_17, Salvador_46, Santhid_30, Savbucketdawg_47, Schnabeltier_38, Schnauzer_36, Scitech_31, Shinji_48, Shipwreck_32, ShrimpFriedEgg_37, Shweta_33, Silvafighter_37, Silvy_34, Sixama_89, SkinnyPete_31, Smilerella_19, SmokingBunny_47, Smurph_36, Snekmaggedon_33, Sonah_30, SpongeBob_33, Spooky_35, Squiddly_37, StevieRay_30, StressBall_30, Tapioca_37, TaronosaurusRx_39, Tarzan_31, Techage_30, Thespis_30, TillyBobJoe_47, Togo_46, Trogglehumper_82, Twister6_49, UmaThurman_35, Valary_49, VanDeWege_50, Venti_30, Vidya_30, Vordorf_34, Walrus_40, Whack_39, Willsammy_29, Wizard_46, Xeno_33, Xerxes_36, Xula_28, YungMoney_50, ZAYM_40, Zaheer_39, Zarbodnamra_39, Zilizebeth_30,

Summary by start number:

Start 16:

- Found in 2 of 302 (0.7%) of genes in pham
- Manual Annotations of this start: 1 of 257
- Called 100.0% of time when present
- Phage (with cluster) where this start called: 32HC_47 (Z), Rem711_46 (Z),

Start 20:

- Found in 2 of 302 (0.7%) of genes in pham
- Manual Annotations of this start: 1 of 257
- Called 50.0% of time when present
- Phage (with cluster) where this start called: Jojo24_30 (DY),

Start 21:

- Found in 1 of 302 (0.3%) of genes in pham
- Manual Annotations of this start: 1 of 257
- Called 100.0% of time when present
- Phage (with cluster) where this start called: P3MA_38 (singleton),

Start 22:

- Found in 5 of 302 (1.7%) of genes in pham
- Manual Annotations of this start: 1 of 257
- Called 20.0% of time when present
- Phage (with cluster) where this start called: Santhid_30 (DY),

Start 30:

- Found in 34 of 302 (11.3%) of genes in pham
- Manual Annotations of this start: 18 of 257
- Called 55.9% of time when present
- Phage (with cluster) where this start called: Arri_50 (DC1), Bakery_53 (DC1), ClamChowder_49 (DC1), Danyall_49 (DC1), GRU3_17 (CW2), Halo3_48 (DC1),

Hibiscus_32 (DY), Jambalaya_47 (DC1), Mutzi_47 (DC1), Nubi_47 (DC1), PhrostedPhlake_43 (CV), Pipp_37 (CV), Portcullis_49 (DC1), PullumCavea_46 (DC1), RogerDodger_50 (DC1), Salvador_46 (DC1), Savbucketdawg_47 (DC1), Valary_49 (DC1), VanDeWege_50 (DC1),

Start 31:

- Found in 1 of 302 (0.3%) of genes in pham
- No Manual Annotations of this start.
- Called 100.0% of time when present
- Phage (with cluster) where this start called: Smilerella_19 (GH),

Start 34:

- Found in 42 of 302 (13.9%) of genes in pham
- Manual Annotations of this start: 36 of 257
- Called 95.2% of time when present
- Phage (with cluster) where this start called: Aggie_34 (N), Andies_33 (N), BabeRuth_38 (N), Bosection6_34 (N), Butters_37 (N), Carcharodon_36 (N), Charlie_34 (N), Chewbacca_37 (N), Duplicity_36 (N), Fulbright_35 (N), Jamie19_33 (N), Journey_35 (N), Kevin1_35 (N), Magsby_36 (N), Melville_38 (N), MichelleMyBell_34 (N), Nenae_37 (N), Panchino_32 (N), Parmesanjohn_36 (N), PhancyPhin_37 (N), Philonius_34 (N), Phloss_34 (N), Phrann_37 (N), Pipsqueaks_36 (N), Raymond7_31 (N), Redi_37 (N), Rubeelu_37 (N), Schnauzer_36 (N), Scitech_31 (N), ShrimpFriedEgg_37 (N), Shweta_33 (N), Silvafighter_37 (N), Silvy_34 (N), SkinnyPete_31 (N), Smurph_36 (N), Snekmaggedon_33 (N), SpongeBob_33 (N), Tapioca_37 (N), Xeno_33 (N), Xerxes_36 (N),

Start 35:

- Found in 4 of 302 (1.3%) of genes in pham
- Manual Annotations of this start: 3 of 257
- Called 75.0% of time when present
- Phage (with cluster) where this start called: Jeanie_18 (CW1), McGonagall_18 (CW1), UmaThurman_35 (CV),

Start 39:

- Found in 1 of 302 (0.3%) of genes in pham
- Manual Annotations of this start: 1 of 257
- Called 100.0% of time when present
- Phage (with cluster) where this start called: JustASigh_45 (AH),

Start 44:

- Found in 49 of 302 (16.2%) of genes in pham
- Manual Annotations of this start: 34 of 257
- Called 69.4% of time when present
- Phage (with cluster) where this start called: Arib1_30 (P1), Atcoo_30 (P1), Babsiella_33 (I1), Bogie_32 (P1), Brujita_33 (I1), Bunnies_30 (P1), CactusJack_30 (P1), Donovan_30 (P1), Dynamo_30 (P1), FirstPlacePfu_30 (P1), Fishburne_30 (P1), Glaske_30 (P1), GreaseLightnin_30 (P1), HUHilltop_30 (P1), Island3_33 (I1), Juniormint_30 (P1), KilKor_30 (P1), Ksquared_30 (P1), Langerak_30 (P1), Majeke_30 (P1), Malithi_30 (P1), Mangethe_30 (P1), Megiddo_30 (P1), Necropolis_30 (P1), Phalm_30 (P1), Phegasus_30 (P1), Phineas_30 (P1), Pygmy_32 (P1), Sonah_30 (P1), StressBall_30 (P1), Techage_30 (P1), Venti_30 (P1), Willsammy_29 (P1), Zilizebeth_30 (P1),

Start 46:

- Found in 47 of 302 (15.6%) of genes in pham
- Manual Annotations of this start: 16 of 257
- Called 36.2% of time when present
- Phage (with cluster) where this start called: Adora_34 (CZ4), Annalisa_34 (CZ4), BBQValindra_35 (DB), Bunnybear_32 (CZ), Clark_36 (CZ4), DobbysSock_30 (CZ4), Dorito_32 (CZ4), EnalisNailo_34 (CY1), Floral_35 (CY1), Jablanski_34 (CY), Lilas_37 (CY1), Melba_35 (CV), Pipp_33 (CV), Pytheas_34 (CY), Sekhmet_37 (CZ4), Spooky_35 (DN2), Squiddly_37 (DN2),

Start 47:

- Found in 14 of 302 (4.6%) of genes in pham
- Manual Annotations of this start: 8 of 257
- Called 57.1% of time when present
- Phage (with cluster) where this start called: Archis_43 (CV), Delian_43 (CV), Guacamole_38 (CV), Hitter_41 (CV), JasperJr_38 (CV), MintFen_40 (CV), Obliviate_36 (CV), Zarbodnamra_39 (CV),

Start 48:

- Found in 81 of 302 (26.8%) of genes in pham
- Manual Annotations of this start: 53 of 257
- Called 84.0% of time when present
- Phage (with cluster) where this start called: Aikyam_33 (AY), Anekin_35 (AY), Auxilium_34 (AY), Bakery_42 (DC1), Bauer_32 (FN), Beenie_30 (CZ4), BenchScraper_36 (AY), BillyTP_37 (AY), BlackSpider_31 (FN), BlingBling_33 (CV), Bowser_37 (DB), Bradissa_35 (CY1), Bridgette_34 (FA), Bunker_34 (DB), ChuckDuck_35 (FA), Cole_34 (FF), Confidence_36 (CY1), Constance_34 (FA), CookieBear_37 (AY), Culver_60 (CQ1), Dmitri_36 (DB), Dolores_37 (CZ4), EMSquaredA_36 (CY1), Globfish_36 (AY), GlobiWarming_35 (FA), Gorpy_37 (AY), Gusanita_34 (FF), Hestia_36 (AY), Hillester_36 (AY), Hortense_36 (CZ4), Howe_36 (CZ4), Isolde_36 (AY), Judy_35 (FA), Karkharias_34 (FA), Kiko_37 (DB), LonelyBoi_37 (CY), Maja_28 (FO), Malibo_38 (DW), Marteena_35 (CY1), Mcklovin_34 (CZ4), MichaelScott_36 (CZ4), MidnightRain_38 (AY), Mutzi_37 (DC1), Nandita_36 (FF), Oregano_37 (CZ4), PeggyLeg03_34 (FA), PhriskyACE_35 (CZ4), Pollux_37 (CY1), Popper_34 (FF), Pucara_31 (FA), RadFad_36 (AY), Raphaella_36 (AY), Richie_36 (AY), Ryan_36 (FF), Sakai_36 (AY), Samman98_36 (CZ4), Sashimi_35 (AY), Seahorse_38 (AY), Shlim410_35 (CZ4), Thimann_34 (CZ4), Tiff81_34 (AY), Twinkle_35 (CZ4), Utz_31 (CV), WinkNick_38 (CZ4), YoungHarleezy_36 (AY), YungMoney_41 (DC1), Zaheer_36 (FF), Zucker_29 (FN),

Start 52:

- Found in 32 of 302 (10.6%) of genes in pham
- Manual Annotations of this start: 5 of 257
- Called 21.9% of time when present
- Phage (with cluster) where this start called: Barb_49 (DC1), Fugax_50 (DC1), Gezellig_49 (DC1), Phlop_46 (DC1), PinkCoffee_49 (DC1), Shinji_48 (DC1), Wizard_46 (DC1),

Start 53:

- Found in 36 of 302 (11.9%) of genes in pham
- Manual Annotations of this start: 1 of 257
- Called 5.6% of time when present
- Phage (with cluster) where this start called: Evamon_46 (DC1), Heinz_32 (DY),

Start 55:

- Found in 21 of 302 (7.0%) of genes in pham
- Manual Annotations of this start: 1 of 257
- Called 4.8% of time when present
- Phage (with cluster) where this start called: Gudmit_35 (singleton),

Start 56:

- Found in 1 of 302 (0.3%) of genes in pham
- Manual Annotations of this start: 1 of 257
- Called 100.0% of time when present
- Phage (with cluster) where this start called: Whack_39 (singleton),

Start 57:

- Found in 6 of 302 (2.0%) of genes in pham
- Manual Annotations of this start: 1 of 257
- Called 16.7% of time when present
- Phage (with cluster) where this start called: DirtyBoi_40 (DB),

Start 62:

- Found in 48 of 302 (15.9%) of genes in pham
- Manual Annotations of this start: 3 of 257
- Called 6.2% of time when present
- Phage (with cluster) where this start called: KimmyK_48 (DC1), Togo_46 (DC1), Twister6_49 (DC1),

Start 64:

- Found in 14 of 302 (4.6%) of genes in pham
- Manual Annotations of this start: 1 of 257
- Called 7.1% of time when present
- Phage (with cluster) where this start called: Sixama_89 (DS),

Start 66:

- Found in 30 of 302 (9.9%) of genes in pham
- Manual Annotations of this start: 1 of 257
- Called 3.3% of time when present
- Phage (with cluster) where this start called: SmokingBunny_47 (DC1),

Start 68:

- Found in 2 of 302 (0.7%) of genes in pham
- Manual Annotations of this start: 2 of 257
- Called 100.0% of time when present
- Phage (with cluster) where this start called: BigNuz_33 (P4), Nazo_34 (P4),

Start 69:

- Found in 5 of 302 (1.7%) of genes in pham
- Manual Annotations of this start: 3 of 257
- Called 60.0% of time when present
- Phage (with cluster) where this start called: Emperor_19 (DM), EpicDab_18 (DM), Rahul_19 (CW2),

Start 70:

- Found in 1 of 302 (0.3%) of genes in pham

- Manual Annotations of this start: 1 of 257
- Called 100.0% of time when present
- Phage (with cluster) where this start called: Camerico_75 (DF),

Start 72:

- Found in 23 of 302 (7.6%) of genes in pham
- Manual Annotations of this start: 2 of 257
- Called 8.7% of time when present
- Phage (with cluster) where this start called: Petra_37 (CV), Trogglehumper_82 (singleton),

Start 74:

- Found in 9 of 302 (3.0%) of genes in pham
- Manual Annotations of this start: 5 of 257
- Called 100.0% of time when present
- Phage (with cluster) where this start called: Coeur_19 (CW2), CyranoPS_17 (singleton), Dogfish_32 (DT), Ewald_33 (DT), Meyran_33 (DT), MoRicky_20 (GH), Phishy_35 (DT), Vordorf_34 (DT), ZAYM_40 (DB),

Start 75:

- Found in 15 of 302 (5.0%) of genes in pham
- Manual Annotations of this start: 11 of 257
- Called 93.3% of time when present
- Phage (with cluster) where this start called: BBQValindra_37 (DB), BackstagePass_45 (DB), Coriander_39 (DB), Dmitri_38 (DB), Doggs_36 (DB), Eyes_36 (DB), GEazy_42 (DB), HannahD_40 (DB), Kiko_39 (DB), MagicMan_38 (DB), Nyceirae_34 (DT), Opie_41 (DB), Schnabeltier_38 (DB), TaronosaurusRx_39 (DB),

Start 76:

- Found in 52 of 302 (17.2%) of genes in pham
- Manual Annotations of this start: 12 of 257
- Called 28.8% of time when present
- Phage (with cluster) where this start called: Bartholomew_29 (P1), Brusacoram_30 (P1), Camster_30 (P1), Jebeks_30 (P1), Jung_29 (P1), Kari_30 (P1), Phayonce_32 (P5), Polkaroo_30 (P1), Purky_37 (P6), QueenHazel_29 (I1), Shipwreck_32 (P1), StevieRay_30 (P1), Thespis_30 (P1), Vidya_30 (P1), Xula_28 (I1),

Start 77:

- Found in 87 of 302 (28.8%) of genes in pham
- Manual Annotations of this start: 1 of 257
- Called 1.1% of time when present
- Phage (with cluster) where this start called: Bunker_36 (DB),

Start 78:

- Found in 37 of 302 (12.3%) of genes in pham
- Manual Annotations of this start: 5 of 257
- Called 16.2% of time when present
- Phage (with cluster) where this start called: Barco_38 (CV), BlingBling_37 (CV), Eyre_35 (singleton), GMA5_17 (CW2), Hedwig_41 (DB), Melba_39 (CV),

Start 79:

- Found in 2 of 302 (0.7%) of genes in pham

- Manual Annotations of this start: 1 of 257
- Called 50.0% of time when present
- Phage (with cluster) where this start called: IdentityCrisis_34 (singleton),

Start 80:

- Found in 16 of 302 (5.3%) of genes in pham
- Manual Annotations of this start: 2 of 257
- Called 12.5% of time when present
- Phage (with cluster) where this start called: Bowser_39 (DB), Clown_56 (DC2),

Start 83:

- Found in 7 of 302 (2.3%) of genes in pham
- Manual Annotations of this start: 1 of 257
- Called 14.3% of time when present
- Phage (with cluster) where this start called: Purgamenstris_37 (N),

Start 85:

- Found in 7 of 302 (2.3%) of genes in pham
- Manual Annotations of this start: 1 of 257
- Called 28.6% of time when present
- Phage (with cluster) where this start called: BigBoyz_15 (GH), TillyBobJoe_47 (DC1),

Start 87:

- Found in 31 of 302 (10.3%) of genes in pham
- Manual Annotations of this start: 1 of 257
- Called 3.2% of time when present
- Phage (with cluster) where this start called: Gex_36 (N),

Start 88:

- Found in 28 of 302 (9.3%) of genes in pham
- Manual Annotations of this start: 6 of 257
- Called 25.0% of time when present
- Phage (with cluster) where this start called: CaptainKirk2_40 (CV), DonkeyMan_31 (DY), Fireball_48 (DC1), RayTheFireFly_45 (DB), Tarzan_31 (DY), Walrus_40 (CV), YungMoney_50 (DC1),

Start 89:

- Found in 6 of 302 (2.0%) of genes in pham
- Manual Annotations of this start: 1 of 257
- Called 16.7% of time when present
- Phage (with cluster) where this start called: SallySpecial_17 (DM),

Start 90:

- Found in 8 of 302 (2.6%) of genes in pham
- Manual Annotations of this start: 7 of 257
- Called 87.5% of time when present
- Phage (with cluster) where this start called: Cole_37 (FF), Elesar_35 (FF), Gusanita_38 (FF), Nandita_39 (FF), Popper_37 (FF), Ryan_39 (FF), Zaheer_39 (FF),

Start 91:

- Found in 3 of 302 (1.0%) of genes in pham
- Manual Annotations of this start: 1 of 257

- Called 66.7% of time when present
- Phage (with cluster) where this start called: Mbo2_72 (singleton), Reynauld_68 (singleton),

Start 94:

- Found in 1 of 302 (0.3%) of genes in pham
- Manual Annotations of this start: 1 of 257
- Called 100.0% of time when present
- Phage (with cluster) where this start called: RobinSparkles_72 (CX),

Start 98:

- Found in 3 of 302 (1.0%) of genes in pham
- No Manual Annotations of this start.
- Called 100.0% of time when present
- Phage (with cluster) where this start called: Gmala1_67 (DF1), GordDuk1_71 (DF1), GordTnk2_72 (DF1),

Start 100:

- Found in 2 of 302 (0.7%) of genes in pham
- Manual Annotations of this start: 1 of 257
- Called 100.0% of time when present
- Phage (with cluster) where this start called: GMA3_75 (DF2), Jumbo_69 (DF3),

Start 104:

- Found in 5 of 302 (1.7%) of genes in pham
- Manual Annotations of this start: 4 of 257
- Called 80.0% of time when present
- Phage (with cluster) where this start called: Gibbles_68 (CX), Kampe_71 (CX), Orchid_70 (CX), PatrickStar_71 (CX),

Start 125:

- Found in 59 of 302 (19.5%) of genes in pham
- Manual Annotations of this start: 1 of 257
- Called 1.7% of time when present
- Phage (with cluster) where this start called: Reyja_31 (DY),

Start 169:

- Found in 6 of 302 (2.0%) of genes in pham
- No Manual Annotations of this start.
- Called 16.7% of time when present
- Phage (with cluster) where this start called: Min1_01 (singleton),

Summary by clusters:

There are 37 clusters represented in this pham: singleton, DM, DF, DB, CZ4, FA, FF, DY, DW, DT, DS, FN, FO, CW1, CW2, DF1, DF3, DF2, DN2, CQ1, GH, CY1, P1, P6, P4, P5, AH, N, CZ, CY, CX, AY, Z, DC2, CV, DC1, I1,

Info for manual annotations of cluster AH:

- Start number 39 was manually annotated 1 time for cluster AH.

Info for manual annotations of cluster AY:

- Start number 48 was manually annotated 10 times for cluster AY.

Info for manual annotations of cluster CQ1:

- Start number 48 was manually annotated 1 time for cluster CQ1.

Info for manual annotations of cluster CV:

- Start number 30 was manually annotated 2 times for cluster CV.
- Start number 35 was manually annotated 1 time for cluster CV.
- Start number 46 was manually annotated 2 times for cluster CV.
- Start number 47 was manually annotated 8 times for cluster CV.
- Start number 48 was manually annotated 2 times for cluster CV.
- Start number 72 was manually annotated 1 time for cluster CV.
- Start number 78 was manually annotated 3 times for cluster CV.
- Start number 88 was manually annotated 2 times for cluster CV.

Info for manual annotations of cluster CW1:

- Start number 35 was manually annotated 2 times for cluster CW1.

Info for manual annotations of cluster CW2:

- Start number 69 was manually annotated 1 time for cluster CW2.
- Start number 74 was manually annotated 1 time for cluster CW2.

Info for manual annotations of cluster CX:

- Start number 94 was manually annotated 1 time for cluster CX.
- Start number 104 was manually annotated 4 times for cluster CX.

Info for manual annotations of cluster CY:

- Start number 46 was manually annotated 2 times for cluster CY.
- Start number 48 was manually annotated 1 time for cluster CY.

Info for manual annotations of cluster CY1:

- Start number 46 was manually annotated 3 times for cluster CY1.
- Start number 48 was manually annotated 5 times for cluster CY1.

Info for manual annotations of cluster CZ:

- Start number 46 was manually annotated 1 time for cluster CZ.

Info for manual annotations of cluster CZ4:

- Start number 46 was manually annotated 5 times for cluster CZ4.
- Start number 48 was manually annotated 12 times for cluster CZ4.

Info for manual annotations of cluster DB:

- Start number 46 was manually annotated 1 time for cluster DB.
- Start number 48 was manually annotated 4 times for cluster DB.
- Start number 57 was manually annotated 1 time for cluster DB.
- Start number 75 was manually annotated 10 times for cluster DB.
- Start number 77 was manually annotated 1 time for cluster DB.
- Start number 78 was manually annotated 1 time for cluster DB.
- Start number 80 was manually annotated 1 time for cluster DB.
- Start number 88 was manually annotated 1 time for cluster DB.

Info for manual annotations of cluster DC1:

- Start number 30 was manually annotated 15 times for cluster DC1.
- Start number 48 was manually annotated 3 times for cluster DC1.

- Start number 52 was manually annotated 5 times for cluster DC1.
- Start number 53 was manually annotated 1 time for cluster DC1.
- Start number 62 was manually annotated 3 times for cluster DC1.
- Start number 66 was manually annotated 1 time for cluster DC1.
- Start number 85 was manually annotated 1 time for cluster DC1.
- Start number 88 was manually annotated 2 times for cluster DC1.

Info for manual annotations of cluster DC2:

- Start number 80 was manually annotated 1 time for cluster DC2.

Info for manual annotations of cluster DF:

- Start number 70 was manually annotated 1 time for cluster DF.

Info for manual annotations of cluster DF3:

- Start number 100 was manually annotated 1 time for cluster DF3.

Info for manual annotations of cluster DM:

- Start number 69 was manually annotated 2 times for cluster DM.
- Start number 89 was manually annotated 1 time for cluster DM.

Info for manual annotations of cluster DN2:

- Start number 46 was manually annotated 2 times for cluster DN2.

Info for manual annotations of cluster DS:

- Start number 64 was manually annotated 1 time for cluster DS.

Info for manual annotations of cluster DT:

- Start number 74 was manually annotated 4 times for cluster DT.
- Start number 75 was manually annotated 1 time for cluster DT.

Info for manual annotations of cluster DW:

- Start number 48 was manually annotated 1 time for cluster DW.

Info for manual annotations of cluster DY:

- Start number 20 was manually annotated 1 time for cluster DY.
- Start number 22 was manually annotated 1 time for cluster DY.
- Start number 30 was manually annotated 1 time for cluster DY.
- Start number 88 was manually annotated 1 time for cluster DY.
- Start number 125 was manually annotated 1 time for cluster DY.

Info for manual annotations of cluster FA:

- Start number 48 was manually annotated 5 times for cluster FA.

Info for manual annotations of cluster FF:

- Start number 48 was manually annotated 6 times for cluster FF.
- Start number 90 was manually annotated 7 times for cluster FF.

Info for manual annotations of cluster FN:

- Start number 48 was manually annotated 2 times for cluster FN.

Info for manual annotations of cluster FO:

- Start number 48 was manually annotated 1 time for cluster FO.

Info for manual annotations of cluster I1:

- Start number 44 was manually annotated 3 times for cluster I1.
- Start number 76 was manually annotated 2 times for cluster I1.

Info for manual annotations of cluster N:

- Start number 34 was manually annotated 36 times for cluster N.
- Start number 83 was manually annotated 1 time for cluster N.
- Start number 87 was manually annotated 1 time for cluster N.

Info for manual annotations of cluster P1:

- Start number 44 was manually annotated 31 times for cluster P1.
- Start number 76 was manually annotated 8 times for cluster P1.

Info for manual annotations of cluster P4:

- Start number 68 was manually annotated 2 times for cluster P4.

Info for manual annotations of cluster P5:

- Start number 76 was manually annotated 1 time for cluster P5.

Info for manual annotations of cluster P6:

- Start number 76 was manually annotated 1 time for cluster P6.

Info for manual annotations of cluster Z:

- Start number 16 was manually annotated 1 time for cluster Z.

Gene Information:

Gene: 32HC_47 Start: 33699, Stop: 32656, Start Num: 16

Candidate Starts for 32HC_47:

(Start: 16 @33699 has 1 MA's), (73, 33564), (86, 33540), (103, 33504), (112, 33483), (115, 33474), (142, 33411), (148, 33396), (150, 33390), (177, 33303), (180, 33297), (181, 33294), (186, 33270), (213, 33198), (220, 33183), (228, 33165), (230, 33162), (239, 33129), (258, 33069), (273, 33012), (278, 33000), (303, 32907), (321, 32847), (327, 32817),

Gene: Adora_34 Start: 29404, Stop: 30327, Start Num: 46

Candidate Starts for Adora_34:

(Start: 46 @29404 has 16 MA's), (Start: 48 @29410 has 53 MA's), (139, 29599), (143, 29605), (174, 29707), (184, 29731), (202, 29791), (232, 29848), (234, 29854), (236, 29860), (266, 29974), (267, 29980), (270, 29992), (291, 30067), (296, 30091), (297, 30094), (312, 30130), (313, 30136), (319, 30169), (327, 30205), (336, 30250),

Gene: Aggie_34 Start: 27389, Stop: 26418, Start Num: 34

Candidate Starts for Aggie_34:

(Start: 34 @27389 has 36 MA's), (37, 27380), (Start: 77 @27305 has 1 MA's), (Start: 87 @27290 has 1 MA's), (142, 27167), (151, 27143), (186, 27026), (188, 27023), (194, 27002), (208, 26963), (210, 26960), (213, 26954), (220, 26939), (230, 26918), (235, 26903), (248, 26846), (253, 26834), (266, 26795), (273, 26768), (278, 26756), (283, 26729), (294, 26690), (303, 26666), (308, 26651), (339, 26522), (354, 26468), (364, 26435),

Gene: Aikyam_33 Start: 22410, Stop: 23327, Start Num: 48

Candidate Starts for Aikyam_33:

(9, 22281), (11, 22287), (Start: 48 @22410 has 53 MA's), (121, 22566), (129, 22581), (135, 22593), (185, 22740), (187, 22749), (200, 22788), (223, 22833), (234, 22857), (236, 22863), (242, 22896), (254, 22938), (259, 22947), (268, 22989), (291, 23073), (323, 23193), (327, 23208),

Gene: Andies_33 Start: 27907, Stop: 26936, Start Num: 34

Candidate Starts for Andies_33:

(Start: 34 @27907 has 36 MA's), (Start: 77 @27823 has 1 MA's), (Start: 87 @27808 has 1 MA's), (142, 27685), (151, 27661), (186, 27544), (188, 27541), (194, 27520), (208, 27481), (210, 27478), (213, 27472), (220, 27457), (230, 27436), (235, 27421), (248, 27364), (253, 27352), (266, 27313), (273, 27286), (278, 27274), (283, 27247), (294, 27208), (303, 27184), (308, 27169), (339, 27040), (343, 27025), (354, 26986),

Gene: Anekin_35 Start: 24275, Stop: 25195, Start Num: 48

Candidate Starts for Anekin_35:

(9, 24146), (14, 24173), (29, 24233), (Start: 48 @24275 has 53 MA's), (107, 24389), (113, 24404), (121, 24431), (130, 24449), (156, 24518), (185, 24608), (187, 24617), (200, 24656), (234, 24725), (236, 24731), (242, 24764), (254, 24806), (259, 24815),

Gene: Annalisa_34 Start: 27176, Stop: 28099, Start Num: 46

Candidate Starts for Annalisa_34:

(Start: 46 @27176 has 16 MA's), (Start: 48 @27182 has 53 MA's), (139, 27371), (143, 27377), (174, 27479), (184, 27503), (202, 27563), (232, 27620), (234, 27626), (236, 27632), (266, 27746), (267, 27752), (270, 27764), (291, 27839), (296, 27863), (297, 27866), (312, 27902), (313, 27908), (315, 27920), (336, 28022),

Gene: Archis_43 Start: 32279, Stop: 31389, Start Num: 47

Candidate Starts for Archis_43:

(Start: 47 @32279 has 8 MA's), (Start: 55 @32258 has 1 MA's), (Start: 62 @32243 has 3 MA's), (Start: 72 @32225 has 2 MA's), (Start: 78 @32216 has 5 MA's), (Start: 88 @32198 has 6 MA's), (117, 32132), (230, 31826), (258, 31733), (265, 31706), (278, 31664), (294, 31604), (303, 31580), (316, 31544), (332, 31463),

Gene: Arib1_30 Start: 26880, Stop: 25924, Start Num: 44

Candidate Starts for Arib1_30:

(Start: 44 @26880 has 34 MA's), (58, 26850), (Start: 76 @26817 has 12 MA's), (Start: 77 @26814 has 1 MA's), (Start: 125 @26742 has 1 MA's), (128, 26733), (131, 26727), (151, 26682), (186, 26565), (188, 26562), (189, 26559), (199, 26529), (201, 26517), (208, 26502), (217, 26484), (230, 26457), (238, 26430), (239, 26424), (255, 26370), (258, 26364), (278, 26295), (303, 26211), (308, 26196), (330, 26109), (339, 26067), (369, 25938),

Gene: Arri_50 Start: 39538, Stop: 38603, Start Num: 30

Candidate Starts for Arri_50:

(Start: 30 @39538 has 18 MA's), (Start: 52 @39490 has 5 MA's), (Start: 53 @39487 has 1 MA's), (Start: 62 @39469 has 3 MA's), (Start: 66 @39460 has 1 MA's), (128, 39328), (193, 39145), (197, 39133), (206, 39103), (208, 39100), (230, 39058), (242, 39007), (253, 38968), (255, 38965), (314, 38764), (316, 38755), (328, 38695), (339, 38647), (343, 38632), (345, 38620),

Gene: Atcoo_30 Start: 27362, Stop: 26406, Start Num: 44

Candidate Starts for Atcoo_30:

(Start: 44 @27362 has 34 MA's), (Start: 76 @27299 has 12 MA's), (Start: 77 @27296 has 1 MA's), (Start: 125 @27224 has 1 MA's), (128, 27215), (151, 27164), (186, 27047), (188, 27044), (189, 27041), (199, 27011), (201, 26999), (208, 26984), (217, 26966), (230, 26939), (238, 26912), (239, 26906), (255, 26852), (258, 26846), (263, 26828), (278, 26777), (303, 26693), (327, 26603), (330, 26591), (339, 26549), (369, 26420),

Gene: Auxilium_34 Start: 22112, Stop: 23029, Start Num: 48

Candidate Starts for Auxilium_34:

(9, 21983), (11, 21989), (Start: 48 @22112 has 53 MA's), (121, 22268), (129, 22283), (135, 22295), (185, 22442), (187, 22451), (200, 22490), (223, 22535), (234, 22559), (236, 22565), (242, 22598), (254, 22640), (259, 22649), (268, 22691), (291, 22775), (323, 22895), (327, 22910),

Gene: BBQValindra_35 Start: 29573, Stop: 30496, Start Num: 46

Candidate Starts for BBQValindra_35:

(Start: 46 @29573 has 16 MA's), (Start: 48 @29579 has 53 MA's), (139, 29768), (143, 29774), (184, 29900), (198, 29945), (202, 29960), (234, 30023), (239, 30044), (267, 30149), (270, 30161), (284, 30215), (291, 30236), (297, 30263), (341, 30440), (350, 30467),

Gene: BBQValindra_37 Start: 32011, Stop: 31118, Start Num: 75

Candidate Starts for BBQValindra_37:

(Start: 75 @32011 has 11 MA's), (Start: 78 @32005 has 5 MA's), (Start: 80 @32002 has 2 MA's), (106, 31945), (108, 31942), (122, 31900), (128, 31885), (175, 31765), (189, 31720), (191, 31714), (231, 31618), (270, 31471), (278, 31447), (287, 31417), (316, 31324), (334, 31237), (339, 31216), (344, 31192),

Gene: BabeRuth_38 Start: 29036, Stop: 28065, Start Num: 34

Candidate Starts for BabeRuth_38:

(Start: 34 @29036 has 36 MA's), (Start: 77 @28952 has 1 MA's), (Start: 83 @28943 has 1 MA's), (151, 28790), (186, 28673), (188, 28670), (208, 28610), (213, 28601), (220, 28586), (230, 28565), (236, 28547), (253, 28481), (273, 28415), (278, 28403), (283, 28376), (294, 28337), (303, 28313), (308, 28298), (327, 28223), (339, 28169),

Gene: Babsiella_33 Start: 28104, Stop: 27151, Start Num: 44

Candidate Starts for Babsiella_33:

(Start: 44 @28104 has 34 MA's), (67, 28053), (Start: 76 @28041 has 12 MA's), (128, 27957), (138, 27939), (186, 27789), (188, 27786), (189, 27783), (199, 27753), (201, 27741), (208, 27726), (213, 27717), (217, 27708), (230, 27681), (239, 27648), (255, 27594), (258, 27588), (273, 27531), (278, 27519), (303, 27435), (308, 27420), (327, 27345), (330, 27333), (332, 27318), (339, 27291), (365, 27198), (368, 27183),

Gene: BackstagePass_45 Start: 32457, Stop: 31561, Start Num: 75

Candidate Starts for BackstagePass_45:

(42, 32523), (Start: 75 @32457 has 11 MA's), (Start: 78 @32451 has 5 MA's), (Start: 80 @32448 has 2 MA's), (97, 32412), (106, 32391), (108, 32388), (122, 32346), (128, 32331), (175, 32211), (189, 32166), (191, 32160), (231, 32064), (233, 32058), (238, 32040), (278, 31893), (287, 31863), (316, 31770), (322, 31743), (334, 31683), (344, 31638), (362, 31581),

Gene: Bakery_53 Start: 40679, Stop: 39744, Start Num: 30

Candidate Starts for Bakery_53:

(Start: 30 @40679 has 18 MA's), (Start: 52 @40631 has 5 MA's), (Start: 53 @40628 has 1 MA's), (Start: 62 @40610 has 3 MA's), (95, 40553), (128, 40469), (197, 40274), (206, 40244), (208, 40241), (230, 40199), (240, 40157), (242, 40148), (253, 40109), (314, 39905), (328, 39836), (339, 39788), (343, 39773), (345, 39761),

Gene: Bakery_42 Start: 33465, Stop: 34382, Start Num: 48

Candidate Starts for Bakery_42:

(Start: 46 @33459 has 16 MA's), (Start: 48 @33465 has 53 MA's), (111, 33582), (112, 33585), (137, 33648), (139, 33654), (143, 33660), (202, 33846), (231, 33900), (232, 33903), (234, 33909), (239, 33930), (266, 34029), (267, 34035), (270, 34047), (291, 34122), (297, 34149), (318, 34221), (327, 34260), (356, 34374),

Gene: Barb_49 Start: 39609, Stop: 38722, Start Num: 52

Candidate Starts for Barb_49:

(Start: 30 @39657 has 18 MA's), (Start: 52 @39609 has 5 MA's), (Start: 53 @39606 has 1 MA's), (Start: 62 @39588 has 3 MA's), (Start: 66 @39579 has 1 MA's), (128, 39447), (193, 39264), (197, 39252), (208, 39219), (230, 39177), (242, 39126), (253, 39087), (314, 38883), (316, 38874), (328, 38814), (339, 38766), (343, 38751), (345, 38739),

Gene: Barco_38 Start: 31266, Stop: 30439, Start Num: 78

Candidate Starts for Barco_38:

(Start: 47 @31329 has 8 MA's), (Start: 55 @31308 has 1 MA's), (Start: 62 @31293 has 3 MA's), (Start: 72 @31275 has 2 MA's), (Start: 78 @31266 has 5 MA's), (Start: 88 @31248 has 6 MA's), (117, 31182), (230, 30876), (258, 30783), (265, 30756), (278, 30714), (294, 30654), (303, 30630), (316, 30594), (332, 30513),

Gene: Bartholomew_29 Start: 26812, Stop: 25919, Start Num: 76

Candidate Starts for Bartholomew_29:

(Start: 44 @26875 has 34 MA's), (58, 26845), (Start: 76 @26812 has 12 MA's), (Start: 77 @26809 has 1 MA's), (Start: 125 @26737 has 1 MA's), (128, 26728), (131, 26722), (151, 26677), (186, 26560), (188, 26557), (189, 26554), (199, 26524), (201, 26512), (208, 26497), (217, 26479), (230, 26452), (238, 26425), (239, 26419), (255, 26365), (258, 26359), (278, 26290), (303, 26206), (321, 26146), (330, 26104), (339, 26062), (369, 25933),

Gene: Bauer_32 Start: 24145, Stop: 25065, Start Num: 48

Candidate Starts for Bauer_32:

(Start: 48 @24145 has 53 MA's), (107, 24259), (121, 24301), (130, 24319), (135, 24331), (156, 24388), (185, 24478), (200, 24526), (234, 24595), (236, 24601), (242, 24634), (250, 24658), (323, 24931), (327, 24946), (328, 24952),

Gene: Beenie_30 Start: 27395, Stop: 28312, Start Num: 48

Candidate Starts for Beenie_30:

(Start: 46 @27389 has 16 MA's), (Start: 48 @27395 has 53 MA's), (139, 27584), (143, 27590), (174, 27692), (184, 27716), (202, 27776), (232, 27833), (234, 27839), (236, 27845), (266, 27959), (267, 27965), (270, 27977), (291, 28052), (296, 28076), (297, 28079), (312, 28115), (313, 28121), (319, 28154), (336, 28235),

Gene: BenchScraper_36 Start: 24587, Stop: 25504, Start Num: 48

Candidate Starts for BenchScraper_36:

(9, 24458), (11, 24464), (Start: 48 @24587 has 53 MA's), (121, 24743), (129, 24758), (135, 24770), (185, 24917), (200, 24965), (223, 25010), (234, 25034), (236, 25040), (242, 25073), (259, 25124), (291, 25250), (297, 25277), (323, 25370), (350, 25475),

Gene: BigBoyz_15 Start: 12973, Stop: 12104, Start Num: 85

Candidate Starts for BigBoyz_15:

(Start: 85 @12973 has 1 MA's), (99, 12943), (138, 12850), (147, 12832), (158, 12793), (192, 12688), (193, 12685), (194, 12679), (213, 12631), (230, 12595), (239, 12562), (242, 12544), (269, 12457),

(278, 12433), (294, 12367), (326, 12247), (327, 12244), (353, 12139), (359, 12115),

Gene: BigNuz_33 Start: 28934, Stop: 28032, Start Num: 68

Candidate Starts for BigNuz_33:

(Start: 55 @28961 has 1 MA's), (Start: 68 @28934 has 2 MA's), (Start: 76 @28925 has 12 MA's), (Start: 125 @28850 has 1 MA's), (128, 28841), (186, 28673), (188, 28670), (189, 28667), (199, 28637), (201, 28625), (208, 28610), (217, 28592), (230, 28565), (238, 28538), (239, 28532), (255, 28478), (263, 28454), (273, 28415), (278, 28403), (303, 28319), (308, 28304), (315, 28286), (330, 28217), (339, 28175), (358, 28106), (369, 28046),

Gene: BillyTP_37 Start: 25308, Stop: 26225, Start Num: 48

Candidate Starts for BillyTP_37:

(9, 25179), (11, 25185), (Start: 48 @25308 has 53 MA's), (121, 25464), (129, 25479), (135, 25491), (185, 25638), (187, 25647), (200, 25686), (223, 25731), (234, 25755), (236, 25761), (242, 25794), (254, 25836), (259, 25845), (268, 25887), (291, 25971), (323, 26091), (327, 26106),

Gene: BlackSpider_31 Start: 24033, Stop: 24953, Start Num: 48

Candidate Starts for BlackSpider_31:

(4, 23742), (5, 23754), (6, 23820), (10, 23910), (Start: 48 @24033 has 53 MA's), (107, 24147), (126, 24198), (130, 24207), (135, 24219), (156, 24276), (185, 24366), (200, 24414), (234, 24483), (236, 24489), (238, 24498), (242, 24522), (250, 24546), (295, 24720), (323, 24819), (324, 24825), (327, 24834), (328, 24840),

Gene: BlingBling_33 Start: 29081, Stop: 30001, Start Num: 48

Candidate Starts for BlingBling_33:

(Start: 46 @29075 has 16 MA's), (Start: 48 @29081 has 53 MA's), (111, 29198), (112, 29201), (137, 29264), (139, 29270), (143, 29276), (202, 29462), (231, 29516), (232, 29519), (234, 29525), (239, 29546), (266, 29645), (267, 29651), (270, 29663), (291, 29738), (297, 29765), (312, 29801), (327, 29876),

Gene: BlingBling_37 Start: 32229, Stop: 31402, Start Num: 78

Candidate Starts for BlingBling_37:

(Start: 47 @32292 has 8 MA's), (Start: 55 @32271 has 1 MA's), (Start: 62 @32256 has 3 MA's), (Start: 72 @32238 has 2 MA's), (Start: 78 @32229 has 5 MA's), (Start: 88 @32211 has 6 MA's), (117, 32145), (230, 31839), (258, 31746), (265, 31719), (278, 31677), (294, 31617), (303, 31593), (316, 31557), (332, 31476),

Gene: Bogie_32 Start: 28658, Stop: 27702, Start Num: 44

Candidate Starts for Bogie_32:

(Start: 44 @28658 has 34 MA's), (58, 28628), (Start: 76 @28595 has 12 MA's), (Start: 77 @28592 has 1 MA's), (Start: 125 @28520 has 1 MA's), (128, 28511), (131, 28505), (151, 28460), (186, 28343), (188, 28340), (189, 28337), (199, 28307), (201, 28295), (208, 28280), (213, 28271), (217, 28262), (230, 28235), (238, 28208), (239, 28202), (255, 28148), (263, 28124), (278, 28073), (303, 27989), (321, 27929), (327, 27899), (330, 27887), (339, 27845), (369, 27716),

Gene: Bosection6_34 Start: 27410, Stop: 26439, Start Num: 34

Candidate Starts for Bosection6_34:

(Start: 34 @27410 has 36 MA's), (37, 27401), (Start: 77 @27326 has 1 MA's), (Start: 87 @27311 has 1 MA's), (142, 27188), (151, 27164), (186, 27047), (188, 27044), (194, 27023), (208, 26984), (210, 26981), (213, 26975), (220, 26960), (230, 26939), (235, 26924), (248, 26867), (253, 26855), (266, 26816), (273, 26789), (278, 26777), (283, 26750), (294, 26711), (303, 26687), (308, 26672), (339, 26543), (354, 26489), (364, 26456),

Gene: Bowser_39 Start: 31647, Stop: 30763, Start Num: 80

Candidate Starts for Bowser_39:

(Start: 75 @31656 has 11 MA's), (Start: 78 @31650 has 5 MA's), (Start: 80 @31647 has 2 MA's), (106, 31590), (108, 31587), (122, 31545), (159, 31461), (189, 31365), (231, 31263), (242, 31215), (334, 30882), (344, 30837),

Gene: Bowser_37 Start: 29401, Stop: 30318, Start Num: 48

Candidate Starts for Bowser_37:

(Start: 46 @29395 has 16 MA's), (Start: 48 @29401 has 53 MA's), (Start: 64 @29425 has 1 MA's), (112, 29521), (139, 29590), (143, 29596), (174, 29698), (183, 29719), (202, 29782), (231, 29836), (234, 29845), (239, 29866), (240, 29875), (249, 29905), (284, 30037), (291, 30058), (296, 30082), (297, 30085), (312, 30121), (316, 30142),

Gene: Bradissa_35 Start: 30283, Stop: 31200, Start Num: 48

Candidate Starts for Bradissa_35:

(Start: 46 @30277 has 16 MA's), (Start: 48 @30283 has 53 MA's), (Start: 64 @30307 has 1 MA's), (112, 30403), (143, 30478), (164, 30550), (183, 30601), (202, 30664), (231, 30718), (234, 30727), (239, 30748), (240, 30757), (249, 30787), (267, 30853), (284, 30919), (291, 30940), (297, 30967), (312, 31003),

Gene: Bridgette_34 Start: 24627, Stop: 25547, Start Num: 48

Candidate Starts for Bridgette_34:

(9, 24498), (11, 24504), (Start: 48 @24627 has 53 MA's), (121, 24783), (130, 24801), (135, 24813), (185, 24960), (187, 24969), (200, 25008), (234, 25077), (236, 25083), (242, 25116), (254, 25158), (261, 25170), (318, 25389), (323, 25413), (327, 25428), (328, 25434), (348, 25515), (350, 25518),

Gene: Brujita_33 Start: 29011, Stop: 28055, Start Num: 44

Candidate Starts for Brujita_33:

(Start: 44 @29011 has 34 MA's), (58, 28981), (Start: 76 @28948 has 12 MA's), (Start: 77 @28945 has 1 MA's), (Start: 125 @28873 has 1 MA's), (128, 28864), (151, 28813), (186, 28696), (188, 28693), (189, 28690), (199, 28660), (201, 28648), (208, 28633), (217, 28615), (230, 28588), (238, 28561), (239, 28555), (255, 28501), (263, 28477), (278, 28426), (303, 28342), (327, 28252), (330, 28240), (339, 28198), (369, 28069),

Gene: Brusacoram_30 Start: 26805, Stop: 25912, Start Num: 76

Candidate Starts for Brusacoram_30:

(Start: 44 @26868 has 34 MA's), (Start: 76 @26805 has 12 MA's), (Start: 77 @26802 has 1 MA's), (Start: 125 @26730 has 1 MA's), (128, 26721), (151, 26670), (186, 26553), (188, 26550), (189, 26547), (199, 26517), (201, 26505), (208, 26490), (217, 26472), (230, 26445), (238, 26418), (239, 26412), (255, 26358), (258, 26352), (263, 26334), (278, 26283), (303, 26199), (327, 26109), (330, 26097), (339, 26055), (369, 25926),

Gene: Bunker_34 Start: 28706, Stop: 29623, Start Num: 48

Candidate Starts for Bunker_34:

(Start: 46 @28700 has 16 MA's), (Start: 48 @28706 has 53 MA's), (139, 28895), (143, 28901), (174, 29003), (202, 29087), (232, 29144), (234, 29150), (236, 29156), (239, 29171), (267, 29276), (270, 29288), (291, 29363), (297, 29390),

Gene: Bunker_36 Start: 30985, Stop: 30131, Start Num: 77

Candidate Starts for Bunker_36:

(Start: 77 @30985 has 1 MA's), (123, 30886), (138, 30856), (151, 30823), (154, 30814), (163, 30778), (186, 30706), (188, 30703), (208, 30643), (220, 30619), (228, 30601), (230, 30598), (236, 30580), (258, 30505), (269, 30460), (278, 30436), (283, 30409), (303, 30346), (308, 30331), (326, 30259),

(330, 30244), (339, 30202), (352, 30157),

Gene: Bunnies_30 Start: 26889, Stop: 25933, Start Num: 44

Candidate Starts for Bunnies_30:

(Start: 44 @26889 has 34 MA's), (Start: 76 @26826 has 12 MA's), (Start: 77 @26823 has 1 MA's), (Start: 125 @26751 has 1 MA's), (128, 26742), (151, 26691), (186, 26574), (188, 26571), (189, 26568), (199, 26538), (201, 26526), (208, 26511), (217, 26493), (230, 26466), (238, 26439), (239, 26433), (255, 26379), (278, 26304), (303, 26220), (327, 26130), (330, 26118), (339, 26076), (369, 25947),

Gene: Bunnybear_32 Start: 28492, Stop: 29415, Start Num: 46

Candidate Starts for Bunnybear_32:

(Start: 46 @28492 has 16 MA's), (Start: 48 @28498 has 53 MA's), (Start: 64 @28522 has 1 MA's), (112, 28618), (139, 28687), (143, 28693), (174, 28795), (183, 28816), (202, 28879), (231, 28933), (234, 28942), (239, 28963), (240, 28972), (249, 29002), (267, 29068), (273, 29092), (284, 29134), (291, 29155), (297, 29182), (312, 29218), (313, 29224),

Gene: Butters_37 Start: 29461, Stop: 28490, Start Num: 34

Candidate Starts for Butters_37:

(32, 29464), (Start: 34 @29461 has 36 MA's), (Start: 77 @29377 has 1 MA's), (128, 29266), (142, 29239), (151, 29215), (186, 29098), (213, 29026), (220, 29011), (230, 28990), (266, 28867), (273, 28840), (278, 28828), (283, 28801), (294, 28762), (303, 28738), (308, 28723), (327, 28648), (330, 28636), (339, 28594), (343, 28579), (354, 28540),

Gene: CactusJack_30 Start: 27132, Stop: 26176, Start Num: 44

Candidate Starts for CactusJack_30:

(Start: 44 @27132 has 34 MA's), (Start: 76 @27069 has 12 MA's), (Start: 77 @27066 has 1 MA's), (Start: 125 @26994 has 1 MA's), (128, 26985), (151, 26934), (186, 26817), (188, 26814), (189, 26811), (199, 26781), (201, 26769), (208, 26754), (217, 26736), (230, 26709), (238, 26682), (239, 26676), (255, 26622), (258, 26616), (263, 26598), (278, 26547), (303, 26463), (327, 26373), (330, 26361), (339, 26319), (369, 26190),

Gene: Camerico_75 Start: 60592, Stop: 59744, Start Num: 70

Candidate Starts for Camerico_75:

(Start: 70 @60592 has 1 MA's), (102, 60535), (127, 60466), (155, 60397), (205, 60232), (215, 60214), (218, 60208), (219, 60202), (258, 60085), (271, 60037), (279, 60013), (286, 59989), (346, 59755),

Gene: Camster_30 Start: 26842, Stop: 25949, Start Num: 76

Candidate Starts for Camster_30:

(Start: 44 @26905 has 34 MA's), (58, 26875), (Start: 76 @26842 has 12 MA's), (Start: 77 @26839 has 1 MA's), (Start: 125 @26767 has 1 MA's), (128, 26758), (151, 26707), (186, 26590), (188, 26587), (189, 26584), (199, 26554), (201, 26542), (208, 26527), (217, 26509), (230, 26482), (238, 26455), (239, 26449), (255, 26395), (258, 26389), (278, 26320), (303, 26236), (327, 26146), (330, 26134), (339, 26092), (369, 25963),

Gene: CaptainKirk2_40 Start: 31496, Stop: 30687, Start Num: 88

Candidate Starts for CaptainKirk2_40:

(Start: 47 @31577 has 8 MA's), (Start: 55 @31556 has 1 MA's), (Start: 62 @31541 has 3 MA's), (Start: 72 @31523 has 2 MA's), (Start: 78 @31514 has 5 MA's), (Start: 88 @31496 has 6 MA's), (117, 31430), (164, 31304), (181, 31259), (230, 31124), (236, 31106), (239, 31091), (258, 31031), (265, 31004), (278, 30962), (294, 30902), (303, 30878), (316, 30842), (332, 30761),

Gene: Carcharodon_36 Start: 28718, Stop: 27747, Start Num: 34

Candidate Starts for Carcharodon_36:

(Start: 34 @28718 has 36 MA's), (Start: 77 @28634 has 1 MA's), (Start: 87 @28619 has 1 MA's), (142, 28496), (151, 28472), (186, 28355), (188, 28352), (194, 28331), (208, 28292), (210, 28289), (213, 28283), (220, 28268), (230, 28247), (235, 28232), (248, 28175), (253, 28163), (266, 28124), (273, 28097), (278, 28085), (283, 28058), (294, 28019), (303, 27995), (308, 27980), (339, 27851), (343, 27836), (354, 27797),

Gene: Charlie_34 Start: 27409, Stop: 26438, Start Num: 34

Candidate Starts for Charlie_34:

(Start: 34 @27409 has 36 MA's), (37, 27400), (Start: 77 @27325 has 1 MA's), (Start: 87 @27310 has 1 MA's), (142, 27187), (151, 27163), (186, 27046), (188, 27043), (194, 27022), (208, 26983), (210, 26980), (213, 26974), (220, 26959), (230, 26938), (235, 26923), (248, 26866), (253, 26854), (266, 26815), (273, 26788), (278, 26776), (283, 26749), (294, 26710), (303, 26686), (308, 26671), (339, 26542), (354, 26488), (364, 26455),

Gene: Chewbacca_37 Start: 28718, Stop: 27747, Start Num: 34

Candidate Starts for Chewbacca_37:

(Start: 34 @28718 has 36 MA's), (Start: 77 @28634 has 1 MA's), (Start: 87 @28619 has 1 MA's), (142, 28496), (151, 28472), (186, 28355), (188, 28352), (194, 28331), (208, 28292), (210, 28289), (213, 28283), (220, 28268), (230, 28247), (235, 28232), (248, 28175), (253, 28163), (266, 28124), (273, 28097), (278, 28085), (283, 28058), (294, 28019), (303, 27995), (308, 27980), (339, 27851), (343, 27836), (354, 27797),

Gene: ChuckDuck_35 Start: 24394, Stop: 25314, Start Num: 48

Candidate Starts for ChuckDuck_35:

(Start: 48 @24394 has 53 MA's), (121, 24550), (130, 24568), (135, 24580), (185, 24727), (187, 24736), (200, 24775), (234, 24844), (236, 24850), (242, 24883), (254, 24925), (268, 24976), (271, 24985), (318, 25156), (323, 25180), (327, 25195), (328, 25201), (348, 25282), (350, 25285),

Gene: ClamChowder_49 Start: 39657, Stop: 38722, Start Num: 30

Candidate Starts for ClamChowder_49:

(Start: 30 @39657 has 18 MA's), (Start: 52 @39609 has 5 MA's), (Start: 53 @39606 has 1 MA's), (Start: 62 @39588 has 3 MA's), (Start: 66 @39579 has 1 MA's), (128, 39447), (193, 39264), (197, 39252), (208, 39219), (230, 39177), (242, 39126), (253, 39087), (314, 38883), (316, 38874), (328, 38814), (339, 38766), (343, 38751), (345, 38739),

Gene: Clark_36 Start: 27206, Stop: 28129, Start Num: 46

Candidate Starts for Clark_36:

(Start: 46 @27206 has 16 MA's), (Start: 48 @27212 has 53 MA's), (139, 27401), (143, 27407), (174, 27509), (184, 27533), (202, 27593), (232, 27650), (234, 27656), (236, 27662), (266, 27776), (267, 27782), (270, 27794), (291, 27869), (296, 27893), (297, 27896), (312, 27932), (313, 27938), (319, 27971), (336, 28052),

Gene: Clown_56 Start: 42611, Stop: 41772, Start Num: 80

Candidate Starts for Clown_56:

(Start: 80 @42611 has 2 MA's), (Start: 88 @42596 has 6 MA's), (96, 42581), (105, 42560), (169, 42389), (186, 42335), (225, 42233), (230, 42224), (265, 42104), (278, 42062), (297, 41993), (303, 41981), (308, 41966), (316, 41945), (326, 41894), (329, 41882), (330, 41879), (332, 41864),

Gene: Coeur_19 Start: 13884, Stop: 13063, Start Num: 74

Candidate Starts for Coeur_19:

(19, 14010), (28, 13980), (42, 13950), (63, 13902), (Start: 74 @13884 has 5 MA's), (105, 13827), (109, 13821), (112, 13812), (Start: 125 @13776 has 1 MA's), (138, 13746), (169, 13653), (183, 13614),

(188, 13596), (190, 13590), (228, 13497), (246, 13428), (247, 13425), (255, 13401), (266, 13365), (267, 13359), (302, 13263), (307, 13248), (329, 13158), (330, 13155), (339, 13113), (343, 13098), (344, 13089), (350, 13077),

Gene: Cole_37 Start: 28322, Stop: 27447, Start Num: 90

Candidate Starts for Cole_37:

(Start: 90 @28322 has 7 MA's), (106, 28283), (144, 28196), (163, 28136), (177, 28097), (193, 28046), (203, 28010), (213, 27992), (230, 27956), (238, 27929), (242, 27905), (246, 27890), (261, 27860), (267, 27827), (273, 27806), (278, 27794), (292, 27722), (294, 27710), (321, 27626), (330, 27584), (332, 27569),

Gene: Cole_34 Start: 26120, Stop: 27040, Start Num: 48

Candidate Starts for Cole_34:

(29, 26078), (Start: 48 @26120 has 53 MA's), (121, 26276), (Start: 125 @26282 has 1 MA's), (130, 26294), (135, 26306), (185, 26453), (187, 26462), (200, 26501), (229, 26558), (234, 26570), (236, 26576), (242, 26609), (250, 26633), (254, 26651), (261, 26663), (268, 26702), (313, 26852), (318, 26882), (323, 26906), (328, 26927), (348, 27008), (350, 27011),

Gene: Confidence_36 Start: 28133, Stop: 29050, Start Num: 48

Candidate Starts for Confidence_36:

(Start: 46 @28127 has 16 MA's), (Start: 48 @28133 has 53 MA's), (Start: 64 @28157 has 1 MA's), (112, 28253), (139, 28322), (143, 28328), (183, 28451), (202, 28514), (231, 28568), (234, 28577), (239, 28598), (240, 28607), (249, 28637), (291, 28790), (297, 28817), (312, 28853),

Gene: Constance_34 Start: 24866, Stop: 25786, Start Num: 48

Candidate Starts for Constance_34:

(Start: 48 @24866 has 53 MA's), (121, 25022), (130, 25040), (135, 25052), (185, 25199), (187, 25208), (200, 25247), (234, 25316), (236, 25322), (242, 25355), (254, 25397), (268, 25448), (318, 25628), (323, 25652), (327, 25667), (328, 25673), (348, 25754), (350, 25757),

Gene: CookieBear_37 Start: 24572, Stop: 25489, Start Num: 48

Candidate Starts for CookieBear_37:

(9, 24443), (11, 24449), (Start: 48 @24572 has 53 MA's), (121, 24728), (129, 24743), (135, 24755), (185, 24902), (187, 24911), (200, 24950), (223, 24995), (234, 25019), (236, 25025), (242, 25058), (254, 25100), (259, 25109), (268, 25151), (291, 25235), (323, 25355), (327, 25370),

Gene: Coriander_39 Start: 31214, Stop: 30324, Start Num: 75

Candidate Starts for Coriander_39:

(Start: 75 @31214 has 11 MA's), (Start: 78 @31208 has 5 MA's), (Start: 80 @31205 has 2 MA's), (106, 31148), (108, 31145), (122, 31103), (159, 31019), (212, 30860), (231, 30821), (242, 30773), (270, 30674), (278, 30650), (297, 30575), (316, 30527), (334, 30440), (344, 30395), (345, 30392),

Gene: Culver_60 Start: 37716, Stop: 38639, Start Num: 48

Candidate Starts for Culver_60:

(Start: 46 @37710 has 16 MA's), (Start: 48 @37716 has 53 MA's), (Start: 64 @37746 has 1 MA's), (110, 37836), (135, 37902), (139, 37911), (143, 37917), (162, 37980), (174, 38019), (198, 38088), (223, 38142), (232, 38160), (233, 38163), (234, 38166), (239, 38187), (261, 38259), (265, 38283), (266, 38286), (267, 38292), (270, 38304), (282, 38352), (283, 38355), (291, 38379), (296, 38403), (312, 38442), (327, 38517), (335, 38556),

Gene: CyranoPS_17 Start: 12355, Stop: 11534, Start Num: 74

Candidate Starts for CyranoPS_17:

(Start: 74 @12355 has 5 MA's), (Start: 91 @12337 has 1 MA's), (105, 12304), (119, 12268), (134, 12232), (140, 12220), (183, 12091), (190, 12067), (199, 12040), (210, 12010), (293, 11764), (298, 11749), (302, 11740), (320, 11677), (339, 11590),

Gene: Danyall_49 Start: 39358, Stop: 38423, Start Num: 30

Candidate Starts for Danyall_49:

(Start: 30 @39358 has 18 MA's), (Start: 52 @39310 has 5 MA's), (Start: 53 @39307 has 1 MA's), (Start: 62 @39289 has 3 MA's), (Start: 66 @39280 has 1 MA's), (128, 39148), (193, 38965), (197, 38953), (206, 38923), (208, 38920), (230, 38878), (242, 38827), (253, 38788), (255, 38785), (314, 38584), (316, 38575), (328, 38515), (339, 38467), (343, 38452), (345, 38440),

Gene: Delian_43 Start: 31575, Stop: 30685, Start Num: 47

Candidate Starts for Delian_43:

(Start: 47 @31575 has 8 MA's), (Start: 55 @31554 has 1 MA's), (Start: 62 @31539 has 3 MA's), (Start: 72 @31521 has 2 MA's), (Start: 78 @31512 has 5 MA's), (Start: 88 @31494 has 6 MA's), (117, 31428), (164, 31302), (181, 31257), (230, 31122), (236, 31104), (239, 31089), (258, 31029), (265, 31002), (278, 30960), (294, 30900), (303, 30876), (316, 30840), (332, 30759),

Gene: DirtyBoi_40 Start: 31075, Stop: 30209, Start Num: 57

Candidate Starts for DirtyBoi_40:

(Start: 53 @31081 has 1 MA's), (Start: 55 @31078 has 1 MA's), (Start: 57 @31075 has 1 MA's), (Start: 62 @31063 has 3 MA's), (Start: 78 @31036 has 5 MA's), (Start: 88 @31018 has 6 MA's), (117, 30952), (123, 30934), (161, 30838), (230, 30646), (265, 30526), (278, 30484), (294, 30424), (303, 30400), (316, 30364), (332, 30283), (351, 30217),

Gene: Dmitri_38 Start: 32615, Stop: 31725, Start Num: 75

Candidate Starts for Dmitri_38:

(Start: 75 @32615 has 11 MA's), (Start: 78 @32609 has 5 MA's), (Start: 80 @32606 has 2 MA's), (97, 32570), (106, 32549), (108, 32546), (122, 32504), (159, 32420), (231, 32222), (270, 32075), (297, 31976), (324, 31883), (334, 31841), (344, 31796),

Gene: Dmitri_36 Start: 30429, Stop: 31346, Start Num: 48

Candidate Starts for Dmitri_36:

(Start: 46 @30423 has 16 MA's), (Start: 48 @30429 has 53 MA's), (Start: 64 @30453 has 1 MA's), (112, 30549), (139, 30618), (143, 30624), (183, 30747), (202, 30810), (231, 30864), (234, 30873), (239, 30894), (240, 30903), (249, 30933), (291, 31086), (297, 31113), (312, 31149), (313, 31155), (348, 31314),

Gene: DobbysSock_30 Start: 26128, Stop: 27051, Start Num: 46

Candidate Starts for DobbysSock_30:

(Start: 46 @26128 has 16 MA's), (Start: 48 @26134 has 53 MA's), (139, 26323), (143, 26329), (174, 26431), (184, 26455), (202, 26515), (232, 26572), (234, 26578), (236, 26584), (266, 26698), (267, 26704), (270, 26716), (291, 26791), (296, 26815), (297, 26818), (312, 26854), (313, 26860), (319, 26893), (336, 26974),

Gene: Dogfish_32 Start: 28978, Stop: 28088, Start Num: 74

Candidate Starts for Dogfish_32:

(Start: 74 @28978 has 5 MA's), (123, 28873), (Start: 125 @28870 has 1 MA's), (138, 28843), (151, 28810), (186, 28693), (208, 28630), (220, 28606), (228, 28588), (230, 28585), (264, 28471), (269, 28447), (278, 28423), (283, 28396), (303, 28333), (316, 28297), (326, 28246), (330, 28231), (339, 28189), (352, 28144), (360, 28111),

Gene: Doggs_36 Start: 31939, Stop: 31049, Start Num: 75

Candidate Starts for Doggs_36:

(Start: 75 @31939 has 11 MA's), (Start: 78 @31933 has 5 MA's), (Start: 80 @31930 has 2 MA's), (97, 31894), (106, 31873), (108, 31870), (122, 31828), (Start: 125 @31822 has 1 MA's), (159, 31744), (212, 31585), (242, 31498), (270, 31399), (334, 31165), (344, 31120), (345, 31117),

Gene: Dolores_37 Start: 28084, Stop: 29001, Start Num: 48

Candidate Starts for Dolores_37:

(Start: 46 @28078 has 16 MA's), (Start: 48 @28084 has 53 MA's), (139, 28273), (143, 28279), (174, 28381), (184, 28405), (202, 28465), (232, 28522), (234, 28528), (236, 28534), (266, 28648), (267, 28654), (270, 28666), (291, 28741), (296, 28765), (297, 28768), (312, 28804), (313, 28810), (315, 28822), (336, 28924),

Gene: DonkeyMan_31 Start: 27041, Stop: 26220, Start Num: 88

Candidate Starts for DonkeyMan_31:

(18, 27188), (Start: 22 @27179 has 1 MA's), (Start: 72 @27068 has 2 MA's), (Start: 88 @27041 has 6 MA's), (105, 27005), (Start: 125 @26954 has 1 MA's), (164, 26849), (168, 26837), (186, 26777), (201, 26729), (225, 26675), (230, 26666), (236, 26648), (258, 26573), (278, 26504), (294, 26444), (303, 26420), (308, 26405), (316, 26384), (329, 26321), (330, 26318), (332, 26303), (352, 26231),

Gene: Donovan_30 Start: 26897, Stop: 25908, Start Num: 44

Candidate Starts for Donovan_30:

(Start: 44 @26897 has 34 MA's), (58, 26867), (Start: 76 @26834 has 12 MA's), (Start: 77 @26831 has 1 MA's), (95, 26801), (96, 26798), (Start: 125 @26726 has 1 MA's), (128, 26717), (131, 26711), (151, 26666), (186, 26549), (188, 26546), (189, 26543), (199, 26513), (201, 26501), (208, 26486), (217, 26468), (230, 26441), (238, 26414), (239, 26408), (255, 26354), (258, 26348), (263, 26330), (278, 26279), (303, 26195), (321, 26135), (330, 26093), (369, 25922),

Gene: Dorito_32 Start: 25772, Stop: 26695, Start Num: 46

Candidate Starts for Dorito_32:

(Start: 46 @25772 has 16 MA's), (Start: 48 @25778 has 53 MA's), (139, 25967), (143, 25973), (174, 26075), (184, 26099), (202, 26159), (232, 26216), (234, 26222), (236, 26228), (266, 26342), (267, 26348), (270, 26360), (291, 26435), (296, 26459), (297, 26462), (312, 26498), (313, 26504), (319, 26537), (336, 26618),

Gene: Duplicity_36 Start: 28727, Stop: 27756, Start Num: 34

Candidate Starts for Duplicity_36:

(Start: 34 @28727 has 36 MA's), (Start: 77 @28643 has 1 MA's), (Start: 87 @28628 has 1 MA's), (142, 28505), (151, 28481), (186, 28364), (188, 28361), (194, 28340), (208, 28301), (210, 28298), (213, 28292), (220, 28277), (230, 28256), (235, 28241), (248, 28184), (253, 28172), (266, 28133), (273, 28106), (278, 28094), (283, 28067), (294, 28028), (303, 28004), (308, 27989), (339, 27860), (343, 27845), (354, 27806),

Gene: Dynamo_30 Start: 27286, Stop: 26330, Start Num: 44

Candidate Starts for Dynamo_30:

(Start: 44 @27286 has 34 MA's), (58, 27256), (Start: 76 @27223 has 12 MA's), (Start: 77 @27220 has 1 MA's), (Start: 125 @27148 has 1 MA's), (128, 27139), (131, 27133), (151, 27088), (186, 26971), (188, 26968), (189, 26965), (199, 26935), (201, 26923), (208, 26908), (217, 26890), (230, 26863), (238, 26836), (239, 26830), (255, 26776), (258, 26770), (278, 26701), (303, 26617), (321, 26557), (330, 26515), (339, 26473), (369, 26344),

Gene: EMSquaredA_36 Start: 28837, Stop: 29754, Start Num: 48

Candidate Starts for EMSquaredA_36:

(Start: 46 @28831 has 16 MA's), (Start: 48 @28837 has 53 MA's), (Start: 64 @28861 has 1 MA's), (112, 28957), (139, 29026), (143, 29032), (183, 29155), (202, 29218), (231, 29272), (234, 29281), (239, 29302), (240, 29311), (249, 29341), (256, 29365), (284, 29473), (291, 29494), (297, 29521),

Gene: Elesar_35 Start: 29248, Stop: 28373, Start Num: 90

Candidate Starts for Elesar_35:

(Start: 90 @29248 has 7 MA's), (106, 29209), (134, 29137), (144, 29122), (177, 29023), (193, 28972), (230, 28882), (239, 28849), (242, 28831), (246, 28816), (261, 28786), (267, 28753), (273, 28732), (278, 28720), (292, 28648), (294, 28636), (317, 28564), (321, 28552), (330, 28510), (332, 28495),

Gene: Emperor_19 Start: 14339, Stop: 13512, Start Num: 69

Candidate Starts for Emperor_19:

(Start: 69 @14339 has 3 MA's), (Start: 79 @14324 has 1 MA's), (81, 14321), (Start: 89 @14312 has 1 MA's), (105, 14276), (119, 14240), (120, 14234), (136, 14198), (183, 14063), (190, 14039), (199, 14012), (204, 13991), (206, 13988), (225, 13952), (228, 13946), (230, 13943), (240, 13901), (246, 13877), (247, 13874), (264, 13823), (266, 13814), (267, 13808), (288, 13763), (307, 13697), (316, 13670), (338, 13565),

Gene: EnalisNailo_34 Start: 29811, Stop: 30734, Start Num: 46

Candidate Starts for EnalisNailo_34:

(Start: 46 @29811 has 16 MA's), (Start: 48 @29817 has 53 MA's), (Start: 64 @29841 has 1 MA's), (112, 29937), (143, 30012), (164, 30084), (183, 30135), (202, 30198), (231, 30252), (234, 30261), (239, 30282), (240, 30291), (249, 30321), (267, 30387), (284, 30453), (291, 30474), (297, 30501), (312, 30537),

Gene: EpicDab_18 Start: 14205, Stop: 13375, Start Num: 69

Candidate Starts for EpicDab_18:

(Start: 69 @14205 has 3 MA's), (Start: 89 @14181 has 1 MA's), (105, 14145), (140, 14058), (199, 13881), (204, 13860), (206, 13857), (230, 13812), (240, 13770), (246, 13746), (247, 13743), (252, 13731), (258, 13713), (264, 13692), (266, 13683), (267, 13677), (307, 13566), (326, 13488), (329, 13476), (330, 13473), (338, 13434),

Gene: Evamon_46 Start: 39326, Stop: 38442, Start Num: 53

Candidate Starts for Evamon_46:

(Start: 30 @39377 has 18 MA's), (Start: 52 @39329 has 5 MA's), (Start: 53 @39326 has 1 MA's), (Start: 62 @39308 has 3 MA's), (Start: 66 @39299 has 1 MA's), (128, 39167), (193, 38984), (197, 38972), (206, 38942), (208, 38939), (230, 38897), (242, 38846), (253, 38807), (314, 38603), (316, 38594), (328, 38534), (339, 38486), (343, 38471), (345, 38459),

Gene: Ewald_33 Start: 29356, Stop: 28496, Start Num: 74

Candidate Starts for Ewald_33:

(Start: 74 @29356 has 5 MA's), (123, 29251), (128, 29239), (138, 29221), (151, 29188), (186, 29071), (220, 28984), (228, 28966), (230, 28963), (248, 28891), (264, 28849), (266, 28840), (269, 28825), (278, 28801), (283, 28774), (303, 28711), (326, 28624), (330, 28609), (352, 28522),

Gene: Eyes_36 Start: 31424, Stop: 30528, Start Num: 75

Candidate Starts for Eyes_36:

(Start: 75 @31424 has 11 MA's), (Start: 78 @31418 has 5 MA's), (Start: 80 @31415 has 2 MA's), (106, 31358), (108, 31355), (122, 31313), (144, 31268), (159, 31229), (214, 31064), (225, 31043), (231, 31031), (233, 31025), (238, 31007), (243, 30980), (265, 30905), (275, 30869), (278, 30860), (300, 30779), (314, 30746), (334, 30650), (339, 30629), (344, 30605),

Gene: Eyre_35 Start: 27388, Stop: 26561, Start Num: 78

Candidate Starts for Eyre_35:

(Start: 53 @27433 has 1 MA's), (Start: 55 @27430 has 1 MA's), (Start: 62 @27415 has 3 MA's), (Start: 78 @27388 has 5 MA's), (Start: 88 @27370 has 6 MA's), (117, 27304), (123, 27286), (161, 27190), (225, 27007), (230, 26998), (236, 26980), (265, 26878), (278, 26836), (303, 26752), (316, 26716), (332, 26635),

Gene: Fireball_48 Start: 39639, Stop: 38821, Start Num: 88

Candidate Starts for Fireball_48:

(84, 39648), (Start: 85 @39645 has 1 MA's), (Start: 88 @39639 has 6 MA's), (161, 39462), (186, 39381), (225, 39285), (230, 39276), (253, 39192), (278, 39114), (294, 39057), (303, 39033), (308, 39018), (316, 38997), (326, 38946), (329, 38934), (330, 38931),

Gene: FirstPlacePfu_30 Start: 26907, Stop: 25918, Start Num: 44

Candidate Starts for FirstPlacePfu_30:

(Start: 44 @26907 has 34 MA's), (58, 26877), (Start: 76 @26844 has 12 MA's), (Start: 77 @26841 has 1 MA's), (95, 26811), (96, 26808), (Start: 125 @26736 has 1 MA's), (128, 26727), (131, 26721), (151, 26676), (186, 26559), (188, 26556), (189, 26553), (199, 26523), (201, 26511), (208, 26496), (217, 26478), (230, 26451), (238, 26424), (239, 26418), (255, 26364), (258, 26358), (263, 26340), (278, 26289), (303, 26205), (321, 26145), (330, 26103), (339, 26061), (369, 25932),

Gene: Fishburne_30 Start: 26875, Stop: 25919, Start Num: 44

Candidate Starts for Fishburne_30:

(Start: 44 @26875 has 34 MA's), (58, 26845), (Start: 76 @26812 has 12 MA's), (Start: 77 @26809 has 1 MA's), (Start: 125 @26737 has 1 MA's), (128, 26728), (131, 26722), (151, 26677), (186, 26560), (188, 26557), (189, 26554), (199, 26524), (201, 26512), (208, 26497), (217, 26479), (230, 26452), (238, 26425), (239, 26419), (255, 26365), (258, 26359), (278, 26290), (303, 26206), (321, 26146), (330, 26104), (339, 26062), (369, 25933),

Gene: Floral_35 Start: 30904, Stop: 31827, Start Num: 46

Candidate Starts for Floral_35:

(Start: 46 @30904 has 16 MA's), (Start: 48 @30910 has 53 MA's), (Start: 64 @30934 has 1 MA's), (112, 31030), (139, 31099), (143, 31105), (183, 31228), (202, 31291), (231, 31345), (234, 31354), (239, 31375), (240, 31384), (249, 31414), (256, 31438), (284, 31546), (291, 31567), (297, 31594),

Gene: Fugax_50 Start: 39601, Stop: 38714, Start Num: 52

Candidate Starts for Fugax_50:

(Start: 30 @39649 has 18 MA's), (Start: 52 @39601 has 5 MA's), (Start: 53 @39598 has 1 MA's), (Start: 62 @39580 has 3 MA's), (Start: 66 @39571 has 1 MA's), (128, 39439), (193, 39256), (197, 39244), (208, 39211), (230, 39169), (242, 39118), (253, 39079), (314, 38875), (316, 38866), (328, 38806), (339, 38758), (343, 38743), (345, 38731),

Gene: Fulbright_35 Start: 27807, Stop: 26836, Start Num: 34

Candidate Starts for Fulbright_35:

(Start: 34 @27807 has 36 MA's), (Start: 77 @27723 has 1 MA's), (Start: 87 @27708 has 1 MA's), (142, 27585), (151, 27561), (186, 27444), (188, 27441), (194, 27420), (208, 27381), (210, 27378), (213, 27372), (220, 27357), (230, 27336), (235, 27321), (248, 27264), (253, 27252), (266, 27213), (273, 27186), (278, 27174), (283, 27147), (294, 27108), (303, 27084), (308, 27069), (339, 26940), (343, 26925), (354, 26886),

Gene: GEazy_42 Start: 31613, Stop: 30720, Start Num: 75

Candidate Starts for GEazy_42:

(Start: 75 @31613 has 11 MA's), (Start: 78 @31607 has 5 MA's), (Start: 80 @31604 has 2 MA's), (93, 31580), (106, 31547), (108, 31544), (122, 31502), (128, 31487), (159, 31418), (214, 31253), (217,

31247), (225, 31232), (231, 31220), (238, 31196), (243, 31169), (265, 31094), (275, 31058), (278, 31049), (322, 30899), (334, 30839), (339, 30818), (344, 30794), (362, 30740),

Gene: GMA3_75 Start: 57620, Stop: 56823, Start Num: 100

Candidate Starts for GMA3_75:

(Start: 100 @57620 has 1 MA's), (143, 57515), (172, 57422), (245, 57200), (271, 57119), (301, 57014), (305, 57008), (325, 56921), (327, 56915), (346, 56834),

Gene: GMA5_17 Start: 13993, Stop: 13184, Start Num: 78

Candidate Starts for GMA5_17:

(Start: 30 @14077 has 18 MA's), (36, 14071), (Start: 66 @14011 has 1 MA's), (Start: 78 @13993 has 5 MA's), (150, 13840), (171, 13774), (190, 13714), (193, 13705), (230, 13618), (251, 13540), (258, 13519), (264, 13498), (266, 13489), (272, 13465), (304, 13384), (307, 13372), (316, 13345),

Gene: GRU3_17 Start: 14088, Stop: 13195, Start Num: 30

Candidate Starts for GRU3_17:

(Start: 30 @14088 has 18 MA's), (Start: 52 @14052 has 5 MA's), (Start: 66 @14022 has 1 MA's), (Start: 78 @14004 has 5 MA's), (145, 13866), (177, 13767), (193, 13716), (195, 13707), (230, 13629), (242, 13578), (270, 13482), (272, 13476), (307, 13383),

Gene: Gex_36 Start: 28635, Stop: 27763, Start Num: 87

Candidate Starts for Gex_36:

(Start: 34 @28734 has 36 MA's), (Start: 77 @28650 has 1 MA's), (Start: 87 @28635 has 1 MA's), (142, 28512), (151, 28488), (186, 28371), (188, 28368), (194, 28347), (208, 28308), (210, 28305), (213, 28299), (220, 28284), (230, 28263), (235, 28248), (248, 28191), (253, 28179), (266, 28140), (273, 28113), (278, 28101), (283, 28074), (294, 28035), (303, 28011), (308, 27996), (339, 27867), (343, 27852), (354, 27813),

Gene: Gezellig_49 Start: 39461, Stop: 38574, Start Num: 52

Candidate Starts for Gezellig_49:

(Start: 30 @39509 has 18 MA's), (Start: 52 @39461 has 5 MA's), (Start: 53 @39458 has 1 MA's), (Start: 62 @39440 has 3 MA's), (Start: 66 @39431 has 1 MA's), (128, 39299), (193, 39116), (197, 39104), (208, 39071), (230, 39029), (242, 38978), (253, 38939), (314, 38735), (316, 38726), (328, 38666), (339, 38618), (343, 38603), (345, 38591),

Gene: Gibbles_68 Start: 56757, Stop: 55996, Start Num: 104

Candidate Starts for Gibbles_68:

(Start: 57 @56847 has 1 MA's), (Start: 72 @56817 has 2 MA's), (84, 56799), (Start: 104 @56757 has 4 MA's), (130, 56688), (166, 56586), (167, 56583), (197, 56499), (201, 56481), (211, 56460), (215, 56451), (221, 56433), (231, 56412), (253, 56331), (273, 56274), (316, 56142), (321, 56118), (326, 56091), (330, 56076), (337, 56040), (340, 56034), (346, 56007), (349, 56001),

Gene: Glaske_30 Start: 27132, Stop: 26176, Start Num: 44

Candidate Starts for Glaske_30:

(Start: 44 @27132 has 34 MA's), (Start: 76 @27069 has 12 MA's), (Start: 77 @27066 has 1 MA's), (Start: 125 @26994 has 1 MA's), (128, 26985), (151, 26934), (186, 26817), (188, 26814), (189, 26811), (199, 26781), (201, 26769), (208, 26754), (217, 26736), (230, 26709), (238, 26682), (239, 26676), (255, 26622), (258, 26616), (263, 26598), (278, 26547), (303, 26463), (327, 26373), (330, 26361), (339, 26319), (369, 26190),

Gene: Globfish_36 Start: 24809, Stop: 25729, Start Num: 48

Candidate Starts for Globfish_36:

(29, 24767), (41, 24791), (Start: 48 @24809 has 53 MA's), (130, 24983), (135, 24995), (185, 25142), (187, 25151), (200, 25190), (223, 25235), (234, 25259), (236, 25265), (242, 25298), (254, 25340), (259, 25349), (261, 25352), (270, 25397), (291, 25475), (323, 25595), (327, 25610), (350, 25700),

Gene: GlobiWarming_35 Start: 24310, Stop: 25230, Start Num: 48

Candidate Starts for GlobiWarming_35:

(9, 24181), (11, 24187), (Start: 48 @24310 has 53 MA's), (121, 24466), (130, 24484), (135, 24496), (185, 24643), (187, 24652), (200, 24691), (234, 24760), (236, 24766), (242, 24799), (254, 24841), (318, 25072), (323, 25096), (327, 25111), (328, 25117), (348, 25198), (350, 25201),

Gene: Gmala1_67 Start: 54450, Stop: 53653, Start Num: 98

Candidate Starts for Gmala1_67:

(98, 54450), (155, 54309), (164, 54273), (239, 54057), (267, 53961), (273, 53940), (279, 53925), (305, 53838), (326, 53748), (346, 53664),

Gene: GordDuk1_71 Start: 55008, Stop: 54211, Start Num: 98

Candidate Starts for GordDuk1_71:

(98, 55008), (152, 54879), (155, 54867), (164, 54831), (239, 54615), (273, 54498), (279, 54483), (305, 54396), (326, 54306), (346, 54222),

Gene: GordTnk2_72 Start: 55169, Stop: 54372, Start Num: 98

Candidate Starts for GordTnk2_72:

(98, 55169), (155, 55028), (164, 54992), (239, 54776), (273, 54659), (279, 54644), (305, 54557), (326, 54467), (346, 54383),

Gene: Gorpy_37 Start: 25804, Stop: 26721, Start Num: 48

Candidate Starts for Gorpy_37:

(9, 25675), (11, 25681), (Start: 48 @25804 has 53 MA's), (121, 25960), (129, 25975), (135, 25987), (185, 26134), (187, 26143), (200, 26182), (223, 26227), (234, 26251), (236, 26257), (242, 26290), (254, 26332), (259, 26341), (268, 26383), (291, 26467), (323, 26587), (327, 26602),

Gene: GreaseLightnin_30 Start: 27124, Stop: 26168, Start Num: 44

Candidate Starts for GreaseLightnin_30:

(Start: 44 @27124 has 34 MA's), (Start: 76 @27061 has 12 MA's), (Start: 77 @27058 has 1 MA's), (Start: 125 @26986 has 1 MA's), (128, 26977), (151, 26926), (186, 26809), (188, 26806), (189, 26803), (199, 26773), (201, 26761), (208, 26746), (217, 26728), (230, 26701), (238, 26674), (239, 26668), (255, 26614), (263, 26590), (278, 26539), (303, 26455), (327, 26365), (330, 26353), (339, 26311), (369, 26182),

Gene: Guacamole_38 Start: 32142, Stop: 31252, Start Num: 47

Candidate Starts for Guacamole_38:

(Start: 47 @32142 has 8 MA's), (Start: 55 @32121 has 1 MA's), (Start: 62 @32106 has 3 MA's), (Start: 72 @32088 has 2 MA's), (Start: 78 @32079 has 5 MA's), (Start: 88 @32061 has 6 MA's), (117, 31995), (230, 31689), (258, 31596), (265, 31569), (278, 31527), (294, 31467), (303, 31443), (316, 31407), (332, 31326),

Gene: Gudmit_35 Start: 26430, Stop: 25561, Start Num: 55

Candidate Starts for Gudmit_35:

(Start: 53 @26433 has 1 MA's), (Start: 55 @26430 has 1 MA's), (Start: 78 @26388 has 5 MA's), (Start: 85 @26376 has 1 MA's), (Start: 88 @26370 has 6 MA's), (102, 26343), (117, 26304), (123, 26286), (164, 26178), (201, 26061), (203, 26055), (230, 25998), (236, 25980), (239, 25965), (240, 25956), (248, 25926), (258, 25905), (278, 25836), (280, 25830), (294, 25776), (303, 25752), (316, 25716), (322, 25689), (326, 25665), (332, 25635),

Gene: Gusanita_34 Start: 26041, Stop: 26961, Start Num: 48

Candidate Starts for Gusanita_34:

(9, 25912), (11, 25918), (Start: 48 @26041 has 53 MA's), (126, 26206), (130, 26215), (135, 26227), (139, 26236), (156, 26284), (185, 26374), (187, 26383), (200, 26422), (223, 26467), (234, 26491), (236, 26497), (242, 26530), (261, 26584), (268, 26623), (273, 26641), (291, 26707), (297, 26734), (345, 26923),

Gene: Gusanita_38 Start: 28900, Stop: 28025, Start Num: 90

Candidate Starts for Gusanita_38:

(Start: 90 @28900 has 7 MA's), (106, 28861), (144, 28774), (153, 28747), (177, 28675), (184, 28654), (193, 28624), (230, 28534), (258, 28441), (261, 28438), (267, 28405), (273, 28384), (278, 28372), (292, 28300), (321, 28204), (330, 28162), (332, 28147), (362, 28042),

Gene: HUHilltop_30 Start: 26908, Stop: 25919, Start Num: 44

Candidate Starts for HUHilltop_30:

(Start: 44 @26908 has 34 MA's), (58, 26878), (Start: 76 @26845 has 12 MA's), (Start: 77 @26842 has 1 MA's), (95, 26812), (96, 26809), (Start: 125 @26737 has 1 MA's), (128, 26728), (131, 26722), (151, 26677), (186, 26560), (188, 26557), (189, 26554), (199, 26524), (201, 26512), (208, 26497), (213, 26488), (217, 26479), (230, 26452), (238, 26425), (239, 26419), (255, 26365), (258, 26359), (263, 26341), (273, 26302), (278, 26290), (303, 26206), (321, 26146), (330, 26104), (369, 25933),

Gene: Halo3_48 Start: 40094, Stop: 39159, Start Num: 30

Candidate Starts for Halo3_48:

(Start: 30 @40094 has 18 MA's), (Start: 52 @40046 has 5 MA's), (Start: 53 @40043 has 1 MA's), (Start: 62 @40025 has 3 MA's), (Start: 66 @40016 has 1 MA's), (128, 39884), (193, 39701), (197, 39689), (206, 39659), (208, 39656), (230, 39614), (242, 39563), (253, 39524), (314, 39320), (316, 39311), (328, 39251), (339, 39203), (343, 39188), (345, 39176),

Gene: HannahD_40 Start: 30978, Stop: 30085, Start Num: 75

Candidate Starts for HannahD_40:

(Start: 75 @30978 has 11 MA's), (Start: 78 @30972 has 5 MA's), (Start: 80 @30969 has 2 MA's), (93, 30945), (106, 30912), (108, 30909), (122, 30867), (128, 30852), (159, 30783), (214, 30618), (217, 30612), (225, 30597), (231, 30585), (238, 30561), (243, 30534), (265, 30459), (275, 30423), (278, 30414), (322, 30264), (334, 30204), (339, 30183), (344, 30159), (362, 30105),

Gene: Hedwig_41 Start: 31459, Stop: 30632, Start Num: 78

Candidate Starts for Hedwig_41:

(Start: 53 @31504 has 1 MA's), (Start: 55 @31501 has 1 MA's), (Start: 57 @31498 has 1 MA's), (Start: 62 @31486 has 3 MA's), (Start: 78 @31459 has 5 MA's), (Start: 88 @31441 has 6 MA's), (117, 31375), (123, 31357), (161, 31261), (230, 31069), (265, 30949), (278, 30907), (294, 30847), (303, 30823), (316, 30787), (332, 30706), (351, 30640),

Gene: Heinz_32 Start: 25034, Stop: 24150, Start Num: 53

Candidate Starts for Heinz_32:

(Start: 30 @25085 has 18 MA's), (Start: 53 @25034 has 1 MA's), (Start: 62 @25016 has 3 MA's), (128, 24875), (193, 24692), (197, 24680), (230, 24605), (231, 24602), (241, 24557), (253, 24515), (265, 24479), (314, 24311), (316, 24302), (327, 24248), (332, 24221), (343, 24179), (345, 24167),

Gene: Hestia_36 Start: 24611, Stop: 25531, Start Num: 48

Candidate Starts for Hestia_36:

(9, 24482), (11, 24488), (Start: 48 @24611 has 53 MA's), (130, 24785), (135, 24797), (185, 24944), (200, 24992), (234, 25061), (236, 25067), (268, 25193), (291, 25277), (318, 25373), (323, 25397),

(327, 25412), (328, 25418), (348, 25499),

Gene: Hibiscus_32 Start: 25034, Stop: 24099, Start Num: 30

Candidate Starts for Hibiscus_32:

(Start: 30 @25034 has 18 MA's), (Start: 53 @24983 has 1 MA's), (Start: 62 @24965 has 3 MA's), (128, 24824), (193, 24641), (197, 24629), (230, 24554), (231, 24551), (241, 24506), (253, 24464), (265, 24428), (314, 24260), (316, 24251), (327, 24197), (332, 24170), (343, 24128), (345, 24116),

Gene: Hillester_36 Start: 24572, Stop: 25492, Start Num: 48

Candidate Starts for Hillester_36:

(9, 24443), (14, 24470), (Start: 48 @24572 has 53 MA's), (107, 24686), (130, 24746), (135, 24758), (156, 24815), (185, 24905), (200, 24953), (234, 25022), (236, 25028), (242, 25061), (250, 25085), (323, 25358), (327, 25373), (328, 25379),

Gene: Hitter_41 Start: 31874, Stop: 30984, Start Num: 47

Candidate Starts for Hitter_41:

(Start: 47 @31874 has 8 MA's), (Start: 55 @31853 has 1 MA's), (Start: 62 @31838 has 3 MA's), (Start: 72 @31820 has 2 MA's), (Start: 78 @31811 has 5 MA's), (Start: 88 @31793 has 6 MA's), (117, 31727), (230, 31421), (265, 31301), (278, 31259), (294, 31199), (303, 31175), (316, 31139), (332, 31058),

Gene: Hortense_36 Start: 30765, Stop: 31682, Start Num: 48

Candidate Starts for Hortense_36:

(Start: 46 @30759 has 16 MA's), (Start: 48 @30765 has 53 MA's), (135, 30945), (139, 30954), (143, 30960), (198, 31131), (202, 31146), (232, 31203), (234, 31209), (236, 31215), (239, 31230), (266, 31329), (267, 31335), (270, 31347), (291, 31422), (296, 31446), (297, 31449), (312, 31485), (313, 31491), (315, 31503), (336, 31605),

Gene: Howe_36 Start: 30765, Stop: 31682, Start Num: 48

Candidate Starts for Howe_36:

(Start: 46 @30759 has 16 MA's), (Start: 48 @30765 has 53 MA's), (135, 30945), (139, 30954), (143, 30960), (198, 31131), (202, 31146), (232, 31203), (234, 31209), (236, 31215), (239, 31230), (266, 31329), (267, 31335), (270, 31347), (291, 31422), (296, 31446), (297, 31449), (312, 31485), (313, 31491), (315, 31503), (336, 31605),

Gene: IdentityCrisis_34 Start: 26927, Stop: 26055, Start Num: 79

Candidate Starts for IdentityCrisis_34:

(Start: 30 @27017 has 18 MA's), (Start: 55 @26969 has 1 MA's), (65, 26948), (Start: 79 @26927 has 1 MA's), (120, 26840), (186, 26651), (194, 26627), (220, 26564), (230, 26543), (232, 26537), (239, 26510), (258, 26450), (270, 26402), (273, 26393), (278, 26381), (283, 26354), (292, 26327), (303, 26291), (321, 26231), (329, 26192), (330, 26189), (360, 26069),

Gene: Island3_33 Start: 29011, Stop: 28055, Start Num: 44

Candidate Starts for Island3_33:

(Start: 44 @29011 has 34 MA's), (58, 28981), (Start: 76 @28948 has 12 MA's), (Start: 77 @28945 has 1 MA's), (Start: 125 @28873 has 1 MA's), (128, 28864), (151, 28813), (186, 28696), (188, 28693), (189, 28690), (199, 28660), (201, 28648), (208, 28633), (217, 28615), (230, 28588), (238, 28561), (239, 28555), (255, 28501), (263, 28477), (278, 28426), (303, 28342), (327, 28252), (330, 28240), (339, 28198), (369, 28069),

Gene: Isolde_36 Start: 24341, Stop: 25258, Start Num: 48

Candidate Starts for Isolde_36:

(9, 24212), (11, 24218), (Start: 48 @24341 has 53 MA's), (129, 24512), (135, 24524), (185, 24671), (200, 24719), (223, 24764), (234, 24788), (236, 24794), (242, 24827), (254, 24869), (259, 24878), (270, 24926), (291, 25004), (297, 25031), (327, 25139), (350, 25229),

Gene: Jablanski_34 Start: 28854, Stop: 29789, Start Num: 46

Candidate Starts for Jablanski_34:

(25, 28800), (Start: 46 @28854 has 16 MA's), (112, 28986), (156, 29103), (174, 29163), (176, 29166), (184, 29187), (229, 29298), (234, 29310), (254, 29391), (269, 29445), (271, 29451), (277, 29469), (291, 29529), (296, 29553), (297, 29556), (312, 29592), (313, 29598), (329, 29676), (342, 29736),

Gene: Jambalaya_47 Start: 39156, Stop: 38221, Start Num: 30

Candidate Starts for Jambalaya_47:

(Start: 30 @39156 has 18 MA's), (Start: 52 @39108 has 5 MA's), (Start: 53 @39105 has 1 MA's), (Start: 62 @39087 has 3 MA's), (Start: 66 @39078 has 1 MA's), (128, 38946), (193, 38763), (197, 38751), (208, 38718), (230, 38676), (242, 38625), (253, 38586), (314, 38382), (316, 38373), (328, 38313), (339, 38265), (343, 38250), (345, 38238),

Gene: Jamie19_33 Start: 27788, Stop: 26817, Start Num: 34

Candidate Starts for Jamie19_33:

(Start: 34 @27788 has 36 MA's), (Start: 77 @27704 has 1 MA's), (Start: 87 @27689 has 1 MA's), (142, 27566), (151, 27542), (186, 27425), (188, 27422), (194, 27401), (208, 27362), (210, 27359), (213, 27353), (220, 27338), (230, 27317), (235, 27302), (248, 27245), (253, 27233), (266, 27194), (273, 27167), (278, 27155), (283, 27128), (294, 27089), (303, 27065), (308, 27050), (339, 26921), (343, 26906), (354, 26867),

Gene: JasperJr_38 Start: 32142, Stop: 31252, Start Num: 47

Candidate Starts for JasperJr_38:

(Start: 47 @32142 has 8 MA's), (Start: 55 @32121 has 1 MA's), (Start: 62 @32106 has 3 MA's), (Start: 72 @32088 has 2 MA's), (Start: 78 @32079 has 5 MA's), (Start: 88 @32061 has 6 MA's), (117, 31995), (230, 31689), (258, 31596), (265, 31569), (278, 31527), (294, 31467), (303, 31443), (316, 31407), (332, 31326),

Gene: Jeanie_18 Start: 13573, Stop: 12677, Start Num: 35

Candidate Starts for Jeanie_18:

(Start: 35 @13573 has 3 MA's), (Start: 52 @13540 has 5 MA's), (Start: 78 @13492 has 5 MA's), (Start: 89 @13486 has 1 MA's), (132, 13381), (151, 13339), (165, 13291), (173, 13273), (177, 13258), (214, 13150), (216, 13147), (230, 13120), (231, 13117), (242, 13069), (258, 13021), (266, 12991), (306, 12877), (327, 12793), (332, 12766), (347, 12709),

Gene: Jebeks_30 Start: 26796, Stop: 25903, Start Num: 76

Candidate Starts for Jebeks_30:

(Start: 44 @26859 has 34 MA's), (58, 26829), (Start: 76 @26796 has 12 MA's), (Start: 77 @26793 has 1 MA's), (Start: 125 @26721 has 1 MA's), (128, 26712), (151, 26661), (186, 26544), (188, 26541), (189, 26538), (199, 26508), (201, 26496), (208, 26481), (217, 26463), (230, 26436), (238, 26409), (239, 26403), (255, 26349), (258, 26343), (278, 26274), (303, 26190), (327, 26100), (330, 26088), (339, 26046), (369, 25917),

Gene: Jojo24_30 Start: 25776, Stop: 24811, Start Num: 20

Candidate Starts for Jojo24_30:

(17, 25785), (Start: 20 @25776 has 1 MA's), (Start: 22 @25770 has 1 MA's), (Start: 72 @25659 has 2 MA's), (Start: 88 @25632 has 6 MA's), (105, 25596), (164, 25440), (168, 25428), (186, 25368), (201, 25320), (204, 25311), (225, 25266), (230, 25257), (236, 25239), (278, 25095), (280, 25089), (294, 25035), (303, 25011), (308, 24996), (316, 24975), (321, 24951), (329, 24912), (330, 24909), (332,

24894),

Gene: Journey_35 Start: 27409, Stop: 26438, Start Num: 34

Candidate Starts for Journey_35:

(Start: 34 @27409 has 36 MA's), (37, 27400), (Start: 77 @27325 has 1 MA's), (Start: 87 @27310 has 1 MA's), (142, 27187), (151, 27163), (186, 27046), (188, 27043), (194, 27022), (208, 26983), (210, 26980), (213, 26974), (220, 26959), (230, 26938), (235, 26923), (248, 26866), (253, 26854), (266, 26815), (273, 26788), (278, 26776), (283, 26749), (294, 26710), (303, 26686), (308, 26671), (339, 26542), (354, 26488), (364, 26455),

Gene: Judy_35 Start: 24877, Stop: 25797, Start Num: 48

Candidate Starts for Judy_35:

(Start: 48 @24877 has 53 MA's), (121, 25033), (130, 25051), (135, 25063), (185, 25210), (187, 25219), (200, 25258), (234, 25327), (236, 25333), (242, 25366), (254, 25408), (268, 25459), (318, 25639), (323, 25663), (327, 25678), (328, 25684), (348, 25765), (350, 25768),

Gene: Jumbo_69 Start: 59172, Stop: 58372, Start Num: 100

Candidate Starts for Jumbo_69:

(Start: 100 @59172 has 1 MA's), (207, 58866), (224, 58824), (242, 58764), (267, 58686), (285, 58626), (305, 58563), (321, 58500), (326, 58470), (332, 58440), (346, 58386),

Gene: Jung_29 Start: 26776, Stop: 25883, Start Num: 76

Candidate Starts for Jung_29:

(Start: 44 @26839 has 34 MA's), (Start: 76 @26776 has 12 MA's), (Start: 77 @26773 has 1 MA's), (Start: 125 @26701 has 1 MA's), (128, 26692), (151, 26641), (186, 26524), (188, 26521), (189, 26518), (199, 26488), (201, 26476), (208, 26461), (217, 26443), (230, 26416), (238, 26389), (239, 26383), (255, 26329), (263, 26305), (278, 26254), (303, 26170), (327, 26080), (330, 26068), (339, 26026), (369, 25897),

Gene: Juniormint_30 Start: 26911, Stop: 25955, Start Num: 44

Candidate Starts for Juniormint_30:

(Start: 44 @26911 has 34 MA's), (Start: 76 @26848 has 12 MA's), (Start: 77 @26845 has 1 MA's), (Start: 125 @26773 has 1 MA's), (128, 26764), (151, 26713), (186, 26596), (188, 26593), (189, 26590), (199, 26560), (201, 26548), (208, 26533), (217, 26515), (230, 26488), (238, 26461), (239, 26455), (255, 26401), (278, 26326), (303, 26242), (327, 26152), (330, 26140), (339, 26098), (369, 25969),

Gene: JustASigh_45 Start: 34059, Stop: 33148, Start Num: 39

Candidate Starts for JustASigh_45:

(Start: 39 @34059 has 1 MA's), (71, 33999), (73, 33996), (81, 33984), (118, 33900), (128, 33873), (134, 33861), (145, 33840), (209, 33642), (230, 33603), (258, 33510), (314, 33312), (316, 33303), (328, 33243), (332, 33222), (345, 33168),

Gene: Kampe_71 Start: 57027, Stop: 56266, Start Num: 104

Candidate Starts for Kampe_71:

(Start: 57 @57117 has 1 MA's), (Start: 72 @57087 has 2 MA's), (84, 57069), (Start: 104 @57027 has 4 MA's), (130, 56958), (166, 56856), (167, 56853), (197, 56769), (201, 56751), (211, 56730), (215, 56721), (221, 56703), (231, 56682), (253, 56601), (273, 56544), (316, 56412), (321, 56388), (326, 56361), (330, 56346), (337, 56310), (340, 56304), (346, 56277), (349, 56271),

Gene: Kari_30 Start: 26809, Stop: 25916, Start Num: 76

Candidate Starts for Kari_30:

(Start: 44 @26872 has 34 MA's), (58, 26842), (Start: 76 @26809 has 12 MA's), (Start: 77 @26806 has 1 MA's), (Start: 125 @26734 has 1 MA's), (128, 26725), (131, 26719), (151, 26674), (186, 26557), (188, 26554), (189, 26551), (199, 26521), (201, 26509), (208, 26494), (217, 26476), (230, 26449), (238, 26422), (239, 26416), (255, 26362), (258, 26356), (278, 26287), (303, 26203), (321, 26143), (330, 26101), (339, 26059), (369, 25930),

Gene: Karkharias_34 Start: 24280, Stop: 25200, Start Num: 48

Candidate Starts for Karkharias_34:

(29, 24238), (Start: 48 @24280 has 53 MA's), (121, 24436), (130, 24454), (135, 24466), (185, 24613), (187, 24622), (200, 24661), (234, 24730), (236, 24736), (242, 24769), (254, 24811), (261, 24823), (318, 25042), (323, 25066), (327, 25081), (328, 25087), (348, 25168), (350, 25171),

Gene: Kevin1_35 Start: 28640, Stop: 27669, Start Num: 34

Candidate Starts for Kevin1_35:

(32, 28643), (Start: 34 @28640 has 36 MA's), (Start: 77 @28556 has 1 MA's), (128, 28445), (142, 28418), (151, 28394), (186, 28277), (213, 28205), (220, 28190), (230, 28169), (266, 28046), (273, 28019), (278, 28007), (283, 27980), (294, 27941), (303, 27917), (308, 27902), (330, 27815), (339, 27773), (343, 27758), (354, 27719),

Gene: Kiko_37 Start: 28964, Stop: 29881, Start Num: 48

Candidate Starts for Kiko_37:

(Start: 46 @28958 has 16 MA's), (Start: 48 @28964 has 53 MA's), (137, 29147), (139, 29153), (143, 29159), (202, 29345), (234, 29408), (236, 29414), (239, 29429), (266, 29528), (267, 29534), (270, 29546), (291, 29621), (296, 29645), (297, 29648), (318, 29720), (319, 29723), (327, 29759),

Gene: Kiko_39 Start: 31306, Stop: 30413, Start Num: 75

Candidate Starts for Kiko_39:

(Start: 75 @31306 has 11 MA's), (Start: 78 @31300 has 5 MA's), (Start: 80 @31297 has 2 MA's), (106, 31240), (108, 31237), (122, 31195), (159, 31111), (175, 31060), (191, 31009), (231, 30913), (238, 30889), (257, 30817), (278, 30742), (334, 30532), (344, 30487),

Gene: KilKor_30 Start: 27132, Stop: 26176, Start Num: 44

Candidate Starts for KilKor_30:

(Start: 44 @27132 has 34 MA's), (Start: 76 @27069 has 12 MA's), (Start: 77 @27066 has 1 MA's), (Start: 125 @26994 has 1 MA's), (128, 26985), (151, 26934), (186, 26817), (188, 26814), (189, 26811), (199, 26781), (201, 26769), (208, 26754), (217, 26736), (230, 26709), (238, 26682), (239, 26676), (255, 26622), (258, 26616), (263, 26598), (278, 26547), (303, 26463), (327, 26373), (330, 26361), (339, 26319), (369, 26190),

Gene: KimmyK_48 Start: 40022, Stop: 39156, Start Num: 62

Candidate Starts for KimmyK_48:

(Start: 30 @40091 has 18 MA's), (Start: 52 @40043 has 5 MA's), (Start: 53 @40040 has 1 MA's), (Start: 62 @40022 has 3 MA's), (Start: 66 @40013 has 1 MA's), (128, 39881), (193, 39698), (197, 39686), (208, 39653), (230, 39611), (242, 39560), (253, 39521), (314, 39317), (316, 39308), (328, 39248), (339, 39200), (343, 39185), (345, 39173),

Gene: Ksquared_30 Start: 26889, Stop: 25933, Start Num: 44

Candidate Starts for Ksquared_30:

(Start: 44 @26889 has 34 MA's), (Start: 76 @26826 has 12 MA's), (Start: 77 @26823 has 1 MA's), (Start: 125 @26751 has 1 MA's), (128, 26742), (151, 26691), (186, 26574), (188, 26571), (189, 26568), (199, 26538), (201, 26526), (208, 26511), (217, 26493), (230, 26466), (238, 26439), (239, 26433), (255, 26379), (278, 26304), (303, 26220), (327, 26130), (330, 26118), (339, 26076), (369, 25947),

Gene: Langerak_30 Start: 26891, Stop: 25902, Start Num: 44

Candidate Starts for Langerak_30:

(Start: 44 @26891 has 34 MA's), (58, 26861), (Start: 76 @26828 has 12 MA's), (Start: 77 @26825 has 1 MA's), (95, 26795), (96, 26792), (Start: 125 @26720 has 1 MA's), (128, 26711), (131, 26705), (151, 26660), (186, 26543), (188, 26540), (189, 26537), (199, 26507), (201, 26495), (208, 26480), (217, 26462), (230, 26435), (238, 26408), (239, 26402), (255, 26348), (258, 26342), (263, 26324), (278, 26273), (303, 26189), (321, 26129), (330, 26087), (339, 26045), (369, 25916),

Gene: Lilas_37 Start: 31522, Stop: 32445, Start Num: 46

Candidate Starts for Lilas_37:

(Start: 46 @31522 has 16 MA's), (Start: 48 @31528 has 53 MA's), (Start: 64 @31552 has 1 MA's), (112, 31648), (143, 31723), (164, 31795), (183, 31846), (202, 31909), (231, 31963), (234, 31972), (239, 31993), (240, 32002), (249, 32032), (267, 32098), (284, 32164), (291, 32185), (297, 32212), (312, 32248),

Gene: LonelyBoi_37 Start: 31310, Stop: 32227, Start Num: 48

Candidate Starts for LonelyBoi_37:

(Start: 46 @31304 has 16 MA's), (Start: 48 @31310 has 53 MA's), (Start: 64 @31334 has 1 MA's), (112, 31430), (143, 31505), (174, 31607), (183, 31628), (202, 31691), (231, 31745), (234, 31754), (239, 31775), (240, 31784), (249, 31814), (267, 31880), (273, 31904), (284, 31946), (291, 31967), (297, 31994), (312, 32030), (313, 32036),

Gene: MagicMan_38 Start: 31978, Stop: 31088, Start Num: 75

Candidate Starts for MagicMan_38:

(23, 32086), (26, 32077), (Start: 44 @32032 has 34 MA's), (Start: 75 @31978 has 11 MA's), (Start: 78 @31972 has 5 MA's), (Start: 80 @31969 has 2 MA's), (106, 31912), (108, 31909), (122, 31867), (144, 31822), (159, 31783), (214, 31618), (225, 31597), (231, 31585), (233, 31579), (238, 31561), (243, 31534), (265, 31459), (275, 31423), (278, 31414), (300, 31333), (334, 31204), (339, 31183), (344, 31159),

Gene: Magsby_36 Start: 28735, Stop: 27764, Start Num: 34

Candidate Starts for Magsby_36:

(Start: 34 @28735 has 36 MA's), (Start: 77 @28651 has 1 MA's), (Start: 87 @28636 has 1 MA's), (142, 28513), (151, 28489), (186, 28372), (188, 28369), (194, 28348), (208, 28309), (210, 28306), (213, 28300), (220, 28285), (230, 28264), (235, 28249), (248, 28192), (253, 28180), (266, 28141), (273, 28114), (278, 28102), (283, 28075), (294, 28036), (303, 28012), (308, 27997), (339, 27868), (343, 27853), (354, 27814),

Gene: Maja_28 Start: 23177, Stop: 24097, Start Num: 48

Candidate Starts for Maja_28:

(Start: 48 @23177 has 53 MA's), (121, 23333), (130, 23351), (135, 23363), (139, 23372), (156, 23420), (185, 23510), (200, 23558), (234, 23627), (236, 23633), (242, 23666), (254, 23708), (261, 23720), (268, 23759), (291, 23843), (297, 23870), (328, 23984), (350, 24068),

Gene: Majeke_30 Start: 26913, Stop: 25924, Start Num: 44

Candidate Starts for Majeke_30:

(Start: 44 @26913 has 34 MA's), (58, 26883), (Start: 76 @26850 has 12 MA's), (Start: 77 @26847 has 1 MA's), (95, 26817), (96, 26814), (Start: 125 @26742 has 1 MA's), (128, 26733), (131, 26727), (151, 26682), (186, 26565), (188, 26562), (189, 26559), (199, 26529), (201, 26517), (208, 26502), (217, 26484), (230, 26457), (238, 26430), (239, 26424), (255, 26370), (258, 26364), (263, 26346), (278, 26295), (303, 26211), (321, 26151), (330, 26109), (339, 26067), (369, 25938),

Gene: Malibo_38 Start: 29560, Stop: 30477, Start Num: 48

Candidate Starts for Malibo_38:

(Start: 46 @29554 has 16 MA's), (Start: 48 @29560 has 53 MA's), (112, 29680), (139, 29749), (143, 29755), (164, 29827), (174, 29857), (183, 29878), (202, 29941), (234, 30004), (239, 30025), (240, 30034), (249, 30064), (256, 30088), (291, 30217), (297, 30244), (312, 30280),

Gene: Malithi_30 Start: 26799, Stop: 25843, Start Num: 44

Candidate Starts for Malithi_30:

(Start: 44 @26799 has 34 MA's), (58, 26769), (Start: 76 @26736 has 12 MA's), (Start: 77 @26733 has 1 MA's), (Start: 125 @26661 has 1 MA's), (128, 26652), (151, 26601), (186, 26484), (188, 26481), (189, 26478), (199, 26448), (201, 26436), (208, 26421), (217, 26403), (230, 26376), (238, 26349), (239, 26343), (255, 26289), (263, 26265), (278, 26214), (303, 26130), (327, 26040), (330, 26028), (339, 25986), (369, 25857),

Gene: Mangethe_30 Start: 26913, Stop: 25924, Start Num: 44

Candidate Starts for Mangethe_30:

(Start: 44 @26913 has 34 MA's), (58, 26883), (Start: 76 @26850 has 12 MA's), (Start: 77 @26847 has 1 MA's), (95, 26817), (96, 26814), (Start: 125 @26742 has 1 MA's), (128, 26733), (131, 26727), (151, 26682), (186, 26565), (188, 26562), (189, 26559), (199, 26529), (201, 26517), (208, 26502), (217, 26484), (230, 26457), (238, 26430), (239, 26424), (255, 26370), (258, 26364), (263, 26346), (278, 26295), (303, 26211), (321, 26151), (330, 26109), (339, 26067), (369, 25938),

Gene: Marteena_35 Start: 28837, Stop: 29754, Start Num: 48

Candidate Starts for Marteena_35:

(Start: 46 @28831 has 16 MA's), (Start: 48 @28837 has 53 MA's), (Start: 64 @28861 has 1 MA's), (112, 28957), (139, 29026), (143, 29032), (183, 29155), (202, 29218), (231, 29272), (234, 29281), (239, 29302), (240, 29311), (249, 29341), (256, 29365), (284, 29473), (291, 29494), (297, 29521),

Gene: Mbo2_72 Start: 53083, Stop: 52283, Start Num: 91

Candidate Starts for Mbo2_72:

(54, 53146), (Start: 91 @53083 has 1 MA's), (127, 52990), (141, 52960), (160, 52900), (179, 52843), (199, 52786), (211, 52753), (215, 52744), (226, 52714), (246, 52642), (276, 52558), (279, 52549), (289, 52522), (295, 52489), (313, 52444), (325, 52381), (327, 52375), (346, 52294),

Gene: McGonagall_18 Start: 13573, Stop: 12677, Start Num: 35

Candidate Starts for McGonagall_18:

(Start: 35 @13573 has 3 MA's), (Start: 52 @13540 has 5 MA's), (Start: 78 @13492 has 5 MA's), (Start: 89 @13486 has 1 MA's), (132, 13381), (151, 13339), (165, 13291), (173, 13273), (177, 13258), (214, 13150), (216, 13147), (230, 13120), (231, 13117), (242, 13069), (258, 13021), (266, 12991), (306, 12877), (327, 12793), (332, 12766), (347, 12709),

Gene: Mcklovin_34 Start: 32550, Stop: 33467, Start Num: 48

Candidate Starts for Mcklovin_34:

(Start: 46 @32544 has 16 MA's), (Start: 48 @32550 has 53 MA's), (139, 32739), (143, 32745), (174, 32847), (184, 32871), (202, 32931), (232, 32988), (234, 32994), (236, 33000), (266, 33114), (267, 33120), (270, 33132), (291, 33207), (296, 33231), (297, 33234), (312, 33270), (313, 33276), (319, 33309), (327, 33345), (336, 33390),

Gene: Megiddo_30 Start: 27132, Stop: 26176, Start Num: 44

Candidate Starts for Megiddo_30:

(Start: 44 @27132 has 34 MA's), (Start: 76 @27069 has 12 MA's), (Start: 77 @27066 has 1 MA's), (Start: 125 @26994 has 1 MA's), (128, 26985), (151, 26934), (186, 26817), (188, 26814), (189, 26811), (199, 26781), (201, 26769), (208, 26754), (217, 26736), (230, 26709), (238, 26682), (239,

26676), (255, 26622), (258, 26616), (263, 26598), (278, 26547), (303, 26463), (327, 26373), (330, 26361), (339, 26319), (369, 26190),

Gene: Melba_39 Start: 32054, Stop: 31227, Start Num: 78

Candidate Starts for Melba_39:

(Start: 47 @32117 has 8 MA's), (Start: 55 @32096 has 1 MA's), (Start: 62 @32081 has 3 MA's), (Start: 72 @32063 has 2 MA's), (Start: 78 @32054 has 5 MA's), (Start: 88 @32036 has 6 MA's), (117, 31970), (230, 31664), (258, 31571), (265, 31544), (278, 31502), (294, 31442), (303, 31418), (316, 31382), (332, 31301),

Gene: Melba_35 Start: 28919, Stop: 29845, Start Num: 46

Candidate Starts for Melba_35:

(Start: 46 @28919 has 16 MA's), (Start: 48 @28925 has 53 MA's), (111, 29042), (112, 29045), (137, 29108), (139, 29114), (143, 29120), (202, 29306), (231, 29360), (232, 29363), (234, 29369), (239, 29390), (266, 29489), (267, 29495), (270, 29507), (291, 29582), (297, 29609), (312, 29645), (327, 29720),

Gene: Melville_38 Start: 28719, Stop: 27748, Start Num: 34

Candidate Starts for Melville_38:

(Start: 34 @28719 has 36 MA's), (Start: 77 @28635 has 1 MA's), (Start: 87 @28620 has 1 MA's), (142, 28497), (151, 28473), (186, 28356), (188, 28353), (194, 28332), (208, 28293), (210, 28290), (213, 28284), (220, 28269), (230, 28248), (235, 28233), (248, 28176), (253, 28164), (266, 28125), (273, 28098), (278, 28086), (283, 28059), (294, 28020), (303, 27996), (308, 27981), (339, 27852), (343, 27837), (354, 27798),

Gene: Meyran_33 Start: 30330, Stop: 29470, Start Num: 74

Candidate Starts for Meyran_33:

(15, 30474), (33, 30408), (Start: 74 @30330 has 5 MA's), (123, 30225), (138, 30195), (151, 30162), (186, 30045), (220, 29958), (228, 29940), (230, 29937), (258, 29844), (266, 29814), (269, 29799), (278, 29775), (283, 29748), (303, 29685), (326, 29598), (330, 29583), (339, 29541), (352, 29496),

Gene: MichaelScott_36 Start: 28688, Stop: 29605, Start Num: 48

Candidate Starts for MichaelScott_36:

(Start: 46 @28682 has 16 MA's), (Start: 48 @28688 has 53 MA's), (139, 28877), (143, 28883), (174, 28985), (184, 29009), (202, 29069), (232, 29126), (234, 29132), (236, 29138), (266, 29252), (267, 29258), (270, 29270), (291, 29345), (296, 29369), (297, 29372), (312, 29408), (313, 29414), (319, 29447), (336, 29528),

Gene: MichelleMyBell_34 Start: 27726, Stop: 26755, Start Num: 34

Candidate Starts for MichelleMyBell_34:

(Start: 34 @27726 has 36 MA's), (Start: 77 @27642 has 1 MA's), (Start: 87 @27627 has 1 MA's), (142, 27504), (151, 27480), (186, 27363), (188, 27360), (194, 27339), (208, 27300), (210, 27297), (213, 27291), (220, 27276), (230, 27255), (235, 27240), (248, 27183), (253, 27171), (266, 27132), (273, 27105), (278, 27093), (283, 27066), (294, 27027), (303, 27003), (308, 26988), (339, 26859), (343, 26844), (354, 26805),

Gene: MidnightRain_38 Start: 25380, Stop: 26300, Start Num: 48

Candidate Starts for MidnightRain_38:

(9, 25251), (11, 25257), (Start: 48 @25380 has 53 MA's), (107, 25494), (130, 25554), (135, 25566), (185, 25713), (200, 25761), (223, 25806), (234, 25830), (236, 25836), (238, 25845), (242, 25869), (254, 25911), (261, 25923), (268, 25962), (273, 25980), (291, 26046), (323, 26166), (327, 26181),

Gene: Min1_01 Start: 771, Stop: 1, Start Num: 169

Candidate Starts for Min1_01:

(169, 771), (177, 750), (201, 669), (228, 612), (231, 606), (238, 582), (316, 318), (321, 294), (330, 252), (339, 210), (345, 183), (362, 129),

Gene: MintFen_40 Start: 32191, Stop: 31301, Start Num: 47

Candidate Starts for MintFen_40:

(Start: 47 @32191 has 8 MA's), (Start: 55 @32170 has 1 MA's), (Start: 62 @32155 has 3 MA's), (Start: 72 @32137 has 2 MA's), (Start: 78 @32128 has 5 MA's), (Start: 88 @32110 has 6 MA's), (117, 32044), (230, 31738), (258, 31645), (265, 31618), (278, 31576), (294, 31516), (303, 31492), (316, 31456), (332, 31375),

Gene: MoRicky_20 Start: 13746, Stop: 12850, Start Num: 74

Candidate Starts for MoRicky_20:

(Start: 74 @13746 has 5 MA's), (147, 13587), (158, 13548), (193, 13440), (194, 13434), (213, 13386), (230, 13350), (239, 13317), (262, 13251), (264, 13236), (269, 13212), (273, 13200), (278, 13188), (294, 13122), (322, 13026), (327, 12999), (331, 12984), (339, 12945),

Gene: Mutzi_47 Start: 40485, Stop: 39550, Start Num: 30

Candidate Starts for Mutzi_47:

(Start: 30 @40485 has 18 MA's), (Start: 52 @40437 has 5 MA's), (Start: 53 @40434 has 1 MA's), (Start: 62 @40416 has 3 MA's), (Start: 66 @40407 has 1 MA's), (128, 40275), (193, 40092), (197, 40080), (208, 40047), (230, 40005), (242, 39954), (253, 39915), (314, 39711), (316, 39702), (328, 39642), (339, 39594), (343, 39579), (345, 39567),

Gene: Mutzi_37 Start: 33648, Stop: 34565, Start Num: 48

Candidate Starts for Mutzi_37:

(Start: 46 @33642 has 16 MA's), (Start: 48 @33648 has 53 MA's), (112, 33768), (139, 33837), (143, 33843), (146, 33852), (174, 33945), (229, 34080), (231, 34083), (232, 34086), (234, 34092), (239, 34113), (256, 34176), (265, 34209), (266, 34212), (270, 34230), (284, 34284), (291, 34305), (296, 34329), (297, 34332), (312, 34368), (313, 34374), (316, 34389), (327, 34443), (350, 34536), (356, 34557),

Gene: Nandita_39 Start: 28503, Stop: 27628, Start Num: 90

Candidate Starts for Nandita_39:

(Start: 90 @28503 has 7 MA's), (106, 28464), (163, 28317), (177, 28278), (193, 28227), (203, 28191), (230, 28137), (238, 28110), (239, 28104), (242, 28086), (246, 28071), (261, 28041), (267, 28008), (273, 27987), (278, 27975), (292, 27903), (321, 27807), (330, 27765), (332, 27750),

Gene: Nandita_36 Start: 26292, Stop: 27212, Start Num: 48

Candidate Starts for Nandita_36:

(29, 26250), (Start: 48 @26292 has 53 MA's), (121, 26448), (130, 26466), (135, 26478), (185, 26625), (200, 26673), (231, 26733), (234, 26742), (236, 26748), (242, 26781), (250, 26805), (254, 26823), (261, 26835), (268, 26874), (318, 27054), (323, 27078), (327, 27093), (328, 27099), (348, 27180), (350, 27183),

Gene: Nazo_34 Start: 28936, Stop: 28034, Start Num: 68

Candidate Starts for Nazo_34:

(Start: 55 @28963 has 1 MA's), (Start: 68 @28936 has 2 MA's), (Start: 76 @28927 has 12 MA's), (Start: 125 @28852 has 1 MA's), (128, 28843), (186, 28675), (188, 28672), (189, 28669), (199, 28639), (201, 28627), (208, 28612), (217, 28594), (230, 28567), (238, 28540), (239, 28534), (255, 28480), (263, 28456), (273, 28417), (278, 28405), (303, 28321), (308, 28306), (315, 28288), (330, 28219), (339, 28177), (358, 28108), (369, 28048),

Gene: Necropolis_30 Start: 26871, Stop: 25915, Start Num: 44

Candidate Starts for Necropolis_30:

(Start: 44 @26871 has 34 MA's), (58, 26841), (Start: 76 @26808 has 12 MA's), (Start: 77 @26805 has 1 MA's), (Start: 125 @26733 has 1 MA's), (128, 26724), (131, 26718), (151, 26673), (186, 26556), (188, 26553), (189, 26550), (199, 26520), (201, 26508), (208, 26493), (217, 26475), (230, 26448), (238, 26421), (239, 26415), (255, 26361), (263, 26337), (278, 26286), (303, 26202), (327, 26112), (330, 26100), (339, 26058), (369, 25929),

Gene: Nenae_37 Start: 29038, Stop: 28067, Start Num: 34

Candidate Starts for Nenae_37:

(Start: 34 @29038 has 36 MA's), (Start: 77 @28954 has 1 MA's), (Start: 83 @28945 has 1 MA's), (151, 28792), (186, 28675), (188, 28672), (208, 28612), (213, 28603), (220, 28588), (230, 28567), (236, 28549), (253, 28483), (273, 28417), (278, 28405), (283, 28378), (294, 28339), (303, 28315), (308, 28300), (327, 28225), (339, 28171),

Gene: Nubi_47 Start: 39482, Stop: 38547, Start Num: 30

Candidate Starts for Nubi_47:

(Start: 30 @39482 has 18 MA's), (Start: 52 @39434 has 5 MA's), (Start: 53 @39431 has 1 MA's), (Start: 62 @39413 has 3 MA's), (Start: 66 @39404 has 1 MA's), (128, 39272), (193, 39089), (197, 39077), (208, 39044), (230, 39002), (242, 38951), (253, 38912), (314, 38708), (316, 38699), (328, 38639), (339, 38591), (343, 38576), (345, 38564),

Gene: Nyceirae_34 Start: 29373, Stop: 28474, Start Num: 75

Candidate Starts for Nyceirae_34:

(Start: 75 @29373 has 11 MA's), (Start: 78 @29367 has 5 MA's), (Start: 80 @29364 has 2 MA's), (106, 29307), (108, 29304), (116, 29280), (122, 29262), (175, 29127), (191, 29076), (201, 29040), (232, 28977), (270, 28833), (308, 28707), (330, 28620), (334, 28599), (344, 28554), (363, 28494),

Gene: Obliviate_36 Start: 30564, Stop: 29674, Start Num: 47

Candidate Starts for Obliviate_36:

(Start: 47 @30564 has 8 MA's), (Start: 55 @30543 has 1 MA's), (Start: 62 @30528 has 3 MA's), (Start: 72 @30510 has 2 MA's), (Start: 78 @30501 has 5 MA's), (Start: 88 @30483 has 6 MA's), (117, 30417), (230, 30111), (265, 29991), (278, 29949), (294, 29889), (303, 29865), (316, 29829), (332, 29748),

Gene: Opie_41 Start: 32411, Stop: 31515, Start Num: 75

Candidate Starts for Opie_41:

(Start: 75 @32411 has 11 MA's), (Start: 78 @32405 has 5 MA's), (Start: 80 @32402 has 2 MA's), (106, 32345), (108, 32342), (122, 32300), (128, 32285), (144, 32255), (175, 32165), (189, 32120), (190, 32117), (191, 32114), (231, 32018), (233, 32012), (238, 31994), (278, 31847), (287, 31817), (322, 31697), (334, 31637), (339, 31616), (344, 31592),

Gene: Orchid_70 Start: 57028, Stop: 56267, Start Num: 104

Candidate Starts for Orchid_70:

(Start: 57 @57118 has 1 MA's), (Start: 72 @57088 has 2 MA's), (84, 57070), (Start: 104 @57028 has 4 MA's), (130, 56959), (166, 56857), (167, 56854), (197, 56770), (201, 56752), (211, 56731), (215, 56722), (221, 56704), (231, 56683), (253, 56602), (273, 56545), (316, 56413), (321, 56389), (326, 56362), (330, 56347), (337, 56311), (340, 56305), (346, 56278), (349, 56272),

Gene: Oregano_37 Start: 27817, Stop: 28734, Start Num: 48

Candidate Starts for Oregano_37:

(Start: 46 @27811 has 16 MA's), (Start: 48 @27817 has 53 MA's), (139, 28006), (143, 28012), (174, 28114), (184, 28138), (202, 28198), (232, 28255), (234, 28261), (236, 28267), (266, 28381), (267,

28387), (270, 28399), (291, 28474), (296, 28498), (297, 28501), (312, 28537), (313, 28543), (319, 28576),

Gene: P3MA_38 Start: 29910, Stop: 28900, Start Num: 21

Candidate Starts for P3MA_38:

(Start: 21 @29910 has 1 MA's), (Start: 76 @29793 has 12 MA's), (112, 29724), (Start: 125 @29688 has 1 MA's), (128, 29679), (169, 29553), (177, 29532), (186, 29499), (220, 29412), (230, 29391), (239, 29358), (248, 29319), (258, 29298), (263, 29280), (265, 29271), (266, 29268), (270, 29250), (278, 29229), (291, 29184), (301, 29148), (333, 29028), (361, 28926),

Gene: Panchino_32 Start: 29134, Stop: 28163, Start Num: 34

Candidate Starts for Panchino_32:

(Start: 34 @29134 has 36 MA's), (Start: 77 @29050 has 1 MA's), (Start: 87 @29035 has 1 MA's), (142, 28912), (151, 28888), (186, 28771), (188, 28768), (194, 28747), (208, 28708), (210, 28705), (213, 28699), (220, 28684), (230, 28663), (235, 28648), (248, 28591), (253, 28579), (266, 28540), (273, 28513), (278, 28501), (283, 28474), (294, 28435), (303, 28411), (308, 28396), (339, 28267), (343, 28252), (354, 28213),

Gene: Parmesanjohn_36 Start: 28738, Stop: 27767, Start Num: 34

Candidate Starts for Parmesanjohn_36:

(Start: 34 @28738 has 36 MA's), (Start: 77 @28654 has 1 MA's), (Start: 87 @28639 has 1 MA's), (142, 28516), (151, 28492), (186, 28375), (188, 28372), (194, 28351), (208, 28312), (210, 28309), (213, 28303), (220, 28288), (230, 28267), (235, 28252), (248, 28195), (253, 28183), (266, 28144), (273, 28117), (278, 28105), (283, 28078), (294, 28039), (303, 28015), (308, 28000), (339, 27871), (343, 27856), (354, 27817),

Gene: PatrickStar_71 Start: 57027, Stop: 56266, Start Num: 104

Candidate Starts for PatrickStar_71:

(Start: 57 @57117 has 1 MA's), (Start: 72 @57087 has 2 MA's), (84, 57069), (Start: 104 @57027 has 4 MA's), (130, 56958), (166, 56856), (167, 56853), (197, 56769), (201, 56751), (211, 56730), (215, 56721), (221, 56703), (231, 56682), (253, 56601), (273, 56544), (316, 56412), (321, 56388), (326, 56361), (330, 56346), (337, 56310), (340, 56304), (346, 56277), (349, 56271),

Gene: PeggyLeg03_34 Start: 24890, Stop: 25810, Start Num: 48

Candidate Starts for PeggyLeg03_34:

(Start: 48 @24890 has 53 MA's), (121, 25046), (130, 25064), (135, 25076), (185, 25223), (187, 25232), (200, 25271), (234, 25340), (236, 25346), (242, 25379), (254, 25421), (261, 25433), (318, 25652), (322, 25664), (323, 25676), (327, 25691), (328, 25697), (348, 25778), (350, 25781),

Gene: Petra_37 Start: 30869, Stop: 30033, Start Num: 72

Candidate Starts for Petra_37:

(Start: 47 @30923 has 8 MA's), (Start: 55 @30902 has 1 MA's), (Start: 62 @30887 has 3 MA's), (Start: 72 @30869 has 2 MA's), (Start: 78 @30860 has 5 MA's), (Start: 88 @30842 has 6 MA's), (117, 30776), (230, 30470), (236, 30452), (239, 30437), (265, 30350), (270, 30329), (278, 30308), (294, 30248), (303, 30224), (316, 30188), (332, 30107),

Gene: Phalm_30 Start: 27132, Stop: 26176, Start Num: 44

Candidate Starts for Phalm_30:

(Start: 44 @27132 has 34 MA's), (Start: 76 @27069 has 12 MA's), (Start: 77 @27066 has 1 MA's), (Start: 125 @26994 has 1 MA's), (128, 26985), (151, 26934), (186, 26817), (188, 26814), (189, 26811), (199, 26781), (201, 26769), (208, 26754), (217, 26736), (230, 26709), (238, 26682), (239, 26676), (255, 26622), (258, 26616), (263, 26598), (278, 26547), (303, 26463), (327, 26373), (330, 26361), (339, 26319), (369, 26190),

Gene: PhancyPhin_37 Start: 29032, Stop: 28061, Start Num: 34

Candidate Starts for PhancyPhin_37:

(Start: 34 @29032 has 36 MA's), (Start: 77 @28948 has 1 MA's), (Start: 83 @28939 has 1 MA's), (151, 28786), (186, 28669), (188, 28666), (208, 28606), (213, 28597), (220, 28582), (230, 28561), (236, 28543), (253, 28477), (273, 28411), (278, 28399), (283, 28372), (294, 28333), (303, 28309), (308, 28294), (327, 28219), (339, 28165),

Gene: Phayonce_32 Start: 28847, Stop: 27957, Start Num: 76

Candidate Starts for Phayonce_32:

(43, 28913), (Start: 47 @28904 has 8 MA's), (50, 28895), (Start: 76 @28847 has 12 MA's), (Start: 125 @28772 has 1 MA's), (128, 28763), (186, 28589), (188, 28586), (189, 28583), (201, 28541), (208, 28526), (217, 28508), (230, 28481), (239, 28448), (255, 28394), (267, 28352), (278, 28319), (303, 28235), (308, 28220), (330, 28133), (339, 28091), (353, 28040), (361, 28010), (366, 27998),

Gene: Phegasus_30 Start: 26880, Stop: 25924, Start Num: 44

Candidate Starts for Phegasus_30:

(Start: 44 @26880 has 34 MA's), (58, 26850), (Start: 76 @26817 has 12 MA's), (Start: 77 @26814 has 1 MA's), (Start: 125 @26742 has 1 MA's), (128, 26733), (131, 26727), (151, 26682), (186, 26565), (188, 26562), (189, 26559), (199, 26529), (201, 26517), (208, 26502), (217, 26484), (230, 26457), (238, 26430), (239, 26424), (255, 26370), (263, 26346), (278, 26295), (303, 26211), (321, 26151), (330, 26109), (339, 26067), (369, 25938),

Gene: Philonius_34 Start: 27400, Stop: 26429, Start Num: 34

Candidate Starts for Philonius_34:

(Start: 34 @27400 has 36 MA's), (37, 27391), (Start: 77 @27316 has 1 MA's), (Start: 87 @27301 has 1 MA's), (142, 27178), (151, 27154), (186, 27037), (188, 27034), (194, 27013), (208, 26974), (210, 26971), (213, 26965), (220, 26950), (230, 26929), (235, 26914), (248, 26857), (253, 26845), (266, 26806), (273, 26779), (278, 26767), (283, 26740), (294, 26701), (303, 26677), (308, 26662), (339, 26533), (354, 26479), (364, 26446),

Gene: Phineas_30 Start: 27246, Stop: 26290, Start Num: 44

Candidate Starts for Phineas_30:

(Start: 44 @27246 has 34 MA's), (58, 27216), (Start: 76 @27183 has 12 MA's), (Start: 77 @27180 has 1 MA's), (Start: 125 @27108 has 1 MA's), (128, 27099), (131, 27093), (151, 27048), (186, 26931), (188, 26928), (189, 26925), (199, 26895), (201, 26883), (208, 26868), (217, 26850), (230, 26823), (238, 26796), (239, 26790), (255, 26736), (258, 26730), (278, 26661), (303, 26577), (321, 26517), (330, 26475), (339, 26433), (369, 26304),

Gene: Phishy_35 Start: 30744, Stop: 29884, Start Num: 74

Candidate Starts for Phishy_35:

(Start: 44 @30795 has 34 MA's), (Start: 74 @30744 has 5 MA's), (123, 30639), (138, 30609), (151, 30576), (154, 30567), (186, 30459), (188, 30456), (208, 30396), (220, 30372), (228, 30354), (230, 30351), (266, 30228), (269, 30213), (278, 30189), (283, 30162), (303, 30099), (308, 30084), (326, 30012), (330, 29997), (339, 29955), (352, 29910),

Gene: Phlop_46 Start: 39515, Stop: 38628, Start Num: 52

Candidate Starts for Phlop_46:

(Start: 30 @39563 has 18 MA's), (Start: 52 @39515 has 5 MA's), (Start: 53 @39512 has 1 MA's), (Start: 62 @39494 has 3 MA's), (Start: 66 @39485 has 1 MA's), (128, 39353), (193, 39170), (197, 39158), (208, 39125), (230, 39083), (242, 39032), (253, 38993), (314, 38789), (316, 38780), (328, 38720), (339, 38672), (343, 38657), (345, 38645),

Gene: Phloss_34 Start: 28145, Stop: 27174, Start Num: 34

Candidate Starts for Phloss_34:

(Start: 34 @28145 has 36 MA's), (Start: 77 @28061 has 1 MA's), (Start: 87 @28046 has 1 MA's), (142, 27923), (151, 27899), (186, 27782), (188, 27779), (194, 27758), (208, 27719), (210, 27716), (213, 27710), (220, 27695), (230, 27674), (235, 27659), (248, 27602), (253, 27590), (266, 27551), (273, 27524), (278, 27512), (283, 27485), (294, 27446), (303, 27422), (308, 27407), (339, 27278), (343, 27263), (354, 27224),

Gene: Phrann_37 Start: 29816, Stop: 28845, Start Num: 34

Candidate Starts for Phrann_37:

(Start: 34 @29816 has 36 MA's), (Start: 77 @29732 has 1 MA's), (Start: 83 @29723 has 1 MA's), (151, 29570), (186, 29453), (188, 29450), (208, 29390), (213, 29381), (220, 29366), (230, 29345), (236, 29327), (253, 29261), (273, 29195), (278, 29183), (283, 29156), (294, 29117), (303, 29093), (308, 29078), (327, 29003), (339, 28949),

Gene: PhriskyACE_35 Start: 28658, Stop: 29575, Start Num: 48

Candidate Starts for PhriskyACE_35:

(Start: 46 @28652 has 16 MA's), (Start: 48 @28658 has 53 MA's), (137, 28841), (139, 28847), (143, 28853), (202, 29039), (234, 29102), (236, 29108), (239, 29123), (266, 29222), (267, 29228), (270, 29240), (291, 29315), (296, 29339), (297, 29342), (312, 29378), (313, 29384), (315, 29396), (327, 29453), (336, 29498),

Gene: PhrostedPhlake_43 Start: 32416, Stop: 31481, Start Num: 30

Candidate Starts for PhrostedPhlake_43:

(Start: 30 @32416 has 18 MA's), (Start: 52 @32368 has 5 MA's), (Start: 53 @32365 has 1 MA's), (Start: 62 @32347 has 3 MA's), (128, 32206), (193, 32023), (208, 31978), (230, 31936), (242, 31885), (253, 31846), (265, 31810), (293, 31699), (314, 31642), (316, 31633), (327, 31579), (345, 31498),

Gene: PinkCoffee_49 Start: 39618, Stop: 38731, Start Num: 52

Candidate Starts for PinkCoffee_49:

(Start: 30 @39666 has 18 MA's), (Start: 52 @39618 has 5 MA's), (Start: 53 @39615 has 1 MA's), (Start: 62 @39597 has 3 MA's), (Start: 66 @39588 has 1 MA's), (128, 39456), (193, 39273), (197, 39261), (208, 39228), (230, 39186), (242, 39135), (253, 39096), (314, 38892), (316, 38883), (328, 38823), (339, 38775), (343, 38760), (345, 38748),

Gene: Pipp_33 Start: 27701, Stop: 28627, Start Num: 46

Candidate Starts for Pipp_33:

(Start: 46 @27701 has 16 MA's), (Start: 48 @27707 has 53 MA's), (111, 27824), (112, 27827), (137, 27890), (139, 27896), (143, 27902), (174, 28004), (202, 28088), (231, 28142), (232, 28145), (234, 28151), (239, 28172), (266, 28271), (270, 28289), (291, 28364), (297, 28391), (312, 28427), (327, 28502),

Gene: Pipp_37 Start: 31000, Stop: 30065, Start Num: 30

Candidate Starts for Pipp_37:

(Start: 30 @31000 has 18 MA's), (Start: 52 @30952 has 5 MA's), (Start: 53 @30949 has 1 MA's), (Start: 62 @30931 has 3 MA's), (Start: 66 @30922 has 1 MA's), (128, 30790), (193, 30607), (208, 30562), (230, 30520), (240, 30478), (242, 30469), (253, 30430), (265, 30394), (298, 30268), (314, 30226), (343, 30094), (345, 30082),

Gene: Pipsqueaks_36 Start: 28715, Stop: 27744, Start Num: 34

Candidate Starts for Pipsqueaks_36:

(Start: 34 @28715 has 36 MA's), (Start: 77 @28631 has 1 MA's), (Start: 87 @28616 has 1 MA's), (142, 28493), (151, 28469), (186, 28352), (188, 28349), (194, 28328), (208, 28289), (210, 28286),

(213, 28280), (220, 28265), (230, 28244), (235, 28229), (248, 28172), (253, 28160), (266, 28121), (273, 28094), (278, 28082), (283, 28055), (294, 28016), (303, 27992), (308, 27977), (339, 27848), (343, 27833), (354, 27794),

Gene: Polkaroo_30 Start: 26826, Stop: 25933, Start Num: 76

Candidate Starts for Polkaroo_30:

(Start: 44 @26889 has 34 MA's), (Start: 76 @26826 has 12 MA's), (Start: 77 @26823 has 1 MA's), (Start: 125 @26751 has 1 MA's), (128, 26742), (151, 26691), (186, 26574), (188, 26571), (189, 26568), (199, 26538), (201, 26526), (208, 26511), (217, 26493), (230, 26466), (238, 26439), (239, 26433), (255, 26379), (258, 26373), (263, 26355), (278, 26304), (303, 26220), (327, 26130), (330, 26118), (339, 26076), (369, 25947),

Gene: Pollux_37 Start: 30910, Stop: 31827, Start Num: 48

Candidate Starts for Pollux_37:

(Start: 46 @30904 has 16 MA's), (Start: 48 @30910 has 53 MA's), (Start: 64 @30934 has 1 MA's), (112, 31030), (139, 31099), (143, 31105), (183, 31228), (202, 31291), (231, 31345), (234, 31354), (239, 31375), (240, 31384), (249, 31414), (256, 31438), (284, 31546), (291, 31567), (297, 31594),

Gene: Popper_34 Start: 26204, Stop: 27124, Start Num: 48

Candidate Starts for Popper_34:

(Start: 48 @26204 has 53 MA's), (Start: 66 @26243 has 1 MA's), (121, 26360), (130, 26378), (135, 26390), (185, 26537), (200, 26585), (231, 26645), (234, 26654), (236, 26660), (242, 26693), (254, 26735), (261, 26747), (268, 26786), (318, 26966), (323, 26990), (327, 27005), (328, 27011), (348, 27092), (350, 27095),

Gene: Popper_37 Start: 28406, Stop: 27531, Start Num: 90

Candidate Starts for Popper_37:

(Start: 90 @28406 has 7 MA's), (106, 28367), (144, 28280), (177, 28181), (193, 28130), (203, 28094), (230, 28040), (238, 28013), (239, 28007), (242, 27989), (246, 27974), (261, 27944), (273, 27890), (278, 27878), (292, 27806), (321, 27710), (330, 27668), (332, 27653),

Gene: Portcullis_49 Start: 39169, Stop: 38234, Start Num: 30

Candidate Starts for Portcullis_49:

(Start: 30 @39169 has 18 MA's), (Start: 52 @39121 has 5 MA's), (Start: 53 @39118 has 1 MA's), (Start: 62 @39100 has 3 MA's), (Start: 66 @39091 has 1 MA's), (128, 38959), (193, 38776), (197, 38764), (206, 38734), (208, 38731), (230, 38689), (242, 38638), (253, 38599), (314, 38395), (316, 38386), (328, 38326), (339, 38278), (343, 38263), (345, 38251),

Gene: Pucara_31 Start: 24120, Stop: 25040, Start Num: 48

Candidate Starts for Pucara_31:

(Start: 48 @24120 has 53 MA's), (121, 24276), (130, 24294), (135, 24306), (185, 24453), (187, 24462), (200, 24501), (234, 24570), (236, 24576), (242, 24609), (254, 24651), (318, 24882), (323, 24906), (328, 24927), (348, 25008), (350, 25011),

Gene: PullumCavea_46 Start: 39563, Stop: 38628, Start Num: 30

Candidate Starts for PullumCavea_46:

(Start: 30 @39563 has 18 MA's), (Start: 52 @39515 has 5 MA's), (Start: 53 @39512 has 1 MA's), (Start: 62 @39494 has 3 MA's), (Start: 66 @39485 has 1 MA's), (128, 39353), (193, 39170), (197, 39158), (208, 39125), (230, 39083), (242, 39032), (253, 38993), (314, 38789), (316, 38780), (328, 38720), (339, 38672), (343, 38657), (345, 38645),

Gene: Purgamenstris_37 Start: 28943, Stop: 28065, Start Num: 83

Candidate Starts for Purgamenstris_37:

(Start: 34 @29036 has 36 MA's), (Start: 77 @28952 has 1 MA's), (Start: 83 @28943 has 1 MA's), (151, 28790), (186, 28673), (188, 28670), (208, 28610), (213, 28601), (220, 28586), (230, 28565), (236, 28547), (253, 28481), (273, 28415), (278, 28403), (283, 28376), (294, 28337), (303, 28313), (308, 28298), (327, 28223), (339, 28169),

Gene: Purky_37 Start: 29562, Stop: 28654, Start Num: 76

Candidate Starts for Purky_37:

(45, 29622), (49, 29613), (Start: 76 @29562 has 12 MA's), (120, 29496), (128, 29478), (186, 29310), (189, 29304), (199, 29274), (201, 29262), (217, 29229), (230, 29202), (232, 29196), (278, 29040), (303, 28956), (305, 28953), (324, 28875), (327, 28866), (339, 28812), (361, 28731),

Gene: Pygmy_32 Start: 28714, Stop: 27758, Start Num: 44

Candidate Starts for Pygmy_32:

(Start: 44 @28714 has 34 MA's), (58, 28684), (Start: 76 @28651 has 12 MA's), (Start: 77 @28648 has 1 MA's), (Start: 125 @28576 has 1 MA's), (128, 28567), (131, 28561), (151, 28516), (186, 28399), (188, 28396), (189, 28393), (199, 28363), (201, 28351), (208, 28336), (213, 28327), (217, 28318), (230, 28291), (238, 28264), (239, 28258), (255, 28204), (263, 28180), (278, 28129), (303, 28045), (321, 27985), (327, 27955), (330, 27943), (339, 27901), (369, 27772),

Gene: Pytheas_34 Start: 28853, Stop: 29788, Start Num: 46

Candidate Starts for Pytheas_34:

(25, 28799), (Start: 46 @28853 has 16 MA's), (112, 28985), (156, 29102), (174, 29162), (176, 29165), (184, 29186), (229, 29297), (234, 29309), (254, 29390), (269, 29444), (271, 29450), (277, 29468), (291, 29528), (296, 29552), (297, 29555), (312, 29591), (313, 29597), (329, 29675), (342, 29735),

Gene: QueenHazel_29 Start: 26975, Stop: 26085, Start Num: 76

Candidate Starts for QueenHazel_29:

(Start: 44 @27038 has 34 MA's), (Start: 76 @26975 has 12 MA's), (128, 26891), (138, 26873), (186, 26723), (188, 26720), (189, 26717), (199, 26687), (201, 26675), (208, 26660), (213, 26651), (217, 26642), (230, 26615), (238, 26588), (239, 26582), (255, 26528), (258, 26522), (273, 26465), (278, 26453), (303, 26369), (308, 26354), (327, 26279), (330, 26267), (339, 26225), (365, 26132), (368, 26117),

Gene: RadFad_36 Start: 24572, Stop: 25492, Start Num: 48

Candidate Starts for RadFad_36:

(9, 24443), (14, 24470), (Start: 48 @24572 has 53 MA's), (107, 24686), (130, 24746), (135, 24758), (156, 24815), (185, 24905), (200, 24953), (234, 25022), (236, 25028), (242, 25061), (250, 25085), (323, 25358), (327, 25373), (328, 25379),

Gene: Rahul_19 Start: 13941, Stop: 13114, Start Num: 69

Candidate Starts for Rahul_19:

(Start: 69 @13941 has 3 MA's), (Start: 89 @13914 has 1 MA's), (119, 13842), (Start: 125 @13827 has 1 MA's), (140, 13791), (169, 13704), (190, 13641), (208, 13587), (225, 13554), (230, 13545), (246, 13479), (247, 13476), (252, 13464), (255, 13452), (258, 13446), (265, 13419), (266, 13416), (288, 13365), (302, 13314), (316, 13272), (327, 13218), (329, 13209), (330, 13206), (339, 13164), (343, 13149), (344, 13140),

Gene: Raphaella_36 Start: 24506, Stop: 25423, Start Num: 48

Candidate Starts for Raphaella_36:

(9, 24377), (11, 24383), (Start: 48 @24506 has 53 MA's), (121, 24662), (129, 24677), (135, 24689), (185, 24836), (187, 24845), (200, 24884), (223, 24929), (234, 24953), (236, 24959), (242, 24992), (254, 25034), (259, 25043), (268, 25085), (291, 25169), (323, 25289), (327, 25304),

Gene: RayTheFireFly_45 Start: 32624, Stop: 31815, Start Num: 88

Candidate Starts for RayTheFireFly_45:

(Start: 53 @32687 has 1 MA's), (Start: 55 @32684 has 1 MA's), (Start: 62 @32669 has 3 MA's), (Start: 78 @32642 has 5 MA's), (Start: 88 @32624 has 6 MA's), (117, 32558), (161, 32444), (225, 32261), (230, 32252), (238, 32225), (239, 32219), (265, 32132), (278, 32090), (294, 32030), (303, 32006), (316, 31970), (332, 31889), (351, 31823),

Gene: Raymond7_31 Start: 28846, Stop: 27872, Start Num: 34

Candidate Starts for Raymond7_31:

(Start: 34 @28846 has 36 MA's), (Start: 77 @28762 has 1 MA's), (131, 28645), (142, 28624), (151, 28600), (177, 28516), (186, 28483), (188, 28480), (194, 28459), (210, 28417), (213, 28411), (220, 28396), (230, 28375), (236, 28357), (248, 28303), (253, 28291), (266, 28252), (273, 28225), (278, 28213), (283, 28186), (294, 28147), (303, 28123), (308, 28108), (321, 28063), (339, 27979), (354, 27925),

Gene: Redi_37 Start: 29035, Stop: 28064, Start Num: 34

Candidate Starts for Redi_37:

(Start: 34 @29035 has 36 MA's), (Start: 77 @28951 has 1 MA's), (Start: 83 @28942 has 1 MA's), (151, 28789), (186, 28672), (188, 28669), (208, 28609), (213, 28600), (220, 28585), (230, 28564), (236, 28546), (253, 28480), (273, 28414), (278, 28402), (283, 28375), (294, 28336), (303, 28312), (308, 28297), (327, 28222), (339, 28168),

Gene: Rem711_46 Start: 33683, Stop: 32640, Start Num: 16

Candidate Starts for Rem711_46:

(Start: 16 @33683 has 1 MA's), (73, 33548), (86, 33524), (112, 33467), (115, 33458), (142, 33395), (148, 33380), (150, 33374), (177, 33287), (180, 33281), (181, 33278), (186, 33254), (213, 33182), (220, 33167), (228, 33149), (230, 33146), (239, 33113), (258, 33053), (269, 33008), (273, 32996), (278, 32984), (303, 32891), (316, 32855), (321, 32831), (327, 32801),

Gene: Reyja_31 Start: 25906, Stop: 25172, Start Num: 125

Candidate Starts for Reyja_31:

(18, 26140), (Start: 22 @26131 has 1 MA's), (Start: 72 @26020 has 2 MA's), (Start: 88 @25993 has 6 MA's), (105, 25957), (Start: 125 @25906 has 1 MA's), (164, 25801), (168, 25789), (186, 25729), (201, 25681), (225, 25627), (230, 25618), (236, 25600), (258, 25525), (278, 25456), (294, 25396), (303, 25372), (308, 25357), (316, 25336), (321, 25312), (329, 25273), (330, 25270), (332, 25255), (352, 25183),

Gene: Reynauld_68 Start: 57456, Stop: 56647, Start Num: 91

Candidate Starts for Reynauld_68:

(Start: 91 @57456 has 1 MA's), (127, 57366), (141, 57336), (183, 57210), (194, 57171), (224, 57093), (246, 57018), (258, 56985), (264, 56964), (279, 56916), (325, 56745), (327, 56739), (346, 56658),

Gene: Richie_36 Start: 24587, Stop: 25504, Start Num: 48

Candidate Starts for Richie_36:

(9, 24458), (11, 24464), (Start: 48 @24587 has 53 MA's), (129, 24758), (135, 24770), (156, 24827), (185, 24917), (187, 24926), (200, 24965), (223, 25010), (234, 25034), (236, 25040), (242, 25073), (254, 25115), (259, 25124), (268, 25166), (291, 25250), (323, 25370), (327, 25385),

Gene: RobinSparkles_72 Start: 56946, Stop: 56164, Start Num: 94

Candidate Starts for RobinSparkles_72:

(Start: 94 @56946 has 1 MA's), (Start: 104 @56925 has 4 MA's), (130, 56856), (166, 56754), (167, 56751), (197, 56667), (201, 56649), (211, 56628), (215, 56619), (221, 56601), (231, 56580), (253, 56499), (273, 56442), (316, 56310), (321, 56286), (326, 56259), (330, 56244), (337, 56208), (340,

56202), (346, 56175), (349, 56169),

Gene: RogerDodger_50 Start: 39706, Stop: 38771, Start Num: 30

Candidate Starts for RogerDodger_50:

(Start: 30 @39706 has 18 MA's), (Start: 52 @39658 has 5 MA's), (Start: 53 @39655 has 1 MA's), (Start: 62 @39637 has 3 MA's), (Start: 66 @39628 has 1 MA's), (128, 39496), (193, 39313), (197, 39301), (206, 39271), (208, 39268), (230, 39226), (242, 39175), (253, 39136), (255, 39133), (314, 38932), (316, 38923), (328, 38863), (339, 38815), (343, 38800), (345, 38788),

Gene: Rubeelu_37 Start: 29461, Stop: 28490, Start Num: 34

Candidate Starts for Rubeelu_37:

(32, 29464), (Start: 34 @29461 has 36 MA's), (Start: 77 @29377 has 1 MA's), (128, 29266), (142, 29239), (151, 29215), (186, 29098), (213, 29026), (220, 29011), (230, 28990), (266, 28867), (273, 28840), (278, 28828), (283, 28801), (294, 28762), (303, 28738), (308, 28723), (327, 28648), (330, 28636), (339, 28594), (343, 28579), (354, 28540),

Gene: Ryan_36 Start: 26903, Stop: 27823, Start Num: 48

Candidate Starts for Ryan_36:

(29, 26861), (Start: 48 @26903 has 53 MA's), (121, 27059), (130, 27077), (135, 27089), (185, 27236), (187, 27245), (200, 27284), (234, 27353), (236, 27359), (242, 27392), (250, 27416), (254, 27434), (261, 27446), (268, 27485), (318, 27665), (323, 27689), (327, 27704), (328, 27710), (348, 27791), (350, 27794),

Gene: Ryan_39 Start: 29105, Stop: 28230, Start Num: 90

Candidate Starts for Ryan_39:

(Start: 90 @29105 has 7 MA's), (106, 29066), (163, 28919), (177, 28880), (193, 28829), (203, 28793), (230, 28739), (238, 28712), (242, 28688), (246, 28673), (261, 28643), (267, 28610), (273, 28589), (278, 28577), (292, 28505), (294, 28493), (321, 28409), (330, 28367), (332, 28352),

Gene: Sakai_36 Start: 24515, Stop: 25432, Start Num: 48

Candidate Starts for Sakai_36:

(9, 24386), (11, 24392), (Start: 48 @24515 has 53 MA's), (121, 24671), (129, 24686), (135, 24698), (185, 24845), (187, 24854), (200, 24893), (223, 24938), (234, 24962), (236, 24968), (242, 25001), (254, 25043), (259, 25052), (268, 25094), (291, 25178), (323, 25298), (327, 25313),

Gene: SallySpecial_17 Start: 13669, Stop: 12869, Start Num: 89

Candidate Starts for SallySpecial_17:

(1, 14119), (2, 14104), (3, 14101), (7, 13924), (24, 13801), (Start: 35 @13771 has 3 MA's), (38, 13762), (Start: 69 @13696 has 3 MA's), (Start: 89 @13669 has 1 MA's), (95, 13657), (96, 13654), (107, 13630), (120, 13591), (138, 13552), (149, 13525), (154, 13510), (190, 13396), (192, 13390), (199, 13369), (208, 13342), (228, 13303), (230, 13300), (242, 13249), (246, 13234), (247, 13231), (258, 13201), (264, 13180), (265, 13174), (266, 13171), (267, 13165), (288, 13120), (302, 13069), (316, 13027), (327, 12973), (338, 12922), (339, 12919), (343, 12904), (344, 12895),

Gene: Salvador_46 Start: 39375, Stop: 38440, Start Num: 30

Candidate Starts for Salvador_46:

(Start: 30 @39375 has 18 MA's), (Start: 52 @39327 has 5 MA's), (Start: 53 @39324 has 1 MA's), (Start: 62 @39306 has 3 MA's), (Start: 66 @39297 has 1 MA's), (128, 39165), (193, 38982), (197, 38970), (206, 38940), (208, 38937), (230, 38895), (242, 38844), (253, 38805), (314, 38601), (316, 38592), (328, 38532), (339, 38484), (343, 38469), (345, 38457),

Gene: Samman98_36 Start: 27315, Stop: 28232, Start Num: 48

Candidate Starts for Samman98_36:

(Start: 46 @27309 has 16 MA's), (Start: 48 @27315 has 53 MA's), (139, 27504), (143, 27510), (174, 27612), (184, 27636), (202, 27696), (232, 27753), (234, 27759), (236, 27765), (266, 27879), (267, 27885), (270, 27897), (291, 27972), (296, 27996), (297, 27999), (312, 28035), (313, 28041), (315, 28053), (336, 28155),

Gene: Santhid_30 Start: 24489, Stop: 23530, Start Num: 22

Candidate Starts for Santhid_30:

(17, 24504), (Start: 20 @24495 has 1 MA's), (Start: 22 @24489 has 1 MA's), (Start: 72 @24378 has 2 MA's), (Start: 88 @24351 has 6 MA's), (105, 24315), (164, 24159), (168, 24147), (186, 24087), (201, 24039), (204, 24030), (225, 23985), (230, 23976), (236, 23958), (278, 23814), (280, 23808), (294, 23754), (303, 23730), (308, 23715), (316, 23694), (329, 23631), (332, 23613),

Gene: Sashimi_35 Start: 25890, Stop: 26810, Start Num: 48

Candidate Starts for Sashimi_35:

(8, 25755), (9, 25758), (12, 25773), (13, 25782), (29, 25848), (Start: 48 @25890 has 53 MA's), (121, 26046), (Start: 125 @26052 has 1 MA's), (130, 26064), (135, 26076), (185, 26223), (187, 26232), (200, 26271), (223, 26316), (234, 26340), (236, 26346), (261, 26433), (273, 26490), (290, 26550), (291, 26556), (297, 26583), (323, 26676), (327, 26691), (350, 26781),

Gene: Savbucketdawg_47 Start: 39156, Stop: 38221, Start Num: 30

Candidate Starts for Savbucketdawg_47:

(Start: 30 @39156 has 18 MA's), (Start: 52 @39108 has 5 MA's), (Start: 53 @39105 has 1 MA's), (Start: 62 @39087 has 3 MA's), (Start: 66 @39078 has 1 MA's), (128, 38946), (193, 38763), (197, 38751), (208, 38718), (230, 38676), (242, 38625), (253, 38586), (314, 38382), (316, 38373), (328, 38313), (339, 38265), (343, 38250), (345, 38238),

Gene: Schnabeltier_38 Start: 31608, Stop: 30718, Start Num: 75

Candidate Starts for Schnabeltier_38:

(43, 31668), (Start: 75 @31608 has 11 MA's), (Start: 78 @31602 has 5 MA's), (Start: 80 @31599 has 2 MA's), (106, 31542), (108, 31539), (122, 31497), (144, 31452), (159, 31413), (214, 31248), (225, 31227), (231, 31215), (233, 31209), (238, 31191), (243, 31164), (265, 31089), (275, 31053), (278, 31044), (300, 30963), (334, 30834), (339, 30813), (344, 30789),

Gene: Schnauzer_36 Start: 28738, Stop: 27767, Start Num: 34

Candidate Starts for Schnauzer_36:

(Start: 34 @28738 has 36 MA's), (Start: 77 @28654 has 1 MA's), (Start: 87 @28639 has 1 MA's), (142, 28516), (151, 28492), (186, 28375), (188, 28372), (194, 28351), (208, 28312), (210, 28309), (213, 28303), (220, 28288), (230, 28267), (235, 28252), (248, 28195), (253, 28183), (266, 28144), (273, 28117), (278, 28105), (283, 28078), (294, 28039), (303, 28015), (308, 28000), (339, 27871), (343, 27856), (354, 27817),

Gene: Scitech_31 Start: 26586, Stop: 25615, Start Num: 34

Candidate Starts for Scitech_31:

(Start: 34 @26586 has 36 MA's), (Start: 77 @26502 has 1 MA's), (Start: 87 @26487 has 1 MA's), (142, 26364), (151, 26340), (186, 26223), (188, 26220), (194, 26199), (208, 26160), (210, 26157), (213, 26151), (220, 26136), (230, 26115), (235, 26100), (248, 26043), (253, 26031), (266, 25992), (273, 25965), (278, 25953), (283, 25926), (294, 25887), (303, 25863), (308, 25848), (339, 25719), (354, 25665), (364, 25632),

Gene: Seahorse_38 Start: 26187, Stop: 27107, Start Num: 48

Candidate Starts for Seahorse_38:

(9, 26058), (11, 26064), (Start: 48 @26187 has 53 MA's), (107, 26301), (126, 26352), (130, 26361), (135, 26373), (156, 26430), (185, 26520), (187, 26529), (200, 26568), (234, 26637), (236, 26643),

(238, 26652), (242, 26676), (250, 26700), (295, 26874), (323, 26973), (327, 26988), (350, 27078),

Gene: Sekhmet_37 Start: 28524, Stop: 29132, Start Num: 46

Candidate Starts for Sekhmet_37:

(Start: 46 @28524 has 16 MA's), (Start: 48 @28530 has 53 MA's), (139, 28719), (143, 28725), (174, 28827), (184, 28851), (202, 28911), (214, 28935), (222, 28941), (227, 28953),

Gene: Shinji_48 Start: 38871, Stop: 37984, Start Num: 52

Candidate Starts for Shinji_48:

(Start: 30 @38919 has 18 MA's), (Start: 52 @38871 has 5 MA's), (Start: 53 @38868 has 1 MA's), (Start: 62 @38850 has 3 MA's), (Start: 66 @38841 has 1 MA's), (128, 38709), (193, 38526), (197, 38514), (206, 38484), (208, 38481), (230, 38439), (242, 38388), (253, 38349), (255, 38346), (314, 38145), (316, 38136), (328, 38076), (339, 38028), (343, 38013), (345, 38001),

Gene: Shipwreck_32 Start: 28626, Stop: 27733, Start Num: 76

Candidate Starts for Shipwreck_32:

(Start: 44 @28689 has 34 MA's), (58, 28659), (Start: 76 @28626 has 12 MA's), (Start: 77 @28623 has 1 MA's), (Start: 125 @28551 has 1 MA's), (128, 28542), (131, 28536), (151, 28491), (186, 28374), (188, 28371), (189, 28368), (199, 28338), (201, 28326), (208, 28311), (213, 28302), (217, 28293), (230, 28266), (238, 28239), (239, 28233), (255, 28179), (263, 28155), (278, 28104), (303, 28020), (321, 27960), (327, 27930), (330, 27918), (339, 27876), (369, 27747),

Gene: Shlim410_35 Start: 30765, Stop: 31682, Start Num: 48

Candidate Starts for Shlim410_35:

(Start: 46 @30759 has 16 MA's), (Start: 48 @30765 has 53 MA's), (135, 30945), (139, 30954), (143, 30960), (198, 31131), (202, 31146), (232, 31203), (234, 31209), (236, 31215), (239, 31230), (266, 31329), (267, 31335), (270, 31347), (291, 31422), (296, 31446), (297, 31449), (312, 31485), (313, 31491), (315, 31503), (336, 31605),

Gene: ShrimpFriedEgg_37 Start: 29035, Stop: 28064, Start Num: 34

Candidate Starts for ShrimpFriedEgg_37:

(Start: 34 @29035 has 36 MA's), (Start: 77 @28951 has 1 MA's), (Start: 83 @28942 has 1 MA's), (151, 28789), (186, 28672), (188, 28669), (208, 28609), (213, 28600), (220, 28585), (230, 28564), (236, 28546), (253, 28480), (273, 28414), (278, 28402), (283, 28375), (294, 28336), (303, 28312), (308, 28297), (327, 28222), (339, 28168),

Gene: Shweta_33 Start: 27918, Stop: 26947, Start Num: 34

Candidate Starts for Shweta_33:

(Start: 34 @27918 has 36 MA's), (Start: 77 @27834 has 1 MA's), (Start: 87 @27819 has 1 MA's), (142, 27696), (151, 27672), (186, 27555), (188, 27552), (194, 27531), (208, 27492), (210, 27489), (213, 27483), (220, 27468), (230, 27447), (235, 27432), (248, 27375), (253, 27363), (266, 27324), (273, 27297), (278, 27285), (283, 27258), (294, 27219), (303, 27195), (308, 27180), (339, 27051), (343, 27036), (354, 26997),

Gene: Silvafighter_37 Start: 28711, Stop: 27740, Start Num: 34

Candidate Starts for Silvafighter_37:

(Start: 34 @28711 has 36 MA's), (Start: 77 @28627 has 1 MA's), (Start: 87 @28612 has 1 MA's), (142, 28489), (151, 28465), (186, 28348), (188, 28345), (194, 28324), (208, 28285), (210, 28282), (213, 28276), (220, 28261), (230, 28240), (235, 28225), (248, 28168), (253, 28156), (266, 28117), (273, 28090), (278, 28078), (283, 28051), (294, 28012), (303, 27988), (308, 27973), (339, 27844), (343, 27829), (354, 27790),

Gene: Silvy_34 Start: 27389, Stop: 26418, Start Num: 34

Candidate Starts for Silvy_34:

(Start: 34 @27389 has 36 MA's), (37, 27380), (Start: 77 @27305 has 1 MA's), (Start: 87 @27290 has 1 MA's), (142, 27167), (151, 27143), (186, 27026), (188, 27023), (194, 27002), (208, 26963), (210, 26960), (213, 26954), (220, 26939), (230, 26918), (235, 26903), (248, 26846), (253, 26834), (266, 26795), (273, 26768), (278, 26756), (283, 26729), (294, 26690), (303, 26666), (308, 26651), (339, 26522), (354, 26468), (364, 26435),

Gene: Sixama_89 Start: 47436, Stop: 48350, Start Num: 64

Candidate Starts for Sixama_89:

(Start: 64 @47436 has 1 MA's), (Start: 90 @47481 has 7 MA's), (114, 47538), (Start: 125 @47568 has 1 MA's), (133, 47586), (162, 47667), (167, 47685), (202, 47796), (223, 47853), (233, 47874), (234, 47877), (274, 48027), (281, 48063), (284, 48072),

Gene: SkinnyPete_31 Start: 26449, Stop: 25478, Start Num: 34

Candidate Starts for SkinnyPete_31:

(Start: 34 @26449 has 36 MA's), (Start: 77 @26365 has 1 MA's), (Start: 87 @26350 has 1 MA's), (142, 26227), (151, 26203), (186, 26086), (188, 26083), (194, 26062), (208, 26023), (210, 26020), (213, 26014), (220, 25999), (230, 25978), (235, 25963), (248, 25906), (253, 25894), (266, 25855), (273, 25828), (278, 25816), (283, 25789), (294, 25750), (303, 25726), (308, 25711), (339, 25582), (354, 25528), (364, 25495),

Gene: Smilerella_19 Start: 13836, Stop: 12850, Start Num: 31

Candidate Starts for Smilerella_19:

(31, 13836), (82, 13734), (Start: 85 @13728 has 1 MA's), (147, 13587), (158, 13548), (193, 13440), (194, 13434), (213, 13386), (230, 13350), (239, 13317), (262, 13251), (264, 13236), (269, 13212), (273, 13200), (278, 13188), (294, 13122), (322, 13026), (327, 12999), (331, 12984), (339, 12945),

Gene: SmokingBunny_47 Start: 39390, Stop: 38533, Start Num: 66

Candidate Starts for SmokingBunny_47:

(Start: 30 @39468 has 18 MA's), (Start: 52 @39420 has 5 MA's), (Start: 53 @39417 has 1 MA's), (Start: 62 @39399 has 3 MA's), (Start: 66 @39390 has 1 MA's), (128, 39258), (193, 39075), (197, 39063), (208, 39030), (230, 38988), (242, 38937), (253, 38898), (314, 38694), (316, 38685), (328, 38625), (339, 38577), (343, 38562), (345, 38550),

Gene: Smurph_36 Start: 28738, Stop: 27767, Start Num: 34

Candidate Starts for Smurph_36:

(Start: 34 @28738 has 36 MA's), (Start: 77 @28654 has 1 MA's), (Start: 87 @28639 has 1 MA's), (142, 28516), (151, 28492), (186, 28375), (188, 28372), (194, 28351), (208, 28312), (210, 28309), (213, 28303), (220, 28288), (230, 28267), (235, 28252), (248, 28195), (253, 28183), (266, 28144), (273, 28117), (278, 28105), (283, 28078), (294, 28039), (303, 28015), (308, 28000), (339, 27871), (343, 27856), (354, 27817),

Gene: Snekmaggedon_33 Start: 27788, Stop: 26817, Start Num: 34

Candidate Starts for Snekmaggedon_33:

(Start: 34 @27788 has 36 MA's), (Start: 77 @27704 has 1 MA's), (Start: 87 @27689 has 1 MA's), (142, 27566), (151, 27542), (186, 27425), (188, 27422), (194, 27401), (208, 27362), (210, 27359), (213, 27353), (220, 27338), (230, 27317), (235, 27302), (248, 27245), (253, 27233), (266, 27194), (273, 27167), (278, 27155), (283, 27128), (294, 27089), (303, 27065), (308, 27050), (339, 26921), (343, 26906), (354, 26867),

Gene: Sonah_30 Start: 26861, Stop: 25905, Start Num: 44

Candidate Starts for Sonah_30:

(Start: 44 @26861 has 34 MA's), (58, 26831), (Start: 76 @26798 has 12 MA's), (Start: 77 @26795 has 1 MA's), (Start: 125 @26723 has 1 MA's), (128, 26714), (151, 26663), (186, 26546), (188, 26543), (189, 26540), (199, 26510), (201, 26498), (208, 26483), (217, 26465), (230, 26438), (238, 26411), (239, 26405), (255, 26351), (263, 26327), (278, 26276), (303, 26192), (327, 26102), (330, 26090), (339, 26048), (369, 25919),

Gene: SpongeBob_33 Start: 27788, Stop: 26817, Start Num: 34

Candidate Starts for SpongeBob_33:

(Start: 34 @27788 has 36 MA's), (Start: 77 @27704 has 1 MA's), (Start: 87 @27689 has 1 MA's), (142, 27566), (151, 27542), (186, 27425), (188, 27422), (194, 27401), (208, 27362), (210, 27359), (213, 27353), (220, 27338), (230, 27317), (235, 27302), (248, 27245), (253, 27233), (266, 27194), (273, 27167), (278, 27155), (283, 27128), (294, 27089), (303, 27065), (308, 27050), (339, 26921), (343, 26906), (354, 26867),

Gene: Spooky_35 Start: 27760, Stop: 28698, Start Num: 46

Candidate Starts for Spooky_35:

(40, 27748), (Start: 46 @27760 has 16 MA's), (96, 27853), (124, 27925), (146, 27976), (169, 28054), (184, 28093), (196, 28132), (229, 28204), (234, 28216), (238, 28231), (239, 28237), (244, 28261), (254, 28297), (271, 28357), (277, 28375), (282, 28408), (291, 28435), (296, 28459), (297, 28462), (309, 28495), (312, 28501), (329, 28585), (336, 28621), (356, 28690),

Gene: Squiddly_37 Start: 28992, Stop: 29930, Start Num: 46

Candidate Starts for Squiddly_37:

(40, 28980), (Start: 46 @28992 has 16 MA's), (124, 29157), (146, 29208), (184, 29325), (229, 29436), (234, 29448), (238, 29463), (239, 29469), (240, 29478), (244, 29493), (254, 29529), (266, 29568), (271, 29589), (277, 29607), (282, 29640), (291, 29667), (296, 29691), (297, 29694), (299, 29697), (308, 29721), (312, 29733), (327, 29808), (328, 29814), (329, 29817), (350, 29901), (356, 29922),

Gene: StevieRay_30 Start: 26777, Stop: 25884, Start Num: 76

Candidate Starts for StevieRay_30:

(Start: 44 @26840 has 34 MA's), (Start: 76 @26777 has 12 MA's), (Start: 77 @26774 has 1 MA's), (Start: 125 @26702 has 1 MA's), (128, 26693), (151, 26642), (186, 26525), (188, 26522), (189, 26519), (199, 26489), (201, 26477), (208, 26462), (217, 26444), (230, 26417), (238, 26390), (239, 26384), (255, 26330), (278, 26255), (303, 26171), (327, 26081), (330, 26069), (339, 26027), (369, 25898),

Gene: StressBall_30 Start: 27132, Stop: 26176, Start Num: 44

Candidate Starts for StressBall_30:

(Start: 44 @27132 has 34 MA's), (Start: 76 @27069 has 12 MA's), (Start: 77 @27066 has 1 MA's), (Start: 125 @26994 has 1 MA's), (128, 26985), (151, 26934), (186, 26817), (188, 26814), (189, 26811), (199, 26781), (201, 26769), (208, 26754), (217, 26736), (230, 26709), (238, 26682), (239, 26676), (255, 26622), (258, 26616), (263, 26598), (278, 26547), (303, 26463), (327, 26373), (330, 26361), (339, 26319), (369, 26190),

Gene: Tapioca_37 Start: 28704, Stop: 27733, Start Num: 34

Candidate Starts for Tapioca_37:

(Start: 34 @28704 has 36 MA's), (Start: 77 @28620 has 1 MA's), (Start: 87 @28605 has 1 MA's), (142, 28482), (151, 28458), (186, 28341), (188, 28338), (194, 28317), (208, 28278), (210, 28275), (213, 28269), (220, 28254), (230, 28233), (235, 28218), (248, 28161), (253, 28149), (266, 28110), (273, 28083), (278, 28071), (283, 28044), (294, 28005), (303, 27981), (308, 27966), (339, 27837), (343, 27822), (354, 27783),

Gene: TaronosaurusRx_39 Start: 30540, Stop: 29644, Start Num: 75

Candidate Starts for TaronosaurusRx_39:

(Start: 75 @30540 has 11 MA's), (Start: 78 @30534 has 5 MA's), (Start: 80 @30531 has 2 MA's), (106, 30474), (108, 30471), (122, 30429), (144, 30384), (175, 30294), (182, 30273), (191, 30243), (231, 30147), (233, 30141), (238, 30123), (278, 29976), (287, 29946), (316, 29853), (322, 29826), (334, 29766), (339, 29745), (344, 29721),

Gene: Tarzan_31 Start: 25523, Stop: 24702, Start Num: 88

Candidate Starts for Tarzan_31:

(18, 25670), (Start: 22 @25661 has 1 MA's), (Start: 72 @25550 has 2 MA's), (Start: 88 @25523 has 6 MA's), (105, 25487), (Start: 125 @25436 has 1 MA's), (164, 25331), (168, 25319), (186, 25259), (201, 25211), (225, 25157), (230, 25148), (236, 25130), (258, 25055), (278, 24986), (294, 24926), (303, 24902), (308, 24887), (316, 24866), (321, 24842), (329, 24803), (330, 24800), (332, 24785),

Gene: Techage_30 Start: 26898, Stop: 25909, Start Num: 44

Candidate Starts for Techage_30:

(Start: 44 @26898 has 34 MA's), (58, 26868), (Start: 76 @26835 has 12 MA's), (Start: 77 @26832 has 1 MA's), (95, 26802), (96, 26799), (Start: 125 @26727 has 1 MA's), (128, 26718), (131, 26712), (151, 26667), (186, 26550), (188, 26547), (189, 26544), (199, 26514), (201, 26502), (208, 26487), (217, 26469), (230, 26442), (238, 26415), (239, 26409), (255, 26355), (258, 26349), (263, 26331), (278, 26280), (303, 26196), (321, 26136), (330, 26094), (339, 26052), (369, 25923),

Gene: Thespis_30 Start: 26805, Stop: 25912, Start Num: 76

Candidate Starts for Thespis_30:

(Start: 44 @26868 has 34 MA's), (Start: 76 @26805 has 12 MA's), (Start: 77 @26802 has 1 MA's), (Start: 125 @26730 has 1 MA's), (128, 26721), (151, 26670), (186, 26553), (188, 26550), (189, 26547), (199, 26517), (201, 26505), (208, 26490), (217, 26472), (230, 26445), (238, 26418), (239, 26412), (255, 26358), (258, 26352), (263, 26334), (278, 26283), (303, 26199), (327, 26109), (330, 26097), (339, 26055), (369, 25926),

Gene: Thimann_34 Start: 26659, Stop: 27576, Start Num: 48

Candidate Starts for Thimann_34:

(Start: 46 @26653 has 16 MA's), (Start: 48 @26659 has 53 MA's), (139, 26848), (143, 26854), (174, 26956), (184, 26980), (202, 27040), (232, 27097), (234, 27103), (236, 27109), (266, 27223), (267, 27229), (270, 27241), (291, 27316), (296, 27340), (297, 27343), (312, 27379), (313, 27385), (315, 27397), (336, 27499),

Gene: Tiff81_34 Start: 21991, Stop: 22911, Start Num: 48

Candidate Starts for Tiff81_34:

(9, 21862), (Start: 48 @21991 has 53 MA's), (107, 22105), (130, 22165), (135, 22177), (185, 22324), (200, 22372), (223, 22417), (234, 22441), (236, 22447), (261, 22534), (273, 22591), (291, 22657), (297, 22684), (323, 22777), (327, 22792), (350, 22882),

Gene: TillyBobJoe_47 Start: 39311, Stop: 38487, Start Num: 85

Candidate Starts for TillyBobJoe_47:

(84, 39314), (Start: 85 @39311 has 1 MA's), (Start: 88 @39305 has 6 MA's), (161, 39128), (186, 39047), (225, 38951), (230, 38942), (253, 38858), (278, 38780), (294, 38723), (303, 38699), (308, 38684), (316, 38663), (326, 38612), (329, 38600), (330, 38597),

Gene: Togo_46 Start: 39399, Stop: 38533, Start Num: 62

Candidate Starts for Togo_46:

(Start: 30 @39468 has 18 MA's), (Start: 52 @39420 has 5 MA's), (Start: 53 @39417 has 1 MA's), (Start: 62 @39399 has 3 MA's), (Start: 66 @39390 has 1 MA's), (128, 39258), (193, 39075), (197, 39063), (208, 39030), (230, 38988), (242, 38937), (253, 38898), (314, 38694), (316, 38685), (328,

38625), (339, 38577), (343, 38562), (345, 38550),

Gene: Trogglehumper_82 Start: 64380, Stop: 63535, Start Num: 72

Candidate Starts for Trogglehumper_82:

(51, 64422), (Start: 72 @64380 has 2 MA's), (121, 64272), (156, 64185), (157, 64179), (164, 64155), (205, 64032), (215, 64014), (231, 63975), (266, 63855), (267, 63849), (280, 63813), (310, 63711), (320, 63666), (324, 63639), (326, 63633),

Gene: Twinkle_35 Start: 31824, Stop: 32741, Start Num: 48

Candidate Starts for Twinkle_35:

(Start: 46 @31818 has 16 MA's), (Start: 48 @31824 has 53 MA's), (135, 32004), (139, 32013), (143, 32019), (198, 32190), (202, 32205), (232, 32262), (234, 32268), (236, 32274), (239, 32289), (266, 32388), (267, 32394), (270, 32406), (291, 32481), (296, 32505), (297, 32508), (312, 32544), (313, 32550), (315, 32562), (336, 32664),

Gene: Twister6_49 Start: 39200, Stop: 38334, Start Num: 62

Candidate Starts for Twister6_49:

(Start: 30 @39269 has 18 MA's), (Start: 52 @39221 has 5 MA's), (Start: 53 @39218 has 1 MA's), (Start: 62 @39200 has 3 MA's), (Start: 66 @39191 has 1 MA's), (128, 39059), (193, 38876), (197, 38864), (206, 38834), (208, 38831), (230, 38789), (242, 38738), (253, 38699), (255, 38696), (314, 38495), (316, 38486), (328, 38426), (339, 38378), (343, 38363), (345, 38351),

Gene: UmaThurman_35 Start: 31152, Stop: 30235, Start Num: 35

Candidate Starts for UmaThurman_35:

(27, 31161), (Start: 35 @31152 has 3 MA's), (59, 31101), (60, 31098), (206, 30735), (230, 30690), (238, 30663), (240, 30648), (266, 30561), (307, 30414), (311, 30405), (314, 30396), (345, 30252), (348, 30249),

Gene: Utz_31 Start: 28505, Stop: 29425, Start Num: 48

Candidate Starts for Utz_31:

(Start: 46 @28499 has 16 MA's), (Start: 48 @28505 has 53 MA's), (111, 28622), (112, 28625), (137, 28688), (139, 28694), (143, 28700), (174, 28802), (202, 28886), (231, 28940), (232, 28943), (234, 28949), (239, 28970), (266, 29069), (270, 29087), (291, 29162), (297, 29189), (312, 29225), (327, 29300),

Gene: Valary_49 Start: 40311, Stop: 39376, Start Num: 30

Candidate Starts for Valary_49:

(Start: 30 @40311 has 18 MA's), (Start: 52 @40263 has 5 MA's), (Start: 53 @40260 has 1 MA's), (Start: 62 @40242 has 3 MA's), (Start: 66 @40233 has 1 MA's), (128, 40101), (193, 39918), (197, 39906), (208, 39873), (230, 39831), (242, 39780), (253, 39741), (314, 39537), (316, 39528), (328, 39468), (339, 39420), (343, 39405), (345, 39393),

Gene: VanDeWege_50 Start: 39603, Stop: 38668, Start Num: 30

Candidate Starts for VanDeWege_50:

(Start: 30 @39603 has 18 MA's), (Start: 52 @39555 has 5 MA's), (Start: 53 @39552 has 1 MA's), (Start: 62 @39534 has 3 MA's), (Start: 66 @39525 has 1 MA's), (128, 39393), (193, 39210), (197, 39198), (208, 39165), (230, 39123), (242, 39072), (253, 39033), (314, 38829), (316, 38820), (328, 38760), (339, 38712), (343, 38697), (345, 38685),

Gene: Venti_30 Start: 26875, Stop: 25919, Start Num: 44

Candidate Starts for Venti_30:

(Start: 44 @26875 has 34 MA's), (58, 26845), (Start: 76 @26812 has 12 MA's), (Start: 77 @26809 has 1 MA's), (Start: 125 @26737 has 1 MA's), (128, 26728), (131, 26722), (151, 26677), (186, 26560),

(188, 26557), (189, 26554), (199, 26524), (201, 26512), (208, 26497), (217, 26479), (230, 26452), (238, 26425), (239, 26419), (255, 26365), (258, 26359), (278, 26290), (303, 26206), (321, 26146), (330, 26104), (339, 26062), (369, 25933),

Gene: Vidya_30 Start: 26845, Stop: 25919, Start Num: 76

Candidate Starts for Vidya_30:

(Start: 44 @26908 has 34 MA's), (58, 26878), (Start: 76 @26845 has 12 MA's), (Start: 77 @26842 has 1 MA's), (95, 26812), (96, 26809), (Start: 125 @26737 has 1 MA's), (128, 26728), (131, 26722), (151, 26677), (186, 26560), (188, 26557), (189, 26554), (199, 26524), (201, 26512), (208, 26497), (217, 26479), (230, 26452), (238, 26425), (239, 26419), (255, 26365), (258, 26359), (263, 26341), (278, 26290), (303, 26206), (321, 26146), (330, 26104), (369, 25933),

Gene: Vordorf_34 Start: 29605, Stop: 28745, Start Num: 74

Candidate Starts for Vordorf_34:

(15, 29749), (33, 29683), (Start: 74 @29605 has 5 MA's), (123, 29500), (138, 29470), (151, 29437), (186, 29320), (220, 29233), (228, 29215), (230, 29212), (258, 29119), (266, 29089), (269, 29074), (278, 29050), (283, 29023), (303, 28960), (326, 28873), (330, 28858), (352, 28771),

Gene: Walrus_40 Start: 32146, Stop: 31328, Start Num: 88

Candidate Starts for Walrus_40:

(61, 32194), (84, 32155), (Start: 85 @32152 has 1 MA's), (Start: 88 @32146 has 6 MA's), (123, 32065), (Start: 125 @32062 has 1 MA's), (178, 31918), (186, 31888), (225, 31792), (230, 31783), (253, 31699), (269, 31645), (278, 31621), (294, 31564), (300, 31546), (303, 31540), (308, 31525), (316, 31504), (329, 31441), (330, 31438), (332, 31423), (345, 31369), (357, 31336),

Gene: Whack_39 Start: 32450, Stop: 31497, Start Num: 56

Candidate Starts for Whack_39:

(Start: 56 @32450 has 1 MA's), (92, 32384), (101, 32363), (170, 32177), (182, 32141), (191, 32111), (199, 32087), (242, 31961), (246, 31946), (258, 31910), (260, 31907), (278, 31835), (294, 31775), (321, 31691), (324, 31670), (355, 31550), (367, 31502),

Gene: Willsammy_29 Start: 26615, Stop: 25659, Start Num: 44

Candidate Starts for Willsammy_29:

(Start: 44 @26615 has 34 MA's), (Start: 76 @26552 has 12 MA's), (Start: 77 @26549 has 1 MA's), (Start: 125 @26477 has 1 MA's), (128, 26468), (151, 26417), (186, 26300), (188, 26297), (189, 26294), (199, 26264), (201, 26252), (208, 26237), (217, 26219), (230, 26192), (238, 26165), (239, 26159), (255, 26105), (258, 26099), (263, 26081), (278, 26030), (303, 25946), (327, 25856), (330, 25844), (339, 25802), (369, 25673),

Gene: WinkNick_38 Start: 28007, Stop: 28924, Start Num: 48

Candidate Starts for WinkNick_38:

(Start: 46 @28001 has 16 MA's), (Start: 48 @28007 has 53 MA's), (139, 28196), (143, 28202), (174, 28304), (184, 28328), (202, 28388), (232, 28445), (234, 28451), (236, 28457), (266, 28571), (267, 28577), (270, 28589), (291, 28664), (296, 28688), (297, 28691), (312, 28727), (313, 28733), (315, 28745), (336, 28847),

Gene: Wizard_46 Start: 39461, Stop: 38574, Start Num: 52

Candidate Starts for Wizard_46:

(Start: 30 @39509 has 18 MA's), (Start: 52 @39461 has 5 MA's), (Start: 53 @39458 has 1 MA's), (Start: 62 @39440 has 3 MA's), (Start: 66 @39431 has 1 MA's), (128, 39299), (193, 39116), (197, 39104), (208, 39071), (230, 39029), (242, 38978), (253, 38939), (314, 38735), (316, 38726), (328, 38666), (339, 38618), (343, 38603), (345, 38591),

Gene: Xeno_33 Start: 27175, Stop: 26204, Start Num: 34

Candidate Starts for Xeno_33:

(Start: 34 @27175 has 36 MA's), (Start: 77 @27091 has 1 MA's), (Start: 87 @27076 has 1 MA's), (142, 26953), (151, 26929), (186, 26812), (188, 26809), (194, 26788), (208, 26749), (210, 26746), (213, 26740), (220, 26725), (230, 26704), (235, 26689), (248, 26632), (253, 26620), (266, 26581), (273, 26554), (278, 26542), (283, 26515), (294, 26476), (303, 26452), (308, 26437), (339, 26308), (354, 26254),

Gene: Xerxes_36 Start: 28735, Stop: 27764, Start Num: 34

Candidate Starts for Xerxes_36:

(Start: 34 @28735 has 36 MA's), (Start: 77 @28651 has 1 MA's), (Start: 87 @28636 has 1 MA's), (142, 28513), (151, 28489), (186, 28372), (188, 28369), (194, 28348), (208, 28309), (210, 28306), (213, 28300), (220, 28285), (230, 28264), (235, 28249), (248, 28192), (253, 28180), (266, 28141), (273, 28114), (278, 28102), (283, 28075), (294, 28036), (303, 28012), (308, 27997), (339, 27868), (343, 27853), (354, 27814),

Gene: Xula_28 Start: 26499, Stop: 25609, Start Num: 76

Candidate Starts for Xula_28:

(Start: 44 @26562 has 34 MA's), (Start: 76 @26499 has 12 MA's), (128, 26415), (138, 26397), (186, 26247), (188, 26244), (189, 26241), (199, 26211), (201, 26199), (208, 26184), (213, 26175), (217, 26166), (230, 26139), (238, 26112), (239, 26106), (255, 26052), (258, 26046), (273, 25989), (278, 25977), (303, 25893), (308, 25878), (327, 25803), (330, 25791), (339, 25749), (365, 25656), (368, 25641),

Gene: YoungHarleezy_36 Start: 24585, Stop: 25502, Start Num: 48

Candidate Starts for YoungHarleezy_36:

(9, 24456), (11, 24462), (Start: 48 @24585 has 53 MA's), (121, 24741), (129, 24756), (135, 24768), (185, 24915), (187, 24924), (200, 24963), (223, 25008), (234, 25032), (236, 25038), (242, 25071), (254, 25113), (259, 25122), (268, 25164), (291, 25248), (323, 25368), (327, 25383),

Gene: YungMoney_50 Start: 41701, Stop: 40871, Start Num: 88

Candidate Starts for YungMoney_50:

(Start: 69 @41731 has 3 MA's), (84, 41710), (Start: 85 @41707 has 1 MA's), (Start: 88 @41701 has 6 MA's), (161, 41524), (186, 41443), (225, 41347), (230, 41338), (253, 41254), (269, 41200), (278, 41176), (294, 41119), (300, 41101), (303, 41095), (308, 41080), (316, 41059), (326, 41008), (327, 41005), (329, 40996), (330, 40993),

Gene: YungMoney_41 Start: 35216, Stop: 36133, Start Num: 48

Candidate Starts for YungMoney_41:

(Start: 46 @35210 has 16 MA's), (Start: 48 @35216 has 53 MA's), (111, 35333), (112, 35336), (137, 35399), (139, 35405), (143, 35411), (202, 35597), (231, 35651), (232, 35654), (234, 35660), (239, 35681), (266, 35780), (267, 35786), (270, 35798), (291, 35873), (297, 35900), (312, 35936), (318, 35972), (327, 36011), (350, 36104), (356, 36125),

Gene: ZAYM_40 Start: 31559, Stop: 30693, Start Num: 74

Candidate Starts for ZAYM_40:

(Start: 74 @31559 has 5 MA's), (138, 31424), (151, 31391), (154, 31382), (163, 31346), (186, 31274), (220, 31187), (228, 31169), (230, 31166), (234, 31154), (236, 31148), (258, 31073), (269, 31028), (278, 31004), (283, 30977), (303, 30914), (330, 30812), (339, 30770), (352, 30725),

Gene: Zaheer_36 Start: 26991, Stop: 27911, Start Num: 48

Candidate Starts for Zaheer_36:

(Start: 48 @26991 has 53 MA's), (121, 27147), (130, 27165), (135, 27177), (185, 27324), (187, 27333), (200, 27372), (231, 27432), (234, 27441), (236, 27447), (242, 27480), (254, 27522), (261, 27534), (267, 27567), (268, 27573), (270, 27579), (291, 27657), (318, 27753), (328, 27798), (348, 27879), (350, 27882),

Gene: Zaheer_39 Start: 29719, Stop: 28844, Start Num: 90

Candidate Starts for Zaheer_39:

(Start: 90 @29719 has 7 MA's), (106, 29680), (144, 29593), (177, 29494), (193, 29443), (203, 29407), (230, 29353), (238, 29326), (239, 29320), (242, 29302), (246, 29287), (261, 29257), (273, 29203), (278, 29191), (292, 29119), (321, 29023), (330, 28981), (332, 28966), (362, 28861),

Gene: Zarbodnamra_39 Start: 31599, Stop: 30709, Start Num: 47

Candidate Starts for Zarbodnamra_39:

(Start: 47 @31599 has 8 MA's), (Start: 55 @31578 has 1 MA's), (Start: 62 @31563 has 3 MA's), (Start: 72 @31545 has 2 MA's), (Start: 78 @31536 has 5 MA's), (Start: 88 @31518 has 6 MA's), (117, 31452), (230, 31146), (258, 31053), (265, 31026), (278, 30984), (294, 30924), (303, 30900), (316, 30864), (332, 30783),

Gene: Zilizebeth_30 Start: 26907, Stop: 25918, Start Num: 44

Candidate Starts for Zilizebeth_30:

(Start: 44 @26907 has 34 MA's), (58, 26877), (Start: 76 @26844 has 12 MA's), (Start: 77 @26841 has 1 MA's), (95, 26811), (96, 26808), (Start: 125 @26736 has 1 MA's), (128, 26727), (131, 26721), (151, 26676), (186, 26559), (188, 26556), (189, 26553), (199, 26523), (201, 26511), (208, 26496), (217, 26478), (230, 26451), (238, 26424), (239, 26418), (255, 26364), (258, 26358), (263, 26340), (278, 26289), (303, 26205), (321, 26145), (330, 26103), (339, 26061), (369, 25932),

Gene: Zucker_29 Start: 23884, Stop: 24804, Start Num: 48

Candidate Starts for Zucker_29:

(29, 23842), (Start: 48 @23884 has 53 MA's), (130, 24058), (135, 24070), (185, 24217), (187, 24226), (200, 24265), (234, 24334), (236, 24340), (237, 24343), (242, 24373), (254, 24415), (291, 24550), (318, 24646), (322, 24658), (323, 24670), (327, 24685), (328, 24691),