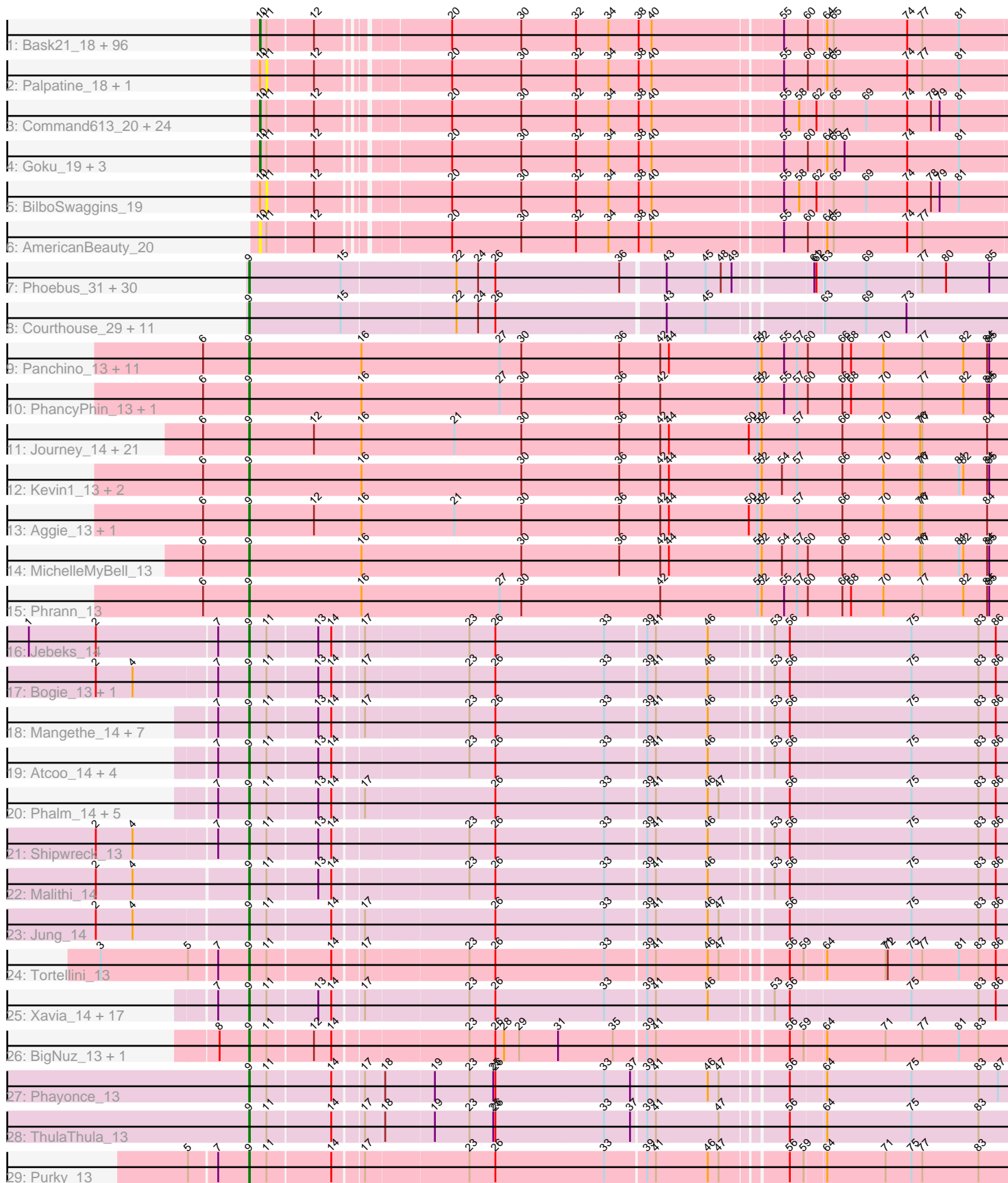


Pham 171167



Note: Tracks are now grouped by subcluster and scaled. Switching in subcluster is indicated by changes in track color. Track scale is now set by default to display the region 30 bp upstream of start 1 to 30 bp downstream of the last possible start. If this default region is judged to be packed too tightly with annotated starts, the track will be further scaled to only show that region of the ORF with annotated starts. This action will be indicated by adding "Zoomed" to the title. For starts, yellow indicates the location of called starts comprised solely of Glimmer/GeneMark auto-annotations, green indicates the location of called starts with at least 1 manual gene annotation.

Pham 171167 Report

This analysis was run 07/10/24 on database version 566.

Pham number 171167 has 265 members, 19 are drafts.

Phages represented in each track:

- Track 1 : Bask21_18, Lilpickle_17, Petra64142_19, DoctorDiddles_19, FireRed_18, BigBubba_18, Gage_20, Bruin_18, Thresher_19, IHOP_18, MISSy_18, Willez_18, Hopey_19, HanKaySha_19, Cactus_20, OrionPax_19, Gemini_20, Filch_19, Lilac_20, Misfit_18, JeTaimé_20, Icee_18, Goldilocks_20, Tarkin_20, Tomaszewski_18, Paperbeatsrock_20, 244_19, Stark_19, Manda_19, Mosby_18, Ukulele_18, ChosenOne_17, BugsBunny_16, Kimchi_20, MPhalcon_18, Marshmallow_19, ShereKhan_20, Stank_20, YassJohnny_19, Teaspoon_18, Sotrice96_19, Cookies_19, Rimmer_18, Simpliphy_19, Pharsalus_19, Argent26_20, Pumpkin_19, Xandras_20, Buck_18, Wiggin_20, Highbury_19, RiverMonster_18, Phaja_18, StolenFromERC_20, Holt_20, Moldemort_19, SirDuracell_18, Youngblood_18, Emmina_18, Nimrod_18, Elph10_19, DrDrey_19, Czystczon1_19, ChotaBhai_18, Sassay_18, Elite2014_17, Barbarian_18, Murica_17, Murphy_18, Policronamos_18, MadamMonkfish_18, xkcd_19, TBrady12_20, Inca_18, GoldenSpark_20, Asriel_18, Traaww1_17, Phrux_18, PhatBacter_18, Bench_20, Easy2Say_19, Maxxinista_19, Dumbo_18, Nala_18, Kanye_20, Porky_17, Hoonter_20, HuffyPuff_17, Phaux_17, Terminus_18, NoSleep_19, Contagion_18, GooberAzure_20, Saints25_19, Lilizi_20, Cjw1_18, Adnama_20
- Track 2 : Palpatine_18, Amao_19
- Track 3 : Command613_20, Dusk_18, Balomoji_18, StellaBean_19, Miniwave_19, Gator_17, Mindy_19, CrystalP_19, Rakim_20, Harella_17, ShamWow_19, SophKB_19, NelitzaMV_19, Henry_19, Qualification_20, ABCat_18, TeardropMSU_18, Kostya_19, Toto_19, Myrale_19, Glexan_17, Tuco_19, Flypotenuse_17, Daikon_17, BadStone_18
- Track 4 : Goku_19, BaboJay_18, Eureka_19, Pat3_18
- Track 5 : BilboSwaggins_19
- Track 6 : AmericanBeauty_20
- Track 7 : Phoebus_31, NihilNomen_30, BAKA_28, Dove_30, Dallas_31, HokkenD_26, Yeet_29, Odette_31, Minerva_31, ThreeRngTarjay_30, Constella_26, Hughesyang_30, EricMillard_31, Pound_31, Schatzie_29, Wanda_32, Halley_31, Optimus_29, Bobby_32, Duke13_28, Zelink_32, Kalah2_32, Bagrid_29, Klein_31, Ejimix_32, Redno2_30, DmpstrDiver_30, Beem_31, JuicyJay_32, Thibault_27, Bombitas_28
- Track 8 : Courthouse_29, Porcelain_28, Ariel_29, Gonephishing_27, Superphikiman_29, Lucky2013_29, LittleE_29, Hannaconda_26, Omega_31, Squint_28, MiaZeal_29, KashFlow_23
- Track 9 : Panchino_13, Snekmaggon_13, SkinnyPete_13, ShrimpFriedEgg_13, Raymond7_13, Nenae_13, Jamie19_13, Rebel_13, Purgamenstris_13,

- BabeRuth_13, SpongeBob_13, Redi_13
- Track 10 : PhancyPhin_13, Shweta_13
 - Track 11 : Journey_14, Andies_13, Smurph_13, Tapioca_13, Gex_13, Xerxes_13, Bosection6_13, Chewbacca_13, Pipsqueaks_13, Silvafighter_13, Charlie_13, Duplicity_13, Xeno_13, Melville_13, Schnauzer_13, Phloss_13, Fulbright_13, Magsby_13, Philonius_13, Scitech_13, Carcharodon_13, Parmesanjohn_13
 - Track 12 : Kevin1_13, Butters_13, Rubeelu_13
 - Track 13 : Aggie_13, Silvy_13
 - Track 14 : MichelleMyBell_13
 - Track 15 : Phrann_13
 - Track 16 : Jebeks_14
 - Track 17 : Bogie_13, Pygmy_13
 - Track 18 : Mangethe_14, Langerak_14, Majeke_14, Donovan_14, Techage_14, Arib1_14, Phegasus_14, Sonah_14
 - Track 19 : Atcoo_14, Thespi_14, Camster_14, Willsammy_14, Brusacoram_14
 - Track 20 : Phalm_14, StressBall_14, Megiddo_14, KilKor_14, CactusJack_14, Glaske_14
 - Track 21 : Shipwreck_13
 - Track 22 : Malithi_14
 - Track 23 : Jung_14
 - Track 24 : Tortellini_13
 - Track 25 : Xavia_14, HUHilltop_14, Ksquared_14, Dynamo_14, Polkaroo_14, Fishburne_14, Zilizebeth_14, Necropolis_14, Bunnies_14, Bartholomew_14, Vidya_14, Venti_14, GreaseLightnin_14, Phineas_14, StevieRay_14, Kari_14, FirstPlacePfu_14, Juniormint_14
 - Track 26 : BigNuz_13, Nazo_13
 - Track 27 : Phayonce_13
 - Track 28 : ThulaThula_13
 - Track 29 : Purky_13

Summary of Final Annotations (See graph section above for start numbers):

The start number called the most often in the published annotations is 9, it was called in 124 of the 246 non-draft genes in the pham.

Genes that call this "Most Annotated" start:

- Aggie_13, Andies_13, Arib1_14, Ariel_29, Atcoo_14, BAKA_28, BabeRuth_13, Bagrid_29, Bartholomew_14, Beem_31, BigNuz_13, Bobby_32, Bogie_13, Bombitas_28, Bosection6_13, Brusacoram_14, Bunnies_14, Butters_13, CactusJack_14, Camster_14, Carcharodon_13, Charlie_13, Chewbacca_13, Constella_26, Courthouse_29, Dallas_31, DmpstrDiver_30, Donovan_14, Dove_30, Duke13_28, Duplicity_13, Dynamo_14, Ejimix_32, EricMillard_31, FirstPlacePfu_14, Fishburne_14, Fulbright_13, Gex_13, Glaske_14, Gonephishing_27, GreaseLightnin_14, HUHilltop_14, Halley_31, Hannaconda_26, HokkenD_26, Hughesyang_30, Jamie19_13, Jebeks_14, Journey_14, JuicyJay_32, Jung_14, Juniormint_14, Kalah2_32, Kari_14, KashFlow_23, Kevin1_13, KilKor_14, Klein_31, Ksquared_14, Langerak_14, LittleE_29, Lucky2013_29, Magsby_13, Majeke_14, Malithi_14, Mangethe_14, Megiddo_14, Melville_13, MiaZeal_29, MichelleMyBell_13, Minerva_31, Nazo_13, Necropolis_14, Nenae_13, NihilNomen_30, Odette_31, Omega_31, Optimus_29, Panchino_13, Parmesanjohn_13, Phalm_14,

PhancyPhin_13, Phayonce_13, Phegasus_14, Philonius_13, Phineas_14, Phloss_13, Phoebus_31, Phrann_13, Pipsqueaks_13, Polkaroo_14, Porcelain_28, Pound_31, Purgamenstris_13, Purky_13, Pygmy_13, Raymond7_13, Rebel_13, Redi_13, Redno2_30, Rubeelu_13, Schatzie_29, Schnauzer_13, Scitech_13, Shipwreck_13, ShrimpFriedEgg_13, Shweta_13, Silvafighter_13, Silvy_13, SkinnyPete_13, Smurph_13, Snekmaggon_13, Sonah_14, SpongeBob_13, Squint_28, StevieRay_14, StressBall_14, Superphikiman_29, Tapioca_13, Techage_14, Thespis_14, Thibault_27, ThreeRngTarjay_30, ThulaThula_13, Tortellini_13, Venti_14, Vidya_14, Wanda_32, Willsammy_14, Xavia_14, Xeno_13, Xerxes_13, Yeet_29, Zelink_32, Zilizebeth_14,

Genes that have the "Most Annotated" start but do not call it:

•

Genes that do not have the "Most Annotated" start:

• 244_19, ABCat_18, Adnama_20, Amao_19, AmericanBeauty_20, Argent26_20, Asriel_18, BaboJay_18, BadStone_18, Balomoji_18, Barbarian_18, Bask21_18, Bench_20, BigBubba_18, BilboSwaggins_19, Bruin_18, Buck_18, BugsBunny_16, Cactus_20, ChosenOne_17, ChotaBhai_18, Cjw1_18, Command613_20, Contagion_18, Cookies_19, CrystalP_19, Czystczon1_19, Daikon_17, DoctorDiddles_19, DrDrey_19, Dumbo_18, Dusk_18, Easy2Say_19, Elite2014_17, Elph10_19, Emmina_18, Eureka_19, Filch_19, FireRed_18, Flypotenuse_17, Gage_20, Gator_17, Gemini_20, Glexan_17, Goku_19, GoldenSpark_20, Goldilocks_20, GooberAzure_20, HanKaySha_19, Harella_17, Henry_19, Highbury_19, Holt_20, Hoonter_20, Hopey_19, HufflyPuff_17, IHOP_18, Icee_18, Inca_18, JeTaime_20, Kanye_20, Kimchi_20, Kostya_19, Lilac_20, Lilizi_20, Lilpickle_17, MISSy_18, MPhalcon_18, MadamMonkfish_18, Manda_19, Marshmallow_19, Maxxinista_19, Mindy_19, Miniwave_19, Misfit_18, Moldemort_19, Mosby_18, Murica_17, Murphy_18, Myrale_19, Nala_18, NelitzaMV_19, Nimrod_18, NoSleep_19, OrionPax_19, Palpatine_18, Paperbeatsrock_20, Pat3_18, Petra64142_19, Phaja_18, Pharsalus_19, PhatBacter_18, Phaux_17, Phrux_18, Policronamos_18, Porky_17, Pumpkin_19, Quallification_20, Rakim_20, Rimmer_18, RiverMonster_18, Saints25_19, Sassay_18, ShamWow_19, ShereKhan_20, Simpliphy_19, SirDuracell_18, SophKB_19, Sotrice96_19, Stank_20, Stark_19, StellaBean_19, StolenFromERC_20, TBrady12_20, Tarkin_20, TeardropMSU_18, Teaspoon_18, Terminus_18, Thresher_19, Tomaszewski_18, Toto_19, Traaww1_17, Tuco_19, Ukulele_18, Wiggin_20, Willez_18, Xandras_20, YassJohnny_19, Youngblood_18, xkcd_19,

Summary by start number:

Start 9:

• Found in 135 of 265 (50.9%) of genes in pham
• Manual Annotations of this start: 124 of 246
• Called 100.0% of time when present
• Phage (with cluster) where this start called: Aggie_13 (N), Andies_13 (N), Arib1_14 (P1), Ariel_29 (J), Atcoo_14 (P1), BAKA_28 (J), BabeRuth_13 (N), Bagrid_29 (J), Bartholomew_14 (P1), Beem_31 (J), BigNuz_13 (P4), Bobby_32 (J), Bogie_13 (P1), Bombitas_28 (J), Bosection6_13 (N), Brusacoram_14 (P1), Bunnies_14 (P1), Butters_13 (N), CactusJack_14 (P1), Camster_14 (P1), Carcharodon_13 (N), Charlie_13 (N), Chewbacca_13 (N), Constella_26 (J), Courthouse_29 (J), Dallas_31 (J), DmpstrDiver_30 (J), Donovan_14 (P1), Dove_30 (J), Duke13_28 (J), Duplicity_13 (N), Dynamo_14 (P1), Ejimix_32 (J), EricMillard_31 (J), FirstPlacePfu_14 (P1),

Fishburne_14 (P1), Fulbright_13 (N), Gex_13 (N), Glaske_14 (P1), Gonephishing_27 (J), GreaseLightnin_14 (P1), HUHilltop_14 (P1), Halley_31 (J), Hannaconda_26 (J), HokkenD_26 (J), Hughesyang_30 (J), Jamie19_13 (N), Jebeks_14 (P1), Journey_14 (N), JuicyJay_32 (J), Jung_14 (P1), Juniormint_14 (P1), Kalah2_32 (J), Kari_14 (P1), KashFlow_23 (J), Kevin1_13 (N), KilKor_14 (P1), Klein_31 (J), Ksquared_14 (P1), Langerak_14 (P1), LittleE_29 (J), Lucky2013_29 (J), Magsby_13 (N), Majeke_14 (P1), Malithi_14 (P1), Mangethe_14 (P1), Megiddo_14 (P1), Melville_13 (N), MiaZeal_29 (J), MichelleMyBell_13 (N), Minerva_31 (J), Nazo_13 (P4), Necropolis_14 (P1), Nenae_13 (N), NihilNomen_30 (J), Odette_31 (J), Omega_31 (J), Optimus_29 (J), Panchino_13 (N), Parmesanjohn_13 (N), Phalm_14 (P1), PhancyPhin_13 (N), Phayonce_13 (P5), Phegasus_14 (P1), Philonius_13 (N), Phineas_14 (P1), Phloss_13 (N), Phoebus_31 (J), Phrann_13 (N), Pipsqueaks_13 (N), Polkaroo_14 (P1), Porcelain_28 (J), Pound_31 (J), Purgamenstris_13 (N), Purky_13 (P6), Pygmy_13 (P1), Raymond7_13 (N), Rebel_13 (N), Redi_13 (N), Redno2_30 (J), Rubeelu_13 (N), Schatzie_29 (J), Schnauzer_13 (N), Scitech_13 (N), Shipwreck_13 (P1), ShrimpFriedEgg_13 (N), Shweta_13 (N), Silvafighter_13 (N), Silvy_13 (N), SkinnyPete_13 (N), Smurph_13 (N), Snekmaggedon_13 (N), Sonah_14 (P1), SpongeBob_13 (N), Squint_28 (J), StevieRay_14 (P1), StressBall_14 (P1), Superphikiman_29 (J), Tapioca_13 (N), Techage_14 (P1), Thespis_14 (P1), Thibault_27 (J), ThreeRngTarjay_30 (J), ThulaThula_13 (P5), Tortellini_13 (P2), Venti_14 (P1), Vidya_14 (P1), Wanda_32 (J), Willsammy_14 (P1), Xavia_14 (P3), Xeno_13 (N), Xerxes_13 (N), Yeet_29 (J), Zelink_32 (J), Zilizebeth_14 (P1),

Start 10:

- Found in 130 of 265 (49.1%) of genes in pham
- Manual Annotations of this start: 122 of 246
- Called 97.7% of time when present
- Phage (with cluster) where this start called: 244_19 (E), ABCat_18 (E), Adnama_20 (E), AmericanBeauty_20 (E), Argent26_20 (E), Asriel_18 (E), BaboJay_18 (E), BadStone_18 (E), Balomoji_18 (E), Barbarian_18 (E), Bask21_18 (E), Bench_20 (E), BigBubba_18 (E), Bruin_18 (E), Buck_18 (E), BugsBunny_16 (E), Cactus_20 (E), ChosenOne_17 (E), ChotaBhai_18 (E), Cjw1_18 (E), Command613_20 (E), Contagion_18 (E), Cookies_19 (E), CrystalP_19 (E), Czyszczonek_19 (E), Daikon_17 (E), DoctorDiddles_19 (E), DrDrey_19 (E), Dumbo_18 (E), Dusk_18 (E), Easy2Say_19 (E), Elite2014_17 (E), Elph10_19 (E), Emmina_18 (E), Eureka_19 (E), Filch_19 (E), FireRed_18 (E), Flypotenuse_17 (E), Gage_20 (E), Gator_17 (E), Gemini_20 (E), Glexan_17 (E), Goku_19 (E), GoldenSpark_20 (E), Goldilocks_20 (E), GooberAzure_20 (E), HanKaySha_19 (E), Harella_17 (E), Henry_19 (E), Highbury_19 (E), Holt_20 (E), Hoonter_20 (E), Hopey_19 (E), HuffyPuff_17 (E), IHOP_18 (E), Icee_18 (E), Inca_18 (E), JeTaime_20 (E), Kanye_20 (E), Kimchi_20 (E), Kostya_19 (E), Lilac_20 (E), Lilizi_20 (E), Lilpickle_17 (E), MISSy_18 (E), MPhalcon_18 (E), MadamMonkfish_18 (E), Manda_19 (E), Marshmallow_19 (E), Maxxinista_19 (E), Mindy_19 (E), Miniwave_19 (E), Misfit_18 (E), Moldemort_19 (E), Mosby_18 (E), Murica_17 (E), Murphy_18 (E), Myrale_19 (E), Nala_18 (E), NelitzaMV_19 (E), Nimrod_18 (E), NoSleep_19 (E), OrionPax_19 (E), Paperbeatsrock_20 (E), Pat3_18 (E), Petra64142_19 (E), Phaja_18 (E), Pharsalus_19 (E), PhatBacter_18 (E), Phaux_17 (E), Phrux_18 (E), Policronamos_18 (E), Porky_17 (E), Pumpkin_19 (E), Quallification_20 (E), Rakim_20 (E), Rimmer_18 (E), RiverMonster_18 (E), Saints25_19 (E), Sassay_18 (E), ShamWow_19 (E), ShereKhan_20 (E), Simpliphy_19 (E), SirDuracell_18 (E), SophKB_19 (E), Sotrice96_19 (E), Stank_20 (E), Stark_19 (E), StellaBean_19 (E), StolenFromERC_20 (E), TBrady12_20 (E), Tarkin_20 (E), TeardropMSU_18 (E), Teaspoon_18 (E), Terminus_18 (E), Thresher_19 (E), Tomaszewski_18 (E), Toto_19

(E), Traaww1_17 (E), Tuco_19 (E), Ukulele_18 (E), Wiggin_20 (E), Willez_18 (E), Xandras_20 (E), YassJohnny_19 (E), Youngblood_18 (E), xkcd_19 (E),

Start 11:

- Found in 179 of 265 (67.5%) of genes in pham
- No Manual Annotations of this start.
- Called 1.7% of time when present
- Phage (with cluster) where this start called: Amao_19 (E), BilboSwaggins_19 (E), Palpatine_18 (E),

Summary by clusters:

There are 9 clusters represented in this pham: P2, P3, P1, E, P4, P5, J, N, P6,

Info for manual annotations of cluster E:

- Start number 10 was manually annotated 122 times for cluster E.

Info for manual annotations of cluster J:

- Start number 9 was manually annotated 39 times for cluster J.

Info for manual annotations of cluster N:

- Start number 9 was manually annotated 39 times for cluster N.

Info for manual annotations of cluster P1:

- Start number 9 was manually annotated 39 times for cluster P1.

Info for manual annotations of cluster P2:

- Start number 9 was manually annotated 1 time for cluster P2.

Info for manual annotations of cluster P3:

- Start number 9 was manually annotated 1 time for cluster P3.

Info for manual annotations of cluster P4:

- Start number 9 was manually annotated 2 times for cluster P4.

Info for manual annotations of cluster P5:

- Start number 9 was manually annotated 2 times for cluster P5.

Info for manual annotations of cluster P6:

- Start number 9 was manually annotated 1 time for cluster P6.

Gene Information:

Gene: 244_19 Start: 10603, Stop: 11577, Start Num: 10

Candidate Starts for 244_19:

(Start: 10 @10603 has 122 MA's), (11, 10612), (12, 10672), (20, 10825), (30, 10921), (32, 10996), (34, 11041), (38, 11083), (40, 11101), (55, 11272), (60, 11302), (64, 11326), (65, 11335), (74, 11434), (77, 11455), (81, 11506),

Gene: ABCat_18 Start: 11378, Stop: 12349, Start Num: 10

Candidate Starts for ABCat_18:

(Start: 10 @11378 has 122 MA's), (11, 11387), (12, 11447), (20, 11600), (30, 11696), (32, 11771), (34, 11816), (38, 11858), (40, 11876), (55, 12047), (58, 12068), (62, 12089), (65, 12110), (69, 12155), (74, 12209), (78, 12242), (79, 12254), (81, 12281),

Gene: Adnama_20 Start: 10835, Stop: 11809, Start Num: 10

Candidate Starts for Adnama_20:

(Start: 10 @10835 has 122 MA's), (11, 10844), (12, 10904), (20, 11057), (30, 11153), (32, 11228), (34, 11273), (38, 11315), (40, 11333), (55, 11504), (60, 11534), (64, 11558), (65, 11567), (74, 11666), (77, 11687), (81, 11738),

Gene: Aggie_13 Start: 7878, Stop: 8936, Start Num: 9

Candidate Starts for Aggie_13:

(6, 7815), (Start: 9 @7878 has 124 MA's), (12, 7968), (16, 8034), (21, 8163), (30, 8256), (36, 8391), (42, 8448), (44, 8460), (50, 8571), (51, 8583), (52, 8589), (57, 8637), (66, 8700), (70, 8757), (76, 8808), (77, 8811), (84, 8901),

Gene: Amao_19 Start: 10592, Stop: 11554, Start Num: 11

Candidate Starts for Amao_19:

(Start: 10 @10583 has 122 MA's), (11, 10592), (12, 10652), (20, 10805), (30, 10901), (32, 10976), (34, 11021), (38, 11063), (40, 11081), (55, 11252), (60, 11282), (64, 11306), (65, 11315), (74, 11414), (77, 11435), (81, 11486),

Gene: AmericanBeauty_20 Start: 10832, Stop: 11806, Start Num: 10

Candidate Starts for AmericanBeauty_20:

(Start: 10 @10832 has 122 MA's), (11, 10841), (12, 10901), (20, 11054), (30, 11150), (32, 11225), (34, 11270), (38, 11312), (40, 11330), (55, 11501), (60, 11531), (64, 11555), (65, 11564), (74, 11663), (77, 11684),

Gene: Andies_13 Start: 7877, Stop: 8935, Start Num: 9

Candidate Starts for Andies_13:

(6, 7814), (Start: 9 @7877 has 124 MA's), (12, 7967), (16, 8033), (21, 8162), (30, 8255), (36, 8390), (42, 8447), (44, 8459), (50, 8570), (51, 8582), (52, 8588), (57, 8636), (66, 8699), (70, 8756), (76, 8807), (77, 8810), (84, 8900),

Gene: Argent26_20 Start: 10835, Stop: 11809, Start Num: 10

Candidate Starts for Argent26_20:

(Start: 10 @10835 has 122 MA's), (11, 10844), (12, 10904), (20, 11057), (30, 11153), (32, 11228), (34, 11273), (38, 11315), (40, 11333), (55, 11504), (60, 11534), (64, 11558), (65, 11567), (74, 11666), (77, 11687), (81, 11738),

Gene: Arib1_14 Start: 8818, Stop: 9816, Start Num: 9

Candidate Starts for Arib1_14:

(7, 8779), (Start: 9 @8818 has 124 MA's), (11, 8842), (13, 8908), (14, 8926), (17, 8962), (23, 9097), (26, 9133), (33, 9283), (39, 9337), (41, 9349), (46, 9418), (53, 9493), (56, 9514), (75, 9676), (83, 9769), (86, 9793),

Gene: Ariel_29 Start: 15912, Stop: 16916, Start Num: 9

Candidate Starts for Ariel_29:

(Start: 9 @15912 has 124 MA's), (15, 16038), (22, 16188), (24, 16218), (26, 16242), (43, 16467), (45, 16521), (63, 16662), (69, 16719), (73, 16773),

Gene: Asriel_18 Start: 10250, Stop: 11221, Start Num: 10

Candidate Starts for Asriel_18:

(Start: 10 @10250 has 122 MA's), (11, 10259), (12, 10319), (20, 10472), (30, 10568), (32, 10643), (34, 10688), (38, 10730), (40, 10748), (55, 10919), (60, 10949), (64, 10973), (65, 10982), (74, 11081), (77, 11102), (81, 11153),

Gene: Atcoo_14 Start: 8838, Stop: 9836, Start Num: 9

Candidate Starts for Atcoo_14:

(7, 8799), (Start: 9 @8838 has 124 MA's), (11, 8862), (13, 8928), (14, 8946), (23, 9117), (26, 9153), (33, 9303), (39, 9357), (41, 9369), (46, 9438), (53, 9513), (56, 9534), (75, 9696), (83, 9789), (86, 9813),

Gene: BAKA_28 Start: 17998, Stop: 19002, Start Num: 9

Candidate Starts for BAKA_28:

(Start: 9 @17998 has 124 MA's), (15, 18124), (22, 18274), (24, 18304), (26, 18328), (36, 18499), (43, 18553), (45, 18607), (48, 18628), (49, 18643), (61, 18736), (62, 18739), (63, 18748), (69, 18805), (77, 18877), (80, 18910), (85, 18970),

Gene: BabeRuth_13 Start: 7923, Stop: 8981, Start Num: 9

Candidate Starts for BabeRuth_13:

(6, 7860), (Start: 9 @7923 has 124 MA's), (16, 8079), (27, 8271), (30, 8301), (36, 8436), (42, 8493), (44, 8505), (51, 8628), (52, 8634), (55, 8664), (57, 8682), (60, 8697), (66, 8745), (68, 8757), (70, 8802), (77, 8856), (82, 8913), (84, 8946), (85, 8949),

Gene: BaboJay_18 Start: 10914, Stop: 11885, Start Num: 10

Candidate Starts for BaboJay_18:

(Start: 10 @10914 has 122 MA's), (11, 10923), (12, 10983), (20, 11136), (30, 11232), (32, 11307), (34, 11352), (38, 11394), (40, 11412), (55, 11583), (60, 11613), (64, 11637), (65, 11646), (67, 11661), (74, 11745), (81, 11817),

Gene: BadStone_18 Start: 11378, Stop: 12349, Start Num: 10

Candidate Starts for BadStone_18:

(Start: 10 @11378 has 122 MA's), (11, 11387), (12, 11447), (20, 11600), (30, 11696), (32, 11771), (34, 11816), (38, 11858), (40, 11876), (55, 12047), (58, 12068), (62, 12089), (65, 12110), (69, 12155), (74, 12209), (78, 12242), (79, 12254), (81, 12281),

Gene: Bagrid_29 Start: 17787, Stop: 18791, Start Num: 9

Candidate Starts for Bagrid_29:

(Start: 9 @17787 has 124 MA's), (15, 17913), (22, 18063), (24, 18093), (26, 18117), (36, 18288), (43, 18342), (45, 18396), (48, 18417), (49, 18432), (61, 18525), (62, 18528), (63, 18537), (69, 18594), (77, 18666), (80, 18699), (85, 18759),

Gene: Balomoji_18 Start: 11112, Stop: 12083, Start Num: 10

Candidate Starts for Balomoji_18:

(Start: 10 @11112 has 122 MA's), (11, 11121), (12, 11181), (20, 11334), (30, 11430), (32, 11505), (34, 11550), (38, 11592), (40, 11610), (55, 11781), (58, 11802), (62, 11823), (65, 11844), (69, 11889), (74, 11943), (78, 11976), (79, 11988), (81, 12015),

Gene: Barbarian_18 Start: 10250, Stop: 11221, Start Num: 10

Candidate Starts for Barbarian_18:

(Start: 10 @10250 has 122 MA's), (11, 10259), (12, 10319), (20, 10472), (30, 10568), (32, 10643), (34, 10688), (38, 10730), (40, 10748), (55, 10919), (60, 10949), (64, 10973), (65, 10982), (74, 11081), (77, 11102), (81, 11153),

Gene: Bartholomew_14 Start: 8834, Stop: 9832, Start Num: 9

Candidate Starts for Bartholomew_14:

(7, 8795), (Start: 9 @8834 has 124 MA's), (11, 8858), (13, 8924), (14, 8942), (17, 8978), (23, 9113), (26, 9149), (33, 9299), (39, 9353), (41, 9365), (46, 9434), (53, 9509), (56, 9530), (75, 9692), (83, 9785), (86, 9809),

Gene: Bask21_18 Start: 10045, Stop: 11016, Start Num: 10

Candidate Starts for Bask21_18:

(Start: 10 @10045 has 122 MA's), (11, 10054), (12, 10114), (20, 10267), (30, 10363), (32, 10438), (34, 10483), (38, 10525), (40, 10543), (55, 10714), (60, 10744), (64, 10768), (65, 10777), (74, 10876), (77, 10897), (81, 10948),

Gene: Beem_31 Start: 18353, Stop: 19357, Start Num: 9

Candidate Starts for Beem_31:

(Start: 9 @18353 has 124 MA's), (15, 18479), (22, 18629), (24, 18659), (26, 18683), (36, 18854), (43, 18908), (45, 18962), (48, 18983), (49, 18998), (61, 19091), (62, 19094), (63, 19103), (69, 19160), (77, 19232), (80, 19265), (85, 19325),

Gene: Bench_20 Start: 10708, Stop: 11682, Start Num: 10

Candidate Starts for Bench_20:

(Start: 10 @10708 has 122 MA's), (11, 10717), (12, 10777), (20, 10930), (30, 11026), (32, 11101), (34, 11146), (38, 11188), (40, 11206), (55, 11377), (60, 11407), (64, 11431), (65, 11440), (74, 11539), (77, 11560), (81, 11611),

Gene: BigBubba_18 Start: 10091, Stop: 11065, Start Num: 10

Candidate Starts for BigBubba_18:

(Start: 10 @10091 has 122 MA's), (11, 10100), (12, 10160), (20, 10313), (30, 10409), (32, 10484), (34, 10529), (38, 10571), (40, 10589), (55, 10760), (60, 10790), (64, 10814), (65, 10823), (74, 10922), (77, 10943), (81, 10994),

Gene: BigNuz_13 Start: 8552, Stop: 9550, Start Num: 9

Candidate Starts for BigNuz_13:

(8, 8513), (Start: 9 @8552 has 124 MA's), (11, 8576), (12, 8636), (14, 8660), (23, 8831), (26, 8867), (28, 8879), (29, 8900), (31, 8954), (35, 9029), (39, 9071), (41, 9083), (56, 9248), (59, 9266), (64, 9293), (71, 9374), (77, 9425), (81, 9476), (83, 9503),

Gene: BilboSwaggins_19 Start: 11388, Stop: 12350, Start Num: 11

Candidate Starts for BilboSwaggins_19:

(Start: 10 @11379 has 122 MA's), (11, 11388), (12, 11448), (20, 11601), (30, 11697), (32, 11772), (34, 11817), (38, 11859), (40, 11877), (55, 12048), (58, 12069), (62, 12090), (65, 12111), (69, 12156), (74, 12210), (78, 12243), (79, 12255), (81, 12282),

Gene: Bobby_32 Start: 18306, Stop: 19310, Start Num: 9

Candidate Starts for Bobby_32:

(Start: 9 @18306 has 124 MA's), (15, 18432), (22, 18582), (24, 18612), (26, 18636), (36, 18807), (43, 18861), (45, 18915), (48, 18936), (49, 18951), (61, 19044), (62, 19047), (63, 19056), (69, 19113), (77, 19185), (80, 19218), (85, 19278),

Gene: Bogie_13 Start: 8552, Stop: 9550, Start Num: 9

Candidate Starts for Bogie_13:

(2, 8351), (4, 8402), (7, 8513), (Start: 9 @8552 has 124 MA's), (11, 8576), (13, 8642), (14, 8660), (17, 8696), (23, 8831), (26, 8867), (33, 9017), (39, 9071), (41, 9083), (46, 9152), (53, 9227), (56, 9248), (75, 9410), (83, 9503), (86, 9527),

Gene: Bombitas_28 Start: 17663, Stop: 18667, Start Num: 9

Candidate Starts for Bombitas_28:

(Start: 9 @17663 has 124 MA's), (15, 17789), (22, 17939), (24, 17969), (26, 17993), (36, 18164), (43, 18218), (45, 18272), (48, 18293), (49, 18308), (61, 18401), (62, 18404), (63, 18413), (69, 18470), (77, 18542), (80, 18575), (85, 18635),

Gene: Bosection6_13 Start: 7877, Stop: 8935, Start Num: 9

Candidate Starts for Bosection6_13:

(6, 7814), (Start: 9 @7877 has 124 MA's), (12, 7967), (16, 8033), (21, 8162), (30, 8255), (36, 8390), (42, 8447), (44, 8459), (50, 8570), (51, 8582), (52, 8588), (57, 8636), (66, 8699), (70, 8756), (76, 8807), (77, 8810), (84, 8900),

Gene: Bruin_18 Start: 10886, Stop: 11857, Start Num: 10

Candidate Starts for Bruin_18:

(Start: 10 @10886 has 122 MA's), (11, 10895), (12, 10955), (20, 11108), (30, 11204), (32, 11279), (34, 11324), (38, 11366), (40, 11384), (55, 11555), (60, 11585), (64, 11609), (65, 11618), (74, 11717), (77, 11738), (81, 11789),

Gene: Brusacoram_14 Start: 8837, Stop: 9835, Start Num: 9

Candidate Starts for Brusacoram_14:

(7, 8798), (Start: 9 @8837 has 124 MA's), (11, 8861), (13, 8927), (14, 8945), (23, 9116), (26, 9152), (33, 9302), (39, 9356), (41, 9368), (46, 9437), (53, 9512), (56, 9533), (75, 9695), (83, 9788), (86, 9812),

Gene: Buck_18 Start: 11335, Stop: 12306, Start Num: 10

Candidate Starts for Buck_18:

(Start: 10 @11335 has 122 MA's), (11, 11344), (12, 11404), (20, 11557), (30, 11653), (32, 11728), (34, 11773), (38, 11815), (40, 11833), (55, 12004), (60, 12034), (64, 12058), (65, 12067), (74, 12166), (77, 12187), (81, 12238),

Gene: BugsBunny_16 Start: 10452, Stop: 11423, Start Num: 10

Candidate Starts for BugsBunny_16:

(Start: 10 @10452 has 122 MA's), (11, 10461), (12, 10521), (20, 10674), (30, 10770), (32, 10845), (34, 10890), (38, 10932), (40, 10950), (55, 11121), (60, 11151), (64, 11175), (65, 11184), (74, 11283), (77, 11304), (81, 11355),

Gene: Bunnies_14 Start: 8850, Stop: 9848, Start Num: 9

Candidate Starts for Bunnies_14:

(7, 8811), (Start: 9 @8850 has 124 MA's), (11, 8874), (13, 8940), (14, 8958), (17, 8994), (23, 9129), (26, 9165), (33, 9315), (39, 9369), (41, 9381), (46, 9450), (53, 9525), (56, 9546), (75, 9708), (83, 9801), (86, 9825),

Gene: Butters_13 Start: 7898, Stop: 8956, Start Num: 9

Candidate Starts for Butters_13:

(6, 7835), (Start: 9 @7898 has 124 MA's), (16, 8054), (30, 8276), (36, 8411), (42, 8468), (44, 8480), (51, 8603), (52, 8609), (54, 8636), (57, 8657), (66, 8720), (70, 8777), (76, 8828), (77, 8831), (81, 8882), (82, 8888), (84, 8921), (85, 8924),

Gene: Cactus_20 Start: 10591, Stop: 11562, Start Num: 10

Candidate Starts for Cactus_20:

(Start: 10 @10591 has 122 MA's), (11, 10600), (12, 10660), (20, 10813), (30, 10909), (32, 10984), (34, 11029), (38, 11071), (40, 11089), (55, 11260), (60, 11290), (64, 11314), (65, 11323), (74, 11422), (77, 11443), (81, 11494),

Gene: CactusJack_14 Start: 8837, Stop: 9835, Start Num: 9

Candidate Starts for CactusJack_14:

(7, 8798), (Start: 9 @8837 has 124 MA's), (11, 8861), (13, 8927), (14, 8945), (17, 8981), (26, 9152), (33, 9302), (39, 9356), (41, 9368), (46, 9437), (47, 9452), (56, 9533), (75, 9695), (83, 9788), (86, 9812),

Gene: Camster_14 Start: 8834, Stop: 9832, Start Num: 9

Candidate Starts for Camster_14:

(7, 8795), (Start: 9 @8834 has 124 MA's), (11, 8858), (13, 8924), (14, 8942), (23, 9113), (26, 9149), (33, 9299), (39, 9353), (41, 9365), (46, 9434), (53, 9509), (56, 9530), (75, 9692), (83, 9785), (86, 9809),

Gene: Carcharodon_13 Start: 7877, Stop: 8935, Start Num: 9

Candidate Starts for Carcharodon_13:

(6, 7814), (Start: 9 @7877 has 124 MA's), (12, 7967), (16, 8033), (21, 8162), (30, 8255), (36, 8390), (42, 8447), (44, 8459), (50, 8570), (51, 8582), (52, 8588), (57, 8636), (66, 8699), (70, 8756), (76, 8807), (77, 8810), (84, 8900),

Gene: Charlie_13 Start: 7877, Stop: 8935, Start Num: 9

Candidate Starts for Charlie_13:

(6, 7814), (Start: 9 @7877 has 124 MA's), (12, 7967), (16, 8033), (21, 8162), (30, 8255), (36, 8390), (42, 8447), (44, 8459), (50, 8570), (51, 8582), (52, 8588), (57, 8636), (66, 8699), (70, 8756), (76, 8807), (77, 8810), (84, 8900),

Gene: Chewbacca_13 Start: 7877, Stop: 8935, Start Num: 9

Candidate Starts for Chewbacca_13:

(6, 7814), (Start: 9 @7877 has 124 MA's), (12, 7967), (16, 8033), (21, 8162), (30, 8255), (36, 8390), (42, 8447), (44, 8459), (50, 8570), (51, 8582), (52, 8588), (57, 8636), (66, 8699), (70, 8756), (76, 8807), (77, 8810), (84, 8900),

Gene: ChosenOne_17 Start: 10055, Stop: 11029, Start Num: 10

Candidate Starts for ChosenOne_17:

(Start: 10 @10055 has 122 MA's), (11, 10064), (12, 10124), (20, 10277), (30, 10373), (32, 10448), (34, 10493), (38, 10535), (40, 10553), (55, 10724), (60, 10754), (64, 10778), (65, 10787), (74, 10886), (77, 10907), (81, 10958),

Gene: ChotaBhai_18 Start: 10091, Stop: 11065, Start Num: 10

Candidate Starts for ChotaBhai_18:

(Start: 10 @10091 has 122 MA's), (11, 10100), (12, 10160), (20, 10313), (30, 10409), (32, 10484), (34, 10529), (38, 10571), (40, 10589), (55, 10760), (60, 10790), (64, 10814), (65, 10823), (74, 10922), (77, 10943), (81, 10994),

Gene: Cjw1_18 Start: 11605, Stop: 12579, Start Num: 10

Candidate Starts for Cjw1_18:

(Start: 10 @11605 has 122 MA's), (11, 11614), (12, 11674), (20, 11827), (30, 11923), (32, 11998), (34, 12043), (38, 12085), (40, 12103), (55, 12274), (60, 12304), (64, 12328), (65, 12337), (74, 12436), (77, 12457), (81, 12508),

Gene: Command613_20 Start: 11647, Stop: 12618, Start Num: 10

Candidate Starts for Command613_20:

(Start: 10 @11647 has 122 MA's), (11, 11656), (12, 11716), (20, 11869), (30, 11965), (32, 12040), (34, 12085), (38, 12127), (40, 12145), (55, 12316), (58, 12337), (62, 12358), (65, 12379), (69, 12424), (74,

12478), (78, 12511), (79, 12523), (81, 12550),

Gene: Constella_26 Start: 17176, Stop: 18180, Start Num: 9

Candidate Starts for Constella_26:

(Start: 9 @17176 has 124 MA's), (15, 17302), (22, 17452), (24, 17482), (26, 17506), (36, 17677), (43, 17731), (45, 17785), (48, 17806), (49, 17821), (61, 17914), (62, 17917), (63, 17926), (69, 17983), (77, 18055), (80, 18088), (85, 18148),

Gene: Contagion_18 Start: 10886, Stop: 11857, Start Num: 10

Candidate Starts for Contagion_18:

(Start: 10 @10886 has 122 MA's), (11, 10895), (12, 10955), (20, 11108), (30, 11204), (32, 11279), (34, 11324), (38, 11366), (40, 11384), (55, 11555), (60, 11585), (64, 11609), (65, 11618), (74, 11717), (77, 11738), (81, 11789),

Gene: Cookies_19 Start: 11251, Stop: 12222, Start Num: 10

Candidate Starts for Cookies_19:

(Start: 10 @11251 has 122 MA's), (11, 11260), (12, 11320), (20, 11473), (30, 11569), (32, 11644), (34, 11689), (38, 11731), (40, 11749), (55, 11920), (60, 11950), (64, 11974), (65, 11983), (74, 12082), (77, 12103), (81, 12154),

Gene: Courthouse_29 Start: 16315, Stop: 17319, Start Num: 9

Candidate Starts for Courthouse_29:

(Start: 9 @16315 has 124 MA's), (15, 16441), (22, 16591), (24, 16621), (26, 16645), (43, 16870), (45, 16924), (63, 17065), (69, 17122), (73, 17176),

Gene: CrystalP_19 Start: 11379, Stop: 12350, Start Num: 10

Candidate Starts for CrystalP_19:

(Start: 10 @11379 has 122 MA's), (11, 11388), (12, 11448), (20, 11601), (30, 11697), (32, 11772), (34, 11817), (38, 11859), (40, 11877), (55, 12048), (58, 12069), (62, 12090), (65, 12111), (69, 12156), (74, 12210), (78, 12243), (79, 12255), (81, 12282),

Gene: Czyszczone1_19 Start: 10590, Stop: 11564, Start Num: 10

Candidate Starts for Czyszczone1_19:

(Start: 10 @10590 has 122 MA's), (11, 10599), (12, 10659), (20, 10812), (30, 10908), (32, 10983), (34, 11028), (38, 11070), (40, 11088), (55, 11259), (60, 11289), (64, 11313), (65, 11322), (74, 11421), (77, 11442), (81, 11493),

Gene: Daikon_17 Start: 11113, Stop: 12084, Start Num: 10

Candidate Starts for Daikon_17:

(Start: 10 @11113 has 122 MA's), (11, 11122), (12, 11182), (20, 11335), (30, 11431), (32, 11506), (34, 11551), (38, 11593), (40, 11611), (55, 11782), (58, 11803), (62, 11824), (65, 11845), (69, 11890), (74, 11944), (78, 11977), (79, 11989), (81, 12016),

Gene: Dallas_31 Start: 17893, Stop: 18897, Start Num: 9

Candidate Starts for Dallas_31:

(Start: 9 @17893 has 124 MA's), (15, 18019), (22, 18169), (24, 18199), (26, 18223), (36, 18394), (43, 18448), (45, 18502), (48, 18523), (49, 18538), (61, 18631), (62, 18634), (63, 18643), (69, 18700), (77, 18772), (80, 18805), (85, 18865),

Gene: DmpstrDiver_30 Start: 18529, Stop: 19533, Start Num: 9

Candidate Starts for DmpstrDiver_30:

(Start: 9 @18529 has 124 MA's), (15, 18655), (22, 18805), (24, 18835), (26, 18859), (36, 19030), (43, 19084), (45, 19138), (48, 19159), (49, 19174), (61, 19267), (62, 19270), (63, 19279), (69, 19336), (77,

19408), (80, 19441), (85, 19501),

Gene: DoctorDiddles_19 Start: 10544, Stop: 11515, Start Num: 10

Candidate Starts for DoctorDiddles_19:

(Start: 10 @10544 has 122 MA's), (11, 10553), (12, 10613), (20, 10766), (30, 10862), (32, 10937), (34, 10982), (38, 11024), (40, 11042), (55, 11213), (60, 11243), (64, 11267), (65, 11276), (74, 11375), (77, 11396), (81, 11447),

Gene: Donovan_14 Start: 8819, Stop: 9817, Start Num: 9

Candidate Starts for Donovan_14:

(7, 8780), (Start: 9 @8819 has 124 MA's), (11, 8843), (13, 8909), (14, 8927), (17, 8963), (23, 9098), (26, 9134), (33, 9284), (39, 9338), (41, 9350), (46, 9419), (53, 9494), (56, 9515), (75, 9677), (83, 9770), (86, 9794),

Gene: Dove_30 Start: 17662, Stop: 18666, Start Num: 9

Candidate Starts for Dove_30:

(Start: 9 @17662 has 124 MA's), (15, 17788), (22, 17938), (24, 17968), (26, 17992), (36, 18163), (43, 18217), (45, 18271), (48, 18292), (49, 18307), (61, 18400), (62, 18403), (63, 18412), (69, 18469), (77, 18541), (80, 18574), (85, 18634),

Gene: DrDrey_19 Start: 11331, Stop: 12305, Start Num: 10

Candidate Starts for DrDrey_19:

(Start: 10 @11331 has 122 MA's), (11, 11340), (12, 11400), (20, 11553), (30, 11649), (32, 11724), (34, 11769), (38, 11811), (40, 11829), (55, 12000), (60, 12030), (64, 12054), (65, 12063), (74, 12162), (77, 12183), (81, 12234),

Gene: Duke13_28 Start: 17927, Stop: 18931, Start Num: 9

Candidate Starts for Duke13_28:

(Start: 9 @17927 has 124 MA's), (15, 18053), (22, 18203), (24, 18233), (26, 18257), (36, 18428), (43, 18482), (45, 18536), (48, 18557), (49, 18572), (61, 18665), (62, 18668), (63, 18677), (69, 18734), (77, 18806), (80, 18839), (85, 18899),

Gene: Dumbo_18 Start: 10312, Stop: 11286, Start Num: 10

Candidate Starts for Dumbo_18:

(Start: 10 @10312 has 122 MA's), (11, 10321), (12, 10381), (20, 10534), (30, 10630), (32, 10705), (34, 10750), (38, 10792), (40, 10810), (55, 10981), (60, 11011), (64, 11035), (65, 11044), (74, 11143), (77, 11164), (81, 11215),

Gene: Duplicity_13 Start: 7877, Stop: 8935, Start Num: 9

Candidate Starts for Duplicity_13:

(6, 7814), (Start: 9 @7877 has 124 MA's), (12, 7967), (16, 8033), (21, 8162), (30, 8255), (36, 8390), (42, 8447), (44, 8459), (50, 8570), (51, 8582), (52, 8588), (57, 8636), (66, 8699), (70, 8756), (76, 8807), (77, 8810), (84, 8900),

Gene: Dusk_18 Start: 11038, Stop: 12009, Start Num: 10

Candidate Starts for Dusk_18:

(Start: 10 @11038 has 122 MA's), (11, 11047), (12, 11107), (20, 11260), (30, 11356), (32, 11431), (34, 11476), (38, 11518), (40, 11536), (55, 11707), (58, 11728), (62, 11749), (65, 11770), (69, 11815), (74, 11869), (78, 11902), (79, 11914), (81, 11941),

Gene: Dynamo_14 Start: 8834, Stop: 9832, Start Num: 9

Candidate Starts for Dynamo_14:

(7, 8795), (Start: 9 @8834 has 124 MA's), (11, 8858), (13, 8924), (14, 8942), (17, 8978), (23, 9113), (26, 9149), (33, 9299), (39, 9353), (41, 9365), (46, 9434), (53, 9509), (56, 9530), (75, 9692), (83, 9785), (86, 9809),

Gene: Easy2Say_19 Start: 11578, Stop: 12552, Start Num: 10

Candidate Starts for Easy2Say_19:

(Start: 10 @11578 has 122 MA's), (11, 11587), (12, 11647), (20, 11800), (30, 11896), (32, 11971), (34, 12016), (38, 12058), (40, 12076), (55, 12247), (60, 12277), (64, 12301), (65, 12310), (74, 12409), (77, 12430), (81, 12481),

Gene: Ejimix_32 Start: 19103, Stop: 20107, Start Num: 9

Candidate Starts for Ejimix_32:

(Start: 9 @19103 has 124 MA's), (15, 19229), (22, 19379), (24, 19409), (26, 19433), (36, 19604), (43, 19658), (45, 19712), (48, 19733), (49, 19748), (61, 19841), (62, 19844), (63, 19853), (69, 19910), (77, 19982), (80, 20015), (85, 20075),

Gene: Elite2014_17 Start: 10055, Stop: 11029, Start Num: 10

Candidate Starts for Elite2014_17:

(Start: 10 @10055 has 122 MA's), (11, 10064), (12, 10124), (20, 10277), (30, 10373), (32, 10448), (34, 10493), (38, 10535), (40, 10553), (55, 10724), (60, 10754), (64, 10778), (65, 10787), (74, 10886), (77, 10907), (81, 10958),

Gene: Elph10_19 Start: 10315, Stop: 11289, Start Num: 10

Candidate Starts for Elph10_19:

(Start: 10 @10315 has 122 MA's), (11, 10324), (12, 10384), (20, 10537), (30, 10633), (32, 10708), (34, 10753), (38, 10795), (40, 10813), (55, 10984), (60, 11014), (64, 11038), (65, 11047), (74, 11146), (77, 11167), (81, 11218),

Gene: Emmina_18 Start: 10160, Stop: 11134, Start Num: 10

Candidate Starts for Emmina_18:

(Start: 10 @10160 has 122 MA's), (11, 10169), (12, 10229), (20, 10382), (30, 10478), (32, 10553), (34, 10598), (38, 10640), (40, 10658), (55, 10829), (60, 10859), (64, 10883), (65, 10892), (74, 10991), (77, 11012), (81, 11063),

Gene: EricMillard_31 Start: 18639, Stop: 19643, Start Num: 9

Candidate Starts for EricMillard_31:

(Start: 9 @18639 has 124 MA's), (15, 18765), (22, 18915), (24, 18945), (26, 18969), (36, 19140), (43, 19194), (45, 19248), (48, 19269), (49, 19284), (61, 19377), (62, 19380), (63, 19389), (69, 19446), (77, 19518), (80, 19551), (85, 19611),

Gene: Eureka_19 Start: 11358, Stop: 12329, Start Num: 10

Candidate Starts for Eureka_19:

(Start: 10 @11358 has 122 MA's), (11, 11367), (12, 11427), (20, 11580), (30, 11676), (32, 11751), (34, 11796), (38, 11838), (40, 11856), (55, 12027), (60, 12057), (64, 12081), (65, 12090), (67, 12105), (74, 12189), (81, 12261),

Gene: Filch_19 Start: 10600, Stop: 11574, Start Num: 10

Candidate Starts for Filch_19:

(Start: 10 @10600 has 122 MA's), (11, 10609), (12, 10669), (20, 10822), (30, 10918), (32, 10993), (34, 11038), (38, 11080), (40, 11098), (55, 11269), (60, 11299), (64, 11323), (65, 11332), (74, 11431), (77, 11452), (81, 11503),

Gene: FireRed_18 Start: 10888, Stop: 11859, Start Num: 10

Candidate Starts for FireRed_18:

(Start: 10 @10888 has 122 MA's), (11, 10897), (12, 10957), (20, 11110), (30, 11206), (32, 11281), (34, 11326), (38, 11368), (40, 11386), (55, 11557), (60, 11587), (64, 11611), (65, 11620), (74, 11719), (77, 11740), (81, 11791),

Gene: FirstPlacePfu_14 Start: 8834, Stop: 9832, Start Num: 9

Candidate Starts for FirstPlacePfu_14:

(7, 8795), (Start: 9 @8834 has 124 MA's), (11, 8858), (13, 8924), (14, 8942), (17, 8978), (23, 9113), (26, 9149), (33, 9299), (39, 9353), (41, 9365), (46, 9434), (53, 9509), (56, 9530), (75, 9692), (83, 9785), (86, 9809),

Gene: Fishburne_14 Start: 8834, Stop: 9832, Start Num: 9

Candidate Starts for Fishburne_14:

(7, 8795), (Start: 9 @8834 has 124 MA's), (11, 8858), (13, 8924), (14, 8942), (17, 8978), (23, 9113), (26, 9149), (33, 9299), (39, 9353), (41, 9365), (46, 9434), (53, 9509), (56, 9530), (75, 9692), (83, 9785), (86, 9809),

Gene: Flypotenuse_17 Start: 10995, Stop: 11966, Start Num: 10

Candidate Starts for Flypotenuse_17:

(Start: 10 @10995 has 122 MA's), (11, 11004), (12, 11064), (20, 11217), (30, 11313), (32, 11388), (34, 11433), (38, 11475), (40, 11493), (55, 11664), (58, 11685), (62, 11706), (65, 11727), (69, 11772), (74, 11826), (78, 11859), (79, 11871), (81, 11898),

Gene: Fulbright_13 Start: 7877, Stop: 8935, Start Num: 9

Candidate Starts for Fulbright_13:

(6, 7814), (Start: 9 @7877 has 124 MA's), (12, 7967), (16, 8033), (21, 8162), (30, 8255), (36, 8390), (42, 8447), (44, 8459), (50, 8570), (51, 8582), (52, 8588), (57, 8636), (66, 8699), (70, 8756), (76, 8807), (77, 8810), (84, 8900),

Gene: Gage_20 Start: 10835, Stop: 11809, Start Num: 10

Candidate Starts for Gage_20:

(Start: 10 @10835 has 122 MA's), (11, 10844), (12, 10904), (20, 11057), (30, 11153), (32, 11228), (34, 11273), (38, 11315), (40, 11333), (55, 11504), (60, 11534), (64, 11558), (65, 11567), (74, 11666), (77, 11687), (81, 11738),

Gene: Gator_17 Start: 10994, Stop: 11965, Start Num: 10

Candidate Starts for Gator_17:

(Start: 10 @10994 has 122 MA's), (11, 11003), (12, 11063), (20, 11216), (30, 11312), (32, 11387), (34, 11432), (38, 11474), (40, 11492), (55, 11663), (58, 11684), (62, 11705), (65, 11726), (69, 11771), (74, 11825), (78, 11858), (79, 11870), (81, 11897),

Gene: Gemini_20 Start: 10835, Stop: 11809, Start Num: 10

Candidate Starts for Gemini_20:

(Start: 10 @10835 has 122 MA's), (11, 10844), (12, 10904), (20, 11057), (30, 11153), (32, 11228), (34, 11273), (38, 11315), (40, 11333), (55, 11504), (60, 11534), (64, 11558), (65, 11567), (74, 11666), (77, 11687), (81, 11738),

Gene: Gex_13 Start: 7877, Stop: 8935, Start Num: 9

Candidate Starts for Gex_13:

(6, 7814), (Start: 9 @7877 has 124 MA's), (12, 7967), (16, 8033), (21, 8162), (30, 8255), (36, 8390), (42, 8447), (44, 8459), (50, 8570), (51, 8582), (52, 8588), (57, 8636), (66, 8699), (70, 8756), (76, 8807), (77, 8810), (84, 8900),

Gene: Glaske_14 Start: 8837, Stop: 9835, Start Num: 9

Candidate Starts for Glaske_14:

(7, 8798), (Start: 9 @8837 has 124 MA's), (11, 8861), (13, 8927), (14, 8945), (17, 8981), (26, 9152), (33, 9302), (39, 9356), (41, 9368), (46, 9437), (47, 9452), (56, 9533), (75, 9695), (83, 9788), (86, 9812),

Gene: Glexan_17 Start: 10995, Stop: 11966, Start Num: 10

Candidate Starts for Glexan_17:

(Start: 10 @10995 has 122 MA's), (11, 11004), (12, 11064), (20, 11217), (30, 11313), (32, 11388), (34, 11433), (38, 11475), (40, 11493), (55, 11664), (58, 11685), (62, 11706), (65, 11727), (69, 11772), (74, 11826), (78, 11859), (79, 11871), (81, 11898),

Gene: Goku_19 Start: 11087, Stop: 12058, Start Num: 10

Candidate Starts for Goku_19:

(Start: 10 @11087 has 122 MA's), (11, 11096), (12, 11156), (20, 11309), (30, 11405), (32, 11480), (34, 11525), (38, 11567), (40, 11585), (55, 11756), (60, 11786), (64, 11810), (65, 11819), (67, 11834), (74, 11918), (81, 11990),

Gene: GoldenSpark_20 Start: 10835, Stop: 11809, Start Num: 10

Candidate Starts for GoldenSpark_20:

(Start: 10 @10835 has 122 MA's), (11, 10844), (12, 10904), (20, 11057), (30, 11153), (32, 11228), (34, 11273), (38, 11315), (40, 11333), (55, 11504), (60, 11534), (64, 11558), (65, 11567), (74, 11666), (77, 11687), (81, 11738),

Gene: Goldilocks_20 Start: 10789, Stop: 11760, Start Num: 10

Candidate Starts for Goldilocks_20:

(Start: 10 @10789 has 122 MA's), (11, 10798), (12, 10858), (20, 11011), (30, 11107), (32, 11182), (34, 11227), (38, 11269), (40, 11287), (55, 11458), (60, 11488), (64, 11512), (65, 11521), (74, 11620), (77, 11641), (81, 11692),

Gene: Gonephishing_27 Start: 16487, Stop: 17491, Start Num: 9

Candidate Starts for Gonephishing_27:

(Start: 9 @16487 has 124 MA's), (15, 16613), (22, 16763), (24, 16793), (26, 16817), (43, 17042), (45, 17096), (63, 17237), (69, 17294), (73, 17348),

Gene: GooberAzure_20 Start: 10835, Stop: 11809, Start Num: 10

Candidate Starts for GooberAzure_20:

(Start: 10 @10835 has 122 MA's), (11, 10844), (12, 10904), (20, 11057), (30, 11153), (32, 11228), (34, 11273), (38, 11315), (40, 11333), (55, 11504), (60, 11534), (64, 11558), (65, 11567), (74, 11666), (77, 11687), (81, 11738),

Gene: GreaseLightnin_14 Start: 8834, Stop: 9832, Start Num: 9

Candidate Starts for GreaseLightnin_14:

(7, 8795), (Start: 9 @8834 has 124 MA's), (11, 8858), (13, 8924), (14, 8942), (17, 8978), (23, 9113), (26, 9149), (33, 9299), (39, 9353), (41, 9365), (46, 9434), (53, 9509), (56, 9530), (75, 9692), (83, 9785), (86, 9809),

Gene: HUHilltop_14 Start: 8834, Stop: 9832, Start Num: 9

Candidate Starts for HUHilltop_14:

(7, 8795), (Start: 9 @8834 has 124 MA's), (11, 8858), (13, 8924), (14, 8942), (17, 8978), (23, 9113), (26, 9149), (33, 9299), (39, 9353), (41, 9365), (46, 9434), (53, 9509), (56, 9530), (75, 9692), (83, 9785), (86, 9809),

Gene: Halley_31 Start: 18352, Stop: 19356, Start Num: 9

Candidate Starts for Halley_31:

(Start: 9 @18352 has 124 MA's), (15, 18478), (22, 18628), (24, 18658), (26, 18682), (36, 18853), (43, 18907), (45, 18961), (48, 18982), (49, 18997), (61, 19090), (62, 19093), (63, 19102), (69, 19159), (77, 19231), (80, 19264), (85, 19324),

Gene: HanKaySha_19 Start: 10590, Stop: 11564, Start Num: 10

Candidate Starts for HanKaySha_19:

(Start: 10 @10590 has 122 MA's), (11, 10599), (12, 10659), (20, 10812), (30, 10908), (32, 10983), (34, 11028), (38, 11070), (40, 11088), (55, 11259), (60, 11289), (64, 11313), (65, 11322), (74, 11421), (77, 11442), (81, 11493),

Gene: Hannaconda_26 Start: 14994, Stop: 15998, Start Num: 9

Candidate Starts for Hannaconda_26:

(Start: 9 @14994 has 124 MA's), (15, 15120), (22, 15270), (24, 15300), (26, 15324), (43, 15549), (45, 15603), (63, 15744), (69, 15801), (73, 15855),

Gene: Harella_17 Start: 10995, Stop: 11966, Start Num: 10

Candidate Starts for Harella_17:

(Start: 10 @10995 has 122 MA's), (11, 11004), (12, 11064), (20, 11217), (30, 11313), (32, 11388), (34, 11433), (38, 11475), (40, 11493), (55, 11664), (58, 11685), (62, 11706), (65, 11727), (69, 11772), (74, 11826), (78, 11859), (79, 11871), (81, 11898),

Gene: Henry_19 Start: 11378, Stop: 12349, Start Num: 10

Candidate Starts for Henry_19:

(Start: 10 @11378 has 122 MA's), (11, 11387), (12, 11447), (20, 11600), (30, 11696), (32, 11771), (34, 11816), (38, 11858), (40, 11876), (55, 12047), (58, 12068), (62, 12089), (65, 12110), (69, 12155), (74, 12209), (78, 12242), (79, 12254), (81, 12281),

Gene: Highbury_19 Start: 10509, Stop: 11483, Start Num: 10

Candidate Starts for Highbury_19:

(Start: 10 @10509 has 122 MA's), (11, 10518), (12, 10578), (20, 10731), (30, 10827), (32, 10902), (34, 10947), (38, 10989), (40, 11007), (55, 11178), (60, 11208), (64, 11232), (65, 11241), (74, 11340), (77, 11361), (81, 11412),

Gene: HokkenD_26 Start: 17922, Stop: 18926, Start Num: 9

Candidate Starts for HokkenD_26:

(Start: 9 @17922 has 124 MA's), (15, 18048), (22, 18198), (24, 18228), (26, 18252), (36, 18423), (43, 18477), (45, 18531), (48, 18552), (49, 18567), (61, 18660), (62, 18663), (63, 18672), (69, 18729), (77, 18801), (80, 18834), (85, 18894),

Gene: Holt_20 Start: 10662, Stop: 11633, Start Num: 10

Candidate Starts for Holt_20:

(Start: 10 @10662 has 122 MA's), (11, 10671), (12, 10731), (20, 10884), (30, 10980), (32, 11055), (34, 11100), (38, 11142), (40, 11160), (55, 11331), (60, 11361), (64, 11385), (65, 11394), (74, 11493), (77, 11514), (81, 11565),

Gene: Hoonter_20 Start: 10835, Stop: 11809, Start Num: 10

Candidate Starts for Hoonter_20:

(Start: 10 @10835 has 122 MA's), (11, 10844), (12, 10904), (20, 11057), (30, 11153), (32, 11228), (34, 11273), (38, 11315), (40, 11333), (55, 11504), (60, 11534), (64, 11558), (65, 11567), (74, 11666), (77, 11687), (81, 11738),

Gene: Hopey_19 Start: 10600, Stop: 11574, Start Num: 10

Candidate Starts for Hopey_19:

(Start: 10 @10600 has 122 MA's), (11, 10609), (12, 10669), (20, 10822), (30, 10918), (32, 10993), (34, 11038), (38, 11080), (40, 11098), (55, 11269), (60, 11299), (64, 11323), (65, 11332), (74, 11431), (77, 11452), (81, 11503),

Gene: HufflyPuff_17 Start: 10844, Stop: 11815, Start Num: 10

Candidate Starts for HufflyPuff_17:

(Start: 10 @10844 has 122 MA's), (11, 10853), (12, 10913), (20, 11066), (30, 11162), (32, 11237), (34, 11282), (38, 11324), (40, 11342), (55, 11513), (60, 11543), (64, 11567), (65, 11576), (74, 11675), (77, 11696), (81, 11747),

Gene: Hughesyang_30 Start: 18535, Stop: 19539, Start Num: 9

Candidate Starts for Hughesyang_30:

(Start: 9 @18535 has 124 MA's), (15, 18661), (22, 18811), (24, 18841), (26, 18865), (36, 19036), (43, 19090), (45, 19144), (48, 19165), (49, 19180), (61, 19273), (62, 19276), (63, 19285), (69, 19342), (77, 19414), (80, 19447), (85, 19507),

Gene: IHOP_18 Start: 11038, Stop: 12009, Start Num: 10

Candidate Starts for IHOP_18:

(Start: 10 @11038 has 122 MA's), (11, 11047), (12, 11107), (20, 11260), (30, 11356), (32, 11431), (34, 11476), (38, 11518), (40, 11536), (55, 11707), (60, 11737), (64, 11761), (65, 11770), (74, 11869), (77, 11890), (81, 11941),

Gene: Icee_18 Start: 11038, Stop: 12009, Start Num: 10

Candidate Starts for Icee_18:

(Start: 10 @11038 has 122 MA's), (11, 11047), (12, 11107), (20, 11260), (30, 11356), (32, 11431), (34, 11476), (38, 11518), (40, 11536), (55, 11707), (60, 11737), (64, 11761), (65, 11770), (74, 11869), (77, 11890), (81, 11941),

Gene: Inca_18 Start: 10058, Stop: 11029, Start Num: 10

Candidate Starts for Inca_18:

(Start: 10 @10058 has 122 MA's), (11, 10067), (12, 10127), (20, 10280), (30, 10376), (32, 10451), (34, 10496), (38, 10538), (40, 10556), (55, 10727), (60, 10757), (64, 10781), (65, 10790), (74, 10889), (77, 10910), (81, 10961),

Gene: Jamie19_13 Start: 7923, Stop: 8981, Start Num: 9

Candidate Starts for Jamie19_13:

(6, 7860), (Start: 9 @7923 has 124 MA's), (16, 8079), (27, 8271), (30, 8301), (36, 8436), (42, 8493), (44, 8505), (51, 8628), (52, 8634), (55, 8664), (57, 8682), (60, 8697), (66, 8745), (68, 8757), (70, 8802), (77, 8856), (82, 8913), (84, 8946), (85, 8949),

Gene: JeTaime_20 Start: 11640, Stop: 12614, Start Num: 10

Candidate Starts for JeTaime_20:

(Start: 10 @11640 has 122 MA's), (11, 11649), (12, 11709), (20, 11862), (30, 11958), (32, 12033), (34, 12078), (38, 12120), (40, 12138), (55, 12309), (60, 12339), (64, 12363), (65, 12372), (74, 12471), (77, 12492), (81, 12543),

Gene: Jebeks_14 Start: 8819, Stop: 9817, Start Num: 9

Candidate Starts for Jebeks_14:

(1, 8522), (2, 8615), (7, 8780), (Start: 9 @8819 has 124 MA's), (11, 8843), (13, 8909), (14, 8927), (17, 8963), (23, 9098), (26, 9134), (33, 9284), (39, 9338), (41, 9350), (46, 9419), (53, 9494), (56, 9515), (75, 9677), (83, 9770), (86, 9794),

Gene: Journey_14 Start: 7877, Stop: 8935, Start Num: 9

Candidate Starts for Journey_14:

(6, 7814), (Start: 9 @7877 has 124 MA's), (12, 7967), (16, 8033), (21, 8162), (30, 8255), (36, 8390), (42, 8447), (44, 8459), (50, 8570), (51, 8582), (52, 8588), (57, 8636), (66, 8699), (70, 8756), (76, 8807), (77, 8810), (84, 8900),

Gene: JuicyJay_32 Start: 19186, Stop: 20190, Start Num: 9

Candidate Starts for JuicyJay_32:

(Start: 9 @19186 has 124 MA's), (15, 19312), (22, 19462), (24, 19492), (26, 19516), (36, 19687), (43, 19741), (45, 19795), (48, 19816), (49, 19831), (61, 19924), (62, 19927), (63, 19936), (69, 19993), (77, 20065), (80, 20098), (85, 20158),

Gene: Jung_14 Start: 8862, Stop: 9860, Start Num: 9

Candidate Starts for Jung_14:

(2, 8661), (4, 8712), (Start: 9 @8862 has 124 MA's), (11, 8886), (14, 8970), (17, 9006), (26, 9177), (33, 9327), (39, 9381), (41, 9393), (46, 9462), (47, 9477), (56, 9558), (75, 9720), (83, 9813), (86, 9837),

Gene: Juniormint_14 Start: 8854, Stop: 9852, Start Num: 9

Candidate Starts for Juniormint_14:

(7, 8815), (Start: 9 @8854 has 124 MA's), (11, 8878), (13, 8944), (14, 8962), (17, 8998), (23, 9133), (26, 9169), (33, 9319), (39, 9373), (41, 9385), (46, 9454), (53, 9529), (56, 9550), (75, 9712), (83, 9805), (86, 9829),

Gene: Kalah2_32 Start: 18954, Stop: 19958, Start Num: 9

Candidate Starts for Kalah2_32:

(Start: 9 @18954 has 124 MA's), (15, 19080), (22, 19230), (24, 19260), (26, 19284), (36, 19455), (43, 19509), (45, 19563), (48, 19584), (49, 19599), (61, 19692), (62, 19695), (63, 19704), (69, 19761), (77, 19833), (80, 19866), (85, 19926),

Gene: Kanye_20 Start: 11828, Stop: 12802, Start Num: 10

Candidate Starts for Kanye_20:

(Start: 10 @11828 has 122 MA's), (11, 11837), (12, 11897), (20, 12050), (30, 12146), (32, 12221), (34, 12266), (38, 12308), (40, 12326), (55, 12497), (60, 12527), (64, 12551), (65, 12560), (74, 12659), (77, 12680), (81, 12731),

Gene: Kari_14 Start: 8834, Stop: 9832, Start Num: 9

Candidate Starts for Kari_14:

(7, 8795), (Start: 9 @8834 has 124 MA's), (11, 8858), (13, 8924), (14, 8942), (17, 8978), (23, 9113), (26, 9149), (33, 9299), (39, 9353), (41, 9365), (46, 9434), (53, 9509), (56, 9530), (75, 9692), (83, 9785), (86, 9809),

Gene: KashFlow_23 Start: 14560, Stop: 15564, Start Num: 9

Candidate Starts for KashFlow_23:

(Start: 9 @14560 has 124 MA's), (15, 14686), (22, 14836), (24, 14866), (26, 14890), (43, 15115), (45, 15169), (63, 15310), (69, 15367), (73, 15421),

Gene: Kevin1_13 Start: 7898, Stop: 8956, Start Num: 9

Candidate Starts for Kevin1_13:

(6, 7835), (Start: 9 @7898 has 124 MA's), (16, 8054), (30, 8276), (36, 8411), (42, 8468), (44, 8480), (51, 8603), (52, 8609), (54, 8636), (57, 8657), (66, 8720), (70, 8777), (76, 8828), (77, 8831), (81, 8882), (82, 8888), (84, 8921), (85, 8924),

Gene: KilKor_14 Start: 8837, Stop: 9835, Start Num: 9

Candidate Starts for KilKor_14:

(7, 8798), (Start: 9 @8837 has 124 MA's), (11, 8861), (13, 8927), (14, 8945), (17, 8981), (26, 9152), (33, 9302), (39, 9356), (41, 9368), (46, 9437), (47, 9452), (56, 9533), (75, 9695), (83, 9788), (86, 9812),

Gene: Kimchi_20 Start: 10835, Stop: 11809, Start Num: 10

Candidate Starts for Kimchi_20:

(Start: 10 @10835 has 122 MA's), (11, 10844), (12, 10904), (20, 11057), (30, 11153), (32, 11228), (34, 11273), (38, 11315), (40, 11333), (55, 11504), (60, 11534), (64, 11558), (65, 11567), (74, 11666), (77, 11687), (81, 11738),

Gene: Klein_31 Start: 17932, Stop: 18936, Start Num: 9

Candidate Starts for Klein_31:

(Start: 9 @17932 has 124 MA's), (15, 18058), (22, 18208), (24, 18238), (26, 18262), (36, 18433), (43, 18487), (45, 18541), (48, 18562), (49, 18577), (61, 18670), (62, 18673), (63, 18682), (69, 18739), (77, 18811), (80, 18844), (85, 18904),

Gene: Kostya_19 Start: 11378, Stop: 12349, Start Num: 10

Candidate Starts for Kostya_19:

(Start: 10 @11378 has 122 MA's), (11, 11387), (12, 11447), (20, 11600), (30, 11696), (32, 11771), (34, 11816), (38, 11858), (40, 11876), (55, 12047), (58, 12068), (62, 12089), (65, 12110), (69, 12155), (74, 12209), (78, 12242), (79, 12254), (81, 12281),

Gene: Ksquared_14 Start: 8850, Stop: 9848, Start Num: 9

Candidate Starts for Ksquared_14:

(7, 8811), (Start: 9 @8850 has 124 MA's), (11, 8874), (13, 8940), (14, 8958), (17, 8994), (23, 9129), (26, 9165), (33, 9315), (39, 9369), (41, 9381), (46, 9450), (53, 9525), (56, 9546), (75, 9708), (83, 9801), (86, 9825),

Gene: Langerak_14 Start: 8818, Stop: 9816, Start Num: 9

Candidate Starts for Langerak_14:

(7, 8779), (Start: 9 @8818 has 124 MA's), (11, 8842), (13, 8908), (14, 8926), (17, 8962), (23, 9097), (26, 9133), (33, 9283), (39, 9337), (41, 9349), (46, 9418), (53, 9493), (56, 9514), (75, 9676), (83, 9769), (86, 9793),

Gene: Lilac_20 Start: 10336, Stop: 11310, Start Num: 10

Candidate Starts for Lilac_20:

(Start: 10 @10336 has 122 MA's), (11, 10345), (12, 10405), (20, 10558), (30, 10654), (32, 10729), (34, 10774), (38, 10816), (40, 10834), (55, 11005), (60, 11035), (64, 11059), (65, 11068), (74, 11167), (77, 11188), (81, 11239),

Gene: Lilizi_20 Start: 10547, Stop: 11521, Start Num: 10

Candidate Starts for Lilizi_20:

(Start: 10 @10547 has 122 MA's), (11, 10556), (12, 10616), (20, 10769), (30, 10865), (32, 10940), (34, 10985), (38, 11027), (40, 11045), (55, 11216), (60, 11246), (64, 11270), (65, 11279), (74, 11378), (77, 11399), (81, 11450),

Gene: Lilpickle_17 Start: 10055, Stop: 11029, Start Num: 10

Candidate Starts for Lilpickle_17:

(Start: 10 @10055 has 122 MA's), (11, 10064), (12, 10124), (20, 10277), (30, 10373), (32, 10448), (34, 10493), (38, 10535), (40, 10553), (55, 10724), (60, 10754), (64, 10778), (65, 10787), (74, 10886), (77, 10907), (81, 10958),

Gene: LittleE_29 Start: 17699, Stop: 18703, Start Num: 9

Candidate Starts for LittleE_29:

(Start: 9 @17699 has 124 MA's), (15, 17825), (22, 17975), (24, 18005), (26, 18029), (43, 18254), (45, 18308), (63, 18449), (69, 18506), (73, 18560),

Gene: Lucky2013_29 Start: 16442, Stop: 17446, Start Num: 9

Candidate Starts for Lucky2013_29:

(Start: 9 @16442 has 124 MA's), (15, 16568), (22, 16718), (24, 16748), (26, 16772), (43, 16997), (45, 17051), (63, 17192), (69, 17249), (73, 17303),

Gene: MISSy_18 Start: 10888, Stop: 11859, Start Num: 10

Candidate Starts for MISSy_18:

(Start: 10 @10888 has 122 MA's), (11, 10897), (12, 10957), (20, 11110), (30, 11206), (32, 11281), (34, 11326), (38, 11368), (40, 11386), (55, 11557), (60, 11587), (64, 11611), (65, 11620), (74, 11719), (77, 11740), (81, 11791),

Gene: MPhalcon_18 Start: 10888, Stop: 11859, Start Num: 10

Candidate Starts for MPhalcon_18:

(Start: 10 @10888 has 122 MA's), (11, 10897), (12, 10957), (20, 11110), (30, 11206), (32, 11281), (34, 11326), (38, 11368), (40, 11386), (55, 11557), (60, 11587), (64, 11611), (65, 11620), (74, 11719), (77, 11740), (81, 11791),

Gene: MadamMonkfish_18 Start: 10266, Stop: 11240, Start Num: 10

Candidate Starts for MadamMonkfish_18:

(Start: 10 @10266 has 122 MA's), (11, 10275), (12, 10335), (20, 10488), (30, 10584), (32, 10659), (34, 10704), (38, 10746), (40, 10764), (55, 10935), (60, 10965), (64, 10989), (65, 10998), (74, 11097), (77, 11118), (81, 11169),

Gene: Magsby_13 Start: 7877, Stop: 8935, Start Num: 9

Candidate Starts for Magsby_13:

(6, 7814), (Start: 9 @7877 has 124 MA's), (12, 7967), (16, 8033), (21, 8162), (30, 8255), (36, 8390), (42, 8447), (44, 8459), (50, 8570), (51, 8582), (52, 8588), (57, 8636), (66, 8699), (70, 8756), (76, 8807), (77, 8810), (84, 8900),

Gene: Majeke_14 Start: 8818, Stop: 9816, Start Num: 9

Candidate Starts for Majeke_14:

(7, 8779), (Start: 9 @8818 has 124 MA's), (11, 8842), (13, 8908), (14, 8926), (17, 8962), (23, 9097), (26, 9133), (33, 9283), (39, 9337), (41, 9349), (46, 9418), (53, 9493), (56, 9514), (75, 9676), (83, 9769), (86, 9793),

Gene: Malithi_14 Start: 8874, Stop: 9872, Start Num: 9

Candidate Starts for Malithi_14:

(2, 8673), (4, 8724), (Start: 9 @8874 has 124 MA's), (11, 8898), (13, 8964), (14, 8982), (23, 9153), (26, 9189), (33, 9339), (39, 9393), (41, 9405), (46, 9474), (53, 9549), (56, 9570), (75, 9732), (83, 9825), (86, 9849),

Gene: Manda_19 Start: 11348, Stop: 12319, Start Num: 10

Candidate Starts for Manda_19:

(Start: 10 @11348 has 122 MA's), (11, 11357), (12, 11417), (20, 11570), (30, 11666), (32, 11741), (34, 11786), (38, 11828), (40, 11846), (55, 12017), (60, 12047), (64, 12071), (65, 12080), (74, 12179), (77, 12200), (81, 12251),

Gene: Mangethe_14 Start: 8818, Stop: 9816, Start Num: 9

Candidate Starts for Mangethe_14:

(7, 8779), (Start: 9 @8818 has 124 MA's), (11, 8842), (13, 8908), (14, 8926), (17, 8962), (23, 9097), (26, 9133), (33, 9283), (39, 9337), (41, 9349), (46, 9418), (53, 9493), (56, 9514), (75, 9676), (83, 9769), (86, 9793),

Gene: Marshmallow_19 Start: 11378, Stop: 12349, Start Num: 10

Candidate Starts for Marshmallow_19:

(Start: 10 @11378 has 122 MA's), (11, 11387), (12, 11447), (20, 11600), (30, 11696), (32, 11771), (34, 11816), (38, 11858), (40, 11876), (55, 12047), (60, 12077), (64, 12101), (65, 12110), (74, 12209), (77, 12230), (81, 12281),

Gene: Maxxinista_19 Start: 10315, Stop: 11289, Start Num: 10

Candidate Starts for Maxxinista_19:

(Start: 10 @10315 has 122 MA's), (11, 10324), (12, 10384), (20, 10537), (30, 10633), (32, 10708), (34, 10753), (38, 10795), (40, 10813), (55, 10984), (60, 11014), (64, 11038), (65, 11047), (74, 11146), (77, 11167), (81, 11218),

Gene: Megiddo_14 Start: 8837, Stop: 9835, Start Num: 9

Candidate Starts for Megiddo_14:

(7, 8798), (Start: 9 @8837 has 124 MA's), (11, 8861), (13, 8927), (14, 8945), (17, 8981), (26, 9152), (33, 9302), (39, 9356), (41, 9368), (46, 9437), (47, 9452), (56, 9533), (75, 9695), (83, 9788), (86, 9812),

Gene: Melville_13 Start: 7877, Stop: 8935, Start Num: 9

Candidate Starts for Melville_13:

(6, 7814), (Start: 9 @7877 has 124 MA's), (12, 7967), (16, 8033), (21, 8162), (30, 8255), (36, 8390), (42, 8447), (44, 8459), (50, 8570), (51, 8582), (52, 8588), (57, 8636), (66, 8699), (70, 8756), (76, 8807), (77, 8810), (84, 8900),

Gene: MiaZeal_29 Start: 16133, Stop: 17137, Start Num: 9

Candidate Starts for MiaZeal_29:

(Start: 9 @16133 has 124 MA's), (15, 16259), (22, 16409), (24, 16439), (26, 16463), (43, 16688), (45, 16742), (63, 16883), (69, 16940), (73, 16994),

Gene: MichelleMyBell_13 Start: 7917, Stop: 8975, Start Num: 9

Candidate Starts for MichelleMyBell_13:

(6, 7854), (Start: 9 @7917 has 124 MA's), (16, 8073), (30, 8295), (36, 8430), (42, 8487), (44, 8499), (51, 8622), (52, 8628), (54, 8655), (57, 8676), (60, 8691), (66, 8739), (70, 8796), (76, 8847), (77, 8850), (81, 8901), (82, 8907), (84, 8940), (85, 8943),

Gene: Mindy_19 Start: 11157, Stop: 12128, Start Num: 10

Candidate Starts for Mindy_19:

(Start: 10 @11157 has 122 MA's), (11, 11166), (12, 11226), (20, 11379), (30, 11475), (32, 11550), (34, 11595), (38, 11637), (40, 11655), (55, 11826), (58, 11847), (62, 11868), (65, 11889), (69, 11934), (74, 11988), (78, 12021), (79, 12033), (81, 12060),

Gene: Minerva_31 Start: 18417, Stop: 19421, Start Num: 9

Candidate Starts for Minerva_31:

(Start: 9 @18417 has 124 MA's), (15, 18543), (22, 18693), (24, 18723), (26, 18747), (36, 18918), (43, 18972), (45, 19026), (48, 19047), (49, 19062), (61, 19155), (62, 19158), (63, 19167), (69, 19224), (77, 19296), (80, 19329), (85, 19389),

Gene: Miniwave_19 Start: 11576, Stop: 12547, Start Num: 10

Candidate Starts for Miniwave_19:

(Start: 10 @11576 has 122 MA's), (11, 11585), (12, 11645), (20, 11798), (30, 11894), (32, 11969), (34, 12014), (38, 12056), (40, 12074), (55, 12245), (58, 12266), (62, 12287), (65, 12308), (69, 12353), (74, 12407), (78, 12440), (79, 12452), (81, 12479),

Gene: Misfit_18 Start: 10932, Stop: 11906, Start Num: 10

Candidate Starts for Misfit_18:

(Start: 10 @10932 has 122 MA's), (11, 10941), (12, 11001), (20, 11154), (30, 11250), (32, 11325), (34, 11370), (38, 11412), (40, 11430), (55, 11601), (60, 11631), (64, 11655), (65, 11664), (74, 11763), (77, 11784), (81, 11835),

Gene: Moldemort_19 Start: 10590, Stop: 11564, Start Num: 10

Candidate Starts for Moldemort_19:

(Start: 10 @10590 has 122 MA's), (11, 10599), (12, 10659), (20, 10812), (30, 10908), (32, 10983), (34, 11028), (38, 11070), (40, 11088), (55, 11259), (60, 11289), (64, 11313), (65, 11322), (74, 11421), (77, 11442), (81, 11493),

Gene: Mosby_18 Start: 10886, Stop: 11857, Start Num: 10

Candidate Starts for Mosby_18:

(Start: 10 @10886 has 122 MA's), (11, 10895), (12, 10955), (20, 11108), (30, 11204), (32, 11279), (34, 11324), (38, 11366), (40, 11384), (55, 11555), (60, 11585), (64, 11609), (65, 11618), (74, 11717), (77, 11738), (81, 11789),

Gene: Murica_17 Start: 10844, Stop: 11815, Start Num: 10

Candidate Starts for Murica_17:

(Start: 10 @10844 has 122 MA's), (11, 10853), (12, 10913), (20, 11066), (30, 11162), (32, 11237), (34, 11282), (38, 11324), (40, 11342), (55, 11513), (60, 11543), (64, 11567), (65, 11576), (74, 11675), (77, 11696), (81, 11747),

Gene: Murphy_18 Start: 10307, Stop: 11281, Start Num: 10

Candidate Starts for Murphy_18:

(Start: 10 @10307 has 122 MA's), (11, 10316), (12, 10376), (20, 10529), (30, 10625), (32, 10700), (34, 10745), (38, 10787), (40, 10805), (55, 10976), (60, 11006), (64, 11030), (65, 11039), (74, 11138), (77, 11159), (81, 11210),

Gene: Myrale_19 Start: 11249, Stop: 12220, Start Num: 10

Candidate Starts for Myrale_19:

(Start: 10 @11249 has 122 MA's), (11, 11258), (12, 11318), (20, 11471), (30, 11567), (32, 11642), (34, 11687), (38, 11729), (40, 11747), (55, 11918), (58, 11939), (62, 11960), (65, 11981), (69, 12026), (74, 12080), (78, 12113), (79, 12125), (81, 12152),

Gene: Nala_18 Start: 10886, Stop: 11857, Start Num: 10

Candidate Starts for Nala_18:

(Start: 10 @10886 has 122 MA's), (11, 10895), (12, 10955), (20, 11108), (30, 11204), (32, 11279), (34, 11324), (38, 11366), (40, 11384), (55, 11555), (60, 11585), (64, 11609), (65, 11618), (74, 11717), (77, 11738), (81, 11789),

Gene: Nazo_13 Start: 8552, Stop: 9550, Start Num: 9

Candidate Starts for Nazo_13:

(8, 8513), (Start: 9 @8552 has 124 MA's), (11, 8576), (12, 8636), (14, 8660), (23, 8831), (26, 8867), (28, 8879), (29, 8900), (31, 8954), (35, 9029), (39, 9071), (41, 9083), (56, 9248), (59, 9266), (64, 9293), (71, 9374), (77, 9425), (81, 9476), (83, 9503),

Gene: Necropolis_14 Start: 8834, Stop: 9832, Start Num: 9

Candidate Starts for Necropolis_14:

(7, 8795), (Start: 9 @8834 has 124 MA's), (11, 8858), (13, 8924), (14, 8942), (17, 8978), (23, 9113), (26, 9149), (33, 9299), (39, 9353), (41, 9365), (46, 9434), (53, 9509), (56, 9530), (75, 9692), (83, 9785), (86, 9809),

Gene: NelitzaMV_19 Start: 11448, Stop: 12419, Start Num: 10

Candidate Starts for NelitzaMV_19:

(Start: 10 @11448 has 122 MA's), (11, 11457), (12, 11517), (20, 11670), (30, 11766), (32, 11841), (34, 11886), (38, 11928), (40, 11946), (55, 12117), (58, 12138), (62, 12159), (65, 12180), (69, 12225), (74, 12279), (78, 12312), (79, 12324), (81, 12351),

Gene: Nенаe_13 Start: 7923, Stop: 8981, Start Num: 9

Candidate Starts for Nенаe_13:

(6, 7860), (Start: 9 @7923 has 124 MA's), (16, 8079), (27, 8271), (30, 8301), (36, 8436), (42, 8493), (44, 8505), (51, 8628), (52, 8634), (55, 8664), (57, 8682), (60, 8697), (66, 8745), (68, 8757), (70, 8802), (77, 8856), (82, 8913), (84, 8946), (85, 8949),

Gene: NihilNomen_30 Start: 18414, Stop: 19418, Start Num: 9

Candidate Starts for NihilNomen_30:

(Start: 9 @18414 has 124 MA's), (15, 18540), (22, 18690), (24, 18720), (26, 18744), (36, 18915), (43, 18969), (45, 19023), (48, 19044), (49, 19059), (61, 19152), (62, 19155), (63, 19164), (69, 19221), (77, 19293), (80, 19326), (85, 19386),

Gene: Nimrod_18 Start: 11087, Stop: 12061, Start Num: 10

Candidate Starts for Nimrod_18:

(Start: 10 @11087 has 122 MA's), (11, 11096), (12, 11156), (20, 11309), (30, 11405), (32, 11480), (34, 11525), (38, 11567), (40, 11585), (55, 11756), (60, 11786), (64, 11810), (65, 11819), (74, 11918), (77, 11939), (81, 11990),

Gene: NoSleep_19 Start: 10587, Stop: 11561, Start Num: 10

Candidate Starts for NoSleep_19:

(Start: 10 @10587 has 122 MA's), (11, 10596), (12, 10656), (20, 10809), (30, 10905), (32, 10980), (34, 11025), (38, 11067), (40, 11085), (55, 11256), (60, 11286), (64, 11310), (65, 11319), (74, 11418), (77, 11439), (81, 11490),

Gene: Odette_31 Start: 17895, Stop: 18899, Start Num: 9

Candidate Starts for Odette_31:

(Start: 9 @17895 has 124 MA's), (15, 18021), (22, 18171), (24, 18201), (26, 18225), (36, 18396), (43, 18450), (45, 18504), (48, 18525), (49, 18540), (61, 18633), (62, 18636), (63, 18645), (69, 18702), (77, 18774), (80, 18807), (85, 18867),

Gene: Omega_31 Start: 20059, Stop: 21063, Start Num: 9

Candidate Starts for Omega_31:

(Start: 9 @20059 has 124 MA's), (15, 20185), (22, 20335), (24, 20365), (26, 20389), (43, 20614), (45, 20668), (63, 20809), (69, 20866), (73, 20920),

Gene: Optimus_29 Start: 17992, Stop: 18996, Start Num: 9

Candidate Starts for Optimus_29:

(Start: 9 @17992 has 124 MA's), (15, 18118), (22, 18268), (24, 18298), (26, 18322), (36, 18493), (43, 18547), (45, 18601), (48, 18622), (49, 18637), (61, 18730), (62, 18733), (63, 18742), (69, 18799), (77, 18871), (80, 18904), (85, 18964),

Gene: OrionPax_19 Start: 10590, Stop: 11564, Start Num: 10

Candidate Starts for OrionPax_19:

(Start: 10 @10590 has 122 MA's), (11, 10599), (12, 10659), (20, 10812), (30, 10908), (32, 10983), (34, 11028), (38, 11070), (40, 11088), (55, 11259), (60, 11289), (64, 11313), (65, 11322), (74, 11421), (77, 11442), (81, 11493),

Gene: Palpatine_18 Start: 10892, Stop: 11854, Start Num: 11

Candidate Starts for Palpatine_18:

(Start: 10 @10883 has 122 MA's), (11, 10892), (12, 10952), (20, 11105), (30, 11201), (32, 11276), (34, 11321), (38, 11363), (40, 11381), (55, 11552), (60, 11582), (64, 11606), (65, 11615), (74, 11714), (77, 11735), (81, 11786),

Gene: Panchino_13 Start: 7899, Stop: 8957, Start Num: 9

Candidate Starts for Panchino_13:

(6, 7836), (Start: 9 @7899 has 124 MA's), (16, 8055), (27, 8247), (30, 8277), (36, 8412), (42, 8469), (44, 8481), (51, 8604), (52, 8610), (55, 8640), (57, 8658), (60, 8673), (66, 8721), (68, 8733), (70, 8778), (77, 8832), (82, 8889), (84, 8922), (85, 8925),

Gene: Paperbeatsrock_20 Start: 11822, Stop: 12796, Start Num: 10

Candidate Starts for Paperbeatsrock_20:

(Start: 10 @11822 has 122 MA's), (11, 11831), (12, 11891), (20, 12044), (30, 12140), (32, 12215), (34, 12260), (38, 12302), (40, 12320), (55, 12491), (60, 12521), (64, 12545), (65, 12554), (74, 12653), (77, 12674), (81, 12725),

Gene: Parmesanjohn_13 Start: 7877, Stop: 8935, Start Num: 9

Candidate Starts for Parmesanjohn_13:

(6, 7814), (Start: 9 @7877 has 124 MA's), (12, 7967), (16, 8033), (21, 8162), (30, 8255), (36, 8390), (42, 8447), (44, 8459), (50, 8570), (51, 8582), (52, 8588), (57, 8636), (66, 8699), (70, 8756), (76, 8807), (77, 8810), (84, 8900),

Gene: Pat3_18 Start: 10090, Stop: 11061, Start Num: 10

Candidate Starts for Pat3_18:

(Start: 10 @10090 has 122 MA's), (11, 10099), (12, 10159), (20, 10312), (30, 10408), (32, 10483), (34, 10528), (38, 10570), (40, 10588), (55, 10759), (60, 10789), (64, 10813), (65, 10822), (67, 10837), (74, 10921), (81, 10993),

Gene: Petra64142_19 Start: 11303, Stop: 12277, Start Num: 10

Candidate Starts for Petra64142_19:

(Start: 10 @11303 has 122 MA's), (11, 11312), (12, 11372), (20, 11525), (30, 11621), (32, 11696), (34, 11741), (38, 11783), (40, 11801), (55, 11972), (60, 12002), (64, 12026), (65, 12035), (74, 12134), (77, 12155), (81, 12206),

Gene: Phaja_18 Start: 11038, Stop: 12009, Start Num: 10

Candidate Starts for Phaja_18:

(Start: 10 @11038 has 122 MA's), (11, 11047), (12, 11107), (20, 11260), (30, 11356), (32, 11431), (34, 11476), (38, 11518), (40, 11536), (55, 11707), (60, 11737), (64, 11761), (65, 11770), (74, 11869), (77, 11890), (81, 11941),

Gene: Phalm_14 Start: 8837, Stop: 9835, Start Num: 9

Candidate Starts for Phalm_14:

(7, 8798), (Start: 9 @8837 has 124 MA's), (11, 8861), (13, 8927), (14, 8945), (17, 8981), (26, 9152), (33, 9302), (39, 9356), (41, 9368), (46, 9437), (47, 9452), (56, 9533), (75, 9695), (83, 9788), (86,

9812),

Gene: PhancyPhin_13 Start: 7923, Stop: 8981, Start Num: 9

Candidate Starts for PhancyPhin_13:

(6, 7860), (Start: 9 @7923 has 124 MA's), (16, 8079), (27, 8271), (30, 8301), (36, 8436), (42, 8493), (51, 8628), (52, 8634), (55, 8664), (57, 8682), (60, 8697), (66, 8745), (68, 8757), (70, 8802), (77, 8856), (82, 8913), (84, 8946), (85, 8949),

Gene: Pharsalus_19 Start: 11622, Stop: 12596, Start Num: 10

Candidate Starts for Pharsalus_19:

(Start: 10 @11622 has 122 MA's), (11, 11631), (12, 11691), (20, 11844), (30, 11940), (32, 12015), (34, 12060), (38, 12102), (40, 12120), (55, 12291), (60, 12321), (64, 12345), (65, 12354), (74, 12453), (77, 12474), (81, 12525),

Gene: PhatBacter_18 Start: 10888, Stop: 11859, Start Num: 10

Candidate Starts for PhatBacter_18:

(Start: 10 @10888 has 122 MA's), (11, 10897), (12, 10957), (20, 11110), (30, 11206), (32, 11281), (34, 11326), (38, 11368), (40, 11386), (55, 11557), (60, 11587), (64, 11611), (65, 11620), (74, 11719), (77, 11740), (81, 11791),

Gene: Phaux_17 Start: 10886, Stop: 11857, Start Num: 10

Candidate Starts for Phaux_17:

(Start: 10 @10886 has 122 MA's), (11, 10895), (12, 10955), (20, 11108), (30, 11204), (32, 11279), (34, 11324), (38, 11366), (40, 11384), (55, 11555), (60, 11585), (64, 11609), (65, 11618), (74, 11717), (77, 11738), (81, 11789),

Gene: Phayonce_13 Start: 8501, Stop: 9499, Start Num: 9

Candidate Starts for Phayonce_13:

(Start: 9 @8501 has 124 MA's), (11, 8525), (14, 8609), (17, 8645), (18, 8669), (19, 8732), (23, 8780), (25, 8813), (26, 8816), (33, 8966), (37, 9002), (39, 9020), (41, 9032), (46, 9101), (47, 9116), (56, 9197), (64, 9242), (75, 9359), (83, 9452), (87, 9479),

Gene: Phegasus_14 Start: 8818, Stop: 9816, Start Num: 9

Candidate Starts for Phegasus_14:

(7, 8779), (Start: 9 @8818 has 124 MA's), (11, 8842), (13, 8908), (14, 8926), (17, 8962), (23, 9097), (26, 9133), (33, 9283), (39, 9337), (41, 9349), (46, 9418), (53, 9493), (56, 9514), (75, 9676), (83, 9769), (86, 9793),

Gene: Philonius_13 Start: 7877, Stop: 8935, Start Num: 9

Candidate Starts for Philonius_13:

(6, 7814), (Start: 9 @7877 has 124 MA's), (12, 7967), (16, 8033), (21, 8162), (30, 8255), (36, 8390), (42, 8447), (44, 8459), (50, 8570), (51, 8582), (52, 8588), (57, 8636), (66, 8699), (70, 8756), (76, 8807), (77, 8810), (84, 8900),

Gene: Phineas_14 Start: 8822, Stop: 9820, Start Num: 9

Candidate Starts for Phineas_14:

(7, 8783), (Start: 9 @8822 has 124 MA's), (11, 8846), (13, 8912), (14, 8930), (17, 8966), (23, 9101), (26, 9137), (33, 9287), (39, 9341), (41, 9353), (46, 9422), (53, 9497), (56, 9518), (75, 9680), (83, 9773), (86, 9797),

Gene: Phloss_13 Start: 7877, Stop: 8935, Start Num: 9

Candidate Starts for Phloss_13:

(6, 7814), (Start: 9 @7877 has 124 MA's), (12, 7967), (16, 8033), (21, 8162), (30, 8255), (36, 8390), (42, 8447), (44, 8459), (50, 8570), (51, 8582), (52, 8588), (57, 8636), (66, 8699), (70, 8756), (76, 8807), (77, 8810), (84, 8900),

Gene: Phoebus_31 Start: 18639, Stop: 19643, Start Num: 9

Candidate Starts for Phoebus_31:

(Start: 9 @18639 has 124 MA's), (15, 18765), (22, 18915), (24, 18945), (26, 18969), (36, 19140), (43, 19194), (45, 19248), (48, 19269), (49, 19284), (61, 19377), (62, 19380), (63, 19389), (69, 19446), (77, 19518), (80, 19551), (85, 19611),

Gene: Phrann_13 Start: 7923, Stop: 8981, Start Num: 9

Candidate Starts for Phrann_13:

(6, 7860), (Start: 9 @7923 has 124 MA's), (16, 8079), (27, 8271), (30, 8301), (42, 8493), (51, 8628), (52, 8634), (55, 8664), (57, 8682), (60, 8697), (66, 8745), (68, 8757), (70, 8802), (77, 8856), (82, 8913), (84, 8946), (85, 8949),

Gene: Phrux_18 Start: 10586, Stop: 11560, Start Num: 10

Candidate Starts for Phrux_18:

(Start: 10 @10586 has 122 MA's), (11, 10595), (12, 10655), (20, 10808), (30, 10904), (32, 10979), (34, 11024), (38, 11066), (40, 11084), (55, 11255), (60, 11285), (64, 11309), (65, 11318), (74, 11417), (77, 11438), (81, 11489),

Gene: Pipsqueaks_13 Start: 7877, Stop: 8935, Start Num: 9

Candidate Starts for Pipsqueaks_13:

(6, 7814), (Start: 9 @7877 has 124 MA's), (12, 7967), (16, 8033), (21, 8162), (30, 8255), (36, 8390), (42, 8447), (44, 8459), (50, 8570), (51, 8582), (52, 8588), (57, 8636), (66, 8699), (70, 8756), (76, 8807), (77, 8810), (84, 8900),

Gene: Policronamos_18 Start: 10888, Stop: 11859, Start Num: 10

Candidate Starts for Policronamos_18:

(Start: 10 @10888 has 122 MA's), (11, 10897), (12, 10957), (20, 11110), (30, 11206), (32, 11281), (34, 11326), (38, 11368), (40, 11386), (55, 11557), (60, 11587), (64, 11611), (65, 11620), (74, 11719), (77, 11740), (81, 11791),

Gene: Polkaroo_14 Start: 8850, Stop: 9848, Start Num: 9

Candidate Starts for Polkaroo_14:

(7, 8811), (Start: 9 @8850 has 124 MA's), (11, 8874), (13, 8940), (14, 8958), (17, 8994), (23, 9129), (26, 9165), (33, 9315), (39, 9369), (41, 9381), (46, 9450), (53, 9525), (56, 9546), (75, 9708), (83, 9801), (86, 9825),

Gene: Porcelain_28 Start: 16133, Stop: 17137, Start Num: 9

Candidate Starts for Porcelain_28:

(Start: 9 @16133 has 124 MA's), (15, 16259), (22, 16409), (24, 16439), (26, 16463), (43, 16688), (45, 16742), (63, 16883), (69, 16940), (73, 16994),

Gene: Porky_17 Start: 10160, Stop: 11134, Start Num: 10

Candidate Starts for Porky_17:

(Start: 10 @10160 has 122 MA's), (11, 10169), (12, 10229), (20, 10382), (30, 10478), (32, 10553), (34, 10598), (38, 10640), (40, 10658), (55, 10829), (60, 10859), (64, 10883), (65, 10892), (74, 10991), (77, 11012), (81, 11063),

Gene: Pound_31 Start: 18731, Stop: 19735, Start Num: 9

Candidate Starts for Pound_31:

(Start: 9 @18731 has 124 MA's), (15, 18857), (22, 19007), (24, 19037), (26, 19061), (36, 19232), (43, 19286), (45, 19340), (48, 19361), (49, 19376), (61, 19469), (62, 19472), (63, 19481), (69, 19538), (77, 19610), (80, 19643), (85, 19703),

Gene: Pumpkin_19 Start: 10403, Stop: 11377, Start Num: 10

Candidate Starts for Pumpkin_19:

(Start: 10 @10403 has 122 MA's), (11, 10412), (12, 10472), (20, 10625), (30, 10721), (32, 10796), (34, 10841), (38, 10883), (40, 10901), (55, 11072), (60, 11102), (64, 11126), (65, 11135), (74, 11234), (77, 11255), (81, 11306),

Gene: Purgamenstris_13 Start: 7923, Stop: 8981, Start Num: 9

Candidate Starts for Purgamenstris_13:

(6, 7860), (Start: 9 @7923 has 124 MA's), (16, 8079), (27, 8271), (30, 8301), (36, 8436), (42, 8493), (44, 8505), (51, 8628), (52, 8634), (55, 8664), (57, 8682), (60, 8697), (66, 8745), (68, 8757), (70, 8802), (77, 8856), (82, 8913), (84, 8946), (85, 8949),

Gene: Purky_13 Start: 8511, Stop: 9509, Start Num: 9

Candidate Starts for Purky_13:

(5, 8436), (7, 8472), (Start: 9 @8511 has 124 MA's), (11, 8535), (14, 8619), (17, 8655), (23, 8790), (26, 8826), (33, 8976), (39, 9030), (41, 9042), (46, 9111), (47, 9126), (56, 9207), (59, 9225), (64, 9252), (71, 9333), (75, 9369), (77, 9384), (83, 9462),

Gene: Pygmy_13 Start: 8552, Stop: 9550, Start Num: 9

Candidate Starts for Pygmy_13:

(2, 8351), (4, 8402), (7, 8513), (Start: 9 @8552 has 124 MA's), (11, 8576), (13, 8642), (14, 8660), (17, 8696), (23, 8831), (26, 8867), (33, 9017), (39, 9071), (41, 9083), (46, 9152), (53, 9227), (56, 9248), (75, 9410), (83, 9503), (86, 9527),

Gene: Quallification_20 Start: 11585, Stop: 12556, Start Num: 10

Candidate Starts for Quallification_20:

(Start: 10 @11585 has 122 MA's), (11, 11594), (12, 11654), (20, 11807), (30, 11903), (32, 11978), (34, 12023), (38, 12065), (40, 12083), (55, 12254), (58, 12275), (62, 12296), (65, 12317), (69, 12362), (74, 12416), (78, 12449), (79, 12461), (81, 12488),

Gene: Rakim_20 Start: 11492, Stop: 12463, Start Num: 10

Candidate Starts for Rakim_20:

(Start: 10 @11492 has 122 MA's), (11, 11501), (12, 11561), (20, 11714), (30, 11810), (32, 11885), (34, 11930), (38, 11972), (40, 11990), (55, 12161), (58, 12182), (62, 12203), (65, 12224), (69, 12269), (74, 12323), (78, 12356), (79, 12368), (81, 12395),

Gene: Raymond7_13 Start: 7923, Stop: 8981, Start Num: 9

Candidate Starts for Raymond7_13:

(6, 7860), (Start: 9 @7923 has 124 MA's), (16, 8079), (27, 8271), (30, 8301), (36, 8436), (42, 8493), (44, 8505), (51, 8628), (52, 8634), (55, 8664), (57, 8682), (60, 8697), (66, 8745), (68, 8757), (70, 8802), (77, 8856), (82, 8913), (84, 8946), (85, 8949),

Gene: Rebel_13 Start: 7923, Stop: 8981, Start Num: 9

Candidate Starts for Rebel_13:

(6, 7860), (Start: 9 @7923 has 124 MA's), (16, 8079), (27, 8271), (30, 8301), (36, 8436), (42, 8493), (44, 8505), (51, 8628), (52, 8634), (55, 8664), (57, 8682), (60, 8697), (66, 8745), (68, 8757), (70, 8802), (77, 8856), (82, 8913), (84, 8946), (85, 8949),

Gene: Redi_13 Start: 7923, Stop: 8981, Start Num: 9

Candidate Starts for Redi_13:

(6, 7860), (Start: 9 @7923 has 124 MA's), (16, 8079), (27, 8271), (30, 8301), (36, 8436), (42, 8493), (44, 8505), (51, 8628), (52, 8634), (55, 8664), (57, 8682), (60, 8697), (66, 8745), (68, 8757), (70, 8802), (77, 8856), (82, 8913), (84, 8946), (85, 8949),

Gene: Redno2_30 Start: 18123, Stop: 19127, Start Num: 9

Candidate Starts for Redno2_30:

(Start: 9 @18123 has 124 MA's), (15, 18249), (22, 18399), (24, 18429), (26, 18453), (36, 18624), (43, 18678), (45, 18732), (48, 18753), (49, 18768), (61, 18861), (62, 18864), (63, 18873), (69, 18930), (77, 19002), (80, 19035), (85, 19095),

Gene: Rimmer_18 Start: 10945, Stop: 11916, Start Num: 10

Candidate Starts for Rimmer_18:

(Start: 10 @10945 has 122 MA's), (11, 10954), (12, 11014), (20, 11167), (30, 11263), (32, 11338), (34, 11383), (38, 11425), (40, 11443), (55, 11614), (60, 11644), (64, 11668), (65, 11677), (74, 11776), (77, 11797), (81, 11848),

Gene: RiverMonster_18 Start: 10600, Stop: 11574, Start Num: 10

Candidate Starts for RiverMonster_18:

(Start: 10 @10600 has 122 MA's), (11, 10609), (12, 10669), (20, 10822), (30, 10918), (32, 10993), (34, 11038), (38, 11080), (40, 11098), (55, 11269), (60, 11299), (64, 11323), (65, 11332), (74, 11431), (77, 11452), (81, 11503),

Gene: Rubeelu_13 Start: 7898, Stop: 8956, Start Num: 9

Candidate Starts for Rubeelu_13:

(6, 7835), (Start: 9 @7898 has 124 MA's), (16, 8054), (30, 8276), (36, 8411), (42, 8468), (44, 8480), (51, 8603), (52, 8609), (54, 8636), (57, 8657), (66, 8720), (70, 8777), (76, 8828), (77, 8831), (81, 8882), (82, 8888), (84, 8921), (85, 8924),

Gene: Saints25_19 Start: 10509, Stop: 11483, Start Num: 10

Candidate Starts for Saints25_19:

(Start: 10 @10509 has 122 MA's), (11, 10518), (12, 10578), (20, 10731), (30, 10827), (32, 10902), (34, 10947), (38, 10989), (40, 11007), (55, 11178), (60, 11208), (64, 11232), (65, 11241), (74, 11340), (77, 11361), (81, 11412),

Gene: Sassay_18 Start: 10886, Stop: 11857, Start Num: 10

Candidate Starts for Sassay_18:

(Start: 10 @10886 has 122 MA's), (11, 10895), (12, 10955), (20, 11108), (30, 11204), (32, 11279), (34, 11324), (38, 11366), (40, 11384), (55, 11555), (60, 11585), (64, 11609), (65, 11618), (74, 11717), (77, 11738), (81, 11789),

Gene: Schatzie_29 Start: 17664, Stop: 18668, Start Num: 9

Candidate Starts for Schatzie_29:

(Start: 9 @17664 has 124 MA's), (15, 17790), (22, 17940), (24, 17970), (26, 17994), (36, 18165), (43, 18219), (45, 18273), (48, 18294), (49, 18309), (61, 18402), (62, 18405), (63, 18414), (69, 18471), (77, 18543), (80, 18576), (85, 18636),

Gene: Schnauzer_13 Start: 7877, Stop: 8935, Start Num: 9

Candidate Starts for Schnauzer_13:

(6, 7814), (Start: 9 @7877 has 124 MA's), (12, 7967), (16, 8033), (21, 8162), (30, 8255), (36, 8390), (42, 8447), (44, 8459), (50, 8570), (51, 8582), (52, 8588), (57, 8636), (66, 8699), (70, 8756), (76, 8807), (77, 8810), (84, 8900),

Gene: Scitech_13 Start: 7877, Stop: 8935, Start Num: 9

Candidate Starts for Scitech_13:

(6, 7814), (Start: 9 @7877 has 124 MA's), (12, 7967), (16, 8033), (21, 8162), (30, 8255), (36, 8390), (42, 8447), (44, 8459), (50, 8570), (51, 8582), (52, 8588), (57, 8636), (66, 8699), (70, 8756), (76, 8807), (77, 8810), (84, 8900),

Gene: ShamWow_19 Start: 11379, Stop: 12350, Start Num: 10

Candidate Starts for ShamWow_19:

(Start: 10 @11379 has 122 MA's), (11, 11388), (12, 11448), (20, 11601), (30, 11697), (32, 11772), (34, 11817), (38, 11859), (40, 11877), (55, 12048), (58, 12069), (62, 12090), (65, 12111), (69, 12156), (74, 12210), (78, 12243), (79, 12255), (81, 12282),

Gene: ShereKhan_20 Start: 11828, Stop: 12802, Start Num: 10

Candidate Starts for ShereKhan_20:

(Start: 10 @11828 has 122 MA's), (11, 11837), (12, 11897), (20, 12050), (30, 12146), (32, 12221), (34, 12266), (38, 12308), (40, 12326), (55, 12497), (60, 12527), (64, 12551), (65, 12560), (74, 12659), (77, 12680), (81, 12731),

Gene: Shipwreck_13 Start: 8530, Stop: 9528, Start Num: 9

Candidate Starts for Shipwreck_13:

(2, 8329), (4, 8380), (7, 8491), (Start: 9 @8530 has 124 MA's), (11, 8554), (13, 8620), (14, 8638), (23, 8809), (26, 8845), (33, 8995), (39, 9049), (41, 9061), (46, 9130), (53, 9205), (56, 9226), (75, 9388), (83, 9481), (86, 9505),

Gene: ShrimpFriedEgg_13 Start: 7923, Stop: 8981, Start Num: 9

Candidate Starts for ShrimpFriedEgg_13:

(6, 7860), (Start: 9 @7923 has 124 MA's), (16, 8079), (27, 8271), (30, 8301), (36, 8436), (42, 8493), (44, 8505), (51, 8628), (52, 8634), (55, 8664), (57, 8682), (60, 8697), (66, 8745), (68, 8757), (70, 8802), (77, 8856), (82, 8913), (84, 8946), (85, 8949),

Gene: Shweta_13 Start: 7923, Stop: 8981, Start Num: 9

Candidate Starts for Shweta_13:

(6, 7860), (Start: 9 @7923 has 124 MA's), (16, 8079), (27, 8271), (30, 8301), (36, 8436), (42, 8493), (51, 8628), (52, 8634), (55, 8664), (57, 8682), (60, 8697), (66, 8745), (68, 8757), (70, 8802), (77, 8856), (82, 8913), (84, 8946), (85, 8949),

Gene: Silvafighter_13 Start: 7877, Stop: 8935, Start Num: 9

Candidate Starts for Silvafighter_13:

(6, 7814), (Start: 9 @7877 has 124 MA's), (12, 7967), (16, 8033), (21, 8162), (30, 8255), (36, 8390), (42, 8447), (44, 8459), (50, 8570), (51, 8582), (52, 8588), (57, 8636), (66, 8699), (70, 8756), (76, 8807), (77, 8810), (84, 8900),

Gene: Silvy_13 Start: 7878, Stop: 8936, Start Num: 9

Candidate Starts for Silvy_13:

(6, 7815), (Start: 9 @7878 has 124 MA's), (12, 7968), (16, 8034), (21, 8163), (30, 8256), (36, 8391), (42, 8448), (44, 8460), (50, 8571), (51, 8583), (52, 8589), (57, 8637), (66, 8700), (70, 8757), (76, 8808), (77, 8811), (84, 8901),

Gene: Simpliphy_19 Start: 10590, Stop: 11564, Start Num: 10

Candidate Starts for Simpliphy_19:

(Start: 10 @10590 has 122 MA's), (11, 10599), (12, 10659), (20, 10812), (30, 10908), (32, 10983), (34, 11028), (38, 11070), (40, 11088), (55, 11259), (60, 11289), (64, 11313), (65, 11322), (74, 11421), (77, 11442), (81, 11493),

Gene: SirDuracell_18 Start: 10045, Stop: 11016, Start Num: 10

Candidate Starts for SirDuracell_18:

(Start: 10 @10045 has 122 MA's), (11, 10054), (12, 10114), (20, 10267), (30, 10363), (32, 10438), (34, 10483), (38, 10525), (40, 10543), (55, 10714), (60, 10744), (64, 10768), (65, 10777), (74, 10876), (77, 10897), (81, 10948),

Gene: SkinnyPete_13 Start: 7923, Stop: 8981, Start Num: 9

Candidate Starts for SkinnyPete_13:

(6, 7860), (Start: 9 @7923 has 124 MA's), (16, 8079), (27, 8271), (30, 8301), (36, 8436), (42, 8493), (44, 8505), (51, 8628), (52, 8634), (55, 8664), (57, 8682), (60, 8697), (66, 8745), (68, 8757), (70, 8802), (77, 8856), (82, 8913), (84, 8946), (85, 8949),

Gene: Smurph_13 Start: 7877, Stop: 8935, Start Num: 9

Candidate Starts for Smurph_13:

(6, 7814), (Start: 9 @7877 has 124 MA's), (12, 7967), (16, 8033), (21, 8162), (30, 8255), (36, 8390), (42, 8447), (44, 8459), (50, 8570), (51, 8582), (52, 8588), (57, 8636), (66, 8699), (70, 8756), (76, 8807), (77, 8810), (84, 8900),

Gene: Snekmaggedon_13 Start: 7923, Stop: 8981, Start Num: 9

Candidate Starts for Snekmaggedon_13:

(6, 7860), (Start: 9 @7923 has 124 MA's), (16, 8079), (27, 8271), (30, 8301), (36, 8436), (42, 8493), (44, 8505), (51, 8628), (52, 8634), (55, 8664), (57, 8682), (60, 8697), (66, 8745), (68, 8757), (70, 8802), (77, 8856), (82, 8913), (84, 8946), (85, 8949),

Gene: Sonah_14 Start: 8820, Stop: 9818, Start Num: 9

Candidate Starts for Sonah_14:

(7, 8781), (Start: 9 @8820 has 124 MA's), (11, 8844), (13, 8910), (14, 8928), (17, 8964), (23, 9099), (26, 9135), (33, 9285), (39, 9339), (41, 9351), (46, 9420), (53, 9495), (56, 9516), (75, 9678), (83, 9771), (86, 9795),

Gene: SophKB_19 Start: 11378, Stop: 12349, Start Num: 10

Candidate Starts for SophKB_19:

(Start: 10 @11378 has 122 MA's), (11, 11387), (12, 11447), (20, 11600), (30, 11696), (32, 11771), (34, 11816), (38, 11858), (40, 11876), (55, 12047), (58, 12068), (62, 12089), (65, 12110), (69, 12155), (74, 12209), (78, 12242), (79, 12254), (81, 12281),

Gene: Sotrice96_19 Start: 11334, Stop: 12305, Start Num: 10

Candidate Starts for Sotrice96_19:

(Start: 10 @11334 has 122 MA's), (11, 11343), (12, 11403), (20, 11556), (30, 11652), (32, 11727), (34, 11772), (38, 11814), (40, 11832), (55, 12003), (60, 12033), (64, 12057), (65, 12066), (74, 12165), (77, 12186), (81, 12237),

Gene: SpongeBob_13 Start: 7923, Stop: 8981, Start Num: 9

Candidate Starts for SpongeBob_13:

(6, 7860), (Start: 9 @7923 has 124 MA's), (16, 8079), (27, 8271), (30, 8301), (36, 8436), (42, 8493), (44, 8505), (51, 8628), (52, 8634), (55, 8664), (57, 8682), (60, 8697), (66, 8745), (68, 8757), (70, 8802), (77, 8856), (82, 8913), (84, 8946), (85, 8949),

Gene: Squint_28 Start: 16260, Stop: 17264, Start Num: 9

Candidate Starts for Squint_28:

(Start: 9 @16260 has 124 MA's), (15, 16386), (22, 16536), (24, 16566), (26, 16590), (43, 16815), (45, 16869), (63, 17010), (69, 17067), (73, 17121),

Gene: Stank_20 Start: 10835, Stop: 11809, Start Num: 10

Candidate Starts for Stank_20:

(Start: 10 @10835 has 122 MA's), (11, 10844), (12, 10904), (20, 11057), (30, 11153), (32, 11228), (34, 11273), (38, 11315), (40, 11333), (55, 11504), (60, 11534), (64, 11558), (65, 11567), (74, 11666), (77, 11687), (81, 11738),

Gene: Stark_19 Start: 10603, Stop: 11577, Start Num: 10

Candidate Starts for Stark_19:

(Start: 10 @10603 has 122 MA's), (11, 10612), (12, 10672), (20, 10825), (30, 10921), (32, 10996), (34, 11041), (38, 11083), (40, 11101), (55, 11272), (60, 11302), (64, 11326), (65, 11335), (74, 11434), (77, 11455), (81, 11506),

Gene: StellaBean_19 Start: 11378, Stop: 12349, Start Num: 10

Candidate Starts for StellaBean_19:

(Start: 10 @11378 has 122 MA's), (11, 11387), (12, 11447), (20, 11600), (30, 11696), (32, 11771), (34, 11816), (38, 11858), (40, 11876), (55, 12047), (58, 12068), (62, 12089), (65, 12110), (69, 12155), (74, 12209), (78, 12242), (79, 12254), (81, 12281),

Gene: StevieRay_14 Start: 8825, Stop: 9823, Start Num: 9

Candidate Starts for StevieRay_14:

(7, 8786), (Start: 9 @8825 has 124 MA's), (11, 8849), (13, 8915), (14, 8933), (17, 8969), (23, 9104), (26, 9140), (33, 9290), (39, 9344), (41, 9356), (46, 9425), (53, 9500), (56, 9521), (75, 9683), (83, 9776), (86, 9800),

Gene: StolenFromERC_20 Start: 10835, Stop: 11809, Start Num: 10

Candidate Starts for StolenFromERC_20:

(Start: 10 @10835 has 122 MA's), (11, 10844), (12, 10904), (20, 11057), (30, 11153), (32, 11228), (34, 11273), (38, 11315), (40, 11333), (55, 11504), (60, 11534), (64, 11558), (65, 11567), (74, 11666), (77, 11687), (81, 11738),

Gene: StressBall_14 Start: 8837, Stop: 9835, Start Num: 9

Candidate Starts for StressBall_14:

(7, 8798), (Start: 9 @8837 has 124 MA's), (11, 8861), (13, 8927), (14, 8945), (17, 8981), (26, 9152), (33, 9302), (39, 9356), (41, 9368), (46, 9437), (47, 9452), (56, 9533), (75, 9695), (83, 9788), (86, 9812),

Gene: Superphikiman_29 Start: 16315, Stop: 17319, Start Num: 9

Candidate Starts for Superphikiman_29:

(Start: 9 @16315 has 124 MA's), (15, 16441), (22, 16591), (24, 16621), (26, 16645), (43, 16870), (45, 16924), (63, 17065), (69, 17122), (73, 17176),

Gene: TBrady12_20 Start: 10832, Stop: 11806, Start Num: 10

Candidate Starts for TBrady12_20:

(Start: 10 @10832 has 122 MA's), (11, 10841), (12, 10901), (20, 11054), (30, 11150), (32, 11225), (34, 11270), (38, 11312), (40, 11330), (55, 11501), (60, 11531), (64, 11555), (65, 11564), (74, 11663), (77, 11684), (81, 11735),

Gene: Tapioca_13 Start: 7877, Stop: 8935, Start Num: 9

Candidate Starts for Tapioca_13:

(6, 7814), (Start: 9 @7877 has 124 MA's), (12, 7967), (16, 8033), (21, 8162), (30, 8255), (36, 8390), (42, 8447), (44, 8459), (50, 8570), (51, 8582), (52, 8588), (57, 8636), (66, 8699), (70, 8756), (76, 8807), (77, 8810), (84, 8900),

Gene: Tarkin_20 Start: 11831, Stop: 12805, Start Num: 10

Candidate Starts for Tarkin_20:

(Start: 10 @11831 has 122 MA's), (11, 11840), (12, 11900), (20, 12053), (30, 12149), (32, 12224), (34, 12269), (38, 12311), (40, 12329), (55, 12500), (60, 12530), (64, 12554), (65, 12563), (74, 12662), (77, 12683), (81, 12734),

Gene: TeardropMSU_18 Start: 11286, Stop: 12257, Start Num: 10

Candidate Starts for TeardropMSU_18:

(Start: 10 @11286 has 122 MA's), (11, 11295), (12, 11355), (20, 11508), (30, 11604), (32, 11679), (34, 11724), (38, 11766), (40, 11784), (55, 11955), (58, 11976), (62, 11997), (65, 12018), (69, 12063), (74, 12117), (78, 12150), (79, 12162), (81, 12189),

Gene: Teaspoon_18 Start: 10285, Stop: 11259, Start Num: 10

Candidate Starts for Teaspoon_18:

(Start: 10 @10285 has 122 MA's), (11, 10294), (12, 10354), (20, 10507), (30, 10603), (32, 10678), (34, 10723), (38, 10765), (40, 10783), (55, 10954), (60, 10984), (64, 11008), (65, 11017), (74, 11116), (77, 11137), (81, 11188),

Gene: Techage_14 Start: 8821, Stop: 9819, Start Num: 9

Candidate Starts for Techage_14:

(7, 8782), (Start: 9 @8821 has 124 MA's), (11, 8845), (13, 8911), (14, 8929), (17, 8965), (23, 9100), (26, 9136), (33, 9286), (39, 9340), (41, 9352), (46, 9421), (53, 9496), (56, 9517), (75, 9679), (83, 9772), (86, 9796),

Gene: Terminus_18 Start: 10932, Stop: 11906, Start Num: 10

Candidate Starts for Terminus_18:

(Start: 10 @10932 has 122 MA's), (11, 10941), (12, 11001), (20, 11154), (30, 11250), (32, 11325), (34, 11370), (38, 11412), (40, 11430), (55, 11601), (60, 11631), (64, 11655), (65, 11664), (74, 11763), (77, 11784), (81, 11835),

Gene: Thespis_14 Start: 8837, Stop: 9835, Start Num: 9

Candidate Starts for Thespis_14:

(7, 8798), (Start: 9 @8837 has 124 MA's), (11, 8861), (13, 8927), (14, 8945), (23, 9116), (26, 9152), (33, 9302), (39, 9356), (41, 9368), (46, 9437), (53, 9512), (56, 9533), (75, 9695), (83, 9788), (86, 9812),

Gene: Thibault_27 Start: 17923, Stop: 18927, Start Num: 9

Candidate Starts for Thibault_27:

(Start: 9 @17923 has 124 MA's), (15, 18049), (22, 18199), (24, 18229), (26, 18253), (36, 18424), (43, 18478), (45, 18532), (48, 18553), (49, 18568), (61, 18661), (62, 18664), (63, 18673), (69, 18730), (77, 18802), (80, 18835), (85, 18895),

Gene: ThreeRngTarjay_30 Start: 18489, Stop: 19493, Start Num: 9

Candidate Starts for ThreeRngTarjay_30:

(Start: 9 @18489 has 124 MA's), (15, 18615), (22, 18765), (24, 18795), (26, 18819), (36, 18990), (43, 19044), (45, 19098), (48, 19119), (49, 19134), (61, 19227), (62, 19230), (63, 19239), (69, 19296), (77, 19368), (80, 19401), (85, 19461),

Gene: Thresher_19 Start: 11593, Stop: 12567, Start Num: 10

Candidate Starts for Thresher_19:

(Start: 10 @11593 has 122 MA's), (11, 11602), (12, 11662), (20, 11815), (30, 11911), (32, 11986), (34, 12031), (38, 12073), (40, 12091), (55, 12262), (60, 12292), (64, 12316), (65, 12325), (74, 12424), (77,

12445), (81, 12496),

Gene: ThulaThula_13 Start: 8507, Stop: 9505, Start Num: 9

Candidate Starts for ThulaThula_13:

(Start: 9 @8507 has 124 MA's), (11, 8531), (14, 8615), (17, 8651), (18, 8675), (19, 8738), (23, 8786), (25, 8819), (26, 8822), (33, 8972), (37, 9008), (39, 9026), (41, 9038), (47, 9122), (56, 9203), (64, 9248), (75, 9365), (83, 9458),

Gene: Tomaszewski_18 Start: 10979, Stop: 11950, Start Num: 10

Candidate Starts for Tomaszewski_18:

(Start: 10 @10979 has 122 MA's), (11, 10988), (12, 11048), (20, 11201), (30, 11297), (32, 11372), (34, 11417), (38, 11459), (40, 11477), (55, 11648), (60, 11678), (64, 11702), (65, 11711), (74, 11810), (77, 11831), (81, 11882),

Gene: Tortellini_13 Start: 8525, Stop: 9523, Start Num: 9

Candidate Starts for Tortellini_13:

(3, 8330), (5, 8450), (7, 8486), (Start: 9 @8525 has 124 MA's), (11, 8549), (14, 8633), (17, 8669), (23, 8804), (26, 8840), (33, 8990), (39, 9044), (41, 9056), (46, 9125), (47, 9140), (56, 9221), (59, 9239), (64, 9266), (71, 9347), (72, 9350), (75, 9383), (77, 9398), (81, 9449), (83, 9476), (86, 9500),

Gene: Toto_19 Start: 11379, Stop: 12350, Start Num: 10

Candidate Starts for Toto_19:

(Start: 10 @11379 has 122 MA's), (11, 11388), (12, 11448), (20, 11601), (30, 11697), (32, 11772), (34, 11817), (38, 11859), (40, 11877), (55, 12048), (58, 12069), (62, 12090), (65, 12111), (69, 12156), (74, 12210), (78, 12243), (79, 12255), (81, 12282),

Gene: Traaww1_17 Start: 11024, Stop: 11995, Start Num: 10

Candidate Starts for Traaww1_17:

(Start: 10 @11024 has 122 MA's), (11, 11033), (12, 11093), (20, 11246), (30, 11342), (32, 11417), (34, 11462), (38, 11504), (40, 11522), (55, 11693), (60, 11723), (64, 11747), (65, 11756), (74, 11855), (77, 11876), (81, 11927),

Gene: Tuco_19 Start: 11378, Stop: 12349, Start Num: 10

Candidate Starts for Tuco_19:

(Start: 10 @11378 has 122 MA's), (11, 11387), (12, 11447), (20, 11600), (30, 11696), (32, 11771), (34, 11816), (38, 11858), (40, 11876), (55, 12047), (58, 12068), (62, 12089), (65, 12110), (69, 12155), (74, 12209), (78, 12242), (79, 12254), (81, 12281),

Gene: Ukulele_18 Start: 10603, Stop: 11577, Start Num: 10

Candidate Starts for Ukulele_18:

(Start: 10 @10603 has 122 MA's), (11, 10612), (12, 10672), (20, 10825), (30, 10921), (32, 10996), (34, 11041), (38, 11083), (40, 11101), (55, 11272), (60, 11302), (64, 11326), (65, 11335), (74, 11434), (77, 11455), (81, 11506),

Gene: Venti_14 Start: 8834, Stop: 9832, Start Num: 9

Candidate Starts for Venti_14:

(7, 8795), (Start: 9 @8834 has 124 MA's), (11, 8858), (13, 8924), (14, 8942), (17, 8978), (23, 9113), (26, 9149), (33, 9299), (39, 9353), (41, 9365), (46, 9434), (53, 9509), (56, 9530), (75, 9692), (83, 9785), (86, 9809),

Gene: Vidya_14 Start: 8834, Stop: 9832, Start Num: 9

Candidate Starts for Vidya_14:

(7, 8795), (Start: 9 @8834 has 124 MA's), (11, 8858), (13, 8924), (14, 8942), (17, 8978), (23, 9113), (26, 9149), (33, 9299), (39, 9353), (41, 9365), (46, 9434), (53, 9509), (56, 9530), (75, 9692), (83, 9785), (86, 9809),

Gene: Wanda_32 Start: 17932, Stop: 18936, Start Num: 9

Candidate Starts for Wanda_32:

(Start: 9 @17932 has 124 MA's), (15, 18058), (22, 18208), (24, 18238), (26, 18262), (36, 18433), (43, 18487), (45, 18541), (48, 18562), (49, 18577), (61, 18670), (62, 18673), (63, 18682), (69, 18739), (77, 18811), (80, 18844), (85, 18904),

Gene: Wiggin_20 Start: 10835, Stop: 11809, Start Num: 10

Candidate Starts for Wiggin_20:

(Start: 10 @10835 has 122 MA's), (11, 10844), (12, 10904), (20, 11057), (30, 11153), (32, 11228), (34, 11273), (38, 11315), (40, 11333), (55, 11504), (60, 11534), (64, 11558), (65, 11567), (74, 11666), (77, 11687), (81, 11738),

Gene: Willez_18 Start: 10886, Stop: 11857, Start Num: 10

Candidate Starts for Willez_18:

(Start: 10 @10886 has 122 MA's), (11, 10895), (12, 10955), (20, 11108), (30, 11204), (32, 11279), (34, 11324), (38, 11366), (40, 11384), (55, 11555), (60, 11585), (64, 11609), (65, 11618), (74, 11717), (77, 11738), (81, 11789),

Gene: Willsammy_14 Start: 8840, Stop: 9838, Start Num: 9

Candidate Starts for Willsammy_14:

(7, 8801), (Start: 9 @8840 has 124 MA's), (11, 8864), (13, 8930), (14, 8948), (23, 9119), (26, 9155), (33, 9305), (39, 9359), (41, 9371), (46, 9440), (53, 9515), (56, 9536), (75, 9698), (83, 9791), (86, 9815),

Gene: Xandras_20 Start: 10835, Stop: 11809, Start Num: 10

Candidate Starts for Xandras_20:

(Start: 10 @10835 has 122 MA's), (11, 10844), (12, 10904), (20, 11057), (30, 11153), (32, 11228), (34, 11273), (38, 11315), (40, 11333), (55, 11504), (60, 11534), (64, 11558), (65, 11567), (74, 11666), (77, 11687), (81, 11738),

Gene: Xavia_14 Start: 8838, Stop: 9836, Start Num: 9

Candidate Starts for Xavia_14:

(7, 8799), (Start: 9 @8838 has 124 MA's), (11, 8862), (13, 8928), (14, 8946), (17, 8982), (23, 9117), (26, 9153), (33, 9303), (39, 9357), (41, 9369), (46, 9438), (53, 9513), (56, 9534), (75, 9696), (83, 9789), (86, 9813),

Gene: Xeno_13 Start: 7877, Stop: 8935, Start Num: 9

Candidate Starts for Xeno_13:

(6, 7814), (Start: 9 @7877 has 124 MA's), (12, 7967), (16, 8033), (21, 8162), (30, 8255), (36, 8390), (42, 8447), (44, 8459), (50, 8570), (51, 8582), (52, 8588), (57, 8636), (66, 8699), (70, 8756), (76, 8807), (77, 8810), (84, 8900),

Gene: Xerxes_13 Start: 7877, Stop: 8935, Start Num: 9

Candidate Starts for Xerxes_13:

(6, 7814), (Start: 9 @7877 has 124 MA's), (12, 7967), (16, 8033), (21, 8162), (30, 8255), (36, 8390), (42, 8447), (44, 8459), (50, 8570), (51, 8582), (52, 8588), (57, 8636), (66, 8699), (70, 8756), (76, 8807), (77, 8810), (84, 8900),

Gene: YassJohnny_19 Start: 11378, Stop: 12349, Start Num: 10

Candidate Starts for YassJohnny_19:

(Start: 10 @11378 has 122 MA's), (11, 11387), (12, 11447), (20, 11600), (30, 11696), (32, 11771), (34, 11816), (38, 11858), (40, 11876), (55, 12047), (60, 12077), (64, 12101), (65, 12110), (74, 12209), (77, 12230), (81, 12281),

Gene: Yeet_29 Start: 17665, Stop: 18669, Start Num: 9

Candidate Starts for Yeet_29:

(Start: 9 @17665 has 124 MA's), (15, 17791), (22, 17941), (24, 17971), (26, 17995), (36, 18166), (43, 18220), (45, 18274), (48, 18295), (49, 18310), (61, 18403), (62, 18406), (63, 18415), (69, 18472), (77, 18544), (80, 18577), (85, 18637),

Gene: Youngblood_18 Start: 11013, Stop: 11987, Start Num: 10

Candidate Starts for Youngblood_18:

(Start: 10 @11013 has 122 MA's), (11, 11022), (12, 11082), (20, 11235), (30, 11331), (32, 11406), (34, 11451), (38, 11493), (40, 11511), (55, 11682), (60, 11712), (64, 11736), (65, 11745), (74, 11844), (77, 11865), (81, 11916),

Gene: Zelink_32 Start: 18517, Stop: 19521, Start Num: 9

Candidate Starts for Zelink_32:

(Start: 9 @18517 has 124 MA's), (15, 18643), (22, 18793), (24, 18823), (26, 18847), (36, 19018), (43, 19072), (45, 19126), (48, 19147), (49, 19162), (61, 19255), (62, 19258), (63, 19267), (69, 19324), (77, 19396), (80, 19429), (85, 19489),

Gene: Zilizebeth_14 Start: 8834, Stop: 9832, Start Num: 9

Candidate Starts for Zilizebeth_14:

(7, 8795), (Start: 9 @8834 has 124 MA's), (11, 8858), (13, 8924), (14, 8942), (17, 8978), (23, 9113), (26, 9149), (33, 9299), (39, 9353), (41, 9365), (46, 9434), (53, 9509), (56, 9530), (75, 9692), (83, 9785), (86, 9809),

Gene: xkcd_19 Start: 11038, Stop: 12009, Start Num: 10

Candidate Starts for xkcd_19:

(Start: 10 @11038 has 122 MA's), (11, 11047), (12, 11107), (20, 11260), (30, 11356), (32, 11431), (34, 11476), (38, 11518), (40, 11536), (55, 11707), (60, 11737), (64, 11761), (65, 11770), (74, 11869), (77, 11890), (81, 11941),