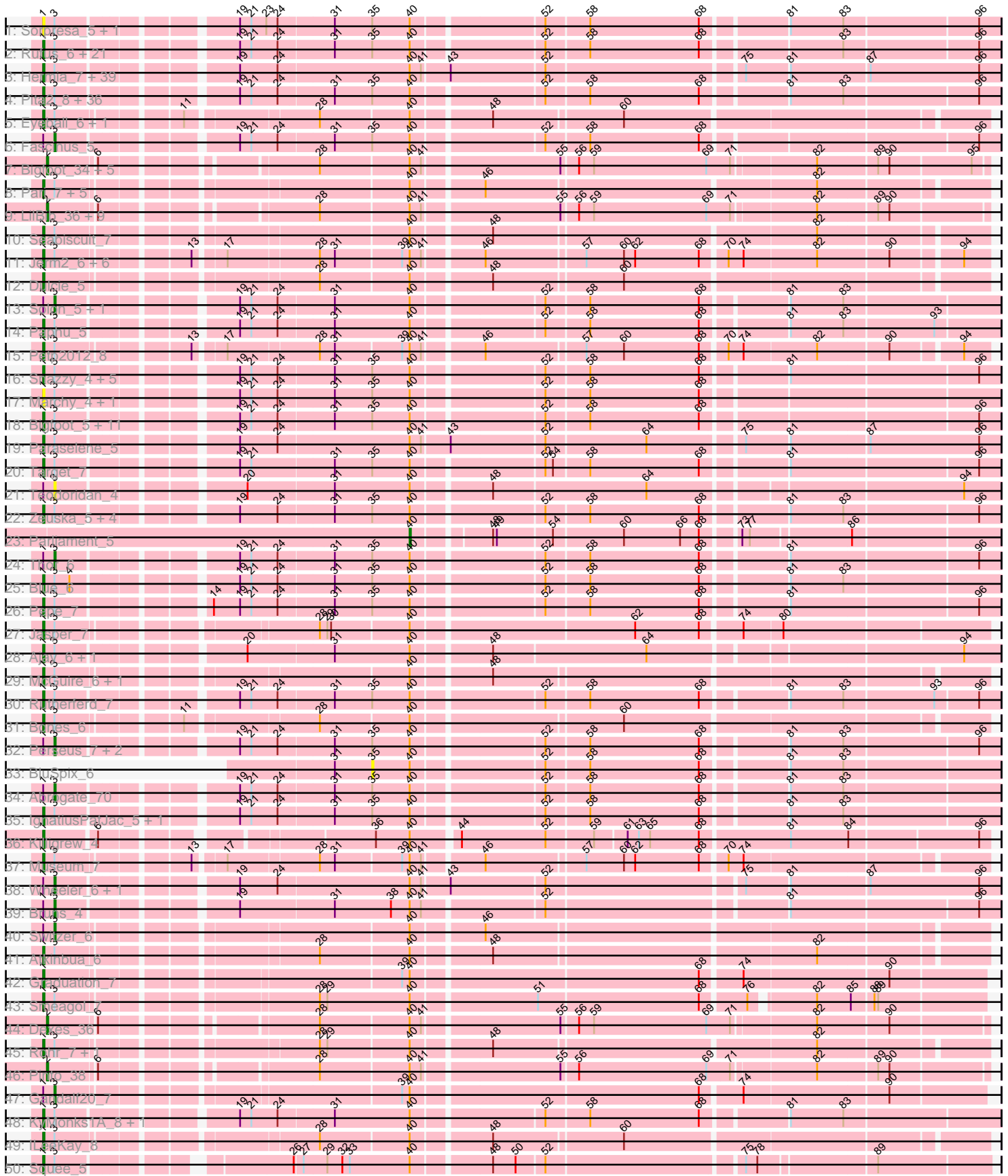
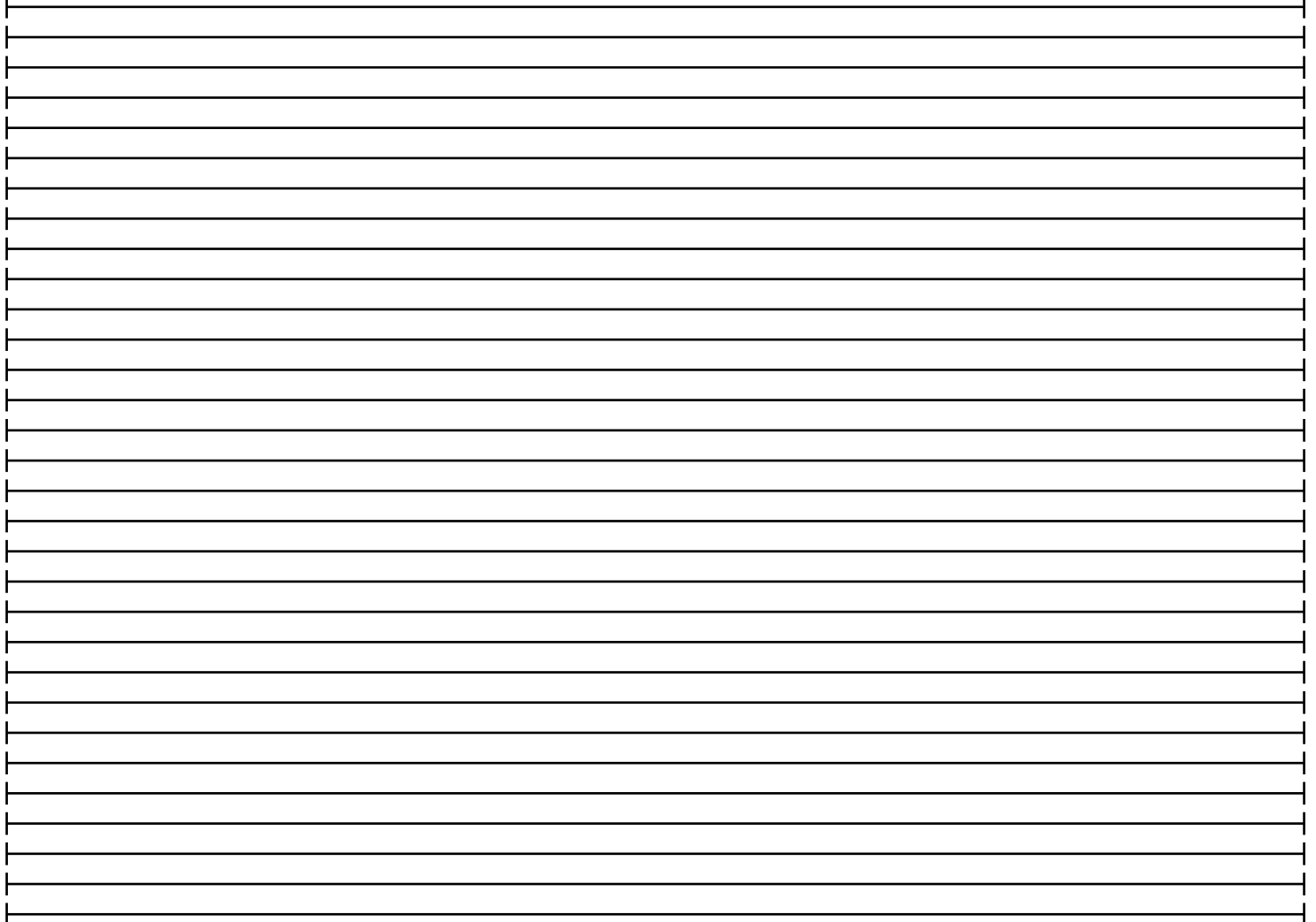
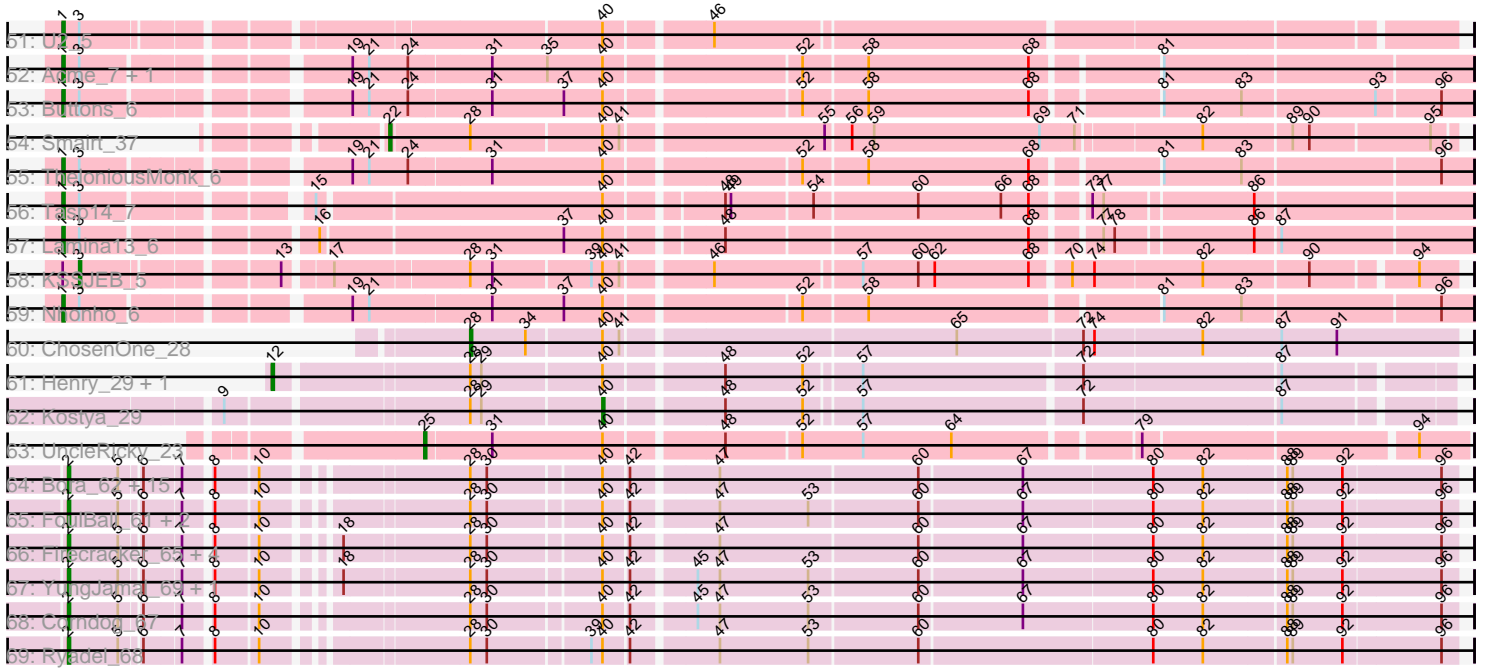


Pham 171176



Pham 171176



Note: Tracks are now grouped by subcluster and scaled. Switching in subcluster is indicated by changes in track color. Track scale is now set by default to display the region 30 bp upstream of start 1 to 30 bp downstream of the last possible start. If this default region is judged to be packed too tightly with annotated starts, the track will be further scaled to only show that region of the ORF with annotated starts. This action will be indicated by adding "Zoomed" to the title. For starts, yellow indicates the location of called starts comprised solely of Glimmer/GeneMark auto-annotations, green indicates the location of called starts with at least 1 manual gene annotation.

Pham 171176 Report

This analysis was run 07/10/24 on database version 566.

Pham number 171176 has 246 members, 18 are drafts.

Phages represented in each track:

- Track 1 : Sorpresa_5, Sandaddy_5
- Track 2 : Rufus_6, Greg_7, Molly_7, NEHalo_6, Niza_7, Zephyr_6, Agaliana_6, Ciao_6, BaconJack_7, Corvo_6, MPlant7149_5, JC27_7, MetalQZJ_6, Ohno789_5, Espresso_6, Arlo_5, Rubeus_6, Lopton_7, Fajezeel_7, Ichabod_6, MaryBeth_6, Sibs6_7
- Track 3 : Hermia_7, Ashballer_4, Bxb1_5, Carlyle_8, Scowl_7, BillKnuckles_6, Slagathor_6, QTRlifeCrisis_5, Froghopper_7, Petruccio_6, Kenmech_7, Lockley_6, Watermelon_8, Manatee_6, Traft412_8, Homines_6, Monet_6, Gyzlar_7, GrecoEtereo_7, Seanderson_7, Kugel_7, Dussy_7, A6_04, Lesedi_5, DD5_6, Abbysshoes_7, Fushigi_6, Magnito_5, Anglerfish_6, HarryOW_7, Marge_6, Violet_5, BK1_04, Arcanine_6, Gwendoluna_6, Marcell_6, Kykar_4, Rajelicia_5, Licorice_8, Turj99_5
- Track 4 : Pita2_8, Euphoria_6, Topgun_6, KBG_6, LilBib_5, Smairt_7, Applejack_6, Swole_8, Sumter_5, JackSparrow_6, StewieG_5, SwissCheese_6, TwoPeat_7, PascalRango_5, Trouble_6, Dexes_7, HanShotFirst_6, Pelly_7, Hami1_6, BPBiebs31_7, ShortQueendom_4, Sunshine924_5, PhrostyMug_5, Rhynn_6, Tote_8, Sanya_5, Nerujay_6, Mule_5, Sagefire_7, PattyP_7, JuliaChild_8, PSullivan_8, BigPaolini_7, Aeneas_7, Wilkins_6, Forsytheast_5, Moose_5
- Track 5 : Eyeball_6, Chanagan_5
- Track 6 : Fascinus_5
- Track 7 : Bigfoot_34, Kykar_35, A6_33, BK1_33, JC27_37, Fascinus_35
- Track 8 : Pari_7, Bircsak_6, Briton15_7, HermioneGrange_7, DreamCatcher_7, Hope4ever_6
- Track 9 : LilBib_36, GageAP_37, IgnatiusPatJac_35, HanShotFirst_35, Froghopper_36, Wilkins_35, Topgun_35, HarryOW_36, Pelly_36, CactusRose_34
- Track 10 : Seabiscuit_7
- Track 11 : Jerm2_6, Bob3_5, Burton_6, Fenn_6, PinkPlastic_4, Naira_6, BigMau_7
- Track 12 : Dulcie_5
- Track 13 : Solon_5, Edtherson_6
- Track 14 : Paphu_5
- Track 15 : Petp2012_8
- Track 16 : Snazzy_4, STLscum_7, Ringer_5, Bethlehem_6, SarFire_6, Ruotula_5
- Track 17 : Marchy_4, Payneful_5
- Track 18 : Bigfoot_5, Altman_7, Francis47_6, CactusRose_5, GageAP_7, Oogway_5, Pinto_8, ConceptII_6, PacerPaul_6, Kanely_7, Adahisdi_7, Maroc7_5
- Track 19 : Paraselene_5
- Track 20 : Target_7

- Track 21 : Teodoridan_4
- Track 22 : Zeuska_5, AFIS_6, SpikeBT_6, Barriga_6, Papez_6
- Track 23 : Parliament_5
- Track 24 : Thor_6
- Track 25 : Blue_6
- Track 26 : Pepe_7
- Track 27 : Jasper_7
- Track 28 : Ajay_6, Alsfro_10
- Track 29 : McGuire_6, Dynamix_6
- Track 30 : Rutherford_7
- Track 31 : Bones_6
- Track 32 : Perseus_7, Doom_6, RidgeCB_6
- Track 33 : BluSpix_6
- Track 34 : Abrogate_70
- Track 35 : IgnatiusPatJac_5, Marsha_6
- Track 36 : Killigrew_4
- Track 37 : Museum_7
- Track 38 : Wheeler_6, Treddle_6
- Track 39 : Bruns_4
- Track 40 : Switzer_6
- Track 41 : Atkinbua_6
- Track 42 : Graduation_7
- Track 43 : Smeagol_7
- Track 44 : Dexes_36
- Track 45 : Rohr_7, BeesKnees_6
- Track 46 : Pinto_38
- Track 47 : Gandalf20_7
- Track 48 : KyMonks1A_8, Magnar_6
- Track 49 : lLeeKay_8
- Track 50 : Squee_5
- Track 51 : U2_5
- Track 52 : Acme_7, Pippin_7
- Track 53 : Buttons_6
- Track 54 : Smairt_37
- Track 55 : TheloniousMonk_6
- Track 56 : Tasp14_7
- Track 57 : Lamina13_6
- Track 58 : KSSJEB_5
- Track 59 : Nhonho_6
- Track 60 : ChosenOne_28
- Track 61 : Henry_29, Daikon_27
- Track 62 : Kostya_29
- Track 63 : UncleRicky_23
- Track 64 : Bora_62, SchoolBus_64, Idergollasper_64, Schuy_65, Blessica_65, JangDynasty_64, Alkhayr_62, Mori_64, TelAviv_61, Shida_64, Catdawg_64, Vorrps_64, Murai_65, Winget_65, Familton_65, MadKillah_65
- Track 65 : FoulBall_61, Krili_63, NiebruSaylor_63
- Track 66 : Firecracker_65, Dylan_64, Zakhe101_64, Ashwin_66, Wildflower_64
- Track 67 : YungJamal_69, Smooch_67
- Track 68 : Corndog_67
- Track 69 : Ryadel_68

Summary of Final Annotations (See graph section above for start numbers):

The start number called the most often in the published annotations is 1, it was called in 165 of the 228 non-draft genes in the pham.

Genes that call this "Most Annotated" start:

- A6_04, AFIS_6, Abbyshoes_7, Acme_7, Adahisdi_7, Aeneas_7, Agaliana_6, Ajay_6, Alsfro_10, Altman_7, Anglerfish_6, Applejack_6, Arcanine_6, Arlo_5, Ashballer_4, Atkinbua_6, BK1_04, BPBiebs31_7, BaconJack_7, Barriga_6, BeesKnees_6, Bethlehem_6, BigMau_7, BigPaolini_7, Bigfoot_5, BillKnuckles_6, Bircsak_6, Blue_6, Bob3_5, Bones_6, Briton15_7, Burton_6, Buttons_6, Bxb1_5, CactusRose_5, Carlyle_8, Chanagan_5, Ciao_6, ConceptII_6, Corvo_6, DD5_6, Dexes_7, DreamCatcher_7, Dulcie_5, Dussy_7, Dynamix_6, Espresso_6, Euphoria_6, Eyeball_6, Fajezeel_7, Fenn_6, Forsytheast_5, Francis47_6, Froghopper_7, Fushigi_6, GageAP_7, Graduation_7, GrecoEtereo_7, Greg_7, Gwendoluna_6, Gyzlar_7, Hami1_6, HanShotFirst_6, HarryOW_7, Hermia_7, HermioneGrange_7, Homines_6, Hope4ever_6, ILeeKay_8, Ichabod_6, IgnatiusPatJac_5, JC27_7, JackSparrow_6, Jasper_7, Jerm2_6, JuliaChild_8, KBG_6, Kanely_7, Kenmech_7, Killigrew_4, Kugel_7, KyMonks1A_8, Kykar_4, Lamina13_6, Lesedi_5, Licorice_8, LilBib_5, Lockley_6, Lopton_7, MPlant7149_5, Magnar_6, Magnito_5, Manatee_6, Marcell_6, Marchy_4, Marge_6, Maroc7_5, Marsha_6, MaryBeth_6, McGuire_6, MetalQZJ_6, Molly_7, Monet_6, Moose_5, Mule_5, Museum_7, NEHalo_6, Naira_6, Nerujay_6, Nhonho_6, Niza_7, Ohno789_5, Oogway_5, PSullivan_8, PacerPaul_6, Papez_6, Paphu_5, Paraselene_5, Pari_7, PascalRango_5, PattyP_7, Payneful_5, Pelly_7, Pepe_7, Petp2012_8, Petruchio_6, PhrostyMug_5, PinkPlastic_4, Pinto_8, Pippin_7, Pita2_8, QTRlifeCrisis_5, Rajelicia_5, Rhynn_6, Ringer_5, Rohr_7, Rubeus_6, Rufus_6, Ruotula_5, Rutherford_7, STLscum_7, Sagefire_7, Sandaddy_5, Sanya_5, SarFire_6, Scowl_7, Seabiscuit_7, Seanderson_7, ShortQueendom_4, Sibs6_7, Slagathor_6, Smairt_7, Smeagol_7, Snazzy_4, Sorpresa_5, SpikeBT_6, Squee_5, StewieG_5, Sumter_5, Sunshine924_5, SwissCheese_6, Swole_8, Target_7, Tasp14_7, TheloniousMonk_6, Topgun_6, Tote_8, Trafft412_8, Trouble_6, Turj99_5, TwoPeat_7, U2_5, Violet_5, Watermelon_8, Wilkins_6, Zephyr_6, Zeuska_5,

Genes that have the "Most Annotated" start but do not call it:

- Abrogate_70, Bruns_4, Doom_6, Edtherson_6, Fascinus_5, Gandalf20_7, KSSJEB_5, Perseus_7, RidgeCB_6, Solon_5, Switzer_6, Teodoridan_4, Thor_6, Treddle_6, Wheeler_6,

Genes that do not have the "Most Annotated" start:

- A6_33, Alkhayr_62, Ashwin_66, BK1_33, Bigfoot_34, Blessica_65, BluSpix_6, Bora_62, CactusRose_34, Catdawg_64, ChosenOne_28, Corndog_67, Daikon_27, Dexes_36, Dylan_64, Familton_65, Fascinus_35, Firecracker_65, FoulBall_61, Froghopper_36, GageAP_37, HanShotFirst_35, HarryOW_36, Henry_29, Idergollasper_64, IgnatiusPatJac_35, JC27_37, JangDynasty_64, Kostya_29, Krili_63, Kykar_35, LilBib_36, MadKillah_65, Mori_64, Murai_65, NiebruSaylor_63, Parliament_5, Pelly_36, Pinto_38, Ryadel_68, SchoolBus_64, Schuy_65, Shida_64, Smairt_37, Smooch_67, TelAviv_61, Topgun_35, UncleRicky_23, Vorrps_64, Wildflower_64, Wilkins_35, Winget_65, YungJamal_69, Zakhe101_64,

Summary by start number:

Start 1:

- Found in 192 of 246 (78.0%) of genes in pham
- Manual Annotations of this start: 165 of 228
- Called 92.2% of time when present
- Phage (with cluster) where this start called: A6_04 (A1), AFIS_6 (A1), Abbyshoes_7 (A1), Acme_7 (A1), Adahisdi_7 (A1), Aeneas_7 (A1), Agaliana_6 (A1), Ajay_6 (A1), Alsfro_10 (A1), Altman_7 (A1), Anglerfish_6 (A1), Applejack_6 (A1), Arcanine_6 (A1), Arlo_5 (A1), Ashballer_4 (A1), Atkinbua_6 (A1), BK1_04 (A1), BPBiebs31_7 (A1), BaconJack_7 (A1), Barriga_6 (A1), BeesKnees_6 (A1), Bethlehem_6 (A1), BigMau_7 (A1), BigPaolini_7 (A1), Bigfoot_5 (A1), BillKnuckles_6 (A1), Bircsak_6 (A1), Blue_6 (A1), Bob3_5 (A1), Bones_6 (A1), Briton15_7 (A1), Burton_6 (A1), Buttons_6 (A1), Bxb1_5 (A1), CactusRose_5 (A1), Carlyle_8 (A1), Chanagan_5 (A1), Ciao_6 (A1), Conceptll_6 (A1), Corvo_6 (A1), DD5_6 (A1), Dexes_7 (A1), DreamCatcher_7 (A1), Dulcie_5 (A1), Dussy_7 (A1), Dynamix_6 (A1), Espresso_6 (A1), Euphoria_6 (A1), Eyeball_6 (A1), Fajezeel_7 (A1), Fenn_6 (A1), Forsytheast_5 (A1), Francis47_6 (A1), Froghopper_7 (A1), Fushigi_6 (A1), GageAP_7 (A1), Graduation_7 (A1), GrecoEtereo_7 (A1), Greg_7 (A1), Gwendoluna_6 (A1), Gyzlar_7 (A1), Hami1_6 (A1), HanShotFirst_6 (A1), HarryOW_7 (A1), Hermia_7 (A1), HermioneGrange_7 (A1), Homines_6 (A1), Hope4ever_6 (A1), ILeeKay_8 (A1), Ichabod_6 (A1), IgnatiusPatJac_5 (A1), JC27_7 (A1), JackSparrow_6 (A1), Jasper_7 (A1), Jerm2_6 (A1), JuliaChild_8 (A1), KBG_6 (A1), Kanely_7 (A1), Kenmech_7 (A1), Killigrew_4 (A1), Kugel_7 (A1), KyMonks1A_8 (A1), Kykar_4 (A1), Lamina13_6 (A1), Lesedi_5 (A1), Licorice_8 (A1), LilBib_5 (A1), Lockley_6 (A1), Lopton_7 (A1), MPlant7149_5 (A1), Magnar_6 (A1), Magnito_5 (A1), Manatee_6 (A1), Marcell_6 (A1), Marchy_4 (A1), Marge_6 (A1), Maroc7_5 (A1), Marsha_6 (A1), MaryBeth_6 (A1), McGuire_6 (A1), MetalQZJ_6 (A1), Molly_7 (A1), Monet_6 (A1), Moose_5 (A1), Mule_5 (A1), Museum_7 (A1), NEHalo_6 (A1), Naira_6 (A1), Nerujay_6 (A1), Nhonho_6 (A1), Niza_7 (A1), Ohno789_5 (A1), Oogway_5 (A1), PSullivan_8 (A1), PacerPaul_6 (A1), Papez_6 (A1), Paphu_5 (A1), Paraselene_5 (A1), Pari_7 (A1), PascalRango_5 (A1), PattyP_7 (A1), Payneful_5 (A1), Pelly_7 (A1), Pepe_7 (A1), Petp2012_8 (A1), Petruccio_6 (A1), PhrostyMug_5 (A1), PinkPlastic_4 (A1), Pinto_8 (A1), Pippin_7 (A1), Pita2_8 (A1), QTRLifeCrisis_5 (A1), Rajelicia_5 (A1), Rhynn_6 (A1), Ringer_5 (A1), Rohr_7 (A1), Rubeus_6 (A1), Rufus_6 (A1), Ruotula_5 (A1), Rutherford_7 (A1), STLscum_7 (A1), Sagefire_7 (A1), Sandaddy_5 (A1), Sanya_5 (A1), SarFire_6 (A1), Scowl_7 (A1), Seabiscuit_7 (A1), Seanderson_7 (A1), ShortQueendom_4 (A1), Sibs6_7 (A1), Slagathor_6 (A1), Smairt_7 (A1), Smeagol_7 (A1), Snazzy_4 (A1), Sorpresa_5 (A1), SpikeBT_6 (A1), Squee_5 (A1), StewieG_5 (A1), Sumter_5 (A1), Sunshine924_5 (A1), SwissCheese_6 (A1), Swole_8 (A1), Target_7 (A1), Tasp14_7 (A1), TheloniousMonk_6 (A1), Topgun_6 (A1), Tote_8 (A1), Traft412_8 (A1), Trouble_6 (A1), Turj99_5 (A1), TwoPeat_7 (A1), U2_5 (A1), Violet_5 (A1), Watermelon_8 (A1), Wilkins_6 (A1), Zephyr_6 (A1), Zeuska_5 (A1),

Start 2:

- Found in 46 of 246 (18.7%) of genes in pham
- Manual Annotations of this start: 43 of 228
- Called 100.0% of time when present
- Phage (with cluster) where this start called: A6_33 (A1), Alkhayr_62 (O), Ashwin_66 (O), BK1_33 (A1), Bigfoot_34 (A1), Blessica_65 (O), Bora_62 (O), CactusRose_34 (A1), Catdawg_64 (O), Corndog_67 (O), Dexes_36 (A1), Dylan_64 (O), Familton_65 (O), Fascinus_35 (A1), Firecracker_65 (O), FoulBall_61 (O), Froghopper_36 (A1), GageAP_37 (A1), HanShotFirst_35 (A1), HarryOW_36 (A1), Idergollasper_64 (O), IgnatiusPatJac_35 (A1), JC27_37 (A1), JangDynasty_64 (O), Krili_63 (O), Kykar_35 (A1), LilBib_36 (A1), MadKillah_65 (O), Mori_64 (O), Murai_65 (O), NiebruSaylor_63

(O), Pelly_36 (A1), Pinto_38 (A1), Ryadel_68 (O), SchoolBus_64 (O), Schuy_65 (O), Shida_64 (O), Smooch_67 (O), TelAviv_61 (O), Topgun_35 (A1), Vorrps_64 (O), Wildflower_64 (O), Wilkins_35 (A1), Winget_65 (O), YungJamal_69 (O), Zakhe101_64 (O),

Start 3:

- Found in 189 of 246 (76.8%) of genes in pham
- Manual Annotations of this start: 14 of 228
- Called 7.9% of time when present
- Phage (with cluster) where this start called: Abrogate_70 (A1), Bruns_4 (A1), Doom_6 (A1), Edtherson_6 (A1), Fascinus_5 (A1), Gandalf20_7 (A1), KSSJEB_5 (A1), Perseus_7 (A1), RidgeCB_6 (A1), Solon_5 (A1), Switzer_6 (A1), Teodoridan_4 (A1), Thor_6 (A1), Treddle_6 (A1), Wheeler_6 (A1),

Start 12:

- Found in 2 of 246 (0.8%) of genes in pham
- Manual Annotations of this start: 1 of 228
- Called 100.0% of time when present
- Phage (with cluster) where this start called: Daikon_27 (E), Henry_29 (E),

Start 22:

- Found in 1 of 246 (0.4%) of genes in pham
- Manual Annotations of this start: 1 of 228
- Called 100.0% of time when present
- Phage (with cluster) where this start called: Smairt_37 (A1),

Start 25:

- Found in 1 of 246 (0.4%) of genes in pham
- Manual Annotations of this start: 1 of 228
- Called 100.0% of time when present
- Phage (with cluster) where this start called: UncleRicky_23 (F1),

Start 28:

- Found in 71 of 246 (28.9%) of genes in pham
- Manual Annotations of this start: 1 of 228
- Called 1.4% of time when present
- Phage (with cluster) where this start called: ChosenOne_28 (E),

Start 35:

- Found in 101 of 246 (41.1%) of genes in pham
- No Manual Annotations of this start.
- Called 1.0% of time when present
- Phage (with cluster) where this start called: BluSpix_6 (A1),

Start 40:

- Found in 246 of 246 (100.0%) of genes in pham
- Manual Annotations of this start: 2 of 228
- Called 0.8% of time when present
- Phage (with cluster) where this start called: Kostya_29 (E), Parliament_5 (A1),

Summary by clusters:

There are 4 clusters represented in this pham: A1, F1, E, O,

Info for manual annotations of cluster A1:

- Start number 1 was manually annotated 165 times for cluster A1.
- Start number 2 was manually annotated 17 times for cluster A1.
- Start number 3 was manually annotated 14 times for cluster A1.
- Start number 22 was manually annotated 1 time for cluster A1.
- Start number 40 was manually annotated 1 time for cluster A1.

Info for manual annotations of cluster E:

- Start number 12 was manually annotated 1 time for cluster E.
- Start number 28 was manually annotated 1 time for cluster E.
- Start number 40 was manually annotated 1 time for cluster E.

Info for manual annotations of cluster F1:

- Start number 25 was manually annotated 1 time for cluster F1.

Info for manual annotations of cluster O:

- Start number 2 was manually annotated 26 times for cluster O.

Gene Information:

Gene: A6_33 Start: 27619, Stop: 28305, Start Num: 2

Candidate Starts for A6_33:

(Start: 2 @27619 has 43 MA's), (6, 27655), (Start: 28 @27802 has 1 MA's), (Start: 40 @27871 has 2 MA's), (41, 27880), (55, 27982), (56, 27994), (59, 28006), (69, 28096), (71, 28114), (82, 28177), (89, 28222), (90, 28231), (95, 28294),

Gene: A6_04 Start: 2921, Stop: 3631, Start Num: 1

Candidate Starts for A6_04:

(Start: 1 @2921 has 165 MA's), (Start: 3 @2930 has 14 MA's), (19, 3053), (24, 3083), (Start: 40 @3185 has 2 MA's), (41, 3194), (43, 3215), (52, 3287), (75, 3434), (81, 3467), (87, 3527), (96, 3614),

Gene: AFIS_6 Start: 3288, Stop: 3989, Start Num: 1

Candidate Starts for AFIS_6:

(Start: 1 @3288 has 165 MA's), (Start: 3 @3297 has 14 MA's), (19, 3420), (24, 3450), (31, 3492), (35, 3522), (Start: 40 @3552 has 2 MA's), (52, 3648), (58, 3681), (68, 3768), (81, 3828), (83, 3870), (96, 3972),

Gene: Abbyshoes_7 Start: 3368, Stop: 4078, Start Num: 1

Candidate Starts for Abbyshoes_7:

(Start: 1 @3368 has 165 MA's), (Start: 3 @3377 has 14 MA's), (19, 3500), (24, 3530), (Start: 40 @3632 has 2 MA's), (41, 3641), (43, 3662), (52, 3734), (75, 3881), (81, 3914), (87, 3974), (96, 4061),

Gene: Abrogate_70 Start: 4028, Stop: 4720, Start Num: 3

Candidate Starts for Abrogate_70:

(Start: 1 @4019 has 165 MA's), (Start: 3 @4028 has 14 MA's), (19, 4151), (21, 4160), (24, 4181), (31, 4223), (35, 4253), (Start: 40 @4283 has 2 MA's), (52, 4379), (58, 4412), (68, 4499), (81, 4559), (83, 4601),

Gene: Acme_7 Start: 3201, Stop: 3902, Start Num: 1

Candidate Starts for Acme_7:

(Start: 1 @3201 has 165 MA's), (Start: 3 @3210 has 14 MA's), (19, 3333), (21, 3342), (24, 3363), (31, 3405), (35, 3435), (Start: 40 @3465 has 2 MA's), (52, 3561), (58, 3594), (68, 3681), (81, 3741),

Gene: Adahisdi_7 Start: 3595, Stop: 4296, Start Num: 1

Candidate Starts for Adahisdi_7:

(Start: 1 @3595 has 165 MA's), (Start: 3 @3604 has 14 MA's), (19, 3727), (21, 3736), (24, 3757), (31, 3799), (35, 3829), (Start: 40 @3859 has 2 MA's), (52, 3955), (58, 3988), (68, 4075), (96, 4279),

Gene: Aeneas_7 Start: 3480, Stop: 4181, Start Num: 1

Candidate Starts for Aeneas_7:

(Start: 1 @3480 has 165 MA's), (Start: 3 @3489 has 14 MA's), (19, 3612), (21, 3621), (24, 3642), (31, 3684), (35, 3714), (Start: 40 @3744 has 2 MA's), (52, 3840), (58, 3873), (68, 3960), (81, 4020), (83, 4062), (96, 4164),

Gene: Agaliana_6 Start: 3404, Stop: 4105, Start Num: 1

Candidate Starts for Agaliana_6:

(Start: 1 @3404 has 165 MA's), (Start: 3 @3413 has 14 MA's), (19, 3536), (21, 3545), (24, 3566), (31, 3608), (35, 3638), (Start: 40 @3668 has 2 MA's), (52, 3764), (58, 3797), (68, 3884), (83, 3986), (96, 4088),

Gene: Ajay_6 Start: 3432, Stop: 4136, Start Num: 1

Candidate Starts for Ajay_6:

(Start: 1 @3432 has 165 MA's), (Start: 3 @3441 has 14 MA's), (20, 3570), (31, 3636), (Start: 40 @3696 has 2 MA's), (48, 3753), (64, 3873), (94, 4107),

Gene: Alkhayr_62 Start: 41056, Stop: 41742, Start Num: 2

Candidate Starts for Alkhayr_62:

(Start: 2 @41056 has 43 MA's), (5, 41083), (6, 41092), (7, 41110), (8, 41122), (10, 41143), (Start: 28 @41236 has 1 MA's), (30, 41245), (Start: 40 @41302 has 2 MA's), (42, 41314), (47, 41356), (60, 41461), (67, 41515), (80, 41584), (82, 41611), (88, 41653), (89, 41656), (92, 41683), (96, 41734),

Gene: Alsfro_10 Start: 4116, Stop: 4820, Start Num: 1

Candidate Starts for Alsfro_10:

(Start: 1 @4116 has 165 MA's), (Start: 3 @4125 has 14 MA's), (20, 4254), (31, 4320), (Start: 40 @4380 has 2 MA's), (48, 4437), (64, 4557), (94, 4791),

Gene: Altman_7 Start: 3938, Stop: 4639, Start Num: 1

Candidate Starts for Altman_7:

(Start: 1 @3938 has 165 MA's), (Start: 3 @3947 has 14 MA's), (19, 4070), (21, 4079), (24, 4100), (31, 4142), (35, 4172), (Start: 40 @4202 has 2 MA's), (52, 4298), (58, 4331), (68, 4418), (96, 4622),

Gene: Anglerfish_6 Start: 2963, Stop: 3673, Start Num: 1

Candidate Starts for Anglerfish_6:

(Start: 1 @2963 has 165 MA's), (Start: 3 @2972 has 14 MA's), (19, 3095), (24, 3125), (Start: 40 @3227 has 2 MA's), (41, 3236), (43, 3257), (52, 3329), (75, 3476), (81, 3509), (87, 3569), (96, 3656),

Gene: Applejack_6 Start: 3338, Stop: 4039, Start Num: 1

Candidate Starts for Applejack_6:

(Start: 1 @3338 has 165 MA's), (Start: 3 @3347 has 14 MA's), (19, 3470), (21, 3479), (24, 3500), (31, 3542), (35, 3572), (Start: 40 @3602 has 2 MA's), (52, 3698), (58, 3731), (68, 3818), (81, 3878), (83, 3920), (96, 4022),

Gene: Arcanine_6 Start: 2929, Stop: 3639, Start Num: 1

Candidate Starts for Arcanine_6:

(Start: 1 @2929 has 165 MA's), (Start: 3 @2938 has 14 MA's), (19, 3061), (24, 3091), (Start: 40 @3193 has 2 MA's), (41, 3202), (43, 3223), (52, 3295), (75, 3442), (81, 3475), (87, 3535), (96, 3622),

Gene: Arlo_5 Start: 2963, Stop: 3664, Start Num: 1

Candidate Starts for Arlo_5:

(Start: 1 @2963 has 165 MA's), (Start: 3 @2972 has 14 MA's), (19, 3095), (21, 3104), (24, 3125), (31, 3167), (35, 3197), (Start: 40 @3227 has 2 MA's), (52, 3323), (58, 3356), (68, 3443), (83, 3545), (96, 3647),

Gene: Ashballe_4 Start: 2832, Stop: 3542, Start Num: 1

Candidate Starts for Ashballe_4:

(Start: 1 @2832 has 165 MA's), (Start: 3 @2841 has 14 MA's), (19, 2964), (24, 2994), (Start: 40 @3096 has 2 MA's), (41, 3105), (43, 3126), (52, 3198), (75, 3345), (81, 3378), (87, 3438), (96, 3525),

Gene: Ashwin_66 Start: 41826, Stop: 42512, Start Num: 2

Candidate Starts for Ashwin_66:

(Start: 2 @41826 has 43 MA's), (5, 41853), (6, 41862), (7, 41880), (8, 41892), (10, 41913), (18, 41943), (Start: 28 @42006 has 1 MA's), (30, 42015), (Start: 40 @42072 has 2 MA's), (42, 42084), (47, 42126), (60, 42231), (67, 42285), (80, 42354), (82, 42381), (88, 42423), (89, 42426), (92, 42453), (96, 42504),

Gene: Atkinbua_6 Start: 3001, Stop: 3690, Start Num: 1

Candidate Starts for Atkinbua_6:

(Start: 1 @3001 has 165 MA's), (Start: 3 @3010 has 14 MA's), (Start: 28 @3193 has 1 MA's), (Start: 40 @3262 has 2 MA's), (48, 3319), (82, 3565),

Gene: BK1_33 Start: 27619, Stop: 28305, Start Num: 2

Candidate Starts for BK1_33:

(Start: 2 @27619 has 43 MA's), (6, 27655), (Start: 28 @27802 has 1 MA's), (Start: 40 @27871 has 2 MA's), (41, 27880), (55, 27982), (56, 27994), (59, 28006), (69, 28096), (71, 28114), (82, 28177), (89, 28222), (90, 28231), (95, 28294),

Gene: BK1_04 Start: 2921, Stop: 3631, Start Num: 1

Candidate Starts for BK1_04:

(Start: 1 @2921 has 165 MA's), (Start: 3 @2930 has 14 MA's), (19, 3053), (24, 3083), (Start: 40 @3185 has 2 MA's), (41, 3194), (43, 3215), (52, 3287), (75, 3434), (81, 3467), (87, 3527), (96, 3614),

Gene: BPBiebs31_7 Start: 3602, Stop: 4303, Start Num: 1

Candidate Starts for BPBiebs31_7:

(Start: 1 @3602 has 165 MA's), (Start: 3 @3611 has 14 MA's), (19, 3734), (21, 3743), (24, 3764), (31, 3806), (35, 3836), (Start: 40 @3866 has 2 MA's), (52, 3962), (58, 3995), (68, 4082), (81, 4142), (83, 4184), (96, 4286),

Gene: BaconJack_7 Start: 3186, Stop: 3887, Start Num: 1

Candidate Starts for BaconJack_7:

(Start: 1 @3186 has 165 MA's), (Start: 3 @3195 has 14 MA's), (19, 3318), (21, 3327), (24, 3348), (31, 3390), (35, 3420), (Start: 40 @3450 has 2 MA's), (52, 3546), (58, 3579), (68, 3666), (83, 3768), (96, 3870),

Gene: Barriga_6 Start: 3218, Stop: 3919, Start Num: 1

Candidate Starts for Barriga_6:

(Start: 1 @3218 has 165 MA's), (Start: 3 @3227 has 14 MA's), (19, 3350), (24, 3380), (31, 3422), (35, 3452), (Start: 40 @3482 has 2 MA's), (52, 3578), (58, 3611), (68, 3698), (81, 3758), (83, 3800), (96, 3902),

Gene: BeesKnees_6 Start: 3082, Stop: 3771, Start Num: 1

Candidate Starts for BeesKnees_6:

(Start: 1 @3082 has 165 MA's), (Start: 3 @3091 has 14 MA's), (Start: 28 @3274 has 1 MA's), (29, 3280), (Start: 40 @3343 has 2 MA's), (48, 3400), (82, 3646),

Gene: Bethlehem_6 Start: 3609, Stop: 4310, Start Num: 1

Candidate Starts for Bethlehem_6:

(Start: 1 @3609 has 165 MA's), (Start: 3 @3618 has 14 MA's), (19, 3741), (21, 3750), (24, 3771), (31, 3813), (35, 3843), (Start: 40 @3873 has 2 MA's), (52, 3969), (58, 4002), (68, 4089), (81, 4149), (96, 4293),

Gene: BigMau_7 Start: 3086, Stop: 3775, Start Num: 1

Candidate Starts for BigMau_7:

(Start: 1 @3086 has 165 MA's), (Start: 3 @3095 has 14 MA's), (13, 3188), (17, 3209), (Start: 28 @3278 has 1 MA's), (31, 3290), (39, 3341), (Start: 40 @3347 has 2 MA's), (41, 3356), (46, 3398), (57, 3473), (60, 3503), (62, 3512), (68, 3563), (70, 3581), (74, 3593), (82, 3650), (90, 3704), (94, 3755),

Gene: BigPaolini_7 Start: 3995, Stop: 4696, Start Num: 1

Candidate Starts for BigPaolini_7:

(Start: 1 @3995 has 165 MA's), (Start: 3 @4004 has 14 MA's), (19, 4127), (21, 4136), (24, 4157), (31, 4199), (35, 4229), (Start: 40 @4259 has 2 MA's), (52, 4355), (58, 4388), (68, 4475), (81, 4535), (83, 4577), (96, 4679),

Gene: Bigfoot_34 Start: 27850, Stop: 28536, Start Num: 2

Candidate Starts for Bigfoot_34:

(Start: 2 @27850 has 43 MA's), (6, 27886), (Start: 28 @28033 has 1 MA's), (Start: 40 @28102 has 2 MA's), (41, 28111), (55, 28213), (56, 28225), (59, 28237), (69, 28327), (71, 28345), (82, 28408), (89, 28453), (90, 28462), (95, 28525),

Gene: Bigfoot_5 Start: 3094, Stop: 3795, Start Num: 1

Candidate Starts for Bigfoot_5:

(Start: 1 @3094 has 165 MA's), (Start: 3 @3103 has 14 MA's), (19, 3226), (21, 3235), (24, 3256), (31, 3298), (35, 3328), (Start: 40 @3358 has 2 MA's), (52, 3454), (58, 3487), (68, 3574), (96, 3778),

Gene: BillKnuckles_6 Start: 3460, Stop: 4170, Start Num: 1

Candidate Starts for BillKnuckles_6:

(Start: 1 @3460 has 165 MA's), (Start: 3 @3469 has 14 MA's), (19, 3592), (24, 3622), (Start: 40 @3724 has 2 MA's), (41, 3733), (43, 3754), (52, 3826), (75, 3973), (81, 4006), (87, 4066), (96, 4153),

Gene: Bircsak_6 Start: 3571, Stop: 4260, Start Num: 1

Candidate Starts for Bircsak_6:

(Start: 1 @3571 has 165 MA's), (Start: 3 @3580 has 14 MA's), (Start: 40 @3832 has 2 MA's), (46, 3883), (82, 4135),

Gene: Blessica_65 Start: 41655, Stop: 42341, Start Num: 2

Candidate Starts for Blessica_65:

(Start: 2 @41655 has 43 MA's), (5, 41682), (6, 41691), (7, 41709), (8, 41721), (10, 41742), (Start: 28 @41835 has 1 MA's), (30, 41844), (Start: 40 @41901 has 2 MA's), (42, 41913), (47, 41955), (60, 42060), (67, 42114), (80, 42183), (82, 42210), (88, 42252), (89, 42255), (92, 42282), (96, 42333),

Gene: BluSpix_6 Start: 3595, Stop: 4062, Start Num: 35

Candidate Starts for BluSpix_6:

(31, 3565), (35, 3595), (Start: 40 @3625 has 2 MA's), (52, 3721), (58, 3754), (68, 3841), (81, 3901), (83, 3943),

Gene: Blue_6 Start: 3463, Stop: 4164, Start Num: 1

Candidate Starts for Blue_6:

(Start: 1 @3463 has 165 MA's), (Start: 3 @3472 has 14 MA's), (4, 3484), (19, 3595), (21, 3604), (24, 3625), (31, 3667), (35, 3697), (Start: 40 @3727 has 2 MA's), (52, 3823), (58, 3856), (68, 3943), (81, 4003), (83, 4045),

Gene: Bob3_5 Start: 2926, Stop: 3615, Start Num: 1

Candidate Starts for Bob3_5:

(Start: 1 @2926 has 165 MA's), (Start: 3 @2935 has 14 MA's), (13, 3028), (17, 3049), (Start: 28 @3118 has 1 MA's), (31, 3130), (39, 3181), (Start: 40 @3187 has 2 MA's), (41, 3196), (46, 3238), (57, 3313), (60, 3343), (62, 3352), (68, 3403), (70, 3421), (74, 3433), (82, 3490), (90, 3544), (94, 3595),

Gene: Bones_6 Start: 3119, Stop: 3808, Start Num: 1

Candidate Starts for Bones_6:

(Start: 1 @3119 has 165 MA's), (Start: 3 @3128 has 14 MA's), (11, 3215), (Start: 28 @3311 has 1 MA's), (Start: 40 @3380 has 2 MA's), (60, 3536),

Gene: Bora_62 Start: 41012, Stop: 41698, Start Num: 2

Candidate Starts for Bora_62:

(Start: 2 @41012 has 43 MA's), (5, 41039), (6, 41048), (7, 41066), (8, 41078), (10, 41099), (Start: 28 @41192 has 1 MA's), (30, 41201), (Start: 40 @41258 has 2 MA's), (42, 41270), (47, 41312), (60, 41417), (67, 41471), (80, 41540), (82, 41567), (88, 41609), (89, 41612), (92, 41639), (96, 41690),

Gene: Briton15_7 Start: 3137, Stop: 3826, Start Num: 1

Candidate Starts for Briton15_7:

(Start: 1 @3137 has 165 MA's), (Start: 3 @3146 has 14 MA's), (Start: 40 @3398 has 2 MA's), (46, 3449), (82, 3701),

Gene: Bruns_4 Start: 2779, Stop: 3474, Start Num: 3

Candidate Starts for Bruns_4:

(Start: 1 @2770 has 165 MA's), (Start: 3 @2779 has 14 MA's), (19, 2902), (31, 2974), (38, 3019), (Start: 40 @3034 has 2 MA's), (41, 3043), (52, 3133), (81, 3313), (96, 3457),

Gene: Burton_6 Start: 2987, Stop: 3676, Start Num: 1

Candidate Starts for Burton_6:

(Start: 1 @2987 has 165 MA's), (Start: 3 @2996 has 14 MA's), (13, 3089), (17, 3110), (Start: 28 @3179 has 1 MA's), (31, 3191), (39, 3242), (Start: 40 @3248 has 2 MA's), (41, 3257), (46, 3299), (57, 3374), (60, 3404), (62, 3413), (68, 3464), (70, 3482), (74, 3494), (82, 3551), (90, 3605), (94, 3656),

Gene: Buttons_6 Start: 2980, Stop: 3681, Start Num: 1

Candidate Starts for Buttons_6:

(Start: 1 @2980 has 165 MA's), (Start: 3 @2989 has 14 MA's), (19, 3112), (21, 3121), (24, 3142), (31, 3184), (37, 3223), (Start: 40 @3244 has 2 MA's), (52, 3340), (58, 3373), (68, 3460), (81, 3520), (83, 3562), (93, 3631), (96, 3664),

Gene: Bxb1_5 Start: 3371, Stop: 4081, Start Num: 1

Candidate Starts for Bxb1_5:

(Start: 1 @3371 has 165 MA's), (Start: 3 @3380 has 14 MA's), (19, 3503), (24, 3533), (Start: 40 @3635 has 2 MA's), (41, 3644), (43, 3665), (52, 3737), (75, 3884), (81, 3917), (87, 3977), (96, 4064),

Gene: CactusRose_5 Start: 3093, Stop: 3794, Start Num: 1

Candidate Starts for CactusRose_5:

(Start: 1 @3093 has 165 MA's), (Start: 3 @3102 has 14 MA's), (19, 3225), (21, 3234), (24, 3255), (31, 3297), (35, 3327), (Start: 40 @3357 has 2 MA's), (52, 3453), (58, 3486), (68, 3573), (96, 3777),

Gene: CactusRose_34 Start: 27944, Stop: 28630, Start Num: 2

Candidate Starts for CactusRose_34:

(Start: 2 @27944 has 43 MA's), (6, 27980), (Start: 28 @28127 has 1 MA's), (Start: 40 @28196 has 2 MA's), (41, 28205), (55, 28307), (56, 28319), (59, 28331), (69, 28421), (71, 28439), (82, 28502), (89, 28547), (90, 28556),

Gene: Carlyle_8 Start: 3934, Stop: 4644, Start Num: 1

Candidate Starts for Carlyle_8:

(Start: 1 @3934 has 165 MA's), (Start: 3 @3943 has 14 MA's), (19, 4066), (24, 4096), (Start: 40 @4198 has 2 MA's), (41, 4207), (43, 4228), (52, 4300), (75, 4447), (81, 4480), (87, 4540), (96, 4627),

Gene: Catdawg_64 Start: 41391, Stop: 42077, Start Num: 2

Candidate Starts for Catdawg_64:

(Start: 2 @41391 has 43 MA's), (5, 41418), (6, 41427), (7, 41445), (8, 41457), (10, 41478), (Start: 28 @41571 has 1 MA's), (30, 41580), (Start: 40 @41637 has 2 MA's), (42, 41649), (47, 41691), (60, 41796), (67, 41850), (80, 41919), (82, 41946), (88, 41988), (89, 41991), (92, 42018), (96, 42069),

Gene: Chanagan_5 Start: 2952, Stop: 3641, Start Num: 1

Candidate Starts for Chanagan_5:

(Start: 1 @2952 has 165 MA's), (Start: 3 @2961 has 14 MA's), (11, 3048), (Start: 28 @3144 has 1 MA's), (Start: 40 @3213 has 2 MA's), (48, 3270), (60, 3369),

Gene: ChosenOne_28 Start: 27173, Stop: 27688, Start Num: 28

Candidate Starts for ChosenOne_28:

(Start: 28 @27173 has 1 MA's), (34, 27203), (Start: 40 @27242 has 2 MA's), (41, 27251), (65, 27422), (72, 27488), (74, 27494), (82, 27551), (87, 27593), (91, 27623),

Gene: Ciao_6 Start: 3325, Stop: 4026, Start Num: 1

Candidate Starts for Ciao_6:

(Start: 1 @3325 has 165 MA's), (Start: 3 @3334 has 14 MA's), (19, 3457), (21, 3466), (24, 3487), (31, 3529), (35, 3559), (Start: 40 @3589 has 2 MA's), (52, 3685), (58, 3718), (68, 3805), (83, 3907), (96, 4009),

Gene: ConceptII_6 Start: 3574, Stop: 4275, Start Num: 1

Candidate Starts for ConceptII_6:

(Start: 1 @3574 has 165 MA's), (Start: 3 @3583 has 14 MA's), (19, 3706), (21, 3715), (24, 3736), (31, 3778), (35, 3808), (Start: 40 @3838 has 2 MA's), (52, 3934), (58, 3967), (68, 4054), (96, 4258),

Gene: Corndog_67 Start: 42385, Stop: 43071, Start Num: 2

Candidate Starts for Corndog_67:

(Start: 2 @42385 has 43 MA's), (5, 42412), (6, 42421), (7, 42439), (8, 42451), (10, 42472), (Start: 28 @42565 has 1 MA's), (30, 42574), (Start: 40 @42631 has 2 MA's), (42, 42643), (45, 42673), (47, 42685), (53, 42733), (60, 42790), (67, 42844), (80, 42913), (82, 42940), (88, 42982), (89, 42985), (92, 43012), (96, 43063),

Gene: Corvo_6 Start: 3520, Stop: 4221, Start Num: 1

Candidate Starts for Corvo_6:

(Start: 1 @3520 has 165 MA's), (Start: 3 @3529 has 14 MA's), (19, 3652), (21, 3661), (24, 3682), (31, 3724), (35, 3754), (Start: 40 @3784 has 2 MA's), (52, 3880), (58, 3913), (68, 4000), (83, 4102), (96, 4204),

Gene: DD5_6 Start: 3502, Stop: 4212, Start Num: 1

Candidate Starts for DD5_6:

(Start: 1 @3502 has 165 MA's), (Start: 3 @3511 has 14 MA's), (19, 3634), (24, 3664), (Start: 40 @3766 has 2 MA's), (41, 3775), (43, 3796), (52, 3868), (75, 4015), (81, 4048), (87, 4108), (96, 4195),

Gene: Daikon_27 Start: 27616, Stop: 28206, Start Num: 12

Candidate Starts for Daikon_27:

(Start: 12 @27616 has 1 MA's), (Start: 28 @27712 has 1 MA's), (29, 27718), (Start: 40 @27781 has 2 MA's), (48, 27838), (52, 27880), (57, 27907), (72, 28021), (87, 28123),

Gene: Dexes_7 Start: 3958, Stop: 4659, Start Num: 1

Candidate Starts for Dexes_7:

(Start: 1 @3958 has 165 MA's), (Start: 3 @3967 has 14 MA's), (19, 4090), (21, 4099), (24, 4120), (31, 4162), (35, 4192), (Start: 40 @4222 has 2 MA's), (52, 4318), (58, 4351), (68, 4438), (81, 4498), (83, 4540), (96, 4642),

Gene: Dexes_36 Start: 28737, Stop: 29423, Start Num: 2

Candidate Starts for Dexes_36:

(Start: 2 @28737 has 43 MA's), (6, 28773), (Start: 28 @28920 has 1 MA's), (Start: 40 @28989 has 2 MA's), (41, 28998), (55, 29100), (56, 29112), (59, 29124), (69, 29214), (71, 29232), (82, 29295), (90, 29349),

Gene: Doom_6 Start: 3605, Stop: 4297, Start Num: 3

Candidate Starts for Doom_6:

(Start: 1 @3596 has 165 MA's), (Start: 3 @3605 has 14 MA's), (19, 3728), (21, 3737), (24, 3758), (31, 3800), (35, 3830), (Start: 40 @3860 has 2 MA's), (52, 3956), (58, 3989), (68, 4076), (81, 4136), (83, 4178), (96, 4280),

Gene: DreamCatcher_7 Start: 3730, Stop: 4419, Start Num: 1

Candidate Starts for DreamCatcher_7:

(Start: 1 @3730 has 165 MA's), (Start: 3 @3739 has 14 MA's), (Start: 40 @3991 has 2 MA's), (46, 4042), (82, 4294),

Gene: Dulcie_5 Start: 3031, Stop: 3720, Start Num: 1

Candidate Starts for Dulcie_5:

(Start: 1 @3031 has 165 MA's), (Start: 28 @3223 has 1 MA's), (Start: 40 @3292 has 2 MA's), (48, 3349), (60, 3448),

Gene: Dussy_7 Start: 3368, Stop: 4078, Start Num: 1

Candidate Starts for Dussy_7:

(Start: 1 @3368 has 165 MA's), (Start: 3 @3377 has 14 MA's), (19, 3500), (24, 3530), (Start: 40 @3632 has 2 MA's), (41, 3641), (43, 3662), (52, 3734), (75, 3881), (81, 3914), (87, 3974), (96, 4061),

Gene: Dylan_64 Start: 41438, Stop: 42124, Start Num: 2

Candidate Starts for Dylan_64:

(Start: 2 @41438 has 43 MA's), (5, 41465), (6, 41474), (7, 41492), (8, 41504), (10, 41525), (18, 41555), (Start: 28 @41618 has 1 MA's), (30, 41627), (Start: 40 @41684 has 2 MA's), (42, 41696), (47,

41738), (60, 41843), (67, 41897), (80, 41966), (82, 41993), (88, 42035), (89, 42038), (92, 42065), (96, 42116),

Gene: Dynamix_6 Start: 3084, Stop: 3773, Start Num: 1

Candidate Starts for Dynamix_6:

(Start: 1 @3084 has 165 MA's), (Start: 3 @3093 has 14 MA's), (Start: 40 @3345 has 2 MA's), (48, 3402),

Gene: Edtherson_6 Start: 3299, Stop: 3991, Start Num: 3

Candidate Starts for Edtherson_6:

(Start: 1 @3290 has 165 MA's), (Start: 3 @3299 has 14 MA's), (19, 3422), (21, 3431), (24, 3452), (31, 3494), (Start: 40 @3554 has 2 MA's), (52, 3650), (58, 3683), (68, 3770), (81, 3830), (83, 3872),

Gene: Espresso_6 Start: 3449, Stop: 4150, Start Num: 1

Candidate Starts for Espresso_6:

(Start: 1 @3449 has 165 MA's), (Start: 3 @3458 has 14 MA's), (19, 3581), (21, 3590), (24, 3611), (31, 3653), (35, 3683), (Start: 40 @3713 has 2 MA's), (52, 3809), (58, 3842), (68, 3929), (83, 4031), (96, 4133),

Gene: Euphoria_6 Start: 3347, Stop: 4048, Start Num: 1

Candidate Starts for Euphoria_6:

(Start: 1 @3347 has 165 MA's), (Start: 3 @3356 has 14 MA's), (19, 3479), (21, 3488), (24, 3509), (31, 3551), (35, 3581), (Start: 40 @3611 has 2 MA's), (52, 3707), (58, 3740), (68, 3827), (81, 3887), (83, 3929), (96, 4031),

Gene: Eyeball_6 Start: 3127, Stop: 3816, Start Num: 1

Candidate Starts for Eyeball_6:

(Start: 1 @3127 has 165 MA's), (Start: 3 @3136 has 14 MA's), (11, 3223), (Start: 28 @3319 has 1 MA's), (Start: 40 @3388 has 2 MA's), (48, 3445), (60, 3544),

Gene: Fajezeel_7 Start: 3169, Stop: 3870, Start Num: 1

Candidate Starts for Fajezeel_7:

(Start: 1 @3169 has 165 MA's), (Start: 3 @3178 has 14 MA's), (19, 3301), (21, 3310), (24, 3331), (31, 3373), (35, 3403), (Start: 40 @3433 has 2 MA's), (52, 3529), (58, 3562), (68, 3649), (83, 3751), (96, 3853),

Gene: Familton_65 Start: 41348, Stop: 42034, Start Num: 2

Candidate Starts for Familton_65:

(Start: 2 @41348 has 43 MA's), (5, 41375), (6, 41384), (7, 41402), (8, 41414), (10, 41435), (Start: 28 @41528 has 1 MA's), (30, 41537), (Start: 40 @41594 has 2 MA's), (42, 41606), (47, 41648), (60, 41753), (67, 41807), (80, 41876), (82, 41903), (88, 41945), (89, 41948), (92, 41975), (96, 42026),

Gene: Fascinus_5 Start: 3104, Stop: 3796, Start Num: 3

Candidate Starts for Fascinus_5:

(Start: 1 @3095 has 165 MA's), (Start: 3 @3104 has 14 MA's), (19, 3227), (21, 3236), (24, 3257), (31, 3299), (35, 3329), (Start: 40 @3359 has 2 MA's), (52, 3455), (58, 3488), (68, 3575), (96, 3779),

Gene: Fascinus_35 Start: 28001, Stop: 28687, Start Num: 2

Candidate Starts for Fascinus_35:

(Start: 2 @28001 has 43 MA's), (6, 28037), (Start: 28 @28184 has 1 MA's), (Start: 40 @28253 has 2 MA's), (41, 28262), (55, 28364), (56, 28376), (59, 28388), (69, 28478), (71, 28496), (82, 28559), (89, 28604), (90, 28613), (95, 28676),

Gene: Fenn_6 Start: 3315, Stop: 4004, Start Num: 1

Candidate Starts for Fenn_6:

(Start: 1 @3315 has 165 MA's), (Start: 3 @3324 has 14 MA's), (13, 3417), (17, 3438), (Start: 28 @3507 has 1 MA's), (31, 3519), (39, 3570), (Start: 40 @3576 has 2 MA's), (41, 3585), (46, 3627), (57, 3702), (60, 3732), (62, 3741), (68, 3792), (70, 3810), (74, 3822), (82, 3879), (90, 3933), (94, 3984),

Gene: Firecracker_65 Start: 41538, Stop: 42224, Start Num: 2

Candidate Starts for Firecracker_65:

(Start: 2 @41538 has 43 MA's), (5, 41565), (6, 41574), (7, 41592), (8, 41604), (10, 41625), (18, 41655), (Start: 28 @41718 has 1 MA's), (30, 41727), (Start: 40 @41784 has 2 MA's), (42, 41796), (47, 41838), (60, 41943), (67, 41997), (80, 42066), (82, 42093), (88, 42135), (89, 42138), (92, 42165), (96, 42216),

Gene: Forsytheast_5 Start: 3359, Stop: 4060, Start Num: 1

Candidate Starts for Forsytheast_5:

(Start: 1 @3359 has 165 MA's), (Start: 3 @3368 has 14 MA's), (19, 3491), (21, 3500), (24, 3521), (31, 3563), (35, 3593), (Start: 40 @3623 has 2 MA's), (52, 3719), (58, 3752), (68, 3839), (81, 3899), (83, 3941), (96, 4043),

Gene: FoulBall_61 Start: 41342, Stop: 42028, Start Num: 2

Candidate Starts for FoulBall_61:

(Start: 2 @41342 has 43 MA's), (5, 41369), (6, 41378), (7, 41396), (8, 41408), (10, 41429), (Start: 28 @41522 has 1 MA's), (30, 41531), (Start: 40 @41588 has 2 MA's), (42, 41600), (47, 41642), (53, 41690), (60, 41747), (67, 41801), (80, 41870), (82, 41897), (88, 41939), (89, 41942), (92, 41969), (96, 42020),

Gene: Francis47_6 Start: 3617, Stop: 4318, Start Num: 1

Candidate Starts for Francis47_6:

(Start: 1 @3617 has 165 MA's), (Start: 3 @3626 has 14 MA's), (19, 3749), (21, 3758), (24, 3779), (31, 3821), (35, 3851), (Start: 40 @3881 has 2 MA's), (52, 3977), (58, 4010), (68, 4097), (96, 4301),

Gene: Froghopper_7 Start: 3029, Stop: 3739, Start Num: 1

Candidate Starts for Froghopper_7:

(Start: 1 @3029 has 165 MA's), (Start: 3 @3038 has 14 MA's), (19, 3161), (24, 3191), (Start: 40 @3293 has 2 MA's), (41, 3302), (43, 3323), (52, 3395), (75, 3542), (81, 3575), (87, 3635), (96, 3722),

Gene: Froghopper_36 Start: 28015, Stop: 28701, Start Num: 2

Candidate Starts for Froghopper_36:

(Start: 2 @28015 has 43 MA's), (6, 28051), (Start: 28 @28198 has 1 MA's), (Start: 40 @28267 has 2 MA's), (41, 28276), (55, 28378), (56, 28390), (59, 28402), (69, 28492), (71, 28510), (82, 28573), (89, 28618), (90, 28627),

Gene: Fushigi_6 Start: 3249, Stop: 3959, Start Num: 1

Candidate Starts for Fushigi_6:

(Start: 1 @3249 has 165 MA's), (Start: 3 @3258 has 14 MA's), (19, 3381), (24, 3411), (Start: 40 @3513 has 2 MA's), (41, 3522), (43, 3543), (52, 3615), (75, 3762), (81, 3795), (87, 3855), (96, 3942),

Gene: GageAP_37 Start: 28786, Stop: 29472, Start Num: 2

Candidate Starts for GageAP_37:

(Start: 2 @28786 has 43 MA's), (6, 28822), (Start: 28 @28969 has 1 MA's), (Start: 40 @29038 has 2 MA's), (41, 29047), (55, 29149), (56, 29161), (59, 29173), (69, 29263), (71, 29281), (82, 29344), (89, 29389), (90, 29398),

Gene: GageAP_7 Start: 3583, Stop: 4284, Start Num: 1

Candidate Starts for GageAP_7:

(Start: 1 @3583 has 165 MA's), (Start: 3 @3592 has 14 MA's), (19, 3715), (21, 3724), (24, 3745), (31, 3787), (35, 3817), (Start: 40 @3847 has 2 MA's), (52, 3943), (58, 3976), (68, 4063), (96, 4267),

Gene: Gandalf20_7 Start: 3468, Stop: 4154, Start Num: 3

Candidate Starts for Gandalf20_7:

(Start: 1 @3459 has 165 MA's), (Start: 3 @3468 has 14 MA's), (39, 3714), (Start: 40 @3720 has 2 MA's), (68, 3939), (74, 3969), (90, 4080),

Gene: Graduation_7 Start: 3446, Stop: 4141, Start Num: 1

Candidate Starts for Graduation_7:

(Start: 1 @3446 has 165 MA's), (39, 3701), (Start: 40 @3707 has 2 MA's), (68, 3926), (74, 3956), (90, 4067),

Gene: GrecoEtereo_7 Start: 3653, Stop: 4363, Start Num: 1

Candidate Starts for GrecoEtereo_7:

(Start: 1 @3653 has 165 MA's), (Start: 3 @3662 has 14 MA's), (19, 3785), (24, 3815), (Start: 40 @3917 has 2 MA's), (41, 3926), (43, 3947), (52, 4019), (75, 4166), (81, 4199), (87, 4259), (96, 4346),

Gene: Greg_7 Start: 3169, Stop: 3870, Start Num: 1

Candidate Starts for Greg_7:

(Start: 1 @3169 has 165 MA's), (Start: 3 @3178 has 14 MA's), (19, 3301), (21, 3310), (24, 3331), (31, 3373), (35, 3403), (Start: 40 @3433 has 2 MA's), (52, 3529), (58, 3562), (68, 3649), (83, 3751), (96, 3853),

Gene: Gwendoluna_6 Start: 3451, Stop: 4161, Start Num: 1

Candidate Starts for Gwendoluna_6:

(Start: 1 @3451 has 165 MA's), (Start: 3 @3460 has 14 MA's), (19, 3583), (24, 3613), (Start: 40 @3715 has 2 MA's), (41, 3724), (43, 3745), (52, 3817), (75, 3964), (81, 3997), (87, 4057), (96, 4144),

Gene: Gyzlar_7 Start: 3788, Stop: 4498, Start Num: 1

Candidate Starts for Gyzlar_7:

(Start: 1 @3788 has 165 MA's), (Start: 3 @3797 has 14 MA's), (19, 3920), (24, 3950), (Start: 40 @4052 has 2 MA's), (41, 4061), (43, 4082), (52, 4154), (75, 4301), (81, 4334), (87, 4394), (96, 4481),

Gene: Hami1_6 Start: 3357, Stop: 4058, Start Num: 1

Candidate Starts for Hami1_6:

(Start: 1 @3357 has 165 MA's), (Start: 3 @3366 has 14 MA's), (19, 3489), (21, 3498), (24, 3519), (31, 3561), (35, 3591), (Start: 40 @3621 has 2 MA's), (52, 3717), (58, 3750), (68, 3837), (81, 3897), (83, 3939), (96, 4041),

Gene: HanShotFirst_35 Start: 27990, Stop: 28676, Start Num: 2

Candidate Starts for HanShotFirst_35:

(Start: 2 @27990 has 43 MA's), (6, 28026), (Start: 28 @28173 has 1 MA's), (Start: 40 @28242 has 2 MA's), (41, 28251), (55, 28353), (56, 28365), (59, 28377), (69, 28467), (71, 28485), (82, 28548), (89, 28593), (90, 28602),

Gene: HanShotFirst_6 Start: 2962, Stop: 3663, Start Num: 1

Candidate Starts for HanShotFirst_6:

(Start: 1 @2962 has 165 MA's), (Start: 3 @2971 has 14 MA's), (19, 3094), (21, 3103), (24, 3124), (31, 3166), (35, 3196), (Start: 40 @3226 has 2 MA's), (52, 3322), (58, 3355), (68, 3442), (81, 3502), (83, 3544), (96, 3646),

Gene: HarryOW_36 Start: 28444, Stop: 29130, Start Num: 2

Candidate Starts for HarryOW_36:

(Start: 2 @28444 has 43 MA's), (6, 28480), (Start: 28 @28627 has 1 MA's), (Start: 40 @28696 has 2 MA's), (41, 28705), (55, 28807), (56, 28819), (59, 28831), (69, 28921), (71, 28939), (82, 29002), (89, 29047), (90, 29056),

Gene: HarryOW_7 Start: 3653, Stop: 4363, Start Num: 1

Candidate Starts for HarryOW_7:

(Start: 1 @3653 has 165 MA's), (Start: 3 @3662 has 14 MA's), (19, 3785), (24, 3815), (Start: 40 @3917 has 2 MA's), (41, 3926), (43, 3947), (52, 4019), (75, 4166), (81, 4199), (87, 4259), (96, 4346),

Gene: Henry_29 Start: 27878, Stop: 28468, Start Num: 12

Candidate Starts for Henry_29:

(Start: 12 @27878 has 1 MA's), (Start: 28 @27974 has 1 MA's), (29, 27980), (Start: 40 @28043 has 2 MA's), (48, 28100), (52, 28142), (57, 28169), (72, 28283), (87, 28385),

Gene: Hermia_7 Start: 3534, Stop: 4244, Start Num: 1

Candidate Starts for Hermia_7:

(Start: 1 @3534 has 165 MA's), (Start: 3 @3543 has 14 MA's), (19, 3666), (24, 3696), (Start: 40 @3798 has 2 MA's), (41, 3807), (43, 3828), (52, 3900), (75, 4047), (81, 4080), (87, 4140), (96, 4227),

Gene: HermioneGrange_7 Start: 3087, Stop: 3776, Start Num: 1

Candidate Starts for HermioneGrange_7:

(Start: 1 @3087 has 165 MA's), (Start: 3 @3096 has 14 MA's), (Start: 40 @3348 has 2 MA's), (46, 3399), (82, 3651),

Gene: Homines_6 Start: 3366, Stop: 4076, Start Num: 1

Candidate Starts for Homines_6:

(Start: 1 @3366 has 165 MA's), (Start: 3 @3375 has 14 MA's), (19, 3498), (24, 3528), (Start: 40 @3630 has 2 MA's), (41, 3639), (43, 3660), (52, 3732), (75, 3879), (81, 3912), (87, 3972), (96, 4059),

Gene: Hope4ever_6 Start: 3493, Stop: 4182, Start Num: 1

Candidate Starts for Hope4ever_6:

(Start: 1 @3493 has 165 MA's), (Start: 3 @3502 has 14 MA's), (Start: 40 @3754 has 2 MA's), (46, 3805), (82, 4057),

Gene: ILeeKay_8 Start: 3564, Stop: 4253, Start Num: 1

Candidate Starts for ILeeKay_8:

(Start: 1 @3564 has 165 MA's), (Start: 3 @3573 has 14 MA's), (Start: 28 @3756 has 1 MA's), (Start: 40 @3825 has 2 MA's), (48, 3882), (60, 3981),

Gene: Ichabod_6 Start: 3086, Stop: 3787, Start Num: 1

Candidate Starts for Ichabod_6:

(Start: 1 @3086 has 165 MA's), (Start: 3 @3095 has 14 MA's), (19, 3218), (21, 3227), (24, 3248), (31, 3290), (35, 3320), (Start: 40 @3350 has 2 MA's), (52, 3446), (58, 3479), (68, 3566), (83, 3668), (96, 3770),

Gene: Idergollasper_64 Start: 41342, Stop: 42028, Start Num: 2

Candidate Starts for Idergollasper_64:

(Start: 2 @41342 has 43 MA's), (5, 41369), (6, 41378), (7, 41396), (8, 41408), (10, 41429), (Start: 28 @41522 has 1 MA's), (30, 41531), (Start: 40 @41588 has 2 MA's), (42, 41600), (47, 41642), (60, 41747), (67, 41801), (80, 41870), (82, 41897), (88, 41939), (89, 41942), (92, 41969), (96, 42020),

Gene: IgnatiusPatJac_35 Start: 28305, Stop: 28991, Start Num: 2

Candidate Starts for IgnatiusPatJac_35:

(Start: 2 @28305 has 43 MA's), (6, 28341), (Start: 28 @28488 has 1 MA's), (Start: 40 @28557 has 2 MA's), (41, 28566), (55, 28668), (56, 28680), (59, 28692), (69, 28782), (71, 28800), (82, 28863), (89, 28908), (90, 28917),

Gene: IgnatiusPatJac_5 Start: 3362, Stop: 4063, Start Num: 1

Candidate Starts for IgnatiusPatJac_5:

(Start: 1 @3362 has 165 MA's), (Start: 3 @3371 has 14 MA's), (19, 3494), (21, 3503), (24, 3524), (31, 3566), (35, 3596), (Start: 40 @3626 has 2 MA's), (52, 3722), (58, 3755), (68, 3842), (81, 3902), (83, 3944),

Gene: JC27_7 Start: 3784, Stop: 4485, Start Num: 1

Candidate Starts for JC27_7:

(Start: 1 @3784 has 165 MA's), (Start: 3 @3793 has 14 MA's), (19, 3916), (21, 3925), (24, 3946), (31, 3988), (35, 4018), (Start: 40 @4048 has 2 MA's), (52, 4144), (58, 4177), (68, 4264), (83, 4366), (96, 4468),

Gene: JC27_37 Start: 28962, Stop: 29648, Start Num: 2

Candidate Starts for JC27_37:

(Start: 2 @28962 has 43 MA's), (6, 28998), (Start: 28 @29145 has 1 MA's), (Start: 40 @29214 has 2 MA's), (41, 29223), (55, 29325), (56, 29337), (59, 29349), (69, 29439), (71, 29457), (82, 29520), (89, 29565), (90, 29574), (95, 29637),

Gene: JackSparrow_6 Start: 3351, Stop: 4052, Start Num: 1

Candidate Starts for JackSparrow_6:

(Start: 1 @3351 has 165 MA's), (Start: 3 @3360 has 14 MA's), (19, 3483), (21, 3492), (24, 3513), (31, 3555), (35, 3585), (Start: 40 @3615 has 2 MA's), (52, 3711), (58, 3744), (68, 3831), (81, 3891), (83, 3933), (96, 4035),

Gene: JangDynasty_64 Start: 41428, Stop: 42114, Start Num: 2

Candidate Starts for JangDynasty_64:

(Start: 2 @41428 has 43 MA's), (5, 41455), (6, 41464), (7, 41482), (8, 41494), (10, 41515), (Start: 28 @41608 has 1 MA's), (30, 41617), (Start: 40 @41674 has 2 MA's), (42, 41686), (47, 41728), (60, 41833), (67, 41887), (80, 41956), (82, 41983), (88, 42025), (89, 42028), (92, 42055), (96, 42106),

Gene: Jasper_7 Start: 3199, Stop: 3897, Start Num: 1

Candidate Starts for Jasper_7:

(Start: 1 @3199 has 165 MA's), (Start: 3 @3208 has 14 MA's), (Start: 28 @3391 has 1 MA's), (29, 3397), (30, 3400), (Start: 40 @3460 has 2 MA's), (62, 3628), (68, 3679), (74, 3709), (80, 3739),

Gene: Jerm2_6 Start: 3086, Stop: 3775, Start Num: 1

Candidate Starts for Jerm2_6:

(Start: 1 @3086 has 165 MA's), (Start: 3 @3095 has 14 MA's), (13, 3188), (17, 3209), (Start: 28 @3278 has 1 MA's), (31, 3290), (39, 3341), (Start: 40 @3347 has 2 MA's), (41, 3356), (46, 3398), (57, 3473), (60, 3503), (62, 3512), (68, 3563), (70, 3581), (74, 3593), (82, 3650), (90, 3704), (94, 3755),

Gene: JuliaChild_8 Start: 3828, Stop: 4529, Start Num: 1

Candidate Starts for JuliaChild_8:

(Start: 1 @3828 has 165 MA's), (Start: 3 @3837 has 14 MA's), (19, 3960), (21, 3969), (24, 3990), (31, 4032), (35, 4062), (Start: 40 @4092 has 2 MA's), (52, 4188), (58, 4221), (68, 4308), (81, 4368), (83, 4410), (96, 4512),

Gene: KBG_6 Start: 3719, Stop: 4420, Start Num: 1

Candidate Starts for KBG_6:

(Start: 1 @3719 has 165 MA's), (Start: 3 @3728 has 14 MA's), (19, 3851), (21, 3860), (24, 3881), (31, 3923), (35, 3953), (Start: 40 @3983 has 2 MA's), (52, 4079), (58, 4112), (68, 4199), (81, 4259), (83, 4301), (96, 4403),

Gene: KSSJEB_5 Start: 2853, Stop: 3533, Start Num: 3

Candidate Starts for KSSJEB_5:

(Start: 1 @2844 has 165 MA's), (Start: 3 @2853 has 14 MA's), (13, 2946), (17, 2967), (Start: 28 @3036 has 1 MA's), (31, 3048), (39, 3099), (Start: 40 @3105 has 2 MA's), (41, 3114), (46, 3156), (57, 3231), (60, 3261), (62, 3270), (68, 3321), (70, 3339), (74, 3351), (82, 3408), (90, 3462), (94, 3513),

Gene: Kanely_7 Start: 3938, Stop: 4639, Start Num: 1

Candidate Starts for Kanely_7:

(Start: 1 @3938 has 165 MA's), (Start: 3 @3947 has 14 MA's), (19, 4070), (21, 4079), (24, 4100), (31, 4142), (35, 4172), (Start: 40 @4202 has 2 MA's), (52, 4298), (58, 4331), (68, 4418), (96, 4622),

Gene: Kenmech_7 Start: 3368, Stop: 4078, Start Num: 1

Candidate Starts for Kenmech_7:

(Start: 1 @3368 has 165 MA's), (Start: 3 @3377 has 14 MA's), (19, 3500), (24, 3530), (Start: 40 @3632 has 2 MA's), (41, 3641), (43, 3662), (52, 3734), (75, 3881), (81, 3914), (87, 3974), (96, 4061),

Gene: Killigrew_4 Start: 2819, Stop: 3508, Start Num: 1

Candidate Starts for Killigrew_4:

(Start: 1 @2819 has 165 MA's), (6, 2858), (36, 3044), (Start: 40 @3071 has 2 MA's), (44, 3104), (52, 3170), (59, 3206), (61, 3230), (63, 3239), (65, 3248), (68, 3287), (81, 3356), (84, 3401), (96, 3500),

Gene: Kostya_29 Start: 28044, Stop: 28469, Start Num: 40

Candidate Starts for Kostya_29:

(9, 27855), (Start: 28 @27975 has 1 MA's), (29, 27981), (Start: 40 @28044 has 2 MA's), (48, 28101), (52, 28143), (57, 28170), (72, 28284), (87, 28386),

Gene: Krili_63 Start: 40852, Stop: 41538, Start Num: 2

Candidate Starts for Krili_63:

(Start: 2 @40852 has 43 MA's), (5, 40879), (6, 40888), (7, 40906), (8, 40918), (10, 40939), (Start: 28 @41032 has 1 MA's), (30, 41041), (Start: 40 @41098 has 2 MA's), (42, 41110), (47, 41152), (53, 41200), (60, 41257), (67, 41311), (80, 41380), (82, 41407), (88, 41449), (89, 41452), (92, 41479), (96, 41530),

Gene: Kugel_7 Start: 3406, Stop: 4116, Start Num: 1

Candidate Starts for Kugel_7:

(Start: 1 @3406 has 165 MA's), (Start: 3 @3415 has 14 MA's), (19, 3538), (24, 3568), (Start: 40 @3670 has 2 MA's), (41, 3679), (43, 3700), (52, 3772), (75, 3919), (81, 3952), (87, 4012), (96, 4099),

Gene: KyMonks1A_8 Start: 3672, Stop: 4373, Start Num: 1

Candidate Starts for KyMonks1A_8:

(Start: 1 @3672 has 165 MA's), (Start: 3 @3681 has 14 MA's), (19, 3804), (21, 3813), (24, 3834), (31, 3876), (Start: 40 @3936 has 2 MA's), (52, 4032), (58, 4065), (68, 4152), (81, 4212), (83, 4254),

Gene: Kykar_35 Start: 28019, Stop: 28705, Start Num: 2

Candidate Starts for Kykar_35:

(Start: 2 @28019 has 43 MA's), (6, 28055), (Start: 28 @28202 has 1 MA's), (Start: 40 @28271 has 2 MA's), (41, 28280), (55, 28382), (56, 28394), (59, 28406), (69, 28496), (71, 28514), (82, 28577), (89, 28622), (90, 28631), (95, 28694),

Gene: Kykar_4 Start: 2883, Stop: 3593, Start Num: 1

Candidate Starts for Kykar_4:

(Start: 1 @2883 has 165 MA's), (Start: 3 @2892 has 14 MA's), (19, 3015), (24, 3045), (Start: 40 @3147 has 2 MA's), (41, 3156), (43, 3177), (52, 3249), (75, 3396), (81, 3429), (87, 3489), (96, 3576),

Gene: Lamina13_6 Start: 2960, Stop: 3655, Start Num: 1

Candidate Starts for Lamina13_6:

(Start: 1 @2960 has 165 MA's), (Start: 3 @2969 has 14 MA's), (16, 3077), (37, 3203), (Start: 40 @3224 has 2 MA's), (48, 3278), (68, 3437), (77, 3467), (78, 3473), (86, 3542), (87, 3554),

Gene: Lesedi_5 Start: 3098, Stop: 3808, Start Num: 1

Candidate Starts for Lesedi_5:

(Start: 1 @3098 has 165 MA's), (Start: 3 @3107 has 14 MA's), (19, 3230), (24, 3260), (Start: 40 @3362 has 2 MA's), (41, 3371), (43, 3392), (52, 3464), (75, 3611), (81, 3644), (87, 3704), (96, 3791),

Gene: Licorice_8 Start: 3957, Stop: 4667, Start Num: 1

Candidate Starts for Licorice_8:

(Start: 1 @3957 has 165 MA's), (Start: 3 @3966 has 14 MA's), (19, 4089), (24, 4119), (Start: 40 @4221 has 2 MA's), (41, 4230), (43, 4251), (52, 4323), (75, 4470), (81, 4503), (87, 4563), (96, 4650),

Gene: LilBib_36 Start: 29268, Stop: 29954, Start Num: 2

Candidate Starts for LilBib_36:

(Start: 2 @29268 has 43 MA's), (6, 29304), (Start: 28 @29451 has 1 MA's), (Start: 40 @29520 has 2 MA's), (41, 29529), (55, 29631), (56, 29643), (59, 29655), (69, 29745), (71, 29763), (82, 29826), (89, 29871), (90, 29880),

Gene: LilBib_5 Start: 3141, Stop: 3842, Start Num: 1

Candidate Starts for LilBib_5:

(Start: 1 @3141 has 165 MA's), (Start: 3 @3150 has 14 MA's), (19, 3273), (21, 3282), (24, 3303), (31, 3345), (35, 3375), (Start: 40 @3405 has 2 MA's), (52, 3501), (58, 3534), (68, 3621), (81, 3681), (83, 3723), (96, 3825),

Gene: Lockley_6 Start: 3279, Stop: 3989, Start Num: 1

Candidate Starts for Lockley_6:

(Start: 1 @3279 has 165 MA's), (Start: 3 @3288 has 14 MA's), (19, 3411), (24, 3441), (Start: 40 @3543 has 2 MA's), (41, 3552), (43, 3573), (52, 3645), (75, 3792), (81, 3825), (87, 3885), (96, 3972),

Gene: Lopton_7 Start: 3693, Stop: 4394, Start Num: 1

Candidate Starts for Lopton_7:

(Start: 1 @3693 has 165 MA's), (Start: 3 @3702 has 14 MA's), (19, 3825), (21, 3834), (24, 3855), (31, 3897), (35, 3927), (Start: 40 @3957 has 2 MA's), (52, 4053), (58, 4086), (68, 4173), (83, 4275), (96, 4377),

Gene: MPlant7149_5 Start: 2926, Stop: 3627, Start Num: 1

Candidate Starts for MPlant7149_5:

(Start: 1 @2926 has 165 MA's), (Start: 3 @2935 has 14 MA's), (19, 3058), (21, 3067), (24, 3088), (31, 3130), (35, 3160), (Start: 40 @3190 has 2 MA's), (52, 3286), (58, 3319), (68, 3406), (83, 3508), (96, 3610),

Gene: MadKillah_65 Start: 41121, Stop: 41807, Start Num: 2

Candidate Starts for MadKillah_65:

(Start: 2 @41121 has 43 MA's), (5, 41148), (6, 41157), (7, 41175), (8, 41187), (10, 41208), (Start: 28 @41301 has 1 MA's), (30, 41310), (Start: 40 @41367 has 2 MA's), (42, 41379), (47, 41421), (60, 41526), (67, 41580), (80, 41649), (82, 41676), (88, 41718), (89, 41721), (92, 41748), (96, 41799),

Gene: Magnar_6 Start: 3078, Stop: 3779, Start Num: 1

Candidate Starts for Magnar_6:

(Start: 1 @3078 has 165 MA's), (Start: 3 @3087 has 14 MA's), (19, 3210), (21, 3219), (24, 3240), (31, 3282), (Start: 40 @3342 has 2 MA's), (52, 3438), (58, 3471), (68, 3558), (81, 3618), (83, 3660),

Gene: Magnito_5 Start: 2814, Stop: 3524, Start Num: 1

Candidate Starts for Magnito_5:

(Start: 1 @2814 has 165 MA's), (Start: 3 @2823 has 14 MA's), (19, 2946), (24, 2976), (Start: 40 @3078 has 2 MA's), (41, 3087), (43, 3108), (52, 3180), (75, 3327), (81, 3360), (87, 3420), (96, 3507),

Gene: Manatee_6 Start: 3013, Stop: 3723, Start Num: 1

Candidate Starts for Manatee_6:

(Start: 1 @3013 has 165 MA's), (Start: 3 @3022 has 14 MA's), (19, 3145), (24, 3175), (Start: 40 @3277 has 2 MA's), (41, 3286), (43, 3307), (52, 3379), (75, 3526), (81, 3559), (87, 3619), (96, 3706),

Gene: Marcell_6 Start: 3274, Stop: 3984, Start Num: 1

Candidate Starts for Marcell_6:

(Start: 1 @3274 has 165 MA's), (Start: 3 @3283 has 14 MA's), (19, 3406), (24, 3436), (Start: 40 @3538 has 2 MA's), (41, 3547), (43, 3568), (52, 3640), (75, 3787), (81, 3820), (87, 3880), (96, 3967),

Gene: Marchy_4 Start: 2910, Stop: 3611, Start Num: 1

Candidate Starts for Marchy_4:

(Start: 1 @2910 has 165 MA's), (Start: 3 @2919 has 14 MA's), (19, 3042), (21, 3051), (24, 3072), (31, 3114), (35, 3144), (Start: 40 @3174 has 2 MA's), (52, 3270), (58, 3303), (68, 3390),

Gene: Marge_6 Start: 3295, Stop: 4005, Start Num: 1

Candidate Starts for Marge_6:

(Start: 1 @3295 has 165 MA's), (Start: 3 @3304 has 14 MA's), (19, 3427), (24, 3457), (Start: 40 @3559 has 2 MA's), (41, 3568), (43, 3589), (52, 3661), (75, 3808), (81, 3841), (87, 3901), (96, 3988),

Gene: Maroc7_5 Start: 3096, Stop: 3797, Start Num: 1

Candidate Starts for Maroc7_5:

(Start: 1 @3096 has 165 MA's), (Start: 3 @3105 has 14 MA's), (19, 3228), (21, 3237), (24, 3258), (31, 3300), (35, 3330), (Start: 40 @3360 has 2 MA's), (52, 3456), (58, 3489), (68, 3576), (96, 3780),

Gene: Marsha_6 Start: 3549, Stop: 4250, Start Num: 1

Candidate Starts for Marsha_6:

(Start: 1 @3549 has 165 MA's), (Start: 3 @3558 has 14 MA's), (19, 3681), (21, 3690), (24, 3711), (31, 3753), (35, 3783), (Start: 40 @3813 has 2 MA's), (52, 3909), (58, 3942), (68, 4029), (81, 4089), (83, 4131),

Gene: MaryBeth_6 Start: 3520, Stop: 4221, Start Num: 1

Candidate Starts for MaryBeth_6:

(Start: 1 @3520 has 165 MA's), (Start: 3 @3529 has 14 MA's), (19, 3652), (21, 3661), (24, 3682), (31, 3724), (35, 3754), (Start: 40 @3784 has 2 MA's), (52, 3880), (58, 3913), (68, 4000), (83, 4102), (96, 4204),

Gene: McGuire_6 Start: 3080, Stop: 3769, Start Num: 1

Candidate Starts for McGuire_6:

(Start: 1 @3080 has 165 MA's), (Start: 3 @3089 has 14 MA's), (Start: 40 @3341 has 2 MA's), (48, 3398),

Gene: MetalQZJ_6 Start: 3520, Stop: 4221, Start Num: 1

Candidate Starts for MetalQZJ_6:

(Start: 1 @3520 has 165 MA's), (Start: 3 @3529 has 14 MA's), (19, 3652), (21, 3661), (24, 3682), (31, 3724), (35, 3754), (Start: 40 @3784 has 2 MA's), (52, 3880), (58, 3913), (68, 4000), (83, 4102), (96, 4204),

Gene: Molly_7 Start: 3126, Stop: 3827, Start Num: 1

Candidate Starts for Molly_7:

(Start: 1 @3126 has 165 MA's), (Start: 3 @3135 has 14 MA's), (19, 3258), (21, 3267), (24, 3288), (31, 3330), (35, 3360), (Start: 40 @3390 has 2 MA's), (52, 3486), (58, 3519), (68, 3606), (83, 3708), (96, 3810),

Gene: Monet_6 Start: 3249, Stop: 3959, Start Num: 1

Candidate Starts for Monet_6:

(Start: 1 @3249 has 165 MA's), (Start: 3 @3258 has 14 MA's), (19, 3381), (24, 3411), (Start: 40 @3513 has 2 MA's), (41, 3522), (43, 3543), (52, 3615), (75, 3762), (81, 3795), (87, 3855), (96, 3942),

Gene: Moose_5 Start: 3359, Stop: 4060, Start Num: 1

Candidate Starts for Moose_5:

(Start: 1 @3359 has 165 MA's), (Start: 3 @3368 has 14 MA's), (19, 3491), (21, 3500), (24, 3521), (31, 3563), (35, 3593), (Start: 40 @3623 has 2 MA's), (52, 3719), (58, 3752), (68, 3839), (81, 3899), (83, 3941), (96, 4043),

Gene: Mori_64 Start: 41383, Stop: 42069, Start Num: 2

Candidate Starts for Mori_64:

(Start: 2 @41383 has 43 MA's), (5, 41410), (6, 41419), (7, 41437), (8, 41449), (10, 41470), (Start: 28 @41563 has 1 MA's), (30, 41572), (Start: 40 @41629 has 2 MA's), (42, 41641), (47, 41683), (60, 41788), (67, 41842), (80, 41911), (82, 41938), (88, 41980), (89, 41983), (92, 42010), (96, 42061),

Gene: Mule_5 Start: 3184, Stop: 3885, Start Num: 1

Candidate Starts for Mule_5:

(Start: 1 @3184 has 165 MA's), (Start: 3 @3193 has 14 MA's), (19, 3316), (21, 3325), (24, 3346), (31, 3388), (35, 3418), (Start: 40 @3448 has 2 MA's), (52, 3544), (58, 3577), (68, 3664), (81, 3724), (83, 3766), (96, 3868),

Gene: Murai_65 Start: 41564, Stop: 42250, Start Num: 2

Candidate Starts for Murai_65:

(Start: 2 @41564 has 43 MA's), (5, 41591), (6, 41600), (7, 41618), (8, 41630), (10, 41651), (Start: 28 @41744 has 1 MA's), (30, 41753), (Start: 40 @41810 has 2 MA's), (42, 41822), (47, 41864), (60, 41969), (67, 42023), (80, 42092), (82, 42119), (88, 42161), (89, 42164), (92, 42191), (96, 42242),

Gene: Museum_7 Start: 2926, Stop: 3615, Start Num: 1

Candidate Starts for Museum_7:

(Start: 1 @2926 has 165 MA's), (Start: 3 @2935 has 14 MA's), (13, 3028), (17, 3049), (Start: 28 @3118 has 1 MA's), (31, 3130), (39, 3181), (Start: 40 @3187 has 2 MA's), (41, 3196), (46, 3238), (57, 3313), (60, 3343), (62, 3352), (68, 3403), (70, 3421), (74, 3433),

Gene: NEHalo_6 Start: 2920, Stop: 3621, Start Num: 1

Candidate Starts for NEHalo_6:

(Start: 1 @2920 has 165 MA's), (Start: 3 @2929 has 14 MA's), (19, 3052), (21, 3061), (24, 3082), (31, 3124), (35, 3154), (Start: 40 @3184 has 2 MA's), (52, 3280), (58, 3313), (68, 3400), (83, 3502), (96, 3604),

Gene: Naira_6 Start: 3315, Stop: 4004, Start Num: 1

Candidate Starts for Naira_6:

(Start: 1 @3315 has 165 MA's), (Start: 3 @3324 has 14 MA's), (13, 3417), (17, 3438), (Start: 28 @3507 has 1 MA's), (31, 3519), (39, 3570), (Start: 40 @3576 has 2 MA's), (41, 3585), (46, 3627), (57, 3702), (60, 3732), (62, 3741), (68, 3792), (70, 3810), (74, 3822), (82, 3879), (90, 3933), (94, 3984),

Gene: Nerujay_6 Start: 3213, Stop: 3914, Start Num: 1

Candidate Starts for Nerujay_6:

(Start: 1 @3213 has 165 MA's), (Start: 3 @3222 has 14 MA's), (19, 3345), (21, 3354), (24, 3375), (31, 3417), (35, 3447), (Start: 40 @3477 has 2 MA's), (52, 3573), (58, 3606), (68, 3693), (81, 3753), (83, 3795), (96, 3897),

Gene: Nhonho_6 Start: 3216, Stop: 3917, Start Num: 1

Candidate Starts for Nhonho_6:

(Start: 1 @3216 has 165 MA's), (Start: 3 @3225 has 14 MA's), (19, 3348), (21, 3357), (31, 3420), (37, 3459), (Start: 40 @3480 has 2 MA's), (52, 3576), (58, 3609), (81, 3756), (83, 3798), (96, 3900),

Gene: NiebruSaylor_63 Start: 40771, Stop: 41457, Start Num: 2

Candidate Starts for NiebruSaylor_63:

(Start: 2 @40771 has 43 MA's), (5, 40798), (6, 40807), (7, 40825), (8, 40837), (10, 40858), (Start: 28 @40951 has 1 MA's), (30, 40960), (Start: 40 @41017 has 2 MA's), (42, 41029), (47, 41071), (53, 41119), (60, 41176), (67, 41230), (80, 41299), (82, 41326), (88, 41368), (89, 41371), (92, 41398), (96, 41449),

Gene: Niza_7 Start: 3932, Stop: 4633, Start Num: 1

Candidate Starts for Niza_7:

(Start: 1 @3932 has 165 MA's), (Start: 3 @3941 has 14 MA's), (19, 4064), (21, 4073), (24, 4094), (31, 4136), (35, 4166), (Start: 40 @4196 has 2 MA's), (52, 4292), (58, 4325), (68, 4412), (83, 4514), (96, 4616),

Gene: Ohno789_5 Start: 2769, Stop: 3470, Start Num: 1

Candidate Starts for Ohno789_5:

(Start: 1 @2769 has 165 MA's), (Start: 3 @2778 has 14 MA's), (19, 2901), (21, 2910), (24, 2931), (31, 2973), (35, 3003), (Start: 40 @3033 has 2 MA's), (52, 3129), (58, 3162), (68, 3249), (83, 3351), (96, 3453),

Gene: Oogway_5 Start: 3340, Stop: 4041, Start Num: 1

Candidate Starts for Oogway_5:

(Start: 1 @3340 has 165 MA's), (Start: 3 @3349 has 14 MA's), (19, 3472), (21, 3481), (24, 3502), (31, 3544), (35, 3574), (Start: 40 @3604 has 2 MA's), (52, 3700), (58, 3733), (68, 3820), (96, 4024),

Gene: PSullivan_8 Start: 3828, Stop: 4529, Start Num: 1

Candidate Starts for PSullivan_8:

(Start: 1 @3828 has 165 MA's), (Start: 3 @3837 has 14 MA's), (19, 3960), (21, 3969), (24, 3990), (31, 4032), (35, 4062), (Start: 40 @4092 has 2 MA's), (52, 4188), (58, 4221), (68, 4308), (81, 4368), (83, 4410), (96, 4512),

Gene: PacerPaul_6 Start: 3617, Stop: 4318, Start Num: 1

Candidate Starts for PacerPaul_6:

(Start: 1 @3617 has 165 MA's), (Start: 3 @3626 has 14 MA's), (19, 3749), (21, 3758), (24, 3779), (31, 3821), (35, 3851), (Start: 40 @3881 has 2 MA's), (52, 3977), (58, 4010), (68, 4097), (96, 4301),

Gene: Papez_6 Start: 3435, Stop: 4136, Start Num: 1

Candidate Starts for Papez_6:

(Start: 1 @3435 has 165 MA's), (Start: 3 @3444 has 14 MA's), (19, 3567), (24, 3597), (31, 3639), (35, 3669), (Start: 40 @3699 has 2 MA's), (52, 3795), (58, 3828), (68, 3915), (81, 3975), (83, 4017), (96, 4119),

Gene: Paphu_5 Start: 2806, Stop: 3507, Start Num: 1

Candidate Starts for Paphu_5:

(Start: 1 @2806 has 165 MA's), (Start: 3 @2815 has 14 MA's), (19, 2938), (21, 2947), (24, 2968), (31, 3010), (Start: 40 @3070 has 2 MA's), (52, 3166), (58, 3199), (68, 3286), (81, 3346), (83, 3388), (93, 3457),

Gene: Paraselene_5 Start: 3090, Stop: 3800, Start Num: 1

Candidate Starts for Paraselene_5:

(Start: 1 @3090 has 165 MA's), (Start: 3 @3099 has 14 MA's), (19, 3222), (24, 3252), (Start: 40 @3354 has 2 MA's), (41, 3363), (43, 3384), (52, 3456), (64, 3534), (75, 3603), (81, 3636), (87, 3696), (96, 3783),

Gene: Pari_7 Start: 3580, Stop: 4269, Start Num: 1

Candidate Starts for Pari_7:

(Start: 1 @3580 has 165 MA's), (Start: 3 @3589 has 14 MA's), (Start: 40 @3841 has 2 MA's), (46, 3892), (82, 4144),

Gene: Parliament_5 Start: 3442, Stop: 3873, Start Num: 40

Candidate Starts for Parliament_5:

(Start: 40 @3442 has 2 MA's), (48, 3496), (49, 3499), (54, 3541), (60, 3595), (66, 3640), (68, 3655), (73, 3679), (77, 3685), (86, 3760),

Gene: PascalRango_5 Start: 2963, Stop: 3664, Start Num: 1

Candidate Starts for PascalRango_5:

(Start: 1 @2963 has 165 MA's), (Start: 3 @2972 has 14 MA's), (19, 3095), (21, 3104), (24, 3125), (31, 3167), (35, 3197), (Start: 40 @3227 has 2 MA's), (52, 3323), (58, 3356), (68, 3443), (81, 3503), (83, 3545), (96, 3647),

Gene: PattyP_7 Start: 3121, Stop: 3822, Start Num: 1

Candidate Starts for PattyP_7:

(Start: 1 @3121 has 165 MA's), (Start: 3 @3130 has 14 MA's), (19, 3253), (21, 3262), (24, 3283), (31, 3325), (35, 3355), (Start: 40 @3385 has 2 MA's), (52, 3481), (58, 3514), (68, 3601), (81, 3661), (83, 3703), (96, 3805),

Gene: Payneful_5 Start: 2910, Stop: 3611, Start Num: 1

Candidate Starts for Payneful_5:

(Start: 1 @2910 has 165 MA's), (Start: 3 @2919 has 14 MA's), (19, 3042), (21, 3051), (24, 3072), (31, 3114), (35, 3144), (Start: 40 @3174 has 2 MA's), (52, 3270), (58, 3303), (68, 3390),

Gene: Pelly_7 Start: 3760, Stop: 4461, Start Num: 1

Candidate Starts for Pelly_7:

(Start: 1 @3760 has 165 MA's), (Start: 3 @3769 has 14 MA's), (19, 3892), (21, 3901), (24, 3922), (31, 3964), (35, 3994), (Start: 40 @4024 has 2 MA's), (52, 4120), (58, 4153), (68, 4240), (81, 4300), (83,

4342), (96, 4444),

Gene: Pelly_36 Start: 28758, Stop: 29444, Start Num: 2

Candidate Starts for Pelly_36:

(Start: 2 @28758 has 43 MA's), (6, 28794), (Start: 28 @28941 has 1 MA's), (Start: 40 @29010 has 2 MA's), (41, 29019), (55, 29121), (56, 29133), (59, 29145), (69, 29235), (71, 29253), (82, 29316), (89, 29361), (90, 29370),

Gene: Pepe_7 Start: 3783, Stop: 4484, Start Num: 1

Candidate Starts for Pepe_7:

(Start: 1 @3783 has 165 MA's), (Start: 3 @3792 has 14 MA's), (14, 3894), (19, 3915), (21, 3924), (24, 3945), (31, 3987), (35, 4017), (Start: 40 @4047 has 2 MA's), (52, 4143), (58, 4176), (68, 4263), (81, 4323), (96, 4467),

Gene: Perseus_7 Start: 3489, Stop: 4181, Start Num: 3

Candidate Starts for Perseus_7:

(Start: 1 @3480 has 165 MA's), (Start: 3 @3489 has 14 MA's), (19, 3612), (21, 3621), (24, 3642), (31, 3684), (35, 3714), (Start: 40 @3744 has 2 MA's), (52, 3840), (58, 3873), (68, 3960), (81, 4020), (83, 4062), (96, 4164),

Gene: Petp2012_8 Start: 3288, Stop: 3977, Start Num: 1

Candidate Starts for Petp2012_8:

(Start: 1 @3288 has 165 MA's), (Start: 3 @3297 has 14 MA's), (13, 3390), (17, 3411), (Start: 28 @3480 has 1 MA's), (31, 3492), (39, 3543), (Start: 40 @3549 has 2 MA's), (41, 3558), (46, 3600), (57, 3675), (60, 3705), (68, 3765), (70, 3783), (74, 3795), (82, 3852), (90, 3906), (94, 3957),

Gene: Petruccio_6 Start: 3029, Stop: 3739, Start Num: 1

Candidate Starts for Petruccio_6:

(Start: 1 @3029 has 165 MA's), (Start: 3 @3038 has 14 MA's), (19, 3161), (24, 3191), (Start: 40 @3293 has 2 MA's), (41, 3302), (43, 3323), (52, 3395), (75, 3542), (81, 3575), (87, 3635), (96, 3722),

Gene: PhrostyMug_5 Start: 3184, Stop: 3885, Start Num: 1

Candidate Starts for PhrostyMug_5:

(Start: 1 @3184 has 165 MA's), (Start: 3 @3193 has 14 MA's), (19, 3316), (21, 3325), (24, 3346), (31, 3388), (35, 3418), (Start: 40 @3448 has 2 MA's), (52, 3544), (58, 3577), (68, 3664), (81, 3724), (83, 3766), (96, 3868),

Gene: PinkPlastic_4 Start: 2843, Stop: 3532, Start Num: 1

Candidate Starts for PinkPlastic_4:

(Start: 1 @2843 has 165 MA's), (Start: 3 @2852 has 14 MA's), (13, 2945), (17, 2966), (Start: 28 @3035 has 1 MA's), (31, 3047), (39, 3098), (Start: 40 @3104 has 2 MA's), (41, 3113), (46, 3155), (57, 3230), (60, 3260), (62, 3269), (68, 3320), (70, 3338), (74, 3350), (82, 3407), (90, 3461), (94, 3512),

Gene: Pinto_8 Start: 3470, Stop: 4171, Start Num: 1

Candidate Starts for Pinto_8:

(Start: 1 @3470 has 165 MA's), (Start: 3 @3479 has 14 MA's), (19, 3602), (21, 3611), (24, 3632), (31, 3674), (35, 3704), (Start: 40 @3734 has 2 MA's), (52, 3830), (58, 3863), (68, 3950), (96, 4154),

Gene: Pinto_38 Start: 28671, Stop: 29357, Start Num: 2

Candidate Starts for Pinto_38:

(Start: 2 @28671 has 43 MA's), (6, 28707), (Start: 28 @28854 has 1 MA's), (Start: 40 @28923 has 2 MA's), (41, 28932), (55, 29034), (56, 29046), (69, 29148), (71, 29166), (82, 29229), (89, 29274), (90, 29283),

Gene: Pippin_7 Start: 3169, Stop: 3870, Start Num: 1

Candidate Starts for Pippin_7:

(Start: 1 @3169 has 165 MA's), (Start: 3 @3178 has 14 MA's), (19, 3301), (21, 3310), (24, 3331), (31, 3373), (35, 3403), (Start: 40 @3433 has 2 MA's), (52, 3529), (58, 3562), (68, 3649), (81, 3709),

Gene: Pita2_8 Start: 3828, Stop: 4529, Start Num: 1

Candidate Starts for Pita2_8:

(Start: 1 @3828 has 165 MA's), (Start: 3 @3837 has 14 MA's), (19, 3960), (21, 3969), (24, 3990), (31, 4032), (35, 4062), (Start: 40 @4092 has 2 MA's), (52, 4188), (58, 4221), (68, 4308), (81, 4368), (83, 4410), (96, 4512),

Gene: QTRlifeCrisis_5 Start: 3245, Stop: 3955, Start Num: 1

Candidate Starts for QTRlifeCrisis_5:

(Start: 1 @3245 has 165 MA's), (Start: 3 @3254 has 14 MA's), (19, 3377), (24, 3407), (Start: 40 @3509 has 2 MA's), (41, 3518), (43, 3539), (52, 3611), (75, 3758), (81, 3791), (87, 3851), (96, 3938),

Gene: Rajelicia_5 Start: 2958, Stop: 3668, Start Num: 1

Candidate Starts for Rajelicia_5:

(Start: 1 @2958 has 165 MA's), (Start: 3 @2967 has 14 MA's), (19, 3090), (24, 3120), (Start: 40 @3222 has 2 MA's), (41, 3231), (43, 3252), (52, 3324), (75, 3471), (81, 3504), (87, 3564), (96, 3651),

Gene: Rhynn_6 Start: 3404, Stop: 4105, Start Num: 1

Candidate Starts for Rhynn_6:

(Start: 1 @3404 has 165 MA's), (Start: 3 @3413 has 14 MA's), (19, 3536), (21, 3545), (24, 3566), (31, 3608), (35, 3638), (Start: 40 @3668 has 2 MA's), (52, 3764), (58, 3797), (68, 3884), (81, 3944), (83, 3986), (96, 4088),

Gene: RidgeCB_6 Start: 2935, Stop: 3627, Start Num: 3

Candidate Starts for RidgeCB_6:

(Start: 1 @2926 has 165 MA's), (Start: 3 @2935 has 14 MA's), (19, 3058), (21, 3067), (24, 3088), (31, 3130), (35, 3160), (Start: 40 @3190 has 2 MA's), (52, 3286), (58, 3319), (68, 3406), (81, 3466), (83, 3508), (96, 3610),

Gene: Ringer_5 Start: 3413, Stop: 4114, Start Num: 1

Candidate Starts for Ringer_5:

(Start: 1 @3413 has 165 MA's), (Start: 3 @3422 has 14 MA's), (19, 3545), (21, 3554), (24, 3575), (31, 3617), (35, 3647), (Start: 40 @3677 has 2 MA's), (52, 3773), (58, 3806), (68, 3893), (81, 3953), (96, 4097),

Gene: Rohr_7 Start: 3620, Stop: 4309, Start Num: 1

Candidate Starts for Rohr_7:

(Start: 1 @3620 has 165 MA's), (Start: 3 @3629 has 14 MA's), (Start: 28 @3812 has 1 MA's), (29, 3818), (Start: 40 @3881 has 2 MA's), (48, 3938), (82, 4184),

Gene: Rubeus_6 Start: 2927, Stop: 3628, Start Num: 1

Candidate Starts for Rubeus_6:

(Start: 1 @2927 has 165 MA's), (Start: 3 @2936 has 14 MA's), (19, 3059), (21, 3068), (24, 3089), (31, 3131), (35, 3161), (Start: 40 @3191 has 2 MA's), (52, 3287), (58, 3320), (68, 3407), (83, 3509), (96, 3611),

Gene: Rufus_6 Start: 2984, Stop: 3685, Start Num: 1

Candidate Starts for Rufus_6:

(Start: 1 @2984 has 165 MA's), (Start: 3 @2993 has 14 MA's), (19, 3116), (21, 3125), (24, 3146), (31, 3188), (35, 3218), (Start: 40 @3248 has 2 MA's), (52, 3344), (58, 3377), (68, 3464), (83, 3566), (96, 3668),

Gene: Ruotula_5 Start: 3545, Stop: 4246, Start Num: 1

Candidate Starts for Ruotula_5:

(Start: 1 @3545 has 165 MA's), (Start: 3 @3554 has 14 MA's), (19, 3677), (21, 3686), (24, 3707), (31, 3749), (35, 3779), (Start: 40 @3809 has 2 MA's), (52, 3905), (58, 3938), (68, 4025), (81, 4085), (96, 4229),

Gene: Rutherferd_7 Start: 3445, Stop: 4146, Start Num: 1

Candidate Starts for Rutherferd_7:

(Start: 1 @3445 has 165 MA's), (Start: 3 @3454 has 14 MA's), (19, 3577), (21, 3586), (24, 3607), (31, 3649), (35, 3679), (Start: 40 @3709 has 2 MA's), (52, 3805), (58, 3838), (68, 3925), (81, 3985), (83, 4027), (93, 4096), (96, 4129),

Gene: Ryadel_68 Start: 42152, Stop: 42838, Start Num: 2

Candidate Starts for Ryadel_68:

(Start: 2 @42152 has 43 MA's), (5, 42179), (6, 42188), (7, 42206), (8, 42218), (10, 42239), (Start: 28 @42332 has 1 MA's), (30, 42341), (39, 42392), (Start: 40 @42398 has 2 MA's), (42, 42410), (47, 42452), (53, 42500), (60, 42557), (80, 42680), (82, 42707), (88, 42749), (89, 42752), (92, 42779), (96, 42830),

Gene: STLscum_7 Start: 3537, Stop: 4238, Start Num: 1

Candidate Starts for STLscum_7:

(Start: 1 @3537 has 165 MA's), (Start: 3 @3546 has 14 MA's), (19, 3669), (21, 3678), (24, 3699), (31, 3741), (35, 3771), (Start: 40 @3801 has 2 MA's), (52, 3897), (58, 3930), (68, 4017), (81, 4077), (96, 4221),

Gene: Sagefire_7 Start: 3600, Stop: 4301, Start Num: 1

Candidate Starts for Sagefire_7:

(Start: 1 @3600 has 165 MA's), (Start: 3 @3609 has 14 MA's), (19, 3732), (21, 3741), (24, 3762), (31, 3804), (35, 3834), (Start: 40 @3864 has 2 MA's), (52, 3960), (58, 3993), (68, 4080), (81, 4140), (83, 4182), (96, 4284),

Gene: Sandaddy_5 Start: 3321, Stop: 4022, Start Num: 1

Candidate Starts for Sandaddy_5:

(Start: 1 @3321 has 165 MA's), (Start: 3 @3330 has 14 MA's), (19, 3453), (21, 3462), (23, 3474), (24, 3483), (31, 3525), (35, 3555), (Start: 40 @3585 has 2 MA's), (52, 3681), (58, 3714), (68, 3801), (81, 3861), (83, 3903), (96, 4005),

Gene: Sanya_5 Start: 3983, Stop: 4684, Start Num: 1

Candidate Starts for Sanya_5:

(Start: 1 @3983 has 165 MA's), (Start: 3 @3992 has 14 MA's), (19, 4115), (21, 4124), (24, 4145), (31, 4187), (35, 4217), (Start: 40 @4247 has 2 MA's), (52, 4343), (58, 4376), (68, 4463), (81, 4523), (83, 4565), (96, 4667),

Gene: SarFire_6 Start: 3182, Stop: 3883, Start Num: 1

Candidate Starts for SarFire_6:

(Start: 1 @3182 has 165 MA's), (Start: 3 @3191 has 14 MA's), (19, 3314), (21, 3323), (24, 3344), (31, 3386), (35, 3416), (Start: 40 @3446 has 2 MA's), (52, 3542), (58, 3575), (68, 3662), (81, 3722), (96, 3866),

Gene: SchoolBus_64 Start: 41336, Stop: 42022, Start Num: 2

Candidate Starts for SchoolBus_64:

(Start: 2 @41336 has 43 MA's), (5, 41363), (6, 41372), (7, 41390), (8, 41402), (10, 41423), (Start: 28 @41516 has 1 MA's), (30, 41525), (Start: 40 @41582 has 2 MA's), (42, 41594), (47, 41636), (60, 41741), (67, 41795), (80, 41864), (82, 41891), (88, 41933), (89, 41936), (92, 41963), (96, 42014),

Gene: Schuy_65 Start: 41127, Stop: 41813, Start Num: 2

Candidate Starts for Schuy_65:

(Start: 2 @41127 has 43 MA's), (5, 41154), (6, 41163), (7, 41181), (8, 41193), (10, 41214), (Start: 28 @41307 has 1 MA's), (30, 41316), (Start: 40 @41373 has 2 MA's), (42, 41385), (47, 41427), (60, 41532), (67, 41586), (80, 41655), (82, 41682), (88, 41724), (89, 41727), (92, 41754), (96, 41805),

Gene: Scowl_7 Start: 3865, Stop: 4575, Start Num: 1

Candidate Starts for Scowl_7:

(Start: 1 @3865 has 165 MA's), (Start: 3 @3874 has 14 MA's), (19, 3997), (24, 4027), (Start: 40 @4129 has 2 MA's), (41, 4138), (43, 4159), (52, 4231), (75, 4378), (81, 4411), (87, 4471), (96, 4558),

Gene: Seabiscuit_7 Start: 3080, Stop: 3769, Start Num: 1

Candidate Starts for Seabiscuit_7:

(Start: 1 @3080 has 165 MA's), (Start: 3 @3089 has 14 MA's), (Start: 40 @3341 has 2 MA's), (48, 3398), (82, 3644),

Gene: Seanderson_7 Start: 3844, Stop: 4554, Start Num: 1

Candidate Starts for Seanderson_7:

(Start: 1 @3844 has 165 MA's), (Start: 3 @3853 has 14 MA's), (19, 3976), (24, 4006), (Start: 40 @4108 has 2 MA's), (41, 4117), (43, 4138), (52, 4210), (75, 4357), (81, 4390), (87, 4450), (96, 4537),

Gene: Shida_64 Start: 41034, Stop: 41720, Start Num: 2

Candidate Starts for Shida_64:

(Start: 2 @41034 has 43 MA's), (5, 41061), (6, 41070), (7, 41088), (8, 41100), (10, 41121), (Start: 28 @41214 has 1 MA's), (30, 41223), (Start: 40 @41280 has 2 MA's), (42, 41292), (47, 41334), (60, 41439), (67, 41493), (80, 41562), (82, 41589), (88, 41631), (89, 41634), (92, 41661), (96, 41712),

Gene: ShortQueendom_4 Start: 2779, Stop: 3480, Start Num: 1

Candidate Starts for ShortQueendom_4:

(Start: 1 @2779 has 165 MA's), (Start: 3 @2788 has 14 MA's), (19, 2911), (21, 2920), (24, 2941), (31, 2983), (35, 3013), (Start: 40 @3043 has 2 MA's), (52, 3139), (58, 3172), (68, 3259), (81, 3319), (83, 3361), (96, 3463),

Gene: Sibs6_7 Start: 3120, Stop: 3821, Start Num: 1

Candidate Starts for Sibs6_7:

(Start: 1 @3120 has 165 MA's), (Start: 3 @3129 has 14 MA's), (19, 3252), (21, 3261), (24, 3282), (31, 3324), (35, 3354), (Start: 40 @3384 has 2 MA's), (52, 3480), (58, 3513), (68, 3600), (83, 3702), (96, 3804),

Gene: Slagathor_6 Start: 2929, Stop: 3639, Start Num: 1

Candidate Starts for Slagathor_6:

(Start: 1 @2929 has 165 MA's), (Start: 3 @2938 has 14 MA's), (19, 3061), (24, 3091), (Start: 40 @3193 has 2 MA's), (41, 3202), (43, 3223), (52, 3295), (75, 3442), (81, 3475), (87, 3535), (96, 3622),

Gene: Smairt_7 Start: 3793, Stop: 4494, Start Num: 1

Candidate Starts for Smairt_7:

(Start: 1 @3793 has 165 MA's), (Start: 3 @3802 has 14 MA's), (19, 3925), (21, 3934), (24, 3955), (31, 3997), (35, 4027), (Start: 40 @4057 has 2 MA's), (52, 4153), (58, 4186), (68, 4273), (81, 4333), (83, 4375), (96, 4477),

Gene: Smairt_37 Start: 28913, Stop: 29458, Start Num: 22

Candidate Starts for Smairt_37:

(Start: 22 @28913 has 1 MA's), (Start: 28 @28955 has 1 MA's), (Start: 40 @29024 has 2 MA's), (41, 29033), (55, 29135), (56, 29147), (59, 29159), (69, 29249), (71, 29267), (82, 29330), (89, 29375), (90, 29384), (95, 29447),

Gene: Smeagol_7 Start: 4108, Stop: 4797, Start Num: 1

Candidate Starts for Smeagol_7:

(Start: 1 @4108 has 165 MA's), (Start: 3 @4117 has 14 MA's), (Start: 28 @4300 has 1 MA's), (29, 4306), (Start: 40 @4372 has 2 MA's), (51, 4465), (68, 4591), (76, 4624), (82, 4669), (85, 4696), (88, 4711), (89, 4714),

Gene: Smooch_67 Start: 43056, Stop: 43742, Start Num: 2

Candidate Starts for Smooch_67:

(Start: 2 @43056 has 43 MA's), (5, 43083), (6, 43092), (7, 43110), (8, 43122), (10, 43143), (18, 43173), (Start: 28 @43236 has 1 MA's), (30, 43245), (Start: 40 @43302 has 2 MA's), (42, 43314), (45, 43344), (47, 43356), (53, 43404), (60, 43461), (67, 43515), (80, 43584), (82, 43611), (88, 43653), (89, 43656), (92, 43683), (96, 43734),

Gene: Snazzy_4 Start: 2824, Stop: 3525, Start Num: 1

Candidate Starts for Snazzy_4:

(Start: 1 @2824 has 165 MA's), (Start: 3 @2833 has 14 MA's), (19, 2956), (21, 2965), (24, 2986), (31, 3028), (35, 3058), (Start: 40 @3088 has 2 MA's), (52, 3184), (58, 3217), (68, 3304), (81, 3364), (96, 3508),

Gene: Solon_5 Start: 2826, Stop: 3518, Start Num: 3

Candidate Starts for Solon_5:

(Start: 1 @2817 has 165 MA's), (Start: 3 @2826 has 14 MA's), (19, 2949), (21, 2958), (24, 2979), (31, 3021), (Start: 40 @3081 has 2 MA's), (52, 3177), (58, 3210), (68, 3297), (81, 3357), (83, 3399),

Gene: Sorpresa_5 Start: 3321, Stop: 4022, Start Num: 1

Candidate Starts for Sorpresa_5:

(Start: 1 @3321 has 165 MA's), (Start: 3 @3330 has 14 MA's), (19, 3453), (21, 3462), (23, 3474), (24, 3483), (31, 3525), (35, 3555), (Start: 40 @3585 has 2 MA's), (52, 3681), (58, 3714), (68, 3801), (81, 3861), (83, 3903), (96, 4005),

Gene: SpikeBT_6 Start: 3193, Stop: 3894, Start Num: 1

Candidate Starts for SpikeBT_6:

(Start: 1 @3193 has 165 MA's), (Start: 3 @3202 has 14 MA's), (19, 3325), (24, 3355), (31, 3397), (35, 3427), (Start: 40 @3457 has 2 MA's), (52, 3553), (58, 3586), (68, 3673), (81, 3733), (83, 3775), (96, 3877),

Gene: Squee_5 Start: 2943, Stop: 3623, Start Num: 1

Candidate Starts for Squee_5:

(Start: 1 @2943 has 165 MA's), (Start: 3 @2952 has 14 MA's), (26, 3108), (27, 3114), (29, 3132), (32, 3144), (33, 3150), (Start: 40 @3198 has 2 MA's), (48, 3255), (50, 3273), (52, 3294), (75, 3441), (78, 3450), (89, 3537),

Gene: StewieG_5 Start: 3192, Stop: 3893, Start Num: 1

Candidate Starts for StewieG_5:

(Start: 1 @3192 has 165 MA's), (Start: 3 @3201 has 14 MA's), (19, 3324), (21, 3333), (24, 3354), (31, 3396), (35, 3426), (Start: 40 @3456 has 2 MA's), (52, 3552), (58, 3585), (68, 3672), (81, 3732), (83, 3774), (96, 3876),

Gene: Sumter_5 Start: 2916, Stop: 3617, Start Num: 1

Candidate Starts for Sumter_5:

(Start: 1 @2916 has 165 MA's), (Start: 3 @2925 has 14 MA's), (19, 3048), (21, 3057), (24, 3078), (31, 3120), (35, 3150), (Start: 40 @3180 has 2 MA's), (52, 3276), (58, 3309), (68, 3396), (81, 3456), (83, 3498), (96, 3600),

Gene: Sunshine924_5 Start: 2897, Stop: 3598, Start Num: 1

Candidate Starts for Sunshine924_5:

(Start: 1 @2897 has 165 MA's), (Start: 3 @2906 has 14 MA's), (19, 3029), (21, 3038), (24, 3059), (31, 3101), (35, 3131), (Start: 40 @3161 has 2 MA's), (52, 3257), (58, 3290), (68, 3377), (81, 3437), (83, 3479), (96, 3581),

Gene: SwissCheese_6 Start: 3359, Stop: 4060, Start Num: 1

Candidate Starts for SwissCheese_6:

(Start: 1 @3359 has 165 MA's), (Start: 3 @3368 has 14 MA's), (19, 3491), (21, 3500), (24, 3521), (31, 3563), (35, 3593), (Start: 40 @3623 has 2 MA's), (52, 3719), (58, 3752), (68, 3839), (81, 3899), (83, 3941), (96, 4043),

Gene: Switzer_6 Start: 2969, Stop: 3649, Start Num: 3

Candidate Starts for Switzer_6:

(Start: 1 @2960 has 165 MA's), (Start: 3 @2969 has 14 MA's), (Start: 40 @3221 has 2 MA's), (46, 3272),

Gene: Swole_8 Start: 3828, Stop: 4529, Start Num: 1

Candidate Starts for Swole_8:

(Start: 1 @3828 has 165 MA's), (Start: 3 @3837 has 14 MA's), (19, 3960), (21, 3969), (24, 3990), (31, 4032), (35, 4062), (Start: 40 @4092 has 2 MA's), (52, 4188), (58, 4221), (68, 4308), (81, 4368), (83, 4410), (96, 4512),

Gene: Target_7 Start: 3616, Stop: 4317, Start Num: 1

Candidate Starts for Target_7:

(Start: 1 @3616 has 165 MA's), (Start: 3 @3625 has 14 MA's), (19, 3748), (21, 3757), (31, 3820), (35, 3850), (Start: 40 @3880 has 2 MA's), (52, 3976), (54, 3982), (58, 4009), (68, 4096), (81, 4156), (96, 4300),

Gene: Tasp14_7 Start: 3616, Stop: 4305, Start Num: 1

Candidate Starts for Tasp14_7:

(Start: 1 @3616 has 165 MA's), (Start: 3 @3625 has 14 MA's), (15, 3727), (Start: 40 @3874 has 2 MA's), (48, 3928), (49, 3931), (54, 3973), (60, 4027), (66, 4072), (68, 4087), (73, 4111), (77, 4117), (86, 4192),

Gene: TelAviv_61 Start: 41309, Stop: 41995, Start Num: 2

Candidate Starts for TelAviv_61:

(Start: 2 @41309 has 43 MA's), (5, 41336), (6, 41345), (7, 41363), (8, 41375), (10, 41396), (Start: 28 @41489 has 1 MA's), (30, 41498), (Start: 40 @41555 has 2 MA's), (42, 41567), (47, 41609), (60, 41714), (67, 41768), (80, 41837), (82, 41864), (88, 41906), (89, 41909), (92, 41936), (96, 41987),

Gene: Teodoridan_4 Start: 2771, Stop: 3466, Start Num: 3

Candidate Starts for Teodoridan_4:

(Start: 1 @2762 has 165 MA's), (Start: 3 @2771 has 14 MA's), (20, 2900), (31, 2966), (Start: 40 @3026 has 2 MA's), (48, 3083), (64, 3203), (94, 3437),

Gene: TheloniousMonk_6 Start: 3244, Stop: 3945, Start Num: 1

Candidate Starts for TheloniousMonk_6:

(Start: 1 @3244 has 165 MA's), (Start: 3 @3253 has 14 MA's), (19, 3376), (21, 3385), (24, 3406), (31, 3448), (Start: 40 @3508 has 2 MA's), (52, 3604), (58, 3637), (68, 3724), (81, 3784), (83, 3826), (96, 3928),

Gene: Thor_6 Start: 3191, Stop: 3883, Start Num: 3

Candidate Starts for Thor_6:

(Start: 1 @3182 has 165 MA's), (Start: 3 @3191 has 14 MA's), (19, 3314), (21, 3323), (24, 3344), (31, 3386), (35, 3416), (Start: 40 @3446 has 2 MA's), (52, 3542), (58, 3575), (68, 3662), (81, 3722), (96, 3866),

Gene: Topgun_6 Start: 3108, Stop: 3809, Start Num: 1

Candidate Starts for Topgun_6:

(Start: 1 @3108 has 165 MA's), (Start: 3 @3117 has 14 MA's), (19, 3240), (21, 3249), (24, 3270), (31, 3312), (35, 3342), (Start: 40 @3372 has 2 MA's), (52, 3468), (58, 3501), (68, 3588), (81, 3648), (83, 3690), (96, 3792),

Gene: Topgun_35 Start: 27931, Stop: 28617, Start Num: 2

Candidate Starts for Topgun_35:

(Start: 2 @27931 has 43 MA's), (6, 27967), (Start: 28 @28114 has 1 MA's), (Start: 40 @28183 has 2 MA's), (41, 28192), (55, 28294), (56, 28306), (59, 28318), (69, 28408), (71, 28426), (82, 28489), (89, 28534), (90, 28543),

Gene: Tote_8 Start: 3828, Stop: 4529, Start Num: 1

Candidate Starts for Tote_8:

(Start: 1 @3828 has 165 MA's), (Start: 3 @3837 has 14 MA's), (19, 3960), (21, 3969), (24, 3990), (31, 4032), (35, 4062), (Start: 40 @4092 has 2 MA's), (52, 4188), (58, 4221), (68, 4308), (81, 4368), (83, 4410), (96, 4512),

Gene: Traft412_8 Start: 4006, Stop: 4716, Start Num: 1

Candidate Starts for Traft412_8:

(Start: 1 @4006 has 165 MA's), (Start: 3 @4015 has 14 MA's), (19, 4138), (24, 4168), (Start: 40 @4270 has 2 MA's), (41, 4279), (43, 4300), (52, 4372), (75, 4519), (81, 4552), (87, 4612), (96, 4699),

Gene: Treddle_6 Start: 3259, Stop: 3960, Start Num: 3

Candidate Starts for Treddle_6:

(Start: 1 @3250 has 165 MA's), (Start: 3 @3259 has 14 MA's), (19, 3382), (24, 3412), (Start: 40 @3514 has 2 MA's), (41, 3523), (43, 3544), (52, 3616), (75, 3763), (81, 3796), (87, 3856), (96, 3943),

Gene: Trouble_6 Start: 3659, Stop: 4360, Start Num: 1

Candidate Starts for Trouble_6:

(Start: 1 @3659 has 165 MA's), (Start: 3 @3668 has 14 MA's), (19, 3791), (21, 3800), (24, 3821), (31, 3863), (35, 3893), (Start: 40 @3923 has 2 MA's), (52, 4019), (58, 4052), (68, 4139), (81, 4199), (83, 4241), (96, 4343),

Gene: Turj99_5 Start: 3094, Stop: 3804, Start Num: 1

Candidate Starts for Turj99_5:

(Start: 1 @3094 has 165 MA's), (Start: 3 @3103 has 14 MA's), (19, 3226), (24, 3256), (Start: 40 @3358 has 2 MA's), (41, 3367), (43, 3388), (52, 3460), (75, 3607), (81, 3640), (87, 3700), (96, 3787),

Gene: TwoPeat_7 Start: 3621, Stop: 4322, Start Num: 1

Candidate Starts for TwoPeat_7:

(Start: 1 @3621 has 165 MA's), (Start: 3 @3630 has 14 MA's), (19, 3753), (21, 3762), (24, 3783), (31, 3825), (35, 3855), (Start: 40 @3885 has 2 MA's), (52, 3981), (58, 4014), (68, 4101), (81, 4161), (83, 4203), (96, 4305),

Gene: U2_5 Start: 2962, Stop: 3651, Start Num: 1

Candidate Starts for U2_5:

(Start: 1 @2962 has 165 MA's), (Start: 3 @2971 has 14 MA's), (Start: 40 @3223 has 2 MA's), (46, 3274),

Gene: UncleRicky_23 Start: 23775, Stop: 24299, Start Num: 25

Candidate Starts for UncleRicky_23:

(Start: 25 @23775 has 1 MA's), (31, 23808), (Start: 40 @23868 has 2 MA's), (48, 23925), (52, 23964), (57, 23997), (64, 24045), (79, 24135), (94, 24273),

Gene: Violet_5 Start: 2907, Stop: 3617, Start Num: 1

Candidate Starts for Violet_5:

(Start: 1 @2907 has 165 MA's), (Start: 3 @2916 has 14 MA's), (19, 3039), (24, 3069), (Start: 40 @3171 has 2 MA's), (41, 3180), (43, 3201), (52, 3273), (75, 3420), (81, 3453), (87, 3513), (96, 3600),

Gene: Vorrps_64 Start: 41384, Stop: 42070, Start Num: 2

Candidate Starts for Vorrps_64:

(Start: 2 @41384 has 43 MA's), (5, 41411), (6, 41420), (7, 41438), (8, 41450), (10, 41471), (Start: 28 @41564 has 1 MA's), (30, 41573), (Start: 40 @41630 has 2 MA's), (42, 41642), (47, 41684), (60, 41789), (67, 41843), (80, 41912), (82, 41939), (88, 41981), (89, 41984), (92, 42011), (96, 42062),

Gene: Watermelon_8 Start: 4201, Stop: 4911, Start Num: 1

Candidate Starts for Watermelon_8:

(Start: 1 @4201 has 165 MA's), (Start: 3 @4210 has 14 MA's), (19, 4333), (24, 4363), (Start: 40 @4465 has 2 MA's), (41, 4474), (43, 4495), (52, 4567), (75, 4714), (81, 4747), (87, 4807), (96, 4894),

Gene: Wheeler_6 Start: 3376, Stop: 4077, Start Num: 3

Candidate Starts for Wheeler_6:

(Start: 1 @3367 has 165 MA's), (Start: 3 @3376 has 14 MA's), (19, 3499), (24, 3529), (Start: 40 @3631 has 2 MA's), (41, 3640), (43, 3661), (52, 3733), (75, 3880), (81, 3913), (87, 3973), (96, 4060),

Gene: Wildflower_64 Start: 40896, Stop: 41582, Start Num: 2

Candidate Starts for Wildflower_64:

(Start: 2 @40896 has 43 MA's), (5, 40923), (6, 40932), (7, 40950), (8, 40962), (10, 40983), (18, 41013), (Start: 28 @41076 has 1 MA's), (30, 41085), (Start: 40 @41142 has 2 MA's), (42, 41154), (47, 41196), (60, 41301), (67, 41355), (80, 41424), (82, 41451), (88, 41493), (89, 41496), (92, 41523), (96, 41574),

Gene: Wilkins_35 Start: 27862, Stop: 28548, Start Num: 2

Candidate Starts for Wilkins_35:

(Start: 2 @27862 has 43 MA's), (6, 27898), (Start: 28 @28045 has 1 MA's), (Start: 40 @28114 has 2 MA's), (41, 28123), (55, 28225), (56, 28237), (59, 28249), (69, 28339), (71, 28357), (82, 28420), (89, 28465), (90, 28474),

Gene: Wilkins_6 Start: 3108, Stop: 3809, Start Num: 1

Candidate Starts for Wilkins_6:

(Start: 1 @3108 has 165 MA's), (Start: 3 @3117 has 14 MA's), (19, 3240), (21, 3249), (24, 3270), (31, 3312), (35, 3342), (Start: 40 @3372 has 2 MA's), (52, 3468), (58, 3501), (68, 3588), (81, 3648), (83, 3690), (96, 3792),

Gene: Winget_65 Start: 41602, Stop: 42288, Start Num: 2

Candidate Starts for Winget_65:

(Start: 2 @41602 has 43 MA's), (5, 41629), (6, 41638), (7, 41656), (8, 41668), (10, 41689), (Start: 28 @41782 has 1 MA's), (30, 41791), (Start: 40 @41848 has 2 MA's), (42, 41860), (47, 41902), (60, 42007), (67, 42061), (80, 42130), (82, 42157), (88, 42199), (89, 42202), (92, 42229), (96, 42280),

Gene: YungJamal_69 Start: 42794, Stop: 43480, Start Num: 2

Candidate Starts for YungJamal_69:

(Start: 2 @42794 has 43 MA's), (5, 42821), (6, 42830), (7, 42848), (8, 42860), (10, 42881), (18, 42911), (Start: 28 @42974 has 1 MA's), (30, 42983), (Start: 40 @43040 has 2 MA's), (42, 43052), (45, 43082), (47, 43094), (53, 43142), (60, 43199), (67, 43253), (80, 43322), (82, 43349), (88, 43391), (89, 43394), (92, 43421), (96, 43472),

Gene: Zakhe101_64 Start: 41442, Stop: 42128, Start Num: 2

Candidate Starts for Zakhe101_64:

(Start: 2 @41442 has 43 MA's), (5, 41469), (6, 41478), (7, 41496), (8, 41508), (10, 41529), (18, 41559), (Start: 28 @41622 has 1 MA's), (30, 41631), (Start: 40 @41688 has 2 MA's), (42, 41700), (47, 41742), (60, 41847), (67, 41901), (80, 41970), (82, 41997), (88, 42039), (89, 42042), (92, 42069), (96, 42120),

Gene: Zephyr_6 Start: 3214, Stop: 3915, Start Num: 1

Candidate Starts for Zephyr_6:

(Start: 1 @3214 has 165 MA's), (Start: 3 @3223 has 14 MA's), (19, 3346), (21, 3355), (24, 3376), (31, 3418), (35, 3448), (Start: 40 @3478 has 2 MA's), (52, 3574), (58, 3607), (68, 3694), (83, 3796), (96, 3898),

Gene: Zeuska_5 Start: 3138, Stop: 3839, Start Num: 1

Candidate Starts for Zeuska_5:

(Start: 1 @3138 has 165 MA's), (Start: 3 @3147 has 14 MA's), (19, 3270), (24, 3300), (31, 3342), (35, 3372), (Start: 40 @3402 has 2 MA's), (52, 3498), (58, 3531), (68, 3618), (81, 3678), (83, 3720), (96, 3822),