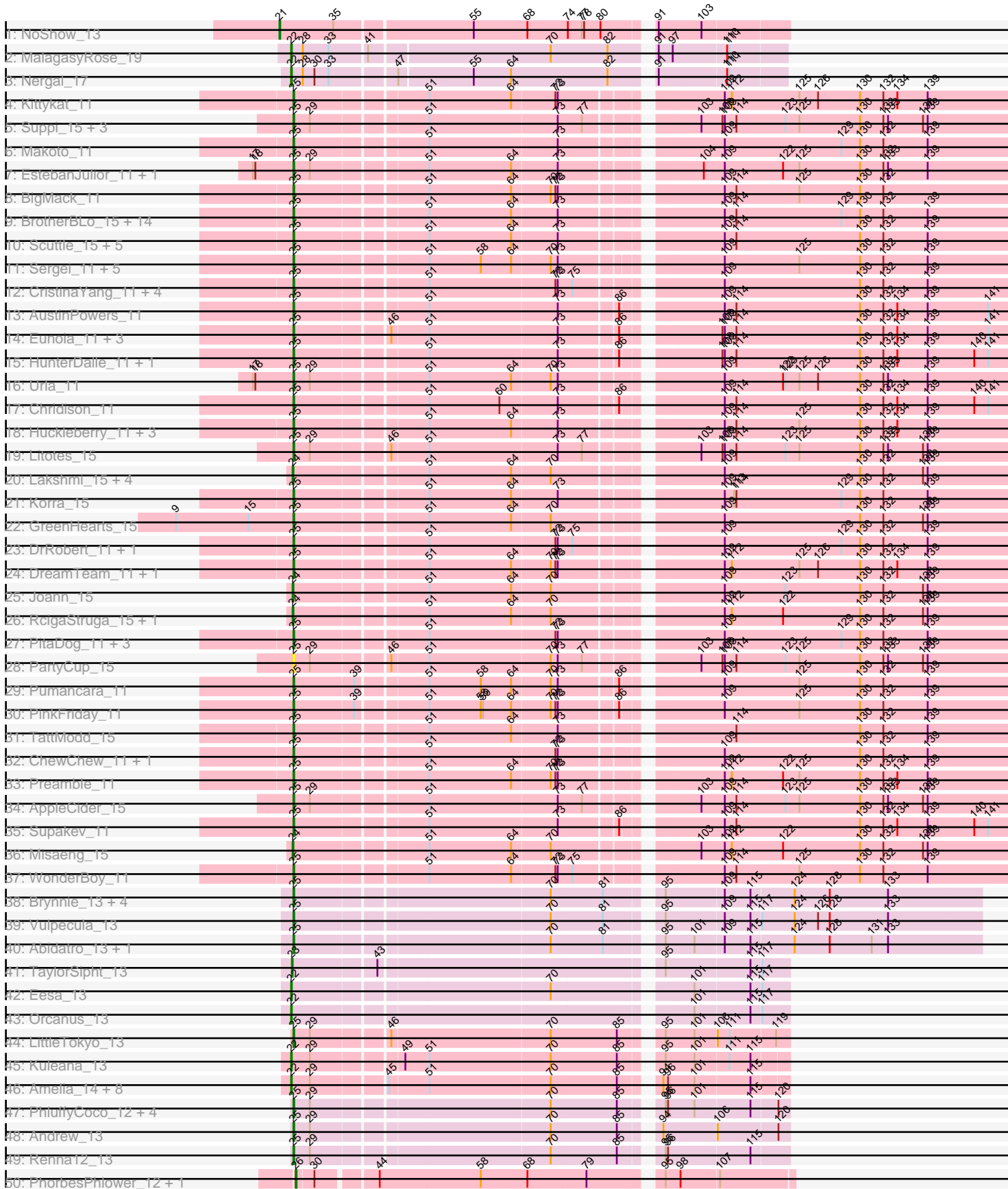
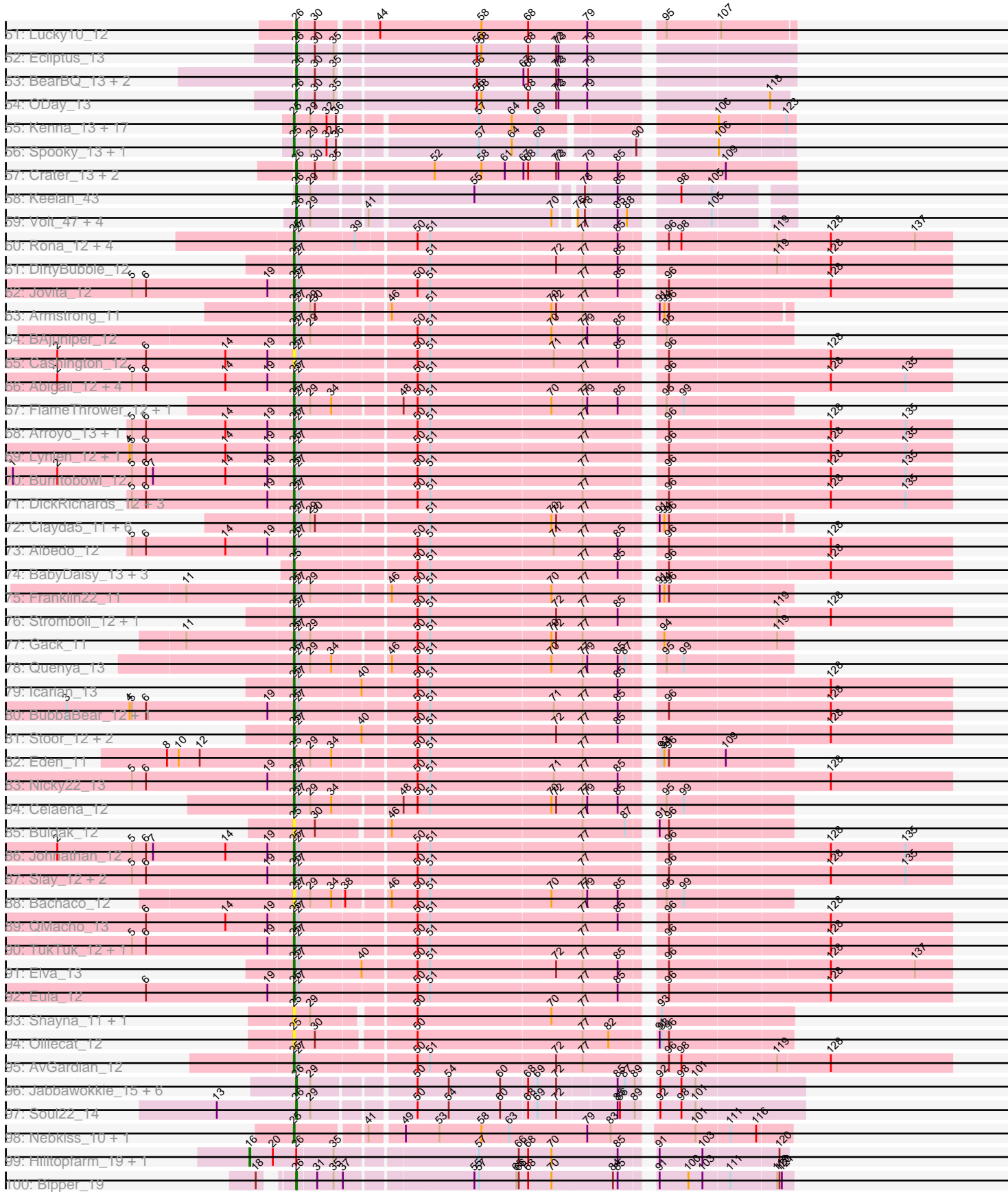


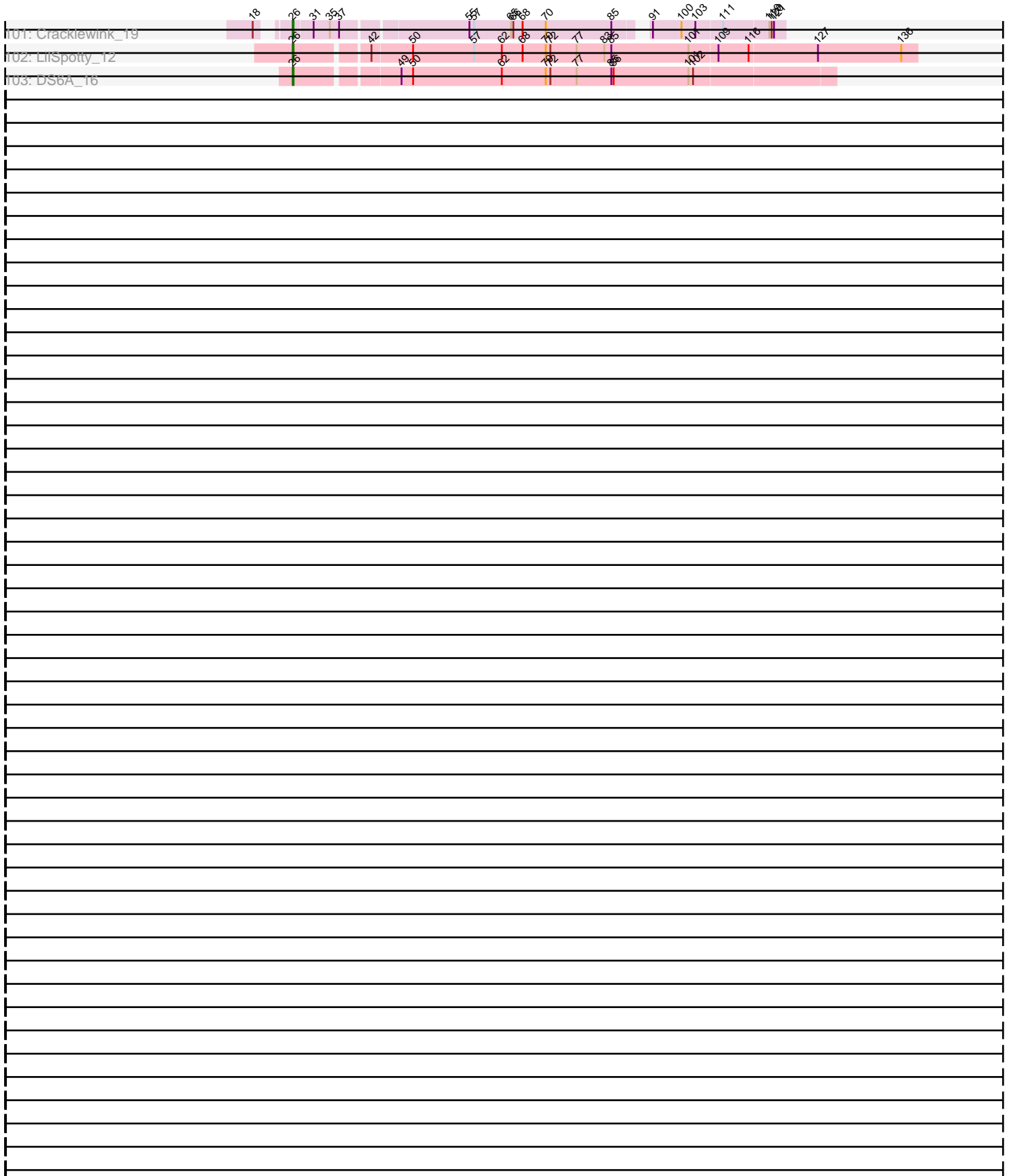
Pham 171178



Pham 171178



Pham 171178



Note: Tracks are now grouped by subcluster and scaled. Switching in subcluster is indicated by changes in track color. Track scale is now set by default to display the region 30 bp upstream of start 1 to 30 bp downstream of the last possible start. If this default region is judged to be packed too tightly with annotated starts, the track will be further scaled to only show that region of the ORF with annotated starts. This action will be indicated by adding "Zoomed" to the title. For starts, yellow indicates the location of called starts comprised solely of Glimmer/GeneMark auto-annotations, green indicates the location of called starts with at least 1 manual gene annotation.

Pham 171178 Report

This analysis was run 07/10/24 on database version 566.

Pham number 171178 has 236 members, 17 are drafts.

Phages represented in each track:

- Track 1 : NoShow_13
- Track 2 : MalagasyRose_19
- Track 3 : Nergal_17
- Track 4 : Kittykat_11
- Track 5 : Suppi_15, Canowicakte_15, CallieOMalley_15, Wayne_15
- Track 6 : Makoto_11
- Track 7 : EstebanJulior_11, MamaPearl_11
- Track 8 : BigMack_11
- Track 9 : BrotherBLo_15, RAP15_15, Wawa_15, Potatoes_15, Dino_15, Savage2526_15, Glenn_15, Jumboset_15, Cholula_15, Vallejo_15, Rozby_15, Immaculata_15, MeganNoll_15, Kalizoi_15, Zorro_15
- Track 10 : Scuttle_15, Carpal_15, Fluke_15, MrGloopy_15, Riverdale_15, Beethoven_15
- Track 11 : Sergei_11, KingBob_11, Herb_11, Temper16_11, Maria1952_11, Daiboju_11
- Track 12 : CristinaYang_11, Lasagna_11, LilStuart_11, Nancia_11, Christian_11
- Track 13 : AustinPowers_11
- Track 14 : Eunoia_11, Aledel_11, OMalley_11, Riovina_11
- Track 15 : HunterDalle_11, Vulture_11
- Track 16 : Urla_11
- Track 17 : Chridison_11
- Track 18 : Huckleberry_11, HeadNerd_11, Bennie_11, Moki_11
- Track 19 : Litotes_15
- Track 20 : Lakshmi_15, Albanese_15, Greenhouse_15, Oxynfrius_15, Nubia_15
- Track 21 : Korra_15
- Track 22 : GreenHearts_15
- Track 23 : DrRobert_11, Pterodactyl_11
- Track 24 : DreamTeam_11, Gisselle_11
- Track 25 : Joann_15
- Track 26 : RcigaStruga_15, Huntingdon_15
- Track 27 : PitaDog_11, Lucy_11, Lennox_11, OurGirlNessie_11
- Track 28 : PartyCup_15
- Track 29 : Pumancara_11
- Track 30 : PinkFriday_11
- Track 31 : TattModd_15
- Track 32 : ChewChew_11, Bodacious_11
- Track 33 : Preamble_11

- Track 34 : AppleCider_15
- Track 35 : Supakev_11
- Track 36 : Misaeng_15
- Track 37 : WonderBoy_11
- Track 38 : Brynnie_13, Jamun_13, Ruchi_13, Basilisk_13, Chickaboom_12
- Track 39 : Vulpecula_13
- Track 40 : Abidatro_13, Galaxy_13
- Track 41 : TaylorSipht_13
- Track 42 : Eesa_13
- Track 43 : Orcanus_13
- Track 44 : LittleTokyo_13
- Track 45 : Kuleana_13
- Track 46 : Amelia_14, Polka_13, Cote_14, Daob_14, Coral_13, Melons_14, Lunar_14, Kepler_13, HannahPhantana_14
- Track 47 : PhluffyCoco_12, KHumphrey_12, Leona_12, Juno112_12, RedFox_12
- Track 48 : Andrew_13
- Track 49 : Renna12_13
- Track 50 : PhorbesPhlower_12, Morkie_12
- Track 51 : Lucky10_12
- Track 52 : Ecliptus_13
- Track 53 : BearBQ_13, MortyNRick_13, Birdsong_13
- Track 54 : ODay_13
- Track 55 : Kenna_13, Lutum_13, Whitney_13, CheeseTouch_13, Periwinkle_13, Leroy_13, Horus_13, Getalong_13, Budski_13, BENtherdunthat_13, LitninMcQueen_13, Kamaru_13, Asapag_13, Phabuloso_13, Holliday_13, Frickyeah_13, Squiddly_14, Phistory_13
- Track 56 : Spooky_13, Malisha_13
- Track 57 : Crater_13, Kuwabara_13, Apricot_13
- Track 58 : Keelan_43
- Track 59 : Volt_47, Fryberger_45, Guey18_50, Ziko_48, Ronaldo_48
- Track 60 : Rona_12, Kieran_12, ChiliPepper_12, Sharkboy_12, Dismas_12
- Track 61 : DirtyBubble_12
- Track 62 : Jovita_12
- Track 63 : Armstrong_11
- Track 64 : BAjuniper_12
- Track 65 : Cashington_12
- Track 66 : Abigail_12, Doobus_12, Albright_12, LimaBean_12, Avacadoman_12
- Track 67 : FlameThrower_12, Katzastrophic_12
- Track 68 : Arroyo_13, SansAfet_12
- Track 69 : Lynlen_12, Kenzers_12
- Track 70 : Burritobowl_12
- Track 71 : DickRichards_12, CroZenni_12, BelmontSKP_13, AnnaLie_13
- Track 72 : Clayda5_11, Rollins_11, Coltrane_11, Bernstein_11, Vitas_11, Brahms_11, Skylord_11
- Track 73 : Albedo_12
- Track 74 : BabyDaisy_13, Didgeridoo_13, IndyLu_12, Lahqtemish_12
- Track 75 : Franklin22_11
- Track 76 : Stromboli_12, BabyYoda_12
- Track 77 : Gack_11
- Track 78 : Quenya_13
- Track 79 : Icarian_13
- Track 80 : BubbaBear_12, Phisb_12
- Track 81 : Stoor_12, Loviatar_20, SanaSana_13

- Track 82 : Eden_11
- Track 83 : Nicky22_13
- Track 84 : Celaena_12
- Track 85 : Buldak_12
- Track 86 : Johnathan_12
- Track 87 : Slay_12, SarBear_12, Swervy_12
- Track 88 : Bachaco_12
- Track 89 : QMacho_13
- Track 90 : TukTuk_12, Finalfrontier_13
- Track 91 : Elva_13
- Track 92 : Eula_12
- Track 93 : Shayna_11, SunnyD_11
- Track 94 : Olliecat_12
- Track 95 : AvGardian_12
- Track 96 : Jabbawokkie_15, Che9d_14, Yoshi_14, Avani_14, Blarby_15, Zapner_15, Demsculpinboyz_14
- Track 97 : Soul22_14
- Track 98 : Nebkiss_10, Gaia_10
- Track 99 : Hilltopfarm_19, Typha_19
- Track 100 : Bipper_19
- Track 101 : Cracklewink_19
- Track 102 : LilSpotty_12
- Track 103 : DS6A_16

Summary of Final Annotations (See graph section above for start numbers):

The start number called the most often in the published annotations is 25, it was called in 166 of the 219 non-draft genes in the pham.

Genes that call this "Most Annotated" start:

- Abidatro_13, Abigail_12, Albedo_12, Albright_12, Aledel_11, Andrew_13, AnnaLie_13, AppleCider_15, Armstrong_11, Arroyo_13, Asapag_13, AustinPowers_11, AvGardian_12, Avocadoman_12, BAJuniper_12, BENtherdunthat_13, BabyDaisy_13, BabyYoda_12, Bachaco_12, Basilisk_13, Beethoven_15, BelmontSKP_13, Bennie_11, Bernstein_11, BigMack_11, Bodacious_11, Brahms_11, BrotherBLo_15, Brynnie_13, BubbaBear_12, Budski_13, Buldak_12, Burritobowl_12, CallieOMalley_15, Canowicakte_15, Carpal_15, Cashington_12, Celaena_12, CheeseTouch_13, ChewChew_11, Chickaboom_12, ChiliPepper_12, Cholula_15, Chridison_11, Christian_11, Clayda5_11, Coltrane_11, CristinaYang_11, CroZenni_12, Daiboju_11, DickRichards_12, Didgeridoo_13, Dino_15, DirtyBubble_12, Dismas_12, Doobus_12, DrRobert_11, DreamTeam_11, Eden_11, Elva_13, EstebanJulior_11, Eula_12, Eunoia_11, Finalfrontier_13, FlameThrower_12, Fluke_15, Franklin22_11, Frickyeah_13, Gack_11, Gaia_10, Galaxy_13, Getalong_13, Gisselle_11, Glenn_15, GreenHearts_15, HeadNerd_11, Herb_11, Holliday_13, Horus_13, Huckleberry_11, HunterDalle_11, Icarian_13, Immaculata_15, IndyLu_12, Jamun_13, Johnathan_12, Jovita_12, Jumboset_15, Juno112_12, KHumphrey_12, Kalizoi_15, Kamaru_13, Katzastrophic_12, Kenna_13, Kenzers_12, Kieran_12, KingBob_11, Kittykat_11, Korra_15, Lahqtemish_12, Lasagna_11, Lennox_11, Leona_12, Leroy_13, LilStuart_11, LimaBean_12, LitninMcQueen_13, Litotes_15, LittleTokyo_13, Loviatar_20, Lucy_11, Lutum_13,

Lynlen_12, Makoto_11, Malisha_13, MamaPearl_11, Maria1952_11, MeganNoll_15, Moki_11, MrGloopy_15, Nancia_11, Nebkiss_10, Nicky22_13, OMalley_11, Olliecat_12, OurGirlNessie_11, PartyCup_15, Periwinkle_13, Phabuloso_13, Phisb_12, Phistory_13, PhluffyCoco_12, PinkFriday_11, PitaDog_11, Potatoes_15, Preamble_11, Pterodactyl_11, Pumancara_11, QMacho_13, Quenya_13, RAP15_15, RedFox_12, Renna12_13, Riovina_11, Riverdale_15, Rollins_11, Rona_12, Rozby_15, Ruchi_13, SanaSana_13, SansAfet_12, SarBear_12, Savage2526_15, Scuttle_15, Sergei_11, Sharkboy_12, Shayna_11, Skylord_11, Slay_12, Spooky_13, Squiddly_14, Stoor_12, Stromboli_12, SunnyD_11, Supakev_11, Suppi_15, Swervy_12, TattModd_15, Temper16_11, TukTuk_12, Urla_11, Vallejo_15, Vitas_11, Vulpecula_13, Vulture_11, Wawa_15, Wayne_15, Whitney_13, WonderBoy_11, Zorro_15,

Genes that have the "Most Annotated" start but do not call it:

-

Genes that do not have the "Most Annotated" start:

- Albanese_15, Amelia_14, Apricot_13, Avani_14, BearBQ_13, Bipper_19, Birdsong_13, Blarby_15, Che9d_14, Coral_13, Cote_14, Cracklewink_19, Crater_13, DS6A_16, Daob_14, Demsculpinboyz_14, Ecliptus_13, Eesa_13, Fryberger_45, Greenhouse_15, Guey18_50, HannahPhantana_14, Hilltopfarm_19, Huntingdon_15, Jabbawokkie_15, Joann_15, Keelan_43, Kepler_13, Kuleana_13, Kuwabara_13, Lakshmi_15, LilSpotty_12, Lucky10_12, Lunar_14, MalagasyRose_19, Melons_14, Misaeng_15, Morkie_12, MortyNRick_13, Nergal_17, NoShow_13, Nubia_15, ODay_13, Orcanus_13, Oxynfrius_15, PhorbesPhlower_12, Polka_13, RcigaStruga_15, Ronaldo_48, Soul22_14, TaylorSipht_13, Typha_19, Volt_47, Yoshi_14, Zapner_15, Ziko_48,

Summary by start number:

Start 16:

- Found in 2 of 236 (0.8%) of genes in pham
- Manual Annotations of this start: 2 of 219
- Called 100.0% of time when present
- Phage (with cluster) where this start called: Hilltopfarm_19 (Y), Typha_19 (Y),

Start 21:

- Found in 1 of 236 (0.4%) of genes in pham
- Manual Annotations of this start: 1 of 219
- Called 100.0% of time when present
- Phage (with cluster) where this start called: NoShow_13 (AB),

Start 22:

- Found in 14 of 236 (5.9%) of genes in pham
- Manual Annotations of this start: 13 of 219
- Called 100.0% of time when present
- Phage (with cluster) where this start called: Amelia_14 (AS2), Coral_13 (AS2), Cote_14 (AS2), Daob_14 (AS2), Eesa_13 (AS1), HannahPhantana_14 (AS2), Kepler_13 (AS2), Kuleana_13 (AS2), Lunar_14 (AS2), MalagasyRose_19 (AG), Melons_14 (AS2), Nergal_17 (AG), Orcanus_13 (AS1), Polka_13 (AS2),

Start 23:

- Found in 1 of 236 (0.4%) of genes in pham

- Manual Annotations of this start: 1 of 219
- Called 100.0% of time when present
- Phage (with cluster) where this start called: TaylorSipht_13 (AS1),

Start 24:

- Found in 9 of 236 (3.8%) of genes in pham
- Manual Annotations of this start: 9 of 219
- Called 100.0% of time when present
- Phage (with cluster) where this start called: Albanese_15 (AK), Greenhouse_15 (AK), Huntingdon_15 (AK), Joann_15 (AK), Lakshmi_15 (AK), Misaeng_15 (AK), Nubia_15 (AK), Oxynfrius_15 (AK), RcigaStruga_15 (AK),

Start 25:

- Found in 180 of 236 (76.3%) of genes in pham
- Manual Annotations of this start: 166 of 219
- Called 100.0% of time when present
- Phage (with cluster) where this start called: Abidatro_13 (AS1), Abigail_12 (EB), Albedo_12 (EB), Albright_12 (EB), Aledel_11 (AK), Andrew_13 (AS3), AnnaLie_13 (EB), AppleCider_15 (AK), Armstrong_11 (EB), Arroyo_13 (EB), Asapag_13 (DN1), AustinPowers_11 (AK), AvGardian_12 (EB), Avocadoman_12 (EB), BAjuniper_12 (EB), BENtherdunthat_13 (DN1), BabyDaisy_13 (EB), BabyYoda_12 (EB), Bachaco_12 (EB), Basilisk_13 (AS1), Beethoven_15 (AK), BelmontSKP_13 (EB), Bennie_11 (AK), Bernstein_11 (EB), BigMack_11 (AK), Bodacious_11 (AK), Brahms_11 (EB), BrotherBLo_15 (AK), Brynnie_13 (AS1), BubbaBear_12 (EB), Budski_13 (DN), Buldak_12 (EB), Burritobowl_12 (EB), CallieOMalley_15 (AK), Canowicakte_15 (AK), Carpal_15 (AK), Cashington_12 (EB), Celaena_12 (EB), CheeseTouch_13 (DN1), ChewChew_11 (AK), Chickaboom_12 (AS1), ChiliPepper_12 (EB), Cholula_15 (AK), Chridison_11 (AK), Christian_11 (AK), Clayda5_11 (EB), Coltrane_11 (EB), CristinaYang_11 (AK), CroZenni_12 (EB), Daiboju_11 (AK), DickRichards_12 (EB), Didgeridoo_13 (EB), Dino_15 (AK), DirtyBubble_12 (EB), Dismas_12 (EB), Doobus_12 (EB), DrRobert_11 (AK), DreamTeam_11 (AK), Eden_11 (EB), Elva_13 (EB), EstebanJulior_11 (AK), Eula_12 (EB), Eunoia_11 (AK), Finalfrontier_13 (EB), FlameThrower_12 (EB), Fluke_15 (AK), Franklin22_11 (EB), Frickyeah_13 (DN1), Gack_11 (EB), Gaia_10 (X), Galaxy_13 (AS1), Getalong_13 (DN1), Gisselle_11 (AK), Glenn_15 (AK), GreenHearts_15 (AK), HeadNerd_11 (AK), Herb_11 (AK), Holliday_13 (DN1), Horus_13 (DN1), Huckleberry_11 (AK), HunterDalle_11 (AK), Icarian_13 (EB), Immaculata_15 (AK), IndyLu_12 (EB), Jamun_13 (AS1), Johnathan_12 (EB), Jovita_12 (EB), Jumboset_15 (AK), Juno112_12 (AS3), KHumphrey_12 (AS3), Kalizoi_15 (AK), Kamaru_13 (DN1), Katzastrophic_12 (EB), Kenna_13 (DN1), Kenzers_12 (EB), Kieran_12 (EB), KingBob_11 (AK), Kittykat_11 (AK), Korra_15 (AK), Lahqtemish_12 (EB), Lasagna_11 (AK), Lennox_11 (AK), Leona_12 (AS3), Leroy_13 (DN1), LilStuart_11 (AK), LimaBean_12 (EB), LitninMcQueen_13 (DN1), Litotes_15 (AK), LittleTokyo_13 (AS2), Loviatar_20 (EB), Lucy_11 (AK), Lutum_13 (DN1), Lynlen_12 (EB), Makoto_11 (AK), Malisha_13 (DN), MamaPearl_11 (AK), Maria1952_11 (AK), MeganNoll_15 (AK), Moki_11 (AK), MrGloopy_15 (AK), Nancia_11 (AK), Nebkiss_10 (X), Nicky22_13 (EB), OMalley_11 (AK), Olliecat_12 (EB), OurGirlNessie_11 (AK), PartyCup_15 (AK), Periwinkle_13 (DN1), Phabuloso_13 (DN1), Phisb_12 (EB), Phistory_13 (DN1), PhluffyCoco_12 (AS3), PinkFriday_11 (AK), PitaDog_11 (AK), Potatoes_15 (AK), Preamble_11 (AK), Pterodactyl_11 (AK), Pumancara_11 (AK), QMacho_13 (EB), Quenya_13 (EB), RAP15_15 (AK), RedFox_12 (AS3), Renna12_13 (AS3), Rivovina_11 (AK), Riverdale_15 (AK), Rollins_11 (EB), Rona_12 (EB), Rozby_15 (AK), Ruchi_13 (AS1), SanaSana_13 (EB), SansAfet_12 (EB),

SarBear_12 (EB), Savage2526_15 (AK), Scuttle_15 (AK), Sergei_11 (AK), Sharkboy_12 (EB), Shayna_11 (EB), Skylord_11 (EB), Slay_12 (EB), Spooky_13 (DN2), Squiddly_14 (DN2), Stoor_12 (EB), Stromboli_12 (EB), SunnyD_11 (EB), Supakev_11 (AK), Suppi_15 (AK), Swervy_12 (EB), TattModd_15 (AK), Temper16_11 (AK), TukTuk_12 (EB), Urla_11 (AK), Vallejo_15 (AK), Vitas_11 (EB), Vulpecula_13 (AS1), Vulture_11 (AK), Wawa_15 (AK), Wayne_15 (AK), Whitney_13 (DN1), WonderBoy_11 (AK), Zorro_15 (AK),

Start 26:

- Found in 31 of 236 (13.1%) of genes in pham
- Manual Annotations of this start: 27 of 219
- Called 93.5% of time when present
- Phage (with cluster) where this start called: Apricot_13 (DN3), Avani_14 (F2), BearBQ_13 (DN), Bipper_19 (Y), Birdsong_13 (DN), Blarby_15 (F), Che9d_14 (F2), Cracklewink_19 (Y), Crater_13 (DN3), DS6A_16 (singleton), Demsculpinboyz_14 (F2), Ecliptus_13 (DN), Fryberger_45 (DP), Guey18_50 (DP), Jabbawokkie_15 (F2), Keelan_43 (DP), Kuwabara_13 (DN4), LilSpotty_12 (singleton), Lucky10_12 (DH), Morkie_12 (DH), MortyNRick_13 (DN), ODay_13 (DN), PhorbPhlower_12 (DH), Ronaldo_48 (DP), Soul22_14 (F2), Volt_47 (DP), Yoshi_14 (F2), Zapner_15 (F2), Ziko_48 (DP),

Summary by clusters:

There are 19 clusters represented in this pham: AS3, DN, F2, AB, AG, DH, AS2, AK, F, AS1, EB, DN4, DN1, DN3, DN2, Y, X, singleton, DP,

Info for manual annotations of cluster AB:

- Start number 21 was manually annotated 1 time for cluster AB.

Info for manual annotations of cluster AG:

- Start number 22 was manually annotated 2 times for cluster AG.

Info for manual annotations of cluster AK:

- Start number 24 was manually annotated 9 times for cluster AK.
- Start number 25 was manually annotated 73 times for cluster AK.

Info for manual annotations of cluster AS1:

- Start number 22 was manually annotated 2 times for cluster AS1.
- Start number 23 was manually annotated 1 time for cluster AS1.
- Start number 25 was manually annotated 7 times for cluster AS1.

Info for manual annotations of cluster AS2:

- Start number 22 was manually annotated 9 times for cluster AS2.
- Start number 25 was manually annotated 1 time for cluster AS2.

Info for manual annotations of cluster AS3:

- Start number 25 was manually annotated 4 times for cluster AS3.

Info for manual annotations of cluster DH:

- Start number 26 was manually annotated 3 times for cluster DH.

Info for manual annotations of cluster DN:

- Start number 25 was manually annotated 2 times for cluster DN.

- Start number 26 was manually annotated 4 times for cluster DN.

Info for manual annotations of cluster DN1:

- Start number 25 was manually annotated 15 times for cluster DN1.

Info for manual annotations of cluster DN2:

- Start number 25 was manually annotated 2 times for cluster DN2.

Info for manual annotations of cluster DN3:

- Start number 26 was manually annotated 2 times for cluster DN3.

Info for manual annotations of cluster DN4:

- Start number 26 was manually annotated 1 time for cluster DN4.

Info for manual annotations of cluster DP:

- Start number 26 was manually annotated 6 times for cluster DP.

Info for manual annotations of cluster EB:

- Start number 25 was manually annotated 60 times for cluster EB.

Info for manual annotations of cluster F2:

- Start number 26 was manually annotated 7 times for cluster F2.

Info for manual annotations of cluster X:

- Start number 25 was manually annotated 2 times for cluster X.

Info for manual annotations of cluster Y:

- Start number 16 was manually annotated 2 times for cluster Y.
- Start number 26 was manually annotated 2 times for cluster Y.

Gene Information:

Gene: Abidatro_13 Start: 8801, Stop: 9631, Start Num: 25

Candidate Starts for Abidatro_13:

(Start: 25 @8801 has 166 MA's), (70, 9110), (81, 9176), (95, 9233), (101, 9269), (109, 9305), (115, 9338), (124, 9392), (128, 9437), (131, 9491), (133, 9512),

Gene: Abigail_12 Start: 8439, Stop: 9236, Start Num: 25

Candidate Starts for Abigail_12:

(2, 8139), (5, 8235), (6, 8253), (14, 8355), (19, 8409), (Start: 25 @8439 has 166 MA's), (27, 8445), (50, 8586), (51, 8601), (77, 8793), (96, 8880), (128, 9081), (135, 9177),

Gene: Albanese_15 Start: 10902, Stop: 11810, Start Num: 24

Candidate Starts for Albanese_15:

(Start: 24 @10902 has 9 MA's), (51, 11058), (64, 11163), (70, 11211), (109, 11400), (130, 11574), (132, 11604), (138, 11655), (139, 11661),

Gene: Albedo_12 Start: 8314, Stop: 9111, Start Num: 25

Candidate Starts for Albedo_12:

(5, 8110), (6, 8128), (14, 8230), (19, 8284), (Start: 25 @8314 has 166 MA's), (27, 8320), (50, 8461), (51, 8476), (71, 8632), (77, 8668), (85, 8713), (96, 8755), (128, 8956),

Gene: Albright_12 Start: 8320, Stop: 9117, Start Num: 25

Candidate Starts for Albright_12:

(2, 8020), (5, 8116), (6, 8134), (14, 8236), (19, 8290), (Start: 25 @8320 has 166 MA's), (27, 8326), (50, 8467), (51, 8482), (77, 8674), (96, 8761), (128, 8962), (135, 9058),

Gene: Aledel_11 Start: 7979, Stop: 8884, Start Num: 25

Candidate Starts for Aledel_11:

(Start: 25 @7979 has 166 MA's), (46, 8090), (51, 8135), (73, 8297), (86, 8366), (108, 8471), (109, 8474), (114, 8489), (130, 8648), (132, 8678), (134, 8696), (139, 8735), (141, 8813),

Gene: Amelia_14 Start: 8964, Stop: 9545, Start Num: 22

Candidate Starts for Amelia_14:

(Start: 22 @8964 has 13 MA's), (29, 8985), (45, 9072), (51, 9120), (70, 9273), (85, 9357), (94, 9393), (96, 9399), (101, 9432), (115, 9501),

Gene: Andrew_13 Start: 8753, Stop: 9334, Start Num: 25

Candidate Starts for Andrew_13:

(Start: 25 @8753 has 166 MA's), (29, 8774), (70, 9062), (85, 9146), (94, 9182), (106, 9248), (120, 9320),

Gene: AnnaLie_13 Start: 8729, Stop: 9526, Start Num: 25

Candidate Starts for AnnaLie_13:

(5, 8525), (6, 8543), (19, 8699), (Start: 25 @8729 has 166 MA's), (27, 8735), (50, 8876), (51, 8891), (77, 9083), (96, 9170), (128, 9371), (135, 9467),

Gene: AppleCider_15 Start: 10835, Stop: 11743, Start Num: 25

Candidate Starts for AppleCider_15:

(Start: 25 @10835 has 166 MA's), (29, 10856), (51, 10991), (73, 11153), (77, 11183), (103, 11303), (109, 11333), (114, 11348), (123, 11411), (125, 11429), (130, 11507), (132, 11537), (133, 11543), (138, 11588), (139, 11594),

Gene: Apricot_13 Start: 7836, Stop: 8429, Start Num: 26

Candidate Starts for Apricot_13:

(Start: 26 @7836 has 27 MA's), (30, 7857), (35, 7881), (52, 7995), (58, 8055), (61, 8085), (67, 8109), (68, 8115), (72, 8151), (73, 8154), (79, 8190), (85, 8229), (109, 8340),

Gene: Armstrong_11 Start: 8096, Stop: 8680, Start Num: 25

Candidate Starts for Armstrong_11:

(Start: 25 @8096 has 166 MA's), (27, 8102), (29, 8117), (30, 8123), (46, 8207), (51, 8255), (70, 8408), (72, 8414), (77, 8447), (91, 8522), (94, 8528), (96, 8534),

Gene: Arroyo_13 Start: 8790, Stop: 9587, Start Num: 25

Candidate Starts for Arroyo_13:

(5, 8586), (6, 8604), (14, 8706), (19, 8760), (Start: 25 @8790 has 166 MA's), (27, 8796), (50, 8937), (51, 8952), (77, 9144), (96, 9231), (128, 9432), (135, 9528),

Gene: Asapag_13 Start: 7514, Stop: 8086, Start Num: 25

Candidate Starts for Asapag_13:

(Start: 25 @7514 has 166 MA's), (29, 7535), (32, 7556), (36, 7568), (57, 7727), (64, 7769), (69, 7802), (106, 7991), (123, 8075),

Gene: AustinPowers_11 Start: 7980, Stop: 8885, Start Num: 25

Candidate Starts for AustinPowers_11:

(Start: 25 @7980 has 166 MA's), (51, 8136), (73, 8298), (86, 8367), (109, 8475), (114, 8490), (130, 8649), (132, 8679), (134, 8697), (139, 8736), (141, 8814),

Gene: AvGardian_12 Start: 8379, Stop: 9176, Start Num: 25

Candidate Starts for AvGardian_12:

(Start: 25 @8379 has 166 MA's), (27, 8385), (50, 8529), (51, 8544), (72, 8703), (77, 8736), (96, 8823), (98, 8838), (119, 8955), (128, 9021),

Gene: Avani_14 Start: 7679, Stop: 8272, Start Num: 26

Candidate Starts for Avani_14:

(Start: 26 @7679 has 27 MA's), (29, 7697), (50, 7814), (54, 7853), (60, 7919), (68, 7952), (69, 7964), (72, 7988), (85, 8060), (87, 8069), (89, 8081), (92, 8093), (98, 8117), (101, 8135),

Gene: Avocadoman_12 Start: 8378, Stop: 9175, Start Num: 25

Candidate Starts for Avocadoman_12:

(2, 8078), (5, 8174), (6, 8192), (14, 8294), (19, 8348), (Start: 25 @8378 has 166 MA's), (27, 8384), (50, 8525), (51, 8540), (77, 8732), (96, 8819), (128, 9020), (135, 9116),

Gene: BAjuniper_12 Start: 8258, Stop: 8848, Start Num: 25

Candidate Starts for BAjuniper_12:

(Start: 25 @8258 has 166 MA's), (27, 8264), (29, 8279), (50, 8402), (51, 8417), (70, 8570), (77, 8609), (79, 8615), (85, 8654), (95, 8693),

Gene: BENtherdunthat_13 Start: 7514, Stop: 8086, Start Num: 25

Candidate Starts for BENtherdunthat_13:

(Start: 25 @7514 has 166 MA's), (29, 7535), (32, 7556), (36, 7568), (57, 7727), (64, 7769), (69, 7802), (106, 7991), (123, 8075),

Gene: BabyDaisy_13 Start: 8547, Stop: 9341, Start Num: 25

Candidate Starts for BabyDaisy_13:

(Start: 25 @8547 has 166 MA's), (50, 8694), (51, 8709), (77, 8901), (85, 8946), (96, 8988), (128, 9186),

Gene: BabyYoda_12 Start: 8571, Stop: 9368, Start Num: 25

Candidate Starts for BabyYoda_12:

(Start: 25 @8571 has 166 MA's), (27, 8577), (50, 8721), (51, 8736), (72, 8895), (77, 8928), (85, 8973), (119, 9147), (128, 9213),

Gene: Bachaco_12 Start: 8464, Stop: 9054, Start Num: 25

Candidate Starts for Bachaco_12:

(Start: 25 @8464 has 166 MA's), (27, 8470), (29, 8485), (34, 8512), (38, 8527), (46, 8575), (50, 8608), (51, 8623), (70, 8776), (77, 8815), (79, 8821), (85, 8860), (95, 8899), (99, 8920),

Gene: Basilisk_13 Start: 9125, Stop: 9955, Start Num: 25

Candidate Starts for Basilisk_13:

(Start: 25 @9125 has 166 MA's), (70, 9434), (81, 9500), (95, 9557), (109, 9629), (115, 9662), (124, 9716), (128, 9761), (133, 9836),

Gene: BearBQ_13 Start: 7836, Stop: 8429, Start Num: 26

Candidate Starts for BearBQ_13:

(Start: 26 @7836 has 27 MA's), (30, 7857), (35, 7881), (56, 8049), (67, 8109), (68, 8115), (72, 8151), (73, 8154), (79, 8190),

Gene: Beethoven_15 Start: 10796, Stop: 11704, Start Num: 25

Candidate Starts for Beethoven_15:

(Start: 25 @10796 has 166 MA's), (51, 10952), (64, 11057), (73, 11114), (109, 11294), (114, 11309), (130, 11468), (132, 11498), (139, 11555),

Gene: BelmontSKP_13 Start: 8729, Stop: 9526, Start Num: 25

Candidate Starts for BelmontSKP_13:

(5, 8525), (6, 8543), (19, 8699), (Start: 25 @8729 has 166 MA's), (27, 8735), (50, 8876), (51, 8891), (77, 9083), (96, 9170), (128, 9371), (135, 9467),

Gene: Bennie_11 Start: 7938, Stop: 8846, Start Num: 25

Candidate Starts for Bennie_11:

(Start: 25 @7938 has 166 MA's), (51, 8094), (64, 8199), (73, 8256), (109, 8436), (114, 8451), (125, 8532), (130, 8610), (132, 8640), (134, 8658), (139, 8697),

Gene: Bernstein_11 Start: 8156, Stop: 8740, Start Num: 25

Candidate Starts for Bernstein_11:

(Start: 25 @8156 has 166 MA's), (27, 8162), (29, 8177), (30, 8183), (51, 8315), (70, 8468), (72, 8474), (77, 8507), (91, 8582), (94, 8588), (96, 8594),

Gene: BigMack_11 Start: 7938, Stop: 8846, Start Num: 25

Candidate Starts for BigMack_11:

(Start: 25 @7938 has 166 MA's), (51, 8094), (64, 8199), (70, 8247), (72, 8253), (73, 8256), (109, 8436), (114, 8451), (125, 8532), (130, 8610), (132, 8640),

Gene: Bipper_19 Start: 12607, Stop: 13194, Start Num: 26

Candidate Starts for Bipper_19:

(18, 12580), (Start: 26 @12607 has 27 MA's), (31, 12631), (35, 12652), (37, 12664), (55, 12817), (57, 12823), (65, 12871), (66, 12874), (68, 12886), (70, 12916), (84, 12994), (85, 13000), (91, 13030), (100, 13066), (103, 13084), (111, 13117), (119, 13174), (120, 13177), (121, 13180),

Gene: Birdsong_13 Start: 7836, Stop: 8429, Start Num: 26

Candidate Starts for Birdsong_13:

(Start: 26 @7836 has 27 MA's), (30, 7857), (35, 7881), (56, 8049), (67, 8109), (68, 8115), (72, 8151), (73, 8154), (79, 8190),

Gene: Blarby_15 Start: 8203, Stop: 8796, Start Num: 26

Candidate Starts for Blarby_15:

(Start: 26 @8203 has 27 MA's), (29, 8221), (50, 8338), (54, 8377), (60, 8443), (68, 8476), (69, 8488), (72, 8512), (85, 8584), (87, 8593), (89, 8605), (92, 8617), (98, 8641), (101, 8659),

Gene: Bodacious_11 Start: 7936, Stop: 8844, Start Num: 25

Candidate Starts for Bodacious_11:

(Start: 25 @7936 has 166 MA's), (51, 8092), (72, 8251), (73, 8254), (109, 8434), (130, 8608), (132, 8638), (139, 8695),

Gene: Brahms_11 Start: 8096, Stop: 8680, Start Num: 25

Candidate Starts for Brahms_11:

(Start: 25 @8096 has 166 MA's), (27, 8102), (29, 8117), (30, 8123), (51, 8255), (70, 8408), (72, 8414), (77, 8447), (91, 8522), (94, 8528), (96, 8534),

Gene: BrotherBLo_15 Start: 10803, Stop: 11711, Start Num: 25

Candidate Starts for BrotherBLo_15:

(Start: 25 @10803 has 166 MA's), (51, 10959), (64, 11064), (73, 11121), (109, 11301), (114, 11316), (129, 11451), (130, 11475), (132, 11505), (139, 11562),

Gene: Brynnie_13 Start: 8937, Stop: 9767, Start Num: 25

Candidate Starts for Brynnie_13:

(Start: 25 @8937 has 166 MA's), (70, 9246), (81, 9312), (95, 9369), (109, 9441), (115, 9474), (124, 9528), (128, 9573), (133, 9648),

Gene: BubbaBear_12 Start: 8314, Stop: 9111, Start Num: 25

Candidate Starts for BubbaBear_12:

(3, 8026), (4, 8107), (5, 8110), (6, 8128), (19, 8284), (Start: 25 @8314 has 166 MA's), (27, 8320), (50, 8461), (51, 8476), (71, 8632), (77, 8668), (85, 8713), (96, 8755), (128, 8956),

Gene: Budski_13 Start: 7501, Stop: 8073, Start Num: 25

Candidate Starts for Budski_13:

(Start: 25 @7501 has 166 MA's), (29, 7522), (32, 7543), (36, 7555), (57, 7714), (64, 7756), (69, 7789), (106, 7978), (123, 8062),

Gene: Buldak_12 Start: 8598, Stop: 9185, Start Num: 25

Candidate Starts for Buldak_12:

(Start: 25 @8598 has 166 MA's), (30, 8625), (46, 8706), (77, 8946), (87, 9000), (91, 9021), (96, 9033),

Gene: Burritobowl_12 Start: 8347, Stop: 9144, Start Num: 25

Candidate Starts for Burritobowl_12:

(1, 7990), (2, 8047), (5, 8143), (6, 8161), (7, 8170), (14, 8263), (19, 8317), (Start: 25 @8347 has 166 MA's), (27, 8353), (50, 8494), (51, 8509), (77, 8701), (96, 8788), (128, 8989), (135, 9085),

Gene: CallieOMalley_15 Start: 10835, Stop: 11743, Start Num: 25

Candidate Starts for CallieOMalley_15:

(Start: 25 @10835 has 166 MA's), (29, 10856), (51, 10991), (73, 11153), (77, 11183), (103, 11303), (108, 11330), (109, 11333), (114, 11348), (123, 11411), (125, 11429), (130, 11507), (132, 11537), (133, 11543), (138, 11588), (139, 11594),

Gene: Canowicakte_15 Start: 10870, Stop: 11778, Start Num: 25

Candidate Starts for Canowicakte_15:

(Start: 25 @10870 has 166 MA's), (29, 10891), (51, 11026), (73, 11188), (77, 11218), (103, 11338), (108, 11365), (109, 11368), (114, 11383), (123, 11446), (125, 11464), (130, 11542), (132, 11572), (133, 11578), (138, 11623), (139, 11629),

Gene: Carpal_15 Start: 10803, Stop: 11711, Start Num: 25

Candidate Starts for Carpal_15:

(Start: 25 @10803 has 166 MA's), (51, 10959), (64, 11064), (73, 11121), (109, 11301), (114, 11316), (130, 11475), (132, 11505), (139, 11562),

Gene: Cashington_12 Start: 8337, Stop: 9134, Start Num: 25

Candidate Starts for Cashington_12:

(2, 8037), (6, 8151), (14, 8253), (19, 8307), (Start: 25 @8337 has 166 MA's), (27, 8343), (50, 8484), (51, 8499), (71, 8655), (77, 8691), (85, 8736), (96, 8778), (128, 8979),

Gene: Celaena_12 Start: 8400, Stop: 8990, Start Num: 25

Candidate Starts for Celaena_12:

(Start: 25 @8400 has 166 MA's), (27, 8406), (29, 8421), (34, 8448), (48, 8526), (50, 8544), (51, 8559), (70, 8712), (72, 8718), (77, 8751), (79, 8757), (85, 8796), (95, 8835), (99, 8856),

Gene: Che9d_14 Start: 7688, Stop: 8281, Start Num: 26

Candidate Starts for Che9d_14:

(Start: 26 @7688 has 27 MA's), (29, 7706), (50, 7823), (54, 7862), (60, 7928), (68, 7961), (69, 7973), (72, 7997), (85, 8069), (87, 8078), (89, 8090), (92, 8102), (98, 8126), (101, 8144),

Gene: CheeseTouch_13 Start: 7501, Stop: 8073, Start Num: 25

Candidate Starts for CheeseTouch_13:

(Start: 25 @7501 has 166 MA's), (29, 7522), (32, 7543), (36, 7555), (57, 7714), (64, 7756), (69, 7789), (106, 7978), (123, 8062),

Gene: ChewChew_11 Start: 7935, Stop: 8843, Start Num: 25

Candidate Starts for ChewChew_11:

(Start: 25 @7935 has 166 MA's), (51, 8091), (72, 8250), (73, 8253), (109, 8433), (130, 8607), (132, 8637), (139, 8694),

Gene: Chickaboom_12 Start: 8482, Stop: 9312, Start Num: 25

Candidate Starts for Chickaboom_12:

(Start: 25 @8482 has 166 MA's), (70, 8791), (81, 8857), (95, 8914), (109, 8986), (115, 9019), (124, 9073), (128, 9118), (133, 9193),

Gene: ChiliPepper_12 Start: 8556, Stop: 9350, Start Num: 25

Candidate Starts for ChiliPepper_12:

(Start: 25 @8556 has 166 MA's), (27, 8562), (39, 8631), (50, 8703), (51, 8718), (77, 8910), (85, 8955), (96, 8997), (98, 9012), (119, 9129), (128, 9195), (137, 9303),

Gene: Cholula_15 Start: 10848, Stop: 11756, Start Num: 25

Candidate Starts for Cholula_15:

(Start: 25 @10848 has 166 MA's), (51, 11004), (64, 11109), (73, 11166), (109, 11346), (114, 11361), (129, 11496), (130, 11520), (132, 11550), (139, 11607),

Gene: Chridison_11 Start: 7980, Stop: 8885, Start Num: 25

Candidate Starts for Chridison_11:

(Start: 25 @7980 has 166 MA's), (51, 8136), (60, 8226), (73, 8298), (86, 8367), (109, 8475), (114, 8490), (130, 8649), (132, 8679), (134, 8697), (139, 8736), (140, 8796), (141, 8814),

Gene: Christian_11 Start: 7936, Stop: 8844, Start Num: 25

Candidate Starts for Christian_11:

(Start: 25 @7936 has 166 MA's), (51, 8092), (72, 8251), (73, 8254), (75, 8272), (109, 8434), (130, 8608), (132, 8638), (139, 8695),

Gene: Clayda5_11 Start: 8096, Stop: 8680, Start Num: 25

Candidate Starts for Clayda5_11:

(Start: 25 @8096 has 166 MA's), (27, 8102), (29, 8117), (30, 8123), (51, 8255), (70, 8408), (72, 8414), (77, 8447), (91, 8522), (94, 8528), (96, 8534),

Gene: Coltrane_11 Start: 8096, Stop: 8680, Start Num: 25

Candidate Starts for Coltrane_11:

(Start: 25 @8096 has 166 MA's), (27, 8102), (29, 8117), (30, 8123), (51, 8255), (70, 8408), (72, 8414), (77, 8447), (91, 8522), (94, 8528), (96, 8534),

Gene: Coral_13 Start: 8803, Stop: 9384, Start Num: 22

Candidate Starts for Coral_13:

(Start: 22 @8803 has 13 MA's), (29, 8824), (45, 8911), (51, 8959), (70, 9112), (85, 9196), (94, 9232), (96, 9238), (101, 9271), (115, 9340),

Gene: Cote_14 Start: 8964, Stop: 9545, Start Num: 22

Candidate Starts for Cote_14:

(Start: 22 @8964 has 13 MA's), (29, 8985), (45, 9072), (51, 9120), (70, 9273), (85, 9357), (94, 9393), (96, 9399), (101, 9432), (115, 9501),

Gene: Cracklewink_19 Start: 12607, Stop: 13194, Start Num: 26

Candidate Starts for Cracklewink_19:

(18, 12580), (Start: 26 @12607 has 27 MA's), (31, 12631), (35, 12652), (37, 12664), (55, 12817), (57, 12823), (65, 12871), (66, 12874), (68, 12886), (70, 12916), (85, 13000), (91, 13030), (100, 13066), (103, 13084), (111, 13117), (119, 13174), (120, 13177), (121, 13180),

Gene: Crater_13 Start: 7836, Stop: 8429, Start Num: 26

Candidate Starts for Crater_13:

(Start: 26 @7836 has 27 MA's), (30, 7857), (35, 7881), (52, 7995), (58, 8055), (61, 8085), (67, 8109), (68, 8115), (72, 8151), (73, 8154), (79, 8190), (85, 8229), (109, 8340),

Gene: CristinaYang_11 Start: 7936, Stop: 8844, Start Num: 25

Candidate Starts for CristinaYang_11:

(Start: 25 @7936 has 166 MA's), (51, 8092), (72, 8251), (73, 8254), (75, 8272), (109, 8434), (130, 8608), (132, 8638), (139, 8695),

Gene: CroZenni_12 Start: 8320, Stop: 9117, Start Num: 25

Candidate Starts for CroZenni_12:

(5, 8116), (6, 8134), (19, 8290), (Start: 25 @8320 has 166 MA's), (27, 8326), (50, 8467), (51, 8482), (77, 8674), (96, 8761), (128, 8962), (135, 9058),

Gene: DS6A_16 Start: 10775, Stop: 11446, Start Num: 26

Candidate Starts for DS6A_16:

(Start: 26 @10775 has 27 MA's), (49, 10898), (50, 10913), (62, 11027), (70, 11084), (72, 11090), (77, 11123), (85, 11168), (86, 11171), (101, 11267), (102, 11273),

Gene: Daiboju_11 Start: 7981, Stop: 8886, Start Num: 25

Candidate Starts for Daiboju_11:

(Start: 25 @7981 has 166 MA's), (51, 8137), (58, 8203), (64, 8242), (70, 8290), (73, 8299), (109, 8476), (125, 8572), (130, 8650), (132, 8680), (139, 8737),

Gene: Daob_14 Start: 8967, Stop: 9548, Start Num: 22

Candidate Starts for Daob_14:

(Start: 22 @8967 has 13 MA's), (29, 8988), (45, 9075), (51, 9123), (70, 9276), (85, 9360), (94, 9396), (96, 9402), (101, 9435), (115, 9504),

Gene: Demsculpinboyz_14 Start: 7679, Stop: 8272, Start Num: 26

Candidate Starts for Demsculpinboyz_14:

(Start: 26 @7679 has 27 MA's), (29, 7697), (50, 7814), (54, 7853), (60, 7919), (68, 7952), (69, 7964), (72, 7988), (85, 8060), (87, 8069), (89, 8081), (92, 8093), (98, 8117), (101, 8135),

Gene: DickRichards_12 Start: 8814, Stop: 9611, Start Num: 25

Candidate Starts for DickRichards_12:

(5, 8610), (6, 8628), (19, 8784), (Start: 25 @8814 has 166 MA's), (27, 8820), (50, 8961), (51, 8976), (77, 9168), (96, 9255), (128, 9456), (135, 9552),

Gene: Didgeridoo_13 Start: 8549, Stop: 9343, Start Num: 25

Candidate Starts for Didgeridoo_13:

(Start: 25 @8549 has 166 MA's), (50, 8696), (51, 8711), (77, 8903), (85, 8948), (96, 8990), (128, 9188),

Gene: Dino_15 Start: 10802, Stop: 11710, Start Num: 25

Candidate Starts for Dino_15:

(Start: 25 @10802 has 166 MA's), (51, 10958), (64, 11063), (73, 11120), (109, 11300), (114, 11315), (129, 11450), (130, 11474), (132, 11504), (139, 11561),

Gene: DirtyBubble_12 Start: 8579, Stop: 9376, Start Num: 25

Candidate Starts for DirtyBubble_12:

(Start: 25 @8579 has 166 MA's), (27, 8585), (51, 8744), (72, 8903), (77, 8936), (85, 8981), (119, 9155), (128, 9221),

Gene: Dismas_12 Start: 8556, Stop: 9350, Start Num: 25

Candidate Starts for Dismas_12:

(Start: 25 @8556 has 166 MA's), (27, 8562), (39, 8631), (50, 8703), (51, 8718), (77, 8910), (85, 8955), (96, 8997), (98, 9012), (119, 9129), (128, 9195), (137, 9303),

Gene: Doobus_12 Start: 8551, Stop: 9348, Start Num: 25

Candidate Starts for Doobus_12:

(2, 8251), (5, 8347), (6, 8365), (14, 8467), (19, 8521), (Start: 25 @8551 has 166 MA's), (27, 8557), (50, 8698), (51, 8713), (77, 8905), (96, 8992), (128, 9193), (135, 9289),

Gene: DrRobert_11 Start: 7936, Stop: 8844, Start Num: 25

Candidate Starts for DrRobert_11:

(Start: 25 @7936 has 166 MA's), (51, 8092), (72, 8251), (73, 8254), (75, 8272), (109, 8434), (129, 8584), (130, 8608), (132, 8638), (139, 8695),

Gene: DreamTeam_11 Start: 8003, Stop: 8911, Start Num: 25

Candidate Starts for DreamTeam_11:

(Start: 25 @8003 has 166 MA's), (51, 8159), (64, 8264), (70, 8312), (72, 8318), (73, 8321), (109, 8501), (112, 8510), (125, 8597), (126, 8621), (130, 8675), (132, 8705), (134, 8723), (139, 8762),

Gene: Ecliptus_13 Start: 7565, Stop: 8158, Start Num: 26

Candidate Starts for Ecliptus_13:

(Start: 26 @7565 has 27 MA's), (30, 7586), (35, 7610), (56, 7778), (58, 7784), (68, 7844), (72, 7880), (73, 7883), (79, 7919),

Gene: Eden_11 Start: 8192, Stop: 8782, Start Num: 25

Candidate Starts for Eden_11:

(8, 8039), (10, 8051), (12, 8078), (Start: 25 @8192 has 166 MA's), (29, 8213), (34, 8240), (50, 8336), (51, 8351), (77, 8543), (93, 8621), (94, 8624), (96, 8630), (109, 8699),

Gene: Eesa_13 Start: 8964, Stop: 9548, Start Num: 22

Candidate Starts for Eesa_13:

(Start: 22 @8964 has 13 MA's), (70, 9273), (101, 9432), (115, 9501), (117, 9513),

Gene: Elva_13 Start: 8634, Stop: 9431, Start Num: 25

Candidate Starts for Elva_13:

(Start: 25 @8634 has 166 MA's), (27, 8640), (40, 8718), (50, 8784), (51, 8799), (72, 8958), (77, 8991), (85, 9036), (96, 9078), (128, 9276), (137, 9384),

Gene: EstebanJulior_11 Start: 7982, Stop: 8890, Start Num: 25

Candidate Starts for EstebanJulior_11:

(17, 7931), (18, 7934), (Start: 25 @7982 has 166 MA's), (29, 8003), (51, 8138), (64, 8243), (73, 8300), (104, 8453), (109, 8480), (122, 8555), (125, 8576), (130, 8654), (132, 8684), (133, 8690), (139, 8741),

Gene: Eula_12 Start: 8321, Stop: 9118, Start Num: 25

Candidate Starts for Eula_12:

(6, 8135), (19, 8291), (Start: 25 @8321 has 166 MA's), (27, 8327), (50, 8468), (51, 8483), (77, 8675), (85, 8720), (96, 8762), (128, 8963),

Gene: Eunoia_11 Start: 7979, Stop: 8884, Start Num: 25

Candidate Starts for Eunoia_11:

(Start: 25 @7979 has 166 MA's), (46, 8090), (51, 8135), (73, 8297), (86, 8366), (108, 8471), (109, 8474), (114, 8489), (130, 8648), (132, 8678), (134, 8696), (139, 8735), (141, 8813),

Gene: Finalfrontier_13 Start: 8833, Stop: 9630, Start Num: 25

Candidate Starts for Finalfrontier_13:

(5, 8629), (6, 8647), (19, 8803), (Start: 25 @8833 has 166 MA's), (27, 8839), (50, 8980), (51, 8995), (77, 9187), (96, 9274), (128, 9475),

Gene: FlameThrower_12 Start: 8288, Stop: 8878, Start Num: 25

Candidate Starts for FlameThrower_12:

(Start: 25 @8288 has 166 MA's), (27, 8294), (29, 8309), (34, 8336), (48, 8414), (50, 8432), (51, 8447), (70, 8600), (77, 8639), (79, 8645), (85, 8684), (95, 8723), (99, 8744),

Gene: Fluke_15 Start: 10844, Stop: 11752, Start Num: 25

Candidate Starts for Fluke_15:

(Start: 25 @10844 has 166 MA's), (51, 11000), (64, 11105), (73, 11162), (109, 11342), (114, 11357), (130, 11516), (132, 11546), (139, 11603),

Gene: Franklin22_11 Start: 8165, Stop: 8755, Start Num: 25

Candidate Starts for Franklin22_11:

(11, 8033), (Start: 25 @8165 has 166 MA's), (27, 8171), (29, 8186), (46, 8276), (50, 8309), (51, 8324), (70, 8477), (77, 8516), (91, 8591), (94, 8597), (96, 8603),

Gene: Frickyeah_13 Start: 7514, Stop: 8086, Start Num: 25

Candidate Starts for Frickyeah_13:

(Start: 25 @7514 has 166 MA's), (29, 7535), (32, 7556), (36, 7568), (57, 7727), (64, 7769), (69, 7802), (106, 7991), (123, 8075),

Gene: Fryberger_45 Start: 16970, Stop: 17527, Start Num: 26

Candidate Starts for Fryberger_45:

(Start: 26 @16970 has 27 MA's), (29, 16988), (41, 17051), (70, 17276), (76, 17294), (78, 17303), (85, 17342), (88, 17354), (105, 17441),

Gene: Gack_11 Start: 8231, Stop: 8821, Start Num: 25

Candidate Starts for Gack_11:

(11, 8099), (Start: 25 @8231 has 166 MA's), (27, 8237), (29, 8252), (50, 8375), (51, 8390), (70, 8543), (72, 8549), (77, 8582), (94, 8663), (119, 8801),

Gene: Gaia_10 Start: 8073, Stop: 8660, Start Num: 25

Candidate Starts for Gaia_10:

(Start: 25 @8073 has 166 MA's), (41, 8154), (49, 8193), (53, 8235), (58, 8289), (63, 8325), (79, 8424), (83, 8454), (101, 8544), (111, 8586), (116, 8619),

Gene: Galaxy_13 Start: 8808, Stop: 9638, Start Num: 25

Candidate Starts for Galaxy_13:

(Start: 25 @8808 has 166 MA's), (70, 9117), (81, 9183), (95, 9240), (101, 9276), (109, 9312), (115, 9345), (124, 9399), (128, 9444), (131, 9498), (133, 9519),

Gene: Getalong_13 Start: 7496, Stop: 8068, Start Num: 25

Candidate Starts for Getalong_13:

(Start: 25 @7496 has 166 MA's), (29, 7517), (32, 7538), (36, 7550), (57, 7709), (64, 7751), (69, 7784), (106, 7973), (123, 8057),

Gene: Gisselle_11 Start: 8003, Stop: 8911, Start Num: 25

Candidate Starts for Gisselle_11:

(Start: 25 @8003 has 166 MA's), (51, 8159), (64, 8264), (70, 8312), (72, 8318), (73, 8321), (109, 8501), (112, 8510), (125, 8597), (126, 8621), (130, 8675), (132, 8705), (134, 8723), (139, 8762),

Gene: Glenn_15 Start: 10854, Stop: 11762, Start Num: 25

Candidate Starts for Glenn_15:

(Start: 25 @10854 has 166 MA's), (51, 11010), (64, 11115), (73, 11172), (109, 11352), (114, 11367), (129, 11502), (130, 11526), (132, 11556), (139, 11613),

Gene: GreenHearts_15 Start: 10949, Stop: 11857, Start Num: 25

Candidate Starts for GreenHearts_15:

(9, 10799), (15, 10892), (Start: 25 @10949 has 166 MA's), (51, 11105), (64, 11210), (70, 11258), (109, 11447), (130, 11621), (132, 11651), (138, 11702), (139, 11708),

Gene: Greenhouse_15 Start: 10873, Stop: 11781, Start Num: 24

Candidate Starts for Greenhouse_15:

(Start: 24 @10873 has 9 MA's), (51, 11029), (64, 11134), (70, 11182), (109, 11371), (130, 11545), (132, 11575), (138, 11626), (139, 11632),

Gene: Guey18_50 Start: 18163, Stop: 18720, Start Num: 26

Candidate Starts for Guey18_50:

(Start: 26 @18163 has 27 MA's), (29, 18181), (41, 18244), (70, 18469), (76, 18487), (78, 18496), (85, 18535), (88, 18547), (105, 18634),

Gene: HannahPhantana_14 Start: 8967, Stop: 9548, Start Num: 22

Candidate Starts for HannahPhantana_14:

(Start: 22 @8967 has 13 MA's), (29, 8988), (45, 9075), (51, 9123), (70, 9276), (85, 9360), (94, 9396), (96, 9402), (101, 9435), (115, 9504),

Gene: HeadNerd_11 Start: 7938, Stop: 8846, Start Num: 25

Candidate Starts for HeadNerd_11:

(Start: 25 @7938 has 166 MA's), (51, 8094), (64, 8199), (73, 8256), (109, 8436), (114, 8451), (125, 8532), (130, 8610), (132, 8640), (134, 8658), (139, 8697),

Gene: Herb_11 Start: 7981, Stop: 8886, Start Num: 25

Candidate Starts for Herb_11:

(Start: 25 @7981 has 166 MA's), (51, 8137), (58, 8203), (64, 8242), (70, 8290), (73, 8299), (109, 8476), (125, 8572), (130, 8650), (132, 8680), (139, 8737),

Gene: Hilltopfarm_19 Start: 12517, Stop: 13158, Start Num: 16

Candidate Starts for Hilltopfarm_19:

(Start: 16 @12517 has 2 MA's), (20, 12547), (Start: 26 @12577 has 27 MA's), (35, 12622), (57, 12793), (66, 12844), (68, 12856), (70, 12886), (85, 12970), (91, 13000), (103, 13054), (120, 13147),

Gene: Holliday_13 Start: 7501, Stop: 8073, Start Num: 25

Candidate Starts for Holliday_13:

(Start: 25 @7501 has 166 MA's), (29, 7522), (32, 7543), (36, 7555), (57, 7714), (64, 7756), (69, 7789), (106, 7978), (123, 8062),

Gene: Horus_13 Start: 7514, Stop: 8086, Start Num: 25

Candidate Starts for Horus_13:

(Start: 25 @7514 has 166 MA's), (29, 7535), (32, 7556), (36, 7568), (57, 7727), (64, 7769), (69, 7802), (106, 7991), (123, 8075),

Gene: Huckleberry_11 Start: 7938, Stop: 8846, Start Num: 25

Candidate Starts for Huckleberry_11:

(Start: 25 @7938 has 166 MA's), (51, 8094), (64, 8199), (73, 8256), (109, 8436), (114, 8451), (125, 8532), (130, 8610), (132, 8640), (134, 8658), (139, 8697),

Gene: HunterDalle_11 Start: 7979, Stop: 8884, Start Num: 25

Candidate Starts for HunterDalle_11:

(Start: 25 @7979 has 166 MA's), (51, 8135), (73, 8297), (86, 8366), (108, 8471), (109, 8474), (114, 8489), (130, 8648), (132, 8678), (134, 8696), (139, 8735), (140, 8795), (141, 8813),

Gene: Huntingdon_15 Start: 10859, Stop: 11767, Start Num: 24

Candidate Starts for Huntingdon_15:

(Start: 24 @10859 has 9 MA's), (51, 11015), (64, 11120), (70, 11168), (109, 11357), (112, 11366), (122, 11432), (130, 11531), (132, 11561), (138, 11612), (139, 11618),

Gene: Icarian_13 Start: 8561, Stop: 9358, Start Num: 25

Candidate Starts for Icarian_13:

(Start: 25 @8561 has 166 MA's), (27, 8567), (40, 8645), (50, 8711), (51, 8726), (77, 8918), (85, 8963), (128, 9203),

Gene: Immaculata_15 Start: 10848, Stop: 11756, Start Num: 25

Candidate Starts for Immaculata_15:

(Start: 25 @10848 has 166 MA's), (51, 11004), (64, 11109), (73, 11166), (109, 11346), (114, 11361), (129, 11496), (130, 11520), (132, 11550), (139, 11607),

Gene: IndyLu_12 Start: 8371, Stop: 9165, Start Num: 25

Candidate Starts for IndyLu_12:

(Start: 25 @8371 has 166 MA's), (50, 8518), (51, 8533), (77, 8725), (85, 8770), (96, 8812), (128, 9010),

Gene: Jabbawokkie_15 Start: 8202, Stop: 8795, Start Num: 26

Candidate Starts for Jabbawokkie_15:

(Start: 26 @8202 has 27 MA's), (29, 8220), (50, 8337), (54, 8376), (60, 8442), (68, 8475), (69, 8487), (72, 8511), (85, 8583), (87, 8592), (89, 8604), (92, 8616), (98, 8640), (101, 8658),

Gene: Jamun_13 Start: 9149, Stop: 9979, Start Num: 25

Candidate Starts for Jamun_13:

(Start: 25 @9149 has 166 MA's), (70, 9458), (81, 9524), (95, 9581), (109, 9653), (115, 9686), (124, 9740), (128, 9785), (133, 9860),

Gene: Joann_15 Start: 10851, Stop: 11759, Start Num: 24

Candidate Starts for Joann_15:

(Start: 24 @10851 has 9 MA's), (51, 11007), (64, 11112), (70, 11160), (109, 11349), (123, 11427), (130, 11523), (132, 11553), (138, 11604), (139, 11610),

Gene: Johnathan_12 Start: 8320, Stop: 9117, Start Num: 25

Candidate Starts for Johnathan_12:

(2, 8020), (5, 8116), (6, 8134), (7, 8143), (14, 8236), (19, 8290), (Start: 25 @8320 has 166 MA's), (27, 8326), (50, 8467), (51, 8482), (77, 8674), (96, 8761), (128, 8962), (135, 9058),

Gene: Jovita_12 Start: 8422, Stop: 9219, Start Num: 25

Candidate Starts for Jovita_12:

(5, 8218), (6, 8236), (19, 8392), (Start: 25 @8422 has 166 MA's), (27, 8428), (50, 8569), (51, 8584), (77, 8776), (85, 8821), (96, 8863), (128, 9064),

Gene: Jumboset_15 Start: 10797, Stop: 11705, Start Num: 25

Candidate Starts for Jumboset_15:

(Start: 25 @10797 has 166 MA's), (51, 10953), (64, 11058), (73, 11115), (109, 11295), (114, 11310), (129, 11445), (130, 11469), (132, 11499), (139, 11556),

Gene: Juno112_12 Start: 8379, Stop: 8960, Start Num: 25

Candidate Starts for Juno112_12:

(Start: 25 @8379 has 166 MA's), (29, 8400), (70, 8688), (85, 8772), (95, 8811), (96, 8814), (101, 8847), (115, 8916), (120, 8946),

Gene: KHumphrey_12 Start: 8378, Stop: 8959, Start Num: 25

Candidate Starts for KHumphrey_12:

(Start: 25 @8378 has 166 MA's), (29, 8399), (70, 8687), (85, 8771), (95, 8810), (96, 8813), (101, 8846), (115, 8915), (120, 8945),

Gene: Kalizoi_15 Start: 10796, Stop: 11704, Start Num: 25

Candidate Starts for Kalizoi_15:

(Start: 25 @10796 has 166 MA's), (51, 10952), (64, 11057), (73, 11114), (109, 11294), (114, 11309), (129, 11444), (130, 11468), (132, 11498), (139, 11555),

Gene: Kamaru_13 Start: 7501, Stop: 8073, Start Num: 25

Candidate Starts for Kamaru_13:

(Start: 25 @7501 has 166 MA's), (29, 7522), (32, 7543), (36, 7555), (57, 7714), (64, 7756), (69, 7789), (106, 7978), (123, 8062),

Gene: Katzastrophic_12 Start: 8463, Stop: 9053, Start Num: 25

Candidate Starts for Katzastrophic_12:

(Start: 25 @8463 has 166 MA's), (27, 8469), (29, 8484), (34, 8511), (48, 8589), (50, 8607), (51, 8622), (70, 8775), (77, 8814), (79, 8820), (85, 8859), (95, 8898), (99, 8919),

Gene: Keelan_43 Start: 16946, Stop: 17503, Start Num: 26

Candidate Starts for Keelan_43:

(Start: 26 @16946 has 27 MA's), (29, 16964), (55, 17153), (78, 17279), (85, 17318), (98, 17378), (105, 17417),

Gene: Kenna_13 Start: 7514, Stop: 8086, Start Num: 25

Candidate Starts for Kenna_13:

(Start: 25 @7514 has 166 MA's), (29, 7535), (32, 7556), (36, 7568), (57, 7727), (64, 7769), (69, 7802), (106, 7991), (123, 8075),

Gene: Kenzers_12 Start: 8337, Stop: 9134, Start Num: 25

Candidate Starts for Kenzers_12:

(4, 8130), (5, 8133), (6, 8151), (14, 8253), (19, 8307), (Start: 25 @8337 has 166 MA's), (27, 8343), (50, 8484), (51, 8499), (77, 8691), (96, 8778), (128, 8979), (135, 9075),

Gene: Kepler_13 Start: 8802, Stop: 9383, Start Num: 22

Candidate Starts for Kepler_13:

(Start: 22 @8802 has 13 MA's), (29, 8823), (45, 8910), (51, 8958), (70, 9111), (85, 9195), (94, 9231), (96, 9237), (101, 9270), (115, 9339),

Gene: Kieran_12 Start: 8559, Stop: 9353, Start Num: 25

Candidate Starts for Kieran_12:

(Start: 25 @8559 has 166 MA's), (27, 8565), (39, 8634), (50, 8706), (51, 8721), (77, 8913), (85, 8958), (96, 9000), (98, 9015), (119, 9132), (128, 9198), (137, 9306),

Gene: KingBob_11 Start: 7981, Stop: 8886, Start Num: 25

Candidate Starts for KingBob_11:

(Start: 25 @7981 has 166 MA's), (51, 8137), (58, 8203), (64, 8242), (70, 8290), (73, 8299), (109, 8476), (125, 8572), (130, 8650), (132, 8680), (139, 8737),

Gene: Kittykat_11 Start: 7979, Stop: 8887, Start Num: 25

Candidate Starts for Kittykat_11:

(Start: 25 @7979 has 166 MA's), (51, 8135), (64, 8240), (72, 8294), (73, 8297), (109, 8477), (112, 8486), (125, 8573), (126, 8597), (130, 8651), (132, 8681), (134, 8699), (139, 8738),

Gene: Korra_15 Start: 10802, Stop: 11710, Start Num: 25

Candidate Starts for Korra_15:

(Start: 25 @10802 has 166 MA's), (51, 10958), (64, 11063), (73, 11120), (109, 11300), (113, 11312), (114, 11315), (129, 11450), (130, 11474), (132, 11504), (139, 11561),

Gene: Kuleana_13 Start: 8760, Stop: 9341, Start Num: 22

Candidate Starts for Kuleana_13:

(Start: 22 @8760 has 13 MA's), (29, 8781), (49, 8886), (51, 8916), (70, 9069), (85, 9153), (95, 9192), (101, 9228), (111, 9270), (115, 9297),

Gene: Kuwabara_13 Start: 7836, Stop: 8429, Start Num: 26

Candidate Starts for Kuwabara_13:

(Start: 26 @7836 has 27 MA's), (30, 7857), (35, 7881), (52, 7995), (58, 8055), (61, 8085), (67, 8109), (68, 8115), (72, 8151), (73, 8154), (79, 8190), (85, 8229), (109, 8340),

Gene: Lahqtemish_12 Start: 8417, Stop: 9211, Start Num: 25

Candidate Starts for Lahqtemish_12:

(Start: 25 @8417 has 166 MA's), (50, 8564), (51, 8579), (77, 8771), (85, 8816), (96, 8858), (128, 9056),

Gene: Lakshmi_15 Start: 10878, Stop: 11786, Start Num: 24

Candidate Starts for Lakshmi_15:

(Start: 24 @10878 has 9 MA's), (51, 11034), (64, 11139), (70, 11187), (109, 11376), (130, 11550), (132, 11580), (138, 11631), (139, 11637),

Gene: Lasagna_11 Start: 7936, Stop: 8844, Start Num: 25

Candidate Starts for Lasagna_11:

(Start: 25 @7936 has 166 MA's), (51, 8092), (72, 8251), (73, 8254), (75, 8272), (109, 8434), (130, 8608), (132, 8638), (139, 8695),

Gene: Lennox_11 Start: 7936, Stop: 8844, Start Num: 25

Candidate Starts for Lennox_11:

(Start: 25 @7936 has 166 MA's), (51, 8092), (72, 8251), (73, 8254), (109, 8434), (129, 8584), (130, 8608), (132, 8638), (139, 8695),

Gene: Leona_12 Start: 8429, Stop: 9010, Start Num: 25

Candidate Starts for Leona_12:

(Start: 25 @8429 has 166 MA's), (29, 8450), (70, 8738), (85, 8822), (95, 8861), (96, 8864), (101, 8897), (115, 8966), (120, 8996),

Gene: Leroy_13 Start: 7515, Stop: 8087, Start Num: 25

Candidate Starts for Leroy_13:

(Start: 25 @7515 has 166 MA's), (29, 7536), (32, 7557), (36, 7569), (57, 7728), (64, 7770), (69, 7803), (106, 7992), (123, 8076),

Gene: LilSpotty_12 Start: 7545, Stop: 8324, Start Num: 26

Candidate Starts for LilSpotty_12:

(Start: 26 @7545 has 27 MA's), (42, 7632), (50, 7683), (57, 7761), (62, 7797), (68, 7824), (70, 7854), (72, 7860), (77, 7893), (83, 7929), (85, 7938), (101, 8034), (109, 8070), (116, 8109), (127, 8196), (136, 8304),

Gene: LilStuart_11 Start: 7936, Stop: 8844, Start Num: 25

Candidate Starts for LilStuart_11:

(Start: 25 @7936 has 166 MA's), (51, 8092), (72, 8251), (73, 8254), (75, 8272), (109, 8434), (130, 8608), (132, 8638), (139, 8695),

Gene: LimaBean_12 Start: 8320, Stop: 9117, Start Num: 25

Candidate Starts for LimaBean_12:

(2, 8020), (5, 8116), (6, 8134), (14, 8236), (19, 8290), (Start: 25 @8320 has 166 MA's), (27, 8326), (50, 8467), (51, 8482), (77, 8674), (96, 8761), (128, 8962), (135, 9058),

Gene: LitninMcQueen_13 Start: 7501, Stop: 8073, Start Num: 25

Candidate Starts for LitninMcQueen_13:

(Start: 25 @7501 has 166 MA's), (29, 7522), (32, 7543), (36, 7555), (57, 7714), (64, 7756), (69, 7789), (106, 7978), (123, 8062),

Gene: Litotes_15 Start: 10820, Stop: 11728, Start Num: 25

Candidate Starts for Litotes_15:

(Start: 25 @10820 has 166 MA's), (29, 10841), (46, 10931), (51, 10976), (73, 11138), (77, 11168), (103, 11288), (108, 11315), (109, 11318), (114, 11333), (123, 11396), (125, 11414), (130, 11492),

(132, 11522), (133, 11528), (138, 11573), (139, 11579),

Gene: LittleTokyo_13 Start: 8714, Stop: 9298, Start Num: 25

Candidate Starts for LittleTokyo_13:

(Start: 25 @8714 has 166 MA's), (29, 8735), (46, 8825), (70, 9023), (85, 9107), (95, 9146), (101, 9182), (106, 9209), (111, 9224), (119, 9281),

Gene: Loviatar_20 Start: 8640, Stop: 9437, Start Num: 25

Candidate Starts for Loviatar_20:

(Start: 25 @8640 has 166 MA's), (27, 8646), (40, 8724), (50, 8790), (51, 8805), (72, 8964), (77, 8997), (85, 9042), (128, 9282),

Gene: Lucky10_12 Start: 7042, Stop: 7632, Start Num: 26

Candidate Starts for Lucky10_12:

(Start: 26 @7042 has 27 MA's), (30, 7063), (44, 7132), (58, 7261), (68, 7321), (79, 7396), (95, 7474), (107, 7540),

Gene: Lucy_11 Start: 7927, Stop: 8835, Start Num: 25

Candidate Starts for Lucy_11:

(Start: 25 @7927 has 166 MA's), (51, 8083), (72, 8242), (73, 8245), (109, 8425), (129, 8575), (130, 8599), (132, 8629), (139, 8686),

Gene: Lunar_14 Start: 8964, Stop: 9545, Start Num: 22

Candidate Starts for Lunar_14:

(Start: 22 @8964 has 13 MA's), (29, 8985), (45, 9072), (51, 9120), (70, 9273), (85, 9357), (94, 9393), (96, 9399), (101, 9432), (115, 9501),

Gene: Lutum_13 Start: 7514, Stop: 8086, Start Num: 25

Candidate Starts for Lutum_13:

(Start: 25 @7514 has 166 MA's), (29, 7535), (32, 7556), (36, 7568), (57, 7727), (64, 7769), (69, 7802), (106, 7991), (123, 8075),

Gene: Lynlen_12 Start: 8337, Stop: 9134, Start Num: 25

Candidate Starts for Lynlen_12:

(4, 8130), (5, 8133), (6, 8151), (14, 8253), (19, 8307), (Start: 25 @8337 has 166 MA's), (27, 8343), (50, 8484), (51, 8499), (77, 8691), (96, 8778), (128, 8979), (135, 9075),

Gene: Makoto_11 Start: 7936, Stop: 8844, Start Num: 25

Candidate Starts for Makoto_11:

(Start: 25 @7936 has 166 MA's), (51, 8092), (73, 8254), (109, 8434), (129, 8584), (130, 8608), (132, 8638), (139, 8695),

Gene: MalagasyRose_19 Start: 10934, Stop: 11524, Start Num: 22

Candidate Starts for MalagasyRose_19:

(Start: 22 @10934 has 13 MA's), (28, 10949), (33, 10982), (41, 11027), (70, 11249), (82, 11321), (91, 11366), (97, 11384), (110, 11450), (111, 11453),

Gene: Malisha_13 Start: 8564, Stop: 9133, Start Num: 25

Candidate Starts for Malisha_13:

(Start: 25 @8564 has 166 MA's), (29, 8585), (32, 8606), (36, 8618), (57, 8777), (64, 8819), (69, 8852), (90, 8960), (106, 9041),

Gene: MamaPearl_11 Start: 7982, Stop: 8890, Start Num: 25

Candidate Starts for MamaPearl_11:

(17, 7931), (18, 7934), (Start: 25 @7982 has 166 MA's), (29, 8003), (51, 8138), (64, 8243), (73, 8300), (104, 8453), (109, 8480), (122, 8555), (125, 8576), (130, 8654), (132, 8684), (133, 8690), (139, 8741),

Gene: Maria1952_11 Start: 7981, Stop: 8886, Start Num: 25

Candidate Starts for Maria1952_11:

(Start: 25 @7981 has 166 MA's), (51, 8137), (58, 8203), (64, 8242), (70, 8290), (73, 8299), (109, 8476), (125, 8572), (130, 8650), (132, 8680), (139, 8737),

Gene: MeganNoll_15 Start: 10854, Stop: 11762, Start Num: 25

Candidate Starts for MeganNoll_15:

(Start: 25 @10854 has 166 MA's), (51, 11010), (64, 11115), (73, 11172), (109, 11352), (114, 11367), (129, 11502), (130, 11526), (132, 11556), (139, 11613),

Gene: Melons_14 Start: 8964, Stop: 9545, Start Num: 22

Candidate Starts for Melons_14:

(Start: 22 @8964 has 13 MA's), (29, 8985), (45, 9072), (51, 9120), (70, 9273), (85, 9357), (94, 9393), (96, 9399), (101, 9432), (115, 9501),

Gene: Misaeng_15 Start: 10924, Stop: 11832, Start Num: 24

Candidate Starts for Misaeng_15:

(Start: 24 @10924 has 9 MA's), (51, 11080), (64, 11185), (70, 11233), (103, 11392), (109, 11422), (112, 11431), (122, 11497), (130, 11596), (132, 11626), (138, 11677), (139, 11683),

Gene: Moki_11 Start: 7938, Stop: 8846, Start Num: 25

Candidate Starts for Moki_11:

(Start: 25 @7938 has 166 MA's), (51, 8094), (64, 8199), (73, 8256), (109, 8436), (114, 8451), (125, 8532), (130, 8610), (132, 8640), (134, 8658), (139, 8697),

Gene: Morkie_12 Start: 7004, Stop: 7594, Start Num: 26

Candidate Starts for Morkie_12:

(Start: 26 @7004 has 27 MA's), (30, 7025), (44, 7094), (58, 7223), (68, 7283), (79, 7358), (95, 7436), (98, 7454), (107, 7502),

Gene: MortyNRick_13 Start: 7836, Stop: 8429, Start Num: 26

Candidate Starts for MortyNRick_13:

(Start: 26 @7836 has 27 MA's), (30, 7857), (35, 7881), (56, 8049), (67, 8109), (68, 8115), (72, 8151), (73, 8154), (79, 8190),

Gene: MrGloopy_15 Start: 10787, Stop: 11695, Start Num: 25

Candidate Starts for MrGloopy_15:

(Start: 25 @10787 has 166 MA's), (51, 10943), (64, 11048), (73, 11105), (109, 11285), (114, 11300), (130, 11459), (132, 11489), (139, 11546),

Gene: Nancia_11 Start: 7936, Stop: 8844, Start Num: 25

Candidate Starts for Nancia_11:

(Start: 25 @7936 has 166 MA's), (51, 8092), (72, 8251), (73, 8254), (75, 8272), (109, 8434), (130, 8608), (132, 8638), (139, 8695),

Gene: Nebkiss_10 Start: 8074, Stop: 8661, Start Num: 25

Candidate Starts for Nebkiss_10:

(Start: 25 @8074 has 166 MA's), (41, 8155), (49, 8194), (53, 8236), (58, 8290), (63, 8326), (79, 8425), (83, 8455), (101, 8545), (111, 8587), (116, 8620),

Gene: Nergal_17 Start: 11411, Stop: 12001, Start Num: 22

Candidate Starts for Nergal_17:

(Start: 22 @11411 has 13 MA's), (28, 11426), (30, 11441), (33, 11459), (47, 11537), (55, 11627), (64, 11675), (82, 11798), (91, 11843), (110, 11927), (111, 11930),

Gene: Nicky22_13 Start: 8768, Stop: 9565, Start Num: 25

Candidate Starts for Nicky22_13:

(5, 8564), (6, 8582), (19, 8738), (Start: 25 @8768 has 166 MA's), (27, 8774), (50, 8915), (51, 8930), (71, 9086), (77, 9122), (85, 9167), (128, 9410),

Gene: NoShow_13 Start: 8694, Stop: 9302, Start Num: 21

Candidate Starts for NoShow_13:

(Start: 21 @8694 has 1 MA's), (35, 8763), (55, 8928), (68, 8997), (74, 9048), (77, 9066), (78, 9069), (80, 9090), (91, 9141), (103, 9195),

Gene: Nubia_15 Start: 10838, Stop: 11746, Start Num: 24

Candidate Starts for Nubia_15:

(Start: 24 @10838 has 9 MA's), (51, 10994), (64, 11099), (70, 11147), (109, 11336), (130, 11510), (132, 11540), (138, 11591), (139, 11597),

Gene: ODay_13 Start: 7563, Stop: 8147, Start Num: 26

Candidate Starts for ODay_13:

(Start: 26 @7563 has 27 MA's), (30, 7584), (35, 7608), (56, 7776), (58, 7782), (68, 7842), (72, 7878), (73, 7881), (79, 7917), (118, 8124),

Gene: OMalley_11 Start: 7979, Stop: 8884, Start Num: 25

Candidate Starts for OMalley_11:

(Start: 25 @7979 has 166 MA's), (46, 8090), (51, 8135), (73, 8297), (86, 8366), (108, 8471), (109, 8474), (114, 8489), (130, 8648), (132, 8678), (134, 8696), (139, 8735), (141, 8813),

Gene: Olliecat_12 Start: 8550, Stop: 9137, Start Num: 25

Candidate Starts for Olliecat_12:

(Start: 25 @8550 has 166 MA's), (30, 8577), (50, 8691), (77, 8898), (82, 8931), (91, 8973), (93, 8976), (96, 8985),

Gene: Orcanus_13 Start: 8754, Stop: 9338, Start Num: 22

Candidate Starts for Orcanus_13:

(Start: 22 @8754 has 13 MA's), (101, 9222), (115, 9291), (117, 9303),

Gene: OurGirlNessie_11 Start: 7927, Stop: 8835, Start Num: 25

Candidate Starts for OurGirlNessie_11:

(Start: 25 @7927 has 166 MA's), (51, 8083), (72, 8242), (73, 8245), (109, 8425), (129, 8575), (130, 8599), (132, 8629), (139, 8686),

Gene: Oxynfrius_15 Start: 10851, Stop: 11759, Start Num: 24

Candidate Starts for Oxynfrius_15:

(Start: 24 @10851 has 9 MA's), (51, 11007), (64, 11112), (70, 11160), (109, 11349), (130, 11523), (132, 11553), (138, 11604), (139, 11610),

Gene: PartyCup_15 Start: 10867, Stop: 11775, Start Num: 25

Candidate Starts for PartyCup_15:

(Start: 25 @10867 has 166 MA's), (29, 10888), (46, 10978), (51, 11023), (70, 11176), (73, 11185), (77, 11215), (103, 11335), (108, 11362), (109, 11365), (114, 11380), (123, 11443), (125, 11461), (130, 11539), (132, 11569), (133, 11575), (138, 11620), (139, 11626),

Gene: Periwinkle_13 Start: 7496, Stop: 8068, Start Num: 25

Candidate Starts for Periwinkle_13:

(Start: 25 @7496 has 166 MA's), (29, 7517), (32, 7538), (36, 7550), (57, 7709), (64, 7751), (69, 7784), (106, 7973), (123, 8057),

Gene: Phabuloso_13 Start: 7501, Stop: 8073, Start Num: 25

Candidate Starts for Phabuloso_13:

(Start: 25 @7501 has 166 MA's), (29, 7522), (32, 7543), (36, 7555), (57, 7714), (64, 7756), (69, 7789), (106, 7978), (123, 8062),

Gene: Phisb_12 Start: 8314, Stop: 9111, Start Num: 25

Candidate Starts for Phisb_12:

(3, 8026), (4, 8107), (5, 8110), (6, 8128), (19, 8284), (Start: 25 @8314 has 166 MA's), (27, 8320), (50, 8461), (51, 8476), (71, 8632), (77, 8668), (85, 8713), (96, 8755), (128, 8956),

Gene: Phistory_13 Start: 7485, Stop: 8057, Start Num: 25

Candidate Starts for Phistory_13:

(Start: 25 @7485 has 166 MA's), (29, 7506), (32, 7527), (36, 7539), (57, 7698), (64, 7740), (69, 7773), (106, 7962), (123, 8046),

Gene: PhluffyCoco_12 Start: 8378, Stop: 8959, Start Num: 25

Candidate Starts for PhluffyCoco_12:

(Start: 25 @8378 has 166 MA's), (29, 8399), (70, 8687), (85, 8771), (95, 8810), (96, 8813), (101, 8846), (115, 8915), (120, 8945),

Gene: PhorbesPhlower_12 Start: 7004, Stop: 7594, Start Num: 26

Candidate Starts for PhorbesPhlower_12:

(Start: 26 @7004 has 27 MA's), (30, 7025), (44, 7094), (58, 7223), (68, 7283), (79, 7358), (95, 7436), (98, 7454), (107, 7502),

Gene: PinkFriday_11 Start: 7979, Stop: 8884, Start Num: 25

Candidate Starts for PinkFriday_11:

(Start: 25 @7979 has 166 MA's), (39, 8054), (51, 8135), (58, 8201), (59, 8204), (64, 8240), (70, 8288), (72, 8294), (73, 8297), (86, 8366), (109, 8474), (125, 8570), (130, 8648), (132, 8678), (139, 8735),

Gene: PitaDog_11 Start: 7927, Stop: 8835, Start Num: 25

Candidate Starts for PitaDog_11:

(Start: 25 @7927 has 166 MA's), (51, 8083), (72, 8242), (73, 8245), (109, 8425), (129, 8575), (130, 8599), (132, 8629), (139, 8686),

Gene: Polka_13 Start: 8803, Stop: 9384, Start Num: 22

Candidate Starts for Polka_13:

(Start: 22 @8803 has 13 MA's), (29, 8824), (45, 8911), (51, 8959), (70, 9112), (85, 9196), (94, 9232), (96, 9238), (101, 9271), (115, 9340),

Gene: Potatoes_15 Start: 10848, Stop: 11756, Start Num: 25

Candidate Starts for Potatoes_15:

(Start: 25 @10848 has 166 MA's), (51, 11004), (64, 11109), (73, 11166), (109, 11346), (114, 11361), (129, 11496), (130, 11520), (132, 11550), (139, 11607),

Gene: Preamble_11 Start: 7937, Stop: 8845, Start Num: 25

Candidate Starts for Preamble_11:

(Start: 25 @7937 has 166 MA's), (51, 8093), (64, 8198), (70, 8246), (72, 8252), (73, 8255), (109, 8435), (112, 8444), (122, 8510), (125, 8531), (130, 8609), (132, 8639), (134, 8657), (139, 8696),

Gene: Pterodactyl_11 Start: 7928, Stop: 8836, Start Num: 25

Candidate Starts for Pterodactyl_11:

(Start: 25 @7928 has 166 MA's), (51, 8084), (72, 8243), (73, 8246), (75, 8264), (109, 8426), (129, 8576), (130, 8600), (132, 8630), (139, 8687),

Gene: Pumancara_11 Start: 7978, Stop: 8883, Start Num: 25

Candidate Starts for Pumancara_11:

(Start: 25 @7978 has 166 MA's), (39, 8053), (51, 8134), (58, 8200), (64, 8239), (70, 8287), (73, 8296), (86, 8365), (109, 8473), (125, 8569), (130, 8647), (132, 8677), (139, 8734),

Gene: QMacho_13 Start: 8804, Stop: 9601, Start Num: 25

Candidate Starts for QMacho_13:

(6, 8618), (14, 8720), (19, 8774), (Start: 25 @8804 has 166 MA's), (27, 8810), (50, 8951), (51, 8966), (77, 9158), (85, 9203), (96, 9245), (128, 9446),

Gene: Quenya_13 Start: 8462, Stop: 9052, Start Num: 25

Candidate Starts for Quenya_13:

(Start: 25 @8462 has 166 MA's), (27, 8468), (29, 8483), (34, 8510), (46, 8573), (50, 8606), (51, 8621), (70, 8774), (77, 8813), (79, 8819), (85, 8858), (87, 8867), (95, 8897), (99, 8918),

Gene: RAP15_15 Start: 10854, Stop: 11762, Start Num: 25

Candidate Starts for RAP15_15:

(Start: 25 @10854 has 166 MA's), (51, 11010), (64, 11115), (73, 11172), (109, 11352), (114, 11367), (129, 11502), (130, 11526), (132, 11556), (139, 11613),

Gene: RcigaStruga_15 Start: 10859, Stop: 11767, Start Num: 24

Candidate Starts for RcigaStruga_15:

(Start: 24 @10859 has 9 MA's), (51, 11015), (64, 11120), (70, 11168), (109, 11357), (112, 11366), (122, 11432), (130, 11531), (132, 11561), (138, 11612), (139, 11618),

Gene: RedFox_12 Start: 8378, Stop: 8959, Start Num: 25

Candidate Starts for RedFox_12:

(Start: 25 @8378 has 166 MA's), (29, 8399), (70, 8687), (85, 8771), (95, 8810), (96, 8813), (101, 8846), (115, 8915), (120, 8945),

Gene: Renna12_13 Start: 8581, Stop: 9165, Start Num: 25

Candidate Starts for Renna12_13:

(Start: 25 @8581 has 166 MA's), (29, 8602), (70, 8890), (85, 8974), (95, 9013), (96, 9016), (115, 9118),

Gene: Riovina_11 Start: 7979, Stop: 8884, Start Num: 25

Candidate Starts for Riovina_11:

(Start: 25 @7979 has 166 MA's), (46, 8090), (51, 8135), (73, 8297), (86, 8366), (108, 8471), (109, 8474), (114, 8489), (130, 8648), (132, 8678), (134, 8696), (139, 8735), (141, 8813),

Gene: Riverdale_15 Start: 10785, Stop: 11693, Start Num: 25

Candidate Starts for Riverdale_15:

(Start: 25 @10785 has 166 MA's), (51, 10941), (64, 11046), (73, 11103), (109, 11283), (114, 11298), (130, 11457), (132, 11487), (139, 11544),

Gene: Rollins_11 Start: 8156, Stop: 8740, Start Num: 25

Candidate Starts for Rollins_11:

(Start: 25 @8156 has 166 MA's), (27, 8162), (29, 8177), (30, 8183), (51, 8315), (70, 8468), (72, 8474), (77, 8507), (91, 8582), (94, 8588), (96, 8594),

Gene: Rona_12 Start: 8556, Stop: 9350, Start Num: 25

Candidate Starts for Rona_12:

(Start: 25 @8556 has 166 MA's), (27, 8562), (39, 8631), (50, 8703), (51, 8718), (77, 8910), (85, 8955), (96, 8997), (98, 9012), (119, 9129), (128, 9195), (137, 9303),

Gene: Ronaldo_48 Start: 17900, Stop: 18457, Start Num: 26

Candidate Starts for Ronaldo_48:

(Start: 26 @17900 has 27 MA's), (29, 17918), (41, 17981), (70, 18206), (76, 18224), (78, 18233), (85, 18272), (88, 18284), (105, 18371),

Gene: Rozby_15 Start: 10785, Stop: 11693, Start Num: 25

Candidate Starts for Rozby_15:

(Start: 25 @10785 has 166 MA's), (51, 10941), (64, 11046), (73, 11103), (109, 11283), (114, 11298), (129, 11433), (130, 11457), (132, 11487), (139, 11544),

Gene: Ruchi_13 Start: 9071, Stop: 9901, Start Num: 25

Candidate Starts for Ruchi_13:

(Start: 25 @9071 has 166 MA's), (70, 9380), (81, 9446), (95, 9503), (109, 9575), (115, 9608), (124, 9662), (128, 9707), (133, 9782),

Gene: SanaSana_13 Start: 8569, Stop: 9366, Start Num: 25

Candidate Starts for SanaSana_13:

(Start: 25 @8569 has 166 MA's), (27, 8575), (40, 8653), (50, 8719), (51, 8734), (72, 8893), (77, 8926), (85, 8971), (128, 9211),

Gene: SansAfet_12 Start: 8331, Stop: 9128, Start Num: 25

Candidate Starts for SansAfet_12:

(5, 8127), (6, 8145), (14, 8247), (19, 8301), (Start: 25 @8331 has 166 MA's), (27, 8337), (50, 8478), (51, 8493), (77, 8685), (96, 8772), (128, 8973), (135, 9069),

Gene: SarBear_12 Start: 8297, Stop: 9094, Start Num: 25

Candidate Starts for SarBear_12:

(5, 8093), (6, 8111), (19, 8267), (Start: 25 @8297 has 166 MA's), (27, 8303), (50, 8444), (51, 8459), (77, 8651), (96, 8738), (128, 8939), (135, 9035),

Gene: Savage2526_15 Start: 10848, Stop: 11756, Start Num: 25

Candidate Starts for Savage2526_15:

(Start: 25 @10848 has 166 MA's), (51, 11004), (64, 11109), (73, 11166), (109, 11346), (114, 11361), (129, 11496), (130, 11520), (132, 11550), (139, 11607),

Gene: Scuttle_15 Start: 10854, Stop: 11762, Start Num: 25

Candidate Starts for Scuttle_15:

(Start: 25 @10854 has 166 MA's), (51, 11010), (64, 11115), (73, 11172), (109, 11352), (114, 11367), (130, 11526), (132, 11556), (139, 11613),

Gene: Sergei_11 Start: 7981, Stop: 8886, Start Num: 25

Candidate Starts for Sergei_11:

(Start: 25 @7981 has 166 MA's), (51, 8137), (58, 8203), (64, 8242), (70, 8290), (73, 8299), (109, 8476), (125, 8572), (130, 8650), (132, 8680), (139, 8737),

Gene: Sharkboy_12 Start: 8555, Stop: 9349, Start Num: 25

Candidate Starts for Sharkboy_12:

(Start: 25 @8555 has 166 MA's), (27, 8561), (39, 8630), (50, 8702), (51, 8717), (77, 8909), (85, 8954), (96, 8996), (98, 9011), (119, 9128), (128, 9194), (137, 9302),

Gene: Shayna_11 Start: 8161, Stop: 8745, Start Num: 25

Candidate Starts for Shayna_11:

(Start: 25 @8161 has 166 MA's), (29, 8182), (50, 8299), (70, 8467), (77, 8506), (93, 8584),

Gene: Skylord_11 Start: 8096, Stop: 8680, Start Num: 25

Candidate Starts for Skylord_11:

(Start: 25 @8096 has 166 MA's), (27, 8102), (29, 8117), (30, 8123), (51, 8255), (70, 8408), (72, 8414), (77, 8447), (91, 8522), (94, 8528), (96, 8534),

Gene: Slay_12 Start: 8773, Stop: 9570, Start Num: 25

Candidate Starts for Slay_12:

(5, 8569), (6, 8587), (19, 8743), (Start: 25 @8773 has 166 MA's), (27, 8779), (50, 8920), (51, 8935), (77, 9127), (96, 9214), (128, 9415), (135, 9511),

Gene: Soul22_14 Start: 7679, Stop: 8272, Start Num: 26

Candidate Starts for Soul22_14:

(13, 7577), (Start: 26 @7679 has 27 MA's), (29, 7697), (50, 7814), (54, 7853), (60, 7919), (68, 7952), (69, 7964), (72, 7988), (85, 8060), (86, 8063), (89, 8081), (92, 8093), (98, 8117), (101, 8135),

Gene: Spooky_13 Start: 7512, Stop: 8081, Start Num: 25

Candidate Starts for Spooky_13:

(Start: 25 @7512 has 166 MA's), (29, 7533), (32, 7554), (36, 7566), (57, 7725), (64, 7767), (69, 7800), (90, 7908), (106, 7989),

Gene: Squiddly_14 Start: 8181, Stop: 8753, Start Num: 25

Candidate Starts for Squiddly_14:

(Start: 25 @8181 has 166 MA's), (29, 8202), (32, 8223), (36, 8235), (57, 8394), (64, 8436), (69, 8469), (106, 8658), (123, 8742),

Gene: Stoor_12 Start: 8566, Stop: 9363, Start Num: 25

Candidate Starts for Stoor_12:

(Start: 25 @8566 has 166 MA's), (27, 8572), (40, 8650), (50, 8716), (51, 8731), (72, 8890), (77, 8923), (85, 8968), (128, 9208),

Gene: Stromboli_12 Start: 8570, Stop: 9367, Start Num: 25

Candidate Starts for Stromboli_12:

(Start: 25 @8570 has 166 MA's), (27, 8576), (50, 8720), (51, 8735), (72, 8894), (77, 8927), (85, 8972), (119, 9146), (128, 9212),

Gene: SunnyD_11 Start: 8161, Stop: 8745, Start Num: 25

Candidate Starts for SunnyD_11:

(Start: 25 @8161 has 166 MA's), (29, 8182), (50, 8299), (70, 8467), (77, 8506), (93, 8584),

Gene: Supakev_11 Start: 7981, Stop: 8886, Start Num: 25

Candidate Starts for Supakev_11:

(Start: 25 @7981 has 166 MA's), (51, 8137), (73, 8299), (86, 8368), (109, 8476), (114, 8491), (130, 8650), (132, 8680), (134, 8698), (139, 8737), (140, 8797), (141, 8815),

Gene: Suppi_15 Start: 10870, Stop: 11778, Start Num: 25

Candidate Starts for Suppi_15:

(Start: 25 @10870 has 166 MA's), (29, 10891), (51, 11026), (73, 11188), (77, 11218), (103, 11338), (108, 11365), (109, 11368), (114, 11383), (123, 11446), (125, 11464), (130, 11542), (132, 11572), (133, 11578), (138, 11623), (139, 11629),

Gene: Swervy_12 Start: 8297, Stop: 9094, Start Num: 25

Candidate Starts for Swervy_12:

(5, 8093), (6, 8111), (19, 8267), (Start: 25 @8297 has 166 MA's), (27, 8303), (50, 8444), (51, 8459), (77, 8651), (96, 8738), (128, 8939), (135, 9035),

Gene: TattModd_15 Start: 10848, Stop: 11756, Start Num: 25

Candidate Starts for TattModd_15:

(Start: 25 @10848 has 166 MA's), (51, 11004), (64, 11109), (73, 11166), (114, 11361), (130, 11520), (132, 11550), (139, 11607),

Gene: TaylorSipht_13 Start: 8839, Stop: 9423, Start Num: 23

Candidate Starts for TaylorSipht_13:

(Start: 23 @8839 has 1 MA's), (43, 8938), (95, 9271), (115, 9376), (117, 9388),

Gene: Temper16_11 Start: 7981, Stop: 8886, Start Num: 25

Candidate Starts for Temper16_11:

(Start: 25 @7981 has 166 MA's), (51, 8137), (58, 8203), (64, 8242), (70, 8290), (73, 8299), (109, 8476), (125, 8572), (130, 8650), (132, 8680), (139, 8737),

Gene: TukTuk_12 Start: 8357, Stop: 9154, Start Num: 25

Candidate Starts for TukTuk_12:

(5, 8153), (6, 8171), (19, 8327), (Start: 25 @8357 has 166 MA's), (27, 8363), (50, 8504), (51, 8519), (77, 8711), (96, 8798), (128, 8999),

Gene: Typha_19 Start: 12487, Stop: 13128, Start Num: 16

Candidate Starts for Typha_19:

(Start: 16 @12487 has 2 MA's), (20, 12517), (Start: 26 @12547 has 27 MA's), (35, 12592), (57, 12763), (66, 12814), (68, 12826), (70, 12856), (85, 12940), (91, 12970), (103, 13024), (120, 13117),

Gene: Urla_11 Start: 7985, Stop: 8893, Start Num: 25

Candidate Starts for Urla_11:

(17, 7934), (18, 7937), (Start: 25 @7985 has 166 MA's), (29, 8006), (51, 8141), (64, 8246), (70, 8294), (73, 8303), (109, 8483), (122, 8558), (123, 8561), (125, 8579), (126, 8603), (130, 8657), (132, 8687), (133, 8693), (139, 8744),

Gene: Vallejo_15 Start: 10786, Stop: 11694, Start Num: 25

Candidate Starts for Vallejo_15:

(Start: 25 @10786 has 166 MA's), (51, 10942), (64, 11047), (73, 11104), (109, 11284), (114, 11299), (129, 11434), (130, 11458), (132, 11488), (139, 11545),

Gene: Vitas_11 Start: 8096, Stop: 8680, Start Num: 25

Candidate Starts for Vitas_11:

(Start: 25 @8096 has 166 MA's), (27, 8102), (29, 8117), (30, 8123), (51, 8255), (70, 8408), (72, 8414), (77, 8447), (91, 8522), (94, 8528), (96, 8534),

Gene: Volt_47 Start: 17900, Stop: 18457, Start Num: 26

Candidate Starts for Volt_47:

(Start: 26 @17900 has 27 MA's), (29, 17918), (41, 17981), (70, 18206), (76, 18224), (78, 18233), (85, 18272), (88, 18284), (105, 18371),

Gene: Vulpecula_13 Start: 9147, Stop: 9977, Start Num: 25

Candidate Starts for Vulpecula_13:

(Start: 25 @9147 has 166 MA's), (70, 9456), (81, 9522), (95, 9579), (109, 9651), (115, 9684), (117, 9696), (124, 9738), (126, 9768), (128, 9783), (133, 9858),

Gene: Vulture_11 Start: 7979, Stop: 8884, Start Num: 25

Candidate Starts for Vulture_11:

(Start: 25 @7979 has 166 MA's), (51, 8135), (73, 8297), (86, 8366), (108, 8471), (109, 8474), (114, 8489), (130, 8648), (132, 8678), (134, 8696), (139, 8735), (140, 8795), (141, 8813),

Gene: Wawa_15 Start: 10823, Stop: 11731, Start Num: 25

Candidate Starts for Wawa_15:

(Start: 25 @10823 has 166 MA's), (51, 10979), (64, 11084), (73, 11141), (109, 11321), (114, 11336), (129, 11471), (130, 11495), (132, 11525), (139, 11582),

Gene: Wayne_15 Start: 10916, Stop: 11824, Start Num: 25

Candidate Starts for Wayne_15:

(Start: 25 @10916 has 166 MA's), (29, 10937), (51, 11072), (73, 11234), (77, 11264), (103, 11384), (108, 11411), (109, 11414), (114, 11429), (123, 11492), (125, 11510), (130, 11588), (132, 11618), (133, 11624), (138, 11669), (139, 11675),

Gene: Whitney_13 Start: 7496, Stop: 8068, Start Num: 25

Candidate Starts for Whitney_13:

(Start: 25 @7496 has 166 MA's), (29, 7517), (32, 7538), (36, 7550), (57, 7709), (64, 7751), (69, 7784), (106, 7973), (123, 8057),

Gene: WonderBoy_11 Start: 7936, Stop: 8844, Start Num: 25

Candidate Starts for WonderBoy_11:

(Start: 25 @7936 has 166 MA's), (51, 8092), (64, 8197), (72, 8251), (73, 8254), (75, 8272), (109, 8434), (114, 8449), (125, 8530), (130, 8608), (132, 8638), (139, 8695),

Gene: Yoshi_14 Start: 7678, Stop: 8271, Start Num: 26

Candidate Starts for Yoshi_14:

(Start: 26 @7678 has 27 MA's), (29, 7696), (50, 7813), (54, 7852), (60, 7918), (68, 7951), (69, 7963), (72, 7987), (85, 8059), (87, 8068), (89, 8080), (92, 8092), (98, 8116), (101, 8134),

Gene: Zapner_15 Start: 8203, Stop: 8796, Start Num: 26

Candidate Starts for Zapner_15:

(Start: 26 @8203 has 27 MA's), (29, 8221), (50, 8338), (54, 8377), (60, 8443), (68, 8476), (69, 8488), (72, 8512), (85, 8584), (87, 8593), (89, 8605), (92, 8617), (98, 8641), (101, 8659),

Gene: Ziko_48 Start: 17840, Stop: 18397, Start Num: 26

Candidate Starts for Ziko_48:

(Start: 26 @17840 has 27 MA's), (29, 17858), (41, 17921), (70, 18146), (76, 18164), (78, 18173), (85, 18212), (88, 18224), (105, 18311),

Gene: Zorro_15 Start: 10802, Stop: 11710, Start Num: 25

Candidate Starts for Zorro_15:

(Start: 25 @10802 has 166 MA's), (51, 10958), (64, 11063), (73, 11120), (109, 11300), (114, 11315),
(129, 11450), (130, 11474), (132, 11504), (139, 11561),