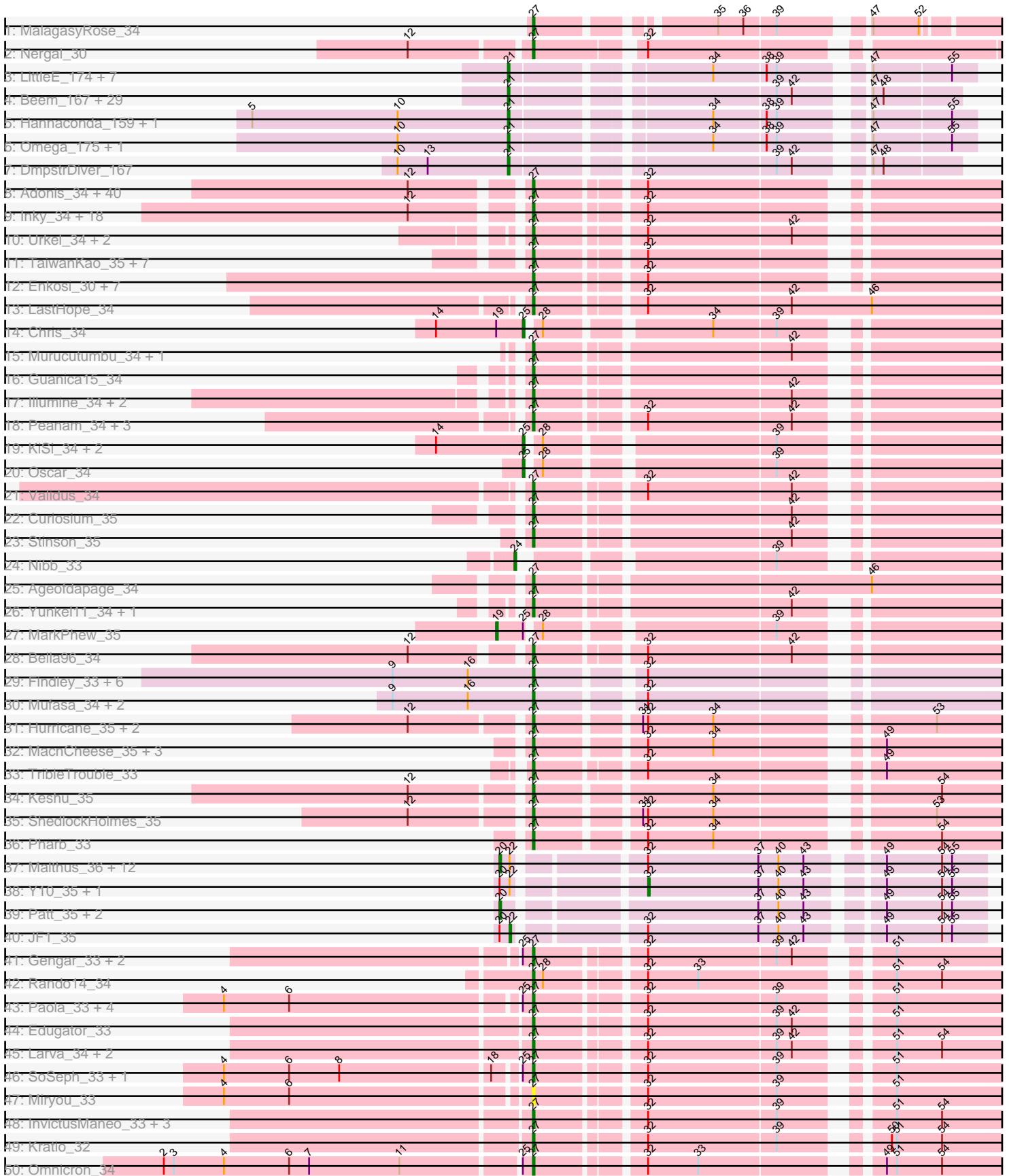
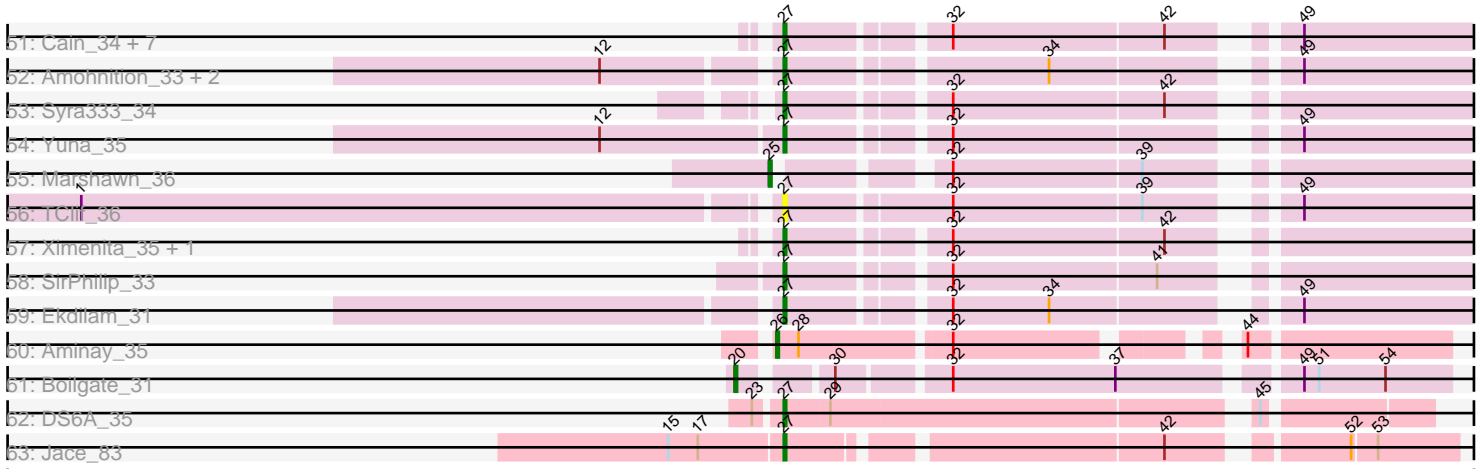


Pham 171181



Pham 171181



Note: Tracks are now grouped by subcluster and scaled. Switching in subcluster is indicated by changes in track color. Track scale is now set by default to display the region 30 bp upstream of start 1 to 30 bp downstream of the last possible start. If this default region is judged to be packed too tightly with annotated starts, the track will be further scaled to only show that region of the ORF with annotated starts. This action will be indicated by adding "Zoomed" to the title. For starts, yellow indicates the location of called starts comprised solely of Glimmer/GeneMark auto-annotations, green indicates the location of called starts with at least 1 manual gene annotation.

Pham 171181 Report

This analysis was run 07/10/24 on database version 566.

Pham number 171181 has 234 members, 10 are drafts.

Phages represented in each track:

- Track 1 : MalagasyRose_34
- Track 2 : Nergal_30
- Track 3 : LittleE_174, Courthouse_164, Superphikiman_165, Porcelain_167, Ariel_167, MiaZeal_170, Lucky2013_163, Squint_162
- Track 4 : Beem_167, HokkenD_161, EricMillard_164, Bobby_159, BAKA_172, Phoebus_167, Constella_162, Minerva_166, Odette_170, Optimus_165, Kalah2_163, Ejimix_157, Dove_161, Halley_167, Duke13_169, Klein_170, Hughesyang_165, Yeet_158, Pound_160, JuicyJay_161, Schatzie_161, NihilNomen_168, Bombitas_153, Zelink_159, Redno2_160, ThreeRngTarjay_163, Bagrid_175, Thibault_150, Wanda_164, Dallas_166
- Track 5 : Hannaconda_159, Gonephishing_160
- Track 6 : Omega_175, KashFlow_164
- Track 7 : DmpstrDiver_167
- Track 8 : Adonis_34, BarrelRoll_34, Blizzard_34, QuincyRose_33, Apocalypse_34, Deby_34, BEEST_34, Piatt_34, Padfoot_34, Adephagia_34, Sulley_34, Zavala_34, Jayhawk_35, Slimphazie_34, Asayake_34, JAWS_34, Geraldini_34, Angelica_34, Tachez_34, Mynx_34, ShiaSurprise_34, HedwigODU_34, Zabiza_35, Ganymede_35, MeaningOfLife_34, Beezoo_34, AlishaPH_34, ActinUp_34, Pokerus_33, CaseJules_34, Emerson_34, TruffulaTree_34, Padpat_34, Atiba_34, Rapunzel97_34, Durfee_34, Ramen_34, Veliki_34, Boiiii_34, Hyperbowlee_34, YoureAdopted_33
- Track 9 : Inky_34, Spock_34, Anaya_35, BaghaKamala_34, Belladonna_34, Capricorn_34, BGIluviae_34, CREW_34, Joy99_34, Jeckyll_34, Twitch_34, Dalmuri_34, Rosmarinus_34, Lunahalos_34, Peel_34, Llorens_34, Topper_34, Jarvi_34, Homura_34
- Track 10 : Urkel_34, SamuelLPlaqson_34, DrHayes_34
- Track 11 : TaiwanKao_35, LindNT_34, Tiri_34, TreyKay_34, CheetoDust_34, Prithvi_34, Megsy_34, CrimD_34
- Track 12 : Enkosi_30, Binglebops_30, Amelie_30, SgtBeansprout_30, Nikao_30, LilPharaoh_30, Nutello_30, Mdavu_30
- Track 13 : LastHope_34
- Track 14 : Chris_34
- Track 15 : Murucutumbu_34, LaterM_34
- Track 16 : Guanica15_34
- Track 17 : Illumine_34, Dole_34, Devera_34
- Track 18 : Peanam_34, Shadow1_33, Shaobing_34, Niklas_34
- Track 19 : KiSi_34, LeMond_34, Scarlett_34
- Track 20 : Oscar_34

- Track 21 : Validus_34
- Track 22 : Curiosium_35
- Track 23 : Stinson_35
- Track 24 : Nibb_33
- Track 25 : Ageofdapage_34
- Track 26 : Yunkel11_34, Efra2_34
- Track 27 : MarkPhew_35
- Track 28 : Bella96_34
- Track 29 : Findley_33, Marcoliusprime_33, Strobilo_33, DismalStressor_33, Milly_33, DismalFunk_33, ZoeJ_33
- Track 30 : Mufasa_34, TM4_35, BoostSeason_34
- Track 31 : Hurricane_35, TBond007_34, Pixie_34
- Track 32 : MacnCheese_35, Fefferhead_33, Amgine_32, Ellie_31
- Track 33 : TribbleTrouble_33
- Track 34 : Keshu_35
- Track 35 : ShedlockHolmes_35
- Track 36 : Pharb_33
- Track 37 : Malthus_36, Mitti_35, Fionnbharth_35, Chancellor_35, Wintermute_35, Slarp_35, Eponine_37, Juliette_37, OmniCritical_35, Cheetobro_35, Ruthiejr_36, Taquito_35, SamScheppers_35
- Track 38 : Y10_35, Y2_35
- Track 39 : Patt_35, MissDaisy_35, Reptar3000_35
- Track 40 : JF1_35
- Track 41 : Gengar_33, OkiRoe_33, Feyre_33
- Track 42 : Rando14_34
- Track 43 : Paola_33, Waterfoul_33, Thyatira_33, Guillsminger_33, Leston_33
- Track 44 : Edugator_33
- Track 45 : Larva_34, Psycho_34, Dadosky_34
- Track 46 : SoSeph_33, Heftyboy_33
- Track 47 : Miryou_33
- Track 48 : InvictusManeo_33, AlleyCat_34, Collard_33, Agent47_33
- Track 49 : Kratio_32
- Track 50 : Omnicron_34
- Track 51 : Cain_34, Krueger_34, Unicorn_34, Phrank_34, Bryler_34, Tierra_34, Sunflower1121_33, PhelpsODU_34
- Track 52 : Amohnition_33, DarthP_33, Hammy_33
- Track 53 : Syra333_34
- Track 54 : Yuna_35
- Track 55 : Marshawn_36
- Track 56 : TClif_36
- Track 57 : Ximenita_35, TiniBug_34
- Track 58 : SirPhilip_33
- Track 59 : Ekdilam_31
- Track 60 : Aminay_35
- Track 61 : Boilgate_31
- Track 62 : DS6A_35
- Track 63 : Jace_83

Summary of Final Annotations (See graph section above for start numbers):

The start number called the most often in the published annotations is 27, it was called in 156 of the 224 non-draft genes in the pham.

Genes that call this "Most Annotated" start:

- ActinUp_34, Adephegia_34, Adonis_34, Agent47_33, Ageofdapage_34, AlishaPH_34, AlleyCat_34, Amelie_30, Amgine_32, Amohnition_33, Anaya_35, Angelica_34, Apocalypse_34, Asayake_34, Atiba_34, BEEST_34, BGIlluviae_34, BaghaKamala_34, BarrelRoll_34, Beezoo_34, Bella96_34, Belladonna_34, Binglebops_30, Blizzard_34, Boiiii_34, BoostSeason_34, Bryler_34, CREW_34, Cain_34, Capricorn_34, CaseJules_34, CheetoDust_34, Collard_33, CrimD_34, Curiosium_35, DS6A_35, Dadosky_34, Dalmuri_34, DarthP_33, Deby_34, Devera_34, DismalFunk_33, DismalStressor_33, Dole_34, DrHayes_34, Durfee_34, Edugator_33, Efra2_34, Ekdilam_31, Ellie_31, Emerson_34, Enkosi_30, Fefferhead_33, Feyre_33, Findley_33, Ganymede_35, Gengar_33, Geraldini_34, Guanica15_34, Guillsminger_33, Hammy_33, HedwigODU_34, Heftyboy_33, Homura_34, Hurricane_35, Hyperbowlee_34, Illumine_34, Inky_34, InvictusManeo_33, JAWS_34, Jace_83, Jarvi_34, Jayhawk_35, Jeckyll_34, Joy99_34, Keshu_35, Kratio_32, Krueger_34, Larva_34, LastHope_34, LaterM_34, Leston_33, LilPharaoh_30, LindNT_34, Llorens_34, Lunahalos_34, MacnCheese_35, MalagasyRose_34, Marcoliusprime_33, Mdavu_30, MeaningOfLife_34, Megsy_34, Milly_33, Miryou_33, Mufasa_34, Murucutumbu_34, Mynx_34, Nergal_30, Nikao_30, Niklas_34, Nutello_30, OkiRoe_33, Omnicron_34, Padfoot_34, Padpat_34, Paola_33, Peanam_34, Peel_34, Pharb_33, PhelpsODU_34, Phrank_34, Piatt_34, Pixie_34, Pokerus_33, Prithvi_34, Psycho_34, QuincyRose_33, Ramen_34, Rando14_34, Rapunzel97_34, Rosmarinus_34, SamuelLPlaqson_34, SgtBeansprout_30, Shadow1_33, Shaobing_34, ShedlockHolmes_35, ShiaSurprise_34, SirPhilip_33, Slimphazie_34, SoSeph_33, Spock_34, Stinson_35, Strobilo_33, Sulley_34, Sunflower1121_33, Syra333_34, TBond007_34, TClif_36, TM4_35, Tachez_34, TaiwanKao_35, Thyatira_33, Tierra_34, TiniBug_34, Tiri_34, Topper_34, TreyKay_34, TripleTrouble_33, TruffulaTree_34, Twitch_34, Unicorn_34, Urkel_34, Validus_34, Veliki_34, Waterfoul_33, Ximenita_35, YoureAdopted_33, Yuna_35, Yunkel11_34, Zabiza_35, Zavala_34, ZoeJ_33,

Genes that have the "Most Annotated" start but do not call it:

-

Genes that do not have the "Most Annotated" start:

- Aminay_35, Ariel_167, BAKA_172, Bagrid_175, Beem_167, Bobby_159, Boilgate_31, Bombitas_153, Chancellor_35, Cheetobro_35, Chris_34, Constella_162, Courthouse_164, Dallas_166, DmpstrDiver_167, Dove_161, Duke13_169, Ejimix_157, Eponine_37, EricMillard_164, Fionnbharth_35, Gonephishing_160, Halley_167, Hannaconda_159, HokkenD_161, Hughesyang_165, JF1_35, JuicyJay_161, Juliette_37, Kalah2_163, KashFlow_164, KiSi_34, Klein_170, LeMond_34, LittleE_174, Lucky2013_163, Malthus_36, MarkPhew_35, Marshawn_36, MiaZeal_170, Minerva_166, MissDaisy_35, Mitti_35, Nibb_33, NihilNomen_168, Odette_170, Omega_175, OmniCritical_35, Optimus_165, Oscar_34, Patt_35, Phoebus_167, Porcelain_167, Pound_160, Redno2_160, Reptar3000_35, Ruthiejr_36, SamScheppers_35, Scarlett_34, Schatzie_161, Slarp_35, Squint_162, Superphikiman_165, Taquito_35, Thibault_150, ThreeRngTarjay_163, Wanda_164, Wintermute_35, Y10_35, Y2_35, Yeet_158, Zelink_159,

Summary by start number:

Start 19:

- Found in 2 of 234 (0.9%) of genes in pham
- Manual Annotations of this start: 1 of 224
- Called 50.0% of time when present
- Phage (with cluster) where this start called: MarkPhew_35 (K1),

Start 20:

- Found in 20 of 234 (8.5%) of genes in pham
- Manual Annotations of this start: 17 of 224
- Called 85.0% of time when present
- Phage (with cluster) where this start called: Boilgate_31 (K8), Chancellor_35 (K4), Cheetobro_35 (K4), Eponine_37 (K4), Fionnbharth_35 (K4), Juliette_37 (K4), Malthus_36 (K4), MissDaisy_35 (K4), Mitti_35 (K4), OmniCritical_35 (K4), Patt_35 (K4), Reptar3000_35 (K4), Ruthiejr_36 (K4), SamScheppers_35 (K4), Slarp_35 (K4), Taquito_35 (K4), Wintermute_35 (K4),

Start 21:

- Found in 43 of 234 (18.4%) of genes in pham
- Manual Annotations of this start: 39 of 224
- Called 100.0% of time when present
- Phage (with cluster) where this start called: Ariel_167 (J), BAKA_172 (J), Bagrid_175 (J), Beem_167 (J), Bobby_159 (J), Bombitas_153 (J), Constella_162 (J), Courthouse_164 (J), Dallas_166 (J), DmpstrDiver_167 (J), Dove_161 (J), Duke13_169 (J), Ejimix_157 (J), EricMillard_164 (J), Gonephishing_160 (J), Halley_167 (J), Hannaconda_159 (J), HokkenD_161 (J), Hughesyang_165 (J), JuicyJay_161 (J), Kalah2_163 (J), KashFlow_164 (J), Klein_170 (J), LittleE_174 (J), Lucky2013_163 (J), MiaZeal_170 (J), Minerva_166 (J), NihilNomen_168 (J), Odette_170 (J), Omega_175 (J), Optimus_165 (J), Phoebus_167 (J), Porcelain_167 (J), Pound_160 (J), Redno2_160 (J), Schatzie_161 (J), Squint_162 (J), Superphikiman_165 (J), Thibault_150 (J), ThreeRngTarjay_163 (J), Wanda_164 (J), Yeet_158 (J), Zelink_159 (J),

Start 22:

- Found in 16 of 234 (6.8%) of genes in pham
- Manual Annotations of this start: 1 of 224
- Called 6.2% of time when present
- Phage (with cluster) where this start called: JF1_35 (K4),

Start 24:

- Found in 1 of 234 (0.4%) of genes in pham
- Manual Annotations of this start: 1 of 224
- Called 100.0% of time when present
- Phage (with cluster) where this start called: Nibb_33 (K1),

Start 25:

- Found in 18 of 234 (7.7%) of genes in pham
- Manual Annotations of this start: 6 of 224
- Called 33.3% of time when present
- Phage (with cluster) where this start called: Chris_34 (K1), KiSi_34 (K1), LeMond_34 (K1), Marshawn_36 (K6), Oscar_34 (K1), Scarlett_34 (K1),

Start 26:

- Found in 1 of 234 (0.4%) of genes in pham
- Manual Annotations of this start: 1 of 224
- Called 100.0% of time when present
- Phage (with cluster) where this start called: Aminay_35 (K7),

Start 27:

- Found in 162 of 234 (69.2%) of genes in pham
- Manual Annotations of this start: 156 of 224
- Called 100.0% of time when present
- Phage (with cluster) where this start called: ActinUp_34 (K1), Adephagia_34 (K1), Adonis_34 (K1), Agent47_33 (K5), Ageofdapage_34 (K1), AlishaPH_34 (K1), AlleyCat_34 (K5), Amelie_30 (K1), Amgine_32 (K6), Amohnition_33 (K6), Anaya_35 (K1), Angelica_34 (K1), Apocalypse_34 (K1), Asayake_34 (K1), Atiba_34 (K1), BEEST_34 (K1), BGlluviae_34 (K1), BaghaKamala_34 (K1), BarrelRoll_34 (K1), Beezoo_34 (K1), Bella96_34 (K1), Belladonna_34 (K1), Binglebops_30 (K1), Blizzard_34 (K1), Boiiii_34 (K1), BoostSeason_34 (K2), Bryler_34 (K6), CREW_34 (K1), Cain_34 (K6), Capricorn_34 (K1), CaseJules_34 (K1), CheetoDust_34 (K1), Collard_33 (K5), CrimD_34 (K1), Curiosium_35 (K1), DS6A_35 (singleton), Dadosky_34 (K5), Dalmuri_34 (K1), DarthP_33 (K6), Deby_34 (K1), Devera_34 (K1), DismalFunk_33 (K2), DismalStressor_33 (K2), Dole_34 (K1), DrHayes_34 (K1), Durfee_34 (K1), Edugator_33 (K5), Efra2_34 (K1), Ekdilam_31 (K6), Ellie_31 (K6), Emerson_34 (K1), Enkosi_30 (K1), Fefferhead_33 (K6), Feyre_33 (K5), Findley_33 (K2), Ganymede_35 (K1), Gengar_33 (K5), Geraldini_34 (K1), Guanica15_34 (K1), Guillsminger_33 (K5), Hammy_33 (K6), HedwigODU_34 (K1), Heftyboy_33 (K5), Homura_34 (K1), Hurricane_35 (K3), Hyperbowlee_34 (K1), Illumine_34 (K1), Inky_34 (K1), InvictusManeo_33 (K5), JAWS_34 (K1), Jace_83 (singleton), Jarvi_34 (K1), Jayhawk_35 (K1), Jeckyll_34 (K1), Joy99_34 (K1), Keshu_35 (K3), Kratio_32 (K5), Krueger_34 (K6), Larva_34 (K5), LastHope_34 (K1), LaterM_34 (K1), Leston_33 (K5), LilPharaoh_30 (K1), LindNT_34 (K1), Llorens_34 (K1), Lunahalos_34 (K1), MacnCheese_35 (K3), MalagasyRose_34 (AG), Marcoliusprime_33 (K2), Mdavu_30 (K1), MeaningOfLife_34 (K1), Megsy_34 (K1), Milly_33 (K2), Miryou_33 (K5), Mufasa_34 (K2), Murucutumbu_34 (K1), Mynx_34 (K1), Nergal_30 (AG), Nikao_30 (K1), Niklas_34 (K1), Nutello_30 (K1), OkiRoe_33 (K5), Omnicon_34 (K5), Padfoot_34 (K1), Padpat_34 (K1), Paola_33 (K5), Peanam_34 (K1), Peel_34 (K1), Pharb_33 (K3), PhelpsODU_34 (K6), Phrank_34 (K6), Piatt_34 (K1), Pixie_34 (K3), Pokerus_33 (K1), Prithvi_34 (K1), Psycho_34 (K5), QuincyRose_33 (K1), Ramen_34 (K1), Rando14_34 (K5), Rapunzel97_34 (K1), Rosmarinus_34 (K1), SamuelLPlaqson_34 (K1), SgtBeansprout_30 (K1), Shadow1_33 (K6), Shaobing_34 (K1), ShedlockHolmes_35 (K3), ShiaSurprise_34 (K1), SirPhilip_33 (K6), Slimphazie_34 (K1), SoSeph_33 (K5), Spock_34 (K1), Stinson_35 (K1), Strobilo_33 (K2), Sulley_34 (K1), Sunflower1121_33 (K6), Syra333_34 (K6), TBond007_34 (K3), TClif_36 (K6), TM4_35 (K2), Tachez_34 (K1), TaiwanKao_35 (K1), Thyatira_33 (K5), Tierra_34 (K6), TiniBug_34 (K1), Tiri_34 (K1), Topper_34 (K1), TreyKay_34 (K1), TribbleTrouble_33 (K3), TruffulaTree_34 (K1), Twitch_34 (K1), Unicorn_34 (K6), Urkel_34 (K1), Validus_34 (K1), Veliki_34 (K1), Waterfoul_33 (K5), Ximenita_35 (K6), YoureAdopted_33 (K1), Yuna_35 (K6), Yunkel11_34 (K1), Zabiza_35 (K1), Zavala_34 (K1), ZoeJ_33 (K2),

Start 32:

- Found in 163 of 234 (69.7%) of genes in pham
- Manual Annotations of this start: 2 of 224
- Called 1.2% of time when present
- Phage (with cluster) where this start called: Y10_35 (K4), Y2_35 (K4),

Summary by clusters:

There are 11 clusters represented in this pham: singleton, AG, J, K3, K2, K1, K7, K6, K5, K4, K8,

Info for manual annotations of cluster AG:

- Start number 27 was manually annotated 2 times for cluster AG.

Info for manual annotations of cluster J:

- Start number 21 was manually annotated 39 times for cluster J.

Info for manual annotations of cluster K1:

- Start number 19 was manually annotated 1 time for cluster K1.
- Start number 24 was manually annotated 1 time for cluster K1.
- Start number 25 was manually annotated 5 times for cluster K1.
- Start number 27 was manually annotated 93 times for cluster K1.

Info for manual annotations of cluster K2:

- Start number 27 was manually annotated 10 times for cluster K2.

Info for manual annotations of cluster K3:

- Start number 27 was manually annotated 8 times for cluster K3.

Info for manual annotations of cluster K4:

- Start number 20 was manually annotated 16 times for cluster K4.
- Start number 22 was manually annotated 1 time for cluster K4.
- Start number 32 was manually annotated 2 times for cluster K4.

Info for manual annotations of cluster K5:

- Start number 27 was manually annotated 21 times for cluster K5.

Info for manual annotations of cluster K6:

- Start number 25 was manually annotated 1 time for cluster K6.
- Start number 27 was manually annotated 20 times for cluster K6.

Info for manual annotations of cluster K7:

- Start number 26 was manually annotated 1 time for cluster K7.

Info for manual annotations of cluster K8:

- Start number 20 was manually annotated 1 time for cluster K8.

Gene Information:

Gene: ActinUp_34 Start: 28124, Stop: 28375, Start Num: 27

Candidate Starts for ActinUp_34:

(12, 28064), (Start: 27 @28124 has 156 MA's), (Start: 32 @28181 has 2 MA's),

Gene: Adephagia_34 Start: 28121, Stop: 28372, Start Num: 27

Candidate Starts for Adephagia_34:

(12, 28061), (Start: 27 @28121 has 156 MA's), (Start: 32 @28178 has 2 MA's),

Gene: Adonis_34 Start: 28136, Stop: 28387, Start Num: 27

Candidate Starts for Adonis_34:

(12, 28076), (Start: 27 @28136 has 156 MA's), (Start: 32 @28193 has 2 MA's),

Gene: Agent47_33 Start: 28760, Stop: 29011, Start Num: 27

Candidate Starts for Agent47_33:

(Start: 27 @28760 has 156 MA's), (Start: 32 @28817 has 2 MA's), (39, 28892), (51, 28943), (54, 28970),

Gene: Ageofdapage_34 Start: 28061, Stop: 28333, Start Num: 27

Candidate Starts for Ageofdapage_34:

(Start: 27 @28061 has 156 MA's), (46, 28250),

Gene: AlishaPH_34 Start: 28114, Stop: 28365, Start Num: 27

Candidate Starts for AlishaPH_34:

(12, 28054), (Start: 27 @28114 has 156 MA's), (Start: 32 @28171 has 2 MA's),

Gene: AlleyCat_34 Start: 28691, Stop: 28942, Start Num: 27

Candidate Starts for AlleyCat_34:

(Start: 27 @28691 has 156 MA's), (Start: 32 @28748 has 2 MA's), (39, 28823), (51, 28874), (54, 28901),

Gene: Amelie_30 Start: 27546, Stop: 27797, Start Num: 27

Candidate Starts for Amelie_30:

(Start: 27 @27546 has 156 MA's), (Start: 32 @27603 has 2 MA's),

Gene: Amgine_32 Start: 28083, Stop: 28340, Start Num: 27

Candidate Starts for Amgine_32:

(Start: 27 @28083 has 156 MA's), (Start: 32 @28146 has 2 MA's), (34, 28185), (49, 28266),

Gene: Aminay_35 Start: 29809, Stop: 30045, Start Num: 26

Candidate Starts for Aminay_35:

(Start: 26 @29809 has 1 MA's), (28, 29818), (Start: 32 @29875 has 2 MA's), (44, 29968),

Gene: Amohndition_33 Start: 28517, Stop: 28768, Start Num: 27

Candidate Starts for Amohndition_33:

(12, 28454), (Start: 27 @28517 has 156 MA's), (34, 28613), (49, 28694),

Gene: Anaya_35 Start: 28149, Stop: 28400, Start Num: 27

Candidate Starts for Anaya_35:

(12, 28089), (Start: 27 @28149 has 156 MA's), (Start: 32 @28206 has 2 MA's),

Gene: Angelica_34 Start: 28071, Stop: 28322, Start Num: 27

Candidate Starts for Angelica_34:

(12, 28011), (Start: 27 @28071 has 156 MA's), (Start: 32 @28128 has 2 MA's),

Gene: Apocalypse_34 Start: 28092, Stop: 28343, Start Num: 27

Candidate Starts for Apocalypse_34:

(12, 28032), (Start: 27 @28092 has 156 MA's), (Start: 32 @28149 has 2 MA's),

Gene: Ariel_167 Start: 85326, Stop: 85568, Start Num: 21

Candidate Starts for Ariel_167:

(Start: 21 @85326 has 39 MA's), (34, 85431), (38, 85461), (39, 85467), (47, 85509), (55, 85554),

Gene: Asayake_34 Start: 28155, Stop: 28406, Start Num: 27

Candidate Starts for Asayake_34:

(12, 28095), (Start: 27 @28155 has 156 MA's), (Start: 32 @28212 has 2 MA's),

Gene: Atiba_34 Start: 28084, Stop: 28335, Start Num: 27

Candidate Starts for Atiba_34:

(12, 28024), (Start: 27 @28084 has 156 MA's), (Start: 32 @28141 has 2 MA's),

Gene: BAKA_172 Start: 90313, Stop: 90546, Start Num: 21

Candidate Starts for BAKA_172:

(Start: 21 @90313 has 39 MA's), (39, 90454), (42, 90463), (47, 90496), (48, 90502),

Gene: BEEST_34 Start: 28155, Stop: 28406, Start Num: 27

Candidate Starts for BEEST_34:

(12, 28095), (Start: 27 @28155 has 156 MA's), (Start: 32 @28212 has 2 MA's),

Gene: BGlluviae_34 Start: 28155, Stop: 28406, Start Num: 27

Candidate Starts for BGlluviae_34:

(12, 28095), (Start: 27 @28155 has 156 MA's), (Start: 32 @28212 has 2 MA's),

Gene: BaghaKamala_34 Start: 28084, Stop: 28335, Start Num: 27

Candidate Starts for BaghaKamala_34:

(12, 28024), (Start: 27 @28084 has 156 MA's), (Start: 32 @28141 has 2 MA's),

Gene: Bagrid_175 Start: 90675, Stop: 90908, Start Num: 21

Candidate Starts for Bagrid_175:

(Start: 21 @90675 has 39 MA's), (39, 90816), (42, 90825), (47, 90858), (48, 90864),

Gene: BarrelRoll_34 Start: 28107, Stop: 28358, Start Num: 27

Candidate Starts for BarrelRoll_34:

(12, 28047), (Start: 27 @28107 has 156 MA's), (Start: 32 @28164 has 2 MA's),

Gene: Beem_167 Start: 89468, Stop: 89701, Start Num: 21

Candidate Starts for Beem_167:

(Start: 21 @89468 has 39 MA's), (39, 89609), (42, 89618), (47, 89651), (48, 89657),

Gene: Beezoo_34 Start: 28132, Stop: 28383, Start Num: 27

Candidate Starts for Beezoo_34:

(12, 28072), (Start: 27 @28132 has 156 MA's), (Start: 32 @28189 has 2 MA's),

Gene: Bella96_34 Start: 28025, Stop: 28276, Start Num: 27

Candidate Starts for Bella96_34:

(12, 27965), (Start: 27 @28025 has 156 MA's), (Start: 32 @28082 has 2 MA's), (42, 28166),

Gene: Belladonna_34 Start: 28155, Stop: 28406, Start Num: 27

Candidate Starts for Belladonna_34:

(12, 28095), (Start: 27 @28155 has 156 MA's), (Start: 32 @28212 has 2 MA's),

Gene: Biglebops_30 Start: 27546, Stop: 27797, Start Num: 27

Candidate Starts for Biglebops_30:

(Start: 27 @27546 has 156 MA's), (Start: 32 @27603 has 2 MA's),

Gene: Blizzard_34 Start: 28155, Stop: 28406, Start Num: 27

Candidate Starts for Blizzard_34:

(12, 28095), (Start: 27 @28155 has 156 MA's), (Start: 32 @28212 has 2 MA's),

Gene: Bobby_159 Start: 90463, Stop: 90696, Start Num: 21

Candidate Starts for Bobby_159:

(Start: 21 @90463 has 39 MA's), (39, 90604), (42, 90613), (47, 90646), (48, 90652),

Gene: Boiiii_34 Start: 28157, Stop: 28408, Start Num: 27

Candidate Starts for Boiiii_34:

(12, 28097), (Start: 27 @28157 has 156 MA's), (Start: 32 @28214 has 2 MA's),

Gene: Boilgate_31 Start: 29990, Stop: 30247, Start Num: 20

Candidate Starts for Boilgate_31:

(Start: 20 @29990 has 17 MA's), (30, 30020), (Start: 32 @30059 has 2 MA's), (37, 30125), (49, 30188), (51, 30194), (54, 30221),

Gene: Bombitas_153 Start: 85698, Stop: 85931, Start Num: 21

Candidate Starts for Bombitas_153:

(Start: 21 @85698 has 39 MA's), (39, 85839), (42, 85848), (47, 85881), (48, 85887),

Gene: BoostSeason_34 Start: 27482, Stop: 27730, Start Num: 27

Candidate Starts for BoostSeason_34:

(9, 27398), (16, 27443), (Start: 27 @27482 has 156 MA's), (Start: 32 @27536 has 2 MA's),

Gene: Bryler_34 Start: 27447, Stop: 27698, Start Num: 27

Candidate Starts for Bryler_34:

(Start: 27 @27447 has 156 MA's), (Start: 32 @27504 has 2 MA's), (42, 27588), (49, 27624),

Gene: CREW_34 Start: 28155, Stop: 28406, Start Num: 27

Candidate Starts for CREW_34:

(12, 28095), (Start: 27 @28155 has 156 MA's), (Start: 32 @28212 has 2 MA's),

Gene: Cain_34 Start: 27435, Stop: 27686, Start Num: 27

Candidate Starts for Cain_34:

(Start: 27 @27435 has 156 MA's), (Start: 32 @27492 has 2 MA's), (42, 27576), (49, 27612),

Gene: Capricorn_34 Start: 28155, Stop: 28406, Start Num: 27

Candidate Starts for Capricorn_34:

(12, 28095), (Start: 27 @28155 has 156 MA's), (Start: 32 @28212 has 2 MA's),

Gene: CaseJules_34 Start: 28155, Stop: 28406, Start Num: 27

Candidate Starts for CaseJules_34:

(12, 28095), (Start: 27 @28155 has 156 MA's), (Start: 32 @28212 has 2 MA's),

Gene: Chancellor_35 Start: 29198, Stop: 29458, Start Num: 20

Candidate Starts for Chancellor_35:

(Start: 20 @29198 has 17 MA's), (Start: 22 @29204 has 1 MA's), (Start: 32 @29270 has 2 MA's), (37, 29336), (40, 29348), (43, 29363), (49, 29399), (54, 29432), (55, 29438),

Gene: CheetoDust_34 Start: 28132, Stop: 28383, Start Num: 27

Candidate Starts for CheetoDust_34:

(Start: 27 @28132 has 156 MA's), (Start: 32 @28189 has 2 MA's),

Gene: Cheetobro_35 Start: 29195, Stop: 29455, Start Num: 20

Candidate Starts for Cheetobro_35:

(Start: 20 @29195 has 17 MA's), (Start: 22 @29201 has 1 MA's), (Start: 32 @29267 has 2 MA's), (37, 29333), (40, 29345), (43, 29360), (49, 29396), (54, 29429), (55, 29435),

Gene: Chris_34 Start: 27872, Stop: 28120, Start Num: 25

Candidate Starts for Chris_34:

(14, 27821), (Start: 19 @27857 has 1 MA's), (Start: 25 @27872 has 6 MA's), (28, 27878), (34, 27965), (39, 28001),

Gene: Collard_33 Start: 28721, Stop: 28972, Start Num: 27

Candidate Starts for Collard_33:

(Start: 27 @28721 has 156 MA's), (Start: 32 @28778 has 2 MA's), (39, 28853), (51, 28904), (54, 28931),

Gene: Constella_162 Start: 88202, Stop: 88435, Start Num: 21

Candidate Starts for Constella_162:

(Start: 21 @88202 has 39 MA's), (39, 88343), (42, 88352), (47, 88385), (48, 88391),

Gene: Courthouse_164 Start: 85770, Stop: 86012, Start Num: 21

Candidate Starts for Courthouse_164:

(Start: 21 @85770 has 39 MA's), (34, 85875), (38, 85905), (39, 85911), (47, 85953), (55, 85998),

Gene: CrimD_34 Start: 28089, Stop: 28340, Start Num: 27

Candidate Starts for CrimD_34:

(Start: 27 @28089 has 156 MA's), (Start: 32 @28146 has 2 MA's),

Gene: Curiosium_35 Start: 27915, Stop: 28166, Start Num: 27

Candidate Starts for Curiosium_35:

(Start: 27 @27915 has 156 MA's), (42, 28056),

Gene: DS6A_35 Start: 29978, Stop: 30217, Start Num: 27

Candidate Starts for DS6A_35:

(23, 29969), (Start: 27 @29978 has 156 MA's), (29, 29996), (45, 30155),

Gene: Dadosky_34 Start: 28692, Stop: 28943, Start Num: 27

Candidate Starts for Dadosky_34:

(Start: 27 @28692 has 156 MA's), (Start: 32 @28749 has 2 MA's), (39, 28824), (42, 28833), (51, 28875), (54, 28902),

Gene: Dallas_166 Start: 88691, Stop: 88924, Start Num: 21

Candidate Starts for Dallas_166:

(Start: 21 @88691 has 39 MA's), (39, 88832), (42, 88841), (47, 88874), (48, 88880),

Gene: Dalmuri_34 Start: 28155, Stop: 28406, Start Num: 27

Candidate Starts for Dalmuri_34:

(12, 28095), (Start: 27 @28155 has 156 MA's), (Start: 32 @28212 has 2 MA's),

Gene: DarthP_33 Start: 28439, Stop: 28690, Start Num: 27

Candidate Starts for DarthP_33:

(12, 28376), (Start: 27 @28439 has 156 MA's), (34, 28535), (49, 28616),

Gene: Deby_34 Start: 28089, Stop: 28340, Start Num: 27
Candidate Starts for Deby_34:
(12, 28029), (Start: 27 @28089 has 156 MA's), (Start: 32 @28146 has 2 MA's),

Gene: Devera_34 Start: 28150, Stop: 28401, Start Num: 27
Candidate Starts for Devera_34:
(Start: 27 @28150 has 156 MA's), (42, 28291),

Gene: DismalFunk_33 Start: 27394, Stop: 27642, Start Num: 27
Candidate Starts for DismalFunk_33:
(9, 27310), (16, 27355), (Start: 27 @27394 has 156 MA's), (Start: 32 @27448 has 2 MA's),

Gene: DismalStressor_33 Start: 27394, Stop: 27642, Start Num: 27
Candidate Starts for DismalStressor_33:
(9, 27310), (16, 27355), (Start: 27 @27394 has 156 MA's), (Start: 32 @27448 has 2 MA's),

Gene: DmpstrDiver_167 Start: 88386, Stop: 88619, Start Num: 21
Candidate Starts for DmpstrDiver_167:
(10, 88320), (13, 88338), (Start: 21 @88386 has 39 MA's), (39, 88527), (42, 88536), (47, 88569), (48, 88575),

Gene: Dole_34 Start: 28152, Stop: 28403, Start Num: 27
Candidate Starts for Dole_34:
(Start: 27 @28152 has 156 MA's), (42, 28293),

Gene: Dove_161 Start: 84054, Stop: 84287, Start Num: 21
Candidate Starts for Dove_161:
(Start: 21 @84054 has 39 MA's), (39, 84195), (42, 84204), (47, 84237), (48, 84243),

Gene: DrHayes_34 Start: 28065, Stop: 28316, Start Num: 27
Candidate Starts for DrHayes_34:
(Start: 27 @28065 has 156 MA's), (Start: 32 @28122 has 2 MA's), (42, 28206),

Gene: Duke13_169 Start: 88809, Stop: 89042, Start Num: 21
Candidate Starts for Duke13_169:
(Start: 21 @88809 has 39 MA's), (39, 88950), (42, 88959), (47, 88992), (48, 88998),

Gene: Durfee_34 Start: 28155, Stop: 28406, Start Num: 27
Candidate Starts for Durfee_34:
(12, 28095), (Start: 27 @28155 has 156 MA's), (Start: 32 @28212 has 2 MA's),

Gene: Edugator_33 Start: 28691, Stop: 28945, Start Num: 27
Candidate Starts for Edugator_33:
(Start: 27 @28691 has 156 MA's), (Start: 32 @28748 has 2 MA's), (39, 28823), (42, 28832), (51, 28874),

Gene: Efra2_34 Start: 27390, Stop: 27641, Start Num: 27
Candidate Starts for Efra2_34:
(Start: 27 @27390 has 156 MA's), (42, 27531),

Gene: Ejimix_157 Start: 87679, Stop: 87912, Start Num: 21
Candidate Starts for Ejimix_157:

(Start: 21 @87679 has 39 MA's), (39, 87820), (42, 87829), (47, 87862), (48, 87868),

Gene: Ekdilam_31 Start: 28197, Stop: 28448, Start Num: 27

Candidate Starts for Ekdilam_31:

(Start: 27 @28197 has 156 MA's), (Start: 32 @28254 has 2 MA's), (34, 28293), (49, 28374),

Gene: Ellie_31 Start: 28196, Stop: 28453, Start Num: 27

Candidate Starts for Ellie_31:

(Start: 27 @28196 has 156 MA's), (Start: 32 @28259 has 2 MA's), (34, 28298), (49, 28379),

Gene: Emerson_34 Start: 28115, Stop: 28366, Start Num: 27

Candidate Starts for Emerson_34:

(12, 28055), (Start: 27 @28115 has 156 MA's), (Start: 32 @28172 has 2 MA's),

Gene: Enkosi_30 Start: 27546, Stop: 27797, Start Num: 27

Candidate Starts for Enkosi_30:

(Start: 27 @27546 has 156 MA's), (Start: 32 @27603 has 2 MA's),

Gene: Eponine_37 Start: 29951, Stop: 30211, Start Num: 20

Candidate Starts for Eponine_37:

(Start: 20 @29951 has 17 MA's), (Start: 22 @29957 has 1 MA's), (Start: 32 @30023 has 2 MA's), (37, 30089), (40, 30101), (43, 30116), (49, 30152), (54, 30185), (55, 30191),

Gene: EricMillard_164 Start: 89285, Stop: 89518, Start Num: 21

Candidate Starts for EricMillard_164:

(Start: 21 @89285 has 39 MA's), (39, 89426), (42, 89435), (47, 89468), (48, 89474),

Gene: Fefferhead_33 Start: 28396, Stop: 28653, Start Num: 27

Candidate Starts for Fefferhead_33:

(Start: 27 @28396 has 156 MA's), (Start: 32 @28459 has 2 MA's), (34, 28498), (49, 28579),

Gene: Feyre_33 Start: 28605, Stop: 28859, Start Num: 27

Candidate Starts for Feyre_33:

(Start: 25 @28599 has 6 MA's), (Start: 27 @28605 has 156 MA's), (Start: 32 @28662 has 2 MA's), (39, 28737), (42, 28746), (51, 28788),

Gene: Findley_33 Start: 27386, Stop: 27631, Start Num: 27

Candidate Starts for Findley_33:

(9, 27302), (16, 27347), (Start: 27 @27386 has 156 MA's), (Start: 32 @27440 has 2 MA's),

Gene: Fionnbharth_35 Start: 29186, Stop: 29446, Start Num: 20

Candidate Starts for Fionnbharth_35:

(Start: 20 @29186 has 17 MA's), (Start: 22 @29192 has 1 MA's), (Start: 32 @29258 has 2 MA's), (37, 29324), (40, 29336), (43, 29351), (49, 29387), (54, 29420), (55, 29426),

Gene: Ganymede_35 Start: 28144, Stop: 28395, Start Num: 27

Candidate Starts for Ganymede_35:

(12, 28084), (Start: 27 @28144 has 156 MA's), (Start: 32 @28201 has 2 MA's),

Gene: Gengar_33 Start: 28715, Stop: 28969, Start Num: 27

Candidate Starts for Gengar_33:

(Start: 25 @28709 has 6 MA's), (Start: 27 @28715 has 156 MA's), (Start: 32 @28772 has 2 MA's), (39, 28847), (42, 28856), (51, 28898),

Gene: Geraldini_34 Start: 28132, Stop: 28383, Start Num: 27
Candidate Starts for Geraldini_34:
(12, 28072), (Start: 27 @28132 has 156 MA's), (Start: 32 @28189 has 2 MA's),

Gene: Gonephishing_160 Start: 86587, Stop: 86829, Start Num: 21
Candidate Starts for Gonephishing_160:
(5, 86434), (10, 86521), (Start: 21 @86587 has 39 MA's), (34, 86692), (38, 86722), (39, 86728), (47, 86770), (55, 86815),

Gene: Guanica15_34 Start: 27407, Stop: 27658, Start Num: 27
Candidate Starts for Guanica15_34:
(Start: 27 @27407 has 156 MA's),

Gene: Guillsminger_33 Start: 28686, Stop: 28940, Start Num: 27
Candidate Starts for Guillsminger_33:
(4, 28512), (6, 28551), (Start: 25 @28680 has 6 MA's), (Start: 27 @28686 has 156 MA's), (Start: 32 @28743 has 2 MA's), (39, 28818), (51, 28869),

Gene: Halley_167 Start: 87995, Stop: 88228, Start Num: 21
Candidate Starts for Halley_167:
(Start: 21 @87995 has 39 MA's), (39, 88136), (42, 88145), (47, 88178), (48, 88184),

Gene: Hammy_33 Start: 28430, Stop: 28681, Start Num: 27
Candidate Starts for Hammy_33:
(12, 28367), (Start: 27 @28430 has 156 MA's), (34, 28526), (49, 28607),

Gene: Hannaconda_159 Start: 88508, Stop: 88750, Start Num: 21
Candidate Starts for Hannaconda_159:
(5, 88355), (10, 88442), (Start: 21 @88508 has 39 MA's), (34, 88613), (38, 88643), (39, 88649), (47, 88691), (55, 88736),

Gene: HedwigODU_34 Start: 28124, Stop: 28375, Start Num: 27
Candidate Starts for HedwigODU_34:
(12, 28064), (Start: 27 @28124 has 156 MA's), (Start: 32 @28181 has 2 MA's),

Gene: Heftyboy_33 Start: 28832, Stop: 29086, Start Num: 27
Candidate Starts for Heftyboy_33:
(4, 28658), (6, 28697), (8, 28727), (18, 28814), (Start: 25 @28826 has 6 MA's), (Start: 27 @28832 has 156 MA's), (Start: 32 @28889 has 2 MA's), (39, 28964), (51, 29015),

Gene: HokkenD_161 Start: 89776, Stop: 90009, Start Num: 21
Candidate Starts for HokkenD_161:
(Start: 21 @89776 has 39 MA's), (39, 89917), (42, 89926), (47, 89959), (48, 89965),

Gene: Homura_34 Start: 28155, Stop: 28406, Start Num: 27
Candidate Starts for Homura_34:
(12, 28095), (Start: 27 @28155 has 156 MA's), (Start: 32 @28212 has 2 MA's),

Gene: Hughesyang_165 Start: 88477, Stop: 88710, Start Num: 21
Candidate Starts for Hughesyang_165:
(Start: 21 @88477 has 39 MA's), (39, 88618), (42, 88627), (47, 88660), (48, 88666),

Gene: Hurricane_35 Start: 28982, Stop: 29233, Start Num: 27

Candidate Starts for Hurricane_35:

(12, 28919), (Start: 27 @28982 has 156 MA's), (31, 29036), (Start: 32 @29039 has 2 MA's), (34, 29078), (53, 29189),

Gene: Hyperbowlee_34 Start: 28155, Stop: 28406, Start Num: 27

Candidate Starts for Hyperbowlee_34:

(12, 28095), (Start: 27 @28155 has 156 MA's), (Start: 32 @28212 has 2 MA's),

Gene: Illumine_34 Start: 28152, Stop: 28403, Start Num: 27

Candidate Starts for Illumine_34:

(Start: 27 @28152 has 156 MA's), (42, 28293),

Gene: Inky_34 Start: 28155, Stop: 28406, Start Num: 27

Candidate Starts for Inky_34:

(12, 28095), (Start: 27 @28155 has 156 MA's), (Start: 32 @28212 has 2 MA's),

Gene: InvictusManeo_33 Start: 28764, Stop: 29015, Start Num: 27

Candidate Starts for InvictusManeo_33:

(Start: 27 @28764 has 156 MA's), (Start: 32 @28821 has 2 MA's), (39, 28896), (51, 28947), (54, 28974),

Gene: JAWS_34 Start: 28109, Stop: 28360, Start Num: 27

Candidate Starts for JAWS_34:

(12, 28049), (Start: 27 @28109 has 156 MA's), (Start: 32 @28166 has 2 MA's),

Gene: JF1_35 Start: 29191, Stop: 29445, Start Num: 22

Candidate Starts for JF1_35:

(Start: 20 @29185 has 17 MA's), (Start: 22 @29191 has 1 MA's), (Start: 32 @29257 has 2 MA's), (37, 29323), (40, 29335), (43, 29350), (49, 29386), (54, 29419), (55, 29425),

Gene: Jace_83 Start: 45617, Stop: 45856, Start Num: 27

Candidate Starts for Jace_83:

(15, 45572), (17, 45584), (Start: 27 @45617 has 156 MA's), (42, 45755), (52, 45815), (53, 45824),

Gene: Jarvi_34 Start: 28155, Stop: 28406, Start Num: 27

Candidate Starts for Jarvi_34:

(12, 28095), (Start: 27 @28155 has 156 MA's), (Start: 32 @28212 has 2 MA's),

Gene: Jayhawk_35 Start: 28122, Stop: 28373, Start Num: 27

Candidate Starts for Jayhawk_35:

(12, 28062), (Start: 27 @28122 has 156 MA's), (Start: 32 @28179 has 2 MA's),

Gene: Jeckyll_34 Start: 28155, Stop: 28406, Start Num: 27

Candidate Starts for Jeckyll_34:

(12, 28095), (Start: 27 @28155 has 156 MA's), (Start: 32 @28212 has 2 MA's),

Gene: Joy99_34 Start: 28084, Stop: 28335, Start Num: 27

Candidate Starts for Joy99_34:

(12, 28024), (Start: 27 @28084 has 156 MA's), (Start: 32 @28141 has 2 MA's),

Gene: JuicyJay_161 Start: 89423, Stop: 89656, Start Num: 21

Candidate Starts for JuicyJay_161:

(Start: 21 @89423 has 39 MA's), (39, 89564), (42, 89573), (47, 89606), (48, 89612),

Gene: Juliette_37 Start: 29344, Stop: 29604, Start Num: 20

Candidate Starts for Juliette_37:

(Start: 20 @29344 has 17 MA's), (Start: 22 @29350 has 1 MA's), (Start: 32 @29416 has 2 MA's), (37, 29482), (40, 29494), (43, 29509), (49, 29545), (54, 29578), (55, 29584),

Gene: Kalah2_163 Start: 89761, Stop: 89994, Start Num: 21

Candidate Starts for Kalah2_163:

(Start: 21 @89761 has 39 MA's), (39, 89902), (42, 89911), (47, 89944), (48, 89950),

Gene: KashFlow_164 Start: 88321, Stop: 88563, Start Num: 21

Candidate Starts for KashFlow_164:

(10, 88255), (Start: 21 @88321 has 39 MA's), (34, 88426), (38, 88456), (39, 88462), (47, 88504), (55, 88549),

Gene: Keshu_35 Start: 28970, Stop: 29221, Start Num: 27

Candidate Starts for Keshu_35:

(12, 28907), (Start: 27 @28970 has 156 MA's), (34, 29066), (54, 29180),

Gene: KiSi_34 Start: 27747, Stop: 27995, Start Num: 25

Candidate Starts for KiSi_34:

(14, 27696), (Start: 25 @27747 has 6 MA's), (28, 27753), (39, 27876),

Gene: Klein_170 Start: 88100, Stop: 88333, Start Num: 21

Candidate Starts for Klein_170:

(Start: 21 @88100 has 39 MA's), (39, 88241), (42, 88250), (47, 88283), (48, 88289),

Gene: Kratio_32 Start: 28395, Stop: 28646, Start Num: 27

Candidate Starts for Kratio_32:

(Start: 27 @28395 has 156 MA's), (Start: 32 @28452 has 2 MA's), (39, 28527), (50, 28575), (51, 28578), (54, 28605),

Gene: Krueger_34 Start: 27308, Stop: 27559, Start Num: 27

Candidate Starts for Krueger_34:

(Start: 27 @27308 has 156 MA's), (Start: 32 @27365 has 2 MA's), (42, 27449), (49, 27485),

Gene: Larva_34 Start: 28559, Stop: 28810, Start Num: 27

Candidate Starts for Larva_34:

(Start: 27 @28559 has 156 MA's), (Start: 32 @28616 has 2 MA's), (39, 28691), (42, 28700), (51, 28742), (54, 28769),

Gene: LastHope_34 Start: 27271, Stop: 27543, Start Num: 27

Candidate Starts for LastHope_34:

(Start: 27 @27271 has 156 MA's), (Start: 32 @27328 has 2 MA's), (42, 27412), (46, 27460),

Gene: LaterM_34 Start: 28069, Stop: 28320, Start Num: 27

Candidate Starts for LaterM_34:

(Start: 27 @28069 has 156 MA's), (42, 28210),

Gene: LeMond_34 Start: 27818, Stop: 28066, Start Num: 25

Candidate Starts for LeMond_34:

(14, 27767), (Start: 25 @27818 has 6 MA's), (28, 27824), (39, 27947),

Gene: Leston_33 Start: 28816, Stop: 29070, Start Num: 27
Candidate Starts for Leston_33:
(4, 28642), (6, 28681), (Start: 25 @28810 has 6 MA's), (Start: 27 @28816 has 156 MA's), (Start: 32 @28873 has 2 MA's), (39, 28948), (51, 28999),

Gene: LilPharaoh_30 Start: 27546, Stop: 27797, Start Num: 27
Candidate Starts for LilPharaoh_30:
(Start: 27 @27546 has 156 MA's), (Start: 32 @27603 has 2 MA's),

Gene: LindNT_34 Start: 28085, Stop: 28336, Start Num: 27
Candidate Starts for LindNT_34:
(Start: 27 @28085 has 156 MA's), (Start: 32 @28142 has 2 MA's),

Gene: LittleE_174 Start: 89344, Stop: 89586, Start Num: 21
Candidate Starts for LittleE_174:
(Start: 21 @89344 has 39 MA's), (34, 89449), (38, 89479), (39, 89485), (47, 89527), (55, 89572),

Gene: Llorens_34 Start: 28155, Stop: 28406, Start Num: 27
Candidate Starts for Llorens_34:
(12, 28095), (Start: 27 @28155 has 156 MA's), (Start: 32 @28212 has 2 MA's),

Gene: Lucky2013_163 Start: 84841, Stop: 85083, Start Num: 21
Candidate Starts for Lucky2013_163:
(Start: 21 @84841 has 39 MA's), (34, 84946), (38, 84976), (39, 84982), (47, 85024), (55, 85069),

Gene: Lunahalos_34 Start: 28155, Stop: 28406, Start Num: 27
Candidate Starts for Lunahalos_34:
(12, 28095), (Start: 27 @28155 has 156 MA's), (Start: 32 @28212 has 2 MA's),

Gene: MacnCheese_35 Start: 29023, Stop: 29301, Start Num: 27
Candidate Starts for MacnCheese_35:
(Start: 27 @29023 has 156 MA's), (Start: 32 @29080 has 2 MA's), (34, 29119), (49, 29200),

Gene: MalagasyRose_34 Start: 27443, Stop: 27676, Start Num: 27
Candidate Starts for MalagasyRose_34:
(Start: 27 @27443 has 156 MA's), (35, 27530), (36, 27545), (39, 27563), (47, 27605), (52, 27632),

Gene: Malthus_36 Start: 29110, Stop: 29370, Start Num: 20
Candidate Starts for Malthus_36:
(Start: 20 @29110 has 17 MA's), (Start: 22 @29116 has 1 MA's), (Start: 32 @29182 has 2 MA's), (37, 29248), (40, 29260), (43, 29275), (49, 29311), (54, 29344), (55, 29350),

Gene: Marcoliusprime_33 Start: 27394, Stop: 27642, Start Num: 27
Candidate Starts for Marcoliusprime_33:
(9, 27310), (16, 27355), (Start: 27 @27394 has 156 MA's), (Start: 32 @27448 has 2 MA's),

Gene: MarkPhew_35 Start: 27704, Stop: 27967, Start Num: 19
Candidate Starts for MarkPhew_35:
(Start: 19 @27704 has 1 MA's), (Start: 25 @27719 has 6 MA's), (28, 27725), (39, 27848),

Gene: Marshawn_36 Start: 28360, Stop: 28608, Start Num: 25
Candidate Starts for Marshawn_36:

(Start: 25 @28360 has 6 MA's), (Start: 32 @28414 has 2 MA's), (39, 28489),

Gene: Mdavu_30 Start: 27534, Stop: 27785, Start Num: 27

Candidate Starts for Mdavu_30:

(Start: 27 @27534 has 156 MA's), (Start: 32 @27591 has 2 MA's),

Gene: MeaningOfLife_34 Start: 28100, Stop: 28351, Start Num: 27

Candidate Starts for MeaningOfLife_34:

(12, 28040), (Start: 27 @28100 has 156 MA's), (Start: 32 @28157 has 2 MA's),

Gene: Megsy_34 Start: 28088, Stop: 28339, Start Num: 27

Candidate Starts for Megsy_34:

(Start: 27 @28088 has 156 MA's), (Start: 32 @28145 has 2 MA's),

Gene: MiaZeal_170 Start: 85988, Stop: 86230, Start Num: 21

Candidate Starts for MiaZeal_170:

(Start: 21 @85988 has 39 MA's), (34, 86093), (38, 86123), (39, 86129), (47, 86171), (55, 86216),

Gene: Milly_33 Start: 27367, Stop: 27615, Start Num: 27

Candidate Starts for Milly_33:

(9, 27283), (16, 27328), (Start: 27 @27367 has 156 MA's), (Start: 32 @27421 has 2 MA's),

Gene: Minerva_166 Start: 87841, Stop: 88074, Start Num: 21

Candidate Starts for Minerva_166:

(Start: 21 @87841 has 39 MA's), (39, 87982), (42, 87991), (47, 88024), (48, 88030),

Gene: Miryou_33 Start: 28671, Stop: 28925, Start Num: 27

Candidate Starts for Miryou_33:

(4, 28497), (6, 28536), (Start: 27 @28671 has 156 MA's), (Start: 32 @28728 has 2 MA's), (39, 28803), (51, 28854),

Gene: MissDaisy_35 Start: 28953, Stop: 29213, Start Num: 20

Candidate Starts for MissDaisy_35:

(Start: 20 @28953 has 17 MA's), (37, 29091), (40, 29103), (43, 29118), (49, 29154), (54, 29187), (55, 29193),

Gene: Mitti_35 Start: 29111, Stop: 29371, Start Num: 20

Candidate Starts for Mitti_35:

(Start: 20 @29111 has 17 MA's), (Start: 22 @29117 has 1 MA's), (Start: 32 @29183 has 2 MA's), (37, 29249), (40, 29261), (43, 29276), (49, 29312), (54, 29345), (55, 29351),

Gene: Mufasa_34 Start: 27475, Stop: 27723, Start Num: 27

Candidate Starts for Mufasa_34:

(9, 27391), (16, 27436), (Start: 27 @27475 has 156 MA's), (Start: 32 @27529 has 2 MA's),

Gene: Murucutumbu_34 Start: 28088, Stop: 28339, Start Num: 27

Candidate Starts for Murucutumbu_34:

(Start: 27 @28088 has 156 MA's), (42, 28229),

Gene: Mynx_34 Start: 28138, Stop: 28389, Start Num: 27

Candidate Starts for Mynx_34:

(12, 28078), (Start: 27 @28138 has 156 MA's), (Start: 32 @28195 has 2 MA's),

Gene: Nergal_30 Start: 25836, Stop: 26081, Start Num: 27
Candidate Starts for Nergal_30:
(12, 25770), (Start: 27 @25836 has 156 MA's), (Start: 32 @25893 has 2 MA's),

Gene: Nibb_33 Start: 27286, Stop: 27534, Start Num: 24
Candidate Starts for Nibb_33:
(Start: 24 @27286 has 1 MA's), (39, 27415),

Gene: NihilNomen_168 Start: 87549, Stop: 87782, Start Num: 21
Candidate Starts for NihilNomen_168:
(Start: 21 @87549 has 39 MA's), (39, 87690), (42, 87699), (47, 87732), (48, 87738),

Gene: Nikao_30 Start: 27546, Stop: 27797, Start Num: 27
Candidate Starts for Nikao_30:
(Start: 27 @27546 has 156 MA's), (Start: 32 @27603 has 2 MA's),

Gene: Niklas_34 Start: 27445, Stop: 27696, Start Num: 27
Candidate Starts for Niklas_34:
(Start: 27 @27445 has 156 MA's), (Start: 32 @27502 has 2 MA's), (42, 27586),

Gene: Nutello_30 Start: 27546, Stop: 27797, Start Num: 27
Candidate Starts for Nutello_30:
(Start: 27 @27546 has 156 MA's), (Start: 32 @27603 has 2 MA's),

Gene: Odette_170 Start: 90230, Stop: 90463, Start Num: 21
Candidate Starts for Odette_170:
(Start: 21 @90230 has 39 MA's), (39, 90371), (42, 90380), (47, 90413), (48, 90419),

Gene: OkiRoe_33 Start: 28688, Stop: 28942, Start Num: 27
Candidate Starts for OkiRoe_33:
(Start: 25 @28682 has 6 MA's), (Start: 27 @28688 has 156 MA's), (Start: 32 @28745 has 2 MA's),
(39, 28820), (42, 28829), (51, 28871),

Gene: Omega_175 Start: 90315, Stop: 90557, Start Num: 21
Candidate Starts for Omega_175:
(10, 90249), (Start: 21 @90315 has 39 MA's), (34, 90420), (38, 90450), (39, 90456), (47, 90498), (55, 90543),

Gene: OmniCritical_35 Start: 29095, Stop: 29355, Start Num: 20
Candidate Starts for OmniCritical_35:
(Start: 20 @29095 has 17 MA's), (Start: 22 @29101 has 1 MA's), (Start: 32 @29167 has 2 MA's), (37, 29233), (40, 29245), (43, 29260), (49, 29296), (54, 29329), (55, 29335),

Gene: Omnicron_34 Start: 27596, Stop: 27847, Start Num: 27
Candidate Starts for Omnicron_34:
(2, 27383), (3, 27389), (4, 27419), (6, 27458), (7, 27470), (11, 27524), (Start: 25 @27590 has 6 MA's),
(Start: 27 @27596 has 156 MA's), (Start: 32 @27653 has 2 MA's), (33, 27683), (49, 27773), (51, 27779), (54, 27806),

Gene: Optimus_165 Start: 88756, Stop: 88989, Start Num: 21
Candidate Starts for Optimus_165:
(Start: 21 @88756 has 39 MA's), (39, 88897), (42, 88906), (47, 88939), (48, 88945),

Gene: Oscar_34 Start: 27820, Stop: 28068, Start Num: 25

Candidate Starts for Oscar_34:

(Start: 25 @27820 has 6 MA's), (28, 27826), (39, 27949),

Gene: Padfoot_34 Start: 28155, Stop: 28406, Start Num: 27

Candidate Starts for Padfoot_34:

(12, 28095), (Start: 27 @28155 has 156 MA's), (Start: 32 @28212 has 2 MA's),

Gene: Padpat_34 Start: 28115, Stop: 28366, Start Num: 27

Candidate Starts for Padpat_34:

(12, 28055), (Start: 27 @28115 has 156 MA's), (Start: 32 @28172 has 2 MA's),

Gene: Paola_33 Start: 28686, Stop: 28940, Start Num: 27

Candidate Starts for Paola_33:

(4, 28512), (6, 28551), (Start: 25 @28680 has 6 MA's), (Start: 27 @28686 has 156 MA's), (Start: 32 @28743 has 2 MA's), (39, 28818), (51, 28869),

Gene: Patt_35 Start: 28929, Stop: 29189, Start Num: 20

Candidate Starts for Patt_35:

(Start: 20 @28929 has 17 MA's), (37, 29067), (40, 29079), (43, 29094), (49, 29130), (54, 29163), (55, 29169),

Gene: Peanam_34 Start: 27442, Stop: 27693, Start Num: 27

Candidate Starts for Peanam_34:

(Start: 27 @27442 has 156 MA's), (Start: 32 @27499 has 2 MA's), (42, 27583),

Gene: Peel_34 Start: 28155, Stop: 28406, Start Num: 27

Candidate Starts for Peel_34:

(12, 28095), (Start: 27 @28155 has 156 MA's), (Start: 32 @28212 has 2 MA's),

Gene: Pharb_33 Start: 28285, Stop: 28536, Start Num: 27

Candidate Starts for Pharb_33:

(Start: 27 @28285 has 156 MA's), (Start: 32 @28342 has 2 MA's), (34, 28381), (54, 28495),

Gene: PhelpsODU_34 Start: 27473, Stop: 27724, Start Num: 27

Candidate Starts for PhelpsODU_34:

(Start: 27 @27473 has 156 MA's), (Start: 32 @27530 has 2 MA's), (42, 27614), (49, 27650),

Gene: Phoebus_167 Start: 91236, Stop: 91469, Start Num: 21

Candidate Starts for Phoebus_167:

(Start: 21 @91236 has 39 MA's), (39, 91377), (42, 91386), (47, 91419), (48, 91425),

Gene: Phrank_34 Start: 27423, Stop: 27674, Start Num: 27

Candidate Starts for Phrank_34:

(Start: 27 @27423 has 156 MA's), (Start: 32 @27480 has 2 MA's), (42, 27564), (49, 27600),

Gene: Piatt_34 Start: 28155, Stop: 28406, Start Num: 27

Candidate Starts for Piatt_34:

(12, 28095), (Start: 27 @28155 has 156 MA's), (Start: 32 @28212 has 2 MA's),

Gene: Pixie_34 Start: 28524, Stop: 28775, Start Num: 27

Candidate Starts for Pixie_34:

(12, 28461), (Start: 27 @28524 has 156 MA's), (31, 28578), (Start: 32 @28581 has 2 MA's), (34, 28620), (53, 28731),

Gene: Pokerus_33 Start: 28072, Stop: 28323, Start Num: 27

Candidate Starts for Pokerus_33:

(12, 28012), (Start: 27 @28072 has 156 MA's), (Start: 32 @28129 has 2 MA's),

Gene: Porcelain_167 Start: 85787, Stop: 86029, Start Num: 21

Candidate Starts for Porcelain_167:

(Start: 21 @85787 has 39 MA's), (34, 85892), (38, 85922), (39, 85928), (47, 85970), (55, 86015),

Gene: Pound_160 Start: 87285, Stop: 87518, Start Num: 21

Candidate Starts for Pound_160:

(Start: 21 @87285 has 39 MA's), (39, 87426), (42, 87435), (47, 87468), (48, 87474),

Gene: Prithvi_34 Start: 28085, Stop: 28336, Start Num: 27

Candidate Starts for Prithvi_34:

(Start: 27 @28085 has 156 MA's), (Start: 32 @28142 has 2 MA's),

Gene: Psycho_34 Start: 28689, Stop: 28940, Start Num: 27

Candidate Starts for Psycho_34:

(Start: 27 @28689 has 156 MA's), (Start: 32 @28746 has 2 MA's), (39, 28821), (42, 28830), (51, 28872), (54, 28899),

Gene: QuincyRose_33 Start: 28144, Stop: 28395, Start Num: 27

Candidate Starts for QuincyRose_33:

(12, 28084), (Start: 27 @28144 has 156 MA's), (Start: 32 @28201 has 2 MA's),

Gene: Ramen_34 Start: 28121, Stop: 28372, Start Num: 27

Candidate Starts for Ramen_34:

(12, 28061), (Start: 27 @28121 has 156 MA's), (Start: 32 @28178 has 2 MA's),

Gene: Rando14_34 Start: 27550, Stop: 27801, Start Num: 27

Candidate Starts for Rando14_34:

(Start: 27 @27550 has 156 MA's), (28, 27556), (Start: 32 @27607 has 2 MA's), (33, 27637), (51, 27733), (54, 27760),

Gene: Rapunzel97_34 Start: 28122, Stop: 28373, Start Num: 27

Candidate Starts for Rapunzel97_34:

(12, 28062), (Start: 27 @28122 has 156 MA's), (Start: 32 @28179 has 2 MA's),

Gene: Redno2_160 Start: 85349, Stop: 85582, Start Num: 21

Candidate Starts for Redno2_160:

(Start: 21 @85349 has 39 MA's), (39, 85490), (42, 85499), (47, 85532), (48, 85538),

Gene: Reptar3000_35 Start: 28920, Stop: 29180, Start Num: 20

Candidate Starts for Reptar3000_35:

(Start: 20 @28920 has 17 MA's), (37, 29058), (40, 29070), (43, 29085), (49, 29121), (54, 29154), (55, 29160),

Gene: Rosmarinus_34 Start: 28143, Stop: 28394, Start Num: 27

Candidate Starts for Rosmarinus_34:

(12, 28083), (Start: 27 @28143 has 156 MA's), (Start: 32 @28200 has 2 MA's),

Gene: Ruthiejr_36 Start: 29076, Stop: 29336, Start Num: 20

Candidate Starts for Ruthiejr_36:

(Start: 20 @29076 has 17 MA's), (Start: 22 @29082 has 1 MA's), (Start: 32 @29148 has 2 MA's), (37, 29214), (40, 29226), (43, 29241), (49, 29277), (54, 29310), (55, 29316),

Gene: SamScheppers_35 Start: 29589, Stop: 29849, Start Num: 20

Candidate Starts for SamScheppers_35:

(Start: 20 @29589 has 17 MA's), (Start: 22 @29595 has 1 MA's), (Start: 32 @29661 has 2 MA's), (37, 29727), (40, 29739), (43, 29754), (49, 29790), (54, 29823), (55, 29829),

Gene: SamuelLPlaqson_34 Start: 28065, Stop: 28316, Start Num: 27

Candidate Starts for SamuelLPlaqson_34:

(Start: 27 @28065 has 156 MA's), (Start: 32 @28122 has 2 MA's), (42, 28206),

Gene: Scarlett_34 Start: 27820, Stop: 28068, Start Num: 25

Candidate Starts for Scarlett_34:

(14, 27769), (Start: 25 @27820 has 6 MA's), (28, 27826), (39, 27949),

Gene: Schatzie_161 Start: 88284, Stop: 88517, Start Num: 21

Candidate Starts for Schatzie_161:

(Start: 21 @88284 has 39 MA's), (39, 88425), (42, 88434), (47, 88467), (48, 88473),

Gene: SgtBeansprout_30 Start: 27546, Stop: 27797, Start Num: 27

Candidate Starts for SgtBeansprout_30:

(Start: 27 @27546 has 156 MA's), (Start: 32 @27603 has 2 MA's),

Gene: Shadow1_33 Start: 27290, Stop: 27541, Start Num: 27

Candidate Starts for Shadow1_33:

(Start: 27 @27290 has 156 MA's), (Start: 32 @27347 has 2 MA's), (42, 27431),

Gene: Shaobing_34 Start: 27442, Stop: 27693, Start Num: 27

Candidate Starts for Shaobing_34:

(Start: 27 @27442 has 156 MA's), (Start: 32 @27499 has 2 MA's), (42, 27583),

Gene: ShedlockHolmes_35 Start: 29046, Stop: 29297, Start Num: 27

Candidate Starts for ShedlockHolmes_35:

(12, 28983), (Start: 27 @29046 has 156 MA's), (31, 29100), (Start: 32 @29103 has 2 MA's), (34, 29142), (53, 29253),

Gene: ShiaSurprise_34 Start: 28155, Stop: 28406, Start Num: 27

Candidate Starts for ShiaSurprise_34:

(12, 28095), (Start: 27 @28155 has 156 MA's), (Start: 32 @28212 has 2 MA's),

Gene: SirPhilip_33 Start: 26921, Stop: 27172, Start Num: 27

Candidate Starts for SirPhilip_33:

(Start: 27 @26921 has 156 MA's), (Start: 32 @26978 has 2 MA's), (41, 27059),

Gene: Slarp_35 Start: 29198, Stop: 29458, Start Num: 20

Candidate Starts for Slarp_35:

(Start: 20 @29198 has 17 MA's), (Start: 22 @29204 has 1 MA's), (Start: 32 @29270 has 2 MA's), (37, 29336), (40, 29348), (43, 29363), (49, 29399), (54, 29432), (55, 29438),

Gene: Slimphazie_34 Start: 28122, Stop: 28373, Start Num: 27
Candidate Starts for Slimphazie_34:
(12, 28062), (Start: 27 @28122 has 156 MA's), (Start: 32 @28179 has 2 MA's),

Gene: SoSeph_33 Start: 28832, Stop: 29086, Start Num: 27
Candidate Starts for SoSeph_33:
(4, 28658), (6, 28697), (8, 28727), (18, 28814), (Start: 25 @28826 has 6 MA's), (Start: 27 @28832 has 156 MA's), (Start: 32 @28889 has 2 MA's), (39, 28964), (51, 29015),

Gene: Spock_34 Start: 28155, Stop: 28406, Start Num: 27
Candidate Starts for Spock_34:
(12, 28095), (Start: 27 @28155 has 156 MA's), (Start: 32 @28212 has 2 MA's),

Gene: Squint_162 Start: 86297, Stop: 86539, Start Num: 21
Candidate Starts for Squint_162:
(Start: 21 @86297 has 39 MA's), (34, 86402), (38, 86432), (39, 86438), (47, 86480), (55, 86525),

Gene: Stinson_35 Start: 28357, Stop: 28608, Start Num: 27
Candidate Starts for Stinson_35:
(Start: 27 @28357 has 156 MA's), (42, 28498),

Gene: Strobilo_33 Start: 27367, Stop: 27612, Start Num: 27
Candidate Starts for Strobilo_33:
(9, 27283), (16, 27328), (Start: 27 @27367 has 156 MA's), (Start: 32 @27421 has 2 MA's),

Gene: Sulley_34 Start: 28088, Stop: 28339, Start Num: 27
Candidate Starts for Sulley_34:
(12, 28028), (Start: 27 @28088 has 156 MA's), (Start: 32 @28145 has 2 MA's),

Gene: Sunflower1121_33 Start: 27308, Stop: 27559, Start Num: 27
Candidate Starts for Sunflower1121_33:
(Start: 27 @27308 has 156 MA's), (Start: 32 @27365 has 2 MA's), (42, 27449), (49, 27485),

Gene: Superphikiman_165 Start: 85466, Stop: 85708, Start Num: 21
Candidate Starts for Superphikiman_165:
(Start: 21 @85466 has 39 MA's), (34, 85571), (38, 85601), (39, 85607), (47, 85649), (55, 85694),

Gene: Syra333_34 Start: 27309, Stop: 27560, Start Num: 27
Candidate Starts for Syra333_34:
(Start: 27 @27309 has 156 MA's), (Start: 32 @27366 has 2 MA's), (42, 27450),

Gene: TBond007_34 Start: 28523, Stop: 28774, Start Num: 27
Candidate Starts for TBond007_34:
(12, 28460), (Start: 27 @28523 has 156 MA's), (31, 28577), (Start: 32 @28580 has 2 MA's), (34, 28619), (53, 28730),

Gene: TClif_36 Start: 27881, Stop: 28138, Start Num: 27
Candidate Starts for TClif_36:
(1, 27608), (Start: 27 @27881 has 156 MA's), (Start: 32 @27944 has 2 MA's), (39, 28019), (49, 28064),

Gene: TM4_35 Start: 27573, Stop: 27821, Start Num: 27
Candidate Starts for TM4_35:

(9, 27489), (16, 27534), (Start: 27 @27573 has 156 MA's), (Start: 32 @27627 has 2 MA's),

Gene: Tachez_34 Start: 28084, Stop: 28335, Start Num: 27

Candidate Starts for Tachez_34:

(12, 28024), (Start: 27 @28084 has 156 MA's), (Start: 32 @28141 has 2 MA's),

Gene: TaiwanKao_35 Start: 28085, Stop: 28336, Start Num: 27

Candidate Starts for TaiwanKao_35:

(Start: 27 @28085 has 156 MA's), (Start: 32 @28142 has 2 MA's),

Gene: Taquito_35 Start: 29636, Stop: 29896, Start Num: 20

Candidate Starts for Taquito_35:

(Start: 20 @29636 has 17 MA's), (Start: 22 @29642 has 1 MA's), (Start: 32 @29708 has 2 MA's), (37, 29774), (40, 29786), (43, 29801), (49, 29837), (54, 29870), (55, 29876),

Gene: Thibault_150 Start: 85164, Stop: 85397, Start Num: 21

Candidate Starts for Thibault_150:

(Start: 21 @85164 has 39 MA's), (39, 85305), (42, 85314), (47, 85347), (48, 85353),

Gene: ThreeRngTarjay_163 Start: 89158, Stop: 89391, Start Num: 21

Candidate Starts for ThreeRngTarjay_163:

(Start: 21 @89158 has 39 MA's), (39, 89299), (42, 89308), (47, 89341), (48, 89347),

Gene: Thyatira_33 Start: 28686, Stop: 28940, Start Num: 27

Candidate Starts for Thyatira_33:

(4, 28512), (6, 28551), (Start: 25 @28680 has 6 MA's), (Start: 27 @28686 has 156 MA's), (Start: 32 @28743 has 2 MA's), (39, 28818), (51, 28869),

Gene: Tierra_34 Start: 28144, Stop: 28395, Start Num: 27

Candidate Starts for Tierra_34:

(Start: 27 @28144 has 156 MA's), (Start: 32 @28201 has 2 MA's), (42, 28285), (49, 28321),

Gene: TiniBug_34 Start: 28061, Stop: 28312, Start Num: 27

Candidate Starts for TiniBug_34:

(Start: 27 @28061 has 156 MA's), (Start: 32 @28118 has 2 MA's), (42, 28202),

Gene: Tiri_34 Start: 28136, Stop: 28387, Start Num: 27

Candidate Starts for Tiri_34:

(Start: 27 @28136 has 156 MA's), (Start: 32 @28193 has 2 MA's),

Gene: Topper_34 Start: 28155, Stop: 28406, Start Num: 27

Candidate Starts for Topper_34:

(12, 28095), (Start: 27 @28155 has 156 MA's), (Start: 32 @28212 has 2 MA's),

Gene: TreyKay_34 Start: 28085, Stop: 28336, Start Num: 27

Candidate Starts for TreyKay_34:

(Start: 27 @28085 has 156 MA's), (Start: 32 @28142 has 2 MA's),

Gene: TribbleTrouble_33 Start: 28580, Stop: 28831, Start Num: 27

Candidate Starts for TribbleTrouble_33:

(Start: 27 @28580 has 156 MA's), (Start: 32 @28637 has 2 MA's), (49, 28757),

Gene: TruffulaTree_34 Start: 28118, Stop: 28369, Start Num: 27

Candidate Starts for TruffulaTree_34:

(12, 28058), (Start: 27 @28118 has 156 MA's), (Start: 32 @28175 has 2 MA's),

Gene: Twitch_34 Start: 28155, Stop: 28406, Start Num: 27

Candidate Starts for Twitch_34:

(12, 28095), (Start: 27 @28155 has 156 MA's), (Start: 32 @28212 has 2 MA's),

Gene: Unicorn_34 Start: 27473, Stop: 27724, Start Num: 27

Candidate Starts for Unicorn_34:

(Start: 27 @27473 has 156 MA's), (Start: 32 @27530 has 2 MA's), (42, 27614), (49, 27650),

Gene: Urkel_34 Start: 28065, Stop: 28316, Start Num: 27

Candidate Starts for Urkel_34:

(Start: 27 @28065 has 156 MA's), (Start: 32 @28122 has 2 MA's), (42, 28206),

Gene: Validus_34 Start: 27374, Stop: 27625, Start Num: 27

Candidate Starts for Validus_34:

(Start: 27 @27374 has 156 MA's), (Start: 32 @27431 has 2 MA's), (42, 27515),

Gene: Veliki_34 Start: 28158, Stop: 28409, Start Num: 27

Candidate Starts for Veliki_34:

(12, 28098), (Start: 27 @28158 has 156 MA's), (Start: 32 @28215 has 2 MA's),

Gene: Wanda_164 Start: 85749, Stop: 85982, Start Num: 21

Candidate Starts for Wanda_164:

(Start: 21 @85749 has 39 MA's), (39, 85890), (42, 85899), (47, 85932), (48, 85938),

Gene: Waterfoul_33 Start: 28710, Stop: 28964, Start Num: 27

Candidate Starts for Waterfoul_33:

(4, 28536), (6, 28575), (Start: 25 @28704 has 6 MA's), (Start: 27 @28710 has 156 MA's), (Start: 32 @28767 has 2 MA's), (39, 28842), (51, 28893),

Gene: Wintermute_35 Start: 29185, Stop: 29445, Start Num: 20

Candidate Starts for Wintermute_35:

(Start: 20 @29185 has 17 MA's), (Start: 22 @29191 has 1 MA's), (Start: 32 @29257 has 2 MA's), (37, 29323), (40, 29335), (43, 29350), (49, 29386), (54, 29419), (55, 29425),

Gene: Ximenita_35 Start: 27494, Stop: 27745, Start Num: 27

Candidate Starts for Ximenita_35:

(Start: 27 @27494 has 156 MA's), (Start: 32 @27551 has 2 MA's), (42, 27635),

Gene: Y10_35 Start: 29257, Stop: 29445, Start Num: 32

Candidate Starts for Y10_35:

(Start: 20 @29185 has 17 MA's), (Start: 22 @29191 has 1 MA's), (Start: 32 @29257 has 2 MA's), (37, 29323), (40, 29335), (43, 29350), (49, 29386), (54, 29419), (55, 29425),

Gene: Y2_35 Start: 29257, Stop: 29445, Start Num: 32

Candidate Starts for Y2_35:

(Start: 20 @29185 has 17 MA's), (Start: 22 @29191 has 1 MA's), (Start: 32 @29257 has 2 MA's), (37, 29323), (40, 29335), (43, 29350), (49, 29386), (54, 29419), (55, 29425),

Gene: Yeet_158 Start: 87137, Stop: 87370, Start Num: 21

Candidate Starts for Yeet_158:

(Start: 21 @87137 has 39 MA's), (39, 87278), (42, 87287), (47, 87320), (48, 87326),

Gene: YoureAdopted_33 Start: 28091, Stop: 28342, Start Num: 27

Candidate Starts for YoureAdopted_33:

(12, 28031), (Start: 27 @28091 has 156 MA's), (Start: 32 @28148 has 2 MA's),

Gene: Yuna_35 Start: 27890, Stop: 28141, Start Num: 27

Candidate Starts for Yuna_35:

(12, 27818), (Start: 27 @27890 has 156 MA's), (Start: 32 @27947 has 2 MA's), (49, 28067),

Gene: Yunkel11_34 Start: 27406, Stop: 27657, Start Num: 27

Candidate Starts for Yunkel11_34:

(Start: 27 @27406 has 156 MA's), (42, 27547),

Gene: Zabiza_35 Start: 28122, Stop: 28373, Start Num: 27

Candidate Starts for Zabiza_35:

(12, 28062), (Start: 27 @28122 has 156 MA's), (Start: 32 @28179 has 2 MA's),

Gene: Zavala_34 Start: 28097, Stop: 28348, Start Num: 27

Candidate Starts for Zavala_34:

(12, 28037), (Start: 27 @28097 has 156 MA's), (Start: 32 @28154 has 2 MA's),

Gene: Zelink_159 Start: 87472, Stop: 87705, Start Num: 21

Candidate Starts for Zelink_159:

(Start: 21 @87472 has 39 MA's), (39, 87613), (42, 87622), (47, 87655), (48, 87661),

Gene: ZoeJ_33 Start: 27372, Stop: 27620, Start Num: 27

Candidate Starts for ZoeJ_33:

(9, 27288), (16, 27333), (Start: 27 @27372 has 156 MA's), (Start: 32 @27426 has 2 MA's),