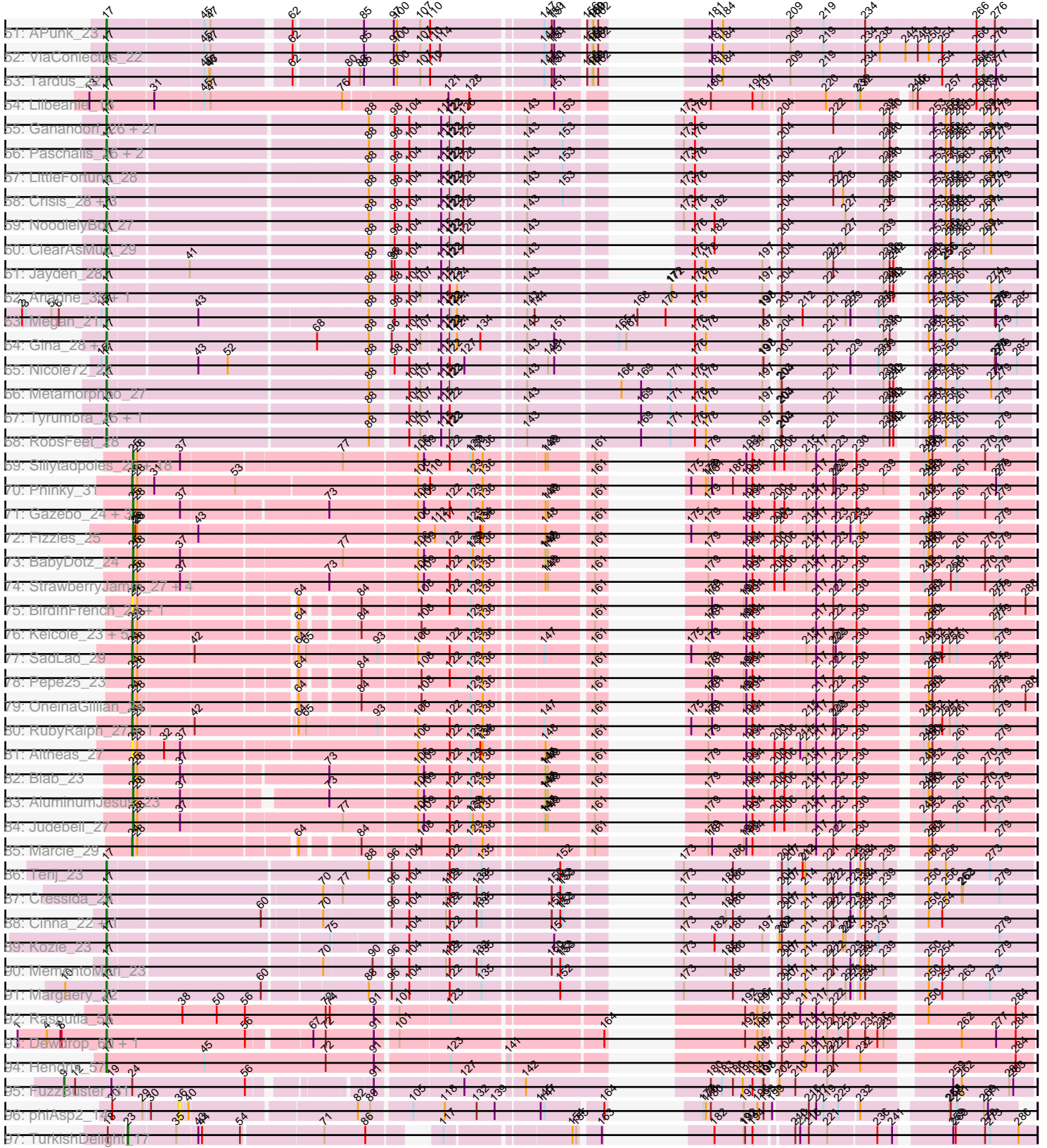


Pham 171183

1: BayC_T3 + 2	36	39	58	66	71	86	94	99	111	117	128	136	143	146	157	181	189	210	216	220	236	252	260	268	273	281	291
2: TP1604_T3 + 2	36	39	58	66	71	86	94	99	111	117	128	136	143	146	157	181	189	210	216	220	236	252	260	268	273	281	291
3: Abt2graduate_313	36	39	58	63	69	84	94	99	111	117	128	136	141	146	157	181	189	210	216	220	236	252	260	268	273	281	291
4: Xkcd426_T4	36	39	58	66	71	86	94	99	111	117	128	136	141	146	157	181	189	210	216	220	236	252	260	268	273	281	291
5: RainyPoika_T3	36	39	58	66	71	86	94	99	111	117	128	136	141	146	157	181	189	210	216	220	236	252	260	268	273	281	291
6: YDINT2_T4	36	39	58	61	73	81	94	99	111	117	128	136	141	146	157	181	189	210	216	220	236	252	260	268	273	281	291
7: Mischief_T4	36	39	58	61	73	81	94	99	111	117	128	136	141	146	157	181	189	210	216	220	236	252	260	268	273	281	291
8: Jambalaya_T0 + 4	36	39	58	61	73	81	94	99	111	117	128	136	141	146	157	181	189	210	216	220	236	252	260	268	273	281	291
9: Mutzi_T1	36	39	58	61	73	81	94	99	111	117	128	136	141	146	157	181	189	210	216	220	236	252	260	268	273	281	291
10: Danyail_T1 + 4	36	39	58	61	73	81	94	99	111	117	128	136	141	146	157	181	189	210	216	220	236	252	260	268	273	281	291
11: Salvador_T1 + 4	36	39	58	61	73	81	94	99	111	117	128	136	141	146	157	181	189	210	216	220	236	252	260	268	273	281	291
12: KimmyK_T1 + 4	36	39	58	61	73	81	94	99	111	117	128	136	141	146	157	181	189	210	216	220	236	252	260	268	273	281	291
13: Hai03_T0	36	39	58	61	73	81	94	99	111	117	128	136	141	146	157	181	189	210	216	220	236	252	260	268	273	281	291
14: Gezeing_T0 + 2	36	39	58	61	73	81	94	99	111	117	128	136	141	146	157	181	189	210	216	220	236	252	260	268	273	281	291
15: Pniop_T9 + 0	36	39	58	61	73	81	94	99	111	117	128	136	141	146	157	181	189	210	216	220	236	252	260	268	273	281	291
16: YungMoney_T1	36	39	58	61	73	81	94	99	111	117	128	136	141	146	157	181	189	210	216	220	236	252	260	268	273	281	291
17: Bakery_T0	36	39	58	61	73	81	94	99	111	117	128	136	141	146	157	181	189	210	216	220	236	252	260	268	273	281	291
18: Am_T2	36	39	58	61	73	81	94	99	111	117	128	136	141	146	157	181	189	210	216	220	236	252	260	268	273	281	291
19: Clown_T3	36	39	58	61	73	81	94	99	111	117	128	136	141	146	157	181	189	210	216	220	236	252	260	268	273	281	291
20: Belphegor_T8	36	39	58	61	73	81	94	99	111	117	128	136	141	146	157	181	189	210	216	220	236	252	260	268	273	281	291
21: Baumdotcom_T0 + 2	36	39	58	61	73	81	94	99	111	117	128	136	141	146	157	181	189	210	216	220	236	252	260	268	273	281	291
22: Lennon_T2 + 5	36	39	58	61	73	81	94	99	111	117	128	136	141	146	157	181	189	210	216	220	236	252	260	268	273	281	291
23: Flatwoods_T1 + 5	36	39	58	61	73	81	94	99	111	117	128	136	141	146	157	181	189	210	216	220	236	252	260	268	273	281	291
24: Fosterous_T6 + 13	36	39	58	61	73	81	94	99	111	117	128	136	141	146	157	181	189	210	216	220	236	252	260	268	273	281	291
25: Kewpiedoll_T2 + 6	36	39	58	61	73	81	94	99	111	117	128	136	141	146	157	181	189	210	216	220	236	252	260	268	273	281	291
26: Ribeye_T1	36	39	58	61	73	81	94	99	111	117	128	136	141	146	157	181	189	210	216	220	236	252	260	268	273	281	291
27: Derg_T8 + 2	36	39	58	61	73	81	94	99	111	117	128	136	141	146	157	181	189	210	216	220	236	252	260	268	273	281	291
28: Asher(mem) _T1 + 2	36	39	58	61	73	81	94	99	111	117	128	136	141	146	157	181	189	210	216	220	236	252	260	268	273	281	291
29: Rolo_T0	36	39	58	61	73	81	94	99	111	117	128	136	141	146	157	181	189	210	216	220	236	252	260	268	273	281	291
30: Alfeca_T0 + 1	36	39	58	61	73	81	94	99	111	117	128	136	141	146	157	181	189	210	216	220	236	252	260	268	273	281	291
31: Keitabear_T0	36	39	58	61	73	81	94	99	111	117	128	136	141	146	157	181	189	210	216	220	236	252	260	268	273	281	291
32: Baddon_T0	36	39	58	61	73	81	94	99	111	117	128	136	141	146	157	181	189	210	216	220	236	252	260	268	273	281	291
33: Nordenberg_T5	36	39	58	61	73	81	94	99	111	117	128	136	141	146	157	181	189	210	216	220	236	252	260	268	273	281	291
34: YorkOryx_T0	36	39	58	61	73	81	94	99	111	117	128	136	141	146	157	181	189	210	216	220	236	252	260	268	273	281	291
35: RiverRaider_T22	36	39	58	61	73	81	94	99	111	117	128	136	141	146	157	181	189	210	216	220	236	252	260	268	273	281	291
36: JKSYngboy_T19	36	39	58	61	73	81	94	99	111	117	128	136	141	146	157	181	189	210	216	220	236	252	260	268	273	281	291
37: Leonard_T1 + 2	36	39	58	61	73	81	94	99	111	117	128	136	141	146	157	181	189	210	216	220	236	252	260	268	273	281	291
38: Hans_T3	36	39	58	61	73	81	94	99	111	117	128	136	141	146	157	181	189	210	216	220	236	252	260	268	273	281	291
39: ElMoore_T6	36	39	58	61	73	81	94	99	111	117	128	136	141	146	157	181	189	210	216	220	236	252	260	268	273	281	291
40: MeiBins_T4	36	39	58	61	73	81	94	99	111	117	128	136	141	146	157	181	189	210	216	220	236	252	260	268	273	281	291
41: Phaud_T4	36	39	58	61	73	81	94	99	111	117	128	136	141	146	157	181	189	210	216	220	236	252	260	268	273	281	291
42: Inspectmeat_T4	36	39	58	61	73	81	94	99	111	117	128	136	141	146	157	181	189	210	216	220	236	252	260	268	273	281	291
43: Chickadee_T0 + 1	36	39	58	61	73	81	94	99	111	117	128	136	141	146	157	181	189	210	216	220	236	252	260	268	273	281	291
44: Kwekel_T0	36	39	58	61	73	81	94	99	111	117	128	136	141	146	157	181	189	210	216	220	236	252	260	268	273	281	291
45: Iwonlo_T0	36	39	58	61	73	81	94	99	111	117	128	136	141	146	157	181	189	210	216	220	236	252	260	268	273	281	291
46: GTE6_T0	36	39	58	61	73	81	94	99	111	117	128	136	141	146	157	181	189	210	216	220	236	252	260	268	273	281	291
47: RoadKill_T1 + 2	36	39	58	61	73	81	94	99	111	117	128	136	141	146	157	181	189	210	216	220	236	252	260	268	273	281	291
48: Scioto_T1 + 3	36	39	58	61	73	81	94	99	111	117	128	136	141	146	157	181	189	210	216	220	236	252	260	268	273	281	291
49: Deirey21_T1 + 3	36	39	58	61	73	81	94	99	111	117	128	136	141	146	157	181	189	210	216	220	236	252	260	268	273	281	291
50: Zitch_T3	36	39	58	61	73	81	94	99	111	117	128	136	141	146	157	181	189	210	216	220	236	252	260	268	273	281	291



Note: Tracks are now grouped by subcluster and scaled. Switching in subcluster is indicated by changes in track color. Track scale is now set by default to display the region 30 bp upstream of start 1 to 30 bp downstream of the last possible start. If this default region is judged to be packed too tightly with annotated starts, the track will be further scaled to only show that region of the ORF with annotated starts. This action will be indicated by adding "Zoomed" to the title. For starts, yellow indicates the location of called starts comprised solely of Glimmer/GeneMark auto-annotations, green indicates the location of called starts with at least 1 manual gene annotation.

Pham 171183 Report

This analysis was run 07/10/24 on database version 566.

Pham number 171183 has 230 members, 32 are drafts.

Phages represented in each track:

- Track 1 : BayC_13, Salete_13, Maih_13
- Track 2 : TP1604_13, BabyGotBac_13, Asis_13
- Track 3 : Abt2graduatex2_13
- Track 4 : Xkcd426_14
- Track 5 : RainyPolka_13
- Track 6 : YDN12_14
- Track 7 : Mischief19_14
- Track 8 : Jambalaya_19, TillyBobJoe_19, Savbucketdawg_19, Shinji_19, Portcullis_19
- Track 9 : Mutzi_21
- Track 10 : Danyall_21, RogerDodger_22, Twister6_21, VanDeWege_22, Valary_22
- Track 11 : Salvador_19, SmokingBunny_19, Nubi_19, Evamon_19, Togo_19
- Track 12 : KimmyK_21, PinkCoffee_21, ClamChowder_21, Fugax_21, Barb_21
- Track 13 : Halo3_20
- Track 14 : Gezellig_20, Fireball_20, Wizard_19
- Track 15 : Phlop_19, PullumCavea_19
- Track 16 : YungMoney_21
- Track 17 : Bakery_20
- Track 18 : Arri_22
- Track 19 : Clown_23
- Track 20 : Belphegor_18
- Track 21 : Baumdotcom_20, Saronaya_20, Gustavo_20
- Track 22 : Lennon_22, Bibwit_21, Sedona_22, Stultus_20, Sitar_22, Ailee_20
- Track 23 : Flatwoods_21, Gaea_20, Tycho_20, Kroos_21, Kwobi_21, Bizzy_21
- Track 24 : Fosterous_18, Love_22, MoontowerMania_19, Brandonk123_22, Shivanishola_20, Jabberwocky_18, Kamashten_21, BobBob_18, Sanjuju_18, Charming_18, Thing3_21, Paries_21, Tangent_18, Geodirt_19
- Track 25 : Kewpiedoll_21, ChadMasterC_20, Vivi2_20, Barsten_21, Fitzgerald_18, Galadriel_22, McKinley_21
- Track 26 : Ribeye_21
- Track 27 : Derg_18, LilHam_18, SchottB_19
- Track 28 : Ashertheman_21, StorminNorm_20, Tangerine_20
- Track 29 : Rofo_20
- Track 30 : Affeca_20, Angelicage_20
- Track 31 : Keitabear_22
- Track 32 : Baddon_20
- Track 33 : Nordenberg_15

- Track 34 : YorkOnyx_21
- Track 35 : RiverRaider_22
- Track 36 : JKSyngboy_19
- Track 37 : Leonard_21, Ali17_19, Phinally_21
- Track 38 : Hans_23
- Track 39 : EMOore_16
- Track 40 : MelBins_22
- Track 41 : Phauci_14
- Track 42 : Inspectinfecti_22
- Track 43 : Chickadee_20, Tiamoceli_21
- Track 44 : Kwekel_20
- Track 45 : Twonlo_18
- Track 46 : GTE6_20
- Track 47 : RoadKill_18, Dexdert_21, EdmundFerry_19
- Track 48 : Scioto_21, Natkenzie_21, Sampson_21, Abblin_21
- Track 49 : Delrey21_21, DoctorFroggo_21, Zipp_21, Verity_21
- Track 50 : Zitch_23
- Track 51 : APunk_23
- Track 52 : ViaConlectus_22
- Track 53 : Tardus_22
- Track 54 : Lilbeanie_18
- Track 55 : Ganandorf_26, Quhwah_30, Jefe_27, BrazzalePHS_26, Cranjis_28, Jollipop_27, PiperSansNom_27, Hermeonysus_26, Onika_26, Busephilis_26, Savannah_26, Selwyn23_28, PierreOrion_27, Pulchra_28, Piperis_27, Antares_27, Scumberland_28, Shotgun_26, CrazyRich_26, Phorgeous_26, Honeyfin_28, Yeti_27
- Track 56 : Paschalis_26, Ramiel05_26, Kowalski_26
- Track 57 : LittleFortune_28
- Track 58 : Crisis_28, KaiHaiDragon_27, EarickHC_27, Phrancesco_27
- Track 59 : NoodlelyBoi_27
- Track 60 : ClearAsMud_29
- Track 61 : Jayden_28
- Track 62 : Ariadne_35, Smarties_35
- Track 63 : Megan_21
- Track 64 : Gina_28, Teamocil_28
- Track 65 : Nicole72_22
- Track 66 : Metamorphoo_27
- Track 67 : Tyumbra_25, Fireman_27
- Track 68 : RobsFeet_28
- Track 69 : Sillytadpoles_25, Statler_27, Phabia_25, Quammi_23, Zagie_25, Rowlf_21, Llemily_25, Zhafia_28, Wheelie_24, Jehoshaphat_27, Teehee_26, Nike_25, DonaldDuck_25, Viceroy_24, Lonelysoil_24, Squash_27, Wayne3_26, Rudy_23, Casend_26
- Track 70 : Phinky_31
- Track 71 : Gazebo_24, Mashley_23, Hyperion_24, Tissue_25
- Track 72 : Fizzles_25
- Track 73 : BabyDotz_24
- Track 74 : StrawberryJamm_27, Namago_25, Kyva_27, Grassboy_26, SallyK_26
- Track 75 : BirdInFrench_24, Wilca_24
- Track 76 : Kelcole_23, CandC_23, RobinRose_26, Tempo_24, Romm_26, Fregley_25
- Track 77 : SadLad_29
- Track 78 : Pepe25_23
- Track 79 : OneinaGillian_24

- Track 80 : RubyRalph_27, Fransoyer_27
- Track 81 : Altheas_27
- Track 82 : Blab_23
- Track 83 : AluminumJesus_23
- Track 84 : Judebell_27
- Track 85 : Marcie_29
- Track 86 : Terij_23
- Track 87 : Cressida_24
- Track 88 : Cinna_22, Matzah_23
- Track 89 : Kozie_23
- Track 90 : MementoMori_23
- Track 91 : Margaery_22
- Track 92 : Rasputia_56
- Track 93 : Dewdrop_60, Leaf_60
- Track 94 : Hendrix_57
- Track 95 : FuzzBuster_31
- Track 96 : phiAsp2_14
- Track 97 : TurkishDelight_17

Summary of Final Annotations (See graph section above for start numbers):

The start number called the most often in the published annotations is 17, it was called in 148 of the 198 non-draft genes in the pham.

Genes that call this "Most Annotated" start:

- APunk_23, Abblin_21, Affeca_20, Ailee_20, Ali17_19, Angelicage_20, Antares_27, Ariadne_35, Arri_22, Ashertheman_21, Baddon_20, Bakery_20, Barb_21, Barsten_21, Baumdotcom_20, Belphegor_18, Bibwit_21, Bizzy_21, BobBob_18, Brandonk123_22, BrazzalePHS_26, Busephilis_26, ChadMasterC_20, Charming_18, Chickadee_20, Cinna_22, ClamChowder_21, ClearAsMud_29, Clown_23, Cranjis_28, CrazyRich_26, Cressida_24, Crisis_28, Danyall_21, Delrey21_21, Derg_18, Dewdrop_60, Dexdert_21, DoctorFroggo_21, EMoore_16, EarickHC_27, EdmundFerry_19, Evamon_19, Fireball_20, Fireman_27, Fitzgerald_18, Flatwoods_21, Fosterous_18, Fugax_21, GTE6_20, Gaea_20, Galadriel_22, Ganandorf_26, Geodirt_19, Gezellig_20, Gina_28, Gustavo_20, Halo3_20, Hans_23, Hendrix_57, Hermeonysus_26, Honeyfin_28, Inspectinfecti_22, JKSyngboy_19, Jabberwocky_18, Jambalaya_19, Jayden_28, Jefe_27, Jollipop_27, KaiHaiDragon_27, Kamashten_21, Keitabear_22, Kewpiedoll_21, KimmyK_21, Kowalski_26, Kozie_23, Kroos_21, Kwekel_20, Kwobi_21, Leaf_60, Lennon_22, Leonard_21, LilHam_18, Lilbeanie_18, LittleFortune_28, Love_22, Margaery_22, Matzah_23, McKinley_21, Megan_21, MelBins_22, MementoMori_23, Metamorphoo_27, MoontowerMania_19, Mutzi_21, Natkenzie_21, Nicole72_22, NoodlelyBoi_27, Nordenberg_15, Nubi_19, Onika_26, Paries_21, Paschalis_26, Phauci_14, Phinally_21, Phlop_19, Phorgeous_26, Phrancesco_27, PierreOrion_27, PinkCoffee_21, PiperSansNom_27, Piperis_27, Portcullis_19, Pulchra_28, PullumCavea_19, Quhwah_30, Ramiel05_26, Rasputia_56, Ribeye_21, RiverRaider_22, RoadKill_18, RobsFeet_28, Rofo_20, RogerDodger_22, Salvador_19, Sampson_21, Sanjuju_18, Saronaya_20, Savannah_26, Savbucketdawg_19, SchottB_19, Scioto_21, Scumberland_28, Sedona_22, Selwyn23_28, Shinji_19, Shivanishola_20, Shotgun_26, Sitar_22, Smarties_35,

SmokingBunny_19, StorminNorm_20, Stultus_20, Tangent_18, Tangerine_20, Tardus_22, Teamocil_28, Terij_23, Thing3_21, Tiamoceli_21, TillyBobJoe_19, Togo_19, Twister6_21, Twonlo_18, Tycho_20, Tyrumbra_25, Valary_22, VanDeWege_22, Verity_21, ViaConlectus_22, Vivi2_20, Wizard_19, Yeti_27, YorkOnyx_21, YungMoney_21, Zipp_21, Zitch_23,

Genes that have the "Most Annotated" start but do not call it:

-

Genes that do not have the "Most Annotated" start:

- Abt2graduatex2_13, Altheas_27, AluminumJesus_23, Asis_13, BabyDotz_24, BabyGotBac_13, BayC_13, BirdInFrench_24, Blab_23, CandC_23, Casend_26, DonaldDuck_25, Fizzles_25, Fransoyer_27, Fregley_25, FuzzBuster_31, Gazebo_24, Grassboy_26, Hyperion_24, Jehoshaphat_27, Judebell_27, Kelcole_23, Kyva_27, Llemily_25, Lonelysoil_24, Maih_13, Marcie_29, Mashley_23, Mischief19_14, Namago_25, Nike_25, OneinaGillian_24, Pepe25_23, Phabia_25, Phinky_31, Quammi_23, RainyPolka_13, RobinRose_26, Romm_26, Rowlf_21, RubyRalph_27, Rudy_23, SadLad_29, Saletе_13, SallyK_26, Sillytadpoles_25, Squash_27, Statler_27, StrawberryJamm_27, TP1604_13, Teehee_26, Tempo_24, Tissue_25, TurkishDelight_17, Viceroy_24, Wayne3_26, Wheelie_24, Wilca_24, Xkcd426_14, YDN12_14, Zagie_25, Zhafia_28, phiAsp2_14,

Summary by start number:

Start 9:

- Found in 1 of 230 (0.4%) of genes in pham
- Manual Annotations of this start: 1 of 198
- Called 100.0% of time when present
- Phage (with cluster) where this start called: FuzzBuster_31 (singleton),

Start 17:

- Found in 167 of 230 (72.6%) of genes in pham
- Manual Annotations of this start: 148 of 198
- Called 100.0% of time when present
- Phage (with cluster) where this start called: APunk_23 (DE4), Abblin_21 (DE4), Affeca_20 (DE1), Ailee_20 (DE1), Ali17_19 (DE2), Angelicage_20 (DE1), Antares_27 (EC), Ariadne_35 (EC), Arri_22 (DC1), Ashertheman_21 (DE1), Baddon_20 (DE1), Bakery_20 (DC1), Barb_21 (DC1), Barsten_21 (DE1), Baumdotcom_20 (DE1), Belphegor_18 (DE), Bibwit_21 (DE1), Bizzy_21 (DE1), BobBob_18 (DE1), Brandonk123_22 (DE1), BrazzalePHS_26 (EC), Busephilis_26 (EC), ChadMasterC_20 (DE1), Charming_18 (DE1), Chickadee_20 (DE3), Cinna_22 (EI), ClamChowder_21 (DC1), ClearAsMud_29 (EC), Clown_23 (DC2), Cranjis_28 (EC), CrazyRich_26 (EC), Cressida_24 (EI), Crisis_28 (EC), Danyall_21 (DC1), Delrey21_21 (DE4), Derg_18 (DE1), Dewdrop_60 (GC), Dextert_21 (DE3), DoctorFroggo_21 (DE4), EMoore_16 (DE2), EarickHC_27 (EC), EdmundFerry_19 (DE3), Evamon_19 (DC1), Fireball_20 (DC1), Fireman_27 (EC), Fitzgerald_18 (DE1), Flatwoods_21 (DE1), Fosterous_18 (DE1), Fugax_21 (DC1), GTE6_20 (DE3), Gaea_20 (DE1), Galadriel_22 (DE1), Ganandorf_26 (EC), Geodirt_19 (DE1), Gezellig_20 (DC1), Gina_28 (EC), Gustavo_20 (DE1), Halo3_20 (DC1), Hans_23 (DE2), Hendrix_57 (GC), Hermeonysus_26 (EC), Honeyfin_28 (EC), Inspectinfecti_22 (DE2), JKSyngboy_19 (DE1), Jabberwocky_18 (DE1), Jambalaya_19 (DC1), Jayden_28 (EC), Jefe_27 (EC), Jollipop_27 (EC), KaiHaiDragon_27 (EC), Kamashten_21 (DE1), Keitabear_22 (DE1), Kewpiedoll_21

(DE1), KimmyK_21 (DC1), Kowalski_26 (EC), Kozie_23 (EI), Kroos_21 (DE1), Kwekel_20 (DE3), Kwobi_21 (DE1), Leaf_60 (GC), Lennon_22 (DE1), Leonard_21 (DE2), LilHam_18 (DE1), Lilbeanie_18 (DE5), LittleFortune_28 (EC), Love_22 (DE1), Margaery_22 (EI), Matzah_23 (EI), McKinley_21 (DE1), Megan_21 (EC), MelBins_22 (DE2), MementoMori_23 (EI), Metamorphoo_27 (EC), MoontowerMania_19 (DE1), Mutzi_21 (DC1), Natkenzie_21 (DE4), Nicole72_22 (EC), NoodlelyBoi_27 (EC), Nordenberg_15 (DE1), Nubi_19 (DC1), Onika_26 (EC), Paries_21 (DE1), Paschalis_26 (EC), Phauci_14 (DE2), Phinally_21 (DE2), Phlop_19 (DC1), Phorgeous_26 (EC), Phrancesco_27 (EC), PierreOrion_27 (EC), PinkCoffee_21 (DC1), PiperSansNom_27 (EC), Piperis_27 (EC), Portcullis_19 (DC1), Pulchra_28 (EC), PullumCavea_19 (DC1), Quhwah_30 (EC), Ramiel05_26 (EC), Rasputia_56 (GC), Ribeye_21 (DE1), RiverRaider_22 (DE1), RoadKill_18 (DE3), RobsFeet_28 (EC), Rofo_20 (DE1), RogerDodger_22 (DC1), Salvador_19 (DC1), Sampson_21 (DE4), Sanjuju_18 (DE1), Saronaya_20 (DE1), Savannah_26 (EC), Savbucketdawg_19 (DC1), SchottB_19 (DE1), Scioto_21 (DE4), Scumberland_28 (EC), Sedona_22 (DE1), Selwyn23_28 (EC), Shinji_19 (DC1), Shivanishola_20 (DE1), Shotgun_26 (EC), Sitar_22 (DE1), Smarties_35 (EC), SmokingBunny_19 (DC1), StorminNorm_20 (DE1), Stultus_20 (DE1), Tangent_18 (DE1), Tangerine_20 (DE1), Tardus_22 (DE4), Teamocil_28 (EC), Terij_23 (EI), Thing3_21 (DE1), Tiamoceli_21 (DE3), TillyBobJoe_19 (DC1), Togo_19 (DC1), Twister6_21 (DC1), Twonlo_18 (DE3), Tycho_20 (DE1), Tyrumbra_25 (EC), Valary_22 (DC1), VanDeWege_22 (DC1), Verity_21 (DE4), ViaConlectus_22 (DE4), Vivi2_20 (DE1), Wizard_19 (DC1), Yeti_27 (EC), YorkOnyx_21 (DE1), YungMoney_21 (DC1), Zipp_21 (DE4), Zitch_23 (DE4),

Start 23:

- Found in 12 of 230 (5.2%) of genes in pham
- Manual Annotations of this start: 11 of 198
- Called 100.0% of time when present
- Phage (with cluster) where this start called: Abt2graduatex2_13 (BG), Asis_13 (BG), BabyGotBac_13 (BG), BayC_13 (BG), Maih_13 (BG), Mischief19_14 (BG), RainyPolka_13 (BG), Salete_13 (BG), TP1604_13 (BG), TurkishDelight_17 (singleton), Xkcd426_14 (BG), YDN12_14 (BG),

Start 24:

- Found in 17 of 230 (7.4%) of genes in pham
- Manual Annotations of this start: 12 of 198
- Called 94.1% of time when present
- Phage (with cluster) where this start called: Altheas_27 (EG), BirdInFrench_24 (EG), CandC_23 (EG), Fransoyer_27 (EG), Fregley_25 (EG), Kelcole_23 (EG), Marcie_29 (EG), OneinaGillian_24 (EG), Pepe25_23 (EG), Phinky_31 (EG), RobinRose_26 (EG), Romm_26 (EG), RubyRalph_27 (EG), SadLad_29 (EG), Tempo_24 (EG), Wilca_24 (EG),

Start 25:

- Found in 42 of 230 (18.3%) of genes in pham
- Manual Annotations of this start: 26 of 198
- Called 78.6% of time when present
- Phage (with cluster) where this start called: AluminumJesus_23 (EG), BabyDotz_24 (EG), Blab_23 (EG), Casend_26 (EG), DonaldDuck_25 (EG), Fizzles_25 (EG), Gazebo_24 (EG), Grassboy_26 (EG), Hyperion_24 (EG), Jehoshaphat_27 (EG), Judebell_27 (EG), Kyva_27 (EG), Llemily_25 (EG), Lonelysoil_24 (EG), Mashley_23 (EG), Namago_25 (EG), Nike_25 (EG), Phabia_25 (EG), Quammi_23 (EG), Rowlf_21

(EG), Rudy_23 (EG), SallyK_26 (EG), Sillytadpoles_25 (EG), Squash_27 (EG), Statler_27 (EG), StrawberryJamm_27 (EG), Teehee_26 (EG), Tissue_25 (EG), Viceroy_24 (EG), Wayne3_26 (EG), Wheelie_24 (EG), Zagie_25 (EG), Zhafia_28 (EG),

Start 36:

- Found in 1 of 230 (0.4%) of genes in pham
- No Manual Annotations of this start.
- Called 100.0% of time when present
- Phage (with cluster) where this start called: phiAsp2_14 (singleton),

Summary by clusters:

There are 14 clusters represented in this pham: singleton, DE, EI, DE1, EG, DE3, DE4, DE5, EC, BG, GC, DC2, DE2, DC1,

Info for manual annotations of cluster BG:

- Start number 23 was manually annotated 10 times for cluster BG.

Info for manual annotations of cluster DC1:

- Start number 17 was manually annotated 28 times for cluster DC1.

Info for manual annotations of cluster DC2:

- Start number 17 was manually annotated 1 time for cluster DC2.

Info for manual annotations of cluster DE1:

- Start number 17 was manually annotated 43 times for cluster DE1.

Info for manual annotations of cluster DE2:

- Start number 17 was manually annotated 7 times for cluster DE2.

Info for manual annotations of cluster DE3:

- Start number 17 was manually annotated 7 times for cluster DE3.

Info for manual annotations of cluster DE4:

- Start number 17 was manually annotated 9 times for cluster DE4.

Info for manual annotations of cluster DE5:

- Start number 17 was manually annotated 1 time for cluster DE5.

Info for manual annotations of cluster EC:

- Start number 17 was manually annotated 41 times for cluster EC.

Info for manual annotations of cluster EG:

- Start number 24 was manually annotated 12 times for cluster EG.
- Start number 25 was manually annotated 26 times for cluster EG.

Info for manual annotations of cluster EI:

- Start number 17 was manually annotated 7 times for cluster EI.

Info for manual annotations of cluster GC:

- Start number 17 was manually annotated 4 times for cluster GC.

Gene Information:

Gene: APunk_23 Start: 16314, Stop: 18233, Start Num: 17

Candidate Starts for APunk_23:

(Start: 17 @16314 has 148 MA's), (45, 16530), (47, 16545), (62, 16719), (85, 16866), (97, 16935), (100, 16941), (107, 16995), (110, 17019), (147, 17271), (150, 17289), (151, 17295), (156, 17358), (159, 17370), (160, 17373), (162, 17385), (181, 17475), (184, 17502), (209, 17661), (219, 17739), (234, 17835), (266, 18105), (276, 18150),

Gene: Abblin_21 Start: 15527, Stop: 17449, Start Num: 17

Candidate Starts for Abblin_21:

(Start: 17 @15527 has 148 MA's), (45, 15743), (47, 15758), (62, 15932), (83, 16070), (85, 16079), (97, 16148), (100, 16154), (107, 16208), (110, 16232), (147, 16484), (150, 16502), (151, 16508), (156, 16571), (159, 16583), (160, 16586), (162, 16598), (181, 16688), (184, 16715), (209, 16874), (219, 16952), (234, 17048), (238, 17084), (250, 17204), (254, 17237), (266, 17321), (276, 17366),

Gene: Abt2graduatex2_13 Start: 13868, Stop: 15571, Start Num: 23

Candidate Starts for Abt2graduatex2_13:

(Start: 23 @13868 has 11 MA's), (Start: 25 @13877 has 26 MA's), (37, 13964), (58, 14111), (59, 14135), (77, 14318), (86, 14372), (93, 14402), (98, 14432), (99, 14435), (117, 14483), (126, 14519), (136, 14564), (141, 14606), (146, 14675), (181, 14855), (191, 14933), (192, 14936), (216, 15086), (220, 15128), (229, 15188), (233, 15209), (252, 15341), (260, 15398), (264, 15419), (268, 15461), (270, 15467), (287, 15542),

Gene: Affeca_20 Start: 15348, Stop: 17258, Start Num: 17

Candidate Starts for Affeca_20:

(Start: 17 @15348 has 148 MA's), (47, 15579), (51, 15597), (76, 15867), (102, 16005), (111, 16074), (120, 16107), (150, 16332), (151, 16338), (159, 16413), (160, 16416), (162, 16428), (174, 16464), (181, 16515), (197, 16638), (201, 16674), (224, 16818), (232, 16869), (251, 17013), (252, 17016), (253, 17019), (259, 17067), (266, 17124),

Gene: Ailee_20 Start: 15256, Stop: 17172, Start Num: 17

Candidate Starts for Ailee_20:

(Start: 17 @15256 has 148 MA's), (47, 15487), (51, 15505), (76, 15781), (102, 15919), (111, 15988), (120, 16021), (150, 16246), (151, 16252), (156, 16315), (159, 16327), (160, 16330), (162, 16342), (181, 16429), (197, 16552), (201, 16588), (224, 16732), (232, 16783), (251, 16927), (252, 16930), (253, 16933), (259, 16981), (266, 17038), (289, 17155),

Gene: Ali17_19 Start: 14661, Stop: 16580, Start Num: 17

Candidate Starts for Ali17_19:

(Start: 17 @14661 has 148 MA's), (43, 14862), (57, 14985), (76, 15156), (85, 15201), (92, 15222), (102, 15279), (124, 15405), (133, 15456), (136, 15465), (140, 15516), (142, 15567), (150, 15630), (151, 15636), (156, 15699), (162, 15726), (181, 15813), (208, 15996), (218, 16071), (221, 16086), (224, 16110), (229, 16143), (232, 16161), (239, 16218), (250, 16329), (261, 16398), (262, 16410), (266, 16446), (280, 16512),

Gene: Altheas_27 Start: 14496, Stop: 16319, Start Num: 24

Candidate Starts for Altheas_27:

(Start: 24 @14496 has 12 MA's), (28, 14508), (32, 14568), (37, 14607), (106, 15129), (122, 15204), (129, 15252), (134, 15276), (136, 15282), (148, 15399), (161, 15498), (179, 15579), (193, 15672),

(194, 15687), (200, 15735), (206, 15759), (211, 15792), (215, 15807), (217, 15831), (223, 15879), (230, 15921), (249, 16056), (250, 16068), (252, 16077), (261, 16137), (279, 16239),

Gene: AluminumJesus_23 Start: 13874, Stop: 15679, Start Num: 25

Candidate Starts for AluminumJesus_23:

(Start: 25 @13874 has 26 MA's), (28, 13883), (37, 13982), (73, 14288), (106, 14489), (109, 14504), (122, 14564), (129, 14612), (136, 14642), (147, 14756), (148, 14759), (149, 14765), (161, 14858), (179, 14939), (193, 15032), (194, 15047), (200, 15095), (206, 15119), (215, 15167), (217, 15191), (223, 15239), (230, 15281), (249, 15416), (250, 15428), (252, 15437), (261, 15497), (270, 15566), (279, 15599),

Gene: Angelicage_20 Start: 15771, Stop: 17681, Start Num: 17

Candidate Starts for Angelicage_20:

(Start: 17 @15771 has 148 MA's), (47, 16002), (51, 16020), (76, 16290), (102, 16428), (111, 16497), (120, 16530), (150, 16755), (151, 16761), (159, 16836), (160, 16839), (162, 16851), (174, 16887), (181, 16938), (197, 17061), (201, 17097), (224, 17241), (232, 17292), (251, 17436), (252, 17439), (253, 17442), (259, 17490), (266, 17547),

Gene: Antares_27 Start: 14003, Stop: 15859, Start Num: 17

Candidate Starts for Antares_27:

(Start: 17 @14003 has 148 MA's), (88, 14579), (98, 14624), (104, 14660), (115, 14729), (122, 14750), (123, 14753), (126, 14783), (143, 14903), (153, 14984), (173, 15098), (176, 15125), (204, 15314), (222, 15440), (239, 15554), (240, 15569), (253, 15617), (256, 15647), (258, 15659), (261, 15674), (263, 15689), (269, 15740), (274, 15758), (279, 15776),

Gene: Ariadne_35 Start: 15581, Stop: 17596, Start Num: 17

Candidate Starts for Ariadne_35:

(Start: 17 @15581 has 148 MA's), (88, 16160), (98, 16205), (104, 16241), (107, 16265), (115, 16310), (122, 16331), (124, 16349), (143, 16484), (171, 16814), (172, 16817), (176, 16874), (178, 16898), (197, 17036), (204, 17063), (221, 17174), (239, 17303), (240, 17318), (242, 17327), (250, 17354), (253, 17366), (256, 17396), (261, 17423), (274, 17507), (279, 17525),

Gene: Arri_22 Start: 12537, Stop: 14423, Start Num: 17

Candidate Starts for Arri_22:

(Start: 17 @12537 has 148 MA's), (48, 12774), (51, 12786), (54, 12840), (79, 13062), (109, 13224), (113, 13257), (151, 13509), (158, 13581), (174, 13638), (176, 13650), (191, 13767), (197, 13812), (198, 13815), (218, 13938), (220, 13950), (229, 14010), (243, 14112), (250, 14163), (252, 14172), (262, 14244), (265, 14274), (280, 14346), (284, 14370),

Gene: Ashertheman_21 Start: 14855, Stop: 16762, Start Num: 17

Candidate Starts for Ashertheman_21:

(Start: 17 @14855 has 148 MA's), (33, 14990), (47, 15086), (76, 15368), (92, 15437), (98, 15485), (102, 15509), (107, 15545), (111, 15578), (117, 15602), (136, 15695), (150, 15836), (151, 15842), (156, 15905), (159, 15917), (160, 15920), (162, 15932), (181, 16019), (197, 16142), (201, 16178), (218, 16283), (224, 16322), (232, 16373), (250, 16511), (251, 16517), (252, 16520), (259, 16571), (266, 16628), (267, 16640), (270, 16649), (290, 16748),

Gene: Asis_13 Start: 13751, Stop: 15445, Start Num: 23

Candidate Starts for Asis_13:

(Start: 23 @13751 has 11 MA's), (Start: 25 @13760 has 26 MA's), (39, 13862), (58, 13994), (59, 14018), (66, 14114), (77, 14195), (84, 14240), (86, 14249), (94, 14282), (98, 14309), (99, 14312), (117, 14360), (125, 14393), (126, 14396), (134, 14435), (136, 14441), (143, 14519), (146, 14552), (157, 14642), (178, 14717), (181, 14732), (189, 14798), (191, 14810), (192, 14813), (210, 14930),

(216, 14963), (220, 15005), (236, 15122), (252, 15218), (260, 15275), (264, 15296), (268, 15338), (270, 15344), (279, 15377), (282, 15401), (287, 15419), (291, 15434),

Gene: BabyDotz_24 Start: 14116, Stop: 15948, Start Num: 25

Candidate Starts for BabyDotz_24:

(Start: 25 @14116 has 26 MA's), (28, 14125), (37, 14224), (77, 14590), (106, 14758), (109, 14773), (122, 14833), (129, 14881), (130, 14887), (136, 14911), (147, 15025), (148, 15028), (149, 15034), (161, 15127), (179, 15208), (193, 15301), (194, 15316), (200, 15364), (206, 15388), (215, 15436), (217, 15460), (223, 15508), (230, 15550), (249, 15685), (250, 15697), (252, 15706), (261, 15766), (270, 15835), (279, 15868),

Gene: BabyGotBac_13 Start: 13751, Stop: 15445, Start Num: 23

Candidate Starts for BabyGotBac_13:

(Start: 23 @13751 has 11 MA's), (Start: 25 @13760 has 26 MA's), (39, 13862), (58, 13994), (59, 14018), (66, 14114), (77, 14195), (84, 14240), (86, 14249), (94, 14282), (98, 14309), (99, 14312), (117, 14360), (125, 14393), (126, 14396), (134, 14435), (136, 14441), (143, 14519), (146, 14552), (157, 14642), (178, 14717), (181, 14732), (189, 14798), (191, 14810), (192, 14813), (210, 14930), (216, 14963), (220, 15005), (236, 15122), (252, 15218), (260, 15275), (264, 15296), (268, 15338), (270, 15344), (279, 15377), (282, 15401), (287, 15419), (291, 15434),

Gene: Baddon_20 Start: 15702, Stop: 17609, Start Num: 17

Candidate Starts for Baddon_20:

(Start: 17 @15702 has 148 MA's), (33, 15837), (38, 15870), (47, 15933), (76, 16215), (92, 16284), (98, 16332), (102, 16356), (111, 16425), (117, 16449), (136, 16542), (150, 16683), (151, 16689), (156, 16752), (159, 16764), (160, 16767), (162, 16779), (181, 16866), (197, 16989), (201, 17025), (209, 17058), (213, 17088), (218, 17130), (224, 17169), (232, 17220), (251, 17364), (252, 17367), (259, 17418), (266, 17475), (267, 17487), (270, 17496), (276, 17520),

Gene: Bakery_20 Start: 11735, Stop: 13636, Start Num: 17

Candidate Starts for Bakery_20:

(Start: 17 @11735 has 148 MA's), (48, 11972), (51, 11984), (54, 12038), (109, 12425), (113, 12458), (120, 12482), (136, 12563), (138, 12590), (151, 12728), (174, 12857), (176, 12869), (181, 12908), (191, 12986), (197, 13031), (198, 13034), (201, 13055), (210, 13097), (213, 13118), (218, 13160), (220, 13172), (262, 13466), (265, 13496), (269, 13520), (277, 13550),

Gene: Barb_21 Start: 12512, Stop: 14410, Start Num: 17

Candidate Starts for Barb_21:

(Start: 17 @12512 has 148 MA's), (48, 12749), (51, 12761), (54, 12815), (109, 13208), (113, 13241), (120, 13265), (151, 13505), (174, 13634), (176, 13646), (191, 13763), (197, 13808), (198, 13811), (210, 13871), (212, 13889), (218, 13934), (220, 13946), (221, 13949), (223, 13970), (238, 14069), (243, 14108), (252, 14168), (262, 14240), (265, 14270), (269, 14294), (276, 14321), (277, 14324), (281, 14351),

Gene: Barsten_21 Start: 15284, Stop: 17188, Start Num: 17

Candidate Starts for Barsten_21:

(Start: 17 @15284 has 148 MA's), (47, 15515), (51, 15533), (76, 15800), (102, 15938), (111, 16007), (120, 16040), (150, 16265), (151, 16271), (156, 16334), (159, 16346), (160, 16349), (162, 16361), (181, 16448), (197, 16571), (201, 16607), (224, 16751), (232, 16802), (251, 16946), (252, 16949), (253, 16952), (259, 17000), (266, 17057),

Gene: Baumdotcom_20 Start: 14471, Stop: 16378, Start Num: 17

Candidate Starts for Baumdotcom_20:

(Start: 17 @14471 has 148 MA's), (33, 14606), (47, 14702), (76, 14984), (92, 15053), (98, 15101), (102, 15125), (107, 15161), (111, 15194), (117, 15218), (136, 15311), (150, 15452), (151, 15458), (156, 15521), (159, 15533), (160, 15536), (162, 15548), (181, 15635), (197, 15758), (201, 15794), (218, 15899), (224, 15938), (232, 15989), (250, 16127), (251, 16133), (252, 16136), (259, 16187), (266, 16244), (267, 16256), (270, 16265),

Gene: BayC_13 Start: 13751, Stop: 15445, Start Num: 23

Candidate Starts for BayC_13:

(Start: 23 @13751 has 11 MA's), (Start: 25 @13760 has 26 MA's), (39, 13862), (58, 13994), (59, 14018), (66, 14114), (77, 14195), (84, 14240), (86, 14249), (94, 14282), (98, 14309), (99, 14312), (117, 14360), (125, 14393), (126, 14396), (134, 14435), (136, 14441), (143, 14519), (146, 14552), (157, 14642), (181, 14732), (189, 14798), (191, 14810), (192, 14813), (210, 14930), (216, 14963), (220, 15005), (236, 15122), (252, 15218), (260, 15275), (268, 15338), (270, 15344), (279, 15377), (282, 15401), (287, 15419), (291, 15434),

Gene: Belphegor_18 Start: 13765, Stop: 15693, Start Num: 17

Candidate Starts for Belphegor_18:

(Start: 17 @13765 has 148 MA's), (43, 13969), (49, 14008), (57, 14092), (78, 14272), (102, 14392), (117, 14485), (133, 14569), (136, 14578), (140, 14629), (142, 14680), (150, 14743), (151, 14749), (156, 14812), (162, 14839), (181, 14926), (218, 15184), (221, 15199), (224, 15223), (232, 15274), (239, 15331), (248, 15427), (250, 15442), (261, 15511), (262, 15523), (266, 15559), (278, 15610),

Gene: Bibwit_21 Start: 15528, Stop: 17423, Start Num: 17

Candidate Starts for Bibwit_21:

(Start: 17 @15528 has 148 MA's), (47, 15759), (51, 15777), (76, 16032), (102, 16170), (111, 16239), (120, 16272), (150, 16497), (151, 16503), (156, 16566), (159, 16578), (160, 16581), (162, 16593), (181, 16680), (197, 16803), (201, 16839), (224, 16983), (232, 17034), (251, 17178), (252, 17181), (253, 17184), (259, 17232), (266, 17289), (289, 17406),

Gene: BirdInFrench_24 Start: 12993, Stop: 14771, Start Num: 24

Candidate Starts for BirdInFrench_24:

(Start: 24 @12993 has 12 MA's), (28, 13005), (64, 13350), (84, 13464), (108, 13590), (122, 13656), (129, 13704), (136, 13734), (161, 13947), (179, 14028), (181, 14037), (191, 14115), (193, 14121), (194, 14136), (217, 14280), (222, 14322), (230, 14373), (250, 14520), (252, 14529), (275, 14679), (279, 14691), (288, 14751),

Gene: Bizzy_21 Start: 14750, Stop: 16663, Start Num: 17

Candidate Starts for Bizzy_21:

(Start: 17 @14750 has 148 MA's), (33, 14885), (47, 14981), (76, 15269), (92, 15338), (98, 15386), (102, 15410), (107, 15446), (111, 15479), (117, 15503), (136, 15596), (150, 15737), (151, 15743), (156, 15806), (159, 15818), (160, 15821), (162, 15833), (181, 15920), (197, 16043), (201, 16079), (209, 16112), (218, 16184), (224, 16223), (232, 16274), (250, 16412), (251, 16418), (252, 16421), (259, 16472), (266, 16529), (267, 16541), (270, 16550),

Gene: Blab_23 Start: 13751, Stop: 15577, Start Num: 25

Candidate Starts for Blab_23:

(Start: 25 @13751 has 26 MA's), (28, 13760), (37, 13859), (73, 14186), (106, 14387), (109, 14402), (122, 14462), (129, 14510), (136, 14540), (147, 14654), (148, 14657), (149, 14663), (161, 14756), (179, 14837), (193, 14930), (194, 14945), (200, 14993), (206, 15017), (215, 15065), (217, 15089), (223, 15137), (230, 15179), (249, 15314), (252, 15335), (261, 15395), (270, 15464), (279, 15497),

Gene: BobBob_18 Start: 14138, Stop: 16045, Start Num: 17

Candidate Starts for BobBob_18:

(Start: 17 @14138 has 148 MA's), (47, 14369), (51, 14387), (76, 14654), (102, 14792), (111, 14861), (120, 14894), (150, 15119), (151, 15125), (156, 15188), (159, 15200), (160, 15203), (162, 15215), (181, 15302), (187, 15356), (197, 15425), (201, 15461), (224, 15605), (232, 15656), (251, 15800), (252, 15803), (253, 15806), (259, 15854), (266, 15911),

Gene: Brandonk123_22 Start: 14830, Stop: 16737, Start Num: 17

Candidate Starts for Brandonk123_22:

(Start: 17 @14830 has 148 MA's), (47, 15061), (51, 15079), (76, 15346), (102, 15484), (111, 15553), (120, 15586), (150, 15811), (151, 15817), (156, 15880), (159, 15892), (160, 15895), (162, 15907), (181, 15994), (187, 16048), (197, 16117), (201, 16153), (224, 16297), (232, 16348), (251, 16492), (252, 16495), (253, 16498), (259, 16546), (266, 16603),

Gene: BrazzalePHS_26 Start: 13795, Stop: 15654, Start Num: 17

Candidate Starts for BrazzalePHS_26:

(Start: 17 @13795 has 148 MA's), (88, 14374), (98, 14419), (104, 14455), (115, 14524), (122, 14545), (123, 14548), (126, 14578), (143, 14698), (153, 14779), (173, 14893), (176, 14920), (204, 15109), (222, 15235), (239, 15349), (240, 15364), (253, 15412), (256, 15442), (258, 15454), (261, 15469), (263, 15484), (269, 15535), (274, 15553), (279, 15571),

Gene: Busephilis_26 Start: 13734, Stop: 15590, Start Num: 17

Candidate Starts for Busephilis_26:

(Start: 17 @13734 has 148 MA's), (88, 14310), (98, 14355), (104, 14391), (115, 14460), (122, 14481), (123, 14484), (126, 14514), (143, 14634), (153, 14715), (173, 14829), (176, 14856), (204, 15045), (222, 15171), (239, 15285), (240, 15300), (253, 15348), (256, 15378), (258, 15390), (261, 15405), (263, 15420), (269, 15471), (274, 15489), (279, 15507),

Gene: CandC_23 Start: 12598, Stop: 14376, Start Num: 24

Candidate Starts for CandC_23:

(Start: 24 @12598 has 12 MA's), (28, 12610), (64, 12952), (84, 13069), (108, 13195), (129, 13309), (136, 13339), (161, 13552), (179, 13633), (181, 13642), (191, 13720), (193, 13726), (194, 13741), (217, 13885), (222, 13927), (230, 13978), (250, 14125), (252, 14134), (275, 14284), (279, 14296),

Gene: Casend_26 Start: 14462, Stop: 16294, Start Num: 25

Candidate Starts for Casend_26:

(Start: 25 @14462 has 26 MA's), (28, 14471), (37, 14570), (77, 14936), (106, 15104), (109, 15119), (122, 15179), (129, 15227), (130, 15233), (136, 15257), (148, 15374), (149, 15380), (161, 15473), (179, 15554), (193, 15647), (194, 15662), (200, 15710), (206, 15734), (215, 15782), (217, 15806), (223, 15854), (230, 15896), (249, 16031), (250, 16043), (252, 16052), (261, 16112), (270, 16181), (279, 16214),

Gene: ChadMasterC_20 Start: 15249, Stop: 17144, Start Num: 17

Candidate Starts for ChadMasterC_20:

(Start: 17 @15249 has 148 MA's), (47, 15480), (51, 15498), (76, 15753), (102, 15891), (111, 15960), (120, 15993), (150, 16218), (151, 16224), (156, 16287), (159, 16299), (160, 16302), (162, 16314), (181, 16401), (197, 16524), (201, 16560), (224, 16704), (232, 16755), (251, 16899), (252, 16902), (253, 16905), (259, 16953), (266, 17010),

Gene: Charming_18 Start: 14140, Stop: 16047, Start Num: 17

Candidate Starts for Charming_18:

(Start: 17 @14140 has 148 MA's), (47, 14371), (51, 14389), (76, 14656), (102, 14794), (111, 14863), (120, 14896), (150, 15121), (151, 15127), (156, 15190), (159, 15202), (160, 15205), (162, 15217), (181, 15304), (187, 15358), (197, 15427), (201, 15463), (224, 15607), (232, 15658), (251, 15802), (252, 15805), (253, 15808), (259, 15856), (266, 15913),

Gene: Chickadee_20 Start: 13744, Stop: 15633, Start Num: 17

Candidate Starts for Chickadee_20:

(16, 13735), (Start: 17 @13744 has 148 MA's), (27, 13810), (47, 13978), (51, 13996), (79, 14269), (98, 14365), (131, 14557), (135, 14572), (142, 14650), (151, 14719), (156, 14782), (159, 14794), (160, 14797), (178, 14881), (181, 14896), (194, 14995), (201, 15049), (218, 15154), (232, 15244), (242, 15325), (250, 15382), (262, 15463), (266, 15499), (280, 15565),

Gene: Cinna_22 Start: 13276, Stop: 15141, Start Num: 17

Candidate Starts for Cinna_22:

(Start: 17 @13276 has 148 MA's), (60, 13630), (70, 13756), (96, 13894), (104, 13936), (119, 14017), (122, 14026), (132, 14083), (135, 14095), (150, 14227), (152, 14248), (153, 14254), (173, 14368), (185, 14467), (186, 14485), (204, 14584), (207, 14599), (214, 14641), (221, 14695), (222, 14710), (229, 14752), (232, 14767), (234, 14779), (239, 14824), (250, 14887), (254, 14920),

Gene: ClamChowder_21 Start: 12512, Stop: 14410, Start Num: 17

Candidate Starts for ClamChowder_21:

(Start: 17 @12512 has 148 MA's), (48, 12749), (51, 12761), (54, 12815), (109, 13208), (113, 13241), (120, 13265), (151, 13505), (174, 13634), (176, 13646), (191, 13763), (197, 13808), (198, 13811), (210, 13871), (212, 13889), (218, 13934), (220, 13946), (221, 13949), (223, 13970), (238, 14069), (243, 14108), (252, 14168), (262, 14240), (265, 14270), (269, 14294), (276, 14321), (277, 14324), (281, 14351),

Gene: ClearAsMud_29 Start: 14527, Stop: 16377, Start Num: 17

Candidate Starts for ClearAsMud_29:

(Start: 17 @14527 has 148 MA's), (88, 15103), (98, 15148), (104, 15184), (115, 15253), (122, 15274), (123, 15277), (126, 15307), (143, 15427), (176, 15649), (182, 15694), (204, 15838), (227, 15994), (239, 16078), (253, 16141), (256, 16171), (258, 16183), (261, 16198), (263, 16213), (269, 16264), (274, 16282),

Gene: Clown_23 Start: 14522, Stop: 16378, Start Num: 17

Candidate Starts for Clown_23:

(14, 14495), (Start: 17 @14522 has 148 MA's), (21, 14543), (31, 14624), (47, 14756), (51, 14774), (56, 14840), (103, 15146), (113, 15212), (117, 15227), (121, 15239), (151, 15479), (158, 15551), (174, 15608), (176, 15620), (181, 15659), (191, 15737), (195, 15767), (197, 15782), (218, 15908), (220, 15920), (221, 15923), (238, 16043), (239, 16052), (250, 16133), (258, 16187), (262, 16214), (276, 16295), (277, 16298),

Gene: Cranjjs_28 Start: 13958, Stop: 15814, Start Num: 17

Candidate Starts for Cranjjs_28:

(Start: 17 @13958 has 148 MA's), (88, 14534), (98, 14579), (104, 14615), (115, 14684), (122, 14705), (123, 14708), (126, 14738), (143, 14858), (153, 14939), (173, 15053), (176, 15080), (204, 15269), (222, 15395), (239, 15509), (240, 15524), (253, 15572), (256, 15602), (258, 15614), (261, 15629), (263, 15644), (269, 15695), (274, 15713), (279, 15731),

Gene: CrazyRich_26 Start: 13768, Stop: 15624, Start Num: 17

Candidate Starts for CrazyRich_26:

(Start: 17 @13768 has 148 MA's), (88, 14344), (98, 14389), (104, 14425), (115, 14494), (122, 14515), (123, 14518), (126, 14548), (143, 14668), (153, 14749), (173, 14863), (176, 14890), (204, 15079), (222, 15205), (239, 15319), (240, 15334), (253, 15382), (256, 15412), (258, 15424), (261, 15439), (263, 15454), (269, 15505), (274, 15523), (279, 15541),

Gene: Cressida_24 Start: 13311, Stop: 15185, Start Num: 17

Candidate Starts for Cressida_24:

(Start: 17 @13311 has 148 MA's), (70, 13797), (77, 13836), (96, 13935), (104, 13977), (119, 14058), (122, 14067), (132, 14124), (135, 14136), (150, 14268), (152, 14289), (153, 14295), (173, 14409), (185, 14508), (186, 14526), (204, 14625), (207, 14640), (214, 14682), (221, 14736), (222, 14751), (229, 14793), (232, 14808), (234, 14820), (239, 14865), (250, 14928), (256, 14970), (262, 15009), (263, 15012), (279, 15099),

Gene: Crisis_28 Start: 13753, Stop: 15609, Start Num: 17

Candidate Starts for Crisis_28:

(Start: 17 @13753 has 148 MA's), (88, 14329), (98, 14374), (104, 14410), (115, 14479), (122, 14500), (123, 14503), (126, 14533), (143, 14653), (153, 14734), (173, 14848), (176, 14875), (204, 15064), (222, 15190), (226, 15214), (239, 15304), (240, 15319), (253, 15367), (256, 15397), (258, 15409), (261, 15424), (263, 15439), (269, 15490), (274, 15508), (279, 15526),

Gene: Danyall_21 Start: 12369, Stop: 14255, Start Num: 17

Candidate Starts for Danyall_21:

(Start: 17 @12369 has 148 MA's), (48, 12606), (51, 12618), (54, 12672), (79, 12894), (109, 13056), (113, 13089), (151, 13341), (158, 13413), (174, 13470), (176, 13482), (191, 13599), (197, 13644), (198, 13647), (218, 13770), (220, 13782), (229, 13842), (250, 13995), (252, 14004), (262, 14076), (265, 14106), (280, 14178), (284, 14202),

Gene: Delrey21_21 Start: 14990, Stop: 16909, Start Num: 17

Candidate Starts for Delrey21_21:

(Start: 17 @14990 has 148 MA's), (31, 15089), (45, 15206), (46, 15218), (47, 15221), (62, 15395), (80, 15509), (85, 15542), (97, 15608), (100, 15614), (107, 15668), (110, 15692), (118, 15728), (147, 15944), (150, 15962), (151, 15968), (156, 16031), (159, 16043), (160, 16046), (162, 16058), (181, 16148), (184, 16175), (209, 16334), (219, 16412), (225, 16448), (234, 16508), (239, 16553), (250, 16664), (254, 16697), (266, 16781), (269, 16799), (277, 16829),

Gene: Derg_18 Start: 14345, Stop: 16255, Start Num: 17

Candidate Starts for Derg_18:

(Start: 17 @14345 has 148 MA's), (33, 14480), (47, 14576), (76, 14861), (92, 14930), (98, 14978), (102, 15002), (107, 15038), (111, 15071), (117, 15095), (136, 15188), (150, 15329), (151, 15335), (156, 15398), (159, 15410), (160, 15413), (162, 15425), (181, 15512), (197, 15635), (201, 15671), (209, 15704), (218, 15776), (224, 15815), (232, 15866), (251, 16010), (252, 16013), (259, 16064), (266, 16121), (267, 16133), (270, 16142),

Gene: Dewdrop_60 Start: 29654, Stop: 31561, Start Num: 17

Candidate Starts for Dewdrop_60:

(1, 29438), (4, 29510), (7, 29543), (8, 29546), (Start: 17 @29654 has 148 MA's), (56, 29993), (67, 30131), (72, 30161), (91, 30269), (101, 30314), (164, 30755), (192, 30929), (196, 30959), (197, 30971), (204, 30998), (214, 31055), (217, 31082), (221, 31109), (225, 31136), (228, 31160), (234, 31202), (236, 31232), (239, 31247), (262, 31391), (277, 31475), (284, 31517),

Gene: Dxdert_21 Start: 14191, Stop: 16077, Start Num: 17

Candidate Starts for Dxdert_21:

(16, 14182), (Start: 17 @14191 has 148 MA's), (27, 14257), (47, 14425), (51, 14443), (79, 14713), (98, 14809), (135, 15016), (142, 15094), (151, 15163), (156, 15226), (159, 15238), (160, 15241), (178, 15325), (181, 15340), (194, 15439), (201, 15493), (218, 15598), (232, 15688), (242, 15769), (250, 15826), (253, 15838), (261, 15895), (262, 15907), (266, 15943), (280, 16009),

Gene: DoctorFroggo_21 Start: 14990, Stop: 16909, Start Num: 17

Candidate Starts for DoctorFroggo_21:

(Start: 17 @14990 has 148 MA's), (31, 15089), (45, 15206), (46, 15218), (47, 15221), (62, 15395), (80, 15509), (85, 15542), (97, 15608), (100, 15614), (107, 15668), (110, 15692), (118, 15728), (147, 15944), (150, 15962), (151, 15968), (156, 16031), (159, 16043), (160, 16046), (162, 16058), (181, 16148), (184, 16175), (209, 16334), (219, 16412), (225, 16448), (234, 16508), (239, 16553), (250, 16664), (254, 16697), (266, 16781), (269, 16799), (277, 16829),

Gene: DonaldDuck_25 Start: 13808, Stop: 15640, Start Num: 25

Candidate Starts for DonaldDuck_25:

(Start: 25 @13808 has 26 MA's), (28, 13817), (37, 13916), (77, 14282), (106, 14450), (109, 14465), (122, 14525), (129, 14573), (130, 14579), (136, 14603), (148, 14720), (149, 14726), (161, 14819), (179, 14900), (193, 14993), (194, 15008), (200, 15056), (206, 15080), (215, 15128), (217, 15152), (223, 15200), (230, 15242), (249, 15377), (250, 15389), (252, 15398), (261, 15458), (270, 15527), (279, 15560),

Gene: EMoore_16 Start: 13023, Stop: 14942, Start Num: 17

Candidate Starts for EMoore_16:

(Start: 17 @13023 has 148 MA's), (49, 13263), (81, 13551), (133, 13818), (136, 13827), (137, 13845), (140, 13878), (150, 13992), (151, 13998), (156, 14061), (162, 14088), (181, 14175), (208, 14358), (218, 14433), (220, 14445), (224, 14472), (232, 14523), (239, 14580), (250, 14691), (261, 14760), (262, 14772), (266, 14808), (267, 14820), (269, 14826),

Gene: EarickHC_27 Start: 13679, Stop: 15535, Start Num: 17

Candidate Starts for EarickHC_27:

(Start: 17 @13679 has 148 MA's), (88, 14255), (98, 14300), (104, 14336), (115, 14405), (122, 14426), (123, 14429), (126, 14459), (143, 14579), (153, 14660), (173, 14774), (176, 14801), (204, 14990), (222, 15116), (226, 15140), (239, 15230), (240, 15245), (253, 15293), (256, 15323), (258, 15335), (261, 15350), (263, 15365), (269, 15416), (274, 15434), (279, 15452),

Gene: EdmundFerry_19 Start: 13775, Stop: 15661, Start Num: 17

Candidate Starts for EdmundFerry_19:

(16, 13766), (Start: 17 @13775 has 148 MA's), (27, 13841), (47, 14009), (51, 14027), (79, 14297), (98, 14393), (135, 14600), (142, 14678), (151, 14747), (156, 14810), (159, 14822), (160, 14825), (178, 14909), (181, 14924), (194, 15023), (201, 15077), (218, 15182), (232, 15272), (242, 15353), (250, 15410), (253, 15422), (261, 15479), (262, 15491), (266, 15527), (280, 15593),

Gene: Evamon_19 Start: 11844, Stop: 13742, Start Num: 17

Candidate Starts for Evamon_19:

(Start: 17 @11844 has 148 MA's), (48, 12081), (51, 12093), (54, 12147), (79, 12378), (109, 12540), (113, 12573), (151, 12837), (174, 12966), (176, 12978), (191, 13095), (197, 13140), (198, 13143), (210, 13203), (212, 13221), (216, 13236), (218, 13266), (220, 13278), (221, 13281), (238, 13401), (243, 13440), (252, 13500), (262, 13572), (265, 13602), (269, 13626), (276, 13653), (277, 13656), (281, 13683),

Gene: Fireball_20 Start: 11982, Stop: 13874, Start Num: 17

Candidate Starts for Fireball_20:

(Start: 17 @11982 has 148 MA's), (48, 12219), (51, 12231), (54, 12285), (79, 12510), (109, 12672), (113, 12705), (121, 12732), (174, 13098), (176, 13110), (191, 13227), (197, 13272), (198, 13275), (210, 13335), (212, 13353), (218, 13398), (220, 13410), (221, 13413), (238, 13533), (243, 13572), (252, 13632), (262, 13704), (265, 13734), (269, 13758), (276, 13785), (277, 13788), (281, 13815),

Gene: Fireman_27 Start: 13483, Stop: 15504, Start Num: 17

Candidate Starts for Fireman_27:

(Start: 17 @13483 has 148 MA's), (88, 14068), (104, 14149), (107, 14173), (115, 14218), (122, 14239), (143, 14392), (169, 14650), (171, 14722), (176, 14782), (178, 14806), (197, 14944), (203, 14968), (204, 14971), (221, 15082), (239, 15211), (240, 15226), (242, 15235), (250, 15262), (253, 15274), (256, 15304), (261, 15331), (279, 15433),

Gene: Fitzgerald_18 Start: 14566, Stop: 16473, Start Num: 17

Candidate Starts for Fitzgerald_18:

(Start: 17 @14566 has 148 MA's), (47, 14797), (51, 14815), (76, 15082), (102, 15220), (111, 15289), (120, 15322), (150, 15547), (151, 15553), (156, 15616), (159, 15628), (160, 15631), (162, 15643), (181, 15730), (197, 15853), (201, 15889), (224, 16033), (232, 16084), (251, 16228), (252, 16231), (253, 16234), (259, 16282), (266, 16339),

Gene: Fizzles_25 Start: 13768, Stop: 15600, Start Num: 25

Candidate Starts for Fizzles_25:

(Start: 25 @13768 has 26 MA's), (26, 13774), (28, 13777), (43, 13915), (106, 14410), (112, 14449), (117, 14470), (129, 14533), (134, 14557), (136, 14563), (148, 14680), (161, 14779), (175, 14821), (179, 14860), (193, 14953), (194, 14968), (200, 15016), (203, 15031), (215, 15088), (217, 15112), (223, 15160), (229, 15196), (232, 15211), (249, 15337), (250, 15349), (252, 15358), (279, 15520),

Gene: Flatwoods_21 Start: 14757, Stop: 16682, Start Num: 17

Candidate Starts for Flatwoods_21:

(Start: 17 @14757 has 148 MA's), (33, 14892), (47, 14988), (76, 15288), (92, 15357), (98, 15405), (102, 15429), (107, 15465), (111, 15498), (117, 15522), (136, 15615), (150, 15756), (151, 15762), (156, 15825), (159, 15837), (160, 15840), (162, 15852), (181, 15939), (197, 16062), (201, 16098), (209, 16131), (218, 16203), (224, 16242), (232, 16293), (250, 16431), (251, 16437), (252, 16440), (259, 16491), (266, 16548), (267, 16560), (270, 16569),

Gene: Fosterous_18 Start: 15029, Stop: 16936, Start Num: 17

Candidate Starts for Fosterous_18:

(Start: 17 @15029 has 148 MA's), (47, 15260), (51, 15278), (76, 15545), (102, 15683), (111, 15752), (120, 15785), (150, 16010), (151, 16016), (156, 16079), (159, 16091), (160, 16094), (162, 16106), (181, 16193), (187, 16247), (197, 16316), (201, 16352), (224, 16496), (232, 16547), (251, 16691), (252, 16694), (253, 16697), (259, 16745), (266, 16802),

Gene: Fransoyer_27 Start: 13833, Stop: 15662, Start Num: 24

Candidate Starts for Fransoyer_27:

(Start: 24 @13833 has 12 MA's), (28, 13845), (42, 13974), (64, 14202), (65, 14220), (93, 14379), (106, 14463), (122, 14541), (129, 14589), (136, 14619), (147, 14733), (161, 14835), (175, 14877), (179, 14916), (181, 14925), (193, 15009), (194, 15024), (215, 15144), (217, 15168), (222, 15210), (223, 15216), (230, 15258), (249, 15393), (252, 15414), (254, 15438), (257, 15456), (261, 15474), (279, 15576),

Gene: Fregley_25 Start: 13171, Stop: 14949, Start Num: 24

Candidate Starts for Fregley_25:

(Start: 24 @13171 has 12 MA's), (28, 13183), (64, 13525), (84, 13642), (108, 13768), (129, 13882), (136, 13912), (161, 14125), (179, 14206), (181, 14215), (191, 14293), (193, 14299), (194, 14314), (217, 14458), (222, 14500), (230, 14551), (250, 14698), (252, 14707), (275, 14857), (279, 14869),

Gene: Fugax_21 Start: 12512, Stop: 14410, Start Num: 17

Candidate Starts for Fugax_21:

(Start: 17 @12512 has 148 MA's), (48, 12749), (51, 12761), (54, 12815), (109, 13208), (113, 13241), (120, 13265), (151, 13505), (174, 13634), (176, 13646), (191, 13763), (197, 13808), (198, 13811), (210, 13871), (212, 13889), (218, 13934), (220, 13946), (221, 13949), (223, 13970), (238, 14069),

(243, 14108), (252, 14168), (262, 14240), (265, 14270), (269, 14294), (276, 14321), (277, 14324), (281, 14351),

Gene: FuzzBuster_31 Start: 13864, Stop: 15825, Start Num: 9

Candidate Starts for FuzzBuster_31:

(Start: 9 @13864 has 1 MA's), (12, 13891), (19, 13975), (Start: 24 @14026 has 12 MA's), (56, 14296), (91, 14533), (127, 14728), (142, 14842), (180, 15121), (183, 15148), (186, 15175), (190, 15199), (194, 15223), (197, 15247), (198, 15250), (202, 15268), (210, 15307), (221, 15385), (259, 15637), (262, 15658), (281, 15769), (283, 15778),

Gene: GTE6_20 Start: 14261, Stop: 16150, Start Num: 17

Candidate Starts for GTE6_20:

(16, 14252), (Start: 17 @14261 has 148 MA's), (27, 14327), (47, 14495), (51, 14513), (79, 14786), (98, 14882), (135, 15089), (142, 15167), (151, 15236), (156, 15299), (159, 15311), (160, 15314), (178, 15398), (181, 15413), (194, 15512), (201, 15566), (218, 15671), (232, 15761), (242, 15842), (250, 15899), (254, 15932), (262, 15980), (266, 16016), (280, 16082),

Gene: Gaea_20 Start: 14451, Stop: 16370, Start Num: 17

Candidate Starts for Gaea_20:

(Start: 17 @14451 has 148 MA's), (33, 14586), (47, 14682), (76, 14976), (92, 15045), (98, 15093), (102, 15117), (107, 15153), (111, 15186), (117, 15210), (136, 15303), (150, 15444), (151, 15450), (156, 15513), (159, 15525), (160, 15528), (162, 15540), (181, 15627), (197, 15750), (201, 15786), (209, 15819), (218, 15891), (224, 15930), (232, 15981), (250, 16119), (251, 16125), (252, 16128), (259, 16179), (266, 16236), (267, 16248), (270, 16257),

Gene: Galadriel_22 Start: 14888, Stop: 16786, Start Num: 17

Candidate Starts for Galadriel_22:

(Start: 17 @14888 has 148 MA's), (47, 15119), (51, 15137), (76, 15395), (102, 15533), (111, 15602), (120, 15635), (150, 15860), (151, 15866), (156, 15929), (159, 15941), (160, 15944), (162, 15956), (181, 16043), (197, 16166), (201, 16202), (224, 16346), (232, 16397), (251, 16541), (252, 16544), (253, 16547), (259, 16595), (266, 16652),

Gene: Ganandorf_26 Start: 13815, Stop: 15671, Start Num: 17

Candidate Starts for Ganandorf_26:

(Start: 17 @13815 has 148 MA's), (88, 14391), (98, 14436), (104, 14472), (115, 14541), (122, 14562), (123, 14565), (126, 14595), (143, 14715), (153, 14796), (173, 14910), (176, 14937), (204, 15126), (222, 15252), (239, 15366), (240, 15381), (253, 15429), (256, 15459), (258, 15471), (261, 15486), (263, 15501), (269, 15552), (274, 15570), (279, 15588),

Gene: Gazebo_24 Start: 14317, Stop: 16143, Start Num: 25

Candidate Starts for Gazebo_24:

(Start: 25 @14317 has 26 MA's), (28, 14326), (37, 14425), (73, 14752), (106, 14953), (109, 14968), (122, 15028), (129, 15076), (136, 15106), (148, 15223), (149, 15229), (161, 15322), (179, 15403), (193, 15496), (194, 15511), (200, 15559), (206, 15583), (215, 15631), (217, 15655), (223, 15703), (230, 15745), (249, 15880), (252, 15901), (261, 15961), (270, 16030), (279, 16063),

Gene: Geodirt_19 Start: 15093, Stop: 17003, Start Num: 17

Candidate Starts for Geodirt_19:

(Start: 17 @15093 has 148 MA's), (47, 15324), (51, 15342), (76, 15612), (102, 15750), (111, 15819), (120, 15852), (150, 16077), (151, 16083), (156, 16146), (159, 16158), (160, 16161), (162, 16173), (181, 16260), (187, 16314), (197, 16383), (201, 16419), (224, 16563), (232, 16614), (251, 16758), (252, 16761), (253, 16764), (259, 16812), (266, 16869),

Gene: Gezellig_20 Start: 11982, Stop: 13874, Start Num: 17

Candidate Starts for Gezellig_20:

(Start: 17 @11982 has 148 MA's), (48, 12219), (51, 12231), (54, 12285), (79, 12510), (109, 12672), (113, 12705), (121, 12732), (174, 13098), (176, 13110), (191, 13227), (197, 13272), (198, 13275), (210, 13335), (212, 13353), (218, 13398), (220, 13410), (221, 13413), (238, 13533), (243, 13572), (252, 13632), (262, 13704), (265, 13734), (269, 13758), (276, 13785), (277, 13788), (281, 13815),

Gene: Gina_28 Start: 13149, Stop: 15167, Start Num: 17

Candidate Starts for Gina_28:

(Start: 17 @13149 has 148 MA's), (68, 13617), (88, 13731), (96, 13770), (104, 13812), (107, 13836), (115, 13881), (122, 13902), (123, 13905), (124, 13920), (134, 13974), (143, 14055), (151, 14115), (165, 14259), (167, 14277), (176, 14445), (178, 14469), (197, 14607), (204, 14634), (221, 14745), (239, 14874), (240, 14889), (250, 14925), (253, 14937), (256, 14967), (261, 14994), (279, 15096),

Gene: Grassboy_26 Start: 14484, Stop: 16316, Start Num: 25

Candidate Starts for Grassboy_26:

(Start: 25 @14484 has 26 MA's), (28, 14493), (37, 14592), (73, 14925), (106, 15126), (109, 15141), (122, 15201), (129, 15249), (136, 15279), (148, 15396), (149, 15402), (161, 15495), (179, 15576), (193, 15669), (194, 15684), (200, 15732), (206, 15756), (215, 15804), (217, 15828), (223, 15876), (230, 15918), (249, 16053), (252, 16074), (258, 16119), (261, 16134), (270, 16203), (279, 16236),

Gene: Gustavo_20 Start: 14562, Stop: 16469, Start Num: 17

Candidate Starts for Gustavo_20:

(Start: 17 @14562 has 148 MA's), (33, 14697), (47, 14793), (76, 15075), (92, 15144), (98, 15192), (102, 15216), (107, 15252), (111, 15285), (117, 15309), (136, 15402), (150, 15543), (151, 15549), (156, 15612), (159, 15624), (160, 15627), (162, 15639), (181, 15726), (197, 15849), (201, 15885), (218, 15990), (224, 16029), (232, 16080), (250, 16218), (251, 16224), (252, 16227), (259, 16278), (266, 16335), (267, 16347), (270, 16356),

Gene: Halo3_20 Start: 12297, Stop: 14195, Start Num: 17

Candidate Starts for Halo3_20:

(Start: 17 @12297 has 148 MA's), (48, 12534), (51, 12546), (54, 12600), (109, 12993), (113, 13026), (151, 13290), (174, 13419), (176, 13431), (180, 13467), (191, 13548), (197, 13593), (198, 13596), (210, 13656), (218, 13719), (220, 13731), (221, 13734), (243, 13893), (252, 13953), (262, 14025), (265, 14055), (269, 14079), (276, 14106), (277, 14109),

Gene: Hans_23 Start: 15322, Stop: 17238, Start Num: 17

Candidate Starts for Hans_23:

(Start: 17 @15322 has 148 MA's), (43, 15523), (57, 15646), (76, 15814), (92, 15880), (102, 15937), (133, 16114), (136, 16123), (140, 16174), (142, 16225), (150, 16288), (151, 16294), (156, 16357), (162, 16384), (181, 16471), (184, 16498), (208, 16654), (218, 16729), (221, 16744), (224, 16768), (229, 16801), (232, 16819), (239, 16876), (250, 16987), (261, 17056), (262, 17068), (266, 17104), (280, 17170),

Gene: Hendrix_57 Start: 29698, Stop: 31632, Start Num: 17

Candidate Starts for Hendrix_57:

(Start: 17 @29698 has 148 MA's), (45, 29935), (72, 30232), (91, 30343), (123, 30505), (141, 30619), (196, 31033), (197, 31045), (204, 31072), (214, 31129), (217, 31156), (221, 31183), (222, 31198), (232, 31264), (284, 31591),

Gene: Hermeonysus_26 Start: 13684, Stop: 15543, Start Num: 17

Candidate Starts for Hermeonysus_26:

(Start: 17 @13684 has 148 MA's), (88, 14263), (98, 14308), (104, 14344), (115, 14413), (122, 14434), (123, 14437), (126, 14467), (143, 14587), (153, 14668), (173, 14782), (176, 14809), (204, 14998), (222, 15124), (239, 15238), (240, 15253), (253, 15301), (256, 15331), (258, 15343), (261, 15358), (263, 15373), (269, 15424), (274, 15442), (279, 15460),

Gene: Honeyfin_28 Start: 14000, Stop: 15859, Start Num: 17

Candidate Starts for Honeyfin_28:

(Start: 17 @14000 has 148 MA's), (88, 14579), (98, 14624), (104, 14660), (115, 14729), (122, 14750), (123, 14753), (126, 14783), (143, 14903), (153, 14984), (173, 15098), (176, 15125), (204, 15314), (222, 15440), (239, 15554), (240, 15569), (253, 15617), (256, 15647), (258, 15659), (261, 15674), (263, 15689), (269, 15740), (274, 15758), (279, 15776),

Gene: Hyperion_24 Start: 14277, Stop: 16103, Start Num: 25

Candidate Starts for Hyperion_24:

(Start: 25 @14277 has 26 MA's), (28, 14286), (37, 14385), (73, 14712), (106, 14913), (109, 14928), (122, 14988), (129, 15036), (136, 15066), (148, 15183), (149, 15189), (161, 15282), (179, 15363), (193, 15456), (194, 15471), (200, 15519), (206, 15543), (215, 15591), (217, 15615), (223, 15663), (230, 15705), (249, 15840), (252, 15861), (261, 15921), (270, 15990), (279, 16023),

Gene: Inspectinfecti_22 Start: 15744, Stop: 17663, Start Num: 17

Candidate Starts for Inspectinfecti_22:

(Start: 17 @15744 has 148 MA's), (43, 15945), (57, 16068), (76, 16239), (85, 16284), (92, 16305), (102, 16362), (133, 16539), (136, 16548), (140, 16599), (142, 16650), (150, 16713), (151, 16719), (156, 16782), (162, 16809), (181, 16896), (184, 16923), (190, 16971), (208, 17079), (218, 17154), (221, 17169), (224, 17193), (229, 17226), (232, 17244), (239, 17301), (250, 17412), (261, 17481), (262, 17493), (266, 17529), (280, 17595),

Gene: JKSyngboy_19 Start: 15221, Stop: 17128, Start Num: 17

Candidate Starts for JKSyngboy_19:

(Start: 17 @15221 has 148 MA's), (33, 15356), (38, 15389), (47, 15452), (76, 15734), (92, 15803), (98, 15851), (102, 15875), (111, 15944), (117, 15968), (136, 16061), (150, 16202), (151, 16208), (156, 16271), (159, 16283), (160, 16286), (162, 16298), (181, 16385), (197, 16508), (201, 16544), (209, 16577), (218, 16649), (224, 16688), (232, 16739), (251, 16883), (252, 16886), (259, 16937), (266, 16994), (267, 17006), (270, 17015),

Gene: Jabberwocky_18 Start: 15000, Stop: 16907, Start Num: 17

Candidate Starts for Jabberwocky_18:

(Start: 17 @15000 has 148 MA's), (47, 15231), (51, 15249), (76, 15516), (102, 15654), (111, 15723), (120, 15756), (150, 15981), (151, 15987), (156, 16050), (159, 16062), (160, 16065), (162, 16077), (181, 16164), (187, 16218), (197, 16287), (201, 16323), (224, 16467), (232, 16518), (251, 16662), (252, 16665), (253, 16668), (259, 16716), (266, 16773),

Gene: Jambalaya_19 Start: 11635, Stop: 13521, Start Num: 17

Candidate Starts for Jambalaya_19:

(Start: 17 @11635 has 148 MA's), (48, 11872), (51, 11884), (54, 11938), (109, 12319), (113, 12352), (121, 12379), (174, 12745), (176, 12757), (191, 12874), (197, 12919), (198, 12922), (210, 12982), (212, 13000), (218, 13045), (220, 13057), (221, 13060), (238, 13180), (243, 13219), (252, 13279), (262, 13351), (265, 13381), (269, 13405), (276, 13432), (277, 13435), (281, 13462),

Gene: Jayden_28 Start: 13519, Stop: 15375, Start Num: 17

Candidate Starts for Jayden_28:

(Start: 17 @13519 has 148 MA's), (41, 13699), (88, 14092), (96, 14131), (98, 14137), (104, 14173), (115, 14242), (122, 14263), (123, 14266), (143, 14416), (176, 14638), (178, 14662), (197, 14800),

(204, 14827), (221, 14938), (222, 14953), (239, 15067), (240, 15082), (242, 15091), (250, 15118), (253, 15130), (255, 15157), (256, 15160), (263, 15202),

Gene: Jefe_27 Start: 13737, Stop: 15596, Start Num: 17

Candidate Starts for Jefe_27:

(Start: 17 @13737 has 148 MA's), (88, 14316), (98, 14361), (104, 14397), (115, 14466), (122, 14487), (123, 14490), (126, 14520), (143, 14640), (153, 14721), (173, 14835), (176, 14862), (204, 15051), (222, 15177), (239, 15291), (240, 15306), (253, 15354), (256, 15384), (258, 15396), (261, 15411), (263, 15426), (269, 15477), (274, 15495), (279, 15513),

Gene: Jehoshaphat_27 Start: 14727, Stop: 16559, Start Num: 25

Candidate Starts for Jehoshaphat_27:

(Start: 25 @14727 has 26 MA's), (28, 14736), (37, 14835), (77, 15201), (106, 15369), (109, 15384), (122, 15444), (129, 15492), (130, 15498), (136, 15522), (148, 15639), (149, 15645), (161, 15738), (179, 15819), (193, 15912), (194, 15927), (200, 15975), (206, 15999), (215, 16047), (217, 16071), (223, 16119), (230, 16161), (249, 16296), (250, 16308), (252, 16317), (261, 16377), (270, 16446), (279, 16479),

Gene: Jollipop_27 Start: 14085, Stop: 15941, Start Num: 17

Candidate Starts for Jollipop_27:

(Start: 17 @14085 has 148 MA's), (88, 14661), (98, 14706), (104, 14742), (115, 14811), (122, 14832), (123, 14835), (126, 14865), (143, 14985), (153, 15066), (173, 15180), (176, 15207), (204, 15396), (222, 15522), (239, 15636), (240, 15651), (253, 15699), (256, 15729), (258, 15741), (261, 15756), (263, 15771), (269, 15822), (274, 15840), (279, 15858),

Gene: Judebell_27 Start: 14268, Stop: 16100, Start Num: 25

Candidate Starts for Judebell_27:

(Start: 25 @14268 has 26 MA's), (28, 14277), (37, 14376), (77, 14742), (106, 14910), (109, 14925), (122, 14985), (129, 15033), (130, 15039), (136, 15063), (147, 15177), (148, 15180), (149, 15186), (161, 15279), (179, 15360), (193, 15453), (194, 15468), (200, 15516), (206, 15540), (215, 15588), (217, 15612), (223, 15660), (230, 15702), (249, 15837), (252, 15858), (261, 15918), (270, 15987), (279, 16020),

Gene: KaiHaiDragon_27 Start: 13679, Stop: 15535, Start Num: 17

Candidate Starts for KaiHaiDragon_27:

(Start: 17 @13679 has 148 MA's), (88, 14255), (98, 14300), (104, 14336), (115, 14405), (122, 14426), (123, 14429), (126, 14459), (143, 14579), (153, 14660), (173, 14774), (176, 14801), (204, 14990), (222, 15116), (226, 15140), (239, 15230), (240, 15245), (253, 15293), (256, 15323), (258, 15335), (261, 15350), (263, 15365), (269, 15416), (274, 15434), (279, 15452),

Gene: Kamashten_21 Start: 15684, Stop: 17591, Start Num: 17

Candidate Starts for Kamashten_21:

(Start: 17 @15684 has 148 MA's), (47, 15915), (51, 15933), (76, 16200), (102, 16338), (111, 16407), (120, 16440), (150, 16665), (151, 16671), (156, 16734), (159, 16746), (160, 16749), (162, 16761), (181, 16848), (187, 16902), (197, 16971), (201, 17007), (224, 17151), (232, 17202), (251, 17346), (252, 17349), (253, 17352), (259, 17400), (266, 17457),

Gene: Keitabear_22 Start: 17233, Stop: 19128, Start Num: 17

Candidate Starts for Keitabear_22:

(Start: 17 @17233 has 148 MA's), (47, 17464), (51, 17482), (76, 17737), (102, 17875), (111, 17944), (120, 17977), (150, 18202), (151, 18208), (159, 18283), (160, 18286), (162, 18298), (174, 18334), (181, 18385), (197, 18508), (201, 18544), (224, 18688), (232, 18739), (251, 18883), (252, 18886), (253, 18889), (259, 18937), (266, 18994), (289, 19111),

Gene: Kelcole_23 Start: 13023, Stop: 14801, Start Num: 24

Candidate Starts for Kelcole_23:

(Start: 24 @13023 has 12 MA's), (28, 13035), (64, 13377), (84, 13494), (108, 13620), (129, 13734), (136, 13764), (161, 13977), (179, 14058), (181, 14067), (191, 14145), (193, 14151), (194, 14166), (217, 14310), (222, 14352), (230, 14403), (250, 14550), (252, 14559), (275, 14709), (279, 14721),

Gene: Kewpiedoll_21 Start: 15069, Stop: 16979, Start Num: 17

Candidate Starts for Kewpiedoll_21:

(Start: 17 @15069 has 148 MA's), (47, 15300), (51, 15318), (76, 15588), (102, 15726), (111, 15795), (120, 15828), (150, 16053), (151, 16059), (156, 16122), (159, 16134), (160, 16137), (162, 16149), (181, 16236), (197, 16359), (201, 16395), (224, 16539), (232, 16590), (251, 16734), (252, 16737), (253, 16740), (259, 16788), (266, 16845),

Gene: KimmyK_21 Start: 12512, Stop: 14410, Start Num: 17

Candidate Starts for KimmyK_21:

(Start: 17 @12512 has 148 MA's), (48, 12749), (51, 12761), (54, 12815), (109, 13208), (113, 13241), (120, 13265), (151, 13505), (174, 13634), (176, 13646), (191, 13763), (197, 13808), (198, 13811), (210, 13871), (212, 13889), (218, 13934), (220, 13946), (221, 13949), (223, 13970), (238, 14069), (243, 14108), (252, 14168), (262, 14240), (265, 14270), (269, 14294), (276, 14321), (277, 14324), (281, 14351),

Gene: Kowalski_26 Start: 13795, Stop: 15651, Start Num: 17

Candidate Starts for Kowalski_26:

(Start: 17 @13795 has 148 MA's), (88, 14371), (98, 14416), (104, 14452), (115, 14521), (122, 14542), (123, 14545), (126, 14575), (143, 14695), (153, 14776), (173, 14890), (176, 14917), (204, 15106), (239, 15346), (240, 15361), (253, 15409), (256, 15439), (258, 15451), (261, 15466), (263, 15481), (269, 15532), (274, 15550), (279, 15568),

Gene: Kozie_23 Start: 13272, Stop: 15131, Start Num: 17

Candidate Starts for Kozie_23:

(Start: 17 @13272 has 148 MA's), (75, 13767), (104, 13923), (122, 14013), (151, 14220), (173, 14355), (182, 14427), (186, 14472), (197, 14544), (202, 14565), (204, 14571), (214, 14628), (221, 14682), (226, 14721), (227, 14727), (234, 14766), (237, 14799), (279, 15045),

Gene: Kroos_21 Start: 15314, Stop: 17227, Start Num: 17

Candidate Starts for Kroos_21:

(Start: 17 @15314 has 148 MA's), (33, 15449), (47, 15545), (76, 15833), (92, 15902), (98, 15950), (102, 15974), (107, 16010), (111, 16043), (117, 16067), (136, 16160), (150, 16301), (151, 16307), (156, 16370), (159, 16382), (160, 16385), (162, 16397), (181, 16484), (197, 16607), (201, 16643), (209, 16676), (218, 16748), (224, 16787), (232, 16838), (250, 16976), (251, 16982), (252, 16985), (259, 17036), (266, 17093), (267, 17105), (270, 17114),

Gene: Kwekel_20 Start: 13711, Stop: 15594, Start Num: 17

Candidate Starts for Kwekel_20:

(16, 13702), (Start: 17 @13711 has 148 MA's), (47, 13945), (51, 13963), (79, 14233), (98, 14329), (135, 14536), (142, 14614), (150, 14677), (151, 14683), (156, 14746), (159, 14758), (160, 14761), (178, 14845), (181, 14860), (201, 15013), (218, 15118), (232, 15208), (242, 15289), (250, 15346), (261, 15415), (262, 15427), (266, 15463), (280, 15529),

Gene: Kwobi_21 Start: 15290, Stop: 17209, Start Num: 17

Candidate Starts for Kwobi_21:

(Start: 17 @15290 has 148 MA's), (33, 15425), (47, 15521), (76, 15815), (92, 15884), (98, 15932), (102, 15956), (107, 15992), (111, 16025), (117, 16049), (136, 16142), (150, 16283), (151, 16289), (156, 16352), (159, 16364), (160, 16367), (162, 16379), (181, 16466), (197, 16589), (201, 16625), (209, 16658), (218, 16730), (224, 16769), (232, 16820), (250, 16958), (251, 16964), (252, 16967), (259, 17018), (266, 17075), (267, 17087), (270, 17096),

Gene: Kyva_27 Start: 14519, Stop: 16351, Start Num: 25

Candidate Starts for Kyva_27:

(Start: 25 @14519 has 26 MA's), (28, 14528), (37, 14627), (73, 14960), (106, 15161), (109, 15176), (122, 15236), (129, 15284), (136, 15314), (148, 15431), (149, 15437), (161, 15530), (179, 15611), (193, 15704), (194, 15719), (200, 15767), (206, 15791), (215, 15839), (217, 15863), (223, 15911), (230, 15953), (249, 16088), (252, 16109), (258, 16154), (261, 16169), (270, 16238), (279, 16271),

Gene: Leaf_60 Start: 29654, Stop: 31561, Start Num: 17

Candidate Starts for Leaf_60:

(1, 29438), (4, 29510), (7, 29543), (8, 29546), (Start: 17 @29654 has 148 MA's), (56, 29993), (67, 30131), (72, 30161), (91, 30269), (101, 30314), (164, 30755), (192, 30929), (196, 30959), (197, 30971), (204, 30998), (214, 31055), (217, 31082), (221, 31109), (225, 31136), (228, 31160), (234, 31202), (236, 31232), (239, 31247), (262, 31391), (277, 31475), (284, 31517),

Gene: Lennon_22 Start: 16336, Stop: 18231, Start Num: 17

Candidate Starts for Lennon_22:

(Start: 17 @16336 has 148 MA's), (47, 16567), (51, 16585), (76, 16840), (102, 16978), (111, 17047), (120, 17080), (150, 17305), (151, 17311), (156, 17374), (159, 17386), (160, 17389), (162, 17401), (181, 17488), (197, 17611), (201, 17647), (224, 17791), (232, 17842), (251, 17986), (252, 17989), (253, 17992), (259, 18040), (266, 18097), (289, 18214),

Gene: Leonard_21 Start: 15339, Stop: 17258, Start Num: 17

Candidate Starts for Leonard_21:

(Start: 17 @15339 has 148 MA's), (43, 15540), (57, 15663), (76, 15834), (85, 15879), (92, 15900), (102, 15957), (124, 16083), (133, 16134), (136, 16143), (140, 16194), (142, 16245), (150, 16308), (151, 16314), (156, 16377), (162, 16404), (181, 16491), (208, 16674), (218, 16749), (221, 16764), (224, 16788), (229, 16821), (232, 16839), (239, 16896), (250, 17007), (261, 17076), (262, 17088), (266, 17124), (280, 17190),

Gene: LilHam_18 Start: 13869, Stop: 15788, Start Num: 17

Candidate Starts for LilHam_18:

(Start: 17 @13869 has 148 MA's), (33, 14004), (47, 14100), (76, 14394), (92, 14463), (98, 14511), (102, 14535), (107, 14571), (111, 14604), (117, 14628), (136, 14721), (150, 14862), (151, 14868), (156, 14931), (159, 14943), (160, 14946), (162, 14958), (181, 15045), (197, 15168), (201, 15204), (209, 15237), (218, 15309), (224, 15348), (232, 15399), (251, 15543), (252, 15546), (259, 15597), (266, 15654), (267, 15666), (270, 15675),

Gene: Lilbeanie_18 Start: 10655, Stop: 12583, Start Num: 17

Candidate Starts for Lilbeanie_18:

(13, 10613), (Start: 17 @10655 has 148 MA's), (31, 10754), (45, 10871), (47, 10886), (76, 11204), (121, 11441), (128, 11489), (151, 11672), (180, 11846), (194, 11948), (197, 11972), (220, 12107), (231, 12179), (232, 12185), (245, 12287), (246, 12299), (257, 12377), (266, 12443), (269, 12461), (276, 12488),

Gene: LittleFortune_28 Start: 14042, Stop: 15901, Start Num: 17

Candidate Starts for LittleFortune_28:

(Start: 17 @14042 has 148 MA's), (88, 14621), (98, 14666), (104, 14702), (115, 14771), (122, 14792), (123, 14795), (126, 14825), (143, 14945), (153, 15026), (173, 15140), (176, 15167), (204, 15356), (222, 15482), (239, 15596), (240, 15611), (253, 15659), (256, 15689), (261, 15716), (263, 15731), (269, 15782), (274, 15800), (279, 15818),

Gene: Llemily_25 Start: 13503, Stop: 15335, Start Num: 25

Candidate Starts for Llemily_25:

(Start: 25 @13503 has 26 MA's), (28, 13512), (37, 13611), (77, 13977), (106, 14145), (109, 14160), (122, 14220), (129, 14268), (130, 14274), (136, 14298), (148, 14415), (149, 14421), (161, 14514), (179, 14595), (193, 14688), (194, 14703), (200, 14751), (206, 14775), (215, 14823), (217, 14847), (223, 14895), (230, 14937), (249, 15072), (250, 15084), (252, 15093), (261, 15153), (270, 15222), (279, 15255),

Gene: Lonelysoil_24 Start: 13748, Stop: 15580, Start Num: 25

Candidate Starts for Lonelysoil_24:

(Start: 25 @13748 has 26 MA's), (28, 13757), (37, 13856), (77, 14222), (106, 14390), (109, 14405), (122, 14465), (129, 14513), (130, 14519), (136, 14543), (148, 14660), (149, 14666), (161, 14759), (179, 14840), (193, 14933), (194, 14948), (200, 14996), (206, 15020), (215, 15068), (217, 15092), (223, 15140), (230, 15182), (249, 15317), (250, 15329), (252, 15338), (261, 15398), (270, 15467), (279, 15500),

Gene: Love_22 Start: 15199, Stop: 17106, Start Num: 17

Candidate Starts for Love_22:

(Start: 17 @15199 has 148 MA's), (47, 15430), (51, 15448), (76, 15715), (102, 15853), (111, 15922), (120, 15955), (150, 16180), (151, 16186), (156, 16249), (159, 16261), (160, 16264), (162, 16276), (181, 16363), (187, 16417), (197, 16486), (201, 16522), (224, 16666), (232, 16717), (251, 16861), (252, 16864), (253, 16867), (259, 16915), (266, 16972),

Gene: Maih_13 Start: 13750, Stop: 15444, Start Num: 23

Candidate Starts for Maih_13:

(Start: 23 @13750 has 11 MA's), (Start: 25 @13759 has 26 MA's), (39, 13861), (58, 13993), (59, 14017), (66, 14113), (77, 14194), (84, 14239), (86, 14248), (94, 14281), (98, 14308), (99, 14311), (117, 14359), (125, 14392), (126, 14395), (134, 14434), (136, 14440), (143, 14518), (146, 14551), (157, 14641), (181, 14731), (189, 14797), (191, 14809), (192, 14812), (210, 14929), (216, 14962), (220, 15004), (236, 15121), (252, 15217), (260, 15274), (268, 15337), (270, 15343), (279, 15376), (282, 15400), (287, 15418), (291, 15433),

Gene: Marcie_29 Start: 13698, Stop: 15482, Start Num: 24

Candidate Starts for Marcie_29:

(Start: 24 @13698 has 12 MA's), (28, 13710), (64, 14058), (84, 14175), (108, 14301), (122, 14367), (129, 14415), (136, 14445), (161, 14658), (179, 14739), (181, 14748), (191, 14826), (193, 14832), (194, 14847), (217, 14991), (222, 15033), (230, 15084), (250, 15231), (252, 15240), (279, 15402),

Gene: Margaery_22 Start: 13234, Stop: 15096, Start Num: 17

Candidate Starts for Margaery_22:

(10, 13135), (Start: 17 @13234 has 148 MA's), (60, 13588), (88, 13807), (96, 13846), (104, 13888), (122, 13978), (135, 14047), (152, 14200), (173, 14320), (186, 14437), (204, 14536), (207, 14551), (214, 14593), (221, 14647), (227, 14692), (229, 14704), (232, 14719), (234, 14731), (250, 14839), (254, 14872), (263, 14923), (273, 14989),

Gene: Mashley_23 Start: 14088, Stop: 15914, Start Num: 25

Candidate Starts for Mashley_23:

(Start: 25 @14088 has 26 MA's), (28, 14097), (37, 14196), (73, 14523), (106, 14724), (109, 14739), (122, 14799), (129, 14847), (136, 14877), (148, 14994), (149, 15000), (161, 15093), (179, 15174), (193, 15267), (194, 15282), (200, 15330), (206, 15354), (215, 15402), (217, 15426), (223, 15474), (230, 15516), (249, 15651), (252, 15672), (261, 15732), (270, 15801), (279, 15834),

Gene: Matzah_23 Start: 13253, Stop: 15118, Start Num: 17

Candidate Starts for Matzah_23:

(Start: 17 @13253 has 148 MA's), (60, 13607), (70, 13733), (96, 13871), (104, 13913), (119, 13994), (122, 14003), (132, 14060), (135, 14072), (150, 14204), (152, 14225), (153, 14231), (173, 14345), (185, 14444), (186, 14462), (204, 14561), (207, 14576), (214, 14618), (221, 14672), (222, 14687), (229, 14729), (232, 14744), (234, 14756), (239, 14801), (250, 14864), (254, 14897),

Gene: McKinley_21 Start: 15222, Stop: 17132, Start Num: 17

Candidate Starts for McKinley_21:

(Start: 17 @15222 has 148 MA's), (47, 15453), (51, 15471), (76, 15741), (102, 15879), (111, 15948), (120, 15981), (150, 16206), (151, 16212), (156, 16275), (159, 16287), (160, 16290), (162, 16302), (181, 16389), (197, 16512), (201, 16548), (224, 16692), (232, 16743), (251, 16887), (252, 16890), (253, 16893), (259, 16941), (266, 16998),

Gene: Megan_21 Start: 14855, Stop: 16870, Start Num: 17

Candidate Starts for Megan_21:

(2, 14651), (3, 14660), (5, 14723), (6, 14741), (15, 14843), (Start: 17 @14855 has 148 MA's), (43, 15056), (88, 15434), (98, 15479), (104, 15515), (115, 15584), (122, 15605), (123, 15608), (124, 15623), (143, 15758), (144, 15773), (168, 16007), (170, 16076), (176, 16148), (197, 16310), (198, 16313), (203, 16334), (212, 16388), (221, 16448), (227, 16493), (229, 16505), (237, 16565), (239, 16577), (253, 16640), (256, 16670), (261, 16697), (276, 16790), (277, 16793), (279, 16799), (285, 16838),

Gene: MelBins_22 Start: 15543, Stop: 17459, Start Num: 17

Candidate Starts for MelBins_22:

(Start: 17 @15543 has 148 MA's), (43, 15744), (57, 15867), (76, 16035), (92, 16101), (102, 16158), (133, 16335), (136, 16344), (140, 16395), (142, 16446), (150, 16509), (151, 16515), (156, 16578), (162, 16605), (181, 16692), (208, 16875), (218, 16950), (221, 16965), (224, 16989), (229, 17022), (232, 17040), (239, 17097), (250, 17208), (261, 17277), (262, 17289), (266, 17325), (280, 17391),

Gene: MementoMori_23 Start: 12969, Stop: 14840, Start Num: 17

Candidate Starts for MementoMori_23:

(Start: 17 @12969 has 148 MA's), (70, 13452), (90, 13560), (96, 13590), (104, 13632), (119, 13713), (122, 13722), (132, 13779), (135, 13791), (150, 13923), (152, 13944), (153, 13950), (173, 14064), (185, 14163), (186, 14181), (204, 14280), (207, 14295), (214, 14337), (221, 14391), (222, 14406), (229, 14448), (232, 14463), (234, 14475), (239, 14520), (250, 14583), (254, 14616), (279, 14754),

Gene: Metamorphoo_27 Start: 13469, Stop: 15490, Start Num: 17

Candidate Starts for Metamorphoo_27:

(Start: 17 @13469 has 148 MA's), (88, 14054), (104, 14135), (107, 14159), (115, 14204), (122, 14225), (123, 14228), (143, 14378), (166, 14588), (169, 14636), (171, 14708), (176, 14768), (178, 14792), (197, 14930), (203, 14954), (204, 14957), (221, 15068), (239, 15197), (240, 15212), (242, 15221), (250, 15248), (253, 15260), (256, 15290), (261, 15317), (274, 15401), (279, 15419),

Gene: Mischief19_14 Start: 15652, Stop: 17313, Start Num: 23

Candidate Starts for Mischief19_14:

(Start: 23 @15652 has 11 MA's), (34, 15730), (58, 15895), (61, 15976), (73, 16060), (87, 16147), (95, 16189), (99, 16204), (114, 16243), (116, 16249), (117, 16252), (125, 16285), (143, 16411), (146,

16444), (150, 16465), (155, 16525), (178, 16609), (188, 16684), (191, 16702), (216, 16837), (220, 16879), (236, 16996), (247, 17065), (253, 17095),

Gene: MoontowerMania_19 Start: 14205, Stop: 16112, Start Num: 17

Candidate Starts for MoontowerMania_19:

(Start: 17 @14205 has 148 MA's), (47, 14436), (51, 14454), (76, 14721), (102, 14859), (111, 14928), (120, 14961), (150, 15186), (151, 15192), (156, 15255), (159, 15267), (160, 15270), (162, 15282), (181, 15369), (187, 15423), (197, 15492), (201, 15528), (224, 15672), (232, 15723), (251, 15867), (252, 15870), (253, 15873), (259, 15921), (266, 15978),

Gene: Mutzi_21 Start: 12236, Stop: 14134, Start Num: 17

Candidate Starts for Mutzi_21:

(Start: 17 @12236 has 148 MA's), (48, 12473), (51, 12485), (54, 12539), (109, 12932), (113, 12965), (120, 12989), (151, 13229), (176, 13370), (191, 13487), (197, 13532), (198, 13535), (210, 13595), (218, 13658), (243, 13832), (252, 13892), (253, 13895), (262, 13964), (265, 13994), (269, 14018), (276, 14045), (277, 14048),

Gene: Namago_25 Start: 13649, Stop: 15481, Start Num: 25

Candidate Starts for Namago_25:

(Start: 25 @13649 has 26 MA's), (28, 13658), (37, 13757), (73, 14090), (106, 14291), (109, 14306), (122, 14366), (129, 14414), (136, 14444), (148, 14561), (149, 14567), (161, 14660), (179, 14741), (193, 14834), (194, 14849), (200, 14897), (206, 14921), (215, 14969), (217, 14993), (223, 15041), (230, 15083), (249, 15218), (252, 15239), (258, 15284), (261, 15299), (270, 15368), (279, 15401),

Gene: Natkenzie_21 Start: 15527, Stop: 17449, Start Num: 17

Candidate Starts for Natkenzie_21:

(Start: 17 @15527 has 148 MA's), (45, 15743), (47, 15758), (62, 15932), (83, 16070), (85, 16079), (97, 16148), (100, 16154), (107, 16208), (110, 16232), (147, 16484), (150, 16502), (151, 16508), (156, 16571), (159, 16583), (160, 16586), (162, 16598), (181, 16688), (184, 16715), (209, 16874), (219, 16952), (234, 17048), (238, 17084), (250, 17204), (254, 17237), (266, 17321), (276, 17366),

Gene: Nicole72_22 Start: 15232, Stop: 17253, Start Num: 17

Candidate Starts for Nicole72_22:

(15, 15220), (Start: 17 @15232 has 148 MA's), (43, 15433), (52, 15505), (88, 15817), (98, 15862), (104, 15898), (115, 15967), (122, 15988), (127, 16024), (143, 16141), (149, 16186), (151, 16201), (176, 16531), (197, 16693), (198, 16696), (203, 16717), (221, 16831), (229, 16888), (237, 16948), (239, 16960), (253, 17023), (256, 17053), (276, 17173), (277, 17176), (279, 17182), (285, 17221),

Gene: Nike_25 Start: 14547, Stop: 16379, Start Num: 25

Candidate Starts for Nike_25:

(Start: 25 @14547 has 26 MA's), (28, 14556), (37, 14655), (77, 15021), (106, 15189), (109, 15204), (122, 15264), (129, 15312), (130, 15318), (136, 15342), (148, 15459), (149, 15465), (161, 15558), (179, 15639), (193, 15732), (194, 15747), (200, 15795), (206, 15819), (215, 15867), (217, 15891), (223, 15939), (230, 15981), (249, 16116), (250, 16128), (252, 16137), (261, 16197), (270, 16266), (279, 16299),

Gene: NoodlelyBoi_27 Start: 14134, Stop: 15984, Start Num: 17

Candidate Starts for NoodlelyBoi_27:

(Start: 17 @14134 has 148 MA's), (88, 14710), (98, 14755), (104, 14791), (115, 14860), (122, 14881), (123, 14884), (126, 14914), (143, 15034), (173, 15229), (176, 15256), (182, 15301), (204, 15445), (227, 15601), (239, 15685), (253, 15748), (256, 15778), (258, 15790), (261, 15805), (263, 15820), (269, 15871), (274, 15889),

Gene: Nordenberg_15 Start: 13519, Stop: 15426, Start Num: 17

Candidate Starts for Nordenberg_15:

(Start: 17 @13519 has 148 MA's), (47, 13750), (51, 13768), (76, 14035), (102, 14173), (111, 14242), (120, 14275), (150, 14500), (151, 14506), (156, 14569), (159, 14581), (160, 14584), (162, 14596), (181, 14683), (197, 14806), (201, 14842), (224, 14986), (232, 15037), (250, 15175), (251, 15181), (252, 15184), (253, 15187), (259, 15235), (266, 15292),

Gene: Nubi_19 Start: 11864, Stop: 13762, Start Num: 17

Candidate Starts for Nubi_19:

(Start: 17 @11864 has 148 MA's), (48, 12101), (51, 12113), (54, 12167), (79, 12398), (109, 12560), (113, 12593), (151, 12857), (174, 12986), (176, 12998), (191, 13115), (197, 13160), (198, 13163), (210, 13223), (212, 13241), (216, 13256), (218, 13286), (220, 13298), (221, 13301), (238, 13421), (243, 13460), (252, 13520), (262, 13592), (265, 13622), (269, 13646), (276, 13673), (277, 13676), (281, 13703),

Gene: OneinaGillian_24 Start: 12673, Stop: 14451, Start Num: 24

Candidate Starts for OneinaGillian_24:

(Start: 24 @12673 has 12 MA's), (28, 12685), (64, 13027), (84, 13144), (108, 13270), (129, 13384), (136, 13414), (161, 13627), (179, 13708), (181, 13717), (191, 13795), (193, 13801), (194, 13816), (217, 13960), (222, 14002), (230, 14053), (250, 14200), (252, 14209), (275, 14359), (279, 14371), (288, 14431),

Gene: Onika_26 Start: 13769, Stop: 15625, Start Num: 17

Candidate Starts for Onika_26:

(Start: 17 @13769 has 148 MA's), (88, 14345), (98, 14390), (104, 14426), (115, 14495), (122, 14516), (123, 14519), (126, 14549), (143, 14669), (153, 14750), (173, 14864), (176, 14891), (204, 15080), (222, 15206), (239, 15320), (240, 15335), (253, 15383), (256, 15413), (258, 15425), (261, 15440), (263, 15455), (269, 15506), (274, 15524), (279, 15542),

Gene: Paries_21 Start: 14887, Stop: 16794, Start Num: 17

Candidate Starts for Paries_21:

(Start: 17 @14887 has 148 MA's), (47, 15118), (51, 15136), (76, 15403), (102, 15541), (111, 15610), (120, 15643), (150, 15868), (151, 15874), (156, 15937), (159, 15949), (160, 15952), (162, 15964), (181, 16051), (187, 16105), (197, 16174), (201, 16210), (224, 16354), (232, 16405), (251, 16549), (252, 16552), (253, 16555), (259, 16603), (266, 16660),

Gene: Paschalis_26 Start: 13783, Stop: 15639, Start Num: 17

Candidate Starts for Paschalis_26:

(Start: 17 @13783 has 148 MA's), (88, 14359), (98, 14404), (104, 14440), (115, 14509), (122, 14530), (123, 14533), (126, 14563), (143, 14683), (153, 14764), (173, 14878), (176, 14905), (204, 15094), (239, 15334), (240, 15349), (253, 15397), (256, 15427), (258, 15439), (261, 15454), (263, 15469), (269, 15520), (274, 15538), (279, 15556),

Gene: Pepe25_23 Start: 13010, Stop: 14788, Start Num: 24

Candidate Starts for Pepe25_23:

(Start: 24 @13010 has 12 MA's), (28, 13022), (64, 13367), (84, 13481), (108, 13607), (122, 13673), (129, 13721), (136, 13751), (161, 13964), (179, 14045), (181, 14054), (191, 14132), (193, 14138), (194, 14153), (217, 14297), (222, 14339), (230, 14390), (250, 14537), (252, 14546), (275, 14696), (279, 14708),

Gene: Phabia_25 Start: 13921, Stop: 15753, Start Num: 25

Candidate Starts for Phabia_25:

(Start: 25 @13921 has 26 MA's), (28, 13930), (37, 14029), (77, 14395), (106, 14563), (109, 14578), (122, 14638), (129, 14686), (130, 14692), (136, 14716), (148, 14833), (149, 14839), (161, 14932), (179, 15013), (193, 15106), (194, 15121), (200, 15169), (206, 15193), (215, 15241), (217, 15265), (223, 15313), (230, 15355), (249, 15490), (250, 15502), (252, 15511), (261, 15571), (270, 15640), (279, 15673),

Gene: Phauci_14 Start: 11906, Stop: 13825, Start Num: 17

Candidate Starts for Phauci_14:

(Start: 17 @11906 has 148 MA's), (43, 12107), (57, 12230), (76, 12401), (85, 12446), (92, 12467), (102, 12524), (133, 12701), (136, 12710), (140, 12761), (142, 12812), (150, 12875), (151, 12881), (156, 12944), (162, 12971), (181, 13058), (208, 13241), (218, 13316), (221, 13331), (224, 13355), (229, 13388), (232, 13406), (239, 13463), (250, 13574), (261, 13643), (262, 13655), (266, 13691), (280, 13757),

Gene: Phinally_21 Start: 15336, Stop: 17255, Start Num: 17

Candidate Starts for Phinally_21:

(Start: 17 @15336 has 148 MA's), (43, 15537), (57, 15660), (76, 15831), (85, 15876), (92, 15897), (102, 15954), (124, 16080), (133, 16131), (136, 16140), (140, 16191), (142, 16242), (150, 16305), (151, 16311), (156, 16374), (162, 16401), (181, 16488), (208, 16671), (218, 16746), (221, 16761), (224, 16785), (229, 16818), (232, 16836), (239, 16893), (250, 17004), (261, 17073), (262, 17085), (266, 17121), (280, 17187),

Gene: Phinky_31 Start: 14788, Stop: 16635, Start Num: 24

Candidate Starts for Phinky_31:

(Start: 24 @14788 has 12 MA's), (28, 14797), (31, 14833), (53, 15022), (106, 15442), (110, 15469), (129, 15565), (136, 15595), (161, 15811), (175, 15853), (178, 15886), (179, 15892), (181, 15901), (186, 15952), (193, 15985), (194, 16000), (217, 16144), (222, 16186), (223, 16192), (230, 16237), (239, 16303), (249, 16372), (250, 16384), (252, 16393), (261, 16453), (277, 16549), (279, 16555),

Gene: Phlop_19 Start: 11937, Stop: 13826, Start Num: 17

Candidate Starts for Phlop_19:

(Start: 17 @11937 has 148 MA's), (48, 12174), (51, 12186), (54, 12240), (79, 12465), (109, 12627), (113, 12660), (120, 12684), (151, 12912), (158, 12984), (174, 13041), (191, 13170), (197, 13215), (198, 13218), (218, 13341), (220, 13353), (229, 13413), (250, 13566), (252, 13575), (262, 13647), (265, 13677), (276, 13728), (280, 13749), (284, 13773),

Gene: Phorgeous_26 Start: 13636, Stop: 15492, Start Num: 17

Candidate Starts for Phorgeous_26:

(Start: 17 @13636 has 148 MA's), (88, 14212), (98, 14257), (104, 14293), (115, 14362), (122, 14383), (123, 14386), (126, 14416), (143, 14536), (153, 14617), (173, 14731), (176, 14758), (204, 14947), (222, 15073), (239, 15187), (240, 15202), (253, 15250), (256, 15280), (258, 15292), (261, 15307), (263, 15322), (269, 15373), (274, 15391), (279, 15409),

Gene: Phrancesco_27 Start: 13914, Stop: 15770, Start Num: 17

Candidate Starts for Phrancesco_27:

(Start: 17 @13914 has 148 MA's), (88, 14490), (98, 14535), (104, 14571), (115, 14640), (122, 14661), (123, 14664), (126, 14694), (143, 14814), (153, 14895), (173, 15009), (176, 15036), (204, 15225), (222, 15351), (226, 15375), (239, 15465), (240, 15480), (253, 15528), (256, 15558), (258, 15570), (261, 15585), (263, 15600), (269, 15651), (274, 15669), (279, 15687),

Gene: PierreOrion_27 Start: 13938, Stop: 15794, Start Num: 17

Candidate Starts for PierreOrion_27:

(Start: 17 @13938 has 148 MA's), (88, 14514), (98, 14559), (104, 14595), (115, 14664), (122, 14685), (123, 14688), (126, 14718), (143, 14838), (153, 14919), (173, 15033), (176, 15060), (204, 15249), (222, 15375), (239, 15489), (240, 15504), (253, 15552), (256, 15582), (258, 15594), (261, 15609), (263, 15624), (269, 15675), (274, 15693), (279, 15711),

Gene: PinkCoffee_21 Start: 12521, Stop: 14419, Start Num: 17

Candidate Starts for PinkCoffee_21:

(Start: 17 @12521 has 148 MA's), (48, 12758), (51, 12770), (54, 12824), (109, 13217), (113, 13250), (120, 13274), (151, 13514), (174, 13643), (176, 13655), (191, 13772), (197, 13817), (198, 13820), (210, 13880), (212, 13898), (218, 13943), (220, 13955), (221, 13958), (223, 13979), (238, 14078), (243, 14117), (252, 14177), (262, 14249), (265, 14279), (269, 14303), (276, 14330), (277, 14333), (281, 14360),

Gene: PiperSansNom_27 Start: 14090, Stop: 15946, Start Num: 17

Candidate Starts for PiperSansNom_27:

(Start: 17 @14090 has 148 MA's), (88, 14666), (98, 14711), (104, 14747), (115, 14816), (122, 14837), (123, 14840), (126, 14870), (143, 14990), (153, 15071), (173, 15185), (176, 15212), (204, 15401), (222, 15527), (239, 15641), (240, 15656), (253, 15704), (256, 15734), (258, 15746), (261, 15761), (263, 15776), (269, 15827), (274, 15845), (279, 15863),

Gene: Piperis_27 Start: 13760, Stop: 15616, Start Num: 17

Candidate Starts for Piperis_27:

(Start: 17 @13760 has 148 MA's), (88, 14336), (98, 14381), (104, 14417), (115, 14486), (122, 14507), (123, 14510), (126, 14540), (143, 14660), (153, 14741), (173, 14855), (176, 14882), (204, 15071), (222, 15197), (239, 15311), (240, 15326), (253, 15374), (256, 15404), (258, 15416), (261, 15431), (263, 15446), (269, 15497), (274, 15515), (279, 15533),

Gene: Portcullis_19 Start: 11883, Stop: 13769, Start Num: 17

Candidate Starts for Portcullis_19:

(Start: 17 @11883 has 148 MA's), (48, 12120), (51, 12132), (54, 12186), (109, 12567), (113, 12600), (121, 12627), (174, 12993), (176, 13005), (191, 13122), (197, 13167), (198, 13170), (210, 13230), (212, 13248), (218, 13293), (220, 13305), (221, 13308), (238, 13428), (243, 13467), (252, 13527), (262, 13599), (265, 13629), (269, 13653), (276, 13680), (277, 13683), (281, 13710),

Gene: Pulchra_28 Start: 14160, Stop: 16016, Start Num: 17

Candidate Starts for Pulchra_28:

(Start: 17 @14160 has 148 MA's), (88, 14736), (98, 14781), (104, 14817), (115, 14886), (122, 14907), (123, 14910), (126, 14940), (143, 15060), (153, 15141), (173, 15255), (176, 15282), (204, 15471), (222, 15597), (239, 15711), (240, 15726), (253, 15774), (256, 15804), (258, 15816), (261, 15831), (263, 15846), (269, 15897), (274, 15915), (279, 15933),

Gene: PullumCavea_19 Start: 11937, Stop: 13826, Start Num: 17

Candidate Starts for PullumCavea_19:

(Start: 17 @11937 has 148 MA's), (48, 12174), (51, 12186), (54, 12240), (79, 12465), (109, 12627), (113, 12660), (120, 12684), (151, 12912), (158, 12984), (174, 13041), (191, 13170), (197, 13215), (198, 13218), (218, 13341), (220, 13353), (229, 13413), (250, 13566), (252, 13575), (262, 13647), (265, 13677), (276, 13728), (280, 13749), (284, 13773),

Gene: Quammi_23 Start: 13492, Stop: 15324, Start Num: 25

Candidate Starts for Quammi_23:

(Start: 25 @13492 has 26 MA's), (28, 13501), (37, 13600), (77, 13966), (106, 14134), (109, 14149), (122, 14209), (129, 14257), (130, 14263), (136, 14287), (148, 14404), (149, 14410), (161, 14503), (179, 14584), (193, 14677), (194, 14692), (200, 14740), (206, 14764), (215, 14812), (217, 14836),

(223, 14884), (230, 14926), (249, 15061), (250, 15073), (252, 15082), (261, 15142), (270, 15211), (279, 15244),

Gene: Quhwah_30 Start: 14383, Stop: 16242, Start Num: 17

Candidate Starts for Quhwah_30:

(Start: 17 @14383 has 148 MA's), (88, 14962), (98, 15007), (104, 15043), (115, 15112), (122, 15133), (123, 15136), (126, 15166), (143, 15286), (153, 15367), (173, 15481), (176, 15508), (204, 15697), (222, 15823), (239, 15937), (240, 15952), (253, 16000), (256, 16030), (258, 16042), (261, 16057), (263, 16072), (269, 16123), (274, 16141), (279, 16159),

Gene: RainyPolka_13 Start: 13679, Stop: 15376, Start Num: 23

Candidate Starts for RainyPolka_13:

(Start: 23 @13679 has 11 MA's), (Start: 25 @13688 has 26 MA's), (34, 13757), (37, 13775), (39, 13790), (58, 13922), (59, 13946), (66, 14045), (77, 14126), (86, 14180), (93, 14210), (94, 14213), (98, 14240), (99, 14243), (117, 14291), (136, 14372), (141, 14414), (146, 14483), (157, 14573), (181, 14663), (189, 14729), (191, 14741), (192, 14744), (200, 14810), (216, 14894), (220, 14936), (229, 14996), (252, 15149), (260, 15206), (267, 15266), (268, 15269), (279, 15308), (282, 15332), (287, 15350),

Gene: Ramiel05_26 Start: 13795, Stop: 15651, Start Num: 17

Candidate Starts for Ramiel05_26:

(Start: 17 @13795 has 148 MA's), (88, 14371), (98, 14416), (104, 14452), (115, 14521), (122, 14542), (123, 14545), (126, 14575), (143, 14695), (153, 14776), (173, 14890), (176, 14917), (204, 15106), (239, 15346), (240, 15361), (253, 15409), (256, 15439), (258, 15451), (261, 15466), (263, 15481), (269, 15532), (274, 15550), (279, 15568),

Gene: Rasputia_56 Start: 29361, Stop: 31292, Start Num: 17

Candidate Starts for Rasputia_56:

(Start: 17 @29361 has 148 MA's), (38, 29544), (50, 29628), (56, 29697), (72, 29895), (74, 29904), (91, 30003), (101, 30048), (123, 30165), (192, 30663), (196, 30693), (197, 30705), (204, 30732), (211, 30777), (217, 30816), (222, 30858), (250, 31044), (284, 31251),

Gene: Ribeye_21 Start: 15768, Stop: 17690, Start Num: 17

Candidate Starts for Ribeye_21:

(Start: 17 @15768 has 148 MA's), (47, 15999), (76, 16296), (92, 16365), (98, 16413), (102, 16437), (111, 16506), (117, 16530), (136, 16623), (150, 16764), (151, 16770), (156, 16833), (159, 16845), (160, 16848), (162, 16860), (181, 16947), (197, 17070), (201, 17106), (209, 17139), (218, 17211), (224, 17250), (232, 17301), (250, 17439), (251, 17445), (252, 17448), (259, 17499), (266, 17556), (267, 17568), (270, 17577),

Gene: RiverRaider_22 Start: 14172, Stop: 16070, Start Num: 17

Candidate Starts for RiverRaider_22:

(11, 14094), (Start: 17 @14172 has 148 MA's), (47, 14403), (51, 14421), (57, 14496), (76, 14670), (92, 14751), (102, 14817), (111, 14886), (150, 15144), (151, 15150), (156, 15213), (159, 15225), (160, 15228), (162, 15240), (181, 15327), (197, 15450), (201, 15486), (218, 15591), (224, 15630), (232, 15681), (235, 15714), (251, 15825), (252, 15828), (253, 15831), (254, 15852), (259, 15879), (264, 15906), (266, 15936), (267, 15948),

Gene: RoadKill_18 Start: 13249, Stop: 15138, Start Num: 17

Candidate Starts for RoadKill_18:

(16, 13240), (Start: 17 @13249 has 148 MA's), (27, 13315), (47, 13483), (51, 13501), (79, 13774), (98, 13870), (135, 14077), (142, 14155), (151, 14224), (156, 14287), (159, 14299), (160, 14302), (178, 14386), (181, 14401), (194, 14500), (201, 14554), (218, 14659), (232, 14749), (242, 14830), (250,

14887), (253, 14899), (261, 14956), (262, 14968), (266, 15004), (280, 15070),

Gene: RobinRose_26 Start: 13174, Stop: 14952, Start Num: 24

Candidate Starts for RobinRose_26:

(Start: 24 @13174 has 12 MA's), (28, 13186), (64, 13528), (84, 13645), (108, 13771), (129, 13885), (136, 13915), (161, 14128), (179, 14209), (181, 14218), (191, 14296), (193, 14302), (194, 14317), (217, 14461), (222, 14503), (230, 14554), (250, 14701), (252, 14710), (275, 14860), (279, 14872),

Gene: RobsFeet_28 Start: 13750, Stop: 15771, Start Num: 17

Candidate Starts for RobsFeet_28:

(Start: 17 @13750 has 148 MA's), (88, 14335), (104, 14416), (107, 14440), (115, 14485), (122, 14506), (123, 14509), (143, 14659), (169, 14917), (171, 14989), (176, 15049), (178, 15073), (197, 15211), (203, 15235), (204, 15238), (221, 15349), (239, 15478), (240, 15493), (242, 15502), (250, 15529), (253, 15541), (256, 15571), (261, 15598), (279, 15700),

Gene: Rofo_20 Start: 15139, Stop: 17046, Start Num: 17

Candidate Starts for Rofo_20:

(Start: 17 @15139 has 148 MA's), (47, 15370), (51, 15388), (76, 15655), (102, 15793), (111, 15862), (120, 15895), (150, 16120), (151, 16126), (156, 16189), (159, 16201), (160, 16204), (162, 16216), (197, 16426), (201, 16462), (224, 16606), (232, 16657), (251, 16801), (252, 16804), (253, 16807), (259, 16855), (266, 16912),

Gene: RogerDodger_22 Start: 12733, Stop: 14619, Start Num: 17

Candidate Starts for RogerDodger_22:

(Start: 17 @12733 has 148 MA's), (48, 12970), (51, 12982), (54, 13036), (79, 13258), (109, 13420), (113, 13453), (151, 13705), (158, 13777), (174, 13834), (176, 13846), (191, 13963), (197, 14008), (198, 14011), (218, 14134), (220, 14146), (229, 14206), (250, 14359), (252, 14368), (262, 14440), (265, 14470), (280, 14542), (284, 14566),

Gene: Romm_26 Start: 13174, Stop: 14952, Start Num: 24

Candidate Starts for Romm_26:

(Start: 24 @13174 has 12 MA's), (28, 13186), (64, 13528), (84, 13645), (108, 13771), (129, 13885), (136, 13915), (161, 14128), (179, 14209), (181, 14218), (191, 14296), (193, 14302), (194, 14317), (217, 14461), (222, 14503), (230, 14554), (250, 14701), (252, 14710), (275, 14860), (279, 14872),

Gene: Rowlf_21 Start: 13250, Stop: 15082, Start Num: 25

Candidate Starts for Rowlf_21:

(Start: 25 @13250 has 26 MA's), (28, 13259), (37, 13358), (77, 13724), (106, 13892), (109, 13907), (122, 13967), (129, 14015), (130, 14021), (136, 14045), (148, 14162), (149, 14168), (161, 14261), (179, 14342), (193, 14435), (194, 14450), (200, 14498), (206, 14522), (215, 14570), (217, 14594), (223, 14642), (230, 14684), (249, 14819), (250, 14831), (252, 14840), (261, 14900), (270, 14969), (279, 15002),

Gene: RubyRalph_27 Start: 13767, Stop: 15596, Start Num: 24

Candidate Starts for RubyRalph_27:

(Start: 24 @13767 has 12 MA's), (28, 13779), (42, 13908), (64, 14136), (65, 14154), (93, 14313), (106, 14397), (122, 14475), (129, 14523), (136, 14553), (147, 14667), (161, 14769), (175, 14811), (179, 14850), (181, 14859), (193, 14943), (194, 14958), (215, 15078), (217, 15102), (222, 15144), (223, 15150), (230, 15192), (249, 15327), (252, 15348), (254, 15372), (257, 15390), (261, 15408), (279, 15510),

Gene: Rudy_23 Start: 13492, Stop: 15324, Start Num: 25

Candidate Starts for Rudy_23:

(Start: 25 @13492 has 26 MA's), (28, 13501), (37, 13600), (77, 13966), (106, 14134), (109, 14149), (122, 14209), (129, 14257), (130, 14263), (136, 14287), (148, 14404), (149, 14410), (161, 14503), (179, 14584), (193, 14677), (194, 14692), (200, 14740), (206, 14764), (215, 14812), (217, 14836), (223, 14884), (230, 14926), (249, 15061), (250, 15073), (252, 15082), (261, 15142), (270, 15211), (279, 15244),

Gene: SadLad_29 Start: 14704, Stop: 16533, Start Num: 24

Candidate Starts for SadLad_29:

(Start: 24 @14704 has 12 MA's), (28, 14716), (42, 14845), (64, 15073), (65, 15091), (93, 15250), (106, 15334), (122, 15412), (129, 15460), (136, 15490), (147, 15604), (161, 15706), (175, 15748), (179, 15787), (193, 15880), (194, 15895), (215, 16015), (217, 16039), (222, 16081), (223, 16087), (230, 16129), (249, 16264), (252, 16285), (254, 16309), (257, 16327), (261, 16345), (279, 16447),

Gene: Salete_13 Start: 13751, Stop: 15445, Start Num: 23

Candidate Starts for Salete_13:

(Start: 23 @13751 has 11 MA's), (Start: 25 @13760 has 26 MA's), (39, 13862), (58, 13994), (59, 14018), (66, 14114), (77, 14195), (84, 14240), (86, 14249), (94, 14282), (98, 14309), (99, 14312), (117, 14360), (125, 14393), (126, 14396), (134, 14435), (136, 14441), (143, 14519), (146, 14552), (157, 14642), (181, 14732), (189, 14798), (191, 14810), (192, 14813), (210, 14930), (216, 14963), (220, 15005), (236, 15122), (252, 15218), (260, 15275), (268, 15338), (270, 15344), (279, 15377), (282, 15401), (287, 15419), (291, 15434),

Gene: SallyK_26 Start: 14644, Stop: 16470, Start Num: 25

Candidate Starts for SallyK_26:

(Start: 25 @14644 has 26 MA's), (28, 14653), (37, 14752), (73, 15079), (106, 15280), (109, 15295), (122, 15355), (129, 15403), (136, 15433), (148, 15550), (149, 15556), (161, 15649), (179, 15730), (193, 15823), (194, 15838), (200, 15886), (206, 15910), (215, 15958), (217, 15982), (223, 16030), (230, 16072), (249, 16207), (252, 16228), (258, 16273), (261, 16288), (270, 16357), (279, 16390),

Gene: Salvador_19 Start: 11842, Stop: 13740, Start Num: 17

Candidate Starts for Salvador_19:

(Start: 17 @11842 has 148 MA's), (48, 12079), (51, 12091), (54, 12145), (79, 12376), (109, 12538), (113, 12571), (151, 12835), (174, 12964), (176, 12976), (191, 13093), (197, 13138), (198, 13141), (210, 13201), (212, 13219), (216, 13234), (218, 13264), (220, 13276), (221, 13279), (238, 13399), (243, 13438), (252, 13498), (262, 13570), (265, 13600), (269, 13624), (276, 13651), (277, 13654), (281, 13681),

Gene: Sampson_21 Start: 15472, Stop: 17394, Start Num: 17

Candidate Starts for Sampson_21:

(Start: 17 @15472 has 148 MA's), (45, 15688), (47, 15703), (62, 15877), (83, 16015), (85, 16024), (97, 16093), (100, 16099), (107, 16153), (110, 16177), (147, 16429), (150, 16447), (151, 16453), (156, 16516), (159, 16528), (160, 16531), (162, 16543), (181, 16633), (184, 16660), (209, 16819), (219, 16897), (234, 16993), (238, 17029), (250, 17149), (254, 17182), (266, 17266), (276, 17311),

Gene: Sanjuju_18 Start: 14651, Stop: 16558, Start Num: 17

Candidate Starts for Sanjuju_18:

(Start: 17 @14651 has 148 MA's), (47, 14882), (51, 14900), (76, 15167), (102, 15305), (111, 15374), (120, 15407), (150, 15632), (151, 15638), (156, 15701), (159, 15713), (160, 15716), (162, 15728), (181, 15815), (187, 15869), (197, 15938), (201, 15974), (224, 16118), (232, 16169), (251, 16313), (252, 16316), (253, 16319), (259, 16367), (266, 16424),

Gene: Saronaya_20 Start: 14562, Stop: 16469, Start Num: 17

Candidate Starts for Saronaya_20:

(Start: 17 @14562 has 148 MA's), (33, 14697), (47, 14793), (76, 15075), (92, 15144), (98, 15192), (102, 15216), (107, 15252), (111, 15285), (117, 15309), (136, 15402), (150, 15543), (151, 15549), (156, 15612), (159, 15624), (160, 15627), (162, 15639), (181, 15726), (197, 15849), (201, 15885), (218, 15990), (224, 16029), (232, 16080), (250, 16218), (251, 16224), (252, 16227), (259, 16278), (266, 16335), (267, 16347), (270, 16356),

Gene: Savannah_26 Start: 13819, Stop: 15678, Start Num: 17

Candidate Starts for Savannah_26:

(Start: 17 @13819 has 148 MA's), (88, 14398), (98, 14443), (104, 14479), (115, 14548), (122, 14569), (123, 14572), (126, 14602), (143, 14722), (153, 14803), (173, 14917), (176, 14944), (204, 15133), (222, 15259), (239, 15373), (240, 15388), (253, 15436), (256, 15466), (258, 15478), (261, 15493), (263, 15508), (269, 15559), (274, 15577), (279, 15595),

Gene: Savbucketdawg_19 Start: 11635, Stop: 13521, Start Num: 17

Candidate Starts for Savbucketdawg_19:

(Start: 17 @11635 has 148 MA's), (48, 11872), (51, 11884), (54, 11938), (109, 12319), (113, 12352), (121, 12379), (174, 12745), (176, 12757), (191, 12874), (197, 12919), (198, 12922), (210, 12982), (212, 13000), (218, 13045), (220, 13057), (221, 13060), (238, 13180), (243, 13219), (252, 13279), (262, 13351), (265, 13381), (269, 13405), (276, 13432), (277, 13435), (281, 13462),

Gene: SchottB_19 Start: 15551, Stop: 17470, Start Num: 17

Candidate Starts for SchottB_19:

(Start: 17 @15551 has 148 MA's), (33, 15686), (47, 15782), (76, 16076), (92, 16145), (98, 16193), (102, 16217), (107, 16253), (111, 16286), (117, 16310), (136, 16403), (150, 16544), (151, 16550), (156, 16613), (159, 16625), (160, 16628), (162, 16640), (181, 16727), (197, 16850), (201, 16886), (209, 16919), (218, 16991), (224, 17030), (232, 17081), (251, 17225), (252, 17228), (259, 17279), (266, 17336), (267, 17348), (270, 17357),

Gene: Scioto_21 Start: 15527, Stop: 17449, Start Num: 17

Candidate Starts for Scioto_21:

(Start: 17 @15527 has 148 MA's), (45, 15743), (47, 15758), (62, 15932), (83, 16070), (85, 16079), (97, 16148), (100, 16154), (107, 16208), (110, 16232), (147, 16484), (150, 16502), (151, 16508), (156, 16571), (159, 16583), (160, 16586), (162, 16598), (181, 16688), (184, 16715), (209, 16874), (219, 16952), (234, 17048), (238, 17084), (250, 17204), (254, 17237), (266, 17321), (276, 17366),

Gene: Scumberland_28 Start: 14010, Stop: 15866, Start Num: 17

Candidate Starts for Scumberland_28:

(Start: 17 @14010 has 148 MA's), (88, 14586), (98, 14631), (104, 14667), (115, 14736), (122, 14757), (123, 14760), (126, 14790), (143, 14910), (153, 14991), (173, 15105), (176, 15132), (204, 15321), (222, 15447), (239, 15561), (240, 15576), (253, 15624), (256, 15654), (258, 15666), (261, 15681), (263, 15696), (269, 15747), (274, 15765), (279, 15783),

Gene: Sedona_22 Start: 16968, Stop: 18863, Start Num: 17

Candidate Starts for Sedona_22:

(Start: 17 @16968 has 148 MA's), (47, 17199), (51, 17217), (76, 17472), (102, 17610), (111, 17679), (120, 17712), (150, 17937), (151, 17943), (156, 18006), (159, 18018), (160, 18021), (162, 18033), (181, 18120), (197, 18243), (201, 18279), (224, 18423), (232, 18474), (251, 18618), (252, 18621), (253, 18624), (259, 18672), (266, 18729), (289, 18846),

Gene: Selwyn23_28 Start: 13988, Stop: 15844, Start Num: 17

Candidate Starts for Selwyn23_28:

(Start: 17 @13988 has 148 MA's), (88, 14564), (98, 14609), (104, 14645), (115, 14714), (122, 14735), (123, 14738), (126, 14768), (143, 14888), (153, 14969), (173, 15083), (176, 15110), (204, 15299),

(222, 15425), (239, 15539), (240, 15554), (253, 15602), (256, 15632), (258, 15644), (261, 15659),
(263, 15674), (269, 15725), (274, 15743), (279, 15761),

Gene: Shinji_19 Start: 11824, Stop: 13710, Start Num: 17

Candidate Starts for Shinji_19:

(Start: 17 @11824 has 148 MA's), (48, 12061), (51, 12073), (54, 12127), (109, 12508), (113, 12541),
(121, 12568), (174, 12934), (176, 12946), (191, 13063), (197, 13108), (198, 13111), (210, 13171),
(212, 13189), (218, 13234), (220, 13246), (221, 13249), (238, 13369), (243, 13408), (252, 13468),
(262, 13540), (265, 13570), (269, 13594), (276, 13621), (277, 13624), (281, 13651),

Gene: Shivanishola_20 Start: 14945, Stop: 16852, Start Num: 17

Candidate Starts for Shivanishola_20:

(Start: 17 @14945 has 148 MA's), (47, 15176), (51, 15194), (76, 15461), (102, 15599), (111, 15668),
(120, 15701), (150, 15926), (151, 15932), (156, 15995), (159, 16007), (160, 16010), (162, 16022),
(181, 16109), (187, 16163), (197, 16232), (201, 16268), (224, 16412), (232, 16463), (251, 16607),
(252, 16610), (253, 16613), (259, 16661), (266, 16718),

Gene: Shotgun_26 Start: 13617, Stop: 15476, Start Num: 17

Candidate Starts for Shotgun_26:

(Start: 17 @13617 has 148 MA's), (88, 14196), (98, 14241), (104, 14277), (115, 14346), (122, 14367),
(123, 14370), (126, 14400), (143, 14520), (153, 14601), (173, 14715), (176, 14742), (204, 14931),
(222, 15057), (239, 15171), (240, 15186), (253, 15234), (256, 15264), (258, 15276), (261, 15291),
(263, 15306), (269, 15357), (274, 15375), (279, 15393),

Gene: Sillytadpoles_25 Start: 13490, Stop: 15322, Start Num: 25

Candidate Starts for Sillytadpoles_25:

(Start: 25 @13490 has 26 MA's), (28, 13499), (37, 13598), (77, 13964), (106, 14132), (109, 14147),
(122, 14207), (129, 14255), (130, 14261), (136, 14285), (148, 14402), (149, 14408), (161, 14501),
(179, 14582), (193, 14675), (194, 14690), (200, 14738), (206, 14762), (215, 14810), (217, 14834),
(223, 14882), (230, 14924), (249, 15059), (250, 15071), (252, 15080), (261, 15140), (270, 15209),
(279, 15242),

Gene: Sitar_22 Start: 16336, Stop: 18231, Start Num: 17

Candidate Starts for Sitar_22:

(Start: 17 @16336 has 148 MA's), (47, 16567), (51, 16585), (76, 16840), (102, 16978), (111, 17047),
(120, 17080), (150, 17305), (151, 17311), (156, 17374), (159, 17386), (160, 17389), (162, 17401),
(181, 17488), (197, 17611), (201, 17647), (224, 17791), (232, 17842), (251, 17986), (252, 17989),
(253, 17992), (259, 18040), (266, 18097), (289, 18214),

Gene: Smarties_35 Start: 15581, Stop: 17596, Start Num: 17

Candidate Starts for Smarties_35:

(Start: 17 @15581 has 148 MA's), (88, 16160), (98, 16205), (104, 16241), (107, 16265), (115, 16310),
(122, 16331), (124, 16349), (143, 16484), (171, 16814), (172, 16817), (176, 16874), (178, 16898),
(197, 17036), (204, 17063), (221, 17174), (239, 17303), (240, 17318), (242, 17327), (250, 17354),
(253, 17366), (256, 17396), (261, 17423), (274, 17507), (279, 17525),

Gene: SmokingBunny_19 Start: 11842, Stop: 13740, Start Num: 17

Candidate Starts for SmokingBunny_19:

(Start: 17 @11842 has 148 MA's), (48, 12079), (51, 12091), (54, 12145), (79, 12376), (109, 12538),
(113, 12571), (151, 12835), (174, 12964), (176, 12976), (191, 13093), (197, 13138), (198, 13141),
(210, 13201), (212, 13219), (216, 13234), (218, 13264), (220, 13276), (221, 13279), (238, 13399),
(243, 13438), (252, 13498), (262, 13570), (265, 13600), (269, 13624), (276, 13651), (277, 13654),
(281, 13681),

Gene: Squash_27 Start: 14560, Stop: 16392, Start Num: 25

Candidate Starts for Squash_27:

(Start: 25 @14560 has 26 MA's), (28, 14569), (37, 14668), (77, 15034), (106, 15202), (109, 15217), (122, 15277), (129, 15325), (130, 15331), (136, 15355), (148, 15472), (149, 15478), (161, 15571), (179, 15652), (193, 15745), (194, 15760), (200, 15808), (206, 15832), (215, 15880), (217, 15904), (223, 15952), (230, 15994), (249, 16129), (250, 16141), (252, 16150), (261, 16210), (270, 16279), (279, 16312),

Gene: Statler_27 Start: 14472, Stop: 16304, Start Num: 25

Candidate Starts for Statler_27:

(Start: 25 @14472 has 26 MA's), (28, 14481), (37, 14580), (77, 14946), (106, 15114), (109, 15129), (122, 15189), (129, 15237), (130, 15243), (136, 15267), (148, 15384), (149, 15390), (161, 15483), (179, 15564), (193, 15657), (194, 15672), (200, 15720), (206, 15744), (215, 15792), (217, 15816), (223, 15864), (230, 15906), (249, 16041), (250, 16053), (252, 16062), (261, 16122), (270, 16191), (279, 16224),

Gene: StorminNorm_20 Start: 14442, Stop: 16349, Start Num: 17

Candidate Starts for StorminNorm_20:

(Start: 17 @14442 has 148 MA's), (33, 14577), (47, 14673), (76, 14955), (92, 15024), (98, 15072), (102, 15096), (107, 15132), (111, 15165), (117, 15189), (136, 15282), (150, 15423), (151, 15429), (156, 15492), (159, 15504), (160, 15507), (162, 15519), (181, 15606), (197, 15729), (201, 15765), (218, 15870), (224, 15909), (232, 15960), (250, 16098), (251, 16104), (252, 16107), (259, 16158), (266, 16215), (267, 16227), (270, 16236), (290, 16335),

Gene: StrawberryJamm_27 Start: 13792, Stop: 15624, Start Num: 25

Candidate Starts for StrawberryJamm_27:

(Start: 25 @13792 has 26 MA's), (28, 13801), (37, 13900), (73, 14233), (106, 14434), (109, 14449), (122, 14509), (129, 14557), (136, 14587), (148, 14704), (149, 14710), (161, 14803), (179, 14884), (193, 14977), (194, 14992), (200, 15040), (206, 15064), (215, 15112), (217, 15136), (223, 15184), (230, 15226), (249, 15361), (252, 15382), (258, 15427), (261, 15442), (270, 15511), (279, 15544),

Gene: Stultus_20 Start: 14947, Stop: 16842, Start Num: 17

Candidate Starts for Stultus_20:

(Start: 17 @14947 has 148 MA's), (47, 15178), (51, 15196), (76, 15451), (102, 15589), (111, 15658), (120, 15691), (150, 15916), (151, 15922), (156, 15985), (159, 15997), (160, 16000), (162, 16012), (181, 16099), (197, 16222), (201, 16258), (224, 16402), (232, 16453), (251, 16597), (252, 16600), (253, 16603), (259, 16651), (266, 16708), (289, 16825),

Gene: TP1604_13 Start: 13751, Stop: 15445, Start Num: 23

Candidate Starts for TP1604_13:

(Start: 23 @13751 has 11 MA's), (Start: 25 @13760 has 26 MA's), (39, 13862), (58, 13994), (59, 14018), (66, 14114), (77, 14195), (84, 14240), (86, 14249), (94, 14282), (98, 14309), (99, 14312), (117, 14360), (125, 14393), (126, 14396), (134, 14435), (136, 14441), (143, 14519), (146, 14552), (157, 14642), (178, 14717), (181, 14732), (189, 14798), (191, 14810), (192, 14813), (210, 14930), (216, 14963), (220, 15005), (236, 15122), (252, 15218), (260, 15275), (264, 15296), (268, 15338), (270, 15344), (279, 15377), (282, 15401), (287, 15419), (291, 15434),

Gene: Tangent_18 Start: 14140, Stop: 16047, Start Num: 17

Candidate Starts for Tangent_18:

(Start: 17 @14140 has 148 MA's), (47, 14371), (51, 14389), (76, 14656), (102, 14794), (111, 14863), (120, 14896), (150, 15121), (151, 15127), (156, 15190), (159, 15202), (160, 15205), (162, 15217), (181, 15304), (187, 15358), (197, 15427), (201, 15463), (224, 15607), (232, 15658), (251, 15802),

(252, 15805), (253, 15808), (259, 15856), (266, 15913),

Gene: Tangerine_20 Start: 14448, Stop: 16355, Start Num: 17

Candidate Starts for Tangerine_20:

(Start: 17 @14448 has 148 MA's), (33, 14583), (47, 14679), (76, 14961), (92, 15030), (98, 15078), (102, 15102), (107, 15138), (111, 15171), (117, 15195), (136, 15288), (150, 15429), (151, 15435), (156, 15498), (159, 15510), (160, 15513), (162, 15525), (181, 15612), (197, 15735), (201, 15771), (218, 15876), (224, 15915), (232, 15966), (250, 16104), (251, 16110), (252, 16113), (259, 16164), (266, 16221), (267, 16233), (270, 16242), (290, 16341),

Gene: Tardus_22 Start: 14807, Stop: 16726, Start Num: 17

Candidate Starts for Tardus_22:

(Start: 17 @14807 has 148 MA's), (45, 15023), (46, 15035), (47, 15038), (62, 15212), (80, 15326), (83, 15350), (85, 15359), (97, 15425), (100, 15431), (107, 15485), (110, 15509), (147, 15761), (150, 15779), (151, 15785), (156, 15848), (159, 15860), (160, 15863), (162, 15875), (181, 15965), (184, 15992), (209, 16151), (219, 16229), (234, 16325), (254, 16514), (266, 16598), (269, 16616), (277, 16646),

Gene: Teamocil_28 Start: 13248, Stop: 15266, Start Num: 17

Candidate Starts for Teamocil_28:

(Start: 17 @13248 has 148 MA's), (68, 13716), (88, 13830), (96, 13869), (104, 13911), (107, 13935), (115, 13980), (122, 14001), (123, 14004), (124, 14019), (134, 14073), (143, 14154), (151, 14214), (165, 14358), (167, 14376), (176, 14544), (178, 14568), (197, 14706), (204, 14733), (221, 14844), (239, 14973), (240, 14988), (250, 15024), (253, 15036), (256, 15066), (261, 15093), (279, 15195),

Gene: Teehee_26 Start: 14727, Stop: 16559, Start Num: 25

Candidate Starts for Teehee_26:

(Start: 25 @14727 has 26 MA's), (28, 14736), (37, 14835), (77, 15201), (106, 15369), (109, 15384), (122, 15444), (129, 15492), (130, 15498), (136, 15522), (148, 15639), (149, 15645), (161, 15738), (179, 15819), (193, 15912), (194, 15927), (200, 15975), (206, 15999), (215, 16047), (217, 16071), (223, 16119), (230, 16161), (249, 16296), (250, 16308), (252, 16317), (261, 16377), (270, 16446), (279, 16479),

Gene: Tempo_24 Start: 13050, Stop: 14828, Start Num: 24

Candidate Starts for Tempo_24:

(Start: 24 @13050 has 12 MA's), (28, 13062), (64, 13404), (84, 13521), (108, 13647), (129, 13761), (136, 13791), (161, 14004), (179, 14085), (181, 14094), (191, 14172), (193, 14178), (194, 14193), (217, 14337), (222, 14379), (230, 14430), (250, 14577), (252, 14586), (275, 14736), (279, 14748),

Gene: Terij_23 Start: 13292, Stop: 15169, Start Num: 17

Candidate Starts for Terij_23:

(Start: 17 @13292 has 148 MA's), (88, 13889), (96, 13928), (104, 13970), (122, 14060), (135, 14129), (152, 14282), (173, 14402), (186, 14519), (204, 14618), (207, 14633), (212, 14669), (214, 14675), (221, 14729), (229, 14786), (232, 14801), (234, 14813), (239, 14858), (250, 14921), (256, 14963), (273, 15071),

Gene: Thing3_21 Start: 15684, Stop: 17591, Start Num: 17

Candidate Starts for Thing3_21:

(Start: 17 @15684 has 148 MA's), (47, 15915), (51, 15933), (76, 16200), (102, 16338), (111, 16407), (120, 16440), (150, 16665), (151, 16671), (156, 16734), (159, 16746), (160, 16749), (162, 16761), (181, 16848), (187, 16902), (197, 16971), (201, 17007), (224, 17151), (232, 17202), (251, 17346), (252, 17349), (253, 17352), (259, 17400), (266, 17457),

Gene: Tiamoceli_21 Start: 14601, Stop: 16490, Start Num: 17

Candidate Starts for Tiamoceli_21:

(16, 14592), (Start: 17 @14601 has 148 MA's), (27, 14667), (47, 14835), (51, 14853), (79, 15126), (98, 15222), (131, 15414), (135, 15429), (142, 15507), (151, 15576), (156, 15639), (159, 15651), (160, 15654), (178, 15738), (181, 15753), (194, 15852), (201, 15906), (218, 16011), (232, 16101), (242, 16182), (250, 16239), (262, 16320), (266, 16356), (280, 16422),

Gene: TillyBobJoe_19 Start: 11638, Stop: 13524, Start Num: 17

Candidate Starts for TillyBobJoe_19:

(Start: 17 @11638 has 148 MA's), (48, 11875), (51, 11887), (54, 11941), (109, 12322), (113, 12355), (121, 12382), (174, 12748), (176, 12760), (191, 12877), (197, 12922), (198, 12925), (210, 12985), (212, 13003), (218, 13048), (220, 13060), (221, 13063), (238, 13183), (243, 13222), (252, 13282), (262, 13354), (265, 13384), (269, 13408), (276, 13435), (277, 13438), (281, 13465),

Gene: Tissue_25 Start: 14292, Stop: 16115, Start Num: 25

Candidate Starts for Tissue_25:

(Start: 25 @14292 has 26 MA's), (28, 14301), (37, 14400), (73, 14724), (106, 14925), (109, 14940), (122, 15000), (129, 15048), (136, 15078), (148, 15195), (149, 15201), (161, 15294), (179, 15375), (193, 15468), (194, 15483), (200, 15531), (206, 15555), (215, 15603), (217, 15627), (223, 15675), (230, 15717), (249, 15852), (252, 15873), (261, 15933), (270, 16002), (279, 16035),

Gene: Togo_19 Start: 11842, Stop: 13740, Start Num: 17

Candidate Starts for Togo_19:

(Start: 17 @11842 has 148 MA's), (48, 12079), (51, 12091), (54, 12145), (79, 12376), (109, 12538), (113, 12571), (151, 12835), (174, 12964), (176, 12976), (191, 13093), (197, 13138), (198, 13141), (210, 13201), (212, 13219), (216, 13234), (218, 13264), (220, 13276), (221, 13279), (238, 13399), (243, 13438), (252, 13498), (262, 13570), (265, 13600), (269, 13624), (276, 13651), (277, 13654), (281, 13681),

Gene: TurkishDelight_17 Start: 12983, Stop: 14710, Start Num: 23

Candidate Starts for TurkishDelight_17:

(18, 12944), (Start: 23 @12983 has 11 MA's), (35, 13091), (43, 13139), (44, 13148), (54, 13241), (71, 13418), (86, 13514), (117, 13625), (154, 13889), (155, 13898), (163, 13940), (182, 14003), (191, 14075), (192, 14078), (194, 14096), (210, 14177), (211, 14189), (216, 14210), (221, 14255), (236, 14369), (241, 14405), (259, 14516), (260, 14522), (270, 14594), (273, 14606), (286, 14669),

Gene: Twister6_21 Start: 12280, Stop: 14166, Start Num: 17

Candidate Starts for Twister6_21:

(Start: 17 @12280 has 148 MA's), (48, 12517), (51, 12529), (54, 12583), (79, 12805), (109, 12967), (113, 13000), (151, 13252), (158, 13324), (174, 13381), (176, 13393), (191, 13510), (197, 13555), (198, 13558), (218, 13681), (220, 13693), (229, 13753), (250, 13906), (252, 13915), (262, 13987), (265, 14017), (280, 14089), (284, 14113),

Gene: Twonlo_18 Start: 13218, Stop: 15107, Start Num: 17

Candidate Starts for Twonlo_18:

(16, 13209), (Start: 17 @13218 has 148 MA's), (27, 13284), (47, 13452), (51, 13470), (79, 13743), (98, 13839), (131, 14031), (135, 14046), (142, 14124), (151, 14193), (156, 14256), (159, 14268), (160, 14271), (178, 14355), (181, 14370), (194, 14469), (201, 14523), (218, 14628), (232, 14718), (242, 14799), (250, 14856), (261, 14925), (262, 14937), (266, 14973), (280, 15039),

Gene: Tycho_20 Start: 14565, Stop: 16484, Start Num: 17

Candidate Starts for Tycho_20:

(Start: 17 @14565 has 148 MA's), (33, 14700), (47, 14796), (76, 15090), (92, 15159), (98, 15207), (102, 15231), (107, 15267), (111, 15300), (117, 15324), (136, 15417), (150, 15558), (151, 15564), (156, 15627), (159, 15639), (160, 15642), (162, 15654), (181, 15741), (197, 15864), (201, 15900), (209, 15933), (218, 16005), (224, 16044), (232, 16095), (250, 16233), (251, 16239), (252, 16242), (259, 16293), (266, 16350), (267, 16362), (270, 16371),

Gene: Tyrumbra_25 Start: 12826, Stop: 14847, Start Num: 17

Candidate Starts for Tyrumbra_25:

(Start: 17 @12826 has 148 MA's), (88, 13411), (104, 13492), (107, 13516), (115, 13561), (122, 13582), (143, 13735), (169, 13993), (171, 14065), (176, 14125), (178, 14149), (197, 14287), (203, 14311), (204, 14314), (221, 14425), (239, 14554), (240, 14569), (242, 14578), (250, 14605), (253, 14617), (256, 14647), (261, 14674), (279, 14776),

Gene: Valary_22 Start: 12733, Stop: 14619, Start Num: 17

Candidate Starts for Valary_22:

(Start: 17 @12733 has 148 MA's), (48, 12970), (51, 12982), (54, 13036), (79, 13258), (109, 13420), (113, 13453), (151, 13705), (158, 13777), (174, 13834), (176, 13846), (191, 13963), (197, 14008), (198, 14011), (218, 14134), (220, 14146), (229, 14206), (250, 14359), (252, 14368), (262, 14440), (265, 14470), (280, 14542), (284, 14566),

Gene: VanDeWege_22 Start: 12661, Stop: 14547, Start Num: 17

Candidate Starts for VanDeWege_22:

(Start: 17 @12661 has 148 MA's), (48, 12898), (51, 12910), (54, 12964), (79, 13186), (109, 13348), (113, 13381), (151, 13633), (158, 13705), (174, 13762), (176, 13774), (191, 13891), (197, 13936), (198, 13939), (218, 14062), (220, 14074), (229, 14134), (250, 14287), (252, 14296), (262, 14368), (265, 14398), (280, 14470), (284, 14494),

Gene: Verity_21 Start: 14990, Stop: 16909, Start Num: 17

Candidate Starts for Verity_21:

(Start: 17 @14990 has 148 MA's), (31, 15089), (45, 15206), (46, 15218), (47, 15221), (62, 15395), (80, 15509), (85, 15542), (97, 15608), (100, 15614), (107, 15668), (110, 15692), (118, 15728), (147, 15944), (150, 15962), (151, 15968), (156, 16031), (159, 16043), (160, 16046), (162, 16058), (181, 16148), (184, 16175), (209, 16334), (219, 16412), (225, 16448), (234, 16508), (239, 16553), (250, 16664), (254, 16697), (266, 16781), (269, 16799), (277, 16829),

Gene: ViaConlectus_22 Start: 15542, Stop: 17461, Start Num: 17

Candidate Starts for ViaConlectus_22:

(Start: 17 @15542 has 148 MA's), (45, 15758), (47, 15773), (62, 15947), (85, 16094), (97, 16160), (100, 16166), (107, 16220), (110, 16244), (114, 16268), (147, 16496), (150, 16514), (151, 16520), (156, 16583), (159, 16595), (160, 16598), (162, 16610), (181, 16700), (184, 16727), (209, 16886), (219, 16964), (234, 17060), (238, 17096), (244, 17159), (246, 17189), (250, 17216), (254, 17249), (266, 17333), (276, 17378),

Gene: Viceroy_24 Start: 13492, Stop: 15324, Start Num: 25

Candidate Starts for Viceroy_24:

(Start: 25 @13492 has 26 MA's), (28, 13501), (37, 13600), (77, 13966), (106, 14134), (109, 14149), (122, 14209), (129, 14257), (130, 14263), (136, 14287), (148, 14404), (149, 14410), (161, 14503), (179, 14584), (193, 14677), (194, 14692), (200, 14740), (206, 14764), (215, 14812), (217, 14836), (223, 14884), (230, 14926), (249, 15061), (250, 15073), (252, 15082), (261, 15142), (270, 15211), (279, 15244),

Gene: Vivi2_20 Start: 15311, Stop: 17209, Start Num: 17

Candidate Starts for Vivi2_20:

(Start: 17 @15311 has 148 MA's), (47, 15542), (51, 15560), (76, 15818), (102, 15956), (111, 16025), (120, 16058), (150, 16283), (151, 16289), (156, 16352), (159, 16364), (160, 16367), (162, 16379), (181, 16466), (197, 16589), (201, 16625), (224, 16769), (232, 16820), (251, 16964), (252, 16967), (253, 16970), (259, 17018), (266, 17075),

Gene: Wayne3_26 Start: 14457, Stop: 16289, Start Num: 25

Candidate Starts for Wayne3_26:

(Start: 25 @14457 has 26 MA's), (28, 14466), (37, 14565), (77, 14931), (106, 15099), (109, 15114), (122, 15174), (129, 15222), (130, 15228), (136, 15252), (148, 15369), (149, 15375), (161, 15468), (179, 15549), (193, 15642), (194, 15657), (200, 15705), (206, 15729), (215, 15777), (217, 15801), (223, 15849), (230, 15891), (249, 16026), (250, 16038), (252, 16047), (261, 16107), (270, 16176), (279, 16209),

Gene: Wheelie_24 Start: 13808, Stop: 15640, Start Num: 25

Candidate Starts for Wheelie_24:

(Start: 25 @13808 has 26 MA's), (28, 13817), (37, 13916), (77, 14282), (106, 14450), (109, 14465), (122, 14525), (129, 14573), (130, 14579), (136, 14603), (148, 14720), (149, 14726), (161, 14819), (179, 14900), (193, 14993), (194, 15008), (200, 15056), (206, 15080), (215, 15128), (217, 15152), (223, 15200), (230, 15242), (249, 15377), (250, 15389), (252, 15398), (261, 15458), (270, 15527), (279, 15560),

Gene: Wilca_24 Start: 12993, Stop: 14771, Start Num: 24

Candidate Starts for Wilca_24:

(Start: 24 @12993 has 12 MA's), (28, 13005), (64, 13350), (84, 13464), (108, 13590), (122, 13656), (129, 13704), (136, 13734), (161, 13947), (179, 14028), (181, 14037), (191, 14115), (193, 14121), (194, 14136), (217, 14280), (222, 14322), (230, 14373), (250, 14520), (252, 14529), (275, 14679), (279, 14691), (288, 14751),

Gene: Wizard_19 Start: 11982, Stop: 13874, Start Num: 17

Candidate Starts for Wizard_19:

(Start: 17 @11982 has 148 MA's), (48, 12219), (51, 12231), (54, 12285), (79, 12510), (109, 12672), (113, 12705), (121, 12732), (174, 13098), (176, 13110), (191, 13227), (197, 13272), (198, 13275), (210, 13335), (212, 13353), (218, 13398), (220, 13410), (221, 13413), (238, 13533), (243, 13572), (252, 13632), (262, 13704), (265, 13734), (269, 13758), (276, 13785), (277, 13788), (281, 13815),

Gene: Xkcd426_14 Start: 14736, Stop: 16433, Start Num: 23

Candidate Starts for Xkcd426_14:

(22, 14721), (Start: 23 @14736 has 11 MA's), (35, 14823), (55, 14970), (63, 15072), (69, 15117), (84, 15210), (86, 15219), (87, 15225), (99, 15282), (116, 15327), (117, 15330), (127, 15369), (136, 15411), (146, 15522), (186, 15771), (187, 15774), (191, 15798), (196, 15831), (203, 15870), (205, 15876), (216, 15939), (220, 15981), (224, 16008), (225, 16011), (230, 16047), (260, 16257), (268, 16320), (272, 16335), (277, 16353),

Gene: YDN12_14 Start: 13688, Stop: 15382, Start Num: 23

Candidate Starts for YDN12_14:

(Start: 23 @13688 has 11 MA's), (Start: 25 @13697 has 26 MA's), (39, 13799), (59, 13955), (66, 14051), (77, 14132), (84, 14177), (86, 14186), (94, 14219), (98, 14246), (99, 14249), (117, 14297), (125, 14330), (126, 14333), (134, 14372), (136, 14378), (141, 14420), (146, 14489), (181, 14669), (189, 14735), (191, 14747), (210, 14867), (216, 14900), (220, 14942), (236, 15059), (252, 15155), (260, 15212), (268, 15275), (270, 15281), (279, 15314), (282, 15338), (287, 15356), (291, 15371),

Gene: Yeti_27 Start: 13790, Stop: 15646, Start Num: 17

Candidate Starts for Yeti_27:

(Start: 17 @13790 has 148 MA's), (88, 14366), (98, 14411), (104, 14447), (115, 14516), (122, 14537), (123, 14540), (126, 14570), (143, 14690), (153, 14771), (173, 14885), (176, 14912), (204, 15101), (222, 15227), (239, 15341), (240, 15356), (253, 15404), (256, 15434), (258, 15446), (261, 15461), (263, 15476), (269, 15527), (274, 15545), (279, 15563),

Gene: YorkOnyx_21 Start: 14834, Stop: 16753, Start Num: 17

Candidate Starts for YorkOnyx_21:

(Start: 17 @14834 has 148 MA's), (33, 14969), (47, 15065), (76, 15359), (92, 15428), (98, 15476), (102, 15500), (107, 15536), (111, 15569), (117, 15593), (136, 15686), (150, 15827), (151, 15833), (156, 15896), (159, 15908), (160, 15911), (162, 15923), (174, 15959), (178, 15995), (181, 16010), (187, 16064), (197, 16133), (201, 16169), (209, 16202), (218, 16274), (224, 16313), (232, 16364), (250, 16502), (251, 16508), (252, 16511), (259, 16562), (266, 16619), (267, 16631), (270, 16640),

Gene: YungMoney_21 Start: 13292, Stop: 15184, Start Num: 17

Candidate Starts for YungMoney_21:

(Start: 17 @13292 has 148 MA's), (48, 13529), (51, 13541), (54, 13595), (109, 13982), (113, 14015), (120, 14039), (151, 14279), (174, 14408), (176, 14420), (180, 14456), (191, 14537), (197, 14582), (198, 14585), (210, 14645), (218, 14708), (220, 14720), (252, 14942), (262, 15014), (265, 15044), (269, 15068), (276, 15095), (277, 15098),

Gene: Zagie_25 Start: 13996, Stop: 15828, Start Num: 25

Candidate Starts for Zagie_25:

(Start: 25 @13996 has 26 MA's), (28, 14005), (37, 14104), (77, 14470), (106, 14638), (109, 14653), (122, 14713), (129, 14761), (130, 14767), (136, 14791), (148, 14908), (149, 14914), (161, 15007), (179, 15088), (193, 15181), (194, 15196), (200, 15244), (206, 15268), (215, 15316), (217, 15340), (223, 15388), (230, 15430), (249, 15565), (250, 15577), (252, 15586), (261, 15646), (270, 15715), (279, 15748),

Gene: Zhafia_28 Start: 14319, Stop: 16151, Start Num: 25

Candidate Starts for Zhafia_28:

(Start: 25 @14319 has 26 MA's), (28, 14328), (37, 14427), (77, 14793), (106, 14961), (109, 14976), (122, 15036), (129, 15084), (130, 15090), (136, 15114), (148, 15231), (149, 15237), (161, 15330), (179, 15411), (193, 15504), (194, 15519), (200, 15567), (206, 15591), (215, 15639), (217, 15663), (223, 15711), (230, 15753), (249, 15888), (250, 15900), (252, 15909), (261, 15969), (270, 16038), (279, 16071),

Gene: Zipp_21 Start: 15639, Stop: 17558, Start Num: 17

Candidate Starts for Zipp_21:

(Start: 17 @15639 has 148 MA's), (31, 15738), (45, 15855), (46, 15867), (47, 15870), (62, 16044), (80, 16158), (85, 16191), (97, 16257), (100, 16263), (107, 16317), (110, 16341), (118, 16377), (147, 16593), (150, 16611), (151, 16617), (156, 16680), (159, 16692), (160, 16695), (162, 16707), (181, 16797), (184, 16824), (209, 16983), (219, 17061), (225, 17097), (234, 17157), (239, 17202), (250, 17313), (254, 17346), (266, 17430), (269, 17448), (277, 17478),

Gene: Zitch_23 Start: 14769, Stop: 16688, Start Num: 17

Candidate Starts for Zitch_23:

(Start: 17 @14769 has 148 MA's), (45, 14988), (46, 15000), (47, 15003), (54, 15075), (62, 15177), (85, 15324), (97, 15390), (100, 15396), (107, 15450), (110, 15474), (114, 15498), (147, 15726), (150, 15744), (151, 15750), (156, 15813), (159, 15825), (160, 15828), (162, 15840), (181, 15930), (184, 15957), (209, 16116), (219, 16194), (234, 16290), (266, 16560), (269, 16578), (277, 16608),

Gene: phiAsp2_14 Start: 8361, Stop: 10073, Start Num: 36

Candidate Starts for phiAsp2_14:

(20, 8205), (29, 8277), (30, 8292), (36, 8361), (40, 8382), (82, 8763), (89, 8793), (105, 8883), (118, 8955), (132, 9033), (139, 9075), (145, 9171), (147, 9180), (164, 9309), (177, 9360), (178, 9366), (180, 9378), (191, 9459), (196, 9492), (198, 9507), (199, 9528), (216, 9606), (217, 9624), (219, 9642), (225, 9678), (232, 9723), (257, 9912), (258, 9915), (261, 9930), (269, 9996), (271, 10005),