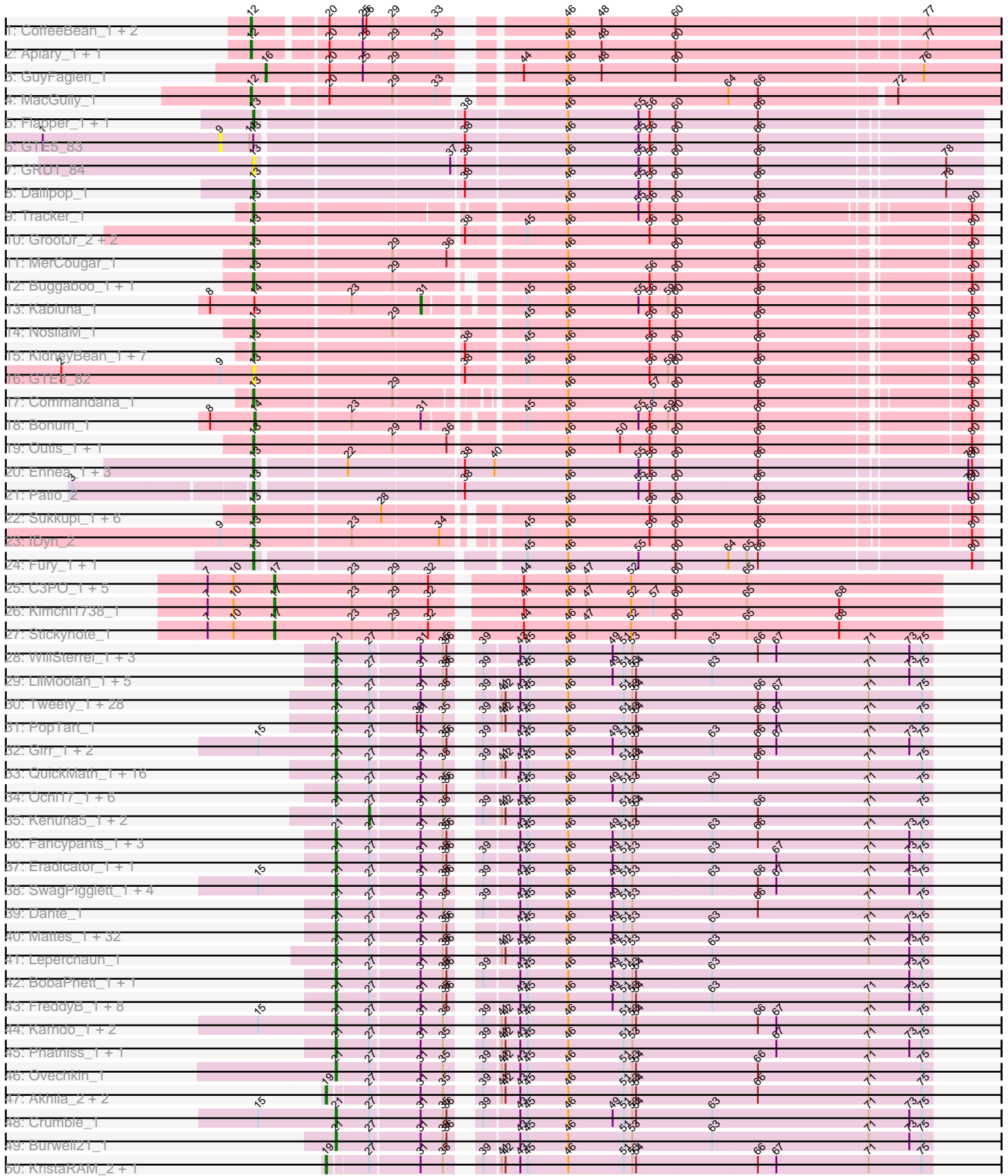
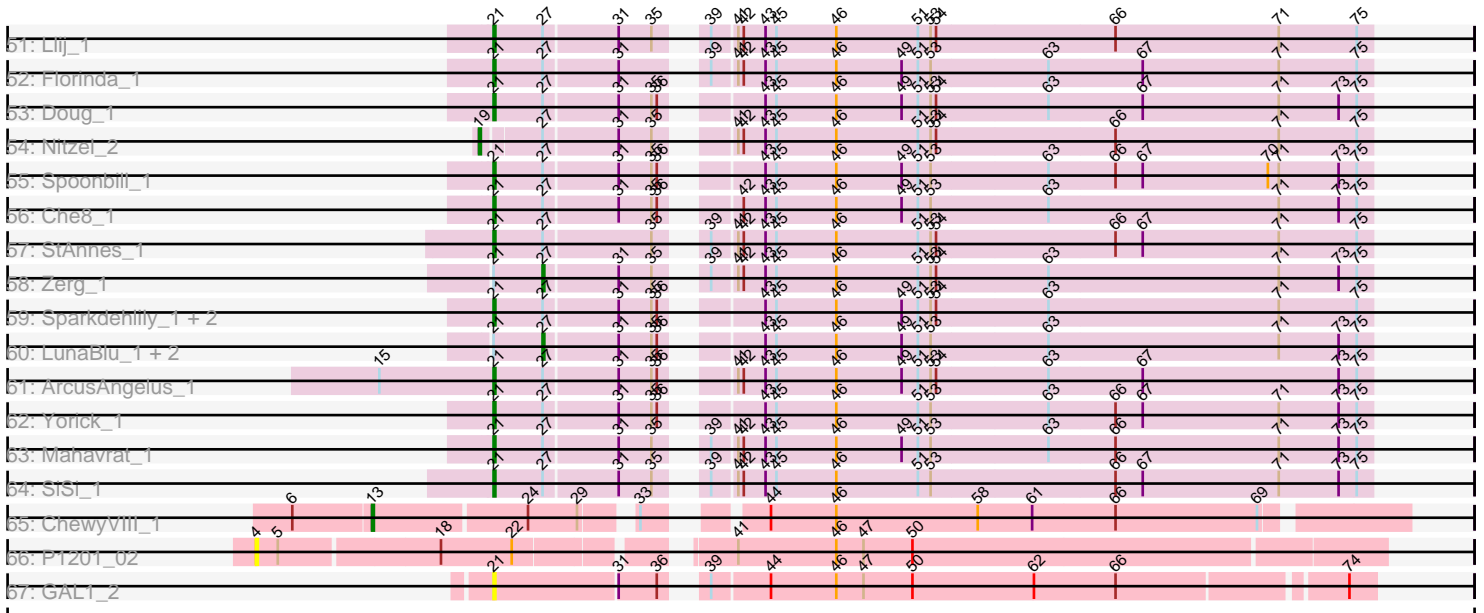


Pham 171188



Pham 171188



Note: Tracks are now grouped by subcluster and scaled. Switching in subcluster is indicated by changes in track color. Track scale is now set by default to display the region 30 bp upstream of start 1 to 30 bp downstream of the last possible start. If this default region is judged to be packed too tightly with annotated starts, the track will be further scaled to only show that region of the ORF with annotated starts. This action will be indicated by adding "Zoomed" to the title. For starts, yellow indicates the location of called starts comprised solely of Glimmer/GeneMark auto-annotations, green indicates the location of called starts with at least 1 manual gene annotation.

Pham 171188 Report

This analysis was run 07/10/24 on database version 566.

Pham number 171188 has 218 members, 12 are drafts.

Phages represented in each track:

- Track 1 : CoffeeBean_1, Braxoaddie_1, Maselop_1
- Track 2 : Apiary_1, Polyuyuki_1
- Track 3 : GuyFagieri_1
- Track 4 : MacGully_1
- Track 5 : Flapper_1, Turuncu_1
- Track 6 : GTE5_83
- Track 7 : GRU1_84
- Track 8 : Dalilpop_1
- Track 9 : Tracker_1
- Track 10 : GrootJr_2, NovumRegina_2, NatB6_2
- Track 11 : MerCougar_1
- Track 12 : Buggaboo_1, SuperSulley_1
- Track 13 : Kabluna_1
- Track 14 : NosilaM_1
- Track 15 : KidneyBean_1, Arti_1, Foxboro_1, Emianna_1, Wheezy_1, Kurt_1, Jifall16_1, Phomeo_1
- Track 16 : GTE8_82
- Track 17 : Commandaria_1
- Track 18 : Bonum_1
- Track 19 : Outis_1, StarStruck_1
- Track 20 : Ennea_1, Lollipop1437_1, Float294_1, Skysand_1
- Track 21 : Patio_2
- Track 22 : Sukkupi_1, WhoseManz_1, NadineRae_1, HubbaBubba_1, BiPauneto_1, Marietta_1, Yndexa_1
- Track 23 : IDyn_2
- Track 24 : Fury_1, Pleakley_1
- Track 25 : C3PO_1, PeteyPab_1, PotatoChip_1, Zion_1, Darwin_1, Cruella_1
- Track 26 : Kimchi1738_1
- Track 27 : Stickynote_1
- Track 28 : WillSterrel_1, Kersh_1, Spartacus_1, IrishSherpFalk_1
- Track 29 : LilMoolah_1, Nivrat_1, ShiLan_1, Polka14_1, Jarcob_1, Philus_1
- Track 30 : Tweety_1, Melissauren88_1, DotProduct_1, Fruitloop_1, Zizzle_1, DeadP_1, Hamulus_1, SuperGrey_1, Bipolar_1, XFactor_1, Mantra_1, Blexus_1, GigiOuiOui_1, ShroomBoi_1, Bubbles123_1, Emma_1, Hades_1, Shauna1_1, Mutaforma13_1, DLane_1, Guppsters_1, Wee_1, SassyB_1, Aubs_1, SG4_1, Chuckly_1, Phanphagia_1, Gandalph_1, Royals2015_1
- Track 31 : PopTart_1

- Track 32 : Girr_1, MisterCuddles_1, Ruby_1
- Track 33 : QuickMath_1, Firehouse51_1, Sandalphon_1, Rita_1, Phasih_1, Taj_1, Sabbb_1, MadMen_1, Ardmore_1, EleanorGeorge_1, DillTech15_1, Rockne_1, Batiatus_1, Donkeykong_1, Filuzino_1, PMC_1, Whatsapiecost_1
- Track 34 : Ochi17_1, Seabastian_1, Llama_1, Modragons_1, OfUltron_1, AlpineSix_1, Jinglebell_1
- Track 35 : Kenuha5_1, Minnie_1, MulchSalad_1
- Track 36 : Fancypants_1, lbhubesi_1, Harley_1, Whouxphf_1
- Track 37 : Eradicator_1, Moonbeam_1
- Track 38 : SwagPigglett_1, ByChance_1, Lizziana_1, ShowerHandel_1, Martik_1
- Track 39 : Dante_1
- Track 40 : Mattes_1, BodEinwohner17_1, Nimbo_1, Scottish_1, Estave1_1, Eish_1, Strokeseat_1, Galactic_1, PHappiness_1, RedBird_1, Wachhund_1, Daenerys_1, Gorge_1, Saal_1, VRedHorse_1, JoeyJr_1, Dorothy_1, Empress_1, Radiance_1, Inventum_1, Hlubikazi_1, Latretium_1, RitaG_1, Mandlovu_1, BlueCrab_1, Sassafras_1, Pacc40_1, Geralt_1, Doomphist_1, Poenanya_1, Brocalys_1, KingMidas_1, OldBen_1
- Track 41 : Leperchaun_1
- Track 42 : BobaPhett_1, James_1
- Track 43 : FreddyB_1, Koella_1, LastJedi_1, Clifton_1, NormanBulbieJr_1, OlympiaSaint_1, Pippy_1, Priscilla_1, Cabrinians_1
- Track 44 : Karhdo_1, Veteran_1, GUmble_1
- Track 45 : Phatniss_1, Maravista_1
- Track 46 : Ovechkin_1
- Track 47 : Akhila_2, MilleniumForce_2, MilanaBonita_2
- Track 48 : Crumble_1
- Track 49 : Burwell21_1
- Track 50 : KristaRAM_2, CaptainTrips_2
- Track 51 : Llij_1
- Track 52 : Florinda_1
- Track 53 : Doug_1
- Track 54 : Nitzel_2
- Track 55 : Spoonbill_1
- Track 56 : Che8_1
- Track 57 : StAnnes_1
- Track 58 : Zerg_1
- Track 59 : Sparkdehlily_1, TDanisky_1, DRBy19_1
- Track 60 : LunaBlu_1, DaddyRickover_1, Deb65_1
- Track 61 : ArcusAngelus_1
- Track 62 : Yorick_1
- Track 63 : Mahavrat_1
- Track 64 : SiSi_1
- Track 65 : ChewyVIII_1
- Track 66 : P1201_02
- Track 67 : GAL1_2

Summary of Final Annotations (See graph section above for start numbers):

The start number called the most often in the published annotations is 21, it was called in 143 of the 206 non-draft genes in the pham.

Genes that call this "Most Annotated" start:

- AlpineSix_1, ArcusAngelus_1, Ardmore_1, Aubs_1, Batiatus_1, Bipolar_1, Blexus_1, BlueCrab_1, BobaPhett_1, BodEinwohner17_1, Brocalys_1, Bubbles123_1, Burwell21_1, ByChance_1, Cabrinians_1, Che8_1, Chuckly_1, Clifton_1, Crumble_1, DLane_1, DRBy19_1, Daenerys_1, Dante_1, DeadP_1, DillTech15_1, Donkeykong_1, Doomphist_1, Dorothy_1, DotProduct_1, Doug_1, Eish_1, EleanorGeorge_1, Emma_1, Empress_1, Eradicator_1, Estave1_1, Fancypants_1, Filuzino_1, Firehouse51_1, Florinda_1, FreddyB_1, Fruitloop_1, GAL1_2, GÜmbie_1, Galactic_1, Gandalph_1, Geralt_1, GigiOuiOui_1, Girr_1, Gorge_1, Guppsters_1, Hades_1, Hamulus_1, Harley_1, Hlubikazi_1, Ibhubesi_1, Inventum_1, IrishSherpFalk_1, James_1, Jarcob_1, Jinglebell_1, JoeyJr_1, Karhdo_1, Kersh_1, KingMidas_1, Koella_1, LastJedi_1, Latretium_1, Leperchaun_1, LilMoolah_1, Lizziana_1, Llama_1, Llij_1, MadMen_1, Mahavrat_1, Mandlovu_1, Mantra_1, Maravista_1, Martik_1, Mattes_1, Melissauren88_1, MisterCuddles_1, Modragons_1, Moonbeam_1, Mutaforma13_1, Nimbo_1, Nivrat_1, NormanBulbieJr_1, Ochi17_1, OfUltron_1, OldBen_1, OlympiaSaint_1, Ovechkin_1, PHappiness_1, PMC_1, Pacc40_1, Phanphagia_1, Phasih_1, Phatniss_1, Philus_1, Pippy_1, Poenanya_1, Polka14_1, PopTart_1, Priscilla_1, QuickMath_1, Radiance_1, RedBird_1, RitaG_1, Rita_1, Rockne_1, Royals2015_1, Ruby_1, SG4_1, Saal_1, Sabbb_1, Sandalphon_1, Sassafras_1, SassyB_1, Scottish_1, Seabastian_1, Shauna1_1, ShiLan_1, ShowerHandel_1, ShroomBoi_1, SiSi_1, Sparkdehlily_1, Spartacus_1, Spoonbill_1, StAnnes_1, Strokeseat_1, SuperGrey_1, SwagPiggett_1, TDanisky_1, Taj_1, Tweety_1, VRedHorse_1, Veteran_1, Wachhund_1, Wee_1, Whatsapiecost_1, Whouxphf_1, WillSterrel_1, XFactor_1, Yorick_1, Zizzle_1,

Genes that have the "Most Annotated" start but do not call it:

- DaddyRickover_1, Deb65_1, Kenuha5_1, LunaBlu_1, Minnie_1, MulchSalad_1, Zerg_1,

Genes that do not have the "Most Annotated" start:

- Akhila_2, Apiary_1, Arti_1, BiPauneto_1, Bonum_1, Braxoaddie_1, Buggaboo_1, C3PO_1, CaptainTrips_2, ChewyVIII_1, CoffeeBean_1, Commandaria_1, Cruella_1, Dalilpop_1, Darwin_1, Erianna_1, Ennea_1, Flapper_1, Float294_1, Foxboro_1, Fury_1, GRU1_84, GTE5_83, GTE8_82, GrootJr_2, GuyFagieri_1, HubbaBubba_1, IDyn_2, Jifall16_1, Kabluna_1, KidneyBean_1, Kimchi1738_1, KristaRAM_2, Kurt_1, Lollipop1437_1, MacGully_1, Marietta_1, Maselop_1, MerCougar_1, MilanaBonita_2, MilleniumForce_2, NadineRae_1, NatB6_2, Nitzel_2, NosilaM_1, NovumRegina_2, Outis_1, P1201_02, Patio_2, PeteyPab_1, Phomeo_1, Pleakley_1, Polyuyuki_1, PotatoChip_1, Skysand_1, StarStruck_1, Stickynote_1, Sukkupi_1, SuperSulley_1, Tracker_1, Turuncu_1, Wheezy_1, WhoseManz_1, Yndexa_1, Zion_1,

Summary by start number:

Start 4:

- Found in 1 of 218 (0.5%) of genes in pham
- No Manual Annotations of this start.
- Called 100.0% of time when present
- Phage (with cluster) where this start called: P1201_02 (singleton),

Start 9:

- Found in 3 of 218 (1.4%) of genes in pham

- No Manual Annotations of this start.
- Called 33.3% of time when present
- Phage (with cluster) where this start called: GTE5_83 (CR1),

Start 12:

- Found in 6 of 218 (2.8%) of genes in pham
- Manual Annotations of this start: 6 of 206
- Called 100.0% of time when present
- Phage (with cluster) where this start called: Apiary_1 (CR), Braxoaddie_1 (CR), CoffeeBean_1 (CR), MacGully_1 (CR), Maselop_1 (CR), Polyuyuki_1 (CR),

Start 13:

- Found in 41 of 218 (18.8%) of genes in pham
- Manual Annotations of this start: 36 of 206
- Called 97.6% of time when present
- Phage (with cluster) where this start called: Arti_1 (CR2), BiPauneto_1 (CR4), Buggaboo_1 (CR2), ChewyVIII_1 (singleton), Commandaria_1 (CR2), Dalilpop_1 (CR1), Emianna_1 (CR2), Ennea_1 (CR3), Flapper_1 (CR1), Float294_1 (CR3), Foxboro_1 (CR2), Fury_1 (CR5), GRU1_84 (CR1), GTE8_82 (CR2), GrootJr_2 (CR2), HubbaBubba_1 (CR4), IDyn_2 (CR4), Jifall16_1 (CR2), KidneyBean_1 (CR2), Kurt_1 (CR2), Lollipop1437_1 (CR3), Marietta_1 (CR4), MerCougar_1 (CR2), NadineRae_1 (CR4), NatB6_2 (CR2), NosilaM_1 (CR2), NovumRegina_2 (CR2), Outis_1 (CR2), Patio_2 (CR3), Phomeo_1 (CR2), Pleakley_1 (CR5), Skysand_1 (CR3), StarStruck_1 (CR2), Sukkupi_1 (CR4), SuperSulley_1 (CR2), Tracker_1 (CR2), Turuncu_1 (CR1), Wheezy_1 (CR2), WhoseManz_1 (CR4), Yndexa_1 (CR4),

Start 14:

- Found in 2 of 218 (0.9%) of genes in pham
- Manual Annotations of this start: 1 of 206
- Called 50.0% of time when present
- Phage (with cluster) where this start called: Bonum_1 (CR2),

Start 16:

- Found in 1 of 218 (0.5%) of genes in pham
- Manual Annotations of this start: 1 of 206
- Called 100.0% of time when present
- Phage (with cluster) where this start called: GuyFagieri_1 (CR),

Start 17:

- Found in 8 of 218 (3.7%) of genes in pham
- Manual Annotations of this start: 8 of 206
- Called 100.0% of time when present
- Phage (with cluster) where this start called: C3PO_1 (EN), Cruella_1 (EN), Darwin_1 (EN), Kimchi1738_1 (EN), PeteyPab_1 (EN), PotatoChip_1 (EN), Stickynote_1 (EN), Zion_1 (EN),

Start 19:

- Found in 6 of 218 (2.8%) of genes in pham
- Manual Annotations of this start: 6 of 206
- Called 100.0% of time when present
- Phage (with cluster) where this start called: Akhila_2 (F1), CaptainTrips_2 (F1), KristaRAM_2 (F1), MilanaBonita_2 (F1), MilleniumForce_2 (F1), Nitzel_2 (F1),

Start 21:

- Found in 153 of 218 (70.2%) of genes in pham
- Manual Annotations of this start: 143 of 206
- Called 95.4% of time when present
- Phage (with cluster) where this start called: AlpineSix_1 (F1), ArcusAngelus_1 (F1), Ardmore_1 (F1), Aubs_1 (F1), Batiatus_1 (F1), Bipolar_1 (F1), Blexus_1 (F1), BlueCrab_1 (F1), BobaPhett_1 (F1), BodEinwohner17_1 (F1), Brocalys_1 (F1), Bubbles123_1 (F1), Burwell21_1 (F1), ByChance_1 (F1), Cabrinians_1 (F1), Che8_1 (F1), Chuckly_1 (F1), Clifton_1 (F1), Crumble_1 (F1), DLane_1 (F1), DRBy19_1 (F1), Daenerys_1 (F1), Dante_1 (F1), DeadP_1 (F1), DillTech15_1 (F1), Donkeykong_1 (F1), Doomphist_1 (F1), Dorothy_1 (F1), DotProduct_1 (F1), Doug_1 (F1), Eish_1 (F1), EleanorGeorge_1 (F1), Emma_1 (F1), Empress_1 (F1), Eradicator_1 (F1), Estave1_1 (F1), Fancypants_1 (F1), Filuzino_1 (F1), Firehouse51_1 (F1), Florinda_1 (F1), FreddyB_1 (F1), Fruitloop_1 (F1), GAL1_2 (singleton), GUmbie_1 (F1), Galactic_1 (F1), Gandolph_1 (F1), Geralt_1 (F1), GigiOuiOui_1 (F1), Girr_1 (F1), Gorge_1 (F1), Guppsters_1 (F1), Hades_1 (F1), Hamulus_1 (F1), Harley_1 (F1), Hlubikazi_1 (F1), Ibhubesi_1 (F1), Inventum_1 (F1), IrishSherpFalk_1 (F1), James_1 (F1), Jarcob_1 (F1), Jinglebell_1 (F1), JoeyJr_1 (F1), Karhdo_1 (F1), Kersh_1 (F1), KingMidas_1 (F1), Koella_1 (F1), LastJedi_1 (F1), Latretium_1 (F1), Leperchaun_1 (F1), LilMoolah_1 (F1), Lizziana_1 (F1), Llama_1 (F1), Llij_1 (F1), MadMen_1 (F1), Mahavrat_1 (F1), Mandlovu_1 (F1), Mantra_1 (F1), Maravista_1 (F1), Martik_1 (F1), Mattes_1 (F1), Melissauren88_1 (F1), MisterCuddles_1 (F1), Modragons_1 (F1), Moonbeam_1 (F1), Mutaforma13_1 (F1), Nimbo_1 (F1), Nivrat_1 (F1), NormanBulbieJr_1 (F1), Ochi17_1 (F1), OfUltron_1 (F1), OldBen_1 (F1), OlympiaSaint_1 (F1), Ovechkin_1 (F1), PHappiness_1 (F1), PMC_1 (F1), Pacc40_1 (F1), Phanphagia_1 (F1), Phasih_1 (F1), Phatniss_1 (F1), Philus_1 (F1), Pippy_1 (F1), Poenanya_1 (F1), Polka14_1 (F1), PopTart_1 (F1), Priscilla_1 (F1), QuickMath_1 (F1), Radiance_1 (F1), RedBird_1 (F1), RitaG_1 (F1), Rita_1 (F1), Rockne_1 (F1), Royals2015_1 (F1), Ruby_1 (F1), SG4_1 (F1), Saal_1 (F1), Sabbb_1 (F1), Sandalphon_1 (F1), Sassafras_1 (F1), SassyB_1 (F1), Scottish_1 (F1), Sebastian_1 (F1), Shauna1_1 (F1), ShiLan_1 (F1), ShowerHandel_1 (F1), ShroomBoi_1 (F1), SiSi_1 (F1), Sparkdehlily_1 (F1), Spartacus_1 (F1), Spoonbill_1 (F1), StAnnes_1 (F1), Strokeseat_1 (F1), SuperGrey_1 (F1), SwagPigglett_1 (F1), TDanisky_1 (F1), Taj_1 (F1), Tweety_1 (F1), VRedHorse_1 (F1), Veteran_1 (F1), Wachhund_1 (F1), Wee_1 (F1), Whatsapiecost_1 (F1), Whouxphf_1 (F1), WillSterrel_1 (F1), XFactor_1 (F1), Yorick_1 (F1), Zizzle_1 (F1),

Start 27:

- Found in 158 of 218 (72.5%) of genes in pham
- Manual Annotations of this start: 4 of 206
- Called 4.4% of time when present
- Phage (with cluster) where this start called: DaddyRickover_1 (F1), Deb65_1 (F1), Kenuha5_1 (F1), LunaBlu_1 (F1), Minnie_1 (F1), MulchSalad_1 (F), Zerg_1 (F1),

Start 31:

- Found in 160 of 218 (73.4%) of genes in pham
- Manual Annotations of this start: 1 of 206
- Called 0.6% of time when present
- Phage (with cluster) where this start called: Kabluna_1 (CR2),

Summary by clusters:

There are 10 clusters represented in this pham: CR2, F1, singleton, CR1, CR4, CR3, CR5, EN, F, CR,

Info for manual annotations of cluster CR:

- Start number 12 was manually annotated 6 times for cluster CR.
- Start number 16 was manually annotated 1 time for cluster CR.

Info for manual annotations of cluster CR1:

- Start number 13 was manually annotated 3 times for cluster CR1.

Info for manual annotations of cluster CR2:

- Start number 13 was manually annotated 18 times for cluster CR2.
- Start number 14 was manually annotated 1 time for cluster CR2.
- Start number 31 was manually annotated 1 time for cluster CR2.

Info for manual annotations of cluster CR3:

- Start number 13 was manually annotated 5 times for cluster CR3.

Info for manual annotations of cluster CR4:

- Start number 13 was manually annotated 7 times for cluster CR4.

Info for manual annotations of cluster CR5:

- Start number 13 was manually annotated 2 times for cluster CR5.

Info for manual annotations of cluster EN:

- Start number 17 was manually annotated 8 times for cluster EN.

Info for manual annotations of cluster F1:

- Start number 19 was manually annotated 6 times for cluster F1.
- Start number 21 was manually annotated 143 times for cluster F1.
- Start number 27 was manually annotated 4 times for cluster F1.

Gene Information:

Gene: Akhila_2 Start: 754, Stop: 1212, Start Num: 19

Candidate Starts for Akhila_2:

(Start: 19 @754 has 6 MA's), (Start: 27 @784 has 4 MA's), (Start: 31 @823 has 1 MA's), (35, 841), (39, 856), (41, 868), (42, 871), (43, 883), (45, 889), (46, 922), (51, 967), (53, 973), (54, 976), (66, 1072), (71, 1162), (75, 1204),

Gene: AlpineSix_1 Start: 109, Stop: 564, Start Num: 21

Candidate Starts for AlpineSix_1:

(Start: 21 @109 has 143 MA's), (Start: 27 @136 has 4 MA's), (Start: 31 @175 has 1 MA's), (35, 193), (36, 196), (43, 235), (45, 241), (46, 274), (49, 310), (51, 319), (53, 325), (63, 388), (71, 514), (75, 556),

Gene: Apiary_1 Start: 110, Stop: 667, Start Num: 12

Candidate Starts for Apiary_1:

(Start: 12 @110 has 6 MA's), (20, 161), (25, 188), (29, 212), (33, 245), (46, 326), (48, 353), (60, 413), (77, 608),

Gene: ArcusAngelus_1 Start: 110, Stop: 565, Start Num: 21

Candidate Starts for ArcusAngelus_1:

(15, 50), (Start: 21 @110 has 143 MA's), (Start: 27 @137 has 4 MA's), (Start: 31 @176 has 1 MA's), (35, 194), (36, 197), (41, 221), (42, 224), (43, 236), (45, 242), (46, 275), (49, 311), (51, 320), (53, 326), (54, 329), (63, 389), (67, 440), (73, 548), (75, 557),

Gene: Ardmore_1 Start: 109, Stop: 564, Start Num: 21

Candidate Starts for Ardmore_1:

(Start: 21 @109 has 143 MA's), (Start: 27 @136 has 4 MA's), (Start: 31 @175 has 1 MA's), (35, 193), (39, 208), (41, 220), (42, 223), (43, 235), (45, 241), (46, 274), (51, 319), (53, 325), (54, 328), (66, 424), (71, 514), (75, 556),

Gene: Arti_1 Start: 158, Stop: 715, Start Num: 13

Candidate Starts for Arti_1:

(Start: 13 @158 has 36 MA's), (38, 317), (45, 362), (46, 395), (56, 461), (60, 482), (66, 548), (80, 707),

Gene: Aubs_1 Start: 109, Stop: 564, Start Num: 21

Candidate Starts for Aubs_1:

(Start: 21 @109 has 143 MA's), (Start: 27 @136 has 4 MA's), (Start: 31 @175 has 1 MA's), (35, 193), (39, 208), (41, 220), (42, 223), (43, 235), (45, 241), (46, 274), (51, 319), (53, 325), (54, 328), (66, 424), (67, 439), (71, 514), (75, 556),

Gene: Batiatus_1 Start: 109, Stop: 564, Start Num: 21

Candidate Starts for Batiatus_1:

(Start: 21 @109 has 143 MA's), (Start: 27 @136 has 4 MA's), (Start: 31 @175 has 1 MA's), (35, 193), (39, 208), (41, 220), (42, 223), (43, 235), (45, 241), (46, 274), (51, 319), (53, 325), (54, 328), (66, 424), (71, 514), (75, 556),

Gene: BiPauneto_1 Start: 159, Stop: 710, Start Num: 13

Candidate Starts for BiPauneto_1:

(Start: 13 @159 has 36 MA's), (28, 258), (46, 387), (56, 453), (60, 474), (66, 540), (80, 702),

Gene: Bipolar_1 Start: 109, Stop: 564, Start Num: 21

Candidate Starts for Bipolar_1:

(Start: 21 @109 has 143 MA's), (Start: 27 @136 has 4 MA's), (Start: 31 @175 has 1 MA's), (35, 193), (39, 208), (41, 220), (42, 223), (43, 235), (45, 241), (46, 274), (51, 319), (53, 325), (54, 328), (66, 424), (67, 439), (71, 514), (75, 556),

Gene: Blexus_1 Start: 109, Stop: 564, Start Num: 21

Candidate Starts for Blexus_1:

(Start: 21 @109 has 143 MA's), (Start: 27 @136 has 4 MA's), (Start: 31 @175 has 1 MA's), (35, 193), (39, 208), (41, 220), (42, 223), (43, 235), (45, 241), (46, 274), (51, 319), (53, 325), (54, 328), (66, 424), (67, 439), (71, 514), (75, 556),

Gene: BlueCrab_1 Start: 108, Stop: 563, Start Num: 21

Candidate Starts for BlueCrab_1:

(Start: 21 @108 has 143 MA's), (Start: 27 @135 has 4 MA's), (Start: 31 @174 has 1 MA's), (35, 192), (36, 195), (43, 234), (45, 240), (46, 273), (49, 309), (51, 318), (53, 324), (63, 387), (71, 513), (73, 546), (75, 555),

Gene: BobaPhett_1 Start: 109, Stop: 564, Start Num: 21

Candidate Starts for BobaPhett_1:

(Start: 21 @109 has 143 MA's), (Start: 27 @136 has 4 MA's), (Start: 31 @175 has 1 MA's), (35, 193), (36, 196), (39, 208), (43, 235), (45, 241), (46, 274), (49, 310), (51, 319), (53, 325), (54, 328), (63, 388), (73, 547), (75, 556),

Gene: BodEinwohner17_1 Start: 108, Stop: 563, Start Num: 21

Candidate Starts for BodEinwohner17_1:

(Start: 21 @108 has 143 MA's), (Start: 27 @135 has 4 MA's), (Start: 31 @174 has 1 MA's), (35, 192), (36, 195), (43, 234), (45, 240), (46, 273), (49, 309), (51, 318), (53, 324), (63, 387), (71, 513), (73, 546), (75, 555),

Gene: Bonum_1 Start: 160, Stop: 708, Start Num: 14

Candidate Starts for Bonum_1:

(8, 124), (Start: 14 @160 has 1 MA's), (23, 235), (Start: 31 @289 has 1 MA's), (45, 355), (46, 388), (55, 445), (56, 454), (59, 469), (60, 475), (66, 541), (80, 700),

Gene: Braxoaddie_1 Start: 110, Stop: 667, Start Num: 12

Candidate Starts for Braxoaddie_1:

(Start: 12 @110 has 6 MA's), (20, 161), (25, 188), (26, 191), (29, 212), (33, 245), (46, 326), (48, 353), (60, 413), (77, 608),

Gene: Brocalys_1 Start: 109, Stop: 564, Start Num: 21

Candidate Starts for Brocalys_1:

(Start: 21 @109 has 143 MA's), (Start: 27 @136 has 4 MA's), (Start: 31 @175 has 1 MA's), (35, 193), (36, 196), (43, 235), (45, 241), (46, 274), (49, 310), (51, 319), (53, 325), (63, 388), (71, 514), (73, 547), (75, 556),

Gene: Bubbles123_1 Start: 109, Stop: 564, Start Num: 21

Candidate Starts for Bubbles123_1:

(Start: 21 @109 has 143 MA's), (Start: 27 @136 has 4 MA's), (Start: 31 @175 has 1 MA's), (35, 193), (39, 208), (41, 220), (42, 223), (43, 235), (45, 241), (46, 274), (51, 319), (53, 325), (54, 328), (66, 424), (67, 439), (71, 514), (75, 556),

Gene: Buggaboo_1 Start: 157, Stop: 702, Start Num: 13

Candidate Starts for Buggaboo_1:

(Start: 13 @157 has 36 MA's), (29, 265), (46, 382), (56, 448), (60, 469), (66, 535), (80, 694),

Gene: Burwell21_1 Start: 108, Stop: 563, Start Num: 21

Candidate Starts for Burwell21_1:

(Start: 21 @108 has 143 MA's), (Start: 27 @135 has 4 MA's), (Start: 31 @174 has 1 MA's), (35, 192), (36, 195), (43, 234), (45, 240), (46, 273), (51, 318), (53, 324), (63, 387), (71, 513), (73, 546), (75, 555),

Gene: ByChance_1 Start: 110, Stop: 565, Start Num: 21

Candidate Starts for ByChance_1:

(15, 50), (Start: 21 @110 has 143 MA's), (Start: 27 @137 has 4 MA's), (Start: 31 @176 has 1 MA's), (35, 194), (36, 197), (39, 209), (43, 236), (45, 242), (46, 275), (49, 311), (51, 320), (53, 326), (63, 389), (66, 425), (67, 440), (71, 515), (73, 548), (75, 557),

Gene: C3PO_1 Start: 94, Stop: 618, Start Num: 17

Candidate Starts for C3PO_1:

(7, 40), (10, 61), (Start: 17 @94 has 8 MA's), (23, 157), (29, 190), (32, 217), (44, 280), (46, 316), (47, 331), (52, 367), (60, 403), (65, 460),

Gene: Cabrinians_1 Start: 109, Stop: 564, Start Num: 21

Candidate Starts for Cabrinians_1:

(Start: 21 @109 has 143 MA's), (Start: 27 @136 has 4 MA's), (Start: 31 @175 has 1 MA's), (35, 193), (36, 196), (43, 235), (45, 241), (46, 274), (49, 310), (51, 319), (53, 325), (54, 328), (63, 388), (71, 514), (73, 547), (75, 556),

Gene: CaptainTrips_2 Start: 754, Stop: 1212, Start Num: 19

Candidate Starts for CaptainTrips_2:

(Start: 19 @754 has 6 MA's), (Start: 27 @784 has 4 MA's), (Start: 31 @823 has 1 MA's), (35, 841), (39, 856), (41, 868), (42, 871), (43, 883), (45, 889), (46, 922), (51, 967), (53, 973), (54, 976), (66, 1072), (67, 1087), (71, 1162), (75, 1204),

Gene: Che8_1 Start: 108, Stop: 563, Start Num: 21

Candidate Starts for Che8_1:

(Start: 21 @108 has 143 MA's), (Start: 27 @135 has 4 MA's), (Start: 31 @174 has 1 MA's), (35, 192), (36, 195), (42, 222), (43, 234), (45, 240), (46, 273), (49, 309), (51, 318), (53, 324), (63, 387), (71, 513), (73, 546), (75, 555),

Gene: ChewyVIII_1 Start: 141, Stop: 653, Start Num: 13

Candidate Starts for ChewyVIII_1:

(6, 99), (Start: 13 @141 has 36 MA's), (24, 222), (29, 249), (33, 270), (44, 315), (46, 351), (58, 429), (61, 459), (66, 504), (69, 582),

Gene: Chuckly_1 Start: 109, Stop: 564, Start Num: 21

Candidate Starts for Chuckly_1:

(Start: 21 @109 has 143 MA's), (Start: 27 @136 has 4 MA's), (Start: 31 @175 has 1 MA's), (35, 193), (39, 208), (41, 220), (42, 223), (43, 235), (45, 241), (46, 274), (51, 319), (53, 325), (54, 328), (66, 424), (67, 439), (71, 514), (75, 556),

Gene: Clifton_1 Start: 109, Stop: 564, Start Num: 21

Candidate Starts for Clifton_1:

(Start: 21 @109 has 143 MA's), (Start: 27 @136 has 4 MA's), (Start: 31 @175 has 1 MA's), (35, 193), (36, 196), (43, 235), (45, 241), (46, 274), (49, 310), (51, 319), (53, 325), (54, 328), (63, 388), (71, 514), (73, 547), (75, 556),

Gene: CoffeeBean_1 Start: 110, Stop: 667, Start Num: 12

Candidate Starts for CoffeeBean_1:

(Start: 12 @110 has 6 MA's), (20, 161), (25, 188), (26, 191), (29, 212), (33, 245), (46, 326), (48, 353), (60, 413), (77, 608),

Gene: Commandaria_1 Start: 158, Stop: 700, Start Num: 13

Candidate Starts for Commandaria_1:

(Start: 13 @158 has 36 MA's), (29, 266), (46, 383), (57, 452), (60, 470), (66, 536), (80, 692),

Gene: Cruella_1 Start: 94, Stop: 618, Start Num: 17

Candidate Starts for Cruella_1:

(7, 40), (10, 61), (Start: 17 @94 has 8 MA's), (23, 157), (29, 190), (32, 217), (44, 280), (46, 316), (47, 331), (52, 367), (60, 403), (65, 460),

Gene: Crumble_1 Start: 110, Stop: 565, Start Num: 21

Candidate Starts for Crumble_1:

(15, 50), (Start: 21 @110 has 143 MA's), (Start: 27 @137 has 4 MA's), (Start: 31 @176 has 1 MA's), (35, 194), (36, 197), (39, 209), (43, 236), (45, 242), (46, 275), (49, 311), (51, 320), (53, 326), (54, 329), (63, 389), (71, 515), (73, 548), (75, 557),

Gene: DLane_1 Start: 109, Stop: 564, Start Num: 21

Candidate Starts for DLane_1:

(Start: 21 @109 has 143 MA's), (Start: 27 @136 has 4 MA's), (Start: 31 @175 has 1 MA's), (35, 193), (39, 208), (41, 220), (42, 223), (43, 235), (45, 241), (46, 274), (51, 319), (53, 325), (54, 328), (66, 424), (67, 439), (71, 514), (75, 556),

Gene: DRBy19_1 Start: 110, Stop: 565, Start Num: 21

Candidate Starts for DRBy19_1:

(Start: 21 @110 has 143 MA's), (Start: 27 @137 has 4 MA's), (Start: 31 @176 has 1 MA's), (35, 194), (36, 197), (43, 236), (45, 242), (46, 275), (49, 311), (51, 320), (53, 326), (54, 329), (63, 389), (71, 515), (75, 557),

Gene: DaddyRickover_1 Start: 135, Stop: 563, Start Num: 27

Candidate Starts for DaddyRickover_1:

(Start: 21 @108 has 143 MA's), (Start: 27 @135 has 4 MA's), (Start: 31 @174 has 1 MA's), (35, 192), (36, 195), (43, 234), (45, 240), (46, 273), (49, 309), (51, 318), (53, 324), (63, 387), (71, 513), (73, 546), (75, 555),

Gene: Daenerys_1 Start: 108, Stop: 563, Start Num: 21

Candidate Starts for Daenerys_1:

(Start: 21 @108 has 143 MA's), (Start: 27 @135 has 4 MA's), (Start: 31 @174 has 1 MA's), (35, 192), (36, 195), (43, 234), (45, 240), (46, 273), (49, 309), (51, 318), (53, 324), (63, 387), (71, 513), (73, 546), (75, 555),

Gene: Dalilpop_1 Start: 122, Stop: 685, Start Num: 13

Candidate Starts for Dalilpop_1:

(Start: 13 @122 has 36 MA's), (38, 278), (46, 359), (55, 416), (56, 425), (60, 446), (66, 512), (78, 656),

Gene: Dante_1 Start: 109, Stop: 564, Start Num: 21

Candidate Starts for Dante_1:

(Start: 21 @109 has 143 MA's), (Start: 27 @136 has 4 MA's), (Start: 31 @175 has 1 MA's), (35, 193), (39, 208), (43, 235), (45, 241), (46, 274), (49, 310), (51, 319), (53, 325), (66, 424), (71, 514), (75, 556),

Gene: Darwin_1 Start: 94, Stop: 618, Start Num: 17

Candidate Starts for Darwin_1:

(7, 40), (10, 61), (Start: 17 @94 has 8 MA's), (23, 157), (29, 190), (32, 217), (44, 280), (46, 316), (47, 331), (52, 367), (60, 403), (65, 460),

Gene: DeadP_1 Start: 109, Stop: 564, Start Num: 21

Candidate Starts for DeadP_1:

(Start: 21 @109 has 143 MA's), (Start: 27 @136 has 4 MA's), (Start: 31 @175 has 1 MA's), (35, 193), (39, 208), (41, 220), (42, 223), (43, 235), (45, 241), (46, 274), (51, 319), (53, 325), (54, 328), (66, 424), (67, 439), (71, 514), (75, 556),

Gene: Deb65_1 Start: 135, Stop: 563, Start Num: 27

Candidate Starts for Deb65_1:

(Start: 21 @108 has 143 MA's), (Start: 27 @135 has 4 MA's), (Start: 31 @174 has 1 MA's), (35, 192), (36, 195), (43, 234), (45, 240), (46, 273), (49, 309), (51, 318), (53, 324), (63, 387), (71, 513), (73, 546), (75, 555),

Gene: DillTech15_1 Start: 109, Stop: 564, Start Num: 21

Candidate Starts for DillTech15_1:

(Start: 21 @109 has 143 MA's), (Start: 27 @136 has 4 MA's), (Start: 31 @175 has 1 MA's), (35, 193), (39, 208), (41, 220), (42, 223), (43, 235), (45, 241), (46, 274), (51, 319), (53, 325), (54, 328), (66, 424), (71, 514), (75, 556),

Gene: Donkeykong_1 Start: 109, Stop: 564, Start Num: 21

Candidate Starts for Donkeykong_1:

(Start: 21 @109 has 143 MA's), (Start: 27 @136 has 4 MA's), (Start: 31 @175 has 1 MA's), (35, 193), (39, 208), (41, 220), (42, 223), (43, 235), (45, 241), (46, 274), (51, 319), (53, 325), (54, 328), (66, 424), (71, 514), (75, 556),

Gene: Doomphist_1 Start: 108, Stop: 563, Start Num: 21

Candidate Starts for Doomphist_1:

(Start: 21 @108 has 143 MA's), (Start: 27 @135 has 4 MA's), (Start: 31 @174 has 1 MA's), (35, 192), (36, 195), (43, 234), (45, 240), (46, 273), (49, 309), (51, 318), (53, 324), (63, 387), (71, 513), (73, 546), (75, 555),

Gene: Dorothy_1 Start: 108, Stop: 563, Start Num: 21

Candidate Starts for Dorothy_1:

(Start: 21 @108 has 143 MA's), (Start: 27 @135 has 4 MA's), (Start: 31 @174 has 1 MA's), (35, 192), (36, 195), (43, 234), (45, 240), (46, 273), (49, 309), (51, 318), (53, 324), (63, 387), (71, 513), (73, 546), (75, 555),

Gene: DotProduct_1 Start: 110, Stop: 565, Start Num: 21

Candidate Starts for DotProduct_1:

(Start: 21 @110 has 143 MA's), (Start: 27 @137 has 4 MA's), (Start: 31 @176 has 1 MA's), (35, 194), (39, 209), (41, 221), (42, 224), (43, 236), (45, 242), (46, 275), (51, 320), (53, 326), (54, 329), (66, 425), (67, 440), (71, 515), (75, 557),

Gene: Doug_1 Start: 109, Stop: 564, Start Num: 21

Candidate Starts for Doug_1:

(Start: 21 @109 has 143 MA's), (Start: 27 @136 has 4 MA's), (Start: 31 @175 has 1 MA's), (35, 193), (36, 196), (43, 235), (45, 241), (46, 274), (49, 310), (51, 319), (53, 325), (54, 328), (63, 388), (67, 439), (71, 514), (73, 547), (75, 556),

Gene: Eish_1 Start: 109, Stop: 564, Start Num: 21

Candidate Starts for Eish_1:

(Start: 21 @109 has 143 MA's), (Start: 27 @136 has 4 MA's), (Start: 31 @175 has 1 MA's), (35, 193), (36, 196), (43, 235), (45, 241), (46, 274), (49, 310), (51, 319), (53, 325), (63, 388), (71, 514), (73, 547), (75, 556),

Gene: EleanorGeorge_1 Start: 109, Stop: 564, Start Num: 21

Candidate Starts for EleanorGeorge_1:

(Start: 21 @109 has 143 MA's), (Start: 27 @136 has 4 MA's), (Start: 31 @175 has 1 MA's), (35, 193), (39, 208), (41, 220), (42, 223), (43, 235), (45, 241), (46, 274), (51, 319), (53, 325), (54, 328), (66, 424), (71, 514), (75, 556),

Gene: Emianna_1 Start: 158, Stop: 715, Start Num: 13

Candidate Starts for Emianna_1:

(Start: 13 @158 has 36 MA's), (38, 317), (45, 362), (46, 395), (56, 461), (60, 482), (66, 548), (80, 707),

Gene: Emma_1 Start: 109, Stop: 564, Start Num: 21

Candidate Starts for Emma_1:

(Start: 21 @109 has 143 MA's), (Start: 27 @136 has 4 MA's), (Start: 31 @175 has 1 MA's), (35, 193), (39, 208), (41, 220), (42, 223), (43, 235), (45, 241), (46, 274), (51, 319), (53, 325), (54, 328), (66, 424), (67, 439), (71, 514), (75, 556),

Gene: Empress_1 Start: 108, Stop: 563, Start Num: 21

Candidate Starts for Empress_1:

(Start: 21 @108 has 143 MA's), (Start: 27 @135 has 4 MA's), (Start: 31 @174 has 1 MA's), (35, 192), (36, 195), (43, 234), (45, 240), (46, 273), (49, 309), (51, 318), (53, 324), (63, 387), (71, 513), (73, 546), (75, 555),

Gene: Ennea_1 Start: 121, Stop: 687, Start Num: 13

Candidate Starts for Ennea_1:

(Start: 13 @121 has 36 MA's), (22, 187), (38, 277), (40, 301), (46, 361), (55, 418), (56, 427), (60, 448), (66, 514), (79, 676), (80, 679),

Gene: Eradicator_1 Start: 109, Stop: 564, Start Num: 21

Candidate Starts for Eradicator_1:

(Start: 21 @109 has 143 MA's), (Start: 27 @136 has 4 MA's), (Start: 31 @175 has 1 MA's), (35, 193), (36, 196), (39, 208), (43, 235), (45, 241), (46, 274), (49, 310), (51, 319), (53, 325), (63, 388), (67, 439), (71, 514), (73, 547), (75, 556),

Gene: Estave1_1 Start: 109, Stop: 564, Start Num: 21

Candidate Starts for Estave1_1:

(Start: 21 @109 has 143 MA's), (Start: 27 @136 has 4 MA's), (Start: 31 @175 has 1 MA's), (35, 193), (36, 196), (43, 235), (45, 241), (46, 274), (49, 310), (51, 319), (53, 325), (63, 388), (71, 514), (73, 547), (75, 556),

Gene: Fancypants_1 Start: 109, Stop: 564, Start Num: 21

Candidate Starts for Fancypants_1:

(Start: 21 @109 has 143 MA's), (Start: 27 @136 has 4 MA's), (Start: 31 @175 has 1 MA's), (35, 193), (36, 196), (43, 235), (45, 241), (46, 274), (49, 310), (51, 319), (53, 325), (63, 388), (66, 424), (71, 514), (73, 547), (75, 556),

Gene: Filuzino_1 Start: 110, Stop: 565, Start Num: 21

Candidate Starts for Filuzino_1:

(Start: 21 @110 has 143 MA's), (Start: 27 @137 has 4 MA's), (Start: 31 @176 has 1 MA's), (35, 194), (39, 209), (41, 221), (42, 224), (43, 236), (45, 242), (46, 275), (51, 320), (53, 326), (54, 329), (66, 425), (71, 515), (75, 557),

Gene: Firehouse51_1 Start: 109, Stop: 564, Start Num: 21

Candidate Starts for Firehouse51_1:

(Start: 21 @109 has 143 MA's), (Start: 27 @136 has 4 MA's), (Start: 31 @175 has 1 MA's), (35, 193), (39, 208), (41, 220), (42, 223), (43, 235), (45, 241), (46, 274), (51, 319), (53, 325), (54, 328), (66, 424), (71, 514), (75, 556),

Gene: Flapper_1 Start: 122, Stop: 685, Start Num: 13

Candidate Starts for Flapper_1:

(Start: 13 @122 has 36 MA's), (38, 278), (46, 359), (55, 416), (56, 425), (60, 446), (66, 512),

Gene: Float294_1 Start: 121, Stop: 687, Start Num: 13

Candidate Starts for Float294_1:

(Start: 13 @121 has 36 MA's), (22, 187), (38, 277), (40, 301), (46, 361), (55, 418), (56, 427), (60, 448), (66, 514), (79, 676), (80, 679),

Gene: Florinda_1 Start: 106, Stop: 561, Start Num: 21

Candidate Starts for Florinda_1:

(Start: 21 @106 has 143 MA's), (Start: 27 @133 has 4 MA's), (Start: 31 @172 has 1 MA's), (39, 205), (41, 217), (42, 220), (43, 232), (45, 238), (46, 271), (49, 307), (51, 316), (53, 322), (63, 385), (67, 436), (71, 511), (75, 553),

Gene: Foxboro_1 Start: 158, Stop: 715, Start Num: 13

Candidate Starts for Foxboro_1:

(Start: 13 @158 has 36 MA's), (38, 317), (45, 362), (46, 395), (56, 461), (60, 482), (66, 548), (80, 707),

Gene: FreddyB_1 Start: 109, Stop: 564, Start Num: 21

Candidate Starts for FreddyB_1:

(Start: 21 @109 has 143 MA's), (Start: 27 @136 has 4 MA's), (Start: 31 @175 has 1 MA's), (35, 193), (36, 196), (43, 235), (45, 241), (46, 274), (49, 310), (51, 319), (53, 325), (54, 328), (63, 388), (71, 514), (73, 547), (75, 556),

Gene: Fruitloop_1 Start: 109, Stop: 564, Start Num: 21

Candidate Starts for Fruitloop_1:

(Start: 21 @109 has 143 MA's), (Start: 27 @136 has 4 MA's), (Start: 31 @175 has 1 MA's), (35, 193), (39, 208), (41, 220), (42, 223), (43, 235), (45, 241), (46, 274), (51, 319), (53, 325), (54, 328), (66, 424), (67, 439), (71, 514), (75, 556),

Gene: Fury_1 Start: 122, Stop: 679, Start Num: 13

Candidate Starts for Fury_1:

(Start: 13 @122 has 36 MA's), (45, 317), (46, 350), (55, 407), (60, 437), (64, 479), (65, 494), (66, 503), (80, 671),

Gene: GAL1_2 Start: 720, Stop: 1169, Start Num: 21

Candidate Starts for GAL1_2:

(Start: 21 @720 has 143 MA's), (Start: 31 @786 has 1 MA's), (36, 807), (39, 819), (44, 849), (46, 885), (47, 900), (50, 927), (62, 993), (66, 1038), (74, 1155),

Gene: GRU1_84 Start: 59190, Stop: 59753, Start Num: 13

Candidate Starts for GRU1_84:

(Start: 13 @59190 has 36 MA's), (37, 59337), (38, 59346), (46, 59427), (55, 59484), (56, 59493), (60, 59514), (66, 59580), (78, 59724),

Gene: GTE5_83 Start: 60179, Stop: 60772, Start Num: 9

Candidate Starts for GTE5_83:

(1, 60035), (9, 60179), (11, 60203), (Start: 13 @60206 has 36 MA's), (38, 60365), (46, 60446), (55, 60503), (56, 60512), (60, 60533), (66, 60599),

Gene: GTE8_82 Start: 60392, Stop: 60949, Start Num: 13

Candidate Starts for GTE8_82:

(2, 60236), (9, 60365), (Start: 13 @60392 has 36 MA's), (38, 60551), (45, 60596), (46, 60629), (56, 60695), (59, 60710), (60, 60716), (66, 60782), (80, 60941),

Gene: GUmbie_1 Start: 110, Stop: 565, Start Num: 21

Candidate Starts for GUmbie_1:

(15, 50), (Start: 21 @110 has 143 MA's), (Start: 27 @137 has 4 MA's), (Start: 31 @176 has 1 MA's), (35, 194), (39, 209), (41, 221), (42, 224), (43, 236), (45, 242), (46, 275), (51, 320), (53, 326), (54, 329), (66, 425), (67, 440), (71, 515), (75, 557),

Gene: Galactic_1 Start: 108, Stop: 563, Start Num: 21

Candidate Starts for Galactic_1:

(Start: 21 @108 has 143 MA's), (Start: 27 @135 has 4 MA's), (Start: 31 @174 has 1 MA's), (35, 192), (36, 195), (43, 234), (45, 240), (46, 273), (49, 309), (51, 318), (53, 324), (63, 387), (71, 513), (73, 546), (75, 555),

Gene: Gandalph_1 Start: 109, Stop: 564, Start Num: 21

Candidate Starts for Gandalph_1:

(Start: 21 @109 has 143 MA's), (Start: 27 @136 has 4 MA's), (Start: 31 @175 has 1 MA's), (35, 193), (39, 208), (41, 220), (42, 223), (43, 235), (45, 241), (46, 274), (51, 319), (53, 325), (54, 328), (66, 424), (67, 439), (71, 514), (75, 556),

Gene: Geralt_1 Start: 108, Stop: 563, Start Num: 21

Candidate Starts for Geralt_1:

(Start: 21 @108 has 143 MA's), (Start: 27 @135 has 4 MA's), (Start: 31 @174 has 1 MA's), (35, 192), (36, 195), (43, 234), (45, 240), (46, 273), (49, 309), (51, 318), (53, 324), (63, 387), (71, 513), (73, 546), (75, 555),

Gene: GigiOuiOui_1 Start: 109, Stop: 564, Start Num: 21

Candidate Starts for GigiOuiOui_1:

(Start: 21 @109 has 143 MA's), (Start: 27 @136 has 4 MA's), (Start: 31 @175 has 1 MA's), (35, 193), (39, 208), (41, 220), (42, 223), (43, 235), (45, 241), (46, 274), (51, 319), (53, 325), (54, 328), (66, 424), (67, 439), (71, 514), (75, 556),

Gene: Girr_1 Start: 110, Stop: 565, Start Num: 21

Candidate Starts for Girr_1:

(15, 50), (Start: 21 @110 has 143 MA's), (Start: 27 @137 has 4 MA's), (Start: 31 @176 has 1 MA's), (35, 194), (36, 197), (39, 209), (43, 236), (45, 242), (46, 275), (49, 311), (51, 320), (53, 326), (54, 329), (63, 389), (66, 425), (67, 440), (71, 515), (73, 548), (75, 557),

Gene: Gorge_1 Start: 109, Stop: 564, Start Num: 21

Candidate Starts for Gorge_1:

(Start: 21 @109 has 143 MA's), (Start: 27 @136 has 4 MA's), (Start: 31 @175 has 1 MA's), (35, 193), (36, 196), (43, 235), (45, 241), (46, 274), (49, 310), (51, 319), (53, 325), (63, 388), (71, 514), (73, 547), (75, 556),

Gene: GrootJr_2 Start: 773, Stop: 1330, Start Num: 13

Candidate Starts for GrootJr_2:

(Start: 13 @773 has 36 MA's), (38, 932), (45, 977), (46, 1010), (56, 1076), (60, 1097), (66, 1163), (80, 1322),

Gene: Guppsters_1 Start: 109, Stop: 564, Start Num: 21

Candidate Starts for Guppsters_1:

(Start: 21 @109 has 143 MA's), (Start: 27 @136 has 4 MA's), (Start: 31 @175 has 1 MA's), (35, 193), (39, 208), (41, 220), (42, 223), (43, 235), (45, 241), (46, 274), (51, 319), (53, 325), (54, 328), (66, 424), (67, 439), (71, 514), (75, 556),

Gene: GuyFagieri_1 Start: 112, Stop: 669, Start Num: 16

Candidate Starts for GuyFagieri_1:

(Start: 16 @112 has 1 MA's), (20, 160), (25, 187), (29, 211), (44, 289), (46, 325), (48, 352), (60, 412), (76, 607),

Gene: Hades_1 Start: 109, Stop: 564, Start Num: 21

Candidate Starts for Hades_1:

(Start: 21 @109 has 143 MA's), (Start: 27 @136 has 4 MA's), (Start: 31 @175 has 1 MA's), (35, 193), (39, 208), (41, 220), (42, 223), (43, 235), (45, 241), (46, 274), (51, 319), (53, 325), (54, 328), (66, 424), (67, 439), (71, 514), (75, 556),

Gene: Hamulus_1 Start: 110, Stop: 565, Start Num: 21

Candidate Starts for Hamulus_1:

(Start: 21 @110 has 143 MA's), (Start: 27 @137 has 4 MA's), (Start: 31 @176 has 1 MA's), (35, 194), (39, 209), (41, 221), (42, 224), (43, 236), (45, 242), (46, 275), (51, 320), (53, 326), (54, 329), (66, 425), (67, 440), (71, 515), (75, 557),

Gene: Harley_1 Start: 109, Stop: 564, Start Num: 21

Candidate Starts for Harley_1:

(Start: 21 @109 has 143 MA's), (Start: 27 @136 has 4 MA's), (Start: 31 @175 has 1 MA's), (35, 193), (36, 196), (43, 235), (45, 241), (46, 274), (49, 310), (51, 319), (53, 325), (63, 388), (66, 424), (71, 514), (73, 547), (75, 556),

Gene: Hlubikazi_1 Start: 109, Stop: 564, Start Num: 21

Candidate Starts for Hlubikazi_1:

(Start: 21 @109 has 143 MA's), (Start: 27 @136 has 4 MA's), (Start: 31 @175 has 1 MA's), (35, 193), (36, 196), (43, 235), (45, 241), (46, 274), (49, 310), (51, 319), (53, 325), (63, 388), (71, 514), (73, 547), (75, 556),

Gene: HubbaBubba_1 Start: 158, Stop: 709, Start Num: 13

Candidate Starts for HubbaBubba_1:

(Start: 13 @158 has 36 MA's), (28, 257), (46, 386), (56, 452), (60, 473), (66, 539), (80, 701),

Gene: IDyn_2 Start: 786, Stop: 1334, Start Num: 13

Candidate Starts for IDyn_2:

(9, 759), (Start: 13 @786 has 36 MA's), (23, 861), (34, 930), (45, 978), (46, 1011), (56, 1077), (60, 1098), (66, 1164), (80, 1326),

Gene: Ibhubesi_1 Start: 109, Stop: 564, Start Num: 21

Candidate Starts for Ibhubesi_1:

(Start: 21 @109 has 143 MA's), (Start: 27 @136 has 4 MA's), (Start: 31 @175 has 1 MA's), (35, 193), (36, 196), (43, 235), (45, 241), (46, 274), (49, 310), (51, 319), (53, 325), (63, 388), (66, 424), (71, 514), (73, 547), (75, 556),

Gene: Inventum_1 Start: 108, Stop: 563, Start Num: 21

Candidate Starts for Inventum_1:

(Start: 21 @108 has 143 MA's), (Start: 27 @135 has 4 MA's), (Start: 31 @174 has 1 MA's), (35, 192), (36, 195), (43, 234), (45, 240), (46, 273), (49, 309), (51, 318), (53, 324), (63, 387), (71, 513), (73, 546), (75, 555),

Gene: IrishSherpFalk_1 Start: 112, Stop: 567, Start Num: 21

Candidate Starts for IrishSherpFalk_1:

(Start: 21 @112 has 143 MA's), (Start: 27 @139 has 4 MA's), (Start: 31 @178 has 1 MA's), (35, 196), (36, 199), (39, 211), (43, 238), (45, 244), (46, 277), (49, 313), (51, 322), (53, 328), (63, 391), (66, 427), (67, 442), (71, 517), (73, 550), (75, 559),

Gene: James_1 Start: 109, Stop: 564, Start Num: 21

Candidate Starts for James_1:

(Start: 21 @109 has 143 MA's), (Start: 27 @136 has 4 MA's), (Start: 31 @175 has 1 MA's), (35, 193), (36, 196), (39, 208), (43, 235), (45, 241), (46, 274), (49, 310), (51, 319), (53, 325), (54, 328), (63, 388), (73, 547), (75, 556),

Gene: Jarcob_1 Start: 109, Stop: 564, Start Num: 21

Candidate Starts for Jarcob_1:

(Start: 21 @109 has 143 MA's), (Start: 27 @136 has 4 MA's), (Start: 31 @175 has 1 MA's), (35, 193), (36, 196), (39, 208), (43, 235), (45, 241), (46, 274), (49, 310), (51, 319), (53, 325), (54, 328), (63, 388), (71, 514), (73, 547), (75, 556),

Gene: Jifall16_1 Start: 158, Stop: 715, Start Num: 13

Candidate Starts for Jifall16_1:

(Start: 13 @158 has 36 MA's), (38, 317), (45, 362), (46, 395), (56, 461), (60, 482), (66, 548), (80, 707),

Gene: Jinglebell_1 Start: 109, Stop: 564, Start Num: 21

Candidate Starts for Jinglebell_1:

(Start: 21 @109 has 143 MA's), (Start: 27 @136 has 4 MA's), (Start: 31 @175 has 1 MA's), (35, 193), (36, 196), (43, 235), (45, 241), (46, 274), (49, 310), (51, 319), (53, 325), (63, 388), (71, 514), (75, 556),

Gene: JoeyJr_1 Start: 108, Stop: 563, Start Num: 21

Candidate Starts for JoeyJr_1:

(Start: 21 @108 has 143 MA's), (Start: 27 @135 has 4 MA's), (Start: 31 @174 has 1 MA's), (35, 192), (36, 195), (43, 234), (45, 240), (46, 273), (49, 309), (51, 318), (53, 324), (63, 387), (71, 513), (73, 546), (75, 555),

Gene: Kabluna_1 Start: 289, Stop: 708, Start Num: 31

Candidate Starts for Kabluna_1:

(8, 124), (Start: 14 @160 has 1 MA's), (23, 235), (Start: 31 @289 has 1 MA's), (45, 355), (46, 388), (55, 445), (56, 454), (59, 469), (60, 475), (66, 541), (80, 700),

Gene: Karhdo_1 Start: 110, Stop: 565, Start Num: 21

Candidate Starts for Karhdo_1:

(15, 50), (Start: 21 @110 has 143 MA's), (Start: 27 @137 has 4 MA's), (Start: 31 @176 has 1 MA's), (35, 194), (39, 209), (41, 221), (42, 224), (43, 236), (45, 242), (46, 275), (51, 320), (53, 326), (54, 329), (66, 425), (67, 440), (71, 515), (75, 557),

Gene: Kenuha5_1 Start: 136, Stop: 564, Start Num: 27

Candidate Starts for Kenuha5_1:

(Start: 21 @109 has 143 MA's), (Start: 27 @136 has 4 MA's), (Start: 31 @175 has 1 MA's), (35, 193), (39, 208), (41, 220), (42, 223), (43, 235), (45, 241), (46, 274), (51, 319), (53, 325), (54, 328), (66, 424), (71, 514), (75, 556),

Gene: Kersh_1 Start: 112, Stop: 567, Start Num: 21

Candidate Starts for Kersh_1:

(Start: 21 @112 has 143 MA's), (Start: 27 @139 has 4 MA's), (Start: 31 @178 has 1 MA's), (35, 196), (36, 199), (39, 211), (43, 238), (45, 244), (46, 277), (49, 313), (51, 322), (53, 328), (63, 391), (66, 427), (67, 442), (71, 517), (73, 550), (75, 559),

Gene: KidneyBean_1 Start: 158, Stop: 715, Start Num: 13

Candidate Starts for KidneyBean_1:

(Start: 13 @158 has 36 MA's), (38, 317), (45, 362), (46, 395), (56, 461), (60, 482), (66, 548), (80, 707),

Gene: Kimchi1738_1 Start: 94, Stop: 618, Start Num: 17

Candidate Starts for Kimchi1738_1:

(7, 40), (10, 61), (Start: 17 @94 has 8 MA's), (23, 157), (29, 190), (32, 217), (44, 280), (46, 316), (47, 331), (52, 367), (57, 385), (60, 403), (65, 460), (68, 535),

Gene: KingMidas_1 Start: 108, Stop: 563, Start Num: 21

Candidate Starts for KingMidas_1:

(Start: 21 @108 has 143 MA's), (Start: 27 @135 has 4 MA's), (Start: 31 @174 has 1 MA's), (35, 192), (36, 195), (43, 234), (45, 240), (46, 273), (49, 309), (51, 318), (53, 324), (63, 387), (71, 513), (73, 546), (75, 555),

Gene: Koella_1 Start: 109, Stop: 564, Start Num: 21

Candidate Starts for Koella_1:

(Start: 21 @109 has 143 MA's), (Start: 27 @136 has 4 MA's), (Start: 31 @175 has 1 MA's), (35, 193), (36, 196), (43, 235), (45, 241), (46, 274), (49, 310), (51, 319), (53, 325), (54, 328), (63, 388), (71, 514), (73, 547), (75, 556),

Gene: KristaRAM_2 Start: 754, Stop: 1212, Start Num: 19

Candidate Starts for KristaRAM_2:

(Start: 19 @754 has 6 MA's), (Start: 27 @784 has 4 MA's), (Start: 31 @823 has 1 MA's), (35, 841), (39, 856), (41, 868), (42, 871), (43, 883), (45, 889), (46, 922), (51, 967), (53, 973), (54, 976), (66, 1072), (67, 1087), (71, 1162), (75, 1204),

Gene: Kurt_1 Start: 158, Stop: 715, Start Num: 13

Candidate Starts for Kurt_1:

(Start: 13 @158 has 36 MA's), (38, 317), (45, 362), (46, 395), (56, 461), (60, 482), (66, 548), (80, 707),

Gene: LastJedi_1 Start: 109, Stop: 564, Start Num: 21

Candidate Starts for LastJedi_1:

(Start: 21 @109 has 143 MA's), (Start: 27 @136 has 4 MA's), (Start: 31 @175 has 1 MA's), (35, 193), (36, 196), (43, 235), (45, 241), (46, 274), (49, 310), (51, 319), (53, 325), (54, 328), (63, 388), (71, 514), (73, 547), (75, 556),

Gene: Latretium_1 Start: 108, Stop: 563, Start Num: 21

Candidate Starts for Latretium_1:

(Start: 21 @108 has 143 MA's), (Start: 27 @135 has 4 MA's), (Start: 31 @174 has 1 MA's), (35, 192), (36, 195), (43, 234), (45, 240), (46, 273), (49, 309), (51, 318), (53, 324), (63, 387), (71, 513), (73, 546), (75, 555),

Gene: Leperchaun_1 Start: 109, Stop: 564, Start Num: 21

Candidate Starts for Leperchaun_1:

(Start: 21 @109 has 143 MA's), (Start: 27 @136 has 4 MA's), (Start: 31 @175 has 1 MA's), (35, 193), (36, 196), (41, 220), (42, 223), (43, 235), (45, 241), (46, 274), (49, 310), (51, 319), (53, 325), (63, 388), (71, 514), (73, 547), (75, 556),

Gene: LilMoolah_1 Start: 109, Stop: 564, Start Num: 21

Candidate Starts for LilMoolah_1:

(Start: 21 @109 has 143 MA's), (Start: 27 @136 has 4 MA's), (Start: 31 @175 has 1 MA's), (35, 193), (36, 196), (39, 208), (43, 235), (45, 241), (46, 274), (49, 310), (51, 319), (53, 325), (54, 328), (63, 388), (71, 514), (73, 547), (75, 556),

Gene: Lizziana_1 Start: 110, Stop: 565, Start Num: 21

Candidate Starts for Lizziana_1:

(15, 50), (Start: 21 @110 has 143 MA's), (Start: 27 @137 has 4 MA's), (Start: 31 @176 has 1 MA's), (35, 194), (36, 197), (39, 209), (43, 236), (45, 242), (46, 275), (49, 311), (51, 320), (53, 326), (63, 389), (66, 425), (67, 440), (71, 515), (73, 548), (75, 557),

Gene: Llama_1 Start: 109, Stop: 564, Start Num: 21

Candidate Starts for Llama_1:

(Start: 21 @109 has 143 MA's), (Start: 27 @136 has 4 MA's), (Start: 31 @175 has 1 MA's), (35, 193), (36, 196), (43, 235), (45, 241), (46, 274), (49, 310), (51, 319), (53, 325), (63, 388), (71, 514), (75, 556),

Gene: Llij_1 Start: 109, Stop: 564, Start Num: 21

Candidate Starts for Llij_1:

(Start: 21 @109 has 143 MA's), (Start: 27 @136 has 4 MA's), (Start: 31 @175 has 1 MA's), (35, 193), (39, 208), (41, 220), (42, 223), (43, 235), (45, 241), (46, 274), (51, 319), (53, 325), (54, 328), (66, 424), (71, 514), (75, 556),

Gene: Lollipop1437_1 Start: 121, Stop: 687, Start Num: 13

Candidate Starts for Lollipop1437_1:

(Start: 13 @121 has 36 MA's), (22, 187), (38, 277), (40, 301), (46, 361), (55, 418), (56, 427), (60, 448), (66, 514), (79, 676), (80, 679),

Gene: LunaBlu_1 Start: 135, Stop: 563, Start Num: 27

Candidate Starts for LunaBlu_1:

(Start: 21 @108 has 143 MA's), (Start: 27 @135 has 4 MA's), (Start: 31 @174 has 1 MA's), (35, 192), (36, 195), (43, 234), (45, 240), (46, 273), (49, 309), (51, 318), (53, 324), (63, 387), (71, 513), (73, 546), (75, 555),

Gene: MacGully_1 Start: 112, Stop: 666, Start Num: 12

Candidate Starts for MacGully_1:

(Start: 12 @112 has 6 MA's), (20, 163), (29, 214), (33, 247), (46, 325), (64, 454), (66, 478), (72, 583),

Gene: MadMen_1 Start: 109, Stop: 564, Start Num: 21

Candidate Starts for MadMen_1:

(Start: 21 @109 has 143 MA's), (Start: 27 @136 has 4 MA's), (Start: 31 @175 has 1 MA's), (35, 193), (39, 208), (41, 220), (42, 223), (43, 235), (45, 241), (46, 274), (51, 319), (53, 325), (54, 328), (66, 424), (71, 514), (75, 556),

Gene: Mahavrat_1 Start: 108, Stop: 563, Start Num: 21

Candidate Starts for Mahavrat_1:

(Start: 21 @108 has 143 MA's), (Start: 27 @135 has 4 MA's), (Start: 31 @174 has 1 MA's), (35, 192), (39, 207), (41, 219), (42, 222), (43, 234), (45, 240), (46, 273), (49, 309), (51, 318), (53, 324), (63, 387), (66, 423), (71, 513), (73, 546), (75, 555),

Gene: Mandlovu_1 Start: 109, Stop: 564, Start Num: 21

Candidate Starts for Mandlovu_1:

(Start: 21 @109 has 143 MA's), (Start: 27 @136 has 4 MA's), (Start: 31 @175 has 1 MA's), (35, 193), (36, 196), (43, 235), (45, 241), (46, 274), (49, 310), (51, 319), (53, 325), (63, 388), (71, 514), (73, 547), (75, 556),

Gene: Mantra_1 Start: 109, Stop: 564, Start Num: 21

Candidate Starts for Mantra_1:

(Start: 21 @109 has 143 MA's), (Start: 27 @136 has 4 MA's), (Start: 31 @175 has 1 MA's), (35, 193), (39, 208), (41, 220), (42, 223), (43, 235), (45, 241), (46, 274), (51, 319), (53, 325), (54, 328), (66, 424), (67, 439), (71, 514), (75, 556),

Gene: Maravista_1 Start: 109, Stop: 564, Start Num: 21

Candidate Starts for Maravista_1:

(Start: 21 @109 has 143 MA's), (Start: 27 @136 has 4 MA's), (Start: 31 @175 has 1 MA's), (35, 193), (39, 208), (41, 220), (42, 223), (43, 235), (45, 241), (46, 274), (51, 319), (53, 325), (67, 439), (71, 514), (73, 547), (75, 556),

Gene: Marietta_1 Start: 159, Stop: 710, Start Num: 13

Candidate Starts for Marietta_1:

(Start: 13 @159 has 36 MA's), (28, 258), (46, 387), (56, 453), (60, 474), (66, 540), (80, 702),

Gene: Martik_1 Start: 110, Stop: 565, Start Num: 21

Candidate Starts for Martik_1:

(15, 50), (Start: 21 @110 has 143 MA's), (Start: 27 @137 has 4 MA's), (Start: 31 @176 has 1 MA's), (35, 194), (36, 197), (39, 209), (43, 236), (45, 242), (46, 275), (49, 311), (51, 320), (53, 326), (63, 389), (66, 425), (67, 440), (71, 515), (73, 548), (75, 557),

Gene: Maselop_1 Start: 110, Stop: 667, Start Num: 12

Candidate Starts for Maselop_1:

(Start: 12 @110 has 6 MA's), (20, 161), (25, 188), (26, 191), (29, 212), (33, 245), (46, 326), (48, 353), (60, 413), (77, 608),

Gene: Mattes_1 Start: 109, Stop: 564, Start Num: 21

Candidate Starts for Mattes_1:

(Start: 21 @109 has 143 MA's), (Start: 27 @136 has 4 MA's), (Start: 31 @175 has 1 MA's), (35, 193), (36, 196), (43, 235), (45, 241), (46, 274), (49, 310), (51, 319), (53, 325), (63, 388), (71, 514), (73, 547), (75, 556),

Gene: Melissauren88_1 Start: 109, Stop: 564, Start Num: 21

Candidate Starts for Melissauren88_1:

(Start: 21 @109 has 143 MA's), (Start: 27 @136 has 4 MA's), (Start: 31 @175 has 1 MA's), (35, 193), (39, 208), (41, 220), (42, 223), (43, 235), (45, 241), (46, 274), (51, 319), (53, 325), (54, 328), (66, 424), (67, 439), (71, 514), (75, 556),

Gene: MerCougar_1 Start: 158, Stop: 715, Start Num: 13

Candidate Starts for MerCougar_1:

(Start: 13 @158 has 36 MA's), (29, 266), (36, 308), (46, 395), (60, 482), (66, 548), (80, 707),

Gene: MilanaBonita_2 Start: 754, Stop: 1212, Start Num: 19

Candidate Starts for MilanaBonita_2:

(Start: 19 @754 has 6 MA's), (Start: 27 @784 has 4 MA's), (Start: 31 @823 has 1 MA's), (35, 841), (39, 856), (41, 868), (42, 871), (43, 883), (45, 889), (46, 922), (51, 967), (53, 973), (54, 976), (66, 1072), (71, 1162), (75, 1204),

Gene: MilleniumForce_2 Start: 754, Stop: 1212, Start Num: 19

Candidate Starts for MilleniumForce_2:

(Start: 19 @754 has 6 MA's), (Start: 27 @784 has 4 MA's), (Start: 31 @823 has 1 MA's), (35, 841), (39, 856), (41, 868), (42, 871), (43, 883), (45, 889), (46, 922), (51, 967), (53, 973), (54, 976), (66, 1072), (71, 1162), (75, 1204),

Gene: Minnie_1 Start: 136, Stop: 564, Start Num: 27

Candidate Starts for Minnie_1:

(Start: 21 @109 has 143 MA's), (Start: 27 @136 has 4 MA's), (Start: 31 @175 has 1 MA's), (35, 193), (39, 208), (41, 220), (42, 223), (43, 235), (45, 241), (46, 274), (51, 319), (53, 325), (54, 328), (66, 424), (71, 514), (75, 556),

Gene: MisterCuddles_1 Start: 110, Stop: 565, Start Num: 21

Candidate Starts for MisterCuddles_1:

(15, 50), (Start: 21 @110 has 143 MA's), (Start: 27 @137 has 4 MA's), (Start: 31 @176 has 1 MA's), (35, 194), (36, 197), (39, 209), (43, 236), (45, 242), (46, 275), (49, 311), (51, 320), (53, 326), (54, 329), (63, 389), (66, 425), (67, 440), (71, 515), (73, 548), (75, 557),

Gene: Modragons_1 Start: 109, Stop: 564, Start Num: 21

Candidate Starts for Modragons_1:

(Start: 21 @109 has 143 MA's), (Start: 27 @136 has 4 MA's), (Start: 31 @175 has 1 MA's), (35, 193), (36, 196), (43, 235), (45, 241), (46, 274), (49, 310), (51, 319), (53, 325), (63, 388), (71, 514), (75, 556),

Gene: Moonbeam_1 Start: 109, Stop: 564, Start Num: 21

Candidate Starts for Moonbeam_1:

(Start: 21 @109 has 143 MA's), (Start: 27 @136 has 4 MA's), (Start: 31 @175 has 1 MA's), (35, 193), (36, 196), (39, 208), (43, 235), (45, 241), (46, 274), (49, 310), (51, 319), (53, 325), (63, 388), (67, 439), (71, 514), (73, 547), (75, 556),

Gene: MulchSalad_1 Start: 135, Stop: 563, Start Num: 27

Candidate Starts for MulchSalad_1:

(Start: 21 @108 has 143 MA's), (Start: 27 @135 has 4 MA's), (Start: 31 @174 has 1 MA's), (35, 192), (39, 207), (41, 219), (42, 222), (43, 234), (45, 240), (46, 273), (51, 318), (53, 324), (54, 327), (66, 423), (71, 513), (75, 555),

Gene: Mutaforma13_1 Start: 109, Stop: 564, Start Num: 21

Candidate Starts for Mutaforma13_1:

(Start: 21 @109 has 143 MA's), (Start: 27 @136 has 4 MA's), (Start: 31 @175 has 1 MA's), (35, 193), (39, 208), (41, 220), (42, 223), (43, 235), (45, 241), (46, 274), (51, 319), (53, 325), (54, 328), (66, 424), (67, 439), (71, 514), (75, 556),

Gene: NadineRae_1 Start: 159, Stop: 710, Start Num: 13

Candidate Starts for NadineRae_1:

(Start: 13 @159 has 36 MA's), (28, 258), (46, 387), (56, 453), (60, 474), (66, 540), (80, 702),

Gene: NatB6_2 Start: 773, Stop: 1330, Start Num: 13

Candidate Starts for NatB6_2:

(Start: 13 @773 has 36 MA's), (38, 932), (45, 977), (46, 1010), (56, 1076), (60, 1097), (66, 1163), (80, 1322),

Gene: Nimbo_1 Start: 108, Stop: 563, Start Num: 21

Candidate Starts for Nimbo_1:

(Start: 21 @108 has 143 MA's), (Start: 27 @135 has 4 MA's), (Start: 31 @174 has 1 MA's), (35, 192), (36, 195), (43, 234), (45, 240), (46, 273), (49, 309), (51, 318), (53, 324), (63, 387), (71, 513), (73, 546), (75, 555),

Gene: Nitzel_2 Start: 754, Stop: 1212, Start Num: 19

Candidate Starts for Nitzel_2:

(Start: 19 @754 has 6 MA's), (Start: 27 @784 has 4 MA's), (Start: 31 @823 has 1 MA's), (35, 841), (41, 868), (42, 871), (43, 883), (45, 889), (46, 922), (51, 967), (53, 973), (54, 976), (66, 1072), (71, 1162), (75, 1204),

Gene: Nivrat_1 Start: 109, Stop: 564, Start Num: 21

Candidate Starts for Nivrat_1:

(Start: 21 @109 has 143 MA's), (Start: 27 @136 has 4 MA's), (Start: 31 @175 has 1 MA's), (35, 193), (36, 196), (39, 208), (43, 235), (45, 241), (46, 274), (49, 310), (51, 319), (53, 325), (54, 328), (63, 388), (71, 514), (73, 547), (75, 556),

Gene: NormanBulbieJr_1 Start: 109, Stop: 564, Start Num: 21

Candidate Starts for NormanBulbieJr_1:

(Start: 21 @109 has 143 MA's), (Start: 27 @136 has 4 MA's), (Start: 31 @175 has 1 MA's), (35, 193), (36, 196), (43, 235), (45, 241), (46, 274), (49, 310), (51, 319), (53, 325), (54, 328), (63, 388), (71, 514), (73, 547), (75, 556),

Gene: NosilaM_1 Start: 158, Stop: 715, Start Num: 13

Candidate Starts for NosilaM_1:

(Start: 13 @158 has 36 MA's), (29, 266), (45, 362), (46, 395), (56, 461), (60, 482), (66, 548), (80, 707),

Gene: NovumRegina_2 Start: 773, Stop: 1330, Start Num: 13

Candidate Starts for NovumRegina_2:

(Start: 13 @773 has 36 MA's), (38, 932), (45, 977), (46, 1010), (56, 1076), (60, 1097), (66, 1163), (80, 1322),

Gene: Ochi17_1 Start: 109, Stop: 564, Start Num: 21

Candidate Starts for Ochi17_1:

(Start: 21 @109 has 143 MA's), (Start: 27 @136 has 4 MA's), (Start: 31 @175 has 1 MA's), (35, 193), (36, 196), (43, 235), (45, 241), (46, 274), (49, 310), (51, 319), (53, 325), (63, 388), (71, 514), (75, 556),

Gene: OfUltron_1 Start: 109, Stop: 564, Start Num: 21

Candidate Starts for OfUltron_1:

(Start: 21 @109 has 143 MA's), (Start: 27 @136 has 4 MA's), (Start: 31 @175 has 1 MA's), (35, 193), (36, 196), (43, 235), (45, 241), (46, 274), (49, 310), (51, 319), (53, 325), (63, 388), (71, 514), (75, 556),

Gene: OldBen_1 Start: 108, Stop: 563, Start Num: 21

Candidate Starts for OldBen_1:

(Start: 21 @108 has 143 MA's), (Start: 27 @135 has 4 MA's), (Start: 31 @174 has 1 MA's), (35, 192), (36, 195), (43, 234), (45, 240), (46, 273), (49, 309), (51, 318), (53, 324), (63, 387), (71, 513), (73, 546), (75, 555),

Gene: OlympiaSaint_1 Start: 109, Stop: 564, Start Num: 21

Candidate Starts for OlympiaSaint_1:

(Start: 21 @109 has 143 MA's), (Start: 27 @136 has 4 MA's), (Start: 31 @175 has 1 MA's), (35, 193), (36, 196), (43, 235), (45, 241), (46, 274), (49, 310), (51, 319), (53, 325), (54, 328), (63, 388), (71, 514), (73, 547), (75, 556),

Gene: Outis_1 Start: 158, Stop: 715, Start Num: 13

Candidate Starts for Outis_1:

(Start: 13 @158 has 36 MA's), (29, 266), (36, 308), (46, 395), (50, 437), (56, 461), (60, 482), (66, 548), (80, 707),

Gene: Ovechkin_1 Start: 109, Stop: 564, Start Num: 21

Candidate Starts for Ovechkin_1:

(Start: 21 @109 has 143 MA's), (Start: 27 @136 has 4 MA's), (Start: 31 @175 has 1 MA's), (35, 193), (39, 208), (41, 220), (42, 223), (43, 235), (45, 241), (46, 274), (51, 319), (53, 325), (54, 328), (66, 424),

(71, 514), (75, 556),

Gene: P1201_02 Start: 294, Stop: 875, Start Num: 4

Candidate Starts for P1201_02:

(4, 294), (5, 306), (18, 390), (22, 429), (41, 525), (46, 579), (47, 594), (50, 621),

Gene: PHappiness_1 Start: 108, Stop: 563, Start Num: 21

Candidate Starts for PHappiness_1:

(Start: 21 @108 has 143 MA's), (Start: 27 @135 has 4 MA's), (Start: 31 @174 has 1 MA's), (35, 192), (36, 195), (43, 234), (45, 240), (46, 273), (49, 309), (51, 318), (53, 324), (63, 387), (71, 513), (73, 546), (75, 555),

Gene: PMC_1 Start: 109, Stop: 564, Start Num: 21

Candidate Starts for PMC_1:

(Start: 21 @109 has 143 MA's), (Start: 27 @136 has 4 MA's), (Start: 31 @175 has 1 MA's), (35, 193), (39, 208), (41, 220), (42, 223), (43, 235), (45, 241), (46, 274), (51, 319), (53, 325), (54, 328), (66, 424), (71, 514), (75, 556),

Gene: Pacc40_1 Start: 108, Stop: 563, Start Num: 21

Candidate Starts for Pacc40_1:

(Start: 21 @108 has 143 MA's), (Start: 27 @135 has 4 MA's), (Start: 31 @174 has 1 MA's), (35, 192), (36, 195), (43, 234), (45, 240), (46, 273), (49, 309), (51, 318), (53, 324), (63, 387), (71, 513), (73, 546), (75, 555),

Gene: Patio_2 Start: 777, Stop: 1343, Start Num: 13

Candidate Starts for Patio_2:

(3, 642), (Start: 13 @777 has 36 MA's), (38, 933), (46, 1017), (55, 1074), (56, 1083), (60, 1104), (66, 1170), (79, 1332), (80, 1335),

Gene: PeteyPab_1 Start: 94, Stop: 618, Start Num: 17

Candidate Starts for PeteyPab_1:

(7, 40), (10, 61), (Start: 17 @94 has 8 MA's), (23, 157), (29, 190), (32, 217), (44, 280), (46, 316), (47, 331), (52, 367), (60, 403), (65, 460),

Gene: Phanphagia_1 Start: 109, Stop: 564, Start Num: 21

Candidate Starts for Phanphagia_1:

(Start: 21 @109 has 143 MA's), (Start: 27 @136 has 4 MA's), (Start: 31 @175 has 1 MA's), (35, 193), (39, 208), (41, 220), (42, 223), (43, 235), (45, 241), (46, 274), (51, 319), (53, 325), (54, 328), (66, 424), (67, 439), (71, 514), (75, 556),

Gene: Phasih_1 Start: 109, Stop: 564, Start Num: 21

Candidate Starts for Phasih_1:

(Start: 21 @109 has 143 MA's), (Start: 27 @136 has 4 MA's), (Start: 31 @175 has 1 MA's), (35, 193), (39, 208), (41, 220), (42, 223), (43, 235), (45, 241), (46, 274), (51, 319), (53, 325), (54, 328), (66, 424), (71, 514), (75, 556),

Gene: Phatniss_1 Start: 109, Stop: 564, Start Num: 21

Candidate Starts for Phatniss_1:

(Start: 21 @109 has 143 MA's), (Start: 27 @136 has 4 MA's), (Start: 31 @175 has 1 MA's), (35, 193), (39, 208), (41, 220), (42, 223), (43, 235), (45, 241), (46, 274), (51, 319), (53, 325), (67, 439), (71, 514), (73, 547), (75, 556),

Gene: Philus_1 Start: 109, Stop: 564, Start Num: 21

Candidate Starts for Philus_1:

(Start: 21 @109 has 143 MA's), (Start: 27 @136 has 4 MA's), (Start: 31 @175 has 1 MA's), (35, 193), (36, 196), (39, 208), (43, 235), (45, 241), (46, 274), (49, 310), (51, 319), (53, 325), (54, 328), (63, 388), (71, 514), (73, 547), (75, 556),

Gene: Phomeo_1 Start: 158, Stop: 715, Start Num: 13

Candidate Starts for Phomeo_1:

(Start: 13 @158 has 36 MA's), (38, 317), (45, 362), (46, 395), (56, 461), (60, 482), (66, 548), (80, 707),

Gene: Pippy_1 Start: 109, Stop: 564, Start Num: 21

Candidate Starts for Pippy_1:

(Start: 21 @109 has 143 MA's), (Start: 27 @136 has 4 MA's), (Start: 31 @175 has 1 MA's), (35, 193), (36, 196), (43, 235), (45, 241), (46, 274), (49, 310), (51, 319), (53, 325), (54, 328), (63, 388), (71, 514), (73, 547), (75, 556),

Gene: Pleakley_1 Start: 122, Stop: 679, Start Num: 13

Candidate Starts for Pleakley_1:

(Start: 13 @122 has 36 MA's), (45, 317), (46, 350), (55, 407), (60, 437), (64, 479), (65, 494), (66, 503), (80, 671),

Gene: Poenanya_1 Start: 108, Stop: 563, Start Num: 21

Candidate Starts for Poenanya_1:

(Start: 21 @108 has 143 MA's), (Start: 27 @135 has 4 MA's), (Start: 31 @174 has 1 MA's), (35, 192), (36, 195), (43, 234), (45, 240), (46, 273), (49, 309), (51, 318), (53, 324), (63, 387), (71, 513), (73, 546), (75, 555),

Gene: Polka14_1 Start: 109, Stop: 564, Start Num: 21

Candidate Starts for Polka14_1:

(Start: 21 @109 has 143 MA's), (Start: 27 @136 has 4 MA's), (Start: 31 @175 has 1 MA's), (35, 193), (36, 196), (39, 208), (43, 235), (45, 241), (46, 274), (49, 310), (51, 319), (53, 325), (54, 328), (63, 388), (71, 514), (73, 547), (75, 556),

Gene: Polyzuki_1 Start: 110, Stop: 667, Start Num: 12

Candidate Starts for Polyzuki_1:

(Start: 12 @110 has 6 MA's), (20, 161), (25, 188), (29, 212), (33, 245), (46, 326), (48, 353), (60, 413), (77, 608),

Gene: PopTart_1 Start: 109, Stop: 564, Start Num: 21

Candidate Starts for PopTart_1:

(Start: 21 @109 has 143 MA's), (Start: 27 @136 has 4 MA's), (30, 172), (Start: 31 @175 has 1 MA's), (35, 193), (39, 208), (41, 220), (42, 223), (43, 235), (45, 241), (46, 274), (51, 319), (53, 325), (54, 328), (66, 424), (67, 439), (71, 514), (75, 556),

Gene: PotatoChip_1 Start: 94, Stop: 618, Start Num: 17

Candidate Starts for PotatoChip_1:

(7, 40), (10, 61), (Start: 17 @94 has 8 MA's), (23, 157), (29, 190), (32, 217), (44, 280), (46, 316), (47, 331), (52, 367), (60, 403), (65, 460),

Gene: Priscilla_1 Start: 109, Stop: 564, Start Num: 21

Candidate Starts for Priscilla_1:

(Start: 21 @109 has 143 MA's), (Start: 27 @136 has 4 MA's), (Start: 31 @175 has 1 MA's), (35, 193), (36, 196), (43, 235), (45, 241), (46, 274), (49, 310), (51, 319), (53, 325), (54, 328), (63, 388), (71, 514), (73, 547), (75, 556),

Gene: QuickMath_1 Start: 109, Stop: 564, Start Num: 21

Candidate Starts for QuickMath_1:

(Start: 21 @109 has 143 MA's), (Start: 27 @136 has 4 MA's), (Start: 31 @175 has 1 MA's), (35, 193), (39, 208), (41, 220), (42, 223), (43, 235), (45, 241), (46, 274), (51, 319), (53, 325), (54, 328), (66, 424), (71, 514), (75, 556),

Gene: Radiance_1 Start: 108, Stop: 563, Start Num: 21

Candidate Starts for Radiance_1:

(Start: 21 @108 has 143 MA's), (Start: 27 @135 has 4 MA's), (Start: 31 @174 has 1 MA's), (35, 192), (36, 195), (43, 234), (45, 240), (46, 273), (49, 309), (51, 318), (53, 324), (63, 387), (71, 513), (73, 546), (75, 555),

Gene: RedBird_1 Start: 108, Stop: 563, Start Num: 21

Candidate Starts for RedBird_1:

(Start: 21 @108 has 143 MA's), (Start: 27 @135 has 4 MA's), (Start: 31 @174 has 1 MA's), (35, 192), (36, 195), (43, 234), (45, 240), (46, 273), (49, 309), (51, 318), (53, 324), (63, 387), (71, 513), (73, 546), (75, 555),

Gene: Rita_1 Start: 110, Stop: 565, Start Num: 21

Candidate Starts for Rita_1:

(Start: 21 @110 has 143 MA's), (Start: 27 @137 has 4 MA's), (Start: 31 @176 has 1 MA's), (35, 194), (39, 209), (41, 221), (42, 224), (43, 236), (45, 242), (46, 275), (51, 320), (53, 326), (54, 329), (66, 425), (71, 515), (75, 557),

Gene: RitaG_1 Start: 108, Stop: 563, Start Num: 21

Candidate Starts for RitaG_1:

(Start: 21 @108 has 143 MA's), (Start: 27 @135 has 4 MA's), (Start: 31 @174 has 1 MA's), (35, 192), (36, 195), (43, 234), (45, 240), (46, 273), (49, 309), (51, 318), (53, 324), (63, 387), (71, 513), (73, 546), (75, 555),

Gene: Rockne_1 Start: 109, Stop: 564, Start Num: 21

Candidate Starts for Rockne_1:

(Start: 21 @109 has 143 MA's), (Start: 27 @136 has 4 MA's), (Start: 31 @175 has 1 MA's), (35, 193), (39, 208), (41, 220), (42, 223), (43, 235), (45, 241), (46, 274), (51, 319), (53, 325), (54, 328), (66, 424), (71, 514), (75, 556),

Gene: Royals2015_1 Start: 109, Stop: 564, Start Num: 21

Candidate Starts for Royals2015_1:

(Start: 21 @109 has 143 MA's), (Start: 27 @136 has 4 MA's), (Start: 31 @175 has 1 MA's), (35, 193), (39, 208), (41, 220), (42, 223), (43, 235), (45, 241), (46, 274), (51, 319), (53, 325), (54, 328), (66, 424), (67, 439), (71, 514), (75, 556),

Gene: Ruby_1 Start: 110, Stop: 565, Start Num: 21

Candidate Starts for Ruby_1:

(15, 50), (Start: 21 @110 has 143 MA's), (Start: 27 @137 has 4 MA's), (Start: 31 @176 has 1 MA's), (35, 194), (36, 197), (39, 209), (43, 236), (45, 242), (46, 275), (49, 311), (51, 320), (53, 326), (54, 329), (63, 389), (66, 425), (67, 440), (71, 515), (73, 548), (75, 557),

Gene: SG4_1 Start: 109, Stop: 564, Start Num: 21

Candidate Starts for SG4_1:

(Start: 21 @109 has 143 MA's), (Start: 27 @136 has 4 MA's), (Start: 31 @175 has 1 MA's), (35, 193), (39, 208), (41, 220), (42, 223), (43, 235), (45, 241), (46, 274), (51, 319), (53, 325), (54, 328), (66, 424),

(67, 439), (71, 514), (75, 556),

Gene: Saal_1 Start: 109, Stop: 564, Start Num: 21

Candidate Starts for Saal_1:

(Start: 21 @109 has 143 MA's), (Start: 27 @136 has 4 MA's), (Start: 31 @175 has 1 MA's), (35, 193), (36, 196), (43, 235), (45, 241), (46, 274), (49, 310), (51, 319), (53, 325), (63, 388), (71, 514), (73, 547), (75, 556),

Gene: Sabbb_1 Start: 109, Stop: 564, Start Num: 21

Candidate Starts for Sabbb_1:

(Start: 21 @109 has 143 MA's), (Start: 27 @136 has 4 MA's), (Start: 31 @175 has 1 MA's), (35, 193), (39, 208), (41, 220), (42, 223), (43, 235), (45, 241), (46, 274), (51, 319), (53, 325), (54, 328), (66, 424), (71, 514), (75, 556),

Gene: Sandalphon_1 Start: 109, Stop: 564, Start Num: 21

Candidate Starts for Sandalphon_1:

(Start: 21 @109 has 143 MA's), (Start: 27 @136 has 4 MA's), (Start: 31 @175 has 1 MA's), (35, 193), (39, 208), (41, 220), (42, 223), (43, 235), (45, 241), (46, 274), (51, 319), (53, 325), (54, 328), (66, 424), (71, 514), (75, 556),

Gene: Sassafras_1 Start: 108, Stop: 563, Start Num: 21

Candidate Starts for Sassafras_1:

(Start: 21 @108 has 143 MA's), (Start: 27 @135 has 4 MA's), (Start: 31 @174 has 1 MA's), (35, 192), (36, 195), (43, 234), (45, 240), (46, 273), (49, 309), (51, 318), (53, 324), (63, 387), (71, 513), (73, 546), (75, 555),

Gene: SassyB_1 Start: 109, Stop: 564, Start Num: 21

Candidate Starts for SassyB_1:

(Start: 21 @109 has 143 MA's), (Start: 27 @136 has 4 MA's), (Start: 31 @175 has 1 MA's), (35, 193), (39, 208), (41, 220), (42, 223), (43, 235), (45, 241), (46, 274), (51, 319), (53, 325), (54, 328), (66, 424), (67, 439), (71, 514), (75, 556),

Gene: Scottish_1 Start: 108, Stop: 563, Start Num: 21

Candidate Starts for Scottish_1:

(Start: 21 @108 has 143 MA's), (Start: 27 @135 has 4 MA's), (Start: 31 @174 has 1 MA's), (35, 192), (36, 195), (43, 234), (45, 240), (46, 273), (49, 309), (51, 318), (53, 324), (63, 387), (71, 513), (73, 546), (75, 555),

Gene: Seabastian_1 Start: 109, Stop: 564, Start Num: 21

Candidate Starts for Seabastian_1:

(Start: 21 @109 has 143 MA's), (Start: 27 @136 has 4 MA's), (Start: 31 @175 has 1 MA's), (35, 193), (36, 196), (43, 235), (45, 241), (46, 274), (49, 310), (51, 319), (53, 325), (63, 388), (71, 514), (75, 556),

Gene: Shauna1_1 Start: 109, Stop: 564, Start Num: 21

Candidate Starts for Shauna1_1:

(Start: 21 @109 has 143 MA's), (Start: 27 @136 has 4 MA's), (Start: 31 @175 has 1 MA's), (35, 193), (39, 208), (41, 220), (42, 223), (43, 235), (45, 241), (46, 274), (51, 319), (53, 325), (54, 328), (66, 424), (67, 439), (71, 514), (75, 556),

Gene: ShiLan_1 Start: 109, Stop: 564, Start Num: 21

Candidate Starts for ShiLan_1:

(Start: 21 @109 has 143 MA's), (Start: 27 @136 has 4 MA's), (Start: 31 @175 has 1 MA's), (35, 193), (36, 196), (39, 208), (43, 235), (45, 241), (46, 274), (49, 310), (51, 319), (53, 325), (54, 328), (63, 388),

(71, 514), (73, 547), (75, 556),

Gene: ShowerHandel_1 Start: 110, Stop: 565, Start Num: 21

Candidate Starts for ShowerHandel_1:

(15, 50), (Start: 21 @110 has 143 MA's), (Start: 27 @137 has 4 MA's), (Start: 31 @176 has 1 MA's), (35, 194), (36, 197), (39, 209), (43, 236), (45, 242), (46, 275), (49, 311), (51, 320), (53, 326), (63, 389), (66, 425), (67, 440), (71, 515), (73, 548), (75, 557),

Gene: ShroomBoi_1 Start: 109, Stop: 564, Start Num: 21

Candidate Starts for ShroomBoi_1:

(Start: 21 @109 has 143 MA's), (Start: 27 @136 has 4 MA's), (Start: 31 @175 has 1 MA's), (35, 193), (39, 208), (41, 220), (42, 223), (43, 235), (45, 241), (46, 274), (51, 319), (53, 325), (54, 328), (66, 424), (67, 439), (71, 514), (75, 556),

Gene: SiSi_1 Start: 109, Stop: 564, Start Num: 21

Candidate Starts for SiSi_1:

(Start: 21 @109 has 143 MA's), (Start: 27 @136 has 4 MA's), (Start: 31 @175 has 1 MA's), (35, 193), (39, 208), (41, 220), (42, 223), (43, 235), (45, 241), (46, 274), (51, 319), (53, 325), (66, 424), (67, 439), (71, 514), (73, 547), (75, 556),

Gene: Skysand_1 Start: 121, Stop: 687, Start Num: 13

Candidate Starts for Skysand_1:

(Start: 13 @121 has 36 MA's), (22, 187), (38, 277), (40, 301), (46, 361), (55, 418), (56, 427), (60, 448), (66, 514), (79, 676), (80, 679),

Gene: Sparkdehlily_1 Start: 110, Stop: 565, Start Num: 21

Candidate Starts for Sparkdehlily_1:

(Start: 21 @110 has 143 MA's), (Start: 27 @137 has 4 MA's), (Start: 31 @176 has 1 MA's), (35, 194), (36, 197), (43, 236), (45, 242), (46, 275), (49, 311), (51, 320), (53, 326), (54, 329), (63, 389), (71, 515), (75, 557),

Gene: Spartacus_1 Start: 112, Stop: 567, Start Num: 21

Candidate Starts for Spartacus_1:

(Start: 21 @112 has 143 MA's), (Start: 27 @139 has 4 MA's), (Start: 31 @178 has 1 MA's), (35, 196), (36, 199), (39, 211), (43, 238), (45, 244), (46, 277), (49, 313), (51, 322), (53, 328), (63, 391), (66, 427), (67, 442), (71, 517), (73, 550), (75, 559),

Gene: Spoonbill_1 Start: 109, Stop: 564, Start Num: 21

Candidate Starts for Spoonbill_1:

(Start: 21 @109 has 143 MA's), (Start: 27 @136 has 4 MA's), (Start: 31 @175 has 1 MA's), (35, 193), (36, 196), (43, 235), (45, 241), (46, 274), (49, 310), (51, 319), (53, 325), (63, 388), (66, 424), (67, 439), (70, 508), (71, 514), (73, 547), (75, 556),

Gene: StAnnes_1 Start: 109, Stop: 564, Start Num: 21

Candidate Starts for StAnnes_1:

(Start: 21 @109 has 143 MA's), (Start: 27 @136 has 4 MA's), (35, 193), (39, 208), (41, 220), (42, 223), (43, 235), (45, 241), (46, 274), (51, 319), (53, 325), (54, 328), (66, 424), (67, 439), (71, 514), (75, 556),

Gene: StarStruck_1 Start: 158, Stop: 715, Start Num: 13

Candidate Starts for StarStruck_1:

(Start: 13 @158 has 36 MA's), (29, 266), (36, 308), (46, 395), (50, 437), (56, 461), (60, 482), (66, 548), (80, 707),

Gene: Stickynote_1 Start: 94, Stop: 618, Start Num: 17

Candidate Starts for Stickynote_1:

(7, 40), (10, 61), (Start: 17 @94 has 8 MA's), (23, 157), (29, 190), (32, 217), (44, 280), (46, 316), (47, 331), (52, 367), (60, 403), (65, 460), (68, 535),

Gene: Strokeseat_1 Start: 109, Stop: 564, Start Num: 21

Candidate Starts for Strokeseat_1:

(Start: 21 @109 has 143 MA's), (Start: 27 @136 has 4 MA's), (Start: 31 @175 has 1 MA's), (35, 193), (36, 196), (43, 235), (45, 241), (46, 274), (49, 310), (51, 319), (53, 325), (63, 388), (71, 514), (73, 547), (75, 556),

Gene: Sukkupi_1 Start: 159, Stop: 710, Start Num: 13

Candidate Starts for Sukkupi_1:

(Start: 13 @159 has 36 MA's), (28, 258), (46, 387), (56, 453), (60, 474), (66, 540), (80, 702),

Gene: SuperGrey_1 Start: 109, Stop: 564, Start Num: 21

Candidate Starts for SuperGrey_1:

(Start: 21 @109 has 143 MA's), (Start: 27 @136 has 4 MA's), (Start: 31 @175 has 1 MA's), (35, 193), (39, 208), (41, 220), (42, 223), (43, 235), (45, 241), (46, 274), (51, 319), (53, 325), (54, 328), (66, 424), (67, 439), (71, 514), (75, 556),

Gene: SuperSulley_1 Start: 157, Stop: 702, Start Num: 13

Candidate Starts for SuperSulley_1:

(Start: 13 @157 has 36 MA's), (29, 265), (46, 382), (56, 448), (60, 469), (66, 535), (80, 694),

Gene: SwagPiggett_1 Start: 110, Stop: 565, Start Num: 21

Candidate Starts for SwagPiggett_1:

(15, 50), (Start: 21 @110 has 143 MA's), (Start: 27 @137 has 4 MA's), (Start: 31 @176 has 1 MA's), (35, 194), (36, 197), (39, 209), (43, 236), (45, 242), (46, 275), (49, 311), (51, 320), (53, 326), (63, 389), (66, 425), (67, 440), (71, 515), (73, 548), (75, 557),

Gene: TDanisky_1 Start: 110, Stop: 565, Start Num: 21

Candidate Starts for TDanisky_1:

(Start: 21 @110 has 143 MA's), (Start: 27 @137 has 4 MA's), (Start: 31 @176 has 1 MA's), (35, 194), (36, 197), (43, 236), (45, 242), (46, 275), (49, 311), (51, 320), (53, 326), (54, 329), (63, 389), (71, 515), (75, 557),

Gene: Taj_1 Start: 109, Stop: 564, Start Num: 21

Candidate Starts for Taj_1:

(Start: 21 @109 has 143 MA's), (Start: 27 @136 has 4 MA's), (Start: 31 @175 has 1 MA's), (35, 193), (39, 208), (41, 220), (42, 223), (43, 235), (45, 241), (46, 274), (51, 319), (53, 325), (54, 328), (66, 424), (71, 514), (75, 556),

Gene: Tracker_1 Start: 159, Stop: 701, Start Num: 13

Candidate Starts for Tracker_1:

(Start: 13 @159 has 36 MA's), (46, 387), (55, 444), (56, 453), (60, 474), (66, 540), (80, 693),

Gene: Turuncu_1 Start: 122, Stop: 688, Start Num: 13

Candidate Starts for Turuncu_1:

(Start: 13 @122 has 36 MA's), (38, 281), (46, 362), (55, 419), (56, 428), (60, 449), (66, 515),

Gene: Tweety_1 Start: 109, Stop: 564, Start Num: 21

Candidate Starts for Tweety_1:

(Start: 21 @109 has 143 MA's), (Start: 27 @136 has 4 MA's), (Start: 31 @175 has 1 MA's), (35, 193), (39, 208), (41, 220), (42, 223), (43, 235), (45, 241), (46, 274), (51, 319), (53, 325), (54, 328), (66, 424), (67, 439), (71, 514), (75, 556),

Gene: VRedHorse_1 Start: 109, Stop: 564, Start Num: 21

Candidate Starts for VRedHorse_1:

(Start: 21 @109 has 143 MA's), (Start: 27 @136 has 4 MA's), (Start: 31 @175 has 1 MA's), (35, 193), (36, 196), (43, 235), (45, 241), (46, 274), (49, 310), (51, 319), (53, 325), (63, 388), (71, 514), (73, 547), (75, 556),

Gene: Veteran_1 Start: 110, Stop: 565, Start Num: 21

Candidate Starts for Veteran_1:

(15, 50), (Start: 21 @110 has 143 MA's), (Start: 27 @137 has 4 MA's), (Start: 31 @176 has 1 MA's), (35, 194), (39, 209), (41, 221), (42, 224), (43, 236), (45, 242), (46, 275), (51, 320), (53, 326), (54, 329), (66, 425), (67, 440), (71, 515), (75, 557),

Gene: Wachhund_1 Start: 109, Stop: 564, Start Num: 21

Candidate Starts for Wachhund_1:

(Start: 21 @109 has 143 MA's), (Start: 27 @136 has 4 MA's), (Start: 31 @175 has 1 MA's), (35, 193), (36, 196), (43, 235), (45, 241), (46, 274), (49, 310), (51, 319), (53, 325), (63, 388), (71, 514), (73, 547), (75, 556),

Gene: Wee_1 Start: 109, Stop: 564, Start Num: 21

Candidate Starts for Wee_1:

(Start: 21 @109 has 143 MA's), (Start: 27 @136 has 4 MA's), (Start: 31 @175 has 1 MA's), (35, 193), (39, 208), (41, 220), (42, 223), (43, 235), (45, 241), (46, 274), (51, 319), (53, 325), (54, 328), (66, 424), (67, 439), (71, 514), (75, 556),

Gene: Whatsapiecost_1 Start: 109, Stop: 564, Start Num: 21

Candidate Starts for Whatsapiecost_1:

(Start: 21 @109 has 143 MA's), (Start: 27 @136 has 4 MA's), (Start: 31 @175 has 1 MA's), (35, 193), (39, 208), (41, 220), (42, 223), (43, 235), (45, 241), (46, 274), (51, 319), (53, 325), (54, 328), (66, 424), (71, 514), (75, 556),

Gene: Wheezy_1 Start: 158, Stop: 715, Start Num: 13

Candidate Starts for Wheezy_1:

(Start: 13 @158 has 36 MA's), (38, 317), (45, 362), (46, 395), (56, 461), (60, 482), (66, 548), (80, 707),

Gene: WhoseManz_1 Start: 159, Stop: 710, Start Num: 13

Candidate Starts for WhoseManz_1:

(Start: 13 @159 has 36 MA's), (28, 258), (46, 387), (56, 453), (60, 474), (66, 540), (80, 702),

Gene: Whouxphf_1 Start: 109, Stop: 564, Start Num: 21

Candidate Starts for Whouxphf_1:

(Start: 21 @109 has 143 MA's), (Start: 27 @136 has 4 MA's), (Start: 31 @175 has 1 MA's), (35, 193), (36, 196), (43, 235), (45, 241), (46, 274), (49, 310), (51, 319), (53, 325), (63, 388), (66, 424), (71, 514), (73, 547), (75, 556),

Gene: WillSterrel_1 Start: 112, Stop: 567, Start Num: 21

Candidate Starts for WillSterrel_1:

(Start: 21 @112 has 143 MA's), (Start: 27 @139 has 4 MA's), (Start: 31 @178 has 1 MA's), (35, 196), (36, 199), (39, 211), (43, 238), (45, 244), (46, 277), (49, 313), (51, 322), (53, 328), (63, 391), (66, 427), (67, 442), (71, 517), (73, 550), (75, 559),

Gene: XFactor_1 Start: 109, Stop: 564, Start Num: 21

Candidate Starts for XFactor_1:

(Start: 21 @109 has 143 MA's), (Start: 27 @136 has 4 MA's), (Start: 31 @175 has 1 MA's), (35, 193), (39, 208), (41, 220), (42, 223), (43, 235), (45, 241), (46, 274), (51, 319), (53, 325), (54, 328), (66, 424), (67, 439), (71, 514), (75, 556),

Gene: Yndexa_1 Start: 159, Stop: 710, Start Num: 13

Candidate Starts for Yndexa_1:

(Start: 13 @159 has 36 MA's), (28, 258), (46, 387), (56, 453), (60, 474), (66, 540), (80, 702),

Gene: Yorick_1 Start: 108, Stop: 563, Start Num: 21

Candidate Starts for Yorick_1:

(Start: 21 @108 has 143 MA's), (Start: 27 @135 has 4 MA's), (Start: 31 @174 has 1 MA's), (35, 192), (36, 195), (43, 234), (45, 240), (46, 273), (51, 318), (53, 324), (63, 387), (66, 423), (67, 438), (71, 513), (73, 546), (75, 555),

Gene: Zerg_1 Start: 136, Stop: 564, Start Num: 27

Candidate Starts for Zerg_1:

(Start: 21 @109 has 143 MA's), (Start: 27 @136 has 4 MA's), (Start: 31 @175 has 1 MA's), (35, 193), (39, 208), (41, 220), (42, 223), (43, 235), (45, 241), (46, 274), (51, 319), (53, 325), (54, 328), (63, 388), (71, 514), (73, 547), (75, 556),

Gene: Zion_1 Start: 94, Stop: 618, Start Num: 17

Candidate Starts for Zion_1:

(7, 40), (10, 61), (Start: 17 @94 has 8 MA's), (23, 157), (29, 190), (32, 217), (44, 280), (46, 316), (47, 331), (52, 367), (60, 403), (65, 460),

Gene: Zizzle_1 Start: 109, Stop: 564, Start Num: 21

Candidate Starts for Zizzle_1:

(Start: 21 @109 has 143 MA's), (Start: 27 @136 has 4 MA's), (Start: 31 @175 has 1 MA's), (35, 193), (39, 208), (41, 220), (42, 223), (43, 235), (45, 241), (46, 274), (51, 319), (53, 325), (54, 328), (66, 424), (67, 439), (71, 514), (75, 556),