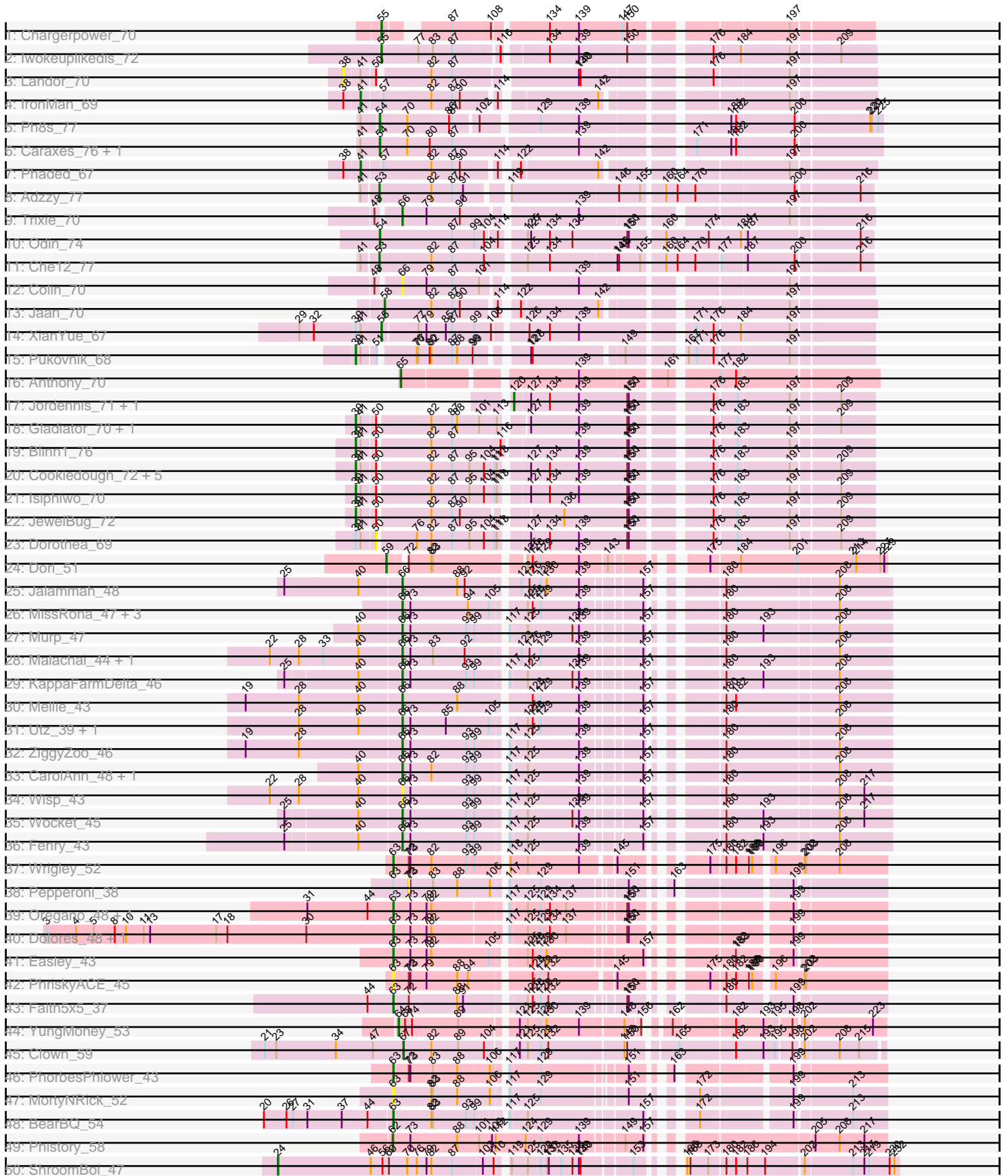
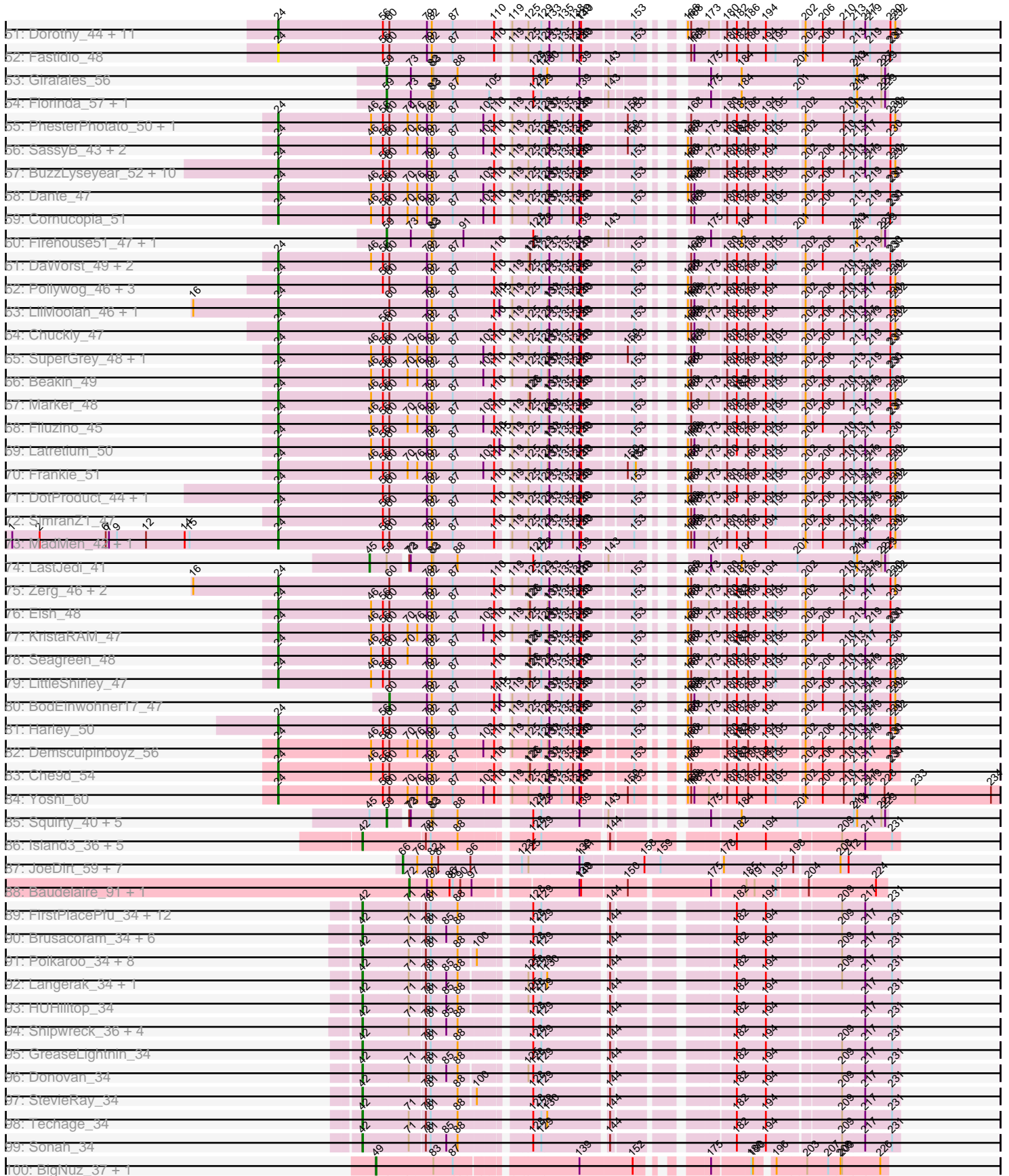


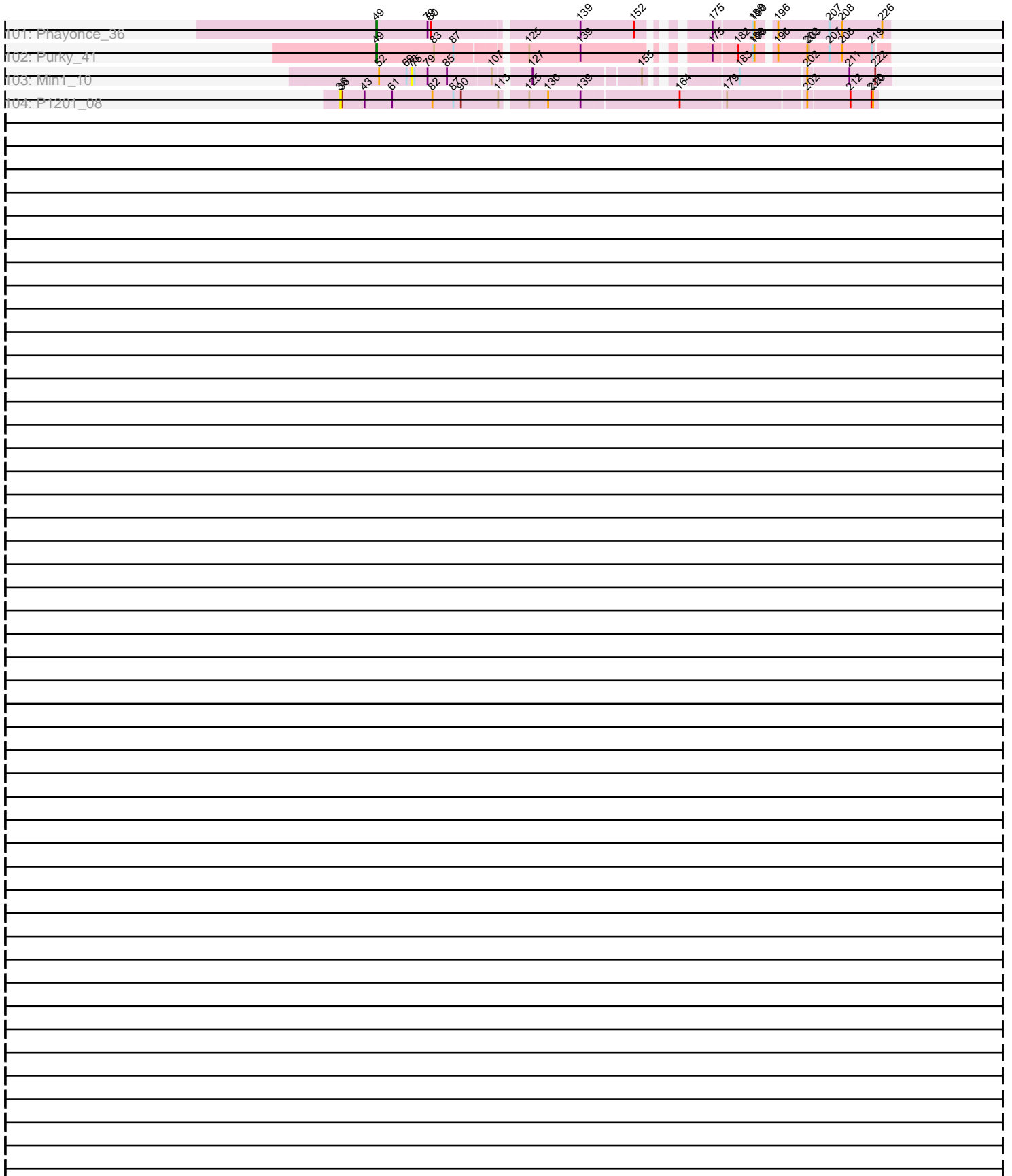
Pham 171201



Pham 171201



Pham 171201



Note: Tracks are now grouped by subcluster and scaled. Switching in subcluster is indicated by changes in track color. Track scale is now set by default to display the region 30 bp upstream of start 1 to 30 bp downstream of the last possible start. If this default region is judged to be packed too tightly with annotated starts, the track will be further scaled to only show that region of the ORF with annotated starts. This action will be indicated by adding "Zoomed" to the title. For starts, yellow indicates the location of called starts comprised solely of Glimmer/GeneMark auto-annotations, green indicates the location of called starts with at least 1 manual gene annotation.

Pham 171201 Report

This analysis was run 07/10/24 on database version 566.

Pham number 171201 has 207 members, 17 are drafts.

Phages represented in each track:

- Track 1 : Chargerpower_70
- Track 2 : Iwokeuplikedis_72
- Track 3 : Landor_70
- Track 4 : IronMan_69
- Track 5 : Ph8s_77
- Track 6 : Caraxes_76, Superchunk_75
- Track 7 : Phaded_67
- Track 8 : Adzzy_77
- Track 9 : Trixie_70
- Track 10 : Odin_74
- Track 11 : Che12_77
- Track 12 : Colin_70
- Track 13 : Jaan_70
- Track 14 : XianYue_67
- Track 15 : Pukovnik_68
- Track 16 : Anthony_70
- Track 17 : Jordennis_71, Priamo_74
- Track 18 : Gladiator_70, Newrala_72
- Track 19 : Blinn1_76
- Track 20 : Cookiedough_72, Neeharika16_71, BABullseye_65, SuperCallie99_69, Pmask_71, SuperAwesome_72
- Track 21 : Isiphiwo_70
- Track 22 : JewelBug_72
- Track 23 : Dorothea_69
- Track 24 : Dori_51
- Track 25 : Jalammah_48
- Track 26 : MissRona_47, Blueberry_46, Gambino_49, Azula_47
- Track 27 : Murp_47
- Track 28 : Malachai_44, Begonia_44
- Track 29 : KappaFarmDelta_46
- Track 30 : Mellie_43
- Track 31 : Utz_39, Samba_44
- Track 32 : ZiggyZoo_46
- Track 33 : CarolAnn_48, Blino_49
- Track 34 : Wisp_43
- Track 35 : Wocket_45
- Track 36 : Fenry_43

- Track 37 : Wrigley_52
- Track 38 : Pepperoni_38
- Track 39 : Oregano_48, Annalisa_46
- Track 40 : Dolores_48, WinkNick_49
- Track 41 : Easley_43
- Track 42 : PhriskyACE_45
- Track 43 : Faith5x5_37
- Track 44 : YungMoney_53
- Track 45 : Clown_59
- Track 46 : PhorbesPhlower_43
- Track 47 : MortyNRick_52
- Track 48 : BearBQ_54
- Track 49 : Phistory_58
- Track 50 : ShroomBoi_47
- Track 51 : Dorothy_44, Doomphist_47, Girr_48, Poenanya_47, Job42_48, Ruby_46, Stap_46, RedBird_44, BlueCrab_45, MisterCuddles_47, Madiba_43, Blexus_45
- Track 52 : Fastidio_48
- Track 53 : Girafales_56
- Track 54 : Florinda_57, Quico_55
- Track 55 : PhesterPhotato_50, Phalconet_46
- Track 56 : SassyB_43, Estave1_48, PopTart_43
- Track 57 : BuzzLyseyear_52, Karhdo_46, Veteran_45, GUmbie_45, Tweety_47, Mantra_44, GigiOuiOui_44, Starceвич_47, Wee_50, SiSi_47, Hamulus_48
- Track 58 : Dante_47
- Track 59 : Cornucopia_51
- Track 60 : Firehouse51_47, DosHalletts_47
- Track 61 : DaWorst_49, Ogopogo_48, DillTech15_46
- Track 62 : Pollywog_46, PMC_42, Boomer_50, Rockne_45
- Track 63 : LilMoolah_46, Nivrat_45
- Track 64 : Chuckly_47
- Track 65 : SuperGrey_48, Fruitloop_46
- Track 66 : Beakin_49
- Track 67 : Marker_48
- Track 68 : Filuzino_45
- Track 69 : Latretium_50
- Track 70 : Frankie_51
- Track 71 : DotProduct_44, Totinger_50
- Track 72 : SimranZ1_47
- Track 73 : MadMen_42, Krakatau_45
- Track 74 : LastJedi_41
- Track 75 : Zerg_46, RockyHorror_48, Phasih_45
- Track 76 : Eish_48
- Track 77 : KristaRAM_47
- Track 78 : Seagreen_48
- Track 79 : LittleShirley_47
- Track 80 : BodEinwohner17_47
- Track 81 : Harley_50
- Track 82 : Demsculpinboyz_56
- Track 83 : Che9d_54
- Track 84 : Yoshi_60
- Track 85 : Squirty_40, Donkeykong_46, Zizzle_51, Brocalys_43, Pippy_45, Clifton_42
- Track 86 : Island3_36, Babsiella_36, Brujita_36, HC_34, QueenHazel_32, Xula_31

- Track 87 : JoeDirt_59, Wyatt2_61, Acquire49_60, CicholasNage_59, AvadaKedavra_60, Silverleaf_60, Tyson_60, Rose5_60
- Track 88 : Baudelaire_91, Aegeus_91
- Track 89 : FirstPlacePfu_34, Fishburne_34, Bartholomew_33, Venti_34, Dynamo_34, Mangethe_34, Phineas_34, Majeke_34, Vidya_34, Necropolis_34, Kari_34, Zilizebeth_34, Phegasus_34
- Track 90 : Brusacoram_34, Atcoo_34, Juniormint_34, Jebeks_35, Ksquared_34, Bunnies_34, Thespis_34
- Track 91 : Polkaroo_34, KilKor_34, Willsammy_33, Phalm_34, Jung_33, Megiddo_34, Glaske_34, CactusJack_34, StressBall_34
- Track 92 : Langerak_34, Arib1_34
- Track 93 : HUHilltop_34
- Track 94 : Shipwreck_36, Pygmy_36, Camster_34, Bogie_36, Malithi_34
- Track 95 : GreaseLightnin_34
- Track 96 : Donovan_34
- Track 97 : StevieRay_34
- Track 98 : Techage_34
- Track 99 : Sonah_34
- Track 100 : BigNuz_37, Nazo_38
- Track 101 : Phayonce_36
- Track 102 : Purky_41
- Track 103 : Min1_10
- Track 104 : P1201_08

Summary of Final Annotations (See graph section above for start numbers):

The start number called the most often in the published annotations is 24, it was called in 62 of the 190 non-draft genes in the pham.

Genes that call this "Most Annotated" start:

- Beakin_49, Blexus_45, BlueCrab_45, Boomer_50, BuzzLyseyear_52, Che9d_54, Chuckly_47, Cornucopia_51, DaWorst_49, Dante_47, Demsculpinboyz_56, DillTech15_46, Doomphist_47, Dorothy_44, DotProduct_44, Eish_48, Estave1_48, Fastidio_48, Filuzino_45, Frankie_51, Fruitloop_46, GUmbe_45, GigiOuiOui_44, Girr_48, Hamulus_48, Harley_50, Job42_48, Karhdo_46, Krakatau_45, KristaRAM_47, Latretium_50, LilMoolah_46, LittleShirley_47, MadMen_42, Madiba_43, Mantra_44, Marker_48, MisterCuddles_47, Nivrat_45, Ogopogo_48, PMC_42, Phalconet_46, Phasih_45, PhesterPotato_50, Poenanya_47, Pollywog_46, PopTart_43, RedBird_44, Rockne_45, RockyHorror_48, Ruby_46, SassyB_43, Seagreen_48, ShroomBoi_47, SiSi_47, SimranZ1_47, Stap_46, Starcevich_47, SuperGrey_48, Totinger_50, Tweety_47, Veteran_45, Wee_50, Yoshi_60, Zerg_46,

Genes that have the "Most Annotated" start but do not call it:

-

Genes that do not have the "Most Annotated" start:

- Acquire49_60, Adzzy_77, Aegeus_91, Annalisa_46, Anthony_70, Arib1_34, Atcoo_34, AvadaKedavra_60, Azula_47, BABullseye_65, Babsiella_36, Bartholomew_33, Baudelaire_91, BearBQ_54, Begonia_44, BigNuz_37, Blinn1_76,

Blino_49, Blueberry_46, BodEinwohner17_47, Bogie_36, Brocalys_43, Brujita_36, Brusacoram_34, Bunnies_34, CactusJack_34, Camster_34, Caraxes_76, CarolAnn_48, Chargerpower_70, Che12_77, CicholasNage_59, Clifton_42, Clown_59, Colin_70, Cookiedough_72, Dolores_48, Donkeykong_46, Donovan_34, Dori_51, Dorothea_69, DosHalletts_47, Dynamo_34, Easley_43, Faith5x5_37, Ferry_43, Firehouse51_47, FirstPlacePfu_34, Fishburne_34, Florinda_57, Gambino_49, Girafales_56, Gladiator_70, Glaske_34, GreaseLightnin_34, HC_34, HUHilltop_34, IronMan_69, Isiphiwo_70, Island3_36, Iwokeuplikedis_72, Jaan_70, Jalammah_48, Jebeks_35, JewelBug_72, JoeDirt_59, Jordennis_71, Jung_33, Juniormint_34, KappaFarmDelta_46, Kari_34, KilKor_34, Ksquared_34, Landor_70, Langerak_34, LastJedi_41, Majeke_34, Malachai_44, Malithi_34, Mangethe_34, Megiddo_34, Mellie_43, Min1_10, MissRona_47, MortyNRick_52, Murp_47, Nazo_38, Necropolis_34, Neeharika16_71, Newrala_72, Odin_74, Oregano_48, P1201_08, Pepperoni_38, Ph8s_77, Phaded_67, Phalm_34, Phayonce_36, Phegasus_34, Phineas_34, Phistory_58, PhorbesPhlower_43, PhriskyACE_45, Pippy_45, Pmask_71, Polkaroo_34, Priamo_74, Pukovnik_68, Purky_41, Pygmy_36, QueenHazel_32, Quico_55, Rose5_60, Samba_44, Shipwreck_36, Silverleaf_60, Sonah_34, Squirty_40, StevieRay_34, StressBall_34, SuperAwesome_72, SuperCallie99_69, Superchunk_75, Techage_34, Thespis_34, Trixie_70, Tyson_60, Utz_39, Venti_34, Vidya_34, Willsammy_33, WinkNick_49, Wisp_43, Wocket_45, Wrigley_52, Wyatt2_61, XianYue_67, Xula_31, YungMoney_53, ZiggyZoo_46, Zilizabeth_34, Zizzle_51,

Summary by start number:

Start 24:

- Found in 65 of 207 (31.4%) of genes in pham
- Manual Annotations of this start: 62 of 190
- Called 100.0% of time when present
- Phage (with cluster) where this start called: Beakin_49 (F1), Blexus_45 (F1), BlueCrab_45 (F1), Boomer_50 (F1), BuzzLyseyear_52 (F1), Che9d_54 (F2), Chuckly_47 (F1), Cornucopia_51 (F1), DaWorst_49 (F1), Dante_47 (F1), Demsculpinboyz_56 (F2), DillTech15_46 (F1), Doomphist_47 (F1), Dorothy_44 (F1), DotProduct_44 (F1), Eish_48 (F1), Estave1_48 (F1), Fastidio_48 (F1), Filuzino_45 (F1), Frankie_51 (F1), Fruitloop_46 (F1), GUmble_45 (F1), GigiOuiOui_44 (F1), Girr_48 (F1), Hamulus_48 (F1), Harley_50 (F1), Job42_48 (F1), Karhdo_46 (F1), Krakatau_45 (F1), KristaRAM_47 (F1), Latretium_50 (F1), LilMoolah_46 (F1), LittleShirley_47 (F1), MadMen_42 (F1), Madiba_43 (F1), Mantra_44 (F1), Marker_48 (F1), MisterCuddles_47 (F1), Nivrat_45 (F1), OgoPogo_48 (F1), PMC_42 (F1), Phalconet_46 (F1), Phasih_45 (F1), PhesterPotato_50 (F1), Poenanya_47 (F1), Pollywog_46 (F1), PopTart_43 (F1), RedBird_44 (F1), Rockne_45 (F1), RockyHorror_48 (F1), Ruby_46 (F1), SassyB_43 (F1), Seagreen_48 (F1), ShroomBoi_47 (F1), SiSi_47 (F1), SimranZ1_47 (F1), Stap_46 (F1), Starcevic_47 (F1), SuperGrey_48 (F1), Totinger_50 (F1), Tweety_47 (F1), Veteran_45 (F1), Wee_50 (F1), Yoshi_60 (F2), Zerg_46 (F1),

Start 35:

- Found in 1 of 207 (0.5%) of genes in pham
- No Manual Annotations of this start.
- Called 100.0% of time when present
- Phage (with cluster) where this start called: P1201_08 (singleton),

Start 38:

- Found in 3 of 207 (1.4%) of genes in pham
- No Manual Annotations of this start.
- Called 33.3% of time when present
- Phage (with cluster) where this start called: Landor_70 (A2),

Start 39:

- Found in 14 of 207 (6.8%) of genes in pham
- Manual Annotations of this start: 12 of 190
- Called 85.7% of time when present
- Phage (with cluster) where this start called: BABullseye_65 (A6), Blinn1_76 (A6), Cookiedough_72 (A6), Gladiator_70 (A6), Isiphiwo_70 (A6), JewelBug_72 (A6), Neeharika16_71 (A6), Newrala_72 (A6), Pmask_71 (A6), Pukovnik_68 (A2), SuperAwesome_72 (A6), SuperCallie99_69 (A6),

Start 41:

- Found in 22 of 207 (10.6%) of genes in pham
- Manual Annotations of this start: 2 of 190
- Called 9.1% of time when present
- Phage (with cluster) where this start called: IronMan_69 (A2), Phaded_67 (A2),

Start 42:

- Found in 48 of 207 (23.2%) of genes in pham
- Manual Annotations of this start: 45 of 190
- Called 100.0% of time when present
- Phage (with cluster) where this start called: Arib1_34 (P1), Atcoo_34 (P1), Babsiella_36 (I1), Bartholomew_33 (P1), Bogie_36 (P1), Brujita_36 (I1), Brusacoram_34 (P1), Bunnies_34 (P1), CactusJack_34 (P1), Camster_34 (P1), Donovan_34 (P1), Dynamo_34 (P1), FirstPlacePfu_34 (P1), Fishburne_34 (P1), Glaske_34 (P1), GreaseLightnin_34 (P1), HC_34 (I1), HUHilltop_34 (P1), Island3_36 (I1), Jebeks_35 (P1), Jung_33 (P1), Juniormint_34 (P1), Kari_34 (P1), KilKor_34 (P1), Ksquared_34 (P1), Langerak_34 (P1), Majeke_34 (P1), Malithi_34 (P1), Mangethe_34 (P1), Megiddo_34 (P1), Necropolis_34 (P1), Phalm_34 (P1), Phegasus_34 (P1), Phineas_34 (P1), Polkaroo_34 (P1), Pygmy_36 (P1), QueenHazel_32 (I1), Shipwreck_36 (P1), Sonah_34 (P1), StevieRay_34 (P1), StressBall_34 (P1), Techage_34 (P1), Thespis_34 (P1), Venti_34 (P1), Vidya_34 (P1), Willsammy_33 (P1), Xula_31 (I1), Zilizebeth_34 (P1),

Start 45:

- Found in 7 of 207 (3.4%) of genes in pham
- Manual Annotations of this start: 1 of 190
- Called 14.3% of time when present
- Phage (with cluster) where this start called: LastJedi_41 (F1),

Start 49:

- Found in 4 of 207 (1.9%) of genes in pham
- Manual Annotations of this start: 4 of 190
- Called 100.0% of time when present
- Phage (with cluster) where this start called: BigNuz_37 (P4), Nazo_38 (P4), Phayonce_36 (P5), Purky_41 (P6),

Start 50:

- Found in 13 of 207 (6.3%) of genes in pham
- No Manual Annotations of this start.

- Called 7.7% of time when present
- Phage (with cluster) where this start called: Dorothea_69 (A6),

Start 53:

- Found in 2 of 207 (1.0%) of genes in pham
- Manual Annotations of this start: 2 of 190
- Called 100.0% of time when present
- Phage (with cluster) where this start called: Adzzy_77 (A2), Che12_77 (A2),

Start 54:

- Found in 4 of 207 (1.9%) of genes in pham
- Manual Annotations of this start: 3 of 190
- Called 100.0% of time when present
- Phage (with cluster) where this start called: Caraxes_76 (A2), Odin_74 (A2), Ph8s_77 (A2), Superchunk_75 (A2),

Start 55:

- Found in 3 of 207 (1.4%) of genes in pham
- Manual Annotations of this start: 3 of 190
- Called 100.0% of time when present
- Phage (with cluster) where this start called: Chargerpower_70 (A), Iwokeuplikedis_72 (A2), XianYue_67 (A2),

Start 58:

- Found in 1 of 207 (0.5%) of genes in pham
- Manual Annotations of this start: 1 of 190
- Called 100.0% of time when present
- Phage (with cluster) where this start called: Jaan_70 (A2),

Start 59:

- Found in 13 of 207 (6.3%) of genes in pham
- Manual Annotations of this start: 12 of 190
- Called 92.3% of time when present
- Phage (with cluster) where this start called: Brocalys_43 (F1), Clifton_42 (F1), Donkeykong_46 (F1), Dori_51 (AD), DosHalletts_47 (F1), Firehouse51_47 (F1), Florinda_57 (F1), Girafales_56 (F1), Pippy_45 (F1), Quico_55 (F1), Squirty_40 (F3), Zizzle_51 (F1),

Start 60:

- Found in 66 of 207 (31.9%) of genes in pham
- Manual Annotations of this start: 1 of 190
- Called 1.5% of time when present
- Phage (with cluster) where this start called: BodEinwohner17_47 (F1),

Start 62:

- Found in 1 of 207 (0.5%) of genes in pham
- Manual Annotations of this start: 1 of 190
- Called 100.0% of time when present
- Phage (with cluster) where this start called: Phistory_58 (DN1),

Start 63:

- Found in 12 of 207 (5.8%) of genes in pham
- Manual Annotations of this start: 8 of 190

- Called 91.7% of time when present
- Phage (with cluster) where this start called: Annalisa_46 (CZ4), BearBQ_54 (DN), Dolores_48 (CZ4), Easley_43 (CZ4), Faith5x5_37 (CZ6), MortyNRick_52 (DN), Oregano_48 (CZ4), PhorbesPhlower_43 (DH), PhriskyACE_45 (CZ4), WinkNick_49 (CZ4), Wrigley_52 (CY),

Start 64:

- Found in 1 of 207 (0.5%) of genes in pham
- Manual Annotations of this start: 1 of 190
- Called 100.0% of time when present
- Phage (with cluster) where this start called: YungMoney_53 (DC1),

Start 65:

- Found in 1 of 207 (0.5%) of genes in pham
- Manual Annotations of this start: 1 of 190
- Called 100.0% of time when present
- Phage (with cluster) where this start called: Anthony_70 (A20),

Start 66:

- Found in 28 of 207 (13.5%) of genes in pham
- Manual Annotations of this start: 26 of 190
- Called 100.0% of time when present
- Phage (with cluster) where this start called: Acquire49_60 (L1), AvadaKedavra_60 (L1), Azula_47 (CV), Begonia_44 (CV), Blino_49 (CV), Blueberry_46 (CV), CarolAnn_48 (CV), CicholasNage_59 (L1), Colin_70 (A2), Fenry_43 (CV), Gambino_49 (CV), Jalammah_48 (CV), JoeDirt_59 (L1), KappaFarmDelta_46 (CV), Malachai_44 (CV), Mellie_43 (CV), MissRona_47 (CV), Murp_47 (CV), Rose5_60 (L1), Samba_44 (CV), Silverleaf_60 (L1), Trixie_70 (A2), Tyson_60 (L1), Utz_39 (CV), Wisp_43 (CV), Wocket_45 (CV), Wyatt2_61 (L1), ZiggyZoo_46 (CV),

Start 67:

- Found in 1 of 207 (0.5%) of genes in pham
- Manual Annotations of this start: 1 of 190
- Called 100.0% of time when present
- Phage (with cluster) where this start called: Clown_59 (DC2),

Start 72:

- Found in 15 of 207 (7.2%) of genes in pham
- Manual Annotations of this start: 2 of 190
- Called 20.0% of time when present
- Phage (with cluster) where this start called: Aegeus_91 (L5), Baudelaire_91 (L5), Pepperoni_38 (CZ),

Start 73:

- Found in 39 of 207 (18.8%) of genes in pham
- No Manual Annotations of this start.
- Called 2.6% of time when present
- Phage (with cluster) where this start called: Min1_10 (singleton),

Start 120:

- Found in 2 of 207 (1.0%) of genes in pham
- Manual Annotations of this start: 2 of 190
- Called 100.0% of time when present

- Phage (with cluster) where this start called: Jordennis_71 (A6), Priamo_74 (A6),

Summary by clusters:

There are 26 clusters represented in this pham: DN, singleton, DH, CZ6, CZ4, I1, A2, DN1, A6, A, P1, P6, AD, P4, P5, CZ, CY, L5, L1, DC2, CV, DC1, A20, F1, F2, F3,

Info for manual annotations of cluster A:

- Start number 55 was manually annotated 1 time for cluster A.

Info for manual annotations of cluster A2:

- Start number 39 was manually annotated 1 time for cluster A2.
- Start number 41 was manually annotated 2 times for cluster A2.
- Start number 53 was manually annotated 2 times for cluster A2.
- Start number 54 was manually annotated 3 times for cluster A2.
- Start number 55 was manually annotated 2 times for cluster A2.
- Start number 58 was manually annotated 1 time for cluster A2.
- Start number 66 was manually annotated 1 time for cluster A2.

Info for manual annotations of cluster A20:

- Start number 65 was manually annotated 1 time for cluster A20.

Info for manual annotations of cluster A6:

- Start number 39 was manually annotated 11 times for cluster A6.
- Start number 120 was manually annotated 2 times for cluster A6.

Info for manual annotations of cluster AD:

- Start number 59 was manually annotated 1 time for cluster AD.

Info for manual annotations of cluster CV:

- Start number 66 was manually annotated 17 times for cluster CV.

Info for manual annotations of cluster CY:

- Start number 63 was manually annotated 1 time for cluster CY.

Info for manual annotations of cluster CZ4:

- Start number 63 was manually annotated 4 times for cluster CZ4.

Info for manual annotations of cluster CZ6:

- Start number 63 was manually annotated 1 time for cluster CZ6.

Info for manual annotations of cluster DC1:

- Start number 64 was manually annotated 1 time for cluster DC1.

Info for manual annotations of cluster DC2:

- Start number 67 was manually annotated 1 time for cluster DC2.

Info for manual annotations of cluster DH:

- Start number 63 was manually annotated 1 time for cluster DH.

Info for manual annotations of cluster DN:

- Start number 63 was manually annotated 1 time for cluster DN.

Info for manual annotations of cluster DN1:

- Start number 62 was manually annotated 1 time for cluster DN1.

Info for manual annotations of cluster F1:

- Start number 24 was manually annotated 59 times for cluster F1.
- Start number 45 was manually annotated 1 time for cluster F1.
- Start number 59 was manually annotated 10 times for cluster F1.
- Start number 60 was manually annotated 1 time for cluster F1.

Info for manual annotations of cluster F2:

- Start number 24 was manually annotated 3 times for cluster F2.

Info for manual annotations of cluster F3:

- Start number 59 was manually annotated 1 time for cluster F3.

Info for manual annotations of cluster I1:

- Start number 42 was manually annotated 6 times for cluster I1.

Info for manual annotations of cluster L1:

- Start number 66 was manually annotated 8 times for cluster L1.

Info for manual annotations of cluster L5:

- Start number 72 was manually annotated 2 times for cluster L5.

Info for manual annotations of cluster P1:

- Start number 42 was manually annotated 39 times for cluster P1.

Info for manual annotations of cluster P4:

- Start number 49 was manually annotated 2 times for cluster P4.

Info for manual annotations of cluster P5:

- Start number 49 was manually annotated 1 time for cluster P5.

Info for manual annotations of cluster P6:

- Start number 49 was manually annotated 1 time for cluster P6.

Gene Information:

Gene: Acquire49_60 Start: 42360, Stop: 43178, Start Num: 66

Candidate Starts for Acquire49_60:

(Start: 66 @42360 has 26 MA's), (76, 42387), (82, 42414), (84, 42426), (96, 42486), (123, 42561), (125, 42573), (139, 42663), (141, 42669), (158, 42774), (159, 42804), (178, 42909), (198, 43032), (208, 43107), (212, 43122),

Gene: Adzzy_77 Start: 43239, Stop: 42412, Start Num: 53

Candidate Starts for Adzzy_77:

(Start: 41 @43266 has 2 MA's), (Start: 53 @43239 has 2 MA's), (82, 43146), (87, 43107), (91, 43089), (119, 43032), (146, 42843), (155, 42804), (160, 42768), (164, 42747), (170, 42714), (200, 42543), (216, 42435),

Gene: Aegeus_91 Start: 56094, Stop: 56897, Start Num: 72

Candidate Starts for Aegeus_91:

(Start: 72 @56094 has 2 MA's), (79, 56127), (82, 56136), (86, 56169), (87, 56175), (90, 56187), (97, 56208), (139, 56373), (140, 56376), (150, 56457), (175, 56595), (185, 56655), (191, 56670), (195, 56709), (204, 56757), (224, 56877),

Gene: Annalisa_46 Start: 33306, Stop: 34055, Start Num: 63

Candidate Starts for Annalisa_46:

(31, 33153), (44, 33261), (Start: 63 @33306 has 8 MA's), (73, 33336), (79, 33363), (82, 33372), (117, 33489), (125, 33516), (129, 33540), (134, 33555), (137, 33585), (150, 33675), (151, 33678), (199, 33900),

Gene: Anthony_70 Start: 42960, Stop: 42178, Start Num: 65

Candidate Starts for Anthony_70:

(Start: 65 @42960 has 1 MA's), (139, 42675), (161, 42528), (177, 42453), (182, 42426),

Gene: Arib1_34 Start: 27945, Stop: 28808, Start Num: 42

Candidate Starts for Arib1_34:

(Start: 42 @27945 has 45 MA's), (71, 28026), (78, 28050), (81, 28059), (85, 28086), (88, 28107), (125, 28203), (128, 28212), (129, 28227), (130, 28236), (144, 28338), (182, 28521), (194, 28575), (209, 28704), (217, 28746), (231, 28794),

Gene: Atcoo_34 Start: 28426, Stop: 29292, Start Num: 42

Candidate Starts for Atcoo_34:

(Start: 42 @28426 has 45 MA's), (71, 28507), (78, 28531), (81, 28540), (85, 28567), (88, 28588), (128, 28696), (129, 28711), (144, 28822), (182, 29005), (194, 29059), (209, 29188), (217, 29230), (231, 29278),

Gene: AvadaKedavra_60 Start: 42433, Stop: 43251, Start Num: 66

Candidate Starts for AvadaKedavra_60:

(Start: 66 @42433 has 26 MA's), (76, 42460), (82, 42487), (84, 42499), (96, 42559), (123, 42634), (125, 42646), (139, 42736), (141, 42742), (158, 42847), (159, 42877), (178, 42982), (198, 43105), (208, 43180), (212, 43195),

Gene: Azula_47 Start: 35195, Stop: 35956, Start Num: 66

Candidate Starts for Azula_47:

(Start: 66 @35195 has 26 MA's), (73, 35210), (94, 35312), (105, 35345), (125, 35390), (128, 35399), (129, 35414), (139, 35483), (157, 35579), (180, 35669), (208, 35861),

Gene: BABullseye_65 Start: 39826, Stop: 38978, Start Num: 39

Candidate Starts for BABullseye_65:

(Start: 39 @39826 has 12 MA's), (Start: 41 @39817 has 2 MA's), (50, 39793), (82, 39703), (87, 39664), (95, 39634), (104, 39610), (111, 39592), (113, 39589), (127, 39550), (134, 39517), (139, 39463), (150, 39376), (151, 39373), (176, 39253), (183, 39214), (197, 39121), (209, 39040),

Gene: Babsiella_36 Start: 28877, Stop: 29746, Start Num: 42

Candidate Starts for Babsiella_36:

(Start: 42 @28877 has 45 MA's), (78, 28985), (81, 28994), (88, 29042), (128, 29150), (129, 29165), (144, 29276), (182, 29459), (194, 29513), (209, 29642), (217, 29684), (231, 29732),

Gene: Bartholomew_33 Start: 27939, Stop: 28805, Start Num: 42

Candidate Starts for Bartholomew_33:

(Start: 42 @27939 has 45 MA's), (71, 28020), (78, 28044), (81, 28053), (88, 28101), (128, 28209), (129, 28224), (144, 28335), (182, 28518), (194, 28572), (209, 28701), (217, 28743), (231, 28791),

Gene: Baudelaire_91 Start: 56094, Stop: 56897, Start Num: 72

Candidate Starts for Baudelaire_91:

(Start: 72 @56094 has 2 MA's), (79, 56127), (82, 56136), (86, 56169), (87, 56175), (90, 56187), (97, 56208), (139, 56373), (140, 56376), (150, 56457), (175, 56595), (185, 56655), (191, 56670), (195, 56709), (204, 56757), (224, 56877),

Gene: Beakin_49 Start: 35134, Stop: 36138, Start Num: 24

Candidate Starts for Beakin_49:

(Start: 24 @35134 has 62 MA's), (46, 35302), (56, 35323), (Start: 60 @35335 has 1 MA's), (70, 35368), (76, 35383), (79, 35401), (82, 35410), (87, 35446), (103, 35494), (110, 35512), (119, 35524), (125, 35551), (129, 35575), (131, 35587), (133, 35590), (135, 35611), (138, 35632), (139, 35644), (140, 35647), (153, 35731), (166, 35776), (168, 35782), (180, 35839), (182, 35857), (186, 35878), (194, 35911), (195, 35929), (202, 35971), (206, 35998), (213, 36055), (219, 36085), (230, 36121), (231, 36124),

Gene: BearBQ_54 Start: 38297, Stop: 39052, Start Num: 63

Candidate Starts for BearBQ_54:

(20, 38063), (26, 38105), (27, 38117), (31, 38144), (37, 38207), (44, 38255), (Start: 63 @38297 has 8 MA's), (82, 38363), (83, 38366), (93, 38426), (99, 38438), (117, 38480), (125, 38507), (157, 38702), (172, 38753), (199, 38897), (213, 38990),

Gene: Begonia_44 Start: 35305, Stop: 36069, Start Num: 66

Candidate Starts for Begonia_44:

(22, 35065), (28, 35119), (33, 35164), (40, 35230), (Start: 66 @35305 has 26 MA's), (73, 35320), (83, 35359), (92, 35416), (123, 35494), (126, 35506), (129, 35527), (139, 35596), (157, 35692), (180, 35782), (208, 35974),

Gene: BigNuz_37 Start: 30064, Stop: 30867, Start Num: 49

Candidate Starts for BigNuz_37:

(Start: 49 @30064 has 4 MA's), (83, 30166), (87, 30202), (139, 30394), (152, 30490), (175, 30574), (189, 30640), (190, 30643), (196, 30667), (203, 30721), (207, 30760), (208, 30781), (209, 30784), (226, 30853),

Gene: Blexus_45 Start: 35131, Stop: 36135, Start Num: 24

Candidate Starts for Blexus_45:

(Start: 24 @35131 has 62 MA's), (56, 35320), (Start: 60 @35332 has 1 MA's), (79, 35398), (82, 35407), (87, 35443), (110, 35509), (119, 35521), (125, 35548), (129, 35572), (133, 35587), (135, 35608), (138, 35629), (139, 35641), (140, 35644), (153, 35728), (166, 35773), (168, 35779), (173, 35809), (180, 35836), (182, 35854), (186, 35875), (194, 35908), (202, 35968), (206, 35995), (210, 36034), (213, 36052), (217, 36073), (219, 36082), (230, 36118), (232, 36127),

Gene: Blinn1_76 Start: 42445, Stop: 41582, Start Num: 39

Candidate Starts for Blinn1_76:

(Start: 39 @42445 has 12 MA's), (Start: 41 @42436 has 2 MA's), (50, 42412), (82, 42322), (87, 42283), (116, 42196), (139, 42067), (150, 41980), (151, 41977), (176, 41857), (183, 41818), (197, 41725),

Gene: Blino_49 Start: 38491, Stop: 39252, Start Num: 66

Candidate Starts for Blino_49:

(40, 38416), (Start: 66 @38491 has 26 MA's), (73, 38506), (82, 38542), (93, 38605), (99, 38617), (117, 38659), (125, 38686), (139, 38779), (157, 38875), (180, 38965), (208, 39157),

Gene: BlueCrab_45 Start: 34857, Stop: 35861, Start Num: 24

Candidate Starts for BlueCrab_45:

(Start: 24 @34857 has 62 MA's), (56, 35046), (Start: 60 @35058 has 1 MA's), (79, 35124), (82, 35133), (87, 35169), (110, 35235), (119, 35247), (125, 35274), (129, 35298), (133, 35313), (135, 35334), (138, 35355), (139, 35367), (140, 35370), (153, 35454), (166, 35499), (168, 35505), (173, 35535), (180, 35562), (182, 35580), (186, 35601), (194, 35634), (202, 35694), (206, 35721), (210, 35760), (213, 35778), (217, 35799), (219, 35808), (230, 35844), (232, 35853),

Gene: Blueberry_46 Start: 35195, Stop: 35956, Start Num: 66

Candidate Starts for Blueberry_46:

(Start: 66 @35195 has 26 MA's), (73, 35210), (94, 35312), (105, 35345), (125, 35390), (128, 35399), (129, 35414), (139, 35483), (157, 35579), (180, 35669), (208, 35861),

Gene: BodEinwohner17_47 Start: 35274, Stop: 36077, Start Num: 60

Candidate Starts for BodEinwohner17_47:

(Start: 60 @35274 has 1 MA's), (79, 35340), (82, 35349), (87, 35385), (110, 35451), (115, 35457), (119, 35463), (125, 35490), (131, 35526), (133, 35529), (135, 35550), (138, 35571), (139, 35583), (140, 35586), (153, 35670), (166, 35715), (168, 35721), (169, 35727), (173, 35751), (180, 35778), (182, 35796), (186, 35817), (194, 35850), (202, 35910), (206, 35937), (210, 35976), (213, 35994), (217, 36015), (219, 36024), (230, 36060), (232, 36069),

Gene: Bogie_36 Start: 29722, Stop: 30588, Start Num: 42

Candidate Starts for Bogie_36:

(Start: 42 @29722 has 45 MA's), (71, 29803), (78, 29827), (81, 29836), (85, 29863), (88, 29884), (128, 29992), (129, 30007), (144, 30118), (182, 30301), (194, 30355), (217, 30526), (231, 30574),

Gene: Boomer_50 Start: 36306, Stop: 37310, Start Num: 24

Candidate Starts for Boomer_50:

(Start: 24 @36306 has 62 MA's), (56, 36495), (Start: 60 @36507 has 1 MA's), (79, 36573), (82, 36582), (87, 36618), (110, 36684), (119, 36696), (125, 36723), (129, 36747), (133, 36762), (135, 36783), (138, 36804), (139, 36816), (140, 36819), (153, 36903), (166, 36948), (168, 36954), (173, 36984), (180, 37011), (182, 37029), (186, 37050), (194, 37083), (202, 37143), (210, 37209), (213, 37227), (217, 37248), (219, 37257), (230, 37293), (232, 37302),

Gene: Brocalys_43 Start: 31207, Stop: 31986, Start Num: 59

Candidate Starts for Brocalys_43:

(Start: 45 @31177 has 1 MA's), (Start: 59 @31207 has 12 MA's), (Start: 72 @31231 has 2 MA's), (73, 31234), (82, 31270), (83, 31273), (88, 31318), (128, 31426), (129, 31441), (139, 31510), (143, 31558), (175, 31675), (184, 31726), (201, 31822), (213, 31927), (214, 31933), (227, 31975), (229, 31981),

Gene: Brujita_36 Start: 29775, Stop: 30644, Start Num: 42

Candidate Starts for Brujita_36:

(Start: 42 @29775 has 45 MA's), (78, 29883), (81, 29892), (88, 29940), (128, 30048), (129, 30063), (144, 30174), (182, 30357), (194, 30411), (209, 30540), (217, 30582), (231, 30630),

Gene: Brusacoram_34 Start: 27932, Stop: 28798, Start Num: 42

Candidate Starts for Brusacoram_34:

(Start: 42 @27932 has 45 MA's), (71, 28013), (78, 28037), (81, 28046), (85, 28073), (88, 28094), (128, 28202), (129, 28217), (144, 28328), (182, 28511), (194, 28565), (209, 28694), (217, 28736), (231, 28784),

Gene: Bunnies_34 Start: 27953, Stop: 28819, Start Num: 42

Candidate Starts for Bunnies_34:

(Start: 42 @27953 has 45 MA's), (71, 28034), (78, 28058), (81, 28067), (85, 28094), (88, 28115), (128, 28223), (129, 28238), (144, 28349), (182, 28532), (194, 28586), (209, 28715), (217, 28757), (231, 28805),

Gene: BuzzLyseyear_52 Start: 36683, Stop: 37687, Start Num: 24

Candidate Starts for BuzzLyseyear_52:

(Start: 24 @36683 has 62 MA's), (56, 36872), (Start: 60 @36884 has 1 MA's), (79, 36950), (82, 36959), (87, 36995), (110, 37061), (119, 37073), (125, 37100), (129, 37124), (133, 37139), (135, 37160), (138, 37181), (139, 37193), (140, 37196), (153, 37280), (166, 37325), (168, 37331), (173, 37361), (180, 37388), (182, 37406), (186, 37427), (194, 37460), (202, 37520), (206, 37547), (210, 37586), (213, 37604), (217, 37625), (219, 37634), (230, 37670), (232, 37679),

Gene: CactusJack_34 Start: 28196, Stop: 29059, Start Num: 42

Candidate Starts for CactusJack_34:

(Start: 42 @28196 has 45 MA's), (71, 28277), (78, 28301), (81, 28310), (88, 28358), (100, 28382), (128, 28463), (129, 28478), (144, 28589), (182, 28772), (194, 28826), (209, 28955), (217, 28997), (231, 29045),

Gene: Camster_34 Start: 27969, Stop: 28835, Start Num: 42

Candidate Starts for Camster_34:

(Start: 42 @27969 has 45 MA's), (71, 28050), (78, 28074), (81, 28083), (85, 28110), (88, 28131), (128, 28239), (129, 28254), (144, 28365), (182, 28548), (194, 28602), (217, 28773), (231, 28821),

Gene: Caraxes_76 Start: 43021, Stop: 42170, Start Num: 54

Candidate Starts for Caraxes_76:

(Start: 41 @43054 has 2 MA's), (Start: 54 @43021 has 3 MA's), (70, 42970), (80, 42931), (87, 42889), (139, 42673), (171, 42493), (181, 42433), (182, 42424), (200, 42319),

Gene: CarolAnn_48 Start: 38490, Stop: 39251, Start Num: 66

Candidate Starts for CarolAnn_48:

(40, 38415), (Start: 66 @38490 has 26 MA's), (73, 38505), (82, 38541), (93, 38604), (99, 38616), (117, 38658), (125, 38685), (139, 38778), (157, 38874), (180, 38964), (208, 39156),

Gene: Chargerpower_70 Start: 41985, Stop: 41206, Start Num: 55

Candidate Starts for Chargerpower_70:

(Start: 55 @41985 has 3 MA's), (87, 41895), (108, 41829), (134, 41745), (139, 41691), (147, 41613), (150, 41604), (197, 41349),

Gene: Che12_77 Start: 43138, Stop: 42296, Start Num: 53

Candidate Starts for Che12_77:

(Start: 41 @43165 has 2 MA's), (Start: 53 @43138 has 2 MA's), (82, 43045), (87, 43006), (104, 42952), (125, 42889), (134, 42850), (145, 42730), (146, 42727), (155, 42688), (160, 42652), (164, 42631), (170, 42598), (177, 42559), (187, 42514), (200, 42427), (216, 42319),

Gene: Che9d_54 Start: 34668, Stop: 35669, Start Num: 24

Candidate Starts for Che9d_54:

(Start: 24 @34668 has 62 MA's), (46, 34836), (56, 34857), (Start: 60 @34869 has 1 MA's), (79, 34935), (82, 34944), (87, 34980), (110, 35046), (125, 35085), (126, 35088), (131, 35121), (133, 35124), (135, 35145), (138, 35166), (139, 35178), (140, 35181), (153, 35262), (166, 35307), (168, 35313), (180, 35370), (182, 35388), (183, 35391), (186, 35409), (192, 35430), (194, 35442), (195,

35460), (202, 35502), (206, 35529), (210, 35568), (213, 35586), (217, 35607), (230, 35652), (231, 35655),

Gene: Chuckly_47 Start: 35101, Stop: 36108, Start Num: 24

Candidate Starts for Chuckly_47:

(Start: 24 @35101 has 62 MA's), (56, 35293), (Start: 60 @35305 has 1 MA's), (79, 35371), (82, 35380), (87, 35416), (110, 35482), (119, 35494), (125, 35521), (129, 35545), (133, 35560), (135, 35581), (138, 35602), (139, 35614), (140, 35617), (153, 35701), (166, 35746), (168, 35752), (169, 35758), (173, 35782), (180, 35809), (182, 35827), (186, 35848), (194, 35881), (202, 35941), (206, 35968), (210, 36007), (213, 36025), (217, 36046), (219, 36055), (230, 36091), (232, 36100),

Gene: CicholasNage_59 Start: 42396, Stop: 43214, Start Num: 66

Candidate Starts for CicholasNage_59:

(Start: 66 @42396 has 26 MA's), (76, 42423), (82, 42450), (84, 42462), (96, 42522), (123, 42597), (125, 42609), (139, 42699), (141, 42705), (158, 42810), (159, 42840), (178, 42945), (198, 43068), (208, 43143), (212, 43158),

Gene: Clifton_42 Start: 31558, Stop: 32337, Start Num: 59

Candidate Starts for Clifton_42:

(Start: 45 @31528 has 1 MA's), (Start: 59 @31558 has 12 MA's), (Start: 72 @31582 has 2 MA's), (73, 31585), (82, 31621), (83, 31624), (88, 31669), (128, 31777), (129, 31792), (139, 31861), (143, 31909), (175, 32026), (184, 32077), (201, 32173), (213, 32278), (214, 32284), (227, 32326), (229, 32332),

Gene: Clown_59 Start: 43467, Stop: 44249, Start Num: 67

Candidate Starts for Clown_59:

(21, 43209), (23, 43230), (34, 43341), (47, 43410), (Start: 67 @43467 has 1 MA's), (82, 43518), (89, 43566), (104, 43611), (121, 43656), (125, 43668), (129, 43689), (132, 43701), (148, 43833), (150, 43836), (165, 43908), (182, 44004), (193, 44055), (195, 44076), (198, 44103), (202, 44118), (208, 44178), (215, 44214),

Gene: Colin_70 Start: 43999, Stop: 43229, Start Num: 66

Candidate Starts for Colin_70:

(48, 44038), (Start: 66 @43999 has 26 MA's), (79, 43957), (87, 43909), (101, 43861), (139, 43711), (197, 43372),

Gene: Cookiedough_72 Start: 42134, Stop: 41286, Start Num: 39

Candidate Starts for Cookiedough_72:

(Start: 39 @42134 has 12 MA's), (Start: 41 @42125 has 2 MA's), (50, 42101), (82, 42011), (87, 41972), (95, 41942), (104, 41918), (111, 41900), (113, 41897), (127, 41858), (134, 41825), (139, 41771), (150, 41684), (151, 41681), (176, 41561), (183, 41522), (197, 41429), (209, 41348),

Gene: Cornucopia_51 Start: 36403, Stop: 37407, Start Num: 24

Candidate Starts for Cornucopia_51:

(Start: 24 @36403 has 62 MA's), (46, 36571), (56, 36592), (Start: 60 @36604 has 1 MA's), (70, 36637), (76, 36652), (79, 36670), (82, 36679), (87, 36715), (103, 36763), (110, 36781), (119, 36793), (125, 36820), (129, 36844), (131, 36856), (133, 36859), (135, 36880), (138, 36901), (139, 36913), (140, 36916), (153, 37000), (168, 37051), (169, 37057), (180, 37108), (182, 37126), (186, 37147), (194, 37180), (195, 37198), (202, 37240), (206, 37267), (213, 37324), (219, 37354), (230, 37390), (231, 37393),

Gene: DaWorst_49 Start: 35931, Stop: 36935, Start Num: 24

Candidate Starts for DaWorst_49:

(Start: 24 @35931 has 62 MA's), (46, 36099), (56, 36120), (Start: 60 @36132 has 1 MA's), (79, 36198), (82, 36207), (87, 36243), (110, 36309), (125, 36348), (126, 36351), (129, 36372), (133, 36387), (135, 36408), (138, 36429), (139, 36441), (140, 36444), (153, 36528), (168, 36579), (169, 36585), (180, 36636), (182, 36654), (186, 36675), (194, 36708), (195, 36726), (202, 36768), (206, 36795), (213, 36852), (219, 36882), (230, 36918), (231, 36921),

Gene: Dante_47 Start: 34836, Stop: 35840, Start Num: 24

Candidate Starts for Dante_47:

(Start: 24 @34836 has 62 MA's), (46, 35004), (56, 35025), (Start: 60 @35037 has 1 MA's), (70, 35070), (76, 35085), (79, 35103), (82, 35112), (87, 35148), (103, 35196), (110, 35214), (119, 35226), (125, 35253), (129, 35277), (131, 35289), (133, 35292), (135, 35313), (138, 35334), (139, 35346), (140, 35349), (153, 35433), (166, 35478), (168, 35484), (169, 35490), (180, 35541), (182, 35559), (186, 35580), (194, 35613), (195, 35631), (202, 35673), (206, 35700), (213, 35757), (219, 35787), (230, 35823), (231, 35826),

Gene: Demsculpinboyz_56 Start: 34780, Stop: 35781, Start Num: 24

Candidate Starts for Demsculpinboyz_56:

(Start: 24 @34780 has 62 MA's), (46, 34948), (56, 34969), (Start: 60 @34981 has 1 MA's), (70, 35014), (76, 35029), (79, 35047), (82, 35056), (87, 35092), (103, 35140), (110, 35158), (119, 35170), (125, 35197), (129, 35221), (131, 35233), (133, 35236), (135, 35257), (138, 35278), (139, 35290), (140, 35293), (153, 35374), (166, 35419), (168, 35425), (180, 35482), (182, 35500), (183, 35503), (186, 35521), (194, 35554), (195, 35572), (202, 35614), (206, 35641), (210, 35680), (213, 35698), (217, 35719), (219, 35728), (230, 35764), (231, 35767),

Gene: DillTech15_46 Start: 34346, Stop: 35350, Start Num: 24

Candidate Starts for DillTech15_46:

(Start: 24 @34346 has 62 MA's), (46, 34514), (56, 34535), (Start: 60 @34547 has 1 MA's), (79, 34613), (82, 34622), (87, 34658), (110, 34724), (125, 34763), (126, 34766), (129, 34787), (133, 34802), (135, 34823), (138, 34844), (139, 34856), (140, 34859), (153, 34943), (168, 34994), (169, 35000), (180, 35051), (182, 35069), (186, 35090), (194, 35123), (195, 35141), (202, 35183), (206, 35210), (213, 35267), (219, 35297), (230, 35333), (231, 35336),

Gene: Dolores_48 Start: 34386, Stop: 35135, Start Num: 63

Candidate Starts for Dolores_48:

(3, 33747), (4, 33801), (5, 33834), (8, 33873), (10, 33894), (11, 33927), (13, 33939), (17, 34062), (18, 34083), (30, 34230), (Start: 63 @34386 has 8 MA's), (73, 34416), (79, 34443), (82, 34452), (117, 34569), (125, 34596), (129, 34620), (134, 34635), (137, 34665), (150, 34755), (151, 34758), (199, 34980),

Gene: Donkeykong_46 Start: 35576, Stop: 36355, Start Num: 59

Candidate Starts for Donkeykong_46:

(Start: 45 @35546 has 1 MA's), (Start: 59 @35576 has 12 MA's), (Start: 72 @35600 has 2 MA's), (73, 35603), (82, 35639), (83, 35642), (88, 35687), (128, 35795), (129, 35810), (139, 35879), (143, 35927), (175, 36044), (184, 36095), (201, 36191), (213, 36296), (214, 36302), (227, 36344), (229, 36350),

Gene: Donovan_34 Start: 27961, Stop: 28824, Start Num: 42

Candidate Starts for Donovan_34:

(Start: 42 @27961 has 45 MA's), (71, 28042), (78, 28066), (81, 28075), (85, 28102), (88, 28123), (125, 28219), (128, 28228), (129, 28243), (144, 28354), (182, 28537), (194, 28591), (209, 28720), (217, 28762), (231, 28810),

Gene: Doomphist_47 Start: 36071, Stop: 37075, Start Num: 24

Candidate Starts for Doomphist_47:

(Start: 24 @36071 has 62 MA's), (56, 36260), (Start: 60 @36272 has 1 MA's), (79, 36338), (82, 36347), (87, 36383), (110, 36449), (119, 36461), (125, 36488), (129, 36512), (133, 36527), (135, 36548), (138, 36569), (139, 36581), (140, 36584), (153, 36668), (166, 36713), (168, 36719), (173, 36749), (180, 36776), (182, 36794), (186, 36815), (194, 36848), (202, 36908), (206, 36935), (210, 36974), (213, 36992), (217, 37013), (219, 37022), (230, 37058), (232, 37067),

Gene: Dori_51 Start: 44920, Stop: 45693, Start Num: 59

Candidate Starts for Dori_51:

(Start: 59 @44920 has 12 MA's), (Start: 72 @44941 has 2 MA's), (82, 44980), (83, 44983), (125, 45124), (128, 45133), (129, 45148), (139, 45217), (143, 45265), (175, 45382), (184, 45433), (201, 45529), (213, 45634), (214, 45640), (227, 45682), (229, 45688),

Gene: Dorothea_69 Start: 42099, Stop: 41284, Start Num: 50

Candidate Starts for Dorothea_69:

(Start: 39 @42132 has 12 MA's), (Start: 41 @42123 has 2 MA's), (50, 42099), (76, 42036), (82, 42009), (87, 41970), (95, 41940), (104, 41916), (111, 41898), (113, 41895), (127, 41856), (134, 41823), (139, 41769), (150, 41682), (151, 41679), (176, 41559), (183, 41520), (197, 41427), (209, 41346),

Gene: Dorothy_44 Start: 34870, Stop: 35874, Start Num: 24

Candidate Starts for Dorothy_44:

(Start: 24 @34870 has 62 MA's), (56, 35059), (Start: 60 @35071 has 1 MA's), (79, 35137), (82, 35146), (87, 35182), (110, 35248), (119, 35260), (125, 35287), (129, 35311), (133, 35326), (135, 35347), (138, 35368), (139, 35380), (140, 35383), (153, 35467), (166, 35512), (168, 35518), (173, 35548), (180, 35575), (182, 35593), (186, 35614), (194, 35647), (202, 35707), (206, 35734), (210, 35773), (213, 35791), (217, 35812), (219, 35821), (230, 35857), (232, 35866),

Gene: DosHalletts_47 Start: 34853, Stop: 35650, Start Num: 59

Candidate Starts for DosHalletts_47:

(Start: 59 @34853 has 12 MA's), (73, 34895), (82, 34931), (83, 34934), (91, 34988), (128, 35090), (129, 35105), (139, 35174), (143, 35222), (175, 35339), (184, 35390), (201, 35486), (213, 35591), (214, 35597), (227, 35639), (229, 35645),

Gene: DotProduct_44 Start: 34531, Stop: 35535, Start Num: 24

Candidate Starts for DotProduct_44:

(Start: 24 @34531 has 62 MA's), (56, 34720), (Start: 60 @34732 has 1 MA's), (79, 34798), (82, 34807), (87, 34843), (110, 34909), (119, 34921), (125, 34948), (129, 34972), (133, 34987), (135, 35008), (138, 35029), (139, 35041), (140, 35044), (153, 35128), (166, 35173), (168, 35179), (173, 35209), (180, 35236), (182, 35254), (186, 35275), (194, 35308), (195, 35326), (202, 35368), (206, 35395), (210, 35434), (213, 35452), (217, 35473), (219, 35482), (230, 35518), (232, 35527),

Gene: Dynamo_34 Start: 28347, Stop: 29213, Start Num: 42

Candidate Starts for Dynamo_34:

(Start: 42 @28347 has 45 MA's), (71, 28428), (78, 28452), (81, 28461), (88, 28509), (128, 28617), (129, 28632), (144, 28743), (182, 28926), (194, 28980), (209, 29109), (217, 29151), (231, 29199),

Gene: Easley_43 Start: 32655, Stop: 33410, Start Num: 63

Candidate Starts for Easley_43:

(Start: 63 @32655 has 8 MA's), (73, 32685), (79, 32712), (82, 32721), (105, 32820), (125, 32865), (128, 32874), (129, 32889), (130, 32898), (157, 33060), (182, 33171), (183, 33174), (199, 33255),

Gene: Eish_48 Start: 35416, Stop: 36417, Start Num: 24

Candidate Starts for Eish_48:

(Start: 24 @35416 has 62 MA's), (46, 35584), (56, 35605), (Start: 60 @35617 has 1 MA's), (79, 35683), (82, 35692), (87, 35728), (110, 35794), (125, 35833), (126, 35836), (131, 35869), (133, 35872), (135, 35893), (138, 35914), (139, 35926), (140, 35929), (153, 36010), (166, 36055), (168, 36061), (173, 36091), (180, 36118), (182, 36136), (183, 36139), (186, 36157), (194, 36190), (195, 36208), (202, 36250), (210, 36316), (217, 36355), (230, 36400),

Gene: Estave1_48 Start: 34820, Stop: 35824, Start Num: 24

Candidate Starts for Estave1_48:

(Start: 24 @34820 has 62 MA's), (46, 34988), (56, 35009), (Start: 60 @35021 has 1 MA's), (70, 35054), (76, 35069), (79, 35087), (82, 35096), (87, 35132), (103, 35180), (110, 35198), (119, 35210), (125, 35237), (129, 35261), (131, 35273), (133, 35276), (135, 35297), (138, 35318), (139, 35330), (140, 35333), (150, 35405), (153, 35417), (166, 35462), (168, 35468), (173, 35498), (180, 35525), (182, 35543), (183, 35546), (186, 35564), (194, 35597), (195, 35615), (202, 35657), (210, 35723), (213, 35741), (217, 35762), (230, 35807),

Gene: Faith5x5_37 Start: 28702, Stop: 29454, Start Num: 63

Candidate Starts for Faith5x5_37:

(44, 28657), (Start: 63 @28702 has 8 MA's), (Start: 72 @28729 has 2 MA's), (88, 28816), (91, 28825), (125, 28915), (128, 28924), (129, 28939), (132, 28951), (150, 29074), (151, 29077), (180, 29197), (199, 29299),

Gene: Fastidio_48 Start: 34493, Stop: 35497, Start Num: 24

Candidate Starts for Fastidio_48:

(Start: 24 @34493 has 62 MA's), (56, 34682), (Start: 60 @34694 has 1 MA's), (79, 34760), (82, 34769), (87, 34805), (110, 34871), (119, 34883), (125, 34910), (129, 34934), (133, 34949), (135, 34970), (138, 34991), (139, 35003), (140, 35006), (153, 35090), (168, 35141), (169, 35147), (180, 35198), (182, 35216), (186, 35237), (194, 35270), (195, 35288), (202, 35330), (206, 35357), (213, 35414), (219, 35444), (230, 35480), (231, 35483),

Gene: Fenry_43 Start: 34202, Stop: 34963, Start Num: 66

Candidate Starts for Fenry_43:

(25, 33998), (40, 34127), (Start: 66 @34202 has 26 MA's), (73, 34217), (93, 34316), (99, 34328), (117, 34370), (125, 34397), (139, 34490), (157, 34586), (180, 34676), (193, 34742), (208, 34868),

Gene: Filuzino_45 Start: 34250, Stop: 35254, Start Num: 24

Candidate Starts for Filuzino_45:

(Start: 24 @34250 has 62 MA's), (46, 34418), (56, 34439), (Start: 60 @34451 has 1 MA's), (70, 34484), (76, 34499), (79, 34517), (82, 34526), (87, 34562), (103, 34610), (110, 34628), (119, 34640), (125, 34667), (129, 34691), (131, 34703), (133, 34706), (135, 34727), (138, 34748), (139, 34760), (140, 34763), (153, 34847), (168, 34898), (180, 34955), (182, 34973), (186, 34994), (194, 35027), (195, 35045), (202, 35087), (206, 35114), (213, 35171), (219, 35201), (230, 35237), (231, 35240),

Gene: Firehouse51_47 Start: 36491, Stop: 37288, Start Num: 59

Candidate Starts for Firehouse51_47:

(Start: 59 @36491 has 12 MA's), (73, 36533), (82, 36569), (83, 36572), (91, 36626), (128, 36728), (129, 36743), (139, 36812), (143, 36860), (175, 36977), (184, 37028), (201, 37124), (213, 37229), (214, 37235), (227, 37277), (229, 37283),

Gene: FirstPlacePfu_34 Start: 27971, Stop: 28837, Start Num: 42

Candidate Starts for FirstPlacePfu_34:

(Start: 42 @27971 has 45 MA's), (71, 28052), (78, 28076), (81, 28085), (88, 28133), (128, 28241), (129, 28256), (144, 28367), (182, 28550), (194, 28604), (209, 28733), (217, 28775), (231, 28823),

Gene: Fishburne_34 Start: 27939, Stop: 28805, Start Num: 42

Candidate Starts for Fishburne_34:

(Start: 42 @27939 has 45 MA's), (71, 28020), (78, 28044), (81, 28053), (88, 28101), (128, 28209), (129, 28224), (144, 28335), (182, 28518), (194, 28572), (209, 28701), (217, 28743), (231, 28791),

Gene: Florinda_57 Start: 36157, Stop: 36951, Start Num: 59

Candidate Starts for Florinda_57:

(Start: 59 @36157 has 12 MA's), (73, 36199), (82, 36235), (83, 36238), (87, 36274), (105, 36334), (128, 36391), (129, 36406), (139, 36475), (143, 36523), (175, 36640), (184, 36691), (201, 36787), (213, 36892), (214, 36898), (227, 36940), (229, 36946),

Gene: Frankie_51 Start: 36473, Stop: 37477, Start Num: 24

Candidate Starts for Frankie_51:

(Start: 24 @36473 has 62 MA's), (46, 36641), (56, 36662), (Start: 60 @36674 has 1 MA's), (70, 36707), (76, 36722), (79, 36740), (82, 36749), (87, 36785), (103, 36833), (110, 36851), (119, 36863), (125, 36890), (129, 36914), (131, 36926), (133, 36929), (135, 36950), (138, 36971), (139, 36983), (140, 36986), (150, 37058), (153, 37070), (154, 37073), (166, 37115), (168, 37121), (173, 37151), (180, 37178), (186, 37217), (194, 37250), (195, 37268), (202, 37310), (206, 37337), (210, 37376), (213, 37394), (217, 37415), (219, 37424), (230, 37460), (232, 37469),

Gene: Fruitloop_46 Start: 36116, Stop: 37120, Start Num: 24

Candidate Starts for Fruitloop_46:

(Start: 24 @36116 has 62 MA's), (46, 36284), (56, 36305), (Start: 60 @36317 has 1 MA's), (70, 36350), (76, 36365), (79, 36383), (82, 36392), (87, 36428), (103, 36476), (110, 36494), (119, 36506), (125, 36533), (129, 36557), (131, 36569), (133, 36572), (135, 36593), (138, 36614), (139, 36626), (140, 36629), (150, 36701), (153, 36713), (168, 36764), (169, 36770), (180, 36821), (182, 36839), (186, 36860), (194, 36893), (195, 36911), (202, 36953), (206, 36980), (213, 37037), (219, 37067), (230, 37103), (231, 37106),

Gene: GUmbie_45 Start: 34760, Stop: 35764, Start Num: 24

Candidate Starts for GUmbie_45:

(Start: 24 @34760 has 62 MA's), (56, 34949), (Start: 60 @34961 has 1 MA's), (79, 35027), (82, 35036), (87, 35072), (110, 35138), (119, 35150), (125, 35177), (129, 35201), (133, 35216), (135, 35237), (138, 35258), (139, 35270), (140, 35273), (153, 35357), (166, 35402), (168, 35408), (173, 35438), (180, 35465), (182, 35483), (186, 35504), (194, 35537), (202, 35597), (206, 35624), (210, 35663), (213, 35681), (217, 35702), (219, 35711), (230, 35747), (232, 35756),

Gene: Gambino_49 Start: 35195, Stop: 35956, Start Num: 66

Candidate Starts for Gambino_49:

(Start: 66 @35195 has 26 MA's), (73, 35210), (94, 35312), (105, 35345), (125, 35390), (128, 35399), (129, 35414), (139, 35483), (157, 35579), (180, 35669), (208, 35861),

Gene: GigiOuiOui_44 Start: 34673, Stop: 35677, Start Num: 24

Candidate Starts for GigiOuiOui_44:

(Start: 24 @34673 has 62 MA's), (56, 34862), (Start: 60 @34874 has 1 MA's), (79, 34940), (82, 34949), (87, 34985), (110, 35051), (119, 35063), (125, 35090), (129, 35114), (133, 35129), (135, 35150), (138, 35171), (139, 35183), (140, 35186), (153, 35270), (166, 35315), (168, 35321), (173, 35351), (180, 35378), (182, 35396), (186, 35417), (194, 35450), (202, 35510), (206, 35537), (210, 35576), (213, 35594), (217, 35615), (219, 35624), (230, 35660), (232, 35669),

Gene: Girafales_56 Start: 35966, Stop: 36760, Start Num: 59

Candidate Starts for Girafales_56:

(Start: 59 @35966 has 12 MA's), (73, 36008), (82, 36044), (83, 36047), (88, 36092), (128, 36200), (129, 36215), (130, 36224), (139, 36284), (143, 36332), (175, 36449), (184, 36500), (201, 36596), (213, 36701), (214, 36707), (227, 36749), (229, 36755),

Gene: Girr_48 Start: 35732, Stop: 36736, Start Num: 24

Candidate Starts for Girr_48:

(Start: 24 @35732 has 62 MA's), (56, 35921), (Start: 60 @35933 has 1 MA's), (79, 35999), (82, 36008), (87, 36044), (110, 36110), (119, 36122), (125, 36149), (129, 36173), (133, 36188), (135, 36209), (138, 36230), (139, 36242), (140, 36245), (153, 36329), (166, 36374), (168, 36380), (173, 36410), (180, 36437), (182, 36455), (186, 36476), (194, 36509), (202, 36569), (206, 36596), (210, 36635), (213, 36653), (217, 36674), (219, 36683), (230, 36719), (232, 36728),

Gene: Gladiator_70 Start: 41751, Stop: 40912, Start Num: 39

Candidate Starts for Gladiator_70:

(Start: 39 @41751 has 12 MA's), (Start: 41 @41742 has 2 MA's), (50, 41718), (82, 41628), (87, 41589), (88, 41580), (101, 41547), (113, 41517), (127, 41484), (139, 41397), (150, 41310), (151, 41307), (176, 41187), (183, 41148), (197, 41055), (209, 40974),

Gene: Glaske_34 Start: 28196, Stop: 29059, Start Num: 42

Candidate Starts for Glaske_34:

(Start: 42 @28196 has 45 MA's), (71, 28277), (78, 28301), (81, 28310), (88, 28358), (100, 28382), (128, 28463), (129, 28478), (144, 28589), (182, 28772), (194, 28826), (209, 28955), (217, 28997), (231, 29045),

Gene: GreaseLightnin_34 Start: 28179, Stop: 29045, Start Num: 42

Candidate Starts for GreaseLightnin_34:

(Start: 42 @28179 has 45 MA's), (78, 28284), (81, 28293), (88, 28341), (128, 28449), (129, 28464), (144, 28575), (182, 28758), (194, 28812), (209, 28941), (217, 28983), (231, 29031),

Gene: HC_34 Start: 27658, Stop: 28527, Start Num: 42

Candidate Starts for HC_34:

(Start: 42 @27658 has 45 MA's), (78, 27766), (81, 27775), (88, 27823), (128, 27931), (129, 27946), (144, 28057), (182, 28240), (194, 28294), (209, 28423), (217, 28465), (231, 28513),

Gene: HUHilltop_34 Start: 27972, Stop: 28835, Start Num: 42

Candidate Starts for HUHilltop_34:

(Start: 42 @27972 has 45 MA's), (71, 28053), (78, 28077), (81, 28086), (85, 28113), (88, 28134), (125, 28230), (128, 28239), (129, 28254), (144, 28365), (182, 28548), (194, 28602), (217, 28773), (231, 28821),

Gene: Hamulus_48 Start: 36115, Stop: 37119, Start Num: 24

Candidate Starts for Hamulus_48:

(Start: 24 @36115 has 62 MA's), (56, 36304), (Start: 60 @36316 has 1 MA's), (79, 36382), (82, 36391), (87, 36427), (110, 36493), (119, 36505), (125, 36532), (129, 36556), (133, 36571), (135, 36592), (138, 36613), (139, 36625), (140, 36628), (153, 36712), (166, 36757), (168, 36763), (173, 36793), (180, 36820), (182, 36838), (186, 36859), (194, 36892), (202, 36952), (206, 36979), (210, 37018), (213, 37036), (217, 37057), (219, 37066), (230, 37102), (232, 37111),

Gene: Harley_50 Start: 35468, Stop: 36472, Start Num: 24

Candidate Starts for Harley_50:

(Start: 24 @35468 has 62 MA's), (56, 35657), (Start: 60 @35669 has 1 MA's), (79, 35735), (82, 35744), (87, 35780), (110, 35846), (119, 35858), (125, 35885), (129, 35909), (133, 35924), (135, 35945), (138, 35966), (139, 35978), (140, 35981), (153, 36065), (166, 36110), (168, 36116), (173,

36146), (180, 36173), (182, 36191), (186, 36212), (194, 36245), (202, 36305), (210, 36371), (213, 36389), (217, 36410), (219, 36419), (230, 36455), (232, 36464),

Gene: IronMan_69 Start: 44419, Stop: 43604, Start Num: 41

Candidate Starts for IronMan_69:

(38, 44446), (Start: 41 @44419 has 2 MA's), (57, 44386), (82, 44302), (87, 44263), (90, 44251), (114, 44194), (142, 44041), (197, 43750),

Gene: Isiphiwo_70 Start: 41692, Stop: 40844, Start Num: 39

Candidate Starts for Isiphiwo_70:

(Start: 39 @41692 has 12 MA's), (Start: 41 @41683 has 2 MA's), (50, 41659), (82, 41569), (87, 41530), (95, 41500), (104, 41476), (111, 41458), (113, 41455), (127, 41416), (134, 41383), (139, 41329), (150, 41242), (151, 41239), (176, 41119), (183, 41080), (197, 40987), (209, 40906),

Gene: Island3_36 Start: 29775, Stop: 30644, Start Num: 42

Candidate Starts for Island3_36:

(Start: 42 @29775 has 45 MA's), (78, 29883), (81, 29892), (88, 29940), (128, 30048), (129, 30063), (144, 30174), (182, 30357), (194, 30411), (209, 30540), (217, 30582), (231, 30630),

Gene: Iwokeuplikedis_72 Start: 43407, Stop: 42592, Start Num: 55

Candidate Starts for Iwokeuplikedis_72:

(Start: 55 @43407 has 3 MA's), (77, 43341), (83, 43314), (87, 43278), (116, 43203), (134, 43134), (139, 43080), (150, 42993), (176, 42870), (184, 42825), (197, 42738), (209, 42657),

Gene: Jaan_70 Start: 44554, Stop: 43772, Start Num: 58

Candidate Starts for Jaan_70:

(Start: 58 @44554 has 1 MA's), (82, 44470), (87, 44431), (90, 44419), (114, 44362), (122, 44341), (142, 44209), (197, 43918),

Gene: Jalammah_48 Start: 35515, Stop: 36279, Start Num: 66

Candidate Starts for Jalammah_48:

(25, 35311), (40, 35440), (Start: 66 @35515 has 26 MA's), (88, 35614), (92, 35626), (123, 35704), (126, 35716), (129, 35737), (130, 35746), (139, 35806), (157, 35902), (180, 35992), (208, 36184),

Gene: Jebeks_35 Start: 27924, Stop: 28790, Start Num: 42

Candidate Starts for Jebeks_35:

(Start: 42 @27924 has 45 MA's), (71, 28005), (78, 28029), (81, 28038), (85, 28065), (88, 28086), (128, 28194), (129, 28209), (144, 28320), (182, 28503), (194, 28557), (209, 28686), (217, 28728), (231, 28776),

Gene: JewelBug_72 Start: 42414, Stop: 41578, Start Num: 39

Candidate Starts for JewelBug_72:

(Start: 39 @42414 has 12 MA's), (Start: 41 @42405 has 2 MA's), (50, 42381), (82, 42291), (87, 42252), (90, 42240), (136, 42090), (150, 41976), (151, 41973), (176, 41853), (183, 41814), (197, 41721), (209, 41640),

Gene: Job42_48 Start: 36721, Stop: 37725, Start Num: 24

Candidate Starts for Job42_48:

(Start: 24 @36721 has 62 MA's), (56, 36910), (Start: 60 @36922 has 1 MA's), (79, 36988), (82, 36997), (87, 37033), (110, 37099), (119, 37111), (125, 37138), (129, 37162), (133, 37177), (135, 37198), (138, 37219), (139, 37231), (140, 37234), (153, 37318), (166, 37363), (168, 37369), (173, 37399), (180, 37426), (182, 37444), (186, 37465), (194, 37498), (202, 37558), (206, 37585), (210, 37624), (213, 37642), (217, 37663), (219, 37672), (230, 37708), (232, 37717),

Gene: JoeDirt_59 Start: 42675, Stop: 43493, Start Num: 66

Candidate Starts for JoeDirt_59:

(Start: 66 @42675 has 26 MA's), (76, 42702), (82, 42729), (84, 42741), (96, 42801), (123, 42876), (125, 42888), (139, 42978), (141, 42984), (158, 43089), (159, 43119), (178, 43224), (198, 43347), (208, 43422), (212, 43437),

Gene: Jordennis_71 Start: 41658, Stop: 41059, Start Num: 120

Candidate Starts for Jordennis_71:

(Start: 120 @41658 has 2 MA's), (127, 41631), (134, 41598), (139, 41544), (150, 41457), (151, 41454), (176, 41334), (183, 41295), (197, 41202), (209, 41121),

Gene: Jung_33 Start: 27903, Stop: 28766, Start Num: 42

Candidate Starts for Jung_33:

(Start: 42 @27903 has 45 MA's), (71, 27984), (78, 28008), (81, 28017), (88, 28065), (100, 28089), (128, 28170), (129, 28185), (144, 28296), (182, 28479), (194, 28533), (209, 28662), (217, 28704), (231, 28752),

Gene: Juniormint_34 Start: 27975, Stop: 28841, Start Num: 42

Candidate Starts for Juniormint_34:

(Start: 42 @27975 has 45 MA's), (71, 28056), (78, 28080), (81, 28089), (85, 28116), (88, 28137), (128, 28245), (129, 28260), (144, 28371), (182, 28554), (194, 28608), (209, 28737), (217, 28779), (231, 28827),

Gene: KappaFarmDelta_46 Start: 33140, Stop: 33901, Start Num: 66

Candidate Starts for KappaFarmDelta_46:

(25, 32939), (40, 33065), (Start: 66 @33140 has 26 MA's), (73, 33155), (93, 33254), (99, 33266), (117, 33308), (125, 33335), (138, 33416), (139, 33428), (157, 33524), (180, 33614), (193, 33680), (208, 33806),

Gene: Karhdo_46 Start: 35555, Stop: 36559, Start Num: 24

Candidate Starts for Karhdo_46:

(Start: 24 @35555 has 62 MA's), (56, 35744), (Start: 60 @35756 has 1 MA's), (79, 35822), (82, 35831), (87, 35867), (110, 35933), (119, 35945), (125, 35972), (129, 35996), (133, 36011), (135, 36032), (138, 36053), (139, 36065), (140, 36068), (153, 36152), (166, 36197), (168, 36203), (173, 36233), (180, 36260), (182, 36278), (186, 36299), (194, 36332), (202, 36392), (206, 36419), (210, 36458), (213, 36476), (217, 36497), (219, 36506), (230, 36542), (232, 36551),

Gene: Kari_34 Start: 27936, Stop: 28802, Start Num: 42

Candidate Starts for Kari_34:

(Start: 42 @27936 has 45 MA's), (71, 28017), (78, 28041), (81, 28050), (88, 28098), (128, 28206), (129, 28221), (144, 28332), (182, 28515), (194, 28569), (209, 28698), (217, 28740), (231, 28788),

Gene: KilKor_34 Start: 28196, Stop: 29059, Start Num: 42

Candidate Starts for KilKor_34:

(Start: 42 @28196 has 45 MA's), (71, 28277), (78, 28301), (81, 28310), (88, 28358), (100, 28382), (128, 28463), (129, 28478), (144, 28589), (182, 28772), (194, 28826), (209, 28955), (217, 28997), (231, 29045),

Gene: Krakatau_45 Start: 35226, Stop: 36230, Start Num: 24

Candidate Starts for Krakatau_45:

(1, 34731), (2, 34782), (6, 34905), (7, 34911), (9, 34926), (12, 34980), (14, 35052), (15, 35061), (Start: 24 @35226 has 62 MA's), (56, 35415), (Start: 60 @35427 has 1 MA's), (79, 35493), (82, 35502), (87,

35538), (110, 35604), (119, 35616), (125, 35643), (129, 35667), (133, 35682), (135, 35703), (138, 35724), (139, 35736), (140, 35739), (153, 35823), (166, 35868), (168, 35874), (169, 35880), (173, 35904), (180, 35931), (182, 35949), (186, 35970), (194, 36003), (202, 36063), (206, 36090), (210, 36129), (213, 36147), (217, 36168), (219, 36177), (230, 36213), (232, 36222),

Gene: KristaRAM_47 Start: 36438, Stop: 37442, Start Num: 24

Candidate Starts for KristaRAM_47:

(Start: 24 @36438 has 62 MA's), (46, 36606), (56, 36627), (Start: 60 @36639 has 1 MA's), (70, 36672), (76, 36687), (79, 36705), (82, 36714), (87, 36750), (103, 36798), (110, 36816), (119, 36828), (125, 36855), (129, 36879), (131, 36891), (133, 36894), (135, 36915), (138, 36936), (139, 36948), (140, 36951), (153, 37035), (166, 37080), (168, 37086), (173, 37116), (180, 37143), (182, 37161), (186, 37182), (194, 37215), (195, 37233), (202, 37275), (206, 37302), (213, 37359), (219, 37389), (230, 37425), (231, 37428),

Gene: Ksquared_34 Start: 27953, Stop: 28819, Start Num: 42

Candidate Starts for Ksquared_34:

(Start: 42 @27953 has 45 MA's), (71, 28034), (78, 28058), (81, 28067), (85, 28094), (88, 28115), (128, 28223), (129, 28238), (144, 28349), (182, 28532), (194, 28586), (209, 28715), (217, 28757), (231, 28805),

Gene: Landor_70 Start: 44539, Stop: 43679, Start Num: 38

Candidate Starts for Landor_70:

(38, 44539), (Start: 41 @44512 has 2 MA's), (50, 44488), (82, 44404), (87, 44365), (139, 44164), (140, 44161), (176, 43957), (197, 43825),

Gene: Langerak_34 Start: 27955, Stop: 28818, Start Num: 42

Candidate Starts for Langerak_34:

(Start: 42 @27955 has 45 MA's), (71, 28036), (78, 28060), (81, 28069), (85, 28096), (88, 28117), (125, 28213), (128, 28222), (129, 28237), (130, 28246), (144, 28348), (182, 28531), (194, 28585), (209, 28714), (217, 28756), (231, 28804),

Gene: LastJedi_41 Start: 31571, Stop: 32380, Start Num: 45

Candidate Starts for LastJedi_41:

(Start: 45 @31571 has 1 MA's), (Start: 59 @31601 has 12 MA's), (Start: 72 @31625 has 2 MA's), (73, 31628), (82, 31664), (83, 31667), (88, 31712), (128, 31820), (129, 31835), (139, 31904), (143, 31952), (175, 32069), (184, 32120), (201, 32216), (213, 32321), (214, 32327), (227, 32369), (229, 32375),

Gene: Latretium_50 Start: 36344, Stop: 37345, Start Num: 24

Candidate Starts for Latretium_50:

(Start: 24 @36344 has 62 MA's), (46, 36512), (56, 36533), (Start: 60 @36545 has 1 MA's), (79, 36611), (82, 36620), (87, 36656), (110, 36722), (115, 36728), (119, 36734), (125, 36761), (131, 36797), (133, 36800), (135, 36821), (138, 36842), (139, 36854), (140, 36857), (153, 36938), (166, 36983), (168, 36989), (169, 36995), (173, 37019), (180, 37046), (182, 37064), (186, 37085), (194, 37118), (195, 37136), (202, 37178), (210, 37244), (213, 37262), (217, 37283), (230, 37328),

Gene: LilMoolah_46 Start: 35122, Stop: 36126, Start Num: 24

Candidate Starts for LilMoolah_46:

(16, 34966), (Start: 24 @35122 has 62 MA's), (Start: 60 @35323 has 1 MA's), (79, 35389), (82, 35398), (87, 35434), (110, 35500), (115, 35506), (119, 35512), (125, 35539), (131, 35575), (133, 35578), (135, 35599), (138, 35620), (139, 35632), (140, 35635), (153, 35719), (166, 35764), (168, 35770), (169, 35776), (173, 35800), (180, 35827), (182, 35845), (186, 35866), (194, 35899), (202, 35959), (206, 35986), (210, 36025), (213, 36043), (217, 36064), (230, 36109), (232, 36118),

Gene: LittleShirley_47 Start: 36153, Stop: 37157, Start Num: 24

Candidate Starts for LittleShirley_47:

(Start: 24 @36153 has 62 MA's), (46, 36321), (56, 36342), (Start: 60 @36354 has 1 MA's), (79, 36420), (82, 36429), (87, 36465), (110, 36531), (125, 36570), (126, 36573), (129, 36594), (133, 36609), (135, 36630), (138, 36651), (139, 36663), (140, 36666), (153, 36750), (166, 36795), (168, 36801), (173, 36831), (180, 36858), (182, 36876), (186, 36897), (194, 36930), (195, 36948), (202, 36990), (206, 37017), (210, 37056), (213, 37074), (217, 37095), (219, 37104), (230, 37140), (232, 37149),

Gene: MadMen_42 Start: 34172, Stop: 35179, Start Num: 24

Candidate Starts for MadMen_42:

(1, 33677), (2, 33728), (6, 33851), (7, 33857), (9, 33872), (12, 33926), (14, 33998), (15, 34007), (Start: 24 @34172 has 62 MA's), (56, 34364), (Start: 60 @34376 has 1 MA's), (79, 34442), (82, 34451), (87, 34487), (110, 34553), (119, 34565), (125, 34592), (129, 34616), (133, 34631), (135, 34652), (138, 34673), (139, 34685), (140, 34688), (153, 34772), (166, 34817), (168, 34823), (169, 34829), (173, 34853), (180, 34880), (182, 34898), (186, 34919), (194, 34952), (202, 35012), (206, 35039), (210, 35078), (213, 35096), (217, 35117), (219, 35126), (230, 35162), (232, 35171),

Gene: Madiba_43 Start: 33464, Stop: 34468, Start Num: 24

Candidate Starts for Madiba_43:

(Start: 24 @33464 has 62 MA's), (56, 33653), (Start: 60 @33665 has 1 MA's), (79, 33731), (82, 33740), (87, 33776), (110, 33842), (119, 33854), (125, 33881), (129, 33905), (133, 33920), (135, 33941), (138, 33962), (139, 33974), (140, 33977), (153, 34061), (166, 34106), (168, 34112), (173, 34142), (180, 34169), (182, 34187), (186, 34208), (194, 34241), (202, 34301), (206, 34328), (210, 34367), (213, 34385), (217, 34406), (219, 34415), (230, 34451), (232, 34460),

Gene: Majeke_34 Start: 27977, Stop: 28843, Start Num: 42

Candidate Starts for Majeke_34:

(Start: 42 @27977 has 45 MA's), (71, 28058), (78, 28082), (81, 28091), (88, 28139), (128, 28247), (129, 28262), (144, 28373), (182, 28556), (194, 28610), (209, 28739), (217, 28781), (231, 28829),

Gene: Malachai_44 Start: 35305, Stop: 36069, Start Num: 66

Candidate Starts for Malachai_44:

(22, 35065), (28, 35119), (33, 35164), (40, 35230), (Start: 66 @35305 has 26 MA's), (73, 35320), (83, 35359), (92, 35416), (123, 35494), (126, 35506), (129, 35527), (139, 35596), (157, 35692), (180, 35782), (208, 35974),

Gene: Malithi_34 Start: 27862, Stop: 28728, Start Num: 42

Candidate Starts for Malithi_34:

(Start: 42 @27862 has 45 MA's), (71, 27943), (78, 27967), (81, 27976), (85, 28003), (88, 28024), (128, 28132), (129, 28147), (144, 28258), (182, 28441), (194, 28495), (217, 28666), (231, 28714),

Gene: Mangethe_34 Start: 27977, Stop: 28843, Start Num: 42

Candidate Starts for Mangethe_34:

(Start: 42 @27977 has 45 MA's), (71, 28058), (78, 28082), (81, 28091), (88, 28139), (128, 28247), (129, 28262), (144, 28373), (182, 28556), (194, 28610), (209, 28739), (217, 28781), (231, 28829),

Gene: Mantra_44 Start: 34639, Stop: 35643, Start Num: 24

Candidate Starts for Mantra_44:

(Start: 24 @34639 has 62 MA's), (56, 34828), (Start: 60 @34840 has 1 MA's), (79, 34906), (82, 34915), (87, 34951), (110, 35017), (119, 35029), (125, 35056), (129, 35080), (133, 35095), (135, 35116), (138, 35137), (139, 35149), (140, 35152), (153, 35236), (166, 35281), (168, 35287), (173, 35317), (180, 35344), (182, 35362), (186, 35383), (194, 35416), (202, 35476), (206, 35503), (210,

35542), (213, 35560), (217, 35581), (219, 35590), (230, 35626), (232, 35635),

Gene: Marker_48 Start: 35024, Stop: 36025, Start Num: 24

Candidate Starts for Marker_48:

(Start: 24 @35024 has 62 MA's), (46, 35192), (56, 35213), (Start: 60 @35225 has 1 MA's), (79, 35291), (82, 35300), (87, 35336), (110, 35402), (125, 35441), (126, 35444), (131, 35477), (133, 35480), (135, 35501), (138, 35522), (139, 35534), (140, 35537), (153, 35618), (166, 35663), (168, 35669), (173, 35699), (180, 35726), (182, 35744), (183, 35747), (186, 35765), (194, 35798), (195, 35816), (202, 35858), (206, 35885), (210, 35924), (213, 35942), (217, 35963), (219, 35972), (230, 36008), (232, 36017),

Gene: Megiddo_34 Start: 28196, Stop: 29059, Start Num: 42

Candidate Starts for Megiddo_34:

(Start: 42 @28196 has 45 MA's), (71, 28277), (78, 28301), (81, 28310), (88, 28358), (100, 28382), (128, 28463), (129, 28478), (144, 28589), (182, 28772), (194, 28826), (209, 28955), (217, 28997), (231, 29045),

Gene: Mellie_43 Start: 33024, Stop: 33788, Start Num: 66

Candidate Starts for Mellie_43:

(19, 32739), (28, 32838), (40, 32949), (Start: 66 @33024 has 26 MA's), (88, 33123), (128, 33231), (129, 33246), (139, 33315), (157, 33411), (180, 33501), (182, 33519), (208, 33693),

Gene: Min1_10 Start: 3743, Stop: 4495, Start Num: 73

Candidate Starts for Min1_10:

(52, 3686), (69, 3734), (73, 3743), (75, 3749), (79, 3773), (85, 3809), (107, 3881), (127, 3935), (155, 4118), (183, 4235), (202, 4346), (211, 4418), (222, 4466),

Gene: MissRona_47 Start: 35196, Stop: 35957, Start Num: 66

Candidate Starts for MissRona_47:

(Start: 66 @35196 has 26 MA's), (73, 35211), (94, 35313), (105, 35346), (125, 35391), (128, 35400), (129, 35415), (139, 35484), (157, 35580), (180, 35670), (208, 35862),

Gene: MisterCuddles_47 Start: 35732, Stop: 36736, Start Num: 24

Candidate Starts for MisterCuddles_47:

(Start: 24 @35732 has 62 MA's), (56, 35921), (Start: 60 @35933 has 1 MA's), (79, 35999), (82, 36008), (87, 36044), (110, 36110), (119, 36122), (125, 36149), (129, 36173), (133, 36188), (135, 36209), (138, 36230), (139, 36242), (140, 36245), (153, 36329), (166, 36374), (168, 36380), (173, 36410), (180, 36437), (182, 36455), (186, 36476), (194, 36509), (202, 36569), (206, 36596), (210, 36635), (213, 36653), (217, 36674), (219, 36683), (230, 36719), (232, 36728),

Gene: MortyNRick_52 Start: 37859, Stop: 38608, Start Num: 63

Candidate Starts for MortyNRick_52:

(Start: 63 @37859 has 8 MA's), (82, 37925), (83, 37928), (88, 37973), (106, 38024), (117, 38042), (129, 38093), (151, 38231), (172, 38309), (199, 38453), (213, 38546),

Gene: Murp_47 Start: 36766, Stop: 37527, Start Num: 66

Candidate Starts for Murp_47:

(40, 36691), (Start: 66 @36766 has 26 MA's), (73, 36781), (93, 36880), (99, 36892), (117, 36934), (125, 36961), (138, 37042), (139, 37054), (157, 37150), (180, 37240), (193, 37306), (208, 37432),

Gene: Nazo_38 Start: 30066, Stop: 30869, Start Num: 49

Candidate Starts for Nazo_38:

(Start: 49 @30066 has 4 MA's), (83, 30168), (87, 30204), (139, 30396), (152, 30492), (175, 30576), (189, 30642), (190, 30645), (196, 30669), (203, 30723), (207, 30762), (208, 30783), (209, 30786), (226, 30855),

Gene: Necropolis_34 Start: 27936, Stop: 28802, Start Num: 42

Candidate Starts for Necropolis_34:

(Start: 42 @27936 has 45 MA's), (71, 28017), (78, 28041), (81, 28050), (88, 28098), (128, 28206), (129, 28221), (144, 28332), (182, 28515), (194, 28569), (209, 28698), (217, 28740), (231, 28788),

Gene: Neeharika16_71 Start: 41586, Stop: 40738, Start Num: 39

Candidate Starts for Neeharika16_71:

(Start: 39 @41586 has 12 MA's), (Start: 41 @41577 has 2 MA's), (50, 41553), (82, 41463), (87, 41424), (95, 41394), (104, 41370), (111, 41352), (113, 41349), (127, 41310), (134, 41277), (139, 41223), (150, 41136), (151, 41133), (176, 41013), (183, 40974), (197, 40881), (209, 40800),

Gene: Newrala_72 Start: 42117, Stop: 41278, Start Num: 39

Candidate Starts for Newrala_72:

(Start: 39 @42117 has 12 MA's), (Start: 41 @42108 has 2 MA's), (50, 42084), (82, 41994), (87, 41955), (88, 41946), (101, 41913), (113, 41883), (127, 41850), (139, 41763), (150, 41676), (151, 41673), (176, 41553), (183, 41514), (197, 41421), (209, 41340),

Gene: Nivrat_45 Start: 34995, Stop: 35999, Start Num: 24

Candidate Starts for Nivrat_45:

(16, 34839), (Start: 24 @34995 has 62 MA's), (Start: 60 @35196 has 1 MA's), (79, 35262), (82, 35271), (87, 35307), (110, 35373), (115, 35379), (119, 35385), (125, 35412), (131, 35448), (133, 35451), (135, 35472), (138, 35493), (139, 35505), (140, 35508), (153, 35592), (166, 35637), (168, 35643), (169, 35649), (173, 35673), (180, 35700), (182, 35718), (186, 35739), (194, 35772), (202, 35832), (206, 35859), (210, 35898), (213, 35916), (217, 35937), (230, 35982), (232, 35991),

Gene: Odin_74 Start: 43407, Stop: 42565, Start Num: 54

Candidate Starts for Odin_74:

(Start: 54 @43407 has 3 MA's), (87, 43275), (99, 43236), (104, 43221), (114, 43203), (125, 43167), (127, 43161), (134, 43128), (138, 43086), (150, 42987), (151, 42984), (160, 42927), (174, 42852), (184, 42792), (187, 42783), (216, 42588),

Gene: Ogopogo_48 Start: 34646, Stop: 35650, Start Num: 24

Candidate Starts for Ogopogo_48:

(Start: 24 @34646 has 62 MA's), (46, 34814), (56, 34835), (Start: 60 @34847 has 1 MA's), (79, 34913), (82, 34922), (87, 34958), (110, 35024), (125, 35063), (126, 35066), (129, 35087), (133, 35102), (135, 35123), (138, 35144), (139, 35156), (140, 35159), (153, 35243), (168, 35294), (169, 35300), (180, 35351), (182, 35369), (186, 35390), (194, 35423), (195, 35441), (202, 35483), (206, 35510), (213, 35567), (219, 35597), (230, 35633), (231, 35636),

Gene: Oregano_48 Start: 33939, Stop: 34688, Start Num: 63

Candidate Starts for Oregano_48:

(31, 33786), (44, 33894), (Start: 63 @33939 has 8 MA's), (73, 33969), (79, 33996), (82, 34005), (117, 34122), (125, 34149), (129, 34173), (134, 34188), (137, 34218), (150, 34308), (151, 34311), (199, 34533),

Gene: P1201_08 Start: 2597, Stop: 3520, Start Num: 35

Candidate Starts for P1201_08:

(35, 2597), (36, 2600), (43, 2642), (61, 2690), (82, 2765), (87, 2804), (90, 2816), (113, 2882), (125, 2924), (130, 2957), (139, 3017), (164, 3185), (179, 3263), (202, 3398), (212, 3473), (218, 3509), (220,

3512),

Gene: PMC_42 Start: 34542, Stop: 35546, Start Num: 24

Candidate Starts for PMC_42:

(Start: 24 @34542 has 62 MA's), (56, 34731), (Start: 60 @34743 has 1 MA's), (79, 34809), (82, 34818), (87, 34854), (110, 34920), (119, 34932), (125, 34959), (129, 34983), (133, 34998), (135, 35019), (138, 35040), (139, 35052), (140, 35055), (153, 35139), (166, 35184), (168, 35190), (173, 35220), (180, 35247), (182, 35265), (186, 35286), (194, 35319), (202, 35379), (210, 35445), (213, 35463), (217, 35484), (219, 35493), (230, 35529), (232, 35538),

Gene: Pepperoni_38 Start: 29786, Stop: 30508, Start Num: 72

Candidate Starts for Pepperoni_38:

(Start: 63 @29759 has 8 MA's), (Start: 72 @29786 has 2 MA's), (73, 29789), (83, 29828), (88, 29873), (106, 29924), (117, 29942), (129, 29993), (151, 30131), (163, 30182), (199, 30353),

Gene: Ph8s_77 Start: 43456, Stop: 42623, Start Num: 54

Candidate Starts for Ph8s_77:

(Start: 41 @43483 has 2 MA's), (Start: 54 @43456 has 3 MA's), (70, 43405), (86, 43330), (87, 43324), (102, 43285), (129, 43195), (139, 43126), (181, 42886), (182, 42877), (200, 42772), (220, 42646), (221, 42643), (225, 42631),

Gene: Phaded_67 Start: 44471, Stop: 43656, Start Num: 41

Candidate Starts for Phaded_67:

(38, 44498), (Start: 41 @44471 has 2 MA's), (57, 44438), (82, 44354), (87, 44315), (90, 44303), (114, 44246), (122, 44225), (142, 44093), (197, 43802),

Gene: Phalconet_46 Start: 34873, Stop: 35877, Start Num: 24

Candidate Starts for Phalconet_46:

(Start: 24 @34873 has 62 MA's), (46, 35041), (56, 35062), (Start: 60 @35074 has 1 MA's), (70, 35107), (76, 35122), (79, 35140), (82, 35149), (87, 35185), (103, 35233), (110, 35251), (119, 35263), (125, 35290), (129, 35314), (131, 35326), (133, 35329), (135, 35350), (138, 35371), (139, 35383), (140, 35386), (150, 35458), (153, 35470), (168, 35521), (180, 35578), (182, 35596), (186, 35617), (194, 35650), (195, 35668), (202, 35710), (210, 35776), (213, 35794), (217, 35815), (230, 35860), (232, 35869),

Gene: Phalm_34 Start: 28196, Stop: 29059, Start Num: 42

Candidate Starts for Phalm_34:

(Start: 42 @28196 has 45 MA's), (71, 28277), (78, 28301), (81, 28310), (88, 28358), (100, 28382), (128, 28463), (129, 28478), (144, 28589), (182, 28772), (194, 28826), (209, 28955), (217, 28997), (231, 29045),

Gene: Phasih_45 Start: 35085, Stop: 36089, Start Num: 24

Candidate Starts for Phasih_45:

(16, 34929), (Start: 24 @35085 has 62 MA's), (Start: 60 @35286 has 1 MA's), (79, 35352), (82, 35361), (87, 35397), (110, 35463), (119, 35475), (125, 35502), (129, 35526), (133, 35541), (135, 35562), (138, 35583), (139, 35595), (140, 35598), (153, 35682), (166, 35727), (168, 35733), (173, 35763), (180, 35790), (182, 35808), (186, 35829), (194, 35862), (202, 35922), (210, 35988), (213, 36006), (217, 36027), (219, 36036), (230, 36072), (232, 36081),

Gene: Phayonce_36 Start: 29962, Stop: 30771, Start Num: 49

Candidate Starts for Phayonce_36:

(Start: 49 @29962 has 4 MA's), (79, 30052), (80, 30058), (139, 30298), (152, 30394), (175, 30478), (189, 30544), (190, 30547), (196, 30571), (207, 30664), (208, 30685), (226, 30757),

Gene: Phegasus_34 Start: 27944, Stop: 28810, Start Num: 42

Candidate Starts for Phegasus_34:

(Start: 42 @27944 has 45 MA's), (71, 28025), (78, 28049), (81, 28058), (88, 28106), (128, 28214), (129, 28229), (144, 28340), (182, 28523), (194, 28577), (209, 28706), (217, 28748), (231, 28796),

Gene: PhesterPhotato_50 Start: 35828, Stop: 36832, Start Num: 24

Candidate Starts for PhesterPhotato_50:

(Start: 24 @35828 has 62 MA's), (46, 35996), (56, 36017), (Start: 60 @36029 has 1 MA's), (70, 36062), (76, 36077), (79, 36095), (82, 36104), (87, 36140), (103, 36188), (110, 36206), (119, 36218), (125, 36245), (129, 36269), (131, 36281), (133, 36284), (135, 36305), (138, 36326), (139, 36338), (140, 36341), (150, 36413), (153, 36425), (168, 36476), (180, 36533), (182, 36551), (186, 36572), (194, 36605), (195, 36623), (202, 36665), (210, 36731), (213, 36749), (217, 36770), (230, 36815), (232, 36824),

Gene: Phineas_34 Start: 28307, Stop: 29173, Start Num: 42

Candidate Starts for Phineas_34:

(Start: 42 @28307 has 45 MA's), (71, 28388), (78, 28412), (81, 28421), (88, 28469), (128, 28577), (129, 28592), (144, 28703), (182, 28886), (194, 28940), (209, 29069), (217, 29111), (231, 29159),

Gene: Phistory_58 Start: 36964, Stop: 37761, Start Num: 62

Candidate Starts for Phistory_58:

(Start: 62 @36964 has 1 MA's), (73, 36991), (88, 37075), (101, 37111), (109, 37132), (112, 37138), (124, 37192), (129, 37219), (139, 37288), (149, 37357), (157, 37390), (205, 37633), (208, 37675), (217, 37720),

Gene: PhorbesPhlower_43 Start: 29950, Stop: 30699, Start Num: 63

Candidate Starts for PhorbesPhlower_43:

(Start: 63 @29950 has 8 MA's), (Start: 72 @29977 has 2 MA's), (73, 29980), (83, 30019), (88, 30064), (106, 30115), (117, 30133), (129, 30184), (151, 30322), (163, 30373), (199, 30544),

Gene: PhriskyACE_45 Start: 34290, Stop: 35057, Start Num: 63

Candidate Starts for PhriskyACE_45:

(Start: 63 @34290 has 8 MA's), (Start: 72 @34317 has 2 MA's), (73, 34320), (79, 34347), (88, 34404), (94, 34422), (128, 34512), (129, 34527), (132, 34539), (145, 34650), (175, 34764), (180, 34788), (182, 34806), (188, 34827), (189, 34830), (190, 34833), (196, 34857), (202, 34908), (203, 34911),

Gene: Pippy_45 Start: 33164, Stop: 33943, Start Num: 59

Candidate Starts for Pippy_45:

(Start: 45 @33134 has 1 MA's), (Start: 59 @33164 has 12 MA's), (Start: 72 @33188 has 2 MA's), (73, 33191), (82, 33227), (83, 33230), (88, 33275), (128, 33383), (129, 33398), (139, 33467), (143, 33515), (175, 33632), (184, 33683), (201, 33779), (213, 33884), (214, 33890), (227, 33932), (229, 33938),

Gene: Pmask_71 Start: 42122, Stop: 41274, Start Num: 39

Candidate Starts for Pmask_71:

(Start: 39 @42122 has 12 MA's), (Start: 41 @42113 has 2 MA's), (50, 42089), (82, 41999), (87, 41960), (95, 41930), (104, 41906), (111, 41888), (113, 41885), (127, 41846), (134, 41813), (139, 41759), (150, 41672), (151, 41669), (176, 41549), (183, 41510), (197, 41417), (209, 41336),

Gene: Poenanya_47 Start: 36071, Stop: 37075, Start Num: 24

Candidate Starts for Poenanya_47:

(Start: 24 @36071 has 62 MA's), (56, 36260), (Start: 60 @36272 has 1 MA's), (79, 36338), (82, 36347), (87, 36383), (110, 36449), (119, 36461), (125, 36488), (129, 36512), (133, 36527), (135,

36548), (138, 36569), (139, 36581), (140, 36584), (153, 36668), (166, 36713), (168, 36719), (173, 36749), (180, 36776), (182, 36794), (186, 36815), (194, 36848), (202, 36908), (206, 36935), (210, 36974), (213, 36992), (217, 37013), (219, 37022), (230, 37058), (232, 37067),

Gene: Polkaroo_34 Start: 27953, Stop: 28816, Start Num: 42

Candidate Starts for Polkaroo_34:

(Start: 42 @27953 has 45 MA's), (71, 28034), (78, 28058), (81, 28067), (88, 28115), (100, 28139), (128, 28220), (129, 28235), (144, 28346), (182, 28529), (194, 28583), (209, 28712), (217, 28754), (231, 28802),

Gene: Pollywog_46 Start: 35249, Stop: 36253, Start Num: 24

Candidate Starts for Pollywog_46:

(Start: 24 @35249 has 62 MA's), (56, 35438), (Start: 60 @35450 has 1 MA's), (79, 35516), (82, 35525), (87, 35561), (110, 35627), (119, 35639), (125, 35666), (129, 35690), (133, 35705), (135, 35726), (138, 35747), (139, 35759), (140, 35762), (153, 35846), (166, 35891), (168, 35897), (173, 35927), (180, 35954), (182, 35972), (186, 35993), (194, 36026), (202, 36086), (210, 36152), (213, 36170), (217, 36191), (219, 36200), (230, 36236), (232, 36245),

Gene: PopTart_43 Start: 34554, Stop: 35558, Start Num: 24

Candidate Starts for PopTart_43:

(Start: 24 @34554 has 62 MA's), (46, 34722), (56, 34743), (Start: 60 @34755 has 1 MA's), (70, 34788), (76, 34803), (79, 34821), (82, 34830), (87, 34866), (103, 34914), (110, 34932), (119, 34944), (125, 34971), (129, 34995), (131, 35007), (133, 35010), (135, 35031), (138, 35052), (139, 35064), (140, 35067), (150, 35139), (153, 35151), (166, 35196), (168, 35202), (173, 35232), (180, 35259), (182, 35277), (183, 35280), (186, 35298), (194, 35331), (195, 35349), (202, 35391), (210, 35457), (213, 35475), (217, 35496), (230, 35541),

Gene: Priamo_74 Start: 41728, Stop: 41129, Start Num: 120

Candidate Starts for Priamo_74:

(Start: 120 @41728 has 2 MA's), (127, 41701), (134, 41668), (139, 41614), (150, 41527), (151, 41524), (176, 41404), (183, 41365), (197, 41272), (209, 41191),

Gene: Pukovnik_68 Start: 44139, Stop: 43324, Start Num: 39

Candidate Starts for Pukovnik_68:

(Start: 39 @44139 has 12 MA's), (Start: 41 @44130 has 2 MA's), (51, 44106), (76, 44049), (77, 44046), (80, 44025), (82, 44022), (87, 43983), (88, 43974), (98, 43947), (99, 43944), (127, 43878), (128, 43875), (149, 43725), (167, 43641), (171, 43626), (176, 43599), (197, 43467),

Gene: Purky_41 Start: 30689, Stop: 31480, Start Num: 49

Candidate Starts for Purky_41:

(Start: 49 @30689 has 4 MA's), (83, 30788), (87, 30824), (125, 30923), (139, 31016), (175, 31196), (182, 31238), (189, 31262), (190, 31265), (196, 31289), (202, 31340), (203, 31343), (207, 31382), (208, 31403), (219, 31454),

Gene: Pygmy_36 Start: 29778, Stop: 30644, Start Num: 42

Candidate Starts for Pygmy_36:

(Start: 42 @29778 has 45 MA's), (71, 29859), (78, 29883), (81, 29892), (85, 29919), (88, 29940), (128, 30048), (129, 30063), (144, 30174), (182, 30357), (194, 30411), (217, 30582), (231, 30630),

Gene: QueenHazel_32 Start: 27811, Stop: 28680, Start Num: 42

Candidate Starts for QueenHazel_32:

(Start: 42 @27811 has 45 MA's), (78, 27919), (81, 27928), (88, 27976), (128, 28084), (129, 28099), (144, 28210), (182, 28393), (194, 28447), (209, 28576), (217, 28618), (231, 28666),

Gene: Quico_55 Start: 35977, Stop: 36771, Start Num: 59

Candidate Starts for Quico_55:

(Start: 59 @35977 has 12 MA's), (73, 36019), (82, 36055), (83, 36058), (87, 36094), (105, 36154), (128, 36211), (129, 36226), (139, 36295), (143, 36343), (175, 36460), (184, 36511), (201, 36607), (213, 36712), (214, 36718), (227, 36760), (229, 36766),

Gene: RedBird_44 Start: 34882, Stop: 35886, Start Num: 24

Candidate Starts for RedBird_44:

(Start: 24 @34882 has 62 MA's), (56, 35071), (Start: 60 @35083 has 1 MA's), (79, 35149), (82, 35158), (87, 35194), (110, 35260), (119, 35272), (125, 35299), (129, 35323), (133, 35338), (135, 35359), (138, 35380), (139, 35392), (140, 35395), (153, 35479), (166, 35524), (168, 35530), (173, 35560), (180, 35587), (182, 35605), (186, 35626), (194, 35659), (202, 35719), (206, 35746), (210, 35785), (213, 35803), (217, 35824), (219, 35833), (230, 35869), (232, 35878),

Gene: Rockne_45 Start: 34542, Stop: 35546, Start Num: 24

Candidate Starts for Rockne_45:

(Start: 24 @34542 has 62 MA's), (56, 34731), (Start: 60 @34743 has 1 MA's), (79, 34809), (82, 34818), (87, 34854), (110, 34920), (119, 34932), (125, 34959), (129, 34983), (133, 34998), (135, 35019), (138, 35040), (139, 35052), (140, 35055), (153, 35139), (166, 35184), (168, 35190), (173, 35220), (180, 35247), (182, 35265), (186, 35286), (194, 35319), (202, 35379), (210, 35445), (213, 35463), (217, 35484), (219, 35493), (230, 35529), (232, 35538),

Gene: RockyHorror_48 Start: 34943, Stop: 35947, Start Num: 24

Candidate Starts for RockyHorror_48:

(16, 34787), (Start: 24 @34943 has 62 MA's), (Start: 60 @35144 has 1 MA's), (79, 35210), (82, 35219), (87, 35255), (110, 35321), (119, 35333), (125, 35360), (129, 35384), (133, 35399), (135, 35420), (138, 35441), (139, 35453), (140, 35456), (153, 35540), (166, 35585), (168, 35591), (173, 35621), (180, 35648), (182, 35666), (186, 35687), (194, 35720), (202, 35780), (210, 35846), (213, 35864), (217, 35885), (219, 35894), (230, 35930), (232, 35939),

Gene: Rose5_60 Start: 42695, Stop: 43513, Start Num: 66

Candidate Starts for Rose5_60:

(Start: 66 @42695 has 26 MA's), (76, 42722), (82, 42749), (84, 42761), (96, 42821), (123, 42896), (125, 42908), (139, 42998), (141, 43004), (158, 43109), (159, 43139), (178, 43244), (198, 43367), (208, 43442), (212, 43457),

Gene: Ruby_46 Start: 35733, Stop: 36737, Start Num: 24

Candidate Starts for Ruby_46:

(Start: 24 @35733 has 62 MA's), (56, 35922), (Start: 60 @35934 has 1 MA's), (79, 36000), (82, 36009), (87, 36045), (110, 36111), (119, 36123), (125, 36150), (129, 36174), (133, 36189), (135, 36210), (138, 36231), (139, 36243), (140, 36246), (153, 36330), (166, 36375), (168, 36381), (173, 36411), (180, 36438), (182, 36456), (186, 36477), (194, 36510), (202, 36570), (206, 36597), (210, 36636), (213, 36654), (217, 36675), (219, 36684), (230, 36720), (232, 36729),

Gene: Samba_44 Start: 35414, Stop: 36175, Start Num: 66

Candidate Starts for Samba_44:

(28, 35228), (40, 35339), (Start: 66 @35414 has 26 MA's), (73, 35429), (85, 35492), (105, 35564), (125, 35609), (128, 35618), (129, 35633), (139, 35702), (157, 35798), (180, 35888), (208, 36080),

Gene: SassyB_43 Start: 34554, Stop: 35558, Start Num: 24

Candidate Starts for SassyB_43:

(Start: 24 @34554 has 62 MA's), (46, 34722), (56, 34743), (Start: 60 @34755 has 1 MA's), (70, 34788), (76, 34803), (79, 34821), (82, 34830), (87, 34866), (103, 34914), (110, 34932), (119, 34944), (125, 34971), (129, 34995), (131, 35007), (133, 35010), (135, 35031), (138, 35052), (139, 35064), (140, 35067), (150, 35139), (153, 35151), (166, 35196), (168, 35202), (173, 35232), (180, 35259), (182, 35277), (183, 35280), (186, 35298), (194, 35331), (195, 35349), (202, 35391), (210, 35457), (213, 35475), (217, 35496), (230, 35541),

Gene: Seagreen_48 Start: 35285, Stop: 36286, Start Num: 24

Candidate Starts for Seagreen_48:

(Start: 24 @35285 has 62 MA's), (46, 35453), (56, 35474), (Start: 60 @35486 has 1 MA's), (70, 35519), (79, 35552), (82, 35561), (87, 35597), (110, 35663), (125, 35702), (126, 35705), (131, 35738), (133, 35741), (135, 35762), (138, 35783), (139, 35795), (140, 35798), (153, 35879), (166, 35924), (168, 35930), (173, 35960), (180, 35987), (182, 36005), (183, 36008), (186, 36026), (194, 36059), (195, 36077), (202, 36119), (210, 36185), (213, 36203), (217, 36224), (230, 36269),

Gene: Shipwreck_36 Start: 29753, Stop: 30619, Start Num: 42

Candidate Starts for Shipwreck_36:

(Start: 42 @29753 has 45 MA's), (71, 29834), (78, 29858), (81, 29867), (85, 29894), (88, 29915), (128, 30023), (129, 30038), (144, 30149), (182, 30332), (194, 30386), (217, 30557), (231, 30605),

Gene: ShroomBoi_47 Start: 35208, Stop: 36212, Start Num: 24

Candidate Starts for ShroomBoi_47:

(Start: 24 @35208 has 62 MA's), (46, 35376), (56, 35397), (Start: 60 @35409 has 1 MA's), (70, 35442), (76, 35457), (79, 35475), (82, 35484), (87, 35520), (103, 35568), (110, 35586), (119, 35598), (125, 35625), (129, 35649), (131, 35661), (133, 35664), (135, 35685), (138, 35706), (139, 35718), (140, 35721), (153, 35805), (166, 35850), (168, 35856), (173, 35886), (180, 35913), (182, 35931), (186, 35952), (194, 35985), (202, 36045), (213, 36129), (217, 36150), (219, 36159), (230, 36195), (232, 36204),

Gene: SiSi_47 Start: 35103, Stop: 36107, Start Num: 24

Candidate Starts for SiSi_47:

(Start: 24 @35103 has 62 MA's), (56, 35292), (Start: 60 @35304 has 1 MA's), (79, 35370), (82, 35379), (87, 35415), (110, 35481), (119, 35493), (125, 35520), (129, 35544), (133, 35559), (135, 35580), (138, 35601), (139, 35613), (140, 35616), (153, 35700), (166, 35745), (168, 35751), (173, 35781), (180, 35808), (182, 35826), (186, 35847), (194, 35880), (202, 35940), (206, 35967), (210, 36006), (213, 36024), (217, 36045), (219, 36054), (230, 36090), (232, 36099),

Gene: Silverleaf_60 Start: 42430, Stop: 43248, Start Num: 66

Candidate Starts for Silverleaf_60:

(Start: 66 @42430 has 26 MA's), (76, 42457), (82, 42484), (84, 42496), (96, 42556), (123, 42631), (125, 42643), (139, 42733), (141, 42739), (158, 42844), (159, 42874), (178, 42979), (198, 43102), (208, 43177), (212, 43192),

Gene: SimranZ1_47 Start: 34553, Stop: 35554, Start Num: 24

Candidate Starts for SimranZ1_47:

(Start: 24 @34553 has 62 MA's), (56, 34742), (Start: 60 @34754 has 1 MA's), (79, 34820), (82, 34829), (87, 34865), (110, 34931), (119, 34943), (125, 34970), (129, 34994), (133, 35009), (135, 35030), (138, 35051), (139, 35063), (140, 35066), (153, 35147), (166, 35192), (168, 35198), (169, 35204), (173, 35228), (180, 35255), (186, 35294), (194, 35327), (195, 35345), (202, 35387), (206, 35414), (210, 35453), (213, 35471), (217, 35492), (219, 35501), (230, 35537), (232, 35546),

Gene: Sonah_34 Start: 27925, Stop: 28791, Start Num: 42

Candidate Starts for Sonah_34:

(Start: 42 @27925 has 45 MA's), (71, 28006), (78, 28030), (81, 28039), (85, 28066), (88, 28087), (128, 28195), (129, 28210), (144, 28321), (182, 28504), (194, 28558), (209, 28687), (217, 28729), (231, 28777),

Gene: Squirty_40 Start: 32337, Stop: 33116, Start Num: 59

Candidate Starts for Squirty_40:

(Start: 45 @32307 has 1 MA's), (Start: 59 @32337 has 12 MA's), (Start: 72 @32361 has 2 MA's), (73, 32364), (82, 32400), (83, 32403), (88, 32448), (128, 32556), (129, 32571), (139, 32640), (143, 32688), (175, 32805), (184, 32856), (201, 32952), (213, 33057), (214, 33063), (227, 33105), (229, 33111),

Gene: Stap_46 Start: 34844, Stop: 35848, Start Num: 24

Candidate Starts for Stap_46:

(Start: 24 @34844 has 62 MA's), (56, 35033), (Start: 60 @35045 has 1 MA's), (79, 35111), (82, 35120), (87, 35156), (110, 35222), (119, 35234), (125, 35261), (129, 35285), (133, 35300), (135, 35321), (138, 35342), (139, 35354), (140, 35357), (153, 35441), (166, 35486), (168, 35492), (173, 35522), (180, 35549), (182, 35567), (186, 35588), (194, 35621), (202, 35681), (206, 35708), (210, 35747), (213, 35765), (217, 35786), (219, 35795), (230, 35831), (232, 35840),

Gene: Starcevich_47 Start: 35737, Stop: 36741, Start Num: 24

Candidate Starts for Starcevich_47:

(Start: 24 @35737 has 62 MA's), (56, 35926), (Start: 60 @35938 has 1 MA's), (79, 36004), (82, 36013), (87, 36049), (110, 36115), (119, 36127), (125, 36154), (129, 36178), (133, 36193), (135, 36214), (138, 36235), (139, 36247), (140, 36250), (153, 36334), (166, 36379), (168, 36385), (173, 36415), (180, 36442), (182, 36460), (186, 36481), (194, 36514), (202, 36574), (206, 36601), (210, 36640), (213, 36658), (217, 36679), (219, 36688), (230, 36724), (232, 36733),

Gene: StevieRay_34 Start: 27895, Stop: 28758, Start Num: 42

Candidate Starts for StevieRay_34:

(Start: 42 @27895 has 45 MA's), (78, 28000), (81, 28009), (88, 28057), (100, 28081), (128, 28162), (129, 28177), (144, 28288), (182, 28471), (194, 28525), (209, 28654), (217, 28696), (231, 28744),

Gene: StressBall_34 Start: 28196, Stop: 29059, Start Num: 42

Candidate Starts for StressBall_34:

(Start: 42 @28196 has 45 MA's), (71, 28277), (78, 28301), (81, 28310), (88, 28358), (100, 28382), (128, 28463), (129, 28478), (144, 28589), (182, 28772), (194, 28826), (209, 28955), (217, 28997), (231, 29045),

Gene: SuperAwesome_72 Start: 42164, Stop: 41316, Start Num: 39

Candidate Starts for SuperAwesome_72:

(Start: 39 @42164 has 12 MA's), (Start: 41 @42155 has 2 MA's), (50, 42131), (82, 42041), (87, 42002), (95, 41972), (104, 41948), (111, 41930), (113, 41927), (127, 41888), (134, 41855), (139, 41801), (150, 41714), (151, 41711), (176, 41591), (183, 41552), (197, 41459), (209, 41378),

Gene: SuperCallie99_69 Start: 42006, Stop: 41158, Start Num: 39

Candidate Starts for SuperCallie99_69:

(Start: 39 @42006 has 12 MA's), (Start: 41 @41997 has 2 MA's), (50, 41973), (82, 41883), (87, 41844), (95, 41814), (104, 41790), (111, 41772), (113, 41769), (127, 41730), (134, 41697), (139, 41643), (150, 41556), (151, 41553), (176, 41433), (183, 41394), (197, 41301), (209, 41220),

Gene: SuperGrey_48 Start: 36177, Stop: 37181, Start Num: 24

Candidate Starts for SuperGrey_48:

(Start: 24 @36177 has 62 MA's), (46, 36345), (56, 36366), (Start: 60 @36378 has 1 MA's), (70, 36411), (76, 36426), (79, 36444), (82, 36453), (87, 36489), (103, 36537), (110, 36555), (119, 36567),

(125, 36594), (129, 36618), (131, 36630), (133, 36633), (135, 36654), (138, 36675), (139, 36687), (140, 36690), (150, 36762), (153, 36774), (168, 36825), (169, 36831), (180, 36882), (182, 36900), (186, 36921), (194, 36954), (195, 36972), (202, 37014), (206, 37041), (213, 37098), (219, 37128), (230, 37164), (231, 37167),

Gene: Superchunk_75 Start: 43021, Stop: 42170, Start Num: 54

Candidate Starts for Superchunk_75:

(Start: 41 @43054 has 2 MA's), (Start: 54 @43021 has 3 MA's), (70, 42970), (80, 42931), (87, 42889), (139, 42673), (171, 42493), (181, 42433), (182, 42424), (200, 42319),

Gene: Techage_34 Start: 27962, Stop: 28828, Start Num: 42

Candidate Starts for Techage_34:

(Start: 42 @27962 has 45 MA's), (71, 28043), (78, 28067), (81, 28076), (88, 28124), (128, 28232), (129, 28247), (130, 28256), (144, 28358), (182, 28541), (194, 28595), (209, 28724), (217, 28766), (231, 28814),

Gene: Thespis_34 Start: 27932, Stop: 28798, Start Num: 42

Candidate Starts for Thespis_34:

(Start: 42 @27932 has 45 MA's), (71, 28013), (78, 28037), (81, 28046), (85, 28073), (88, 28094), (128, 28202), (129, 28217), (144, 28328), (182, 28511), (194, 28565), (209, 28694), (217, 28736), (231, 28784),

Gene: Totinger_50 Start: 34879, Stop: 35883, Start Num: 24

Candidate Starts for Totinger_50:

(Start: 24 @34879 has 62 MA's), (56, 35068), (Start: 60 @35080 has 1 MA's), (79, 35146), (82, 35155), (87, 35191), (110, 35257), (119, 35269), (125, 35296), (129, 35320), (133, 35335), (135, 35356), (138, 35377), (139, 35389), (140, 35392), (153, 35476), (166, 35521), (168, 35527), (173, 35557), (180, 35584), (182, 35602), (186, 35623), (194, 35656), (195, 35674), (202, 35716), (206, 35743), (210, 35782), (213, 35800), (217, 35821), (219, 35830), (230, 35866), (232, 35875),

Gene: Trixie_70 Start: 43815, Stop: 43045, Start Num: 66

Candidate Starts for Trixie_70:

(48, 43854), (Start: 66 @43815 has 26 MA's), (79, 43773), (90, 43713), (139, 43527), (197, 43188),

Gene: Tweety_47 Start: 35615, Stop: 36619, Start Num: 24

Candidate Starts for Tweety_47:

(Start: 24 @35615 has 62 MA's), (56, 35804), (Start: 60 @35816 has 1 MA's), (79, 35882), (82, 35891), (87, 35927), (110, 35993), (119, 36005), (125, 36032), (129, 36056), (133, 36071), (135, 36092), (138, 36113), (139, 36125), (140, 36128), (153, 36212), (166, 36257), (168, 36263), (173, 36293), (180, 36320), (182, 36338), (186, 36359), (194, 36392), (202, 36452), (206, 36479), (210, 36518), (213, 36536), (217, 36557), (219, 36566), (230, 36602), (232, 36611),

Gene: Tyson_60 Start: 42697, Stop: 43515, Start Num: 66

Candidate Starts for Tyson_60:

(Start: 66 @42697 has 26 MA's), (76, 42724), (82, 42751), (84, 42763), (96, 42823), (123, 42898), (125, 42910), (139, 43000), (141, 43006), (158, 43111), (159, 43141), (178, 43246), (198, 43369), (208, 43444), (212, 43459),

Gene: Utz_39 Start: 34104, Stop: 34865, Start Num: 66

Candidate Starts for Utz_39:

(28, 33918), (40, 34029), (Start: 66 @34104 has 26 MA's), (73, 34119), (85, 34182), (105, 34254), (125, 34299), (128, 34308), (129, 34323), (139, 34392), (157, 34488), (180, 34578), (208, 34770),

Gene: Venti_34 Start: 27939, Stop: 28805, Start Num: 42

Candidate Starts for Venti_34:

(Start: 42 @27939 has 45 MA's), (71, 28020), (78, 28044), (81, 28053), (88, 28101), (128, 28209), (129, 28224), (144, 28335), (182, 28518), (194, 28572), (209, 28701), (217, 28743), (231, 28791),

Gene: Veteran_45 Start: 34747, Stop: 35751, Start Num: 24

Candidate Starts for Veteran_45:

(Start: 24 @34747 has 62 MA's), (56, 34936), (Start: 60 @34948 has 1 MA's), (79, 35014), (82, 35023), (87, 35059), (110, 35125), (119, 35137), (125, 35164), (129, 35188), (133, 35203), (135, 35224), (138, 35245), (139, 35257), (140, 35260), (153, 35344), (166, 35389), (168, 35395), (173, 35425), (180, 35452), (182, 35470), (186, 35491), (194, 35524), (202, 35584), (206, 35611), (210, 35650), (213, 35668), (217, 35689), (219, 35698), (230, 35734), (232, 35743),

Gene: Vidya_34 Start: 27972, Stop: 28838, Start Num: 42

Candidate Starts for Vidya_34:

(Start: 42 @27972 has 45 MA's), (71, 28053), (78, 28077), (81, 28086), (88, 28134), (128, 28242), (129, 28257), (144, 28368), (182, 28551), (194, 28605), (209, 28734), (217, 28776), (231, 28824),

Gene: Wee_50 Start: 36114, Stop: 37118, Start Num: 24

Candidate Starts for Wee_50:

(Start: 24 @36114 has 62 MA's), (56, 36303), (Start: 60 @36315 has 1 MA's), (79, 36381), (82, 36390), (87, 36426), (110, 36492), (119, 36504), (125, 36531), (129, 36555), (133, 36570), (135, 36591), (138, 36612), (139, 36624), (140, 36627), (153, 36711), (166, 36756), (168, 36762), (173, 36792), (180, 36819), (182, 36837), (186, 36858), (194, 36891), (202, 36951), (206, 36978), (210, 37017), (213, 37035), (217, 37056), (219, 37065), (230, 37101), (232, 37110),

Gene: Willsammy_33 Start: 27679, Stop: 28542, Start Num: 42

Candidate Starts for Willsammy_33:

(Start: 42 @27679 has 45 MA's), (71, 27760), (78, 27784), (81, 27793), (88, 27841), (100, 27865), (128, 27946), (129, 27961), (144, 28072), (182, 28255), (194, 28309), (209, 28438), (217, 28480), (231, 28528),

Gene: WinkNick_49 Start: 34309, Stop: 35058, Start Num: 63

Candidate Starts for WinkNick_49:

(3, 33670), (4, 33724), (5, 33757), (8, 33796), (10, 33817), (11, 33850), (13, 33862), (17, 33985), (18, 34006), (30, 34153), (Start: 63 @34309 has 8 MA's), (73, 34339), (79, 34366), (82, 34375), (117, 34492), (125, 34519), (129, 34543), (134, 34558), (137, 34588), (150, 34678), (151, 34681), (199, 34903),

Gene: Wisp_43 Start: 34155, Stop: 34916, Start Num: 66

Candidate Starts for Wisp_43:

(22, 33915), (28, 33969), (40, 34080), (Start: 66 @34155 has 26 MA's), (73, 34170), (93, 34269), (99, 34281), (117, 34323), (125, 34350), (139, 34443), (157, 34539), (180, 34629), (208, 34821), (217, 34866),

Gene: Wocket_45 Start: 33305, Stop: 34066, Start Num: 66

Candidate Starts for Wocket_45:

(25, 33104), (40, 33230), (Start: 66 @33305 has 26 MA's), (73, 33320), (93, 33419), (99, 33431), (117, 33473), (125, 33500), (138, 33581), (139, 33593), (157, 33689), (180, 33779), (193, 33845), (208, 33971), (217, 34016),

Gene: Wrigley_52 Start: 36935, Stop: 37699, Start Num: 63

Candidate Starts for Wrigley_52:

(Start: 63 @36935 has 8 MA's), (Start: 72 @36962 has 2 MA's), (73, 36965), (82, 37001), (93, 37064), (99, 37076), (118, 37118), (125, 37145), (139, 37238), (145, 37292), (175, 37406), (180, 37430), (182, 37448), (188, 37469), (189, 37472), (190, 37475), (196, 37499), (202, 37550), (203, 37553), (208, 37613),

Gene: Wyatt2_61 Start: 42695, Stop: 43513, Start Num: 66

Candidate Starts for Wyatt2_61:

(Start: 66 @42695 has 26 MA's), (76, 42722), (82, 42749), (84, 42761), (96, 42821), (123, 42896), (125, 42908), (139, 42998), (141, 43004), (158, 43109), (159, 43139), (178, 43244), (198, 43367), (208, 43442), (212, 43457),

Gene: XianYue_67 Start: 43032, Stop: 42220, Start Num: 55

Candidate Starts for XianYue_67:

(29, 43182), (32, 43155), (Start: 39 @43077 has 12 MA's), (Start: 41 @43068 has 2 MA's), (Start: 55 @43032 has 3 MA's), (77, 42972), (79, 42957), (85, 42921), (87, 42909), (99, 42870), (108, 42843), (126, 42795), (134, 42759), (139, 42705), (171, 42522), (176, 42495), (184, 42450), (197, 42363),

Gene: Xula_31 Start: 27335, Stop: 28204, Start Num: 42

Candidate Starts for Xula_31:

(Start: 42 @27335 has 45 MA's), (78, 27443), (81, 27452), (88, 27500), (128, 27608), (129, 27623), (144, 27734), (182, 27917), (194, 27971), (209, 28100), (217, 28142), (231, 28190),

Gene: Yoshi_60 Start: 36844, Stop: 38034, Start Num: 24

Candidate Starts for Yoshi_60:

(Start: 24 @36844 has 62 MA's), (56, 37033), (Start: 60 @37045 has 1 MA's), (70, 37078), (76, 37093), (79, 37111), (82, 37120), (87, 37156), (103, 37204), (110, 37222), (119, 37234), (125, 37261), (129, 37285), (131, 37297), (133, 37300), (135, 37321), (138, 37342), (139, 37354), (140, 37357), (150, 37426), (153, 37438), (166, 37483), (168, 37489), (169, 37495), (173, 37519), (180, 37546), (182, 37564), (186, 37585), (194, 37618), (195, 37636), (202, 37678), (206, 37705), (210, 37744), (213, 37762), (217, 37783), (219, 37792), (228, 37819), (233, 37876), (234, 38017),

Gene: YungMoney_53 Start: 42952, Stop: 43722, Start Num: 64

Candidate Starts for YungMoney_53:

(Start: 64 @42952 has 1 MA's), (68, 42964), (74, 42976), (89, 43057), (121, 43147), (125, 43159), (129, 43180), (130, 43189), (139, 43249), (148, 43321), (156, 43342), (162, 43369), (182, 43465), (193, 43516), (195, 43537), (198, 43564), (202, 43579), (223, 43699),

Gene: Zerg_46 Start: 35052, Stop: 36056, Start Num: 24

Candidate Starts for Zerg_46:

(16, 34896), (Start: 24 @35052 has 62 MA's), (Start: 60 @35253 has 1 MA's), (79, 35319), (82, 35328), (87, 35364), (110, 35430), (119, 35442), (125, 35469), (129, 35493), (133, 35508), (135, 35529), (138, 35550), (139, 35562), (140, 35565), (153, 35649), (166, 35694), (168, 35700), (173, 35730), (180, 35757), (182, 35775), (186, 35796), (194, 35829), (202, 35889), (210, 35955), (213, 35973), (217, 35994), (219, 36003), (230, 36039), (232, 36048),

Gene: ZiggyZoo_46 Start: 35375, Stop: 36136, Start Num: 66

Candidate Starts for ZiggyZoo_46:

(19, 35090), (28, 35189), (Start: 66 @35375 has 26 MA's), (73, 35390), (93, 35489), (99, 35501), (117, 35543), (125, 35570), (139, 35663), (157, 35759), (180, 35849), (208, 36041),

Gene: Zilizabeth_34 Start: 27971, Stop: 28837, Start Num: 42

Candidate Starts for Zilizabeth_34:

(Start: 42 @27971 has 45 MA's), (71, 28052), (78, 28076), (81, 28085), (88, 28133), (128, 28241), (129, 28256), (144, 28367), (182, 28550), (194, 28604), (209, 28733), (217, 28775), (231, 28823),

Gene: Zizzle_51 Start: 36006, Stop: 36785, Start Num: 59

Candidate Starts for Zizzle_51:

(Start: 45 @35976 has 1 MA's), (Start: 59 @36006 has 12 MA's), (Start: 72 @36030 has 2 MA's), (73, 36033), (82, 36069), (83, 36072), (88, 36117), (128, 36225), (129, 36240), (139, 36309), (143, 36357), (175, 36474), (184, 36525), (201, 36621), (213, 36726), (214, 36732), (227, 36774), (229, 36780),