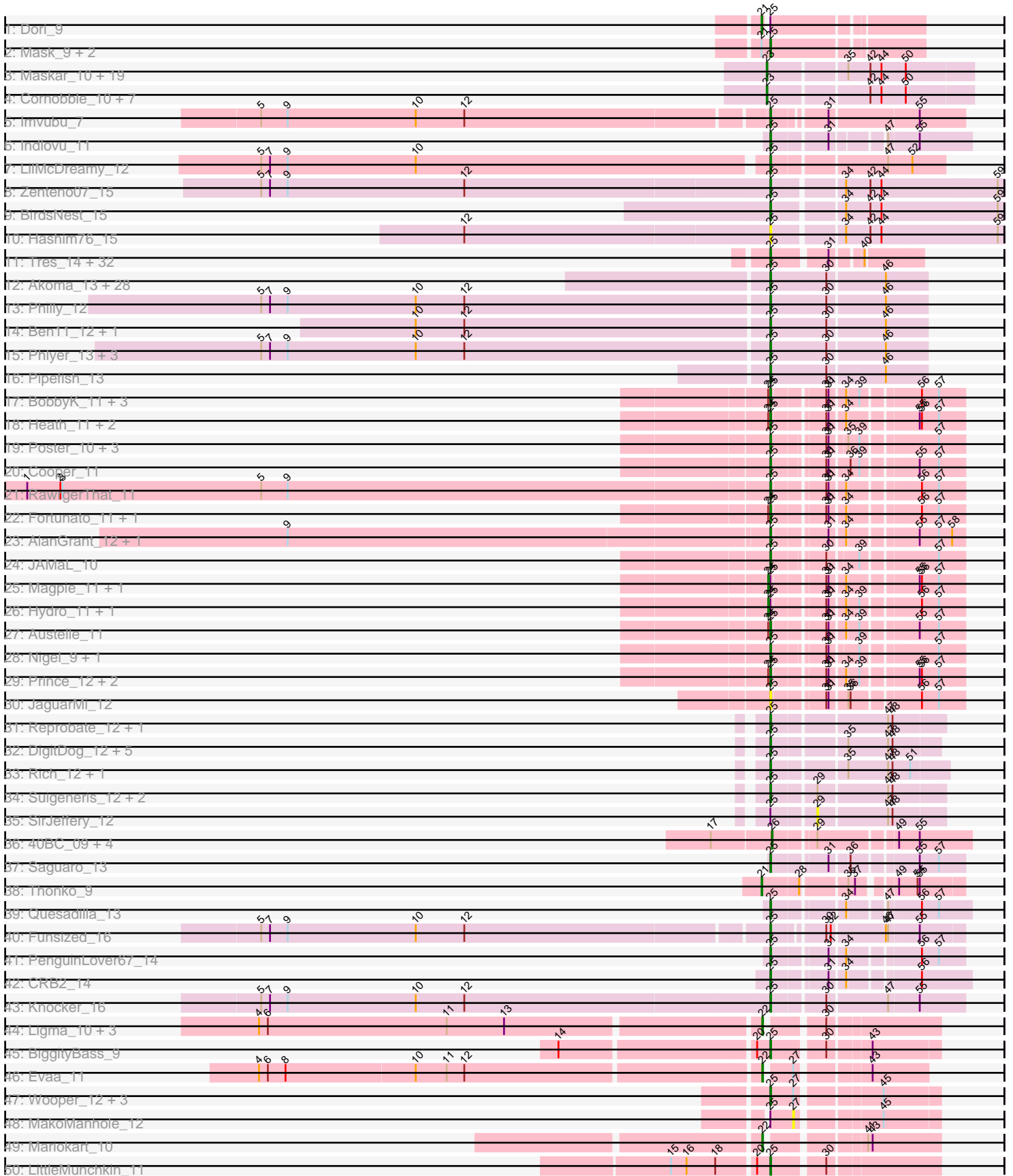
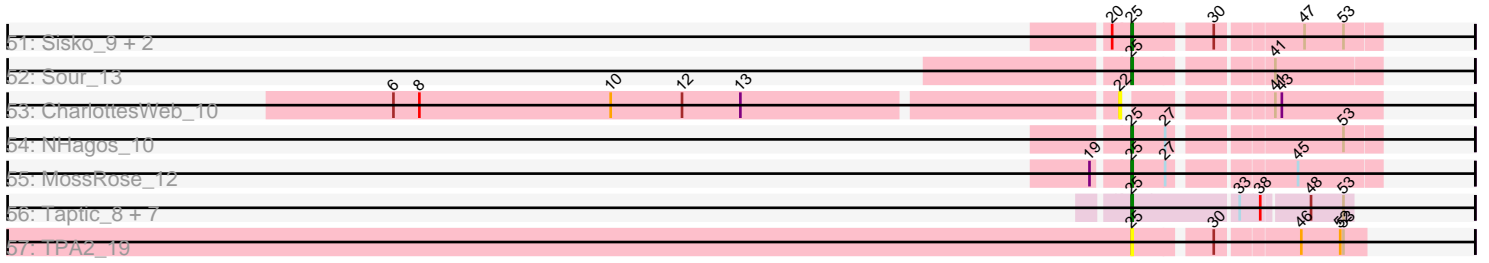


Pham 171220



Pham 171220



Note: Tracks are now grouped by subcluster and scaled. Switching in subcluster is indicated by changes in track color. Track scale is now set by default to display the region 30 bp upstream of start 1 to 30 bp downstream of the last possible start. If this default region is judged to be packed too tightly with annotated starts, the track will be further scaled to only show that region of the ORF with annotated starts. This action will be indicated by adding "Zoomed" to the title. For starts, yellow indicates the location of called starts comprised solely of Glimmer/GeneMark auto-annotations, green indicates the location of called starts with at least 1 manual gene annotation.

Pham 171220 Report

This analysis was run 07/10/24 on database version 566.

Pham number 171220 has 192 members, 26 are drafts.

Phages represented in each track:

- Track 1 : Dori_9
- Track 2 : Mask_9, Mao1_8, Sejanus_9
- Track 3 : Maskar_10, Labeouficaum_10, BatteryCK_10, Struggle_10, MelsMeow_10, Pinkman_10, Oline_10, DuchessDung_10, CharlieGBrown_10, Phleuron_10, Derpp_10, Phergie_10, Jiminy_10, Kwksand96_10, Ashraf_10, MichaelPhcott_10, PhenghisKhan_10, ImtiyazSitla_10, TyrionL_10, PhrankReynolds_10
- Track 4 : Cornobble_10, Manad_10, Robyn_10, Lopsy_10, Schadenfreude_10, Antonia_10, Crownjwl_11, Aelin_10
- Track 5 : Imvubu_7
- Track 6 : Indlovu_11
- Track 7 : LilMcDreamy_12
- Track 8 : Zenteno07_15
- Track 9 : BirdsNest_15
- Track 10 : Hashim76_15
- Track 11 : Tres_14, Brownie5_14, Arbiter_14, LizLemon_14, Kheth_14, Hedgerow_14, Rhinoforte_14, Opia_14, Ares_14, Rosebush_14, Eaglehorse_14, Glass_14, Godines_14, ItsyBitsy1_14, Allegro_14, Laurie_14, Faze9_14, MasterPo_14, Lephleur_14, FrenchFry_14, Bananafish_14, TA17A_14, Calamitous_14, West99_14, Tinciduntolum_15, Blocker23_14, Lars_14, Boyle_14, Holeinone_14, Kaleb_14, Phantasmagoria_14, Sabella_14, Coffee_14
- Track 12 : Akoma_13, HarveySr_13, Jackstina_12, Neos5_13, Yinz_13, Tydolla_13, LestyG_13, Briakila_13, Corofin_13, SynergyX_13, Baloo_13, Gadget_14, Kronus_12, Devonte_13, Deenasa_13, Audrey_13, OrangeOswald_13, SlippinJimmy_13, Mortcellus_12, Halfpint_12, Phayeta_13, Phaedrus_12, Casbah_12, Athena_14, Kamiyu_13, Nozo_13, RagingRooster_13, MmasiCarm_13, ChaChing_13
- Track 13 : Philly_12
- Track 14 : Ben11_12, Abinghost_13
- Track 15 : Phlyer_13, Heathcliff_13, GlenHope_14, Bernardo_13
- Track 16 : Pipefish_13
- Track 17 : BobbyK_11, Hangman_11, Waleliano_11, VioletZ_11
- Track 18 : Heath_11, Apex_10, Lolalove_11
- Track 19 : Poster_10, ChrisnMich_10, Nanao_10, Ahwei_10
- Track 20 : Cooper_11
- Track 21 : RawrgerThat_11
- Track 22 : Fortunato_11, Frederick_11
- Track 23 : AlanGrant_12, Vincenzo_12

- Track 24 : JAMaL_10
- Track 25 : Magpie_11, BrownCNA_12
- Track 26 : Hydro_11, Zemanar_12
- Track 27 : Austelle_11
- Track 28 : Nigel_9, Stinger_9
- Track 29 : Prince_12, Mudslide_11, Mithril_11
- Track 30 : JaguarMi_12
- Track 31 : Reprobate_12, Phelemich_12
- Track 32 : DigitDog_12, Serendipitous_12, Mysterious_12, Nangang_12, EastView9101_12, StinkyVeggy_13
- Track 33 : Rich_12, Bae_12
- Track 34 : Suigeneris_12, Donny_12, Acadian_12
- Track 35 : SirJeffery_12
- Track 36 : 40BC_09, Jolie1_09, 39HC_09, KayaCho_9, Hosp_07
- Track 37 : Saguario_13
- Track 38 : Thonko_9
- Track 39 : Quesadilla_13
- Track 40 : Funsized_16
- Track 41 : PenguinLover67_14
- Track 42 : CRB2_14
- Track 43 : Knocker_16
- Track 44 : Ligma_10, Axumite_10, Shatter_10, Fresco_10
- Track 45 : BiggityBass_9
- Track 46 : Evaa_11
- Track 47 : Wooper_12, CaiB_12, CloverMinnie_12, AnarQue_12
- Track 48 : MakoManhole_12
- Track 49 : Mariokart_10
- Track 50 : LittleMunchkin_11
- Track 51 : Sisko_9, Yago84_9, AnClar_9
- Track 52 : Sour_13
- Track 53 : CharlottesWeb_10
- Track 54 : NHagos_10
- Track 55 : MossRose_12
- Track 56 : Taptic_8, PR_08, Argie_9, D12_08, Megabear_8, GodPhather_9, Jeon_8, Cepens_8
- Track 57 : TPA2_19

Summary of Final Annotations (See graph section above for start numbers):

The start number called the most often in the published annotations is 25, it was called in 126 of the 166 non-draft genes in the pham.

Genes that call this "Most Annotated" start:

• Abinghost_13, Acadian_12, Ahwei_10, Akoma_13, AlanGrant_12, Allegro_14, AnClar_9, AnarQue_12, Apex_10, Arbiter_14, Ares_14, Argie_9, Athena_14, Audrey_13, Austelle_11, Bae_12, Baloo_13, Bananafish_14, Ben11_12, Bernardo_13, BiggityBass_9, BirdsNest_15, Blocker23_14, BobbyK_11, Boyle_14, Briakila_13, Brownie5_14, CRB2_14, CaiB_12, Calamitous_14, Casbah_12, Cepens_8, ChaChing_13, ChrisnMich_10, CloverMinnie_12, Coffee_14, Cooper_11, Corofin_13, D12_08, Deenasa_13, Devonte_13, DigitDog_12, Donny_12,

Eaglehorse_14, EastView9101_12, Faze9_14, Fortunato_11, Frederick_11, FrenchFry_14, Funsized_16, Gadget_14, Glass_14, GlenHope_14, GodPhather_9, Godines_14, Halfpint_12, Hangman_11, HarveySr_13, Hashim76_15, Heath_11, Heathcliff_13, Hedgerow_14, Holeinone_14, Imvubu_7, Indlovu_11, ItsyBitsy1_14, JAMaL_10, Jackstina_12, JaguarMi_12, Jeon_8, Kaleb_14, Kamiyu_13, Kheth_14, Knocker_16, Kronus_12, Lars_14, Laurie_14, Lephleur_14, LestyG_13, LilMcDreamy_12, LittleMunchkin_11, LizLemon_14, Lolalove_11, Mao1_8, Mask_9, MasterPo_14, Megabear_8, Mithril_11, MmasiCarm_13, Mortcellus_12, MossRose_12, Mudslide_11, Mysterious_12, NHagos_10, Nanao_10, Nangang_12, Neos5_13, Nigel_9, Nozo_13, Opia_14, OrangeOswald_13, PR_08, PenguinLover67_14, Phaedrus_12, Phantasmagoria_14, Phayeta_13, Phelemich_12, Philly_12, Phlyer_13, Pipefish_13, Poster_10, Prince_12, Quesadilla_13, RagingRooster_13, RawrgerThat_11, Reprobate_12, Rhinoforte_14, Rich_12, Rosebush_14, Sabella_14, Saguaro_13, Sejanus_9, Serendipitous_12, Sisko_9, SlippinJimmy_13, Sour_13, Stinger_9, StinkyVeggy_13, Suigeneris_12, SynergyX_13, TA17A_14, TPA2_19, Taptic_8, Tinciduntolum_15, Tres_14, Tydolla_13, Vincenzo_12, VioletZ_11, Waleliano_11, West99_14, Wooper_12, Yago84_9, Yinz_13, Zenteno07_15,

Genes that have the "Most Annotated" start but do not call it:

- BrownCNA_12, Dori_9, Hydro_11, Magpie_11, MakoManhole_12, SirJeffery_12, Zemanar_12,

Genes that do not have the "Most Annotated" start:

- 39HC_09, 40BC_09, Aelin_10, Antonia_10, Ashraf_10, Axumite_10, BatteryCK_10, CharlieGBrown_10, CharlottesWeb_10, Cornobble_10, Crownjwl_11, Derpp_10, DuchessDung_10, Evaa_11, Fresco_10, Hosp_07, ImtiyazSitla_10, Jiminy_10, Jolie1_09, KayaCho_9, Kwksand96_10, Labeouficaum_10, Ligma_10, Lopsy_10, Manad_10, Mariokart_10, Maskar_10, MelsMeow_10, MichaelPhcott_10, Oline_10, PhenghisKhan_10, Phergie_10, Phleuron_10, PhrankReynolds_10, Pinkman_10, Robyn_10, Schadenfreude_10, Shatter_10, Struggle_10, Thonko_9, TyrionL_10,

Summary by start number:

Start 21:

- Found in 5 of 192 (2.6%) of genes in pham
- Manual Annotations of this start: 2 of 166
- Called 40.0% of time when present
- Phage (with cluster) where this start called: Dori_9 (AD), Thonko_9 (B8),

Start 22:

- Found in 7 of 192 (3.6%) of genes in pham
- Manual Annotations of this start: 6 of 166
- Called 100.0% of time when present
- Phage (with cluster) where this start called: Axumite_10 (DR), CharlottesWeb_10 (DR), Evaa_11 (DR), Fresco_10 (DR), Ligma_10 (DR), Mariokart_10 (DR), Shatter_10 (DR),

Start 23:

- Found in 28 of 192 (14.6%) of genes in pham
- Manual Annotations of this start: 27 of 166
- Called 100.0% of time when present

- Phage (with cluster) where this start called: Aelin_10 (B1), Antonia_10 (B1), Ashraf_10 (B1), BatteryCK_10 (B1), CharlieGBrown_10 (B1), Cornobble_10 (B1), Crownjwl_11 (B1), Derpp_10 (B1), DuchessDung_10 (B1), ImtiyazSittla_10 (B1), Jiminy_10 (B1), Kwksand96_10 (B1), Labeouficaum_10 (B1), Lopsy_10 (B1), Manad_10 (B1), Maskar_10 (B1), MelsMeow_10 (B1), MichaelPhcott_10 (B1), Oline_10 (B1), PhenghisKhan_10 (B1), Phergie_10 (B1), Phleuron_10 (B1), PhrankReynolds_10 (B1), Pinkman_10 (B1), Robyn_10 (B1), Schadenfreude_10 (B1), Struggle_10 (B1), TyrionL_10 (B1),

Start 24:

- Found in 17 of 192 (8.9%) of genes in pham
- Manual Annotations of this start: 4 of 166
- Called 23.5% of time when present
- Phage (with cluster) where this start called: BrownCNA_12 (B4), Hydro_11 (B4), Magpie_11 (B4), Zemanar_12 (B4),

Start 25:

- Found in 151 of 192 (78.6%) of genes in pham
- Manual Annotations of this start: 126 of 166
- Called 95.4% of time when present
- Phage (with cluster) where this start called: Abinghost_13 (B3), Acadian_12 (B5), Ahwei_10 (B4), Akoma_13 (B3), AlanGrant_12 (B4), Allegro_14 (B2), AnClar_9 (DR), AnarQue_12 (DR), Apex_10 (B4), Arbiter_14 (B2), Ares_14 (B2), Argie_9 (W), Athena_14 (B3), Audrey_13 (B3), Austelle_11 (B4), Bae_12 (B5), Baloo_13 (B3), Bananafish_14 (B2), Ben11_12 (B3), Bernardo_13 (B3), BiggityBass_9 (DR), BirdsNest_15 (B13), Blocker23_14 (B2), BobbyK_11 (B4), Boyle_14 (B2), Briakila_13 (B3), Brownie5_14 (B2), CRB2_14 (B9), CaiB_12 (DR), Calamitous_14 (B2), Casbah_12 (B3), Cepens_8 (W), ChaChing_13 (B3), ChrisnMich_10 (B4), CloverMinnie_12 (DR), Coffee_14 (B2), Cooper_11 (B4), Corofin_13 (B3), D12_08 (W), Deenasa_13 (B3), Devonte_13 (B3), DigitDog_12 (B5), Donny_12 (B5), Eaglehorse_14 (B2), EastView9101_12 (B5), Faze9_14 (B2), Fortunato_11 (B4), Frederick_11 (B4), FrenchFry_14 (B2), Funsized_16 (B9), Gadget_14 (B3), Glass_14 (B2), GlenHope_14 (B3), GodPhather_9 (W), Godines_14 (B2), Halfpint_12 (B3), Hangman_11 (B4), HarveySr_13 (B3), Hashim76_15 (B13), Heath_11 (B4), Heathcliff_13 (B3), Hedgerow_14 (B2), Holeinone_14 (B2), Imvubu_7 (B10), Indlovu_11 (B11), ItsyBitsy1_14 (B2), JAMaL_10 (B4), Jackstina_12 (B3), JaguarMi_12 (B4), Jeon_8 (W), Kaleb_14 (B2), Kamiyu_13 (B3), Kheth_14 (B2), Knocker_16 (B9), Kronus_12 (B3), Lars_14 (B2), Laurie_14 (B2), Lepheur_14 (B2), LestyG_13 (B3), LilMcDreamy_12 (B12), LittleMunchkin_11 (DR), LizLemon_14 (B2), Lolalove_11 (B4), Mao1_8 (AD), Mask_9 (AD), MasterPo_14 (B2), Megabear_8 (W), Mithril_11 (B4), MmasiCarm_13 (B3), Mortcellus_12 (B3), MossRose_12 (DR), Mudslide_11 (B4), Mysterious_12 (B5), NHagos_10 (DR), Nanao_10 (B4), Nangang_12 (B5), Neos5_13 (B3), Nigel_9 (B4), Nozo_13 (B3), Opia_14 (B2), OrangeOswald_13 (B3), PR_08 (W), PenguinLover67_14 (B9), Phaedrus_12 (B3), Phantasmagoria_14 (B2), Phayeta_13 (B3), Phelemich_12 (B5), Philly_12 (B3), Phlyer_13 (B3), Pipefish_13 (B3), Poster_10 (B4), Prince_12 (B4), Quesadilla_13 (B9), RagingRooster_13 (B3), RawrgerThat_11 (B4), Reprobate_12 (B5), Rhinoforte_14 (B2), Rich_12 (B5), Rosebush_14 (B2), Sabella_14 (B2), Saguaro_13 (B7), Sejanus_9 (AD), Serendipitous_12 (B5), Sisko_9 (DR), SlippinJimmy_13 (B3), Sour_13 (DR), Stinger_9 (B4), StinkyVeggy_13 (B5), Suigeneris_12 (B5), SynergyX_13 (B3), TA17A_14 (B2), TPA2_19 (singleton), Taptic_8 (W), Tinciduntolum_15 (B2), Tres_14 (B2), Tydolla_13 (B3), Vincenzo_12 (B4), VioletZ_11 (B4), Waleliano_11 (B4), West99_14 (B2), Wooper_12 (DR), Yago84_9

(DR), Yinz_13 (B3), Zenteno07_15 (B13),

Start 26:

- Found in 5 of 192 (2.6%) of genes in pham
- Manual Annotations of this start: 1 of 166
- Called 100.0% of time when present
- Phage (with cluster) where this start called: 39HC_09 (B6), 40BC_09 (B6), Hosp_07 (B6), Jolie1_09 (B6), KayaCho_9 (B6),

Start 27:

- Found in 8 of 192 (4.2%) of genes in pham
- No Manual Annotations of this start.
- Called 12.5% of time when present
- Phage (with cluster) where this start called: MakoManhole_12 (DR),

Start 29:

- Found in 9 of 192 (4.7%) of genes in pham
- No Manual Annotations of this start.
- Called 11.1% of time when present
- Phage (with cluster) where this start called: SirJeffery_12 (B5),

Summary by clusters:

There are 17 clusters represented in this pham: singleton, B2, B10, B8, B11, B4, B5, B6, B7, B12, B1, W, B3, AD, DR, B9, B13,

Info for manual annotations of cluster AD:

- Start number 21 was manually annotated 1 time for cluster AD.
- Start number 25 was manually annotated 3 times for cluster AD.

Info for manual annotations of cluster B1:

- Start number 23 was manually annotated 27 times for cluster B1.

Info for manual annotations of cluster B10:

- Start number 25 was manually annotated 1 time for cluster B10.

Info for manual annotations of cluster B11:

- Start number 25 was manually annotated 1 time for cluster B11.

Info for manual annotations of cluster B12:

- Start number 25 was manually annotated 1 time for cluster B12.

Info for manual annotations of cluster B13:

- Start number 25 was manually annotated 2 times for cluster B13.

Info for manual annotations of cluster B2:

- Start number 25 was manually annotated 31 times for cluster B2.

Info for manual annotations of cluster B3:

- Start number 25 was manually annotated 34 times for cluster B3.

Info for manual annotations of cluster B4:

- Start number 24 was manually annotated 4 times for cluster B4.

- Start number 25 was manually annotated 19 times for cluster B4.

Info for manual annotations of cluster B5:

- Start number 25 was manually annotated 8 times for cluster B5.

Info for manual annotations of cluster B6:

- Start number 26 was manually annotated 1 time for cluster B6.

Info for manual annotations of cluster B7:

- Start number 25 was manually annotated 1 time for cluster B7.

Info for manual annotations of cluster B8:

- Start number 21 was manually annotated 1 time for cluster B8.

Info for manual annotations of cluster B9:

- Start number 25 was manually annotated 5 times for cluster B9.

Info for manual annotations of cluster DR:

- Start number 22 was manually annotated 6 times for cluster DR.
- Start number 25 was manually annotated 12 times for cluster DR.

Info for manual annotations of cluster W:

- Start number 25 was manually annotated 8 times for cluster W.

Gene Information:

Gene: 39HC_09 Start: 9546, Stop: 9785, Start Num: 26

Candidate Starts for 39HC_09:

(17, 9468), (Start: 26 @9546 has 1 MA's), (29, 9594), (49, 9690), (55, 9717),

Gene: 40BC_09 Start: 9546, Stop: 9785, Start Num: 26

Candidate Starts for 40BC_09:

(17, 9468), (Start: 26 @9546 has 1 MA's), (29, 9594), (49, 9690), (55, 9717),

Gene: Abinghost_13 Start: 10640, Stop: 10846, Start Num: 25

Candidate Starts for Abinghost_13:

(10, 10166), (12, 10232), (Start: 25 @10640 has 126 MA's), (30, 10715), (46, 10790),

Gene: Acadian_12 Start: 11068, Stop: 11286, Start Num: 25

Candidate Starts for Acadian_12:

(Start: 25 @11068 has 126 MA's), (29, 11122), (47, 11212), (48, 11218),

Gene: Aelin_10 Start: 8930, Stop: 9193, Start Num: 23

Candidate Starts for Aelin_10:

(Start: 23 @8930 has 27 MA's), (42, 9056), (44, 9071), (50, 9104),

Gene: Ahwei_10 Start: 10039, Stop: 10260, Start Num: 25

Candidate Starts for Ahwei_10:

(Start: 25 @10039 has 126 MA's), (30, 10099), (31, 10102), (35, 10120), (39, 10135), (57, 10225),

Gene: Akoma_13 Start: 10640, Stop: 10846, Start Num: 25

Candidate Starts for Akoma_13:
(Start: 25 @10640 has 126 MA's), (30, 10715), (46, 10790),

Gene: AlanGrant_12 Start: 11855, Stop: 12076, Start Num: 25
Candidate Starts for AlanGrant_12:
(9, 11213), (Start: 25 @11855 has 126 MA's), (31, 11918), (34, 11936), (55, 12017), (57, 12041), (58, 12059),

Gene: Allegro_14 Start: 12064, Stop: 12237, Start Num: 25
Candidate Starts for Allegro_14:
(Start: 25 @12064 has 126 MA's), (31, 12130), (40, 12163),

Gene: AnClar_9 Start: 9843, Stop: 10046, Start Num: 25
Candidate Starts for AnClar_9:
(20, 9834), (Start: 25 @9843 has 126 MA's), (30, 9906), (47, 9978), (53, 10014),

Gene: AnarQue_12 Start: 11030, Stop: 11233, Start Num: 25
Candidate Starts for AnarQue_12:
(Start: 25 @11030 has 126 MA's), (27, 11060), (45, 11159),

Gene: Antonia_10 Start: 8930, Stop: 9193, Start Num: 23
Candidate Starts for Antonia_10:
(Start: 23 @8930 has 27 MA's), (42, 9056), (44, 9071), (50, 9104),

Gene: Apex_10 Start: 10688, Stop: 10909, Start Num: 25
Candidate Starts for Apex_10:
(Start: 24 @10685 has 4 MA's), (Start: 25 @10688 has 126 MA's), (30, 10748), (31, 10751), (34, 10769), (55, 10850), (56, 10853), (57, 10874),

Gene: Arbiter_14 Start: 12154, Stop: 12327, Start Num: 25
Candidate Starts for Arbiter_14:
(Start: 25 @12154 has 126 MA's), (31, 12220), (40, 12253),

Gene: Ares_14 Start: 12064, Stop: 12237, Start Num: 25
Candidate Starts for Ares_14:
(Start: 25 @12064 has 126 MA's), (31, 12130), (40, 12163),

Gene: Argie_9 Start: 10545, Stop: 10733, Start Num: 25
Candidate Starts for Argie_9:
(Start: 25 @10545 has 126 MA's), (33, 10638), (38, 10656), (48, 10695), (53, 10725),

Gene: Ashraf_10 Start: 8927, Stop: 9190, Start Num: 23
Candidate Starts for Ashraf_10:
(Start: 23 @8927 has 27 MA's), (35, 9023), (42, 9053), (44, 9068), (50, 9101),

Gene: Athena_14 Start: 11403, Stop: 11609, Start Num: 25
Candidate Starts for Athena_14:
(Start: 25 @11403 has 126 MA's), (30, 11478), (46, 11553),

Gene: Audrey_13 Start: 10640, Stop: 10846, Start Num: 25
Candidate Starts for Audrey_13:
(Start: 25 @10640 has 126 MA's), (30, 10715), (46, 10790),

Gene: Austelle_11 Start: 11144, Stop: 11365, Start Num: 25

Candidate Starts for Austelle_11:

(Start: 24 @11141 has 4 MA's), (Start: 25 @11144 has 126 MA's), (30, 11204), (31, 11207), (34, 11225), (39, 11240), (55, 11306), (57, 11330),

Gene: Axumite_10 Start: 9533, Stop: 9739, Start Num: 22

Candidate Starts for Axumite_10:

(4, 8870), (6, 8882), (11, 9125), (13, 9203), (Start: 22 @9533 has 6 MA's), (30, 9596),

Gene: Bae_12 Start: 11074, Stop: 11298, Start Num: 25

Candidate Starts for Bae_12:

(Start: 25 @11074 has 126 MA's), (35, 11164), (47, 11218), (48, 11224), (51, 11248),

Gene: Baloo_13 Start: 10640, Stop: 10846, Start Num: 25

Candidate Starts for Baloo_13:

(Start: 25 @10640 has 126 MA's), (30, 10715), (46, 10790),

Gene: Bananafish_14 Start: 12064, Stop: 12237, Start Num: 25

Candidate Starts for Bananafish_14:

(Start: 25 @12064 has 126 MA's), (31, 12130), (40, 12163),

Gene: BatteryCK_10 Start: 8933, Stop: 9196, Start Num: 23

Candidate Starts for BatteryCK_10:

(Start: 23 @8933 has 27 MA's), (35, 9029), (42, 9059), (44, 9074), (50, 9107),

Gene: Ben11_12 Start: 10488, Stop: 10694, Start Num: 25

Candidate Starts for Ben11_12:

(10, 10014), (12, 10080), (Start: 25 @10488 has 126 MA's), (30, 10563), (46, 10638),

Gene: Bernardo_13 Start: 10662, Stop: 10868, Start Num: 25

Candidate Starts for Bernardo_13:

(5, 9978), (7, 9990), (9, 10014), (10, 10188), (12, 10254), (Start: 25 @10662 has 126 MA's), (30, 10737), (46, 10812),

Gene: BiggityBass_9 Start: 9351, Stop: 9554, Start Num: 25

Candidate Starts for BiggityBass_9:

(14, 9090), (20, 9342), (Start: 25 @9351 has 126 MA's), (30, 9414), (43, 9465),

Gene: BirdsNest_15 Start: 9740, Stop: 10039, Start Num: 25

Candidate Starts for BirdsNest_15:

(Start: 25 @9740 has 126 MA's), (34, 9827), (42, 9860), (44, 9875), (59, 10031),

Gene: Blocker23_14 Start: 12181, Stop: 12354, Start Num: 25

Candidate Starts for Blocker23_14:

(Start: 25 @12181 has 126 MA's), (31, 12247), (40, 12280),

Gene: BobbyK_11 Start: 11141, Stop: 11362, Start Num: 25

Candidate Starts for BobbyK_11:

(Start: 24 @11138 has 4 MA's), (Start: 25 @11141 has 126 MA's), (30, 11201), (31, 11204), (34, 11222), (39, 11237), (56, 11306), (57, 11327),

Gene: Boyle_14 Start: 12181, Stop: 12354, Start Num: 25

Candidate Starts for Boyle_14:

(Start: 25 @12181 has 126 MA's), (31, 12247), (40, 12280),

Gene: Briakila_13 Start: 11429, Stop: 11635, Start Num: 25

Candidate Starts for Briakila_13:

(Start: 25 @11429 has 126 MA's), (30, 11504), (46, 11579),

Gene: BrownCNA_12 Start: 11392, Stop: 11616, Start Num: 24

Candidate Starts for BrownCNA_12:

(Start: 24 @11392 has 4 MA's), (Start: 25 @11395 has 126 MA's), (30, 11455), (31, 11458), (34, 11476), (55, 11557), (56, 11560), (57, 11581),

Gene: Brownie5_14 Start: 12181, Stop: 12354, Start Num: 25

Candidate Starts for Brownie5_14:

(Start: 25 @12181 has 126 MA's), (31, 12247), (40, 12280),

Gene: CRB2_14 Start: 11939, Stop: 12169, Start Num: 25

Candidate Starts for CRB2_14:

(Start: 25 @11939 has 126 MA's), (31, 12002), (34, 12020), (56, 12104),

Gene: CaiB_12 Start: 11030, Stop: 11233, Start Num: 25

Candidate Starts for CaiB_12:

(Start: 25 @11030 has 126 MA's), (27, 11060), (45, 11159),

Gene: Calamitous_14 Start: 12064, Stop: 12237, Start Num: 25

Candidate Starts for Calamitous_14:

(Start: 25 @12064 has 126 MA's), (31, 12130), (40, 12163),

Gene: Casbah_12 Start: 10492, Stop: 10698, Start Num: 25

Candidate Starts for Casbah_12:

(Start: 25 @10492 has 126 MA's), (30, 10567), (46, 10642),

Gene: Cepens_8 Start: 10284, Stop: 10472, Start Num: 25

Candidate Starts for Cepens_8:

(Start: 25 @10284 has 126 MA's), (33, 10377), (38, 10395), (48, 10434), (53, 10464),

Gene: ChaChing_13 Start: 10655, Stop: 10861, Start Num: 25

Candidate Starts for ChaChing_13:

(Start: 25 @10655 has 126 MA's), (30, 10730), (46, 10805),

Gene: CharlieGBrown_10 Start: 8951, Stop: 9214, Start Num: 23

Candidate Starts for CharlieGBrown_10:

(Start: 23 @8951 has 27 MA's), (35, 9047), (42, 9077), (44, 9092), (50, 9125),

Gene: CharlottesWeb_10 Start: 9585, Stop: 9791, Start Num: 22

Candidate Starts for CharlottesWeb_10:

(6, 8934), (8, 8958), (10, 9135), (12, 9201), (13, 9255), (Start: 22 @9585 has 6 MA's), (41, 9693), (43, 9699),

Gene: ChrisnMich_10 Start: 10039, Stop: 10260, Start Num: 25

Candidate Starts for ChrisnMich_10:

(Start: 25 @10039 has 126 MA's), (30, 10099), (31, 10102), (35, 10120), (39, 10135), (57, 10225),

Gene: CloverMinnie_12 Start: 11030, Stop: 11233, Start Num: 25

Candidate Starts for CloverMinnie_12:
(Start: 25 @11030 has 126 MA's), (27, 11060), (45, 11159),

Gene: Coffee_14 Start: 12181, Stop: 12354, Start Num: 25
Candidate Starts for Coffee_14:
(Start: 25 @12181 has 126 MA's), (31, 12247), (40, 12280),

Gene: Cooper_11 Start: 10112, Stop: 10336, Start Num: 25
Candidate Starts for Cooper_11:
(Start: 25 @10112 has 126 MA's), (30, 10172), (31, 10175), (36, 10199), (39, 10211), (55, 10277), (57, 10301),

Gene: Cornobble_10 Start: 8931, Stop: 9194, Start Num: 23
Candidate Starts for Cornobble_10:
(Start: 23 @8931 has 27 MA's), (42, 9057), (44, 9072), (50, 9105),

Gene: Corofin_13 Start: 10665, Stop: 10871, Start Num: 25
Candidate Starts for Corofin_13:
(Start: 25 @10665 has 126 MA's), (30, 10740), (46, 10815),

Gene: Crownjwl_11 Start: 9165, Stop: 9428, Start Num: 23
Candidate Starts for Crownjwl_11:
(Start: 23 @9165 has 27 MA's), (42, 9291), (44, 9306), (50, 9339),

Gene: D12_08 Start: 10239, Stop: 10427, Start Num: 25
Candidate Starts for D12_08:
(Start: 25 @10239 has 126 MA's), (33, 10332), (38, 10350), (48, 10389), (53, 10419),

Gene: Deenasa_13 Start: 11403, Stop: 11609, Start Num: 25
Candidate Starts for Deenasa_13:
(Start: 25 @11403 has 126 MA's), (30, 11478), (46, 11553),

Gene: Derpp_10 Start: 8939, Stop: 9202, Start Num: 23
Candidate Starts for Derpp_10:
(Start: 23 @8939 has 27 MA's), (35, 9035), (42, 9065), (44, 9080), (50, 9113),

Gene: Devonte_13 Start: 10640, Stop: 10846, Start Num: 25
Candidate Starts for Devonte_13:
(Start: 25 @10640 has 126 MA's), (30, 10715), (46, 10790),

Gene: DigitDog_12 Start: 11071, Stop: 11283, Start Num: 25
Candidate Starts for DigitDog_12:
(Start: 25 @11071 has 126 MA's), (35, 11161), (47, 11215), (48, 11221),

Gene: Donny_12 Start: 11070, Stop: 11288, Start Num: 25
Candidate Starts for Donny_12:
(Start: 25 @11070 has 126 MA's), (29, 11124), (47, 11214), (48, 11220),

Gene: Dori_9 Start: 8150, Stop: 8341, Start Num: 21
Candidate Starts for Dori_9:
(Start: 21 @8150 has 2 MA's), (Start: 25 @8153 has 126 MA's),

Gene: DuchessDung_10 Start: 8933, Stop: 9196, Start Num: 23

Candidate Starts for DuchessDung_10:
(Start: 23 @8933 has 27 MA's), (35, 9029), (42, 9059), (44, 9074), (50, 9107),

Gene: Eaglehorse_14 Start: 12082, Stop: 12255, Start Num: 25
Candidate Starts for Eaglehorse_14:
(Start: 25 @12082 has 126 MA's), (31, 12148), (40, 12181),

Gene: EastView9101_12 Start: 11073, Stop: 11291, Start Num: 25
Candidate Starts for EastView9101_12:
(Start: 25 @11073 has 126 MA's), (35, 11163), (47, 11217), (48, 11223),

Gene: Evaa_11 Start: 10856, Stop: 11044, Start Num: 22
Candidate Starts for Evaa_11:
(4, 10193), (6, 10205), (8, 10229), (10, 10403), (11, 10445), (12, 10469), (Start: 22 @10856 has 6 MA's), (27, 10886), (43, 10970),

Gene: Faze9_14 Start: 12181, Stop: 12354, Start Num: 25
Candidate Starts for Faze9_14:
(Start: 25 @12181 has 126 MA's), (31, 12247), (40, 12280),

Gene: Fortunato_11 Start: 11135, Stop: 11356, Start Num: 25
Candidate Starts for Fortunato_11:
(Start: 24 @11132 has 4 MA's), (Start: 25 @11135 has 126 MA's), (30, 11195), (31, 11198), (34, 11216), (56, 11300), (57, 11321),

Gene: Frederick_11 Start: 11144, Stop: 11365, Start Num: 25
Candidate Starts for Frederick_11:
(Start: 24 @11141 has 4 MA's), (Start: 25 @11144 has 126 MA's), (30, 11204), (31, 11207), (34, 11225), (56, 11309), (57, 11330),

Gene: FrenchFry_14 Start: 12181, Stop: 12354, Start Num: 25
Candidate Starts for FrenchFry_14:
(Start: 25 @12181 has 126 MA's), (31, 12247), (40, 12280),

Gene: Fresco_10 Start: 9533, Stop: 9739, Start Num: 22
Candidate Starts for Fresco_10:
(4, 8870), (6, 8882), (11, 9125), (13, 9203), (Start: 22 @9533 has 6 MA's), (30, 9596),

Gene: Funsized_16 Start: 13096, Stop: 13326, Start Num: 25
Candidate Starts for Funsized_16:
(5, 12424), (7, 12436), (9, 12460), (10, 12634), (12, 12700), (Start: 25 @13096 has 126 MA's), (30, 13156), (32, 13162), (46, 13228), (47, 13231), (55, 13270),

Gene: Gadget_14 Start: 10644, Stop: 10850, Start Num: 25
Candidate Starts for Gadget_14:
(Start: 25 @10644 has 126 MA's), (30, 10719), (46, 10794),

Gene: Glass_14 Start: 12181, Stop: 12354, Start Num: 25
Candidate Starts for Glass_14:
(Start: 25 @12181 has 126 MA's), (31, 12247), (40, 12280),

Gene: GlenHope_14 Start: 10654, Stop: 10860, Start Num: 25
Candidate Starts for GlenHope_14:

(5, 9970), (7, 9982), (9, 10006), (10, 10180), (12, 10246), (Start: 25 @10654 has 126 MA's), (30, 10729), (46, 10804),

Gene: GodPhather_9 Start: 10542, Stop: 10730, Start Num: 25

Candidate Starts for GodPhather_9:

(Start: 25 @10542 has 126 MA's), (33, 10635), (38, 10653), (48, 10692), (53, 10722),

Gene: Godines_14 Start: 12064, Stop: 12237, Start Num: 25

Candidate Starts for Godines_14:

(Start: 25 @12064 has 126 MA's), (31, 12130), (40, 12163),

Gene: Halfpint_12 Start: 10489, Stop: 10695, Start Num: 25

Candidate Starts for Halfpint_12:

(Start: 25 @10489 has 126 MA's), (30, 10564), (46, 10639),

Gene: Hangman_11 Start: 11144, Stop: 11365, Start Num: 25

Candidate Starts for Hangman_11:

(Start: 24 @11141 has 4 MA's), (Start: 25 @11144 has 126 MA's), (30, 11204), (31, 11207), (34, 11225), (39, 11240), (56, 11309), (57, 11330),

Gene: HarveySr_13 Start: 10641, Stop: 10847, Start Num: 25

Candidate Starts for HarveySr_13:

(Start: 25 @10641 has 126 MA's), (30, 10716), (46, 10791),

Gene: Hashim76_15 Start: 10023, Stop: 10322, Start Num: 25

Candidate Starts for Hashim76_15:

(12, 9615), (Start: 25 @10023 has 126 MA's), (34, 10110), (42, 10143), (44, 10158), (59, 10314),

Gene: Heath_11 Start: 11144, Stop: 11365, Start Num: 25

Candidate Starts for Heath_11:

(Start: 24 @11141 has 4 MA's), (Start: 25 @11144 has 126 MA's), (30, 11204), (31, 11207), (34, 11225), (55, 11306), (56, 11309), (57, 11330),

Gene: Heathcliff_13 Start: 10626, Stop: 10832, Start Num: 25

Candidate Starts for Heathcliff_13:

(5, 9942), (7, 9954), (9, 9978), (10, 10152), (12, 10218), (Start: 25 @10626 has 126 MA's), (30, 10701), (46, 10776),

Gene: Hedgerow_14 Start: 12163, Stop: 12336, Start Num: 25

Candidate Starts for Hedgerow_14:

(Start: 25 @12163 has 126 MA's), (31, 12229), (40, 12262),

Gene: Holeinone_14 Start: 12063, Stop: 12236, Start Num: 25

Candidate Starts for Holeinone_14:

(Start: 25 @12063 has 126 MA's), (31, 12129), (40, 12162),

Gene: Hosp_07 Start: 7748, Stop: 7987, Start Num: 26

Candidate Starts for Hosp_07:

(17, 7670), (Start: 26 @7748 has 1 MA's), (29, 7796), (49, 7892), (55, 7919),

Gene: Hydro_11 Start: 11138, Stop: 11362, Start Num: 24

Candidate Starts for Hydro_11:

(Start: 24 @11138 has 4 MA's), (Start: 25 @11141 has 126 MA's), (30, 11201), (31, 11204), (34, 11222), (39, 11237), (56, 11306), (57, 11327),

Gene: ImtiyazSitla_10 Start: 8927, Stop: 9190, Start Num: 23

Candidate Starts for ImtiyazSitla_10:

(Start: 23 @8927 has 27 MA's), (35, 9023), (42, 9053), (44, 9068), (50, 9101),

Gene: Imvubu_7 Start: 7957, Stop: 8193, Start Num: 25

Candidate Starts for Imvubu_7:

(5, 7288), (9, 7324), (10, 7498), (12, 7564), (Start: 25 @7957 has 126 MA's), (31, 8020), (55, 8134),

Gene: Indlovu_11 Start: 10773, Stop: 11009, Start Num: 25

Candidate Starts for Indlovu_11:

(Start: 25 @10773 has 126 MA's), (31, 10842), (47, 10902), (55, 10941),

Gene: ItsyBitsy1_14 Start: 12055, Stop: 12228, Start Num: 25

Candidate Starts for ItsyBitsy1_14:

(Start: 25 @12055 has 126 MA's), (31, 12121), (40, 12154),

Gene: JAMaL_10 Start: 10664, Stop: 10885, Start Num: 25

Candidate Starts for JAMaL_10:

(Start: 25 @10664 has 126 MA's), (30, 10724), (39, 10760), (57, 10850),

Gene: Jackstina_12 Start: 10557, Stop: 10763, Start Num: 25

Candidate Starts for Jackstina_12:

(Start: 25 @10557 has 126 MA's), (30, 10632), (46, 10707),

Gene: JaguarMi_12 Start: 10965, Stop: 11189, Start Num: 25

Candidate Starts for JaguarMi_12:

(Start: 25 @10965 has 126 MA's), (30, 11025), (31, 11028), (35, 11049), (36, 11052), (56, 11133), (57, 11154),

Gene: Jeon_8 Start: 10272, Stop: 10460, Start Num: 25

Candidate Starts for Jeon_8:

(Start: 25 @10272 has 126 MA's), (33, 10365), (38, 10383), (48, 10422), (53, 10452),

Gene: Jiminy_10 Start: 8935, Stop: 9198, Start Num: 23

Candidate Starts for Jiminy_10:

(Start: 23 @8935 has 27 MA's), (35, 9031), (42, 9061), (44, 9076), (50, 9109),

Gene: Jolie1_09 Start: 9546, Stop: 9785, Start Num: 26

Candidate Starts for Jolie1_09:

(17, 9468), (Start: 26 @9546 has 1 MA's), (29, 9594), (49, 9690), (55, 9717),

Gene: Kaleb_14 Start: 12181, Stop: 12354, Start Num: 25

Candidate Starts for Kaleb_14:

(Start: 25 @12181 has 126 MA's), (31, 12247), (40, 12280),

Gene: Kamiyu_13 Start: 10635, Stop: 10841, Start Num: 25

Candidate Starts for Kamiyu_13:

(Start: 25 @10635 has 126 MA's), (30, 10710), (46, 10785),

Gene: KayaCho_9 Start: 9549, Stop: 9788, Start Num: 26

Candidate Starts for KayaCho_9:
(17, 9471), (Start: 26 @9549 has 1 MA's), (29, 9597), (49, 9693), (55, 9720),

Gene: Kheth_14 Start: 12064, Stop: 12237, Start Num: 25
Candidate Starts for Kheth_14:
(Start: 25 @12064 has 126 MA's), (31, 12130), (40, 12163),

Gene: Knocker_16 Start: 13569, Stop: 13811, Start Num: 25
Candidate Starts for Knocker_16:
(5, 12882), (7, 12894), (9, 12918), (10, 13092), (12, 13158), (Start: 25 @13569 has 126 MA's), (30, 13635), (47, 13713), (55, 13752),

Gene: Kronus_12 Start: 11247, Stop: 11453, Start Num: 25
Candidate Starts for Kronus_12:
(Start: 25 @11247 has 126 MA's), (30, 11322), (46, 11397),

Gene: Kwksand96_10 Start: 8933, Stop: 9196, Start Num: 23
Candidate Starts for Kwksand96_10:
(Start: 23 @8933 has 27 MA's), (35, 9029), (42, 9059), (44, 9074), (50, 9107),

Gene: Labeouficaum_10 Start: 8939, Stop: 9202, Start Num: 23
Candidate Starts for Labeouficaum_10:
(Start: 23 @8939 has 27 MA's), (35, 9035), (42, 9065), (44, 9080), (50, 9113),

Gene: Lars_14 Start: 12181, Stop: 12354, Start Num: 25
Candidate Starts for Lars_14:
(Start: 25 @12181 has 126 MA's), (31, 12247), (40, 12280),

Gene: Laurie_14 Start: 12065, Stop: 12238, Start Num: 25
Candidate Starts for Laurie_14:
(Start: 25 @12065 has 126 MA's), (31, 12131), (40, 12164),

Gene: Lephleur_14 Start: 12064, Stop: 12237, Start Num: 25
Candidate Starts for Lephleur_14:
(Start: 25 @12064 has 126 MA's), (31, 12130), (40, 12163),

Gene: LestyG_13 Start: 10644, Stop: 10850, Start Num: 25
Candidate Starts for LestyG_13:
(Start: 25 @10644 has 126 MA's), (30, 10719), (46, 10794),

Gene: Ligma_10 Start: 9533, Stop: 9739, Start Num: 22
Candidate Starts for Ligma_10:
(4, 8870), (6, 8882), (11, 9125), (13, 9203), (Start: 22 @9533 has 6 MA's), (30, 9596),

Gene: LilMcDreamy_12 Start: 11806, Stop: 12027, Start Num: 25
Candidate Starts for LilMcDreamy_12:
(5, 11131), (7, 11143), (9, 11167), (10, 11341), (Start: 25 @11806 has 126 MA's), (47, 11950), (52, 11983),

Gene: LittleMunchkin_11 Start: 10824, Stop: 11030, Start Num: 25
Candidate Starts for LittleMunchkin_11:
(15, 10707), (16, 10728), (18, 10767), (20, 10815), (Start: 25 @10824 has 126 MA's), (30, 10887),

Gene: LizLemon_14 Start: 12181, Stop: 12354, Start Num: 25

Candidate Starts for LizLemon_14:

(Start: 25 @12181 has 126 MA's), (31, 12247), (40, 12280),

Gene: Lolalove_11 Start: 11141, Stop: 11362, Start Num: 25

Candidate Starts for Lolalove_11:

(Start: 24 @11138 has 4 MA's), (Start: 25 @11141 has 126 MA's), (30, 11201), (31, 11204), (34, 11222), (55, 11303), (56, 11306), (57, 11327),

Gene: Lopsy_10 Start: 8930, Stop: 9193, Start Num: 23

Candidate Starts for Lopsy_10:

(Start: 23 @8930 has 27 MA's), (42, 9056), (44, 9071), (50, 9104),

Gene: Magpie_11 Start: 11296, Stop: 11520, Start Num: 24

Candidate Starts for Magpie_11:

(Start: 24 @11296 has 4 MA's), (Start: 25 @11299 has 126 MA's), (30, 11359), (31, 11362), (34, 11380), (55, 11461), (56, 11464), (57, 11485),

Gene: MakoManhole_12 Start: 11060, Stop: 11233, Start Num: 27

Candidate Starts for MakoManhole_12:

(Start: 25 @11030 has 126 MA's), (27, 11060), (45, 11159),

Gene: Manad_10 Start: 8931, Stop: 9194, Start Num: 23

Candidate Starts for Manad_10:

(Start: 23 @8931 has 27 MA's), (42, 9057), (44, 9072), (50, 9105),

Gene: Mao1_8 Start: 8549, Stop: 8737, Start Num: 25

Candidate Starts for Mao1_8:

(Start: 21 @8546 has 2 MA's), (Start: 25 @8549 has 126 MA's),

Gene: Mariokart_10 Start: 9585, Stop: 9791, Start Num: 22

Candidate Starts for Mariokart_10:

(Start: 22 @9585 has 6 MA's), (41, 9693), (43, 9699),

Gene: Mask_9 Start: 8550, Stop: 8738, Start Num: 25

Candidate Starts for Mask_9:

(Start: 21 @8547 has 2 MA's), (Start: 25 @8550 has 126 MA's),

Gene: Maskar_10 Start: 8927, Stop: 9190, Start Num: 23

Candidate Starts for Maskar_10:

(Start: 23 @8927 has 27 MA's), (35, 9023), (42, 9053), (44, 9068), (50, 9101),

Gene: MasterPo_14 Start: 12064, Stop: 12237, Start Num: 25

Candidate Starts for MasterPo_14:

(Start: 25 @12064 has 126 MA's), (31, 12130), (40, 12163),

Gene: Megabear_8 Start: 10239, Stop: 10427, Start Num: 25

Candidate Starts for Megabear_8:

(Start: 25 @10239 has 126 MA's), (33, 10332), (38, 10350), (48, 10389), (53, 10419),

Gene: MelsMeow_10 Start: 8933, Stop: 9196, Start Num: 23

Candidate Starts for MelsMeow_10:

(Start: 23 @8933 has 27 MA's), (35, 9029), (42, 9059), (44, 9074), (50, 9107),

Gene: MichaelPhcott_10 Start: 8939, Stop: 9202, Start Num: 23
Candidate Starts for MichaelPhcott_10:
(Start: 23 @8939 has 27 MA's), (35, 9035), (42, 9065), (44, 9080), (50, 9113),

Gene: Mithril_11 Start: 11144, Stop: 11365, Start Num: 25
Candidate Starts for Mithril_11:
(Start: 24 @11141 has 4 MA's), (Start: 25 @11144 has 126 MA's), (30, 11204), (31, 11207), (34, 11225), (39, 11240), (55, 11306), (56, 11309), (57, 11330),

Gene: MmasiCarm_13 Start: 10640, Stop: 10846, Start Num: 25
Candidate Starts for MmasiCarm_13:
(Start: 25 @10640 has 126 MA's), (30, 10715), (46, 10790),

Gene: Mortcellus_12 Start: 11278, Stop: 11484, Start Num: 25
Candidate Starts for Mortcellus_12:
(Start: 25 @11278 has 126 MA's), (30, 11353), (46, 11428),

Gene: MossRose_12 Start: 11030, Stop: 11233, Start Num: 25
Candidate Starts for MossRose_12:
(19, 11009), (Start: 25 @11030 has 126 MA's), (27, 11060), (45, 11159),

Gene: Mudslide_11 Start: 11392, Stop: 11613, Start Num: 25
Candidate Starts for Mudslide_11:
(Start: 24 @11389 has 4 MA's), (Start: 25 @11392 has 126 MA's), (30, 11452), (31, 11455), (34, 11473), (39, 11488), (55, 11554), (56, 11557), (57, 11578),

Gene: Mysterious_12 Start: 11310, Stop: 11528, Start Num: 25
Candidate Starts for Mysterious_12:
(Start: 25 @11310 has 126 MA's), (35, 11400), (47, 11454), (48, 11460),

Gene: NHagos_10 Start: 9514, Stop: 9717, Start Num: 25
Candidate Starts for NHagos_10:
(Start: 25 @9514 has 126 MA's), (27, 9544), (53, 9685),

Gene: Nanao_10 Start: 10039, Stop: 10260, Start Num: 25
Candidate Starts for Nanao_10:
(Start: 25 @10039 has 126 MA's), (30, 10099), (31, 10102), (35, 10120), (39, 10135), (57, 10225),

Gene: Nangang_12 Start: 11071, Stop: 11283, Start Num: 25
Candidate Starts for Nangang_12:
(Start: 25 @11071 has 126 MA's), (35, 11161), (47, 11215), (48, 11221),

Gene: Neos5_13 Start: 11430, Stop: 11636, Start Num: 25
Candidate Starts for Neos5_13:
(Start: 25 @11430 has 126 MA's), (30, 11505), (46, 11580),

Gene: Nigel_9 Start: 9942, Stop: 10163, Start Num: 25
Candidate Starts for Nigel_9:
(Start: 25 @9942 has 126 MA's), (30, 10002), (31, 10005), (39, 10038), (57, 10128),

Gene: Nozo_13 Start: 11405, Stop: 11611, Start Num: 25
Candidate Starts for Nozo_13:

(Start: 25 @11405 has 126 MA's), (30, 11480), (46, 11555),

Gene: Oline_10 Start: 8939, Stop: 9202, Start Num: 23

Candidate Starts for Oline_10:

(Start: 23 @8939 has 27 MA's), (35, 9035), (42, 9065), (44, 9080), (50, 9113),

Gene: Opia_14 Start: 12064, Stop: 12237, Start Num: 25

Candidate Starts for Opia_14:

(Start: 25 @12064 has 126 MA's), (31, 12130), (40, 12163),

Gene: OrangeOswald_13 Start: 10640, Stop: 10846, Start Num: 25

Candidate Starts for OrangeOswald_13:

(Start: 25 @10640 has 126 MA's), (30, 10715), (46, 10790),

Gene: PR_08 Start: 10239, Stop: 10427, Start Num: 25

Candidate Starts for PR_08:

(Start: 25 @10239 has 126 MA's), (33, 10332), (38, 10350), (48, 10389), (53, 10419),

Gene: PenguinLover67_14 Start: 11948, Stop: 12169, Start Num: 25

Candidate Starts for PenguinLover67_14:

(Start: 25 @11948 has 126 MA's), (31, 12011), (34, 12029), (56, 12113), (57, 12134),

Gene: Phaedrus_12 Start: 10557, Stop: 10763, Start Num: 25

Candidate Starts for Phaedrus_12:

(Start: 25 @10557 has 126 MA's), (30, 10632), (46, 10707),

Gene: Phantasmagoria_14 Start: 12064, Stop: 12237, Start Num: 25

Candidate Starts for Phantasmagoria_14:

(Start: 25 @12064 has 126 MA's), (31, 12130), (40, 12163),

Gene: Phayeta_13 Start: 10516, Stop: 10722, Start Num: 25

Candidate Starts for Phayeta_13:

(Start: 25 @10516 has 126 MA's), (30, 10591), (46, 10666),

Gene: Phelemich_12 Start: 11313, Stop: 11531, Start Num: 25

Candidate Starts for Phelemich_12:

(Start: 25 @11313 has 126 MA's), (47, 11457), (48, 11463),

Gene: PhenghisKhan_10 Start: 8939, Stop: 9202, Start Num: 23

Candidate Starts for PhenghisKhan_10:

(Start: 23 @8939 has 27 MA's), (35, 9035), (42, 9065), (44, 9080), (50, 9113),

Gene: Phergie_10 Start: 8933, Stop: 9196, Start Num: 23

Candidate Starts for Phergie_10:

(Start: 23 @8933 has 27 MA's), (35, 9029), (42, 9059), (44, 9074), (50, 9107),

Gene: Philly_12 Start: 10530, Stop: 10736, Start Num: 25

Candidate Starts for Philly_12:

(5, 9846), (7, 9858), (9, 9882), (10, 10056), (12, 10122), (Start: 25 @10530 has 126 MA's), (30, 10605), (46, 10680),

Gene: Phleuron_10 Start: 8939, Stop: 9202, Start Num: 23

Candidate Starts for Phleuron_10:

(Start: 23 @8939 has 27 MA's), (35, 9035), (42, 9065), (44, 9080), (50, 9113),

Gene: Phlyer_13 Start: 11397, Stop: 11603, Start Num: 25

Candidate Starts for Phlyer_13:

(5, 10713), (7, 10725), (9, 10749), (10, 10923), (12, 10989), (Start: 25 @11397 has 126 MA's), (30, 11472), (46, 11547),

Gene: PhrankReynolds_10 Start: 8939, Stop: 9202, Start Num: 23

Candidate Starts for PhrankReynolds_10:

(Start: 23 @8939 has 27 MA's), (35, 9035), (42, 9065), (44, 9080), (50, 9113),

Gene: Pinkman_10 Start: 8939, Stop: 9202, Start Num: 23

Candidate Starts for Pinkman_10:

(Start: 23 @8939 has 27 MA's), (35, 9035), (42, 9065), (44, 9080), (50, 9113),

Gene: Pipefish_13 Start: 11526, Stop: 11732, Start Num: 25

Candidate Starts for Pipefish_13:

(Start: 25 @11526 has 126 MA's), (30, 11601), (46, 11676),

Gene: Poster_10 Start: 10039, Stop: 10260, Start Num: 25

Candidate Starts for Poster_10:

(Start: 25 @10039 has 126 MA's), (30, 10099), (31, 10102), (35, 10120), (39, 10135), (57, 10225),

Gene: Prince_12 Start: 11304, Stop: 11525, Start Num: 25

Candidate Starts for Prince_12:

(Start: 24 @11301 has 4 MA's), (Start: 25 @11304 has 126 MA's), (30, 11364), (31, 11367), (34, 11385), (39, 11400), (55, 11466), (56, 11469), (57, 11490),

Gene: Quesadilla_13 Start: 11758, Stop: 11988, Start Num: 25

Candidate Starts for Quesadilla_13:

(Start: 25 @11758 has 126 MA's), (34, 11839), (47, 11881), (56, 11923), (57, 11944),

Gene: RagingRooster_13 Start: 10641, Stop: 10847, Start Num: 25

Candidate Starts for RagingRooster_13:

(Start: 25 @10641 has 126 MA's), (30, 10716), (46, 10791),

Gene: RawrgerThat_11 Start: 11135, Stop: 11356, Start Num: 25

Candidate Starts for RawrgerThat_11:

(1, 10139), (2, 10184), (3, 10187), (5, 10457), (9, 10493), (Start: 25 @11135 has 126 MA's), (30, 11195), (31, 11198), (34, 11216), (56, 11300), (57, 11321),

Gene: Reprobate_12 Start: 11310, Stop: 11528, Start Num: 25

Candidate Starts for Reprobate_12:

(Start: 25 @11310 has 126 MA's), (47, 11454), (48, 11460),

Gene: Rhinoforte_14 Start: 12181, Stop: 12354, Start Num: 25

Candidate Starts for Rhinoforte_14:

(Start: 25 @12181 has 126 MA's), (31, 12247), (40, 12280),

Gene: Rich_12 Start: 11071, Stop: 11295, Start Num: 25

Candidate Starts for Rich_12:

(Start: 25 @11071 has 126 MA's), (35, 11161), (47, 11215), (48, 11221), (51, 11245),

Gene: Robyn_10 Start: 8932, Stop: 9195, Start Num: 23
Candidate Starts for Robyn_10:
(Start: 23 @8932 has 27 MA's), (42, 9058), (44, 9073), (50, 9106),

Gene: Rosebush_14 Start: 12181, Stop: 12354, Start Num: 25
Candidate Starts for Rosebush_14:
(Start: 25 @12181 has 126 MA's), (31, 12247), (40, 12280),

Gene: Sabella_14 Start: 12064, Stop: 12237, Start Num: 25
Candidate Starts for Sabella_14:
(Start: 25 @12064 has 126 MA's), (31, 12130), (40, 12163),

Gene: Saguaro_13 Start: 12000, Stop: 12221, Start Num: 25
Candidate Starts for Saguaro_13:
(Start: 25 @12000 has 126 MA's), (31, 12063), (36, 12084), (55, 12162), (57, 12186),

Gene: Schadenfreude_10 Start: 8928, Stop: 9191, Start Num: 23
Candidate Starts for Schadenfreude_10:
(Start: 23 @8928 has 27 MA's), (42, 9054), (44, 9069), (50, 9102),

Gene: Sejanus_9 Start: 9366, Stop: 9554, Start Num: 25
Candidate Starts for Sejanus_9:
(Start: 21 @9363 has 2 MA's), (Start: 25 @9366 has 126 MA's),

Gene: Serendipitous_12 Start: 11113, Stop: 11331, Start Num: 25
Candidate Starts for Serendipitous_12:
(Start: 25 @11113 has 126 MA's), (35, 11203), (47, 11257), (48, 11263),

Gene: Shatter_10 Start: 9533, Stop: 9739, Start Num: 22
Candidate Starts for Shatter_10:
(4, 8870), (6, 8882), (11, 9125), (13, 9203), (Start: 22 @9533 has 6 MA's), (30, 9596),

Gene: SirJeffery_12 Start: 11124, Stop: 11288, Start Num: 29
Candidate Starts for SirJeffery_12:
(Start: 25 @11070 has 126 MA's), (29, 11124), (47, 11214), (48, 11220),

Gene: Sisko_9 Start: 9345, Stop: 9548, Start Num: 25
Candidate Starts for Sisko_9:
(20, 9336), (Start: 25 @9345 has 126 MA's), (30, 9408), (47, 9480), (53, 9516),

Gene: SlippinJimmy_13 Start: 11402, Stop: 11608, Start Num: 25
Candidate Starts for SlippinJimmy_13:
(Start: 25 @11402 has 126 MA's), (30, 11477), (46, 11552),

Gene: Sour_13 Start: 11191, Stop: 11394, Start Num: 25
Candidate Starts for Sour_13:
(Start: 25 @11191 has 126 MA's), (41, 11299),

Gene: Stinger_9 Start: 9575, Stop: 9799, Start Num: 25
Candidate Starts for Stinger_9:
(Start: 25 @9575 has 126 MA's), (30, 9635), (31, 9638), (39, 9674), (57, 9764),

Gene: StinkyVeggy_13 Start: 11235, Stop: 11447, Start Num: 25

Candidate Starts for StinkyVeggy_13:
(Start: 25 @11235 has 126 MA's), (35, 11325), (47, 11379), (48, 11385),

Gene: Struggle_10 Start: 8933, Stop: 9196, Start Num: 23
Candidate Starts for Struggle_10:
(Start: 23 @8933 has 27 MA's), (35, 9029), (42, 9059), (44, 9074), (50, 9107),

Gene: Suigeneris_12 Start: 11070, Stop: 11288, Start Num: 25
Candidate Starts for Suigeneris_12:
(Start: 25 @11070 has 126 MA's), (29, 11124), (47, 11214), (48, 11220),

Gene: SynergyX_13 Start: 10641, Stop: 10847, Start Num: 25
Candidate Starts for SynergyX_13:
(Start: 25 @10641 has 126 MA's), (30, 10716), (46, 10791),

Gene: TA17A_14 Start: 12064, Stop: 12237, Start Num: 25
Candidate Starts for TA17A_14:
(Start: 25 @12064 has 126 MA's), (31, 12130), (40, 12163),

Gene: TPA2_19 Start: 12170, Stop: 12361, Start Num: 25
Candidate Starts for TPA2_19:
(Start: 25 @12170 has 126 MA's), (30, 12233), (46, 12302), (52, 12338), (53, 12341),

Gene: Taptic_8 Start: 10239, Stop: 10427, Start Num: 25
Candidate Starts for Taptic_8:
(Start: 25 @10239 has 126 MA's), (33, 10332), (38, 10350), (48, 10389), (53, 10419),

Gene: Thonko_9 Start: 8053, Stop: 8286, Start Num: 21
Candidate Starts for Thonko_9:
(Start: 21 @8053 has 2 MA's), (28, 8101), (35, 8155), (37, 8164), (49, 8203), (54, 8227), (55, 8230),

Gene: Tinciduntolum_15 Start: 12180, Stop: 12353, Start Num: 25
Candidate Starts for Tinciduntolum_15:
(Start: 25 @12180 has 126 MA's), (31, 12246), (40, 12279),

Gene: Tres_14 Start: 12064, Stop: 12237, Start Num: 25
Candidate Starts for Tres_14:
(Start: 25 @12064 has 126 MA's), (31, 12130), (40, 12163),

Gene: Tydolla_13 Start: 11402, Stop: 11608, Start Num: 25
Candidate Starts for Tydolla_13:
(Start: 25 @11402 has 126 MA's), (30, 11477), (46, 11552),

Gene: TyrionL_10 Start: 8939, Stop: 9202, Start Num: 23
Candidate Starts for TyrionL_10:
(Start: 23 @8939 has 27 MA's), (35, 9035), (42, 9065), (44, 9080), (50, 9113),

Gene: Vincenzo_12 Start: 11855, Stop: 12076, Start Num: 25
Candidate Starts for Vincenzo_12:
(9, 11213), (Start: 25 @11855 has 126 MA's), (31, 11918), (34, 11936), (55, 12017), (57, 12041), (58, 12059),

Gene: VioletZ_11 Start: 11144, Stop: 11365, Start Num: 25

Candidate Starts for VioletZ_11:

(Start: 24 @11141 has 4 MA's), (Start: 25 @11144 has 126 MA's), (30, 11204), (31, 11207), (34, 11225), (39, 11240), (56, 11309), (57, 11330),

Gene: Waleliano_11 Start: 11144, Stop: 11365, Start Num: 25

Candidate Starts for Waleliano_11:

(Start: 24 @11141 has 4 MA's), (Start: 25 @11144 has 126 MA's), (30, 11204), (31, 11207), (34, 11225), (39, 11240), (56, 11309), (57, 11330),

Gene: West99_14 Start: 12181, Stop: 12354, Start Num: 25

Candidate Starts for West99_14:

(Start: 25 @12181 has 126 MA's), (31, 12247), (40, 12280),

Gene: Wooper_12 Start: 11030, Stop: 11233, Start Num: 25

Candidate Starts for Wooper_12:

(Start: 25 @11030 has 126 MA's), (27, 11060), (45, 11159),

Gene: Yago84_9 Start: 9354, Stop: 9557, Start Num: 25

Candidate Starts for Yago84_9:

(20, 9345), (Start: 25 @9354 has 126 MA's), (30, 9417), (47, 9489), (53, 9525),

Gene: Yinz_13 Start: 10670, Stop: 10876, Start Num: 25

Candidate Starts for Yinz_13:

(Start: 25 @10670 has 126 MA's), (30, 10745), (46, 10820),

Gene: Zemanar_12 Start: 11141, Stop: 11365, Start Num: 24

Candidate Starts for Zemanar_12:

(Start: 24 @11141 has 4 MA's), (Start: 25 @11144 has 126 MA's), (30, 11204), (31, 11207), (34, 11225), (39, 11240), (56, 11309), (57, 11330),

Gene: Zenteno07_15 Start: 10050, Stop: 10349, Start Num: 25

Candidate Starts for Zenteno07_15:

(5, 9366), (7, 9378), (9, 9402), (12, 9642), (Start: 25 @10050 has 126 MA's), (34, 10137), (42, 10170), (44, 10185), (59, 10341),