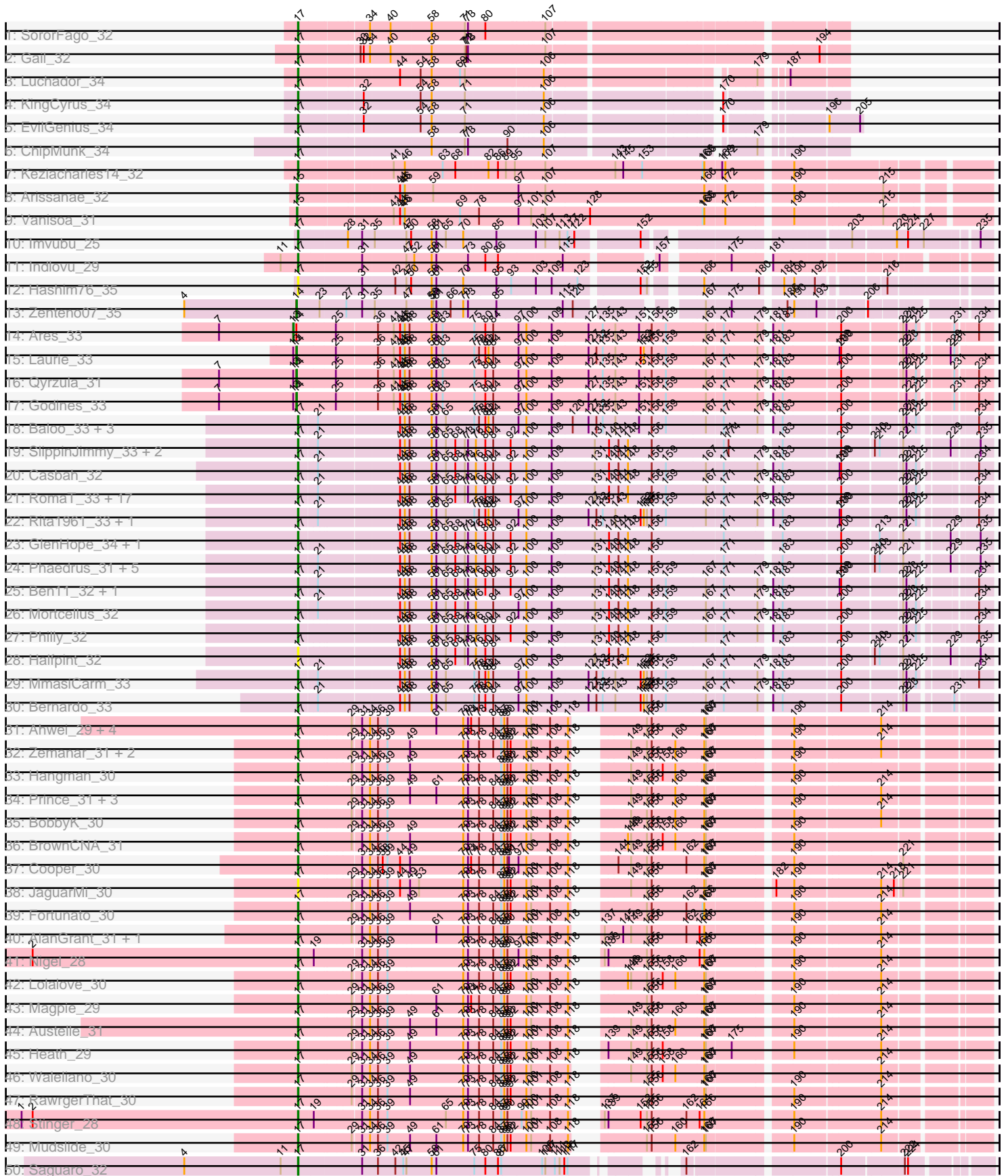
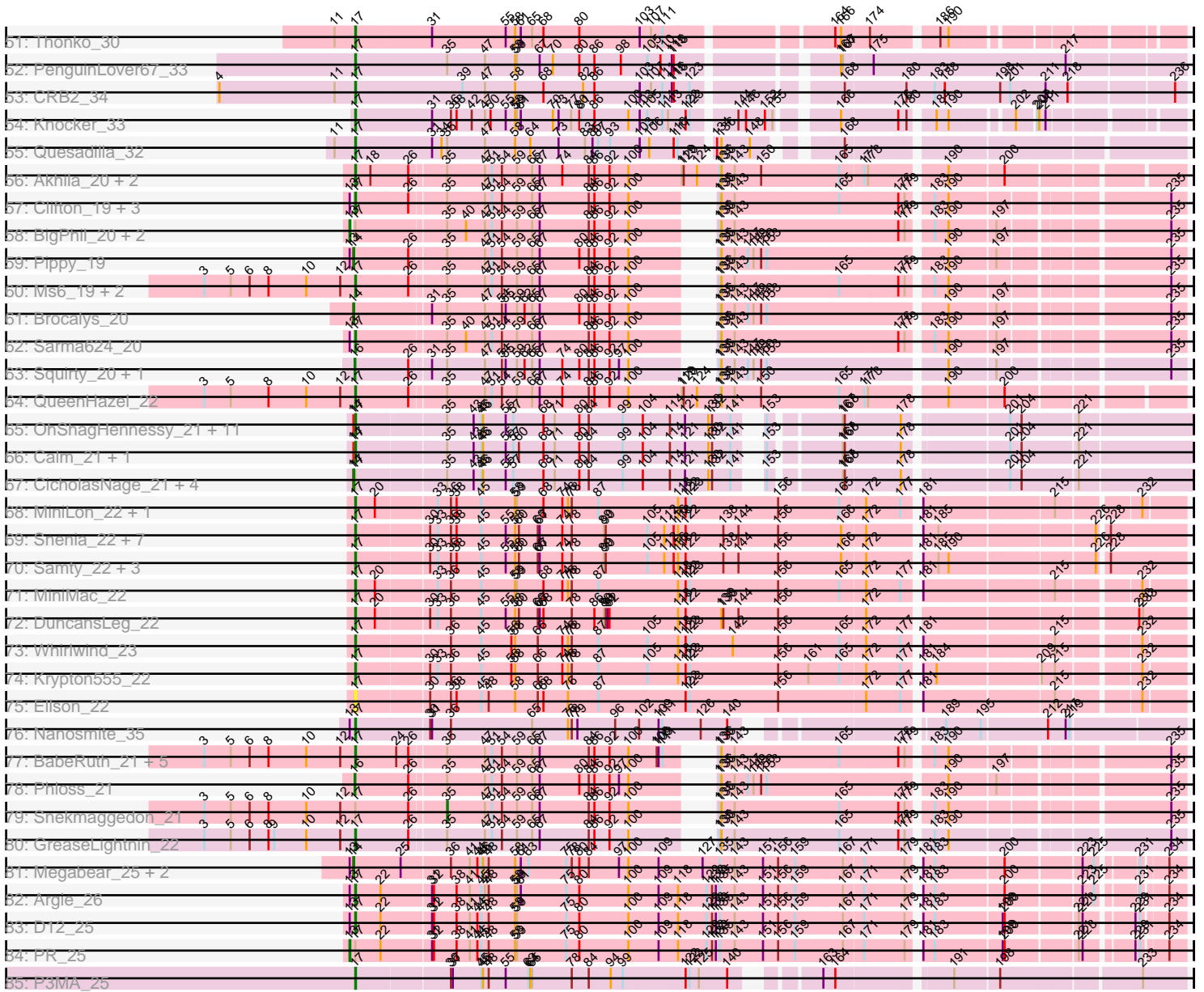


Pham 171241



Pham 171241



Note: Tracks are now grouped by subcluster and scaled. Switching in subcluster is indicated by changes in track color. Track scale is now set by default to display the region 30 bp upstream of start 1 to 30 bp downstream of the last possible start. If this default region is judged to be packed too tightly with annotated starts, the track will be further scaled to only show that region of the ORF with annotated starts. This action will be indicated by adding "Zoomed" to the title. For starts, yellow indicates the location of called starts comprised solely of Glimmer/GeneMark auto-annotations, green indicates the location of called starts with at least 1 manual gene annotation.

Pham 171241 Report

This analysis was run 07/10/24 on database version 566.

Pham number 171241 has 169 members, 15 are drafts.

Phages represented in each track:

- Track 1 : SororFago_32
- Track 2 : Gail_32
- Track 3 : Luchador_34
- Track 4 : KingCyrus_34
- Track 5 : EvilGenius_34
- Track 6 : ChipMunk_34
- Track 7 : Keziacharles14_32
- Track 8 : Arissanae_32
- Track 9 : Vanisoa_31
- Track 10 : Imvubu_25
- Track 11 : Indlovu_29
- Track 12 : Hashim76_35
- Track 13 : Zenteno07_35
- Track 14 : Ares_33
- Track 15 : Laurie_33
- Track 16 : Qyrzula_31
- Track 17 : Godines_33
- Track 18 : Baloo_33, Athena_34, Gervas_33, Tydolla_33
- Track 19 : SlippinJimmy_33, Kamiyu_33, Yinz_33
- Track 20 : Casbah_32
- Track 21 : RomaT_33, Nozo_33, RagingRooster_33, Marley1013_33, Morty007_33, Devonte_33, Audrey_33, ChaChing_33, SynergyX_33, Akoma_33, Daisy_33, Neos5_33, Heathcliff_33, Chandler_33, LestyG_33, OrangeOswald_33, Abinghost_33, Deenasa_33
- Track 22 : Rita1961_33, Obutu_33
- Track 23 : GlenHope_34, Compostia_34
- Track 24 : Phaedrus_31, HarveySr_33, Phlyer_33, Jackstina_30, Gadget_34, Yahalom_33
- Track 25 : Ben11_32, Kronus_32
- Track 26 : Mortcellus_32
- Track 27 : Philly_32
- Track 28 : Halfpint_32
- Track 29 : MmasiCarm_33
- Track 30 : Bernardo_33
- Track 31 : Ahwei_29, Poster_29, JAMaL_30, Nanao_29, ChrisnMich_29
- Track 32 : Zemanar_31, Hydro_30, Mithril_30
- Track 33 : Hangman_30

- Track 34 : Prince_31, Apex_30, VioletZ_30, Frederick_30
- Track 35 : BobbyK_30
- Track 36 : BrownCNA_31
- Track 37 : Cooper_30
- Track 38 : JaguarMi_30
- Track 39 : Fortunato_30
- Track 40 : AlanGrant_31, Vincenzo_31
- Track 41 : Nigel_28
- Track 42 : Lolalove_30
- Track 43 : Magpie_29
- Track 44 : Austelle_31
- Track 45 : Heath_29
- Track 46 : Waleliano_30
- Track 47 : RawrgerThat_30
- Track 48 : Stinger_28
- Track 49 : Mudslide_30
- Track 50 : Saguaro_32
- Track 51 : Thonko_30
- Track 52 : PenguinLover67_33
- Track 53 : CRB2_34
- Track 54 : Knocker_33
- Track 55 : Quesadilla_32
- Track 56 : Akhila_20, MilanaBonita_20, Xula_21
- Track 57 : Clifton_19, LastJedi_19, Crumble_19, Koella_19
- Track 58 : BigPhil_20, Cerasum_20, Velveteen_20
- Track 59 : Pippy_19
- Track 60 : Ms6_19, SpongeBob_21, Jamie19_21
- Track 61 : Brocalys_20
- Track 62 : Sarma624_20
- Track 63 : Squirty_20, Fulbright_21
- Track 64 : QueenHazel_22
- Track 65 : OhShagHennessy_21, Tyson_21, Halena_21, Wyatt2_21, Wamburgxpress_21, MAckerman_21, Enceladus_21, AvadaKedavra_21, Acquire49_21, DirkDirk_21, Rose5_21, Silverleaf_21
- Track 66 : Calm_21, Zaria_21
- Track 67 : CicholasNage_21, JoeDirt_21, Appletree2_21, UPIE_21, LeBron_21
- Track 68 : MiniLon_22, Lolly9_22
- Track 69 : Snenia_22, Lumos_22, Nicholas_22, MsGreen_22, Kingsolomon_22, Jubie_22, Clautastrophe_22, Jobypre_22
- Track 70 : Samty_22, Bellis_22, Finnry_22, Moostard_22
- Track 71 : MiniMac_22
- Track 72 : DuncansLeg_22
- Track 73 : Whirlwind_23
- Track 74 : Krypton555_22
- Track 75 : Ellson_22
- Track 76 : Nanosmite_35
- Track 77 : BabeRuth_21, Nenae_21, PhancyPhin_21, Redi_21, ShrimpFriedEgg_21, Purgamenstris_21
- Track 78 : Phloss_21
- Track 79 : Snekmaggedon_21
- Track 80 : GreaseLightnin_22
- Track 81 : Megabear_25, Taptic_25, Cepens_25
- Track 82 : Argie_26

- Track 83 : D12_25
- Track 84 : PR_25
- Track 85 : P3MA_25

Summary of Final Annotations (See graph section above for start numbers):

The start number called the most often in the published annotations is 17, it was called in 129 of the 154 non-draft genes in the pham.

Genes that call this "Most Annotated" start:

- Abinghost_33, Acquire49_21, Ahwei_29, Akhila_20, Akoma_33, AlanGrant_31, Apex_30, Argie_26, Athena_34, Audrey_33, Austelle_31, AvadaKedavra_21, BabeRuth_21, Baloo_33, Bellis_22, Ben11_32, Bernardo_33, BobbyK_30, BrownCNA_31, CRB2_34, Calm_21, Casbah_32, ChaChing_33, Chandler_33, ChipMunk_34, ChrisnMich_29, Clautastrophe_22, Clifton_19, Compostia_34, Cooper_30, Crumble_19, D12_25, Daisy_33, Deenasa_33, Devonte_33, DirkDirk_21, DuncansLeg_22, Ellson_22, Enceladus_21, EvilGenius_34, Finnry_22, Fortunato_30, Frederick_30, Gadget_34, Gail_32, Gervas_33, GlenHope_34, GreaseLightnin_22, Halena_21, Halfpint_32, Hangman_30, HarveySr_33, Hashim76_35, Heath_29, Heathcliff_33, Hydro_30, Imvubu_25, Indlovu_29, JAMaL_30, Jackstina_30, JaguarMi_30, Jamie19_21, Jobypre_22, Jubie_22, Kamiyu_33, Keziacharles14_32, KingCyrus_34, Kingsolomon_22, Knocker_33, Koella_19, Kronus_32, Krypton555_22, LastJedi_19, LestyG_33, Lolalove_30, Lolly9_22, Luchador_34, Lumos_22, MAckerman_21, Magpie_29, Marley1013_33, MilanaBonita_20, MiniLon_22, MiniMac_22, Mithril_30, MmasiCarm_33, Moostard_22, Mortcellus_32, Morty007_33, Ms6_19, MsGreen_22, Mudslide_30, Nanao_29, Nanosmite_35, Nенаe_21, Neos5_33, Nicholas_22, Nigel_28, Nozo_33, Obutu_33, OhShagHennessy_21, OrangeOswald_33, P3MA_25, PenguinLover67_33, Phaedrus_31, PhancyPhin_21, Philly_32, Phlyer_33, Poster_29, Prince_31, Purgamenstris_21, QueenHazel_22, Quesadilla_32, RagingRooster_33, RawrgerThat_30, Redi_21, Rita1961_33, RomaT_33, Rose5_21, Saguaro_32, Samty_22, Sarma624_20, ShrimpFriedEgg_21, Silverleaf_21, SlippinJimmy_33, Snenia_22, SororFago_32, SpongeBob_21, Stinger_28, SynergyX_33, Thonko_30, Tydolla_33, Tyson_21, Vincenzo_31, VioletZ_30, Waleliano_30, Wamburgxpress_21, Whirlwind_23, Wyatt2_21, Xula_21, Yahalom_33, Yinz_33, Zaria_21, Zemanar_31,

Genes that have the "Most Annotated" start but do not call it:

- Appletree2_21, BigPhil_20, Cerasum_20, CicholasNage_21, JoeDirt_21, LeBron_21, PR_25, Snekmaggon_21, UPIE_21, Velveteen_20,

Genes that do not have the "Most Annotated" start:

- Ares_33, Arissanae_32, Brocalys_20, Cepens_25, Fulbright_21, Godines_33, Laurie_33, Megabear_25, Phloss_21, Pippy_19, Qyrzula_31, Squirty_20, Taptic_25, Vanisoa_31, Zenteno07_35,

Summary by start number:

Start 13:

- Found in 20 of 169 (11.8%) of genes in pham

- Manual Annotations of this start: 5 of 154
- Called 25.0% of time when present
- Phage (with cluster) where this start called: Ares_33 (B2), BigPhil_20 (F1), Cerasum_20 (F1), PR_25 (W), Velveteen_20 (F1),

Start 14:

- Found in 29 of 169 (17.2%) of genes in pham
- Manual Annotations of this start: 14 of 154
- Called 48.3% of time when present
- Phage (with cluster) where this start called: Appletree2_21 (L1), Brocalys_20 (F1), Cepens_25 (W), CicholasNage_21 (L1), Godines_33 (B2), JoeDirt_21 (L1), Laurie_33 (B2), LeBron_21 (L1), Megabear_25 (W), Pippy_19 (F1), Qyrzula_31 (B2), Taptic_25 (W), UPIE_21 (L1), Zenteno07_35 (B13),

Start 15:

- Found in 2 of 169 (1.2%) of genes in pham
- Manual Annotations of this start: 2 of 154
- Called 100.0% of time when present
- Phage (with cluster) where this start called: Arissanee_32 (A9), Vanisoa_31 (A9),

Start 16:

- Found in 3 of 169 (1.8%) of genes in pham
- Manual Annotations of this start: 3 of 154
- Called 100.0% of time when present
- Phage (with cluster) where this start called: Fulbright_21 (N), Phloss_21 (N), Squirty_20 (F3),

Start 17:

- Found in 154 of 169 (91.1%) of genes in pham
- Manual Annotations of this start: 129 of 154
- Called 93.5% of time when present
- Phage (with cluster) where this start called: Abinghost_33 (B3), Acquire49_21 (L1), Ahwei_29 (B4), Akhila_20 (F1), Akoma_33 (B3), AlanGrant_31 (B4), Apex_30 (B4), Argie_26 (W), Athena_34 (B3), Audrey_33 (B3), Austelle_31 (B4), AvadaKedavra_21 (L1), BabeRuth_21 (N), Baloo_33 (B3), Bellis_22 (L3), Ben11_32 (B3), Bernardo_33 (B3), BobbyK_30 (B4), BrownCNA_31 (B4), CRB2_34 (B9), Calm_21 (L1), Casbah_32 (B3), ChaChing_33 (B3), Chandler_33 (B3), ChipMunk_34 (A2), ChrisnMich_29 (B4), Clautastrophe_22 (L3), Clifton_19 (F1), Compostia_34 (B3), Cooper_30 (B4), Crumble_19 (F1), D12_25 (W), Daisy_33 (B3), Deenasa_33 (B3), Devonte_33 (B3), DirkDirk_21 (L1), DuncansLeg_22 (L3), Ellson_22 (L3), Enceladus_21 (L1), EvilGenius_34 (A2), Finnry_22 (L3), Fortunato_30 (B4), Frederick_30 (B4), Gadget_34 (B3), Gail_32 (A14), Gervas_33 (B3), GlenHope_34 (B3), GreaseLightnin_22 (P1), Halena_21 (L1), Halfpint_32 (B3), Hangman_30 (B4), HarveySr_33 (B3), Hashim76_35 (B13), Heath_29 (B4), Heathcliff_33 (B3), Hydro_30 (B4), Imvubu_25 (B10), Indlovu_29 (B11), JAMaL_30 (B4), Jackstina_30 (B3), JaguarMi_30 (B4), Jamie19_21 (N), Jobypre_22 (L3), Jubie_22 (L3), Kamiyu_33 (B3), Keziacharles14_32 (A9), KingCyrus_34 (A2), Kingsolomon_22 (L3), Knocker_33 (B9), Koella_19 (F1), Kronus_32 (B3), Krypton555_22 (L3), LastJedi_19 (F1), LestyG_33 (B3), Lolalove_30 (B4), Lolly9_22 (L3), Luchador_34 (A14), Lumos_22 (L3), MAckerman_21 (L1), Magpie_29 (B4), Marley1013_33 (B3), MilanaBonita_20 (F1), MiniLon_22 (L3), MiniMac_22 (L3), Mithril_30 (B4), MmasiCarm_33 (B3), Moostard_22 (L3), Mortcellus_32 (B3), Morty007_33 (B3), Ms6_19 (F1), MsGreen_22 (L3), Mudslide_30 (B4), Nanao_29 (B4), Nanosmite_35

(M3), Nенаe_21 (N), Neos5_33 (B3), Nicholas_22 (L3), Nigel_28 (B4), Nozo_33 (B3), Obutu_33 (B3), OhShagHennessy_21 (L1), OrangeOswald_33 (B3), P3MA_25 (singleton), PenguinLover67_33 (B9), Phaedrus_31 (B3), PhancyPhin_21 (N), Philly_32 (B3), Phlyer_33 (B3), Poster_29 (B4), Prince_31 (B4), Purgamenstris_21 (N), QueenHazel_22 (I1), Quesadilla_32 (B9), RagingRooster_33 (B3), RawrgerThat_30 (B4), Redi_21 (N), Rita1961_33 (B3), RomaT_33 (B3), Rose5_21 (L1), Saguaro_32 (B7), Samty_22 (L3), Sarma624_20 (F1), ShrimpFriedEgg_21 (N), Silverleaf_21 (L1), SlippinJimmy_33 (B3), Snenia_22 (L3), SororFago_32 (A14), SpongeBob_21 (N), Stinger_28 (B4), SynergyX_33 (B3), Thonko_30 (B8), Tydolla_33 (B3), Tyson_21 (L1), Vincenzo_31 (B4), VioletZ_30 (B4), Waleliano_30 (B4), Wamburgrxpress_21 (L1), Whirlwind_23 (L3), Wyatt2_21 (L1), Xula_21 (I1), Yahalom_33 (B3), Yinz_33 (B3), Zaria_21 (L1), Zemanar_31 (B4),

Start 35:

- Found in 51 of 169 (30.2%) of genes in pham
- Manual Annotations of this start: 1 of 154
- Called 2.0% of time when present
- Phage (with cluster) where this start called: Snekmaggon_21 (N),

Summary by clusters:

There are 22 clusters represented in this pham: singleton, M3, B13, B10, B11, A14, I1, A2, A9, P1, N, L3, W, L1, F1, F3, B4, B7, B2, B3, B8, B9,

Info for manual annotations of cluster A14:

- Start number 17 was manually annotated 3 times for cluster A14.

Info for manual annotations of cluster A2:

- Start number 17 was manually annotated 3 times for cluster A2.

Info for manual annotations of cluster A9:

- Start number 15 was manually annotated 2 times for cluster A9.
- Start number 17 was manually annotated 1 time for cluster A9.

Info for manual annotations of cluster B10:

- Start number 17 was manually annotated 1 time for cluster B10.

Info for manual annotations of cluster B11:

- Start number 17 was manually annotated 1 time for cluster B11.

Info for manual annotations of cluster B13:

- Start number 14 was manually annotated 1 time for cluster B13.

Info for manual annotations of cluster B2:

- Start number 13 was manually annotated 1 time for cluster B2.
- Start number 14 was manually annotated 3 times for cluster B2.

Info for manual annotations of cluster B3:

- Start number 17 was manually annotated 40 times for cluster B3.

Info for manual annotations of cluster B4:

- Start number 17 was manually annotated 23 times for cluster B4.

Info for manual annotations of cluster B7:

- Start number 17 was manually annotated 1 time for cluster B7.

Info for manual annotations of cluster B8:

- Start number 17 was manually annotated 1 time for cluster B8.

Info for manual annotations of cluster B9:

- Start number 17 was manually annotated 4 times for cluster B9.

Info for manual annotations of cluster F1:

- Start number 13 was manually annotated 3 times for cluster F1.
- Start number 14 was manually annotated 2 times for cluster F1.
- Start number 17 was manually annotated 7 times for cluster F1.

Info for manual annotations of cluster F3:

- Start number 16 was manually annotated 1 time for cluster F3.

Info for manual annotations of cluster I1:

- Start number 17 was manually annotated 2 times for cluster I1.

Info for manual annotations of cluster L1:

- Start number 14 was manually annotated 5 times for cluster L1.
- Start number 17 was manually annotated 13 times for cluster L1.

Info for manual annotations of cluster L3:

- Start number 17 was manually annotated 16 times for cluster L3.

Info for manual annotations of cluster M3:

- Start number 17 was manually annotated 1 time for cluster M3.

Info for manual annotations of cluster N:

- Start number 16 was manually annotated 2 times for cluster N.
- Start number 17 was manually annotated 8 times for cluster N.
- Start number 35 was manually annotated 1 time for cluster N.

Info for manual annotations of cluster P1:

- Start number 17 was manually annotated 1 time for cluster P1.

Info for manual annotations of cluster W:

- Start number 13 was manually annotated 1 time for cluster W.
- Start number 14 was manually annotated 3 times for cluster W.
- Start number 17 was manually annotated 2 times for cluster W.

Gene Information:

Gene: Abinghost_33 Start: 32219, Stop: 33421, Start Num: 17

Candidate Starts for Abinghost_33:

(Start: 17 @32219 has 129 MA's), (21, 32252), (44, 32396), (46, 32405), (48, 32414), (58, 32453), (61, 32462), (65, 32480), (68, 32498), (71, 32516), (73, 32522), (76, 32534), (80, 32552), (84, 32567), (92, 32600), (100, 32627), (109, 32672), (131, 32753), (140, 32780), (144, 32798), (148, 32816), (156, 32858), (159, 32882), (167, 32957), (171, 32987), (179, 33047), (181, 33059), (183, 33077), (200,

33179), (221, 33284), (223, 33290), (225, 33308), (234, 33395),

Gene: Acquire49_21 Start: 21688, Stop: 22860, Start Num: 17

Candidate Starts for Acquire49_21:

(Start: 14 @21685 has 14 MA's), (Start: 17 @21688 has 129 MA's), (Start: 35 @21814 has 1 MA's), (43, 21856), (45, 21868), (46, 21871), (55, 21904), (57, 21916), (68, 21964), (71, 21982), (80, 22018), (84, 22033), (99, 22084), (104, 22114), (114, 22156), (121, 22180), (130, 22216), (132, 22222), (141, 22249), (153, 22267), (167, 22360), (168, 22363), (178, 22447), (201, 22585), (204, 22603), (221, 22687),

Gene: Ahwei_29 Start: 31578, Stop: 32735, Start Num: 17

Candidate Starts for Ahwei_29:

(Start: 17 @31578 has 129 MA's), (29, 31671), (31, 31686), (34, 31701), (36, 31713), (39, 31731), (61, 31821), (70, 31872), (73, 31881), (74, 31887), (78, 31899), (84, 31926), (87, 31941), (88, 31947), (90, 31953), (100, 31986), (101, 31995), (108, 32028), (118, 32061), (155, 32151), (156, 32157), (166, 32256), (167, 32259), (190, 32403), (214, 32556),

Gene: Akhila_20 Start: 20281, Stop: 21492, Start Num: 17

Candidate Starts for Akhila_20:

(Start: 17 @20281 has 129 MA's), (18, 20305), (26, 20362), (Start: 35 @20410 has 1 MA's), (47, 20470), (51, 20479), (54, 20494), (59, 20518), (65, 20542), (67, 20554), (74, 20590), (84, 20629), (86, 20638), (92, 20662), (100, 20692), (119, 20776), (120, 20779), (124, 20800), (135, 20836), (136, 20839), (143, 20860), (150, 20902), (165, 21019), (171, 21055), (173, 21061), (190, 21166), (200, 21247),

Gene: Akoma_33 Start: 32223, Stop: 33425, Start Num: 17

Candidate Starts for Akoma_33:

(Start: 17 @32223 has 129 MA's), (21, 32256), (44, 32400), (46, 32409), (48, 32418), (58, 32457), (61, 32466), (65, 32484), (68, 32502), (71, 32520), (73, 32526), (76, 32538), (80, 32556), (84, 32571), (92, 32604), (100, 32631), (109, 32676), (131, 32757), (140, 32784), (144, 32802), (148, 32820), (156, 32862), (159, 32886), (167, 32961), (171, 32991), (179, 33051), (181, 33063), (183, 33081), (200, 33183), (221, 33288), (223, 33294), (225, 33312), (234, 33399),

Gene: AlanGrant_31 Start: 33326, Stop: 34483, Start Num: 17

Candidate Starts for AlanGrant_31:

(Start: 17 @33326 has 129 MA's), (29, 33419), (31, 33434), (34, 33449), (36, 33461), (39, 33479), (61, 33569), (70, 33620), (73, 33629), (78, 33647), (84, 33674), (87, 33689), (88, 33695), (90, 33701), (100, 33734), (101, 33743), (108, 33776), (118, 33809), (137, 33821), (145, 33854), (149, 33869), (155, 33899), (156, 33905), (162, 33971), (164, 33995), (166, 34004), (190, 34151), (214, 34304),

Gene: Apex_30 Start: 32785, Stop: 33942, Start Num: 17

Candidate Starts for Apex_30:

(Start: 17 @32785 has 129 MA's), (29, 32878), (31, 32893), (34, 32908), (36, 32920), (39, 32938), (49, 32980), (61, 33028), (70, 33079), (73, 33088), (78, 33106), (84, 33133), (87, 33148), (88, 33154), (90, 33160), (92, 33166), (100, 33193), (101, 33202), (108, 33235), (118, 33268), (149, 33328), (155, 33358), (156, 33364), (160, 33409), (166, 33463), (167, 33466), (190, 33610), (214, 33763),

Gene: Appletree2_21 Start: 21628, Stop: 22803, Start Num: 14

Candidate Starts for Appletree2_21:

(Start: 14 @21628 has 14 MA's), (Start: 17 @21631 has 129 MA's), (Start: 35 @21757 has 1 MA's), (43, 21799), (45, 21811), (46, 21814), (55, 21847), (57, 21859), (68, 21907), (71, 21925), (80, 21961), (84, 21976), (99, 22027), (104, 22057), (114, 22099), (121, 22123), (130, 22159), (132, 22165), (141, 22192), (153, 22210), (167, 22303), (168, 22306), (178, 22390), (201, 22528), (204, 22546), (221,

22630),

Gene: Ares_33 Start: 32688, Stop: 33896, Start Num: 13

Candidate Starts for Ares_33:

(7, 32547), (Start: 13 @32688 has 5 MA's), (Start: 14 @32691 has 14 MA's), (25, 32760), (36, 32829), (41, 32859), (44, 32871), (45, 32877), (46, 32880), (48, 32889), (58, 32928), (61, 32937), (63, 32949), (75, 33006), (80, 33027), (84, 33042), (97, 33087), (100, 33102), (109, 33147), (127, 33216), (135, 33243), (143, 33267), (151, 33312), (156, 33333), (159, 33357), (167, 33432), (171, 33462), (179, 33522), (181, 33534), (183, 33552), (200, 33654), (221, 33759), (223, 33765), (225, 33783), (231, 33834), (234, 33870),

Gene: Argie_26 Start: 29663, Stop: 30871, Start Num: 17

Candidate Starts for Argie_26:

(Start: 13 @29657 has 5 MA's), (Start: 17 @29663 has 129 MA's), (22, 29702), (31, 29777), (32, 29780), (38, 29813), (41, 29834), (45, 29852), (47, 29858), (48, 29864), (58, 29903), (59, 29906), (61, 29912), (75, 29981), (80, 30002), (100, 30077), (109, 30122), (118, 30152), (129, 30197), (132, 30206), (133, 30212), (135, 30218), (143, 30242), (151, 30287), (156, 30308), (159, 30332), (167, 30407), (171, 30437), (179, 30497), (181, 30509), (183, 30527), (200, 30629), (223, 30740), (225, 30758), (231, 30809), (234, 30845),

Gene: Arissanae_32 Start: 24817, Stop: 26022, Start Num: 15

Candidate Starts for Arissanae_32:

(Start: 15 @24817 has 2 MA's), (44, 24994), (45, 25000), (46, 25003), (59, 25054), (97, 25210), (107, 25258), (166, 25552), (172, 25585), (190, 25696), (215, 25852),

Gene: Athena_34 Start: 32970, Stop: 34172, Start Num: 17

Candidate Starts for Athena_34:

(Start: 17 @32970 has 129 MA's), (21, 33003), (44, 33147), (46, 33156), (48, 33165), (58, 33204), (61, 33213), (65, 33231), (75, 33282), (78, 33291), (80, 33303), (82, 33309), (84, 33318), (97, 33363), (100, 33378), (109, 33423), (120, 33462), (127, 33492), (132, 33507), (135, 33519), (143, 33543), (151, 33588), (156, 33609), (159, 33633), (167, 33708), (171, 33738), (179, 33798), (181, 33810), (183, 33828), (200, 33930), (221, 34035), (223, 34041), (225, 34059), (234, 34146),

Gene: Audrey_33 Start: 32219, Stop: 33421, Start Num: 17

Candidate Starts for Audrey_33:

(Start: 17 @32219 has 129 MA's), (21, 32252), (44, 32396), (46, 32405), (48, 32414), (58, 32453), (61, 32462), (65, 32480), (68, 32498), (71, 32516), (73, 32522), (76, 32534), (80, 32552), (84, 32567), (92, 32600), (100, 32627), (109, 32672), (131, 32753), (140, 32780), (144, 32798), (148, 32816), (156, 32858), (159, 32882), (167, 32957), (171, 32987), (179, 33047), (181, 33059), (183, 33077), (200, 33179), (221, 33284), (223, 33290), (225, 33308), (234, 33395),

Gene: Austelle_31 Start: 33241, Stop: 34398, Start Num: 17

Candidate Starts for Austelle_31:

(Start: 17 @33241 has 129 MA's), (29, 33334), (31, 33349), (34, 33364), (36, 33376), (39, 33394), (49, 33436), (61, 33484), (70, 33535), (73, 33544), (78, 33562), (84, 33589), (87, 33604), (88, 33610), (90, 33616), (92, 33622), (100, 33649), (101, 33658), (108, 33691), (118, 33724), (149, 33784), (155, 33814), (156, 33820), (160, 33865), (166, 33919), (167, 33922), (190, 34066), (214, 34219),

Gene: AvadaKedavra_21 Start: 21698, Stop: 22870, Start Num: 17

Candidate Starts for AvadaKedavra_21:

(Start: 14 @21695 has 14 MA's), (Start: 17 @21698 has 129 MA's), (Start: 35 @21824 has 1 MA's), (43, 21866), (45, 21878), (46, 21881), (55, 21914), (57, 21926), (68, 21974), (71, 21992), (80, 22028), (84, 22043), (99, 22094), (104, 22124), (114, 22166), (121, 22190), (130, 22226), (132, 22232), (141,

22259), (153, 22277), (167, 22370), (168, 22373), (178, 22457), (201, 22595), (204, 22613), (221, 22697),

Gene: BabeRuth_21 Start: 19877, Stop: 21031, Start Num: 17

Candidate Starts for BabeRuth_21:

(3, 19640), (5, 19682), (6, 19712), (8, 19742), (10, 19802), (12, 19856), (Start: 17 @19877 has 129 MA's), (24, 19940), (26, 19958), (Start: 35 @20006 has 1 MA's), (47, 20066), (51, 20075), (54, 20090), (59, 20114), (65, 20138), (67, 20150), (84, 20225), (86, 20234), (92, 20258), (100, 20288), (108, 20333), (109, 20336), (111, 20342), (135, 20372), (136, 20375), (143, 20396), (165, 20555), (176, 20645), (179, 20654), (183, 20684), (190, 20705), (235, 21008),

Gene: Baloo_33 Start: 32222, Stop: 33424, Start Num: 17

Candidate Starts for Baloo_33:

(Start: 17 @32222 has 129 MA's), (21, 32255), (44, 32399), (46, 32408), (48, 32417), (58, 32456), (61, 32465), (65, 32483), (75, 32534), (78, 32543), (80, 32555), (82, 32561), (84, 32570), (97, 32615), (100, 32630), (109, 32675), (120, 32714), (127, 32744), (132, 32759), (135, 32771), (143, 32795), (151, 32840), (156, 32861), (159, 32885), (167, 32960), (171, 32990), (179, 33050), (181, 33062), (183, 33080), (200, 33182), (221, 33287), (223, 33293), (225, 33311), (234, 33398),

Gene: Bellis_22 Start: 22249, Stop: 23466, Start Num: 17

Candidate Starts for Bellis_22:

(Start: 17 @22249 has 129 MA's), (30, 22351), (33, 22363), (36, 22381), (38, 22390), (45, 22429), (55, 22465), (58, 22480), (60, 22486), (66, 22516), (67, 22519), (74, 22555), (78, 22567), (89, 22618), (90, 22621), (105, 22681), (112, 22708), (116, 22723), (118, 22729), (122, 22741), (138, 22801), (144, 22825), (156, 22885), (166, 22981), (172, 23014), (181, 23086), (185, 23110), (190, 23125), (226, 23338), (228, 23350),

Gene: Ben11_32 Start: 32041, Stop: 33243, Start Num: 17

Candidate Starts for Ben11_32:

(Start: 17 @32041 has 129 MA's), (21, 32074), (44, 32218), (46, 32227), (48, 32236), (58, 32275), (61, 32284), (65, 32302), (68, 32320), (71, 32338), (73, 32344), (76, 32356), (80, 32374), (84, 32389), (92, 32422), (100, 32449), (109, 32494), (131, 32575), (140, 32602), (144, 32620), (148, 32638), (156, 32680), (159, 32704), (167, 32779), (171, 32809), (179, 32869), (181, 32881), (183, 32899), (199, 32998), (200, 33001), (221, 33106), (223, 33112), (225, 33130), (234, 33217),

Gene: Bernardo_33 Start: 32309, Stop: 33511, Start Num: 17

Candidate Starts for Bernardo_33:

(Start: 17 @32309 has 129 MA's), (21, 32342), (44, 32486), (46, 32495), (48, 32504), (58, 32543), (61, 32552), (65, 32570), (75, 32621), (78, 32630), (80, 32642), (84, 32657), (97, 32702), (100, 32717), (109, 32762), (127, 32831), (132, 32846), (135, 32858), (143, 32882), (152, 32930), (154, 32936), (155, 32942), (156, 32948), (159, 32972), (167, 33047), (171, 33077), (179, 33137), (181, 33149), (183, 33167), (200, 33269), (221, 33374), (223, 33380), (231, 33449),

Gene: BigPhil_20 Start: 20087, Stop: 21244, Start Num: 13

Candidate Starts for BigPhil_20:

(Start: 13 @20087 has 5 MA's), (Start: 17 @20090 has 129 MA's), (Start: 35 @20219 has 1 MA's), (40, 20249), (47, 20279), (51, 20288), (54, 20303), (59, 20327), (65, 20351), (67, 20363), (84, 20438), (86, 20447), (92, 20471), (100, 20501), (135, 20585), (136, 20588), (143, 20609), (176, 20858), (179, 20867), (183, 20897), (190, 20918), (197, 20987), (235, 21221),

Gene: BobbyK_30 Start: 32610, Stop: 33767, Start Num: 17

Candidate Starts for BobbyK_30:

(Start: 17 @32610 has 129 MA's), (29, 32703), (31, 32718), (34, 32733), (36, 32745), (39, 32763), (70, 32904), (73, 32913), (78, 32931), (84, 32958), (87, 32973), (88, 32979), (90, 32985), (92, 32991), (100, 33018), (101, 33027), (108, 33060), (118, 33093), (149, 33153), (155, 33183), (156, 33189), (160, 33234), (166, 33288), (167, 33291), (190, 33435), (214, 33588),

Gene: Brocalys_20 Start: 19901, Stop: 21058, Start Num: 14

Candidate Starts for Brocalys_20:

(Start: 14 @19901 has 14 MA's), (31, 20009), (Start: 35 @20030 has 1 MA's), (47, 20090), (54, 20114), (55, 20120), (59, 20138), (62, 20150), (65, 20162), (67, 20174), (80, 20234), (84, 20249), (86, 20258), (92, 20282), (100, 20312), (135, 20396), (136, 20399), (143, 20420), (147, 20441), (149, 20450), (150, 20462), (153, 20471), (190, 20732), (197, 20801), (235, 21035),

Gene: BrownCNA_31 Start: 32871, Stop: 34028, Start Num: 17

Candidate Starts for BrownCNA_31:

(Start: 17 @32871 has 129 MA's), (29, 32964), (31, 32979), (34, 32994), (36, 33006), (39, 33024), (49, 33066), (70, 33165), (73, 33174), (78, 33192), (84, 33219), (87, 33234), (88, 33240), (90, 33246), (92, 33252), (100, 33279), (101, 33288), (108, 33321), (118, 33354), (148, 33408), (149, 33414), (155, 33444), (156, 33450), (158, 33471), (160, 33495), (166, 33549), (167, 33552), (190, 33696),

Gene: CRB2_34 Start: 34225, Stop: 35433, Start Num: 17

Candidate Starts for CRB2_34:

(4, 34009), (11, 34192), (Start: 17 @34225 has 129 MA's), (39, 34387), (47, 34423), (58, 34471), (68, 34516), (82, 34576), (86, 34594), (103, 34660), (107, 34678), (111, 34696), (115, 34711), (116, 34714), (123, 34738), (168, 34933), (180, 35023), (183, 35068), (188, 35083), (198, 35170), (201, 35185), (211, 35236), (218, 35269), (236, 35416),

Gene: Calm_21 Start: 21702, Stop: 22874, Start Num: 17

Candidate Starts for Calm_21:

(Start: 14 @21699 has 14 MA's), (Start: 17 @21702 has 129 MA's), (Start: 35 @21828 has 1 MA's), (43, 21870), (45, 21882), (46, 21885), (55, 21918), (57, 21930), (60, 21939), (68, 21978), (71, 21996), (80, 22032), (84, 22047), (99, 22098), (104, 22128), (114, 22170), (121, 22194), (130, 22230), (132, 22236), (141, 22263), (153, 22281), (167, 22374), (168, 22377), (178, 22461), (201, 22599), (204, 22617), (221, 22701),

Gene: Casbah_32 Start: 32071, Stop: 33273, Start Num: 17

Candidate Starts for Casbah_32:

(Start: 17 @32071 has 129 MA's), (21, 32104), (44, 32248), (46, 32257), (48, 32266), (58, 32305), (61, 32314), (65, 32332), (68, 32350), (71, 32368), (73, 32374), (76, 32386), (80, 32404), (84, 32419), (92, 32452), (100, 32479), (109, 32524), (131, 32605), (140, 32632), (144, 32650), (148, 32668), (156, 32710), (159, 32734), (167, 32809), (171, 32839), (179, 32899), (181, 32911), (183, 32929), (199, 33028), (200, 33031), (221, 33136), (223, 33142), (225, 33160), (234, 33247),

Gene: Cepens_25 Start: 29381, Stop: 30586, Start Num: 14

Candidate Starts for Cepens_25:

(Start: 13 @29378 has 5 MA's), (Start: 14 @29381 has 14 MA's), (25, 29450), (36, 29519), (41, 29549), (44, 29561), (45, 29567), (46, 29570), (48, 29579), (58, 29618), (61, 29627), (63, 29639), (75, 29696), (78, 29705), (80, 29717), (84, 29732), (97, 29777), (100, 29792), (109, 29837), (127, 29906), (135, 29933), (143, 29957), (151, 30002), (156, 30023), (159, 30047), (167, 30122), (171, 30152), (179, 30212), (181, 30224), (183, 30242), (200, 30344), (223, 30455), (225, 30473), (231, 30524), (234, 30560),

Gene: Cerasum_20 Start: 20087, Stop: 21244, Start Num: 13

Candidate Starts for Cerasum_20:

(Start: 13 @20087 has 5 MA's), (Start: 17 @20090 has 129 MA's), (Start: 35 @20219 has 1 MA's), (40, 20249), (47, 20279), (51, 20288), (54, 20303), (59, 20327), (65, 20351), (67, 20363), (84, 20438), (86, 20447), (92, 20471), (100, 20501), (135, 20585), (136, 20588), (143, 20609), (176, 20858), (179, 20867), (183, 20897), (190, 20918), (197, 20987), (235, 21221),

Gene: ChaChing_33 Start: 32234, Stop: 33436, Start Num: 17

Candidate Starts for ChaChing_33:

(Start: 17 @32234 has 129 MA's), (21, 32267), (44, 32411), (46, 32420), (48, 32429), (58, 32468), (61, 32477), (65, 32495), (68, 32513), (71, 32531), (73, 32537), (76, 32549), (80, 32567), (84, 32582), (92, 32615), (100, 32642), (109, 32687), (131, 32768), (140, 32795), (144, 32813), (148, 32831), (156, 32873), (159, 32897), (167, 32972), (171, 33002), (179, 33062), (181, 33074), (183, 33092), (200, 33194), (221, 33299), (223, 33305), (225, 33323), (234, 33410),

Gene: Chandler_33 Start: 33002, Stop: 34204, Start Num: 17

Candidate Starts for Chandler_33:

(Start: 17 @33002 has 129 MA's), (21, 33035), (44, 33179), (46, 33188), (48, 33197), (58, 33236), (61, 33245), (65, 33263), (68, 33281), (71, 33299), (73, 33305), (76, 33317), (80, 33335), (84, 33350), (92, 33383), (100, 33410), (109, 33455), (131, 33536), (140, 33563), (144, 33581), (148, 33599), (156, 33641), (159, 33665), (167, 33740), (171, 33770), (179, 33830), (181, 33842), (183, 33860), (200, 33962), (221, 34067), (223, 34073), (225, 34091), (234, 34178),

Gene: ChipMunk_34 Start: 25662, Stop: 26558, Start Num: 17

Candidate Starts for ChipMunk_34:

(Start: 17 @25662 has 129 MA's), (58, 25893), (71, 25956), (73, 25962), (90, 26034), (106, 26088), (179, 26424),

Gene: ChrisnMich_29 Start: 31570, Stop: 32727, Start Num: 17

Candidate Starts for ChrisnMich_29:

(Start: 17 @31570 has 129 MA's), (29, 31663), (31, 31678), (34, 31693), (36, 31705), (39, 31723), (61, 31813), (70, 31864), (73, 31873), (74, 31879), (78, 31891), (84, 31918), (87, 31933), (88, 31939), (90, 31945), (100, 31978), (101, 31987), (108, 32020), (118, 32053), (155, 32143), (156, 32149), (166, 32248), (167, 32251), (190, 32395), (214, 32548),

Gene: CicholasNage_21 Start: 21687, Stop: 22862, Start Num: 14

Candidate Starts for CicholasNage_21:

(Start: 14 @21687 has 14 MA's), (Start: 17 @21690 has 129 MA's), (Start: 35 @21816 has 1 MA's), (43, 21858), (45, 21870), (46, 21873), (55, 21906), (57, 21918), (68, 21966), (71, 21984), (80, 22020), (84, 22035), (99, 22086), (104, 22116), (114, 22158), (121, 22182), (130, 22218), (132, 22224), (141, 22251), (153, 22269), (167, 22362), (168, 22365), (178, 22449), (201, 22587), (204, 22605), (221, 22689),

Gene: Clautastrophe_22 Start: 22247, Stop: 23464, Start Num: 17

Candidate Starts for Clautastrophe_22:

(Start: 17 @22247 has 129 MA's), (30, 22349), (33, 22361), (36, 22379), (38, 22388), (45, 22427), (55, 22463), (58, 22478), (60, 22484), (66, 22514), (67, 22517), (74, 22553), (78, 22565), (89, 22616), (90, 22619), (105, 22679), (112, 22706), (116, 22721), (118, 22727), (122, 22739), (138, 22799), (144, 22823), (156, 22883), (166, 22979), (172, 23012), (181, 23084), (185, 23108), (226, 23336), (228, 23348),

Gene: Clifton_19 Start: 20217, Stop: 21371, Start Num: 17

Candidate Starts for Clifton_19:

(Start: 13 @20214 has 5 MA's), (Start: 17 @20217 has 129 MA's), (26, 20298), (Start: 35 @20346 has 1 MA's), (47, 20406), (51, 20415), (54, 20430), (59, 20454), (65, 20478), (67, 20490), (84, 20565), (86,

20574), (92, 20598), (100, 20628), (135, 20712), (136, 20715), (143, 20736), (165, 20895), (176, 20985), (179, 20994), (183, 21024), (190, 21045), (235, 21348),

Gene: Compostia_34 Start: 32649, Stop: 33851, Start Num: 17

Candidate Starts for Compostia_34:

(Start: 17 @32649 has 129 MA's), (44, 32826), (46, 32835), (48, 32844), (58, 32883), (61, 32892), (65, 32910), (68, 32928), (71, 32946), (73, 32952), (76, 32964), (80, 32982), (84, 32997), (92, 33030), (100, 33057), (109, 33102), (131, 33183), (140, 33210), (144, 33228), (148, 33246), (156, 33288), (171, 33417), (183, 33507), (200, 33609), (213, 33675), (221, 33714), (229, 33786), (235, 33828),

Gene: Cooper_30 Start: 31786, Stop: 32946, Start Num: 17

Candidate Starts for Cooper_30:

(Start: 17 @31786 has 129 MA's), (31, 31894), (34, 31909), (36, 31921), (38, 31930), (39, 31939), (44, 31963), (49, 31981), (70, 32080), (73, 32089), (74, 32095), (78, 32107), (84, 32134), (87, 32149), (88, 32155), (90, 32161), (91, 32164), (97, 32182), (100, 32197), (108, 32239), (118, 32272), (144, 32308), (149, 32332), (155, 32362), (156, 32368), (162, 32434), (166, 32467), (167, 32470), (190, 32614), (221, 32803),

Gene: Crumble_19 Start: 20264, Stop: 21418, Start Num: 17

Candidate Starts for Crumble_19:

(Start: 13 @20261 has 5 MA's), (Start: 17 @20264 has 129 MA's), (26, 20345), (Start: 35 @20393 has 1 MA's), (47, 20453), (51, 20462), (54, 20477), (59, 20501), (65, 20525), (67, 20537), (84, 20612), (86, 20621), (92, 20645), (100, 20675), (135, 20759), (136, 20762), (143, 20783), (165, 20942), (176, 21032), (179, 21041), (183, 21071), (190, 21092), (235, 21395),

Gene: D12_25 Start: 29948, Stop: 31156, Start Num: 17

Candidate Starts for D12_25:

(Start: 13 @29942 has 5 MA's), (Start: 17 @29948 has 129 MA's), (22, 29987), (31, 30062), (32, 30065), (38, 30098), (41, 30119), (44, 30131), (45, 30137), (48, 30149), (58, 30188), (59, 30191), (75, 30266), (80, 30287), (100, 30362), (109, 30407), (118, 30437), (129, 30482), (132, 30491), (133, 30497), (135, 30503), (143, 30527), (151, 30572), (156, 30593), (159, 30617), (167, 30692), (171, 30722), (179, 30782), (181, 30794), (183, 30812), (199, 30911), (200, 30914), (221, 31019), (223, 31025), (229, 31091), (231, 31094), (234, 31130),

Gene: Daisy_33 Start: 32246, Stop: 33448, Start Num: 17

Candidate Starts for Daisy_33:

(Start: 17 @32246 has 129 MA's), (21, 32279), (44, 32423), (46, 32432), (48, 32441), (58, 32480), (61, 32489), (65, 32507), (68, 32525), (71, 32543), (73, 32549), (76, 32561), (80, 32579), (84, 32594), (92, 32627), (100, 32654), (109, 32699), (131, 32780), (140, 32807), (144, 32825), (148, 32843), (156, 32885), (159, 32909), (167, 32984), (171, 33014), (179, 33074), (181, 33086), (183, 33104), (200, 33206), (221, 33311), (223, 33317), (225, 33335), (234, 33422),

Gene: Deenasa_33 Start: 32985, Stop: 34187, Start Num: 17

Candidate Starts for Deenasa_33:

(Start: 17 @32985 has 129 MA's), (21, 33018), (44, 33162), (46, 33171), (48, 33180), (58, 33219), (61, 33228), (65, 33246), (68, 33264), (71, 33282), (73, 33288), (76, 33300), (80, 33318), (84, 33333), (92, 33366), (100, 33393), (109, 33438), (131, 33519), (140, 33546), (144, 33564), (148, 33582), (156, 33624), (159, 33648), (167, 33723), (171, 33753), (179, 33813), (181, 33825), (183, 33843), (200, 33945), (221, 34050), (223, 34056), (225, 34074), (234, 34161),

Gene: Devonte_33 Start: 32210, Stop: 33412, Start Num: 17

Candidate Starts for Devonte_33:

(Start: 17 @32210 has 129 MA's), (21, 32243), (44, 32387), (46, 32396), (48, 32405), (58, 32444), (61, 32453), (65, 32471), (68, 32489), (71, 32507), (73, 32513), (76, 32525), (80, 32543), (84, 32558), (92, 32591), (100, 32618), (109, 32663), (131, 32744), (140, 32771), (144, 32789), (148, 32807), (156, 32849), (159, 32873), (167, 32948), (171, 32978), (179, 33038), (181, 33050), (183, 33068), (200, 33170), (221, 33275), (223, 33281), (225, 33299), (234, 33386),

Gene: DirkDirk_21 Start: 21671, Stop: 22843, Start Num: 17

Candidate Starts for DirkDirk_21:

(Start: 14 @21668 has 14 MA's), (Start: 17 @21671 has 129 MA's), (Start: 35 @21797 has 1 MA's), (43, 21839), (45, 21851), (46, 21854), (55, 21887), (57, 21899), (68, 21947), (71, 21965), (80, 22001), (84, 22016), (99, 22067), (104, 22097), (114, 22139), (121, 22163), (130, 22199), (132, 22205), (141, 22232), (153, 22250), (167, 22343), (168, 22346), (178, 22430), (201, 22568), (204, 22586), (221, 22670),

Gene: DuncansLeg_22 Start: 22232, Stop: 23449, Start Num: 17

Candidate Starts for DuncansLeg_22:

(Start: 17 @22232 has 129 MA's), (20, 22259), (30, 22334), (33, 22346), (36, 22364), (45, 22412), (55, 22448), (58, 22463), (60, 22469), (66, 22499), (67, 22502), (68, 22508), (78, 22550), (86, 22586), (89, 22601), (90, 22604), (91, 22607), (92, 22610), (118, 22712), (122, 22724), (136, 22781), (138, 22784), (144, 22808), (156, 22868), (172, 22997), (230, 23375), (233, 23381),

Gene: Ellson_22 Start: 22237, Stop: 23436, Start Num: 17

Candidate Starts for Ellson_22:

(Start: 17 @22237 has 129 MA's), (30, 22339), (36, 22369), (38, 22378), (45, 22417), (48, 22429), (58, 22468), (66, 22504), (68, 22513), (76, 22549), (87, 22597), (122, 22729), (123, 22735), (156, 22873), (172, 23002), (177, 23056), (181, 23074), (215, 23266), (232, 23374),

Gene: Enceladus_21 Start: 21672, Stop: 22844, Start Num: 17

Candidate Starts for Enceladus_21:

(Start: 14 @21669 has 14 MA's), (Start: 17 @21672 has 129 MA's), (Start: 35 @21798 has 1 MA's), (43, 21840), (45, 21852), (46, 21855), (55, 21888), (57, 21900), (68, 21948), (71, 21966), (80, 22002), (84, 22017), (99, 22068), (104, 22098), (114, 22140), (121, 22164), (130, 22200), (132, 22206), (141, 22233), (153, 22251), (167, 22344), (168, 22347), (178, 22431), (201, 22569), (204, 22587), (221, 22671),

Gene: EvilGenius_34 Start: 25671, Stop: 26591, Start Num: 17

Candidate Starts for EvilGenius_34:

(Start: 17 @25671 has 129 MA's), (32, 25779), (54, 25881), (58, 25902), (71, 25965), (106, 26097), (170, 26379), (196, 26529), (205, 26586),

Gene: Finnry_22 Start: 22251, Stop: 23468, Start Num: 17

Candidate Starts for Finnry_22:

(Start: 17 @22251 has 129 MA's), (30, 22353), (33, 22365), (36, 22383), (38, 22392), (45, 22431), (55, 22467), (58, 22482), (60, 22488), (66, 22518), (67, 22521), (74, 22557), (78, 22569), (89, 22620), (90, 22623), (105, 22683), (112, 22710), (116, 22725), (118, 22731), (122, 22743), (138, 22803), (144, 22827), (156, 22887), (166, 22983), (172, 23016), (181, 23088), (185, 23112), (190, 23127), (226, 23340), (228, 23352),

Gene: Fortunato_30 Start: 32604, Stop: 33761, Start Num: 17

Candidate Starts for Fortunato_30:

(Start: 17 @32604 has 129 MA's), (29, 32697), (31, 32712), (34, 32727), (36, 32739), (39, 32757), (49, 32799), (70, 32898), (73, 32907), (78, 32925), (84, 32952), (87, 32967), (88, 32973), (90, 32979), (92, 32985), (100, 33012), (101, 33021), (108, 33054), (118, 33087), (155, 33177), (156, 33183), (162,

33249), (165, 33279), (166, 33282), (190, 33429), (214, 33582),

Gene: Frederick_30 Start: 32610, Stop: 33767, Start Num: 17

Candidate Starts for Frederick_30:

(Start: 17 @32610 has 129 MA's), (29, 32703), (31, 32718), (34, 32733), (36, 32745), (39, 32763), (49, 32805), (61, 32853), (70, 32904), (73, 32913), (78, 32931), (84, 32958), (87, 32973), (88, 32979), (90, 32985), (92, 32991), (100, 33018), (101, 33027), (108, 33060), (118, 33093), (149, 33153), (155, 33183), (156, 33189), (160, 33234), (166, 33288), (167, 33291), (190, 33435), (214, 33588),

Gene: Fulbright_21 Start: 20200, Stop: 21357, Start Num: 16

Candidate Starts for Fulbright_21:

(Start: 16 @20200 has 3 MA's), (26, 20281), (31, 20308), (Start: 35 @20329 has 1 MA's), (47, 20389), (54, 20413), (55, 20419), (59, 20437), (62, 20449), (65, 20461), (67, 20473), (74, 20509), (80, 20533), (84, 20548), (86, 20557), (92, 20581), (97, 20596), (100, 20611), (135, 20695), (136, 20698), (143, 20719), (147, 20740), (149, 20749), (150, 20761), (153, 20770), (190, 21031), (197, 21100), (235, 21334),

Gene: Gadget_34 Start: 32229, Stop: 33431, Start Num: 17

Candidate Starts for Gadget_34:

(Start: 17 @32229 has 129 MA's), (21, 32262), (44, 32406), (46, 32415), (48, 32424), (58, 32463), (61, 32472), (65, 32490), (68, 32508), (71, 32526), (73, 32532), (76, 32544), (80, 32562), (84, 32577), (92, 32610), (100, 32637), (109, 32682), (131, 32763), (140, 32790), (144, 32808), (148, 32826), (156, 32868), (171, 32997), (183, 33087), (200, 33189), (210, 33246), (213, 33255), (221, 33294), (229, 33366), (235, 33408),

Gene: Gail_32 Start: 24477, Stop: 25421, Start Num: 17

Candidate Starts for Gail_32:

(Start: 17 @24477 has 129 MA's), (30, 24582), (32, 24588), (34, 24600), (40, 24636), (58, 24711), (71, 24774), (72, 24777), (73, 24780), (107, 24915), (194, 25371),

Gene: Gervas_33 Start: 32200, Stop: 33402, Start Num: 17

Candidate Starts for Gervas_33:

(Start: 17 @32200 has 129 MA's), (21, 32233), (44, 32377), (46, 32386), (48, 32395), (58, 32434), (61, 32443), (65, 32461), (75, 32512), (78, 32521), (80, 32533), (82, 32539), (84, 32548), (97, 32593), (100, 32608), (109, 32653), (120, 32692), (127, 32722), (132, 32737), (135, 32749), (143, 32773), (151, 32818), (156, 32839), (159, 32863), (167, 32938), (171, 32968), (179, 33028), (181, 33040), (183, 33058), (200, 33160), (221, 33265), (223, 33271), (225, 33289), (234, 33376),

Gene: GlenHope_34 Start: 32212, Stop: 33414, Start Num: 17

Candidate Starts for GlenHope_34:

(Start: 17 @32212 has 129 MA's), (44, 32389), (46, 32398), (48, 32407), (58, 32446), (61, 32455), (65, 32473), (68, 32491), (71, 32509), (73, 32515), (76, 32527), (80, 32545), (84, 32560), (92, 32593), (100, 32620), (109, 32665), (131, 32746), (140, 32773), (144, 32791), (148, 32809), (156, 32851), (171, 32980), (183, 33070), (200, 33172), (213, 33238), (221, 33277), (229, 33349), (235, 33391),

Gene: Godines_33 Start: 32691, Stop: 33896, Start Num: 14

Candidate Starts for Godines_33:

(7, 32547), (Start: 13 @32688 has 5 MA's), (Start: 14 @32691 has 14 MA's), (25, 32760), (36, 32829), (41, 32859), (44, 32871), (45, 32877), (46, 32880), (48, 32889), (58, 32928), (61, 32937), (63, 32949), (75, 33006), (80, 33027), (84, 33042), (97, 33087), (100, 33102), (109, 33147), (127, 33216), (135, 33243), (143, 33267), (151, 33312), (156, 33333), (159, 33357), (167, 33432), (171, 33462), (179, 33522), (181, 33534), (183, 33552), (200, 33654), (223, 33765), (225, 33783), (231, 33834), (234, 33870),

Gene: GreaseLightnin_22 Start: 21355, Stop: 22509, Start Num: 17

Candidate Starts for GreaseLightnin_22:

(3, 21118), (5, 21160), (6, 21190), (8, 21220), (9, 21229), (10, 21280), (12, 21334), (Start: 17 @21355 has 129 MA's), (26, 21436), (Start: 35 @21484 has 1 MA's), (47, 21544), (51, 21553), (54, 21568), (59, 21592), (65, 21616), (67, 21628), (84, 21703), (86, 21712), (92, 21736), (100, 21766), (135, 21850), (136, 21853), (143, 21874), (165, 22033), (176, 22123), (179, 22132), (183, 22162), (190, 22183), (235, 22486),

Gene: Halena_21 Start: 21699, Stop: 22871, Start Num: 17

Candidate Starts for Halena_21:

(Start: 14 @21696 has 14 MA's), (Start: 17 @21699 has 129 MA's), (Start: 35 @21825 has 1 MA's), (43, 21867), (45, 21879), (46, 21882), (55, 21915), (57, 21927), (68, 21975), (71, 21993), (80, 22029), (84, 22044), (99, 22095), (104, 22125), (114, 22167), (121, 22191), (130, 22227), (132, 22233), (141, 22260), (153, 22278), (167, 22371), (168, 22374), (178, 22458), (201, 22596), (204, 22614), (221, 22698),

Gene: Halfpint_32 Start: 32038, Stop: 33240, Start Num: 17

Candidate Starts for Halfpint_32:

(Start: 17 @32038 has 129 MA's), (44, 32215), (46, 32224), (48, 32233), (58, 32272), (61, 32281), (65, 32299), (68, 32317), (71, 32335), (73, 32341), (76, 32353), (80, 32371), (84, 32386), (100, 32446), (109, 32491), (131, 32572), (140, 32599), (144, 32617), (148, 32635), (156, 32677), (171, 32806), (183, 32896), (200, 32998), (210, 33055), (213, 33064), (221, 33103), (229, 33175), (235, 33217),

Gene: Hangman_30 Start: 32602, Stop: 33759, Start Num: 17

Candidate Starts for Hangman_30:

(Start: 17 @32602 has 129 MA's), (29, 32695), (31, 32710), (34, 32725), (36, 32737), (39, 32755), (49, 32797), (70, 32896), (73, 32905), (78, 32923), (87, 32965), (88, 32971), (90, 32977), (92, 32983), (100, 33010), (101, 33019), (108, 33052), (118, 33085), (149, 33145), (155, 33175), (156, 33181), (158, 33202), (160, 33226), (166, 33280), (167, 33283), (190, 33427),

Gene: HarveySr_33 Start: 32202, Stop: 33404, Start Num: 17

Candidate Starts for HarveySr_33:

(Start: 17 @32202 has 129 MA's), (21, 32235), (44, 32379), (46, 32388), (48, 32397), (58, 32436), (61, 32445), (65, 32463), (68, 32481), (71, 32499), (73, 32505), (76, 32517), (80, 32535), (84, 32550), (92, 32583), (100, 32610), (109, 32655), (131, 32736), (140, 32763), (144, 32781), (148, 32799), (156, 32841), (171, 32970), (183, 33060), (200, 33162), (210, 33219), (213, 33228), (221, 33267), (229, 33339), (235, 33381),

Gene: Hashim76_35 Start: 31239, Stop: 32393, Start Num: 17

Candidate Starts for Hashim76_35:

(Start: 17 @31239 has 129 MA's), (31, 31356), (42, 31416), (47, 31437), (50, 31446), (58, 31485), (61, 31494), (70, 31545), (85, 31605), (93, 31632), (103, 31674), (109, 31704), (123, 31752), (152, 31854), (155, 31866), (166, 31941), (180, 32037), (184, 32067), (190, 32085), (192, 32121), (216, 32223),

Gene: Heath_29 Start: 32206, Stop: 33363, Start Num: 17

Candidate Starts for Heath_29:

(Start: 17 @32206 has 129 MA's), (29, 32299), (31, 32314), (34, 32329), (36, 32341), (39, 32359), (49, 32401), (70, 32500), (73, 32509), (78, 32527), (84, 32554), (87, 32569), (88, 32575), (90, 32581), (92, 32587), (100, 32614), (101, 32623), (108, 32656), (118, 32689), (139, 32707), (149, 32749), (155, 32779), (156, 32785), (158, 32806), (166, 32884), (167, 32887), (175, 32932), (190, 33031), (214, 33184),

Gene: Heathcliff_33 Start: 32184, Stop: 33386, Start Num: 17

Candidate Starts for Heathcliff_33:

(Start: 17 @32184 has 129 MA's), (21, 32217), (44, 32361), (46, 32370), (48, 32379), (58, 32418), (61, 32427), (65, 32445), (68, 32463), (71, 32481), (73, 32487), (76, 32499), (80, 32517), (84, 32532), (92, 32565), (100, 32592), (109, 32637), (131, 32718), (140, 32745), (144, 32763), (148, 32781), (156, 32823), (159, 32847), (167, 32922), (171, 32952), (179, 33012), (181, 33024), (183, 33042), (200, 33144), (221, 33249), (223, 33255), (225, 33273), (234, 33360),

Gene: Hydro_30 Start: 32619, Stop: 33776, Start Num: 17

Candidate Starts for Hydro_30:

(Start: 17 @32619 has 129 MA's), (29, 32712), (31, 32727), (34, 32742), (36, 32754), (39, 32772), (49, 32814), (70, 32913), (73, 32922), (78, 32940), (84, 32967), (87, 32982), (88, 32988), (90, 32994), (92, 33000), (100, 33027), (101, 33036), (108, 33069), (118, 33102), (149, 33162), (155, 33192), (156, 33198), (160, 33243), (166, 33297), (167, 33300), (190, 33444), (214, 33597),

Gene: Imvubu_25 Start: 28919, Stop: 30094, Start Num: 17

Candidate Starts for Imvubu_25:

(Start: 17 @28919 has 129 MA's), (28, 29009), (31, 29036), (Start: 35 @29057 has 1 MA's), (47, 29117), (50, 29126), (58, 29165), (61, 29174), (65, 29192), (70, 29225), (85, 29285), (103, 29354), (107, 29372), (113, 29399), (117, 29414), (122, 29426), (152, 29534), (203, 29858), (220, 29933), (224, 29954), (227, 29984), (235, 30071),

Gene: Indlovu_29 Start: 31250, Stop: 32386, Start Num: 17

Candidate Starts for Indlovu_29:

(11, 31217), (Start: 17 @31250 has 129 MA's), (31, 31367), (47, 31448), (52, 31463), (58, 31496), (61, 31505), (73, 31565), (80, 31595), (86, 31619), (115, 31736), (157, 31877), (175, 31985), (181, 32042),

Gene: JAMaL_30 Start: 32789, Stop: 33946, Start Num: 17

Candidate Starts for JAMaL_30:

(Start: 17 @32789 has 129 MA's), (29, 32882), (31, 32897), (34, 32912), (36, 32924), (39, 32942), (61, 33032), (70, 33083), (73, 33092), (74, 33098), (78, 33110), (84, 33137), (87, 33152), (88, 33158), (90, 33164), (100, 33197), (101, 33206), (108, 33239), (118, 33272), (155, 33362), (156, 33368), (166, 33467), (167, 33470), (190, 33614), (214, 33767),

Gene: Jackstina_30 Start: 32142, Stop: 33344, Start Num: 17

Candidate Starts for Jackstina_30:

(Start: 17 @32142 has 129 MA's), (21, 32175), (44, 32319), (46, 32328), (48, 32337), (58, 32376), (61, 32385), (65, 32403), (68, 32421), (71, 32439), (73, 32445), (76, 32457), (80, 32475), (84, 32490), (92, 32523), (100, 32550), (109, 32595), (131, 32676), (140, 32703), (144, 32721), (148, 32739), (156, 32781), (171, 32910), (183, 33000), (200, 33102), (210, 33159), (213, 33168), (221, 33207), (229, 33279), (235, 33321),

Gene: JaguarMi_30 Start: 32084, Stop: 33241, Start Num: 17

Candidate Starts for JaguarMi_30:

(Start: 17 @32084 has 129 MA's), (29, 32177), (31, 32192), (34, 32207), (36, 32219), (39, 32237), (44, 32261), (49, 32279), (53, 32294), (70, 32378), (73, 32387), (78, 32405), (87, 32447), (88, 32453), (90, 32459), (92, 32465), (100, 32492), (101, 32501), (108, 32534), (118, 32567), (149, 32627), (155, 32657), (156, 32663), (166, 32762), (167, 32765), (182, 32876), (190, 32909), (214, 33062), (218, 33086), (221, 33098),

Gene: Jamie19_21 Start: 19877, Stop: 21031, Start Num: 17

Candidate Starts for Jamie19_21:

(3, 19640), (5, 19682), (6, 19712), (8, 19742), (10, 19802), (12, 19856), (Start: 17 @19877 has 129 MA's), (26, 19958), (Start: 35 @20006 has 1 MA's), (47, 20066), (51, 20075), (54, 20090), (59, 20114), (65, 20138), (67, 20150), (84, 20225), (86, 20234), (92, 20258), (100, 20288), (135, 20372), (136, 20375), (143, 20396), (165, 20555), (176, 20645), (179, 20654), (183, 20684), (190, 20705), (235, 21008),

Gene: Jobypre_22 Start: 22247, Stop: 23464, Start Num: 17

Candidate Starts for Jobypre_22:

(Start: 17 @22247 has 129 MA's), (30, 22349), (33, 22361), (36, 22379), (38, 22388), (45, 22427), (55, 22463), (58, 22478), (60, 22484), (66, 22514), (67, 22517), (74, 22553), (78, 22565), (89, 22616), (90, 22619), (105, 22679), (112, 22706), (116, 22721), (118, 22727), (122, 22739), (138, 22799), (144, 22823), (156, 22883), (166, 22979), (172, 23012), (181, 23084), (185, 23108), (226, 23336), (228, 23348),

Gene: JoeDirt_21 Start: 21667, Stop: 22842, Start Num: 14

Candidate Starts for JoeDirt_21:

(Start: 14 @21667 has 14 MA's), (Start: 17 @21670 has 129 MA's), (Start: 35 @21796 has 1 MA's), (43, 21838), (45, 21850), (46, 21853), (55, 21886), (57, 21898), (68, 21946), (71, 21964), (80, 22000), (84, 22015), (99, 22066), (104, 22096), (114, 22138), (121, 22162), (130, 22198), (132, 22204), (141, 22231), (153, 22249), (167, 22342), (168, 22345), (178, 22429), (201, 22567), (204, 22585), (221, 22669),

Gene: Jubie_22 Start: 22248, Stop: 23465, Start Num: 17

Candidate Starts for Jubie_22:

(Start: 17 @22248 has 129 MA's), (30, 22350), (33, 22362), (36, 22380), (38, 22389), (45, 22428), (55, 22464), (58, 22479), (60, 22485), (66, 22515), (67, 22518), (74, 22554), (78, 22566), (89, 22617), (90, 22620), (105, 22680), (112, 22707), (116, 22722), (118, 22728), (122, 22740), (138, 22800), (144, 22824), (156, 22884), (166, 22980), (172, 23013), (181, 23085), (185, 23109), (226, 23337), (228, 23349),

Gene: Kamiyu_33 Start: 32188, Stop: 33390, Start Num: 17

Candidate Starts for Kamiyu_33:

(Start: 17 @32188 has 129 MA's), (21, 32221), (44, 32365), (46, 32374), (48, 32383), (58, 32422), (61, 32431), (65, 32449), (68, 32467), (71, 32485), (73, 32491), (76, 32503), (80, 32521), (84, 32536), (92, 32569), (100, 32596), (109, 32641), (131, 32722), (140, 32749), (144, 32767), (148, 32785), (156, 32827), (171, 32956), (174, 32965), (183, 33046), (200, 33148), (210, 33205), (213, 33214), (221, 33253), (229, 33325), (235, 33367),

Gene: Keziacharles14_32 Start: 24883, Stop: 26085, Start Num: 17

Candidate Starts for Keziacharles14_32:

(Start: 17 @24883 has 129 MA's), (41, 25045), (46, 25066), (63, 25135), (68, 25159), (82, 25219), (86, 25237), (89, 25252), (95, 25267), (107, 25321), (143, 25453), (145, 25468), (153, 25504), (165, 25612), (166, 25615), (169, 25642), (172, 25648), (190, 25759),

Gene: KingCyrus_34 Start: 25662, Stop: 26561, Start Num: 17

Candidate Starts for KingCyrus_34:

(Start: 17 @25662 has 129 MA's), (32, 25773), (54, 25875), (58, 25896), (71, 25959), (106, 26091), (170, 26373),

Gene: Kingsolomon_22 Start: 22247, Stop: 23464, Start Num: 17

Candidate Starts for Kingsolomon_22:

(Start: 17 @22247 has 129 MA's), (30, 22349), (33, 22361), (36, 22379), (38, 22388), (45, 22427), (55, 22463), (58, 22478), (60, 22484), (66, 22514), (67, 22517), (74, 22553), (78, 22565), (89, 22616), (90,

22619), (105, 22679), (112, 22706), (116, 22721), (118, 22727), (122, 22739), (138, 22799), (144, 22823), (156, 22883), (166, 22979), (172, 23012), (181, 23084), (185, 23108), (226, 23336), (228, 23348),

Gene: Knocker_33 Start: 33872, Stop: 35014, Start Num: 17

Candidate Starts for Knocker_33:

(Start: 17 @33872 has 129 MA's), (31, 33989), (36, 34016), (38, 34025), (42, 34049), (47, 34070), (50, 34079), (55, 34103), (58, 34118), (59, 34121), (61, 34127), (70, 34178), (73, 34187), (77, 34205), (80, 34217), (81, 34220), (86, 34241), (100, 34292), (103, 34307), (105, 34319), (111, 34343), (113, 34352), (122, 34379), (123, 34385), (144, 34445), (146, 34457), (152, 34487), (155, 34499), (166, 34574), (176, 34658), (180, 34670), (184, 34700), (190, 34718), (202, 34799), (207, 34826), (208, 34829), (211, 34838),

Gene: Koella_19 Start: 20229, Stop: 21383, Start Num: 17

Candidate Starts for Koella_19:

(Start: 13 @20226 has 5 MA's), (Start: 17 @20229 has 129 MA's), (26, 20310), (Start: 35 @20358 has 1 MA's), (47, 20418), (51, 20427), (54, 20442), (59, 20466), (65, 20490), (67, 20502), (84, 20577), (86, 20586), (92, 20610), (100, 20640), (135, 20724), (136, 20727), (143, 20748), (165, 20907), (176, 20997), (179, 21006), (183, 21036), (190, 21057), (235, 21360),

Gene: Kronus_32 Start: 32802, Stop: 34004, Start Num: 17

Candidate Starts for Kronus_32:

(Start: 17 @32802 has 129 MA's), (21, 32835), (44, 32979), (46, 32988), (48, 32997), (58, 33036), (61, 33045), (65, 33063), (68, 33081), (71, 33099), (73, 33105), (76, 33117), (80, 33135), (84, 33150), (92, 33183), (100, 33210), (109, 33255), (131, 33336), (140, 33363), (144, 33381), (148, 33399), (156, 33441), (159, 33465), (167, 33540), (171, 33570), (179, 33630), (181, 33642), (183, 33660), (199, 33759), (200, 33762), (221, 33867), (223, 33873), (225, 33891), (234, 33978),

Gene: Krypton555_22 Start: 22170, Stop: 23369, Start Num: 17

Candidate Starts for Krypton555_22:

(Start: 17 @22170 has 129 MA's), (30, 22272), (33, 22284), (36, 22302), (45, 22350), (56, 22395), (58, 22401), (66, 22437), (74, 22476), (76, 22482), (78, 22488), (87, 22530), (105, 22602), (118, 22650), (122, 22662), (123, 22668), (156, 22806), (161, 22851), (165, 22899), (172, 22935), (177, 22989), (181, 23007), (184, 23028), (209, 23178), (215, 23199), (232, 23307),

Gene: LastJedi_19 Start: 20260, Stop: 21414, Start Num: 17

Candidate Starts for LastJedi_19:

(Start: 13 @20257 has 5 MA's), (Start: 17 @20260 has 129 MA's), (26, 20341), (Start: 35 @20389 has 1 MA's), (47, 20449), (51, 20458), (54, 20473), (59, 20497), (65, 20521), (67, 20533), (84, 20608), (86, 20617), (92, 20641), (100, 20671), (135, 20755), (136, 20758), (143, 20779), (165, 20938), (176, 21028), (179, 21037), (183, 21067), (190, 21088), (235, 21391),

Gene: Laurie_33 Start: 32132, Stop: 33340, Start Num: 14

Candidate Starts for Laurie_33:

(Start: 13 @32129 has 5 MA's), (Start: 14 @32132 has 14 MA's), (25, 32201), (36, 32270), (41, 32300), (44, 32312), (45, 32318), (46, 32321), (48, 32330), (58, 32369), (61, 32378), (63, 32390), (75, 32447), (78, 32456), (80, 32468), (82, 32474), (84, 32483), (97, 32528), (100, 32543), (109, 32588), (127, 32657), (132, 32672), (135, 32684), (143, 32708), (152, 32756), (154, 32762), (156, 32774), (159, 32798), (167, 32873), (171, 32903), (179, 32963), (181, 32975), (183, 32993), (199, 33092), (200, 33095), (221, 33200), (223, 33206), (229, 33272), (231, 33275),

Gene: LeBron_21 Start: 21711, Stop: 22886, Start Num: 14

Candidate Starts for LeBron_21:

(Start: 14 @21711 has 14 MA's), (Start: 17 @21714 has 129 MA's), (Start: 35 @21840 has 1 MA's), (43, 21882), (45, 21894), (46, 21897), (55, 21930), (57, 21942), (68, 21990), (71, 22008), (80, 22044), (84, 22059), (99, 22110), (104, 22140), (114, 22182), (121, 22206), (130, 22242), (132, 22248), (141, 22275), (153, 22293), (167, 22386), (168, 22389), (178, 22473), (201, 22611), (204, 22629), (221, 22713),

Gene: LestyG_33 Start: 32223, Stop: 33425, Start Num: 17

Candidate Starts for LestyG_33:

(Start: 17 @32223 has 129 MA's), (21, 32256), (44, 32400), (46, 32409), (48, 32418), (58, 32457), (61, 32466), (65, 32484), (68, 32502), (71, 32520), (73, 32526), (76, 32538), (80, 32556), (84, 32571), (92, 32604), (100, 32631), (109, 32676), (131, 32757), (140, 32784), (144, 32802), (148, 32820), (156, 32862), (159, 32886), (167, 32961), (171, 32991), (179, 33051), (181, 33063), (183, 33081), (200, 33183), (221, 33288), (223, 33294), (225, 33312), (234, 33399),

Gene: Lolalove_30 Start: 32616, Stop: 33773, Start Num: 17

Candidate Starts for Lolalove_30:

(Start: 17 @32616 has 129 MA's), (29, 32709), (31, 32724), (34, 32739), (36, 32751), (39, 32769), (70, 32910), (73, 32919), (78, 32937), (84, 32964), (87, 32979), (88, 32985), (90, 32991), (92, 32997), (100, 33024), (101, 33033), (108, 33066), (118, 33099), (148, 33153), (149, 33159), (155, 33189), (156, 33195), (158, 33216), (160, 33240), (166, 33294), (167, 33297), (190, 33441), (214, 33594),

Gene: Lolly9_22 Start: 22045, Stop: 23244, Start Num: 17

Candidate Starts for Lolly9_22:

(Start: 17 @22045 has 129 MA's), (20, 22072), (33, 22159), (36, 22177), (38, 22186), (45, 22225), (58, 22276), (59, 22279), (68, 22321), (74, 22351), (76, 22357), (78, 22363), (87, 22405), (118, 22525), (122, 22537), (123, 22543), (156, 22681), (165, 22774), (172, 22810), (177, 22864), (181, 22882), (215, 23074), (232, 23182),

Gene: Luchador_34 Start: 25731, Stop: 26627, Start Num: 17

Candidate Starts for Luchador_34:

(Start: 17 @25731 has 129 MA's), (44, 25905), (54, 25941), (58, 25962), (69, 26016), (71, 26025), (106, 26157), (179, 26493), (187, 26523),

Gene: Lumos_22 Start: 22244, Stop: 23461, Start Num: 17

Candidate Starts for Lumos_22:

(Start: 17 @22244 has 129 MA's), (30, 22346), (33, 22358), (36, 22376), (38, 22385), (45, 22424), (55, 22460), (58, 22475), (60, 22481), (66, 22511), (67, 22514), (74, 22550), (78, 22562), (89, 22613), (90, 22616), (105, 22676), (112, 22703), (116, 22718), (118, 22724), (122, 22736), (138, 22796), (144, 22820), (156, 22880), (166, 22976), (172, 23009), (181, 23081), (185, 23105), (226, 23333), (228, 23345),

Gene: MAckerman_21 Start: 21688, Stop: 22860, Start Num: 17

Candidate Starts for MAckerman_21:

(Start: 14 @21685 has 14 MA's), (Start: 17 @21688 has 129 MA's), (Start: 35 @21814 has 1 MA's), (43, 21856), (45, 21868), (46, 21871), (55, 21904), (57, 21916), (68, 21964), (71, 21982), (80, 22018), (84, 22033), (99, 22084), (104, 22114), (114, 22156), (121, 22180), (130, 22216), (132, 22222), (141, 22249), (153, 22267), (167, 22360), (168, 22363), (178, 22447), (201, 22585), (204, 22603), (221, 22687),

Gene: Magpie_29 Start: 32448, Stop: 33605, Start Num: 17

Candidate Starts for Magpie_29:

(Start: 17 @32448 has 129 MA's), (29, 32541), (31, 32556), (34, 32571), (36, 32583), (39, 32601), (61, 32691), (70, 32742), (73, 32751), (74, 32757), (78, 32769), (84, 32796), (87, 32811), (88, 32817), (90,

32823), (100, 32856), (101, 32865), (108, 32898), (118, 32931), (155, 33021), (156, 33027), (166, 33126), (167, 33129), (190, 33273), (214, 33426),

Gene: Marley1013_33 Start: 33001, Stop: 34203, Start Num: 17

Candidate Starts for Marley1013_33:

(Start: 17 @33001 has 129 MA's), (21, 33034), (44, 33178), (46, 33187), (48, 33196), (58, 33235), (61, 33244), (65, 33262), (68, 33280), (71, 33298), (73, 33304), (76, 33316), (80, 33334), (84, 33349), (92, 33382), (100, 33409), (109, 33454), (131, 33535), (140, 33562), (144, 33580), (148, 33598), (156, 33640), (159, 33664), (167, 33739), (171, 33769), (179, 33829), (181, 33841), (183, 33859), (200, 33961), (221, 34066), (223, 34072), (225, 34090), (234, 34177),

Gene: Megabear_25 Start: 29324, Stop: 30529, Start Num: 14

Candidate Starts for Megabear_25:

(Start: 13 @29321 has 5 MA's), (Start: 14 @29324 has 14 MA's), (25, 29393), (36, 29462), (41, 29492), (44, 29504), (45, 29510), (46, 29513), (48, 29522), (58, 29561), (61, 29570), (63, 29582), (75, 29639), (78, 29648), (80, 29660), (84, 29675), (97, 29720), (100, 29735), (109, 29780), (127, 29849), (135, 29876), (143, 29900), (151, 29945), (156, 29966), (159, 29990), (167, 30065), (171, 30095), (179, 30155), (181, 30167), (183, 30185), (200, 30287), (223, 30398), (225, 30416), (231, 30467), (234, 30503),

Gene: MilanaBonita_20 Start: 20281, Stop: 21492, Start Num: 17

Candidate Starts for MilanaBonita_20:

(Start: 17 @20281 has 129 MA's), (18, 20305), (26, 20362), (Start: 35 @20410 has 1 MA's), (47, 20470), (51, 20479), (54, 20494), (59, 20518), (65, 20542), (67, 20554), (74, 20590), (84, 20629), (86, 20638), (92, 20662), (100, 20692), (119, 20776), (120, 20779), (124, 20800), (135, 20836), (136, 20839), (143, 20860), (150, 20902), (165, 21019), (171, 21055), (173, 21061), (190, 21166), (200, 21247),

Gene: MiniLon_22 Start: 22045, Stop: 23244, Start Num: 17

Candidate Starts for MiniLon_22:

(Start: 17 @22045 has 129 MA's), (20, 22072), (33, 22159), (36, 22177), (38, 22186), (45, 22225), (58, 22276), (59, 22279), (68, 22321), (74, 22351), (76, 22357), (78, 22363), (87, 22405), (118, 22525), (122, 22537), (123, 22543), (156, 22681), (165, 22774), (172, 22810), (177, 22864), (181, 22882), (215, 23074), (232, 23182),

Gene: MiniMac_22 Start: 22046, Stop: 23245, Start Num: 17

Candidate Starts for MiniMac_22:

(Start: 17 @22046 has 129 MA's), (20, 22073), (33, 22160), (36, 22178), (45, 22226), (58, 22277), (59, 22280), (68, 22322), (74, 22352), (76, 22358), (78, 22364), (87, 22406), (118, 22526), (122, 22538), (123, 22544), (156, 22682), (165, 22775), (172, 22811), (177, 22865), (181, 22883), (215, 23075), (232, 23183),

Gene: Mithril_30 Start: 32620, Stop: 33777, Start Num: 17

Candidate Starts for Mithril_30:

(Start: 17 @32620 has 129 MA's), (29, 32713), (31, 32728), (34, 32743), (36, 32755), (39, 32773), (49, 32815), (70, 32914), (73, 32923), (78, 32941), (84, 32968), (87, 32983), (88, 32989), (90, 32995), (92, 33001), (100, 33028), (101, 33037), (108, 33070), (118, 33103), (149, 33163), (155, 33193), (156, 33199), (160, 33244), (166, 33298), (167, 33301), (190, 33445), (214, 33598),

Gene: MmasiCarm_33 Start: 32205, Stop: 33407, Start Num: 17

Candidate Starts for MmasiCarm_33:

(Start: 17 @32205 has 129 MA's), (21, 32238), (44, 32382), (46, 32391), (48, 32400), (58, 32439), (61, 32448), (65, 32466), (75, 32517), (78, 32526), (80, 32538), (82, 32544), (84, 32553), (97, 32598),

(100, 32613), (109, 32658), (127, 32727), (132, 32742), (135, 32754), (143, 32778), (152, 32826), (154, 32832), (155, 32838), (156, 32844), (159, 32868), (167, 32943), (171, 32973), (179, 33033), (181, 33045), (183, 33063), (200, 33165), (221, 33270), (223, 33276), (225, 33294), (234, 33381),

Gene: Moostard_22 Start: 22250, Stop: 23467, Start Num: 17

Candidate Starts for Moostard_22:

(Start: 17 @22250 has 129 MA's), (30, 22352), (33, 22364), (36, 22382), (38, 22391), (45, 22430), (55, 22466), (58, 22481), (60, 22487), (66, 22517), (67, 22520), (74, 22556), (78, 22568), (89, 22619), (90, 22622), (105, 22682), (112, 22709), (116, 22724), (118, 22730), (122, 22742), (138, 22802), (144, 22826), (156, 22886), (166, 22982), (172, 23015), (181, 23087), (185, 23111), (190, 23126), (226, 23339), (228, 23351),

Gene: Mortcellus_32 Start: 32857, Stop: 34059, Start Num: 17

Candidate Starts for Mortcellus_32:

(Start: 17 @32857 has 129 MA's), (21, 32890), (44, 33034), (46, 33043), (48, 33052), (58, 33091), (61, 33100), (65, 33118), (68, 33136), (71, 33154), (73, 33160), (76, 33172), (84, 33205), (97, 33250), (100, 33265), (109, 33310), (131, 33391), (140, 33418), (144, 33436), (148, 33454), (156, 33496), (159, 33520), (167, 33595), (171, 33625), (179, 33685), (181, 33697), (183, 33715), (200, 33817), (221, 33922), (223, 33928), (225, 33946), (234, 34033),

Gene: Morty007_33 Start: 33001, Stop: 34203, Start Num: 17

Candidate Starts for Morty007_33:

(Start: 17 @33001 has 129 MA's), (21, 33034), (44, 33178), (46, 33187), (48, 33196), (58, 33235), (61, 33244), (65, 33262), (68, 33280), (71, 33298), (73, 33304), (76, 33316), (80, 33334), (84, 33349), (92, 33382), (100, 33409), (109, 33454), (131, 33535), (140, 33562), (144, 33580), (148, 33598), (156, 33640), (159, 33664), (167, 33739), (171, 33769), (179, 33829), (181, 33841), (183, 33859), (200, 33961), (221, 34066), (223, 34072), (225, 34090), (234, 34177),

Gene: Ms6_19 Start: 19730, Stop: 20884, Start Num: 17

Candidate Starts for Ms6_19:

(3, 19493), (5, 19535), (6, 19565), (8, 19595), (10, 19655), (12, 19709), (Start: 17 @19730 has 129 MA's), (26, 19811), (Start: 35 @19859 has 1 MA's), (47, 19919), (51, 19928), (54, 19943), (59, 19967), (65, 19991), (67, 20003), (84, 20078), (86, 20087), (92, 20111), (100, 20141), (135, 20225), (136, 20228), (143, 20249), (165, 20408), (176, 20498), (179, 20507), (183, 20537), (190, 20558), (235, 20861),

Gene: MsGreen_22 Start: 22247, Stop: 23464, Start Num: 17

Candidate Starts for MsGreen_22:

(Start: 17 @22247 has 129 MA's), (30, 22349), (33, 22361), (36, 22379), (38, 22388), (45, 22427), (55, 22463), (58, 22478), (60, 22484), (66, 22514), (67, 22517), (74, 22553), (78, 22565), (89, 22616), (90, 22619), (105, 22679), (112, 22706), (116, 22721), (118, 22727), (122, 22739), (138, 22799), (144, 22823), (156, 22883), (166, 22979), (172, 23012), (181, 23084), (185, 23108), (226, 23336), (228, 23348),

Gene: Mudslide_30 Start: 32852, Stop: 34009, Start Num: 17

Candidate Starts for Mudslide_30:

(Start: 17 @32852 has 129 MA's), (29, 32945), (31, 32960), (34, 32975), (36, 32987), (39, 33005), (49, 33047), (61, 33095), (70, 33146), (73, 33155), (78, 33173), (84, 33200), (87, 33215), (88, 33221), (90, 33227), (92, 33233), (100, 33260), (101, 33269), (108, 33302), (118, 33335), (155, 33425), (156, 33431), (160, 33476), (166, 33530), (167, 33533), (190, 33677), (214, 33830),

Gene: Nanao_29 Start: 31577, Stop: 32734, Start Num: 17

Candidate Starts for Nanao_29:

(Start: 17 @31577 has 129 MA's), (29, 31670), (31, 31685), (34, 31700), (36, 31712), (39, 31730), (61, 31820), (70, 31871), (73, 31880), (74, 31886), (78, 31898), (84, 31925), (87, 31940), (88, 31946), (90, 31952), (100, 31985), (101, 31994), (108, 32027), (118, 32060), (155, 32150), (156, 32156), (166, 32255), (167, 32258), (190, 32402), (214, 32555),

Gene: Nanosmite_35 Start: 27723, Stop: 28895, Start Num: 17

Candidate Starts for Nanosmite_35:

(Start: 13 @27717 has 5 MA's), (Start: 17 @27723 has 129 MA's), (30, 27828), (31, 27831), (36, 27858), (65, 27984), (76, 28038), (78, 28044), (79, 28053), (96, 28113), (102, 28146), (109, 28176), (111, 28182), (126, 28242), (140, 28284), (189, 28539), (195, 28593), (212, 28689), (217, 28716), (219, 28722),

Gene: Nenae_21 Start: 19877, Stop: 21031, Start Num: 17

Candidate Starts for Nenae_21:

(3, 19640), (5, 19682), (6, 19712), (8, 19742), (10, 19802), (12, 19856), (Start: 17 @19877 has 129 MA's), (24, 19940), (26, 19958), (Start: 35 @20006 has 1 MA's), (47, 20066), (51, 20075), (54, 20090), (59, 20114), (65, 20138), (67, 20150), (84, 20225), (86, 20234), (92, 20258), (100, 20288), (108, 20333), (109, 20336), (111, 20342), (135, 20372), (136, 20375), (143, 20396), (165, 20555), (176, 20645), (179, 20654), (183, 20684), (190, 20705), (235, 21008),

Gene: Neos5_33 Start: 33020, Stop: 34222, Start Num: 17

Candidate Starts for Neos5_33:

(Start: 17 @33020 has 129 MA's), (21, 33053), (44, 33197), (46, 33206), (48, 33215), (58, 33254), (61, 33263), (65, 33281), (68, 33299), (71, 33317), (73, 33323), (76, 33335), (80, 33353), (84, 33368), (92, 33401), (100, 33428), (109, 33473), (131, 33554), (140, 33581), (144, 33599), (148, 33617), (156, 33659), (159, 33683), (167, 33758), (171, 33788), (179, 33848), (181, 33860), (183, 33878), (200, 33980), (221, 34085), (223, 34091), (225, 34109), (234, 34196),

Gene: Nicholas_22 Start: 22247, Stop: 23464, Start Num: 17

Candidate Starts for Nicholas_22:

(Start: 17 @22247 has 129 MA's), (30, 22349), (33, 22361), (36, 22379), (38, 22388), (45, 22427), (55, 22463), (58, 22478), (60, 22484), (66, 22514), (67, 22517), (74, 22553), (78, 22565), (89, 22616), (90, 22619), (105, 22679), (112, 22706), (116, 22721), (118, 22727), (122, 22739), (138, 22799), (144, 22823), (156, 22883), (166, 22979), (172, 23012), (181, 23084), (185, 23108), (226, 23336), (228, 23348),

Gene: Nigel_28 Start: 31491, Stop: 32651, Start Num: 17

Candidate Starts for Nigel_28:

(2, 30987), (Start: 17 @31491 has 129 MA's), (19, 31518), (31, 31602), (34, 31617), (36, 31629), (39, 31647), (70, 31788), (73, 31797), (78, 31815), (84, 31842), (87, 31857), (88, 31863), (90, 31869), (97, 31887), (100, 31902), (101, 31911), (108, 31944), (118, 31977), (137, 31989), (139, 31995), (155, 32067), (156, 32073), (164, 32163), (166, 32172), (190, 32319), (214, 32472),

Gene: Nozo_33 Start: 32981, Stop: 34183, Start Num: 17

Candidate Starts for Nozo_33:

(Start: 17 @32981 has 129 MA's), (21, 33014), (44, 33158), (46, 33167), (48, 33176), (58, 33215), (61, 33224), (65, 33242), (68, 33260), (71, 33278), (73, 33284), (76, 33296), (80, 33314), (84, 33329), (92, 33362), (100, 33389), (109, 33434), (131, 33515), (140, 33542), (144, 33560), (148, 33578), (156, 33620), (159, 33644), (167, 33719), (171, 33749), (179, 33809), (181, 33821), (183, 33839), (200, 33941), (221, 34046), (223, 34052), (225, 34070), (234, 34157),

Gene: Obutu_33 Start: 32205, Stop: 33407, Start Num: 17

Candidate Starts for Obutu_33:

(Start: 17 @32205 has 129 MA's), (21, 32238), (44, 32382), (46, 32391), (48, 32400), (58, 32439), (61, 32448), (65, 32466), (75, 32517), (78, 32526), (80, 32538), (82, 32544), (84, 32553), (97, 32598), (100, 32613), (109, 32658), (127, 32727), (132, 32742), (135, 32754), (143, 32778), (152, 32826), (154, 32832), (155, 32838), (156, 32844), (159, 32868), (167, 32943), (171, 32973), (179, 33033), (181, 33045), (183, 33063), (199, 33162), (200, 33165), (221, 33270), (223, 33276), (225, 33294), (234, 33381),

Gene: OhShagHennessey_21 Start: 21653, Stop: 22825, Start Num: 17

Candidate Starts for OhShagHennessey_21:

(Start: 14 @21650 has 14 MA's), (Start: 17 @21653 has 129 MA's), (Start: 35 @21779 has 1 MA's), (43, 21821), (45, 21833), (46, 21836), (55, 21869), (57, 21881), (68, 21929), (71, 21947), (80, 21983), (84, 21998), (99, 22049), (104, 22079), (114, 22121), (121, 22145), (130, 22181), (132, 22187), (141, 22214), (153, 22232), (167, 22325), (168, 22328), (178, 22412), (201, 22550), (204, 22568), (221, 22652),

Gene: OrangeOswald_33 Start: 32222, Stop: 33424, Start Num: 17

Candidate Starts for OrangeOswald_33:

(Start: 17 @32222 has 129 MA's), (21, 32255), (44, 32399), (46, 32408), (48, 32417), (58, 32456), (61, 32465), (65, 32483), (68, 32501), (71, 32519), (73, 32525), (76, 32537), (80, 32555), (84, 32570), (92, 32603), (100, 32630), (109, 32675), (131, 32756), (140, 32783), (144, 32801), (148, 32819), (156, 32861), (159, 32885), (167, 32960), (171, 32990), (179, 33050), (181, 33062), (183, 33080), (200, 33182), (221, 33287), (223, 33293), (225, 33311), (234, 33398),

Gene: P3MA_25 Start: 20906, Stop: 22060, Start Num: 17

Candidate Starts for P3MA_25:

(Start: 17 @20906 has 129 MA's), (36, 21038), (37, 21041), (45, 21086), (46, 21089), (48, 21098), (55, 21122), (63, 21158), (64, 21161), (65, 21164), (78, 21224), (84, 21251), (94, 21284), (99, 21302), (122, 21398), (123, 21404), (125, 21419), (140, 21464), (163, 21554), (164, 21572), (191, 21728), (198, 21794), (233, 21992),

Gene: PR_25 Start: 29919, Stop: 31133, Start Num: 13

Candidate Starts for PR_25:

(Start: 13 @29919 has 5 MA's), (Start: 17 @29925 has 129 MA's), (22, 29964), (31, 30039), (32, 30042), (38, 30075), (41, 30096), (44, 30108), (45, 30114), (48, 30126), (58, 30165), (59, 30168), (75, 30243), (80, 30264), (100, 30339), (109, 30384), (118, 30414), (129, 30459), (132, 30468), (133, 30474), (135, 30480), (143, 30504), (151, 30549), (156, 30570), (159, 30594), (167, 30669), (171, 30699), (179, 30759), (181, 30771), (183, 30789), (199, 30888), (200, 30891), (221, 30996), (223, 31002), (229, 31068), (231, 31071), (234, 31107),

Gene: PenguinLover67_33 Start: 33434, Stop: 34648, Start Num: 17

Candidate Starts for PenguinLover67_33:

(Start: 17 @33434 has 129 MA's), (Start: 35 @33572 has 1 MA's), (47, 33632), (58, 33680), (59, 33683), (67, 33719), (70, 33740), (80, 33779), (86, 33803), (98, 33842), (105, 33881), (110, 33902), (115, 33920), (116, 33923), (166, 34136), (167, 34139), (175, 34184), (217, 34478),

Gene: Phaedrus_31 Start: 32138, Stop: 33340, Start Num: 17

Candidate Starts for Phaedrus_31:

(Start: 17 @32138 has 129 MA's), (21, 32171), (44, 32315), (46, 32324), (48, 32333), (58, 32372), (61, 32381), (65, 32399), (68, 32417), (71, 32435), (73, 32441), (76, 32453), (80, 32471), (84, 32486), (92, 32519), (100, 32546), (109, 32591), (131, 32672), (140, 32699), (144, 32717), (148, 32735), (156, 32777), (171, 32906), (183, 32996), (200, 33098), (210, 33155), (213, 33164), (221, 33203), (229, 33275), (235, 33317),

Gene: PhancyPhin_21 Start: 19874, Stop: 21028, Start Num: 17

Candidate Starts for PhancyPhin_21:

(3, 19637), (5, 19679), (6, 19709), (8, 19739), (10, 19799), (12, 19853), (Start: 17 @19874 has 129 MA's), (24, 19937), (26, 19955), (Start: 35 @20003 has 1 MA's), (47, 20063), (51, 20072), (54, 20087), (59, 20111), (65, 20135), (67, 20147), (84, 20222), (86, 20231), (92, 20255), (100, 20285), (108, 20330), (109, 20333), (111, 20339), (135, 20369), (136, 20372), (143, 20393), (165, 20552), (176, 20642), (179, 20651), (183, 20681), (190, 20702), (235, 21005),

Gene: Philly_32 Start: 32073, Stop: 33275, Start Num: 17

Candidate Starts for Philly_32:

(Start: 17 @32073 has 129 MA's), (44, 32250), (46, 32259), (48, 32268), (58, 32307), (61, 32316), (65, 32334), (68, 32352), (71, 32370), (73, 32376), (76, 32388), (80, 32406), (84, 32421), (92, 32454), (100, 32481), (109, 32526), (131, 32607), (140, 32634), (144, 32652), (148, 32670), (156, 32712), (159, 32736), (167, 32811), (171, 32841), (179, 32901), (181, 32913), (183, 32931), (200, 33033), (221, 33138), (223, 33144), (225, 33162), (234, 33249),

Gene: Phloss_21 Start: 20203, Stop: 21360, Start Num: 16

Candidate Starts for Phloss_21:

(Start: 16 @20203 has 3 MA's), (26, 20284), (Start: 35 @20332 has 1 MA's), (47, 20392), (51, 20401), (54, 20416), (59, 20440), (65, 20464), (67, 20476), (80, 20536), (84, 20551), (86, 20560), (92, 20584), (97, 20599), (100, 20614), (135, 20698), (136, 20701), (143, 20722), (147, 20743), (149, 20752), (150, 20764), (153, 20773), (190, 21034), (197, 21103), (235, 21337),

Gene: Phlyer_33 Start: 32957, Stop: 34159, Start Num: 17

Candidate Starts for Phlyer_33:

(Start: 17 @32957 has 129 MA's), (21, 32990), (44, 33134), (46, 33143), (48, 33152), (58, 33191), (61, 33200), (65, 33218), (68, 33236), (71, 33254), (73, 33260), (76, 33272), (80, 33290), (84, 33305), (92, 33338), (100, 33365), (109, 33410), (131, 33491), (140, 33518), (144, 33536), (148, 33554), (156, 33596), (171, 33725), (183, 33815), (200, 33917), (210, 33974), (213, 33983), (221, 34022), (229, 34094), (235, 34136),

Gene: Pippy_19 Start: 20253, Stop: 21410, Start Num: 14

Candidate Starts for Pippy_19:

(Start: 13 @20250 has 5 MA's), (Start: 14 @20253 has 14 MA's), (26, 20334), (Start: 35 @20382 has 1 MA's), (47, 20442), (51, 20451), (54, 20466), (59, 20490), (65, 20514), (67, 20526), (80, 20586), (84, 20601), (86, 20610), (92, 20634), (100, 20664), (135, 20748), (136, 20751), (143, 20772), (147, 20793), (149, 20802), (150, 20814), (153, 20823), (190, 21084), (197, 21153), (235, 21387),

Gene: Poster_29 Start: 31578, Stop: 32735, Start Num: 17

Candidate Starts for Poster_29:

(Start: 17 @31578 has 129 MA's), (29, 31671), (31, 31686), (34, 31701), (36, 31713), (39, 31731), (61, 31821), (70, 31872), (73, 31881), (74, 31887), (78, 31899), (84, 31926), (87, 31941), (88, 31947), (90, 31953), (100, 31986), (101, 31995), (108, 32028), (118, 32061), (155, 32151), (156, 32157), (166, 32256), (167, 32259), (190, 32403), (214, 32556),

Gene: Prince_31 Start: 32761, Stop: 33918, Start Num: 17

Candidate Starts for Prince_31:

(Start: 17 @32761 has 129 MA's), (29, 32854), (31, 32869), (34, 32884), (36, 32896), (39, 32914), (49, 32956), (61, 33004), (70, 33055), (73, 33064), (78, 33082), (84, 33109), (87, 33124), (88, 33130), (90, 33136), (92, 33142), (100, 33169), (101, 33178), (108, 33211), (118, 33244), (149, 33304), (155, 33334), (156, 33340), (160, 33385), (166, 33439), (167, 33442), (190, 33586), (214, 33739),

Gene: Purgamenstris_21 Start: 19877, Stop: 21031, Start Num: 17

Candidate Starts for Purgamenstris_21:

(3, 19640), (5, 19682), (6, 19712), (8, 19742), (10, 19802), (12, 19856), (Start: 17 @19877 has 129 MA's), (24, 19940), (26, 19958), (Start: 35 @20006 has 1 MA's), (47, 20066), (51, 20075), (54, 20090), (59, 20114), (65, 20138), (67, 20150), (84, 20225), (86, 20234), (92, 20258), (100, 20288), (108, 20333), (109, 20336), (111, 20342), (135, 20372), (136, 20375), (143, 20396), (165, 20555), (176, 20645), (179, 20654), (183, 20684), (190, 20705), (235, 21008),

Gene: QueenHazel_22 Start: 21423, Stop: 22634, Start Num: 17

Candidate Starts for QueenHazel_22:

(3, 21186), (5, 21228), (8, 21288), (10, 21348), (12, 21402), (Start: 17 @21423 has 129 MA's), (26, 21504), (Start: 35 @21552 has 1 MA's), (47, 21612), (51, 21621), (54, 21636), (59, 21660), (65, 21684), (67, 21696), (74, 21732), (84, 21771), (86, 21780), (92, 21804), (100, 21834), (119, 21918), (120, 21921), (124, 21942), (135, 21978), (136, 21981), (143, 22002), (150, 22044), (165, 22161), (171, 22197), (173, 22203), (190, 22308), (200, 22389),

Gene: Quesadilla_32 Start: 33335, Stop: 34516, Start Num: 17

Candidate Starts for Quesadilla_32:

(11, 33302), (Start: 17 @33335 has 129 MA's), (31, 33452), (34, 33467), (Start: 35 @33473 has 1 MA's), (47, 33533), (58, 33581), (64, 33605), (73, 33650), (83, 33689), (85, 33701), (87, 33710), (93, 33728), (103, 33770), (106, 33785), (116, 33824), (117, 33830), (134, 33875), (136, 33881), (148, 33926), (168, 34028),

Gene: Qyrzula_31 Start: 32776, Stop: 33981, Start Num: 14

Candidate Starts for Qyrzula_31:

(7, 32632), (Start: 13 @32773 has 5 MA's), (Start: 14 @32776 has 14 MA's), (25, 32845), (36, 32914), (41, 32944), (44, 32956), (45, 32962), (46, 32965), (48, 32974), (58, 33013), (61, 33022), (63, 33034), (75, 33091), (80, 33112), (84, 33127), (97, 33172), (100, 33187), (109, 33232), (127, 33301), (135, 33328), (143, 33352), (151, 33397), (156, 33418), (159, 33442), (167, 33517), (171, 33547), (179, 33607), (181, 33619), (183, 33637), (200, 33739), (221, 33844), (223, 33850), (225, 33868), (231, 33919), (234, 33955),

Gene: RagingRooster_33 Start: 32223, Stop: 33425, Start Num: 17

Candidate Starts for RagingRooster_33:

(Start: 17 @32223 has 129 MA's), (21, 32256), (44, 32400), (46, 32409), (48, 32418), (58, 32457), (61, 32466), (65, 32484), (68, 32502), (71, 32520), (73, 32526), (76, 32538), (80, 32556), (84, 32571), (92, 32604), (100, 32631), (109, 32676), (131, 32757), (140, 32784), (144, 32802), (148, 32820), (156, 32862), (159, 32886), (167, 32961), (171, 32991), (179, 33051), (181, 33063), (183, 33081), (200, 33183), (221, 33288), (223, 33294), (225, 33312), (234, 33399),

Gene: RawrgerThat_30 Start: 32607, Stop: 33764, Start Num: 17

Candidate Starts for RawrgerThat_30:

(Start: 17 @32607 has 129 MA's), (29, 32700), (31, 32715), (34, 32730), (36, 32742), (39, 32760), (49, 32802), (70, 32901), (73, 32910), (78, 32928), (84, 32955), (87, 32970), (88, 32976), (90, 32982), (92, 32988), (100, 33015), (101, 33024), (108, 33057), (118, 33090), (155, 33180), (156, 33186), (166, 33285), (167, 33288), (190, 33432), (214, 33585),

Gene: Redi_21 Start: 19877, Stop: 21031, Start Num: 17

Candidate Starts for Redi_21:

(3, 19640), (5, 19682), (6, 19712), (8, 19742), (10, 19802), (12, 19856), (Start: 17 @19877 has 129 MA's), (24, 19940), (26, 19958), (Start: 35 @20006 has 1 MA's), (47, 20066), (51, 20075), (54, 20090), (59, 20114), (65, 20138), (67, 20150), (84, 20225), (86, 20234), (92, 20258), (100, 20288), (108, 20333), (109, 20336), (111, 20342), (135, 20372), (136, 20375), (143, 20396), (165, 20555), (176, 20645), (179, 20654), (183, 20684), (190, 20705), (235, 21008),

Gene: Rita1961_33 Start: 32206, Stop: 33408, Start Num: 17

Candidate Starts for Rita1961_33:

(Start: 17 @32206 has 129 MA's), (21, 32239), (44, 32383), (46, 32392), (48, 32401), (58, 32440), (61, 32449), (65, 32467), (75, 32518), (78, 32527), (80, 32539), (82, 32545), (84, 32554), (97, 32599), (100, 32614), (109, 32659), (127, 32728), (132, 32743), (135, 32755), (143, 32779), (152, 32827), (154, 32833), (155, 32839), (156, 32845), (159, 32869), (167, 32944), (171, 32974), (179, 33034), (181, 33046), (183, 33064), (199, 33163), (200, 33166), (221, 33271), (223, 33277), (225, 33295), (234, 33382),

Gene: RomaT_33 Start: 32996, Stop: 34198, Start Num: 17

Candidate Starts for RomaT_33:

(Start: 17 @32996 has 129 MA's), (21, 33029), (44, 33173), (46, 33182), (48, 33191), (58, 33230), (61, 33239), (65, 33257), (68, 33275), (71, 33293), (73, 33299), (76, 33311), (80, 33329), (84, 33344), (92, 33377), (100, 33404), (109, 33449), (131, 33530), (140, 33557), (144, 33575), (148, 33593), (156, 33635), (159, 33659), (167, 33734), (171, 33764), (179, 33824), (181, 33836), (183, 33854), (200, 33956), (221, 34061), (223, 34067), (225, 34085), (234, 34172),

Gene: Rose5_21 Start: 21688, Stop: 22860, Start Num: 17

Candidate Starts for Rose5_21:

(Start: 14 @21685 has 14 MA's), (Start: 17 @21688 has 129 MA's), (Start: 35 @21814 has 1 MA's), (43, 21856), (45, 21868), (46, 21871), (55, 21904), (57, 21916), (68, 21964), (71, 21982), (80, 22018), (84, 22033), (99, 22084), (104, 22114), (114, 22156), (121, 22180), (130, 22216), (132, 22222), (141, 22249), (153, 22267), (167, 22360), (168, 22363), (178, 22447), (201, 22585), (204, 22603), (221, 22687),

Gene: Saguaro_32 Start: 33436, Stop: 34548, Start Num: 17

Candidate Starts for Saguaro_32:

(4, 33223), (11, 33406), (Start: 17 @33436 has 129 MA's), (31, 33550), (36, 33577), (42, 33610), (45, 33625), (47, 33631), (58, 33679), (61, 33688), (75, 33757), (80, 33778), (86, 33802), (87, 33808), (105, 33883), (107, 33889), (111, 33907), (113, 33916), (116, 33925), (117, 33931), (162, 34051), (200, 34303), (222, 34411), (224, 34417),

Gene: Samty_22 Start: 22250, Stop: 23467, Start Num: 17

Candidate Starts for Samty_22:

(Start: 17 @22250 has 129 MA's), (30, 22352), (33, 22364), (36, 22382), (38, 22391), (45, 22430), (55, 22466), (58, 22481), (60, 22487), (66, 22517), (67, 22520), (74, 22556), (78, 22568), (89, 22619), (90, 22622), (105, 22682), (112, 22709), (116, 22724), (118, 22730), (122, 22742), (138, 22802), (144, 22826), (156, 22886), (166, 22982), (172, 23015), (181, 23087), (185, 23111), (190, 23126), (226, 23339), (228, 23351),

Gene: Sarma624_20 Start: 20090, Stop: 21244, Start Num: 17

Candidate Starts for Sarma624_20:

(Start: 13 @20087 has 5 MA's), (Start: 17 @20090 has 129 MA's), (Start: 35 @20219 has 1 MA's), (40, 20249), (47, 20279), (51, 20288), (54, 20303), (59, 20327), (65, 20351), (67, 20363), (84, 20438), (86, 20447), (92, 20471), (100, 20501), (135, 20585), (136, 20588), (143, 20609), (176, 20858), (179, 20867), (183, 20897), (190, 20918), (197, 20987), (235, 21221),

Gene: ShrimpFriedEgg_21 Start: 19877, Stop: 21031, Start Num: 17

Candidate Starts for ShrimpFriedEgg_21:

(3, 19640), (5, 19682), (6, 19712), (8, 19742), (10, 19802), (12, 19856), (Start: 17 @19877 has 129 MA's), (24, 19940), (26, 19958), (Start: 35 @20006 has 1 MA's), (47, 20066), (51, 20075), (54, 20090), (59, 20114), (65, 20138), (67, 20150), (84, 20225), (86, 20234), (92, 20258), (100, 20288), (108,

20333), (109, 20336), (111, 20342), (135, 20372), (136, 20375), (143, 20396), (165, 20555), (176, 20645), (179, 20654), (183, 20684), (190, 20705), (235, 21008),

Gene: Silverleaf_21 Start: 21688, Stop: 22860, Start Num: 17

Candidate Starts for Silverleaf_21:

(Start: 14 @21685 has 14 MA's), (Start: 17 @21688 has 129 MA's), (Start: 35 @21814 has 1 MA's), (43, 21856), (45, 21868), (46, 21871), (55, 21904), (57, 21916), (68, 21964), (71, 21982), (80, 22018), (84, 22033), (99, 22084), (104, 22114), (114, 22156), (121, 22180), (130, 22216), (132, 22222), (141, 22249), (153, 22267), (167, 22360), (168, 22363), (178, 22447), (201, 22585), (204, 22603), (221, 22687),

Gene: SlippinJimmy_33 Start: 32984, Stop: 34186, Start Num: 17

Candidate Starts for SlippinJimmy_33:

(Start: 17 @32984 has 129 MA's), (21, 33017), (44, 33161), (46, 33170), (48, 33179), (58, 33218), (61, 33227), (65, 33245), (68, 33263), (71, 33281), (73, 33287), (76, 33299), (80, 33317), (84, 33332), (92, 33365), (100, 33392), (109, 33437), (131, 33518), (140, 33545), (144, 33563), (148, 33581), (156, 33623), (171, 33752), (174, 33761), (183, 33842), (200, 33944), (210, 34001), (213, 34010), (221, 34049), (229, 34121), (235, 34163),

Gene: Snekmaggedon_21 Start: 20006, Stop: 21031, Start Num: 35

Candidate Starts for Snekmaggedon_21:

(3, 19640), (5, 19682), (6, 19712), (8, 19742), (10, 19802), (12, 19856), (Start: 17 @19877 has 129 MA's), (26, 19958), (Start: 35 @20006 has 1 MA's), (47, 20066), (51, 20075), (54, 20090), (59, 20114), (65, 20138), (67, 20150), (84, 20225), (86, 20234), (92, 20258), (100, 20288), (135, 20372), (136, 20375), (143, 20396), (165, 20555), (176, 20645), (179, 20654), (183, 20684), (190, 20705), (235, 21008),

Gene: Snenia_22 Start: 22248, Stop: 23465, Start Num: 17

Candidate Starts for Snenia_22:

(Start: 17 @22248 has 129 MA's), (30, 22350), (33, 22362), (36, 22380), (38, 22389), (45, 22428), (55, 22464), (58, 22479), (60, 22485), (66, 22515), (67, 22518), (74, 22554), (78, 22566), (89, 22617), (90, 22620), (105, 22680), (112, 22707), (116, 22722), (118, 22728), (122, 22740), (138, 22800), (144, 22824), (156, 22884), (166, 22980), (172, 23013), (181, 23085), (185, 23109), (226, 23337), (228, 23349),

Gene: SororFago_32 Start: 24455, Stop: 25399, Start Num: 17

Candidate Starts for SororFago_32:

(Start: 17 @24455 has 129 MA's), (34, 24578), (40, 24614), (58, 24689), (71, 24752), (73, 24758), (80, 24791), (107, 24893),

Gene: SpongeBob_21 Start: 19877, Stop: 21031, Start Num: 17

Candidate Starts for SpongeBob_21:

(3, 19640), (5, 19682), (6, 19712), (8, 19742), (10, 19802), (12, 19856), (Start: 17 @19877 has 129 MA's), (26, 19958), (Start: 35 @20006 has 1 MA's), (47, 20066), (51, 20075), (54, 20090), (59, 20114), (65, 20138), (67, 20150), (84, 20225), (86, 20234), (92, 20258), (100, 20288), (135, 20372), (136, 20375), (143, 20396), (165, 20555), (176, 20645), (179, 20654), (183, 20684), (190, 20705), (235, 21008),

Gene: Squirty_20 Start: 19922, Stop: 21079, Start Num: 16

Candidate Starts for Squirty_20:

(Start: 16 @19922 has 3 MA's), (26, 20003), (31, 20030), (Start: 35 @20051 has 1 MA's), (47, 20111), (54, 20135), (55, 20141), (59, 20159), (62, 20171), (65, 20183), (67, 20195), (74, 20231), (80, 20255), (84, 20270), (86, 20279), (92, 20303), (97, 20318), (100, 20333), (135, 20417), (136, 20420), (143,

20441), (147, 20462), (149, 20471), (150, 20483), (153, 20492), (190, 20753), (197, 20822), (235, 21056),

Gene: Stinger_28 Start: 31182, Stop: 32339, Start Num: 17

Candidate Starts for Stinger_28:

(1, 30657), (2, 30678), (Start: 17 @31182 has 129 MA's), (19, 31209), (31, 31290), (34, 31305), (36, 31317), (39, 31335), (65, 31443), (70, 31476), (73, 31485), (78, 31503), (84, 31530), (87, 31545), (88, 31551), (90, 31557), (99, 31581), (100, 31590), (101, 31599), (108, 31632), (118, 31665), (137, 31677), (139, 31683), (152, 31743), (155, 31755), (156, 31761), (162, 31827), (164, 31851), (166, 31860), (190, 32007), (214, 32160),

Gene: SynergyX_33 Start: 32223, Stop: 33425, Start Num: 17

Candidate Starts for SynergyX_33:

(Start: 17 @32223 has 129 MA's), (21, 32256), (44, 32400), (46, 32409), (48, 32418), (58, 32457), (61, 32466), (65, 32484), (68, 32502), (71, 32520), (73, 32526), (76, 32538), (80, 32556), (84, 32571), (92, 32604), (100, 32631), (109, 32676), (131, 32757), (140, 32784), (144, 32802), (148, 32820), (156, 32862), (159, 32886), (167, 32961), (171, 32991), (179, 33051), (181, 33063), (183, 33081), (200, 33183), (221, 33288), (223, 33294), (225, 33312), (234, 33399),

Gene: Taptic_25 Start: 29324, Stop: 30529, Start Num: 14

Candidate Starts for Taptic_25:

(Start: 13 @29321 has 5 MA's), (Start: 14 @29324 has 14 MA's), (25, 29393), (36, 29462), (41, 29492), (44, 29504), (45, 29510), (46, 29513), (48, 29522), (58, 29561), (61, 29570), (63, 29582), (75, 29639), (78, 29648), (80, 29660), (84, 29675), (97, 29720), (100, 29735), (109, 29780), (127, 29849), (135, 29876), (143, 29900), (151, 29945), (156, 29966), (159, 29990), (167, 30065), (171, 30095), (179, 30155), (181, 30167), (183, 30185), (200, 30287), (223, 30398), (225, 30416), (231, 30467), (234, 30503),

Gene: Thonko_30 Start: 29614, Stop: 30771, Start Num: 17

Candidate Starts for Thonko_30:

(11, 29584), (Start: 17 @29614 has 129 MA's), (31, 29728), (55, 29845), (58, 29860), (61, 29869), (65, 29887), (68, 29905), (80, 29959), (103, 30049), (107, 30067), (111, 30085), (164, 30319), (166, 30328), (174, 30370), (186, 30460), (190, 30472),

Gene: Tydolla_33 Start: 32957, Stop: 34159, Start Num: 17

Candidate Starts for Tydolla_33:

(Start: 17 @32957 has 129 MA's), (21, 32990), (44, 33134), (46, 33143), (48, 33152), (58, 33191), (61, 33200), (65, 33218), (75, 33269), (78, 33278), (80, 33290), (82, 33296), (84, 33305), (97, 33350), (100, 33365), (109, 33410), (120, 33449), (127, 33479), (132, 33494), (135, 33506), (143, 33530), (151, 33575), (156, 33596), (159, 33620), (167, 33695), (171, 33725), (179, 33785), (181, 33797), (183, 33815), (200, 33917), (221, 34022), (223, 34028), (225, 34046), (234, 34133),

Gene: Tyson_21 Start: 21688, Stop: 22860, Start Num: 17

Candidate Starts for Tyson_21:

(Start: 14 @21685 has 14 MA's), (Start: 17 @21688 has 129 MA's), (Start: 35 @21814 has 1 MA's), (43, 21856), (45, 21868), (46, 21871), (55, 21904), (57, 21916), (68, 21964), (71, 21982), (80, 22018), (84, 22033), (99, 22084), (104, 22114), (114, 22156), (121, 22180), (130, 22216), (132, 22222), (141, 22249), (153, 22267), (167, 22360), (168, 22363), (178, 22447), (201, 22585), (204, 22603), (221, 22687),

Gene: UPIE_21 Start: 21683, Stop: 22858, Start Num: 14

Candidate Starts for UPIE_21:

(Start: 14 @21683 has 14 MA's), (Start: 17 @21686 has 129 MA's), (Start: 35 @21812 has 1 MA's), (43, 21854), (45, 21866), (46, 21869), (55, 21902), (57, 21914), (68, 21962), (71, 21980), (80, 22016), (84, 22031), (99, 22082), (104, 22112), (114, 22154), (121, 22178), (130, 22214), (132, 22220), (141, 22247), (153, 22265), (167, 22358), (168, 22361), (178, 22445), (201, 22583), (204, 22601), (221, 22685),

Gene: Vanisoa_31 Start: 24621, Stop: 25826, Start Num: 15

Candidate Starts for Vanisoa_31:

(Start: 15 @24621 has 2 MA's), (41, 24786), (44, 24798), (45, 24804), (46, 24807), (69, 24909), (78, 24942), (97, 25014), (101, 25038), (107, 25062), (128, 25146), (165, 25353), (166, 25356), (172, 25389), (190, 25500), (215, 25656),

Gene: Velveteen_20 Start: 20087, Stop: 21244, Start Num: 13

Candidate Starts for Velveteen_20:

(Start: 13 @20087 has 5 MA's), (Start: 17 @20090 has 129 MA's), (Start: 35 @20219 has 1 MA's), (40, 20249), (47, 20279), (51, 20288), (54, 20303), (59, 20327), (65, 20351), (67, 20363), (84, 20438), (86, 20447), (92, 20471), (100, 20501), (135, 20585), (136, 20588), (143, 20609), (176, 20858), (179, 20867), (183, 20897), (190, 20918), (197, 20987), (235, 21221),

Gene: Vincenzo_31 Start: 33326, Stop: 34483, Start Num: 17

Candidate Starts for Vincenzo_31:

(Start: 17 @33326 has 129 MA's), (29, 33419), (31, 33434), (34, 33449), (36, 33461), (39, 33479), (61, 33569), (70, 33620), (73, 33629), (78, 33647), (84, 33674), (87, 33689), (88, 33695), (90, 33701), (100, 33734), (101, 33743), (108, 33776), (118, 33809), (137, 33821), (145, 33854), (149, 33869), (155, 33899), (156, 33905), (162, 33971), (164, 33995), (166, 34004), (190, 34151), (214, 34304),

Gene: VioletZ_30 Start: 32678, Stop: 33835, Start Num: 17

Candidate Starts for VioletZ_30:

(Start: 17 @32678 has 129 MA's), (29, 32771), (31, 32786), (34, 32801), (36, 32813), (39, 32831), (49, 32873), (61, 32921), (70, 32972), (73, 32981), (78, 32999), (84, 33026), (87, 33041), (88, 33047), (90, 33053), (92, 33059), (100, 33086), (101, 33095), (108, 33128), (118, 33161), (149, 33221), (155, 33251), (156, 33257), (160, 33302), (166, 33356), (167, 33359), (190, 33503), (214, 33656),

Gene: Waleliano_30 Start: 32605, Stop: 33762, Start Num: 17

Candidate Starts for Waleliano_30:

(Start: 17 @32605 has 129 MA's), (29, 32698), (31, 32713), (34, 32728), (36, 32740), (39, 32758), (49, 32800), (70, 32899), (73, 32908), (78, 32926), (84, 32953), (87, 32968), (88, 32974), (90, 32980), (92, 32986), (100, 33013), (101, 33022), (108, 33055), (118, 33088), (149, 33148), (155, 33178), (156, 33184), (158, 33205), (160, 33229), (166, 33283), (167, 33286), (214, 33583),

Gene: Wamburgxpress_21 Start: 21701, Stop: 22873, Start Num: 17

Candidate Starts for Wamburgxpress_21:

(Start: 14 @21698 has 14 MA's), (Start: 17 @21701 has 129 MA's), (Start: 35 @21827 has 1 MA's), (43, 21869), (45, 21881), (46, 21884), (55, 21917), (57, 21929), (68, 21977), (71, 21995), (80, 22031), (84, 22046), (99, 22097), (104, 22127), (114, 22169), (121, 22193), (130, 22229), (132, 22235), (141, 22262), (153, 22280), (167, 22373), (168, 22376), (178, 22460), (201, 22598), (204, 22616), (221, 22700),

Gene: Whirlwind_23 Start: 22004, Stop: 23203, Start Num: 17

Candidate Starts for Whirlwind_23:

(Start: 17 @22004 has 129 MA's), (36, 22136), (45, 22184), (56, 22229), (58, 22235), (66, 22271), (74, 22310), (76, 22316), (78, 22322), (87, 22364), (105, 22436), (118, 22484), (122, 22496), (123, 22502), (142, 22571), (156, 22640), (165, 22733), (172, 22769), (177, 22823), (181, 22841), (215, 23033),

(232, 23141),

Gene: Wyatt2_21 Start: 21688, Stop: 22860, Start Num: 17

Candidate Starts for Wyatt2_21:

(Start: 14 @21685 has 14 MA's), (Start: 17 @21688 has 129 MA's), (Start: 35 @21814 has 1 MA's), (43, 21856), (45, 21868), (46, 21871), (55, 21904), (57, 21916), (68, 21964), (71, 21982), (80, 22018), (84, 22033), (99, 22084), (104, 22114), (114, 22156), (121, 22180), (130, 22216), (132, 22222), (141, 22249), (153, 22267), (167, 22360), (168, 22363), (178, 22447), (201, 22585), (204, 22603), (221, 22687),

Gene: Xula_21 Start: 20946, Stop: 22157, Start Num: 17

Candidate Starts for Xula_21:

(Start: 17 @20946 has 129 MA's), (18, 20970), (26, 21027), (Start: 35 @21075 has 1 MA's), (47, 21135), (51, 21144), (54, 21159), (59, 21183), (65, 21207), (67, 21219), (74, 21255), (84, 21294), (86, 21303), (92, 21327), (100, 21357), (119, 21441), (120, 21444), (124, 21465), (135, 21501), (136, 21504), (143, 21525), (150, 21567), (165, 21684), (171, 21720), (173, 21726), (190, 21831), (200, 21912),

Gene: Yahalom_33 Start: 32232, Stop: 33434, Start Num: 17

Candidate Starts for Yahalom_33:

(Start: 17 @32232 has 129 MA's), (21, 32265), (44, 32409), (46, 32418), (48, 32427), (58, 32466), (61, 32475), (65, 32493), (68, 32511), (71, 32529), (73, 32535), (76, 32547), (80, 32565), (84, 32580), (92, 32613), (100, 32640), (109, 32685), (131, 32766), (140, 32793), (144, 32811), (148, 32829), (156, 32871), (171, 33000), (183, 33090), (200, 33192), (210, 33249), (213, 33258), (221, 33297), (229, 33369), (235, 33411),

Gene: Yinz_33 Start: 32255, Stop: 33457, Start Num: 17

Candidate Starts for Yinz_33:

(Start: 17 @32255 has 129 MA's), (21, 32288), (44, 32432), (46, 32441), (48, 32450), (58, 32489), (61, 32498), (65, 32516), (68, 32534), (71, 32552), (73, 32558), (76, 32570), (80, 32588), (84, 32603), (92, 32636), (100, 32663), (109, 32708), (131, 32789), (140, 32816), (144, 32834), (148, 32852), (156, 32894), (171, 33023), (174, 33032), (183, 33113), (200, 33215), (210, 33272), (213, 33281), (221, 33320), (229, 33392), (235, 33434),

Gene: Zaria_21 Start: 21702, Stop: 22874, Start Num: 17

Candidate Starts for Zaria_21:

(Start: 14 @21699 has 14 MA's), (Start: 17 @21702 has 129 MA's), (Start: 35 @21828 has 1 MA's), (43, 21870), (45, 21882), (46, 21885), (55, 21918), (57, 21930), (60, 21939), (68, 21978), (71, 21996), (80, 22032), (84, 22047), (99, 22098), (104, 22128), (114, 22170), (121, 22194), (130, 22230), (132, 22236), (141, 22263), (153, 22281), (167, 22374), (168, 22377), (178, 22461), (201, 22599), (204, 22617), (221, 22701),

Gene: Zemanar_31 Start: 32608, Stop: 33765, Start Num: 17

Candidate Starts for Zemanar_31:

(Start: 17 @32608 has 129 MA's), (29, 32701), (31, 32716), (34, 32731), (36, 32743), (39, 32761), (49, 32803), (70, 32902), (73, 32911), (78, 32929), (84, 32956), (87, 32971), (88, 32977), (90, 32983), (92, 32989), (100, 33016), (101, 33025), (108, 33058), (118, 33091), (149, 33151), (155, 33181), (156, 33187), (160, 33232), (166, 33286), (167, 33289), (190, 33433), (214, 33586),

Gene: Zenteno07_35 Start: 31167, Stop: 32306, Start Num: 14

Candidate Starts for Zenteno07_35:

(4, 30954), (Start: 14 @31167 has 14 MA's), (23, 31209), (27, 31257), (31, 31287), (Start: 35 @31308 has 1 MA's), (47, 31368), (58, 31416), (59, 31419), (61, 31425), (66, 31452), (70, 31476), (73, 31485),

(85, 31536), (115, 31656), (120, 31674), (167, 31860), (175, 31905), (186, 31989), (190, 32001), (193, 32040), (206, 32118),