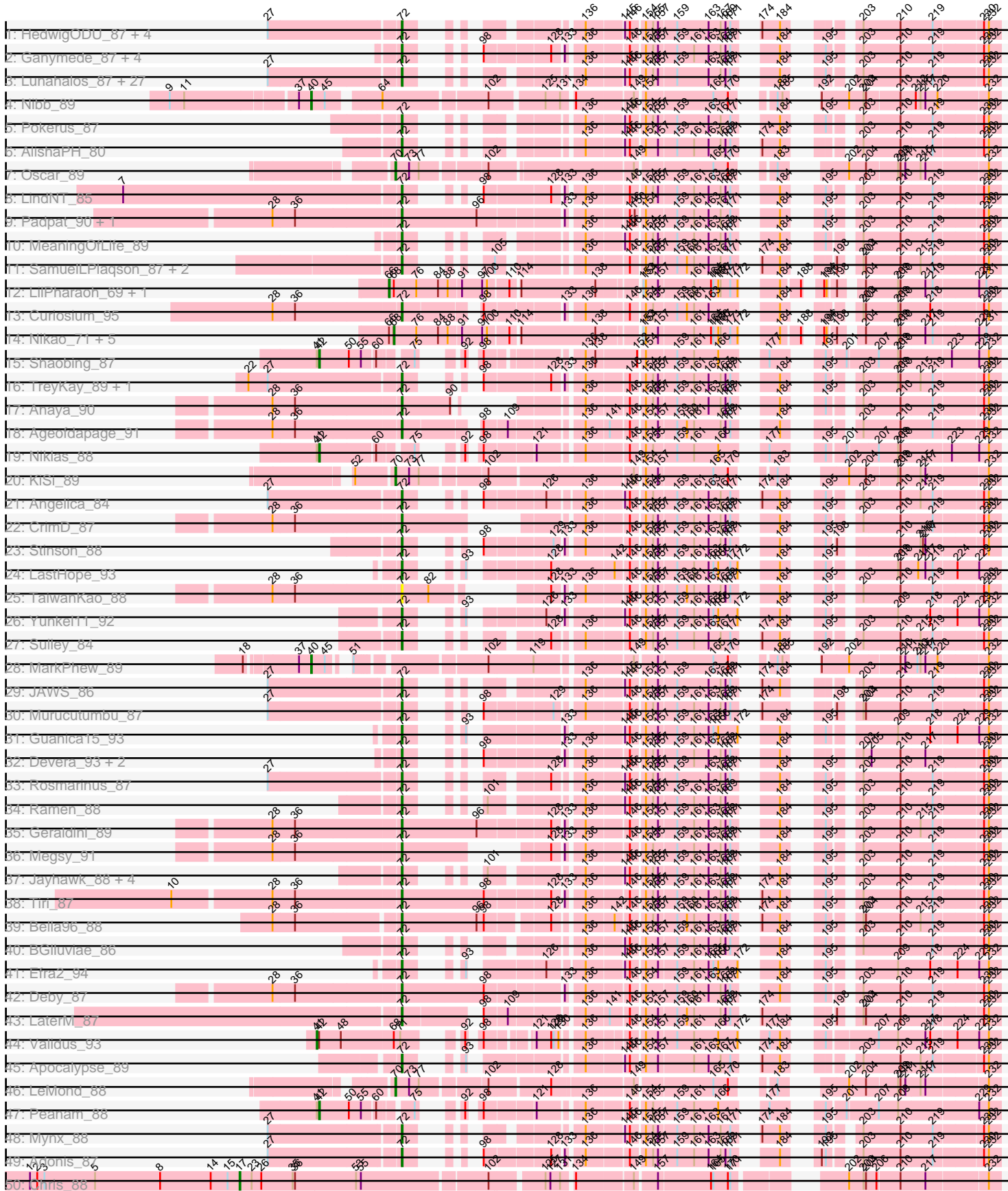
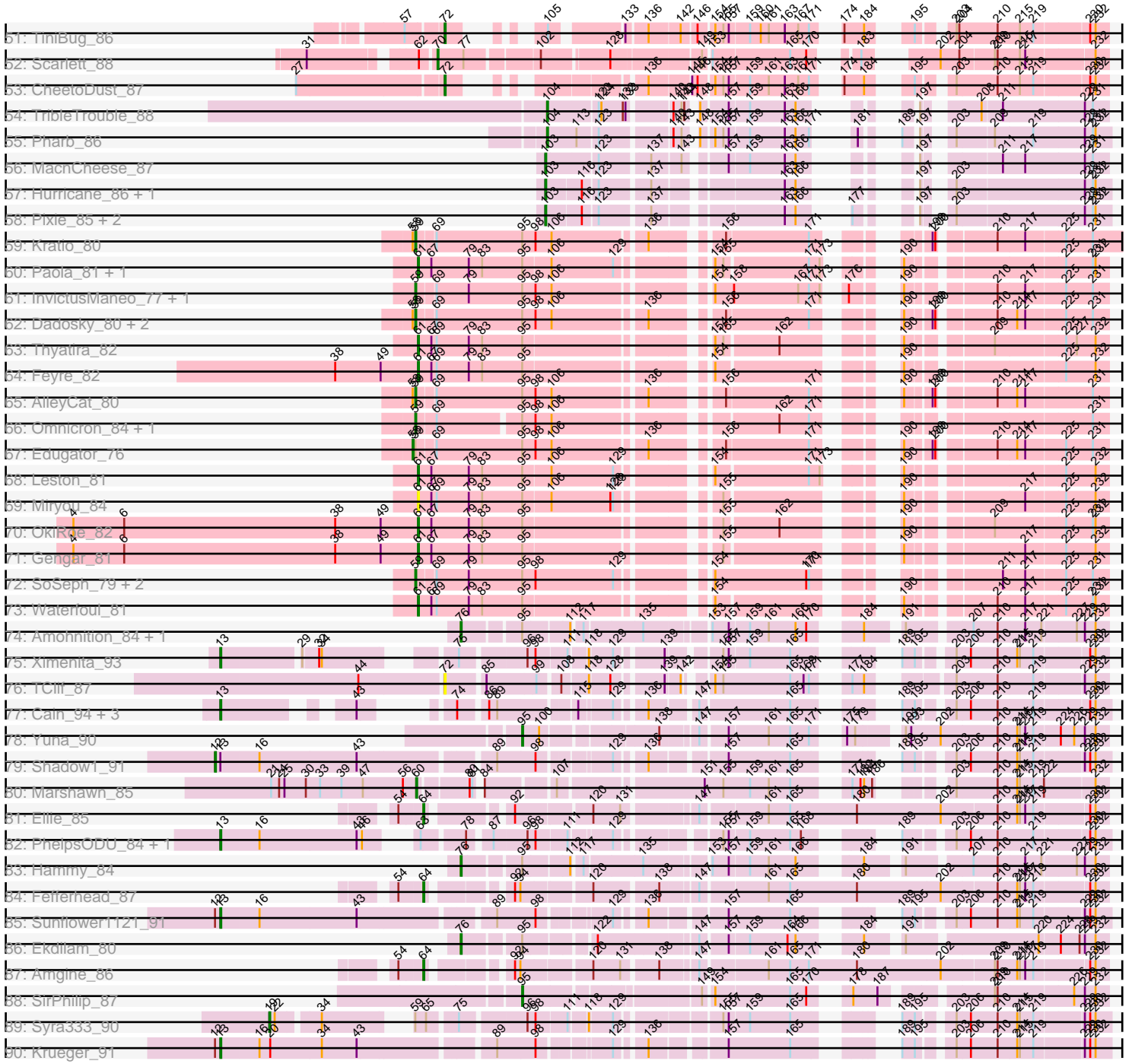


Pham 171253



Pham 171253



Note: Tracks are now grouped by subcluster and scaled. Switching in subcluster is indicated by changes in track color. Track scale is now set by default to display the region 30 bp upstream of start 1 to 30 bp downstream of the last possible start. If this default region is judged to be packed too tightly with annotated starts, the track will be further scaled to only show that region of the ORF with annotated starts. This action will be indicated by adding "Zoomed" to the title. For starts, yellow indicates the location of called starts comprised solely of Glimmer/GeneMark auto-annotations, green indicates the location of called starts with at least 1 manual gene annotation.

Pham 171253 Report

This analysis was run 07/10/24 on database version 566.

Pham number 171253 has 156 members, 6 are drafts.

Phages represented in each track:

- Track 1 : HedwigODU_87, Adephagia_86, ActinUp_88, Zabiza_83, Veliki_88
- Track 2 : Ganymede_87, Beezoo_90, QuincyRose_85, YoureAdopted_86, Zavala_89
- Track 3 : Lunahalos_87, ShiaSurprise_88, BEEST_87, Homura_86, Llorens_86, Spock_87, Capricorn_87, Tachez_87, Twitch_87, Piatt_86, Durfee_87, Peel_87, Dalmuri_87, Topper_87, Hyperbowlee_86, CaseJules_89, Jarvi_87, Jeckyll_87, Padfoot_87, CREW_86, BaghaKamala_86, Joy99_88, Boiiii_87, Belladonna_87, Atiba_88, Blizzard_87, Inky_87, Asayake_87
- Track 4 : Nibb_89
- Track 5 : Pokerus_87
- Track 6 : AlishaPH_80
- Track 7 : Oscar_89
- Track 8 : LindNT_85
- Track 9 : Padpat_90, Emerson_89
- Track 10 : MeaningOfLife_89
- Track 11 : SamuelLPlaqson_87, DrHayes_87, Urkel_87
- Track 12 : LilPharaoh_69, Binglebops_68
- Track 13 : Curiosium_95
- Track 14 : Nikao_71, SgtBeansprout_69, Nutello_68, Enkosi_70, Amelie_68, Mdavu_69
- Track 15 : Shaobing_87
- Track 16 : TreyKay_89, Prithvi_89
- Track 17 : Anaya_90
- Track 18 : Ageofdapage_91
- Track 19 : Niklas_88
- Track 20 : KiSi_89
- Track 21 : Angelica_84
- Track 22 : CrimD_87
- Track 23 : Stinson_88
- Track 24 : LastHope_93
- Track 25 : TaiwanKao_88
- Track 26 : Yunkel11_92
- Track 27 : Sulley_84
- Track 28 : MarkPhew_89
- Track 29 : JAWS_86
- Track 30 : Murucutumbu_87
- Track 31 : Guanica15_93

- Track 32 : Devera_93, Illumine_91, Dole_90
- Track 33 : Rosmarinus_87
- Track 34 : Ramen_88
- Track 35 : Geraldini_89
- Track 36 : Megsy_91
- Track 37 : Jayhawk_88, Rapunzel97_89, BarrelRoll_87, TruffulaTree_89, Slimphazie_89
- Track 38 : Tiri_87
- Track 39 : Bella96_88
- Track 40 : BGIlluviae_86
- Track 41 : Efra2_94
- Track 42 : Deby_87
- Track 43 : LaterM_87
- Track 44 : Validus_93
- Track 45 : Apocalypse_89
- Track 46 : LeMond_88
- Track 47 : Peanam_88
- Track 48 : Mynx_88
- Track 49 : Adonis_87
- Track 50 : Chris_88
- Track 51 : TiniBug_86
- Track 52 : Scarlett_88
- Track 53 : CheetoDust_87
- Track 54 : TribbleTrouble_88
- Track 55 : Pharb_86
- Track 56 : MacnCheese_87
- Track 57 : Hurricane_86, Keshu_88
- Track 58 : Pixie_85, TBond007_82, ShedlockHolmes_88
- Track 59 : Kratio_80
- Track 60 : Paola_81, Guillsminger_82
- Track 61 : InvictusManeo_77, Agent47_79
- Track 62 : Dadosky_80, Psycho_78, Larva_79
- Track 63 : Thyatira_82
- Track 64 : Feyre_82
- Track 65 : AlleyCat_80
- Track 66 : Omnicron_84, Rando14_81
- Track 67 : Edugator_76
- Track 68 : Leston_81
- Track 69 : Miryou_84
- Track 70 : OkiRoe_82
- Track 71 : Gengar_81
- Track 72 : SoSeph_79, Collard_77, Heftyboy_79
- Track 73 : Waterfoul_81
- Track 74 : Amohnition_84, DARTH_P_84
- Track 75 : Ximenita_93
- Track 76 : TClif_87
- Track 77 : Cain_94, Bryler_86, Phrank_94, Tierra_94
- Track 78 : Yuna_90
- Track 79 : Shadow1_91
- Track 80 : Marshawn_85
- Track 81 : Ellie_85
- Track 82 : PhelpsODU_84, Unicorn_94
- Track 83 : Hammy_84

- Track 84 : Fefferhead_87
- Track 85 : Sunflower1121_91
- Track 86 : Ekdilam_80
- Track 87 : Amgine_86
- Track 88 : SirPhilip_87
- Track 89 : Syra333_90
- Track 90 : Krueger_91

Summary of Final Annotations (See graph section above for start numbers):

The start number called the most often in the published annotations is 72, it was called in 81 of the 150 non-draft genes in the pham.

Genes that call this "Most Annotated" start:

- ActinUp_88, Adephagia_86, Adonis_87, Ageofdapage_91, AlishaPH_80, Anaya_90, Angelica_84, Apocalypse_89, Asayake_87, Atiba_88, BEEST_87, BGlluviae_86, BaghaKamala_86, BarrelRoll_87, Beezoo_90, Bella96_88, Belladonna_87, Blizzard_87, Boiiii_87, CREW_86, Capricorn_87, CaseJules_89, CheetoDust_87, CrimD_87, Curiosium_95, Dalmuri_87, Deby_87, Devera_93, Dole_90, DrHayes_87, Durfee_87, Efra2_94, Emerson_89, Ganymede_87, Geraldini_89, Guanica15_93, HedwigODU_87, Homura_86, Hyperbowlee_86, Illumine_91, Inky_87, JAWS_86, Jarvi_87, Jayhawk_88, Jeckyll_87, Joy99_88, LastHope_93, LaterM_87, LindNT_85, Llorens_86, Lunahalos_87, MeaningOfLife_89, Megsy_91, Murucutumbu_87, Mynx_88, Padfoot_87, Padpat_90, Peel_87, Piatt_86, Pokerus_87, Prithvi_89, QuincyRose_85, Ramen_88, Rapunzel97_89, Rosmarinus_87, SamuelLPlaqson_87, ShiaSurprise_88, Slimphazie_89, Spock_87, Stinson_88, Sulley_84, TClif_87, Tachez_87, TaiwanKao_88, TiniBug_86, Tiri_87, Topper_87, TreyKay_89, TruffulaTree_89, Twitch_87, Urkel_87, Veliki_88, YoureAdopted_86, Yunkel11_92, Zabiza_83, Zavala_89,

Genes that have the "Most Annotated" start but do not call it:

-

Genes that do not have the "Most Annotated" start:

- Agent47_79, AlleyCat_80, Amelie_68, Amgine_86, Amohnition_84, Biglebops_68, Bryler_86, Cain_94, Chris_88, Collard_77, Dadosky_80, DarthP_84, Edugator_76, Ekdilam_80, Ellie_85, Enkosi_70, Fefferhead_87, Feyre_82, Gengar_81, Guillsminger_82, Hammy_84, Heftyboy_79, Hurricane_86, InvictusManeo_77, Keshu_88, KiSi_89, Kratio_80, Krueger_91, Larva_79, LeMond_88, Leston_81, LilPharaoh_69, MacnCheese_87, MarkPhew_89, Marshawn_85, Mdavu_69, Miryou_84, Nibb_89, Nikao_71, Niklas_88, Nutello_68, OkiRoe_82, Omnicron_84, Oscar_89, Paola_81, Peanam_88, Pharb_86, PhelpsODU_84, Phrank_94, Pixie_85, Psycho_78, Rando14_81, Scarlett_88, SgtBeansprout_69, Shadow1_91, Shaobing_87, ShedlockHolmes_88, SirPhilip_87, SoSeph_79, Sunflower1121_91, Syra333_90, TBond007_82, Thyatira_82, Tierra_94, TripleTrouble_88, Unicorn_94, Validus_93, Waterfoul_81, Ximenita_93, Yuna_90,

Summary by start number:

Start 12:

- Found in 3 of 156 (1.9%) of genes in pham
- Manual Annotations of this start: 1 of 150
- Called 33.3% of time when present
- Phage (with cluster) where this start called: Shadow1_91 (K6),

Start 13:

- Found in 10 of 156 (6.4%) of genes in pham
- Manual Annotations of this start: 9 of 150
- Called 90.0% of time when present
- Phage (with cluster) where this start called: Bryler_86 (K6), Cain_94 (K6), Krueger_91 (K6), PhelpsODU_84 (K6), Phrank_94 (K6), Sunflower1121_91 (K6), Tierra_94 (K6), Unicorn_94 (K6), Ximenita_93 (K6),

Start 17:

- Found in 1 of 156 (0.6%) of genes in pham
- Manual Annotations of this start: 1 of 150
- Called 100.0% of time when present
- Phage (with cluster) where this start called: Chris_88 (K1),

Start 19:

- Found in 1 of 156 (0.6%) of genes in pham
- Manual Annotations of this start: 1 of 150
- Called 100.0% of time when present
- Phage (with cluster) where this start called: Syra333_90 (K6),

Start 40:

- Found in 2 of 156 (1.3%) of genes in pham
- Manual Annotations of this start: 2 of 150
- Called 100.0% of time when present
- Phage (with cluster) where this start called: MarkPhew_89 (K1), Nibb_89 (K1),

Start 41:

- Found in 4 of 156 (2.6%) of genes in pham
- Manual Annotations of this start: 1 of 150
- Called 25.0% of time when present
- Phage (with cluster) where this start called: Validus_93 (K1),

Start 42:

- Found in 4 of 156 (2.6%) of genes in pham
- Manual Annotations of this start: 3 of 150
- Called 75.0% of time when present
- Phage (with cluster) where this start called: Niklas_88 (K1), Peanam_88 (K1), Shaobing_87 (K1),

Start 58:

- Found in 6 of 156 (3.8%) of genes in pham
- Manual Annotations of this start: 1 of 150
- Called 16.7% of time when present
- Phage (with cluster) where this start called: Edugator_76 (K5),

Start 59:

- Found in 14 of 156 (9.0%) of genes in pham
- Manual Annotations of this start: 12 of 150

- Called 85.7% of time when present
- Phage (with cluster) where this start called: Agent47_79 (K5), AlleyCat_80 (K5), Collard_77 (K5), Dadosky_80 (K5), Heftyboy_79 (K5), InvictusManeo_77 (K5), Kratio_80 (K5), Larva_79 (K5), Omnicron_84 (K5), Psycho_78 (K5), Rando14_81 (K5), SoSeph_79 (K5),

Start 60:

- Found in 4 of 156 (2.6%) of genes in pham
- Manual Annotations of this start: 1 of 150
- Called 25.0% of time when present
- Phage (with cluster) where this start called: Marshawn_85 (K6),

Start 61:

- Found in 9 of 156 (5.8%) of genes in pham
- Manual Annotations of this start: 8 of 150
- Called 100.0% of time when present
- Phage (with cluster) where this start called: Feyre_82 (K5), Gengar_81 (K5), Guillsminger_82 (K5), Leston_81 (K5), Miryou_84 (K5), OkiRoe_82 (K5), Paola_81 (K5), Thyatira_82 (K5), Waterfoul_81 (K5),

Start 64:

- Found in 4 of 156 (2.6%) of genes in pham
- Manual Annotations of this start: 3 of 150
- Called 75.0% of time when present
- Phage (with cluster) where this start called: Amgine_86 (K6), Ellie_85 (K6), Fefferhead_87 (K6),

Start 66:

- Found in 8 of 156 (5.1%) of genes in pham
- Manual Annotations of this start: 2 of 150
- Called 25.0% of time when present
- Phage (with cluster) where this start called: Biglebops_68 (K1), LilPharaoh_69 (K1),

Start 68:

- Found in 9 of 156 (5.8%) of genes in pham
- Manual Annotations of this start: 6 of 150
- Called 66.7% of time when present
- Phage (with cluster) where this start called: Amelie_68 (K1), Enkosi_70 (K1), Mdavu_69 (K1), Nikao_71 (K1), Nutello_68 (K1), SgtBeansprout_69 (K1),

Start 70:

- Found in 4 of 156 (2.6%) of genes in pham
- Manual Annotations of this start: 4 of 150
- Called 100.0% of time when present
- Phage (with cluster) where this start called: KiSi_89 (K1), LeMond_88 (K1), Oscar_89 (K1), Scarlett_88 (K1),

Start 72:

- Found in 86 of 156 (55.1%) of genes in pham
- Manual Annotations of this start: 81 of 150
- Called 100.0% of time when present
- Phage (with cluster) where this start called: ActinUp_88 (K1), Adephegia_86 (K1), Adonis_87 (K1), Ageofdapage_91 (K1), AlishaPH_80 (K1), Anaya_90 (K1),

Angelica_84 (K1), Apocalypse_89 (K1), Asayake_87 (K1), Atiba_88 (K1), BEEST_87 (K1), BGIluviae_86 (K1), BaghaKamala_86 (K1), BarrelRoll_87 (K1), Beezoo_90 (K1), Bella96_88 (K1), Belladonna_87 (K1), Blizzard_87 (K1), Boiiii_87 (K1), CREW_86 (K1), Capricorn_87 (K1), CaseJules_89 (K1), CheetoDust_87 (K1), CrimD_87 (K1), Curiosium_95 (K1), Dalmuri_87 (K1), Deby_87 (K1), Devera_93 (K1), Dole_90 (K1), DrHayes_87 (K1), Durfee_87 (K1), Efra2_94 (K1), Emerson_89 (K1), Ganymede_87 (K1), Geraldini_89 (K1), Guanica15_93 (K1), HedwigODU_87 (K1), Homura_86 (K1), Hyperbowlee_86 (K1), Illumine_91 (K1), Inky_87 (K1), JAWS_86 (K1), Jarvi_87 (K1), Jayhawk_88 (K1), Jeckyll_87 (K1), Joy99_88 (K1), LastHope_93 (K1), LaterM_87 (K1), LindNT_85 (K1), Llorens_86 (K1), Lunahalos_87 (K1), MeaningOfLife_89 (K1), Megsy_91 (K1), Murucutumbu_87 (K1), Mynx_88 (K1), Padfoot_87 (K1), Padpat_90 (K1), Peel_87 (K1), Piatt_86 (K1), Pokerus_87 (K1), Prithvi_89 (K1), QuincyRose_85 (K1), Ramen_88 (K1), Rapunzel97_89 (K1), Rosmarinus_87 (K1), SamuelLPlaqson_87 (K1), ShiaSurprise_88 (K1), Slimphazie_89 (K1), Spock_87 (K1), Stinson_88 (K1), Sulley_84 (K1), TClif_87 (K6), Tachez_87 (K1), TaiwanKao_88 (K1), TiniBug_86 (K1), Tiri_87 (K1), Topper_87 (K1), TreyKay_89 (K1), TruffulaTree_89 (K1), Twitch_87 (K1), Urkel_87 (K1), Veliki_88 (K1), YoureAdopted_86 (K1), Yunkel11_92 (K1), Zabiza_83 (K1), Zavala_89 (K1),

Start 76:

- Found in 12 of 156 (7.7%) of genes in pham
- Manual Annotations of this start: 4 of 150
- Called 33.3% of time when present
- Phage (with cluster) where this start called: Amohnition_84 (K6), DARTH_P_84 (K6), Ekdilam_80 (K6), Hammy_84 (K6),

Start 95:

- Found in 28 of 156 (17.9%) of genes in pham
- Manual Annotations of this start: 2 of 150
- Called 7.1% of time when present
- Phage (with cluster) where this start called: SirPhilip_87 (K6), Yuna_90 (K6),

Start 103:

- Found in 6 of 156 (3.8%) of genes in pham
- Manual Annotations of this start: 6 of 150
- Called 100.0% of time when present
- Phage (with cluster) where this start called: Hurricane_86 (K3), Keshu_88 (K3), MacnCheese_87 (K3), Pixie_85 (K3), ShedlockHolmes_88 (K3), TBond007_82 (K3),

Start 104:

- Found in 2 of 156 (1.3%) of genes in pham
- Manual Annotations of this start: 2 of 150
- Called 100.0% of time when present
- Phage (with cluster) where this start called: Pharb_86 (K3), TripleTrouble_88 (K3),

Summary by clusters:

There are 4 clusters represented in this pham: K3, K1, K6, K5,

Info for manual annotations of cluster K1:

- Start number 17 was manually annotated 1 time for cluster K1.
- Start number 40 was manually annotated 2 times for cluster K1.
- Start number 41 was manually annotated 1 time for cluster K1.

- Start number 42 was manually annotated 3 times for cluster K1.
- Start number 66 was manually annotated 2 times for cluster K1.
- Start number 68 was manually annotated 6 times for cluster K1.
- Start number 70 was manually annotated 4 times for cluster K1.
- Start number 72 was manually annotated 81 times for cluster K1.

Info for manual annotations of cluster K3:

- Start number 103 was manually annotated 6 times for cluster K3.
- Start number 104 was manually annotated 2 times for cluster K3.

Info for manual annotations of cluster K5:

- Start number 58 was manually annotated 1 time for cluster K5.
- Start number 59 was manually annotated 12 times for cluster K5.
- Start number 61 was manually annotated 8 times for cluster K5.

Info for manual annotations of cluster K6:

- Start number 12 was manually annotated 1 time for cluster K6.
- Start number 13 was manually annotated 9 times for cluster K6.
- Start number 19 was manually annotated 1 time for cluster K6.
- Start number 60 was manually annotated 1 time for cluster K6.
- Start number 64 was manually annotated 3 times for cluster K6.
- Start number 76 was manually annotated 4 times for cluster K6.
- Start number 95 was manually annotated 2 times for cluster K6.

Gene Information:

Gene: ActinUp_88 Start: 55559, Stop: 56098, Start Num: 72

Candidate Starts for ActinUp_88:

(27, 55403), (Start: 72 @55559 has 81 MA's), (136, 55688), (145, 55730), (146, 55736), (154, 55751), (155, 55760), (157, 55766), (159, 55787), (163, 55826), (167, 55841), (169, 55847), (171, 55853), (174, 55865), (184, 55886), (203, 55937), (210, 55982), (219, 56021), (230, 56078), (232, 56084),

Gene: Adephagia_86 Start: 55402, Stop: 55941, Start Num: 72

Candidate Starts for Adephagia_86:

(27, 55246), (Start: 72 @55402 has 81 MA's), (136, 55531), (145, 55573), (146, 55579), (154, 55594), (155, 55603), (157, 55609), (159, 55630), (163, 55669), (167, 55684), (169, 55690), (171, 55696), (174, 55708), (184, 55729), (203, 55780), (210, 55825), (219, 55864), (230, 55921), (232, 55927),

Gene: Adonis_87 Start: 55591, Stop: 56139, Start Num: 72

Candidate Starts for Adonis_87:

(27, 55435), (Start: 72 @55591 has 81 MA's), (98, 55624), (128, 55699), (133, 55711), (136, 55729), (146, 55777), (154, 55792), (155, 55801), (157, 55807), (159, 55828), (161, 55849), (163, 55867), (167, 55882), (169, 55888), (171, 55894), (184, 55927), (192, 55948), (195, 55951), (203, 55978), (210, 56023), (219, 56062), (230, 56119), (232, 56125),

Gene: Agent47_79 Start: 51751, Stop: 52398, Start Num: 59

Candidate Starts for Agent47_79:

(Start: 59 @51751 has 12 MA's), (69, 51769), (79, 51805), (Start: 95 @51865 has 2 MA's), (98, 51880), (106, 51898), (154, 52045), (158, 52066), (167, 52138), (171, 52150), (173, 52162), (176, 52171), (190, 52198), (210, 52279), (217, 52309), (225, 52351), (231, 52381),

Gene: Ageofdapage_91 Start: 56356, Stop: 56949, Start Num: 72

Candidate Starts for Ageofdapage_91:

(28, 56203), (36, 56230), (Start: 72 @56356 has 81 MA's), (98, 56434), (109, 56461), (136, 56539), (141, 56566), (146, 56587), (154, 56602), (157, 56617), (159, 56638), (160, 56650), (161, 56659), (167, 56692), (169, 56698), (171, 56704), (184, 56737), (203, 56788), (210, 56833), (219, 56872), (230, 56929), (232, 56935),

Gene: AlishaPH_80 Start: 52788, Stop: 53327, Start Num: 72

Candidate Starts for AlishaPH_80:

(Start: 72 @52788 has 81 MA's), (136, 52917), (145, 52959), (146, 52965), (154, 52980), (157, 52995), (159, 53016), (161, 53037), (163, 53055), (167, 53070), (169, 53076), (171, 53082), (174, 53094), (184, 53115), (203, 53166), (210, 53211), (219, 53250), (230, 53307), (232, 53313),

Gene: AlleyCat_80 Start: 52608, Stop: 53252, Start Num: 59

Candidate Starts for AlleyCat_80:

(Start: 58 @52605 has 1 MA's), (Start: 59 @52608 has 12 MA's), (69, 52626), (Start: 95 @52722 has 2 MA's), (98, 52737), (106, 52755), (136, 52851), (156, 52914), (171, 53004), (190, 53052), (199, 53076), (200, 53079), (210, 53133), (214, 53154), (217, 53163), (231, 53235),

Gene: Amelie_68 Start: 51228, Stop: 51872, Start Num: 68

Candidate Starts for Amelie_68:

(Start: 66 @51222 has 2 MA's), (Start: 68 @51228 has 6 MA's), (Start: 76 @51255 has 4 MA's), (84, 51282), (88, 51294), (91, 51309), (97, 51333), (100, 51339), (110, 51363), (114, 51372), (138, 51462), (153, 51507), (154, 51510), (157, 51525), (161, 51567), (164, 51588), (165, 51591), (166, 51597), (167, 51600), (171, 51612), (172, 51621), (184, 51645), (188, 51666), (194, 51678), (196, 51681), (198, 51690), (204, 51711), (209, 51750), (210, 51753), (217, 51783), (219, 51792), (229, 51846), (231, 51855),

Gene: Amgine_86 Start: 56691, Stop: 57377, Start Num: 64

Candidate Starts for Amgine_86:

(54, 56667), (Start: 64 @56691 has 3 MA's), (92, 56763), (94, 56769), (120, 56838), (131, 56868), (138, 56904), (147, 56940), (161, 57009), (165, 57033), (171, 57054), (180, 57108), (202, 57201), (209, 57258), (210, 57261), (214, 57282), (215, 57285), (217, 57291), (219, 57300), (230, 57357), (232, 57363),

Gene: Amohnition_84 Start: 55743, Stop: 56357, Start Num: 76

Candidate Starts for Amohnition_84:

(Start: 76 @55743 has 4 MA's), (Start: 95 @55800 has 2 MA's), (112, 55848), (117, 55857), (135, 55917), (153, 55980), (157, 55998), (159, 56019), (161, 56040), (166, 56070), (170, 56082), (184, 56118), (191, 56148), (207, 56211), (210, 56238), (217, 56268), (221, 56286), (227, 56322), (229, 56331), (232, 56343),

Gene: Anaya_90 Start: 56620, Stop: 57162, Start Num: 72

Candidate Starts for Anaya_90:

(28, 56467), (36, 56494), (Start: 72 @56620 has 81 MA's), (90, 56680), (136, 56752), (146, 56800), (154, 56815), (155, 56824), (157, 56830), (159, 56851), (161, 56872), (163, 56890), (167, 56905), (169, 56911), (171, 56917), (184, 56950), (195, 56974), (203, 57001), (210, 57046), (219, 57085), (230, 57142), (232, 57148),

Gene: Angelica_84 Start: 54828, Stop: 55379, Start Num: 72

Candidate Starts for Angelica_84:

(27, 54672), (Start: 72 @54828 has 81 MA's), (98, 54861), (126, 54930), (136, 54969), (145, 55011), (146, 55017), (154, 55032), (155, 55041), (159, 55068), (161, 55089), (163, 55107), (167, 55122),

(171, 55134), (174, 55146), (184, 55167), (195, 55191), (203, 55218), (210, 55263), (215, 55287), (219, 55302), (230, 55359), (232, 55365),

Gene: Apocalypse_89 Start: 55750, Stop: 56301, Start Num: 72

Candidate Starts for Apocalypse_89:

(Start: 72 @55750 has 81 MA's), (93, 55783), (136, 55891), (145, 55933), (146, 55939), (154, 55954), (157, 55969), (161, 56011), (163, 56029), (167, 56044), (171, 56056), (174, 56068), (184, 56089), (203, 56140), (210, 56185), (215, 56209), (219, 56224), (230, 56281), (232, 56287),

Gene: Asayake_87 Start: 55717, Stop: 56256, Start Num: 72

Candidate Starts for Asayake_87:

(27, 55561), (Start: 72 @55717 has 81 MA's), (136, 55846), (145, 55888), (146, 55894), (154, 55909), (155, 55918), (157, 55924), (159, 55945), (163, 55984), (167, 55999), (169, 56005), (171, 56011), (184, 56044), (195, 56068), (203, 56095), (210, 56140), (219, 56179), (230, 56236), (232, 56242),

Gene: Atiba_88 Start: 55365, Stop: 55904, Start Num: 72

Candidate Starts for Atiba_88:

(27, 55209), (Start: 72 @55365 has 81 MA's), (136, 55494), (145, 55536), (146, 55542), (154, 55557), (155, 55566), (157, 55572), (159, 55593), (163, 55632), (167, 55647), (169, 55653), (171, 55659), (184, 55692), (195, 55716), (203, 55743), (210, 55788), (219, 55827), (230, 55884), (232, 55890),

Gene: BEEST_87 Start: 55717, Stop: 56256, Start Num: 72

Candidate Starts for BEEST_87:

(27, 55561), (Start: 72 @55717 has 81 MA's), (136, 55846), (145, 55888), (146, 55894), (154, 55909), (155, 55918), (157, 55924), (159, 55945), (163, 55984), (167, 55999), (169, 56005), (171, 56011), (184, 56044), (195, 56068), (203, 56095), (210, 56140), (219, 56179), (230, 56236), (232, 56242),

Gene: BGlluviae_86 Start: 55097, Stop: 55636, Start Num: 72

Candidate Starts for BGlluviae_86:

(Start: 72 @55097 has 81 MA's), (136, 55226), (145, 55268), (146, 55274), (154, 55289), (157, 55304), (159, 55325), (161, 55346), (163, 55364), (167, 55379), (169, 55385), (171, 55391), (184, 55424), (195, 55448), (203, 55475), (210, 55520), (219, 55559), (230, 55616), (232, 55622),

Gene: BaghaKamala_86 Start: 54945, Stop: 55484, Start Num: 72

Candidate Starts for BaghaKamala_86:

(27, 54789), (Start: 72 @54945 has 81 MA's), (136, 55074), (145, 55116), (146, 55122), (154, 55137), (155, 55146), (157, 55152), (159, 55173), (163, 55212), (167, 55227), (169, 55233), (171, 55239), (184, 55272), (195, 55296), (203, 55323), (210, 55368), (219, 55407), (230, 55464), (232, 55470),

Gene: BarrelRoll_87 Start: 55476, Stop: 56015, Start Num: 72

Candidate Starts for BarrelRoll_87:

(Start: 72 @55476 has 81 MA's), (101, 55515), (136, 55605), (145, 55647), (146, 55653), (154, 55668), (155, 55677), (157, 55683), (159, 55704), (161, 55725), (163, 55743), (167, 55758), (169, 55764), (171, 55770), (184, 55803), (195, 55827), (203, 55854), (210, 55899), (219, 55938), (230, 55995), (232, 56001),

Gene: Beezoo_90 Start: 56297, Stop: 56845, Start Num: 72

Candidate Starts for Beezoo_90:

(Start: 72 @56297 has 81 MA's), (98, 56330), (128, 56405), (133, 56417), (136, 56435), (146, 56483), (154, 56498), (155, 56507), (157, 56513), (159, 56534), (161, 56555), (163, 56573), (167, 56588), (169, 56594), (171, 56600), (184, 56633), (195, 56657), (203, 56684), (210, 56729), (219, 56768), (230, 56825), (232, 56831),

Gene: Bella96_88 Start: 55904, Stop: 56509, Start Num: 72

Candidate Starts for Bella96_88:

(28, 55757), (36, 55784), (Start: 72 @55904 has 81 MA's), (96, 55991), (98, 56000), (128, 56069), (136, 56099), (142, 56132), (146, 56147), (154, 56162), (155, 56171), (157, 56177), (159, 56198), (160, 56210), (161, 56219), (163, 56237), (167, 56252), (169, 56258), (171, 56264), (174, 56276), (184, 56297), (195, 56321), (203, 56348), (204, 56351), (210, 56393), (215, 56417), (219, 56432), (230, 56489), (232, 56495),

Gene: Belladonna_87 Start: 55520, Stop: 56059, Start Num: 72

Candidate Starts for Belladonna_87:

(27, 55364), (Start: 72 @55520 has 81 MA's), (136, 55649), (145, 55691), (146, 55697), (154, 55712), (155, 55721), (157, 55727), (159, 55748), (163, 55787), (167, 55802), (169, 55808), (171, 55814), (184, 55847), (195, 55871), (203, 55898), (210, 55943), (219, 55982), (230, 56039), (232, 56045),

Gene: Biglebops_68 Start: 51237, Stop: 51887, Start Num: 66

Candidate Starts for Biglebops_68:

(Start: 66 @51237 has 2 MA's), (Start: 68 @51243 has 6 MA's), (Start: 76 @51270 has 4 MA's), (84, 51297), (88, 51309), (91, 51324), (97, 51348), (100, 51354), (110, 51378), (114, 51387), (138, 51477), (153, 51522), (154, 51525), (157, 51540), (161, 51582), (164, 51603), (165, 51606), (166, 51612), (167, 51615), (171, 51627), (172, 51636), (184, 51660), (188, 51681), (194, 51693), (196, 51696), (198, 51705), (204, 51726), (209, 51765), (210, 51768), (217, 51798), (219, 51807), (229, 51861), (231, 51870),

Gene: Blizzard_87 Start: 55717, Stop: 56256, Start Num: 72

Candidate Starts for Blizzard_87:

(27, 55561), (Start: 72 @55717 has 81 MA's), (136, 55846), (145, 55888), (146, 55894), (154, 55909), (155, 55918), (157, 55924), (159, 55945), (163, 55984), (167, 55999), (169, 56005), (171, 56011), (184, 56044), (195, 56068), (203, 56095), (210, 56140), (219, 56179), (230, 56236), (232, 56242),

Gene: Boiiii_87 Start: 55719, Stop: 56258, Start Num: 72

Candidate Starts for Boiiii_87:

(27, 55563), (Start: 72 @55719 has 81 MA's), (136, 55848), (145, 55890), (146, 55896), (154, 55911), (155, 55920), (157, 55926), (159, 55947), (163, 55986), (167, 56001), (169, 56007), (171, 56013), (184, 56046), (195, 56070), (203, 56097), (210, 56142), (219, 56181), (230, 56238), (232, 56244),

Gene: Bryler_86 Start: 53452, Stop: 54183, Start Num: 13

Candidate Starts for Bryler_86:

(Start: 13 @53452 has 9 MA's), (43, 53560), (74, 53599), (86, 53626), (89, 53635), (115, 53713), (129, 53746), (136, 53773), (147, 53818), (165, 53914), (189, 53977), (195, 53989), (203, 54019), (206, 54034), (210, 54064), (219, 54103), (230, 54160), (232, 54166),

Gene: CREW_86 Start: 55520, Stop: 56059, Start Num: 72

Candidate Starts for CREW_86:

(27, 55364), (Start: 72 @55520 has 81 MA's), (136, 55649), (145, 55691), (146, 55697), (154, 55712), (155, 55721), (157, 55727), (159, 55748), (163, 55787), (167, 55802), (169, 55808), (171, 55814), (184, 55847), (195, 55871), (203, 55898), (210, 55943), (219, 55982), (230, 56039), (232, 56045),

Gene: Cain_94 Start: 56599, Stop: 57330, Start Num: 13

Candidate Starts for Cain_94:

(Start: 13 @56599 has 9 MA's), (43, 56707), (74, 56746), (86, 56773), (89, 56782), (115, 56860), (129, 56893), (136, 56920), (147, 56965), (165, 57061), (189, 57124), (195, 57136), (203, 57166), (206, 57181), (210, 57211), (219, 57250), (230, 57307), (232, 57313),

Gene: Capricorn_87 Start: 55520, Stop: 56059, Start Num: 72

Candidate Starts for Capricorn_87:

(27, 55364), (Start: 72 @55520 has 81 MA's), (136, 55649), (145, 55691), (146, 55697), (154, 55712), (155, 55721), (157, 55727), (159, 55748), (163, 55787), (167, 55802), (169, 55808), (171, 55814), (184, 55847), (195, 55871), (203, 55898), (210, 55943), (219, 55982), (230, 56039), (232, 56045),

Gene: CaseJules_89 Start: 55717, Stop: 56256, Start Num: 72

Candidate Starts for CaseJules_89:

(27, 55561), (Start: 72 @55717 has 81 MA's), (136, 55846), (145, 55888), (146, 55894), (154, 55909), (155, 55918), (157, 55924), (159, 55945), (163, 55984), (167, 55999), (169, 56005), (171, 56011), (184, 56044), (195, 56068), (203, 56095), (210, 56140), (219, 56179), (230, 56236), (232, 56242),

Gene: CheetoDust_87 Start: 54906, Stop: 55457, Start Num: 72

Candidate Starts for CheetoDust_87:

(27, 54750), (Start: 72 @54906 has 81 MA's), (136, 55047), (145, 55089), (146, 55095), (154, 55110), (155, 55119), (157, 55125), (159, 55146), (161, 55167), (163, 55185), (167, 55200), (171, 55212), (174, 55224), (184, 55245), (195, 55269), (203, 55296), (210, 55341), (215, 55365), (219, 55380), (230, 55437), (232, 55443),

Gene: Chris_88 Start: 55802, Stop: 56641, Start Num: 17

Candidate Starts for Chris_88:

(1, 55541), (2, 55550), (3, 55559), (5, 55622), (8, 55703), (14, 55766), (15, 55787), (Start: 17 @55802 has 1 MA's), (23, 55817), (26, 55829), (35, 55868), (36, 55871), (53, 55946), (55, 55952), (102, 56099), (125, 56159), (127, 56165), (131, 56177), (134, 56189), (149, 56255), (157, 56279), (164, 56342), (165, 56345), (170, 56363), (171, 56366), (202, 56465), (203, 56483), (204, 56486), (206, 56498), (210, 56525), (217, 56555), (232, 56627),

Gene: Collard_77 Start: 51715, Stop: 52362, Start Num: 59

Candidate Starts for Collard_77:

(Start: 59 @51715 has 12 MA's), (69, 51733), (79, 51769), (Start: 95 @51829 has 2 MA's), (98, 51844), (129, 51931), (154, 52009), (170, 52111), (171, 52114), (211, 52249), (217, 52273), (225, 52315), (231, 52345),

Gene: CrimD_87 Start: 55556, Stop: 56107, Start Num: 72

Candidate Starts for CrimD_87:

(28, 55403), (36, 55430), (Start: 72 @55556 has 81 MA's), (136, 55697), (146, 55745), (154, 55760), (155, 55769), (157, 55775), (159, 55796), (161, 55817), (163, 55835), (167, 55850), (169, 55856), (171, 55862), (184, 55895), (195, 55919), (203, 55946), (210, 55991), (219, 56030), (230, 56087), (232, 56093),

Gene: Curiosium_95 Start: 56915, Stop: 57508, Start Num: 72

Candidate Starts for Curiosium_95:

(28, 56762), (36, 56789), (Start: 72 @56915 has 81 MA's), (98, 56993), (133, 57080), (136, 57098), (146, 57146), (154, 57161), (155, 57170), (159, 57197), (160, 57209), (161, 57218), (163, 57236), (184, 57296), (203, 57347), (204, 57350), (209, 57389), (210, 57392), (218, 57428), (230, 57488), (232, 57494),

Gene: Dadosky_80 Start: 52609, Stop: 53253, Start Num: 59

Candidate Starts for Dadosky_80:

(Start: 58 @52606 has 1 MA's), (Start: 59 @52609 has 12 MA's), (69, 52627), (Start: 95 @52723 has 2 MA's), (98, 52738), (106, 52756), (136, 52852), (156, 52915), (171, 53005), (190, 53053), (199, 53077), (200, 53080), (210, 53134), (214, 53155), (217, 53164), (225, 53206), (231, 53236),

Gene: Dalmuri_87 Start: 55520, Stop: 56059, Start Num: 72

Candidate Starts for Dalmuri_87:

(27, 55364), (Start: 72 @55520 has 81 MA's), (136, 55649), (145, 55691), (146, 55697), (154, 55712), (155, 55721), (157, 55727), (159, 55748), (163, 55787), (167, 55802), (169, 55808), (171, 55814), (184, 55847), (195, 55871), (203, 55898), (210, 55943), (219, 55982), (230, 56039), (232, 56045),

Gene: DarthP_84 Start: 55596, Stop: 56210, Start Num: 76

Candidate Starts for DarthP_84:

(Start: 76 @55596 has 4 MA's), (Start: 95 @55653 has 2 MA's), (112, 55701), (117, 55710), (135, 55770), (153, 55833), (157, 55851), (159, 55872), (161, 55893), (166, 55923), (170, 55935), (184, 55971), (191, 56001), (207, 56064), (210, 56091), (217, 56121), (221, 56139), (227, 56175), (229, 56184), (232, 56196),

Gene: Deby_87 Start: 56043, Stop: 56654, Start Num: 72

Candidate Starts for Deby_87:

(28, 55890), (36, 55917), (Start: 72 @56043 has 81 MA's), (98, 56139), (133, 56226), (136, 56244), (146, 56292), (154, 56307), (159, 56343), (161, 56364), (163, 56382), (167, 56397), (169, 56403), (171, 56409), (184, 56442), (195, 56466), (203, 56493), (210, 56538), (219, 56577), (230, 56634), (232, 56640),

Gene: Devera_93 Start: 56388, Stop: 56936, Start Num: 72

Candidate Starts for Devera_93:

(Start: 72 @56388 has 81 MA's), (98, 56421), (133, 56508), (136, 56526), (146, 56574), (154, 56589), (155, 56598), (157, 56604), (159, 56625), (161, 56646), (163, 56664), (167, 56679), (169, 56685), (171, 56691), (184, 56724), (203, 56775), (205, 56784), (210, 56820), (217, 56850), (230, 56916), (232, 56922),

Gene: Dole_90 Start: 56391, Stop: 56939, Start Num: 72

Candidate Starts for Dole_90:

(Start: 72 @56391 has 81 MA's), (98, 56424), (133, 56511), (136, 56529), (146, 56577), (154, 56592), (155, 56601), (157, 56607), (159, 56628), (161, 56649), (163, 56667), (167, 56682), (169, 56688), (171, 56694), (184, 56727), (203, 56778), (205, 56787), (210, 56823), (217, 56853), (230, 56919), (232, 56925),

Gene: DrHayes_87 Start: 55782, Stop: 56321, Start Num: 72

Candidate Starts for DrHayes_87:

(Start: 72 @55782 has 81 MA's), (105, 55830), (136, 55911), (146, 55959), (154, 55974), (155, 55983), (157, 55989), (159, 56010), (160, 56022), (161, 56031), (163, 56049), (167, 56064), (171, 56076), (174, 56088), (184, 56109), (198, 56142), (203, 56160), (204, 56163), (210, 56205), (215, 56229), (219, 56244), (230, 56301), (232, 56307),

Gene: Durfee_87 Start: 55717, Stop: 56256, Start Num: 72

Candidate Starts for Durfee_87:

(27, 55561), (Start: 72 @55717 has 81 MA's), (136, 55846), (145, 55888), (146, 55894), (154, 55909), (155, 55918), (157, 55924), (159, 55945), (163, 55984), (167, 55999), (169, 56005), (171, 56011), (184, 56044), (195, 56068), (203, 56095), (210, 56140), (219, 56179), (230, 56236), (232, 56242),

Gene: Edugator_76 Start: 53777, Stop: 54424, Start Num: 58

Candidate Starts for Edugator_76:

(Start: 58 @53777 has 1 MA's), (Start: 59 @53780 has 12 MA's), (69, 53798), (Start: 95 @53894 has 2 MA's), (98, 53909), (106, 53927), (136, 54023), (156, 54086), (171, 54176), (190, 54224), (199, 54248), (200, 54251), (210, 54305), (214, 54326), (217, 54335), (225, 54377), (231, 54407),

Gene: Efra2_94 Start: 56866, Stop: 57423, Start Num: 72

Candidate Starts for Efra2_94:

(Start: 72 @56866 has 81 MA's), (93, 56899), (126, 56971), (136, 57010), (145, 57052), (146, 57058), (154, 57073), (157, 57088), (159, 57109), (161, 57130), (163, 57148), (165, 57154), (166, 57160), (172, 57184), (184, 57208), (195, 57232), (209, 57301), (218, 57340), (224, 57370), (229, 57397), (232, 57409),

Gene: Ekdilam_80 Start: 55444, Stop: 56052, Start Num: 76

Candidate Starts for Ekdilam_80:

(Start: 76 @55444 has 4 MA's), (Start: 95 @55501 has 2 MA's), (122, 55567), (147, 55666), (157, 55693), (159, 55714), (164, 55756), (166, 55765), (184, 55813), (191, 55843), (220, 55978), (224, 55999), (228, 56020), (229, 56026), (232, 56038),

Gene: Ellie_85 Start: 55858, Stop: 56547, Start Num: 64

Candidate Starts for Ellie_85:

(54, 55834), (Start: 64 @55858 has 3 MA's), (92, 55933), (120, 56008), (131, 56038), (147, 56110), (161, 56179), (165, 56203), (180, 56278), (202, 56371), (210, 56431), (214, 56452), (215, 56455), (217, 56461), (219, 56470), (230, 56527), (232, 56533),

Gene: Emerson_89 Start: 55720, Stop: 56331, Start Num: 72

Candidate Starts for Emerson_89:

(28, 55567), (36, 55594), (Start: 72 @55720 has 81 MA's), (96, 55807), (133, 55903), (136, 55921), (146, 55969), (150, 55975), (154, 55984), (159, 56020), (161, 56041), (163, 56059), (167, 56074), (171, 56086), (184, 56119), (195, 56143), (203, 56170), (210, 56215), (219, 56254), (230, 56311), (232, 56317),

Gene: Enkosi_70 Start: 53841, Stop: 54485, Start Num: 68

Candidate Starts for Enkosi_70:

(Start: 66 @53835 has 2 MA's), (Start: 68 @53841 has 6 MA's), (Start: 76 @53868 has 4 MA's), (84, 53895), (88, 53907), (91, 53922), (97, 53946), (100, 53952), (110, 53976), (114, 53985), (138, 54075), (153, 54120), (154, 54123), (157, 54138), (161, 54180), (164, 54201), (165, 54204), (166, 54210), (167, 54213), (171, 54225), (172, 54234), (184, 54258), (188, 54279), (194, 54291), (196, 54294), (198, 54303), (204, 54324), (209, 54363), (210, 54366), (217, 54396), (219, 54405), (229, 54459), (231, 54468),

Gene: Fefferhead_87 Start: 55655, Stop: 56341, Start Num: 64

Candidate Starts for Fefferhead_87:

(54, 55631), (Start: 64 @55655 has 3 MA's), (92, 55727), (94, 55733), (120, 55802), (138, 55868), (147, 55904), (161, 55973), (165, 55997), (180, 56072), (202, 56165), (210, 56225), (214, 56246), (215, 56249), (217, 56255), (219, 56264), (230, 56321), (232, 56327),

Gene: Feyre_82 Start: 55415, Stop: 56056, Start Num: 61

Candidate Starts for Feyre_82:

(38, 55322), (49, 55373), (Start: 61 @55415 has 8 MA's), (67, 55430), (69, 55436), (79, 55472), (83, 55487), (Start: 95 @55532 has 2 MA's), (154, 55709), (190, 55856), (225, 56009), (232, 56042),

Gene: Ganymede_87 Start: 55523, Stop: 56071, Start Num: 72

Candidate Starts for Ganymede_87:

(Start: 72 @55523 has 81 MA's), (98, 55556), (128, 55631), (133, 55643), (136, 55661), (146, 55709), (154, 55724), (155, 55733), (157, 55739), (159, 55760), (161, 55781), (163, 55799), (167, 55814), (169, 55820), (171, 55826), (184, 55859), (195, 55883), (203, 55910), (210, 55955), (219, 55994), (230, 56051), (232, 56057),

Gene: Gengar_81 Start: 54230, Stop: 54871, Start Num: 61

Candidate Starts for Gengar_81:

(4, 53843), (6, 53900), (38, 54137), (49, 54188), (Start: 61 @54230 has 8 MA's), (67, 54245), (79, 54287), (83, 54302), (Start: 95 @54347 has 2 MA's), (155, 54533), (190, 54671), (217, 54782), (225, 54824), (232, 54857),

Gene: Geraldini_89 Start: 55561, Stop: 56172, Start Num: 72

Candidate Starts for Geraldini_89:

(28, 55408), (36, 55435), (Start: 72 @55561 has 81 MA's), (96, 55648), (128, 55732), (133, 55744), (136, 55762), (146, 55810), (154, 55825), (157, 55840), (159, 55861), (161, 55882), (163, 55900), (167, 55915), (169, 55921), (171, 55927), (184, 55960), (195, 55984), (203, 56011), (210, 56056), (215, 56080), (219, 56095), (230, 56152), (232, 56158),

Gene: Guanica15_93 Start: 56558, Stop: 57112, Start Num: 72

Candidate Starts for Guanica15_93:

(Start: 72 @56558 has 81 MA's), (93, 56591), (133, 56681), (145, 56741), (146, 56747), (154, 56762), (157, 56777), (159, 56798), (161, 56819), (163, 56837), (165, 56843), (166, 56849), (172, 56873), (184, 56897), (195, 56921), (209, 56990), (218, 57029), (224, 57059), (229, 57086), (232, 57098),

Gene: Guillsminger_82 Start: 54078, Stop: 54719, Start Num: 61

Candidate Starts for Guillsminger_82:

(Start: 61 @54078 has 8 MA's), (67, 54093), (79, 54135), (83, 54150), (Start: 95 @54195 has 2 MA's), (106, 54225), (129, 54294), (154, 54372), (155, 54381), (171, 54471), (173, 54483), (190, 54519), (225, 54672), (231, 54702), (232, 54705),

Gene: Hammy_84 Start: 55586, Stop: 56200, Start Num: 76

Candidate Starts for Hammy_84:

(Start: 76 @55586 has 4 MA's), (Start: 95 @55643 has 2 MA's), (112, 55691), (117, 55700), (135, 55760), (153, 55823), (157, 55841), (159, 55862), (161, 55883), (166, 55913), (184, 55961), (191, 55991), (207, 56054), (210, 56081), (217, 56111), (221, 56129), (227, 56165), (229, 56174), (232, 56186),

Gene: HedwigODU_87 Start: 55559, Stop: 56098, Start Num: 72

Candidate Starts for HedwigODU_87:

(27, 55403), (Start: 72 @55559 has 81 MA's), (136, 55688), (145, 55730), (146, 55736), (154, 55751), (155, 55760), (157, 55766), (159, 55787), (163, 55826), (167, 55841), (169, 55847), (171, 55853), (174, 55865), (184, 55886), (203, 55937), (210, 55982), (219, 56021), (230, 56078), (232, 56084),

Gene: Heftyboy_79 Start: 53442, Stop: 54089, Start Num: 59

Candidate Starts for Heftyboy_79:

(Start: 59 @53442 has 12 MA's), (69, 53460), (79, 53496), (Start: 95 @53556 has 2 MA's), (98, 53571), (129, 53658), (154, 53736), (170, 53838), (171, 53841), (211, 53976), (217, 54000), (225, 54042), (231, 54072),

Gene: Homura_86 Start: 55520, Stop: 56059, Start Num: 72

Candidate Starts for Homura_86:

(27, 55364), (Start: 72 @55520 has 81 MA's), (136, 55649), (145, 55691), (146, 55697), (154, 55712), (155, 55721), (157, 55727), (159, 55748), (163, 55787), (167, 55802), (169, 55808), (171, 55814), (184, 55847), (195, 55871), (203, 55898), (210, 55943), (219, 55982), (230, 56039), (232, 56045),

Gene: Hurricane_86 Start: 54730, Stop: 55197, Start Num: 103

Candidate Starts for Hurricane_86:

(Start: 103 @54730 has 6 MA's), (116, 54763), (123, 54778), (137, 54826), (163, 54952), (166, 54964), (197, 55012), (203, 55030), (229, 55168), (231, 55177), (232, 55180),

Gene: Hyperbowlee_86 Start: 55717, Stop: 56256, Start Num: 72

Candidate Starts for Hyperbowlee_86:

(27, 55561), (Start: 72 @55717 has 81 MA's), (136, 55846), (145, 55888), (146, 55894), (154, 55909), (155, 55918), (157, 55924), (159, 55945), (163, 55984), (167, 55999), (169, 56005), (171, 56011), (184, 56044), (195, 56068), (203, 56095), (210, 56140), (219, 56179), (230, 56236), (232, 56242),

Gene: Illumine_91 Start: 56390, Stop: 56938, Start Num: 72

Candidate Starts for Illumine_91:

(Start: 72 @56390 has 81 MA's), (98, 56423), (133, 56510), (136, 56528), (146, 56576), (154, 56591), (155, 56600), (157, 56606), (159, 56627), (161, 56648), (163, 56666), (167, 56681), (169, 56687), (171, 56693), (184, 56726), (203, 56777), (205, 56786), (210, 56822), (217, 56852), (230, 56918), (232, 56924),

Gene: Inky_87 Start: 55520, Stop: 56059, Start Num: 72

Candidate Starts for Inky_87:

(27, 55364), (Start: 72 @55520 has 81 MA's), (136, 55649), (145, 55691), (146, 55697), (154, 55712), (155, 55721), (157, 55727), (159, 55748), (163, 55787), (167, 55802), (169, 55808), (171, 55814), (184, 55847), (195, 55871), (203, 55898), (210, 55943), (219, 55982), (230, 56039), (232, 56045),

Gene: InvictusManeo_77 Start: 51755, Stop: 52402, Start Num: 59

Candidate Starts for InvictusManeo_77:

(Start: 59 @51755 has 12 MA's), (69, 51773), (79, 51809), (Start: 95 @51869 has 2 MA's), (98, 51884), (106, 51902), (154, 52049), (158, 52070), (167, 52142), (171, 52154), (173, 52166), (176, 52175), (190, 52202), (210, 52283), (217, 52313), (225, 52355), (231, 52385),

Gene: JAWS_86 Start: 55506, Stop: 56045, Start Num: 72

Candidate Starts for JAWS_86:

(27, 55350), (Start: 72 @55506 has 81 MA's), (136, 55635), (145, 55677), (146, 55683), (154, 55698), (157, 55713), (159, 55734), (163, 55773), (167, 55788), (169, 55794), (171, 55800), (174, 55812), (184, 55833), (203, 55884), (210, 55929), (219, 55968), (230, 56025), (232, 56031),

Gene: Jarvi_87 Start: 55520, Stop: 56059, Start Num: 72

Candidate Starts for Jarvi_87:

(27, 55364), (Start: 72 @55520 has 81 MA's), (136, 55649), (145, 55691), (146, 55697), (154, 55712), (155, 55721), (157, 55727), (159, 55748), (163, 55787), (167, 55802), (169, 55808), (171, 55814), (184, 55847), (195, 55871), (203, 55898), (210, 55943), (219, 55982), (230, 56039), (232, 56045),

Gene: Jayhawk_88 Start: 55536, Stop: 56075, Start Num: 72

Candidate Starts for Jayhawk_88:

(Start: 72 @55536 has 81 MA's), (101, 55575), (136, 55665), (145, 55707), (146, 55713), (154, 55728), (155, 55737), (157, 55743), (159, 55764), (161, 55785), (163, 55803), (167, 55818), (169, 55824), (171, 55830), (184, 55863), (195, 55887), (203, 55914), (210, 55959), (219, 55998), (230, 56055), (232, 56061),

Gene: Jeckyll_87 Start: 55520, Stop: 56059, Start Num: 72

Candidate Starts for Jeckyll_87:

(27, 55364), (Start: 72 @55520 has 81 MA's), (136, 55649), (145, 55691), (146, 55697), (154, 55712), (155, 55721), (157, 55727), (159, 55748), (163, 55787), (167, 55802), (169, 55808), (171, 55814), (184, 55847), (195, 55871), (203, 55898), (210, 55943), (219, 55982), (230, 56039), (232, 56045),

Gene: Joy99_88 Start: 55649, Stop: 56188, Start Num: 72

Candidate Starts for Joy99_88:

(27, 55493), (Start: 72 @55649 has 81 MA's), (136, 55778), (145, 55820), (146, 55826), (154, 55841), (155, 55850), (157, 55856), (159, 55877), (163, 55916), (167, 55931), (169, 55937), (171, 55943), (184, 55976), (195, 56000), (203, 56027), (210, 56072), (219, 56111), (230, 56168), (232, 56174),

Gene: Keshu_88 Start: 55022, Stop: 55489, Start Num: 103

Candidate Starts for Keshu_88:

(Start: 103 @55022 has 6 MA's), (116, 55055), (123, 55070), (137, 55118), (163, 55244), (166, 55256), (197, 55304), (203, 55322), (229, 55460), (231, 55469), (232, 55472),

Gene: KiSi_89 Start: 55752, Stop: 56375, Start Num: 70

Candidate Starts for KiSi_89:

(52, 55710), (Start: 70 @55752 has 4 MA's), (73, 55767), (77, 55779), (102, 55851), (149, 56016), (154, 56025), (157, 56040), (165, 56106), (170, 56124), (183, 56151), (202, 56199), (204, 56220), (209, 56256), (210, 56259), (215, 56283), (217, 56289), (232, 56361),

Gene: Kratio_80 Start: 52503, Stop: 53210, Start Num: 59

Candidate Starts for Kratio_80:

(Start: 58 @52500 has 1 MA's), (Start: 59 @52503 has 12 MA's), (69, 52521), (Start: 95 @52617 has 2 MA's), (98, 52632), (106, 52650), (136, 52746), (156, 52809), (171, 52899), (199, 52971), (200, 52974), (210, 53028), (217, 53058), (225, 53100), (231, 53130),

Gene: Krueger_91 Start: 55693, Stop: 56526, Start Num: 13

Candidate Starts for Krueger_91:

(Start: 12 @55687 has 1 MA's), (Start: 13 @55693 has 9 MA's), (16, 55735), (20, 55747), (34, 55804), (43, 55843), (89, 55978), (98, 56020), (129, 56089), (136, 56116), (157, 56188), (165, 56257), (189, 56320), (195, 56332), (203, 56362), (206, 56377), (210, 56407), (214, 56428), (215, 56431), (219, 56446), (229, 56497), (230, 56503), (232, 56509),

Gene: Larva_79 Start: 53481, Stop: 54125, Start Num: 59

Candidate Starts for Larva_79:

(Start: 58 @53478 has 1 MA's), (Start: 59 @53481 has 12 MA's), (69, 53499), (Start: 95 @53595 has 2 MA's), (98, 53610), (106, 53628), (136, 53724), (156, 53787), (171, 53877), (190, 53925), (199, 53949), (200, 53952), (210, 54006), (214, 54027), (217, 54036), (225, 54078), (231, 54108),

Gene: LastHope_93 Start: 56273, Stop: 56836, Start Num: 72

Candidate Starts for LastHope_93:

(Start: 72 @56273 has 81 MA's), (93, 56306), (128, 56381), (142, 56456), (146, 56471), (154, 56486), (155, 56495), (157, 56501), (159, 56522), (161, 56543), (163, 56561), (165, 56567), (166, 56573), (171, 56588), (172, 56597), (184, 56621), (195, 56645), (209, 56714), (210, 56717), (214, 56738), (217, 56747), (219, 56756), (224, 56783), (229, 56810),

Gene: LaterM_87 Start: 55885, Stop: 56478, Start Num: 72

Candidate Starts for LaterM_87:

(Start: 72 @55885 has 81 MA's), (98, 55963), (109, 55990), (136, 56068), (141, 56095), (146, 56116), (154, 56131), (157, 56146), (159, 56167), (160, 56179), (161, 56188), (167, 56221), (169, 56227), (171, 56233), (174, 56245), (198, 56299), (203, 56317), (204, 56320), (210, 56362), (219, 56401), (230, 56458), (232, 56464),

Gene: LeMond_88 Start: 55714, Stop: 56331, Start Num: 70

Candidate Starts for LeMond_88:

(Start: 70 @55714 has 4 MA's), (73, 55729), (77, 55741), (102, 55813), (128, 55882), (149, 55972), (165, 56062), (170, 56080), (183, 56107), (202, 56155), (204, 56176), (209, 56212), (210, 56215), (211, 56221), (215, 56239), (217, 56245), (232, 56317),

Gene: Leston_81 Start: 54195, Stop: 54836, Start Num: 61

Candidate Starts for Leston_81:

(Start: 61 @54195 has 8 MA's), (67, 54210), (79, 54252), (83, 54267), (Start: 95 @54312 has 2 MA's), (106, 54342), (129, 54411), (154, 54489), (171, 54588), (173, 54600), (190, 54636), (225, 54789), (232, 54822),

Gene: LilPharaoh_69 Start: 50950, Stop: 51600, Start Num: 66

Candidate Starts for LilPharaoh_69:

(Start: 66 @50950 has 2 MA's), (Start: 68 @50956 has 6 MA's), (Start: 76 @50983 has 4 MA's), (84, 51010), (88, 51022), (91, 51037), (97, 51061), (100, 51067), (110, 51091), (114, 51100), (138, 51190), (153, 51235), (154, 51238), (157, 51253), (161, 51295), (164, 51316), (165, 51319), (166, 51325), (167, 51328), (171, 51340), (172, 51349), (184, 51373), (188, 51394), (194, 51406), (196, 51409), (198, 51418), (204, 51439), (209, 51478), (210, 51481), (217, 51511), (219, 51520), (229, 51574), (231, 51583),

Gene: LindNT_85 Start: 55622, Stop: 56173, Start Num: 72

Candidate Starts for LindNT_85:

(7, 55286), (Start: 72 @55622 has 81 MA's), (98, 55655), (128, 55733), (133, 55745), (136, 55763), (146, 55811), (154, 55826), (155, 55835), (157, 55841), (159, 55862), (161, 55883), (163, 55901), (167, 55916), (169, 55922), (171, 55928), (184, 55961), (195, 55985), (203, 56012), (210, 56057), (219, 56096), (230, 56153), (232, 56159),

Gene: Llorens_86 Start: 55520, Stop: 56059, Start Num: 72

Candidate Starts for Llorens_86:

(27, 55364), (Start: 72 @55520 has 81 MA's), (136, 55649), (145, 55691), (146, 55697), (154, 55712), (155, 55721), (157, 55727), (159, 55748), (163, 55787), (167, 55802), (169, 55808), (171, 55814), (184, 55847), (195, 55871), (203, 55898), (210, 55943), (219, 55982), (230, 56039), (232, 56045),

Gene: Lunahalos_87 Start: 55520, Stop: 56059, Start Num: 72

Candidate Starts for Lunahalos_87:

(27, 55364), (Start: 72 @55520 has 81 MA's), (136, 55649), (145, 55691), (146, 55697), (154, 55712), (155, 55721), (157, 55727), (159, 55748), (163, 55787), (167, 55802), (169, 55808), (171, 55814), (184, 55847), (195, 55871), (203, 55898), (210, 55943), (219, 55982), (230, 56039), (232, 56045),

Gene: MacnCheese_87 Start: 55279, Stop: 55746, Start Num: 103

Candidate Starts for MacnCheese_87:

(Start: 103 @55279 has 6 MA's), (123, 55330), (137, 55378), (143, 55408), (157, 55444), (159, 55465), (163, 55504), (166, 55516), (197, 55564), (211, 55630), (217, 55654), (229, 55720), (231, 55729),

Gene: MarkPhew_89 Start: 55775, Stop: 56458, Start Num: 40

Candidate Starts for MarkPhew_89:

(18, 55703), (37, 55760), (Start: 40 @55775 has 2 MA's), (45, 55790), (51, 55802), (102, 55940), (119, 55994), (149, 56099), (157, 56123), (165, 56189), (170, 56207), (183, 56234), (185, 56240), (192, 56249), (202, 56282), (210, 56342), (211, 56348), (213, 56363), (215, 56366), (217, 56372), (220, 56387), (232, 56444),

Gene: Marshawn_85 Start: 55928, Stop: 56566, Start Num: 60

Candidate Starts for Marshawn_85:

(21, 55766), (24, 55775), (25, 55781), (30, 55805), (33, 55820), (39, 55844), (47, 55868), (56, 55913), (Start: 60 @55928 has 1 MA's), (80, 55979), (81, 55982), (84, 55985), (107, 56054), (151, 56201), (155, 56222), (159, 56252), (161, 56273), (165, 56297), (177, 56339), (182, 56348), (184, 56351), (186, 56360), (203, 56402), (210, 56447), (214, 56468), (215, 56471), (219, 56486), (222, 56498), (232, 56552),

Gene: Mdavu_69 Start: 51232, Stop: 51876, Start Num: 68

Candidate Starts for Mdavu_69:

(Start: 66 @51226 has 2 MA's), (Start: 68 @51232 has 6 MA's), (Start: 76 @51259 has 4 MA's), (84, 51286), (88, 51298), (91, 51313), (97, 51337), (100, 51343), (110, 51367), (114, 51376), (138, 51466), (153, 51511), (154, 51514), (157, 51529), (161, 51571), (164, 51592), (165, 51595), (166, 51601), (167, 51604), (171, 51616), (172, 51625), (184, 51649), (188, 51670), (194, 51682), (196, 51685), (198, 51694), (204, 51715), (209, 51754), (210, 51757), (217, 51787), (219, 51796), (229, 51850), (231, 51859),

Gene: MeaningOfLife_89 Start: 56205, Stop: 56744, Start Num: 72

Candidate Starts for MeaningOfLife_89:

(Start: 72 @56205 has 81 MA's), (136, 56334), (145, 56376), (146, 56382), (154, 56397), (155, 56406), (157, 56412), (159, 56433), (161, 56454), (163, 56472), (167, 56487), (169, 56493), (171, 56499), (184, 56532), (195, 56556), (203, 56583), (210, 56628), (219, 56667), (230, 56724), (232, 56730),

Gene: Megsy_91 Start: 55851, Stop: 56402, Start Num: 72

Candidate Starts for Megsy_91:

(28, 55698), (36, 55725), (Start: 72 @55851 has 81 MA's), (128, 55962), (133, 55974), (136, 55992), (146, 56040), (154, 56055), (155, 56064), (159, 56091), (161, 56112), (163, 56130), (167, 56145), (169, 56151), (171, 56157), (184, 56190), (195, 56214), (203, 56241), (210, 56286), (219, 56325), (230, 56382), (232, 56388),

Gene: Miryou_84 Start: 56053, Stop: 56694, Start Num: 61

Candidate Starts for Miryou_84:

(Start: 61 @56053 has 8 MA's), (67, 56068), (69, 56074), (79, 56110), (83, 56125), (Start: 95 @56170 has 2 MA's), (106, 56200), (128, 56266), (129, 56269), (155, 56356), (190, 56494), (217, 56605), (225, 56647), (232, 56680),

Gene: Murucutumbu_87 Start: 56412, Stop: 56960, Start Num: 72

Candidate Starts for Murucutumbu_87:

(27, 56256), (Start: 72 @56412 has 81 MA's), (98, 56445), (129, 56523), (136, 56550), (146, 56598), (154, 56613), (155, 56622), (157, 56628), (159, 56649), (161, 56670), (163, 56688), (167, 56703), (169, 56709), (171, 56715), (174, 56727), (198, 56781), (203, 56799), (204, 56802), (210, 56844), (219, 56883), (230, 56940), (232, 56946),

Gene: Mynx_88 Start: 55828, Stop: 56367, Start Num: 72

Candidate Starts for Mynx_88:

(27, 55672), (Start: 72 @55828 has 81 MA's), (136, 55957), (145, 55999), (146, 56005), (154, 56020), (155, 56029), (157, 56035), (159, 56056), (161, 56077), (163, 56095), (167, 56110), (171, 56122), (174, 56134), (184, 56155), (195, 56179), (203, 56206), (210, 56251), (219, 56290), (230, 56347), (232, 56353),

Gene: Nibb_89 Start: 55433, Stop: 56137, Start Num: 40

Candidate Starts for Nibb_89:

(9, 55271), (11, 55289), (37, 55418), (Start: 40 @55433 has 2 MA's), (45, 55448), (Start: 64 @55502 has 3 MA's), (102, 55622), (125, 55682), (131, 55700), (134, 55712), (149, 55778), (154, 55787), (165,

55868), (170, 55886), (183, 55913), (185, 55919), (192, 55928), (202, 55961), (203, 55979), (204, 55982), (210, 56021), (212, 56039), (215, 56045), (217, 56051), (220, 56066), (232, 56123),

Gene: Nikao_71 Start: 53841, Stop: 54485, Start Num: 68

Candidate Starts for Nikao_71:

(Start: 66 @53835 has 2 MA's), (Start: 68 @53841 has 6 MA's), (Start: 76 @53868 has 4 MA's), (84, 53895), (88, 53907), (91, 53922), (97, 53946), (100, 53952), (110, 53976), (114, 53985), (138, 54075), (153, 54120), (154, 54123), (157, 54138), (161, 54180), (164, 54201), (165, 54204), (166, 54210), (167, 54213), (171, 54225), (172, 54234), (184, 54258), (188, 54279), (194, 54291), (196, 54294), (198, 54303), (204, 54324), (209, 54363), (210, 54366), (217, 54396), (219, 54405), (229, 54459), (231, 54468),

Gene: Niklas_88 Start: 56449, Stop: 57108, Start Num: 42

Candidate Starts for Niklas_88:

(Start: 41 @56446 has 1 MA's), (Start: 42 @56449 has 3 MA's), (Start: 60 @56515 has 1 MA's), (75, 56548), (92, 56569), (98, 56578), (121, 56635), (136, 56683), (146, 56731), (154, 56746), (155, 56755), (159, 56782), (161, 56803), (166, 56833), (177, 56869), (195, 56905), (201, 56926), (207, 56962), (209, 56986), (210, 56989), (223, 57049), (229, 57082), (232, 57094),

Gene: Nutello_68 Start: 51228, Stop: 51872, Start Num: 68

Candidate Starts for Nutello_68:

(Start: 66 @51222 has 2 MA's), (Start: 68 @51228 has 6 MA's), (Start: 76 @51255 has 4 MA's), (84, 51282), (88, 51294), (91, 51309), (97, 51333), (100, 51339), (110, 51363), (114, 51372), (138, 51462), (153, 51507), (154, 51510), (157, 51525), (161, 51567), (164, 51588), (165, 51591), (166, 51597), (167, 51600), (171, 51612), (172, 51621), (184, 51645), (188, 51666), (194, 51678), (196, 51681), (198, 51690), (204, 51711), (209, 51750), (210, 51753), (217, 51783), (219, 51792), (229, 51846), (231, 51855),

Gene: OkiRoe_82 Start: 55193, Stop: 55834, Start Num: 61

Candidate Starts for OkiRoe_82:

(4, 54806), (6, 54863), (38, 55100), (49, 55151), (Start: 61 @55193 has 8 MA's), (67, 55208), (79, 55250), (83, 55265), (Start: 95 @55310 has 2 MA's), (155, 55496), (162, 55553), (190, 55634), (209, 55712), (225, 55787), (231, 55817), (232, 55820),

Gene: Omnicron_84 Start: 56077, Stop: 56712, Start Num: 59

Candidate Starts for Omnicron_84:

(Start: 59 @56077 has 12 MA's), (69, 56098), (Start: 95 @56185 has 2 MA's), (98, 56200), (106, 56218), (162, 56431), (171, 56464), (231, 56695),

Gene: Oscar_89 Start: 55635, Stop: 56255, Start Num: 70

Candidate Starts for Oscar_89:

(Start: 70 @55635 has 4 MA's), (73, 55650), (77, 55662), (102, 55734), (149, 55896), (165, 55986), (170, 56004), (183, 56031), (202, 56079), (204, 56100), (209, 56136), (210, 56139), (211, 56145), (215, 56163), (217, 56169), (232, 56241),

Gene: Padfoot_87 Start: 55717, Stop: 56256, Start Num: 72

Candidate Starts for Padfoot_87:

(27, 55561), (Start: 72 @55717 has 81 MA's), (136, 55846), (145, 55888), (146, 55894), (154, 55909), (155, 55918), (157, 55924), (159, 55945), (163, 55984), (167, 55999), (169, 56005), (171, 56011), (184, 56044), (195, 56068), (203, 56095), (210, 56140), (219, 56179), (230, 56236), (232, 56242),

Gene: Padpat_90 Start: 55720, Stop: 56331, Start Num: 72

Candidate Starts for Padpat_90:

(28, 55567), (36, 55594), (Start: 72 @55720 has 81 MA's), (96, 55807), (133, 55903), (136, 55921), (146, 55969), (150, 55975), (154, 55984), (159, 56020), (161, 56041), (163, 56059), (167, 56074), (171, 56086), (184, 56119), (195, 56143), (203, 56170), (210, 56215), (219, 56254), (230, 56311), (232, 56317),

Gene: Paola_81 Start: 54078, Stop: 54719, Start Num: 61

Candidate Starts for Paola_81:

(Start: 61 @54078 has 8 MA's), (67, 54093), (79, 54135), (83, 54150), (Start: 95 @54195 has 2 MA's), (106, 54225), (129, 54294), (154, 54372), (155, 54381), (171, 54471), (173, 54483), (190, 54519), (225, 54672), (231, 54702), (232, 54705),

Gene: Peanam_88 Start: 56428, Stop: 57087, Start Num: 42

Candidate Starts for Peanam_88:

(Start: 41 @56425 has 1 MA's), (Start: 42 @56428 has 3 MA's), (50, 56464), (55, 56479), (Start: 60 @56494 has 1 MA's), (75, 56527), (92, 56548), (98, 56557), (121, 56614), (136, 56662), (146, 56710), (154, 56725), (155, 56734), (159, 56761), (161, 56782), (166, 56812), (177, 56848), (195, 56884), (201, 56905), (207, 56941), (209, 56965), (229, 57061), (232, 57073),

Gene: Peel_87 Start: 55522, Stop: 56061, Start Num: 72

Candidate Starts for Peel_87:

(27, 55366), (Start: 72 @55522 has 81 MA's), (136, 55651), (145, 55693), (146, 55699), (154, 55714), (155, 55723), (157, 55729), (159, 55750), (163, 55789), (167, 55804), (169, 55810), (171, 55816), (184, 55849), (195, 55873), (203, 55900), (210, 55945), (219, 55984), (230, 56041), (232, 56047),

Gene: Pharb_86 Start: 54652, Stop: 55125, Start Num: 104

Candidate Starts for Pharb_86:

(Start: 104 @54652 has 2 MA's), (113, 54682), (123, 54703), (140, 54775), (143, 54784), (148, 54793), (154, 54805), (155, 54814), (157, 54820), (159, 54841), (163, 54880), (166, 54892), (171, 54907), (181, 54916), (189, 54928), (197, 54940), (203, 54958), (209, 54997), (219, 55039), (229, 55096), (231, 55105), (232, 55108),

Gene: PhelpsODU_84 Start: 52304, Stop: 53098, Start Num: 13

Candidate Starts for PhelpsODU_84:

(Start: 13 @52304 has 9 MA's), (16, 52346), (43, 52454), (46, 52457), (63, 52484), (78, 52526), (87, 52547), (96, 52583), (98, 52592), (111, 52625), (129, 52664), (155, 52757), (157, 52763), (159, 52784), (165, 52829), (168, 52841), (189, 52892), (203, 52934), (206, 52949), (210, 52979), (219, 53018), (230, 53075), (232, 53081),

Gene: Phrank_94 Start: 56586, Stop: 57317, Start Num: 13

Candidate Starts for Phrank_94:

(Start: 13 @56586 has 9 MA's), (43, 56694), (74, 56733), (86, 56760), (89, 56769), (115, 56847), (129, 56880), (136, 56907), (147, 56952), (165, 57048), (189, 57111), (195, 57123), (203, 57153), (206, 57168), (210, 57198), (219, 57237), (230, 57294), (232, 57300),

Gene: Piatt_86 Start: 55717, Stop: 56256, Start Num: 72

Candidate Starts for Piatt_86:

(27, 55561), (Start: 72 @55717 has 81 MA's), (136, 55846), (145, 55888), (146, 55894), (154, 55909), (155, 55918), (157, 55924), (159, 55945), (163, 55984), (167, 55999), (169, 56005), (171, 56011), (184, 56044), (195, 56068), (203, 56095), (210, 56140), (219, 56179), (230, 56236), (232, 56242),

Gene: Pixie_85 Start: 54434, Stop: 54901, Start Num: 103

Candidate Starts for Pixie_85:

(Start: 103 @54434 has 6 MA's), (116, 54467), (123, 54482), (137, 54530), (163, 54656), (166, 54668), (177, 54686), (197, 54716), (203, 54734), (229, 54872), (231, 54881), (232, 54884),

Gene: Pokerus_87 Start: 55526, Stop: 56065, Start Num: 72

Candidate Starts for Pokerus_87:

(Start: 72 @55526 has 81 MA's), (136, 55655), (145, 55697), (146, 55703), (154, 55718), (155, 55727), (157, 55733), (159, 55754), (163, 55793), (167, 55808), (171, 55820), (184, 55853), (195, 55877), (203, 55904), (210, 55949), (219, 55988), (230, 56045), (232, 56051),

Gene: Prithvi_89 Start: 55920, Stop: 56471, Start Num: 72

Candidate Starts for Prithvi_89:

(22, 55740), (27, 55764), (Start: 72 @55920 has 81 MA's), (98, 55953), (128, 56031), (133, 56043), (136, 56061), (146, 56109), (154, 56124), (155, 56133), (157, 56139), (159, 56160), (161, 56181), (163, 56199), (167, 56214), (169, 56220), (171, 56226), (184, 56259), (195, 56283), (203, 56310), (209, 56352), (210, 56355), (215, 56379), (219, 56394), (230, 56451), (232, 56457),

Gene: Psycho_78 Start: 52606, Stop: 53250, Start Num: 59

Candidate Starts for Psycho_78:

(Start: 58 @52603 has 1 MA's), (Start: 59 @52606 has 12 MA's), (69, 52624), (Start: 95 @52720 has 2 MA's), (98, 52735), (106, 52753), (136, 52849), (156, 52912), (171, 53002), (190, 53050), (199, 53074), (200, 53077), (210, 53131), (214, 53152), (217, 53161), (225, 53203), (231, 53233),

Gene: QuincyRose_85 Start: 55523, Stop: 56071, Start Num: 72

Candidate Starts for QuincyRose_85:

(Start: 72 @55523 has 81 MA's), (98, 55556), (128, 55631), (133, 55643), (136, 55661), (146, 55709), (154, 55724), (155, 55733), (157, 55739), (159, 55760), (161, 55781), (163, 55799), (167, 55814), (169, 55820), (171, 55826), (184, 55859), (195, 55883), (203, 55910), (210, 55955), (219, 55994), (230, 56051), (232, 56057),

Gene: Ramen_88 Start: 55275, Stop: 55814, Start Num: 72

Candidate Starts for Ramen_88:

(Start: 72 @55275 has 81 MA's), (101, 55314), (136, 55404), (145, 55446), (146, 55452), (154, 55467), (155, 55476), (157, 55482), (159, 55503), (161, 55524), (163, 55542), (167, 55557), (169, 55563), (184, 55602), (195, 55626), (203, 55653), (210, 55698), (219, 55737), (230, 55794), (232, 55800),

Gene: Rando14_81 Start: 54488, Stop: 55123, Start Num: 59

Candidate Starts for Rando14_81:

(Start: 59 @54488 has 12 MA's), (69, 54509), (Start: 95 @54596 has 2 MA's), (98, 54611), (106, 54629), (162, 54842), (171, 54875), (231, 55106),

Gene: Rapunzel97_89 Start: 55491, Stop: 56030, Start Num: 72

Candidate Starts for Rapunzel97_89:

(Start: 72 @55491 has 81 MA's), (101, 55530), (136, 55620), (145, 55662), (146, 55668), (154, 55683), (155, 55692), (157, 55698), (159, 55719), (161, 55740), (163, 55758), (167, 55773), (169, 55779), (171, 55785), (184, 55818), (195, 55842), (203, 55869), (210, 55914), (219, 55953), (230, 56010), (232, 56016),

Gene: Rosmarinus_87 Start: 55508, Stop: 56047, Start Num: 72

Candidate Starts for Rosmarinus_87:

(27, 55352), (Start: 72 @55508 has 81 MA's), (128, 55607), (136, 55637), (145, 55679), (146, 55685), (154, 55700), (155, 55709), (157, 55715), (159, 55736), (163, 55775), (167, 55790), (169, 55796), (171, 55802), (184, 55835), (195, 55859), (203, 55886), (210, 55931), (219, 55970), (230, 56027),

(232, 56033),

Gene: SamuelLPlaqson_87 Start: 55782, Stop: 56321, Start Num: 72

Candidate Starts for SamuelLPlaqson_87:

(Start: 72 @55782 has 81 MA's), (105, 55830), (136, 55911), (146, 55959), (154, 55974), (155, 55983), (157, 55989), (159, 56010), (160, 56022), (161, 56031), (163, 56049), (167, 56064), (171, 56076), (174, 56088), (184, 56109), (198, 56142), (203, 56160), (204, 56163), (210, 56205), (215, 56229), (219, 56244), (230, 56301), (232, 56307),

Gene: Scarlett_88 Start: 55509, Stop: 56123, Start Num: 70

Candidate Starts for Scarlett_88:

(31, 55389), (62, 55494), (Start: 70 @55509 has 4 MA's), (77, 55536), (102, 55608), (128, 55674), (149, 55764), (153, 55770), (165, 55854), (170, 55872), (183, 55899), (202, 55947), (204, 55968), (209, 56004), (210, 56007), (215, 56031), (217, 56037), (232, 56109),

Gene: SgtBeansprout_69 Start: 51228, Stop: 51872, Start Num: 68

Candidate Starts for SgtBeansprout_69:

(Start: 66 @51222 has 2 MA's), (Start: 68 @51228 has 6 MA's), (Start: 76 @51255 has 4 MA's), (84, 51282), (88, 51294), (91, 51309), (97, 51333), (100, 51339), (110, 51363), (114, 51372), (138, 51462), (153, 51507), (154, 51510), (157, 51525), (161, 51567), (164, 51588), (165, 51591), (166, 51597), (167, 51600), (171, 51612), (172, 51621), (184, 51645), (188, 51666), (194, 51678), (196, 51681), (198, 51690), (204, 51711), (209, 51750), (210, 51753), (217, 51783), (219, 51792), (229, 51846), (231, 51855),

Gene: Shadow1_91 Start: 55827, Stop: 56666, Start Num: 12

Candidate Starts for Shadow1_91:

(Start: 12 @55827 has 1 MA's), (Start: 13 @55833 has 9 MA's), (16, 55875), (43, 55983), (89, 56118), (98, 56160), (129, 56229), (136, 56256), (157, 56328), (165, 56397), (189, 56460), (195, 56472), (203, 56502), (206, 56517), (210, 56547), (214, 56568), (215, 56571), (219, 56586), (229, 56637), (230, 56643), (232, 56649),

Gene: Shaobing_87 Start: 56496, Stop: 57149, Start Num: 42

Candidate Starts for Shaobing_87:

(Start: 41 @56493 has 1 MA's), (Start: 42 @56496 has 3 MA's), (50, 56532), (55, 56547), (Start: 60 @56562 has 1 MA's), (75, 56595), (92, 56616), (98, 56625), (136, 56721), (138, 56733), (152, 56781), (154, 56787), (159, 56823), (161, 56844), (166, 56874), (177, 56910), (195, 56946), (201, 56967), (207, 57003), (209, 57027), (210, 57030), (223, 57090), (229, 57123), (232, 57135),

Gene: ShedlockHolmes_88 Start: 54857, Stop: 55324, Start Num: 103

Candidate Starts for ShedlockHolmes_88:

(Start: 103 @54857 has 6 MA's), (116, 54890), (123, 54905), (137, 54953), (163, 55079), (166, 55091), (177, 55109), (197, 55139), (203, 55157), (229, 55295), (231, 55304), (232, 55307),

Gene: ShiaSurprise_88 Start: 55717, Stop: 56256, Start Num: 72

Candidate Starts for ShiaSurprise_88:

(27, 55561), (Start: 72 @55717 has 81 MA's), (136, 55846), (145, 55888), (146, 55894), (154, 55909), (155, 55918), (157, 55924), (159, 55945), (163, 55984), (167, 55999), (169, 56005), (171, 56011), (184, 56044), (195, 56068), (203, 56095), (210, 56140), (219, 56179), (230, 56236), (232, 56242),

Gene: SirPhilip_87 Start: 55717, Stop: 56277, Start Num: 95

Candidate Starts for SirPhilip_87:

(Start: 95 @55717 has 2 MA's), (149, 55894), (154, 55903), (165, 55984), (170, 56002), (178, 56026), (187, 56053), (209, 56155), (210, 56158), (226, 56239), (229, 56251), (232, 56263),

Gene: Slimphazie_89 Start: 55947, Stop: 56486, Start Num: 72

Candidate Starts for Slimphazie_89:

(Start: 72 @55947 has 81 MA's), (101, 55986), (136, 56076), (145, 56118), (146, 56124), (154, 56139), (155, 56148), (157, 56154), (159, 56175), (161, 56196), (163, 56214), (167, 56229), (169, 56235), (171, 56241), (184, 56274), (195, 56298), (203, 56325), (210, 56370), (219, 56409), (230, 56466), (232, 56472),

Gene: SoSeph_79 Start: 53442, Stop: 54089, Start Num: 59

Candidate Starts for SoSeph_79:

(Start: 59 @53442 has 12 MA's), (69, 53460), (79, 53496), (Start: 95 @53556 has 2 MA's), (98, 53571), (129, 53658), (154, 53736), (170, 53838), (171, 53841), (211, 53976), (217, 54000), (225, 54042), (231, 54072),

Gene: Spock_87 Start: 55521, Stop: 56060, Start Num: 72

Candidate Starts for Spock_87:

(27, 55365), (Start: 72 @55521 has 81 MA's), (136, 55650), (145, 55692), (146, 55698), (154, 55713), (155, 55722), (157, 55728), (159, 55749), (163, 55788), (167, 55803), (169, 55809), (171, 55815), (184, 55848), (195, 55872), (203, 55899), (210, 55944), (219, 55983), (230, 56040), (232, 56046),

Gene: Stinson_88 Start: 55691, Stop: 56239, Start Num: 72

Candidate Starts for Stinson_88:

(Start: 72 @55691 has 81 MA's), (98, 55724), (129, 55802), (133, 55811), (136, 55829), (146, 55877), (154, 55892), (155, 55901), (157, 55907), (159, 55928), (161, 55949), (163, 55967), (167, 55982), (169, 55988), (171, 55994), (184, 56027), (195, 56051), (198, 56060), (210, 56123), (215, 56147), (216, 56150), (217, 56153), (230, 56219), (232, 56225),

Gene: Sulley_84 Start: 55116, Stop: 55655, Start Num: 72

Candidate Starts for Sulley_84:

(Start: 72 @55116 has 81 MA's), (128, 55215), (136, 55245), (146, 55293), (154, 55308), (155, 55317), (157, 55323), (159, 55344), (161, 55365), (163, 55383), (167, 55398), (171, 55410), (174, 55422), (184, 55443), (195, 55467), (203, 55494), (210, 55539), (215, 55563), (219, 55578), (230, 55635), (232, 55641),

Gene: Sunflower1121_91 Start: 55592, Stop: 56425, Start Num: 13

Candidate Starts for Sunflower1121_91:

(Start: 12 @55586 has 1 MA's), (Start: 13 @55592 has 9 MA's), (16, 55634), (43, 55742), (89, 55877), (98, 55919), (129, 55988), (136, 56015), (157, 56087), (165, 56156), (189, 56219), (195, 56231), (203, 56261), (206, 56276), (210, 56306), (214, 56327), (215, 56330), (219, 56345), (229, 56396), (230, 56402), (232, 56408),

Gene: Syra333_90 Start: 55739, Stop: 56482, Start Num: 19

Candidate Starts for Syra333_90:

(Start: 19 @55739 has 1 MA's), (22, 55745), (34, 55787), (Start: 59 @55856 has 12 MA's), (65, 55868), (75, 55895), (96, 55961), (98, 55970), (111, 56003), (118, 56018), (129, 56042), (155, 56141), (157, 56147), (159, 56168), (165, 56213), (189, 56276), (195, 56288), (203, 56318), (206, 56333), (210, 56363), (214, 56384), (215, 56387), (219, 56402), (229, 56453), (230, 56459), (232, 56465),

Gene: TBond007_82 Start: 54432, Stop: 54899, Start Num: 103

Candidate Starts for TBond007_82:

(Start: 103 @54432 has 6 MA's), (116, 54465), (123, 54480), (137, 54528), (163, 54654), (166, 54666), (177, 54684), (197, 54714), (203, 54732), (229, 54870), (231, 54879), (232, 54882),

Gene: TClif_87 Start: 55031, Stop: 55636, Start Num: 72

Candidate Starts for TClif_87:

(44, 54941), (Start: 72 @55031 has 81 MA's), (85, 55070), (99, 55124), (108, 55145), (118, 55172), (128, 55193), (139, 55241), (142, 55256), (154, 55274), (155, 55283), (165, 55358), (169, 55373), (171, 55379), (177, 55400), (184, 55412), (203, 55475), (210, 55520), (219, 55559), (229, 55610), (232, 55622),

Gene: Tachez_87 Start: 55365, Stop: 55904, Start Num: 72

Candidate Starts for Tachez_87:

(27, 55209), (Start: 72 @55365 has 81 MA's), (136, 55494), (145, 55536), (146, 55542), (154, 55557), (155, 55566), (157, 55572), (159, 55593), (163, 55632), (167, 55647), (169, 55653), (171, 55659), (184, 55692), (195, 55716), (203, 55743), (210, 55788), (219, 55827), (230, 55884), (232, 55890),

Gene: TaiwanKao_88 Start: 55563, Stop: 56111, Start Num: 72

Candidate Starts for TaiwanKao_88:

(28, 55410), (36, 55437), (Start: 72 @55563 has 81 MA's), (82, 55596), (128, 55671), (133, 55683), (136, 55701), (146, 55749), (154, 55764), (155, 55773), (157, 55779), (159, 55800), (160, 55812), (161, 55821), (163, 55839), (167, 55854), (169, 55860), (171, 55866), (184, 55899), (195, 55923), (203, 55950), (210, 55995), (219, 56034), (230, 56091), (232, 56097),

Gene: Thyatira_82 Start: 55790, Stop: 56431, Start Num: 61

Candidate Starts for Thyatira_82:

(Start: 61 @55790 has 8 MA's), (67, 55805), (69, 55811), (79, 55847), (83, 55862), (Start: 95 @55907 has 2 MA's), (154, 56084), (155, 56093), (162, 56150), (190, 56231), (209, 56309), (225, 56384), (227, 56396), (232, 56417),

Gene: Tierra_94 Start: 57212, Stop: 57943, Start Num: 13

Candidate Starts for Tierra_94:

(Start: 13 @57212 has 9 MA's), (43, 57320), (74, 57359), (86, 57386), (89, 57395), (115, 57473), (129, 57506), (136, 57533), (147, 57578), (165, 57674), (189, 57737), (195, 57749), (203, 57779), (206, 57794), (210, 57824), (219, 57863), (230, 57920), (232, 57926),

Gene: TiniBug_86 Start: 55892, Stop: 56437, Start Num: 72

Candidate Starts for TiniBug_86:

(57, 55856), (Start: 72 @55892 has 81 MA's), (105, 55940), (133, 56006), (136, 56027), (142, 56060), (146, 56075), (154, 56090), (155, 56099), (157, 56105), (159, 56126), (160, 56138), (161, 56147), (163, 56165), (167, 56180), (171, 56192), (174, 56204), (184, 56225), (195, 56249), (203, 56276), (204, 56279), (210, 56321), (215, 56345), (219, 56360), (230, 56417), (232, 56423),

Gene: Tiri_87 Start: 55187, Stop: 55798, Start Num: 72

Candidate Starts for Tiri_87:

(10, 54917), (28, 55034), (36, 55061), (Start: 72 @55187 has 81 MA's), (98, 55283), (128, 55358), (133, 55370), (136, 55388), (146, 55436), (154, 55451), (155, 55460), (157, 55466), (159, 55487), (161, 55508), (163, 55526), (167, 55541), (169, 55547), (171, 55553), (174, 55565), (184, 55586), (195, 55610), (203, 55637), (210, 55682), (219, 55721), (230, 55778), (232, 55784),

Gene: Topper_87 Start: 55520, Stop: 56059, Start Num: 72

Candidate Starts for Topper_87:

(27, 55364), (Start: 72 @55520 has 81 MA's), (136, 55649), (145, 55691), (146, 55697), (154, 55712), (155, 55721), (157, 55727), (159, 55748), (163, 55787), (167, 55802), (169, 55808), (171, 55814), (184, 55847), (195, 55871), (203, 55898), (210, 55943), (219, 55982), (230, 56039), (232, 56045),

Gene: TreyKay_89 Start: 55920, Stop: 56471, Start Num: 72

Candidate Starts for TreyKay_89:

(22, 55740), (27, 55764), (Start: 72 @55920 has 81 MA's), (98, 55953), (128, 56031), (133, 56043), (136, 56061), (146, 56109), (154, 56124), (155, 56133), (157, 56139), (159, 56160), (161, 56181), (163, 56199), (167, 56214), (169, 56220), (171, 56226), (184, 56259), (195, 56283), (203, 56310), (209, 56352), (210, 56355), (215, 56379), (219, 56394), (230, 56451), (232, 56457),

Gene: TribelTrouble_88 Start: 56688, Stop: 57158, Start Num: 104

Candidate Starts for TribelTrouble_88:

(Start: 104 @56688 has 2 MA's), (123, 56739), (124, 56742), (132, 56766), (133, 56769), (140, 56811), (143, 56820), (144, 56823), (148, 56829), (157, 56856), (159, 56877), (163, 56916), (166, 56928), (197, 56976), (208, 57021), (211, 57042), (229, 57132), (231, 57141),

Gene: TruffulaTree_89 Start: 55913, Stop: 56452, Start Num: 72

Candidate Starts for TruffulaTree_89:

(Start: 72 @55913 has 81 MA's), (101, 55952), (136, 56042), (145, 56084), (146, 56090), (154, 56105), (155, 56114), (157, 56120), (159, 56141), (161, 56162), (163, 56180), (167, 56195), (169, 56201), (171, 56207), (184, 56240), (195, 56264), (203, 56291), (210, 56336), (219, 56375), (230, 56432), (232, 56438),

Gene: Twitch_87 Start: 55522, Stop: 56061, Start Num: 72

Candidate Starts for Twitch_87:

(27, 55366), (Start: 72 @55522 has 81 MA's), (136, 55651), (145, 55693), (146, 55699), (154, 55714), (155, 55723), (157, 55729), (159, 55750), (163, 55789), (167, 55804), (169, 55810), (171, 55816), (184, 55849), (195, 55873), (203, 55900), (210, 55945), (219, 55984), (230, 56041), (232, 56047),

Gene: Unicorn_94 Start: 56932, Stop: 57726, Start Num: 13

Candidate Starts for Unicorn_94:

(Start: 13 @56932 has 9 MA's), (16, 56974), (43, 57082), (46, 57085), (63, 57112), (78, 57154), (87, 57175), (96, 57211), (98, 57220), (111, 57253), (129, 57292), (155, 57385), (157, 57391), (159, 57412), (165, 57457), (168, 57469), (189, 57520), (203, 57562), (206, 57577), (210, 57607), (219, 57646), (230, 57703), (232, 57709),

Gene: Urkel_87 Start: 55782, Stop: 56321, Start Num: 72

Candidate Starts for Urkel_87:

(Start: 72 @55782 has 81 MA's), (105, 55830), (136, 55911), (146, 55959), (154, 55974), (155, 55983), (157, 55989), (159, 56010), (160, 56022), (161, 56031), (163, 56049), (167, 56064), (171, 56076), (174, 56088), (184, 56109), (198, 56142), (203, 56160), (204, 56163), (210, 56205), (215, 56229), (219, 56244), (230, 56301), (232, 56307),

Gene: Validus_93 Start: 57272, Stop: 57934, Start Num: 41

Candidate Starts for Validus_93:

(Start: 41 @57272 has 1 MA's), (Start: 42 @57275 has 3 MA's), (48, 57302), (Start: 68 @57365 has 6 MA's), (71, 57371), (92, 57410), (98, 57419), (121, 57464), (128, 57482), (129, 57485), (130, 57491), (136, 57512), (146, 57557), (154, 57572), (157, 57587), (159, 57608), (161, 57629), (166, 57659), (172, 57683), (177, 57695), (184, 57707), (195, 57731), (207, 57788), (209, 57812), (217, 57845), (218, 57851), (224, 57881), (229, 57908), (232, 57920),

Gene: Veliki_88 Start: 55491, Stop: 56030, Start Num: 72

Candidate Starts for Veliki_88:

(27, 55335), (Start: 72 @55491 has 81 MA's), (136, 55620), (145, 55662), (146, 55668), (154, 55683), (155, 55692), (157, 55698), (159, 55719), (163, 55758), (167, 55773), (169, 55779), (171, 55785), (174, 55797), (184, 55818), (203, 55869), (210, 55914), (219, 55953), (230, 56010), (232, 56016),

Gene: Waterfoul_81 Start: 53860, Stop: 54501, Start Num: 61

Candidate Starts for Waterfoul_81:

(Start: 61 @53860 has 8 MA's), (67, 53875), (69, 53881), (79, 53917), (83, 53932), (Start: 95 @53977 has 2 MA's), (154, 54154), (190, 54301), (210, 54382), (217, 54412), (225, 54454), (231, 54484), (232, 54487),

Gene: Ximenita_93 Start: 56440, Stop: 57225, Start Num: 13

Candidate Starts for Ximenita_93:

(Start: 13 @56440 has 9 MA's), (29, 56521), (32, 56536), (34, 56539), (75, 56647), (96, 56713), (98, 56722), (111, 56755), (118, 56770), (129, 56794), (139, 56839), (155, 56887), (157, 56893), (159, 56914), (165, 56959), (189, 57022), (195, 57034), (203, 57064), (206, 57079), (210, 57109), (214, 57130), (215, 57133), (219, 57148), (230, 57205), (232, 57211),

Gene: YoureAdopted_86 Start: 55308, Stop: 55856, Start Num: 72

Candidate Starts for YoureAdopted_86:

(Start: 72 @55308 has 81 MA's), (98, 55341), (128, 55416), (133, 55428), (136, 55446), (146, 55494), (154, 55509), (155, 55518), (157, 55524), (159, 55545), (161, 55566), (163, 55584), (167, 55599), (169, 55605), (171, 55611), (184, 55644), (195, 55668), (203, 55695), (210, 55740), (219, 55779), (230, 55836), (232, 55842),

Gene: Yuna_90 Start: 57455, Stop: 58021, Start Num: 95

Candidate Starts for Yuna_90:

(Start: 95 @57455 has 2 MA's), (100, 57473), (138, 57587), (147, 57623), (157, 57650), (161, 57692), (165, 57716), (171, 57737), (175, 57752), (179, 57761), (191, 57800), (193, 57806), (202, 57839), (210, 57902), (214, 57923), (215, 57926), (217, 57932), (219, 57941), (224, 57968), (226, 57983), (229, 57995), (232, 58007),

Gene: Yunkel11_92 Start: 56143, Stop: 56694, Start Num: 72

Candidate Starts for Yunkel11_92:

(Start: 72 @56143 has 81 MA's), (93, 56176), (126, 56245), (133, 56263), (145, 56323), (146, 56329), (154, 56344), (157, 56359), (159, 56380), (161, 56401), (163, 56419), (165, 56425), (166, 56431), (172, 56455), (184, 56479), (195, 56503), (209, 56572), (218, 56611), (224, 56641), (229, 56668), (232, 56680),

Gene: Zabiza_83 Start: 51864, Stop: 52403, Start Num: 72

Candidate Starts for Zabiza_83:

(27, 51708), (Start: 72 @51864 has 81 MA's), (136, 51993), (145, 52035), (146, 52041), (154, 52056), (155, 52065), (157, 52071), (159, 52092), (163, 52131), (167, 52146), (169, 52152), (171, 52158), (174, 52170), (184, 52191), (203, 52242), (210, 52287), (219, 52326), (230, 52383), (232, 52389),

Gene: Zavala_89 Start: 55773, Stop: 56321, Start Num: 72

Candidate Starts for Zavala_89:

(Start: 72 @55773 has 81 MA's), (98, 55806), (128, 55881), (133, 55893), (136, 55911), (146, 55959), (154, 55974), (155, 55983), (157, 55989), (159, 56010), (161, 56031), (163, 56049), (167, 56064), (169, 56070), (171, 56076), (184, 56109), (195, 56133), (203, 56160), (210, 56205), (219, 56244), (230, 56301), (232, 56307),