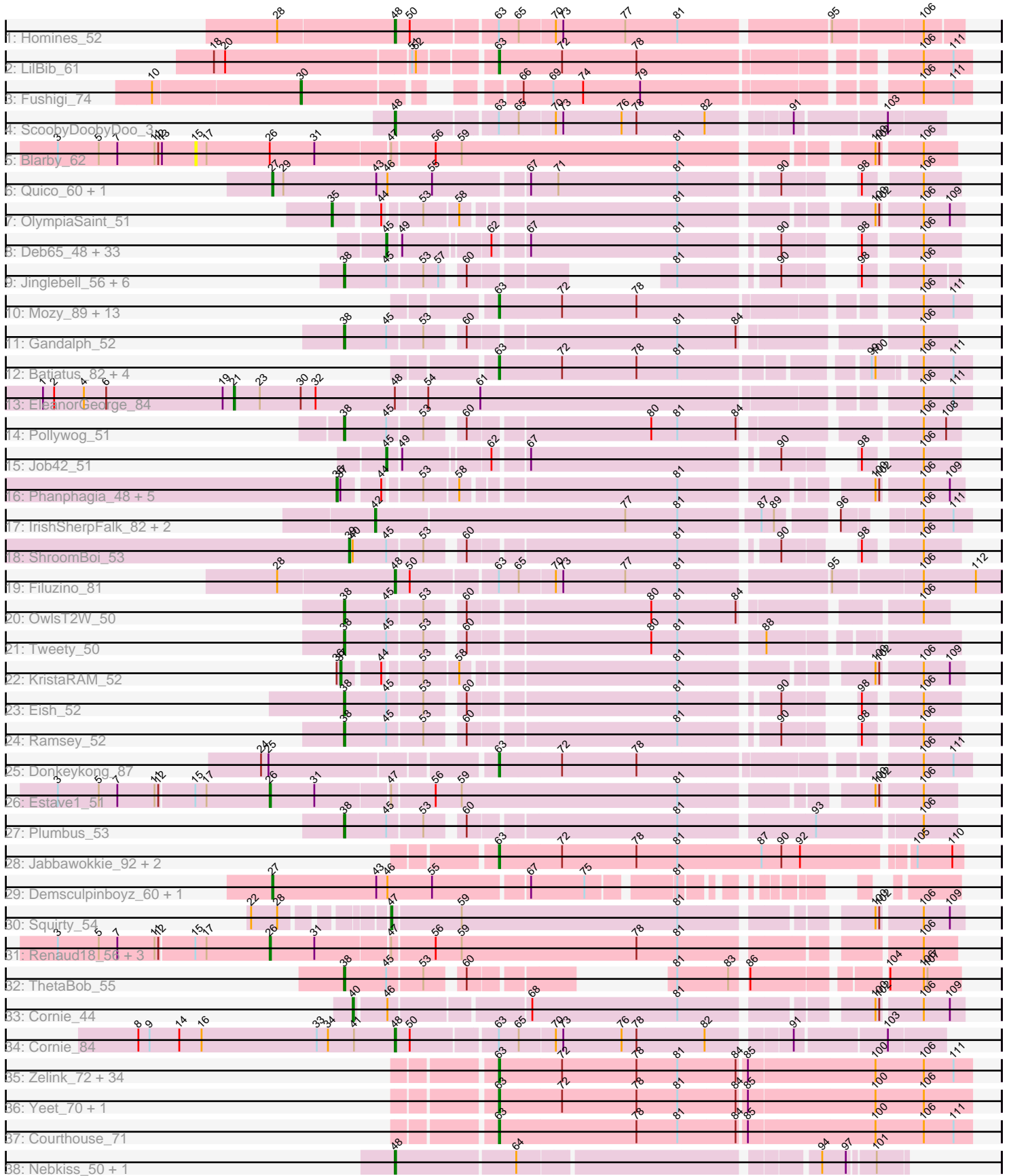


Pham 171261



Note: Tracks are now grouped by subcluster and scaled. Switching in subcluster is indicated by changes in track color. Track scale is now set by default to display the region 30 bp upstream of start 1 to 30 bp downstream of the last possible start. If this default region is judged to be packed too tightly with annotated starts, the track will be further scaled to only show that region of the ORF with annotated starts. This action will be indicated by adding "Zoomed" to the title. For starts, yellow indicates the location of called starts comprised solely of Glimmer/GeneMark auto-annotations, green indicates the location of called starts with at least 1 manual gene annotation.

Pham 171261 Report

This analysis was run 07/10/24 on database version 566.

Pham number 171261 has 144 members, 10 are drafts.

Phages represented in each track:

- Track 1 : Homines_52
- Track 2 : LilBib_61
- Track 3 : Fushigi_74
- Track 4 : ScoobyDoobyDoo_3
- Track 5 : Blarby_62
- Track 6 : Quico_60, Florinda_63
- Track 7 : OlympiaSaint_51
- Track 8 : Deb65_48, Poenanya_50, Sandalphon_53, RockyHorror_51, OldBen_49, DaWorst_52, Spoonbill_49, Blexus_49, Leperchaun_44, Nimbo_46, Daenerys_46, JoeyJr_47, Phasih_48, PMC_45, BodEinwohner17_52, PHappiness_47, BlueCrab_48, Stap_50, Radiance_51, Oksu_55, Boomer_53, Zerg_50, Geralt_47, RitaG_47, Polka14_48, IbOuu_53, Spikelee_57, Doug_53, Pacc40_46, Doomphist_50, Rockne_49, Empress_50, KingMidas_51, Scottish_50
- Track 9 : Jinglebell_56, Ochi17_54, Seabastian_56, Llama_56, Modragons_55, AlpineSix_56, OfUltron_56
- Track 10 : Mozy_89, MadMen_88, LunaBlu_85, Velveteen_76, KristaRAM_80, Sarma624_81, Cerasum_76, BigPhil_75, Soul22_83, Kingsley_86, Ogotopogo_88, Coco12_79, Bipolar_85, LittleE_76
- Track 11 : Gandalph_52
- Track 12 : Batiatus_82, Ms6_83, MilanaBonita_78, Kumao_60, Akhila_79
- Track 13 : EleanorGeorge_84
- Track 14 : Pollywog_51
- Track 15 : Job42_51
- Track 16 : Phanphagia_48, Shauna1_48, Bipolar_50, SuperGrey_53, JalFarm20_61, Donkeykong_54
- Track 17 : IrishSherpFalk_82, WillSterrel_81, Spartacus_88
- Track 18 : ShroomBoi_53
- Track 19 : Filuzino_81
- Track 20 : OwlsT2W_50
- Track 21 : Tweety_50
- Track 22 : KristaRAM_52
- Track 23 : Eish_52
- Track 24 : Ramsey_52
- Track 25 : Donkeykong_87
- Track 26 : Estave1_51
- Track 27 : Plumbus_53
- Track 28 : Jabbawokkie_92, Blarby_92, Zapner_91

- Track 29 : Demsculpinboyz_60, Che9d_57
- Track 30 : Squirty_54
- Track 31 : Renaud18_56, DeadP_56, Taj_54, Wee_53
- Track 32 : ThetaBob_55
- Track 33 : Cornie_44
- Track 34 : Cornie_84
- Track 35 : Zelink_72, Superphikiman_72, Bagrid_73, Schatzie_69, Daikon_43, Kalah2_69, Redno2_71, Ejimix_74, DmpstrDiver_74, Phoebus_77, Squint_75, Beem_74, JuicyJay_73, Sprinklers_17, NihilNomen_75, Traaww1_39, Flypotenuse_37, Che8_87, Glexan_40, BadAgartude_18, Dallas_73, HokkenD_67, Odette_73, ThreeRngTarjay_72, Porcelain_74, Balomoji_41, Gator_40, EricMillard_73, Hughesyang_73, MiaZeal_75, Lucky2013_72, Halley_76, Ariel_74, Cali_18, Harella_42
- Track 36 : Yeet_70, Marker_88
- Track 37 : Courthouse_71
- Track 38 : Nebkiss_50, Gaia_47

Summary of Final Annotations (See graph section above for start numbers):

The start number called the most often in the published annotations is 63, it was called in 57 of the 134 non-draft genes in the pham.

Genes that call this "Most Annotated" start:

- Akhila_79, Ariel_74, BadAgartude_18, Bagrid_73, Balomoji_41, Batiatus_82, Beem_74, BigPhil_75, Bipolar_85, Blarby_92, Cali_18, Cerasum_76, Che8_87, Coco12_79, Courthouse_71, Daikon_43, Dallas_73, DmpstrDiver_74, Donkeykong_87, Ejimix_74, EricMillard_73, Flypotenuse_37, Gator_40, Glexan_40, Halley_76, Harella_42, HokkenD_67, Hughesyang_73, Jabbawokkie_92, JuicyJay_73, Kalah2_69, Kingsley_86, KristaRAM_80, Kumao_60, LilBib_61, LittleE_76, Lucky2013_72, LunaBlu_85, MadMen_88, Marker_88, MiaZeal_75, MilanaBonita_78, Mozy_89, Ms6_83, NihilNomen_75, Odette_73, Ogoopogo_88, Phoebus_77, Porcelain_74, Redno2_71, Sarma624_81, Schatzie_69, Soul22_83, Sprinklers_17, Squint_75, Superphikiman_72, ThreeRngTarjay_72, Traaww1_39, Velveteen_76, Yeet_70, Zapner_91, Zelink_72,

Genes that have the "Most Annotated" start but do not call it:

- Cornie_84, Filuzino_81, Homines_52, ScoobyDoobyDoo_3,

Genes that do not have the "Most Annotated" start:

- AlpineSix_56, Bipolar_50, Blarby_62, Blexus_49, BlueCrab_48, BodEinwohner17_52, Boomer_53, Che9d_57, Cornie_44, DaWorst_52, Daenerys_46, DeadP_56, Deb65_48, Demsculpinboyz_60, Donkeykong_54, Doomphist_50, Doug_53, Eish_52, EleanorGeorge_84, Empress_50, Estave1_51, Florinda_63, Fushigi_74, Gaia_47, Gandalph_52, Geralt_47, IbOuu_53, IrishSherpFalk_82, JalFarm20_61, Jinglebell_56, Job42_51, JoeyJr_47, KingMidas_51, KristaRAM_52, Leperchaun_44, Llama_56, Modragons_55, Nebkiss_50, Nimbo_46, Ochi17_54, OfUltron_56, Oksu_55, OldBen_49, OlympiaSaint_51, OwlsT2W_50, PHappiness_47, PMC_45, Pacc40_46, Phanphagia_48, Phasih_48, Plumbus_53, Poenanya_50, Polka14_48, Pollywog_51, Quico_60, Radiance_51, Ramsey_52, Renaud18_56, RitaG_47, Rockne_49,

RockyHorror_51, Sandalphon_53, Scottish_50, Seabastian_56, Shauna1_48, ShroomBoi_53, Spartacus_88, Spikelee_57, Spoonbill_49, Squirty_54, Stap_50, SuperGrey_53, Taj_54, ThetaBob_55, Tweety_50, Wee_53, WillSterrel_81, Zerg_50,

Summary by start number:

Start 15:

- Found in 6 of 144 (4.2%) of genes in pham
- No Manual Annotations of this start.
- Called 16.7% of time when present
- Phage (with cluster) where this start called: Blarby_62 (F),

Start 21:

- Found in 1 of 144 (0.7%) of genes in pham
- Manual Annotations of this start: 1 of 134
- Called 100.0% of time when present
- Phage (with cluster) where this start called: EleanorGeorge_84 (F1),

Start 26:

- Found in 6 of 144 (4.2%) of genes in pham
- Manual Annotations of this start: 5 of 134
- Called 83.3% of time when present
- Phage (with cluster) where this start called: DeadP_56 (F1), Estave1_51 (F1), Renaud18_56 (F4), Taj_54 (F1), Wee_53 (F1),

Start 27:

- Found in 4 of 144 (2.8%) of genes in pham
- Manual Annotations of this start: 4 of 134
- Called 100.0% of time when present
- Phage (with cluster) where this start called: Che9d_57 (F2), Demsculpinboyz_60 (F2), Florinda_63 (F1), Quico_60 (F1),

Start 30:

- Found in 2 of 144 (1.4%) of genes in pham
- Manual Annotations of this start: 1 of 134
- Called 50.0% of time when present
- Phage (with cluster) where this start called: Fushigi_74 (A1),

Start 35:

- Found in 1 of 144 (0.7%) of genes in pham
- Manual Annotations of this start: 1 of 134
- Called 100.0% of time when present
- Phage (with cluster) where this start called: OlympiaSaint_51 (F1),

Start 36:

- Found in 7 of 144 (4.9%) of genes in pham
- Manual Annotations of this start: 6 of 134
- Called 85.7% of time when present
- Phage (with cluster) where this start called: Bipolar_50 (F1), Donkeykong_54 (F1), JalFarm20_61 (F1), Phanphagia_48 (F1), Shauna1_48 (F1), SuperGrey_53 (F1),

Start 37:

- Found in 7 of 144 (4.9%) of genes in pham

- Manual Annotations of this start: 1 of 134
- Called 14.3% of time when present
- Phage (with cluster) where this start called: KristaRAM_52 (F1),

Start 38:

- Found in 15 of 144 (10.4%) of genes in pham
- Manual Annotations of this start: 14 of 134
- Called 100.0% of time when present
- Phage (with cluster) where this start called: AlpineSix_56 (F1), Eish_52 (F1), Gandalph_52 (F1), Jinglebell_56 (F1), Llama_56 (F1), Modragons_55 (F1), Ochi17_54 (F1), OfUltron_56 (F1), OwlsT2W_50 (F1), Plumbus_53 (F1), Pollywog_51 (F1), Ramsey_52 (F1), Seabastian_56 (F1), ThetaBob_55 (F4), Tweety_50 (F1),

Start 39:

- Found in 1 of 144 (0.7%) of genes in pham
- Manual Annotations of this start: 1 of 134
- Called 100.0% of time when present
- Phage (with cluster) where this start called: ShroomBoi_53 (F1),

Start 40:

- Found in 2 of 144 (1.4%) of genes in pham
- Manual Annotations of this start: 1 of 134
- Called 50.0% of time when present
- Phage (with cluster) where this start called: Cornie_44 (F5),

Start 42:

- Found in 3 of 144 (2.1%) of genes in pham
- Manual Annotations of this start: 3 of 134
- Called 100.0% of time when present
- Phage (with cluster) where this start called: IrishSherpFalk_82 (F1), Spartacus_88 (F1), WillSterrel_81 (F1),

Start 45:

- Found in 51 of 144 (35.4%) of genes in pham
- Manual Annotations of this start: 32 of 134
- Called 68.6% of time when present
- Phage (with cluster) where this start called: Blexus_49 (F1), BlueCrab_48 (F1), BodEinwohner17_52 (F1), Boomer_53 (F1), DaWorst_52 (F1), Daenerys_46 (F1), Deb65_48 (F1), Doomphist_50 (F1), Doug_53 (F1), Empress_50 (F1), Geralt_47 (F1), IbOuu_53 (F1), Job42_51 (F1), JoeyJr_47 (F1), KingMidas_51 (F1), Leperchaun_44 (F1), Nimbo_46 (F1), Oksu_55 (F1), OldBen_49 (F1), PHappiness_47 (F1), PMC_45 (F1), Pacc40_46 (F1), Phasih_48 (F1), Poenanya_50 (F1), Polka14_48 (F1), Radiance_51 (F1), RitaG_47 (F1), Rockne_49 (F1), RockyHorror_51 (F1), Sandalphon_53 (F1), Scottish_50 (F1), Spikelee_57 (F1), Spoonbill_49 (F1), Stap_50 (F1), Zerg_50 (F1),

Start 47:

- Found in 7 of 144 (4.9%) of genes in pham
- Manual Annotations of this start: 1 of 134
- Called 14.3% of time when present
- Phage (with cluster) where this start called: Squirty_54 (F3),

Start 48:

- Found in 7 of 144 (4.9%) of genes in pham
- Manual Annotations of this start: 6 of 134
- Called 85.7% of time when present
- Phage (with cluster) where this start called: Cornie_84 (F5), Filuzino_81 (F1), Gaia_47 (X), Homines_52 (A1), Nebkiss_50 (X), ScoobyDoobyDoo_3 (C2),

Start 63:

- Found in 66 of 144 (45.8%) of genes in pham
- Manual Annotations of this start: 57 of 134
- Called 93.9% of time when present
- Phage (with cluster) where this start called: Akhila_79 (F1), Ariel_74 (J), BadAgartude_18 (C1), Bagrid_73 (J), Balomoji_41 (E), Batiatus_82 (F1), Beem_74 (J), BigPhil_75 (F1), Bipolar_85 (F1), Blarby_92 (F), Cali_18 (C1), Cerasum_76 (F1), Che8_87 (F1), Coco12_79 (F1), Courthouse_71 (J), Daikon_43 (E), Dallas_73 (J), DmpstrDiver_74 (J), Donkeykong_87 (F1), Ejimix_74 (J), EricMillard_73 (J), Flypotenuse_37 (E), Gator_40 (E), Glexan_40 (E), Halley_76 (J), Harella_42 (E), HokkenD_67 (J), Hughesyang_73 (J), Jabbawokkie_92 (F2), JuicyJay_73 (J), Kalah2_69 (J), Kingsley_86 (F1), KristaRAM_80 (F1), Kumao_60 (singleton), LilBib_61 (A1), LittleE_76 (J), Lucky2013_72 (J), LunaBlu_85 (F1), MadMen_88 (F1), Marker_88 (F1), MiaZeal_75 (J), MilanaBonita_78 (F1), Mozy_89 (F1), Ms6_83 (F1), NihilNomen_75 (J), Odette_73 (J), Ogopogo_88 (F1), Phoebus_77 (J), Porcelain_74 (J), Redno2_71 (J), Sarma624_81 (F1), Schatzie_69 (J), Soul22_83 (F2), Sprinklers_17 (C1), Squint_75 (J), Superphikiman_72 (J), ThreeRngTarjay_72 (J), Traaww1_39 (E), Velveteen_76 (F1), Yeet_70 (J), Zapner_91 (F2), Zelink_72 (J),

Summary by clusters:

There are 13 clusters represented in this pham: F1, singleton, F3, E, F5, F, J, F2, A1, X, F4, C1, C2,

Info for manual annotations of cluster A1:

- Start number 30 was manually annotated 1 time for cluster A1.
- Start number 48 was manually annotated 1 time for cluster A1.
- Start number 63 was manually annotated 1 time for cluster A1.

Info for manual annotations of cluster C1:

- Start number 63 was manually annotated 3 times for cluster C1.

Info for manual annotations of cluster C2:

- Start number 48 was manually annotated 1 time for cluster C2.

Info for manual annotations of cluster E:

- Start number 63 was manually annotated 6 times for cluster E.

Info for manual annotations of cluster F1:

- Start number 21 was manually annotated 1 time for cluster F1.
- Start number 26 was manually annotated 4 times for cluster F1.
- Start number 27 was manually annotated 2 times for cluster F1.
- Start number 35 was manually annotated 1 time for cluster F1.
- Start number 36 was manually annotated 6 times for cluster F1.
- Start number 37 was manually annotated 1 time for cluster F1.

- Start number 38 was manually annotated 13 times for cluster F1.
- Start number 39 was manually annotated 1 time for cluster F1.
- Start number 42 was manually annotated 3 times for cluster F1.
- Start number 45 was manually annotated 32 times for cluster F1.
- Start number 48 was manually annotated 1 time for cluster F1.
- Start number 63 was manually annotated 18 times for cluster F1.

Info for manual annotations of cluster F2:

- Start number 27 was manually annotated 2 times for cluster F2.
- Start number 63 was manually annotated 3 times for cluster F2.

Info for manual annotations of cluster F3:

- Start number 47 was manually annotated 1 time for cluster F3.

Info for manual annotations of cluster F4:

- Start number 26 was manually annotated 1 time for cluster F4.
- Start number 38 was manually annotated 1 time for cluster F4.

Info for manual annotations of cluster F5:

- Start number 40 was manually annotated 1 time for cluster F5.
- Start number 48 was manually annotated 1 time for cluster F5.

Info for manual annotations of cluster J:

- Start number 63 was manually annotated 25 times for cluster J.

Info for manual annotations of cluster X:

- Start number 48 was manually annotated 2 times for cluster X.

Gene Information:

Gene: Akhila_79 Start: 48285, Stop: 48626, Start Num: 63

Candidate Starts for Akhila_79:

(Start: 63 @48285 has 57 MA's), (72, 48333), (78, 48393), (81, 48426), (99, 48555), (100, 48558), (106, 48588), (111, 48612),

Gene: AlpineSix_56 Start: 38900, Stop: 39235, Start Num: 38

Candidate Starts for AlpineSix_56:

(Start: 38 @38900 has 14 MA's), (Start: 45 @38933 has 32 MA's), (53, 38960), (57, 38972), (60, 38984), (81, 39068), (90, 39134), (98, 39170), (106, 39209),

Gene: Ariel_74 Start: 47072, Stop: 46704, Start Num: 63

Candidate Starts for Ariel_74:

(Start: 63 @47072 has 57 MA's), (72, 47024), (78, 46964), (81, 46931), (84, 46886), (85, 46880), (100, 46781), (106, 46742), (111, 46718),

Gene: BadAgartude_18 Start: 5785, Stop: 6153, Start Num: 63

Candidate Starts for BadAgartude_18:

(Start: 63 @5785 has 57 MA's), (72, 5833), (78, 5893), (81, 5926), (84, 5971), (85, 5977), (100, 6076), (106, 6115), (111, 6139),

Gene: Bagrid_73 Start: 50489, Stop: 50121, Start Num: 63

Candidate Starts for Bagrid_73:

(Start: 63 @50489 has 57 MA's), (72, 50441), (78, 50381), (81, 50348), (84, 50303), (85, 50297), (100, 50198), (106, 50159), (111, 50135),

Gene: Balomoji_41 Start: 35435, Stop: 35067, Start Num: 63

Candidate Starts for Balomoji_41:

(Start: 63 @35435 has 57 MA's), (72, 35387), (78, 35327), (81, 35294), (84, 35249), (85, 35243), (100, 35144), (106, 35105), (111, 35081),

Gene: Batiatus_82 Start: 49370, Stop: 49711, Start Num: 63

Candidate Starts for Batiatus_82:

(Start: 63 @49370 has 57 MA's), (72, 49418), (78, 49478), (81, 49511), (99, 49640), (100, 49643), (106, 49673), (111, 49697),

Gene: Beem_74 Start: 51349, Stop: 50981, Start Num: 63

Candidate Starts for Beem_74:

(Start: 63 @51349 has 57 MA's), (72, 51301), (78, 51241), (81, 51208), (84, 51163), (85, 51157), (100, 51058), (106, 51019), (111, 50995),

Gene: BigPhil_75 Start: 45204, Stop: 45548, Start Num: 63

Candidate Starts for BigPhil_75:

(Start: 63 @45204 has 57 MA's), (72, 45252), (78, 45312), (106, 45510), (111, 45534),

Gene: Bipolar_50 Start: 37100, Stop: 37534, Start Num: 36

Candidate Starts for Bipolar_50:

(Start: 36 @37100 has 6 MA's), (Start: 37 @37103 has 1 MA's), (44, 37130), (53, 37157), (58, 37181), (81, 37340), (100, 37469), (102, 37472), (106, 37502), (109, 37523),

Gene: Bipolar_85 Start: 50898, Stop: 51242, Start Num: 63

Candidate Starts for Bipolar_85:

(Start: 63 @50898 has 57 MA's), (72, 50946), (78, 51006), (106, 51204), (111, 51228),

Gene: Blarby_62 Start: 37522, Stop: 38091, Start Num: 15

Candidate Starts for Blarby_62:

(3, 37411), (5, 37444), (7, 37459), (11, 37489), (12, 37492), (13, 37495), (15, 37522), (17, 37531), (Start: 26 @37582 has 5 MA's), (31, 37618), (Start: 47 @37675 has 1 MA's), (56, 37708), (59, 37729), (81, 37903), (100, 38032), (102, 38035), (106, 38065),

Gene: Blarby_92 Start: 48162, Stop: 48512, Start Num: 63

Candidate Starts for Blarby_92:

(Start: 63 @48162 has 57 MA's), (72, 48210), (78, 48270), (81, 48303), (87, 48369), (90, 48384), (92, 48399), (105, 48477), (110, 48504),

Gene: Blexus_49 Start: 36674, Stop: 37057, Start Num: 45

Candidate Starts for Blexus_49:

(Start: 45 @36674 has 32 MA's), (49, 36683), (62, 36746), (67, 36770), (81, 36887), (90, 36953), (98, 36989), (106, 37028),

Gene: BlueCrab_48 Start: 36400, Stop: 36783, Start Num: 45

Candidate Starts for BlueCrab_48:

(Start: 45 @36400 has 32 MA's), (49, 36409), (62, 36472), (67, 36496), (81, 36613), (90, 36679), (98, 36715), (106, 36754),

Gene: BodEinwohner17_52 Start: 36616, Stop: 36999, Start Num: 45

Candidate Starts for BodEinwohner17_52:

(Start: 45 @36616 has 32 MA's), (49, 36625), (62, 36688), (67, 36712), (81, 36829), (90, 36895), (98, 36931), (106, 36970),

Gene: Boomer_53 Start: 37849, Stop: 38232, Start Num: 45

Candidate Starts for Boomer_53:

(Start: 45 @37849 has 32 MA's), (49, 37858), (62, 37921), (67, 37945), (81, 38062), (90, 38128), (98, 38164), (106, 38203),

Gene: Cali_18 Start: 6761, Stop: 7129, Start Num: 63

Candidate Starts for Cali_18:

(Start: 63 @6761 has 57 MA's), (72, 6809), (78, 6869), (81, 6902), (84, 6947), (85, 6953), (100, 7052), (106, 7091), (111, 7115),

Gene: Cerasum_76 Start: 45222, Stop: 45566, Start Num: 63

Candidate Starts for Cerasum_76:

(Start: 63 @45222 has 57 MA's), (72, 45270), (78, 45330), (106, 45528), (111, 45552),

Gene: Che8_87 Start: 50151, Stop: 50519, Start Num: 63

Candidate Starts for Che8_87:

(Start: 63 @50151 has 57 MA's), (72, 50199), (78, 50259), (81, 50292), (84, 50337), (85, 50343), (100, 50442), (106, 50481), (111, 50505),

Gene: Che9d_57 Start: 36146, Stop: 36583, Start Num: 27

Candidate Starts for Che9d_57:

(Start: 27 @36146 has 4 MA's), (43, 36230), (46, 36239), (55, 36275), (67, 36347), (75, 36389), (81, 36449),

Gene: Coco12_79 Start: 49279, Stop: 49623, Start Num: 63

Candidate Starts for Coco12_79:

(Start: 63 @49279 has 57 MA's), (72, 49327), (78, 49387), (106, 49585), (111, 49609),

Gene: Cornie_44 Start: 34732, Stop: 35169, Start Num: 40

Candidate Starts for Cornie_44:

(Start: 40 @34732 has 1 MA's), (46, 34756), (68, 34858), (81, 34975), (100, 35104), (102, 35107), (106, 35137), (109, 35158),

Gene: Cornie_84 Start: 49125, Stop: 49526, Start Num: 48

Candidate Starts for Cornie_84:

(8, 48918), (9, 48927), (14, 48951), (16, 48969), (33, 49062), (34, 49071), (41, 49092), (Start: 48 @49125 has 6 MA's), (50, 49137), (Start: 63 @49200 has 57 MA's), (65, 49215), (70, 49242), (73, 49248), (76, 49293), (78, 49305), (82, 49359), (91, 49416), (103, 49482),

Gene: Courthouse_71 Start: 46710, Stop: 46342, Start Num: 63

Candidate Starts for Courthouse_71:

(Start: 63 @46710 has 57 MA's), (78, 46602), (81, 46569), (84, 46524), (85, 46518), (100, 46419), (106, 46380), (111, 46356),

Gene: DaWorst_52 Start: 37475, Stop: 37858, Start Num: 45

Candidate Starts for DaWorst_52:

(Start: 45 @37475 has 32 MA's), (49, 37484), (62, 37547), (67, 37571), (81, 37688), (90, 37754), (98, 37790), (106, 37829),

Gene: Daenerys_46 Start: 35343, Stop: 35726, Start Num: 45

Candidate Starts for Daenerys_46:

(Start: 45 @35343 has 32 MA's), (49, 35352), (62, 35415), (67, 35439), (81, 35556), (90, 35622), (98, 35658), (106, 35697),

Gene: Daikon_43 Start: 35456, Stop: 35088, Start Num: 63

Candidate Starts for Daikon_43:

(Start: 63 @35456 has 57 MA's), (72, 35408), (78, 35348), (81, 35315), (84, 35270), (85, 35264), (100, 35165), (106, 35126), (111, 35102),

Gene: Dallas_73 Start: 50270, Stop: 49902, Start Num: 63

Candidate Starts for Dallas_73:

(Start: 63 @50270 has 57 MA's), (72, 50222), (78, 50162), (81, 50129), (84, 50084), (85, 50078), (100, 49979), (106, 49940), (111, 49916),

Gene: DeadP_56 Start: 38235, Stop: 38747, Start Num: 26

Candidate Starts for DeadP_56:

(3, 38067), (5, 38100), (7, 38115), (11, 38145), (12, 38148), (15, 38175), (17, 38184), (Start: 26 @38235 has 5 MA's), (31, 38271), (Start: 47 @38328 has 1 MA's), (56, 38361), (59, 38382), (78, 38523), (81, 38556), (106, 38721),

Gene: Deb65_48 Start: 35312, Stop: 35695, Start Num: 45

Candidate Starts for Deb65_48:

(Start: 45 @35312 has 32 MA's), (49, 35321), (62, 35384), (67, 35408), (81, 35525), (90, 35591), (98, 35627), (106, 35666),

Gene: Demsculpinboyz_60 Start: 36255, Stop: 36692, Start Num: 27

Candidate Starts for Demsculpinboyz_60:

(Start: 27 @36255 has 4 MA's), (43, 36339), (46, 36348), (55, 36384), (67, 36456), (75, 36498), (81, 36558),

Gene: DmpstrDiver_74 Start: 50697, Stop: 50329, Start Num: 63

Candidate Starts for DmpstrDiver_74:

(Start: 63 @50697 has 57 MA's), (72, 50649), (78, 50589), (81, 50556), (84, 50511), (85, 50505), (100, 50406), (106, 50367), (111, 50343),

Gene: Donkeykong_54 Start: 39346, Stop: 39780, Start Num: 36

Candidate Starts for Donkeykong_54:

(Start: 36 @39346 has 6 MA's), (Start: 37 @39349 has 1 MA's), (44, 39376), (53, 39403), (58, 39427), (81, 39586), (100, 39715), (102, 39718), (106, 39748), (109, 39769),

Gene: Donkeykong_87 Start: 51001, Stop: 51345, Start Num: 63

Candidate Starts for Donkeykong_87:

(24, 50827), (25, 50833), (Start: 63 @51001 has 57 MA's), (72, 51049), (78, 51109), (106, 51307), (111, 51331),

Gene: Doomphist_50 Start: 37614, Stop: 37997, Start Num: 45

Candidate Starts for Doomphist_50:

(Start: 45 @37614 has 32 MA's), (49, 37623), (62, 37686), (67, 37710), (81, 37827), (90, 37893), (98, 37929), (106, 37968),

Gene: Doug_53 Start: 37732, Stop: 38115, Start Num: 45

Candidate Starts for Doug_53:

(Start: 45 @37732 has 32 MA's), (49, 37741), (62, 37804), (67, 37828), (81, 37945), (90, 38011), (98, 38047), (106, 38086),

Gene: Eish_52 Start: 37152, Stop: 37565, Start Num: 38

Candidate Starts for Eish_52:

(Start: 38 @37152 has 14 MA's), (Start: 45 @37185 has 32 MA's), (53, 37212), (60, 37236), (81, 37395), (90, 37461), (98, 37497), (106, 37536),

Gene: Ejimix_74 Start: 52138, Stop: 51770, Start Num: 63

Candidate Starts for Ejimix_74:

(Start: 63 @52138 has 57 MA's), (72, 52090), (78, 52030), (81, 51997), (84, 51952), (85, 51946), (100, 51847), (106, 51808), (111, 51784),

Gene: EleanorGeorge_84 Start: 49979, Stop: 50533, Start Num: 21

Candidate Starts for EleanorGeorge_84:

(1, 49826), (2, 49835), (4, 49859), (6, 49877), (19, 49970), (Start: 21 @49979 has 1 MA's), (23, 50000), (Start: 30 @50033 has 1 MA's), (32, 50045), (Start: 48 @50108 has 6 MA's), (54, 50132), (61, 50174), (106, 50495), (111, 50519),

Gene: Empress_50 Start: 36757, Stop: 37140, Start Num: 45

Candidate Starts for Empress_50:

(Start: 45 @36757 has 32 MA's), (49, 36766), (62, 36829), (67, 36853), (81, 36970), (90, 37036), (98, 37072), (106, 37111),

Gene: EricMillard_73 Start: 51342, Stop: 50974, Start Num: 63

Candidate Starts for EricMillard_73:

(Start: 63 @51342 has 57 MA's), (72, 51294), (78, 51234), (81, 51201), (84, 51156), (85, 51150), (100, 51051), (106, 51012), (111, 50988),

Gene: Estave1_51 Start: 36423, Stop: 36932, Start Num: 26

Candidate Starts for Estave1_51:

(3, 36255), (5, 36288), (7, 36303), (11, 36333), (12, 36336), (15, 36363), (17, 36372), (Start: 26 @36423 has 5 MA's), (31, 36459), (Start: 47 @36516 has 1 MA's), (56, 36549), (59, 36570), (81, 36744), (100, 36873), (102, 36876), (106, 36906),

Gene: Filuzino_81 Start: 50456, Stop: 50911, Start Num: 48

Candidate Starts for Filuzino_81:

(28, 50363), (Start: 48 @50456 has 6 MA's), (50, 50468), (Start: 63 @50531 has 57 MA's), (65, 50546), (70, 50573), (73, 50579), (77, 50627), (81, 50669), (95, 50780), (106, 50849), (112, 50891),

Gene: Florinda_63 Start: 39217, Stop: 39705, Start Num: 27

Candidate Starts for Florinda_63:

(Start: 27 @39217 has 4 MA's), (29, 39226), (43, 39301), (46, 39310), (55, 39346), (67, 39418), (71, 39439), (81, 39535), (90, 39601), (98, 39637), (106, 39676),

Gene: Flypotenuse_37 Start: 34187, Stop: 33819, Start Num: 63

Candidate Starts for Flypotenuse_37:

(Start: 63 @34187 has 57 MA's), (72, 34139), (78, 34079), (81, 34046), (84, 34001), (85, 33995), (100, 33896), (106, 33857), (111, 33833),

Gene: Fushigi_74 Start: 44956, Stop: 44495, Start Num: 30

Candidate Starts for Fushigi_74:

(10, 45070), (Start: 30 @44956 has 1 MA's), (66, 44821), (69, 44797), (74, 44773), (79, 44728), (106, 44533), (111, 44509),

Gene: Gaia_47 Start: 36098, Stop: 35730, Start Num: 48

Candidate Starts for Gaia_47:

(Start: 48 @36098 has 6 MA's), (64, 36005), (94, 35789), (97, 35771), (101, 35753),

Gene: Gandalph_52 Start: 36543, Stop: 36980, Start Num: 38

Candidate Starts for Gandalph_52:

(Start: 38 @36543 has 14 MA's), (Start: 45 @36576 has 32 MA's), (53, 36603), (60, 36627), (81, 36786), (84, 36831), (106, 36954),

Gene: Gator_40 Start: 35326, Stop: 34958, Start Num: 63

Candidate Starts for Gator_40:

(Start: 63 @35326 has 57 MA's), (72, 35278), (78, 35218), (81, 35185), (84, 35140), (85, 35134), (100, 35035), (106, 34996), (111, 34972),

Gene: Geralt_47 Start: 35311, Stop: 35694, Start Num: 45

Candidate Starts for Geralt_47:

(Start: 45 @35311 has 32 MA's), (49, 35320), (62, 35383), (67, 35407), (81, 35524), (90, 35590), (98, 35626), (106, 35665),

Gene: Glexan_40 Start: 35314, Stop: 34946, Start Num: 63

Candidate Starts for Glexan_40:

(Start: 63 @35314 has 57 MA's), (72, 35266), (78, 35206), (81, 35173), (84, 35128), (85, 35122), (100, 35023), (106, 34984), (111, 34960),

Gene: Halley_76 Start: 51349, Stop: 50981, Start Num: 63

Candidate Starts for Halley_76:

(Start: 63 @51349 has 57 MA's), (72, 51301), (78, 51241), (81, 51208), (84, 51163), (85, 51157), (100, 51058), (106, 51019), (111, 50995),

Gene: Harella_42 Start: 35830, Stop: 35462, Start Num: 63

Candidate Starts for Harella_42:

(Start: 63 @35830 has 57 MA's), (72, 35782), (78, 35722), (81, 35689), (84, 35644), (85, 35638), (100, 35539), (106, 35500), (111, 35476),

Gene: HokkenD_67 Start: 49618, Stop: 49250, Start Num: 63

Candidate Starts for HokkenD_67:

(Start: 63 @49618 has 57 MA's), (72, 49570), (78, 49510), (81, 49477), (84, 49432), (85, 49426), (100, 49327), (106, 49288), (111, 49264),

Gene: Homines_52 Start: 36648, Stop: 36226, Start Num: 48

Candidate Starts for Homines_52:

(28, 36741), (Start: 48 @36648 has 6 MA's), (50, 36636), (Start: 63 @36573 has 57 MA's), (65, 36558), (70, 36531), (73, 36525), (77, 36477), (81, 36435), (95, 36324), (106, 36255),

Gene: Hughesyang_73 Start: 51308, Stop: 50940, Start Num: 63

Candidate Starts for Hughesyang_73:

(Start: 63 @51308 has 57 MA's), (72, 51260), (78, 51200), (81, 51167), (84, 51122), (85, 51116), (100, 51017), (106, 50978), (111, 50954),

Gene: lbOuu_53 Start: 37593, Stop: 37976, Start Num: 45

Candidate Starts for IbOuu_53:

(Start: 45 @37593 has 32 MA's), (49, 37602), (62, 37665), (67, 37689), (81, 37806), (90, 37872), (98, 37908), (106, 37947),

Gene: IrishSherpFalk_82 Start: 49608, Stop: 50033, Start Num: 42

Candidate Starts for IrishSherpFalk_82:

(Start: 42 @49608 has 3 MA's), (77, 49803), (81, 49845), (87, 49905), (89, 49914), (96, 49950), (106, 49995), (111, 50019),

Gene: Jabbawokkie_92 Start: 48082, Stop: 48432, Start Num: 63

Candidate Starts for Jabbawokkie_92:

(Start: 63 @48082 has 57 MA's), (72, 48130), (78, 48190), (81, 48223), (87, 48289), (90, 48304), (92, 48319), (105, 48397), (110, 48424),

Gene: JalFarm20_61 Start: 39841, Stop: 40275, Start Num: 36

Candidate Starts for JalFarm20_61:

(Start: 36 @39841 has 6 MA's), (Start: 37 @39844 has 1 MA's), (44, 39871), (53, 39898), (58, 39922), (81, 40081), (100, 40210), (102, 40213), (106, 40243), (109, 40264),

Gene: Jinglebell_56 Start: 38899, Stop: 39234, Start Num: 38

Candidate Starts for Jinglebell_56:

(Start: 38 @38899 has 14 MA's), (Start: 45 @38932 has 32 MA's), (53, 38959), (57, 38971), (60, 38983), (81, 39067), (90, 39133), (98, 39169), (106, 39208),

Gene: Job42_51 Start: 38265, Stop: 38648, Start Num: 45

Candidate Starts for Job42_51:

(Start: 45 @38265 has 32 MA's), (49, 38274), (62, 38337), (67, 38361), (90, 38544), (98, 38580), (106, 38619),

Gene: JoeyJr_47 Start: 35511, Stop: 35894, Start Num: 45

Candidate Starts for JoeyJr_47:

(Start: 45 @35511 has 32 MA's), (49, 35520), (62, 35583), (67, 35607), (81, 35724), (90, 35790), (98, 35826), (106, 35865),

Gene: JuicyJay_73 Start: 52483, Stop: 52115, Start Num: 63

Candidate Starts for JuicyJay_73:

(Start: 63 @52483 has 57 MA's), (72, 52435), (78, 52375), (81, 52342), (84, 52297), (85, 52291), (100, 52192), (106, 52153), (111, 52129),

Gene: Kalah2_69 Start: 50642, Stop: 50274, Start Num: 63

Candidate Starts for Kalah2_69:

(Start: 63 @50642 has 57 MA's), (72, 50594), (78, 50534), (81, 50501), (84, 50456), (85, 50450), (100, 50351), (106, 50312), (111, 50288),

Gene: KingMidas_51 Start: 37173, Stop: 37556, Start Num: 45

Candidate Starts for KingMidas_51:

(Start: 45 @37173 has 32 MA's), (49, 37182), (62, 37245), (67, 37269), (81, 37386), (90, 37452), (98, 37488), (106, 37527),

Gene: Kingsley_86 Start: 51886, Stop: 52230, Start Num: 63

Candidate Starts for Kingsley_86:

(Start: 63 @51886 has 57 MA's), (72, 51934), (78, 51994), (106, 52192), (111, 52216),

Gene: KristaRAM_80 Start: 48204, Stop: 48548, Start Num: 63
Candidate Starts for KristaRAM_80:
(Start: 63 @48204 has 57 MA's), (72, 48252), (78, 48312), (106, 48510), (111, 48534),

Gene: KristaRAM_52 Start: 38472, Stop: 38903, Start Num: 37
Candidate Starts for KristaRAM_52:
(Start: 36 @38469 has 6 MA's), (Start: 37 @38472 has 1 MA's), (44, 38499), (53, 38526), (58, 38550),
(81, 38709), (100, 38838), (102, 38841), (106, 38871), (109, 38892),

Gene: Kumao_60 Start: 43284, Stop: 43625, Start Num: 63
Candidate Starts for Kumao_60:
(Start: 63 @43284 has 57 MA's), (72, 43332), (78, 43392), (81, 43425), (99, 43554), (100, 43557),
(106, 43587), (111, 43611),

Gene: Leperchaun_44 Start: 34741, Stop: 35124, Start Num: 45
Candidate Starts for Leperchaun_44:
(Start: 45 @34741 has 32 MA's), (49, 34750), (62, 34813), (67, 34837), (81, 34954), (90, 35020), (98,
35056), (106, 35095),

Gene: LilBib_61 Start: 42376, Stop: 42032, Start Num: 63
Candidate Starts for LilBib_61:
(18, 42586), (20, 42577), (51, 42433), (52, 42430), (Start: 63 @42376 has 57 MA's), (72, 42328), (78,
42268), (106, 42070), (111, 42046),

Gene: LittleE_76 Start: 50154, Stop: 49810, Start Num: 63
Candidate Starts for LittleE_76:
(Start: 63 @50154 has 57 MA's), (72, 50106), (78, 50046), (106, 49848), (111, 49824),

Gene: Llama_56 Start: 38897, Stop: 39232, Start Num: 38
Candidate Starts for Llama_56:
(Start: 38 @38897 has 14 MA's), (Start: 45 @38930 has 32 MA's), (53, 38957), (57, 38969), (60,
38981), (81, 39065), (90, 39131), (98, 39167), (106, 39206),

Gene: Lucky2013_72 Start: 47088, Stop: 46720, Start Num: 63
Candidate Starts for Lucky2013_72:
(Start: 63 @47088 has 57 MA's), (72, 47040), (78, 46980), (81, 46947), (84, 46902), (85, 46896), (100,
46797), (106, 46758), (111, 46734),

Gene: LunaBlu_85 Start: 49751, Stop: 50095, Start Num: 63
Candidate Starts for LunaBlu_85:
(Start: 63 @49751 has 57 MA's), (72, 49799), (78, 49859), (106, 50057), (111, 50081),

Gene: MadMen_88 Start: 49877, Stop: 50221, Start Num: 63
Candidate Starts for MadMen_88:
(Start: 63 @49877 has 57 MA's), (72, 49925), (78, 49985), (106, 50183), (111, 50207),

Gene: Marker_88 Start: 49677, Stop: 50045, Start Num: 63
Candidate Starts for Marker_88:
(Start: 63 @49677 has 57 MA's), (72, 49725), (78, 49785), (81, 49818), (84, 49863), (85, 49869), (100,
49968), (106, 50007),

Gene: MiaZeal_75 Start: 47744, Stop: 47376, Start Num: 63
Candidate Starts for MiaZeal_75:

(Start: 63 @47744 has 57 MA's), (72, 47696), (78, 47636), (81, 47603), (84, 47558), (85, 47552), (100, 47453), (106, 47414), (111, 47390),

Gene: MilanaBonita_78 Start: 48285, Stop: 48626, Start Num: 63

Candidate Starts for MilanaBonita_78:

(Start: 63 @48285 has 57 MA's), (72, 48333), (78, 48393), (81, 48426), (99, 48555), (100, 48558), (106, 48588), (111, 48612),

Gene: Modragons_55 Start: 38743, Stop: 39078, Start Num: 38

Candidate Starts for Modragons_55:

(Start: 38 @38743 has 14 MA's), (Start: 45 @38776 has 32 MA's), (53, 38803), (57, 38815), (60, 38827), (81, 38911), (90, 38977), (98, 39013), (106, 39052),

Gene: Mozy_89 Start: 48614, Stop: 48958, Start Num: 63

Candidate Starts for Mozy_89:

(Start: 63 @48614 has 57 MA's), (72, 48662), (78, 48722), (106, 48920), (111, 48944),

Gene: Ms6_83 Start: 45978, Stop: 46319, Start Num: 63

Candidate Starts for Ms6_83:

(Start: 63 @45978 has 57 MA's), (72, 46026), (78, 46086), (81, 46119), (99, 46248), (100, 46251), (106, 46281), (111, 46305),

Gene: Nebkiss_50 Start: 35799, Stop: 35431, Start Num: 48

Candidate Starts for Nebkiss_50:

(Start: 48 @35799 has 6 MA's), (64, 35706), (94, 35490), (97, 35472), (101, 35454),

Gene: NihilNomen_75 Start: 51436, Stop: 51068, Start Num: 63

Candidate Starts for NihilNomen_75:

(Start: 63 @51436 has 57 MA's), (72, 51388), (78, 51328), (81, 51295), (84, 51250), (85, 51244), (100, 51145), (106, 51106), (111, 51082),

Gene: Nimbo_46 Start: 35314, Stop: 35697, Start Num: 45

Candidate Starts for Nimbo_46:

(Start: 45 @35314 has 32 MA's), (49, 35323), (62, 35386), (67, 35410), (81, 35527), (90, 35593), (98, 35629), (106, 35668),

Gene: Ochi17_54 Start: 38350, Stop: 38685, Start Num: 38

Candidate Starts for Ochi17_54:

(Start: 38 @38350 has 14 MA's), (Start: 45 @38383 has 32 MA's), (53, 38410), (57, 38422), (60, 38434), (81, 38518), (90, 38584), (98, 38620), (106, 38659),

Gene: Odette_73 Start: 50479, Stop: 50111, Start Num: 63

Candidate Starts for Odette_73:

(Start: 63 @50479 has 57 MA's), (72, 50431), (78, 50371), (81, 50338), (84, 50293), (85, 50287), (100, 50188), (106, 50149), (111, 50125),

Gene: OfUltron_56 Start: 38899, Stop: 39234, Start Num: 38

Candidate Starts for OfUltron_56:

(Start: 38 @38899 has 14 MA's), (Start: 45 @38932 has 32 MA's), (53, 38959), (57, 38971), (60, 38983), (81, 39067), (90, 39133), (98, 39169), (106, 39208),

Gene: Ogopogo_88 Start: 49094, Stop: 49438, Start Num: 63

Candidate Starts for Ogopogo_88:

(Start: 63 @49094 has 57 MA's), (72, 49142), (78, 49202), (106, 49400), (111, 49424),

Gene: Oksu_55 Start: 38799, Stop: 39179, Start Num: 45

Candidate Starts for Oksu_55:

(Start: 45 @38799 has 32 MA's), (49, 38808), (62, 38871), (67, 38895), (81, 39012), (90, 39078), (98, 39114), (106, 39153),

Gene: OldBen_49 Start: 37029, Stop: 37412, Start Num: 45

Candidate Starts for OldBen_49:

(Start: 45 @37029 has 32 MA's), (49, 37038), (62, 37101), (67, 37125), (81, 37242), (90, 37308), (98, 37344), (106, 37383),

Gene: OlympiaSaint_51 Start: 36873, Stop: 37310, Start Num: 35

Candidate Starts for OlympiaSaint_51:

(Start: 35 @36873 has 1 MA's), (44, 36906), (53, 36933), (58, 36957), (81, 37116), (100, 37245), (102, 37248), (106, 37278), (109, 37299),

Gene: OwlsT2W_50 Start: 36873, Stop: 37304, Start Num: 38

Candidate Starts for OwlsT2W_50:

(Start: 38 @36873 has 14 MA's), (Start: 45 @36906 has 32 MA's), (53, 36933), (60, 36957), (80, 37095), (81, 37116), (84, 37161), (106, 37284),

Gene: PHappiness_47 Start: 35287, Stop: 35670, Start Num: 45

Candidate Starts for PHappiness_47:

(Start: 45 @35287 has 32 MA's), (49, 35296), (62, 35359), (67, 35383), (81, 35500), (90, 35566), (98, 35602), (106, 35641),

Gene: PMC_45 Start: 36085, Stop: 36468, Start Num: 45

Candidate Starts for PMC_45:

(Start: 45 @36085 has 32 MA's), (49, 36094), (62, 36157), (67, 36181), (81, 36298), (90, 36364), (98, 36400), (106, 36439),

Gene: Pacc40_46 Start: 35361, Stop: 35744, Start Num: 45

Candidate Starts for Pacc40_46:

(Start: 45 @35361 has 32 MA's), (49, 35370), (62, 35433), (67, 35457), (81, 35574), (90, 35640), (98, 35676), (106, 35715),

Gene: Phanphagia_48 Start: 36801, Stop: 37235, Start Num: 36

Candidate Starts for Phanphagia_48:

(Start: 36 @36801 has 6 MA's), (Start: 37 @36804 has 1 MA's), (44, 36831), (53, 36858), (58, 36882), (81, 37041), (100, 37170), (102, 37173), (106, 37203), (109, 37224),

Gene: Phasih_48 Start: 36631, Stop: 37014, Start Num: 45

Candidate Starts for Phasih_48:

(Start: 45 @36631 has 32 MA's), (49, 36640), (62, 36703), (67, 36727), (81, 36844), (90, 36910), (98, 36946), (106, 36985),

Gene: Phoebus_77 Start: 52618, Stop: 52250, Start Num: 63

Candidate Starts for Phoebus_77:

(Start: 63 @52618 has 57 MA's), (72, 52570), (78, 52510), (81, 52477), (84, 52432), (85, 52426), (100, 52327), (106, 52288), (111, 52264),

Gene: Plumbus_53 Start: 37073, Stop: 37519, Start Num: 38

Candidate Starts for Plumbus_53:

(Start: 38 @37073 has 14 MA's), (Start: 45 @37106 has 32 MA's), (53, 37133), (60, 37157), (81, 37316), (93, 37415), (106, 37493),

Gene: Poenanya_50 Start: 37614, Stop: 37997, Start Num: 45

Candidate Starts for Poenanya_50:

(Start: 45 @37614 has 32 MA's), (49, 37623), (62, 37686), (67, 37710), (81, 37827), (90, 37893), (98, 37929), (106, 37968),

Gene: Polka14_48 Start: 35964, Stop: 36347, Start Num: 45

Candidate Starts for Polka14_48:

(Start: 45 @35964 has 32 MA's), (49, 35973), (62, 36036), (67, 36060), (81, 36177), (90, 36243), (98, 36279), (106, 36318),

Gene: Pollywog_51 Start: 37317, Stop: 37757, Start Num: 38

Candidate Starts for Pollywog_51:

(Start: 38 @37317 has 14 MA's), (Start: 45 @37350 has 32 MA's), (53, 37377), (60, 37401), (80, 37539), (81, 37560), (84, 37605), (106, 37728), (108, 37746),

Gene: Porcelain_74 Start: 47744, Stop: 47376, Start Num: 63

Candidate Starts for Porcelain_74:

(Start: 63 @47744 has 57 MA's), (72, 47696), (78, 47636), (81, 47603), (84, 47558), (85, 47552), (100, 47453), (106, 47414), (111, 47390),

Gene: Quico_60 Start: 39037, Stop: 39525, Start Num: 27

Candidate Starts for Quico_60:

(Start: 27 @39037 has 4 MA's), (29, 39046), (43, 39121), (46, 39130), (55, 39166), (67, 39238), (71, 39259), (81, 39355), (90, 39421), (98, 39457), (106, 39496),

Gene: Radiance_51 Start: 37201, Stop: 37584, Start Num: 45

Candidate Starts for Radiance_51:

(Start: 45 @37201 has 32 MA's), (49, 37210), (62, 37273), (67, 37297), (81, 37414), (90, 37480), (98, 37516), (106, 37555),

Gene: Ramsey_52 Start: 37825, Stop: 38238, Start Num: 38

Candidate Starts for Ramsey_52:

(Start: 38 @37825 has 14 MA's), (Start: 45 @37858 has 32 MA's), (53, 37885), (60, 37909), (81, 38068), (90, 38134), (98, 38170), (106, 38209),

Gene: Redno2_71 Start: 48232, Stop: 47864, Start Num: 63

Candidate Starts for Redno2_71:

(Start: 63 @48232 has 57 MA's), (72, 48184), (78, 48124), (81, 48091), (84, 48046), (85, 48040), (100, 47941), (106, 47902), (111, 47878),

Gene: Renaud18_56 Start: 37524, Stop: 38036, Start Num: 26

Candidate Starts for Renaud18_56:

(3, 37356), (5, 37389), (7, 37404), (11, 37434), (12, 37437), (15, 37464), (17, 37473), (Start: 26 @37524 has 5 MA's), (31, 37560), (Start: 47 @37617 has 1 MA's), (56, 37650), (59, 37671), (78, 37812), (81, 37845), (106, 38010),

Gene: RitaG_47 Start: 35632, Stop: 36015, Start Num: 45

Candidate Starts for RitaG_47:

(Start: 45 @35632 has 32 MA's), (49, 35641), (62, 35704), (67, 35728), (81, 35845), (90, 35911), (98, 35947), (106, 35986),

Gene: Rockne_49 Start: 36085, Stop: 36468, Start Num: 45

Candidate Starts for Rockne_49:

(Start: 45 @36085 has 32 MA's), (49, 36094), (62, 36157), (67, 36181), (81, 36298), (90, 36364), (98, 36400), (106, 36439),

Gene: RockyHorror_51 Start: 36489, Stop: 36872, Start Num: 45

Candidate Starts for RockyHorror_51:

(Start: 45 @36489 has 32 MA's), (49, 36498), (62, 36561), (67, 36585), (81, 36702), (90, 36768), (98, 36804), (106, 36843),

Gene: Sandalphon_53 Start: 37808, Stop: 38191, Start Num: 45

Candidate Starts for Sandalphon_53:

(Start: 45 @37808 has 32 MA's), (49, 37817), (62, 37880), (67, 37904), (81, 38021), (90, 38087), (98, 38123), (106, 38162),

Gene: Sarma624_81 Start: 45898, Stop: 46242, Start Num: 63

Candidate Starts for Sarma624_81:

(Start: 63 @45898 has 57 MA's), (72, 45946), (78, 46006), (106, 46204), (111, 46228),

Gene: Schatzie_69 Start: 50226, Stop: 49858, Start Num: 63

Candidate Starts for Schatzie_69:

(Start: 63 @50226 has 57 MA's), (72, 50178), (78, 50118), (81, 50085), (84, 50040), (85, 50034), (100, 49935), (106, 49896), (111, 49872),

Gene: ScoobyDoobyDoo_3 Start: 606, Stop: 1007, Start Num: 48

Candidate Starts for ScoobyDoobyDoo_3:

(Start: 48 @606 has 6 MA's), (Start: 63 @681 has 57 MA's), (65, 696), (70, 723), (73, 729), (76, 774), (78, 786), (82, 840), (91, 897), (103, 963),

Gene: Scottish_50 Start: 36644, Stop: 37027, Start Num: 45

Candidate Starts for Scottish_50:

(Start: 45 @36644 has 32 MA's), (49, 36653), (62, 36716), (67, 36740), (81, 36857), (90, 36923), (98, 36959), (106, 36998),

Gene: Seabastian_56 Start: 38900, Stop: 39235, Start Num: 38

Candidate Starts for Seabastian_56:

(Start: 38 @38900 has 14 MA's), (Start: 45 @38933 has 32 MA's), (53, 38960), (57, 38972), (60, 38984), (81, 39068), (90, 39134), (98, 39170), (106, 39209),

Gene: Shauna1_48 Start: 36782, Stop: 37216, Start Num: 36

Candidate Starts for Shauna1_48:

(Start: 36 @36782 has 6 MA's), (Start: 37 @36785 has 1 MA's), (44, 36812), (53, 36839), (58, 36863), (81, 37022), (100, 37151), (102, 37154), (106, 37184), (109, 37205),

Gene: ShroomBoi_53 Start: 37239, Stop: 37649, Start Num: 39

Candidate Starts for ShroomBoi_53:

(Start: 39 @37239 has 1 MA's), (Start: 40 @37242 has 1 MA's), (Start: 45 @37269 has 32 MA's), (53, 37296), (60, 37320), (81, 37479), (90, 37545), (98, 37581), (106, 37620),

Gene: Soul22_83 Start: 47464, Stop: 47808, Start Num: 63

Candidate Starts for Soul22_83:

(Start: 63 @47464 has 57 MA's), (72, 47512), (78, 47572), (106, 47770), (111, 47794),

Gene: Spartacus_88 Start: 51839, Stop: 52264, Start Num: 42

Candidate Starts for Spartacus_88:

(Start: 42 @51839 has 3 MA's), (77, 52034), (81, 52076), (87, 52136), (89, 52145), (96, 52181), (106, 52226), (111, 52250),

Gene: Spikelee_57 Start: 38384, Stop: 38767, Start Num: 45

Candidate Starts for Spikelee_57:

(Start: 45 @38384 has 32 MA's), (49, 38393), (62, 38456), (67, 38480), (81, 38597), (90, 38663), (98, 38699), (106, 38738),

Gene: Spoonbill_49 Start: 35586, Stop: 35969, Start Num: 45

Candidate Starts for Spoonbill_49:

(Start: 45 @35586 has 32 MA's), (49, 35595), (62, 35658), (67, 35682), (81, 35799), (90, 35865), (98, 35901), (106, 35940),

Gene: Sprinklers_17 Start: 5187, Stop: 5555, Start Num: 63

Candidate Starts for Sprinklers_17:

(Start: 63 @5187 has 57 MA's), (72, 5235), (78, 5295), (81, 5328), (84, 5373), (85, 5379), (100, 5478), (106, 5517), (111, 5541),

Gene: Squint_75 Start: 47863, Stop: 47495, Start Num: 63

Candidate Starts for Squint_75:

(Start: 63 @47863 has 57 MA's), (72, 47815), (78, 47755), (81, 47722), (84, 47677), (85, 47671), (100, 47572), (106, 47533), (111, 47509),

Gene: Squirty_54 Start: 37873, Stop: 38295, Start Num: 47

Candidate Starts for Squirty_54:

(22, 37786), (28, 37807), (Start: 47 @37873 has 1 MA's), (59, 37927), (81, 38101), (100, 38230), (102, 38233), (106, 38263), (109, 38284),

Gene: Stap_50 Start: 36387, Stop: 36770, Start Num: 45

Candidate Starts for Stap_50:

(Start: 45 @36387 has 32 MA's), (49, 36396), (62, 36459), (67, 36483), (81, 36600), (90, 36666), (98, 36702), (106, 36741),

Gene: SuperGrey_53 Start: 38208, Stop: 38642, Start Num: 36

Candidate Starts for SuperGrey_53:

(Start: 36 @38208 has 6 MA's), (Start: 37 @38211 has 1 MA's), (44, 38238), (53, 38265), (58, 38289), (81, 38448), (100, 38577), (102, 38580), (106, 38610), (109, 38631),

Gene: Superphikiman_72 Start: 46954, Stop: 46586, Start Num: 63

Candidate Starts for Superphikiman_72:

(Start: 63 @46954 has 57 MA's), (72, 46906), (78, 46846), (81, 46813), (84, 46768), (85, 46762), (100, 46663), (106, 46624), (111, 46600),

Gene: Taj_54 Start: 37445, Stop: 37957, Start Num: 26

Candidate Starts for Taj_54:

(3, 37277), (5, 37310), (7, 37325), (11, 37355), (12, 37358), (15, 37385), (17, 37394), (Start: 26 @37445 has 5 MA's), (31, 37481), (Start: 47 @37538 has 1 MA's), (56, 37571), (59, 37592), (78, 37733), (81, 37766), (106, 37931),

Gene: ThetaBob_55 Start: 37062, Stop: 37427, Start Num: 38

Candidate Starts for ThetaBob_55:

(Start: 38 @37062 has 14 MA's), (Start: 45 @37095 has 32 MA's), (53, 37122), (60, 37146), (81, 37230), (83, 37269), (86, 37278), (104, 37371), (106, 37398), (107, 37401),

Gene: ThreeRngTarjay_72 Start: 51510, Stop: 51142, Start Num: 63

Candidate Starts for ThreeRngTarjay_72:

(Start: 63 @51510 has 57 MA's), (72, 51462), (78, 51402), (81, 51369), (84, 51324), (85, 51318), (100, 51219), (106, 51180), (111, 51156),

Gene: Traaww1_39 Start: 34655, Stop: 34287, Start Num: 63

Candidate Starts for Traaww1_39:

(Start: 63 @34655 has 57 MA's), (72, 34607), (78, 34547), (81, 34514), (84, 34469), (85, 34463), (100, 34364), (106, 34325), (111, 34301),

Gene: Tweety_50 Start: 37155, Stop: 37592, Start Num: 38

Candidate Starts for Tweety_50:

(Start: 38 @37155 has 14 MA's), (Start: 45 @37188 has 32 MA's), (53, 37215), (60, 37239), (80, 37377), (81, 37398), (88, 37458),

Gene: Velveteen_76 Start: 45898, Stop: 46242, Start Num: 63

Candidate Starts for Velveteen_76:

(Start: 63 @45898 has 57 MA's), (72, 45946), (78, 46006), (106, 46204), (111, 46228),

Gene: Wee_53 Start: 37717, Stop: 38229, Start Num: 26

Candidate Starts for Wee_53:

(3, 37549), (5, 37582), (7, 37597), (11, 37627), (12, 37630), (15, 37657), (17, 37666), (Start: 26 @37717 has 5 MA's), (31, 37753), (Start: 47 @37810 has 1 MA's), (56, 37843), (59, 37864), (78, 38005), (81, 38038), (106, 38203),

Gene: WillSterrel_81 Start: 49641, Stop: 50066, Start Num: 42

Candidate Starts for WillSterrel_81:

(Start: 42 @49641 has 3 MA's), (77, 49836), (81, 49878), (87, 49938), (89, 49947), (96, 49983), (106, 50028), (111, 50052),

Gene: Yeet_70 Start: 49727, Stop: 49359, Start Num: 63

Candidate Starts for Yeet_70:

(Start: 63 @49727 has 57 MA's), (72, 49679), (78, 49619), (81, 49586), (84, 49541), (85, 49535), (100, 49436), (106, 49397),

Gene: Zapner_91 Start: 48176, Stop: 48526, Start Num: 63

Candidate Starts for Zapner_91:

(Start: 63 @48176 has 57 MA's), (72, 48224), (78, 48284), (81, 48317), (87, 48383), (90, 48398), (92, 48413), (105, 48491), (110, 48518),

Gene: Zelink_72 Start: 51822, Stop: 51454, Start Num: 63

Candidate Starts for Zelink_72:

(Start: 63 @51822 has 57 MA's), (72, 51774), (78, 51714), (81, 51681), (84, 51636), (85, 51630), (100, 51531), (106, 51492), (111, 51468),

Gene: Zerg_50 Start: 36598, Stop: 36981, Start Num: 45

Candidate Starts for Zerg_50:

(Start: 45 @36598 has 32 MA's), (49, 36607), (62, 36670), (67, 36694), (81, 36811), (90, 36877), (98, 36913), (106, 36952),