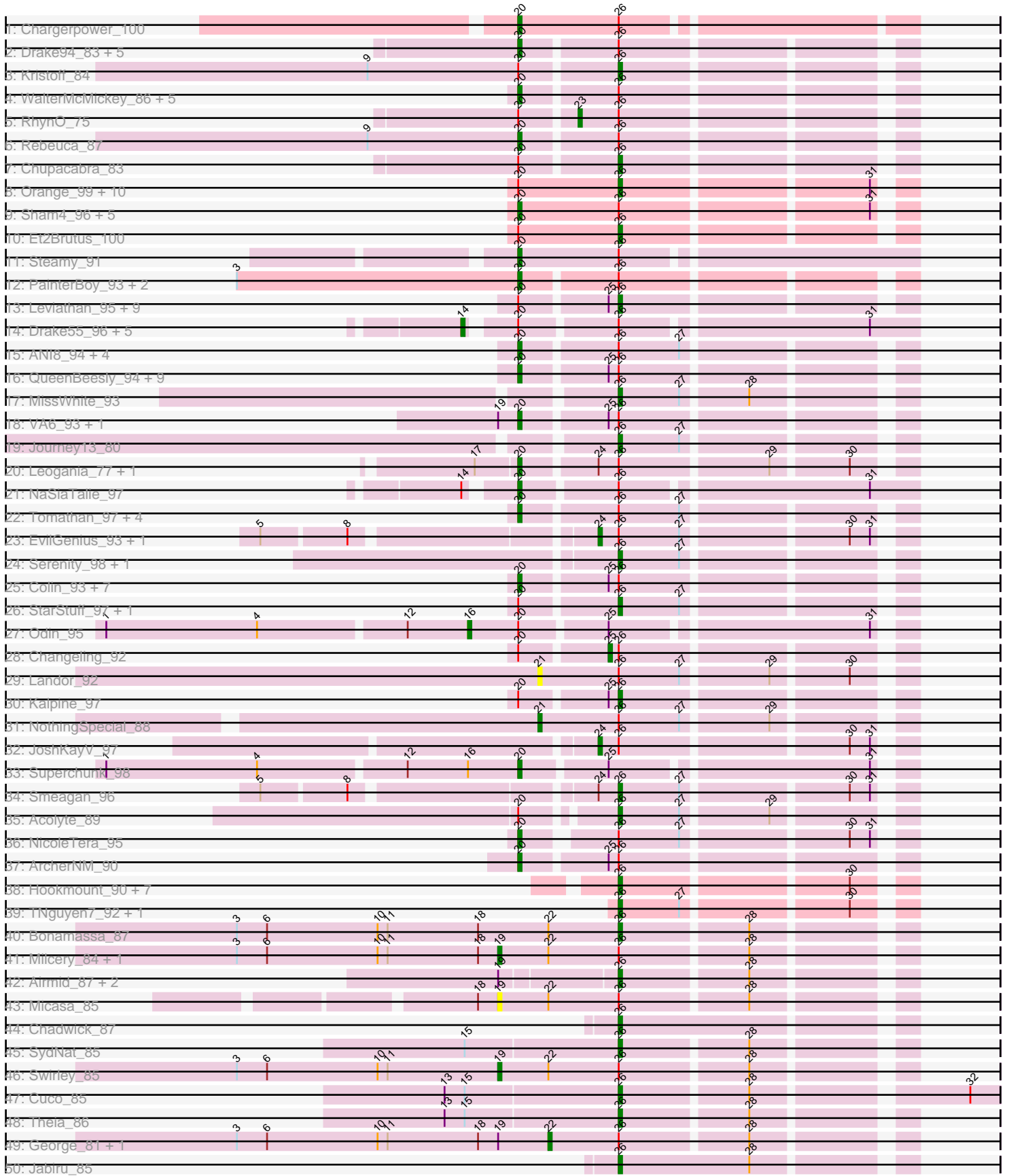


Pham 171265





Note: Tracks are now grouped by subcluster and scaled. Switching in subcluster is indicated by changes in track color. Track scale is now set by default to display the region 30 bp upstream of start 1 to 30 bp downstream of the last possible start. If this default region is judged to be packed too tightly with annotated starts, the track will be further scaled to only show that region of the ORF with annotated starts. This action will be indicated by adding "Zoomed" to the title. For starts, yellow indicates the location of called starts comprised solely of Glimmer/GeneMark auto-annotations, green indicates the location of called starts with at least 1 manual gene annotation.

## Pham 171265 Report

This analysis was run 07/10/24 on database version 566.

Pham number 171265 has 141 members, 5 are drafts.

Phages represented in each track:

- Track 1 : Chargerpower\_100
- Track 2 : Drake94\_83, PeaceMeal1\_83, KittenMittens\_81, Poompha\_84, Goose\_87, OKCentral2016\_85
- Track 3 : Kristoff\_84
- Track 4 : WalterMcMickey\_86, Twister\_87, Edison31\_73, Salz\_96, Topanga\_76, Hutc2\_97
- Track 5 : RhynO\_75
- Track 6 : Rebeuca\_87
- Track 7 : Chupacabra\_83
- Track 8 : Orange\_99, Joselito\_97, Timothy\_99, Lucivia\_100, Ebony\_98, Mulciber\_98, Snape\_99, Mabel\_99, Gilberta\_97, Bowtie\_95, Fibonacci\_99
- Track 9 : Sham4\_96, TinyTimmy\_97, Insomnia\_99, Petersenfast\_93, MaCh\_99, Flaverint\_100
- Track 10 : Et2Brutus\_100
- Track 11 : Steamy\_91
- Track 12 : PainterBoy\_93, Lucyedi\_94, EagleEye\_96
- Track 13 : Leviathan\_95, AbbyPaige\_96, Anselm\_97, Dalmatian\_94, Agape74\_96, Fameo\_93, FiringLine\_94, Power\_94, DudeLittle\_93, LilTurb\_95
- Track 14 : Drake55\_96, Centaur\_97, Equemioh13\_96, WideWale\_97, MiculUcigas\_96, Updawg\_97
- Track 15 : ANI8\_94, VC3\_93, C3\_87, AN9\_94, Kerberos\_97
- Track 16 : QueenBeesly\_94, Crucio\_94, SnapTap\_94, Jerm\_95, QueenB2\_93, Retro23\_95, Buggy\_84, Dignity\_96, Georgie2\_96, SweetiePie\_94
- Track 17 : MissWhite\_93
- Track 18 : VA6\_93, AN3\_93
- Track 19 : Journey13\_80
- Track 20 : Leogania\_77, BiancaTri92\_90
- Track 21 : NaSiaTalie\_97
- Track 22 : Tomathan\_97, Naji\_86, Duplo\_98, DBQu4n\_97, D32\_85
- Track 23 : EvilGenius\_93, ChipMunk\_94
- Track 24 : Serenity\_98, Jsquared\_101
- Track 25 : Colin\_93, Loser\_97, Lokk\_89, AnnaL29\_96, BobSwaget\_88, Miko\_90, Rachaly\_91, RedRock\_95
- Track 26 : StarStuff\_97, Pomar16\_97
- Track 27 : Odin\_95
- Track 28 : Changeling\_92
- Track 29 : Landor\_92

- Track 30 : Kalpine\_97
- Track 31 : NothingSpecial\_88
- Track 32 : JoshKayV\_97
- Track 33 : Superchunk\_98
- Track 34 : Smeagan\_96
- Track 35 : Acolyte\_89
- Track 36 : NicoleTera\_95
- Track 37 : ArcherNM\_90
- Track 38 : Hookmount\_90, Todacoro\_90, Caviar\_79, Popcicle\_90, Margo\_90, QuinnKiro\_89, Lambert1\_90, Texage\_88
- Track 39 : TNguyen7\_92, BlueBird\_93
- Track 40 : Bonamassa\_87
- Track 41 : Milcery\_84, LittleCherry\_84
- Track 42 : Airmid\_87, Benedict\_88, EITiger69\_90
- Track 43 : Micasa\_85
- Track 44 : Chadwick\_87
- Track 45 : SydNat\_85
- Track 46 : Swirley\_85
- Track 47 : Cuco\_85
- Track 48 : Theia\_86
- Track 49 : George\_81, Tarynearal\_87
- Track 50 : Jabiru\_85
- Track 51 : PetterN\_92
- Track 52 : PP\_09
- Track 53 : Saintus\_94
- Track 54 : Smeadley\_99, Dixon\_98, Stephig9\_100, Astro\_98, NearlyHeadless\_100
- Track 55 : Phillis\_96

***Summary of Final Annotations (See graph section above for start numbers):***

The start number called the most often in the published annotations is 26, it was called in 60 of the 136 non-draft genes in the pham.

Genes that call this "Most Annotated" start:

• AbbyPaige\_96, Acolyte\_89, Agape74\_96, Airmid\_87, Anselm\_97, Astro\_98, Benedict\_88, BlueBird\_93, Bonamassa\_87, Bowtie\_95, Caviar\_79, Chadwick\_87, Chupacabra\_83, Cuco\_85, Dalmatian\_94, Dixon\_98, DudeLittle\_93, Ebony\_98, EITiger69\_90, Et2Brutus\_100, Fameo\_93, Fibonacci\_99, FiringLine\_94, Gilberta\_97, Hookmount\_90, Jabiru\_85, Joselito\_97, Journey13\_80, Jsquared\_101, Kalpine\_97, Kristoff\_84, Lambert1\_90, Leviathan\_95, LilTurb\_95, Lucivia\_100, Mabel\_99, Margo\_90, MissWhite\_93, Mulciber\_98, NearlyHeadless\_100, Orange\_99, PetterN\_92, Phillis\_96, Pomar16\_97, Popcicle\_90, Power\_94, QuinnKiro\_89, Saintus\_94, Serenity\_98, Smeadley\_99, Smeagan\_96, Snape\_99, StarStuff\_97, Stephig9\_100, SydNat\_85, TNguyen7\_92, Texage\_88, Theia\_86, Timothy\_99, Todacoro\_90,

Genes that have the "Most Annotated" start but do not call it:

• AN3\_93, AN9\_94, ANI8\_94, AnnaL29\_96, ArcherNM\_90, BiancaTri92\_90, BobSwaget\_88, Buggy\_84, C3\_87, Centaur\_97, Changeling\_92, Chargerpower\_100, ChipMunk\_94, Colin\_93, Crucio\_94, D32\_85, DBQu4n\_97, Dignity\_96, Drake55\_96,

Drake94\_83, Duplo\_98, EagleEye\_96, Edison31\_73, Equemioh13\_96, EvilGenius\_93, Flaverint\_100, George\_81, Georgie2\_96, Goose\_87, Hutc2\_97, Insomnia\_99, Jerm\_95, JoshKayV\_97, Kerberos\_97, KittenMittens\_81, Landor\_92, Leogania\_77, LittleCherry\_84, Lokk\_89, Loser\_97, Lucyedi\_94, MaCh\_99, Micasa\_85, MiculUcigas\_96, Miko\_90, Milcery\_84, NaSiaTalie\_97, Naji\_86, NicoleTera\_95, NothingSpecial\_88, OKCentral2016\_85, PP\_09, PainterBoy\_93, PeaceMeal1\_83, Petersenfast\_93, Poompha\_84, QueenB2\_93, QueenBeesly\_94, Rachaly\_91, Rebeuca\_87, RedRock\_95, Retro23\_95, RhynO\_75, Salz\_96, Sham4\_96, SnapTap\_94, Steamy\_91, SweetiePie\_94, Swirley\_85, Tarynearal\_87, TinyTimmy\_97, Tomathan\_97, Topanga\_76, Twister\_87, Updawg\_97, VA6\_93, VC3\_93, WalterMcMickey\_86, WideWale\_97,

Genes that do not have the "Most Annotated" start:

- Odin\_95, Superchunk\_98,

### Summary by start number:

Start 14:

- Found in 7 of 141 ( 5.0% ) of genes in pham
- Manual Annotations of this start: 6 of 136
- Called 85.7% of time when present
- Phage (with cluster) where this start called: Centaur\_97 (A2), Drake55\_96 (A2), Equemioh13\_96 (A2), MiculUcigas\_96 (A2), Updawg\_97 (A2), WideWale\_97 (A2),

Start 16:

- Found in 2 of 141 ( 1.4% ) of genes in pham
- Manual Annotations of this start: 1 of 136
- Called 50.0% of time when present
- Phage (with cluster) where this start called: Odin\_95 (A2),

Start 18:

- Found in 7 of 141 ( 5.0% ) of genes in pham
- Manual Annotations of this start: 1 of 136
- Called 14.3% of time when present
- Phage (with cluster) where this start called: PP\_09 (A7),

Start 19:

- Found in 11 of 141 ( 7.8% ) of genes in pham
- Manual Annotations of this start: 3 of 136
- Called 36.4% of time when present
- Phage (with cluster) where this start called: LittleCherry\_84 (A5), Micasa\_85 (A5), Milcery\_84 (A5), Swirley\_85 (A5),

Start 20:

- Found in 97 of 141 ( 68.8% ) of genes in pham
- Manual Annotations of this start: 57 of 136
- Called 61.9% of time when present
- Phage (with cluster) where this start called: AN3\_93 (A2), AN9\_94 (A2), ANI8\_94 (A2), AnnaL29\_96 (A2), ArcherNM\_90 (A2), BiancaTri92\_90 (A2), BobSwaget\_88 (A2), Buggy\_84 (A2), C3\_87 (A2), Chargerpower\_100 (A), Colin\_93 (A2), Crucio\_94 (A2), D32\_85 (A2), DBQu4n\_97 (A2), Dignity\_96 (A2), Drake94\_83 (A10), Duplo\_98 (A2), EagleEye\_96 (A16), Edison31\_73 (A10), Flaverint\_100 (A11), Georgie2\_96 (A2), Goose\_87 (A10), Hutc2\_97 (A11), Insomnia\_99 (A11), Jerm\_95 (A2),

Kerberos\_97 (A2), KittenMittens\_81 (A10), Leogania\_77 (A2), Lokk\_89 (A2), Loser\_97 (A2), Lucyedi\_94 (A16), MaCh\_99 (A11), Miko\_90 (A2), NaSiaTalie\_97 (A2), Naji\_86 (A2), NicoleTera\_95 (A2), OKCentral2016\_85 (A10), PainterBoy\_93 (A16), PeaceMeal1\_83 (A10), Petersenfast\_93 (A11), Poompha\_84 (A10), QueenB2\_93 (A2), QueenBeesly\_94 (A2), Rachaly\_91 (A2), Rebeuca\_87 (A10), RedRock\_95 (A2), Retro23\_95 (A2), Salz\_96 (A11), Sham4\_96 (A11), SnapTap\_94 (A2), Steamy\_91 (A12), Superchunk\_98 (A2), SweetiePie\_94 (A2), TinyTimmy\_97 (A11), Tomathan\_97 (A2), Topanga\_76 (A10), Twister\_87 (A10), VA6\_93 (A2), VC3\_93 (A2), WalterMcMickey\_86 (A10),

#### Start 21:

- Found in 2 of 141 ( 1.4% ) of genes in pham
- Manual Annotations of this start: 1 of 136
- Called 100.0% of time when present
- Phage (with cluster) where this start called: Landor\_92 (A2), NothingSpecial\_88 (A2),

#### Start 22:

- Found in 7 of 141 ( 5.0% ) of genes in pham
- Manual Annotations of this start: 2 of 136
- Called 28.6% of time when present
- Phage (with cluster) where this start called: George\_81 (A5), Tarynearal\_87 (A5),

#### Start 23:

- Found in 1 of 141 ( 0.7% ) of genes in pham
- Manual Annotations of this start: 1 of 136
- Called 100.0% of time when present
- Phage (with cluster) where this start called: RhynO\_75 (A10),

#### Start 24:

- Found in 6 of 141 ( 4.3% ) of genes in pham
- Manual Annotations of this start: 3 of 136
- Called 50.0% of time when present
- Phage (with cluster) where this start called: ChipMunk\_94 (A2), EvilGenius\_93 (A2), JoshKayV\_97 (A2),

#### Start 25:

- Found in 35 of 141 ( 24.8% ) of genes in pham
- Manual Annotations of this start: 1 of 136
- Called 2.9% of time when present
- Phage (with cluster) where this start called: Changeling\_92 (A2),

#### Start 26:

- Found in 139 of 141 ( 98.6% ) of genes in pham
- Manual Annotations of this start: 60 of 136
- Called 43.2% of time when present
- Phage (with cluster) where this start called: AbbyPaige\_96 (A2), Acolyte\_89 (A2), Agape74\_96 (A2), Airmid\_87 (A5), Anselm\_97 (A2), Astro\_98 (A8), Benedict\_88 (A5), BlueBird\_93 (A3), Bonamassa\_87 (A5), Bowtie\_95 (A11), Caviar\_79 (A3), Chadwick\_87 (A5), Chupacabra\_83 (A10), Cuco\_85 (A5), Dalmatian\_94 (A2), Dixon\_98 (A8), DudeLittle\_93 (A2), Ebony\_98 (A11), EITiger69\_90 (A5), Et2Brutus\_100 (A11), Fameo\_93 (A2), Fibonacci\_99 (A11), FiringLine\_94 (A2), Gilberta\_97 (A11), Hookmount\_90 (A3), Jabiru\_85 (A5), Joselito\_97 (A11),

Journey13\_80 (A2), Jsquared\_101 (A2), Kalpine\_97 (A2), Kristoff\_84 (A10), Lambert1\_90 (A3), Leviathan\_95 (A2), LilTurb\_95 (A2), Lucivia\_100 (A11), Mabel\_99 (A11), Margo\_90 (A3), MissWhite\_93 (A2), Mulciber\_98 (A11), NearlyHeadless\_100 (A8), Orange\_99 (A11), PetterN\_92 (A5), Phillis\_96 (A8), Pomar16\_97 (A2), Popcicle\_90 (A3), Power\_94 (A2), QuinnKiro\_89 (A3), Saintus\_94 (A8), Serenity\_98 (A2), Smeadley\_99 (A8), Smeagan\_96 (A2), Snape\_99 (A11), StarStuff\_97 (A2), Stephig9\_100 (A8), SydNat\_85 (A5), TNguyen7\_92 (A3), Texage\_88 (A3), Theia\_86 (A5), Timothy\_99 (A11), Todacoro\_90 (A3),

### **Summary by clusters:**

There are 10 clusters represented in this pham: A, A16, A11, A10, A12, A3, A2, A5, A7, A8,

Info for manual annotations of cluster A:

- Start number 20 was manually annotated 1 time for cluster A.

Info for manual annotations of cluster A10:

- Start number 20 was manually annotated 11 times for cluster A10.
- Start number 23 was manually annotated 1 time for cluster A10.
- Start number 26 was manually annotated 2 times for cluster A10.

Info for manual annotations of cluster A11:

- Start number 20 was manually annotated 6 times for cluster A11.
- Start number 26 was manually annotated 12 times for cluster A11.

Info for manual annotations of cluster A12:

- Start number 20 was manually annotated 1 time for cluster A12.

Info for manual annotations of cluster A16:

- Start number 20 was manually annotated 3 times for cluster A16.

Info for manual annotations of cluster A2:

- Start number 14 was manually annotated 6 times for cluster A2.
- Start number 16 was manually annotated 1 time for cluster A2.
- Start number 20 was manually annotated 35 times for cluster A2.
- Start number 21 was manually annotated 1 time for cluster A2.
- Start number 24 was manually annotated 3 times for cluster A2.
- Start number 25 was manually annotated 1 time for cluster A2.
- Start number 26 was manually annotated 19 times for cluster A2.

Info for manual annotations of cluster A3:

- Start number 26 was manually annotated 10 times for cluster A3.

Info for manual annotations of cluster A5:

- Start number 19 was manually annotated 3 times for cluster A5.
- Start number 22 was manually annotated 2 times for cluster A5.
- Start number 26 was manually annotated 10 times for cluster A5.

Info for manual annotations of cluster A7:

- Start number 18 was manually annotated 1 time for cluster A7.

Info for manual annotations of cluster A8:

- Start number 26 was manually annotated 7 times for cluster A8.

**Gene Information:**

Gene: AN3\_93 Start: 49491, Stop: 49387, Start Num: 20

Candidate Starts for AN3\_93:

(Start: 19 @49497 has 3 MA's), (Start: 20 @49491 has 57 MA's), (Start: 25 @49467 has 1 MA's),  
(Start: 26 @49464 has 60 MA's),

Gene: AN9\_94 Start: 49621, Stop: 49517, Start Num: 20

Candidate Starts for AN9\_94:

(Start: 20 @49621 has 57 MA's), (Start: 26 @49594 has 60 MA's), (27, 49576),

Gene: ANI8\_94 Start: 49621, Stop: 49517, Start Num: 20

Candidate Starts for ANI8\_94:

(Start: 20 @49621 has 57 MA's), (Start: 26 @49594 has 60 MA's), (27, 49576),

Gene: AbbyPaige\_96 Start: 51634, Stop: 51557, Start Num: 26

Candidate Starts for AbbyPaige\_96:

(Start: 20 @51661 has 57 MA's), (Start: 25 @51637 has 1 MA's), (Start: 26 @51634 has 60 MA's),

Gene: Acolyte\_89 Start: 50809, Stop: 50732, Start Num: 26

Candidate Starts for Acolyte\_89:

(Start: 20 @50833 has 57 MA's), (Start: 26 @50809 has 60 MA's), (27, 50791), (29, 50767),

Gene: Agape74\_96 Start: 51607, Stop: 51530, Start Num: 26

Candidate Starts for Agape74\_96:

(Start: 20 @51634 has 57 MA's), (Start: 25 @51610 has 1 MA's), (Start: 26 @51607 has 60 MA's),

Gene: Airmid\_87 Start: 49229, Stop: 49152, Start Num: 26

Candidate Starts for Airmid\_87:

(Start: 19 @49262 has 3 MA's), (Start: 26 @49229 has 60 MA's), (28, 49193),

Gene: AnnaL29\_96 Start: 51737, Stop: 51633, Start Num: 20

Candidate Starts for AnnaL29\_96:

(Start: 20 @51737 has 57 MA's), (Start: 25 @51713 has 1 MA's), (Start: 26 @51710 has 60 MA's),

Gene: Anselm\_97 Start: 52009, Stop: 51932, Start Num: 26

Candidate Starts for Anselm\_97:

(Start: 20 @52036 has 57 MA's), (Start: 25 @52012 has 1 MA's), (Start: 26 @52009 has 60 MA's),

Gene: ArcherNM\_90 Start: 51024, Stop: 50920, Start Num: 20

Candidate Starts for ArcherNM\_90:

(Start: 20 @51024 has 57 MA's), (Start: 25 @51000 has 1 MA's), (Start: 26 @50997 has 60 MA's),

Gene: Astro\_98 Start: 50607, Stop: 50530, Start Num: 26

Candidate Starts for Astro\_98:

(Start: 26 @50607 has 60 MA's),

Gene: Benedict\_88 Start: 49072, Stop: 48995, Start Num: 26

Candidate Starts for Benedict\_88:



(Start: 19 @49105 has 3 MA's), (Start: 26 @49072 has 60 MA's), (28, 49036),

Gene: BiancaTri92\_90 Start: 50689, Stop: 50585, Start Num: 20

Candidate Starts for BiancaTri92\_90:

(17, 50701), (Start: 20 @50689 has 57 MA's), (Start: 24 @50668 has 3 MA's), (Start: 26 @50662 has 60 MA's), (29, 50620), (30, 50599),

Gene: BlueBird\_93 Start: 49300, Stop: 49223, Start Num: 26

Candidate Starts for BlueBird\_93:

(Start: 26 @49300 has 60 MA's), (27, 49282), (30, 49237),

Gene: BobSwaget\_88 Start: 48834, Stop: 48730, Start Num: 20

Candidate Starts for BobSwaget\_88:

(Start: 20 @48834 has 57 MA's), (Start: 25 @48810 has 1 MA's), (Start: 26 @48807 has 60 MA's),

Gene: Bonamassa\_87 Start: 49219, Stop: 49142, Start Num: 26

Candidate Starts for Bonamassa\_87:

(3, 49333), (6, 49324), (10, 49291), (11, 49288), (Start: 18 @49261 has 1 MA's), (Start: 22 @49240 has 2 MA's), (Start: 26 @49219 has 60 MA's), (28, 49183),

Gene: Bowtie\_95 Start: 49674, Stop: 49597, Start Num: 26

Candidate Starts for Bowtie\_95:

(Start: 20 @49704 has 57 MA's), (Start: 26 @49674 has 60 MA's), (31, 49605),

Gene: Buggy\_84 Start: 48373, Stop: 48269, Start Num: 20

Candidate Starts for Buggy\_84:

(Start: 20 @48373 has 57 MA's), (Start: 25 @48349 has 1 MA's), (Start: 26 @48346 has 60 MA's),

Gene: C3\_87 Start: 49621, Stop: 49517, Start Num: 20

Candidate Starts for C3\_87:

(Start: 20 @49621 has 57 MA's), (Start: 26 @49594 has 60 MA's), (27, 49576),

Gene: Caviar\_79 Start: 45928, Stop: 45851, Start Num: 26

Candidate Starts for Caviar\_79:

(Start: 26 @45928 has 60 MA's), (30, 45865),

Gene: Centaur\_97 Start: 51531, Stop: 51409, Start Num: 14

Candidate Starts for Centaur\_97:

(Start: 14 @51531 has 6 MA's), (Start: 20 @51519 has 57 MA's), (Start: 26 @51492 has 60 MA's), (31, 51423),

Gene: Chadwick\_87 Start: 47540, Stop: 47460, Start Num: 26

Candidate Starts for Chadwick\_87:

(Start: 26 @47540 has 60 MA's),

Gene: Changeling\_92 Start: 51425, Stop: 51345, Start Num: 25

Candidate Starts for Changeling\_92:

(Start: 20 @51449 has 57 MA's), (Start: 25 @51425 has 1 MA's), (Start: 26 @51422 has 60 MA's),

Gene: Chargerpower\_100 Start: 51126, Stop: 51016, Start Num: 20

Candidate Starts for Chargerpower\_100:

(Start: 20 @51126 has 57 MA's), (Start: 26 @51096 has 60 MA's),

Gene: ChipMunk\_94 Start: 52355, Stop: 52272, Start Num: 24  
Candidate Starts for ChipMunk\_94:  
(5, 52445), (8, 52421), (Start: 24 @52355 has 3 MA's), (Start: 26 @52349 has 60 MA's), (27, 52331),  
(30, 52286), (31, 52280),

Gene: Chupacabra\_83 Start: 49581, Stop: 49504, Start Num: 26  
Candidate Starts for Chupacabra\_83:  
(Start: 20 @49608 has 57 MA's), (Start: 26 @49581 has 60 MA's),

Gene: Colin\_93 Start: 51994, Stop: 51890, Start Num: 20  
Candidate Starts for Colin\_93:  
(Start: 20 @51994 has 57 MA's), (Start: 25 @51970 has 1 MA's), (Start: 26 @51967 has 60 MA's),

Gene: Crucio\_94 Start: 51711, Stop: 51607, Start Num: 20  
Candidate Starts for Crucio\_94:  
(Start: 20 @51711 has 57 MA's), (Start: 25 @51687 has 1 MA's), (Start: 26 @51684 has 60 MA's),

Gene: Cuco\_85 Start: 49160, Stop: 49059, Start Num: 26  
Candidate Starts for Cuco\_85:  
(13, 49211), (15, 49205), (Start: 26 @49160 has 60 MA's), (28, 49124), (32, 49067),

Gene: D32\_85 Start: 47615, Stop: 47511, Start Num: 20  
Candidate Starts for D32\_85:  
(Start: 20 @47615 has 57 MA's), (Start: 26 @47588 has 60 MA's), (27, 47570),

Gene: DBQu4n\_97 Start: 51230, Stop: 51126, Start Num: 20  
Candidate Starts for DBQu4n\_97:  
(Start: 20 @51230 has 57 MA's), (Start: 26 @51203 has 60 MA's), (27, 51185),

Gene: Dalmatian\_94 Start: 51310, Stop: 51233, Start Num: 26  
Candidate Starts for Dalmatian\_94:  
(Start: 20 @51337 has 57 MA's), (Start: 25 @51313 has 1 MA's), (Start: 26 @51310 has 60 MA's),

Gene: Dignity\_96 Start: 51741, Stop: 51637, Start Num: 20  
Candidate Starts for Dignity\_96:  
(Start: 20 @51741 has 57 MA's), (Start: 25 @51717 has 1 MA's), (Start: 26 @51714 has 60 MA's),

Gene: Dixon\_98 Start: 50172, Stop: 50095, Start Num: 26  
Candidate Starts for Dixon\_98:  
(Start: 26 @50172 has 60 MA's),

Gene: Drake55\_96 Start: 51249, Stop: 51127, Start Num: 14  
Candidate Starts for Drake55\_96:  
(Start: 14 @51249 has 6 MA's), (Start: 20 @51237 has 57 MA's), (Start: 26 @51210 has 60 MA's),  
(31, 51141),

Gene: Drake94\_83 Start: 48766, Stop: 48662, Start Num: 20  
Candidate Starts for Drake94\_83:  
(Start: 20 @48766 has 57 MA's), (Start: 26 @48739 has 60 MA's),

Gene: DudeLittle\_93 Start: 51376, Stop: 51299, Start Num: 26  
Candidate Starts for DudeLittle\_93:  
(Start: 20 @51403 has 57 MA's), (Start: 25 @51379 has 1 MA's), (Start: 26 @51376 has 60 MA's),

Gene: Duplo\_98 Start: 51287, Stop: 51183, Start Num: 20  
Candidate Starts for Duplo\_98:  
(Start: 20 @51287 has 57 MA's), (Start: 26 @51260 has 60 MA's), (27, 51242),

Gene: EagleEye\_96 Start: 51407, Stop: 51303, Start Num: 20  
Candidate Starts for EagleEye\_96:  
(3, 51491), (Start: 20 @51407 has 57 MA's), (Start: 26 @51380 has 60 MA's),

Gene: Ebony\_98 Start: 50638, Stop: 50561, Start Num: 26  
Candidate Starts for Ebony\_98:  
(Start: 20 @50668 has 57 MA's), (Start: 26 @50638 has 60 MA's), (31, 50569),

Gene: Edison31\_73 Start: 45753, Stop: 45649, Start Num: 20  
Candidate Starts for Edison31\_73:  
(Start: 20 @45753 has 57 MA's), (Start: 26 @45726 has 60 MA's),

Gene: EITiger69\_90 Start: 49493, Stop: 49416, Start Num: 26  
Candidate Starts for EITiger69\_90:  
(Start: 19 @49526 has 3 MA's), (Start: 26 @49493 has 60 MA's), (28, 49457),

Gene: Equemioh13\_96 Start: 51572, Stop: 51450, Start Num: 14  
Candidate Starts for Equemioh13\_96:  
(Start: 14 @51572 has 6 MA's), (Start: 20 @51560 has 57 MA's), (Start: 26 @51533 has 60 MA's),  
(31, 51464),

Gene: Et2Brutus\_100 Start: 50983, Stop: 50906, Start Num: 26  
Candidate Starts for Et2Brutus\_100:  
(Start: 20 @51013 has 57 MA's), (Start: 26 @50983 has 60 MA's),

Gene: EvilGenius\_93 Start: 52356, Stop: 52273, Start Num: 24  
Candidate Starts for EvilGenius\_93:  
(5, 52446), (8, 52422), (Start: 24 @52356 has 3 MA's), (Start: 26 @52350 has 60 MA's), (27, 52332),  
(30, 52287), (31, 52281),

Gene: Fameo\_93 Start: 51082, Stop: 51005, Start Num: 26  
Candidate Starts for Fameo\_93:  
(Start: 20 @51109 has 57 MA's), (Start: 25 @51085 has 1 MA's), (Start: 26 @51082 has 60 MA's),

Gene: Fibonacci\_99 Start: 50921, Stop: 50844, Start Num: 26  
Candidate Starts for Fibonacci\_99:  
(Start: 20 @50951 has 57 MA's), (Start: 26 @50921 has 60 MA's), (31, 50852),

Gene: FiringLine\_94 Start: 51780, Stop: 51703, Start Num: 26  
Candidate Starts for FiringLine\_94:  
(Start: 20 @51807 has 57 MA's), (Start: 25 @51783 has 1 MA's), (Start: 26 @51780 has 60 MA's),

Gene: Flaverint\_100 Start: 51095, Stop: 50988, Start Num: 20  
Candidate Starts for Flaverint\_100:  
(Start: 20 @51095 has 57 MA's), (Start: 26 @51065 has 60 MA's), (31, 50996),

Gene: George\_81 Start: 49646, Stop: 49548, Start Num: 22  
Candidate Starts for George\_81:

(3, 49739), (6, 49730), (10, 49697), (11, 49694), (Start: 18 @49667 has 1 MA's), (Start: 19 @49661 has 3 MA's), (Start: 22 @49646 has 2 MA's), (Start: 26 @49625 has 60 MA's), (28, 49589),

Gene: Georgie2\_96 Start: 51855, Stop: 51751, Start Num: 20

Candidate Starts for Georgie2\_96:

(Start: 20 @51855 has 57 MA's), (Start: 25 @51831 has 1 MA's), (Start: 26 @51828 has 60 MA's),

Gene: Gilberta\_97 Start: 49941, Stop: 49864, Start Num: 26

Candidate Starts for Gilberta\_97:

(Start: 20 @49971 has 57 MA's), (Start: 26 @49941 has 60 MA's), (31, 49872),

Gene: Goose\_87 Start: 49419, Stop: 49315, Start Num: 20

Candidate Starts for Goose\_87:

(Start: 20 @49419 has 57 MA's), (Start: 26 @49392 has 60 MA's),

Gene: Hookmount\_90 Start: 48931, Stop: 48854, Start Num: 26

Candidate Starts for Hookmount\_90:

(Start: 26 @48931 has 60 MA's), (30, 48868),

Gene: Hutc2\_97 Start: 49903, Stop: 49796, Start Num: 20

Candidate Starts for Hutc2\_97:

(Start: 20 @49903 has 57 MA's), (Start: 26 @49873 has 60 MA's),

Gene: Insomnia\_99 Start: 51129, Stop: 51022, Start Num: 20

Candidate Starts for Insomnia\_99:

(Start: 20 @51129 has 57 MA's), (Start: 26 @51099 has 60 MA's), (31, 51030),

Gene: Jabiru\_85 Start: 48652, Stop: 48572, Start Num: 26

Candidate Starts for Jabiru\_85:

(Start: 26 @48652 has 60 MA's), (28, 48613),

Gene: Jerm\_95 Start: 51599, Stop: 51495, Start Num: 20

Candidate Starts for Jerm\_95:

(Start: 20 @51599 has 57 MA's), (Start: 25 @51575 has 1 MA's), (Start: 26 @51572 has 60 MA's),

Gene: Joselito\_97 Start: 50819, Stop: 50742, Start Num: 26

Candidate Starts for Joselito\_97:

(Start: 20 @50849 has 57 MA's), (Start: 26 @50819 has 60 MA's), (31, 50750),

Gene: JoshKayV\_97 Start: 51822, Stop: 51739, Start Num: 24

Candidate Starts for JoshKayV\_97:

(Start: 24 @51822 has 3 MA's), (Start: 26 @51816 has 60 MA's), (30, 51753), (31, 51747),

Gene: Journey13\_80 Start: 46885, Stop: 46808, Start Num: 26

Candidate Starts for Journey13\_80:

(Start: 26 @46885 has 60 MA's), (27, 46867),

Gene: Jsquared\_101 Start: 51418, Stop: 51341, Start Num: 26

Candidate Starts for Jsquared\_101:

(Start: 26 @51418 has 60 MA's), (27, 51400),

Gene: Kalpine\_97 Start: 51831, Stop: 51754, Start Num: 26

Candidate Starts for Kalpine\_97:

(Start: 20 @51858 has 57 MA's), (Start: 25 @51834 has 1 MA's), (Start: 26 @51831 has 60 MA's),

Gene: Kerberos\_97 Start: 51250, Stop: 51146, Start Num: 20

Candidate Starts for Kerberos\_97:

(Start: 20 @51250 has 57 MA's), (Start: 26 @51223 has 60 MA's), (27, 51205),

Gene: KittenMittens\_81 Start: 48769, Stop: 48665, Start Num: 20

Candidate Starts for KittenMittens\_81:

(Start: 20 @48769 has 57 MA's), (Start: 26 @48742 has 60 MA's),

Gene: Kristoff\_84 Start: 50050, Stop: 49973, Start Num: 26

Candidate Starts for Kristoff\_84:

(9, 50122), (Start: 20 @50077 has 57 MA's), (Start: 26 @50050 has 60 MA's),

Gene: Lambert1\_90 Start: 48932, Stop: 48855, Start Num: 26

Candidate Starts for Lambert1\_90:

(Start: 26 @48932 has 60 MA's), (30, 48869),

Gene: Landor\_92 Start: 52182, Stop: 52081, Start Num: 21

Candidate Starts for Landor\_92:

(Start: 21 @52182 has 1 MA's), (Start: 26 @52158 has 60 MA's), (27, 52140), (29, 52116), (30, 52095),

Gene: Leogania\_77 Start: 47504, Stop: 47400, Start Num: 20

Candidate Starts for Leogania\_77:

(17, 47516), (Start: 20 @47504 has 57 MA's), (Start: 24 @47483 has 3 MA's), (Start: 26 @47477 has 60 MA's), (29, 47435), (30, 47414),

Gene: Leviathan\_95 Start: 51650, Stop: 51573, Start Num: 26

Candidate Starts for Leviathan\_95:

(Start: 20 @51677 has 57 MA's), (Start: 25 @51653 has 1 MA's), (Start: 26 @51650 has 60 MA's),

Gene: LilTurb\_95 Start: 51562, Stop: 51485, Start Num: 26

Candidate Starts for LilTurb\_95:

(Start: 20 @51589 has 57 MA's), (Start: 25 @51565 has 1 MA's), (Start: 26 @51562 has 60 MA's),

Gene: LittleCherry\_84 Start: 48771, Stop: 48658, Start Num: 19

Candidate Starts for LittleCherry\_84:

(3, 48849), (6, 48840), (10, 48807), (11, 48804), (Start: 18 @48777 has 1 MA's), (Start: 19 @48771 has 3 MA's), (Start: 22 @48756 has 2 MA's), (Start: 26 @48735 has 60 MA's), (28, 48699),

Gene: Lokk\_89 Start: 49455, Stop: 49351, Start Num: 20

Candidate Starts for Lokk\_89:

(Start: 20 @49455 has 57 MA's), (Start: 25 @49431 has 1 MA's), (Start: 26 @49428 has 60 MA's),

Gene: Loser\_97 Start: 51981, Stop: 51877, Start Num: 20

Candidate Starts for Loser\_97:

(Start: 20 @51981 has 57 MA's), (Start: 25 @51957 has 1 MA's), (Start: 26 @51954 has 60 MA's),

Gene: Lucivia\_100 Start: 51098, Stop: 51021, Start Num: 26

Candidate Starts for Lucivia\_100:

(Start: 20 @51128 has 57 MA's), (Start: 26 @51098 has 60 MA's), (31, 51029),

Gene: Lucyedi\_94 Start: 51420, Stop: 51316, Start Num: 20  
Candidate Starts for Lucyedi\_94:  
(3, 51504), (Start: 20 @51420 has 57 MA's), (Start: 26 @51393 has 60 MA's),

Gene: MaCh\_99 Start: 51092, Stop: 50985, Start Num: 20  
Candidate Starts for MaCh\_99:  
(Start: 20 @51092 has 57 MA's), (Start: 26 @51062 has 60 MA's), (31, 50993),

Gene: Mabel\_99 Start: 51063, Stop: 50986, Start Num: 26  
Candidate Starts for Mabel\_99:  
(Start: 20 @51093 has 57 MA's), (Start: 26 @51063 has 60 MA's), (31, 50994),

Gene: Margo\_90 Start: 48957, Stop: 48880, Start Num: 26  
Candidate Starts for Margo\_90:  
(Start: 26 @48957 has 60 MA's), (30, 48894),

Gene: Micasa\_85 Start: 49438, Stop: 49325, Start Num: 19  
Candidate Starts for Micasa\_85:  
(Start: 18 @49444 has 1 MA's), (Start: 19 @49438 has 3 MA's), (Start: 22 @49423 has 2 MA's), (Start: 26 @49402 has 60 MA's), (28, 49366),

Gene: MiculUcigas\_96 Start: 51290, Stop: 51168, Start Num: 14  
Candidate Starts for MiculUcigas\_96:  
(Start: 14 @51290 has 6 MA's), (Start: 20 @51278 has 57 MA's), (Start: 26 @51251 has 60 MA's), (31, 51182),

Gene: Miko\_90 Start: 50312, Stop: 50208, Start Num: 20  
Candidate Starts for Miko\_90:  
(Start: 20 @50312 has 57 MA's), (Start: 25 @50288 has 1 MA's), (Start: 26 @50285 has 60 MA's),

Gene: Milcery\_84 Start: 49067, Stop: 48954, Start Num: 19  
Candidate Starts for Milcery\_84:  
(3, 49145), (6, 49136), (10, 49103), (11, 49100), (Start: 18 @49073 has 1 MA's), (Start: 19 @49067 has 3 MA's), (Start: 22 @49052 has 2 MA's), (Start: 26 @49031 has 60 MA's), (28, 48995),

Gene: MissWhite\_93 Start: 48728, Stop: 48651, Start Num: 26  
Candidate Starts for MissWhite\_93:  
(Start: 26 @48728 has 60 MA's), (27, 48710), (28, 48692),

Gene: Mulciber\_98 Start: 50918, Stop: 50841, Start Num: 26  
Candidate Starts for Mulciber\_98:  
(Start: 20 @50948 has 57 MA's), (Start: 26 @50918 has 60 MA's), (31, 50849),

Gene: NaSiaTalie\_97 Start: 51439, Stop: 51329, Start Num: 20  
Candidate Starts for NaSiaTalie\_97:  
(Start: 14 @51451 has 6 MA's), (Start: 20 @51439 has 57 MA's), (Start: 26 @51412 has 60 MA's), (31, 51343),

Gene: Naji\_86 Start: 47615, Stop: 47511, Start Num: 20  
Candidate Starts for Naji\_86:  
(Start: 20 @47615 has 57 MA's), (Start: 26 @47588 has 60 MA's), (27, 47570),

Gene: NearlyHeadless\_100 Start: 50504, Stop: 50427, Start Num: 26

Candidate Starts for NearlyHeadless\_100:

(Start: 26 @50504 has 60 MA's),

Gene: NicoleTera\_95 Start: 51425, Stop: 51324, Start Num: 20

Candidate Starts for NicoleTera\_95:

(Start: 20 @51425 has 57 MA's), (Start: 26 @51401 has 60 MA's), (27, 51383), (30, 51338), (31, 51332),

Gene: NothingSpecial\_88 Start: 50971, Stop: 50870, Start Num: 21

Candidate Starts for NothingSpecial\_88:

(Start: 21 @50971 has 1 MA's), (Start: 26 @50947 has 60 MA's), (27, 50929), (29, 50905),

Gene: OKCentral2016\_85 Start: 48846, Stop: 48742, Start Num: 20

Candidate Starts for OKCentral2016\_85:

(Start: 20 @48846 has 57 MA's), (Start: 26 @48819 has 60 MA's),

Gene: Odin\_95 Start: 51188, Stop: 51069, Start Num: 16

Candidate Starts for Odin\_95:

(1, 51293), (4, 51248), (12, 51206), (Start: 16 @51188 has 1 MA's), (Start: 20 @51173 has 57 MA's), (Start: 25 @51149 has 1 MA's), (31, 51077),

Gene: Orange\_99 Start: 50617, Stop: 50540, Start Num: 26

Candidate Starts for Orange\_99:

(Start: 20 @50647 has 57 MA's), (Start: 26 @50617 has 60 MA's), (31, 50548),

Gene: PP\_09 Start: 2269, Stop: 2150, Start Num: 18

Candidate Starts for PP\_09:

(2, 2356), (Start: 18 @2269 has 1 MA's), (Start: 26 @2227 has 60 MA's),

Gene: PainterBoy\_93 Start: 51131, Stop: 51027, Start Num: 20

Candidate Starts for PainterBoy\_93:

(3, 51215), (Start: 20 @51131 has 57 MA's), (Start: 26 @51104 has 60 MA's),

Gene: PeaceMeal1\_83 Start: 48773, Stop: 48669, Start Num: 20

Candidate Starts for PeaceMeal1\_83:

(Start: 20 @48773 has 57 MA's), (Start: 26 @48746 has 60 MA's),

Gene: Petersenfast\_93 Start: 49528, Stop: 49421, Start Num: 20

Candidate Starts for Petersenfast\_93:

(Start: 20 @49528 has 57 MA's), (Start: 26 @49498 has 60 MA's), (31, 49429),

Gene: PetterN\_92 Start: 49239, Stop: 49159, Start Num: 26

Candidate Starts for PetterN\_92:

(7, 49320), (Start: 26 @49239 has 60 MA's),

Gene: Phillis\_96 Start: 49511, Stop: 49434, Start Num: 26

Candidate Starts for Phillis\_96:

(Start: 26 @49511 has 60 MA's),

Gene: Pomar16\_97 Start: 51296, Stop: 51219, Start Num: 26

Candidate Starts for Pomar16\_97:

(Start: 20 @51323 has 57 MA's), (Start: 26 @51296 has 60 MA's), (27, 51278),

Gene: Poompha\_84 Start: 48962, Stop: 48858, Start Num: 20  
Candidate Starts for Poompha\_84:  
(Start: 20 @48962 has 57 MA's), (Start: 26 @48935 has 60 MA's),

Gene: Popcicle\_90 Start: 48928, Stop: 48851, Start Num: 26  
Candidate Starts for Popcicle\_90:  
(Start: 26 @48928 has 60 MA's), (30, 48865),

Gene: Power\_94 Start: 51827, Stop: 51750, Start Num: 26  
Candidate Starts for Power\_94:  
(Start: 20 @51854 has 57 MA's), (Start: 25 @51830 has 1 MA's), (Start: 26 @51827 has 60 MA's),

Gene: QueenB2\_93 Start: 51229, Stop: 51125, Start Num: 20  
Candidate Starts for QueenB2\_93:  
(Start: 20 @51229 has 57 MA's), (Start: 25 @51205 has 1 MA's), (Start: 26 @51202 has 60 MA's),

Gene: QueenBeesly\_94 Start: 51807, Stop: 51703, Start Num: 20  
Candidate Starts for QueenBeesly\_94:  
(Start: 20 @51807 has 57 MA's), (Start: 25 @51783 has 1 MA's), (Start: 26 @51780 has 60 MA's),

Gene: QuinnKiro\_89 Start: 48931, Stop: 48854, Start Num: 26  
Candidate Starts for QuinnKiro\_89:  
(Start: 26 @48931 has 60 MA's), (30, 48868),

Gene: Rachaly\_91 Start: 50455, Stop: 50351, Start Num: 20  
Candidate Starts for Rachaly\_91:  
(Start: 20 @50455 has 57 MA's), (Start: 25 @50431 has 1 MA's), (Start: 26 @50428 has 60 MA's),

Gene: Rebeuca\_87 Start: 50078, Stop: 49974, Start Num: 20  
Candidate Starts for Rebeuca\_87:  
(9, 50123), (Start: 20 @50078 has 57 MA's), (Start: 26 @50051 has 60 MA's),

Gene: RedRock\_95 Start: 51739, Stop: 51635, Start Num: 20  
Candidate Starts for RedRock\_95:  
(Start: 20 @51739 has 57 MA's), (Start: 25 @51715 has 1 MA's), (Start: 26 @51712 has 60 MA's),

Gene: Retro23\_95 Start: 51527, Stop: 51423, Start Num: 20  
Candidate Starts for Retro23\_95:  
(Start: 20 @51527 has 57 MA's), (Start: 25 @51503 has 1 MA's), (Start: 26 @51500 has 60 MA's),

Gene: RhynO\_75 Start: 45612, Stop: 45523, Start Num: 23  
Candidate Starts for RhynO\_75:  
(Start: 20 @45627 has 57 MA's), (Start: 23 @45612 has 1 MA's), (Start: 26 @45600 has 60 MA's),

Gene: Saintus\_94 Start: 47348, Stop: 47271, Start Num: 26  
Candidate Starts for Saintus\_94:  
(Start: 26 @47348 has 60 MA's),

Gene: Salz\_96 Start: 49825, Stop: 49718, Start Num: 20  
Candidate Starts for Salz\_96:  
(Start: 20 @49825 has 57 MA's), (Start: 26 @49795 has 60 MA's),

Gene: Serenity\_98 Start: 50529, Stop: 50452, Start Num: 26



Candidate Starts for Serenity\_98:  
(Start: 26 @50529 has 60 MA's), (27, 50511),

Gene: Sham4\_96 Start: 49843, Stop: 49736, Start Num: 20  
Candidate Starts for Sham4\_96:  
(Start: 20 @49843 has 57 MA's), (Start: 26 @49813 has 60 MA's), (31, 49744),

Gene: Smeadley\_99 Start: 50508, Stop: 50431, Start Num: 26  
Candidate Starts for Smeadley\_99:  
(Start: 26 @50508 has 60 MA's),

Gene: Smeagan\_96 Start: 51716, Stop: 51639, Start Num: 26  
Candidate Starts for Smeagan\_96:  
(5, 51812), (8, 51788), (Start: 24 @51722 has 3 MA's), (Start: 26 @51716 has 60 MA's), (27, 51698),  
(30, 51653), (31, 51647),

Gene: SnapTap\_94 Start: 51510, Stop: 51406, Start Num: 20  
Candidate Starts for SnapTap\_94:  
(Start: 20 @51510 has 57 MA's), (Start: 25 @51486 has 1 MA's), (Start: 26 @51483 has 60 MA's),

Gene: Snape\_99 Start: 50606, Stop: 50529, Start Num: 26  
Candidate Starts for Snape\_99:  
(Start: 20 @50636 has 57 MA's), (Start: 26 @50606 has 60 MA's), (31, 50537),

Gene: StarStuff\_97 Start: 51258, Stop: 51181, Start Num: 26  
Candidate Starts for StarStuff\_97:  
(Start: 20 @51285 has 57 MA's), (Start: 26 @51258 has 60 MA's), (27, 51240),

Gene: Steamy\_91 Start: 51725, Stop: 51612, Start Num: 20  
Candidate Starts for Steamy\_91:  
(Start: 20 @51725 has 57 MA's), (Start: 26 @51695 has 60 MA's),

Gene: Stephig9\_100 Start: 50834, Stop: 50757, Start Num: 26  
Candidate Starts for Stephig9\_100:  
(Start: 26 @50834 has 60 MA's),

Gene: Superchunk\_98 Start: 51262, Stop: 51158, Start Num: 20  
Candidate Starts for Superchunk\_98:  
(1, 51382), (4, 51337), (12, 51295), (Start: 16 @51277 has 1 MA's), (Start: 20 @51262 has 57 MA's),  
(Start: 25 @51238 has 1 MA's), (31, 51166),

Gene: SweetiePie\_94 Start: 51643, Stop: 51539, Start Num: 20  
Candidate Starts for SweetiePie\_94:  
(Start: 20 @51643 has 57 MA's), (Start: 25 @51619 has 1 MA's), (Start: 26 @51616 has 60 MA's),

Gene: Swirley\_85 Start: 47789, Stop: 47676, Start Num: 19  
Candidate Starts for Swirley\_85:  
(3, 47867), (6, 47858), (10, 47825), (11, 47822), (Start: 19 @47789 has 3 MA's), (Start: 22 @47774  
has 2 MA's), (Start: 26 @47753 has 60 MA's), (28, 47717),

Gene: SydNat\_85 Start: 49394, Stop: 49317, Start Num: 26  
Candidate Starts for SydNat\_85:  
(15, 49439), (Start: 26 @49394 has 60 MA's), (28, 49358),

Gene: TNguyen7\_92 Start: 49258, Stop: 49181, Start Num: 26  
Candidate Starts for TNguyen7\_92:  
(Start: 26 @49258 has 60 MA's), (27, 49240), (30, 49195),

Gene: Tarynearal\_87 Start: 49212, Stop: 49114, Start Num: 22  
Candidate Starts for Tarynearal\_87:  
(3, 49305), (6, 49296), (10, 49263), (11, 49260), (Start: 18 @49233 has 1 MA's), (Start: 19 @49227 has 3 MA's), (Start: 22 @49212 has 2 MA's), (Start: 26 @49191 has 60 MA's), (28, 49155),

Gene: Texage\_88 Start: 48932, Stop: 48855, Start Num: 26  
Candidate Starts for Texage\_88:  
(Start: 26 @48932 has 60 MA's), (30, 48869),

Gene: Theia\_86 Start: 49737, Stop: 49660, Start Num: 26  
Candidate Starts for Theia\_86:  
(13, 49788), (15, 49782), (Start: 26 @49737 has 60 MA's), (28, 49701),

Gene: Timothy\_99 Start: 50583, Stop: 50506, Start Num: 26  
Candidate Starts for Timothy\_99:  
(Start: 20 @50613 has 57 MA's), (Start: 26 @50583 has 60 MA's), (31, 50514),

Gene: TinyTimmy\_97 Start: 50342, Stop: 50235, Start Num: 20  
Candidate Starts for TinyTimmy\_97:  
(Start: 20 @50342 has 57 MA's), (Start: 26 @50312 has 60 MA's), (31, 50243),

Gene: Todacoro\_90 Start: 48931, Stop: 48854, Start Num: 26  
Candidate Starts for Todacoro\_90:  
(Start: 26 @48931 has 60 MA's), (30, 48868),

Gene: Tomathan\_97 Start: 51364, Stop: 51260, Start Num: 20  
Candidate Starts for Tomathan\_97:  
(Start: 20 @51364 has 57 MA's), (Start: 26 @51337 has 60 MA's), (27, 51319),

Gene: Topanga\_76 Start: 46554, Stop: 46450, Start Num: 20  
Candidate Starts for Topanga\_76:  
(Start: 20 @46554 has 57 MA's), (Start: 26 @46527 has 60 MA's),

Gene: Twister\_87 Start: 49768, Stop: 49664, Start Num: 20  
Candidate Starts for Twister\_87:  
(Start: 20 @49768 has 57 MA's), (Start: 26 @49741 has 60 MA's),

Gene: Updawg\_97 Start: 51572, Stop: 51450, Start Num: 14  
Candidate Starts for Updawg\_97:  
(Start: 14 @51572 has 6 MA's), (Start: 20 @51560 has 57 MA's), (Start: 26 @51533 has 60 MA's), (31, 51464),

Gene: VA6\_93 Start: 51062, Stop: 50958, Start Num: 20  
Candidate Starts for VA6\_93:  
(Start: 19 @51068 has 3 MA's), (Start: 20 @51062 has 57 MA's), (Start: 25 @51038 has 1 MA's), (Start: 26 @51035 has 60 MA's),

Gene: VC3\_93 Start: 49621, Stop: 49517, Start Num: 20

Candidate Starts for VC3\_93:

(Start: 20 @49621 has 57 MA's), (Start: 26 @49594 has 60 MA's), (27, 49576),

Gene: WalterMcMickey\_86 Start: 49768, Stop: 49664, Start Num: 20

Candidate Starts for WalterMcMickey\_86:

(Start: 20 @49768 has 57 MA's), (Start: 26 @49741 has 60 MA's),

Gene: WideWale\_97 Start: 51572, Stop: 51450, Start Num: 14

Candidate Starts for WideWale\_97:

(Start: 14 @51572 has 6 MA's), (Start: 20 @51560 has 57 MA's), (Start: 26 @51533 has 60 MA's),  
(31, 51464),