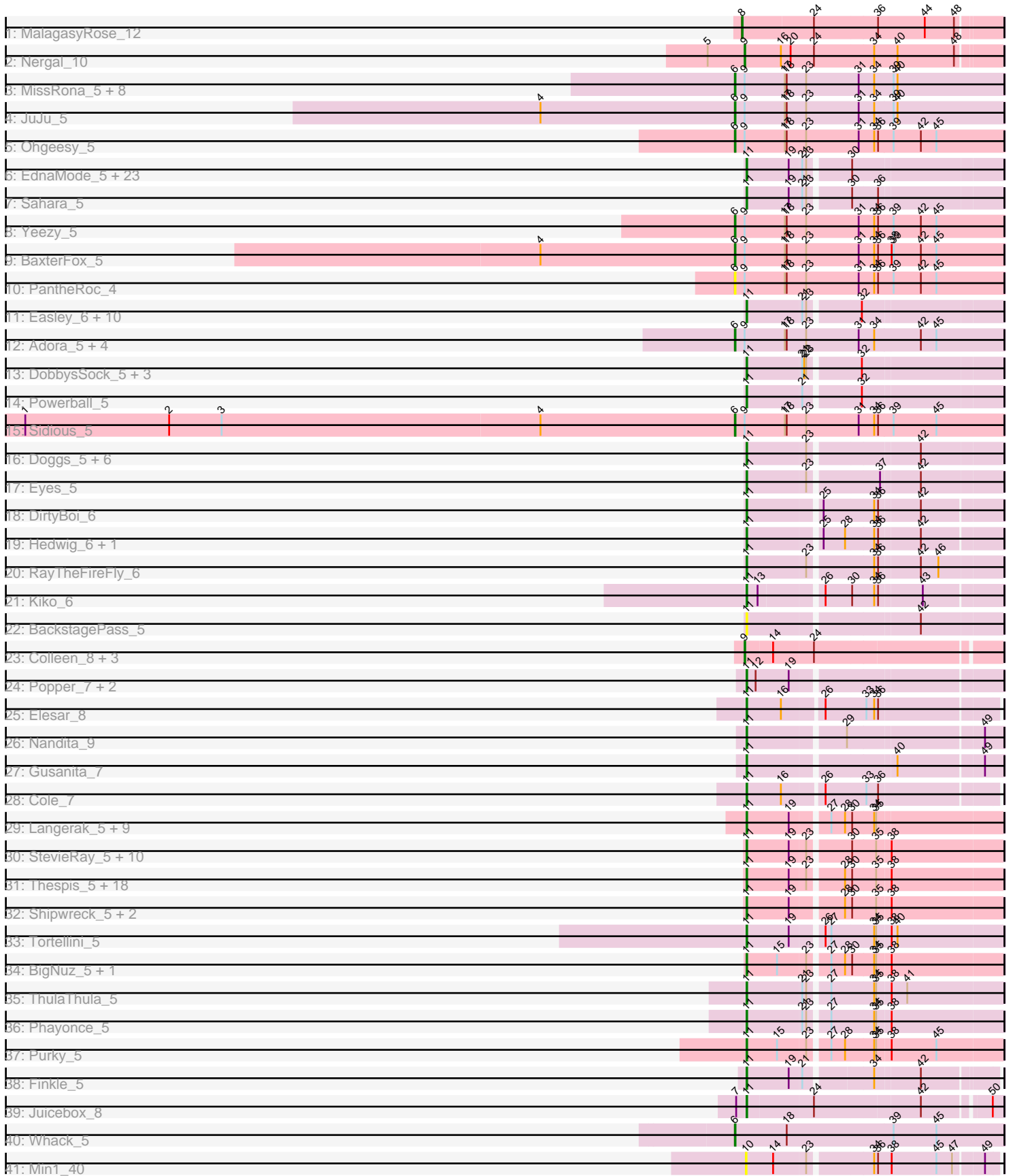


Pham 171266



Note: Tracks are now grouped by subcluster and scaled. Switching in subcluster is indicated by changes in track color. Track scale is now set by default to display the region 30 bp upstream of start 1 to 30 bp downstream of the last possible start. If this default region is judged to be packed too tightly with annotated starts, the track will be further scaled to only show that region of the ORF with annotated starts. This action will be indicated by adding "Zoomed" to the title. For starts, yellow indicates the location of called starts comprised solely of Glimmer/GeneMark auto-annotations, green indicates the location of called starts with at least 1 manual gene annotation.

Pham 171266 Report

This analysis was run 07/10/24 on database version 566.

Pham number 171266 has 141 members, 10 are drafts.

Phages represented in each track:

- Track 1 : MalagasyRose_12
- Track 2 : Nergal_10
- Track 3 : MissRona_5, Walrus_5, CarolAnn_5, Frokostdame_5, Azula_5, Blueberry_5, Petra_5, Gambino_5, Blino_5
- Track 4 : JuJu_5
- Track 5 : Ohgeesy_5
- Track 6 : EdnaMode_5, LordFarquaad_5, JCole_5, Cynthia_5, Clap_5, GemG_5, TuertoX_5, Lamberg_5, Denise_5, Whiteclaw_5, Vasanti_5, Attis_5, Gizermo_5, SoilAssassin_5, Nettuno_5, Ebert_5, Matteo_5, Savage_5, Bjaner7_5, Pickett_5, Haley23_5, Sproutie_5, Mocha12_5, Yeet412_5
- Track 7 : Sahara_5
- Track 8 : Yeezy_5
- Track 9 : BaxterFox_5
- Track 10 : PantheRoc_4
- Track 11 : Easley_6, Sekhmet_6, Oregano_6, Suerte_5, MichaelScott_6, Dolores_6, Samman98_6, Beenie_6, Clark_6, WinkNick_6, Thimann_6
- Track 12 : Adora_5, Shlim410_5, Hortense_5, Howe_5, Twinkle_5
- Track 13 : DobbysSock_5, Annalisa_6, Dorito_5, PhriskyACE_5
- Track 14 : Powerball_5
- Track 15 : Sidious_5
- Track 16 : Doggs_5, GEazy_5, Bunker_5, Bowser_5, BBQValindra_5, Coriander_6, HannahD_5
- Track 17 : Eyes_5
- Track 18 : DirtyBoi_6
- Track 19 : Hedwig_6, Dmitri_6
- Track 20 : RayTheFireFly_6
- Track 21 : Kiko_6
- Track 22 : BackstagePass_5
- Track 23 : Colleen_8, TouchMeNot_8, Arianna_8, Poushou_8
- Track 24 : Popper_7, Zaheer_9, Ryan_9
- Track 25 : Elesar_8
- Track 26 : Nandita_9
- Track 27 : Gusanita_7
- Track 28 : Cole_7
- Track 29 : Langerak_5, Mangethe_5, Majeke_5, Donovan_5, Sonah_5, Arib1_5, Phegasus_5, Jebeks_5, Juniormint_5, Techage_5

- Track 30 : StevieRay_5, Glaske_5, Bunnies_5, Phalm_5, Megiddo_5, Polkaroo_5, KilKor_5, StressBall_5, Willsammy_5, CactusJack_5, Ksquared_5
- Track 31 : Thespis_5, Malithi_5, Venti_5, Brusacoram_5, Atcoo_5, Camster_5, FirstPlacePfu_5, Jung_5, HUHilltop_5, Necropolis_5, Phineas_5, Xavia_5, Dynamo_5, Bartholomew_5, GreaseLightnin_5, Zilizebeth_5, Kari_5, Fishburne_5, Vidya_5
- Track 32 : Shipwreck_5, Pygmy_5, Bogie_5
- Track 33 : Tortellini_5
- Track 34 : BigNuz_5, Nazo_5
- Track 35 : ThulaThula_5
- Track 36 : Phayonce_5
- Track 37 : Purky_5
- Track 38 : Finkle_5
- Track 39 : Juicebox_8
- Track 40 : Whack_5
- Track 41 : Min1_40

Summary of Final Annotations (See graph section above for start numbers):

The start number called the most often in the published annotations is 11, it was called in 105 of the 131 non-draft genes in the pham.

Genes that call this "Most Annotated" start:

- Annalisa_6, Arib1_5, Atcoo_5, Attis_5, BBQValindra_5, BackstagePass_5, Bartholomew_5, Beenie_6, BigNuz_5, Bjanes7_5, Bogie_5, Bowser_5, Brusacoram_5, Bunker_5, Bunnies_5, CactusJack_5, Camster_5, Clap_5, Clark_6, Cole_7, Coriander_6, Cynthia_5, Denise_5, DirtyBoi_6, Dmitri_6, DobbysSock_5, Doggs_5, Dolores_6, Donovan_5, Dorito_5, Dynamo_5, Easley_6, Ebert_5, EdnaMode_5, Elesar_8, Eyes_5, Finkle_5, FirstPlacePfu_5, Fishburne_5, GEazy_5, GemG_5, Gizermo_5, Glaske_5, GreaseLightnin_5, Gusanita_7, HUHilltop_5, Haley23_5, HannahD_5, Hedwig_6, JCole_5, Jebeks_5, Juicebox_8, Jung_5, Juniormint_5, Kari_5, Kiko_6, KilKor_5, Ksquared_5, Lamberg_5, Langerak_5, LordFarquaad_5, Majeke_5, Malithi_5, Mangethe_5, Matteo_5, Megiddo_5, MichaelScott_6, Mocha12_5, Nandita_9, Nazo_5, Necropolis_5, Nettuno_5, Oregano_6, Phalm_5, Phayonce_5, Phegasus_5, Phineas_5, PhriskyACE_5, Pickett_5, Polkaroo_5, Popper_7, Powerball_5, Purky_5, Pygmy_5, RayTheFireFly_6, Ryan_9, Sahara_5, Samman98_6, Savage_5, Sekhmet_6, Shipwreck_5, SoilAssassin_5, Sonah_5, Sproutie_5, StevieRay_5, StressBall_5, Suerte_5, Techage_5, Thespis_5, Thimann_6, ThulaThula_5, Tortellini_5, TuertoX_5, Vasanti_5, Venti_5, Vidya_5, Whiteclaw_5, Willsammy_5, WinkNick_6, Xavia_5, Yeet412_5, Zaheer_9, Zilizebeth_5,

Genes that have the "Most Annotated" start but do not call it:

-

Genes that do not have the "Most Annotated" start:

- Adora_5, Arianna_8, Azula_5, BaxterFox_5, Blino_5, Blueberry_5, CarolAnn_5, Colleen_8, Frokostdame_5, Gambino_5, Hortense_5, Howe_5, JuJu_5, MalagasyRose_12, Min1_40, MissRona_5, Nergal_10, Ohgeesy_5, PantheRoc_4, Petra_5, Poushou_8, Shlim410_5, Sidious_5, TouchMeNot_8, Twinkle_5, Walrus_5,

Whack_5, Yeezy_5,

Summary by start number:

Start 6:

- Found in 21 of 141 (14.9%) of genes in pham
- Manual Annotations of this start: 20 of 131
- Called 100.0% of time when present
- Phage (with cluster) where this start called: Adora_5 (CZ4), Azula_5 (CV), BaxterFox_5 (CZ3), Blino_5 (CV), Blueberry_5 (CV), CarolAnn_5 (CV), Frokostdame_5 (CV), Gambino_5 (CV), Hortense_5 (CZ4), Howe_5 (CZ4), JuJu_5 (CV), MissRona_5 (CV), Ohgeesy_5 (CZ), PantheRoc_4 (CZ3), Petra_5 (CV), Shlim410_5 (CZ4), Sidious_5 (CZ7), Twinkle_5 (CZ4), Walrus_5 (CV), Whack_5 (singleton), Yeezy_5 (CZ3),

Start 8:

- Found in 1 of 141 (0.7%) of genes in pham
- Manual Annotations of this start: 1 of 131
- Called 100.0% of time when present
- Phage (with cluster) where this start called: MalagasyRose_12 (AG),

Start 9:

- Found in 25 of 141 (17.7%) of genes in pham
- Manual Annotations of this start: 5 of 131
- Called 20.0% of time when present
- Phage (with cluster) where this start called: Arianna_8 (EO), Colleen_8 (EO), Nergal_10 (AG), Poushou_8 (EO), TouchMeNot_8 (EO),

Start 10:

- Found in 1 of 141 (0.7%) of genes in pham
- No Manual Annotations of this start.
- Called 100.0% of time when present
- Phage (with cluster) where this start called: Min1_40 (singleton),

Start 11:

- Found in 113 of 141 (80.1%) of genes in pham
- Manual Annotations of this start: 105 of 131
- Called 100.0% of time when present
- Phage (with cluster) where this start called: Annalisa_6 (CZ4), Arib1_5 (P1), Atcoo_5 (P1), Attis_5 (CZ2), BBQValindra_5 (DB), BackstagePass_5 (DB), Bartholomew_5 (P1), Beenie_6 (CZ4), BigNuz_5 (P4), Bjaner7_5 (CZ2), Bogie_5 (P1), Bowser_5 (DB), Brusacoram_5 (P1), Bunker_5 (DB), Bunnies_5 (P1), CactusJack_5 (P1), Camster_5 (P1), Clap_5 (CZ2), Clark_6 (CZ4), Cole_7 (FF), Coriander_6 (DB), Cynthia_5 (CZ2), Denise_5 (CZ5), DirtyBoi_6 (DB), Dmitri_6 (DB), DobbysSock_5 (CZ4), Doggs_5 (DB), Dolores_6 (CZ4), Donovan_5 (P1), Dorito_5 (CZ4), Dynamo_5 (P1), Easley_6 (CZ4), Ebert_5 (CZ2), EdnaMode_5 (CZ2), Elesar_8 (FF), Eyes_5 (DB), Finkle_5 (singleton), FirstPlacePfu_5 (P1), Fishburne_5 (P1), GEazy_5 (DB), GemG_5 (CZ2), Gizermo_5 (CZ2), Glaske_5 (P1), GreaseLightnin_5 (P1), Gusanita_7 (FF), HUHilltop_5 (P1), Haley23_5 (CZ2), HannahD_5 (DB), Hedwig_6 (DB), JCole_5 (CZ2), Jebeks_5 (P1), Juicebox_8 (singleton), Jung_5 (P1), Juniormint_5 (P1), Kari_5 (P1), Kiko_6 (DB), KilKor_5 (P1), Ksquared_5 (P1), Lamberg_5 (CZ2), Langerak_5 (P1), LordFarquaad_5 (CZ2), Majeke_5 (P1), Malithi_5 (P1), Mangethe_5 (P1), Matteo_5 (CZ2), Megiddo_5 (P1),

MichaelScott_6 (CZ4), Mocha12_5 (CZ2), Nandita_9 (FF), Nazo_5 (P4), Necropolis_5 (P1), Nettuno_5 (CZ2), Oregano_6 (CZ4), Phalm_5 (P1), Phayonce_5 (P5), Phegasus_5 (P1), Phineas_5 (P1), PhriskyACE_5 (CZ4), Pickett_5 (CZ2), Polkaroo_5 (P1), Popper_7 (FF), Powerball_5 (CZ4), Purky_5 (P6), Pygmy_5 (P1), RayTheFireFly_6 (DB), Ryan_9 (FF), Sahara_5 (CZ2), Samman98_6 (CZ4), Savage_5 (CZ2), Sekhmet_6 (CZ4), Shipwreck_5 (P1), SoilAssassin_5 (CZ2), Sonah_5 (P1), Sproutie_5 (CZ2), StevieRay_5 (P1), StressBall_5 (P1), Suerte_5 (CZ4), Techage_5 (P1), Thespis_5 (P1), Thimann_6 (CZ4), ThulaThula_5 (P5), Tortellini_5 (P2), TuertoX_5 (CZ2), Vasanti_5 (CZ2), Venti_5 (P1), Vidya_5 (P1), Whiteclaw_5 (CZ2), Willsammy_5 (P1), WinkNick_6 (CZ4), Xavia_5 (P3), Yeet412_5 (CZ2), Zaheer_9 (FF), Zilizebeth_5 (P1),

Summary by clusters:

There are 18 clusters represented in this pham: P2, P3, singleton, P1, P6, AG, P4, P5, CZ2, CZ3, DB, EO, CZ4, CZ7, CZ, FF, CZ5, CV,

Info for manual annotations of cluster AG:

- Start number 8 was manually annotated 1 time for cluster AG.
- Start number 9 was manually annotated 1 time for cluster AG.

Info for manual annotations of cluster CV:

- Start number 6 was manually annotated 10 times for cluster CV.

Info for manual annotations of cluster CZ:

- Start number 6 was manually annotated 1 time for cluster CZ.

Info for manual annotations of cluster CZ2:

- Start number 11 was manually annotated 23 times for cluster CZ2.

Info for manual annotations of cluster CZ3:

- Start number 6 was manually annotated 2 times for cluster CZ3.

Info for manual annotations of cluster CZ4:

- Start number 6 was manually annotated 5 times for cluster CZ4.
- Start number 11 was manually annotated 14 times for cluster CZ4.

Info for manual annotations of cluster CZ5:

- Start number 11 was manually annotated 1 time for cluster CZ5.

Info for manual annotations of cluster CZ7:

- Start number 6 was manually annotated 1 time for cluster CZ7.

Info for manual annotations of cluster DB:

- Start number 11 was manually annotated 12 times for cluster DB.

Info for manual annotations of cluster EO:

- Start number 9 was manually annotated 4 times for cluster EO.

Info for manual annotations of cluster FF:

- Start number 11 was manually annotated 7 times for cluster FF.

Info for manual annotations of cluster P1:

•Start number 11 was manually annotated 39 times for cluster P1.

Info for manual annotations of cluster P2:

•Start number 11 was manually annotated 1 time for cluster P2.

Info for manual annotations of cluster P3:

•Start number 11 was manually annotated 1 time for cluster P3.

Info for manual annotations of cluster P4:

•Start number 11 was manually annotated 2 times for cluster P4.

Info for manual annotations of cluster P5:

•Start number 11 was manually annotated 2 times for cluster P5.

Info for manual annotations of cluster P6:

•Start number 11 was manually annotated 1 time for cluster P6.

Gene Information:

Gene: Adora_5 Start: 4490, Stop: 4900, Start Num: 6

Candidate Starts for Adora_5:

(Start: 6 @4490 has 20 MA's), (Start: 9 @4505 has 5 MA's), (17, 4565), (18, 4568), (23, 4598), (31, 4679), (34, 4703), (42, 4772), (45, 4796),

Gene: Annalisa_6 Start: 4955, Stop: 5317, Start Num: 11

Candidate Starts for Annalisa_6:

(Start: 11 @4955 has 105 MA's), (21, 5036), (22, 5039), (23, 5042), (32, 5114),

Gene: Arianna_8 Start: 6945, Stop: 7313, Start Num: 9

Candidate Starts for Arianna_8:

(Start: 9 @6945 has 5 MA's), (14, 6984), (24, 7044),

Gene: Arib1_5 Start: 4896, Stop: 5261, Start Num: 11

Candidate Starts for Arib1_5:

(Start: 11 @4896 has 105 MA's), (19, 4959), (27, 5010), (28, 5031), (30, 5040), (34, 5073), (35, 5076),

Gene: Atcoo_5 Start: 4880, Stop: 5245, Start Num: 11

Candidate Starts for Atcoo_5:

(Start: 11 @4880 has 105 MA's), (19, 4943), (23, 4967), (28, 5015), (30, 5024), (35, 5060), (38, 5078),

Gene: Attis_5 Start: 4464, Stop: 4826, Start Num: 11

Candidate Starts for Attis_5:

(Start: 11 @4464 has 105 MA's), (19, 4527), (21, 4545), (23, 4551), (30, 4608),

Gene: Azula_5 Start: 4627, Stop: 5037, Start Num: 6

Candidate Starts for Azula_5:

(Start: 6 @4627 has 20 MA's), (Start: 9 @4642 has 5 MA's), (17, 4702), (18, 4705), (23, 4735), (31, 4816), (34, 4840), (39, 4867), (40, 4873),

Gene: BBQValindra_5 Start: 4809, Stop: 5171, Start Num: 11

Candidate Starts for BBQValindra_5:

(Start: 11 @4809 has 105 MA's), (23, 4896), (42, 5052),

Gene: BackstagePass_5 Start: 4786, Stop: 5148, Start Num: 11

Candidate Starts for BackstagePass_5:

(Start: 11 @4786 has 105 MA's), (42, 5029),

Gene: Bartholomew_5 Start: 4892, Stop: 5257, Start Num: 11

Candidate Starts for Bartholomew_5:

(Start: 11 @4892 has 105 MA's), (19, 4955), (23, 4979), (28, 5027), (30, 5036), (35, 5072), (38, 5090),

Gene: BaxterFox_5 Start: 4481, Stop: 4891, Start Num: 6

Candidate Starts for BaxterFox_5:

(4, 4181), (Start: 6 @4481 has 20 MA's), (Start: 9 @4496 has 5 MA's), (17, 4556), (18, 4559), (23, 4589), (31, 4670), (34, 4694), (36, 4700), (38, 4718), (39, 4721), (42, 4763), (45, 4787),

Gene: Beenie_6 Start: 4955, Stop: 5317, Start Num: 11

Candidate Starts for Beenie_6:

(Start: 11 @4955 has 105 MA's), (21, 5036), (23, 5042), (32, 5114),

Gene: BigNuz_5 Start: 4865, Stop: 5230, Start Num: 11

Candidate Starts for BigNuz_5:

(Start: 11 @4865 has 105 MA's), (15, 4910), (23, 4952), (27, 4979), (28, 5000), (30, 5009), (34, 5042), (35, 5045), (38, 5063),

Gene: Bjaner7_5 Start: 4464, Stop: 4826, Start Num: 11

Candidate Starts for Bjaner7_5:

(Start: 11 @4464 has 105 MA's), (19, 4527), (21, 4545), (23, 4551), (30, 4608),

Gene: Blino_5 Start: 4630, Stop: 5040, Start Num: 6

Candidate Starts for Blino_5:

(Start: 6 @4630 has 20 MA's), (Start: 9 @4645 has 5 MA's), (17, 4705), (18, 4708), (23, 4738), (31, 4819), (34, 4843), (39, 4870), (40, 4876),

Gene: Blueberry_5 Start: 4627, Stop: 5037, Start Num: 6

Candidate Starts for Blueberry_5:

(Start: 6 @4627 has 20 MA's), (Start: 9 @4642 has 5 MA's), (17, 4702), (18, 4705), (23, 4735), (31, 4816), (34, 4840), (39, 4867), (40, 4873),

Gene: Bogie_5 Start: 4880, Stop: 5245, Start Num: 11

Candidate Starts for Bogie_5:

(Start: 11 @4880 has 105 MA's), (19, 4943), (28, 5015), (30, 5024), (35, 5060), (38, 5078),

Gene: Bowser_5 Start: 4806, Stop: 5168, Start Num: 11

Candidate Starts for Bowser_5:

(Start: 11 @4806 has 105 MA's), (23, 4893), (42, 5049),

Gene: Brusacoram_5 Start: 4879, Stop: 5244, Start Num: 11

Candidate Starts for Brusacoram_5:

(Start: 11 @4879 has 105 MA's), (19, 4942), (23, 4966), (28, 5014), (30, 5023), (35, 5059), (38, 5077),

Gene: Bunker_5 Start: 4809, Stop: 5171, Start Num: 11

Candidate Starts for Bunker_5:

(Start: 11 @4809 has 105 MA's), (23, 4896), (42, 5052),

Gene: Bunnies_5 Start: 4892, Stop: 5257, Start Num: 11

Candidate Starts for Bunnies_5:

(Start: 11 @4892 has 105 MA's), (19, 4955), (23, 4979), (30, 5036), (35, 5072), (38, 5090),

Gene: CactusJack_5 Start: 4879, Stop: 5244, Start Num: 11

Candidate Starts for CactusJack_5:

(Start: 11 @4879 has 105 MA's), (19, 4942), (23, 4966), (30, 5023), (35, 5059), (38, 5077),

Gene: Camster_5 Start: 4892, Stop: 5257, Start Num: 11

Candidate Starts for Camster_5:

(Start: 11 @4892 has 105 MA's), (19, 4955), (23, 4979), (28, 5027), (30, 5036), (35, 5072), (38, 5090),

Gene: CarolAnn_5 Start: 4629, Stop: 5039, Start Num: 6

Candidate Starts for CarolAnn_5:

(Start: 6 @4629 has 20 MA's), (Start: 9 @4644 has 5 MA's), (17, 4704), (18, 4707), (23, 4737), (31, 4818), (34, 4842), (39, 4869), (40, 4875),

Gene: Clap_5 Start: 4464, Stop: 4826, Start Num: 11

Candidate Starts for Clap_5:

(Start: 11 @4464 has 105 MA's), (19, 4527), (21, 4545), (23, 4551), (30, 4608),

Gene: Clark_6 Start: 4955, Stop: 5317, Start Num: 11

Candidate Starts for Clark_6:

(Start: 11 @4955 has 105 MA's), (21, 5036), (23, 5042), (32, 5114),

Gene: Cole_7 Start: 5835, Stop: 6194, Start Num: 11

Candidate Starts for Cole_7:

(Start: 11 @5835 has 105 MA's), (16, 5886), (26, 5943), (33, 6003), (36, 6021),

Gene: Colleen_8 Start: 6945, Stop: 7313, Start Num: 9

Candidate Starts for Colleen_8:

(Start: 9 @6945 has 5 MA's), (14, 6984), (24, 7044),

Gene: Coriander_6 Start: 5185, Stop: 5547, Start Num: 11

Candidate Starts for Coriander_6:

(Start: 11 @5185 has 105 MA's), (23, 5272), (42, 5428),

Gene: Cynthia_5 Start: 4464, Stop: 4826, Start Num: 11

Candidate Starts for Cynthia_5:

(Start: 11 @4464 has 105 MA's), (19, 4527), (21, 4545), (23, 4551), (30, 4608),

Gene: Denise_5 Start: 4473, Stop: 4835, Start Num: 11

Candidate Starts for Denise_5:

(Start: 11 @4473 has 105 MA's), (19, 4536), (21, 4554), (23, 4560), (30, 4617),

Gene: DirtyBoi_6 Start: 5167, Stop: 5529, Start Num: 11

Candidate Starts for DirtyBoi_6:

(Start: 11 @5167 has 105 MA's), (25, 5269), (34, 5344), (36, 5350), (42, 5410),

Gene: Dmitri_6 Start: 5167, Stop: 5529, Start Num: 11

Candidate Starts for Dmitri_6:

(Start: 11 @5167 has 105 MA's), (25, 5269), (28, 5302), (34, 5344), (36, 5350), (42, 5410),

Gene: DobbysSock_5 Start: 4453, Stop: 4815, Start Num: 11

Candidate Starts for DobbysSock_5:

(Start: 11 @4453 has 105 MA's), (21, 4534), (22, 4537), (23, 4540), (32, 4612),

Gene: Doggs_5 Start: 4882, Stop: 5244, Start Num: 11

Candidate Starts for Doggs_5:

(Start: 11 @4882 has 105 MA's), (23, 4969), (42, 5125),

Gene: Dolores_6 Start: 4955, Stop: 5317, Start Num: 11

Candidate Starts for Dolores_6:

(Start: 11 @4955 has 105 MA's), (21, 5036), (23, 5042), (32, 5114),

Gene: Donovan_5 Start: 4896, Stop: 5261, Start Num: 11

Candidate Starts for Donovan_5:

(Start: 11 @4896 has 105 MA's), (19, 4959), (27, 5010), (28, 5031), (30, 5040), (34, 5073), (35, 5076),

Gene: Dorito_5 Start: 4453, Stop: 4815, Start Num: 11

Candidate Starts for Dorito_5:

(Start: 11 @4453 has 105 MA's), (21, 4534), (22, 4537), (23, 4540), (32, 4612),

Gene: Dynamo_5 Start: 4892, Stop: 5257, Start Num: 11

Candidate Starts for Dynamo_5:

(Start: 11 @4892 has 105 MA's), (19, 4955), (23, 4979), (28, 5027), (30, 5036), (35, 5072), (38, 5090),

Gene: Easley_6 Start: 4955, Stop: 5317, Start Num: 11

Candidate Starts for Easley_6:

(Start: 11 @4955 has 105 MA's), (21, 5036), (23, 5042), (32, 5114),

Gene: Ebert_5 Start: 4464, Stop: 4826, Start Num: 11

Candidate Starts for Ebert_5:

(Start: 11 @4464 has 105 MA's), (19, 4527), (21, 4545), (23, 4551), (30, 4608),

Gene: EdnaMode_5 Start: 4464, Stop: 4826, Start Num: 11

Candidate Starts for EdnaMode_5:

(Start: 11 @4464 has 105 MA's), (19, 4527), (21, 4545), (23, 4551), (30, 4608),

Gene: Elesar_8 Start: 6224, Stop: 6583, Start Num: 11

Candidate Starts for Elesar_8:

(Start: 11 @6224 has 105 MA's), (16, 6275), (26, 6332), (33, 6392), (34, 6404), (36, 6410),

Gene: Eyes_5 Start: 4815, Stop: 5177, Start Num: 11

Candidate Starts for Eyes_5:

(Start: 11 @4815 has 105 MA's), (23, 4902), (37, 5001), (42, 5058),

Gene: Finkle_5 Start: 4607, Stop: 4954, Start Num: 11

Candidate Starts for Finkle_5:

(Start: 11 @4607 has 105 MA's), (19, 4670), (21, 4688), (34, 4781), (42, 4847),

Gene: FirstPlacePfu_5 Start: 4892, Stop: 5257, Start Num: 11

Candidate Starts for FirstPlacePfu_5:

(Start: 11 @4892 has 105 MA's), (19, 4955), (23, 4979), (28, 5027), (30, 5036), (35, 5072), (38, 5090),

Gene: Fishburne_5 Start: 4892, Stop: 5257, Start Num: 11
Candidate Starts for Fishburne_5:
(Start: 11 @4892 has 105 MA's), (19, 4955), (23, 4979), (28, 5027), (30, 5036), (35, 5072), (38, 5090),

Gene: Frokostdame_5 Start: 4698, Stop: 5108, Start Num: 6
Candidate Starts for Frokostdame_5:
(Start: 6 @4698 has 20 MA's), (Start: 9 @4713 has 5 MA's), (17, 4773), (18, 4776), (23, 4806), (31, 4887), (34, 4911), (39, 4938), (40, 4944),

Gene: GEazy_5 Start: 4818, Stop: 5180, Start Num: 11
Candidate Starts for GEazy_5:
(Start: 11 @4818 has 105 MA's), (23, 4905), (42, 5061),

Gene: Gambino_5 Start: 4627, Stop: 5037, Start Num: 6
Candidate Starts for Gambino_5:
(Start: 6 @4627 has 20 MA's), (Start: 9 @4642 has 5 MA's), (17, 4702), (18, 4705), (23, 4735), (31, 4816), (34, 4840), (39, 4867), (40, 4873),

Gene: GemG_5 Start: 4464, Stop: 4826, Start Num: 11
Candidate Starts for GemG_5:
(Start: 11 @4464 has 105 MA's), (19, 4527), (21, 4545), (23, 4551), (30, 4608),

Gene: Gizermo_5 Start: 4464, Stop: 4826, Start Num: 11
Candidate Starts for Gizermo_5:
(Start: 11 @4464 has 105 MA's), (19, 4527), (21, 4545), (23, 4551), (30, 4608),

Gene: Glaske_5 Start: 4879, Stop: 5244, Start Num: 11
Candidate Starts for Glaske_5:
(Start: 11 @4879 has 105 MA's), (19, 4942), (23, 4966), (30, 5023), (35, 5059), (38, 5077),

Gene: GreaseLightnin_5 Start: 4892, Stop: 5257, Start Num: 11
Candidate Starts for GreaseLightnin_5:
(Start: 11 @4892 has 105 MA's), (19, 4955), (23, 4979), (28, 5027), (30, 5036), (35, 5072), (38, 5090),

Gene: Gusanita_7 Start: 6107, Stop: 6469, Start Num: 11
Candidate Starts for Gusanita_7:
(Start: 11 @6107 has 105 MA's), (40, 6314), (49, 6440),

Gene: HUHilltop_5 Start: 4892, Stop: 5257, Start Num: 11
Candidate Starts for HUHilltop_5:
(Start: 11 @4892 has 105 MA's), (19, 4955), (23, 4979), (28, 5027), (30, 5036), (35, 5072), (38, 5090),

Gene: Haley23_5 Start: 4464, Stop: 4826, Start Num: 11
Candidate Starts for Haley23_5:
(Start: 11 @4464 has 105 MA's), (19, 4527), (21, 4545), (23, 4551), (30, 4608),

Gene: HannahD_5 Start: 4818, Stop: 5180, Start Num: 11
Candidate Starts for HannahD_5:
(Start: 11 @4818 has 105 MA's), (23, 4905), (42, 5061),

Gene: Hedwig_6 Start: 5167, Stop: 5529, Start Num: 11
Candidate Starts for Hedwig_6:
(Start: 11 @5167 has 105 MA's), (25, 5269), (28, 5302), (34, 5344), (36, 5350), (42, 5410),

Gene: Hortense_5 Start: 4490, Stop: 4900, Start Num: 6

Candidate Starts for Hortense_5:

(Start: 6 @4490 has 20 MA's), (Start: 9 @4505 has 5 MA's), (17, 4565), (18, 4568), (23, 4598), (31, 4679), (34, 4703), (42, 4772), (45, 4796),

Gene: Howe_5 Start: 4490, Stop: 4900, Start Num: 6

Candidate Starts for Howe_5:

(Start: 6 @4490 has 20 MA's), (Start: 9 @4505 has 5 MA's), (17, 4565), (18, 4568), (23, 4598), (31, 4679), (34, 4703), (42, 4772), (45, 4796),

Gene: JCole_5 Start: 4464, Stop: 4826, Start Num: 11

Candidate Starts for JCole_5:

(Start: 11 @4464 has 105 MA's), (19, 4527), (21, 4545), (23, 4551), (30, 4608),

Gene: Jebeks_5 Start: 4896, Stop: 5261, Start Num: 11

Candidate Starts for Jebeks_5:

(Start: 11 @4896 has 105 MA's), (19, 4959), (27, 5010), (28, 5031), (30, 5040), (34, 5073), (35, 5076),

Gene: JuJu_5 Start: 4640, Stop: 5050, Start Num: 6

Candidate Starts for JuJu_5:

(4, 4340), (Start: 6 @4640 has 20 MA's), (Start: 9 @4655 has 5 MA's), (17, 4715), (18, 4718), (23, 4748), (31, 4829), (34, 4853), (39, 4880), (40, 4886),

Gene: Juicebox_8 Start: 6592, Stop: 6951, Start Num: 11

Candidate Starts for Juicebox_8:

(7, 6577), (Start: 11 @6592 has 105 MA's), (24, 6688), (42, 6844), (50, 6937),

Gene: Jung_5 Start: 4879, Stop: 5244, Start Num: 11

Candidate Starts for Jung_5:

(Start: 11 @4879 has 105 MA's), (19, 4942), (23, 4966), (28, 5014), (30, 5023), (35, 5059), (38, 5077),

Gene: Juniormint_5 Start: 4899, Stop: 5264, Start Num: 11

Candidate Starts for Juniormint_5:

(Start: 11 @4899 has 105 MA's), (19, 4962), (27, 5013), (28, 5034), (30, 5043), (34, 5076), (35, 5079),

Gene: Kari_5 Start: 4892, Stop: 5257, Start Num: 11

Candidate Starts for Kari_5:

(Start: 11 @4892 has 105 MA's), (19, 4955), (23, 4979), (28, 5027), (30, 5036), (35, 5072), (38, 5090),

Gene: Kiko_6 Start: 5029, Stop: 5388, Start Num: 11

Candidate Starts for Kiko_6:

(Start: 11 @5029 has 105 MA's), (13, 5044), (26, 5131), (30, 5170), (34, 5203), (36, 5209), (43, 5272),

Gene: KilKor_5 Start: 4879, Stop: 5244, Start Num: 11

Candidate Starts for KilKor_5:

(Start: 11 @4879 has 105 MA's), (19, 4942), (23, 4966), (30, 5023), (35, 5059), (38, 5077),

Gene: Ksquared_5 Start: 4892, Stop: 5257, Start Num: 11

Candidate Starts for Ksquared_5:

(Start: 11 @4892 has 105 MA's), (19, 4955), (23, 4979), (30, 5036), (35, 5072), (38, 5090),

Gene: Lamberg_5 Start: 4464, Stop: 4826, Start Num: 11

Candidate Starts for Lamberg_5:

(Start: 11 @4464 has 105 MA's), (19, 4527), (21, 4545), (23, 4551), (30, 4608),

Gene: Langerak_5 Start: 4896, Stop: 5261, Start Num: 11

Candidate Starts for Langerak_5:

(Start: 11 @4896 has 105 MA's), (19, 4959), (27, 5010), (28, 5031), (30, 5040), (34, 5073), (35, 5076),

Gene: LordFarquaad_5 Start: 4464, Stop: 4826, Start Num: 11

Candidate Starts for LordFarquaad_5:

(Start: 11 @4464 has 105 MA's), (19, 4527), (21, 4545), (23, 4551), (30, 4608),

Gene: Majeke_5 Start: 4896, Stop: 5261, Start Num: 11

Candidate Starts for Majeke_5:

(Start: 11 @4896 has 105 MA's), (19, 4959), (27, 5010), (28, 5031), (30, 5040), (34, 5073), (35, 5076),

Gene: MalagasyRose_12 Start: 7571, Stop: 7951, Start Num: 8

Candidate Starts for MalagasyRose_12:

(Start: 8 @7571 has 1 MA's), (24, 7676), (36, 7772), (44, 7844), (48, 7889),

Gene: Malithi_5 Start: 4892, Stop: 5257, Start Num: 11

Candidate Starts for Malithi_5:

(Start: 11 @4892 has 105 MA's), (19, 4955), (23, 4979), (28, 5027), (30, 5036), (35, 5072), (38, 5090),

Gene: Mangethe_5 Start: 4896, Stop: 5261, Start Num: 11

Candidate Starts for Mangethe_5:

(Start: 11 @4896 has 105 MA's), (19, 4959), (27, 5010), (28, 5031), (30, 5040), (34, 5073), (35, 5076),

Gene: Matteo_5 Start: 4464, Stop: 4826, Start Num: 11

Candidate Starts for Matteo_5:

(Start: 11 @4464 has 105 MA's), (19, 4527), (21, 4545), (23, 4551), (30, 4608),

Gene: Megiddo_5 Start: 4879, Stop: 5244, Start Num: 11

Candidate Starts for Megiddo_5:

(Start: 11 @4879 has 105 MA's), (19, 4942), (23, 4966), (30, 5023), (35, 5059), (38, 5077),

Gene: MichaelScott_6 Start: 4955, Stop: 5317, Start Num: 11

Candidate Starts for MichaelScott_6:

(Start: 11 @4955 has 105 MA's), (21, 5036), (23, 5042), (32, 5114),

Gene: Min1_40 Start: 21806, Stop: 22165, Start Num: 10

Candidate Starts for Min1_40:

(10, 21806), (14, 21848), (23, 21896), (34, 21986), (36, 21992), (38, 22013), (45, 22082), (47, 22106), (49, 22145),

Gene: MissRona_5 Start: 4627, Stop: 5037, Start Num: 6

Candidate Starts for MissRona_5:

(Start: 6 @4627 has 20 MA's), (Start: 9 @4642 has 5 MA's), (17, 4702), (18, 4705), (23, 4735), (31, 4816), (34, 4840), (39, 4867), (40, 4873),

Gene: Mocha12_5 Start: 4464, Stop: 4826, Start Num: 11

Candidate Starts for Mocha12_5:

(Start: 11 @4464 has 105 MA's), (19, 4527), (21, 4545), (23, 4551), (30, 4608),

Gene: Nandita_9 Start: 6219, Stop: 6581, Start Num: 11

Candidate Starts for Nandita_9:

(Start: 11 @6219 has 105 MA's), (29, 6357), (49, 6552),

Gene: Nazo_5 Start: 4865, Stop: 5230, Start Num: 11

Candidate Starts for Nazo_5:

(Start: 11 @4865 has 105 MA's), (15, 4910), (23, 4952), (27, 4979), (28, 5000), (30, 5009), (34, 5042), (35, 5045), (38, 5063),

Gene: Necropolis_5 Start: 4892, Stop: 5257, Start Num: 11

Candidate Starts for Necropolis_5:

(Start: 11 @4892 has 105 MA's), (19, 4955), (23, 4979), (28, 5027), (30, 5036), (35, 5072), (38, 5090),

Gene: Nergal_10 Start: 8026, Stop: 8406, Start Num: 9

Candidate Starts for Nergal_10:

(5, 7969), (Start: 9 @8026 has 5 MA's), (16, 8080), (20, 8095), (24, 8131), (34, 8221), (40, 8257), (48, 8344),

Gene: Nettuno_5 Start: 4464, Stop: 4826, Start Num: 11

Candidate Starts for Nettuno_5:

(Start: 11 @4464 has 105 MA's), (19, 4527), (21, 4545), (23, 4551), (30, 4608),

Gene: Ohgeesy_5 Start: 4481, Stop: 4891, Start Num: 6

Candidate Starts for Ohgeesy_5:

(Start: 6 @4481 has 20 MA's), (Start: 9 @4496 has 5 MA's), (17, 4556), (18, 4559), (23, 4589), (31, 4670), (34, 4694), (36, 4700), (39, 4721), (42, 4763), (45, 4787),

Gene: Oregano_6 Start: 4626, Stop: 4988, Start Num: 11

Candidate Starts for Oregano_6:

(Start: 11 @4626 has 105 MA's), (21, 4707), (23, 4713), (32, 4785),

Gene: PantheRoc_4 Start: 4481, Stop: 4891, Start Num: 6

Candidate Starts for PantheRoc_4:

(Start: 6 @4481 has 20 MA's), (Start: 9 @4496 has 5 MA's), (17, 4556), (18, 4559), (23, 4589), (31, 4670), (34, 4694), (36, 4700), (39, 4721), (42, 4763), (45, 4787),

Gene: Petra_5 Start: 4627, Stop: 5037, Start Num: 6

Candidate Starts for Petra_5:

(Start: 6 @4627 has 20 MA's), (Start: 9 @4642 has 5 MA's), (17, 4702), (18, 4705), (23, 4735), (31, 4816), (34, 4840), (39, 4867), (40, 4873),

Gene: Phalm_5 Start: 4879, Stop: 5244, Start Num: 11

Candidate Starts for Phalm_5:

(Start: 11 @4879 has 105 MA's), (19, 4942), (23, 4966), (30, 5023), (35, 5059), (38, 5077),

Gene: Phayonce_5 Start: 4861, Stop: 5226, Start Num: 11

Candidate Starts for Phayonce_5:

(Start: 11 @4861 has 105 MA's), (21, 4942), (23, 4948), (27, 4975), (34, 5038), (35, 5041), (38, 5059),

Gene: Phegasus_5 Start: 4896, Stop: 5261, Start Num: 11

Candidate Starts for Phegasus_5:

(Start: 11 @4896 has 105 MA's), (19, 4959), (27, 5010), (28, 5031), (30, 5040), (34, 5073), (35, 5076),

Gene: Phineas_5 Start: 4880, Stop: 5245, Start Num: 11
Candidate Starts for Phineas_5:
(Start: 11 @4880 has 105 MA's), (19, 4943), (23, 4967), (28, 5015), (30, 5024), (35, 5060), (38, 5078),

Gene: PhriskyACE_5 Start: 4453, Stop: 4815, Start Num: 11
Candidate Starts for PhriskyACE_5:
(Start: 11 @4453 has 105 MA's), (21, 4534), (22, 4537), (23, 4540), (32, 4612),

Gene: Pickett_5 Start: 4464, Stop: 4826, Start Num: 11
Candidate Starts for Pickett_5:
(Start: 11 @4464 has 105 MA's), (19, 4527), (21, 4545), (23, 4551), (30, 4608),

Gene: Polkaroo_5 Start: 4892, Stop: 5257, Start Num: 11
Candidate Starts for Polkaroo_5:
(Start: 11 @4892 has 105 MA's), (19, 4955), (23, 4979), (30, 5036), (35, 5072), (38, 5090),

Gene: Popper_7 Start: 5711, Stop: 6073, Start Num: 11
Candidate Starts for Popper_7:
(Start: 11 @5711 has 105 MA's), (12, 5723), (19, 5774),

Gene: Poushou_8 Start: 6945, Stop: 7313, Start Num: 9
Candidate Starts for Poushou_8:
(Start: 9 @6945 has 5 MA's), (14, 6984), (24, 7044),

Gene: Powerball_5 Start: 4453, Stop: 4815, Start Num: 11
Candidate Starts for Powerball_5:
(Start: 11 @4453 has 105 MA's), (21, 4534), (32, 4612),

Gene: Purky_5 Start: 4864, Stop: 5229, Start Num: 11
Candidate Starts for Purky_5:
(Start: 11 @4864 has 105 MA's), (15, 4909), (23, 4951), (27, 4978), (28, 4999), (34, 5041), (35, 5044),
(38, 5062), (45, 5131),

Gene: Pygmy_5 Start: 4880, Stop: 5245, Start Num: 11
Candidate Starts for Pygmy_5:
(Start: 11 @4880 has 105 MA's), (19, 4943), (28, 5015), (30, 5024), (35, 5060), (38, 5078),

Gene: RayTheFireFly_6 Start: 5191, Stop: 5553, Start Num: 11
Candidate Starts for RayTheFireFly_6:
(Start: 11 @5191 has 105 MA's), (23, 5278), (34, 5368), (36, 5374), (42, 5434), (46, 5461),

Gene: Ryan_9 Start: 6329, Stop: 6691, Start Num: 11
Candidate Starts for Ryan_9:
(Start: 11 @6329 has 105 MA's), (12, 6341), (19, 6392),

Gene: Sahara_5 Start: 4455, Stop: 4817, Start Num: 11
Candidate Starts for Sahara_5:
(Start: 11 @4455 has 105 MA's), (19, 4518), (21, 4536), (23, 4542), (30, 4599), (36, 4638),

Gene: Samman98_6 Start: 4955, Stop: 5317, Start Num: 11
Candidate Starts for Samman98_6:
(Start: 11 @4955 has 105 MA's), (21, 5036), (23, 5042), (32, 5114),

Gene: Savage_5 Start: 4464, Stop: 4826, Start Num: 11

Candidate Starts for Savage_5:

(Start: 11 @4464 has 105 MA's), (19, 4527), (21, 4545), (23, 4551), (30, 4608),

Gene: Sekhmet_6 Start: 4955, Stop: 5317, Start Num: 11

Candidate Starts for Sekhmet_6:

(Start: 11 @4955 has 105 MA's), (21, 5036), (23, 5042), (32, 5114),

Gene: Shipwreck_5 Start: 4880, Stop: 5245, Start Num: 11

Candidate Starts for Shipwreck_5:

(Start: 11 @4880 has 105 MA's), (19, 4943), (28, 5015), (30, 5024), (35, 5060), (38, 5078),

Gene: Shlim410_5 Start: 4490, Stop: 4900, Start Num: 6

Candidate Starts for Shlim410_5:

(Start: 6 @4490 has 20 MA's), (Start: 9 @4505 has 5 MA's), (17, 4565), (18, 4568), (23, 4598), (31, 4679), (34, 4703), (42, 4772), (45, 4796),

Gene: Sidious_5 Start: 4484, Stop: 4894, Start Num: 6

Candidate Starts for Sidious_5:

(1, 3392), (2, 3614), (3, 3695), (4, 4184), (Start: 6 @4484 has 20 MA's), (Start: 9 @4499 has 5 MA's), (17, 4559), (18, 4562), (23, 4592), (31, 4673), (34, 4697), (36, 4703), (39, 4724), (45, 4790),

Gene: SoilAssassin_5 Start: 4464, Stop: 4826, Start Num: 11

Candidate Starts for SoilAssassin_5:

(Start: 11 @4464 has 105 MA's), (19, 4527), (21, 4545), (23, 4551), (30, 4608),

Gene: Sonah_5 Start: 4896, Stop: 5261, Start Num: 11

Candidate Starts for Sonah_5:

(Start: 11 @4896 has 105 MA's), (19, 4959), (27, 5010), (28, 5031), (30, 5040), (34, 5073), (35, 5076),

Gene: Sproutie_5 Start: 4464, Stop: 4826, Start Num: 11

Candidate Starts for Sproutie_5:

(Start: 11 @4464 has 105 MA's), (19, 4527), (21, 4545), (23, 4551), (30, 4608),

Gene: StevieRay_5 Start: 4883, Stop: 5248, Start Num: 11

Candidate Starts for StevieRay_5:

(Start: 11 @4883 has 105 MA's), (19, 4946), (23, 4970), (30, 5027), (35, 5063), (38, 5081),

Gene: StressBall_5 Start: 4879, Stop: 5244, Start Num: 11

Candidate Starts for StressBall_5:

(Start: 11 @4879 has 105 MA's), (19, 4942), (23, 4966), (30, 5023), (35, 5059), (38, 5077),

Gene: Suerte_5 Start: 4453, Stop: 4815, Start Num: 11

Candidate Starts for Suerte_5:

(Start: 11 @4453 has 105 MA's), (21, 4534), (23, 4540), (32, 4612),

Gene: Techage_5 Start: 4899, Stop: 5264, Start Num: 11

Candidate Starts for Techage_5:

(Start: 11 @4899 has 105 MA's), (19, 4962), (27, 5013), (28, 5034), (30, 5043), (34, 5076), (35, 5079),

Gene: Thespis_5 Start: 4879, Stop: 5244, Start Num: 11

Candidate Starts for Thespis_5:

(Start: 11 @4879 has 105 MA's), (19, 4942), (23, 4966), (28, 5014), (30, 5023), (35, 5059), (38, 5077),

Gene: Thimann_6 Start: 4955, Stop: 5317, Start Num: 11
Candidate Starts for Thimann_6:
(Start: 11 @4955 has 105 MA's), (21, 5036), (23, 5042), (32, 5114),

Gene: ThulaThula_5 Start: 4906, Stop: 5271, Start Num: 11
Candidate Starts for ThulaThula_5:
(Start: 11 @4906 has 105 MA's), (21, 4987), (23, 4993), (27, 5020), (34, 5083), (35, 5086), (38, 5104),
(41, 5128),

Gene: Tortellini_5 Start: 4852, Stop: 5217, Start Num: 11
Candidate Starts for Tortellini_5:
(Start: 11 @4852 has 105 MA's), (19, 4915), (26, 4957), (27, 4966), (34, 5029), (35, 5032), (38, 5050),
(40, 5059),

Gene: TouchMeNot_8 Start: 6945, Stop: 7313, Start Num: 9
Candidate Starts for TouchMeNot_8:
(Start: 9 @6945 has 5 MA's), (14, 6984), (24, 7044),

Gene: TuertoX_5 Start: 4464, Stop: 4826, Start Num: 11
Candidate Starts for TuertoX_5:
(Start: 11 @4464 has 105 MA's), (19, 4527), (21, 4545), (23, 4551), (30, 4608),

Gene: Twinkle_5 Start: 4490, Stop: 4900, Start Num: 6
Candidate Starts for Twinkle_5:
(Start: 6 @4490 has 20 MA's), (Start: 9 @4505 has 5 MA's), (17, 4565), (18, 4568), (23, 4598), (31,
4679), (34, 4703), (42, 4772), (45, 4796),

Gene: Vasanti_5 Start: 4465, Stop: 4827, Start Num: 11
Candidate Starts for Vasanti_5:
(Start: 11 @4465 has 105 MA's), (19, 4528), (21, 4546), (23, 4552), (30, 4609),

Gene: Venti_5 Start: 4892, Stop: 5257, Start Num: 11
Candidate Starts for Venti_5:
(Start: 11 @4892 has 105 MA's), (19, 4955), (23, 4979), (28, 5027), (30, 5036), (35, 5072), (38, 5090),

Gene: Vidya_5 Start: 4892, Stop: 5257, Start Num: 11
Candidate Starts for Vidya_5:
(Start: 11 @4892 has 105 MA's), (19, 4955), (23, 4979), (28, 5027), (30, 5036), (35, 5072), (38, 5090),

Gene: Walrus_5 Start: 4630, Stop: 5040, Start Num: 6
Candidate Starts for Walrus_5:
(Start: 6 @4630 has 20 MA's), (Start: 9 @4645 has 5 MA's), (17, 4705), (18, 4708), (23, 4738), (31,
4819), (34, 4843), (39, 4870), (40, 4876),

Gene: Whack_5 Start: 4499, Stop: 4909, Start Num: 6
Candidate Starts for Whack_5:
(Start: 6 @4499 has 20 MA's), (18, 4577), (39, 4739), (45, 4805),

Gene: Whiteclaw_5 Start: 4464, Stop: 4826, Start Num: 11
Candidate Starts for Whiteclaw_5:
(Start: 11 @4464 has 105 MA's), (19, 4527), (21, 4545), (23, 4551), (30, 4608),

Gene: Willsammy_5 Start: 4882, Stop: 5247, Start Num: 11

Candidate Starts for Willsammy_5:

(Start: 11 @4882 has 105 MA's), (19, 4945), (23, 4969), (30, 5026), (35, 5062), (38, 5080),

Gene: WinkNick_6 Start: 4955, Stop: 5317, Start Num: 11

Candidate Starts for WinkNick_6:

(Start: 11 @4955 has 105 MA's), (21, 5036), (23, 5042), (32, 5114),

Gene: Xavia_5 Start: 4893, Stop: 5258, Start Num: 11

Candidate Starts for Xavia_5:

(Start: 11 @4893 has 105 MA's), (19, 4956), (23, 4980), (28, 5028), (30, 5037), (35, 5073), (38, 5091),

Gene: Yeet412_5 Start: 4464, Stop: 4826, Start Num: 11

Candidate Starts for Yeet412_5:

(Start: 11 @4464 has 105 MA's), (19, 4527), (21, 4545), (23, 4551), (30, 4608),

Gene: Yeezy_5 Start: 4481, Stop: 4891, Start Num: 6

Candidate Starts for Yeezy_5:

(Start: 6 @4481 has 20 MA's), (Start: 9 @4496 has 5 MA's), (17, 4556), (18, 4559), (23, 4589), (31, 4670), (34, 4694), (36, 4700), (39, 4721), (42, 4763), (45, 4787),

Gene: Zaheer_9 Start: 6418, Stop: 6780, Start Num: 11

Candidate Starts for Zaheer_9:

(Start: 11 @6418 has 105 MA's), (12, 6430), (19, 6481),

Gene: Zilizebeth_5 Start: 4892, Stop: 5257, Start Num: 11

Candidate Starts for Zilizebeth_5:

(Start: 11 @4892 has 105 MA's), (19, 4955), (23, 4979), (28, 5027), (30, 5036), (35, 5072), (38, 5090),