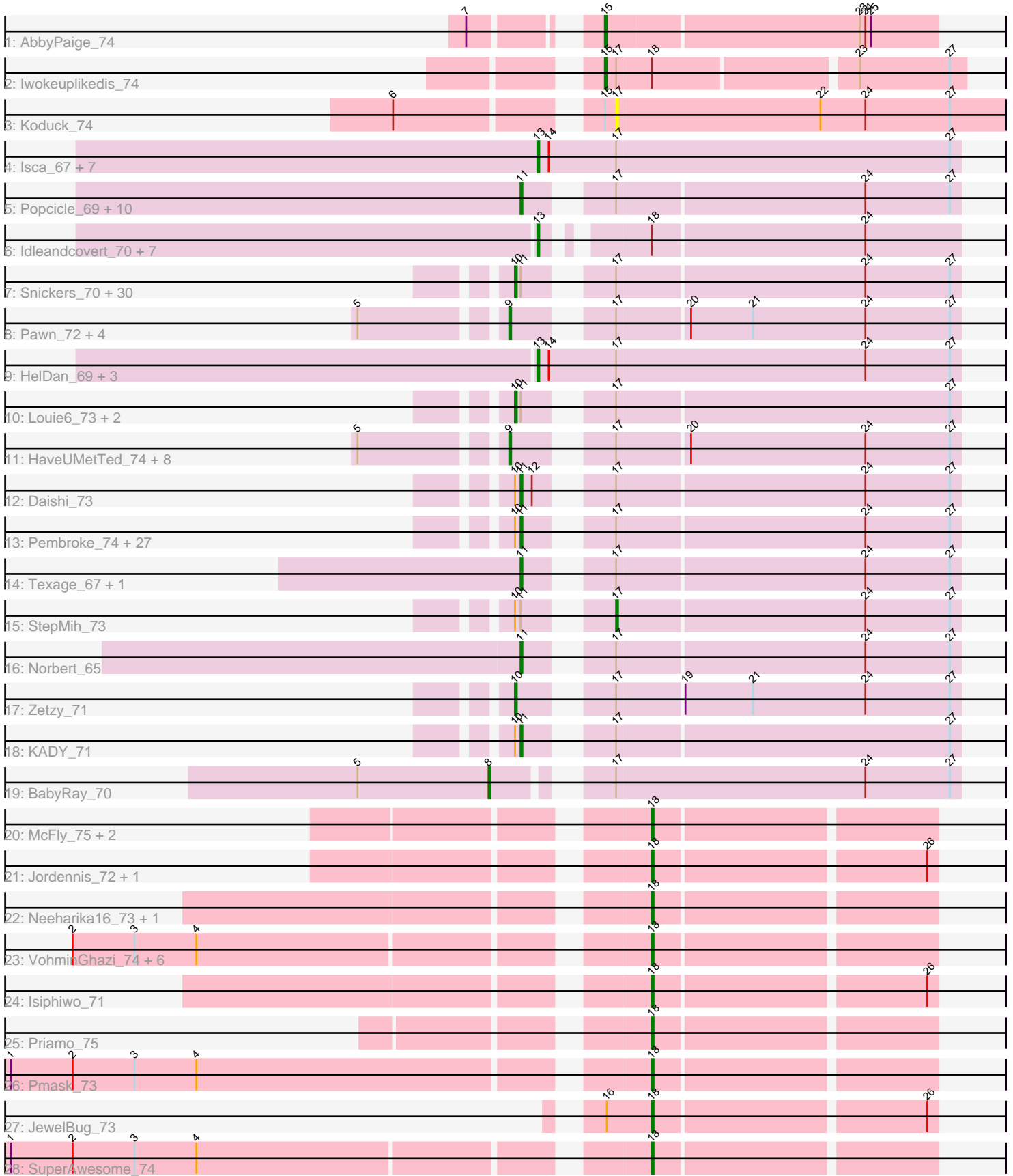


Pham 171274



Note: Tracks are now grouped by subcluster and scaled. Switching in subcluster is indicated by changes in track color. Track scale is now set by default to display the region 30 bp upstream of start 1 to 30 bp downstream of the last possible start. If this default region is judged to be packed too tightly with annotated starts, the track will be further scaled to only show that region of the ORF with annotated starts. This action will be indicated by adding "Zoomed" to the title. For starts, yellow indicates the location of called starts comprised solely of Glimmer/GeneMark auto-annotations, green indicates the location of called starts with at least 1 manual gene annotation.

Pham 171274 Report

This analysis was run 07/10/24 on database version 566.

Pham number 171274 has 137 members, 10 are drafts.

Phages represented in each track:

- Track 1 : AbbyPaige_74
- Track 2 : Iwokeuplikedis_74
- Track 3 : Koduck_74
- Track 4 : Isca_67, JF4_67, Phantastic_71, MK4_69, JF2_67, B1_61, Rockstar_68, MA5_69
- Track 5 : Popcicle_69, Caviar_69, Pocahontas_68, Todacoro_69, Veracruz_66, Panamaxus_67, Lambert1_69, ResDef_67, Margo_69, Hookmount_69, QuinnKiro_68
- Track 6 : Idleandcovert_70, TNguyen7_70, BlueBird_72, SaturnRing_69, Bugatti_69, Puppy_70, Pistachio_69, Giroux_68
- Track 7 : Snickers_70, JenCasNa_75, Methuselah_67, Mainiac_73, Cullens_74, Soshari_76, MoneyMay_73, Hercules11_74, Sabia_72, LugYA_77, Microwolf_70, Taurus_75, MarQuardt_74, PotatoSplit_75, Vix_70, Colbster_70, Farber_74, Phoxy_74, Tiffany_73, Wooldri_76, Anubis_77, Jobu08_70, LBerry_75, DaHudson_73, JHC117_70, Rummer_73, Spike509_74, P28Green_74, GingkoMaracino_74, Phoebe_75, Grum1_73
- Track 8 : Pawn_72, Kalnoky_74, JeppNRM_74, Marius_74, ACFishhook_71
- Track 9 : HelDan_69, Heathen_69, Scout_68, Fred313_67
- Track 10 : Louie6_73, Misomonster_75, BuzzBuzz_68
- Track 11 : HaveUMetTed_74, Gemma_71, Groupthink_74, PhishRPhriends_70, Kalb97_74, OlanP_72, Heliosoles_71, Manu_73, PurpleHaze_73
- Track 12 : Daishi_73
- Track 13 : Pembroke_74, Marie_72, Grif_72, Ollie_74, BreSam8_74, MuchMore_77, SoilDragon_73, Penny1_74, GtownJaz_74, Stagni_71, Beauxregard13_73, Lilith_72, HashRod_75, Bxz2_69, Fernando_74, Grub_72, Sabinator_72, Dieselweasel_74, EpicPhail_75, MadMarie_72, Watson_73, AgronaGT15_71, LarryKay_74, PGHhamlin_76, Malinsilva_76, Aglet_75, AugsMagnumOpus_77, SoYo_71
- Track 14 : Texage_67, Noella_69
- Track 15 : StepMih_73
- Track 16 : Norbert_65
- Track 17 : Zetzy_71
- Track 18 : KADY_71
- Track 19 : BabyRay_70
- Track 20 : McFly_75, BABullseye_67, Dorothea_71
- Track 21 : Jordennis_72, Newrala_73
- Track 22 : Neeharika16_73, SuperCallie99_71

- Track 23 : VohminGhazi_74, Hoot_69, Candra_72, EricB_73, Chartreuse_71, Kipper29_74, DaVinci_72
- Track 24 : Isiphiwo_71
- Track 25 : Priamo_75
- Track 26 : Pmask_73
- Track 27 : JewelBug_73
- Track 28 : SuperAwesome_74

Summary of Final Annotations (See graph section above for start numbers):

The start number called the most often in the published annotations is 11, it was called in 43 of the 127 non-draft genes in the pham.

Genes that call this "Most Annotated" start:

- Aglet_75, AgronaGT15_71, AugsMagnumOpus_77, Beauxregard13_73, BreSam8_74, Bxz2_69, Caviar_69, Daishi_73, Dieselweasel_74, EpicPhail_75, Fernando_74, Grif_72, Grub_72, GtownJaz_74, HashRod_75, Hookmount_69, KADY_71, Lambert1_69, LarryKay_74, Lilith_72, MadMarie_72, Malinsilva_76, Margo_69, Marie_72, MuchMore_77, Noella_69, Norbert_65, Ollie_74, PGHhamlin_76, Panamaxus_67, Pembroke_74, Penny1_74, Pocahontas_68, Popcicle_69, QuinnKiro_68, ResDef_67, Sabinator_72, SoYo_71, SoilDragon_73, Stagni_71, Texage_67, Todacoro_69, Veracruz_66, Watson_73,

Genes that have the "Most Annotated" start but do not call it:

- Anubis_77, BuzzBuzz_68, Colbster_70, Cullens_74, DaHudson_73, Farber_74, GingkoMaracino_74, Grum1_73, Hercules11_74, JHC117_70, JenCasNa_75, Jobu08_70, LBerry_75, Louie6_73, LugYA_77, Mainiac_73, MarQuardt_74, Methuselah_67, Microwolf_70, Misomonster_75, MoneyMay_73, P28Green_74, Phoebe_75, Phoxy_74, PotatoSplit_75, Rummer_73, Sabia_72, Snickers_70, Soshari_76, Spike509_74, StepMih_73, Taurus_75, Tiffany_73, Vix_70, Wooldri_76,

Genes that do not have the "Most Annotated" start:

- ACFishhook_71, AbbyPaige_74, B1_61, BABullseye_67, BabyRay_70, BlueBird_72, Bugatti_69, Candra_72, Chartreuse_71, DaVinci_72, Dorothea_71, EricB_73, Fred313_67, Gemma_71, Giroux_68, Groupthink_74, HaveUMetTed_74, Heathen_69, HelDan_69, Heliosoles_71, Hoot_69, Idleandcovert_70, Isca_67, Isiphiwo_71, Iwokeuplikedis_74, JF2_67, JF4_67, JeppNRM_74, JewelBug_73, Jordennis_72, Kalb97_74, Kalnoky_74, Kipper29_74, Koduck_74, MA5_69, MK4_69, Manu_73, Marius_74, McFly_75, Neeharika16_73, Newrala_73, OlanP_72, Pawn_72, Phantastic_71, PhishRPhriends_70, Pistachio_69, Pmask_73, Priamo_75, Puppy_70, PurpleHaze_73, Rockstar_68, SaturnRing_69, Scout_68, SuperAwesome_74, SuperCallie99_71, TNguyen7_70, VohminGhazi_74, Zetzy_71,

Summary by start number:

Start 8:

- Found in 1 of 137 (0.7%) of genes in pham
- Manual Annotations of this start: 1 of 127
- Called 100.0% of time when present
- Phage (with cluster) where this start called: BabyRay_70 (A3),

Start 9:

- Found in 14 of 137 (10.2%) of genes in pham
- Manual Annotations of this start: 13 of 127
- Called 100.0% of time when present
- Phage (with cluster) where this start called: ACFishhook_71 (A3), Gemma_71 (A3), Groupthink_74 (A3), HaveUMetTed_74 (A3), Heliosoles_71 (A3), JeppNRM_74 (A3), Kalb97_74 (A3), Kalnoky_74 (A3), Manu_73 (A3), Marius_74 (A3), OlanP_72 (A3), Pawn_72 (A3), PhishRPhriends_70 (A3), PurpleHaze_73 (A3),

Start 10:

- Found in 66 of 137 (48.2%) of genes in pham
- Manual Annotations of this start: 34 of 127
- Called 53.0% of time when present
- Phage (with cluster) where this start called: Anubis_77 (A3), BuzzBuzz_68 (A3), Colbster_70 (A3), Cullens_74 (A3), DaHudson_73 (A3), Farber_74 (A3), GingkoMaracino_74 (A3), Grum1_73 (A3), Hercules11_74 (A3), JHC117_70 (A3), JenCasNa_75 (A3), Jobu08_70 (A3), LBerry_75 (A3), Louie6_73 (A3), LugYA_77 (A3), Mainiac_73 (A3), MarQuardt_74 (A3), Methuselah_67 (A3), Microwolf_70 (A3), Misomonster_75 (A3), MoneyMay_73 (A3), P28Green_74 (A3), Phoebe_75 (A3), Phoxy_74 (A3), PotatoSplit_75 (A3), Rummer_73 (A3), Sabia_72 (A3), Snickers_70 (A3), Soshari_76 (A3), Spike509_74 (A3), Taurus_75 (A3), Tiffany_73 (A3), Vix_70 (A3), Wooldri_76 (A3), Zetzy_71 (A3),

Start 11:

- Found in 79 of 137 (57.7%) of genes in pham
- Manual Annotations of this start: 43 of 127
- Called 55.7% of time when present
- Phage (with cluster) where this start called: Aglet_75 (A3), AgronaGT15_71 (A3), AugsMagnumOpus_77 (A3), Beauxregard13_73 (A3), BreSam8_74 (A3), Bxz2_69 (A3), Caviar_69 (A3), Daishi_73 (A3), Dieselweasel_74 (A3), EpicPhail_75 (A3), Fernando_74 (A3), Grif_72 (A3), Grub_72 (A3), GtownJaz_74 (A3), HashRod_75 (A3), Hookmount_69 (A3), KADY_71 (A3), Lambert1_69 (A3), LarryKay_74 (A3), Lilit_72 (A3), MadMarie_72 (A3), Malinsilva_76 (A3), Margo_69 (A3), Marie_72 (A3), MuchMore_77 (A3), Noella_69 (A3), Norbert_65 (A3), Ollie_74 (A3), PGHhamlin_76 (A3), Panamaxus_67 (A3), Pembroke_74 (A3), Penny1_74 (A3), Pocahontas_68 (A3), Popcicle_69 (A3), QuinnKiro_68 (A3), ResDef_67 (A3), Sabinator_72 (A3), SoYo_71 (A3), SoilDragon_73 (A3), Stagni_71 (A3), Texage_67 (A3), Todacoro_69 (A3), Veracruz_66 (A3), Watson_73 (A3),

Start 13:

- Found in 20 of 137 (14.6%) of genes in pham
- Manual Annotations of this start: 17 of 127
- Called 100.0% of time when present
- Phage (with cluster) where this start called: B1_61 (A3), BlueBird_72 (A3), Bugatti_69 (A3), Fred313_67 (A3), Giroux_68 (A3), Heathen_69 (A3), HelDan_69 (A3), Idleandcovert_70 (A3), Isca_67 (A3), JF2_67 (A3), JF4_67 (A3), MA5_69 (A3), MK4_69 (A3), Phantastic_71 (A3), Pistachio_69 (A3), Puppy_70 (A3), Rockstar_68 (A3), SaturnRing_69 (A3), Scout_68 (A3), TNguyen7_70 (A3),

Start 15:

- Found in 3 of 137 (2.2%) of genes in pham
- Manual Annotations of this start: 2 of 127

- Called 66.7% of time when present
- Phage (with cluster) where this start called: AbbyPaige_74 (A2), Iwokeuplikedis_74 (A2),

Start 17:

- Found in 109 of 137 (79.6%) of genes in pham
- Manual Annotations of this start: 1 of 127
- Called 1.8% of time when present
- Phage (with cluster) where this start called: Koduck_74 (A2), StepMih_73 (A3),

Start 18:

- Found in 28 of 137 (20.4%) of genes in pham
- Manual Annotations of this start: 16 of 127
- Called 67.9% of time when present
- Phage (with cluster) where this start called: BABullseye_67 (A6), Candra_72 (A6), Chartreuse_71 (A6), DaVinci_72 (A6), Dorothea_71 (A6), EricB_73 (A6), Hoot_69 (A6), Isiphiwo_71 (A6), JewelBug_73 (A6), Jordennis_72 (A6), Kipper29_74 (A6), McFly_75 (A6), Neeharika16_73 (A6), Newrala_73 (A6), Pmask_73 (A6), Priamo_75 (A6), SuperAwesome_74 (A6), SuperCallie99_71 (A6), VohminGhazi_74 (A6),

Summary by clusters:

There are 3 clusters represented in this pham: A3, A2, A6,

Info for manual annotations of cluster A2:

- Start number 15 was manually annotated 2 times for cluster A2.

Info for manual annotations of cluster A3:

- Start number 8 was manually annotated 1 time for cluster A3.
- Start number 9 was manually annotated 13 times for cluster A3.
- Start number 10 was manually annotated 34 times for cluster A3.
- Start number 11 was manually annotated 43 times for cluster A3.
- Start number 13 was manually annotated 17 times for cluster A3.
- Start number 17 was manually annotated 1 time for cluster A3.

Info for manual annotations of cluster A6:

- Start number 18 was manually annotated 16 times for cluster A6.

Gene Information:

Gene: ACFishhook_71 Start: 42736, Stop: 42518, Start Num: 9

Candidate Starts for ACFishhook_71:

(5, 42805), (Start: 9 @42736 has 13 MA's), (Start: 17 @42697 has 1 MA's), (20, 42661), (21, 42628), (24, 42568), (27, 42523),

Gene: AbbyPaige_74 Start: 43716, Stop: 43543, Start Num: 15

Candidate Starts for AbbyPaige_74:

(7, 43767), (Start: 15 @43716 has 2 MA's), (23, 43584), (24, 43581), (25, 43578),

Gene: Aglet_75 Start: 42842, Stop: 42630, Start Num: 11

Candidate Starts for Aglet_75:

(Start: 10 @42845 has 34 MA's), (Start: 11 @42842 has 43 MA's), (Start: 17 @42809 has 1 MA's),
(24, 42680), (27, 42635),

Gene: AgronaGT15_71 Start: 42690, Stop: 42478, Start Num: 11

Candidate Starts for AgronaGT15_71:

(Start: 10 @42693 has 34 MA's), (Start: 11 @42690 has 43 MA's), (Start: 17 @42657 has 1 MA's),
(24, 42528), (27, 42483),

Gene: Anubis_77 Start: 42731, Stop: 42516, Start Num: 10

Candidate Starts for Anubis_77:

(Start: 10 @42731 has 34 MA's), (Start: 11 @42728 has 43 MA's), (Start: 17 @42695 has 1 MA's),
(24, 42566), (27, 42521),

Gene: AugsMagnumOpus_77 Start: 42833, Stop: 42621, Start Num: 11

Candidate Starts for AugsMagnumOpus_77:

(Start: 10 @42836 has 34 MA's), (Start: 11 @42833 has 43 MA's), (Start: 17 @42800 has 1 MA's),
(24, 42671), (27, 42626),

Gene: B1_61 Start: 40764, Stop: 40540, Start Num: 13

Candidate Starts for B1_61:

(Start: 13 @40764 has 17 MA's), (14, 40758), (Start: 17 @40722 has 1 MA's), (27, 40545),

Gene: BABullseye_67 Start: 40157, Stop: 40014, Start Num: 18

Candidate Starts for BABullseye_67:

(Start: 18 @40157 has 16 MA's),

Gene: BabyRay_70 Start: 42572, Stop: 42345, Start Num: 8

Candidate Starts for BabyRay_70:

(5, 42641), (Start: 8 @42572 has 1 MA's), (Start: 17 @42527 has 1 MA's), (24, 42395), (27, 42350),

Gene: Beauxregard13_73 Start: 42845, Stop: 42633, Start Num: 11

Candidate Starts for Beauxregard13_73:

(Start: 10 @42848 has 34 MA's), (Start: 11 @42845 has 43 MA's), (Start: 17 @42812 has 1 MA's),
(24, 42683), (27, 42638),

Gene: BlueBird_72 Start: 42595, Stop: 42392, Start Num: 13

Candidate Starts for BlueBird_72:

(Start: 13 @42595 has 17 MA's), (Start: 18 @42553 has 16 MA's), (24, 42442),

Gene: BreSam8_74 Start: 42835, Stop: 42623, Start Num: 11

Candidate Starts for BreSam8_74:

(Start: 10 @42838 has 34 MA's), (Start: 11 @42835 has 43 MA's), (Start: 17 @42802 has 1 MA's),
(24, 42673), (27, 42628),

Gene: Bugatti_69 Start: 42595, Stop: 42392, Start Num: 13

Candidate Starts for Bugatti_69:

(Start: 13 @42595 has 17 MA's), (Start: 18 @42553 has 16 MA's), (24, 42442),

Gene: BuzzBuzz_68 Start: 42872, Stop: 42657, Start Num: 10

Candidate Starts for BuzzBuzz_68:

(Start: 10 @42872 has 34 MA's), (Start: 11 @42869 has 43 MA's), (Start: 17 @42836 has 1 MA's),
(27, 42662),

Gene: Bxz2_69 Start: 42876, Stop: 42664, Start Num: 11
Candidate Starts for Bxz2_69:
(Start: 10 @42879 has 34 MA's), (Start: 11 @42876 has 43 MA's), (Start: 17 @42843 has 1 MA's),
(24, 42714), (27, 42669),

Gene: Candra_72 Start: 41853, Stop: 41710, Start Num: 18
Candidate Starts for Candra_72:
(2, 42138), (3, 42105), (4, 42072), (Start: 18 @41853 has 16 MA's),

Gene: Caviar_69 Start: 42560, Stop: 42348, Start Num: 11
Candidate Starts for Caviar_69:
(Start: 11 @42560 has 43 MA's), (Start: 17 @42527 has 1 MA's), (24, 42398), (27, 42353),

Gene: Chartreuse_71 Start: 41164, Stop: 41021, Start Num: 18
Candidate Starts for Chartreuse_71:
(2, 41449), (3, 41416), (4, 41383), (Start: 18 @41164 has 16 MA's),

Gene: Colbster_70 Start: 42848, Stop: 42633, Start Num: 10
Candidate Starts for Colbster_70:
(Start: 10 @42848 has 34 MA's), (Start: 11 @42845 has 43 MA's), (Start: 17 @42812 has 1 MA's),
(24, 42683), (27, 42638),

Gene: Cullens_74 Start: 42844, Stop: 42629, Start Num: 10
Candidate Starts for Cullens_74:
(Start: 10 @42844 has 34 MA's), (Start: 11 @42841 has 43 MA's), (Start: 17 @42808 has 1 MA's),
(24, 42679), (27, 42634),

Gene: DaHudson_73 Start: 42837, Stop: 42622, Start Num: 10
Candidate Starts for DaHudson_73:
(Start: 10 @42837 has 34 MA's), (Start: 11 @42834 has 43 MA's), (Start: 17 @42801 has 1 MA's),
(24, 42672), (27, 42627),

Gene: DaVinci_72 Start: 41218, Stop: 41075, Start Num: 18
Candidate Starts for DaVinci_72:
(2, 41503), (3, 41470), (4, 41437), (Start: 18 @41218 has 16 MA's),

Gene: Daishi_73 Start: 41709, Stop: 41497, Start Num: 11
Candidate Starts for Daishi_73:
(Start: 10 @41712 has 34 MA's), (Start: 11 @41709 has 43 MA's), (12, 41703), (Start: 17 @41676 has
1 MA's), (24, 41547), (27, 41502),

Gene: Dieselweasel_74 Start: 42843, Stop: 42631, Start Num: 11
Candidate Starts for Dieselweasel_74:
(Start: 10 @42846 has 34 MA's), (Start: 11 @42843 has 43 MA's), (Start: 17 @42810 has 1 MA's),
(24, 42681), (27, 42636),

Gene: Dorothea_71 Start: 42463, Stop: 42320, Start Num: 18
Candidate Starts for Dorothea_71:
(Start: 18 @42463 has 16 MA's),

Gene: EpicPhail_75 Start: 42845, Stop: 42633, Start Num: 11
Candidate Starts for EpicPhail_75:

(Start: 10 @42848 has 34 MA's), (Start: 11 @42845 has 43 MA's), (Start: 17 @42812 has 1 MA's),
(24, 42683), (27, 42638),

Gene: EricB_73 Start: 41810, Stop: 41667, Start Num: 18
Candidate Starts for EricB_73:
(2, 42095), (3, 42062), (4, 42029), (Start: 18 @41810 has 16 MA's),

Gene: Farber_74 Start: 42834, Stop: 42619, Start Num: 10
Candidate Starts for Farber_74:
(Start: 10 @42834 has 34 MA's), (Start: 11 @42831 has 43 MA's), (Start: 17 @42798 has 1 MA's),
(24, 42669), (27, 42624),

Gene: Fernando_74 Start: 42841, Stop: 42629, Start Num: 11
Candidate Starts for Fernando_74:
(Start: 10 @42844 has 34 MA's), (Start: 11 @42841 has 43 MA's), (Start: 17 @42808 has 1 MA's),
(24, 42679), (27, 42634),

Gene: Fred313_67 Start: 42209, Stop: 41985, Start Num: 13
Candidate Starts for Fred313_67:
(Start: 13 @42209 has 17 MA's), (14, 42203), (Start: 17 @42167 has 1 MA's), (24, 42035), (27,
41990),

Gene: Gemma_71 Start: 42660, Stop: 42442, Start Num: 9
Candidate Starts for Gemma_71:
(5, 42729), (Start: 9 @42660 has 13 MA's), (Start: 17 @42621 has 1 MA's), (20, 42585), (24, 42492),
(27, 42447),

Gene: GingkoMaracino_74 Start: 42730, Stop: 42515, Start Num: 10
Candidate Starts for GingkoMaracino_74:
(Start: 10 @42730 has 34 MA's), (Start: 11 @42727 has 43 MA's), (Start: 17 @42694 has 1 MA's),
(24, 42565), (27, 42520),

Gene: Giroux_68 Start: 42594, Stop: 42391, Start Num: 13
Candidate Starts for Giroux_68:
(Start: 13 @42594 has 17 MA's), (Start: 18 @42552 has 16 MA's), (24, 42441),

Gene: Grif_72 Start: 42915, Stop: 42703, Start Num: 11
Candidate Starts for Grif_72:
(Start: 10 @42918 has 34 MA's), (Start: 11 @42915 has 43 MA's), (Start: 17 @42882 has 1 MA's),
(24, 42753), (27, 42708),

Gene: Groupthink_74 Start: 42664, Stop: 42446, Start Num: 9
Candidate Starts for Groupthink_74:
(5, 42733), (Start: 9 @42664 has 13 MA's), (Start: 17 @42625 has 1 MA's), (20, 42589), (24, 42496),
(27, 42451),

Gene: Grub_72 Start: 42833, Stop: 42621, Start Num: 11
Candidate Starts for Grub_72:
(Start: 10 @42836 has 34 MA's), (Start: 11 @42833 has 43 MA's), (Start: 17 @42800 has 1 MA's),
(24, 42671), (27, 42626),

Gene: Grum1_73 Start: 42844, Stop: 42629, Start Num: 10
Candidate Starts for Grum1_73:

(Start: 10 @42844 has 34 MA's), (Start: 11 @42841 has 43 MA's), (Start: 17 @42808 has 1 MA's),
(24, 42679), (27, 42634),

Gene: GtownJaz_74 Start: 42842, Stop: 42630, Start Num: 11

Candidate Starts for GtownJaz_74:

(Start: 10 @42845 has 34 MA's), (Start: 11 @42842 has 43 MA's), (Start: 17 @42809 has 1 MA's),
(24, 42680), (27, 42635),

Gene: HashRod_75 Start: 42869, Stop: 42657, Start Num: 11

Candidate Starts for HashRod_75:

(Start: 10 @42872 has 34 MA's), (Start: 11 @42869 has 43 MA's), (Start: 17 @42836 has 1 MA's),
(24, 42707), (27, 42662),

Gene: HaveUMetTed_74 Start: 42649, Stop: 42431, Start Num: 9

Candidate Starts for HaveUMetTed_74:

(5, 42718), (Start: 9 @42649 has 13 MA's), (Start: 17 @42610 has 1 MA's), (20, 42574), (24, 42481),
(27, 42436),

Gene: Heathen_69 Start: 42304, Stop: 42080, Start Num: 13

Candidate Starts for Heathen_69:

(Start: 13 @42304 has 17 MA's), (14, 42298), (Start: 17 @42262 has 1 MA's), (24, 42130), (27,
42085),

Gene: HelDan_69 Start: 42520, Stop: 42296, Start Num: 13

Candidate Starts for HelDan_69:

(Start: 13 @42520 has 17 MA's), (14, 42514), (Start: 17 @42478 has 1 MA's), (24, 42346), (27,
42301),

Gene: Heliosoles_71 Start: 42667, Stop: 42449, Start Num: 9

Candidate Starts for Heliosoles_71:

(5, 42736), (Start: 9 @42667 has 13 MA's), (Start: 17 @42628 has 1 MA's), (20, 42592), (24, 42499),
(27, 42454),

Gene: Hercules11_74 Start: 42853, Stop: 42638, Start Num: 10

Candidate Starts for Hercules11_74:

(Start: 10 @42853 has 34 MA's), (Start: 11 @42850 has 43 MA's), (Start: 17 @42817 has 1 MA's),
(24, 42688), (27, 42643),

Gene: Hookmount_69 Start: 42561, Stop: 42349, Start Num: 11

Candidate Starts for Hookmount_69:

(Start: 11 @42561 has 43 MA's), (Start: 17 @42528 has 1 MA's), (24, 42399), (27, 42354),

Gene: Hoot_69 Start: 39668, Stop: 39525, Start Num: 18

Candidate Starts for Hoot_69:

(2, 39953), (3, 39920), (4, 39887), (Start: 18 @39668 has 16 MA's),

Gene: Idleandcovert_70 Start: 42595, Stop: 42392, Start Num: 13

Candidate Starts for Idleandcovert_70:

(Start: 13 @42595 has 17 MA's), (Start: 18 @42553 has 16 MA's), (24, 42442),

Gene: Isca_67 Start: 42069, Stop: 41845, Start Num: 13

Candidate Starts for Isca_67:

(Start: 13 @42069 has 17 MA's), (14, 42063), (Start: 17 @42027 has 1 MA's), (27, 41850),

Gene: Isiphiwo_71 Start: 41832, Stop: 41689, Start Num: 18

Candidate Starts for Isiphiwo_71:

(Start: 18 @41832 has 16 MA's), (26, 41694),

Gene: Iwokeuplikedis_74 Start: 43821, Stop: 43639, Start Num: 15

Candidate Starts for Iwokeuplikedis_74:

(Start: 15 @43821 has 2 MA's), (Start: 17 @43815 has 1 MA's), (Start: 18 @43797 has 16 MA's), (23, 43695), (27, 43647),

Gene: JF2_67 Start: 40764, Stop: 40540, Start Num: 13

Candidate Starts for JF2_67:

(Start: 13 @40764 has 17 MA's), (14, 40758), (Start: 17 @40722 has 1 MA's), (27, 40545),

Gene: JF4_67 Start: 40764, Stop: 40540, Start Num: 13

Candidate Starts for JF4_67:

(Start: 13 @40764 has 17 MA's), (14, 40758), (Start: 17 @40722 has 1 MA's), (27, 40545),

Gene: JHC117_70 Start: 42842, Stop: 42627, Start Num: 10

Candidate Starts for JHC117_70:

(Start: 10 @42842 has 34 MA's), (Start: 11 @42839 has 43 MA's), (Start: 17 @42806 has 1 MA's), (24, 42677), (27, 42632),

Gene: JenCasNa_75 Start: 42844, Stop: 42629, Start Num: 10

Candidate Starts for JenCasNa_75:

(Start: 10 @42844 has 34 MA's), (Start: 11 @42841 has 43 MA's), (Start: 17 @42808 has 1 MA's), (24, 42679), (27, 42634),

Gene: JeppNRM_74 Start: 42665, Stop: 42447, Start Num: 9

Candidate Starts for JeppNRM_74:

(5, 42734), (Start: 9 @42665 has 13 MA's), (Start: 17 @42626 has 1 MA's), (20, 42590), (21, 42557), (24, 42497), (27, 42452),

Gene: JewelBug_73 Start: 42554, Stop: 42411, Start Num: 18

Candidate Starts for JewelBug_73:

(16, 42578), (Start: 18 @42554 has 16 MA's), (26, 42416),

Gene: Jobu08_70 Start: 42676, Stop: 42461, Start Num: 10

Candidate Starts for Jobu08_70:

(Start: 10 @42676 has 34 MA's), (Start: 11 @42673 has 43 MA's), (Start: 17 @42640 has 1 MA's), (24, 42511), (27, 42466),

Gene: Jordennis_72 Start: 42048, Stop: 41905, Start Num: 18

Candidate Starts for Jordennis_72:

(Start: 18 @42048 has 16 MA's), (26, 41910),

Gene: KADY_71 Start: 42869, Stop: 42657, Start Num: 11

Candidate Starts for KADY_71:

(Start: 10 @42872 has 34 MA's), (Start: 11 @42869 has 43 MA's), (Start: 17 @42836 has 1 MA's), (27, 42662),

Gene: Kalb97_74 Start: 42663, Stop: 42445, Start Num: 9

Candidate Starts for Kalb97_74:

(5, 42732), (Start: 9 @42663 has 13 MA's), (Start: 17 @42624 has 1 MA's), (20, 42588), (24, 42495), (27, 42450),

Gene: Kalnoky_74 Start: 42661, Stop: 42443, Start Num: 9

Candidate Starts for Kalnoky_74:

(5, 42730), (Start: 9 @42661 has 13 MA's), (Start: 17 @42622 has 1 MA's), (20, 42586), (21, 42553), (24, 42493), (27, 42448),

Gene: Kipper29_74 Start: 41836, Stop: 41693, Start Num: 18

Candidate Starts for Kipper29_74:

(2, 42121), (3, 42088), (4, 42055), (Start: 18 @41836 has 16 MA's),

Gene: Koduck_74 Start: 42710, Stop: 42504, Start Num: 17

Candidate Starts for Koduck_74:

(6, 42809), (Start: 15 @42716 has 2 MA's), (Start: 17 @42710 has 1 MA's), (22, 42602), (24, 42578), (27, 42533),

Gene: LBerry_75 Start: 42848, Stop: 42633, Start Num: 10

Candidate Starts for LBerry_75:

(Start: 10 @42848 has 34 MA's), (Start: 11 @42845 has 43 MA's), (Start: 17 @42812 has 1 MA's), (24, 42683), (27, 42638),

Gene: Lambert1_69 Start: 42560, Stop: 42348, Start Num: 11

Candidate Starts for Lambert1_69:

(Start: 11 @42560 has 43 MA's), (Start: 17 @42527 has 1 MA's), (24, 42398), (27, 42353),

Gene: LarryKay_74 Start: 42870, Stop: 42658, Start Num: 11

Candidate Starts for LarryKay_74:

(Start: 10 @42873 has 34 MA's), (Start: 11 @42870 has 43 MA's), (Start: 17 @42837 has 1 MA's), (24, 42708), (27, 42663),

Gene: Lilith_72 Start: 42834, Stop: 42622, Start Num: 11

Candidate Starts for Lilith_72:

(Start: 10 @42837 has 34 MA's), (Start: 11 @42834 has 43 MA's), (Start: 17 @42801 has 1 MA's), (24, 42672), (27, 42627),

Gene: Louie6_73 Start: 42874, Stop: 42659, Start Num: 10

Candidate Starts for Louie6_73:

(Start: 10 @42874 has 34 MA's), (Start: 11 @42871 has 43 MA's), (Start: 17 @42838 has 1 MA's), (27, 42664),

Gene: LugYA_77 Start: 42845, Stop: 42630, Start Num: 10

Candidate Starts for LugYA_77:

(Start: 10 @42845 has 34 MA's), (Start: 11 @42842 has 43 MA's), (Start: 17 @42809 has 1 MA's), (24, 42680), (27, 42635),

Gene: MA5_69 Start: 41973, Stop: 41749, Start Num: 13

Candidate Starts for MA5_69:

(Start: 13 @41973 has 17 MA's), (14, 41967), (Start: 17 @41931 has 1 MA's), (27, 41754),

Gene: MK4_69 Start: 42048, Stop: 41824, Start Num: 13

Candidate Starts for MK4_69:

(Start: 13 @42048 has 17 MA's), (14, 42042), (Start: 17 @42006 has 1 MA's), (27, 41829),

Gene: MadMarie_72 Start: 42842, Stop: 42630, Start Num: 11
Candidate Starts for MadMarie_72:
(Start: 10 @42845 has 34 MA's), (Start: 11 @42842 has 43 MA's), (Start: 17 @42809 has 1 MA's),
(24, 42680), (27, 42635),

Gene: Mainiac_73 Start: 42837, Stop: 42622, Start Num: 10
Candidate Starts for Mainiac_73:
(Start: 10 @42837 has 34 MA's), (Start: 11 @42834 has 43 MA's), (Start: 17 @42801 has 1 MA's),
(24, 42672), (27, 42627),

Gene: Malinsilva_76 Start: 42833, Stop: 42621, Start Num: 11
Candidate Starts for Malinsilva_76:
(Start: 10 @42836 has 34 MA's), (Start: 11 @42833 has 43 MA's), (Start: 17 @42800 has 1 MA's),
(24, 42671), (27, 42626),

Gene: Manu_73 Start: 42664, Stop: 42446, Start Num: 9
Candidate Starts for Manu_73:
(5, 42733), (Start: 9 @42664 has 13 MA's), (Start: 17 @42625 has 1 MA's), (20, 42589), (24, 42496),
(27, 42451),

Gene: MarQuardt_74 Start: 42846, Stop: 42631, Start Num: 10
Candidate Starts for MarQuardt_74:
(Start: 10 @42846 has 34 MA's), (Start: 11 @42843 has 43 MA's), (Start: 17 @42810 has 1 MA's),
(24, 42681), (27, 42636),

Gene: Margo_69 Start: 42586, Stop: 42374, Start Num: 11
Candidate Starts for Margo_69:
(Start: 11 @42586 has 43 MA's), (Start: 17 @42553 has 1 MA's), (24, 42424), (27, 42379),

Gene: Marie_72 Start: 42841, Stop: 42629, Start Num: 11
Candidate Starts for Marie_72:
(Start: 10 @42844 has 34 MA's), (Start: 11 @42841 has 43 MA's), (Start: 17 @42808 has 1 MA's),
(24, 42679), (27, 42634),

Gene: Marius_74 Start: 42661, Stop: 42443, Start Num: 9
Candidate Starts for Marius_74:
(5, 42730), (Start: 9 @42661 has 13 MA's), (Start: 17 @42622 has 1 MA's), (20, 42586), (21, 42553),
(24, 42493), (27, 42448),

Gene: McFly_75 Start: 42451, Stop: 42308, Start Num: 18
Candidate Starts for McFly_75:
(Start: 18 @42451 has 16 MA's),

Gene: Methuselah_67 Start: 42868, Stop: 42653, Start Num: 10
Candidate Starts for Methuselah_67:
(Start: 10 @42868 has 34 MA's), (Start: 11 @42865 has 43 MA's), (Start: 17 @42832 has 1 MA's),
(24, 42703), (27, 42658),

Gene: Microwolf_70 Start: 42860, Stop: 42645, Start Num: 10
Candidate Starts for Microwolf_70:
(Start: 10 @42860 has 34 MA's), (Start: 11 @42857 has 43 MA's), (Start: 17 @42824 has 1 MA's),
(24, 42695), (27, 42650),

Gene: Misomonster_75 Start: 42871, Stop: 42656, Start Num: 10
Candidate Starts for Misomonster_75:
(Start: 10 @42871 has 34 MA's), (Start: 11 @42868 has 43 MA's), (Start: 17 @42835 has 1 MA's),
(27, 42661),

Gene: MoneyMay_73 Start: 42844, Stop: 42629, Start Num: 10
Candidate Starts for MoneyMay_73:
(Start: 10 @42844 has 34 MA's), (Start: 11 @42841 has 43 MA's), (Start: 17 @42808 has 1 MA's),
(24, 42679), (27, 42634),

Gene: MuchMore_77 Start: 42833, Stop: 42621, Start Num: 11
Candidate Starts for MuchMore_77:
(Start: 10 @42836 has 34 MA's), (Start: 11 @42833 has 43 MA's), (Start: 17 @42800 has 1 MA's),
(24, 42671), (27, 42626),

Gene: Neeharika16_73 Start: 41917, Stop: 41774, Start Num: 18
Candidate Starts for Neeharika16_73:
(Start: 18 @41917 has 16 MA's),

Gene: Newrala_73 Start: 42257, Stop: 42114, Start Num: 18
Candidate Starts for Newrala_73:
(Start: 18 @42257 has 16 MA's), (26, 42119),

Gene: Noella_69 Start: 42561, Stop: 42349, Start Num: 11
Candidate Starts for Noella_69:
(Start: 11 @42561 has 43 MA's), (Start: 17 @42528 has 1 MA's), (24, 42399), (27, 42354),

Gene: Norbert_65 Start: 42560, Stop: 42348, Start Num: 11
Candidate Starts for Norbert_65:
(Start: 11 @42560 has 43 MA's), (Start: 17 @42527 has 1 MA's), (24, 42398), (27, 42353),

Gene: OlanP_72 Start: 42837, Stop: 42619, Start Num: 9
Candidate Starts for OlanP_72:
(5, 42906), (Start: 9 @42837 has 13 MA's), (Start: 17 @42798 has 1 MA's), (20, 42762), (24, 42669),
(27, 42624),

Gene: Ollie_74 Start: 42712, Stop: 42500, Start Num: 11
Candidate Starts for Ollie_74:
(Start: 10 @42715 has 34 MA's), (Start: 11 @42712 has 43 MA's), (Start: 17 @42679 has 1 MA's),
(24, 42550), (27, 42505),

Gene: P28Green_74 Start: 42847, Stop: 42632, Start Num: 10
Candidate Starts for P28Green_74:
(Start: 10 @42847 has 34 MA's), (Start: 11 @42844 has 43 MA's), (Start: 17 @42811 has 1 MA's),
(24, 42682), (27, 42637),

Gene: PGHhamlin_76 Start: 42833, Stop: 42621, Start Num: 11
Candidate Starts for PGHhamlin_76:
(Start: 10 @42836 has 34 MA's), (Start: 11 @42833 has 43 MA's), (Start: 17 @42800 has 1 MA's),
(24, 42671), (27, 42626),

Gene: Panamaxus_67 Start: 42560, Stop: 42348, Start Num: 11

Candidate Starts for Panamaxus_67:

(Start: 11 @42560 has 43 MA's), (Start: 17 @42527 has 1 MA's), (24, 42398), (27, 42353),

Gene: Pawn_72 Start: 42668, Stop: 42450, Start Num: 9

Candidate Starts for Pawn_72:

(5, 42737), (Start: 9 @42668 has 13 MA's), (Start: 17 @42629 has 1 MA's), (20, 42593), (21, 42560), (24, 42500), (27, 42455),

Gene: Pembroke_74 Start: 42842, Stop: 42630, Start Num: 11

Candidate Starts for Pembroke_74:

(Start: 10 @42845 has 34 MA's), (Start: 11 @42842 has 43 MA's), (Start: 17 @42809 has 1 MA's), (24, 42680), (27, 42635),

Gene: Penny1_74 Start: 42845, Stop: 42633, Start Num: 11

Candidate Starts for Penny1_74:

(Start: 10 @42848 has 34 MA's), (Start: 11 @42845 has 43 MA's), (Start: 17 @42812 has 1 MA's), (24, 42683), (27, 42638),

Gene: Phantastic_71 Start: 42234, Stop: 42010, Start Num: 13

Candidate Starts for Phantastic_71:

(Start: 13 @42234 has 17 MA's), (14, 42228), (Start: 17 @42192 has 1 MA's), (27, 42015),

Gene: PhishRPhriends_70 Start: 41845, Stop: 41627, Start Num: 9

Candidate Starts for PhishRPhriends_70:

(5, 41914), (Start: 9 @41845 has 13 MA's), (Start: 17 @41806 has 1 MA's), (20, 41770), (24, 41677), (27, 41632),

Gene: Phoebe_75 Start: 42837, Stop: 42622, Start Num: 10

Candidate Starts for Phoebe_75:

(Start: 10 @42837 has 34 MA's), (Start: 11 @42834 has 43 MA's), (Start: 17 @42801 has 1 MA's), (24, 42672), (27, 42627),

Gene: Phoxy_74 Start: 42869, Stop: 42654, Start Num: 10

Candidate Starts for Phoxy_74:

(Start: 10 @42869 has 34 MA's), (Start: 11 @42866 has 43 MA's), (Start: 17 @42833 has 1 MA's), (24, 42704), (27, 42659),

Gene: Pistachio_69 Start: 42142, Stop: 41939, Start Num: 13

Candidate Starts for Pistachio_69:

(Start: 13 @42142 has 17 MA's), (Start: 18 @42100 has 16 MA's), (24, 41989),

Gene: Pmask_73 Start: 42453, Stop: 42310, Start Num: 18

Candidate Starts for Pmask_73:

(1, 42774), (2, 42741), (3, 42708), (4, 42675), (Start: 18 @42453 has 16 MA's),

Gene: Pocahontas_68 Start: 42557, Stop: 42345, Start Num: 11

Candidate Starts for Pocahontas_68:

(Start: 11 @42557 has 43 MA's), (Start: 17 @42524 has 1 MA's), (24, 42395), (27, 42350),

Gene: Popcicle_69 Start: 42557, Stop: 42345, Start Num: 11

Candidate Starts for Popcicle_69:

(Start: 11 @42557 has 43 MA's), (Start: 17 @42524 has 1 MA's), (24, 42395), (27, 42350),

Gene: PotatoSplit_75 Start: 42848, Stop: 42633, Start Num: 10
Candidate Starts for PotatoSplit_75:
(Start: 10 @42848 has 34 MA's), (Start: 11 @42845 has 43 MA's), (Start: 17 @42812 has 1 MA's),
(24, 42683), (27, 42638),

Gene: Priamo_75 Start: 42118, Stop: 41975, Start Num: 18
Candidate Starts for Priamo_75:
(Start: 18 @42118 has 16 MA's),

Gene: Puppy_70 Start: 42214, Stop: 42011, Start Num: 13
Candidate Starts for Puppy_70:
(Start: 13 @42214 has 17 MA's), (Start: 18 @42172 has 16 MA's), (24, 42061),

Gene: PurpleHaze_73 Start: 42663, Stop: 42445, Start Num: 9
Candidate Starts for PurpleHaze_73:
(5, 42732), (Start: 9 @42663 has 13 MA's), (Start: 17 @42624 has 1 MA's), (20, 42588), (24, 42495),
(27, 42450),

Gene: QuinnKiro_68 Start: 42560, Stop: 42348, Start Num: 11
Candidate Starts for QuinnKiro_68:
(Start: 11 @42560 has 43 MA's), (Start: 17 @42527 has 1 MA's), (24, 42398), (27, 42353),

Gene: ResDef_67 Start: 42560, Stop: 42348, Start Num: 11
Candidate Starts for ResDef_67:
(Start: 11 @42560 has 43 MA's), (Start: 17 @42527 has 1 MA's), (24, 42398), (27, 42353),

Gene: Rockstar_68 Start: 42057, Stop: 41833, Start Num: 13
Candidate Starts for Rockstar_68:
(Start: 13 @42057 has 17 MA's), (14, 42051), (Start: 17 @42015 has 1 MA's), (27, 41838),

Gene: Rummer_73 Start: 42872, Stop: 42657, Start Num: 10
Candidate Starts for Rummer_73:
(Start: 10 @42872 has 34 MA's), (Start: 11 @42869 has 43 MA's), (Start: 17 @42836 has 1 MA's),
(24, 42707), (27, 42662),

Gene: Sabia_72 Start: 42852, Stop: 42637, Start Num: 10
Candidate Starts for Sabia_72:
(Start: 10 @42852 has 34 MA's), (Start: 11 @42849 has 43 MA's), (Start: 17 @42816 has 1 MA's),
(24, 42687), (27, 42642),

Gene: Sabinator_72 Start: 42840, Stop: 42628, Start Num: 11
Candidate Starts for Sabinator_72:
(Start: 10 @42843 has 34 MA's), (Start: 11 @42840 has 43 MA's), (Start: 17 @42807 has 1 MA's),
(24, 42678), (27, 42633),

Gene: SaturnRing_69 Start: 42595, Stop: 42392, Start Num: 13
Candidate Starts for SaturnRing_69:
(Start: 13 @42595 has 17 MA's), (Start: 18 @42553 has 16 MA's), (24, 42442),

Gene: Scout_68 Start: 41767, Stop: 41543, Start Num: 13
Candidate Starts for Scout_68:
(Start: 13 @41767 has 17 MA's), (14, 41761), (Start: 17 @41725 has 1 MA's), (24, 41593), (27,
41548),

Gene: Snickers_70 Start: 42817, Stop: 42602, Start Num: 10

Candidate Starts for Snickers_70:

(Start: 10 @42817 has 34 MA's), (Start: 11 @42814 has 43 MA's), (Start: 17 @42781 has 1 MA's),
(24, 42652), (27, 42607),

Gene: SoYo_71 Start: 42753, Stop: 42541, Start Num: 11

Candidate Starts for SoYo_71:

(Start: 10 @42756 has 34 MA's), (Start: 11 @42753 has 43 MA's), (Start: 17 @42720 has 1 MA's),
(24, 42591), (27, 42546),

Gene: SoilDragon_73 Start: 42289, Stop: 42077, Start Num: 11

Candidate Starts for SoilDragon_73:

(Start: 10 @42292 has 34 MA's), (Start: 11 @42289 has 43 MA's), (Start: 17 @42256 has 1 MA's),
(24, 42127), (27, 42082),

Gene: Soshari_76 Start: 42868, Stop: 42653, Start Num: 10

Candidate Starts for Soshari_76:

(Start: 10 @42868 has 34 MA's), (Start: 11 @42865 has 43 MA's), (Start: 17 @42832 has 1 MA's),
(24, 42703), (27, 42658),

Gene: Spike509_74 Start: 42869, Stop: 42654, Start Num: 10

Candidate Starts for Spike509_74:

(Start: 10 @42869 has 34 MA's), (Start: 11 @42866 has 43 MA's), (Start: 17 @42833 has 1 MA's),
(24, 42704), (27, 42659),

Gene: Stagni_71 Start: 42844, Stop: 42632, Start Num: 11

Candidate Starts for Stagni_71:

(Start: 10 @42847 has 34 MA's), (Start: 11 @42844 has 43 MA's), (Start: 17 @42811 has 1 MA's),
(24, 42682), (27, 42637),

Gene: StepMih_73 Start: 42802, Stop: 42623, Start Num: 17

Candidate Starts for StepMih_73:

(Start: 10 @42838 has 34 MA's), (Start: 11 @42835 has 43 MA's), (Start: 17 @42802 has 1 MA's),
(24, 42673), (27, 42628),

Gene: SuperAwesome_74 Start: 42495, Stop: 42352, Start Num: 18

Candidate Starts for SuperAwesome_74:

(1, 42813), (2, 42780), (3, 42747), (4, 42714), (Start: 18 @42495 has 16 MA's),

Gene: SuperCallie99_71 Start: 42337, Stop: 42194, Start Num: 18

Candidate Starts for SuperCallie99_71:

(Start: 18 @42337 has 16 MA's),

Gene: TNguyen7_70 Start: 42555, Stop: 42352, Start Num: 13

Candidate Starts for TNguyen7_70:

(Start: 13 @42555 has 17 MA's), (Start: 18 @42513 has 16 MA's), (24, 42402),

Gene: Taurus_75 Start: 42844, Stop: 42629, Start Num: 10

Candidate Starts for Taurus_75:

(Start: 10 @42844 has 34 MA's), (Start: 11 @42841 has 43 MA's), (Start: 17 @42808 has 1 MA's),
(24, 42679), (27, 42634),

Gene: Texage_67 Start: 42561, Stop: 42349, Start Num: 11

Candidate Starts for Texage_67:

(Start: 11 @42561 has 43 MA's), (Start: 17 @42528 has 1 MA's), (24, 42399), (27, 42354),

Gene: Tiffany_73 Start: 42729, Stop: 42514, Start Num: 10

Candidate Starts for Tiffany_73:

(Start: 10 @42729 has 34 MA's), (Start: 11 @42726 has 43 MA's), (Start: 17 @42693 has 1 MA's),
(24, 42564), (27, 42519),

Gene: Todacoro_69 Start: 42560, Stop: 42348, Start Num: 11

Candidate Starts for Todacoro_69:

(Start: 11 @42560 has 43 MA's), (Start: 17 @42527 has 1 MA's), (24, 42398), (27, 42353),

Gene: Veracruz_66 Start: 42560, Stop: 42348, Start Num: 11

Candidate Starts for Veracruz_66:

(Start: 11 @42560 has 43 MA's), (Start: 17 @42527 has 1 MA's), (24, 42398), (27, 42353),

Gene: Vix_70 Start: 42927, Stop: 42712, Start Num: 10

Candidate Starts for Vix_70:

(Start: 10 @42927 has 34 MA's), (Start: 11 @42924 has 43 MA's), (Start: 17 @42891 has 1 MA's),
(24, 42762), (27, 42717),

Gene: VohminGhazi_74 Start: 41818, Stop: 41675, Start Num: 18

Candidate Starts for VohminGhazi_74:

(2, 42103), (3, 42070), (4, 42037), (Start: 18 @41818 has 16 MA's),

Gene: Watson_73 Start: 42833, Stop: 42621, Start Num: 11

Candidate Starts for Watson_73:

(Start: 10 @42836 has 34 MA's), (Start: 11 @42833 has 43 MA's), (Start: 17 @42800 has 1 MA's),
(24, 42671), (27, 42626),

Gene: Wooldri_76 Start: 42756, Stop: 42541, Start Num: 10

Candidate Starts for Wooldri_76:

(Start: 10 @42756 has 34 MA's), (Start: 11 @42753 has 43 MA's), (Start: 17 @42720 has 1 MA's),
(24, 42591), (27, 42546),

Gene: Zetzy_71 Start: 42407, Stop: 42192, Start Num: 10

Candidate Starts for Zetzy_71:

(Start: 10 @42407 has 34 MA's), (Start: 17 @42371 has 1 MA's), (19, 42338), (21, 42302), (24,
42242), (27, 42197),