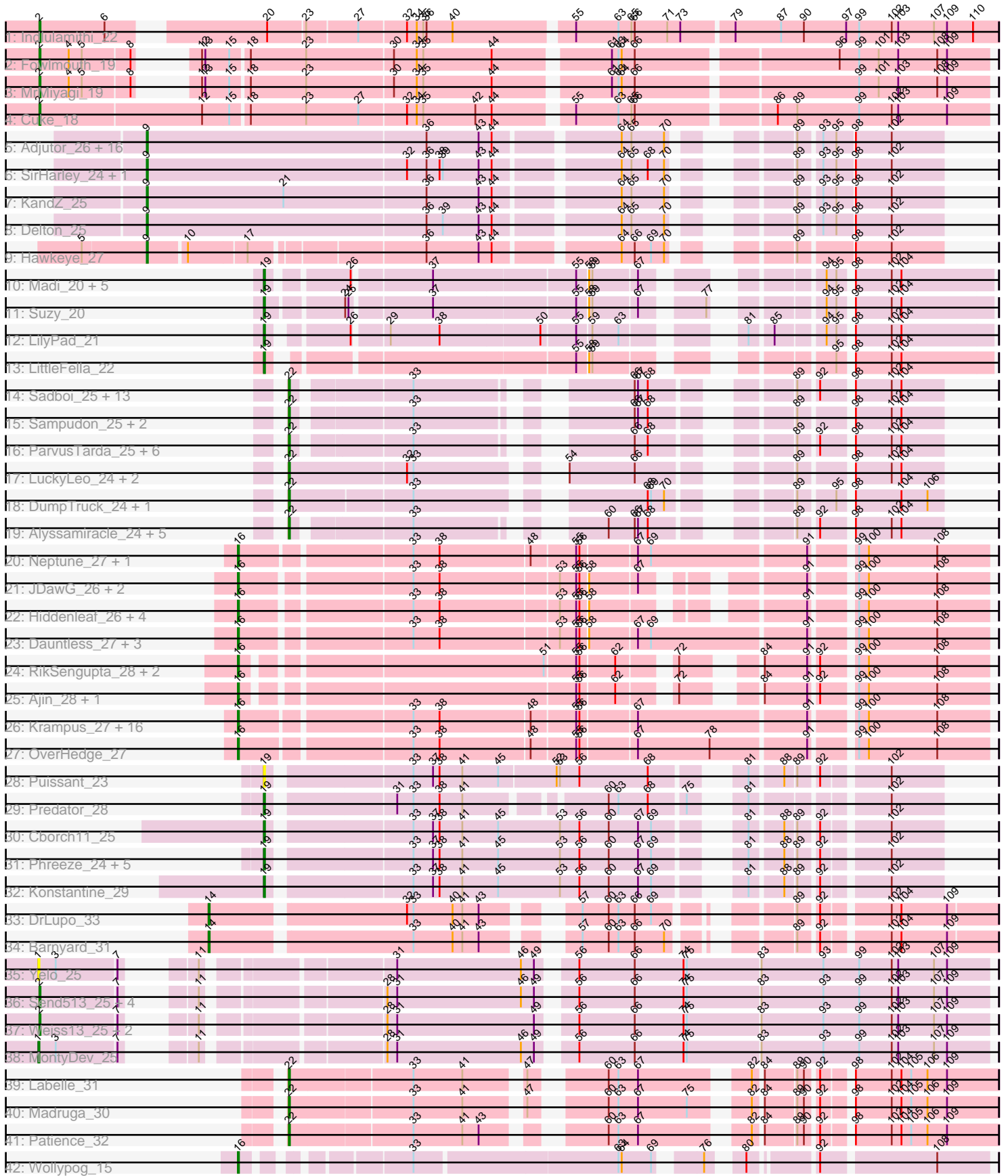


Pham 171280



Note: Tracks are now grouped by subcluster and scaled. Switching in subcluster is indicated by changes in track color. Track scale is now set by default to display the region 30 bp upstream of start 1 to 30 bp downstream of the last possible start. If this default region is judged to be packed too tightly with annotated starts, the track will be further scaled to only show that region of the ORF with annotated starts. This action will be indicated by adding "Zoomed" to the title. For starts, yellow indicates the location of called starts comprised solely of Glimmer/GeneMark auto-annotations, green indicates the location of called starts with at least 1 manual gene annotation.

## Pham 171280 Report

This analysis was run 07/10/24 on database version 566.

Pham number 171280 has 133 members, 21 are drafts.

Phages represented in each track:

- Track 1 : Indlulamithi\_22
- Track 2 : Fowlmouth\_19
- Track 3 : MrMiyagi\_19
- Track 4 : Cuke\_18
- Track 5 : Adjutor\_26, Nova\_25, Penelope2018\_25, BigMama\_23, Thoth\_25, Erk16\_25, Giuseppe\_25, Mopey\_25, Butterscotch\_25, Prager\_25, WaldoWhy\_26, PLOT\_26, Chill\_26, Troll4\_25, Visconti\_25, Helpful\_26, PBI1\_25
- Track 6 : SirHarley\_24, Gumball\_24
- Track 7 : KandZ\_25
- Track 8 : Delton\_25
- Track 9 : Hawkeye\_27
- Track 10 : Madi\_20, BiteSize\_20, Terapin\_20, Beyoncage\_20, Sienna\_20, Djokovic\_20
- Track 11 : Suzy\_20
- Track 12 : LilyPad\_21
- Track 13 : LittleFella\_22
- Track 14 : Sadboi\_25, Yikes\_26, OtterstedtS21\_25, Alephilan\_21, DaviePasture\_26, Gibbin\_26, Mima20\_24, GretelLyn\_25, Patos\_26, Ranch\_25, Erutan\_25, Zany\_23, NorManre\_26, DoobyDoo\_24
- Track 15 : Sampudon\_25, Lila22\_26, Jalebi\_24
- Track 16 : ParvusTarda\_25, Lambo\_25, MoiGyank\_27, Fulcrum\_26, BirthdayBoy\_26, GOATification\_26, Wojtek\_24
- Track 17 : LuckyLeo\_24, Apeppi\_22, Tillicus\_25
- Track 18 : DumpTruck\_24, Xenia2\_21
- Track 19 : Alyssamiracle\_24, Avian\_23, Genamy16\_24, Rumi\_24, Jamemuya19\_22, NovaSharks\_24
- Track 20 : Neptune\_27, Cybele\_27
- Track 21 : JDawG\_26, Aesir\_26, MortySmith\_25
- Track 22 : Hiddenleaf\_26, Snakehole\_28, DannyDe\_26, Chivey\_26, FreddieHg\_26
- Track 23 : Dauntless\_27, Crestdrop\_27, JingleBells\_26, Erudite\_26
- Track 24 : RikSengupta\_28, TinyMiny\_28, Kors\_29
- Track 25 : Ajin\_28, Sparcetus\_28
- Track 26 : Krampus\_27, Gilda\_27, Pharpay\_27, Anakin\_27, Rachella\_27, CoolCookie\_31, Poultruss\_26, Haunter\_27, Kate\_27, AnnaSerena\_27, Rie18\_27, Potty\_27, Tedro\_27, PhunaPhoke\_27, Karate\_26, Hager\_28, NarutoRun\_27
- Track 27 : OverHedge\_27
- Track 28 : Puissant\_23

- Track 29 : Predator\_28
- Track 30 : Cborch11\_25
- Track 31 : Phreeze\_24, Beckerton\_24, Oaker\_24, Megatron06\_26, Damien\_24, Thumb\_24
- Track 32 : Konstantine\_29
- Track 33 : DrLupo\_33
- Track 34 : Barnyard\_31
- Track 35 : Yelo\_25
- Track 36 : Send513\_25, Candle\_25, Nilo\_26, Riparian\_25, Zenon\_26
- Track 37 : Weiss13\_25, Papyrus\_25, Rope\_25
- Track 38 : MontyDev\_25
- Track 39 : Labelle\_31
- Track 40 : Madruga\_30
- Track 41 : Patience\_32
- Track 42 : Wollypog\_15

***Summary of Final Annotations (See graph section above for start numbers):***

The start number called the most often in the published annotations is 16, it was called in 31 of the 112 non-draft genes in the pham.

Genes that call this "Most Annotated" start:

- Aesir\_26, Ajin\_28, Anakin\_27, AnnaSerena\_27, Chivey\_26, CoolCookie\_31, Crestdrop\_27, Cybele\_27, DannyDe\_26, Dauntless\_27, Erudite\_26, FreddieHg\_26, Gilda\_27, Hager\_28, Haunter\_27, Hiddenleaf\_26, JDawG\_26, JingleBells\_26, Karate\_26, Kate\_27, Kors\_29, Krampus\_27, MortySmith\_25, NarutoRun\_27, Neptune\_27, OverHedge\_27, Pharpay\_27, PhunaPhoke\_27, Potty\_27, Poultruss\_26, Rachella\_27, Rie18\_27, RikSengupta\_28, Snakehole\_28, Sparcetus\_28, Tedro\_27, TinyMiny\_28, Wollypog\_15,

Genes that have the "Most Annotated" start but do not call it:

- 

Genes that do not have the "Most Annotated" start:

- Adjutor\_26, Alephilan\_21, Alyssamiracle\_24, Apeppi\_22, Avian\_23, Barnyard\_31, Beckerton\_24, Beyoncage\_20, BigMama\_23, BirthdayBoy\_26, BiteSize\_20, Butterscotch\_25, Candle\_25, Cborch11\_25, Chill\_26, Cuke\_18, Damien\_24, DaviePasture\_26, Delton\_25, Djokovic\_20, DoobyDoo\_24, DrLupo\_33, DumpTruck\_24, Erk16\_25, Erutan\_25, Fowlmouth\_19, Fulcrum\_26, GOATification\_26, Genamy16\_24, Gibbin\_26, Giuseppe\_25, GretelLyn\_25, Gumball\_24, Hawkeye\_27, Helpful\_26, Indlulamithi\_22, Jalebi\_24, Jamemuya19\_22, KandZ\_25, Konstantine\_29, Labelle\_31, Lambo\_25, Lila22\_26, LilyPad\_21, LittleFella\_22, LuckyLeo\_24, Madi\_20, Madruga\_30, Megatron06\_26, Mima20\_24, MoiGyank\_27, MontyDev\_25, Mopey\_25, MrMiyagi\_19, Nilo\_26, NorManre\_26, NovaSharks\_24, Nova\_25, Oaker\_24, OtterstedtS21\_25, PBI1\_25, PLOT\_26, Papyrus\_25, ParvusTarda\_25, Patience\_32, Patos\_26, Penelope2018\_25, Phreeze\_24, Prager\_25, Predator\_28, Puissant\_23, Ranch\_25, Riparian\_25, Rope\_25, Rumi\_24, Sadboi\_25, Sampudon\_25, Send513\_25, Sienna\_20, SirHarley\_24, Suzy\_20, Terapin\_20, Thoth\_25, Thumb\_24, Tillicus\_25, Troll4\_25, Visconti\_25, WaldoWhy\_26, Weiss13\_25, Wojtek\_24, Xenia2\_21, Yelo\_25,

Yikes\_26, Zany\_23, Zenon\_26,

### Summary by start number:

#### Start 1:

- Found in 2 of 133 ( 1.5% ) of genes in pham
- Manual Annotations of this start: 1 of 112
- Called 100.0% of time when present
- Phage (with cluster) where this start called: MontyDev\_25 (R), Yelo\_25 (R),

#### Start 2:

- Found in 12 of 133 ( 9.0% ) of genes in pham
- Manual Annotations of this start: 12 of 112
- Called 100.0% of time when present
- Phage (with cluster) where this start called: Candle\_25 (R), Cuke\_18 (AC), Fowlmouth\_19 (AC), Indulamithi\_22 (AC), MrMiyagi\_19 (AC), Nilo\_26 (R), Papyrus\_25 (R), Riparian\_25 (R), Rope\_25 (R), Send513\_25 (R), Weiss13\_25 (R), Zenon\_26 (R),

#### Start 9:

- Found in 22 of 133 ( 16.5% ) of genes in pham
- Manual Annotations of this start: 21 of 112
- Called 100.0% of time when present
- Phage (with cluster) where this start called: Adjutor\_26 (D1), BigMama\_23 (D1), Butterscotch\_25 (D1), Chill\_26 (D1), Delton\_25 (D1), Erk16\_25 (D1), Giuseppe\_25 (D1), Gumball\_24 (D1), Hawkeye\_27 (D2), Helpful\_26 (D1), KandZ\_25 (D1), Mopey\_25 (D1), Nova\_25 (D1), PBI1\_25 (D1), PLOT\_26 (D1), Penelope2018\_25 (D1), Prager\_25 (D1), SirHarley\_24 (D1), Thoth\_25 (D1), Troll4\_25 (D1), Visconti\_25 (D1), WaldoWhy\_26 (D1),

#### Start 14:

- Found in 2 of 133 ( 1.5% ) of genes in pham
- Manual Annotations of this start: 2 of 112
- Called 100.0% of time when present
- Phage (with cluster) where this start called: Barnyard\_31 (H2), DrLupo\_33 (H2),

#### Start 16:

- Found in 38 of 133 ( 28.6% ) of genes in pham
- Manual Annotations of this start: 31 of 112
- Called 100.0% of time when present
- Phage (with cluster) where this start called: Aesir\_26 (EF), Ajin\_28 (EF), Anakin\_27 (EF), AnnaSerena\_27 (EF), Chivey\_26 (EF), CoolCookie\_31 (EF), Crestdrop\_27 (EF), Cybele\_27 (EF), DannyDe\_26 (EF), Dauntless\_27 (EF), Erudite\_26 (EF), FreddieHg\_26 (EF), Gilda\_27 (EF), Hager\_28 (EF), Haunter\_27 (EF), Hiddenleaf\_26 (EF), JDawG\_26 (EF), JingleBells\_26 (EF), Karate\_26 (EF), Kate\_27 (EF), Kors\_29 (EF), Krampus\_27 (EF), MortySmith\_25 (EF), NarutoRun\_27 (EF), Neptune\_27 (EF), OverHedge\_27 (EF), Pharpay\_27 (EF), PhunaPhoke\_27 (EF), Potty\_27 (EF), Poultruss\_26 (EF), Rachella\_27 (EF), Rie18\_27 (EF), RikSengupta\_28 (EF), Snakehole\_28 (EF), Sparcetus\_28 (EF), Tedro\_27 (EF), TinyMiny\_28 (EF), Wollypog\_15 (singleton),

#### Start 19:

- Found in 19 of 133 ( 14.3% ) of genes in pham

- Manual Annotations of this start: 18 of 112
- Called 100.0% of time when present
- Phage (with cluster) where this start called: Beckerton\_24 (H1), Beyoncage\_20 (DG1), BiteSize\_20 (DG1), Cborch11\_25 (H1), Damien\_24 (H1), Djokovic\_20 (DG1), Konstantine\_29 (H1), LilyPad\_21 (DG1), LittleFella\_22 (DG2), Madi\_20 (DG1), Megatron06\_26 (H1), Oaker\_24 (H1), Phreeze\_24 (H1), Predator\_28 (H1), Puissant\_23 (H1), Sienna\_20 (DG1), Suzy\_20 (DG1), Terapin\_20 (DG1), Thumb\_24 (H1),

Start 22:

- Found in 38 of 133 ( 28.6% ) of genes in pham
- Manual Annotations of this start: 27 of 112
- Called 100.0% of time when present
- Phage (with cluster) where this start called: Alephilan\_21 (DV), Alyssamiracle\_24 (DV), Apeppi\_22 (DV), Avian\_23 (DV), BirthdayBoy\_26 (DV), DaviePasture\_26 (DV), DoobyDoo\_24 (DV), DumpTruck\_24 (DV), Erutan\_25 (DV), Fulcrum\_26 (DV), GOATification\_26 (DV), Genamy16\_24 (DV), Gibbin\_26 (DV), GretelLyn\_25 (DV), Jalebi\_24 (DV), Jamemuya19\_22 (DV), Labelle\_31 (U), Lambo\_25 (DV), Lila22\_26 (DV), LuckyLeo\_24 (DV), Madruga\_30 (U), Mima20\_24 (DV), MoiGyank\_27 (DV), NorManre\_26 (DV), NovaSharks\_24 (DV), OtterstedtS21\_25 (DV), ParvusTarda\_25 (DV), Patience\_32 (U), Patos\_26 (DV), Ranch\_25 (DV), Rumi\_24 (DV), Sadboi\_25 (DV), Sampudon\_25 (DV), Tillicus\_25 (DV), Wojtek\_24 (DV), Xenia2\_21 (DV), Yikes\_26 (DV), Zany\_23 (DV),

### Summary by clusters:

There are 12 clusters represented in this pham: AC, EF, H2, H1, singleton, DG2, DG1, U, DV, R, D2, D1,

Info for manual annotations of cluster AC:

- Start number 2 was manually annotated 4 times for cluster AC.

Info for manual annotations of cluster D1:

- Start number 9 was manually annotated 20 times for cluster D1.

Info for manual annotations of cluster D2:

- Start number 9 was manually annotated 1 time for cluster D2.

Info for manual annotations of cluster DG1:

- Start number 19 was manually annotated 8 times for cluster DG1.

Info for manual annotations of cluster DG2:

- Start number 19 was manually annotated 1 time for cluster DG2.

Info for manual annotations of cluster DV:

- Start number 22 was manually annotated 24 times for cluster DV.

Info for manual annotations of cluster EF:

- Start number 16 was manually annotated 30 times for cluster EF.

Info for manual annotations of cluster H1:

- Start number 19 was manually annotated 9 times for cluster H1.

Info for manual annotations of cluster H2:

- Start number 14 was manually annotated 2 times for cluster H2.

Info for manual annotations of cluster R:

- Start number 1 was manually annotated 1 time for cluster R.
- Start number 2 was manually annotated 8 times for cluster R.

Info for manual annotations of cluster U:

- Start number 22 was manually annotated 3 times for cluster U.

### **Gene Information:**

Gene: Adjutor\_26 Start: 15426, Stop: 16079, Start Num: 9

Candidate Starts for Adjutor\_26:

(Start: 9 @15426 has 21 MA's), (36, 15681), (43, 15729), (44, 15741), (64, 15843), (65, 15852), (70, 15882), (89, 15954), (93, 15972), (95, 15984), (98, 15999), (102, 16032),

Gene: Aesir\_26 Start: 13825, Stop: 14427, Start Num: 16

Candidate Starts for Aesir\_26:

(Start: 16 @13825 has 31 MA's), (33, 13969), (38, 13993), (53, 14098), (55, 14113), (56, 14116), (58, 14122), (67, 14164), (91, 14275), (99, 14308), (100, 14317), (108, 14380),

Gene: Ajin\_28 Start: 13971, Stop: 14564, Start Num: 16

Candidate Starts for Ajin\_28:

(Start: 16 @13971 has 31 MA's), (55, 14253), (56, 14256), (62, 14286), (72, 14325), (84, 14373), (91, 14412), (92, 14418), (99, 14445), (100, 14454), (108, 14517),

Gene: Alephilan\_21 Start: 15936, Stop: 16421, Start Num: 22

Candidate Starts for Alephilan\_21:

(Start: 22 @15936 has 27 MA's), (33, 16041), (66, 16197), (67, 16200), (68, 16209), (89, 16302), (92, 16317), (98, 16341), (102, 16374), (104, 16383),

Gene: Alyssamiracle\_24 Start: 14342, Stop: 14818, Start Num: 22

Candidate Starts for Alyssamiracle\_24:

(Start: 22 @14342 has 27 MA's), (33, 14438), (60, 14570), (66, 14594), (67, 14597), (68, 14606), (89, 14699), (92, 14714), (98, 14738), (102, 14771), (104, 14780),

Gene: Anakin\_27 Start: 14035, Stop: 14679, Start Num: 16

Candidate Starts for Anakin\_27:

(Start: 16 @14035 has 31 MA's), (33, 14182), (38, 14206), (48, 14287), (55, 14326), (56, 14329), (67, 14377), (91, 14527), (99, 14560), (100, 14569), (108, 14632),

Gene: AnnaSerena\_27 Start: 14044, Stop: 14688, Start Num: 16

Candidate Starts for AnnaSerena\_27:

(Start: 16 @14044 has 31 MA's), (33, 14191), (38, 14215), (48, 14296), (55, 14335), (56, 14338), (67, 14386), (91, 14536), (99, 14569), (100, 14578), (108, 14641),

Gene: Apeppi\_22 Start: 16058, Stop: 16555, Start Num: 22

Candidate Starts for Apeppi\_22:

(Start: 22 @16058 has 27 MA's), (32, 16163), (33, 16169), (54, 16271), (66, 16331), (89, 16436), (98, 16475), (102, 16508), (104, 16517),

Gene: Avian\_23 Start: 14342, Stop: 14818, Start Num: 22

Candidate Starts for Avian\_23:

(Start: 22 @14342 has 27 MA's), (33, 14438), (60, 14570), (66, 14594), (67, 14597), (68, 14606), (89, 14699), (92, 14714), (98, 14738), (102, 14771), (104, 14780),

Gene: Barnyard\_31 Start: 17229, Stop: 17840, Start Num: 14

Candidate Starts for Barnyard\_31:

(Start: 14 @17229 has 2 MA's), (33, 17403), (40, 17439), (41, 17448), (43, 17463), (57, 17523), (60, 17547), (63, 17556), (66, 17571), (70, 17598), (89, 17676), (92, 17691), (102, 17745), (104, 17754), (109, 17796),

Gene: Beckerton\_24 Start: 15907, Stop: 16452, Start Num: 19

Candidate Starts for Beckerton\_24:

(Start: 19 @15907 has 18 MA's), (33, 16027), (37, 16045), (38, 16051), (41, 16072), (45, 16105), (53, 16162), (56, 16180), (60, 16207), (67, 16234), (69, 16246), (81, 16300), (88, 16327), (89, 16336), (92, 16351), (102, 16405),

Gene: Beyoncage\_20 Start: 11749, Stop: 12312, Start Num: 19

Candidate Starts for Beyoncage\_20:

(Start: 19 @11749 has 18 MA's), (26, 11812), (37, 11878), (55, 12004), (58, 12013), (59, 12016), (67, 12055), (94, 12169), (95, 12178), (98, 12187), (102, 12220), (104, 12229),

Gene: BigMama\_23 Start: 15502, Stop: 16155, Start Num: 9

Candidate Starts for BigMama\_23:

(Start: 9 @15502 has 21 MA's), (36, 15757), (43, 15805), (44, 15817), (64, 15919), (65, 15928), (70, 15958), (89, 16030), (93, 16048), (95, 16060), (98, 16075), (102, 16108),

Gene: BirthdayBoy\_26 Start: 16789, Stop: 17265, Start Num: 22

Candidate Starts for BirthdayBoy\_26:

(Start: 22 @16789 has 27 MA's), (33, 16885), (66, 17041), (68, 17053), (89, 17146), (92, 17161), (98, 17185), (102, 17218), (104, 17227),

Gene: BiteSize\_20 Start: 11749, Stop: 12312, Start Num: 19

Candidate Starts for BiteSize\_20:

(Start: 19 @11749 has 18 MA's), (26, 11812), (37, 11878), (55, 12004), (58, 12013), (59, 12016), (67, 12055), (94, 12169), (95, 12178), (98, 12187), (102, 12220), (104, 12229),

Gene: Butterscotch\_25 Start: 15486, Stop: 16139, Start Num: 9

Candidate Starts for Butterscotch\_25:

(Start: 9 @15486 has 21 MA's), (36, 15741), (43, 15789), (44, 15801), (64, 15903), (65, 15912), (70, 15942), (89, 16014), (93, 16032), (95, 16044), (98, 16059), (102, 16092),

Gene: Candle\_25 Start: 15923, Stop: 16699, Start Num: 2

Candidate Starts for Candle\_25:

(Start: 2 @15923 has 12 MA's), (7, 15992), (11, 16022), (28, 16166), (31, 16175), (46, 16289), (49, 16301), (56, 16325), (66, 16376), (74, 16421), (75, 16424), (83, 16490), (93, 16547), (99, 16580), (102, 16610), (103, 16616), (107, 16649), (109, 16661),

Gene: Cborch11\_25 Start: 15369, Stop: 15914, Start Num: 19

Candidate Starts for Cborch11\_25:

(Start: 19 @15369 has 18 MA's), (33, 15489), (37, 15507), (38, 15513), (41, 15534), (45, 15567), (53, 15624), (56, 15642), (60, 15669), (67, 15696), (69, 15708), (81, 15762), (88, 15789), (89, 15798), (92,

15813), (102, 15867),

Gene: Chill\_26 Start: 15492, Stop: 16145, Start Num: 9

Candidate Starts for Chill\_26:

(Start: 9 @15492 has 21 MA's), (36, 15747), (43, 15795), (44, 15807), (64, 15909), (65, 15918), (70, 15948), (89, 16020), (93, 16038), (95, 16050), (98, 16065), (102, 16098),

Gene: Chivey\_26 Start: 13241, Stop: 13843, Start Num: 16

Candidate Starts for Chivey\_26:

(Start: 16 @13241 has 31 MA's), (33, 13385), (38, 13409), (53, 13514), (55, 13529), (56, 13532), (58, 13538), (91, 13691), (99, 13724), (100, 13733), (108, 13796),

Gene: CoolCookie\_31 Start: 14042, Stop: 14686, Start Num: 16

Candidate Starts for CoolCookie\_31:

(Start: 16 @14042 has 31 MA's), (33, 14189), (38, 14213), (48, 14294), (55, 14333), (56, 14336), (67, 14384), (91, 14534), (99, 14567), (100, 14576), (108, 14639),

Gene: Crestdrop\_27 Start: 13111, Stop: 13752, Start Num: 16

Candidate Starts for Crestdrop\_27:

(Start: 16 @13111 has 31 MA's), (33, 13255), (38, 13279), (53, 13384), (55, 13399), (56, 13402), (58, 13408), (67, 13450), (69, 13462), (91, 13600), (99, 13633), (100, 13642), (108, 13705),

Gene: Cuke\_18 Start: 11044, Stop: 11877, Start Num: 2

Candidate Starts for Cuke\_18:

(Start: 2 @11044 has 12 MA's), (12, 11191), (15, 11215), (18, 11230), (23, 11281), (27, 11329), (32, 11371), (34, 11380), (35, 11386), (42, 11434), (44, 11449), (55, 11512), (63, 11551), (65, 11563), (66, 11566), (86, 11683), (89, 11701), (99, 11758), (102, 11788), (103, 11794), (109, 11839),

Gene: Cybele\_27 Start: 14012, Stop: 14656, Start Num: 16

Candidate Starts for Cybele\_27:

(Start: 16 @14012 has 31 MA's), (33, 14159), (38, 14183), (48, 14264), (55, 14303), (56, 14306), (67, 14354), (69, 14366), (91, 14504), (99, 14537), (100, 14546), (108, 14609),

Gene: Damien\_24 Start: 15370, Stop: 15915, Start Num: 19

Candidate Starts for Damien\_24:

(Start: 19 @15370 has 18 MA's), (33, 15490), (37, 15508), (38, 15514), (41, 15535), (45, 15568), (53, 15625), (56, 15643), (60, 15670), (67, 15697), (69, 15709), (81, 15763), (88, 15790), (89, 15799), (92, 15814), (102, 15868),

Gene: DannyDe\_26 Start: 13233, Stop: 13835, Start Num: 16

Candidate Starts for DannyDe\_26:

(Start: 16 @13233 has 31 MA's), (33, 13377), (38, 13401), (53, 13506), (55, 13521), (56, 13524), (58, 13530), (91, 13683), (99, 13716), (100, 13725), (108, 13788),

Gene: Dauntless\_27 Start: 13754, Stop: 14395, Start Num: 16

Candidate Starts for Dauntless\_27:

(Start: 16 @13754 has 31 MA's), (33, 13898), (38, 13922), (53, 14027), (55, 14042), (56, 14045), (58, 14051), (67, 14093), (69, 14105), (91, 14243), (99, 14276), (100, 14285), (108, 14348),

Gene: DaviePasture\_26 Start: 16546, Stop: 17034, Start Num: 22

Candidate Starts for DaviePasture\_26:

(Start: 22 @16546 has 27 MA's), (33, 16654), (66, 16810), (67, 16813), (68, 16822), (89, 16915), (92, 16930), (98, 16954), (102, 16987), (104, 16996),



Gene: Delton\_25 Start: 15498, Stop: 16151, Start Num: 9

Candidate Starts for Delton\_25:

(Start: 9 @15498 has 21 MA's), (36, 15753), (39, 15768), (43, 15801), (44, 15813), (64, 15915), (65, 15924), (70, 15954), (89, 16026), (93, 16044), (95, 16056), (98, 16071), (102, 16104),

Gene: Djokovic\_20 Start: 11749, Stop: 12312, Start Num: 19

Candidate Starts for Djokovic\_20:

(Start: 19 @11749 has 18 MA's), (26, 11812), (37, 11878), (55, 12004), (58, 12013), (59, 12016), (67, 12055), (94, 12169), (95, 12178), (98, 12187), (102, 12220), (104, 12229),

Gene: DoobyDoo\_24 Start: 15723, Stop: 16199, Start Num: 22

Candidate Starts for DoobyDoo\_24:

(Start: 22 @15723 has 27 MA's), (33, 15819), (66, 15975), (67, 15978), (68, 15987), (89, 16080), (92, 16095), (98, 16119), (102, 16152), (104, 16161),

Gene: DrLupo\_33 Start: 17635, Stop: 18246, Start Num: 14

Candidate Starts for DrLupo\_33:

(Start: 14 @17635 has 2 MA's), (32, 17803), (33, 17809), (40, 17845), (41, 17854), (43, 17869), (57, 17929), (60, 17953), (63, 17962), (66, 17977), (69, 17992), (89, 18082), (92, 18097), (102, 18151), (104, 18160), (109, 18202),

Gene: DumpTruck\_24 Start: 15958, Stop: 16452, Start Num: 22

Candidate Starts for DumpTruck\_24:

(Start: 22 @15958 has 27 MA's), (33, 16066), (68, 16240), (69, 16243), (70, 16255), (89, 16333), (95, 16363), (98, 16372), (104, 16414), (106, 16438),

Gene: Erk16\_25 Start: 15489, Stop: 16142, Start Num: 9

Candidate Starts for Erk16\_25:

(Start: 9 @15489 has 21 MA's), (36, 15744), (43, 15792), (44, 15804), (64, 15906), (65, 15915), (70, 15945), (89, 16017), (93, 16035), (95, 16047), (98, 16062), (102, 16095),

Gene: Erudite\_26 Start: 13754, Stop: 14395, Start Num: 16

Candidate Starts for Erudite\_26:

(Start: 16 @13754 has 31 MA's), (33, 13898), (38, 13922), (53, 14027), (55, 14042), (56, 14045), (58, 14051), (67, 14093), (69, 14105), (91, 14243), (99, 14276), (100, 14285), (108, 14348),

Gene: Erutan\_25 Start: 16236, Stop: 16712, Start Num: 22

Candidate Starts for Erutan\_25:

(Start: 22 @16236 has 27 MA's), (33, 16332), (66, 16488), (67, 16491), (68, 16500), (89, 16593), (92, 16608), (98, 16632), (102, 16665), (104, 16674),

Gene: Fowlmouth\_19 Start: 11198, Stop: 11980, Start Num: 2

Candidate Starts for Fowlmouth\_19:

(Start: 2 @11198 has 12 MA's), (4, 11225), (5, 11237), (8, 11279), (12, 11294), (13, 11297), (15, 11318), (18, 11333), (23, 11384), (30, 11462), (34, 11483), (35, 11489), (44, 11552), (61, 11648), (63, 11654), (64, 11657), (66, 11669), (96, 11843), (99, 11861), (101, 11879), (103, 11897), (108, 11933), (109, 11942),

Gene: FreddieHg\_26 Start: 13257, Stop: 13859, Start Num: 16

Candidate Starts for FreddieHg\_26:

(Start: 16 @13257 has 31 MA's), (33, 13401), (38, 13425), (53, 13530), (55, 13545), (56, 13548), (58, 13554), (91, 13707), (99, 13740), (100, 13749), (108, 13812),

Gene: Fulcrum\_26 Start: 16769, Stop: 17245, Start Num: 22

Candidate Starts for Fulcrum\_26:

(Start: 22 @16769 has 27 MA's), (33, 16865), (66, 17021), (68, 17033), (89, 17126), (92, 17141), (98, 17165), (102, 17198), (104, 17207),

Gene: GOATification\_26 Start: 16769, Stop: 17245, Start Num: 22

Candidate Starts for GOATification\_26:

(Start: 22 @16769 has 27 MA's), (33, 16865), (66, 17021), (68, 17033), (89, 17126), (92, 17141), (98, 17165), (102, 17198), (104, 17207),

Gene: Genamy16\_24 Start: 14342, Stop: 14818, Start Num: 22

Candidate Starts for Genamy16\_24:

(Start: 22 @14342 has 27 MA's), (33, 14438), (60, 14570), (66, 14594), (67, 14597), (68, 14606), (89, 14699), (92, 14714), (98, 14738), (102, 14771), (104, 14780),

Gene: Gibbin\_26 Start: 16829, Stop: 17317, Start Num: 22

Candidate Starts for Gibbin\_26:

(Start: 22 @16829 has 27 MA's), (33, 16937), (66, 17093), (67, 17096), (68, 17105), (89, 17198), (92, 17213), (98, 17237), (102, 17270), (104, 17279),

Gene: Gilda\_27 Start: 14036, Stop: 14680, Start Num: 16

Candidate Starts for Gilda\_27:

(Start: 16 @14036 has 31 MA's), (33, 14183), (38, 14207), (48, 14288), (55, 14327), (56, 14330), (67, 14378), (91, 14528), (99, 14561), (100, 14570), (108, 14633),

Gene: Giuseppe\_25 Start: 15478, Stop: 16131, Start Num: 9

Candidate Starts for Giuseppe\_25:

(Start: 9 @15478 has 21 MA's), (36, 15733), (43, 15781), (44, 15793), (64, 15895), (65, 15904), (70, 15934), (89, 16006), (93, 16024), (95, 16036), (98, 16051), (102, 16084),

Gene: Gretellyn\_25 Start: 17103, Stop: 17579, Start Num: 22

Candidate Starts for Gretellyn\_25:

(Start: 22 @17103 has 27 MA's), (33, 17199), (66, 17355), (67, 17358), (68, 17367), (89, 17460), (92, 17475), (98, 17499), (102, 17532), (104, 17541),

Gene: Gumball\_24 Start: 15436, Stop: 16089, Start Num: 9

Candidate Starts for Gumball\_24:

(Start: 9 @15436 has 21 MA's), (32, 15673), (36, 15691), (38, 15703), (39, 15706), (43, 15739), (44, 15751), (64, 15853), (65, 15862), (68, 15877), (70, 15892), (89, 15964), (93, 15982), (95, 15994), (98, 16009), (102, 16042),

Gene: Hager\_28 Start: 13598, Stop: 14242, Start Num: 16

Candidate Starts for Hager\_28:

(Start: 16 @13598 has 31 MA's), (33, 13745), (38, 13769), (48, 13850), (55, 13889), (56, 13892), (67, 13940), (91, 14090), (99, 14123), (100, 14132), (108, 14195),

Gene: Haunter\_27 Start: 13449, Stop: 14093, Start Num: 16

Candidate Starts for Haunter\_27:

(Start: 16 @13449 has 31 MA's), (33, 13596), (38, 13620), (48, 13701), (55, 13740), (56, 13743), (67, 13791), (91, 13941), (99, 13974), (100, 13983), (108, 14046),

Gene: Hawkeye\_27 Start: 15385, Stop: 16014, Start Num: 9

Candidate Starts for Hawkeye\_27:

(5, 15328), (Start: 9 @15385 has 21 MA's), (10, 15418), (17, 15469), (36, 15616), (43, 15664), (44, 15676), (64, 15778), (66, 15790), (69, 15805), (70, 15817), (89, 15889), (98, 15934), (102, 15967),

Gene: Helpful\_26 Start: 15486, Stop: 16139, Start Num: 9

Candidate Starts for Helpful\_26:

(Start: 9 @15486 has 21 MA's), (36, 15741), (43, 15789), (44, 15801), (64, 15903), (65, 15912), (70, 15942), (89, 16014), (93, 16032), (95, 16044), (98, 16059), (102, 16092),

Gene: Hiddenleaf\_26 Start: 13241, Stop: 13843, Start Num: 16

Candidate Starts for Hiddenleaf\_26:

(Start: 16 @13241 has 31 MA's), (33, 13385), (38, 13409), (53, 13514), (55, 13529), (56, 13532), (58, 13538), (91, 13691), (99, 13724), (100, 13733), (108, 13796),

Gene: Indlulamithi\_22 Start: 13331, Stop: 14158, Start Num: 2

Candidate Starts for Indlulamithi\_22:

(Start: 2 @13331 has 12 MA's), (6, 13391), (20, 13511), (23, 13544), (27, 13589), (32, 13631), (34, 13640), (35, 13646), (36, 13649), (40, 13673), (55, 13775), (63, 13814), (65, 13826), (66, 13829), (71, 13859), (73, 13871), (79, 13916), (87, 13958), (90, 13979), (97, 14018), (99, 14030), (102, 14060), (103, 14066), (107, 14099), (109, 14111), (110, 14135),

Gene: JDawG\_26 Start: 13823, Stop: 14425, Start Num: 16

Candidate Starts for JDawG\_26:

(Start: 16 @13823 has 31 MA's), (33, 13967), (38, 13991), (53, 14096), (55, 14111), (56, 14114), (58, 14120), (67, 14162), (91, 14273), (99, 14306), (100, 14315), (108, 14378),

Gene: Jalebi\_24 Start: 17279, Stop: 17755, Start Num: 22

Candidate Starts for Jalebi\_24:

(Start: 22 @17279 has 27 MA's), (33, 17375), (66, 17531), (67, 17534), (68, 17543), (89, 17636), (98, 17675), (102, 17708), (104, 17717),

Gene: Jamemuya19\_22 Start: 14342, Stop: 14818, Start Num: 22

Candidate Starts for Jamemuya19\_22:

(Start: 22 @14342 has 27 MA's), (33, 14438), (60, 14570), (66, 14594), (67, 14597), (68, 14606), (89, 14699), (92, 14714), (98, 14738), (102, 14771), (104, 14780),

Gene: JingleBells\_26 Start: 13318, Stop: 13959, Start Num: 16

Candidate Starts for JingleBells\_26:

(Start: 16 @13318 has 31 MA's), (33, 13462), (38, 13486), (53, 13591), (55, 13606), (56, 13609), (58, 13615), (67, 13657), (69, 13669), (91, 13807), (99, 13840), (100, 13849), (108, 13912),

Gene: KandZ\_25 Start: 15586, Stop: 16239, Start Num: 9

Candidate Starts for KandZ\_25:

(Start: 9 @15586 has 21 MA's), (21, 15712), (36, 15841), (43, 15889), (44, 15901), (64, 16003), (65, 16012), (70, 16042), (89, 16114), (93, 16132), (95, 16144), (98, 16159), (102, 16192),

Gene: Karate\_26 Start: 13448, Stop: 14092, Start Num: 16

Candidate Starts for Karate\_26:

(Start: 16 @13448 has 31 MA's), (33, 13595), (38, 13619), (48, 13700), (55, 13739), (56, 13742), (67, 13790), (91, 13940), (99, 13973), (100, 13982), (108, 14045),

Gene: Kate\_27 Start: 14044, Stop: 14688, Start Num: 16

Candidate Starts for Kate\_27:

(Start: 16 @14044 has 31 MA's), (33, 14191), (38, 14215), (48, 14296), (55, 14335), (56, 14338), (67, 14386), (91, 14536), (99, 14569), (100, 14578), (108, 14641),

Gene: Konstantine\_29 Start: 16571, Stop: 17116, Start Num: 19

Candidate Starts for Konstantine\_29:

(Start: 19 @16571 has 18 MA's), (33, 16691), (37, 16709), (38, 16715), (41, 16736), (45, 16769), (53, 16826), (56, 16844), (60, 16871), (67, 16898), (69, 16910), (81, 16964), (88, 16991), (89, 17000), (92, 17015), (102, 17069),

Gene: Kors\_29 Start: 14017, Stop: 14610, Start Num: 16

Candidate Starts for Kors\_29:

(Start: 16 @14017 has 31 MA's), (51, 14272), (55, 14299), (56, 14302), (62, 14332), (72, 14371), (84, 14419), (91, 14458), (92, 14464), (99, 14491), (100, 14500), (108, 14563),

Gene: Krampus\_27 Start: 14042, Stop: 14686, Start Num: 16

Candidate Starts for Krampus\_27:

(Start: 16 @14042 has 31 MA's), (33, 14189), (38, 14213), (48, 14294), (55, 14333), (56, 14336), (67, 14384), (91, 14534), (99, 14567), (100, 14576), (108, 14639),

Gene: Labelle\_31 Start: 18732, Stop: 19292, Start Num: 22

Candidate Starts for Labelle\_31:

(Start: 22 @18732 has 27 MA's), (33, 18840), (41, 18885), (47, 18930), (60, 18981), (63, 18990), (67, 19008), (82, 19092), (84, 19098), (89, 19125), (90, 19131), (92, 19140), (98, 19161), (102, 19194), (104, 19203), (105, 19212), (106, 19227), (109, 19245),

Gene: Lambo\_25 Start: 16772, Stop: 17257, Start Num: 22

Candidate Starts for Lambo\_25:

(Start: 22 @16772 has 27 MA's), (33, 16877), (66, 17033), (68, 17045), (89, 17138), (92, 17153), (98, 17177), (102, 17210), (104, 17219),

Gene: Lila22\_26 Start: 16727, Stop: 17203, Start Num: 22

Candidate Starts for Lila22\_26:

(Start: 22 @16727 has 27 MA's), (33, 16823), (66, 16979), (67, 16982), (68, 16991), (89, 17084), (98, 17123), (102, 17156), (104, 17165),

Gene: LilyPad\_21 Start: 12413, Stop: 12973, Start Num: 19

Candidate Starts for LilyPad\_21:

(Start: 19 @12413 has 18 MA's), (26, 12473), (29, 12500), (38, 12545), (50, 12635), (55, 12665), (59, 12677), (63, 12701), (81, 12773), (85, 12791), (94, 12830), (95, 12839), (98, 12848), (102, 12881), (104, 12890),

Gene: LittleFella\_22 Start: 14288, Stop: 14845, Start Num: 19

Candidate Starts for LittleFella\_22:

(Start: 19 @14288 has 18 MA's), (55, 14537), (58, 14546), (59, 14549), (95, 14711), (98, 14720), (102, 14753), (104, 14762),

Gene: LuckyLeo\_24 Start: 16058, Stop: 16555, Start Num: 22

Candidate Starts for LuckyLeo\_24:

(Start: 22 @16058 has 27 MA's), (32, 16163), (33, 16169), (54, 16271), (66, 16331), (89, 16436), (98, 16475), (102, 16508), (104, 16517),

Gene: Madi\_20 Start: 11749, Stop: 12312, Start Num: 19

Candidate Starts for Madi\_20:

(Start: 19 @11749 has 18 MA's), (26, 11812), (37, 11878), (55, 12004), (58, 12013), (59, 12016), (67, 12055), (94, 12169), (95, 12178), (98, 12187), (102, 12220), (104, 12229),

Gene: Madruga\_30 Start: 18401, Stop: 18961, Start Num: 22

Candidate Starts for Madruga\_30:

(Start: 22 @18401 has 27 MA's), (33, 18509), (41, 18554), (47, 18599), (60, 18650), (63, 18659), (67, 18677), (75, 18722), (82, 18761), (84, 18767), (89, 18794), (90, 18800), (92, 18809), (98, 18830), (102, 18863), (104, 18872), (105, 18881), (106, 18896), (109, 18914),

Gene: Megatron06\_26 Start: 15903, Stop: 16448, Start Num: 19

Candidate Starts for Megatron06\_26:

(Start: 19 @15903 has 18 MA's), (33, 16023), (37, 16041), (38, 16047), (41, 16068), (45, 16101), (53, 16158), (56, 16176), (60, 16203), (67, 16230), (69, 16242), (81, 16296), (88, 16323), (89, 16332), (92, 16347), (102, 16401),

Gene: Mima20\_24 Start: 16456, Stop: 16944, Start Num: 22

Candidate Starts for Mima20\_24:

(Start: 22 @16456 has 27 MA's), (33, 16564), (66, 16720), (67, 16723), (68, 16732), (89, 16825), (92, 16840), (98, 16864), (102, 16897), (104, 16906),

Gene: MoiGyank\_27 Start: 17140, Stop: 17616, Start Num: 22

Candidate Starts for MoiGyank\_27:

(Start: 22 @17140 has 27 MA's), (33, 17236), (66, 17392), (68, 17404), (89, 17497), (92, 17512), (98, 17536), (102, 17569), (104, 17578),

Gene: MontyDev\_25 Start: 15564, Stop: 16340, Start Num: 1

Candidate Starts for MontyDev\_25:

(Start: 1 @15564 has 1 MA's), (3, 15579), (7, 15633), (11, 15663), (28, 15807), (31, 15816), (46, 15930), (49, 15942), (56, 15966), (66, 16017), (74, 16062), (75, 16065), (83, 16131), (93, 16188), (99, 16221), (102, 16251), (103, 16257), (107, 16290), (109, 16302),

Gene: Mopey\_25 Start: 15486, Stop: 16139, Start Num: 9

Candidate Starts for Mopey\_25:

(Start: 9 @15486 has 21 MA's), (36, 15741), (43, 15789), (44, 15801), (64, 15903), (65, 15912), (70, 15942), (89, 16014), (93, 16032), (95, 16044), (98, 16059), (102, 16092),

Gene: MortySmith\_25 Start: 13216, Stop: 13818, Start Num: 16

Candidate Starts for MortySmith\_25:

(Start: 16 @13216 has 31 MA's), (33, 13360), (38, 13384), (53, 13489), (55, 13504), (56, 13507), (58, 13513), (67, 13555), (91, 13666), (99, 13699), (100, 13708), (108, 13771),

Gene: MrMiyagi\_19 Start: 11218, Stop: 12000, Start Num: 2

Candidate Starts for MrMiyagi\_19:

(Start: 2 @11218 has 12 MA's), (4, 11245), (5, 11257), (8, 11299), (12, 11314), (13, 11317), (15, 11338), (18, 11353), (23, 11404), (30, 11482), (34, 11503), (35, 11509), (44, 11572), (61, 11668), (63, 11674), (64, 11677), (66, 11689), (99, 11881), (101, 11899), (103, 11917), (108, 11953), (109, 11962),

Gene: NarutoRun\_27 Start: 14035, Stop: 14679, Start Num: 16

Candidate Starts for NarutoRun\_27:

(Start: 16 @14035 has 31 MA's), (33, 14182), (38, 14206), (48, 14287), (55, 14326), (56, 14329), (67, 14377), (91, 14527), (99, 14560), (100, 14569), (108, 14632),

Gene: Neptune\_27 Start: 14012, Stop: 14656, Start Num: 16

Candidate Starts for Neptune\_27:

(Start: 16 @14012 has 31 MA's), (33, 14159), (38, 14183), (48, 14264), (55, 14303), (56, 14306), (67, 14354), (69, 14366), (91, 14504), (99, 14537), (100, 14546), (108, 14609),

Gene: Nilo\_26 Start: 15920, Stop: 16696, Start Num: 2

Candidate Starts for Nilo\_26:

(Start: 2 @15920 has 12 MA's), (7, 15989), (11, 16019), (28, 16163), (31, 16172), (46, 16286), (49, 16298), (56, 16322), (66, 16373), (74, 16418), (75, 16421), (83, 16487), (93, 16544), (99, 16577), (102, 16607), (103, 16613), (107, 16646), (109, 16658),

Gene: NorManre\_26 Start: 16335, Stop: 16823, Start Num: 22

Candidate Starts for NorManre\_26:

(Start: 22 @16335 has 27 MA's), (33, 16443), (66, 16599), (67, 16602), (68, 16611), (89, 16704), (92, 16719), (98, 16743), (102, 16776), (104, 16785),

Gene: Nova\_25 Start: 15913, Stop: 16566, Start Num: 9

Candidate Starts for Nova\_25:

(Start: 9 @15913 has 21 MA's), (36, 16168), (43, 16216), (44, 16228), (64, 16330), (65, 16339), (70, 16369), (89, 16441), (93, 16459), (95, 16471), (98, 16486), (102, 16519),

Gene: NovaSharks\_24 Start: 14342, Stop: 14818, Start Num: 22

Candidate Starts for NovaSharks\_24:

(Start: 22 @14342 has 27 MA's), (33, 14438), (60, 14570), (66, 14594), (67, 14597), (68, 14606), (89, 14699), (92, 14714), (98, 14738), (102, 14771), (104, 14780),

Gene: Oaker\_24 Start: 15627, Stop: 16172, Start Num: 19

Candidate Starts for Oaker\_24:

(Start: 19 @15627 has 18 MA's), (33, 15747), (37, 15765), (38, 15771), (41, 15792), (45, 15825), (53, 15882), (56, 15900), (60, 15927), (67, 15954), (69, 15966), (81, 16020), (88, 16047), (89, 16056), (92, 16071), (102, 16125),

Gene: OtterstedtS21\_25 Start: 16425, Stop: 16901, Start Num: 22

Candidate Starts for OtterstedtS21\_25:

(Start: 22 @16425 has 27 MA's), (33, 16521), (66, 16677), (67, 16680), (68, 16689), (89, 16782), (92, 16797), (98, 16821), (102, 16854), (104, 16863),

Gene: OverHedge\_27 Start: 14002, Stop: 14646, Start Num: 16

Candidate Starts for OverHedge\_27:

(Start: 16 @14002 has 31 MA's), (33, 14149), (38, 14173), (48, 14254), (55, 14293), (56, 14296), (67, 14344), (78, 14410), (91, 14494), (99, 14527), (100, 14536), (108, 14599),

Gene: PBI1\_25 Start: 15417, Stop: 16070, Start Num: 9

Candidate Starts for PBI1\_25:

(Start: 9 @15417 has 21 MA's), (36, 15672), (43, 15720), (44, 15732), (64, 15834), (65, 15843), (70, 15873), (89, 15945), (93, 15963), (95, 15975), (98, 15990), (102, 16023),

Gene: PLOT\_26 Start: 15489, Stop: 16142, Start Num: 9

Candidate Starts for PLOT\_26:

(Start: 9 @15489 has 21 MA's), (36, 15744), (43, 15792), (44, 15804), (64, 15906), (65, 15915), (70, 15945), (89, 16017), (93, 16035), (95, 16047), (98, 16062), (102, 16095),

Gene: Papyrus\_25 Start: 15582, Stop: 16358, Start Num: 2

Candidate Starts for Papyrus\_25:

(Start: 2 @15582 has 12 MA's), (7, 15651), (11, 15681), (28, 15825), (31, 15834), (49, 15960), (56, 15984), (66, 16035), (74, 16080), (75, 16083), (83, 16149), (93, 16206), (99, 16239), (102, 16269), (103, 16275), (107, 16308), (109, 16320),

Gene: ParvusTarda\_25 Start: 15907, Stop: 16383, Start Num: 22

Candidate Starts for ParvusTarda\_25:

(Start: 22 @15907 has 27 MA's), (33, 16003), (66, 16159), (68, 16171), (89, 16264), (92, 16279), (98, 16303), (102, 16336), (104, 16345),

Gene: Patience\_32 Start: 19282, Stop: 19842, Start Num: 22

Candidate Starts for Patience\_32:

(Start: 22 @19282 has 27 MA's), (33, 19390), (41, 19435), (43, 19450), (60, 19531), (63, 19540), (67, 19558), (82, 19642), (84, 19648), (89, 19675), (90, 19681), (92, 19690), (98, 19711), (102, 19744), (104, 19753), (105, 19762), (106, 19777), (109, 19795),

Gene: Patos\_26 Start: 16335, Stop: 16823, Start Num: 22

Candidate Starts for Patos\_26:

(Start: 22 @16335 has 27 MA's), (33, 16443), (66, 16599), (67, 16602), (68, 16611), (89, 16704), (92, 16719), (98, 16743), (102, 16776), (104, 16785),

Gene: Penelope2018\_25 Start: 15486, Stop: 16139, Start Num: 9

Candidate Starts for Penelope2018\_25:

(Start: 9 @15486 has 21 MA's), (36, 15741), (43, 15789), (44, 15801), (64, 15903), (65, 15912), (70, 15942), (89, 16014), (93, 16032), (95, 16044), (98, 16059), (102, 16092),

Gene: Pharpay\_27 Start: 14057, Stop: 14701, Start Num: 16

Candidate Starts for Pharpay\_27:

(Start: 16 @14057 has 31 MA's), (33, 14204), (38, 14228), (48, 14309), (55, 14348), (56, 14351), (67, 14399), (91, 14549), (99, 14582), (100, 14591), (108, 14654),

Gene: Phreeze\_24 Start: 15370, Stop: 15915, Start Num: 19

Candidate Starts for Phreeze\_24:

(Start: 19 @15370 has 18 MA's), (33, 15490), (37, 15508), (38, 15514), (41, 15535), (45, 15568), (53, 15625), (56, 15643), (60, 15670), (67, 15697), (69, 15709), (81, 15763), (88, 15790), (89, 15799), (92, 15814), (102, 15868),

Gene: PhunaPhoke\_27 Start: 14030, Stop: 14674, Start Num: 16

Candidate Starts for PhunaPhoke\_27:

(Start: 16 @14030 has 31 MA's), (33, 14177), (38, 14201), (48, 14282), (55, 14321), (56, 14324), (67, 14372), (91, 14522), (99, 14555), (100, 14564), (108, 14627),

Gene: Potty\_27 Start: 14035, Stop: 14679, Start Num: 16

Candidate Starts for Potty\_27:

(Start: 16 @14035 has 31 MA's), (33, 14182), (38, 14206), (48, 14287), (55, 14326), (56, 14329), (67, 14377), (91, 14527), (99, 14560), (100, 14569), (108, 14632),

Gene: Poultruss\_26 Start: 13799, Stop: 14443, Start Num: 16

Candidate Starts for Poultruss\_26:

(Start: 16 @13799 has 31 MA's), (33, 13946), (38, 13970), (48, 14051), (55, 14090), (56, 14093), (67, 14141), (91, 14291), (99, 14324), (100, 14333), (108, 14396),

Gene: Prager\_25 Start: 15498, Stop: 16151, Start Num: 9

Candidate Starts for Prager\_25:

(Start: 9 @15498 has 21 MA's), (36, 15753), (43, 15801), (44, 15813), (64, 15915), (65, 15924), (70, 15954), (89, 16026), (93, 16044), (95, 16056), (98, 16071), (102, 16104),

Gene: Predator\_28 Start: 16911, Stop: 17432, Start Num: 19

Candidate Starts for Predator\_28:

(Start: 19 @16911 has 18 MA's), (31, 17016), (33, 17031), (38, 17055), (41, 17076), (60, 17187), (63, 17196), (68, 17223), (75, 17253), (81, 17280), (102, 17385),

Gene: Puissant\_23 Start: 15838, Stop: 16380, Start Num: 19

Candidate Starts for Puissant\_23:

(Start: 19 @15838 has 18 MA's), (33, 15958), (37, 15976), (38, 15982), (41, 16003), (45, 16036), (52, 16087), (53, 16090), (56, 16108), (68, 16171), (81, 16228), (88, 16255), (89, 16264), (92, 16279), (102, 16333),

Gene: Rachella\_27 Start: 14038, Stop: 14682, Start Num: 16

Candidate Starts for Rachella\_27:

(Start: 16 @14038 has 31 MA's), (33, 14185), (38, 14209), (48, 14290), (55, 14329), (56, 14332), (67, 14380), (91, 14530), (99, 14563), (100, 14572), (108, 14635),

Gene: Ranch\_25 Start: 15273, Stop: 15749, Start Num: 22

Candidate Starts for Ranch\_25:

(Start: 22 @15273 has 27 MA's), (33, 15369), (66, 15525), (67, 15528), (68, 15537), (89, 15630), (92, 15645), (98, 15669), (102, 15702), (104, 15711),

Gene: Rie18\_27 Start: 13380, Stop: 14024, Start Num: 16

Candidate Starts for Rie18\_27:

(Start: 16 @13380 has 31 MA's), (33, 13527), (38, 13551), (48, 13632), (55, 13671), (56, 13674), (67, 13722), (91, 13872), (99, 13905), (100, 13914), (108, 13977),

Gene: RikSengupta\_28 Start: 14054, Stop: 14647, Start Num: 16

Candidate Starts for RikSengupta\_28:

(Start: 16 @14054 has 31 MA's), (51, 14309), (55, 14336), (56, 14339), (62, 14369), (72, 14408), (84, 14456), (91, 14495), (92, 14501), (99, 14528), (100, 14537), (108, 14600),

Gene: Riparian\_25 Start: 15381, Stop: 16157, Start Num: 2

Candidate Starts for Riparian\_25:

(Start: 2 @15381 has 12 MA's), (7, 15450), (11, 15480), (28, 15624), (31, 15633), (46, 15747), (49, 15759), (56, 15783), (66, 15834), (74, 15879), (75, 15882), (83, 15948), (93, 16005), (99, 16038), (102, 16068), (103, 16074), (107, 16107), (109, 16119),

Gene: Rope\_25 Start: 15573, Stop: 16349, Start Num: 2

Candidate Starts for Rope\_25:

(Start: 2 @15573 has 12 MA's), (7, 15642), (11, 15672), (28, 15816), (31, 15825), (49, 15951), (56, 15975), (66, 16026), (74, 16071), (75, 16074), (83, 16140), (93, 16197), (99, 16230), (102, 16260), (103, 16266), (107, 16299), (109, 16311),

Gene: Rumi\_24 Start: 14342, Stop: 14818, Start Num: 22

Candidate Starts for Rumi\_24:

(Start: 22 @14342 has 27 MA's), (33, 14438), (60, 14570), (66, 14594), (67, 14597), (68, 14606), (89, 14699), (92, 14714), (98, 14738), (102, 14771), (104, 14780),

Gene: Sadboi\_25 Start: 17103, Stop: 17579, Start Num: 22

Candidate Starts for Sadboi\_25:



(Start: 22 @17103 has 27 MA's), (33, 17199), (66, 17355), (67, 17358), (68, 17367), (89, 17460), (92, 17475), (98, 17499), (102, 17532), (104, 17541),

Gene: Sampudon\_25 Start: 17279, Stop: 17755, Start Num: 22

Candidate Starts for Sampudon\_25:

(Start: 22 @17279 has 27 MA's), (33, 17375), (66, 17531), (67, 17534), (68, 17543), (89, 17636), (98, 17675), (102, 17708), (104, 17717),

Gene: Send513\_25 Start: 15923, Stop: 16699, Start Num: 2

Candidate Starts for Send513\_25:

(Start: 2 @15923 has 12 MA's), (7, 15992), (11, 16022), (28, 16166), (31, 16175), (46, 16289), (49, 16301), (56, 16325), (66, 16376), (74, 16421), (75, 16424), (83, 16490), (93, 16547), (99, 16580), (102, 16610), (103, 16616), (107, 16649), (109, 16661),

Gene: Sienna\_20 Start: 11749, Stop: 12312, Start Num: 19

Candidate Starts for Sienna\_20:

(Start: 19 @11749 has 18 MA's), (26, 11812), (37, 11878), (55, 12004), (58, 12013), (59, 12016), (67, 12055), (94, 12169), (95, 12178), (98, 12187), (102, 12220), (104, 12229),

Gene: SirHarley\_24 Start: 15418, Stop: 16071, Start Num: 9

Candidate Starts for SirHarley\_24:

(Start: 9 @15418 has 21 MA's), (32, 15655), (36, 15673), (38, 15685), (39, 15688), (43, 15721), (44, 15733), (64, 15835), (65, 15844), (68, 15859), (70, 15874), (89, 15946), (93, 15964), (95, 15976), (98, 15991), (102, 16024),

Gene: Snakehole\_28 Start: 13338, Stop: 13940, Start Num: 16

Candidate Starts for Snakehole\_28:

(Start: 16 @13338 has 31 MA's), (33, 13482), (38, 13506), (53, 13611), (55, 13626), (56, 13629), (58, 13635), (91, 13788), (99, 13821), (100, 13830), (108, 13893),

Gene: Sparcetus\_28 Start: 13933, Stop: 14526, Start Num: 16

Candidate Starts for Sparcetus\_28:

(Start: 16 @13933 has 31 MA's), (55, 14215), (56, 14218), (62, 14248), (72, 14287), (84, 14335), (91, 14374), (92, 14380), (99, 14407), (100, 14416), (108, 14479),

Gene: Suzy\_20 Start: 12976, Stop: 13545, Start Num: 19

Candidate Starts for Suzy\_20:

(Start: 19 @12976 has 18 MA's), (24, 13039), (25, 13042), (37, 13111), (55, 13237), (58, 13246), (59, 13249), (67, 13288), (77, 13333), (94, 13402), (95, 13411), (98, 13420), (102, 13453), (104, 13462),

Gene: Tedro\_27 Start: 13508, Stop: 14152, Start Num: 16

Candidate Starts for Tedro\_27:

(Start: 16 @13508 has 31 MA's), (33, 13655), (38, 13679), (48, 13760), (55, 13799), (56, 13802), (67, 13850), (91, 14000), (99, 14033), (100, 14042), (108, 14105),

Gene: Terapin\_20 Start: 11749, Stop: 12312, Start Num: 19

Candidate Starts for Terapin\_20:

(Start: 19 @11749 has 18 MA's), (26, 11812), (37, 11878), (55, 12004), (58, 12013), (59, 12016), (67, 12055), (94, 12169), (95, 12178), (98, 12187), (102, 12220), (104, 12229),

Gene: Thoth\_25 Start: 15483, Stop: 16136, Start Num: 9

Candidate Starts for Thoth\_25:

(Start: 9 @15483 has 21 MA's), (36, 15738), (43, 15786), (44, 15798), (64, 15900), (65, 15909), (70, 15939), (89, 16011), (93, 16029), (95, 16041), (98, 16056), (102, 16089),

Gene: Thumb\_24 Start: 15370, Stop: 15915, Start Num: 19

Candidate Starts for Thumb\_24:

(Start: 19 @15370 has 18 MA's), (33, 15490), (37, 15508), (38, 15514), (41, 15535), (45, 15568), (53, 15625), (56, 15643), (60, 15670), (67, 15697), (69, 15709), (81, 15763), (88, 15790), (89, 15799), (92, 15814), (102, 15868),

Gene: Tillicus\_25 Start: 15652, Stop: 16149, Start Num: 22

Candidate Starts for Tillicus\_25:

(Start: 22 @15652 has 27 MA's), (32, 15757), (33, 15763), (54, 15865), (66, 15925), (89, 16030), (98, 16069), (102, 16102), (104, 16111),

Gene: TinyMiny\_28 Start: 13952, Stop: 14545, Start Num: 16

Candidate Starts for TinyMiny\_28:

(Start: 16 @13952 has 31 MA's), (51, 14207), (55, 14234), (56, 14237), (62, 14267), (72, 14306), (84, 14354), (91, 14393), (92, 14399), (99, 14426), (100, 14435), (108, 14498),

Gene: Troll4\_25 Start: 15487, Stop: 16140, Start Num: 9

Candidate Starts for Troll4\_25:

(Start: 9 @15487 has 21 MA's), (36, 15742), (43, 15790), (44, 15802), (64, 15904), (65, 15913), (70, 15943), (89, 16015), (93, 16033), (95, 16045), (98, 16060), (102, 16093),

Gene: Visconti\_25 Start: 15496, Stop: 16149, Start Num: 9

Candidate Starts for Visconti\_25:

(Start: 9 @15496 has 21 MA's), (36, 15751), (43, 15799), (44, 15811), (64, 15913), (65, 15922), (70, 15952), (89, 16024), (93, 16042), (95, 16054), (98, 16069), (102, 16102),

Gene: WaldoWhy\_26 Start: 15492, Stop: 16145, Start Num: 9

Candidate Starts for WaldoWhy\_26:

(Start: 9 @15492 has 21 MA's), (36, 15747), (43, 15795), (44, 15807), (64, 15909), (65, 15918), (70, 15948), (89, 16020), (93, 16038), (95, 16050), (98, 16065), (102, 16098),

Gene: Weiss13\_25 Start: 15613, Stop: 16389, Start Num: 2

Candidate Starts for Weiss13\_25:

(Start: 2 @15613 has 12 MA's), (7, 15682), (11, 15712), (28, 15856), (31, 15865), (49, 15991), (56, 16015), (66, 16066), (74, 16111), (75, 16114), (83, 16180), (93, 16237), (99, 16270), (102, 16300), (103, 16306), (107, 16339), (109, 16351),

Gene: Wojtek\_24 Start: 15980, Stop: 16456, Start Num: 22

Candidate Starts for Wojtek\_24:

(Start: 22 @15980 has 27 MA's), (33, 16076), (66, 16232), (68, 16244), (89, 16337), (92, 16352), (98, 16376), (102, 16409), (104, 16418),

Gene: Wollypog\_15 Start: 10559, Stop: 11137, Start Num: 16

Candidate Starts for Wollypog\_15:

(Start: 16 @10559 has 31 MA's), (33, 10679), (63, 10859), (64, 10862), (69, 10889), (76, 10919), (80, 10940), (92, 10991), (108, 11090),

Gene: Xenia2\_21 Start: 16000, Stop: 16494, Start Num: 22

Candidate Starts for Xenia2\_21:

(Start: 22 @16000 has 27 MA's), (33, 16108), (68, 16282), (69, 16285), (70, 16297), (89, 16375), (95, 16405), (98, 16414), (104, 16456), (106, 16480),

Gene: Yelo\_25 Start: 15906, Stop: 16682, Start Num: 1

Candidate Starts for Yelo\_25:

(Start: 1 @15906 has 1 MA's), (3, 15921), (7, 15975), (11, 16005), (31, 16158), (46, 16272), (49, 16284), (56, 16308), (66, 16359), (74, 16404), (75, 16407), (83, 16473), (93, 16530), (99, 16563), (102, 16593), (103, 16599), (107, 16632), (109, 16644),

Gene: Yikes\_26 Start: 17364, Stop: 17840, Start Num: 22

Candidate Starts for Yikes\_26:

(Start: 22 @17364 has 27 MA's), (33, 17460), (66, 17616), (67, 17619), (68, 17628), (89, 17721), (92, 17736), (98, 17760), (102, 17793), (104, 17802),

Gene: Zany\_23 Start: 16493, Stop: 16969, Start Num: 22

Candidate Starts for Zany\_23:

(Start: 22 @16493 has 27 MA's), (33, 16589), (66, 16745), (67, 16748), (68, 16757), (89, 16850), (92, 16865), (98, 16889), (102, 16922), (104, 16931),

Gene: Zenon\_26 Start: 15925, Stop: 16701, Start Num: 2

Candidate Starts for Zenon\_26:

(Start: 2 @15925 has 12 MA's), (7, 15994), (11, 16024), (28, 16168), (31, 16177), (46, 16291), (49, 16303), (56, 16327), (66, 16378), (74, 16423), (75, 16426), (83, 16492), (93, 16549), (99, 16582), (102, 16612), (103, 16618), (107, 16651), (109, 16663),