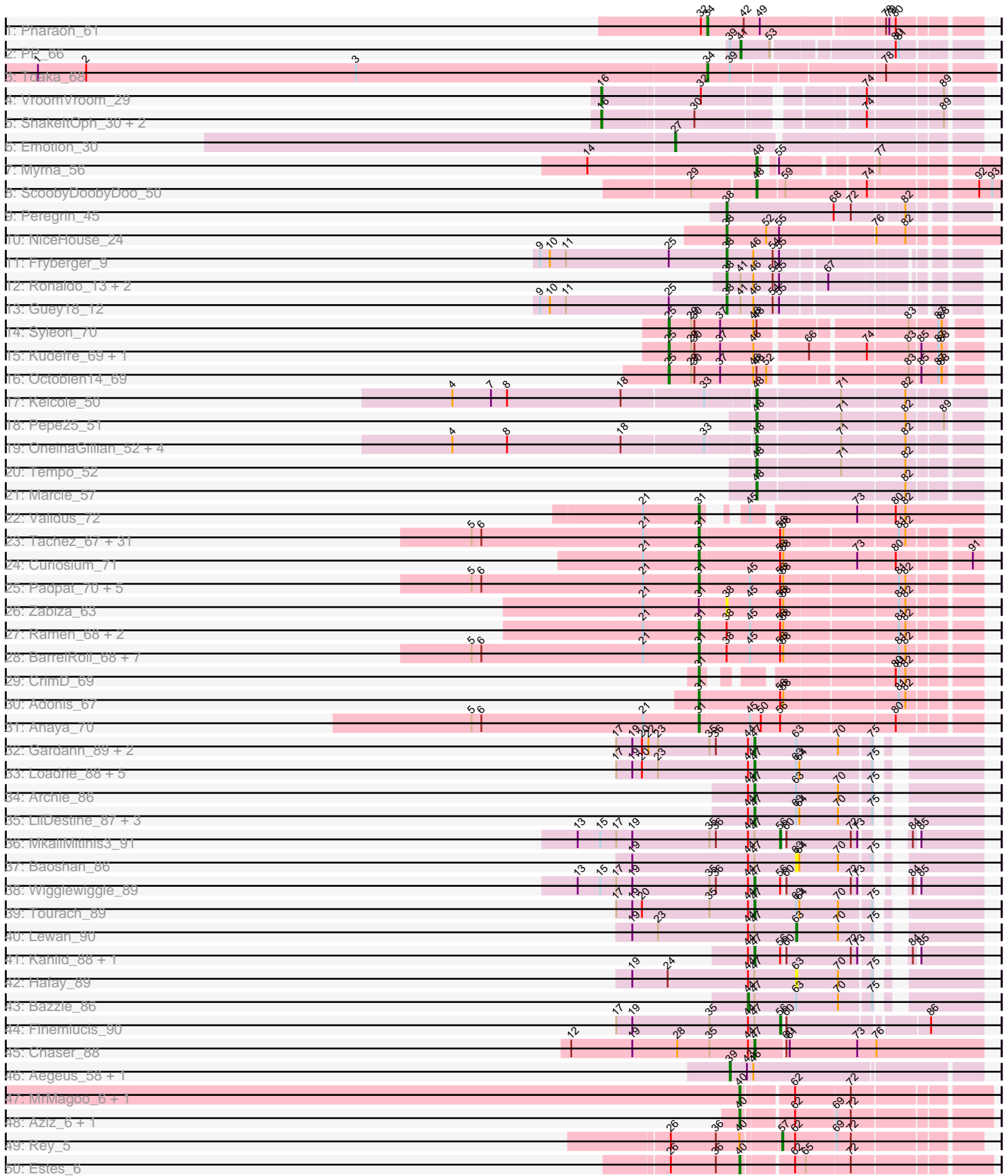


Pham 171307



51: Jace_69

The form consists of a header bar and a series of horizontal lines. The header bar is a thin horizontal strip at the top, containing the text '51: Jace_69' on the left and a color gradient bar on the right. The color gradient bar transitions from light blue to light red. Five vertical tick marks are placed along the gradient bar, each with a number above it: 36 (green), 51 (blue), 60 (red), 80 (red), and 90 (red). Below the header bar, the page is filled with a series of horizontal lines, each starting with a vertical tick mark on the left side, creating a ruled area for writing.

Note: Tracks are now grouped by subcluster and scaled. Switching in subcluster is indicated by changes in track color. Track scale is now set by default to display the region 30 bp upstream of start 1 to 30 bp downstream of the last possible start. If this default region is judged to be packed too tightly with annotated starts, the track will be further scaled to only show that region of the ORF with annotated starts. This action will be indicated by adding "Zoomed" to the title. For starts, yellow indicates the location of called starts comprised solely of Glimmer/GeneMark auto-annotations, green indicates the location of called starts with at least 1 manual gene annotation.

Pham 171307 Report

This analysis was run 07/10/24 on database version 566.

Pham number 171307 has 119 members, 10 are drafts.

Phages represented in each track:

- Track 1 : Pharaoh_61
- Track 2 : PP_66
- Track 3 : Toaka_68
- Track 4 : VroomVroom_29
- Track 5 : ShakeltOph_30, JasmineDragon_29, MiniMommy_30
- Track 6 : Emotion_30
- Track 7 : Myrna_56
- Track 8 : ScoobyDoobyDoo_50
- Track 9 : Peregrin_45
- Track 10 : NiceHouse_24
- Track 11 : Fryberger_9
- Track 12 : Ronaldo_13, Ziko_14, Volt_13
- Track 13 : Guey18_12
- Track 14 : Syleon_70
- Track 15 : Kudrefre_69, Sephiroth_68
- Track 16 : Octobien14_69
- Track 17 : Kelcole_50
- Track 18 : Pepe25_51
- Track 19 : OneinaGillian_52, Romm_54, CandC_51, RobinRose_54, Fregley_53
- Track 20 : Tempo_52
- Track 21 : Marcie_57
- Track 22 : Validus_72
- Track 23 : Tachez_67, BGlluviae_67, Jarvi_67, Twitch_67, Blizzard_67, Atiba_68, Llorens_67, Adephagia_67, Hyperbowlee_67, CaseJules_69, Homura_67, Spock_67, Rosmarinus_67, ShiaSurprise_68, Joy99_67, Boiiii_67, Durfee_67, Piatt_67, Capricorn_67, Peel_67, Belladonna_67, Padfoot_67, Topper_67, Dalmuri_67, Inky_67, Asayake_67, Jeckyll_67, Lunahalos_67, AlishaPH_67, CREW_67, BEEST_67, Geraldini_70
- Track 24 : Curiosium_71
- Track 25 : Padpat_70, Emerson_69, Pokerus_67, QuincyRose_65, Beezoo_69, Ganymede_67
- Track 26 : Zabiza_63
- Track 27 : Ramen_68, ActinUp_67, HedwigODU_67
- Track 28 : BarrelRoll_68, Rapunzel97_69, TruffulaTree_68, Slimphazie_68, Zavala_70, Mynx_69, Jayhawk_69, MeaningOfLife_68
- Track 29 : CrimD_69
- Track 30 : Adonis_67

- Track 31 : Anaya_70
- Track 32 : Gardann_89, Nicholasp3_89, Rumpelstiltskin_85
- Track 33 : Loadrie_88, Faith1_89, Zakai_90, Itos_89, Crossroads_89, Gabriela_89
- Track 34 : Archie_86
- Track 35 : LilDestine_87, GuuelaD_86, Douge_89, ZhongYanYuan_86
- Track 36 : MkaliMitinis3_91
- Track 37 : Baoshan_86
- Track 38 : Wigglewiggle_89
- Track 39 : Tourach_89
- Track 40 : Lewan_90
- Track 41 : Kahlid_88, Wilder_90
- Track 42 : Hafay_89
- Track 43 : Bazzle_86
- Track 44 : Finemlucis_90
- Track 45 : Chaser_88
- Track 46 : Aegeus_58, Baudelaire_58
- Track 47 : MrMagoo_6, GardenSalsa_6
- Track 48 : Aziz_6, GenevaB15_6
- Track 49 : Rey_5
- Track 50 : Estes_6
- Track 51 : Jace_69

Summary of Final Annotations (See graph section above for start numbers):

The start number called the most often in the published annotations is 31, it was called in 52 of the 109 non-draft genes in the pham.

Genes that call this "Most Annotated" start:

- ActinUp_67, Adephagia_67, Adonis_67, AlishaPH_67, Anaya_70, Asayake_67, Atiba_68, BEEST_67, BGIlluviae_67, BarrelRoll_68, Beezoo_69, Belladonna_67, Blizzard_67, Boiiii_67, CREW_67, Capricorn_67, CaseJules_69, CrimD_69, Curiosium_71, Dalmuri_67, Durfee_67, Emerson_69, Ganymede_67, Geraldini_70, HedwigODU_67, Homura_67, Hyperbowlee_67, Inky_67, Jarvi_67, Jayhawk_69, Jeckyll_67, Joy99_67, Llorens_67, Lunahalos_67, MeaningOfLife_68, Mynx_69, Padfoot_67, Padpat_70, Peel_67, Piatt_67, Pokerus_67, QuincyRose_65, Ramen_68, Rapunzel97_69, Rosmarinus_67, ShiaSurprise_68, Slimphazie_68, Spock_67, Tachez_67, Topper_67, TruffulaTree_68, Twitch_67, Validus_72, Zavala_70,

Genes that have the "Most Annotated" start but do not call it:

- Zabiza_63,

Genes that do not have the "Most Annotated" start:

- Aegeus_58, Archie_86, Aziz_6, Baoshan_86, Baudelaire_58, Bazzle_86, CandC_51, Chaser_88, Crossroads_89, Douge_89, Emotion_30, Estes_6, Faith1_89, Finemlucis_90, Fregley_53, Fryberger_9, Gabriela_89, Gardann_89, GardenSalsa_6, GenevaB15_6, Guey18_12, GuuelaD_86, Hafay_89, Itos_89, Jace_69, JasmineDragon_29, Kahlid_88, Kelcole_50, Kudfre_69, Lewan_90, LilDestine_87, Loadrie_88, Marcie_57, MiniMommy_30, MkaliMitinis3_91, MrMagoo_6, Myrna_56, NiceHouse_24, Nicholasp3_89, Octobien14_69,

OneinaGillian_52, PP_66, Pepe25_51, Peregrin_45, Pharaoh_61, Rey_5, RobinRose_54, Romm_54, Ronaldo_13, Rumpelstiltskin_85, ScoobyDoobyDoo_50, Sephiroth_68, ShakeltOph_30, Syleon_70, Tempo_52, Toaka_68, Tourach_89, Volt_13, VroomVroom_29, Wigglewiggles_89, Wilder_90, Zakai_90, ZhongYanYuan_86, Ziko_14,

Summary by start number:

Start 16:

- Found in 4 of 119 (3.4%) of genes in pham
- Manual Annotations of this start: 2 of 109
- Called 100.0% of time when present
- Phage (with cluster) where this start called: JasmineDragon_29 (AZ4), MiniMommy_30 (AZ4), ShakeltOph_30 (AZ4), VroomVroom_29 (AZ4),

Start 25:

- Found in 6 of 119 (5.0%) of genes in pham
- Manual Annotations of this start: 4 of 109
- Called 66.7% of time when present
- Phage (with cluster) where this start called: Kudrefre_69 (DU1), Octobien14_69 (DU1), Sephiroth_68 (DU1), Syleon_70 (DU1),

Start 27:

- Found in 1 of 119 (0.8%) of genes in pham
- Manual Annotations of this start: 1 of 109
- Called 100.0% of time when present
- Phage (with cluster) where this start called: Emotion_30 (AZ4),

Start 31:

- Found in 55 of 119 (46.2%) of genes in pham
- Manual Annotations of this start: 52 of 109
- Called 98.2% of time when present
- Phage (with cluster) where this start called: ActinUp_67 (K1), Adephegia_67 (K1), Adonis_67 (K1), AlishaPH_67 (K1), Anaya_70 (K1), Asayake_67 (K1), Atiba_68 (K1), BEEST_67 (K1), BGlluviae_67 (K1), BarrelRoll_68 (K1), Beezoo_69 (K1), Belladonna_67 (K1), Blizzard_67 (K1), Boiii_67 (K1), CREW_67 (K1), Capricorn_67 (K1), CaseJules_69 (K1), CrimD_69 (K1), Curiosium_71 (K1), Dalmuri_67 (K1), Durfee_67 (K1), Emerson_69 (K1), Ganymede_67 (K1), Geraldini_70 (K1), HedwigODU_67 (K1), Homura_67 (K1), Hyperbowlee_67 (K1), Inky_67 (K1), Jarvi_67 (K1), Jayhawk_69 (K1), Jeckyll_67 (K1), Joy99_67 (K1), Llorens_67 (K1), Lunahalos_67 (K1), MeaningOfLife_68 (K1), Mynx_69 (K1), Padfoot_67 (K1), Padpat_70 (K1), Peel_67 (K1), Piatt_67 (K1), Pokerus_67 (K1), QuincyRose_65 (K1), Ramen_68 (K1), Rapunzel97_69 (K1), Rosmarinus_67 (K1), ShiaSurprise_68 (K1), Slimphazie_68 (K1), Spock_67 (K1), Tachez_67 (K1), Topper_67 (K1), TruffulaTree_68 (K1), Twitch_67 (K1), Validus_72 (K1), Zavala_70 (K1),

Start 34:

- Found in 2 of 119 (1.7%) of genes in pham
- Manual Annotations of this start: 2 of 109
- Called 100.0% of time when present
- Phage (with cluster) where this start called: Pharaoh_61 (A12), Toaka_68 (A9),

Start 36:

- Found in 8 of 119 (6.7%) of genes in pham
- Manual Annotations of this start: 1 of 109
- Called 12.5% of time when present
- Phage (with cluster) where this start called: Jace_69 (singleton),

Start 38:

- Found in 19 of 119 (16.0%) of genes in pham
- Manual Annotations of this start: 7 of 109
- Called 42.1% of time when present
- Phage (with cluster) where this start called: Fryberger_9 (DP), Guey18_12 (DP), NiceHouse_24 (CE), Peregrin_45 (CB), Ronaldo_13 (DP), Volt_13 (DP), Zabiza_63 (K1), Ziko_14 (DP),

Start 39:

- Found in 4 of 119 (3.4%) of genes in pham
- Manual Annotations of this start: 2 of 109
- Called 50.0% of time when present
- Phage (with cluster) where this start called: Aegeus_58 (L5), Baudelaire_58 (L5),

Start 40:

- Found in 6 of 119 (5.0%) of genes in pham
- Manual Annotations of this start: 5 of 109
- Called 83.3% of time when present
- Phage (with cluster) where this start called: Aziz_6 (M2), Estes_6 (M2), GardenSalsa_6 (M2), GenevaB15_6 (M2), MrMagoo_6 (M2),

Start 41:

- Found in 5 of 119 (4.2%) of genes in pham
- Manual Annotations of this start: 1 of 109
- Called 20.0% of time when present
- Phage (with cluster) where this start called: PP_66 (A7),

Start 44:

- Found in 25 of 119 (21.0%) of genes in pham
- Manual Annotations of this start: 1 of 109
- Called 4.0% of time when present
- Phage (with cluster) where this start called: Bazzle_86 (L2),

Start 47:

- Found in 25 of 119 (21.0%) of genes in pham
- Manual Annotations of this start: 17 of 109
- Called 76.0% of time when present
- Phage (with cluster) where this start called: Archie_86 (L2), Chaser_88 (L4), Crossroads_89 (L2), Douge_89 (L4), Faith1_89 (L2), Gabriela_89 (L2), Gardann_89 (L2), GuuelaD_86 (L2), Itos_89 (L2), Kahlid_88 (L2), LilDestine_87 (L2), Loadrie_88 (L2), Nicholasp3_89 (L2), Rumpelstilskin_85 (L2), Tourach_89 (L2), Wigglewiggles_89 (L2), Wilder_90 (L2), Zakai_90 (L2), ZhongYanYuan_86 (L2),

Start 48:

- Found in 13 of 119 (10.9%) of genes in pham
- Manual Annotations of this start: 10 of 109
- Called 84.6% of time when present

- Phage (with cluster) where this start called: CandC_51 (EG), Fregley_53 (EG), Kelcole_50 (EG), Marcie_57 (EG), Myrna_56 (C2), OneinaGillian_52 (EG), Pepe25_51 (EG), RobinRose_54 (EG), Romm_54 (EG), ScoobyDoobyDoo_50 (C2), Tempo_52 (EG),

Start 56:

- Found in 58 of 119 (48.7%) of genes in pham
- Manual Annotations of this start: 2 of 109
- Called 3.4% of time when present
- Phage (with cluster) where this start called: Finemlucis_90 (L2), MkaliMitinis3_91 (L2),

Start 57:

- Found in 1 of 119 (0.8%) of genes in pham
- Manual Annotations of this start: 1 of 109
- Called 100.0% of time when present
- Phage (with cluster) where this start called: Rey_5 (M2),

Start 63:

- Found in 19 of 119 (16.0%) of genes in pham
- Manual Annotations of this start: 1 of 109
- Called 15.8% of time when present
- Phage (with cluster) where this start called: Baoshan_86 (L2), Hafay_89 (L2), Lewan_90 (L2),

Summary by clusters:

There are 16 clusters represented in this pham: singleton, A12, CB, EG, DU1, CE, L4, K1, L5, L2, A7, M2, A9, C2, AZ4, DP,

Info for manual annotations of cluster A12:

- Start number 34 was manually annotated 1 time for cluster A12.

Info for manual annotations of cluster A7:

- Start number 41 was manually annotated 1 time for cluster A7.

Info for manual annotations of cluster A9:

- Start number 34 was manually annotated 1 time for cluster A9.

Info for manual annotations of cluster AZ4:

- Start number 16 was manually annotated 2 times for cluster AZ4.
- Start number 27 was manually annotated 1 time for cluster AZ4.

Info for manual annotations of cluster C2:

- Start number 48 was manually annotated 2 times for cluster C2.

Info for manual annotations of cluster CB:

- Start number 38 was manually annotated 1 time for cluster CB.

Info for manual annotations of cluster CE:

- Start number 38 was manually annotated 1 time for cluster CE.

Info for manual annotations of cluster DP:

- Start number 38 was manually annotated 5 times for cluster DP.

Info for manual annotations of cluster DU1:

- Start number 25 was manually annotated 4 times for cluster DU1.

Info for manual annotations of cluster EG:

- Start number 48 was manually annotated 8 times for cluster EG.

Info for manual annotations of cluster K1:

- Start number 31 was manually annotated 52 times for cluster K1.

Info for manual annotations of cluster L2:

- Start number 44 was manually annotated 1 time for cluster L2.
- Start number 47 was manually annotated 16 times for cluster L2.
- Start number 56 was manually annotated 2 times for cluster L2.
- Start number 63 was manually annotated 1 time for cluster L2.

Info for manual annotations of cluster L4:

- Start number 47 was manually annotated 1 time for cluster L4.

Info for manual annotations of cluster L5:

- Start number 39 was manually annotated 2 times for cluster L5.

Info for manual annotations of cluster M2:

- Start number 40 was manually annotated 5 times for cluster M2.
- Start number 57 was manually annotated 1 time for cluster M2.

Gene Information:

Gene: ActinUp_67 Start: 43706, Stop: 43945, Start Num: 31

Candidate Starts for ActinUp_67:

(21, 43655), (Start: 31 @43706 has 52 MA's), (Start: 38 @43730 has 7 MA's), (45, 43751), (Start: 56 @43778 has 2 MA's), (58, 43781), (81, 43880), (82, 43886),

Gene: Adephagia_67 Start: 43743, Stop: 43982, Start Num: 31

Candidate Starts for Adephagia_67:

(5, 43533), (6, 43542), (21, 43692), (Start: 31 @43743 has 52 MA's), (Start: 56 @43815 has 2 MA's), (58, 43818), (81, 43917), (82, 43923),

Gene: Adonis_67 Start: 43978, Stop: 44217, Start Num: 31

Candidate Starts for Adonis_67:

(Start: 31 @43978 has 52 MA's), (Start: 56 @44050 has 2 MA's), (58, 44053), (81, 44152), (82, 44158),

Gene: Aegeus_58 Start: 40986, Stop: 41207, Start Num: 39

Candidate Starts for Aegeus_58:

(Start: 39 @40986 has 2 MA's), (43, 41001), (46, 41007),

Gene: AlishaPH_67 Start: 44004, Stop: 44243, Start Num: 31

Candidate Starts for AlishaPH_67:

(5, 43794), (6, 43803), (21, 43953), (Start: 31 @44004 has 52 MA's), (Start: 56 @44076 has 2 MA's), (58, 44079), (81, 44178), (82, 44184),

Gene: Anaya_70 Start: 44697, Stop: 44936, Start Num: 31

Candidate Starts for Anaya_70:

(5, 44487), (6, 44496), (21, 44646), (Start: 31 @44697 has 52 MA's), (45, 44742), (50, 44751), (Start: 56 @44769 has 2 MA's), (80, 44868),

Gene: Archie_86 Start: 57063, Stop: 57242, Start Num: 47

Candidate Starts for Archie_86:

(Start: 44 @57057 has 1 MA's), (Start: 47 @57063 has 17 MA's), (Start: 63 @57102 has 1 MA's), (70, 57141), (75, 57168),

Gene: Asayake_67 Start: 44058, Stop: 44297, Start Num: 31

Candidate Starts for Asayake_67:

(5, 43848), (6, 43857), (21, 44007), (Start: 31 @44058 has 52 MA's), (Start: 56 @44130 has 2 MA's), (58, 44133), (81, 44232), (82, 44238),

Gene: Atiba_68 Start: 43706, Stop: 43945, Start Num: 31

Candidate Starts for Atiba_68:

(5, 43496), (6, 43505), (21, 43655), (Start: 31 @43706 has 52 MA's), (Start: 56 @43778 has 2 MA's), (58, 43781), (81, 43880), (82, 43886),

Gene: Aziz_6 Start: 2394, Stop: 2188, Start Num: 40

Candidate Starts for Aziz_6:

(Start: 40 @2394 has 5 MA's), (62, 2352), (69, 2316), (72, 2304),

Gene: BEEST_67 Start: 44058, Stop: 44297, Start Num: 31

Candidate Starts for BEEST_67:

(5, 43848), (6, 43857), (21, 44007), (Start: 31 @44058 has 52 MA's), (Start: 56 @44130 has 2 MA's), (58, 44133), (81, 44232), (82, 44238),

Gene: BGlluviae_67 Start: 43861, Stop: 44100, Start Num: 31

Candidate Starts for BGlluviae_67:

(5, 43651), (6, 43660), (21, 43810), (Start: 31 @43861 has 52 MA's), (Start: 56 @43933 has 2 MA's), (58, 43936), (81, 44035), (82, 44041),

Gene: Baoshan_86 Start: 57756, Stop: 57896, Start Num: 63

Candidate Starts for Baoshan_86:

(19, 57603), (Start: 44 @57711 has 1 MA's), (Start: 47 @57717 has 17 MA's), (Start: 63 @57756 has 1 MA's), (64, 57759), (70, 57795), (75, 57822),

Gene: BarrelRoll_68 Start: 44144, Stop: 44383, Start Num: 31

Candidate Starts for BarrelRoll_68:

(5, 43934), (6, 43943), (21, 44093), (Start: 31 @44144 has 52 MA's), (Start: 38 @44168 has 7 MA's), (45, 44189), (Start: 56 @44216 has 2 MA's), (58, 44219), (81, 44318), (82, 44324),

Gene: Baudelaire_58 Start: 40986, Stop: 41207, Start Num: 39

Candidate Starts for Baudelaire_58:

(Start: 39 @40986 has 2 MA's), (43, 41001), (46, 41007),

Gene: Bazzle_86 Start: 57613, Stop: 57798, Start Num: 44

Candidate Starts for Bazzle_86:

(Start: 44 @57613 has 1 MA's), (Start: 47 @57619 has 17 MA's), (Start: 63 @57658 has 1 MA's), (70, 57697), (75, 57724),

Gene: Beezoo_69 Start: 44656, Stop: 44895, Start Num: 31

Candidate Starts for Beezoo_69:

(5, 44446), (6, 44455), (21, 44605), (Start: 31 @44656 has 52 MA's), (45, 44701), (Start: 56 @44728 has 2 MA's), (58, 44731), (81, 44830), (82, 44836),

Gene: Belladonna_67 Start: 43861, Stop: 44100, Start Num: 31

Candidate Starts for Belladonna_67:

(5, 43651), (6, 43660), (21, 43810), (Start: 31 @43861 has 52 MA's), (Start: 56 @43933 has 2 MA's), (58, 43936), (81, 44035), (82, 44041),

Gene: Blizzard_67 Start: 44058, Stop: 44297, Start Num: 31

Candidate Starts for Blizzard_67:

(5, 43848), (6, 43857), (21, 44007), (Start: 31 @44058 has 52 MA's), (Start: 56 @44130 has 2 MA's), (58, 44133), (81, 44232), (82, 44238),

Gene: Boiiii_67 Start: 44060, Stop: 44299, Start Num: 31

Candidate Starts for Boiiii_67:

(5, 43850), (6, 43859), (21, 44009), (Start: 31 @44060 has 52 MA's), (Start: 56 @44132 has 2 MA's), (58, 44135), (81, 44234), (82, 44240),

Gene: CREW_67 Start: 43861, Stop: 44100, Start Num: 31

Candidate Starts for CREW_67:

(5, 43651), (6, 43660), (21, 43810), (Start: 31 @43861 has 52 MA's), (Start: 56 @43933 has 2 MA's), (58, 43936), (81, 44035), (82, 44041),

Gene: CandC_51 Start: 36309, Stop: 36118, Start Num: 48

Candidate Starts for CandC_51:

(4, 36582), (8, 36531), (18, 36426), (33, 36351), (Start: 48 @36309 has 10 MA's), (71, 36234), (82, 36177),

Gene: Capricorn_67 Start: 43861, Stop: 44100, Start Num: 31

Candidate Starts for Capricorn_67:

(5, 43651), (6, 43660), (21, 43810), (Start: 31 @43861 has 52 MA's), (Start: 56 @43933 has 2 MA's), (58, 43936), (81, 44035), (82, 44041),

Gene: CaseJules_69 Start: 44058, Stop: 44297, Start Num: 31

Candidate Starts for CaseJules_69:

(5, 43848), (6, 43857), (21, 44007), (Start: 31 @44058 has 52 MA's), (Start: 56 @44130 has 2 MA's), (58, 44133), (81, 44232), (82, 44238),

Gene: Chaser_88 Start: 56443, Stop: 56652, Start Num: 47

Candidate Starts for Chaser_88:

(12, 56272), (19, 56329), (28, 56371), (35, 56401), (Start: 44 @56437 has 1 MA's), (Start: 47 @56443 has 17 MA's), (60, 56470), (61, 56473), (73, 56536), (76, 56554),

Gene: CrimD_69 Start: 44683, Stop: 44892, Start Num: 31

Candidate Starts for CrimD_69:

(Start: 31 @44683 has 52 MA's), (80, 44824), (81, 44827), (82, 44833),

Gene: Crossroads_89 Start: 57560, Stop: 57739, Start Num: 47

Candidate Starts for Crossroads_89:

(17, 57431), (19, 57446), (20, 57455), (23, 57470), (Start: 44 @57554 has 1 MA's), (Start: 47 @57560 has 17 MA's), (Start: 63 @57599 has 1 MA's), (64, 57602), (75, 57665),

Gene: Curiosium_71 Start: 43377, Stop: 43622, Start Num: 31

Candidate Starts for Curiosium_71:

(21, 43326), (Start: 31 @43377 has 52 MA's), (Start: 56 @43449 has 2 MA's), (58, 43452), (73, 43521), (80, 43554), (91, 43614),

Gene: Dalmuri_67 Start: 43861, Stop: 44100, Start Num: 31

Candidate Starts for Dalmuri_67:

(5, 43651), (6, 43660), (21, 43810), (Start: 31 @43861 has 52 MA's), (Start: 56 @43933 has 2 MA's), (58, 43936), (81, 44035), (82, 44041),

Gene: Douge_89 Start: 56768, Stop: 56947, Start Num: 47

Candidate Starts for Douge_89:

(Start: 44 @56762 has 1 MA's), (Start: 47 @56768 has 17 MA's), (Start: 63 @56807 has 1 MA's), (64, 56810), (70, 56846), (75, 56873),

Gene: Durfee_67 Start: 44058, Stop: 44297, Start Num: 31

Candidate Starts for Durfee_67:

(5, 43848), (6, 43857), (21, 44007), (Start: 31 @44058 has 52 MA's), (Start: 56 @44130 has 2 MA's), (58, 44133), (81, 44232), (82, 44238),

Gene: Emerson_69 Start: 44178, Stop: 44417, Start Num: 31

Candidate Starts for Emerson_69:

(5, 43968), (6, 43977), (21, 44127), (Start: 31 @44178 has 52 MA's), (45, 44223), (Start: 56 @44250 has 2 MA's), (58, 44253), (81, 44352), (82, 44358),

Gene: Emotion_30 Start: 23341, Stop: 23598, Start Num: 27

Candidate Starts for Emotion_30:

(Start: 27 @23341 has 1 MA's),

Gene: Estes_6 Start: 2402, Stop: 2196, Start Num: 40

Candidate Starts for Estes_6:

(26, 2465), (Start: 36 @2423 has 1 MA's), (Start: 40 @2402 has 5 MA's), (62, 2360), (65, 2351), (72, 2312),

Gene: Faith1_89 Start: 57485, Stop: 57664, Start Num: 47

Candidate Starts for Faith1_89:

(17, 57356), (19, 57371), (20, 57380), (23, 57395), (Start: 44 @57479 has 1 MA's), (Start: 47 @57485 has 17 MA's), (Start: 63 @57524 has 1 MA's), (64, 57527), (75, 57590),

Gene: Finemlucis_90 Start: 58613, Stop: 58783, Start Num: 56

Candidate Starts for Finemlucis_90:

(17, 58460), (19, 58475), (35, 58547), (Start: 44 @58583 has 1 MA's), (Start: 47 @58589 has 17 MA's), (Start: 56 @58613 has 2 MA's), (60, 58616), (86, 58736),

Gene: Fregley_53 Start: 36870, Stop: 36679, Start Num: 48

Candidate Starts for Fregley_53:

(4, 37143), (8, 37092), (18, 36987), (33, 36912), (Start: 48 @36870 has 10 MA's), (71, 36795), (82, 36738),

Gene: Fryberger_9 Start: 2013, Stop: 1810, Start Num: 38

Candidate Starts for Fryberger_9:

(9, 2187), (10, 2178), (11, 2163), (Start: 25 @2067 has 4 MA's), (Start: 38 @2013 has 7 MA's), (46, 1989), (54, 1971), (55, 1965),

Gene: Gabriela_89 Start: 56831, Stop: 57010, Start Num: 47

Candidate Starts for Gabriela_89:

(17, 56702), (19, 56717), (20, 56726), (23, 56741), (Start: 44 @56825 has 1 MA's), (Start: 47 @56831 has 17 MA's), (Start: 63 @56870 has 1 MA's), (64, 56873), (75, 56936),

Gene: Ganymede_67 Start: 44084, Stop: 44323, Start Num: 31

Candidate Starts for Ganymede_67:

(5, 43874), (6, 43883), (21, 44033), (Start: 31 @44084 has 52 MA's), (45, 44129), (Start: 56 @44156 has 2 MA's), (58, 44159), (81, 44258), (82, 44264),

Gene: Gardann_89 Start: 57320, Stop: 57499, Start Num: 47

Candidate Starts for Gardann_89:

(17, 57191), (19, 57206), (20, 57215), (22, 57221), (23, 57230), (35, 57278), (Start: 36 @57284 has 1 MA's), (Start: 44 @57314 has 1 MA's), (Start: 47 @57320 has 17 MA's), (Start: 63 @57359 has 1 MA's), (70, 57398), (75, 57425),

Gene: GardenSalsa_6 Start: 2415, Stop: 2209, Start Num: 40

Candidate Starts for GardenSalsa_6:

(Start: 40 @2415 has 5 MA's), (62, 2373), (72, 2325),

Gene: GenevaB15_6 Start: 2394, Stop: 2188, Start Num: 40

Candidate Starts for GenevaB15_6:

(Start: 40 @2394 has 5 MA's), (62, 2352), (69, 2316), (72, 2304),

Gene: Geraldini_70 Start: 44740, Stop: 44979, Start Num: 31

Candidate Starts for Geraldini_70:

(5, 44530), (6, 44539), (21, 44689), (Start: 31 @44740 has 52 MA's), (Start: 56 @44812 has 2 MA's), (58, 44815), (81, 44914), (82, 44920),

Gene: Guey18_12 Start: 2707, Stop: 2504, Start Num: 38

Candidate Starts for Guey18_12:

(9, 2881), (10, 2872), (11, 2857), (Start: 25 @2761 has 4 MA's), (Start: 38 @2707 has 7 MA's), (Start: 41 @2695 has 1 MA's), (46, 2683), (54, 2665), (55, 2659),

Gene: GuuelaD_86 Start: 57444, Stop: 57623, Start Num: 47

Candidate Starts for GuuelaD_86:

(Start: 44 @57438 has 1 MA's), (Start: 47 @57444 has 17 MA's), (Start: 63 @57483 has 1 MA's), (64, 57486), (70, 57522), (75, 57549),

Gene: Hafay_89 Start: 57435, Stop: 57575, Start Num: 63

Candidate Starts for Hafay_89:

(19, 57282), (24, 57315), (Start: 44 @57390 has 1 MA's), (Start: 47 @57396 has 17 MA's), (Start: 63 @57435 has 1 MA's), (70, 57474), (75, 57501),

Gene: HedwigODU_67 Start: 43706, Stop: 43945, Start Num: 31

Candidate Starts for HedwigODU_67:

(21, 43655), (Start: 31 @43706 has 52 MA's), (Start: 38 @43730 has 7 MA's), (45, 43751), (Start: 56 @43778 has 2 MA's), (58, 43781), (81, 43880), (82, 43886),

Gene: Homura_67 Start: 43861, Stop: 44100, Start Num: 31

Candidate Starts for Homura_67:

(5, 43651), (6, 43660), (21, 43810), (Start: 31 @43861 has 52 MA's), (Start: 56 @43933 has 2 MA's), (58, 43936), (81, 44035), (82, 44041),

Gene: Hyperbowlee_67 Start: 44058, Stop: 44297, Start Num: 31

Candidate Starts for Hyperbowlee_67:

(5, 43848), (6, 43857), (21, 44007), (Start: 31 @44058 has 52 MA's), (Start: 56 @44130 has 2 MA's), (58, 44133), (81, 44232), (82, 44238),

Gene: Inky_67 Start: 43861, Stop: 44100, Start Num: 31

Candidate Starts for Inky_67:

(5, 43651), (6, 43660), (21, 43810), (Start: 31 @43861 has 52 MA's), (Start: 56 @43933 has 2 MA's), (58, 43936), (81, 44035), (82, 44041),

Gene: Itos_89 Start: 56391, Stop: 56570, Start Num: 47

Candidate Starts for Itos_89:

(17, 56262), (19, 56277), (20, 56286), (23, 56301), (Start: 44 @56385 has 1 MA's), (Start: 47 @56391 has 17 MA's), (Start: 63 @56430 has 1 MA's), (64, 56433), (75, 56496),

Gene: Jace_69 Start: 40976, Stop: 41194, Start Num: 36

Candidate Starts for Jace_69:

(Start: 36 @40976 has 1 MA's), (51, 41009), (60, 41030), (80, 41126), (90, 41180),

Gene: Jarvi_67 Start: 43861, Stop: 44100, Start Num: 31

Candidate Starts for Jarvi_67:

(5, 43651), (6, 43660), (21, 43810), (Start: 31 @43861 has 52 MA's), (Start: 56 @43933 has 2 MA's), (58, 43936), (81, 44035), (82, 44041),

Gene: JasmineDragon_29 Start: 22315, Stop: 22620, Start Num: 16

Candidate Starts for JasmineDragon_29:

(Start: 16 @22315 has 2 MA's), (30, 22396), (74, 22528), (89, 22591),

Gene: Jayhawk_69 Start: 44204, Stop: 44443, Start Num: 31

Candidate Starts for Jayhawk_69:

(5, 43994), (6, 44003), (21, 44153), (Start: 31 @44204 has 52 MA's), (Start: 38 @44228 has 7 MA's), (45, 44249), (Start: 56 @44276 has 2 MA's), (58, 44279), (81, 44378), (82, 44384),

Gene: Jeckyll_67 Start: 43861, Stop: 44100, Start Num: 31

Candidate Starts for Jeckyll_67:

(5, 43651), (6, 43660), (21, 43810), (Start: 31 @43861 has 52 MA's), (Start: 56 @43933 has 2 MA's), (58, 43936), (81, 44035), (82, 44041),

Gene: Joy99_67 Start: 43790, Stop: 44029, Start Num: 31

Candidate Starts for Joy99_67:

(5, 43580), (6, 43589), (21, 43739), (Start: 31 @43790 has 52 MA's), (Start: 56 @43862 has 2 MA's), (58, 43865), (81, 43964), (82, 43970),

Gene: Kahlid_88 Start: 57250, Stop: 57417, Start Num: 47

Candidate Starts for Kahlid_88:

(Start: 44 @57244 has 1 MA's), (Start: 47 @57250 has 17 MA's), (Start: 56 @57274 has 2 MA's), (60, 57277), (72, 57337), (73, 57343), (84, 57361), (85, 57364),

Gene: Kelcole_50 Start: 36504, Stop: 36310, Start Num: 48

Candidate Starts for Kelcole_50:

(4, 36777), (7, 36741), (8, 36726), (18, 36621), (33, 36546), (Start: 48 @36504 has 10 MA's), (71, 36429), (82, 36372),

Gene: Kudrefre_69 Start: 44258, Stop: 44521, Start Num: 25

Candidate Starts for Kudrefre_69:

(Start: 25 @44258 has 4 MA's), (29, 44279), (30, 44282), (37, 44306), (46, 44336), (66, 44381), (74, 44429), (83, 44465), (85, 44474), (87, 44489), (88, 44492),

Gene: Lewan_90 Start: 57483, Stop: 57623, Start Num: 63

Candidate Starts for Lewan_90:

(19, 57330), (23, 57354), (Start: 44 @57438 has 1 MA's), (Start: 47 @57444 has 17 MA's), (Start: 63 @57483 has 1 MA's), (70, 57522), (75, 57549),

Gene: LilDestine_87 Start: 57157, Stop: 57336, Start Num: 47

Candidate Starts for LilDestine_87:

(Start: 44 @57151 has 1 MA's), (Start: 47 @57157 has 17 MA's), (Start: 63 @57196 has 1 MA's), (64, 57199), (70, 57235), (75, 57262),

Gene: Llorens_67 Start: 43861, Stop: 44100, Start Num: 31

Candidate Starts for Llorens_67:

(5, 43651), (6, 43660), (21, 43810), (Start: 31 @43861 has 52 MA's), (Start: 56 @43933 has 2 MA's), (58, 43936), (81, 44035), (82, 44041),

Gene: Loadrie_88 Start: 57652, Stop: 57831, Start Num: 47

Candidate Starts for Loadrie_88:

(17, 57523), (19, 57538), (20, 57547), (23, 57562), (Start: 44 @57646 has 1 MA's), (Start: 47 @57652 has 17 MA's), (Start: 63 @57691 has 1 MA's), (64, 57694), (75, 57757),

Gene: Lunahalos_67 Start: 43861, Stop: 44100, Start Num: 31

Candidate Starts for Lunahalos_67:

(5, 43651), (6, 43660), (21, 43810), (Start: 31 @43861 has 52 MA's), (Start: 56 @43933 has 2 MA's), (58, 43936), (81, 44035), (82, 44041),

Gene: Marcie_57 Start: 37372, Stop: 37181, Start Num: 48

Candidate Starts for Marcie_57:

(Start: 48 @37372 has 10 MA's), (82, 37240),

Gene: MeaningOfLife_68 Start: 44613, Stop: 44852, Start Num: 31

Candidate Starts for MeaningOfLife_68:

(5, 44403), (6, 44412), (21, 44562), (Start: 31 @44613 has 52 MA's), (Start: 38 @44637 has 7 MA's), (45, 44658), (Start: 56 @44685 has 2 MA's), (58, 44688), (81, 44787), (82, 44793),

Gene: MiniMommy_30 Start: 22316, Stop: 22621, Start Num: 16

Candidate Starts for MiniMommy_30:

(Start: 16 @22316 has 2 MA's), (30, 22397), (74, 22529), (89, 22592),

Gene: MkaliMitinis3_91 Start: 57639, Stop: 57782, Start Num: 56

Candidate Starts for MkaliMitinis3_91:

(13, 57450), (15, 57471), (17, 57486), (19, 57501), (35, 57573), (Start: 36 @57579 has 1 MA's), (Start: 44 @57609 has 1 MA's), (Start: 47 @57615 has 17 MA's), (Start: 56 @57639 has 2 MA's), (60,

57642), (72, 57702), (73, 57708), (84, 57726), (85, 57729),

Gene: MrMagoo_6 Start: 2415, Stop: 2209, Start Num: 40

Candidate Starts for MrMagoo_6:

(Start: 40 @2415 has 5 MA's), (62, 2373), (72, 2325),

Gene: Mynx_69 Start: 44473, Stop: 44712, Start Num: 31

Candidate Starts for Mynx_69:

(5, 44263), (6, 44272), (21, 44422), (Start: 31 @44473 has 52 MA's), (Start: 38 @44497 has 7 MA's), (45, 44518), (Start: 56 @44545 has 2 MA's), (58, 44548), (81, 44647), (82, 44653),

Gene: Myrna_56 Start: 22168, Stop: 22353, Start Num: 48

Candidate Starts for Myrna_56:

(14, 22015), (Start: 48 @22168 has 10 MA's), (55, 22177), (77, 22255),

Gene: NiceHouse_24 Start: 11340, Stop: 11110, Start Num: 38

Candidate Starts for NiceHouse_24:

(Start: 38 @11340 has 7 MA's), (52, 11304), (55, 11292), (76, 11208), (82, 11181),

Gene: Nicholasp3_89 Start: 57320, Stop: 57499, Start Num: 47

Candidate Starts for Nicholasp3_89:

(17, 57191), (19, 57206), (20, 57215), (22, 57221), (23, 57230), (35, 57278), (Start: 36 @57284 has 1 MA's), (Start: 44 @57314 has 1 MA's), (Start: 47 @57320 has 17 MA's), (Start: 63 @57359 has 1 MA's), (70, 57398), (75, 57425),

Gene: Octobien14_69 Start: 44537, Stop: 44797, Start Num: 25

Candidate Starts for Octobien14_69:

(Start: 25 @44537 has 4 MA's), (29, 44558), (30, 44561), (37, 44585), (46, 44615), (Start: 48 @44618 has 10 MA's), (52, 44627), (83, 44741), (85, 44750), (87, 44765), (88, 44768),

Gene: OneinaGillian_52 Start: 36406, Stop: 36215, Start Num: 48

Candidate Starts for OneinaGillian_52:

(4, 36679), (8, 36628), (18, 36523), (33, 36448), (Start: 48 @36406 has 10 MA's), (71, 36331), (82, 36274),

Gene: PP_66 Start: 45311, Stop: 45114, Start Num: 41

Candidate Starts for PP_66:

(Start: 39 @45320 has 2 MA's), (Start: 41 @45311 has 1 MA's), (53, 45284), (80, 45182), (81, 45179),

Gene: Padfoot_67 Start: 44058, Stop: 44297, Start Num: 31

Candidate Starts for Padfoot_67:

(5, 43848), (6, 43857), (21, 44007), (Start: 31 @44058 has 52 MA's), (Start: 56 @44130 has 2 MA's), (58, 44133), (81, 44232), (82, 44238),

Gene: Padpat_70 Start: 44178, Stop: 44417, Start Num: 31

Candidate Starts for Padpat_70:

(5, 43968), (6, 43977), (21, 44127), (Start: 31 @44178 has 52 MA's), (45, 44223), (Start: 56 @44250 has 2 MA's), (58, 44253), (81, 44352), (82, 44358),

Gene: Peel_67 Start: 43863, Stop: 44102, Start Num: 31

Candidate Starts for Peel_67:

(5, 43653), (6, 43662), (21, 43812), (Start: 31 @43863 has 52 MA's), (Start: 56 @43935 has 2 MA's), (58, 43938), (81, 44037), (82, 44043),

Gene: Pepe25_51 Start: 35948, Stop: 35757, Start Num: 48
Candidate Starts for Pepe25_51:
(Start: 48 @35948 has 10 MA's), (71, 35873), (82, 35816), (89, 35786),

Gene: Peregrin_45 Start: 15804, Stop: 15583, Start Num: 38
Candidate Starts for Peregrin_45:
(Start: 38 @15804 has 7 MA's), (68, 15705), (72, 15690), (82, 15648),

Gene: Pharaoh_61 Start: 40405, Stop: 40172, Start Num: 34
Candidate Starts for Pharaoh_61:
(32, 40411), (Start: 34 @40405 has 2 MA's), (42, 40372), (49, 40357), (78, 40249), (79, 40246), (80, 40240),

Gene: Piatt_67 Start: 44058, Stop: 44297, Start Num: 31
Candidate Starts for Piatt_67:
(5, 43848), (6, 43857), (21, 44007), (Start: 31 @44058 has 52 MA's), (Start: 56 @44130 has 2 MA's), (58, 44133), (81, 44232), (82, 44238),

Gene: Pokerus_67 Start: 44203, Stop: 44442, Start Num: 31
Candidate Starts for Pokerus_67:
(5, 43993), (6, 44002), (21, 44152), (Start: 31 @44203 has 52 MA's), (45, 44248), (Start: 56 @44275 has 2 MA's), (58, 44278), (81, 44377), (82, 44383),

Gene: QuincyRose_65 Start: 44084, Stop: 44323, Start Num: 31
Candidate Starts for QuincyRose_65:
(5, 43874), (6, 43883), (21, 44033), (Start: 31 @44084 has 52 MA's), (45, 44129), (Start: 56 @44156 has 2 MA's), (58, 44159), (81, 44258), (82, 44264),

Gene: Ramen_68 Start: 43708, Stop: 43947, Start Num: 31
Candidate Starts for Ramen_68:
(21, 43657), (Start: 31 @43708 has 52 MA's), (Start: 38 @43732 has 7 MA's), (45, 43753), (Start: 56 @43780 has 2 MA's), (58, 43783), (81, 43882), (82, 43888),

Gene: Rapunzel97_69 Start: 44159, Stop: 44398, Start Num: 31
Candidate Starts for Rapunzel97_69:
(5, 43949), (6, 43958), (21, 44108), (Start: 31 @44159 has 52 MA's), (Start: 38 @44183 has 7 MA's), (45, 44204), (Start: 56 @44231 has 2 MA's), (58, 44234), (81, 44333), (82, 44339),

Gene: Rey_5 Start: 2370, Stop: 2203, Start Num: 57
Candidate Starts for Rey_5:
(26, 2466), (Start: 36 @2424 has 1 MA's), (Start: 40 @2403 has 5 MA's), (Start: 57 @2370 has 1 MA's), (62, 2358), (69, 2322), (72, 2310),

Gene: RobinRose_54 Start: 36915, Stop: 36724, Start Num: 48
Candidate Starts for RobinRose_54:
(4, 37188), (8, 37137), (18, 37032), (33, 36957), (Start: 48 @36915 has 10 MA's), (71, 36840), (82, 36783),

Gene: Romm_54 Start: 36915, Stop: 36724, Start Num: 48
Candidate Starts for Romm_54:
(4, 37188), (8, 37137), (18, 37032), (33, 36957), (Start: 48 @36915 has 10 MA's), (71, 36840), (82, 36783),

Gene: Ronaldo_13 Start: 3139, Stop: 2936, Start Num: 38

Candidate Starts for Ronaldo_13:

(Start: 38 @3139 has 7 MA's), (Start: 41 @3127 has 1 MA's), (46, 3115), (54, 3097), (55, 3091), (67, 3052),

Gene: Rosmarinus_67 Start: 43849, Stop: 44088, Start Num: 31

Candidate Starts for Rosmarinus_67:

(5, 43639), (6, 43648), (21, 43798), (Start: 31 @43849 has 52 MA's), (Start: 56 @43921 has 2 MA's), (58, 43924), (81, 44023), (82, 44029),

Gene: Rumpelstiltskin_85 Start: 57113, Stop: 57292, Start Num: 47

Candidate Starts for Rumpelstiltskin_85:

(17, 56984), (19, 56999), (20, 57008), (22, 57014), (23, 57023), (35, 57071), (Start: 36 @57077 has 1 MA's), (Start: 44 @57107 has 1 MA's), (Start: 47 @57113 has 17 MA's), (Start: 63 @57152 has 1 MA's), (70, 57191), (75, 57218),

Gene: ScoobyDoobyDoo_50 Start: 17925, Stop: 18128, Start Num: 48

Candidate Starts for ScoobyDoobyDoo_50:

(29, 17868), (Start: 48 @17925 has 10 MA's), (59, 17949), (74, 18018), (92, 18108), (93, 18120),

Gene: Sephiroth_68 Start: 44430, Stop: 44693, Start Num: 25

Candidate Starts for Sephiroth_68:

(Start: 25 @44430 has 4 MA's), (29, 44451), (30, 44454), (37, 44478), (46, 44508), (66, 44553), (74, 44601), (83, 44637), (85, 44646), (87, 44661), (88, 44664),

Gene: ShakeltOph_30 Start: 22315, Stop: 22620, Start Num: 16

Candidate Starts for ShakeltOph_30:

(Start: 16 @22315 has 2 MA's), (30, 22396), (74, 22528), (89, 22591),

Gene: ShiaSurprise_68 Start: 44058, Stop: 44297, Start Num: 31

Candidate Starts for ShiaSurprise_68:

(5, 43848), (6, 43857), (21, 44007), (Start: 31 @44058 has 52 MA's), (Start: 56 @44130 has 2 MA's), (58, 44133), (81, 44232), (82, 44238),

Gene: Slimphazie_68 Start: 44159, Stop: 44398, Start Num: 31

Candidate Starts for Slimphazie_68:

(5, 43949), (6, 43958), (21, 44108), (Start: 31 @44159 has 52 MA's), (Start: 38 @44183 has 7 MA's), (45, 44204), (Start: 56 @44231 has 2 MA's), (58, 44234), (81, 44333), (82, 44339),

Gene: Spock_67 Start: 43862, Stop: 44101, Start Num: 31

Candidate Starts for Spock_67:

(5, 43652), (6, 43661), (21, 43811), (Start: 31 @43862 has 52 MA's), (Start: 56 @43934 has 2 MA's), (58, 43937), (81, 44036), (82, 44042),

Gene: Syleon_70 Start: 44371, Stop: 44631, Start Num: 25

Candidate Starts for Syleon_70:

(Start: 25 @44371 has 4 MA's), (29, 44392), (30, 44395), (37, 44419), (46, 44449), (Start: 48 @44452 has 10 MA's), (83, 44575), (87, 44599), (88, 44602),

Gene: Tachez_67 Start: 43706, Stop: 43945, Start Num: 31

Candidate Starts for Tachez_67:

(5, 43496), (6, 43505), (21, 43655), (Start: 31 @43706 has 52 MA's), (Start: 56 @43778 has 2 MA's), (58, 43781), (81, 43880), (82, 43886),

Gene: Tempo_52 Start: 36794, Stop: 36603, Start Num: 48
Candidate Starts for Tempo_52:
(Start: 48 @36794 has 10 MA's), (71, 36719), (82, 36662),

Gene: Toaka_68 Start: 40924, Stop: 40682, Start Num: 34
Candidate Starts for Toaka_68:
(1, 41545), (2, 41500), (3, 41248), (Start: 34 @40924 has 2 MA's), (Start: 39 @40903 has 2 MA's), (78, 40771),

Gene: Topper_67 Start: 43861, Stop: 44100, Start Num: 31
Candidate Starts for Topper_67:
(5, 43651), (6, 43660), (21, 43810), (Start: 31 @43861 has 52 MA's), (Start: 56 @43933 has 2 MA's), (58, 43936), (81, 44035), (82, 44041),

Gene: Tourach_89 Start: 58025, Stop: 58204, Start Num: 47
Candidate Starts for Tourach_89:
(17, 57896), (19, 57911), (20, 57920), (35, 57983), (Start: 44 @58019 has 1 MA's), (Start: 47 @58025 has 17 MA's), (Start: 63 @58064 has 1 MA's), (64, 58067), (70, 58103), (75, 58130),

Gene: TruffulaTree_68 Start: 44155, Stop: 44394, Start Num: 31
Candidate Starts for TruffulaTree_68:
(5, 43945), (6, 43954), (21, 44104), (Start: 31 @44155 has 52 MA's), (Start: 38 @44179 has 7 MA's), (45, 44200), (Start: 56 @44227 has 2 MA's), (58, 44230), (81, 44329), (82, 44335),

Gene: Twitch_67 Start: 43863, Stop: 44102, Start Num: 31
Candidate Starts for Twitch_67:
(5, 43653), (6, 43662), (21, 43812), (Start: 31 @43863 has 52 MA's), (Start: 56 @43935 has 2 MA's), (58, 43938), (81, 44037), (82, 44043),

Gene: Validus_72 Start: 44730, Stop: 44951, Start Num: 31
Candidate Starts for Validus_72:
(21, 44679), (Start: 31 @44730 has 52 MA's), (45, 44748), (73, 44838), (80, 44871), (82, 44880),

Gene: Volt_13 Start: 3139, Stop: 2936, Start Num: 38
Candidate Starts for Volt_13:
(Start: 38 @3139 has 7 MA's), (Start: 41 @3127 has 1 MA's), (46, 3115), (54, 3097), (55, 3091), (67, 3052),

Gene: VroomVroom_29 Start: 22410, Stop: 22715, Start Num: 16
Candidate Starts for VroomVroom_29:
(Start: 16 @22410 has 2 MA's), (32, 22497), (74, 22623), (89, 22686),

Gene: Wigglewiggles_89 Start: 57408, Stop: 57575, Start Num: 47
Candidate Starts for Wigglewiggles_89:
(13, 57243), (15, 57264), (17, 57279), (19, 57294), (35, 57366), (Start: 36 @57372 has 1 MA's), (Start: 44 @57402 has 1 MA's), (Start: 47 @57408 has 17 MA's), (Start: 56 @57432 has 2 MA's), (60, 57435), (72, 57495), (73, 57501), (84, 57519), (85, 57522),

Gene: Wilder_90 Start: 57250, Stop: 57417, Start Num: 47
Candidate Starts for Wilder_90:

(Start: 44 @57244 has 1 MA's), (Start: 47 @57250 has 17 MA's), (Start: 56 @57274 has 2 MA's), (60, 57277), (72, 57337), (73, 57343), (84, 57361), (85, 57364),

Gene: Zabiza_63 Start: 40035, Stop: 40250, Start Num: 38

Candidate Starts for Zabiza_63:

(21, 39960), (Start: 31 @40011 has 52 MA's), (Start: 38 @40035 has 7 MA's), (45, 40056), (Start: 56 @40083 has 2 MA's), (58, 40086), (81, 40185), (82, 40191),

Gene: Zakai_90 Start: 57893, Stop: 58072, Start Num: 47

Candidate Starts for Zakai_90:

(17, 57764), (19, 57779), (20, 57788), (23, 57803), (Start: 44 @57887 has 1 MA's), (Start: 47 @57893 has 17 MA's), (Start: 63 @57932 has 1 MA's), (64, 57935), (75, 57998),

Gene: Zavala_70 Start: 44433, Stop: 44672, Start Num: 31

Candidate Starts for Zavala_70:

(5, 44223), (6, 44232), (21, 44382), (Start: 31 @44433 has 52 MA's), (Start: 38 @44457 has 7 MA's), (45, 44478), (Start: 56 @44505 has 2 MA's), (58, 44508), (81, 44607), (82, 44613),

Gene: ZhongYanYuan_86 Start: 57300, Stop: 57479, Start Num: 47

Candidate Starts for ZhongYanYuan_86:

(Start: 44 @57294 has 1 MA's), (Start: 47 @57300 has 17 MA's), (Start: 63 @57339 has 1 MA's), (64, 57342), (70, 57378), (75, 57405),

Gene: Ziko_14 Start: 3153, Stop: 2950, Start Num: 38

Candidate Starts for Ziko_14:

(Start: 38 @3153 has 7 MA's), (Start: 41 @3141 has 1 MA's), (46, 3129), (54, 3111), (55, 3105), (67, 3066),