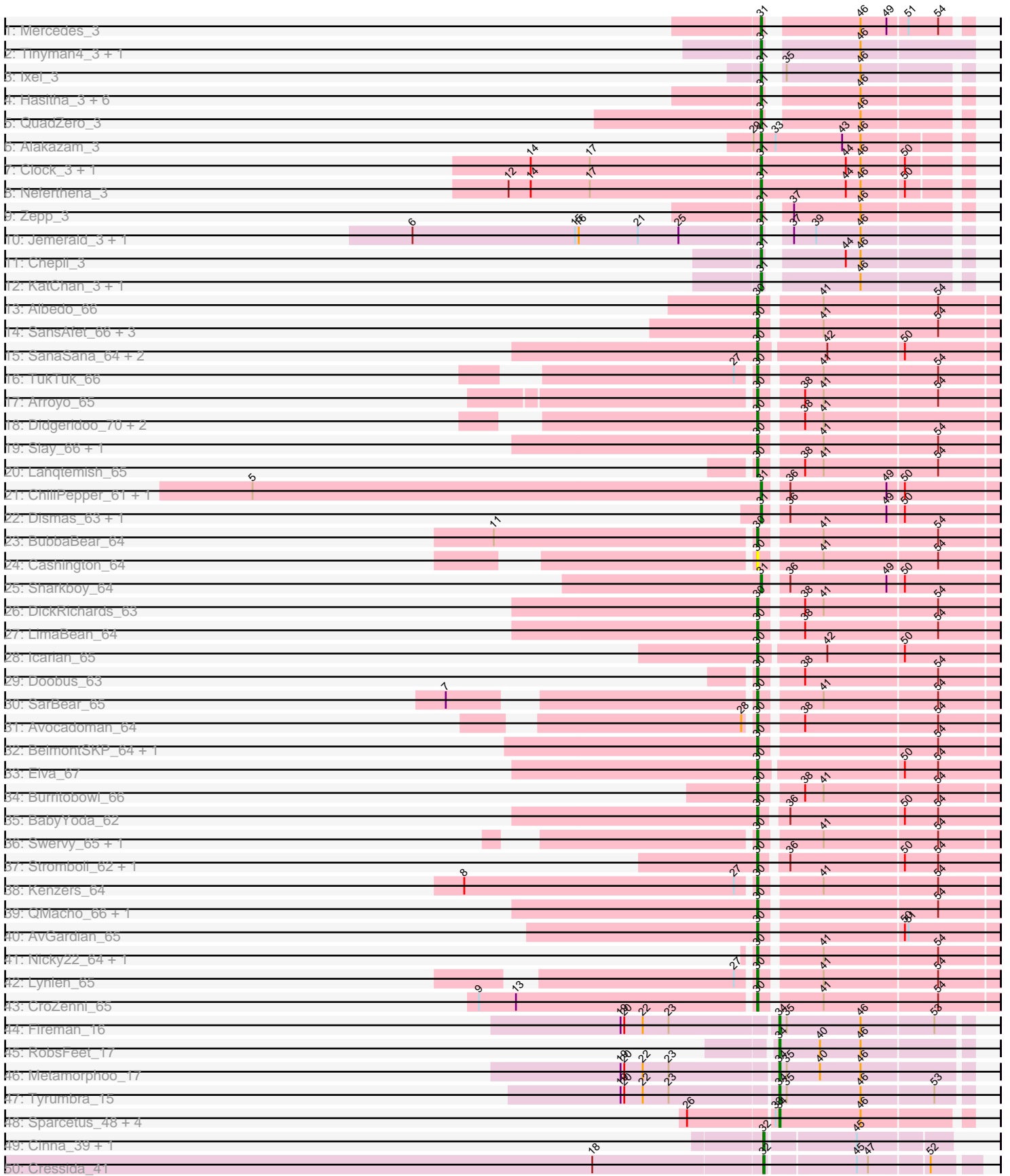
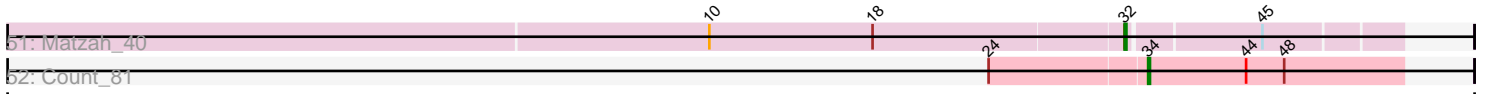


Zoomed Pham 171391



Zoomed Pham 171391



Note: Tracks are now grouped by subcluster and scaled. Switching in subcluster is indicated by changes in track color. Track scale is now set by default to display the region 30 bp upstream of start 1 to 30 bp downstream of the last possible start. If this default region is judged to be packed too tightly with annotated starts, the track will be further scaled to only show that region of the ORF with annotated starts. This action will be indicated by adding "Zoomed" to the title. For starts, yellow indicates the location of called starts comprised solely of Glimmer/GeneMark auto-annotations, green indicates the location of called starts with at least 1 manual gene annotation.

Pham 171391 Report

This analysis was run 07/10/24 on database version 566.

Pham number 171391 has 82 members, 6 are drafts.

Phages represented in each track:

- Track 1 : Mercedes_3
- Track 2 : Tinyman4_3, HerculesXL_3
- Track 3 : Ixel_3
- Track 4 : Hasitha_3, Librie_3, Zayuliv_3, CaptainRex_3, GreenIvy_3, LilTerminator_3, Fulton_3
- Track 5 : QuadZero_3
- Track 6 : Alakazam_3
- Track 7 : Clock_3, Nebulous_3
- Track 8 : Neferthena_3
- Track 9 : Zepp_3
- Track 10 : Jemerald_3, Juicer_3
- Track 11 : Chepli_3
- Track 12 : KatChan_3, Luna18_3
- Track 13 : Albedo_66
- Track 14 : SansAfet_66, Phisb_66, Albright_64, Abigail_64
- Track 15 : SanaSana_64, Stoor_62, Loviatar_107
- Track 16 : TukTuk_66
- Track 17 : Arroyo_65
- Track 18 : Didgeridoo_70, IndyLu_67, BabyDaisy_67
- Track 19 : Slay_66, Finalfrontier_65
- Track 20 : Lahqtemish_65
- Track 21 : ChiliPepper_61, Kieran_61
- Track 22 : Dismas_63, Rona_62
- Track 23 : BubbaBear_64
- Track 24 : Cashington_64
- Track 25 : Sharkboy_64
- Track 26 : DickRichards_63
- Track 27 : LimaBean_64
- Track 28 : Icarian_65
- Track 29 : Doobus_63
- Track 30 : SarBear_65
- Track 31 : Avocadoman_64
- Track 32 : BelmontSKP_64, AnnaLie_64
- Track 33 : Elva_67
- Track 34 : Burritobowl_66
- Track 35 : BabyYoda_62
- Track 36 : Swervy_65, Jovita_63

- Track 37 : Stromboli_62, DirtyBubble_62
- Track 38 : Kenzers_64
- Track 39 : QMacho_66, Johnathan_64
- Track 40 : AvGardian_65
- Track 41 : Nicky22_64, Eula_64
- Track 42 : Lynlen_65
- Track 43 : CroZenni_65
- Track 44 : Fireman_16
- Track 45 : RobsFeet_17
- Track 46 : Metamorphoo_17
- Track 47 : Tyrumbra_15
- Track 48 : Sparcetus_48, Ajin_48, TinyMiny_48, Kors_49, RikSengupta_48
- Track 49 : Cinna_39, MementoMori_40
- Track 50 : Cressida_41
- Track 51 : Matzah_40
- Track 52 : Count_81

Summary of Final Annotations (See graph section above for start numbers):

The start number called the most often in the published annotations is 30, it was called in 39 of the 76 non-draft genes in the pham.

Genes that call this "Most Annotated" start:

- Abigail_64, Albedo_66, Albright_64, AnnaLie_64, Arroyo_65, AvGardian_65, Avocadoman_64, BabyDaisy_67, BabyYoda_62, BelmontSKP_64, BubbaBear_64, Burritobowl_66, Cashington_64, CroZenni_65, DickRichards_63, Didgeridoo_70, DirtyBubble_62, Doobus_63, Elva_67, Eula_64, Finalfrontier_65, Icarian_65, IndyLu_67, Johnathan_64, Jovita_63, Kenzers_64, Lahqtemish_65, LimaBean_64, Loviatar_107, Lynlen_65, Nicky22_64, Phisb_66, QMacho_66, SanaSana_64, SansAfet_66, SarBear_65, Slay_66, Stoor_62, Stromboli_62, Swervy_65, TukTuk_66,

Genes that have the "Most Annotated" start but do not call it:

-

Genes that do not have the "Most Annotated" start:

- Ajin_48, Alakazam_3, CaptainRex_3, Chepli_3, ChiliPepper_61, Cinna_39, Clock_3, Count_81, Cressida_41, Dismas_63, Fireman_16, Fulton_3, Greenlvy_3, Hasitha_3, HerculesXL_3, Ixel_3, Jemerald_3, Juicer_3, KatChan_3, Kieran_61, Kors_49, Librie_3, LilTerminator_3, Luna18_3, Matzah_40, MementoMori_40, Mercedes_3, Metamorphoo_17, Nebulous_3, Neferthena_3, QuadZero_3, RikSengupta_48, RobsFeet_17, Rona_62, Sharkboy_64, Sparcetus_48, TinyMiny_48, Tinyman4_3, Tyrumbra_15, Zayuliv_3, Zepp_3,

Summary by start number:

Start 30:

- Found in 41 of 82 (50.0%) of genes in pham
- Manual Annotations of this start: 39 of 76
- Called 100.0% of time when present

- Phage (with cluster) where this start called: Abigail_64 (EB), Albedo_66 (EB), Albright_64 (EB), AnnaLie_64 (EB), Arroyo_65 (EB), AvGardian_65 (EB), Avocadoman_64 (EB), BabyDaisy_67 (EB), BabyYoda_62 (EB), BelmontSKP_64 (EB), BubbaBear_64 (EB), Burritobowl_66 (EB), Cashington_64 (EB), CroZenni_65 (EB), DickRichards_63 (EB), Didgeridoo_70 (EB), DirtyBubble_62 (EB), Doobus_63 (EB), Elva_67 (EB), Eula_64 (EB), Finalfrontier_65 (EB), Icarian_65 (EB), IndyLu_67 (EB), Johnathan_64 (EB), Jovita_63 (EB), Kenzers_64 (EB), Lahqtemish_65 (EB), LimaBean_64 (EB), Loviatar_107 (EB), Lynlen_65 (EB), Nicky22_64 (EB), Phisb_66 (EB), QMacho_66 (EB), SanaSana_64 (EB), SansAfet_66 (EB), SarBear_65 (EB), Slay_66 (EB), Stoor_62 (EB), Stromboli_62 (EB), Swervy_65 (EB), TukTuk_66 (EB),

Start 31:

- Found in 27 of 82 (32.9%) of genes in pham
- Manual Annotations of this start: 24 of 76
- Called 100.0% of time when present
- Phage (with cluster) where this start called: Alakazam_3 (EA5), CaptainRex_3 (EA5), Chepli_3 (EA6), ChiliPepper_61 (EB), Clock_3 (EA5), Dismas_63 (EB), Fulton_3 (EA5), Greenlvy_3 (EA5), Hasitha_3 (EA5), HerculesXL_3 (EA11), Ixel_3 (EA11), Jemerald_3 (EA6), Juicer_3 (EA6), KatChan_3 (EA6), Kieran_61 (EB), Librie_3 (EA5), LiTerminator_3 (EA5), Luna18_3 (EA6), Mercedes_3 (EA), Nebulous_3 (EA5), Neferthena_3 (EA5), QuadZero_3 (EA5), Rona_62 (EB), Sharkboy_64 (EB), Tinyman4_3 (EA11), Zayuliv_3 (EA5), Zepp_3 (EA5),

Start 32:

- Found in 4 of 82 (4.9%) of genes in pham
- Manual Annotations of this start: 4 of 76
- Called 100.0% of time when present
- Phage (with cluster) where this start called: Cinna_39 (EI), Cressida_41 (EI), Matzah_40 (EI), MementoMori_40 (EI),

Start 34:

- Found in 10 of 82 (12.2%) of genes in pham
- Manual Annotations of this start: 9 of 76
- Called 100.0% of time when present
- Phage (with cluster) where this start called: Ajin_48 (EF), Count_81 (EL), Fireman_16 (EC), Kors_49 (EF), Metamorphoo_17 (EC), RikSengupta_48 (EF), RobsFeet_17 (EC), Sparcetus_48 (EF), TinyMiny_48 (EF), Tyumbra_15 (EC),

Summary by clusters:

There are 9 clusters represented in this pham: EL, EI, EF, EA, EC, EB, EA11, EA5, EA6,

Info for manual annotations of cluster EA:

- Start number 31 was manually annotated 1 time for cluster EA.

Info for manual annotations of cluster EA11:

- Start number 31 was manually annotated 3 times for cluster EA11.

Info for manual annotations of cluster EA5:

- Start number 31 was manually annotated 10 times for cluster EA5.

Info for manual annotations of cluster EA6:

- Start number 31 was manually annotated 5 times for cluster EA6.

Info for manual annotations of cluster EB:

- Start number 30 was manually annotated 39 times for cluster EB.
- Start number 31 was manually annotated 5 times for cluster EB.

Info for manual annotations of cluster EC:

- Start number 34 was manually annotated 4 times for cluster EC.

Info for manual annotations of cluster EF:

- Start number 34 was manually annotated 4 times for cluster EF.

Info for manual annotations of cluster EI:

- Start number 32 was manually annotated 4 times for cluster EI.

Info for manual annotations of cluster EL:

- Start number 34 was manually annotated 1 time for cluster EL.

Gene Information:

Gene: Abigail_64 Start: 39315, Stop: 39497, Start Num: 30

Candidate Starts for Abigail_64:

(Start: 30 @39315 has 39 MA's), (41, 39360), (54, 39450),

Gene: Ajin_48 Start: 30967, Stop: 31113, Start Num: 34

Candidate Starts for Ajin_48:

(26, 30898), (33, 30964), (Start: 34 @30967 has 9 MA's), (46, 31033),

Gene: Alakazam_3 Start: 2071, Stop: 2229, Start Num: 31

Candidate Starts for Alakazam_3:

(29, 2065), (Start: 31 @2071 has 24 MA's), (33, 2083), (43, 2137), (46, 2152),

Gene: Albedo_66 Start: 40235, Stop: 40417, Start Num: 30

Candidate Starts for Albedo_66:

(Start: 30 @40235 has 39 MA's), (41, 40280), (54, 40370),

Gene: Albright_64 Start: 39297, Stop: 39479, Start Num: 30

Candidate Starts for Albright_64:

(Start: 30 @39297 has 39 MA's), (41, 39342), (54, 39432),

Gene: AnnaLie_64 Start: 39976, Stop: 40158, Start Num: 30

Candidate Starts for AnnaLie_64:

(Start: 30 @39976 has 39 MA's), (54, 40111),

Gene: Arroyo_65 Start: 40440, Stop: 40622, Start Num: 30

Candidate Starts for Arroyo_65:

(Start: 30 @40440 has 39 MA's), (38, 40470), (41, 40485), (54, 40575),

Gene: AvGardian_65 Start: 40037, Stop: 40219, Start Num: 30

Candidate Starts for AvGardian_65:

(Start: 30 @40037 has 39 MA's), (50, 40145), (51, 40148),

Gene: Avocadoman_64 Start: 39447, Stop: 39629, Start Num: 30
Candidate Starts for Avocadoman_64:
(28, 39441), (Start: 30 @39447 has 39 MA's), (38, 39477), (54, 39582),

Gene: BabyDaisy_67 Start: 40786, Stop: 40968, Start Num: 30
Candidate Starts for BabyDaisy_67:
(Start: 30 @40786 has 39 MA's), (38, 40816), (41, 40831),

Gene: BabyYoda_62 Start: 39683, Stop: 39868, Start Num: 30
Candidate Starts for BabyYoda_62:
(Start: 30 @39683 has 39 MA's), (36, 39701), (50, 39791), (54, 39818),

Gene: BelmontSKP_64 Start: 39976, Stop: 40158, Start Num: 30
Candidate Starts for BelmontSKP_64:
(Start: 30 @39976 has 39 MA's), (54, 40111),

Gene: BubbaBear_64 Start: 40228, Stop: 40410, Start Num: 30
Candidate Starts for BubbaBear_64:
(11, 40021), (Start: 30 @40228 has 39 MA's), (41, 40273), (54, 40363),

Gene: Burritobowl_66 Start: 39798, Stop: 39980, Start Num: 30
Candidate Starts for Burritobowl_66:
(Start: 30 @39798 has 39 MA's), (38, 39828), (41, 39843), (54, 39933),

Gene: CaptainRex_3 Start: 1963, Stop: 2109, Start Num: 31
Candidate Starts for CaptainRex_3:
(Start: 31 @1963 has 24 MA's), (46, 2029),

Gene: Cashington_64 Start: 39539, Stop: 39721, Start Num: 30
Candidate Starts for Cashington_64:
(Start: 30 @39539 has 39 MA's), (41, 39584), (54, 39674),

Gene: Chepli_3 Start: 2101, Stop: 2247, Start Num: 31
Candidate Starts for Chepli_3:
(Start: 31 @2101 has 24 MA's), (44, 2155), (46, 2167),

Gene: ChiliPepper_61 Start: 40043, Stop: 40222, Start Num: 31
Candidate Starts for ChiliPepper_61:
(5, 39632), (Start: 31 @40043 has 24 MA's), (36, 40058), (49, 40136), (50, 40148),

Gene: Cinna_39 Start: 31034, Stop: 31174, Start Num: 32
Candidate Starts for Cinna_39:
(Start: 32 @31034 has 4 MA's), (45, 31103),

Gene: Clock_3 Start: 2104, Stop: 2262, Start Num: 31
Candidate Starts for Clock_3:
(14, 1921), (17, 1969), (Start: 31 @2104 has 24 MA's), (44, 2173), (46, 2185), (50, 2218),

Gene: Count_81 Start: 55860, Stop: 56000, Start Num: 34
Candidate Starts for Count_81:
(24, 55776), (Start: 34 @55860 has 9 MA's), (44, 55914), (48, 55935),

Gene: Cressida_41 Start: 30483, Stop: 30641, Start Num: 32

Candidate Starts for Cressida_41:

(1, 29526), (2, 29640), (3, 29778), (18, 30348), (Start: 32 @30483 has 4 MA's), (45, 30552), (47, 30561), (52, 30606),

Gene: CroZenni_65 Start: 39783, Stop: 39965, Start Num: 30

Candidate Starts for CroZenni_65:

(9, 39564), (13, 39594), (Start: 30 @39783 has 39 MA's), (41, 39828), (54, 39918),

Gene: DickRichards_63 Start: 39754, Stop: 39936, Start Num: 30

Candidate Starts for DickRichards_63:

(Start: 30 @39754 has 39 MA's), (38, 39784), (41, 39799), (54, 39889),

Gene: Didgeridoo_70 Start: 40896, Stop: 41078, Start Num: 30

Candidate Starts for Didgeridoo_70:

(Start: 30 @40896 has 39 MA's), (38, 40926), (41, 40941),

Gene: DirtyBubble_62 Start: 39722, Stop: 39907, Start Num: 30

Candidate Starts for DirtyBubble_62:

(Start: 30 @39722 has 39 MA's), (36, 39740), (50, 39830), (54, 39857),

Gene: Dismas_63 Start: 40180, Stop: 40359, Start Num: 31

Candidate Starts for Dismas_63:

(Start: 31 @40180 has 24 MA's), (36, 40195), (49, 40273), (50, 40285),

Gene: Doobus_63 Start: 39609, Stop: 39791, Start Num: 30

Candidate Starts for Doobus_63:

(Start: 30 @39609 has 39 MA's), (38, 39639), (54, 39744),

Gene: Elva_67 Start: 40561, Stop: 40749, Start Num: 30

Candidate Starts for Elva_67:

(Start: 30 @40561 has 39 MA's), (50, 40672), (54, 40699),

Gene: Eula_64 Start: 39518, Stop: 39700, Start Num: 30

Candidate Starts for Eula_64:

(Start: 30 @39518 has 39 MA's), (41, 39563), (54, 39653),

Gene: Finalfrontier_65 Start: 40502, Stop: 40684, Start Num: 30

Candidate Starts for Finalfrontier_65:

(Start: 30 @40502 has 39 MA's), (41, 40547), (54, 40637),

Gene: Fireman_16 Start: 6897, Stop: 7046, Start Num: 34

Candidate Starts for Fireman_16:

(19, 6774), (20, 6777), (22, 6792), (23, 6813), (Start: 34 @6897 has 9 MA's), (35, 6903), (46, 6963), (53, 7020),

Gene: Fulton_3 Start: 1963, Stop: 2109, Start Num: 31

Candidate Starts for Fulton_3:

(Start: 31 @1963 has 24 MA's), (46, 2029),

Gene: Greenlvy_3 Start: 1963, Stop: 2109, Start Num: 31

Candidate Starts for Greenlvy_3:

(Start: 31 @1963 has 24 MA's), (46, 2029),

Gene: Hasitha_3 Start: 1963, Stop: 2109, Start Num: 31

Candidate Starts for Hasitha_3:

(Start: 31 @1963 has 24 MA's), (46, 2029),

Gene: HerculesXL_3 Start: 1952, Stop: 2107, Start Num: 31

Candidate Starts for HerculesXL_3:

(Start: 31 @1952 has 24 MA's), (46, 2018),

Gene: Icarian_65 Start: 40372, Stop: 40557, Start Num: 30

Candidate Starts for Icarian_65:

(Start: 30 @40372 has 39 MA's), (42, 40423), (50, 40483),

Gene: IndyLu_67 Start: 40517, Stop: 40699, Start Num: 30

Candidate Starts for IndyLu_67:

(Start: 30 @40517 has 39 MA's), (38, 40547), (41, 40562),

Gene: Ixel_3 Start: 2066, Stop: 2212, Start Num: 31

Candidate Starts for Ixel_3:

(Start: 31 @2066 has 24 MA's), (35, 2072), (46, 2132),

Gene: Jemerald_3 Start: 2077, Stop: 2223, Start Num: 31

Candidate Starts for Jemerald_3:

(6, 1798), (15, 1930), (16, 1933), (21, 1981), (25, 2014), (Start: 31 @2077 has 24 MA's), (37, 2089), (39, 2107), (46, 2143),

Gene: Johnathan_64 Start: 39298, Stop: 39480, Start Num: 30

Candidate Starts for Johnathan_64:

(Start: 30 @39298 has 39 MA's), (54, 39433),

Gene: Jovita_63 Start: 39286, Stop: 39468, Start Num: 30

Candidate Starts for Jovita_63:

(Start: 30 @39286 has 39 MA's), (41, 39331), (54, 39421),

Gene: Juicer_3 Start: 2077, Stop: 2223, Start Num: 31

Candidate Starts for Juicer_3:

(6, 1798), (15, 1930), (16, 1933), (21, 1981), (25, 2014), (Start: 31 @2077 has 24 MA's), (37, 2089), (39, 2107), (46, 2143),

Gene: KatChan_3 Start: 2101, Stop: 2247, Start Num: 31

Candidate Starts for KatChan_3:

(Start: 31 @2101 has 24 MA's), (46, 2167),

Gene: Kenzers_64 Start: 39369, Stop: 39551, Start Num: 30

Candidate Starts for Kenzers_64:

(8, 39138), (27, 39357), (Start: 30 @39369 has 39 MA's), (41, 39414), (54, 39504),

Gene: Kieran_61 Start: 40005, Stop: 40184, Start Num: 31

Candidate Starts for Kieran_61:

(5, 39594), (Start: 31 @40005 has 24 MA's), (36, 40020), (49, 40098), (50, 40110),

Gene: Kors_49 Start: 31044, Stop: 31190, Start Num: 34

Candidate Starts for Kors_49:

(26, 30975), (33, 31041), (Start: 34 @31044 has 9 MA's), (46, 31110),

Gene: Lahqtemish_65 Start: 40719, Stop: 40901, Start Num: 30

Candidate Starts for Lahqtemish_65:

(Start: 30 @40719 has 39 MA's), (38, 40749), (41, 40764), (54, 40854),

Gene: Librie_3 Start: 1963, Stop: 2109, Start Num: 31

Candidate Starts for Librie_3:

(Start: 31 @1963 has 24 MA's), (46, 2029),

Gene: LilTerminator_3 Start: 1963, Stop: 2109, Start Num: 31

Candidate Starts for LilTerminator_3:

(Start: 31 @1963 has 24 MA's), (46, 2029),

Gene: LimaBean_64 Start: 39192, Stop: 39374, Start Num: 30

Candidate Starts for LimaBean_64:

(Start: 30 @39192 has 39 MA's), (38, 39222), (54, 39327),

Gene: Loviatar_107 Start: 40790, Stop: 40975, Start Num: 30

Candidate Starts for Loviatar_107:

(Start: 30 @40790 has 39 MA's), (42, 40841), (50, 40901),

Gene: Luna18_3 Start: 2101, Stop: 2247, Start Num: 31

Candidate Starts for Luna18_3:

(Start: 31 @2101 has 24 MA's), (46, 2167),

Gene: Lynlen_65 Start: 39522, Stop: 39704, Start Num: 30

Candidate Starts for Lynlen_65:

(27, 39510), (Start: 30 @39522 has 39 MA's), (41, 39567), (54, 39657),

Gene: Matzah_40 Start: 30974, Stop: 31114, Start Num: 32

Candidate Starts for Matzah_40:

(3, 30272), (4, 30299), (10, 30749), (18, 30839), (Start: 32 @30974 has 4 MA's), (45, 31043),

Gene: MementoMori_40 Start: 30722, Stop: 30862, Start Num: 32

Candidate Starts for MementoMori_40:

(Start: 32 @30722 has 4 MA's), (45, 30791),

Gene: Mercedes_3 Start: 1955, Stop: 2101, Start Num: 31

Candidate Starts for Mercedes_3:

(Start: 31 @1955 has 24 MA's), (46, 2021), (49, 2042), (51, 2057), (54, 2081),

Gene: Metamorphoo_17 Start: 7070, Stop: 7219, Start Num: 34

Candidate Starts for Metamorphoo_17:

(19, 6947), (20, 6950), (22, 6965), (23, 6986), (Start: 34 @7070 has 9 MA's), (35, 7076), (40, 7103), (46, 7136),

Gene: Nebulous_3 Start: 2113, Stop: 2271, Start Num: 31

Candidate Starts for Nebulous_3:

(14, 1930), (17, 1978), (Start: 31 @2113 has 24 MA's), (44, 2182), (46, 2194), (50, 2227),

Gene: Neferthema_3 Start: 2107, Stop: 2265, Start Num: 31

Candidate Starts for Neferthema_3:

(12, 1906), (14, 1924), (17, 1972), (Start: 31 @2107 has 24 MA's), (44, 2176), (46, 2188), (50, 2221),

Gene: Nicky22_64 Start: 39961, Stop: 40143, Start Num: 30

Candidate Starts for Nicky22_64:

(Start: 30 @39961 has 39 MA's), (41, 40006), (54, 40096),

Gene: Phisb_66 Start: 39867, Stop: 40049, Start Num: 30

Candidate Starts for Phisb_66:

(Start: 30 @39867 has 39 MA's), (41, 39912), (54, 40002),

Gene: QMacho_66 Start: 39998, Stop: 40180, Start Num: 30

Candidate Starts for QMacho_66:

(Start: 30 @39998 has 39 MA's), (54, 40133),

Gene: QuadZero_3 Start: 1963, Stop: 2109, Start Num: 31

Candidate Starts for QuadZero_3:

(Start: 31 @1963 has 24 MA's), (46, 2029),

Gene: RikSengupta_48 Start: 31081, Stop: 31227, Start Num: 34

Candidate Starts for RikSengupta_48:

(26, 31012), (33, 31078), (Start: 34 @31081 has 9 MA's), (46, 31147),

Gene: RobsFeet_17 Start: 6912, Stop: 7061, Start Num: 34

Candidate Starts for RobsFeet_17:

(Start: 34 @6912 has 9 MA's), (40, 6945), (46, 6978),

Gene: Rona_62 Start: 40171, Stop: 40350, Start Num: 31

Candidate Starts for Rona_62:

(Start: 31 @40171 has 24 MA's), (36, 40186), (49, 40264), (50, 40276),

Gene: SanaSana_64 Start: 40133, Stop: 40318, Start Num: 30

Candidate Starts for SanaSana_64:

(Start: 30 @40133 has 39 MA's), (42, 40184), (50, 40244),

Gene: SansAfet_66 Start: 39843, Stop: 40025, Start Num: 30

Candidate Starts for SansAfet_66:

(Start: 30 @39843 has 39 MA's), (41, 39888), (54, 39978),

Gene: SarBear_65 Start: 39611, Stop: 39793, Start Num: 30

Candidate Starts for SarBear_65:

(7, 39398), (Start: 30 @39611 has 39 MA's), (41, 39656), (54, 39746),

Gene: Sharkboy_64 Start: 40536, Stop: 40715, Start Num: 31

Candidate Starts for Sharkboy_64:

(Start: 31 @40536 has 24 MA's), (36, 40551), (49, 40629), (50, 40641),

Gene: Slay_66 Start: 40377, Stop: 40559, Start Num: 30

Candidate Starts for Slay_66:

(Start: 30 @40377 has 39 MA's), (41, 40422), (54, 40512),

Gene: Sparcetus_48 Start: 30958, Stop: 31104, Start Num: 34

Candidate Starts for Sparcetus_48:

(26, 30889), (33, 30955), (Start: 34 @30958 has 9 MA's), (46, 31024),

Gene: Stoor_62 Start: 39920, Stop: 40105, Start Num: 30
Candidate Starts for Stoor_62:
(Start: 30 @39920 has 39 MA's), (42, 39971), (50, 40031),

Gene: Stromboli_62 Start: 39721, Stop: 39906, Start Num: 30
Candidate Starts for Stromboli_62:
(Start: 30 @39721 has 39 MA's), (36, 39739), (50, 39829), (54, 39856),

Gene: Swervy_65 Start: 39648, Stop: 39830, Start Num: 30
Candidate Starts for Swervy_65:
(Start: 30 @39648 has 39 MA's), (41, 39693), (54, 39783),

Gene: TinyMiny_48 Start: 30979, Stop: 31125, Start Num: 34
Candidate Starts for TinyMiny_48:
(26, 30910), (33, 30976), (Start: 34 @30979 has 9 MA's), (46, 31045),

Gene: Tinyman4_3 Start: 1952, Stop: 2107, Start Num: 31
Candidate Starts for Tinyman4_3:
(Start: 31 @1952 has 24 MA's), (46, 2018),

Gene: TukTuk_66 Start: 40156, Stop: 40338, Start Num: 30
Candidate Starts for TukTuk_66:
(27, 40144), (Start: 30 @40156 has 39 MA's), (41, 40201), (54, 40291),

Gene: Tyrumbra_15 Start: 6388, Stop: 6537, Start Num: 34
Candidate Starts for Tyrumbra_15:
(19, 6265), (20, 6268), (22, 6283), (23, 6304), (Start: 34 @6388 has 9 MA's), (35, 6394), (46, 6454),
(53, 6511),

Gene: Zayuliv_3 Start: 1963, Stop: 2109, Start Num: 31
Candidate Starts for Zayuliv_3:
(Start: 31 @1963 has 24 MA's), (46, 2029),

Gene: Zepp_3 Start: 1963, Stop: 2109, Start Num: 31
Candidate Starts for Zepp_3:
(Start: 31 @1963 has 24 MA's), (37, 1975), (46, 2029),