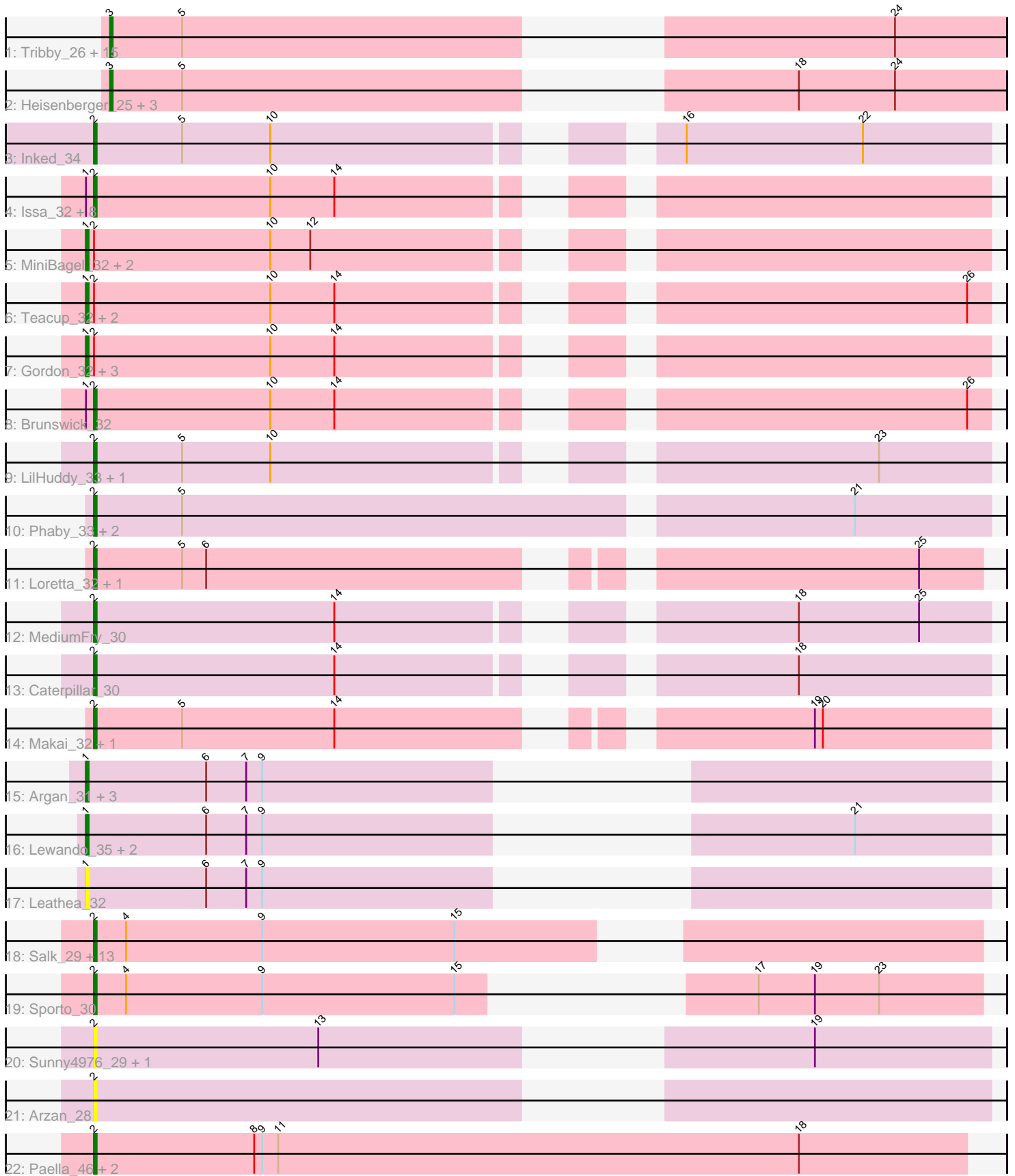


Pham 171396



Note: Tracks are now grouped by subcluster and scaled. Switching in subcluster is indicated by changes in track color. Track scale is now set by default to display the region 30 bp upstream of start 1 to 30 bp downstream of the last possible start. If this default region is judged to be packed too tightly with annotated starts, the track will be further scaled to only show that region of the ORF with annotated starts. This action will be indicated by adding "Zoomed" to the title. For starts, yellow indicates the location of called starts comprised solely of Glimmer/GeneMark auto-annotations, green indicates the location of called starts with at least 1 manual gene annotation.

Pham 171396 Report

This analysis was run 07/10/24 on database version 566.

Pham number 171396 has 81 members, 15 are drafts.

Phages represented in each track:

- Track 1 : Tribby_26, KeaneyLin_24, Elsa_26, Arcadia_26, Xenomorph_24, Correa_25, GoCrazy_24, Dynamite_25, Hankly_24, Benllo_24, Nason_26, Mudcat_25, Cheesy_26, BenitoAntonio_26, Circum_26, NapoleonB_25
- Track 2 : Heisenberger_25, Kardesai_24, Mooshroom_25, JEGGS_25
- Track 3 : Inked_34
- Track 4 : Issa_32, DevitoJr_32, Darby_32, Trustiboi_33, Synepsis_31, Nivinsha_32, AreFloNak_32, CastorTray_34, ScienceWizSam_34
- Track 5 : MiniBagel_32, CapnMurica_32, Tenno_33
- Track 6 : Teacup_32, ElephantMan_32, Niktson_32
- Track 7 : Gordon_32, Breylor17_33, Tatanka_32, Nightmare_33
- Track 8 : Brunswick_32
- Track 9 : LilHuddy_33, Shepard_33
- Track 10 : Phaby_33, Giantsbane_33, Tokki_33
- Track 11 : Loretta_32, Ingrid_32
- Track 12 : MediumFry_30
- Track 13 : Caterpillar_30
- Track 14 : Makai_32, Truckee_31
- Track 15 : Argan_31, Zeina_32, Uzumaki_32, GantcherGoblin_31
- Track 16 : Lewando_35, Renaldo_37, BarbieDoll_35
- Track 17 : Leathea_32
- Track 18 : Salk_29, ProfFrink_29, Raunak_29, Egad_29, Linda_29, Shiba_29, StarLord_29, DoctorPepper_29, MrAaronian_29, Michelle_29, Sloopyjoe_29, BronxBay_29, Stayer_29, Djungelskog_29
- Track 19 : Sporto_30
- Track 20 : Sunny4976_29, Jazzy4900_30
- Track 21 : Arzan_28
- Track 22 : Paella_46, Elver_45, Qui_46

Summary of Final Annotations (See graph section above for start numbers):

The start number called the most often in the published annotations is 2, it was called in 32 of the 66 non-draft genes in the pham.

Genes that call this "Most Annotated" start:

- AreFloNak_32, Arzan_28, BronxBay_29, Brunswick_32, CastorTray_34, Caterpillar_30, Darby_32, DevitoJr_32, Djungelskog_29, DoctorPepper_29, Egad_29, Elver_45, Giantsbane_33, Ingrid_32, Inked_34, Issa_32, Jazzy4900_30, LilHuddy_33, Linda_29, Loretta_32, Makai_32, MediumFry_30, Michelle_29, MrAaronian_29, Nivinsha_32, Paella_46, Phaby_33, ProfFrink_29, Qui_46, Raunak_29, Salk_29, ScienceWizSam_34, Shepard_33, Shiba_29, Sloopyjoe_29, Sporto_30, StarLord_29, Stayer_29, Sunny4976_29, Synepsis_31, Tokki_33, Truckee_31, Trustiboi_33,

Genes that have the "Most Annotated" start but do not call it:

- Breylor17_33, CapnMurica_32, ElephantMan_32, Gordon_32, MiniBagel_32, Nightmare_33, Niktson_32, Tatanka_32, Teacup_32, Tenno_33,

Genes that do not have the "Most Annotated" start:

- Arcadia_26, Argan_31, BarbieDoll_35, BenitoAntonio_26, Benllo_24, Cheesy_26, Circum_26, Correa_25, Dynamite_25, Elsa_26, GantcherGoblin_31, GoCrazy_24, Hankly_24, Heisenberger_25, JEGGS_25, Kardesai_24, KeaneyLin_24, Leathea_32, Lewando_35, Mooshroom_25, Mudcat_25, NapoleonB_25, Nason_26, Renaldo_37, Tribby_26, Uzumaki_32, Xenomorph_24, Zeina_32,

Summary by start number:

Start 1:

- Found in 28 of 81 (34.6%) of genes in pham
- Manual Annotations of this start: 15 of 66
- Called 64.3% of time when present
- Phage (with cluster) where this start called: Argan_31 (AU6), BarbieDoll_35 (AU6), Breylor17_33 (AU1), CapnMurica_32 (AU1), ElephantMan_32 (AU1), GantcherGoblin_31 (AU6), Gordon_32 (AU1), Leathea_32 (AU6), Lewando_35 (AU6), MiniBagel_32 (AU1), Nightmare_33 (AU1), Niktson_32 (AU1), Renaldo_37 (AU6), Tatanka_32 (AU1), Teacup_32 (AU1), Tenno_33 (AU1), Uzumaki_32 (AU6), Zeina_32 (AU6),

Start 2:

- Found in 53 of 81 (65.4%) of genes in pham
- Manual Annotations of this start: 32 of 66
- Called 81.1% of time when present
- Phage (with cluster) where this start called: AreFloNak_32 (AU1), Arzan_28 (FI), BronxBay_29 (AW), Brunswick_32 (AU1), CastorTray_34 (AU1), Caterpillar_30 (AU4), Darby_32 (AU1), DevitoJr_32 (AU1), Djungelskog_29 (AW), DoctorPepper_29 (AW), Egad_29 (AW), Elver_45 (FK), Giantsbane_33 (AU2), Ingrid_32 (AU3), Inked_34 (AU), Issa_32 (AU1), Jazzy4900_30 (FI), LilHuddy_33 (AU2), Linda_29 (AW), Loretta_32 (AU3), Makai_32 (AU5), MediumFry_30 (AU4), Michelle_29 (AW), MrAaronian_29 (AW), Nivinsha_32 (AU1), Paella_46 (FK), Phaby_33 (AU2), ProfFrink_29 (AW), Qui_46 (FK), Raunak_29 (AW), Salk_29 (AW), ScienceWizSam_34 (AU1), Shepard_33 (AU2), Shiba_29 (AW), Sloopyjoe_29 (AW), Sporto_30 (AW), StarLord_29 (AW), Stayer_29 (AW), Sunny4976_29 (FI), Synepsis_31 (AU1), Tokki_33 (AU2), Truckee_31 (AU5), Trustiboi_33 (AU1),

Start 3:

- Found in 20 of 81 (24.7%) of genes in pham
- Manual Annotations of this start: 19 of 66
- Called 100.0% of time when present

- Phage (with cluster) where this start called: Arcadia_26 (AM), BenitoAntonio_26 (AM), Benllo_24 (AM), Cheesy_26 (AM), Circum_26 (AM), Correa_25 (AM), Dynamite_25 (AM), Elsa_26 (AM), GoCrazy_24 (AM), Hankly_24 (AM), Heisenberger_25 (AM), JEGGS_25 (AM), Kardesai_24 (AM), KeaneyLin_24 (AM), Mooshroom_25 (AM), Mudcat_25 (AM), NapoleonB_25 (AM), Nason_26 (AM), Tribby_26 (AM), Xenomorph_24 (AM),

Summary by clusters:

There are 11 clusters represented in this pham: AM, AU1, AU3, AU2, AU5, AU4, AW, AU6, FI, FK, AU,

Info for manual annotations of cluster AM:

- Start number 3 was manually annotated 19 times for cluster AM.

Info for manual annotations of cluster AU:

- Start number 2 was manually annotated 1 time for cluster AU.

Info for manual annotations of cluster AU1:

- Start number 1 was manually annotated 10 times for cluster AU1.
- Start number 2 was manually annotated 7 times for cluster AU1.

Info for manual annotations of cluster AU2:

- Start number 2 was manually annotated 4 times for cluster AU2.

Info for manual annotations of cluster AU3:

- Start number 2 was manually annotated 2 times for cluster AU3.

Info for manual annotations of cluster AU4:

- Start number 2 was manually annotated 2 times for cluster AU4.

Info for manual annotations of cluster AU5:

- Start number 2 was manually annotated 2 times for cluster AU5.

Info for manual annotations of cluster AU6:

- Start number 1 was manually annotated 5 times for cluster AU6.

Info for manual annotations of cluster AW:

- Start number 2 was manually annotated 12 times for cluster AW.

Info for manual annotations of cluster FK:

- Start number 2 was manually annotated 2 times for cluster FK.

Gene Information:

Gene: Arcadia_26 Start: 24545, Stop: 24826, Start Num: 3

Candidate Starts for Arcadia_26:

(Start: 3 @24545 has 19 MA's), (5, 24572), (24, 24785),

Gene: AreFloNak_32 Start: 28123, Stop: 28425, Start Num: 2

Candidate Starts for AreFloNak_32:

(Start: 1 @28120 has 15 MA's), (Start: 2 @28123 has 32 MA's), (10, 28189), (14, 28213),

Gene: Argan_31 Start: 26704, Stop: 26967, Start Num: 1

Candidate Starts for Argan_31:

(Start: 1 @26704 has 15 MA's), (6, 26749), (7, 26764), (9, 26770),

Gene: Arzan_28 Start: 25421, Stop: 25702, Start Num: 2

Candidate Starts for Arzan_28:

(Start: 2 @25421 has 32 MA's),

Gene: BarbieDoll_35 Start: 28680, Stop: 28943, Start Num: 1

Candidate Starts for BarbieDoll_35:

(Start: 1 @28680 has 15 MA's), (6, 28725), (7, 28740), (9, 28746), (21, 28893),

Gene: BenitoAntonio_26 Start: 24161, Stop: 24442, Start Num: 3

Candidate Starts for BenitoAntonio_26:

(Start: 3 @24161 has 19 MA's), (5, 24188), (24, 24401),

Gene: Benllo_24 Start: 24445, Stop: 24726, Start Num: 3

Candidate Starts for Benllo_24:

(Start: 3 @24445 has 19 MA's), (5, 24472), (24, 24685),

Gene: Breylor17_33 Start: 28726, Stop: 29031, Start Num: 1

Candidate Starts for Breylor17_33:

(Start: 1 @28726 has 15 MA's), (Start: 2 @28729 has 32 MA's), (10, 28795), (14, 28819),

Gene: BronxBay_29 Start: 25277, Stop: 25576, Start Num: 2

Candidate Starts for BronxBay_29:

(Start: 2 @25277 has 32 MA's), (4, 25289), (9, 25340), (15, 25412),

Gene: Brunswick_32 Start: 28195, Stop: 28497, Start Num: 2

Candidate Starts for Brunswick_32:

(Start: 1 @28192 has 15 MA's), (Start: 2 @28195 has 32 MA's), (10, 28261), (14, 28285), (26, 28489),

Gene: CapnMurica_32 Start: 29278, Stop: 29583, Start Num: 1

Candidate Starts for CapnMurica_32:

(Start: 1 @29278 has 15 MA's), (Start: 2 @29281 has 32 MA's), (10, 29347), (12, 29362),

Gene: CastorTray_34 Start: 28587, Stop: 28889, Start Num: 2

Candidate Starts for CastorTray_34:

(Start: 1 @28584 has 15 MA's), (Start: 2 @28587 has 32 MA's), (10, 28653), (14, 28677),

Gene: Caterpillar_30 Start: 27361, Stop: 27663, Start Num: 2

Candidate Starts for Caterpillar_30:

(Start: 2 @27361 has 32 MA's), (14, 27451), (18, 27592),

Gene: Cheesy_26 Start: 24260, Stop: 24541, Start Num: 3

Candidate Starts for Cheesy_26:

(Start: 3 @24260 has 19 MA's), (5, 24287), (24, 24500),

Gene: Circum_26 Start: 24267, Stop: 24548, Start Num: 3

Candidate Starts for Circum_26:

(Start: 3 @24267 has 19 MA's), (5, 24294), (24, 24507),

Gene: Correa_25 Start: 23775, Stop: 24056, Start Num: 3

Candidate Starts for Correa_25:

(Start: 3 @23775 has 19 MA's), (5, 23802), (24, 24015),

Gene: Darby_32 Start: 28033, Stop: 28335, Start Num: 2

Candidate Starts for Darby_32:

(Start: 1 @28030 has 15 MA's), (Start: 2 @28033 has 32 MA's), (10, 28099), (14, 28123),

Gene: DevitoJr_32 Start: 28204, Stop: 28506, Start Num: 2

Candidate Starts for DevitoJr_32:

(Start: 1 @28201 has 15 MA's), (Start: 2 @28204 has 32 MA's), (10, 28270), (14, 28294),

Gene: Djungelskog_29 Start: 25277, Stop: 25576, Start Num: 2

Candidate Starts for Djungelskog_29:

(Start: 2 @25277 has 32 MA's), (4, 25289), (9, 25340), (15, 25412),

Gene: DoctorPepper_29 Start: 25277, Stop: 25576, Start Num: 2

Candidate Starts for DoctorPepper_29:

(Start: 2 @25277 has 32 MA's), (4, 25289), (9, 25340), (15, 25412),

Gene: Dynamite_25 Start: 24068, Stop: 24349, Start Num: 3

Candidate Starts for Dynamite_25:

(Start: 3 @24068 has 19 MA's), (5, 24095), (24, 24308),

Gene: Egad_29 Start: 25278, Stop: 25577, Start Num: 2

Candidate Starts for Egad_29:

(Start: 2 @25278 has 32 MA's), (4, 25290), (9, 25341), (15, 25413),

Gene: ElephantMan_32 Start: 28732, Stop: 29037, Start Num: 1

Candidate Starts for ElephantMan_32:

(Start: 1 @28732 has 15 MA's), (Start: 2 @28735 has 32 MA's), (10, 28801), (14, 28825), (26, 29029),

Gene: Elsa_26 Start: 24545, Stop: 24826, Start Num: 3

Candidate Starts for Elsa_26:

(Start: 3 @24545 has 19 MA's), (5, 24572), (24, 24785),

Gene: Elver_45 Start: 36891, Stop: 37217, Start Num: 2

Candidate Starts for Elver_45:

(Start: 2 @36891 has 32 MA's), (8, 36951), (9, 36954), (11, 36960), (18, 37155),

Gene: GantcherGoblin_31 Start: 26743, Stop: 27006, Start Num: 1

Candidate Starts for GantcherGoblin_31:

(Start: 1 @26743 has 15 MA's), (6, 26788), (7, 26803), (9, 26809),

Gene: Giantsbane_33 Start: 27202, Stop: 27525, Start Num: 2

Candidate Starts for Giantsbane_33:

(Start: 2 @27202 has 32 MA's), (5, 27235), (21, 27475),

Gene: GoCrazy_24 Start: 24068, Stop: 24349, Start Num: 3

Candidate Starts for GoCrazy_24:

(Start: 3 @24068 has 19 MA's), (5, 24095), (24, 24308),

Gene: Gordon_32 Start: 29306, Stop: 29611, Start Num: 1
Candidate Starts for Gordon_32:
(Start: 1 @29306 has 15 MA's), (Start: 2 @29309 has 32 MA's), (10, 29375), (14, 29399),

Gene: Hankly_24 Start: 23290, Stop: 23571, Start Num: 3
Candidate Starts for Hankly_24:
(Start: 3 @23290 has 19 MA's), (5, 23317), (24, 23530),

Gene: Heisenberger_25 Start: 23938, Stop: 24219, Start Num: 3
Candidate Starts for Heisenberger_25:
(Start: 3 @23938 has 19 MA's), (5, 23965), (18, 24142), (24, 24178),

Gene: Ingrid_32 Start: 27921, Stop: 28220, Start Num: 2
Candidate Starts for Ingrid_32:
(Start: 2 @27921 has 32 MA's), (5, 27954), (6, 27963), (25, 28197),

Gene: Inked_34 Start: 28940, Stop: 29242, Start Num: 2
Candidate Starts for Inked_34:
(Start: 2 @28940 has 32 MA's), (5, 28973), (10, 29006), (16, 29129), (22, 29195),

Gene: Issa_32 Start: 28013, Stop: 28315, Start Num: 2
Candidate Starts for Issa_32:
(Start: 1 @28010 has 15 MA's), (Start: 2 @28013 has 32 MA's), (10, 28079), (14, 28103),

Gene: JEGGS_25 Start: 23992, Stop: 24273, Start Num: 3
Candidate Starts for JEGGS_25:
(Start: 3 @23992 has 19 MA's), (5, 24019), (18, 24196), (24, 24232),

Gene: Jazzy4900_30 Start: 26675, Stop: 26956, Start Num: 2
Candidate Starts for Jazzy4900_30:
(Start: 2 @26675 has 32 MA's), (13, 26759), (19, 26891),

Gene: Kardesai_24 Start: 23671, Stop: 23952, Start Num: 3
Candidate Starts for Kardesai_24:
(Start: 3 @23671 has 19 MA's), (5, 23698), (18, 23875), (24, 23911),

Gene: KeaneyLin_24 Start: 24068, Stop: 24349, Start Num: 3
Candidate Starts for KeaneyLin_24:
(Start: 3 @24068 has 19 MA's), (5, 24095), (24, 24308),

Gene: Leathea_32 Start: 26639, Stop: 26902, Start Num: 1
Candidate Starts for Leathea_32:
(Start: 1 @26639 has 15 MA's), (6, 26684), (7, 26699), (9, 26705),

Gene: Lewando_35 Start: 28662, Stop: 28925, Start Num: 1
Candidate Starts for Lewando_35:
(Start: 1 @28662 has 15 MA's), (6, 28707), (7, 28722), (9, 28728), (21, 28875),

Gene: LilHuddy_33 Start: 28384, Stop: 28686, Start Num: 2
Candidate Starts for LilHuddy_33:
(Start: 2 @28384 has 32 MA's), (5, 28417), (10, 28450), (23, 28645),

Gene: Linda_29 Start: 25277, Stop: 25576, Start Num: 2
Candidate Starts for Linda_29:
(Start: 2 @25277 has 32 MA's), (4, 25289), (9, 25340), (15, 25412),

Gene: Loretta_32 Start: 27921, Stop: 28220, Start Num: 2
Candidate Starts for Loretta_32:
(Start: 2 @27921 has 32 MA's), (5, 27954), (6, 27963), (25, 28197),

Gene: Makai_32 Start: 28159, Stop: 28461, Start Num: 2
Candidate Starts for Makai_32:
(Start: 2 @28159 has 32 MA's), (5, 28192), (14, 28249), (19, 28396), (20, 28399),

Gene: MediumFry_30 Start: 27363, Stop: 27665, Start Num: 2
Candidate Starts for MediumFry_30:
(Start: 2 @27363 has 32 MA's), (14, 27453), (18, 27594), (25, 27639),

Gene: Michelle_29 Start: 25277, Stop: 25576, Start Num: 2
Candidate Starts for Michelle_29:
(Start: 2 @25277 has 32 MA's), (4, 25289), (9, 25340), (15, 25412),

Gene: MiniBagel_32 Start: 29257, Stop: 29562, Start Num: 1
Candidate Starts for MiniBagel_32:
(Start: 1 @29257 has 15 MA's), (Start: 2 @29260 has 32 MA's), (10, 29326), (12, 29341),

Gene: Mooshroom_25 Start: 23671, Stop: 23952, Start Num: 3
Candidate Starts for Mooshroom_25:
(Start: 3 @23671 has 19 MA's), (5, 23698), (18, 23875), (24, 23911),

Gene: MrAaronian_29 Start: 25277, Stop: 25576, Start Num: 2
Candidate Starts for MrAaronian_29:
(Start: 2 @25277 has 32 MA's), (4, 25289), (9, 25340), (15, 25412),

Gene: Mudcat_25 Start: 25969, Stop: 26250, Start Num: 3
Candidate Starts for Mudcat_25:
(Start: 3 @25969 has 19 MA's), (5, 25996), (24, 26209),

Gene: NapoleonB_25 Start: 24068, Stop: 24349, Start Num: 3
Candidate Starts for NapoleonB_25:
(Start: 3 @24068 has 19 MA's), (5, 24095), (24, 24308),

Gene: Nason_26 Start: 24545, Stop: 24826, Start Num: 3
Candidate Starts for Nason_26:
(Start: 3 @24545 has 19 MA's), (5, 24572), (24, 24785),

Gene: Nightmare_33 Start: 28570, Stop: 28875, Start Num: 1
Candidate Starts for Nightmare_33:
(Start: 1 @28570 has 15 MA's), (Start: 2 @28573 has 32 MA's), (10, 28639), (14, 28663),

Gene: Niktson_32 Start: 28732, Stop: 29037, Start Num: 1
Candidate Starts for Niktson_32:
(Start: 1 @28732 has 15 MA's), (Start: 2 @28735 has 32 MA's), (10, 28801), (14, 28825), (26, 29029),

Gene: Nivinsha_32 Start: 28123, Stop: 28425, Start Num: 2

Candidate Starts for Nivinsha_32:

(Start: 1 @28120 has 15 MA's), (Start: 2 @28123 has 32 MA's), (10, 28189), (14, 28213),

Gene: Paella_46 Start: 36893, Stop: 37219, Start Num: 2

Candidate Starts for Paella_46:

(Start: 2 @36893 has 32 MA's), (8, 36953), (9, 36956), (11, 36962), (18, 37157),

Gene: Phaby_33 Start: 28317, Stop: 28640, Start Num: 2

Candidate Starts for Phaby_33:

(Start: 2 @28317 has 32 MA's), (5, 28350), (21, 28590),

Gene: ProfFrink_29 Start: 25277, Stop: 25576, Start Num: 2

Candidate Starts for ProfFrink_29:

(Start: 2 @25277 has 32 MA's), (4, 25289), (9, 25340), (15, 25412),

Gene: Qui_46 Start: 36893, Stop: 37219, Start Num: 2

Candidate Starts for Qui_46:

(Start: 2 @36893 has 32 MA's), (8, 36953), (9, 36956), (11, 36962), (18, 37157),

Gene: Raunak_29 Start: 25277, Stop: 25576, Start Num: 2

Candidate Starts for Raunak_29:

(Start: 2 @25277 has 32 MA's), (4, 25289), (9, 25340), (15, 25412),

Gene: Renaldo_37 Start: 28671, Stop: 28934, Start Num: 1

Candidate Starts for Renaldo_37:

(Start: 1 @28671 has 15 MA's), (6, 28716), (7, 28731), (9, 28737), (21, 28884),

Gene: Salk_29 Start: 25277, Stop: 25576, Start Num: 2

Candidate Starts for Salk_29:

(Start: 2 @25277 has 32 MA's), (4, 25289), (9, 25340), (15, 25412),

Gene: ScienceWizSam_34 Start: 28524, Stop: 28826, Start Num: 2

Candidate Starts for ScienceWizSam_34:

(Start: 1 @28521 has 15 MA's), (Start: 2 @28524 has 32 MA's), (10, 28590), (14, 28614),

Gene: Shepard_33 Start: 28381, Stop: 28683, Start Num: 2

Candidate Starts for Shepard_33:

(Start: 2 @28381 has 32 MA's), (5, 28414), (10, 28447), (23, 28642),

Gene: Shiba_29 Start: 25277, Stop: 25576, Start Num: 2

Candidate Starts for Shiba_29:

(Start: 2 @25277 has 32 MA's), (4, 25289), (9, 25340), (15, 25412),

Gene: Sloopyjoe_29 Start: 25278, Stop: 25577, Start Num: 2

Candidate Starts for Sloopyjoe_29:

(Start: 2 @25278 has 32 MA's), (4, 25290), (9, 25341), (15, 25413),

Gene: Sporto_30 Start: 26489, Stop: 26746, Start Num: 2

Candidate Starts for Sporto_30:

(Start: 2 @26489 has 32 MA's), (4, 26501), (9, 26552), (15, 26624), (17, 26663), (19, 26684), (23, 26708),

Gene: StarLord_29 Start: 25278, Stop: 25577, Start Num: 2

Candidate Starts for StarLord_29:

(Start: 2 @25278 has 32 MA's), (4, 25290), (9, 25341), (15, 25413),

Gene: Stayer_29 Start: 25277, Stop: 25576, Start Num: 2

Candidate Starts for Stayer_29:

(Start: 2 @25277 has 32 MA's), (4, 25289), (9, 25340), (15, 25412),

Gene: Sunny4976_29 Start: 26675, Stop: 26956, Start Num: 2

Candidate Starts for Sunny4976_29:

(Start: 2 @26675 has 32 MA's), (13, 26759), (19, 26891),

Gene: Synopsis_31 Start: 28187, Stop: 28489, Start Num: 2

Candidate Starts for Synopsis_31:

(Start: 1 @28184 has 15 MA's), (Start: 2 @28187 has 32 MA's), (10, 28253), (14, 28277),

Gene: Tatanka_32 Start: 28668, Stop: 28973, Start Num: 1

Candidate Starts for Tatanka_32:

(Start: 1 @28668 has 15 MA's), (Start: 2 @28671 has 32 MA's), (10, 28737), (14, 28761),

Gene: Teacup_32 Start: 28040, Stop: 28345, Start Num: 1

Candidate Starts for Teacup_32:

(Start: 1 @28040 has 15 MA's), (Start: 2 @28043 has 32 MA's), (10, 28109), (14, 28133), (26, 28337),

Gene: Tenno_33 Start: 29266, Stop: 29571, Start Num: 1

Candidate Starts for Tenno_33:

(Start: 1 @29266 has 15 MA's), (Start: 2 @29269 has 32 MA's), (10, 29335), (12, 29350),

Gene: Tokki_33 Start: 28333, Stop: 28656, Start Num: 2

Candidate Starts for Tokki_33:

(Start: 2 @28333 has 32 MA's), (5, 28366), (21, 28606),

Gene: Tribby_26 Start: 24260, Stop: 24541, Start Num: 3

Candidate Starts for Tribby_26:

(Start: 3 @24260 has 19 MA's), (5, 24287), (24, 24500),

Gene: Truckee_31 Start: 28204, Stop: 28506, Start Num: 2

Candidate Starts for Truckee_31:

(Start: 2 @28204 has 32 MA's), (5, 28237), (14, 28294), (19, 28441), (20, 28444),

Gene: Trustiboi_33 Start: 28740, Stop: 29042, Start Num: 2

Candidate Starts for Trustiboi_33:

(Start: 1 @28737 has 15 MA's), (Start: 2 @28740 has 32 MA's), (10, 28806), (14, 28830),

Gene: Uzumaki_32 Start: 27562, Stop: 27825, Start Num: 1

Candidate Starts for Uzumaki_32:

(Start: 1 @27562 has 15 MA's), (6, 27607), (7, 27622), (9, 27628),

Gene: Xenomorph_24 Start: 24278, Stop: 24559, Start Num: 3

Candidate Starts for Xenomorph_24:

(Start: 3 @24278 has 19 MA's), (5, 24305), (24, 24518),

Gene: Zeina_32 Start: 26943, Stop: 27206, Start Num: 1

Candidate Starts for Zeina_32:

(Start: 1 @26943 has 15 MA's), (6, 26988), (7, 27003), (9, 27009),