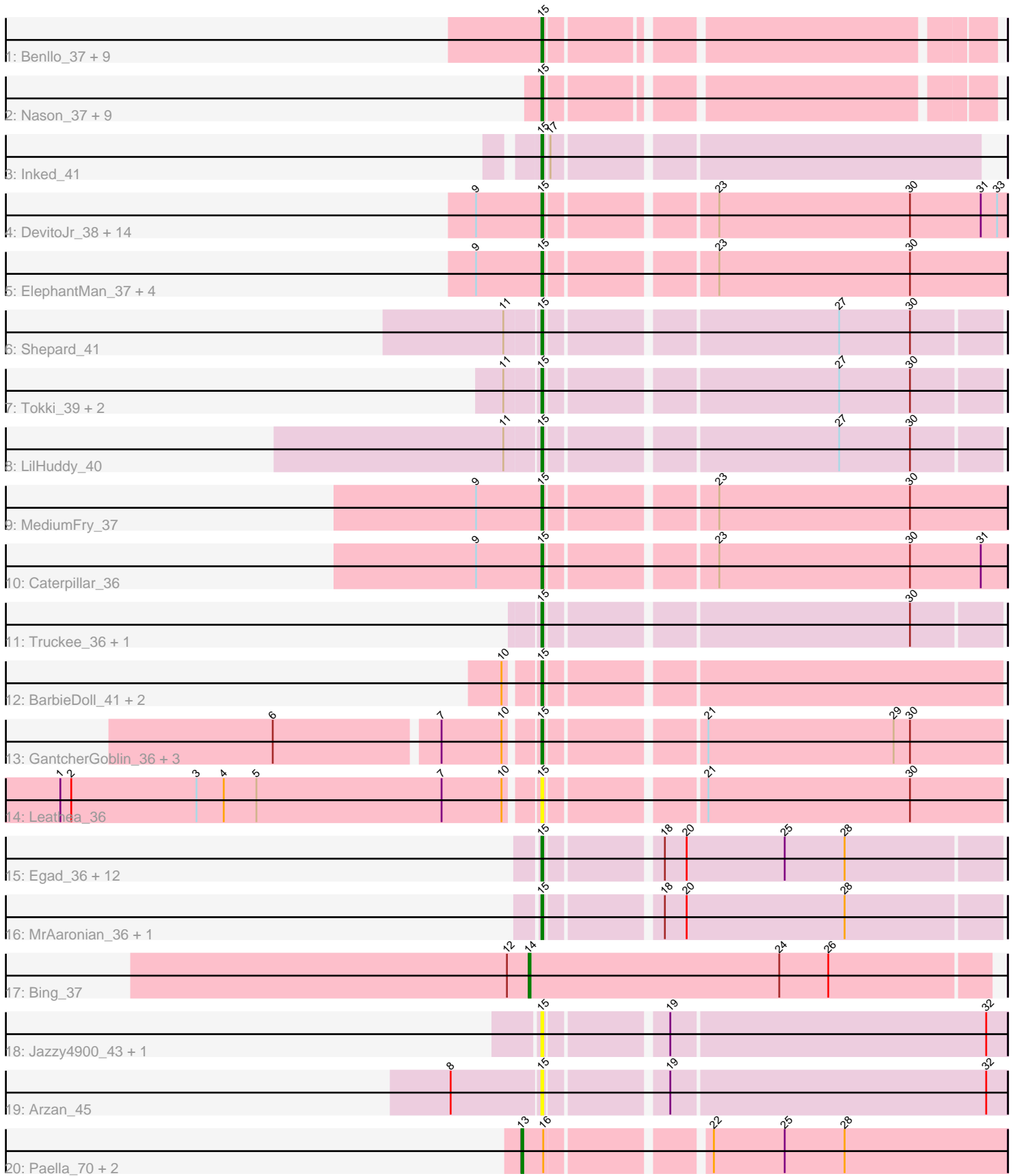


Pham 171401



Note: Tracks are now grouped by subcluster and scaled. Switching in subcluster is indicated by changes in track color. Track scale is now set by default to display the region 30 bp upstream of start 1 to 30 bp downstream of the last possible start. If this default region is judged to be packed too tightly with annotated starts, the track will be further scaled to only show that region of the ORF with annotated starts. This action will be indicated by adding "Zoomed" to the title. For starts, yellow indicates the location of called starts comprised solely of Glimmer/GeneMark auto-annotations, green indicates the location of called starts with at least 1 manual gene annotation.

Pham 171401 Report

This analysis was run 07/10/24 on database version 566.

Pham number 171401 has 80 members, 15 are drafts.

Phages represented in each track:

- Track 1 : Benllo_37, Hankly_37, Dynamite_38, BenitoAntonio_38, Mooshroom_40, Circum_39, Kardesai_39, NapoleonB_38, KeaneyLin_36, GoCrazy_36
- Track 2 : Nason_37, Heisenberger_37, JEGGS_37, Elsa_37, Tribby_37, Arcadia_37, Mudcat_36, Correa_35, Xenomorph_34, Cheesy_37
- Track 3 : Inked_41
- Track 4 : DevitoJr_38, ScienceWizSam_40, Trustiboi_39, Darby_37, Nivinsha_39, Issa_39, CastorTray_40, AreFloNak_38, Synopsis_37, Nightmare_39, MiniBagel_37, CapnMurica_37, Breylor17_39, Gordon_37, Tenno_38
- Track 5 : ElephantMan_37, Teacup_39, Brunswick_38, Niktson_37, Tatanka_37
- Track 6 : Shepard_41
- Track 7 : Tokki_39, Giantsbane_40, Phaby_39
- Track 8 : LilHuddy_40
- Track 9 : MediumFry_37
- Track 10 : Caterpillar_36
- Track 11 : Truckee_36, Makai_37
- Track 12 : BarbieDoll_41, Renaldo_42, Lewando_40
- Track 13 : GantcherGoblin_36, Uzumaki_36, Argan_36, Zeina_38
- Track 14 : Leathea_36
- Track 15 : Egad_36, Shiba_36, Sloopyjoe_36, Michelle_36, DoctorPepper_36, ProfFrink_37, Salk_36, Stayer_36, Linda_36, BronxBay_36, Raunak_37, Sporto_38, StarLord_36
- Track 16 : MrAaronian_36, Djungelskog_36
- Track 17 : Bing_37
- Track 18 : Jazzy4900_43, Sunny4976_42
- Track 19 : Arzan_45
- Track 20 : Paella_70, Elver_67, Qui_70

Summary of Final Annotations (See graph section above for start numbers):

The start number called the most often in the published annotations is 15, it was called in 62 of the 65 non-draft genes in the pham.

Genes that call this "Most Annotated" start:

- Arcadia_37, AreFloNak_38, Argan_36, Arzan_45, BarbieDoll_41, BenitoAntonio_38, Benllo_37, Breylor17_39, BronxBay_36, Brunswick_38, CapnMurica_37, CastorTray_40, Caterpillar_36, Cheesy_37, Circum_39, Correa_35, Darby_37, DevitoJr_38, Djungelskog_36, DoctorPepper_36, Dynamite_38, Egad_36, ElephantMan_37, Elsa_37, GantcherGoblin_36, Giantsbane_40, GoCrazy_36, Gordon_37, Hankly_37, Heisenberger_37, Inked_41, Issa_39, JEGGS_37, Jazzy4900_43, Kardesai_39, KeaneyLin_36, Leathea_36, Lewando_40, LilHuddy_40, Linda_36, Makai_37, MediumFry_37, Michelle_36, MiniBagel_37, Mooshroom_40, MrAaronian_36, Mudcat_36, NapoleonB_38, Nason_37, Nightmare_39, Niktson_37, Nivinsha_39, Phaby_39, ProfFrink_37, Raunak_37, Renaldo_42, Salk_36, ScienceWizSam_40, Shepard_41, Shiba_36, Sloopyjoe_36, Sporto_38, StarLord_36, Stayer_36, Sunny4976_42, Synepsis_37, Tatanka_37, Teacup_39, Tenno_38, Tokki_39, Tribby_37, Truckee_36, Trustiboi_39, Uzumaki_36, Xenomorph_34, Zeina_38,

Genes that have the "Most Annotated" start but do not call it:

-

Genes that do not have the "Most Annotated" start:

- Bing_37, Elver_67, Paella_70, Qui_70,

Summary by start number:

Start 13:

- Found in 3 of 80 (3.8%) of genes in pham
- Manual Annotations of this start: 2 of 65
- Called 100.0% of time when present
- Phage (with cluster) where this start called: Elver_67 (FK), Paella_70 (FK), Qui_70 (FK),

Start 14:

- Found in 1 of 80 (1.2%) of genes in pham
- Manual Annotations of this start: 1 of 65
- Called 100.0% of time when present
- Phage (with cluster) where this start called: Bing_37 (BI5),

Start 15:

- Found in 76 of 80 (95.0%) of genes in pham
- Manual Annotations of this start: 62 of 65
- Called 100.0% of time when present
- Phage (with cluster) where this start called: Arcadia_37 (AM), AreFloNak_38 (AU1), Argan_36 (AU6), Arzan_45 (FI), BarbieDoll_41 (AU6), BenitoAntonio_38 (AM), Benllo_37 (AM), Breylor17_39 (AU1), BronxBay_36 (AW), Brunswick_38 (AU1), CapnMurica_37 (AU1), CastorTray_40 (AU1), Caterpillar_36 (AU4), Cheesy_37 (AM), Circum_39 (AM), Correa_35 (AM), Darby_37 (AU1), DevitoJr_38 (AU1), Djungelskog_36 (AW), DoctorPepper_36 (AW), Dynamite_38 (AM), Egad_36 (AW), ElephantMan_37 (AU1), Elsa_37 (AM), GantcherGoblin_36 (AU6), Giantsbane_40 (AU2), GoCrazy_36 (AM), Gordon_37 (AU1), Hankly_37 (AM), Heisenberger_37 (AM), Inked_41 (AU), Issa_39 (AU1), JEGGS_37 (AM), Jazzy4900_43 (FI), Kardesai_39 (AM), KeaneyLin_36 (AM), Leathea_36 (AU6), Lewando_40 (AU6), LilHuddy_40 (AU2), Linda_36 (AW), Makai_37 (AU5), MediumFry_37 (AU4), Michelle_36 (AW), MiniBagel_37 (AU1), Mooshroom_40 (AM), MrAaronian_36 (AW), Mudcat_36 (AM), NapoleonB_38 (AM), Nason_37 (AM), Nightmare_39 (AU1),

Niktson_37 (AU1), Nivinsha_39 (AU1), Phaby_39 (AU2), ProfFrink_37 (AW), Raunak_37 (AW), Renaldo_42 (AU6), Salk_36 (AW), ScienceWizSam_40 (AU1), Shepard_41 (AU2), Shiba_36 (AW), Sloopyjoe_36 (AW), Sporto_38 (AW), StarLord_36 (AW), Stayer_36 (AW), Sunny4976_42 (FI), Synepsis_37 (AU1), Tatanka_37 (AU1), Teacup_39 (AU1), Tenno_38 (AU1), Tokki_39 (AU2), Tribby_37 (AM), Truckee_36 (AU5), Trustiboi_39 (AU1), Uzumaki_36 (AU6), Xenomorph_34 (AM), Zeina_38 (AU6),

Summary by clusters:

There are 11 clusters represented in this pham: BI5, AU5, AM, AU1, AU2, AU, AU4, AW, AU6, FI, FK,

Info for manual annotations of cluster AM:

- Start number 15 was manually annotated 19 times for cluster AM.

Info for manual annotations of cluster AU:

- Start number 15 was manually annotated 1 time for cluster AU.

Info for manual annotations of cluster AU1:

- Start number 15 was manually annotated 17 times for cluster AU1.

Info for manual annotations of cluster AU2:

- Start number 15 was manually annotated 4 times for cluster AU2.

Info for manual annotations of cluster AU4:

- Start number 15 was manually annotated 2 times for cluster AU4.

Info for manual annotations of cluster AU5:

- Start number 15 was manually annotated 2 times for cluster AU5.

Info for manual annotations of cluster AU6:

- Start number 15 was manually annotated 5 times for cluster AU6.

Info for manual annotations of cluster AW:

- Start number 15 was manually annotated 12 times for cluster AW.

Info for manual annotations of cluster BI5:

- Start number 14 was manually annotated 1 time for cluster BI5.

Info for manual annotations of cluster FK:

- Start number 13 was manually annotated 2 times for cluster FK.

Gene Information:

Gene: Arcadia_37 Start: 27918, Stop: 28139, Start Num: 15

Candidate Starts for Arcadia_37:

(Start: 15 @27918 has 62 MA's),

Gene: AreFloNak_38 Start: 30359, Stop: 30601, Start Num: 15

Candidate Starts for AreFloNak_38:

(9, 30323), (Start: 15 @30359 has 62 MA's), (23, 30443), (30, 30548), (31, 30587), (33, 30596),

Gene: Argan_36 Start: 28652, Stop: 28891, Start Num: 15

Candidate Starts for Argan_36:

(6, 28517), (7, 28604), (10, 28637), (Start: 15 @28652 has 62 MA's), (21, 28730), (29, 28832), (30, 28841),

Gene: Arzan_45 Start: 30391, Stop: 30633, Start Num: 15

Candidate Starts for Arzan_45:

(8, 30343), (Start: 15 @30391 has 62 MA's), (19, 30451), (32, 30622),

Gene: BarbieDoll_41 Start: 30355, Stop: 30594, Start Num: 15

Candidate Starts for BarbieDoll_41:

(10, 30340), (Start: 15 @30355 has 62 MA's),

Gene: BenitoAntonio_38 Start: 27761, Stop: 27982, Start Num: 15

Candidate Starts for BenitoAntonio_38:

(Start: 15 @27761 has 62 MA's),

Gene: Benllo_37 Start: 28439, Stop: 28660, Start Num: 15

Candidate Starts for Benllo_37:

(Start: 15 @28439 has 62 MA's),

Gene: Bing_37 Start: 27756, Stop: 28007, Start Num: 14

Candidate Starts for Bing_37:

(12, 27744), (Start: 14 @27756 has 1 MA's), (24, 27894), (26, 27921),

Gene: Breylor17_39 Start: 30968, Stop: 31210, Start Num: 15

Candidate Starts for Breylor17_39:

(9, 30932), (Start: 15 @30968 has 62 MA's), (23, 31052), (30, 31157), (31, 31196), (33, 31205),

Gene: BronxBay_36 Start: 27776, Stop: 28015, Start Num: 15

Candidate Starts for BronxBay_36:

(Start: 15 @27776 has 62 MA's), (18, 27833), (20, 27845), (25, 27899), (28, 27932),

Gene: Brunswick_38 Start: 30104, Stop: 30346, Start Num: 15

Candidate Starts for Brunswick_38:

(9, 30068), (Start: 15 @30104 has 62 MA's), (23, 30188), (30, 30293),

Gene: CapnMurica_37 Start: 31196, Stop: 31438, Start Num: 15

Candidate Starts for CapnMurica_37:

(9, 31160), (Start: 15 @31196 has 62 MA's), (23, 31280), (30, 31385), (31, 31424), (33, 31433),

Gene: CastorTray_40 Start: 30823, Stop: 31065, Start Num: 15

Candidate Starts for CastorTray_40:

(9, 30787), (Start: 15 @30823 has 62 MA's), (23, 30907), (30, 31012), (31, 31051), (33, 31060),

Gene: Caterpillar_36 Start: 29603, Stop: 29845, Start Num: 15

Candidate Starts for Caterpillar_36:

(9, 29567), (Start: 15 @29603 has 62 MA's), (23, 29687), (30, 29792), (31, 29831),

Gene: Cheesy_37 Start: 27610, Stop: 27831, Start Num: 15

Candidate Starts for Cheesy_37:
(Start: 15 @27610 has 62 MA's),

Gene: Circum_39 Start: 28270, Stop: 28491, Start Num: 15
Candidate Starts for Circum_39:
(Start: 15 @28270 has 62 MA's),

Gene: Correa_35 Start: 26801, Stop: 27022, Start Num: 15
Candidate Starts for Correa_35:
(Start: 15 @26801 has 62 MA's),

Gene: Darby_37 Start: 29946, Stop: 30188, Start Num: 15
Candidate Starts for Darby_37:
(9, 29910), (Start: 15 @29946 has 62 MA's), (23, 30030), (30, 30135), (31, 30174), (33, 30183),

Gene: DevitoJr_38 Start: 30442, Stop: 30684, Start Num: 15
Candidate Starts for DevitoJr_38:
(9, 30406), (Start: 15 @30442 has 62 MA's), (23, 30526), (30, 30631), (31, 30670), (33, 30679),

Gene: Djungelskog_36 Start: 27776, Stop: 28015, Start Num: 15
Candidate Starts for Djungelskog_36:
(Start: 15 @27776 has 62 MA's), (18, 27833), (20, 27845), (28, 27932),

Gene: DoctorPepper_36 Start: 27776, Stop: 28015, Start Num: 15
Candidate Starts for DoctorPepper_36:
(Start: 15 @27776 has 62 MA's), (18, 27833), (20, 27845), (25, 27899), (28, 27932),

Gene: Dynamite_38 Start: 28101, Stop: 28322, Start Num: 15
Candidate Starts for Dynamite_38:
(Start: 15 @28101 has 62 MA's),

Gene: Egad_36 Start: 27777, Stop: 28016, Start Num: 15
Candidate Starts for Egad_36:
(Start: 15 @27777 has 62 MA's), (18, 27834), (20, 27846), (25, 27900), (28, 27933),

Gene: ElephantMan_37 Start: 30644, Stop: 30886, Start Num: 15
Candidate Starts for ElephantMan_37:
(9, 30608), (Start: 15 @30644 has 62 MA's), (23, 30728), (30, 30833),

Gene: Elsa_37 Start: 27918, Stop: 28139, Start Num: 15
Candidate Starts for Elsa_37:
(Start: 15 @27918 has 62 MA's),

Gene: Elver_67 Start: 44169, Stop: 44420, Start Num: 13
Candidate Starts for Elver_67:
(Start: 13 @44169 has 2 MA's), (16, 44181), (22, 44259), (25, 44298), (28, 44331),

Gene: GantcherGoblin_36 Start: 28690, Stop: 28929, Start Num: 15
Candidate Starts for GantcherGoblin_36:
(6, 28555), (7, 28642), (10, 28675), (Start: 15 @28690 has 62 MA's), (21, 28768), (29, 28870), (30, 28879),

Gene: Giantsbane_40 Start: 29463, Stop: 29699, Start Num: 15

Candidate Starts for Giantsbane_40:
(11, 29445), (Start: 15 @29463 has 62 MA's), (27, 29613), (30, 29652),

Gene: GoCrazy_36 Start: 27748, Stop: 27969, Start Num: 15
Candidate Starts for GoCrazy_36:
(Start: 15 @27748 has 62 MA's),

Gene: Gordon_37 Start: 31225, Stop: 31467, Start Num: 15
Candidate Starts for Gordon_37:
(9, 31189), (Start: 15 @31225 has 62 MA's), (23, 31309), (30, 31414), (31, 31453), (33, 31462),

Gene: Hankly_37 Start: 27293, Stop: 27514, Start Num: 15
Candidate Starts for Hankly_37:
(Start: 15 @27293 has 62 MA's),

Gene: Heisenberger_37 Start: 27603, Stop: 27824, Start Num: 15
Candidate Starts for Heisenberger_37:
(Start: 15 @27603 has 62 MA's),

Gene: Inked_41 Start: 31501, Stop: 31728, Start Num: 15
Candidate Starts for Inked_41:
(Start: 15 @31501 has 62 MA's), (17, 31504),

Gene: Issa_39 Start: 30251, Stop: 30493, Start Num: 15
Candidate Starts for Issa_39:
(9, 30215), (Start: 15 @30251 has 62 MA's), (23, 30335), (30, 30440), (31, 30479), (33, 30488),

Gene: JEGGS_37 Start: 27657, Stop: 27878, Start Num: 15
Candidate Starts for JEGGS_37:
(Start: 15 @27657 has 62 MA's),

Gene: Jazzy4900_43 Start: 30976, Stop: 31218, Start Num: 15
Candidate Starts for Jazzy4900_43:
(Start: 15 @30976 has 62 MA's), (19, 31036), (32, 31207),

Gene: Kardesai_39 Start: 28323, Stop: 28544, Start Num: 15
Candidate Starts for Kardesai_39:
(Start: 15 @28323 has 62 MA's),

Gene: KeaneyLin_36 Start: 27748, Stop: 27969, Start Num: 15
Candidate Starts for KeaneyLin_36:
(Start: 15 @27748 has 62 MA's),

Gene: Leathea_36 Start: 28113, Stop: 28352, Start Num: 15
Candidate Starts for Leathea_36:
(1, 27855), (2, 27861), (3, 27930), (4, 27945), (5, 27963), (7, 28065), (10, 28098), (Start: 15 @28113 has 62 MA's), (21, 28191), (30, 28302),

Gene: Lewando_40 Start: 30552, Stop: 30791, Start Num: 15
Candidate Starts for Lewando_40:
(10, 30537), (Start: 15 @30552 has 62 MA's),

Gene: LilHuddy_40 Start: 30610, Stop: 30846, Start Num: 15

Candidate Starts for LilHuddy_40:
(11, 30592), (Start: 15 @30610 has 62 MA's), (27, 30760), (30, 30799),

Gene: Linda_36 Start: 27772, Stop: 28011, Start Num: 15
Candidate Starts for Linda_36:
(Start: 15 @27772 has 62 MA's), (18, 27829), (20, 27841), (25, 27895), (28, 27928),

Gene: Makai_37 Start: 30096, Stop: 30332, Start Num: 15
Candidate Starts for Makai_37:
(Start: 15 @30096 has 62 MA's), (30, 30285),

Gene: MediumFry_37 Start: 29916, Stop: 30158, Start Num: 15
Candidate Starts for MediumFry_37:
(9, 29880), (Start: 15 @29916 has 62 MA's), (23, 30000), (30, 30105),

Gene: Michelle_36 Start: 27776, Stop: 28015, Start Num: 15
Candidate Starts for Michelle_36:
(Start: 15 @27776 has 62 MA's), (18, 27833), (20, 27845), (25, 27899), (28, 27932),

Gene: MiniBagel_37 Start: 31178, Stop: 31420, Start Num: 15
Candidate Starts for MiniBagel_37:
(9, 31142), (Start: 15 @31178 has 62 MA's), (23, 31262), (30, 31367), (31, 31406), (33, 31415),

Gene: Mooshroom_40 Start: 28323, Stop: 28544, Start Num: 15
Candidate Starts for Mooshroom_40:
(Start: 15 @28323 has 62 MA's),

Gene: MrAaronian_36 Start: 27776, Stop: 28015, Start Num: 15
Candidate Starts for MrAaronian_36:
(Start: 15 @27776 has 62 MA's), (18, 27833), (20, 27845), (28, 27932),

Gene: Mudcat_36 Start: 29309, Stop: 29530, Start Num: 15
Candidate Starts for Mudcat_36:
(Start: 15 @29309 has 62 MA's),

Gene: NapoleonB_38 Start: 28101, Stop: 28322, Start Num: 15
Candidate Starts for NapoleonB_38:
(Start: 15 @28101 has 62 MA's),

Gene: Nason_37 Start: 27918, Stop: 28139, Start Num: 15
Candidate Starts for Nason_37:
(Start: 15 @27918 has 62 MA's),

Gene: Nightmare_39 Start: 30810, Stop: 31052, Start Num: 15
Candidate Starts for Nightmare_39:
(9, 30774), (Start: 15 @30810 has 62 MA's), (23, 30894), (30, 30999), (31, 31038), (33, 31047),

Gene: Niktson_37 Start: 30644, Stop: 30886, Start Num: 15
Candidate Starts for Niktson_37:
(9, 30608), (Start: 15 @30644 has 62 MA's), (23, 30728), (30, 30833),

Gene: Nivinsha_39 Start: 30359, Stop: 30601, Start Num: 15
Candidate Starts for Nivinsha_39:

(9, 30323), (Start: 15 @30359 has 62 MA's), (23, 30443), (30, 30548), (31, 30587), (33, 30596),

Gene: Paella_70 Start: 44762, Stop: 45013, Start Num: 13

Candidate Starts for Paella_70:

(Start: 13 @44762 has 2 MA's), (16, 44774), (22, 44852), (25, 44891), (28, 44924),

Gene: Phaby_39 Start: 30565, Stop: 30801, Start Num: 15

Candidate Starts for Phaby_39:

(11, 30547), (Start: 15 @30565 has 62 MA's), (27, 30715), (30, 30754),

Gene: ProfFrink_37 Start: 27776, Stop: 28015, Start Num: 15

Candidate Starts for ProfFrink_37:

(Start: 15 @27776 has 62 MA's), (18, 27833), (20, 27845), (25, 27899), (28, 27932),

Gene: Qui_70 Start: 44762, Stop: 45013, Start Num: 13

Candidate Starts for Qui_70:

(Start: 13 @44762 has 2 MA's), (16, 44774), (22, 44852), (25, 44891), (28, 44924),

Gene: Raunak_37 Start: 27771, Stop: 28010, Start Num: 15

Candidate Starts for Raunak_37:

(Start: 15 @27771 has 62 MA's), (18, 27828), (20, 27840), (25, 27894), (28, 27927),

Gene: Renaldo_42 Start: 30569, Stop: 30808, Start Num: 15

Candidate Starts for Renaldo_42:

(10, 30554), (Start: 15 @30569 has 62 MA's),

Gene: Salk_36 Start: 27772, Stop: 28011, Start Num: 15

Candidate Starts for Salk_36:

(Start: 15 @27772 has 62 MA's), (18, 27829), (20, 27841), (25, 27895), (28, 27928),

Gene: ScienceWizSam_40 Start: 30761, Stop: 31003, Start Num: 15

Candidate Starts for ScienceWizSam_40:

(9, 30725), (Start: 15 @30761 has 62 MA's), (23, 30845), (30, 30950), (31, 30989), (33, 30998),

Gene: Shepard_41 Start: 30896, Stop: 31132, Start Num: 15

Candidate Starts for Shepard_41:

(11, 30878), (Start: 15 @30896 has 62 MA's), (27, 31046), (30, 31085),

Gene: Shiba_36 Start: 27771, Stop: 28010, Start Num: 15

Candidate Starts for Shiba_36:

(Start: 15 @27771 has 62 MA's), (18, 27828), (20, 27840), (25, 27894), (28, 27927),

Gene: Sloopyjoe_36 Start: 27777, Stop: 28016, Start Num: 15

Candidate Starts for Sloopyjoe_36:

(Start: 15 @27777 has 62 MA's), (18, 27834), (20, 27846), (25, 27900), (28, 27933),

Gene: Sporto_38 Start: 29260, Stop: 29499, Start Num: 15

Candidate Starts for Sporto_38:

(Start: 15 @29260 has 62 MA's), (18, 29317), (20, 29329), (25, 29383), (28, 29416),

Gene: StarLord_36 Start: 27777, Stop: 28016, Start Num: 15

Candidate Starts for StarLord_36:

(Start: 15 @27777 has 62 MA's), (18, 27834), (20, 27846), (25, 27900), (28, 27933),

Gene: Stayer_36 Start: 27772, Stop: 28011, Start Num: 15

Candidate Starts for Stayer_36:

(Start: 15 @27772 has 62 MA's), (18, 27829), (20, 27841), (25, 27895), (28, 27928),

Gene: Sunny4976_42 Start: 30976, Stop: 31218, Start Num: 15

Candidate Starts for Sunny4976_42:

(Start: 15 @30976 has 62 MA's), (19, 31036), (32, 31207),

Gene: Synopsis_37 Start: 30426, Stop: 30668, Start Num: 15

Candidate Starts for Synopsis_37:

(9, 30390), (Start: 15 @30426 has 62 MA's), (23, 30510), (30, 30615), (31, 30654), (33, 30663),

Gene: Tatanka_37 Start: 30589, Stop: 30831, Start Num: 15

Candidate Starts for Tatanka_37:

(9, 30553), (Start: 15 @30589 has 62 MA's), (23, 30673), (30, 30778),

Gene: Teacup_39 Start: 30574, Stop: 30816, Start Num: 15

Candidate Starts for Teacup_39:

(9, 30538), (Start: 15 @30574 has 62 MA's), (23, 30658), (30, 30763),

Gene: Tenno_38 Start: 31187, Stop: 31429, Start Num: 15

Candidate Starts for Tenno_38:

(9, 31151), (Start: 15 @31187 has 62 MA's), (23, 31271), (30, 31376), (31, 31415), (33, 31424),

Gene: Tokki_39 Start: 30282, Stop: 30518, Start Num: 15

Candidate Starts for Tokki_39:

(11, 30264), (Start: 15 @30282 has 62 MA's), (27, 30432), (30, 30471),

Gene: Tribby_37 Start: 27633, Stop: 27854, Start Num: 15

Candidate Starts for Tribby_37:

(Start: 15 @27633 has 62 MA's),

Gene: Truckee_36 Start: 30146, Stop: 30382, Start Num: 15

Candidate Starts for Truckee_36:

(Start: 15 @30146 has 62 MA's), (30, 30335),

Gene: Trustiboi_39 Start: 30978, Stop: 31220, Start Num: 15

Candidate Starts for Trustiboi_39:

(9, 30942), (Start: 15 @30978 has 62 MA's), (23, 31062), (30, 31167), (31, 31206), (33, 31215),

Gene: Uzumaki_36 Start: 29214, Stop: 29453, Start Num: 15

Candidate Starts for Uzumaki_36:

(6, 29079), (7, 29166), (10, 29199), (Start: 15 @29214 has 62 MA's), (21, 29292), (29, 29394), (30, 29403),

Gene: Xenomorph_34 Start: 27589, Stop: 27810, Start Num: 15

Candidate Starts for Xenomorph_34:

(Start: 15 @27589 has 62 MA's),

Gene: Zeina_38 Start: 29069, Stop: 29308, Start Num: 15

Candidate Starts for Zeina_38:

(6, 28934), (7, 29021), (10, 29054), (Start: 15 @29069 has 62 MA's), (21, 29147), (29, 29249), (30, 29258),