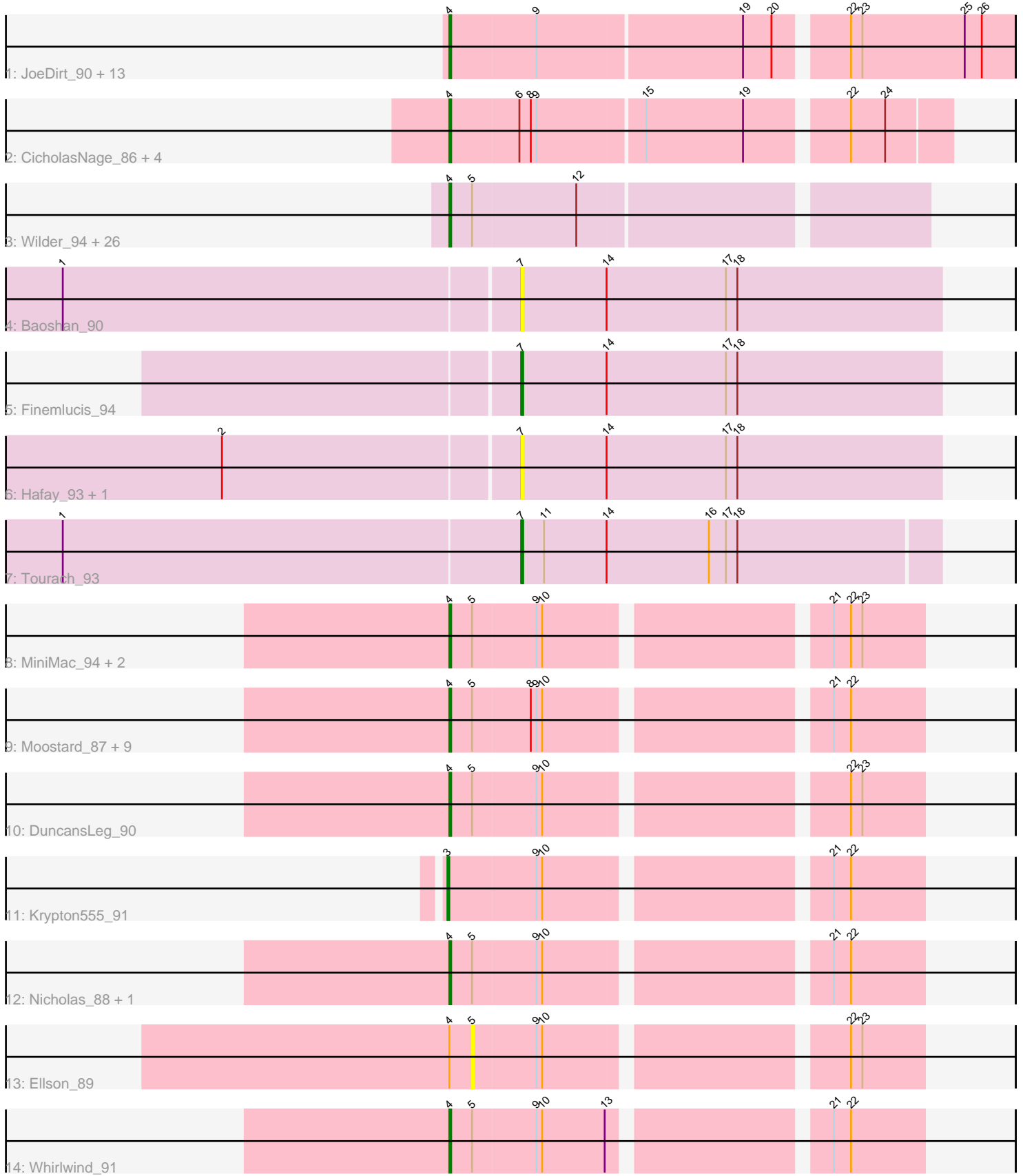


Pham 171436



Note: Tracks are now grouped by subcluster and scaled. Switching in subcluster is indicated by changes in track color. Track scale is now set by default to display the region 30 bp upstream of start 1 to 30 bp downstream of the last possible start. If this default region is judged to be packed too tightly with annotated starts, the track will be further scaled to only show that region of the ORF with annotated starts. This action will be indicated by adding "Zoomed" to the title. For starts, yellow indicates the location of called starts comprised solely of Glimmer/GeneMark auto-annotations, green indicates the location of called starts with at least 1 manual gene annotation.

Pham 171436 Report

This analysis was run 07/10/24 on database version 566.

Pham number 171436 has 70 members, 8 are drafts.

Phages represented in each track:

- Track 1 : JoeDirt_90, AvadaKedavra_89, Rose5_90, Zaria_89, DirkDirk_86, Wamburgxpress_88, Halena_86, Appletree2_88, Calm_90, Silverleaf_88, MAckerman_85, OhShagHennessy_85, Enceladus_86, Wyatt2_90
- Track 2 : CicholasNage_86, Acquire49_89, Tyson_90, UPIE_88, LeBron_88
- Track 3 : Wilder_94, Netyap_92, Rumpelstiltskin_89, MkaliMitinis3_95, Gabriela_93, DrSeegs_92, Gardann_93, Breezona_93, Lewan_94, Zakai_94, Archie_90, Kahlid_92, BobsGarage_92, Nicholasp3_93, LilDestine_91, Itos_93, Winky_93, BigCheese_93, Wigglewiggles_93, Crossroads_93, Vetrix_91, Faith1_93, ZhongYanYuan_90, Miley16_93, GuuelaD_90, Loadrie_92, Bazzle_90
- Track 4 : Baoshan_90
- Track 5 : Finemlucis_94
- Track 6 : Hafay_93, Claus_91
- Track 7 : Tourach_93
- Track 8 : MiniMac_94, Lolly9_89, MiniLon_94
- Track 9 : Moostard_87, Samty_89, Snenia_89, Jobypre_91, MsGreen_90, Lumos_90, Clautastrophe_88, Jubie_89, Bellis_88, Finnry_90
- Track 10 : DuncansLeg_90
- Track 11 : Krypton555_91
- Track 12 : Nicholas_88, Kingsolomon_88
- Track 13 : Ellson_89
- Track 14 : Whirlwind_91

Summary of Final Annotations (See graph section above for start numbers):

The start number called the most often in the published annotations is 4, it was called in 59 of the 62 non-draft genes in the pham.

Genes that call this "Most Annotated" start:

- Acquire49_89, Appletree2_88, Archie_90, AvadaKedavra_89, Bazzle_90, Bellis_88, BigCheese_93, BobsGarage_92, Breezona_93, Calm_90, CicholasNage_86, Clautastrophe_88, Crossroads_93, DirkDirk_86, DrSeegs_92, DuncansLeg_90, Enceladus_86, Faith1_93, Finnry_90, Gabriela_93, Gardann_93, GuuelaD_90, Halena_86, Itos_93, Jobypre_91, JoeDirt_90, Jubie_89, Kahlid_92, Kingsolomon_88, LeBron_88, Lewan_94, LilDestine_91, Loadrie_92, Lolly9_89, Lumos_90,

MAckerman_85, Miley16_93, MiniLon_94, MiniMac_94, MkaliMitinis3_95, Moostard_87, MsGreen_90, Netyap_92, Nicholas_88, Nicholasp3_93, OhShagHennessy_85, Rose5_90, Rumpelstiltskin_89, Samty_89, Silverleaf_88, Snenia_89, Tyson_90, UPIE_88, Vetrix_91, Wamburggrxpress_88, Whirlwind_91, Wigglewiggles_93, Wilder_94, Winky_93, Wyatt2_90, Zakai_94, Zaria_89, ZhongYanYuan_90,

Genes that have the "Most Annotated" start but do not call it:

- Ellson_89,

Genes that do not have the "Most Annotated" start:

- Baoshan_90, Claus_91, Finemlucis_94, Hafay_93, Krypton555_91, Tourach_93,

Summary by start number:

Start 3:

- Found in 1 of 70 (1.4%) of genes in pham
- Manual Annotations of this start: 1 of 62
- Called 100.0% of time when present
- Phage (with cluster) where this start called: Krypton555_91 (L3),

Start 4:

- Found in 64 of 70 (91.4%) of genes in pham
- Manual Annotations of this start: 59 of 62
- Called 98.4% of time when present
- Phage (with cluster) where this start called: Acquire49_89 (L1), Appletree2_88 (L1), Archie_90 (L2), AvadaKedavra_89 (L1), Bazzle_90 (L2), Bellis_88 (L3), BigCheese_93 (L2), BobsGarage_92 (L2), Breezona_93 (L2), Calm_90 (L1), CicholasNage_86 (L1), Clautastrophe_88 (L3), Crossroads_93 (L2), DirkDirk_86 (L1), DrSeegs_92 (L2), DuncansLeg_90 (L3), Enceladus_86 (L1), Faith1_93 (L2), Finnry_90 (L3), Gabriela_93 (L2), Gardann_93 (L2), GuuelaD_90 (L2), Halena_86 (L1), Itos_93 (L2), Jobypre_91 (L3), JoeDirt_90 (L1), Jubie_89 (L3), Kahlid_92 (L2), Kingsolomon_88 (L3), LeBron_88 (L1), Lewan_94 (L2), LilDestine_91 (L2), Loadrie_92 (L2), Lolly9_89 (L3), Lumos_90 (L3), MAckerman_85 (L1), Miley16_93 (L2), MiniLon_94 (L3), MiniMac_94 (L3), MkaliMitinis3_95 (L2), Moostard_87 (L3), MsGreen_90 (L3), Netyap_92 (L2), Nicholas_88 (L3), Nicholasp3_93 (L2), OhShagHennessy_85 (L1), Rose5_90 (L1), Rumpelstiltskin_89 (L2), Samty_89 (L3), Silverleaf_88 (L1), Snenia_89 (L3), Tyson_90 (L1), UPIE_88 (L1), Vetrix_91 (L2), Wamburggrxpress_88 (L1), Whirlwind_91 (L3), Wigglewiggles_93 (L2), Wilder_94 (L2), Winky_93 (L2), Wyatt2_90 (L1), Zakai_94 (L2), Zaria_89 (L1), ZhongYanYuan_90 (L2),

Start 5:

- Found in 45 of 70 (64.3%) of genes in pham
- No Manual Annotations of this start.
- Called 2.2% of time when present
- Phage (with cluster) where this start called: Ellson_89 (L3),

Start 7:

- Found in 5 of 70 (7.1%) of genes in pham
- Manual Annotations of this start: 2 of 62
- Called 100.0% of time when present

- Phage (with cluster) where this start called: Baoshan_90 (L2), Claus_91 (L2), Finemlucis_94 (L2), Hafay_93 (L2), Tourach_93 (L2),

Summary by clusters:

There are 3 clusters represented in this pham: L2, L3, L1,

Info for manual annotations of cluster L1:

- Start number 4 was manually annotated 18 times for cluster L1.

Info for manual annotations of cluster L2:

- Start number 4 was manually annotated 26 times for cluster L2.
- Start number 7 was manually annotated 2 times for cluster L2.

Info for manual annotations of cluster L3:

- Start number 3 was manually annotated 1 time for cluster L3.
- Start number 4 was manually annotated 15 times for cluster L3.

Gene Information:

Gene: Acquire49_89 Start: 56740, Stop: 56988, Start Num: 4

Candidate Starts for Acquire49_89:

(Start: 4 @56740 has 59 MA's), (6, 56776), (8, 56782), (9, 56785), (15, 56839), (19, 56890), (22, 56938), (24, 56956),

Gene: Appletree2_88 Start: 56464, Stop: 56748, Start Num: 4

Candidate Starts for Appletree2_88:

(Start: 4 @56464 has 59 MA's), (9, 56509), (19, 56614), (20, 56629), (22, 56662), (23, 56668), (25, 56722), (26, 56731),

Gene: Archie_90 Start: 58431, Stop: 58670, Start Num: 4

Candidate Starts for Archie_90:

(Start: 4 @58431 has 59 MA's), (5, 58443), (12, 58497),

Gene: AvadaKedavra_89 Start: 56816, Stop: 57100, Start Num: 4

Candidate Starts for AvadaKedavra_89:

(Start: 4 @56816 has 59 MA's), (9, 56861), (19, 56966), (20, 56981), (22, 57014), (23, 57020), (25, 57074), (26, 57083),

Gene: Baoshan_90 Start: 59100, Stop: 59321, Start Num: 7

Candidate Starts for Baoshan_90:

(1, 58863), (Start: 7 @59100 has 2 MA's), (14, 59145), (17, 59208), (18, 59214),

Gene: Bazzle_90 Start: 58987, Stop: 59226, Start Num: 4

Candidate Starts for Bazzle_90:

(Start: 4 @58987 has 59 MA's), (5, 58999), (12, 59053),

Gene: Bellis_88 Start: 58629, Stop: 58859, Start Num: 4

Candidate Starts for Bellis_88:

(Start: 4 @58629 has 59 MA's), (5, 58641), (8, 58671), (9, 58674), (10, 58677), (21, 58812), (22, 58821),

Gene: BigCheese_93 Start: 59197, Stop: 59436, Start Num: 4
Candidate Starts for BigCheese_93:
(Start: 4 @59197 has 59 MA's), (5, 59209), (12, 59263),

Gene: BobsGarage_92 Start: 59197, Stop: 59436, Start Num: 4
Candidate Starts for BobsGarage_92:
(Start: 4 @59197 has 59 MA's), (5, 59209), (12, 59263),

Gene: Breezona_93 Start: 59197, Stop: 59436, Start Num: 4
Candidate Starts for Breezona_93:
(Start: 4 @59197 has 59 MA's), (5, 59209), (12, 59263),

Gene: Calm_90 Start: 56715, Stop: 56999, Start Num: 4
Candidate Starts for Calm_90:
(Start: 4 @56715 has 59 MA's), (9, 56760), (19, 56865), (20, 56880), (22, 56913), (23, 56919), (25, 56973), (26, 56982),

Gene: CicholasNage_86 Start: 56404, Stop: 56652, Start Num: 4
Candidate Starts for CicholasNage_86:
(Start: 4 @56404 has 59 MA's), (6, 56440), (8, 56446), (9, 56449), (15, 56503), (19, 56554), (22, 56602), (24, 56620),

Gene: Claus_91 Start: 58751, Stop: 58972, Start Num: 7
Candidate Starts for Claus_91:
(2, 58598), (Start: 7 @58751 has 2 MA's), (14, 58796), (17, 58859), (18, 58865),

Gene: Clautastrophe_88 Start: 58624, Stop: 58854, Start Num: 4
Candidate Starts for Clautastrophe_88:
(Start: 4 @58624 has 59 MA's), (5, 58636), (8, 58666), (9, 58669), (10, 58672), (21, 58807), (22, 58816),

Gene: Crossroads_93 Start: 58909, Stop: 59148, Start Num: 4
Candidate Starts for Crossroads_93:
(Start: 4 @58909 has 59 MA's), (5, 58921), (12, 58975),

Gene: DirkDirk_86 Start: 56044, Stop: 56328, Start Num: 4
Candidate Starts for DirkDirk_86:
(Start: 4 @56044 has 59 MA's), (9, 56089), (19, 56194), (20, 56209), (22, 56242), (23, 56248), (25, 56302), (26, 56311),

Gene: DrSeegs_92 Start: 59197, Stop: 59436, Start Num: 4
Candidate Starts for DrSeegs_92:
(Start: 4 @59197 has 59 MA's), (5, 59209), (12, 59263),

Gene: DuncansLeg_90 Start: 58643, Stop: 58873, Start Num: 4
Candidate Starts for DuncansLeg_90:
(Start: 4 @58643 has 59 MA's), (5, 58655), (9, 58688), (10, 58691), (22, 58835), (23, 58841),

Gene: Ellson_89 Start: 58970, Stop: 59188, Start Num: 5
Candidate Starts for Ellson_89:
(Start: 4 @58958 has 59 MA's), (5, 58970), (9, 59003), (10, 59006), (22, 59150), (23, 59156),

Gene: Enceladus_86 Start: 56745, Stop: 57029, Start Num: 4
Candidate Starts for Enceladus_86:
(Start: 4 @56745 has 59 MA's), (9, 56790), (19, 56895), (20, 56910), (22, 56943), (23, 56949), (25, 57003), (26, 57012),

Gene: Faith1_93 Start: 58834, Stop: 59073, Start Num: 4
Candidate Starts for Faith1_93:
(Start: 4 @58834 has 59 MA's), (5, 58846), (12, 58900),

Gene: Finemlucis_94 Start: 59962, Stop: 60183, Start Num: 7
Candidate Starts for Finemlucis_94:
(Start: 7 @59962 has 2 MA's), (14, 60007), (17, 60070), (18, 60076),

Gene: Finnry_90 Start: 58977, Stop: 59207, Start Num: 4
Candidate Starts for Finnry_90:
(Start: 4 @58977 has 59 MA's), (5, 58989), (8, 59019), (9, 59022), (10, 59025), (21, 59160), (22, 59169),

Gene: Gabriela_93 Start: 58180, Stop: 58419, Start Num: 4
Candidate Starts for Gabriela_93:
(Start: 4 @58180 has 59 MA's), (5, 58192), (12, 58246),

Gene: Gardann_93 Start: 58681, Stop: 58920, Start Num: 4
Candidate Starts for Gardann_93:
(Start: 4 @58681 has 59 MA's), (5, 58693), (12, 58747),

Gene: GuuelaD_90 Start: 58793, Stop: 59032, Start Num: 4
Candidate Starts for GuuelaD_90:
(Start: 4 @58793 has 59 MA's), (5, 58805), (12, 58859),

Gene: Hafay_93 Start: 58746, Stop: 58967, Start Num: 7
Candidate Starts for Hafay_93:
(2, 58593), (Start: 7 @58746 has 2 MA's), (14, 58791), (17, 58854), (18, 58860),

Gene: Halena_86 Start: 55631, Stop: 55915, Start Num: 4
Candidate Starts for Halena_86:
(Start: 4 @55631 has 59 MA's), (9, 55676), (19, 55781), (20, 55796), (22, 55829), (23, 55835), (25, 55889), (26, 55898),

Gene: Itos_93 Start: 57740, Stop: 57979, Start Num: 4
Candidate Starts for Itos_93:
(Start: 4 @57740 has 59 MA's), (5, 57752), (12, 57806),

Gene: Jobypre_91 Start: 58624, Stop: 58854, Start Num: 4
Candidate Starts for Jobypre_91:
(Start: 4 @58624 has 59 MA's), (5, 58636), (8, 58666), (9, 58669), (10, 58672), (21, 58807), (22, 58816),

Gene: JoeDirt_90 Start: 57306, Stop: 57590, Start Num: 4
Candidate Starts for JoeDirt_90:
(Start: 4 @57306 has 59 MA's), (9, 57351), (19, 57456), (20, 57471), (22, 57504), (23, 57510), (25, 57564), (26, 57573),

Gene: Jubie_89 Start: 58759, Stop: 58989, Start Num: 4
Candidate Starts for Jubie_89:
(Start: 4 @58759 has 59 MA's), (5, 58771), (8, 58801), (9, 58804), (10, 58807), (21, 58942), (22, 58951),

Gene: Kahlid_92 Start: 58599, Stop: 58838, Start Num: 4
Candidate Starts for Kahlid_92:
(Start: 4 @58599 has 59 MA's), (5, 58611), (12, 58665),

Gene: Kingsolomon_88 Start: 58733, Stop: 58963, Start Num: 4
Candidate Starts for Kingsolomon_88:
(Start: 4 @58733 has 59 MA's), (5, 58745), (9, 58778), (10, 58781), (21, 58916), (22, 58925),

Gene: Krypton555_91 Start: 59000, Stop: 59230, Start Num: 3
Candidate Starts for Krypton555_91:
(Start: 3 @59000 has 1 MA's), (9, 59045), (10, 59048), (21, 59183), (22, 59192),

Gene: LeBron_88 Start: 55974, Stop: 56222, Start Num: 4
Candidate Starts for LeBron_88:
(Start: 4 @55974 has 59 MA's), (6, 56010), (8, 56016), (9, 56019), (15, 56073), (19, 56124), (22, 56172), (24, 56190),

Gene: Lewan_94 Start: 58833, Stop: 59072, Start Num: 4
Candidate Starts for Lewan_94:
(Start: 4 @58833 has 59 MA's), (5, 58845), (12, 58899),

Gene: LilDestine_91 Start: 58510, Stop: 58749, Start Num: 4
Candidate Starts for LilDestine_91:
(Start: 4 @58510 has 59 MA's), (5, 58522), (12, 58576),

Gene: Loadrie_92 Start: 59001, Stop: 59240, Start Num: 4
Candidate Starts for Loadrie_92:
(Start: 4 @59001 has 59 MA's), (5, 59013), (12, 59067),

Gene: Lolly9_89 Start: 58809, Stop: 59039, Start Num: 4
Candidate Starts for Lolly9_89:
(Start: 4 @58809 has 59 MA's), (5, 58821), (9, 58854), (10, 58857), (21, 58992), (22, 59001), (23, 59007),

Gene: Lumos_90 Start: 58621, Stop: 58851, Start Num: 4
Candidate Starts for Lumos_90:
(Start: 4 @58621 has 59 MA's), (5, 58633), (8, 58663), (9, 58666), (10, 58669), (21, 58804), (22, 58813),

Gene: MAckerman_85 Start: 55624, Stop: 55908, Start Num: 4
Candidate Starts for MAckerman_85:
(Start: 4 @55624 has 59 MA's), (9, 55669), (19, 55774), (20, 55789), (22, 55822), (23, 55828), (25, 55882), (26, 55891),

Gene: Miley16_93 Start: 59197, Stop: 59436, Start Num: 4
Candidate Starts for Miley16_93:
(Start: 4 @59197 has 59 MA's), (5, 59209), (12, 59263),

Gene: MiniLon_94 Start: 58810, Stop: 59040, Start Num: 4
Candidate Starts for MiniLon_94:
(Start: 4 @58810 has 59 MA's), (5, 58822), (9, 58855), (10, 58858), (21, 58993), (22, 59002), (23, 59008),

Gene: MiniMac_94 Start: 58805, Stop: 59035, Start Num: 4
Candidate Starts for MiniMac_94:
(Start: 4 @58805 has 59 MA's), (5, 58817), (9, 58850), (10, 58853), (21, 58988), (22, 58997), (23, 59003),

Gene: MkaliMitinis3_95 Start: 58964, Stop: 59203, Start Num: 4
Candidate Starts for MkaliMitinis3_95:
(Start: 4 @58964 has 59 MA's), (5, 58976), (12, 59030),

Gene: Moostard_87 Start: 58728, Stop: 58958, Start Num: 4
Candidate Starts for Moostard_87:
(Start: 4 @58728 has 59 MA's), (5, 58740), (8, 58770), (9, 58773), (10, 58776), (21, 58911), (22, 58920),

Gene: MsGreen_90 Start: 58623, Stop: 58853, Start Num: 4
Candidate Starts for MsGreen_90:
(Start: 4 @58623 has 59 MA's), (5, 58635), (8, 58665), (9, 58668), (10, 58671), (21, 58806), (22, 58815),

Gene: Netyap_92 Start: 58835, Stop: 59074, Start Num: 4
Candidate Starts for Netyap_92:
(Start: 4 @58835 has 59 MA's), (5, 58847), (12, 58901),

Gene: Nicholas_88 Start: 58733, Stop: 58963, Start Num: 4
Candidate Starts for Nicholas_88:
(Start: 4 @58733 has 59 MA's), (5, 58745), (9, 58778), (10, 58781), (21, 58916), (22, 58925),

Gene: Nicholasp3_93 Start: 58681, Stop: 58920, Start Num: 4
Candidate Starts for Nicholasp3_93:
(Start: 4 @58681 has 59 MA's), (5, 58693), (12, 58747),

Gene: OhShagHennessy_85 Start: 55881, Stop: 56165, Start Num: 4
Candidate Starts for OhShagHennessy_85:
(Start: 4 @55881 has 59 MA's), (9, 55926), (19, 56031), (20, 56046), (22, 56079), (23, 56085), (25, 56139), (26, 56148),

Gene: Rose5_90 Start: 57148, Stop: 57432, Start Num: 4
Candidate Starts for Rose5_90:
(Start: 4 @57148 has 59 MA's), (9, 57193), (19, 57298), (20, 57313), (22, 57346), (23, 57352), (25, 57406), (26, 57415),

Gene: Rumpelstiltskin_89 Start: 58474, Stop: 58713, Start Num: 4
Candidate Starts for Rumpelstiltskin_89:
(Start: 4 @58474 has 59 MA's), (5, 58486), (12, 58540),

Gene: Samty_89 Start: 58721, Stop: 58951, Start Num: 4
Candidate Starts for Samty_89:

(Start: 4 @58721 has 59 MA's), (5, 58733), (8, 58763), (9, 58766), (10, 58769), (21, 58904), (22, 58913),

Gene: Silverleaf_88 Start: 56644, Stop: 56928, Start Num: 4

Candidate Starts for Silverleaf_88:

(Start: 4 @56644 has 59 MA's), (9, 56689), (19, 56794), (20, 56809), (22, 56842), (23, 56848), (25, 56902), (26, 56911),

Gene: Snenia_89 Start: 58625, Stop: 58855, Start Num: 4

Candidate Starts for Snenia_89:

(Start: 4 @58625 has 59 MA's), (5, 58637), (8, 58667), (9, 58670), (10, 58673), (21, 58808), (22, 58817),

Gene: Tourach_93 Start: 59588, Stop: 59806, Start Num: 7

Candidate Starts for Tourach_93:

(1, 59348), (Start: 7 @59588 has 2 MA's), (11, 59600), (14, 59633), (16, 59687), (17, 59696), (18, 59702),

Gene: Tyson_90 Start: 57077, Stop: 57325, Start Num: 4

Candidate Starts for Tyson_90:

(Start: 4 @57077 has 59 MA's), (6, 57113), (8, 57119), (9, 57122), (15, 57176), (19, 57227), (22, 57275), (24, 57293),

Gene: UPIE_88 Start: 56673, Stop: 56921, Start Num: 4

Candidate Starts for UPIE_88:

(Start: 4 @56673 has 59 MA's), (6, 56709), (8, 56715), (9, 56718), (15, 56772), (19, 56823), (22, 56871), (24, 56889),

Gene: Vetrix_91 Start: 58455, Stop: 58694, Start Num: 4

Candidate Starts for Vetrix_91:

(Start: 4 @58455 has 59 MA's), (5, 58467), (12, 58521),

Gene: Wamburgxpress_88 Start: 56765, Stop: 57049, Start Num: 4

Candidate Starts for Wamburgxpress_88:

(Start: 4 @56765 has 59 MA's), (9, 56810), (19, 56915), (20, 56930), (22, 56963), (23, 56969), (25, 57023), (26, 57032),

Gene: Whirlwind_91 Start: 58964, Stop: 59194, Start Num: 4

Candidate Starts for Whirlwind_91:

(Start: 4 @58964 has 59 MA's), (5, 58976), (9, 59009), (10, 59012), (13, 59045), (21, 59147), (22, 59156),

Gene: Wigglewigggle_93 Start: 58757, Stop: 58996, Start Num: 4

Candidate Starts for Wigglewigggle_93:

(Start: 4 @58757 has 59 MA's), (5, 58769), (12, 58823),

Gene: Wilder_94 Start: 58599, Stop: 58838, Start Num: 4

Candidate Starts for Wilder_94:

(Start: 4 @58599 has 59 MA's), (5, 58611), (12, 58665),

Gene: Winky_93 Start: 59197, Stop: 59436, Start Num: 4

Candidate Starts for Winky_93:

(Start: 4 @59197 has 59 MA's), (5, 59209), (12, 59263),

Gene: Wyatt2_90 Start: 57072, Stop: 57356, Start Num: 4

Candidate Starts for Wyatt2_90:

(Start: 4 @57072 has 59 MA's), (9, 57117), (19, 57222), (20, 57237), (22, 57270), (23, 57276), (25, 57330), (26, 57339),

Gene: Zakai_94 Start: 59242, Stop: 59481, Start Num: 4

Candidate Starts for Zakai_94:

(Start: 4 @59242 has 59 MA's), (5, 59254), (12, 59308),

Gene: Zaria_89 Start: 56180, Stop: 56464, Start Num: 4

Candidate Starts for Zaria_89:

(Start: 4 @56180 has 59 MA's), (9, 56225), (19, 56330), (20, 56345), (22, 56378), (23, 56384), (25, 56438), (26, 56447),

Gene: ZhongYanYuan_90 Start: 58653, Stop: 58892, Start Num: 4

Candidate Starts for ZhongYanYuan_90:

(Start: 4 @58653 has 59 MA's), (5, 58665), (12, 58719),