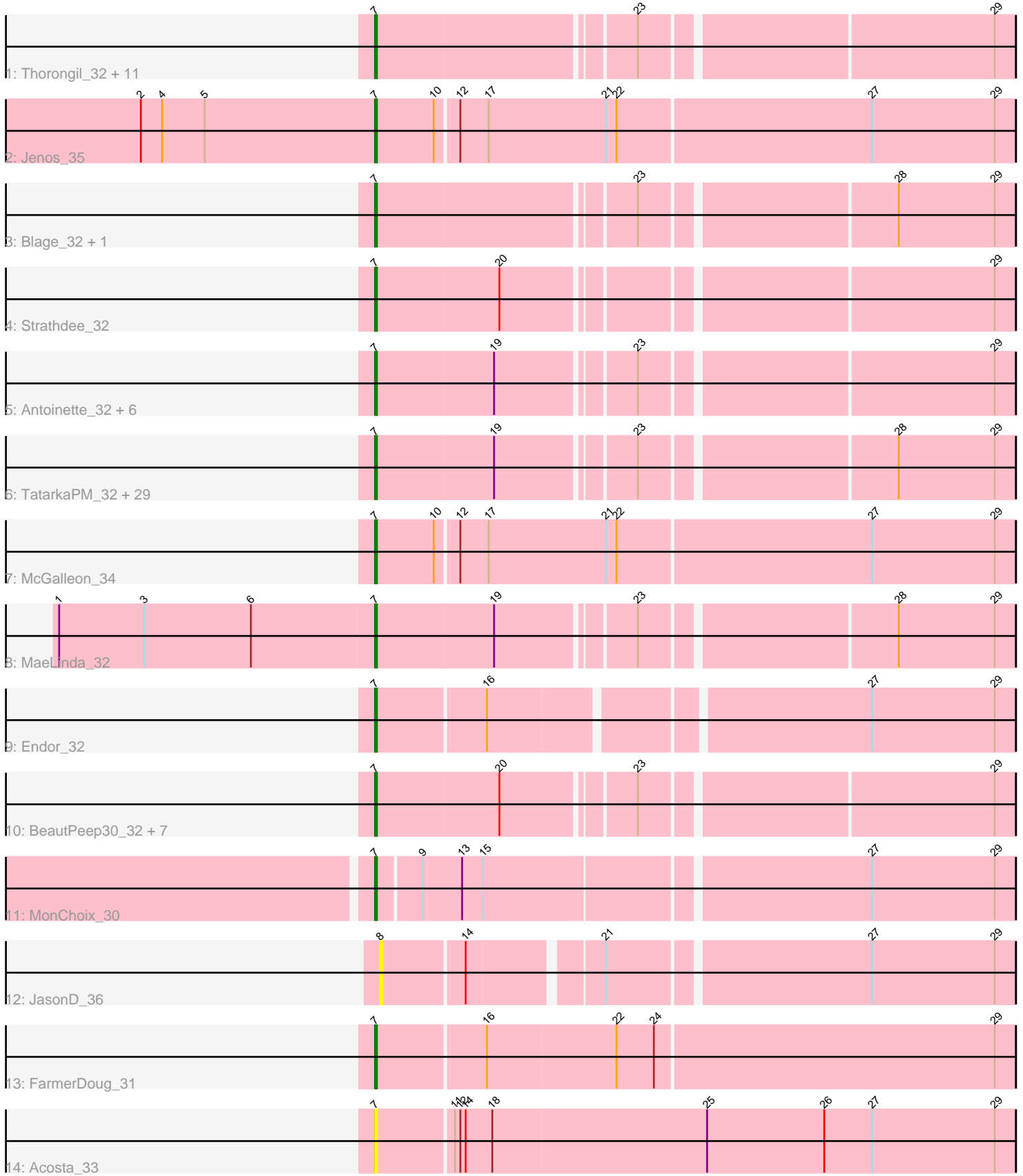


Pham 171442



Note: Tracks are now grouped by subcluster and scaled. Switching in subcluster is indicated by changes in track color. Track scale is now set by default to display the region 30 bp upstream of start 1 to 30 bp downstream of the last possible start. If this default region is judged to be packed too tightly with annotated starts, the track will be further scaled to only show that region of the ORF with annotated starts. This action will be indicated by adding "Zoomed" to the title. For starts, yellow indicates the location of called starts comprised solely of Glimmer/GeneMark auto-annotations, green indicates the location of called starts with at least 1 manual gene annotation.

Pham 171442 Report

This analysis was run 07/10/24 on database version 566.

Pham number 171442 has 68 members, 8 are drafts.

Phages represented in each track:

- Track 1 : Thorongil_32, Den3_32, Oxtober96_32, ShaiHulud_32, WildNOut_32, Lovelyunicorn_32, PuppyEggo_32, Velene_32, Vispistious_32, Zada_32, AxiPup_32, Greys_32
- Track 2 : Jenos_35
- Track 3 : Blage_32, BigRedClifford_32
- Track 4 : Strathdee_32
- Track 5 : Antoinette_32, Superfresh_32, Gargoyle_32, Alyxandracam_32, Dave_32, Peep_32, Renzie_32
- Track 6 : TatarkaPM_32, PhredFlintston_32, Kurt1_32, TinSulphur_32, Nagem_32, Phiderman_32, Inventa_32, Stanktossa_32, Riyhil_32, NickSell_33, Dothraki_32, Teagan_32, Martin_33, OldNelly_32, MillyPhilly_32, MrWorldwide_32, AlexAdler_32, Byron23_32, Bandik_32, Phriends_32, ParleG_32, SJay_32, Figueroism_32, Delphidian_33, Shee_32, Ludgate_32, Rapheph_32, Robinson_32, SoilGremlin_32, Pherferi_32
- Track 7 : McGalleon_34
- Track 8 : MaeLinda_32
- Track 9 : Endor_32
- Track 10 : BeautPeep30_32, Ioannes_32, Thompsone_32, BonesMcCoy_32, Raptor_32, Phireproof_32, Knox_32, Convict_32
- Track 11 : MonChoix_30
- Track 12 : JasonD_36
- Track 13 : FarmerDoug_31
- Track 14 : Acosta_33

Summary of Final Annotations (See graph section above for start numbers):

The start number called the most often in the published annotations is 7, it was called in 60 of the 60 non-draft genes in the pham.

Genes that call this "Most Annotated" start:

- Acosta_33, AlexAdler_32, Alyxandracam_32, Antoinette_32, AxiPup_32, Bandik_32, BeautPeep30_32, BigRedClifford_32, Blage_32, BonesMcCoy_32, Byron23_32, Convict_32, Dave_32, Delphidian_33, Den3_32, Dothraki_32, Endor_32, FarmerDoug_31, Figueroism_32, Gargoyle_32, Greys_32, Inventa_32,

Ioannes_32, Jenos_35, Knox_32, Kurt1_32, Lovelyunicorn_32, Ludgate_32, MaeLinda_32, Martin_33, McGalleon_34, MillyPhilly_32, MonChoix_30, MrWorldwide_32, Nagem_32, NickSell_33, OldNelly_32, Oxtober96_32, ParleG_32, Peep_32, Pherferi_32, Phiderman_32, Phireproof_32, PhredFlintston_32, Phriends_32, PuppyEggo_32, Rapheph_32, Raptor_32, Renzie_32, Riyhil_32, Robinson_32, SJay_32, ShaiHulud_32, Shee_32, SoilGremlin_32, Stanktossa_32, Strathdee_32, Superfresh_32, TatarkaPM_32, Teagan_32, Thompsone_32, Thorongil_32, TinSulphur_32, Velene_32, Vispistious_32, WildNOut_32, Zada_32,

Genes that have the "Most Annotated" start but do not call it:

-

Genes that do not have the "Most Annotated" start:

- JasonD_36,

Summary by start number:

Start 7:

- Found in 67 of 68 (98.5%) of genes in pham
- Manual Annotations of this start: 60 of 60
- Called 100.0% of time when present
- Phage (with cluster) where this start called: Acosta_33 (EA1), AlexAdler_32 (EA1), Alyxandracam_32 (EA1), Antoinette_32 (EA1), AxiPup_32 (EA1), Bandik_32 (EA1), BeautPeep30_32 (EA1), BigRedClifford_32 (EA1), Blage_32 (EA1), BonesMcCoy_32 (EA1), Byron23_32 (EA1), Convict_32 (EA1), Dave_32 (EA1), Delphidian_33 (EA1), Den3_32 (EA1), Dothraki_32 (EA1), Endor_32 (EA1), FarmerDoug_31 (EA1), Figueroism_32 (EA1), Gargoyle_32 (EA1), Greys_32 (EA1), Inventa_32 (EA1), Ioannes_32 (EA1), Jenos_35 (EA1), Knox_32 (EA1), Kurt1_32 (EA1), Lovelyunicorn_32 (EA1), Ludgate_32 (EA1), MaeLinda_32 (EA1), Martin_33 (EA1), McGalleon_34 (EA1), MillyPhilly_32 (EA1), MonChoix_30 (EA1), MrWorldwide_32 (EA1), Nagem_32 (EA1), NickSell_33 (EA1), OldNelly_32 (EA1), Oxtober96_32 (EA1), ParleG_32 (EA1), Peep_32 (EA1), Pherferi_32 (EA1), Phiderman_32 (EA1), Phireproof_32 (EA1), PhredFlintston_32 (EA1), Phriends_32 (EA1), PuppyEggo_32 (EA1), Rapheph_32 (EA1), Raptor_32 (EA1), Renzie_32 (EA1), Riyhil_32 (EA1), Robinson_32 (EA1), SJay_32 (EA1), ShaiHulud_32 (EA1), Shee_32 (EA1), SoilGremlin_32 (EA1), Stanktossa_32 (EA1), Strathdee_32 (EA1), Superfresh_32 (EA1), TatarkaPM_32 (EA1), Teagan_32 (EA1), Thompsone_32 (EA1), Thorongil_32 (EA1), TinSulphur_32 (EA1), Velene_32 (EA1), Vispistious_32 (EA1), WildNOut_32 (EA1), Zada_32 (EA1),

Start 8:

- Found in 1 of 68 (1.5%) of genes in pham
- No Manual Annotations of this start.
- Called 100.0% of time when present
- Phage (with cluster) where this start called: JasonD_36 (EA1),

Summary by clusters:

There is one cluster represented in this pham: EA1

Info for manual annotations of cluster EA1:

- Start number 7 was manually annotated 60 times for cluster EA1.

Gene Information:

Gene: Acosta_33 Start: 22545, Stop: 22189, Start Num: 7

Candidate Starts for Acosta_33:

(Start: 7 @22545 has 60 MA's), (11, 22503), (12, 22500), (14, 22497), (18, 22482), (25, 22362), (26, 22296), (27, 22269), (29, 22200),

Gene: AlexAdler_32 Start: 22169, Stop: 21831, Start Num: 7

Candidate Starts for AlexAdler_32:

(Start: 7 @22169 has 60 MA's), (19, 22103), (23, 22031), (28, 21896), (29, 21842),

Gene: Alyxandracam_32 Start: 22178, Stop: 21840, Start Num: 7

Candidate Starts for Alyxandracam_32:

(Start: 7 @22178 has 60 MA's), (19, 22112), (23, 22040), (29, 21851),

Gene: Antoinette_32 Start: 22166, Stop: 21828, Start Num: 7

Candidate Starts for Antoinette_32:

(Start: 7 @22166 has 60 MA's), (19, 22100), (23, 22028), (29, 21839),

Gene: AxiPup_32 Start: 22178, Stop: 21840, Start Num: 7

Candidate Starts for AxiPup_32:

(Start: 7 @22178 has 60 MA's), (23, 22040), (29, 21851),

Gene: Bandik_32 Start: 22174, Stop: 21836, Start Num: 7

Candidate Starts for Bandik_32:

(Start: 7 @22174 has 60 MA's), (19, 22108), (23, 22036), (28, 21901), (29, 21847),

Gene: BeautPeep30_32 Start: 22180, Stop: 21842, Start Num: 7

Candidate Starts for BeautPeep30_32:

(Start: 7 @22180 has 60 MA's), (20, 22111), (23, 22042), (29, 21853),

Gene: BigRedClifford_32 Start: 22178, Stop: 21840, Start Num: 7

Candidate Starts for BigRedClifford_32:

(Start: 7 @22178 has 60 MA's), (23, 22040), (28, 21905), (29, 21851),

Gene: Blage_32 Start: 22178, Stop: 21840, Start Num: 7

Candidate Starts for Blage_32:

(Start: 7 @22178 has 60 MA's), (23, 22040), (28, 21905), (29, 21851),

Gene: BonesMcCoy_32 Start: 22178, Stop: 21840, Start Num: 7

Candidate Starts for BonesMcCoy_32:

(Start: 7 @22178 has 60 MA's), (20, 22109), (23, 22040), (29, 21851),

Gene: Byron23_32 Start: 22183, Stop: 21845, Start Num: 7

Candidate Starts for Byron23_32:

(Start: 7 @22183 has 60 MA's), (19, 22117), (23, 22045), (28, 21910), (29, 21856),

Gene: Convict_32 Start: 22178, Stop: 21840, Start Num: 7

Candidate Starts for Convict_32:

(Start: 7 @22178 has 60 MA's), (20, 22109), (23, 22040), (29, 21851),

Gene: Dave_32 Start: 22166, Stop: 21828, Start Num: 7
Candidate Starts for Dave_32:
(Start: 7 @22166 has 60 MA's), (19, 22100), (23, 22028), (29, 21839),

Gene: Delphidian_33 Start: 22177, Stop: 21839, Start Num: 7
Candidate Starts for Delphidian_33:
(Start: 7 @22177 has 60 MA's), (19, 22111), (23, 22039), (28, 21904), (29, 21850),

Gene: Den3_32 Start: 22183, Stop: 21845, Start Num: 7
Candidate Starts for Den3_32:
(Start: 7 @22183 has 60 MA's), (23, 22045), (29, 21856),

Gene: Dothraki_32 Start: 22180, Stop: 21842, Start Num: 7
Candidate Starts for Dothraki_32:
(Start: 7 @22180 has 60 MA's), (19, 22114), (23, 22042), (28, 21907), (29, 21853),

Gene: Endor_32 Start: 22483, Stop: 22142, Start Num: 7
Candidate Starts for Endor_32:
(Start: 7 @22483 has 60 MA's), (16, 22423), (27, 22222), (29, 22153),

Gene: FarmerDoug_31 Start: 22136, Stop: 21783, Start Num: 7
Candidate Starts for FarmerDoug_31:
(Start: 7 @22136 has 60 MA's), (16, 22076), (22, 22004), (24, 21983), (29, 21794),

Gene: Figueroism_32 Start: 22165, Stop: 21827, Start Num: 7
Candidate Starts for Figueroism_32:
(Start: 7 @22165 has 60 MA's), (19, 22099), (23, 22027), (28, 21892), (29, 21838),

Gene: Gargoyle_32 Start: 22180, Stop: 21842, Start Num: 7
Candidate Starts for Gargoyle_32:
(Start: 7 @22180 has 60 MA's), (19, 22114), (23, 22042), (29, 21853),

Gene: Greys_32 Start: 22176, Stop: 21838, Start Num: 7
Candidate Starts for Greys_32:
(Start: 7 @22176 has 60 MA's), (23, 22038), (29, 21849),

Gene: Inventa_32 Start: 22180, Stop: 21842, Start Num: 7
Candidate Starts for Inventa_32:
(Start: 7 @22180 has 60 MA's), (19, 22114), (23, 22042), (28, 21907), (29, 21853),

Gene: Ioannes_32 Start: 22178, Stop: 21840, Start Num: 7
Candidate Starts for Ioannes_32:
(Start: 7 @22178 has 60 MA's), (20, 22109), (23, 22040), (29, 21851),

Gene: JasonD_36 Start: 22680, Stop: 22345, Start Num: 8
Candidate Starts for JasonD_36:
(8, 22680), (14, 22635), (21, 22566), (27, 22425), (29, 22356),

Gene: Jenos_35 Start: 23335, Stop: 22982, Start Num: 7
Candidate Starts for Jenos_35:
(2, 23467), (4, 23455), (5, 23431), (Start: 7 @23335 has 60 MA's), (10, 23302), (12, 23290), (17, 23275), (21, 23209), (22, 23203), (27, 23062), (29, 22993),

Gene: Knox_32 Start: 22178, Stop: 21840, Start Num: 7
Candidate Starts for Knox_32:
(Start: 7 @22178 has 60 MA's), (20, 22109), (23, 22040), (29, 21851),

Gene: Kurt1_32 Start: 22180, Stop: 21842, Start Num: 7
Candidate Starts for Kurt1_32:
(Start: 7 @22180 has 60 MA's), (19, 22114), (23, 22042), (28, 21907), (29, 21853),

Gene: Lovelyunicorn_32 Start: 22179, Stop: 21841, Start Num: 7
Candidate Starts for Lovelyunicorn_32:
(Start: 7 @22179 has 60 MA's), (23, 22041), (29, 21852),

Gene: Ludgate_32 Start: 22174, Stop: 21836, Start Num: 7
Candidate Starts for Ludgate_32:
(Start: 7 @22174 has 60 MA's), (19, 22108), (23, 22036), (28, 21901), (29, 21847),

Gene: MaeLinda_32 Start: 22180, Stop: 21842, Start Num: 7
Candidate Starts for MaeLinda_32:
(1, 22357), (3, 22309), (6, 22249), (Start: 7 @22180 has 60 MA's), (19, 22114), (23, 22042), (28, 21907), (29, 21853),

Gene: Martin_33 Start: 22180, Stop: 21842, Start Num: 7
Candidate Starts for Martin_33:
(Start: 7 @22180 has 60 MA's), (19, 22114), (23, 22042), (28, 21907), (29, 21853),

Gene: McGalleon_34 Start: 23557, Stop: 23204, Start Num: 7
Candidate Starts for McGalleon_34:
(Start: 7 @23557 has 60 MA's), (10, 23524), (12, 23512), (17, 23497), (21, 23431), (22, 23425), (27, 23284), (29, 23215),

Gene: MillyPhilly_32 Start: 22177, Stop: 21839, Start Num: 7
Candidate Starts for MillyPhilly_32:
(Start: 7 @22177 has 60 MA's), (19, 22111), (23, 22039), (28, 21904), (29, 21850),

Gene: MonChoix_30 Start: 22172, Stop: 21828, Start Num: 7
Candidate Starts for MonChoix_30:
(Start: 7 @22172 has 60 MA's), (9, 22148), (13, 22127), (15, 22115), (27, 21908), (29, 21839),

Gene: MrWorldwide_32 Start: 22181, Stop: 21843, Start Num: 7
Candidate Starts for MrWorldwide_32:
(Start: 7 @22181 has 60 MA's), (19, 22115), (23, 22043), (28, 21908), (29, 21854),

Gene: Nagem_32 Start: 22174, Stop: 21836, Start Num: 7
Candidate Starts for Nagem_32:
(Start: 7 @22174 has 60 MA's), (19, 22108), (23, 22036), (28, 21901), (29, 21847),

Gene: NickSell_33 Start: 22180, Stop: 21842, Start Num: 7
Candidate Starts for NickSell_33:
(Start: 7 @22180 has 60 MA's), (19, 22114), (23, 22042), (28, 21907), (29, 21853),

Gene: OldNelly_32 Start: 22180, Stop: 21842, Start Num: 7
Candidate Starts for OldNelly_32:
(Start: 7 @22180 has 60 MA's), (19, 22114), (23, 22042), (28, 21907), (29, 21853),

Gene: Oxtober96_32 Start: 22179, Stop: 21841, Start Num: 7

Candidate Starts for Oxtober96_32:

(Start: 7 @22179 has 60 MA's), (23, 22041), (29, 21852),

Gene: ParleG_32 Start: 22181, Stop: 21843, Start Num: 7

Candidate Starts for ParleG_32:

(Start: 7 @22181 has 60 MA's), (19, 22115), (23, 22043), (28, 21908), (29, 21854),

Gene: Peep_32 Start: 22166, Stop: 21828, Start Num: 7

Candidate Starts for Peep_32:

(Start: 7 @22166 has 60 MA's), (19, 22100), (23, 22028), (29, 21839),

Gene: Pherferi_32 Start: 22180, Stop: 21842, Start Num: 7

Candidate Starts for Pherferi_32:

(Start: 7 @22180 has 60 MA's), (19, 22114), (23, 22042), (28, 21907), (29, 21853),

Gene: Phiderman_32 Start: 22177, Stop: 21839, Start Num: 7

Candidate Starts for Phiderman_32:

(Start: 7 @22177 has 60 MA's), (19, 22111), (23, 22039), (28, 21904), (29, 21850),

Gene: Phireproof_32 Start: 22180, Stop: 21842, Start Num: 7

Candidate Starts for Phireproof_32:

(Start: 7 @22180 has 60 MA's), (20, 22111), (23, 22042), (29, 21853),

Gene: PhredFlintston_32 Start: 22180, Stop: 21842, Start Num: 7

Candidate Starts for PhredFlintston_32:

(Start: 7 @22180 has 60 MA's), (19, 22114), (23, 22042), (28, 21907), (29, 21853),

Gene: Phriends_32 Start: 22180, Stop: 21842, Start Num: 7

Candidate Starts for Phriends_32:

(Start: 7 @22180 has 60 MA's), (19, 22114), (23, 22042), (28, 21907), (29, 21853),

Gene: PuppyEggo_32 Start: 22178, Stop: 21840, Start Num: 7

Candidate Starts for PuppyEggo_32:

(Start: 7 @22178 has 60 MA's), (23, 22040), (29, 21851),

Gene: Rapheph_32 Start: 22180, Stop: 21842, Start Num: 7

Candidate Starts for Rapheph_32:

(Start: 7 @22180 has 60 MA's), (19, 22114), (23, 22042), (28, 21907), (29, 21853),

Gene: Raptor_32 Start: 22178, Stop: 21840, Start Num: 7

Candidate Starts for Raptor_32:

(Start: 7 @22178 has 60 MA's), (20, 22109), (23, 22040), (29, 21851),

Gene: Renzie_32 Start: 22166, Stop: 21828, Start Num: 7

Candidate Starts for Renzie_32:

(Start: 7 @22166 has 60 MA's), (19, 22100), (23, 22028), (29, 21839),

Gene: Riyhil_32 Start: 22180, Stop: 21842, Start Num: 7

Candidate Starts for Riyhil_32:

(Start: 7 @22180 has 60 MA's), (19, 22114), (23, 22042), (28, 21907), (29, 21853),

Gene: Robinson_32 Start: 22172, Stop: 21834, Start Num: 7
Candidate Starts for Robinson_32:
(Start: 7 @22172 has 60 MA's), (19, 22106), (23, 22034), (28, 21899), (29, 21845),

Gene: SJay_32 Start: 22175, Stop: 21837, Start Num: 7
Candidate Starts for SJay_32:
(Start: 7 @22175 has 60 MA's), (19, 22109), (23, 22037), (28, 21902), (29, 21848),

Gene: ShaiHulud_32 Start: 22178, Stop: 21840, Start Num: 7
Candidate Starts for ShaiHulud_32:
(Start: 7 @22178 has 60 MA's), (23, 22040), (29, 21851),

Gene: Shee_32 Start: 22177, Stop: 21839, Start Num: 7
Candidate Starts for Shee_32:
(Start: 7 @22177 has 60 MA's), (19, 22111), (23, 22039), (28, 21904), (29, 21850),

Gene: SoilGremlin_32 Start: 22177, Stop: 21839, Start Num: 7
Candidate Starts for SoilGremlin_32:
(Start: 7 @22177 has 60 MA's), (19, 22111), (23, 22039), (28, 21904), (29, 21850),

Gene: Stanktossa_32 Start: 22180, Stop: 21842, Start Num: 7
Candidate Starts for Stanktossa_32:
(Start: 7 @22180 has 60 MA's), (19, 22114), (23, 22042), (28, 21907), (29, 21853),

Gene: Strathdee_32 Start: 22179, Stop: 21841, Start Num: 7
Candidate Starts for Strathdee_32:
(Start: 7 @22179 has 60 MA's), (20, 22110), (29, 21852),

Gene: Superfresh_32 Start: 22166, Stop: 21828, Start Num: 7
Candidate Starts for Superfresh_32:
(Start: 7 @22166 has 60 MA's), (19, 22100), (23, 22028), (29, 21839),

Gene: TatarkaPM_32 Start: 22180, Stop: 21842, Start Num: 7
Candidate Starts for TatarkaPM_32:
(Start: 7 @22180 has 60 MA's), (19, 22114), (23, 22042), (28, 21907), (29, 21853),

Gene: Teagan_32 Start: 22174, Stop: 21836, Start Num: 7
Candidate Starts for Teagan_32:
(Start: 7 @22174 has 60 MA's), (19, 22108), (23, 22036), (28, 21901), (29, 21847),

Gene: Thompsone_32 Start: 22178, Stop: 21840, Start Num: 7
Candidate Starts for Thompsone_32:
(Start: 7 @22178 has 60 MA's), (20, 22109), (23, 22040), (29, 21851),

Gene: Thorongil_32 Start: 22178, Stop: 21840, Start Num: 7
Candidate Starts for Thorongil_32:
(Start: 7 @22178 has 60 MA's), (23, 22040), (29, 21851),

Gene: TinSulphur_32 Start: 22180, Stop: 21842, Start Num: 7
Candidate Starts for TinSulphur_32:
(Start: 7 @22180 has 60 MA's), (19, 22114), (23, 22042), (28, 21907), (29, 21853),

Gene: Velene_32 Start: 22179, Stop: 21841, Start Num: 7

Candidate Starts for Velene_32:

(Start: 7 @22179 has 60 MA's), (23, 22041), (29, 21852),

Gene: Vispistious_32 Start: 22178, Stop: 21840, Start Num: 7

Candidate Starts for Vispistious_32:

(Start: 7 @22178 has 60 MA's), (23, 22040), (29, 21851),

Gene: WildNOut_32 Start: 22178, Stop: 21840, Start Num: 7

Candidate Starts for WildNOut_32:

(Start: 7 @22178 has 60 MA's), (23, 22040), (29, 21851),

Gene: Zada_32 Start: 22159, Stop: 21821, Start Num: 7

Candidate Starts for Zada_32:

(Start: 7 @22159 has 60 MA's), (23, 22021), (29, 21832),