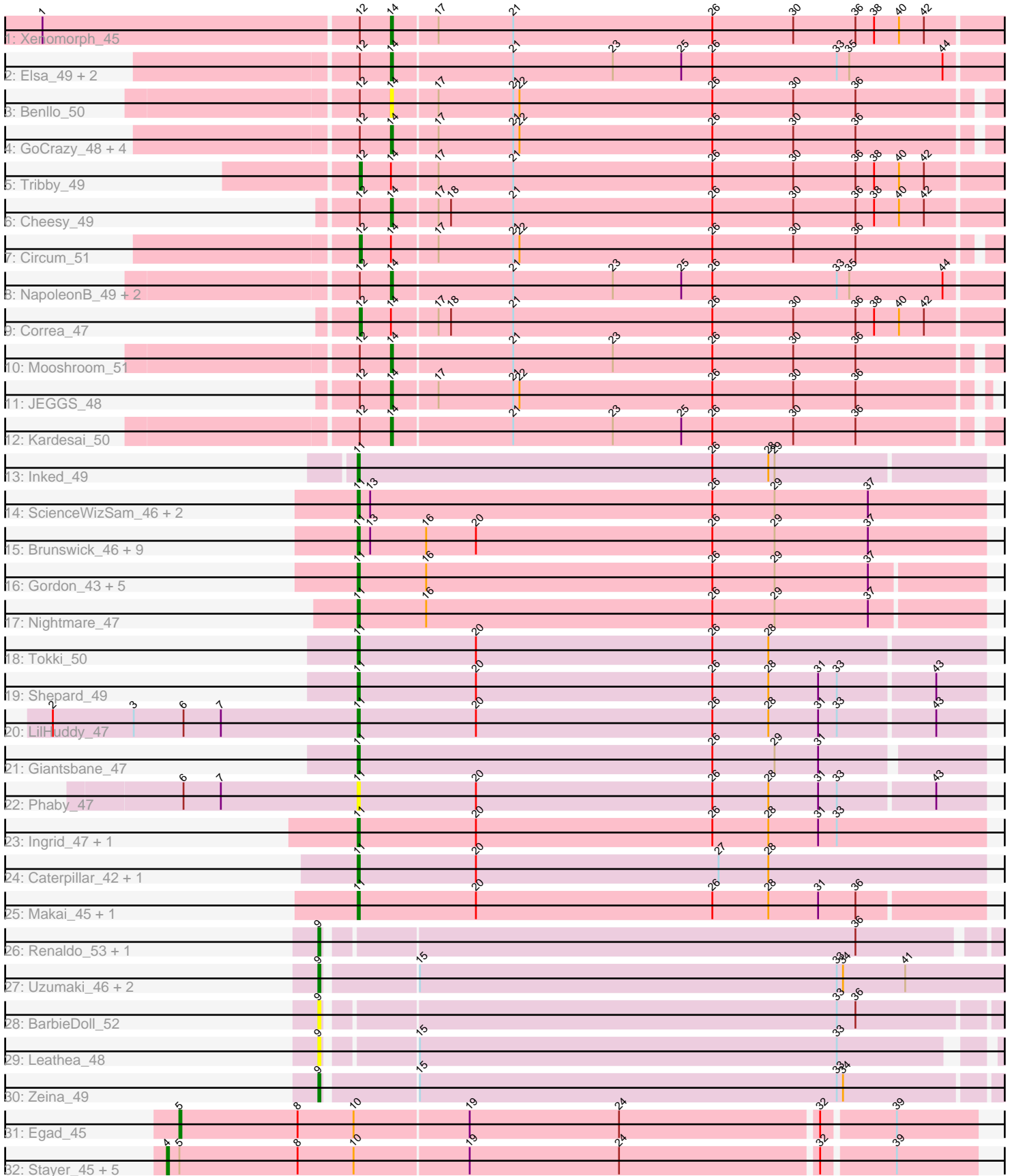


Pham 171450



Note: Tracks are now grouped by subcluster and scaled. Switching in subcluster is indicated by changes in track color. Track scale is now set by default to display the region 30 bp upstream of start 1 to 30 bp downstream of the last possible start. If this default region is judged to be packed too tightly with annotated starts, the track will be further scaled to only show that region of the ORF with annotated starts. This action will be indicated by adding "Zoomed" to the title. For starts, yellow indicates the location of called starts comprised solely of Glimmer/GeneMark auto-annotations, green indicates the location of called starts with at least 1 manual gene annotation.

Pham 171450 Report

This analysis was run 07/10/24 on database version 566.

Pham number 171450 has 67 members, 8 are drafts.

Phages represented in each track:

- Track 1 : Xenomorph_45
- Track 2 : Elsa_49, Arcadia_49, Nason_49
- Track 3 : Benllo_50
- Track 4 : GoCrazy_48, Mudcat_46, Hankly_48, Heisenberger_48, KeaneyLin_48
- Track 5 : Tribby_49
- Track 6 : Cheesy_49
- Track 7 : Circum_51
- Track 8 : NapoleonB_49, Dynamite_49, BenitoAntonio_49
- Track 9 : Correa_47
- Track 10 : Mooshroom_51
- Track 11 : JEGGS_48
- Track 12 : Kardesai_50
- Track 13 : Inked_49
- Track 14 : ScienceWizSam_46, DevitoJr_44, Trustiboi_45
- Track 15 : Brunswick_46, Tatanka_44, ElephantMan_45, Tenno_46, Teacup_46, CapnMurica_43, Issa_47, Synepsis_44, Niktson_45, MiniBagel_45
- Track 16 : Gordon_43, Breylor17_46, CastorTray_48, Darby_44, AreFloNak_46, Nivinsha_46
- Track 17 : Nightmare_47
- Track 18 : Tokki_50
- Track 19 : Shepard_49
- Track 20 : LilHuddy_47
- Track 21 : Giantsbane_47
- Track 22 : Phaby_47
- Track 23 : Ingrid_47, Loretta_47
- Track 24 : Caterpillar_42, MediumFry_43
- Track 25 : Makai_45, Truckee_43
- Track 26 : Renaldo_53, Lewando_50
- Track 27 : Uzumaki_46, GantcherGoblin_47, Argan_47
- Track 28 : BarbieDoll_52
- Track 29 : Leathea_48
- Track 30 : Zeina_49
- Track 31 : Egad_45
- Track 32 : Stayer_45, Sloopyjoe_45, Michelle_45, Shiba_44, StarLord_45, Salk_45

Summary of Final Annotations (See graph section above for start numbers):

The start number called the most often in the published annotations is 11, it was called in 28 of the 59 non-draft genes in the pham.

Genes that call this "Most Annotated" start:

- AreFloNak_46, Breylor17_46, Brunswick_46, CapnMurica_43, CastorTray_48, Caterpillar_42, Darby_44, DevitoJr_44, ElephantMan_45, Giantsbane_47, Gordon_43, Ingrid_47, Inked_49, Issa_47, LilHuddy_47, Loretta_47, Makai_45, MediumFry_43, MiniBagel_45, Nightmare_47, Niktson_45, Nivinsha_46, Phaby_47, ScienceWizSam_46, Shepard_49, Synepsis_44, Tatanka_44, Teacup_46, Tenno_46, Tokki_50, Truckee_43, Trustiboi_45,

Genes that have the "Most Annotated" start but do not call it:

-

Genes that do not have the "Most Annotated" start:

- Arcadia_49, Argan_47, BarbieDoll_52, BenitoAntonio_49, Benllo_50, Cheesy_49, Circum_51, Correa_47, Dynamite_49, Egad_45, Elsa_49, GantcherGoblin_47, GoCrazy_48, Hankly_48, Heisenberger_48, JEGGS_48, Kardesai_50, KeaneyLin_48, Leathea_48, Lewando_50, Michelle_45, Mooshroom_51, Mudcat_46, NapoleonB_49, Nason_49, Renaldo_53, Salk_45, Shiba_44, Sloopyjoe_45, StarLord_45, Stayer_45, Tribby_49, Uzumaki_46, Xenomorph_45, Zeina_49,

Summary by start number:

Start 4:

- Found in 6 of 67 (9.0%) of genes in pham
- Manual Annotations of this start: 6 of 59
- Called 100.0% of time when present
- Phage (with cluster) where this start called: Michelle_45 (AW), Salk_45 (AW), Shiba_44 (AW), Sloopyjoe_45 (AW), StarLord_45 (AW), Stayer_45 (AW),

Start 5:

- Found in 7 of 67 (10.4%) of genes in pham
- Manual Annotations of this start: 1 of 59
- Called 14.3% of time when present
- Phage (with cluster) where this start called: Egad_45 (AW),

Start 9:

- Found in 8 of 67 (11.9%) of genes in pham
- Manual Annotations of this start: 5 of 59
- Called 100.0% of time when present
- Phage (with cluster) where this start called: Argan_47 (AU6), BarbieDoll_52 (AU6), GantcherGoblin_47 (AU6), Leathea_48 (AU6), Lewando_50 (AU6), Renaldo_53 (AU6), Uzumaki_46 (AU6), Zeina_49 (AU6),

Start 11:

- Found in 32 of 67 (47.8%) of genes in pham
- Manual Annotations of this start: 28 of 59
- Called 100.0% of time when present

- Phage (with cluster) where this start called: AreFloNak_46 (AU1), Breylor17_46 (AU1), Brunswick_46 (AU1), CapnMurica_43 (AU1), CastorTray_48 (AU1), Caterpillar_42 (AU4), Darby_44 (AU1), DevitoJr_44 (AU1), ElephantMan_45 (AU1), Giantsbane_47 (AU2), Gordon_43 (AU1), Ingrid_47 (AU3), Inked_49 (AU), Issa_47 (AU1), LilHuddy_47 (AU2), Loretta_47 (AU3), Makai_45 (AU5), MediumFry_43 (AU4), MiniBagel_45 (AU1), Nightmare_47 (AU1), Niktson_45 (AU1), Nivinsha_46 (AU1), Phaby_47 (AU2), ScienceWizSam_46 (AU1), Shepard_49 (AU2), Synepsis_44 (AU1), Tatanka_44 (AU1), Teacup_46 (AU1), Tenno_46 (AU1), Tokki_50 (AU2), Truckee_43 (AU5), Trustiboi_45 (AU1),

Start 12:

- Found in 20 of 67 (29.9%) of genes in pham
- Manual Annotations of this start: 3 of 59
- Called 15.0% of time when present
- Phage (with cluster) where this start called: Circum_51 (AM), Correa_47 (AM), Tribby_49 (AM),

Start 14:

- Found in 20 of 67 (29.9%) of genes in pham
- Manual Annotations of this start: 16 of 59
- Called 85.0% of time when present
- Phage (with cluster) where this start called: Arcadia_49 (AM), BenitoAntonio_49 (AM), Benllo_50 (AM), Cheesy_49 (AM), Dynamite_49 (AM), Elsa_49 (AM), GoCrazy_48 (AM), Hankly_48 (AM), Heisenberger_48 (AM), JEGGS_48 (AM), Kardesai_50 (AM), KeaneyLin_48 (AM), Mooshroom_51 (AM), Mudcat_46 (AM), NapoleonB_49 (AM), Nason_49 (AM), Xenomorph_45 (AM),

Summary by clusters:

There are 9 clusters represented in this pham: AM, AU1, AU3, AU2, AU, AU4, AW, AU6, AU5,

Info for manual annotations of cluster AM:

- Start number 12 was manually annotated 3 times for cluster AM.
- Start number 14 was manually annotated 16 times for cluster AM.

Info for manual annotations of cluster AU:

- Start number 11 was manually annotated 1 time for cluster AU.

Info for manual annotations of cluster AU1:

- Start number 11 was manually annotated 17 times for cluster AU1.

Info for manual annotations of cluster AU2:

- Start number 11 was manually annotated 4 times for cluster AU2.

Info for manual annotations of cluster AU3:

- Start number 11 was manually annotated 2 times for cluster AU3.

Info for manual annotations of cluster AU4:

- Start number 11 was manually annotated 2 times for cluster AU4.

Info for manual annotations of cluster AU5:

- Start number 11 was manually annotated 2 times for cluster AU5.

Info for manual annotations of cluster AU6:

- Start number 9 was manually annotated 5 times for cluster AU6.

Info for manual annotations of cluster AW:

- Start number 4 was manually annotated 6 times for cluster AW.
- Start number 5 was manually annotated 1 time for cluster AW.

Gene Information:

Gene: Arcadia_49 Start: 32580, Stop: 32888, Start Num: 14

Candidate Starts for Arcadia_49:

(Start: 12 @32565 has 3 MA's), (Start: 14 @32580 has 16 MA's), (21, 32637), (23, 32685), (25, 32718), (26, 32733), (33, 32793), (35, 32799), (44, 32844),

Gene: AreFloNak_46 Start: 34044, Stop: 34346, Start Num: 11

Candidate Starts for AreFloNak_46:

(Start: 11 @34044 has 28 MA's), (16, 34077), (26, 34215), (29, 34245), (37, 34290),

Gene: Argan_47 Start: 32696, Stop: 33043, Start Num: 9

Candidate Starts for Argan_47:

(Start: 9 @32696 has 5 MA's), (15, 32738), (33, 32939), (34, 32942), (41, 32972),

Gene: BarbieDoll_52 Start: 34320, Stop: 34643, Start Num: 9

Candidate Starts for BarbieDoll_52:

(Start: 9 @34320 has 5 MA's), (33, 34560), (36, 34569),

Gene: BenitoAntonio_49 Start: 32116, Stop: 32424, Start Num: 14

Candidate Starts for BenitoAntonio_49:

(Start: 12 @32101 has 3 MA's), (Start: 14 @32116 has 16 MA's), (21, 32173), (23, 32221), (25, 32254), (26, 32269), (33, 32329), (35, 32335), (44, 32380),

Gene: Benllo_50 Start: 32800, Stop: 33102, Start Num: 14

Candidate Starts for Benllo_50:

(Start: 12 @32785 has 3 MA's), (Start: 14 @32800 has 16 MA's), (17, 32821), (21, 32857), (22, 32860), (26, 32953), (30, 32992), (36, 33022),

Gene: Breylor17_46 Start: 34842, Stop: 35144, Start Num: 11

Candidate Starts for Breylor17_46:

(Start: 11 @34842 has 28 MA's), (16, 34875), (26, 35013), (29, 35043), (37, 35088),

Gene: Brunswick_46 Start: 33924, Stop: 34226, Start Num: 11

Candidate Starts for Brunswick_46:

(Start: 11 @33924 has 28 MA's), (13, 33930), (16, 33957), (20, 33981), (26, 34095), (29, 34125), (37, 34170),

Gene: CapnMurica_43 Start: 34822, Stop: 35124, Start Num: 11

Candidate Starts for CapnMurica_43:

(Start: 11 @34822 has 28 MA's), (13, 34828), (16, 34855), (20, 34879), (26, 34993), (29, 35023), (37, 35068),

Gene: CastorTray_48 Start: 34652, Stop: 34954, Start Num: 11

Candidate Starts for CastorTray_48:

(Start: 11 @34652 has 28 MA's), (16, 34685), (26, 34823), (29, 34853), (37, 34898),

Gene: Caterpillar_42 Start: 33123, Stop: 33425, Start Num: 11

Candidate Starts for Caterpillar_42:

(Start: 11 @33123 has 28 MA's), (20, 33180), (27, 33297), (28, 33321),

Gene: Cheesy_49 Start: 32301, Stop: 32609, Start Num: 14

Candidate Starts for Cheesy_49:

(Start: 12 @32286 has 3 MA's), (Start: 14 @32301 has 16 MA's), (17, 32322), (18, 32328), (21, 32358), (26, 32454), (30, 32493), (36, 32523), (38, 32532), (40, 32544), (42, 32556),

Gene: Circum_51 Start: 32976, Stop: 33293, Start Num: 12

Candidate Starts for Circum_51:

(Start: 12 @32976 has 3 MA's), (Start: 14 @32991 has 16 MA's), (17, 33012), (21, 33048), (22, 33051), (26, 33144), (30, 33183), (36, 33213),

Gene: Correa_47 Start: 31432, Stop: 31755, Start Num: 12

Candidate Starts for Correa_47:

(Start: 12 @31432 has 3 MA's), (Start: 14 @31447 has 16 MA's), (17, 31468), (18, 31474), (21, 31504), (26, 31600), (30, 31639), (36, 31669), (38, 31678), (40, 31690), (42, 31702),

Gene: Darby_44 Start: 33824, Stop: 34126, Start Num: 11

Candidate Starts for Darby_44:

(Start: 11 @33824 has 28 MA's), (16, 33857), (26, 33995), (29, 34025), (37, 34070),

Gene: DevitoJr_44 Start: 34012, Stop: 34314, Start Num: 11

Candidate Starts for DevitoJr_44:

(Start: 11 @34012 has 28 MA's), (13, 34018), (26, 34183), (29, 34213), (37, 34258),

Gene: Dynamite_49 Start: 32516, Stop: 32824, Start Num: 14

Candidate Starts for Dynamite_49:

(Start: 12 @32501 has 3 MA's), (Start: 14 @32516 has 16 MA's), (21, 32573), (23, 32621), (25, 32654), (26, 32669), (33, 32729), (35, 32735), (44, 32780),

Gene: Egad_45 Start: 31754, Stop: 32128, Start Num: 5

Candidate Starts for Egad_45:

(Start: 5 @31754 has 1 MA's), (8, 31811), (10, 31838), (19, 31892), (24, 31964), (32, 32057), (39, 32090),

Gene: ElephantMan_45 Start: 34497, Stop: 34799, Start Num: 11

Candidate Starts for ElephantMan_45:

(Start: 11 @34497 has 28 MA's), (13, 34503), (16, 34530), (20, 34554), (26, 34668), (29, 34698), (37, 34743),

Gene: Elsa_49 Start: 32580, Stop: 32888, Start Num: 14

Candidate Starts for Elsa_49:

(Start: 12 @32565 has 3 MA's), (Start: 14 @32580 has 16 MA's), (21, 32637), (23, 32685), (25, 32718), (26, 32733), (33, 32793), (35, 32799), (44, 32844),

Gene: GantcherGoblin_47 Start: 32895, Stop: 33227, Start Num: 9

Candidate Starts for GantcherGoblin_47:

(Start: 9 @32895 has 5 MA's), (15, 32937), (33, 33138), (34, 33141), (41, 33171),

Gene: Giantsbane_47 Start: 33208, Stop: 33504, Start Num: 11

Candidate Starts for Giantsbane_47:

(Start: 11 @33208 has 28 MA's), (26, 33379), (29, 33409), (31, 33430),

Gene: GoCrazy_48 Start: 32456, Stop: 32758, Start Num: 14

Candidate Starts for GoCrazy_48:

(Start: 12 @32441 has 3 MA's), (Start: 14 @32456 has 16 MA's), (17, 32477), (21, 32513), (22, 32516), (26, 32609), (30, 32648), (36, 32678),

Gene: Gordon_43 Start: 34647, Stop: 34946, Start Num: 11

Candidate Starts for Gordon_43:

(Start: 11 @34647 has 28 MA's), (16, 34680), (26, 34818), (29, 34848), (37, 34893),

Gene: Hankly_48 Start: 31730, Stop: 32032, Start Num: 14

Candidate Starts for Hankly_48:

(Start: 12 @31715 has 3 MA's), (Start: 14 @31730 has 16 MA's), (17, 31751), (21, 31787), (22, 31790), (26, 31883), (30, 31922), (36, 31952),

Gene: Heisenberger_48 Start: 32020, Stop: 32313, Start Num: 14

Candidate Starts for Heisenberger_48:

(Start: 12 @32005 has 3 MA's), (Start: 14 @32020 has 16 MA's), (17, 32041), (21, 32077), (22, 32080), (26, 32173), (30, 32212), (36, 32242),

Gene: Ingrid_47 Start: 33951, Stop: 34253, Start Num: 11

Candidate Starts for Ingrid_47:

(Start: 11 @33951 has 28 MA's), (20, 34008), (26, 34122), (28, 34149), (31, 34173), (33, 34182),

Gene: Inked_49 Start: 35083, Stop: 35382, Start Num: 11

Candidate Starts for Inked_49:

(Start: 11 @35083 has 28 MA's), (26, 35254), (28, 35281), (29, 35284),

Gene: Issa_47 Start: 34116, Stop: 34418, Start Num: 11

Candidate Starts for Issa_47:

(Start: 11 @34116 has 28 MA's), (13, 34122), (16, 34149), (20, 34173), (26, 34287), (29, 34317), (37, 34362),

Gene: JEGGS_48 Start: 32075, Stop: 32368, Start Num: 14

Candidate Starts for JEGGS_48:

(Start: 12 @32060 has 3 MA's), (Start: 14 @32075 has 16 MA's), (17, 32096), (21, 32132), (22, 32135), (26, 32228), (30, 32267), (36, 32297),

Gene: Kardesai_50 Start: 32700, Stop: 33002, Start Num: 14

Candidate Starts for Kardesai_50:

(Start: 12 @32685 has 3 MA's), (Start: 14 @32700 has 16 MA's), (21, 32757), (23, 32805), (25, 32838), (26, 32853), (30, 32892), (36, 32922),

Gene: KeaneyLin_48 Start: 32456, Stop: 32758, Start Num: 14

Candidate Starts for KeaneyLin_48:

(Start: 12 @32441 has 3 MA's), (Start: 14 @32456 has 16 MA's), (17, 32477), (21, 32513), (22, 32516), (26, 32609), (30, 32648), (36, 32678),

Gene: Leathea_48 Start: 32547, Stop: 32861, Start Num: 9

Candidate Starts for Leathea_48:

(Start: 9 @32547 has 5 MA's), (15, 32586), (33, 32787),

Gene: Lewando_50 Start: 34105, Stop: 34425, Start Num: 9

Candidate Starts for Lewando_50:

(Start: 9 @34105 has 5 MA's), (36, 34354),

Gene: LilHuddy_47 Start: 34159, Stop: 34458, Start Num: 11

Candidate Starts for LilHuddy_47:

(2, 34012), (3, 34051), (6, 34075), (7, 34093), (Start: 11 @34159 has 28 MA's), (20, 34216), (26, 34330), (28, 34357), (31, 34381), (33, 34390), (43, 34435),

Gene: Loretta_47 Start: 33951, Stop: 34253, Start Num: 11

Candidate Starts for Loretta_47:

(Start: 11 @33951 has 28 MA's), (20, 34008), (26, 34122), (28, 34149), (31, 34173), (33, 34182),

Gene: Makai_45 Start: 34138, Stop: 34437, Start Num: 11

Candidate Starts for Makai_45:

(Start: 11 @34138 has 28 MA's), (20, 34195), (26, 34309), (28, 34336), (31, 34360), (36, 34378),

Gene: MediumFry_43 Start: 33426, Stop: 33728, Start Num: 11

Candidate Starts for MediumFry_43:

(Start: 11 @33426 has 28 MA's), (20, 33483), (27, 33600), (28, 33624),

Gene: Michelle_45 Start: 31746, Stop: 32126, Start Num: 4

Candidate Starts for Michelle_45:

(Start: 4 @31746 has 6 MA's), (Start: 5 @31752 has 1 MA's), (8, 31809), (10, 31836), (19, 31890), (24, 31962), (32, 32055), (39, 32088),

Gene: MiniBagel_45 Start: 34804, Stop: 35106, Start Num: 11

Candidate Starts for MiniBagel_45:

(Start: 11 @34804 has 28 MA's), (13, 34810), (16, 34837), (20, 34861), (26, 34975), (29, 35005), (37, 35050),

Gene: Mooshroom_51 Start: 32700, Stop: 33002, Start Num: 14

Candidate Starts for Mooshroom_51:

(Start: 12 @32685 has 3 MA's), (Start: 14 @32700 has 16 MA's), (21, 32757), (23, 32805), (26, 32853), (30, 32892), (36, 32922),

Gene: Mudcat_46 Start: 33433, Stop: 33726, Start Num: 14

Candidate Starts for Mudcat_46:

(Start: 12 @33418 has 3 MA's), (Start: 14 @33433 has 16 MA's), (17, 33454), (21, 33490), (22, 33493), (26, 33586), (30, 33625), (36, 33655),

Gene: NapoleonB_49 Start: 32516, Stop: 32824, Start Num: 14

Candidate Starts for NapoleonB_49:

(Start: 12 @32501 has 3 MA's), (Start: 14 @32516 has 16 MA's), (21, 32573), (23, 32621), (25, 32654), (26, 32669), (33, 32729), (35, 32735), (44, 32780),

Gene: Nason_49 Start: 32580, Stop: 32888, Start Num: 14

Candidate Starts for Nason_49:

(Start: 12 @32565 has 3 MA's), (Start: 14 @32580 has 16 MA's), (21, 32637), (23, 32685), (25, 32718), (26, 32733), (33, 32793), (35, 32799), (44, 32844),

Gene: Nightmare_47 Start: 35063, Stop: 35362, Start Num: 11

Candidate Starts for Nightmare_47:

(Start: 11 @35063 has 28 MA's), (16, 35096), (26, 35234), (29, 35264), (37, 35309),

Gene: Niktson_45 Start: 34497, Stop: 34799, Start Num: 11

Candidate Starts for Niktson_45:

(Start: 11 @34497 has 28 MA's), (13, 34503), (16, 34530), (20, 34554), (26, 34668), (29, 34698), (37, 34743),

Gene: Nivinsha_46 Start: 34044, Stop: 34346, Start Num: 11

Candidate Starts for Nivinsha_46:

(Start: 11 @34044 has 28 MA's), (16, 34077), (26, 34215), (29, 34245), (37, 34290),

Gene: Phaby_47 Start: 34705, Stop: 35004, Start Num: 11

Candidate Starts for Phaby_47:

(6, 34621), (7, 34639), (Start: 11 @34705 has 28 MA's), (20, 34762), (26, 34876), (28, 34903), (31, 34927), (33, 34936), (43, 34981),

Gene: Renaldo_53 Start: 34414, Stop: 34734, Start Num: 9

Candidate Starts for Renaldo_53:

(Start: 9 @34414 has 5 MA's), (36, 34663),

Gene: Salk_45 Start: 31744, Stop: 32124, Start Num: 4

Candidate Starts for Salk_45:

(Start: 4 @31744 has 6 MA's), (Start: 5 @31750 has 1 MA's), (8, 31807), (10, 31834), (19, 31888), (24, 31960), (32, 32053), (39, 32086),

Gene: ScienceWizSam_46 Start: 34154, Stop: 34456, Start Num: 11

Candidate Starts for ScienceWizSam_46:

(Start: 11 @34154 has 28 MA's), (13, 34160), (26, 34325), (29, 34355), (37, 34400),

Gene: Shepard_49 Start: 34232, Stop: 34531, Start Num: 11

Candidate Starts for Shepard_49:

(Start: 11 @34232 has 28 MA's), (20, 34289), (26, 34403), (28, 34430), (31, 34454), (33, 34463), (43, 34508),

Gene: Shiba_44 Start: 31444, Stop: 31824, Start Num: 4

Candidate Starts for Shiba_44:

(Start: 4 @31444 has 6 MA's), (Start: 5 @31450 has 1 MA's), (8, 31507), (10, 31534), (19, 31588), (24, 31660), (32, 31753), (39, 31786),

Gene: Sloopyjoe_45 Start: 31748, Stop: 32128, Start Num: 4

Candidate Starts for Sloopyjoe_45:

(Start: 4 @31748 has 6 MA's), (Start: 5 @31754 has 1 MA's), (8, 31811), (10, 31838), (19, 31892), (24, 31964), (32, 32057), (39, 32090),

Gene: StarLord_45 Start: 31747, Stop: 32127, Start Num: 4

Candidate Starts for StarLord_45:

(Start: 4 @31747 has 6 MA's), (Start: 5 @31753 has 1 MA's), (8, 31810), (10, 31837), (19, 31891), (24, 31963), (32, 32056), (39, 32089),

Gene: Stayer_45 Start: 31744, Stop: 32124, Start Num: 4

Candidate Starts for Stayer_45:

(Start: 4 @31744 has 6 MA's), (Start: 5 @31750 has 1 MA's), (8, 31807), (10, 31834), (19, 31888), (24, 31960), (32, 32053), (39, 32086),

Gene: Synopsis_44 Start: 34166, Stop: 34468, Start Num: 11

Candidate Starts for Synopsis_44:

(Start: 11 @34166 has 28 MA's), (13, 34172), (16, 34199), (20, 34223), (26, 34337), (29, 34367), (37, 34412),

Gene: Tatanka_44 Start: 34336, Stop: 34638, Start Num: 11

Candidate Starts for Tatanka_44:

(Start: 11 @34336 has 28 MA's), (13, 34342), (16, 34369), (20, 34393), (26, 34507), (29, 34537), (37, 34582),

Gene: Teacup_46 Start: 34526, Stop: 34828, Start Num: 11

Candidate Starts for Teacup_46:

(Start: 11 @34526 has 28 MA's), (13, 34532), (16, 34559), (20, 34583), (26, 34697), (29, 34727), (37, 34772),

Gene: Tenno_46 Start: 34812, Stop: 35114, Start Num: 11

Candidate Starts for Tenno_46:

(Start: 11 @34812 has 28 MA's), (13, 34818), (16, 34845), (20, 34869), (26, 34983), (29, 35013), (37, 35058),

Gene: Tokki_50 Start: 34333, Stop: 34632, Start Num: 11

Candidate Starts for Tokki_50:

(Start: 11 @34333 has 28 MA's), (20, 34390), (26, 34504), (28, 34531),

Gene: Tribby_49 Start: 32243, Stop: 32566, Start Num: 12

Candidate Starts for Tribby_49:

(Start: 12 @32243 has 3 MA's), (Start: 14 @32258 has 16 MA's), (17, 32279), (21, 32315), (26, 32411), (30, 32450), (36, 32480), (38, 32489), (40, 32501), (42, 32513),

Gene: Truckee_43 Start: 33926, Stop: 34225, Start Num: 11

Candidate Starts for Truckee_43:

(Start: 11 @33926 has 28 MA's), (20, 33983), (26, 34097), (28, 34124), (31, 34148), (36, 34166),

Gene: Trustiboi_45 Start: 34372, Stop: 34674, Start Num: 11

Candidate Starts for Trustiboi_45:

(Start: 11 @34372 has 28 MA's), (13, 34378), (26, 34543), (29, 34573), (37, 34618),

Gene: Uzumaki_46 Start: 32889, Stop: 33236, Start Num: 9

Candidate Starts for Uzumaki_46:

(Start: 9 @32889 has 5 MA's), (15, 32931), (33, 33132), (34, 33135), (41, 33165),

Gene: Xenomorph_45 Start: 31991, Stop: 32299, Start Num: 14

Candidate Starts for Xenomorph_45:

(1, 31826), (Start: 12 @31976 has 3 MA's), (Start: 14 @31991 has 16 MA's), (17, 32012), (21, 32048), (26, 32144), (30, 32183), (36, 32213), (38, 32222), (40, 32234), (42, 32246),

Gene: Zeina_49 Start: 33207, Stop: 33545, Start Num: 9

Candidate Starts for Zeina_49:

(Start: 9 @33207 has 5 MA's), (15, 33249), (33, 33450), (34, 33453),