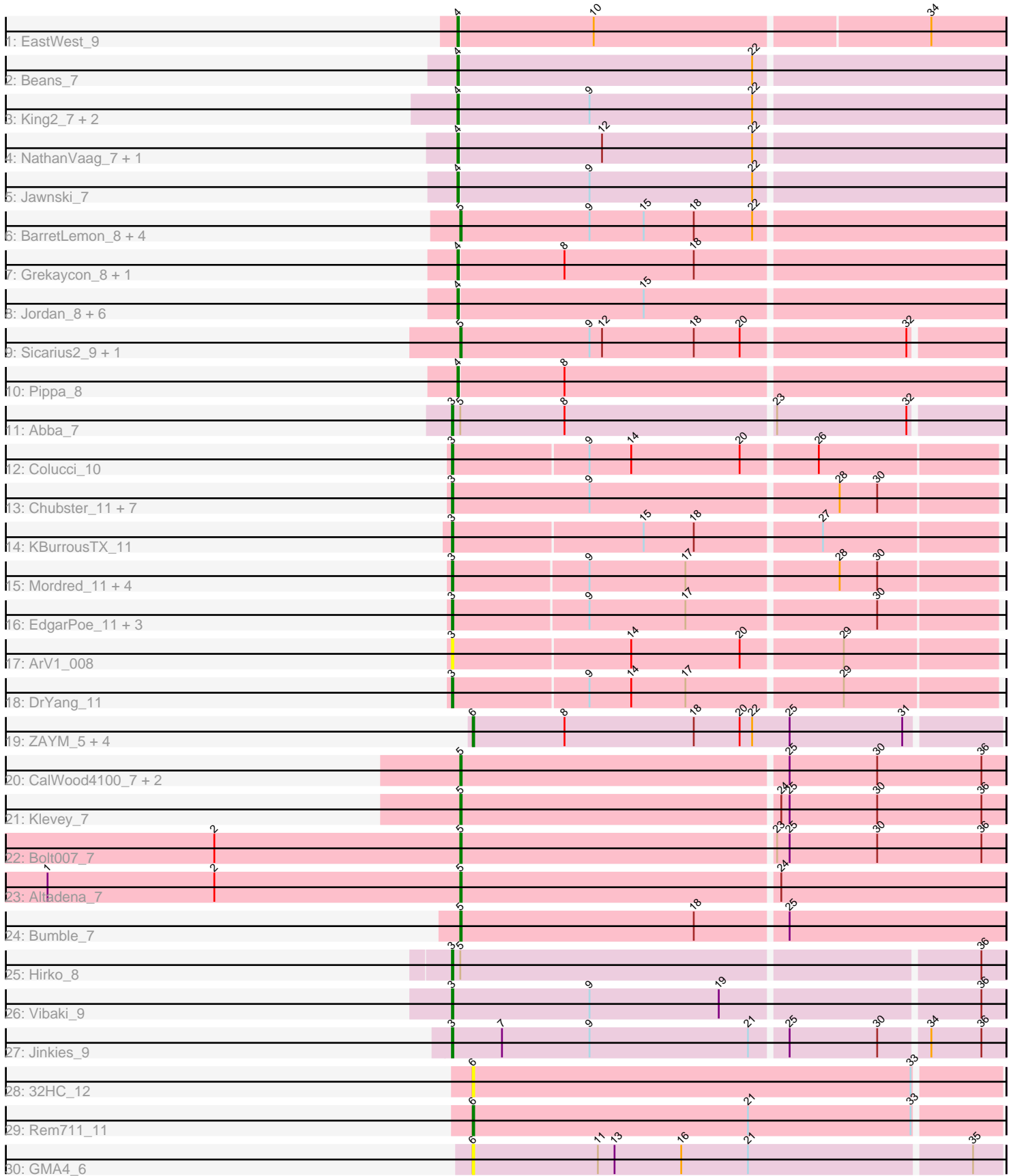


Pham 171453



Note: Tracks are now grouped by subcluster and scaled. Switching in subcluster is indicated by changes in track color. Track scale is now set by default to display the region 30 bp upstream of start 1 to 30 bp downstream of the last possible start. If this default region is judged to be packed too tightly with annotated starts, the track will be further scaled to only show that region of the ORF with annotated starts. This action will be indicated by adding "Zoomed" to the title. For starts, yellow indicates the location of called starts comprised solely of Glimmer/GeneMark auto-annotations, green indicates the location of called starts with at least 1 manual gene annotation.

Pham 171453 Report

This analysis was run 07/10/24 on database version 566.

Pham number 171453 has 65 members, 9 are drafts.

Phages represented in each track:

- Track 1 : EastWest_9
- Track 2 : Beans_7
- Track 3 : King2_7, Brent_7, Franzy_7
- Track 4 : NathanVaag_7, Piccoletto_7
- Track 5 : Jawnski_7
- Track 6 : BarretLemon_8, StevieBAY_8, GravityBall_8, Timinator_8, LeeroyJ_8
- Track 7 : Grekaycon_8, BossLady_8
- Track 8 : Jordan_8, Shade_8, Martha_8, TaeYoung_8, JKerns_8, Sonny_8, Zartrosa_8
- Track 9 : Sicarius2_9, Wyborn_9
- Track 10 : Pippa_8
- Track 11 : Abba_7
- Track 12 : Colucci_10
- Track 13 : Chubster_11, Lymara_11, RosiePosie_11, Linus_11, JayCookie_11, MoyaNatalis_11, Chocolat_11, PrincessTrina_11
- Track 14 : KBurrousTX_11
- Track 15 : Mordred_11, HumptyDumpty_11, JaNo_11, Kabreeze_11, Scavito_11
- Track 16 : EdgarPoe_11, Chipper1996_110, Tophat_11, Conboy_11
- Track 17 : ArV1_008
- Track 18 : DrYang_11
- Track 19 : ZAYM_5, MagicMan_5, Schnabeltier_5, Opie_5, TaronosaurusRx_5
- Track 20 : CalWood4100_7, Prairie_7, Lilmac1015_7
- Track 21 : Klevey_7
- Track 22 : Bolt007_7
- Track 23 : Altadena_7
- Track 24 : Bumble_7
- Track 25 : Hirko_8
- Track 26 : Vibaki_9
- Track 27 : Jinkies_9
- Track 28 : 32HC_12
- Track 29 : Rem711_11
- Track 30 : GMA4_6

Summary of Final Annotations (See graph section above for start numbers):

The start number called the most often in the published annotations is 3, it was called in 22 of the 56 non-draft genes in the pham.

Genes that call this "Most Annotated" start:

- Abba_7, ArV1_008, Chipper1996_110, Chocolat_11, Chubster_11, Colucci_10, Conboy_11, DrYang_11, EdgarPoe_11, Hirko_8, HumptyDumpty_11, JaNo_11, JayCookie_11, Jinkies_9, KBurrousTX_11, Kabreeze_11, Linus_11, Lymara_11, Mordred_11, MoyaNatalis_11, PrincessTrina_11, RosiePosie_11, Scavito_11, Tophat_11, Vibaki_9,

Genes that have the "Most Annotated" start but do not call it:

-

Genes that do not have the "Most Annotated" start:

- 32HC_12, Altadena_7, BarretLemon_8, Beans_7, Bolt007_7, BossLady_8, Brent_7, Bumble_7, CalWood4100_7, EastWest_9, Franzy_7, GMA4_6, GravityBall_8, Grekaycon_8, JKerns_8, Jawnski_7, Jordan_8, King2_7, Klevey_7, LeeroyJ_8, Lilmac1015_7, MagicMan_5, Martha_8, NathanVaag_7, Opie_5, Piccoletto_7, Pippa_8, Prairie_7, Rem711_11, Schnabeltier_5, Shade_8, Sicarius2_9, Sonny_8, StevieBAY_8, TaeYoung_8, TaronosaurusRx_5, Timinator_8, Wyborn_9, ZAYM_5, Zartrosa_8,

Summary by start number:

Start 3:

- Found in 25 of 65 (38.5%) of genes in pham
- Manual Annotations of this start: 22 of 56
- Called 100.0% of time when present
- Phage (with cluster) where this start called: Abba_7 (AO3), ArV1_008 (AR), Chipper1996_110 (AR), Chocolat_11 (AR), Chubster_11 (AR), Colucci_10 (AR), Conboy_11 (AR), DrYang_11 (AR), EdgarPoe_11 (AR), Hirko_8 (FL), HumptyDumpty_11 (AR), JaNo_11 (AR), JayCookie_11 (AR), Jinkies_9 (FL), KBurrousTX_11 (AR), Kabreeze_11 (AR), Linus_11 (AR), Lymara_11 (AR), Mordred_11 (AR), MoyaNatalis_11 (AR), PrincessTrina_11 (AR), RosiePosie_11 (AR), Scavito_11 (AR), Tophat_11 (AR), Vibaki_9 (FL),

Start 4:

- Found in 18 of 65 (27.7%) of genes in pham
- Manual Annotations of this start: 18 of 56
- Called 100.0% of time when present
- Phage (with cluster) where this start called: Beans_7 (AO1), BossLady_8 (AO2), Brent_7 (AO1), EastWest_9 (AO), Franzy_7 (AO1), Grekaycon_8 (AO2), JKerns_8 (AO2), Jawnski_7 (AO1), Jordan_8 (AO2), King2_7 (AO1), Martha_8 (AO2), NathanVaag_7 (AO1), Piccoletto_7 (AO1), Pippa_8 (AO2), Shade_8 (AO2), Sonny_8 (AO2), TaeYoung_8 (AO2), Zartrosa_8 (AO2),

Start 5:

- Found in 16 of 65 (24.6%) of genes in pham
- Manual Annotations of this start: 12 of 56
- Called 87.5% of time when present
- Phage (with cluster) where this start called: Altadena_7 (FH), BarretLemon_8 (AO2), Bolt007_7 (FH), Bumble_7 (FH), CalWood4100_7 (FH), GravityBall_8 (AO2),

Klevey_7 (FH), LeeroyJ_8 (AO2), Lilmac1015_7 (FH), Prairie_7 (FH), Sicarius2_9 (AO2), StevieBAY_8 (AO2), Timinator_8 (AO2), Wyborn_9 (AO2),

Start 6:

- Found in 8 of 65 (12.3%) of genes in pham
- Manual Annotations of this start: 4 of 56
- Called 100.0% of time when present
- Phage (with cluster) where this start called: 32HC_12 (Z), GMA4_6 (singleton), MagicMan_5 (DB), Opie_5 (DB), Rem711_11 (Z), Schnabeltier_5 (DB), TaronosaurusRx_5 (DB), ZAYM_5 (DB),

Summary by clusters:

There are 10 clusters represented in this pham: singleton, DB, AO, AR, AO3, AO2, AO1, FH, Z, FL,

Info for manual annotations of cluster AO:

- Start number 4 was manually annotated 1 time for cluster AO.

Info for manual annotations of cluster AO1:

- Start number 4 was manually annotated 7 times for cluster AO1.

Info for manual annotations of cluster AO2:

- Start number 4 was manually annotated 10 times for cluster AO2.
- Start number 5 was manually annotated 6 times for cluster AO2.

Info for manual annotations of cluster AO3:

- Start number 3 was manually annotated 1 time for cluster AO3.

Info for manual annotations of cluster AR:

- Start number 3 was manually annotated 18 times for cluster AR.

Info for manual annotations of cluster DB:

- Start number 6 was manually annotated 3 times for cluster DB.

Info for manual annotations of cluster FH:

- Start number 5 was manually annotated 6 times for cluster FH.

Info for manual annotations of cluster FL:

- Start number 3 was manually annotated 3 times for cluster FL.

Info for manual annotations of cluster Z:

- Start number 6 was manually annotated 1 time for cluster Z.

Gene Information:

Gene: 32HC_12 Start: 7864, Stop: 8238, Start Num: 6

Candidate Starts for 32HC_12:

(Start: 6 @7864 has 4 MA's), (33, 8179),

Gene: Abba_7 Start: 6995, Stop: 7381, Start Num: 3

Candidate Starts for Abba_7:

(Start: 3 @6995 has 22 MA's), (Start: 5 @7001 has 12 MA's), (8, 7076), (23, 7223), (32, 7316),

Gene: Altadena_7 Start: 6762, Stop: 7148, Start Num: 5

Candidate Starts for Altadena_7:

(1, 6465), (2, 6585), (Start: 5 @6762 has 12 MA's), (24, 6987),

Gene: ArV1_008 Start: 7635, Stop: 8015, Start Num: 3

Candidate Starts for ArV1_008:

(Start: 3 @7635 has 22 MA's), (14, 7761), (20, 7839), (29, 7908),

Gene: BarretLemon_8 Start: 7142, Stop: 7528, Start Num: 5

Candidate Starts for BarretLemon_8:

(Start: 5 @7142 has 12 MA's), (9, 7235), (15, 7274), (18, 7310), (22, 7352),

Gene: Beans_7 Start: 6812, Stop: 7198, Start Num: 4

Candidate Starts for Beans_7:

(Start: 4 @6812 has 18 MA's), (22, 7022),

Gene: Bolt007_7 Start: 6714, Stop: 7100, Start Num: 5

Candidate Starts for Bolt007_7:

(2, 6537), (Start: 5 @6714 has 12 MA's), (23, 6936), (25, 6945), (30, 7008), (36, 7083),

Gene: BossLady_8 Start: 7160, Stop: 7546, Start Num: 4

Candidate Starts for BossLady_8:

(Start: 4 @7160 has 18 MA's), (8, 7235), (18, 7328),

Gene: Brent_7 Start: 6810, Stop: 7196, Start Num: 4

Candidate Starts for Brent_7:

(Start: 4 @6810 has 18 MA's), (9, 6903), (22, 7020),

Gene: Bumble_7 Start: 6769, Stop: 7155, Start Num: 5

Candidate Starts for Bumble_7:

(Start: 5 @6769 has 12 MA's), (18, 6937), (25, 7000),

Gene: CalWood4100_7 Start: 6693, Stop: 7079, Start Num: 5

Candidate Starts for CalWood4100_7:

(Start: 5 @6693 has 12 MA's), (25, 6924), (30, 6987), (36, 7062),

Gene: Chipper1996_110 Start: 9277, Stop: 9657, Start Num: 3

Candidate Starts for Chipper1996_110:

(Start: 3 @9277 has 22 MA's), (9, 9373), (17, 9442), (30, 9574),

Gene: Chocolat_11 Start: 9275, Stop: 9658, Start Num: 3

Candidate Starts for Chocolat_11:

(Start: 3 @9275 has 22 MA's), (9, 9374), (28, 9548), (30, 9575),

Gene: Chubster_11 Start: 9045, Stop: 9428, Start Num: 3

Candidate Starts for Chubster_11:

(Start: 3 @9045 has 22 MA's), (9, 9144), (28, 9318), (30, 9345),

Gene: Colucci_10 Start: 8778, Stop: 9158, Start Num: 3

Candidate Starts for Colucci_10:

(Start: 3 @8778 has 22 MA's), (9, 8874), (14, 8904), (20, 8982), (26, 9033),

Gene: Conboy_11 Start: 9276, Stop: 9656, Start Num: 3

Candidate Starts for Conboy_11:

(Start: 3 @9276 has 22 MA's), (9, 9372), (17, 9441), (30, 9573),

Gene: DrYang_11 Start: 9210, Stop: 9590, Start Num: 3

Candidate Starts for DrYang_11:

(Start: 3 @9210 has 22 MA's), (9, 9306), (14, 9336), (17, 9375), (29, 9483),

Gene: EastWest_9 Start: 7229, Stop: 7612, Start Num: 4

Candidate Starts for EastWest_9:

(Start: 4 @7229 has 18 MA's), (10, 7325), (34, 7559),

Gene: EdgarPoe_11 Start: 9276, Stop: 9656, Start Num: 3

Candidate Starts for EdgarPoe_11:

(Start: 3 @9276 has 22 MA's), (9, 9372), (17, 9441), (30, 9573),

Gene: Franzy_7 Start: 6810, Stop: 7196, Start Num: 4

Candidate Starts for Franzy_7:

(Start: 4 @6810 has 18 MA's), (9, 6903), (22, 7020),

Gene: GMA4_6 Start: 5937, Stop: 6311, Start Num: 6

Candidate Starts for GMA4_6:

(Start: 6 @5937 has 4 MA's), (11, 6027), (13, 6039), (16, 6087), (21, 6135), (35, 6291),

Gene: GravityBall_8 Start: 7142, Stop: 7528, Start Num: 5

Candidate Starts for GravityBall_8:

(Start: 5 @7142 has 12 MA's), (9, 7235), (15, 7274), (18, 7310), (22, 7352),

Gene: Grekaycon_8 Start: 7169, Stop: 7555, Start Num: 4

Candidate Starts for Grekaycon_8:

(Start: 4 @7169 has 18 MA's), (8, 7244), (18, 7337),

Gene: Hirko_8 Start: 8319, Stop: 8705, Start Num: 3

Candidate Starts for Hirko_8:

(Start: 3 @8319 has 22 MA's), (Start: 5 @8325 has 12 MA's), (36, 8688),

Gene: HumptyDumpty_11 Start: 9275, Stop: 9655, Start Num: 3

Candidate Starts for HumptyDumpty_11:

(Start: 3 @9275 has 22 MA's), (9, 9371), (17, 9440), (28, 9545), (30, 9572),

Gene: JKerns_8 Start: 7199, Stop: 7585, Start Num: 4

Candidate Starts for JKerns_8:

(Start: 4 @7199 has 18 MA's), (15, 7331),

Gene: JaNo_11 Start: 9275, Stop: 9655, Start Num: 3

Candidate Starts for JaNo_11:

(Start: 3 @9275 has 22 MA's), (9, 9371), (17, 9440), (28, 9545), (30, 9572),

Gene: Jawnski_7 Start: 6807, Stop: 7193, Start Num: 4

Candidate Starts for Jawnski_7:

(Start: 4 @6807 has 18 MA's), (9, 6900), (22, 7017),

Gene: JayCookie_11 Start: 9275, Stop: 9658, Start Num: 3
Candidate Starts for JayCookie_11:
(Start: 3 @9275 has 22 MA's), (9, 9374), (28, 9548), (30, 9575),

Gene: Jinkies_9 Start: 7642, Stop: 8028, Start Num: 3
Candidate Starts for Jinkies_9:
(Start: 3 @7642 has 22 MA's), (7, 7678), (9, 7741), (21, 7855), (25, 7879), (30, 7942), (34, 7975), (36, 8011),

Gene: Jordan_8 Start: 7169, Stop: 7555, Start Num: 4
Candidate Starts for Jordan_8:
(Start: 4 @7169 has 18 MA's), (15, 7301),

Gene: KBurrousTX_11 Start: 9054, Stop: 9434, Start Num: 3
Candidate Starts for KBurrousTX_11:
(Start: 3 @9054 has 22 MA's), (15, 9189), (18, 9225), (27, 9312),

Gene: Kabreeze_11 Start: 9275, Stop: 9655, Start Num: 3
Candidate Starts for Kabreeze_11:
(Start: 3 @9275 has 22 MA's), (9, 9371), (17, 9440), (28, 9545), (30, 9572),

Gene: King2_7 Start: 6812, Stop: 7198, Start Num: 4
Candidate Starts for King2_7:
(Start: 4 @6812 has 18 MA's), (9, 6905), (22, 7022),

Gene: Klevey_7 Start: 6702, Stop: 7088, Start Num: 5
Candidate Starts for Klevey_7:
(Start: 5 @6702 has 12 MA's), (24, 6927), (25, 6933), (30, 6996), (36, 7071),

Gene: LeeroyJ_8 Start: 7141, Stop: 7527, Start Num: 5
Candidate Starts for LeeroyJ_8:
(Start: 5 @7141 has 12 MA's), (9, 7234), (15, 7273), (18, 7309), (22, 7351),

Gene: Lilmac1015_7 Start: 6693, Stop: 7079, Start Num: 5
Candidate Starts for Lilmac1015_7:
(Start: 5 @6693 has 12 MA's), (25, 6924), (30, 6987), (36, 7062),

Gene: Linus_11 Start: 9272, Stop: 9655, Start Num: 3
Candidate Starts for Linus_11:
(Start: 3 @9272 has 22 MA's), (9, 9371), (28, 9545), (30, 9572),

Gene: Lymara_11 Start: 9262, Stop: 9645, Start Num: 3
Candidate Starts for Lymara_11:
(Start: 3 @9262 has 22 MA's), (9, 9361), (28, 9535), (30, 9562),

Gene: MagicMan_5 Start: 5039, Stop: 5413, Start Num: 6
Candidate Starts for MagicMan_5:
(Start: 6 @5039 has 4 MA's), (8, 5105), (18, 5198), (20, 5231), (22, 5240), (25, 5267), (31, 5348),

Gene: Martha_8 Start: 7106, Stop: 7492, Start Num: 4
Candidate Starts for Martha_8:
(Start: 4 @7106 has 18 MA's), (15, 7238),

Gene: Mordred_11 Start: 9275, Stop: 9655, Start Num: 3
Candidate Starts for Mordred_11:
(Start: 3 @9275 has 22 MA's), (9, 9371), (17, 9440), (28, 9545), (30, 9572),

Gene: MoyaNatalis_11 Start: 9275, Stop: 9658, Start Num: 3
Candidate Starts for MoyaNatalis_11:
(Start: 3 @9275 has 22 MA's), (9, 9374), (28, 9548), (30, 9575),

Gene: NathanVaag_7 Start: 6812, Stop: 7198, Start Num: 4
Candidate Starts for NathanVaag_7:
(Start: 4 @6812 has 18 MA's), (12, 6914), (22, 7022),

Gene: Opie_5 Start: 5048, Stop: 5422, Start Num: 6
Candidate Starts for Opie_5:
(Start: 6 @5048 has 4 MA's), (8, 5114), (18, 5207), (20, 5240), (22, 5249), (25, 5276), (31, 5357),

Gene: Piccoletto_7 Start: 6813, Stop: 7199, Start Num: 4
Candidate Starts for Piccoletto_7:
(Start: 4 @6813 has 18 MA's), (12, 6915), (22, 7023),

Gene: Pippa_8 Start: 7199, Stop: 7585, Start Num: 4
Candidate Starts for Pippa_8:
(Start: 4 @7199 has 18 MA's), (8, 7274),

Gene: Prairie_7 Start: 6702, Stop: 7088, Start Num: 5
Candidate Starts for Prairie_7:
(Start: 5 @6702 has 12 MA's), (25, 6933), (30, 6996), (36, 7071),

Gene: PrincessTrina_11 Start: 9275, Stop: 9658, Start Num: 3
Candidate Starts for PrincessTrina_11:
(Start: 3 @9275 has 22 MA's), (9, 9374), (28, 9548), (30, 9575),

Gene: Rem711_11 Start: 7918, Stop: 8292, Start Num: 6
Candidate Starts for Rem711_11:
(Start: 6 @7918 has 4 MA's), (21, 8116), (33, 8233),

Gene: RosiePosie_11 Start: 9275, Stop: 9658, Start Num: 3
Candidate Starts for RosiePosie_11:
(Start: 3 @9275 has 22 MA's), (9, 9374), (28, 9548), (30, 9575),

Gene: Scavito_11 Start: 9275, Stop: 9655, Start Num: 3
Candidate Starts for Scavito_11:
(Start: 3 @9275 has 22 MA's), (9, 9371), (17, 9440), (28, 9545), (30, 9572),

Gene: Schnabeltier_5 Start: 5040, Stop: 5414, Start Num: 6
Candidate Starts for Schnabeltier_5:
(Start: 6 @5040 has 4 MA's), (8, 5106), (18, 5199), (20, 5232), (22, 5241), (25, 5268), (31, 5349),

Gene: Shade_8 Start: 7148, Stop: 7534, Start Num: 4
Candidate Starts for Shade_8:
(Start: 4 @7148 has 18 MA's), (15, 7280),

Gene: Sicarius2_9 Start: 7705, Stop: 8085, Start Num: 5
Candidate Starts for Sicarius2_9:
(Start: 5 @7705 has 12 MA's), (9, 7798), (12, 7807), (18, 7873), (20, 7906), (32, 8020),

Gene: Sonny_8 Start: 7169, Stop: 7555, Start Num: 4
Candidate Starts for Sonny_8:
(Start: 4 @7169 has 18 MA's), (15, 7301),

Gene: StevieBAY_8 Start: 7142, Stop: 7528, Start Num: 5
Candidate Starts for StevieBAY_8:
(Start: 5 @7142 has 12 MA's), (9, 7235), (15, 7274), (18, 7310), (22, 7352),

Gene: TaeYoung_8 Start: 7169, Stop: 7555, Start Num: 4
Candidate Starts for TaeYoung_8:
(Start: 4 @7169 has 18 MA's), (15, 7301),

Gene: TaronosaurusRx_5 Start: 5047, Stop: 5421, Start Num: 6
Candidate Starts for TaronosaurusRx_5:
(Start: 6 @5047 has 4 MA's), (8, 5113), (18, 5206), (20, 5239), (22, 5248), (25, 5275), (31, 5356),

Gene: Timinator_8 Start: 7141, Stop: 7527, Start Num: 5
Candidate Starts for Timinator_8:
(Start: 5 @7141 has 12 MA's), (9, 7234), (15, 7273), (18, 7309), (22, 7351),

Gene: Tophat_11 Start: 9277, Stop: 9657, Start Num: 3
Candidate Starts for Tophat_11:
(Start: 3 @9277 has 22 MA's), (9, 9373), (17, 9442), (30, 9574),

Gene: Vibaki_9 Start: 8796, Stop: 9182, Start Num: 3
Candidate Starts for Vibaki_9:
(Start: 3 @8796 has 22 MA's), (9, 8895), (19, 8988), (36, 9165),

Gene: Wyborn_9 Start: 7566, Stop: 7946, Start Num: 5
Candidate Starts for Wyborn_9:
(Start: 5 @7566 has 12 MA's), (9, 7659), (12, 7668), (18, 7734), (20, 7767), (32, 7881),

Gene: ZAYM_5 Start: 5040, Stop: 5414, Start Num: 6
Candidate Starts for ZAYM_5:
(Start: 6 @5040 has 4 MA's), (8, 5106), (18, 5199), (20, 5232), (22, 5241), (25, 5268), (31, 5349),

Gene: Zartrosa_8 Start: 7169, Stop: 7555, Start Num: 4
Candidate Starts for Zartrosa_8:
(Start: 4 @7169 has 18 MA's), (15, 7301),