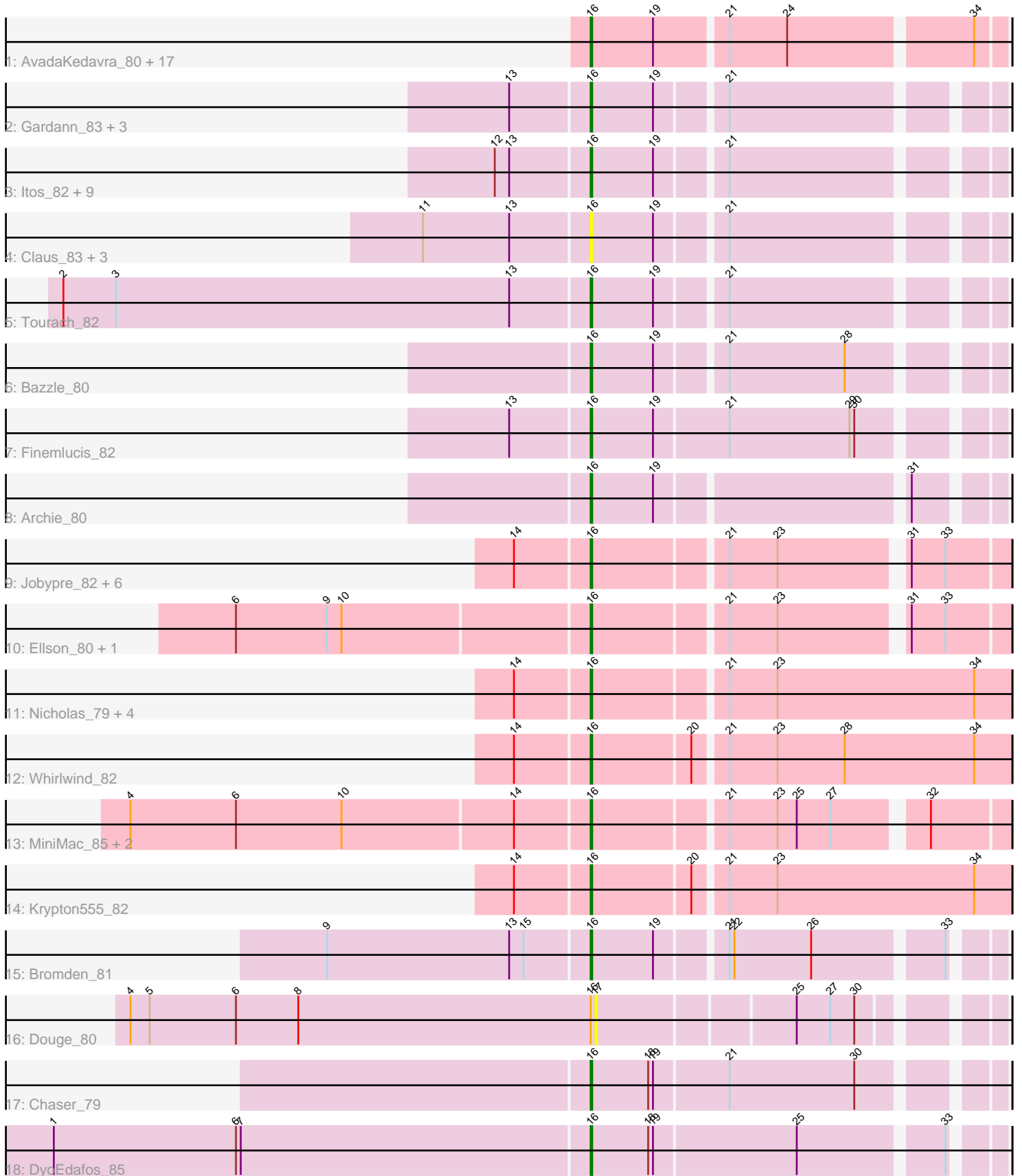


Pham 171461



Note: Tracks are now grouped by subcluster and scaled. Switching in subcluster is indicated by changes in track color. Track scale is now set by default to display the region 30 bp upstream of start 1 to 30 bp downstream of the last possible start. If this default region is judged to be packed too tightly with annotated starts, the track will be further scaled to only show that region of the ORF with annotated starts. This action will be indicated by adding "Zoomed" to the title. For starts, yellow indicates the location of called starts comprised solely of Glimmer/GeneMark auto-annotations, green indicates the location of called starts with at least 1 manual gene annotation.

Pham 171461 Report

This analysis was run 07/10/24 on database version 566.

Pham number 171461 has 63 members, 8 are drafts.

Phages represented in each track:

- Track 1 : AvadaKedavra_80, Appletree2_79, Rose5_80, CicholasNage_77, Enceladus_77, Acquire49_80, Wamburgxpress_80, UPIE_79, LeBron_79, JoeDirt_80, Wyatt2_81, Zaria_81, OhShagHennessy_77, DirkDirk_77, Halena_78, Tyson_81, Calm_82, Silverleaf_80
- Track 2 : Gardann_83, Rumpelstiltskin_80, Crossroads_83, Nicholasp3_83
- Track 3 : Itos_82, BigCheese_83, Winky_83, Miley16_83, BobsGarage_83, Netyap_84, Gabriela_82, DrSeegs_83, Breezona_83, Faith1_83
- Track 4 : Claus_83, Hafay_84, ZhongYanYuan_80, Baoshan_80
- Track 5 : Tourach_82
- Track 6 : Bazzle_80
- Track 7 : Finemlucis_82
- Track 8 : Archie_80
- Track 9 : Jobypre_82, Lumos_81, Clautastrophe_79, MsGreen_81, Bellis_79, Snenia_80, Jubie_80
- Track 10 : Ellson_80, DuncansLeg_81
- Track 11 : Nicholas_79, Kingsolomon_79, Finnry_81, Moostard_79, Samty_80
- Track 12 : Whirlwind_82
- Track 13 : MiniMac_85, Lolly9_80, MiniLon_85
- Track 14 : Krypton555_82
- Track 15 : Bromden_81
- Track 16 : Douge_80
- Track 17 : Chaser_79
- Track 18 : DyoEdafos_85

Summary of Final Annotations (See graph section above for start numbers):

The start number called the most often in the published annotations is 16, it was called in 55 of the 55 non-draft genes in the pham.

Genes that call this "Most Annotated" start:

- Acquire49_80, Appletree2_79, Archie_80, AvadaKedavra_80, Baoshan_80, Bazzle_80, Bellis_79, BigCheese_83, BobsGarage_83, Breezona_83, Bromden_81, Calm_82, Chaser_79, CicholasNage_77, Claus_83, Clautastrophe_79, Crossroads_83, DirkDirk_77, DrSeegs_83, DuncansLeg_81, DyoEdafos_85,

Ellson_80, Enceladus_77, Faith1_83, Finemlucis_82, Finnry_81, Gabriela_82, Gardann_83, Hafay_84, Halena_78, Itos_82, Jobypre_82, JoeDirt_80, Jubie_80, Kingsolomon_79, Krypton555_82, LeBron_79, Lolly9_80, Lumos_81, Miley16_83, MiniLon_85, MiniMac_85, Moostard_79, MsGreen_81, Netyap_84, Nicholas_79, Nicholasp3_83, OhShagHennessy_77, Rose5_80, Rumpelstiltskin_80, Samty_80, Silverleaf_80, Snenia_80, Tourach_82, Tyson_81, UPIE_79, Wamburgrxpress_80, Whirlwind_82, Winky_83, Wyatt2_81, Zaria_81, ZhongYanYuan_80,

Genes that have the "Most Annotated" start but do not call it:

- Douge_80,

Genes that do not have the "Most Annotated" start:

-

Summary by start number:

Start 16:

- Found in 63 of 63 (100.0%) of genes in pham
- Manual Annotations of this start: 55 of 55
- Called 98.4% of time when present
- Phage (with cluster) where this start called: Acquire49_80 (L1), Appletree2_79 (L1), Archie_80 (L2), AvadaKedavra_80 (L1), Baoshan_80 (L2), Bazzle_80 (L2), Bellis_79 (L3), BigCheese_83 (L2), BobsGarage_83 (L2), Breezona_83 (L2), Bromden_81 (L4), Calm_82 (L1), Chaser_79 (L4), CicholasNage_77 (L1), Claus_83 (L2), Clautastrophe_79 (L3), Crossroads_83 (L2), DirkDirk_77 (L1), DrSeegs_83 (L2), DuncansLeg_81 (L3), DyoEdafos_85 (L4), Ellson_80 (L3), Enceladus_77 (L1), Faith1_83 (L2), Finemlucis_82 (L2), Finnry_81 (L3), Gabriela_82 (L2), Gardann_83 (L2), Hafay_84 (L2), Halena_78 (L1), Itos_82 (L2), Jobypre_82 (L3), JoeDirt_80 (L1), Jubie_80 (L3), Kingsolomon_79 (L3), Krypton555_82 (L3), LeBron_79 (L1), Lolly9_80 (L3), Lumos_81 (L3), Miley16_83 (L2), MiniLon_85 (L3), MiniMac_85 (L3), Moostard_79 (L3), MsGreen_81 (L3), Netyap_84 (L2), Nicholas_79 (L3), Nicholasp3_83 (L2), OhShagHennessy_77 (L1), Rose5_80 (L1), Rumpelstiltskin_80 (L2), Samty_80 (L3), Silverleaf_80 (L1), Snenia_80 (L3), Tourach_82 (L2), Tyson_81 (L1), UPIE_79 (L1), Wamburgrxpress_80 (L1), Whirlwind_82 (L3), Winky_83 (L2), Wyatt2_81 (L1), Zaria_81 (L1), ZhongYanYuan_80 (L2),

Start 17:

- Found in 1 of 63 (1.6%) of genes in pham
- No Manual Annotations of this start.
- Called 100.0% of time when present
- Phage (with cluster) where this start called: Douge_80 (L4),

Summary by clusters:

There are 4 clusters represented in this pham: L4, L2, L3, L1,

Info for manual annotations of cluster L1:

- Start number 16 was manually annotated 18 times for cluster L1.

Info for manual annotations of cluster L2:

- Start number 16 was manually annotated 18 times for cluster L2.

Info for manual annotations of cluster L3:

- Start number 16 was manually annotated 16 times for cluster L3.

Info for manual annotations of cluster L4:

- Start number 16 was manually annotated 3 times for cluster L4.

Gene Information:

Gene: Acquire49_80 Start: 52642, Stop: 52884, Start Num: 16

Candidate Starts for Acquire49_80:

(Start: 16 @52642 has 55 MA's), (19, 52681), (21, 52723), (24, 52759), (34, 52867),

Gene: Appletree2_79 Start: 52253, Stop: 52495, Start Num: 16

Candidate Starts for Appletree2_79:

(Start: 16 @52253 has 55 MA's), (19, 52292), (21, 52334), (24, 52370), (34, 52478),

Gene: Archie_80 Start: 54193, Stop: 54423, Start Num: 16

Candidate Starts for Archie_80:

(Start: 16 @54193 has 55 MA's), (19, 54232), (31, 54376),

Gene: AvadaKedavra_80 Start: 52721, Stop: 52963, Start Num: 16

Candidate Starts for AvadaKedavra_80:

(Start: 16 @52721 has 55 MA's), (19, 52760), (21, 52802), (24, 52838), (34, 52946),

Gene: Baoshan_80 Start: 54479, Stop: 54709, Start Num: 16

Candidate Starts for Baoshan_80:

(11, 54377), (13, 54431), (Start: 16 @54479 has 55 MA's), (19, 54518), (21, 54557),

Gene: Bazzle_80 Start: 54382, Stop: 54612, Start Num: 16

Candidate Starts for Bazzle_80:

(Start: 16 @54382 has 55 MA's), (19, 54421), (21, 54460), (28, 54532),

Gene: Bellis_79 Start: 54375, Stop: 54614, Start Num: 16

Candidate Starts for Bellis_79:

(14, 54330), (Start: 16 @54375 has 55 MA's), (21, 54453), (23, 54483), (31, 54555), (33, 54576),

Gene: BigCheese_83 Start: 54609, Stop: 54839, Start Num: 16

Candidate Starts for BigCheese_83:

(12, 54552), (13, 54561), (Start: 16 @54609 has 55 MA's), (19, 54648), (21, 54687),

Gene: BobsGarage_83 Start: 54609, Stop: 54839, Start Num: 16

Candidate Starts for BobsGarage_83:

(12, 54552), (13, 54561), (Start: 16 @54609 has 55 MA's), (19, 54648), (21, 54687),

Gene: Breezona_83 Start: 54609, Stop: 54839, Start Num: 16

Candidate Starts for Breezona_83:

(12, 54552), (13, 54561), (Start: 16 @54609 has 55 MA's), (19, 54648), (21, 54687),

Gene: Bromden_81 Start: 54008, Stop: 54238, Start Num: 16

Candidate Starts for Bromden_81:

(9, 53846), (13, 53960), (15, 53969), (Start: 16 @54008 has 55 MA's), (19, 54047), (21, 54086), (22, 54089), (26, 54137), (33, 54212),

Gene: Calm_82 Start: 52964, Stop: 53206, Start Num: 16
Candidate Starts for Calm_82:
(Start: 16 @52964 has 55 MA's), (19, 53003), (21, 53045), (24, 53081), (34, 53189),

Gene: Chaser_79 Start: 53007, Stop: 53243, Start Num: 16
Candidate Starts for Chaser_79:
(Start: 16 @53007 has 55 MA's), (18, 53043), (19, 53046), (21, 53091), (30, 53169),

Gene: CicholasNage_77 Start: 52306, Stop: 52548, Start Num: 16
Candidate Starts for CicholasNage_77:
(Start: 16 @52306 has 55 MA's), (19, 52345), (21, 52387), (24, 52423), (34, 52531),

Gene: Claus_83 Start: 54544, Stop: 54774, Start Num: 16
Candidate Starts for Claus_83:
(11, 54442), (13, 54496), (Start: 16 @54544 has 55 MA's), (19, 54583), (21, 54622),

Gene: Clautastrophe_79 Start: 54373, Stop: 54612, Start Num: 16
Candidate Starts for Clautastrophe_79:
(14, 54328), (Start: 16 @54373 has 55 MA's), (21, 54451), (23, 54481), (31, 54553), (33, 54574),

Gene: Crossroads_83 Start: 54684, Stop: 54914, Start Num: 16
Candidate Starts for Crossroads_83:
(13, 54636), (Start: 16 @54684 has 55 MA's), (19, 54723), (21, 54762),

Gene: DirkDirk_77 Start: 51833, Stop: 52075, Start Num: 16
Candidate Starts for DirkDirk_77:
(Start: 16 @51833 has 55 MA's), (19, 51872), (21, 51914), (24, 51950), (34, 52058),

Gene: Douge_80 Start: 52966, Stop: 53190, Start Num: 17
Candidate Starts for Douge_80:
(4, 52675), (5, 52687), (6, 52741), (8, 52780), (Start: 16 @52963 has 55 MA's), (17, 52966), (25, 53083), (27, 53104), (30, 53119),

Gene: DrSeegs_83 Start: 54609, Stop: 54839, Start Num: 16
Candidate Starts for DrSeegs_83:
(12, 54552), (13, 54561), (Start: 16 @54609 has 55 MA's), (19, 54648), (21, 54687),

Gene: DuncansLeg_81 Start: 54392, Stop: 54631, Start Num: 16
Candidate Starts for DuncansLeg_81:
(6, 54176), (9, 54233), (10, 54242), (Start: 16 @54392 has 55 MA's), (21, 54470), (23, 54500), (31, 54572), (33, 54593),

Gene: DyoEdafos_85 Start: 53861, Stop: 54097, Start Num: 16
Candidate Starts for DyoEdafos_85:
(1, 53528), (6, 53642), (7, 53645), (Start: 16 @53861 has 55 MA's), (18, 53897), (19, 53900), (25, 53987), (33, 54071),

Gene: Ellson_80 Start: 54707, Stop: 54946, Start Num: 16
Candidate Starts for Ellson_80:
(6, 54491), (9, 54548), (10, 54557), (Start: 16 @54707 has 55 MA's), (21, 54785), (23, 54815), (31, 54887), (33, 54908),

Gene: Enceladus_77 Start: 52610, Stop: 52852, Start Num: 16

Candidate Starts for Enceladus_77:

(Start: 16 @52610 has 55 MA's), (19, 52649), (21, 52691), (24, 52727), (34, 52835),

Gene: Faith1_83 Start: 54609, Stop: 54839, Start Num: 16

Candidate Starts for Faith1_83:

(12, 54552), (13, 54561), (Start: 16 @54609 has 55 MA's), (19, 54648), (21, 54687),

Gene: Finemlucis_82 Start: 55077, Stop: 55313, Start Num: 16

Candidate Starts for Finemlucis_82:

(13, 55029), (Start: 16 @55077 has 55 MA's), (19, 55116), (21, 55161), (29, 55236), (30, 55239),

Gene: Finnry_81 Start: 54624, Stop: 54878, Start Num: 16

Candidate Starts for Finnry_81:

(14, 54579), (Start: 16 @54624 has 55 MA's), (21, 54702), (23, 54732), (34, 54855),

Gene: Gabriela_82 Start: 53955, Stop: 54185, Start Num: 16

Candidate Starts for Gabriela_82:

(12, 53898), (13, 53907), (Start: 16 @53955 has 55 MA's), (19, 53994), (21, 54033),

Gene: Gardann_83 Start: 54444, Stop: 54674, Start Num: 16

Candidate Starts for Gardann_83:

(13, 54396), (Start: 16 @54444 has 55 MA's), (19, 54483), (21, 54522),

Gene: Hafay_84 Start: 54539, Stop: 54769, Start Num: 16

Candidate Starts for Hafay_84:

(11, 54437), (13, 54491), (Start: 16 @54539 has 55 MA's), (19, 54578), (21, 54617),

Gene: Halena_78 Start: 51880, Stop: 52122, Start Num: 16

Candidate Starts for Halena_78:

(Start: 16 @51880 has 55 MA's), (19, 51919), (21, 51961), (24, 51997), (34, 52105),

Gene: Itos_82 Start: 53515, Stop: 53745, Start Num: 16

Candidate Starts for Itos_82:

(12, 53458), (13, 53467), (Start: 16 @53515 has 55 MA's), (19, 53554), (21, 53593),

Gene: Jobypre_82 Start: 54373, Stop: 54612, Start Num: 16

Candidate Starts for Jobypre_82:

(14, 54328), (Start: 16 @54373 has 55 MA's), (21, 54451), (23, 54481), (31, 54553), (33, 54574),

Gene: JoeDirt_80 Start: 53208, Stop: 53450, Start Num: 16

Candidate Starts for JoeDirt_80:

(Start: 16 @53208 has 55 MA's), (19, 53247), (21, 53289), (24, 53325), (34, 53433),

Gene: Jubie_80 Start: 54508, Stop: 54747, Start Num: 16

Candidate Starts for Jubie_80:

(14, 54463), (Start: 16 @54508 has 55 MA's), (21, 54586), (23, 54616), (31, 54688), (33, 54709),

Gene: Kingsolomon_79 Start: 54380, Stop: 54634, Start Num: 16

Candidate Starts for Kingsolomon_79:

(14, 54335), (Start: 16 @54380 has 55 MA's), (21, 54458), (23, 54488), (34, 54611),

Gene: Krypton555_82 Start: 54649, Stop: 54903, Start Num: 16

Candidate Starts for Krypton555_82:

(14, 54604), (Start: 16 @54649 has 55 MA's), (20, 54709), (21, 54727), (23, 54757), (34, 54880),

Gene: LeBron_79 Start: 51879, Stop: 52121, Start Num: 16

Candidate Starts for LeBron_79:

(Start: 16 @51879 has 55 MA's), (19, 51918), (21, 51960), (24, 51996), (34, 52104),

Gene: Lolly9_80 Start: 54471, Stop: 54710, Start Num: 16

Candidate Starts for Lolly9_80:

(4, 54189), (6, 54255), (10, 54321), (14, 54426), (Start: 16 @54471 has 55 MA's), (21, 54549), (23, 54579), (25, 54591), (27, 54612), (32, 54663),

Gene: Lumos_81 Start: 54370, Stop: 54609, Start Num: 16

Candidate Starts for Lumos_81:

(14, 54325), (Start: 16 @54370 has 55 MA's), (21, 54448), (23, 54478), (31, 54550), (33, 54571),

Gene: Miley16_83 Start: 54609, Stop: 54839, Start Num: 16

Candidate Starts for Miley16_83:

(12, 54552), (13, 54561), (Start: 16 @54609 has 55 MA's), (19, 54648), (21, 54687),

Gene: MiniLon_85 Start: 54472, Stop: 54711, Start Num: 16

Candidate Starts for MiniLon_85:

(4, 54190), (6, 54256), (10, 54322), (14, 54427), (Start: 16 @54472 has 55 MA's), (21, 54550), (23, 54580), (25, 54592), (27, 54613), (32, 54664),

Gene: MiniMac_85 Start: 54467, Stop: 54706, Start Num: 16

Candidate Starts for MiniMac_85:

(4, 54185), (6, 54251), (10, 54317), (14, 54422), (Start: 16 @54467 has 55 MA's), (21, 54545), (23, 54575), (25, 54587), (27, 54608), (32, 54659),

Gene: Moostard_79 Start: 54375, Stop: 54629, Start Num: 16

Candidate Starts for Moostard_79:

(14, 54330), (Start: 16 @54375 has 55 MA's), (21, 54453), (23, 54483), (34, 54606),

Gene: MsGreen_81 Start: 54372, Stop: 54611, Start Num: 16

Candidate Starts for MsGreen_81:

(14, 54327), (Start: 16 @54372 has 55 MA's), (21, 54450), (23, 54480), (31, 54552), (33, 54573),

Gene: Netyap_84 Start: 54610, Stop: 54840, Start Num: 16

Candidate Starts for Netyap_84:

(12, 54553), (13, 54562), (Start: 16 @54610 has 55 MA's), (19, 54649), (21, 54688),

Gene: Nicholas_79 Start: 54380, Stop: 54634, Start Num: 16

Candidate Starts for Nicholas_79:

(14, 54335), (Start: 16 @54380 has 55 MA's), (21, 54458), (23, 54488), (34, 54611),

Gene: Nicholasp3_83 Start: 54444, Stop: 54674, Start Num: 16

Candidate Starts for Nicholasp3_83:

(13, 54396), (Start: 16 @54444 has 55 MA's), (19, 54483), (21, 54522),

Gene: OhShagHennessy_77 Start: 51911, Stop: 52153, Start Num: 16

Candidate Starts for OhShagHennessy_77:

(Start: 16 @51911 has 55 MA's), (19, 51950), (21, 51992), (24, 52028), (34, 52136),

Gene: Rose5_80 Start: 53053, Stop: 53295, Start Num: 16

Candidate Starts for Rose5_80:

(Start: 16 @53053 has 55 MA's), (19, 53092), (21, 53134), (24, 53170), (34, 53278),

Gene: Rumpelstiltskin_80 Start: 54237, Stop: 54467, Start Num: 16

Candidate Starts for Rumpelstiltskin_80:

(13, 54189), (Start: 16 @54237 has 55 MA's), (19, 54276), (21, 54315),

Gene: Samty_80 Start: 54368, Stop: 54622, Start Num: 16

Candidate Starts for Samty_80:

(14, 54323), (Start: 16 @54368 has 55 MA's), (21, 54446), (23, 54476), (34, 54599),

Gene: Silverleaf_80 Start: 52509, Stop: 52751, Start Num: 16

Candidate Starts for Silverleaf_80:

(Start: 16 @52509 has 55 MA's), (19, 52548), (21, 52590), (24, 52626), (34, 52734),

Gene: Snenia_80 Start: 54374, Stop: 54613, Start Num: 16

Candidate Starts for Snenia_80:

(14, 54329), (Start: 16 @54374 has 55 MA's), (21, 54452), (23, 54482), (31, 54554), (33, 54575),

Gene: Tourach_82 Start: 54727, Stop: 54957, Start Num: 16

Candidate Starts for Tourach_82:

(2, 54400), (3, 54433), (13, 54679), (Start: 16 @54727 has 55 MA's), (19, 54766), (21, 54805),

Gene: Tyson_81 Start: 52979, Stop: 53221, Start Num: 16

Candidate Starts for Tyson_81:

(Start: 16 @52979 has 55 MA's), (19, 53018), (21, 53060), (24, 53096), (34, 53204),

Gene: UPIE_79 Start: 52575, Stop: 52817, Start Num: 16

Candidate Starts for UPIE_79:

(Start: 16 @52575 has 55 MA's), (19, 52614), (21, 52656), (24, 52692), (34, 52800),

Gene: Wamburgexpress_80 Start: 53014, Stop: 53256, Start Num: 16

Candidate Starts for Wamburgexpress_80:

(Start: 16 @53014 has 55 MA's), (19, 53053), (21, 53095), (24, 53131), (34, 53239),

Gene: Whirlwind_82 Start: 54612, Stop: 54866, Start Num: 16

Candidate Starts for Whirlwind_82:

(14, 54567), (Start: 16 @54612 has 55 MA's), (20, 54672), (21, 54690), (23, 54720), (28, 54762), (34, 54843),

Gene: Winky_83 Start: 54609, Stop: 54839, Start Num: 16

Candidate Starts for Winky_83:

(12, 54552), (13, 54561), (Start: 16 @54609 has 55 MA's), (19, 54648), (21, 54687),

Gene: Wyatt2_81 Start: 52977, Stop: 53219, Start Num: 16

Candidate Starts for Wyatt2_81:

(Start: 16 @52977 has 55 MA's), (19, 53016), (21, 53058), (24, 53094), (34, 53202),

Gene: Zaria_81 Start: 52429, Stop: 52671, Start Num: 16

Candidate Starts for Zaria_81:

(Start: 16 @52429 has 55 MA's), (19, 52468), (21, 52510), (24, 52546), (34, 52654),

Gene: ZhongYanYuan_80 Start: 54062, Stop: 54292, Start Num: 16

Candidate Starts for ZhongYanYuan_80:

(11, 53960), (13, 54014), (Start: 16 @54062 has 55 MA's), (19, 54101), (21, 54140),