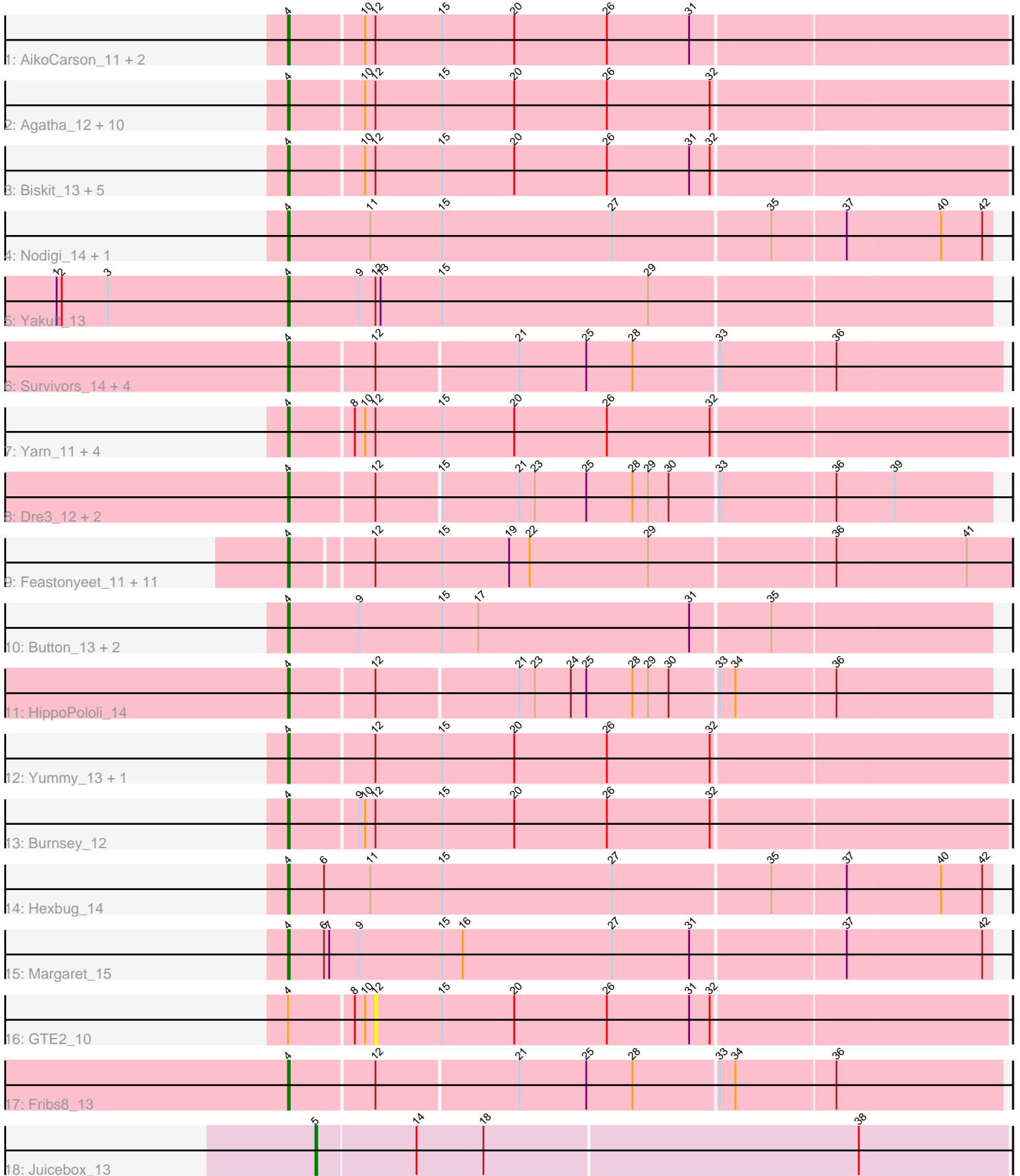


Pham 171474



Note: Tracks are now grouped by subcluster and scaled. Switching in subcluster is indicated by changes in track color. Track scale is now set by default to display the region 30 bp upstream of start 1 to 30 bp downstream of the last possible start. If this default region is judged to be packed too tightly with annotated starts, the track will be further scaled to only show that region of the ORF with annotated starts. This action will be indicated by adding "Zoomed" to the title. For starts, yellow indicates the location of called starts comprised solely of Glimmer/GeneMark auto-annotations, green indicates the location of called starts with at least 1 manual gene annotation.

Pham 171474 Report

This analysis was run 07/10/24 on database version 566.

Pham number 171474 has 60 members, 9 are drafts.

Phages represented in each track:

- Track 1 : AikoCarson_11, Amok_11, Emalyn_11
- Track 2 : Agatha_12, Elliott_12, Quasar_12, Cozz_12, Nina_13, MunkgeeRoachy_13, PsychoKiller_12, Typhonomachy_13, Sopespian_12, RedBaron_13, Axym_12
- Track 3 : Biskit_13, Buttrmldreams_12, Troje_12, SweatNTears_14, SketchMex_11, MScarn_14
- Track 4 : Nodigi_14, Orla_14
- Track 5 : Yakult_13
- Track 6 : Survivors_14, Zareef_16, MaVan_14, Nibbles_14, Azira_14
- Track 7 : Yarn_11, SteamedHams_14, Tolls_14, BillDoor_14, AndPeggy_11
- Track 8 : Dre3_12, Gibbous_12, Cleo_12
- Track 9 : Feastonyeet_11, CherryonLim_13, BigChungus_11, Lauer_11, Mayweather_13, SheckWes_11, SummitAcademy_11, Elinal_13, Vine_13, PotPie_12, Pons_12, KayGee_11
- Track 10 : Button_13, Jamzy_15, GiKK_15
- Track 11 : HippoPololi_14
- Track 12 : Yummy_13, Horseradish_13
- Track 13 : Burnsey_12
- Track 14 : Hexbug_14
- Track 15 : Margaret_15
- Track 16 : GTE2_10
- Track 17 : Fribs8_13
- Track 18 : Juicebox_13

Summary of Final Annotations (See graph section above for start numbers):

The start number called the most often in the published annotations is 4, it was called in 50 of the 51 non-draft genes in the pham.

Genes that call this "Most Annotated" start:

- Agatha_12, AikoCarson_11, Amok_11, AndPeggy_11, Axym_12, Azira_14, BigChungus_11, BillDoor_14, Biskit_13, Burnsey_12, Button_13, Buttrmldreams_12, CherryonLim_13, Cleo_12, Cozz_12, Dre3_12, Elinal_13, Elliott_12, Emalyn_11, Feastonyeet_11, Fribs8_13, GiKK_15, Gibbous_12, Hexbug_14, HippoPololi_14,

Horseradish_13, Jamzy_15, KayGee_11, Lauer_11, MScarn_14, MaVan_14, Margaret_15, Mayweather_13, MunkgeeRoachy_13, Nibbles_14, Nina_13, Nodigi_14, Orla_14, Pons_12, PotPie_12, PsychoKiller_12, Quasar_12, RedBaron_13, SheckWes_11, SketchMex_11, Sopespian_12, SteamedHams_14, SummitAcademy_11, Survivors_14, SweatNTears_14, Tolls_14, Troje_12, Typhonomachy_13, Vine_13, Yakult_13, Yarn_11, Yummy_13, Zareef_16,

Genes that have the "Most Annotated" start but do not call it:

- GTE2_10,

Genes that do not have the "Most Annotated" start:

- Juicebox_13,

Summary by start number:

Start 4:

- Found in 59 of 60 (98.3%) of genes in pham
- Manual Annotations of this start: 50 of 51
- Called 98.3% of time when present
- Phage (with cluster) where this start called: Agatha_12 (CT), AikoCarson_11 (CT), Amok_11 (CT), AndPeggy_11 (CT), Axym_12 (CT), Azira_14 (CT), BigChungus_11 (CT), BillDoor_14 (CT), Biskit_13 (CT), Burnsey_12 (CT), Button_13 (CT), Buttrmlkdreams_12 (CT), CherryonLim_13 (CT), Cleo_12 (CT), Cozz_12 (CT), Dre3_12 (CT), Elinal_13 (CT), Elliott_12 (CT), Emalyn_11 (CT), Feastonyeet_11 (CT), Fribs8_13 (CT), GiKK_15 (CT), Gibbous_12 (CT), Hexbug_14 (CT), HippoPololi_14 (CT), Horseradish_13 (CT), Jamzy_15 (CT), KayGee_11 (CT), Lauer_11 (CT), MScarn_14 (CT), MaVan_14 (CT), Margaret_15 (CT), Mayweather_13 (CT), MunkgeeRoachy_13 (CT), Nibbles_14 (CT), Nina_13 (CT), Nodigi_14 (CT), Orla_14 (CT), Pons_12 (CT), PotPie_12 (CT), PsychoKiller_12 (CT), Quasar_12 (CT), RedBaron_13 (CT), SheckWes_11 (CT), SketchMex_11 (CT), Sopespian_12 (CT), SteamedHams_14 (CT), SummitAcademy_11 (CT), Survivors_14 (CT), SweatNTears_14 (CT), Tolls_14 (CT), Troje_12 (CT), Typhonomachy_13 (CT), Vine_13 (CT), Yakult_13 (CT), Yarn_11 (CT), Yummy_13 (CT), Zareef_16 (CT),

Start 5:

- Found in 1 of 60 (1.7%) of genes in pham
- Manual Annotations of this start: 1 of 51
- Called 100.0% of time when present
- Phage (with cluster) where this start called: Juicebox_13 (singleton),

Start 12:

- Found in 52 of 60 (86.7%) of genes in pham
- No Manual Annotations of this start.
- Called 1.9% of time when present
- Phage (with cluster) where this start called: GTE2_10 (CT),

Summary by clusters:

There are 2 clusters represented in this pham: singleton, CT,

Info for manual annotations of cluster CT:

- Start number 4 was manually annotated 50 times for cluster CT.

Gene Information:

Gene: Agatha_12 Start: 7522, Stop: 7932, Start Num: 4

Candidate Starts for Agatha_12:

(Start: 4 @7522 has 50 MA's), (10, 7564), (12, 7570), (15, 7609), (20, 7651), (26, 7705), (32, 7765),

Gene: AikoCarson_11 Start: 7243, Stop: 7653, Start Num: 4

Candidate Starts for AikoCarson_11:

(Start: 4 @7243 has 50 MA's), (10, 7285), (12, 7291), (15, 7330), (20, 7372), (26, 7426), (31, 7474),

Gene: Amok_11 Start: 7243, Stop: 7653, Start Num: 4

Candidate Starts for Amok_11:

(Start: 4 @7243 has 50 MA's), (10, 7285), (12, 7291), (15, 7330), (20, 7372), (26, 7426), (31, 7474),

Gene: AndPeggy_11 Start: 7534, Stop: 7944, Start Num: 4

Candidate Starts for AndPeggy_11:

(Start: 4 @7534 has 50 MA's), (8, 7570), (10, 7576), (12, 7582), (15, 7621), (20, 7663), (26, 7717), (32, 7777),

Gene: Axym_12 Start: 7522, Stop: 7932, Start Num: 4

Candidate Starts for Axym_12:

(Start: 4 @7522 has 50 MA's), (10, 7564), (12, 7570), (15, 7609), (20, 7651), (26, 7705), (32, 7765),

Gene: Azira_14 Start: 8446, Stop: 8850, Start Num: 4

Candidate Starts for Azira_14:

(Start: 4 @8446 has 50 MA's), (12, 8494), (21, 8575), (25, 8614), (28, 8641), (33, 8689), (36, 8755),

Gene: BigChungus_11 Start: 7313, Stop: 7723, Start Num: 4

Candidate Starts for BigChungus_11:

(Start: 4 @7313 has 50 MA's), (12, 7358), (15, 7397), (19, 7436), (22, 7448), (29, 7517), (36, 7622), (41, 7697),

Gene: BillDoor_14 Start: 7499, Stop: 7909, Start Num: 4

Candidate Starts for BillDoor_14:

(Start: 4 @7499 has 50 MA's), (8, 7535), (10, 7541), (12, 7547), (15, 7586), (20, 7628), (26, 7682), (32, 7742),

Gene: Biskit_13 Start: 7506, Stop: 7916, Start Num: 4

Candidate Starts for Biskit_13:

(Start: 4 @7506 has 50 MA's), (10, 7548), (12, 7554), (15, 7593), (20, 7635), (26, 7689), (31, 7737), (32, 7749),

Gene: Burnsey_12 Start: 7523, Stop: 7933, Start Num: 4

Candidate Starts for Burnsey_12:

(Start: 4 @7523 has 50 MA's), (9, 7562), (10, 7565), (12, 7571), (15, 7610), (20, 7652), (26, 7706), (32, 7766),

Gene: Button_13 Start: 7530, Stop: 7934, Start Num: 4

Candidate Starts for Button_13:

(Start: 4 @7530 has 50 MA's), (9, 7572), (15, 7620), (17, 7641), (31, 7764), (35, 7809),

Gene: Buttrmlkdreams_12 Start: 7491, Stop: 7901, Start Num: 4
Candidate Starts for Buttrmlkdreams_12:
(Start: 4 @7491 has 50 MA's), (10, 7533), (12, 7539), (15, 7578), (20, 7620), (26, 7674), (31, 7722),
(32, 7734),

Gene: CherryonLim_13 Start: 8039, Stop: 8449, Start Num: 4
Candidate Starts for CherryonLim_13:
(Start: 4 @8039 has 50 MA's), (12, 8084), (15, 8123), (19, 8162), (22, 8174), (29, 8243), (36, 8348),
(41, 8423),

Gene: Cleo_12 Start: 7746, Stop: 8144, Start Num: 4
Candidate Starts for Cleo_12:
(Start: 4 @7746 has 50 MA's), (12, 7794), (15, 7830), (21, 7875), (23, 7884), (25, 7914), (28, 7941),
(29, 7950), (30, 7962), (33, 7989), (36, 8055), (39, 8088),

Gene: Cozz_12 Start: 7523, Stop: 7933, Start Num: 4
Candidate Starts for Cozz_12:
(Start: 4 @7523 has 50 MA's), (10, 7565), (12, 7571), (15, 7610), (20, 7652), (26, 7706), (32, 7766),

Gene: Dre3_12 Start: 7693, Stop: 8091, Start Num: 4
Candidate Starts for Dre3_12:
(Start: 4 @7693 has 50 MA's), (12, 7741), (15, 7777), (21, 7822), (23, 7831), (25, 7861), (28, 7888),
(29, 7897), (30, 7909), (33, 7936), (36, 8002), (39, 8035),

Gene: Elinal_13 Start: 7294, Stop: 7704, Start Num: 4
Candidate Starts for Elinal_13:
(Start: 4 @7294 has 50 MA's), (12, 7339), (15, 7378), (19, 7417), (22, 7429), (29, 7498), (36, 7603),
(41, 7678),

Gene: Elliott_12 Start: 7522, Stop: 7932, Start Num: 4
Candidate Starts for Elliott_12:
(Start: 4 @7522 has 50 MA's), (10, 7564), (12, 7570), (15, 7609), (20, 7651), (26, 7705), (32, 7765),

Gene: Emalyn_11 Start: 7242, Stop: 7652, Start Num: 4
Candidate Starts for Emalyn_11:
(Start: 4 @7242 has 50 MA's), (10, 7284), (12, 7290), (15, 7329), (20, 7371), (26, 7425), (31, 7473),

Gene: Feastonyeet_11 Start: 7313, Stop: 7723, Start Num: 4
Candidate Starts for Feastonyeet_11:
(Start: 4 @7313 has 50 MA's), (12, 7358), (15, 7397), (19, 7436), (22, 7448), (29, 7517), (36, 7622),
(41, 7697),

Gene: Fribs8_13 Start: 8259, Stop: 8663, Start Num: 4
Candidate Starts for Fribs8_13:
(Start: 4 @8259 has 50 MA's), (12, 8307), (21, 8388), (25, 8427), (28, 8454), (33, 8502), (34, 8511),
(36, 8568),

Gene: GTE2_10 Start: 7243, Stop: 7605, Start Num: 12
Candidate Starts for GTE2_10:
(Start: 4 @7195 has 50 MA's), (8, 7231), (10, 7237), (12, 7243), (15, 7282), (20, 7324), (26, 7378), (31,
7426), (32, 7438),

Gene: GiKK_15 Start: 7833, Stop: 8237, Start Num: 4

Candidate Starts for GiKK_15:

(Start: 4 @7833 has 50 MA's), (9, 7875), (15, 7923), (17, 7944), (31, 8067), (35, 8112),

Gene: Gibbous_12 Start: 7693, Stop: 8091, Start Num: 4

Candidate Starts for Gibbous_12:

(Start: 4 @7693 has 50 MA's), (12, 7741), (15, 7777), (21, 7822), (23, 7831), (25, 7861), (28, 7888), (29, 7897), (30, 7909), (33, 7936), (36, 8002), (39, 8035),

Gene: Hexbug_14 Start: 8519, Stop: 8923, Start Num: 4

Candidate Starts for Hexbug_14:

(Start: 4 @8519 has 50 MA's), (6, 8540), (11, 8567), (15, 8609), (27, 8708), (35, 8798), (37, 8840), (40, 8894), (42, 8918),

Gene: HippoPololi_14 Start: 8345, Stop: 8743, Start Num: 4

Candidate Starts for HippoPololi_14:

(Start: 4 @8345 has 50 MA's), (12, 8393), (21, 8474), (23, 8483), (24, 8504), (25, 8513), (28, 8540), (29, 8549), (30, 8561), (33, 8588), (34, 8597), (36, 8654),

Gene: Horseradish_13 Start: 7404, Stop: 7814, Start Num: 4

Candidate Starts for Horseradish_13:

(Start: 4 @7404 has 50 MA's), (12, 7452), (15, 7491), (20, 7533), (26, 7587), (32, 7647),

Gene: Jamzy_15 Start: 7843, Stop: 8247, Start Num: 4

Candidate Starts for Jamzy_15:

(Start: 4 @7843 has 50 MA's), (9, 7885), (15, 7933), (17, 7954), (31, 8077), (35, 8122),

Gene: Juicebox_13 Start: 8820, Stop: 9218, Start Num: 5

Candidate Starts for Juicebox_13:

(Start: 5 @8820 has 1 MA's), (14, 8877), (18, 8916), (38, 9132),

Gene: KayGee_11 Start: 7294, Stop: 7704, Start Num: 4

Candidate Starts for KayGee_11:

(Start: 4 @7294 has 50 MA's), (12, 7339), (15, 7378), (19, 7417), (22, 7429), (29, 7498), (36, 7603), (41, 7678),

Gene: Lauer_11 Start: 7343, Stop: 7753, Start Num: 4

Candidate Starts for Lauer_11:

(Start: 4 @7343 has 50 MA's), (12, 7388), (15, 7427), (19, 7466), (22, 7478), (29, 7547), (36, 7652), (41, 7727),

Gene: MScarn_14 Start: 7491, Stop: 7901, Start Num: 4

Candidate Starts for MScarn_14:

(Start: 4 @7491 has 50 MA's), (10, 7533), (12, 7539), (15, 7578), (20, 7620), (26, 7674), (31, 7722), (32, 7734),

Gene: MaVan_14 Start: 8446, Stop: 8850, Start Num: 4

Candidate Starts for MaVan_14:

(Start: 4 @8446 has 50 MA's), (12, 8494), (21, 8575), (25, 8614), (28, 8641), (33, 8689), (36, 8755),

Gene: Margaret_15 Start: 8228, Stop: 8632, Start Num: 4

Candidate Starts for Margaret_15:

(Start: 4 @8228 has 50 MA's), (6, 8249), (7, 8252), (9, 8270), (15, 8318), (16, 8330), (27, 8417), (31, 8462), (37, 8549), (42, 8627),

Gene: Mayweather_13 Start: 7917, Stop: 8327, Start Num: 4

Candidate Starts for Mayweather_13:

(Start: 4 @7917 has 50 MA's), (12, 7962), (15, 8001), (19, 8040), (22, 8052), (29, 8121), (36, 8226), (41, 8301),

Gene: MunkgeeRoachy_13 Start: 7570, Stop: 7980, Start Num: 4

Candidate Starts for MunkgeeRoachy_13:

(Start: 4 @7570 has 50 MA's), (10, 7612), (12, 7618), (15, 7657), (20, 7699), (26, 7753), (32, 7813),

Gene: Nibbles_14 Start: 8446, Stop: 8850, Start Num: 4

Candidate Starts for Nibbles_14:

(Start: 4 @8446 has 50 MA's), (12, 8494), (21, 8575), (25, 8614), (28, 8641), (33, 8689), (36, 8755),

Gene: Nina_13 Start: 8556, Stop: 8966, Start Num: 4

Candidate Starts for Nina_13:

(Start: 4 @8556 has 50 MA's), (10, 8598), (12, 8604), (15, 8643), (20, 8685), (26, 8739), (32, 8799),

Gene: Nodigi_14 Start: 8512, Stop: 8916, Start Num: 4

Candidate Starts for Nodigi_14:

(Start: 4 @8512 has 50 MA's), (11, 8560), (15, 8602), (27, 8701), (35, 8791), (37, 8833), (40, 8887), (42, 8911),

Gene: Orla_14 Start: 8516, Stop: 8920, Start Num: 4

Candidate Starts for Orla_14:

(Start: 4 @8516 has 50 MA's), (11, 8564), (15, 8606), (27, 8705), (35, 8795), (37, 8837), (40, 8891), (42, 8915),

Gene: Pons_12 Start: 7296, Stop: 7706, Start Num: 4

Candidate Starts for Pons_12:

(Start: 4 @7296 has 50 MA's), (12, 7341), (15, 7380), (19, 7419), (22, 7431), (29, 7500), (36, 7605), (41, 7680),

Gene: PotPie_12 Start: 8147, Stop: 8557, Start Num: 4

Candidate Starts for PotPie_12:

(Start: 4 @8147 has 50 MA's), (12, 8192), (15, 8231), (19, 8270), (22, 8282), (29, 8351), (36, 8456), (41, 8531),

Gene: PsychoKiller_12 Start: 7522, Stop: 7932, Start Num: 4

Candidate Starts for PsychoKiller_12:

(Start: 4 @7522 has 50 MA's), (10, 7564), (12, 7570), (15, 7609), (20, 7651), (26, 7705), (32, 7765),

Gene: Quasar_12 Start: 8131, Stop: 8541, Start Num: 4

Candidate Starts for Quasar_12:

(Start: 4 @8131 has 50 MA's), (10, 8173), (12, 8179), (15, 8218), (20, 8260), (26, 8314), (32, 8374),

Gene: RedBaron_13 Start: 7567, Stop: 7977, Start Num: 4

Candidate Starts for RedBaron_13:

(Start: 4 @7567 has 50 MA's), (10, 7609), (12, 7615), (15, 7654), (20, 7696), (26, 7750), (32, 7810),

Gene: SheckWes_11 Start: 7284, Stop: 7694, Start Num: 4

Candidate Starts for SheckWes_11:

(Start: 4 @7284 has 50 MA's), (12, 7329), (15, 7368), (19, 7407), (22, 7419), (29, 7488), (36, 7593), (41, 7668),

Gene: SketchMex_11 Start: 7506, Stop: 7916, Start Num: 4

Candidate Starts for SketchMex_11:

(Start: 4 @7506 has 50 MA's), (10, 7548), (12, 7554), (15, 7593), (20, 7635), (26, 7689), (31, 7737), (32, 7749),

Gene: Sopespian_12 Start: 7522, Stop: 7932, Start Num: 4

Candidate Starts for Sopespian_12:

(Start: 4 @7522 has 50 MA's), (10, 7564), (12, 7570), (15, 7609), (20, 7651), (26, 7705), (32, 7765),

Gene: SteamedHams_14 Start: 7535, Stop: 7945, Start Num: 4

Candidate Starts for SteamedHams_14:

(Start: 4 @7535 has 50 MA's), (8, 7571), (10, 7577), (12, 7583), (15, 7622), (20, 7664), (26, 7718), (32, 7778),

Gene: SummitAcademy_11 Start: 7362, Stop: 7772, Start Num: 4

Candidate Starts for SummitAcademy_11:

(Start: 4 @7362 has 50 MA's), (12, 7407), (15, 7446), (19, 7485), (22, 7497), (29, 7566), (36, 7671), (41, 7746),

Gene: Survivors_14 Start: 8300, Stop: 8704, Start Num: 4

Candidate Starts for Survivors_14:

(Start: 4 @8300 has 50 MA's), (12, 8348), (21, 8429), (25, 8468), (28, 8495), (33, 8543), (36, 8609),

Gene: SweatNTears_14 Start: 8017, Stop: 8427, Start Num: 4

Candidate Starts for SweatNTears_14:

(Start: 4 @8017 has 50 MA's), (10, 8059), (12, 8065), (15, 8104), (20, 8146), (26, 8200), (31, 8248), (32, 8260),

Gene: Tolls_14 Start: 7538, Stop: 7948, Start Num: 4

Candidate Starts for Tolls_14:

(Start: 4 @7538 has 50 MA's), (8, 7574), (10, 7580), (12, 7586), (15, 7625), (20, 7667), (26, 7721), (32, 7781),

Gene: Troje_12 Start: 7491, Stop: 7901, Start Num: 4

Candidate Starts for Troje_12:

(Start: 4 @7491 has 50 MA's), (10, 7533), (12, 7539), (15, 7578), (20, 7620), (26, 7674), (31, 7722), (32, 7734),

Gene: Typhonomachy_13 Start: 7522, Stop: 7932, Start Num: 4

Candidate Starts for Typhonomachy_13:

(Start: 4 @7522 has 50 MA's), (10, 7564), (12, 7570), (15, 7609), (20, 7651), (26, 7705), (32, 7765),

Gene: Vine_13 Start: 8291, Stop: 8701, Start Num: 4

Candidate Starts for Vine_13:

(Start: 4 @8291 has 50 MA's), (12, 8336), (15, 8375), (19, 8414), (22, 8426), (29, 8495), (36, 8600), (41, 8675),

Gene: Yakult_13 Start: 7424, Stop: 7828, Start Num: 4

Candidate Starts for Yakult_13:

(1, 7289), (2, 7292), (3, 7319), (Start: 4 @7424 has 50 MA's), (9, 7466), (12, 7475), (13, 7478), (15, 7514), (29, 7634),

Gene: Yarn_11 Start: 7528, Stop: 7938, Start Num: 4

Candidate Starts for Yarn_11:

(Start: 4 @7528 has 50 MA's), (8, 7564), (10, 7570), (12, 7576), (15, 7615), (20, 7657), (26, 7711), (32, 7771),

Gene: Yummy_13 Start: 7404, Stop: 7814, Start Num: 4

Candidate Starts for Yummy_13:

(Start: 4 @7404 has 50 MA's), (12, 7452), (15, 7491), (20, 7533), (26, 7587), (32, 7647),

Gene: Zareef_16 Start: 8447, Stop: 8851, Start Num: 4

Candidate Starts for Zareef_16:

(Start: 4 @8447 has 50 MA's), (12, 8495), (21, 8576), (25, 8615), (28, 8642), (33, 8690), (36, 8756),