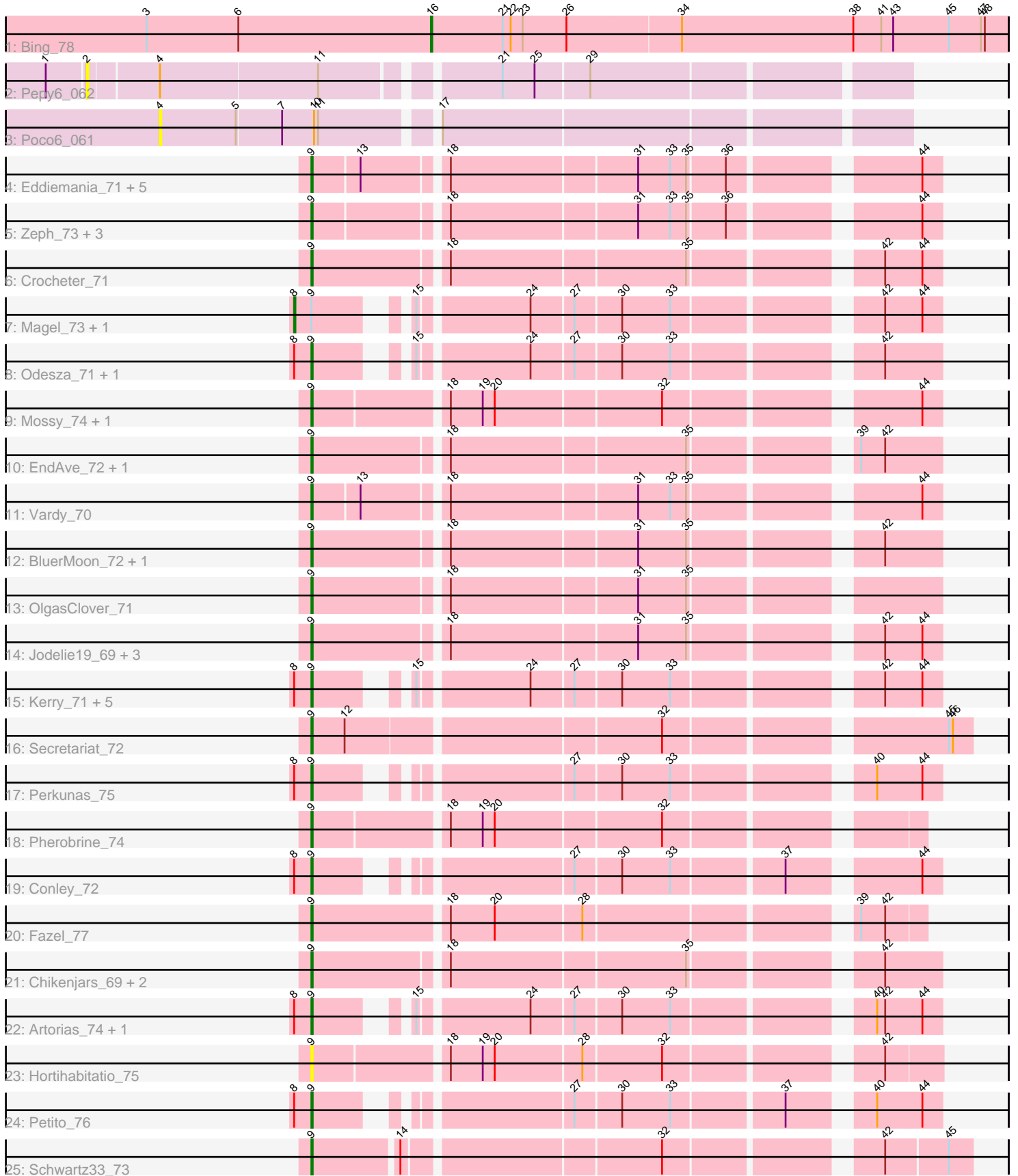


Pham 171541



Note: Tracks are now grouped by subcluster and scaled. Switching in subcluster is indicated by changes in track color. Track scale is now set by default to display the region 30 bp upstream of start 1 to 30 bp downstream of the last possible start. If this default region is judged to be packed too tightly with annotated starts, the track will be further scaled to only show that region of the ORF with annotated starts. This action will be indicated by adding "Zoomed" to the title. For starts, yellow indicates the location of called starts comprised solely of Glimmer/GeneMark auto-annotations, green indicates the location of called starts with at least 1 manual gene annotation.

Pham 171541 Report

This analysis was run 07/10/24 on database version 566.

Pham number 171541 has 49 members, 7 are drafts.

Phages represented in each track:

- Track 1 : Bing_78
- Track 2 : Pepy6_062
- Track 3 : Poco6_061
- Track 4 : Eddiemania_71, Burley_71, Kenosha_70, Nadmeg_72, Madvan_69, Runhaar_71
- Track 5 : Zeph_73, Untouchable_73, Phepper_72, Hydrus_73
- Track 6 : Crocheter_71
- Track 7 : Magel_73, Gill_72
- Track 8 : Odesza_71, Roney_72
- Track 9 : Mossy_74, OhMyWard_70
- Track 10 : EndAve_72, AlainaMarie_70
- Track 11 : Vardy_70
- Track 12 : BluerMoon_72, Duffington_70
- Track 13 : OlgasClover_71
- Track 14 : Jodelie19_69, TenaciousP_76, Aflac_70, Figliar_69
- Track 15 : Kerry_71, Tanis_72, Captrips_73, Avazak_75, Cappybara_72, Gravy_71
- Track 16 : Secretariat_72
- Track 17 : Perkunas_75
- Track 18 : Pherobrine_74
- Track 19 : Conley_72
- Track 20 : Fazel_77
- Track 21 : Chikenjars_69, Rickmore_68, Nithya_71
- Track 22 : Artorias_74, FortCran_74
- Track 23 : Hortihabitatio_75
- Track 24 : Petite_76
- Track 25 : Schwartz33_73

Summary of Final Annotations (See graph section above for start numbers):

The start number called the most often in the published annotations is 9, it was called in 39 of the 42 non-draft genes in the pham.

Genes that call this "Most Annotated" start:

- Aflac_70, AlainaMarie_70, Artorias_74, Avazak_75, BluerMoon_72, Burley_71, Captrips_73, Cappybara_72, Chikenjars_69, Conley_72, Crocheter_71, Duffington_70, Eddiemania_71, EndAve_72, Fazel_77, Figliar_69, FortCran_74, Gravy_71, Hortihabitatio_75, Hydrus_73, Jodelie19_69, Kenosha_70, Kerry_71, Madvan_69, Mossy_74, Nadmeg_72, Nithya_71, Odesza_71, OhMyWard_70, OlgasClover_71, Perkunas_75, Petite_76, Phepper_72, Pherobrine_74, Rickmore_68, Roney_72, Runhaar_71, Schwartz33_73, Secretariat_72, Tanis_72, TenaciousP_76, Untouchable_73, Vardy_70, Zeph_73,

Genes that have the "Most Annotated" start but do not call it:

- Gill_72, Magel_73,

Genes that do not have the "Most Annotated" start:

- Bing_78, Pepy6_062, Poco6_061,

Summary by start number:

Start 2:

- Found in 1 of 49 (2.0%) of genes in pham
- No Manual Annotations of this start.
- Called 100.0% of time when present
- Phage (with cluster) where this start called: Pepy6_062 (CC),

Start 4:

- Found in 2 of 49 (4.1%) of genes in pham
- No Manual Annotations of this start.
- Called 50.0% of time when present
- Phage (with cluster) where this start called: Poco6_061 (CC),

Start 8:

- Found in 15 of 49 (30.6%) of genes in pham
- Manual Annotations of this start: 2 of 42
- Called 13.3% of time when present
- Phage (with cluster) where this start called: Gill_72 (DJ), Magel_73 (DJ),

Start 9:

- Found in 46 of 49 (93.9%) of genes in pham
- Manual Annotations of this start: 39 of 42
- Called 95.7% of time when present
- Phage (with cluster) where this start called: Aflac_70 (DJ), AlainaMarie_70 (DJ), Artorias_74 (DJ), Avazak_75 (DJ), BluerMoon_72 (DJ), Burley_71 (DJ), Captrips_73 (DJ), Cappybara_72 (DJ), Chikenjars_69 (DJ), Conley_72 (DJ), Crocheter_71 (DJ), Duffington_70 (DJ), Eddiemania_71 (DJ), EndAve_72 (DJ), Fazel_77 (DJ), Figliar_69 (DJ), FortCran_74 (DJ), Gravy_71 (DJ), Hortihabitatio_75 (DJ), Hydrus_73 (DJ), Jodelie19_69 (DJ), Kenosha_70 (DJ), Kerry_71 (DJ), Madvan_69 (DJ), Mossy_74 (DJ), Nadmeg_72 (DJ), Nithya_71 (DJ), Odesza_71 (DJ), OhMyWard_70 (DJ), OlgasClover_71 (DJ), Perkunas_75 (DJ), Petite_76 (DJ), Phepper_72 (DJ), Pherobrine_74 (DJ), Rickmore_68 (DJ), Roney_72 (DJ), Runhaar_71 (DJ), Schwartz33_73 (DJ), Secretariat_72 (DJ), Tanis_72 (DJ), TenaciousP_76 (DJ), Untouchable_73 (DJ), Vardy_70 (DJ), Zeph_73 (DJ),

Start 16:

- Found in 1 of 49 (2.0%) of genes in pham

- Manual Annotations of this start: 1 of 42
- Called 100.0% of time when present
- Phage (with cluster) where this start called: Bing_78 (BI5),

Summary by clusters:

There are 3 clusters represented in this pham: CC, BI5, DJ,

Info for manual annotations of cluster BI5:

- Start number 16 was manually annotated 1 time for cluster BI5.

Info for manual annotations of cluster DJ:

- Start number 8 was manually annotated 2 times for cluster DJ.
- Start number 9 was manually annotated 39 times for cluster DJ.

Gene Information:

Gene: Aflac_70 Start: 49866, Stop: 50294, Start Num: 9

Candidate Starts for Aflac_70:

(Start: 9 @49866 has 39 MA's), (18, 49959), (31, 50094), (35, 50130), (42, 50253), (44, 50280),

Gene: AlainaMarie_70 Start: 49907, Stop: 50335, Start Num: 9

Candidate Starts for AlainaMarie_70:

(Start: 9 @49907 has 39 MA's), (18, 50000), (35, 50171), (39, 50276), (42, 50294),

Gene: Artorias_74 Start: 49927, Stop: 50325, Start Num: 9

Candidate Starts for Artorias_74:

(Start: 8 @49915 has 2 MA's), (Start: 9 @49927 has 39 MA's), (15, 49975), (24, 50050), (27, 50080), (30, 50113), (33, 50149), (40, 50278), (42, 50284), (44, 50311),

Gene: Avazak_75 Start: 50609, Stop: 51007, Start Num: 9

Candidate Starts for Avazak_75:

(Start: 8 @50597 has 2 MA's), (Start: 9 @50609 has 39 MA's), (15, 50657), (24, 50732), (27, 50762), (30, 50795), (33, 50831), (42, 50966), (44, 50993),

Gene: Bing_78 Start: 47851, Stop: 48282, Start Num: 16

Candidate Starts for Bing_78:

(3, 47638), (6, 47707), (Start: 16 @47851 has 1 MA's), (21, 47905), (22, 47911), (23, 47920), (26, 47953), (34, 48037), (38, 48166), (41, 48187), (43, 48196), (45, 48238), (47, 48262), (48, 48265),

Gene: BluerMoon_72 Start: 49818, Stop: 50246, Start Num: 9

Candidate Starts for BluerMoon_72:

(Start: 9 @49818 has 39 MA's), (18, 49911), (31, 50046), (35, 50082), (42, 50205),

Gene: Burley_71 Start: 49358, Stop: 49783, Start Num: 9

Candidate Starts for Burley_71:

(Start: 9 @49358 has 39 MA's), (13, 49391), (18, 49448), (31, 49583), (33, 49607), (35, 49619), (36, 49646), (44, 49769),

Gene: Captrips_73 Start: 49757, Stop: 50155, Start Num: 9

Candidate Starts for Captrips_73:

(Start: 8 @49745 has 2 MA's), (Start: 9 @49757 has 39 MA's), (15, 49805), (24, 49880), (27, 49910), (30, 49943), (33, 49979), (42, 50114), (44, 50141),

Gene: Capybara_72 Start: 49596, Stop: 49994, Start Num: 9

Candidate Starts for Capybara_72:

(Start: 8 @49584 has 2 MA's), (Start: 9 @49596 has 39 MA's), (15, 49644), (24, 49719), (27, 49749), (30, 49782), (33, 49818), (42, 49953), (44, 49980),

Gene: Chikenjars_69 Start: 49939, Stop: 50367, Start Num: 9

Candidate Starts for Chikenjars_69:

(Start: 9 @49939 has 39 MA's), (18, 50032), (35, 50203), (42, 50326),

Gene: Conley_72 Start: 50234, Stop: 50632, Start Num: 9

Candidate Starts for Conley_72:

(Start: 8 @50222 has 2 MA's), (Start: 9 @50234 has 39 MA's), (27, 50387), (30, 50420), (33, 50456), (37, 50534), (44, 50618),

Gene: Crocheter_71 Start: 49802, Stop: 50230, Start Num: 9

Candidate Starts for Crocheter_71:

(Start: 9 @49802 has 39 MA's), (18, 49895), (35, 50066), (42, 50189), (44, 50216),

Gene: Duffington_70 Start: 49872, Stop: 50300, Start Num: 9

Candidate Starts for Duffington_70:

(Start: 9 @49872 has 39 MA's), (18, 49965), (31, 50100), (35, 50136), (42, 50259),

Gene: Eddiemania_71 Start: 50547, Stop: 50972, Start Num: 9

Candidate Starts for Eddiemania_71:

(Start: 9 @50547 has 39 MA's), (13, 50580), (18, 50637), (31, 50772), (33, 50796), (35, 50808), (36, 50835), (44, 50958),

Gene: EndAve_72 Start: 50094, Stop: 50522, Start Num: 9

Candidate Starts for EndAve_72:

(Start: 9 @50094 has 39 MA's), (18, 50187), (35, 50358), (39, 50463), (42, 50481),

Gene: Fazel_77 Start: 50881, Stop: 51300, Start Num: 9

Candidate Starts for Fazel_77:

(Start: 9 @50881 has 39 MA's), (18, 50977), (20, 51010), (28, 51073), (39, 51253), (42, 51271),

Gene: Figliar_69 Start: 49935, Stop: 50363, Start Num: 9

Candidate Starts for Figliar_69:

(Start: 9 @49935 has 39 MA's), (18, 50028), (31, 50163), (35, 50199), (42, 50322), (44, 50349),

Gene: FortCran_74 Start: 49927, Stop: 50325, Start Num: 9

Candidate Starts for FortCran_74:

(Start: 8 @49915 has 2 MA's), (Start: 9 @49927 has 39 MA's), (15, 49975), (24, 50050), (27, 50080), (30, 50113), (33, 50149), (40, 50278), (42, 50284), (44, 50311),

Gene: Gill_72 Start: 49596, Stop: 50006, Start Num: 8

Candidate Starts for Gill_72:

(Start: 8 @49596 has 2 MA's), (Start: 9 @49608 has 39 MA's), (15, 49656), (24, 49731), (27, 49761), (30, 49794), (33, 49830), (42, 49965), (44, 49992),

Gene: Gravy_71 Start: 49286, Stop: 49684, Start Num: 9

Candidate Starts for Gravy_71:

(Start: 8 @49274 has 2 MA's), (Start: 9 @49286 has 39 MA's), (15, 49334), (24, 49409), (27, 49439), (30, 49472), (33, 49508), (42, 49643), (44, 49670),

Gene: Hortihabitatio_75 Start: 51089, Stop: 51517, Start Num: 9

Candidate Starts for Hortihabitatio_75:

(Start: 9 @51089 has 39 MA's), (18, 51182), (19, 51206), (20, 51215), (28, 51278), (32, 51335), (42, 51476),

Gene: Hydrus_73 Start: 50523, Stop: 50948, Start Num: 9

Candidate Starts for Hydrus_73:

(Start: 9 @50523 has 39 MA's), (18, 50613), (31, 50748), (33, 50772), (35, 50784), (36, 50811), (44, 50934),

Gene: Jodelie19_69 Start: 51102, Stop: 51530, Start Num: 9

Candidate Starts for Jodelie19_69:

(Start: 9 @51102 has 39 MA's), (18, 51195), (31, 51330), (35, 51366), (42, 51489), (44, 51516),

Gene: Kenosha_70 Start: 49949, Stop: 50374, Start Num: 9

Candidate Starts for Kenosha_70:

(Start: 9 @49949 has 39 MA's), (13, 49982), (18, 50039), (31, 50174), (33, 50198), (35, 50210), (36, 50237), (44, 50360),

Gene: Kerry_71 Start: 49349, Stop: 49747, Start Num: 9

Candidate Starts for Kerry_71:

(Start: 8 @49337 has 2 MA's), (Start: 9 @49349 has 39 MA's), (15, 49397), (24, 49472), (27, 49502), (30, 49535), (33, 49571), (42, 49706), (44, 49733),

Gene: Madvan_69 Start: 49411, Stop: 49836, Start Num: 9

Candidate Starts for Madvan_69:

(Start: 9 @49411 has 39 MA's), (13, 49444), (18, 49501), (31, 49636), (33, 49660), (35, 49672), (36, 49699), (44, 49822),

Gene: Magel_73 Start: 49511, Stop: 49921, Start Num: 8

Candidate Starts for Magel_73:

(Start: 8 @49511 has 2 MA's), (Start: 9 @49523 has 39 MA's), (15, 49571), (24, 49646), (27, 49676), (30, 49709), (33, 49745), (42, 49880), (44, 49907),

Gene: Mossy_74 Start: 51400, Stop: 51828, Start Num: 9

Candidate Starts for Mossy_74:

(Start: 9 @51400 has 39 MA's), (18, 51493), (19, 51517), (20, 51526), (32, 51646), (44, 51814),

Gene: Nadmeg_72 Start: 50640, Stop: 51065, Start Num: 9

Candidate Starts for Nadmeg_72:

(Start: 9 @50640 has 39 MA's), (13, 50673), (18, 50730), (31, 50865), (33, 50889), (35, 50901), (36, 50928), (44, 51051),

Gene: Nithya_71 Start: 49795, Stop: 50223, Start Num: 9

Candidate Starts for Nithya_71:

(Start: 9 @49795 has 39 MA's), (18, 49888), (35, 50059), (42, 50182),

Gene: Odesza_71 Start: 49467, Stop: 49865, Start Num: 9

Candidate Starts for Odesza_71:

(Start: 8 @49455 has 2 MA's), (Start: 9 @49467 has 39 MA's), (15, 49515), (24, 49590), (27, 49620), (30, 49653), (33, 49689), (42, 49824),

Gene: OhMyWard_70 Start: 51159, Stop: 51587, Start Num: 9

Candidate Starts for OhMyWard_70:

(Start: 9 @51159 has 39 MA's), (18, 51252), (19, 51276), (20, 51285), (32, 51405), (44, 51573),

Gene: OlgasClover_71 Start: 50444, Stop: 50872, Start Num: 9

Candidate Starts for OlgasClover_71:

(Start: 9 @50444 has 39 MA's), (18, 50537), (31, 50672), (35, 50708),

Gene: Pepy6_062 Start: 64801, Stop: 65370, Start Num: 2

Candidate Starts for Pepy6_062:

(1, 64774), (2, 64801), (4, 64849), (11, 64966), (21, 65083), (25, 65107), (29, 65146),

Gene: Perkunas_75 Start: 49660, Stop: 50058, Start Num: 9

Candidate Starts for Perkunas_75:

(Start: 8 @49648 has 2 MA's), (Start: 9 @49660 has 39 MA's), (27, 49813), (30, 49846), (33, 49882), (40, 50011), (44, 50044),

Gene: Petito_76 Start: 51180, Stop: 51578, Start Num: 9

Candidate Starts for Petito_76:

(Start: 8 @51168 has 2 MA's), (Start: 9 @51180 has 39 MA's), (27, 51333), (30, 51366), (33, 51402), (37, 51480), (40, 51531), (44, 51564),

Gene: Phepper_72 Start: 49653, Stop: 50078, Start Num: 9

Candidate Starts for Phepper_72:

(Start: 9 @49653 has 39 MA's), (18, 49743), (31, 49878), (33, 49902), (35, 49914), (36, 49941), (44, 50064),

Gene: Pherobrine_74 Start: 51157, Stop: 51573, Start Num: 9

Candidate Starts for Pherobrine_74:

(Start: 9 @51157 has 39 MA's), (18, 51250), (19, 51274), (20, 51283), (32, 51403),

Gene: Poco6_061 Start: 65593, Stop: 66117, Start Num: 4

Candidate Starts for Poco6_061:

(4, 65593), (5, 65650), (7, 65683), (10, 65707), (11, 65710), (17, 65785),

Gene: Rickmore_68 Start: 48311, Stop: 48739, Start Num: 9

Candidate Starts for Rickmore_68:

(Start: 9 @48311 has 39 MA's), (18, 48404), (35, 48575), (42, 48698),

Gene: Roney_72 Start: 49633, Stop: 50031, Start Num: 9

Candidate Starts for Roney_72:

(Start: 8 @49621 has 2 MA's), (Start: 9 @49633 has 39 MA's), (15, 49681), (24, 49756), (27, 49786), (30, 49819), (33, 49855), (42, 49990),

Gene: Runhaar_71 Start: 49462, Stop: 49887, Start Num: 9

Candidate Starts for Runhaar_71:

(Start: 9 @49462 has 39 MA's), (13, 49495), (18, 49552), (31, 49687), (33, 49711), (35, 49723), (36, 49750), (44, 49873),

Gene: Schwartz33_73 Start: 49999, Stop: 50442, Start Num: 9
Candidate Starts for Schwartz33_73:
(Start: 9 @49999 has 39 MA's), (14, 50059), (32, 50239), (42, 50380), (45, 50425),

Gene: Secretariat_72 Start: 49337, Stop: 49789, Start Num: 9
Candidate Starts for Secretariat_72:
(Start: 9 @49337 has 39 MA's), (12, 49361), (32, 49583), (45, 49772), (46, 49775),

Gene: Tanis_72 Start: 49453, Stop: 49851, Start Num: 9
Candidate Starts for Tanis_72:
(Start: 8 @49441 has 2 MA's), (Start: 9 @49453 has 39 MA's), (15, 49501), (24, 49576), (27, 49606),
(30, 49639), (33, 49675), (42, 49810), (44, 49837),

Gene: TenaciousP_76 Start: 51064, Stop: 51492, Start Num: 9
Candidate Starts for TenaciousP_76:
(Start: 9 @51064 has 39 MA's), (18, 51157), (31, 51292), (35, 51328), (42, 51451), (44, 51478),

Gene: Untouchable_73 Start: 50650, Stop: 51075, Start Num: 9
Candidate Starts for Untouchable_73:
(Start: 9 @50650 has 39 MA's), (18, 50740), (31, 50875), (33, 50899), (35, 50911), (36, 50938), (44,
51061),

Gene: Vardy_70 Start: 49352, Stop: 49777, Start Num: 9
Candidate Starts for Vardy_70:
(Start: 9 @49352 has 39 MA's), (13, 49385), (18, 49442), (31, 49577), (33, 49601), (35, 49613), (44,
49763),

Gene: Zeph_73 Start: 50490, Stop: 50915, Start Num: 9
Candidate Starts for Zeph_73:
(Start: 9 @50490 has 39 MA's), (18, 50580), (31, 50715), (33, 50739), (35, 50751), (36, 50778), (44,
50901),