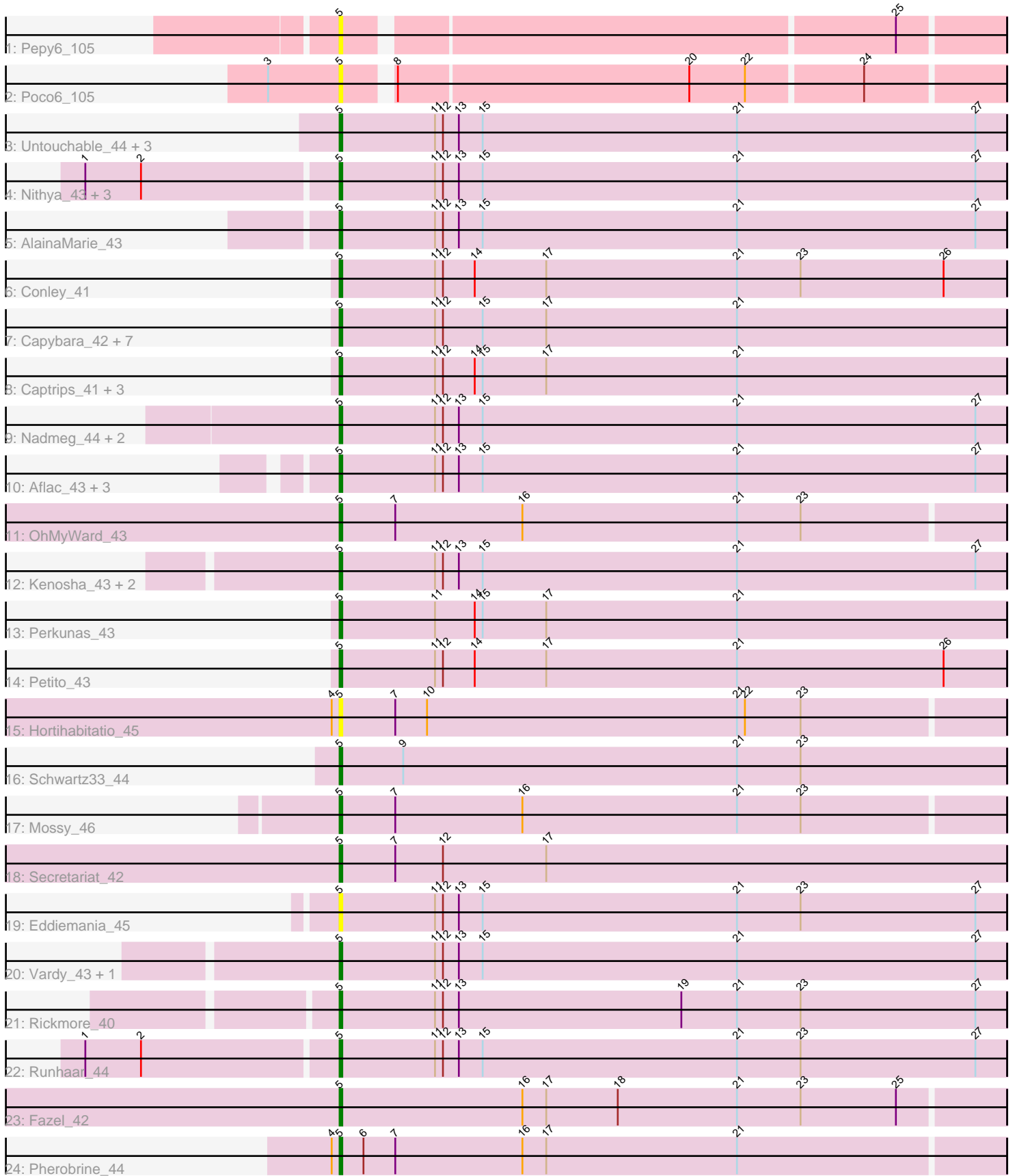


Pham 171550



Note: Tracks are now grouped by subcluster and scaled. Switching in subcluster is indicated by changes in track color. Track scale is now set by default to display the region 30 bp upstream of start 1 to 30 bp downstream of the last possible start. If this default region is judged to be packed too tightly with annotated starts, the track will be further scaled to only show that region of the ORF with annotated starts. This action will be indicated by adding "Zoomed" to the title. For starts, yellow indicates the location of called starts comprised solely of Glimmer/GeneMark auto-annotations, green indicates the location of called starts with at least 1 manual gene annotation.

Pham 171550 Report

This analysis was run 07/10/24 on database version 566.

Pham number 171550 has 48 members, 7 are drafts.

Phages represented in each track:

- Track 1 : Pepy6_105
- Track 2 : Poco6_105
- Track 3 : Untouchable_44, Phepper_44, Hydrus_45, Zeph_45
- Track 4 : Nithya_43, Duffington_42, Chikenjars_43, EndAve_44
- Track 5 : AlainaMarie_43
- Track 6 : Conley_41
- Track 7 : Capybara_42, Gravy_41, Gill_42, Magel_43, Odesza_41, Roney_42, Tanis_42, Kerry_41
- Track 8 : Captrips_41, Artorias_41, Avazak_42, FortCran_41
- Track 9 : Nadmeg_44, Madvan_43, Crocheter_43
- Track 10 : Aflac_43, BluerMoon_46, OlgasClover_44, TenaciousP_47
- Track 11 : OhMyWard_43
- Track 12 : Kenosha_43, Figliar_43, Jodelie19_44
- Track 13 : Perkunas_43
- Track 14 : Petite_43
- Track 15 : Hortihabitatio_45
- Track 16 : Schwartz33_44
- Track 17 : Mossy_46
- Track 18 : Secretariat_42
- Track 19 : Eddiemania_45
- Track 20 : Vardy_43, Burley_43
- Track 21 : Rickmore_40
- Track 22 : Runhaar_44
- Track 23 : Fazel_42
- Track 24 : Pherobrine_44

Summary of Final Annotations (See graph section above for start numbers):

The start number called the most often in the published annotations is 5, it was called in 41 of the 41 non-draft genes in the pham.

Genes that call this "Most Annotated" start:

- Aflac_43, AlainaMarie_43, Artorias_41, Avazak_42, BluerMoon_46, Burley_43, Captrips_41, Capybara_42, Chikenjars_43, Conley_41, Crocheter_43, Duffington_42,

Eddiemania_45, EndAve_44, Fazel_42, Figliar_43, FortCran_41, Gill_42, Gravy_41, Hortihabitatio_45, Hydrus_45, Jodelie19_44, Kenosha_43, Kerry_41, Madvan_43, Magel_43, Mossy_46, Nadmeg_44, Nithya_43, Odesza_41, OhMyWard_43, OlgasClover_44, Pepy6_105, Perkunas_43, Petito_43, Phepper_44, Pherobrine_44, Poco6_105, Rickmore_40, Roney_42, Runhaar_44, Schwartz33_44, Secretariat_42, Tanis_42, TenaciousP_47, Untouchable_44, Vardy_43, Zeph_45,

Genes that have the "Most Annotated" start but do not call it:

-

Genes that do not have the "Most Annotated" start:

-

Summary by start number:

Start 5:

- Found in 48 of 48 (100.0%) of genes in pham
- Manual Annotations of this start: 41 of 41
- Called 100.0% of time when present
- Phage (with cluster) where this start called: Aflac_43 (DJ), AlainaMarie_43 (DJ), Artorias_41 (DJ), Avazak_42 (DJ), BluerMoon_46 (DJ), Burley_43 (DJ), Captrips_41 (DJ), Copybara_42 (DJ), Chikenjars_43 (DJ), Conley_41 (DJ), Crocheter_43 (DJ), Duffington_42 (DJ), Eddiemania_45 (DJ), EndAve_44 (DJ), Fazel_42 (DJ), Figliar_43 (DJ), FortCran_41 (DJ), Gill_42 (DJ), Gravy_41 (DJ), Hortihabitatio_45 (DJ), Hydrus_45 (DJ), Jodelie19_44 (DJ), Kenosha_43 (DJ), Kerry_41 (DJ), Madvan_43 (DJ), Magel_43 (DJ), Mossy_46 (DJ), Nadmeg_44 (DJ), Nithya_43 (DJ), Odesza_41 (DJ), OhMyWard_43 (DJ), OlgasClover_44 (DJ), Pepy6_105 (CC), Perkunas_43 (DJ), Petito_43 (DJ), Phepper_44 (DJ), Pherobrine_44 (DJ), Poco6_105 (CC), Rickmore_40 (DJ), Roney_42 (DJ), Runhaar_44 (DJ), Schwartz33_44 (DJ), Secretariat_42 (DJ), Tanis_42 (DJ), TenaciousP_47 (DJ), Untouchable_44 (DJ), Vardy_43 (DJ), Zeph_45 (DJ),

Summary by clusters:

There are 2 clusters represented in this pham: CC, DJ,

Info for manual annotations of cluster DJ:

- Start number 5 was manually annotated 41 times for cluster DJ.

Gene Information:

Gene: Aflac_43 Start: 33707, Stop: 33958, Start Num: 5

Candidate Starts for Aflac_43:

(Start: 5 @33707 has 41 MA's), (11, 33743), (12, 33746), (13, 33752), (15, 33761), (21, 33857), (27, 33947),

Gene: AlainaMarie_43 Start: 33692, Stop: 33943, Start Num: 5

Candidate Starts for AlainaMarie_43:

(Start: 5 @33692 has 41 MA's), (11, 33728), (12, 33731), (13, 33737), (15, 33746), (21, 33842), (27, 33932),

Gene: Artorias_41 Start: 31178, Stop: 31429, Start Num: 5

Candidate Starts for Artorias_41:

(Start: 5 @31178 has 41 MA's), (11, 31214), (12, 31217), (14, 31229), (15, 31232), (17, 31256), (21, 31328),

Gene: Avazak_42 Start: 31543, Stop: 31794, Start Num: 5

Candidate Starts for Avazak_42:

(Start: 5 @31543 has 41 MA's), (11, 31579), (12, 31582), (14, 31594), (15, 31597), (17, 31621), (21, 31693),

Gene: BluerMoon_46 Start: 33703, Stop: 33954, Start Num: 5

Candidate Starts for BluerMoon_46:

(Start: 5 @33703 has 41 MA's), (11, 33739), (12, 33742), (13, 33748), (15, 33757), (21, 33853), (27, 33943),

Gene: Burley_43 Start: 33465, Stop: 33716, Start Num: 5

Candidate Starts for Burley_43:

(Start: 5 @33465 has 41 MA's), (11, 33501), (12, 33504), (13, 33510), (15, 33519), (21, 33615), (27, 33705),

Gene: Captrips_41 Start: 31216, Stop: 31467, Start Num: 5

Candidate Starts for Captrips_41:

(Start: 5 @31216 has 41 MA's), (11, 31252), (12, 31255), (14, 31267), (15, 31270), (17, 31294), (21, 31366),

Gene: Capybara_42 Start: 31605, Stop: 31856, Start Num: 5

Candidate Starts for Capybara_42:

(Start: 5 @31605 has 41 MA's), (11, 31641), (12, 31644), (15, 31659), (17, 31683), (21, 31755),

Gene: Chikenjars_43 Start: 33703, Stop: 33954, Start Num: 5

Candidate Starts for Chikenjars_43:

(1, 33610), (2, 33631), (Start: 5 @33703 has 41 MA's), (11, 33739), (12, 33742), (13, 33748), (15, 33757), (21, 33853), (27, 33943),

Gene: Conley_41 Start: 32155, Stop: 32406, Start Num: 5

Candidate Starts for Conley_41:

(Start: 5 @32155 has 41 MA's), (11, 32191), (12, 32194), (14, 32206), (17, 32233), (21, 32305), (23, 32329), (26, 32383),

Gene: Crocheter_43 Start: 33868, Stop: 34119, Start Num: 5

Candidate Starts for Crocheter_43:

(Start: 5 @33868 has 41 MA's), (11, 33904), (12, 33907), (13, 33913), (15, 33922), (21, 34018), (27, 34108),

Gene: Duffington_42 Start: 33365, Stop: 33616, Start Num: 5

Candidate Starts for Duffington_42:

(1, 33272), (2, 33293), (Start: 5 @33365 has 41 MA's), (11, 33401), (12, 33404), (13, 33410), (15, 33419), (21, 33515), (27, 33605),

Gene: Eddiemania_45 Start: 34627, Stop: 34878, Start Num: 5

Candidate Starts for Eddiemania_45:

(Start: 5 @34627 has 41 MA's), (11, 34663), (12, 34666), (13, 34672), (15, 34681), (21, 34777), (23, 34801), (27, 34867),

Gene: EndAve_44 Start: 33872, Stop: 34123, Start Num: 5

Candidate Starts for EndAve_44:

(1, 33779), (2, 33800), (Start: 5 @33872 has 41 MA's), (11, 33908), (12, 33911), (13, 33917), (15, 33926), (21, 34022), (27, 34112),

Gene: Fazel_42 Start: 33160, Stop: 33408, Start Num: 5

Candidate Starts for Fazel_42:

(Start: 5 @33160 has 41 MA's), (16, 33229), (17, 33238), (18, 33265), (21, 33310), (23, 33334), (25, 33370),

Gene: Figliar_43 Start: 33767, Stop: 34018, Start Num: 5

Candidate Starts for Figliar_43:

(Start: 5 @33767 has 41 MA's), (11, 33803), (12, 33806), (13, 33812), (15, 33821), (21, 33917), (27, 34007),

Gene: FortCran_41 Start: 31178, Stop: 31429, Start Num: 5

Candidate Starts for FortCran_41:

(Start: 5 @31178 has 41 MA's), (11, 31214), (12, 31217), (14, 31229), (15, 31232), (17, 31256), (21, 31328),

Gene: Gill_42 Start: 31622, Stop: 31873, Start Num: 5

Candidate Starts for Gill_42:

(Start: 5 @31622 has 41 MA's), (11, 31658), (12, 31661), (15, 31676), (17, 31700), (21, 31772),

Gene: Gravy_41 Start: 31295, Stop: 31546, Start Num: 5

Candidate Starts for Gravy_41:

(Start: 5 @31295 has 41 MA's), (11, 31331), (12, 31334), (15, 31349), (17, 31373), (21, 31445),

Gene: Hortihabitatio_45 Start: 33607, Stop: 33855, Start Num: 5

Candidate Starts for Hortihabitatio_45:

(4, 33604), (Start: 5 @33607 has 41 MA's), (7, 33628), (10, 33640), (21, 33757), (22, 33760), (23, 33781),

Gene: Hydrus_45 Start: 34640, Stop: 34891, Start Num: 5

Candidate Starts for Hydrus_45:

(Start: 5 @34640 has 41 MA's), (11, 34676), (12, 34679), (13, 34685), (15, 34694), (21, 34790), (27, 34880),

Gene: Jodelie19_44 Start: 35222, Stop: 35473, Start Num: 5

Candidate Starts for Jodelie19_44:

(Start: 5 @35222 has 41 MA's), (11, 35258), (12, 35261), (13, 35267), (15, 35276), (21, 35372), (27, 35462),

Gene: Kenosha_43 Start: 34275, Stop: 34526, Start Num: 5

Candidate Starts for Kenosha_43:

(Start: 5 @34275 has 41 MA's), (11, 34311), (12, 34314), (13, 34320), (15, 34329), (21, 34425), (27, 34515),

Gene: Kerry_41 Start: 31295, Stop: 31546, Start Num: 5

Candidate Starts for Kerry_41:

(Start: 5 @31295 has 41 MA's), (11, 31331), (12, 31334), (15, 31349), (17, 31373), (21, 31445),

Gene: Madvan_43 Start: 33509, Stop: 33760, Start Num: 5

Candidate Starts for Madvan_43:

(Start: 5 @33509 has 41 MA's), (11, 33545), (12, 33548), (13, 33554), (15, 33563), (21, 33659), (27, 33749),

Gene: Magel_43 Start: 31526, Stop: 31777, Start Num: 5

Candidate Starts for Magel_43:

(Start: 5 @31526 has 41 MA's), (11, 31562), (12, 31565), (15, 31580), (17, 31604), (21, 31676),

Gene: Mossy_46 Start: 35625, Stop: 35873, Start Num: 5

Candidate Starts for Mossy_46:

(Start: 5 @35625 has 41 MA's), (7, 35646), (16, 35694), (21, 35775), (23, 35799),

Gene: Nadmeg_44 Start: 34941, Stop: 35192, Start Num: 5

Candidate Starts for Nadmeg_44:

(Start: 5 @34941 has 41 MA's), (11, 34977), (12, 34980), (13, 34986), (15, 34995), (21, 35091), (27, 35181),

Gene: Nithya_43 Start: 33693, Stop: 33944, Start Num: 5

Candidate Starts for Nithya_43:

(1, 33600), (2, 33621), (Start: 5 @33693 has 41 MA's), (11, 33729), (12, 33732), (13, 33738), (15, 33747), (21, 33843), (27, 33933),

Gene: Odesza_41 Start: 31296, Stop: 31547, Start Num: 5

Candidate Starts for Odesza_41:

(Start: 5 @31296 has 41 MA's), (11, 31332), (12, 31335), (15, 31350), (17, 31374), (21, 31446),

Gene: OhMyWard_43 Start: 34719, Stop: 34967, Start Num: 5

Candidate Starts for OhMyWard_43:

(Start: 5 @34719 has 41 MA's), (7, 34740), (16, 34788), (21, 34869), (23, 34893),

Gene: OlgasClover_44 Start: 34751, Stop: 35002, Start Num: 5

Candidate Starts for OlgasClover_44:

(Start: 5 @34751 has 41 MA's), (11, 34787), (12, 34790), (13, 34796), (15, 34805), (21, 34901), (27, 34991),

Gene: Pepy6_105 Start: 42303, Stop: 42539, Start Num: 5

Candidate Starts for Pepy6_105:

(Start: 5 @42303 has 41 MA's), (25, 42501),

Gene: Perkunas_43 Start: 31586, Stop: 31837, Start Num: 5

Candidate Starts for Perkunas_43:

(Start: 5 @31586 has 41 MA's), (11, 31622), (14, 31637), (15, 31640), (17, 31664), (21, 31736),

Gene: Petite_43 Start: 32690, Stop: 32941, Start Num: 5

Candidate Starts for Petite_43:

(Start: 5 @32690 has 41 MA's), (11, 32726), (12, 32729), (14, 32741), (17, 32768), (21, 32840), (26, 32918),

Gene: Phepper_44 Start: 33762, Stop: 34013, Start Num: 5

Candidate Starts for Phepper_44:

(Start: 5 @33762 has 41 MA's), (11, 33798), (12, 33801), (13, 33807), (15, 33816), (21, 33912), (27, 34002),

Gene: Pherobrine_44 Start: 34201, Stop: 34449, Start Num: 5

Candidate Starts for Pherobrine_44:

(4, 34198), (Start: 5 @34201 has 41 MA's), (6, 34210), (7, 34222), (16, 34270), (17, 34279), (21, 34351),

Gene: Poco6_105 Start: 44097, Stop: 44333, Start Num: 5

Candidate Starts for Poco6_105:

(3, 44070), (Start: 5 @44097 has 41 MA's), (8, 44112), (20, 44220), (22, 44241), (24, 44283),

Gene: Rickmore_40 Start: 31557, Stop: 31808, Start Num: 5

Candidate Starts for Rickmore_40:

(Start: 5 @31557 has 41 MA's), (11, 31593), (12, 31596), (13, 31602), (19, 31686), (21, 31707), (23, 31731), (27, 31797),

Gene: Roney_42 Start: 31617, Stop: 31868, Start Num: 5

Candidate Starts for Roney_42:

(Start: 5 @31617 has 41 MA's), (11, 31653), (12, 31656), (15, 31671), (17, 31695), (21, 31767),

Gene: Runhaar_44 Start: 33756, Stop: 34007, Start Num: 5

Candidate Starts for Runhaar_44:

(1, 33663), (2, 33684), (Start: 5 @33756 has 41 MA's), (11, 33792), (12, 33795), (13, 33801), (15, 33810), (21, 33906), (23, 33930), (27, 33996),

Gene: Schwartz33_44 Start: 34023, Stop: 34274, Start Num: 5

Candidate Starts for Schwartz33_44:

(Start: 5 @34023 has 41 MA's), (9, 34047), (21, 34173), (23, 34197),

Gene: Secretariat_42 Start: 32934, Stop: 33185, Start Num: 5

Candidate Starts for Secretariat_42:

(Start: 5 @32934 has 41 MA's), (7, 32955), (12, 32973), (17, 33012),

Gene: Tanis_42 Start: 31468, Stop: 31719, Start Num: 5

Candidate Starts for Tanis_42:

(Start: 5 @31468 has 41 MA's), (11, 31504), (12, 31507), (15, 31522), (17, 31546), (21, 31618),

Gene: TenaciousP_47 Start: 35132, Stop: 35383, Start Num: 5

Candidate Starts for TenaciousP_47:

(Start: 5 @35132 has 41 MA's), (11, 35168), (12, 35171), (13, 35177), (15, 35186), (21, 35282), (27, 35372),

Gene: Untouchable_44 Start: 34122, Stop: 34373, Start Num: 5

Candidate Starts for Untouchable_44:

(Start: 5 @34122 has 41 MA's), (11, 34158), (12, 34161), (13, 34167), (15, 34176), (21, 34272), (27, 34362),

Gene: Vardy_43 Start: 33466, Stop: 33717, Start Num: 5

Candidate Starts for Vardy_43:

(Start: 5 @33466 has 41 MA's), (11, 33502), (12, 33505), (13, 33511), (15, 33520), (21, 33616), (27, 33706),

Gene: Zeph_45 Start: 34620, Stop: 34871, Start Num: 5

Candidate Starts for Zeph_45:

(Start: 5 @34620 has 41 MA's), (11, 34656), (12, 34659), (13, 34665), (15, 34674), (21, 34770), (27, 34860),