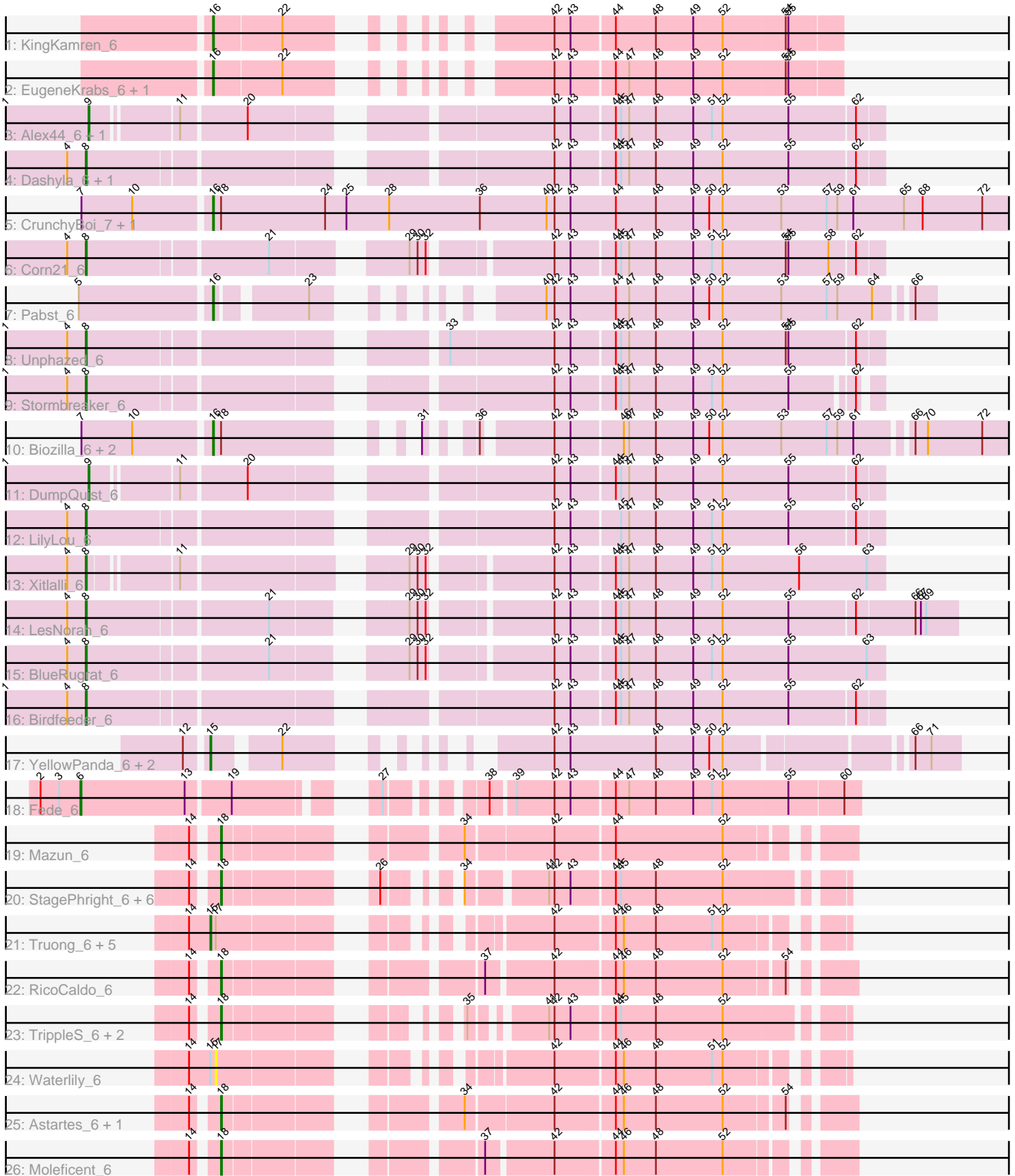


Pham 171555



Note: Tracks are now grouped by subcluster and scaled. Switching in subcluster is indicated by changes in track color. Track scale is now set by default to display the region 30 bp upstream of start 1 to 30 bp downstream of the last possible start. If this default region is judged to be packed too tightly with annotated starts, the track will be further scaled to only show that region of the ORF with annotated starts. This action will be indicated by adding "Zoomed" to the title. For starts, yellow indicates the location of called starts comprised solely of Glimmer/GeneMark auto-annotations, green indicates the location of called starts with at least 1 manual gene annotation.

Pham 171555 Report

This analysis was run 07/10/24 on database version 566.

Pham number 171555 has 48 members, 5 are drafts.

Phages represented in each track:

- Track 1 : KingKamren_6
- Track 2 : EugeneKrabs_6, Zhengyi_6
- Track 3 : Alex44_6, ArMaWen_6
- Track 4 : Dashyla_6, Phogo_6
- Track 5 : CrunchyBoi_7, PineapplePluto_7
- Track 6 : Corn21_6
- Track 7 : Pabst_6
- Track 8 : Unphazed_6
- Track 9 : Stormbreaker_6
- Track 10 : Biozilla_6, Oatly_6, HitchHiker_7
- Track 11 : DumpQuist_6
- Track 12 : LilyLou_6
- Track 13 : Xitlalli_6
- Track 14 : LesNorah_6
- Track 15 : BlueRugrat_6
- Track 16 : Birdfeeder_6
- Track 17 : YellowPanda_6, TinyTimothy_6, Wesak_6
- Track 18 : Fede_6
- Track 19 : Mazun_6
- Track 20 : StagePhright_6, Phracted_6, Pharky_6, Phedro_6, Atraxi_6, PhriedRice_6, Yafa_6
- Track 21 : Truong_6, JordanFarm_6, Barroma_6, AloeVera_6, Akoni_6, Ashton_6
- Track 22 : RicoCaldo_6
- Track 23 : TrippleS_6, ThirteenKH_6, Morrill_6
- Track 24 : Waterlily_6
- Track 25 : Astartes_6, Fullmetal_6
- Track 26 : Moleficent_6

Summary of Final Annotations (See graph section above for start numbers):

The start number called the most often in the published annotations is 18, it was called in 13 of the 43 non-draft genes in the pham.

Genes that call this "Most Annotated" start:

- Astartes_6, Atraxi_6, Fullmetal_6, Mazun_6, Moleficent_6, Morrill_6, Pharky_6, Phedro_6, Phracted_6, PhriedRice_6, RicoCaldo_6, StagePhright_6, ThirteenKH_6, Triples_6, Yafa_6,

Genes that have the "Most Annotated" start but do not call it:

- Biozilla_6, CrunchyBoi_7, HitchHiker_7, Oatly_6, PineapplePluto_7,

Genes that do not have the "Most Annotated" start:

- Akoni_6, Alex44_6, AloeVera_6, ArMaWen_6, Ashton_6, Barroma_6, Birdfeeder_6, BlueRugrat_6, Corn21_6, Dashyla_6, DumpQuist_6, EugeneKrabs_6, Fede_6, JordanFarm_6, KingKamren_6, LesNorah_6, LilyLou_6, Pabst_6, Phogo_6, Stormbreaker_6, TinyTimothy_6, Truong_6, Unphazed_6, Waterlily_6, Wesak_6, Xitlalli_6, YellowPanda_6, Zhengyi_6,

Summary by start number:

Start 6:

- Found in 1 of 48 (2.1%) of genes in pham
- Manual Annotations of this start: 1 of 43
- Called 100.0% of time when present
- Phage (with cluster) where this start called: Fede_6 (EK2),

Start 8:

- Found in 10 of 48 (20.8%) of genes in pham
- Manual Annotations of this start: 10 of 43
- Called 100.0% of time when present
- Phage (with cluster) where this start called: Birdfeeder_6 (EK1), BlueRugrat_6 (EK1), Corn21_6 (EK1), Dashyla_6 (EK1), LesNorah_6 (EK1), LilyLou_6 (EK1), Phogo_6 (EK1), Stormbreaker_6 (EK1), Unphazed_6 (EK1), Xitlalli_6 (EK1),

Start 9:

- Found in 3 of 48 (6.2%) of genes in pham
- Manual Annotations of this start: 3 of 43
- Called 100.0% of time when present
- Phage (with cluster) where this start called: Alex44_6 (EK1), ArMaWen_6 (EK1), DumpQuist_6 (EK1),

Start 15:

- Found in 10 of 48 (20.8%) of genes in pham
- Manual Annotations of this start: 9 of 43
- Called 90.0% of time when present
- Phage (with cluster) where this start called: Akoni_6 (EK2), AloeVera_6 (EK2), Ashton_6 (EK2), Barroma_6 (EK2), JordanFarm_6 (EK2), TinyTimothy_6 (EK1), Truong_6 (EK2), Wesak_6 (EK1), YellowPanda_6 (EK1),

Start 16:

- Found in 9 of 48 (18.8%) of genes in pham
- Manual Annotations of this start: 7 of 43
- Called 100.0% of time when present
- Phage (with cluster) where this start called: Biozilla_6 (EK1), CrunchyBoi_7 (EK1), EugeneKrabs_6 (EK), HitchHiker_7 (EK1), KingKamren_6 (EK), Oatly_6 (EK1), Pabst_6 (EK1), PineapplePluto_7 (EK1), Zhengyi_6 (EK),

Start 17:

- Found in 7 of 48 (14.6%) of genes in pham
- No Manual Annotations of this start.
- Called 14.3% of time when present
- Phage (with cluster) where this start called: Waterlily_6 (EK2),

Start 18:

- Found in 20 of 48 (41.7%) of genes in pham
- Manual Annotations of this start: 13 of 43
- Called 75.0% of time when present
- Phage (with cluster) where this start called: Astartes_6 (EK2), Atraxi_6 (EK2), Fullmetal_6 (EK2), Mazun_6 (EK2), Moleficent_6 (EK2), Morrill_6 (EK2), Pharky_6 (EK2), Phedro_6 (EK2), Phracted_6 (EK2), PhriedRice_6 (EK2), RicoCaldo_6 (EK2), StagePhright_6 (EK2), ThirteenKH_6 (EK2), TrippleS_6 (EK2), Yafa_6 (EK2),

Summary by clusters:

There are 3 clusters represented in this pham: EK, EK2, EK1,

Info for manual annotations of cluster EK:

- Start number 16 was manually annotated 3 times for cluster EK.

Info for manual annotations of cluster EK1:

- Start number 8 was manually annotated 10 times for cluster EK1.
- Start number 9 was manually annotated 3 times for cluster EK1.
- Start number 15 was manually annotated 3 times for cluster EK1.
- Start number 16 was manually annotated 4 times for cluster EK1.

Info for manual annotations of cluster EK2:

- Start number 6 was manually annotated 1 time for cluster EK2.
- Start number 15 was manually annotated 6 times for cluster EK2.
- Start number 18 was manually annotated 13 times for cluster EK2.

Gene Information:

Gene: Akoni_6 Start: 4942, Stop: 4379, Start Num: 15

Candidate Starts for Akoni_6:

(14, 4966), (Start: 15 @4942 has 9 MA's), (17, 4936), (42, 4666), (44, 4603), (46, 4594), (48, 4558), (51, 4495), (52, 4483),

Gene: Alex44_6 Start: 5200, Stop: 4403, Start Num: 9

Candidate Starts for Alex44_6:

(1, 5293), (Start: 9 @5200 has 3 MA's), (11, 5113), (20, 5044), (42, 4759), (43, 4741), (44, 4696), (45, 4690), (47, 4681), (48, 4651), (49, 4609), (51, 4588), (52, 4576), (55, 4504), (62, 4432),

Gene: AloeVera_6 Start: 4942, Stop: 4379, Start Num: 15

Candidate Starts for AloeVera_6:

(14, 4966), (Start: 15 @4942 has 9 MA's), (17, 4936), (42, 4666), (44, 4603), (46, 4594), (48, 4558), (51, 4495), (52, 4483),

Gene: ArMaWen_6 Start: 5197, Stop: 4400, Start Num: 9

Candidate Starts for ArMaWen_6:

(1, 5290), (Start: 9 @5197 has 3 MA's), (11, 5110), (20, 5041), (42, 4756), (43, 4738), (44, 4693), (45, 4687), (47, 4678), (48, 4648), (49, 4606), (51, 4585), (52, 4573), (55, 4501), (62, 4429),

Gene: Ashton_6 Start: 4946, Stop: 4383, Start Num: 15

Candidate Starts for Ashton_6:

(14, 4970), (Start: 15 @4946 has 9 MA's), (17, 4940), (42, 4670), (44, 4607), (46, 4598), (48, 4562), (51, 4499), (52, 4487),

Gene: Astartes_6 Start: 4969, Stop: 4373, Start Num: 18

Candidate Starts for Astartes_6:

(14, 4990), (Start: 18 @4969 has 13 MA's), (34, 4762), (42, 4669), (44, 4606), (46, 4597), (48, 4561), (52, 4486), (54, 4426),

Gene: Atraxi_6 Start: 4934, Stop: 4374, Start Num: 18

Candidate Starts for Atraxi_6:

(14, 4955), (Start: 18 @4934 has 13 MA's), (26, 4805), (34, 4760), (41, 4682), (42, 4676), (43, 4658), (44, 4613), (45, 4607), (48, 4568), (52, 4493),

Gene: Barroma_6 Start: 4942, Stop: 4379, Start Num: 15

Candidate Starts for Barroma_6:

(14, 4966), (Start: 15 @4942 has 9 MA's), (17, 4936), (42, 4666), (44, 4603), (46, 4594), (48, 4558), (51, 4495), (52, 4483),

Gene: Biozilla_6 Start: 5151, Stop: 4411, Start Num: 16

Candidate Starts for Biozilla_6:

(7, 5289), (10, 5232), (Start: 16 @5151 has 7 MA's), (Start: 18 @5142 has 13 MA's), (31, 4995), (36, 4965), (42, 4896), (43, 4878), (46, 4824), (47, 4818), (48, 4788), (49, 4746), (50, 4728), (52, 4713), (53, 4647), (57, 4599), (59, 4587), (61, 4569), (66, 4515), (70, 4503), (72, 4443),

Gene: Birdfeeder_6 Start: 5212, Stop: 4403, Start Num: 8

Candidate Starts for Birdfeeder_6:

(1, 5302), (4, 5233), (Start: 8 @5212 has 10 MA's), (42, 4759), (43, 4741), (44, 4696), (45, 4690), (47, 4681), (48, 4651), (49, 4609), (52, 4576), (55, 4504), (62, 4432),

Gene: BlueRugrat_6 Start: 5209, Stop: 4403, Start Num: 8

Candidate Starts for BlueRugrat_6:

(4, 5230), (Start: 8 @5209 has 10 MA's), (21, 5017), (29, 4903), (30, 4894), (32, 4885), (42, 4765), (43, 4747), (44, 4702), (45, 4696), (47, 4687), (48, 4657), (49, 4615), (51, 4594), (52, 4582), (55, 4510), (63, 4423),

Gene: Corn21_6 Start: 5228, Stop: 4425, Start Num: 8

Candidate Starts for Corn21_6:

(4, 5249), (Start: 8 @5228 has 10 MA's), (21, 5036), (29, 4919), (30, 4910), (32, 4901), (42, 4781), (43, 4763), (44, 4718), (45, 4712), (47, 4703), (48, 4673), (49, 4631), (51, 4610), (52, 4598), (54, 4529), (55, 4526), (58, 4481), (62, 4454),

Gene: CrunchyBoi_7 Start: 5286, Stop: 4387, Start Num: 16

Candidate Starts for CrunchyBoi_7:

(7, 5424), (10, 5367), (Start: 16 @5286 has 7 MA's), (Start: 18 @5277 has 13 MA's), (24, 5160), (25, 5136), (28, 5088), (36, 4986), (40, 4911), (42, 4902), (43, 4884), (44, 4833), (48, 4788), (49, 4746), (50, 4728), (52, 4713), (53, 4647), (57, 4599), (59, 4587), (61, 4569), (65, 4512), (68, 4491), (72, 4425),

Gene: Dashyla_6 Start: 5209, Stop: 4400, Start Num: 8

Candidate Starts for Dashyla_6:

(4, 5230), (Start: 8 @5209 has 10 MA's), (42, 4756), (43, 4738), (44, 4693), (45, 4687), (47, 4678), (48, 4648), (49, 4606), (52, 4573), (55, 4501), (62, 4429),

Gene: DumpQuist_6 Start: 5200, Stop: 4403, Start Num: 9

Candidate Starts for DumpQuist_6:

(1, 5293), (Start: 9 @5200 has 3 MA's), (11, 5113), (20, 5044), (42, 4759), (43, 4741), (44, 4696), (45, 4690), (47, 4681), (48, 4651), (49, 4609), (52, 4576), (55, 4504), (62, 4432),

Gene: EugeneKrabs_6 Start: 4962, Stop: 4408, Start Num: 16

Candidate Starts for EugeneKrabs_6:

(Start: 16 @4962 has 7 MA's), (22, 4887), (42, 4719), (43, 4701), (44, 4656), (47, 4641), (48, 4611), (49, 4569), (52, 4536), (54, 4467), (55, 4464),

Gene: Fede_6 Start: 5153, Stop: 4401, Start Num: 6

Candidate Starts for Fede_6:

(2, 5198), (3, 5177), (Start: 6 @5153 has 1 MA's), (13, 5036), (19, 4991), (27, 4877), (38, 4799), (39, 4775), (42, 4733), (43, 4715), (44, 4670), (47, 4655), (48, 4625), (49, 4583), (51, 4562), (52, 4550), (55, 4478), (60, 4418),

Gene: Fullmetal_6 Start: 4966, Stop: 4370, Start Num: 18

Candidate Starts for Fullmetal_6:

(14, 4987), (Start: 18 @4966 has 13 MA's), (34, 4759), (42, 4666), (44, 4603), (46, 4594), (48, 4558), (52, 4483), (54, 4423),

Gene: HitchHiker_7 Start: 5151, Stop: 4411, Start Num: 16

Candidate Starts for HitchHiker_7:

(7, 5289), (10, 5232), (Start: 16 @5151 has 7 MA's), (Start: 18 @5142 has 13 MA's), (31, 4995), (36, 4965), (42, 4896), (43, 4878), (46, 4824), (47, 4818), (48, 4788), (49, 4746), (50, 4728), (52, 4713), (53, 4647), (57, 4599), (59, 4587), (61, 4569), (66, 4515), (70, 4503), (72, 4443),

Gene: JordanFarm_6 Start: 4942, Stop: 4379, Start Num: 15

Candidate Starts for JordanFarm_6:

(14, 4966), (Start: 15 @4942 has 9 MA's), (17, 4936), (42, 4666), (44, 4603), (46, 4594), (48, 4558), (51, 4495), (52, 4483),

Gene: KingKamren_6 Start: 4962, Stop: 4408, Start Num: 16

Candidate Starts for KingKamren_6:

(Start: 16 @4962 has 7 MA's), (22, 4887), (42, 4719), (43, 4701), (44, 4656), (48, 4611), (49, 4569), (52, 4536), (54, 4467), (55, 4464),

Gene: LesNorah_6 Start: 5284, Stop: 4403, Start Num: 8

Candidate Starts for LesNorah_6:

(4, 5305), (Start: 8 @5284 has 10 MA's), (21, 5092), (29, 4978), (30, 4969), (32, 4960), (42, 4840), (43, 4822), (44, 4777), (45, 4771), (47, 4762), (48, 4732), (49, 4690), (52, 4657), (55, 4585), (62, 4513), (66, 4450), (67, 4444), (69, 4438),

Gene: LilyLou_6 Start: 5212, Stop: 4403, Start Num: 8

Candidate Starts for LilyLou_6:

(4, 5233), (Start: 8 @5212 has 10 MA's), (42, 4759), (43, 4741), (45, 4690), (47, 4681), (48, 4651), (49, 4609), (51, 4588), (52, 4576), (55, 4504), (62, 4432),

Gene: Mazun_6 Start: 4969, Stop: 4373, Start Num: 18

Candidate Starts for Mazun_6:

(14, 4990), (Start: 18 @4969 has 13 MA's), (34, 4762), (42, 4669), (44, 4606), (52, 4486),

Gene: Moleficient_6 Start: 4963, Stop: 4373, Start Num: 18

Candidate Starts for Moleficient_6:

(14, 4984), (Start: 18 @4963 has 13 MA's), (37, 4738), (42, 4669), (44, 4606), (46, 4597), (48, 4561), (52, 4486),

Gene: Morrill_6 Start: 4918, Stop: 4373, Start Num: 18

Candidate Starts for Morrill_6:

(14, 4939), (Start: 18 @4918 has 13 MA's), (35, 4744), (41, 4681), (42, 4675), (43, 4657), (44, 4612), (45, 4606), (48, 4567), (52, 4492),

Gene: Oatly_6 Start: 5151, Stop: 4411, Start Num: 16

Candidate Starts for Oatly_6:

(7, 5289), (10, 5232), (Start: 16 @5151 has 7 MA's), (Start: 18 @5142 has 13 MA's), (31, 4995), (36, 4965), (42, 4896), (43, 4878), (46, 4824), (47, 4818), (48, 4788), (49, 4746), (50, 4728), (52, 4713), (53, 4647), (57, 4599), (59, 4587), (61, 4569), (66, 4515), (70, 4503), (72, 4443),

Gene: Pabst_6 Start: 5012, Stop: 4383, Start Num: 16

Candidate Starts for Pabst_6:

(5, 5153), (Start: 16 @5012 has 7 MA's), (23, 4925), (40, 4799), (42, 4790), (43, 4772), (44, 4721), (47, 4706), (48, 4676), (49, 4634), (50, 4616), (52, 4601), (53, 4535), (57, 4487), (59, 4475), (64, 4436), (66, 4403),

Gene: Pharky_6 Start: 4930, Stop: 4370, Start Num: 18

Candidate Starts for Pharky_6:

(14, 4951), (Start: 18 @4930 has 13 MA's), (26, 4801), (34, 4756), (41, 4678), (42, 4672), (43, 4654), (44, 4609), (45, 4603), (48, 4564), (52, 4489),

Gene: Phedro_6 Start: 4930, Stop: 4370, Start Num: 18

Candidate Starts for Phedro_6:

(14, 4951), (Start: 18 @4930 has 13 MA's), (26, 4801), (34, 4756), (41, 4678), (42, 4672), (43, 4654), (44, 4609), (45, 4603), (48, 4564), (52, 4489),

Gene: Phogo_6 Start: 5212, Stop: 4403, Start Num: 8

Candidate Starts for Phogo_6:

(4, 5233), (Start: 8 @5212 has 10 MA's), (42, 4759), (43, 4741), (44, 4696), (45, 4690), (47, 4681), (48, 4651), (49, 4609), (52, 4576), (55, 4504), (62, 4432),

Gene: Phracted_6 Start: 4930, Stop: 4370, Start Num: 18

Candidate Starts for Phracted_6:

(14, 4951), (Start: 18 @4930 has 13 MA's), (26, 4801), (34, 4756), (41, 4678), (42, 4672), (43, 4654), (44, 4609), (45, 4603), (48, 4564), (52, 4489),

Gene: PhriedRice_6 Start: 4930, Stop: 4370, Start Num: 18

Candidate Starts for PhriedRice_6:

(14, 4951), (Start: 18 @4930 has 13 MA's), (26, 4801), (34, 4756), (41, 4678), (42, 4672), (43, 4654), (44, 4609), (45, 4603), (48, 4564), (52, 4489),

Gene: PineapplePluto_7 Start: 5295, Stop: 4399, Start Num: 16

Candidate Starts for PineapplePluto_7:

(7, 5433), (10, 5376), (Start: 16 @5295 has 7 MA's), (Start: 18 @5286 has 13 MA's), (24, 5169), (25, 5145), (28, 5097), (36, 4995), (40, 4920), (42, 4911), (43, 4893), (44, 4842), (48, 4797), (49, 4755), (50, 4737), (52, 4722), (53, 4656), (57, 4608), (59, 4596), (61, 4578), (65, 4521), (68, 4500), (72, 4434),

Gene: RicoCaldo_6 Start: 4960, Stop: 4370, Start Num: 18

Candidate Starts for RicoCaldo_6:

(14, 4981), (Start: 18 @4960 has 13 MA's), (37, 4735), (42, 4666), (44, 4603), (46, 4594), (48, 4558), (52, 4483), (54, 4423),

Gene: StagePhright_6 Start: 4930, Stop: 4370, Start Num: 18

Candidate Starts for StagePhright_6:

(14, 4951), (Start: 18 @4930 has 13 MA's), (26, 4801), (34, 4756), (41, 4678), (42, 4672), (43, 4654), (44, 4609), (45, 4603), (48, 4564), (52, 4489),

Gene: Stormbreaker_6 Start: 5194, Stop: 4403, Start Num: 8

Candidate Starts for Stormbreaker_6:

(1, 5284), (4, 5215), (Start: 8 @5194 has 10 MA's), (42, 4741), (43, 4723), (44, 4678), (45, 4672), (47, 4663), (48, 4633), (49, 4591), (51, 4570), (52, 4558), (55, 4486), (62, 4423),

Gene: ThirteenKH_6 Start: 4918, Stop: 4373, Start Num: 18

Candidate Starts for ThirteenKH_6:

(14, 4939), (Start: 18 @4918 has 13 MA's), (35, 4744), (41, 4681), (42, 4675), (43, 4657), (44, 4612), (45, 4606), (48, 4567), (52, 4492),

Gene: TinyTimothy_6 Start: 5051, Stop: 4404, Start Num: 15

Candidate Starts for TinyTimothy_6:

(12, 5072), (Start: 15 @5051 has 9 MA's), (22, 4988), (42, 4826), (43, 4808), (48, 4712), (49, 4670), (50, 4652), (52, 4637), (66, 4454), (71, 4436),

Gene: TrippleS_6 Start: 4918, Stop: 4373, Start Num: 18

Candidate Starts for TrippleS_6:

(14, 4939), (Start: 18 @4918 has 13 MA's), (35, 4744), (41, 4681), (42, 4675), (43, 4657), (44, 4612), (45, 4606), (48, 4567), (52, 4492),

Gene: Truong_6 Start: 4942, Stop: 4379, Start Num: 15

Candidate Starts for Truong_6:

(14, 4966), (Start: 15 @4942 has 9 MA's), (17, 4936), (42, 4666), (44, 4603), (46, 4594), (48, 4558), (51, 4495), (52, 4483),

Gene: Unphazed_6 Start: 5212, Stop: 4403, Start Num: 8

Candidate Starts for Unphazed_6:

(1, 5302), (4, 5233), (Start: 8 @5212 has 10 MA's), (33, 4873), (42, 4759), (43, 4741), (44, 4696), (45, 4690), (47, 4681), (48, 4651), (49, 4609), (52, 4576), (54, 4507), (55, 4504), (62, 4432),

Gene: Waterlily_6 Start: 4936, Stop: 4379, Start Num: 17

Candidate Starts for Waterlily_6:

(14, 4966), (Start: 15 @4942 has 9 MA's), (17, 4936), (42, 4666), (44, 4603), (46, 4594), (48, 4558), (51, 4495), (52, 4483),

Gene: Wesak_6 Start: 5051, Stop: 4404, Start Num: 15

Candidate Starts for Wesak_6:

(12, 5072), (Start: 15 @5051 has 9 MA's), (22, 4988), (42, 4826), (43, 4808), (48, 4712), (49, 4670), (50, 4652), (52, 4637), (66, 4454), (71, 4436),

Gene: Xitlalli_6 Start: 5200, Stop: 4403, Start Num: 8

Candidate Starts for Xitlalli_6:

(4, 5221), (Start: 8 @5200 has 10 MA's), (11, 5113), (29, 4903), (30, 4894), (32, 4885), (42, 4765), (43, 4747), (44, 4702), (45, 4696), (47, 4687), (48, 4657), (49, 4615), (51, 4594), (52, 4582), (56, 4498), (63, 4423),

Gene: Yafa_6 Start: 4933, Stop: 4373, Start Num: 18

Candidate Starts for Yafa_6:

(14, 4954), (Start: 18 @4933 has 13 MA's), (26, 4804), (34, 4759), (41, 4681), (42, 4675), (43, 4657), (44, 4612), (45, 4606), (48, 4567), (52, 4492),

Gene: YellowPanda_6 Start: 5051, Stop: 4404, Start Num: 15

Candidate Starts for YellowPanda_6:

(12, 5072), (Start: 15 @5051 has 9 MA's), (22, 4988), (42, 4826), (43, 4808), (48, 4712), (49, 4670), (50, 4652), (52, 4637), (66, 4454), (71, 4436),

Gene: Zhengyi_6 Start: 4962, Stop: 4408, Start Num: 16

Candidate Starts for Zhengyi_6:

(Start: 16 @4962 has 7 MA's), (22, 4887), (42, 4719), (43, 4701), (44, 4656), (47, 4641), (48, 4611), (49, 4569), (52, 4536), (54, 4467), (55, 4464),