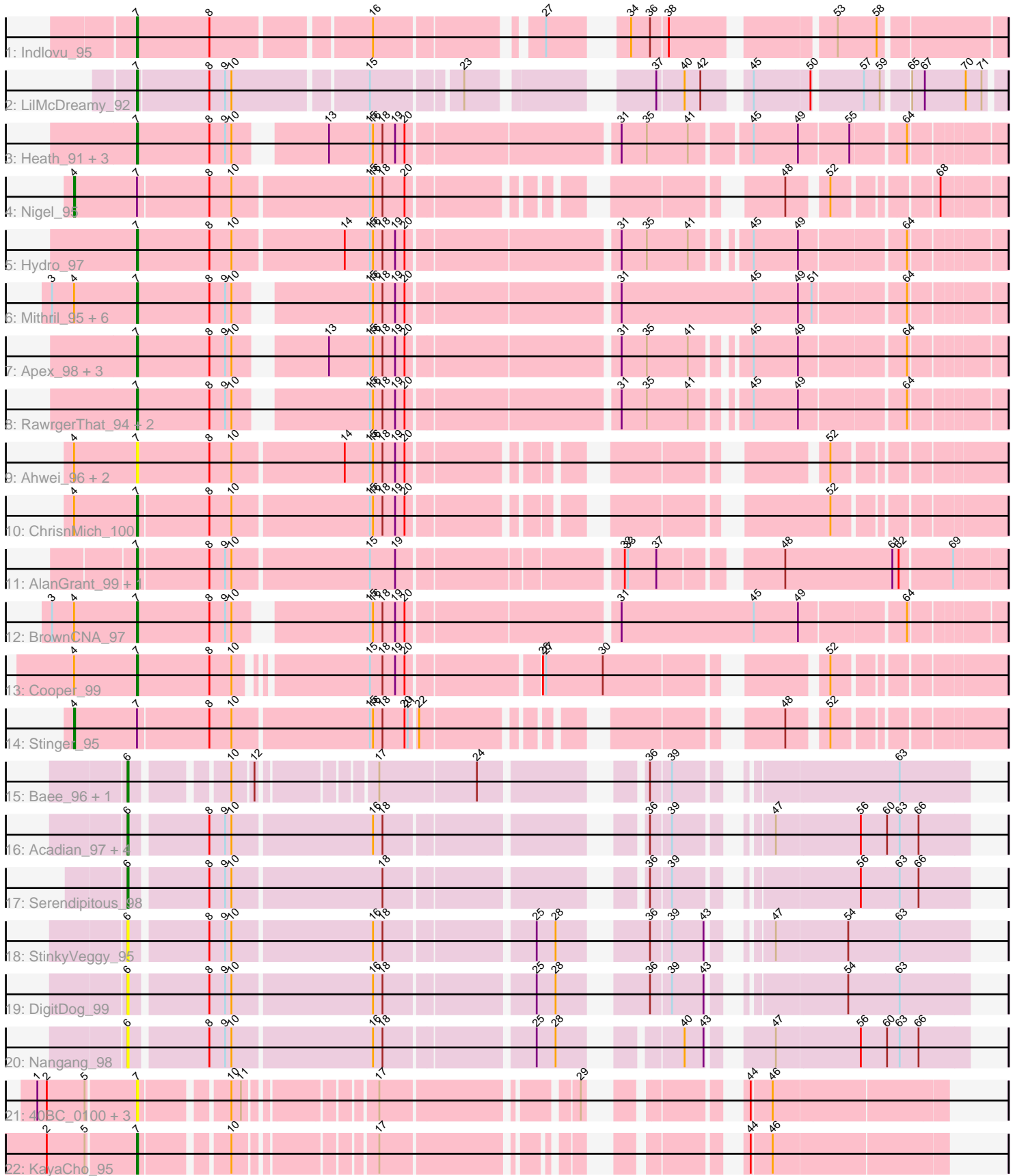


Pham 171559



Note: Tracks are now grouped by subcluster and scaled. Switching in subcluster is indicated by changes in track color. Track scale is now set by default to display the region 30 bp upstream of start 1 to 30 bp downstream of the last possible start. If this default region is judged to be packed too tightly with annotated starts, the track will be further scaled to only show that region of the ORF with annotated starts. This action will be indicated by adding "Zoomed" to the title. For starts, yellow indicates the location of called starts comprised solely of Glimmer/GeneMark auto-annotations, green indicates the location of called starts with at least 1 manual gene annotation.

Pham 171559 Report

This analysis was run 07/10/24 on database version 566.

Pham number 171559 has 47 members, 15 are drafts.

Phages represented in each track:

- Track 1 : Indlovu_95
- Track 2 : LilMcDreamy_92
- Track 3 : Heath_91, Zemanar_95, Frederick_95, BobbyK_97
- Track 4 : Nigel_95
- Track 5 : Hydro_97
- Track 6 : Mithril_95, Lolalove_99, Austelle_97, Mudslide_98, Prince_97, Waleliano_96, Hangman_97
- Track 7 : Apex_98, Magpie_93, JAMaL_98, JaguarMi_90
- Track 8 : RawrgerThat_94, Fortunato_94, VioletZ_99
- Track 9 : Ahwei_96, Nanao_98, Poster_97
- Track 10 : ChrisnMich_100
- Track 11 : AlanGrant_99, Vincenzo_98
- Track 12 : BrownCNA_97
- Track 13 : Cooper_99
- Track 14 : Stinger_95
- Track 15 : Bae_96, Rich_95
- Track 16 : Acadian_97, SirJeffery_95, Donny_97, Suigeneris_98, EastView9101_99
- Track 17 : Serendipitous_98
- Track 18 : StinkyVeggy_95
- Track 19 : DigitDog_99
- Track 20 : Nangang_98
- Track 21 : 40BC_0100, Hosp_095, 39HC_0100, Jolie1_098
- Track 22 : KayaCho_95

Summary of Final Annotations (See graph section above for start numbers):

The start number called the most often in the published annotations is 7, it was called in 24 of the 32 non-draft genes in the pham.

Genes that call this "Most Annotated" start:

- 39HC_0100, 40BC_0100, Ahwei_96, AlanGrant_99, Apex_98, Austelle_97, BobbyK_97, BrownCNA_97, ChrisnMich_100, Cooper_99, Fortunato_94, Frederick_95, Hangman_97, Heath_91, Hosp_095, Hydro_97, Indlovu_95, JAMaL_98, JaguarMi_90, Jolie1_098, KayaCho_95, LilMcDreamy_92, Lolalove_99,

Magpie_93, Mithril_95, Mudslide_98, Nanao_98, Poster_97, Prince_97, RawrgerThat_94, Vincenzo_98, VioletZ_99, Waleliano_96, Zemanar_95,

Genes that have the "Most Annotated" start but do not call it:

- Nigel_95, Stinger_95,

Genes that do not have the "Most Annotated" start:

- Acadian_97, Bae_96, DigitDog_99, Donny_97, EastView9101_99, Nangang_98, Rich_95, Serendipitous_98, SirJeffery_95, StinkyVeggy_95, Suigeneris_98,

Summary by start number:

Start 4:

- Found in 15 of 47 (31.9%) of genes in pham
- Manual Annotations of this start: 2 of 32
- Called 13.3% of time when present
- Phage (with cluster) where this start called: Nigel_95 (B4), Stinger_95 (B4),

Start 6:

- Found in 11 of 47 (23.4%) of genes in pham
- Manual Annotations of this start: 6 of 32
- Called 100.0% of time when present
- Phage (with cluster) where this start called: Acadian_97 (B5), Bae_96 (B5), DigitDog_99 (B5), Donny_97 (B5), EastView9101_99 (B5), Nangang_98 (B5), Rich_95 (B5), Serendipitous_98 (B5), SirJeffery_95 (B5), StinkyVeggy_95 (B5), Suigeneris_98 (B5),

Start 7:

- Found in 36 of 47 (76.6%) of genes in pham
- Manual Annotations of this start: 24 of 32
- Called 94.4% of time when present
- Phage (with cluster) where this start called: 39HC_0100 (B6), 40BC_0100 (B6), Ahwei_96 (B4), AlanGrant_99 (B4), Apex_98 (B4), Austelle_97 (B4), BobbyK_97 (B4), BrownCNA_97 (B4), ChrisnMich_100 (B4), Cooper_99 (B4), Fortunato_94 (B4), Frederick_95 (B4), Hangman_97 (B4), Heath_91 (B4), Hosp_095 (B6), Hydro_97 (B4), Indlovu_95 (B11), JAMaL_98 (B4), JaguarMi_90 (B4), Jolie1_098 (B6), KayaCho_95 (B6), LilMcDreamy_92 (B12), Lolalove_99 (B4), Magpie_93 (B4), Mithril_95 (B4), Mudslide_98 (B4), Nanao_98 (B4), Poster_97 (B4), Prince_97 (B4), RawrgerThat_94 (B4), Vincenzo_98 (B4), VioletZ_99 (B4), Waleliano_96 (B4), Zemanar_95 (B4),

Summary by clusters:

There are 5 clusters represented in this pham: B4, B5, B6, B12, B11,

Info for manual annotations of cluster B11:

- Start number 7 was manually annotated 1 time for cluster B11.

Info for manual annotations of cluster B12:

- Start number 7 was manually annotated 1 time for cluster B12.

Info for manual annotations of cluster B4:

- Start number 4 was manually annotated 2 times for cluster B4.

- Start number 7 was manually annotated 21 times for cluster B4.

Info for manual annotations of cluster B5:

- Start number 6 was manually annotated 6 times for cluster B5.

Info for manual annotations of cluster B6:

- Start number 7 was manually annotated 1 time for cluster B6.

Gene Information:

Gene: 39HC_0100 Start: 71338, Stop: 70730, Start Num: 7

Candidate Starts for 39HC_0100:

(1, 71428), (2, 71419), (5, 71383), (Start: 7 @71338 has 24 MA's), (10, 71266), (11, 71257), (17, 71158), (29, 70999), (44, 70906), (46, 70888),

Gene: 40BC_0100 Start: 71338, Stop: 70730, Start Num: 7

Candidate Starts for 40BC_0100:

(1, 71428), (2, 71419), (5, 71383), (Start: 7 @71338 has 24 MA's), (10, 71266), (11, 71257), (17, 71158), (29, 70999), (44, 70906), (46, 70888),

Gene: Acadian_97 Start: 69755, Stop: 69066, Start Num: 6

Candidate Starts for Acadian_97:

(Start: 6 @69755 has 6 MA's), (8, 69686), (9, 69671), (10, 69665), (16, 69536), (18, 69527), (36, 69326), (39, 69308), (47, 69245), (56, 69167), (60, 69143), (63, 69131), (66, 69113),

Gene: Ahwei_96 Start: 70567, Stop: 69878, Start Num: 7

Candidate Starts for Ahwei_96:

(Start: 4 @70627 has 2 MA's), (Start: 7 @70567 has 24 MA's), (8, 70498), (10, 70477), (14, 70375), (15, 70351), (16, 70348), (18, 70339), (19, 70327), (20, 70318), (52, 70018),

Gene: AlanGrant_99 Start: 72005, Stop: 71247, Start Num: 7

Candidate Starts for AlanGrant_99:

(Start: 7 @72005 has 24 MA's), (8, 71939), (9, 71924), (10, 71918), (15, 71792), (19, 71768), (32, 71576), (33, 71573), (37, 71546), (48, 71450), (61, 71348), (62, 71342), (69, 71294),

Gene: Apex_98 Start: 71007, Stop: 70270, Start Num: 7

Candidate Starts for Apex_98:

(Start: 7 @71007 has 24 MA's), (8, 70938), (9, 70923), (10, 70917), (13, 70848), (15, 70809), (16, 70806), (18, 70797), (19, 70785), (20, 70776), (31, 70590), (35, 70566), (41, 70527), (45, 70485), (49, 70443), (64, 70350),

Gene: Austelle_97 Start: 71561, Stop: 70803, Start Num: 7

Candidate Starts for Austelle_97:

(3, 71642), (Start: 4 @71621 has 2 MA's), (Start: 7 @71561 has 24 MA's), (8, 71492), (9, 71477), (10, 71471), (15, 71363), (16, 71360), (18, 71351), (19, 71339), (20, 71330), (31, 71144), (45, 71018), (49, 70976), (51, 70964), (64, 70883),

Gene: Bae_96 Start: 70161, Stop: 69508, Start Num: 6

Candidate Starts for Bae_96:

(Start: 6 @70161 has 6 MA's), (10, 70086), (12, 70068), (17, 69978), (24, 69888), (36, 69768), (39, 69750), (63, 69573),

Gene: BobbyK_97 Start: 70650, Stop: 69904, Start Num: 7

Candidate Starts for BobbyK_97:

(Start: 7 @70650 has 24 MA's), (8, 70581), (9, 70566), (10, 70560), (13, 70491), (15, 70452), (16, 70449), (18, 70440), (19, 70428), (20, 70419), (31, 70233), (35, 70209), (41, 70170), (45, 70119), (49, 70077), (55, 70032), (64, 69984),

Gene: BrownCNA_97 Start: 70976, Stop: 70218, Start Num: 7

Candidate Starts for BrownCNA_97:

(3, 71057), (Start: 4 @71036 has 2 MA's), (Start: 7 @70976 has 24 MA's), (8, 70907), (9, 70892), (10, 70886), (15, 70778), (16, 70775), (18, 70766), (19, 70754), (20, 70745), (31, 70559), (45, 70433), (49, 70391), (64, 70298),

Gene: ChrisnMich_100 Start: 70192, Stop: 69494, Start Num: 7

Candidate Starts for ChrisnMich_100:

(Start: 4 @70252 has 2 MA's), (Start: 7 @70192 has 24 MA's), (8, 70126), (10, 70105), (15, 69979), (16, 69976), (18, 69967), (19, 69955), (20, 69946), (52, 69634),

Gene: Cooper_99 Start: 70418, Stop: 69705, Start Num: 7

Candidate Starts for Cooper_99:

(Start: 4 @70478 has 2 MA's), (Start: 7 @70418 has 24 MA's), (8, 70349), (10, 70328), (15, 70220), (18, 70208), (19, 70196), (20, 70187), (26, 70073), (27, 70070), (30, 70016), (52, 69845),

Gene: DigitDog_99 Start: 70278, Stop: 69580, Start Num: 6

Candidate Starts for DigitDog_99:

(Start: 6 @70278 has 6 MA's), (8, 70209), (9, 70194), (10, 70188), (16, 70059), (18, 70050), (25, 69921), (28, 69903), (36, 69840), (39, 69822), (43, 69792), (54, 69693), (63, 69645),

Gene: Donny_97 Start: 69582, Stop: 68893, Start Num: 6

Candidate Starts for Donny_97:

(Start: 6 @69582 has 6 MA's), (8, 69513), (9, 69498), (10, 69492), (16, 69363), (18, 69354), (36, 69153), (39, 69135), (47, 69072), (56, 68994), (60, 68970), (63, 68958), (66, 68940),

Gene: EastView9101_99 Start: 69774, Stop: 69085, Start Num: 6

Candidate Starts for EastView9101_99:

(Start: 6 @69774 has 6 MA's), (8, 69705), (9, 69690), (10, 69684), (16, 69555), (18, 69546), (36, 69345), (39, 69327), (47, 69264), (56, 69186), (60, 69162), (63, 69150), (66, 69132),

Gene: Fortunato_94 Start: 70442, Stop: 69705, Start Num: 7

Candidate Starts for Fortunato_94:

(Start: 7 @70442 has 24 MA's), (8, 70373), (9, 70358), (10, 70352), (15, 70244), (16, 70241), (18, 70232), (19, 70220), (20, 70211), (31, 70025), (35, 70001), (41, 69962), (45, 69920), (49, 69878), (64, 69785),

Gene: Frederick_95 Start: 70947, Stop: 70210, Start Num: 7

Candidate Starts for Frederick_95:

(Start: 7 @70947 has 24 MA's), (8, 70878), (9, 70863), (10, 70857), (13, 70788), (15, 70749), (16, 70746), (18, 70737), (19, 70725), (20, 70716), (31, 70530), (35, 70506), (41, 70467), (45, 70425), (49, 70383), (55, 70338), (64, 70290),

Gene: Hangman_97 Start: 71138, Stop: 70380, Start Num: 7

Candidate Starts for Hangman_97:

(3, 71219), (Start: 4 @71198 has 2 MA's), (Start: 7 @71138 has 24 MA's), (8, 71069), (9, 71054), (10, 71048), (15, 70940), (16, 70937), (18, 70928), (19, 70916), (20, 70907), (31, 70721), (45, 70595), (49, 70553), (51, 70541), (64, 70460),

Gene: Heath_91 Start: 69021, Stop: 68275, Start Num: 7

Candidate Starts for Heath_91:

(Start: 7 @69021 has 24 MA's), (8, 68952), (9, 68937), (10, 68931), (13, 68862), (15, 68823), (16, 68820), (18, 68811), (19, 68799), (20, 68790), (31, 68604), (35, 68580), (41, 68541), (45, 68490), (49, 68448), (55, 68403), (64, 68355),

Gene: Hosp_095 Start: 68642, Stop: 68034, Start Num: 7

Candidate Starts for Hosp_095:

(1, 68732), (2, 68723), (5, 68687), (Start: 7 @68642 has 24 MA's), (10, 68570), (11, 68561), (17, 68462), (29, 68303), (44, 68210), (46, 68192),

Gene: Hydro_97 Start: 70922, Stop: 70167, Start Num: 7

Candidate Starts for Hydro_97:

(Start: 7 @70922 has 24 MA's), (8, 70853), (10, 70832), (14, 70730), (15, 70706), (16, 70703), (18, 70694), (19, 70682), (20, 70673), (31, 70487), (35, 70463), (41, 70424), (45, 70382), (49, 70340), (64, 70247),

Gene: Indlovu_95 Start: 70812, Stop: 70111, Start Num: 7

Candidate Starts for Indlovu_95:

(Start: 7 @70812 has 24 MA's), (8, 70743), (16, 70605), (27, 70473), (34, 70422), (36, 70404), (38, 70389), (53, 70257), (58, 70221),

Gene: JAMaL_98 Start: 70604, Stop: 69867, Start Num: 7

Candidate Starts for JAMaL_98:

(Start: 7 @70604 has 24 MA's), (8, 70535), (9, 70520), (10, 70514), (13, 70445), (15, 70406), (16, 70403), (18, 70394), (19, 70382), (20, 70373), (31, 70187), (35, 70163), (41, 70124), (45, 70082), (49, 70040), (64, 69947),

Gene: JaguarMi_90 Start: 70729, Stop: 69992, Start Num: 7

Candidate Starts for JaguarMi_90:

(Start: 7 @70729 has 24 MA's), (8, 70660), (9, 70645), (10, 70639), (13, 70570), (15, 70531), (16, 70528), (18, 70519), (19, 70507), (20, 70498), (31, 70312), (35, 70288), (41, 70249), (45, 70207), (49, 70165), (64, 70072),

Gene: Jolie1_098 Start: 70831, Stop: 70223, Start Num: 7

Candidate Starts for Jolie1_098:

(1, 70921), (2, 70912), (5, 70876), (Start: 7 @70831 has 24 MA's), (10, 70759), (11, 70750), (17, 70651), (29, 70492), (44, 70399), (46, 70381),

Gene: KayaCho_95 Start: 70610, Stop: 70008, Start Num: 7

Candidate Starts for KayaCho_95:

(2, 70691), (5, 70655), (Start: 7 @70610 has 24 MA's), (10, 70538), (17, 70430), (44, 70184), (46, 70166),

Gene: LilMcDreamy_92 Start: 69414, Stop: 68710, Start Num: 7

Candidate Starts for LilMcDreamy_92:

(Start: 7 @69414 has 24 MA's), (8, 69348), (9, 69333), (10, 69327), (15, 69207), (23, 69132), (37, 68994), (40, 68970), (42, 68955), (45, 68922), (50, 68871), (57, 68829), (59, 68814), (65, 68793), (67, 68781), (70, 68742), (71, 68727),

Gene: Lolalove_99 Start: 70873, Stop: 70115, Start Num: 7

Candidate Starts for Lolalove_99:

(3, 70954), (Start: 4 @70933 has 2 MA's), (Start: 7 @70873 has 24 MA's), (8, 70804), (9, 70789), (10, 70783), (15, 70675), (16, 70672), (18, 70663), (19, 70651), (20, 70642), (31, 70456), (45, 70330), (49, 70288), (51, 70276), (64, 70195),

Gene: Magpie_93 Start: 70777, Stop: 70040, Start Num: 7

Candidate Starts for Magpie_93:

(Start: 7 @70777 has 24 MA's), (8, 70708), (9, 70693), (10, 70687), (13, 70618), (15, 70579), (16, 70576), (18, 70567), (19, 70555), (20, 70546), (31, 70360), (35, 70336), (41, 70297), (45, 70255), (49, 70213), (64, 70120),

Gene: Mithril_95 Start: 70699, Stop: 69941, Start Num: 7

Candidate Starts for Mithril_95:

(3, 70780), (Start: 4 @70759 has 2 MA's), (Start: 7 @70699 has 24 MA's), (8, 70630), (9, 70615), (10, 70609), (15, 70501), (16, 70498), (18, 70489), (19, 70477), (20, 70468), (31, 70282), (45, 70156), (49, 70114), (51, 70102), (64, 70021),

Gene: Mudslide_98 Start: 71104, Stop: 70346, Start Num: 7

Candidate Starts for Mudslide_98:

(3, 71185), (Start: 4 @71164 has 2 MA's), (Start: 7 @71104 has 24 MA's), (8, 71035), (9, 71020), (10, 71014), (15, 70906), (16, 70903), (18, 70894), (19, 70882), (20, 70873), (31, 70687), (45, 70561), (49, 70519), (51, 70507), (64, 70426),

Gene: Nanao_98 Start: 70342, Stop: 69653, Start Num: 7

Candidate Starts for Nanao_98:

(Start: 4 @70402 has 2 MA's), (Start: 7 @70342 has 24 MA's), (8, 70273), (10, 70252), (14, 70150), (15, 70126), (16, 70123), (18, 70114), (19, 70102), (20, 70093), (52, 69793),

Gene: Nangang_98 Start: 70177, Stop: 69479, Start Num: 6

Candidate Starts for Nangang_98:

(Start: 6 @70177 has 6 MA's), (8, 70108), (9, 70093), (10, 70087), (16, 69958), (18, 69949), (25, 69820), (28, 69802), (40, 69718), (43, 69700), (47, 69658), (56, 69580), (60, 69556), (63, 69544), (66, 69526),

Gene: Nigel_95 Start: 69728, Stop: 68988, Start Num: 4

Candidate Starts for Nigel_95:

(Start: 4 @69728 has 2 MA's), (Start: 7 @69668 has 24 MA's), (8, 69602), (10, 69581), (15, 69455), (16, 69452), (18, 69443), (20, 69422), (48, 69155), (52, 69125), (68, 69044),

Gene: Poster_97 Start: 70343, Stop: 69654, Start Num: 7

Candidate Starts for Poster_97:

(Start: 4 @70403 has 2 MA's), (Start: 7 @70343 has 24 MA's), (8, 70274), (10, 70253), (14, 70151), (15, 70127), (16, 70124), (18, 70115), (19, 70103), (20, 70094), (52, 69794),

Gene: Prince_97 Start: 70971, Stop: 70213, Start Num: 7

Candidate Starts for Prince_97:

(3, 71052), (Start: 4 @71031 has 2 MA's), (Start: 7 @70971 has 24 MA's), (8, 70902), (9, 70887), (10, 70881), (15, 70773), (16, 70770), (18, 70761), (19, 70749), (20, 70740), (31, 70554), (45, 70428), (49, 70386), (51, 70374), (64, 70293),

Gene: RawrgerThat_94 Start: 70604, Stop: 69867, Start Num: 7

Candidate Starts for RawrgerThat_94:

(Start: 7 @70604 has 24 MA's), (8, 70535), (9, 70520), (10, 70514), (15, 70406), (16, 70403), (18, 70394), (19, 70382), (20, 70373), (31, 70187), (35, 70163), (41, 70124), (45, 70082), (49, 70040), (64, 69947),

Gene: Rich_95 Start: 69710, Stop: 69057, Start Num: 6

Candidate Starts for Rich_95:

(Start: 6 @69710 has 6 MA's), (10, 69635), (12, 69617), (17, 69527), (24, 69437), (36, 69317), (39, 69299), (63, 69122),

Gene: Serendipitous_98 Start: 69758, Stop: 69069, Start Num: 6

Candidate Starts for Serendipitous_98:

(Start: 6 @69758 has 6 MA's), (8, 69689), (9, 69674), (10, 69668), (18, 69530), (36, 69329), (39, 69311), (56, 69170), (63, 69134), (66, 69116),

Gene: SirJeffery_95 Start: 69743, Stop: 69054, Start Num: 6

Candidate Starts for SirJeffery_95:

(Start: 6 @69743 has 6 MA's), (8, 69674), (9, 69659), (10, 69653), (16, 69524), (18, 69515), (36, 69314), (39, 69296), (47, 69233), (56, 69155), (60, 69131), (63, 69119), (66, 69101),

Gene: Stinger_95 Start: 69465, Stop: 68722, Start Num: 4

Candidate Starts for Stinger_95:

(Start: 4 @69465 has 2 MA's), (Start: 7 @69405 has 24 MA's), (8, 69339), (10, 69318), (15, 69192), (16, 69189), (18, 69180), (20, 69159), (21, 69156), (22, 69150), (48, 68892), (52, 68862),

Gene: StinkyVeggy_95 Start: 69551, Stop: 68853, Start Num: 6

Candidate Starts for StinkyVeggy_95:

(Start: 6 @69551 has 6 MA's), (8, 69482), (9, 69467), (10, 69461), (16, 69332), (18, 69323), (25, 69194), (28, 69176), (36, 69113), (39, 69095), (43, 69065), (47, 69032), (54, 68966), (63, 68918),

Gene: Suigeneris_98 Start: 69970, Stop: 69281, Start Num: 6

Candidate Starts for Suigeneris_98:

(Start: 6 @69970 has 6 MA's), (8, 69901), (9, 69886), (10, 69880), (16, 69751), (18, 69742), (36, 69541), (39, 69523), (47, 69460), (56, 69382), (60, 69358), (63, 69346), (66, 69328),

Gene: Vincenzo_98 Start: 72035, Stop: 71277, Start Num: 7

Candidate Starts for Vincenzo_98:

(Start: 7 @72035 has 24 MA's), (8, 71969), (9, 71954), (10, 71948), (15, 71822), (19, 71798), (32, 71606), (33, 71603), (37, 71576), (48, 71480), (61, 71378), (62, 71372), (69, 71324),

Gene: VioletZ_99 Start: 71057, Stop: 70320, Start Num: 7

Candidate Starts for VioletZ_99:

(Start: 7 @71057 has 24 MA's), (8, 70988), (9, 70973), (10, 70967), (15, 70859), (16, 70856), (18, 70847), (19, 70835), (20, 70826), (31, 70640), (35, 70616), (41, 70577), (45, 70535), (49, 70493), (64, 70400),

Gene: Waleliano_96 Start: 70725, Stop: 69967, Start Num: 7

Candidate Starts for Waleliano_96:

(3, 70806), (Start: 4 @70785 has 2 MA's), (Start: 7 @70725 has 24 MA's), (8, 70656), (9, 70641), (10, 70635), (15, 70527), (16, 70524), (18, 70515), (19, 70503), (20, 70494), (31, 70308), (45, 70182), (49, 70140), (51, 70128), (64, 70047),

Gene: Zemanar_95 Start: 70855, Stop: 70109, Start Num: 7

Candidate Starts for Zemanar_95:

(Start: 7 @70855 has 24 MA's), (8, 70786), (9, 70771), (10, 70765), (13, 70696), (15, 70657), (16, 70654), (18, 70645), (19, 70633), (20, 70624), (31, 70438), (35, 70414), (41, 70375), (45, 70324), (49, 70282), (55, 70237), (64, 70189),