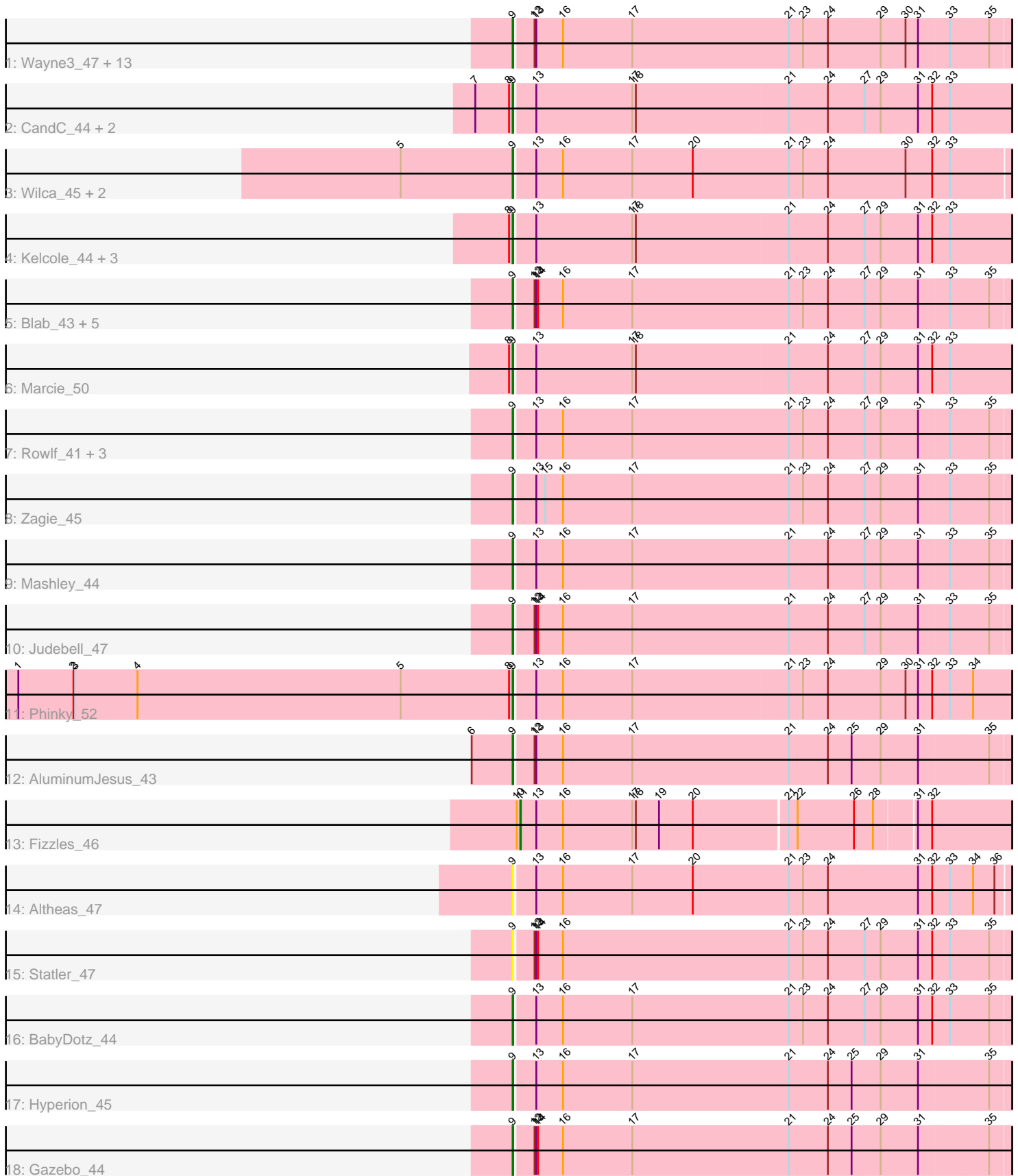


Pham 171566



Note: Tracks are now grouped by subcluster and scaled. Switching in subcluster is indicated by changes in track color. Track scale is now set by default to display the region 30 bp upstream of start 1 to 30 bp downstream of the last possible start. If this default region is judged to be packed too tightly with annotated starts, the track will be further scaled to only show that region of the ORF with annotated starts. This action will be indicated by adding "Zoomed" to the title. For starts, yellow indicates the location of called starts comprised solely of Glimmer/GeneMark auto-annotations, green indicates the location of called starts with at least 1 manual gene annotation.

Pham 171566 Report

This analysis was run 07/10/24 on database version 566.

Pham number 171566 has 46 members, 11 are drafts.

Phages represented in each track:

- Track 1 : Wayne3_47, Casend_46, Jehoshaphat_47, Sillytadpoles_46, Llemily_45, Teehee_46, Zhafia_48, Phabia_45, DonaldDuck_45, Quammi_43, Viceroy_44, Rudy_43, Wheelie_45, Lonelysoil_44
- Track 2 : CandC_44, RobinRose_47, Romm_47
- Track 3 : Wilca_45, Pepe25_44, BirdInFrench_45
- Track 4 : Kelcole_44, OneinaGillian_45, Tempo_45, Fregley_46
- Track 5 : Blab_43, Kyva_47, Grassboy_46, Namago_45, StrawberryJamm_47, SallyK_46
- Track 6 : Marcie_50
- Track 7 : Rowlf_41, Squash_48, Nike_46, Tissue_45
- Track 8 : Zagie_45
- Track 9 : Mashley_44
- Track 10 : Judebell_47
- Track 11 : Phinky_52
- Track 12 : AluminumJesus_43
- Track 13 : Fizzles_46
- Track 14 : Altheas_47
- Track 15 : Statler_47
- Track 16 : BabyDotz_44
- Track 17 : Hyperion_45
- Track 18 : Gazebo_44

Summary of Final Annotations (See graph section above for start numbers):

The start number called the most often in the published annotations is 9, it was called in 34 of the 35 non-draft genes in the pham.

Genes that call this "Most Annotated" start:

- Altheas_47, AluminumJesus_43, BabyDotz_44, BirdInFrench_45, Blab_43, CandC_44, Casend_46, DonaldDuck_45, Fregley_46, Gazebo_44, Grassboy_46, Hyperion_45, Jehoshaphat_47, Judebell_47, Kelcole_44, Kyva_47, Llemily_45, Lonelysoil_44, Marcie_50, Mashley_44, Namago_45, Nike_46, OneinaGillian_45, Pepe25_44, Phabia_45, Phinky_52, Quammi_43, RobinRose_47, Romm_47, Rowlf_41, Rudy_43, SallyK_46, Sillytadpoles_46, Squash_48, Statler_47,

StrawberryJamm_47, Teehee_46, Tempo_45, Tissue_45, Viceroy_44, Wayne3_47, Wheelie_45, Wilca_45, Zagie_45, Zhafia_48,

Genes that have the "Most Annotated" start but do not call it:

-

Genes that do not have the "Most Annotated" start:

- Fizzles_46,

Summary by start number:

Start 9:

- Found in 45 of 46 (97.8%) of genes in pham
- Manual Annotations of this start: 34 of 35
- Called 100.0% of time when present
- Phage (with cluster) where this start called: Altheas_47 (EG), AluminumJesus_43 (EG), BabyDotz_44 (EG), BirdInFrench_45 (EG), Blab_43 (EG), CandC_44 (EG), Casend_46 (EG), DonaldDuck_45 (EG), Fregley_46 (EG), Gazebo_44 (EG), Grassboy_46 (EG), Hyperion_45 (EG), Jehoshaphat_47 (EG), Judebell_47 (EG), Kelcole_44 (EG), Kyva_47 (EG), Llemily_45 (EG), Lonelysoil_44 (EG), Marcie_50 (EG), Mashley_44 (EG), Namago_45 (EG), Nike_46 (EG), OneinaGillian_45 (EG), Pepe25_44 (EG), Phabia_45 (EG), Phinky_52 (EG), Quammi_43 (EG), RobinRose_47 (EG), Romm_47 (EG), Rowlf_41 (EG), Rudy_43 (EG), SallyK_46 (EG), Sillytadpoles_46 (EG), Squash_48 (EG), Statler_47 (EG), StrawberryJamm_47 (EG), Teehee_46 (EG), Tempo_45 (EG), Tissue_45 (EG), Viceroy_44 (EG), Wayne3_47 (EG), Wheelie_45 (EG), Wilca_45 (EG), Zagie_45 (EG), Zhafia_48 (EG),

Start 11:

- Found in 1 of 46 (2.2%) of genes in pham
- Manual Annotations of this start: 1 of 35
- Called 100.0% of time when present
- Phage (with cluster) where this start called: Fizzles_46 (EG),

Summary by clusters:

There is one cluster represented in this pham: EG

Info for manual annotations of cluster EG:

- Start number 9 was manually annotated 34 times for cluster EG.
- Start number 11 was manually annotated 1 time for cluster EG.

Gene Information:

Gene: Altheas_47 Start: 34777, Stop: 35598, Start Num: 9

Candidate Starts for Altheas_47:

(Start: 9 @34777 has 34 MA's), (13, 34810), (16, 34855), (17, 34972), (20, 35074), (21, 35236), (23, 35260), (24, 35299), (31, 35449), (32, 35473), (33, 35500), (34, 35536), (36, 35572),

Gene: AluminumJesus_43 Start: 34353, Stop: 35174, Start Num: 9

Candidate Starts for AluminumJesus_43:

(6, 34284), (Start: 9 @34353 has 34 MA's), (12, 34383), (13, 34386), (16, 34431), (17, 34548), (21, 34812), (24, 34875), (25, 34914), (29, 34962), (31, 35025), (35, 35139),

Gene: BabyDotz_44 Start: 35141, Stop: 35962, Start Num: 9

Candidate Starts for BabyDotz_44:

(Start: 9 @35141 has 34 MA's), (13, 35174), (16, 35219), (17, 35336), (21, 35600), (23, 35624), (24, 35663), (27, 35723), (29, 35750), (31, 35813), (32, 35837), (33, 35864), (35, 35927),

Gene: BirdInFrench_45 Start: 32951, Stop: 33772, Start Num: 9

Candidate Starts for BirdInFrench_45:

(5, 32762), (Start: 9 @32951 has 34 MA's), (13, 32984), (16, 33029), (17, 33146), (20, 33248), (21, 33410), (23, 33434), (24, 33473), (30, 33602), (32, 33647), (33, 33674),

Gene: Blab_43 Start: 34265, Stop: 35086, Start Num: 9

Candidate Starts for Blab_43:

(Start: 9 @34265 has 34 MA's), (12, 34295), (13, 34298), (14, 34301), (16, 34343), (17, 34460), (21, 34724), (23, 34748), (24, 34787), (27, 34847), (29, 34874), (31, 34937), (33, 34988), (35, 35051),

Gene: CandC_44 Start: 33313, Stop: 34134, Start Num: 9

Candidate Starts for CandC_44:

(7, 33250), (8, 33307), (Start: 9 @33313 has 34 MA's), (13, 33346), (17, 33508), (18, 33514), (21, 33766), (24, 33829), (27, 33889), (29, 33916), (31, 33979), (32, 34003), (33, 34030),

Gene: Casend_46 Start: 34902, Stop: 35723, Start Num: 9

Candidate Starts for Casend_46:

(Start: 9 @34902 has 34 MA's), (12, 34932), (13, 34935), (16, 34980), (17, 35097), (21, 35361), (23, 35385), (24, 35424), (29, 35511), (30, 35553), (31, 35574), (33, 35625), (35, 35688),

Gene: DonaldDuck_45 Start: 34251, Stop: 35072, Start Num: 9

Candidate Starts for DonaldDuck_45:

(Start: 9 @34251 has 34 MA's), (12, 34281), (13, 34284), (16, 34329), (17, 34446), (21, 34710), (23, 34734), (24, 34773), (29, 34860), (30, 34902), (31, 34923), (33, 34974), (35, 35037),

Gene: Fizzles_46 Start: 33875, Stop: 34684, Start Num: 11

Candidate Starts for Fizzles_46:

(10, 33869), (Start: 11 @33875 has 1 MA's), (13, 33902), (16, 33947), (17, 34064), (18, 34070), (19, 34109), (20, 34166), (21, 34319), (22, 34334), (26, 34427), (28, 34457), (31, 34523), (32, 34547),

Gene: Fregley_46 Start: 33886, Stop: 34707, Start Num: 9

Candidate Starts for Fregley_46:

(8, 33880), (Start: 9 @33886 has 34 MA's), (13, 33919), (17, 34081), (18, 34087), (21, 34339), (24, 34402), (27, 34462), (29, 34489), (31, 34552), (32, 34576), (33, 34603),

Gene: Gazebo_44 Start: 34812, Stop: 35633, Start Num: 9

Candidate Starts for Gazebo_44:

(Start: 9 @34812 has 34 MA's), (12, 34842), (13, 34845), (14, 34848), (16, 34890), (17, 35007), (21, 35271), (24, 35334), (25, 35373), (29, 35421), (31, 35484), (35, 35598),

Gene: Grassboy_46 Start: 34864, Stop: 35685, Start Num: 9

Candidate Starts for Grassboy_46:

(Start: 9 @34864 has 34 MA's), (12, 34894), (13, 34897), (14, 34900), (16, 34942), (17, 35059), (21, 35323), (23, 35347), (24, 35386), (27, 35446), (29, 35473), (31, 35536), (33, 35587), (35, 35650),

Gene: Hyperion_45 Start: 34771, Stop: 35592, Start Num: 9

Candidate Starts for Hyperion_45:

(Start: 9 @34771 has 34 MA's), (13, 34804), (16, 34849), (17, 34966), (21, 35230), (24, 35293), (25, 35332), (29, 35380), (31, 35443), (35, 35557),

Gene: Jehoshaphat_47 Start: 35170, Stop: 35991, Start Num: 9

Candidate Starts for Jehoshaphat_47:

(Start: 9 @35170 has 34 MA's), (12, 35200), (13, 35203), (16, 35248), (17, 35365), (21, 35629), (23, 35653), (24, 35692), (29, 35779), (30, 35821), (31, 35842), (33, 35893), (35, 35956),

Gene: Judebell_47 Start: 34667, Stop: 35488, Start Num: 9

Candidate Starts for Judebell_47:

(Start: 9 @34667 has 34 MA's), (12, 34697), (13, 34700), (14, 34703), (16, 34745), (17, 34862), (21, 35126), (24, 35189), (27, 35249), (29, 35276), (31, 35339), (33, 35390), (35, 35453),

Gene: Kelcole_44 Start: 33768, Stop: 34589, Start Num: 9

Candidate Starts for Kelcole_44:

(8, 33762), (Start: 9 @33768 has 34 MA's), (13, 33801), (17, 33963), (18, 33969), (21, 34221), (24, 34284), (27, 34344), (29, 34371), (31, 34434), (32, 34458), (33, 34485),

Gene: Kyva_47 Start: 34899, Stop: 35720, Start Num: 9

Candidate Starts for Kyva_47:

(Start: 9 @34899 has 34 MA's), (12, 34929), (13, 34932), (14, 34935), (16, 34977), (17, 35094), (21, 35358), (23, 35382), (24, 35421), (27, 35481), (29, 35508), (31, 35571), (33, 35622), (35, 35685),

Gene: Llemily_45 Start: 33946, Stop: 34767, Start Num: 9

Candidate Starts for Llemily_45:

(Start: 9 @33946 has 34 MA's), (12, 33976), (13, 33979), (16, 34024), (17, 34141), (21, 34405), (23, 34429), (24, 34468), (29, 34555), (30, 34597), (31, 34618), (33, 34669), (35, 34732),

Gene: Lonelysoil_44 Start: 34188, Stop: 35009, Start Num: 9

Candidate Starts for Lonelysoil_44:

(Start: 9 @34188 has 34 MA's), (12, 34218), (13, 34221), (16, 34266), (17, 34383), (21, 34647), (23, 34671), (24, 34710), (29, 34797), (30, 34839), (31, 34860), (33, 34911), (35, 34974),

Gene: Marcie_50 Start: 34414, Stop: 35235, Start Num: 9

Candidate Starts for Marcie_50:

(8, 34408), (Start: 9 @34414 has 34 MA's), (13, 34447), (17, 34609), (18, 34615), (21, 34867), (24, 34930), (27, 34990), (29, 35017), (31, 35080), (32, 35104), (33, 35131),

Gene: Mashley_44 Start: 34586, Stop: 35407, Start Num: 9

Candidate Starts for Mashley_44:

(Start: 9 @34586 has 34 MA's), (13, 34619), (16, 34664), (17, 34781), (21, 35045), (24, 35108), (27, 35168), (29, 35195), (31, 35258), (33, 35309), (35, 35372),

Gene: Namago_45 Start: 34029, Stop: 34850, Start Num: 9

Candidate Starts for Namago_45:

(Start: 9 @34029 has 34 MA's), (12, 34059), (13, 34062), (14, 34065), (16, 34107), (17, 34224), (21, 34488), (23, 34512), (24, 34551), (27, 34611), (29, 34638), (31, 34701), (33, 34752), (35, 34815),

Gene: Nike_46 Start: 34984, Stop: 35805, Start Num: 9

Candidate Starts for Nike_46:

(Start: 9 @34984 has 34 MA's), (13, 35017), (16, 35062), (17, 35179), (21, 35443), (23, 35467), (24, 35506), (27, 35566), (29, 35593), (31, 35656), (33, 35707), (35, 35770),

Gene: OneinaGillian_45 Start: 33419, Stop: 34240, Start Num: 9

Candidate Starts for OneinaGillian_45:

(8, 33413), (Start: 9 @33419 has 34 MA's), (13, 33452), (17, 33614), (18, 33620), (21, 33872), (24, 33935), (27, 33995), (29, 34022), (31, 34085), (32, 34109), (33, 34136),

Gene: Pepe25_44 Start: 32957, Stop: 33778, Start Num: 9

Candidate Starts for Pepe25_44:

(5, 32768), (Start: 9 @32957 has 34 MA's), (13, 32990), (16, 33035), (17, 33152), (20, 33254), (21, 33416), (23, 33440), (24, 33479), (30, 33608), (32, 33653), (33, 33680),

Gene: Phabia_45 Start: 34361, Stop: 35182, Start Num: 9

Candidate Starts for Phabia_45:

(Start: 9 @34361 has 34 MA's), (12, 34391), (13, 34394), (16, 34439), (17, 34556), (21, 34820), (23, 34844), (24, 34883), (29, 34970), (30, 35012), (31, 35033), (33, 35084), (35, 35147),

Gene: Phinky_52 Start: 36192, Stop: 37013, Start Num: 9

Candidate Starts for Phinky_52:

(1, 35358), (2, 35451), (3, 35454), (4, 35559), (5, 36003), (8, 36186), (Start: 9 @36192 has 34 MA's), (13, 36225), (16, 36270), (17, 36387), (21, 36648), (23, 36672), (24, 36711), (29, 36798), (30, 36840), (31, 36861), (32, 36885), (33, 36912), (34, 36948),

Gene: Quammi_43 Start: 34061, Stop: 34882, Start Num: 9

Candidate Starts for Quammi_43:

(Start: 9 @34061 has 34 MA's), (12, 34091), (13, 34094), (16, 34139), (17, 34256), (21, 34520), (23, 34544), (24, 34583), (29, 34670), (30, 34712), (31, 34733), (33, 34784), (35, 34847),

Gene: RobinRose_47 Start: 33922, Stop: 34743, Start Num: 9

Candidate Starts for RobinRose_47:

(7, 33859), (8, 33916), (Start: 9 @33922 has 34 MA's), (13, 33955), (17, 34117), (18, 34123), (21, 34375), (24, 34438), (27, 34498), (29, 34525), (31, 34588), (32, 34612), (33, 34639),

Gene: Romm_47 Start: 33922, Stop: 34743, Start Num: 9

Candidate Starts for Romm_47:

(7, 33859), (8, 33916), (Start: 9 @33922 has 34 MA's), (13, 33955), (17, 34117), (18, 34123), (21, 34375), (24, 34438), (27, 34498), (29, 34525), (31, 34588), (32, 34612), (33, 34639),

Gene: Rowlf_41 Start: 34034, Stop: 34855, Start Num: 9

Candidate Starts for Rowlf_41:

(Start: 9 @34034 has 34 MA's), (13, 34067), (16, 34112), (17, 34229), (21, 34493), (23, 34517), (24, 34556), (27, 34616), (29, 34643), (31, 34706), (33, 34757), (35, 34820),

Gene: Rudy_43 Start: 34094, Stop: 34915, Start Num: 9

Candidate Starts for Rudy_43:

(Start: 9 @34094 has 34 MA's), (12, 34124), (13, 34127), (16, 34172), (17, 34289), (21, 34553), (23, 34577), (24, 34616), (29, 34703), (30, 34745), (31, 34766), (33, 34817), (35, 34880),

Gene: SallyK_46 Start: 35043, Stop: 35864, Start Num: 9

Candidate Starts for SallyK_46:

(Start: 9 @35043 has 34 MA's), (12, 35073), (13, 35076), (14, 35079), (16, 35121), (17, 35238), (21, 35502), (23, 35526), (24, 35565), (27, 35625), (29, 35652), (31, 35715), (33, 35766), (35, 35829),

Gene: Sillytadpoles_46 Start: 33934, Stop: 34755, Start Num: 9

Candidate Starts for Sillytadpoles_46:

(Start: 9 @33934 has 34 MA's), (12, 33964), (13, 33967), (16, 34012), (17, 34129), (21, 34393), (23, 34417), (24, 34456), (29, 34543), (30, 34585), (31, 34606), (33, 34657), (35, 34720),

Gene: Squash_48 Start: 34995, Stop: 35816, Start Num: 9

Candidate Starts for Squash_48:

(Start: 9 @34995 has 34 MA's), (13, 35028), (16, 35073), (17, 35190), (21, 35454), (23, 35478), (24, 35517), (27, 35577), (29, 35604), (31, 35667), (33, 35718), (35, 35781),

Gene: Statler_47 Start: 34849, Stop: 35670, Start Num: 9

Candidate Starts for Statler_47:

(Start: 9 @34849 has 34 MA's), (12, 34879), (13, 34882), (14, 34885), (16, 34927), (21, 35308), (23, 35332), (24, 35371), (27, 35431), (29, 35458), (31, 35521), (32, 35545), (33, 35572), (35, 35635),

Gene: StrawberryJamm_47 Start: 34297, Stop: 35118, Start Num: 9

Candidate Starts for StrawberryJamm_47:

(Start: 9 @34297 has 34 MA's), (12, 34327), (13, 34330), (14, 34333), (16, 34375), (17, 34492), (21, 34756), (23, 34780), (24, 34819), (27, 34879), (29, 34906), (31, 34969), (33, 35020), (35, 35083),

Gene: Teehee_46 Start: 35167, Stop: 35988, Start Num: 9

Candidate Starts for Teehee_46:

(Start: 9 @35167 has 34 MA's), (12, 35197), (13, 35200), (16, 35245), (17, 35362), (21, 35626), (23, 35650), (24, 35689), (29, 35776), (30, 35818), (31, 35839), (33, 35890), (35, 35953),

Gene: Tempo_45 Start: 33798, Stop: 34619, Start Num: 9

Candidate Starts for Tempo_45:

(8, 33792), (Start: 9 @33798 has 34 MA's), (13, 33831), (17, 33993), (18, 33999), (21, 34251), (24, 34314), (27, 34374), (29, 34401), (31, 34464), (32, 34488), (33, 34515),

Gene: Tissue_45 Start: 34672, Stop: 35493, Start Num: 9

Candidate Starts for Tissue_45:

(Start: 9 @34672 has 34 MA's), (13, 34705), (16, 34750), (17, 34867), (21, 35131), (23, 35155), (24, 35194), (27, 35254), (29, 35281), (31, 35344), (33, 35395), (35, 35458),

Gene: Viceroy_44 Start: 34064, Stop: 34885, Start Num: 9

Candidate Starts for Viceroy_44:

(Start: 9 @34064 has 34 MA's), (12, 34094), (13, 34097), (16, 34142), (17, 34259), (21, 34523), (23, 34547), (24, 34586), (29, 34673), (30, 34715), (31, 34736), (33, 34787), (35, 34850),

Gene: Wayne3_47 Start: 34930, Stop: 35751, Start Num: 9

Candidate Starts for Wayne3_47:

(Start: 9 @34930 has 34 MA's), (12, 34960), (13, 34963), (16, 35008), (17, 35125), (21, 35389), (23, 35413), (24, 35452), (29, 35539), (30, 35581), (31, 35602), (33, 35653), (35, 35716),

Gene: Wheelie_45 Start: 34251, Stop: 35072, Start Num: 9

Candidate Starts for Wheelie_45:

(Start: 9 @34251 has 34 MA's), (12, 34281), (13, 34284), (16, 34329), (17, 34446), (21, 34710), (23, 34734), (24, 34773), (29, 34860), (30, 34902), (31, 34923), (33, 34974), (35, 35037),

Gene: Wilca_45 Start: 32951, Stop: 33772, Start Num: 9

Candidate Starts for Wilca_45:

(5, 32762), (Start: 9 @32951 has 34 MA's), (13, 32984), (16, 33029), (17, 33146), (20, 33248), (21, 33410), (23, 33434), (24, 33473), (30, 33602), (32, 33647), (33, 33674),

Gene: Zagie_45 Start: 34499, Stop: 35320, Start Num: 9

Candidate Starts for Zagie_45:

(Start: 9 @34499 has 34 MA's), (13, 34532), (15, 34547), (16, 34577), (17, 34694), (21, 34958), (23, 34982), (24, 35021), (27, 35081), (29, 35108), (31, 35171), (33, 35222), (35, 35285),

Gene: Zhafia_48 Start: 34731, Stop: 35552, Start Num: 9

Candidate Starts for Zhafia_48:

(Start: 9 @34731 has 34 MA's), (12, 34761), (13, 34764), (16, 34809), (17, 34926), (21, 35190), (23, 35214), (24, 35253), (29, 35340), (30, 35382), (31, 35403), (33, 35454), (35, 35517),