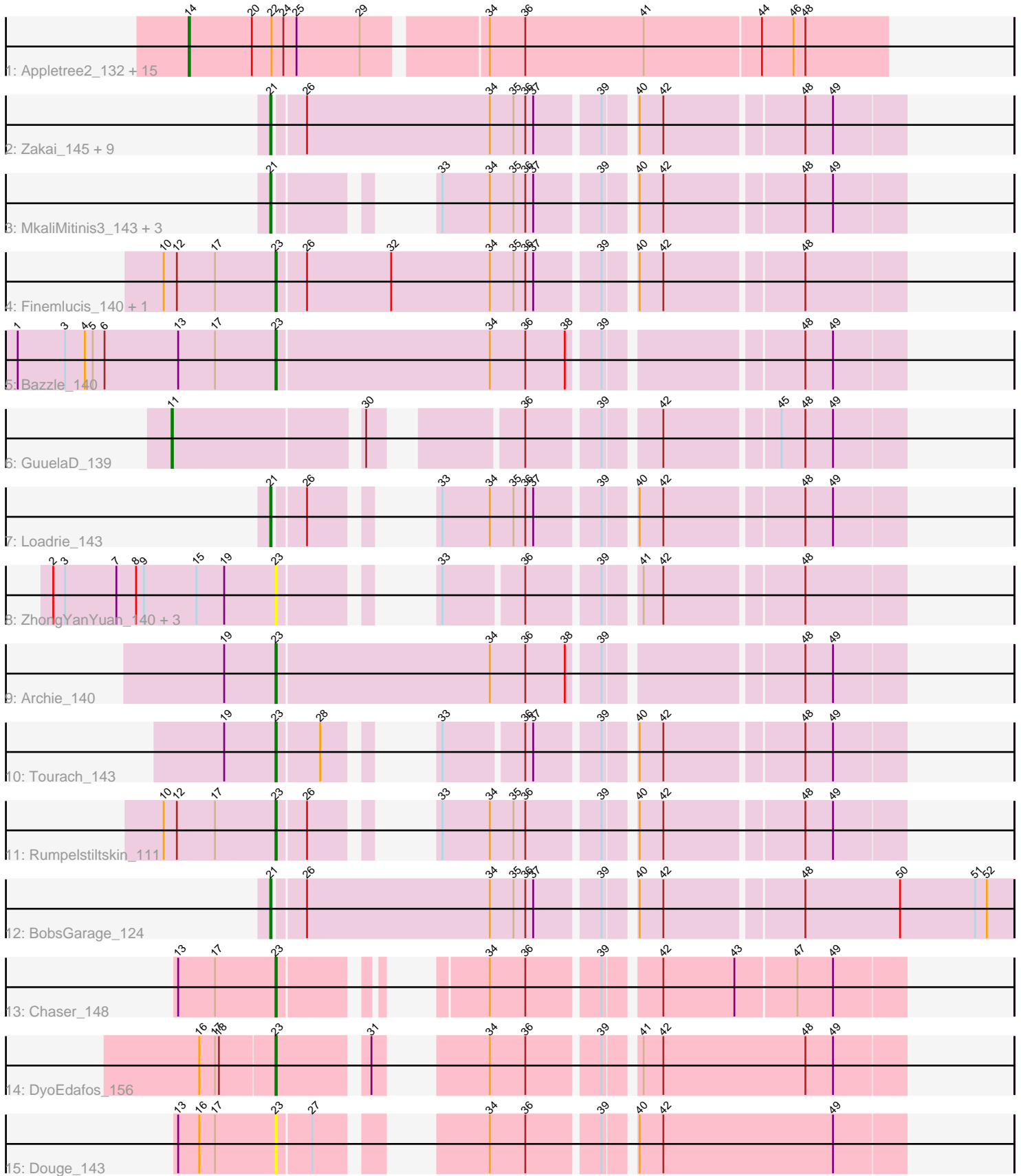


Pham 171567



Note: Tracks are now grouped by subcluster and scaled. Switching in subcluster is indicated by changes in track color. Track scale is now set by default to display the region 30 bp upstream of start 1 to 30 bp downstream of the last possible start. If this default region is judged to be packed too tightly with annotated starts, the track will be further scaled to only show that region of the ORF with annotated starts. This action will be indicated by adding "Zoomed" to the title. For starts, yellow indicates the location of called starts comprised solely of Glimmer/GeneMark auto-annotations, green indicates the location of called starts with at least 1 manual gene annotation.

Pham 171567 Report

This analysis was run 07/10/24 on database version 566.

Pham number 171567 has 46 members, 6 are drafts.

Phages represented in each track:

- Track 1 : Appletree2_132, AvadaKedavra_132, LeBron_131, JoeDirt_133, CicholasNage_122, Calm_138, UPIE_130, MAckerman_129, Wyatt2_131, Halena_131, Zaria_136, OhShagHennessy_124, Acquire49_131, Rose5_132, Tyson_133, Wamburgxpress_135
- Track 2 : Zakai_145, Netyap_142, Lewan_143, Winky_143, Breezona_143, DrSeegs_140, BigCheese_138, Miley16_143, Itos_144, Faith1_140
- Track 3 : MkaliMitinis3_143, Crossroads_144, Vetrix_140, Wigglewiggle_144
- Track 4 : Finemlucis_140, Gabriela_142
- Track 5 : Bazzle_140
- Track 6 : GuuelaD_139
- Track 7 : Loadrie_143
- Track 8 : ZhongYanYuan_140, Baoshan_128, Claus_132, Hafay_110
- Track 9 : Archie_140
- Track 10 : Tourach_143
- Track 11 : Rumpelstiltskin_111
- Track 12 : BobsGarage_124
- Track 13 : Chaser_148
- Track 14 : DyoEdafos_156
- Track 15 : Douge_143

Summary of Final Annotations (See graph section above for start numbers):

The start number called the most often in the published annotations is 21, it was called in 16 of the 40 non-draft genes in the pham.

Genes that call this "Most Annotated" start:

- BigCheese_138, BobsGarage_124, Breezona_143, Crossroads_144, DrSeegs_140, Faith1_140, Itos_144, Lewan_143, Loadrie_143, Miley16_143, MkaliMitinis3_143, Netyap_142, Vetrix_140, Wigglewiggle_144, Winky_143, Zakai_145,

Genes that have the "Most Annotated" start but do not call it:

-

Genes that do not have the "Most Annotated" start:

- Acquire49_131, Appletree2_132, Archie_140, AvadaKedavra_132, Baoshan_128, Bazzle_140, Calm_138, Chaser_148, CicholasNage_122, Claus_132, Douge_143, DyoEdafos_156, Finemlucis_140, Gabriela_142, GuuelaD_139, Hafay_110, Halena_131, JoeDirt_133, LeBron_131, MAckerman_129, OhShagHennessy_124, Rose5_132, Rumpelstiltskin_111, Tourach_143, Tyson_133, UPIE_130, Wamburgxpress_135, Wyatt2_131, Zaria_136, ZhongYanYuan_140,

Summary by start number:

Start 11:

- Found in 1 of 46 (2.2%) of genes in pham
- Manual Annotations of this start: 1 of 40
- Called 100.0% of time when present
- Phage (with cluster) where this start called: GuuelaD_139 (L2),

Start 14:

- Found in 16 of 46 (34.8%) of genes in pham
- Manual Annotations of this start: 15 of 40
- Called 100.0% of time when present
- Phage (with cluster) where this start called: Acquire49_131 (L1), Appletree2_132 (L1), AvadaKedavra_132 (L1), Calm_138 (L1), CicholasNage_122 (L1), Halena_131 (L1), JoeDirt_133 (L1), LeBron_131 (L1), MAckerman_129 (L1), OhShagHennessy_124 (L1), Rose5_132 (L1), Tyson_133 (L1), UPIE_130 (L1), Wamburgxpress_135 (L1), Wyatt2_131 (L1), Zaria_136 (L1),

Start 21:

- Found in 16 of 46 (34.8%) of genes in pham
- Manual Annotations of this start: 16 of 40
- Called 100.0% of time when present
- Phage (with cluster) where this start called: BigCheese_138 (L2), BobsGarage_124 (L2), Breezona_143 (L2), Crossroads_144 (L2), DrSeegs_140 (L2), Faith1_140 (L2), Itos_144 (L2), Lewan_143 (L2), Loadrie_143 (L2), Miley16_143 (L2), MkaliMitinis3_143 (L2), Netyap_142 (L2), Vetrix_140 (L2), Wigglewiggle_144 (L2), Winky_143 (L2), Zakai_145 (L2),

Start 23:

- Found in 13 of 46 (28.3%) of genes in pham
- Manual Annotations of this start: 8 of 40
- Called 100.0% of time when present
- Phage (with cluster) where this start called: Archie_140 (L2), Baoshan_128 (L2), Bazzle_140 (L2), Chaser_148 (L4), Claus_132 (L2), Douge_143 (L4), DyoEdafos_156 (L4), Finemlucis_140 (L2), Gabriela_142 (L2), Hafay_110 (L2), Rumpelstiltskin_111 (L2), Tourach_143 (L2), ZhongYanYuan_140 (L2),

Summary by clusters:

There are 3 clusters represented in this pham: L4, L2, L1,

Info for manual annotations of cluster L1:

- Start number 14 was manually annotated 15 times for cluster L1.

Info for manual annotations of cluster L2:

- Start number 11 was manually annotated 1 time for cluster L2.
- Start number 21 was manually annotated 16 times for cluster L2.
- Start number 23 was manually annotated 6 times for cluster L2.

Info for manual annotations of cluster L4:

- Start number 23 was manually annotated 2 times for cluster L4.

Gene Information:

Gene: Acquire49_131 Start: 72845, Stop: 72333, Start Num: 14

Candidate Starts for Acquire49_131:

(Start: 14 @72845 has 15 MA's), (20, 72797), (22, 72782), (24, 72773), (25, 72764), (29, 72716), (34, 72632), (36, 72605), (41, 72515), (44, 72428), (46, 72404), (48, 72395),

Gene: Appletree2_132 Start: 73023, Stop: 72511, Start Num: 14

Candidate Starts for Appletree2_132:

(Start: 14 @73023 has 15 MA's), (20, 72975), (22, 72960), (24, 72951), (25, 72942), (29, 72894), (34, 72810), (36, 72783), (41, 72693), (44, 72606), (46, 72582), (48, 72573),

Gene: Archie_140 Start: 75399, Stop: 74956, Start Num: 23

Candidate Starts for Archie_140:

(19, 75438), (Start: 23 @75399 has 8 MA's), (34, 75240), (36, 75213), (38, 75183), (39, 75162), (48, 75027), (49, 75006),

Gene: AvadaKedavra_132 Start: 72888, Stop: 72376, Start Num: 14

Candidate Starts for AvadaKedavra_132:

(Start: 14 @72888 has 15 MA's), (20, 72840), (22, 72825), (24, 72816), (25, 72807), (29, 72759), (34, 72675), (36, 72648), (41, 72558), (44, 72471), (46, 72447), (48, 72438),

Gene: Baoshan_128 Start: 70471, Stop: 70094, Start Num: 23

Candidate Starts for Baoshan_128:

(2, 70639), (3, 70630), (7, 70591), (8, 70576), (9, 70570), (15, 70531), (19, 70510), (Start: 23 @70471 has 8 MA's), (33, 70408), (36, 70351), (39, 70300), (41, 70279), (42, 70264), (48, 70165),

Gene: Bazzle_140 Start: 75896, Stop: 75453, Start Num: 23

Candidate Starts for Bazzle_140:

(1, 76088), (3, 76052), (4, 76037), (5, 76031), (6, 76022), (13, 75968), (17, 75941), (Start: 23 @75896 has 8 MA's), (34, 75737), (36, 75710), (38, 75680), (39, 75659), (48, 75524), (49, 75503),

Gene: BigCheese_138 Start: 71942, Stop: 71499, Start Num: 21

Candidate Starts for BigCheese_138:

(Start: 21 @71942 has 16 MA's), (26, 71921), (34, 71783), (35, 71765), (36, 71756), (37, 71750), (39, 71705), (40, 71687), (42, 71669), (48, 71570), (49, 71549),

Gene: BobsGarage_124 Start: 67234, Stop: 66704, Start Num: 21

Candidate Starts for BobsGarage_124:

(Start: 21 @67234 has 16 MA's), (26, 67213), (34, 67075), (35, 67057), (36, 67048), (37, 67042), (39, 66997), (40, 66979), (42, 66961), (48, 66862), (50, 66790), (51, 66733), (52, 66724),

Gene: Breezona_143 Start: 75784, Stop: 75341, Start Num: 21

Candidate Starts for Breezona_143:

(Start: 21 @75784 has 16 MA's), (26, 75763), (34, 75625), (35, 75607), (36, 75598), (37, 75592), (39, 75547), (40, 75529), (42, 75511), (48, 75412), (49, 75391),

Gene: Calm_138 Start: 74106, Stop: 73594, Start Num: 14

Candidate Starts for Calm_138:

(Start: 14 @74106 has 15 MA's), (20, 74058), (22, 74043), (24, 74034), (25, 74025), (29, 73977), (34, 73893), (36, 73866), (41, 73776), (44, 73689), (46, 73665), (48, 73656),

Gene: Chaser_148 Start: 75823, Stop: 75434, Start Num: 23

Candidate Starts for Chaser_148:

(13, 75895), (17, 75868), (Start: 23 @75823 has 8 MA's), (34, 75724), (36, 75697), (39, 75646), (42, 75610), (43, 75556), (47, 75511), (49, 75484),

Gene: CicholasNage_122 Start: 70202, Stop: 69690, Start Num: 14

Candidate Starts for CicholasNage_122:

(Start: 14 @70202 has 15 MA's), (20, 70154), (22, 70139), (24, 70130), (25, 70121), (29, 70073), (34, 69989), (36, 69962), (41, 69872), (44, 69785), (46, 69761), (48, 69752),

Gene: Claus_132 Start: 71384, Stop: 71007, Start Num: 23

Candidate Starts for Claus_132:

(2, 71552), (3, 71543), (7, 71504), (8, 71489), (9, 71483), (15, 71444), (19, 71423), (Start: 23 @71384 has 8 MA's), (33, 71321), (36, 71264), (39, 71213), (41, 71192), (42, 71177), (48, 71078),

Gene: Crossroads_144 Start: 75286, Stop: 74903, Start Num: 21

Candidate Starts for Crossroads_144:

(Start: 21 @75286 has 16 MA's), (33, 75223), (34, 75187), (35, 75169), (36, 75160), (37, 75154), (39, 75109), (40, 75091), (42, 75073), (48, 74974), (49, 74953),

Gene: Douge_143 Start: 73698, Stop: 73297, Start Num: 23

Candidate Starts for Douge_143:

(13, 73770), (16, 73755), (17, 73743), (Start: 23 @73698 has 8 MA's), (27, 73674), (34, 73590), (36, 73563), (39, 73512), (40, 73494), (42, 73476), (49, 73347),

Gene: DrSeegs_140 Start: 75784, Stop: 75341, Start Num: 21

Candidate Starts for DrSeegs_140:

(Start: 21 @75784 has 16 MA's), (26, 75763), (34, 75625), (35, 75607), (36, 75598), (37, 75592), (39, 75547), (40, 75529), (42, 75511), (48, 75412), (49, 75391),

Gene: DyoEdafos_156 Start: 76685, Stop: 76281, Start Num: 23

Candidate Starts for DyoEdafos_156:

(16, 76739), (17, 76727), (18, 76724), (Start: 23 @76685 has 8 MA's), (31, 76625), (34, 76574), (36, 76547), (39, 76496), (41, 76475), (42, 76460), (48, 76352), (49, 76331),

Gene: Faith1_140 Start: 75092, Stop: 74649, Start Num: 21

Candidate Starts for Faith1_140:

(Start: 21 @75092 has 16 MA's), (26, 75071), (34, 74933), (35, 74915), (36, 74906), (37, 74900), (39, 74855), (40, 74837), (42, 74819), (48, 74720), (49, 74699),

Gene: Finemlucis_140 Start: 76184, Stop: 75741, Start Num: 23

Candidate Starts for Finemlucis_140:

(10, 76265), (12, 76256), (17, 76229), (Start: 23 @76184 has 8 MA's), (26, 76163), (32, 76100), (34, 76025), (35, 76007), (36, 75998), (37, 75992), (39, 75947), (40, 75929), (42, 75911), (48, 75812),

Gene: Gabriela_142 Start: 74527, Stop: 74084, Start Num: 23

Candidate Starts for Gabriela_142:

(10, 74608), (12, 74599), (17, 74572), (Start: 23 @74527 has 8 MA's), (26, 74506), (32, 74443), (34, 74368), (35, 74350), (36, 74341), (37, 74335), (39, 74290), (40, 74272), (42, 74254), (48, 74155),

Gene: GuuelaD_139 Start: 75467, Stop: 74988, Start Num: 11

Candidate Starts for GuuelaD_139:

(Start: 11 @75467 has 1 MA's), (30, 75335), (36, 75245), (39, 75194), (42, 75158), (45, 75077), (48, 75059), (49, 75038),

Gene: Hafay_110 Start: 67215, Stop: 66838, Start Num: 23

Candidate Starts for Hafay_110:

(2, 67383), (3, 67374), (7, 67335), (8, 67320), (9, 67314), (15, 67275), (19, 67254), (Start: 23 @67215 has 8 MA's), (33, 67152), (36, 67095), (39, 67044), (41, 67023), (42, 67008), (48, 66909),

Gene: Halena_131 Start: 73043, Stop: 72531, Start Num: 14

Candidate Starts for Halena_131:

(Start: 14 @73043 has 15 MA's), (20, 72995), (22, 72980), (24, 72971), (25, 72962), (29, 72914), (34, 72830), (36, 72803), (41, 72713), (44, 72626), (46, 72602), (48, 72593),

Gene: Itos_144 Start: 74069, Stop: 73626, Start Num: 21

Candidate Starts for Itos_144:

(Start: 21 @74069 has 16 MA's), (26, 74048), (34, 73910), (35, 73892), (36, 73883), (37, 73877), (39, 73832), (40, 73814), (42, 73796), (48, 73697), (49, 73676),

Gene: JoeDirt_133 Start: 74086, Stop: 73574, Start Num: 14

Candidate Starts for JoeDirt_133:

(Start: 14 @74086 has 15 MA's), (20, 74038), (22, 74023), (24, 74014), (25, 74005), (29, 73957), (34, 73873), (36, 73846), (41, 73756), (44, 73669), (46, 73645), (48, 73636),

Gene: LeBron_131 Start: 72608, Stop: 72096, Start Num: 14

Candidate Starts for LeBron_131:

(Start: 14 @72608 has 15 MA's), (20, 72560), (22, 72545), (24, 72536), (25, 72527), (29, 72479), (34, 72395), (36, 72368), (41, 72278), (44, 72191), (46, 72167), (48, 72158),

Gene: Lewan_143 Start: 75891, Stop: 75448, Start Num: 21

Candidate Starts for Lewan_143:

(Start: 21 @75891 has 16 MA's), (26, 75870), (34, 75732), (35, 75714), (36, 75705), (37, 75699), (39, 75654), (40, 75636), (42, 75618), (48, 75519), (49, 75498),

Gene: Loadrie_143 Start: 75624, Stop: 75241, Start Num: 21

Candidate Starts for Loadrie_143:

(Start: 21 @75624 has 16 MA's), (26, 75603), (33, 75561), (34, 75525), (35, 75507), (36, 75498), (37, 75492), (39, 75447), (40, 75429), (42, 75411), (48, 75312), (49, 75291),

Gene: MAckerman_129 Start: 73046, Stop: 72534, Start Num: 14

Candidate Starts for MAckerman_129:

(Start: 14 @73046 has 15 MA's), (20, 72998), (22, 72983), (24, 72974), (25, 72965), (29, 72917), (34, 72833), (36, 72806), (41, 72716), (44, 72629), (46, 72605), (48, 72596),

Gene: Miley16_143 Start: 75785, Stop: 75342, Start Num: 21

Candidate Starts for Miley16_143:

(Start: 21 @75785 has 16 MA's), (26, 75764), (34, 75626), (35, 75608), (36, 75599), (37, 75593), (39, 75548), (40, 75530), (42, 75512), (48, 75413), (49, 75392),

Gene: MkaliMitinis3_143 Start: 75001, Stop: 74618, Start Num: 21

Candidate Starts for MkaliMitinis3_143:

(Start: 21 @75001 has 16 MA's), (33, 74938), (34, 74902), (35, 74884), (36, 74875), (37, 74869), (39, 74824), (40, 74806), (42, 74788), (48, 74689), (49, 74668),

Gene: Netyap_142 Start: 75498, Stop: 75055, Start Num: 21

Candidate Starts for Netyap_142:

(Start: 21 @75498 has 16 MA's), (26, 75477), (34, 75339), (35, 75321), (36, 75312), (37, 75306), (39, 75261), (40, 75243), (42, 75225), (48, 75126), (49, 75105),

Gene: OhShagHennessy_124 Start: 71807, Stop: 71295, Start Num: 14

Candidate Starts for OhShagHennessy_124:

(Start: 14 @71807 has 15 MA's), (20, 71759), (22, 71744), (24, 71735), (25, 71726), (29, 71678), (34, 71594), (36, 71567), (41, 71477), (44, 71390), (46, 71366), (48, 71357),

Gene: Rose5_132 Start: 73116, Stop: 72604, Start Num: 14

Candidate Starts for Rose5_132:

(Start: 14 @73116 has 15 MA's), (20, 73068), (22, 73053), (24, 73044), (25, 73035), (29, 72987), (34, 72903), (36, 72876), (41, 72786), (44, 72699), (46, 72675), (48, 72666),

Gene: Rumpelstiltskin_111 Start: 68448, Stop: 68065, Start Num: 23

Candidate Starts for Rumpelstiltskin_111:

(10, 68529), (12, 68520), (17, 68493), (Start: 23 @68448 has 8 MA's), (26, 68427), (33, 68385), (34, 68349), (35, 68331), (36, 68322), (39, 68271), (40, 68253), (42, 68235), (48, 68136), (49, 68115),

Gene: Tourach_143 Start: 77029, Stop: 76652, Start Num: 23

Candidate Starts for Tourach_143:

(19, 77068), (Start: 23 @77029 has 8 MA's), (28, 76999), (33, 76966), (36, 76909), (37, 76903), (39, 76858), (40, 76840), (42, 76822), (48, 76723), (49, 76702),

Gene: Tyson_133 Start: 73596, Stop: 73084, Start Num: 14

Candidate Starts for Tyson_133:

(Start: 14 @73596 has 15 MA's), (20, 73548), (22, 73533), (24, 73524), (25, 73515), (29, 73467), (34, 73383), (36, 73356), (41, 73266), (44, 73179), (46, 73155), (48, 73146),

Gene: UPIE_130 Start: 72915, Stop: 72403, Start Num: 14

Candidate Starts for UPIE_130:

(Start: 14 @72915 has 15 MA's), (20, 72867), (22, 72852), (24, 72843), (25, 72834), (29, 72786), (34, 72702), (36, 72675), (41, 72585), (44, 72498), (46, 72474), (48, 72465),

Gene: Vetrix_140 Start: 75660, Stop: 75277, Start Num: 21

Candidate Starts for Vetrix_140:

(Start: 21 @75660 has 16 MA's), (33, 75597), (34, 75561), (35, 75543), (36, 75534), (37, 75528), (39, 75483), (40, 75465), (42, 75447), (48, 75348), (49, 75327),

Gene: Wamburgexpress_135 Start: 73573, Stop: 73061, Start Num: 14

Candidate Starts for Wamburgexpress_135:

(Start: 14 @73573 has 15 MA's), (20, 73525), (22, 73510), (24, 73501), (25, 73492), (29, 73444), (34, 73360), (36, 73333), (41, 73243), (44, 73156), (46, 73132), (48, 73123),

Gene: Wigglewiggle_144 Start: 75586, Stop: 75203, Start Num: 21

Candidate Starts for Wigglewiggle_144:

(Start: 21 @75586 has 16 MA's), (33, 75523), (34, 75487), (35, 75469), (36, 75460), (37, 75454), (39, 75409), (40, 75391), (42, 75373), (48, 75274), (49, 75253),

Gene: Winky_143 Start: 75785, Stop: 75342, Start Num: 21

Candidate Starts for Winky_143:

(Start: 21 @75785 has 16 MA's), (26, 75764), (34, 75626), (35, 75608), (36, 75599), (37, 75593), (39, 75548), (40, 75530), (42, 75512), (48, 75413), (49, 75392),

Gene: Wyatt2_131 Start: 73222, Stop: 72710, Start Num: 14

Candidate Starts for Wyatt2_131:

(Start: 14 @73222 has 15 MA's), (20, 73174), (22, 73159), (24, 73150), (25, 73141), (29, 73093), (34, 73009), (36, 72982), (41, 72892), (44, 72805), (46, 72781), (48, 72772),

Gene: Zakai_145 Start: 75495, Stop: 75052, Start Num: 21

Candidate Starts for Zakai_145:

(Start: 21 @75495 has 16 MA's), (26, 75474), (34, 75336), (35, 75318), (36, 75309), (37, 75303), (39, 75258), (40, 75240), (42, 75222), (48, 75123), (49, 75102),

Gene: Zaria_136 Start: 73571, Stop: 73059, Start Num: 14

Candidate Starts for Zaria_136:

(Start: 14 @73571 has 15 MA's), (20, 73523), (22, 73508), (24, 73499), (25, 73490), (29, 73442), (34, 73358), (36, 73331), (41, 73241), (44, 73154), (46, 73130), (48, 73121),

Gene: ZhongYanYuan_140 Start: 75351, Stop: 74974, Start Num: 23

Candidate Starts for ZhongYanYuan_140:

(2, 75519), (3, 75510), (7, 75471), (8, 75456), (9, 75450), (15, 75411), (19, 75390), (Start: 23 @75351 has 8 MA's), (33, 75288), (36, 75231), (39, 75180), (41, 75159), (42, 75144), (48, 75045),